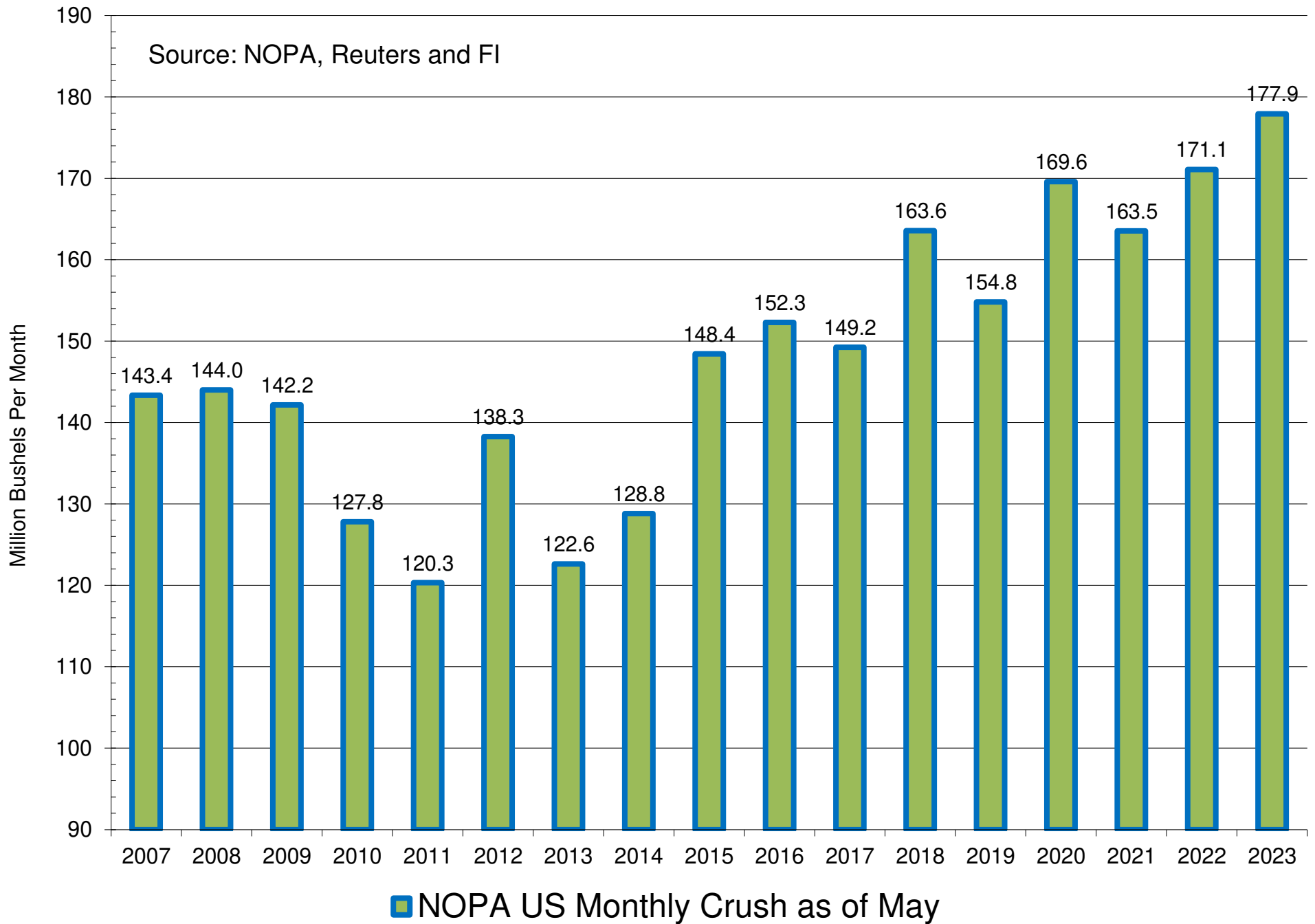


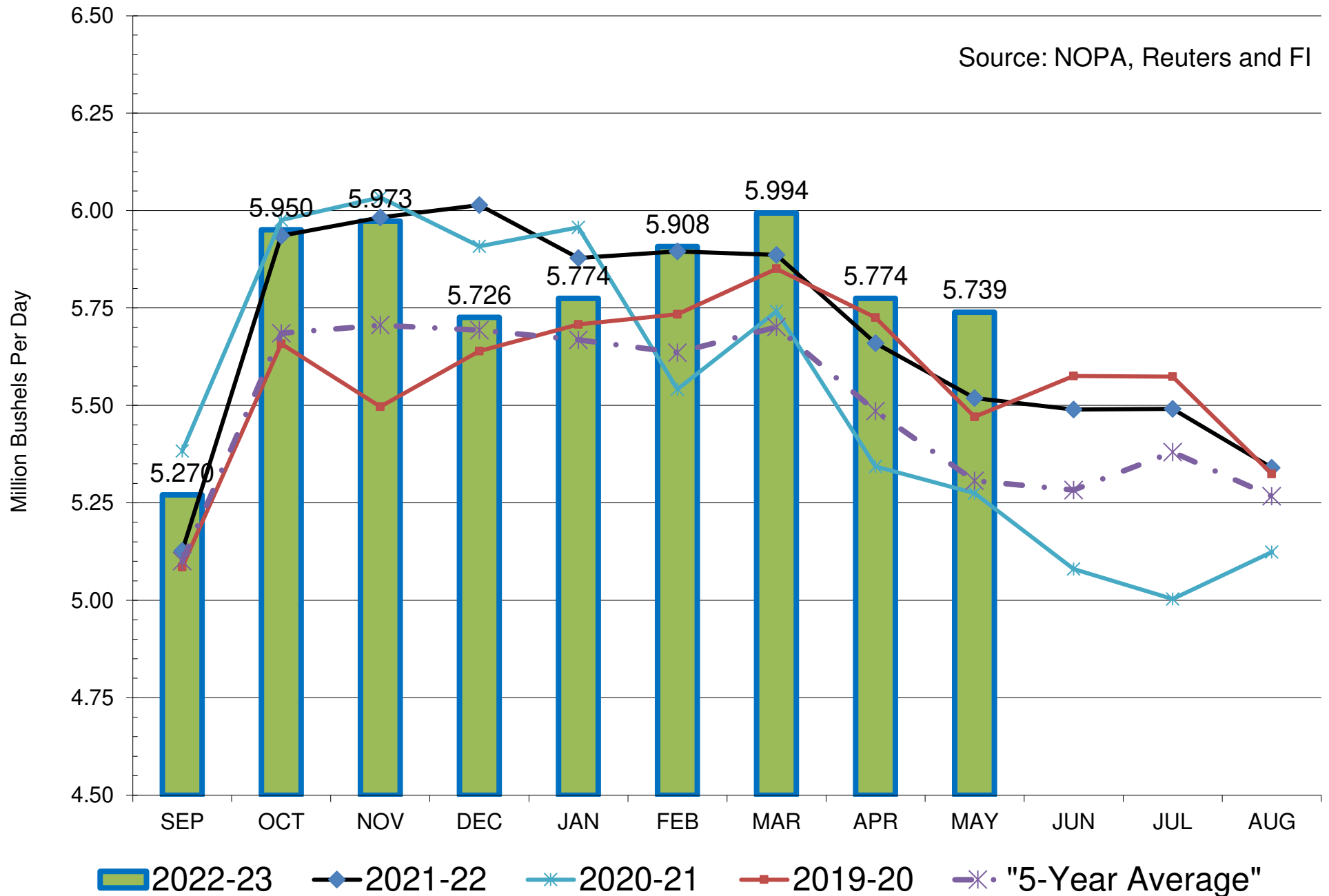
NOPA US Monthly Crush

Source: NOPA, Reuters and FI



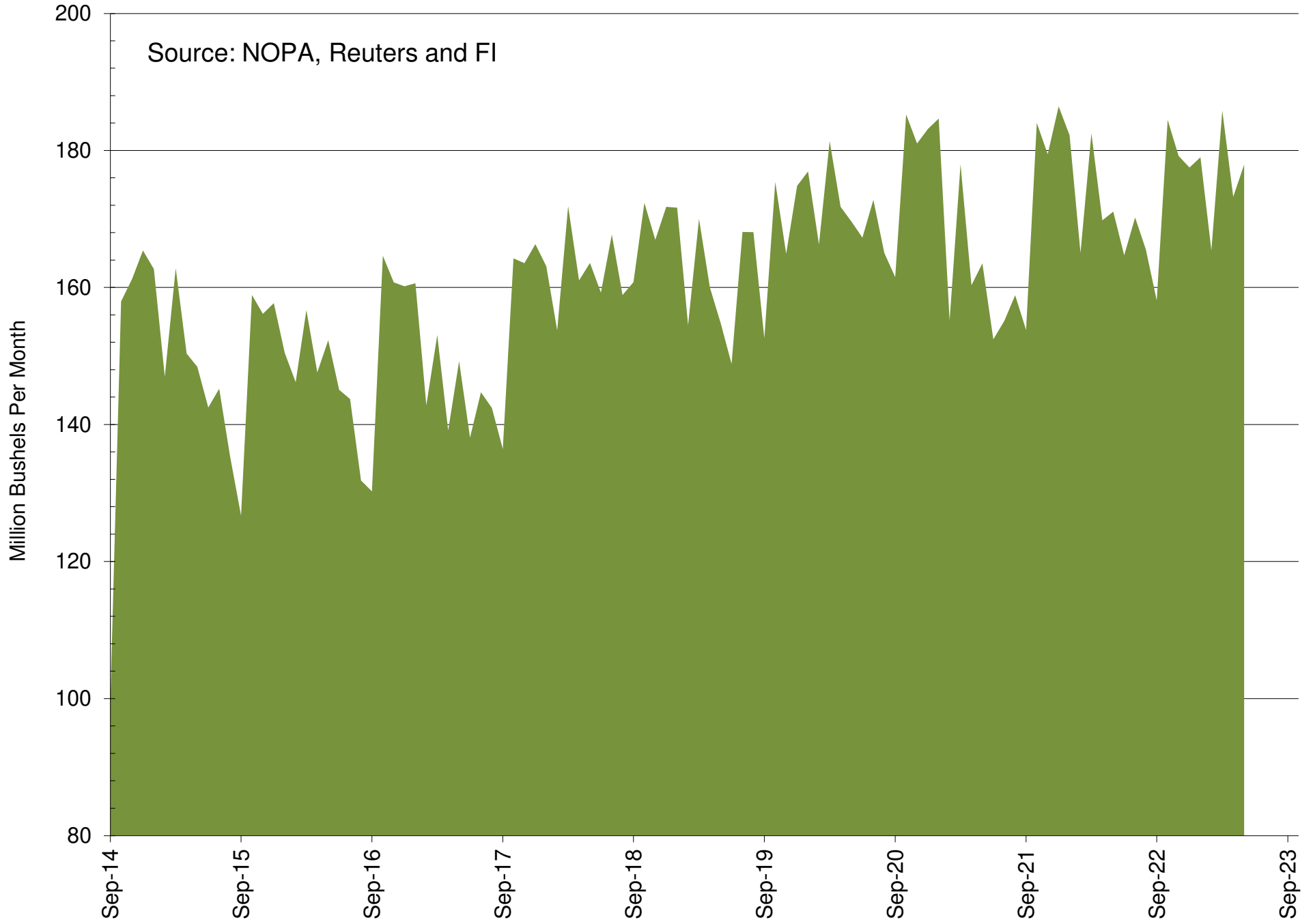
NOPA US Monthly Crush, Daily Adjusted

Source: NOPA, Reuters and FI



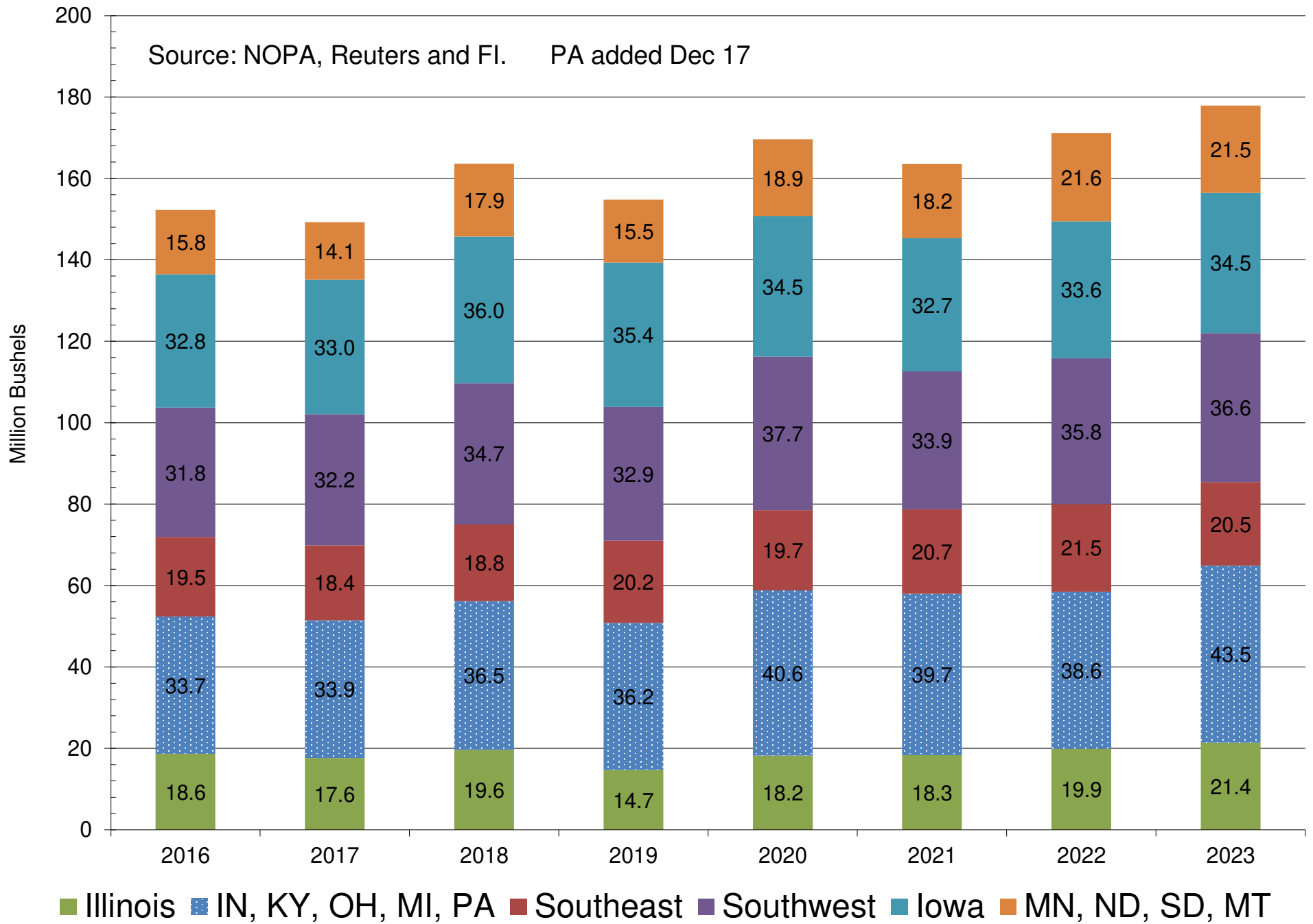
NOPA US Monthly Crush

Source: NOPA, Reuters and FI



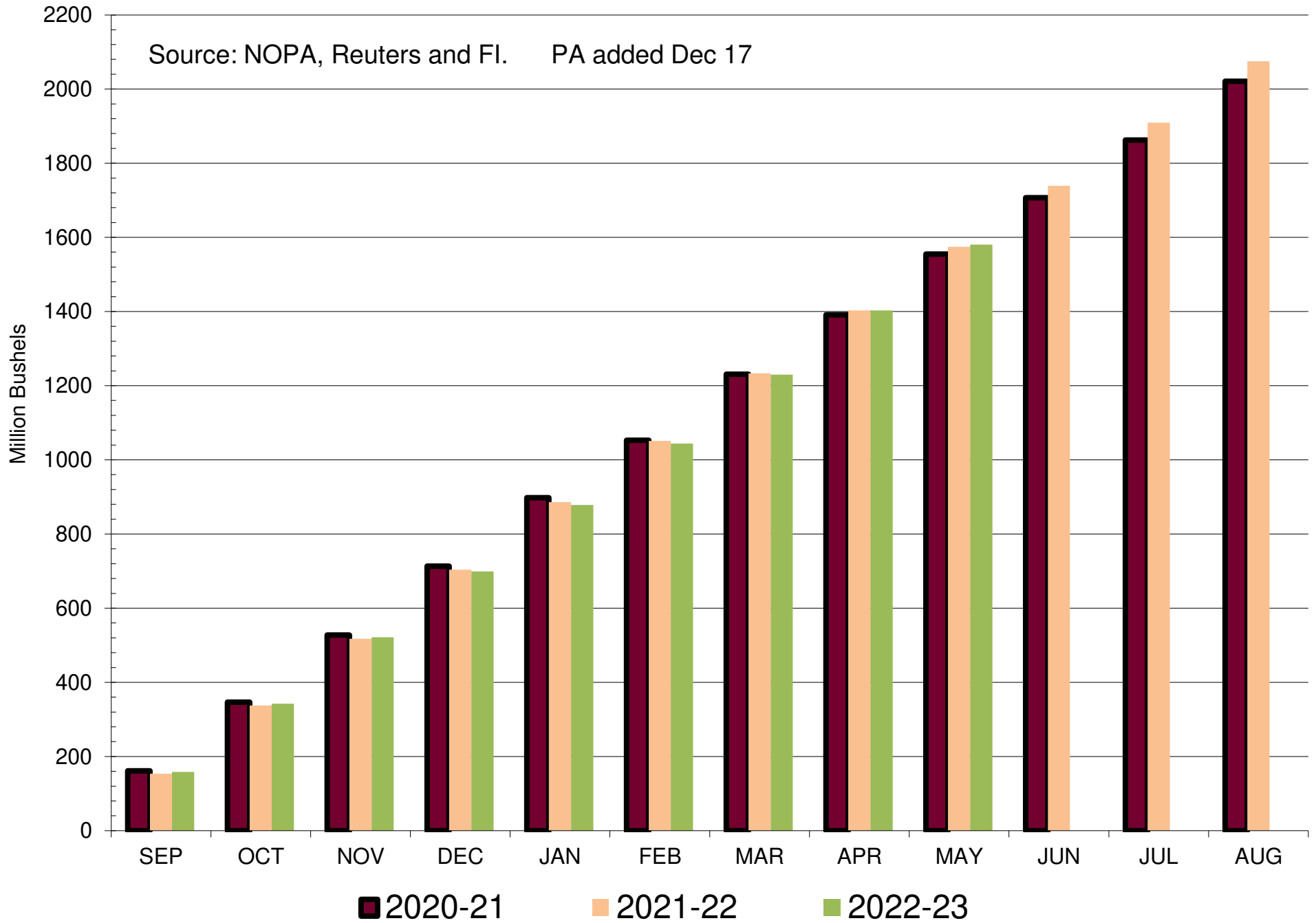
NOPA US Crush By Region - Latest Month

Source: NOPA, Reuters and FI. PA added Dec 17

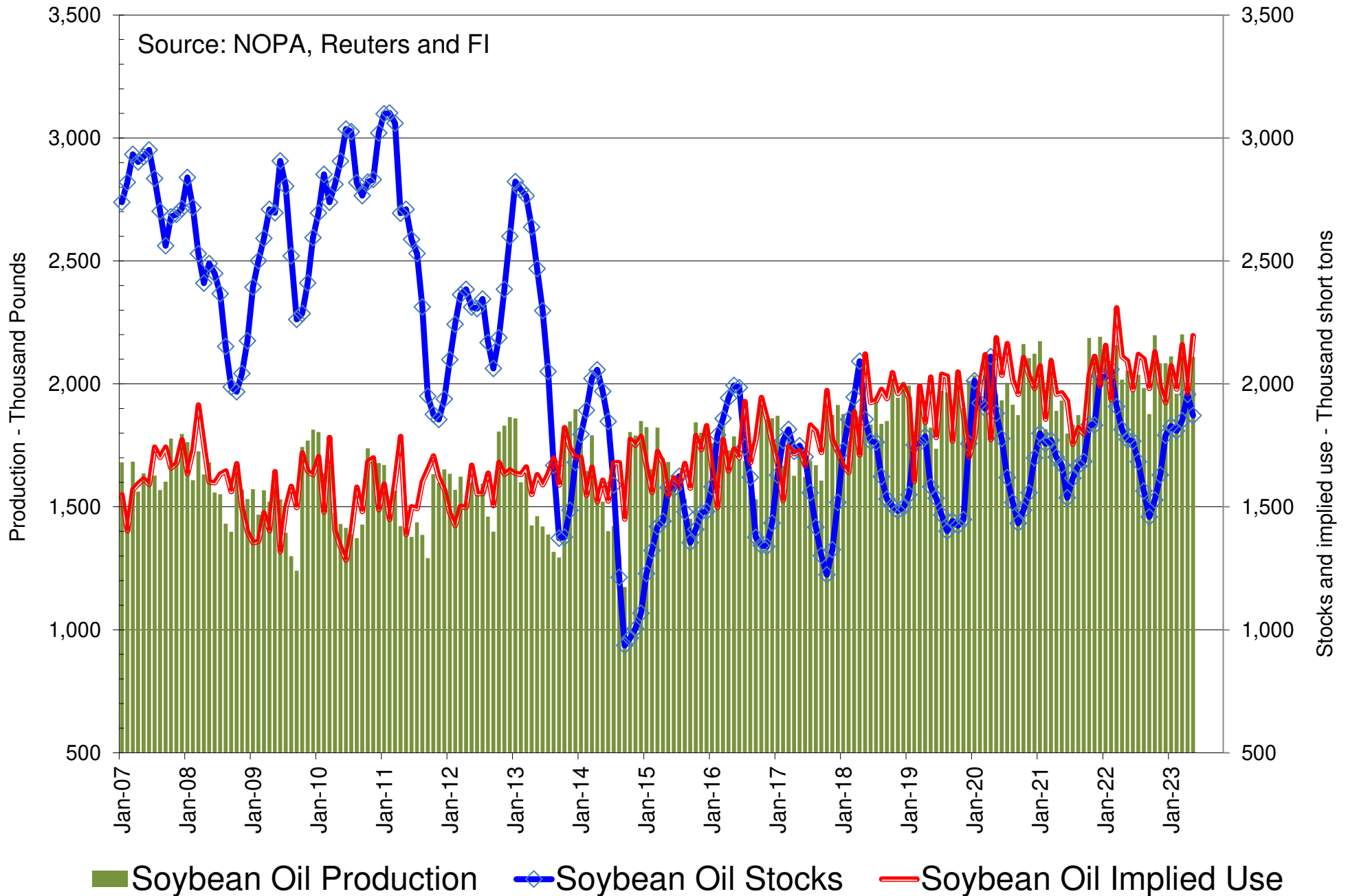


Cumulative NOPA US Crush

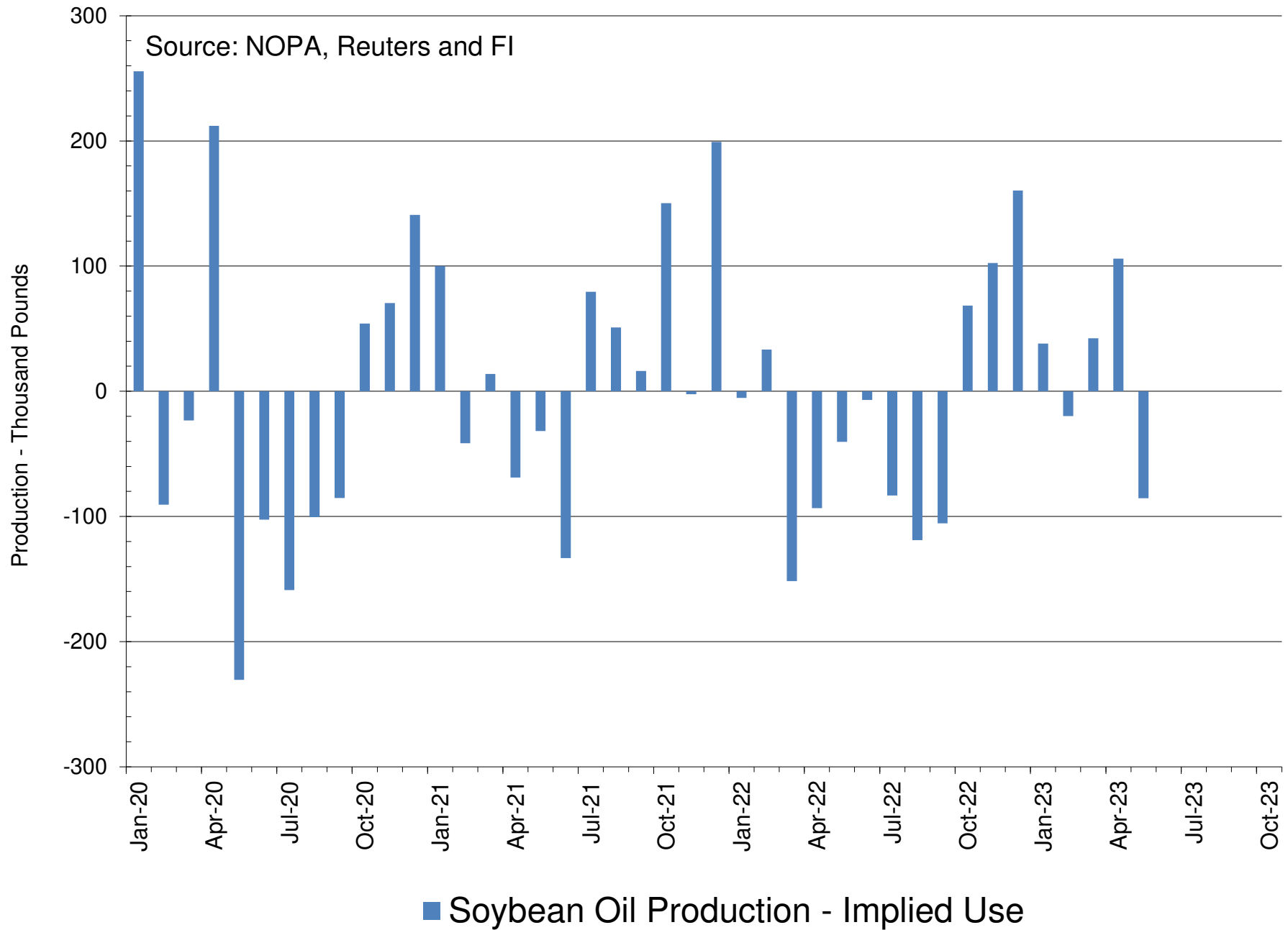
Source: NOPA, Reuters and FI. PA added Dec 17



NOPA US Monthly Soybean Oil Production, Stocks and Implied Use

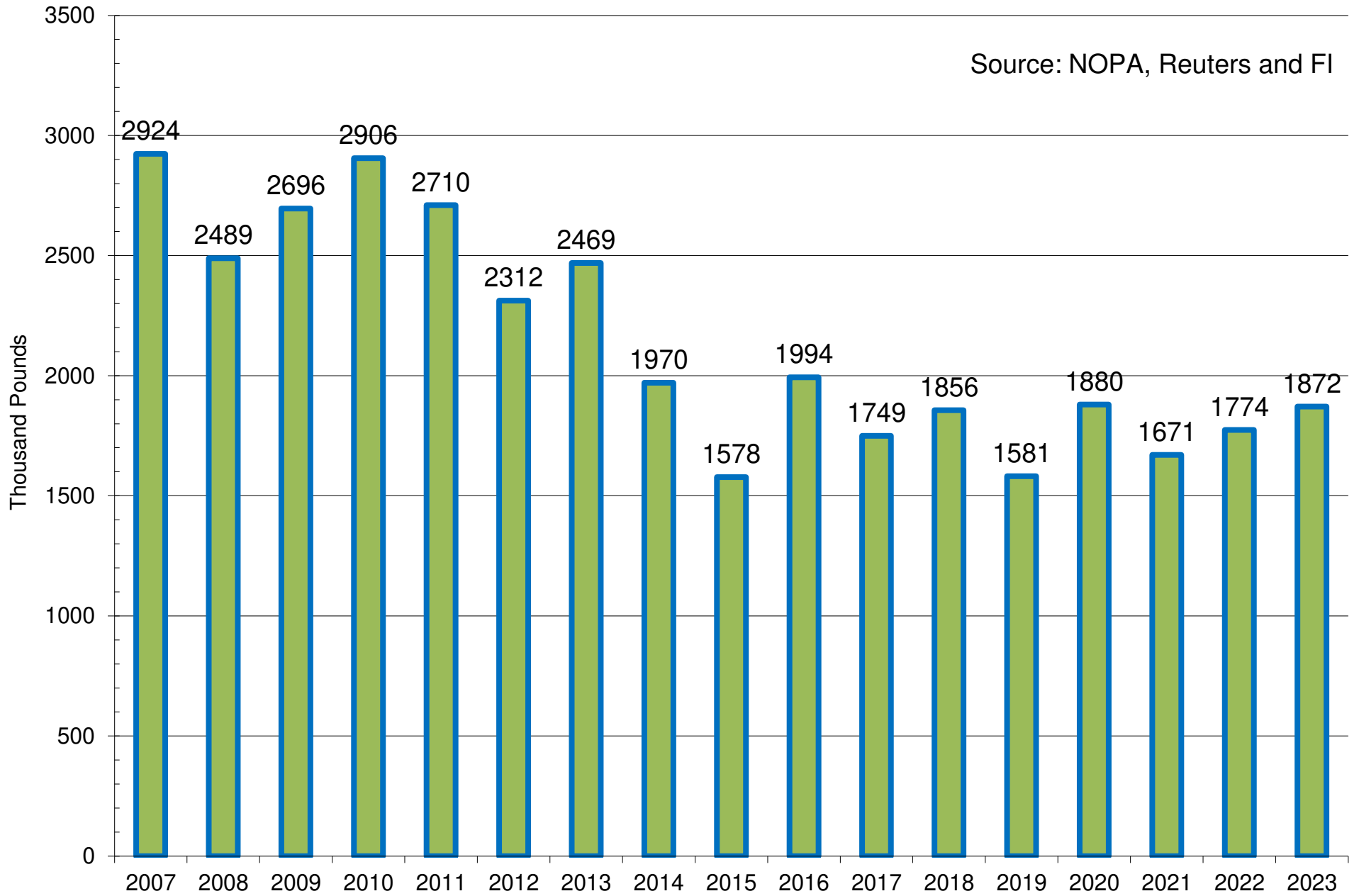


NOPA US Monthly Soybean Oil Production Minus Implied Use



NOPA US Monthly Soybean Oil Stocks

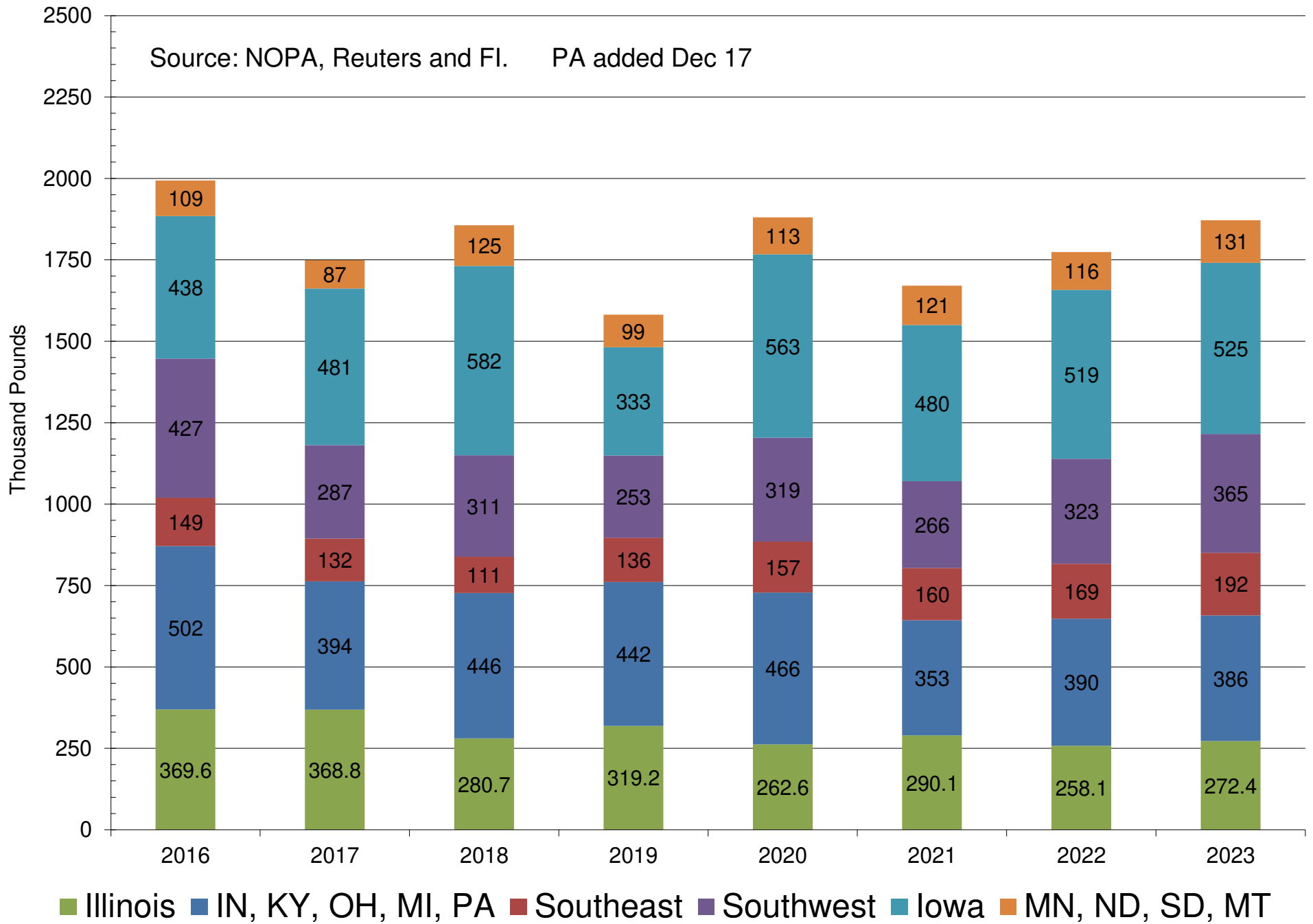
Source: NOPA, Reuters and FI



■ NOPA US Monthly Soybean Oil Stocks as of June 1

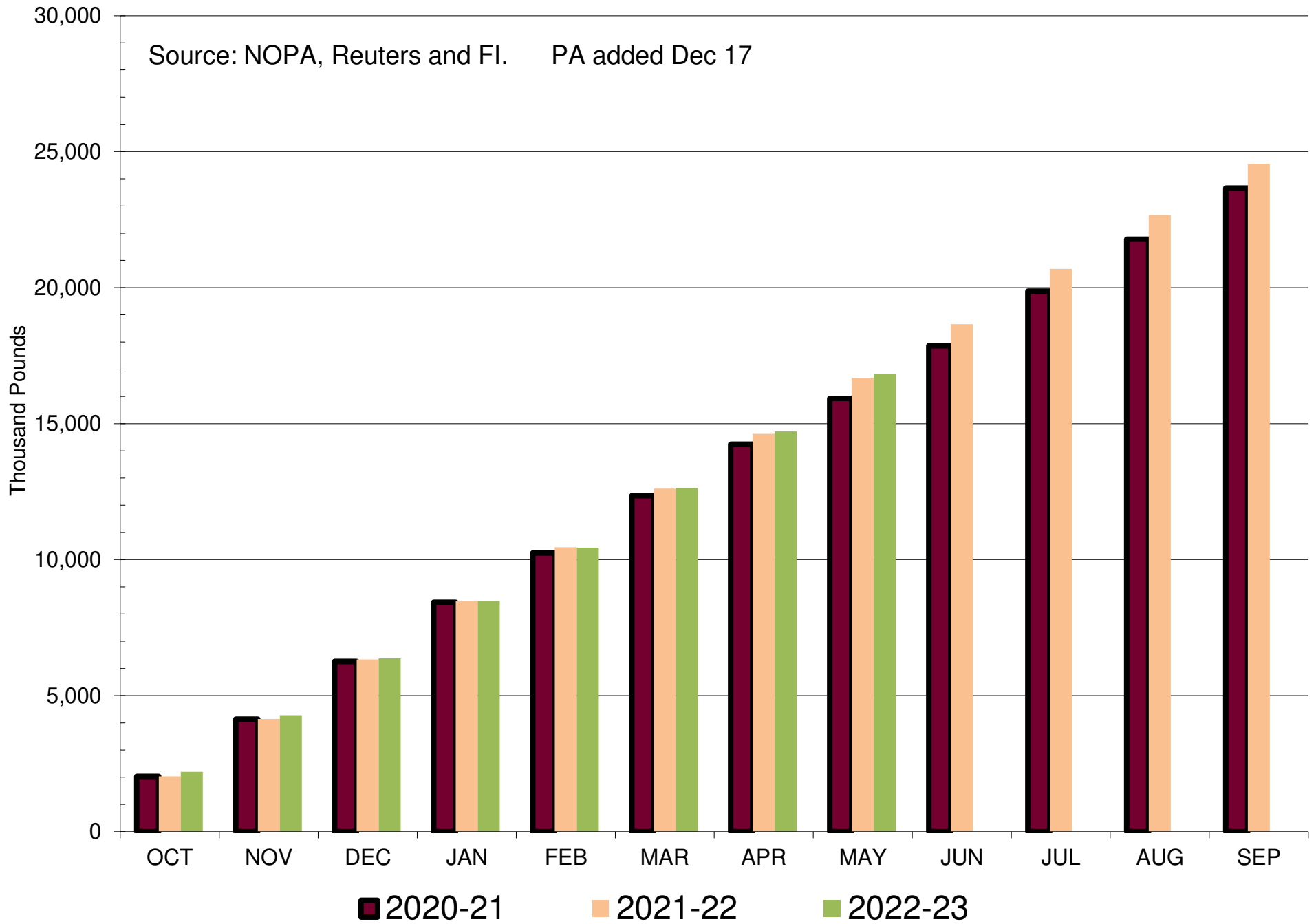
NOPA US Soybean Oil Stocks By Region - Latest Month

Source: NOPA, Reuters and FI. PA added Dec 17

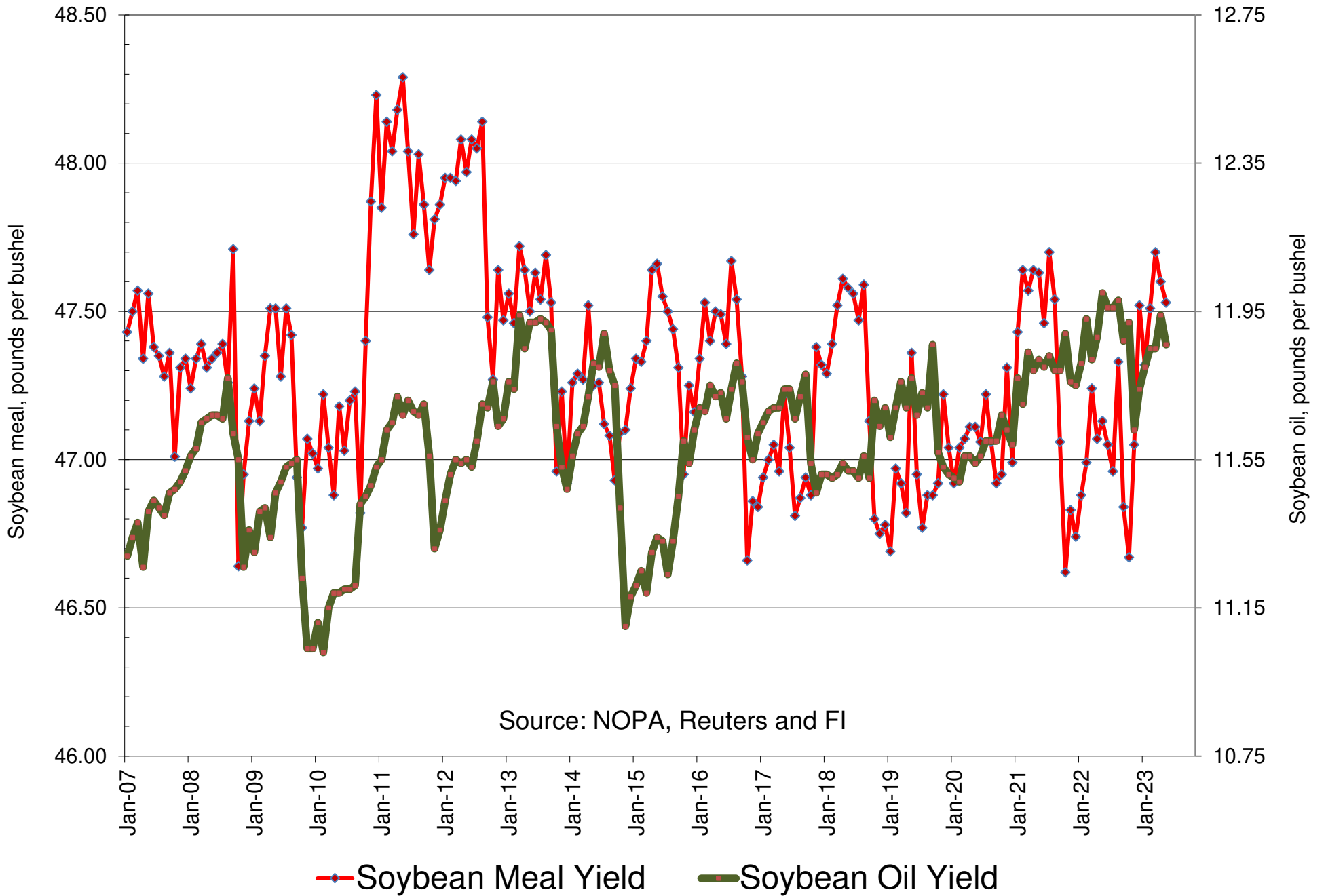


Cumulative NOPA US Soybean Oil Production

Source: NOPA, Reuters and FI. PA added Dec 17

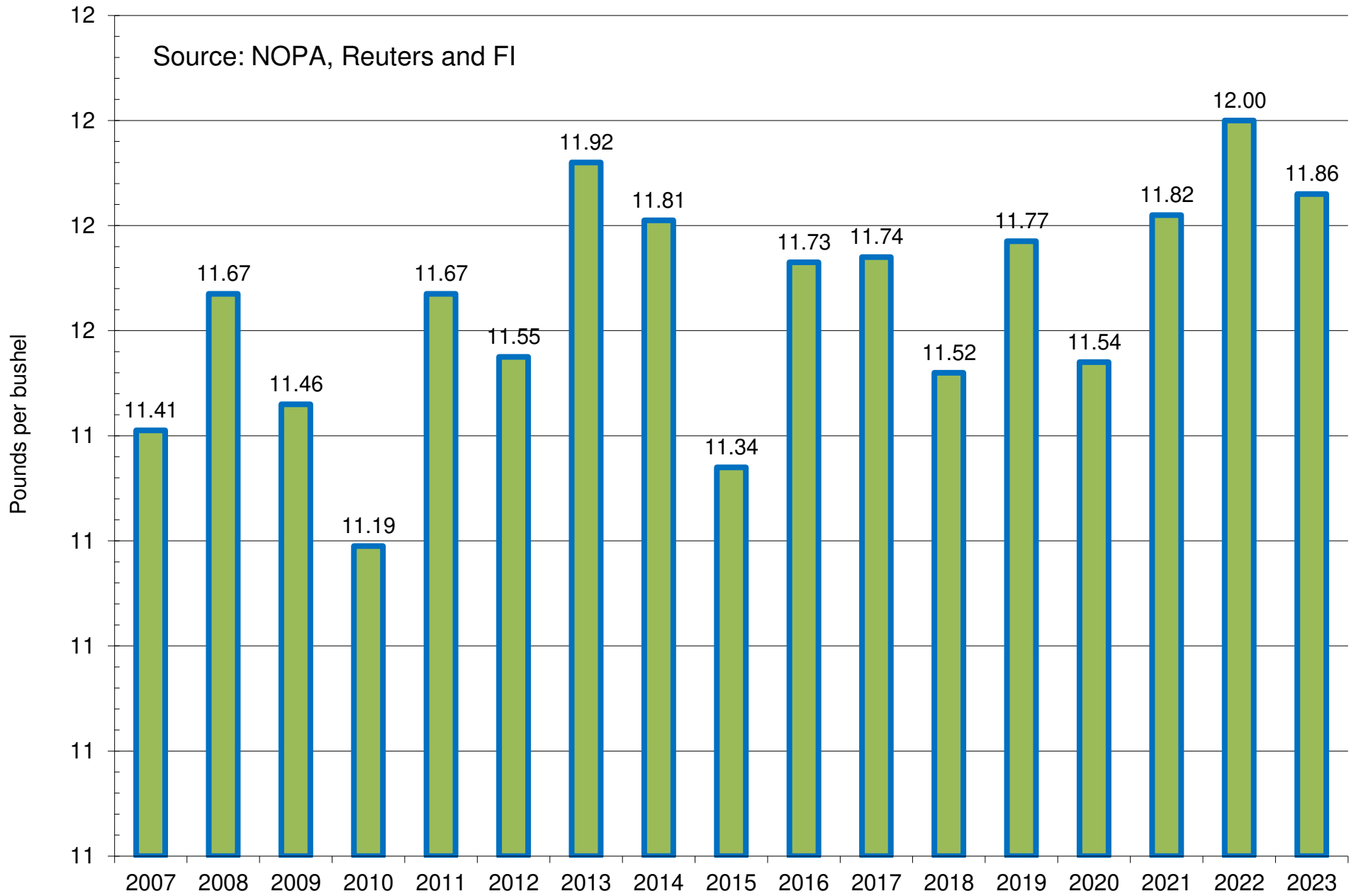


NOPA US Product Yields



NOPA US Monthly Soybean Oil Yield

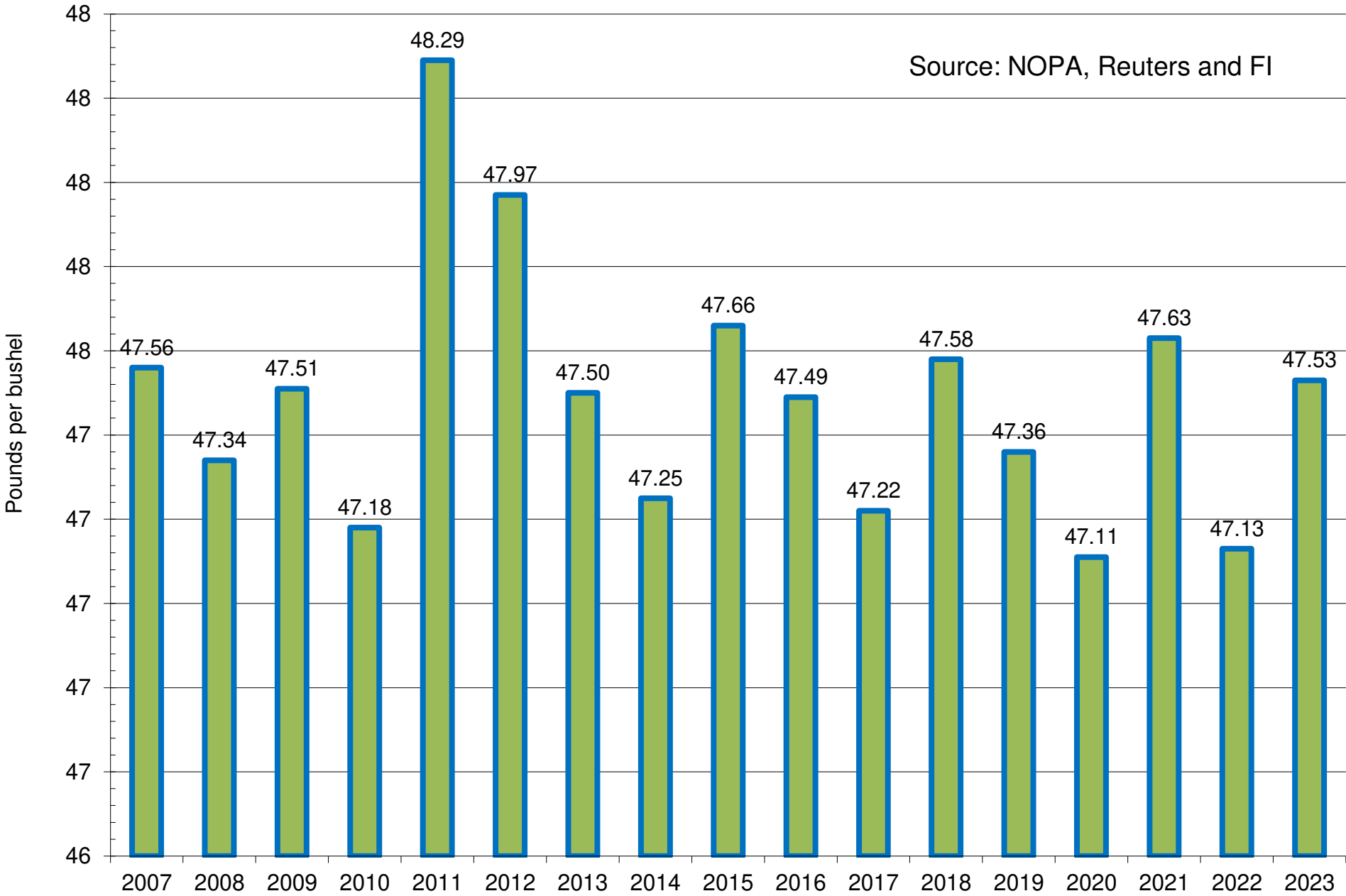
Source: NOPA, Reuters and FI



■ NOPA US Monthly Soybean Oil Yield for May

NOPA US Monthly Soybean Meal Yield

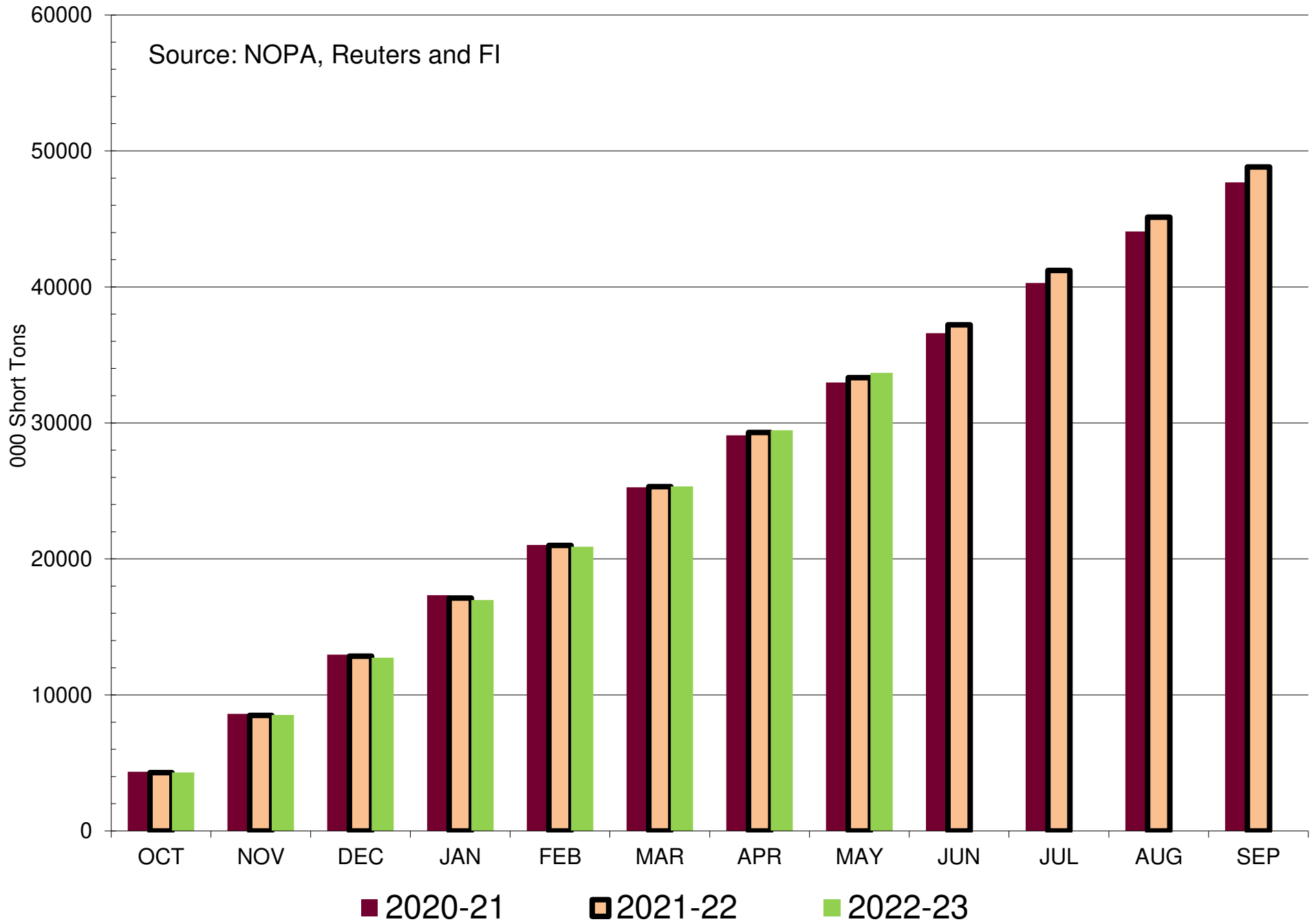
Source: NOPA, Reuters and FI



■ NOPA US Monthly Soybean Meal Yield for May

Cumulative NOPA US Soybean Meal Production

Source: NOPA, Reuters and FI



NATIONAL OILSEED PROCESSORS ASSOCIATION

	CRUSH	OIL STOCKS
	000 BU.	000 LBS.
ILLINOIS	21401	272448
	* 21329	275835
	** 19888	258066
INDIANA, KENTUCKY,	43481	386034
OHIO, MICHIGAN	* 42914	402230
PENNSYLVANIA	** 38613	390041
SOUTHEAST	20502	191652
	* 19879	184717
	** 21526	168741
SOUTHWEST	36602	365344
	* 33783	400876
	** 35817	322523
IOWA	34473 #	525488 #
	* 35983	550885
	** 33631	518542
MINNESOTA, NORTH	21456	130579
DAKOTA, SOUTH	* 19343	142501
DAKOTA, MONTANA	** 21603	115853
TOTALS:	177915 #	1871545 #
	* 173232	1957043
	** 171077	1773766

MEAL:

	4228380 #	47.53 #
	* 4122882	47.60
	** 4031338	47.13

OIL:

	2110392 #	11.86 #
	* 2068237	11.94
	** 2053403	12.00

CAPACITY FIGURES ARE UPDATED QUARTERLY

* Figures for previous month.

** Figures for comparable month a year ago.

Source: Reuters and FI

NOPA CRUSH REPORT

	Actual	Trade	Actual	Apr-23	Mar-23	May-22
	May-23	Est.	less Trade			
Crush- mil bu	177.9	2.0	175.9	173.2	185.8	171.1
Oil Stocks-mil lbs	1872	-70	1942	1957	1851	1774
Oil Yield -lbs/bu	11.86	na	na	11.94	11.85	12.00
Meal Yield -lbs/bu	47.53	na	na	47.60	47.7	47.13

Source: Reuters and FI

Disclaimer

TO CLIENTS/PROSPECTS OF FUTURES INTERNATIONAL, SEE RISK DISCLOSURE BELOW:

THIS COMMUNICATION IS CONVEYED AS A SOLICITATION FOR ENTERING INTO A DERIVATIVES TRANSACTION.

Any trading recommendations and market or other information to Customer by Futures International (FI), although based upon information obtained from sources believed by FI to be reliable may not be accurate and may be changed without notice to customer. FI makes no guarantee as to the accuracy or completeness of any of the information or recommendations furnished to Customer. Customer understands that FI, its managers, employees and/or affiliates may have a position in commodity futures, options or other derivatives which may not be consistent with the recommendations furnished by FI to Customer.

The risk of trading futures and options and other derivatives involves a substantial risk of loss and is not suitable for all persons. In purchasing an option, the risk is limited to the premium paid, and all commissions and fees involved with the trade. When an option is shorted or written, the writer of the option has unlimited risk with respect to the option written. The use of options strategies such as a straddles and strangles involve multiple option positions and may substantially increase the amount of commissions and fees paid to execute the strategy. Option prices do not necessarily move in tandem with cash or futures prices. Each person must consider whether a particular trade, combination of trades or strategy is suitable for that person's financial means and objectives.

This material may include discussions of seasonal patterns, however, futures prices have already factored in the seasonal aspects of supply and demand, and seasonal patterns are no indication of future market trends. Finally, past performance is not indicative of future results.

This communication may contain links to third party websites which are not under the control of FI and FI is not responsible for their content. Products and services are offered only in jurisdictions where solicitation and sale are lawful, and in accordance with applicable laws and regulations in each such jurisdiction.