

# CFTC COMMITMENT OF TRADERS REPORT

As of 6/6/2023

## TRADITIONAL FUNDS net position changes

Wed to Tue, in 000 contracts

	Corn	Bean	Meal	Oil	Chi. Wheat	KC Wheat	Min Wheat
Futures Only	5.6	9.3	8.8	24.1	3.3	(3.3)	(1.4)
Futures & Options Combined	13.5	8.6	7.5	27.2	6.1	(4.2)	(1.4)

## TRADITIONAL COMMERCIAL net position changes

	Corn	Bean	Meal	Oil	Chi. Wheat	KC Wheat	Min Wheat
Futures Only	(6.1)	(11.9)	(10.2)	(22.8)	(3.5)	2.1	0.4
Futures & Options Combined	(15.5)	(12.7)	(9.3)	(25.7)	(6.5)	2.7	0.4

## MANAGED MONEY net position changes

	Corn	Bean	Meal	Oil	Chi. Wheat	KC Wheat	Min Wheat
Futures Only	2.3	11.7	6.3	21.1	4.8	(2.4)	(1.3)
Futures & Options Combined	6.6	13.5	6.1	19.1	7.5	(2.5)	(1.3)

## SWAP DEALERS net position changes

	Corn	Bean	Meal	Oil	Chi. Wheat	KC Wheat	Min Wheat
Futures Only	(2.0)	(6.6)	(4.5)	1.3	2.3	1.3	(1.1)
Futures & Options Combined	(6.2)	(7.4)	(4.5)	0.9	2.7	1.2	(1.1)

## PRODUCERS/END USERS net position changes

	Corn	Bean	Meal	Oil	Chi. Wheat	KC Wheat	Min Wheat
Futures Only	(4.1)	(5.3)	(5.7)	(24.1)	(5.8)	0.8	1.5
Futures & Options Combined	(9.3)	(5.3)	(4.8)	(26.5)	(9.2)	1.5	1.5

## INDEX net position changes

	Corn	Bean	Meal	Oil	Chi. Wheat	KC Wheat	Min Wheat
Futures & Options Combined	12.0	(1.8)	(2.1)	7.9	5.8	(1.1)	NA

## SUPPLEMENTAL NON-COMMERCIAL net position changes

	Corn	Bean	Meal	Oil	Chi. Wheat	KC Wheat	Min Wheat
Futures & Options Combined	1.2	9.8	6.5	20.4	3.5	(1.1)	NA

## OPEN INTEREST net position changes

Wed to Tue, in 000 contracts

	Corn	Bean	Meal	Oil	Chi. Wheat	KC Wheat	Min Wheat
Futures Only	2.9	(3.4)	10.8	(9.5)	10.0	6.5	1.1
Futures & Options Combined	23.5	6.2	13.0	(2.9)	13.3	7.6	1.6

Source: CFTC and FI

Wed to Tue, in 000 contracts

**COMMITMENT OF TRADERS  
FUTURES ONLY NET POSITIONS  
AS OF 06/06/2023  
(IN THOUSAND CONTRACTS)**

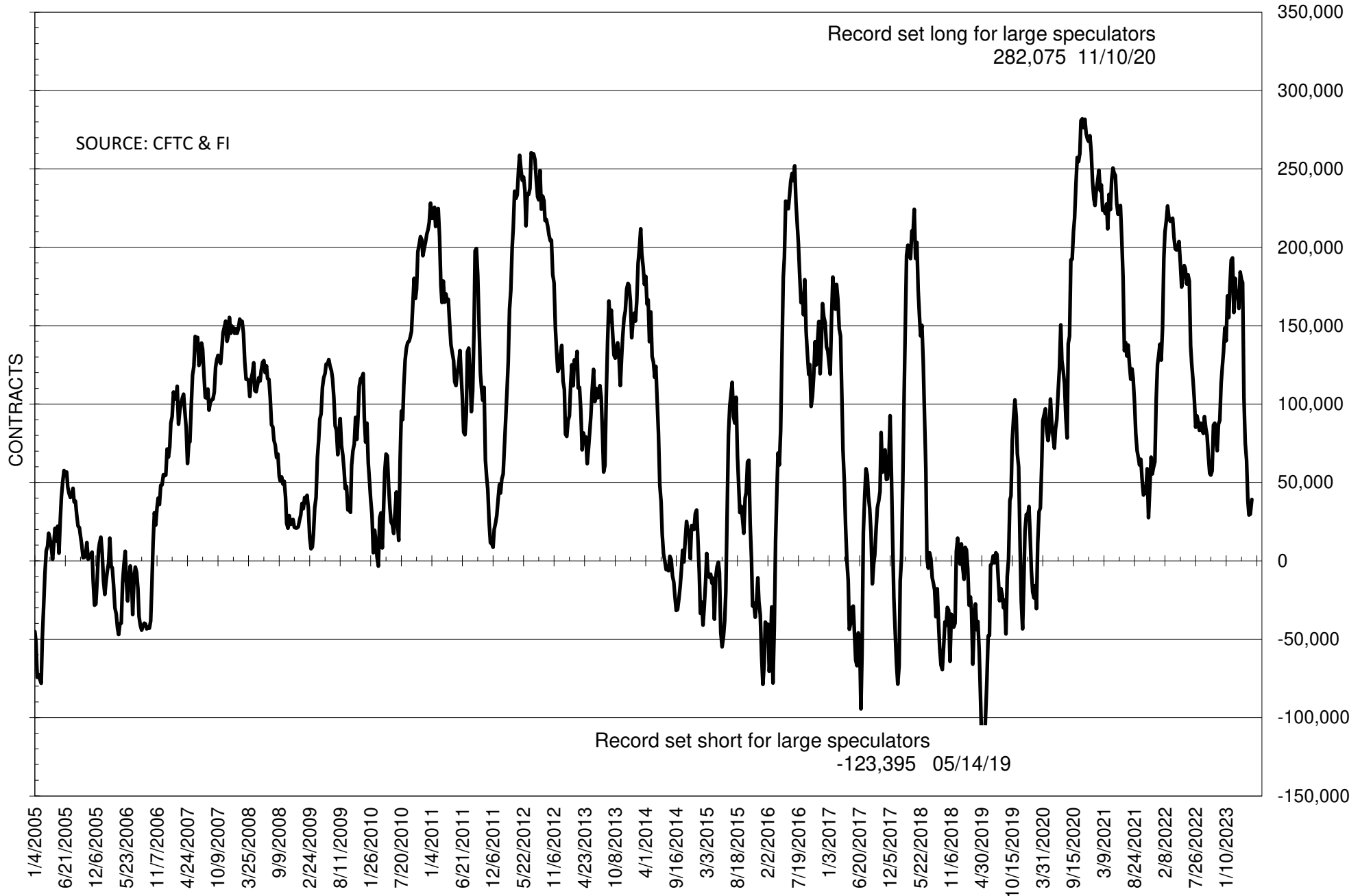
	COMMERCIAL				(FUND) NON COMMERCIAL				(SPEC) NON-REPORTABLE			
	6-Jun	30-May	23-May	16-May	6-Jun	30-May	23-May	16-May	6-Jun	30-May	23-May	16-May
	<b>WHEAT</b>											
Chicago	85.4	88.8	80.6	75.8	-90.7	-94.0	-86.3	-81.4	5.3	5.1	5.7	5.6
Kansas City	4.8	2.7	-5.0	-5.3	0.0	3.3	10.2	9.3	-4.8	-6.0	-5.3	-4.0
Minneapolis	4.6	4.2	3.2	-0.6	-6.0	-4.6	-3.1	-0.8	1.4	0.4	-0.1	1.3
All Wheat	94.8	95.8	78.8	70.0	-96.6	-95.3	-79.1	-72.9	1.8	-0.5	0.4	2.9
<b>CORN</b>	66.1	72.2	115.8	102.6	-14.8	-20.4	-62.3	-48.5	-51.3	-51.8	-53.6	-54.2
<b>OATS</b>	-0.3	-0.1	-0.2	-0.3	-0.3	-0.2	-0.4	-0.4	0.5	0.3	0.5	0.8
<b>SOYBEANS</b>	-16.1	-4.2	-2.4	-11.1	39.2	29.8	29.2	38.2	-23.1	-25.7	-26.8	-27.1
<b>SOY OIL</b>	10.8	33.6	28.9	30.2	-7.2	-31.2	-27.9	-29.5	-3.6	-2.4	-1.0	-0.7
<b>SOY MEAL</b>	-117.6	-107.4	-119.9	-126.9	103.3	94.5	110.0	112.3	14.3	12.9	9.9	14.5

Oats positions thin to be reported

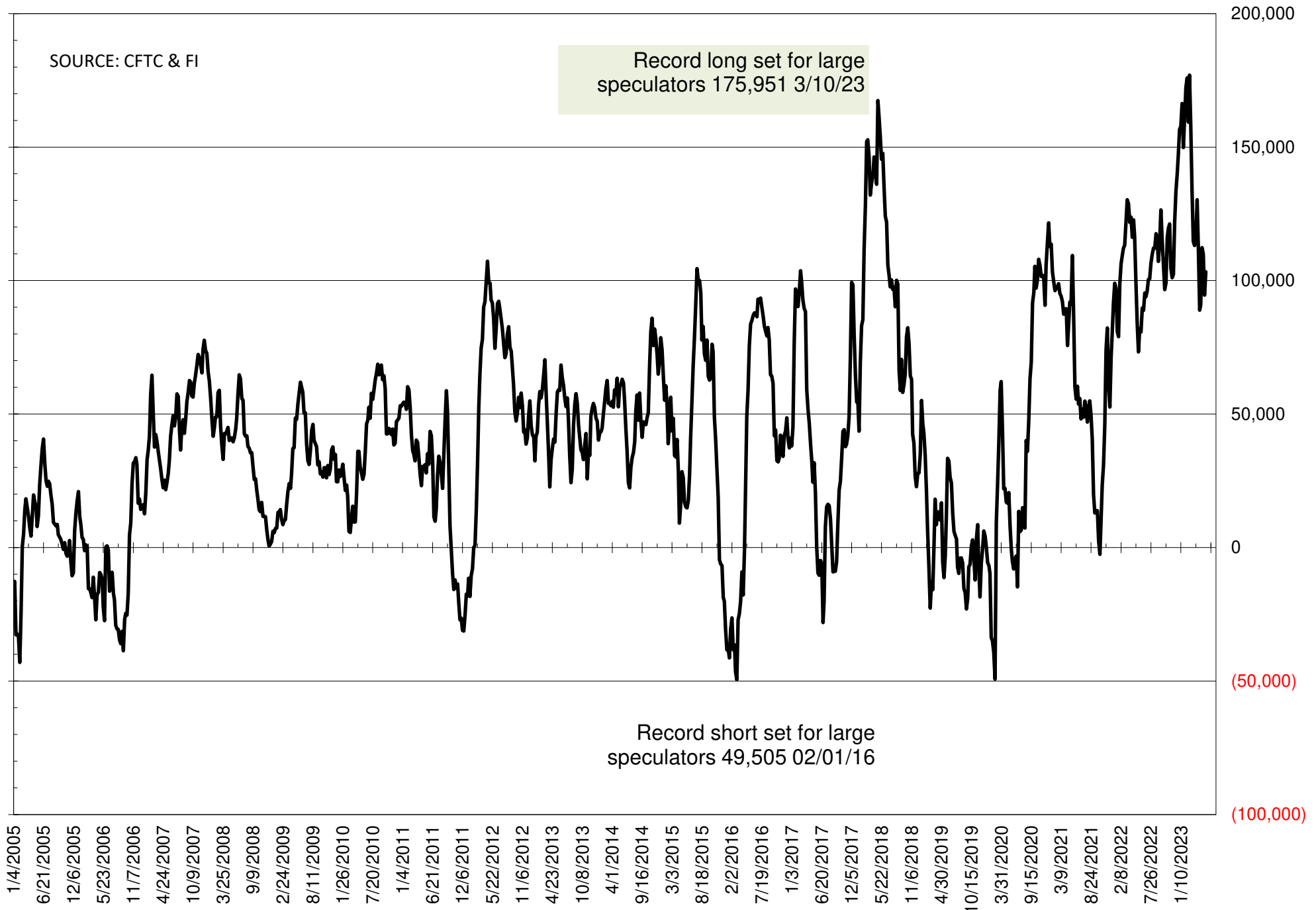
	TOTAL OPEN INTEREST				NEARBY FUTURES PRICE					6-Jun-23 LAST REPORTED % HELD BY TRADERS			
	6-Jun	30-May	23-May	16-May	N 9-Jun	N 6-Jun	N 30-May	N 23-May	N 16-May	LARGE FUND		SMALL	
										LONG	SHORT	LONG	SHORT
<b>WHEAT</b>													
Chicago	405201	395158	379453	372181	630.25	627.75	591.00	622.25	647.50	0%	49%	0%	9%
Kansas City	194113	187580	186585	184413	797.75	820.25	783.75	841.50	895.25	0%	22%	0%	12%
Minneapolis	59247	58136	61156	60257	811.75	815.00	793.00	820.75	874.25	0%	24%	0%	15%
<b>CORN</b>	1322137	1319205	1299841	1299501	604.25	608.00	594.00	577.50	581.25	0%	21%	0%	13%
<b>OATS</b>	4467	4382	4697	4717	358.50	346.75	346.00	321.50	345.00	0%	18%	0%	35%
<b>SOYBEANS</b>	669123	672482	651248	642160	1386.50	1353.25	1296.50	1322.50	1364.00	20%	15%	7%	10%
<b>SOY OIL</b>	539291	548800	541400	519422	54.59	50.92	46.62	47.76	47.45	0%	17%	0%	6%
<b>SOY MEAL</b>	494964	484141	479805	466723	397.20	396.70	392.60	406.40	426.90	0%	6%	0%	7%

SOURCE: CFTC & FI

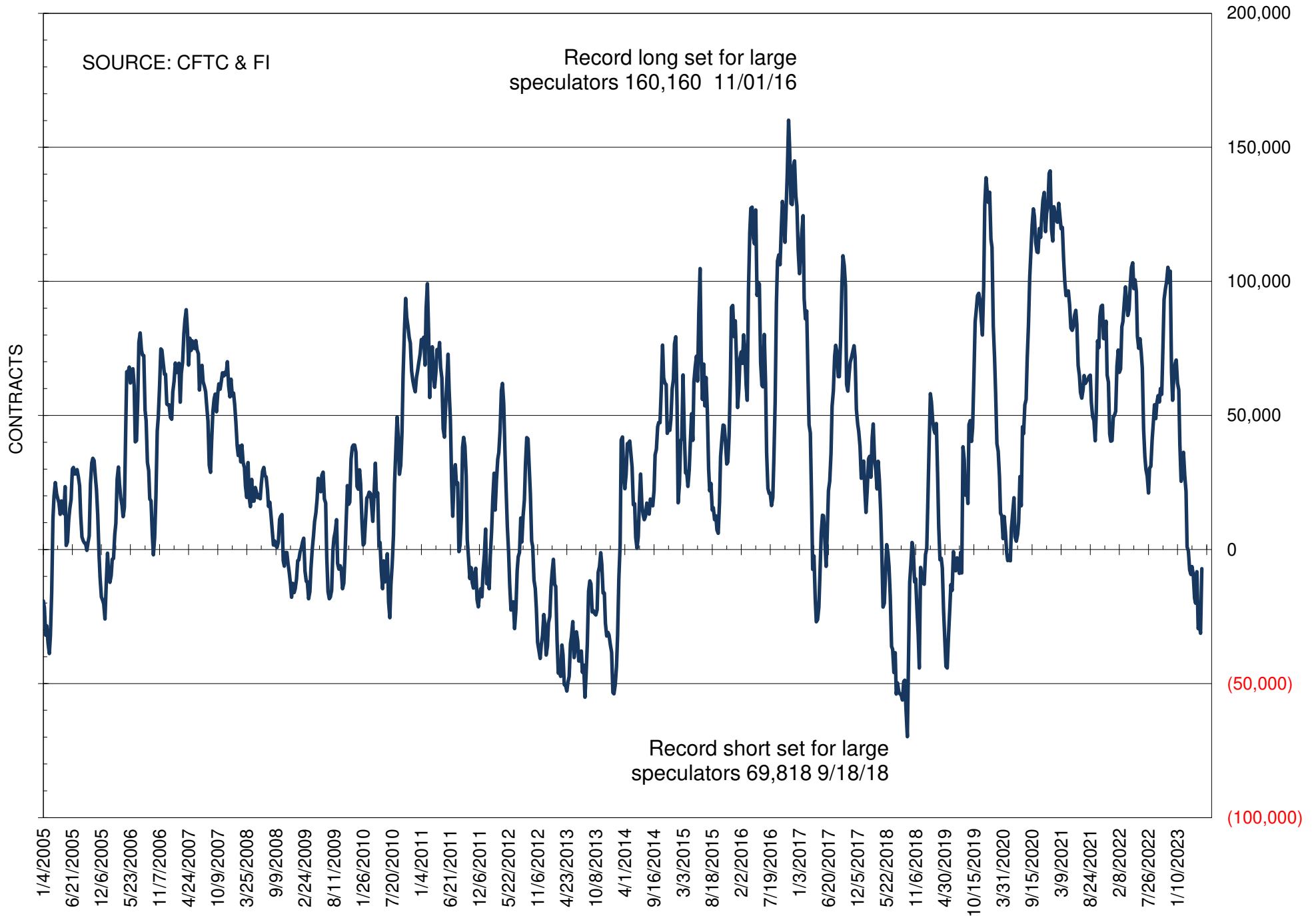
# NET POSITION OF FUTURES ONLY LARGE SPECS IN SOYBEANS



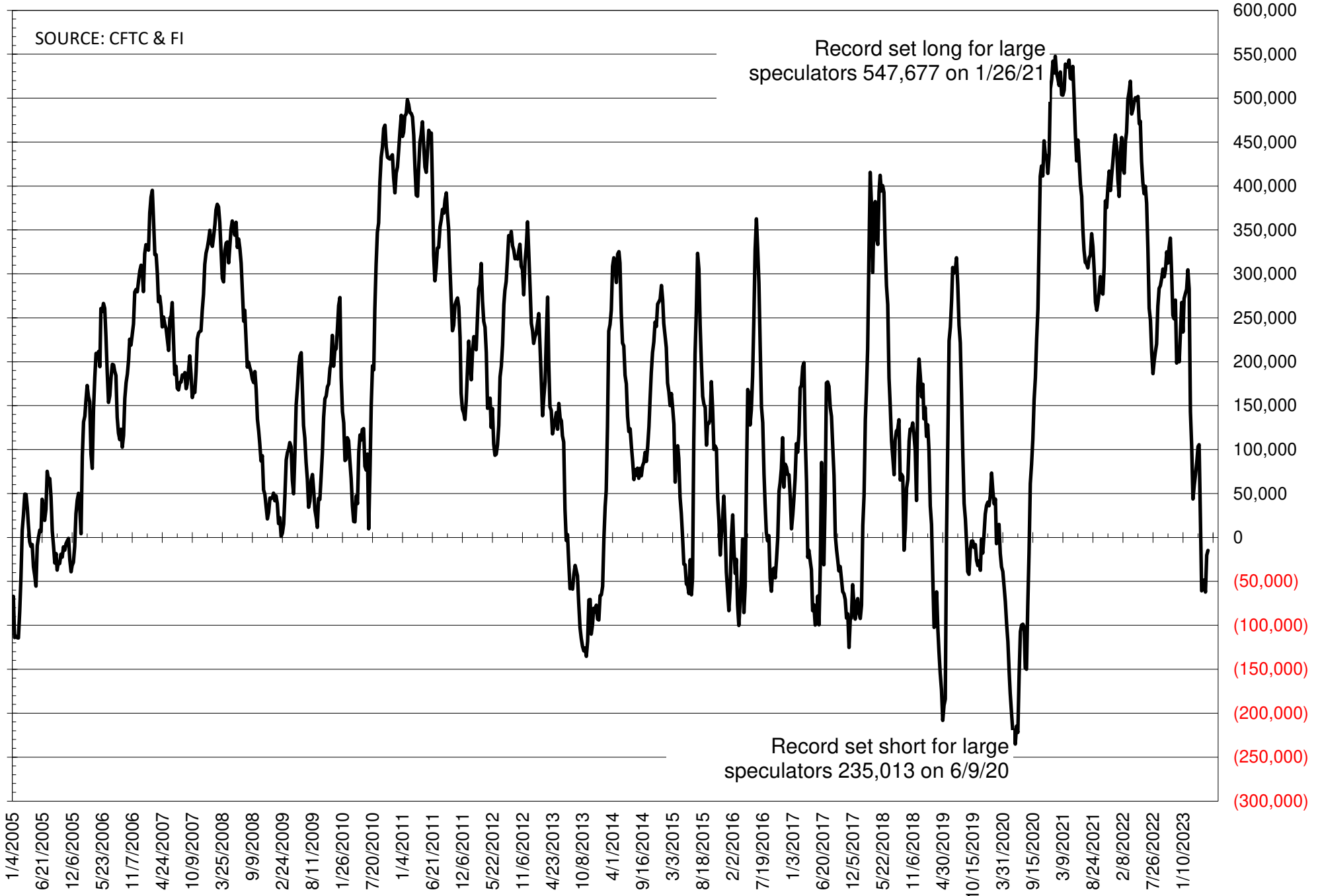
# NET POSITION OF FUTURES ONLY LARGE SPECS IN SOYMEAL



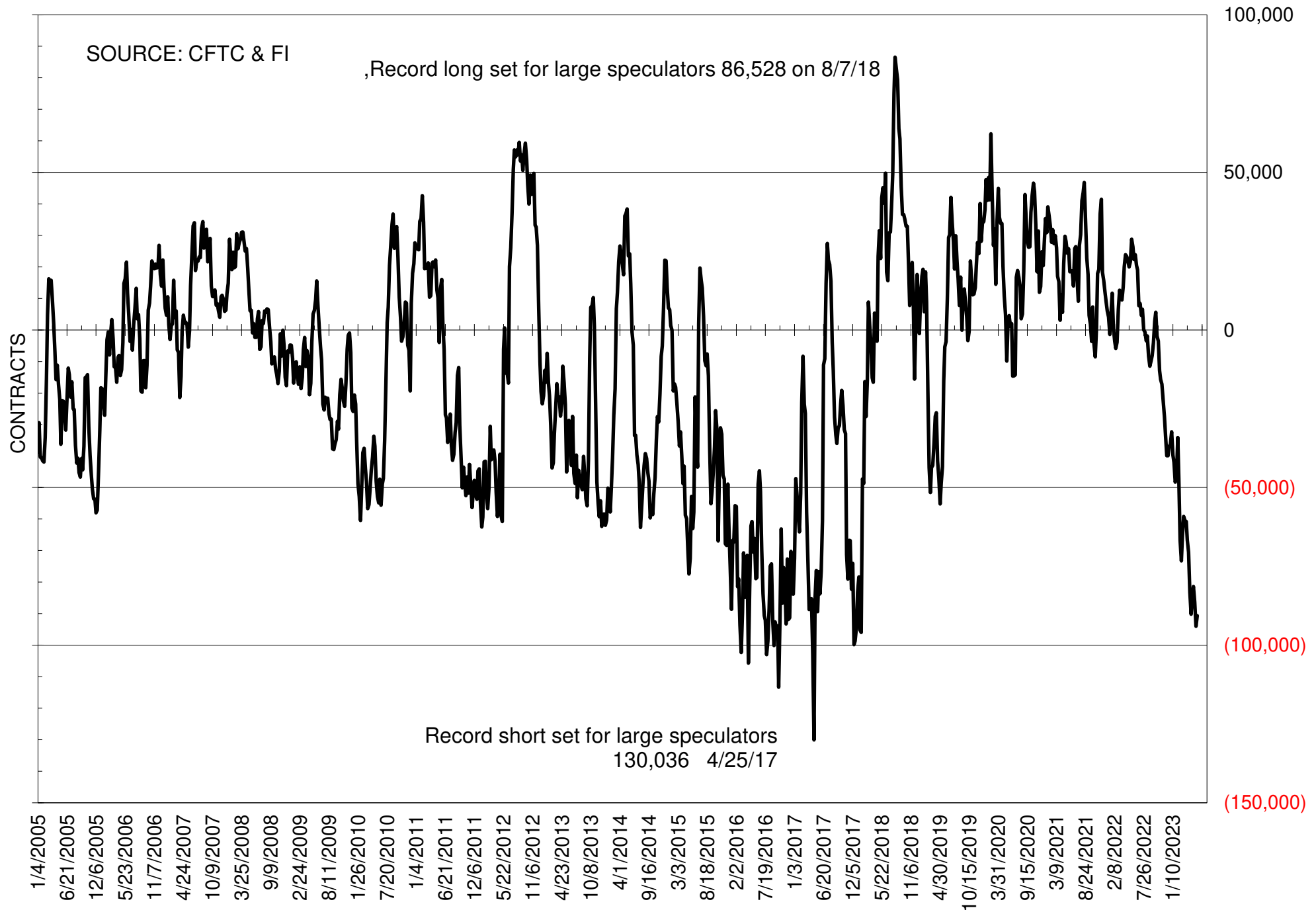
# NET POSITION OF FUTURES ONLY LARGE SPECS IN SOYOIL



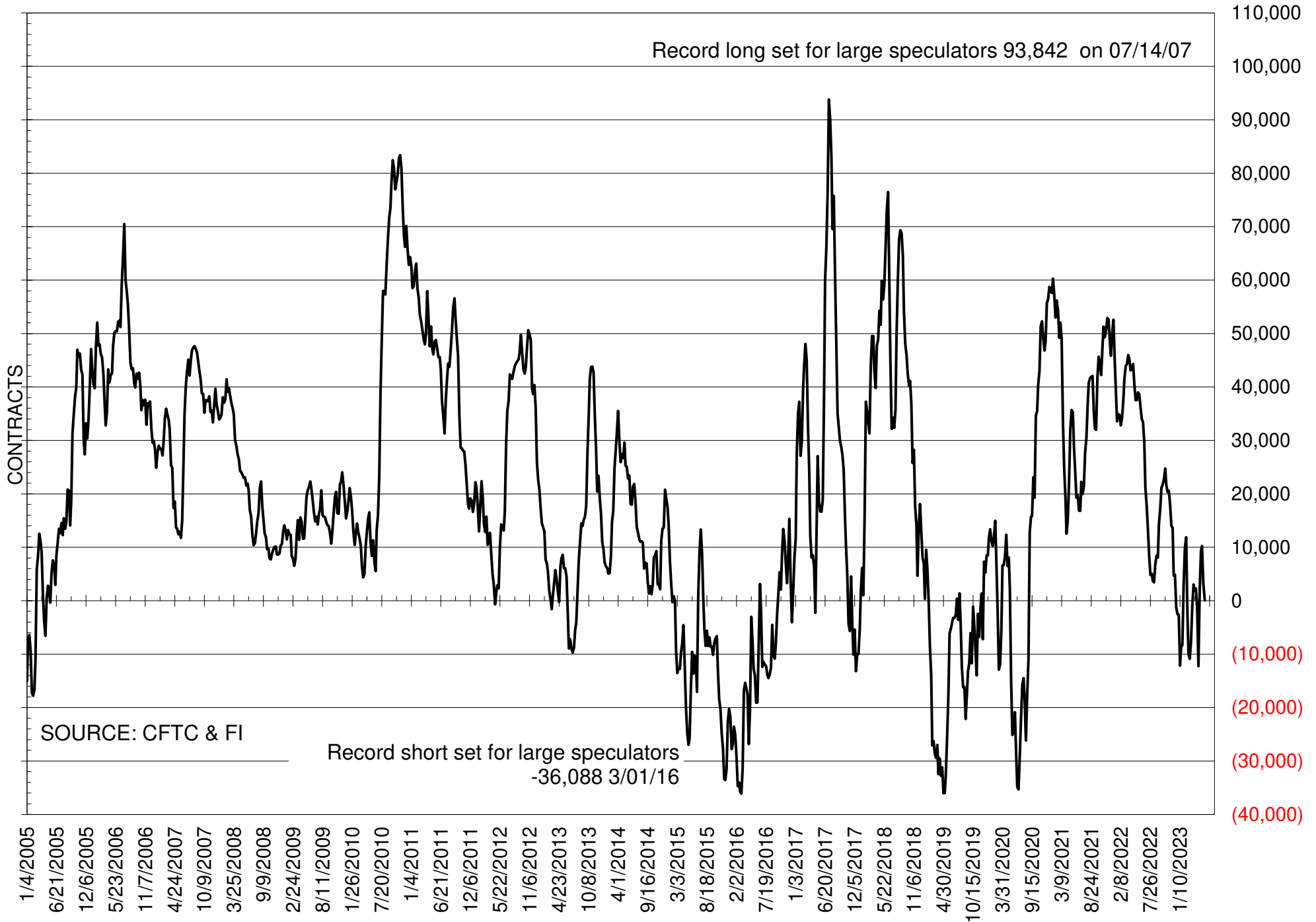
# NET POSITION OF LARGE SPECULATORS IN CORN



# NET POSITION OF FUTURES ONLY LARGE SPECS IN CHICAGO WHEAT

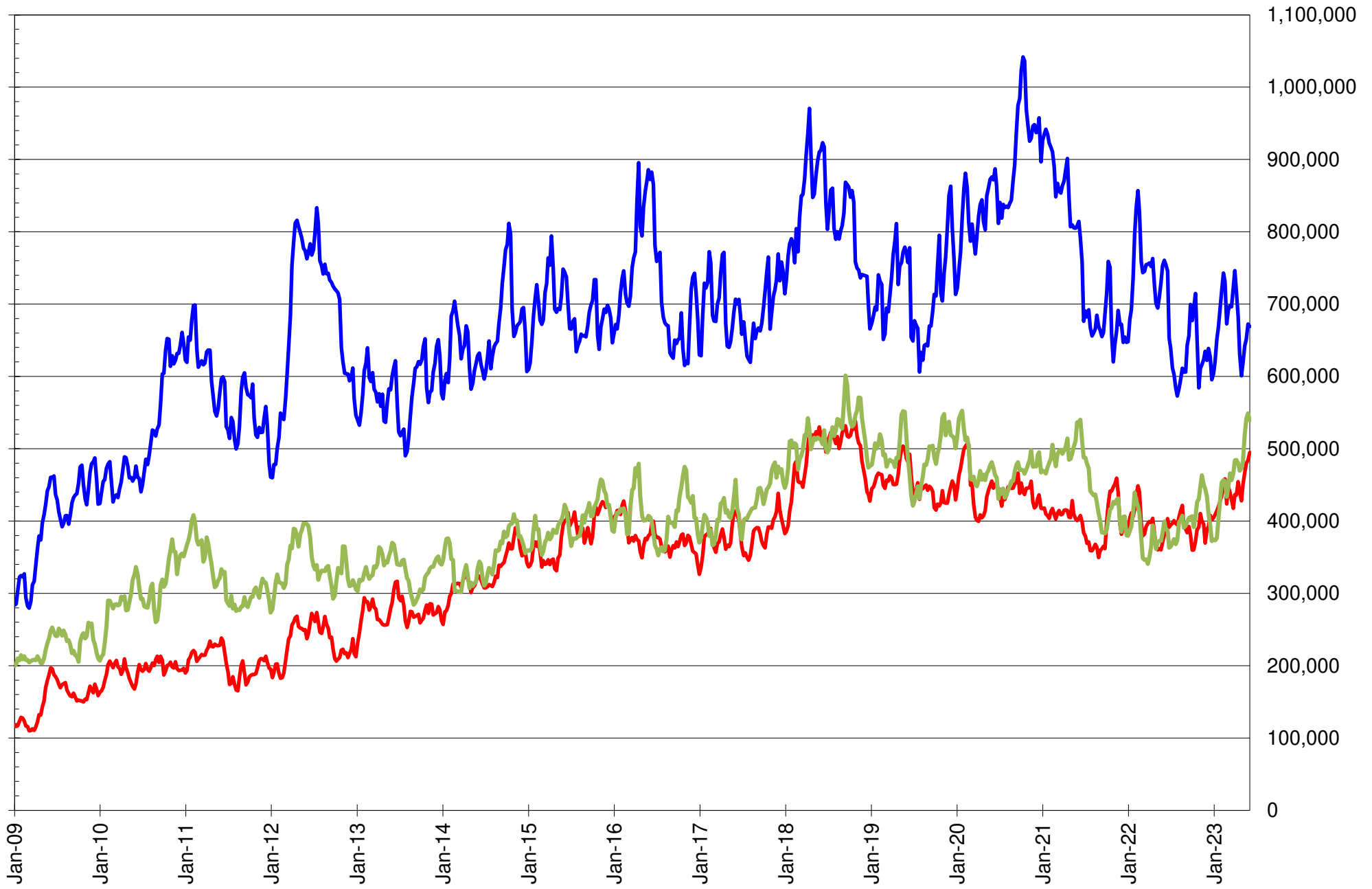


# NET POSITION OF LARGE SPECULATORS IN KANSAS CITY WHEAT





# TOTAL OPEN INTEREST IN SOYBEANS, MEAL AND OIL, FUTURES ONLY



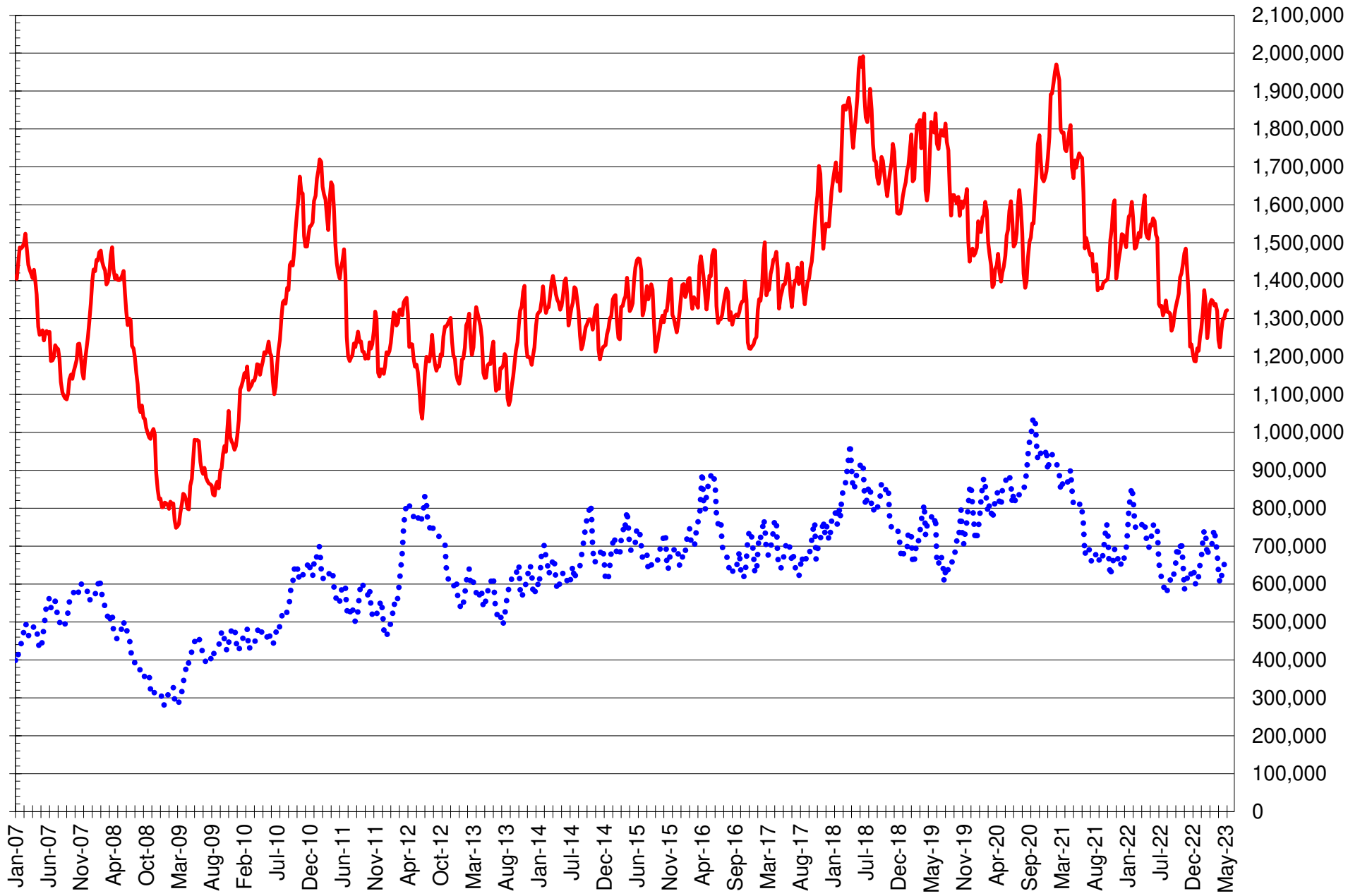
SOURCE: CFTC & FI

— SOYBEANS

— SOYBEAN MEAL

— SOYBEAN OIL

# TOTAL OPEN INTEREST IN CORN AND SOYBEANS, FUTURES ONLY



SOURCE: CFTC & FI

— CORN

..... SOYBEANS

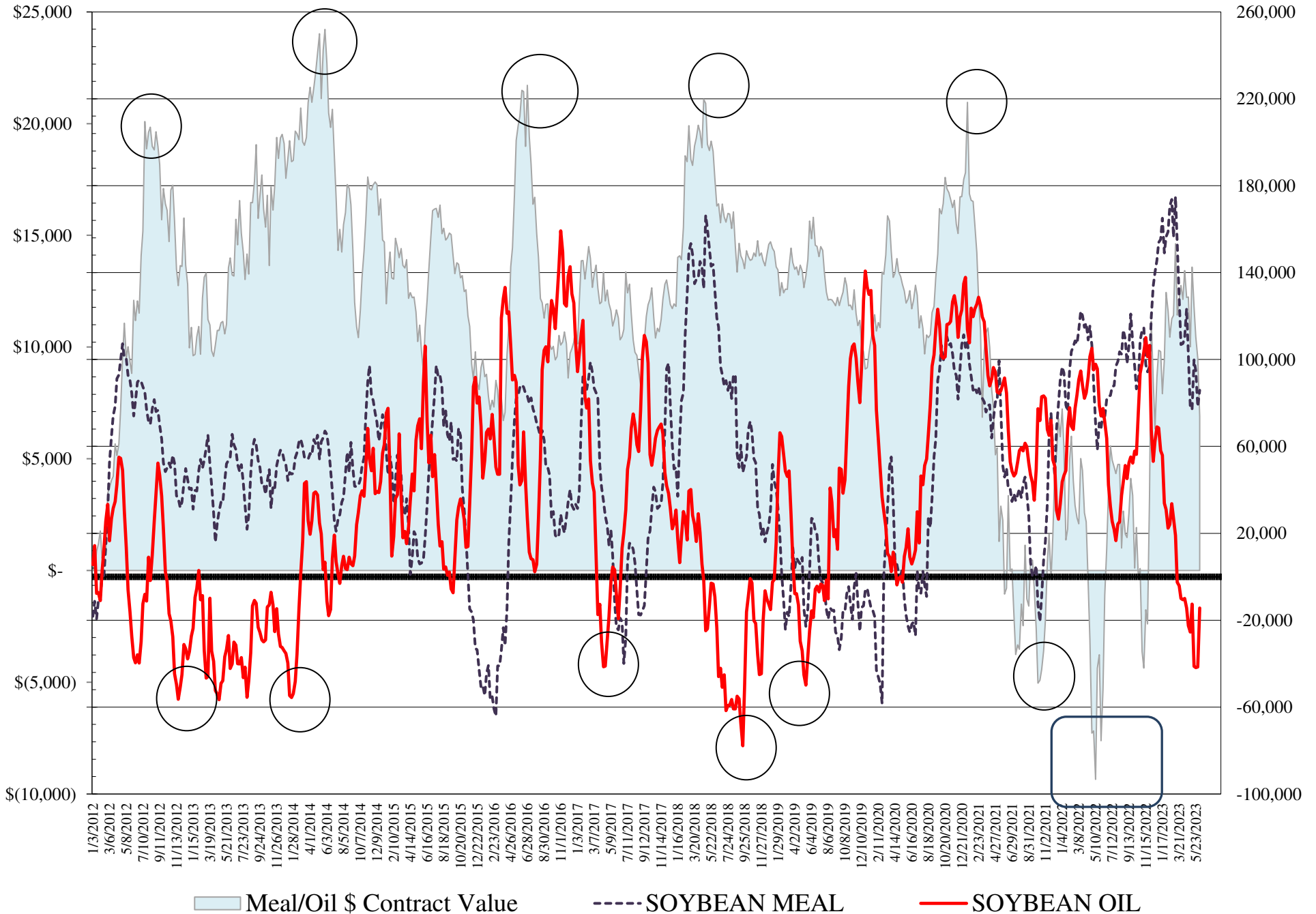
**COMMITMENT OF TRADERS**  
**FUTURES & OPTIONS NET POSITIONS**  
**AS OF 06/06/2023**  
(IN THOUSAND CONTRACTS)

	COMMERCIAL				(FUND) NON COMMERCIAL				(SPEC) NON-REPORTABLE			
	6-Jun	30-May	23-May	16-May	6-Jun	30-May	23-May	16-May	6-Jun	30-May	23-May	16-May
	<b>WHEAT</b>											
Chicago	94.5	101.0	93.4	86.0	-101.4	-107.5	-100.6	-92.9	6.9	6.5	7.2	6.9
Kansas City	5.1	2.4	-4.4	-4.1	-0.2	4.0	9.9	7.9	-4.9	-6.4	-5.5	-3.7
Minneapolis	5.3	4.9	3.5	-0.3	-6.7	-5.4	-3.5	-1.1	1.4	0.4	0.0	1.4
All Wheat	104.9	108.4	92.6	81.6	-108.3	-108.8	-94.3	-86.2	3.4	0.5	1.7	4.6
<b>CORN</b>	83.0	98.4	145.1	132.7	-32.7	-46.2	-91.1	-74.4	-50.3	-52.2	-54.0	-58.3
<b>OATS</b>	-0.3	-0.2	-0.2	-0.4	-0.3	-0.2	-0.4	-0.4	0.5	0.3	0.6	0.8
<b>SOYBEANS</b>	-1.9	10.8	11.7	-1.3	26.3	17.7	18.9	32.5	-24.4	-28.5	-30.5	-31.2
<b>SOY OIL</b>	16.8	42.5	41.5	40.5	-14.4	-41.5	-41.9	-41.3	-2.5	-0.9	0.4	0.7
<b>SOY MEAL</b>	-102.9	-93.6	-107.0	-116.7	85.9	78.4	94.8	99.8	17.0	15.2	12.2	16.9

	TOTAL OPEN INTEREST				COMMERCIALS		% HELD BY TRADERS LARGE (FUNDS)		SMALL (NON-REP)	
	6-Jun	30-May	23-May	16-May	LONG	SHORT	LONG	SHORT	LONG	SHORT
	<b>WHEAT</b>									
Chicago	489,163	475,870	477,760	471,227	37%	18%	19%	39%	9%	8%
Kansas City	212,187	204,606	210,376	210,458	44%	41%	20%	20%	10%	12%
Minneapolis	63,213	61,646	64,651	64,211	62%	53%	11%	22%	17%	15%
<b>CORN</b>	1,785,372	1,761,882	1,774,459	1,754,792	45%	40%	14%	16%	9%	12%
<b>OATS</b>	4,506	4,434	4,741	4,766						
<b>SOYBEANS</b>	854,072	847,867	842,442	815,277	47%	48%	14%	11%	6%	9%
<b>SOY OIL</b>	610,612	613,532	610,653	576,435	56%	54%	13%	15%	5%	6%
<b>SOY MEAL</b>	551,768	538,779	539,152	519,702	38%	57%	20%	5%	10%	7%

SOURCE: CFTC & FI

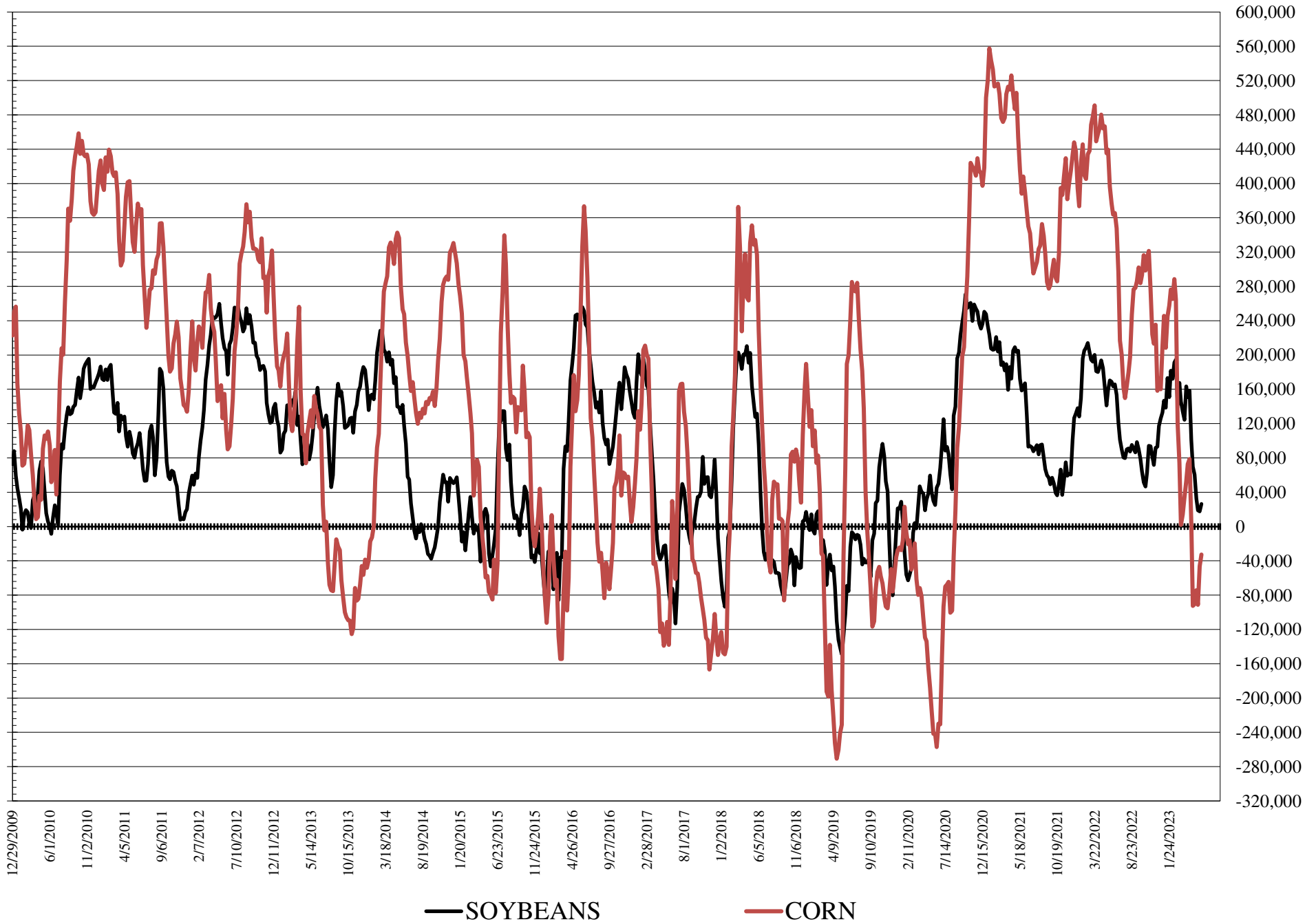
# NET POSITION FUTURES AND OPTIONS OF LARGE SPECULATORS IN SOYBEAN MEAL AND SOYBEAN OIL



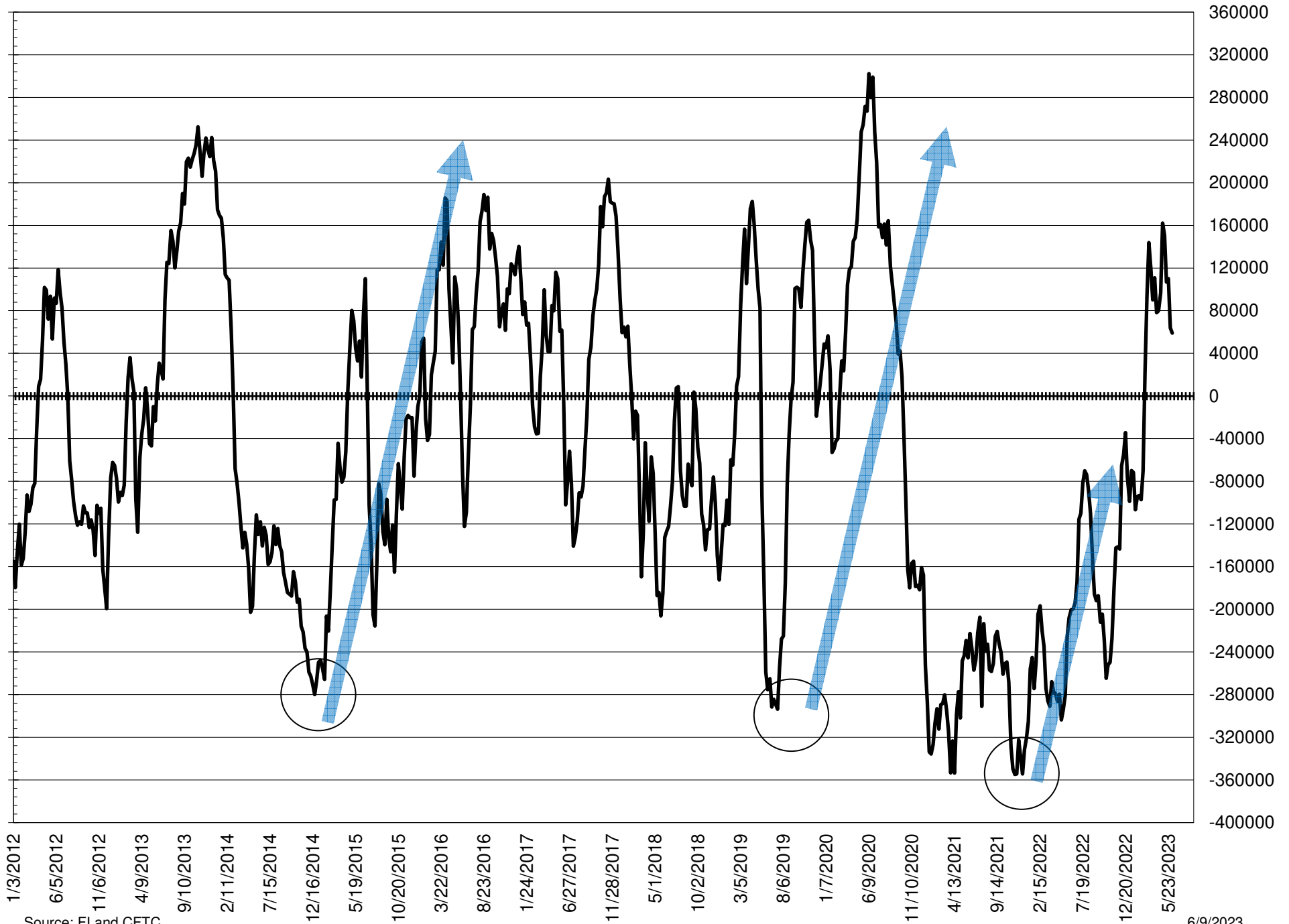
Source: FI and CFTC

6/9/2023

# NET POSITION FUTURES AND OPTIONS OF LARGE SPECULATORS IN SOYBEANS AND CORN



# NET POSITION FUTURES AND OPTIONS SPREAD OF LARGE SPECULATORS IN SOYBEANS MINUS CORN



Source: FI and CFTC

6/9/2023

**DISAGGREGATED COMMITMENT OF TRADERS  
FUTURES ONLY NET POSITIONS  
AS OF 06/06/2023  
(IN THOUSAND CONTRACTS)**

	PRODUCER / MERCHANT / PROCESSOR / USER				(INDEX/ETF) SWAP DEALERS				(CTA/CPO/OTHER UNREGISTERED) MANAGED MONEY				
	6-Jun	30-May	23-May	16-May	6-Jun	30-May	23-May	16-May	6-Jun	30-May	23-May	16-May	
	WHEAT												
Chicago	18.3	24.1	16.0	11.8	67.0	64.7	64.6	64.0	(122.3)	(127.0)	(121.1)	(115.5)	
Kansas City	(27.8)	(28.6)	(34.9)	(35.1)	32.6	31.3	29.9	29.9	6.4	8.8	14.5	15.1	
Minneapolis	4.2	2.6	1.8	(2.1)	0.4	1.6	1.3	1.5	(9.0)	(7.7)	(6.4)	(4.8)	
All Wheat	(5.2)	(1.8)	(17.0)	(25.4)	100.0	97.6	95.8	95.3	(124.9)	(125.9)	(113.0)	(105.2)	
CORN	(176.7)	(172.6)	(129.3)	(144.4)	242.8	244.8	245.2	247.0	(44.5)	(46.8)	(97.6)	(87.7)	
OATS	(0.3)	(0.1)	(0.0)	(0.4)	-	-	(0.1)	0.0	(0.7)	(0.6)	(0.9)	(0.9)	
SOYBEANS	(90.4)	(85.1)	(89.4)	(104.3)	74.4	81.0	87.0	93.2	14.0	2.2	0.7	21.8	
SOY OIL	(103.0)	(78.9)	(82.2)	(79.2)	113.8	112.6	111.1	109.4	(19.2)	(40.3)	(38.7)	(36.5)	
SOY MEAL	(208.2)	(202.5)	(213.0)	(219.1)	90.6	95.1	93.1	92.2	65.7	59.3	73.1	78.6	
<b>Managed % of OI</b>													
									Chicago W	-30%	-32%	-32%	-31%
									Corn	-3%	-4%	-8%	-7%
<b>TOTAL</b>													
	OPEN INTEREST				OTHER REPORTABLE				NON REPORTABLE				
	6-Jun	30-May	23-May	16-May	6-Jun	30-May	23-May	16-May	6-Jun	30-May	23-May	16-May	
WHEAT													
Chicago	405,201	395,158	379,453	372,181	31.6	33.0	34.7	34.1	5.3	5.1	5.7	5.6	
Kansas City	194,113	187,580	186,585	184,413	(6.3)	(5.5)	(4.3)	(5.8)	(4.8)	(6.0)	(5.3)	(4.0)	
Minneapolis	59,247	58,136	61,156	60,257	3.0	3.1	3.3	4.0	1.4	0.4	(0.1)	1.3	
All Wheat	658,561	640,874	627,194	616,851	28.2	30.6	33.8	32.3	1.8	(0.5)	0.4	2.9	
CORN	1,322,137	1,319,205	1,299,841	1,299,501	29.8	26.4	35.4	39.2	(51.3)	(51.8)	(53.6)	(54.2)	
OATS	4,467	4,382	4,697	4,717	0.4	0.5	0.5	0.5	0.5	0.3	0.5	0.8	
SOYBEANS	669,123	672,482	651,248	642,160	25.2	27.6	28.5	16.3	(23.1)	(25.7)	(26.8)	(27.1)	
SOY OIL	539,291	548,800	541,400	519,422	12.0	9.1	10.9	7.0	(3.6)	(2.4)	(1.0)	(0.7)	
SOY MEAL	494,964	484,141	479,805	466,723	37.7	35.2	36.9	33.7	14.3	12.9	9.9	14.5	

SOURCE: CFTC & FI

**DISAGGREGATED COMMITMENT OF TRADERS  
FUTURES & OPTIONS NET POSITIONS  
AS OF 06/06/2023  
(IN THOUSAND CONTRACTS)**

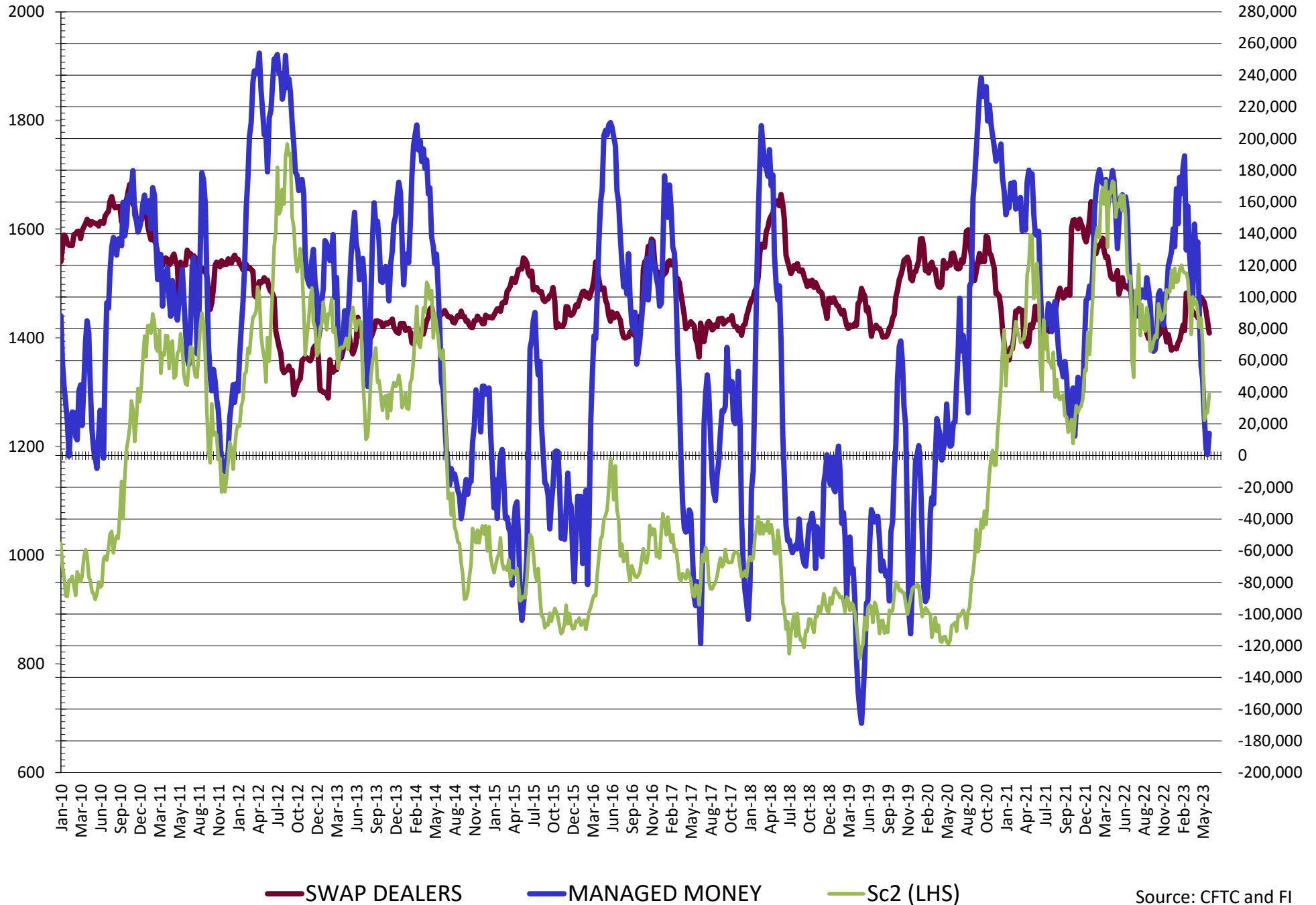
	PRODUCER / MERCHANT / PROCESSOR / USER				(INDEX/ETF) SWAP DEALERS				(CTA/CPO/OTHER UNREGISTERED) MANAGED MONEY			
	6-Jun	30-May	23-May	16-May	6-Jun	30-May	23-May	16-May	6-Jun	30-May	23-May	16-May
	WHEAT											
Chicago	24.2	33.4	25.5	17.8	70.3	67.6	68.0	68.2	(119.5)	(127.0)	(118.8)	(112.8)
Kansas City	(28.0)	(29.5)	(35.2)	(34.9)	33.1	31.9	30.8	30.7	7.1	9.6	16.6	16.6
Minneapolis	4.8	3.4	2.3	(1.7)	0.5	1.6	1.2	1.4	(9.0)	(7.7)	(6.4)	(4.8)
All Wheat	1.0	7.3	(7.5)	(18.8)	104.0	101.1	100.0	100.4	(121.3)	(125.1)	(108.6)	(101.0)
CORN	(157.1)	(147.8)	(102.1)	(117.7)	240.1	246.3	247.2	250.5	(44.5)	(51.1)	(98.0)	(92.0)
OATS	(0.3)	(0.2)	(0.0)	(0.4)	0.0	0.0	(0.1)	0.0	(0.7)	(0.6)	(0.9)	(0.9)
SOYBEANS	(79.1)	(73.8)	(79.3)	(97.8)	77.2	84.6	90.9	96.5	14.0	0.5	4.1	23.9
SOY OIL	(97.4)	(70.9)	(70.5)	(69.7)	114.3	113.4	112.0	110.2	(18.3)	(37.4)	(36.9)	(36.4)
SOY MEAL	(195.3)	(190.4)	(200.9)	(209.1)	92.4	96.9	93.9	92.4	65.8	59.7	73.8	80.3

	TOTAL OPEN INTEREST				OTHER REPORTABLE				NON REPORTABLE			
	6-Jun	30-May	23-May	16-May	6-Jun	30-May	23-May	16-May	6-Jun	30-May	23-May	16-May
	WHEAT											
Chicago	489,163	475,870	477,760	471,227	18.1	19.5	18.2	19.8	6.9	6.5	7.2	6.9
Kansas City	212,187	204,606	210,376	210,458	(7.3)	(5.6)	(6.7)	(8.7)	(4.9)	(6.4)	(5.5)	(3.7)
Minneapolis	63,213	61,646	64,651	64,211	2.2	2.4	2.9	3.7	1.4	0.4	(0.0)	1.4
All Wheat	764,563	742,122	752,787	745,896	13.0	16.2	14.3	14.8	3.4	0.5	1.7	4.6
CORN	1,785,372	1,761,882	1,774,459	1,754,792	11.8	4.8	6.9	17.6	(50.3)	(52.2)	(52.2)	(52.2)
OATS	4,506	4,434	4,741	4,766	0.4	0.5	0.5	0.5	0.5	0.3	0.6	0.8
SOYBEANS	854,072	847,867	842,442	815,277	12.3	17.2	14.7	8.5	(24.4)	(28.5)	(30.5)	(31.2)
SOY OIL	610,612	613,532	610,653	576,435	3.9	(4.1)	(5.0)	(4.9)	(2.5)	(0.9)	0.4	0.7
SOY MEAL	551,768	538,779	539,152	519,702	20.1	18.7	21.0	19.6	17.0	15.2	12.2	16.9

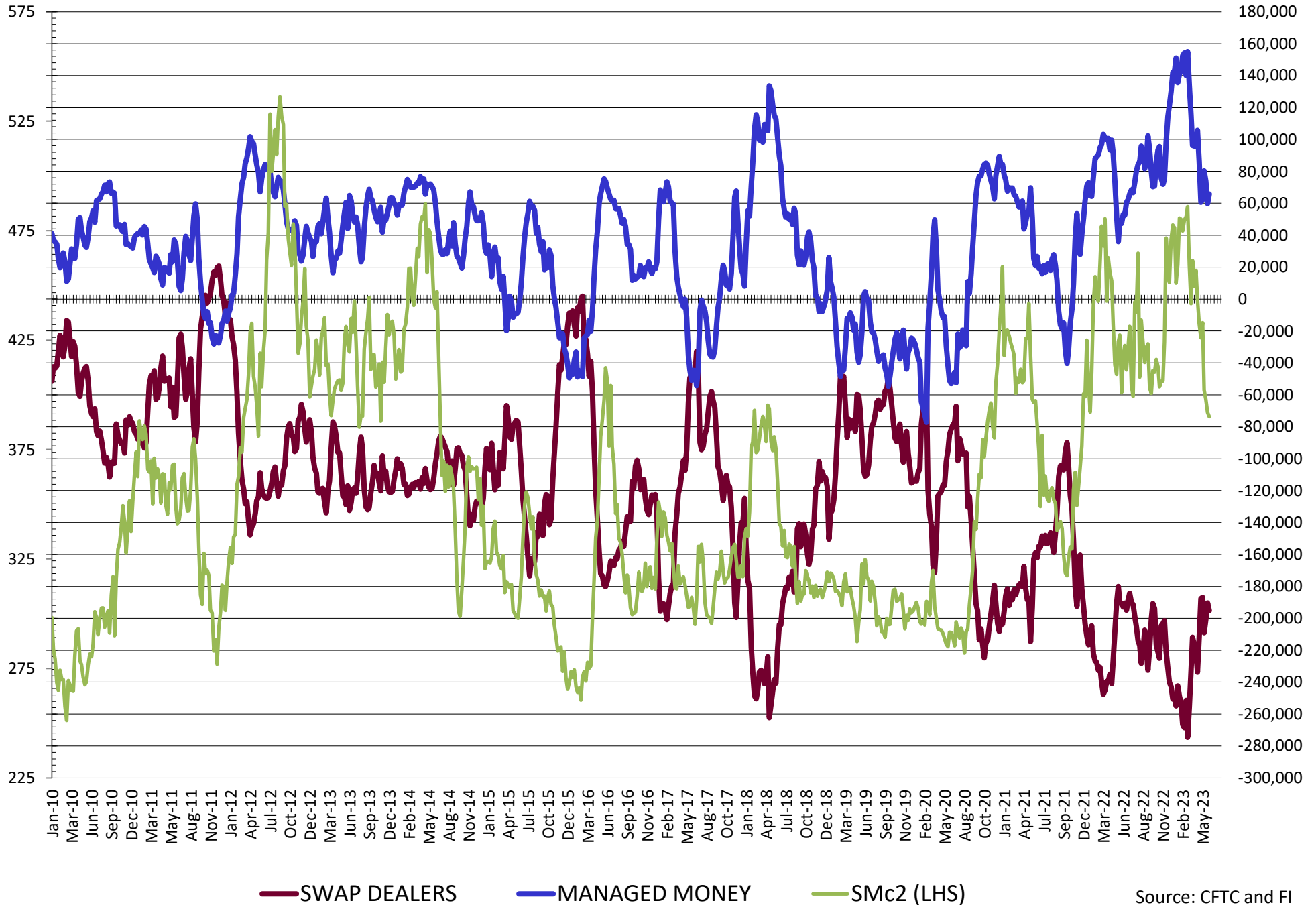
SOURCE: CFTC & FI



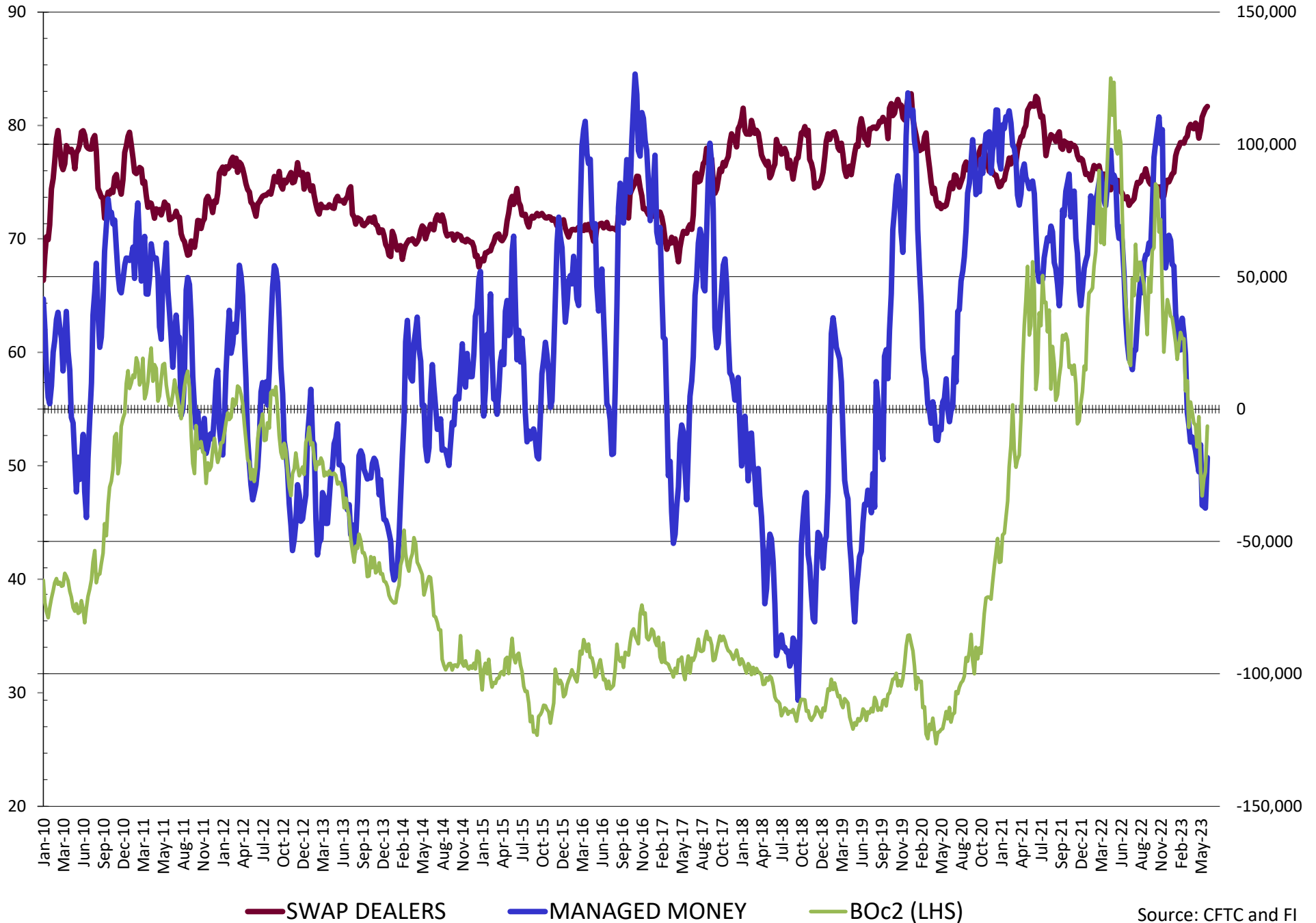
# NET POSITION FUTURES AND OPTIONS OF SWAP AND MANAGED FUNDS IN SOYBEANS



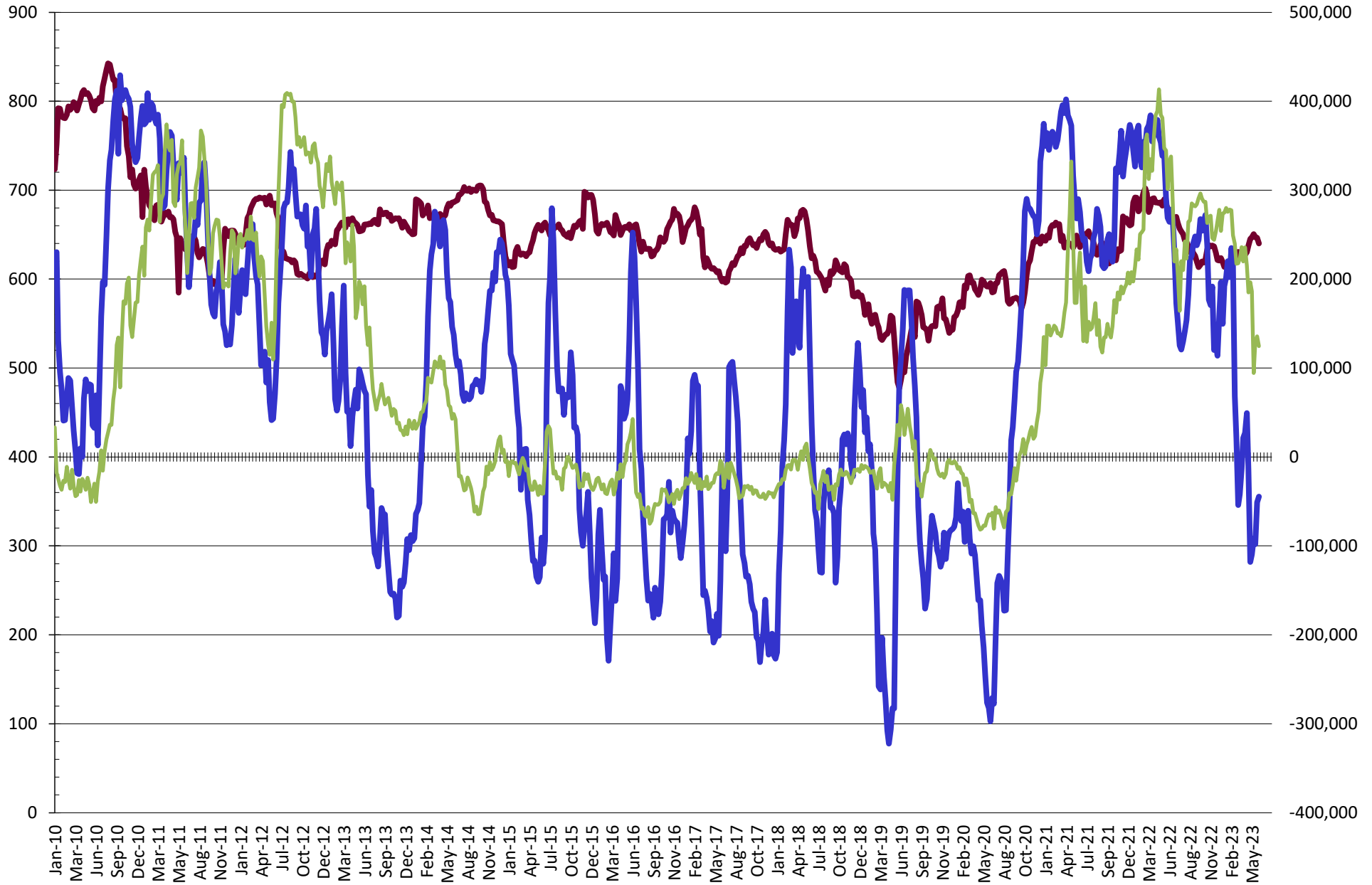
# NET POSITION FUTURES AND OPTIONS OF SWAP AND MANAGED FUNDS IN SOYBEAN MEAL



# NET POSITION FUTURES AND OPTIONS OF SWAP AND MANAGED FUNDS IN SOYBEAN OIL

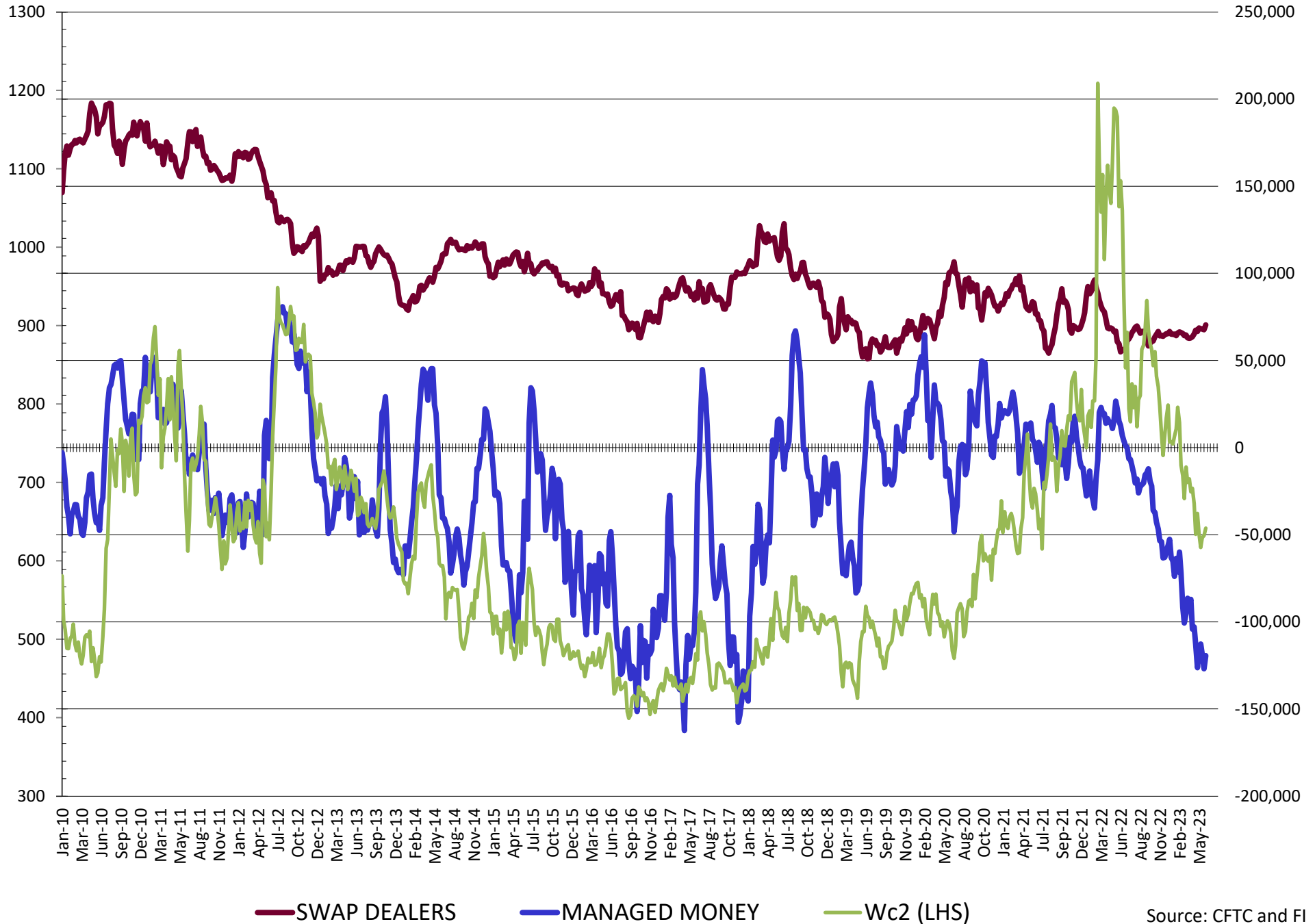


# NET POSITION FUTURES AND OPTIONS OF SWAP AND MANAGED FUNDS IN CORN

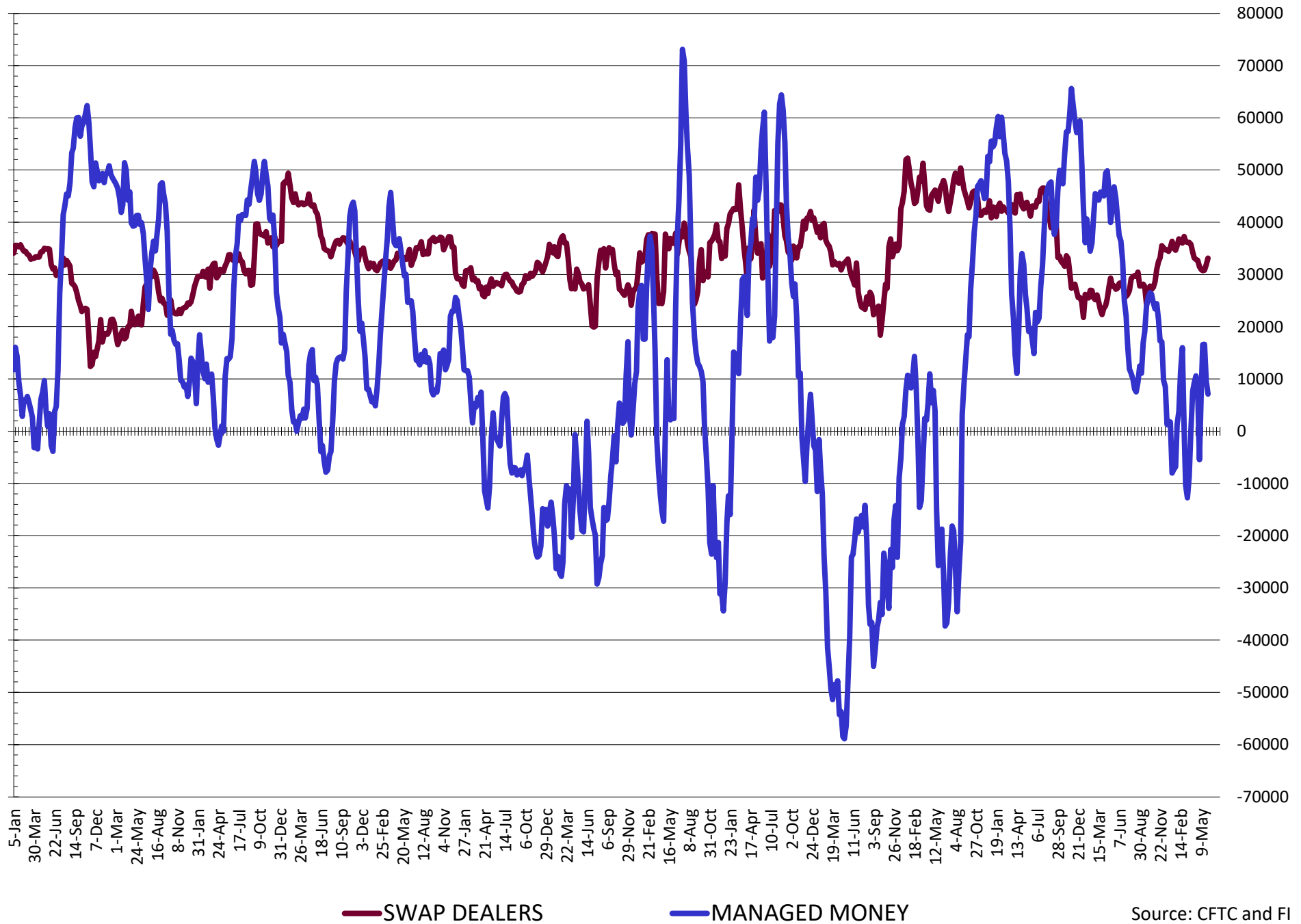


— SWAP DEALERS     
 — MANAGED MONEY     
 — Cc2 (LHS)

# NET POSITION FUTURES AND OPTIONS OF SWAP AND MANAGED FUNDS IN CHICAGO WHEAT

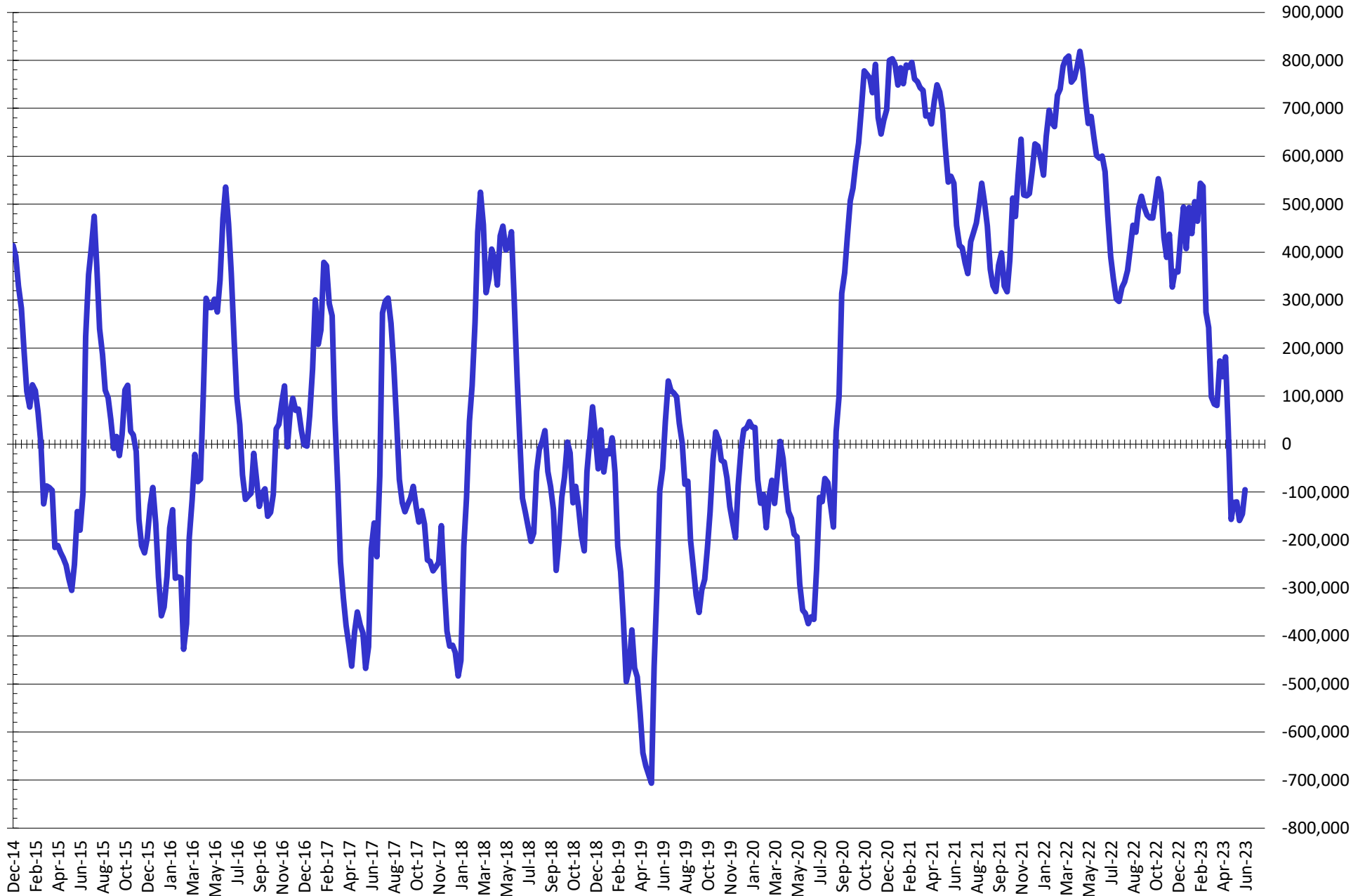


# NET POSITION FUTURES AND OPTIONS OF SWAP DEALERS AND MANAGED FUNDS IN KANSAS WHEAT



Source: CFTC and FI  
6/9/2023

# NET POSITION FUTURES AND OPTIONS OF SWAP AND MANAGED FUNDS IN COMBINED SRW, HRW, CORN, SOYBEANS, SOYMEAL AND SOYOIL



— Net Managed Money

Source: CFTC and FI  
6/9/2023

**COMMITMENT OF TRADERS**  
**FUTURES & OPTIONS NET POSITIONS (INDEX BROKEN OUT)**  
**AS OF 06/06/2023**  
(IN THOUSAND CONTRACTS)

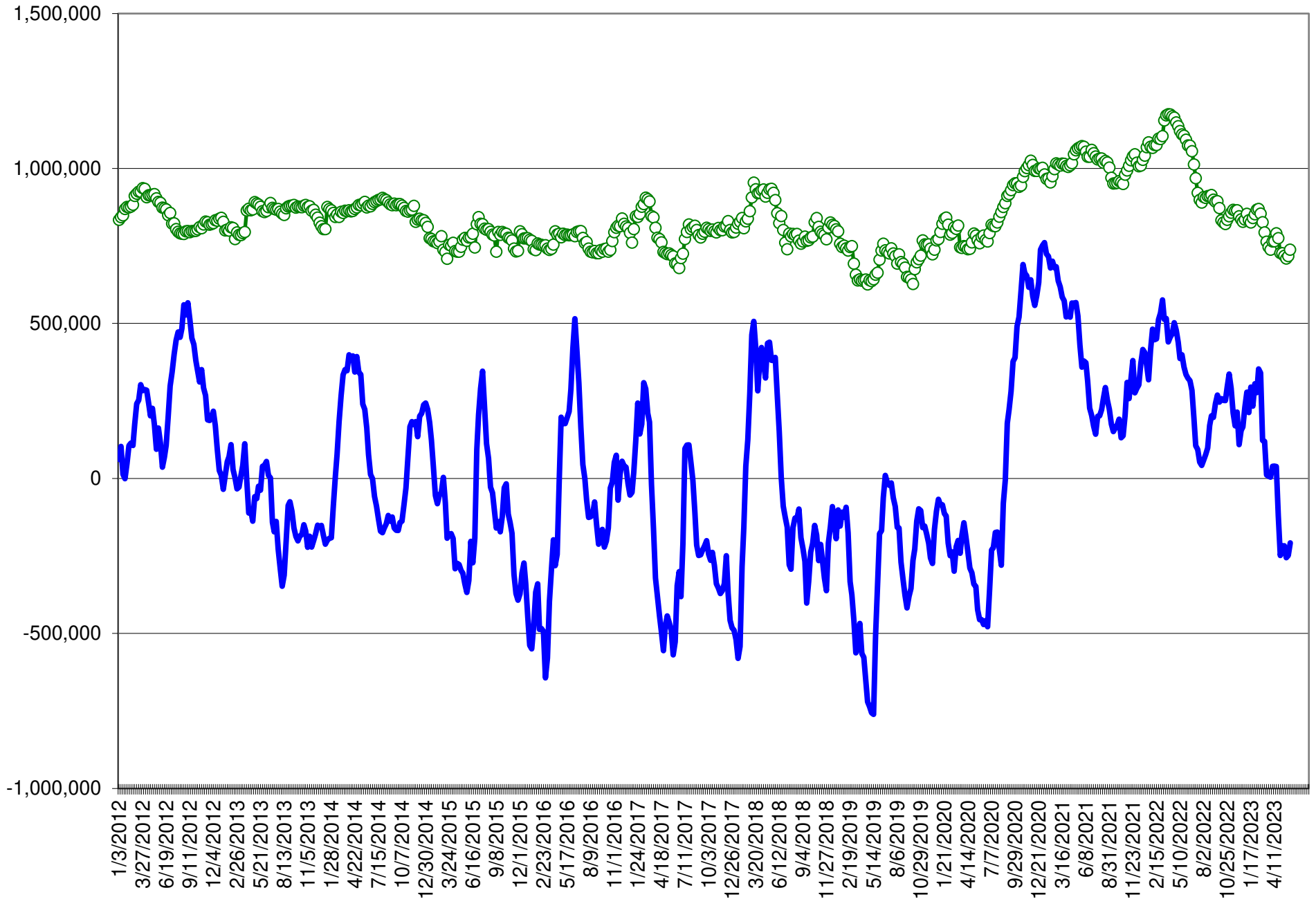
	COMMERCIAL				(FUND) NON COMMERCIAL				(SPEC) NON-REPORTABLE			
	6-Jun	30-May	23-May	16-May	6-Jun	30-May	23-May	16-May	6-Jun	30-May	23-May	16-May
	WHEAT											
Chicago	25.8	35.6	27.7	20.0	(106.7)	(110.2)	(103.2)	(98.4)	6.9	6.5	7.2	6.9
Kansas City	(26.1)	(26.7)	(33.0)	(33.1)	(8.1)	(7.0)	(3.4)	(5.4)	(4.9)	(6.4)	(5.5)	(3.7)
Minneapolis	-	-	-	-	-	-	-	-	-	-	-	-
All Wheat	(0.3)	8.9	(5.2)	(13.0)	(114.8)	(117.2)	(106.5)	(103.7)	1.9	0.0	1.7	3.2
CORN	(142.4)	(127.2)	(77.9)	(92.3)	(110.8)	(112.0)	(149.6)	(126.9)	(50.3)	(52.2)	(54.0)	(58.3)
OATS	-	-	-	-	-	-	-	-	-	-	-	-
SOYBEANS	(82.5)	(70.5)	(74.3)	(91.2)	(1.1)	(11.0)	(4.7)	3.1	(24.4)	(28.5)	(30.5)	(31.2)
SOY OIL	(68.7)	(41.9)	(40.9)	(41.5)	(33.5)	(53.9)	(54.0)	(53.8)	(2.5)	(0.9)	0.4	0.7
SOY MEAL	(177.7)	(171.6)	(184.3)	(193.5)	52.1	45.6	58.8	63.9	17.0	15.2	12.2	16.9

	TOTAL OPEN INTEREST				(INDEX) COMMERCIAL INDEX TRADERS				(INDEX) % NET OF TOTAL OPEN INTEREST			
	6-Jun	30-May	23-May	16-May	6-Jun	30-May	23-May	16-May	6-Jun	30-May	23-May	16-May
	WHEAT											
Chicago	489,163	475,870	477,760	471,227	74.0	68.2	68.2	71.4	15.1%	14.3%	14.3%	15.2%
Kansas City	212,187	204,606	210,376	210,458	39.1	40.1	41.8	42.2	18.4%	19.6%	19.9%	20.0%
Minneapolis	-	-	-	-	-	-	-	-	-	-	-	-
All Wheat	701,350	680,476	688,136	681,685	113.1	108.3	110.1	113.6	16.1%	15.9%	16.0%	16.7%
CORN	1,785,372	1,761,882	1,774,459	1,754,792	303.5	291.4	281.5	277.5	17.0%	16.5%	15.9%	15.8%
OATS	-	-	-	-	-	-	-	-	-	-	-	-
SOYBEANS	854,072	847,867	842,442	815,277	108.0	109.9	109.6	119.2	12.6%	13.0%	13.0%	14.6%
SOY OIL	610,612	613,532	610,653	576,435	104.7	96.8	94.5	94.5	17.1%	15.8%	15.5%	16.4%
SOY MEAL	551,768	538,779	539,152	519,702	108.7	110.8	113.4	112.8	19.7%	20.6%	21.0%	21.7%

SOURCE: CFTC & FI



# NET POSITION FUTURES AND OPTIONS OF SPECULATORS AND INDEX FUNDS IN COMBINED SRW, HRW, CORN, SOYBEANS, SOYMEAL AND SOYOIL



Source: CFTC and FI

○ Net Index

— Net Speculator

## Traditional Daily Estimate of Funds (net in 000)

	(Neg)-"Short"	Pos-"Long"			
Actual less Est.	(2.4)	(5.6)	(8.7)	7.8	9.0
	<b>Corn</b>	<b>Bean</b>	<b>Chi. Wheat</b>	<b>Meal</b>	<b>Oil</b>
<b>Actual</b>	(14.8)	39.2	(90.7)	103.3	(7.2)
7-Jun	(8.0)	2.0	(6.0)	4.0	(3.0)
8-Jun	3.0	5.0	5.0	(1.0)	7.0
9-Jun	(4.0)	11.0	1.0	(3.0)	8.0
12-Jun					
13-Jun					
<b>FI Est. of Futures Only</b>	<b>(23.8)</b>	<b>57.2</b>	<b>(90.7)</b>	<b>103.3</b>	<b>4.8</b>
<b>FI Est. Futures &amp; Options</b>	<b>(41.7)</b>	<b>44.4</b>	<b>(101.4)</b>	<b>85.9</b>	<b>(2.4)</b>
Futures only record long "Traditional Funds"	547.7 1/26/2021	280.9 11/10/2020	86.5 8/7/2018	176.0 2/21/2023	160.2 11/1/2016
Futures only record short	(235.0) 6/9/2020	(118.3) 4/30/2019	(130.0) 4/25/2017	(49.5) 3/1/2016	(69.8) 9/18/2018
Futures and options record net long	557.6 1/12/2021	270.9 10/6/2020	64.8 8/7/2012	173.7 2/21/2023	159.2 1/1/2016
Futures and options record net short	(270.6) 4/26/2019	(132.0) 4/30/2019	(143.3) 4/25/2017	(64.1) 3/1/2016	(77.8) 9/18/2018

## Managed Money Daily Estimate of Funds

	Corn	Bean	Chi. Wheat	Meal	Oil
Latest CFTC Fut. Only	(44.5)	14.0	(122.3)	65.7	(19.2)
Latest CFTC F&O	(44.5)	14.0	(119.5)	65.8	(18.3)
FI Est. Managed Fut. Only	(54)	32	(122)	66	(7)
FI Est. Managed Money F&O	(53)	32	(119)	66	(6)

## Index Funds Latest Positions (as of last Tuesday)

Index Futures & Options	303.5	108.0	74.0	NA	104.7
Change From Previous Week	12.0	(1.8)	5.8	NA	7.9

Source: Reuters, CFTC & FI (FI est. are noted with latest date)

# Disclaimer

TO CLIENTS/PROSPECTS OF FUTURES INTERNATIONAL, SEE RISK DISCLOSURE BELOW:

THIS COMMUNICATION IS CONVEYED AS A SOLICITATION FOR ENTERING INTO A DERIVATIVES TRANSACTION.

Any trading recommendations and market or other information to Customer by Futures International (FI), although based upon information obtained from sources believed by FI to be reliable may not be accurate and may be changed without notice to customer. FI makes no guarantee as to the accuracy or completeness of any of the information or recommendations furnished to Customer. Customer understands that FI, its managers, employees and/or affiliates may have a position in commodity futures, options or other derivatives which may not be consistent with the recommendations furnished by FI to Customer.

The risk of trading futures and options and other derivatives involves a substantial risk of loss and is not suitable for all persons. In purchasing an option, the risk is limited to the premium paid, and all commissions and fees involved with the trade. When an option is shorted or written, the writer of the option has unlimited risk with respect to the option written. The use of options strategies such as a straddles and strangles involve multiple option positions and may substantially increase the amount of commissions and fees paid to execute the strategy. Option prices do not necessarily move in tandem with cash or futures prices. Each person must consider whether a particular trade, combination of trades or strategy is suitable for that person's financial means and objectives.

This material may include discussions of seasonal patterns, however, futures prices have already factored in the seasonal aspects of supply and demand, and seasonal patterns are no indication of future market trends. Finally, past performance is not indicative of future results.

This communication may contain links to third party websites which are not under the control of FI and FI is not responsible for their content. Products and services are offered only in jurisdictions where solicitation and sale are lawful, and in accordance with applicable laws and regulations in each such jurisdiction.