

CFTC COMMITMENT OF TRADERS REPORT

As of 5/2/2023

TRADITIONAL FUNDS net position changes

Wed to Tue, in 000 contracts

	Corn	Bean	Meal	Oil	Chi. Wheat	KC Wheat	Min Wheat
Futures Only	(85.3)	(29.0)	(22.4)	(1.8)	(7.0)	(10.9)	(5.2)
Futures & Options Combined	(96.4)	(30.8)	(24.6)	(2.9)	(9.8)	(11.5)	(5.5)

TRADITIONAL COMMERCIAL net position changes

	Corn	Bean	Meal	Oil	Chi. Wheat	KC Wheat	Min Wheat
Futures Only	78.6	28.0	23.8	2.1	8.0	8.1	2.2
Futures & Options Combined	89.7	29.4	26.0	2.8	10.3	8.5	2.5

MANAGED MONEY net position changes

	Corn	Bean	Meal	Oil	Chi. Wheat	KC Wheat	Min Wheat
Futures Only	(101.7)	(32.1)	(25.9)	(4.5)	(13.7)	(13.1)	(4.8)
Futures & Options Combined	(102.8)	(30.8)	(25.8)	(4.2)	(13.3)	(12.8)	(4.8)

SWAP DEALERS net position changes

	Corn	Bean	Meal	Oil	Chi. Wheat	KC Wheat	Min Wheat
Futures Only	5.7	5.8	1.9	(4.6)	(0.3)	(1.2)	(0.1)
Futures & Options Combined	7.3	5.0	2.0	(4.8)	(0.8)	(1.2)	(0.1)

PRODUCERS/END USERS net position changes

	Corn	Bean	Meal	Oil	Chi. Wheat	KC Wheat	Min Wheat
Futures Only	72.8	22.1	21.9	6.7	8.3	9.3	2.3
Futures & Options Combined	82.4	24.4	24.0	7.6	11.1	9.8	2.6

INDEX net position changes

	Corn	Bean	Meal	Oil	Chi. Wheat	KC Wheat	Min Wheat
Futures & Options Combined	(31.0)	(7.6)	0.3	(2.2)	(4.3)	(3.3)	NA

SUPPLEMENTAL NON-COMMERCIAL net position changes

	Corn	Bean	Meal	Oil	Chi. Wheat	KC Wheat	Min Wheat
Futures & Options Combined	(64.1)	(22.0)	(23.5)	(1.6)	(7.7)	(8.3)	NA

OPEN INTEREST net position changes

Wed to Tue, in 000 contracts

	Corn	Bean	Meal	Oil	Chi. Wheat	KC Wheat	Min Wheat
Futures Only	(19.0)	(29.9)	(12.9)	2.9	7.2	16.2	2.5
Futures & Options Combined	50.1	(17.0)	(9.1)	12.8	32.9	18.2	3.1

Source: CFTC and FI

Wed to Tue, in 000 contracts

5/5/2023

**COMMITMENT OF TRADERS
FUTURES ONLY NET POSITIONS
AS OF 05/02/2023
(IN THOUSAND CONTRACTS)**

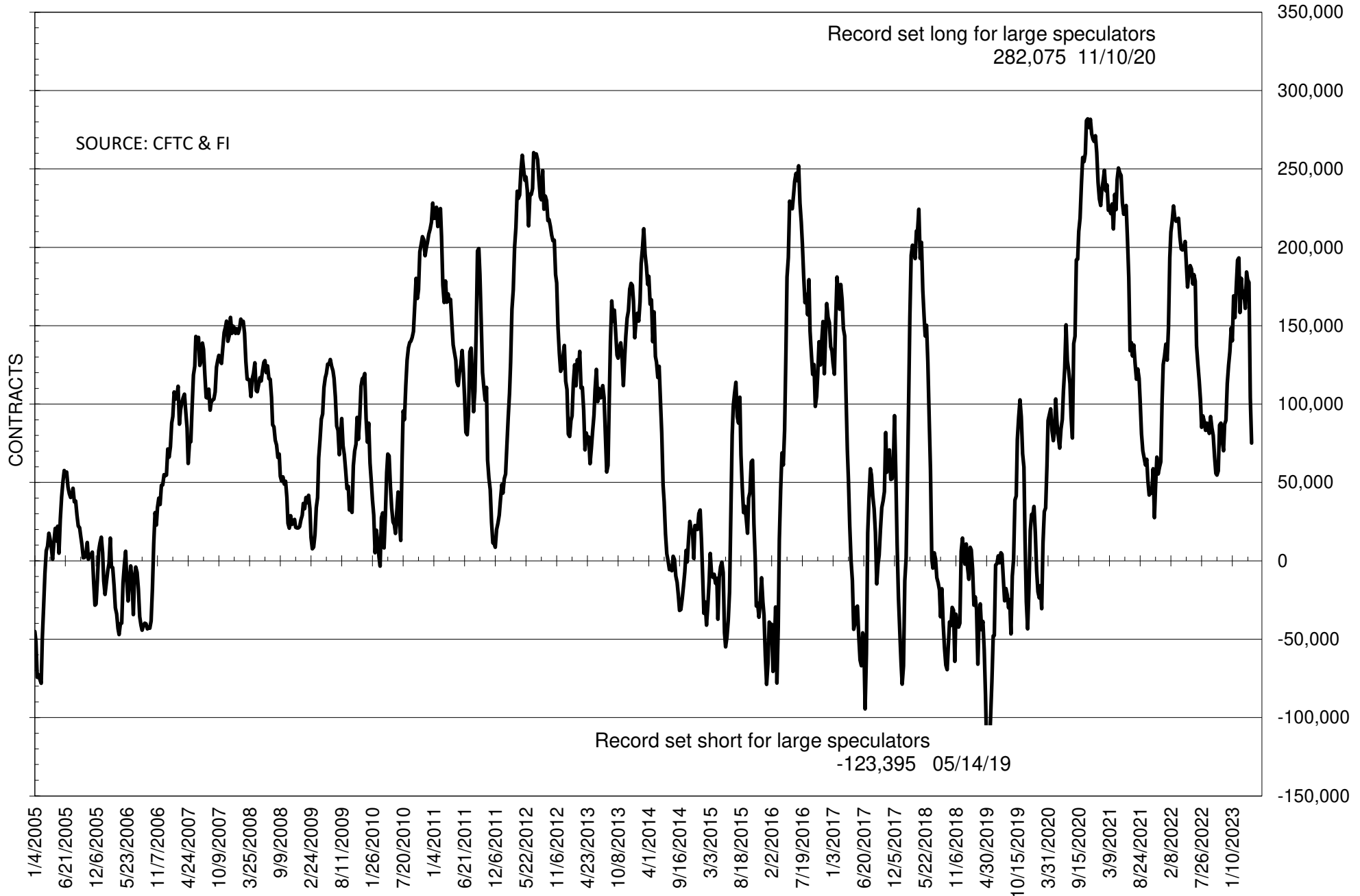
	COMMERCIAL				(FUND) NON COMMERCIAL				(SPEC) NON-REPORTABLE			
	2-May	25-Apr	18-Apr	11-Apr	2-May	25-Apr	18-Apr	11-Apr	2-May	25-Apr	18-Apr	11-Apr
	WHEAT											
Chicago	83.4	75.4	65.2	62.3	-90.2	-83.2	-70.5	-66.7	6.8	7.8	5.3	4.4
Kansas City	11.9	3.8	-1.9	-1.8	-12.2	-1.3	2.3	1.9	0.3	-2.5	-0.4	-0.1
Minneapolis	1.9	-0.4	-4.9	-4.5	-5.1	0.1	3.9	4.1	3.3	0.3	0.9	0.4
All Wheat	97.1	78.8	58.4	56.0	-107.6	-84.4	-64.3	-60.7	10.5	5.6	5.9	4.7
CORN	113.3	34.7	-41.2	-45.3	-60.6	24.6	105.6	103.3	-52.6	-59.3	-64.4	-58.0
OATS	0.2	-0.1	-0.4	-0.4	-1.0	-0.6	-0.6	-0.2	0.8	0.7	1.0	0.7
SOYBEANS	-48.5	-76.5	-149.5	-148.5	75.1	104.1	177.5	179.3	-26.6	-27.6	-28.0	-30.8
SOY OIL	22.5	20.4	6.9	8.2	-20.1	-18.3	-9.5	-6.4	-2.5	-2.2	2.5	-1.8
SOY MEAL	-103.0	-126.8	-146.9	-134.1	88.9	111.3	130.3	115.9	14.1	15.6	16.6	18.1

Oats positions thin to be reported

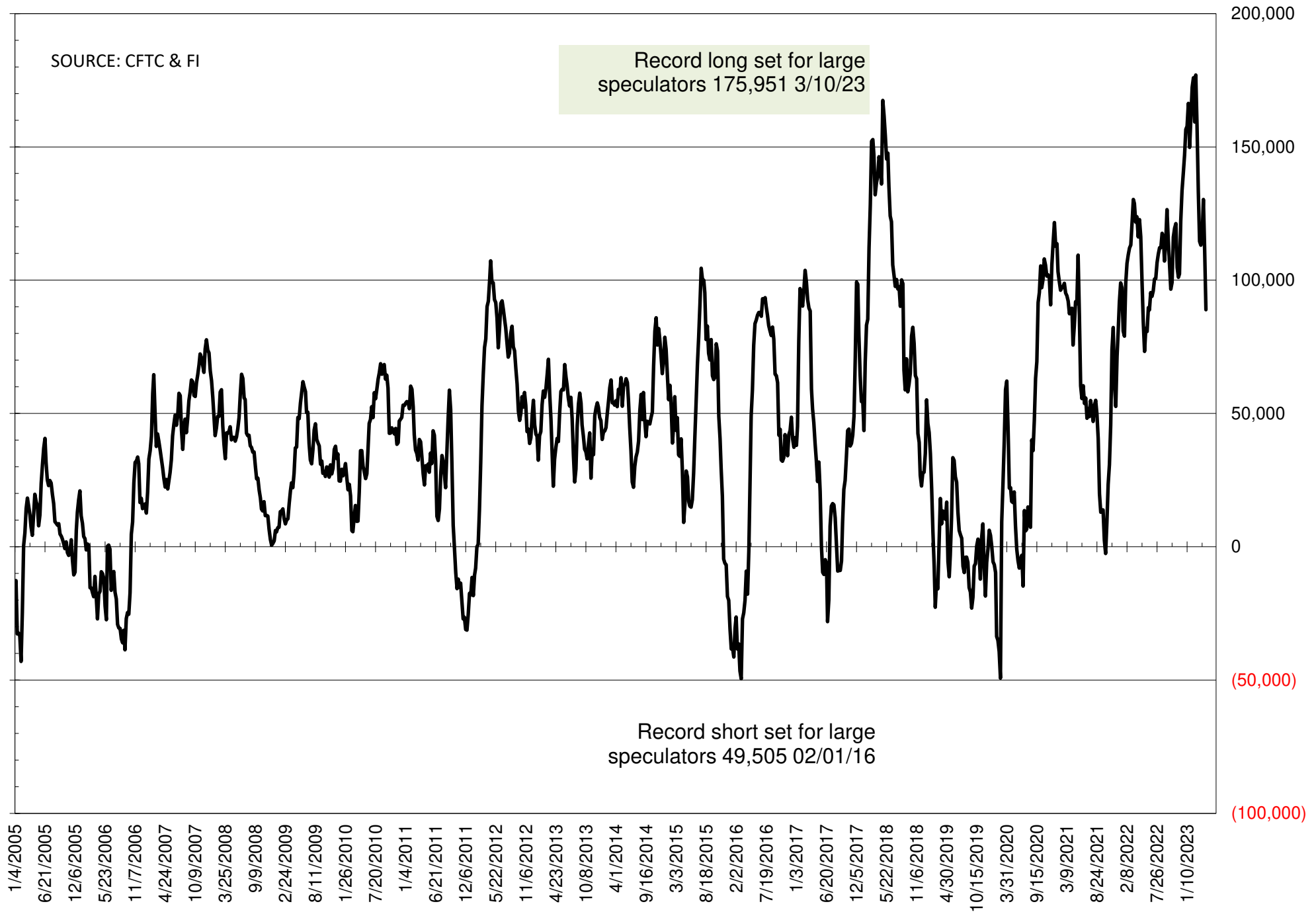
	TOTAL OPEN INTEREST				NEARBY FUTURES PRICE					2-May-23 LAST REPORTED % HELD BY TRADERS			
	2-May	25-Apr	18-Apr	11-Apr	N 5-May	N 2-May	K 25-Apr	K 18-Apr	K 11-Apr	LARGE FUND		SMALL	
										LONG	SHORT	LONG	SHORT
WHEAT													
Chicago	373634	366390	378531	391899	660.25	609.25	638.75	698.00	674.00	0%	53%	0%	9%
Kansas City	187544	171324	171965	175828	833.00	740.25	818.25	881.25	868.25	0%	32%	0%	12%
Minneapolis	55135	52667	58109	61255	836.00	775.50	837.75	885.50	863.75	0%	24%	0%	17%
CORN	1223954	1242943	1319551	1338484	596.50	580.00	646.75	677.50	651.00	0%	27%	0%	14%
OATS	5174	4776	4912	4698	329.00	302.50	334.00	347.50	340.25	0%	37%	0%	32%
SOYBEANS	601051	630935	683161	716906	1436.50	1410.75	1445.25	1519.25	1497.25	26%	13%	7%	12%
SOY OIL	472547	469607	479920	484462	54.33	51.79	51.71	55.36	54.89	0%	21%	0%	7%
SOY MEAL	428013	440917	454299	435709	426.10	427.90	434.80	461.10	457.80	0%	7%	0%	7%

SOURCE: CFTC & FI

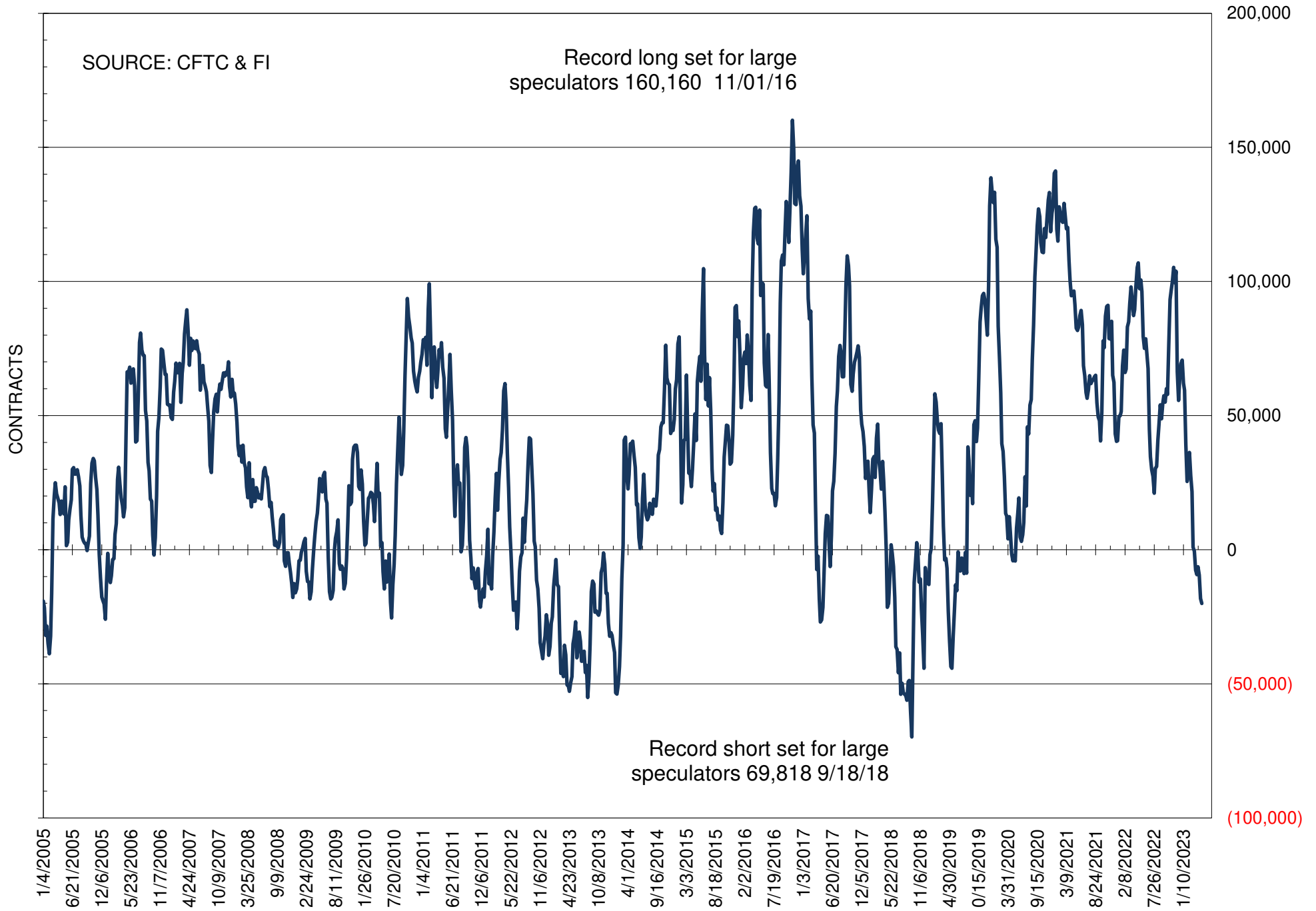
NET POSITION OF FUTURES ONLY LARGE SPECS IN SOYBEANS



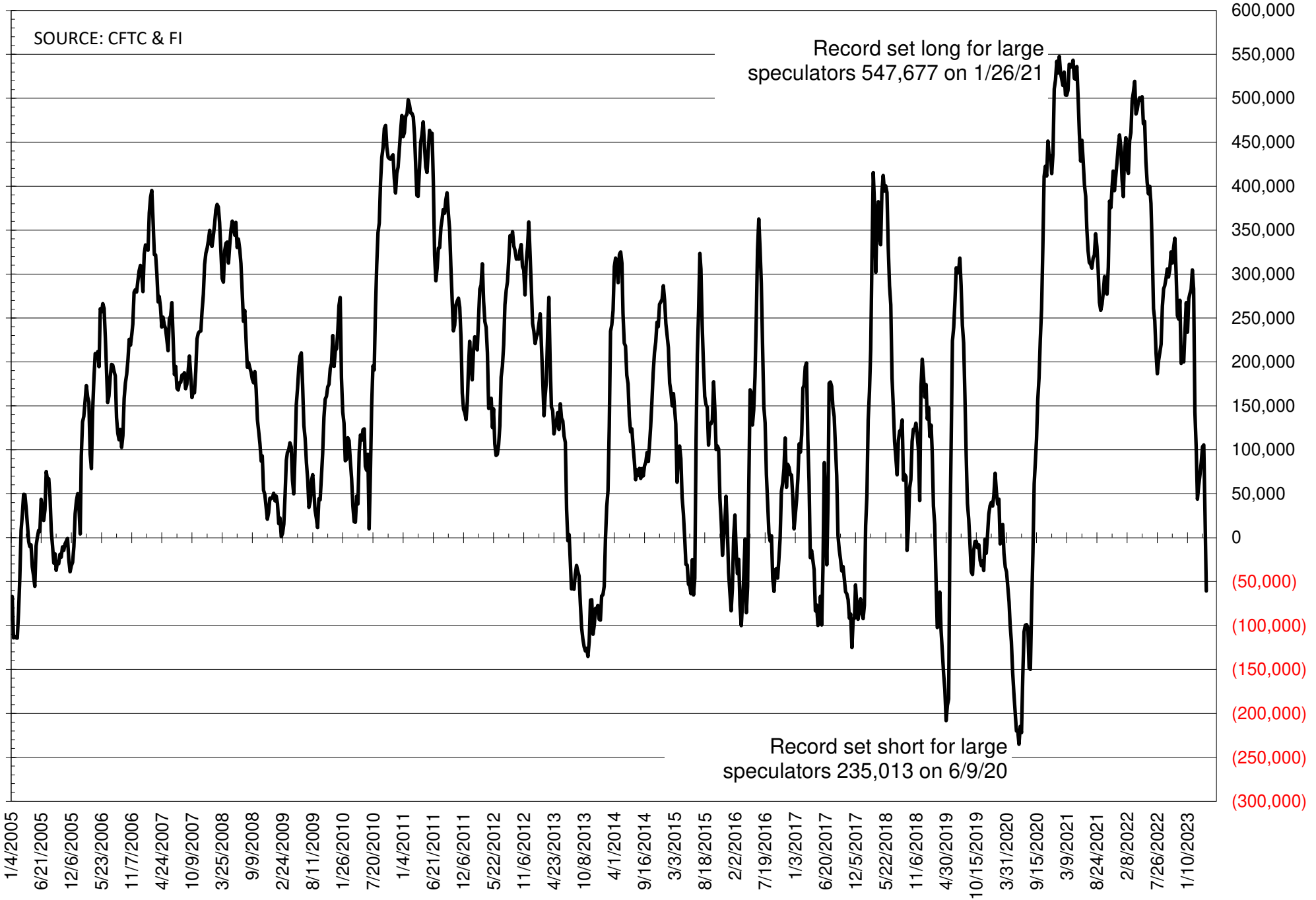
NET POSITION OF FUTURES ONLY LARGE SPECS IN SOYMEAL



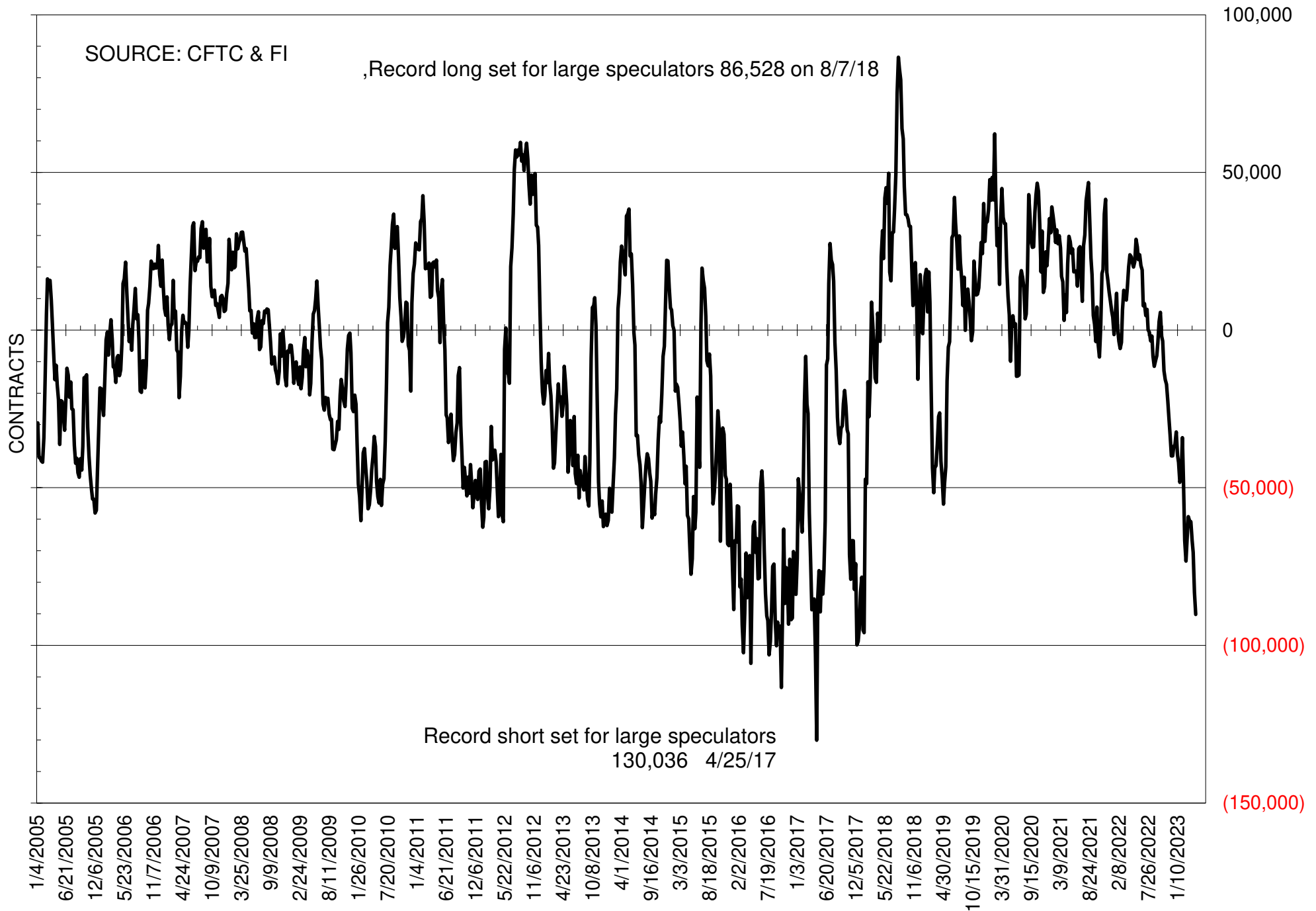
NET POSITION OF FUTURES ONLY LARGE SPECS IN SOYOIL



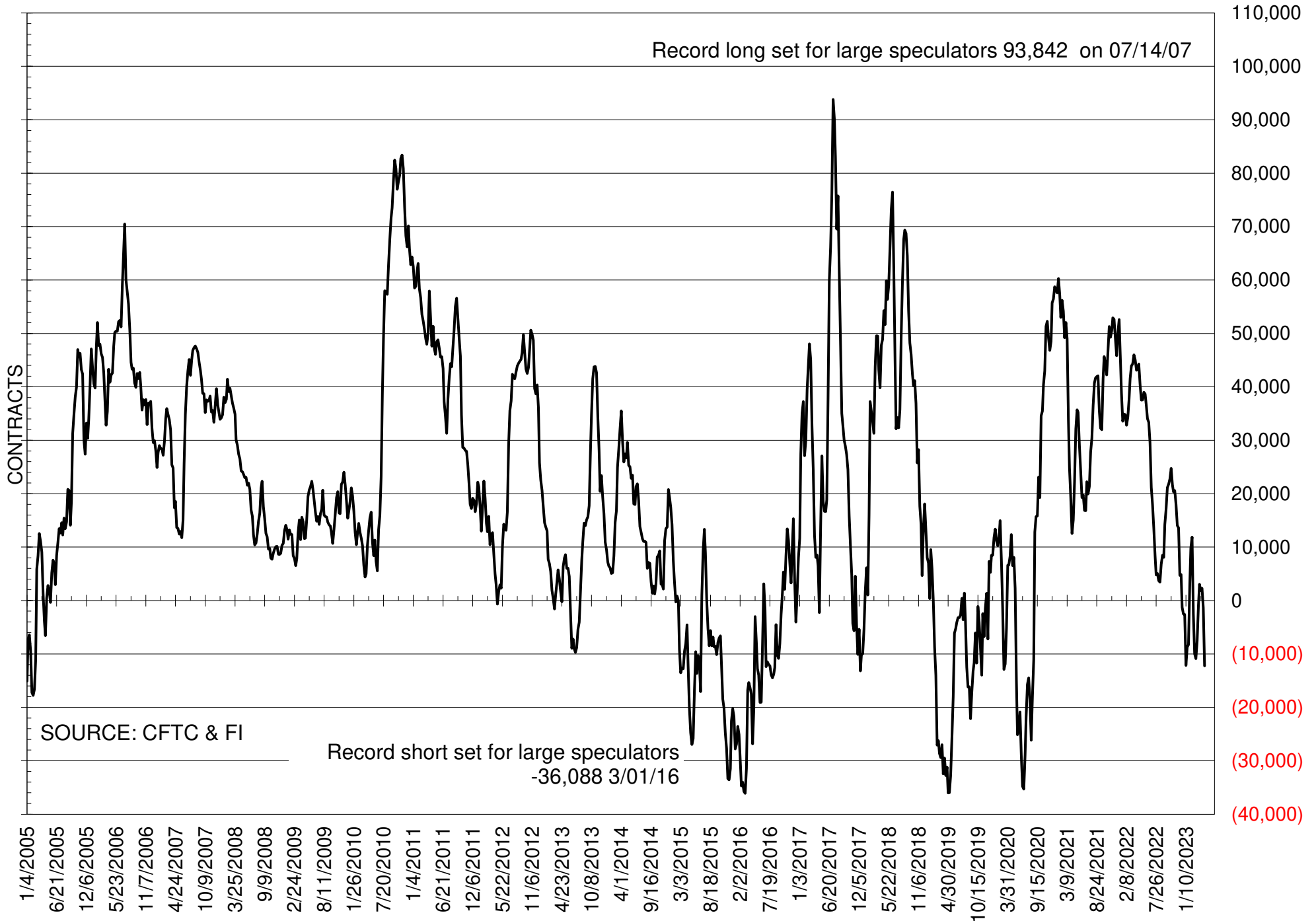
NET POSITION OF LARGE SPECULATORS IN CORN



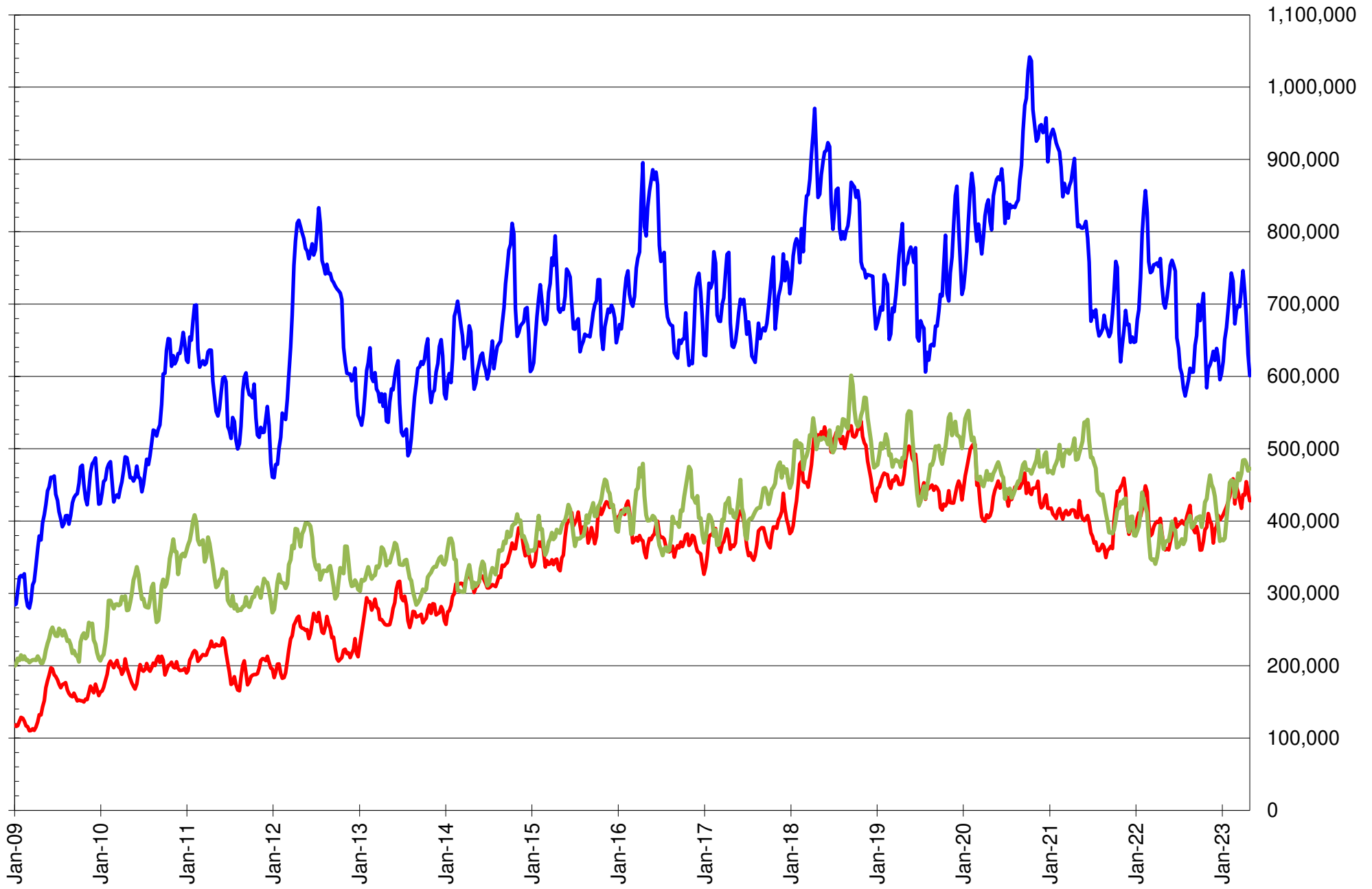
NET POSITION OF FUTURES ONLY LARGE SPECS IN CHICAGO WHEAT



NET POSITION OF LARGE SPECULATORS IN KANSAS CITY WHEAT



TOTAL OPEN INTEREST IN SOYBEANS, MEAL AND OIL, FUTURES ONLY



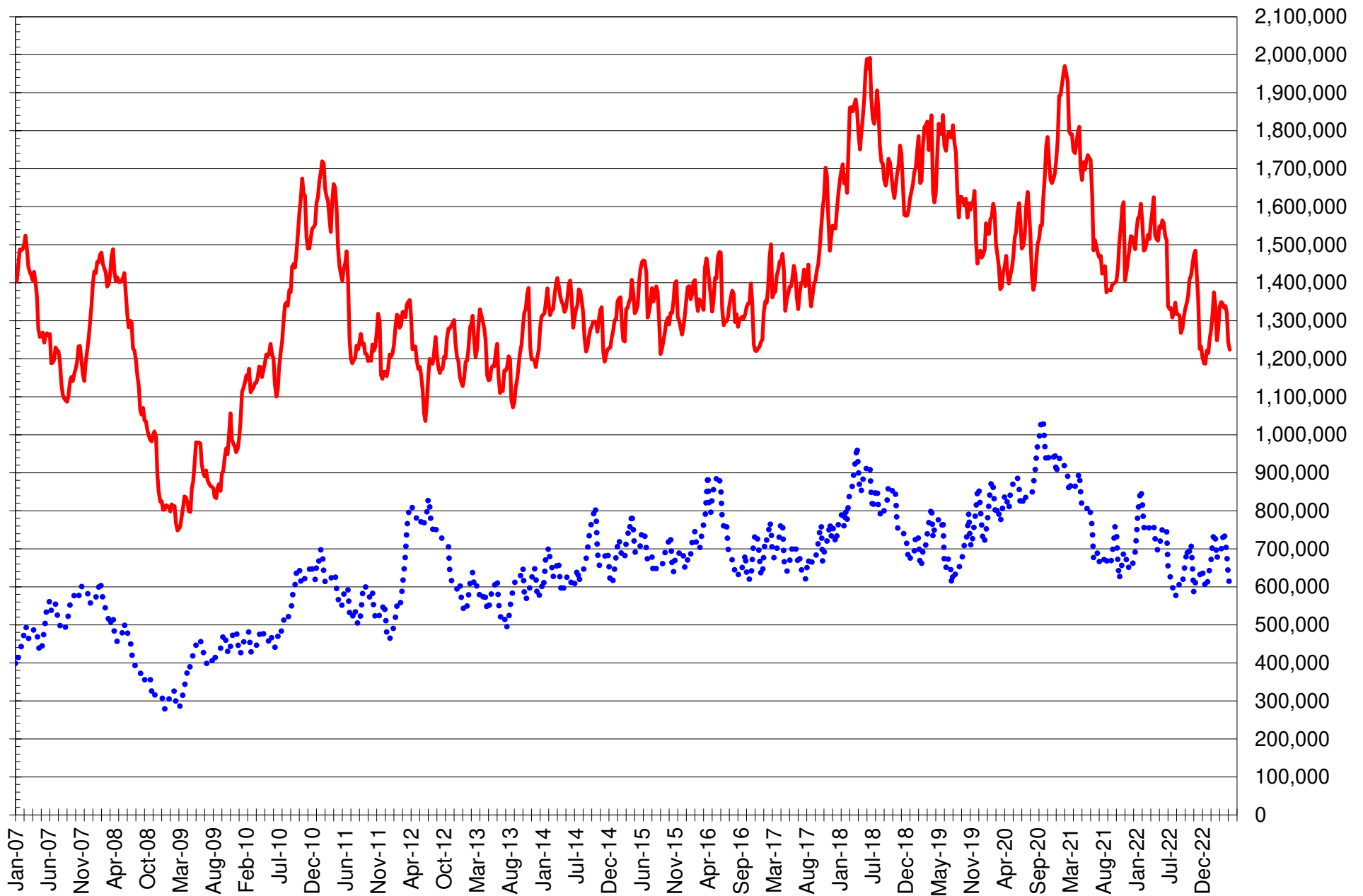
SOURCE: CFTC & FI

— SOYBEANS

— SOYBEAN MEAL

— SOYBEAN OIL

TOTAL OPEN INTEREST IN CORN AND SOYBEANS, FUTURES ONLY



SOURCE: CFTC & FI

— CORN

..... SOYBEANS

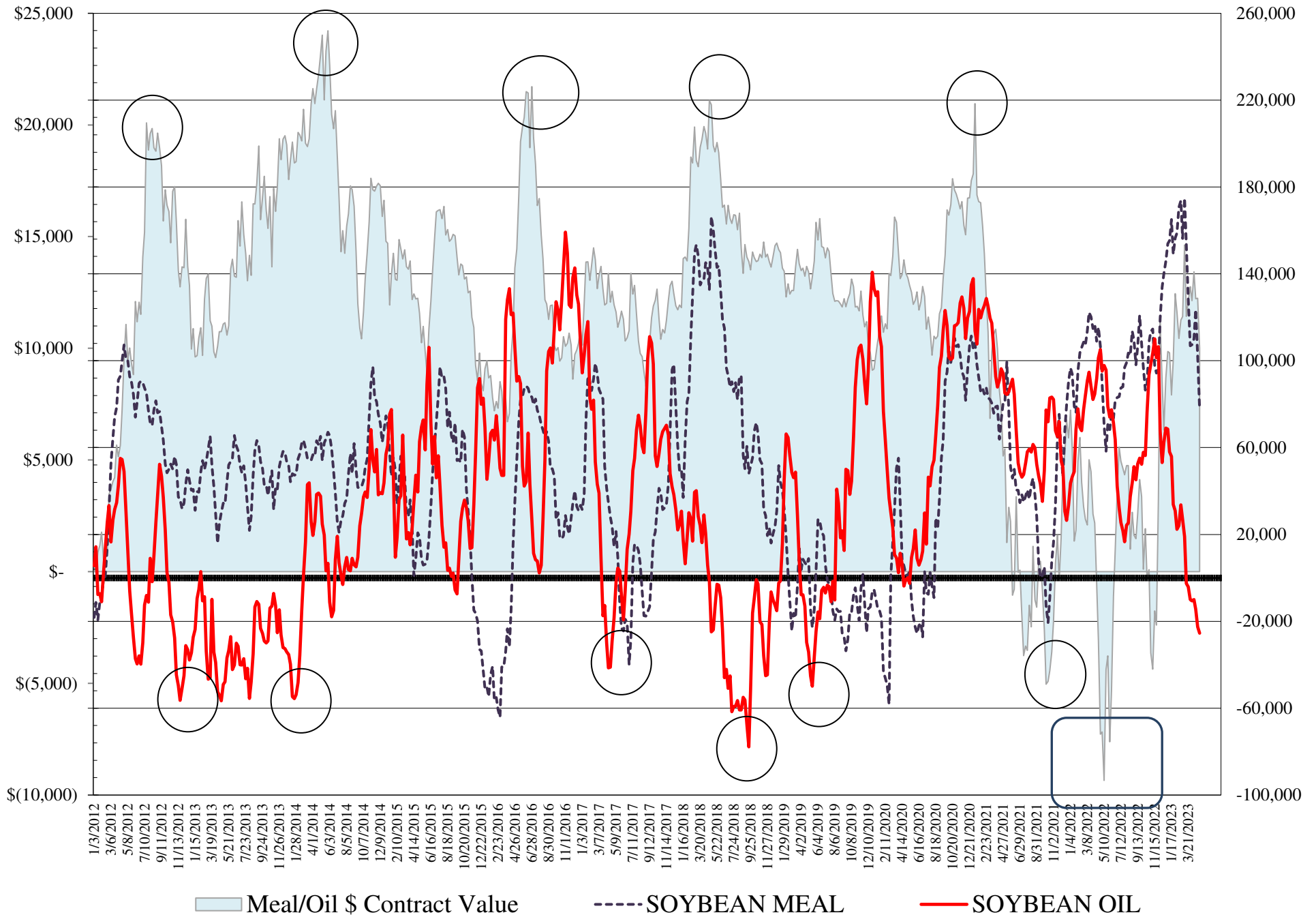
**COMMITMENT OF TRADERS
FUTURES & OPTIONS NET POSITIONS
AS OF 05/02/2023
(IN THOUSAND CONTRACTS)**

	COMMERCIAL				(FUND) NON COMMERCIAL				(SPEC) NON-REPORTABLE			
	2-May	25-Apr	18-Apr	11-Apr	2-May	25-Apr	18-Apr	11-Apr	2-May	25-Apr	18-Apr	11-Apr
WHEAT												
Chicago	93.7	83.4	71.7	67.6	-102.4	-92.6	-78.2	-73.2	8.7	9.2	6.5	5.6
Kansas City	13.2	4.6	-1.3	-1.2	-13.6	-2.1	1.5	1.2	0.4	-2.5	-0.2	-0.1
Minneapolis	2.6	0.0	-5.1	-4.8	-5.8	-0.3	4.0	4.3	3.2	0.3	1.1	0.5
All Wheat	109.4	88.0	65.3	61.6	-121.7	-95.0	-72.7	-67.7	12.3	6.9	7.4	6.0
CORN	146.0	56.3	-16.2	-11.7	-92.5	3.9	78.7	72.9	-53.5	-60.3	-62.5	-61.2
OATS	0.2	-0.1	-0.4	-0.4	-1.0	-0.6	-0.6	-0.2	0.8	0.7	1.0	0.7
SOYBEANS	-40.3	-69.7	-127.6	-117.0	69.7	100.5	158.5	151.0	-29.3	-30.8	-30.8	-34.0
SOY OIL	26.7	23.9	11.0	11.1	-25.4	-22.5	-14.4	-10.0	-1.2	-1.3	3.4	-1.1
SOY MEAL	-93.9	-119.9	-143.2	-130.9	77.5	102.2	123.5	110.1	16.4	17.7	19.7	20.8

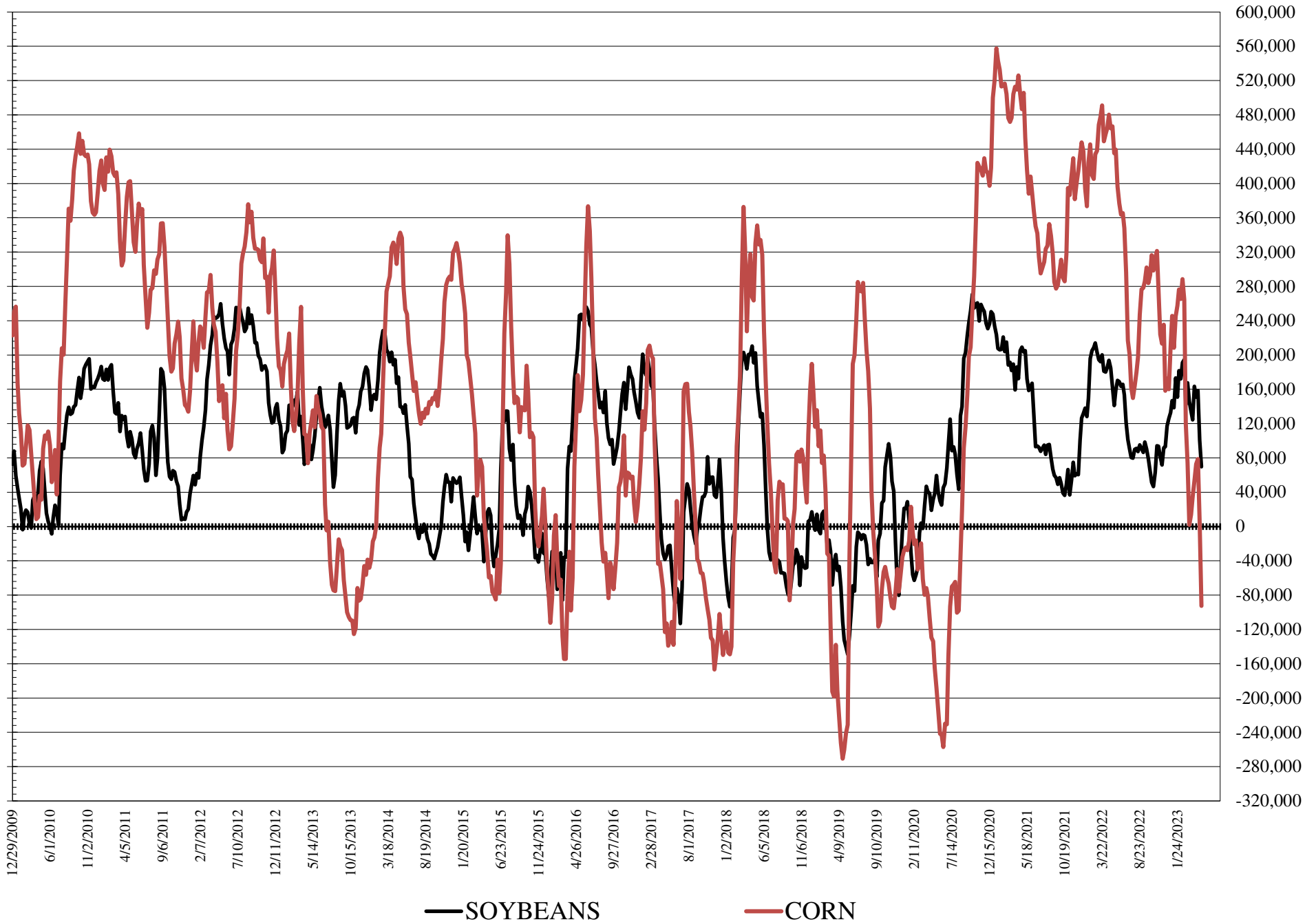
	TOTAL OPEN INTEREST				COMMERCIALS		% HELD BY TRADERS LARGE (FUNDS)		SMALL (NON-REP)	
	2-May	25-Apr	18-Apr	11-Apr	LONG	SHORT	LONG	SHORT	LONG	SHORT
WHEAT										
Chicago	462,482	429,579	458,928	469,091	35%	15%	21%	43%	10%	8%
Kansas City	202,728	184,479	190,739	193,081	41%	35%	22%	29%	12%	12%
Minneapolis	58,032	54,972	61,157	63,883	55%	51%	13%	23%	23%	17%
CORN	1,619,667	1,569,537	1,690,262	1,681,027	47%	38%	15%	21%	10%	13%
OATS	5,207	4,814	4,971	4,757						
SOYBEANS	733,018	750,013	856,008	882,745	48%	53%	20%	10%	7%	11%
SOY OIL	508,660	495,888	523,252	528,132	57%	52%	14%	19%	6%	7%
SOY MEAL	473,433	482,573	504,548	485,932	40%	60%	23%	6%	10%	6%

SOURCE: CFTC & FI

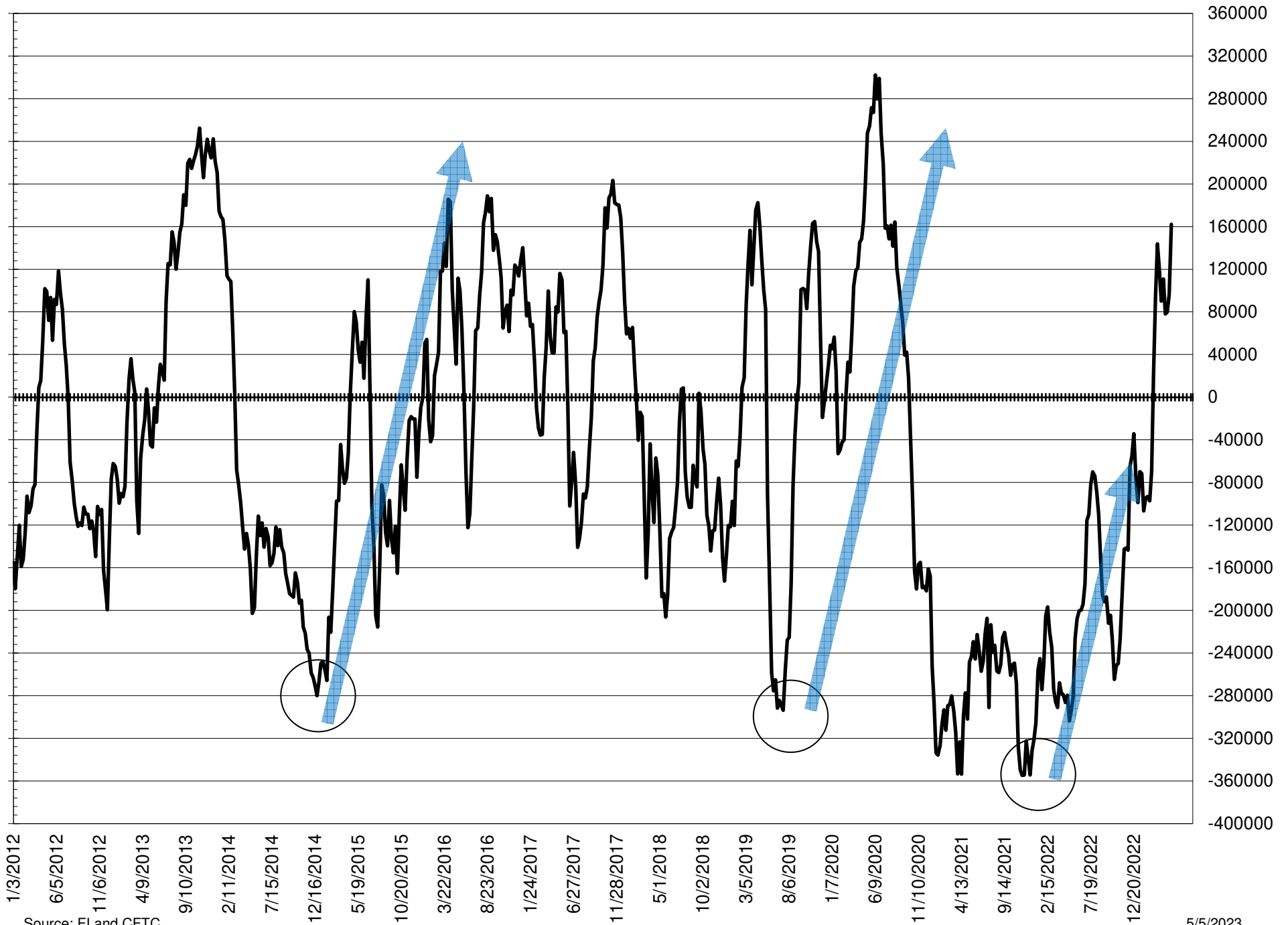
NET POSITION FUTURES AND OPTIONS OF LARGE SPECULATORS IN SOYBEAN MEAL AND SOYBEAN OIL



NET POSITION FUTURES AND OPTIONS OF LARGE SPECULATORS IN SOYBEANS AND CORN



NET POSITION FUTURES AND OPTIONS SPREAD OF LARGE SPECULATORS IN SOYBEANS MINUS CORN



Source: FI and CFTC

5/5/2023

**DISAGGREGATED COMMITMENT OF TRADERS
FUTURES ONLY NET POSITIONS**

AS OF 05/02/2023

(IN THOUSAND CONTRACTS)

	PRODUCER / MERCHANT / PROCESSOR / USER				(INDEX/ETF) SWAP DEALERS				(CTA/CPO/OTHER UNREGISTERED) MANAGED MONEY				
	2-May	25-Apr	18-Apr	11-Apr	2-May	25-Apr	18-Apr	11-Apr	2-May	25-Apr	18-Apr	11-Apr	
	WHEAT												
Chicago	19.2	10.9	1.3	0.1	64.2	64.5	64.0	62.2	(127.9)	(114.2)	(105.3)	(106.4)	
Kansas City	(19.1)	(28.4)	(34.6)	(35.0)	31.0	32.2	32.6	33.2	(6.5)	6.6	9.7	8.6	
Minneapolis	1.0	(1.4)	(6.1)	(5.8)	0.9	1.0	1.3	1.2	(8.2)	(3.4)	0.0	0.2	
All Wheat	1.1	(18.9)	(39.4)	(40.6)	96.1	97.7	97.9	96.6	(142.5)	(111.0)	(95.6)	(97.5)	
CORN	(128.8)	(201.6)	(270.8)	(265.2)	242.0	236.3	229.6	219.9	(111.8)	(10.1)	57.7	28.9	
OATS	0.2	(0.1)	(0.4)	(0.6)	0.0	0.0	0.0	0.1	(1.4)	(1.1)	(1.2)	(0.8)	
SOYBEANS	(146.6)	(168.7)	(234.5)	(235.0)	98.1	92.3	85.0	86.5	55.0	87.1	135.6	124.7	
SOY OIL	(79.3)	(86.1)	(100.3)	(97.1)	101.9	106.5	107.3	105.2	(24.7)	(20.2)	(17.5)	(14.2)	
SOY MEAL	(196.7)	(218.6)	(239.0)	(225.5)	93.7	91.8	92.1	91.4	61.0	86.9	106.1	96.0	
									Managed % of OI				
									Chicago W	-34%	-31%	-28%	-27%
									Corn	-9%	-1%	4%	2%
	TOTAL												
	OPEN INTEREST				OTHER REPORTABLE				NON REPORTABLE				
	2-May	25-Apr	18-Apr	11-Apr	2-May	25-Apr	18-Apr	11-Apr	2-May	25-Apr	18-Apr	11-Apr	
WHEAT													
Chicago	373,634	366,390	378,531	391,899	37.7	31.0	34.8	39.7	6.8	7.8	5.3	4.4	
Kansas City	187,544	171,324	171,965	175,828	(5.8)	(7.9)	(7.4)	(6.7)	0.3	(2.5)	(0.4)	(0.1)	
Minneapolis	55,135	52,667	58,109	61,255	3.1	3.5	3.9	3.9	3.3	0.3	0.9	0.4	
All Wheat	616,313	590,381	608,605	628,982	35.0	26.5	31.3	36.8	10.5	5.6	5.9	4.7	
CORN	1,223,954	1,242,943	1,319,551	1,338,484	51.2	34.7	47.9	74.4	(52.6)	(59.3)	(64.4)	(58.0)	
OATS	5,174	4,776	4,912	4,698	0.4	0.5	0.6	0.6	0.8	0.7	1.0	0.7	
SOYBEANS	601,051	630,935	683,161	716,906	20.1	17.0	41.9	54.6	(26.6)	(27.6)	(28.0)	(30.8)	
SOY OIL	472,547	469,607	479,920	484,462	4.7	1.9	8.1	7.8	(2.5)	(2.2)	2.5	(1.8)	
SOY MEAL	428,013	440,917	454,299	435,709	27.9	24.4	24.2	19.9	14.1	15.6	16.6	18.1	

SOURCE: CFTC & FI

5/5/2023

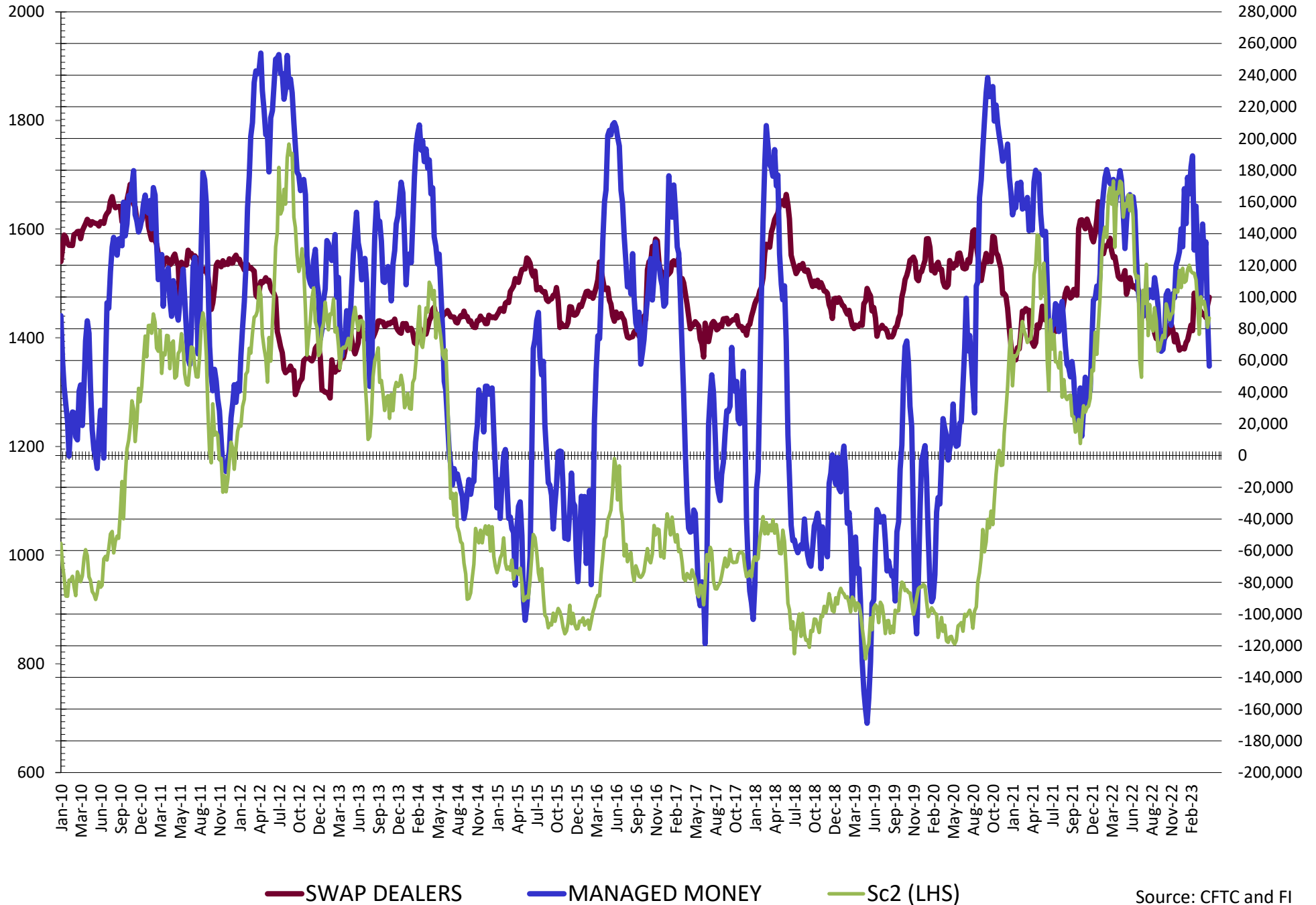
DISAGGREGATED COMMITMENT OF TRADERS
FUTURES & OPTIONS NET POSITIONS
AS OF 05/02/2023
(IN THOUSAND CONTRACTS)

	PRODUCER / MERCHANT / PROCESSOR / USER				(INDEX/ETF) SWAP DEALERS				(CTA/CPO/OTHER UNREGISTERED) MANAGED MONEY			
	2-May	25-Apr	18-Apr	11-Apr	2-May	25-Apr	18-Apr	11-Apr	2-May	25-Apr	18-Apr	11-Apr
	WHEAT											
Chicago	27.1	16.0	6.5	4.0	66.6	67.4	65.3	63.6	(126.3)	(113.0)	(103.0)	(104.2)
Kansas City	(18.3)	(28.1)	(34.2)	(34.3)	31.5	32.7	32.9	33.2	(5.5)	7.4	10.6	9.2
Minneapolis	1.7	(0.9)	(6.3)	(6.0)	0.9	1.0	1.2	1.2	(8.2)	(3.4)	0.0	0.2
All Wheat	10.4	(13.0)	(34.0)	(36.4)	99.0	101.1	99.3	98.0	(140.0)	(109.1)	(92.4)	(94.8)
CORN	(99.1)	(181.4)	(246.6)	(238.8)	245.1	237.8	230.4	227.2	(118.1)	(15.3)	49.4	27.1
OATS	0.2	(0.1)	(0.4)	(0.6)	0.0	(0.0)	0.0	0.1	(1.4)	(1.1)	(1.2)	(0.8)
SOYBEANS	(140.2)	(164.6)	(214.7)	(206.5)	99.9	94.9	87.1	89.5	56.4	87.2	134.8	125.0
SOY OIL	(75.6)	(83.2)	(97.0)	(94.8)	102.3	107.1	108.0	105.8	(23.7)	(19.6)	(15.7)	(12.6)
SOY MEAL	(187.7)	(211.7)	(233.8)	(221.1)	93.8	91.8	90.6	90.3	60.6	86.4	105.7	95.7

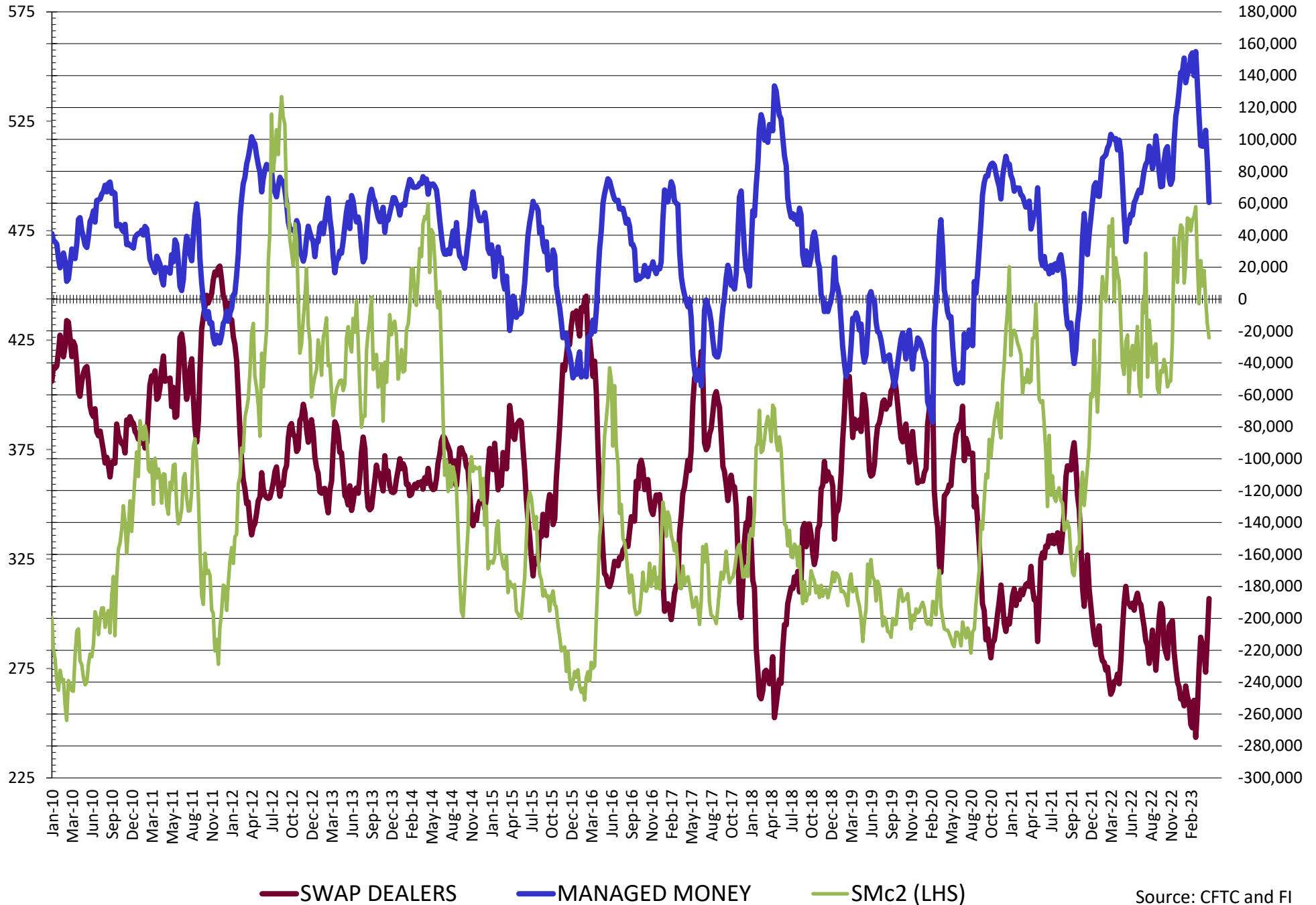
	TOTAL OPEN INTEREST				OTHER REPORTABLE				NON REPORTABLE			
	2-May	25-Apr	18-Apr	11-Apr	2-May	25-Apr	18-Apr	11-Apr	2-May	25-Apr	18-Apr	11-Apr
	WHEAT											
Chicago	462,482	429,579	458,928	469,091	24.0	20.5	24.7	31.0	8.7	9.2	6.5	5.6
Kansas City	202,728	184,479	190,739	193,081	(8.1)	(9.5)	(9.1)	(8.0)	0.4	(2.5)	(0.2)	(0.1)
Minneapolis	58,032	54,972	61,157	63,883	2.4	3.1	4.0	4.1	3.2	0.3	1.1	0.5
All Wheat	723,242	669,030	710,824	726,055	18.3	14.1	19.6	27.1	12.3	6.9	7.4	6.0
CORN	1,619,667	1,569,537	1,690,262	1,681,027	25.7	19.2	29.3	45.8	(53.5)	(60.3)	(60.3)	(60.3)
OATS	5,207	4,814	4,971	4,757	0.4	0.5	0.6	0.6	0.8	0.7	1.0	0.7
SOYBEANS	733,018	750,013	856,008	882,745	13.3	13.3	23.7	26.0	(29.3)	(30.8)	(30.8)	(34.0)
SOY OIL	508,660	495,888	523,252	528,132	(1.7)	(3.0)	1.4	2.6	(1.2)	(1.3)	3.4	(1.1)
SOY MEAL	473,433	482,573	504,548	485,932	17.0	15.8	17.8	14.4	16.4	17.7	19.7	20.8

SOURCE: CFTC & FI

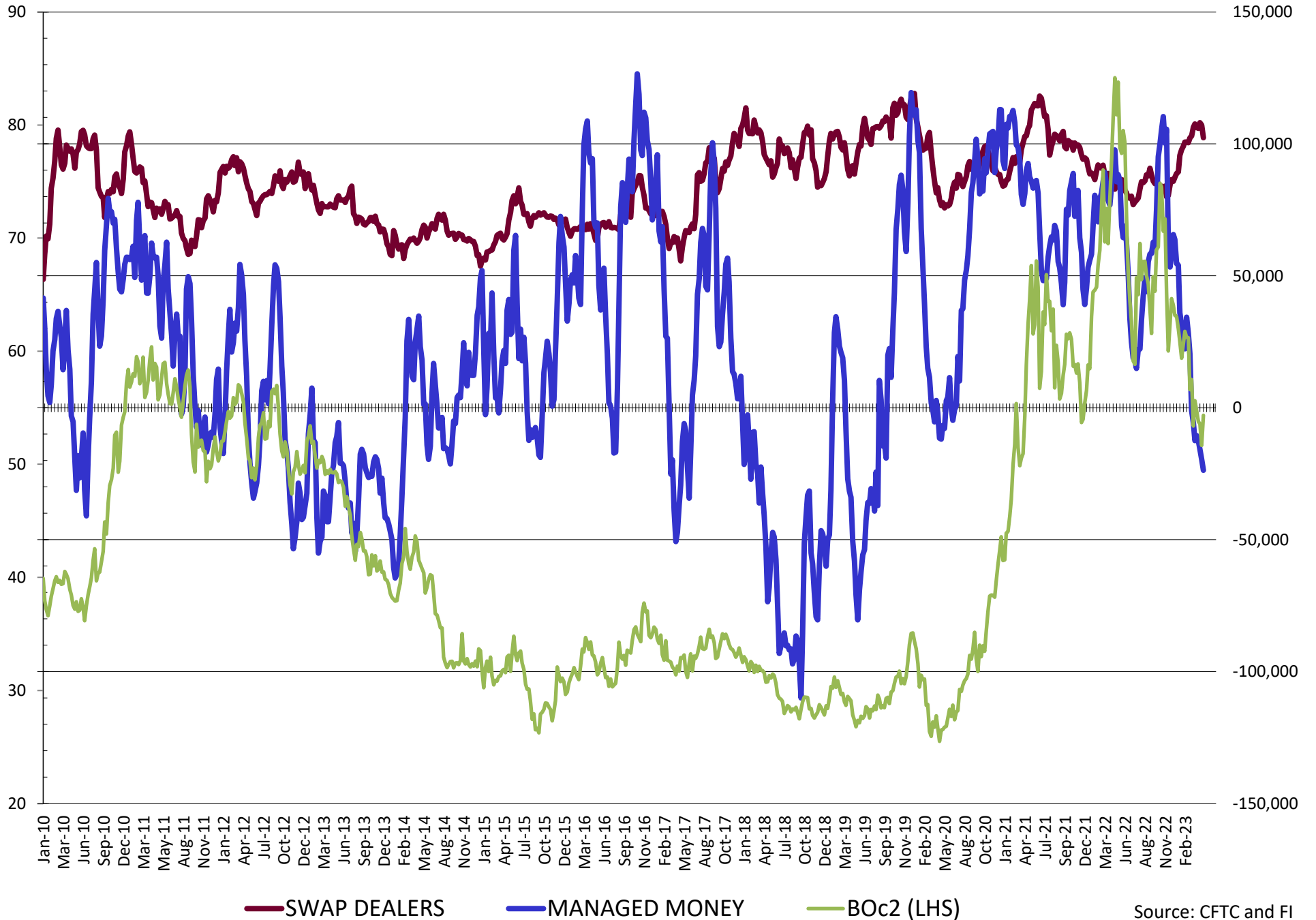
NET POSITION FUTURES AND OPTIONS OF SWAP AND MANAGED FUNDS IN SOYBEANS



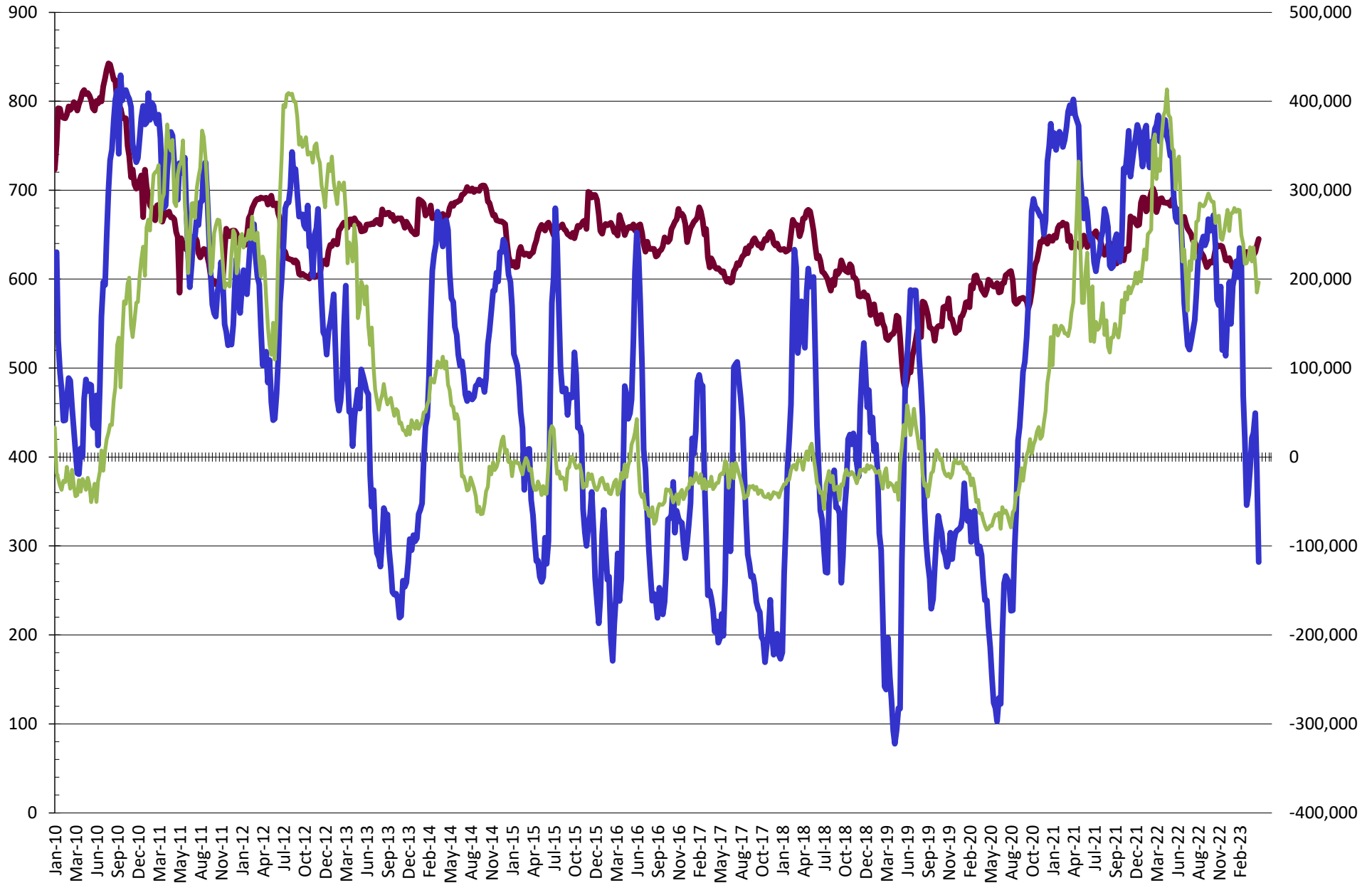
NET POSITION FUTURES AND OPTIONS OF SWAP AND MANAGED FUNDS IN SOYBEAN MEAL



NET POSITION FUTURES AND OPTIONS OF SWAP AND MANAGED FUNDS IN SOYBEAN OIL

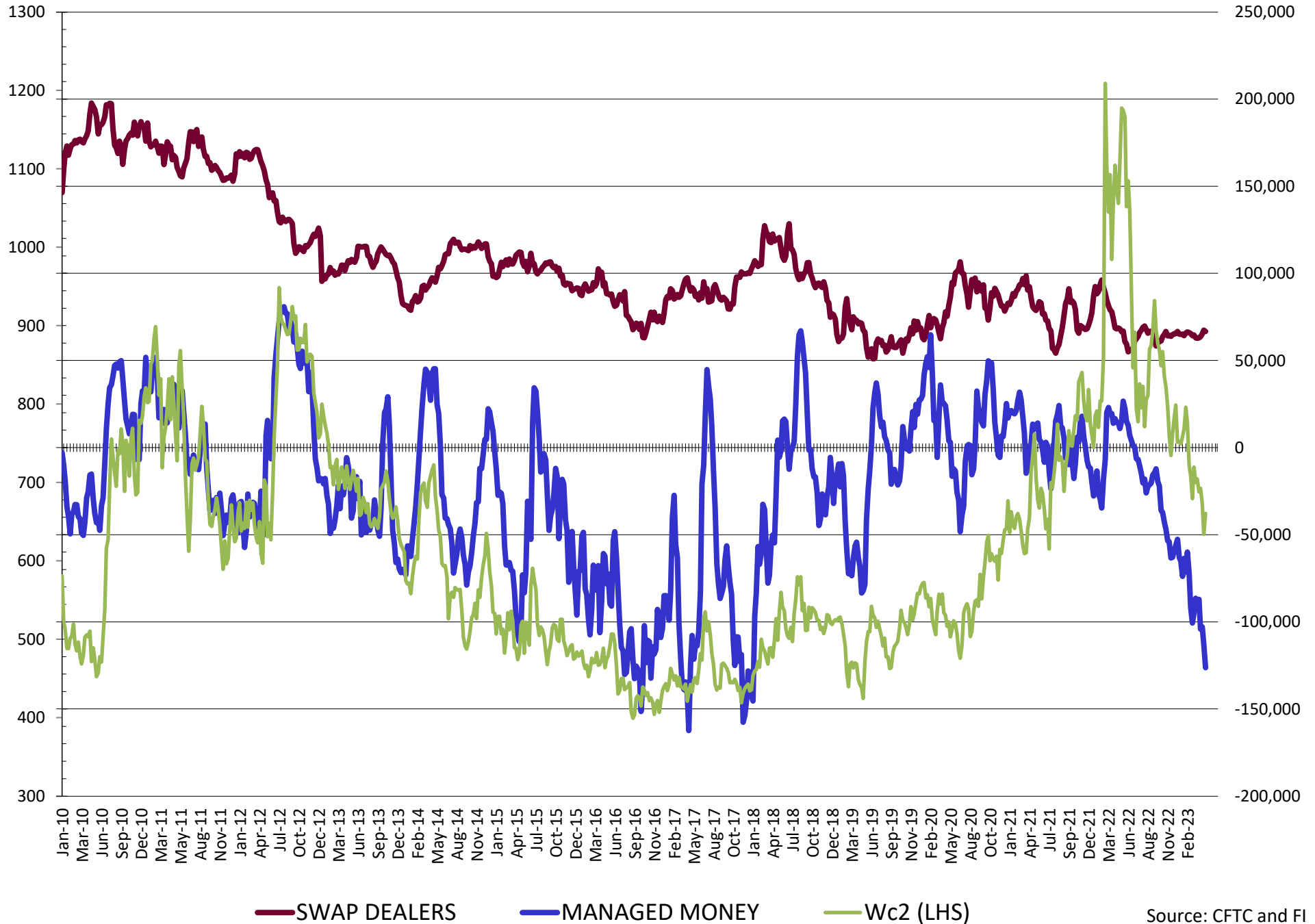


NET POSITION FUTURES AND OPTIONS OF SWAP AND MANAGED FUNDS IN CORN

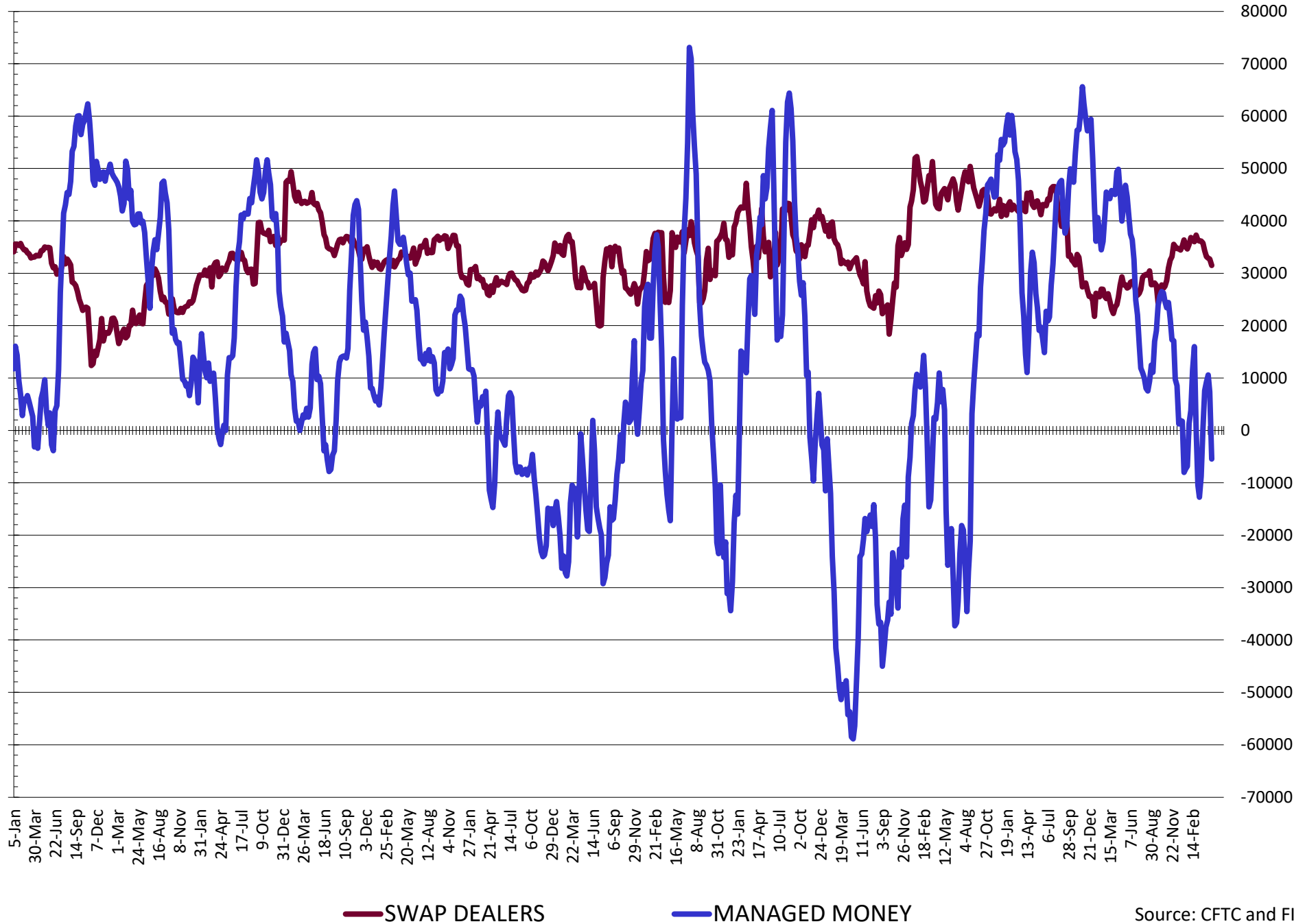


— SWAP DEALERS
 — MANAGED MONEY
 — Cc2 (LHS)

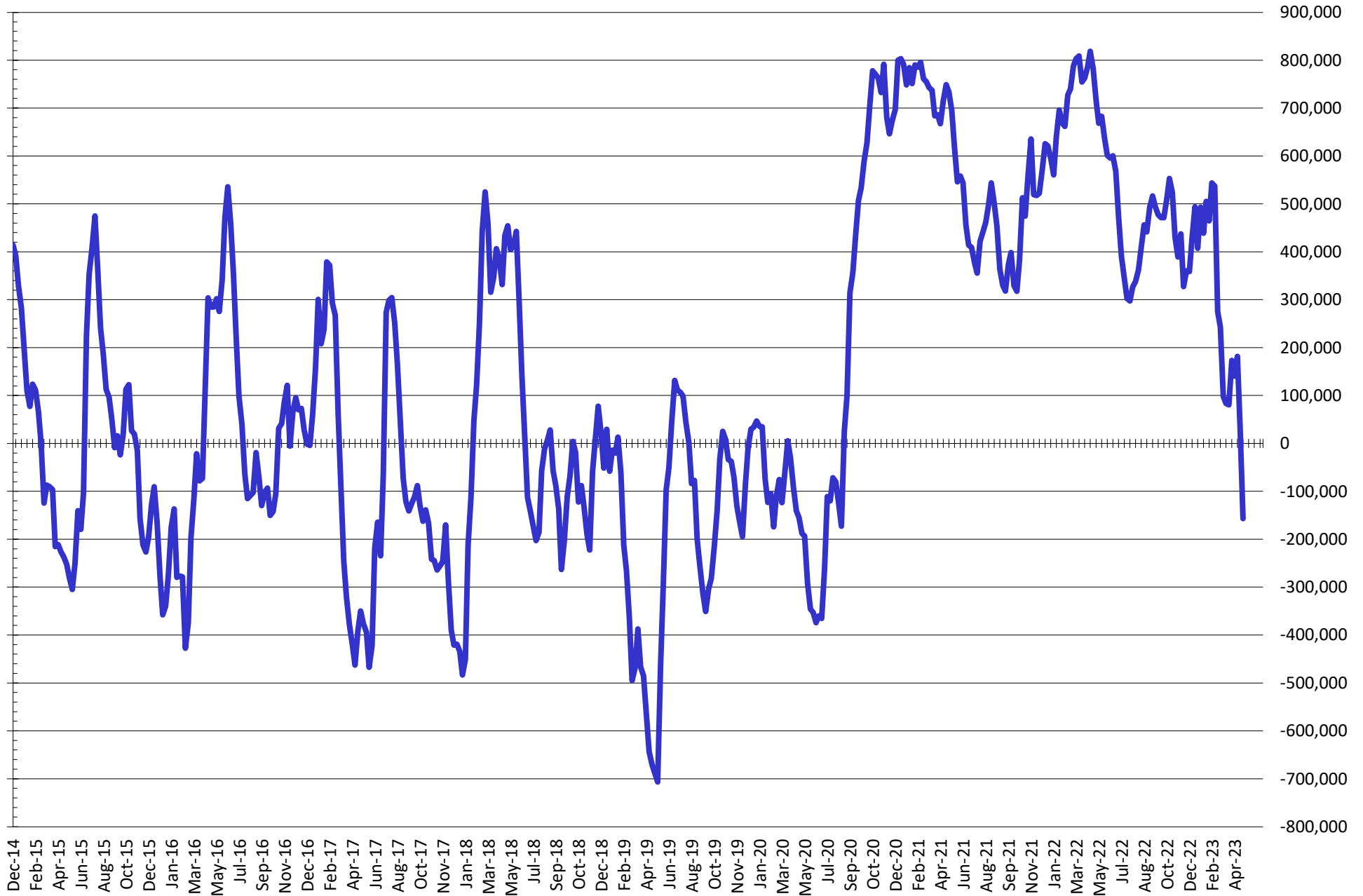
NET POSITION FUTURES AND OPTIONS OF SWAP AND MANAGED FUNDS IN CHICAGO WHEAT



NET POSITION FUTURES AND OPTIONS OF SWAP AND MANAGED FUNDS IN KANSAS WHEAT



NET POSITION FUTURES AND OPTIONS OF SWAP AND MANAGED FUNDS IN COMBINED SRW, HRW, CORN, SOYBEANS, SOYMEAL AND SOYOIL



— Net Managed Money

Source: CFTC and FI
5/5/2023

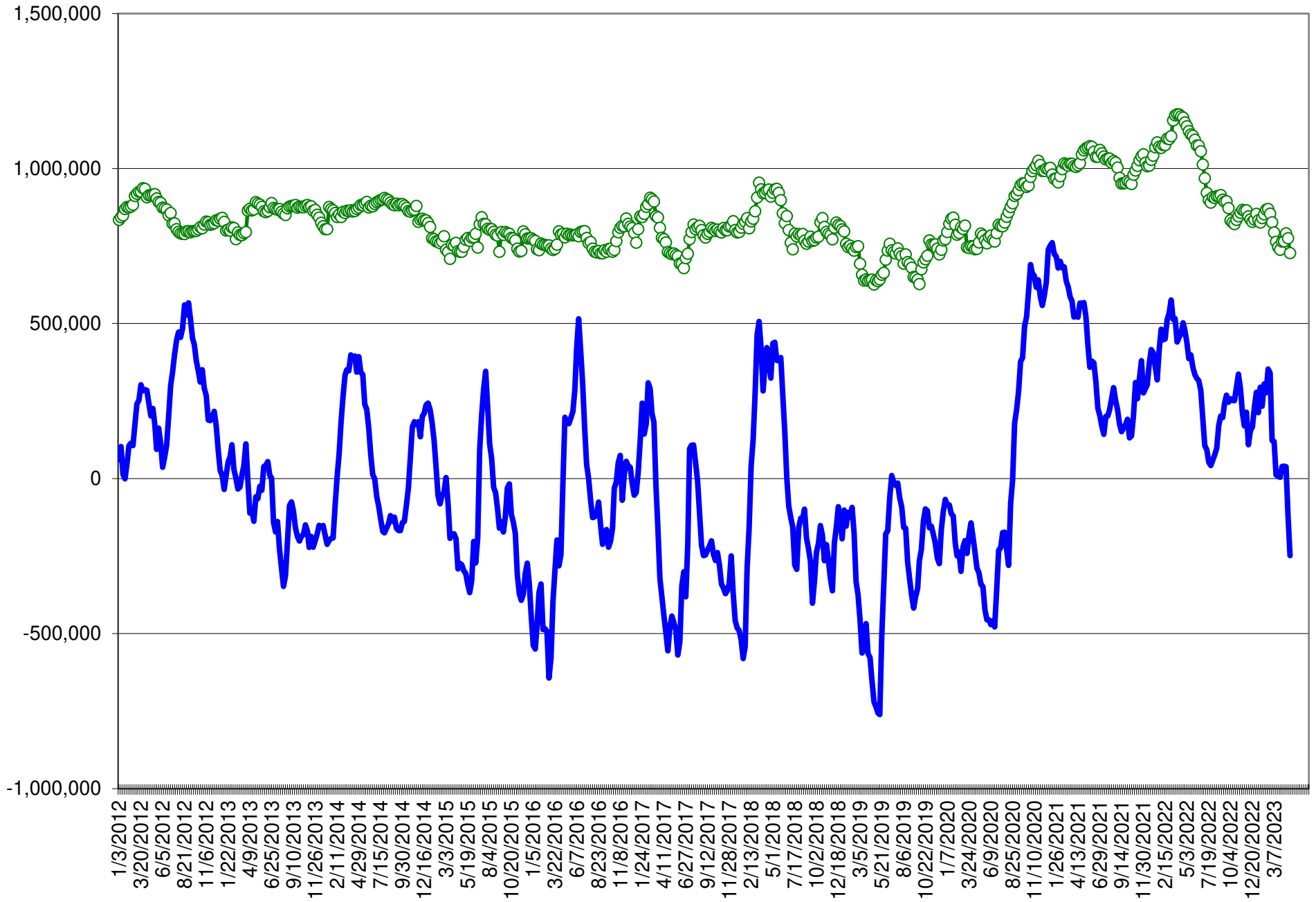
COMMITMENT OF TRADERS
FUTURES & OPTIONS NET POSITIONS (INDEX BROKEN OUT)
AS OF 05/02/2023
(IN THOUSAND CONTRACTS)

	COMMERCIAL				(FUND) NON COMMERCIAL				(SPEC) NON-REPORTABLE			
	2-May	25-Apr	18-Apr	11-Apr	2-May	25-Apr	18-Apr	11-Apr	2-May	25-Apr	18-Apr	11-Apr
	WHEAT											
Chicago	30.5	18.0	7.8	4.1	(108.1)	(100.4)	(89.4)	(83.8)	8.7	9.2	6.5	5.6
Kansas City	(17.4)	(26.0)	(32.0)	(32.1)	(20.3)	(12.0)	(10.3)	(10.2)	0.4	(2.5)	(0.2)	(0.1)
Minneapolis	-	-	-	-	-	-	-	-	-	-	-	-
All Wheat	13.2	(8.0)	(24.2)	(28.0)	(128.4)	(112.4)	(99.7)	(94.0)	9.1	6.7	6.3	5.5
CORN	(78.3)	(166.7)	(236.1)	(227.3)	(153.4)	(89.3)	(19.2)	(10.5)	(53.5)	(60.3)	(62.5)	(61.2)
OATS	-	-	-	-	-	-	-	-	-	-	-	-
SOYBEANS	(131.4)	(159.6)	(217.6)	(205.7)	36.9	58.9	111.3	102.0	(29.3)	(30.8)	(30.8)	(34.0)
SOY OIL	(51.7)	(55.3)	(69.8)	(68.7)	(43.9)	(42.3)	(37.4)	(33.4)	(1.2)	(1.3)	3.4	(1.1)
SOY MEAL	(171.7)	(196.2)	(217.9)	(204.5)	40.2	63.7	83.5	75.2	16.4	17.7	19.7	20.8

	TOTAL OPEN INTEREST				(INDEX) COMMERCIAL INDEX TRADERS				(INDEX) % NET OF TOTAL OPEN INTEREST			
	2-May	25-Apr	18-Apr	11-Apr	2-May	25-Apr	18-Apr	11-Apr	2-May	25-Apr	18-Apr	11-Apr
	WHEAT											
Chicago	462,482	429,579	458,928	469,091	68.9	73.2	75.1	74.1	14.9%	17.0%	16.4%	15.8%
Kansas City	202,728	184,479	190,739	193,081	37.2	40.5	42.5	42.4	18.4%	21.9%	22.3%	22.0%
Minneapolis	-	-	-	-	-	-	-	-	-	-	-	-
All Wheat	665,210	614,058	649,667	662,172	106.1	113.7	117.6	116.5	16.0%	18.5%	18.1%	17.6%
CORN	1,619,667	1,569,537	1,690,262	1,681,027	285.3	316.3	317.8	299.0	17.6%	20.2%	18.8%	17.8%
OATS	-	-	-	-	-	-	-	-	-	-	-	-
SOYBEANS	733,018	750,013	856,008	882,745	123.9	131.5	137.2	137.6	16.9%	17.5%	16.0%	15.6%
SOY OIL	508,660	495,888	523,252	528,132	96.8	99.0	103.7	103.1	19.0%	20.0%	19.8%	19.5%
SOY MEAL	473,433	482,573	504,548	485,932	115.1	114.7	114.7	108.5	24.3%	23.8%	22.7%	22.3%

SOURCE: CFTC & FI

NET POSITION FUTURES AND OPTIONS OF SPECULATORS AND INDEX FUNDS IN COMBINED SRW, HRW, CORN, SOYBEANS, SOYMEAL AND SOYOIL



Source: CFTC and FI

○ Net Index

— Net Speculator

5/5/2023

Traditional Daily Estimate of Funds

	(Neg)-"Short"	Pos-"Long"			
Actual less Est.	(58.2)	(27.0)	10.0	(21.4)	1.2
	Corn	Bean	Chi. Wheat	Meal	Oil
Actual	(60.6)	75.1	(90.2)	88.9	(20.1)
3-May	6.0	1.0	11.0	(2.0)	2.0
4-May	(8.0)	0.0	2.0	(3.0)	(1.0)
5-May	8.0	8.0	4.0	2.0	9.0
8-May					
9-May					
FI Est. of Futures Only	(54.6)	84.1	(73.2)	85.9	(10.1)
FI Est. Futures & Options	(86.4)	78.7	(85.4)	74.5	(15.5)
Futures only record long "Traditional Funds"	547.7 1/26/2021	280.9 11/10/2020	86.5 8/7/2018	176.0 2/21/2023	160.2 11/1/2016
Futures only record short	(235.0) 6/9/2020	(118.3) 4/30/2019	(130.0) 4/25/2017	(49.5) 3/1/2016	(69.8) 9/18/2018
Futures and options record net long	557.6 1/12/2021	270.9 10/6/2020	64.8 8/7/2012	173.7 2/21/2023	159.2 1/1/2016
Futures and options record net short	(270.6) 4/26/2019	(132.0) 4/30/2019	(143.3) 4/25/2017	(64.1) 3/1/2016	(77.8) 9/18/2018

Managed Money Daily Estimate of Funds

	Corn	Bean	Chi. Wheat	Meal	Oil
Latest CFTC Fut. Only	(111.8)	55.0	(127.9)	61.0	(24.7)
Latest CFTC F&O	(118.1)	56.4	(126.3)	60.6	(23.7)
FI Est. Managed Fut. Only	(106)	64	(111)	58	(15)
FI Est. Managed Money F&O	(112)	65	(109)	58	(14)

Index Funds Latest Positions (as of last Tuesday)

Index Futures & Options	285.3	123.9	68.9	NA	96.8
Change From Previous Week	(31.0)	(7.6)	(4.3)	NA	(2.2)

Source: Reuters, CFTC & FI (FI est. are noted with latest date)

Disclaimer

TO CLIENTS/PROSPECTS OF FUTURES INTERNATIONAL, SEE RISK DISCLOSURE BELOW:

THIS COMMUNICATION IS CONVEYED AS A SOLICITATION FOR ENTERING INTO A DERIVATIVES TRANSACTION.

Any trading recommendations and market or other information to Customer by Futures International (FI), although based upon information obtained from sources believed by FI to be reliable may not be accurate and may be changed without notice to customer. FI makes no guarantee as to the accuracy or completeness of any of the information or recommendations furnished to Customer. Customer understands that FI, its managers, employees and/or affiliates may have a position in commodity futures, options or other derivatives which may not be consistent with the recommendations furnished by FI to Customer.

The risk of trading futures and options and other derivatives involves a substantial risk of loss and is not suitable for all persons. In purchasing an option, the risk is limited to the premium paid, and all commissions and fees involved with the trade. When an option is shorted or written, the writer of the option has unlimited risk with respect to the option written. The use of options strategies such as a straddles and strangles involve multiple option positions and may substantially increase the amount of commissions and fees paid to execute the strategy. Option prices do not necessarily move in tandem with cash or futures prices. Each person must consider whether a particular trade, combination of trades or strategy is suitable for that person's financial means and objectives.

This material may include discussions of seasonal patterns, however, futures prices have already factored in the seasonal aspects of supply and demand, and seasonal patterns are no indication of future market trends. Finally, past performance is not indicative of future results.

This communication may contain links to third party websites which are not under the control of FI and FI is not responsible for their content. Products and services are offered only in jurisdictions where solicitation and sale are lawful, and in accordance with applicable laws and regulations in each such jurisdiction.