

CFTC COMMITMENT OF TRADERS REPORT

As of 4/18/2023

TRADITIONAL FUNDS net position changes

Wed to Tue, in 000 contracts

	Corn	Bean	Meal	Oil	Chi. Wheat	KC Wheat	Min Wheat
Futures Only	2.3	(1.8)	14.4	(3.1)	(3.9)	0.4	(0.2)
Futures & Options Combined	5.8	7.5	13.4	(4.4)	(5.0)	0.3	(0.3)

TRADITIONAL COMMERCIAL net position changes

	Corn	Bean	Meal	Oil	Chi. Wheat	KC Wheat	Min Wheat
Futures Only	4.0	(1.0)	(12.8)	(1.2)	2.9	(0.1)	(0.3)
Futures & Options Combined	(4.5)	(10.6)	(12.3)	(0.1)	4.1	(0.1)	(0.3)

MANAGED MONEY net position changes

	Corn	Bean	Meal	Oil	Chi. Wheat	KC Wheat	Min Wheat
Futures Only	28.8	10.9	10.1	(3.3)	1.1	1.1	(0.2)
Futures & Options Combined	22.3	9.8	10.0	(3.2)	1.3	1.4	(0.2)

SWAP DEALERS net position changes

	Corn	Bean	Meal	Oil	Chi. Wheat	KC Wheat	Min Wheat
Futures Only	9.7	(1.5)	0.7	2.0	1.8	(0.6)	0.0
Futures & Options Combined	3.3	(2.4)	0.3	2.2	1.6	(0.3)	0.0

PRODUCERS/END USERS net position changes

	Corn	Bean	Meal	Oil	Chi. Wheat	KC Wheat	Min Wheat
Futures Only	(5.6)	0.5	(13.5)	(3.3)	1.1	0.5	(0.4)
Futures & Options Combined	(7.8)	(8.2)	(12.6)	(2.3)	2.5	0.2	(0.3)

INDEX net position changes

	Corn	Bean	Meal	Oil	Chi. Wheat	KC Wheat	Min Wheat
Futures & Options Combined	18.9	(0.4)	6.2	0.6	1.0	0.1	NA

SUPPLEMENTAL NON-COMMERCIAL net position changes

	Corn	Bean	Meal	Oil	Chi. Wheat	KC Wheat	Min Wheat
Futures & Options Combined	(8.7)	9.3	8.3	(4.0)	(5.6)	(0.1)	NA

OPEN INTEREST net position changes

Wed to Tue, in 000 contracts

	Corn	Bean	Meal	Oil	Chi. Wheat	KC Wheat	Min Wheat
Futures Only	(18.9)	(33.7)	18.6	(4.5)	(13.4)	(3.9)	(3.1)
Futures & Options Combined	9.2	(26.7)	18.6	(4.9)	(10.2)	(2.3)	(2.7)

Source: CFTC and FI

Wed to Tue, in 000 contracts

**COMMITMENT OF TRADERS
FUTURES ONLY NET POSITIONS
AS OF 04/18/2023
(IN THOUSAND CONTRACTS)**

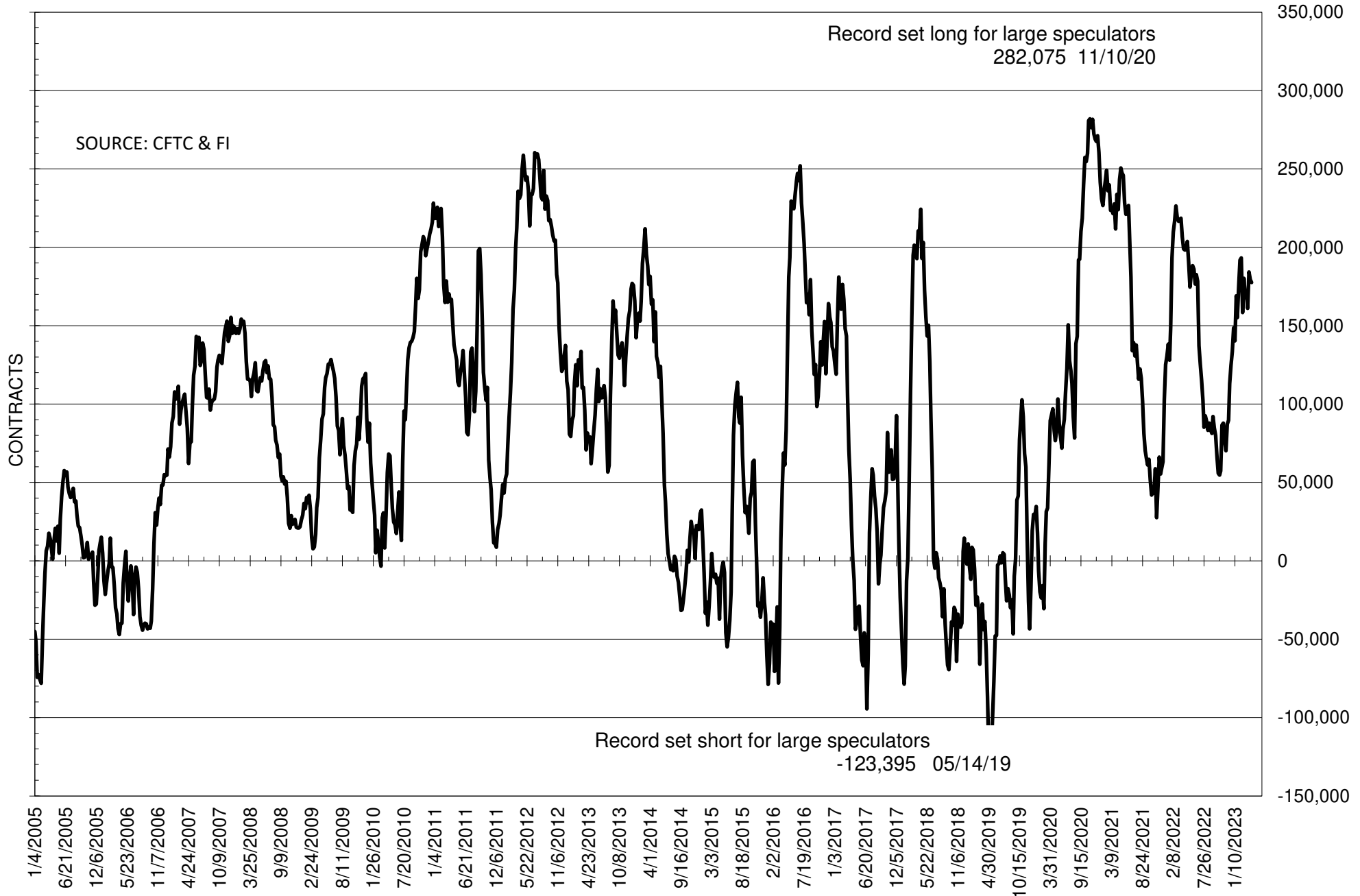
	COMMERCIAL				(FUND) NON COMMERCIAL				(SPEC) NON-REPORTABLE			
	18-Apr	11-Apr	4-Apr	28-Mar	18-Apr	11-Apr	4-Apr	28-Mar	18-Apr	11-Apr	4-Apr	28-Mar
	WHEAT											
Chicago	65.2	62.3	54.9	60.3	-70.5	-66.7	-60.8	-60.5	5.3	4.4	5.9	0.2
Kansas City	-1.9	-1.8	0.3	4.4	2.3	1.9	3.1	-1.0	-0.4	-0.1	-3.4	-3.4
Minneapolis	-4.9	-4.5	-3.9	-1.9	3.9	4.1	3.9	2.6	0.9	0.4	0.0	-0.7
All Wheat	58.4	56.0	51.3	62.9	-64.3	-60.7	-53.8	-58.9	5.9	4.7	2.6	-3.9
CORN	-41.2	-45.3	-53.3	-12.5	105.6	103.3	85.7	71.5	-64.4	-58.0	-32.4	-59.0
OATS	-0.4	-0.4	-0.7	-1.0	-0.6	-0.2	0.0	0.0	1.0	0.7	0.8	1.0
SOYBEANS	-149.5	-148.5	-163.3	-129.3	177.5	179.3	184.3	161.0	-28.0	-30.8	-21.1	-31.7
SOY OIL	6.9	8.2	11.4	8.1	-9.5	-6.4	-9.3	-7.6	2.5	-1.8	-2.1	-0.5
SOY MEAL	-146.9	-134.1	-130.8	-131.1	130.3	115.9	113.1	114.5	16.6	18.1	17.7	16.6

Oats positions thin to be reported

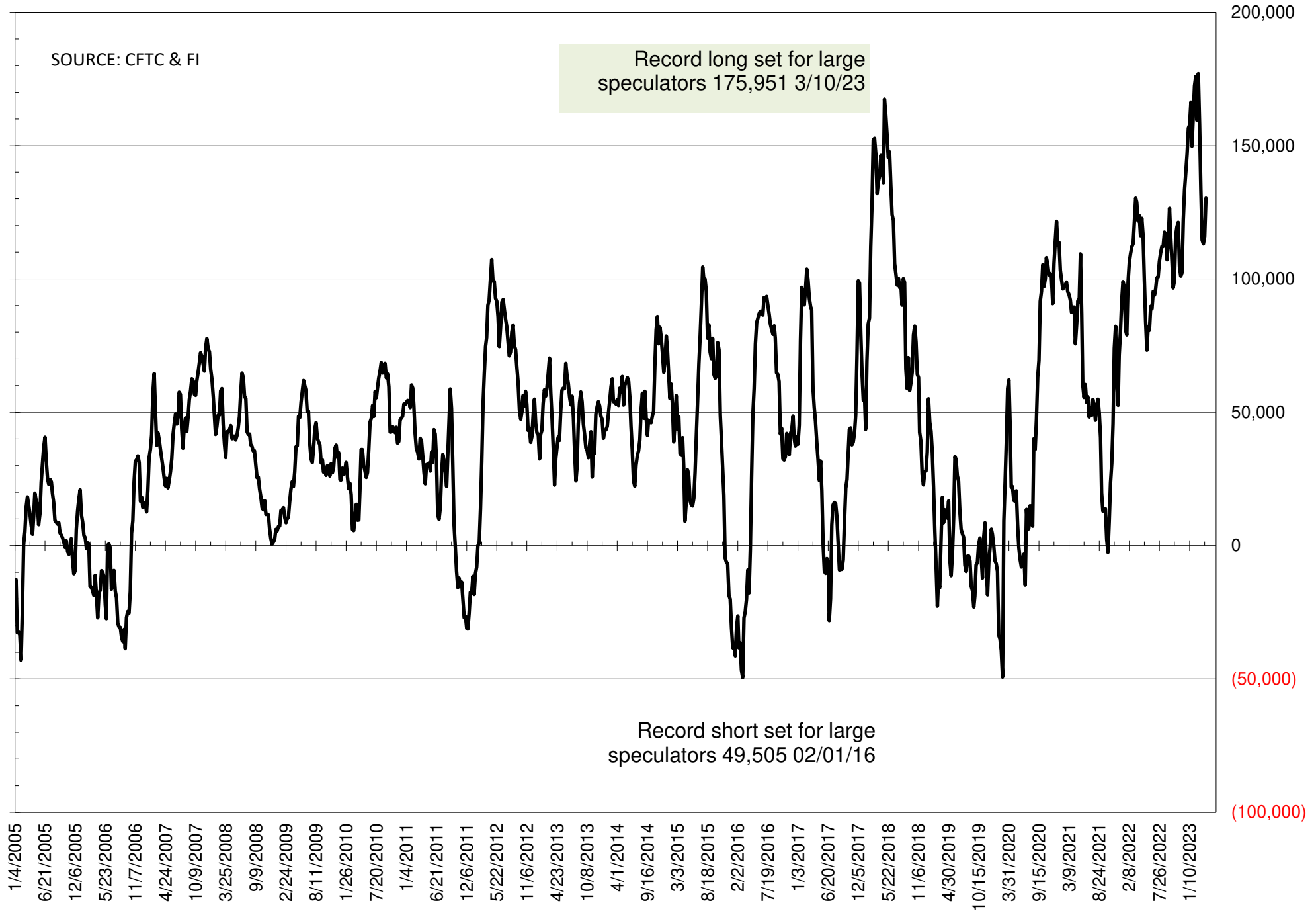
	TOTAL OPEN INTEREST				NEARBY FUTURES PRICE					18-Apr-23 LAST REPORTED % HELD BY TRADERS			
	18-Apr	11-Apr	4-Apr	28-Mar	K 21-Apr	K 18-Apr	K 11-Apr	K 4-Apr	K 28-Mar	LARGE FUND		SMALL	
										LONG	SHORT	LONG	SHORT
WHEAT													
Chicago	378531	391899	375999	373926	661.75	698.00	674.00	691.50	699.75	0%	47%	0%	10%
Kansas City	171965	175828	175353	172549	840.75	881.25	868.25	872.50	872.50	0%	25%	0%	12%
Minneapolis	58109	61255	64593	62180	849.25	885.50	863.75	888.50	879.00	0%	16%	0%	17%
CORN	1319551	1338484	1334671	1345886	663.25	677.50	651.00	653.75	647.25	0%	18%	0%	13%
OATS	4912	4698	4376	4114	243.50	347.50	340.25	341.00	379.25	0%	30%	0%	27%
SOYBEANS	683161	716906	746111	723433	1483.50	1519.25	1497.25	1517.50	1467.75	32%	6%	7%	11%
SOY OIL	479920	484462	483953	465793	53.40	55.36	54.89	55.74	55.05	0%	17%	0%	6%
SOY MEAL	454299	435709	436606	417537	445.70	461.10	457.80	457.40	457.90	0%	5%	0%	7%

SOURCE: CFTC & FI

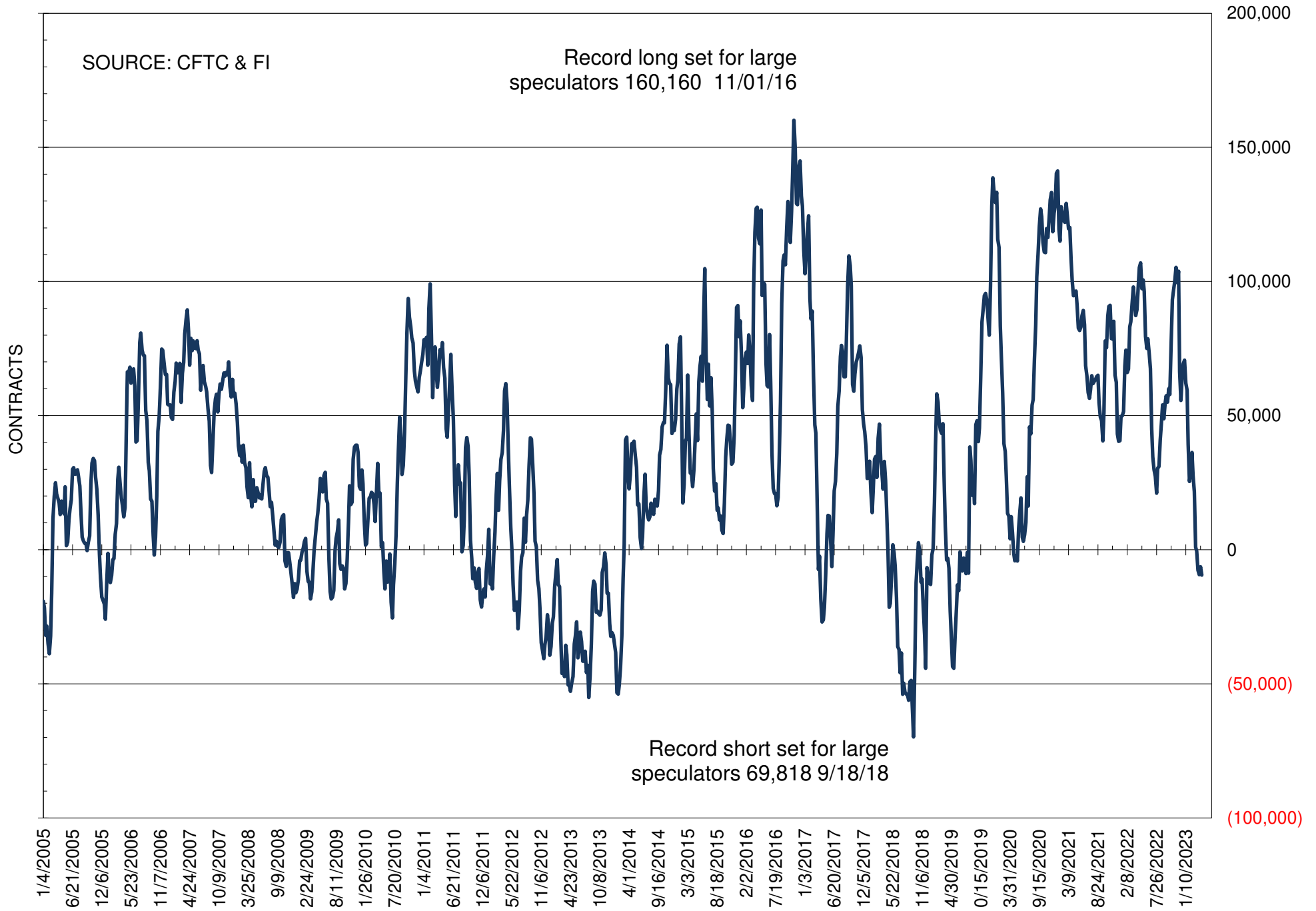
NET POSITION OF FUTURES ONLY LARGE SPECS IN SOYBEANS



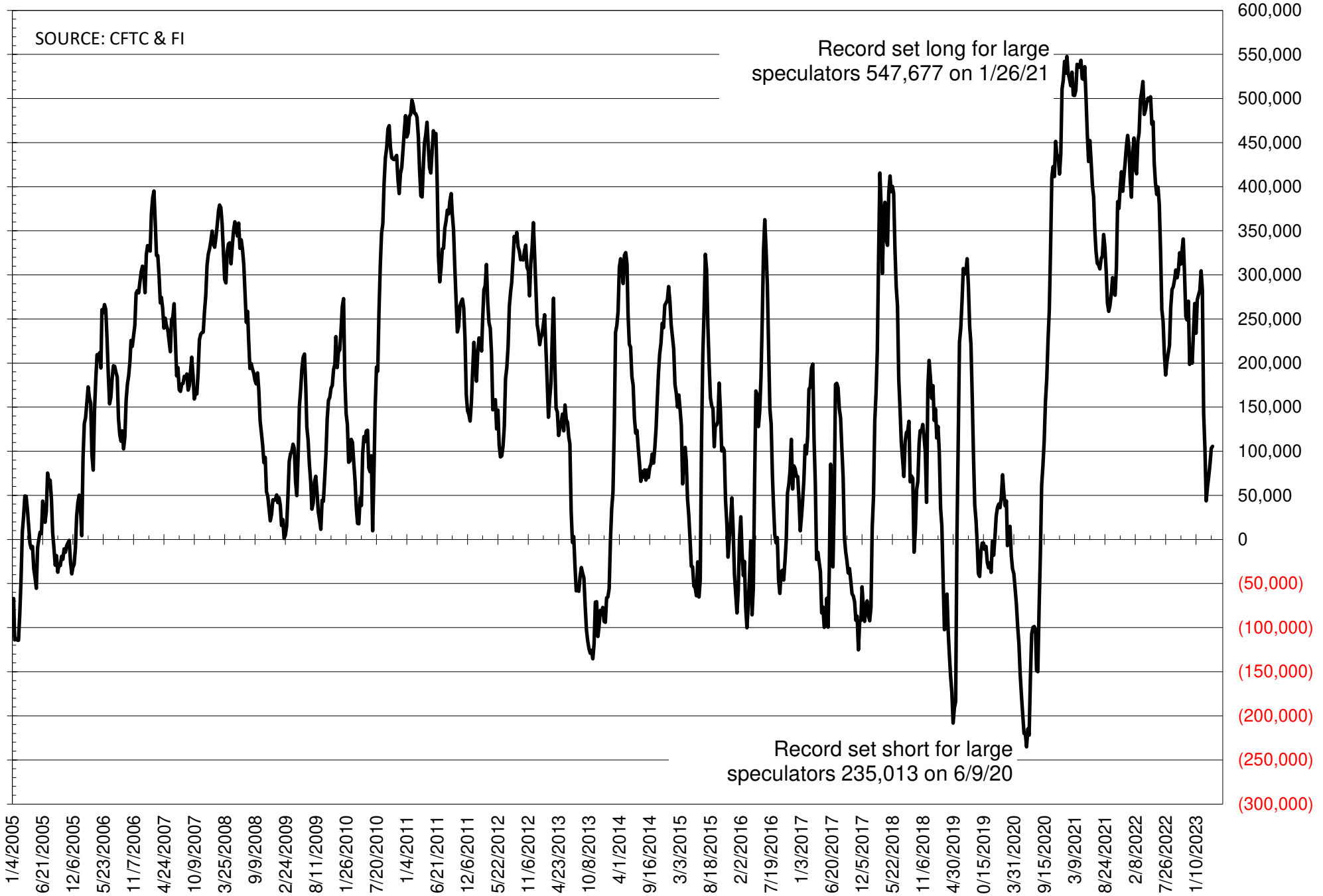
NET POSITION OF FUTURES ONLY LARGE SPECS IN SOYMEAL



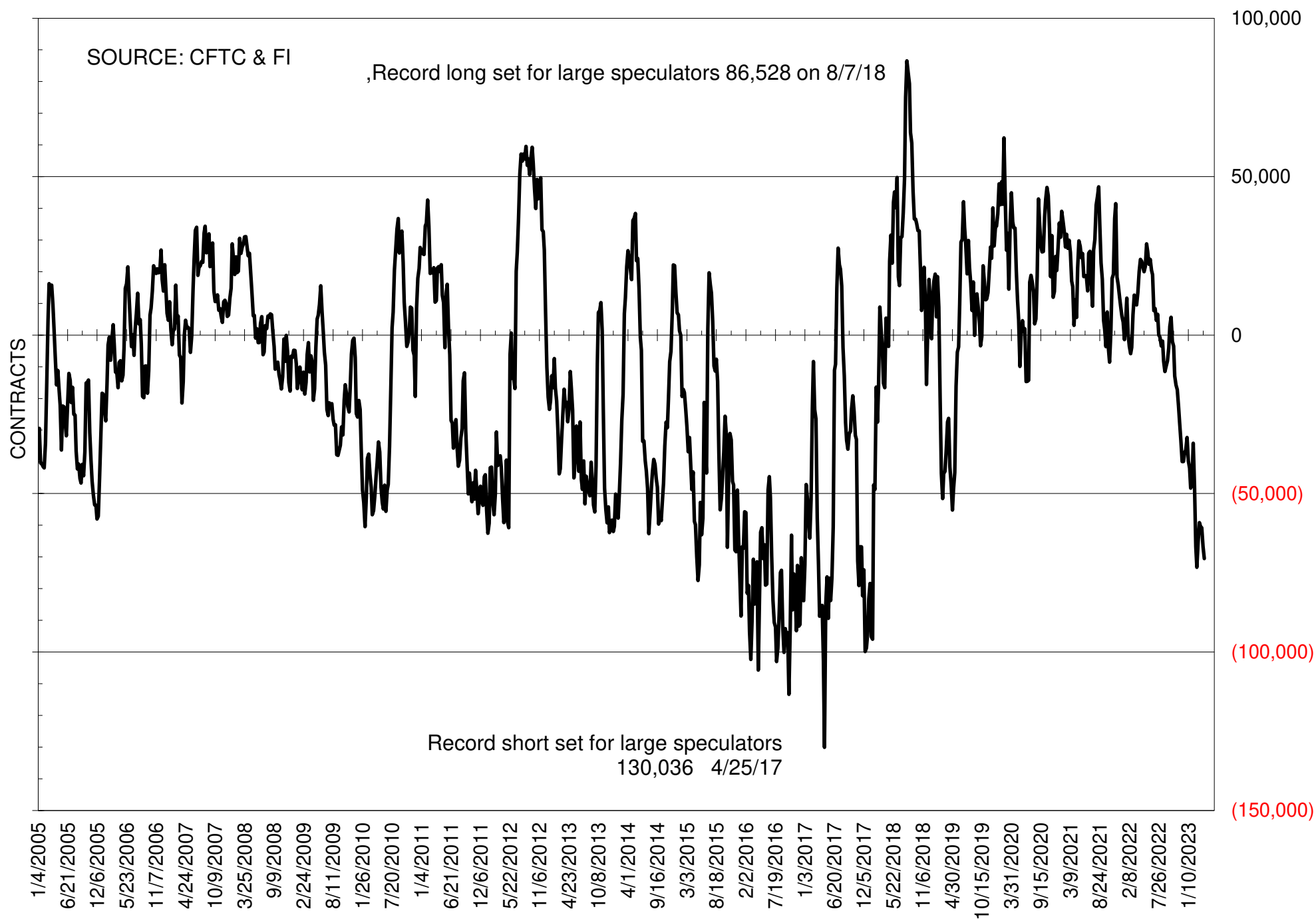
NET POSITION OF FUTURES ONLY LARGE SPECS IN SOYOIL



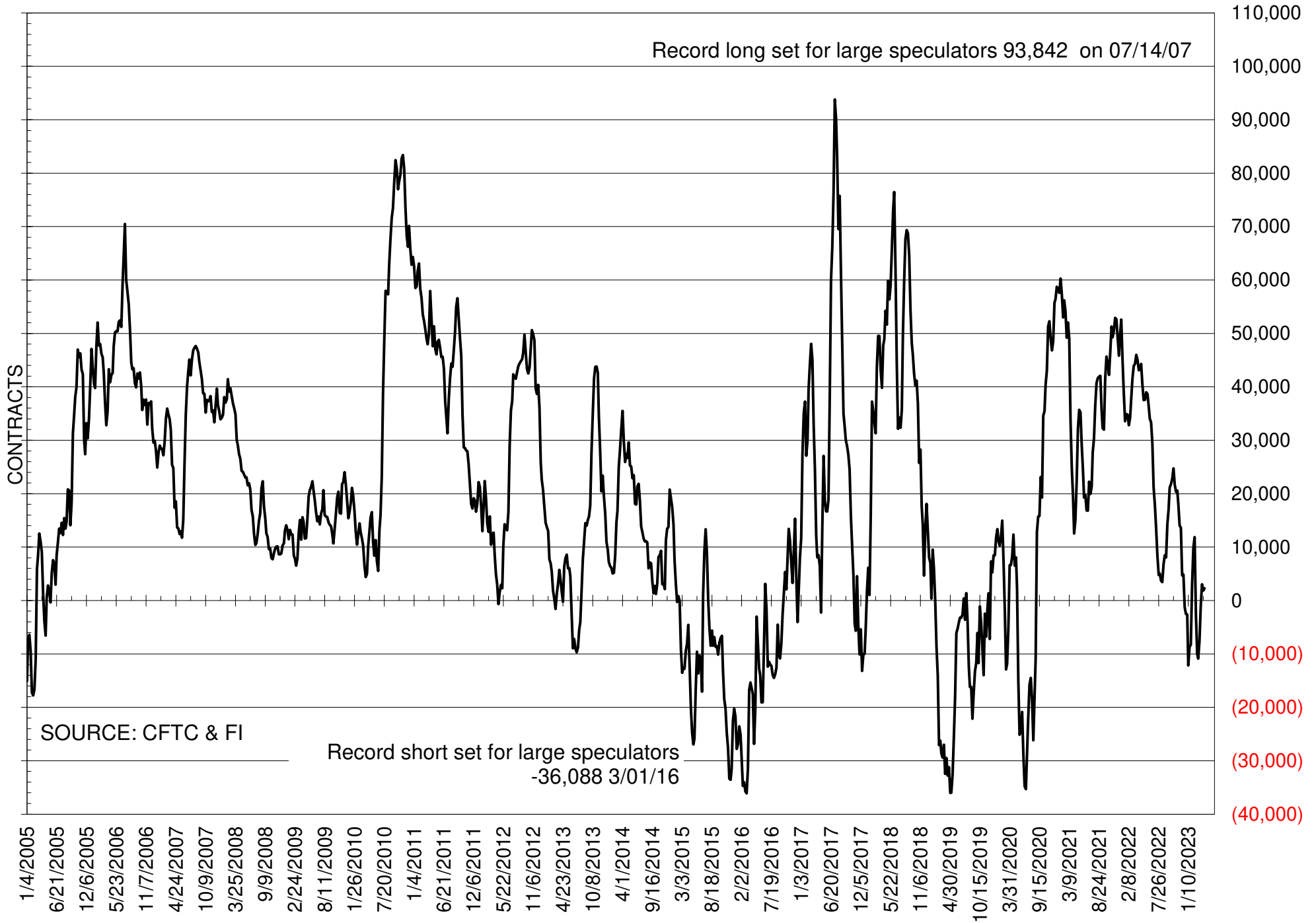
NET POSITION OF LARGE SPECULATORS IN CORN



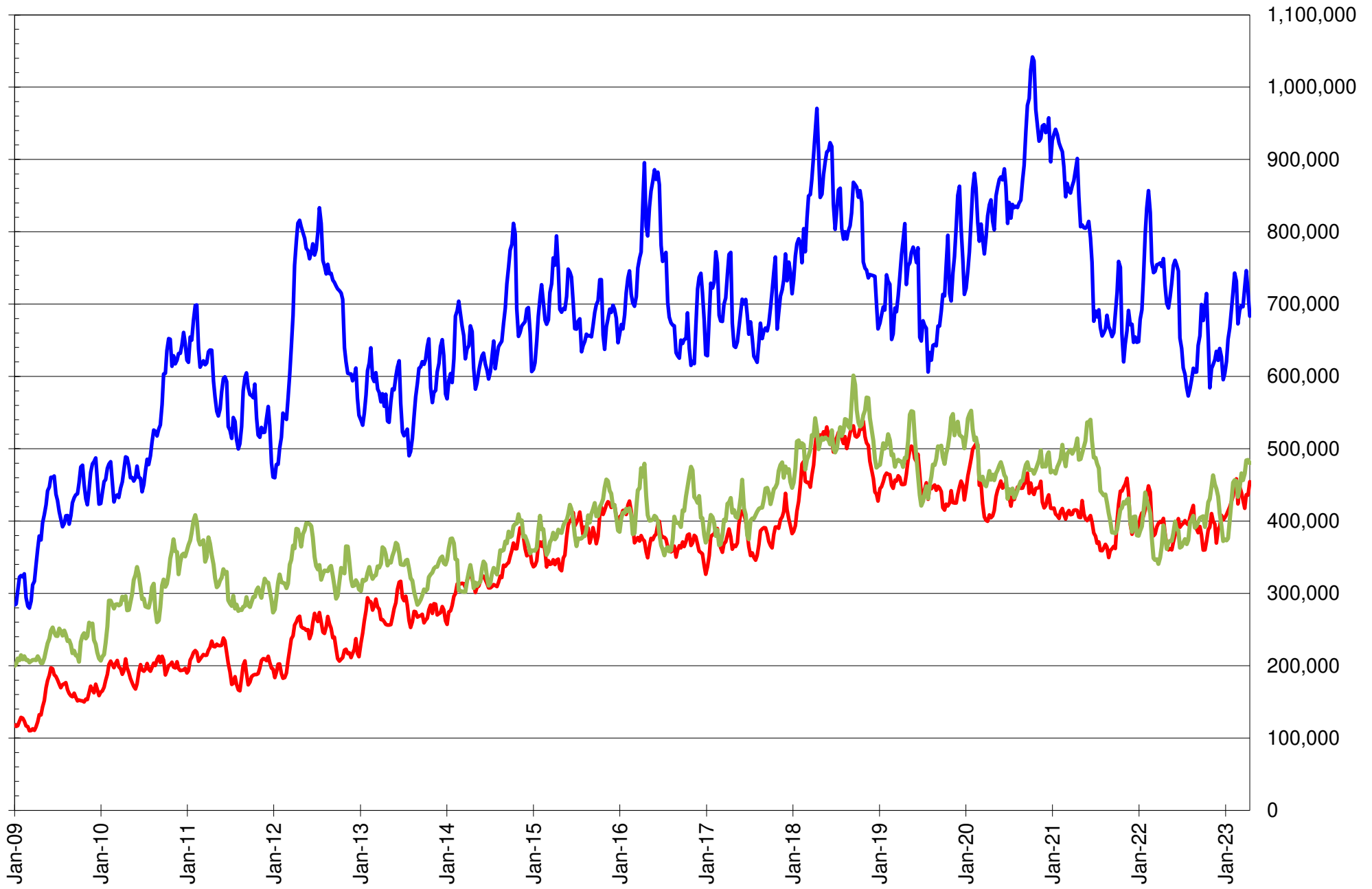
NET POSITION OF FUTURES ONLY LARGE SPECS IN CHICAGO WHEAT



NET POSITION OF LARGE SPECULATORS IN KANSAS CITY WHEAT



TOTAL OPEN INTEREST IN SOYBEANS, MEAL AND OIL, FUTURES ONLY



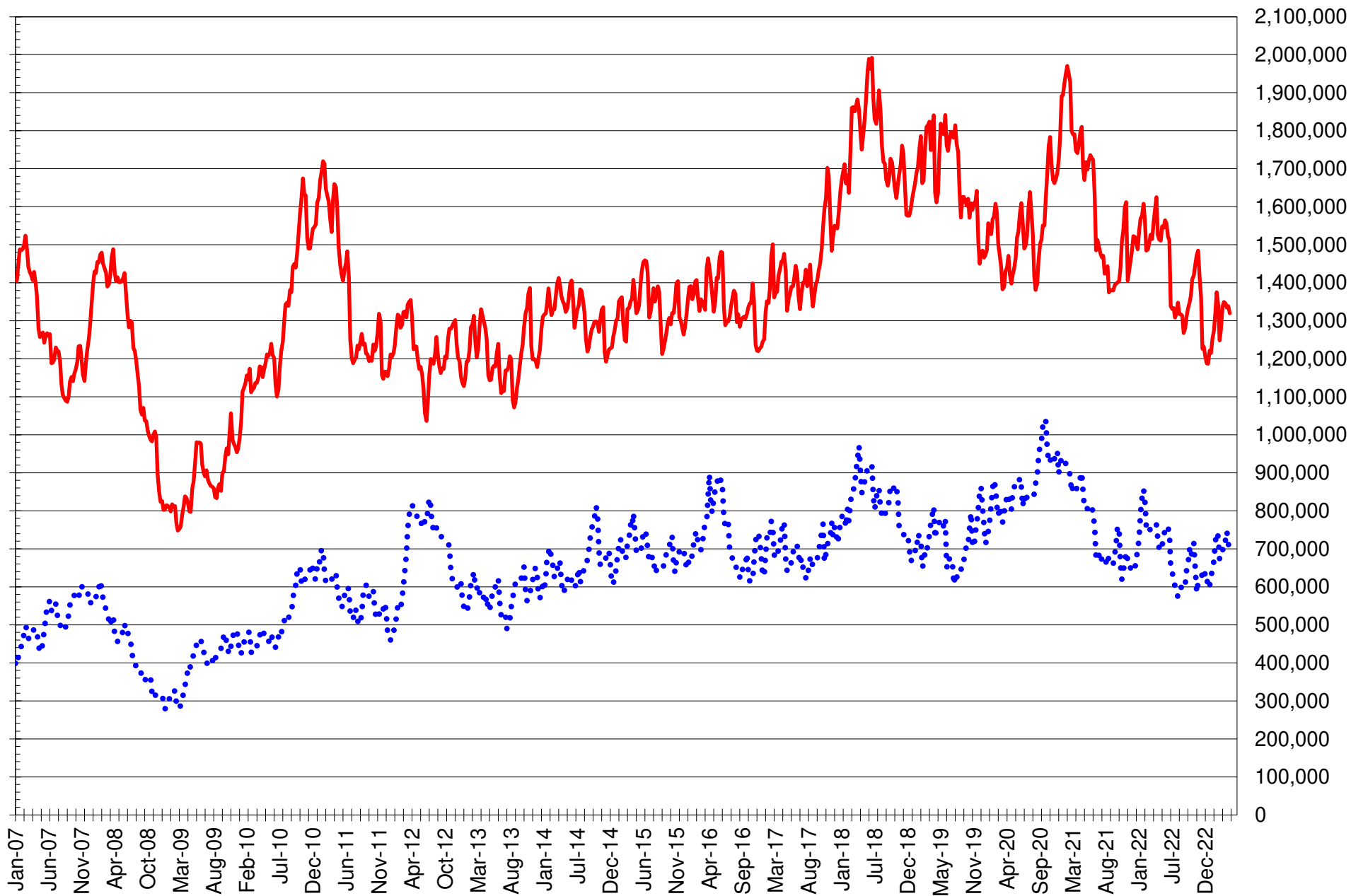
SOURCE: CFTC & FI

— SOYBEANS

— SOYBEAN MEAL

— SOYBEAN OIL

TOTAL OPEN INTEREST IN CORN AND SOYBEANS, FUTURES ONLY



SOURCE: CFTC & FI

— CORN

..... SOYBEANS

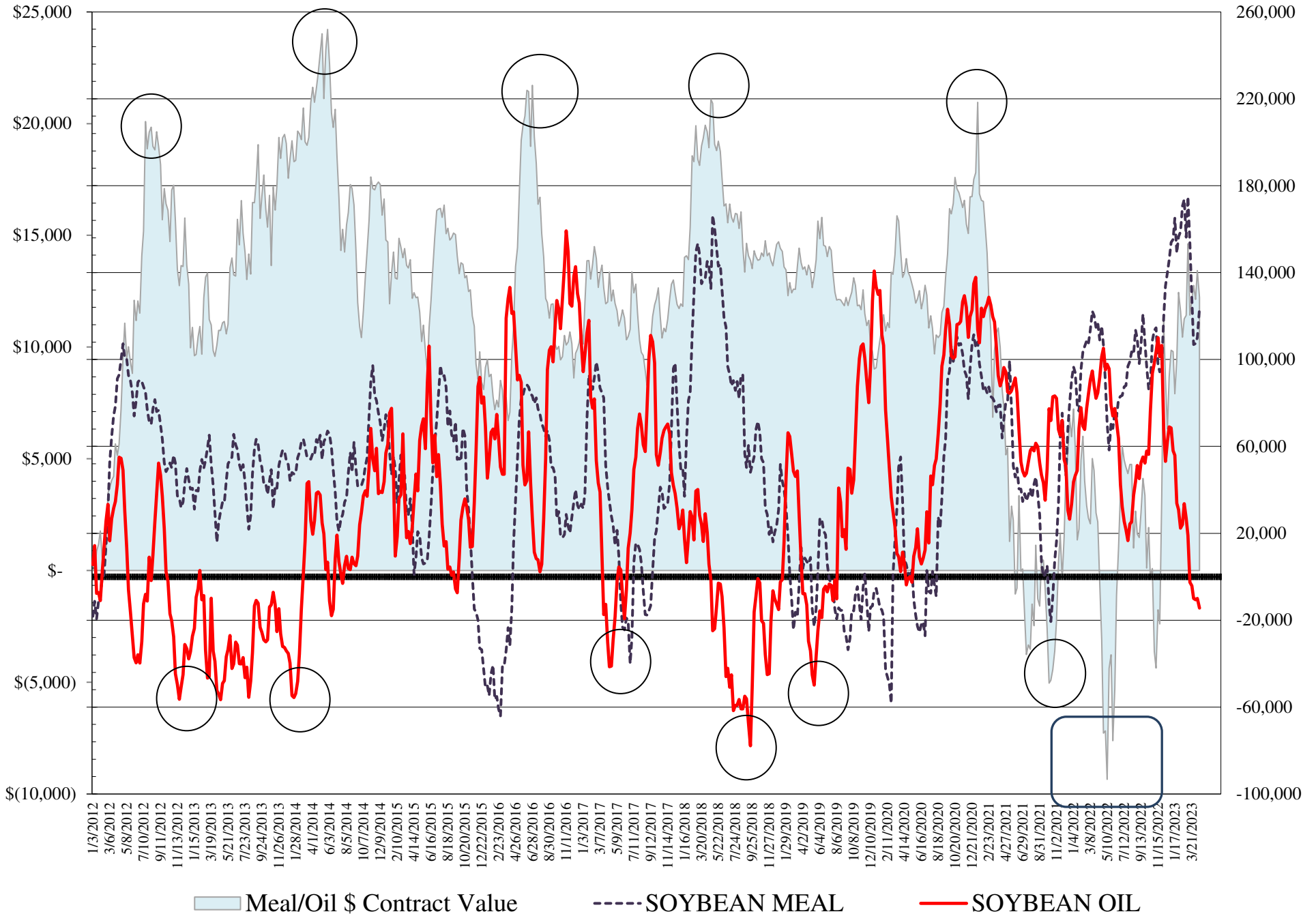
COMMITMENT OF TRADERS
FUTURES & OPTIONS NET POSITIONS
AS OF 04/18/2023
(IN THOUSAND CONTRACTS)

	COMMERCIAL				(FUND) NON COMMERCIAL				(SPEC) NON-REPORTABLE			
	18-Apr	11-Apr	4-Apr	28-Mar	18-Apr	11-Apr	4-Apr	28-Mar	18-Apr	11-Apr	4-Apr	28-Mar
	WHEAT											
Chicago	71.7	67.6	59.2	64.1	-78.2	-73.2	-66.1	-65.5	6.5	5.6	7.0	1.3
Kansas City	-1.3	-1.2	0.8	5.2	1.5	1.2	2.6	-1.8	-0.2	-0.1	-3.4	-3.4
Minneapolis	-5.1	-4.8	-4.4	-2.3	4.0	4.3	4.3	2.9	1.1	0.5	0.1	-0.6
All Wheat	65.3	61.6	55.5	67.1	-72.7	-67.7	-59.3	-64.3	7.4	6.0	3.7	-2.7
CORN	-16.2	-11.7	-15.7	25.3	78.7	72.9	52.7	34.2	-62.5	-61.2	-37.0	-59.6
OATS	-0.4	-0.4	-0.8	-1.0	-0.6	-0.2	0.0	0.0	1.0	0.7	0.8	1.0
SOYBEANS	-127.6	-117.0	-139.9	-89.5	158.5	151.0	163.5	124.4	-30.8	-34.0	-23.5	-34.9
SOY OIL	11.0	11.1	12.0	9.7	-14.4	-10.0	-10.6	-9.9	3.4	-1.1	-1.4	0.2
SOY MEAL	-143.2	-130.9	-126.7	-124.9	123.5	110.1	107.4	106.9	19.7	20.8	19.3	18.0

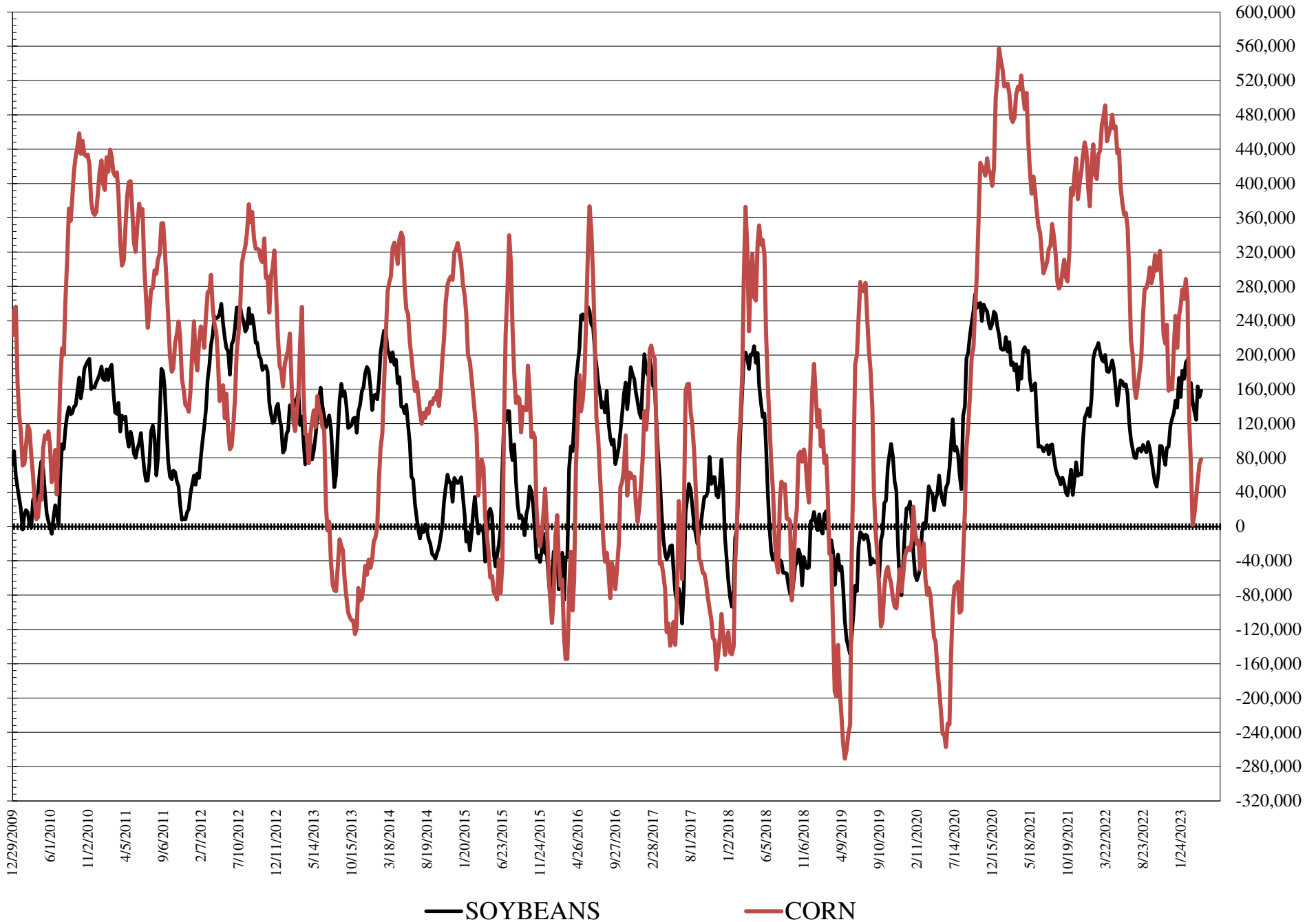
	TOTAL OPEN INTEREST				COMMERCIALS		% HELD BY TRADERS LARGE (FUNDS)		SMALL (NON-REP)	
	18-Apr	11-Apr	4-Apr	28-Mar	LONG	SHORT	LONG	SHORT	LONG	SHORT
	WHEAT									
Chicago	458,928	469,091	449,495	446,151	36%	20%	21%	38%	10%	9%
Kansas City	190,739	193,081	191,019	188,039	43%	43%	23%	22%	12%	12%
Minneapolis	61,157	63,883	67,359	64,799	52%	60%	22%	15%	19%	17%
CORN	1,690,262	1,681,027	1,670,937	1,670,838	44%	45%	18%	13%	9%	13%
OATS	4,971	4,757	4,439	4,191						
SOYBEANS	856,008	882,745	911,421	886,818	42%	56%	23%	4%	6%	10%
SOY OIL	523,252	528,132	525,578	506,284	57%	55%	13%	15%	6%	6%
SOY MEAL	504,548	485,932	487,963	466,859	36%	65%	29%	4%	11%	7%

SOURCE: CFTC & FI

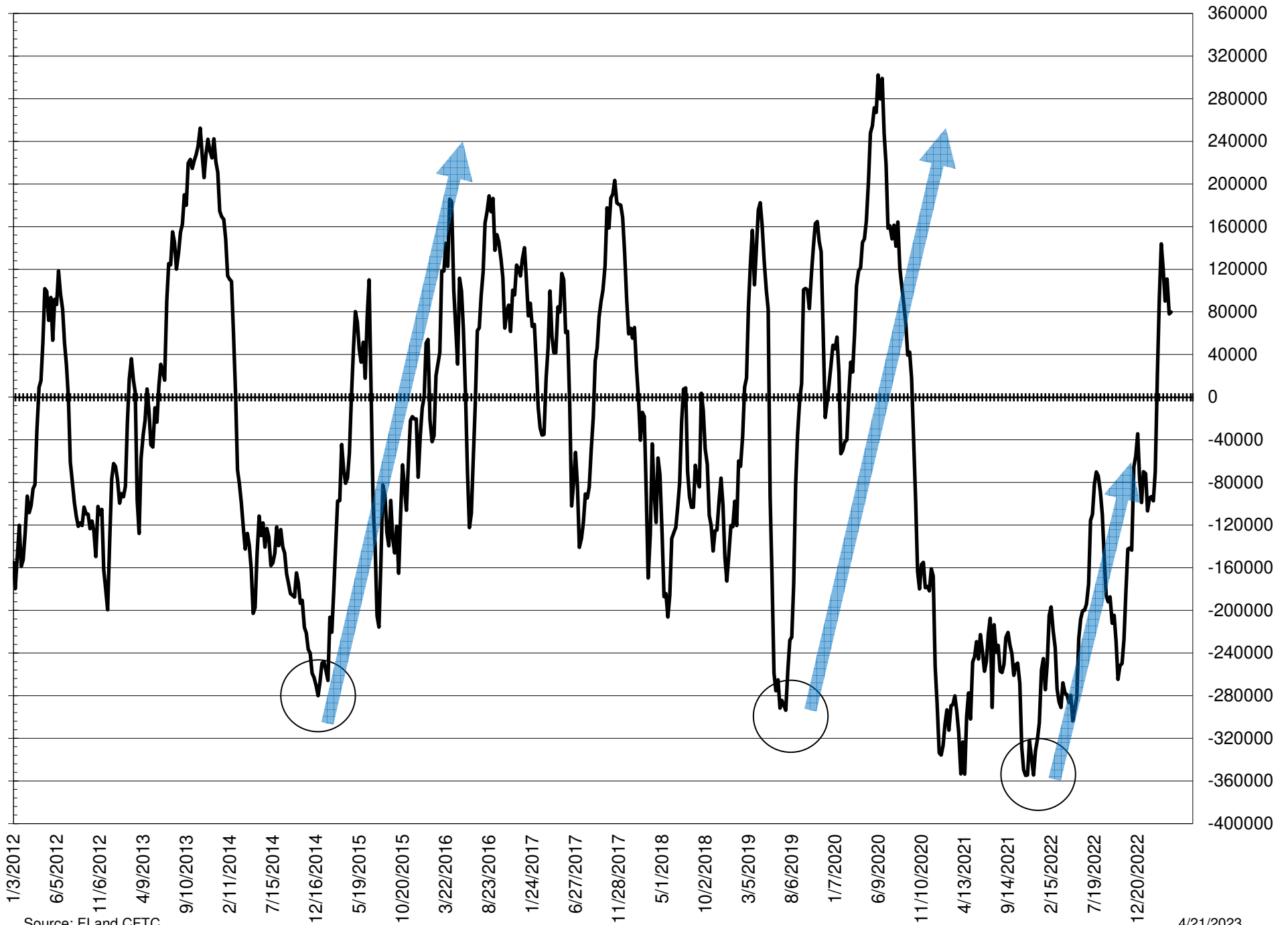
NET POSITION FUTURES AND OPTIONS OF LARGE SPECULATORS IN SOYBEAN MEAL AND SOYBEAN OIL



NET POSITION FUTURES AND OPTIONS OF LARGE SPECULATORS IN SOYBEANS AND CORN



NET POSITION FUTURES AND OPTIONS SPREAD OF LARGE SPECULATORS IN SOYBEANS MINUS CORN



Source: FI and CFTC

4/21/2023

**DISAGGREGATED COMMITMENT OF TRADERS
FUTURES ONLY NET POSITIONS**

AS OF 04/18/2023

(IN THOUSAND CONTRACTS)

	PRODUCER / MERCHANT / PROCESSOR / USER				(INDEX/ETF) SWAP DEALERS				(CTA/CPO/OTHER UNREGISTERED) MANAGED MONEY			
	18-Apr	11-Apr	4-Apr	28-Mar	18-Apr	11-Apr	4-Apr	28-Mar	18-Apr	11-Apr	4-Apr	28-Mar
	WHEAT											
Chicago	1.3	0.1	(6.9)	(1.7)	64.0	62.2	61.7	62.0	(105.3)	(106.4)	(89.8)	(92.7)
Kansas City	(34.6)	(35.0)	(33.9)	(31.2)	32.6	33.2	34.2	35.6	9.7	8.6	7.4	(0.1)
Minneapolis	(6.1)	(5.8)	(5.2)	(3.3)	1.3	1.2	1.3	1.4	0.0	0.2	0.7	0.3
All Wheat	(39.4)	(40.6)	(46.0)	(36.1)	97.9	96.6	97.2	99.0	(95.6)	(97.5)	(81.6)	(92.5)
CORN	(270.8)	(265.2)	(271.2)	(232.5)	229.6	219.9	217.9	220.0	57.7	28.9	24.6	(13.4)
OATS	(0.4)	(0.6)	(0.9)	(1.0)	0.0	0.1	0.1	-	(1.2)	(0.8)	(0.6)	(0.7)
SOYBEANS	(234.5)	(235.0)	(249.1)	(216.5)	85.0	86.5	85.9	87.2	135.6	124.7	145.3	98.4
SOY OIL	(100.3)	(97.1)	(94.3)	(99.1)	107.3	105.2	105.7	107.2	(17.5)	(14.2)	(12.4)	(14.5)
SOY MEAL	(239.0)	(225.5)	(221.9)	(218.3)	92.1	91.4	91.1	87.2	106.1	96.0	96.5	96.3

Managed % of OI

Chicago W	-28%	-27%	-24%	-25%
Corn	4%	2%	2%	-1%

	TOTAL											
	OPEN INTEREST				OTHER REPORTABLE				NON REPORTABLE			
	18-Apr	11-Apr	4-Apr	28-Mar	18-Apr	11-Apr	4-Apr	28-Mar	18-Apr	11-Apr	4-Apr	28-Mar
WHEAT												
Chicago	378,531	391,899	375,999	373,926	34.8	39.7	29.0	32.1	5.3	4.4	5.9	0.2
Kansas City	171,965	175,828	175,353	172,549	(7.4)	(6.7)	(4.4)	(0.9)	(0.4)	(0.1)	(3.4)	(3.4)
Minneapolis	58,109	61,255	64,593	62,180	3.9	3.9	3.2	2.3	0.9	0.4	(0.0)	(0.7)
All Wheat	608,605	628,982	615,945	608,655	31.3	36.8	27.8	33.6	5.9	4.7	2.6	(3.9)
CORN	1,319,551	1,338,484	1,334,671	1,345,886	47.9	74.4	61.1	85.0	(64.4)	(58.0)	(32.4)	(59.0)
OATS	4,912	4,698	4,376	4,114	0.6	0.6	0.6	0.7	1.0	0.7	0.8	1.0
SOYBEANS	683,161	716,906	746,111	723,433	41.9	54.6	39.0	62.6	(28.0)	(30.8)	(21.1)	(31.7)
SOY OIL	479,920	484,462	483,953	465,793	8.1	7.8	3.1	6.9	2.5	(1.8)	(2.1)	(0.5)
SOY MEAL	454,299	435,709	436,606	417,537	24.2	19.9	16.6	18.3	16.6	18.1	17.7	16.6

SOURCE: CFTC & FI

4/21/2023

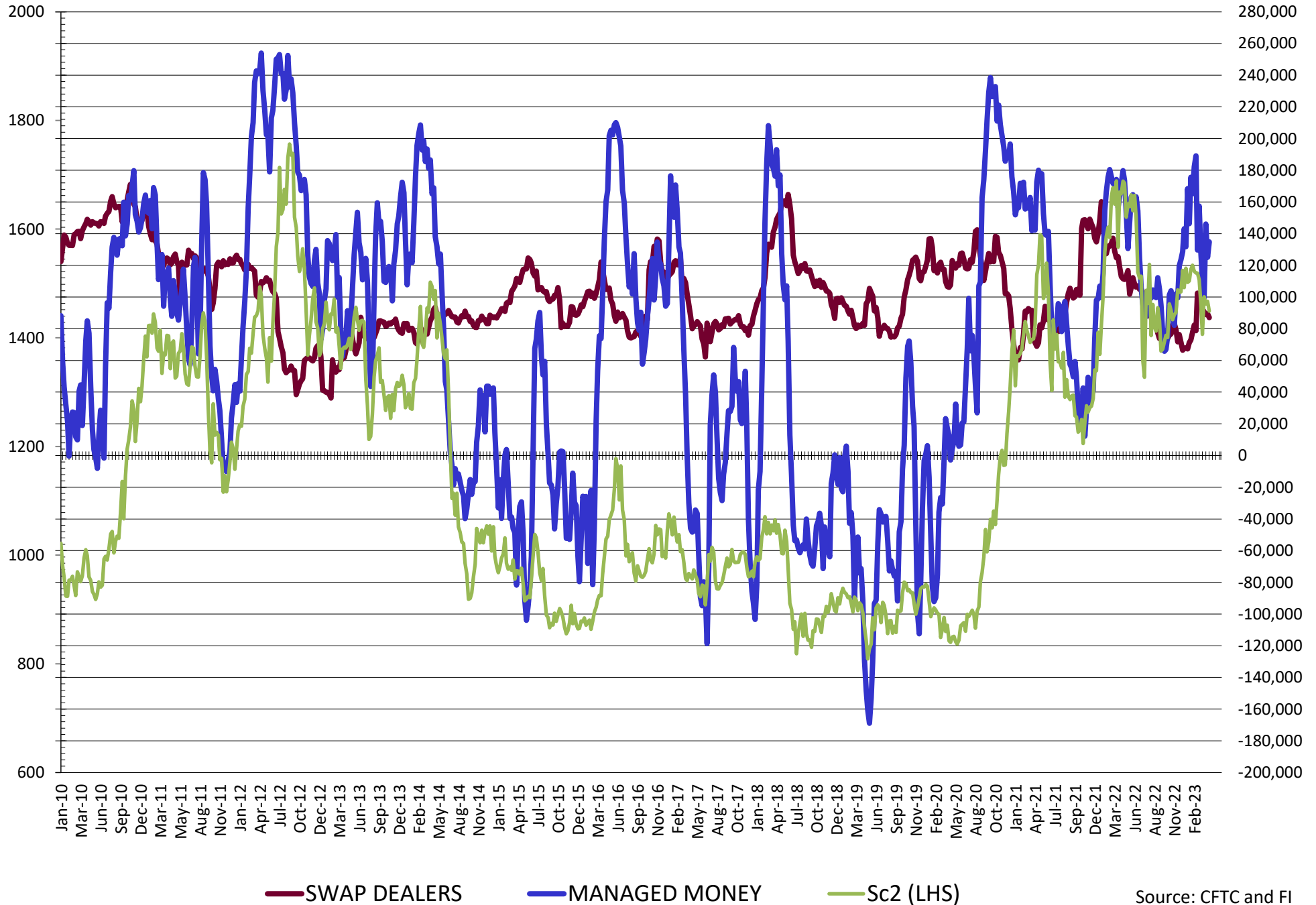
DISAGGREGATED COMMITMENT OF TRADERS
FUTURES & OPTIONS NET POSITIONS
AS OF 04/18/2023
(IN THOUSAND CONTRACTS)

	PRODUCER / MERCHANT / PROCESSOR / USER				(INDEX/ETF) SWAP DEALERS				(CTA/CPO/OTHER UNREGISTERED) MANAGED MONEY			
	18-Apr	11-Apr	4-Apr	28-Mar	18-Apr	11-Apr	4-Apr	28-Mar	18-Apr	11-Apr	4-Apr	28-Mar
	WHEAT											
Chicago	6.5	4.0	(3.8)	1.4	65.3	63.6	63.0	62.8	(103.0)	(104.2)	(87.1)	(89.9)
Kansas City	(34.2)	(34.3)	(33.5)	(30.6)	32.9	33.2	34.3	35.8	10.6	9.2	7.6	0.2
Minneapolis	(6.3)	(6.0)	(5.6)	(3.6)	1.2	1.2	1.3	1.4	0.0	0.2	0.7	0.4
All Wheat	(34.0)	(36.4)	(43.0)	(32.8)	99.3	98.0	98.5	99.9	(92.4)	(94.8)	(78.8)	(89.2)
CORN	(246.6)	(238.8)	(242.9)	(203.5)	230.4	227.2	227.2	228.9	49.4	27.1	21.5	(13.3)
OATS	(0.4)	(0.6)	(0.9)	(1.0)	0.0	0.1	0.1	0.0	(1.2)	(0.8)	(0.6)	(0.7)
SOYBEANS	(214.7)	(206.5)	(228.8)	(180.1)	87.1	89.5	88.9	90.6	134.8	125.0	146.0	99.5
SOY OIL	(97.0)	(94.8)	(94.2)	(97.8)	108.0	105.8	106.2	107.5	(15.7)	(12.6)	(10.6)	(12.5)
SOY MEAL	(233.8)	(221.1)	(216.7)	(211.9)	90.6	90.3	90.0	87.0	105.7	95.7	95.7	96.1

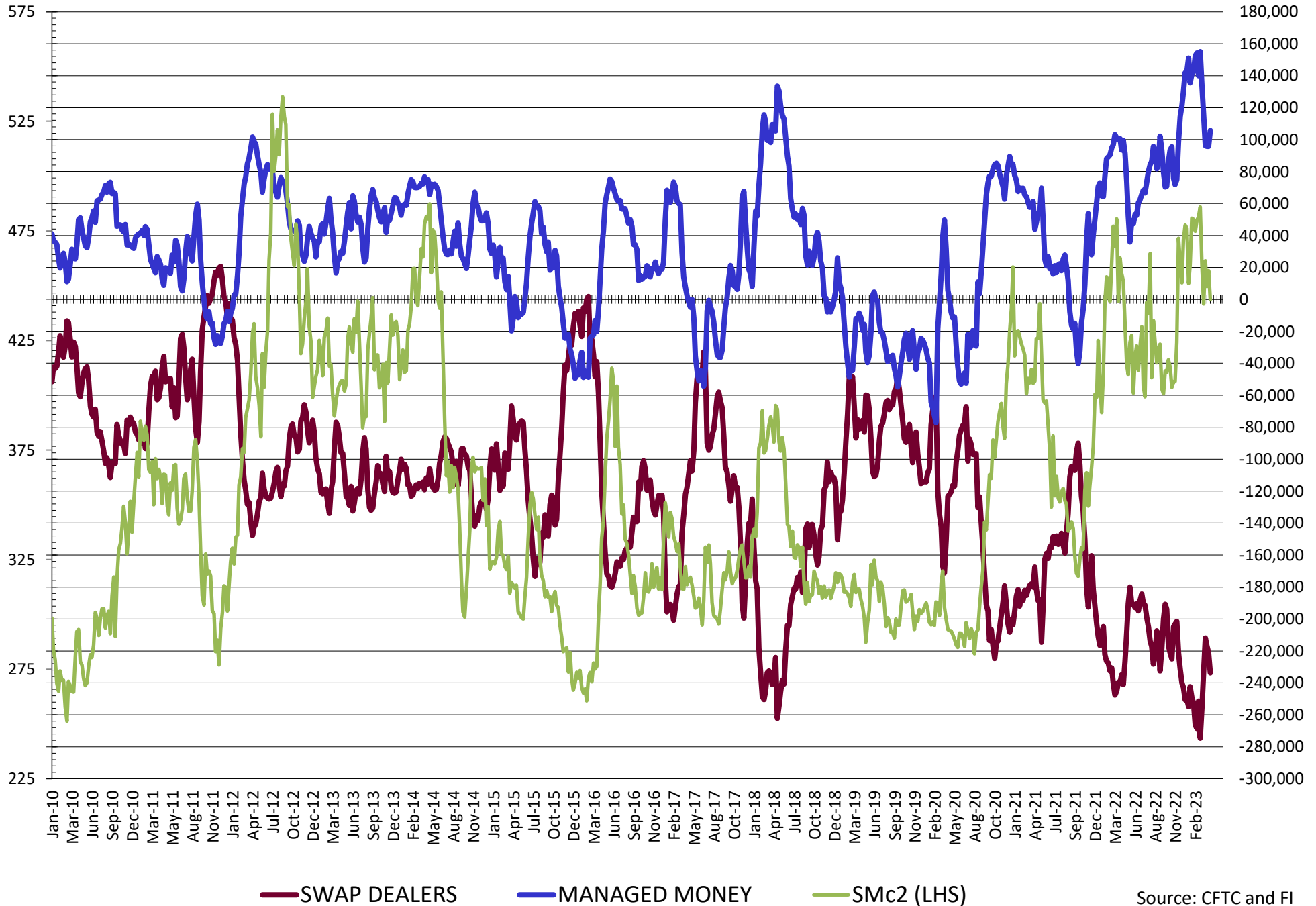
	TOTAL OPEN INTEREST				OTHER REPORTABLE				NON REPORTABLE			
	18-Apr	11-Apr	4-Apr	28-Mar	18-Apr	11-Apr	4-Apr	28-Mar	18-Apr	11-Apr	4-Apr	28-Mar
	WHEAT											
Chicago	458,928	469,091	449,495	446,151	24.7	31.0	21.0	24.4	6.5	5.6	7.0	1.3
Kansas City	190,739	193,081	191,019	188,039	(9.1)	(8.0)	(5.0)	(2.0)	(0.2)	(0.1)	(3.4)	(3.4)
Minneapolis	61,157	63,883	67,359	64,799	4.0	4.1	3.6	2.5	1.1	0.5	0.1	(0.6)
All Wheat	710,824	726,055	707,873	698,989	19.6	27.1	19.5	24.9	7.4	6.0	3.7	(2.7)
CORN	1,690,262	1,681,027	1,670,937	1,670,838	29.3	45.8	31.2	47.5	(62.5)	(61.2)	(61.2)	(61.2)
OATS	4,971	4,757	4,439	4,191	0.6	0.6	0.6	0.7	1.0	0.7	0.8	1.0
SOYBEANS	856,008	882,745	911,421	886,818	23.7	26.0	17.5	24.9	(30.8)	(34.0)	(23.5)	(34.9)
SOY OIL	523,252	528,132	525,578	506,284	1.4	2.6	(0.0)	2.5	3.4	(1.1)	(1.4)	0.2
SOY MEAL	504,548	485,932	487,963	466,859	17.8	14.4	11.6	10.8	19.7	20.8	19.3	18.0

SOURCE: CFTC & FI

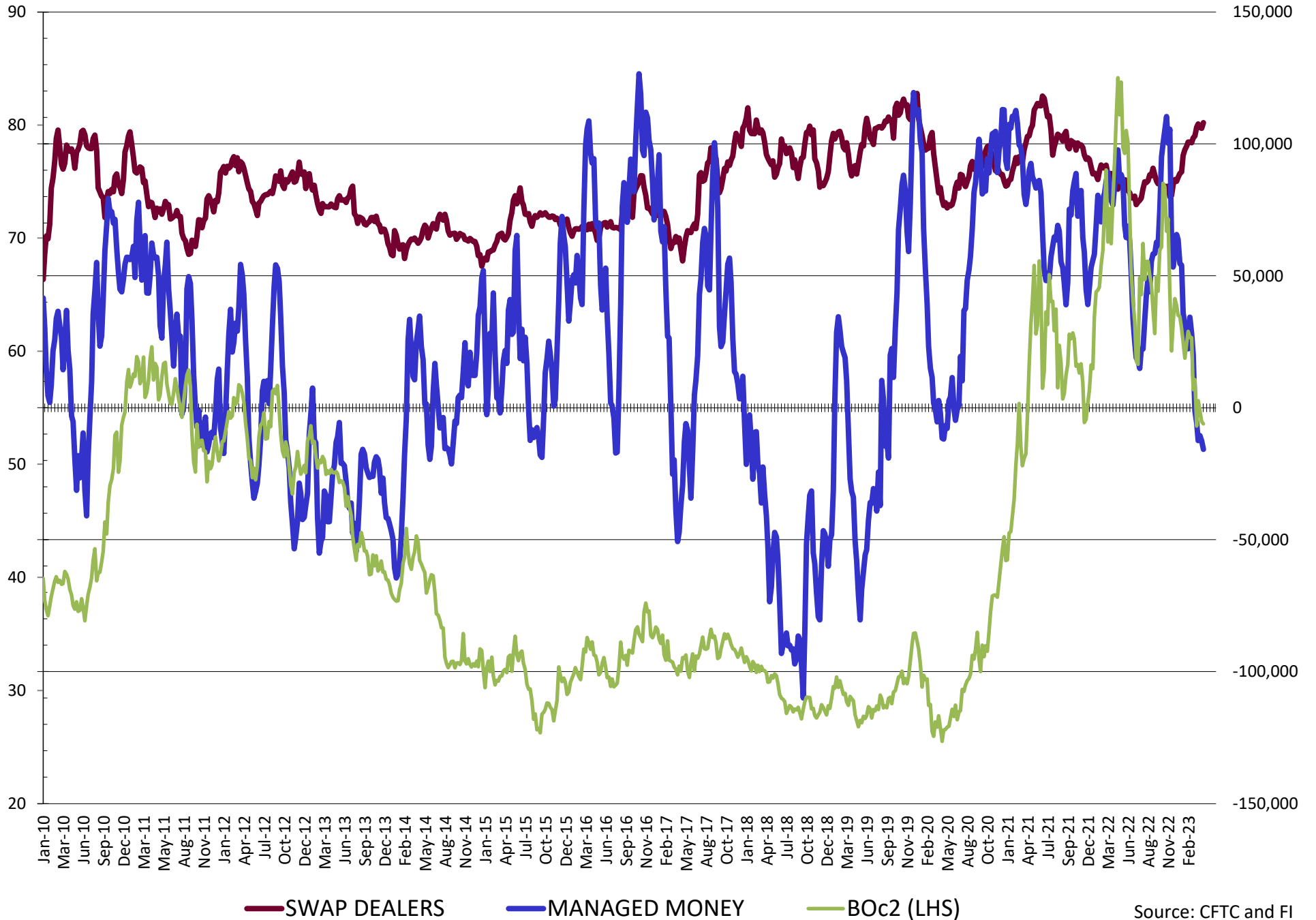
NET POSITION FUTURES AND OPTIONS OF SWAP AND MANAGED FUNDS IN SOYBEANS



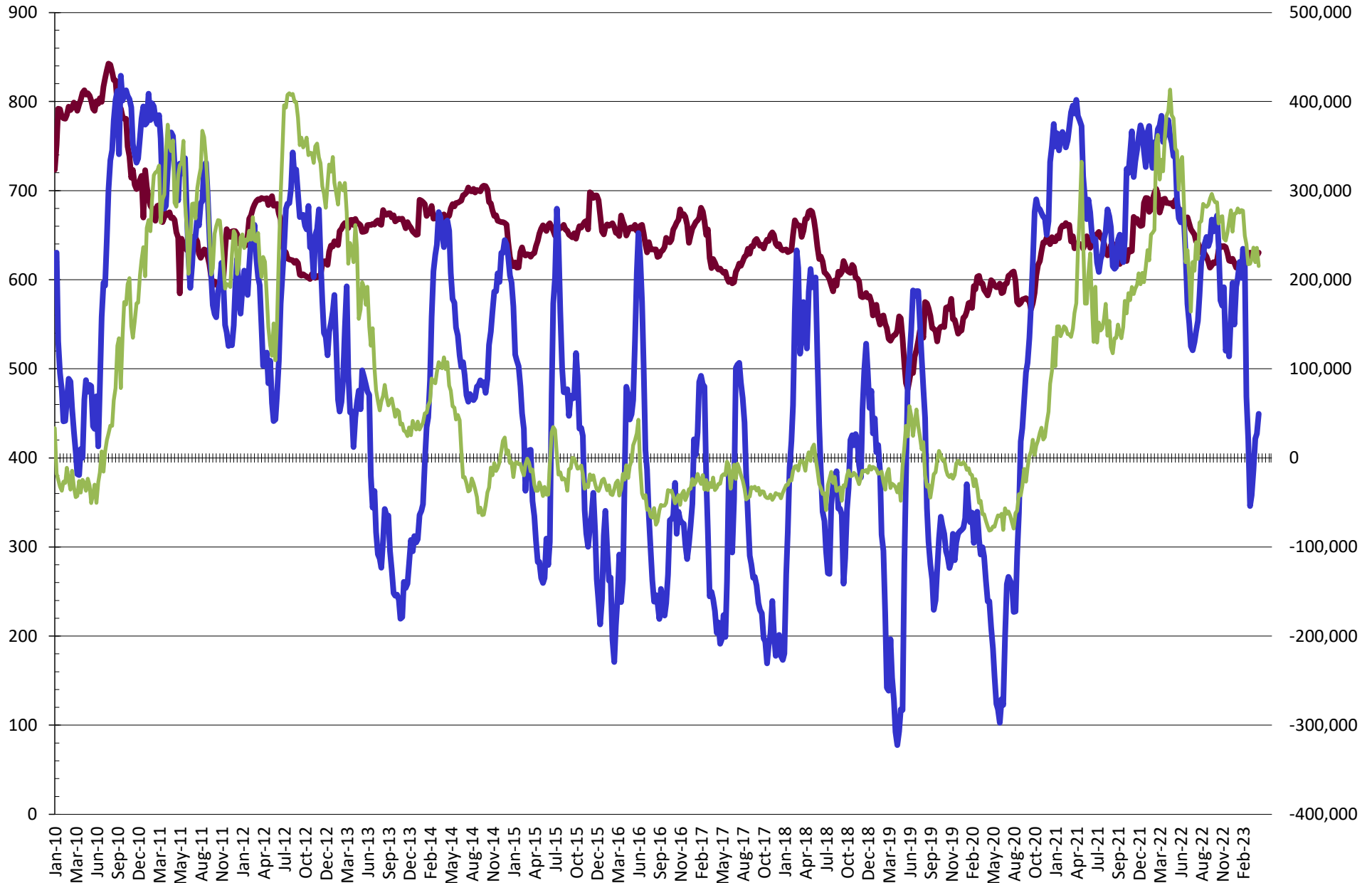
NET POSITION FUTURES AND OPTIONS OF SWAP AND MANAGED FUNDS IN SOYBEAN MEAL



NET POSITION FUTURES AND OPTIONS OF SWAP AND MANAGED FUNDS IN SOYBEAN OIL

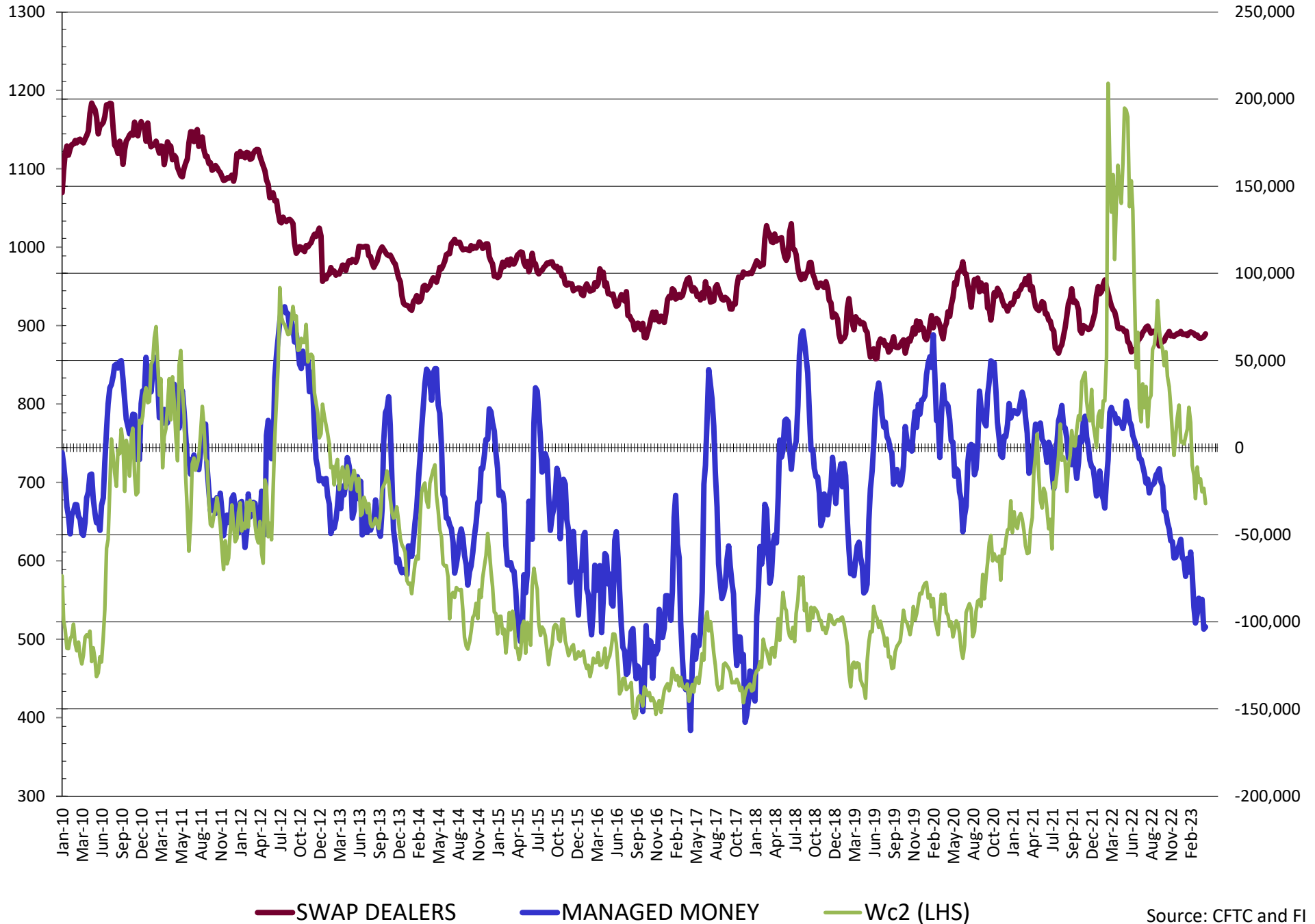


NET POSITION FUTURES AND OPTIONS OF SWAP AND MANAGED FUNDS IN CORN

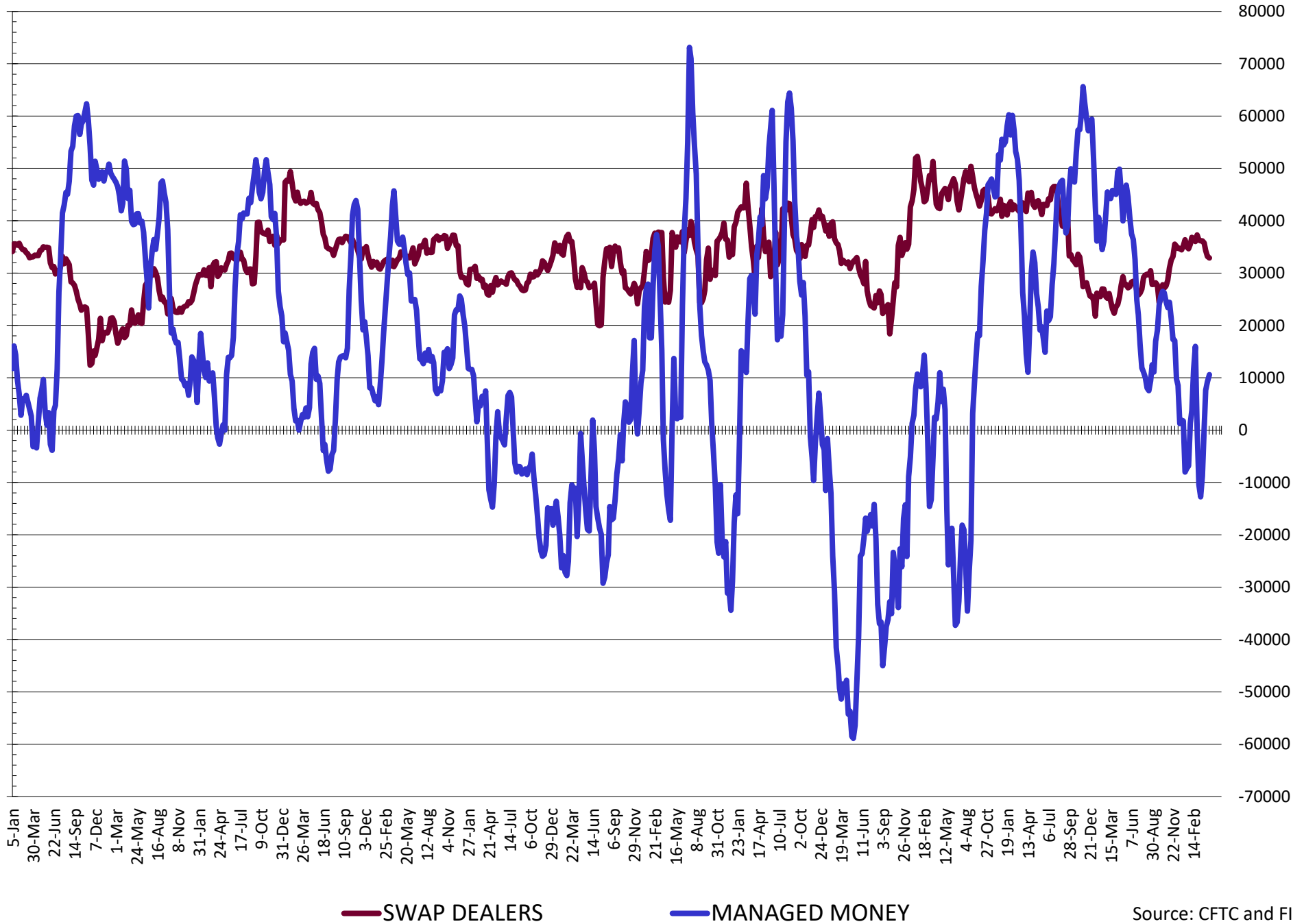


— SWAP DEALERS
 — MANAGED MONEY
 — Cc2 (LHS)

NET POSITION FUTURES AND OPTIONS OF SWAP AND MANAGED FUNDS IN CHICAGO WHEAT

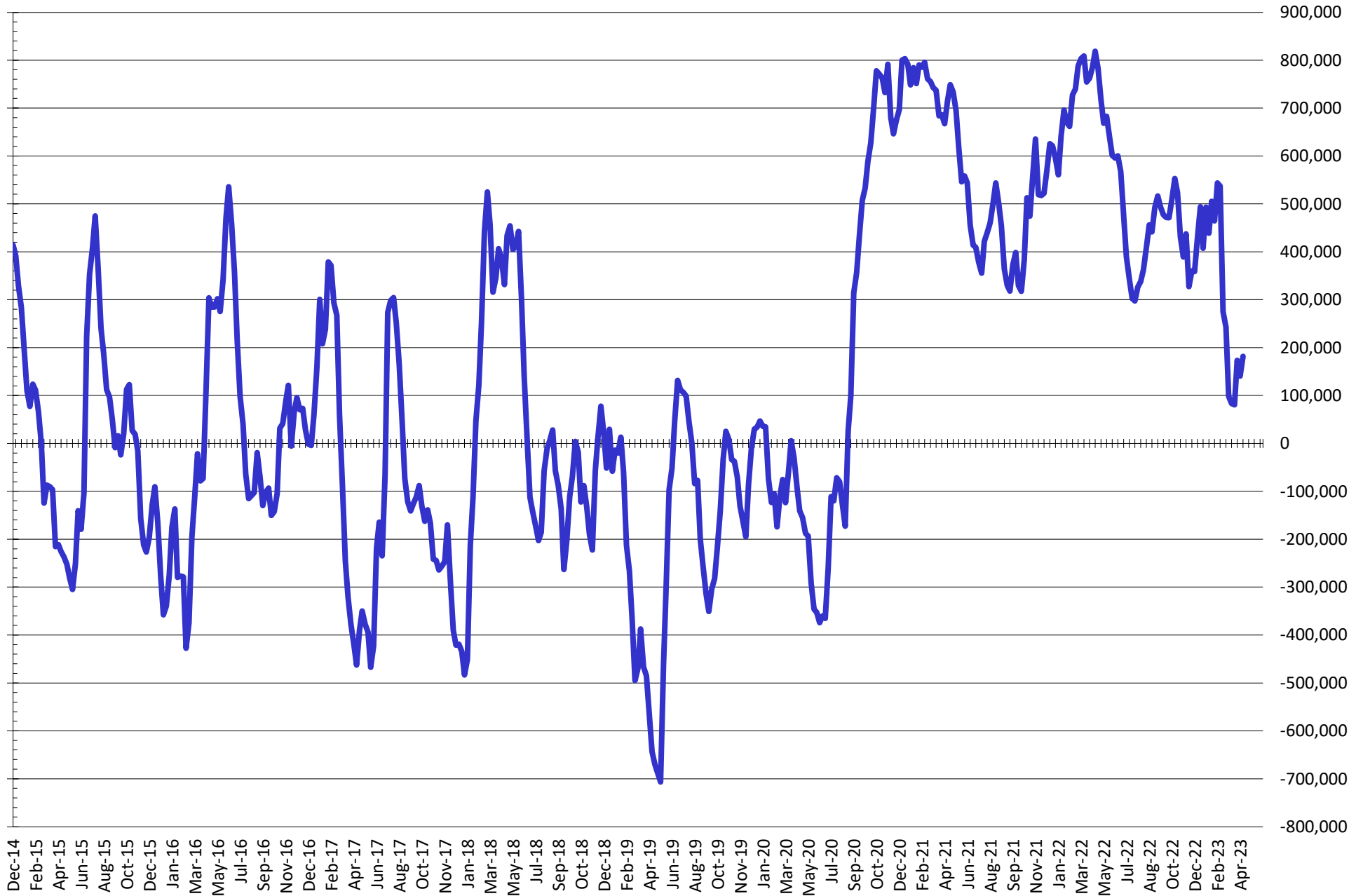


NET POSITION FUTURES AND OPTIONS OF SWAP DEALERS AND MANAGED FUNDS IN KANSAS WHEAT



Source: CFTC and FI
4/21/2023

NET POSITION FUTURES AND OPTIONS OF SWAP AND MANAGED FUNDS IN COMBINED SRW, HRW, CORN, SOYBEANS, SOYMEAL AND SOYOIL



— Net Managed Money

Source: CFTC and FI
4/21/2023

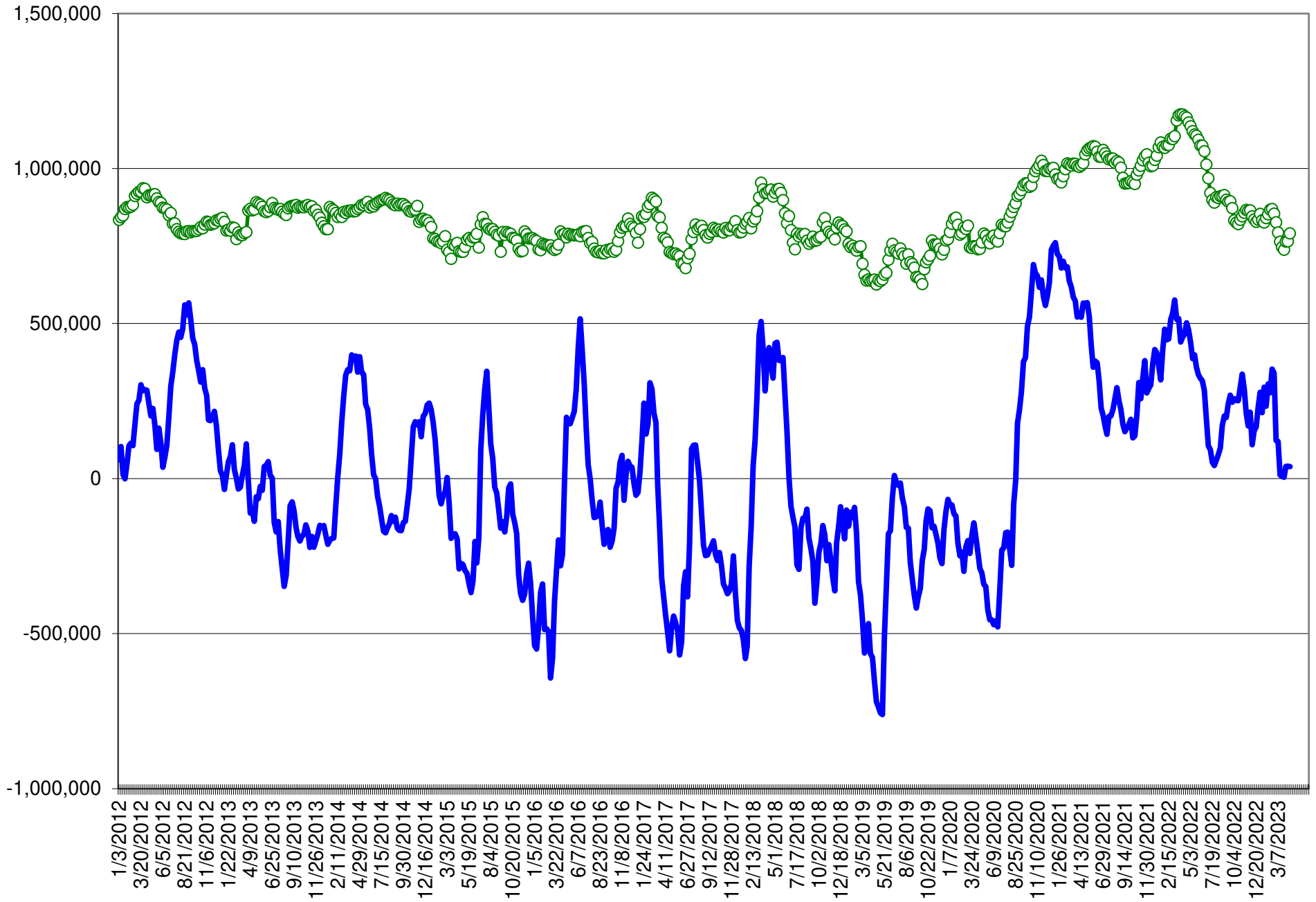
COMMITMENT OF TRADERS
FUTURES & OPTIONS NET POSITIONS (INDEX BROKEN OUT)
AS OF 04/18/2023
(IN THOUSAND CONTRACTS)

	COMMERCIAL				(FUND) NON COMMERCIAL				(SPEC) NON-REPORTABLE			
	18-Apr	11-Apr	4-Apr	28-Mar	18-Apr	11-Apr	4-Apr	28-Mar	18-Apr	11-Apr	4-Apr	28-Mar
	WHEAT											
Chicago	7.8	4.1	(4.8)	(0.2)	(89.4)	(83.8)	(78.3)	(77.6)	6.5	5.6	7.0	1.3
Kansas City	(32.0)	(32.1)	(31.2)	(28.6)	(10.3)	(10.2)	(9.4)	(12.7)	(0.2)	(0.1)	(3.4)	(3.4)
Minneapolis	-	-	-	-	-	-	-	-	-	-	-	-
All Wheat	(24.2)	(28.0)	(36.0)	(28.8)	(99.7)	(94.0)	(87.7)	(90.2)	6.3	5.5	3.6	(2.1)
CORN	(236.1)	(227.3)	(230.5)	(191.5)	(19.2)	(10.5)	(24.6)	(31.5)	(62.5)	(61.2)	(37.0)	(59.6)
OATS	-	-	-	-	-	-	-	-	-	-	-	-
SOYBEANS	(217.6)	(205.7)	(227.9)	(176.3)	111.3	102.0	113.4	87.2	(30.8)	(34.0)	(23.5)	(34.9)
SOY OIL	(69.8)	(68.7)	(69.4)	(71.0)	(37.4)	(33.4)	(33.9)	(31.6)	3.4	(1.1)	(1.4)	0.2
SOY MEAL	(217.9)	(204.5)	(200.4)	(195.9)	83.5	75.2	71.7	69.9	19.7	20.8	19.3	18.0

	TOTAL OPEN INTEREST				(INDEX) COMMERCIAL INDEX TRADERS				(INDEX) % NET OF TOTAL OPEN INTEREST			
	18-Apr	11-Apr	4-Apr	28-Mar	18-Apr	11-Apr	4-Apr	28-Mar	18-Apr	11-Apr	4-Apr	28-Mar
	WHEAT											
Chicago	458,928	469,091	449,495	446,151	75.1	74.1	76.2	76.4	16.4%	15.8%	16.9%	17.1%
Kansas City	190,739	193,081	191,019	188,039	42.5	42.4	44.0	44.7	22.3%	22.0%	23.0%	23.8%
Minneapolis	-	-	-	-	-	-	-	-	-	-	-	-
All Wheat	649,667	662,172	640,514	634,190	117.6	116.5	120.2	121.1	18.1%	17.6%	18.8%	19.1%
CORN	1,690,262	1,681,027	1,670,937	1,670,838	317.8	299.0	292.1	282.5	18.8%	17.8%	17.5%	16.9%
OATS	-	-	-	-	-	-	-	-	-	-	-	-
SOYBEANS	856,008	882,745	911,421	886,818	137.2	137.6	138.0	124.1	16.0%	15.6%	15.1%	14.0%
SOY OIL	523,252	528,132	525,578	506,284	103.7	103.1	104.6	102.3	19.8%	19.5%	19.9%	20.2%
SOY MEAL	504,548	485,932	487,963	466,859	114.7	108.5	109.3	108.0	22.7%	22.3%	22.4%	23.1%

SOURCE: CFTC & FI

NET POSITION FUTURES AND OPTIONS OF SPECULATORS AND INDEX FUNDS IN COMBINED SRW, HRW, CORN, SOYBEANS, SOYMEAL AND SOYOIL



Source: CFTC and FI

○ Net Index

— Net Speculator

4/21/2023

Traditional Daily Estimate of Funds

	(Neg)-"Short"	Pos-"Long"			
Actual less Est.	(16.7)	(9.8)	(17.8)	13.4	(2.1)
	Corn	Bean	Chi. Wheat	Meal	Oil
Actual	105.6	177.5	(70.5)	130.3	(9.5)
19-Apr	(5.0)	(4.0)	(6.0)	(3.0)	(1.0)
20-Apr	(7.0)	(5.5)	(4.5)	(1.5)	(2.0)
21-Apr	(7.0)	(7.0)	(5.0)	(3.0)	(3.0)
24-Apr					
25-Apr					
FI Est. of Futures Only	86.6	161.0	(86.0)	122.8	(15.5)
FI Est. Futures & Options	59.7	142.0	(93.7)	116.0	(20.4)
Futures only record long "Traditional Funds"	547.7 1/26/2021	280.9 11/10/2020	86.5 8/7/2018	176.0 2/21/2023	160.2 11/1/2016
Futures only record short	(235.0) 6/9/2020	(118.3) 4/30/2019	(130.0) 4/25/2017	(49.5) 3/1/2016	(69.8) 9/18/2018
Futures and options record net long	557.6 1/12/2021	270.9 10/6/2020	64.8 8/7/2012	173.7 2/21/2023	159.2 1/1/2016
Futures and options record net short	(270.6) 4/26/2019	(132.0) 4/30/2019	(143.3) 4/25/2017	(64.1) 3/1/2016	(77.8) 9/18/2018

Managed Money Daily Estimate of Funds

	Corn	Bean	Chi. Wheat	Meal	Oil
Latest CFTC Fut. Only	57.7	135.6	(105.3)	106.1	(17.5)
Latest CFTC F&O	49.4	134.8	(103.0)	105.7	(15.7)
FI Est. Managed Fut. Only	39	119	(121)	99	(24)
FI Est. Managed Money F&O	30	118	(118)	98	(22)

Index Funds Latest Positions (as of last Tuesday)

Index Futures & Options	317.8	137.2	75.1	NA	103.7
Change From Previous Week	18.9	(0.4)	1.0	NA	0.6

Source: Reuters, CFTC & FI (FI est. are noted with latest date)

Disclaimer

TO CLIENTS/PROSPECTS OF FUTURES INTERNATIONAL, SEE RISK DISCLOSURE BELOW:

THIS COMMUNICATION IS CONVEYED AS A SOLICITATION FOR ENTERING INTO A DERIVATIVES TRANSACTION.

Any trading recommendations and market or other information to Customer by Futures International (FI), although based upon information obtained from sources believed by FI to be reliable may not be accurate and may be changed without notice to customer. FI makes no guarantee as to the accuracy or completeness of any of the information or recommendations furnished to Customer. Customer understands that FI, its managers, employees and/or affiliates may have a position in commodity futures, options or other derivatives which may not be consistent with the recommendations furnished by FI to Customer.

The risk of trading futures and options and other derivatives involves a substantial risk of loss and is not suitable for all persons. In purchasing an option, the risk is limited to the premium paid, and all commissions and fees involved with the trade. When an option is shorted or written, the writer of the option has unlimited risk with respect to the option written. The use of options strategies such as a straddles and strangles involve multiple option positions and may substantially increase the amount of commissions and fees paid to execute the strategy. Option prices do not necessarily move in tandem with cash or futures prices. Each person must consider whether a particular trade, combination of trades or strategy is suitable for that person's financial means and objectives.

This material may include discussions of seasonal patterns, however, futures prices have already factored in the seasonal aspects of supply and demand, and seasonal patterns are no indication of future market trends. Finally, past performance is not indicative of future results.

This communication may contain links to third party websites which are not under the control of FI and FI is not responsible for their content. Products and services are offered only in jurisdictions where solicitation and sale are lawful, and in accordance with applicable laws and regulations in each such jurisdiction.