

CFTC COMMITMENT OF TRADERS REPORT

As of 4/11/2023

TRADITIONAL FUNDS net position changes

Wed to Tue, in 000 contracts

	Corn	Bean	Meal	Oil	Chi. Wheat	KC Wheat	Min Wheat
Futures Only	17.6	(5.0)	2.8	3.0	(5.9)	(1.2)	0.2
Futures & Options Combined	20.2	(12.5)	2.8	0.6	(7.1)	(1.3)	0.1

TRADITIONAL COMMERCIAL net position changes

	Corn	Bean	Meal	Oil	Chi. Wheat	KC Wheat	Min Wheat
Futures Only	8.0	14.8	(3.3)	(3.3)	7.5	(2.1)	(0.6)
Futures & Options Combined	4.0	22.9	(4.2)	(0.9)	8.5	(2.0)	(0.4)

MANAGED MONEY net position changes

	Corn	Bean	Meal	Oil	Chi. Wheat	KC Wheat	Min Wheat
Futures Only	4.3	(20.6)	(0.5)	(1.8)	(16.6)	1.2	(0.4)
Futures & Options Combined	5.6	(20.9)	(0.1)	(2.0)	(17.2)	1.6	(0.4)

SWAP DEALERS net position changes

	Corn	Bean	Meal	Oil	Chi. Wheat	KC Wheat	Min Wheat
Futures Only	2.0	0.6	0.3	(0.5)	0.4	(1.0)	(0.1)
Futures & Options Combined	0.0	0.6	0.2	(0.4)	0.7	(1.1)	(0.0)

PRODUCERS/END USERS net position changes

	Corn	Bean	Meal	Oil	Chi. Wheat	KC Wheat	Min Wheat
Futures Only	6.1	14.1	(3.6)	(2.8)	7.0	(1.1)	(0.6)
Futures & Options Combined	4.0	22.3	(4.4)	(0.6)	7.8	(0.8)	(0.4)

INDEX net position changes

	Corn	Bean	Meal	Oil	Chi. Wheat	KC Wheat	Min Wheat
Futures & Options Combined	6.9	(0.4)	(0.8)	(1.5)	(2.1)	(1.6)	NA

SUPPLEMENTAL NON-COMMERCIAL net position changes

	Corn	Bean	Meal	Oil	Chi. Wheat	KC Wheat	Min Wheat
Futures & Options Combined	14.1	(11.4)	3.5	0.5	(5.5)	(0.8)	NA

OPEN INTEREST net position changes

Wed to Tue, in 000 contracts

	Corn	Bean	Meal	Oil	Chi. Wheat	KC Wheat	Min Wheat
Futures Only	3.8	(29.2)	(0.9)	0.5	15.9	0.5	(3.3)
Futures & Options Combined	10.1	(28.7)	(2.0)	2.6	19.6	2.1	(3.5)

Source: CFTC and FI

Wed to Tue, in 000 contracts

**COMMITMENT OF TRADERS
FUTURES ONLY NET POSITIONS
AS OF 04/11/2023
(IN THOUSAND CONTRACTS)**

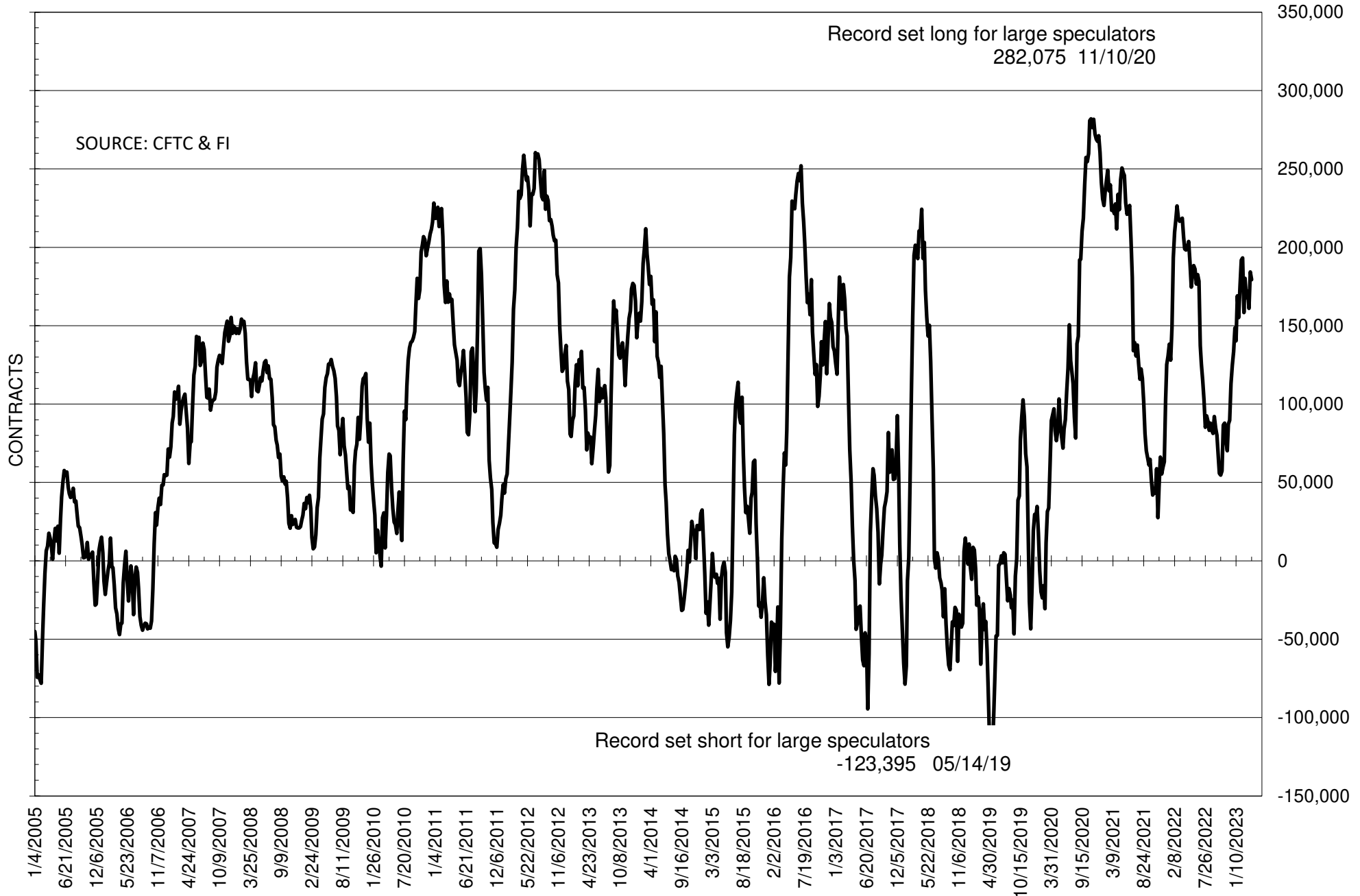
	COMMERCIAL				(FUND) NON COMMERCIAL				(SPEC) NON-REPORTABLE			
	11-Apr	4-Apr	28-Mar	21-Mar	11-Apr	4-Apr	28-Mar	21-Mar	11-Apr	4-Apr	28-Mar	21-Mar
	WHEAT											
Chicago	62.3	54.9	60.3	59.3	-66.7	-60.8	-60.5	-59.2	4.4	5.9	0.2	-0.1
Kansas City	-1.8	0.3	4.4	10.8	1.9	3.1	-1.0	-7.6	-0.1	-3.4	-3.4	-3.2
Minneapolis	-4.5	-3.9	-1.9	0.7	4.1	3.9	2.6	-0.1	0.4	0.0	-0.7	-0.6
All Wheat	56.0	51.3	62.9	70.8	-60.7	-53.8	-58.9	-66.9	4.7	2.6	-3.9	-3.9
CORN	-45.3	-53.3	-12.5	3.8	103.3	85.7	71.5	59.5	-58.0	-32.4	-59.0	-63.3
OATS	-0.4	-0.7	-1.0	-0.1	-0.2	0.0	0.0	-0.4	0.7	0.8	1.0	0.5
SOYBEANS	-148.5	-163.3	-129.3	-141.8	179.3	184.3	161.0	171.8	-30.8	-21.1	-31.7	-29.9
SOY OIL	8.2	11.4	8.1	1.9	-6.4	-9.3	-7.6	-0.6	-1.8	-2.1	-0.5	-1.4
SOY MEAL	-134.1	-130.8	-131.1	-150.4	115.9	113.1	114.5	133.3	18.1	17.7	16.6	17.1

Oats positions thin to be reported

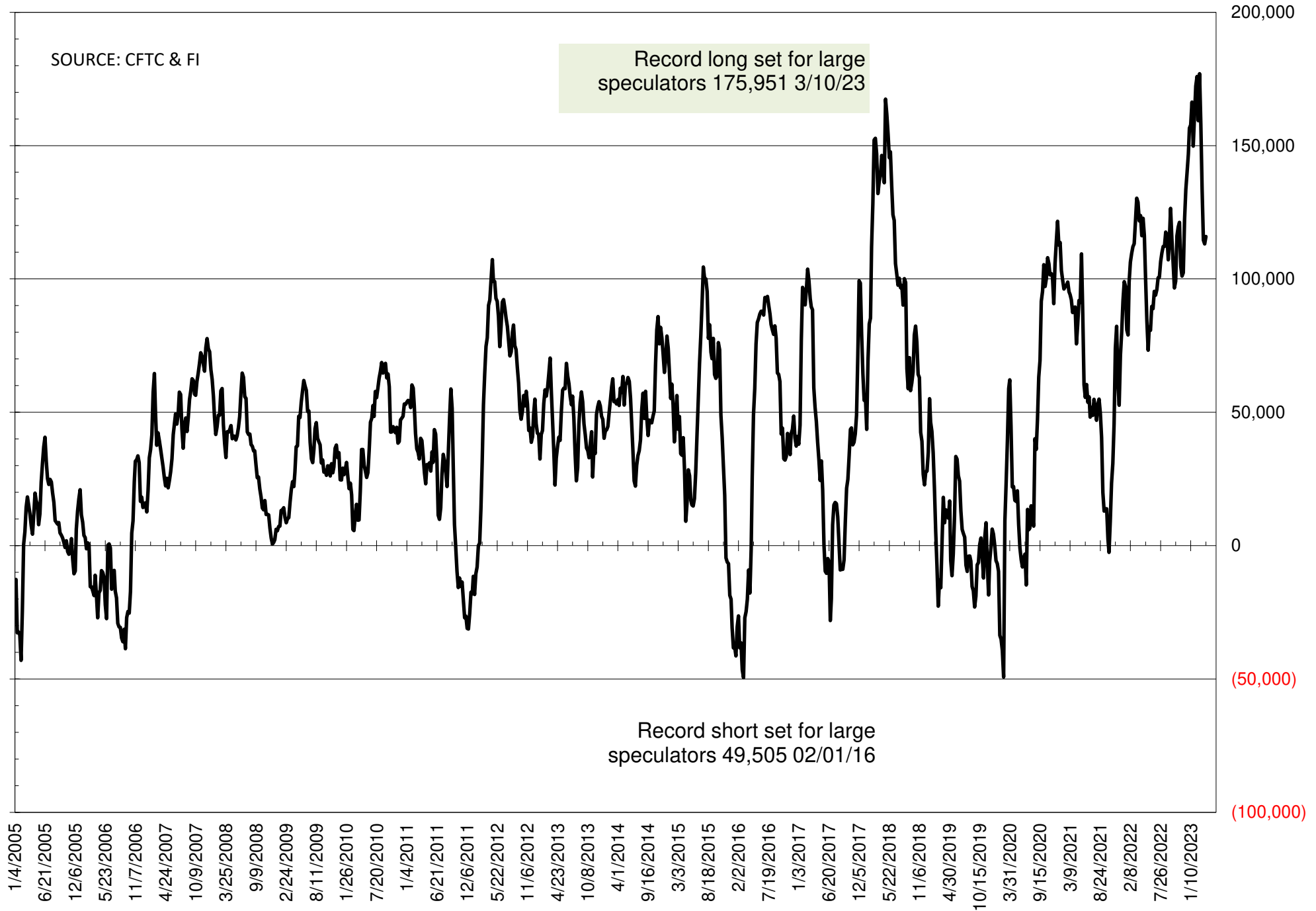
	TOTAL OPEN INTEREST				NEARBY FUTURES PRICE					11-Apr-23 LAST REPORTED % HELD BY TRADERS			
	11-Apr	4-Apr	28-Mar	21-Mar	K 14-Apr	K 11-Apr	K 4-Apr	K 28-Mar	K 21-Mar	LARGE FUND		SMALL	
										LONG	SHORT	LONG	SHORT
WHEAT													
Chicago	391899	375999	373926	370297	682.50	674.00	691.50	699.75	683.25	0%	45%	0%	10%
Kansas City	175828	175353	172549	171307	878.75	868.25	872.50	872.50	820.25	0%	24%	0%	11%
Minneapolis	61255	64593	62180	58734	876.00	863.75	888.50	879.00	847.25	0%	16%	0%	17%
CORN	1338484	1334671	1345886	1349372	666.25	651.00	653.75	647.25	630.00	0%	17%	0%	13%
OATS	4698	4376	4114	4535	336.00	340.25	341.00	379.25	359.00	0%	23%	0%	29%
SOYBEANS	716906	746111	723433	696280	1500.50	1497.25	1517.50	1467.75	1467.00	30%	5%	7%	11%
SOY OIL	484462	483953	465793	456475	53.66	54.89	55.74	55.05	56.24	0%	16%	0%	7%
SOY MEAL	435709	436606	417537	429155	459.70	457.80	457.40	457.90	460.60	0%	5%	0%	7%

SOURCE: CFTC & FI

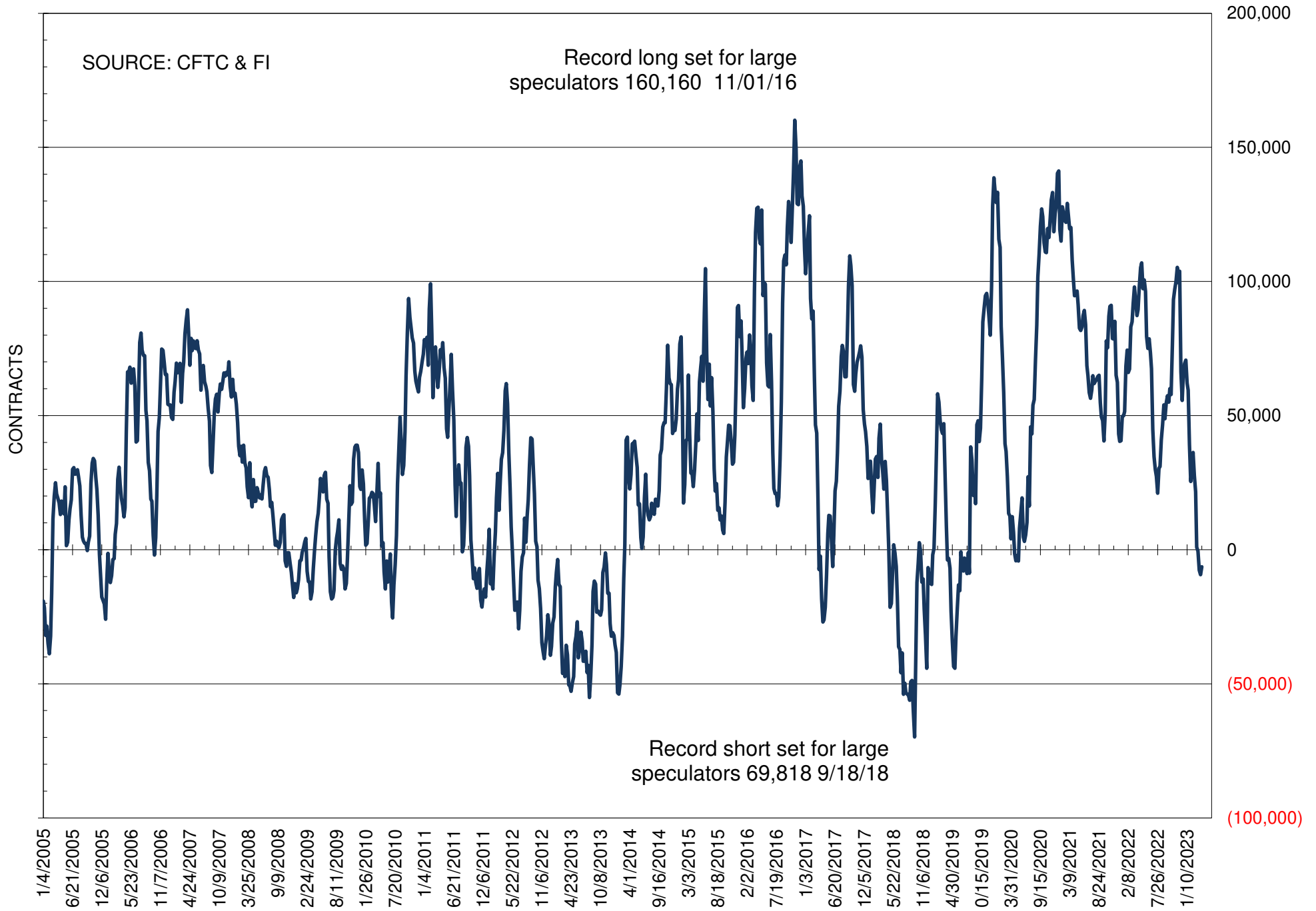
NET POSITION OF FUTURES ONLY LARGE SPECS IN SOYBEANS



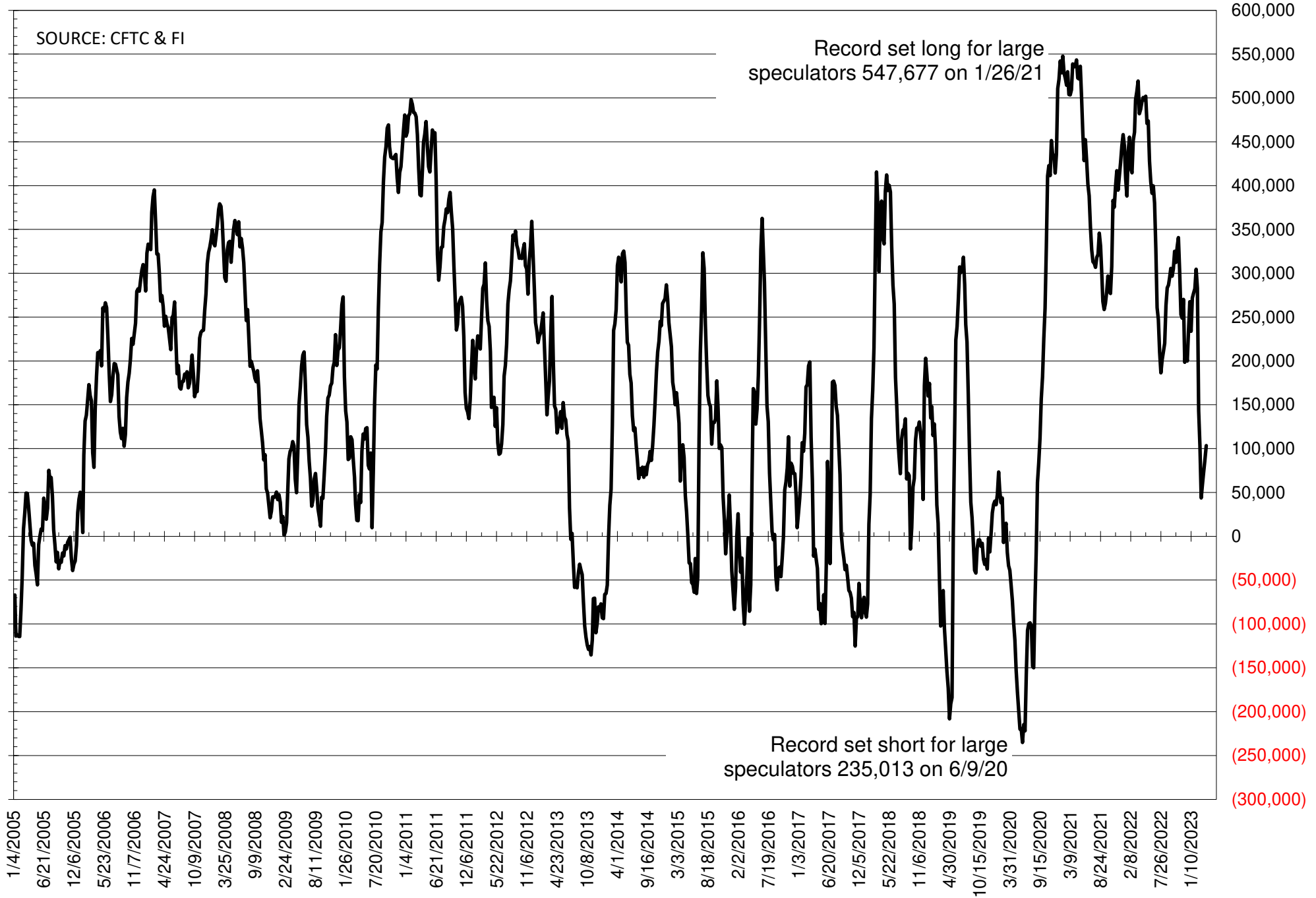
NET POSITION OF FUTURES ONLY LARGE SPECS IN SOYMEAL



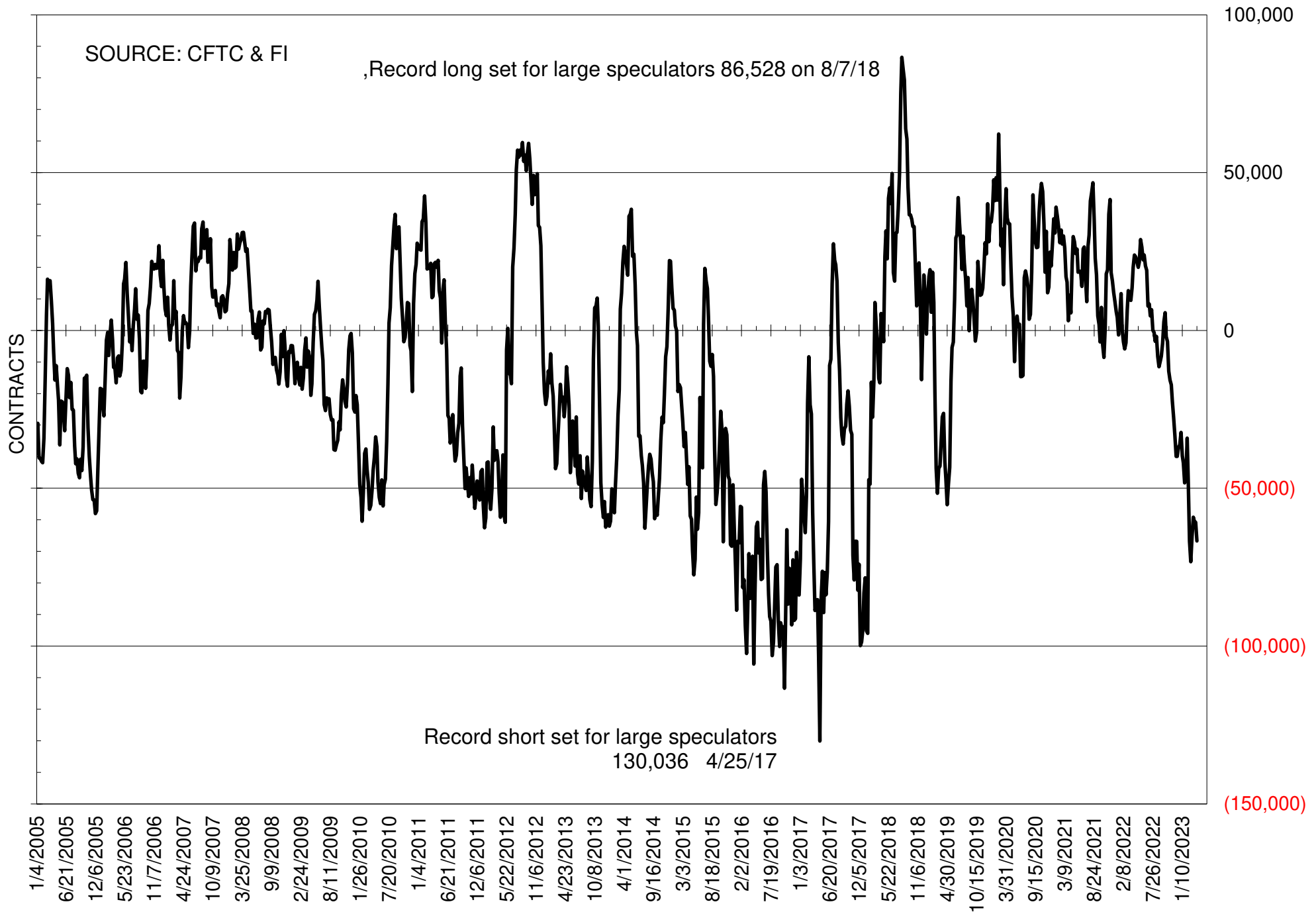
NET POSITION OF FUTURES ONLY LARGE SPECS IN SOYOIL



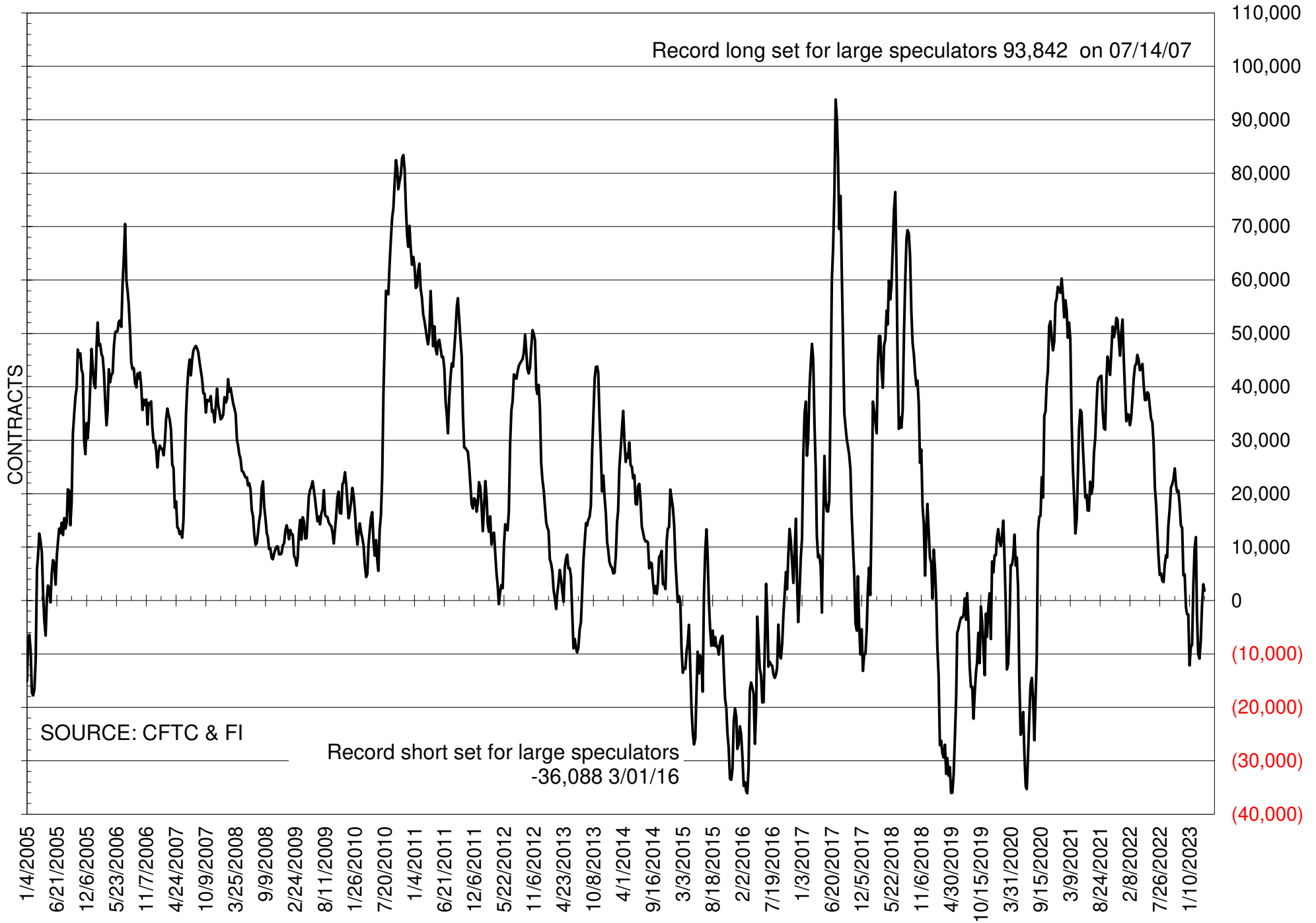
NET POSITION OF LARGE SPECULATORS IN CORN



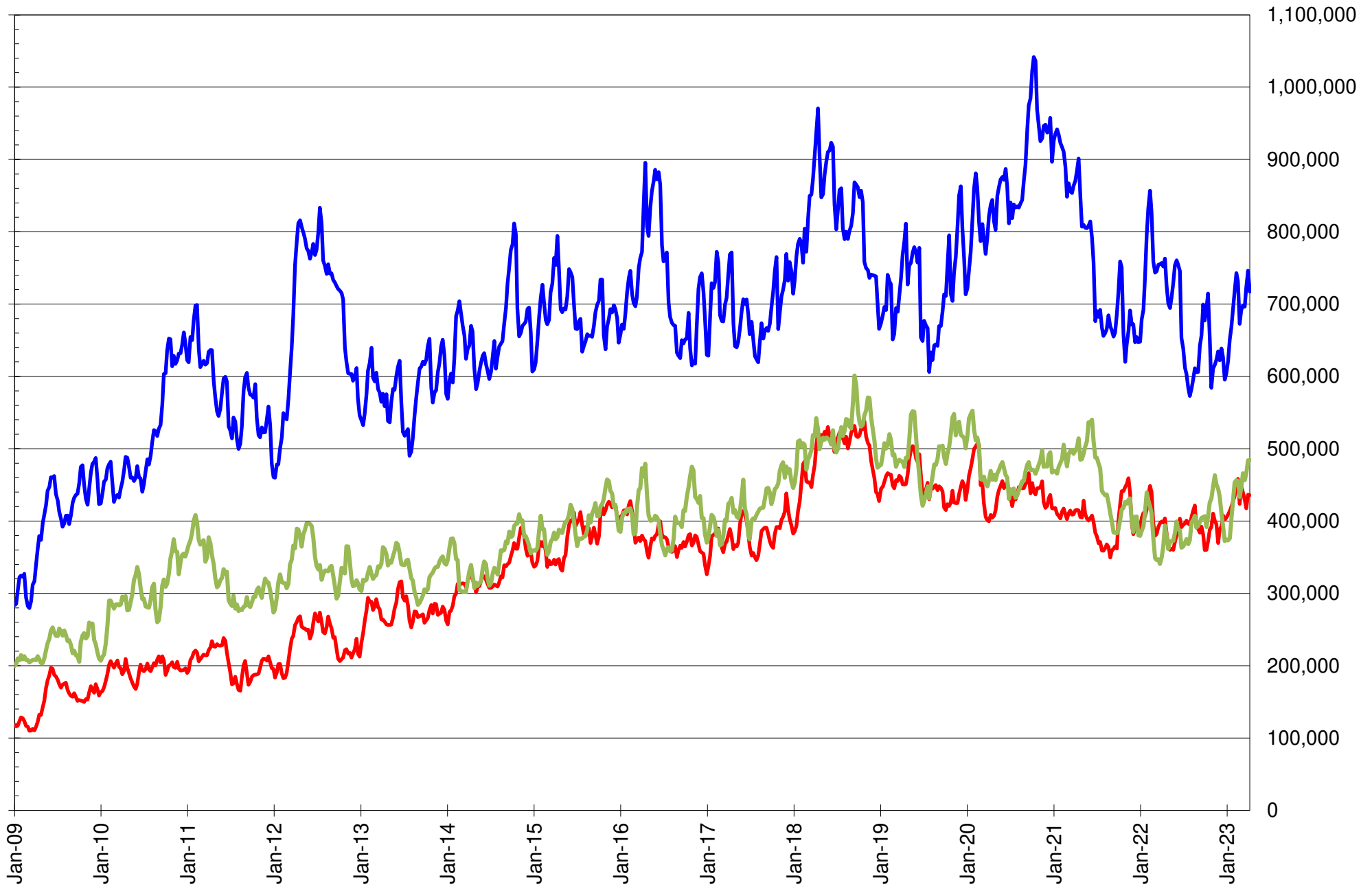
NET POSITION OF FUTURES ONLY LARGE SPECS IN CHICAGO WHEAT



NET POSITION OF LARGE SPECULATORS IN KANSAS CITY WHEAT



TOTAL OPEN INTEREST IN SOYBEANS, MEAL AND OIL, FUTURES ONLY



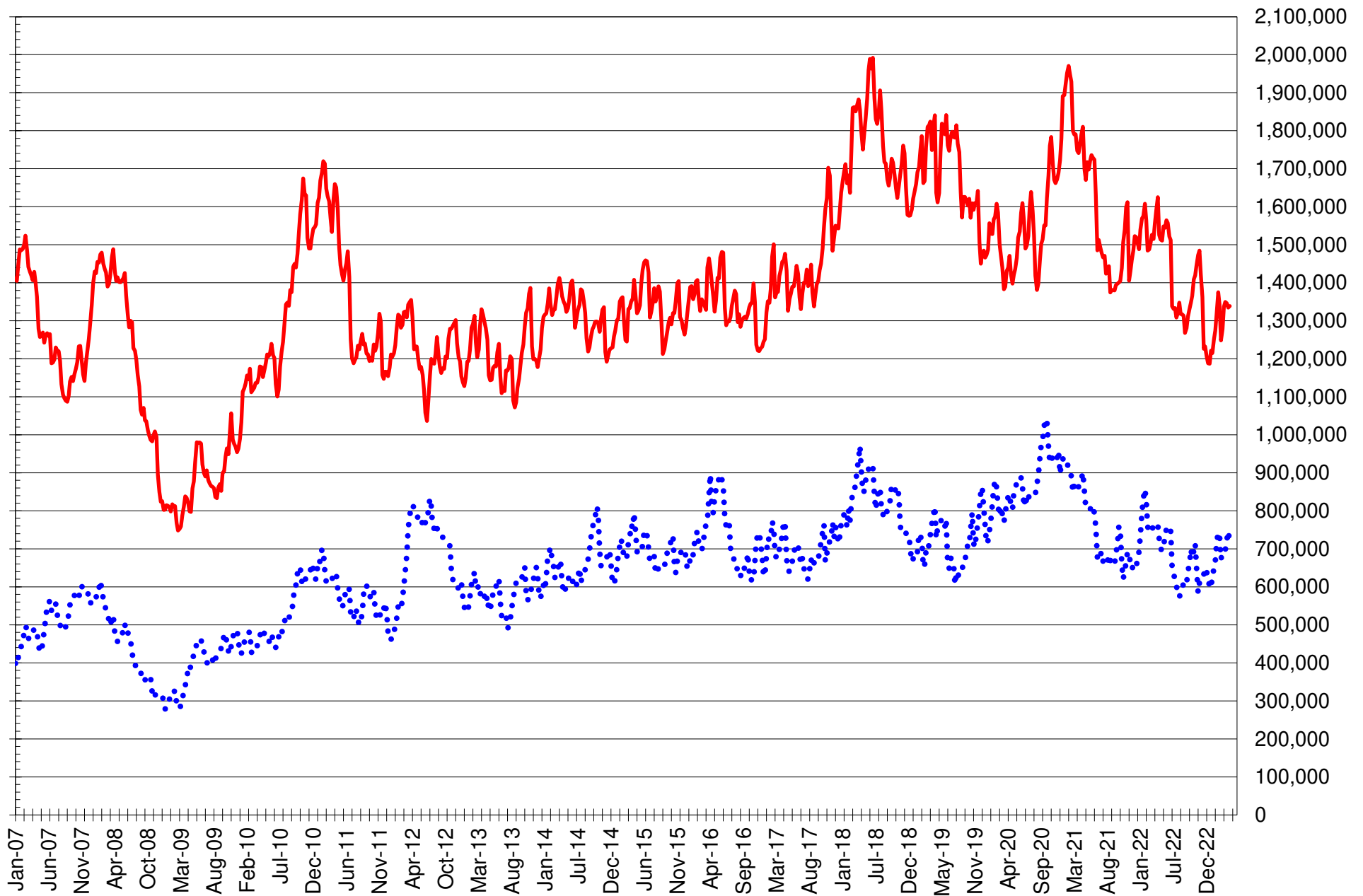
SOURCE: CFTC & FI

— SOYBEANS

— SOYBEAN MEAL

— SOYBEAN OIL

TOTAL OPEN INTEREST IN CORN AND SOYBEANS, FUTURES ONLY



SOURCE: CFTC & FI

— CORN

..... SOYBEANS

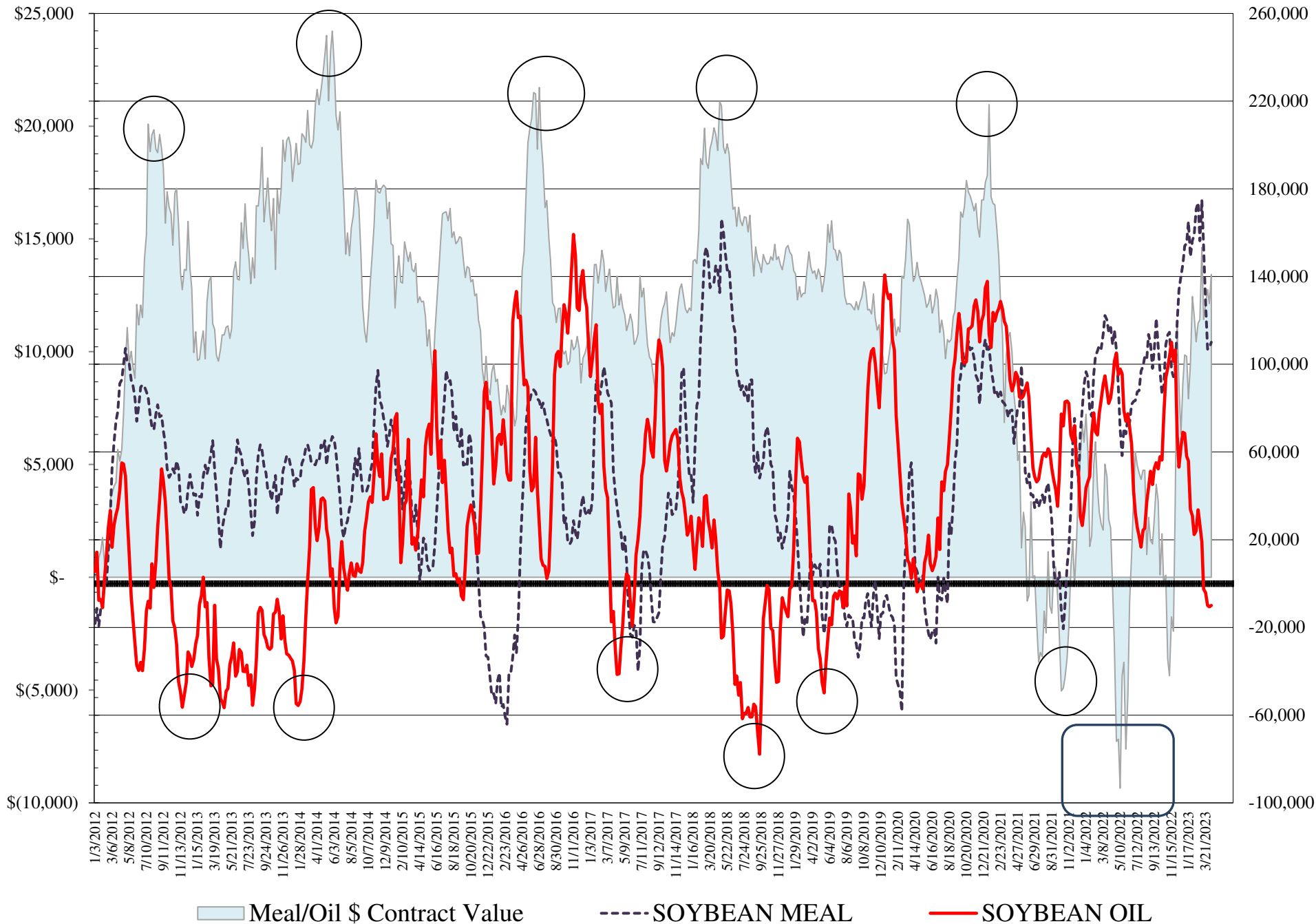
COMMITMENT OF TRADERS
FUTURES & OPTIONS NET POSITIONS
AS OF 04/11/2023
(IN THOUSAND CONTRACTS)

	COMMERCIAL				(FUND) NON COMMERCIAL				(SPEC) NON-REPORTABLE			
	11-Apr	4-Apr	28-Mar	21-Mar	11-Apr	4-Apr	28-Mar	21-Mar	11-Apr	4-Apr	28-Mar	21-Mar
WHEAT												
Chicago	67.6	59.2	64.1	62.6	-73.2	-66.1	-65.5	-64.1	5.6	7.0	1.3	1.5
Kansas City	-1.2	0.8	5.2	11.5	1.2	2.6	-1.8	-8.4	-0.1	-3.4	-3.4	-3.1
Minneapolis	-4.8	-4.4	-2.3	0.7	4.3	4.3	2.9	-0.2	0.5	0.1	-0.6	-0.5
All Wheat	61.6	55.5	67.1	74.8	-67.7	-59.3	-64.3	-72.7	6.0	3.7	-2.7	-2.1
CORN	-11.7	-15.7	25.3	51.2	72.9	52.7	34.2	14.0	-61.2	-37.0	-59.6	-65.2
OATS	-0.4	-0.8	-1.0	-0.1	-0.2	0.0	0.0	-0.4	0.7	0.8	1.0	0.6
SOYBEANS	-117.0	-139.9	-89.5	-98.1	151.0	163.5	124.4	134.1	-34.0	-23.5	-34.9	-36.0
SOY OIL	11.1	12.0	9.7	4.7	-10.0	-10.6	-9.9	-4.2	-1.1	-1.4	0.2	-0.5
SOY MEAL	-130.9	-126.7	-124.9	-145.7	110.1	107.4	106.9	127.9	20.8	19.3	18.0	17.8

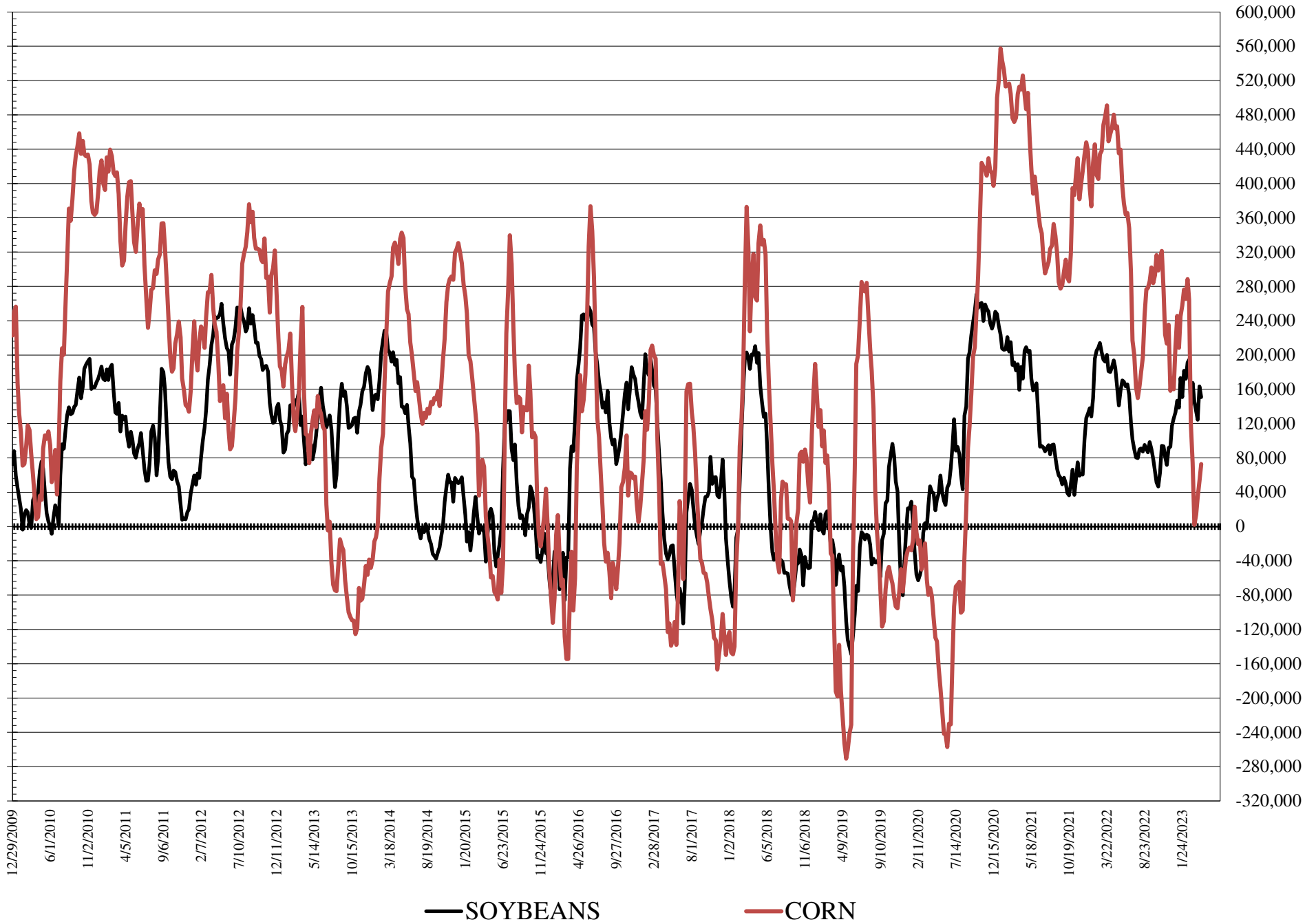
	TOTAL OPEN INTEREST				COMMERCIALS		% HELD BY TRADERS LARGE (FUNDS)		SMALL (NON-REP)	
	11-Apr	4-Apr	28-Mar	21-Mar	LONG	SHORT	LONG	SHORT	LONG	SHORT
WHEAT										
Chicago	469,091	449,495	446,151	454,791	33%	18%	20%	36%	10%	9%
Kansas City	193,081	191,019	188,039	188,590	43%	43%	22%	22%	11%	11%
Minneapolis	63,883	67,359	64,799	60,382	52%	60%	22%	15%	18%	17%
CORN	1,681,027	1,670,937	1,670,838	1,690,830	44%	45%	18%	14%	9%	13%
OATS	4,757	4,439	4,191	4,606						
SOYBEANS	882,745	911,421	886,818	867,790	43%	56%	21%	4%	6%	10%
SOY OIL	528,132	525,578	506,284	496,457	57%	55%	13%	15%	6%	6%
SOY MEAL	485,932	487,963	466,859	481,613	38%	65%	27%	4%	11%	7%

SOURCE: CFTC & FI

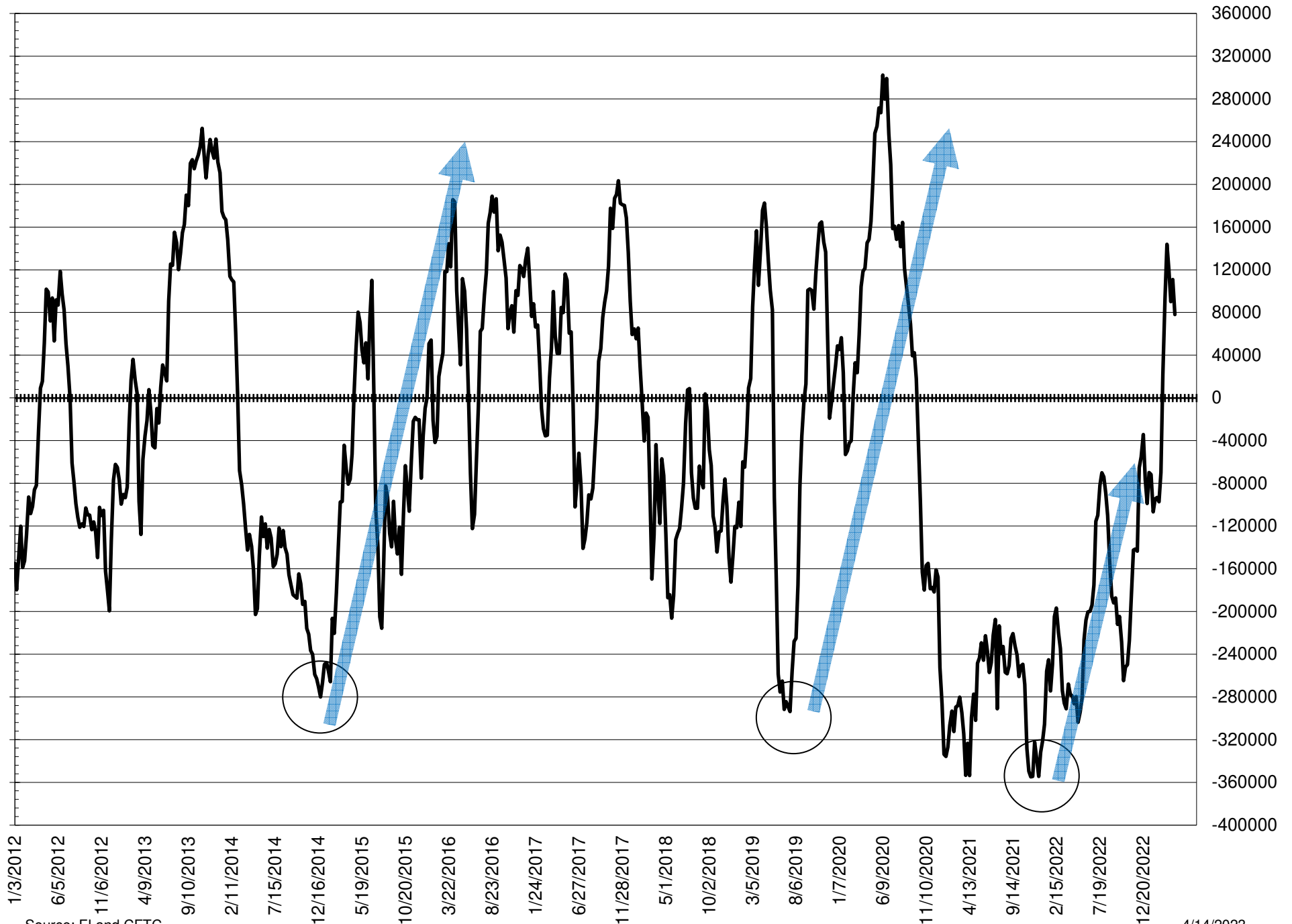
NET POSITION FUTURES AND OPTIONS OF LARGE SPECULATORS IN SOYBEAN MEAL AND SOYBEAN OIL



NET POSITION FUTURES AND OPTIONS OF LARGE SPECULATORS IN SOYBEANS AND CORN



NET POSITION FUTURES AND OPTIONS SPREAD OF LARGE SPECULATORS IN SOYBEANS MINUS CORN



Source: FI and CFTC

4/14/2023

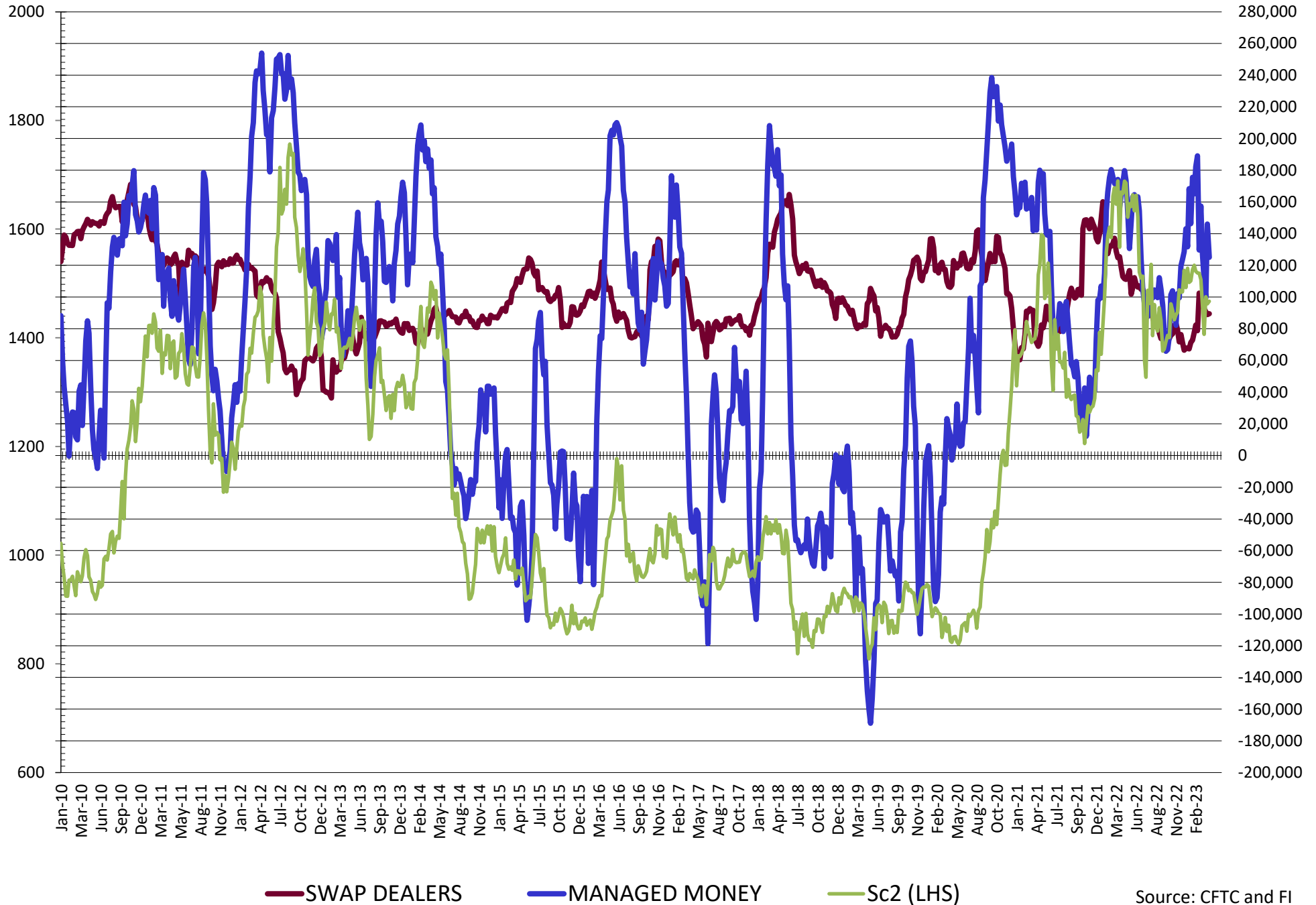
DISAGGREGATED COMMITMENT OF TRADERS
FUTURES & OPTIONS NET POSITIONS
AS OF 04/11/2023
(IN THOUSAND CONTRACTS)

	PRODUCER / MERCHANT / PROCESSOR / USER				(INDEX/ETF) SWAP DEALERS				(CTA/CPO/OTHER UNREGISTERED) MANAGED MONEY			
	11-Apr	4-Apr	28-Mar	21-Mar	11-Apr	4-Apr	28-Mar	21-Mar	11-Apr	4-Apr	28-Mar	21-Mar
	WHEAT											
Chicago	4.0	(3.8)	1.4	(0.3)	63.6	63.0	62.8	62.9	(104.2)	(87.1)	(89.9)	(86.5)
Kansas City	(34.3)	(33.5)	(30.6)	(24.6)	33.2	34.3	35.8	36.2	9.2	7.6	0.2	(8.8)
Minneapolis	(6.0)	(5.6)	(3.6)	(0.6)	1.2	1.3	1.4	1.3	0.2	0.7	0.4	(2.6)
All Wheat	(36.4)	(43.0)	(32.8)	(25.6)	98.0	98.5	99.9	100.4	(94.8)	(78.8)	(89.2)	(97.9)
CORN	(238.8)	(242.9)	(203.5)	(175.5)	227.2	227.2	228.9	226.7	27.1	21.5	(13.3)	(41.9)
OATS	(0.6)	(0.9)	(1.0)	(0.2)	0.1	0.1	0.0	0.0	(0.8)	(0.6)	(0.7)	(1.1)
SOYBEANS	(206.5)	(228.8)	(180.1)	(190.7)	89.5	88.9	90.6	92.6	125.0	146.0	99.5	110.8
SOY OIL	(94.8)	(94.2)	(97.8)	(101.6)	105.8	106.2	107.5	106.3	(12.6)	(10.6)	(12.5)	(5.7)
SOY MEAL	(221.1)	(216.7)	(211.9)	(232.9)	90.3	90.0	87.0	87.2	95.7	95.7	96.1	115.2

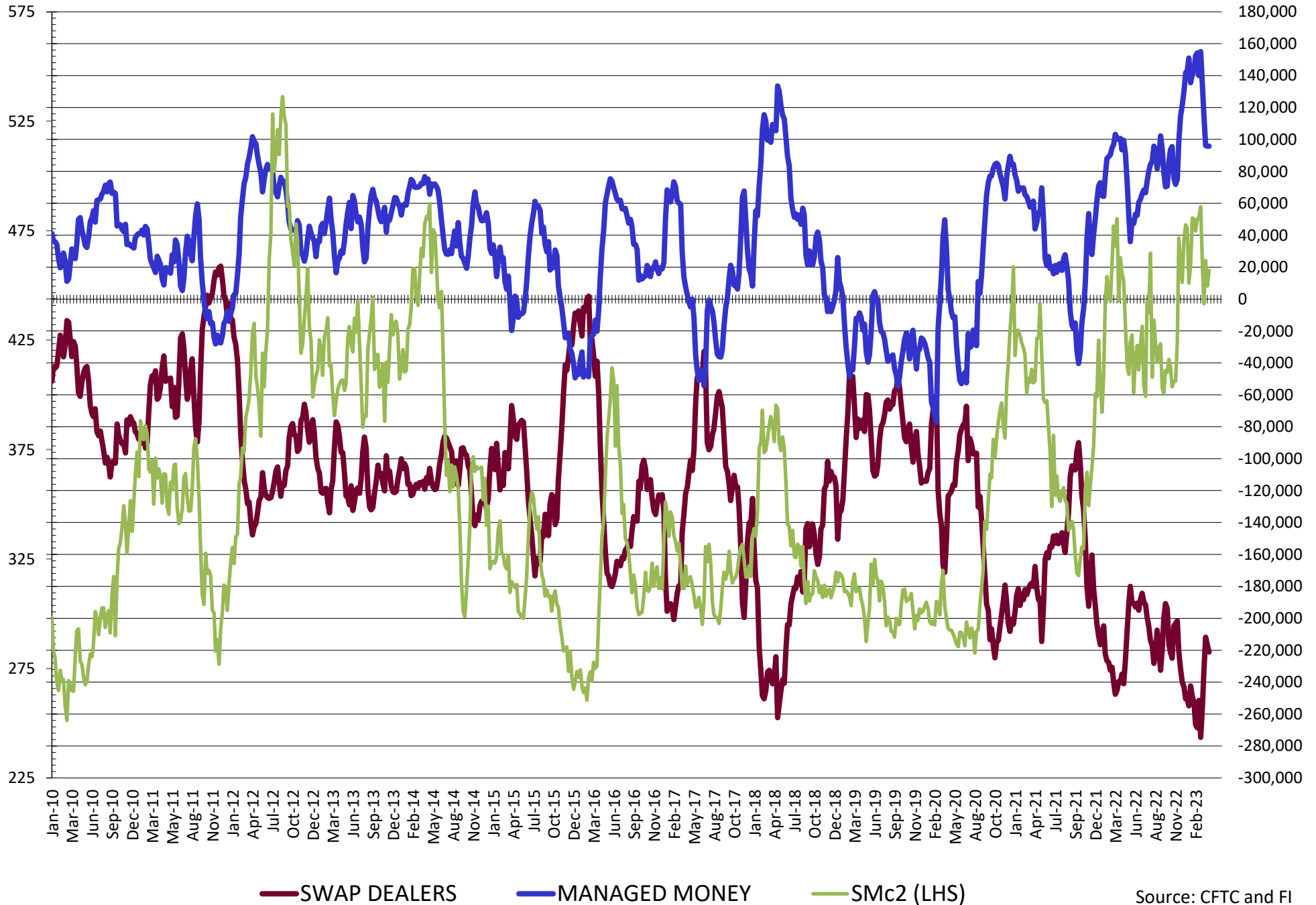
	TOTAL OPEN INTEREST				OTHER REPORTABLE				NON REPORTABLE			
	11-Apr	4-Apr	28-Mar	21-Mar	11-Apr	4-Apr	28-Mar	21-Mar	11-Apr	4-Apr	28-Mar	21-Mar
	WHEAT											
Chicago	469,091	449,495	446,151	454,791	31.0	21.0	24.4	22.4	5.6	7.0	1.3	1.5
Kansas City	193,081	191,019	188,039	188,590	(8.0)	(5.0)	(2.0)	0.3	(0.1)	(3.4)	(3.4)	(3.1)
Minneapolis	63,883	67,359	64,799	60,382	4.1	3.6	2.5	2.4	0.5	0.1	(0.6)	(0.5)
All Wheat	726,055	707,873	698,989	703,763	27.1	19.5	24.9	25.1	6.0	3.7	(2.7)	(2.1)
CORN	1,681,027	1,670,937	1,670,838	1,690,830	45.8	31.2	47.5	55.9	(61.2)	(37.0)	(37.0)	(37.0)
OATS	4,757	4,439	4,191	4,606	0.6	0.6	0.7	0.6	0.7	0.8	1.0	0.6
SOYBEANS	882,745	911,421	886,818	867,790	26.0	17.5	24.9	23.3	(34.0)	(23.5)	(34.9)	(36.0)
SOY OIL	528,132	525,578	506,284	496,457	2.6	(0.0)	2.5	1.5	(1.1)	(1.4)	0.2	(0.5)
SOY MEAL	485,932	487,963	466,859	481,613	14.4	11.6	10.8	12.7	20.8	19.3	18.0	17.8

SOURCE: CFTC & FI

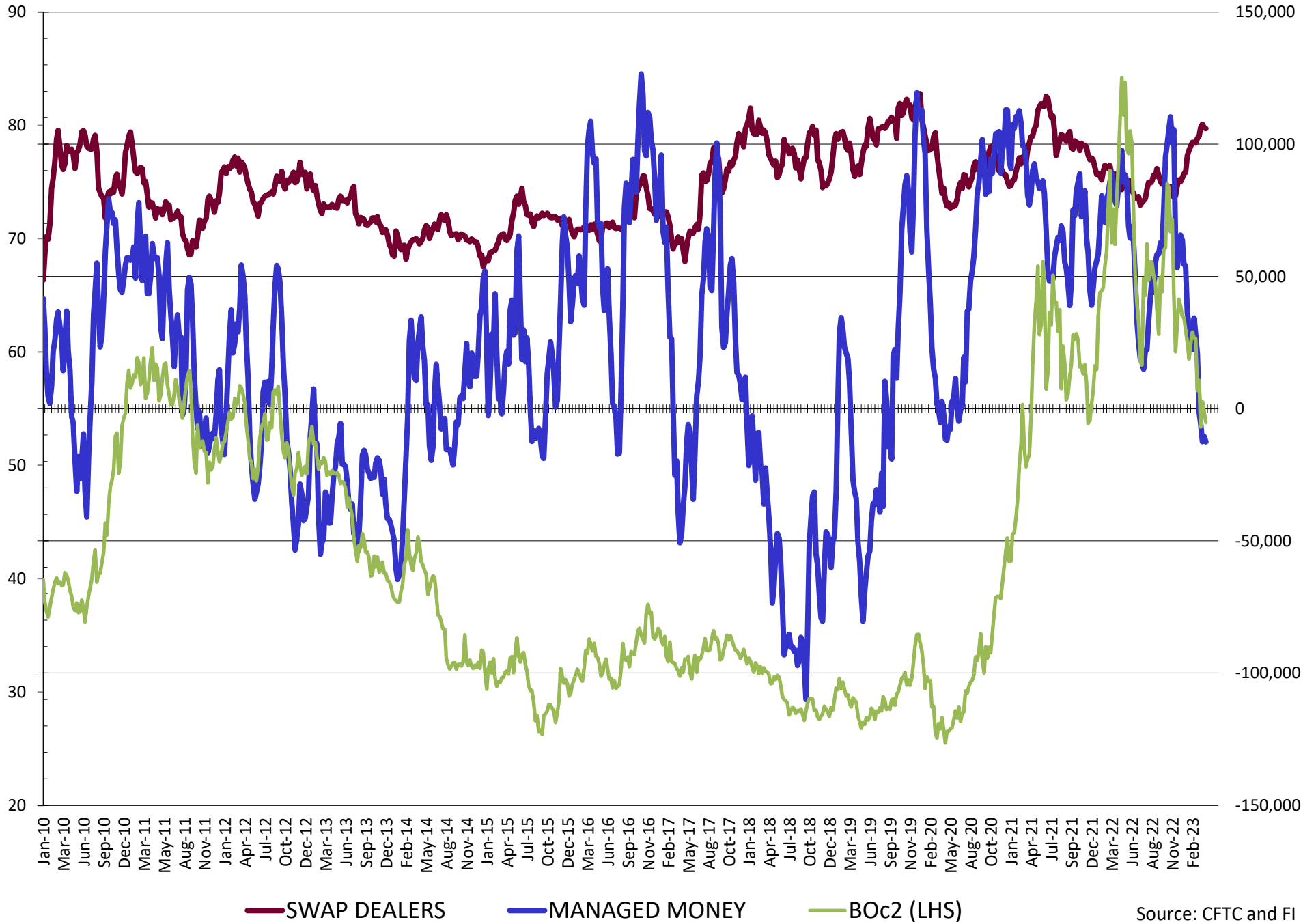
NET POSITION FUTURES AND OPTIONS OF SWAP AND MANAGED FUNDS IN SOYBEANS



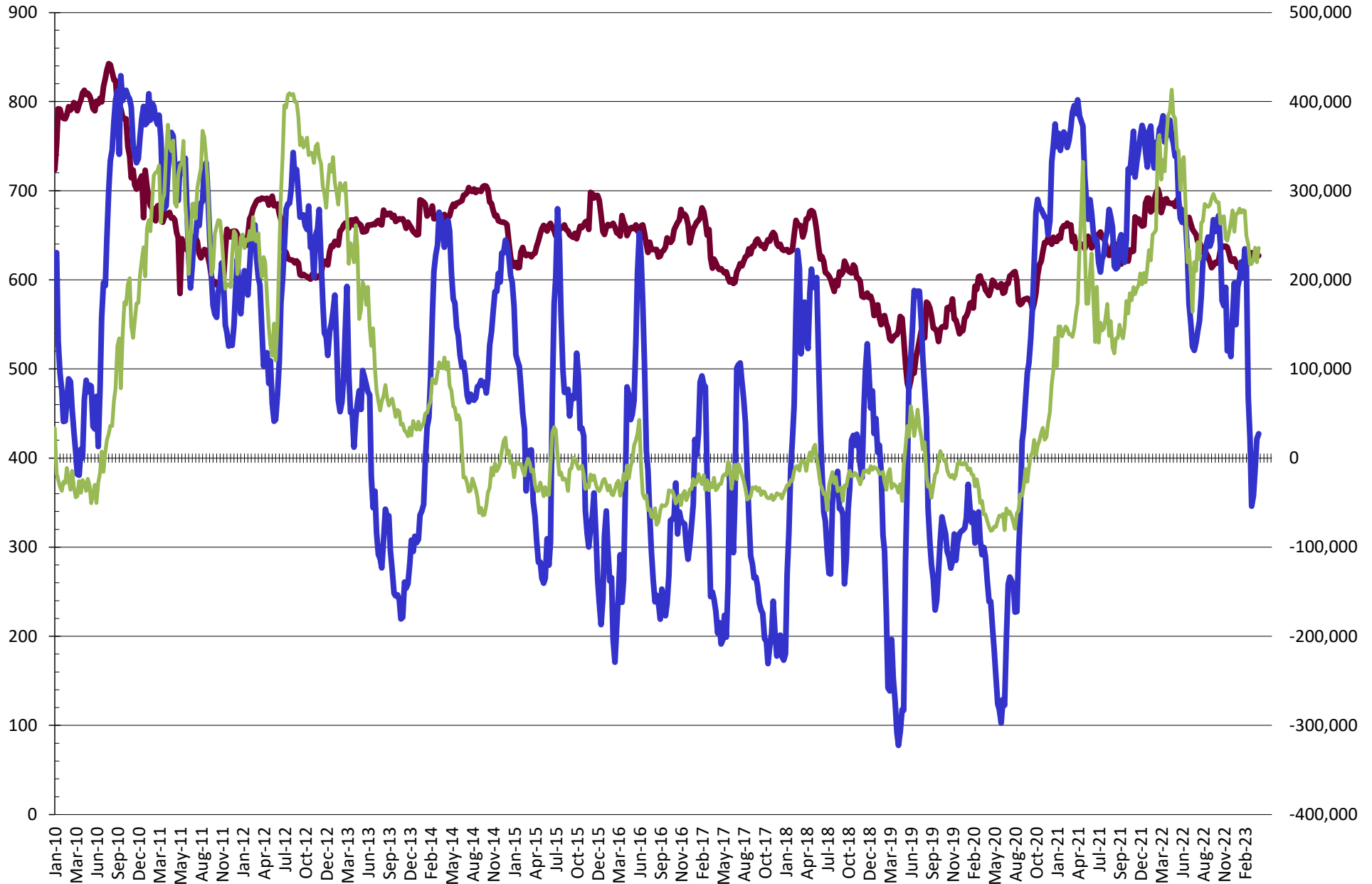
NET POSITION FUTURES AND OPTIONS OF SWAP AND MANAGED FUNDS IN SOYBEAN MEAL



NET POSITION FUTURES AND OPTIONS OF SWAP AND MANAGED FUNDS IN SOYBEAN OIL

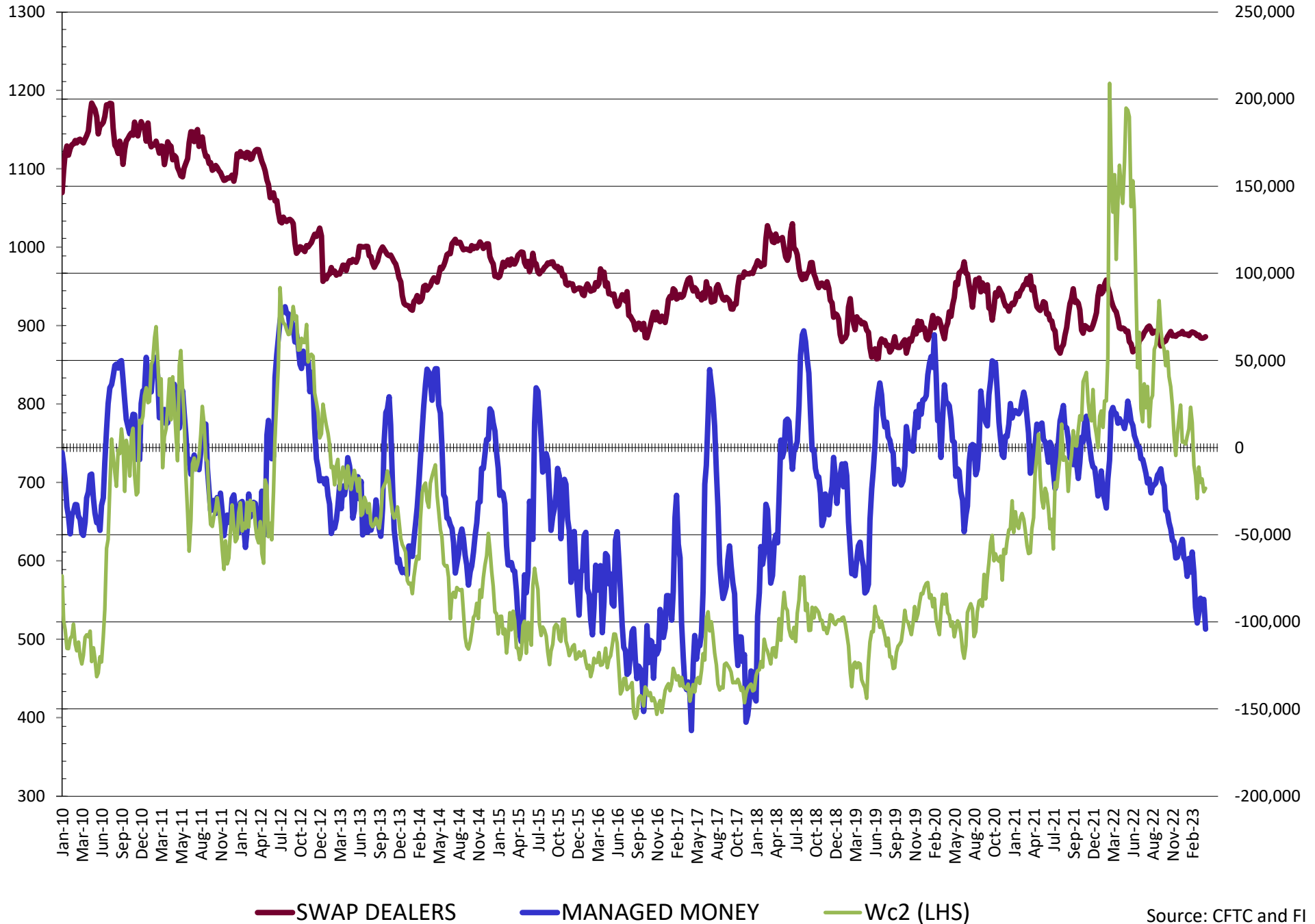


NET POSITION FUTURES AND OPTIONS OF SWAP AND MANAGED FUNDS IN CORN

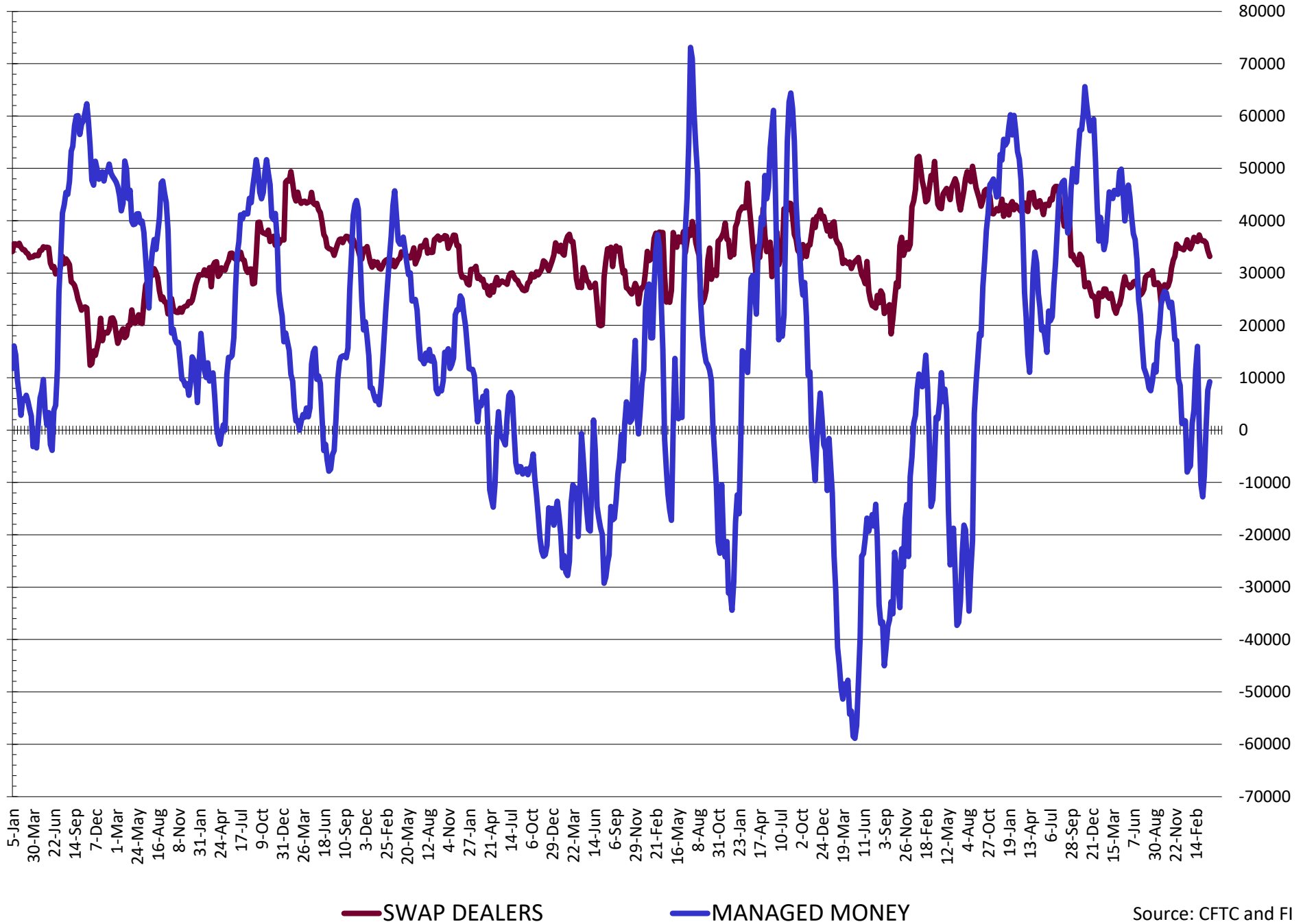


— SWAP DEALERS
 — MANAGED MONEY
 — Cc2 (LHS)

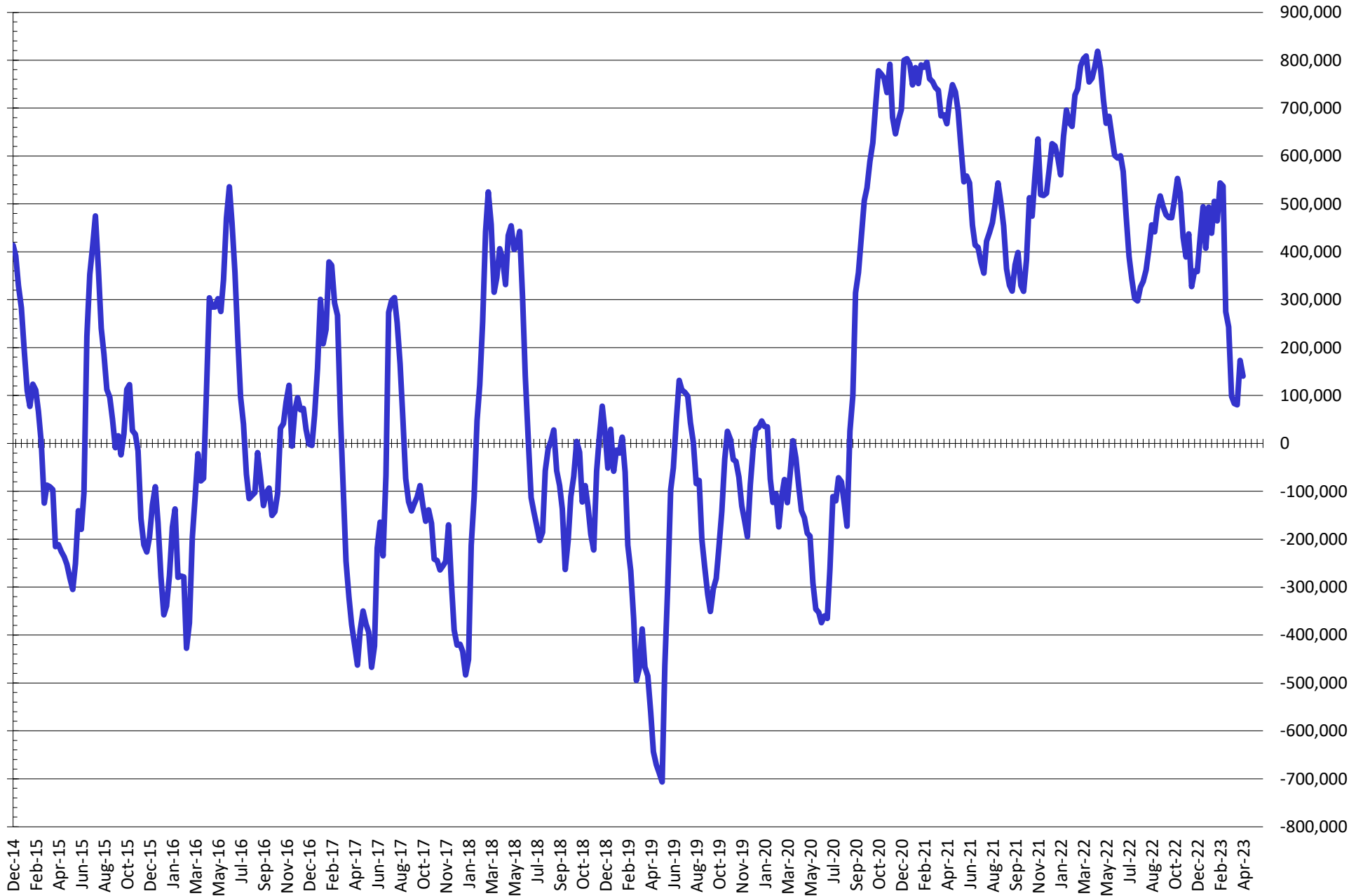
NET POSITION FUTURES AND OPTIONS OF SWAP AND MANAGED FUNDS IN CHICAGO WHEAT



NET POSITION FUTURES AND OPTIONS OF SWAP DEALERS AND MANAGED FUNDS IN KANSAS WHEAT



NET POSITION FUTURES AND OPTIONS OF SWAP AND MANAGED FUNDS IN COMBINED SRW, HRW, CORN, SOYBEANS, SOYMEAL AND SOYOIL



— Net Managed Money

Source: CFTC and FI
4/14/2023

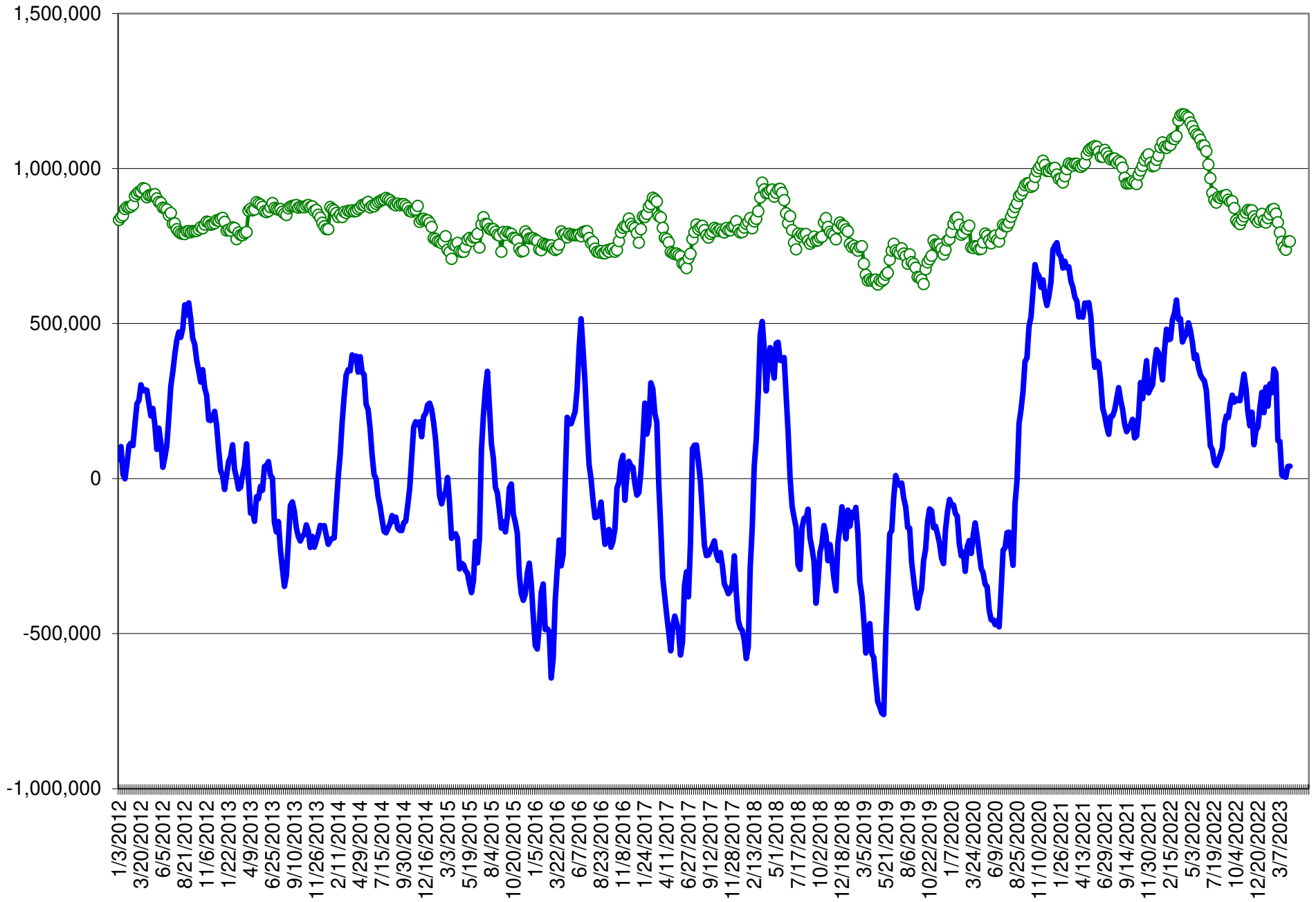
COMMITMENT OF TRADERS
FUTURES & OPTIONS NET POSITIONS (INDEX BROKEN OUT)
AS OF 04/11/2023
(IN THOUSAND CONTRACTS)

	COMMERCIAL				(FUND) NON COMMERCIAL				(SPEC) NON-REPORTABLE			
	11-Apr	4-Apr	28-Mar	21-Mar	11-Apr	4-Apr	28-Mar	21-Mar	11-Apr	4-Apr	28-Mar	21-Mar
	WHEAT											
Chicago	4.1	(4.8)	(0.2)	(1.8)	(83.8)	(78.3)	(77.6)	(80.1)	5.6	7.0	1.3	1.5
Kansas City	(32.1)	(31.2)	(28.6)	(22.7)	(10.2)	(9.4)	(12.7)	(18.7)	(0.1)	(3.4)	(3.4)	(3.1)
Minneapolis	-	-	-	-	-	-	-	-	-	-	-	-
All Wheat	(28.0)	(36.0)	(28.8)	(24.5)	(94.0)	(87.7)	(90.2)	(98.8)	5.5	3.6	(2.1)	(1.6)
CORN	(227.3)	(230.5)	(191.5)	(163.7)	(10.5)	(24.6)	(31.5)	(52.8)	(61.2)	(37.0)	(59.6)	(65.2)
OATS	-	-	-	-	-	-	-	-	-	-	-	-
SOYBEANS	(205.7)	(227.9)	(176.3)	(187.4)	102.0	113.4	87.2	95.0	(34.0)	(23.5)	(34.9)	(36.0)
SOY OIL	(68.7)	(69.4)	(71.0)	(74.9)	(33.4)	(33.9)	(31.6)	(25.6)	(1.1)	(1.4)	0.2	(0.5)
SOY MEAL	(204.5)	(200.4)	(195.9)	(217.3)	75.2	71.7	69.9	89.2	20.8	19.3	18.0	17.8

	TOTAL OPEN INTEREST				(INDEX) COMMERCIAL INDEX TRADERS				(INDEX) % NET OF TOTAL OPEN INTEREST			
	11-Apr	4-Apr	28-Mar	21-Mar	11-Apr	4-Apr	28-Mar	21-Mar	11-Apr	4-Apr	28-Mar	21-Mar
	WHEAT											
Chicago	469,091	449,495	446,151	454,791	74.1	76.2	76.4	80.4	15.8%	16.9%	17.1%	17.7%
Kansas City	193,081	191,019	188,039	188,590	42.4	44.0	44.7	44.5	22.0%	23.0%	23.8%	23.6%
Minneapolis	-	-	-	-	-	-	-	-	-	-	-	-
All Wheat	662,172	640,514	634,190	643,381	116.5	120.2	121.1	124.9	17.6%	18.8%	19.1%	19.4%
CORN	1,681,027	1,670,937	1,670,838	1,690,830	299.0	292.1	282.5	281.7	17.8%	17.5%	16.9%	16.7%
OATS	-	-	-	-	-	-	-	-	-	-	-	-
SOYBEANS	882,745	911,421	886,818	867,790	137.6	138.0	124.1	128.4	15.6%	15.1%	14.0%	14.8%
SOY OIL	528,132	525,578	506,284	496,457	103.1	104.6	102.3	101.0	19.5%	19.9%	20.2%	20.3%
SOY MEAL	485,932	487,963	466,859	481,613	108.5	109.3	108.0	110.3	22.3%	22.4%	23.1%	22.9%

SOURCE: CFTC & FI

NET POSITION FUTURES AND OPTIONS OF SPECULATORS AND INDEX FUNDS IN COMBINED SRW, HRW, CORN, SOYBEANS, SOYMEAL AND SOYOIL



Source: CFTC and FI

○ Net Index

— Net Speculator

Traditional Daily Estimate of Funds

	(Neg)-"Short"	Pos-"Long"			
Actual less Est.	21.6	6.0	3.1	2.8	6.9
	Corn	Bean	Chi. Wheat	Meal	Oil
Actual	103.3	179.3	(66.7)	115.9	(6.4)
12-Apr	2.0	2.0	2.0	1.0	(4.0)
13-Apr	(4.0)	(1.0)	(5.0)	2.0	(1.0)
14-Apr	13.0	(3.0)	8.0	(2.0)	(1.0)
17-Apr					
18-Apr					
FI Est. of Futures Only	114.3	177.3	(61.7)	116.9	(12.4)
FI Est. Futures & Options	83.9	148.9	(68.2)	111.1	(16.0)
Futures only record long "Traditional Funds"	547.7 1/26/2021	280.9 11/10/2020	86.5 8/7/2018	176.0 2/21/2023	160.2 11/1/2016
Futures only record short	(235.0) 6/9/2020	(118.3) 4/30/2019	(130.0) 4/25/2017	(49.5) 3/1/2016	(69.8) 9/18/2018
Futures and options record net long	557.6 1/12/2021	270.9 10/6/2020	64.8 8/7/2012	173.7 2/21/2023	159.2 1/1/2016
Futures and options record net short	(270.6) 4/26/2019	(132.0) 4/30/2019	(143.3) 4/25/2017	(64.1) 3/1/2016	(77.8) 9/18/2018

Managed Money Daily Estimate of Funds

	Corn	Bean	Chi. Wheat	Meal	Oil
Latest CFTC Fut. Only	28.9	124.7	(106.4)	96.0	(14.2)
Latest CFTC F&O	27.1	125.0	(104.2)	95.7	(12.6)
FI Est. Managed Fut. Only	40	123	(101)	97	(20)
FI Est. Managed Money F&O	38	123	(99)	97	(19)

Index Funds Latest Positions (as of last Tuesday)

Index Futures & Options	299.0	137.6	74.1	NA	103.1
Change From Previous Week	6.9	(0.4)	(2.1)	NA	(1.5)

Source: Reuters, CFTC & FI (FI est. are noted with latest date)

Disclaimer

TO CLIENTS/PROSPECTS OF FUTURES INTERNATIONAL, SEE RISK DISCLOSURE BELOW:

THIS COMMUNICATION IS CONVEYED AS A SOLICITATION FOR ENTERING INTO A DERIVATIVES TRANSACTION.

Any trading recommendations and market or other information to Customer by Futures International (FI), although based upon information obtained from sources believed by FI to be reliable may not be accurate and may be changed without notice to customer. FI makes no guarantee as to the accuracy or completeness of any of the information or recommendations furnished to Customer. Customer understands that FI, its managers, employees and/or affiliates may have a position in commodity futures, options or other derivatives which may not be consistent with the recommendations furnished by FI to Customer.

The risk of trading futures and options and other derivatives involves a substantial risk of loss and is not suitable for all persons. In purchasing an option, the risk is limited to the premium paid, and all commissions and fees involved with the trade. When an option is shorted or written, the writer of the option has unlimited risk with respect to the option written. The use of options strategies such as a straddles and strangles involve multiple option positions and may substantially increase the amount of commissions and fees paid to execute the strategy. Option prices do not necessarily move in tandem with cash or futures prices. Each person must consider whether a particular trade, combination of trades or strategy is suitable for that person's financial means and objectives.

This material may include discussions of seasonal patterns, however, futures prices have already factored in the seasonal aspects of supply and demand, and seasonal patterns are no indication of future market trends. Finally, past performance is not indicative of future results.

This communication may contain links to third party websites which are not under the control of FI and FI is not responsible for their content. Products and services are offered only in jurisdictions where solicitation and sale are lawful, and in accordance with applicable laws and regulations in each such jurisdiction.