

CFTC COMMITMENT OF TRADERS REPORT

As of 3/28/2023

TRADITIONAL FUNDS net position changes

Wed to Tue, in 000 contracts

	Corn	Bean	Meal	Oil	Chi. Wheat	KC Wheat	Min Wheat
Futures Only	12.1	(10.8)	(18.8)	(7.0)	(1.3)	6.6	2.7
Futures & Options Combined	20.3	(9.7)	(21.0)	(5.7)	(1.3)	6.7	3.1

TRADITIONAL COMMERCIAL net position changes

	Corn	Bean	Meal	Oil	Chi. Wheat	KC Wheat	Min Wheat
Futures Only	(16.3)	12.5	19.3	6.2	1.0	(6.3)	(2.6)
Futures & Options Combined	(25.9)	8.7	20.8	5.0	1.5	(6.3)	(2.9)

MANAGED MONEY net position changes

	Corn	Bean	Meal	Oil	Chi. Wheat	KC Wheat	Min Wheat
Futures Only	32.5	(12.6)	(18.4)	(6.3)	(3.6)	9.2	2.9
Futures & Options Combined	28.6	(11.3)	(19.1)	(6.7)	(3.4)	9.0	3.0

SWAP DEALERS net position changes

	Corn	Bean	Meal	Oil	Chi. Wheat	KC Wheat	Min Wheat
Futures Only	3.4	(2.2)	(0.1)	1.6	(0.6)	(0.5)	0.1
Futures & Options Combined	2.2	(1.9)	(0.3)	1.2	(0.2)	(0.4)	0.1

PRODUCERS/END USERS net position changes

	Corn	Bean	Meal	Oil	Chi. Wheat	KC Wheat	Min Wheat
Futures Only	(19.7)	14.7	19.4	4.6	1.6	(5.8)	(2.6)
Futures & Options Combined	(28.1)	10.6	21.0	3.8	1.7	(6.0)	(3.0)

INDEX net position changes

	Corn	Bean	Meal	Oil	Chi. Wheat	KC Wheat	Min Wheat
Futures & Options Combined	0.8	(4.3)	(2.4)	1.4	(4.0)	0.2	NA

SUPPLEMENTAL NON-COMMERCIAL net position changes

	Corn	Bean	Meal	Oil	Chi. Wheat	KC Wheat	Min Wheat
Futures & Options Combined	21.3	(7.8)	(19.3)	(6.0)	2.6	6.0	NA

OPEN INTEREST net position changes

Wed to Tue, in 000 contracts

	Corn	Bean	Meal	Oil	Chi. Wheat	KC Wheat	Min Wheat
Futures Only	(3.5)	27.2	(11.6)	9.3	3.6	1.2	3.4
Futures & Options Combined	(20.0)	19.0	(14.8)	9.8	(8.6)	(0.6)	4.4

Source: CFTC and FI

Wed to Tue, in 000 contracts

**COMMITMENT OF TRADERS
FUTURES ONLY NET POSITIONS
AS OF 03/28/2023
(IN THOUSAND CONTRACTS)**

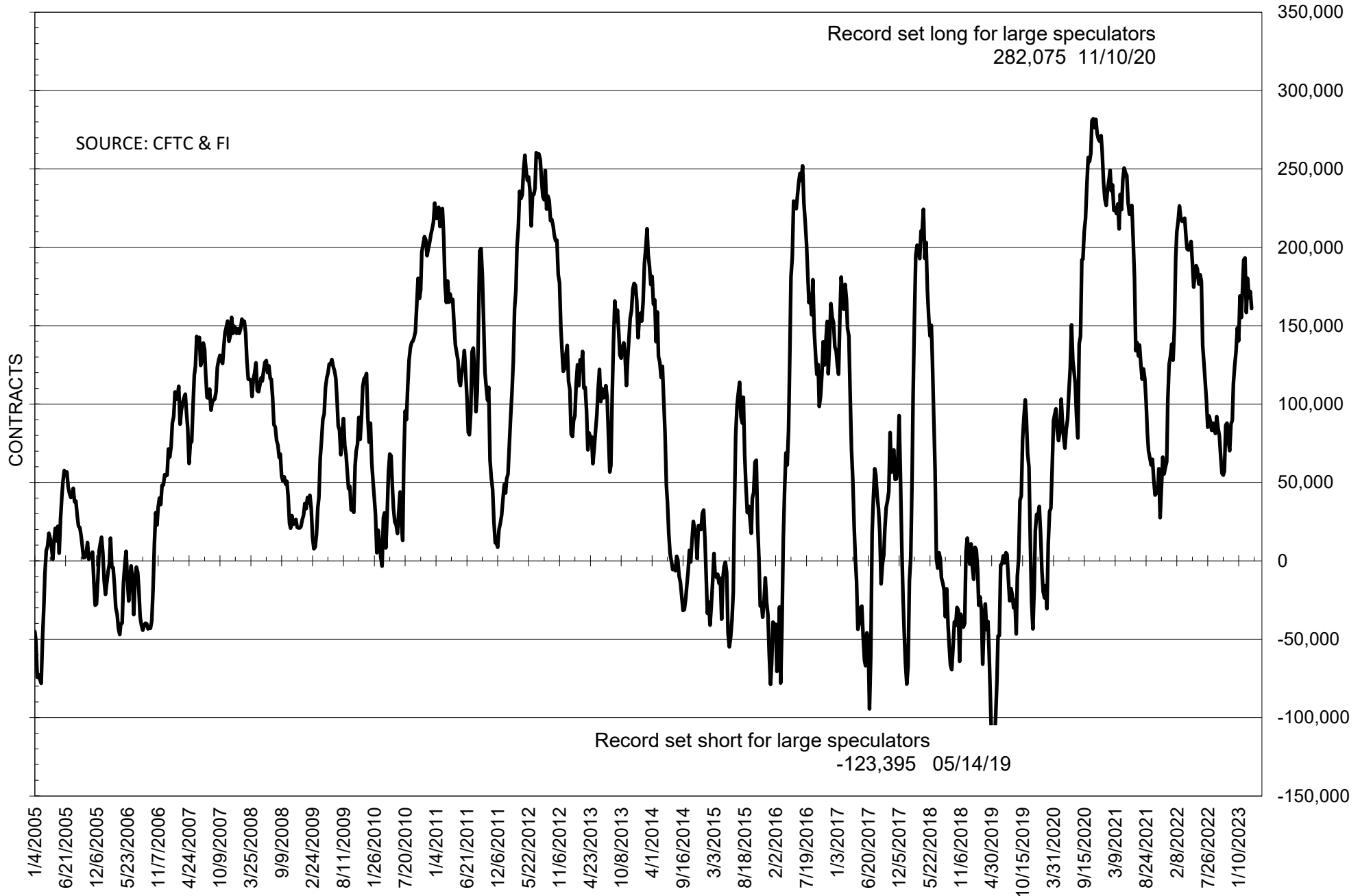
	COMMERCIAL				(FUND) NON COMMERCIAL				(SPEC) NON-REPORTABLE			
	28-Mar	21-Mar	14-Mar	7-Mar	28-Mar	21-Mar	14-Mar	7-Mar	28-Mar	21-Mar	14-Mar	7-Mar
	WHEAT											
Chicago	60.3	59.3	65.1	71.1	-60.5	-59.2	-65.3	-73.3	0.2	-0.1	0.3	2.2
Kansas City	4.4	10.8	12.5	11.7	-1.0	-7.6	-10.9	-10.0	-3.4	-3.2	-1.7	-1.8
Minneapolis	-1.9	0.7	2.8	1.4	2.6	-0.1	-1.2	0.0	-0.7	-0.6	-1.5	-1.4
All Wheat	62.9	70.8	80.4	84.2	-58.9	-66.9	-77.4	-83.2	-3.9	-3.9	-2.9	-1.0
CORN	-12.5	3.8	19.7	-44.2	71.5	59.5	43.8	103.3	-59.0	-63.3	-63.5	-59.1
OATS	-1.0	-0.1	0.0	0.3	0.0	-0.4	-0.7	-1.3	1.0	0.5	0.7	1.0
SOYBEANS	-129.3	-141.8	-130.5	-141.4	161.0	171.8	168.0	180.2	-31.7	-29.9	-37.5	-38.8
SOY OIL	8.1	1.9	-0.5	-22.5	-7.6	-0.6	0.9	21.6	-0.5	-1.4	-0.4	0.9
SOY MEAL	-131.1	-150.4	-176.1	-196.2	114.5	133.3	157.7	177.0	16.6	17.1	18.4	19.2

Oats positions thin to be reported

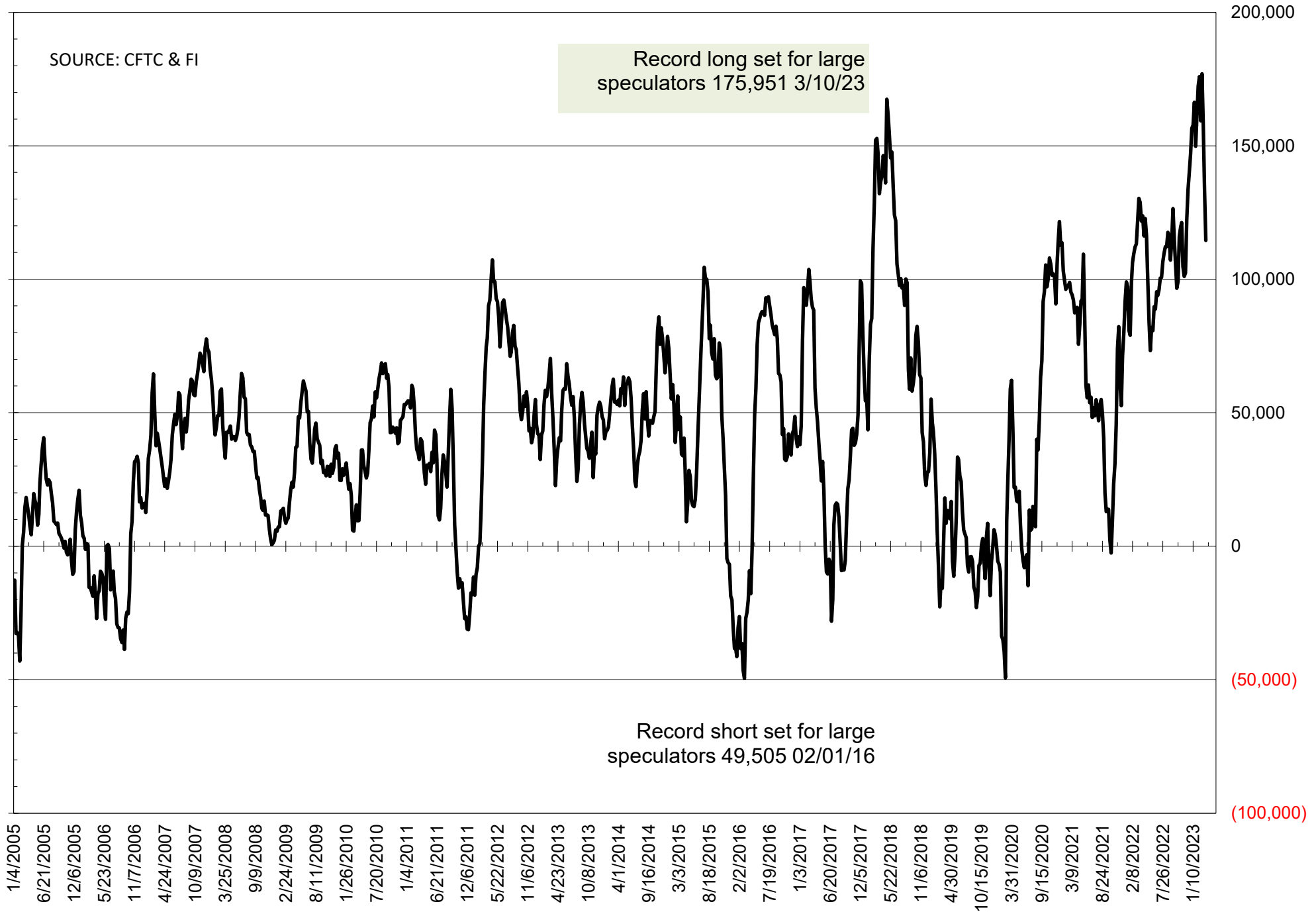
	TOTAL OPEN INTEREST				NEARBY FUTURES PRICE					28-Mar-23 LAST REPORTED % HELD BY TRADERS			
	28-Mar	21-Mar	14-Mar	7-Mar	K 1-Apr	K 28-Mar	K 21-Mar	K 14-Mar	K 7-Mar	LARGE FUND		SMALL	
										LONG	SHORT	LONG	SHORT
WHEAT													
Chicago	373926	370297	374674	360791	692.25	699.75	683.25	696.25	698.00	0%	43%	0%	10%
Kansas City	172549	171307	173762	170310	877.75	872.50	820.25	817.75	799.25	0%	25%	0%	12%
Minneapolis	62180	58734	55742	53628	895.75	879.00	847.25	848.75	854.25	0%	18%	0%	18%
CORN	1345886	1349372	1336866	1278143	660.50	647.25	630.00	620.75	634.25	0%	18%	0%	13%
OATS	4114	4535	4541	4935	364.25	379.25	359.00	349.00	341.50	0%	25%	0%	22%
SOYBEANS	723433	696280	698188	691538	1505.50	1467.75	1467.00	1493.75	1515.50	28%	6%	6%	11%
SOY OIL	465793	456475	465992	446342	55.49	55.05	56.24	56.18	58.66	0%	16%	0%	6%
SOY MEAL	417537	429155	439608	447596	466.00	457.90	460.60	481.20	487.80	0%	6%	0%	6%

SOURCE: CFTC & FI

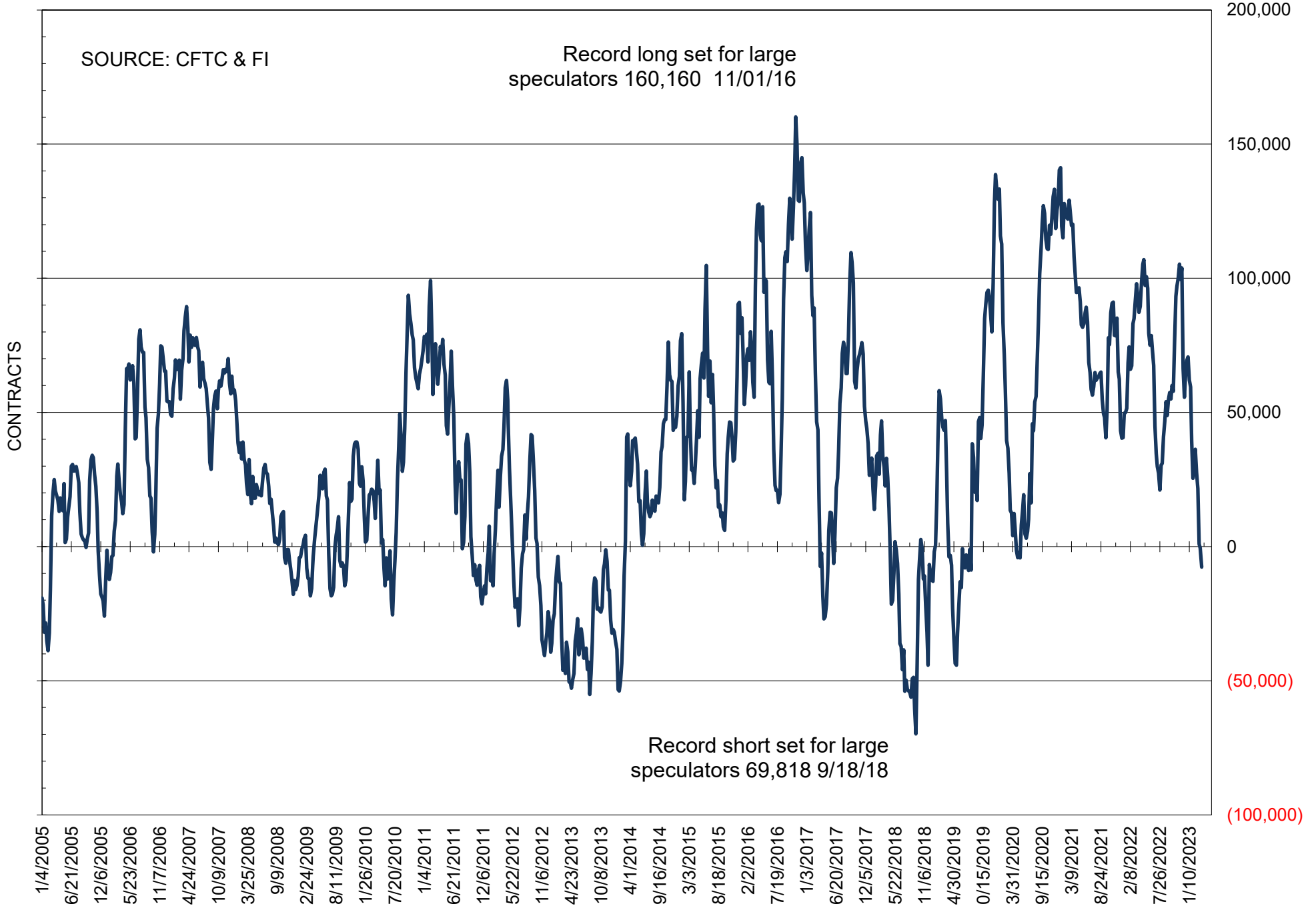
NET POSITION OF FUTURES ONLY LARGE SPECS IN SOYBEANS



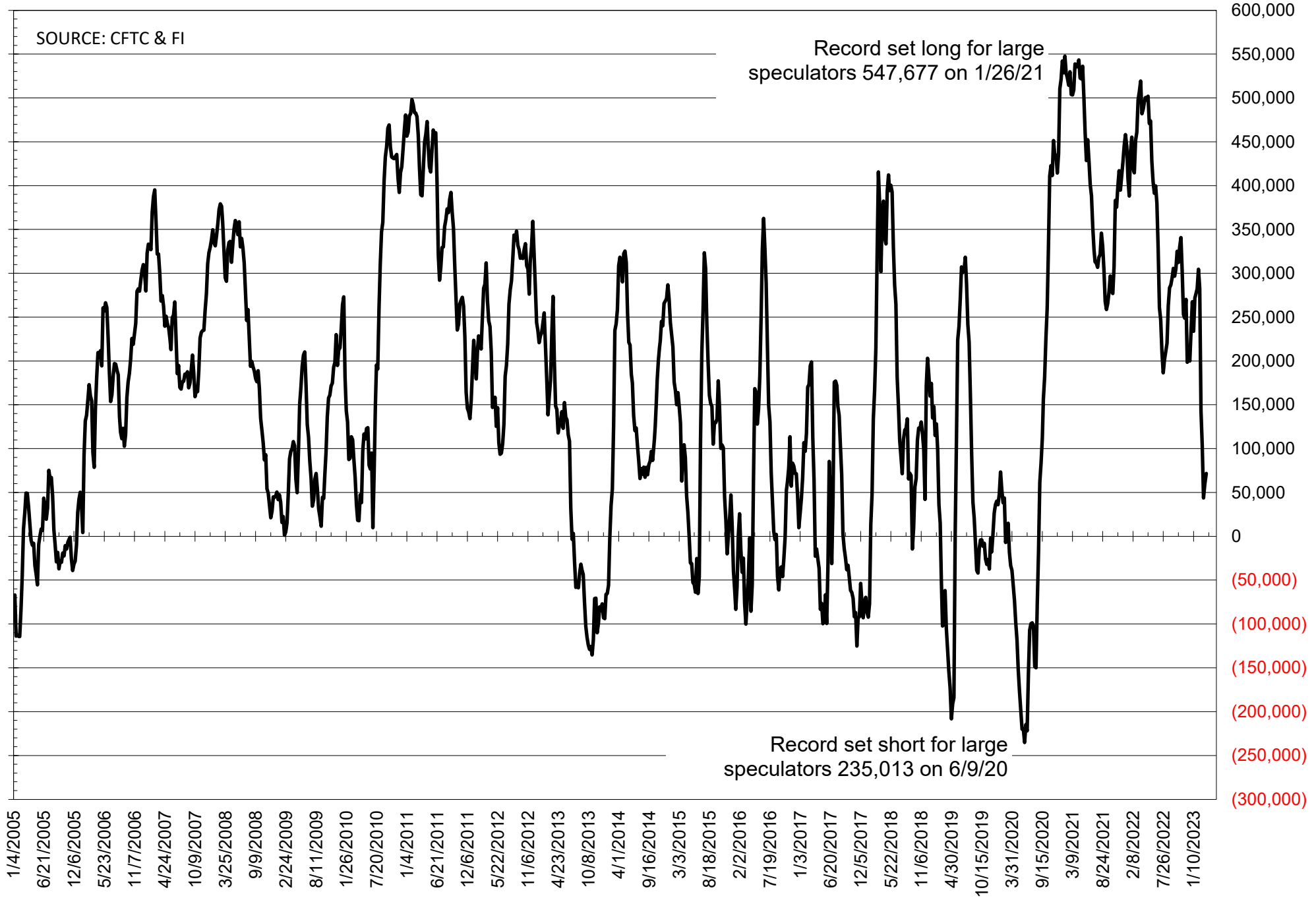
NET POSITION OF FUTURES ONLY LARGE SPECS IN SOYMEAL



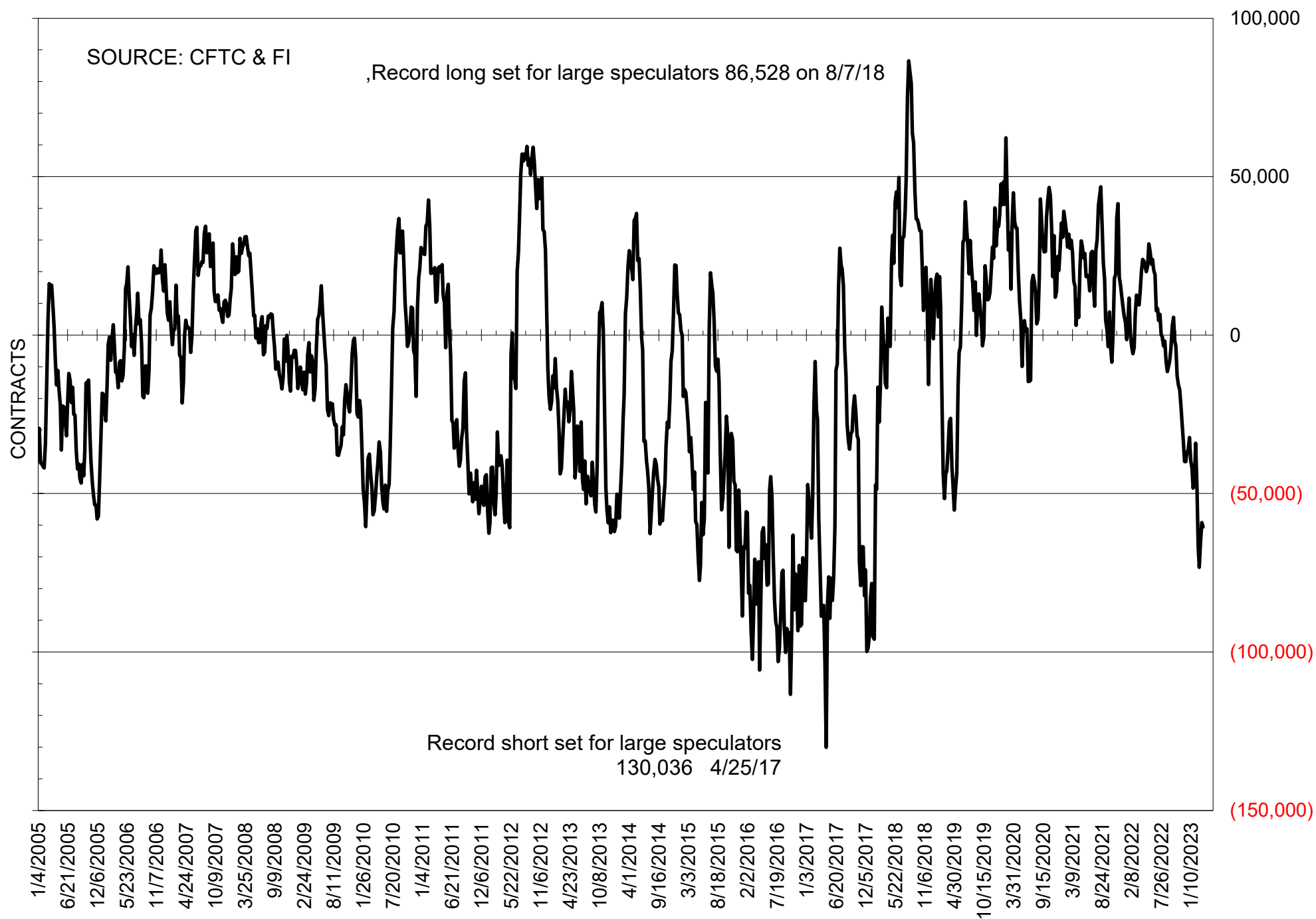
NET POSITION OF FUTURES ONLY LARGE SPECS IN SOYOIL



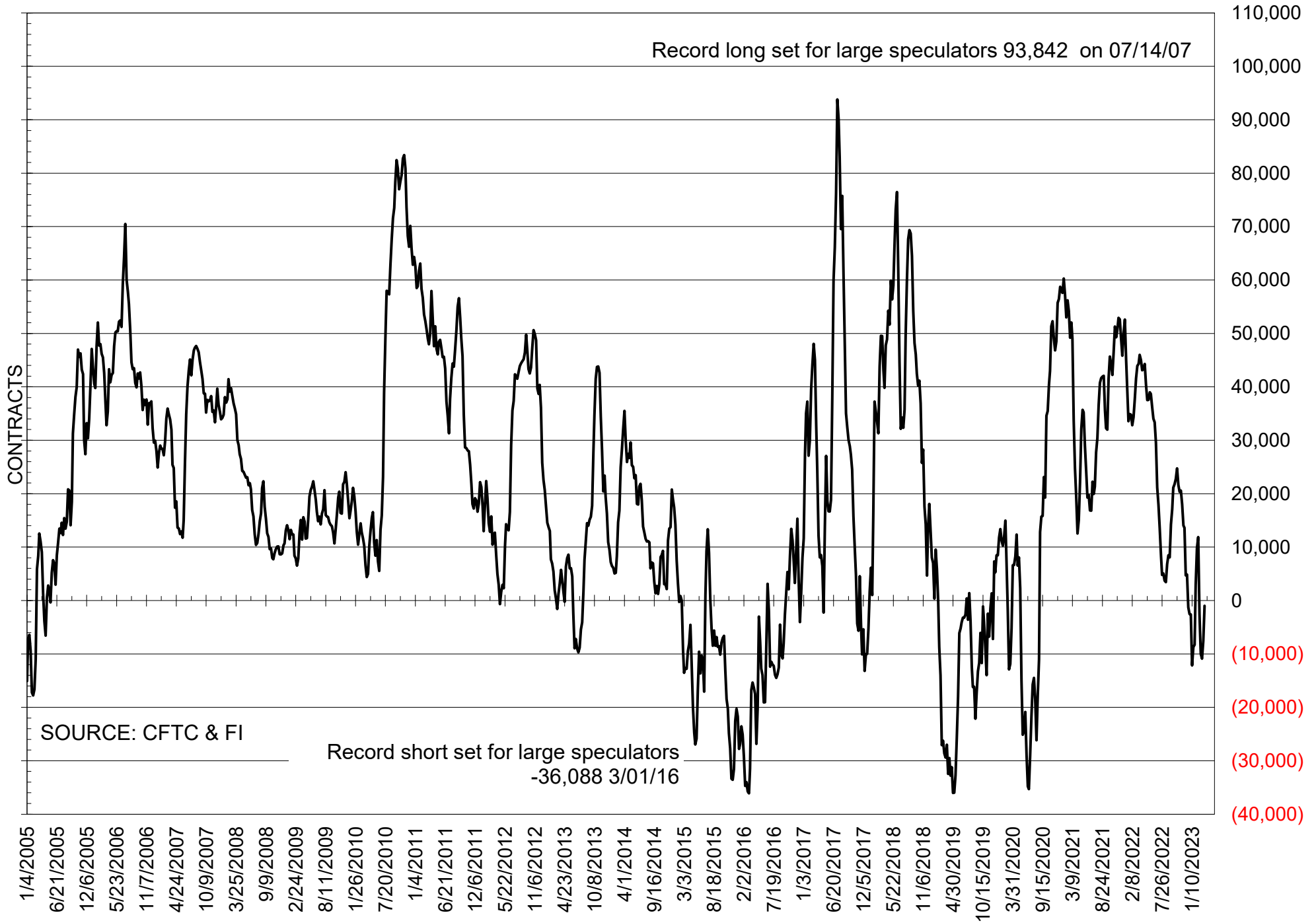
NET POSITION OF LARGE SPECULATORS IN CORN



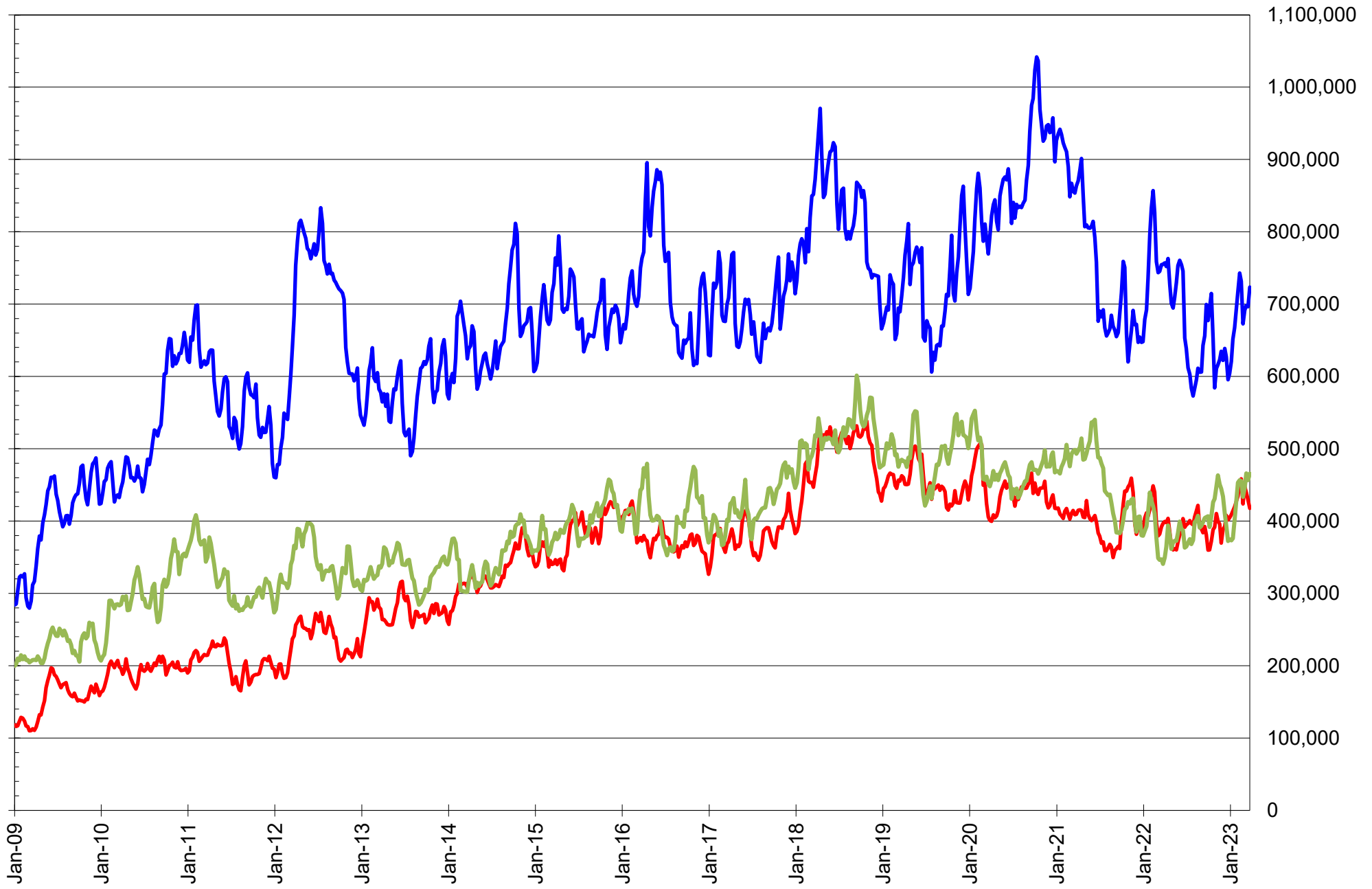
NET POSITION OF FUTURES ONLY LARGE SPECS IN CHICAGO WHEAT



NET POSITION OF LARGE SPECULATORS IN KANSAS CITY WHEAT



TOTAL OPEN INTEREST IN SOYBEANS, MEAL AND OIL, FUTURES ONLY



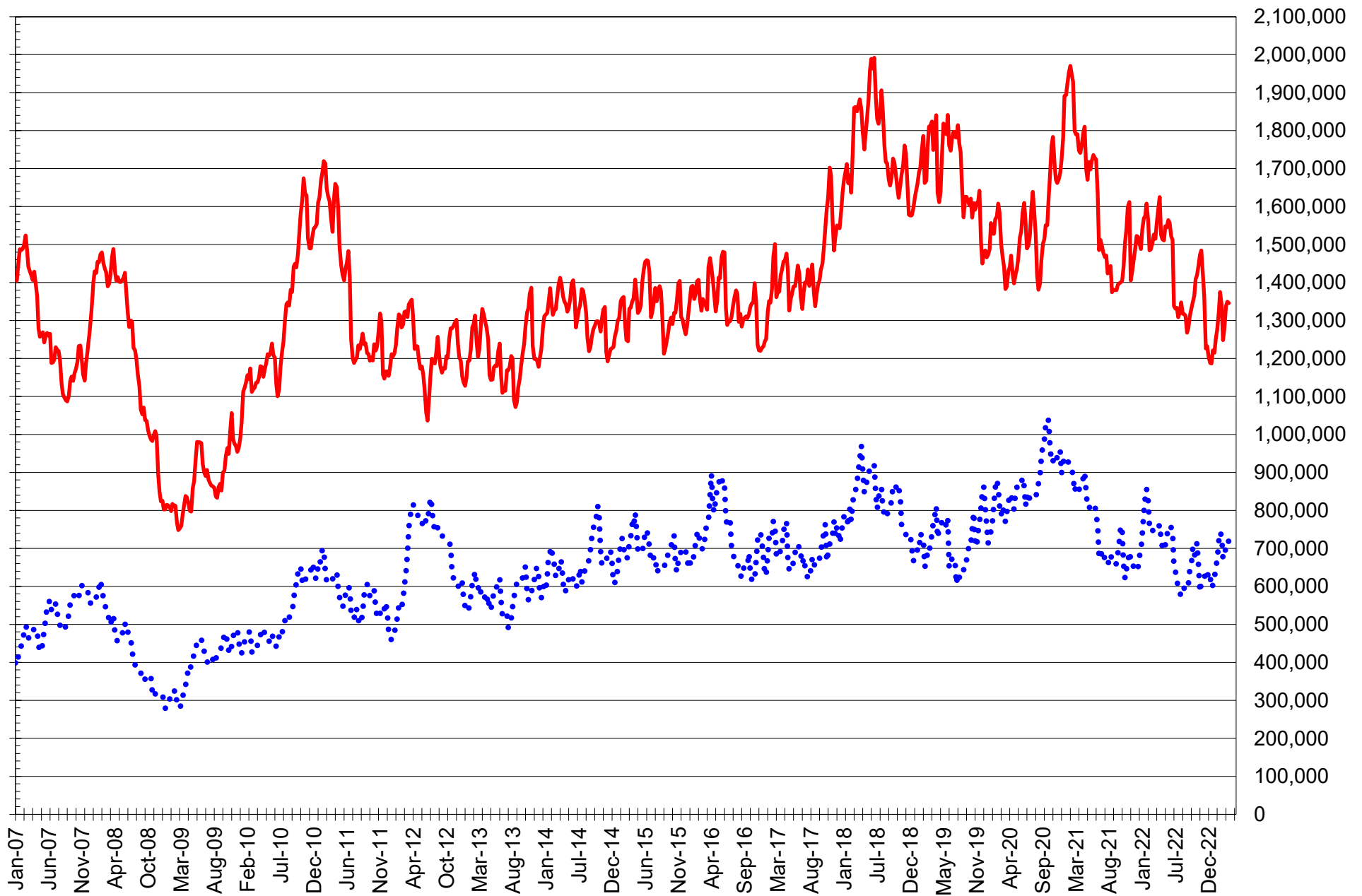
SOURCE: CFTC & FI

— SOYBEANS

— SOYBEAN MEAL

— SOYBEAN OIL

TOTAL OPEN INTEREST IN CORN AND SOYBEANS, FUTURES ONLY



SOURCE: CFTC & FI

— CORN

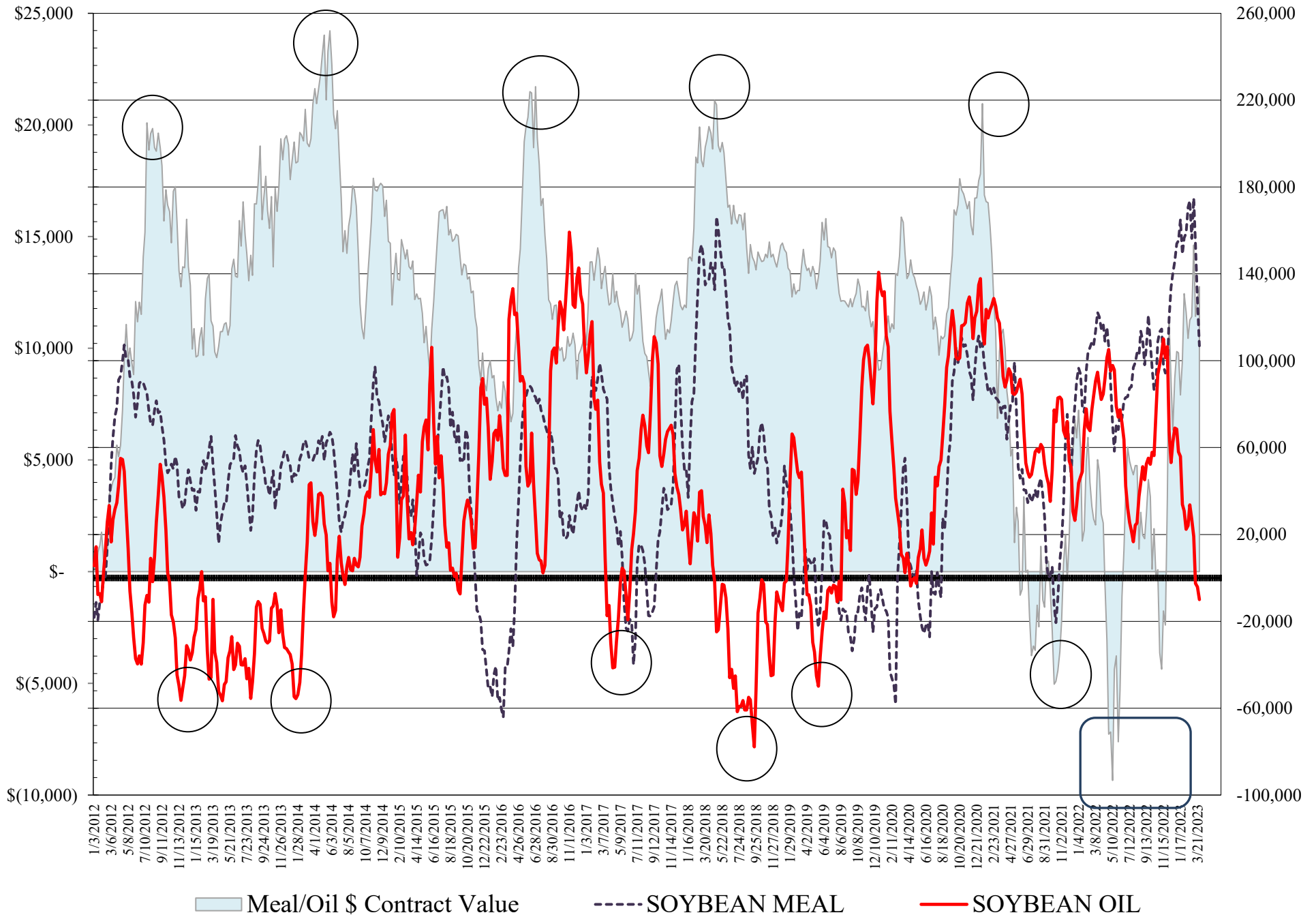
•••• SOYBEANS

**COMMITMENT OF TRADERS
FUTURES & OPTIONS NET POSITIONS
AS OF 03/28/2023
(IN THOUSAND CONTRACTS)**

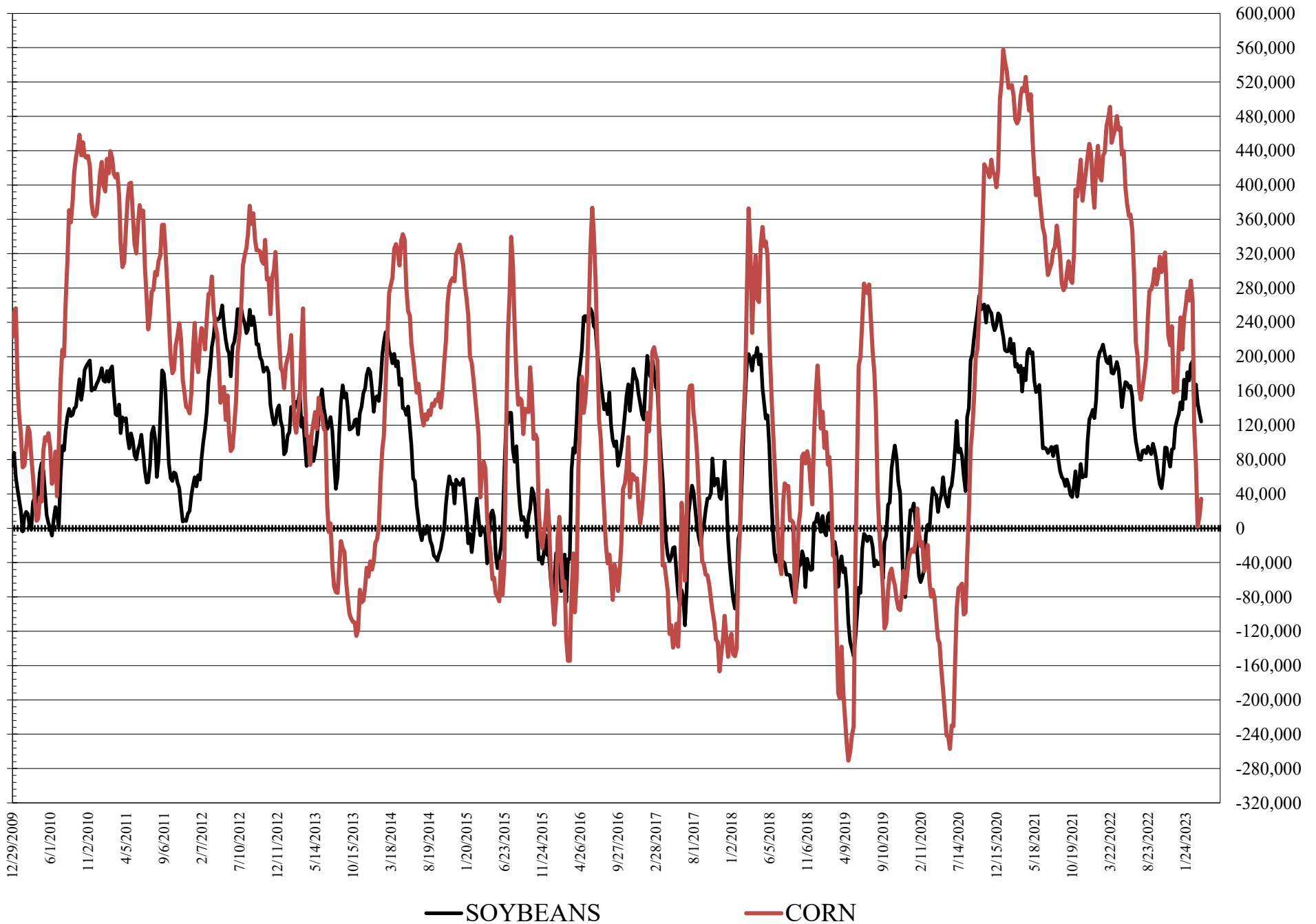
	COMMERCIAL				(FUND) NON COMMERCIAL				(SPEC) NON-REPORTABLE			
	28-Mar	21-Mar	14-Mar	7-Mar	28-Mar	21-Mar	14-Mar	7-Mar	28-Mar	21-Mar	14-Mar	7-Mar
	WHEAT											
Chicago	64.1	62.6	70.0	73.9	-65.5	-64.1	-71.9	-77.3	1.3	1.5	1.8	3.4
Kansas City	5.2	11.5	13.9	12.7	-1.8	-8.4	-12.5	-10.9	-3.4	-3.1	-1.4	-1.8
Minneapolis	-2.3	0.7	2.7	1.3	2.9	-0.2	-1.3	-0.1	-0.6	-0.5	-1.3	-1.2
All Wheat	67.1	74.8	86.6	87.9	-64.3	-72.7	-85.7	-88.3	-2.7	-2.1	-0.9	0.4
CORN	25.3	51.2	65.0	-9.6	34.2	14.0	1.8	74.4	-59.6	-65.2	-66.8	-64.8
OATS	-1.0	-0.1	0.0	0.3	0.0	-0.4	-0.7	-1.3	1.0	0.6	0.7	1.0
SOYBEANS	-89.5	-98.1	-102.4	-123.3	124.4	134.1	145.6	167.5	-34.9	-36.0	-43.2	-44.3
SOY OIL	9.7	4.7	2.0	-21.2	-9.9	-4.2	-2.5	19.1	0.2	-0.5	0.6	2.1
SOY MEAL	-124.9	-145.7	-172.8	-194.6	106.9	127.9	153.6	174.9	18.0	17.8	19.2	19.7
	TOTAL OPEN INTEREST				COMMERCIALS		<u>% HELD BY TRADERS</u> LARGE (FUNDS)		SMALL (NON-REP)			
	28-Mar	21-Mar	14-Mar	7-Mar	LONG	SHORT	LONG	SHORT	LONG	SHORT		
WHEAT												
Chicago	446,151	454,791	459,299	432,751	34%	19%	20%	35%	9%	8%		
Kansas City	188,039	188,590	191,175	185,870	43%	40%	22%	23%	10%	12%		
Minneapolis	64,799	60,382	57,302	55,131	53%	57%	22%	17%	16%	17%		
CORN	1,670,838	1,690,830	1,667,603	1,564,601	46%	44%	16%	14%	9%	13%		
OATS	4,191	4,606	4,604	4,994								
SOYBEANS	886,818	867,790	840,290	816,692	44%	54%	19%	5%	6%	10%		
SOY OIL	506,284	496,457	501,748	479,009	56%	54%	13%	15%	6%	6%		
SOY MEAL	466,859	481,613	489,810	496,776	38%	65%	28%	5%	10%	7%		

SOURCE: CFTC & FI

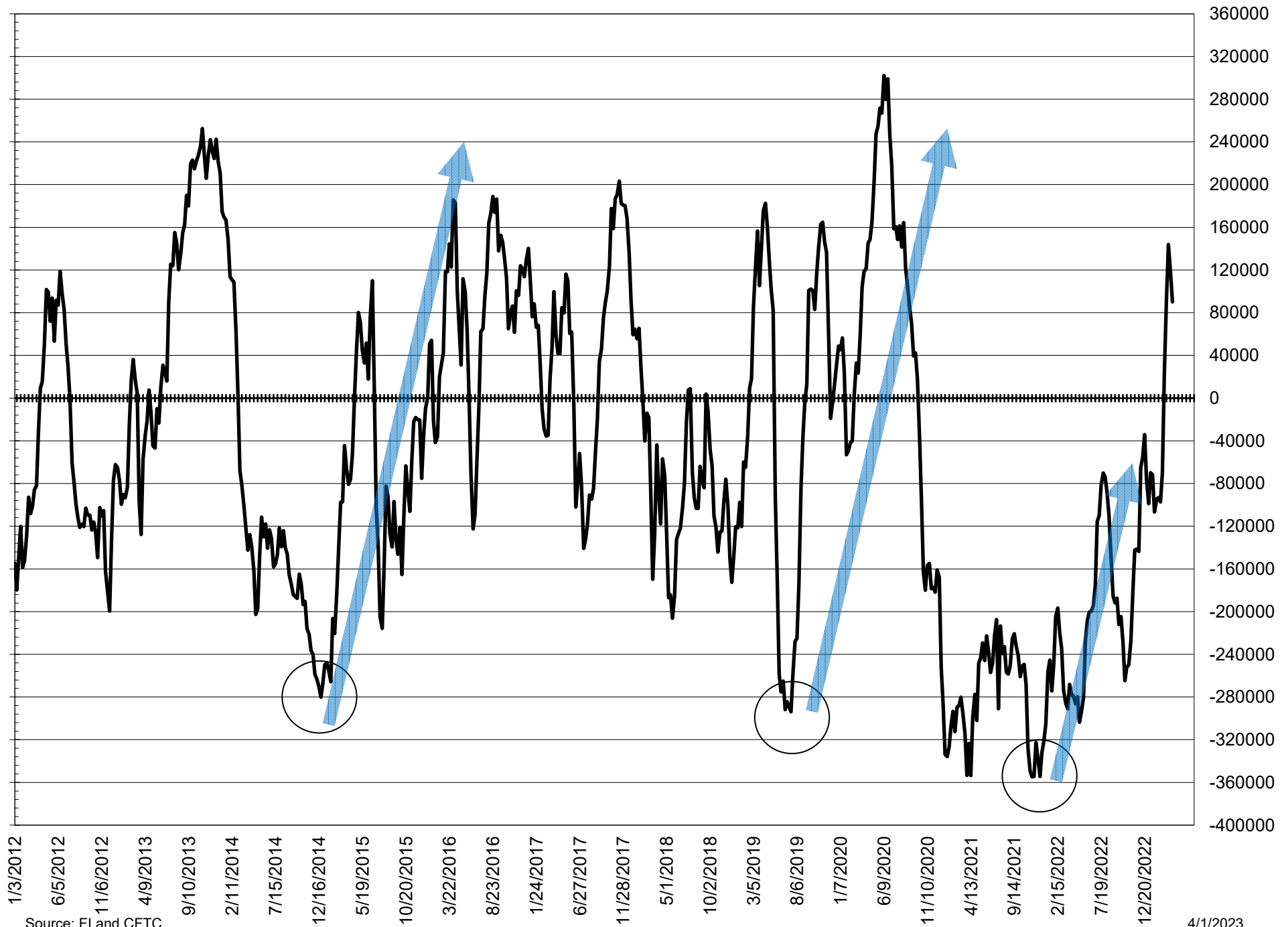
NET POSITION FUTURES AND OPTIONS OF LARGE SPECULATORS IN SOYBEAN MEAL AND SOYBEAN OIL



NET POSITION FUTURES AND OPTIONS OF LARGE SPECULATORS IN SOYBEANS AND CORN



NET POSITION FUTURES AND OPTIONS SPREAD OF LARGE SPECULATORS IN SOYBEANS MINUS CORN



Source: FI and CFTC

4/1/2023

**DISAGGREGATED COMMITMENT OF TRADERS
FUTURES ONLY NET POSITIONS
AS OF 03/28/2023
(IN THOUSAND CONTRACTS)**

	PRODUCER / MERCHANT / PROCESSOR / USER				(INDEX/ETF) SWAP DEALERS				(CTA/CPO/OTHER UNREGISTERED) MANAGED MONEY			
	28-Mar	21-Mar	14-Mar	7-Mar	28-Mar	21-Mar	14-Mar	7-Mar	28-Mar	21-Mar	14-Mar	7-Mar
	WHEAT											
Chicago	(1.7)	(3.2)	1.5	6.3	62.0	62.6	63.5	64.8	(92.7)	(89.0)	(98.1)	(103.1)
Kansas City	(31.2)	(25.4)	(23.5)	(24.9)	35.6	36.1	36.1	36.6	(0.1)	(9.4)	(13.8)	(11.6)
Minneapolis	(3.3)	(0.7)	1.4	(0.0)	1.4	1.3	1.4	1.4	0.3	(2.6)	(4.4)	(3.0)
All Wheat	(36.1)	(29.3)	(20.6)	(18.7)	99.0	100.0	100.9	102.8	(92.5)	(101.0)	(116.3)	(117.7)
CORN	(232.5)	(212.8)	(199.6)	(256.7)	220.0	216.6	219.3	212.5	(13.4)	(45.9)	(59.9)	15.6
OATS	(1.0)	(0.1)	0.1	0.4	-	0.0	(0.1)	(0.1)	(0.7)	(1.1)	(1.3)	(1.8)
SOYBEANS	(216.5)	(231.2)	(221.7)	(235.8)	87.2	89.4	91.2	94.5	98.4	111.0	127.3	154.6
SOY OIL	(99.1)	(103.7)	(102.5)	(124.1)	107.2	105.6	102.0	101.6	(14.5)	(8.2)	(3.3)	18.2
SOY MEAL	(218.3)	(237.7)	(258.8)	(276.6)	87.2	87.3	82.7	80.4	96.3	114.7	133.3	154.2

Managed % of OI				
Chicago W	-25%	-24%	-26%	-29%
Corn	-1%	-3%	-4%	1%

	TOTAL OPEN INTEREST				OTHER REPORTABLE				NON REPORTABLE			
	28-Mar	21-Mar	14-Mar	7-Mar	28-Mar	21-Mar	14-Mar	7-Mar	28-Mar	21-Mar	14-Mar	7-Mar
	WHEAT											
Chicago	373,926	370,297	374,674	360,791	32.1	29.8	32.7	29.9	0.2	(0.1)	0.3	2.2
Kansas City	172,549	171,307	173,762	170,310	(0.9)	1.8	3.0	1.6	(3.4)	(3.2)	(1.7)	(1.8)
Minneapolis	62,180	58,734	55,742	53,628	2.3	2.5	3.2	3.1	(0.7)	(0.6)	(1.5)	(1.4)
All Wheat	608,655	600,338	604,178	584,729	33.6	34.1	38.9	34.5	(3.9)	(3.9)	(2.9)	(1.0)
CORN	1,345,886	1,349,372	1,336,866	1,278,143	85.0	105.4	103.7	87.7	(59.0)	(63.3)	(63.5)	(59.1)
OATS	4,114	4,535	4,541	4,935	0.7	0.6	0.6	0.6	1.0	0.5	0.7	1.0
SOYBEANS	723,433	696,280	698,188	691,538	62.6	60.8	40.6	25.6	(31.7)	(29.9)	(37.5)	(38.8)
SOY OIL	465,793	456,475	465,992	446,342	6.9	7.7	4.2	3.4	(0.5)	(1.4)	(0.4)	0.9
SOY MEAL	417,537	429,155	439,608	447,596	18.3	18.7	24.4	22.8	16.6	17.1	18.4	19.2

SOURCE: CFTC & FI

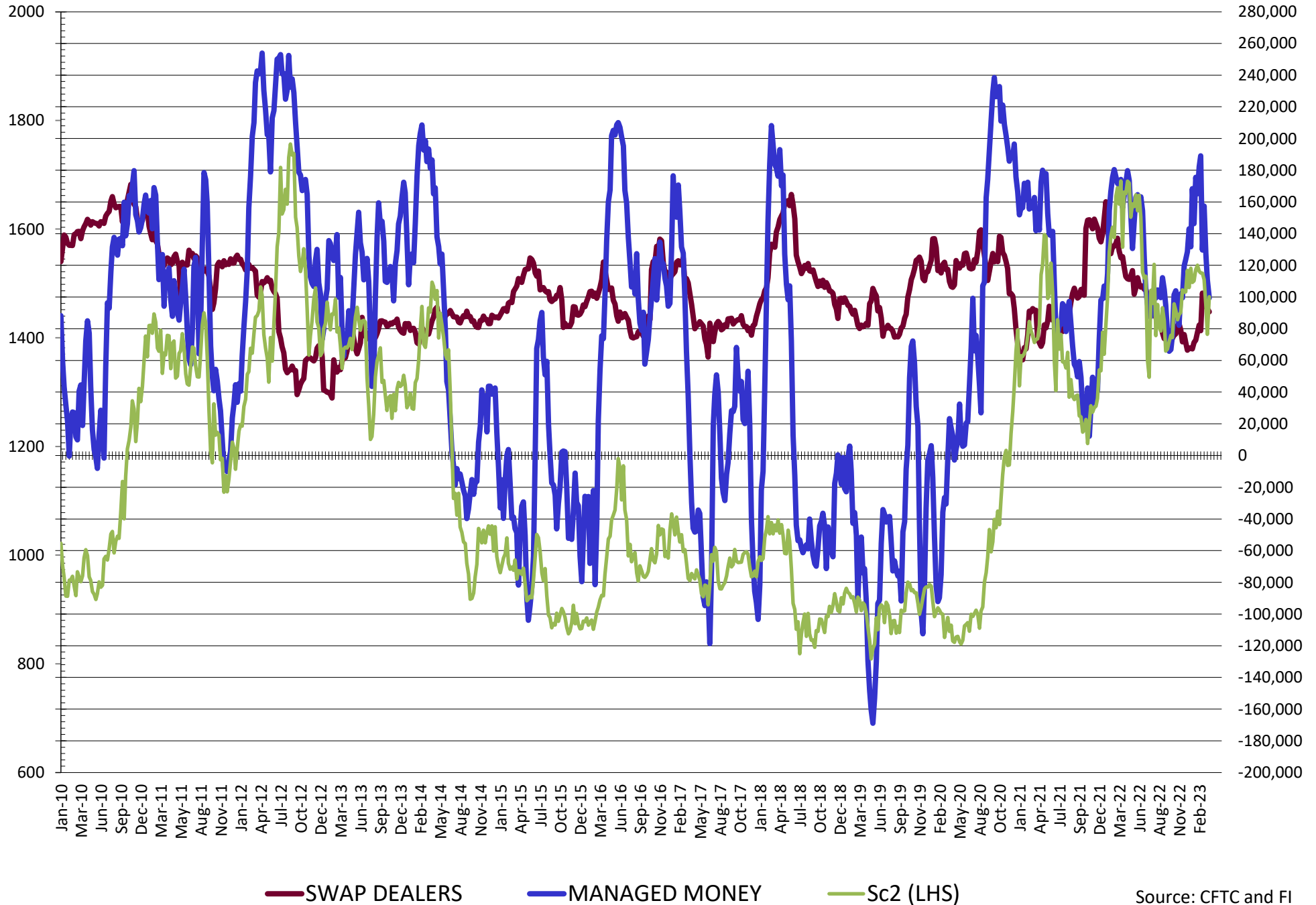
**DISAGGREGATED COMMITMENT OF TRADERS
FUTURES & OPTIONS NET POSITIONS
AS OF 03/28/2023
(IN THOUSAND CONTRACTS)**

	PRODUCER / MERCHANT / PROCESSOR / USER				(INDEX/ETF) SWAP DEALERS				(CTA/CPO/OTHER UNREGISTERED) MANAGED MONEY			
	28-Mar	21-Mar	14-Mar	7-Mar	28-Mar	21-Mar	14-Mar	7-Mar	28-Mar	21-Mar	14-Mar	7-Mar
	WHEAT											
Chicago	1.4	(0.3)	5.4	9.6	62.8	62.9	64.6	64.3	(89.9)	(86.5)	(95.3)	(100.6)
Kansas City	(30.6)	(24.6)	(22.3)	(23.6)	35.8	36.2	36.1	36.3	0.2	(8.8)	(12.7)	(10.4)
Minneapolis	(3.6)	(0.6)	1.3	(0.1)	1.4	1.3	1.3	1.4	0.4	(2.6)	(4.4)	(3.0)
All Wheat	(32.8)	(25.6)	(15.5)	(14.0)	99.9	100.4	102.1	101.9	(89.2)	(97.9)	(112.4)	(114.1)
CORN	(203.5)	(175.5)	(165.5)	(231.4)	228.9	226.7	230.5	221.7	(13.3)	(41.9)	(54.1)	21.1
OATS	(1.0)	(0.2)	0.1	0.4	0.0	0.0	(0.1)	(0.1)	(0.7)	(1.1)	(1.3)	(1.8)
SOYBEANS	(180.1)	(190.7)	(196.7)	(220.0)	90.6	92.6	94.3	96.8	99.5	110.8	127.7	157.3
SOY OIL	(97.8)	(101.6)	(101.0)	(123.5)	107.5	106.3	103.0	102.3	(12.5)	(5.7)	(1.2)	20.5
SOY MEAL	(211.9)	(232.9)	(255.7)	(274.6)	87.0	87.2	82.9	80.0	96.1	115.2	134.0	155.1

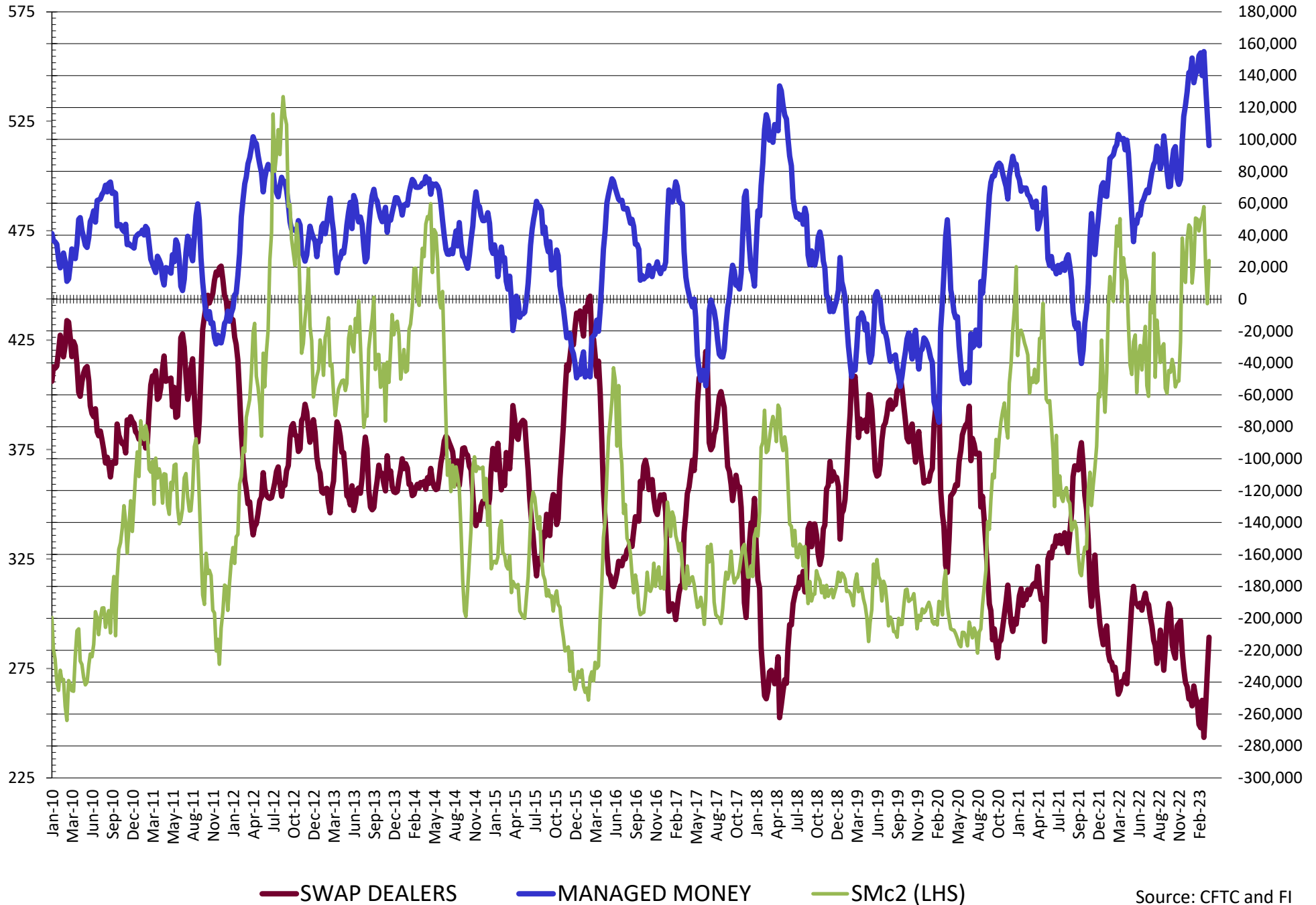
	TOTAL OPEN INTEREST				OTHER REPORTABLE				NON REPORTABLE			
	28-Mar	21-Mar	14-Mar	7-Mar	28-Mar	21-Mar	14-Mar	7-Mar	28-Mar	21-Mar	14-Mar	7-Mar
	WHEAT											
Chicago	446,151	454,791	459,299	432,751	24.4	22.4	23.4	23.3	1.3	1.5	1.8	3.4
Kansas City	188,039	188,590	191,175	185,870	(2.0)	0.3	0.3	(0.5)	(3.4)	(3.1)	(1.4)	(1.8)
Minneapolis	64,799	60,382	57,302	55,131	2.5	2.4	3.1	3.0	(0.6)	(0.5)	(1.3)	(1.2)
All Wheat	698,989	703,763	707,776	673,752	24.9	25.1	26.8	25.8	(2.7)	(2.1)	(0.9)	0.4
CORN	1,670,838	1,690,830	1,667,603	1,564,601	47.5	55.9	56.0	53.3	(59.6)	(65.2)	(65.2)	(65.2)
OATS	4,191	4,606	4,604	4,994	0.7	0.6	0.6	0.6	1.0	0.6	0.7	1.0
SOYBEANS	886,818	867,790	840,290	816,692	24.9	23.3	18.0	10.2	(34.9)	(36.0)	(43.2)	(44.3)
SOY OIL	506,284	496,457	501,748	479,009	2.5	1.5	(1.3)	(1.5)	0.2	(0.5)	0.6	2.1
SOY MEAL	466,859	481,613	489,810	496,776	10.8	12.7	19.6	19.8	18.0	17.8	19.2	19.7

SOURCE: CFTC & FI

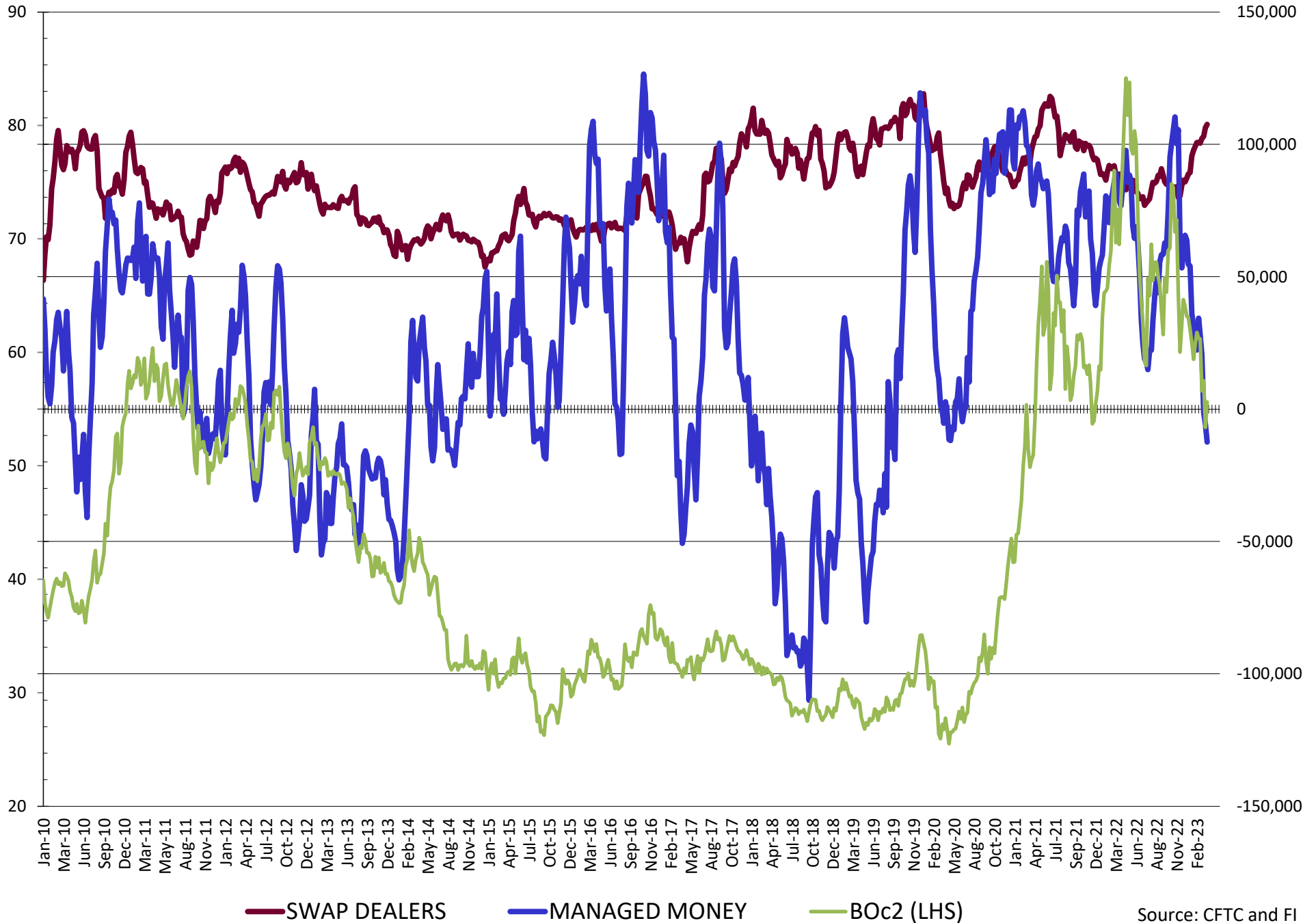
NET POSITION FUTURES AND OPTIONS OF SWAP AND MANAGED FUNDS IN SOYBEANS



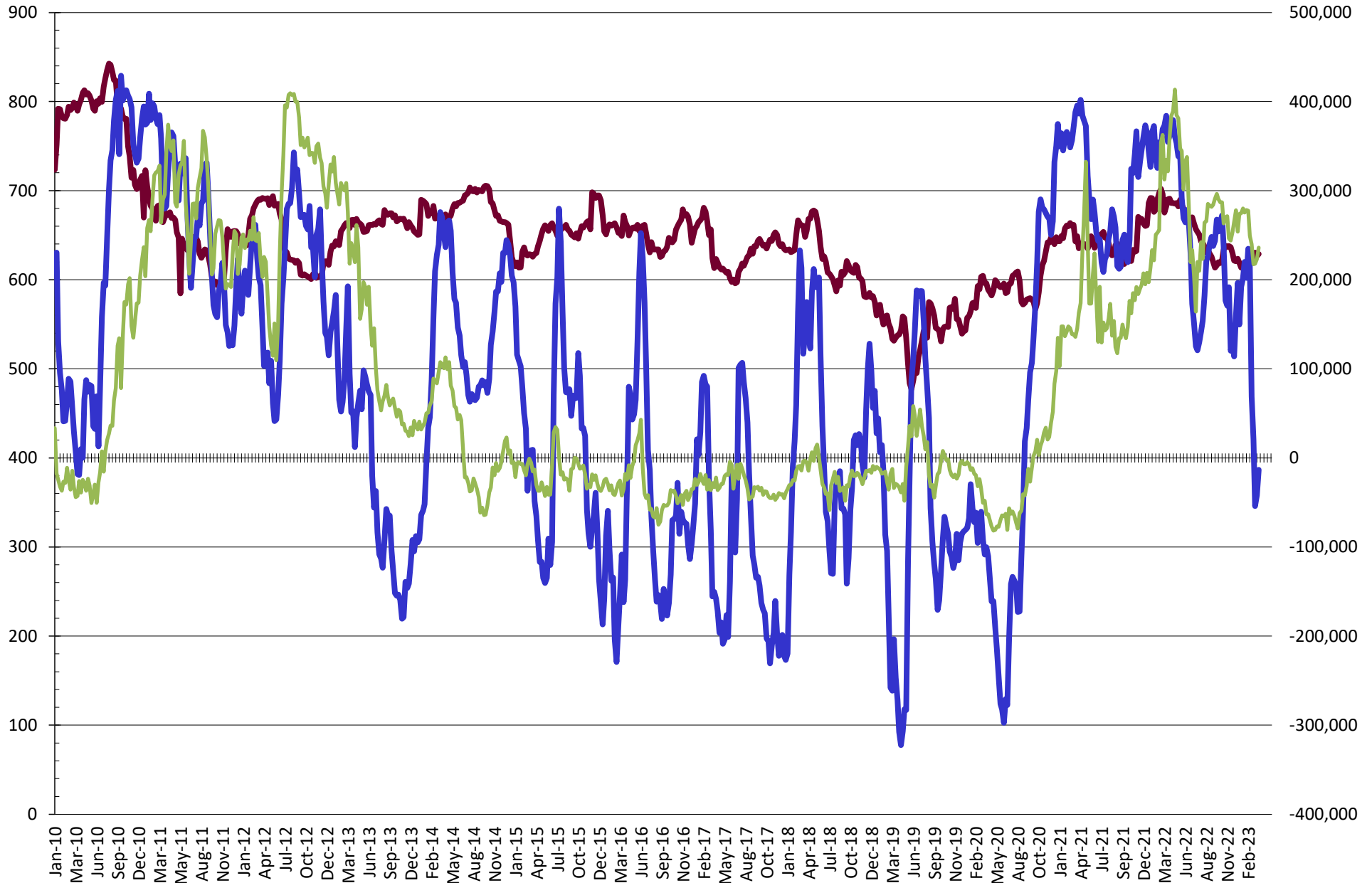
NET POSITION FUTURES AND OPTIONS OF SWAP AND MANAGED FUNDS IN SOYBEAN MEAL



NET POSITION FUTURES AND OPTIONS OF SWAP AND MANAGED FUNDS IN SOYBEAN OIL



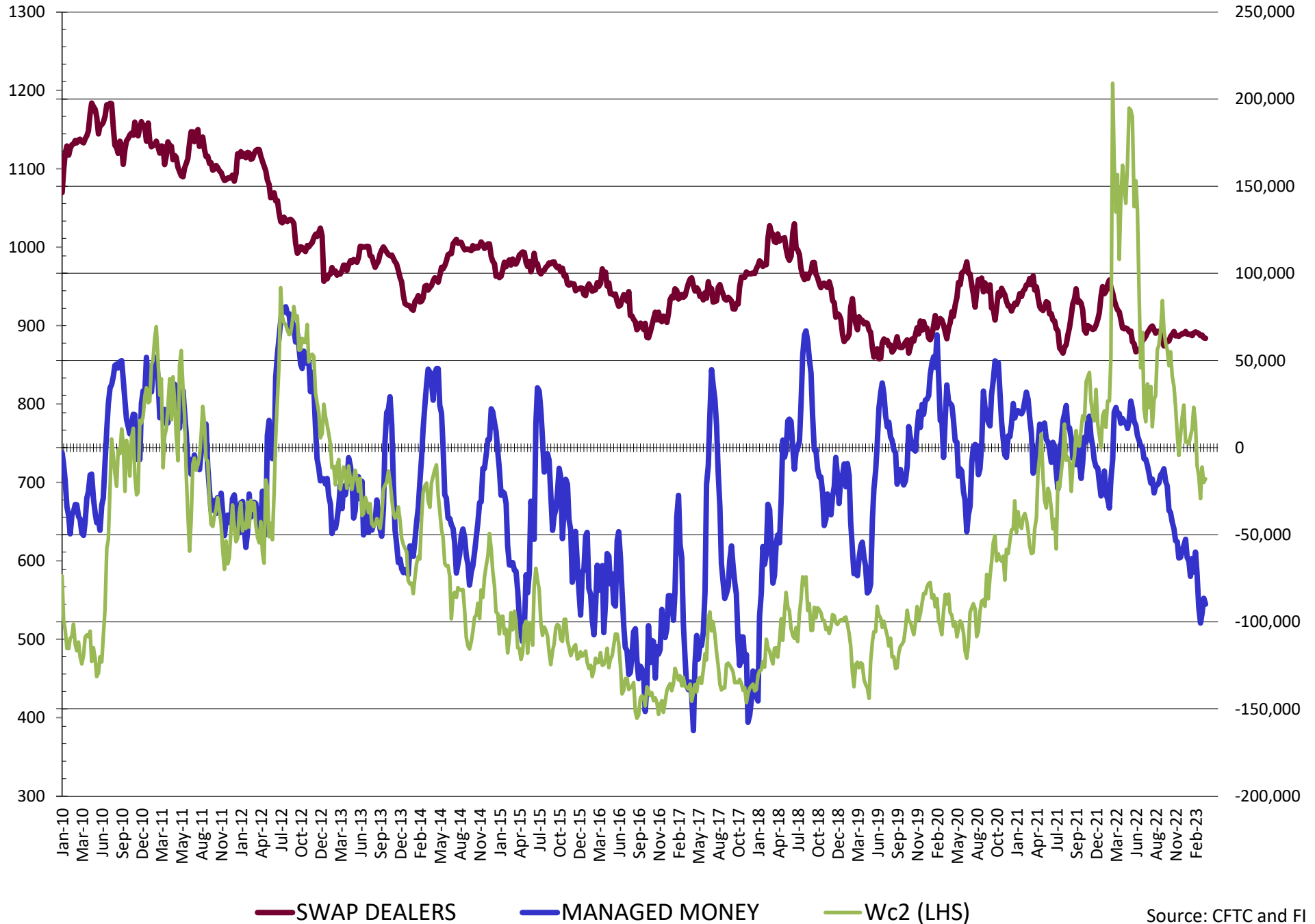
NET POSITION FUTURES AND OPTIONS OF SWAP AND MANAGED FUNDS IN CORN



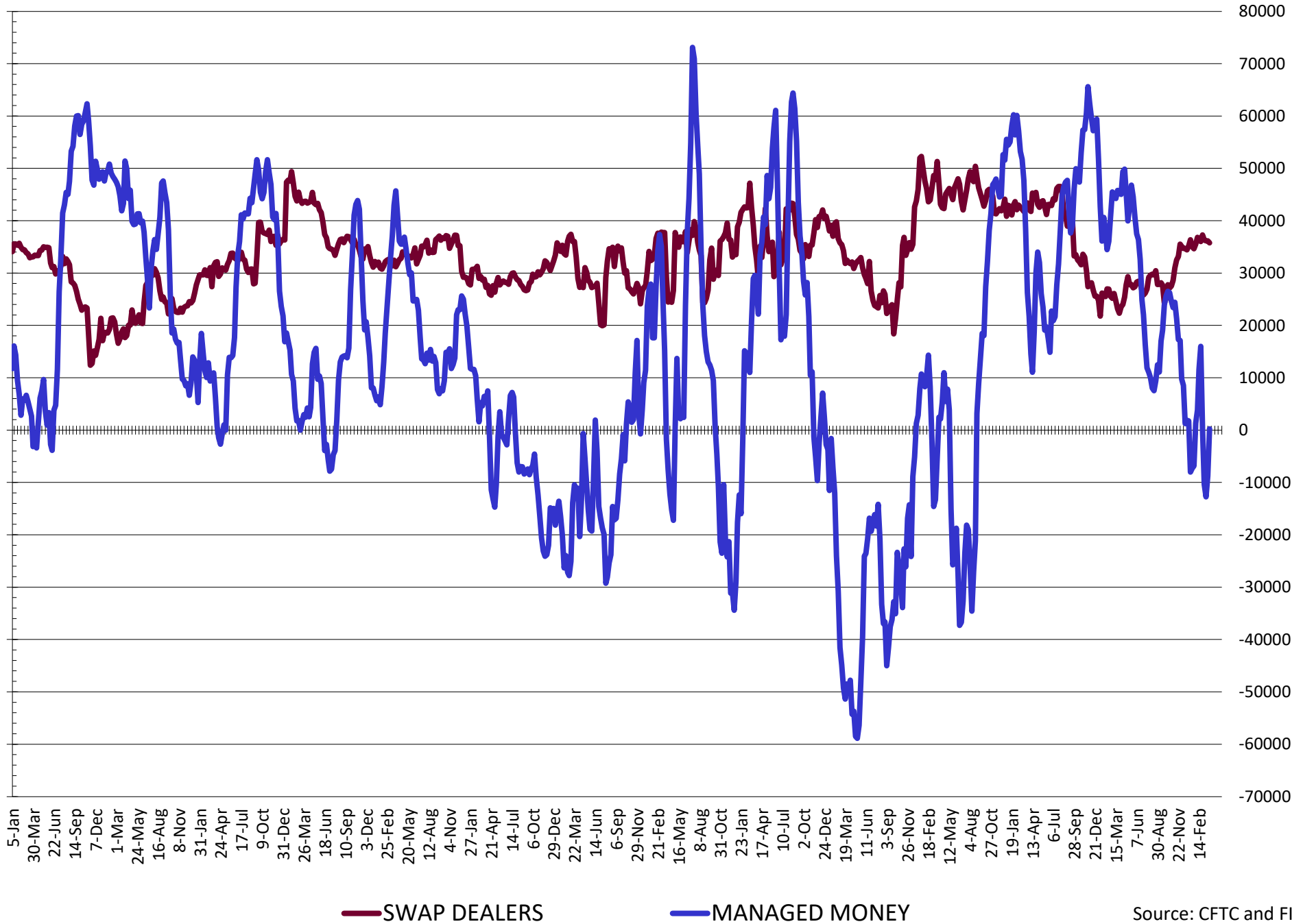
— SWAP DEALERS
 — MANAGED MONEY
 — Cc2 (LHS)

Source: CFTC and FI
4/1/2023

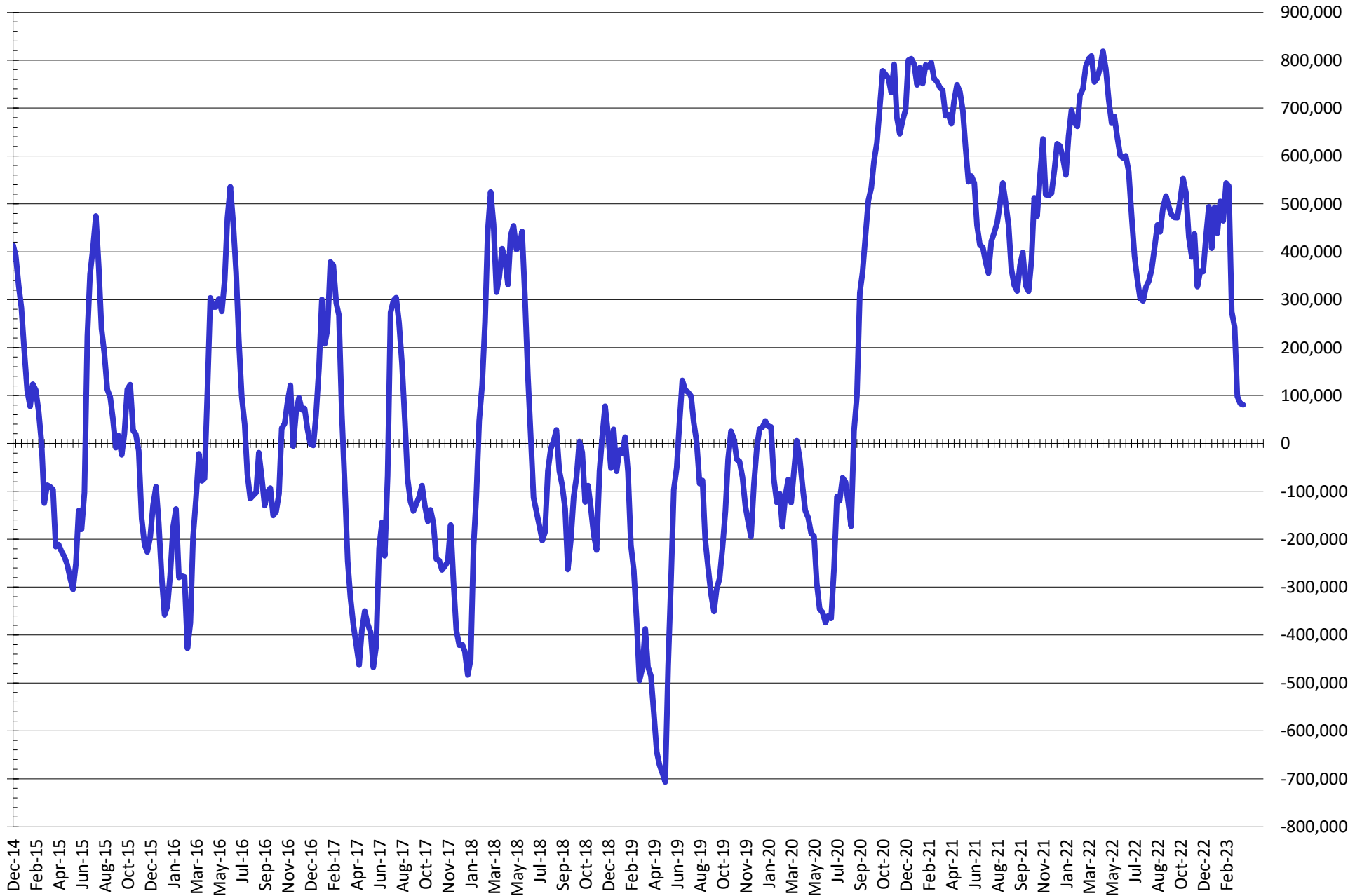
NET POSITION FUTURES AND OPTIONS OF SWAP AND MANAGED FUNDS IN CHICAGO WHEAT



NET POSITION FUTURES AND OPTIONS OF SWAP AND MANAGED FUNDS IN KANSAS WHEAT



NET POSITION FUTURES AND OPTIONS OF SWAP AND MANAGED FUNDS IN COMBINED SRW, HRW, CORN, SOYBEANS, SOYMEAL AND SOYOIL



— Net Managed Money

Source: CFTC and FI
4/1/2023

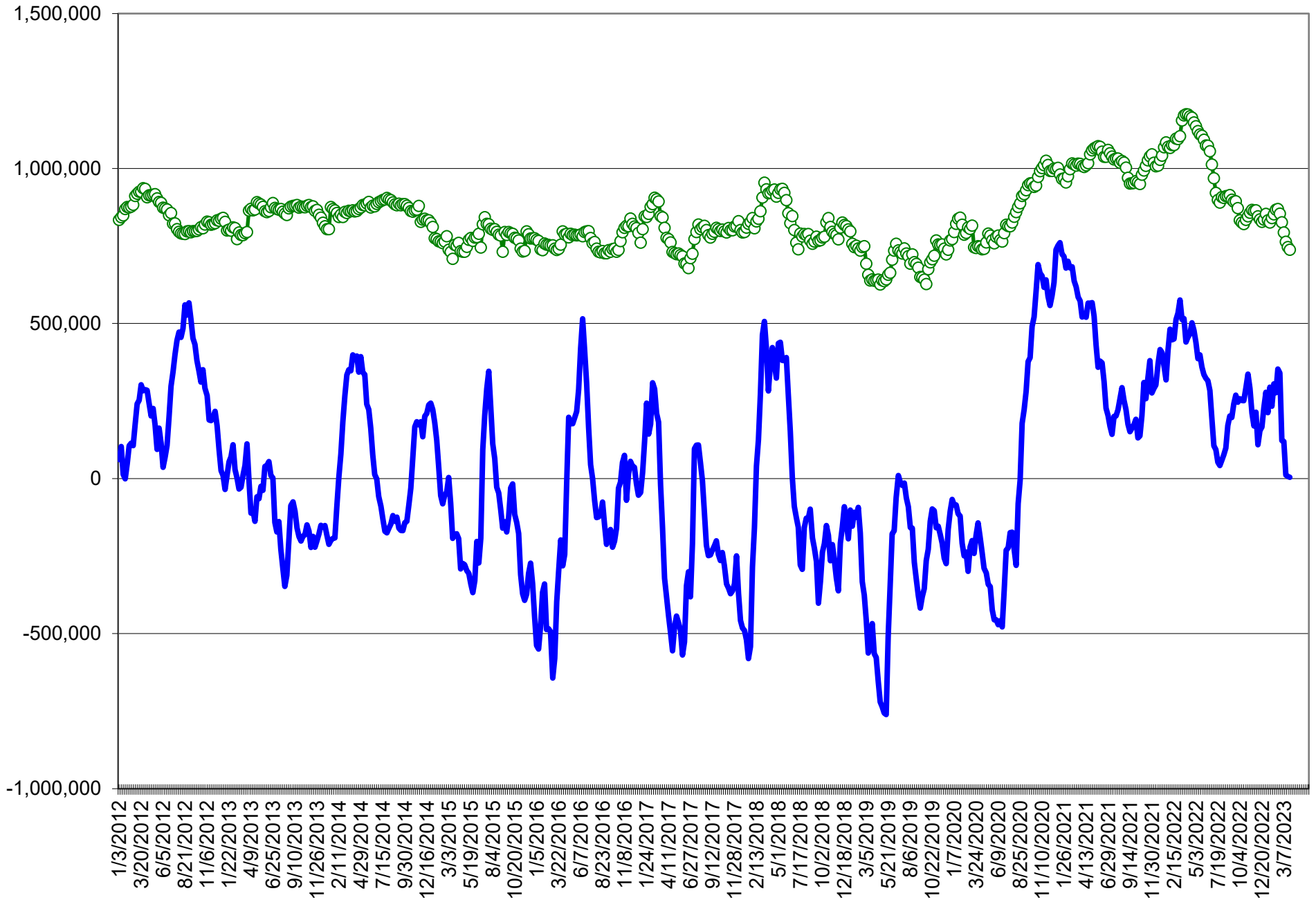
COMMITMENT OF TRADERS
FUTURES & OPTIONS NET POSITIONS (INDEX BROKEN OUT)
AS OF 03/28/2023
(IN THOUSAND CONTRACTS)

	COMMERCIAL				(FUND) NON COMMERCIAL				(SPEC) NON-REPORTABLE			
	28-Mar	21-Mar	14-Mar	7-Mar	28-Mar	21-Mar	14-Mar	7-Mar	28-Mar	21-Mar	14-Mar	7-Mar
	WHEAT											
Chicago	(0.2)	(1.8)	4.2	6.0	(77.6)	(80.1)	(88.0)	(96.8)	1.3	1.5	1.8	3.4
Kansas City	(28.6)	(22.7)	(20.1)	(21.8)	(12.7)	(18.7)	(21.2)	(19.9)	(3.4)	(3.1)	(1.4)	(1.8)
Minneapolis	-	-	-	-	-	-	-	-	-	-	-	-
All Wheat	(28.8)	(24.5)	(15.9)	(15.7)	(90.2)	(98.8)	(109.2)	(116.7)	(2.1)	(1.6)	0.4	1.7
CORN	(191.5)	(163.7)	(153.9)	(227.4)	(31.5)	(52.8)	(77.6)	(19.6)	(59.6)	(65.2)	(66.8)	(64.8)
OATS	-	-	-	-	-	-	-	-	-	-	-	-
SOYBEANS	(176.3)	(187.4)	(195.0)	(219.6)	87.2	95.0	110.7	129.3	(34.9)	(36.0)	(43.2)	(44.3)
SOY OIL	(71.0)	(74.9)	(75.9)	(98.1)	(31.6)	(25.6)	(23.6)	(5.2)	0.2	(0.5)	0.6	2.1
SOY MEAL	(195.9)	(217.3)	(244.6)	(267.2)	69.9	89.2	111.1	131.9	18.0	17.8	19.2	19.7

	TOTAL OPEN INTEREST				(INDEX) COMMERCIAL INDEX TRADERS				(INDEX) % NET OF TOTAL OPEN INTEREST			
	28-Mar	21-Mar	14-Mar	7-Mar	28-Mar	21-Mar	14-Mar	7-Mar	28-Mar	21-Mar	14-Mar	7-Mar
	WHEAT											
Chicago	446,151	454,791	459,299	432,751	76.4	80.4	81.9	87.3	17.1%	17.7%	17.8%	20.2%
Kansas City	188,039	188,590	191,175	185,870	44.7	44.5	42.7	43.5	23.8%	23.6%	22.4%	23.4%
Minneapolis	-	-	-	-	-	-	-	-	-	-	-	-
All Wheat	634,190	643,381	650,474	618,621	121.1	124.9	124.7	130.7	19.1%	19.4%	19.2%	21.1%
CORN	1,670,838	1,690,830	1,667,603	1,564,601	282.5	281.7	298.4	311.8	16.9%	16.7%	17.9%	19.9%
OATS	-	-	-	-	-	-	-	-	-	-	-	-
SOYBEANS	886,818	867,790	840,290	816,692	124.1	128.4	127.5	134.5	14.0%	14.8%	15.2%	16.5%
SOY OIL	506,284	496,457	501,748	479,009	102.3	101.0	98.9	101.2	20.2%	20.3%	19.7%	21.1%
SOY MEAL	466,859	481,613	489,810	496,776	108.0	110.3	114.3	115.6	23.1%	22.9%	23.3%	23.3%

SOURCE: CFTC & FI

NET POSITION FUTURES AND OPTIONS OF SPECULATORS AND INDEX FUNDS IN COMBINED SRW, HRW, CORN, SOYBEANS, SOYMEAL AND SOYOIL



Source: CFTC and FI

○ Net Index

— Net Speculator

Traditional Daily Estimate of Funds

	(Neg)-"Short"	Pos-"Long"			
Actual less Est.	3.0	(8.8)	(13.3)	(19.8)	(0.0)
	Corn	Bean	Chi. Wheat	Meal	Oil
Actual 3/28/23	71.5	161.0	(60.5)	114.5	(7.6)
29-Mar	1.0	2.0	6.0	(1.0)	1.0
30-Mar	(2.0)	(2.0)	(6.0)	2.0	(3.0)
31-Mar	5.0	11.0	1.0	4.0	4.0
3-Apr					
4-Apr					
FI Est. of Futures Only	75.5	172.0	(59.5)	119.5	(5.6)
FI Est. Futures & Options	38.2	135.4	(64.4)	111.8	(7.9)
Futures only record long "Traditional Funds"	547.7 1/26/2021	280.9 11/10/2020	86.5 8/7/2018	176.0 2/21/2023	160.2 11/1/2016
Futures only record short	(235.0) 6/9/2020	(118.3) 4/30/2019	(130.0) 4/25/2017	(49.5) 3/1/2016	(69.8) 9/18/2018
Futures and options record net long	557.6 1/12/2021	270.9 10/6/2020	64.8 8/7/2012	173.7 2/21/2023	159.2 1/1/2016
Futures and options record net short	(270.6) 4/26/2019	(132.0) 4/30/2019	(143.3) 4/25/2017	(64.1) 3/1/2016	(77.8) 9/18/2018

Managed Money Daily Estimate of Funds

	Corn	Bean	Chi. Wheat	Meal	Oil
Latest CFTC Fut. Only	(13.4)	98.4	(92.7)	96.3	(14.5)
Latest CFTC F&O	(13.3)	99.5	(89.9)	96.1	(12.5)
FI Est. Managed Fut. Only	(9)	109	(92)	101	(13)
FI Est. Managed Money F&O	(9)	111	(89)	101	(10)

Index Funds Latest Positions (as of last Tuesday)

Index Futures & Options	282.5	124.1	76.4	NA	102.3
Change From Previous Week	0.8	(4.3)	(4.0)	NA	1.4

Source: Reuters, CFTC & FI (FI est. are noted with latest date)

Disclaimer

TO CLIENTS/PROSPECTS OF FUTURES INTERNATIONAL, SEE RISK DISCLOSURE BELOW:

THIS COMMUNICATION IS CONVEYED AS A SOLICITATION FOR ENTERING INTO A DERIVATIVES TRANSACTION.

Any trading recommendations and market or other information to Customer by Futures International (FI), although based upon information obtained from sources believed by FI to be reliable may not be accurate and may be changed without notice to customer. FI makes no guarantee as to the accuracy or completeness of any of the information or recommendations furnished to Customer. Customer understands that FI, its managers, employees and/or affiliates may have a position in commodity futures, options or other derivatives which may not be consistent with the recommendations furnished by FI to Customer.

The risk of trading futures and options and other derivatives involves a substantial risk of loss and is not suitable for all persons. In purchasing an option, the risk is limited to the premium paid, and all commissions and fees involved with the trade. When an option is shorted or written, the writer of the option has unlimited risk with respect to the option written. The use of options strategies such as a straddles and strangles involve multiple option positions and may substantially increase the amount of commissions and fees paid to execute the strategy. Option prices do not necessarily move in tandem with cash or futures prices. Each person must consider whether a particular trade, combination of trades or strategy is suitable for that person's financial means and objectives.

This material may include discussions of seasonal patterns, however, futures prices have already factored in the seasonal aspects of supply and demand, and seasonal patterns are no indication of future market trends. Finally, past performance is not indicative of future results.

This communication may contain links to third party websites which are not under the control of FI and FI is not responsible for their content. Products and services are offered only in jurisdictions where solicitation and sale are lawful, and in accordance with applicable laws and regulations in each such jurisdiction.