

Traditional Daily Estimate of Funds 02/28/23

	(Neg)-"Short"	Pos-"Long"			
Actual less Est.	(91.9)	4.1	16.7	(8.6)	2.3
	Corn	Bean	Chi. Wheat	Meal	Oil
Actual 2/28/23	143.1	158.4	(66.8)	159.4	27.6
1-Mar	2.0	6.0	4.0	2.0	2.0
2-Mar	(2.0)	6.0	3.0	2.0	2.0
3-Mar	4.0	5.0	(1.0)	5.0	(3.0)
6-Mar	(2.0)	5.0	(5.0)	7.0	(4.0)
7-Mar	(2.0)	(7.0)	3.0	(2.0)	(7.0)
Futures only record long "Traditional Funds"	547.7 1/26/2021	280.9 11/10/2020	86.5 8/7/2018	176.0 2/21/2023	160.2 11/1/2016
Futures only record short	(235.0) 6/9/2020	(118.3) 4/30/2019	(130.0) 4/25/2017	(49.5) 3/1/2016	(69.8) 9/18/2018
Futures and options record net long	557.6 1/12/2021	270.9 10/6/2020	64.8 8/7/2012	173.7 2/21/2023	159.2 1/1/2016
Futures and options record net short	(270.6) 4/26/2019	(132.0) 4/30/2019	(143.3) 4/25/2017	(64.1) 3/1/2016	(77.8) 9/18/2018

Index Funds Latest Positions (as of last Tuesday)

Index Futures & Options	329.5	138.8	90.4	NA	101.8
Change From Previous Week	(21.3)	3.8	(4.8)	NA	0.3

Source: Reuters, CFTC & FI (FI est. are noted with latest date)

CFTC COMMITMENT OF TRADERS REPORT

As of 2/28/2023

TRADITIONAL FUNDS net position changes

Wed to Tue, in 000 contracts

	Corn	Bean	Meal	Oil	Chi. Wheat	KC Wheat	Min Wheat
Futures Only	(139.9)	(34.8)	(16.6)	(8.7)	(19.3)	(14.4)	(3.3)
Futures & Options Combined	(144.9)	(52.7)	(17.4)	(6.7)	(17.4)	(15.3)	(3.4)

TRADITIONAL COMMERCIAL net position changes

	Corn	Bean	Meal	Oil	Chi. Wheat	KC Wheat	Min Wheat
Futures Only	134.3	32.3	20.1	12.6	18.6	16.5	5.3
Futures & Options Combined	141.9	52.1	20.6	10.4	16.8	17.3	5.4

MANAGED MONEY net position changes

	Corn	Bean	Meal	Oil	Chi. Wheat	KC Wheat	Min Wheat
Futures Only	(150.9)	(56.5)	(16.3)	(5.9)	(19.6)	(15.9)	(2.7)
Futures & Options Combined	(147.3)	(59.4)	(14.2)	(6.2)	(19.6)	(15.6)	(2.7)

SWAP DEALERS net position changes

	Corn	Bean	Meal	Oil	Chi. Wheat	KC Wheat	Min Wheat
Futures Only	1.5	20.1	2.2	0.4	1.2	1.6	(0.4)
Futures & Options Combined	5.3	23.7	3.5	(0.2)	(0.5)	1.3	(0.4)

PRODUCERS/END USERS net position changes

	Corn	Bean	Meal	Oil	Chi. Wheat	KC Wheat	Min Wheat
Futures Only	132.7	12.1	17.9	12.2	17.4	14.9	5.6
Futures & Options Combined	136.6	28.5	17.1	10.6	17.3	16.0	5.8

INDEX net position changes

	Corn	Bean	Meal	Oil	Chi. Wheat	KC Wheat	Min Wheat
Futures & Options Combined	(21.3)	3.8	(3.3)	0.3	(4.8)	(2.9)	NA

SUPPLEMENTAL NON-COMMERCIAL net position changes

	Corn	Bean	Meal	Oil	Chi. Wheat	KC Wheat	Min Wheat
Futures & Options Combined	(123.4)	(44.6)	(15.0)	(8.1)	(14.2)	(12.4)	NA

OPEN INTEREST net position changes

Wed to Tue, in 000 contracts

	Corn	Bean	Meal	Oil	Chi. Wheat	KC Wheat	Min Wheat
Futures Only	(92.1)	(58.9)	(34.8)	(22.0)	(18.2)	(14.6)	(4.3)
Futures & Options Combined	(124.4)	(71.2)	(55.2)	(43.8)	(34.0)	(18.0)	(4.5)

Source: CFTC and FI

Wed to Tue, in 000 contracts

**COMMITMENT OF TRADERS
FUTURES ONLY NET POSITIONS
AS OF 02/28/2023
(IN THOUSAND CONTRACTS)**

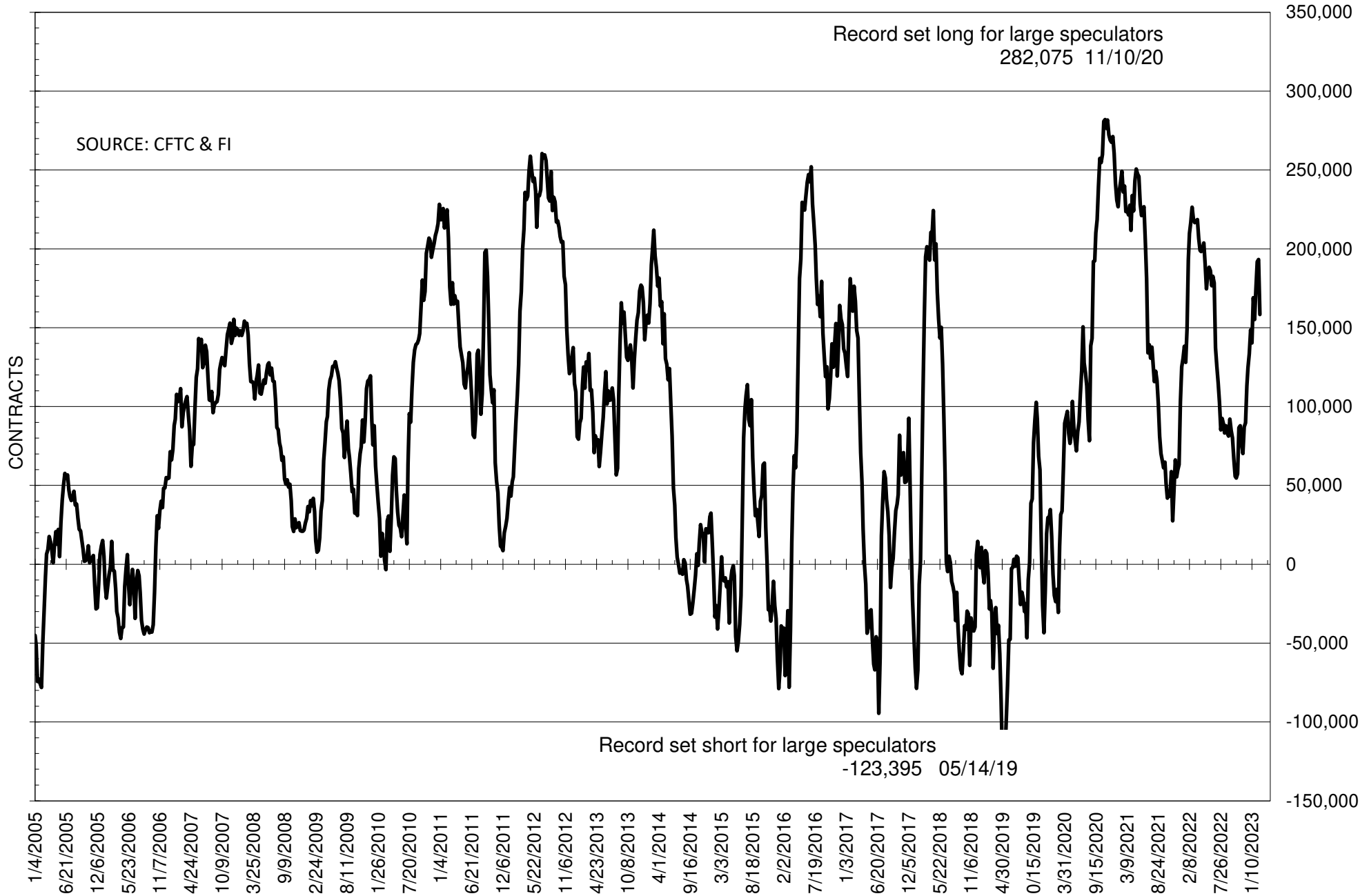
	COMMERCIAL				(FUND) NON COMMERCIAL				(SPEC) NON-REPORTABLE			
	28-Feb	21-Feb	14-Feb	7-Feb	28-Feb	21-Feb	14-Feb	7-Feb	28-Feb	21-Feb	14-Feb	7-Feb
	WHEAT											
Chicago	66.1	47.6	38.1	48.9	-66.8	-47.5	-34.1	-46.3	0.6	-0.1	-4.0	-2.6
Kansas City	5.4	-11.1	-8.7	0.6	-2.5	11.9	9.8	2.9	-2.9	-0.8	-1.1	-3.5
Minneapolis	-1.1	-6.3	-4.9	-2.4	2.8	6.1	4.2	2.0	-1.7	0.3	0.7	0.4
All Wheat	70.5	30.1	24.5	47.1	-66.5	-29.6	-20.1	-41.3	-4.0	-0.6	-4.4	-5.8
CORN	-75.3	-209.6	-223.6	-204.4	143.1	283.0	304.7	282.4	-67.8	-73.4	-81.1	-77.9
OATS	0.0	-0.6	#VALUE!	-1.0	-0.7	-0.3	#VALUE!	0.0	0.7	0.9	#VALUE!	0.9
SOYBEANS	-117.9	-150.1	-149.8	-133.8	158.4	193.3	191.9	174.8	-40.5	-43.1	-42.1	-41.0
SOY OIL	-34.3	-46.9	-33.6	-30.7	27.6	36.3	29.2	25.4	6.8	10.6	4.4	5.3
SOY MEAL	-171.6	-191.7	-189.3	-176.9	159.4	176.0	172.4	161.2	12.3	15.8	17.0	15.8

Oats positions thin to be reported

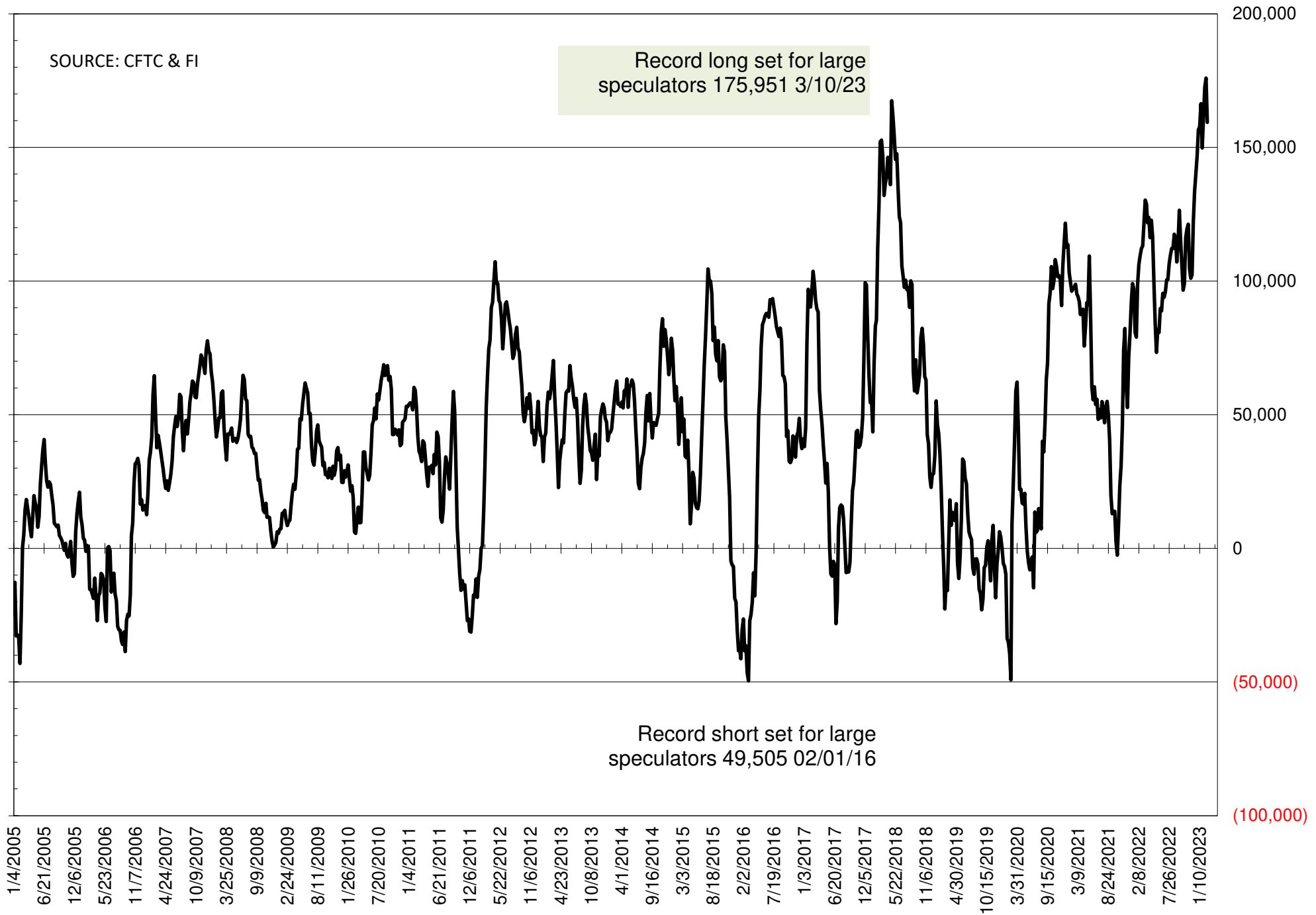
	TOTAL OPEN INTEREST				NEARBY FUTURES PRICE					28-Feb-23 LAST REPORTED % HELD BY TRADERS			
	28-Feb	21-Feb	14-Feb	7-Feb	K 14-Mar	H 28-Feb	H 21-Feb	H 14-Feb	H 7-Feb	LARGE FUND		SMALL	
										LONG	SHORT	LONG	SHORT
WHEAT													
Chicago	341154	359360	370508	358162	696.25	691.50	750.50	786.00	749.75	0%	47%	0%	11%
Kansas City	166388	180977	189148	190500	817.75	815.75	904.25	906.00	885.75	0%	28%	0%	12%
Minneapolis	52504	56820	58628	58239	848.75	877.50	924.75	932.00	917.50	0%	12%	0%	21%
CORN	1248175	1340322	1375249	1319429	620.75	629.50	680.50	682.25	674.00	0%	16%	0%	14%
OATS	4116	3806	#VALUE!	3297	349.00	359.75	364.25	365.75	384.75	0%	32%	0%	34%
SOYBEANS	672590	731529	743026	717684	1493.75	1490.50	1548.75	1537.50	1515.25	31%	7%	6%	12%
SOY OIL	433307	455298	456513	453114	56.18	59.75	62.77	60.40	60.89	0%	12%	0%	6%
SOY MEAL	423624	458446	452892	434476	481.20	487.60	497.70	501.00	481.40	0%	4%	0%	7%

SOURCE: CFTC & FI

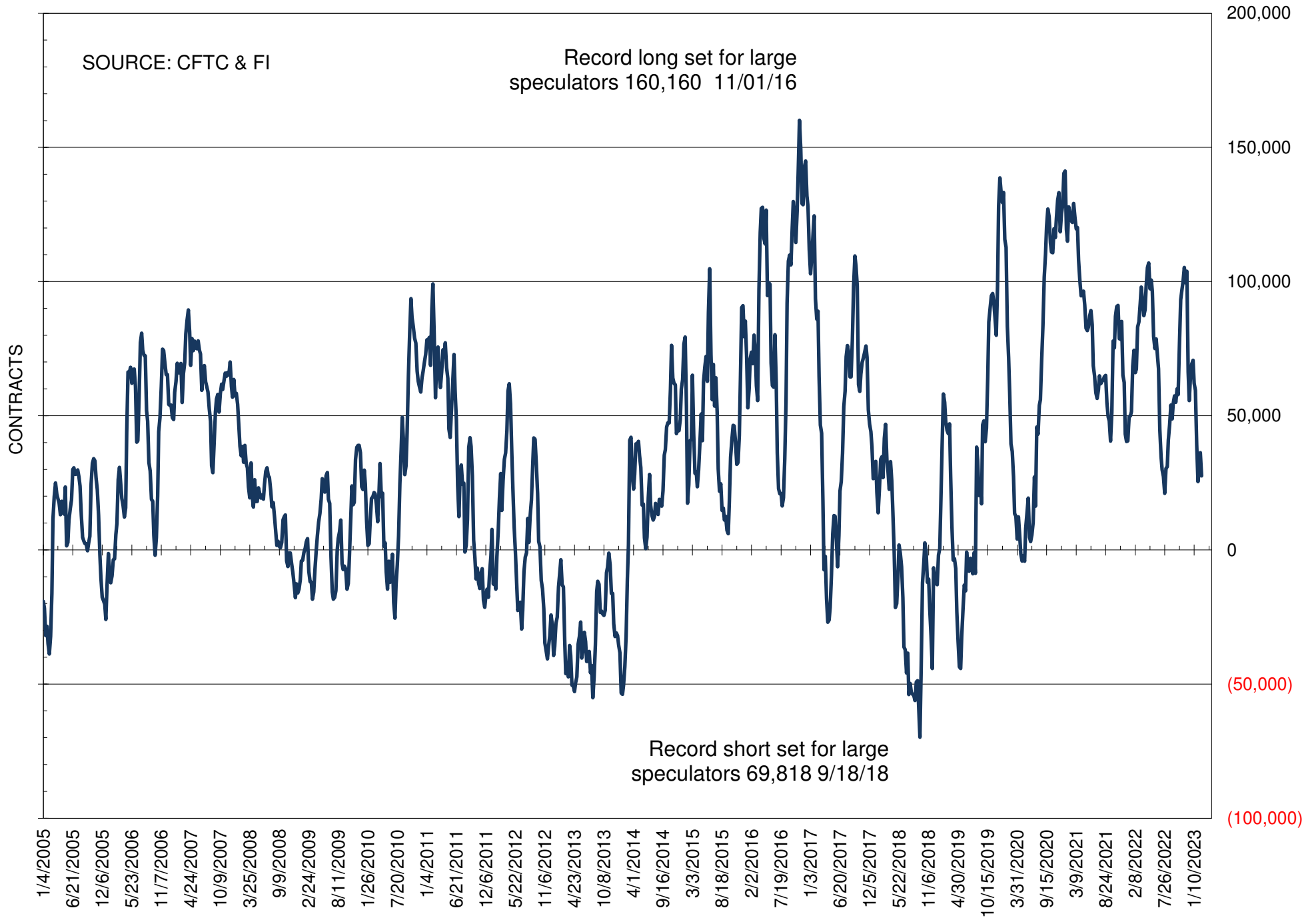
NET POSITION OF FUTURES ONLY LARGE SPECS IN SOYBEANS



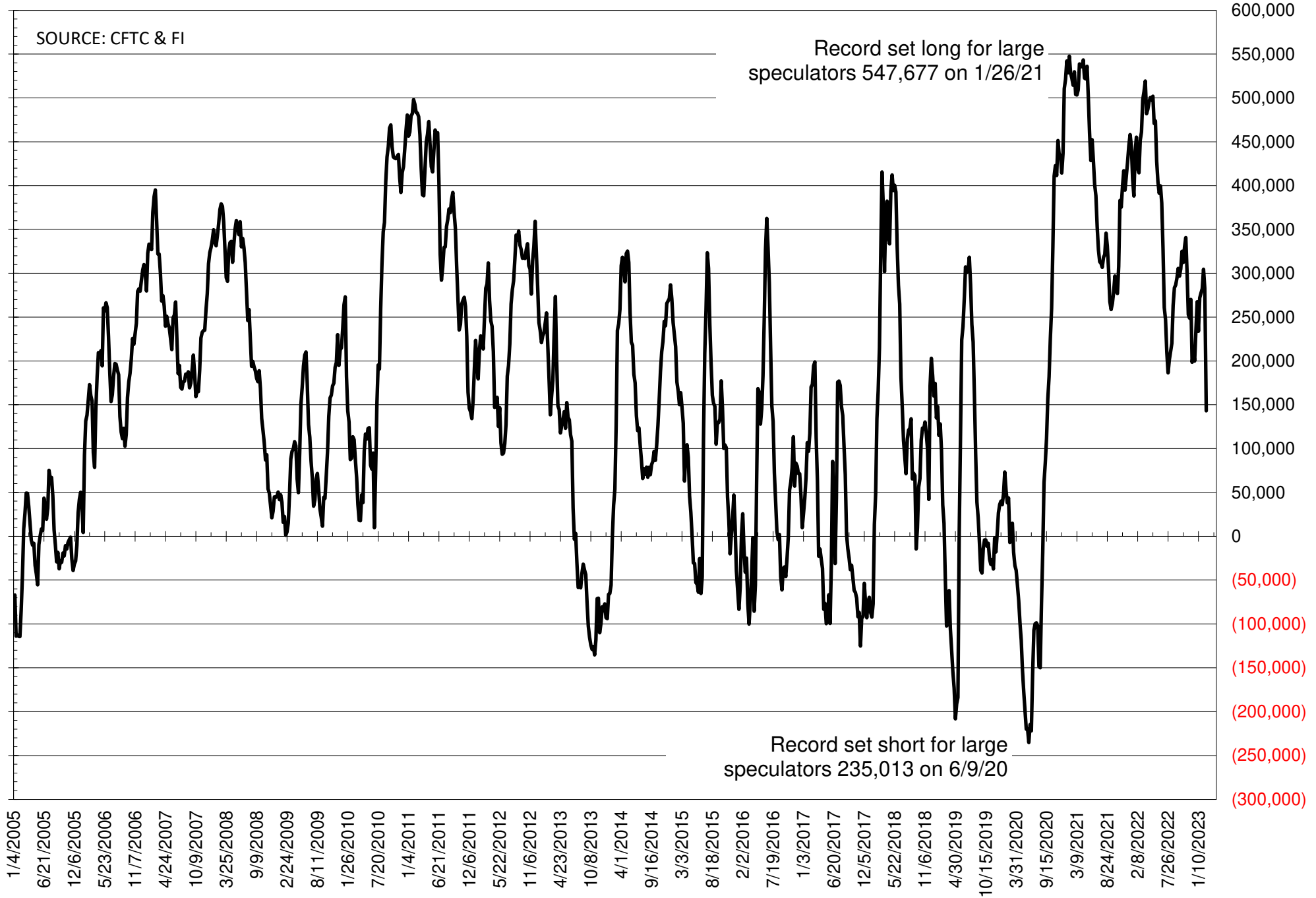
NET POSITION OF FUTURES ONLY LARGE SPECS IN SOYMEAL



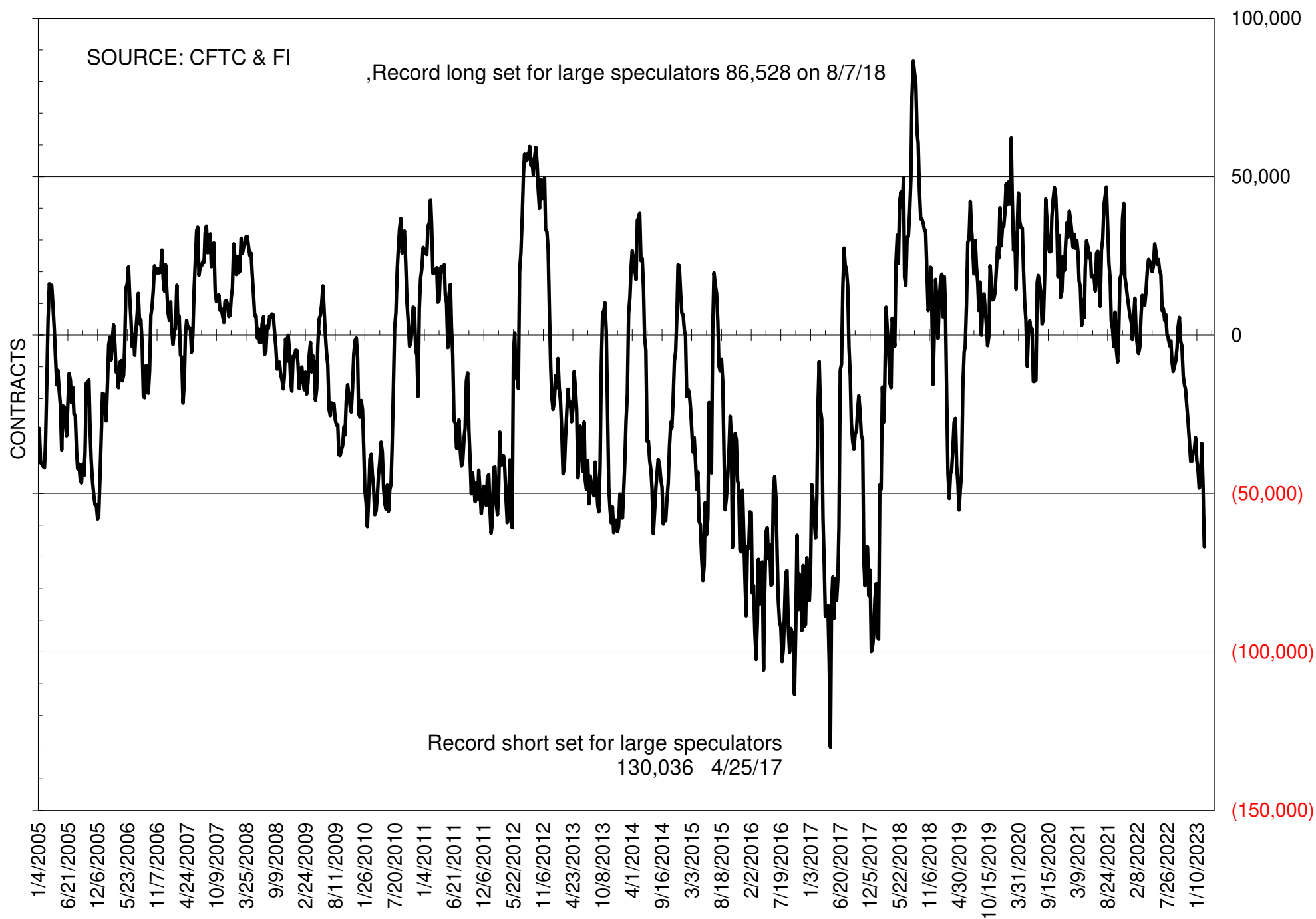
NET POSITION OF FUTURES ONLY LARGE SPECS IN SOYOIL



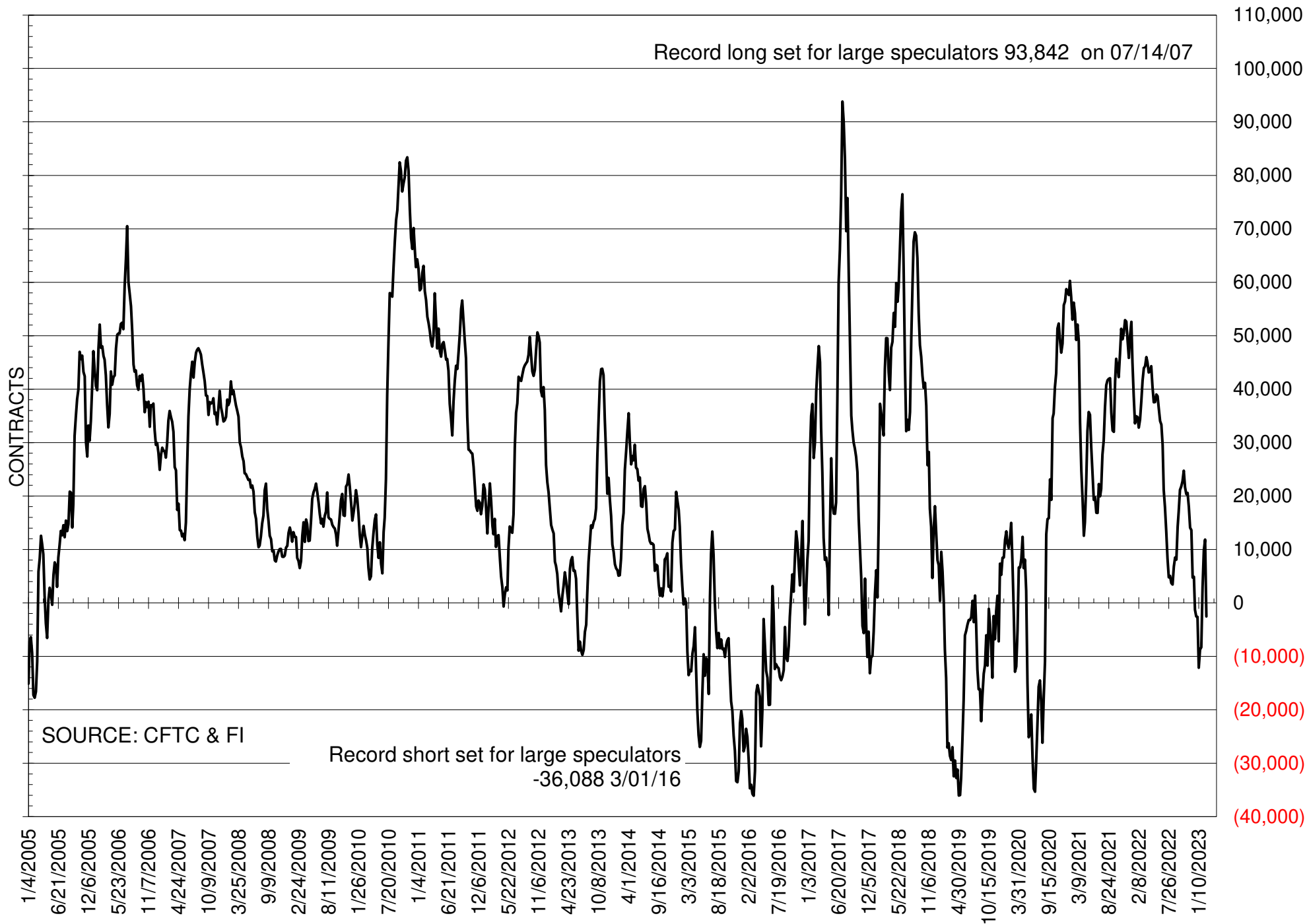
NET POSITION OF LARGE SPECULATORS IN CORN



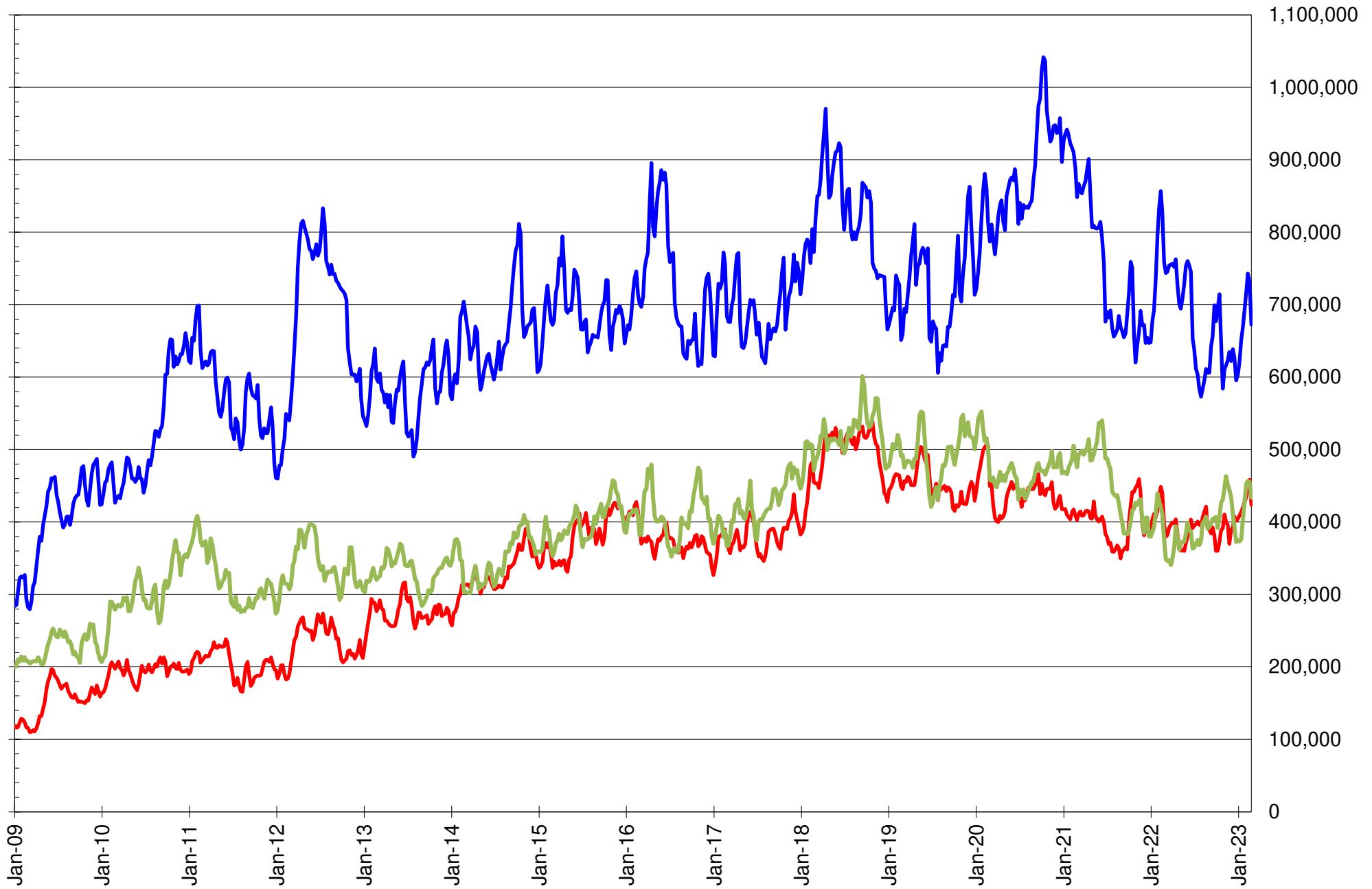
NET POSITION OF FUTURES ONLY LARGE SPECS IN CHICAGO WHEAT



NET POSITION OF LARGE SPECULATORS IN KANSAS CITY WHEAT



TOTAL OPEN INTEREST IN SOYBEANS, MEAL AND OIL, FUTURES ONLY



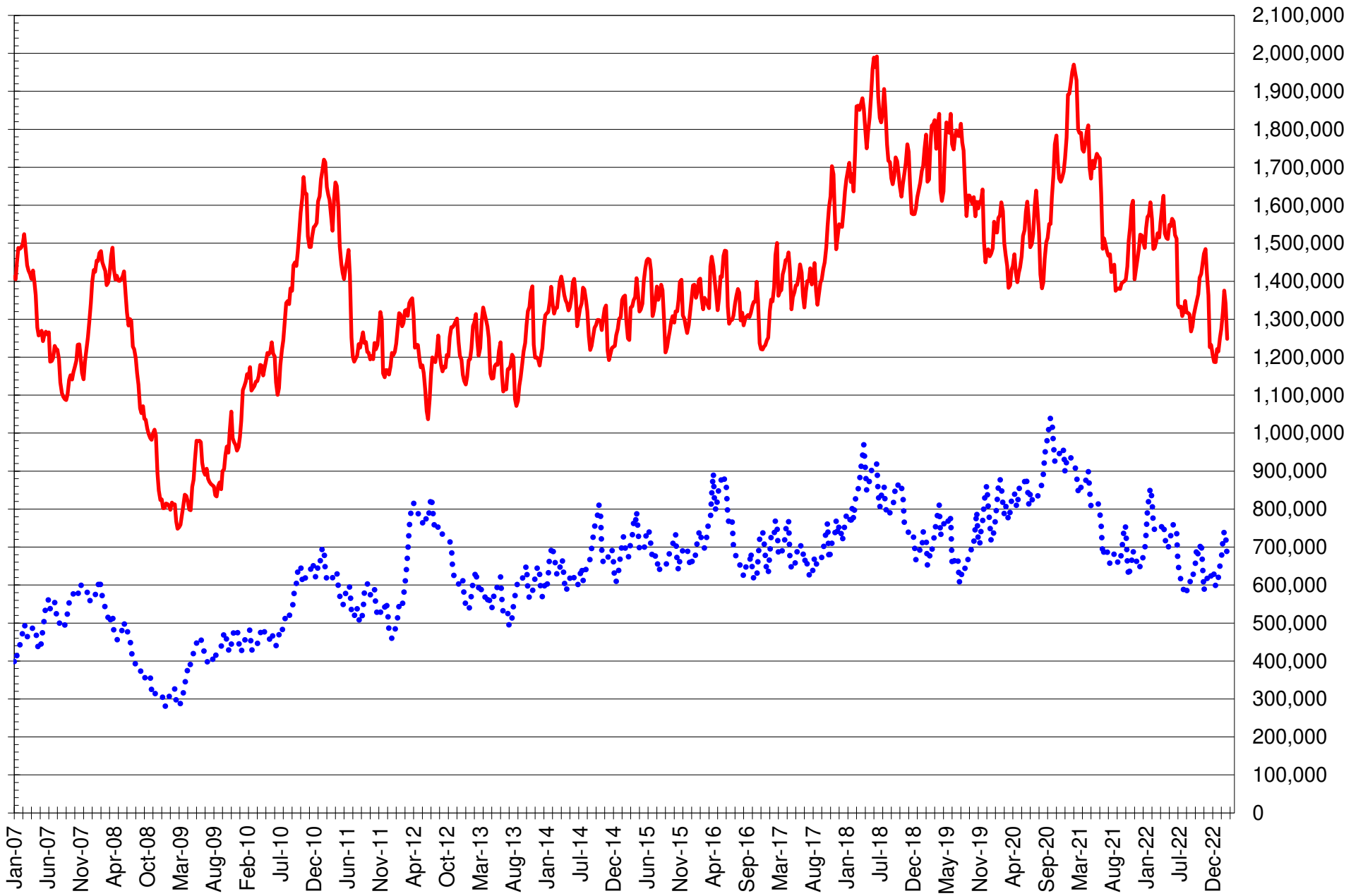
SOURCE: CFTC & FI

— SOYBEANS

— SOYBEAN MEAL

— SOYBEAN OIL

TOTAL OPEN INTEREST IN CORN AND SOYBEANS, FUTURES ONLY



SOURCE: CFTC & FI

— CORN

•••• SOYBEANS

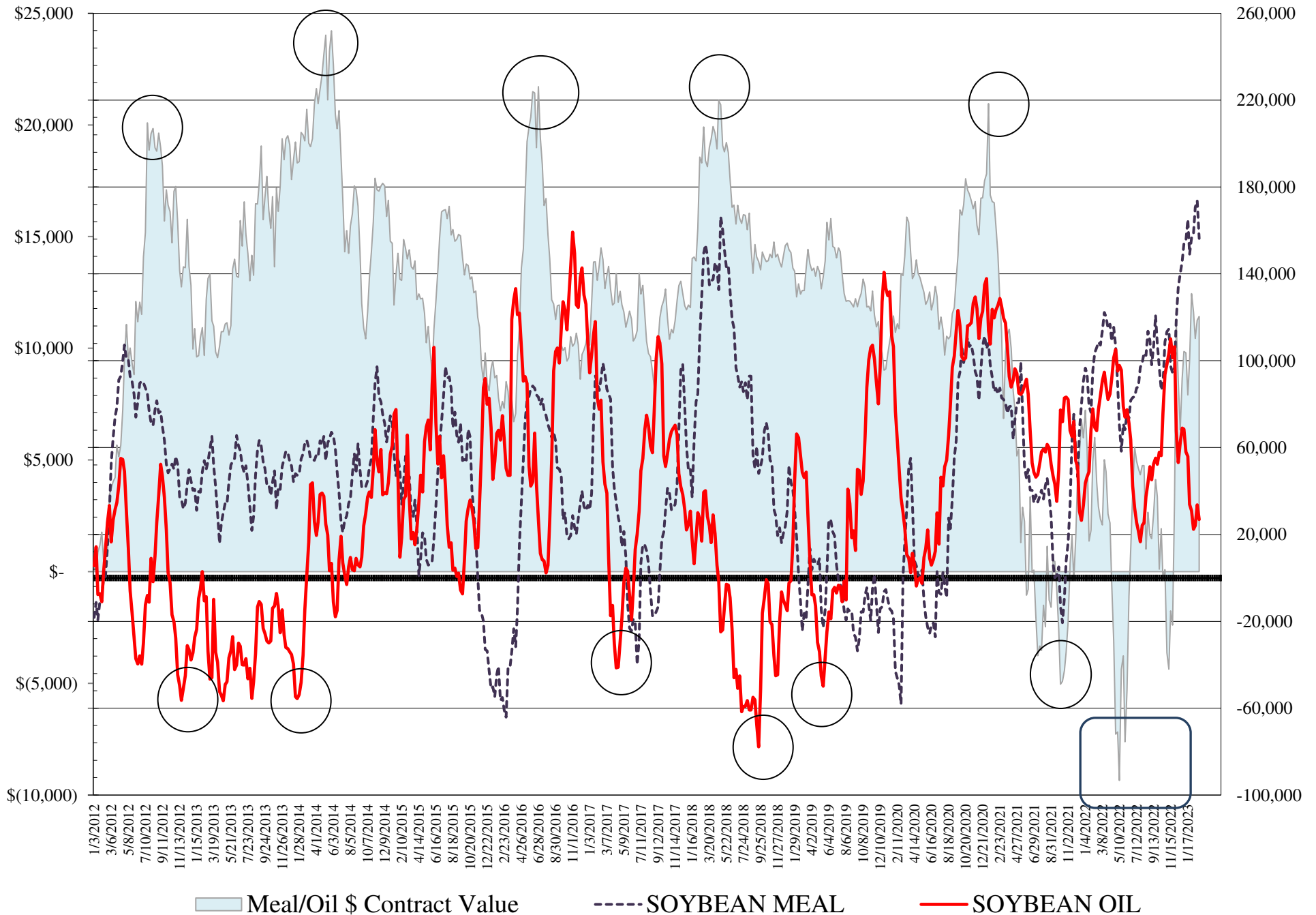
COMMITMENT OF TRADERS
FUTURES & OPTIONS NET POSITIONS
AS OF 02/28/2023
(IN THOUSAND CONTRACTS)

	COMMERCIAL				(FUND) NON COMMERCIAL				(SPEC) NON-REPORTABLE			
	28-Feb	21-Feb	14-Feb	7-Feb	28-Feb	21-Feb	14-Feb	7-Feb	28-Feb	21-Feb	14-Feb	7-Feb
WHEAT												
Chicago	67.1	50.3	42.2	50.9	-68.9	-51.5	-39.3	-49.6	1.8	1.1	-2.9	-1.3
Kansas City	5.9	-11.4	-9.0	0.4	-3.0	12.2	10.0	3.1	-2.8	-0.8	-1.0	-3.5
Minneapolis	-1.1	-6.5	-5.0	-2.4	2.7	6.1	4.3	1.9	-1.6	0.3	0.7	0.5
All Wheat	71.9	32.5	28.2	48.9	-69.3	-33.2	-25.0	-44.6	-2.6	0.7	-3.2	-4.3
CORN	-42.9	-184.9	-201.7	-181.2	119.6	264.5	288.5	265.4	-76.7	-79.7	-86.9	-84.2
OATS	0.0	-0.6	#VALUE!	-1.0	-0.7	-0.3	#VALUE!	0.0	0.7	0.9	#VALUE!	0.9
SOYBEANS	-94.7	-146.8	-144.7	-126.1	141.9	194.6	191.3	172.2	-47.2	-47.8	-46.6	-46.1
SOY OIL	-34.5	-45.0	-29.7	-28.5	26.9	33.7	24.1	22.4	7.6	11.3	5.6	6.1
SOY MEAL	-168.8	-189.4	-187.3	-174.0	156.2	173.7	170.7	158.8	12.5	15.7	16.6	15.2

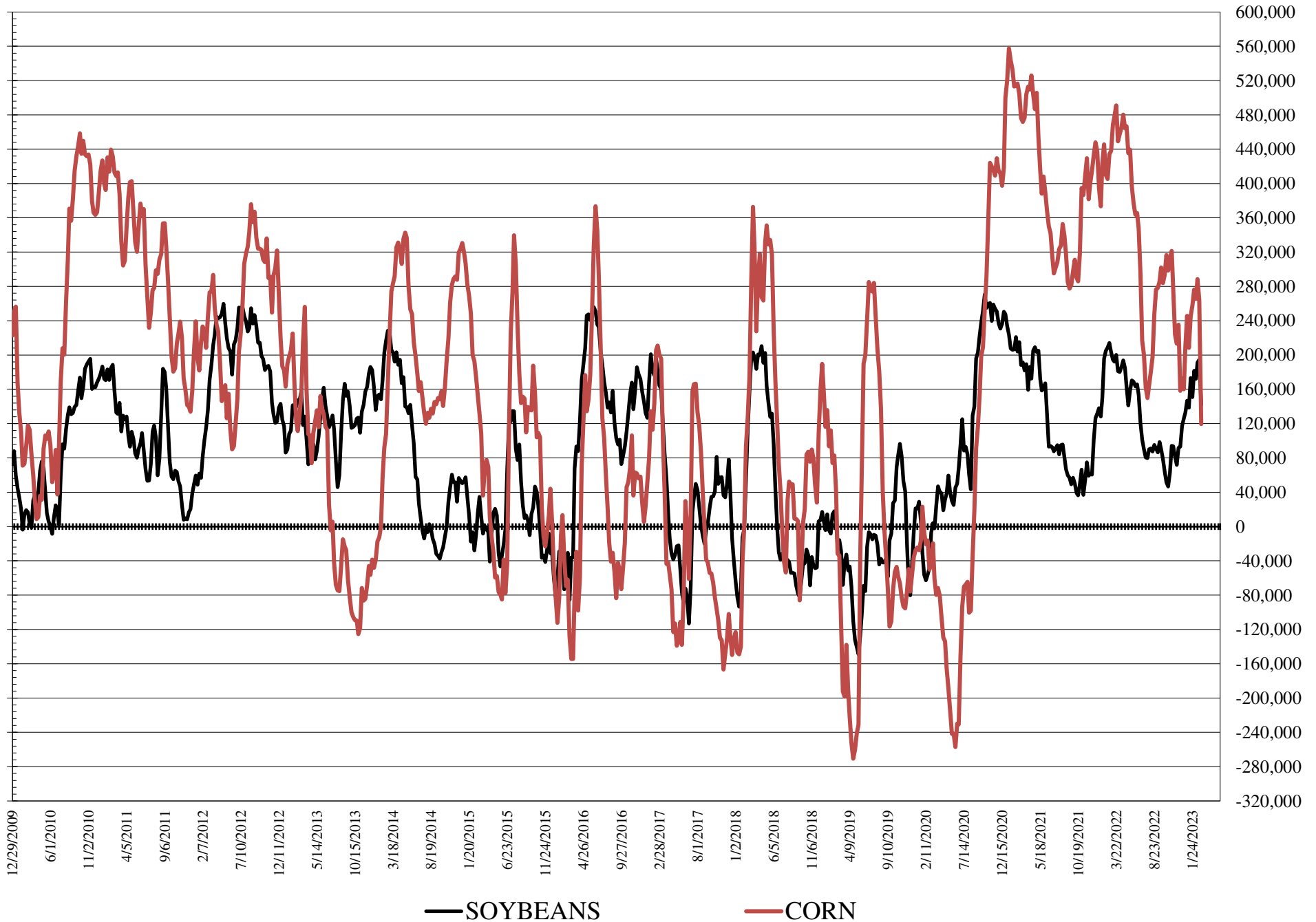
	TOTAL OPEN INTEREST				COMMERCIALS		% HELD BY TRADERS LARGE (FUNDS)		SMALL (NON-REP)	
	28-Feb	21-Feb	14-Feb	7-Feb	LONG	SHORT	LONG	SHORT	LONG	SHORT
WHEAT										
Chicago	407,327	441,354	457,528	428,529		37% 21%	21%	38%	10%	10%
Kansas City	180,456	198,418	206,923	206,406		45% 42%	24%	26%	11%	12%
Minneapolis	53,902	58,427	60,304	59,797		57% 59%	17%	12%	18%	21%
CORN	1,522,958	1,647,324	1,685,824	1,622,738		44% 47%	20%	12%	10%	15%
OATS	4,170	3,873	#VALUE!	3,366						
SOYBEANS	789,610	860,772	868,514	840,111		44% 56%	24%	6%	6%	12%
SOY OIL	463,290	507,077	505,256	499,140		52% 59%	17%	11%	7%	5%
SOY MEAL	462,185	517,351	512,704	488,770		35% 71%	37%	4%	10%	8%

SOURCE: CFTC & FI

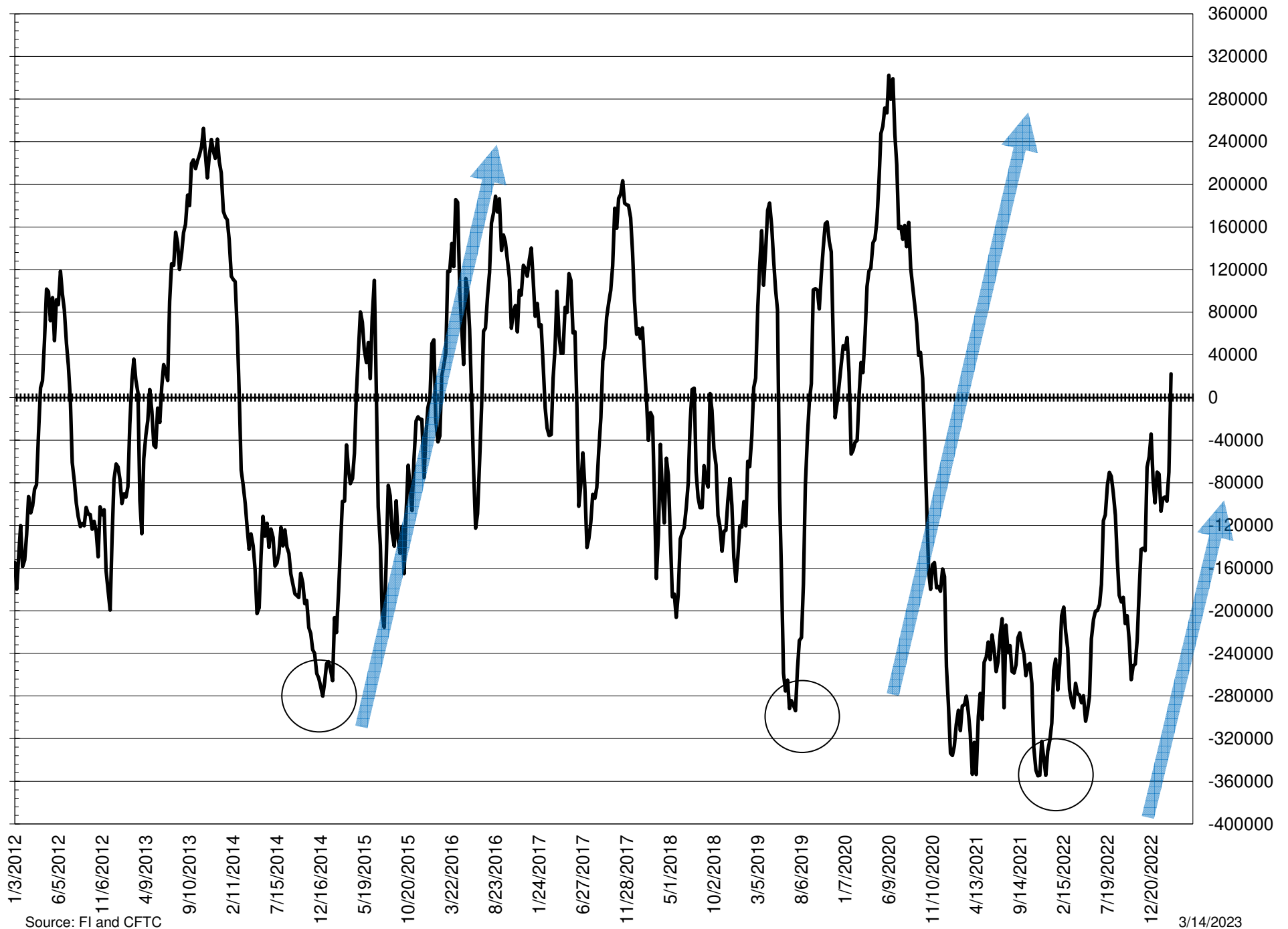
NET POSITION FUTURES AND OPTIONS OF LARGE SPECULATORS IN SOYBEAN MEAL AND SOYBEAN OIL



NET POSITION FUTURES AND OPTIONS OF LARGE SPECULATORS IN SOYBEANS AND CORN



NET POSITION FUTURES AND OPTIONS SPREAD OF LARGE SPECULATORS IN SOYBEANS MINUS CORN



Source: FI and CFTC

3/14/2023

**DISAGGREGATED COMMITMENT OF TRADERS
FUTURES ONLY NET POSITIONS
AS OF 02/28/2023
(IN THOUSAND CONTRACTS)**

	PRODUCER / MERCHANT / PROCESSOR / USER				(INDEX/ETF) SWAP DEALERS				(CTA/CPO/OTHER UNREGISTERED) MANAGED MONEY			
	28-Feb	21-Feb	14-Feb	7-Feb	28-Feb	21-Feb	14-Feb	7-Feb	28-Feb	21-Feb	14-Feb	7-Feb
	WHEAT											
Chicago	0.2	(17.2)	(25.7)	(15.3)	65.9	64.7	63.8	64.3	(93.8)	(74.2)	(61.7)	(72.1)
Kansas City	(32.2)	(47.1)	(45.2)	(36.2)	37.6	36.0	36.5	36.8	(0.5)	15.3	11.0	2.8
Minneapolis	(3.5)	(9.1)	(6.7)	(4.1)	2.4	2.8	1.8	1.6	0.5	3.1	1.9	(0.3)
All Wheat	(35.5)	(73.3)	(77.6)	(55.6)	106.0	103.5	102.1	102.6	(93.9)	(55.7)	(48.8)	(69.6)
CORN	(292.2)	(424.9)	(440.5)	(418.8)	216.8	215.3	216.9	214.4	66.4	217.3	233.8	198.1
OATS	0.0	(0.6)	-	(1.0)	(0.1)	-	-	-	(1.3)	(1.0)	-	(0.6)
SOYBEANS	(219.0)	(231.1)	(233.1)	(213.2)	101.1	80.9	83.3	79.4	130.5	187.0	181.9	165.9
SOY OIL	(133.9)	(146.1)	(132.8)	(128.5)	99.6	99.2	99.2	97.8	25.4	31.4	19.0	19.2
SOY MEAL	(254.5)	(272.4)	(270.2)	(256.8)	82.9	80.7	80.9	79.9	139.4	155.8	154.2	144.3

	Managed % of OI			
Chicago W	-27%	-21%	-17%	-20%
Corn	5%	16%	17%	15%

	TOTAL OPEN INTEREST				OTHER REPORTABLE				NON REPORTABLE			
	28-Feb	21-Feb	14-Feb	7-Feb	28-Feb	21-Feb	14-Feb	7-Feb	28-Feb	21-Feb	14-Feb	7-Feb
	WHEAT											
Chicago	341,154	359,360	370,508	358,162	27.0	26.7	27.6	25.8	0.6	(0.1)	(4.0)	(2.6)
Kansas City	166,388	180,977	189,148	190,500	(2.0)	(3.5)	(1.1)	0.2	(2.9)	(0.8)	(1.1)	(3.5)
Minneapolis	52,504	56,820	58,628	58,239	2.3	2.9	2.2	2.3	(1.7)	0.3	0.7	0.4
All Wheat	560,046	597,157	618,284	606,901	27.3	26.2	28.7	28.3	(4.0)	(0.6)	(4.4)	(5.8)
CORN	1,248,175	1,340,322	1,375,249	1,319,429	76.8	65.7	70.9	84.2	(67.8)	(73.4)	(81.1)	(77.9)
OATS	4,116	3,806	-	3,297	0.5	0.6	-	0.7	0.7	0.9	-	0.9
SOYBEANS	672,590	731,529	743,026	717,684	27.9	6.2	9.9	8.9	(40.5)	(43.1)	(42.1)	(41.0)
SOY OIL	433,307	455,298	456,513	453,114	2.1	4.9	10.2	6.3	6.8	10.6	4.4	5.3
SOY MEAL	423,624	458,446	452,892	434,476	19.9	20.2	18.2	16.9	12.3	15.8	17.0	15.8

SOURCE: CFTC & FI

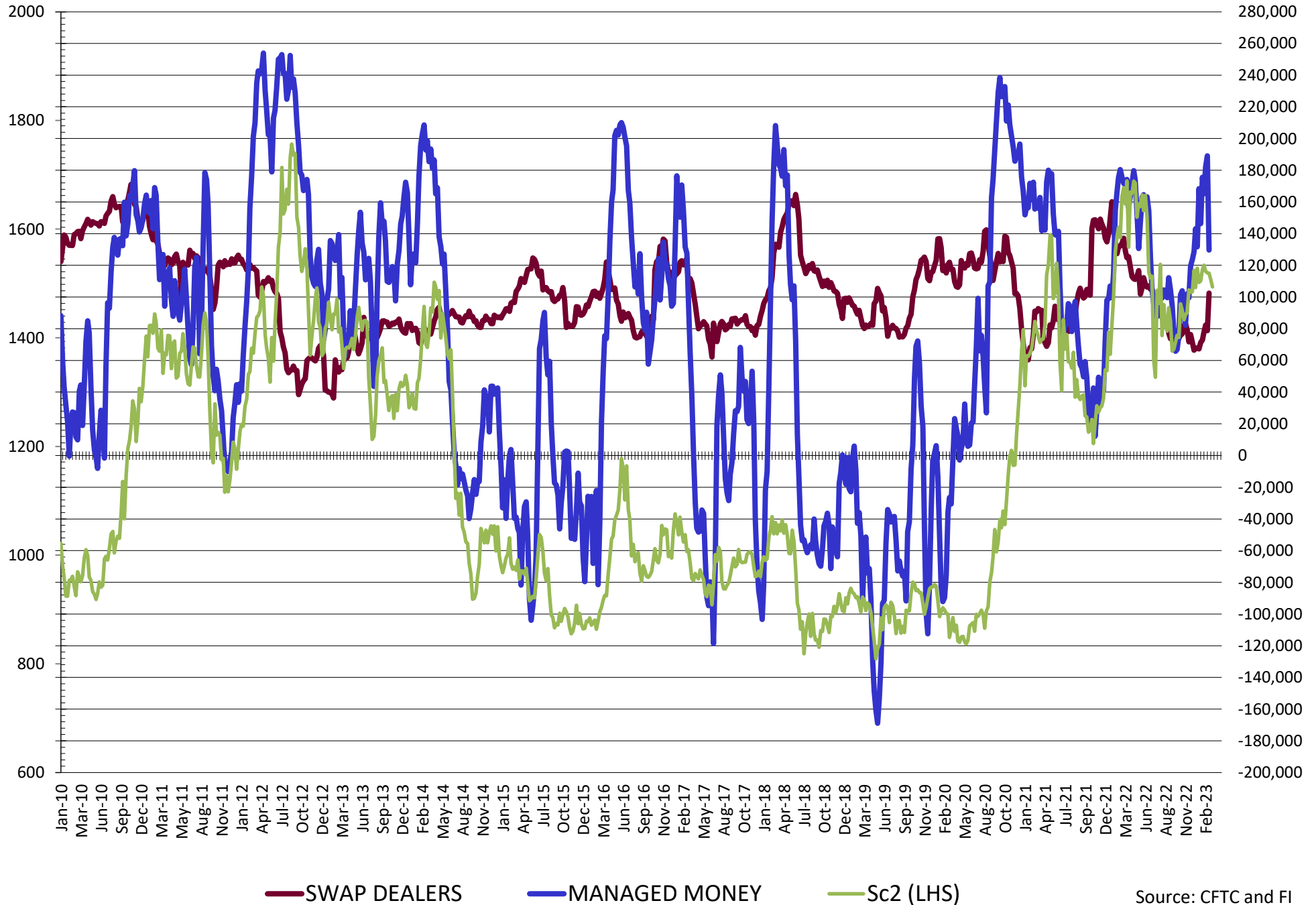
**DISAGGREGATED COMMITMENT OF TRADERS
FUTURES & OPTIONS NET POSITIONS
AS OF 02/28/2023
(IN THOUSAND CONTRACTS)**

	PRODUCER / MERCHANT / PROCESSOR / USER				(INDEX/ETF) SWAP DEALERS				(CTA/CPO/OTHER UNREGISTERED) MANAGED MONEY			
	28-Feb	21-Feb	14-Feb	7-Feb	28-Feb	21-Feb	14-Feb	7-Feb	28-Feb	21-Feb	14-Feb	7-Feb
	WHEAT											
Chicago	1.7	(15.6)	(24.2)	(14.8)	65.4	65.9	66.4	65.7	(91.6)	(72.0)	(60.0)	(71.4)
Kansas City	(31.4)	(47.4)	(45.5)	(36.4)	37.3	36.0	36.6	36.8	0.3	16.0	11.6	3.8
Minneapolis	(3.4)	(9.2)	(6.9)	(4.0)	2.4	2.8	1.9	1.6	0.5	3.1	1.9	(0.3)
All Wheat	(33.1)	(72.2)	(76.6)	(55.2)	105.1	104.7	104.8	104.1	(90.8)	(52.9)	(46.4)	(67.9)
CORN	(268.0)	(404.6)	(421.7)	(399.7)	225.1	219.7	220.0	218.6	68.6	215.9	234.9	202.0
OATS	0.0	(0.6)	0.0	(1.0)	(0.1)	0.0	0.0	0.0	(1.3)	(1.0)	0.0	(0.6)
SOYBEANS	(197.1)	(225.6)	(227.0)	(203.8)	102.5	78.8	82.3	77.7	129.6	189.0	182.2	165.1
SOY OIL	(135.0)	(145.6)	(130.3)	(127.5)	100.4	100.7	100.6	99.1	28.1	34.3	22.3	22.5
SOY MEAL	(251.4)	(268.6)	(266.6)	(252.7)	82.7	79.2	79.3	78.6	140.0	154.1	152.4	142.7

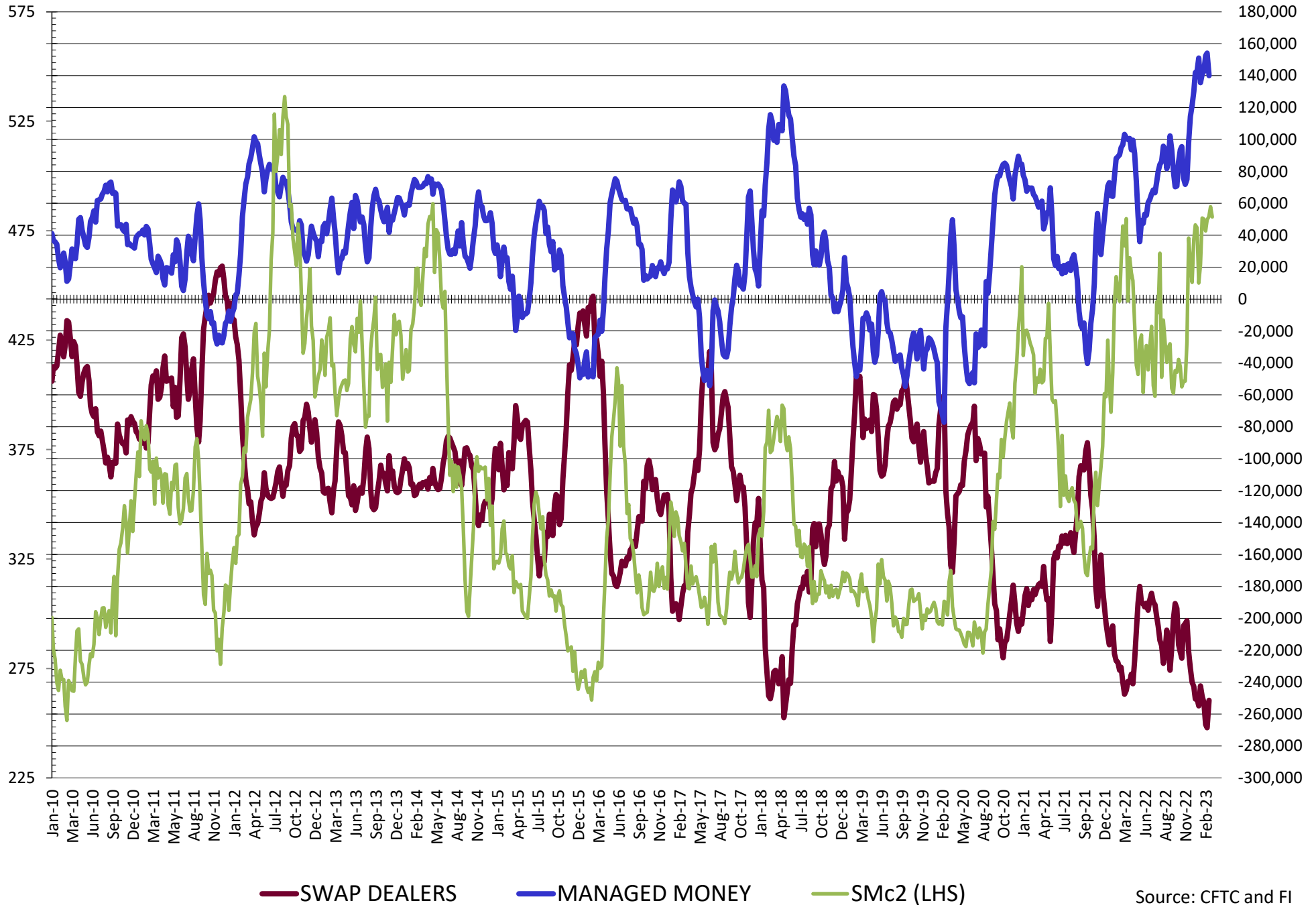
	TOTAL OPEN INTEREST				OTHER REPORTABLE				NON REPORTABLE			
	28-Feb	21-Feb	14-Feb	7-Feb	28-Feb	21-Feb	14-Feb	7-Feb	28-Feb	21-Feb	14-Feb	7-Feb
	WHEAT											
Chicago	407,327	441,354	457,528	428,529	22.7	20.6	20.7	21.8	1.8	1.1	(2.9)	(1.3)
Kansas City	180,456	198,418	206,923	206,406	(3.4)	(3.8)	(1.6)	(0.7)	(2.8)	(0.8)	(1.0)	(3.5)
Minneapolis	53,902	58,427	60,304	59,797	2.2	3.0	2.3	2.2	(1.6)	0.3	0.7	0.5
All Wheat	641,685	698,199	724,755	694,732	21.5	19.8	21.4	23.3	(2.6)	0.7	(3.2)	(4.3)
CORN	1,522,958	1,647,324	1,685,824	1,622,738	51.0	48.6	53.7	63.3	(76.7)	(79.7)	(79.7)	(79.7)
OATS	4,170	3,873	0	3,366	0.5	0.6	0.0	0.7	0.7	0.9	0.0	0.9
SOYBEANS	789,610	860,772	868,514	840,111	12.3	5.5	9.1	7.1	(47.2)	(47.8)	(46.6)	(46.1)
SOY OIL	463,290	507,077	505,256	499,140	(1.2)	(0.6)	1.8	(0.1)	7.6	11.3	5.6	6.1
SOY MEAL	462,185	517,351	512,704	488,770	16.3	19.5	18.3	16.1	12.5	15.7	16.6	15.2

SOURCE: CFTC & FI

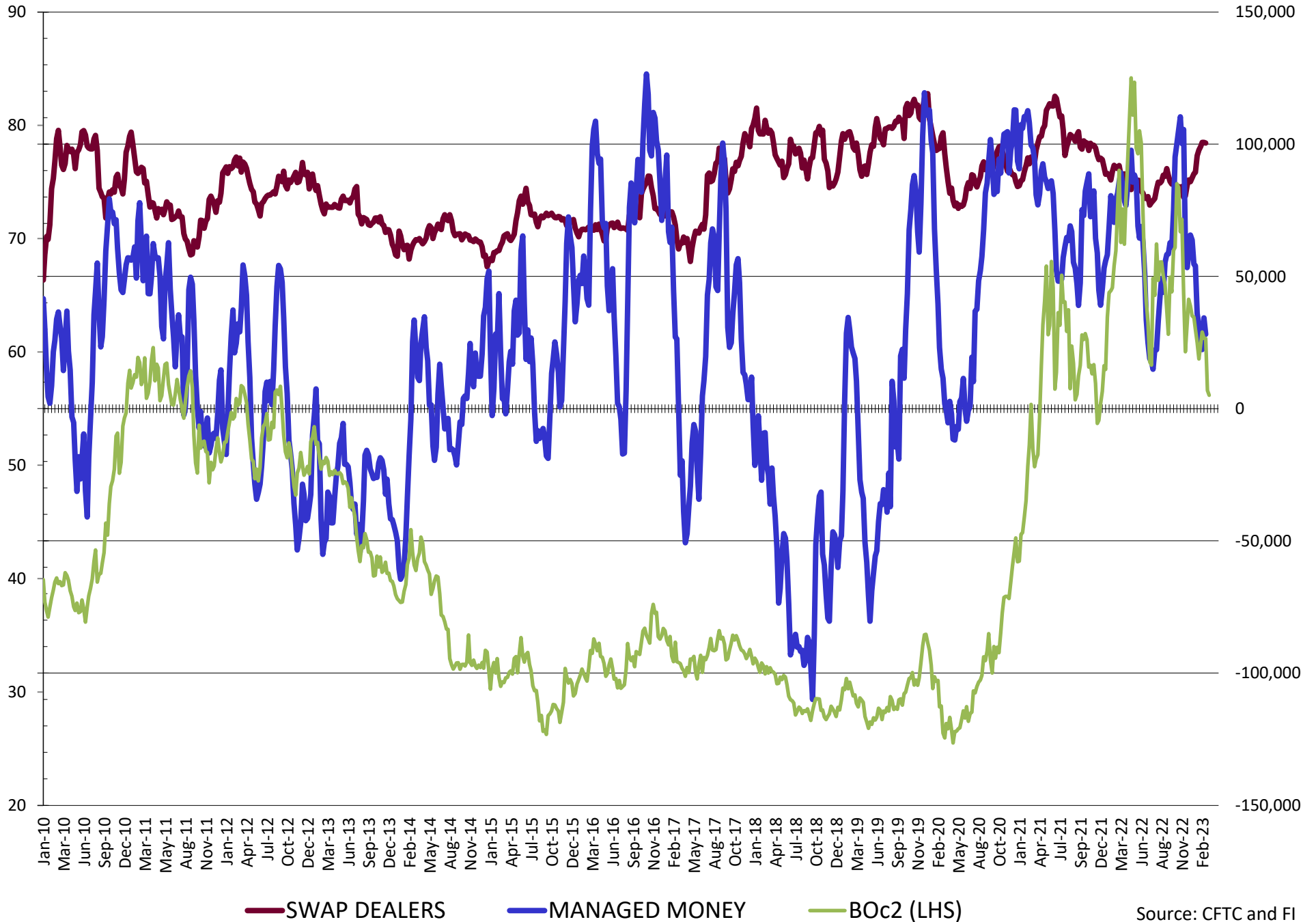
NET POSITION FUTURES AND OPTIONS OF SWAP AND MANAGED FUNDS IN SOYBEANS



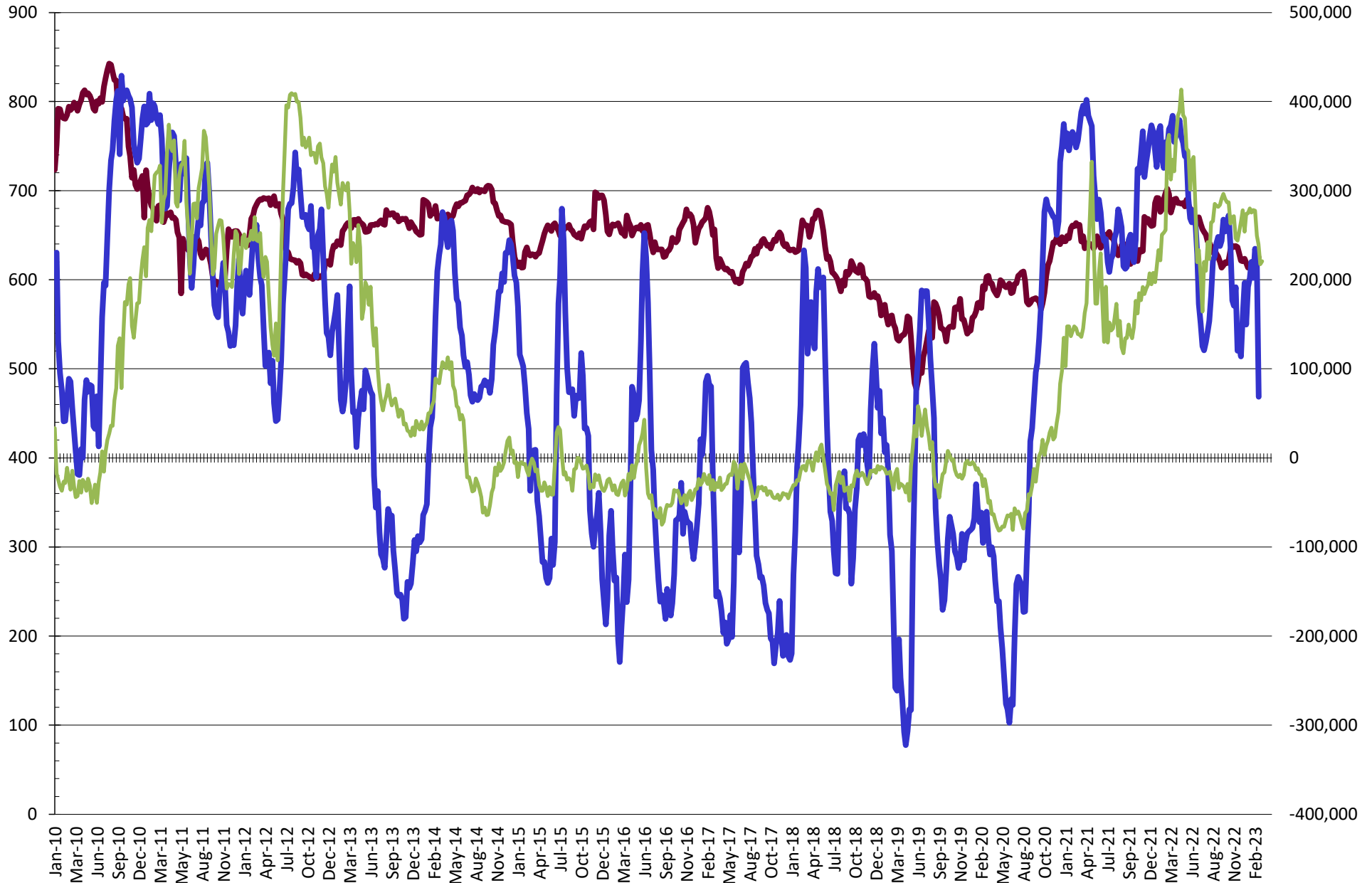
NET POSITION FUTURES AND OPTIONS OF SWAP DEALERS AND MANAGED FUNDS IN SOYBEAN MEAL



NET POSITION FUTURES AND OPTIONS OF SWAP AND MANAGED FUNDS IN SOYBEAN OIL

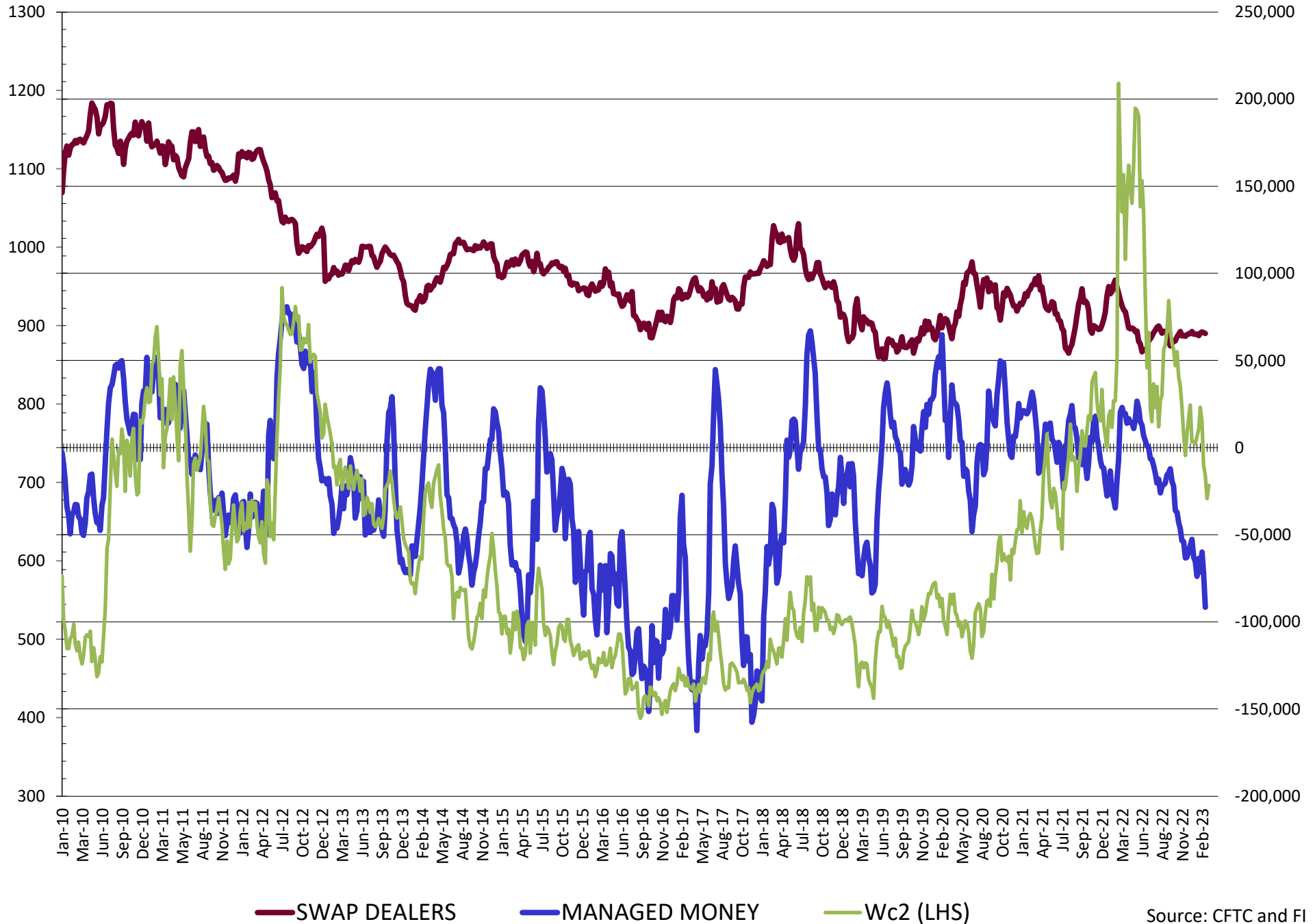


NET POSITION FUTURES AND OPTIONS OF SWAP AND MANAGED FUNDS IN CORN

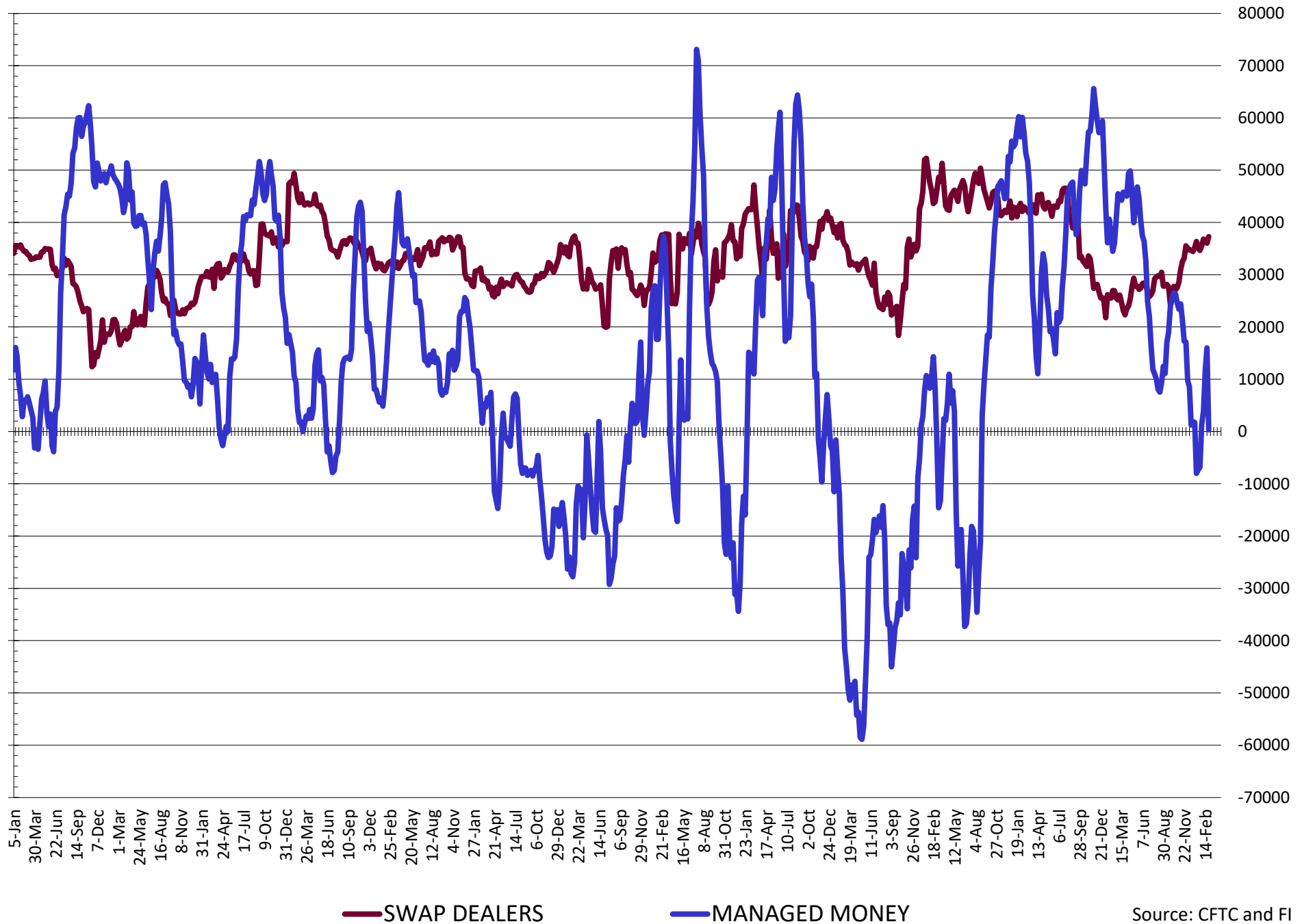


— SWAP DEALERS
 — MANAGED MONEY
 — Cc2 (LHS)

NET POSITION FUTURES AND OPTIONS OF SWAP AND MANAGED FUNDS IN CHICAGO WHEAT

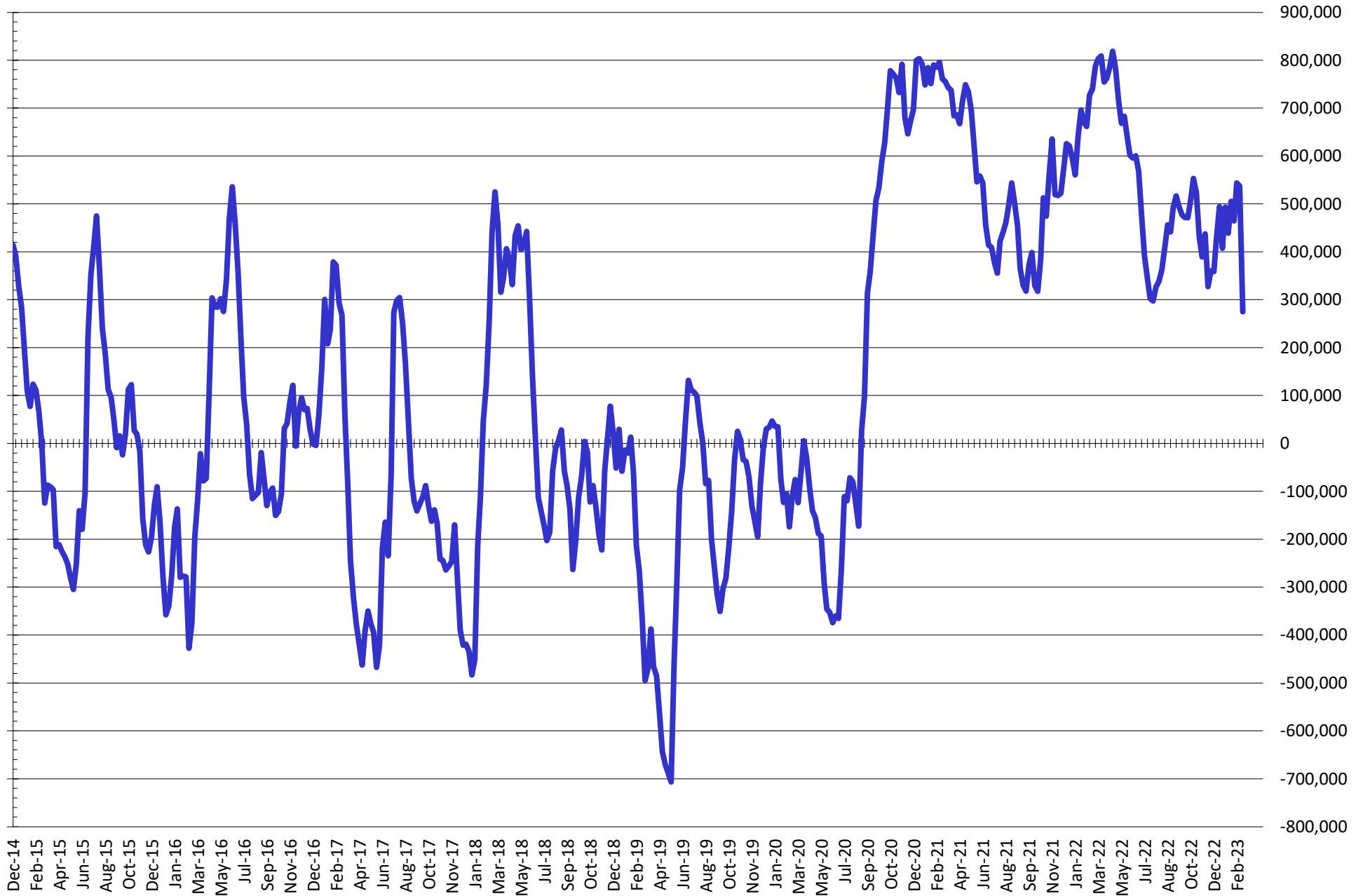


NET POSITION FUTURES AND OPTIONS OF SWAP AND MANAGED FUNDS IN KANSAS WHEAT



Source: CFTC and FI
3/14/2023

NET POSITION FUTURES AND OPTIONS OF SWAP AND MANAGED FUNDS IN COMBINED SRW, HRW, CORN, SOYBEANS, SOYMEAL AND SOYOIL



— Net Managed Money

Source: CFTC and FI
3/14/2023

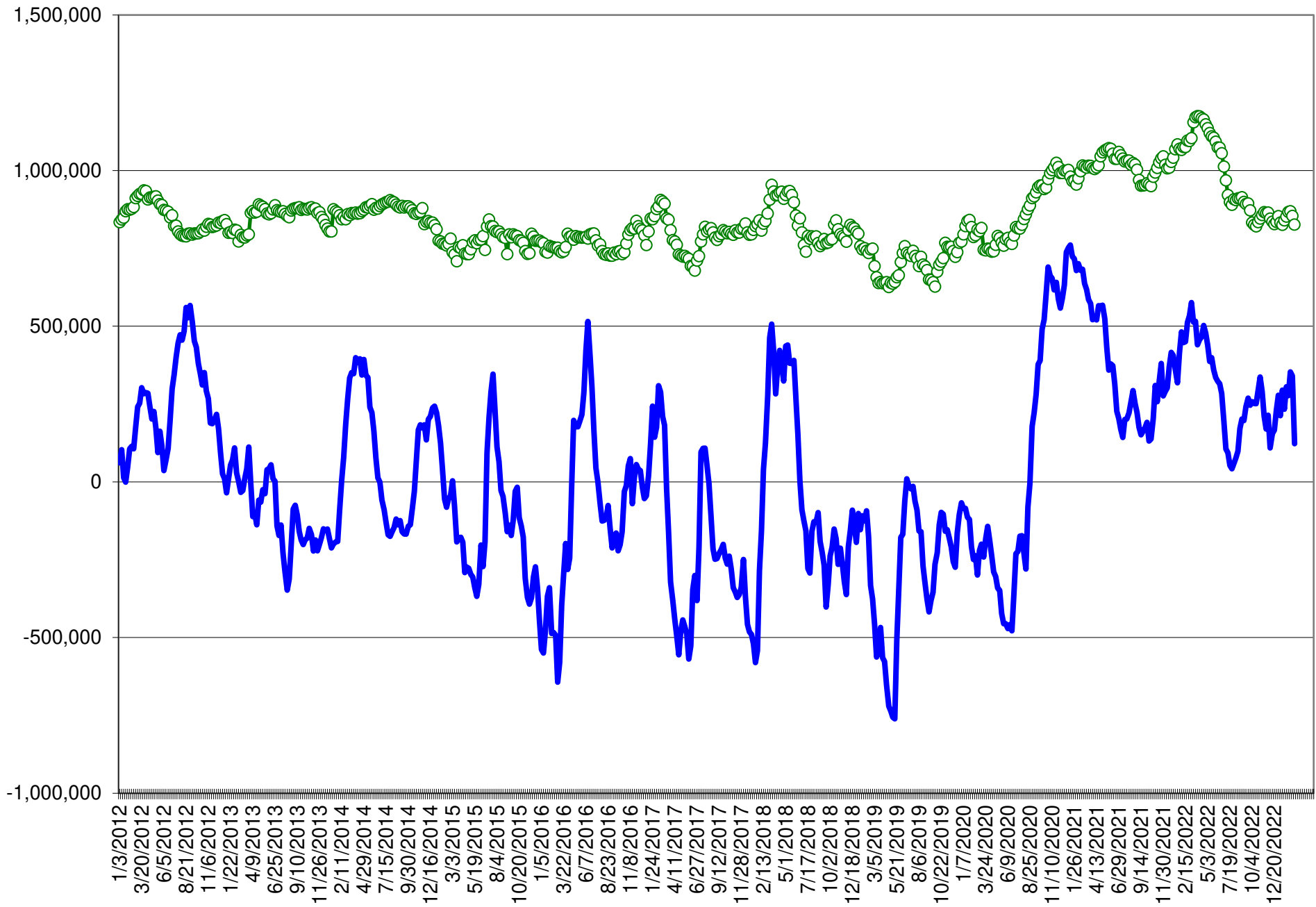
COMMITMENT OF TRADERS
FUTURES & OPTIONS NET POSITIONS (INDEX BROKEN OUT)
AS OF 02/28/2023
(IN THOUSAND CONTRACTS)

	COMMERCIAL				(FUND) NON COMMERCIAL				(SPEC) NON-REPORTABLE			
	28-Feb	21-Feb	14-Feb	7-Feb	28-Feb	21-Feb	14-Feb	7-Feb	28-Feb	21-Feb	14-Feb	7-Feb
	WHEAT											
Chicago	(1.7)	(20.0)	(27.8)	(17.7)	(90.5)	(76.4)	(68.2)	(79.5)	1.8	1.1	(2.9)	(1.3)
Kansas City	(29.9)	(47.2)	(45.2)	(36.7)	(14.2)	(1.8)	(3.5)	(8.6)	(2.8)	(0.8)	(1.0)	(3.5)
Minneapolis	-	-	-	-	-	-	-	-	-	-	-	-
All Wheat	(31.6)	(67.3)	(73.0)	(54.4)	(104.8)	(78.2)	(71.7)	(88.1)	(1.0)	0.3	(4.0)	(4.8)
CORN	(263.1)	(404.8)	(425.9)	(405.3)	10.3	133.6	157.1	131.6	(76.7)	(79.7)	(86.9)	(84.2)
OATS	-	-	-	-	-	-	-	-	-	-	-	-
SOYBEANS	(194.4)	(234.7)	(236.1)	(214.6)	102.8	147.4	144.3	125.0	(47.2)	(47.8)	(46.6)	(46.1)
SOY OIL	(111.8)	(123.3)	(109.4)	(108.2)	2.4	10.5	(0.1)	(2.5)	7.6	11.3	5.6	6.1
SOY MEAL	(243.1)	(264.6)	(262.5)	(247.7)	111.9	126.9	123.2	111.0	12.5	15.7	16.6	15.2

	TOTAL OPEN INTEREST				(INDEX) COMMERCIAL INDEX TRADERS				(INDEX) % NET OF TOTAL OPEN INTEREST			
	28-Feb	21-Feb	14-Feb	7-Feb	28-Feb	21-Feb	14-Feb	7-Feb	28-Feb	21-Feb	14-Feb	7-Feb
	WHEAT											
Chicago	407,327	441,354	457,528	428,529	90.4	95.3	98.9	98.5	22.2%	21.6%	21.6%	23.0%
Kansas City	180,456	198,418	206,923	206,406	47.0	49.8	49.7	48.9	26.0%	25.1%	24.0%	23.7%
Minneapolis	-	-	-	-	-	-	-	-	-	-	-	-
All Wheat	587,783	639,772	664,451	634,935	137.4	145.1	148.6	147.4	23.4%	22.7%	22.4%	23.2%
CORN	1,522,958	1,647,324	1,685,824	1,622,738	329.5	350.9	355.7	357.9	21.6%	21.3%	21.1%	22.1%
OATS	-	-	-	-	-	-	-	-	-	-	-	-
SOYBEANS	789,610	860,772	868,514	840,111	138.8	135.0	138.4	135.8	17.6%	15.7%	15.9%	16.2%
SOY OIL	463,290	507,077	505,256	499,140	101.8	101.4	103.9	104.6	22.0%	20.0%	20.6%	21.0%
SOY MEAL	462,185	517,351	512,704	488,770	118.7	122.0	122.8	121.5	25.7%	23.6%	23.9%	24.9%

SOURCE: CFTC & FI

NET POSITION FUTURES AND OPTIONS OF SPECULATORS AND INDEX FUNDS IN COMBINED SRW, HRW, CORN, SOYBEANS, SOYMEAL AND SOYOIL



Source: CFTC and FI

○ Net Index

— Net Speculator

Traditional Daily Estimate of Funds

(Neg)-"Short" Pos-"Long"

	Corn	Bean	Chi. Wheat	Meal	Oil
Estimate 3/7/23	143.1	173.4	(62.8)	173.4	17.6
8-Mar	(6.0)	1.0	(4.0)	(2.0)	2.0
9-Mar	(10.0)	(2.0)	(8.0)	1.0	(5.0)
10-Mar	4.0	(3.0)	4.0	(1.0)	(2.0)
13-Mar	(4.0)	(8.0)	2.0	(3.0)	(4.0)
14-Mar	6.0	0.0	5.0	1.0	2.0
FI Est. of Futures Only	133.1	161.4	(63.8)	169.4	10.6
FI Est. Futures & Options	109.6	144.8	(66.0)	166.3	9.9

Source: Reuters, CFTC & FI (FI est. are noted with latest date)

Disclaimer

TO CLIENTS/PROSPECTS OF FUTURES INTERNATIONAL, SEE RISK DISCLOSURE BELOW:

THIS COMMUNICATION IS CONVEYED AS A SOLICITATION FOR ENTERING INTO A DERIVATIVES TRANSACTION.

Any trading recommendations and market or other information to Customer by Futures International (FI), although based upon information obtained from sources believed by FI to be reliable may not be accurate and may be changed without notice to customer. FI makes no guarantee as to the accuracy or completeness of any of the information or recommendations furnished to Customer. Customer understands that FI, its managers, employees and/or affiliates may have a position in commodity futures, options or other derivatives which may not be consistent with the recommendations furnished by FI to Customer.

The risk of trading futures and options and other derivatives involves a substantial risk of loss and is not suitable for all persons. In purchasing an option, the risk is limited to the premium paid, and all commissions and fees involved with the trade. When an option is shorted or written, the writer of the option has unlimited risk with respect to the option written. The use of options strategies such as a straddles and strangles involve multiple option positions and may substantially increase the amount of commissions and fees paid to execute the strategy. Option prices do not necessarily move in tandem with cash or futures prices. Each person must consider whether a particular trade, combination of trades or strategy is suitable for that person's financial means and objectives.

This material may include discussions of seasonal patterns, however, futures prices have already factored in the seasonal aspects of supply and demand, and seasonal patterns are no indication of future market trends. Finally, past performance is not indicative of future results.

This communication may contain links to third party websites which are not under the control of FI and FI is not responsible for their content. Products and services are offered only in jurisdictions where solicitation and sale are lawful, and in accordance with applicable laws and regulations in each such jurisdiction.