

CFTC COMMITMENT OF TRADERS REPORT

As of 2/14/2023

TRADITIONAL FUNDS net position changes

Wed to Tue, in 000 contracts

	Corn	Bean	Meal	Oil	Chi. Wheat	KC Wheat	Min Wheat
Futures Only	22.4	17.1	11.2	3.7	12.2	6.9	2.1
Futures & Options Combined	23.2	19.1	11.8	1.7	10.3	6.9	2.4

TRADITIONAL COMMERCIAL net position changes

	Corn	Bean	Meal	Oil	Chi. Wheat	KC Wheat	Min Wheat
Futures Only	(19.2)	(16.0)	(12.4)	(2.9)	(10.8)	(9.3)	(2.4)
Futures & Options Combined	(20.5)	(18.6)	(13.2)	(1.2)	(8.7)	(9.4)	(2.6)

MANAGED MONEY net position changes

	Corn	Bean	Meal	Oil	Chi. Wheat	KC Wheat	Min Wheat
Futures Only	35.7	16.0	9.9	(0.2)	10.4	8.2	2.2
Futures & Options Combined	32.8	17.1	9.7	(0.2)	11.4	7.8	2.2

SWAP DEALERS net position changes

	Corn	Bean	Meal	Oil	Chi. Wheat	KC Wheat	Min Wheat
Futures Only	2.5	3.9	1.0	1.4	(0.5)	(0.3)	0.2
Futures & Options Combined	1.5	4.5	0.7	1.6	0.7	(0.2)	0.2

PRODUCERS/END USERS net position changes

	Corn	Bean	Meal	Oil	Chi. Wheat	KC Wheat	Min Wheat
Futures Only	(21.7)	(19.9)	(13.4)	(4.3)	(10.3)	(9.0)	(2.6)
Futures & Options Combined	(21.9)	(23.1)	(13.9)	(2.8)	(9.4)	(9.2)	(2.8)

INDEX net position changes

	Corn	Bean	Meal	Oil	Chi. Wheat	KC Wheat	Min Wheat
Futures & Options Combined	(2.2)	2.6	1.2	(0.7)	0.4	0.8	NA

SUPPLEMENTAL NON-COMMERCIAL net position changes

	Corn	Bean	Meal	Oil	Chi. Wheat	KC Wheat	Min Wheat
Futures & Options Combined	25.5	19.3	12.2	2.4	11.3	5.1	NA

OPEN INTEREST net position changes

Wed to Tue, in 000 contracts

	Corn	Bean	Meal	Oil	Chi. Wheat	KC Wheat	Min Wheat
Futures Only	55.8	25.3	18.4	3.4	12.3	(1.4)	0.4
Futures & Options Combined	63.1	28.4	23.9	6.1	29.0	0.5	0.5

Source: CFTC and FI

Wed to Tue, in 000 contracts

**COMMITMENT OF TRADERS
FUTURES ONLY NET POSITIONS
AS OF 02/14/2023
(IN THOUSAND CONTRACTS)**

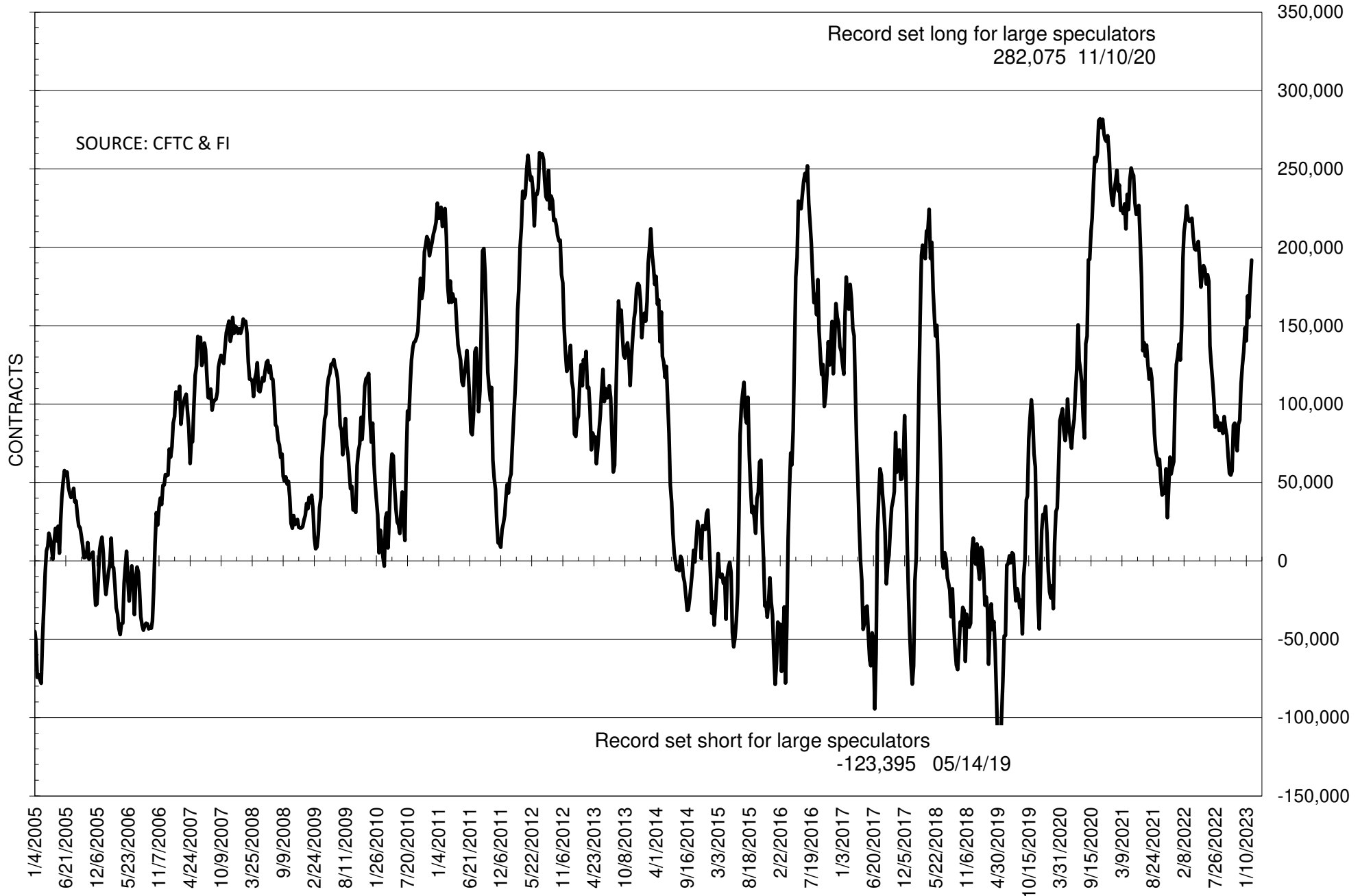
	COMMERCIAL				(FUND) NON COMMERCIAL				(SPEC) NON-REPORTABLE			
	14-Feb	7-Feb	24-Jan	17-Jan	14-Feb	7-Feb	24-Jan	17-Jan	14-Feb	7-Feb	24-Jan	17-Jan
	WHEAT											
Chicago	38.1	48.9	50.4	45.3	-34.1	-46.3	-48.3	-42.0	-4.0	-2.6	-2.1	-3.2
Kansas City	-8.7	0.6	11.2	11.3	9.8	2.9	-8.3	-8.7	-1.1	-3.5	-2.9	-2.6
Minneapolis	-4.9	-2.4	1.4	1.3	4.2	2.0	-0.8	-0.3	0.7	0.4	-0.6	-1.0
All Wheat	24.5	47.1	63.0	57.9	-20.1	-41.3	-57.4	-51.0	-4.4	-5.8	-5.6	-6.8
CORN	-223.6	-204.4	-205.7	-213.8	304.7	282.4	277.4	271.9	-81.1	-77.9	-71.7	-58.1
OATS	#VALUE!	-1.0	#VALUE!	0.0	#VALUE!	0.0	#VALUE!	-0.8	#VALUE!	0.9	#VALUE!	0.8
SOYBEANS	-149.8	-133.8	-117.9	-130.8	191.9	174.8	155.2	169.1	-42.1	-41.0	-37.3	-38.3
SOY OIL	-33.6	-30.7	-44.5	-71.1	29.2	25.4	39.3	59.5	4.4	5.3	5.3	11.6
SOY MEAL	-189.3	-176.9	-169.0	-186.1	172.4	161.2	149.8	166.4	17.0	15.8	19.2	19.8

Oats positions thin to be reported

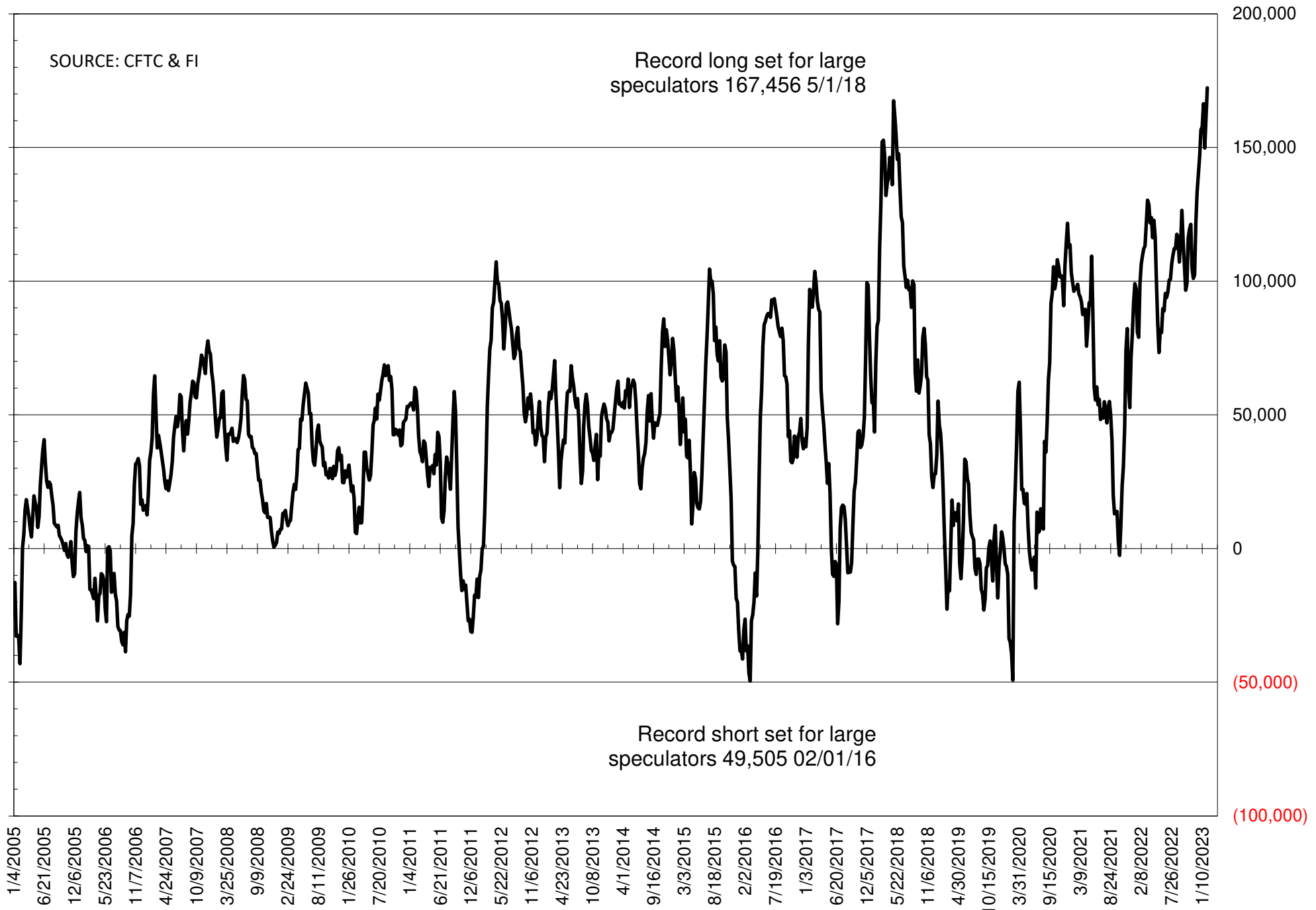
	TOTAL OPEN INTEREST				NEARBY FUTURES PRICE					14-Feb-23 LAST REPORTED % HELD BY TRADERS			
	14-Feb	7-Feb	24-Jan	17-Jan	K 8-Mar	H 14-Feb	H 7-Feb	H 31-Jan	H 24-Jan	LARGE FUND		SMALL	
										LONG	SHORT	LONG	SHORT
WHEAT													
Chicago	370508	358162	350331	340830	687.50	786.00	749.75	761.25	734.50	0%	35%	0%	11%
Kansas City	189148	190500	179845	169085	800.25	906.00	885.75	878.75	833.75	0%	21%	0%	11%
Minneapolis	58628	58239	56945	56640	838.50	932.00	917.50	921.75	904.75	0%	10%	0%	18%
CORN	1375249	1319429	1274410	1251033	625.50	682.25	674.00	679.75	677.00	0%	9%	0%	14%
OATS	#VALUE!	3297	#VALUE!	3643	349.00	365.75	384.75	394.00	375.00	0%	#VALUE!	0%	#VALUE!
SOYBEANS	743026	717684	667416	651328	1517.75	1537.50	1515.25	1538.00	1488.50	32%	6%	7%	12%
SOY OIL	456513	453114	401771	375990	59.08	60.40	60.89	62.33	60.98	0%	12%	0%	7%
SOY MEAL	452892	434476	419769	414120	485.70	501.00	481.40	484.20	459.80	0%	3%	0%	7%

SOURCE: CFTC & FI

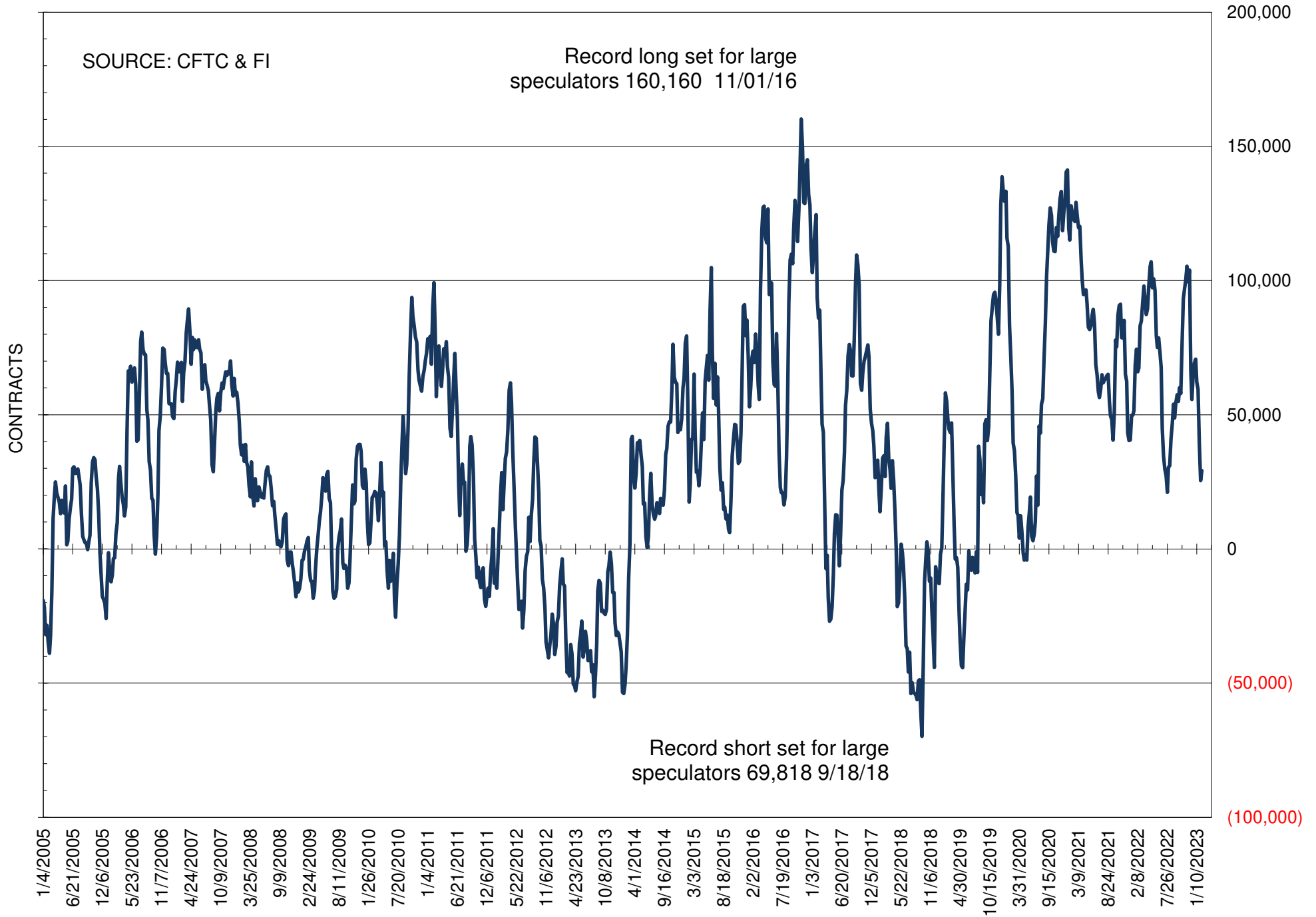
NET POSITION OF FUTURES ONLY LARGE SPECS IN SOYBEANS



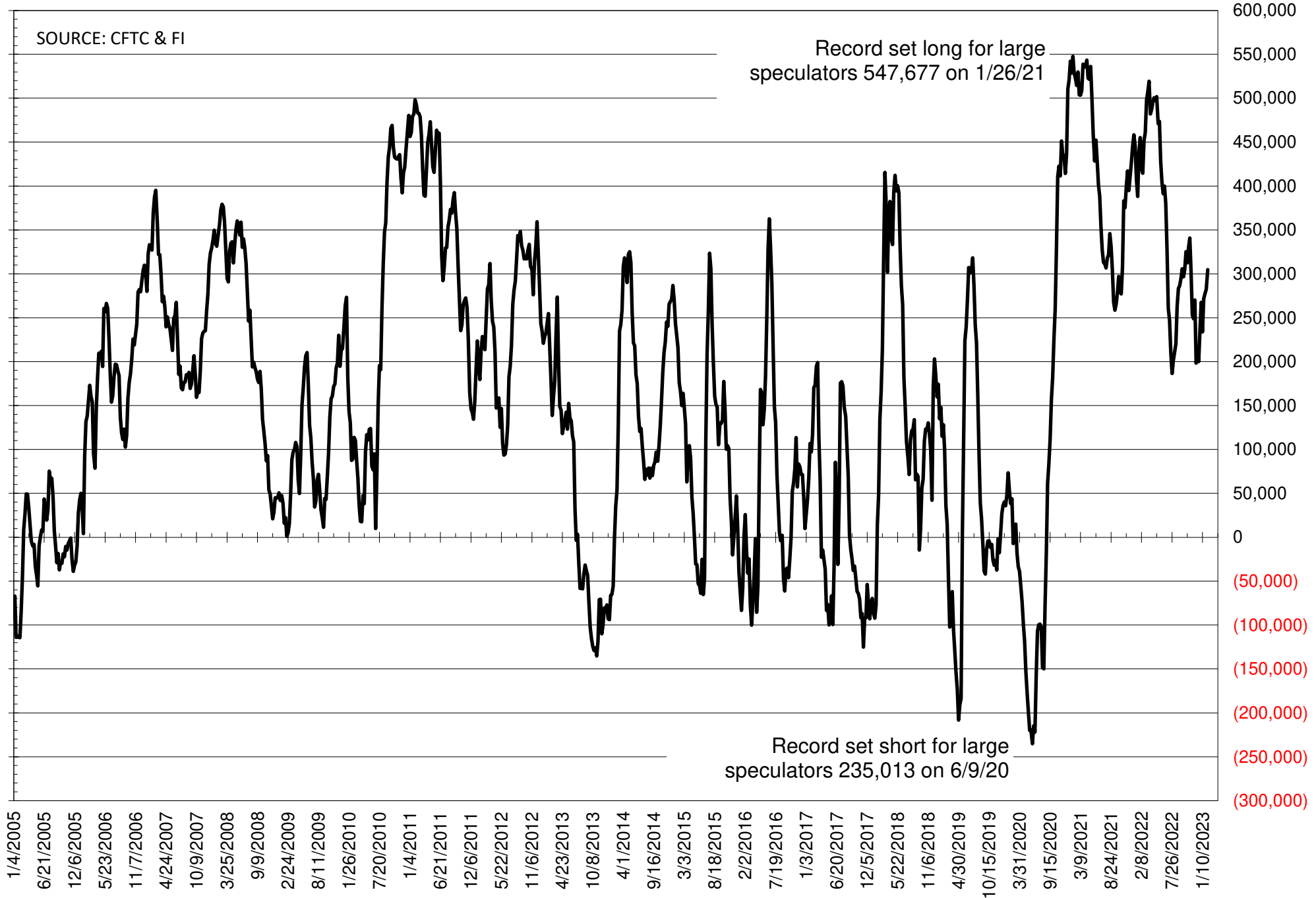
NET POSITION OF FUTURES ONLY LARGE SPECS IN SOYMEAL



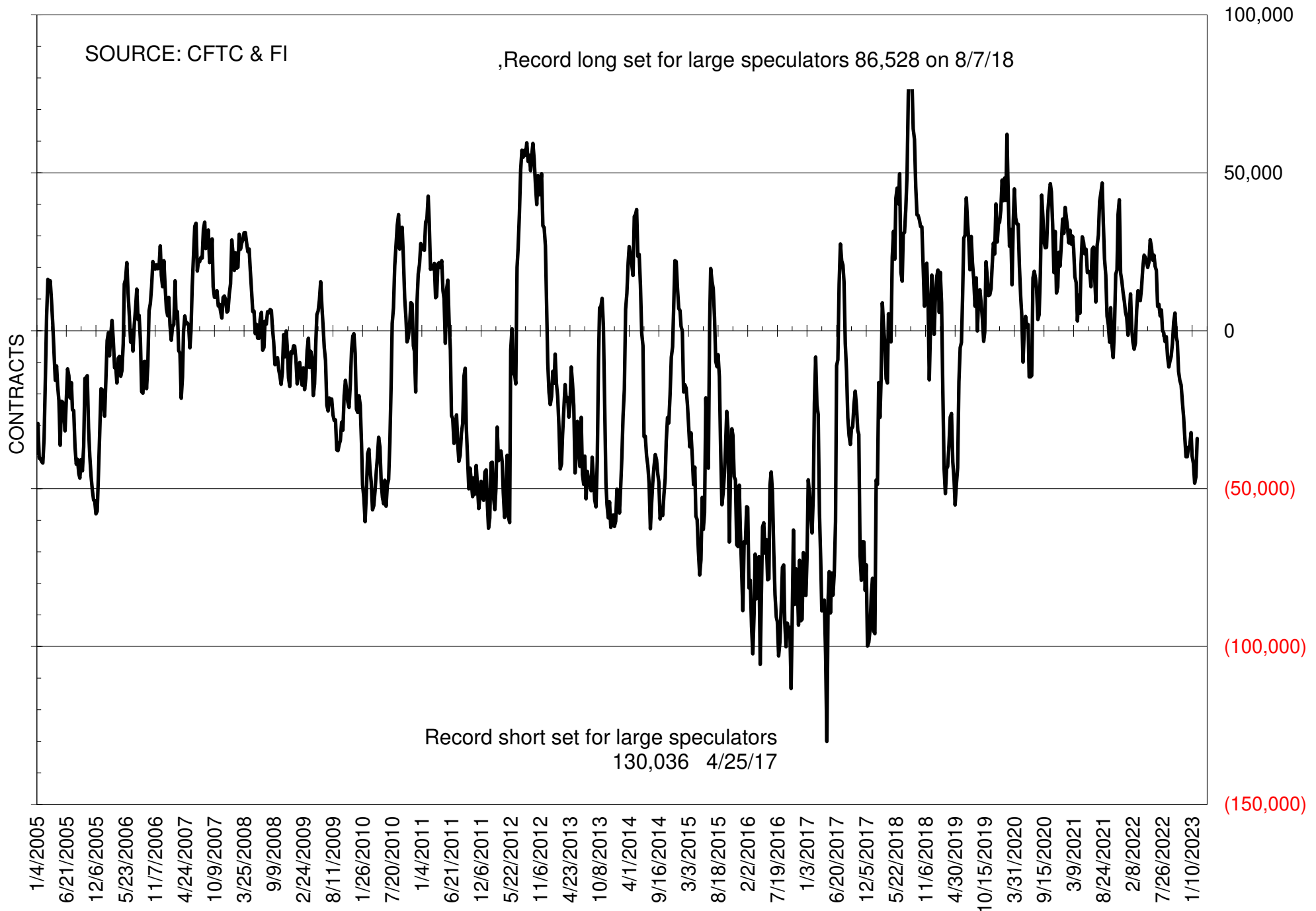
NET POSITION OF FUTURES ONLY LARGE SPECS IN SOYOIL



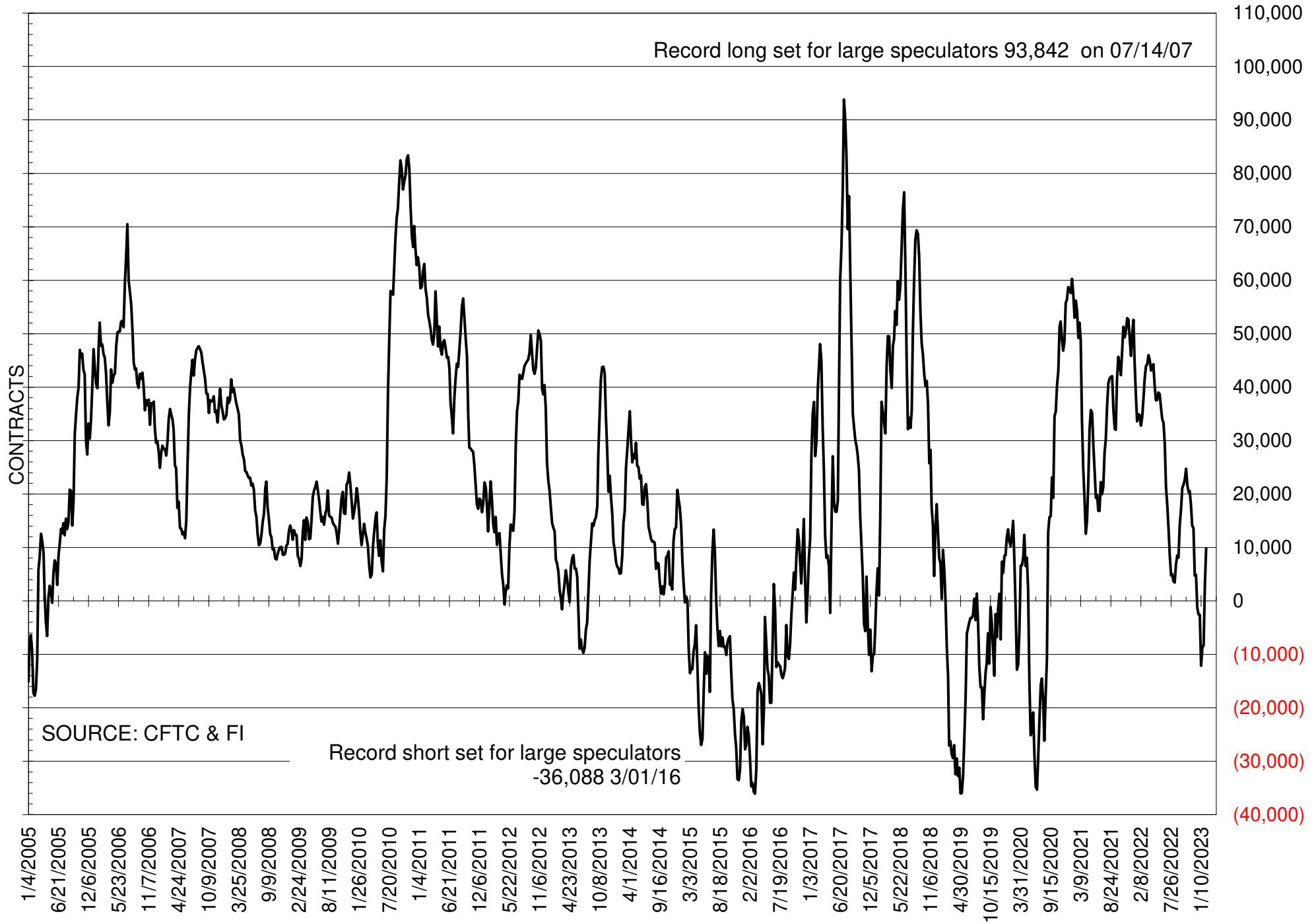
NET POSITION OF LARGE SPECULATORS IN CORN



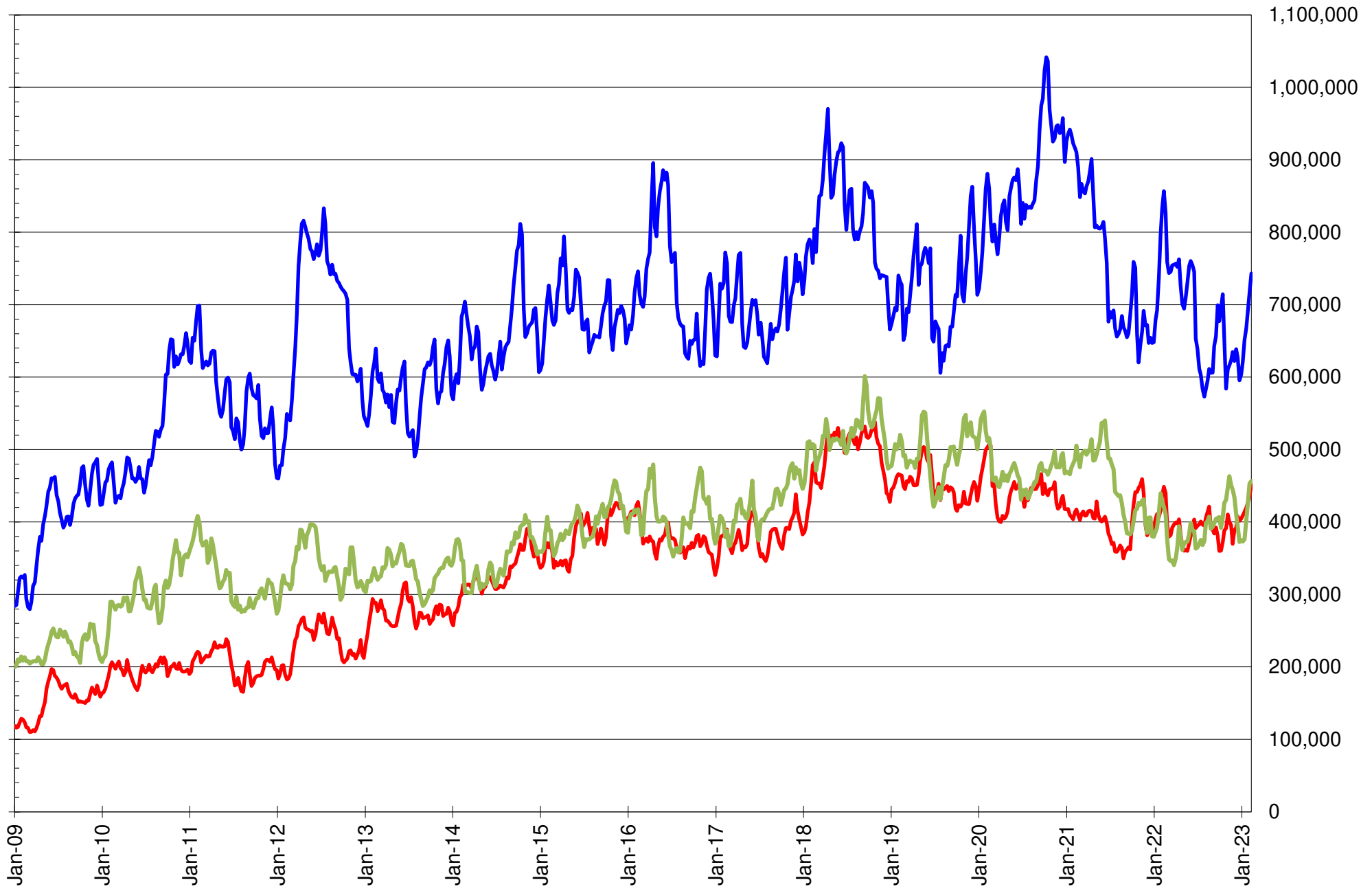
NET POSITION OF FUTURES ONLY LARGE SPECS IN CHICAGO WHEAT



NET POSITION OF LARGE SPECULATORS IN KANSAS CITY WHEAT



TOTAL OPEN INTEREST IN SOYBEANS, MEAL AND OIL, FUTURES ONLY



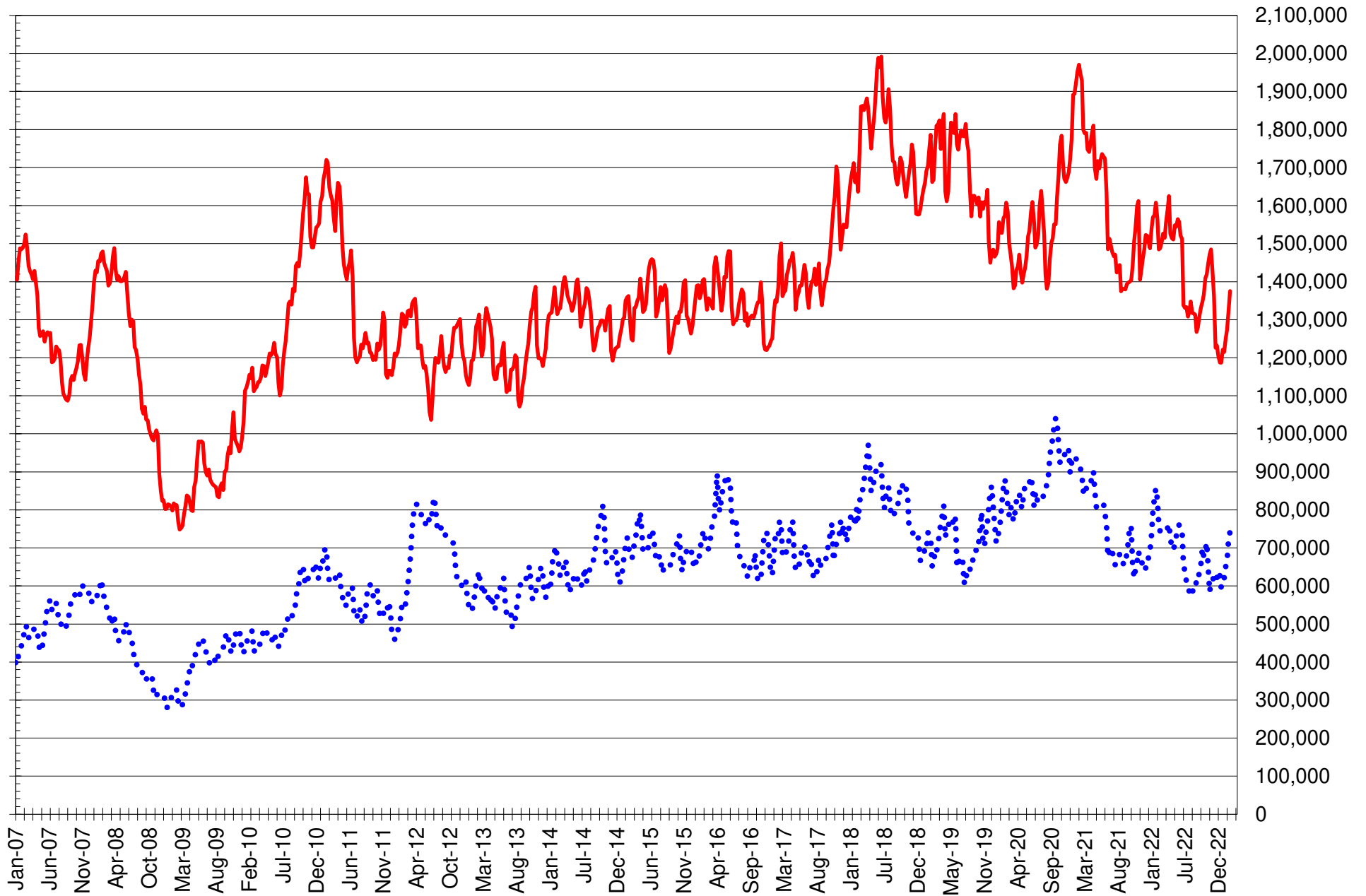
SOURCE: CFTC & FI

— SOYBEANS

— SOYBEAN MEAL

— SOYBEAN OIL

TOTAL OPEN INTEREST IN CORN AND SOYBEANS, FUTURES ONLY



SOURCE: CFTC & FI

— CORN

•••• SOYBEANS

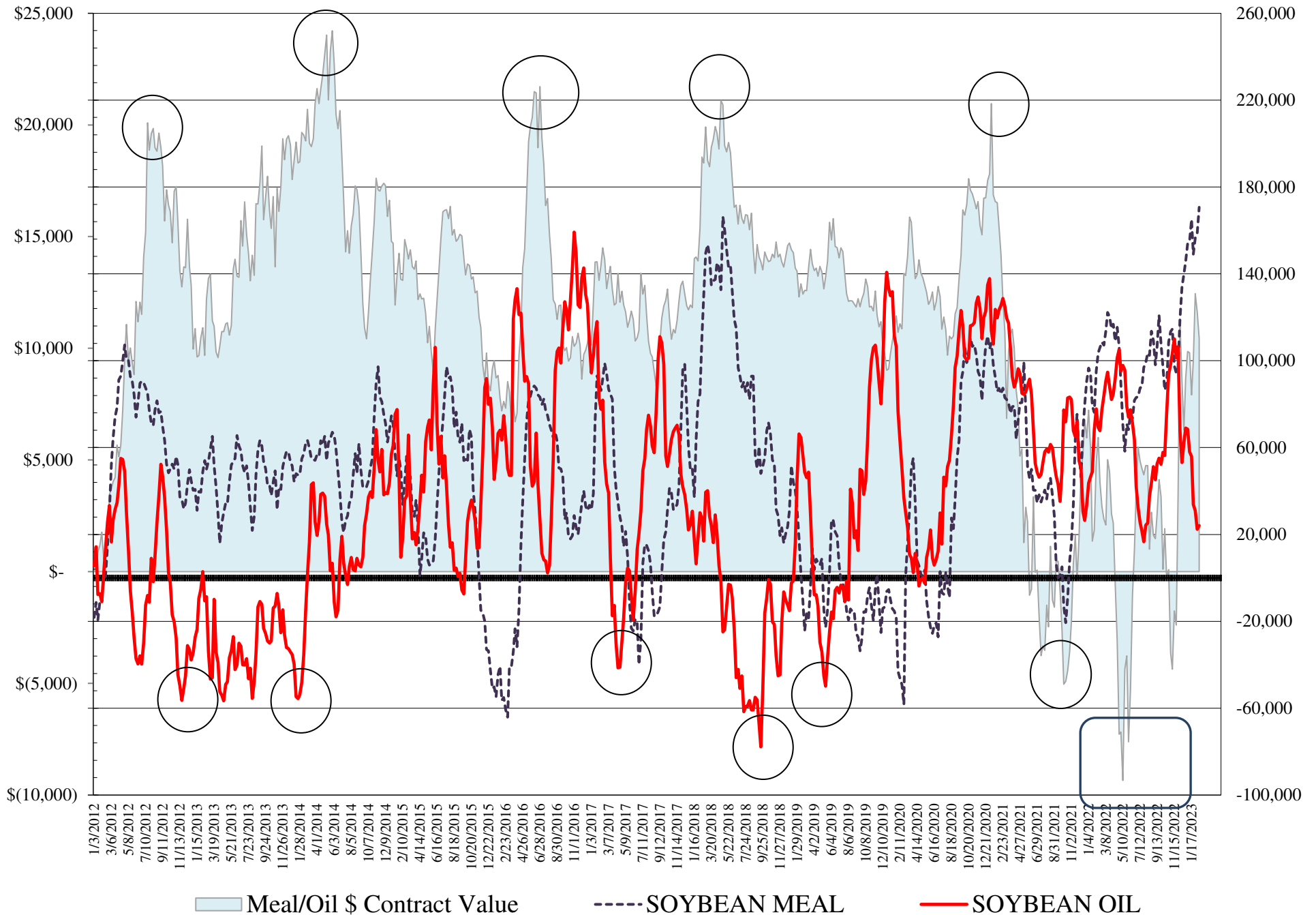
**COMMITMENT OF TRADERS
FUTURES & OPTIONS NET POSITIONS
AS OF 02/14/2023
(IN THOUSAND CONTRACTS)**

	COMMERCIAL				(FUND) NON COMMERCIAL				(SPEC) NON-REPORTABLE			
	14-Feb	7-Feb	31-Jan	24-Jan	14-Feb	7-Feb	31-Jan	24-Jan	14-Feb	7-Feb	31-Jan	24-Jan
WHEAT												
Chicago	42.2	50.9	41.2	54.5	-39.3	-49.6	-40.8	-53.9	-2.9	-1.3	-0.4	-0.6
Kansas City	-9.0	0.4	4.7	11.5	10.0	3.1	-1.2	-8.6	-1.0	-3.5	-3.5	-2.9
Minneapolis	-5.0	-2.4	-0.3	1.6	4.3	1.9	-0.2	-1.1	0.7	0.5	0.6	-0.5
All Wheat	28.2	48.9	45.6	67.6	-25.0	-44.6	-42.3	-63.5	-3.2	-4.3	-3.3	-4.0
CORN	-201.7	-181.2	-201.6	-181.1	288.5	265.4	276.4	257.7	-86.9	-84.2	-74.9	-76.5
OATS	#VALUE!	-1.0	-0.7	#VALUE!	#VALUE!	0.0	-0.3	#VALUE!	#VALUE!	0.9	1.0	#VALUE!
SOYBEANS	-144.7	-126.1	-135.9	-108.4	191.3	172.2	181.7	150.9	-46.6	-46.1	-45.8	-42.5
SOY OIL	-29.7	-28.5	-36.8	-40.0	24.1	22.4	31.0	33.8	5.6	6.1	5.8	6.2
SOY MEAL	-187.3	-174.0	-172.2	-168.2	170.7	158.8	156.5	149.1	16.6	15.2	15.8	19.2

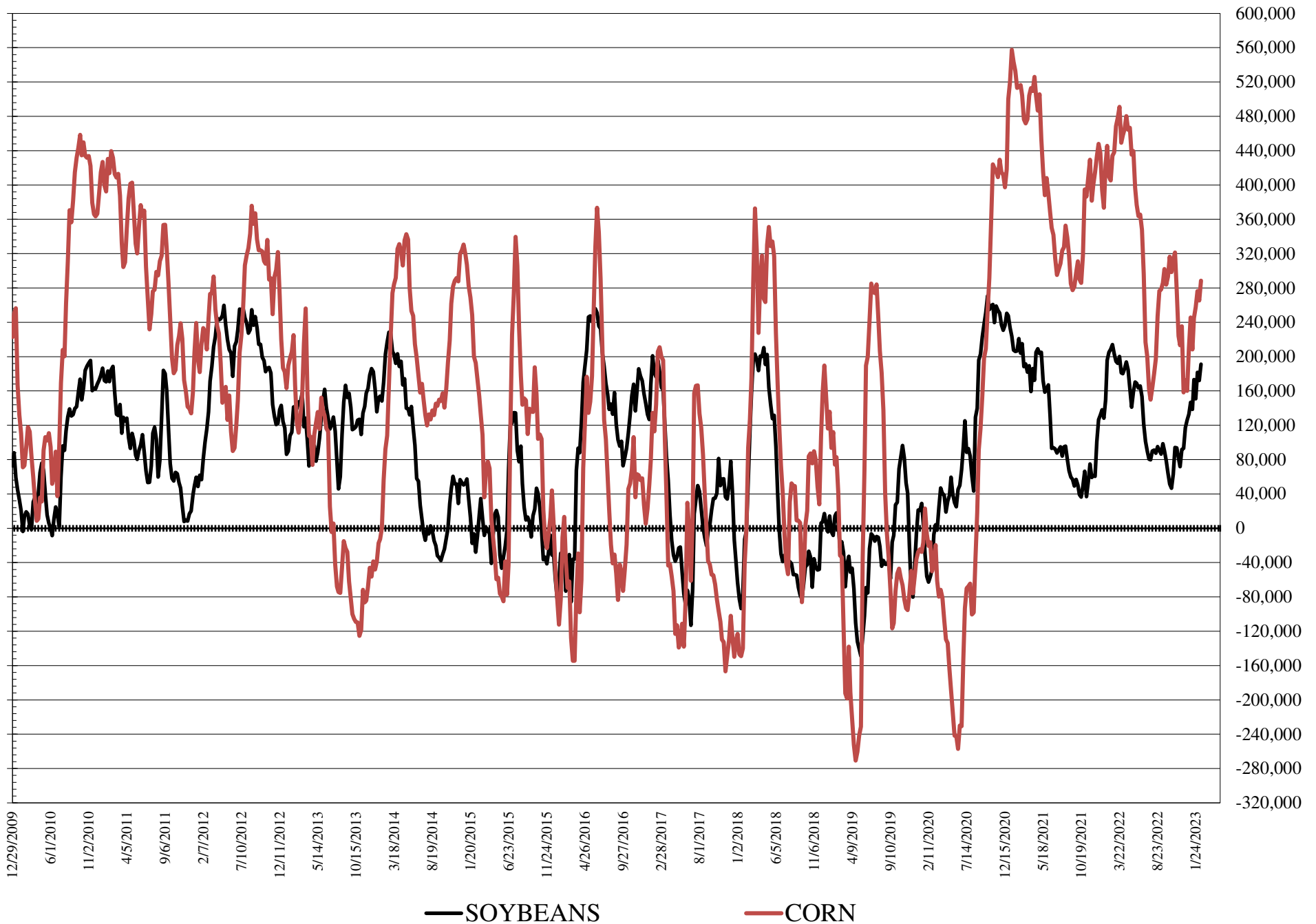
	TOTAL OPEN INTEREST				COMMERCIALS		% HELD BY TRADERS LARGE (FUNDS)		SMALL (NON-REP)	
	14-Feb	7-Feb	31-Jan	24-Jan	LONG	SHORT	LONG	SHORT	LONG	SHORT
WHEAT										
Chicago	457,528	428,529	414,563	419,670	35%	26%	19%	27%	8%	9%
Kansas City	206,923	206,406	202,955	196,188	38%	42%	24%	19%	11%	11%
Minneapolis	60,304	59,797	60,605	58,616	58%	67%	17%	10%	19%	18%
CORN	1,685,824	1,622,738	1,602,455	1,587,621	39%	51%	24%	7%	9%	14%
OATS	#VALUE!	3,366	3,472	#VALUE!						
SOYBEANS	868,514	840,111	807,030	797,356	44%	61%	27%	4%	6%	12%
SOY OIL	505,256	499,140	461,965	442,965	52%	58%	15%	11%	7%	6%
SOY MEAL	512,704	488,770	477,982	470,373	34%	70%	36%	2%	11%	7%

SOURCE: CFTC & FI

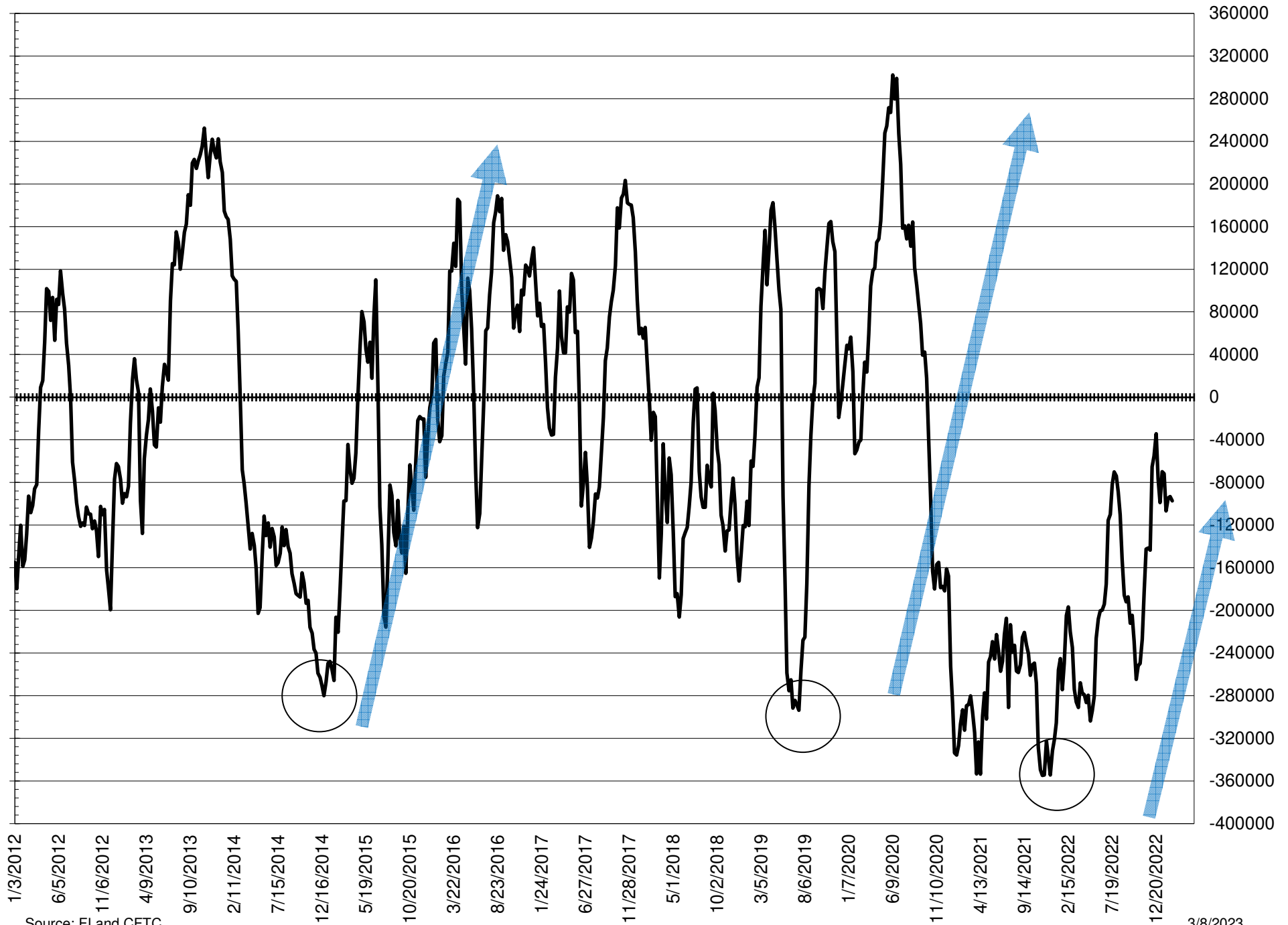
NET POSITION FUTURES AND OPTIONS OF LARGE SPECULATORS IN SOYBEAN MEAL AND SOYBEAN OIL



NET POSITION FUTURES AND OPTIONS OF LARGE SPECULATORS IN SOYBEANS AND CORN



NET POSITION FUTURES AND OPTIONS SPREAD OF LARGE SPECULATORS IN SOYBEANS MINUS CORN



Source: FI and CFTC

3/8/2023

DISAGGREGATED COMMITMENT OF TRADERS
FUTURES ONLY NET POSITIONS
AS OF 02/14/2023
(IN THOUSAND CONTRACTS)

	PRODUCER / MERCHANT / PROCESSOR / USER				(INDEX/ETF) SWAP DEALERS				(CTA/CPO/OTHER UNREGISTERED) MANAGED MONEY			
	14-Feb	7-Feb	31-Jan	24-Jan	14-Feb	7-Feb	31-Jan	24-Jan	14-Feb	7-Feb	31-Jan	24-Jan
	WHEAT											
Chicago	(25.7)	(15.3)	(21.4)	(12.9)	63.8	64.3	63.0	63.3	(61.7)	(72.1)	(64.2)	(73.8)
Kansas City	(45.2)	(36.2)	(30.8)	(23.2)	36.5	36.8	35.4	34.3	11.0	2.8	0.4	(7.8)
Minneapolis	(6.7)	(4.1)	(2.1)	(0.1)	1.8	1.6	1.6	1.5	1.9	(0.3)	(1.8)	(2.9)
All Wheat	(77.6)	(55.6)	(54.2)	(36.1)	102.1	102.6	100.0	99.1	(48.8)	(69.6)	(65.5)	(84.5)
CORN	(440.5)	(418.8)	(438.0)	(418.5)	216.9	214.4	212.4	212.8	233.8	198.1	219.2	203.5
OATS	-	(1.0)	(0.7)	-	-	-	-	-	-	(0.6)	(0.9)	-
SOYBEANS	(233.1)	(213.2)	(212.0)	(190.2)	83.3	79.4	74.8	72.2	181.9	165.9	175.2	147.6
SOY OIL	(132.8)	(128.5)	(133.7)	(138.8)	99.2	97.8	96.9	94.3	19.0	19.2	28.0	32.6
SOY MEAL	(270.2)	(256.8)	(251.4)	(244.1)	80.9	79.9	77.7	75.1	154.2	144.3	142.8	136.7

Managed % of OI

Chicago W	-17%	-20%	-18%	-21%
Corn	17%	15%	17%	16%

	TOTAL OPEN INTEREST				OTHER REPORTABLE				NON REPORTABLE			
	14-Feb	7-Feb	31-Jan	24-Jan	14-Feb	7-Feb	31-Jan	24-Jan	14-Feb	7-Feb	31-Jan	24-Jan
	WHEAT											
Chicago	370,508	358,162	350,871	350,331	27.6	25.8	24.1	25.5	(4.0)	(2.6)	(1.5)	(2.1)
Kansas City	189,148	190,500	187,498	179,845	(1.1)	0.2	(1.6)	(0.5)	(1.1)	(3.5)	(3.5)	(2.9)
Minneapolis	58,628	58,239	59,017	56,945	2.2	2.3	1.8	2.1	0.7	0.4	0.5	(0.6)
All Wheat	618,284	606,901	597,386	587,121	28.7	28.3	24.3	27.1	(4.4)	(5.8)	(4.5)	(5.6)
CORN	1,375,249	1,319,429	1,298,164	1,274,410	70.9	84.2	77.6	73.9	(81.1)	(77.9)	(71.2)	(71.7)
OATS	-	3,297	3,412	-	-	0.7	0.7	-	-	0.9	1.0	-
SOYBEANS	743,026	717,684	689,806	667,416	9.9	8.9	3.2	7.6	(42.1)	(41.0)	(41.2)	(37.3)
SOY OIL	456,513	453,114	426,376	401,771	10.2	6.3	3.3	6.6	4.4	5.3	5.4	5.3
SOY MEAL	452,892	434,476	425,993	419,769	18.2	16.9	15.0	13.1	17.0	15.8	15.9	19.2

SOURCE: CFTC & FI

3/8/2023

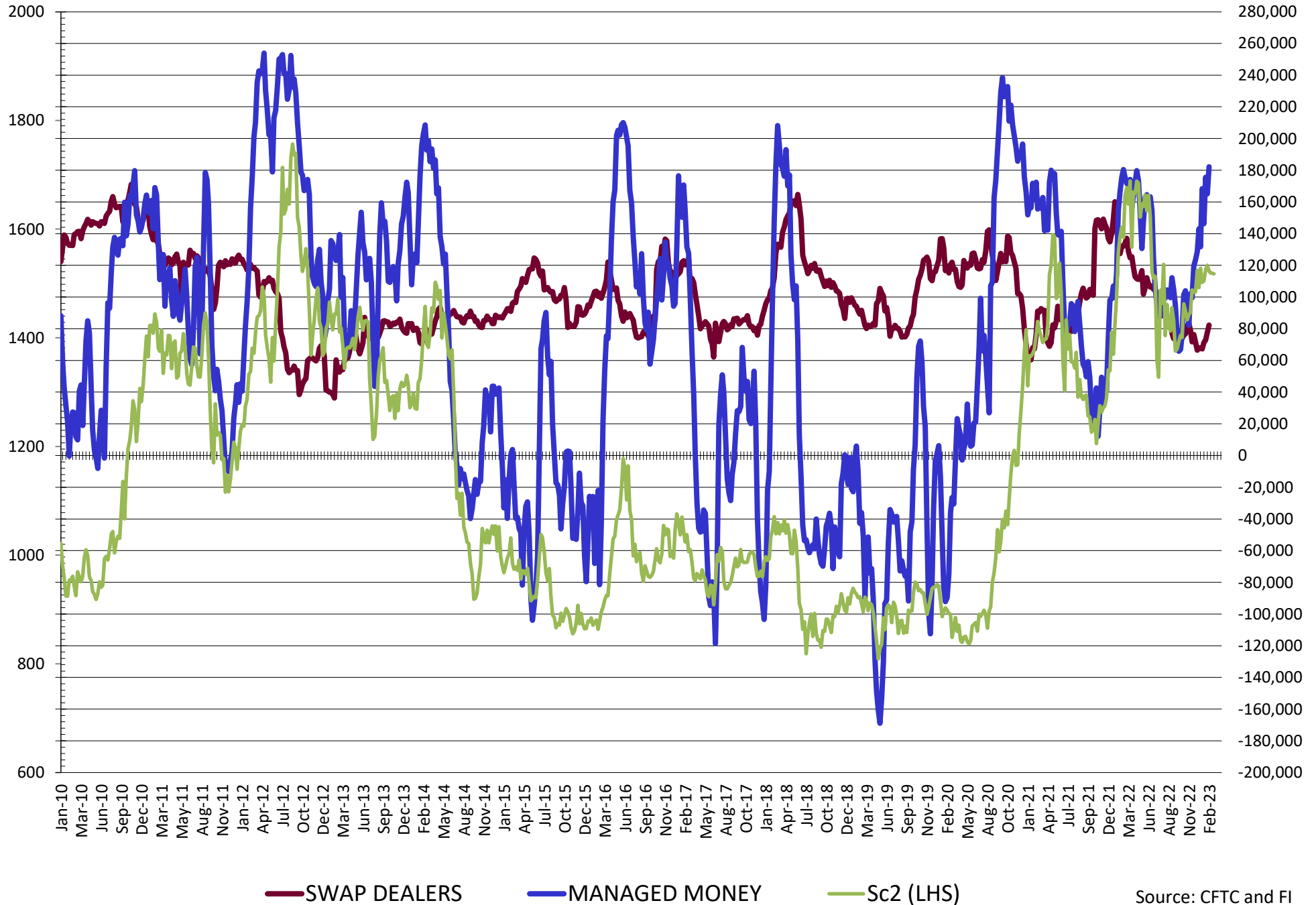
**DISAGGREGATED COMMITMENT OF TRADERS
FUTURES & OPTIONS NET POSITIONS
AS OF 02/14/2023
(IN THOUSAND CONTRACTS)**

	PRODUCER / MERCHANT / PROCESSOR / USER				(INDEX/ETF) SWAP DEALERS				(CTA/CPO/OTHER UNREGISTERED) MANAGED MONEY			
	14-Feb	7-Feb	31-Jan	24-Jan	14-Feb	7-Feb	31-Jan	24-Jan	14-Feb	7-Feb	31-Jan	24-Jan
	WHEAT											
Chicago	(24.2)	(14.8)	(23.0)	(10.6)	66.4	65.7	64.2	65.1	(60.0)	(71.4)	(63.6)	(73.9)
Kansas City	(45.5)	(36.4)	(30.8)	(23.2)	36.6	36.8	35.5	34.6	11.6	3.8	1.3	(6.8)
Minneapolis	(6.9)	(4.0)	(2.0)	0.1	1.9	1.6	1.6	1.5	1.9	(0.3)	(1.8)	(2.9)
All Wheat	(76.6)	(55.2)	(55.8)	(33.7)	104.8	104.1	101.4	101.2	(46.4)	(67.9)	(64.1)	(83.7)
CORN	(421.7)	(399.7)	(417.1)	(395.9)	220.0	218.6	215.5	214.8	234.9	202.0	219.9	201.8
OATS	0.0	(1.0)	(0.7)	0.0	0.0	0.0	0.0	0.0	0.0	(0.6)	(0.9)	0.0
SOYBEANS	(227.0)	(203.8)	(208.7)	(179.8)	82.3	77.7	72.8	71.4	182.2	165.1	175.5	146.3
SOY OIL	(130.3)	(127.5)	(134.6)	(135.6)	100.6	99.1	97.8	95.6	22.3	22.5	31.2	36.0
SOY MEAL	(266.6)	(252.7)	(248.9)	(242.4)	79.3	78.6	76.7	74.2	152.4	142.7	140.9	135.5

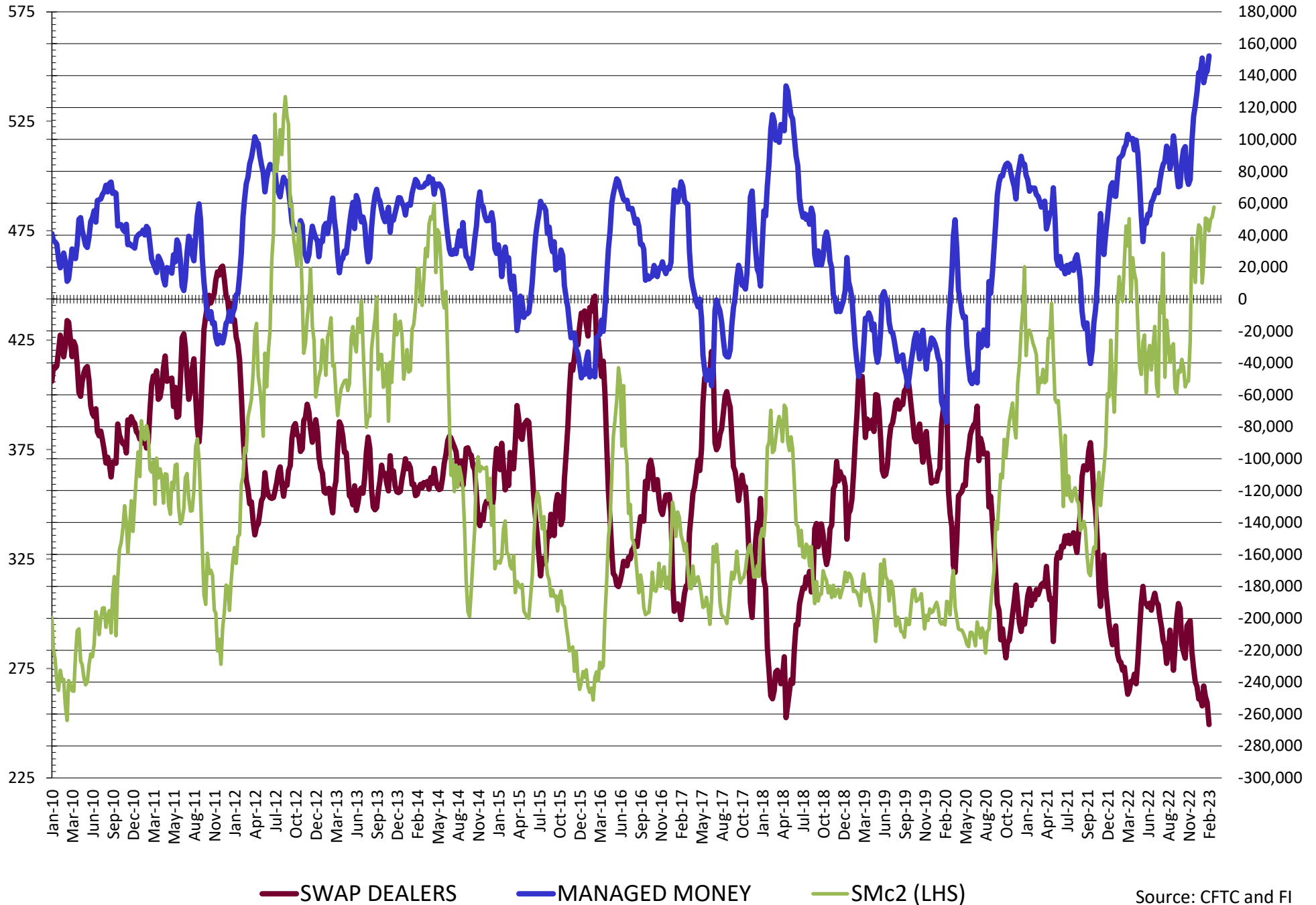
	TOTAL OPEN INTEREST				OTHER REPORTABLE				NON REPORTABLE			
	14-Feb	7-Feb	31-Jan	24-Jan	14-Feb	7-Feb	31-Jan	24-Jan	14-Feb	7-Feb	31-Jan	24-Jan
	WHEAT											
Chicago	457,528	428,529	414,563	419,670	20.7	21.8	22.8	20.1	(2.9)	(1.3)	(0.4)	(0.6)
Kansas City	206,923	206,406	202,955	196,188	(1.6)	(0.7)	(2.6)	(1.7)	(1.0)	(3.5)	(3.5)	(2.9)
Minneapolis	60,304	59,797	60,605	58,616	2.3	2.2	1.6	1.8	0.7	0.5	0.6	(0.5)
All Wheat	724,755	694,732	678,123	674,474	21.4	23.3	21.8	20.1	(3.2)	(4.3)	(3.3)	(4.0)
CORN	1,685,824	1,622,738	1,602,455	1,587,621	53.7	63.3	56.5	55.9	(86.9)	(84.2)	(84.2)	(84.2)
OATS	0	3,366	3,472	0	0.0	0.7	0.7	0.0	0.0	0.9	1.0	0.0
SOYBEANS	868,514	840,111	807,030	797,356	9.1	7.1	6.2	4.6	(46.6)	(46.1)	(45.8)	(42.5)
SOY OIL	505,256	499,140	461,965	442,965	1.8	(0.1)	(0.3)	(2.2)	5.6	6.1	5.8	6.2
SOY MEAL	512,704	488,770	477,982	470,373	18.3	16.1	15.5	13.6	16.6	15.2	15.8	19.2

SOURCE: CFTC & FI

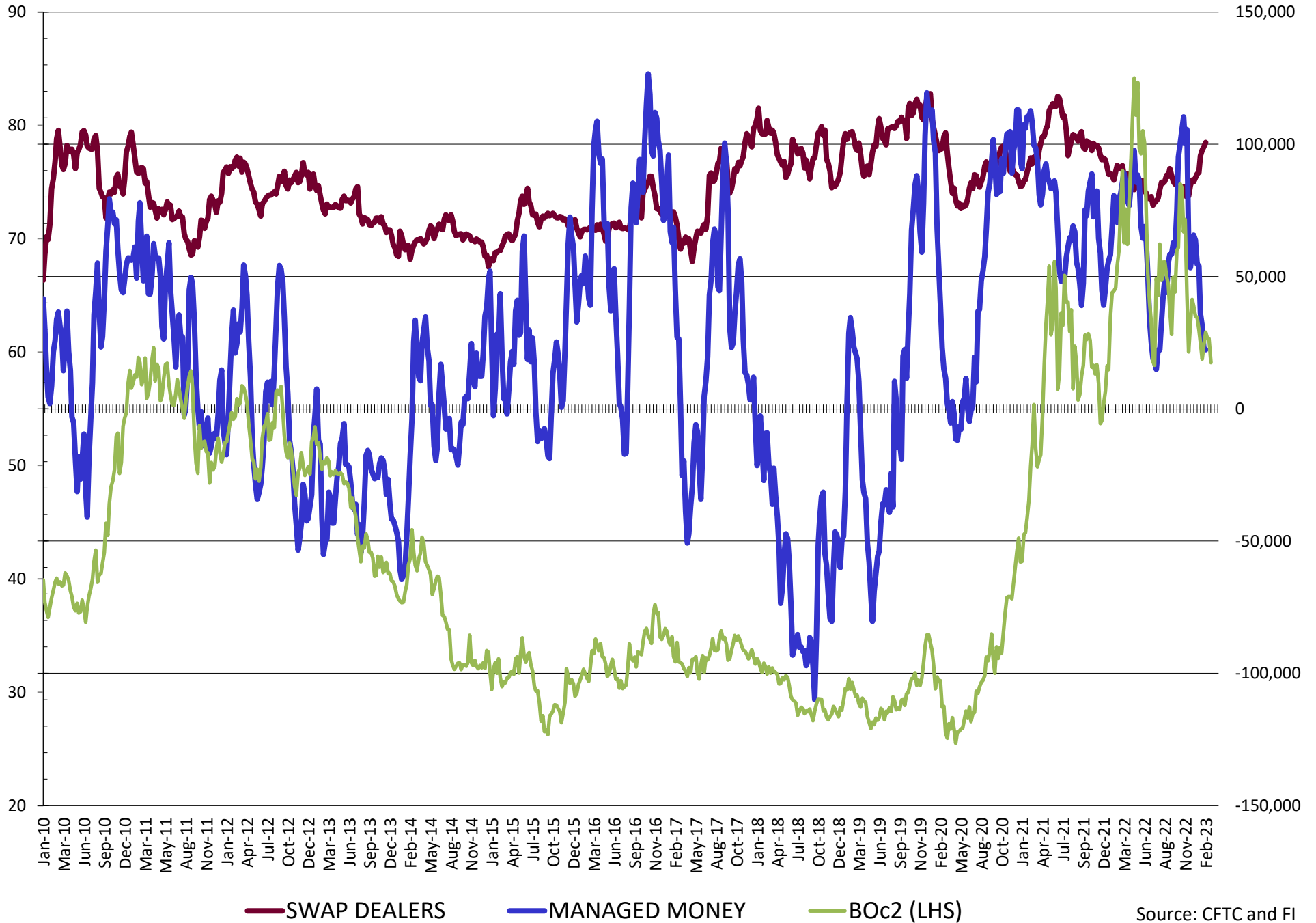
NET POSITION FUTURES AND OPTIONS OF SWAP AND MANAGED FUNDS IN SOYBEANS



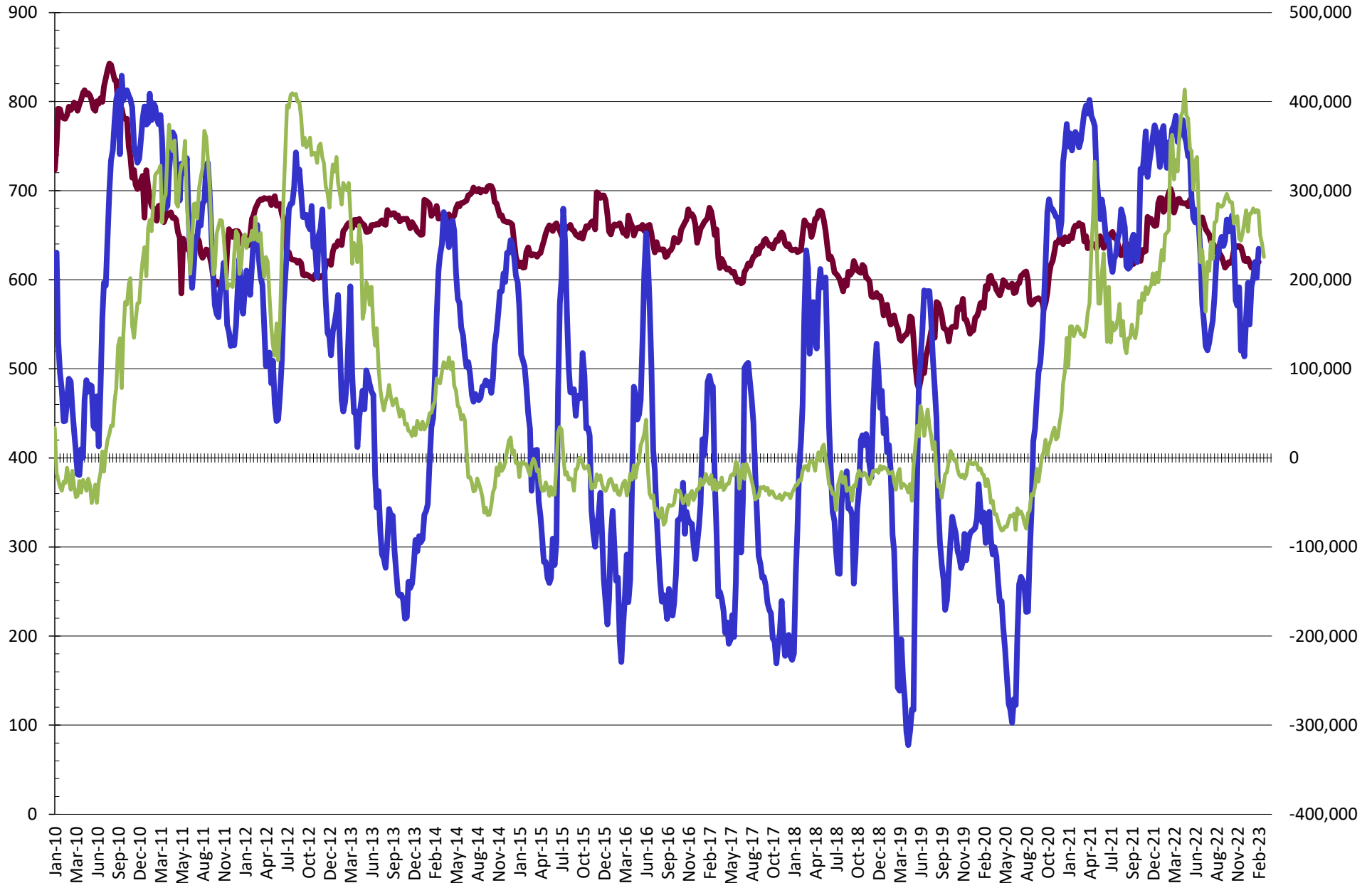
NET POSITION FUTURES AND OPTIONS OF SWAP AND MANAGED FUNDS IN SOYBEAN MEAL



NET POSITION FUTURES AND OPTIONS OF SWAP AND MANAGED FUNDS IN SOYBEAN OIL

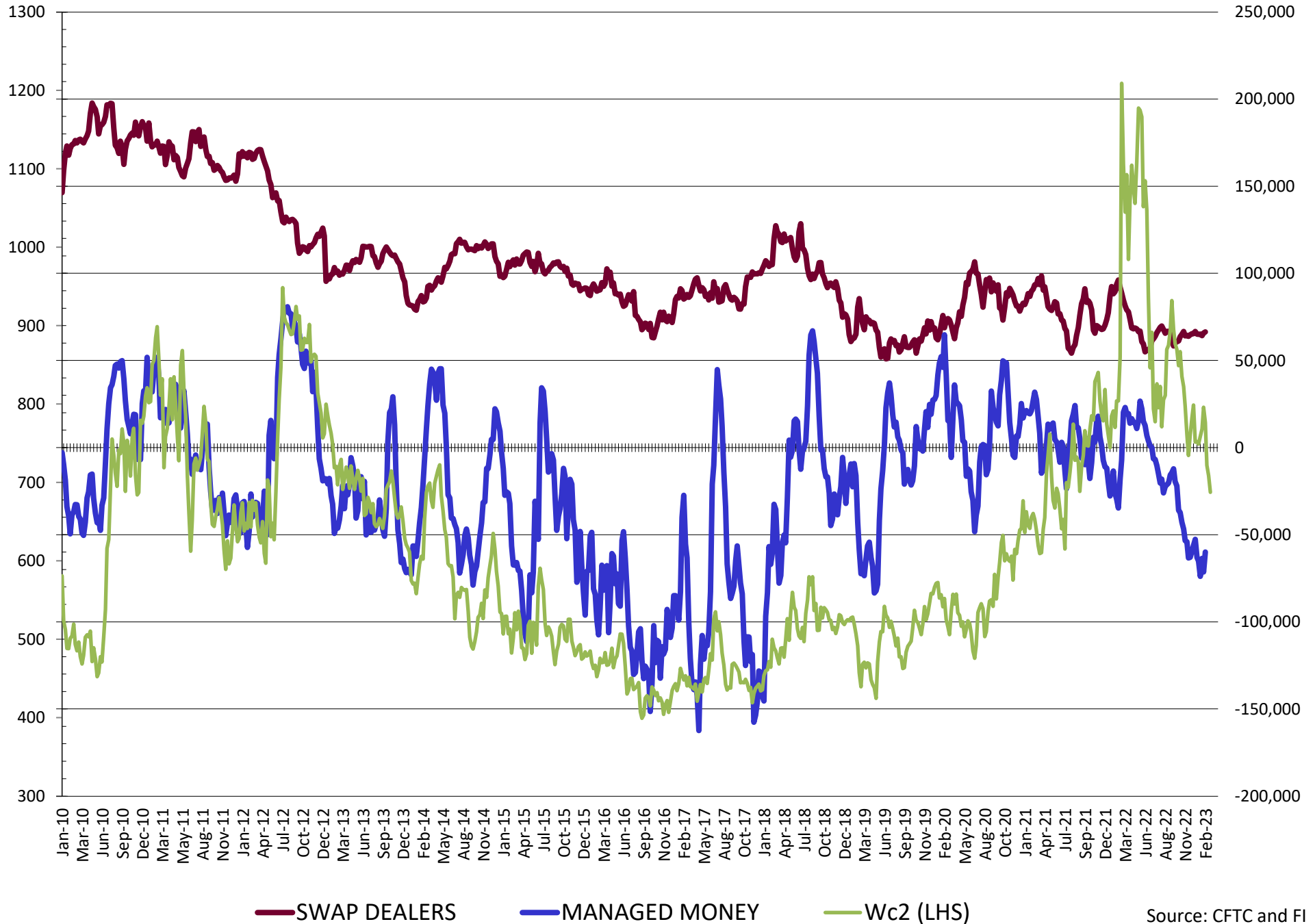


NET POSITION FUTURES AND OPTIONS OF SWAP AND MANAGED FUNDS IN CORN

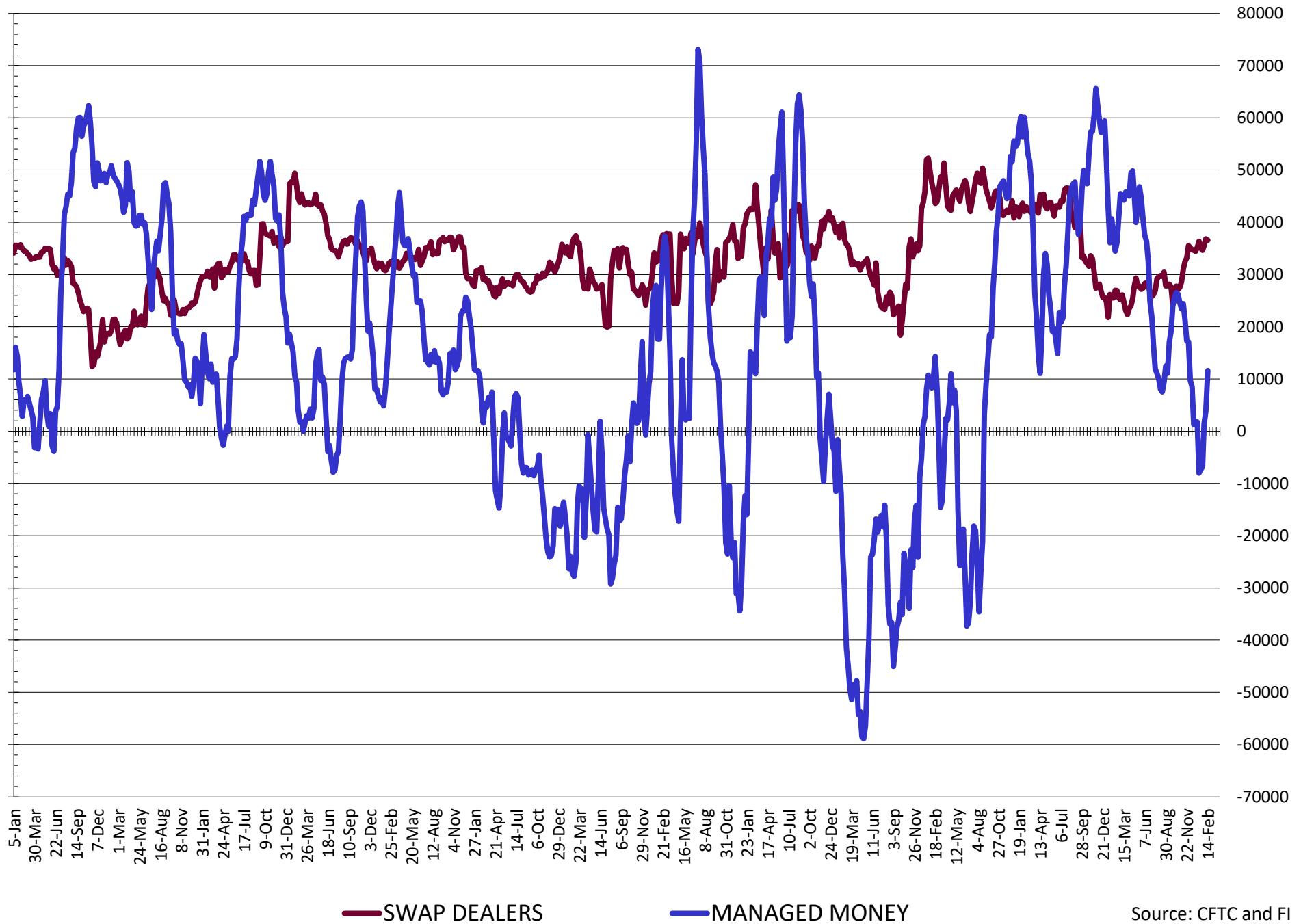


— SWAP DEALERS
 — MANAGED MONEY
 — Cc2 (LHS)

NET POSITION FUTURES AND OPTIONS OF SWAP AND MANAGED FUNDS IN CHICAGO WHEAT

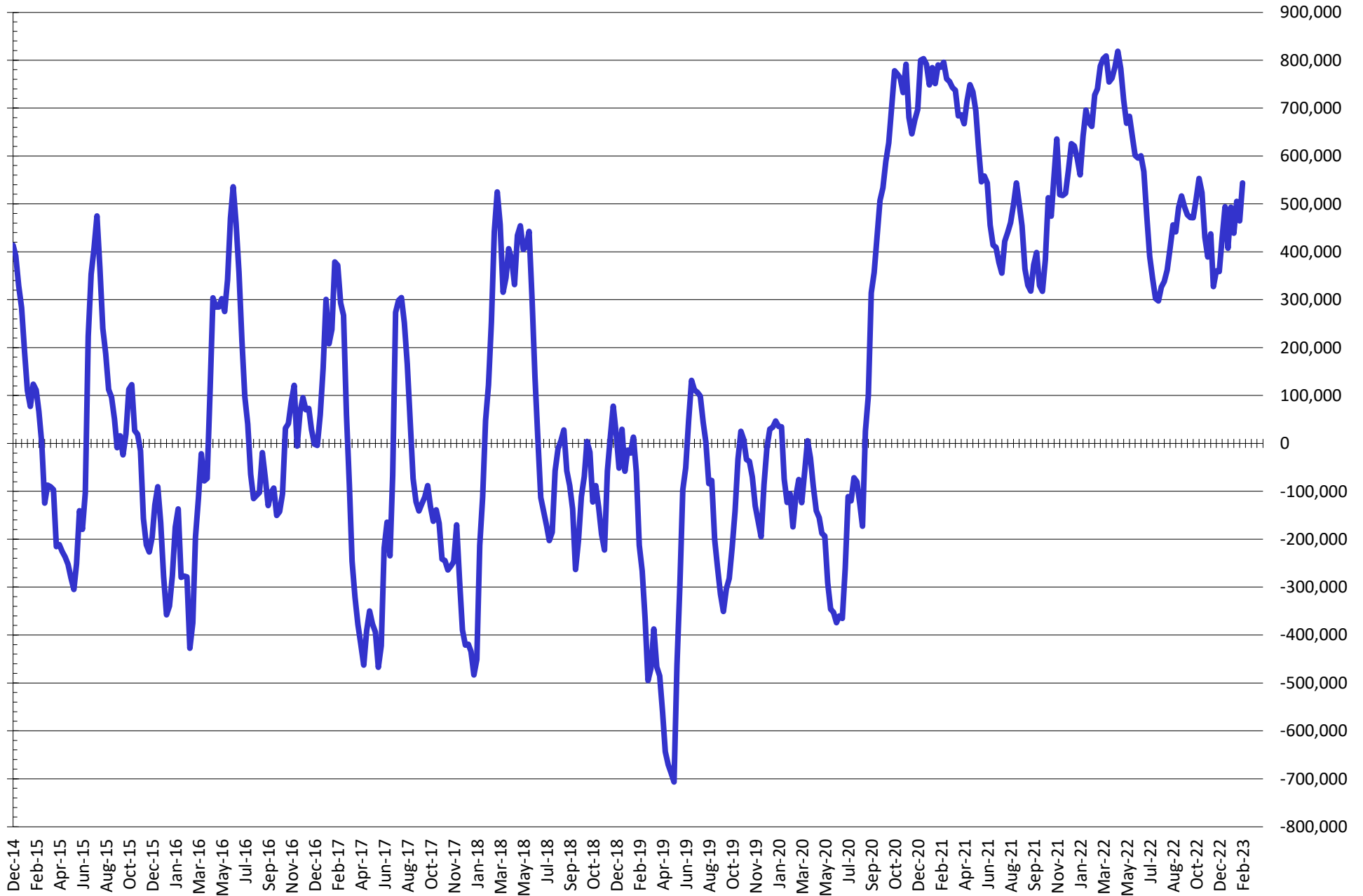


NET POSITION FUTURES AND OPTIONS OF SWAP AND MANAGED FUNDS IN KANSAS WHEAT



Source: CFTC and FI
3/8/2023

NET POSITION FUTURES AND OPTIONS OF SWAP AND MANAGED FUNDS IN COMBINED SRW, HRW, CORN, SOYBEANS, SOYMEAL AND SOYOIL



— Net Managed Money

Source: CFTC and FI
3/8/2023

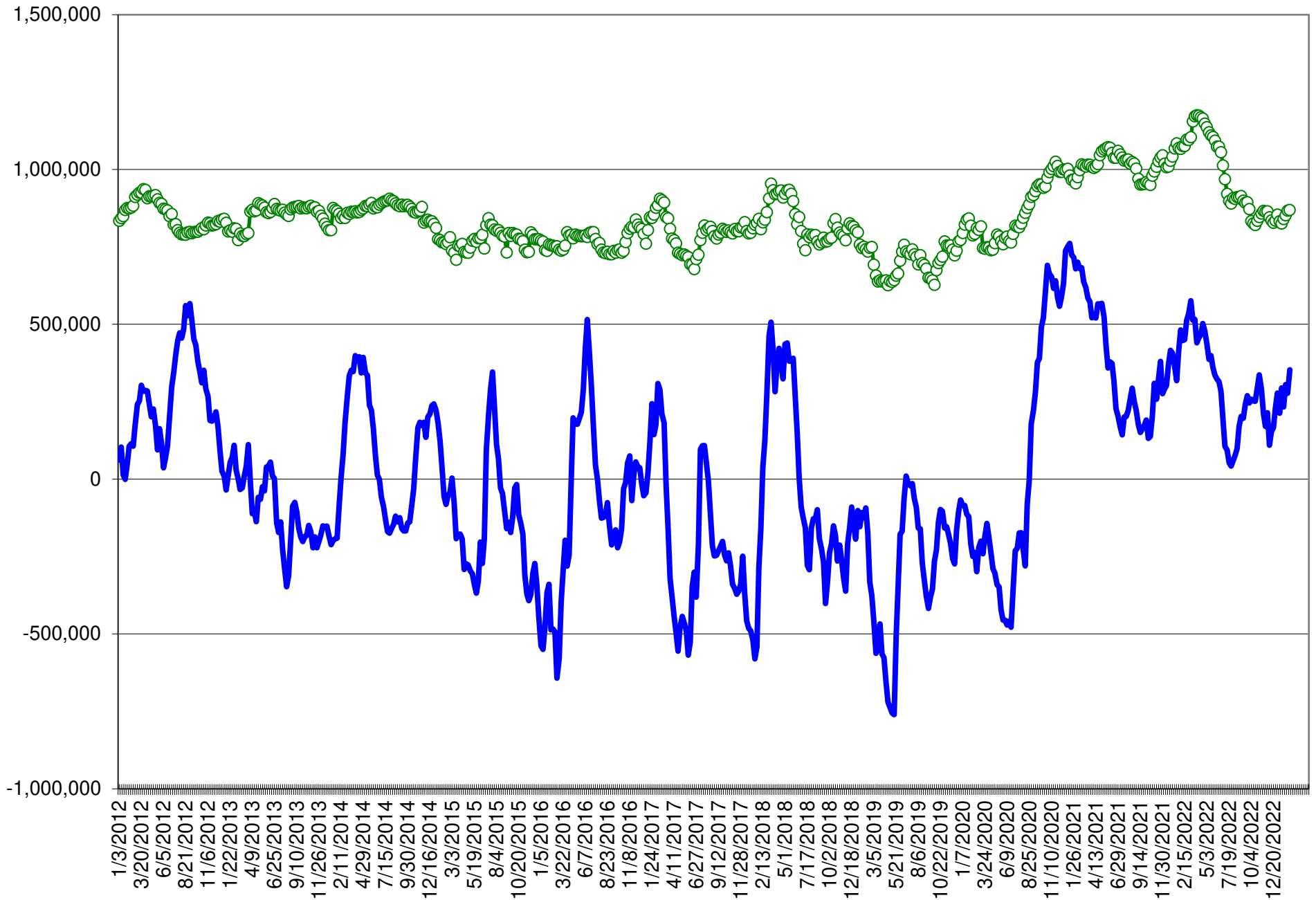
COMMITMENT OF TRADERS
FUTURES & OPTIONS NET POSITIONS (INDEX BROKEN OUT)
AS OF 02/14/2023
(IN THOUSAND CONTRACTS)

	COMMERCIAL				(FUND) NON COMMERCIAL				(SPEC) NON-REPORTABLE			
	14-Feb	7-Feb	31-Jan	24-Jan	14-Feb	7-Feb	31-Jan	24-Jan	14-Feb	7-Feb	31-Jan	24-Jan
	WHEAT											
Chicago	(27.8)	(17.7)	(26.0)	(13.7)	(68.2)	(79.5)	(72.2)	(84.2)	(2.9)	(1.3)	(0.4)	(0.6)
Kansas City	(45.2)	(36.7)	(30.8)	(22.9)	(3.5)	(8.6)	(12.1)	(19.4)	(1.0)	(3.5)	(3.5)	(2.9)
Minneapolis	-	-	-	-	-	-	-	-	-	-	-	-
All Wheat	(73.0)	(54.4)	(56.8)	(36.6)	(71.7)	(88.1)	(84.3)	(103.7)	(4.0)	(4.8)	(3.9)	(3.5)
CORN	(425.9)	(405.3)	(421.6)	(401.5)	157.1	131.6	141.7	122.7	(86.9)	(84.2)	(74.9)	(76.5)
OATS	-	-	-	-	-	-	-	-	-	-	-	-
SOYBEANS	(236.1)	(214.6)	(220.4)	(190.9)	144.3	125.0	135.3	104.7	(46.6)	(46.1)	(45.8)	(42.5)
SOY OIL	(109.4)	(108.2)	(111.6)	(109.3)	(0.1)	(2.5)	4.5	6.8	5.6	6.1	5.8	6.2
SOY MEAL	(262.5)	(247.7)	(243.7)	(237.4)	123.2	111.0	107.8	102.4	16.6	15.2	15.8	19.2

	TOTAL OPEN INTEREST				(INDEX) COMMERCIAL INDEX TRADERS				(INDEX) % NET OF TOTAL OPEN INTEREST			
	14-Feb	7-Feb	31-Jan	24-Jan	14-Feb	7-Feb	31-Jan	24-Jan	14-Feb	7-Feb	31-Jan	24-Jan
	WHEAT											
Chicago	457,528	428,529	414,563	419,670	98.9	98.5	98.6	98.6	21.6%	23.0%	23.8%	23.5%
Kansas City	206,923	206,406	202,955	196,188	49.7	48.9	46.4	45.2	24.0%	23.7%	22.9%	23.1%
Minneapolis	-	-	-	-	-	-	-	-	-	-	-	-
All Wheat	664,451	634,935	617,518	615,858	148.6	147.4	145.0	143.8	22.4%	23.2%	23.5%	23.4%
CORN	1,685,824	1,622,738	1,602,455	1,587,621	355.7	357.9	354.8	355.3	21.1%	22.1%	22.1%	22.4%
OATS	-	-	-	-	-	-	-	-	-	-	-	-
SOYBEANS	868,514	840,111	807,030	797,356	138.4	135.8	130.9	128.6	15.9%	16.2%	16.2%	16.1%
SOY OIL	505,256	499,140	461,965	442,965	103.9	104.6	101.2	96.3	20.6%	21.0%	21.9%	21.7%
SOY MEAL	512,704	488,770	477,982	470,373	122.8	121.5	120.1	115.8	23.9%	24.9%	25.1%	24.6%

SOURCE: CFTC & FI

NET POSITION FUTURES AND OPTIONS OF SPECULATORS AND INDEX FUNDS IN COMBINED SRW, HRW, CORN, SOYBEANS, SOYMEAL AND SOYOIL



Source: CFTC and FI

○ Net Index

— Net Speculator

Traditional Daily Estimate of Funds 2/14/23

	(Neg)-"Short"	Pos-"Long"			
Actual less Est.	14.3	8.1	2.2	1.2	7.8
	Corn	Bean	Chi. Wheat	Meal	Oil
Actual	304.7	191.9	(34.1)	172.4	29.2
15-Feb	(5.0)	(4.0)	(8.0)	(4.0)	2.0
16-Feb	(1.0)	2.0	(3.0)	1.0	2.0
17-Feb	1.0	1.0	1.0	(1.0)	(2.0)
20-Feb	-	-	-	-	-
21-Feb	3.0	9.0	(6.0)	4.0	4.0

FI Est. of Futures Only	302.7	199.9	(50.1)	172.4	35.2
FI Est. Futures & Options	286.5	199.3	(55.2)	170.7	30.1
Futures only record long "Traditional Funds"	547.7 1/26/2021	280.9 11/10/2020	86.5 8/7/2018	167.5 5/1/2018	160.2 11/1/2016
Futures only record short	(235.0) 6/9/2020	(118.3) 4/30/2019	(130.0) 4/25/2017	(49.5) 3/1/2016	(69.8) 9/18/2018
Futures and options record net long	557.6 1/12/2021	270.9 10/6/2020	64.8 8/7/2012	132.1 5/1/2018	159.2 1/1/2016
Futures and options record net short	(270.6) 4/26/2019	(132.0) 4/30/2019	(143.3) 4/25/2017	(64.1) 3/1/2016	(77.8) 9/18/2018

Index Funds Latest Positions (as of last Tuesday)

Index Futures & Options	355.7	138.4	98.9	NA	103.9
Change From Previous Week	(2.2)	2.6	0.4	NA	(0.7)

Source: Reuters, CFTC & FI (FI est. are noted with latest date)

Disclaimer

TO CLIENTS/PROSPECTS OF FUTURES INTERNATIONAL, SEE RISK DISCLOSURE BELOW:

THIS COMMUNICATION IS CONVEYED AS A SOLICITATION FOR ENTERING INTO A DERIVATIVES TRANSACTION.

Any trading recommendations and market or other information to Customer by Futures International (FI), although based upon information obtained from sources believed by FI to be reliable may not be accurate and may be changed without notice to customer. FI makes no guarantee as to the accuracy or completeness of any of the information or recommendations furnished to Customer. Customer understands that FI, its managers, employees and/or affiliates may have a position in commodity futures, options or other derivatives which may not be consistent with the recommendations furnished by FI to Customer.

The risk of trading futures and options and other derivatives involves a substantial risk of loss and is not suitable for all persons. In purchasing an option, the risk is limited to the premium paid, and all commissions and fees involved with the trade. When an option is shorted or written, the writer of the option has unlimited risk with respect to the option written. The use of options strategies such as a straddles and strangles involve multiple option positions and may substantially increase the amount of commissions and fees paid to execute the strategy. Option prices do not necessarily move in tandem with cash or futures prices. Each person must consider whether a particular trade, combination of trades or strategy is suitable for that person's financial means and objectives.

This material may include discussions of seasonal patterns, however, futures prices have already factored in the seasonal aspects of supply and demand, and seasonal patterns are no indication of future market trends. Finally, past performance is not indicative of future results.

This communication may contain links to third party websites which are not under the control of FI and FI is not responsible for their content. Products and services are offered only in jurisdictions where solicitation and sale are lawful, and in accordance with applicable laws and regulations in each such jurisdiction.