

# CFTC COMMITMENT OF TRADERS REPORT

As of 1/3/2023

## TRADITIONAL FUNDS net position changes

Wed to Tue, in 000 contracts

	Corn	Bean	Meal	Oil	Chi. Wheat	KC Wheat	Min Wheat
Futures Only	32.4	15.1	9.7	1.4	4.0	(0.1)	0.2
Futures & Options Combined	36.3	14.0	8.1	(0.5)	3.9	0.1	0.1

## TRADITIONAL COMMERCIAL net position changes

	Corn	Bean	Meal	Oil	Chi. Wheat	KC Wheat	Min Wheat
Futures Only	(27.2)	(11.2)	(10.5)	1.6	(3.0)	0.5	(0.0)
Futures & Options Combined	(28.4)	(9.4)	(9.2)	3.3	(2.7)	0.4	0.0

## MANAGED MONEY net position changes

	Corn	Bean	Meal	Oil	Chi. Wheat	KC Wheat	Min Wheat
Futures Only	36.3	13.6	12.1	(1.7)	3.4	(0.2)	0.5
Futures & Options Combined	37.1	14.4	11.9	(1.8)	3.5	(0.1)	0.5

## SWAP DEALERS net position changes

	Corn	Bean	Meal	Oil	Chi. Wheat	KC Wheat	Min Wheat
Futures Only	2.5	1.4	(1.2)	1.1	0.8	0.8	0.1
Futures & Options Combined	2.8	1.3	(1.4)	1.5	1.3	0.7	0.1

## PRODUCERS/END USERS net position changes

	Corn	Bean	Meal	Oil	Chi. Wheat	KC Wheat	Min Wheat
Futures Only	(29.8)	(12.6)	(9.3)	0.6	(3.8)	(0.3)	(0.1)
Futures & Options Combined	(31.2)	(10.7)	(7.8)	1.9	(4.0)	(0.3)	(0.1)

## INDEX net position changes

	Corn	Bean	Meal	Oil	Chi. Wheat	KC Wheat	Min Wheat
Futures & Options Combined	12.6	3.4	(1.5)	0.4	2.6	1.3	NA

## SUPPLEMENTAL NON-COMMERCIAL net position changes

	Corn	Bean	Meal	Oil	Chi. Wheat	KC Wheat	Min Wheat
Futures & Options Combined	27.8	9.0	8.9	0.5	2.5	(0.3)	NA

## OPEN INTEREST net position changes

Wed to Tue, in 000 contracts

	Corn	Bean	Meal	Oil	Chi. Wheat	KC Wheat	Min Wheat
Futures Only	34.5	8.0	2.9	2.5	0.0	2.4	(0.6)
Futures & Options Combined	46.7	21.8	10.5	3.8	0.5	2.7	(0.5)

Source: CFTC and FI

Wed to Tue, in 000 contracts

**COMMITMENT OF TRADERS  
FUTURES ONLY NET POSITIONS  
AS OF 01/03/2023  
(IN THOUSAND CONTRACTS)**

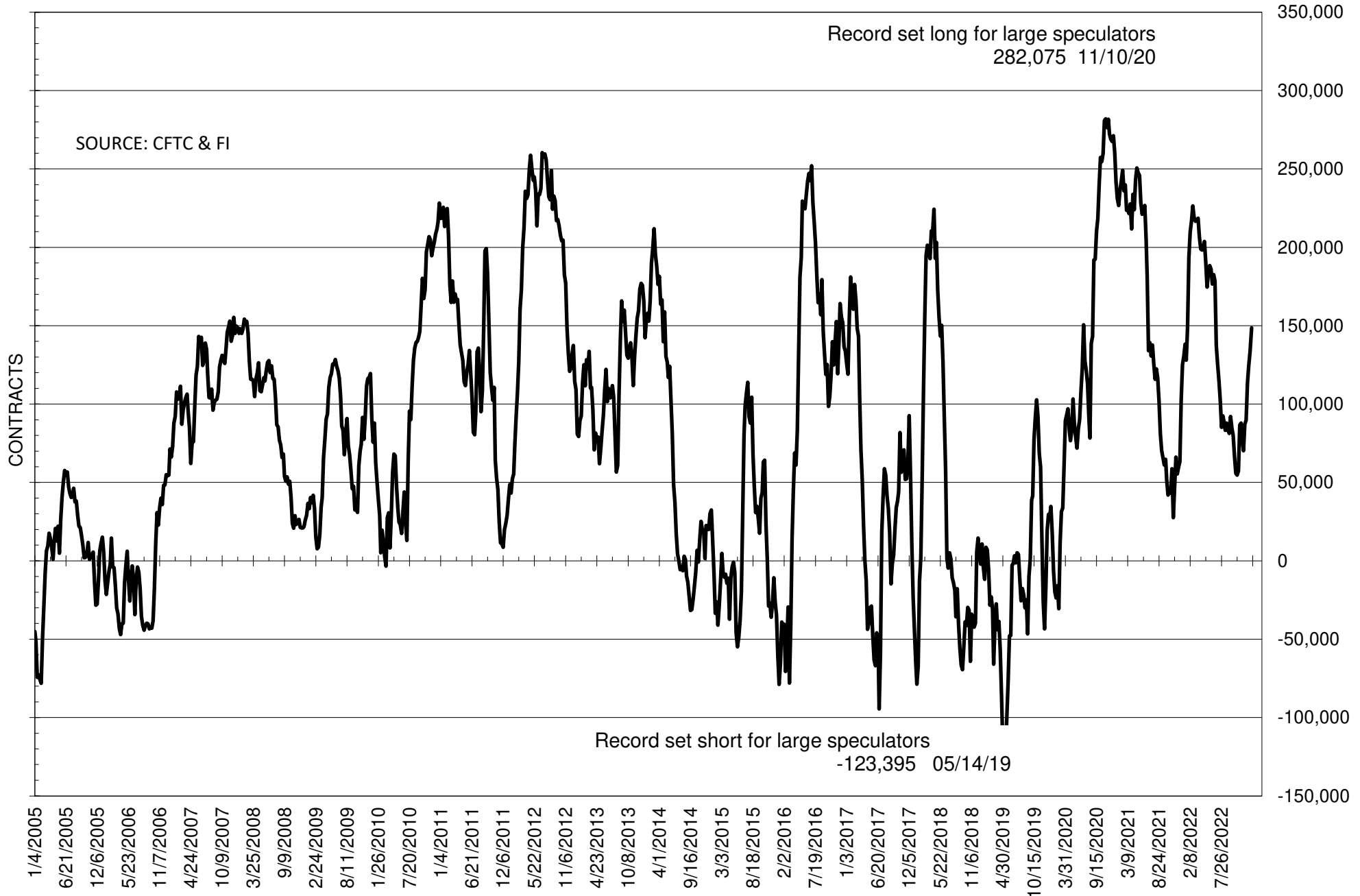
	COMMERCIAL				(FUND) NON COMMERCIAL				(SPEC) NON-REPORTABLE			
	3-Jan	27-Dec	20-Dec	13-Dec	3-Jan	27-Dec	20-Dec	13-Dec	3-Jan	27-Dec	20-Dec	13-Dec
	<b>WHEAT</b>											
Chicago	37.6	40.7	41.1	42.9	-32.3	-36.3	-37.0	-39.9	-5.3	-4.4	-4.1	-3.0
Kansas City	4.7	4.2	2.0	-3.6	-2.6	-2.5	-1.3	4.9	-2.1	-1.7	-0.7	-1.3
Minneapolis	0.8	0.8	3.6	3.4	-0.2	-0.3	-1.7	-1.3	-0.6	-0.5	-1.9	-2.0
All Wheat	43.1	45.7	46.7	42.6	-35.1	-39.2	-40.0	-36.4	-8.0	-6.5	-6.7	-6.3
<b>CORN</b>	-217.1	-189.9	-158.6	-173.2	267.5	235.1	200.0	212.2	-50.4	-45.3	-41.4	-39.0
OATS	-0.2	0.0	0.1	0.1	-0.7	-1.0	-1.2	-1.0	0.8	1.0	1.1	0.9
<b>SOYBEANS</b>	-111.3	-100.1	-91.7	-82.0	148.6	133.5	124.7	113.1	-37.3	-33.4	-33.0	-31.0
SOY OIL	-80.7	-82.3	-76.1	-68.5	70.7	69.3	64.8	55.6	10.0	13.0	11.3	12.9
SOY MEAL	-176.0	-165.5	-162.2	-152.1	156.6	146.9	140.1	133.5	19.4	18.6	22.1	18.6

Oats positions thin to be reported

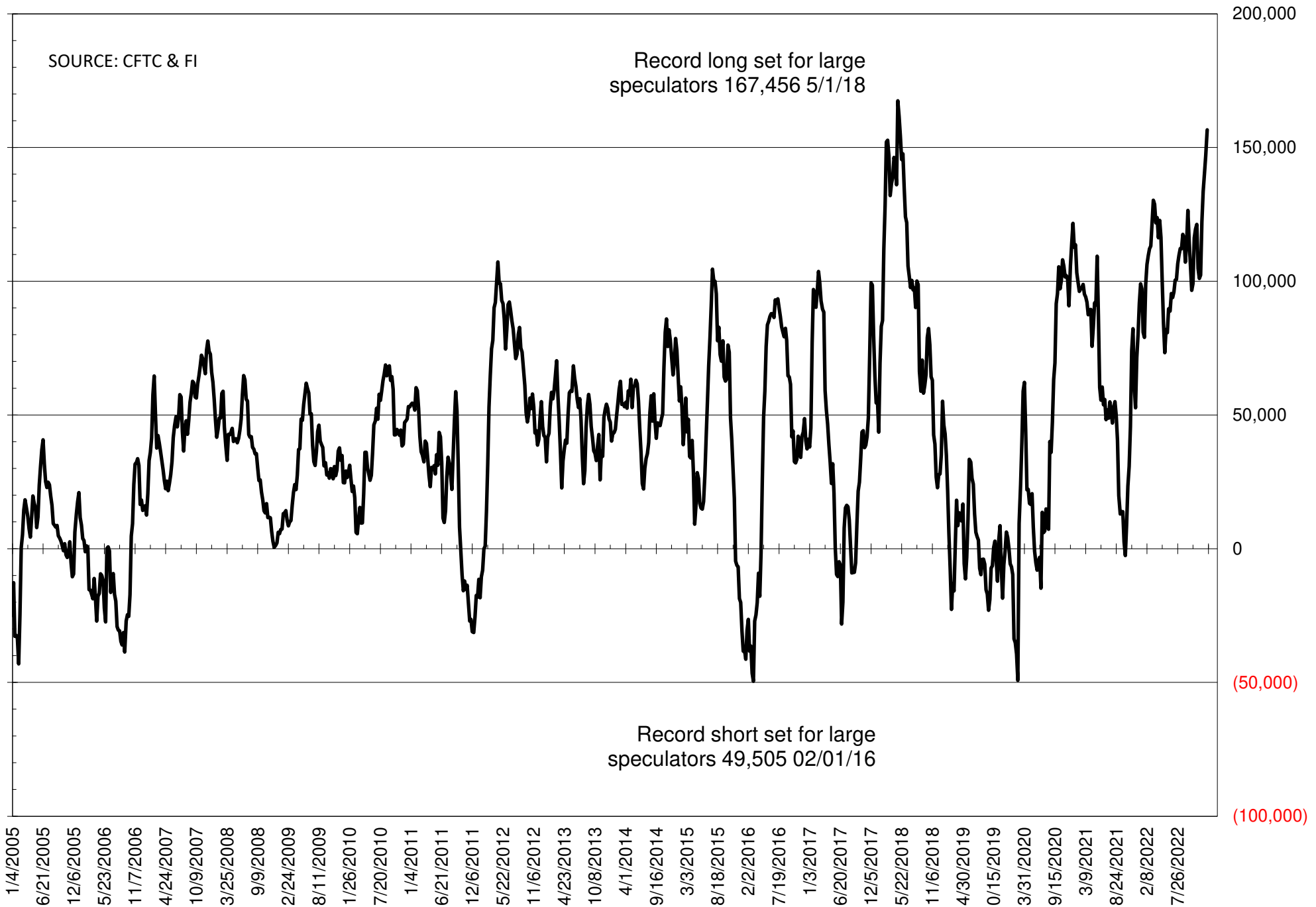
	TOTAL OPEN INTEREST				NEARBY FUTURES PRICE					3-Jan-23 LAST REPORTED % HELD BY TRADERS			
	3-Jan	27-Dec	20-Dec	13-Dec	H Latest	H 3-Jan	F/H 27-Dec	F/H 20-Dec	F/H 13-Dec	LARGE FUND		SMALL	
										LONG	SHORT	LONG	SHORT
<b>WHEAT</b>													
Chicago	331577	331562	332182	335354	743.50	775.50	750.50	750.50	750.75	0%	35%	0%	11%
Kansas City	152061	149652	151177	151174	832.00	869.25	847.00	847.00	865.25	0%	24%	0%	13%
Minneapolis	53547	54118	50754	47865	902.25	919.25	916.00	916.00	922.75	0%	12%	0%	19%
<b>CORN</b>	1221434	1186971	1187781	1205259	654.00	670.50	652.00	652.00	653.50	0%	8%	0%	14%
OATS	3650	3932	4414	4103	344.25	363.50	336.50	336.50	340.75	0%	40%	0%	30%
<b>SOYBEANS</b>	603609	595601	627125	638744	1492.50	1492.25	1478.50	1478.50	1479.75	32%	8%	7%	13%
SOY OIL	374903	372407	393740	410837	63.17	63.20	66.05	66.05	64.12	0%	8%	0%	6%
SOY MEAL	404562	401630	407746	392236	477.60	465.10	452.40	452.40	452.30	0%	3%	0%	6%

SOURCE: CFTC & FI

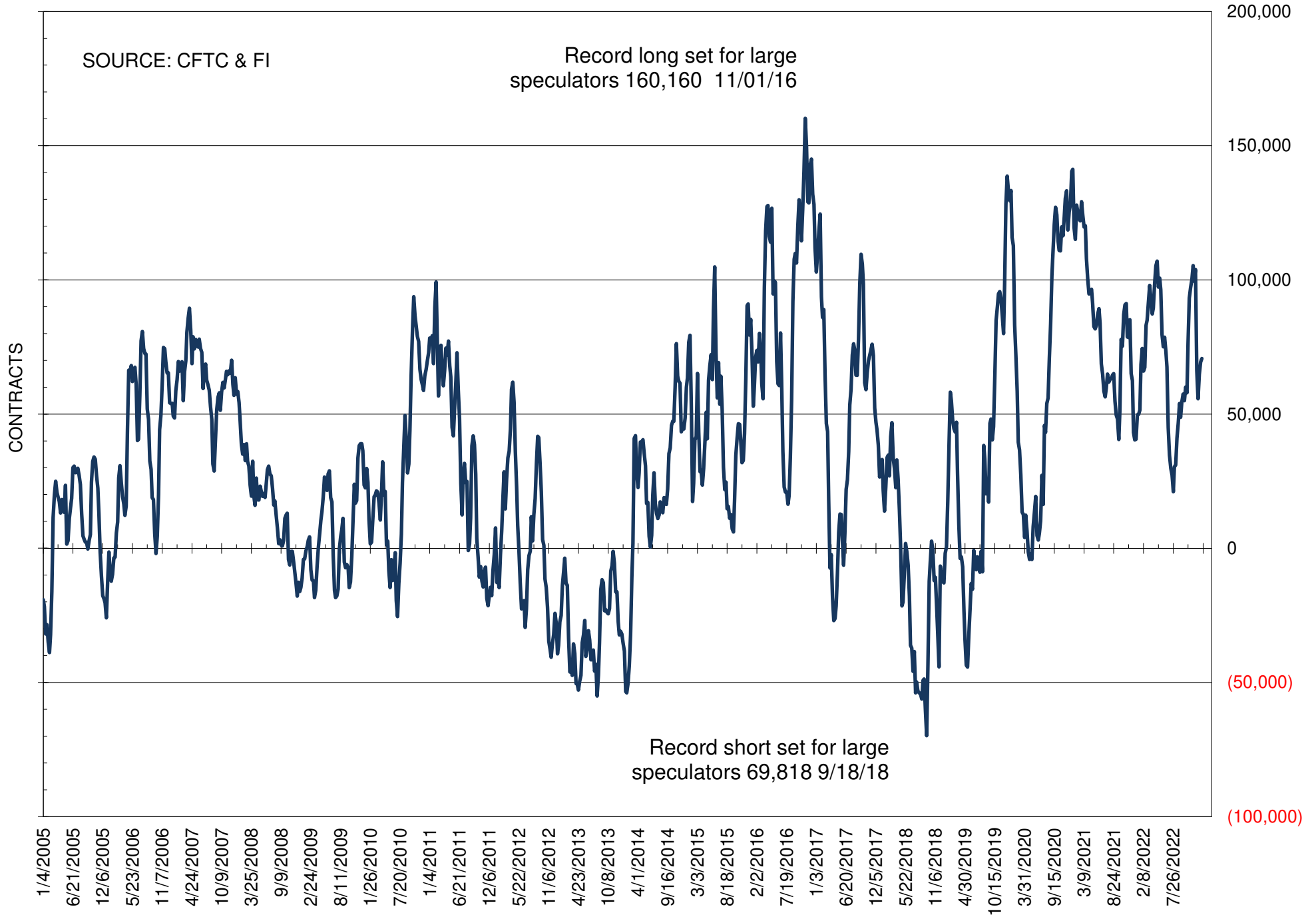
# NET POSITION OF FUTURES ONLY LARGE SPECS IN SOYBEANS



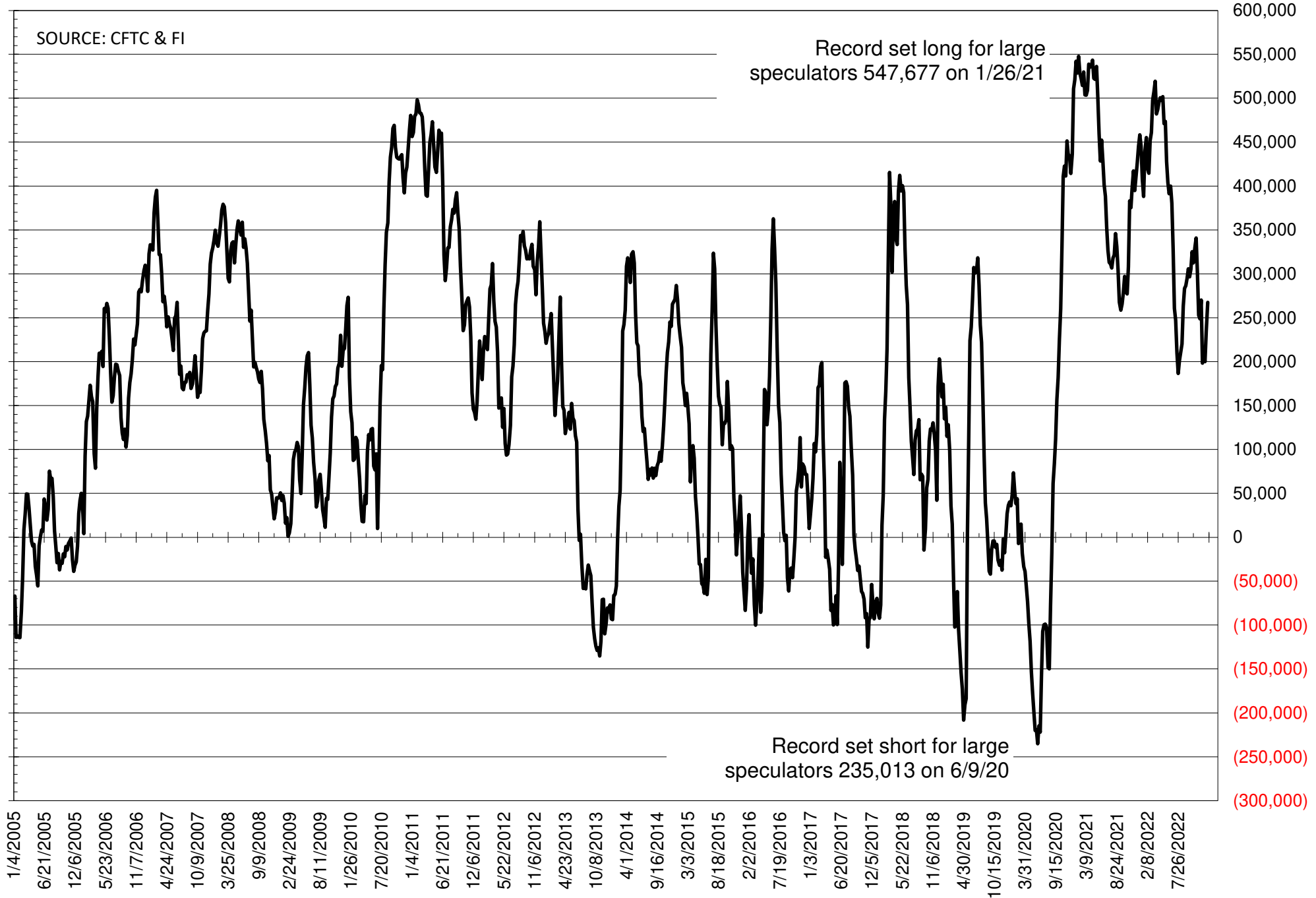
# NET POSITION OF FUTURES ONLY LARGE SPECS IN SOYMEAL



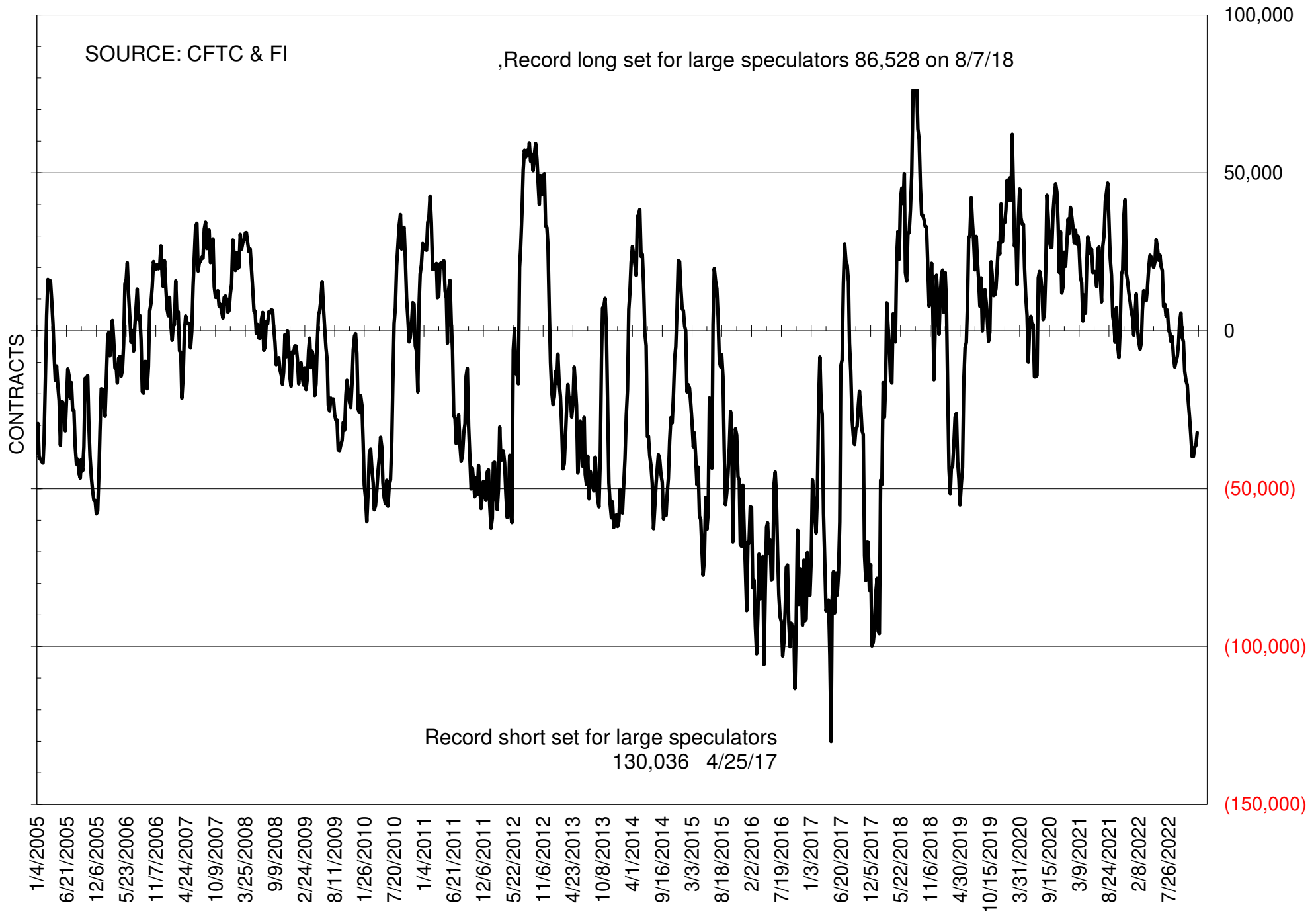
# NET POSITION OF FUTURES ONLY LARGE SPECS IN SOYOIL



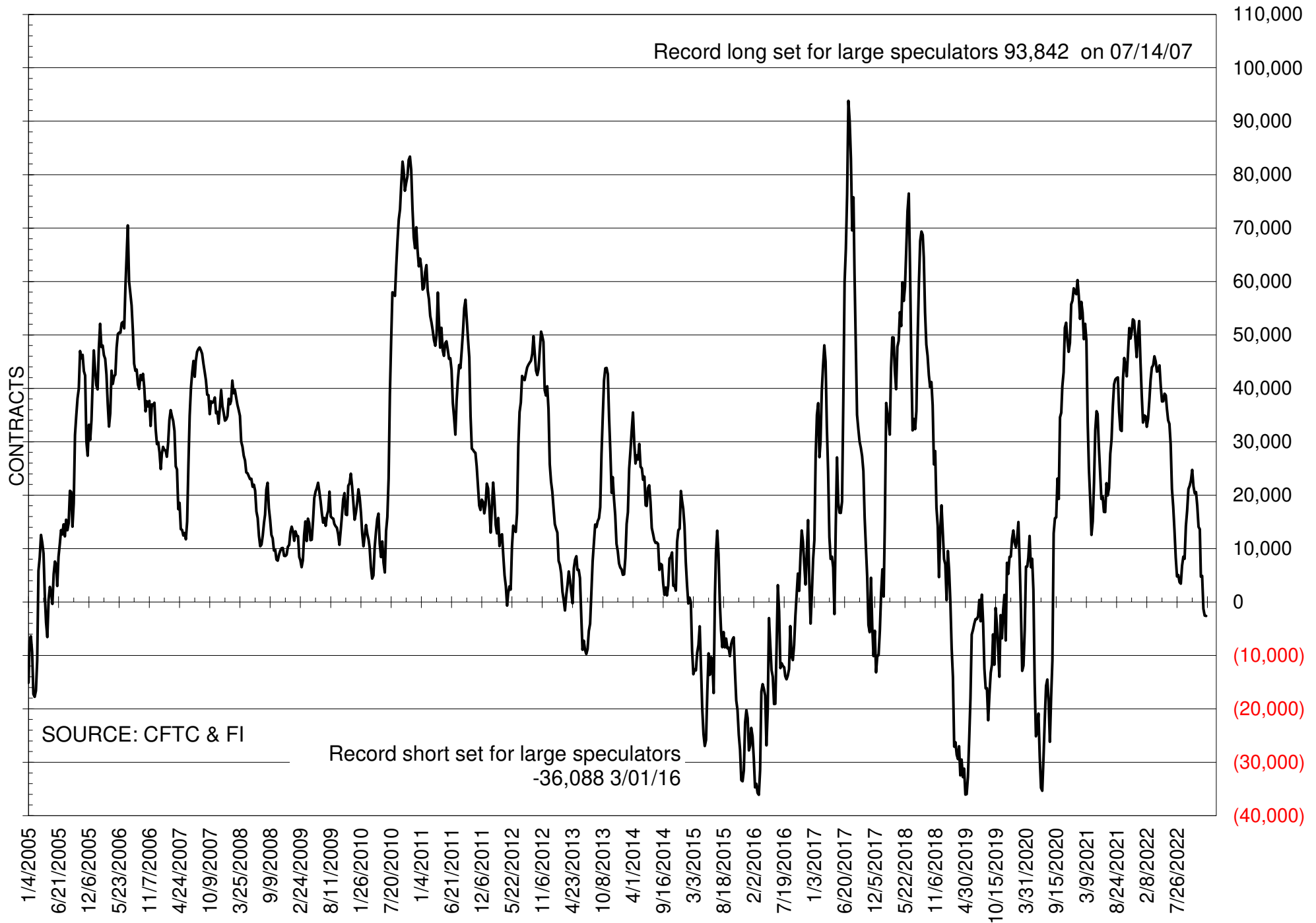
# NET POSITION OF LARGE SPECULATORS IN CORN



# NET POSITION OF FUTURES ONLY LARGE SPECS IN CHICAGO WHEAT

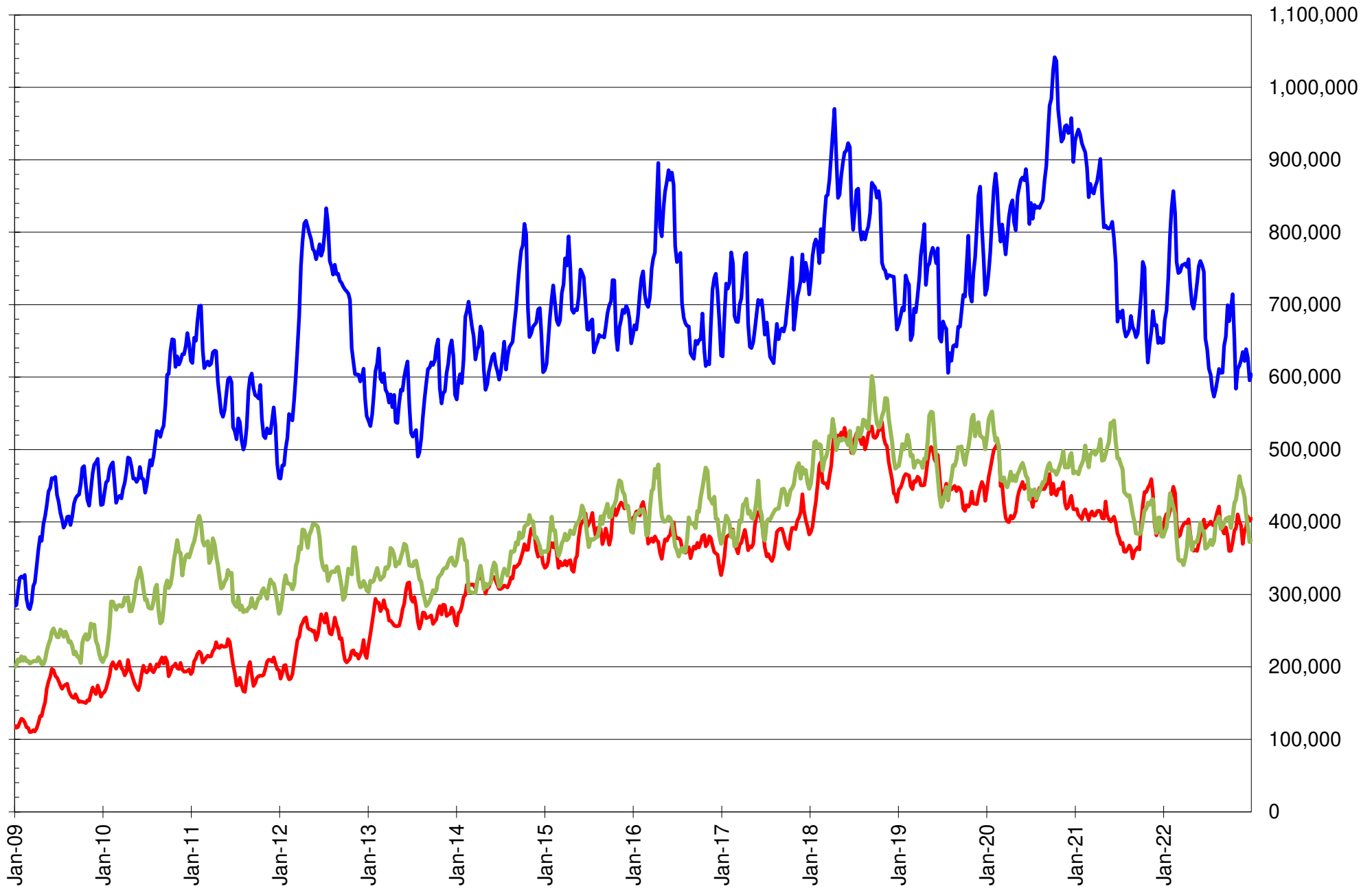


# NET POSITION OF LARGE SPECULATORS IN KANSAS CITY WHEAT





# TOTAL OPEN INTEREST IN SOYBEANS, MEAL AND OIL, FUTURES ONLY



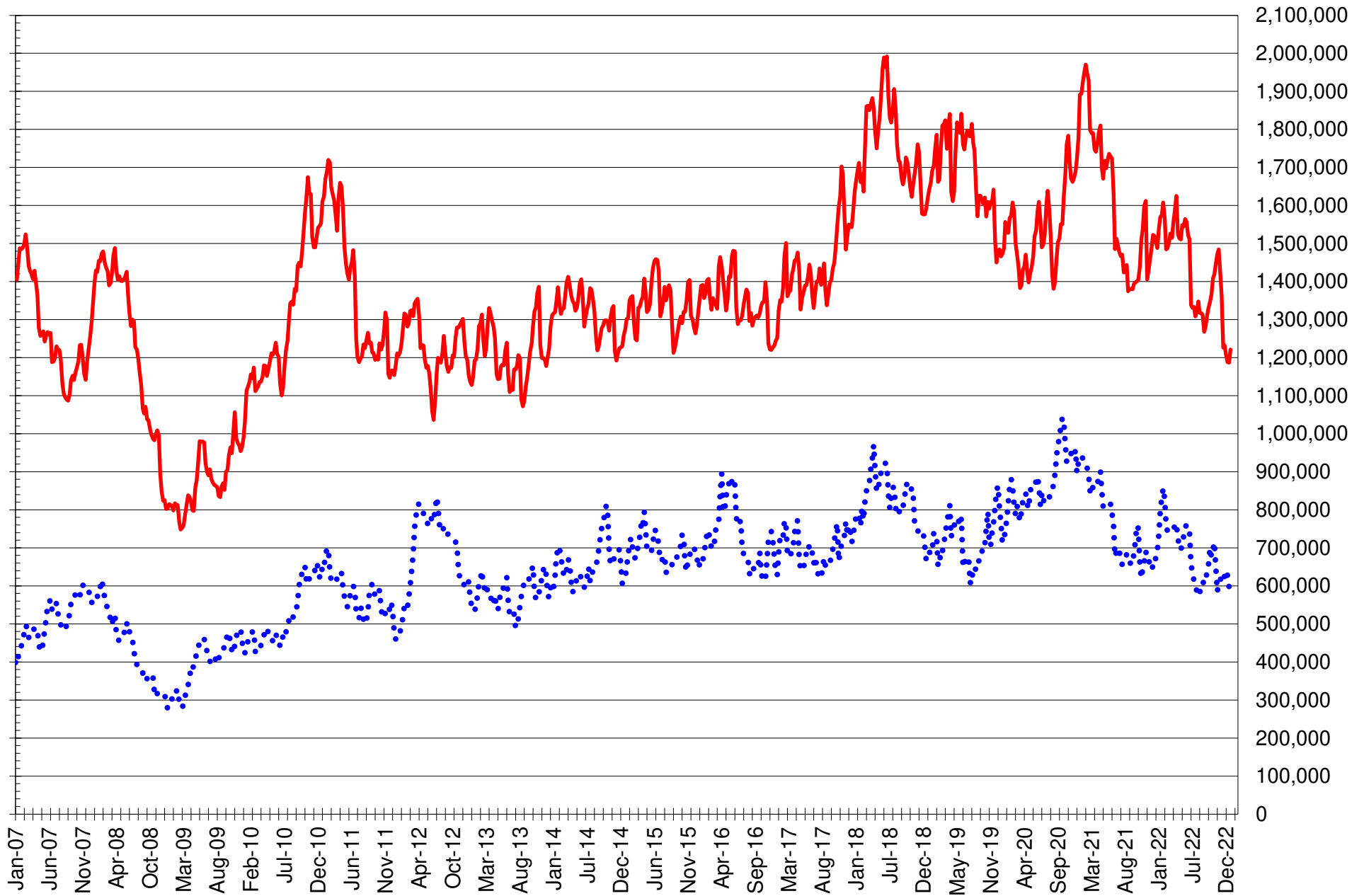
SOURCE: CFTC & FI

— SOYBEANS

— SOYBEAN MEAL

— SOYBEAN OIL

# TOTAL OPEN INTEREST IN CORN AND SOYBEANS, FUTURES ONLY



SOURCE: CFTC & FI

— CORN

..... SOYBEANS

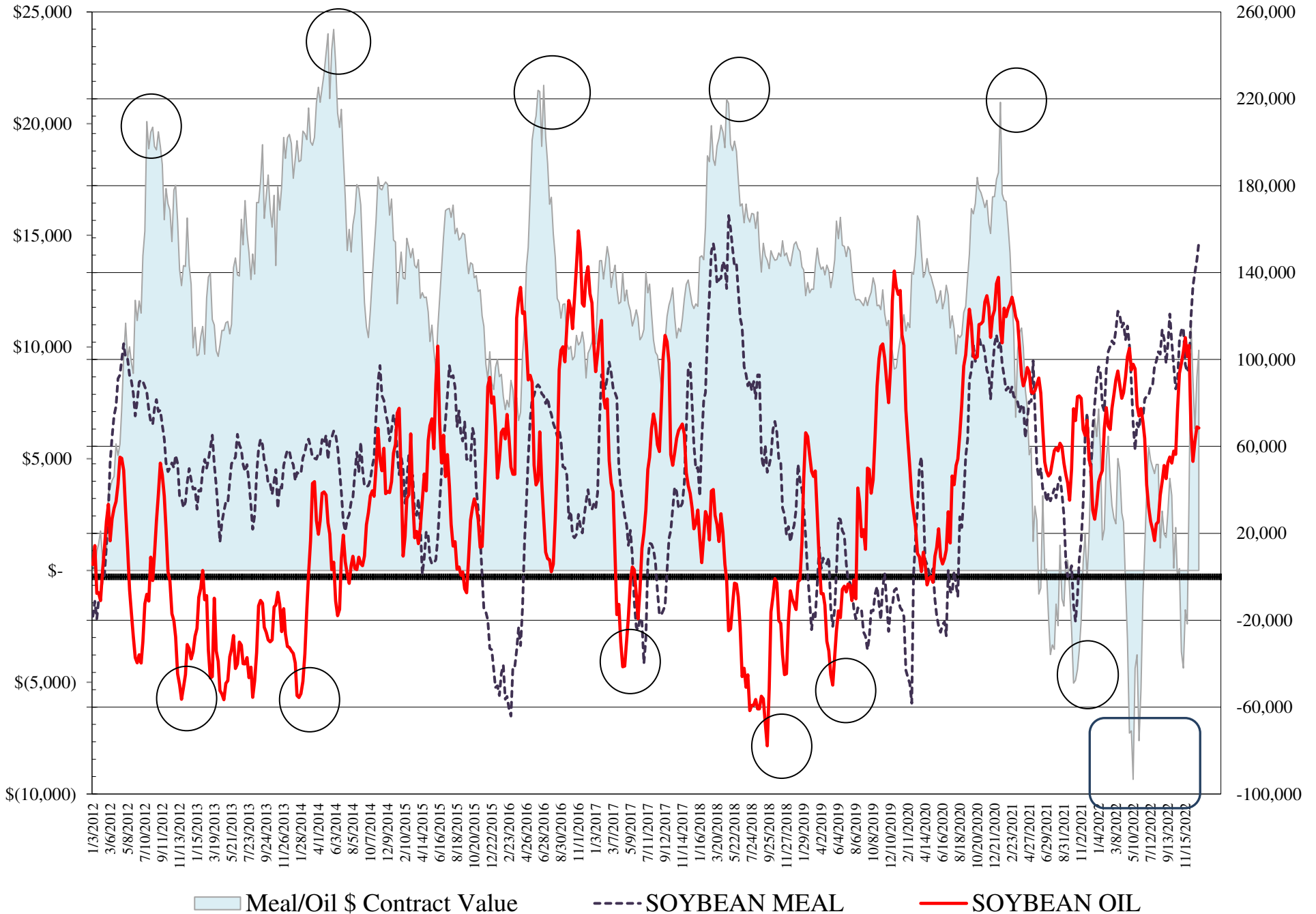
**COMMITMENT OF TRADERS**  
**FUTURES & OPTIONS NET POSITIONS**  
**AS OF 01/03/2023**  
(IN THOUSAND CONTRACTS)

	COMMERCIAL				(FUND) NON COMMERCIAL				(SPEC) NON-REPORTABLE			
	3-Jan	27-Dec	20-Dec	13-Dec	3-Jan	27-Dec	20-Dec	13-Dec	3-Jan	27-Dec	20-Dec	13-Dec
	<b>WHEAT</b>											
Chicago	37.5	40.2	43.6	44.5	-33.5	-37.3	-40.8	-42.9	-4.1	-2.9	-2.8	-1.6
Kansas City	5.4	4.9	3.8	-2.0	-3.4	-3.5	-3.4	3.0	-1.9	-1.4	-0.4	-0.9
Minneapolis	0.9	0.9	3.6	3.3	-0.4	-0.4	-1.7	-1.3	-0.6	-0.4	-1.8	-2.0
All Wheat	43.8	46.1	51.0	45.7	-37.3	-41.3	-45.9	-41.2	-6.6	-4.8	-5.1	-4.5
<b>CORN</b>	-195.7	-167.3	-121.7	-138.2	245.6	209.3	160.1	172.5	-50.0	-42.0	-38.4	-34.2
<b>OATS</b>	-0.2	0.0	0.1	0.1	-0.7	-1.0	-1.2	-1.0	0.8	1.0	1.1	0.9
<b>SOYBEANS</b>	-106.1	-96.7	-90.0	-83.9	146.7	132.8	125.9	117.2	-40.7	-36.1	-35.9	-33.3
<b>SOY OIL</b>	-79.1	-82.5	-73.9	-66.3	68.5	69.0	62.2	53.1	10.6	13.5	11.6	13.2
<b>SOY MEAL</b>	-173.4	-164.2	-162.0	-152.7	153.9	145.7	140.0	133.8	19.6	18.5	22.0	19.0

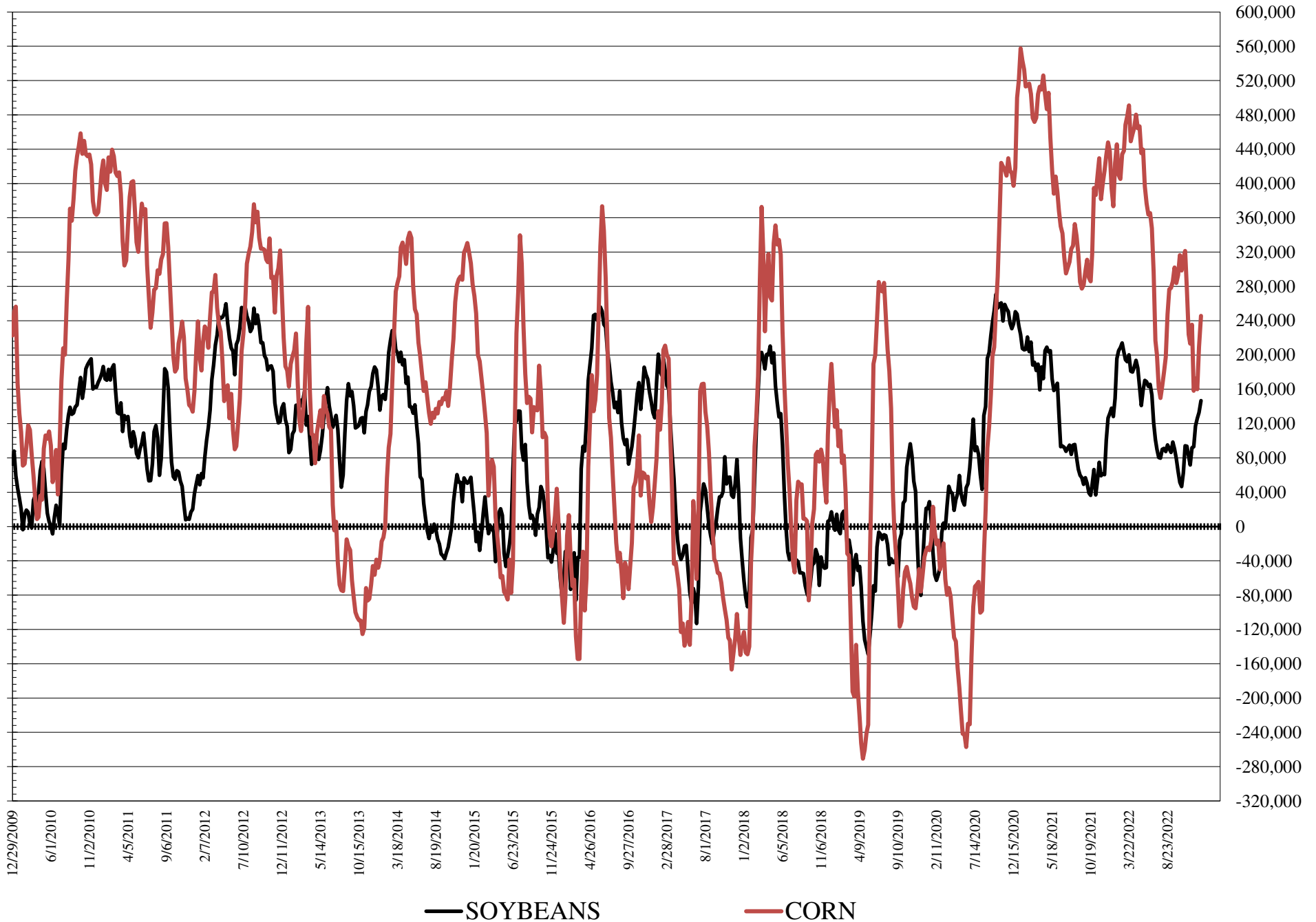
	TOTAL OPEN INTEREST				COMMERCIALS		% HELD BY TRADERS LARGE (FUNDS)		SMALL (NON-REP)	
	3-Jan	27-Dec	20-Dec	13-Dec	LONG	SHORT	LONG	SHORT	LONG	SHORT
	<b>WHEAT</b>									
Chicago	388,172	387,675	402,381	405,051	40%	30%	21%	29%	9%	10%
Kansas City	164,954	162,296	165,627	165,081	46%	42%	20%	22%	11%	12%
Minneapolis	55,071	55,600	52,174	49,229	65%	64%	11%	12%	18%	19%
<b>CORN</b>	1,469,933	1,423,239	1,443,655	1,457,563	42%	55%	23%	6%	11%	14%
<b>OATS</b>	3,683	3,968	4,439	4,126						
<b>SOYBEANS</b>	703,996	682,246	733,115	744,707	44%	59%	28%	7%	7%	13%
<b>SOY OIL</b>	406,954	403,106	445,456	464,030	46%	66%	24%	7%	9%	6%
<b>SOY MEAL</b>	445,612	435,113	453,264	438,398	35%	73%	37%	3%	10%	6%

SOURCE: CFTC & FI

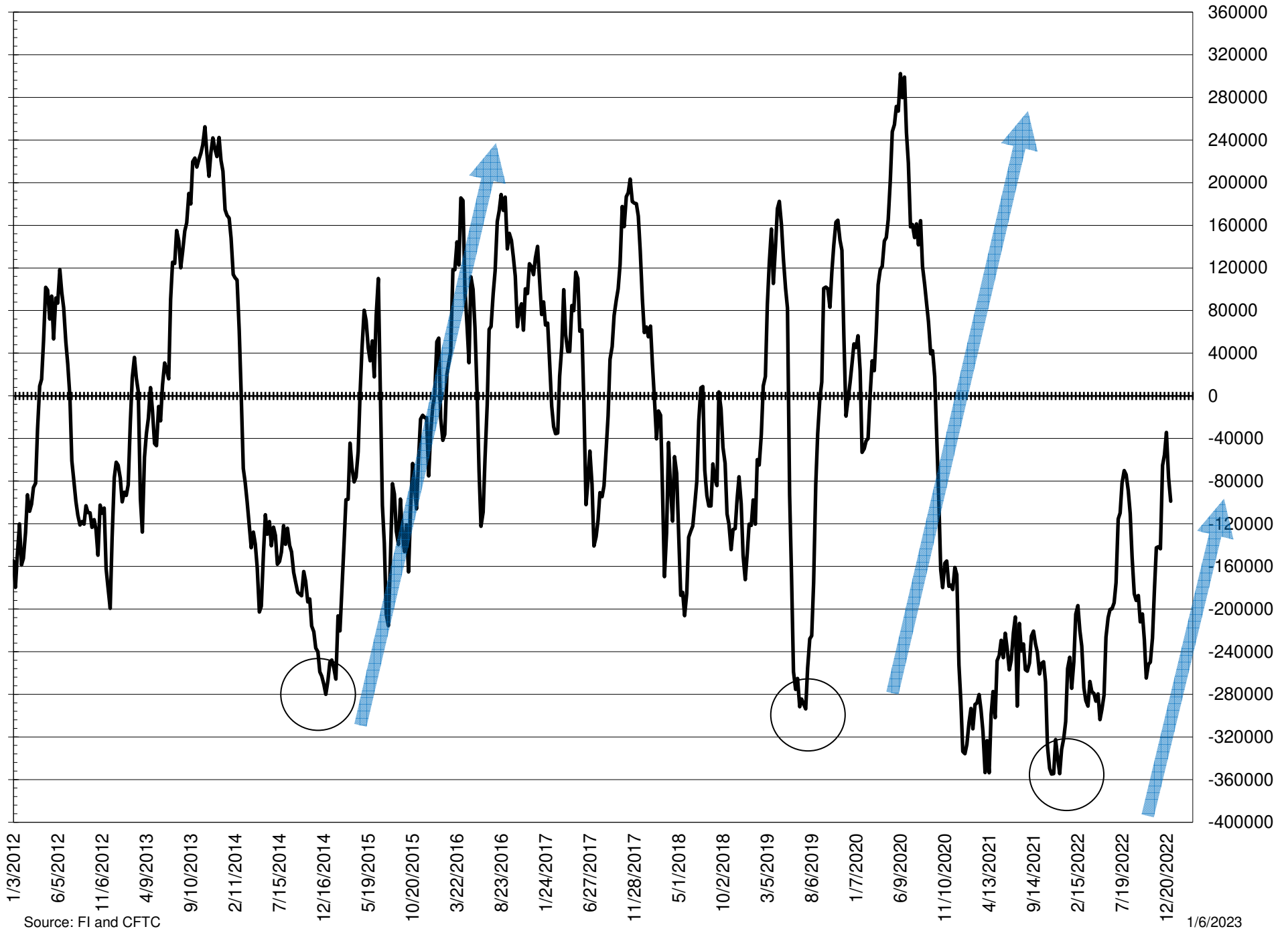
# NET POSITION FUTURES AND OPTIONS OF LARGE SPECULATORS IN SOYBEAN MEAL AND SOYBEAN OIL



# NET POSITION FUTURES AND OPTIONS OF LARGE SPECULATORS IN SOYBEANS AND CORN



# NET POSITION FUTURES AND OPTIONS SPREAD OF LARGE SPECULATORS IN SOYBEANS MINUS CORN



Source: FI and CFTC

1/6/2023

**DISAGGREGATED COMMITMENT OF TRADERS**  
**FUTURES ONLY NET POSITIONS**  
**AS OF 01/03/2023**  
(IN THOUSAND CONTRACTS)

	PRODUCER / MERCHANT / PROCESSOR / USER				(INDEX/ETF) SWAP DEALERS				(CTA/CPO/OTHER UNREGISTERED) MANAGED MONEY			
	3-Jan	27-Dec	20-Dec	13-Dec	3-Jan	27-Dec	20-Dec	13-Dec	3-Jan	27-Dec	20-Dec	13-Dec
	WHEAT											
Chicago	(27.0)	(23.1)	(22.3)	(20.1)	64.6	63.8	63.4	63.0	(52.8)	(56.2)	(59.8)	(63.1)
Kansas City	(30.2)	(29.9)	(31.6)	(37.5)	34.9	34.1	33.6	33.9	1.2	1.3	0.8	8.1
Minneapolis	(0.6)	(0.5)	2.5	1.6	1.4	1.3	1.1	1.8	(2.8)	(3.3)	(4.4)	(3.9)
All Wheat	(57.8)	(53.6)	(51.4)	(56.0)	100.9	99.2	98.1	98.6	(54.5)	(58.2)	(63.4)	(58.9)
CORN	(438.5)	(408.7)	(376.4)	(399.8)	221.4	218.8	217.8	226.6	200.0	163.7	113.6	127.6
OATS	(0.2)	0.0	0.2	0.2	-	-	(0.1)	(0.1)	(1.5)	(1.7)	(1.9)	(1.8)
SOYBEANS	(179.5)	(166.8)	(165.2)	(160.4)	68.1	66.8	73.5	78.3	142.9	129.2	126.7	120.5
SOY OIL	(167.2)	(167.7)	(162.5)	(153.0)	86.5	85.4	86.4	84.5	60.4	62.1	55.1	50.7
SOY MEAL	(253.7)	(244.4)	(241.3)	(231.6)	77.7	78.9	79.1	79.5	142.4	130.3	122.4	115.6

	Managed % of OI			
Chicago W	-16%	-17%	-18%	-19%
Corn	16%	14%	10%	11%

	TOTAL OPEN INTEREST				OTHER REPORTABLE				NON REPORTABLE			
	3-Jan	27-Dec	20-Dec	13-Dec	3-Jan	27-Dec	20-Dec	13-Dec	3-Jan	27-Dec	20-Dec	13-Dec
	WHEAT											
Chicago	331,577	331,562	332,182	335,354	20.5	20.0	22.8	23.2	(5.3)	(4.4)	(4.1)	(3.0)
Kansas City	152,061	149,652	151,177	151,174	(3.8)	(3.9)	(2.1)	(3.2)	(2.1)	(1.7)	(0.7)	(1.3)
Minneapolis	53,547	54,118	50,754	47,865	2.6	3.0	2.7	2.6	(0.6)	(0.5)	(1.9)	(2.0)
All Wheat	537,185	535,332	534,113	534,393	19.4	19.1	23.4	22.6	(8.0)	(6.5)	(6.7)	(6.3)
CORN	1,221,434	1,186,971	1,187,781	1,205,259	67.6	71.5	86.4	84.6	(50.4)	(45.3)	(41.4)	(39.0)
OATS	3,650	3,932	4,414	4,103	0.8	0.7	0.7	0.8	0.8	1.0	1.1	0.9
SOYBEANS	603,609	595,601	627,125	638,744	5.8	4.3	(2.0)	(7.4)	(37.3)	(33.4)	(33.0)	(31.0)
SOY OIL	374,903	372,407	393,740	410,837	10.3	7.2	9.7	5.0	10.0	13.0	11.3	12.9
SOY MEAL	404,562	401,630	407,746	392,236	14.1	16.6	17.7	17.9	19.4	18.6	22.1	18.6

SOURCE: CFTC & FI

**DISAGGREGATED COMMITMENT OF TRADERS  
FUTURES & OPTIONS NET POSITIONS  
AS OF 01/03/2023  
(IN THOUSAND CONTRACTS)**

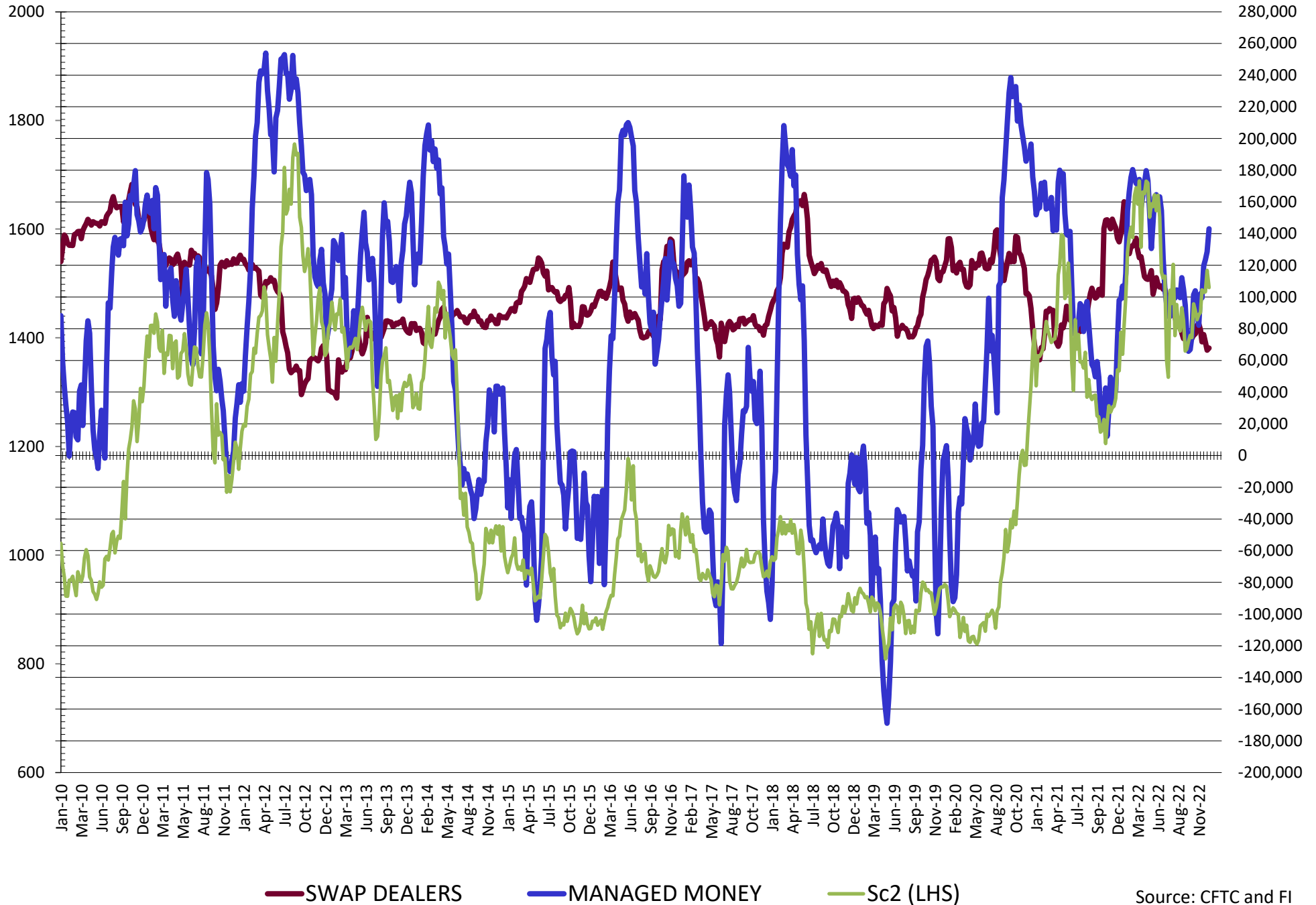
	PRODUCER / MERCHANT / PROCESSOR / USER				(INDEX/ETF) SWAP DEALERS				(CTA/CPO/OTHER UNREGISTERED) MANAGED MONEY			
	3-Jan	27-Dec	20-Dec	13-Dec	3-Jan	27-Dec	20-Dec	13-Dec	3-Jan	27-Dec	20-Dec	13-Dec
	WHEAT											
Chicago	(29.1)	(25.1)	(21.8)	(20.2)	66.6	65.4	65.4	64.7	(52.7)	(56.2)	(59.3)	(63.0)
Kansas City	(29.8)	(29.5)	(30.9)	(36.8)	35.2	34.4	34.7	34.7	1.8	1.9	1.2	8.5
Minneapolis	(0.5)	(0.4)	2.4	1.5	1.4	1.3	1.1	1.8	(2.8)	(3.3)	(4.4)	(3.9)
All Wheat	(59.4)	(55.0)	(50.2)	(55.5)	103.2	101.1	101.2	101.2	(53.8)	(57.7)	(62.5)	(58.4)
CORN	(419.2)	(388.0)	(343.2)	(367.8)	223.5	220.7	221.4	229.5	196.5	159.3	113.8	127.1
OATS	(0.2)	0.0	0.2	0.2	0.0	0.0	(0.1)	(0.1)	(1.5)	(1.7)	(1.9)	(1.8)
SOYBEANS	(173.8)	(163.1)	(161.4)	(160.1)	67.8	66.4	71.4	76.3	143.0	128.6	123.6	119.6
SOY OIL	(166.4)	(168.3)	(160.3)	(150.7)	87.3	85.8	86.4	84.4	63.8	65.6	58.1	53.3
SOY MEAL	(250.6)	(242.7)	(240.1)	(231.4)	77.2	78.5	78.1	78.7	141.9	130.0	121.3	114.5

	TOTAL OPEN INTEREST				OTHER REPORTABLE				NON REPORTABLE			
	3-Jan	27-Dec	20-Dec	13-Dec	3-Jan	27-Dec	20-Dec	13-Dec	3-Jan	27-Dec	20-Dec	13-Dec
	WHEAT											
Chicago	388,172	387,675	402,381	405,051	19.3	18.9	18.5	20.1	(4.1)	(2.9)	(2.8)	(1.6)
Kansas City	164,954	162,296	165,627	165,081	(5.2)	(5.4)	(4.6)	(5.6)	(1.9)	(1.4)	(0.4)	(0.9)
Minneapolis	55,071	55,600	52,174	49,229	2.5	2.9	2.7	2.7	(0.6)	(0.4)	(1.8)	(2.0)
All Wheat	608,197	605,571	620,182	619,361	16.5	16.4	16.6	17.2	(6.6)	(4.8)	(5.1)	(4.5)
CORN	1,469,933	1,423,239	1,443,655	1,457,563	49.2	50.0	46.3	45.4	(50.0)	(42.0)	(42.0)	(42.0)
OATS	3,683	3,968	4,439	4,126	0.8	0.7	0.7	0.8	0.8	1.0	1.1	0.9
SOYBEANS	703,996	682,246	733,115	744,707	3.8	4.2	2.3	(2.4)	(40.7)	(36.1)	(35.9)	(33.3)
SOY OIL	406,954	403,106	445,456	464,030	4.7	3.4	4.1	(0.3)	10.6	13.5	11.6	13.2
SOY MEAL	445,612	435,113	453,264	438,398	12.0	15.7	18.7	19.3	19.6	18.5	22.0	19.0

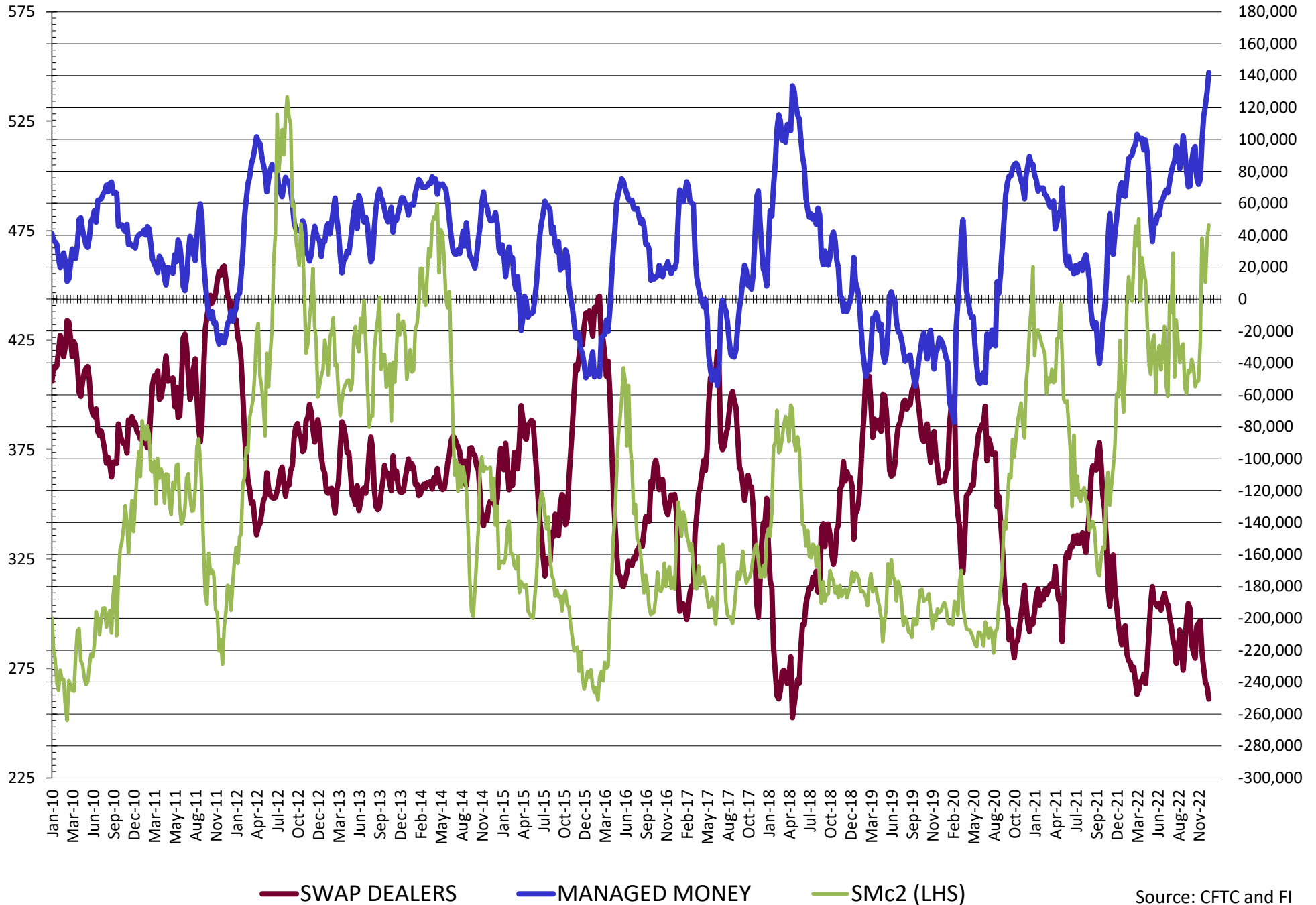
SOURCE: CFTC & FI



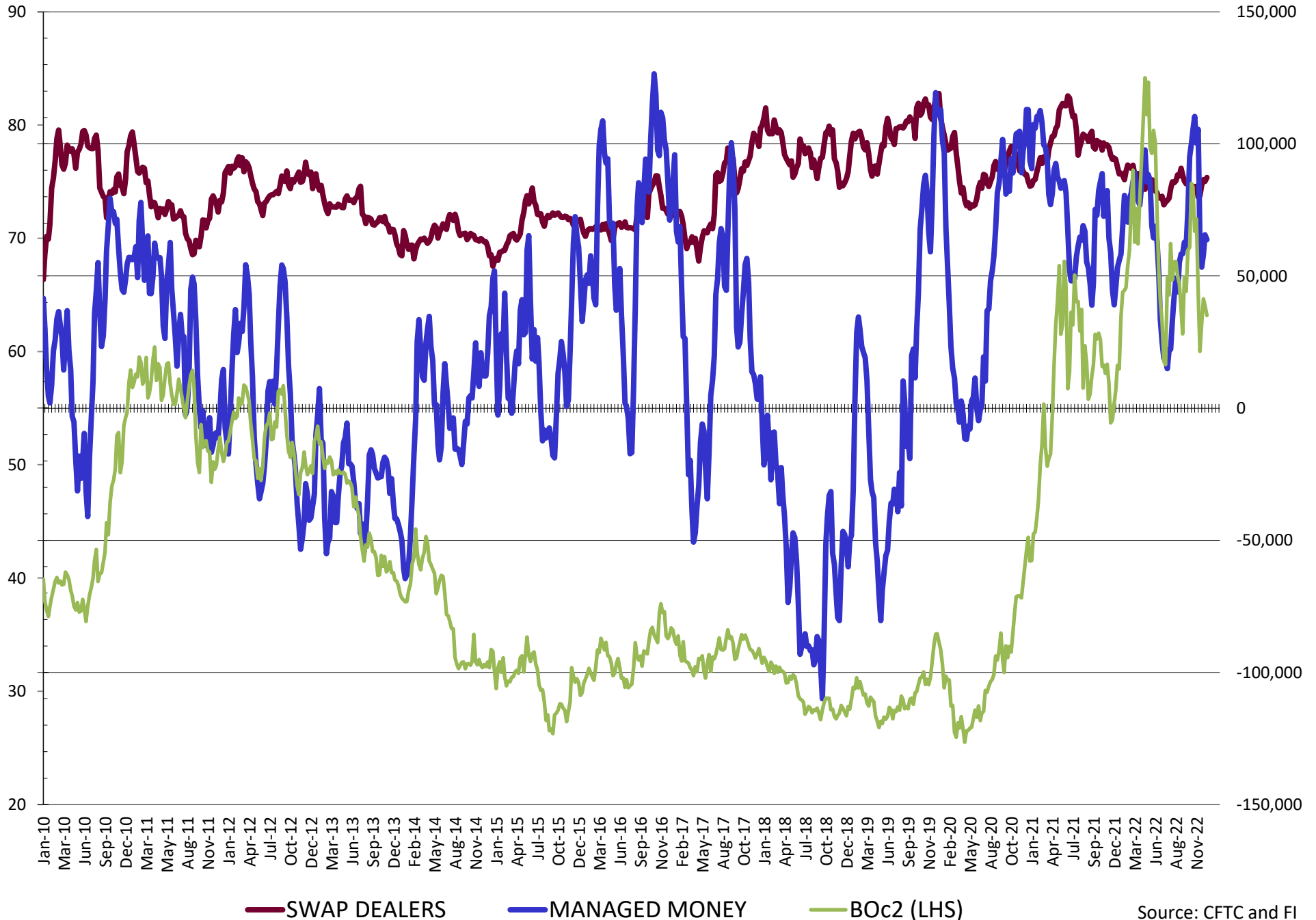
# NET POSITION FUTURES AND OPTIONS OF SWAP AND MANAGED FUNDS IN SOYBEANS



# NET POSITION FUTURES AND OPTIONS OF SWAP AND MANAGED FUNDS IN SOYBEAN MEAL

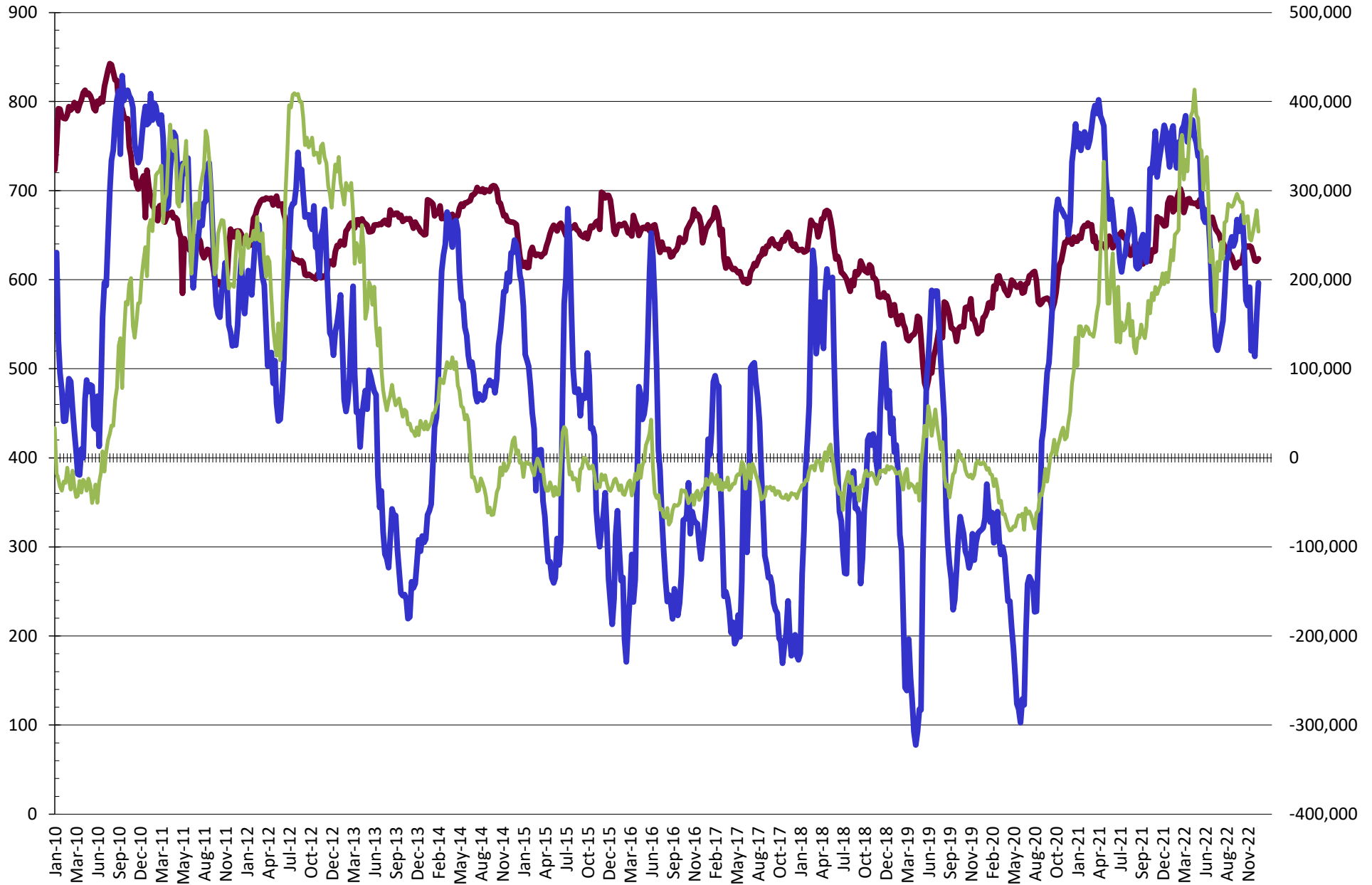


# NET POSITION FUTURES AND OPTIONS OF SWAP AND MANAGED FUNDS IN SOYBEAN OIL



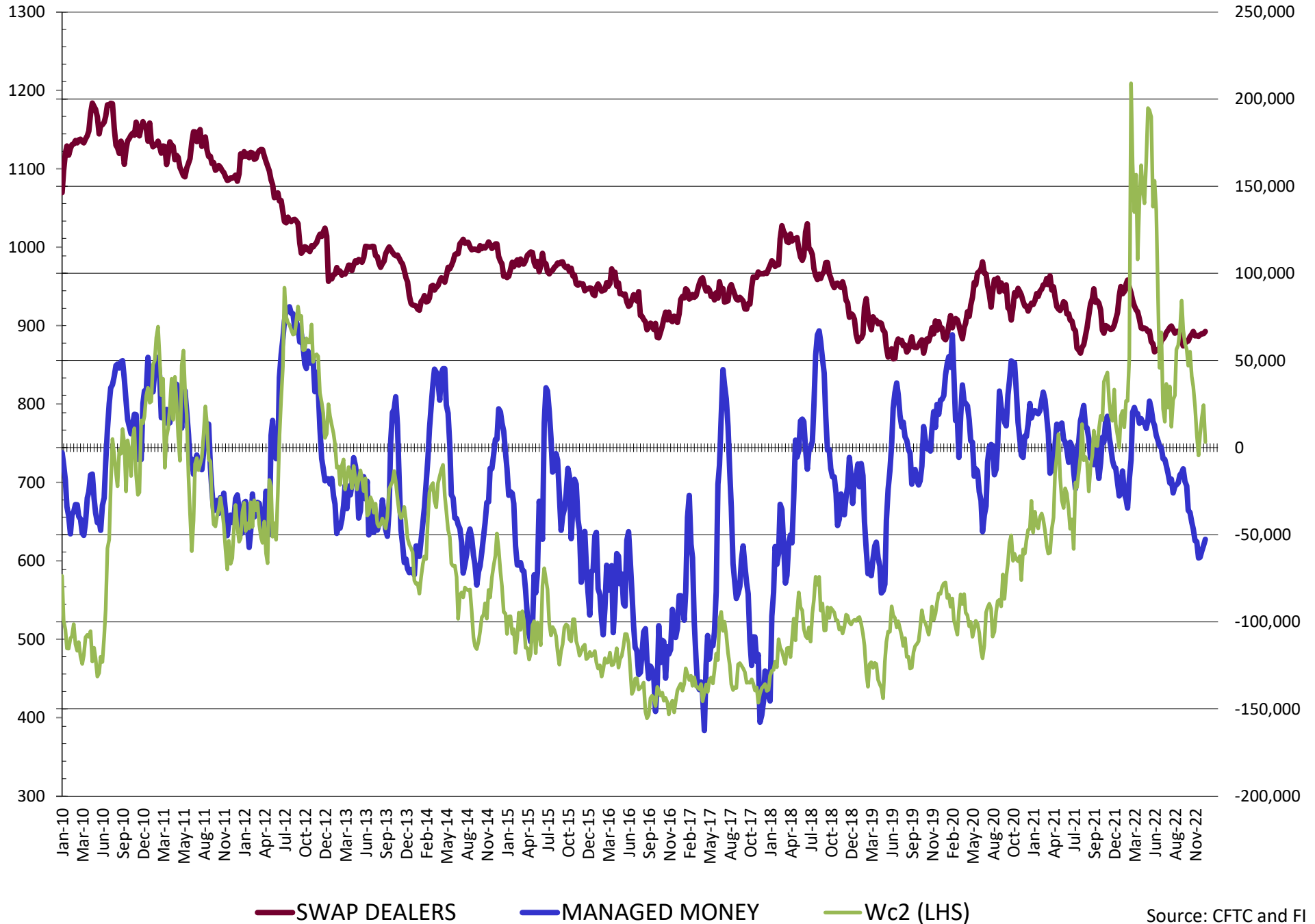
Source: CFTC and FI  
1/6/2023

# NET POSITION FUTURES AND OPTIONS OF SWAP AND MANAGED FUNDS IN CORN

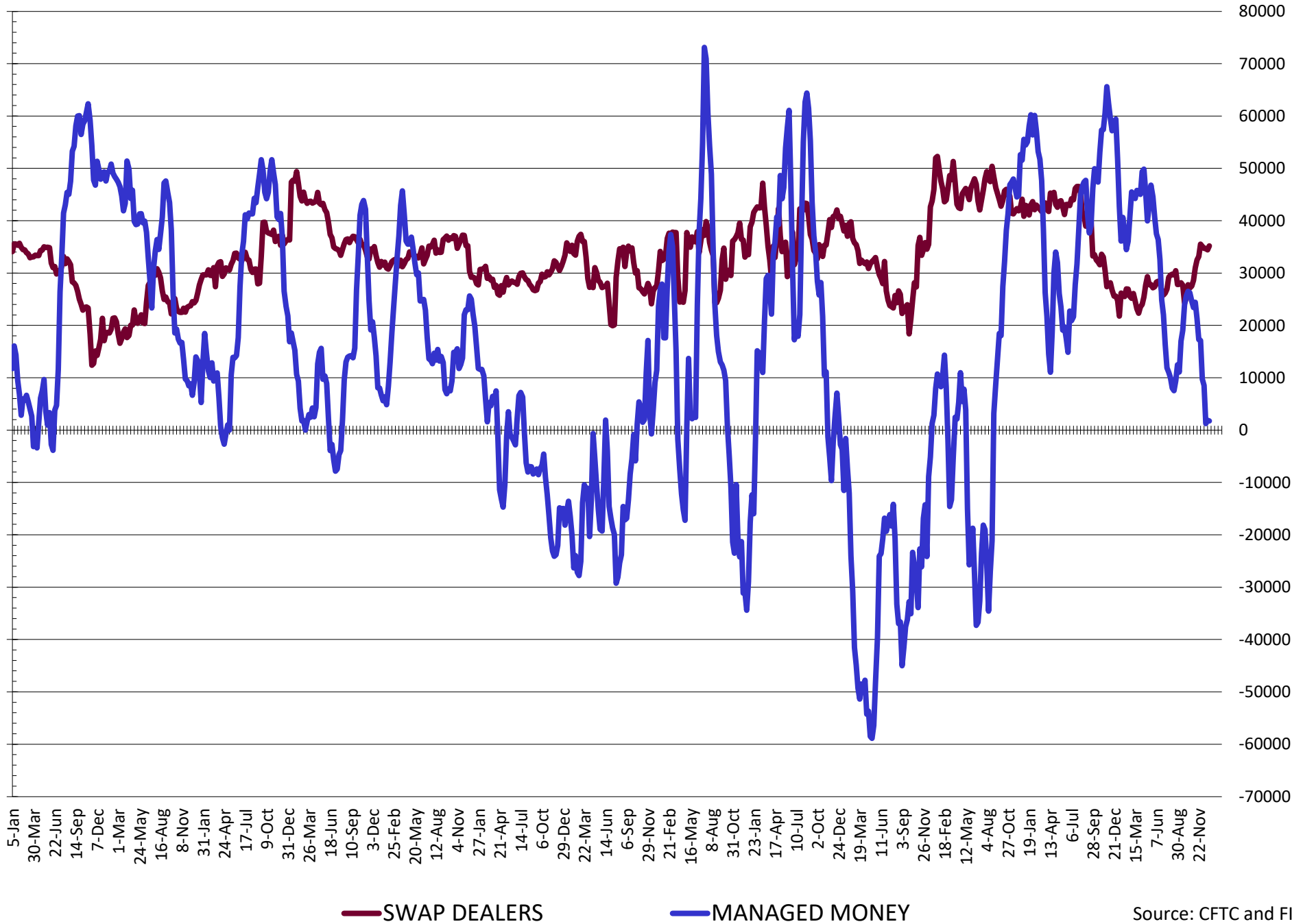


— SWAP DEALERS     
 — MANAGED MONEY     
 — Cc2 (LHS)

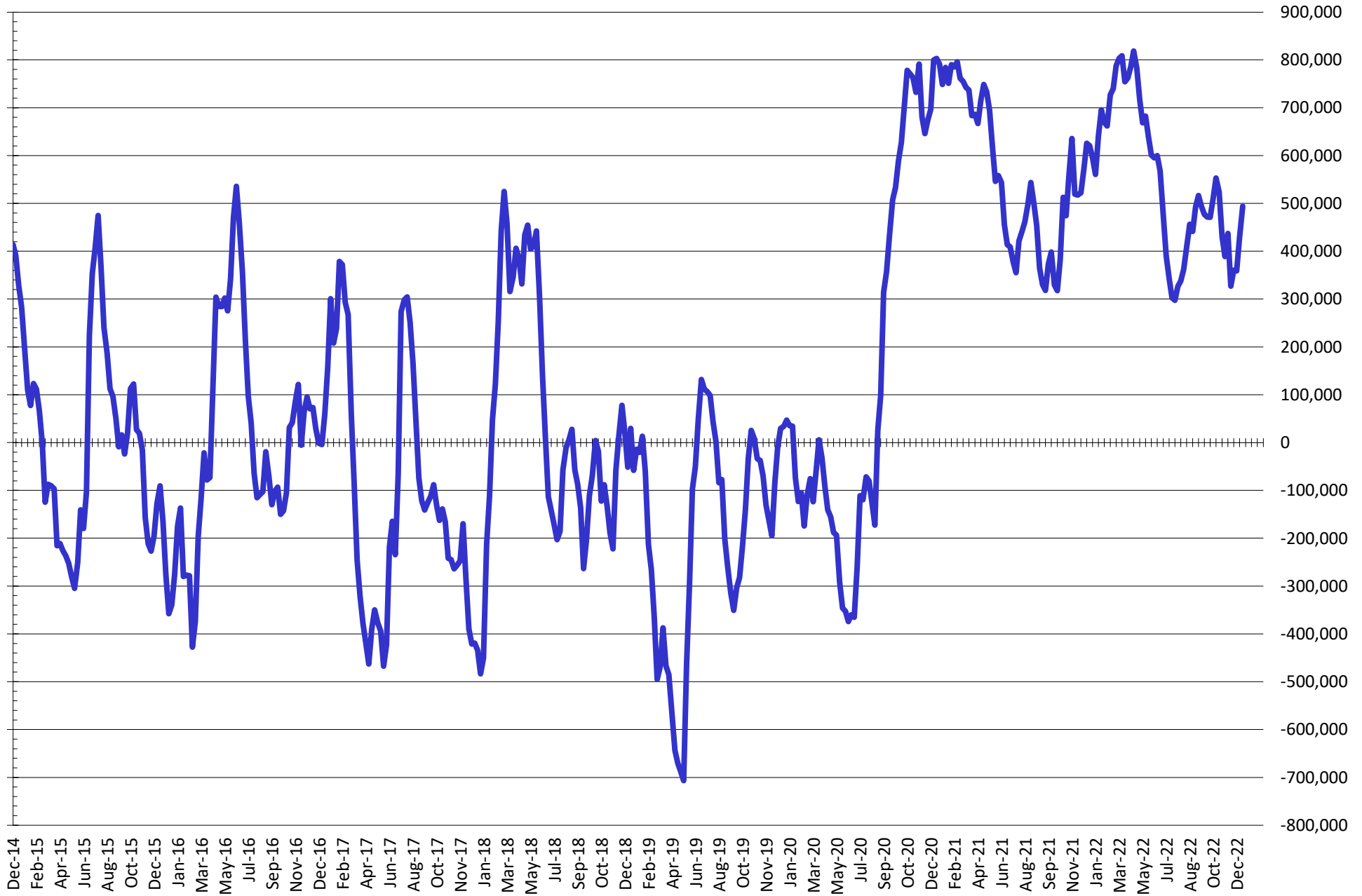
# NET POSITION FUTURES AND OPTIONS OF SWAP AND MANAGED FUNDS IN CHICAGO WHEAT



# NET POSITION FUTURES AND OPTIONS OF SWAP DEALERS AND MANAGED FUNDS IN KANSAS WHEAT



# NET POSITION FUTURES AND OPTIONS OF SWAP AND MANAGED FUNDS IN COMBINED SRW, HRW, CORN, SOYBEANS, SOYMEAL AND SOYOIL



— Net Managed Money

Source: CFTC and FI  
1/6/2023

**COMMITMENT OF TRADERS**  
**FUTURES & OPTIONS NET POSITIONS (INDEX BROKEN OUT)**  
**AS OF 01/03/2023**  
(IN THOUSAND CONTRACTS)

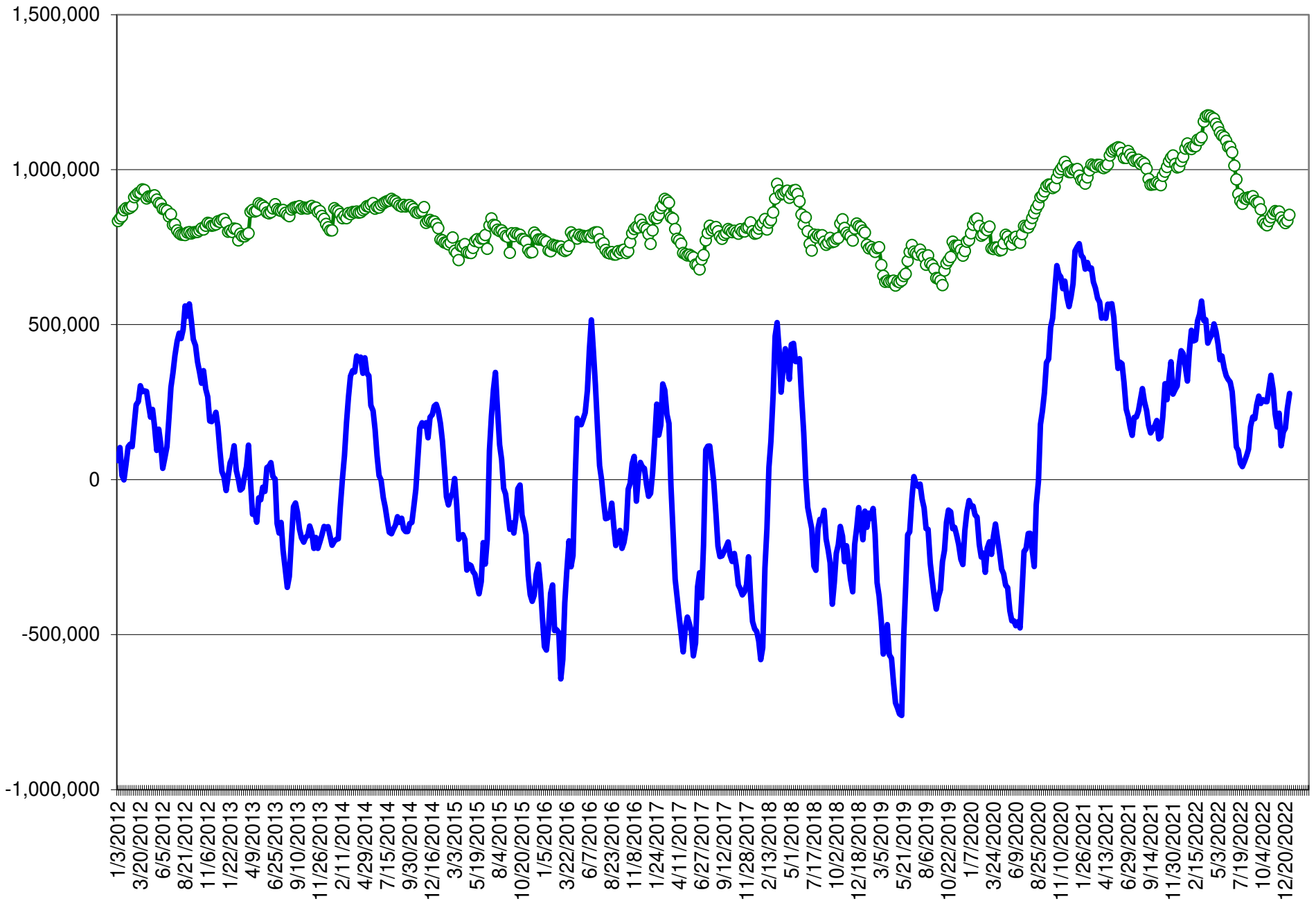
	COMMERCIAL				(FUND) NON COMMERCIAL				(SPEC) NON-REPORTABLE			
	3-Jan	27-Dec	20-Dec	13-Dec	3-Jan	27-Dec	20-Dec	13-Dec	3-Jan	27-Dec	20-Dec	13-Dec
	WHEAT											
Chicago	(34.1)	(30.2)	(26.8)	(25.3)	(62.8)	(65.3)	(67.1)	(71.2)	(4.1)	(2.9)	(2.8)	(1.6)
Kansas City	(28.9)	(28.4)	(29.6)	(35.5)	(16.1)	(15.9)	(16.0)	(9.9)	(1.9)	(1.4)	(0.4)	(0.9)
Minneapolis	-	-	-	-	-	-	-	-	-	-	-	-
All Wheat	(63.0)	(58.6)	(56.4)	(60.8)	(78.9)	(81.2)	(83.1)	(81.1)	(6.0)	(4.4)	(3.2)	(2.5)
CORN	(424.9)	(392.5)	(346.8)	(365.7)	113.8	86.0	42.5	53.1	(50.0)	(42.0)	(38.4)	(34.2)
OATS	-	-	-	-	-	-	-	-	-	-	-	-
SOYBEANS	(184.2)	(176.4)	(171.8)	(169.3)	100.2	91.2	86.3	78.0	(40.7)	(36.1)	(35.9)	(33.3)
SOY OIL	(147.0)	(149.0)	(140.2)	(131.0)	36.0	35.6	28.0	18.8	10.6	13.5	11.6	13.2
SOY MEAL	(246.2)	(237.7)	(235.0)	(225.2)	106.9	98.0	92.2	85.5	19.6	18.5	22.0	19.0

	TOTAL OPEN INTEREST				(INDEX) COMMERCIAL INDEX TRADERS				(INDEX) % NET OF TOTAL OPEN INTEREST			
	3-Jan	27-Dec	20-Dec	13-Dec	3-Jan	27-Dec	20-Dec	13-Dec	3-Jan	27-Dec	20-Dec	13-Dec
	WHEAT											
Chicago	388,172	387,675	402,381	405,051	101.0	98.4	96.7	98.1	26.0%	25.4%	24.0%	24.2%
Kansas City	164,954	162,296	165,627	165,081	47.0	45.7	46.0	46.3	28.5%	28.2%	27.8%	28.1%
Minneapolis	-	-	-	-	-	-	-	-	-	-	-	-
All Wheat	553,126	549,971	568,008	570,132	148.0	144.1	142.7	144.4	26.8%	26.2%	25.1%	25.3%
CORN	1,469,933	1,423,239	1,443,655	1,457,563	361.1	348.5	342.6	346.8	24.6%	24.5%	23.7%	23.8%
OATS	-	-	-	-	-	-	-	-	-	-	-	-
SOYBEANS	703,996	682,246	733,115	744,707	124.7	121.3	121.4	124.6	17.7%	17.8%	16.6%	16.7%
SOY OIL	406,954	403,106	445,456	464,030	100.3	99.9	100.5	98.9	24.7%	24.8%	22.6%	21.3%
SOY MEAL	445,612	435,113	453,264	438,398	119.8	121.2	120.8	120.8	26.9%	27.9%	26.6%	27.6%

SOURCE: CFTC & FI



# NET POSITION FUTURES AND OPTIONS OF SPECULATORS AND INDEX FUNDS IN COMBINED SRW, HRW, CORN, SOYBEANS, SOYMEAL AND SOYOIL



Source: CFTC and FI

○ Net Index

— Net Speculator

## Traditional Daily Estimate of Funds 1/3/23

	(Neg)-"Short"	Pos-"Long"			
Actual less Est.	37.4	8.1	1.0	(1.3)	11.4
	<b>Corn</b>	<b>Bean</b>	<b>Chi. Wheat</b>	<b>Meal</b>	<b>Oil</b>
<b>Actual</b>	267.5	148.6	(32.3)	156.6	70.7
4-Jan	(15.0)	(4.0)	(9.0)	(2.0)	(2.0)
5-Jan	(2.0)	(7.0)	1.0	1.0	(2.0)
6-Jan	1.0	6.0	(2.0)	5.0	3.0
9-Jan					
10-Jan					
<b>FI Est. of Futures Only 11/15/22</b>	<b>251.5</b>	<b>143.6</b>	<b>(42.3)</b>	<b>160.6</b>	<b>69.7</b>
<b>FI Est. Futures &amp; Options</b>	<b>229.6</b>	<b>141.7</b>	<b>(43.5)</b>	<b>157.9</b>	<b>67.5</b>
Futures only record long "Traditional Funds"	547.7 1/26/2021	280.9 11/10/2020	86.5 8/7/2018	167.5 5/1/2018	160.2 11/1/2016
Futures only record short	(235.0) 6/9/2020	(118.3) 4/30/2019	(130.0) 4/25/2017	(49.5) 3/1/2016	(69.8) 9/18/2018
Futures and options record net long	557.6 1/12/2021	270.9 10/6/2020	64.8 8/7/2012	132.1 5/1/2018	159.2 1/1/2016
Futures and options record net short	(270.6) 4/26/2019	(132.0) 4/30/2019	(143.3) 4/25/2017	(64.1) 3/1/2016	(77.8) 9/18/2018

## Managed Money Daily Estimate of Funds

	Corn	Bean	Chi. Wheat	Meal	Oil
Latest CFTC Fut. Only	200.0	142.9	(52.8)	142.4	60.4
Latest CFTC F&O	196.5	143.0	(52.7)	141.9	63.8
	Corn	Bean	Chi. Wheat	Meal	Oil
FI Est. Managed Fut. Only	184	138	(63)	146	59
FI Est. Managed Money F&O	180	138	(63)	146	63

## Index Funds Latest Positions (as of last Tuesday)

Index Futures & Options	361.1	124.7	101.0	NA	100.3
Change From Previous Week	12.6	3.4	2.6	NA	0.4

Source: Reuters, CFTC & FI (FI est. are noted with latest date)

# Disclaimer

TO CLIENTS/PROSPECTS OF FUTURES INTERNATIONAL, SEE RISK DISCLOSURE BELOW:

THIS COMMUNICATION IS CONVEYED AS A SOLICITATION FOR ENTERING INTO A DERIVATIVES TRANSACTION.

Any trading recommendations and market or other information to Customer by Futures International (FI), although based upon information obtained from sources believed by FI to be reliable may not be accurate and may be changed without notice to customer. FI makes no guarantee as to the accuracy or completeness of any of the information or recommendations furnished to Customer. Customer understands that FI, its managers, employees and/or affiliates may have a position in commodity futures, options or other derivatives which may not be consistent with the recommendations furnished by FI to Customer.

The risk of trading futures and options and other derivatives involves a substantial risk of loss and is not suitable for all persons. In purchasing an option, the risk is limited to the premium paid, and all commissions and fees involved with the trade. When an option is shorted or written, the writer of the option has unlimited risk with respect to the option written. The use of options strategies such as a straddles and strangles involve multiple option positions and may substantially increase the amount of commissions and fees paid to execute the strategy. Option prices do not necessarily move in tandem with cash or futures prices. Each person must consider whether a particular trade, combination of trades or strategy is suitable for that person's financial means and objectives.

This material may include discussions of seasonal patterns, however, futures prices have already factored in the seasonal aspects of supply and demand, and seasonal patterns are no indication of future market trends. Finally, past performance is not indicative of future results.

This communication may contain links to third party websites which are not under the control of FI and FI is not responsible for their content. Products and services are offered only in jurisdictions where solicitation and sale are lawful, and in accordance with applicable laws and regulations in each such jurisdiction.