

# CFTC COMMITMENT OF TRADERS REPORT

As of 12/27/2022

## TRADITIONAL FUNDS net position changes

Wed to Tue, in 000 contracts

	Corn	Bean	Meal	Oil	Chi. Wheat	KC Wheat	Min Wheat
Futures Only	35.2	8.8	6.8	4.5	0.7	(1.2)	1.4
Futures & Options Combined	49.2	6.9	5.7	6.7	3.5	(0.1)	1.3

## TRADITIONAL COMMERCIAL net position changes

	Corn	Bean	Meal	Oil	Chi. Wheat	KC Wheat	Min Wheat
Futures Only	(31.3)	(8.4)	(3.3)	(6.2)	(0.4)	2.2	(2.8)
Futures & Options Combined	(45.6)	(6.7)	(2.2)	(8.6)	(3.3)	1.1	(2.7)

## MANAGED MONEY net position changes

	Corn	Bean	Meal	Oil	Chi. Wheat	KC Wheat	Min Wheat
Futures Only	50.1	2.5	7.9	7.0	3.5	0.5	1.1
Futures & Options Combined	45.5	5.0	8.7	7.5	3.1	0.6	1.1

## SWAP DEALERS net position changes

	Corn	Bean	Meal	Oil	Chi. Wheat	KC Wheat	Min Wheat
Futures Only	1.0	(6.7)	(0.2)	(1.0)	0.4	0.5	0.2
Futures & Options Combined	(0.7)	(5.0)	0.4	(0.6)	(0.0)	(0.2)	0.2

## PRODUCERS/END USERS net position changes

	Corn	Bean	Meal	Oil	Chi. Wheat	KC Wheat	Min Wheat
Futures Only	(32.3)	(1.7)	(3.1)	(5.2)	(0.8)	1.7	(3.0)
Futures & Options Combined	(44.9)	(1.7)	(2.6)	(8.0)	(3.3)	1.4	(2.9)

## INDEX net position changes

	Corn	Bean	Meal	Oil	Chi. Wheat	KC Wheat	Min Wheat
Futures & Options Combined	5.8	(0.1)	0.4	(0.6)	1.7	(0.3)	NA

## SUPPLEMENTAL NON-COMMERCIAL net position changes

	Corn	Bean	Meal	Oil	Chi. Wheat	KC Wheat	Min Wheat
Futures & Options Combined	43.5	4.9	5.8	7.6	1.8	0.1	NA

## OPEN INTEREST net position changes

Wed to Tue, in 000 contracts

	Corn	Bean	Meal	Oil	Chi. Wheat	KC Wheat	Min Wheat
Futures Only	(0.8)	(31.5)	(6.1)	(21.3)	(0.6)	(1.5)	3.4
Futures & Options Combined	(20.4)	(50.9)	(18.2)	(42.4)	(14.7)	(3.3)	3.4

Source: CFTC and FI

Wed to Tue, in 000 contracts

12/31/2022

**COMMITMENT OF TRADERS  
FUTURES ONLY NET POSITIONS  
AS OF 12/27/2022  
(IN THOUSAND CONTRACTS)**

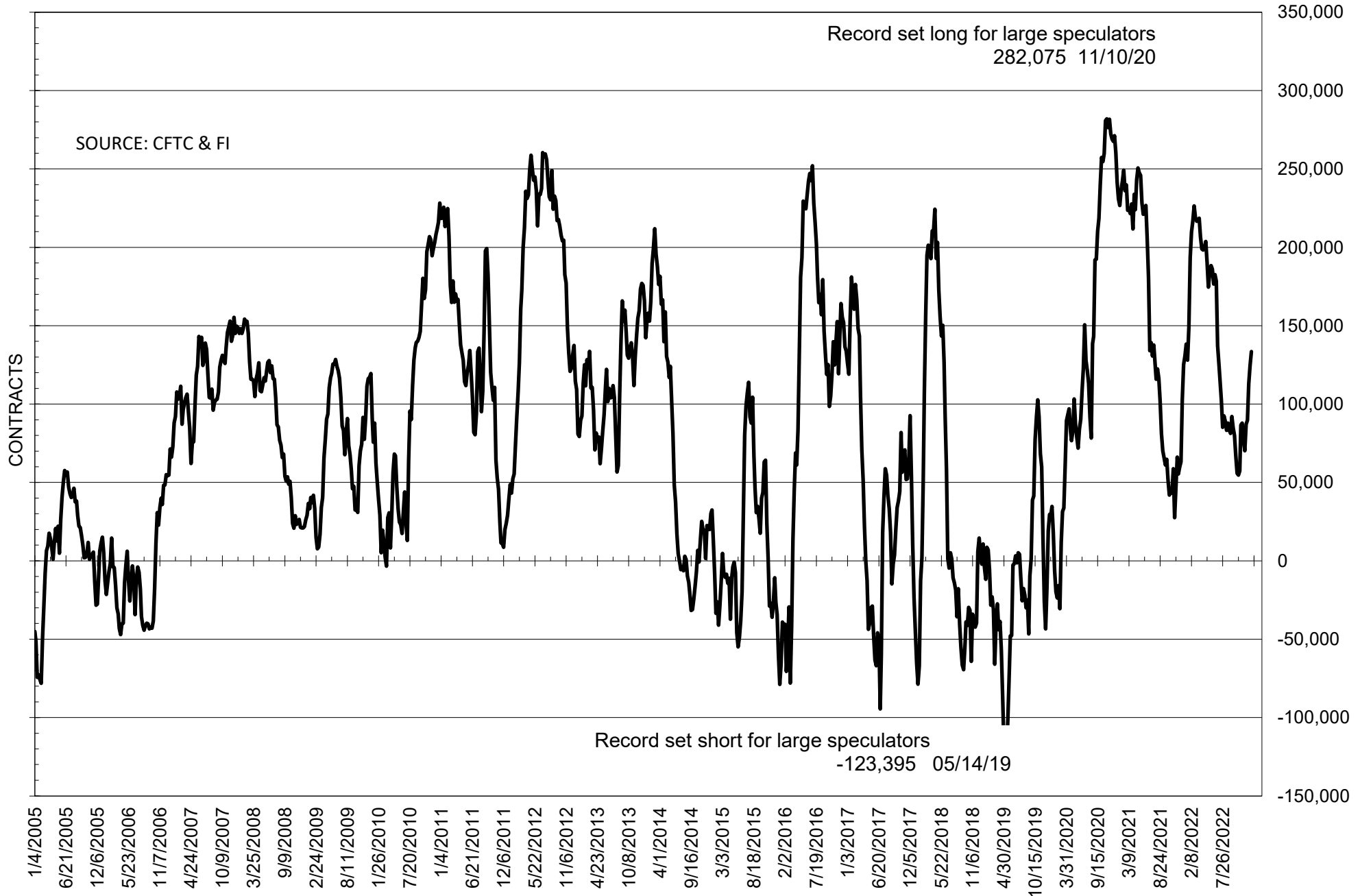
	COMMERCIAL				(FUND) NON COMMERCIAL				(SPEC) NON-REPORTABLE			
	27-Dec	20-Dec	13-Dec	6-Dec	27-Dec	20-Dec	13-Dec	6-Dec	27-Dec	20-Dec	13-Dec	6-Dec
	<b>WHEAT</b>											
Chicago	40.7	41.1	42.9	42.8	-36.3	-37.0	-39.9	-39.9	-4.4	-4.1	-3.0	-2.9
Kansas City	4.2	2.0	-3.6	-2.0	-2.5	-1.3	4.9	4.7	-1.7	-0.7	-1.3	-2.8
Minneapolis	0.8	3.6	3.4	2.8	-0.3	-1.7	-1.3	-0.6	-0.5	-1.9	-2.0	-2.2
All Wheat	45.7	46.7	42.6	43.6	-39.2	-40.0	-36.4	-35.8	-6.5	-6.7	-6.3	-7.9
<b>CORN</b>	-189.9	-158.6	-173.2	-157.5	235.1	200.0	212.2	198.4	-45.3	-41.4	-39.0	-40.8
<b>OATS</b>	0.0	0.1	0.1	0.1	-1.0	-1.2	-1.0	-0.7	1.0	1.1	0.9	0.6
<b>SOYBEANS</b>	-100.1	-91.7	-82.0	-59.9	133.5	124.7	113.1	89.7	-33.4	-33.0	-31.0	-29.8
<b>SOY OIL</b>	-82.3	-76.1	-68.5	-78.9	69.3	64.8	55.6	66.3	13.0	11.3	12.9	12.6
<b>SOY MEAL</b>	-165.5	-162.2	-152.1	-141.8	146.9	140.1	133.5	122.2	18.6	22.1	18.6	19.6

Oats positions thin to be reported

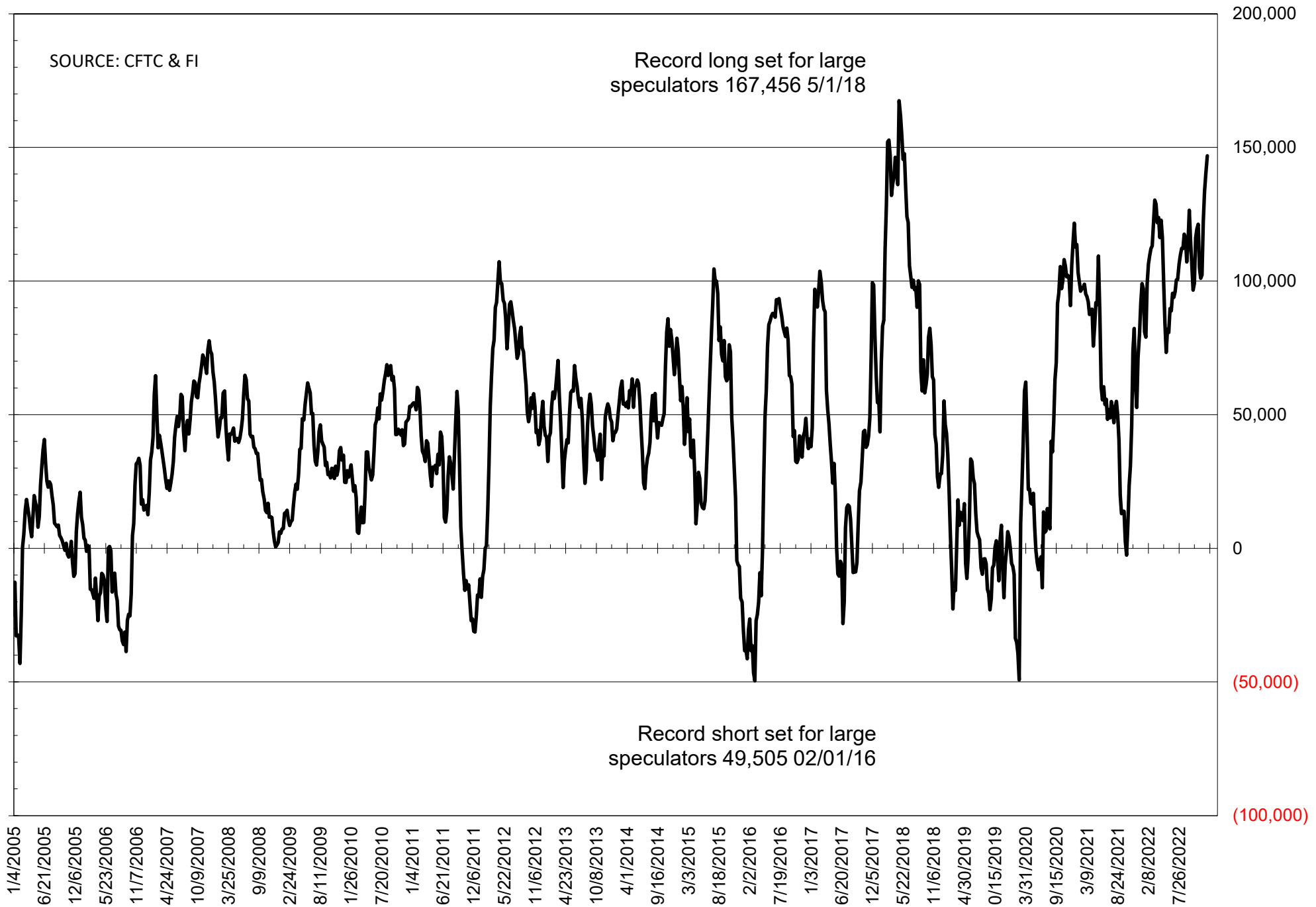
	TOTAL OPEN INTEREST				NEARBY FUTURES PRICE					27-Dec-22 LAST REPORTED % HELD BY TRADERS			
	27-Dec	20-Dec	13-Dec	6-Dec	F/H Latest	F/H 27-Dec	F/H 20-Dec	F/H 13-Dec	F/H 6-Dec	LARGE FUND		SMALL	
										LONG	SHORT	LONG	SHORT
<b>WHEAT</b>													
Chicago	331562	332182	335354	334760	774.50	750.50	750.50	750.75	729.00	0%	37%	0%	11%
Kansas City	149652	151177	151174	146353	879.25	847.00	847.00	865.25	830.00	0%	25%	0%	13%
Minneapolis	54118	50754	47865	46603	934.25	916.00	916.00	922.75	897.00	0%	12%	0%	18%
<b>CORN</b>	1186971	1187781	1205259	1232307	674.75	652.00	652.00	653.50	637.25	0%	8%	0%	14%
<b>OATS</b>	3932	4414	4103	3706	370.50	336.50	336.50	340.75	337.00	0%	43%	0%	28%
<b>SOYBEANS</b>	595601	627125	638744	622200	1482.25	1478.50	1478.50	1479.75	1455.00	30%	8%	8%	13%
<b>SOY OIL</b>	372407	393740	410837	434000	67.65	66.05	66.05	64.12	61.62	0%	8%	0%	6%
<b>SOY MEAL</b>	401630	407746	392236	388478	451.80	452.40	452.40	452.30	448.60	0%	3%	0%	7%

SOURCE: CFTC & FI

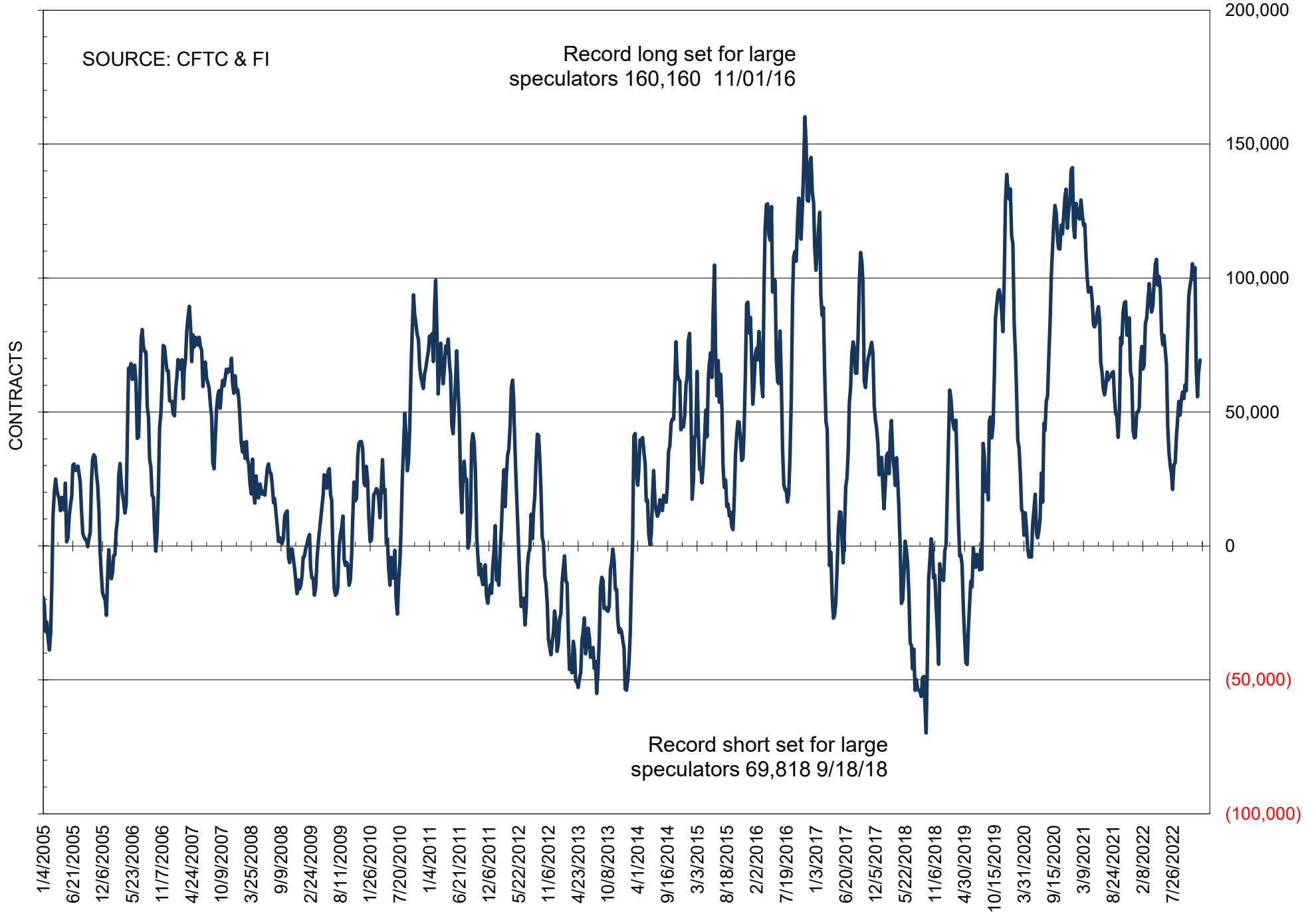
# NET POSITION OF FUTURES ONLY LARGE SPECS IN SOYBEANS



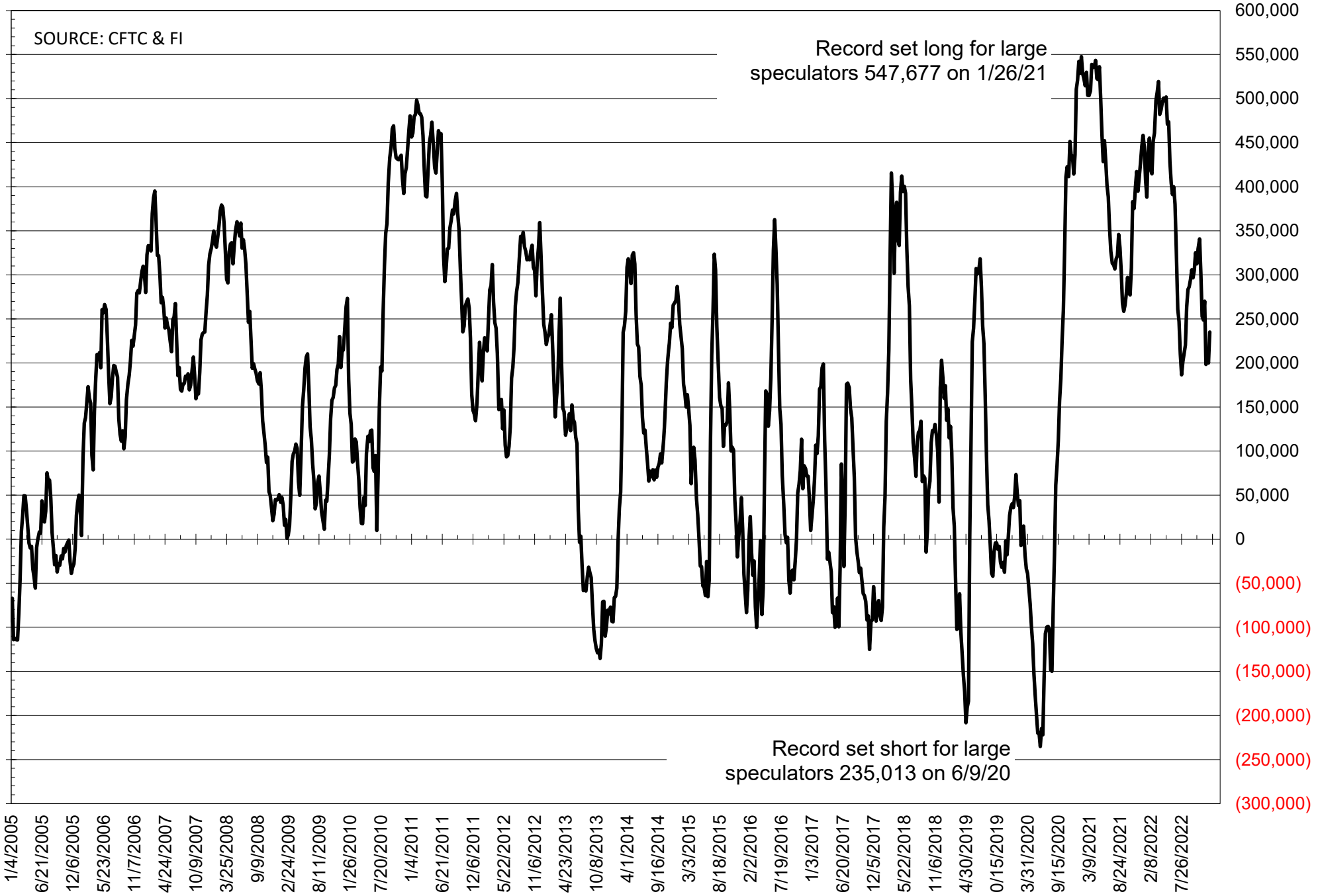
# NET POSITION OF FUTURES ONLY LARGE SPECS IN SOYMEAL



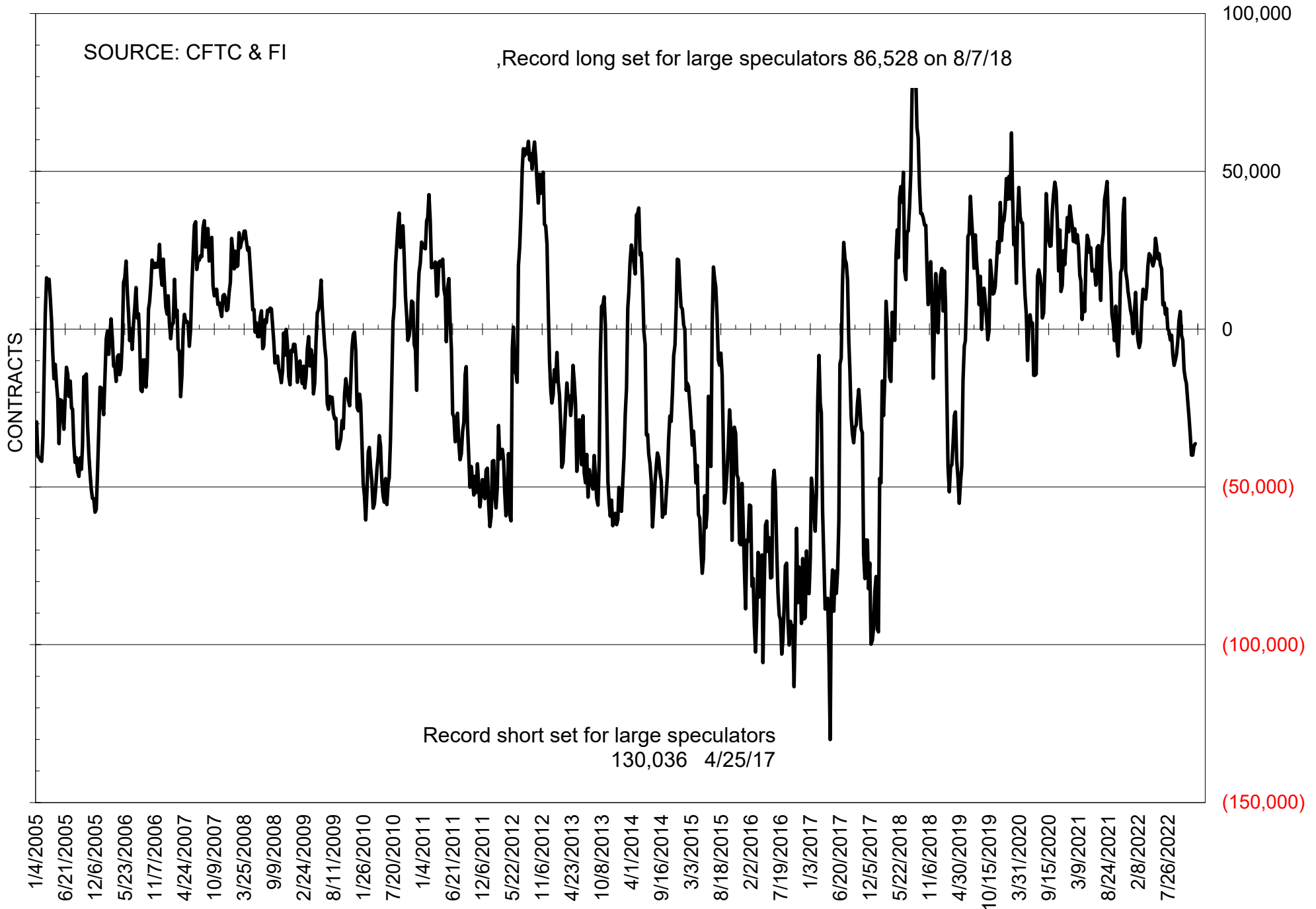
# NET POSITION OF FUTURES ONLY LARGE SPECS IN SOYOIL



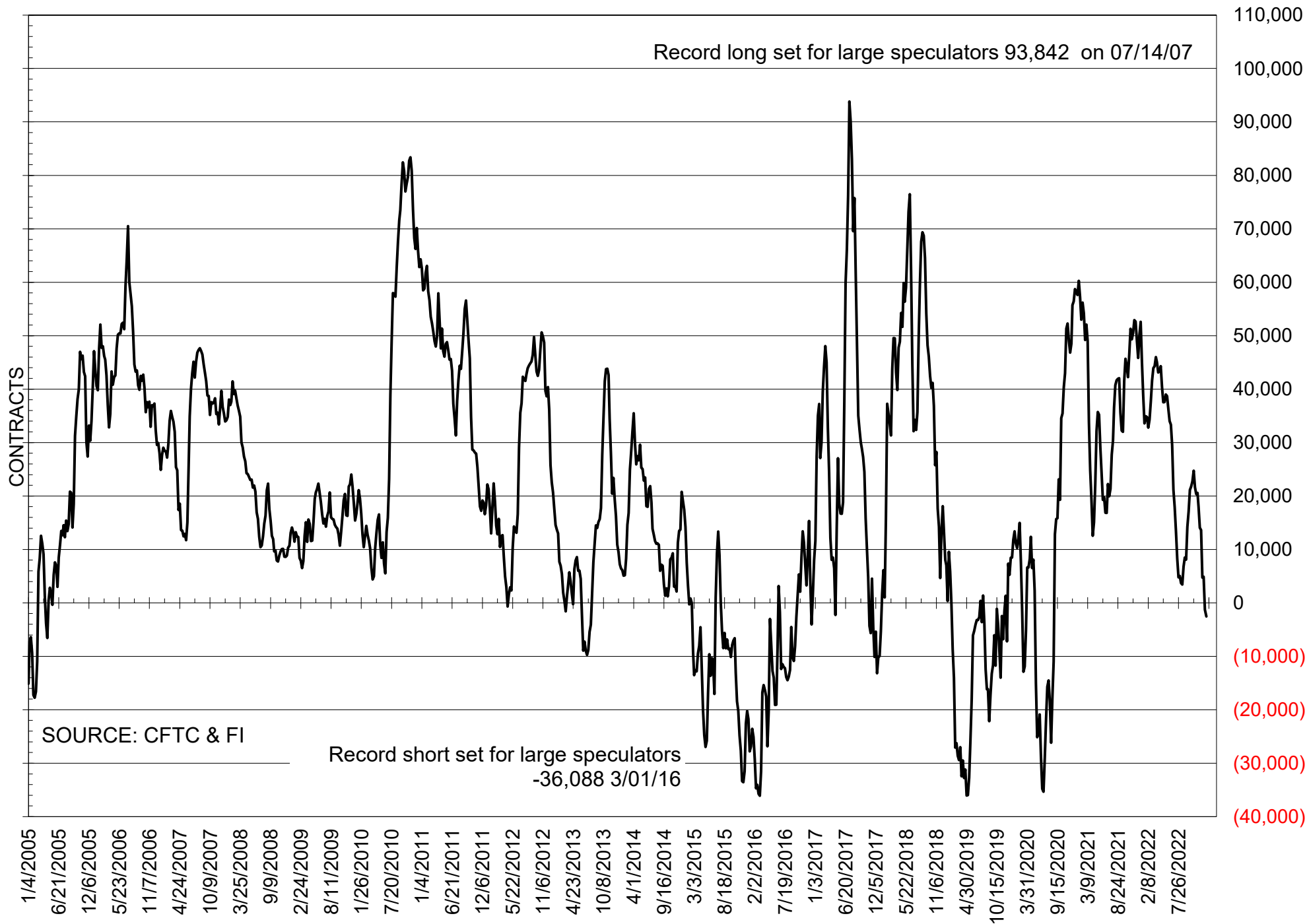
# NET POSITION OF LARGE SPECULATORS IN CORN



# NET POSITION OF FUTURES ONLY LARGE SPECS IN CHICAGO WHEAT

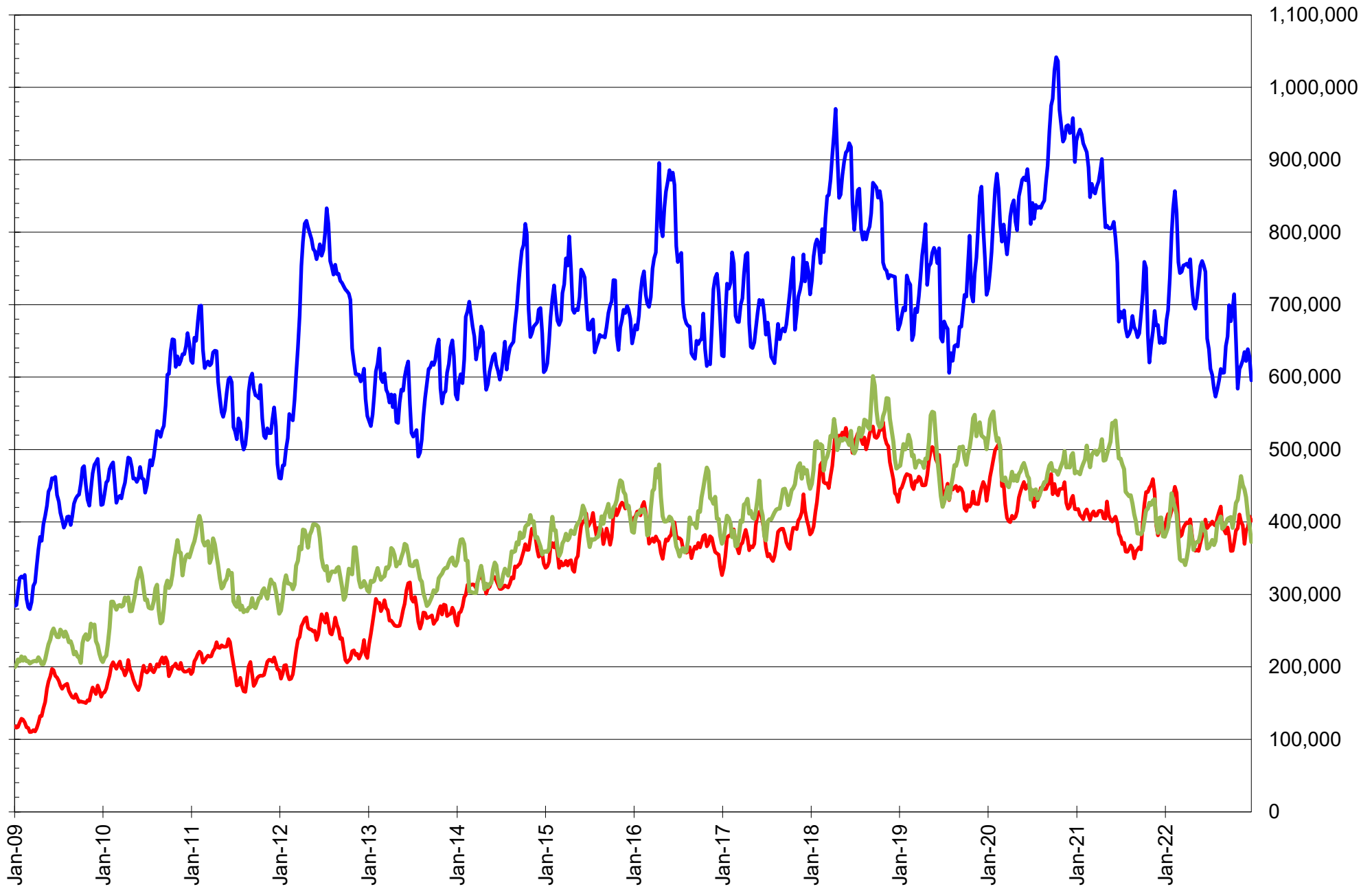


# NET POSITION OF LARGE SPECULATORS IN KANSAS CITY WHEAT





# TOTAL OPEN INTEREST IN SOYBEANS, MEAL AND OIL, FUTURES ONLY



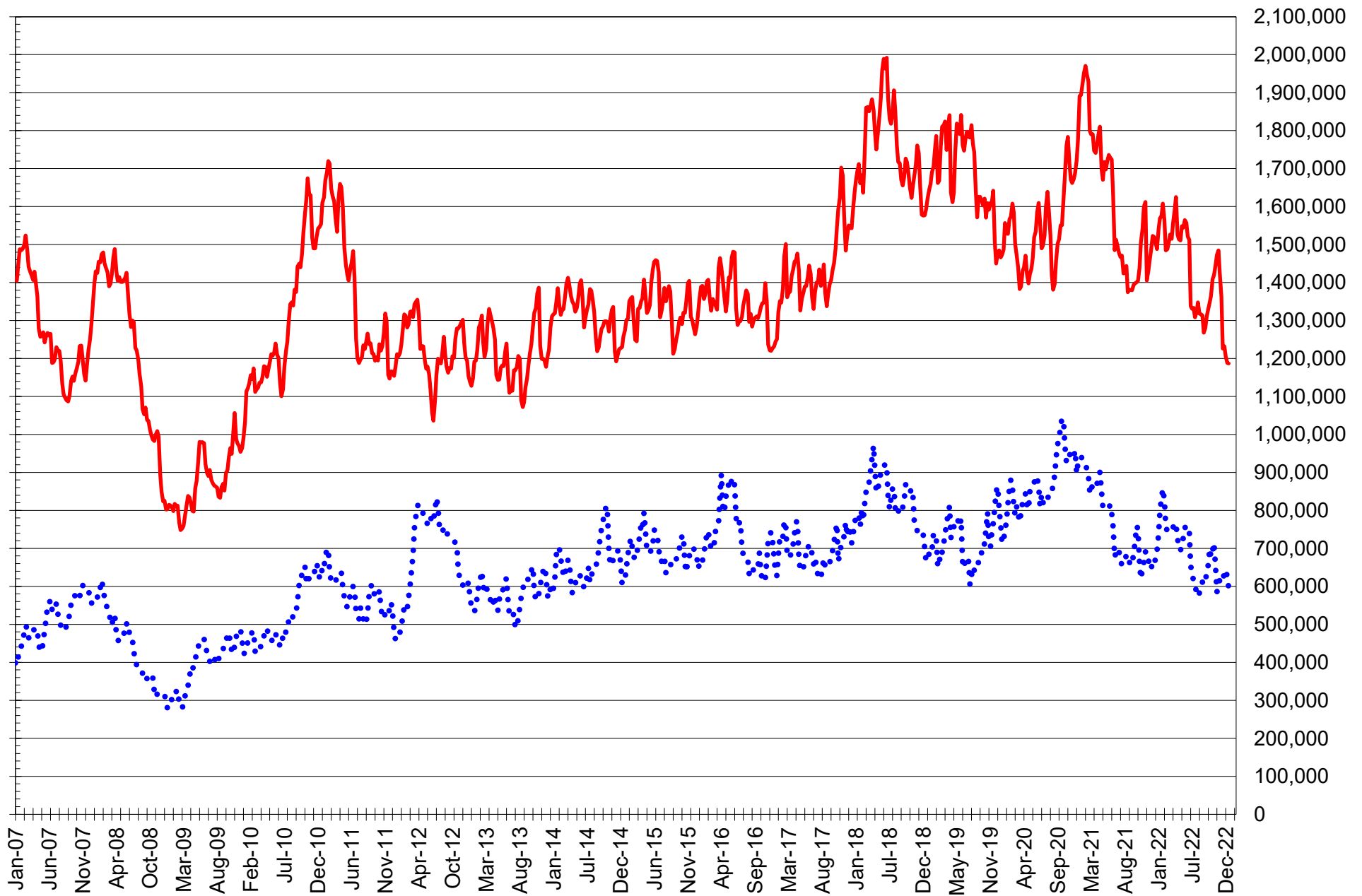
SOURCE: CFTC & FI

— SOYBEANS

— SOYBEAN MEAL

— SOYBEAN OIL

# TOTAL OPEN INTEREST IN CORN AND SOYBEANS, FUTURES ONLY



SOURCE: CFTC & FI

— CORN

..... SOYBEANS

**COMMITMENT OF TRADERS  
FUTURES & OPTIONS NET POSITIONS  
AS OF 12/27/2022  
(IN THOUSAND CONTRACTS)**

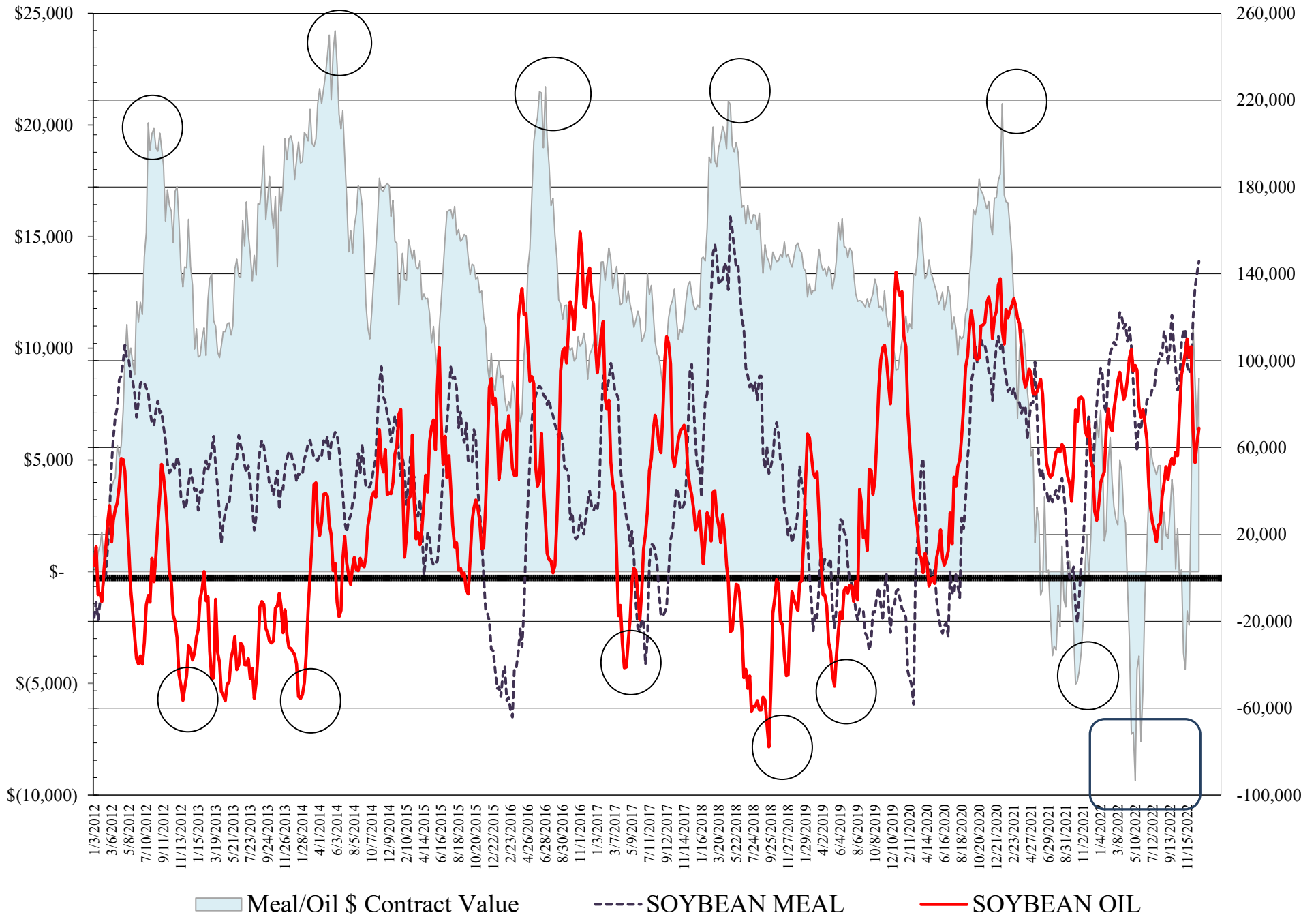
	COMMERCIAL				(FUND) NON COMMERCIAL				(SPEC) NON-REPORTABLE			
	27-Dec	20-Dec	13-Dec	6-Dec	27-Dec	20-Dec	13-Dec	6-Dec	27-Dec	20-Dec	13-Dec	6-Dec
<b>WHEAT</b>												
Chicago	40.2	43.6	44.5	43.5	-37.3	-40.8	-42.9	-41.9	-2.9	-2.8	-1.6	-1.5
Kansas City	4.9	3.8	-2.0	-0.3	-3.5	-3.4	3.0	2.8	-1.4	-0.4	-0.9	-2.5
Minneapolis	0.9	3.6	3.3	2.8	-0.4	-1.7	-1.3	-0.7	-0.4	-1.8	-2.0	-2.2
All Wheat	46.1	51.0	45.7	46.0	-41.3	-45.9	-41.2	-39.8	-4.8	-5.1	-4.5	-6.2
<b>CORN</b>	-167.3	-121.7	-138.2	-120.0	209.3	160.1	172.5	158.4	-42.0	-38.4	-34.2	-38.4
OATS	0.0	0.1	0.1	0.1	-1.0	-1.2	-1.0	-0.7	1.0	1.1	0.9	0.6
<b>SOYBEANS</b>	-96.7	-90.0	-83.9	-61.5	132.8	125.9	117.2	93.1	-36.1	-35.9	-33.3	-31.6
SOY OIL	-82.5	-73.9	-66.3	-80.6	69.0	62.2	53.1	67.7	13.5	11.6	13.2	12.9
SOY MEAL	-164.2	-162.0	-152.7	-140.5	145.7	140.0	133.8	119.4	18.5	22.0	19.0	21.0

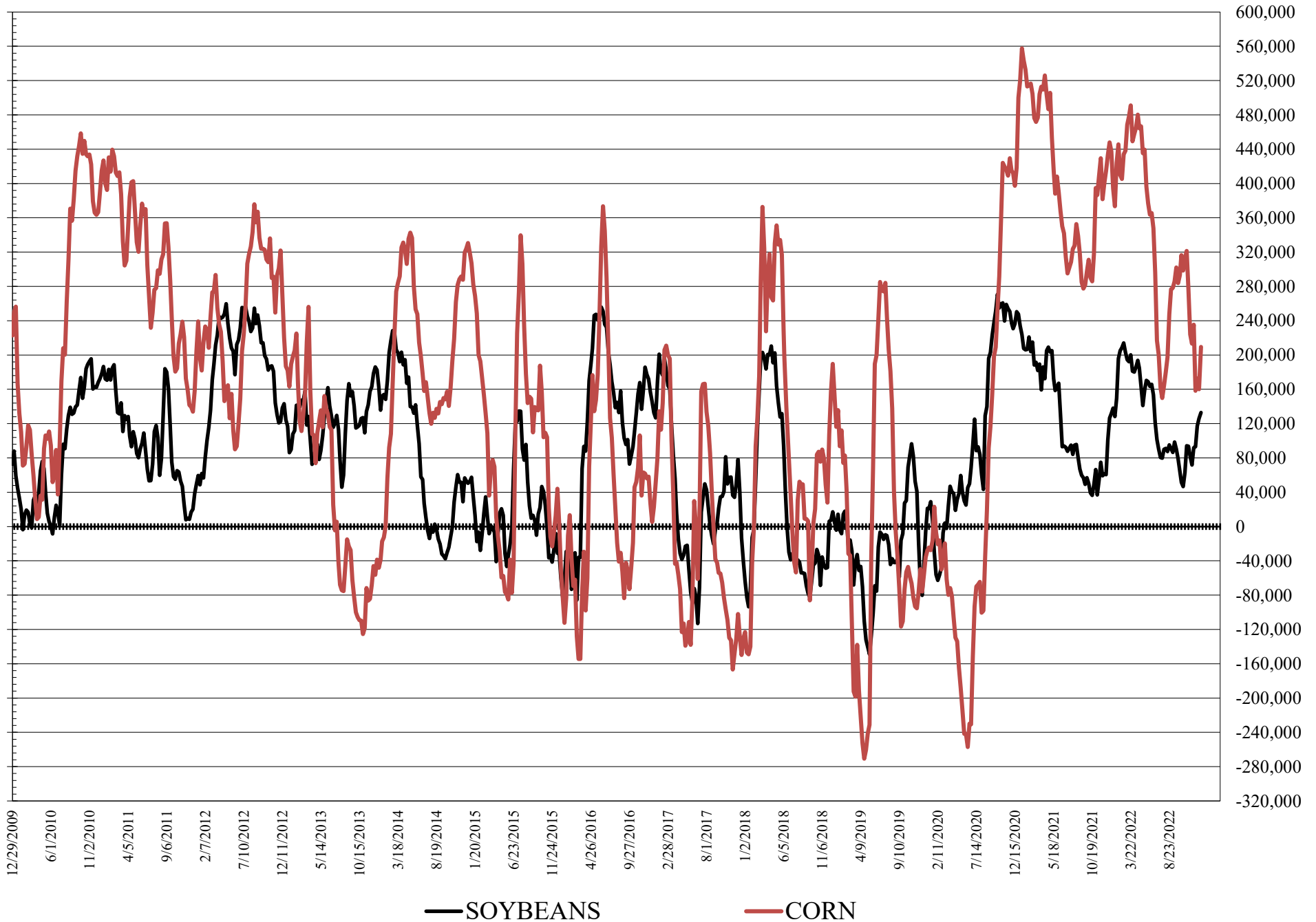
	TOTAL OPEN INTEREST				COMMERCIALS		% HELD BY TRADERS LARGE (FUNDS)		SMALL (NON-REP)	
	27-Dec	20-Dec	13-Dec	6-Dec	LONG	SHORT	LONG	SHORT	LONG	SHORT
<b>WHEAT</b>										
Chicago	387,675	402,381	405,051	404,705	39%	29%	21%	31%	9%	10%
Kansas City	162,296	165,627	165,081	159,860	45%	42%	21%	23%	12%	13%
Minneapolis	55,600	52,174	49,229	48,036	66%	65%	11%	12%	17%	18%
<b>CORN</b>	1,423,239	1,443,655	1,457,563	1,486,178	43%	55%	21%	6%	11%	14%
OATS	3,968	4,439	4,126	3,723						
<b>SOYBEANS</b>	682,246	733,115	744,707	719,341	46%	60%	26%	7%	8%	13%
SOY OIL	403,106	445,456	464,030	485,549	46%	66%	24%	7%	9%	6%
SOY MEAL	435,113	453,264	438,398	427,153	36%	73%	36%	3%	11%	7%

SOURCE: CFTC & FI

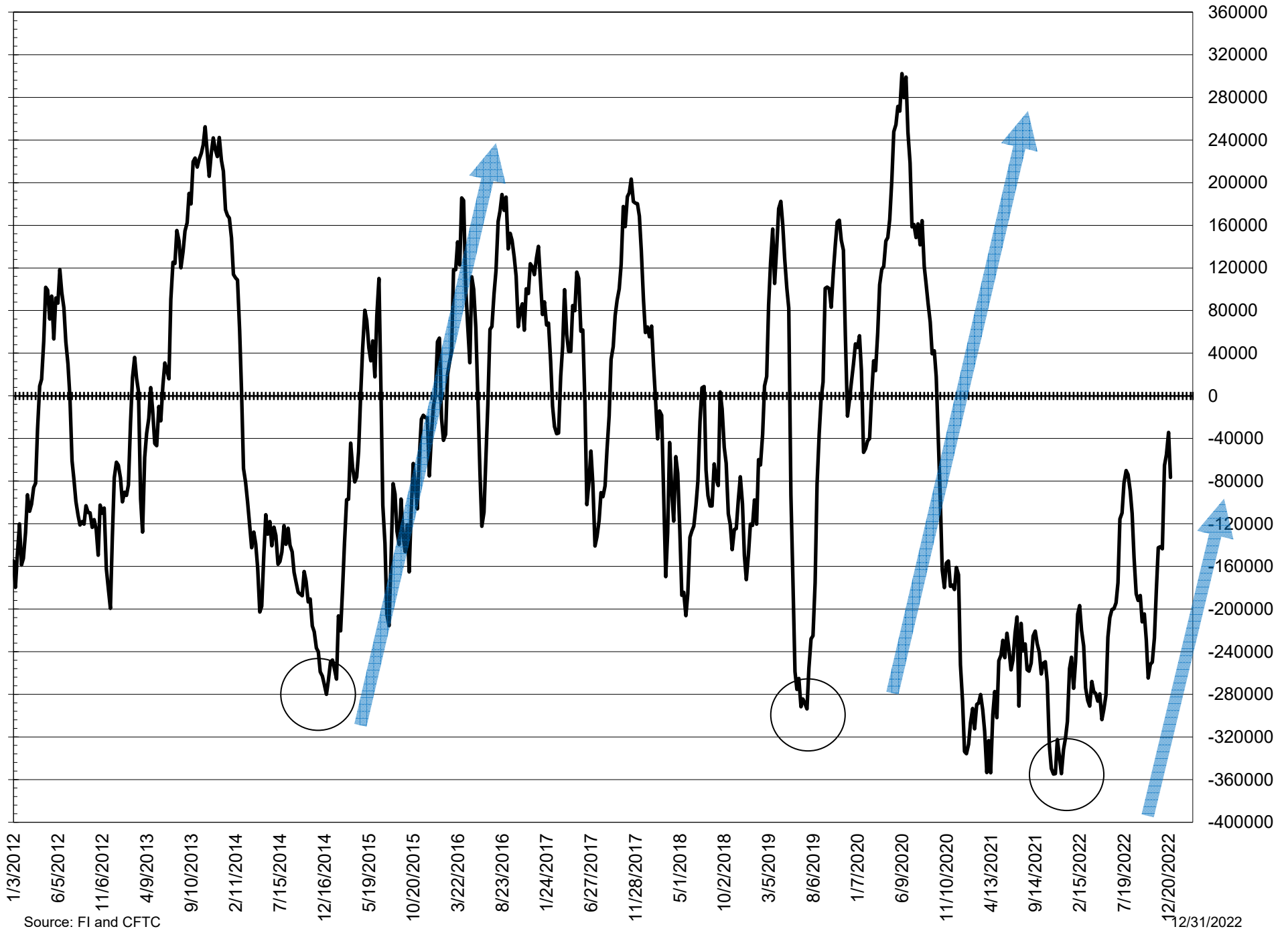
# NET POSITION FUTURES AND OPTIONS OF LARGE SPECULATORS IN SOYBEAN MEAL AND SOYBEAN OIL



# NET POSITION FUTURES AND OPTIONS OF LARGE SPECULATORS IN SOYBEANS AND CORN



# NET POSITION FUTURES AND OPTIONS SPREAD OF LARGE SPECULATORS IN SOYBEANS MINUS CORN



Source: FI and CFTC

**DISAGGREGATED COMMITMENT OF TRADERS  
FUTURES ONLY NET POSITIONS  
AS OF 12/27/2022  
(IN THOUSAND CONTRACTS)**

	PRODUCER / MERCHANT / PROCESSOR / USER				(INDEX/ETF) SWAP DEALERS				(CTA/CPO/OTHER UNREGISTERED) MANAGED MONEY								
	27-Dec	20-Dec	13-Dec	6-Dec	27-Dec	20-Dec	13-Dec	6-Dec	27-Dec	20-Dec	13-Dec	6-Dec					
WHEAT																	
Chicago	(23.1)	(22.3)	(20.1)	(19.5)	63.8	63.4	63.0	62.3	(56.2)	(59.8)	(63.1)	(63.1)					
Kansas City	(29.9)	(31.6)	(37.5)	(36.0)	34.1	33.6	33.9	34.1	1.3	0.8	8.1	9.6					
Minneapolis	(0.5)	2.5	1.6	1.0	1.3	1.1	1.8	1.8	(3.3)	(4.4)	(3.9)	(3.0)					
All Wheat	(53.6)	(51.4)	(56.0)	(54.5)	99.2	98.1	98.6	98.1	(58.2)	(63.4)	(58.9)	(56.5)					
CORN	(408.7)	(376.4)	(399.8)	(390.0)	218.8	217.8	226.6	232.5	163.7	113.6	127.6	119.2					
OATS	0.0	0.2	0.2	0.2	-	(0.1)	(0.1)	(0.1)	(1.7)	(1.9)	(1.8)	(1.4)					
SOYBEANS	(166.8)	(165.2)	(160.4)	(132.9)	66.8	73.5	78.3	73.0	129.2	126.7	120.5	100.8					
SOY OIL	(167.7)	(162.5)	(153.0)	(159.3)	85.4	86.4	84.5	80.4	62.1	55.1	50.7	60.9					
SOY MEAL	(244.4)	(241.3)	(231.6)	(222.7)	78.9	79.1	79.5	81.0	130.3	122.4	115.6	98.7					
													Managed % of OI				
													Chicago W	-17%	-18%	-19%	-19%
													Corn	14%	10%	11%	10%
	TOTAL				OTHER REPORTABLE				NON REPORTABLE								
	OPEN INTEREST																
	27-Dec	20-Dec	13-Dec	6-Dec	27-Dec	20-Dec	13-Dec	6-Dec	27-Dec	20-Dec	13-Dec	6-Dec					
WHEAT																	
Chicago	331,562	332,182	335,354	334,760	20.0	22.8	23.2	23.2	(4.4)	(4.1)	(3.0)	(2.9)					
Kansas City	149,652	151,177	151,174	146,353	(3.9)	(2.1)	(3.2)	(4.9)	(1.7)	(0.7)	(1.3)	(2.8)					
Minneapolis	54,118	50,754	47,865	46,603	3.0	2.7	2.6	2.5	(0.5)	(1.9)	(2.0)	(2.2)					
All Wheat	535,332	534,113	534,393	527,716	19.1	23.4	22.6	20.7	(6.5)	(6.7)	(6.3)	(7.9)					
CORN	1,186,971	1,187,781	1,205,259	1,232,307	71.5	86.4	84.6	79.2	(45.3)	(41.4)	(39.0)	(40.8)					
OATS	3,932	4,414	4,103	3,706	0.7	0.7	0.8	0.7	1.0	1.1	0.9	0.6					
SOYBEANS	595,601	627,125	638,744	622,200	4.3	(2.0)	(7.4)	(11.1)	(33.4)	(33.0)	(31.0)	(29.8)					
SOY OIL	372,407	393,740	410,837	434,000	7.2	9.7	5.0	5.5	13.0	11.3	12.9	12.6					
SOY MEAL	401,630	407,746	392,236	388,478	16.6	17.7	17.9	23.5	18.6	22.1	18.6	19.6					

SOURCE: CFTC & FI

**DISAGGREGATED COMMITMENT OF TRADERS  
FUTURES & OPTIONS NET POSITIONS  
AS OF 12/27/2022  
(IN THOUSAND CONTRACTS)**

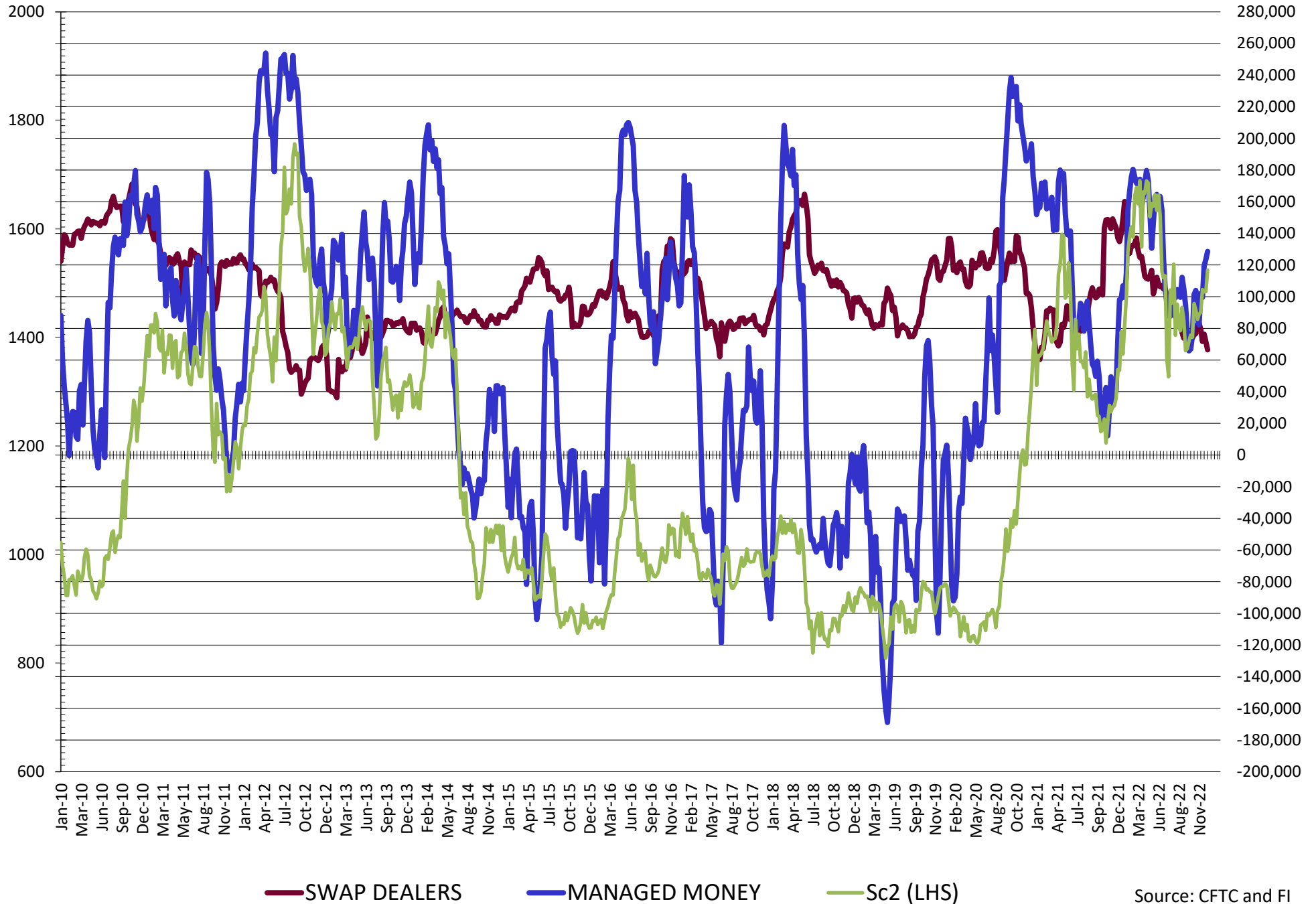
	PRODUCER / MERCHANT / PROCESSOR / USER				(INDEX/ETF) SWAP DEALERS				(CTA/CPO/OTHER UNREGISTERED) MANAGED MONEY			
	27-Dec	20-Dec	13-Dec	6-Dec	27-Dec	20-Dec	13-Dec	6-Dec	27-Dec	20-Dec	13-Dec	6-Dec
	WHEAT											
Chicago	(25.1)	(21.8)	(20.2)	(20.5)	65.4	65.4	64.7	63.9	(56.2)	(59.3)	(63.0)	(63.4)
Kansas City	(29.5)	(30.9)	(36.8)	(35.4)	34.4	34.7	34.7	35.1	1.9	1.2	8.5	9.7
Minneapolis	(0.4)	2.4	1.5	1.1	1.3	1.1	1.8	1.8	(3.3)	(4.4)	(3.9)	(3.0)
All Wheat	(55.0)	(50.2)	(55.5)	(54.8)	101.1	101.2	101.2	100.8	(57.7)	(62.5)	(58.4)	(56.7)
CORN	(388.0)	(343.2)	(367.8)	(356.6)	220.7	221.4	229.5	236.6	159.3	113.8	127.1	120.2
OATS	0.0	0.2	0.2	0.2	0.0	(0.1)	(0.1)	(0.1)	(1.7)	(1.9)	(1.8)	(1.4)
SOYBEANS	(163.1)	(161.4)	(160.1)	(133.2)	66.4	71.4	76.3	71.7	128.6	123.6	119.6	99.5
SOY OIL	(168.3)	(160.3)	(150.7)	(161.0)	85.8	86.4	84.4	80.4	65.6	58.1	53.3	62.6
SOY MEAL	(242.7)	(240.1)	(231.4)	(221.0)	78.5	78.1	78.7	80.5	130.0	121.3	114.5	98.5

	TOTAL OPEN INTEREST				OTHER REPORTABLE				NON REPORTABLE			
	27-Dec	20-Dec	13-Dec	6-Dec	27-Dec	20-Dec	13-Dec	6-Dec	27-Dec	20-Dec	13-Dec	6-Dec
	WHEAT											
Chicago	387,675	402,381	405,051	404,705	18.9	18.5	20.1	21.5	(2.9)	(2.8)	(1.6)	(1.5)
Kansas City	162,296	165,627	165,081	159,860	(5.4)	(4.6)	(5.6)	(7.0)	(1.4)	(0.4)	(0.9)	(2.5)
Minneapolis	55,600	52,174	49,229	48,036	2.9	2.7	2.7	2.4	(0.4)	(1.8)	(2.0)	(2.2)
All Wheat	605,571	620,182	619,361	612,601	16.4	16.6	17.2	16.9	(4.8)	(5.1)	(4.5)	(6.2)
CORN	1,423,239	1,443,655	1,457,563	1,486,178	50.0	46.3	45.4	38.2	(42.0)	(38.4)	(38.4)	(38.4)
OATS	3,968	4,439	4,126	3,723	0.7	0.7	0.8	0.7	1.0	1.1	0.9	0.6
SOYBEANS	682,246	733,115	744,707	719,341	4.2	2.3	(2.4)	(6.4)	(36.1)	(35.9)	(33.3)	(31.6)
SOY OIL	403,106	445,456	464,030	485,549	3.4	4.1	(0.3)	5.1	13.5	11.6	13.2	12.9
SOY MEAL	435,113	453,264	438,398	427,153	15.7	18.7	19.3	20.9	18.5	22.0	19.0	21.0

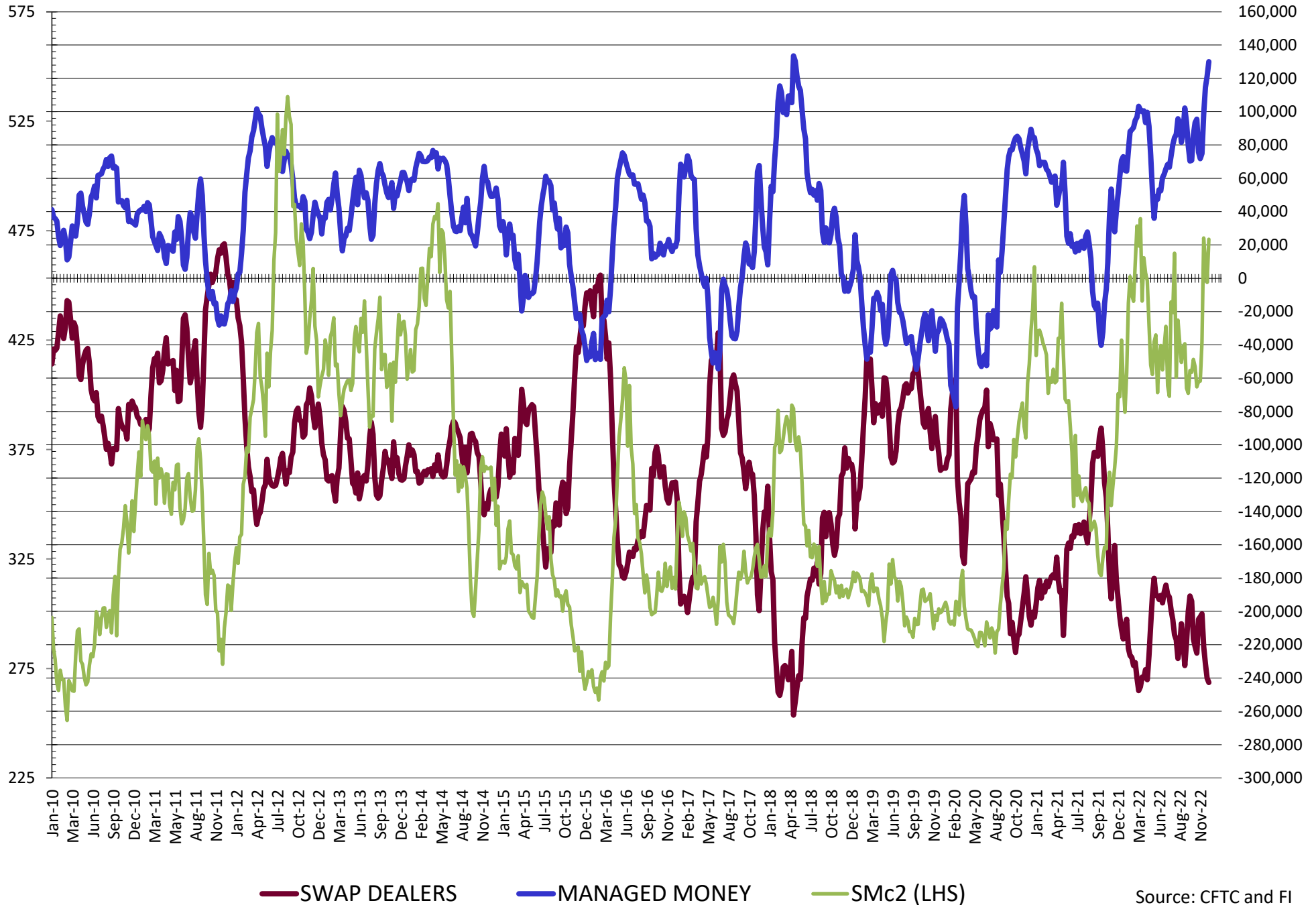
SOURCE: CFTC & FI



# NET POSITION FUTURES AND OPTIONS OF SWAP AND MANAGED FUNDS IN SOYBEANS

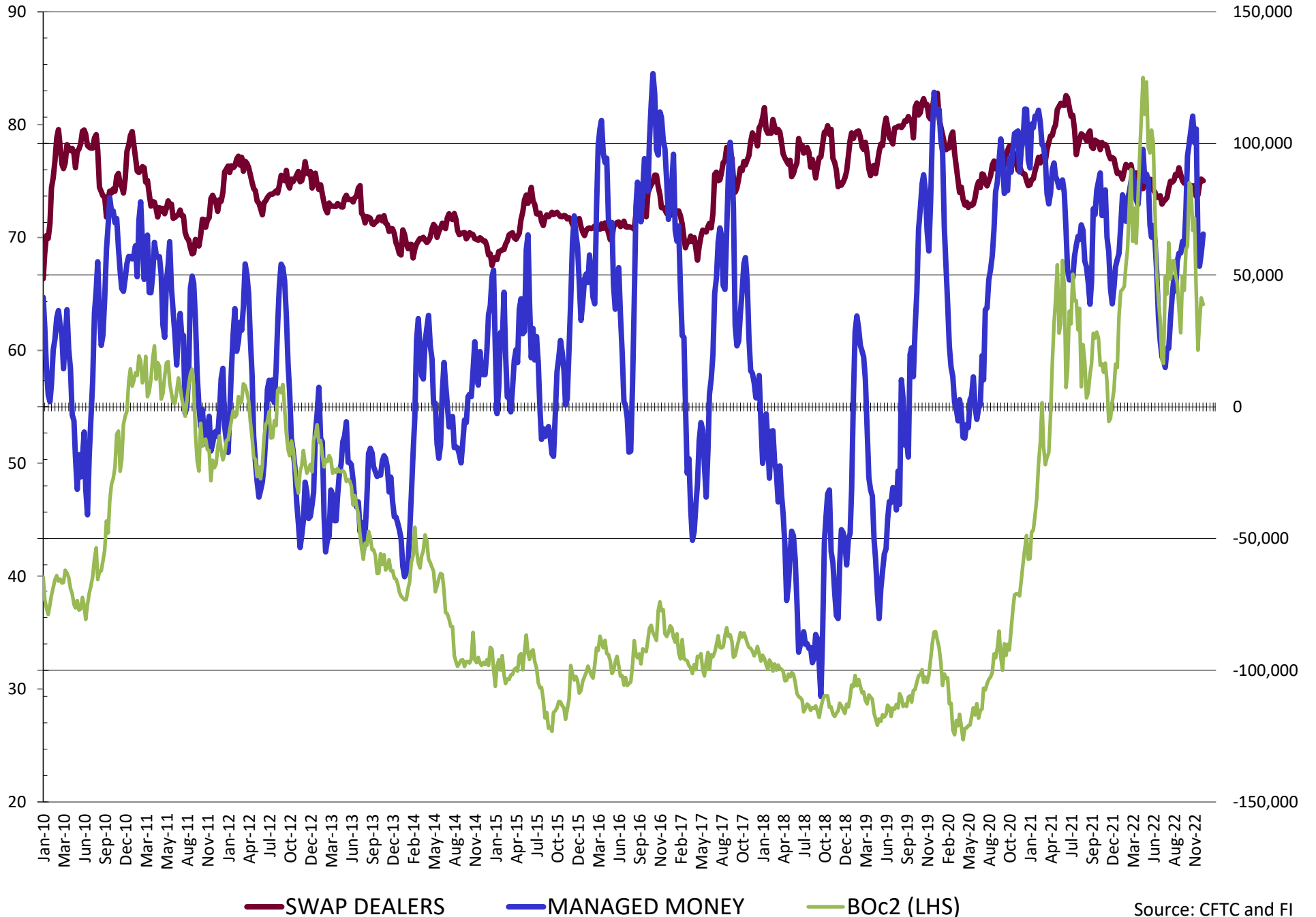


# NET POSITION FUTURES AND OPTIONS OF SWAP AND MANAGED FUNDS IN SOYBEAN MEAL

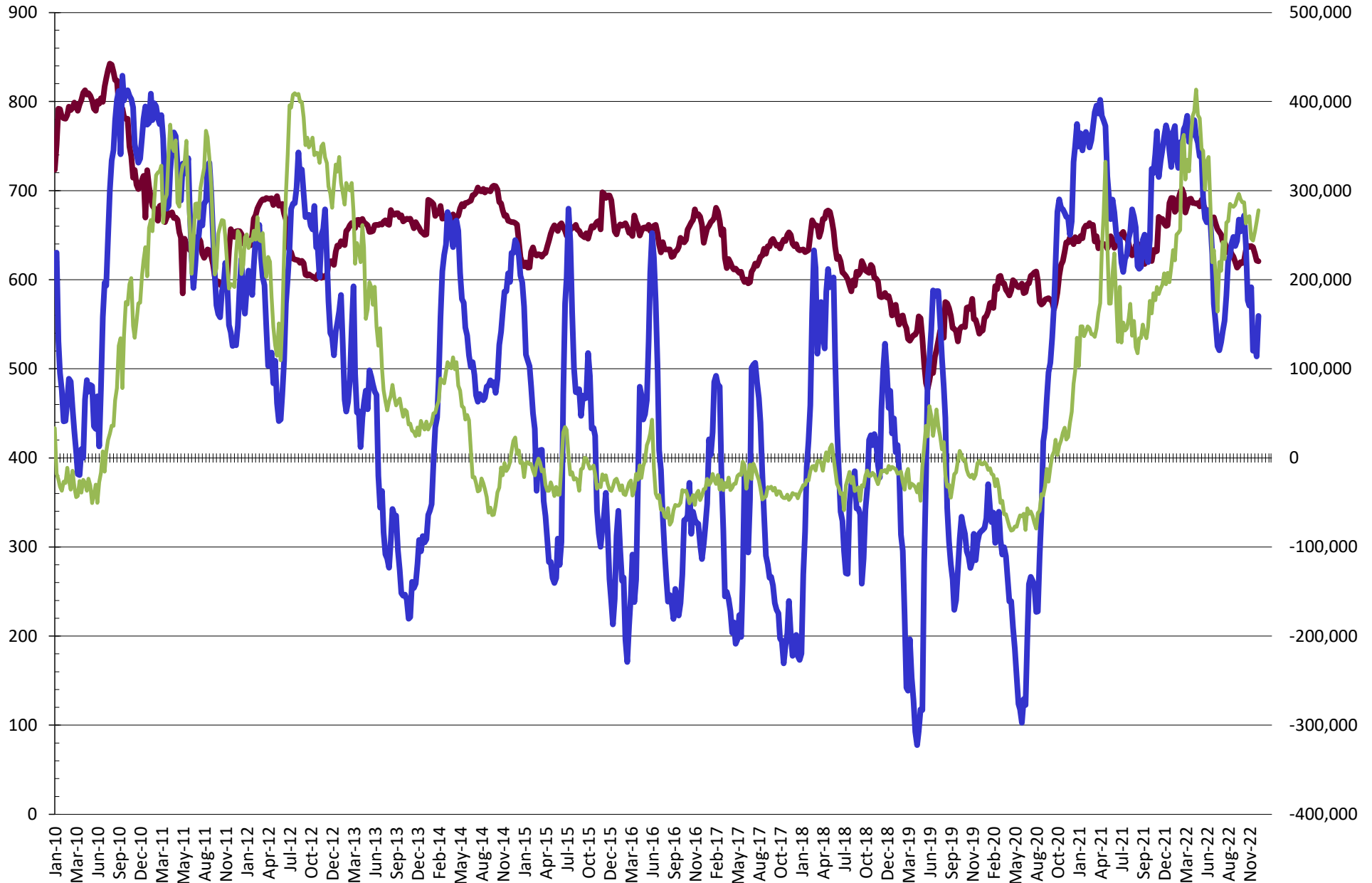


Source: CFTC and FI  
12/31/2022

# NET POSITION FUTURES AND OPTIONS OF SWAP AND MANAGED FUNDS IN SOYBEAN OIL



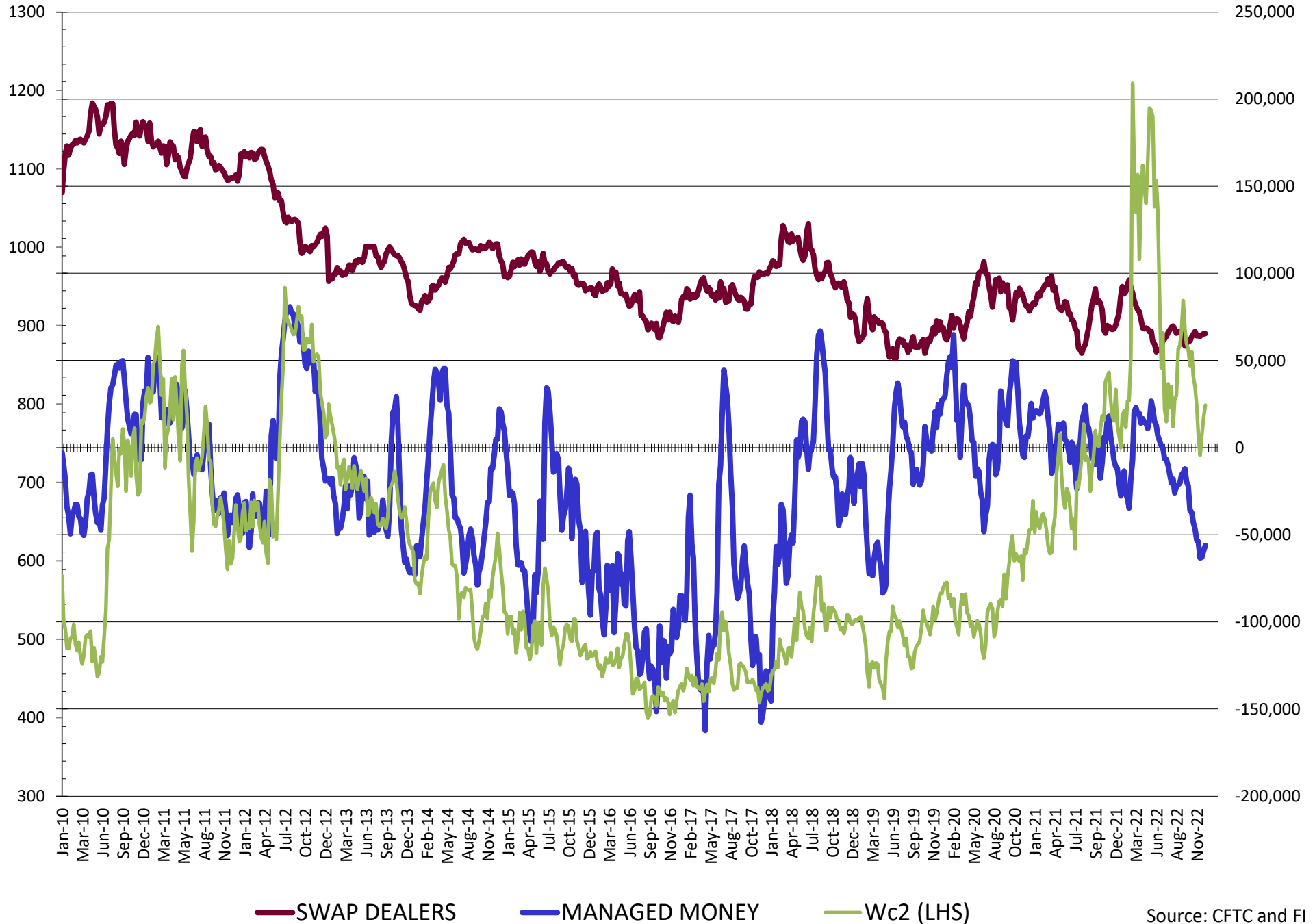
# NET POSITION FUTURES AND OPTIONS OF SWAP AND MANAGED FUNDS IN CORN



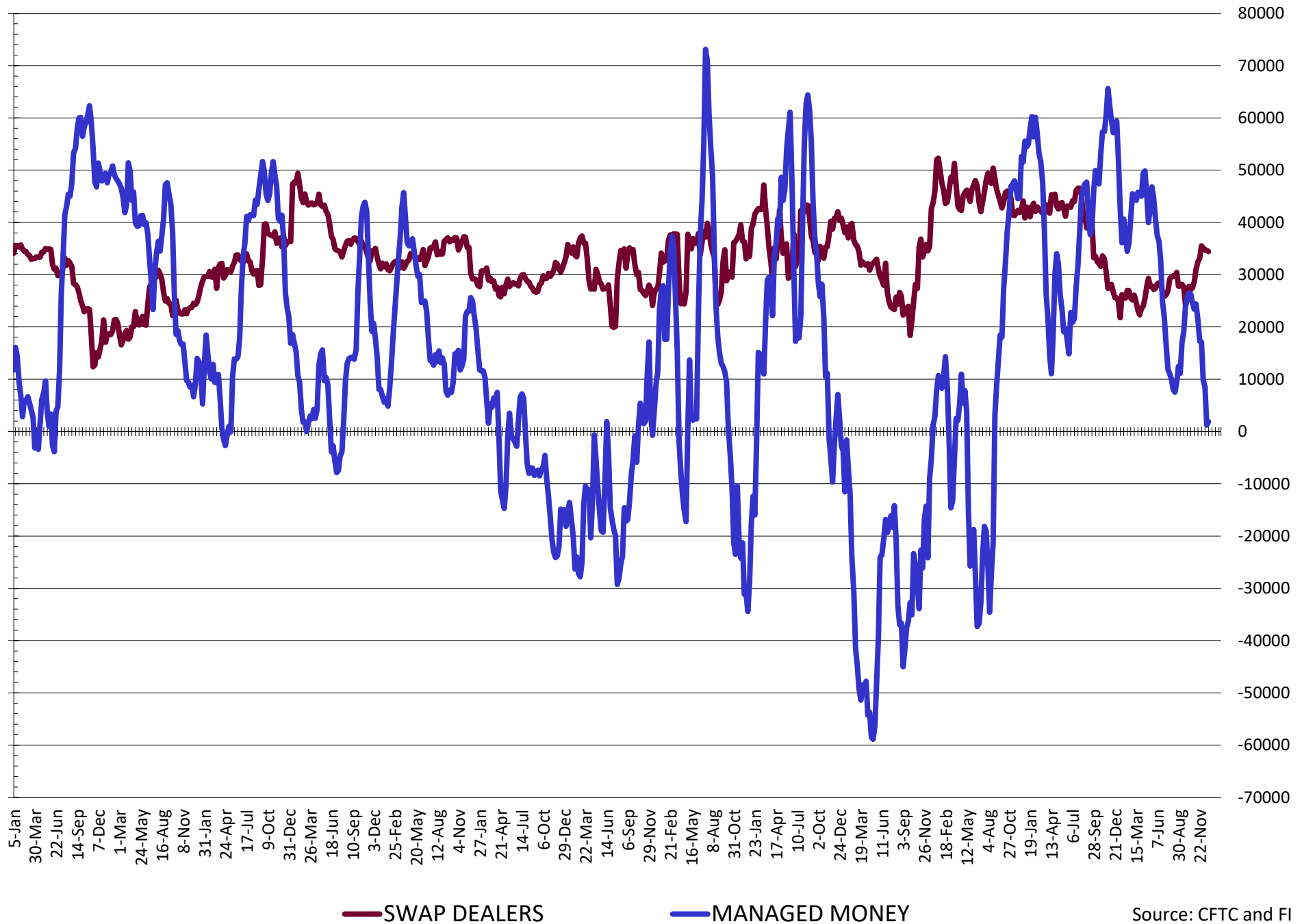
— SWAP DEALERS     
 — MANAGED MONEY     
 — Cc2 (LHS)

Source: CFTC and FI  
12/31/2022

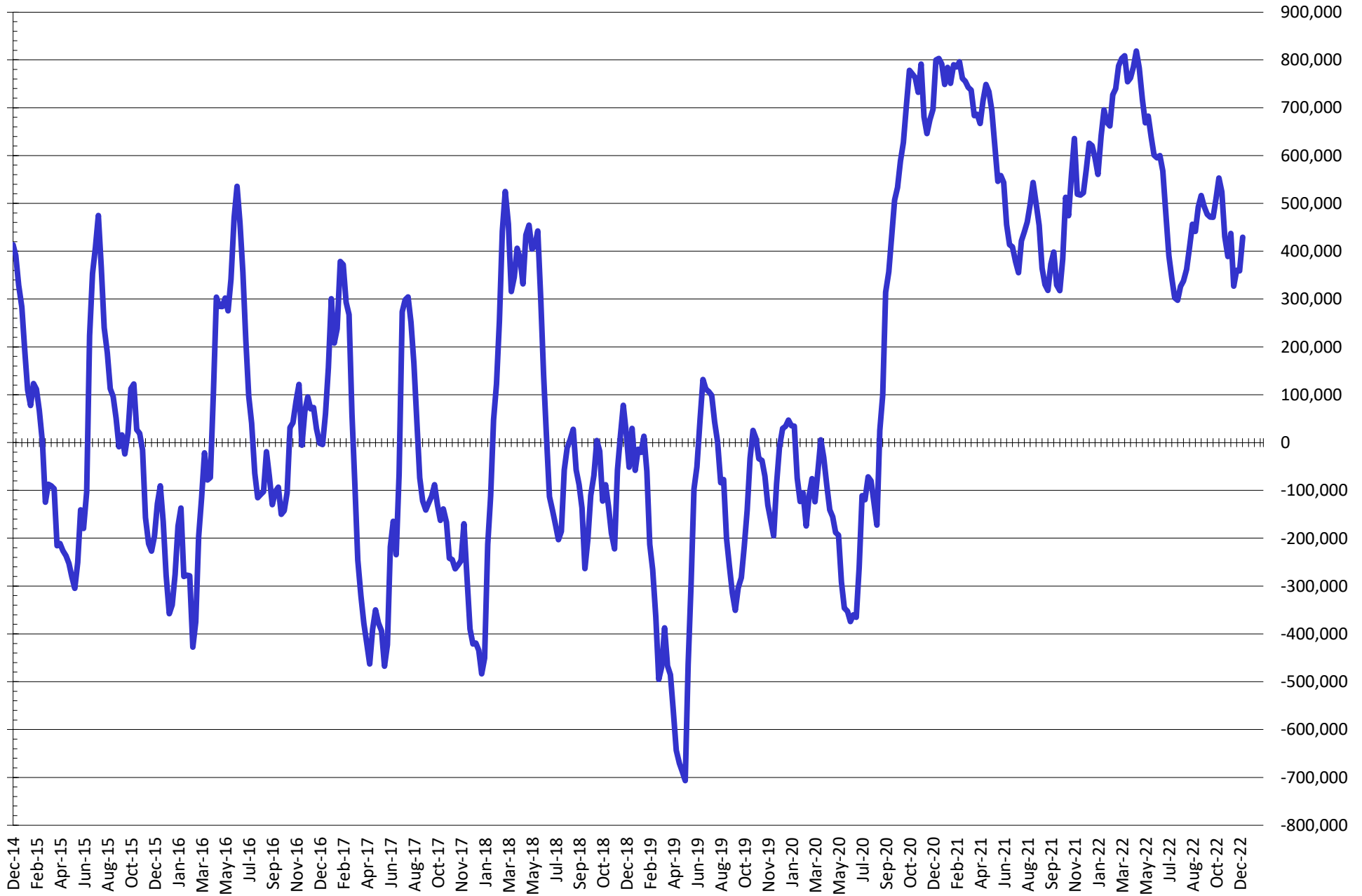
# NET POSITION FUTURES AND OPTIONS OF SWAP AND MANAGED FUNDS IN CHICAGO WHEAT



# NET POSITION FUTURES AND OPTIONS OF SWAP AND MANAGED FUNDS IN KANSAS WHEAT



# NET POSITION FUTURES AND OPTIONS OF SWAP AND MANAGED FUNDS IN COMBINED SRW, HRW, CORN, SOYBEANS, SOYMEAL AND SOYOIL



— Net Managed Money

Source: CFTC and FI  
12/31/2022

**COMMITMENT OF TRADERS**  
**FUTURES & OPTIONS NET POSITIONS (INDEX BROKEN OUT)**  
**AS OF 12/27/2022**  
(IN THOUSAND CONTRACTS)

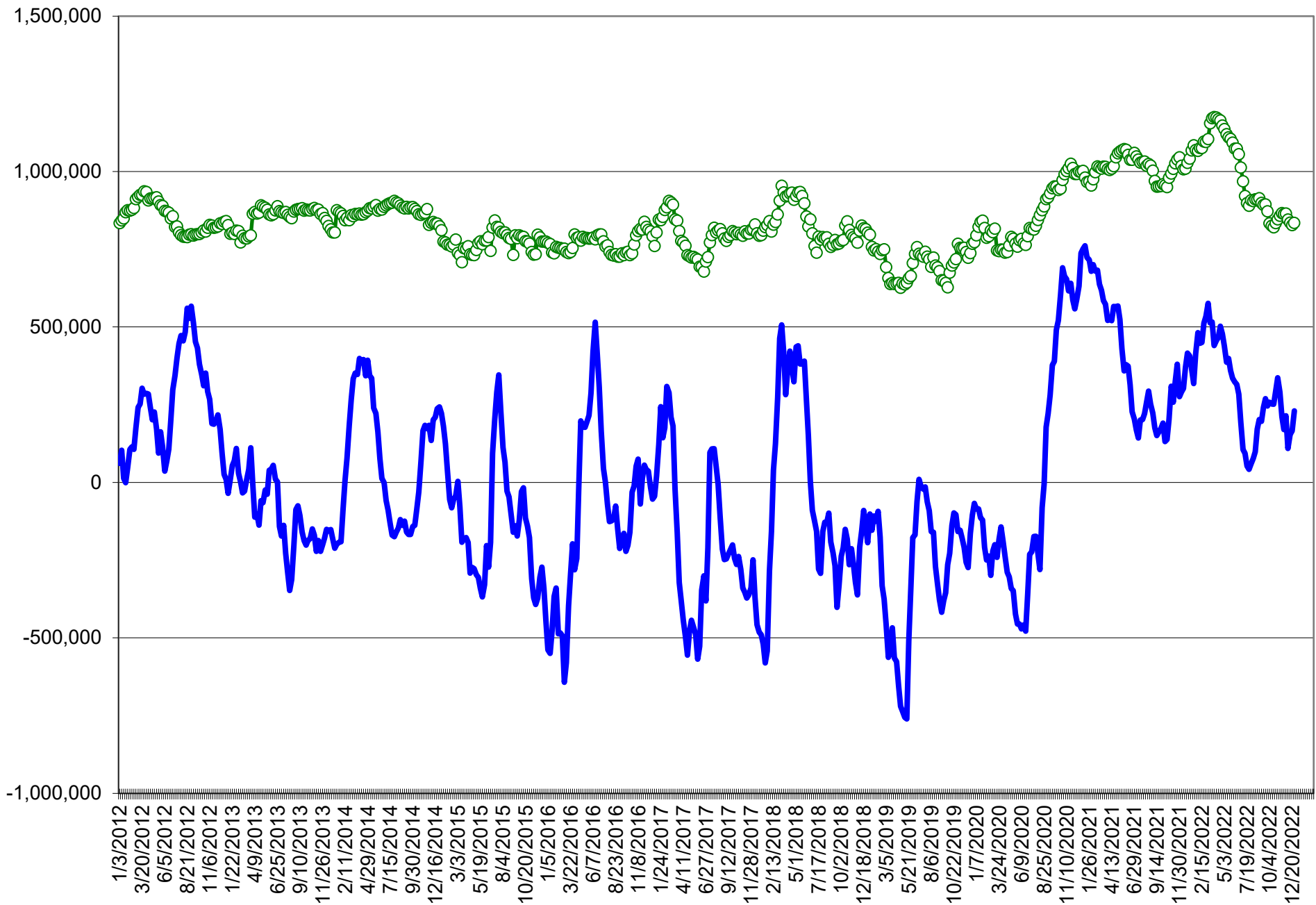
	COMMERCIAL				(FUND) NON COMMERCIAL				(SPEC) NON-REPORTABLE			
	27-Dec	20-Dec	13-Dec	6-Dec	27-Dec	20-Dec	13-Dec	6-Dec	27-Dec	20-Dec	13-Dec	6-Dec
	WHEAT											
Chicago	(30.2)	(26.8)	(25.3)	(26.5)	(65.3)	(67.1)	(71.2)	(71.8)	(2.9)	(2.8)	(1.6)	(1.5)
Kansas City	(28.4)	(29.6)	(35.5)	(33.7)	(15.9)	(16.0)	(9.9)	(10.3)	(1.4)	(0.4)	(0.9)	(2.5)
Minneapolis	-	-	-	-	-	-	-	-	-	-	-	-
All Wheat	(58.6)	(56.4)	(60.8)	(60.2)	(81.2)	(83.1)	(81.1)	(82.1)	(4.4)	(3.2)	(2.5)	(4.0)
CORN	(392.5)	(346.8)	(365.7)	(352.9)	86.0	42.5	53.1	32.8	(42.0)	(38.4)	(34.2)	(38.4)
OATS	-	-	-	-	-	-	-	-	-	-	-	-
SOYBEANS	(176.4)	(171.8)	(169.3)	(142.1)	91.2	86.3	78.0	53.7	(36.1)	(35.9)	(33.3)	(31.6)
SOY OIL	(149.0)	(140.2)	(131.0)	(145.1)	35.6	28.0	18.8	32.9	13.5	11.6	13.2	12.9
SOY MEAL	(237.7)	(235.0)	(225.2)	(214.2)	98.0	92.2	85.5	71.6	18.5	22.0	19.0	21.0

	TOTAL OPEN INTEREST				(INDEX) COMMERCIAL INDEX TRADERS				(INDEX) % NET OF TOTAL OPEN INTEREST			
	27-Dec	20-Dec	13-Dec	6-Dec	27-Dec	20-Dec	13-Dec	6-Dec	27-Dec	20-Dec	13-Dec	6-Dec
	WHEAT											
Chicago	387,675	402,381	405,051	404,705	98.4	96.7	98.1	99.8	25.4%	24.0%	24.2%	24.7%
Kansas City	162,296	165,627	165,081	159,860	45.7	46.0	46.3	46.5	28.2%	27.8%	28.1%	29.1%
Minneapolis	-	-	-	-	-	-	-	-	-	-	-	-
All Wheat	549,971	568,008	570,132	564,565	144.1	142.7	144.4	146.3	26.2%	25.1%	25.3%	25.9%
CORN	1,423,239	1,443,655	1,457,563	1,486,178	348.5	342.6	346.8	358.5	24.5%	23.7%	23.8%	24.1%
OATS	-	-	-	-	-	-	-	-	-	-	-	-
SOYBEANS	682,246	733,115	744,707	719,341	121.3	121.4	124.6	120.0	17.8%	16.6%	16.7%	16.7%
SOY OIL	403,106	445,456	464,030	485,549	99.9	100.5	98.9	99.3	24.8%	22.6%	21.3%	20.4%
SOY MEAL	435,113	453,264	438,398	427,153	121.2	120.8	120.8	121.5	27.9%	26.6%	27.6%	28.5%

SOURCE: CFTC & FI



# NET POSITION FUTURES AND OPTIONS OF SPECULATORS AND INDEX FUNDS IN COMBINED SRW, HRW, CORN, SOYBEANS, SOYMEAL AND SOYOIL



Source: CFTC and FI

○ Net Index

— Net Speculator

## Traditional Daily Estimate of Funds 12/28/22

	(Neg)-"Short"	Pos-"Long"			
Actual less Est.	23.1	5.8	(14.3)	6.8	(2.5)
	<b>Corn</b>	<b>Bean</b>	<b>Chi. Wheat</b>	<b>Meal</b>	<b>Oil</b>
<b>Actual</b>	235.1	133.5	(36.3)	146.9	69.3
28-Dec	5.0	10.0	5.0	9.0	(5.0)
29-Dec	(2.0)	2.0	(5.0)	(2.0)	3.0
30-Dec	(1.0)	4.0	8.0	7.0	(5.0)
2-Jan					
3-Jan					
<b>FI Est. of Futures Only 11/15/22</b>	<b>237.1</b>	<b>149.5</b>	<b>(28.3)</b>	<b>160.9</b>	<b>62.3</b>
<b>FI Est. Futures &amp; Options</b>	<b>211.3</b>	<b>148.8</b>	<b>(29.3)</b>	<b>159.8</b>	<b>62.0</b>
Futures only record long "Traditional Funds"	547.7 1/26/2021	280.9 11/10/2020	86.5 8/7/2018	167.5 5/1/2018	160.2 11/1/2016
Futures only record short	(235.0) 6/9/2020	(118.3) 4/30/2019	(130.0) 4/25/2017	(49.5) 3/1/2016	(69.8) 9/18/2018
Futures and options record net long	557.6 1/12/2021	270.9 10/6/2020	64.8 8/7/2012	132.1 5/1/2018	159.2 1/1/2016
Futures and options record net short	(270.6) 4/26/2019	(132.0) 4/30/2019	(143.3) 4/25/2017	(64.1) 3/1/2016	(77.8) 9/18/2018

## Managed Money Daily Estimate of Funds 11/15/22

	Corn	Bean	Chi. Wheat	Meal	Oil
Latest CFTC Fut. Only	163.7	129.2	(56.2)	130.3	62.1
Latest CFTC F&O	159.3	128.6	(56.2)	130.0	65.6
	Corn	Bean	Chi. Wheat	Meal	Oil
FI Est. Managed Fut. Only	166	145	(48)	144	55
FI Est. Managed Money F&O	161	145	(48)	144	59

## Index Funds Latest Positions (as of last Tuesday)

Index Futures & Options	348.5	121.3	98.4	NA	99.9
Change From Previous Week	5.8	(0.1)	1.7	NA	(0.6)

Source: Reuters, CFTC & FI (FI est. are noted with latest date)

# Disclaimer

TO CLIENTS/PROSPECTS OF FUTURES INTERNATIONAL, SEE RISK DISCLOSURE BELOW:

THIS COMMUNICATION IS CONVEYED AS A SOLICITATION FOR ENTERING INTO A DERIVATIVES TRANSACTION.

Any trading recommendations and market or other information to Customer by Futures International (FI), although based upon information obtained from sources believed by FI to be reliable may not be accurate and may be changed without notice to customer. FI makes no guarantee as to the accuracy or completeness of any of the information or recommendations furnished to Customer. Customer understands that FI, its managers, employees and/or affiliates may have a position in commodity futures, options or other derivatives which may not be consistent with the recommendations furnished by FI to Customer.

The risk of trading futures and options and other derivatives involves a substantial risk of loss and is not suitable for all persons. In purchasing an option, the risk is limited to the premium paid, and all commissions and fees involved with the trade. When an option is shorted or written, the writer of the option has unlimited risk with respect to the option written. The use of options strategies such as a straddles and strangles involve multiple option positions and may substantially increase the amount of commissions and fees paid to execute the strategy. Option prices do not necessarily move in tandem with cash or futures prices. Each person must consider whether a particular trade, combination of trades or strategy is suitable for that person's financial means and objectives.

This material may include discussions of seasonal patterns, however, futures prices have already factored in the seasonal aspects of supply and demand, and seasonal patterns are no indication of future market trends. Finally, past performance is not indicative of future results.

This communication may contain links to third party websites which are not under the control of FI and FI is not responsible for their content. Products and services are offered only in jurisdictions where solicitation and sale are lawful, and in accordance with applicable laws and regulations in each such jurisdiction.