

CFTC COMMITMENT OF TRADERS REPORT

As of 11/29/2022

TRADITIONAL FUNDS net position changes

Wed to Tue, in 000 contracts

	Corn	Bean	Meal	Oil	Chi. Wheat	KC Wheat	Min Wheat
Futures Only	21.5	17.0	1.3	4.3	(5.8)	(0.4)	(0.3)
Futures & Options Combined	22.2	20.1	2.5	5.2	0.1	(1.2)	(0.2)

TRADITIONAL COMMERCIAL net position changes

	Corn	Bean	Meal	Oil	Chi. Wheat	KC Wheat	Min Wheat
Futures Only	(15.7)	(17.1)	(0.9)	(5.7)	6.4	1.3	0.4
Futures & Options Combined	(19.3)	(20.2)	(2.0)	(5.6)	0.4	2.4	0.2

MANAGED MONEY net position changes

	Corn	Bean	Meal	Oil	Chi. Wheat	KC Wheat	Min Wheat
Futures Only	37.3	19.4	2.7	3.1	2.8	(0.5)	(0.8)
Futures & Options Combined	20.9	20.0	3.0	5.2	(0.7)	(0.2)	(0.8)

SWAP DEALERS net position changes

	Corn	Bean	Meal	Oil	Chi. Wheat	KC Wheat	Min Wheat
Futures Only	(0.5)	(3.5)	(3.4)	(1.5)	5.0	1.4	(0.2)
Futures & Options Combined	1.1	(4.0)	(3.7)	(4.1)	0.3	2.4	(0.2)

PRODUCERS/END USERS net position changes

	Corn	Bean	Meal	Oil	Chi. Wheat	KC Wheat	Min Wheat
Futures Only	(15.2)	(13.6)	2.5	(4.1)	1.5	(0.1)	0.5
Futures & Options Combined	(20.4)	(16.2)	1.8	(1.6)	0.1	0.0	0.4

INDEX net position changes

	Corn	Bean	Meal	Oil	Chi. Wheat	KC Wheat	Min Wheat
Futures & Options Combined	3.5	(3.4)	1.0	(0.4)	(0.7)	1.5	NA

SUPPLEMENTAL NON-COMMERCIAL net position changes

	Corn	Bean	Meal	Oil	Chi. Wheat	KC Wheat	Min Wheat
Futures & Options Combined	18.0	21.0	1.2	4.8	0.3	(1.1)	NA

OPEN INTEREST net position changes

Wed to Tue, in 000 contracts

	Corn	Bean	Meal	Oil	Chi. Wheat	KC Wheat	Min Wheat
Futures Only	(136.3)	11.5	(26.0)	(6.2)	(41.7)	(5.2)	1.7
Futures & Options Combined	(312.9)	3.5	(38.9)	(40.1)	(75.7)	(10.9)	0.4

Source: CFTC and FI

Wed to Tue, in 000 contracts

12/2/2022

**COMMITMENT OF TRADERS
FUTURES ONLY NET POSITIONS
AS OF 11/29/2022
(IN THOUSAND CONTRACTS)**

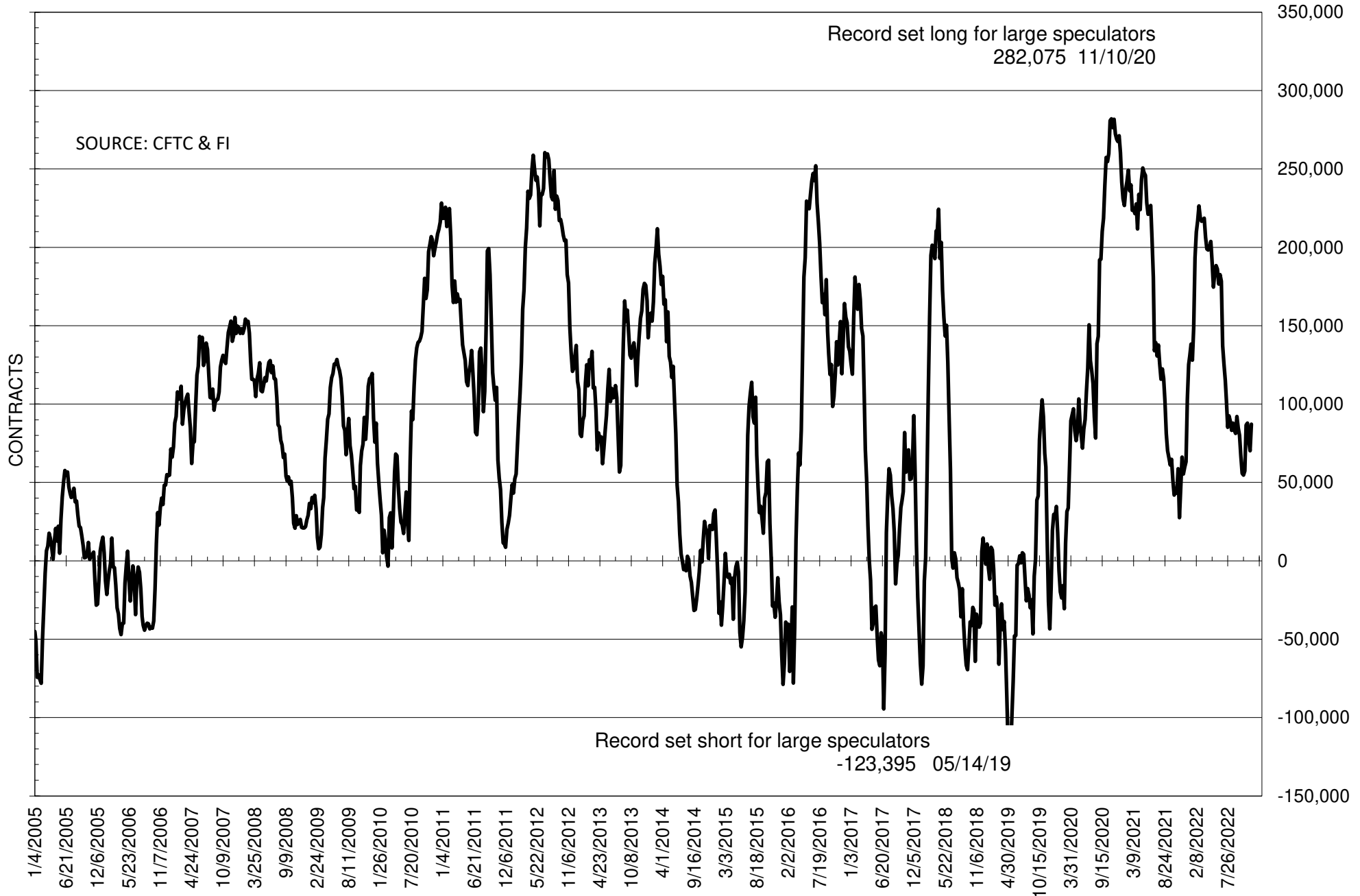
	COMMERCIAL				(FUND) NON COMMERCIAL				(SPEC) NON-REPORTABLE			
	29-Nov	22-Nov	15-Nov	8-Nov	29-Nov	22-Nov	15-Nov	8-Nov	29-Nov	22-Nov	15-Nov	8-Nov
	WHEAT											
Chicago	37.0	30.6	29.3	23.7	-33.3	-27.5	-22.5	-17.2	-3.7	-3.1	-6.8	-6.5
Kansas City	-12.1	-13.4	-17.3	-19.5	13.6	14.1	18.0	20.6	-1.5	-0.7	-0.7	-1.1
Minneapolis	-1.0	-1.3	-0.1	-3.2	1.6	2.0	1.9	5.3	-0.7	-0.6	-1.8	-2.1
All Wheat	24.0	15.9	11.9	1.0	-18.1	-11.5	-2.6	8.7	-5.9	-4.4	-9.3	-9.7
CORN	-231.2	-215.5	-211.9	-254.2	270.2	248.8	252.9	301.6	-39.1	-33.3	-41.0	-47.4
OATS	-0.1	-0.1	0.0	0.0	-0.4	-0.3	-0.5	-0.5	0.5	0.5	0.6	0.5
SOYBEANS	-61.6	-44.4	-49.0	-61.0	87.2	70.2	76.8	87.8	-25.7	-25.8	-27.8	-26.8
SOY OIL	-116.9	-111.2	-120.8	-112.8	103.9	99.5	105.3	100.0	13.0	11.7	15.5	12.8
SOY MEAL	-122.2	-121.3	-124.3	-147.6	102.3	101.1	104.7	121.2	19.9	20.2	19.5	26.4

Oats positions thin to be reported

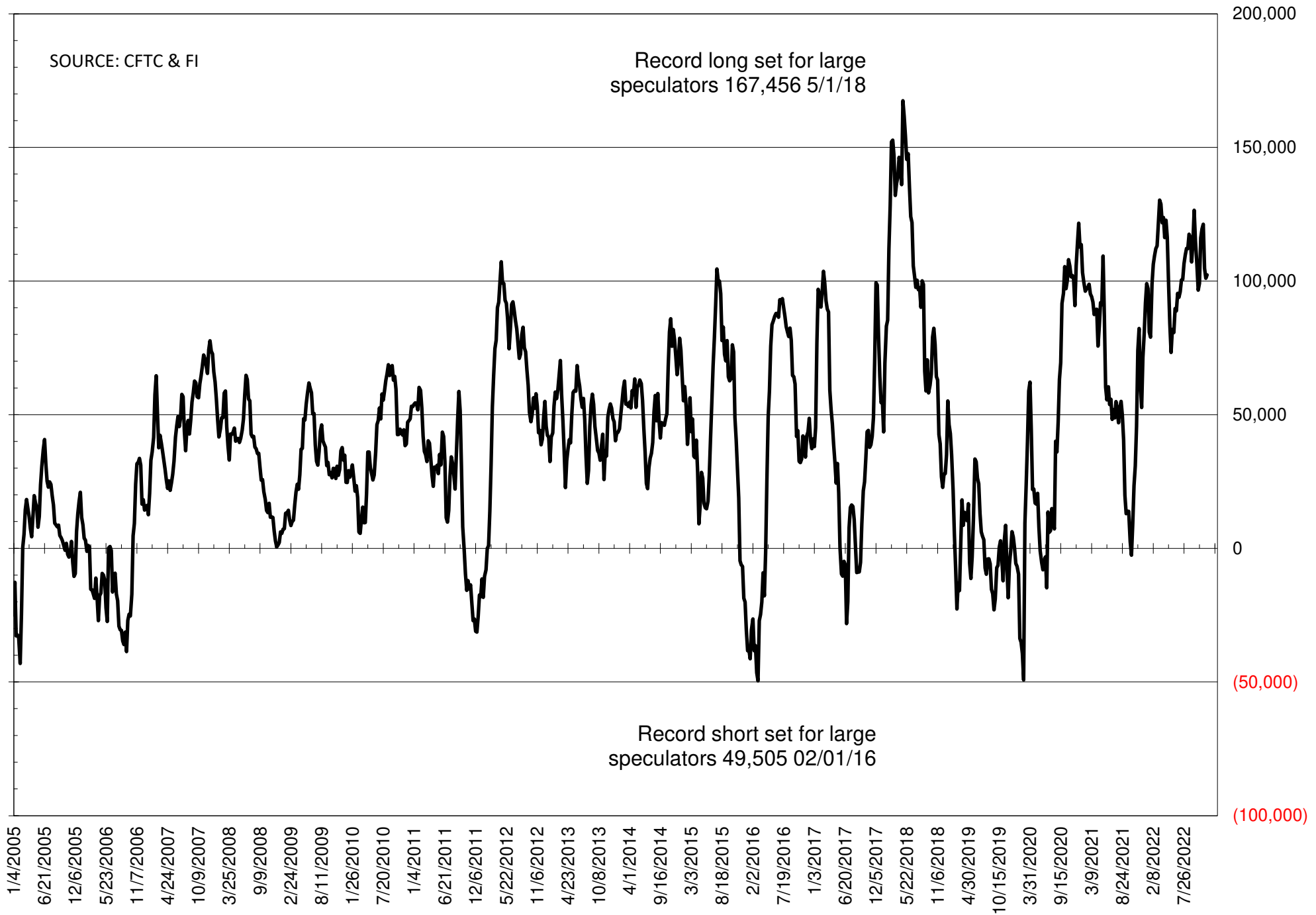
	TOTAL OPEN INTEREST				NEARBY FUTURES PRICE					29-Nov-22 LAST REPORTED % HELD BY TRADERS			
	29-Nov	22-Nov	15-Nov	8-Nov	H/F Latest	Z/F 29-Nov	Z/F 22-Nov	Z/F 15-Nov	Z/F 8-Nov	LARGE FUND		SMALL	
										LONG	SHORT	LONG	SHORT
WHEAT													
Chicago	310667	352395	350091	350843	761.00	757.75	792.50	828.25	827.75	0%	39%	0%	11%
Kansas City	142738	147905	155780	155333	870.75	901.00	912.00	963.00	945.75	0%	17%	0%	14%
Minneapolis	44829	43111	46479	50165	921.25	940.25	950.25	974.00	950.25	0%	8%	0%	21%
CORN	1226410	1362664	1421555	1484427	646.25	665.75	659.25	666.75	667.50	0%	7%	0%	13%
OATS	3274	4071	4413	4558	357.75	392.00	396.00	398.00	380.75	0%	35%	0%	29%
SOYBEANS	634754	623227	616094	611011	1438.50	1459.50	1429.75	1457.25	1446.50	24%	10%	8%	12%
SOY OIL	444650	450896	463079	447632	65.22	76.54	71.44	76.98	75.03	0%	7%	0%	5%
SOY MEAL	369599	395596	400222	410292	424.10	408.50	405.00	409.90	419.30	0%	5%	0%	7%

SOURCE: CFTC & FI

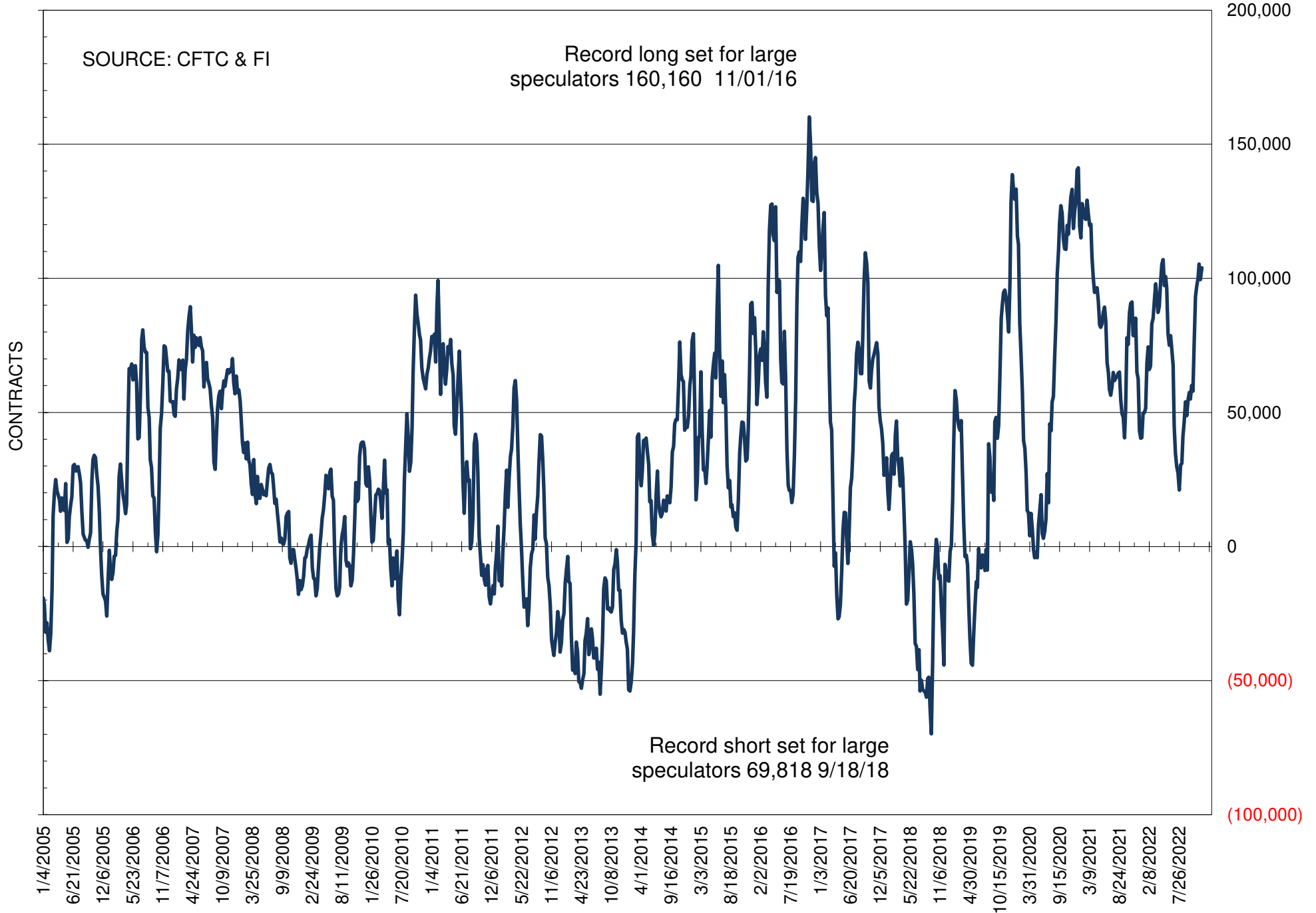
NET POSITION OF FUTURES ONLY LARGE SPECS IN SOYBEANS



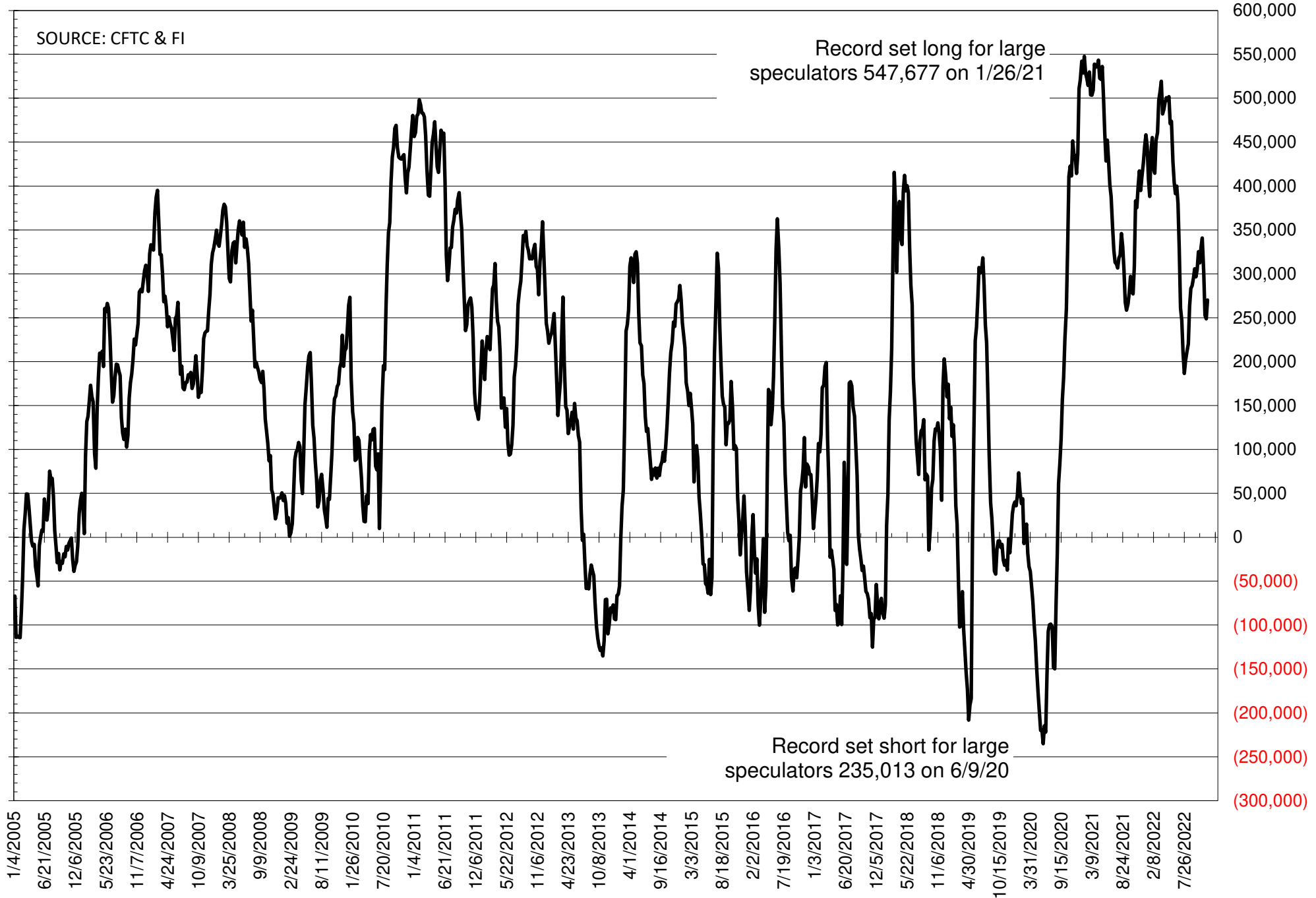
NET POSITION OF FUTURES ONLY LARGE SPECS IN SOYMEAL



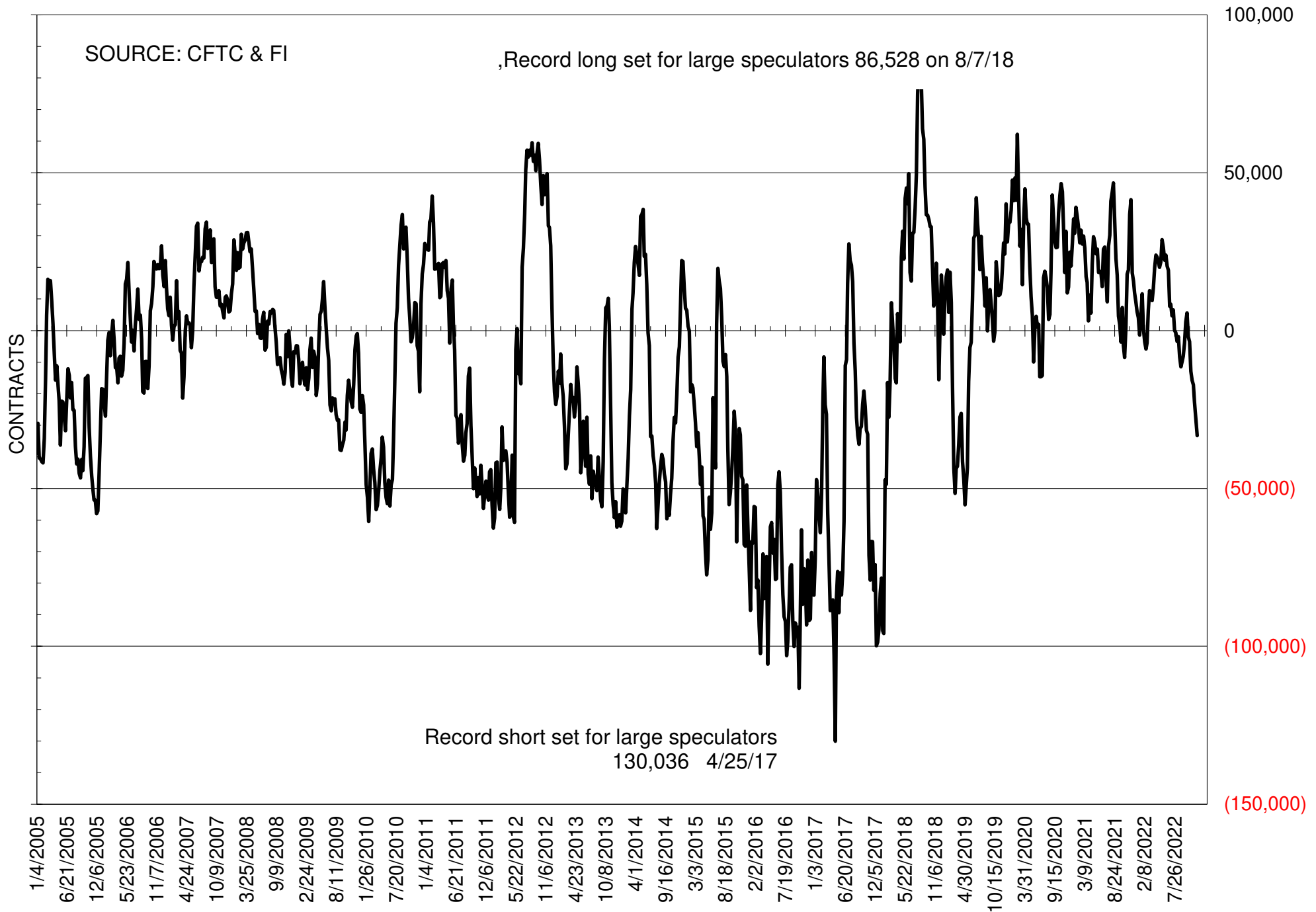
NET POSITION OF FUTURES ONLY LARGE SPECS IN SOYOIL



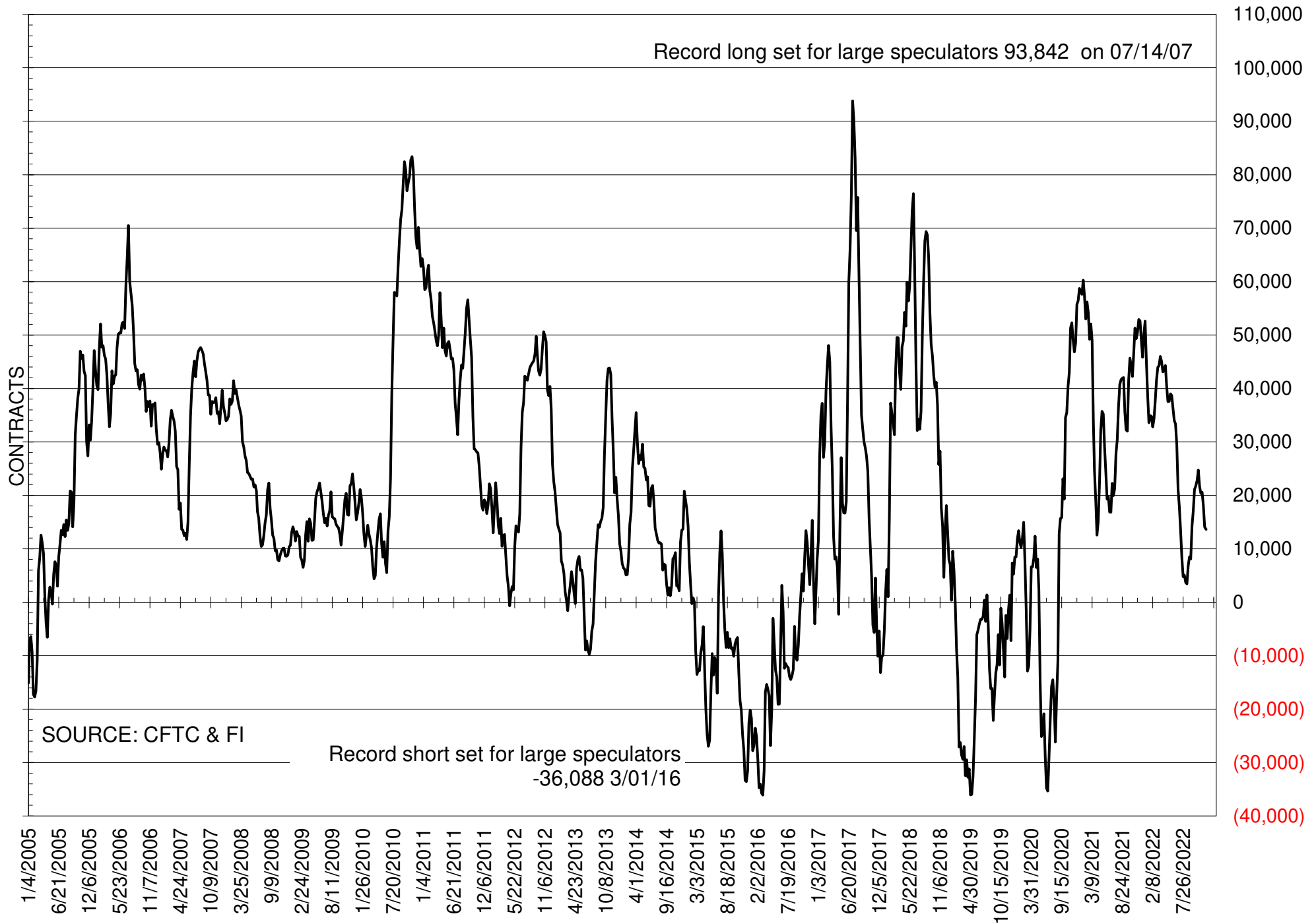
NET POSITION OF LARGE SPECULATORS IN CORN



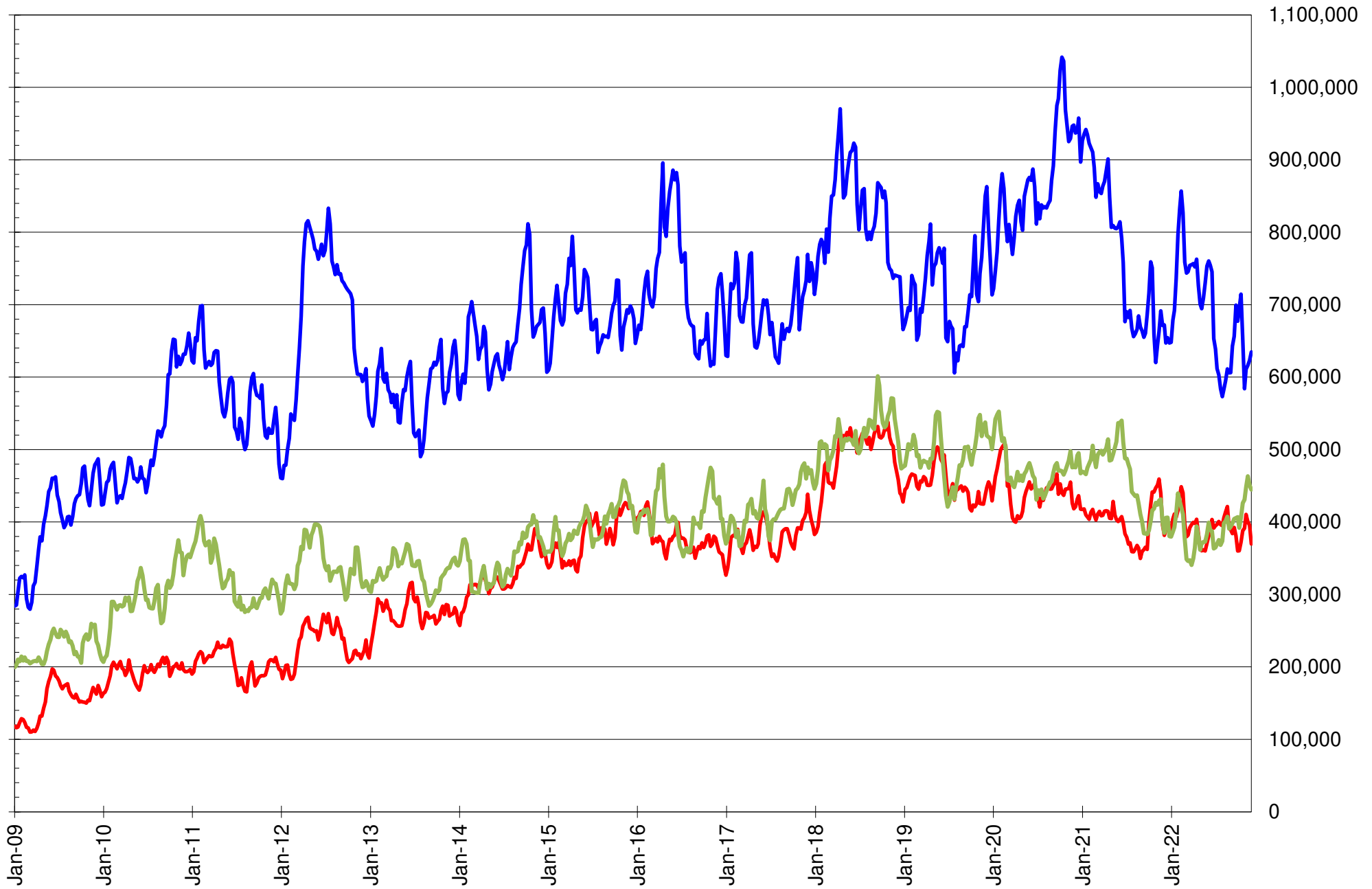
NET POSITION OF FUTURES ONLY LARGE SPECS IN CHICAGO WHEAT



NET POSITION OF LARGE SPECULATORS IN KANSAS CITY WHEAT



TOTAL OPEN INTEREST IN SOYBEANS, MEAL AND OIL, FUTURES ONLY



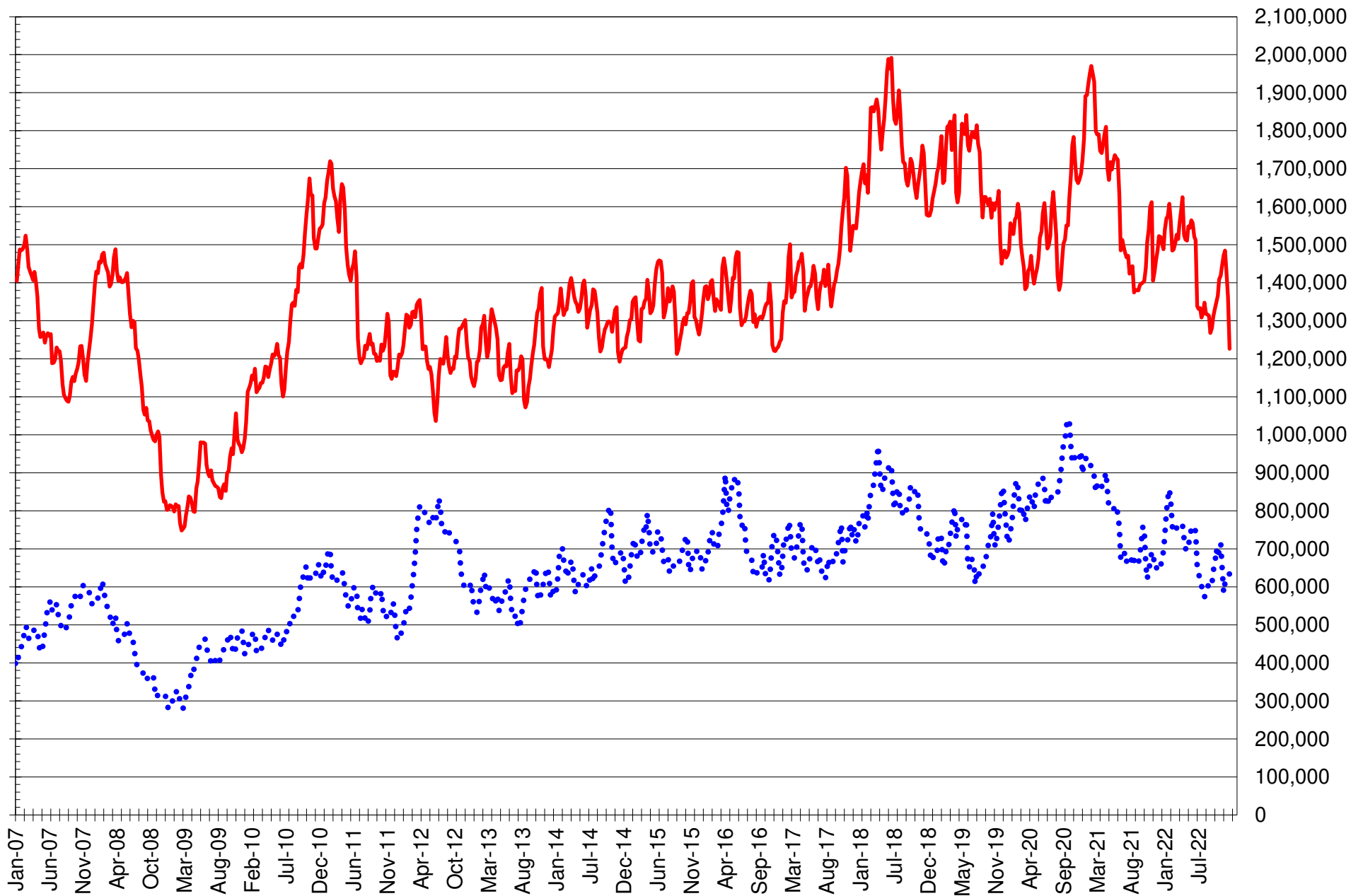
SOURCE: CFTC & FI

— SOYBEANS

— SOYBEAN MEAL

— SOYBEAN OIL

TOTAL OPEN INTEREST IN CORN AND SOYBEANS, FUTURES ONLY



SOURCE: CFTC & FI

— CORN

..... SOYBEANS

Traditional Daily Estimate of Funds 11/29/22

	(Neg)-"Short"	Pos-"Long"			
Actual less Est.	27.3	20.4	8.2	(2.4)	5.6
	Corn	Bean	Chi. Wheat	Meal	Oil
Actual	270.2	87.2	(33.3)	102.3	103.9
30-Nov	(4.0)	5.0	6.0	5.0	(2.0)
1-Dec	(6.0)	(19.0)	(5.0)	2.0	(15.0)
2-Dec	(11.0)	2.0	(7.0)	1.0	(10.0)
5-Dec					
6-Dec					
FI Est. of Futures Only 11/15/22	249.2	75.2	(39.3)	110.3	76.9
FI Est. Futures & Options	214.4	79.8	(39.0)	104.7	79.5
Futures only record long "Traditional Funds"	547.7 1/26/2021	280.9 11/10/2020	86.5 8/7/2018	167.5 5/1/2018	160.2 11/1/2016
Futures only record short	(235.0) 6/9/2020	(118.3) 4/30/2019	(130.0) 4/25/2017	(49.5) 3/1/2016	(69.8) 9/18/2018
Futures and options record net long	557.6 1/12/2021	270.9 10/6/2020	64.8 8/7/2012	132.1 5/1/2018	159.2 1/1/2016
Futures and options record net short	(270.6) 4/26/2019	(132.0) 4/30/2019	(143.3) 4/25/2017	(64.1) 3/1/2016	(77.8) 9/18/2018

Managed Money Daily Estimate of Funds 11/15/22

	Corn	Bean	Chi. Wheat	Meal	Oil
Latest CFTC Fut. Only	194.0	103.2	(53.1)	74.7	104.0
Latest CFTC F&O	191.6	102.1	(54.1)	74.9	105.5
	Corn	Bean	Chi. Wheat	Meal	Oil
FI Est. Managed Fut. Only	173	91	(59)	83	77
FI Est. Managed Money F&O	171	90	(60)	83	79

Index Funds Latest Positions (as of last Tuesday)

Index Futures & Options	363.2	127.4	102.8	NA	105.6
Change From Previous Week	3.5	(3.4)	(0.7)	NA	(0.4)

Source: Reuters, CFTC & FI (FI est. are noted with latest date)

Disclaimer

TO CLIENTS/PROSPECTS OF FUTURES INTERNATIONAL, SEE RISK DISCLOSURE BELOW:

THIS COMMUNICATION IS CONVEYED AS A SOLICITATION FOR ENTERING INTO A DERIVATIVES TRANSACTION.

Any trading recommendations and market or other information to Customer by Futures International (FI), although based upon information obtained from sources believed by FI to be reliable may not be accurate and may be changed without notice to customer. FI makes no guarantee as to the accuracy or completeness of any of the information or recommendations furnished to Customer. Customer understands that FI, its managers, employees and/or affiliates may have a position in commodity futures, options or other derivatives which may not be consistent with the recommendations furnished by FI to Customer.

The risk of trading futures and options and other derivatives involves a substantial risk of loss and is not suitable for all persons. In purchasing an option, the risk is limited to the premium paid, and all commissions and fees involved with the trade. When an option is shorted or written, the writer of the option has unlimited risk with respect to the option written. The use of options strategies such as a straddles and strangles involve multiple option positions and may substantially increase the amount of commissions and fees paid to execute the strategy. Option prices do not necessarily move in tandem with cash or futures prices. Each person must consider whether a particular trade, combination of trades or strategy is suitable for that person's financial means and objectives.

This material may include discussions of seasonal patterns, however, futures prices have already factored in the seasonal aspects of supply and demand, and seasonal patterns are no indication of future market trends. Finally, past performance is not indicative of future results.

This communication may contain links to third party websites which are not under the control of FI and FI is not responsible for their content. Products and services are offered only in jurisdictions where solicitation and sale are lawful, and in accordance with applicable laws and regulations in each such jurisdiction.