

CFTC COMMITMENT OF TRADERS REPORT

As of 11/1/2022

TRADITIONAL FUNDS net position changes

Wed to Tue, in 000 contracts

	Corn	Bean	Meal	Oil	Chi. Wheat	KC Wheat	Min Wheat
Futures Only	11.0	29.1	3.4	3.9	(2.9)	(1.3)	0.1
Futures & Options Combined	8.5	31.4	4.7	4.8	(2.0)	(1.2)	0.2

TRADITIONAL COMMERCIAL net position changes

	Corn	Bean	Meal	Oil	Chi. Wheat	KC Wheat	Min Wheat
Futures Only	(13.1)	(22.6)	(4.1)	(5.1)	2.6	1.4	(0.0)
Futures & Options Combined	(11.1)	(25.4)	(5.6)	(5.8)	2.0	1.4	(0.2)

MANAGED MONEY net position changes

	Corn	Bean	Meal	Oil	Chi. Wheat	KC Wheat	Min Wheat
Futures Only	12.6	26.8	8.3	4.8	0.1	(1.4)	0.3
Futures & Options Combined	7.6	25.9	7.4	5.0	(1.1)	(1.2)	0.3

SWAP DEALERS net position changes

	Corn	Bean	Meal	Oil	Chi. Wheat	KC Wheat	Min Wheat
Futures Only	2.5	2.9	(0.0)	(4.0)	1.8	1.3	0.2
Futures & Options Combined	3.2	1.9	(0.9)	(3.8)	2.4	1.1	0.2

PRODUCERS/END USERS net position changes

	Corn	Bean	Meal	Oil	Chi. Wheat	KC Wheat	Min Wheat
Futures Only	(15.7)	(25.5)	(4.0)	(1.1)	0.8	0.1	(0.3)
Futures & Options Combined	(14.3)	(27.3)	(4.6)	(2.0)	(0.4)	0.3	(0.3)

INDEX net position changes

	Corn	Bean	Meal	Oil	Chi. Wheat	KC Wheat	Min Wheat
Futures & Options Combined	(2.8)	3.8	4.9	2.1	2.8	0.9	NA

SUPPLEMENTAL NON-COMMERCIAL net position changes

	Corn	Bean	Meal	Oil	Chi. Wheat	KC Wheat	Min Wheat
Futures & Options Combined	12.0	30.3	0.3	2.9	(1.8)	(1.0)	NA

OPEN INTEREST net position changes

Wed to Tue, in 000 contracts

	Corn	Bean	Meal	Oil	Chi. Wheat	KC Wheat	Min Wheat
Futures Only	26.7	(67.6)	3.3	4.5	8.9	1.7	(0.5)
Futures & Options Combined	53.5	(52.5)	8.4	10.2	23.1	4.2	(0.5)

Source: CFTC and FI

Wed to Tue, in 000 contracts

**COMMITMENT OF TRADERS
FUTURES ONLY NET POSITIONS
AS OF 11/01/2022
(IN THOUSAND CONTRACTS)**

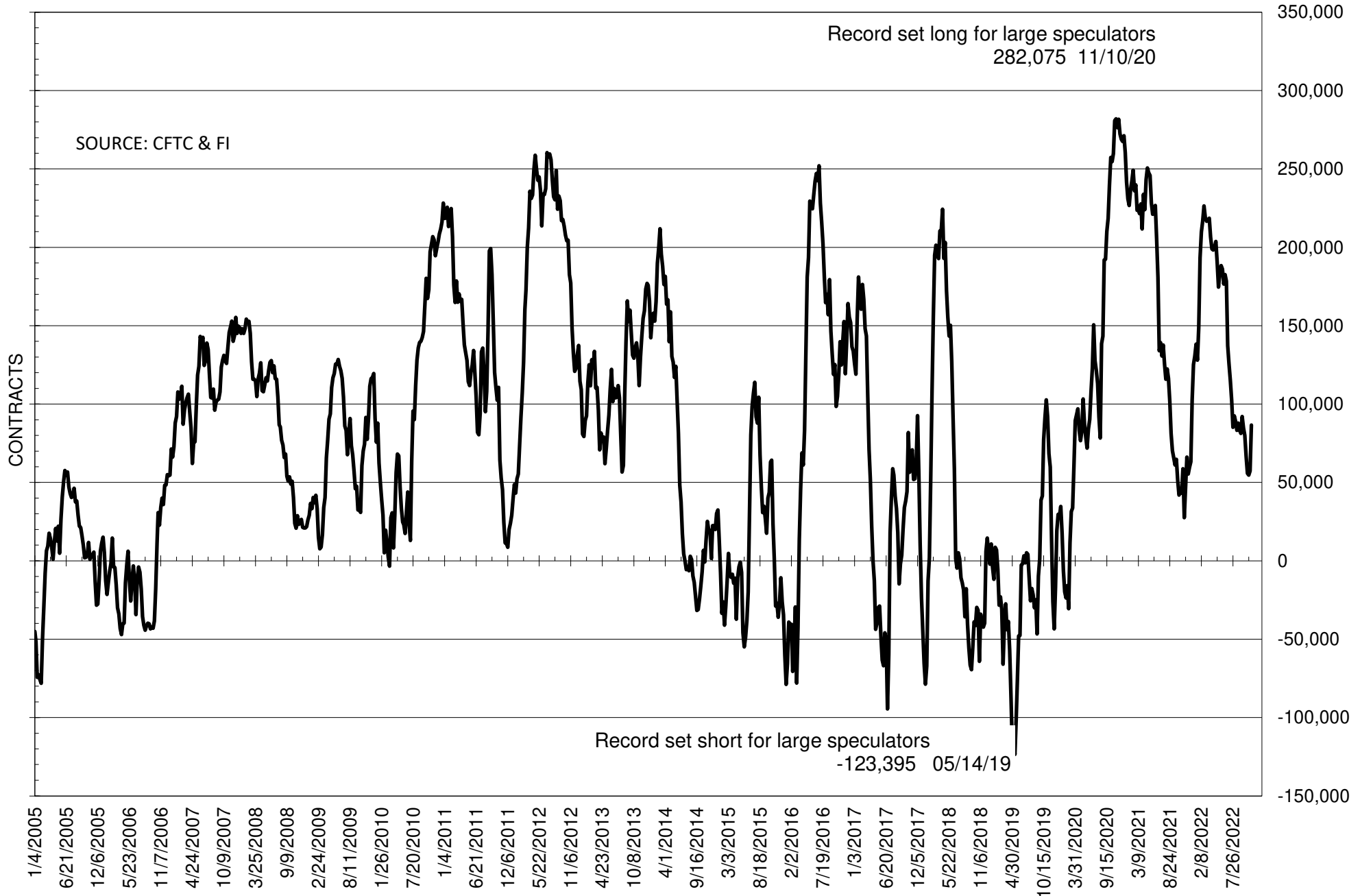
	COMMERCIAL				(FUND) NON COMMERCIAL				(SPEC) NON-REPORTABLE			
	1-Nov	25-Oct	18-Oct	11-Oct	1-Nov	25-Oct	18-Oct	11-Oct	1-Nov	25-Oct	18-Oct	11-Oct
	WHEAT											
Chicago	22.5	19.9	10.5	8.7	-15.8	-12.9	-3.5	-2.0	-6.7	-7.0	-7.0	-6.7
Kansas City	-18.9	-20.3	-22.7	-20.0	20.3	21.6	24.7	22.8	-1.5	-1.4	-2.0	-2.8
Minneapolis	-4.5	-4.5	-5.1	-6.7	6.1	6.0	6.3	6.7	-1.6	-1.6	-1.2	0.0
All Wheat	-0.9	-4.8	-17.3	-18.0	10.7	14.8	27.5	27.5	-9.8	-9.9	-10.2	-9.5
CORN	-286.8	-273.6	-249.3	-258.2	340.8	329.8	312.4	325.1	-54.0	-56.1	-63.2	-66.9
OATS	-0.1	-0.3	-0.8	-0.9	-0.6	-0.5	0.1	0.0	0.7	0.8	0.8	0.9
SOYBEANS	-57.9	-35.3	-30.6	-30.6	86.5	57.4	54.7	55.8	-28.6	-22.1	-24.1	-25.2
SOY OIL	-111.1	-106.0	-91.5	-68.2	97.1	93.2	76.3	57.9	14.0	12.8	15.2	10.3
SOY MEAL	-145.3	-141.2	-122.1	-118.4	119.5	116.1	99.1	96.6	25.8	25.1	23.0	21.8

Oats positions thin to be reported

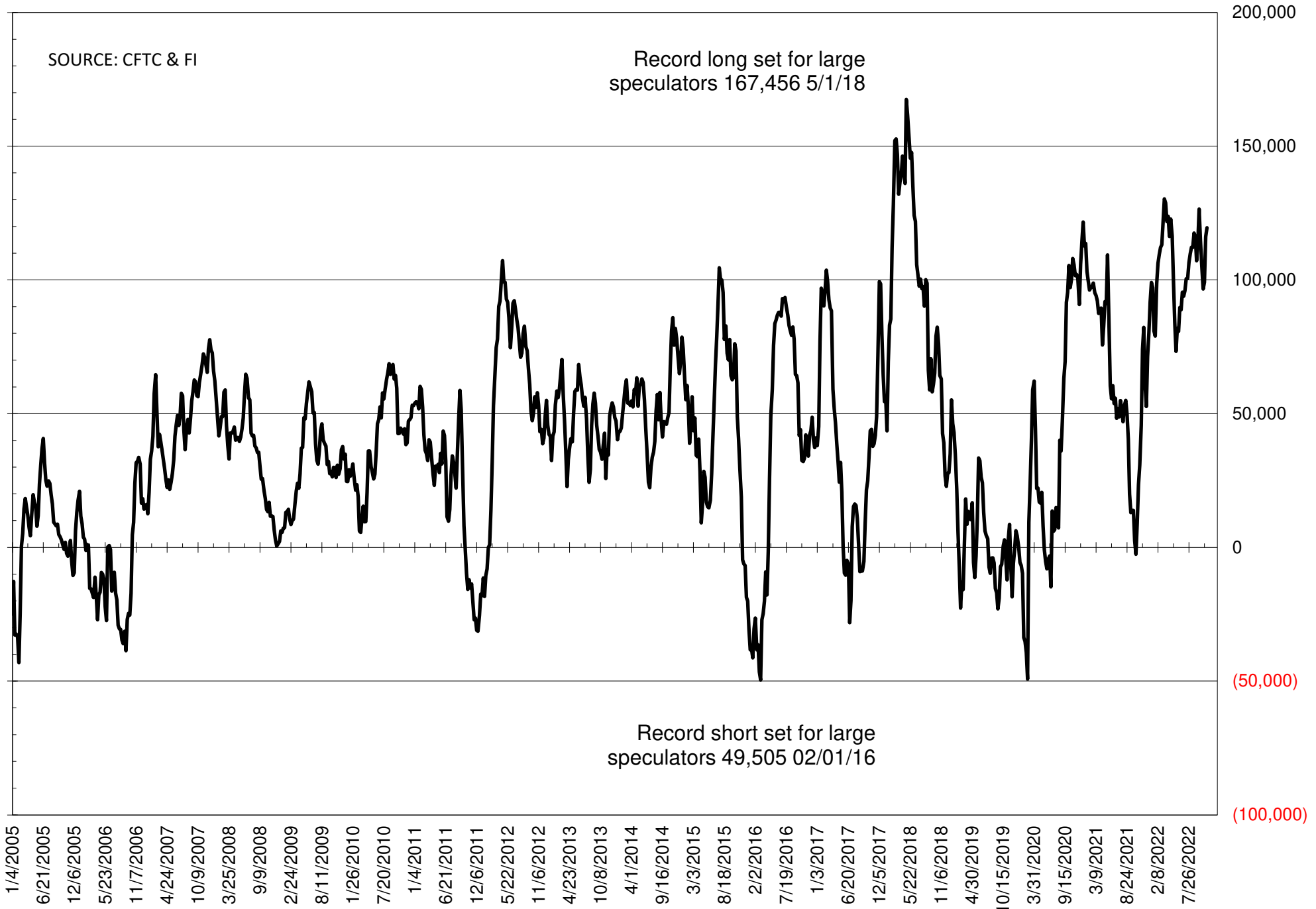
	TOTAL OPEN INTEREST				NEARBY FUTURES PRICE					1-Nov-22 LAST REPORTED % HELD BY TRADERS			
	1-Nov	25-Oct	18-Oct	11-Oct	Z/F Latest	Z/F 1-Nov	X/Z 25-Oct	V/X/Z 18-Oct	V/X/Z 11-Oct	LARGE FUND		SMALL	
										LONG	SHORT	LONG	SHORT
WHEAT													
Chicago	333061	324137	309429	307901	847.75	902.50	834.75	849.50	901.00	0%	32%	0%	11%
Kansas City	160095	158382	157624	156583	953.25	990.00	934.50	944.50	990.75	0%	14%	0%	13%
Minneapolis	55270	55765	56053	56767	954.00	987.25	952.25	956.00	987.00	0%	6%	0%	19%
CORN	1472517	1445842	1419087	1408939	681.00	697.75	686.25	681.00	693.00	0%	8%	0%	12%
OATS	4228	4421	4042	3914	390.75	399.50	357.50	387.25	392.25	0%	31%	0%	25%
SOYBEANS	584073	651685	714532	694960	1462.25	1447.75	1382.00	1372.00	1376.25	26%	11%	7%	12%
SOY OIL	430748	426276	406354	391726	77.17	73.37	72.28	68.74	65.47	0%	7%	0%	6%
SOY MEAL	391398	388147	372161	360308	420.40	424.80	415.60	401.80	406.00	0%	4%	0%	6%

SOURCE: CFTC & FI

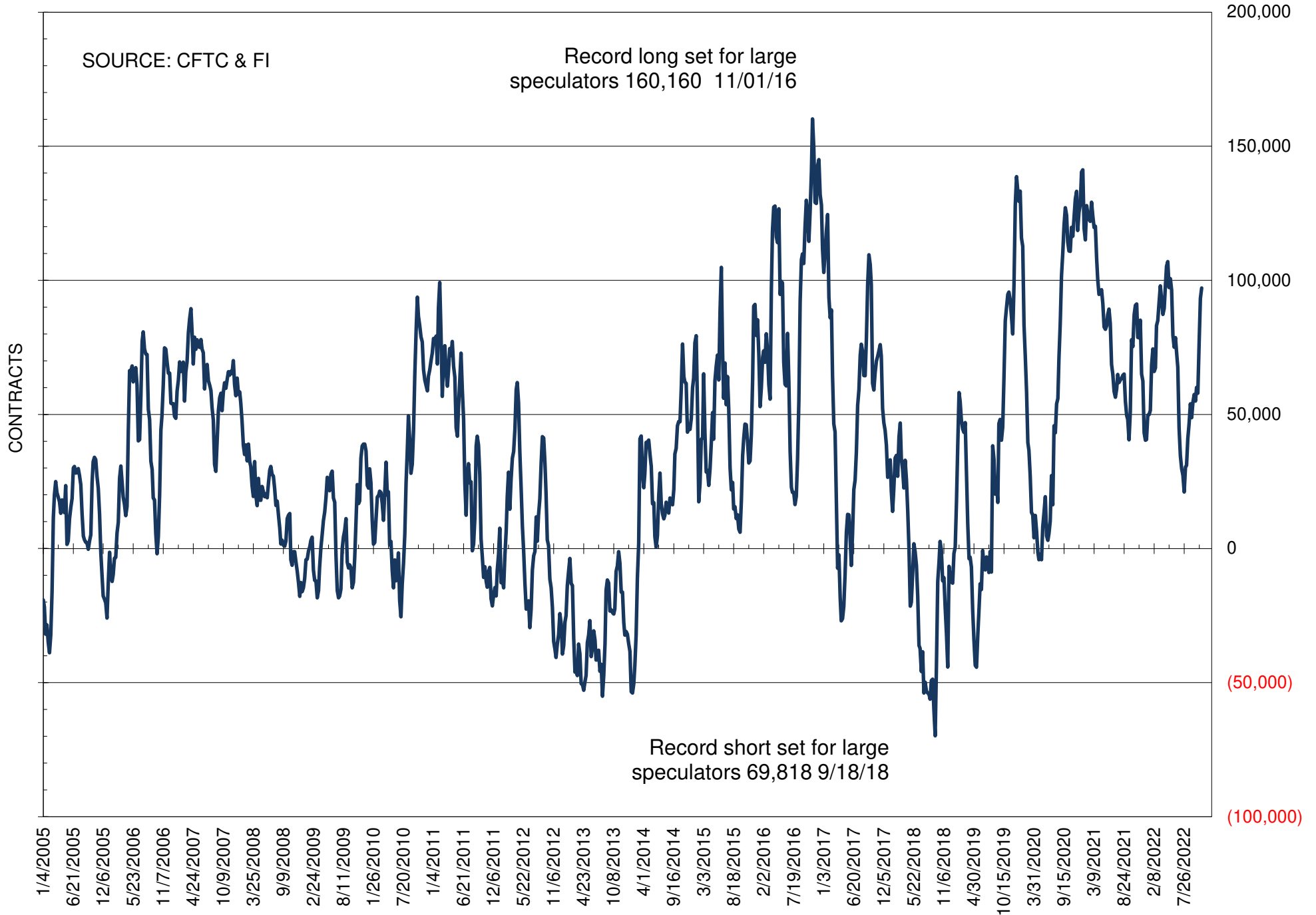
NET POSITION OF FUTURES ONLY LARGE SPECS IN SOYBEANS



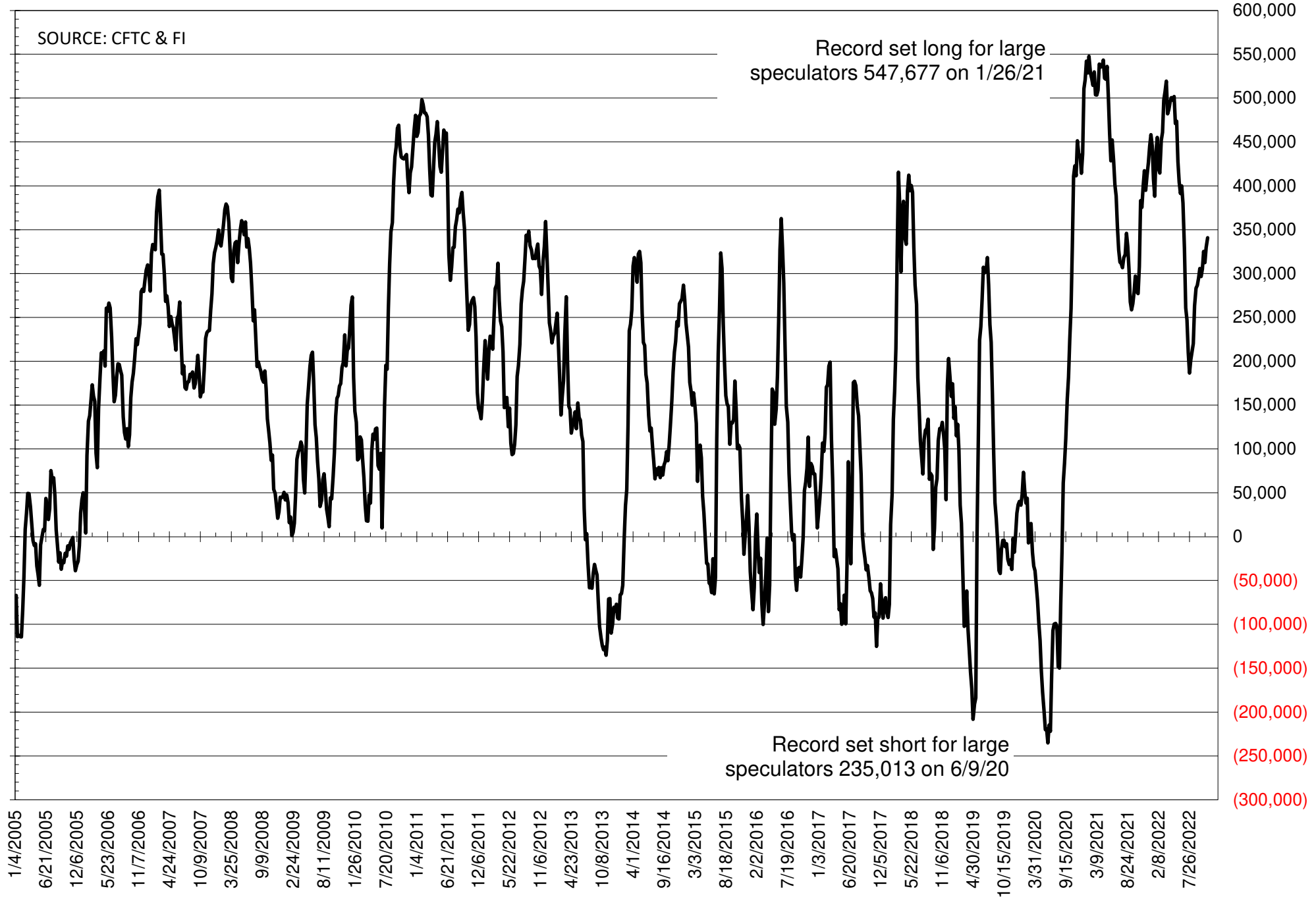
NET POSITION OF FUTURES ONLY LARGE SPECS IN SOYMEAL



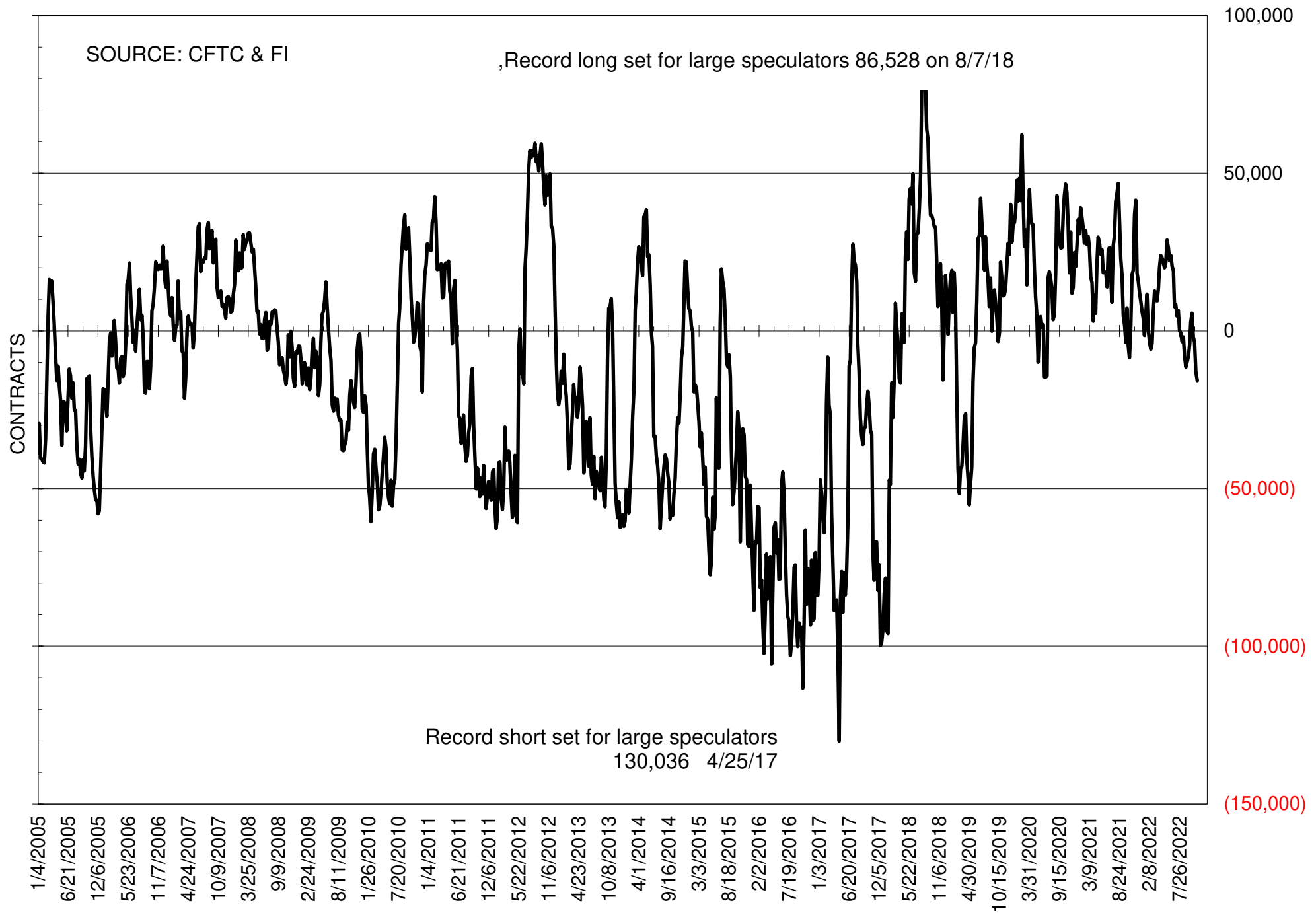
NET POSITION OF FUTURES ONLY LARGE SPECS IN SOYOIL



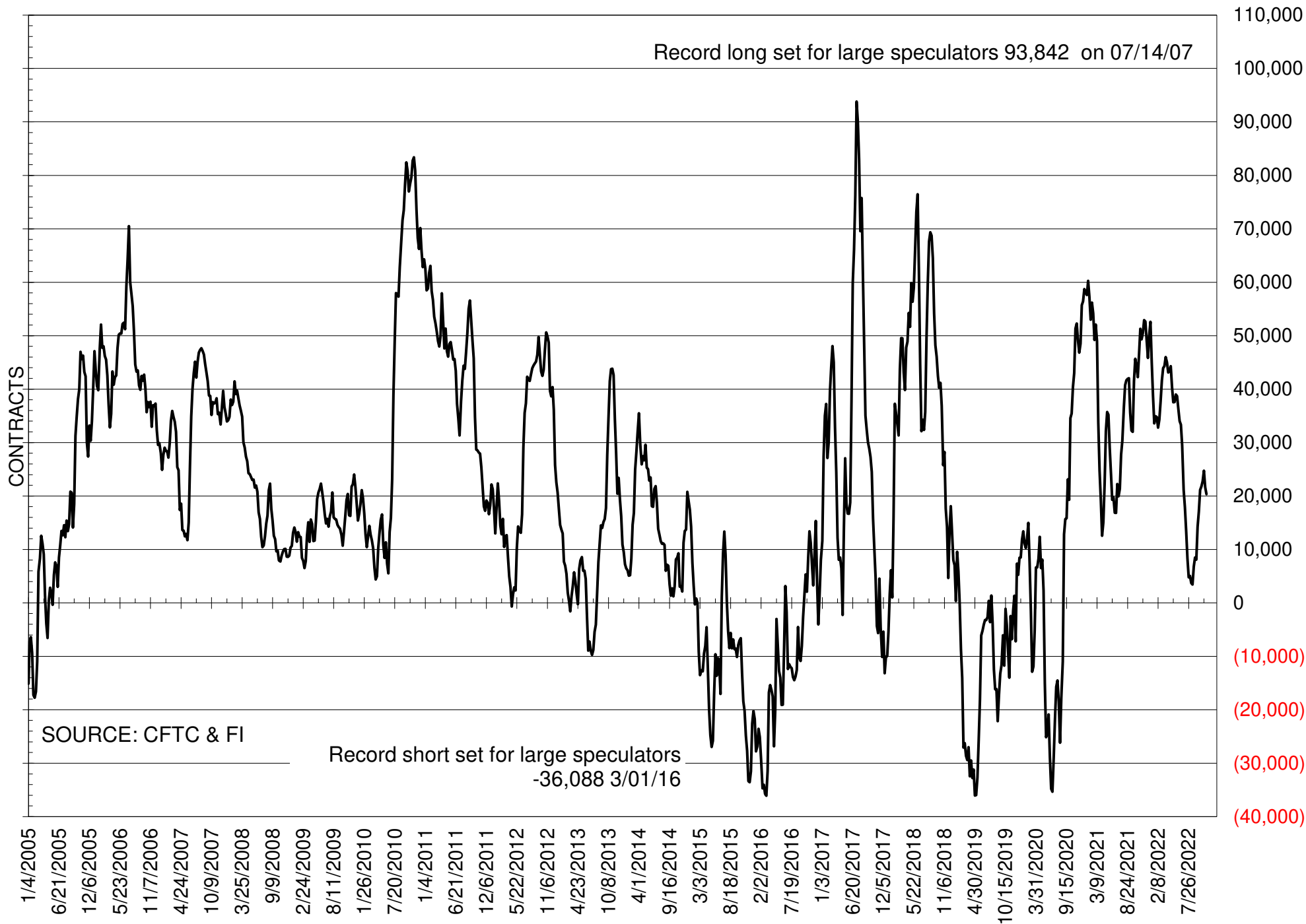
NET POSITION OF LARGE SPECULATORS IN CORN



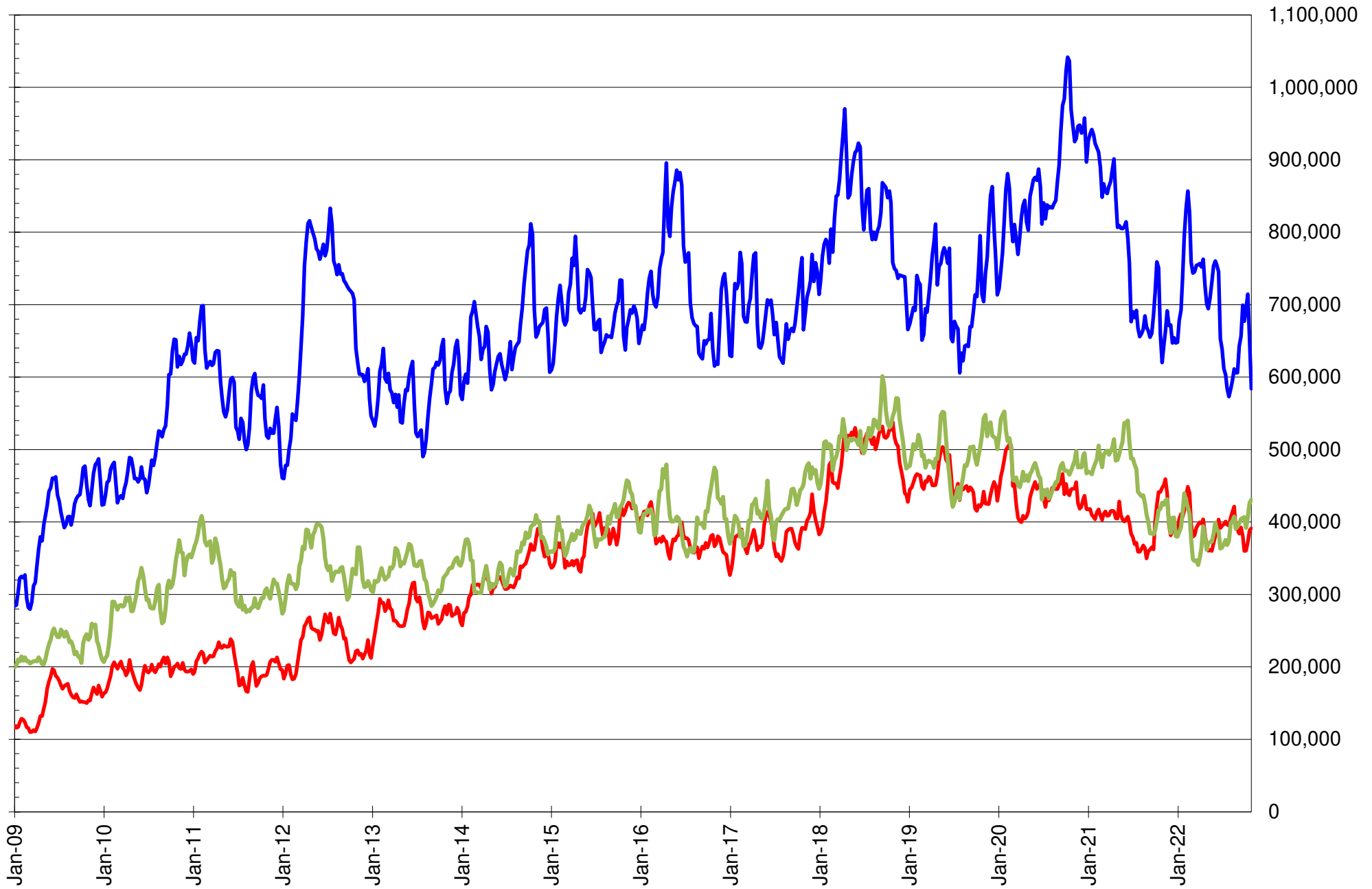
NET POSITION OF FUTURES ONLY LARGE SPECS IN CHICAGO WHEAT



NET POSITION OF LARGE SPECULATORS IN KANSAS CITY WHEAT



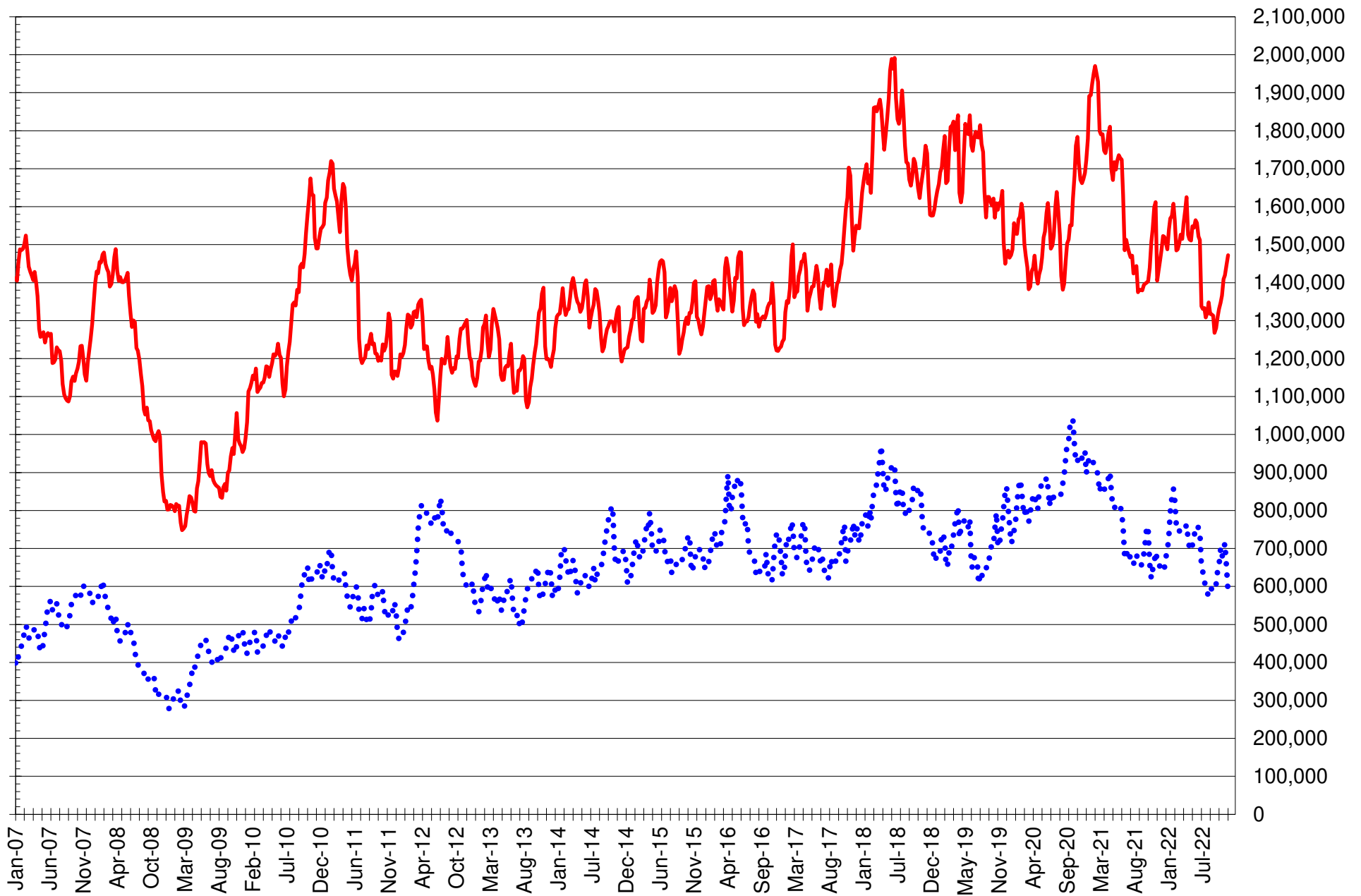
TOTAL OPEN INTEREST IN SOYBEANS, MEAL AND OIL, FUTURES ONLY



SOURCE: CFTC & FI

— SOYBEANS — SOYBEAN MEAL — SOYBEAN OIL

TOTAL OPEN INTEREST IN CORN AND SOYBEANS, FUTURES ONLY



SOURCE: CFTC & FI

— CORN

..... SOYBEANS

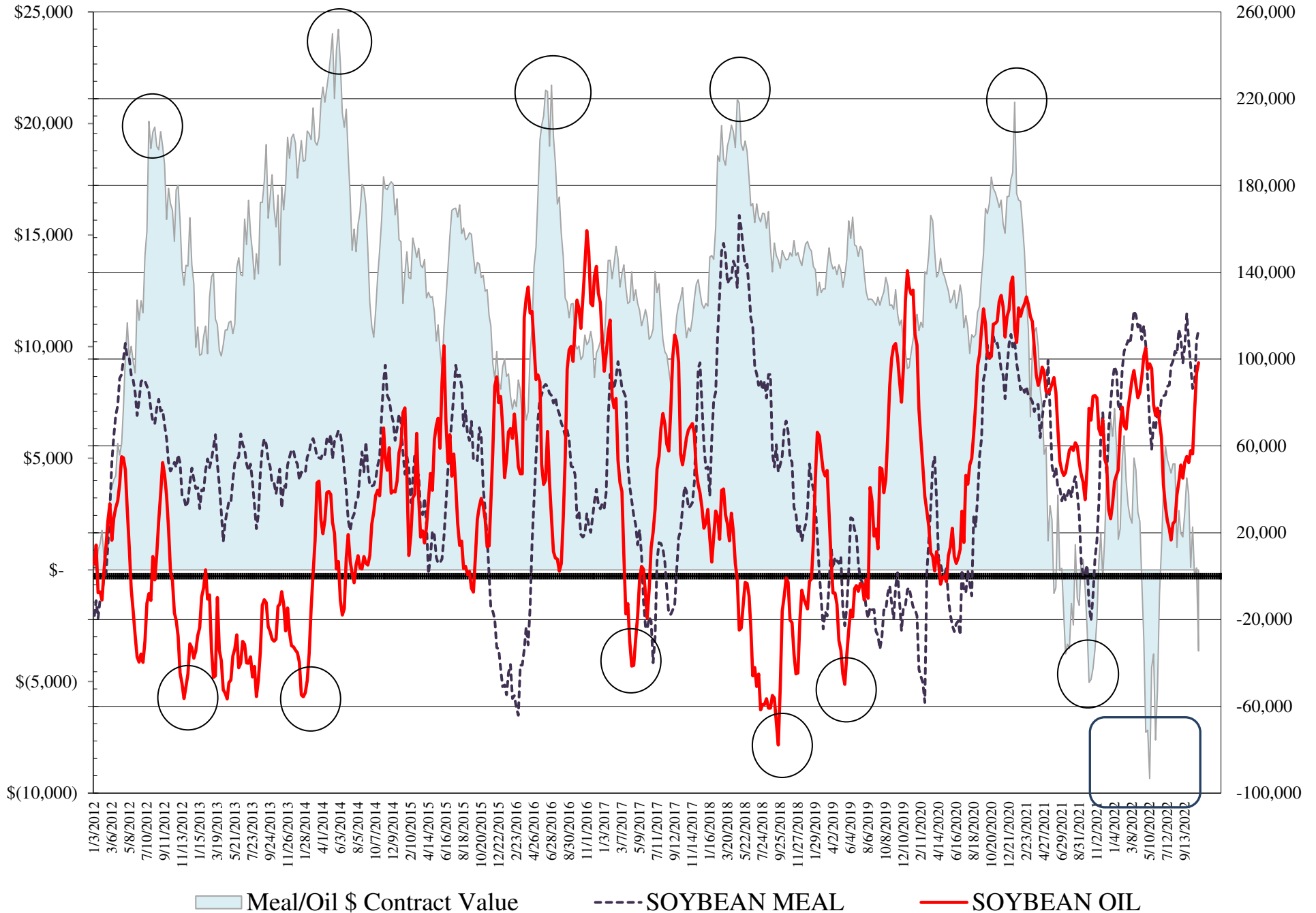
**COMMITMENT OF TRADERS
FUTURES & OPTIONS NET POSITIONS
AS OF 11/01/2022
(IN THOUSAND CONTRACTS)**

	COMMERCIAL				(FUND) NON COMMERCIAL				(SPEC) NON-REPORTABLE			
	1-Nov	25-Oct	18-Oct	11-Oct	1-Nov	25-Oct	18-Oct	11-Oct	1-Nov	25-Oct	18-Oct	11-Oct
WHEAT												
Chicago	25.4	23.4	13.3	11.5	-19.2	-17.2	-7.0	-5.0	-6.2	-6.3	-6.3	-6.4
Kansas City	-19.2	-20.6	-23.5	-21.0	20.3	21.5	24.9	23.2	-1.0	-0.8	-1.4	-2.2
Minneapolis	-4.6	-4.4	-5.1	-6.8	6.1	5.9	6.2	6.7	-1.5	-1.5	-1.2	0.1
All Wheat	1.6	-1.6	-15.3	-16.4	7.2	10.2	24.1	24.9	-8.8	-8.6	-8.8	-8.5
CORN	-268.8	-257.7	-235.5	-247.6	321.2	312.7	298.5	316.4	-52.4	-55.0	-63.1	-68.8
OATS	-0.1	-0.2	-0.8	-0.8	-0.7	-0.6	0.0	-0.1	0.8	0.8	0.8	0.9
SOYBEANS	-64.8	-39.4	-18.7	-21.1	94.2	62.8	46.7	51.6	-29.3	-23.4	-28.0	-30.5
SOY OIL	-112.2	-106.4	-91.6	-67.1	98.4	93.5	76.2	56.3	13.8	12.8	15.4	10.8
SOY MEAL	-141.8	-136.2	-114.4	-110.8	113.4	108.7	89.2	86.5	28.4	27.5	25.2	24.3

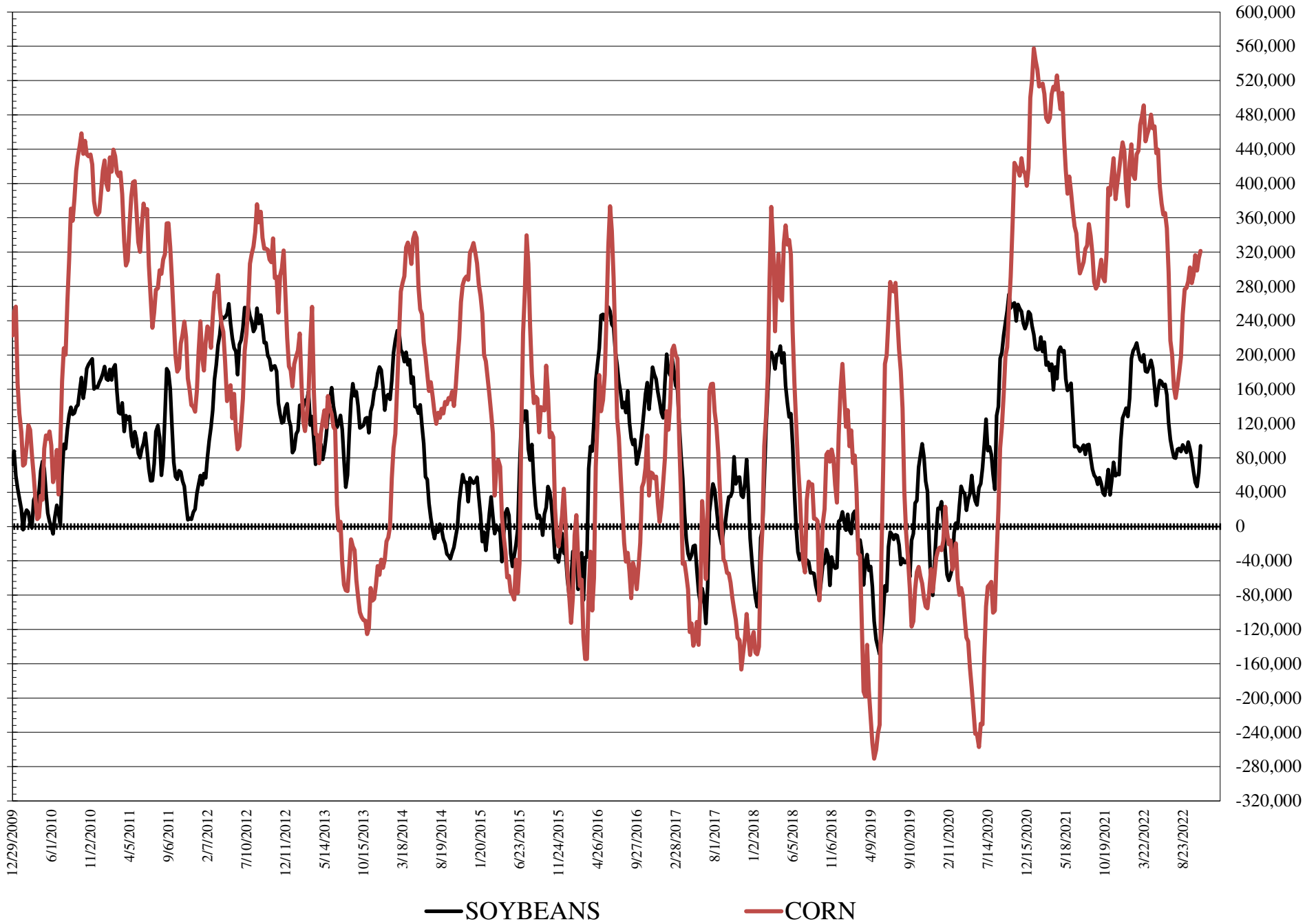
	TOTAL OPEN INTEREST				COMMERCIALS		% HELD BY TRADERS LARGE (FUNDS)		SMALL (NON-REP)		
	1-Nov	25-Oct	18-Oct	11-Oct	LONG	SHORT	LONG	SHORT	LONG	SHORT	
WHEAT											
Chicago	435,024	411,948	404,388	410,978		37%	31%	19%	23%	7%	9%
Kansas City	179,185	174,982	174,916	174,177		40%	51%	23%	12%	12%	13%
Minneapolis	57,724	58,197	58,504	59,266		60%	68%	16%	6%	16%	18%
CORN	1,916,119	1,862,587	1,856,288	1,886,410		38%	52%	21%	5%	9%	12%
OATS	4,351	4,522	4,165	4,042							
SOYBEANS	669,123	721,646	847,777	833,186		47%	57%	22%	8%	7%	12%
SOY OIL	493,168	482,923	459,121	439,056		40%	63%	26%	6%	8%	5%
SOY MEAL	435,093	426,681	414,496	403,425		38%	70%	30%	4%	13%	6%

SOURCE: CFTC & FI

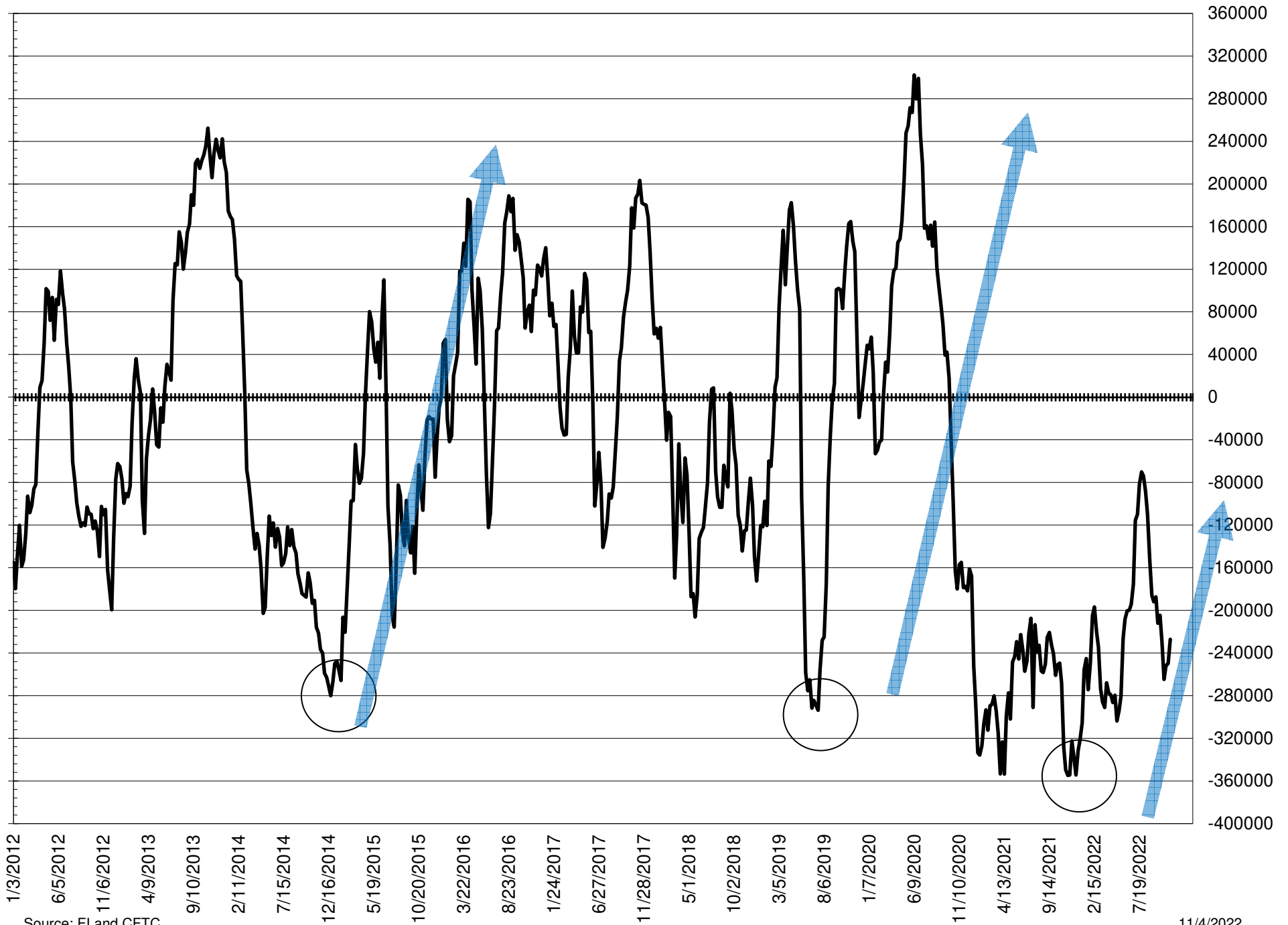
NET POSITION FUTURES AND OPTIONS OF LARGE SPECULATORS IN SOYBEAN MEAL AND SOYBEAN OIL



NET POSITION FUTURES AND OPTIONS OF LARGE SPECULATORS IN SOYBEANS AND CORN



NET POSITION FUTURES AND OPTIONS SPREAD OF LARGE SPECULATORS IN SOYBEANS MINUS CORN



Source: FI and CFTC

11/4/2022

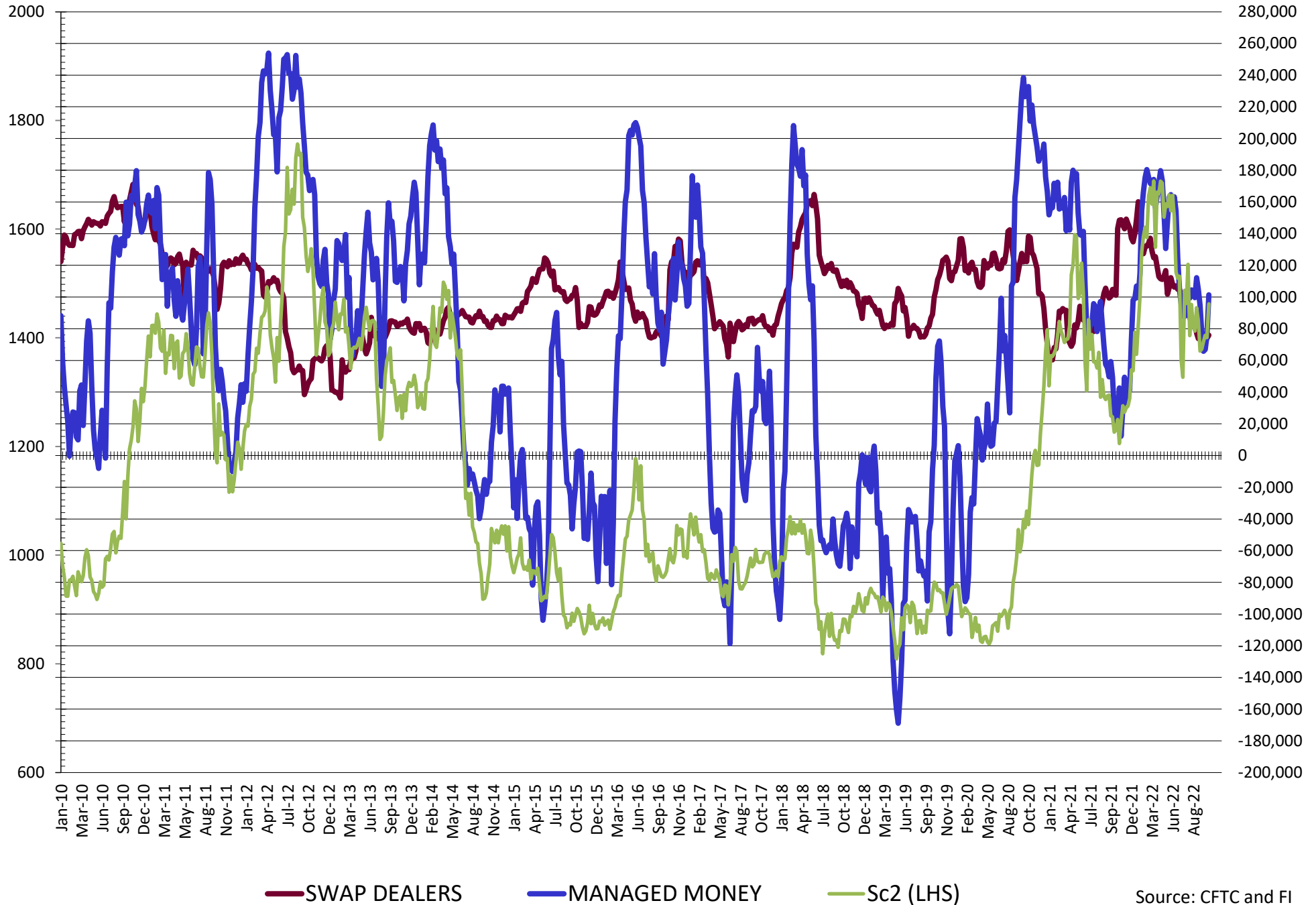
**DISAGGREGATED COMMITMENT OF TRADERS
FUTURES & OPTIONS NET POSITIONS
AS OF 11/01/2022
(IN THOUSAND CONTRACTS)**

	PRODUCER / MERCHANT / PROCESSOR / USER				(INDEX/ETF) SWAP DEALERS				(CTA/CPO/OTHER UNREGISTERED) MANAGED MONEY			
	1-Nov	25-Oct	18-Oct	11-Oct	1-Nov	25-Oct	18-Oct	11-Oct	1-Nov	25-Oct	18-Oct	11-Oct
	WHEAT											
Chicago	(38.2)	(37.8)	(47.4)	(48.5)	63.6	61.2	60.7	60.0	(37.1)	(36.1)	(22.1)	(19.5)
Kansas City	(47.9)	(48.1)	(50.7)	(48.8)	28.6	27.5	27.1	27.8	23.4	24.6	26.3	26.5
Minneapolis	(5.7)	(5.4)	(5.9)	(7.5)	1.2	1.0	0.8	0.7	3.8	3.5	3.8	4.1
All Wheat	(91.8)	(91.4)	(104.0)	(104.9)	93.4	89.7	88.7	88.5	(9.9)	(7.9)	8.0	11.1
CORN	(490.6)	(476.4)	(455.3)	(463.6)	221.8	218.6	219.8	216.1	272.0	264.4	254.3	267.4
OATS	(0.1)	(0.2)	(1.0)	(1.0)	0.0	0.0	0.2	0.1	(1.3)	(1.2)	(0.8)	(0.8)
SOYBEANS	(140.7)	(113.4)	(90.8)	(95.9)	75.9	73.9	72.1	74.8	101.3	75.4	66.9	65.7
SOY OIL	(193.3)	(191.3)	(176.9)	(152.0)	81.1	85.0	85.4	84.9	100.1	95.2	75.0	61.0
SOY MEAL	(221.2)	(216.6)	(193.9)	(190.8)	79.5	80.4	79.5	80.0	93.4	86.0	70.8	70.4

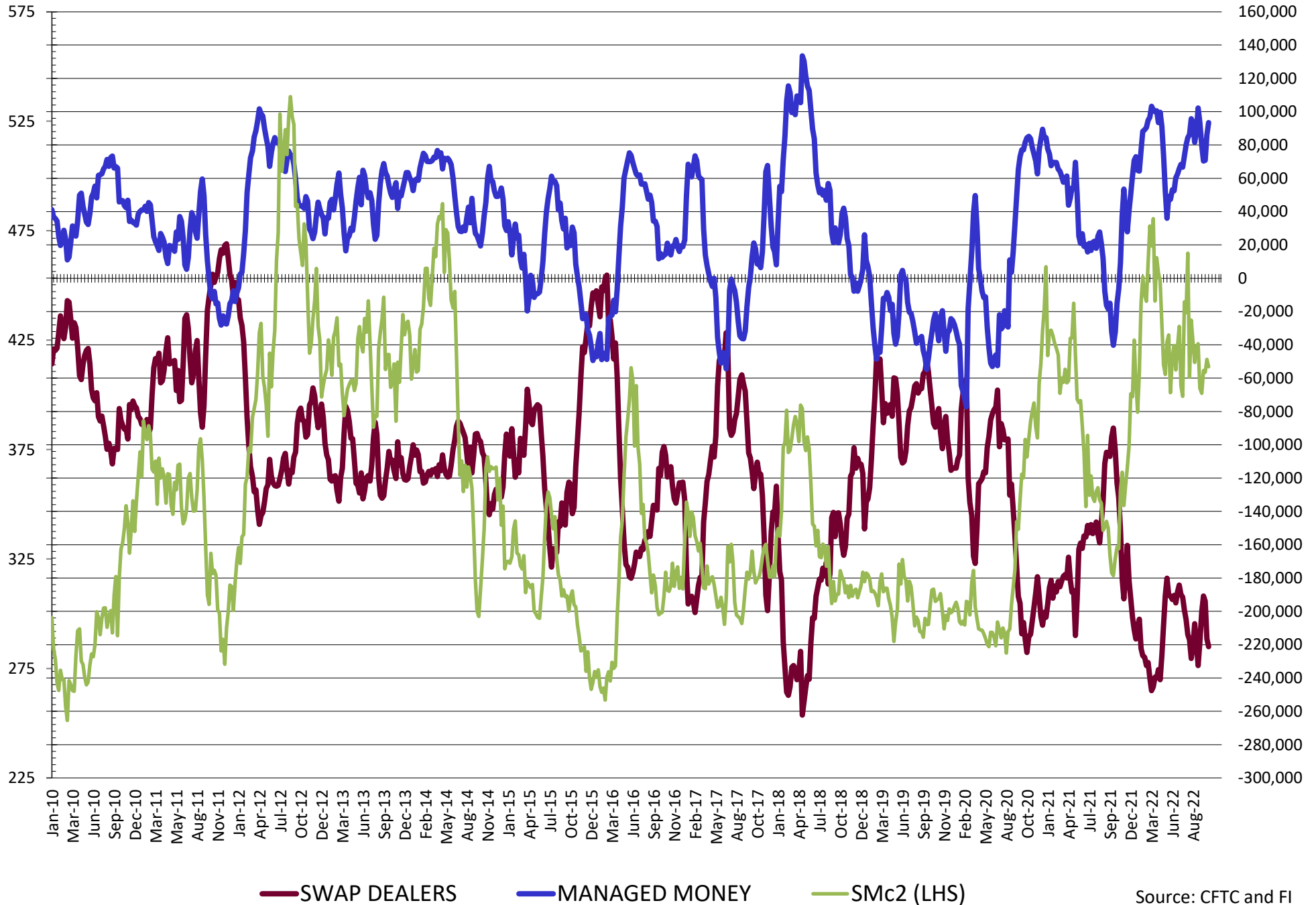
	TOTAL OPEN INTEREST				OTHER REPORTABLE				NON REPORTABLE			
	1-Nov	25-Oct	18-Oct	11-Oct	1-Nov	25-Oct	18-Oct	11-Oct	1-Nov	25-Oct	18-Oct	11-Oct
	WHEAT											
Chicago	435,024	411,948	404,388	410,978	18.0	18.9	15.0	14.5	(6.2)	(6.3)	(6.3)	(6.4)
Kansas City	179,185	174,982	174,916	174,177	(3.2)	(3.1)	(1.4)	(3.3)	(1.0)	(0.8)	(1.4)	(2.2)
Minneapolis	57,724	58,197	58,504	59,266	2.2	2.4	2.4	2.6	(1.5)	(1.5)	(1.2)	0.1
All Wheat	671,933	645,127	637,808	644,421	17.1	18.1	16.1	13.8	(8.8)	(8.6)	(8.8)	(8.5)
CORN	1,916,119	1,862,587	1,856,288	1,886,410	49.3	48.4	44.3	49.0	(52.4)	(55.0)	(55.0)	(55.0)
OATS	4,351	4,522	4,165	4,042	0.6	0.6	0.8	0.7	0.8	0.8	0.8	0.9
SOYBEANS	669,123	721,646	847,777	833,186	(7.2)	(12.6)	(20.2)	(14.1)	(29.3)	(23.4)	(28.0)	(30.5)
SOY OIL	493,168	482,923	459,121	439,056	(1.8)	(1.6)	1.2	(4.7)	13.8	12.8	15.4	10.8
SOY MEAL	435,093	426,681	414,496	403,425	20.0	22.6	18.4	16.1	28.4	27.5	25.2	24.3

SOURCE: CFTC & FI

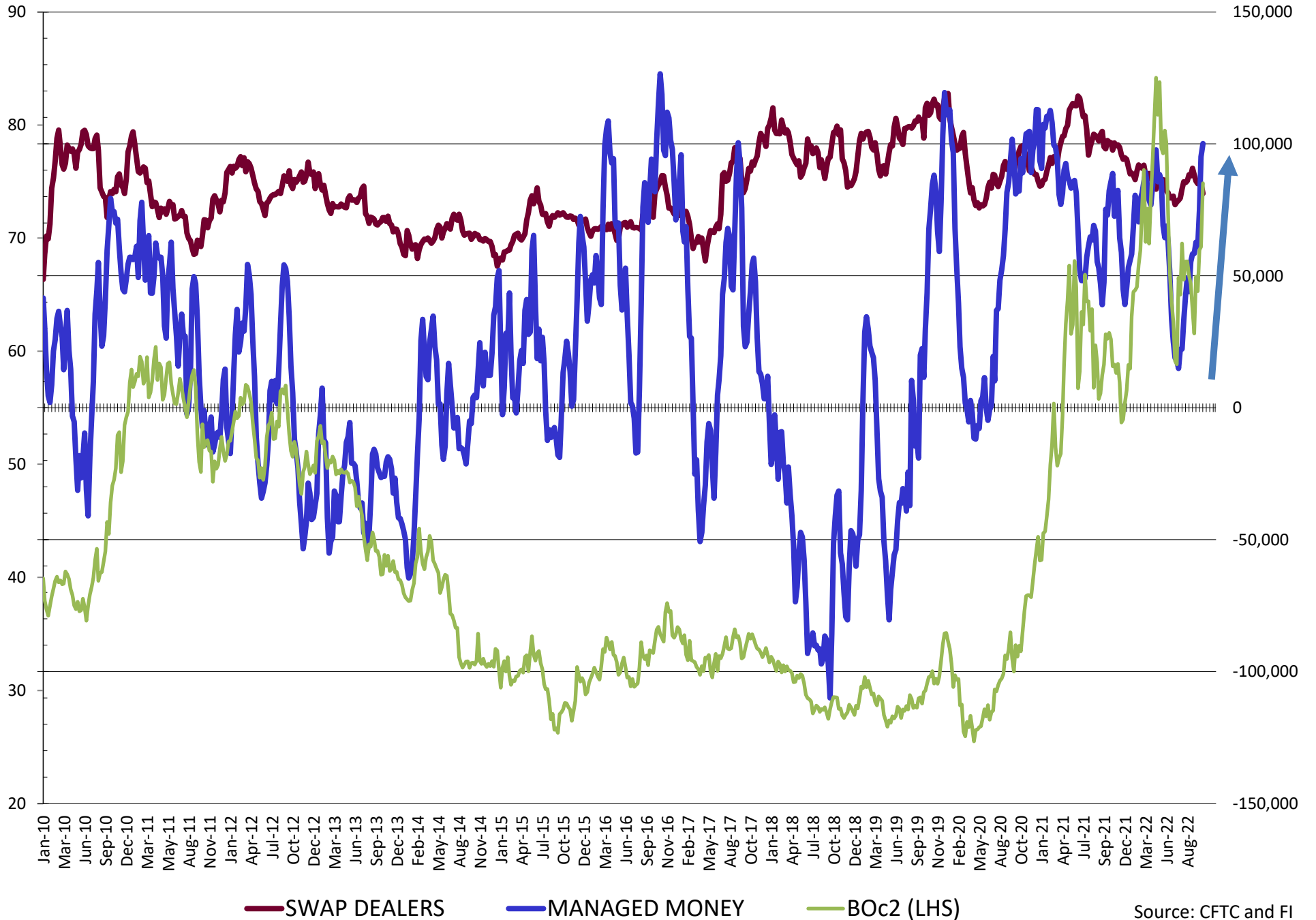
NET POSITION FUTURES AND OPTIONS OF SWAP AND MANAGED FUNDS IN SOYBEANS



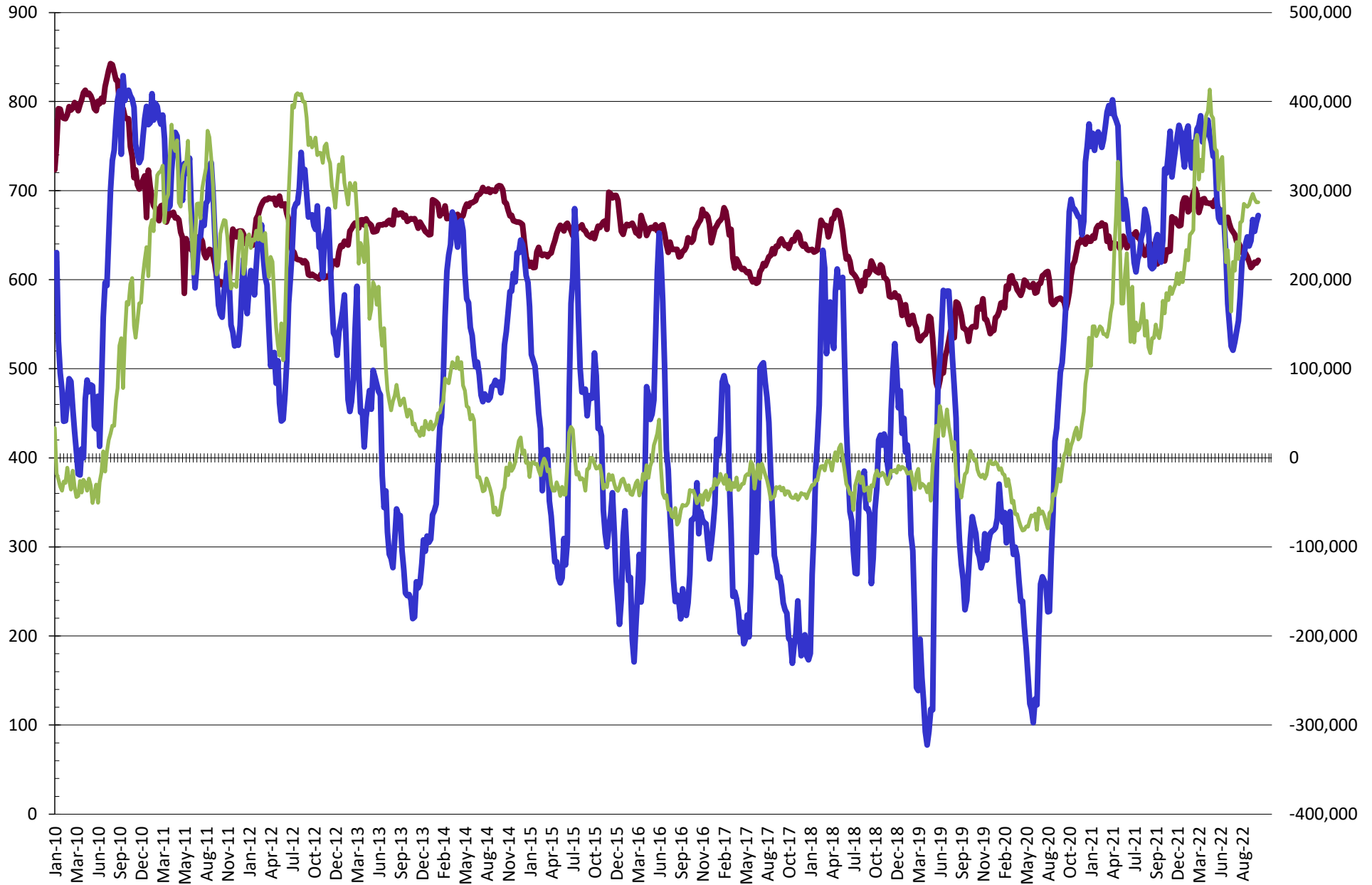
NET POSITION FUTURES AND OPTIONS OF SWAP AND MANAGED FUNDS IN SOYBEAN MEAL



NET POSITION FUTURES AND OPTIONS OF SWAP AND MANAGED FUNDS IN SOYBEAN OIL

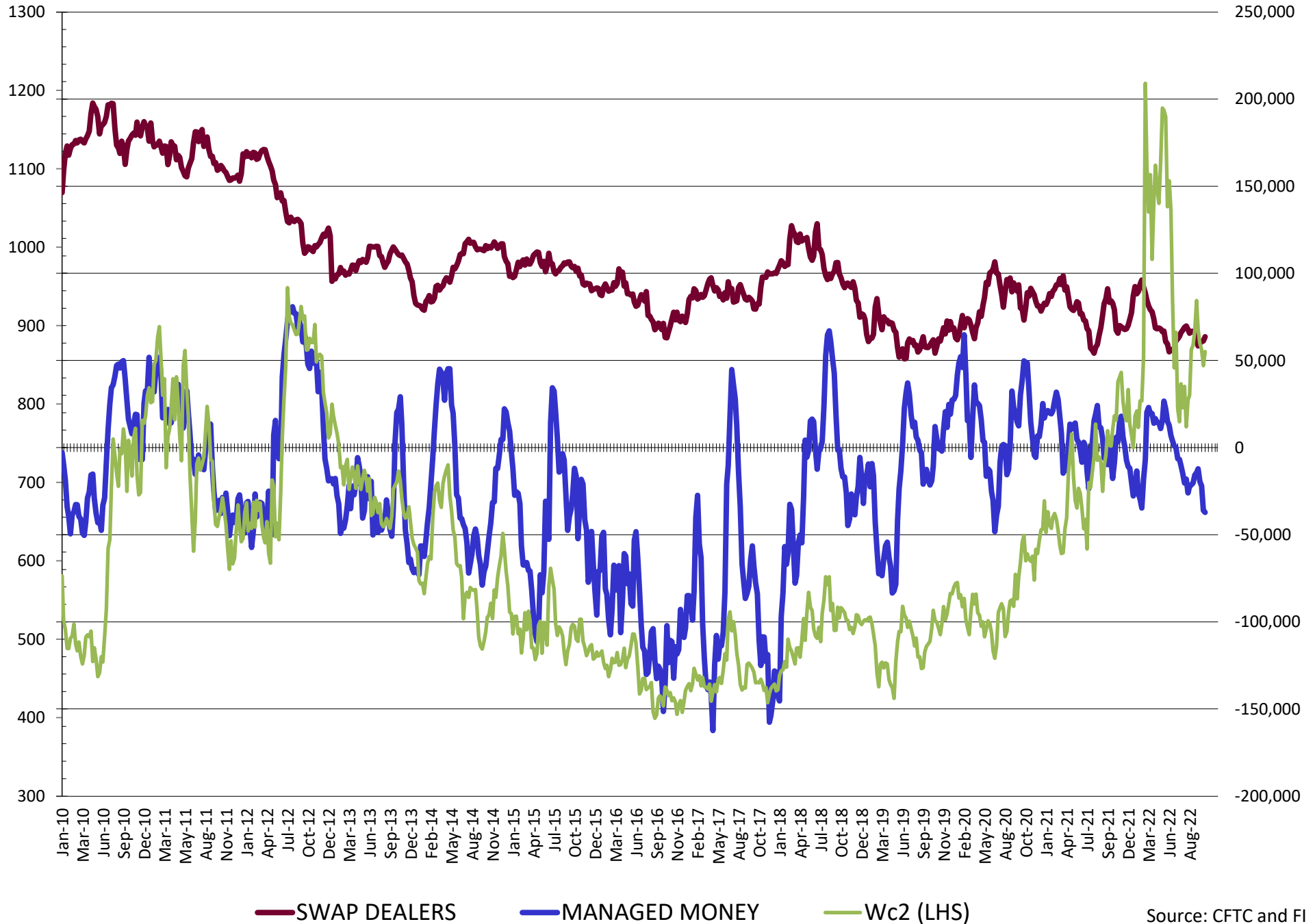


NET POSITION FUTURES AND OPTIONS OF SWAP AND MANAGED FUNDS IN CORN

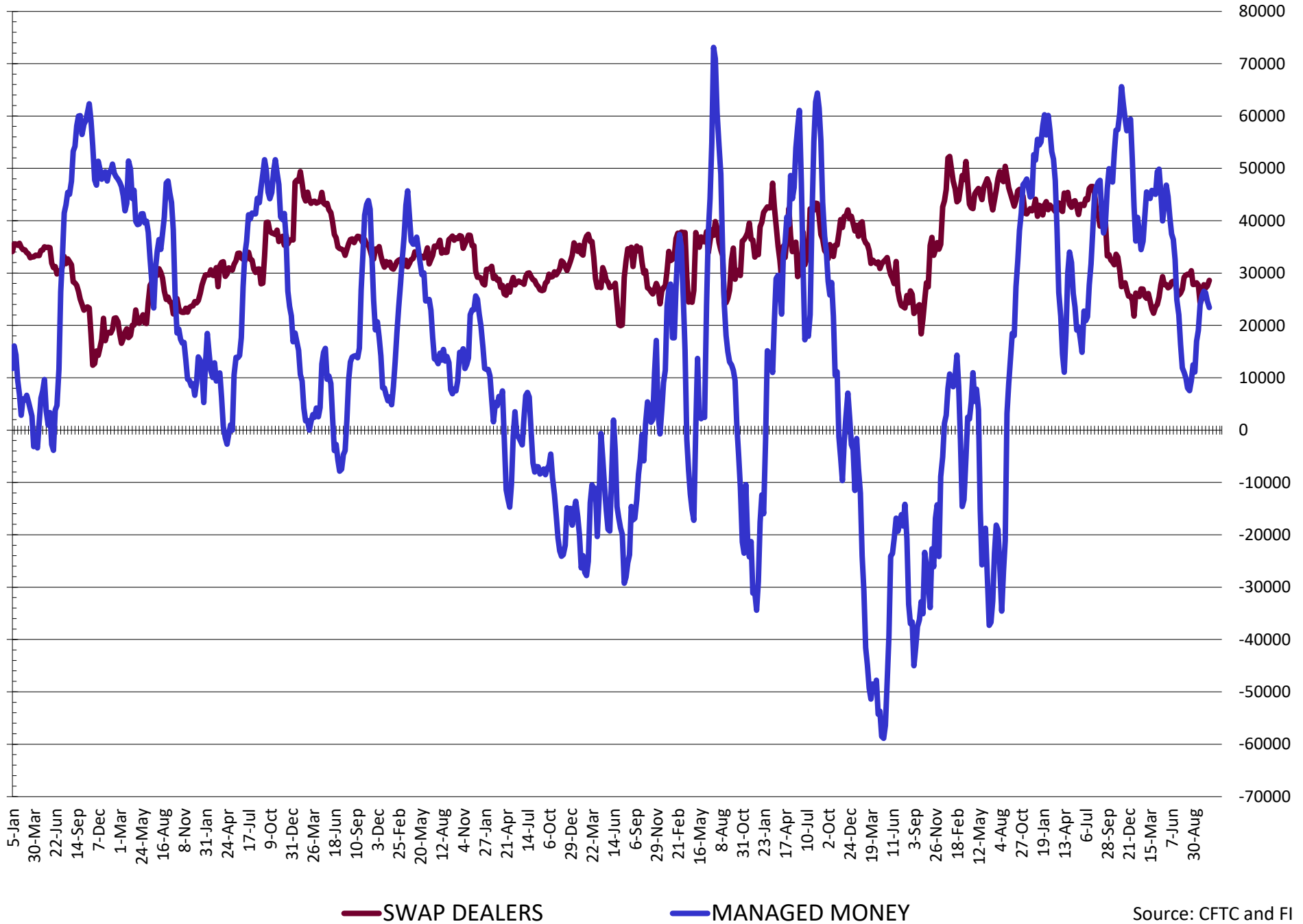


— SWAP DEALERS
 — MANAGED MONEY
 — Cc2 (LHS)

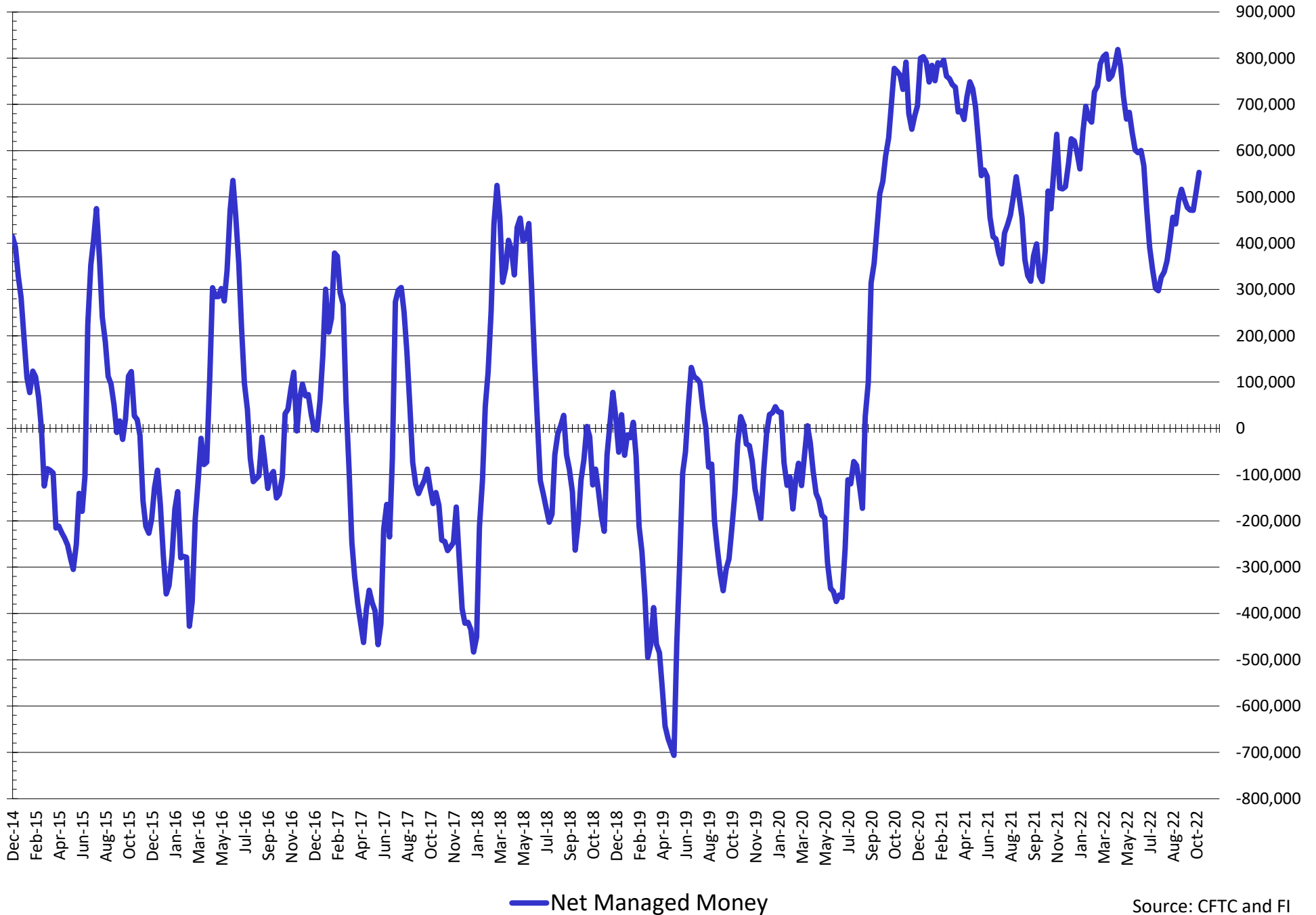
NET POSITION FUTURES AND OPTIONS OF SWAP AND MANAGED FUNDS IN CHICAGO WHEAT



NET POSITION FUTURES AND OPTIONS OF SWAP DEALERS AND MANAGED FUNDS IN KANSAS WHEAT



NET POSITION FUTURES AND OPTIONS OF SWAP AND MANAGED FUNDS IN COMBINED SRW, HRW, CORN, SOYBEANS, SOYMEAL AND SOYOIL



Source: CFTC and FI
11/4/2022

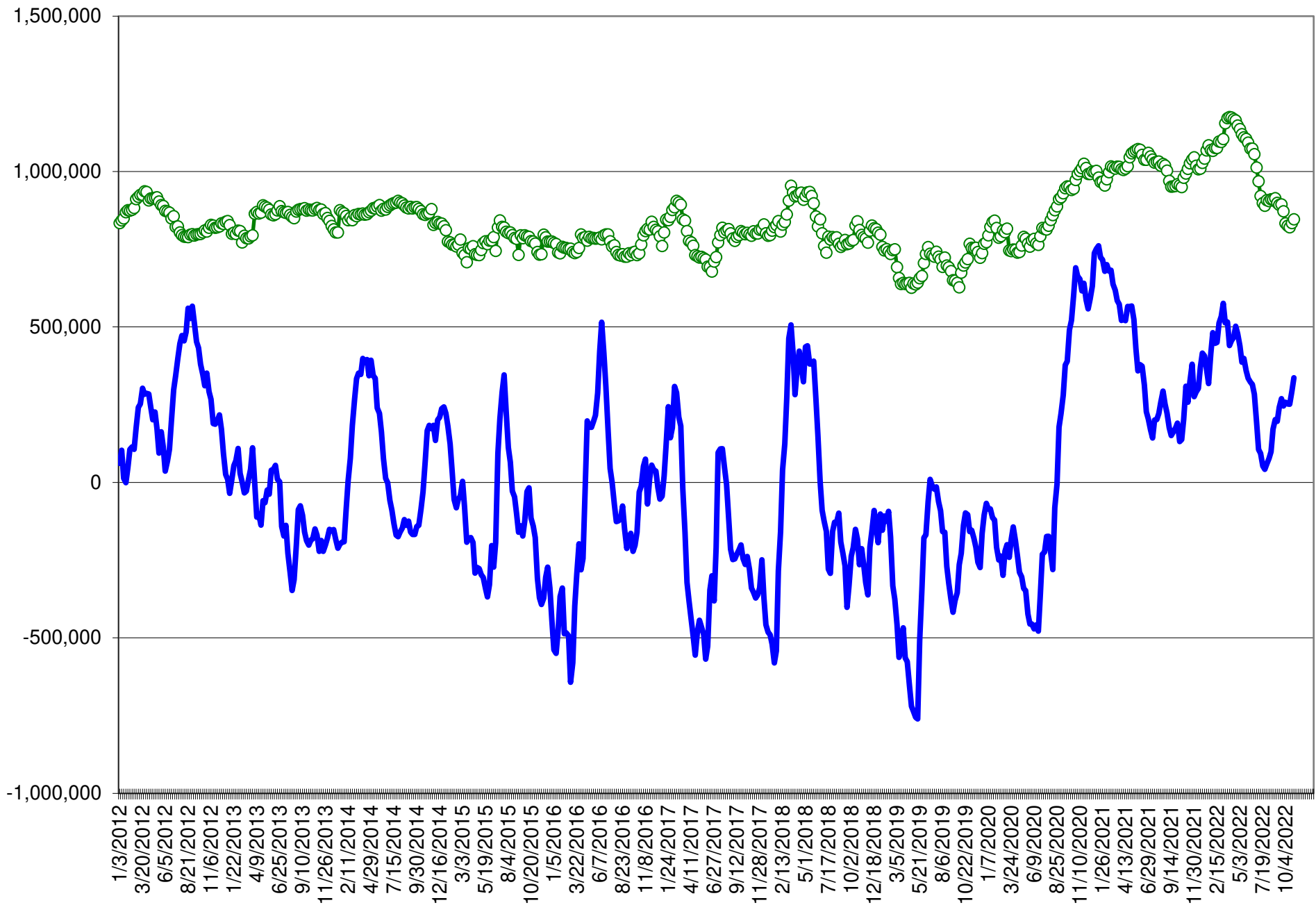
COMMITMENT OF TRADERS
FUTURES & OPTIONS NET POSITIONS (INDEX BROKEN OUT)
AS OF 11/01/2022
(IN THOUSAND CONTRACTS)

	COMMERCIAL				(FUND) NON COMMERCIAL				(SPEC) NON-REPORTABLE			
	1-Nov	25-Oct	18-Oct	11-Oct	1-Nov	25-Oct	18-Oct	11-Oct	1-Nov	25-Oct	18-Oct	11-Oct
	WHEAT											
Chicago	(46.7)	(45.7)	(56.4)	(58.6)	(52.4)	(50.6)	(41.5)	(43.4)	(6.2)	(6.3)	(6.3)	(6.4)
Kansas City	(51.7)	(52.0)	(55.0)	(53.7)	4.8	5.8	8.1	6.1	(1.0)	(0.8)	(1.4)	(2.2)
Minneapolis	-	-	-	-	-	-	-	-	-	-	-	-
All Wheat	(98.4)	(97.7)	(111.4)	(112.4)	(47.6)	(44.8)	(33.4)	(37.3)	(7.3)	(7.1)	(7.6)	(8.6)
CORN	(503.0)	(491.2)	(469.3)	(481.4)	196.7	184.7	176.2	193.9	(52.4)	(55.0)	(63.1)	(68.8)
OATS	-	-	-	-	-	-	-	-	-	-	-	-
SOYBEANS	(147.2)	(119.1)	(95.8)	(100.4)	57.2	26.9	10.6	15.7	(29.3)	(23.4)	(28.0)	(30.5)
SOY OIL	(178.0)	(172.0)	(156.8)	(132.5)	59.9	57.0	43.4	26.3	13.8	12.8	15.4	10.8
SOY MEAL	(209.0)	(203.0)	(180.6)	(178.1)	70.3	70.0	54.4	53.3	28.4	27.5	25.2	24.3

	TOTAL OPEN INTEREST				(INDEX) COMMERCIAL INDEX TRADERS				(INDEX) % NET OF TOTAL OPEN INTEREST			
	1-Nov	25-Oct	18-Oct	11-Oct	1-Nov	25-Oct	18-Oct	11-Oct	1-Nov	25-Oct	18-Oct	11-Oct
	WHEAT											
Chicago	435,024	411,948	404,388	410,978	105.4	102.5	104.2	108.5	24.2%	24.9%	25.8%	26.4%
Kansas City	179,185	174,982	174,916	174,177	47.9	47.0	48.3	49.8	26.7%	26.9%	27.6%	28.6%
Minneapolis	-	-	-	-	-	-	-	-	-	-	-	-
All Wheat	614,209	586,930	579,304	585,155	153.3	149.5	152.4	158.3	25.0%	25.5%	26.3%	27.1%
CORN	1,916,119	1,862,587	1,856,288	1,886,410	358.7	361.5	356.1	356.3	18.7%	19.4%	19.2%	18.9%
OATS	-	-	-	-	-	-	-	-	-	-	-	-
SOYBEANS	669,123	721,646	847,777	833,186	119.4	115.5	113.2	115.2	17.8%	16.0%	13.3%	13.8%
SOY OIL	493,168	482,923	459,121	439,056	104.3	102.2	98.0	95.4	21.1%	21.2%	21.4%	21.7%
SOY MEAL	435,093	426,681	414,496	403,425	110.4	105.4	100.9	100.5	25.4%	24.7%	24.4%	24.9%

SOURCE: CFTC & FI

NET POSITION FUTURES AND OPTIONS OF SPECULATORS AND INDEX FUNDS IN COMBINED SRW, HRW, CORN, SOYBEANS, SOYMEAL AND SOYOIL



Source: CFTC and FI

○ Net Index

— Net Speculator

Traditional Daily Estimate of Funds 11/1/22

	(Neg)-"Short"	Pos-"Long"			
Actual less Est.	4.0	7.1	(25.9)	1.4	(1.1)
	Corn	Bean	Chi. Wheat	Meal	Oil
Actual	340.8	86.5	(15.8)	119.5	97.1
2-Nov	(8.0)	3.0	(20.0)	(1.0)	6.0
3-Nov	(6.0)	(5.0)	(1.0)	(5.0)	(1.0)
4-Nov	2.0	9.0	2.0	3.0	6.0
7-Nov					
8-Nov					
FI Est. of Futures Only 11/1/22	328.8	93.5	(34.8)	116.5	108.1
FI Est. Futures & Options	309.3	101.1	(38.2)	110.4	109.4
Futures only record long "Traditional Funds"	547.7 1/26/2021	280.9 11/10/2020	86.5 8/7/2018	167.5 5/1/2018	160.2 11/1/2016
Futures only record short	(235.0) 6/9/2020	(118.3) 4/30/2019	(130.0) 4/25/2017	(49.5) 3/1/2016	(69.8) 9/18/2018
Futures and options record net long	557.6 1/12/2021	270.9 10/6/2020	64.8 8/7/2012	132.1 5/1/2018	159.2 1/1/2016
Futures and options record net short	(270.6) 4/26/2019	(132.0) 4/30/2019	(143.3) 4/25/2017	(64.1) 3/1/2016	(77.8) 9/18/2018

Managed Money Daily Estimate of Funds 11/1/22

	Corn	Bean	Chi. Wheat	Meal	Oil
Latest CFTC Fut. Only	261.5	102.3	(36.7)	94.8	100.4
Latest CFTC F&O	272.0	101.3	(37.1)	93.4	100.1
	Corn	Bean	Chi. Wheat	Meal	Oil
FI Est. Managed Fut. Only	250	109	(56)	92	111
FI Est. Managed Money F&O	260	108	(56)	90	111

Index Funds Latest Positions (as of last Tuesday)

Index Futures & Options	358.7	119.4	105.4	NA	104.3
Change From Previous Week	(2.8)	3.8	2.8	NA	2.1

Source: Reuters, CFTC & FI (FI est. are noted with latest date)

Disclaimer

TO CLIENTS/PROSPECTS OF FUTURES INTERNATIONAL, SEE RISK DISCLOSURE BELOW:

THIS COMMUNICATION IS CONVEYED AS A SOLICITATION FOR ENTERING INTO A DERIVATIVES TRANSACTION.

Any trading recommendations and market or other information to Customer by Futures International (FI), although based upon information obtained from sources believed by FI to be reliable may not be accurate and may be changed without notice to customer. FI makes no guarantee as to the accuracy or completeness of any of the information or recommendations furnished to Customer. Customer understands that FI, its managers, employees and/or affiliates may have a position in commodity futures, options or other derivatives which may not be consistent with the recommendations furnished by FI to Customer.

The risk of trading futures and options and other derivatives involves a substantial risk of loss and is not suitable for all persons. In purchasing an option, the risk is limited to the premium paid, and all commissions and fees involved with the trade. When an option is shorted or written, the writer of the option has unlimited risk with respect to the option written. The use of options strategies such as a straddles and strangles involve multiple option positions and may substantially increase the amount of commissions and fees paid to execute the strategy. Option prices do not necessarily move in tandem with cash or futures prices. Each person must consider whether a particular trade, combination of trades or strategy is suitable for that person's financial means and objectives.

This material may include discussions of seasonal patterns, however, futures prices have already factored in the seasonal aspects of supply and demand, and seasonal patterns are no indication of future market trends. Finally, past performance is not indicative of future results.

This communication may contain links to third party websites which are not under the control of FI and FI is not responsible for their content. Products and services are offered only in jurisdictions where solicitation and sale are lawful, and in accordance with applicable laws and regulations in each such jurisdiction.