

	Current	Δ from YD	Δ from 7D Avg
Nat Gas Prompt	\$ 5.07	▼ \$ (0.29)	▼ \$ (0.92)

	Current	Δ from YD	Δ from 7D Avg
WTI Prompt	\$ 84.70	▼ \$ (1.28)	▼ \$ (0.5)

	Current	Δ from YD	Δ from 7D Avg
Brent Prompt	\$ 92.59	▲ \$ 0.21	▲ \$ 1.0

Page Menu

[Short-term Weather Model Outlooks](#)

[Lower 48 Component Models](#)

[Regional S/D Models Storage Projection](#)

[Weather Model Storage Projection](#)

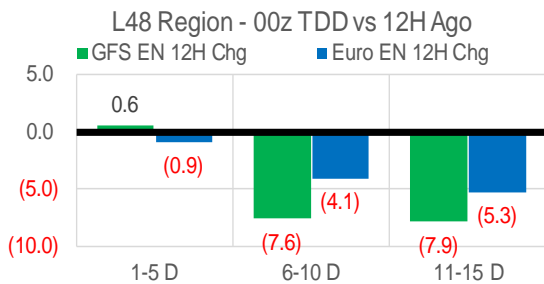
[Supply – Demand Trends](#)

[Nat Gas Options Volume and Open Interest](#)

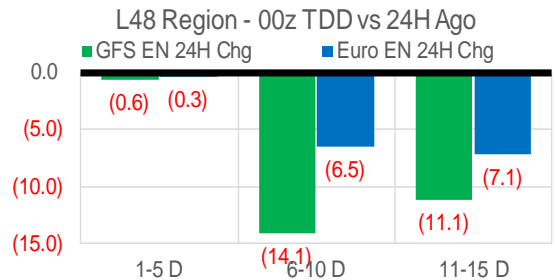
[Nat Gas Futures Open Interest](#)

[Price Summary](#)

Vs. 12H Ago



Vs. 24H Ago



	Current	Δ from YD	Δ from 7D Avg
US Dry Production	100.3	▲ 0.28	▼ -0.10

	Current	Δ from YD	Δ from 7D Avg
US Power Burns	29.4	▼ -1.83	▼ -1.42

	Current	Δ from YD	Δ from 7D Avg
US ResComm	17.2	▼ -5.88	▼ -3.90

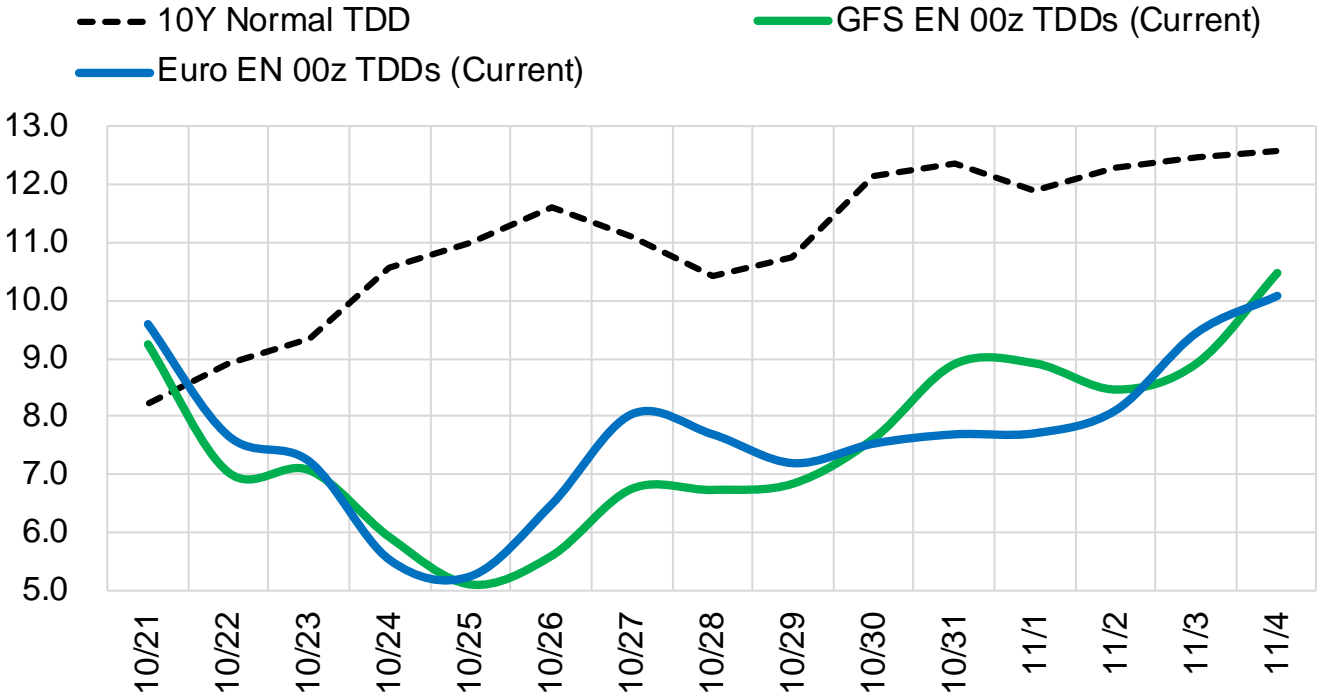
	Current	Δ from YD	Δ from 7D Avg
Canadian Imports	5.5	▼ -0.41	▼ -0.59

	Current	Δ from YD	Δ from 7D Avg
Net LNG Exports	11.5	▼ -0.21	▲ 0.05

	Current	Δ from YD	Δ from 7D Avg
Mexican Exports	6.3	▼ -0.16	▼ -0.19

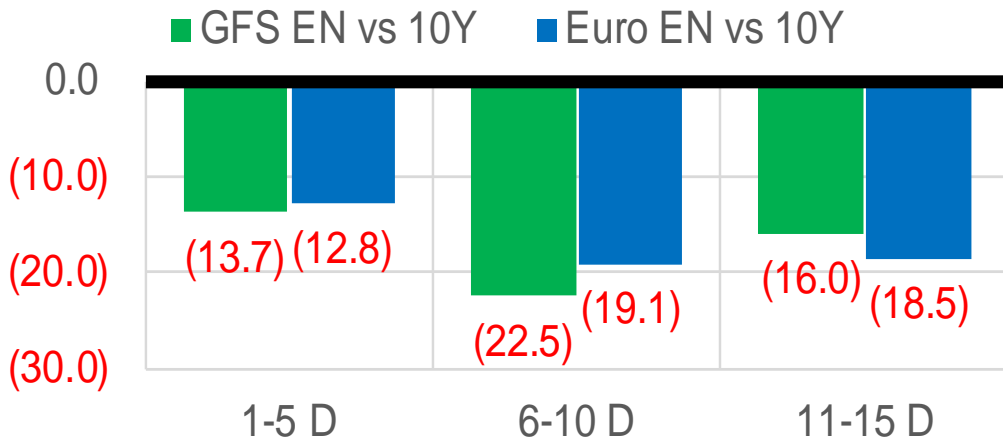
Short-term Weather Model Outlooks (00z)

L48 Region



Vs. 10Y Normal

L48 Region - 00z TDD vs 10Y Normal



Source: WSI, Bloomberg

Lower 48 Component Models

Daily Balances

	15-Oct	16-Oct	17-Oct	18-Oct	19-Oct	20-Oct	21-Oct	DoD	vs. 7D
Lower 48 Dry Production	100.7	101.1	101.5	100.4	100.5	100.0	100.3	▲ 0.3	▼ -0.4
Canadian Imports	6.0	5.9	6.3	6.4	6.2	5.9	5.5	▼ -0.4	▼ -0.6
L48 Power	28.6	28.6	31.7	32.9	32.3	31.2	29.4	▼ -1.8	▼ -1.5
L48 Residential & Commercial	15.9	16.1	21.5	27.0	27.5	23.1	17.2	▼ -5.9	▼ -4.7
L48 Industrial	18.3	17.9	18.4	19.2	20.3	21.1	21.7	▲ 0.6	▲ 2.5
L48 Lease and Plant Fuel	5.6	5.6	5.7	5.6	5.6	5.6	5.5	▼ 0.0	▼ -0.1
L48 Pipeline Distribution	2.7	2.8	3.3	3.7	3.7	3.3	2.9	▼ -0.5	▼ -0.4
L48 Regional Gas Consumption	71.2	71.0	80.5	88.5	89.4	84.3	76.7	▼ -7.6	▼ -4.1
Net LNG Delivered	11.00	11.12	11.81	11.59	11.89	11.75	11.53	▼ -0.2	▲ 0.0
Total Mexican Exports	6.4	6.3	6.3	6.7	6.6	6.5	6.3	▼ -0.2	▼ -0.2
Implied Daily Storage Activity	18.1	18.7	9.2	-0.1	-1.2	3.4	11.2		
EIA Reported Daily Storage Activity									
Daily Model Error									

EIA Storage Week Balances

	LY		LW			Current	WoW	vs. LY
	22-Oct	23-Sep	30-Sep	7-Oct	14-Oct	21-Oct		
Lower 48 Dry Production	95.1	100.6	101.4	102.2	101.9	100.4	▼ -1.5	▲ 5.3
Canadian Imports	5.6	6.1	6.2	6.0	5.5	6.1	▲ 0.5	▲ 0.5
L48 Power	29.2	37.0	31.6	30.6	30.7	30.8	▲ 0.0	1.6
L48 Residential & Commercial	13.4	8.2	11.9	13.0	14.8	21.1	▲ 6.3	7.6
L48 Industrial	20.7	21.3	20.0	20.9	20.2	19.9	▼ -0.4	-0.9
L48 Lease and Plant Fuel	5.3	5.6	5.6	5.7	5.7	5.6	▼ -0.1	0.3
L48 Pipeline Distribution	2.6	2.8	2.7	2.7	2.8	3.2	▲ 0.4	0.6
L48 Regional Gas Consumption	71.3	74.9	71.8	72.9	74.3	80.5	▲ 6.2	▲ 9.2
Net LNG Exports	10.8	11.5	11.8	11.0	11.0	11.5	▲ 0.5	▲ 0.7
Total Mexican Exports	6.6	6.6	6.9	6.7	6.6	6.5	▼ -0.1	▼ -0.1
Implied Daily Storage Activity	12.0	13.8	17.1	17.6	15.5	7.9	-7.6	-4.1
EIA Reported Daily Storage Activity	12.4	14.7	18.4	17.9	15.9			
Daily Model Error	-0.4	-0.9	-1.3	-0.3	-0.3			

Monthly Balances

	2Yr Ago	LY		MTD			MoM	vs. LY	
	Oct-20	Oct-21	Jun-22	Jul-22	Aug-22	Sep-22	Oct-22		
Lower 48 Dry Production	88.5	95.5	97.3	97.7	98.9	100.9	101.5	▲ 0.6	▲ 6.0
Canadian Imports	4.3	5.4	5.7	5.9	5.4	5.9	5.8	▼ -0.1	▲ 0.5
L48 Power	30.6	30.4	38.3	44.3	43.1	36.9	30.8	▼ -6.1	▲ 0.3
L48 Residential & Commercial	15.5	12.6	8.9	8.3	8.0	9.0	16.5	▲ 7.5	▲ 3.9
L48 Industrial	22.7	21.7	19.1	19.8	21.1	20.9	20.1	▼ -0.9	▼ -1.6
L48 Lease and Plant Fuel	4.8	5.3	5.5	5.5	5.5	5.6	5.7	▲ 0.1	▲ 0.3
L48 Pipeline Distribution	2.5	2.7	2.9	3.1	3.0	2.8	2.9	▲ 0.1	▲ 0.3
L48 Regional Gas Consumption	76.1	72.7	74.6	81.0	80.8	75.2	75.9	▲ 0.7	▲ 3.2
Net LNG Exports	8.0	10.6	11.2	10.9	11.0	11.5	11.1	▼ -0.4	▲ 0.5
Total Mexican Exports	6.0	6.6	7.1	7.0	6.9	6.7	6.6	▼ -0.1	▼ 0.0
Implied Daily Storage Activity	2.7	11.0	10.0	4.7	5.7	13.5	13.8		
EIA Reported Daily Storage Activity									
Daily Model Error					0.0				

Source: Bloomberg, analytix.ai

Daily Average Generation Data

Nuclear Generation Daily Average - GWh (NRC)

	13-Oct	14-Oct	15-Oct	16-Oct	17-Oct	18-Oct	19-Oct	DoD	vs. 7D
NRC Nuclear Daily Output	75.4	75.4	75.0	73.8	73.4	74.0	74.5	0.5	0.0
NRC Nuclear Max Capacity	104.9	104.9	104.9	104.9	104.9	104.9	104.9	0.0	0.0
NRC Nuclear Outage	29.5	29.5	29.9	31.0	31.4	30.8	30.4	-0.5	0.0
NRC % Nuclear Cap Utilization	76.7	76.6	76.3	75.1	74.7	75.3	75.7	0.5	0.0

Wind Generation Daily Average - MWh (EIA)

	13-Oct	14-Oct	15-Oct	16-Oct	17-Oct	18-Oct	19-Oct	DoD	vs. 7D
CALI Wind	1164	1017	2216	1665	380	476	573	98	-579
TEXAS Wind	5357	10237	14879	12443	10262	4803	6001	1198	-3663
US Wind	47090	51137	52724	51464	49288	35436	33925	-1510	-13931

Generation Daily Average - MWh (EIA)

	13-Oct	14-Oct	15-Oct	16-Oct	17-Oct	18-Oct	19-Oct	DoD	vs. 7D
US Wind	47090	51137	52724	51464	49288	35436	33925	-1510	-13931
US Solar	13466	15515	13541	12594	11681	13716	15290	1574	1871
US Petroleum	1133	1074	923	901	990	910	898	-12	-91
US Other	11260	12429	11505	13778	12591	9876	10057	181	-1850
US Coal	74572	74865	73468	74091	78193	85090	87465	2375	10752
US Nuke	76490	76262	75816	74566	74489	77722	78233	511	2343
US Hydro	21564	20153	16905	17217	17009	19763	21187	1424	2419
US Gas	177475	161046	148756	144362	161470	170993	171850	858	11167

See National Wind and Nuclear daily charts

Source: Bloomberg, analytix.ai

Storage Week Average Generation Data

Nuclear Generation Weekly Average - GWh (NRC)

	22-Oct	23-Sep	30-Sep	7-Oct	14-Oct	21-Oct	WoW	WoW Bcf/d Impact
NRC Nuclear Daily Output	73.6	86.7	84.9	80.5	76.2	74.4	-1.8	0.3
NRC Nuclear Max Capacity	104.9	104.9	104.9	104.9	104.9	104.9	0.0	
NRC Nuclear Outage	31.2	18.1	20.0	24.4	28.7	30.5	1.8	
NRC % Nuclear Cap Utilization	74.9	88.2	86.4	81.9	77.5	75.6	-1.8	

Wind Generation Weekly Average - MWh (EIA)

	22-Oct	23-Sep	30-Sep	7-Oct	14-Oct	21-Oct	WoW	WoW Bcf/d Impact
CALI Wind	1270	1941	1208	1370	1086	986	-100	0.0
TEXAS Wind	10729	11580	8083	6160	7842	9232	1390	-0.3
US Wind	45986	47953	40606	32707	41061	43986	2924	-0.5
							7%	
						0.2		

Generation Weekly Average - MWh (EIA)

	22-Oct	23-Sep	30-Sep	7-Oct	14-Oct	21-Oct	WoW	WoW Bcf/d Impact
					LY	Current		
US Wind	45986	47953	40606	32707	41061	43986	2924	-0.5
US Solar	12232	17244	16636	15452	14383	13947	-436	0.1
US Petroleum	910	1010	379	664	842	942	99	0.0
US Other	12153	10826	11151	10786	11203	11470	267	-0.1
US Coal	77017	92461	77592	75016	76202	80091	3889	-0.7
US Nuke	74358	89298	86649	84500	77235	76474	-760	0.1
US Hydro	23386	23537	23101	21913	19991	19060	-930	0.2
US Gas	153578	197536	171818	171099	170064	161475	-8588	-1.6

See National Wind and Nuclear daily charts

Source: Bloomberg, analytix.ai

Monthly Average Generation Data

Nuclear Generation Monthly Average - GWh (NRC)

	2Yr Ago	LY	MTD						
	Same 30 days	Same 30 days	Jul-22	Aug-22	Sep-22	Oct-22	Last 30 days	MoM (MTD vs LY)	Last 30 days YoY
	NRC Nuclear Daily Output	79.6	79.8	90.6	90.5	86.2	76.7	79.1	-9.5
NRC Nuclear Max Capacity	104.9	104.9	104.9	104.9	104.9	104.9	104.9	0.0	0.0
NRC Nuclear Outage	25.2	25.0	14.3	14.3	18.7	28.2	25.8	9.5	0.7
NRC % Nuclear Cap Utilization	81.0	81.2	92.1	92.1	87.7	78.0	80.4	-9.7	-0.7

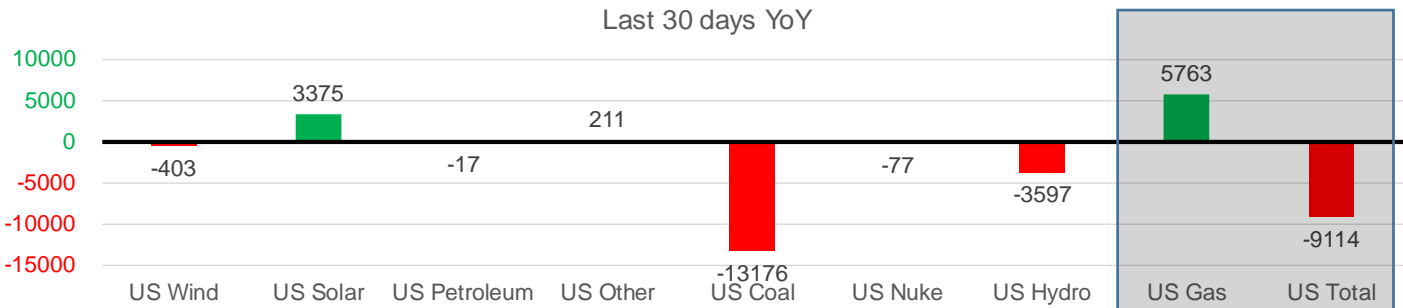
Wind Generation Monthly Average - MWh (EIA)

	2Yr Ago	LY	MTD						
	Same 30 days	Same 30 days	Jul-22	Aug-22	Sep-22	Oct-22	Last 30 days	MoM (MTD vs LY)	Last 30 days YoY
	CALI Wind	1493	1789	2719	2028	1608	1106	1149	-503
TEXAS Wind	9460	10218	11765	8440	7993	7648	7710	-345	-2508
US Wind	39326	39911	39701	33222	38117	38680	39508	563	-403

Generation Monthly Average - MWh (EIA)

	2Yr Ago	LY	MTD						
	Same 30 days	Same 30 days	Jul-22	Aug-22	Sep-22	Oct-22	Last 30 days	MoM (MTD vs LY)	Last 30 days YoY
	US Wind	39326	39911	39701	33222	38117	38680	39508	▲ 827.7
US Solar	9103	11820	18599	16965	16179	14592	15195	▲ 602.4	▲ 3375
US Petroleum	890	739	1252	1253	864	835	722	▼ -112	▼ -17
US Other	8029	10883	10142	10543	10489	11116	11094	▼ -21	▲ 211
US Coal	75511	91316	119788	117203	92002	77720	78140	▲ 420	▼ -13176
US Nuke	82917	81475	92883	92976	89052	78360	81398	▲ 3038	▼ -77
US Hydro	25013	24656	34227	30121	25202	20150	21060	▲ 909	▼ -3597
US Gas	167743	163893	235752	233743	199945	167612	169656	▲ 5664	▲ 5763
US Total	406764	424610	551815	535704	470440	408996	415495	▲ 10501	▼ -9114

Last 30 days YoY



See National Wind and Nuclear daily charts

Source: Bloomberg, analytix.ai

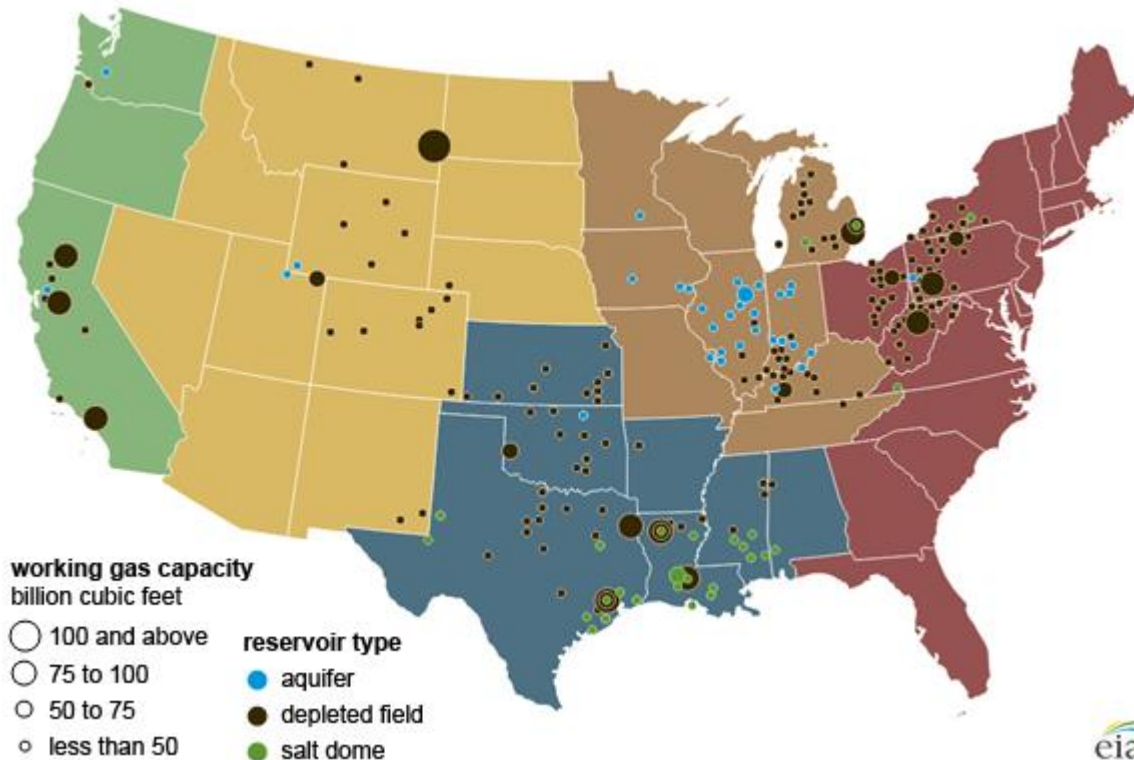
Regional S/D Models Storage Projection

Week Ending 21-Oct

	Daily Raw Storage	Daily Adjustment Factor	Daily Average Storage Activity (Adjusted) *	Weekly Adjusted Storage Activity
L48	9.0	-0.5	8.5	59
East	-1.0	2.8	1.8	12
Midwest	2.1	0.8	3.0	21
Mountain	4.6	-4.2	0.4	3
South Central	2.8	0.5	3.4	23
Pacific	0.5	-0.5	0.0	0

*Adjustment Factor is calculated based on historical regional deltas

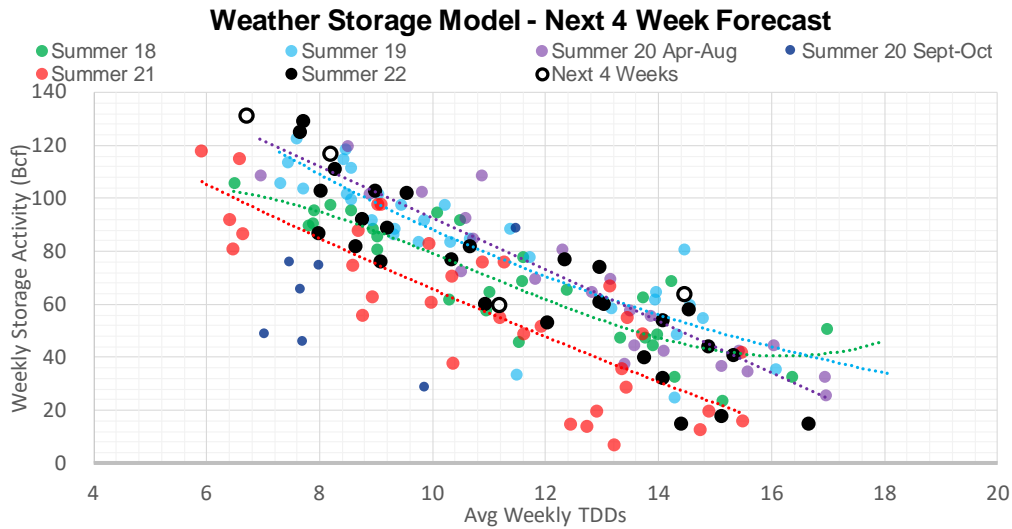
U.S. underground natural gas storage facilities by type (July 2015)



Weather Model Storage Projection

Next report
and beyond

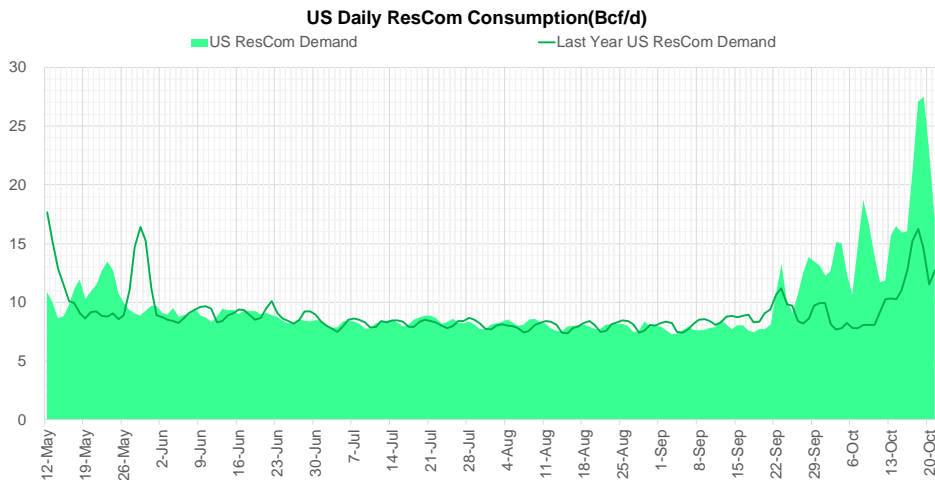
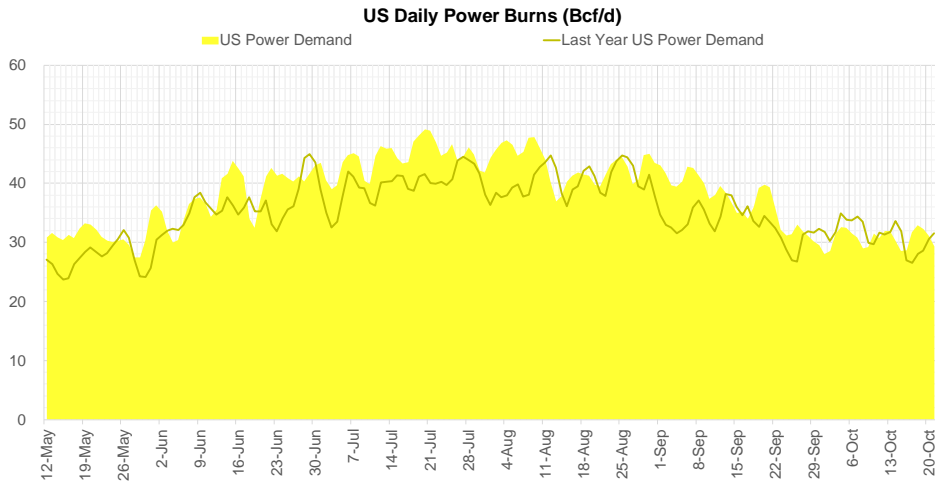
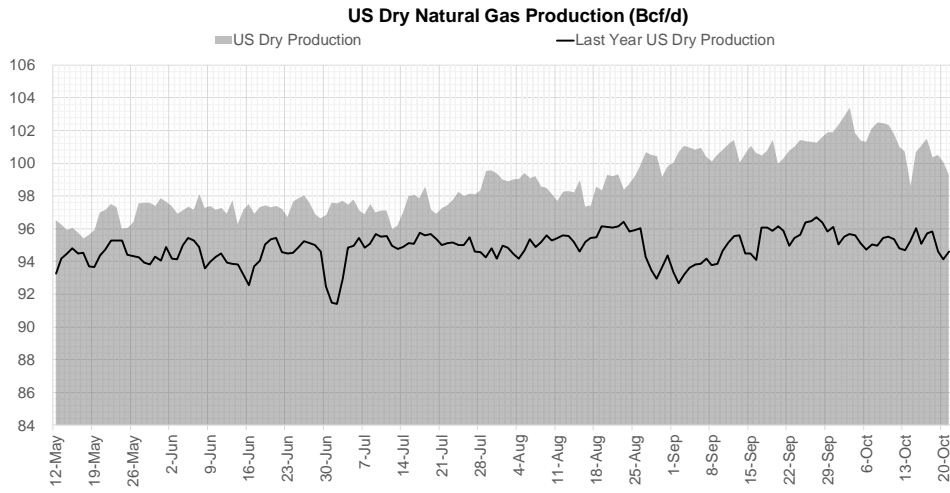
Week Ending	GWDDs	Week Storage Projection
21-Oct	11.2	59
28-Oct	6.7	131
04-Nov	8.2	117
11-Nov	14.5	64



Go to larger image



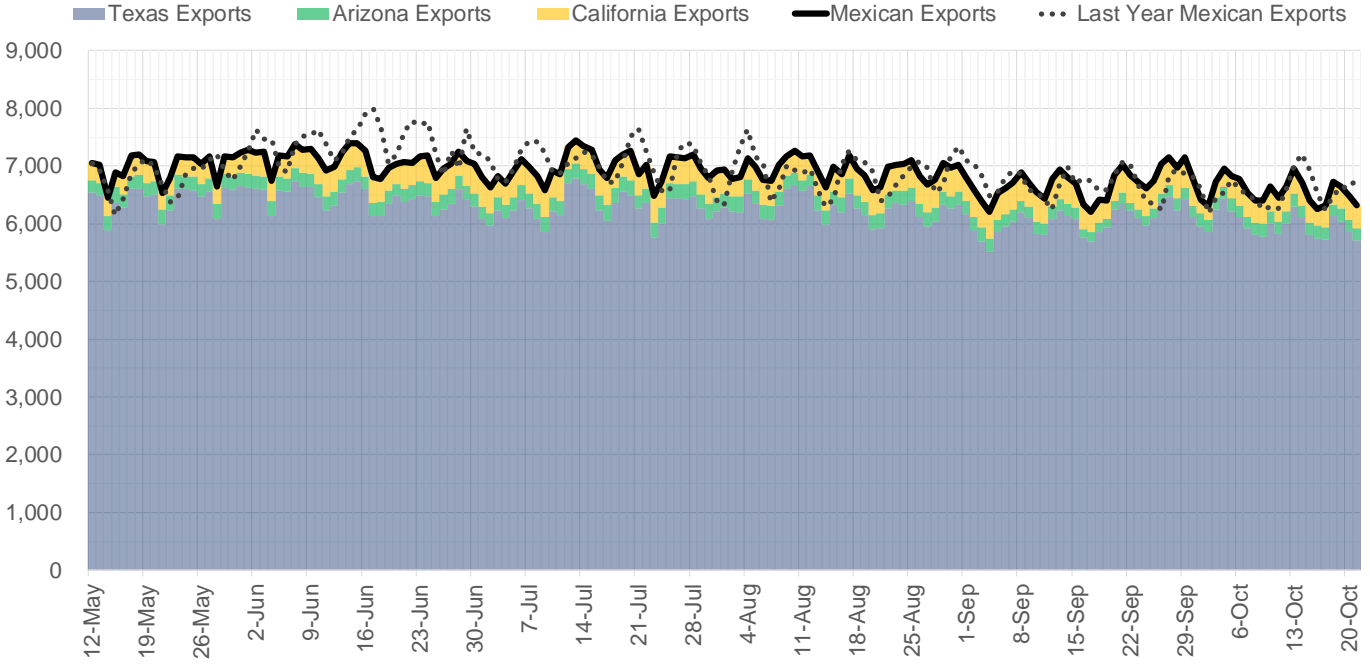
Supply – Demand Trends



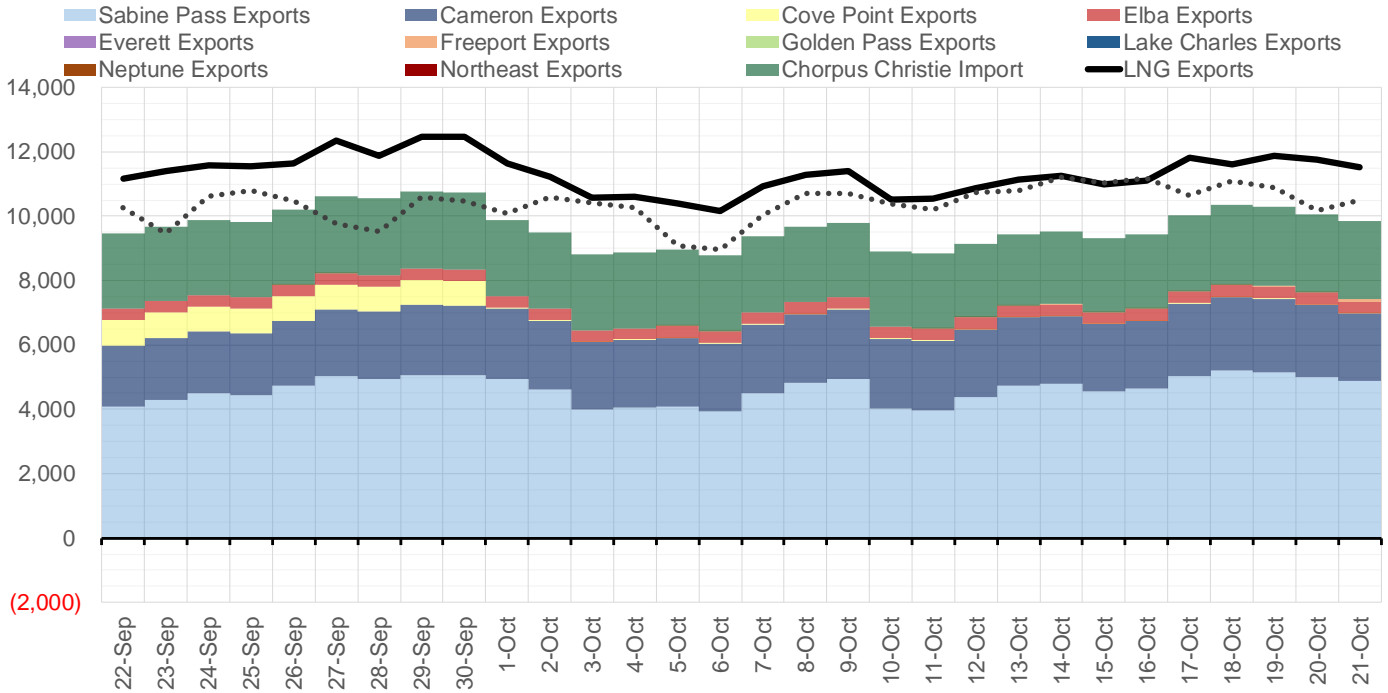
Source: Bloomberg

The risk of trading futures and options and other derivatives involves a substantial risk of loss and is not suitable for all persons. Each person must consider whether a particular trade, combination of trades, or strategy is suitable for that person's financial means and objectives. Past results are not necessarily indicative of future results. This communication may contain links to third party websites which are not under the control of and are not maintained by ION Energy Group, and ION Energy Group is not responsible for their content.

Mexican Exports (MMcf/d)



Net LNG Exports - Last 30 days (MMcf/d)



Source: Bloomberg

The risk of trading futures and options and other derivatives involves a substantial risk of loss and is not suitable for all persons. Each person must consider whether a particular trade, combination of trades, or strategy is suitable for that person's financial means and objectives. Past results are not necessarily indicative of future results. This communication may contain links to third party websites which are not under the control of and are not maintained by ION Energy Group, and ION Energy Group is not responsible for their content.

Nat Gas Options Volume and Open Interest CME and ICE Combined

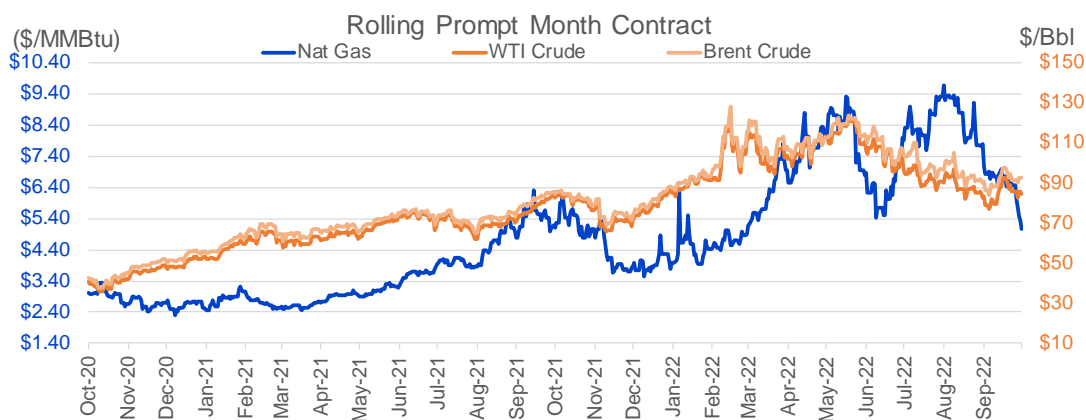
CONTRACT MONTH	CONTRACT YEAR	PUT/CALL	STRIKE	CUMULATIVE VOL	CONTRACT MONTH	CONTRACT YEAR	PUT/CALL	STRIKE	CUMULATIVE OI
11	2022	P	5.00	7785	12	2022	P	5.00	28645
11	2022	P	4.75	6070	12	2022	P	4.00	27061
11	2022	C	6.50	4699	11	2022	C	10.00	26919
11	2022	P	4.50	4638	11	2022	P	4.00	26770
1	2023	C	10.00	4265	5	2023	P	2.00	24818
4	2023	P	2.00	3750	11	2022	P	6.00	24692
5	2023	P	3.00	3550	12	2022	P	6.00	24589
7	2023	P	2.00	3501	3	2023	C	10.00	24138
8	2023	P	2.00	3501	1	2023	C	10.00	21895
9	2023	P	2.00	3501	4	2023	P	3.00	21343
5	2023	P	2.00	3500	10	2023	P	3.00	21289
6	2023	P	2.00	3500	11	2022	P	5.00	21244
10	2023	P	2.00	3500	11	2022	C	8.00	19744
11	2022	P	5.25	3136	4	2023	P	3.50	19722
10	2023	P	3.00	2800	3	2023	P	4.00	19709
5	2023	C	6.00	2650	2	2023	C	10.00	19574
11	2022	C	6.25	2609	1	2023	P	4.00	19453
8	2023	P	3.00	2601	3	2023	C	20.00	19031
7	2023	P	3.00	2600	10	2023	P	2.50	19000
9	2023	P	3.00	2600	10	2023	P	4.00	18951
4	2023	P	3.00	2550	11	2022	P	5.50	18628
6	2023	P	3.00	2550	3	2023	P	3.00	18300
11	2022	C	6.00	2537	12	2022	C	5.00	18223
1	2023	C	8.00	2534	11	2022	C	12.00	17512
11	2022	C	7.00	2517	11	2022	C	6.50	17458
12	2022	C	7.00	2317	12	2022	C	10.00	17375
1	2023	P	4.50	2302	5	2023	P	3.50	17294
12	2022	C	7.10	2000	12	2022	P	5.50	17206
11	2022	C	6.75	1828	6	2023	P	3.00	17135
12	2022	C	9.00	1814	5	2023	P	3.00	16888
12	2022	C	10.00	1789	4	2023	P	4.00	16853
11	2022	P	4.00	1758	9	2023	P	4.00	16701
4	2023	P	2.25	1750	6	2023	P	3.50	16559
5	2023	P	2.25	1750	3	2023	P	2.75	16470
6	2023	P	2.25	1750	2	2023	C	9.00	16445
7	2023	P	2.25	1750	10	2023	P	3.50	16413
8	2023	P	2.25	1750	1	2023	P	5.00	16390
9	2023	P	2.25	1750	4	2023	P	2.00	16323
10	2023	P	2.25	1750	8	2023	P	3.50	16301
11	2022	C	5.50	1737	7	2023	P	3.50	16269
1	2023	P	5.00	1641	9	2023	P	3.50	16259
1	2023	P	5.50	1455	12	2022	C	4.00	16195
1	2023	P	4.25	1454	5	2023	P	2.50	15965
5	2023	C	7.00	1450	11	2022	P	6.50	15824
11	2022	C	8.00	1414	10	2023	P	2.00	15773
12	2022	C	8.00	1335	11	2022	C	4.00	15755
11	2022	P	5.50	1332	11	2022	P	5.25	15683
2	2023	P	5.00	1258	7	2023	P	3.00	15580
11	2022	C	5.75	1253	7	2023	P	4.00	15514
					6	2023	P	4	15456

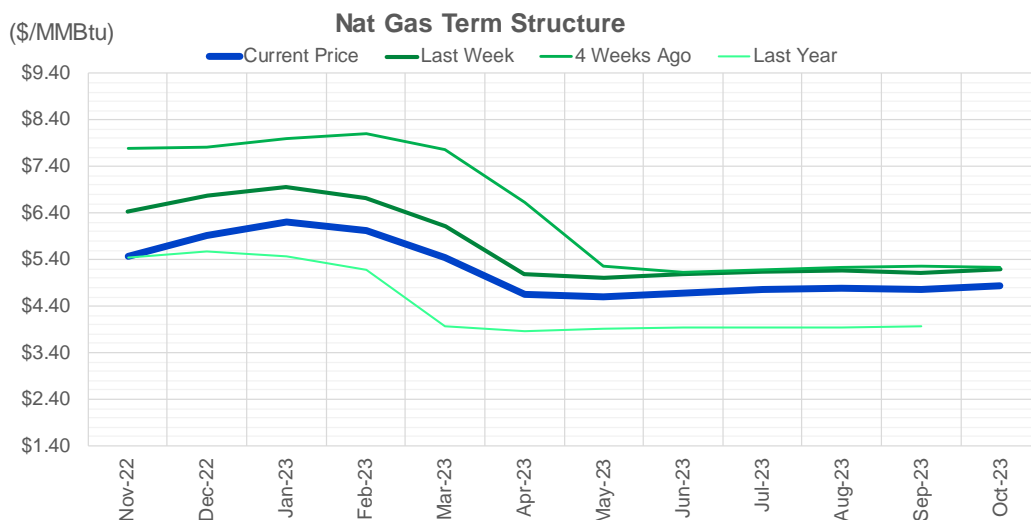
Source: CME, ICE

Nat Gas Futures Open Interest CME and ICE Combined

CME Henry Hub Futures (10,000 MMBtu)				ICE Henry Hub Futures Contract Equivalent (10,000 MM			
	Current	Prior	Daily Change		Current	Prior	Daily Change
NOV 22	38740	48730	-9990	NOV 22	74413	75742	-1329
DEC 22	91963	89708	2255	DEC 22	78277	77949	329
JAN 23	131150	127908	3242	JAN 23	72910	72996	-86
FEB 23	54198	53750	448	FEB 23	67024	66969	54
MAR 23	92598	91601	997	MAR 23	60017	60342	-325
APR 23	76985	77124	-139	APR 23	55981	55762	219
MAY 23	84890	84669	221	MAY 23	57374	56559	815
JUN 23	24407	24563	-156	JUN 23	47830	47634	195
JUL 23	30991	30199	792	JUL 23	48093	47974	119
AUG 23	21217	20873	344	AUG 23	46133	45916	217
SEP 23	29466	29305	161	SEP 23	43654	43391	263
OCT 23	52435	52490	-55	OCT 23	56908	56513	395
NOV 23	23420	23136	284	NOV 23	47856	47695	161
DEC 23	26623	26092	531	DEC 23	40562	40358	204
JAN 24	34975	34519	456	JAN 24	45326	44852	474
FEB 24	10453	10284	169	FEB 24	31187	30998	189
MAR 24	21193	21120	73	MAR 24	35654	35361	293
APR 24	20265	19731	534	APR 24	30524	30804	-279
MAY 24	8475	8403	72	MAY 24	28764	28737	26
JUN 24	3217	3105	112	JUN 24	26099	26099	0
JUL 24	4053	4050	3	JUL 24	25554	25549	5
AUG 24	4020	3999	21	AUG 24	25280	25304	-24
SEP 24	2489	2469	20	SEP 24	24896	24914	-19
OCT 24	8717	8701	16	OCT 24	28996	28901	96
NOV 24	4916	4913	3	NOV 24	26273	26208	65
DEC 24	8574	8575	-1	DEC 24	30185	30119	66
JAN 25	17650	17634	16	JAN 25	23193	23222	-29
FEB 25	1819	1720	99	FEB 25	15651	15622	29
MAR 25	5296	5292	4	MAR 25	18082	18007	76
APR 25	5421	5436	-15	APR 25	16415	16372	43

Source: CME, ICE





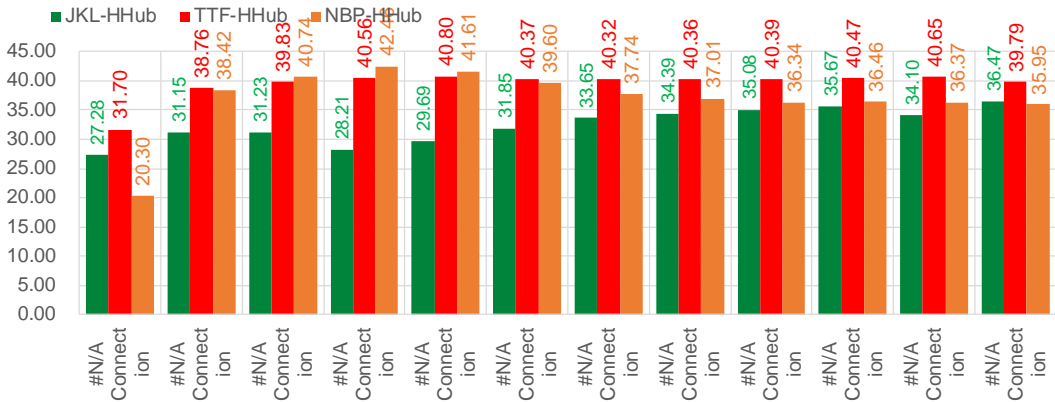
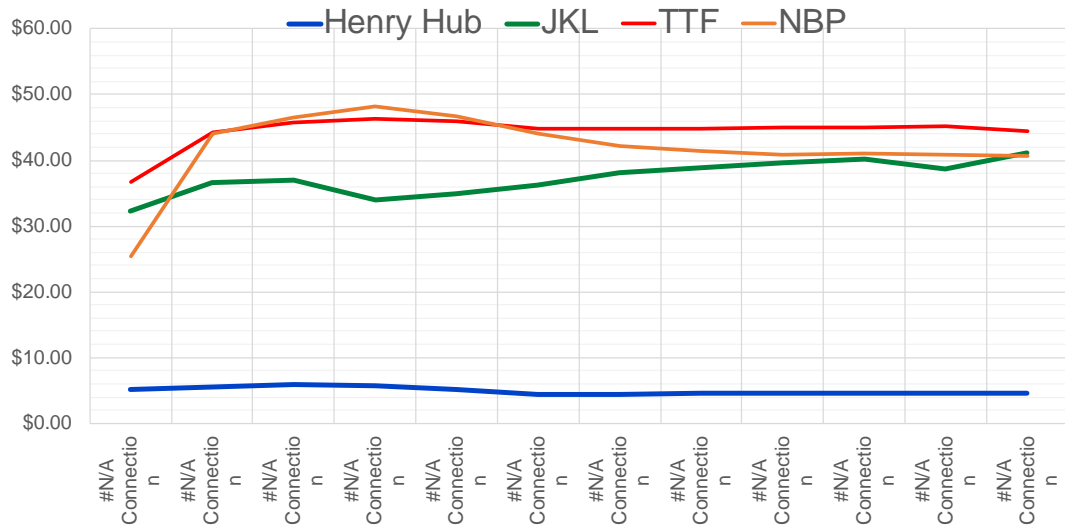
	Nov-22	Dec-22	Jan-23	Feb-23	Mar-23	Apr-23	May-23	Jun-23	Jul-23	Aug-23	Sep-23	Oct-23
Current Price	\$5.462	\$5.928	\$6.212	\$6.016	\$5.444	\$4.655	\$4.604	\$4.681	\$4.765	\$4.789	\$4.762	\$4.839
Last Week	\$6.435	\$6.766	\$6.953	\$6.723	\$6.110	\$5.096	\$5.004	\$5.076	\$5.150	\$5.158	\$5.126	\$5.201
vs. Last Week	-\$0.973	-\$0.838	-\$0.741	-\$0.707	-\$0.666	-\$0.441	-\$0.400	-\$0.395	-\$0.385	-\$0.369	-\$0.364	-\$0.362
4 Weeks Ago	\$7.779	\$7.827	\$7.990	\$8.109	\$7.753	\$6.631	\$5.257	\$5.124	\$5.183	\$5.243	\$5.254	\$5.229
vs. 4 Weeks Ago	-\$2.317	-\$1.899	-\$1.778	-\$2.093	-\$2.309	-\$1.976	-\$0.653	-\$0.443	-\$0.418	-\$0.454	-\$0.492	-\$0.390
Last Year	\$5.170	\$5.447	\$5.562	\$5.469	\$5.171	\$3.978	\$3.867	\$3.905	\$3.946	\$3.950	\$3.931	\$3.963
vs. Last Year	\$0.292	\$0.481	\$0.650	\$0.547	\$0.273	\$0.677	\$0.737	\$0.776	\$0.819	\$0.839	\$0.831	\$0.876

	Units	Cash Settled	Prompt Settle	Cash to Prompt
AGT Citygate	\$/MMBtu	4.60	10.26	5.66
TETCO M3	\$/MMBtu	4.45	6.40	1.95
FGT Zone 3	\$/MMBtu	4.80	7.12	2.32
Zone 6 NY	\$/MMBtu	4.80	6.49	1.69
Chicago Citygate	\$/MMBtu	4.68	6.31	1.63
Michcon	\$/MMBtu	4.67	6.23	1.56
Columbia TCO Pool	\$/MMBtu	4.90	5.88	0.98
Ventura	\$/MMBtu	4.63	6.54	1.91
Rockies/Opal	\$/MMBtu	4.75	6.05	1.30
El Paso Permian Basin	\$/MMBtu	3.98	3.25	-0.73
Socal Citygate	\$/MMBtu	5.65	6.73	1.08
Malin	\$/MMBtu	4.95	6.43	1.48
Houston Ship Channel	\$/MMBtu	4.42	5.98	1.56
Henry Hub Cash	\$/MMBtu	5.47	5.93	0.46
AECO Cash	C\$/GJ	1.39	4.69	3.30
Station2 Cash	C\$/GJ	0.32	6.77	6.45
Dawn Cash	C\$/GJ	4.77	6.29	1.52

Source: CME, Bloomberg

	Units	Current Price	vs. Last Week	vs. 4 Weeks Ago	vs. Last Year
NatGas Jul21/Oct21	\$/MMBtu	2.224	▲ 0.000	▲ 0.000	▲ 0.000
NatGas Oct21/Nov21	\$/MMBtu	0.361	▲ 0.000	▲ 0.000	▲ 1.087
NatGas Oct21/Jan22	\$/MMBtu	-1.817	▲ 0.000	▲ 0.000	▼ -1.437
NatGas Apr22/Oct22	\$/MMBtu	1.532	▲ 0.000	▼ -0.221	▲ 1.538
WTI Crude	\$/Bbl	85.98	▼ -3.130	▲ 2.490	▲ 3.480
Brent Crude	\$/Bbl	92.38	▼ -2.190	▲ 1.920	▲ 7.770
Fuel Oil, NY Harbour 1%	\$/Bbl	97.18	▲ 0.000	▲ 0.000	▲ 0.000
Heating Oil	cents/Gallon	375.68	▼ -33.800	▲ 34.530	▲ 120.770
Propane, Mt. Bel	cents/Gallon	0.85	▼ -0.006	▼ -0.165	▼ -0.612
Ethane, Mt. Bel	cents/Gallon	0.40	▼ -0.027	▼ -0.071	▼ -0.025
Coal, PRB	\$/MTon	12.30	▲ 0.000	▲ 0.000	▲ 0.000
Coal, PRB	\$/MMBtu	0.70			
Coal, ILB	\$/MTon	31.05	▲ 0.000	▲ 0.000	▲ 0.000
Coal, ILB	\$/MMBtu	1.32			

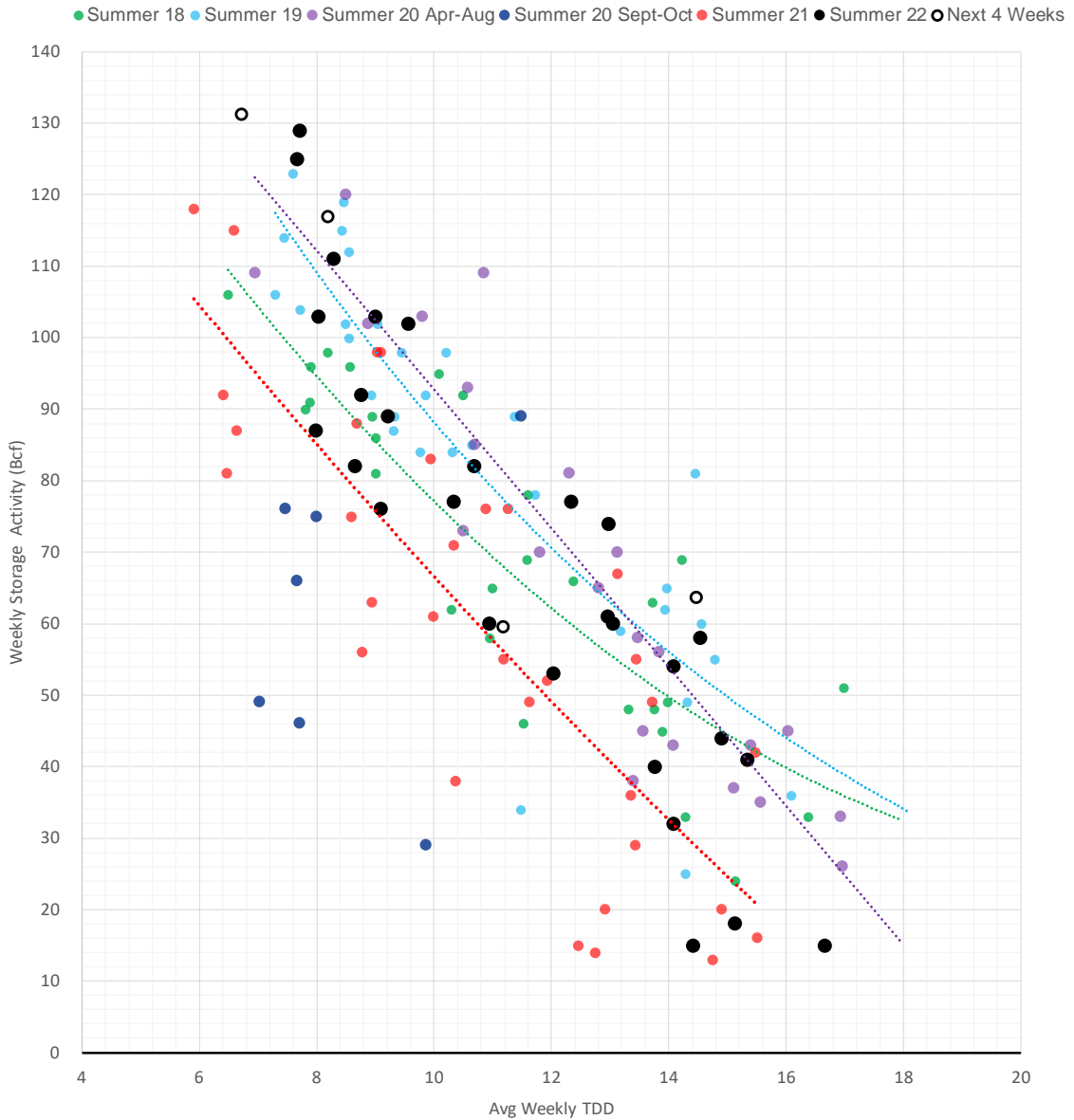
Nat Gas Term Structure (\$MMBTU)



	#N/A Connection on	#N/A Connection on	#N/A Connection on	#N/A Connection on	#N/A Connection on	#N/A Connection on	#N/A Connection on	#N/A Connection on	#N/A Connection on	#N/A Connection on	#N/A Connection on	#N/A Connection on
Henry Hub	\$5.070	\$5.555	\$5.840	\$5.673	\$5.142	\$4.467	\$4.431	\$4.500	\$4.602	\$4.610	\$4.582	\$4.659
JKL	\$32.350	\$36.700	\$37.065	\$33.885	\$34.830	\$36.315	\$38.080	\$38.890	\$39.680	\$40.275	\$38.680	\$41.130
JKL-HHub	\$27.280	\$31.145	\$31.225	\$28.212	\$29.688	\$31.848	\$33.649	\$34.390	\$35.078	\$35.665	\$34.098	\$36.471
TTF	\$36.765	\$44.319	\$45.674	\$46.232	\$45.939	\$44.832	\$44.753	\$44.862	\$44.989	\$45.076	\$45.227	\$44.447
TTF-HHub	\$31.695	\$38.764	\$39.834	\$40.559	\$40.797	\$40.365	\$40.322	\$40.362	\$40.387	\$40.466	\$40.645	\$39.788
NBP	\$25.372	\$43.970	\$46.578	\$48.133	\$46.753	\$44.062	\$42.167	\$41.507	\$40.943	\$41.066	\$40.948	\$40.611
NBP-HHub	\$20.302	\$38.415	\$40.738	\$42.460	\$41.611	\$39.595	\$37.736	\$37.007	\$36.341	\$36.456	\$36.366	\$35.952

The risk of trading futures and options and other derivatives involves a substantial risk of loss and is not suitable for all persons. Each person must consider whether a particular trade, combination of trades, or strategy is suitable for that person's financial means and objectives. Past results are not necessarily indicative of future results. This communication may contain links to third party websites which are not under the control of and are not maintained by ION Energy Group, and ION Energy Group is not responsible for their content.

Weather Storage Model - Next 4 Week Forecast



Weather Storage Model - Next 4 Week Forecast



The risk of trading futures and options and other derivatives involves a substantial risk of loss and is not suitable for all persons. Each person must consider whether a particular trade, combination of trades, or strategy is suitable for that person's financial means and objectives. Past results are not necessarily indicative of future results. This communication may contain links to third party websites which are not under the control of and are not maintained by ION Energy Group, and ION Energy Group is not responsible for their content.

