

CFTC COMMITMENT OF TRADERS REPORT

As of 9/27/2022

TRADITIONAL FUNDS net position changes

Wed to Tue, in 000 contracts

	Corn	Bean	Meal	Oil	Chi. Wheat	KC Wheat	Min Wheat
Futures Only	(9.1)	(4.7)	(11.4)	(2.4)	6.8	4.1	1.7
Futures & Options Combined	(18.4)	(11.1)	(13.1)	(2.8)	8.2	3.9	1.8

TRADITIONAL COMMERCIAL net position changes

	Corn	Bean	Meal	Oil	Chi. Wheat	KC Wheat	Min Wheat
Futures Only	11.8	5.3	13.5	5.8	(5.3)	(3.4)	(1.7)
Futures & Options Combined	22.2	13.1	15.3	6.2	(6.5)	(3.2)	(1.8)

MANAGED MONEY net position changes

	Corn	Bean	Meal	Oil	Chi. Wheat	KC Wheat	Min Wheat
Futures Only	(11.8)	(10.7)	(7.2)	0.5	1.8	5.0	1.9
Futures & Options Combined	(10.1)	(9.9)	(8.6)	0.1	1.3	4.8	1.9

SWAP DEALERS net position changes

	Corn	Bean	Meal	Oil	Chi. Wheat	KC Wheat	Min Wheat
Futures Only	(10.4)	(1.6)	1.0	(2.6)	(4.1)	(3.5)	(1.2)
Futures & Options Combined	(6.0)	0.0	1.6	(2.6)	(4.3)	(3.4)	(1.2)

PRODUCERS/END USERS net position changes

	Corn	Bean	Meal	Oil	Chi. Wheat	KC Wheat	Min Wheat
Futures Only	22.2	6.9	12.5	8.4	(1.2)	0.1	(0.5)
Futures & Options Combined	28.3	13.1	13.7	8.7	(2.2)	0.2	(0.6)

INDEX net position changes

	Corn	Bean	Meal	Oil	Chi. Wheat	KC Wheat	Min Wheat
Futures & Options Combined	(9.6)	(3.2)	(4.8)	(2.6)	(0.5)	(1.4)	NA

SUPPLEMENTAL NON-COMMERCIAL net position changes

	Corn	Bean	Meal	Oil	Chi. Wheat	KC Wheat	Min Wheat
Futures & Options Combined	(13.8)	(9.8)	(9.4)	(1.0)	6.1	4.6	NA

OPEN INTEREST net position changes

Wed to Tue, in 000 contracts

	Corn	Bean	Meal	Oil	Chi. Wheat	KC Wheat	Min Wheat
Futures Only	16.4	43.0	(11.5)	1.1	5.2	(1.0)	0.1
Futures & Options Combined	(30.1)	21.4	(22.9)	(7.4)	(9.9)	(4.3)	(0.0)

Source: CFTC and FI

Wed to Tue, in 000 contracts

**COMMITMENT OF TRADERS
FUTURES ONLY NET POSITIONS
AS OF 09/27/2022
(IN THOUSAND CONTRACTS)**

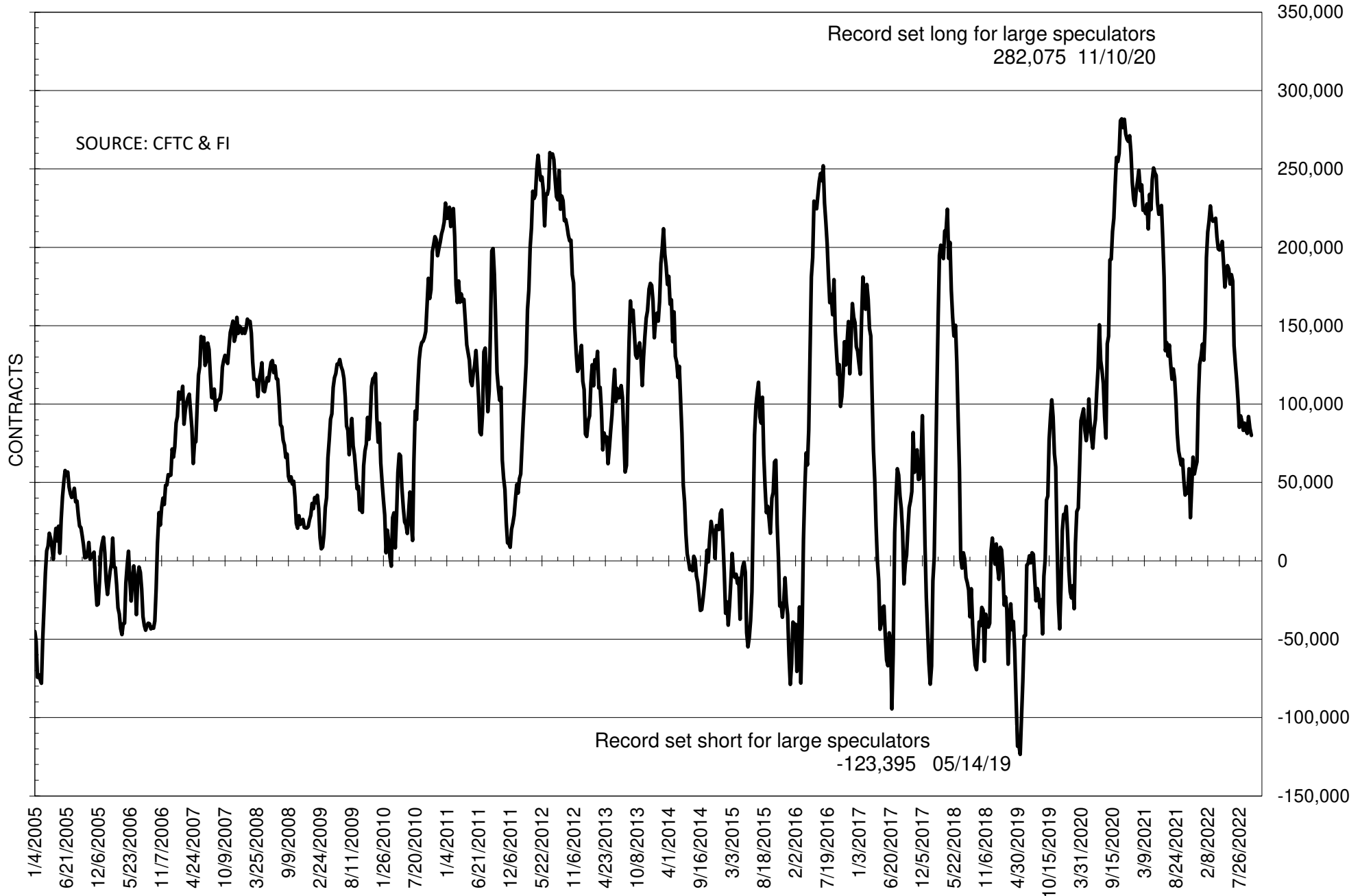
	COMMERCIAL				(FUND) NON COMMERCIAL				(SPEC) NON-REPORTABLE			
	27-Sep	20-Sep	13-Sep	6-Sep	27-Sep	20-Sep	13-Sep	6-Sep	27-Sep	20-Sep	13-Sep	6-Sep
	WHEAT											
Chicago	4.7	10.0	13.0	13.7	2.7	-4.0	-8.1	-9.8	-7.4	-6.0	-4.8	-3.9
Kansas City	-18.7	-15.3	-13.3	-7.5	21.2	17.1	14.2	8.1	-2.4	-1.8	-0.9	-0.5
Minneapolis	-6.8	-5.1	-1.7	-0.5	7.3	5.6	2.7	2.5	-0.5	-0.5	-1.0	-2.0
All Wheat	-20.8	-10.4	-2.0	5.6	31.2	18.6	8.8	0.8	-10.4	-8.2	-6.7	-6.5
CORN	-229.4	-241.2	-234.2	-230.7	296.6	305.7	294.6	286.5	-67.2	-64.4	-60.4	-55.8
OATS	-0.8	-0.7	-0.6	-0.5	0.0	0.0	0.1	0.0	0.8	0.7	0.5	0.5
SOYBEANS	-50.2	-55.5	-61.4	-50.8	80.1	84.8	92.1	81.3	-29.8	-29.3	-30.7	-30.4
SOY OIL	-61.0	-66.7	-64.4	-55.1	55.0	57.4	54.6	48.8	6.0	9.3	9.8	6.4
SOY MEAL	-138.4	-151.9	-137.8	-126.6	115.1	126.5	114.2	107.1	23.3	25.4	23.6	19.5

Oats positions thin to be reported

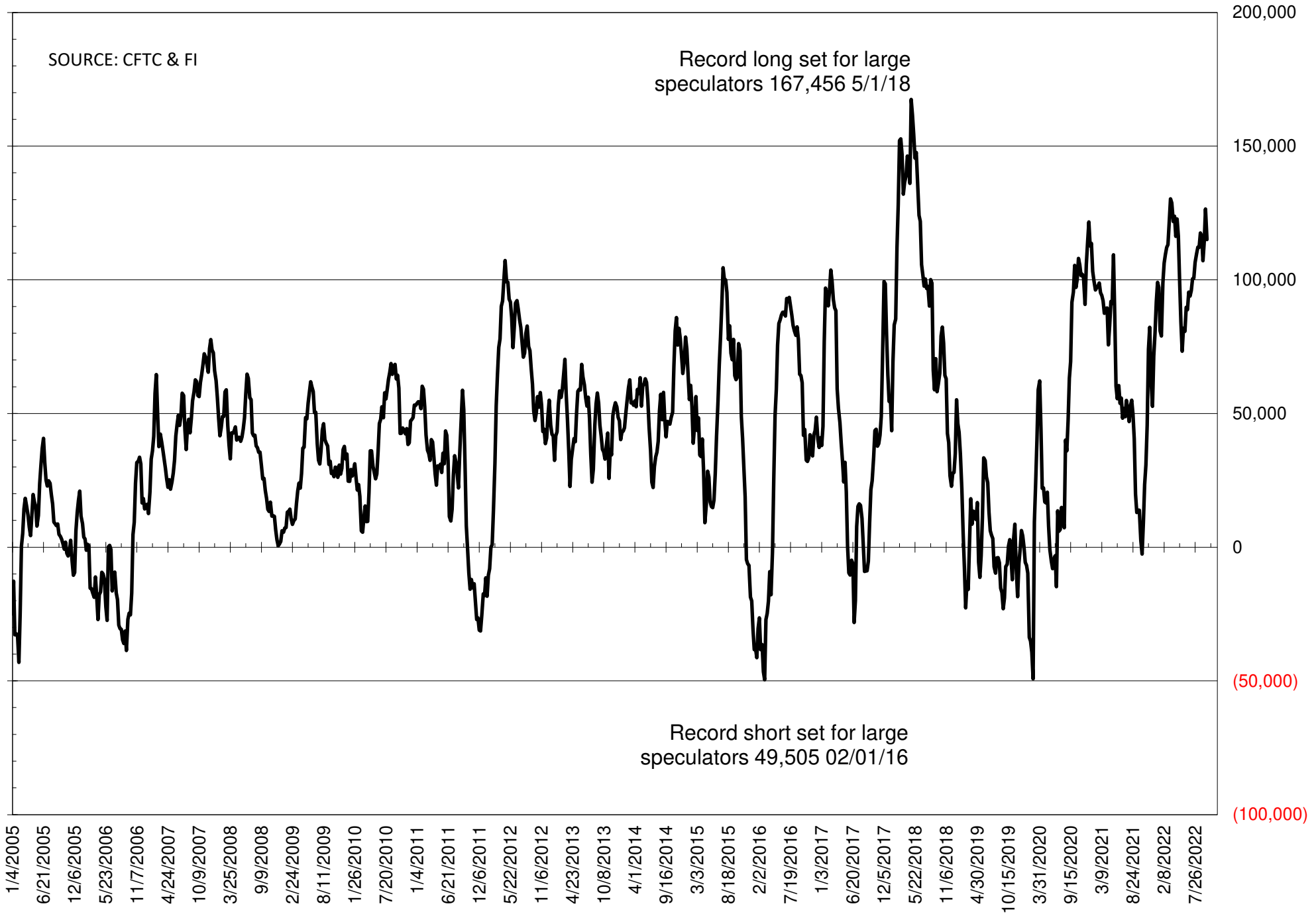
	TOTAL OPEN INTEREST				NEARBY FUTURES PRICE					27-Sep-22 LAST REPORTED % HELD BY TRADERS			
	27-Sep	20-Sep	13-Sep	6-Sep	V/X/Z Latest	V/X/Z 27-Sep	V/X/Z 20-Sep	V/X/Z 13-Sep	V/X/Z 6-Sep	LARGE FUND		SMALL	
										LONG	SHORT	LONG	SHORT
WHEAT													
Chicago	290771	285567	287046	289329	921.50	871.50	893.75	842.75	817.00	0%	29%	0%	12%
Kansas City	153947	154904	149786	146259	991.50	943.25	963.00	944.00	882.00	0%	16%	0%	13%
Minneapolis	54988	54915	48272	45971	982.00	943.25	959.25	928.50	889.75	0%	6%	0%	18%
CORN	1347278	1330841	1310411	1280087	677.50	667.50	692.00	709.00	676.00	0%	9%	0%	14%
OATS	3844	3733	3724	3489	390.00	370.00	413.25	416.50	383.75	0%	17%	0%	28%
SOYBEANS	699311	656310	643018	606187	1364.75	1408.00	1478.75	1478.75	1398.75	21%	10%	6%	10%
SOY OIL	405478	404366	398345	393510	65.35	65.66	68.59	68.93	64.90	0%	9%	0%	5%
SOY MEAL	380991	392512	383899	389152	403.20	426.10	450.80	428.90	410.60	0%	4%	0%	6%

SOURCE: CFTC & FI

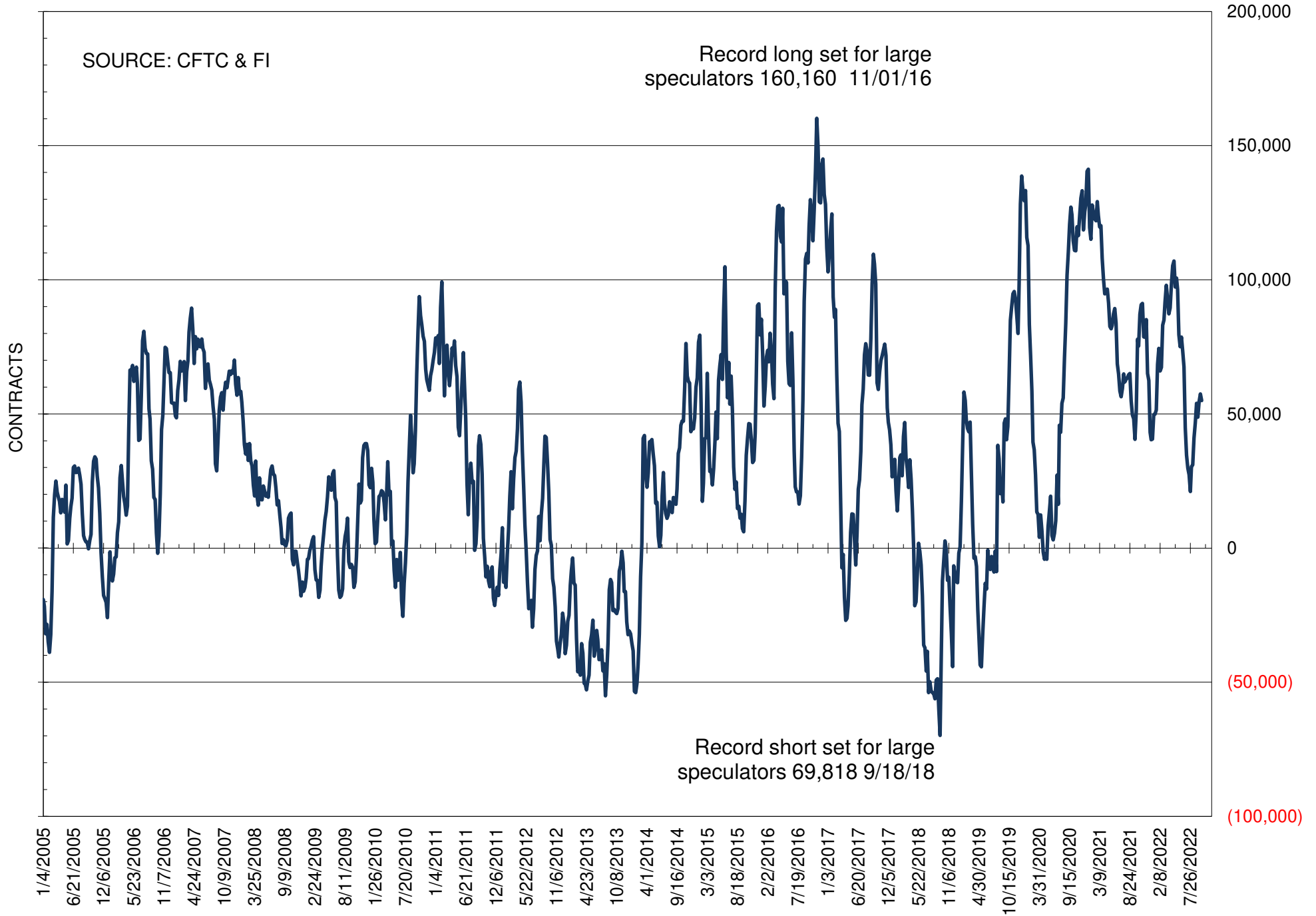
NET POSITION OF FUTURES ONLY LARGE SPECS IN SOYBEANS



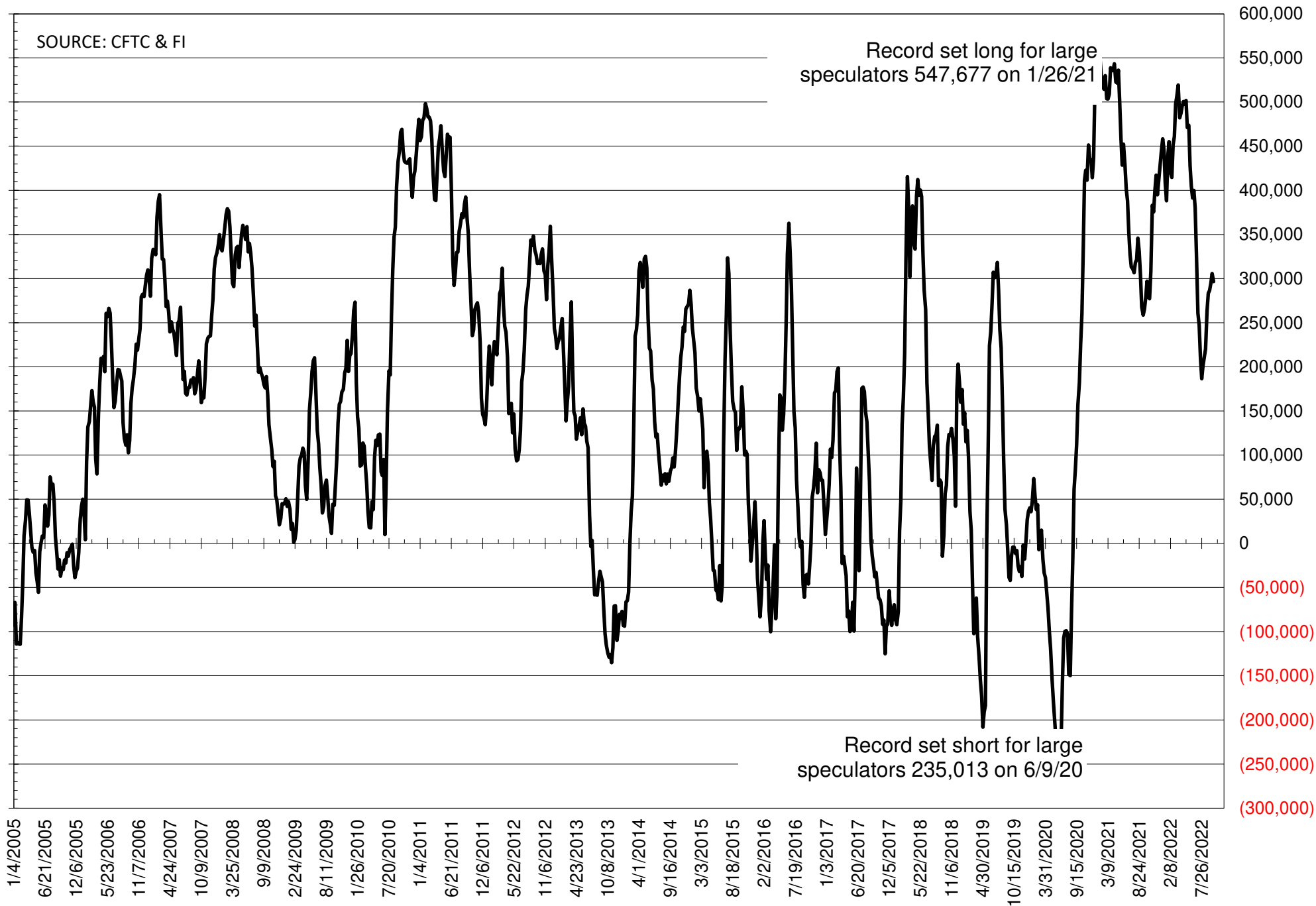
NET POSITION OF FUTURES ONLY LARGE SPECS IN SOYMEAL



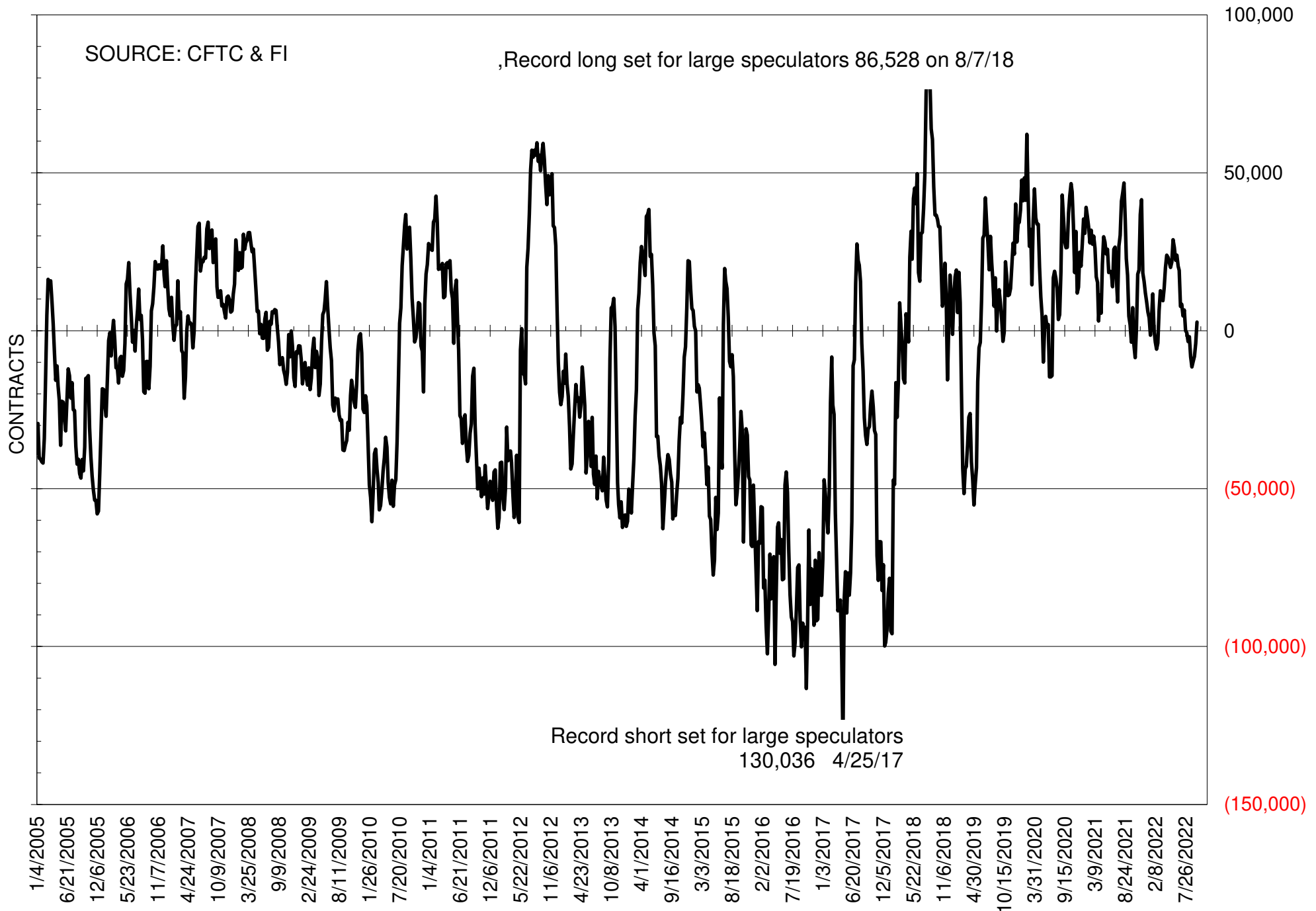
NET POSITION OF FUTURES ONLY LARGE SPECS IN SOYOIL



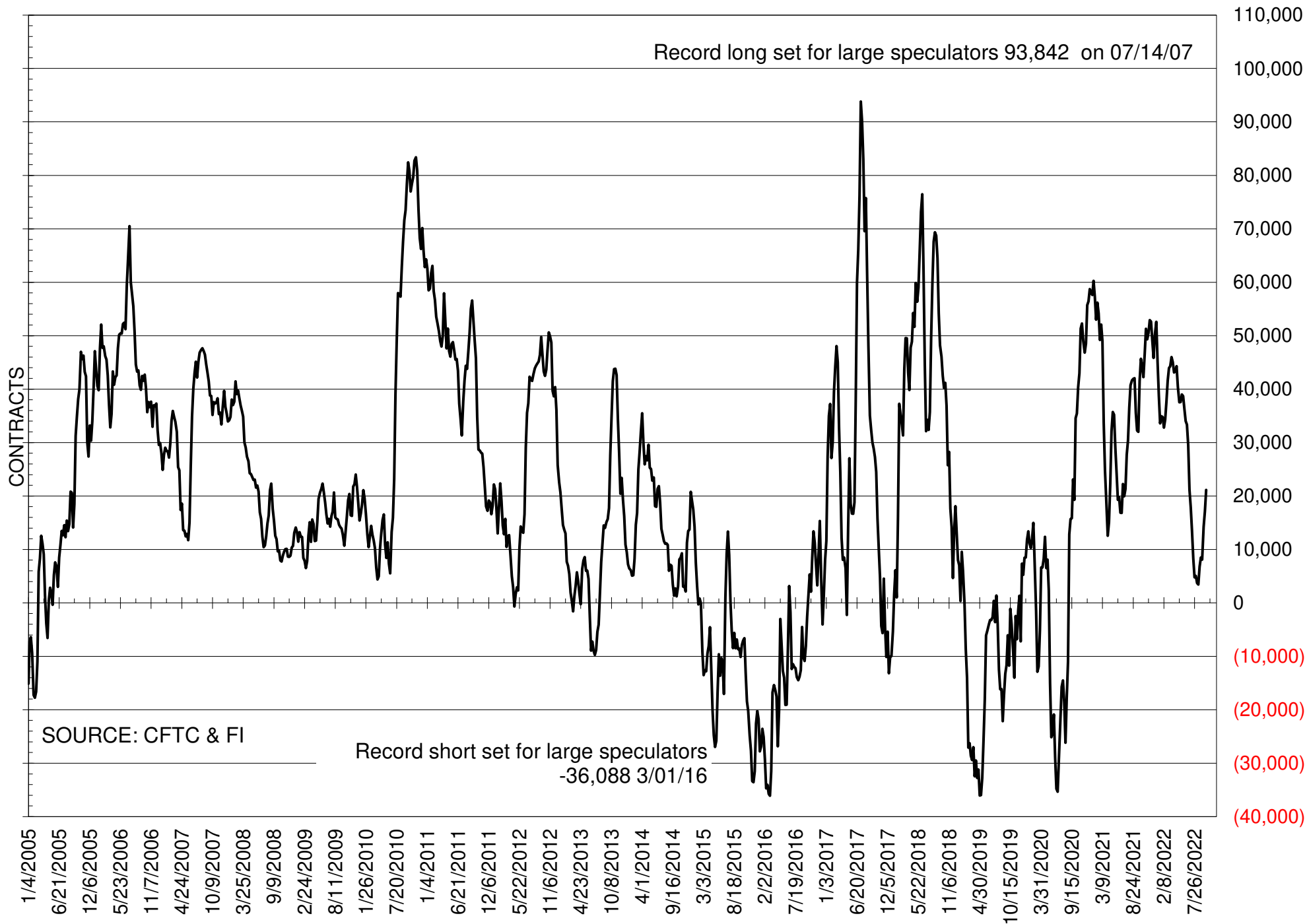
NET POSITION OF LARGE SPECULATORS IN CORN



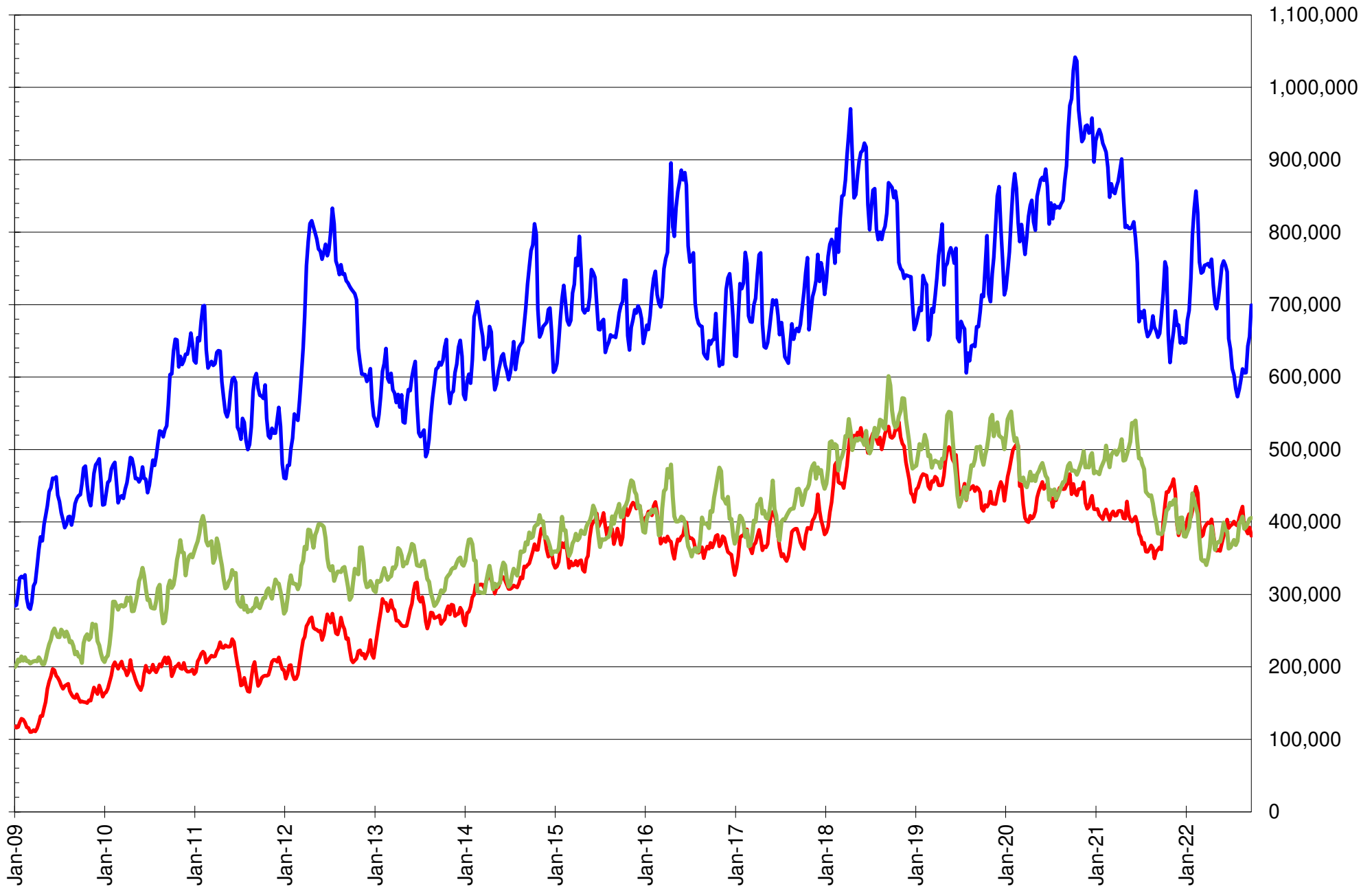
NET POSITION OF FUTURES ONLY LARGE SPECS IN CHICAGO WHEAT



NET POSITION OF LARGE SPECULATORS IN KANSAS CITY WHEAT



TOTAL OPEN INTEREST IN SOYBEANS, MEAL AND OIL, FUTURES ONLY



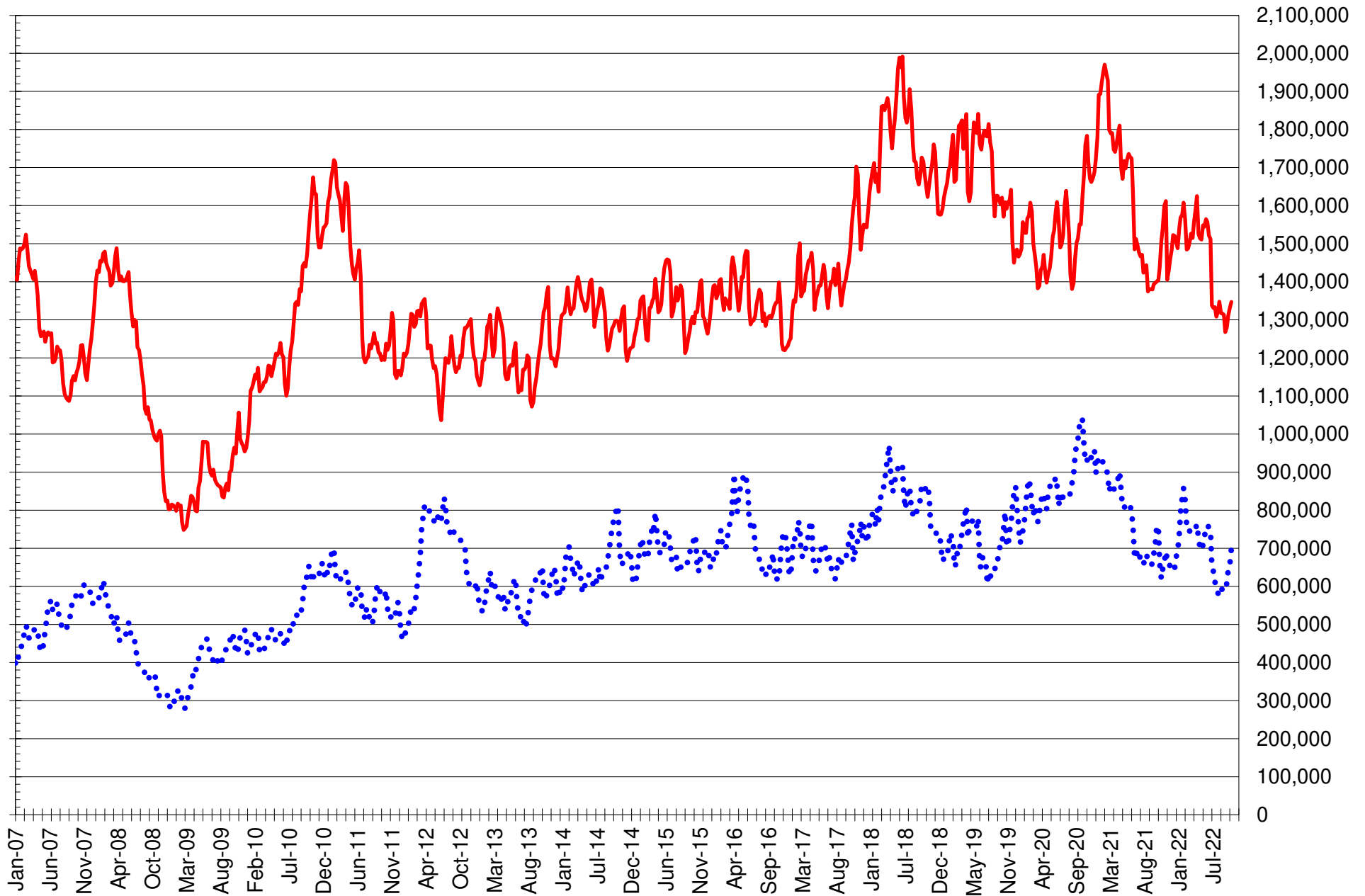
SOURCE: CFTC & FI

— SOYBEANS

— SOYBEAN MEAL

— SOYBEAN OIL

TOTAL OPEN INTEREST IN CORN AND SOYBEANS, FUTURES ONLY



SOURCE: CFTC & FI

— CORN

..... SOYBEANS

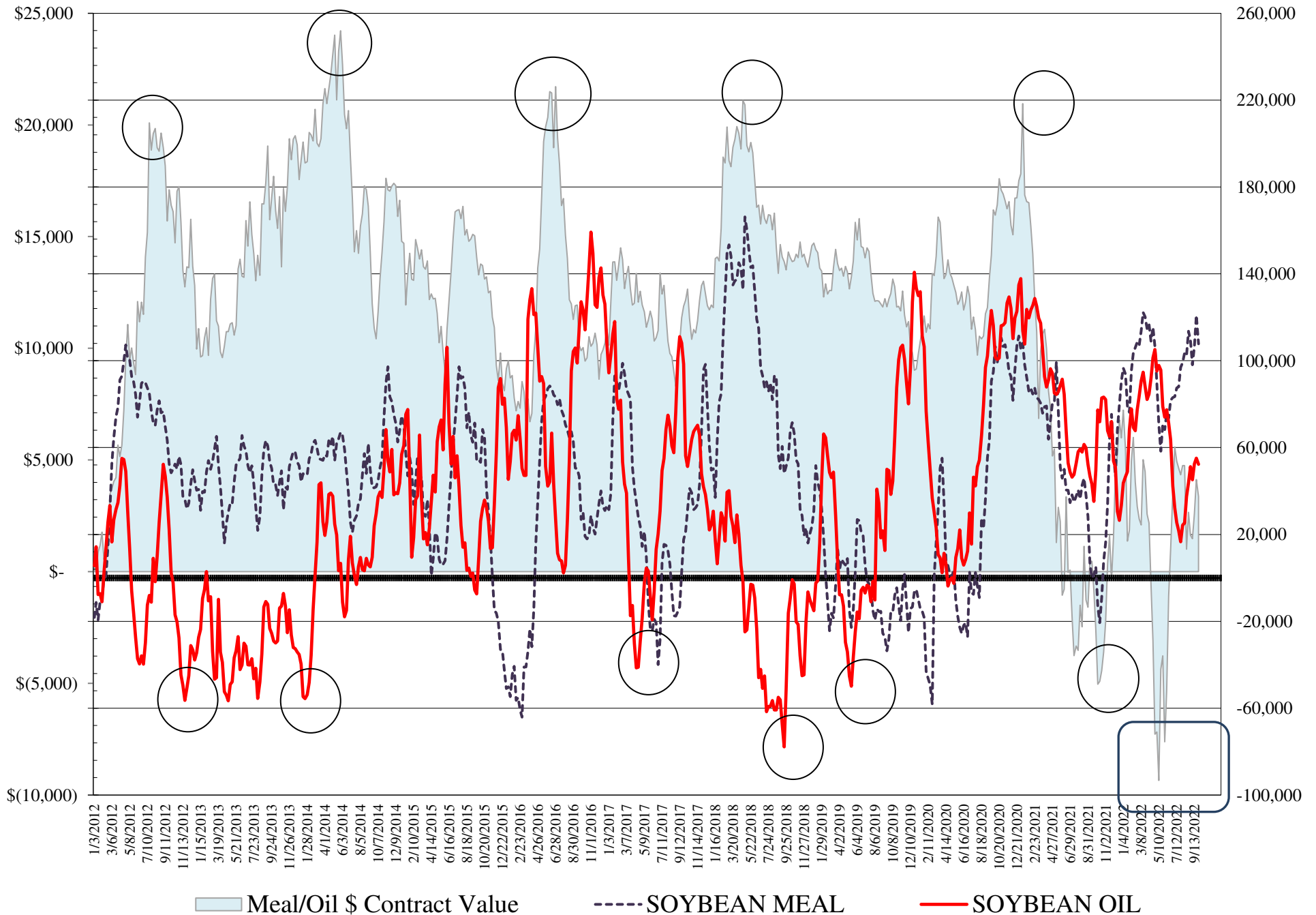
COMMITMENT OF TRADERS
FUTURES & OPTIONS NET POSITIONS
AS OF 09/27/2022
(IN THOUSAND CONTRACTS)

	COMMERCIAL				(FUND) NON COMMERCIAL				(SPEC) NON-REPORTABLE			
	27-Sep	20-Sep	13-Sep	6-Sep	27-Sep	20-Sep	13-Sep	6-Sep	27-Sep	20-Sep	13-Sep	6-Sep
WHEAT												
Chicago	4.9	11.4	14.4	12.8	1.9	-6.4	-10.6	-10.2	-6.8	-5.1	-3.8	-2.6
Kansas City	-19.7	-16.5	-14.3	-8.1	21.6	17.7	14.6	8.2	-2.0	-1.2	-0.4	-0.1
Minneapolis	-6.8	-5.0	-1.6	-0.3	7.2	5.4	2.5	2.3	-0.5	-0.4	-0.9	-2.0
All Wheat	-21.5	-10.1	-1.4	4.4	30.7	16.7	6.6	0.3	-9.2	-6.6	-5.1	-4.7
CORN	-213.5	-235.7	-225.7	-223.4	283.8	302.2	286.0	278.3	-70.3	-66.5	-60.3	-55.0
OATS	-0.8	-0.7	-0.6	-0.4	-0.1	-0.1	0.0	-0.1	0.8	0.8	0.6	0.5
SOYBEANS	-42.7	-55.8	-63.2	-50.1	79.1	90.2	98.6	86.4	-36.4	-34.4	-35.4	-36.3
SOY OIL	-58.9	-65.0	-62.9	-52.1	52.3	55.1	52.5	45.1	6.5	9.9	10.4	7.0
SOY MEAL	-133.2	-148.5	-132.3	-119.2	107.8	120.9	106.5	98.1	25.4	27.6	25.7	21.1

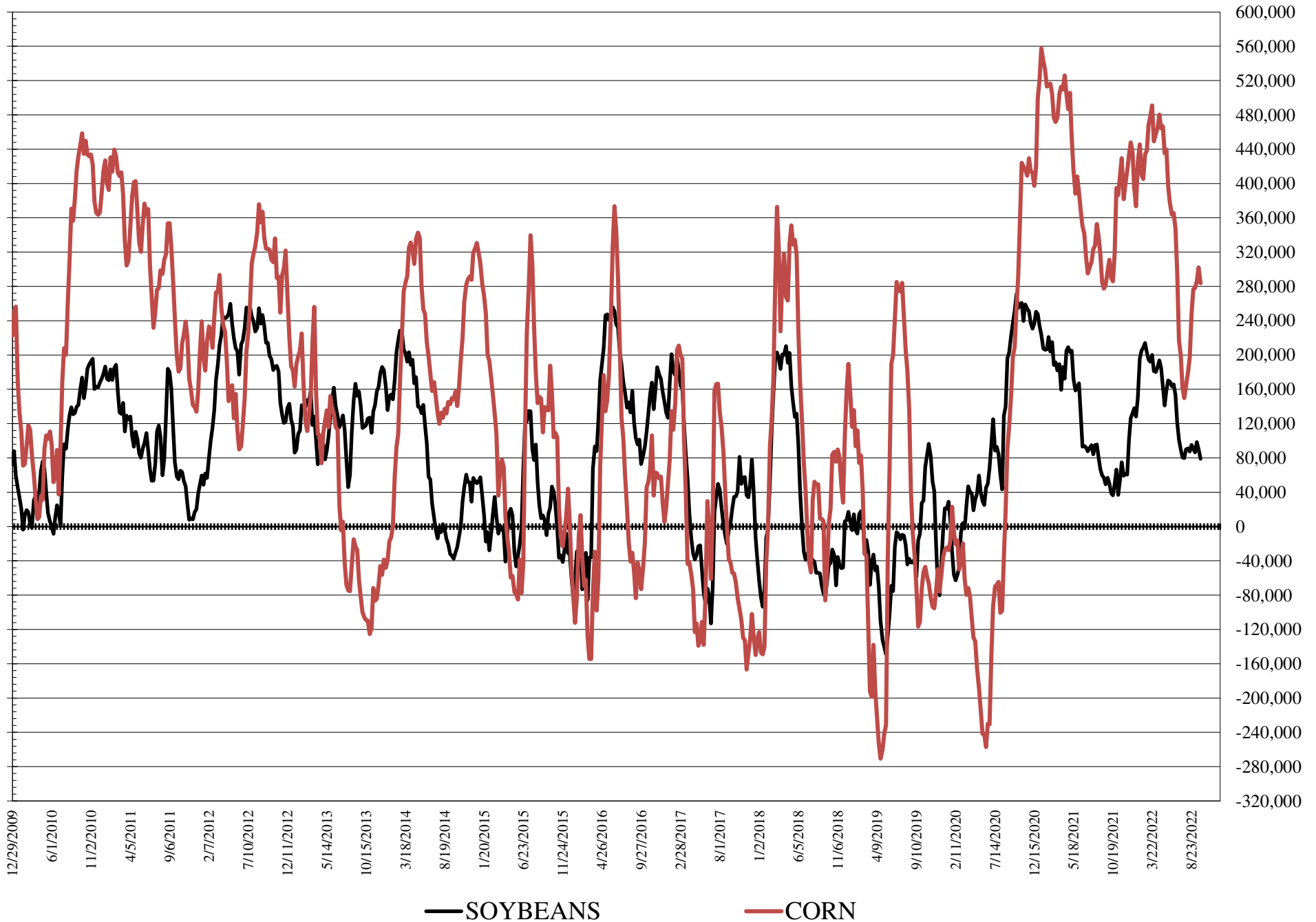
	TOTAL OPEN INTEREST				COMMERCIALS		% HELD BY TRADERS LARGE (FUNDS)		SMALL (NON-REP)		
	27-Sep	20-Sep	13-Sep	6-Sep	LONG	SHORT	LONG	SHORT	LONG	SHORT	
WHEAT											
Chicago	377,966	387,820	373,189	363,699		36%	35%	22%	22%	8%	10%
Kansas City	167,941	172,256	165,458	160,602		42%	54%	27%	14%	11%	13%
Minneapolis	57,413	57,448	50,363	47,914		57%	69%	18%	5%	17%	18%
CORN	1,787,424	1,817,528	1,792,121	1,730,634		39%	51%	21%	5%	9%	13%
OATS	3,963	3,870	3,860	3,618							
SOYBEANS	830,261	808,861	794,029	741,820		48%	53%	17%	7%	6%	10%
SOY OIL	447,185	454,576	449,801	439,474		47%	60%	20%	8%	7%	5%
SOY MEAL	422,486	445,424	428,745	431,875		39%	71%	29%	3%	12%	6%

SOURCE: CFTC & FI

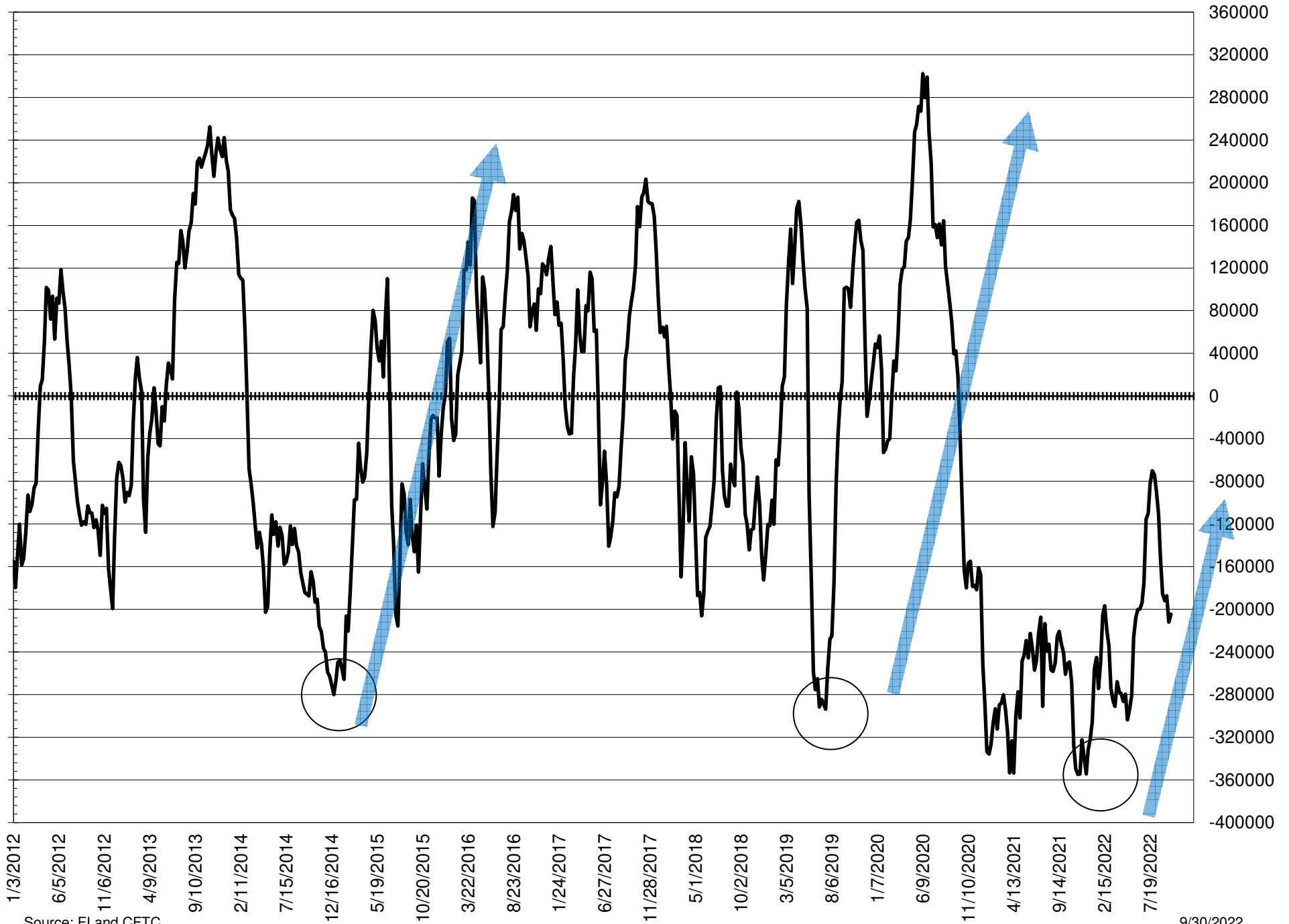
NET POSITION FUTURES AND OPTIONS OF LARGE SPECULATORS IN SOYBEAN MEAL AND SOYBEAN OIL



NET POSITION FUTURES AND OPTIONS OF LARGE SPECULATORS IN SOYBEANS AND CORN



NET POSITION FUTURES AND OPTIONS SPREAD OF LARGE SPECULATORS IN SOYBEANS MINUS CORN



Source: FI and CFTC

9/30/2022

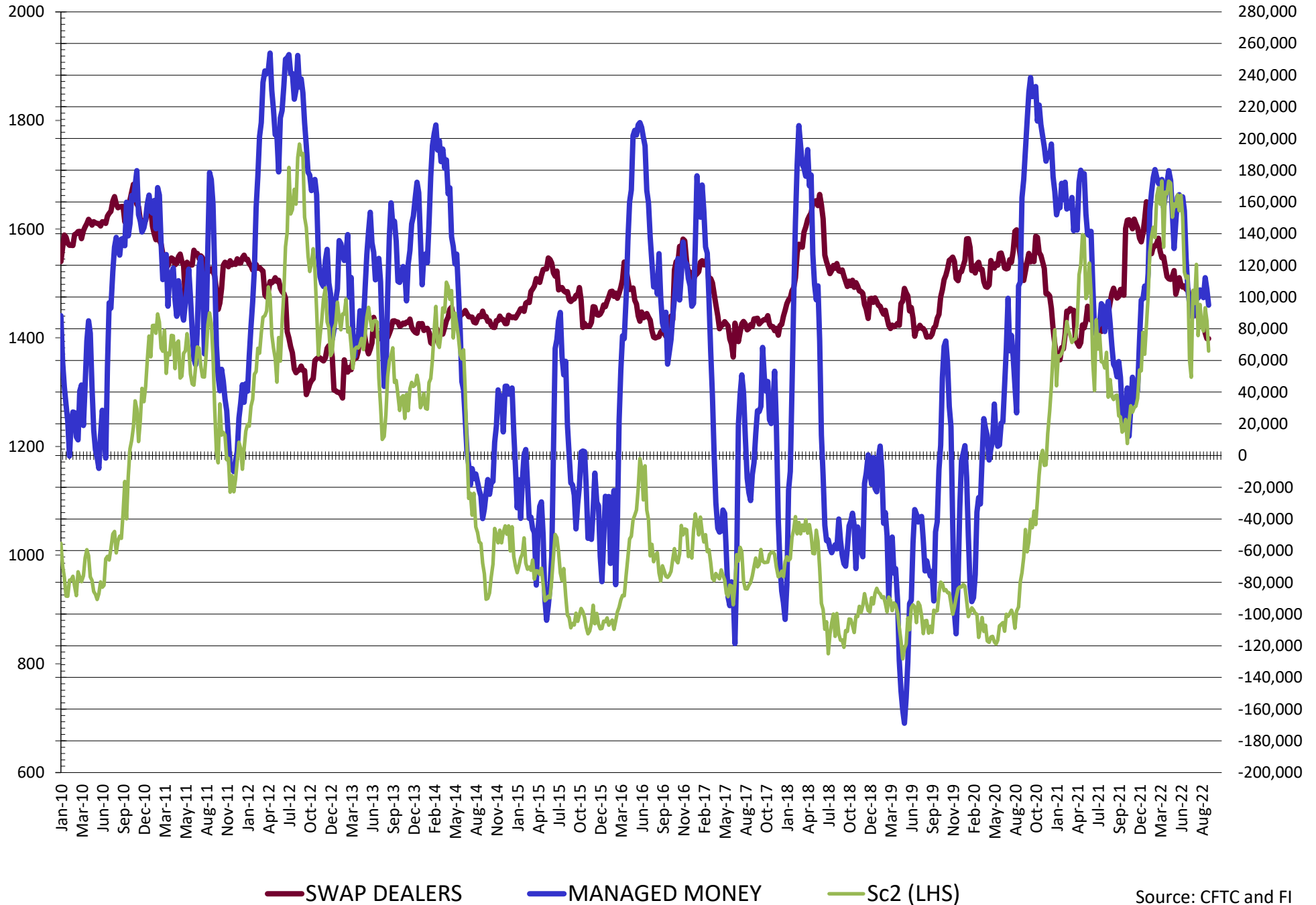
**DISAGGREGATED COMMITMENT OF TRADERS
FUTURES & OPTIONS NET POSITIONS
AS OF 09/27/2022
(IN THOUSAND CONTRACTS)**

	PRODUCER / MERCHANT / PROCESSOR / USER				(INDEX/ETF) SWAP DEALERS				(CTA/CPO/OTHER UNREGISTERED) MANAGED MONEY			
	27-Sep	20-Sep	13-Sep	6-Sep	27-Sep	20-Sep	13-Sep	6-Sep	27-Sep	20-Sep	13-Sep	6-Sep
	WHEAT											
Chicago	(56.5)	(54.3)	(52.3)	(53.9)	61.5	65.7	66.7	66.6	(14.4)	(15.7)	(20.4)	(21.4)
Kansas City	(43.9)	(44.1)	(42.4)	(36.0)	24.3	27.7	28.1	27.8	23.9	19.1	17.0	11.1
Minneapolis	(6.9)	(6.3)	(3.0)	(1.8)	0.1	1.3	1.4	1.6	4.2	2.4	(0.2)	(1.0)
All Wheat	(107.3)	(104.8)	(97.7)	(91.6)	85.9	94.7	96.3	96.0	13.7	5.7	(3.5)	(11.4)
CORN	(433.3)	(461.6)	(454.9)	(456.5)	219.9	225.9	229.2	233.2	237.9	247.9	240.6	226.5
OATS	(1.0)	(1.0)	(0.8)	(0.5)	0.2	0.3	0.2	0.2	(0.7)	(0.6)	(0.5)	(0.6)
SOYBEANS	(116.4)	(129.4)	(140.5)	(133.6)	73.7	73.7	77.2	83.5	94.8	104.7	112.1	99.6
SOY OIL	(147.0)	(155.8)	(150.8)	(140.4)	88.2	90.7	87.9	88.3	58.4	58.3	55.3	44.0
SOY MEAL	(218.8)	(232.5)	(218.3)	(207.5)	85.6	84.0	86.0	88.3	93.5	102.2	87.7	81.6

	TOTAL OPEN INTEREST				OTHER REPORTABLE				NON REPORTABLE			
	27-Sep	20-Sep	13-Sep	6-Sep	27-Sep	20-Sep	13-Sep	6-Sep	27-Sep	20-Sep	13-Sep	6-Sep
	WHEAT											
Chicago	377,966	387,820	373,189	363,699	16.2	9.3	9.8	11.3	(6.8)	(5.1)	(3.8)	(2.6)
Kansas City	167,941	172,256	165,458	160,602	(2.3)	(1.4)	(2.4)	(2.9)	(2.0)	(1.2)	(0.4)	(0.1)
Minneapolis	57,413	57,448	50,363	47,914	3.0	3.0	2.6	3.3	(0.5)	(0.4)	(0.9)	(2.0)
All Wheat	603,320	617,524	589,010	572,215	16.9	11.0	10.1	11.7	(9.2)	(6.6)	(5.1)	(4.7)
CORN	1,787,424	1,817,528	1,792,121	1,730,634	46.0	54.3	45.4	51.8	(70.3)	(66.5)	(66.5)	(66.5)
OATS	3,963	3,870	3,860	3,618	0.6	0.5	0.5	0.5	0.8	0.8	0.6	0.5
SOYBEANS	830,261	808,861	794,029	741,820	(15.7)	(14.5)	(13.5)	(13.2)	(36.4)	(34.4)	(35.4)	(36.3)
SOY OIL	447,185	454,576	449,801	439,474	(6.1)	(3.2)	(2.8)	1.2	6.5	9.9	10.4	7.0
SOY MEAL	422,486	445,424	428,745	431,875	14.2	18.7	18.8	16.5	25.4	27.6	25.7	21.1

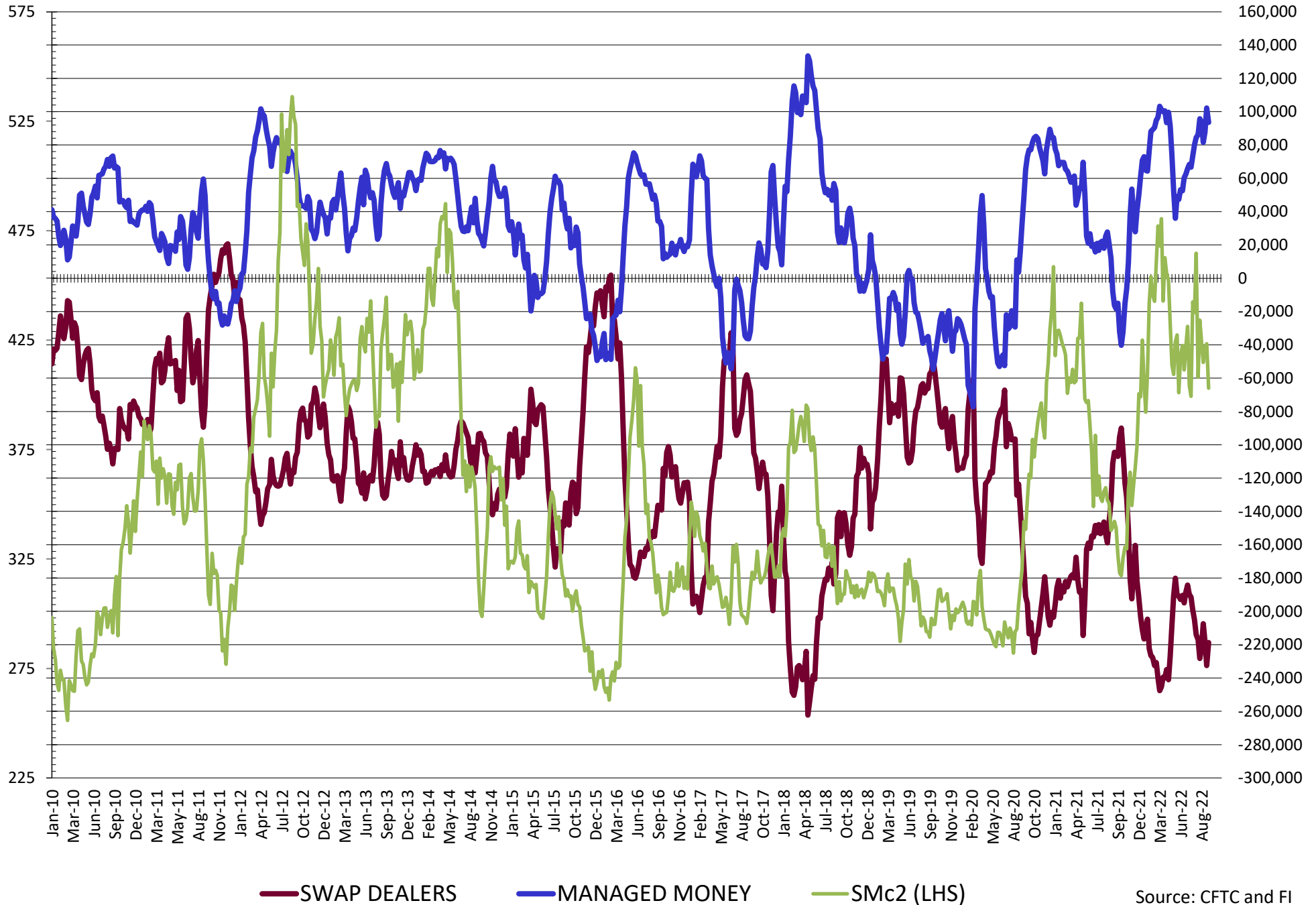
SOURCE: CFTC & FI

NET POSITION FUTURES AND OPTIONS OF SWAP AND MANAGED FUNDS IN SOYBEANS



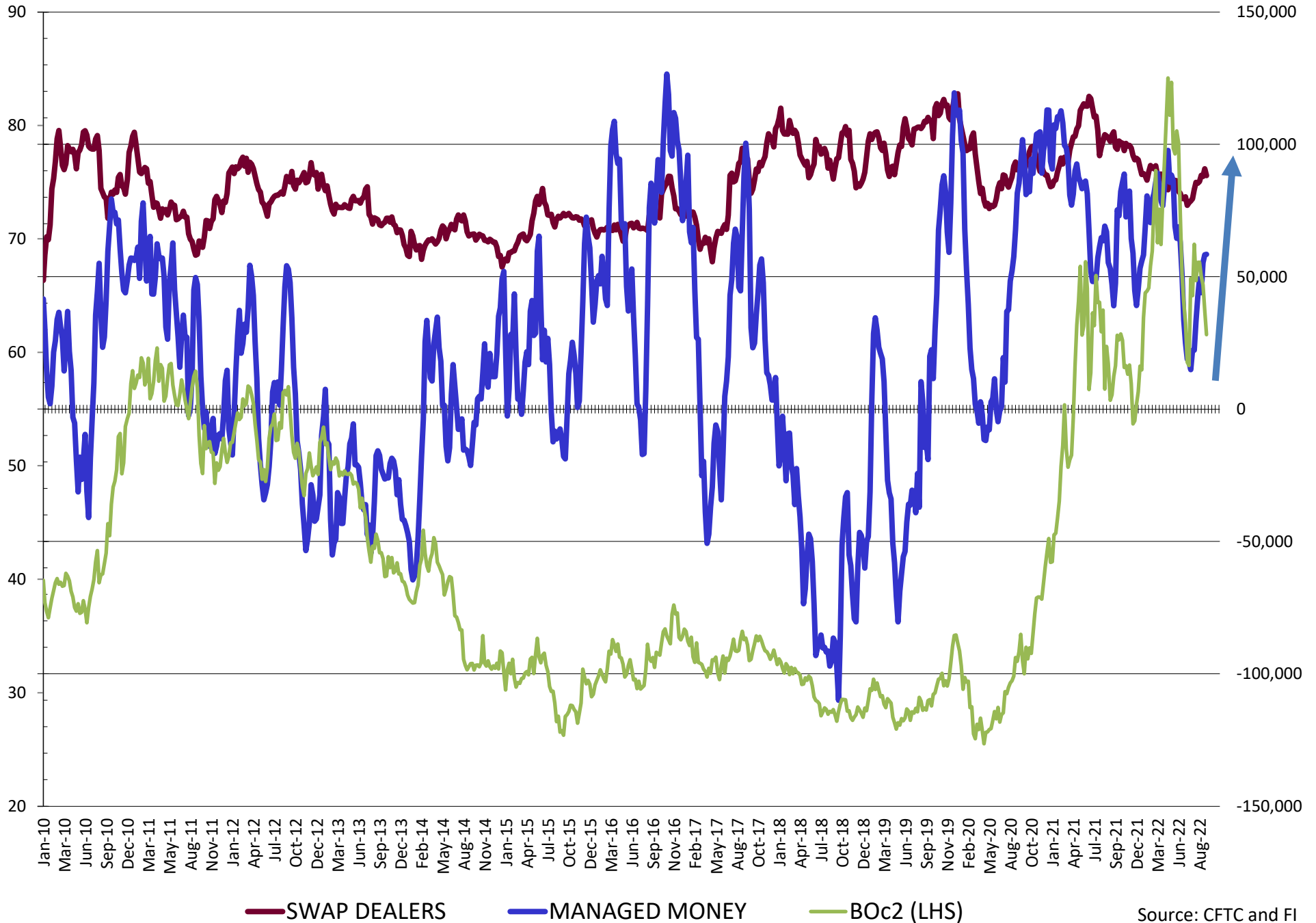
Source: CFTC and FI
9/30/2022

NET POSITION FUTURES AND OPTIONS OF SWAP AND MANAGED FUNDS IN SOYBEAN MEAL



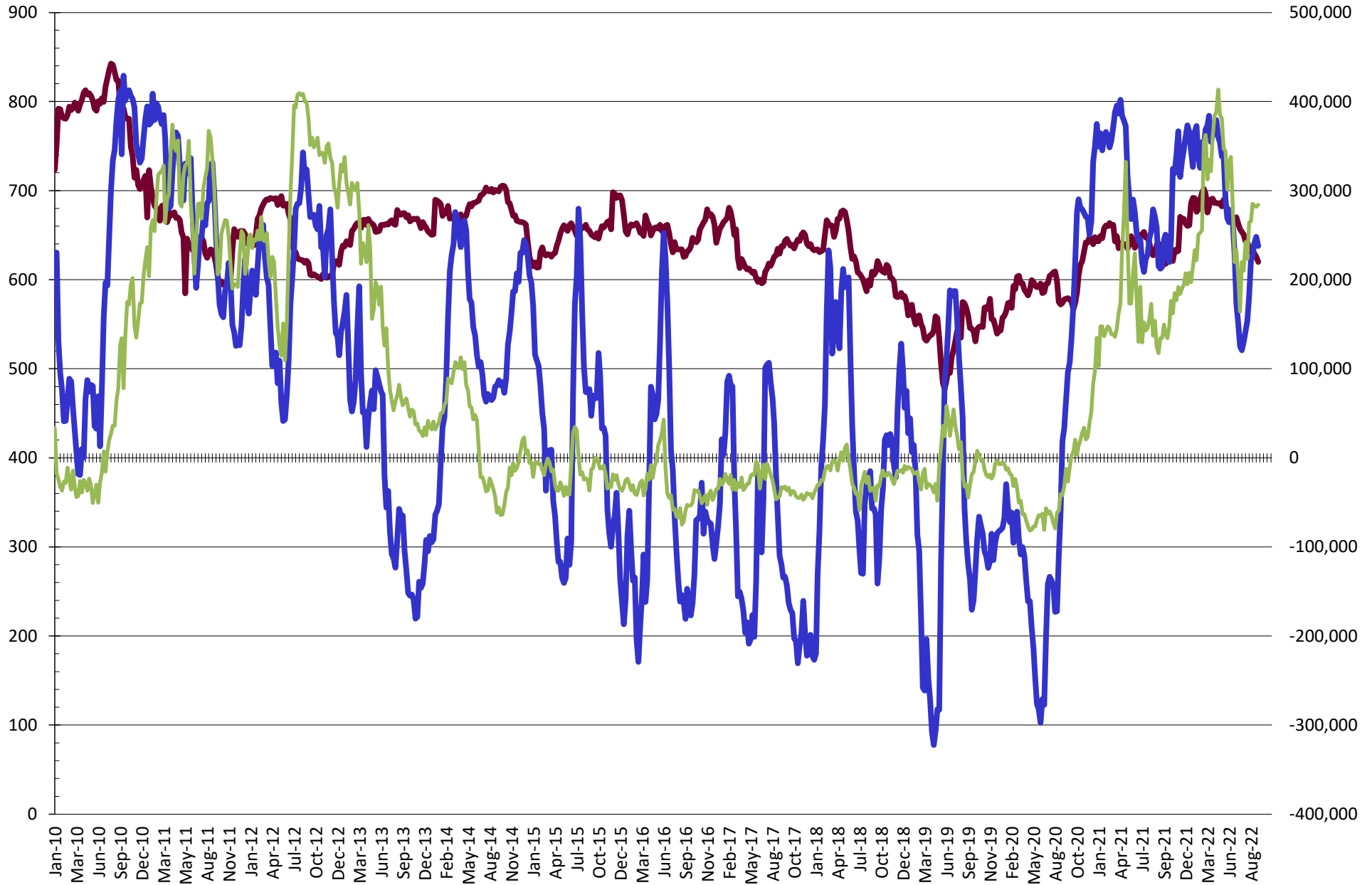
Source: CFTC and FI
9/30/2022

NET POSITION FUTURES AND OPTIONS OF SWAP AND MANAGED FUNDS IN SOYBEAN OIL



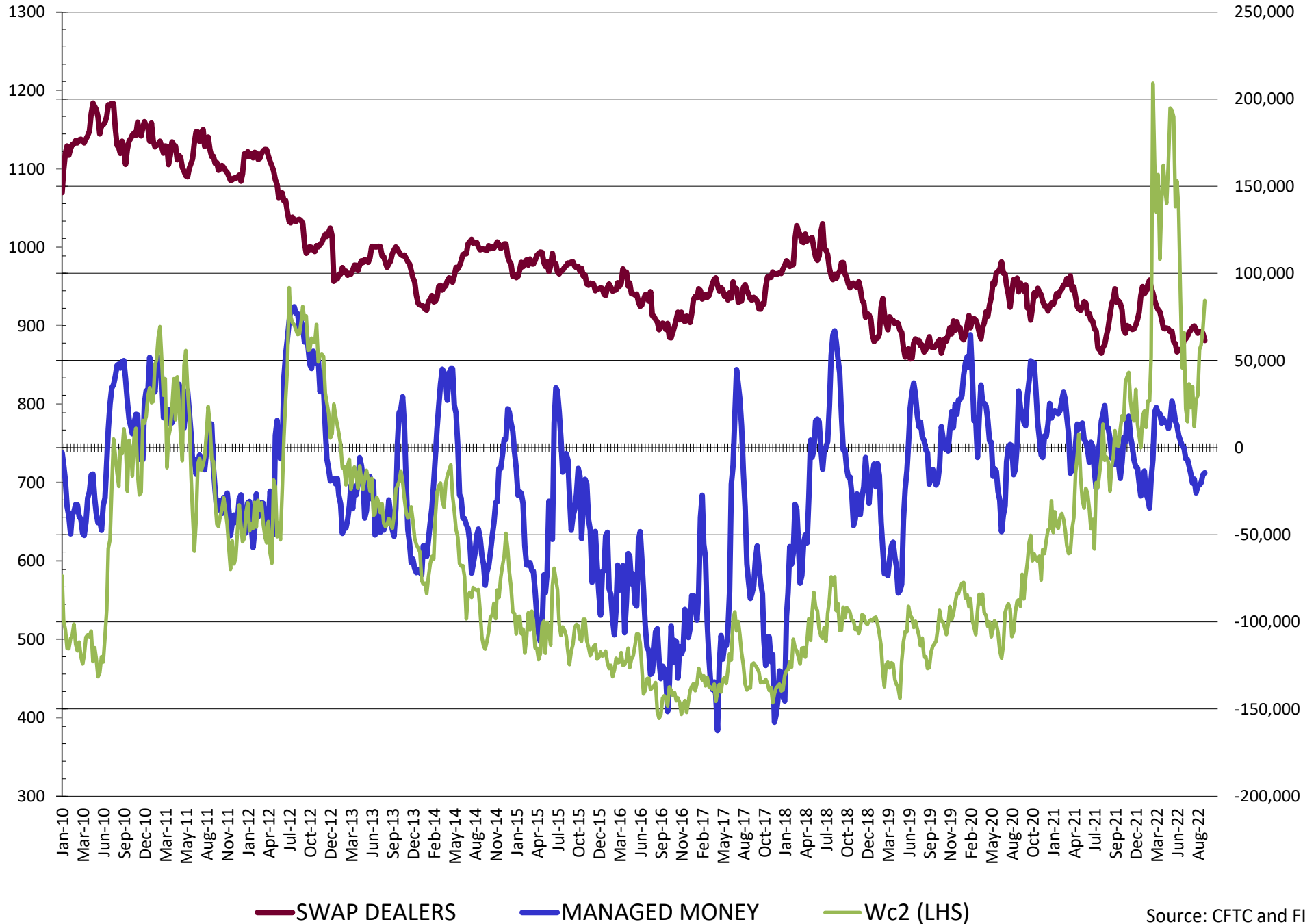
Source: CFTC and FI
9/30/2022

NET POSITION FUTURES AND OPTIONS OF SWAP AND MANAGED FUNDS IN CORN

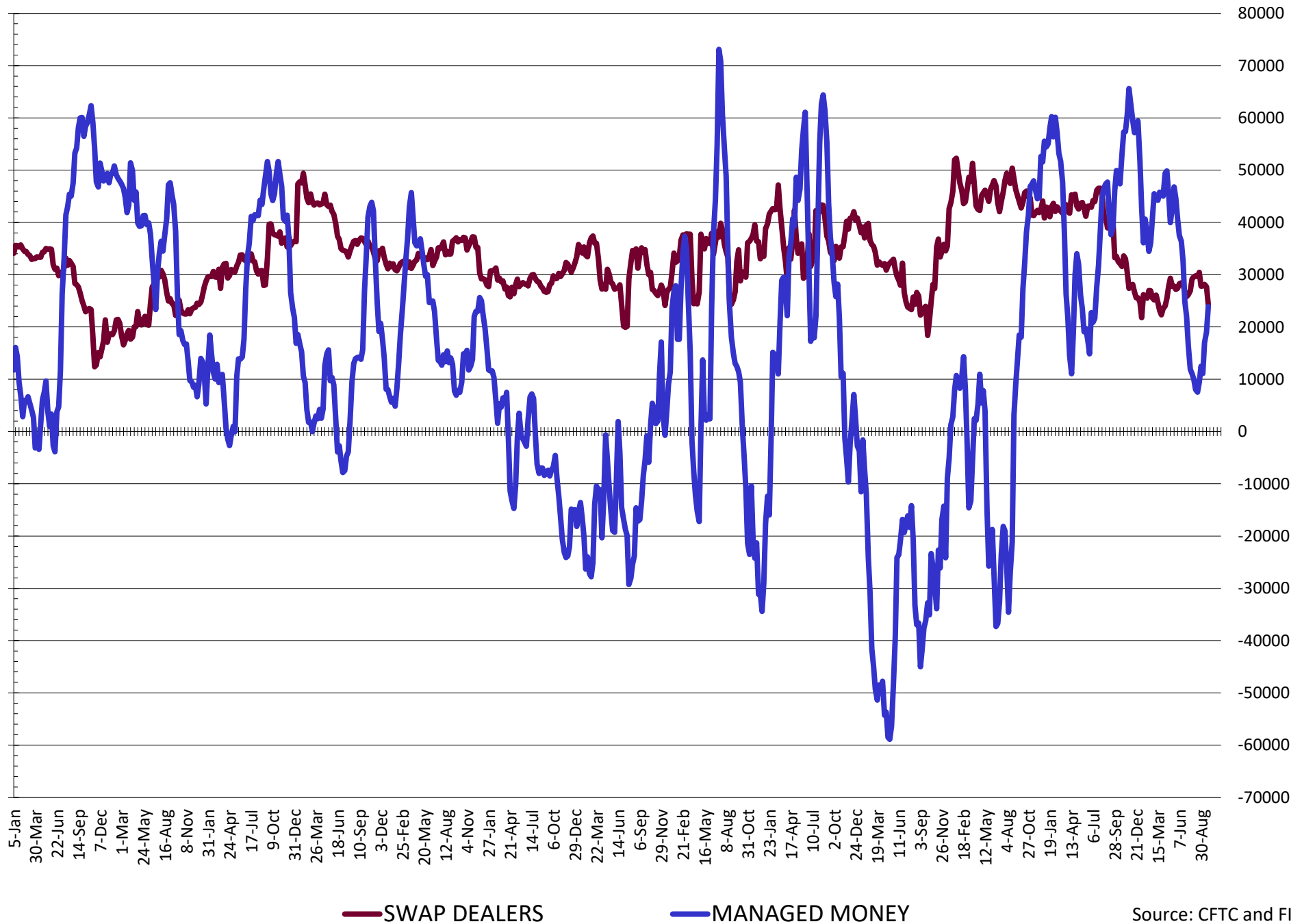


— SWAP DEALERS
 — MANAGED MONEY
 — Cc2 (LHS)

NET POSITION FUTURES AND OPTIONS OF SWAP AND MANAGED FUNDS IN CHICAGO WHEAT

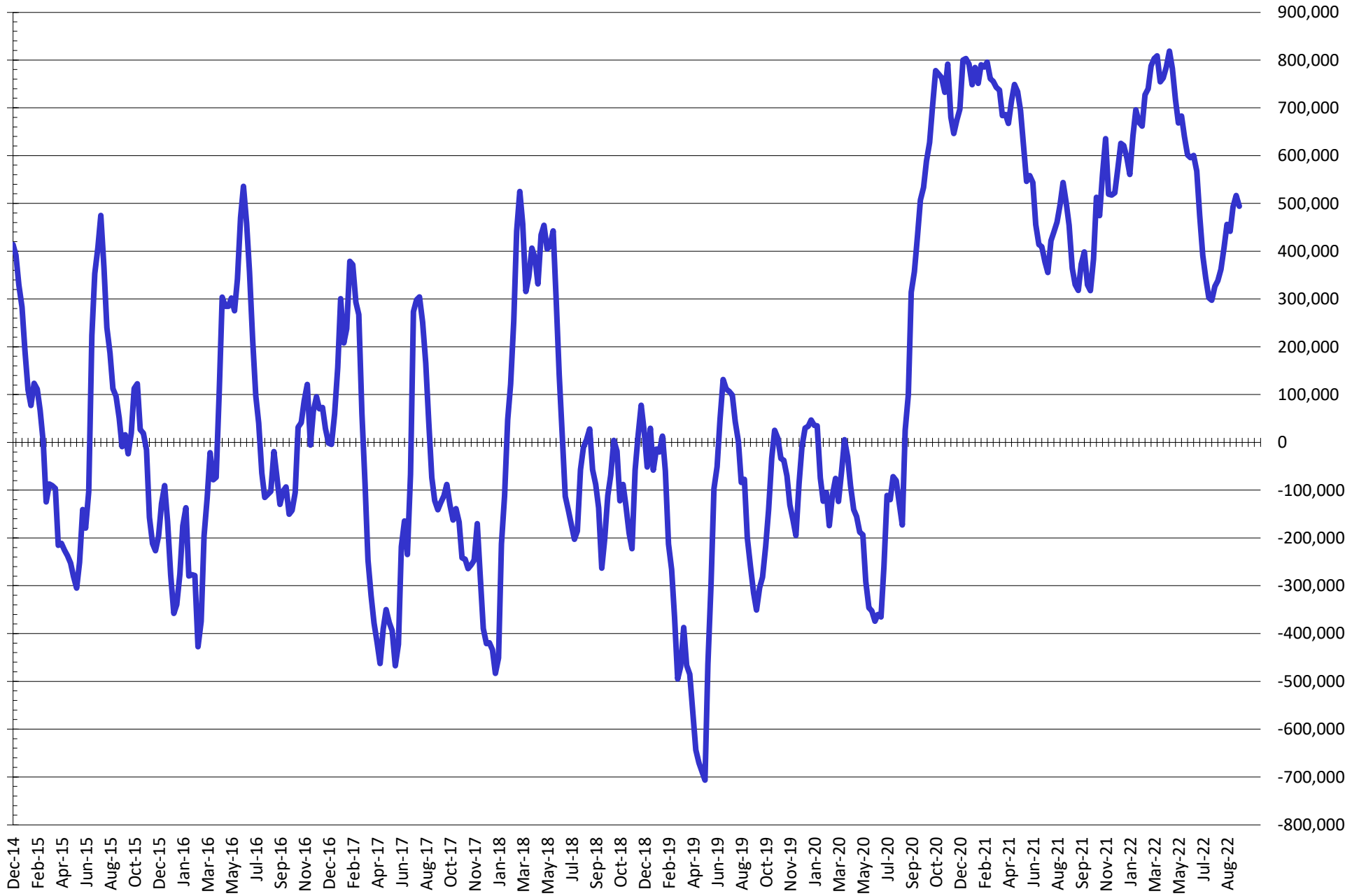


NET POSITION FUTURES AND OPTIONS OF SWAP DEALERS AND MANAGED FUNDS IN KANSAS WHEAT



Source: CFTC and FI
9/30/2022

NET POSITION FUTURES AND OPTIONS OF SWAP AND MANAGED FUNDS IN COMBINED SRW, HRW, CORN, SOYBEANS, SOYMEAL AND SOYOIL



— Net Managed Money

Source: CFTC and FI
9/30/2022

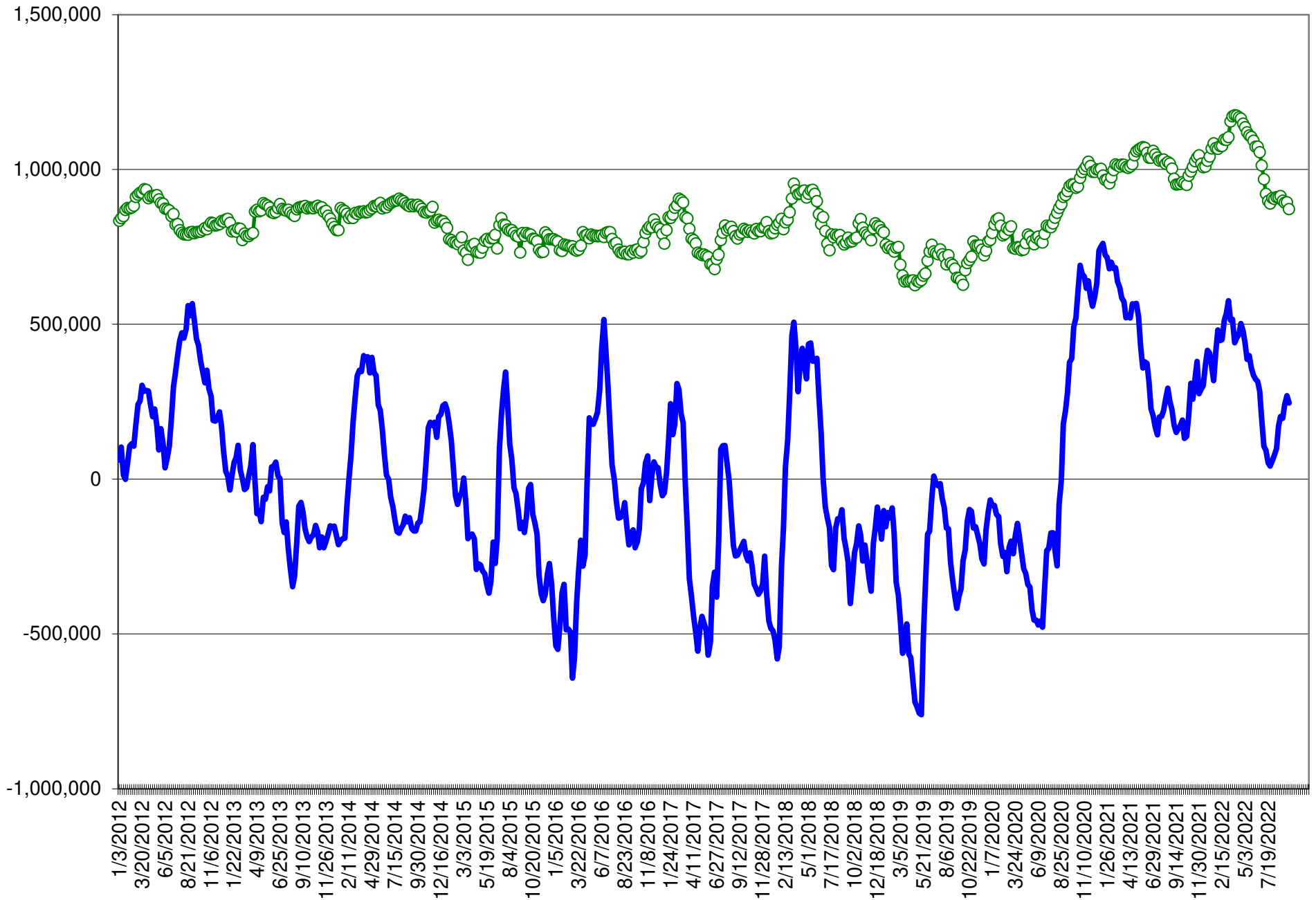
COMMITMENT OF TRADERS
FUTURES & OPTIONS NET POSITIONS (INDEX BROKEN OUT)
AS OF 09/27/2022
(IN THOUSAND CONTRACTS)

	COMMERCIAL				(FUND) NON COMMERCIAL				(SPEC) NON-REPORTABLE			
	27-Sep	20-Sep	13-Sep	6-Sep	27-Sep	20-Sep	13-Sep	6-Sep	27-Sep	20-Sep	13-Sep	6-Sep
	WHEAT											
Chicago	(67.3)	(63.4)	(60.6)	(61.4)	(41.4)	(47.5)	(53.6)	(52.0)	(6.8)	(5.1)	(3.8)	(2.6)
Kansas City	(52.7)	(50.3)	(48.2)	(41.8)	4.7	0.1	(3.0)	(9.2)	(2.0)	(1.2)	(0.4)	(0.1)
Minneapolis	-	-	-	-	-	-	-	-	-	-	-	-
All Wheat	(120.0)	(113.6)	(108.8)	(103.2)	(36.7)	(47.4)	(56.6)	(61.2)	(8.7)	(6.3)	(4.2)	(2.7)
CORN	(450.9)	(478.2)	(470.0)	(469.9)	159.6	173.3	159.5	153.0	(70.3)	(66.5)	(60.3)	(55.0)
OATS	-	-	-	-	-	-	-	-	-	-	-	-
SOYBEANS	(125.4)	(140.4)	(147.5)	(136.6)	31.9	41.7	51.0	33.4	(36.4)	(34.4)	(35.4)	(36.3)
SOY OIL	(128.7)	(135.7)	(134.0)	(122.5)	20.1	21.1	19.8	13.6	6.5	9.9	10.4	7.0
SOY MEAL	(209.0)	(225.4)	(210.0)	(197.7)	70.8	80.2	67.7	57.6	25.4	27.6	25.7	21.1

	TOTAL OPEN INTEREST				(INDEX) COMMERCIAL INDEX TRADERS				(INDEX) % NET OF TOTAL OPEN INTEREST			
	27-Sep	20-Sep	13-Sep	6-Sep	27-Sep	20-Sep	13-Sep	6-Sep	27-Sep	20-Sep	13-Sep	6-Sep
	WHEAT											
Chicago	377,966	387,820	373,189	363,699	115.5	115.9	118.0	116.0	30.5%	29.9%	31.6%	31.9%
Kansas City	167,941	172,256	165,458	160,602	50.0	51.4	51.5	51.1	29.8%	29.8%	31.2%	31.8%
Minneapolis	-	-	-	-	-	-	-	-	-	-	-	-
All Wheat	545,907	560,076	538,647	524,301	165.4	167.3	169.6	167.1	30.3%	29.9%	31.5%	31.9%
CORN	1,787,424	1,817,528	1,792,121	1,730,634	361.7	371.3	370.9	371.9	20.2%	20.4%	20.7%	21.5%
OATS	-	-	-	-	-	-	-	-	-	-	-	-
SOYBEANS	830,261	808,861	794,029	741,820	129.9	133.1	131.9	139.5	15.6%	16.5%	16.6%	18.8%
SOY OIL	447,185	454,576	449,801	439,474	102.0	104.6	103.8	101.9	22.8%	23.0%	23.1%	23.2%
SOY MEAL	422,486	445,424	428,745	431,875	112.7	117.6	116.6	119.0	26.7%	26.4%	27.2%	27.5%

SOURCE: CFTC & FI

NET POSITION FUTURES AND OPTIONS OF SPECULATORS AND INDEX FUNDS IN COMBINED SRW, HRW, CORN, SOYBEANS, SOYMEAL AND SOYOIL



Source: CFTC and FI

○ Net Index

— Net Speculator

9/30/2022

Traditional Daily Estimate of Funds 9/27/22

	(Neg)-"Short"	Pos-"Long"			
Actual less Est.	2.9	24.3	15.2	4.6	9.1
	Corn	Bean	Chi. Wheat	Meal	Oil
Actual	296.6	80.1	2.7	115.1	55.0
28-Sep	3.0	2.0	9.0	(1.0)	(2.0)
29-Sep	0.0	1.0	(2.0)	(4.0)	5.0
30-Sep	5.0	(15.0)	11.0	(3.0)	(6.0)
3-Oct					
4-Oct					
FI Est. of Futures Only 9/27/22	304.6	68.1	20.7	107.1	52.0
FI Est. Futures & Options	291.8	67.1	19.8	99.8	49.3
Futures only record long "Traditional Funds"	547.7 1/26/2021	280.9 11/10/2020	86.5 8/7/2018	167.5 5/1/2018	160.2 11/1/2016
Futures only record short	(235.0) 6/9/2020	(118.3) 4/30/2019	(130.0) 4/25/2017	(49.5) 3/1/2016	(69.8) 9/18/2018
Futures and options record net long	557.6 1/12/2021	270.9 10/6/2020	64.8 8/7/2012	132.1 5/1/2018	159.2 1/1/2016
Futures and options record net short	(270.6) 4/26/2019	(132.0) 4/30/2019	(143.3) 4/25/2017	(64.1) 3/1/2016	(77.8) 9/18/2018

Managed Money Daily Estimate of Funds 9/27/22

	Corn	Bean	Chi. Wheat	Meal	Oil
Latest CFTC Fut. Only	224.4	96.8	(16.4)	93.5	58.5
Latest CFTC F&O	237.9	94.8	(14.4)	93.5	58.4
FI Est. Managed Fut. Only	232	85	2	86	55
FI Est. Managed Money F&O	246	83	4	86	55

Index Funds Latest Positions (as of last Tuesday)

Index Futures & Options	361.7	129.9	115.5	NA	102.0
Change From Previous Week	(9.6)	(3.2)	(0.5)	NA	(2.6)

Source: Reuters, CFTC & FI (FI est. are noted with latest date)

Disclaimer

TO CLIENTS/PROSPECTS OF FUTURES INTERNATIONAL, SEE RISK DISCLOSURE BELOW:

THIS COMMUNICATION IS CONVEYED AS A SOLICITATION FOR ENTERING INTO A DERIVATIVES TRANSACTION.

Any trading recommendations and market or other information to Customer by Futures International (FI), although based upon information obtained from sources believed by FI to be reliable may not be accurate and may be changed without notice to customer. FI makes no guarantee as to the accuracy or completeness of any of the information or recommendations furnished to Customer. Customer understands that FI, its managers, employees and/or affiliates may have a position in commodity futures, options or other derivatives which may not be consistent with the recommendations furnished by FI to Customer.

The risk of trading futures and options and other derivatives involves a substantial risk of loss and is not suitable for all persons. In purchasing an option, the risk is limited to the premium paid, and all commissions and fees involved with the trade. When an option is shorted or written, the writer of the option has unlimited risk with respect to the option written. The use of options strategies such as a straddles and strangles involve multiple option positions and may substantially increase the amount of commissions and fees paid to execute the strategy. Option prices do not necessarily move in tandem with cash or futures prices. Each person must consider whether a particular trade, combination of trades or strategy is suitable for that person's financial means and objectives.

This material may include discussions of seasonal patterns, however, futures prices have already factored in the seasonal aspects of supply and demand, and seasonal patterns are no indication of future market trends. Finally, past performance is not indicative of future results.

This communication may contain links to third party websites which are not under the control of FI and FI is not responsible for their content. Products and services are offered only in jurisdictions where solicitation and sale are lawful, and in accordance with applicable laws and regulations in each such jurisdiction.