

	Current	Δ from YD	Δ from 7D Avg
Nat Gas Prompt	\$ 7.73	▲ \$ 0.14	▼ \$ (0.25)

	Current	Δ from YD	Δ from 7D Avg
WTI Prompt	\$ 91.76	▲ \$ 1.00	▲ \$ 1.6

	Current	Δ from YD	Δ from 7D Avg
Brent Prompt	\$ 97.85	▲ \$ 1.20	▲ \$ 1.7

Page Menu

[Short-term Weather Model Outlooks](#)

[Lower 48 Component Models](#)

[Regional S/D Models Storage Projection](#)

[Weather Model Storage Projection](#)

[Supply – Demand Trends](#)

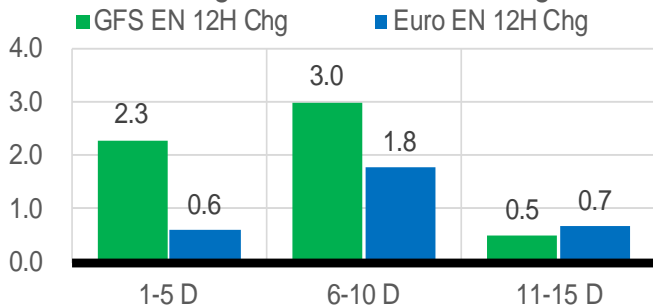
[Nat Gas Options Volume and Open Interest](#)

[Nat Gas Futures Open Interest](#)

[Price Summary](#)

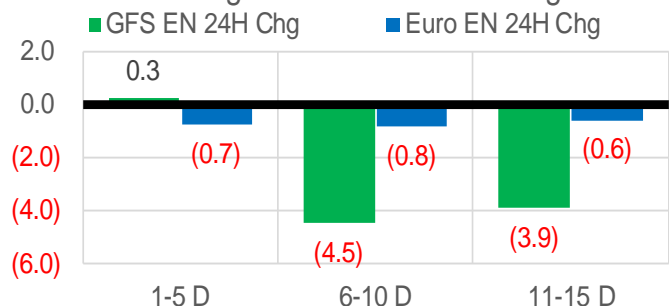
Vs. 12H Ago

L48 Region - 00z TDD vs 12H Ago



Vs. 24H Ago

L48 Region - 00z TDD vs 24H Ago



	Current	Δ from YD	Δ from 7D Avg
US Dry Production	97.2	▼ -1.20	▼ -1.24

	Current	Δ from YD	Δ from 7D Avg
US Power Burns	43.5	▼ -2.82	▼ -1.86

	Current	Δ from YD	Δ from 7D Avg
US ResComm	8.4	▼ -0.15	▲ 0.03

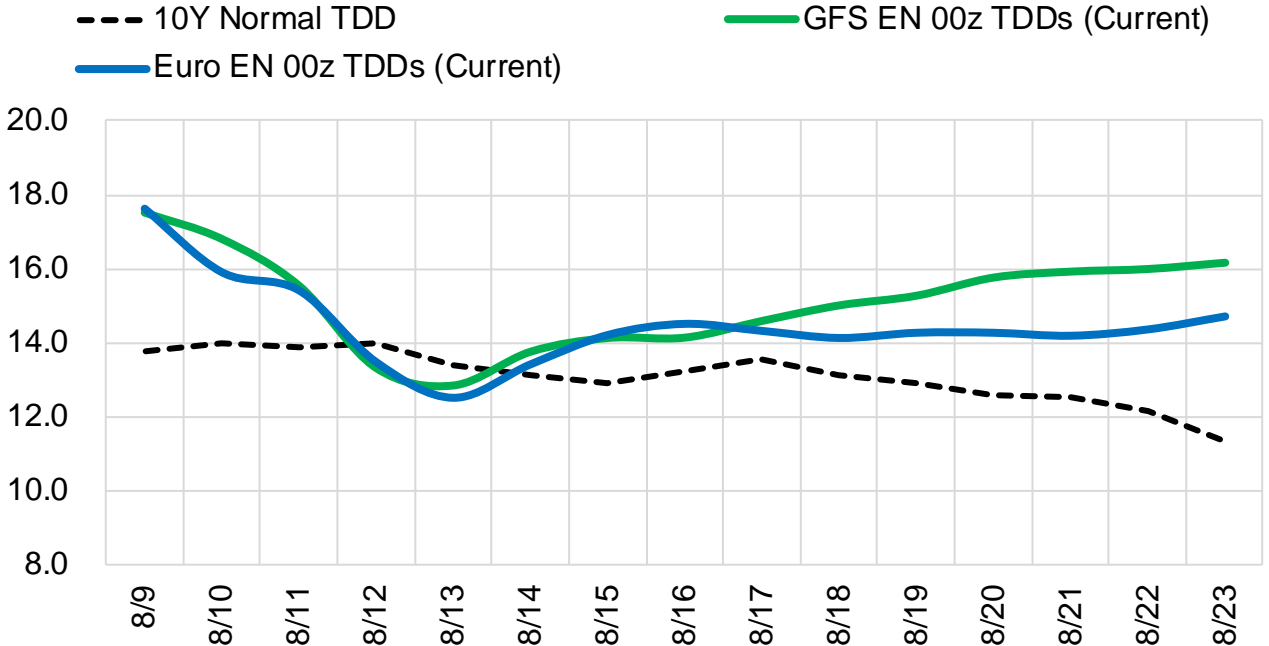
	Current	Δ from YD	Δ from 7D Avg
Canadian Imports	5.3	▲ 0.28	▼ -0.26

	Current	Δ from YD	Δ from 7D Avg
Net LNG Exports	11.0	▼ -0.08	▲ 0.20

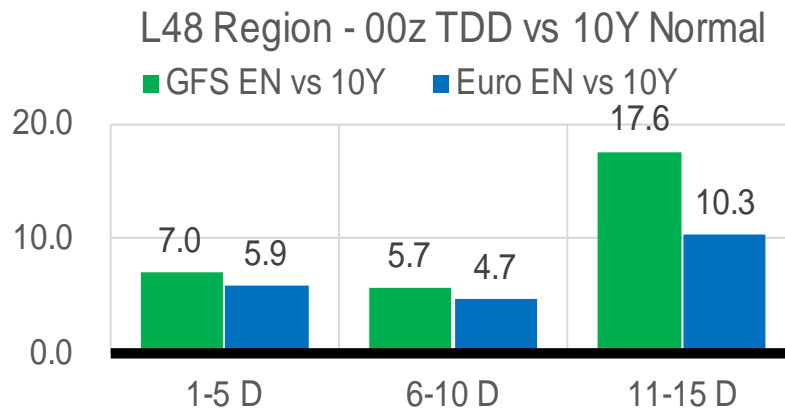
	Current	Δ from YD	Δ from 7D Avg
Mexican Exports	5.5	▼ -1.31	▼ -1.31

Short-term Weather Model Outlooks (00z)

L48 Region



Vs. 10Y Normal



Source: WSI , Bloomberg

Lower 48 Component Models

Daily Balances

	3-Aug	4-Aug	5-Aug	6-Aug	7-Aug	8-Aug	9-Aug	DoD	vs. 7D
Lower 48 Dry Production	98.4	98.4	98.7	98.4	98.5	98.4	97.2	▼ -1.2	▼ -1.3
Canadian Imports	5.7	5.7	5.7	5.4	5.6	5.0	5.3	▲ 0.3	▼ -0.2
L48 Power	46.1	46.7	45.9	43.7	44.4	46.4	43.5	▼ -2.8	▼ -2.0
L48 Residential & Commercial	8.4	8.7	8.4	8.1	8.2	8.6	8.4	▼ -0.2	▲ 0.0
L48 Industrial	21.2	21.3	21.1	21.4	21.3	21.7	21.8	▲ 0.0	▲ 0.4
L48 Lease and Plant Fuel	5.4	5.4	5.4	5.4	5.4	5.4	5.2	▼ -0.2	▼ -0.2
L48 Pipeline Distribution	2.9	2.9	2.9	2.8	2.8	2.9	2.8	▼ -0.2	▼ -0.1
L48 Regional Gas Consumption	84.0	84.9	83.6	81.3	82.0	85.0	81.7	▼ -3.3	▼ -1.8
Net LNG Delivered	10.99	11.02	10.46	10.52	10.30	11.04	10.96	▼ -0.1	▲ 0.2
Total Mexican Exports	6.8	7.1	7.0	6.7	6.6	6.8	6.4	▼ -0.4	▼ -0.4
Implied Daily Storage Activity	2.3	1.0	3.3	5.3	5.1	0.5	3.3		
EIA Reported Daily Storage Activity									
Daily Model Error									

EIA Storage Week Balances

	1-Jul	8-Jul	15-Jul	22-Jul	29-Jul	5-Aug	WoW	vs. 4W
Lower 48 Dry Production	97.1	97.0	96.3	96.9	97.2	98.5	▲ 1.2	▲ 1.6
Canadian Imports	5.7	5.6	6.0	6.2	5.9	5.7	▼ -0.3	▼ -0.3
L48 Power	39.7	41.0	42.9	45.5	44.7	43.9	▼ -0.8	▲ 0.4
L48 Residential & Commercial	8.5	8.4	8.4	8.7	8.6	8.3	▼ -0.3	▼ -0.2
L48 Industrial	20.3	20.1	20.5	21.0	19.4	20.2	▲ 0.8	▼ 0.0
L48 Lease and Plant Fuel	5.3	5.3	5.2	5.3	5.3	5.4	▲ 0.1	▲ 0.1
L48 Pipeline Distribution	2.6	2.6	2.7	2.9	2.8	2.8	▼ -0.1	▲ 0.0
L48 Regional Gas Consumption	76.3	77.4	79.7	83.3	80.8	80.6	▼ -0.2	▲ 0.3
Net LNG Exports	10.6	11.2	11.1	10.8	10.7	10.9	▲ 0.2	▼ 0.0
Total Mexican Exports	7.0	6.9	7.0	7.1	6.9	6.9	▼ 0.0	▼ -0.1
Implied Daily Storage Activity	8.8	7.2	4.5	1.9	4.8	5.8	1.0	
EIA Reported Daily Storage Activity	8.6	8.3	4.6	2.1	5.9			
Daily Model Error	0.2	-1.1	-0.1	-0.2	-1.1			

Monthly Balances

	2Yr Ago Aug-20	LY Aug-21	Apr-22	May-22	Jun-22	Jul-22	MTD Aug-22	MoM	vs. LY
Lower 48 Dry Production	88.8	93.8	94.9	95.8	97.0	97.1	98.4	▲ 1.4	▲ 4.6
Canadian Imports	4.9	5.1	5.8	5.1	5.7	5.9	5.6	▼ -0.4	▲ 0.4
L48 Power	41.0	40.4	25.1	29.7	36.8	43.4	45.2	▲ 1.8	▲ 4.8
L48 Residential & Commercial	7.7	7.9	22.3	12.4	9.0	8.5	8.4	▼ -0.1	▲ 0.5
L48 Industrial	20.8	21.0	20.1	19.8	20.6	20.3	21.3	▲ 1.0	▲ 0.2
L48 Lease and Plant Fuel	4.8	5.1	5.2	5.3	5.2	5.3	5.4	▲ 0.1	▲ 0.3
L48 Pipeline Distribution	2.5	2.6	2.6	2.4	2.5	2.8	2.8	▲ 0.1	▲ 0.3
L48 Regional Gas Consumption	76.9	77.0	75.3	69.6	74.2	80.1	83.0	▲ 2.9	▲ 6.0
Net LNG Exports	4.0	10.5	12.3	12.5	11.2	10.9	10.8	▼ -0.1	▲ 0.3
Total Mexican Exports	6.0	6.9	6.7	7.0	7.1	7.0	6.8	▼ -0.1	▼ 0.0
Implied Daily Storage Activity	6.7	4.6	6.4	11.9	10.2	4.9	3.3		
EIA Reported Daily Storage Activity									
Daily Model Error									

Source: Bloomberg, analytix.ai

Daily Average Generation Data

Nuclear Generation Daily Average - GWh (NRC)

	1-Aug	2-Aug	3-Aug	4-Aug	5-Aug	6-Aug	7-Aug	DoD	vs. 7D
NRC Nuclear Daily Output	90.5	90.7	91.0	90.1	90.0	89.2	90.2	1.0	0.0
NRC Nuclear Max Capacity	104.9	104.9	104.9	104.9	104.9	104.9	104.9	0.0	0.0
NRC Nuclear Outage	14.3	14.2	13.9	14.8	14.9	15.7	14.7	-1.0	0.0
NRC % Nuclear Cap Utilization	92.1	92.2	92.5	91.6	91.5	90.7	91.7	1.0	0.0

Wind Generation Daily Average - MWh (EIA)

	1-Aug	2-Aug	3-Aug	4-Aug	5-Aug	6-Aug	7-Aug	DoD	vs. 7D
CALI Wind	1241	2506	2464	2183	1797	2326	1986	-340	-100
TEXAS Wind	14452	18136	18368	13700	10997	13426	12477	-949	-2370
US Wind	44729	59617	56919	43391	39845	47913	39928	-7985	-8808

Generation Daily Average - MWh (EIA)

	1-Aug	2-Aug	3-Aug	4-Aug	5-Aug	6-Aug	7-Aug	DoD	vs. 7D
US Wind	44729	59617	56919	43391	39845	47913	39928	-7985	-8808
US Solar	16153	18374	17603	15210	16746	18036	17966	-70	946
US Petroleum	1020	1285	1415	1545	1159	989	1118	129	-117
US Other	10153	10171	10485	10648	10139	10143	10350	207	60
US Coal	121692	121989	122674	125736	123878	115183	120842	5659	-1017
US Nuke	92732	92827	92626	92009	91949	91531	92304	773	25
US Hydro	29669	29565	30974	30193	30001	26479	27154	675	-2326
US Gas	231287	235851	243212	253693	252123	233986	235454	1468	-6238

See National Wind and Nuclear daily charts

Source: Bloomberg, analytix.ai

Storage Week Average Generation Data

Nuclear Generation Weekly Average - GWh (NRC)

	1-Jul	8-Jul	15-Jul	22-Jul	29-Jul	5-Aug	WoW	WoW Bcf/d Impact
NRC Nuclear Daily Output	88.9	90.6	91.2	90.5	90.1	90.6	0.5	-0.1
NRC Nuclear Max Capacity	104.9	104.9	104.9	104.9	104.9	104.9	0.0	
NRC Nuclear Outage	16.0	14.2	13.7	14.4	14.8	14.3	-0.5	
NRC % Nuclear Cap Utilization	90.4	92.2	92.7	92.0	91.6	92.1	0.5	

Wind Generation Weekly Average - MWh (EIA)

	1-Jul	8-Jul	15-Jul	22-Jul	29-Jul	5-Aug	WoW	WoW Bcf/d Impact
CALI Wind	2438	3521	2268	2470	3049	1933	-1115	0.2
TEXAS Wind	10046	13920	7264	11182	14533	14443	-90	0.0
US Wind	45054	41967	34343	40039	43435	43379	-56	0.0
							0%	

Generation Weekly Average - MWh (EIA)

	1-Jul	8-Jul	15-Jul	22-Jul	29-Jul	5-Aug	WoW	WoW Bcf/d Impact
						est.		
US Wind	45054	41967	34343	40039	43435	43379	-56	0.0
US Solar	18436	19450	18379	18639	18015	17125	-890	0.2
US Petroleum	865	977	1015	1707	1465	1131	-334	0.1
US Other	7378	9329	9193	10492	10690	10333	-358	0.1
US Coal	100384	113149	113817	118454	125691	118881	-6810	1.2
US Nuke	79101	93305	93507	92543	92281	92607	326	-0.1
US Hydro	36484	35050	34851	32148	30788	29879	-909	0.2
US Gas	199601	221693	237368	248462	237500	234600	-2901	-0.5

See National Wind and Nuclear daily charts

Source: Bloomberg, analytix.ai

Monthly Average Generation Data

Nuclear Generation Monthly Average - GWh (NRC)

	2Yr Ago	LY	MTD				Last 30 days	MoM (MTD vs LY)	Last 30 days YoY
	Same 30 days	Same 30 days	May-22	Jun-22	Jul-22	Aug-22			
NRC Nuclear Daily Output	91.2	90.5	81.7	88.5	90.6	90.3	90.4	-0.3	-0.1
NRC Nuclear Max Capacity	104.9	104.9	104.9	104.9	104.9	104.9	104.9	0.0	0.0
NRC Nuclear Outage	13.7	14.3	23.2	16.3	14.3	14.6	14.5	0.3	0.1
NRC % Nuclear Cap Utilization	92.7	92.1	83.0	90.0	92.1	91.8	91.9	-0.3	-0.1

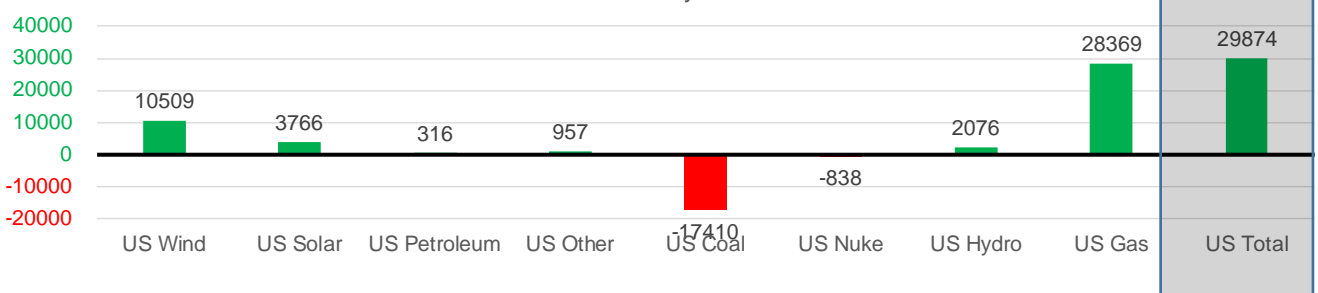
Wind Generation Monthly Average - MWh (EIA)

	2Yr Ago	LY	MTD				Last 30 days	MoM (MTD vs LY)	Last 30 days YoY
	Same 30 days	Same 30 days	May-22	Jun-22	Jul-22	Aug-22			
CALI Wind	2639	2269	3361	2840	2719	2053	2345	-666	76
TEXAS Wind	9410	8755	16756	13441	11765	14057	12446	2291	3690
US Wind	31866	30782	56462	46839	39274	45800	41291	6526	10509

Generation Monthly Average - MWh (EIA)

	2Yr Ago	LY	MTD				Last 30 days	MoM (MTD vs LY)	Last 30 days YoY
	Same 30 days	Same 30 days	May-22	Jun-22	Jul-22	Aug-22			
US Wind	31866	30782	56462	46839	39274	45800	41291	▼-4508.8	▲10509
US Solar	12173	14158	18186	18564	18513	17335	17924	▲588.6	▲3766
US Petroleum	1576	1012	518	998	1252	1196	1328	▲132	▲316
US Other	9878	9377	7724	7710	9961	10310	10335	▲25	▲957
US Coal	120150	137646	85273	102230	117350	121520	120236	▼-1284	▼-17410
US Nuke	93357	93346	85496	85511	92887	92288	92507	▲220	▼-838
US Hydro	30867	28915	31368	36347	32858	28705	30991	▲2287	▲2076
US Gas	227072	212196	157572	190597	235268	239613	240565	▼-2541	▲28369
US Total	524803	527345	443971	490560	548759	561318	557219	▼-573	▲29874

Last 30 days YoY



See National Wind and Nuclear daily charts

Source: Bloomberg, analytix.ai

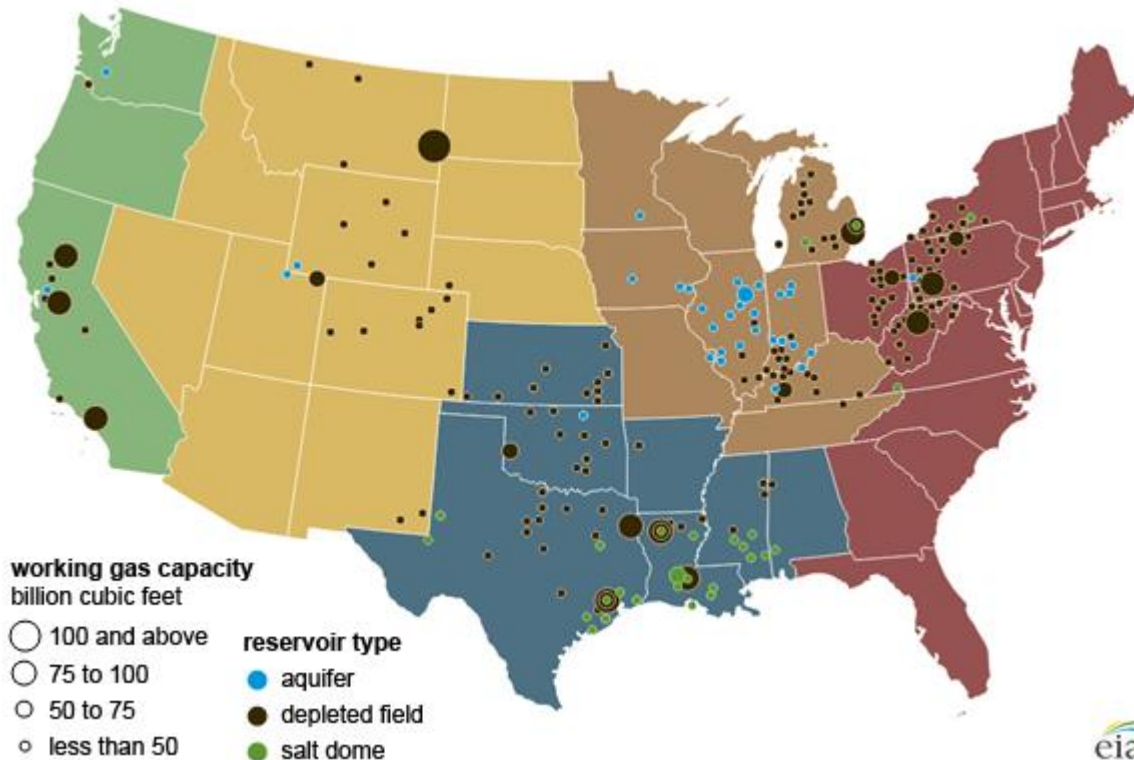
Regional S/D Models Storage Projection

Week Ending 5-Aug

	Daily Raw Storage	Daily Adjustment Factor	Daily Average Storage Activity (Adjusted) *	Weekly Adjusted Storage Activity
L48	6.9	-0.3	6.5	46
East	0.5	2.5	3.0	21
Midwest	3.9	-0.6	3.3	23
Mountain	4.6	-4.2	0.4	3
South Central	-2.7	2.9	0.2	1
Pacific	0.5	-0.9	-0.4	-3

*Adjustment Factor is calculated based on historical regional deltas

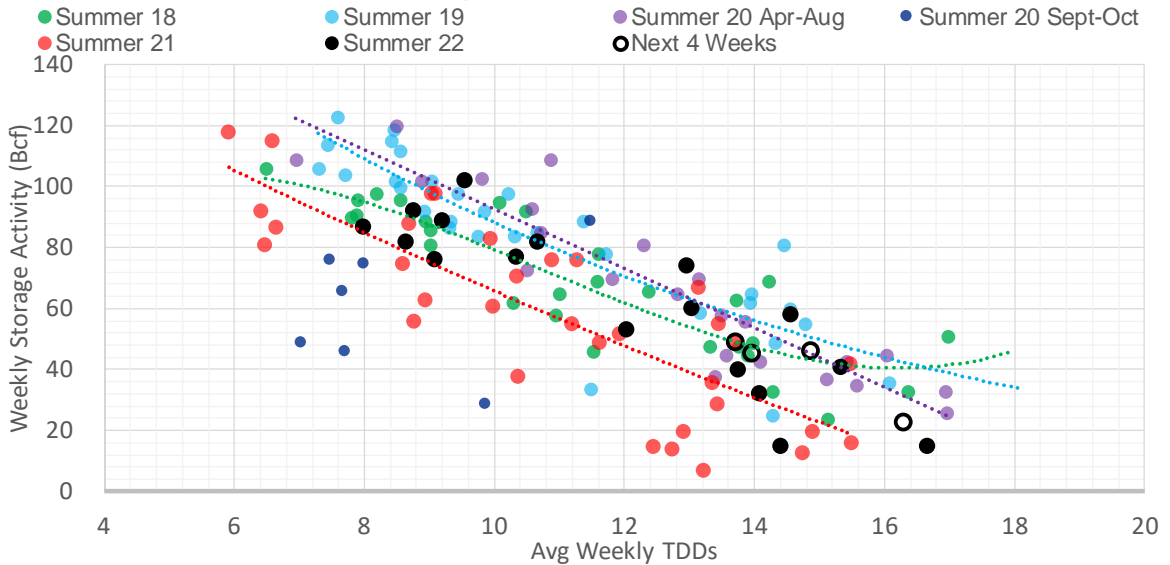
U.S. underground natural gas storage facilities by type (July 2015)



Weather Model Storage Projection

Next report and beyond		
Week Ending	GWDDs	Week Storage Projection
05-Aug	14.9	46
12-Aug	16.3	23
19-Aug	14.0	45
26-Aug	13.7	49

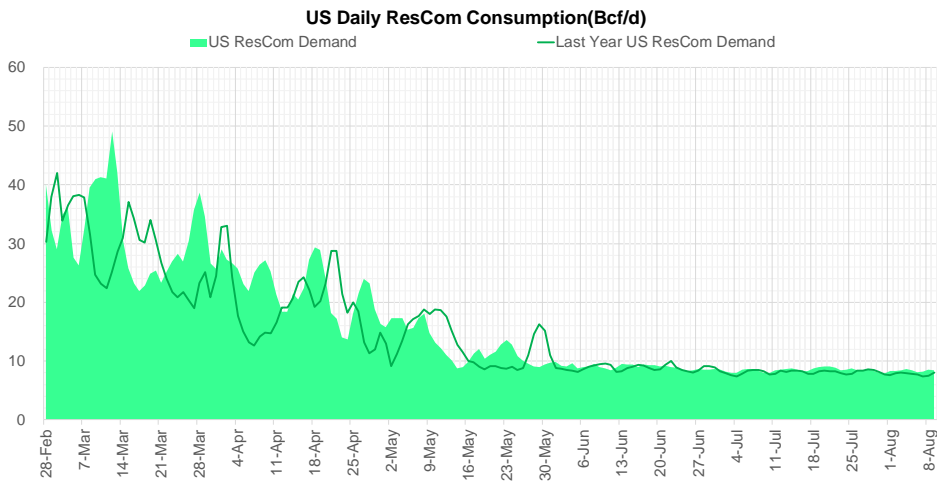
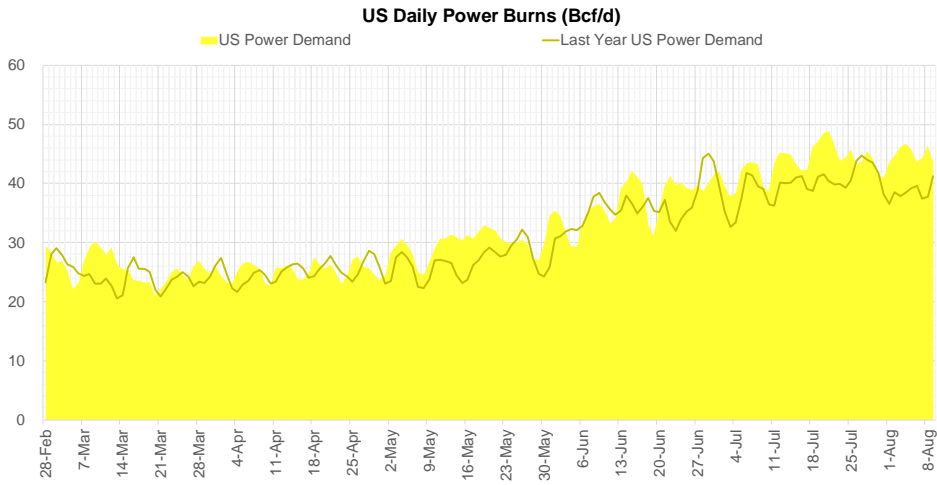
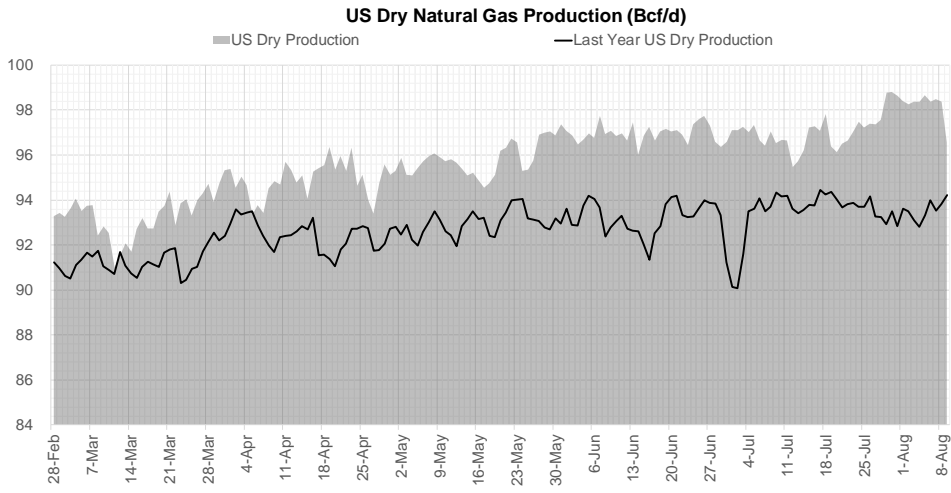
Weather Storage Model - Next 4 Week Forecast



Go to larger image



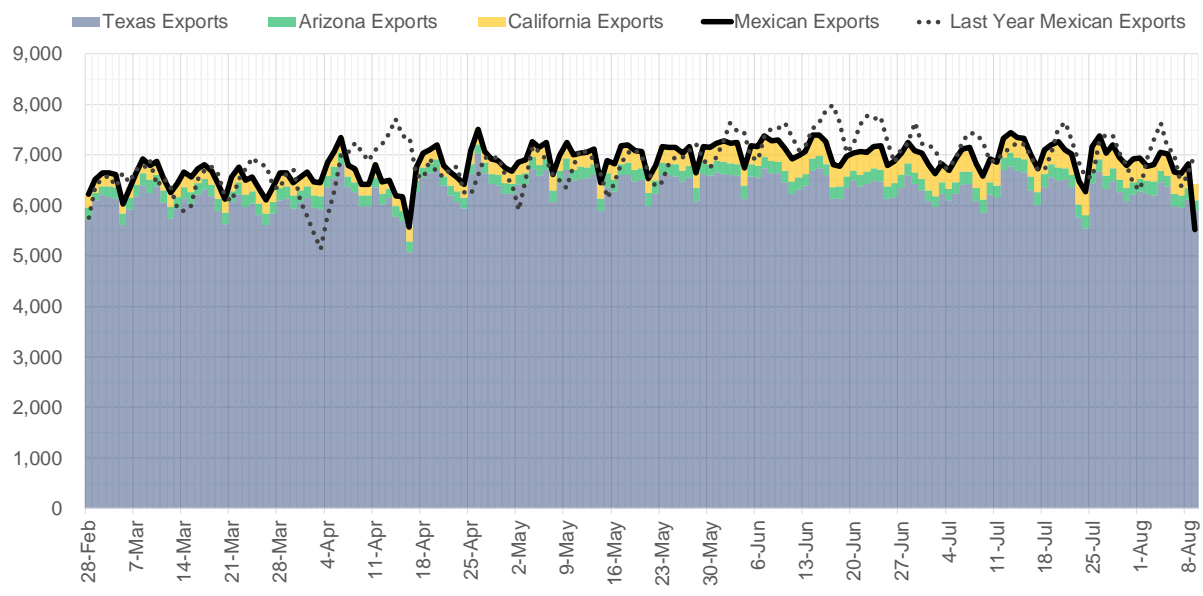
Supply – Demand Trends



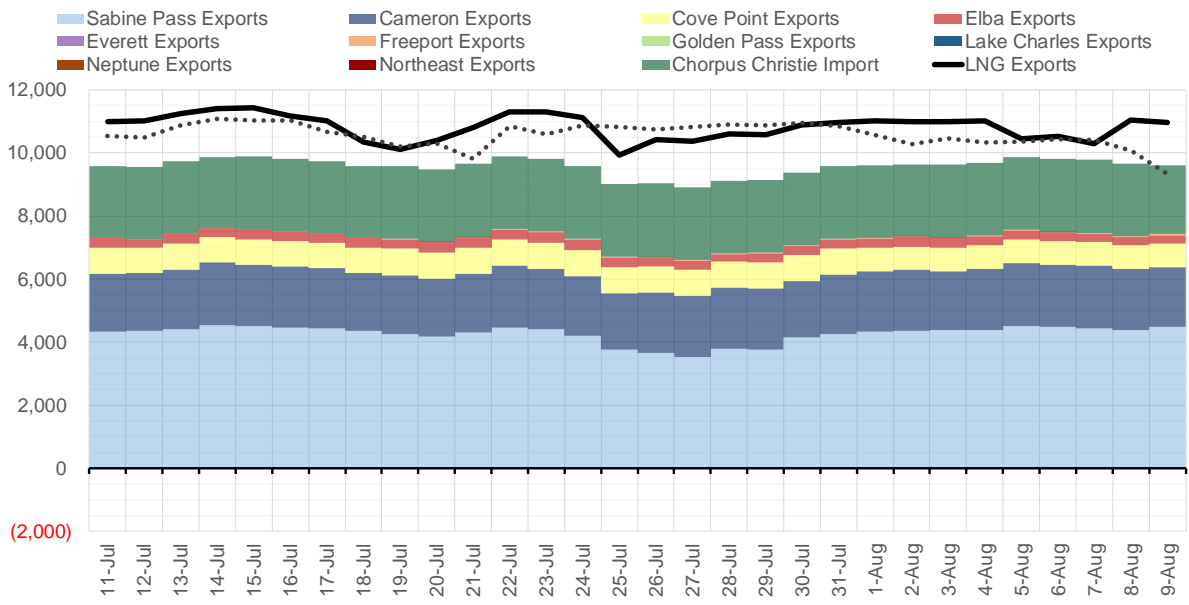
Source: Bloomberg

The risk of trading futures and options and other derivatives involves a substantial risk of loss and is not suitable for all persons. Each person must consider whether a particular trade, combination of trades, or strategy is suitable for that person's financial means and objectives. Past results are not necessarily indicative of future results. This communication may contain links to third party websites which are not under the control of and are not maintained by ION Energy Group, and ION Energy Group is not responsible for their content.

Mexican Exports (MMcf/d)



Net LNG Exports - Last 30 days (MMcf/d)



Source: Bloomberg

The risk of trading futures and options and other derivatives involves a substantial risk of loss and is not suitable for all persons. Each person must consider whether a particular trade, combination of trades, or strategy is suitable for that person's financial means and objectives. Past results are not necessarily indicative of future results. This communication may contain links to third party websites which are not under the control of and are not maintained by ION Energy Group, and ION Energy Group is not responsible for their content.

Nat Gas Options Volume and Open Interest CME and ICE Combined

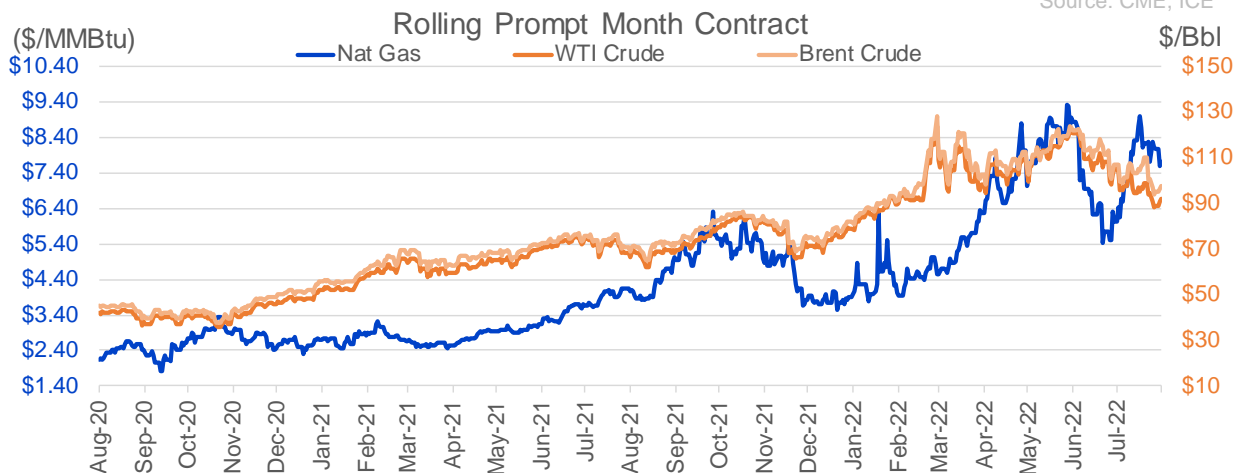
CONTRACT MONTH	CONTRACT YEAR	PUT/CALL	STRIKE	CUMULATIVE VOL	CONTRACT MONTH	CONTRACT YEAR	PUT/CALL	STRIKE	CUMULATIVE OI
9	2022	C	10.00	4179	10	2022	P	3.00	36097
10	2022	P	4.00	3000	10	2022	C	6.00	36016
9	2022	C	11.00	2756	10	2022	P	2.50	28111
11	2022	C	12.00	2552	10	2022	P	6.00	27100
11	2022	C	12.10	2500	10	2022	P	5.00	25230
10	2022	P	5.00	2113	9	2022	C	6.00	24359
11	2022	P	6.00	2072	10	2022	C	5.00	23268
9	2022	P	5.00	1918	3	2023	C	10.00	22739
9	2022	C	9.00	1740	9	2022	C	10.00	22358
10	2022	P	3.00	1504	10	2022	P	3.50	21838
10	2022	P	3.50	1500	10	2022	P	4.00	21618
9	2022	C	12.00	1397	10	2022	C	10.00	20848
9	2022	P	7.00	1353	5	2023	P	2.00	20747
11	2022	C	9.00	1344	9	2022	P	4.00	20586
9	2022	P	6.50	1331	10	2022	C	12.00	20027
11	2022	P	5.00	1326	9	2022	C	7.00	19548
11	2022	P	6.50	1257	9	2022	P	6.00	18947
9	2022	C	10.50	1229	11	2022	P	4.00	18282
9	2022	C	15.00	1191	12	2022	C	5.00	18218
9	2022	C	8.00	1115	12	2022	P	5.00	18153
11	2022	P	4.50	1076	3	2023	P	3.00	17962
9	2022	C	8.50	1068	10	2022	C	8.00	17845
11	2022	C	15.00	1046	1	2023	C	10.00	17610
9	2022	P	6.00	1011	9	2022	C	9.00	17529
9	2022	P	4.50	1009	10	2022	P	2.00	16682
9	2022	P	4.00	1007	9	2022	P	3.00	16633
10	2022	P	4.50	1004	9	2022	P	5.00	16221
9	2022	P	3.50	1000	2	2023	C	10.00	16167
9	2022	P	3.75	1000	9	2022	C	4.00	15970
10	2022	P	3.75	1000	4	2023	P	3.00	15909
11	2022	C	10.00	948	10	2023	P	2.50	15750
10	2022	C	12.00	720	9	2022	P	2.50	15477
10	2022	C	11.00	716	10	2022	P	3.25	15350
9	2022	P	5.75	701	10	2022	C	7.00	15113
9	2022	P	7.50	700	10	2023	P	2.00	14980
11	2022	C	11.00	700	9	2022	P	2.75	14887
9	2022	C	8.75	692	3	2023	C	20.00	14749
10	2022	P	6.00	682	11	2022	C	8.00	14627
9	2022	C	9.50	656	10	2023	P	3.00	14430
9	2022	C	7.50	601	12	2022	C	6.00	13987
10	2022	P	5.75	600	9	2022	C	9.50	13898
7	2023	P	3.00	600	11	2022	C	10.00	13807
10	2023	P	3.00	600	4	2023	P	2.75	13745
10	2022	C	12.50	563	2	2023	C	9.00	13410
9	2022	C	10.15	500	9	2022	P	3.50	13312
10	2022	C	11.25	500	10	2022	C	4.00	13309
10	2022	C	8.50	461	10	2022	P	2.75	13286
4	2024	C	5.00	450	9	2022	C	3.00	13225
4	2024	C	7.00	450	10	2022	C	3.00	13214
					1	2023	P	5	13150

Source: CME, ICE

Nat Gas Futures Open Interest CME and ICE Combined

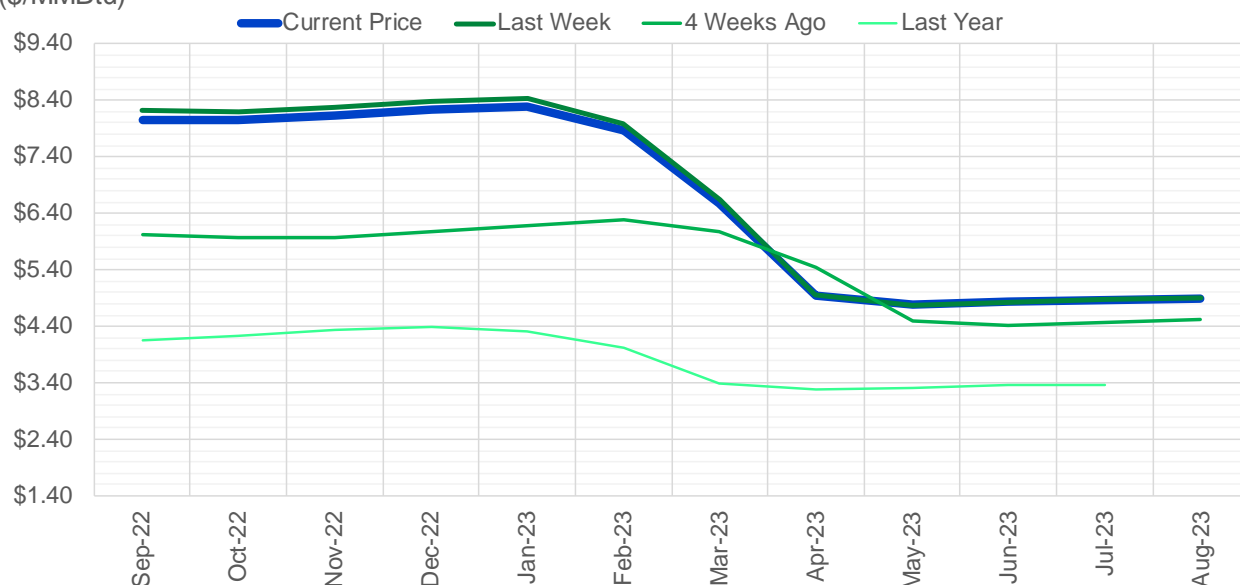
CME Henry Hub Futures (10,000 MMBtu)				ICE Henry Hub Futures Contract Equivalent (10,000 MM			
	Current	Prior	Daily Change		Current	Prior	Daily Change
SEP 22	118817	139056	-20239	SEP 22	82076	82532	-456
OCT 22	91323	92989	-1666	OCT 22	77226	75210	2016
NOV 22	93832	89834	3998	NOV 22	62620	62070	551
DEC 22	59009	58461	548	DEC 22	65608	65390	217
JAN 23	77736	74937	2799	JAN 23	65550	65220	331
FEB 23	36373	36008	365	FEB 23	60165	59220	945
MAR 23	53590	52936	654	MAR 23	53542	53128	414
APR 23	69677	69930	-253	APR 23	53813	53931	-119
MAY 23	69152	68366	786	MAY 23	52826	52661	165
JUN 23	23086	22886	200	JUN 23	46446	46433	13
JUL 23	23785	23452	333	JUL 23	44749	44727	22
AUG 23	19500	19435	65	AUG 23	43757	43766	-9
SEP 23	18518	17766	752	SEP 23	42906	42909	-3
OCT 23	47024	46926	98	OCT 23	50048	49842	207
NOV 23	12931	12816	115	NOV 23	44943	44856	87
DEC 23	11887	11750	137	DEC 23	40850	40719	132
JAN 24	17477	17274	203	JAN 24	39815	39948	-133
FEB 24	7695	7926	-231	FEB 24	30141	30135	6
MAR 24	17697	17426	271	MAR 24	34827	34649	178
APR 24	13964	13944	20	APR 24	28295	28283	11
MAY 24	6887	6770	117	MAY 24	26957	26929	28
JUN 24	2506	2531	-25	JUN 24	23955	23880	75
JUL 24	2418	2364	54	JUL 24	23610	23534	76
AUG 24	3306	3302	4	AUG 24	23498	23453	45
SEP 24	1877	1876	1	SEP 24	23445	23407	37
OCT 24	8501	8489	12	OCT 24	26753	26729	25
NOV 24	4756	4782	-26	NOV 24	24860	24846	14
DEC 24	7659	7657	2	DEC 24	27894	27869	24
JAN 25	15978	15973	5	JAN 25	20729	20689	40
FEB 25	876	870	6	FEB 25	13972	13982	-10

Source: CME, ICE



(\$/MMBtu)

Nat Gas Term Structure



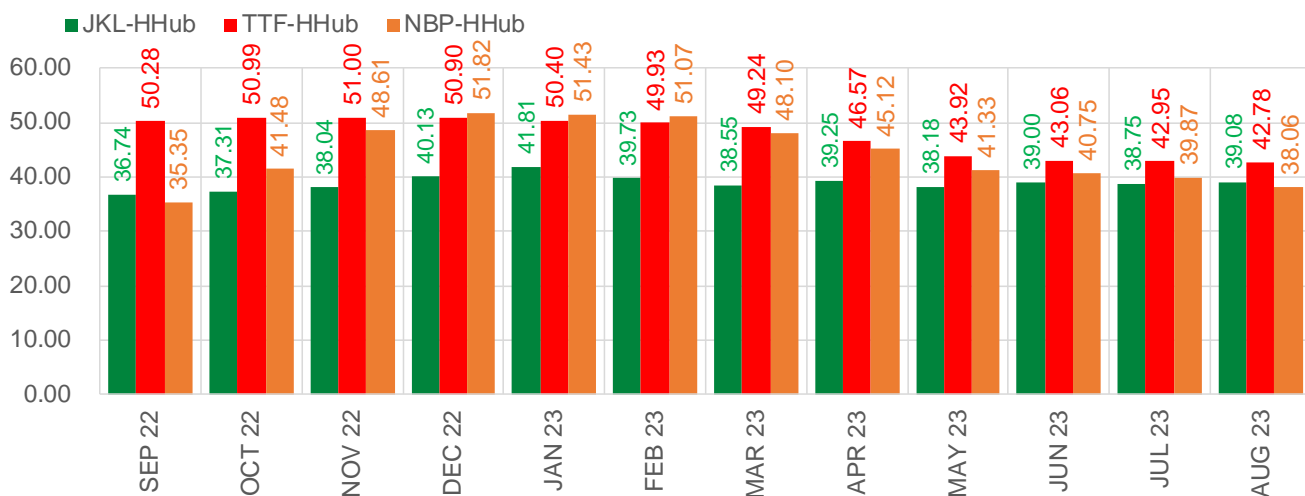
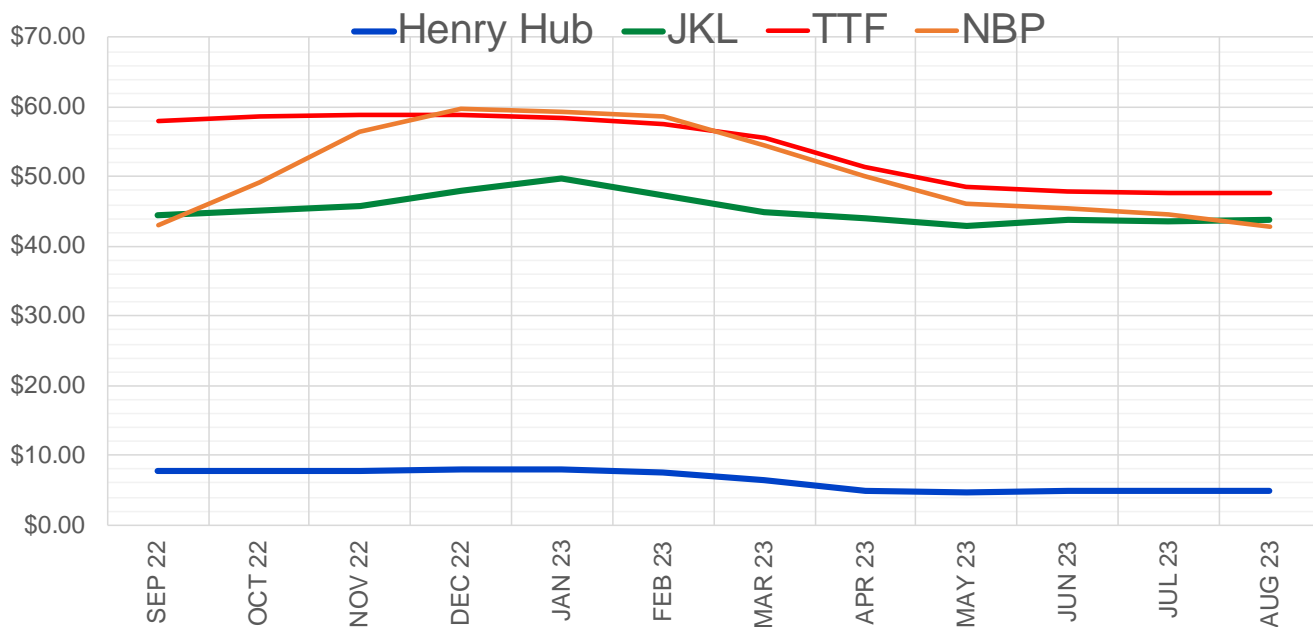
	Sep-22	Oct-22	Nov-22	Dec-22	Jan-23	Feb-23	Mar-23	Apr-23	May-23	Jun-23	Jul-23	Aug-23
Current Price	\$8.064	\$8.051	\$8.120	\$8.230	\$8.294	\$7.860	\$6.565	\$4.954	\$4.786	\$4.829	\$4.873	\$4.886
Last Week	\$8.229	\$8.208	\$8.283	\$8.374	\$8.441	\$7.973	\$6.636	\$4.943	\$4.780	\$4.830	\$4.887	\$4.897
vs. Last Week	-\$0.165	-\$0.157	-\$0.163	-\$0.144	-\$0.147	-\$0.113	-\$0.071	\$0.011	\$0.006	-\$0.001	-\$0.014	-\$0.011
4 Weeks Ago	\$6.034	\$5.967	\$5.963	\$6.068	\$6.187	\$6.287	\$6.087	\$5.433	\$4.506	\$4.406	\$4.466	\$4.527
vs. 4 Weeks Ago	\$2.030	\$2.084	\$2.157	\$2.162	\$2.107	\$1.573	\$0.478	-\$0.479	\$0.280	\$0.423	\$0.407	\$0.359
Last Year	\$4.140	\$4.154	\$4.219	\$4.330	\$4.400	\$4.315	\$4.023	\$3.377	\$3.291	\$3.319	\$3.351	\$3.357
vs. Last Year	\$3.924	\$3.897	\$3.901	\$3.900	\$3.894	\$3.545	\$2.542	\$1.577	\$1.495	\$1.510	\$1.522	\$1.529

	Units	Cash Settled	Prompt Settle	Cash to Prompt
AGT Citygate	\$/MMBtu	8.80	7.90	-0.91
TETCO M3	\$/MMBtu	7.52	7.27	-0.25
FGT Zone 3	\$/MMBtu	7.70	10.37	2.67
Zone 6 NY	\$/MMBtu	7.70	7.22	-0.48
Chicago Citygate	\$/MMBtu	7.42	7.99	0.57
Michcon	\$/MMBtu	7.41	7.94	0.53
Columbia TCO Pool	\$/MMBtu	7.21	7.24	0.03
Ventura	\$/MMBtu	5.95	7.90	1.95
Rockies/Opal	\$/MMBtu	7.41	7.72	0.31
El Paso Permian Basin	\$/MMBtu	6.77	7.34	0.57
Socal Citygate	\$/MMBtu	10.25	8.56	-1.69
Malin	\$/MMBtu	7.64	7.88	0.24
Houston Ship Channel	\$/MMBtu	7.40	7.89	0.49
Henry Hub Cash	\$/MMBtu	7.76	7.78	0.02
AECO Cash	C\$/GJ	3.31	4.83	1.52
Station2 Cash	C\$/GJ	3.81	7.66	3.85
Dawn Cash	C\$/GJ	7.47	8.02	0.55

Source: CME, Bloomberg

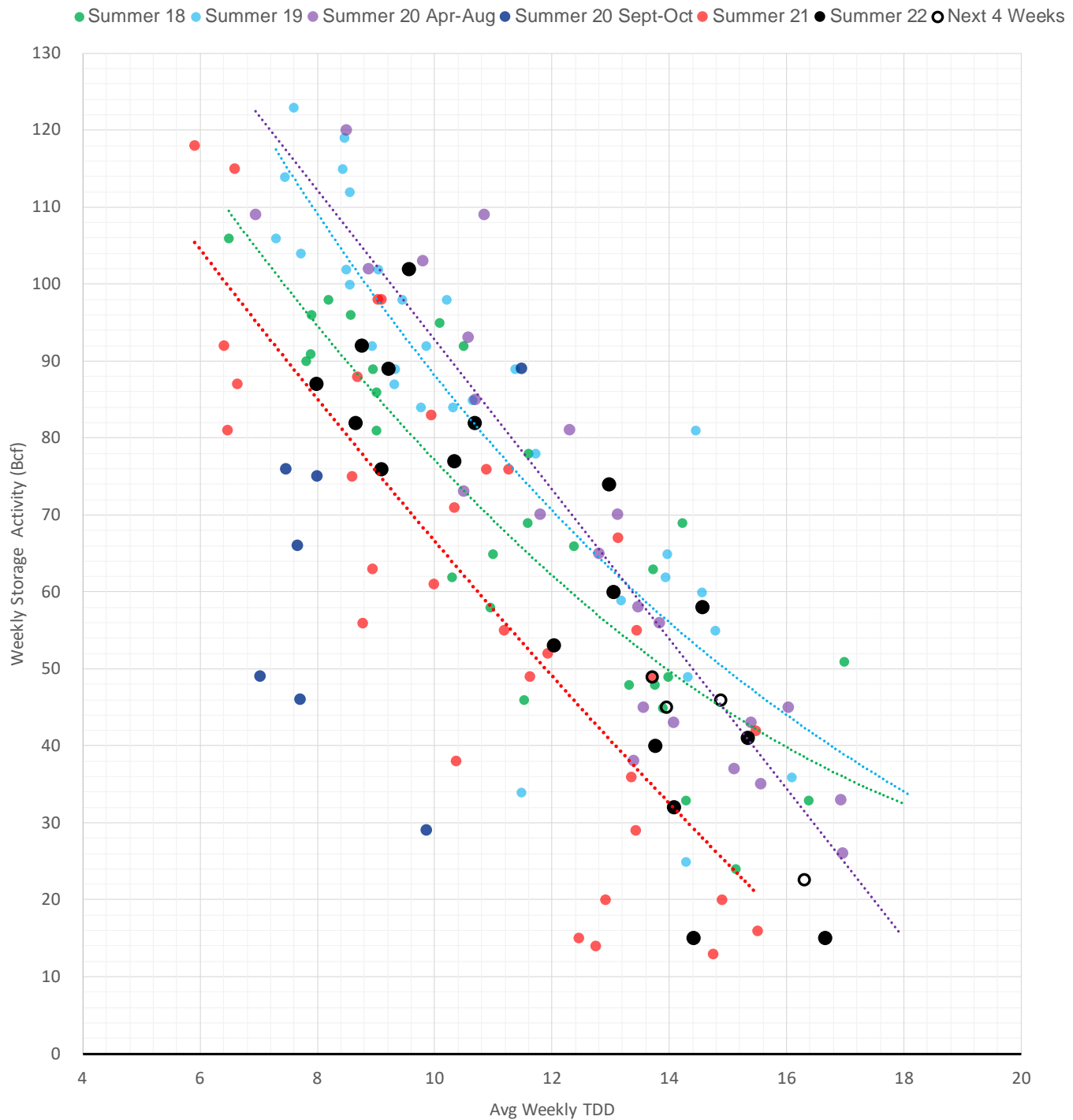
	Units	Current Price	vs. Last Week	vs. 4 Weeks Ago	vs. Last Year
NatGas Jul21/Oct21	\$/MMBtu	2.224	▲ 0.000	▲ 0.000	▲ 1.766
NatGas Oct21/Nov21	\$/MMBtu	0.361	▲ 0.000	▲ 0.000	▲ 0.293
NatGas Oct21/Jan22	\$/MMBtu	-1.817	▲ 0.000	▲ 0.000	▼ -2.060
NatGas Apr22/Oct22	\$/MMBtu	2.242	▼ -0.682	▲ 1.277	▲ 2.245
WTI Crude	\$/Bbl	90.76	▼ -3.130	▼ -13.330	▲ 24.280
Brent Crude	\$/Bbl	96.65	▼ -3.380	▼ -10.450	▲ 27.610
Fuel Oil, NY Harbour 1%	\$/Bbl	97.18	▲ 0.000	▲ 0.000	▲ 0.000
Heating Oil	cents/Gallon	317.91	▼ -26.090	▼ -58.900	▲ 113.700
Propane, Mt. Bel	cents/Gallon	1.07	▼ -0.041	▼ -0.118	▼ -0.015
Ethane, Mt. Bel	cents/Gallon	0.55	▼ -0.040	▲ 0.047	▲ 0.210
Coal, PRB	\$/MTon	12.30	▲ 0.000	▲ 0.000	▲ 0.000
Coal, PRB	\$/MMBtu	0.70			
Coal, ILB	\$/MTon	31.05	▲ 0.000	▲ 0.000	▲ 0.000
Coal, ILB	\$/MMBtu	1.32			

Nat Gas Term Structure (\$MMBTU)



	SEP 22	OCT 22	NOV 22	DEC 22	JAN 23	FEB 23	MAR 23	APR 23	MAY 23	JUN 23	JUL 23	AUG 23
Henry Hub	\$7.733	\$7.726	\$7.809	\$7.912	\$7.971	\$7.525	\$6.328	\$4.887	\$4.734	\$4.788	\$4.829	\$4.839
JKL	\$44.470	\$45.035	\$45.850	\$48.045	\$49.785	\$47.250	\$44.880	\$44.135	\$42.910	\$43.785	\$43.580	\$43.920
JKL-HHub	\$36.737	\$37.309	\$38.041	\$40.133	\$41.814	\$39.725	\$38.552	\$39.248	\$38.176	\$38.997	\$38.751	\$39.081
TTF	\$58.010	\$58.720	\$58.809	\$58.810	\$58.370	\$57.454	\$55.570	\$51.452	\$48.655	\$47.847	\$47.774	\$47.619
TTF-HHub	\$50.277	\$50.994	\$51.000	\$50.898	\$50.399	\$49.929	\$49.242	\$46.565	\$43.921	\$43.059	\$42.945	\$42.780
NBP	\$43.085	\$49.204	\$56.415	\$59.730	\$59.405	\$58.599	\$54.427	\$50.009	\$46.059	\$45.541	\$44.696	\$42.896
NBP-HHub	\$35.352	\$41.478	\$48.606	\$51.818	\$51.434	\$51.074	\$48.099	\$45.122	\$41.325	\$40.753	\$39.867	\$38.057

Weather Storage Model - Next 4 Week Forecast



The risk of trading futures and options and other derivatives involves a substantial risk of loss and is not suitable for all persons. Each person must consider whether a particular trade, combination of trades, or strategy is suitable for that person's financial means and objectives. Past results are not necessarily indicative of future results. This communication may contain links to third party websites which are not under the control of and are not maintained by ION Energy Group, and ION Energy Group is not responsible for their content.

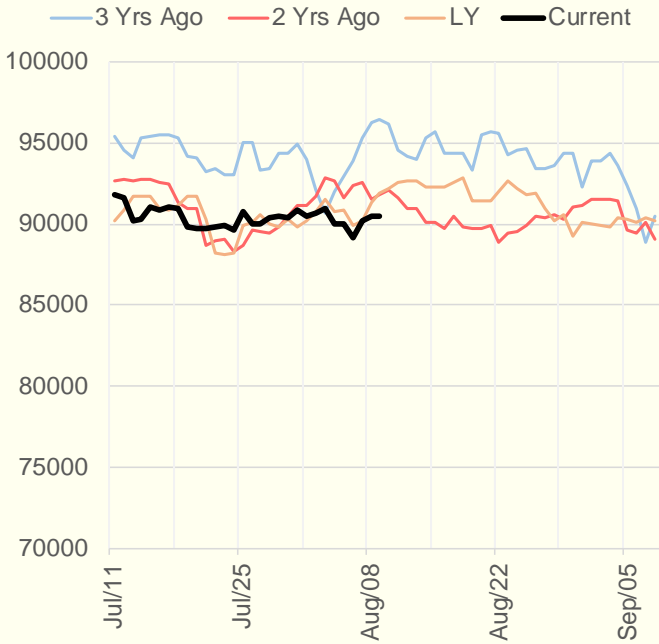
Weather Storage Model - Next 4 Week Forecast

● Apr-May 2021
 ● June-Aug 2021
 ● Sept-Oct 2021
 ● Series8
 ○ Next 4 Weeks

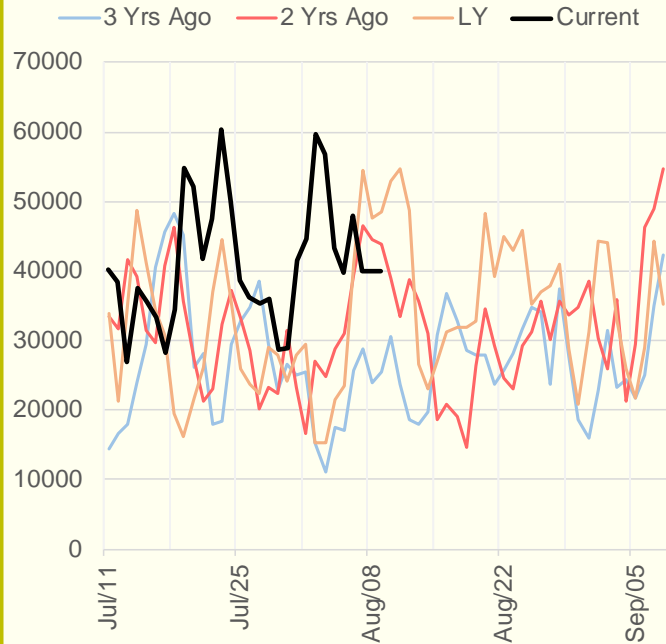


The risk of trading futures and options and other derivatives involves a substantial risk of loss and is not suitable for all persons. Each person must consider whether a particular trade, combination of trades, or strategy is suitable for that person's financial means and objectives. Past results are not necessarily indicative of future results. This communication may contain links to third party websites which are not under the control of and are not maintained by ION Energy Group, and ION Energy Group is not responsible for their content.

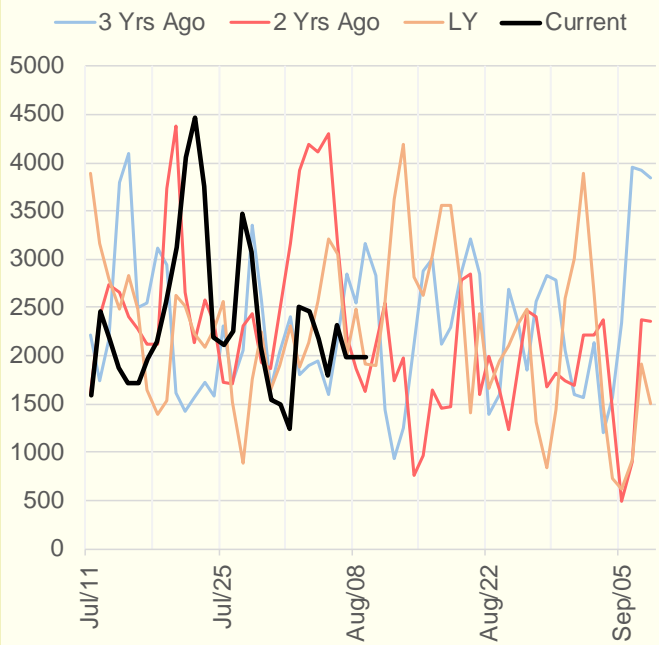
NRC Nuclear Daily Output



US Wind



CALI Wind



TEXAS Wind

