

	Current	Δ from YD	Δ from 7D Avg
Nat Gas Prompt	\$ 7.83	▼ \$ (0.24)	▼ \$ (0.25)

	Current	Δ from YD	Δ from 7D Avg
WTI Prompt	\$ 88.24	▼ \$ (0.77)	▼ \$ (2.4)

	Current	Δ from YD	Δ from 7D Avg
Brent Prompt	\$ 93.97	▼ \$ (0.95)	▼ \$ (2.6)

Page Menu

[Short-term Weather Model Outlooks](#)

[Lower 48 Component Models](#)

[Regional S/D Models Storage Projection](#)

[Weather Model Storage Projection](#)

[Supply – Demand Trends](#)

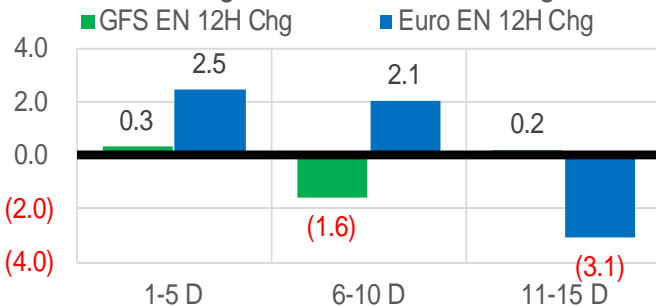
[Nat Gas Options Volume and Open Interest](#)

[Nat Gas Futures Open Interest](#)

[Price Summary](#)

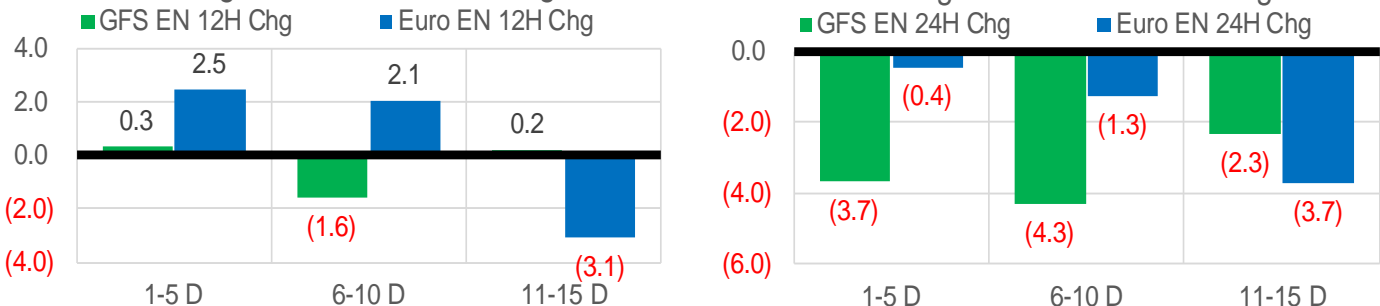
Vs. 12H Ago

L48 Region - 00z TDD vs 12H Ago



Vs. 24H Ago

L48 Region - 00z TDD vs 24H Ago



	Current	Δ from YD	Δ from 7D Avg
US Dry Production	98.5	▼ -0.03	▲ 0.05

	Current	Δ from YD	Δ from 7D Avg
US Power Burns	42.9	▼ -0.76	▼ -2.03

	Current	Δ from YD	Δ from 7D Avg
US ResComm	8.4	▲ 0.07	▲ 0.01

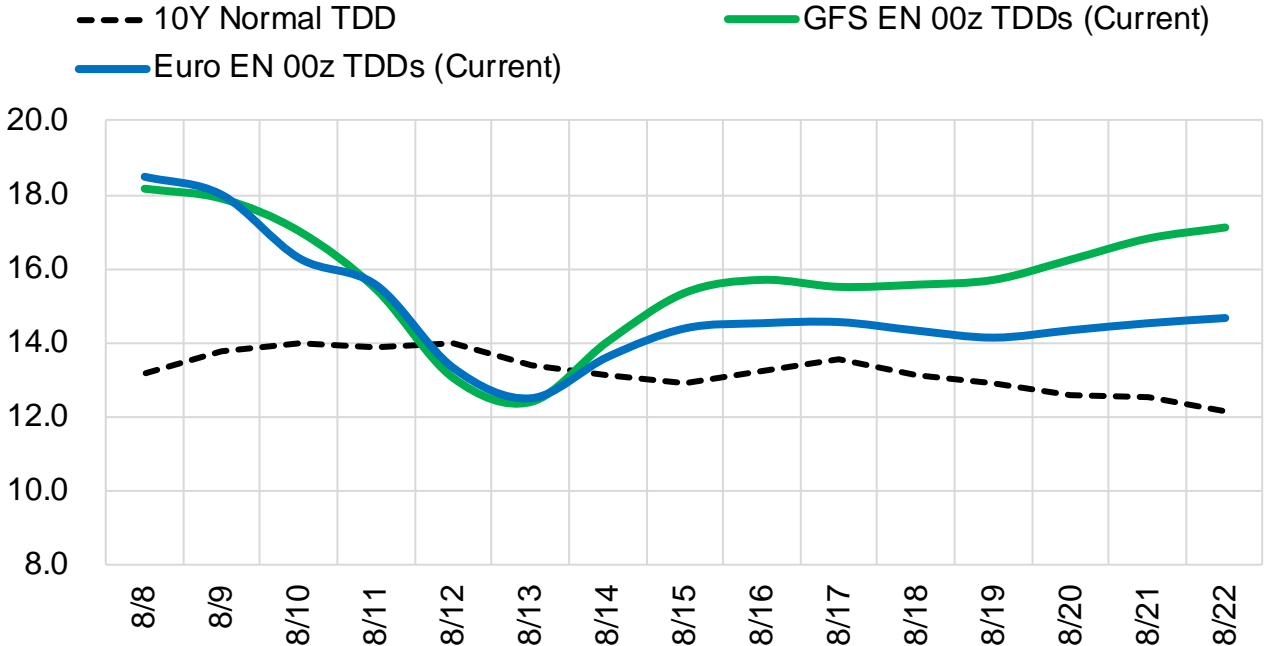
	Current	Δ from YD	Δ from 7D Avg
Canadian Imports	5.5	▲ 0.12	▼ -0.15

	Current	Δ from YD	Δ from 7D Avg
Net LNG Exports	11.2	▲ 0.69	▲ 0.40

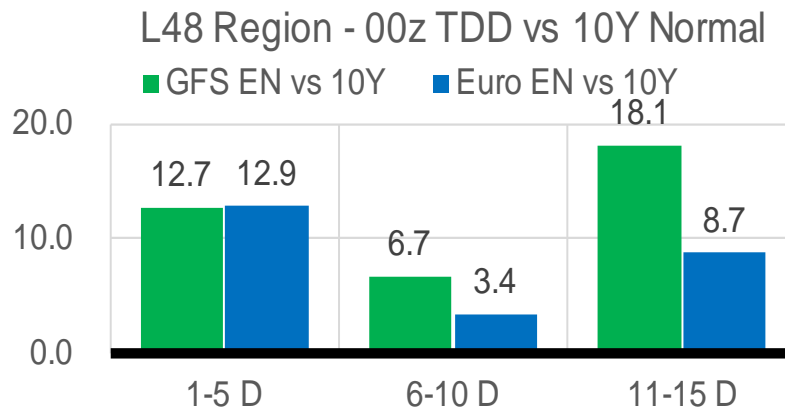
	Current	Δ from YD	Δ from 7D Avg
Mexican Exports	6.7	▲ 0.11	▼ -0.11

Short-term Weather Model Outlooks (00z)

L48 Region



Vs. 10Y Normal



Source: WSI, Bloomberg

Lower 48 Component Models

Daily Balances

	2-Aug	3-Aug	4-Aug	5-Aug	6-Aug	7-Aug	8-Aug	DoD	vs. 7D
Lower 48 Dry Production	98.3	98.4	98.5	98.7	98.4	98.6	98.5	▼ 0.0	▲ 0.0
Canadian Imports	5.6	5.7	5.7	5.7	5.4	5.3	5.5	▲ 0.1	▼ -0.1
L48 Power	44.8	46.1	46.7	46.0	43.7	43.6	42.9	▼ -0.8	▼ -2.3
L48 Residential & Commercial	8.4	8.4	8.7	8.4	8.1	8.3	8.4	▲ 0.1	▼ 0.0
L48 Industrial	21.2	21.5	21.9	22.1	22.7	22.8	23.4	▲ 0.6	▲ 1.4
L48 Lease and Plant Fuel	5.4	5.4	5.4	5.4	5.4	5.4	5.3	▼ 0.0	▼ 0.0
L48 Pipeline Distribution	2.8	2.9	2.9	2.9	2.8	2.8	2.7	▼ 0.0	▼ -0.1
L48 Regional Gas Consumption	82.5	84.3	85.6	84.7	82.6	82.9	82.7	▼ -0.2	▼ -1.1
Net LNG Delivered	11.00	10.99	11.02	10.46	10.52	10.50	11.19	▲ 0.7	▲ 0.4
Total Mexican Exports	6.8	6.8	7.1	7.0	6.7	6.6	6.7	▲ 0.1	▼ -0.1
Implied Daily Storage Activity	3.6	2.0	0.5	2.3	4.1	3.9	3.4		
EIA Reported Daily Storage Activity									
Daily Model Error									

EIA Storage Week Balances

	1-Jul	8-Jul	15-Jul	22-Jul	29-Jul	5-Aug	WoW	vs. 4W
Lower 48 Dry Production	97.1	97.0	96.3	96.9	97.3	98.6	▲ 1.3	▲ 1.7
Canadian Imports	5.7	5.6	6.0	6.2	5.9	5.7	▼ -0.3	▼ -0.3
L48 Power	39.7	41.0	42.9	45.5	44.7	44.0	▼ -0.7	▲ 0.5
L48 Residential & Commercial	8.5	8.4	8.4	8.7	8.6	8.3	▼ -0.3	▼ -0.2
L48 Industrial	20.3	20.1	20.5	21.0	19.4	20.4	▲ 0.9	▲ 0.1
L48 Lease and Plant Fuel	5.3	5.3	5.2	5.3	5.3	5.4	▲ 0.1	▲ 0.1
L48 Pipeline Distribution	2.6	2.6	2.7	2.9	2.8	2.8	▼ -0.1	▲ 0.0
L48 Regional Gas Consumption	76.3	77.4	79.7	83.3	80.8	80.7	▼ -0.1	▲ 0.4
Net LNG Exports	10.6	11.2	11.1	10.8	10.7	10.9	▲ 0.2	▼ 0.0
Total Mexican Exports	7.0	6.9	7.0	7.1	6.9	6.9	▼ 0.0	▼ -0.1
Implied Daily Storage Activity	8.8	7.2	4.5	1.9	4.7	5.7	1.0	
EIA Reported Daily Storage Activity	8.6	8.3	4.6	2.1	5.9			
Daily Model Error	0.2	-1.1	-0.1	-0.2	-1.1			

Monthly Balances

	2Yr Ago Aug-20	LY Aug-21	Apr-22	May-22	Jun-22	Jul-22	MTD Aug-22	MoM	vs. LY
Lower 48 Dry Production	88.8	93.8	94.9	95.8	97.0	97.1	98.5	▲ 1.4	▲ 4.7
Canadian Imports	4.9	5.1	5.8	5.1	5.7	5.9	5.6	▼ -0.3	▲ 0.5
L48 Power	41.0	40.4	25.1	29.7	36.8	43.4	44.9	▲ 1.5	▲ 4.6
L48 Residential & Commercial	7.7	7.9	22.3	12.4	9.0	8.5	8.4	▼ -0.1	▲ 0.5
L48 Industrial	20.8	21.0	20.1	19.8	20.6	20.3	21.9	▲ 1.6	▲ 0.8
L48 Lease and Plant Fuel	4.8	5.1	5.2	5.3	5.2	5.3	5.4	▲ 0.1	▲ 0.3
L48 Pipeline Distribution	2.5	2.6	2.6	2.4	2.5	2.8	2.8	▲ 0.1	▲ 0.3
L48 Regional Gas Consumption	76.9	77.0	75.3	69.6	74.2	80.1	83.4	▲ 3.2	▲ 6.4
Net LNG Exports	4.0	10.5	12.3	12.5	11.2	10.9	10.8	▼ -0.2	▲ 0.3
Total Mexican Exports	6.0	6.9	6.7	7.0	7.1	7.0	6.8	▼ -0.1	▼ 0.0
Implied Daily Storage Activity	6.7	4.6	6.4	11.9	10.2	4.9	3.1		
EIA Reported Daily Storage Activity									
Daily Model Error									

Source: Bloomberg, analytix.ai

Daily Average Generation Data

Nuclear Generation Daily Average - GWh (NRC)

	31-Jul	1-Aug	2-Aug	3-Aug	4-Aug	5-Aug	6-Aug	DoD	vs. 7D
NRC Nuclear Daily Output	90.8	90.5	90.7	91.0	90.1	90.0	90.0	0.0	-0.5
NRC Nuclear Max Capacity	104.9	104.9	104.9	104.9	104.9	104.9	104.9	0.0	0.0
NRC Nuclear Outage	14.0	14.3	14.2	13.9	14.8	14.9	14.9	0.0	0.5
NRC % Nuclear Cap Utilization	92.4	92.1	92.2	92.5	91.6	91.5	91.5	0.0	-0.5

Wind Generation Daily Average - MWh (EIA)

	31-Jul	1-Aug	2-Aug	3-Aug	4-Aug	5-Aug	6-Aug	DoD	vs. 7D
CALI Wind	1495	1241	2506	2464	2183	1797	2326	528	378
TEXAS Wind	14283	14452	18136	18368	13700	10997	13426	2429	-1564
US Wind	41424	44729	59617	56919	43382	39845	48415	8569	762

Generation Daily Average - MWh (EIA)

	31-Jul	1-Aug	2-Aug	3-Aug	4-Aug	5-Aug	6-Aug	DoD	vs. 7D
US Wind	41424	44729	59617	56919	43382	39845	48415	8569	762
US Solar	15796	16153	18374	17603	15201	16746	18136	1391	1491
US Petroleum	835	1020	1285	1415	1517	1159	989	-170	-216
US Other	9732	10142	10171	10485	10624	10139	10137	-2	-78
US Coal	109588	121692	121989	122674	125736	123878	117950	-5928	-2976
US Nuke	92826	92732	92827	92626	91871	91949	91531	-418	-941
US Hydro	28251	29669	29565	30974	30114	30001	27182	-2819	-2580
US Gas	209000	231257	235851	243212	253073	252123	234313	-17810	-3106

See National Wind and Nuclear daily charts

Source: Bloomberg, analytix.ai

Storage Week Average Generation Data

Nuclear Generation Weekly Average - GWh (NRC)

	1-Jul	8-Jul	15-Jul	22-Jul	29-Jul	5-Aug	WoW	WoW Bcf/d Impact
NRC Nuclear Daily Output	88.9	90.6	91.2	90.5	90.1	90.6	0.5	-0.1
NRC Nuclear Max Capacity	104.9	104.9	104.9	104.9	104.9	104.9	0.0	
NRC Nuclear Outage	16.0	14.2	13.7	14.4	14.8	14.3	-0.5	
NRC % Nuclear Cap Utilization	90.4	92.2	92.7	92.0	91.6	92.1	0.5	

Wind Generation Weekly Average - MWh (EIA)

	1-Jul	8-Jul	15-Jul	22-Jul	29-Jul	5-Aug	WoW	WoW Bcf/d Impact
CALI Wind	2438	3521	2268	2470	3049	1933	-1115	0.2
TEXAS Wind	10046	13920	7264	11182	14533	14443	-90	0.0
US Wind	45054	41967	34343	40039	43435	43378	-57	0.0
							0%	

Generation Weekly Average - MWh (EIA)

	1-Jul	8-Jul	15-Jul	22-Jul	29-Jul	5-Aug	WoW	WoW Bcf/d Impact
						est.		
US Wind	45054	41967	34343	40039	43435	43378	-57	0.0
US Solar	18436	19450	18379	18639	18014	17017	-998	0.2
US Petroleum	865	977	1015	1707	1465	1127	-338	0.1
US Other	7378	9329	9193	10492	10690	10288	-402	0.1
US Coal	100384	113149	113817	118454	125691	118881	-6810	1.2
US Nuke	79101	93305	93507	92543	92281	92587	306	-0.1
US Hydro	36484	35050	34851	32148	30788	29867	-920	0.2
US Gas	199601	221693	237368	248462	237500	234345	-3155	-0.6

See National Wind and Nuclear daily charts

Source: Bloomberg, analytix.ai

Monthly Average Generation Data

Nuclear Generation Monthly Average - GWh (NRC)

	2Yr Ago	LY	MTD				Last 30 days	MoM (MTD vs LY)	Last 30 days YoY
	Same 30 days	Same 30 days	May-22	Jun-22	Jul-22	Aug-22			
	NRC Nuclear Daily Output	91.2	90.4	81.7	88.5	90.6			
NRC Nuclear Max Capacity	104.9	104.9	104.9	104.9	104.9	104.9	104.9	0.0	0.0
NRC Nuclear Outage	13.7	14.4	23.2	16.3	14.3	14.6	14.4	0.3	0.0
NRC % Nuclear Cap Utilization	92.7	92.0	83.0	90.0	92.1	91.8	92.0	-0.3	0.0

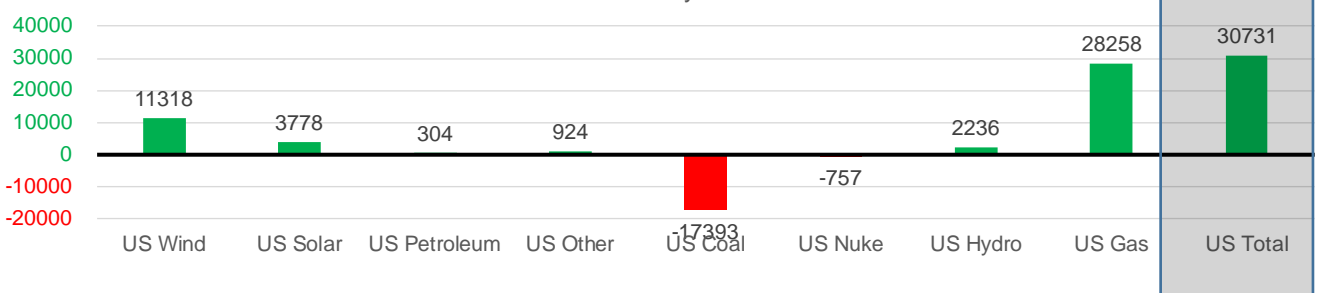
Wind Generation Monthly Average - MWh (EIA)

	2Yr Ago	LY	MTD				Last 30 days	MoM (MTD vs LY)	Last 30 days YoY
	Same 30 days	Same 30 days	May-22	Jun-22	Jul-22	Aug-22			
	CALI Wind	2640	2326	3361	2840	2719			
TEXAS Wind	9341	8488	16756	13441	11765	14491	12248	2726	3760
US Wind	31590	30426	56462	46839	39274	48717	41744	9443	11318

Generation Monthly Average - MWh (EIA)

	2Yr Ago	LY	MTD				Last 30 days	MoM (MTD vs LY)	Last 30 days YoY
	Same 30 days	Same 30 days	May-22	Jun-22	Jul-22	Aug-22			
	US Wind	31590	30426	56462	46839	39274			
US Solar	12192	14140	18186	18564	18489	17311	17918	▲ 607.6	▲ 3778
US Petroleum	1586	1009	518	998	1252	1170	1313	▲ 143	▲ 304
US Other	9876	9320	7724	7710	9952	10246	10244	▼ -2	▲ 924
US Coal	120427	136931	85273	102230	117350	121227	119539	▼ -1689	▼ -17393
US Nuke	93385	93265	85496	85511	92887	92075	92508	▲ 433	▼ -757
US Hydro	31152	28969	31368	36347	32858	28983	31205	▲ 2221	▲ 2236
US Gas	228092	211313	157572	190597	235232	239807	239571	▼ -5259	▲ 28258
US Total	526168	525303	443971	490560	548689	563869	556034	▼ -3545	▲ 30731

Last 30 days YoY



See National Wind and Nuclear daily charts

Source: Bloomberg, analytix.ai

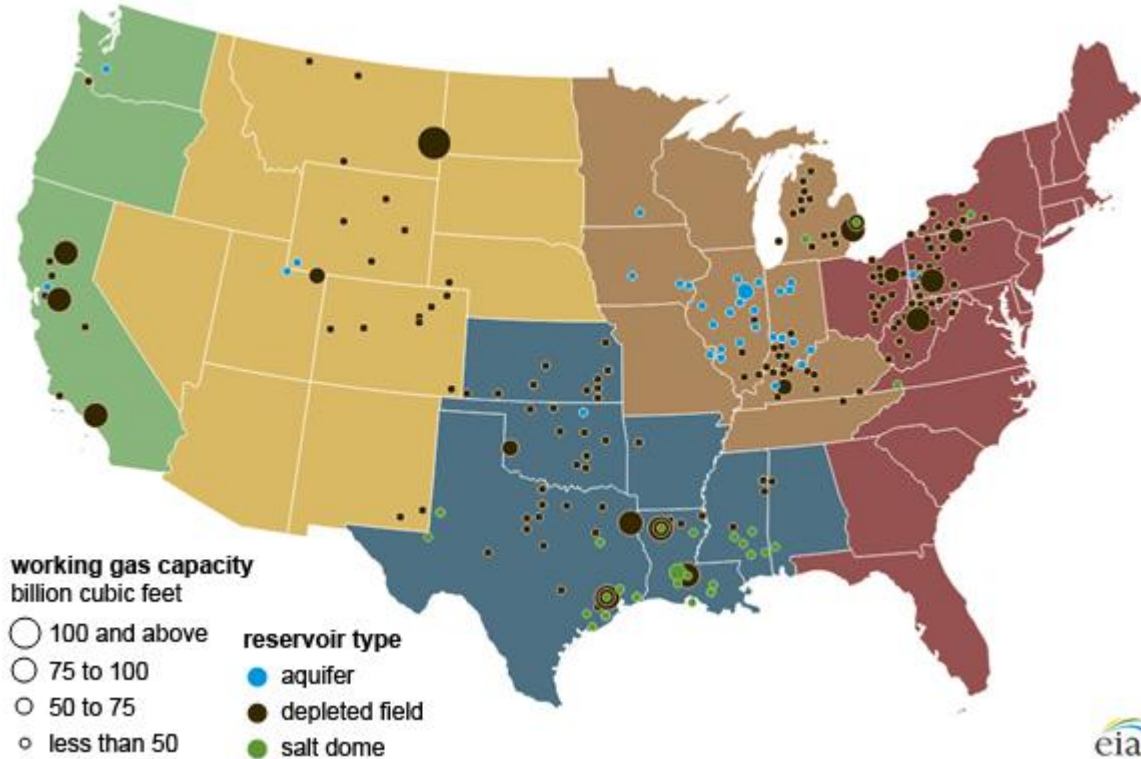
Regional S/D Models Storage Projection

Week Ending 5-Aug

	Daily Raw Storage	Daily Adjustment Factor	Daily Average Storage Activity (Adjusted) *	Weekly Adjusted Storage Activity
L48	6.8	-0.3	6.5	45
East	0.5	2.5	3.0	21
Midwest	3.9	-0.6	3.3	23
Mountain	4.6	-4.2	0.4	3
South Central	-2.7	2.9	0.2	1
Pacific	0.5	-0.9	-0.4	-3

*Adjustment Factor is calculated based on historical regional deltas

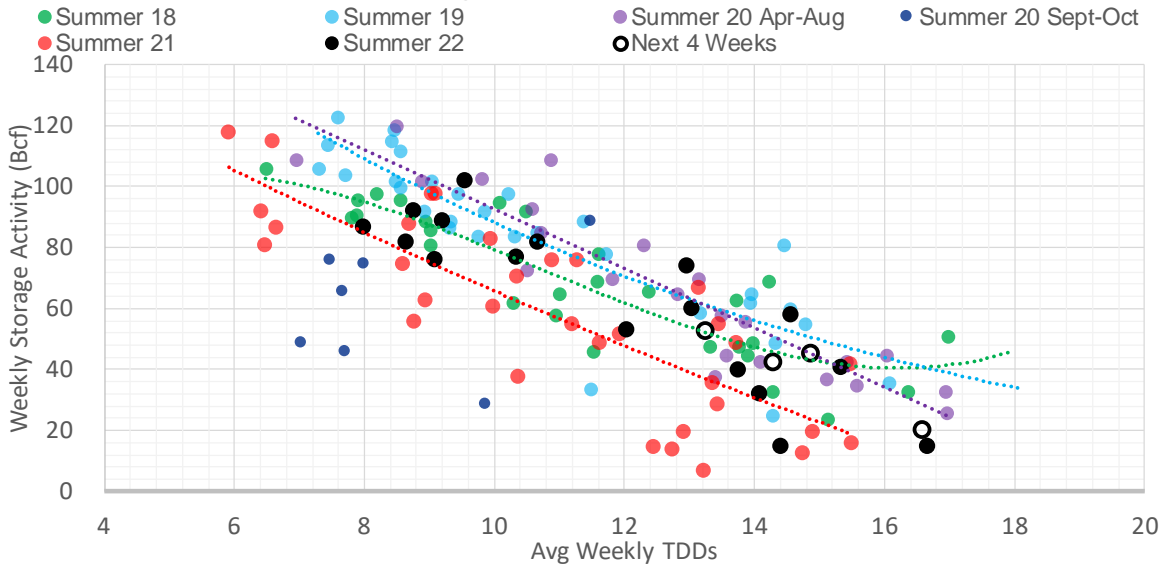
U.S. underground natural gas storage facilities by type (July 2015)



Weather Model Storage Projection

Next report and beyond		
Week Ending	GWDDs	Week Storage Projection
05-Aug	14.9	45
12-Aug	16.6	20
19-Aug	14.3	42
26-Aug	13.3	53

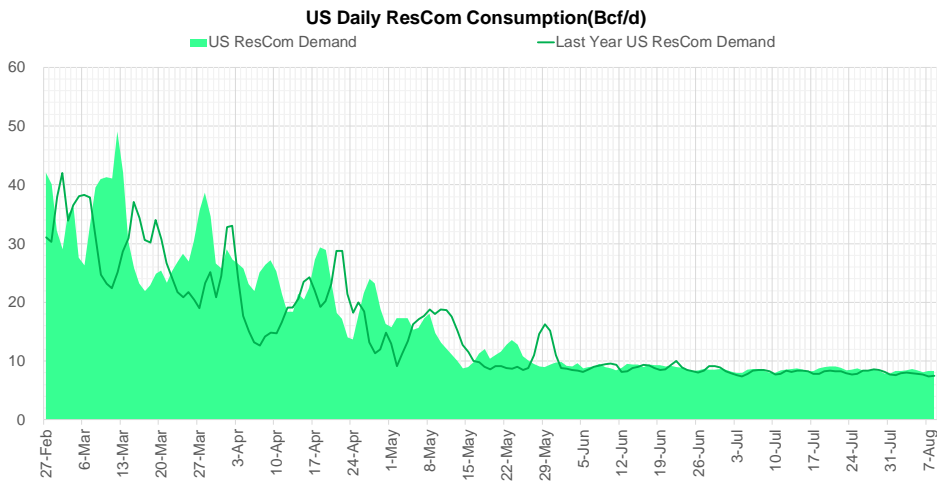
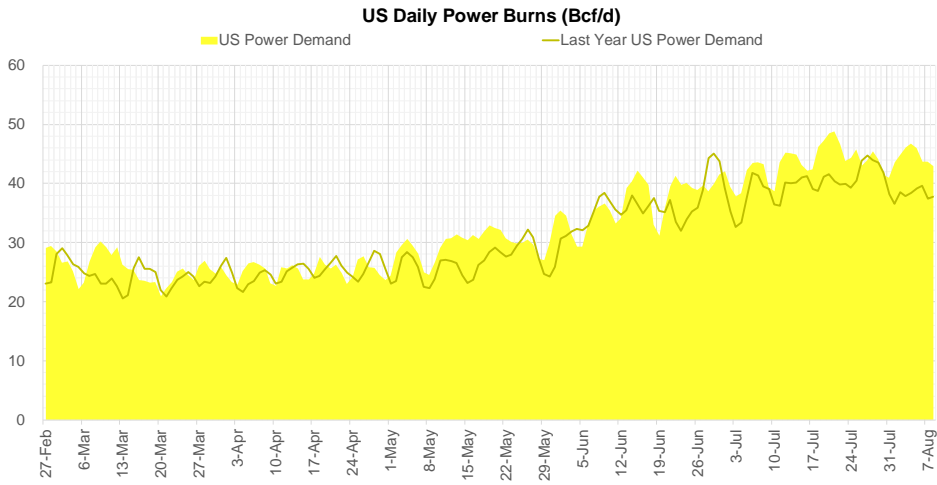
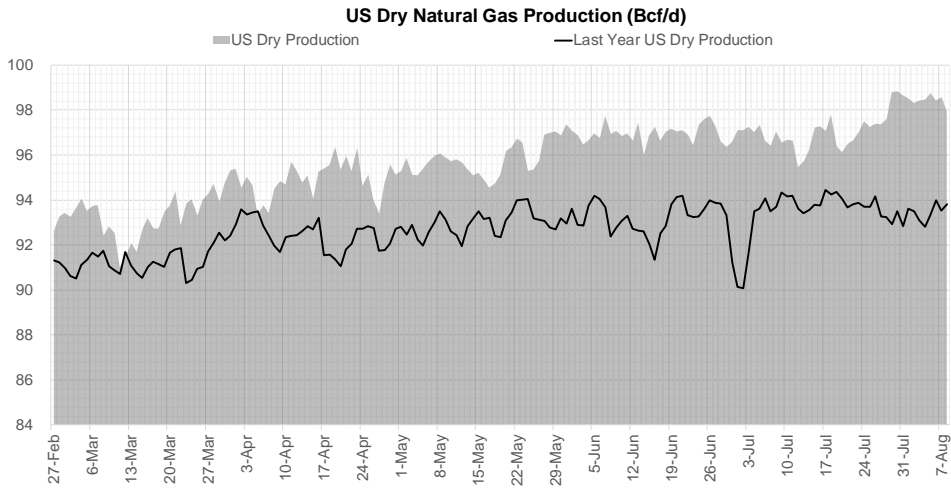
Weather Storage Model - Next 4 Week Forecast



Go to larger image



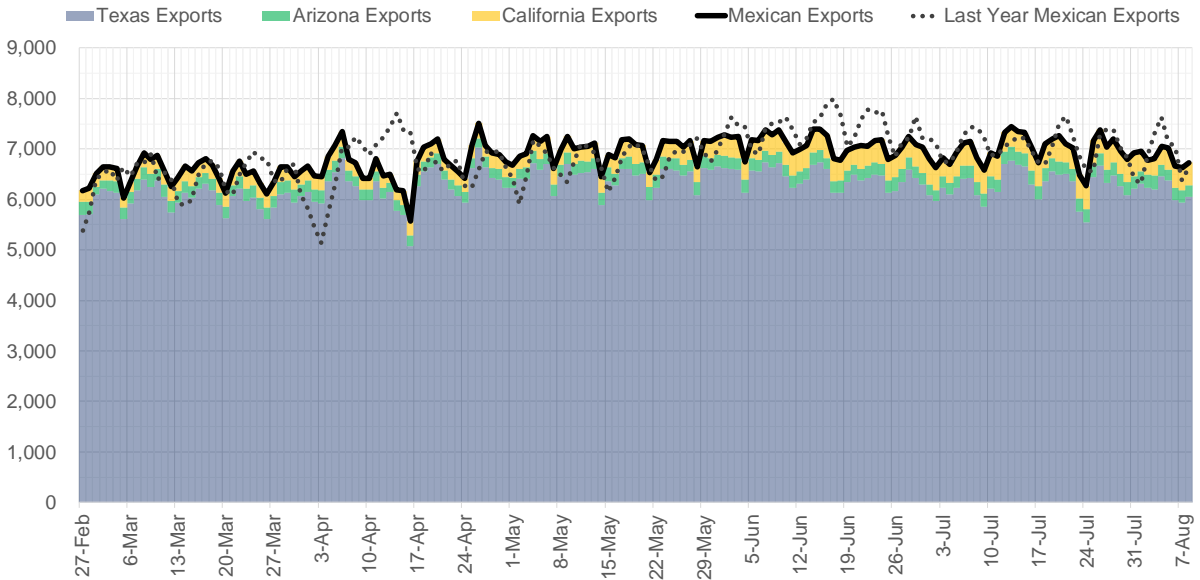
Supply – Demand Trends



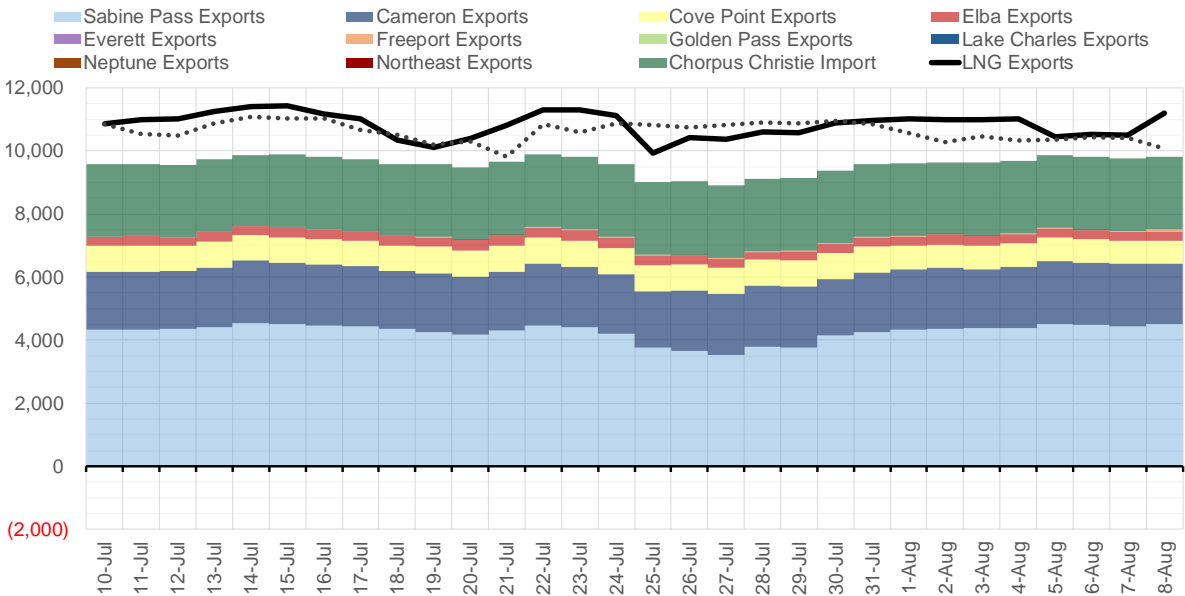
Source: Bloomberg

The risk of trading futures and options and other derivatives involves a substantial risk of loss and is not suitable for all persons. Each person must consider whether a particular trade, combination of trades, or strategy is suitable for that person's financial means and objectives. Past results are not necessarily indicative of future results. This communication may contain links to third party websites which are not under the control of and are not maintained by ION Energy Group, and ION Energy Group is not responsible for their content.

Mexican Exports (MMcf/d)



Net LNG Exports - Last 30 days (MMcf/d)



Source: Bloomberg

The risk of trading futures and options and other derivatives involves a substantial risk of loss and is not suitable for all persons. Each person must consider whether a particular trade, combination of trades, or strategy is suitable for that person's financial means and objectives. Past results are not necessarily indicative of future results. This communication may contain links to third party websites which are not under the control of and are not maintained by ION Energy Group, and ION Energy Group is not responsible for their content.

Nat Gas Options Volume and Open Interest CME and ICE Combined

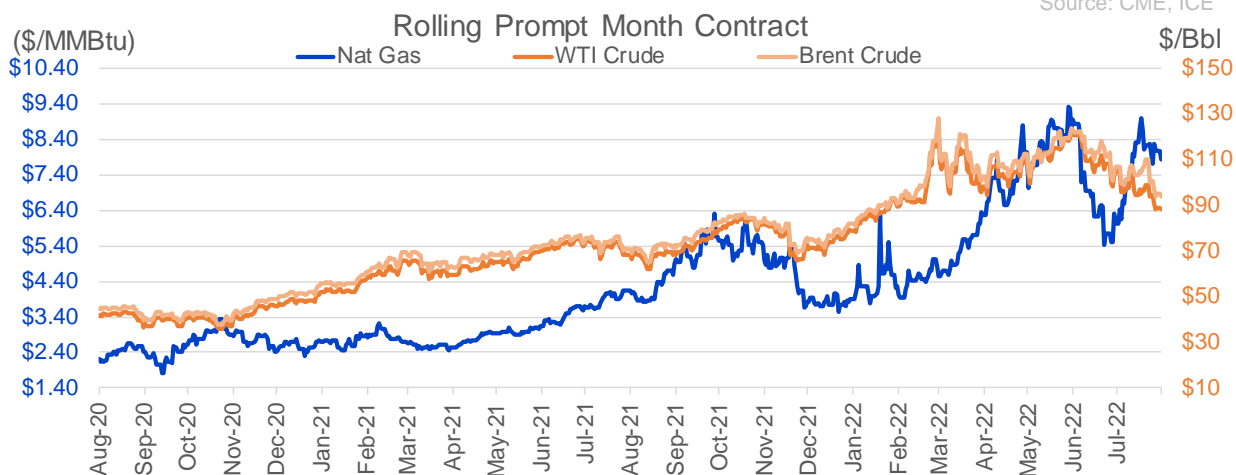
CONTRACT MONTH	CONTRACT YEAR	PUT/CALL	STRIKE	CUMULATIVE VOL	CONTRACT MONTH	CONTRACT YEAR	PUT/CALL	STRIKE	CUMULATIVE OI
10	2022	C	12.00	8996	10	2022	C	6.00	36016
9	2022	C	12.00	5596	10	2022	P	3.00	35778
9	2022	C	10.00	5080	10	2022	P	2.50	28111
9	2022	C	9.00	4689	10	2022	P	6.00	26666
10	2022	C	10.00	4379	9	2022	C	6.00	24361
11	2022	C	12.00	4260	10	2022	P	5.00	23962
10	2022	P	6.00	3534	10	2022	C	5.00	23268
11	2022	C	10.00	3438	3	2023	C	10.00	22594
9	2022	P	6.00	3355	9	2022	C	10.00	22172
10	2022	C	12.50	3315	10	2022	P	3.50	21540
9	2022	C	8.00	3241	10	2022	C	10.00	21040
12	2022	C	10.00	3150	10	2022	P	4.00	20793
12	2022	C	12.00	3002	5	2023	P	2.00	20777
9	2022	P	7.00	2627	9	2022	P	4.00	20537
12	2022	P	6.00	2034	9	2022	C	7.00	19548
9	2022	P	7.50	1845	9	2022	P	6.00	18319
10	2022	C	15.00	1777	11	2022	P	4.00	18282
11	2022	C	8.00	1667	12	2022	C	5.00	18218
10	2022	C	8.00	1578	12	2022	P	5.00	18151
12	2022	C	8.00	1550	3	2023	P	3.00	17962
11	2022	P	6.00	1500	10	2022	C	8.00	17778
10	2022	C	25.00	1351	9	2022	C	9.00	17691
9	2022	C	10.50	1102	1	2023	C	10.00	17617
9	2022	C	9.75	1075	10	2022	C	12.00	17043
10	2022	C	17.00	1055	10	2022	P	2.00	16682
9	2022	C	8.25	1028	9	2022	P	3.00	16633
9	2022	C	10.15	1000	9	2022	P	5.00	16559
1	2023	C	11.20	1000	2	2023	C	10.00	16247
1	2023	C	11.50	1000	9	2022	C	4.00	15970
2	2023	C	12.10	1000	4	2023	P	3.00	15909
2	2023	C	12.40	1000	10	2023	P	2.50	15725
9	2022	P	6.50	978	9	2022	P	2.50	15477
9	2022	C	15.00	915	10	2022	P	3.25	15350
1	2023	C	15.00	830	10	2023	P	2.00	15160
10	2022	P	7.00	827	10	2022	C	7.00	15113
9	2022	C	8.50	812	9	2022	P	2.75	14887
10	2022	C	27.00	800	11	2022	C	8.00	14793
10	2022	P	3.00	796	3	2023	C	20.00	14749
9	2022	C	13.00	766	10	2023	P	3.00	14400
11	2022	C	12.50	720	11	2022	C	10.00	14399
12	2022	C	11.10	700	9	2022	C	9.50	14111
12	2022	C	11.40	700	12	2022	C	6.00	13987
9	2022	P	5.00	695	4	2023	P	2.75	13745
9	2022	P	8.00	682	9	2022	P	3.50	13312
3	2023	C	10.00	660	10	2022	C	4.00	13309
10	2022	C	11.00	659	2	2023	C	9.00	13295
11	2022	C	10.70	600	10	2022	P	2.75	13286
11	2022	C	11.30	600	9	2022	C	3.00	13225
12	2022	C	15.00	600	10	2022	C	3.00	13214
					1	2023	P	4	13106.25

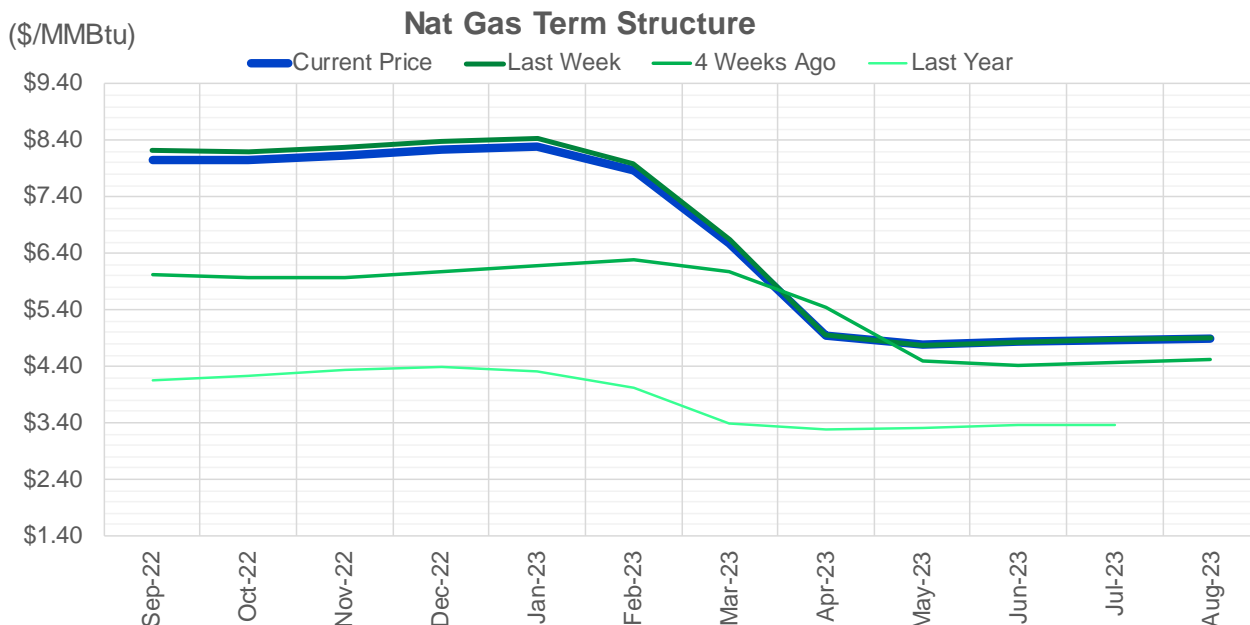
Source: CME, ICE

Nat Gas Futures Open Interest CME and ICE Combined

CME Henry Hub Futures (10,000 MMBtu)				ICE Henry Hub Futures Contract Equivalent (10,000 MM			
	Current	Prior	Daily Change		Current	Prior	Daily Change
SEP 22	139066	151322	-12256	SEP 22	82532	83384	-852
OCT 22	92989	96093	-3104	OCT 22	75210	75333	-123
NOV 22	89833	85001	4832	NOV 22	62070	62932	-862
DEC 22	58461	57258	1203	DEC 22	65390	65325	65
JAN 23	74937	73589	1348	JAN 23	65220	65291	-72
FEB 23	36008	35998	10	FEB 23	59220	58715	506
MAR 23	52936	52392	544	MAR 23	53128	53121	8
APR 23	69930	69288	642	APR 23	53931	53783	148
MAY 23	68366	67638	728	MAY 23	52661	52770	-109
JUN 23	22886	22951	-65	JUN 23	46433	46490	-57
JUL 23	23452	22978	474	JUL 23	44727	44758	-31
AUG 23	19435	19480	-45	AUG 23	43766	43813	-47
SEP 23	17766	17550	216	SEP 23	42909	42964	-55
OCT 23	46926	47009	-83	OCT 23	49842	49899	-57
NOV 23	12816	12935	-119	NOV 23	44856	44925	-69
DEC 23	11750	11726	24	DEC 23	40719	40735	-16
JAN 24	17274	17291	-17	JAN 24	39948	39848	100
FEB 24	7926	7885	41	FEB 24	30135	30170	-35
MAR 24	17426	17178	248	MAR 24	34649	34754	-105
APR 24	13944	13830	114	APR 24	28283	28276	7
MAY 24	6770	6771	-1	MAY 24	26929	26922	8
JUN 24	2531	2480	51	JUN 24	23880	23910	-29
JUL 24	2364	2309	55	JUL 24	23534	23606	-73
AUG 24	3302	3252	50	AUG 24	23453	23527	-74
SEP 24	1876	1826	50	SEP 24	23407	23437	-29
OCT 24	8489	8536	-47	OCT 24	26729	26785	-57
NOV 24	4782	4733	49	NOV 24	24846	24913	-67
DEC 24	7657	7557	100	DEC 24	27869	27931	-61
JAN 25	15973	15992	-19	JAN 25	20689	20695	-7
FEB 25	870	870	0	FEB 25	13982	13968	14

Source: CME, ICE





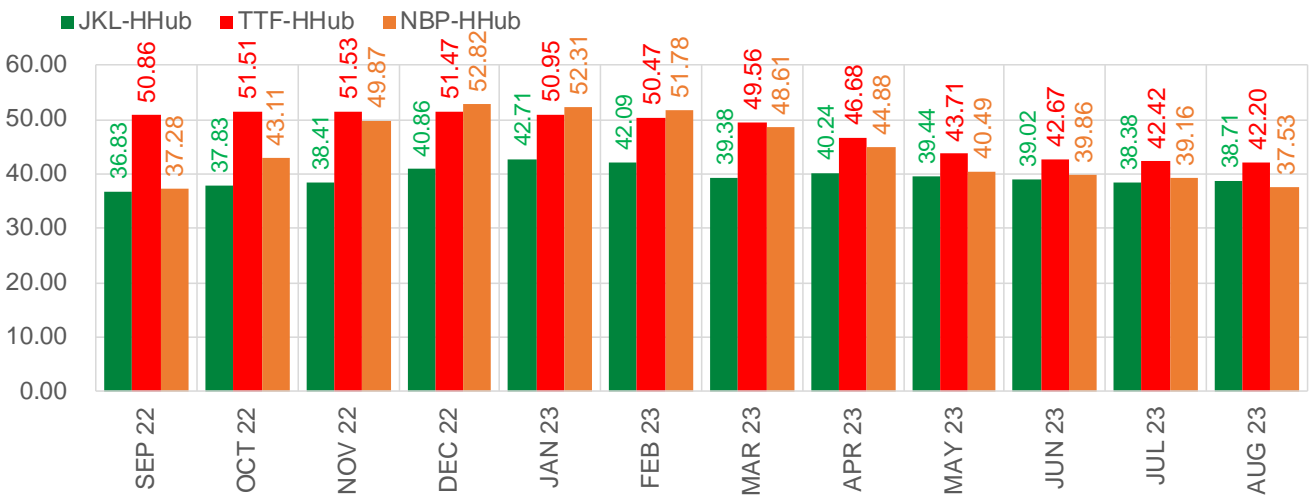
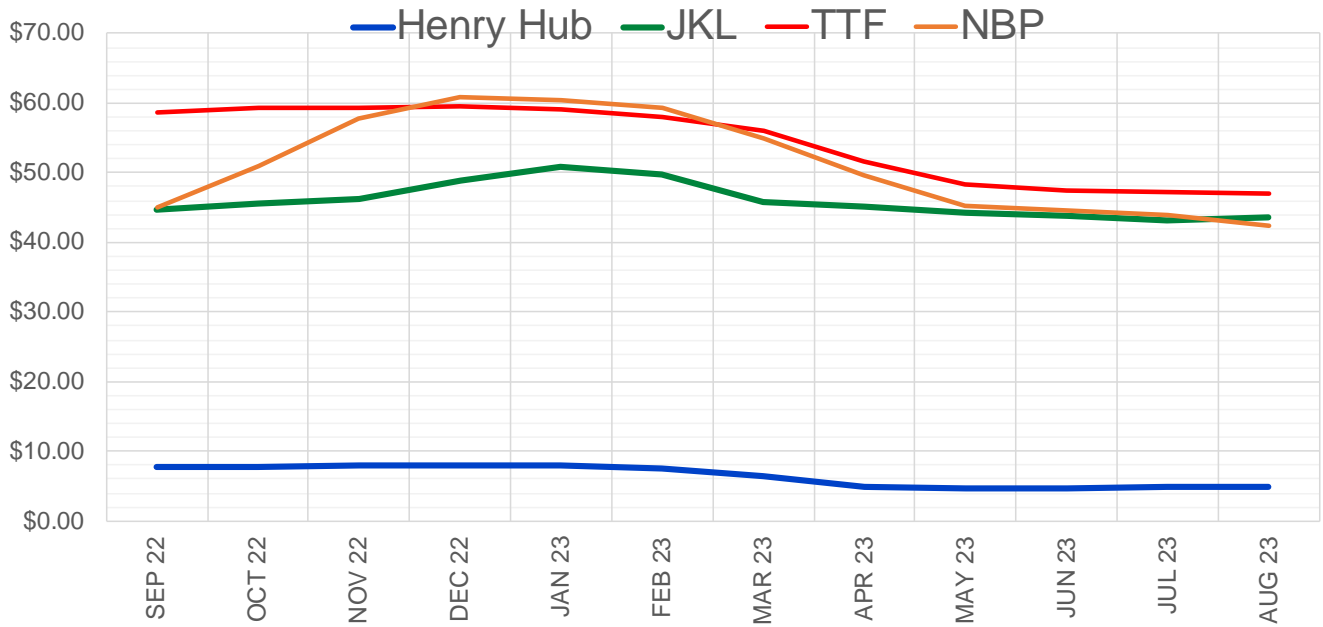
	Sep-22	Oct-22	Nov-22	Dec-22	Jan-23	Feb-23	Mar-23	Apr-23	May-23	Jun-23	Jul-23	Aug-23
Current Price	\$8.064	\$8.051	\$8.120	\$8.230	\$8.294	\$7.860	\$6.565	\$4.954	\$4.786	\$4.829	\$4.873	\$4.886
Last Week	\$8.229	\$8.208	\$8.283	\$8.374	\$8.441	\$7.973	\$6.636	\$4.943	\$4.780	\$4.830	\$4.887	\$4.897
vs. Last Week	-\$0.165	-\$0.157	-\$0.163	-\$0.144	-\$0.147	-\$0.113	-\$0.071	\$0.011	\$0.006	-\$0.001	-\$0.014	-\$0.011
4 Weeks Ago	\$6.034	\$5.967	\$5.963	\$6.068	\$6.187	\$6.287	\$6.087	\$5.433	\$4.506	\$4.406	\$4.466	\$4.527
vs. 4 Weeks Ago	\$2.030	\$2.084	\$2.157	\$2.162	\$2.107	\$1.573	\$0.478	-\$0.479	\$0.280	\$0.423	\$0.407	\$0.359
Last Year	\$4.140	\$4.154	\$4.219	\$4.330	\$4.400	\$4.315	\$4.023	\$3.377	\$3.291	\$3.319	\$3.351	\$3.357
vs. Last Year	\$3.924	\$3.897	\$3.901	\$3.900	\$3.894	\$3.545	\$2.542	\$1.577	\$1.495	\$1.510	\$1.522	\$1.529

	Units	Cash Settled	Prompt Settle	Cash to Prompt
AGT Citygate	\$/MMBtu	8.80	7.89	-0.91
TETCO M3	\$/MMBtu	7.82	7.30	-0.52
FGT Zone 3	\$/MMBtu	7.91	11.02	3.11
Zone 6 NY	\$/MMBtu	7.91	7.27	-0.64
Chicago Citygate	\$/MMBtu	7.84	7.99	0.15
Michcon	\$/MMBtu	7.79	7.96	0.17
Columbia TCO Pool	\$/MMBtu	7.49	7.28	-0.21
Ventura	\$/MMBtu	5.95	7.90	1.95
Rockies/Opal	\$/MMBtu	8.18	7.73	-0.45
El Paso Permian Basin	\$/MMBtu	6.86	7.32	0.46
Socal Citygate	\$/MMBtu	9.56	8.52	-1.04
Malin	\$/MMBtu	8.03	7.84	-0.19
Houston Ship Channel	\$/MMBtu	7.71	7.92	0.21
Henry Hub Cash	\$/MMBtu	8.38	7.78	-0.60
AECO Cash	C\$/GJ	2.60	4.72	2.12
Station2 Cash	C\$/GJ	1.55	7.68	6.13
Dawn Cash	C\$/GJ	7.86	8.04	0.18

Source: CME, Bloomberg

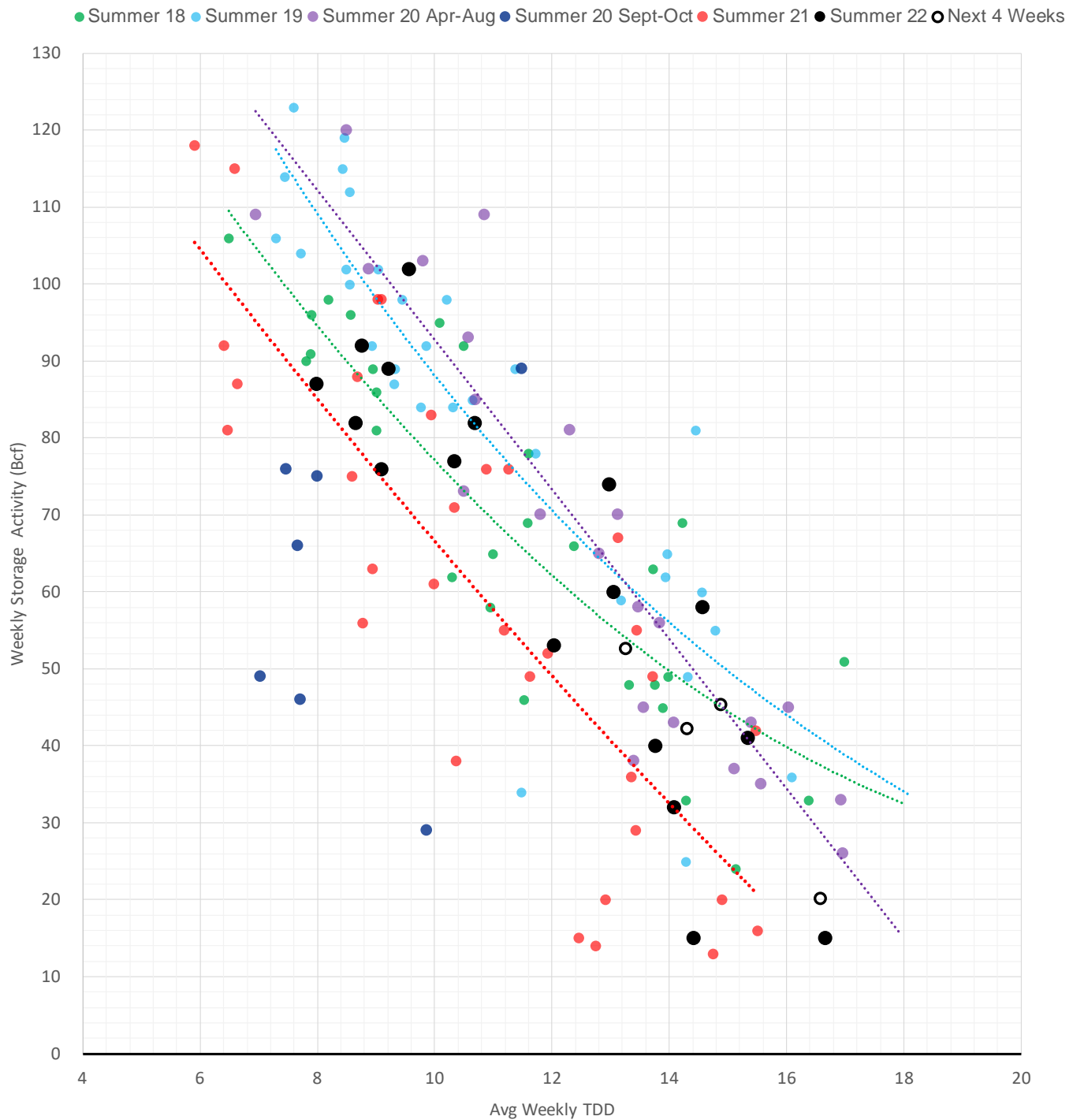
	Units	Current Price	vs. Last Week	vs. 4 Weeks Ago	vs. Last Year
NatGas Jul21/Oct21	\$/MMBtu	2.224	▲ 0.000	▲ 0.000	▲ 1.687
NatGas Oct21/Nov21	\$/MMBtu	0.361	▲ 0.000	▲ 0.000	▲ 0.296
NatGas Oct21/Jan22	\$/MMBtu	-1.817	▲ 0.000	▲ 0.000	▼ -2.063
NatGas Apr22/Oct22	\$/MMBtu	2.715	▼ -0.157	▲ 2.088	▲ 2.730
WTI Crude	\$/Bbl	89.01	▼ -9.610	▼ -15.780	▲ 20.730
Brent Crude	\$/Bbl	94.92	▼ -15.090	▼ -12.100	▲ 24.220
Fuel Oil, NY Harbour 1%	\$/Bbl	97.18	▲ 0.000	▲ 0.000	▲ 0.000
Heating Oil	cents/Gallon	321.59	▼ -40.880	▼ -45.700	▲ 113.140
Propane, Mt. Bel	cents/Gallon	1.07	▼ -0.071	▼ -0.109	▼ -0.021
Ethane, Mt. Bel	cents/Gallon	0.56	▼ -0.012	▲ 0.083	▲ 0.220
Coal, PRB	\$/MTon	12.30	▲ 0.000	▲ 0.000	▲ 0.000
Coal, PRB	\$/MMBtu	0.70			
Coal, ILB	\$/MTon	31.05	▲ 0.000	▲ 0.000	▲ 0.000
Coal, ILB	\$/MMBtu	1.32			

Nat Gas Term Structure (\$MMBTU)



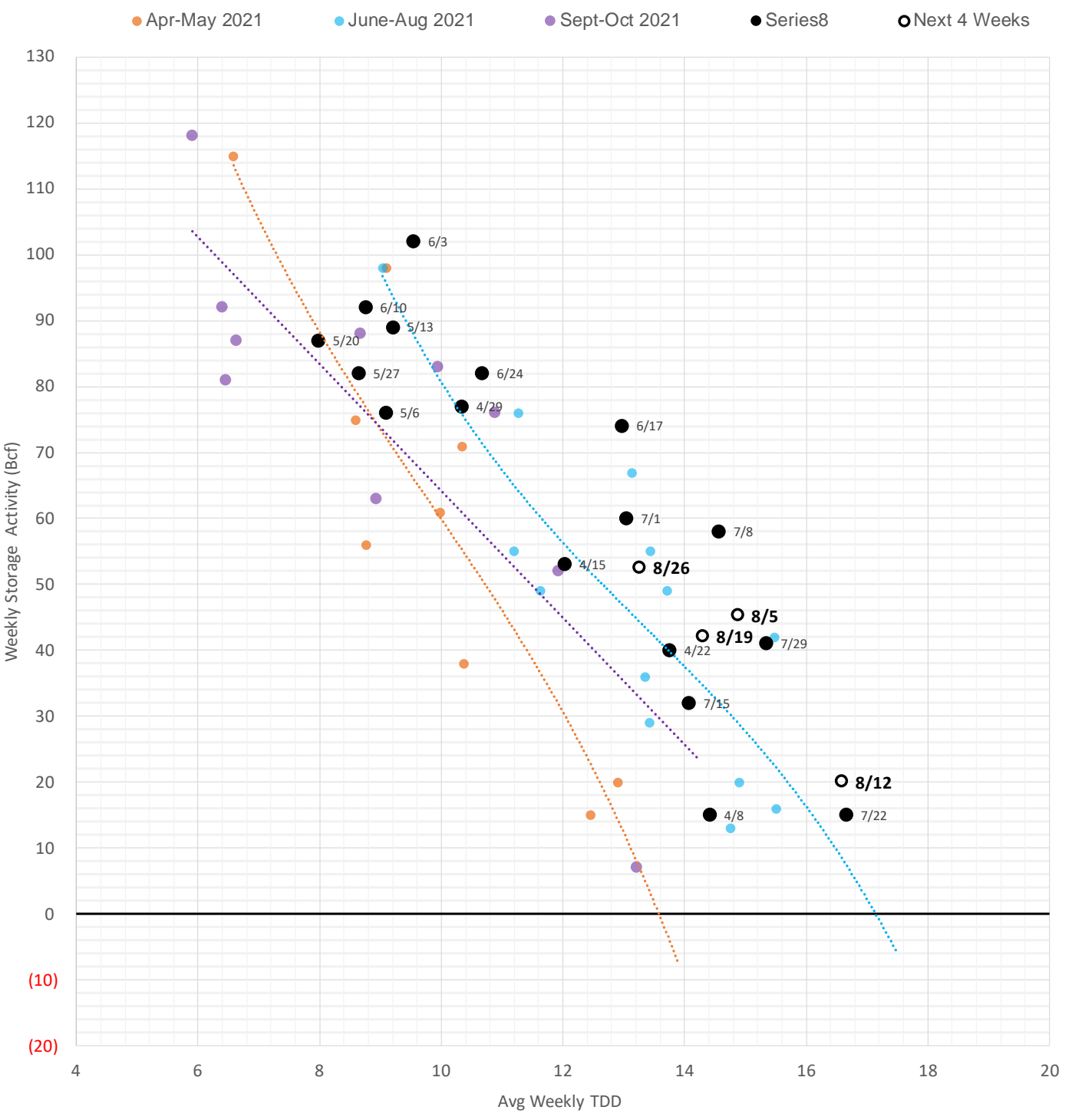
	SEP 22	OCT 22	NOV 22	DEC 22	JAN 23	FEB 23	MAR 23	APR 23	MAY 23	JUN 23	JUL 23	AUG 23
Henry Hub	\$7.827	\$7.823	\$7.885	\$8.017	\$8.042	\$7.603	\$6.369	\$4.872	\$4.726	\$4.754	\$4.799	\$4.815
JKL	\$44.660	\$45.650	\$46.290	\$48.880	\$50.755	\$49.690	\$45.750	\$45.115	\$44.165	\$43.775	\$43.180	\$43.520
JKL-HHHub	\$36.833	\$37.827	\$38.405	\$40.863	\$42.713	\$42.087	\$39.381	\$40.243	\$39.439	\$39.021	\$38.381	\$38.705
TTF	\$58.689	\$59.337	\$59.413	\$59.491	\$58.995	\$58.076	\$55.925	\$51.550	\$48.431	\$47.428	\$47.218	\$47.015
TTF-HHHub	\$50.862	\$51.514	\$51.528	\$51.474	\$50.953	\$50.473	\$49.556	\$46.678	\$43.705	\$42.674	\$42.419	\$42.200
NBP	\$45.102	\$50.929	\$57.753	\$60.835	\$60.355	\$59.383	\$54.974	\$49.750	\$45.219	\$44.610	\$43.958	\$42.347
NBP-HHHub	\$37.275	\$43.106	\$49.868	\$52.818	\$52.313	\$51.780	\$48.605	\$44.878	\$40.493	\$39.856	\$39.159	\$37.532

Weather Storage Model - Next 4 Week Forecast



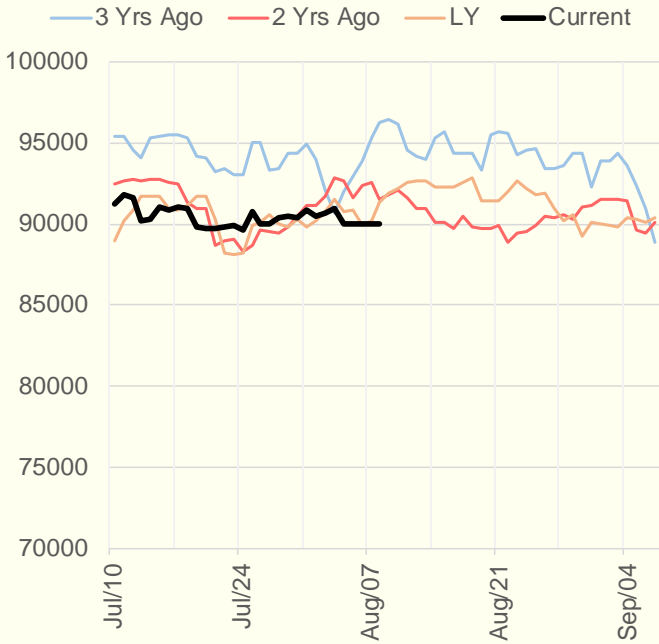
The risk of trading futures and options and other derivatives involves a substantial risk of loss and is not suitable for all persons. Each person must consider whether a particular trade, combination of trades, or strategy is suitable for that person's financial means and objectives. Past results are not necessarily indicative of future results. This communication may contain links to third party websites which are not under the control of and are not maintained by ION Energy Group, and ION Energy Group is not responsible for their content.

Weather Storage Model - Next 4 Week Forecast

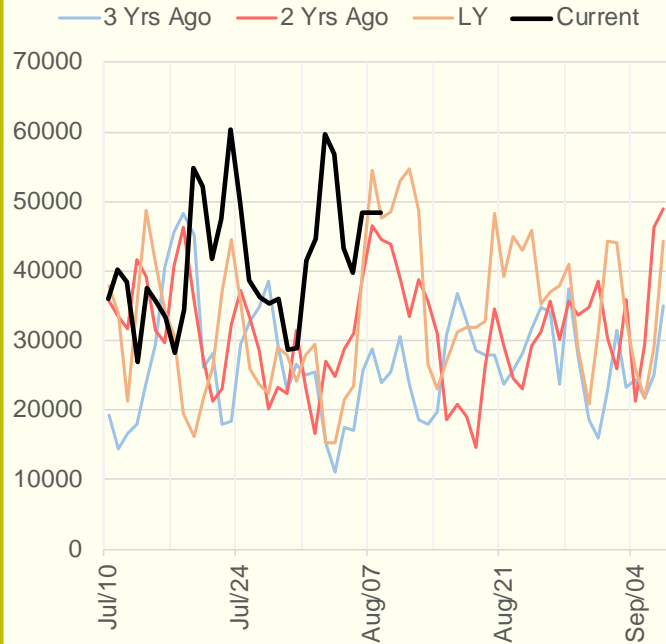


The risk of trading futures and options and other derivatives involves a substantial risk of loss and is not suitable for all persons. Each person must consider whether a particular trade, combination of trades, or strategy is suitable for that person's financial means and objectives. Past results are not necessarily indicative of future results. This communication may contain links to third party websites which are not under the control of and are not maintained by ION Energy Group, and ION Energy Group is not responsible for their content.

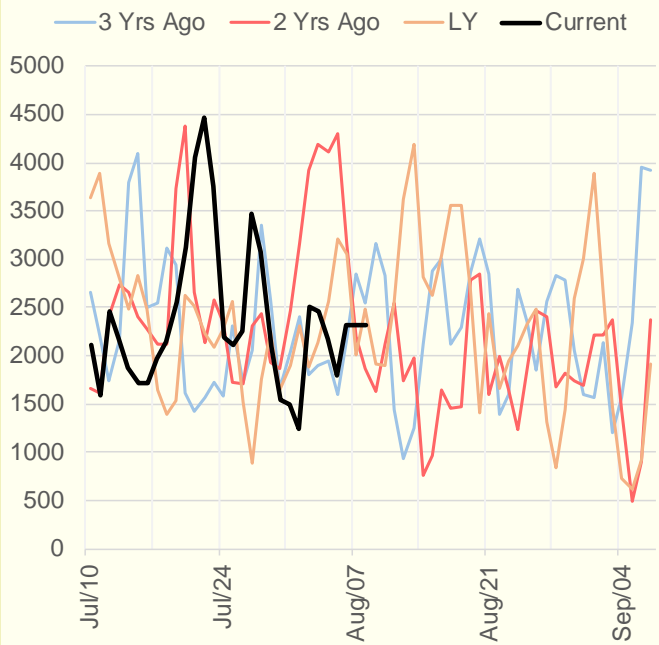
NRC Nuclear Daily Output



US Wind



CALI Wind



TEXAS Wind

