

	Current	Δ from YD	Δ from 7D Avg
Nat Gas Prompt	\$ 7.77	▲ \$ 0.07	▼ \$ (0.44)

	Current	Δ from YD	Δ from 7D Avg
WTI Prompt	\$ 95.80	▲ \$ 1.38	▼ \$ (1.0)

	Current	Δ from YD	Δ from 7D Avg
Brent Prompt	\$ 101.65	▲ \$ 1.11	▼ \$ (4.7)

Page Menu

[Short-term Weather Model Outlooks](#)

[Lower 48 Component Models](#)

[Regional S/D Models Storage Projection](#)

[Weather Model Storage Projection](#)

[Supply – Demand Trends](#)

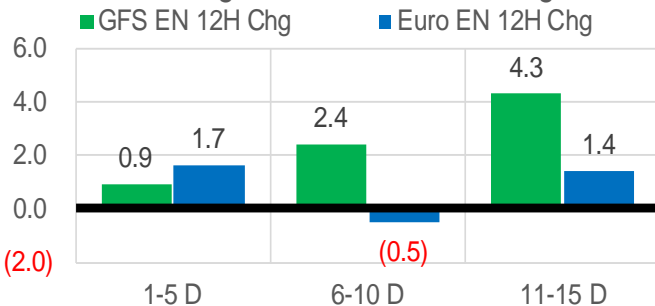
[Nat Gas Options Volume and Open Interest](#)

[Nat Gas Futures Open Interest](#)

[Price Summary](#)

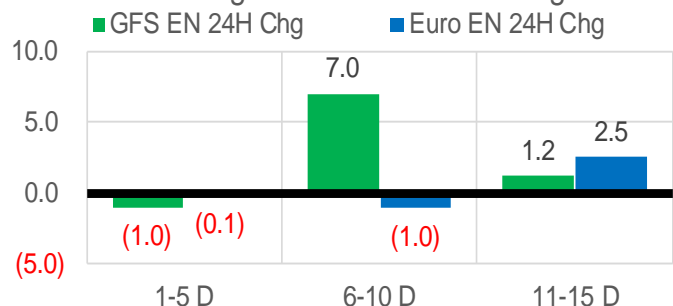
Vs. 12H Ago

L48 Region - 00z TDD vs 12H Ago



Vs. 24H Ago

L48 Region - 00z TDD vs 24H Ago



	Current	Δ from YD	Δ from 7D Avg
US Dry Production	96.2	▼ -0.67	▼ -1.61

	Current	Δ from YD	Δ from 7D Avg
US Power Burns	43.1	▼ -1.00	▼ -0.23

	Current	Δ from YD	Δ from 7D Avg
US ResComm	8.4	▼ -0.07	▲ 0.09

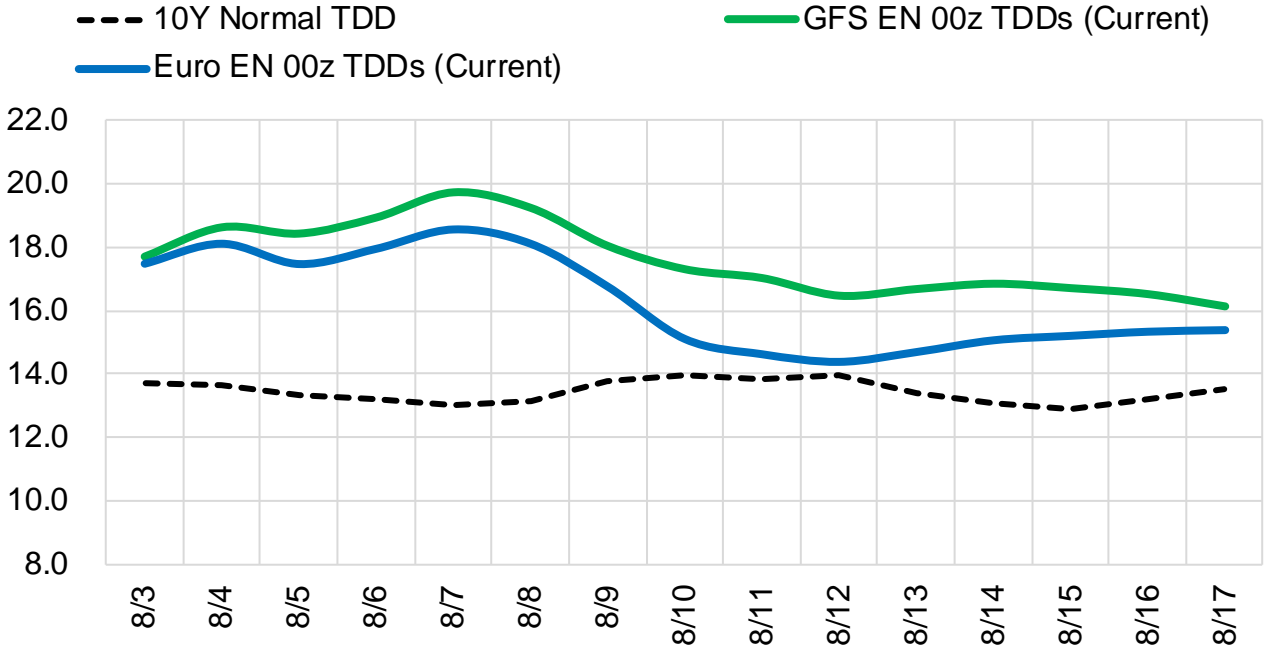
	Current	Δ from YD	Δ from 7D Avg
Canadian Imports	5.7	▲ 0.32	▲ 0.02

	Current	Δ from YD	Δ from 7D Avg
Net LNG Exports	11.1	▲ 0.09	▲ 0.34

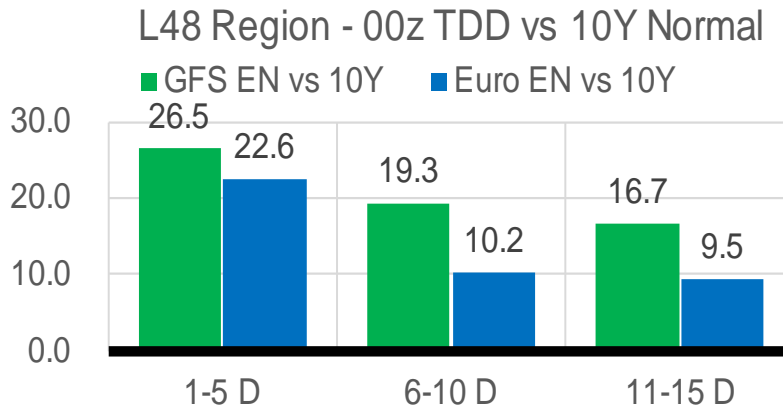
	Current	Δ from YD	Δ from 7D Avg
Mexican Exports	5.7	▲ 0.21	▼ -0.75

Short-term Weather Model Outlooks (00z)

L48 Region



Vs. 10Y Normal



Source: WSI , Bloomberg

Lower 48 Component Models

Daily Balances

	28-Jul	29-Jul	30-Jul	31-Jul	1-Aug	2-Aug	3-Aug	DoD	vs. 7D
Lower 48 Dry Production	97.6	98.7	98.7	98.5	97.2	96.9	96.2	▼ -0.7	▼ -1.7
Canadian Imports	5.8	5.7	5.5	5.6	5.8	5.4	5.7	▲ 0.3	▲ 0.0
L48 Power	45.4	44.1	41.4	40.9	43.6	44.1	43.1	▼ -1.0	▼ -0.2
L48 Residential & Commercial	8.5	8.3	8.0	7.9	8.3	8.4	8.4	▼ -0.1	▲ 0.1
L48 Industrial	20.7	21.4	22.0	22.4	22.7	22.7	22.4	▼ -0.3	▲ 0.4
L48 Lease and Plant Fuel	5.3	5.4	5.4	5.3	5.3	5.3	5.2	▼ -0.1	▼ -0.1
L48 Pipeline Distribution	2.9	2.8	2.6	2.6	2.8	2.8	2.7	▼ -0.1	▼ 0.0
L48 Regional Gas Consumption	82.8	81.9	79.4	79.1	82.5	83.2	81.7	▼ -1.5	▲ 0.2
Net LNG Delivered	10.60	10.57	10.90	10.98	11.02	11.03	11.12	▲ 0.1	▲ 0.3
Total Mexican Exports	7.2	6.3	6.6	6.6	5.7	5.5	5.7	▲ 0.2	▼ -0.7
Implied Daily Storage Activity	2.8	5.6	7.4	7.5	3.7	2.6	3.4		
EIA Reported Daily Storage Activity									
Daily Model Error									

EIA Storage Week Balances

	24-Jun	1-Jul	8-Jul	15-Jul	22-Jul	29-Jul	WoW	vs. 4W
Lower 48 Dry Production	96.9	97.1	97.0	96.3	96.9	97.2	▲ 0.3	▲ 0.4
Canadian Imports	5.6	5.7	5.6	6.0	6.2	5.9	▼ -0.2	▲ 0.0
L48 Power	37.2	39.7	41.0	42.9	45.5	44.6	▼ -0.8	▲ 2.4
L48 Residential & Commercial	9.1	8.5	8.4	8.4	8.7	8.6	▼ -0.1	▲ 0.1
L48 Industrial	20.2	20.3	20.1	20.5	22.0	19.9	▼ -2.1	▼ -0.8
L48 Lease and Plant Fuel	5.2	5.3	5.3	5.2	5.3	5.3	▲ 0.0	▲ 0.0
L48 Pipeline Distribution	2.5	2.6	2.6	2.7	2.9	2.8	▼ -0.1	▲ 0.1
L48 Regional Gas Consumption	74.3	76.3	77.4	79.7	84.4	81.2	▼ -3.1	▲ 1.8
Net LNG Exports	10.6	10.6	11.2	11.1	10.8	10.7	▼ 0.0	▼ -0.2
Total Mexican Exports	7.0	7.0	6.9	7.0	7.1	6.9	▼ -0.2	▼ -0.1
Implied Daily Storage Activity	10.5	8.8	7.2	4.5	0.9	4.3		
EIA Reported Daily Storage Activity	11.7	8.6	8.3	4.6	2.1			
Daily Model Error	-1.2	0.2	-1.1	0.0	-1.3			

Monthly Balances

	2Yr Ago Aug-20	LY Aug-21	Apr-22	May-22	Jun-22	Jul-22	MTD Aug-22	MoM	vs. LY
Lower 48 Dry Production	88.8	93.8	94.9	95.8	97.0	97.0	97.0	▼ 0.0	▲ 3.3
Canadian Imports	4.9	5.1	5.8	5.1	5.7	5.9	5.6	▼ -0.3	▲ 0.5
L48 Power	41.0	40.4	25.1	29.7	36.8	43.4	43.8	▲ 0.5	▲ 3.4
L48 Residential & Commercial	7.7	7.9	22.3	12.4	9.0	8.5	8.3	▼ -0.1	▲ 0.5
L48 Industrial	20.8	21.0	20.1	19.8	20.6	20.5	22.7	▲ 2.1	▲ 1.6
L48 Lease and Plant Fuel	4.8	5.1	5.2	5.3	5.2	5.3	5.3	▲ 0.0	▲ 0.2
L48 Pipeline Distribution	2.5	2.6	2.6	2.4	2.5	2.8	2.8	▲ 0.0	▲ 0.2
L48 Regional Gas Consumption	76.9	77.0	75.3	69.6	74.2	80.4	82.9	▲ 2.5	▲ 5.9
Net LNG Exports	4.0	10.5	12.3	12.5	11.2	10.9	11.0	▲ 0.1	▲ 0.5
Total Mexican Exports	6.0	6.9	6.7	7.0	7.1	6.9	5.6	▼ -1.4	▼ -1.3
Implied Daily Storage Activity	6.7	4.6	6.4	11.9	10.2	4.7	3.1		
EIA Reported Daily Storage Activity									
Daily Model Error									

Source: Bloomberg, analytix.ai

Daily Average Generation Data

Nuclear Generation Daily Average - GWh (NRC)

	26-Jul	27-Jul	28-Jul	29-Jul	30-Jul	31-Jul	1-Aug	DoD	vs. 7D
NRC Nuclear Daily Output	90.0	90.0	90.4	90.5	90.4	90.8	90.5	-0.3	0.2
NRC Nuclear Max Capacity	104.9	104.9	104.9	104.9	104.9	104.9	104.9	0.0	0.0
NRC Nuclear Outage	14.8	14.8	14.4	14.4	14.5	14.0	14.3	0.3	-0.2
NRC % Nuclear Cap Utilization	91.6	91.6	92.0	92.0	91.9	92.4	92.1	-0.3	0.2

Wind Generation Daily Average - MWh (EIA)

	26-Jul	27-Jul	28-Jul	29-Jul	30-Jul	31-Jul	1-Aug	DoD	vs. 7D
CALI Wind	2252	2252	2252	2103	1542	1495	1241	-254	-741
TEXAS Wind	15346	15346	15346	11674	10484	14283	14452	168	705
US Wind	36656	36656	36656	29082	29203	41672	45047	3375	10060

Generation Daily Average - MWh (EIA)

	26-Jul	27-Jul	28-Jul	29-Jul	30-Jul	31-Jul	1-Aug	DoD	vs. 7D
Genscape Wind	37864	37267	37351	28445	30413	45478	46700	1222	10564
US Solar	16944	16944	16944	17550	17318	15858	16202	344	-724
US Petroleum	1298	1298	1298	1074	741	835	1020	185	-71
US Other	10142	10142	10142	10396	9926	9700	10136	436	61
US Coal	128289	128289	128289	122320	113782	112225	124876	12651	2677
US Nuke	92134	92134	92134	92724	92503	92826	92732	-94	323
US Hydro	31140	31140	31140	32025	29959	28956	30470	1514	-256
US Gas	229554	229554	229554	243438	222732	209414	231667	22253	4293

See National Wind and Nuclear daily charts

Source: Bloomberg, analytix.ai

Storage Week Average Generation Data

Nuclear Generation Weekly Average - GWh (NRC)

	24-Jun	1-Jul	8-Jul	15-Jul	22-Jul	29-Jul	WoW	WoW Bcf/d Impact
NRC Nuclear Daily Output	89.0	88.9	90.6	91.2	90.5	90.1	-0.4	0.1
NRC Nuclear Max Capacity	104.9	104.9	104.9	104.9	104.9	104.9	0.0	
NRC Nuclear Outage	15.9	16.0	14.2	13.7	14.4	14.8	0.4	
NRC % Nuclear Cap Utilization	90.5	90.4	92.2	92.7	92.0	91.6	-0.4	

Wind Generation Weekly Average - MWh (EIA)

	24-Jun	1-Jul	8-Jul	15-Jul	22-Jul	29-Jul	WoW	WoW Bcf/d Impact
CALI Wind	2048	2048	2048	2048	2048	2145	98	0.0
TEXAS Wind	22879	22879	22879	22879	22879	18633	-4247	0.8
US Wind	63443	63443	63443	63443	63443	48440	-15003	2.7
							-24%	
							-0.2	

Generation Weekly Average - MWh (EIA)

	24-Jun	1-Jul	8-Jul	15-Jul	22-Jul	29-Jul	WoW	WoW Bcf/d Impact
						est.		
Genscape Wind	50581	45558	42730	34294	40237	44926	4688	-0.8
US Solar	19728	19728	19728	19728	19728	18148	-1580	0.3
US Petroleum	1333	1333	1333	1333	1333	1290	-43	0.0
US Other	9775	9775	9775	9775	9775	10042	267	0.0
US Coal	119543	119543	119543	119543	119543	124838	5295	-1.0
US Nuke	90696	90696	90696	90696	90696	91633	937	-0.2
US Hydro	39690	39690	39690	39690	39690	34445	-5245	0.9
US Gas	220700	220700	220700	220700	220700	227720	7020	1.3

See National Wind and Nuclear daily charts

Source: Bloomberg, analytix.ai

Monthly Average Generation Data

Nuclear Generation Monthly Average - GWh (NRC)

	2Yr Ago		LY		MTD		Last 30 days	MoM (MTD vs LY)	Last 30 days YoY
	Same 30 days	Same 30 days	May-22	Jun-22	Jul-22	Aug-22			
	NRC Nuclear Daily Output	91.2	90.2	81.7	88.5	90.6			
NRC Nuclear Max Capacity	104.9	104.9	104.9	104.9	104.9	104.9	104.9	0.0	0.0
NRC Nuclear Outage	13.6	14.6	23.2	16.3	14.3	14.3	14.2	0.0	-0.4
NRC % Nuclear Cap Utilization	92.8	91.8	83.0	90.0	92.1	92.1	92.2	0.0	0.4

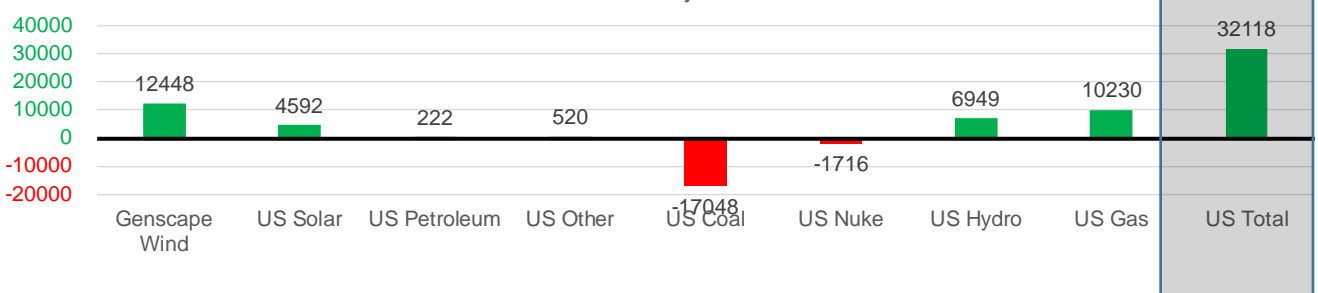
Wind Generation Monthly Average - MWh (EIA)

	2Yr Ago		LY		MTD		Last 30 days	MoM (MTD vs LY)	Last 30 days YoY
	Same 30 days	Same 30 days	May-22	Jun-22	Jul-22	Aug-22			
	CALI Wind	2648	2348	3361	2724	2037			
TEXAS Wind	8738	7440	16756	19072	20882	14452	19972	-6430	12532
US Wind	30040	28716	56462	54014	57140	45047	55090	-12093	26374

Generation Monthly Average - MWh (EIA)

	2Yr Ago		LY		MTD		Last 30 days	MoM (MTD vs LY)	Last 30 days YoY
	Same 30 days	Same 30 days	May-22	Jun-22	Jul-22	Aug-22			
	Genscape Wind	30297	27681	56803	47280	39988			
US Solar	12299	14133	18186	19216	19098	16202	18725	▲2522.8	▲4592
US Petroleum	1623	1025	518	1204	1280	1020	1247	▲226	▲222
US Other	9969	9377	7724	8994	9858	10136	9897	▼-239	▲520
US Coal	121737	138017	85273	109706	120406	124876	120968	▼-3907	▼-17048
US Nuke	93457	93033	85496	91073	91100	92732	91317	▼-1415	▼-1716
US Hydro	32023	29658	31369	38153	37598	30470	36607	▲6136	▲6949
US Gas	233215	213654	157565	204668	222720	231667	223884	▼-3247	▲10230
US Total	532171	527566	443965	530484	561182	553915	559684	▲77	▲32118

Last 30 days YoY



See National Wind and Nuclear daily charts

Source: Bloomberg, analytix.ai

Regional S/D Models Storage Projection

Week Ending 29-Jul

	Daily Raw Storage	Daily Adjustment Factor	Daily Average Storage Activity (Adjusted) *	Weekly Adjusted Storage Activity
L48	5.3	-0.5	4.8	33
East	-0.3	2.3	2.1	14
Midwest	3.1	-0.6	2.5	18
Mountain	4.4	-4.4	0.1	1
South Central	-2.9	2.9	0.0	0
Pacific	1.0	-0.8	0.2	1

*Adjustment Factor is calculated based on historical regional deltas

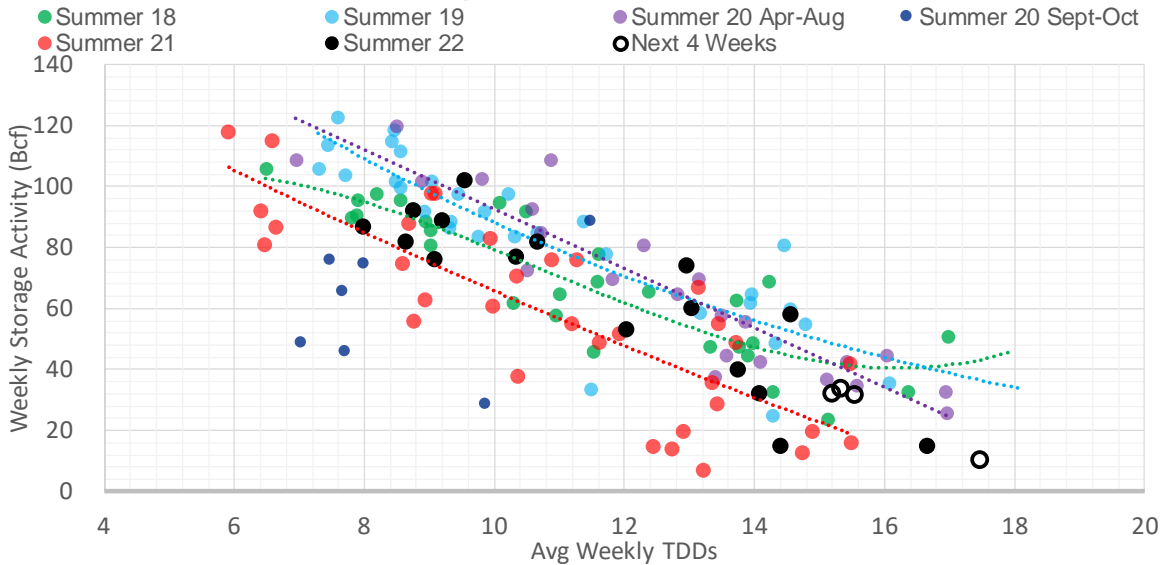
U.S. underground natural gas storage facilities by type (July 2015)



Weather Model Storage Projection

Next report and beyond		
Week Ending	GWDDs	Week Storage Projection
29-Jul	15.3	33
05-Aug	15.6	32
12-Aug	17.5	10
19-Aug	15.2	32

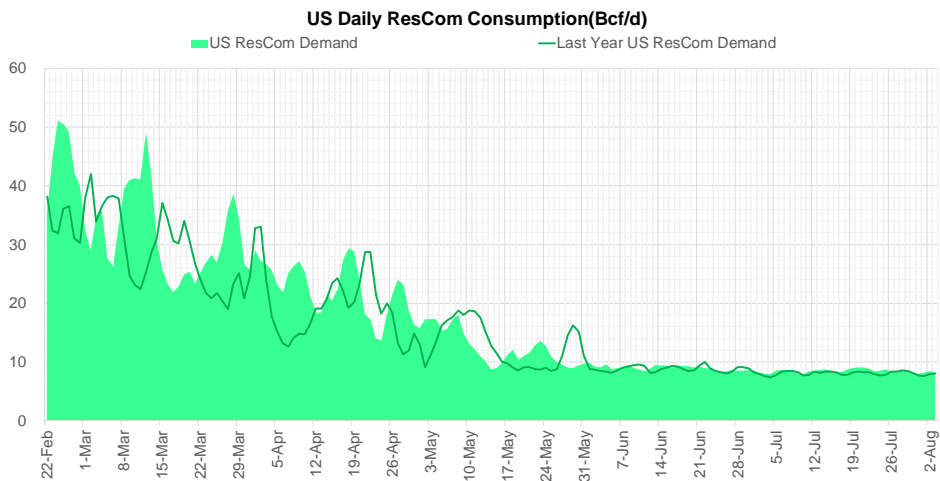
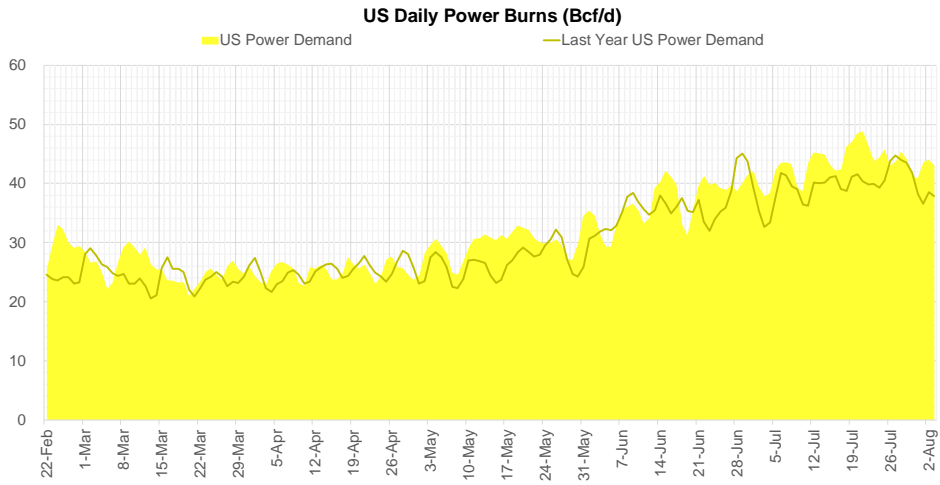
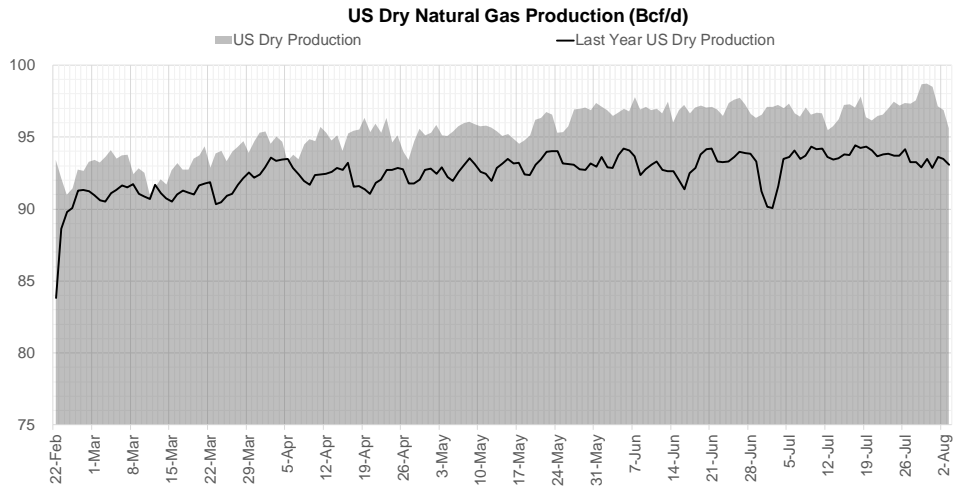
Weather Storage Model - Next 4 Week Forecast



Go to larger image



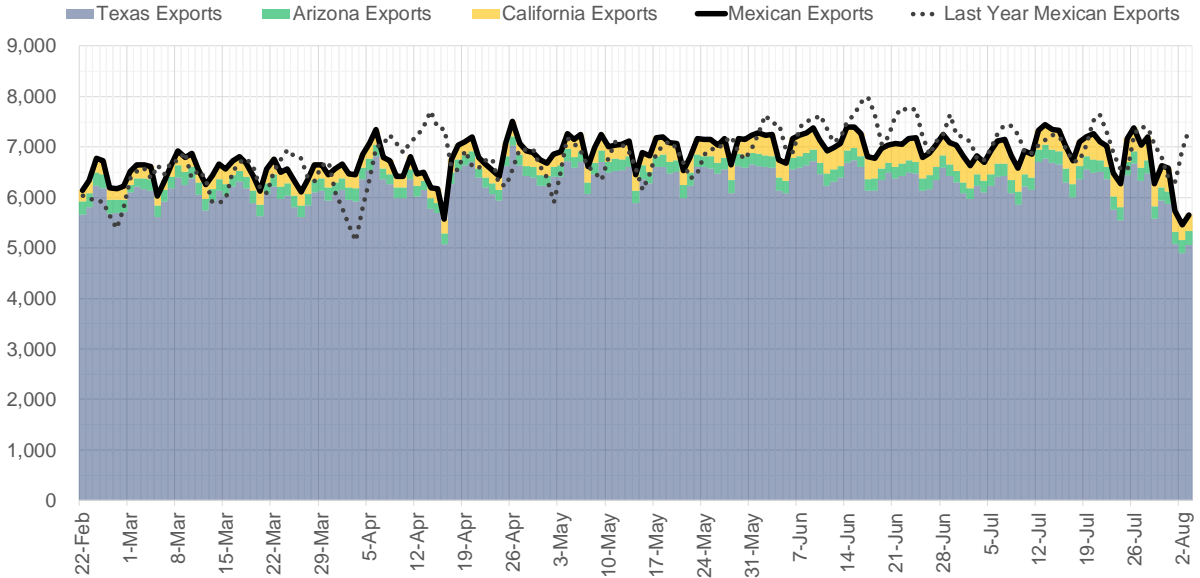
Supply – Demand Trends



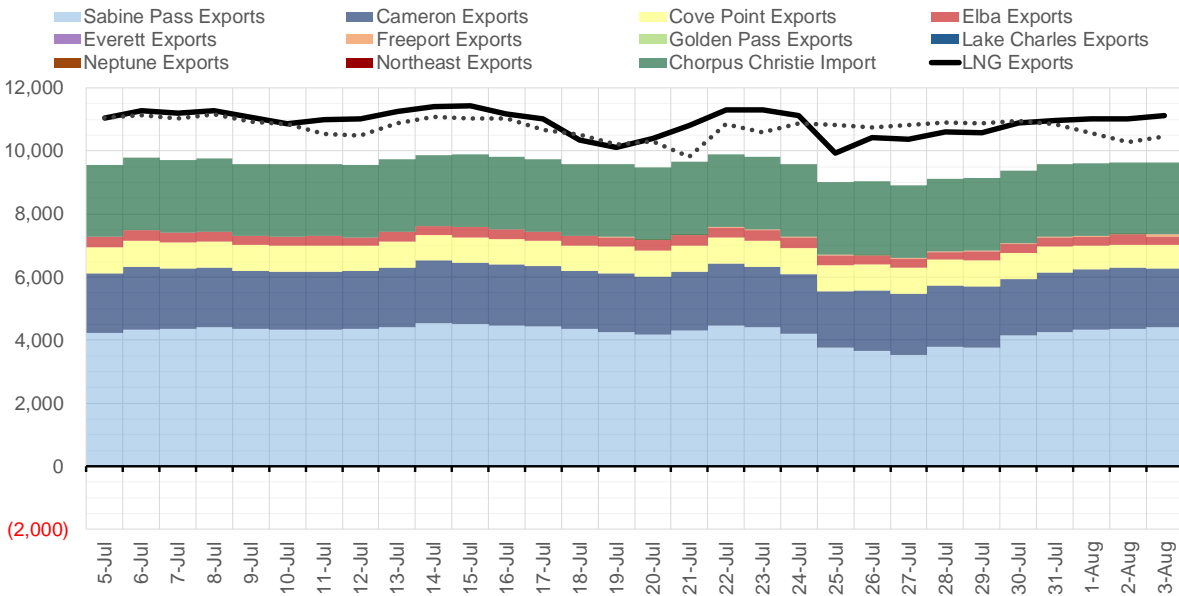
Source: Bloomberg

The risk of trading futures and options and other derivatives involves a substantial risk of loss and is not suitable for all persons. Each person must consider whether a particular trade, combination of trades, or strategy is suitable for that person's financial means and objectives. Past results are not necessarily indicative of future results. This communication may contain links to third party websites which are not under the control of and are not maintained by ION Energy Group, and ION Energy Group is not responsible for their content.

Mexican Exports (MMcf/d)



Net LNG Exports - Last 30 days (MMcf/d)



Source: Bloomberg

The risk of trading futures and options and other derivatives involves a substantial risk of loss and is not suitable for all persons. Each person must consider whether a particular trade, combination of trades, or strategy is suitable for that person's financial means and objectives. Past results are not necessarily indicative of future results. This communication may contain links to third party websites which are not under the control of and are not maintained by ION Energy Group, and ION Energy Group is not responsible for their content.

Nat Gas Options Volume and Open Interest CME and ICE Combined

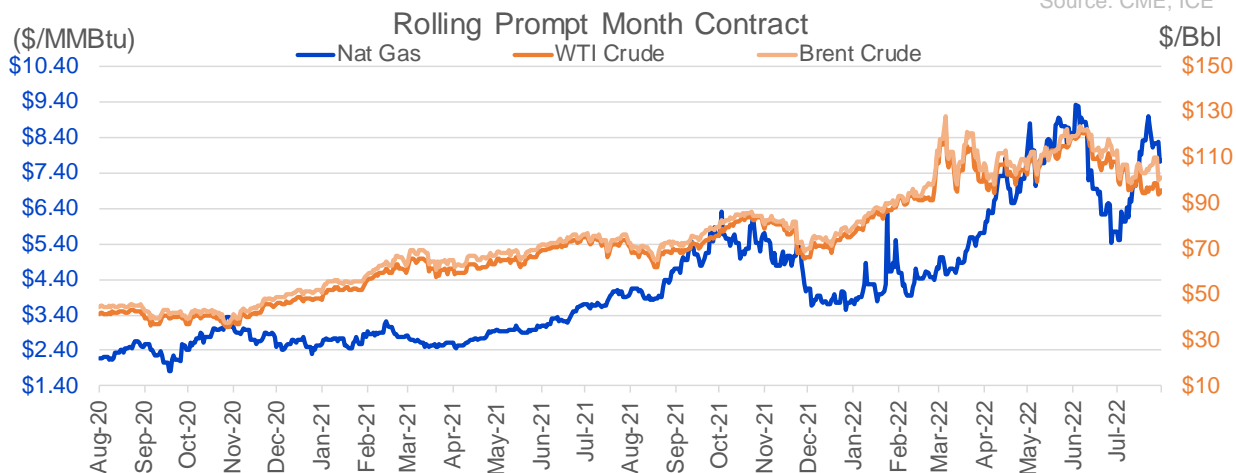
CONTRACT MONTH	CONTRACT YEAR	PUT/CALL	STRIKE	CUMULATIVE VOL	CONTRACT MONTH	CONTRACT YEAR	PUT/CALL	STRIKE	CUMULATIVE OI
9	2022	P	6.50	4347	10	2022	C	6.00	36014
10	2022	C	10.00	3293	10	2022	P	3.00	35678
9	2022	P	5.00	3002	10	2022	P	2.50	28187
5	2023	P	2.00	2778	9	2022	C	6.00	24364
9	2022	P	7.00	2565	10	2022	P	6.00	24276
10	2022	C	10.50	2036	10	2022	P	5.00	23367
9	2022	P	6.00	1739	10	2022	C	5.00	23268
9	2022	P	5.50	1690	10	2022	P	3.50	21679
11	2022	C	8.00	1500	3	2023	C	10.00	21353
11	2022	C	8.10	1400	5	2023	P	2.00	21127
10	2023	P	2.00	1375	9	2022	P	4.00	20268
10	2022	P	4.00	1305	10	2022	P	4.00	20177
9	2022	C	8.00	1192	9	2022	C	7.00	19507
10	2022	C	15.00	1011	10	2022	C	10.00	18508
10	2022	C	7.25	1000	12	2022	C	5.00	18218
10	2022	C	7.35	1000	12	2022	P	5.00	18071
10	2022	C	17.00	1000	3	2023	P	3.00	18012
10	2022	P	2.00	1000	9	2022	C	9.00	17914
10	2022	P	2.50	1000	9	2022	C	10.00	17859
9	2022	C	10.00	918	11	2022	P	4.00	17682
9	2022	P	6.25	900	1	2023	C	10.00	17632
3	2023	C	10.00	846	10	2022	C	8.00	16654
9	2022	P	5.75	803	9	2022	P	3.00	16633
10	2022	P	3.50	803	10	2022	P	2.00	16580
4	2023	P	2.00	775	9	2022	P	6.00	16493
6	2023	P	2.00	775	9	2022	P	5.00	16318
7	2023	P	2.00	775	2	2023	C	10.00	16277
8	2023	P	2.00	775	9	2022	C	4.00	15970
9	2023	P	2.00	775	4	2023	P	3.00	15709
10	2022	P	5.00	675	10	2023	P	2.50	15705
9	2022	C	12.00	632	9	2022	P	2.50	15477
10	2022	C	8.00	626	10	2022	P	3.25	15200
9	2022	P	7.50	608	10	2022	C	7.00	15111
9	2022	C	8.10	599	9	2022	C	9.50	15024
9	2022	P	6.90	593	10	2023	P	2.00	14979
9	2022	P	4.50	577	9	2022	P	2.75	14887
1	2023	P	6.50	575	3	2023	C	20.00	14749
1	2023	P	4.00	550	10	2023	P	3.00	14160
3	2023	C	12.00	550	12	2022	C	6.00	13987
9	2022	C	9.50	503	9	2022	P	3.50	13313
10	2022	P	3.60	500	10	2022	C	4.00	13309
11	2022	P	3.00	500	10	2022	P	2.75	13286
12	2022	P	7.00	500	9	2022	C	3.00	13225
12	2022	P	8.00	500	10	2022	C	3.00	13214
1	2023	C	11.20	500	4	2023	P	2.75	13045
1	2023	C	11.50	500	9	2022	C	14.00	13013
1	2023	P	4.10	500	5	2023	C	5.00	12995
1	2023	P	4.25	500	1	2023	P	5.00	12893
9	2022	C	9.00	477	5	2023	P	3.00	12863
					6	2023	P	3	12860

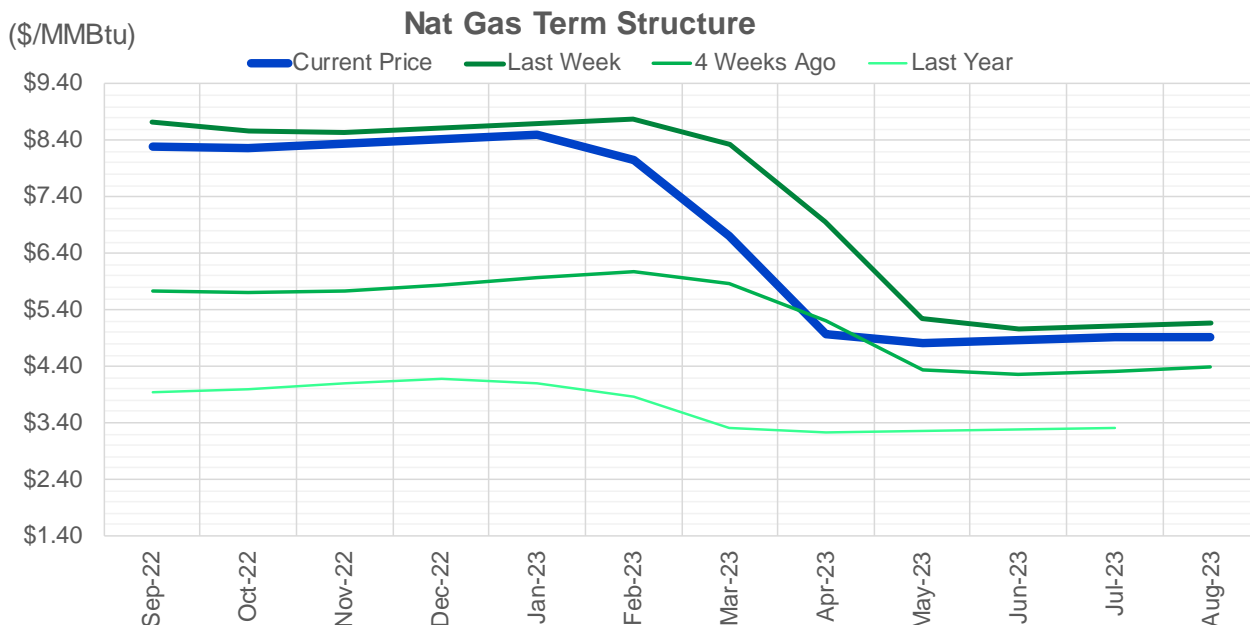
Source: CME, ICE

Nat Gas Futures Open Interest CME and ICE Combined

CME Henry Hub Futures (10,000 MMBtu)				ICE Henry Hub Futures Contract Equivalent (10,000 MM			
	Current	Prior	Daily Change		Current	Prior	Daily Change
SEP 22	157148	161422	-4274	SEP 22	81912	81356	556
OCT 22	95424	94984	440	OCT 22	74917	75145	-228
NOV 22	83698	84198	-500	NOV 22	63263	63552	-289
DEC 22	56338	54719	1619	DEC 22	64862	65291	-429
JAN 23	73391	74213	-822	JAN 23	65516	65383	133
FEB 23	35209	35076	133	FEB 23	58016	57831	184
MAR 23	50815	51395	-580	MAR 23	52228	52039	189
APR 23	69620	69653	-33	APR 23	53788	54125	-337
MAY 23	66475	66543	-68	MAY 23	52284	52009	275
JUN 23	23287	23165	122	JUN 23	46233	46183	50
JUL 23	20689	20457	232	JUL 23	44617	44644	-27
AUG 23	19330	19621	-291	AUG 23	43595	43496	99
SEP 23	17334	17065	269	SEP 23	42755	42697	59
OCT 23	46705	46118	587	OCT 23	49868	49638	230
NOV 23	13076	12855	221	NOV 23	44831	44931	-100
DEC 23	11689	11472	217	DEC 23	40614	40702	-88
JAN 24	17814	17460	354	JAN 24	39735	39529	207
FEB 24	7846	7870	-24	FEB 24	30087	29910	177
MAR 24	16651	16374	277	MAR 24	34682	34449	233
APR 24	13450	13504	-54	APR 24	28241	28179	63
MAY 24	6746	6755	-9	MAY 24	26867	26819	48
JUN 24	2526	2482	44	JUN 24	23830	23783	47
JUL 24	2317	2296	21	JUL 24	23550	23515	35
AUG 24	3222	3221	1	AUG 24	23469	23422	48
SEP 24	1806	1826	-20	SEP 24	23382	23335	47
OCT 24	8746	8687	59	OCT 24	26596	26452	144
NOV 24	4707	4719	-12	NOV 24	24822	24767	55
DEC 24	7556	7558	-2	DEC 24	27772	27716	56
JAN 25	15988	15983	5	JAN 25	20596	20587	9
FEB 25	863	863	0	FEB 25	13834	13771	63

Source: CME, ICE





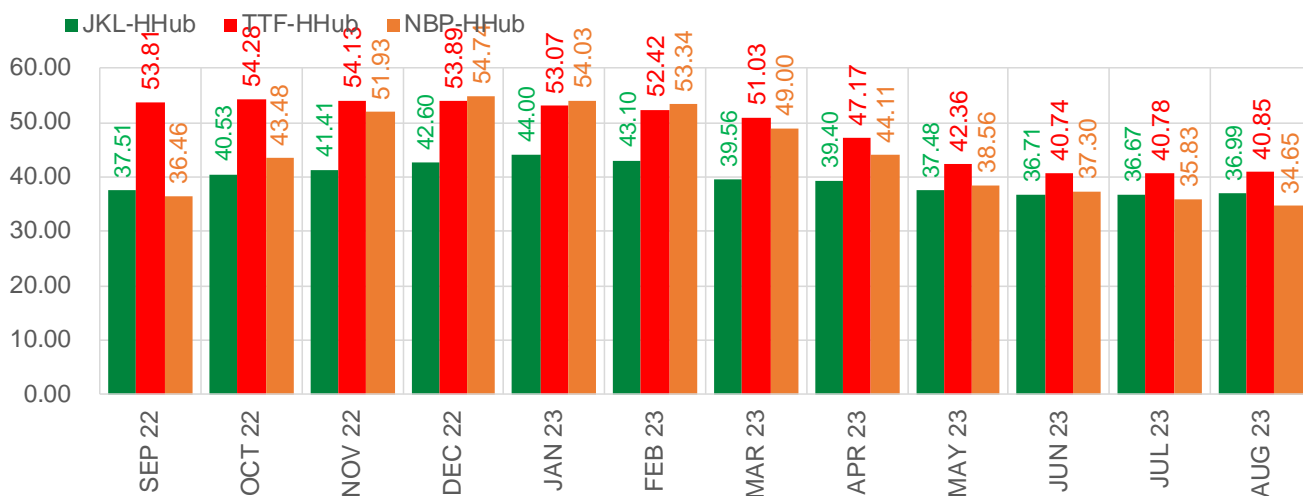
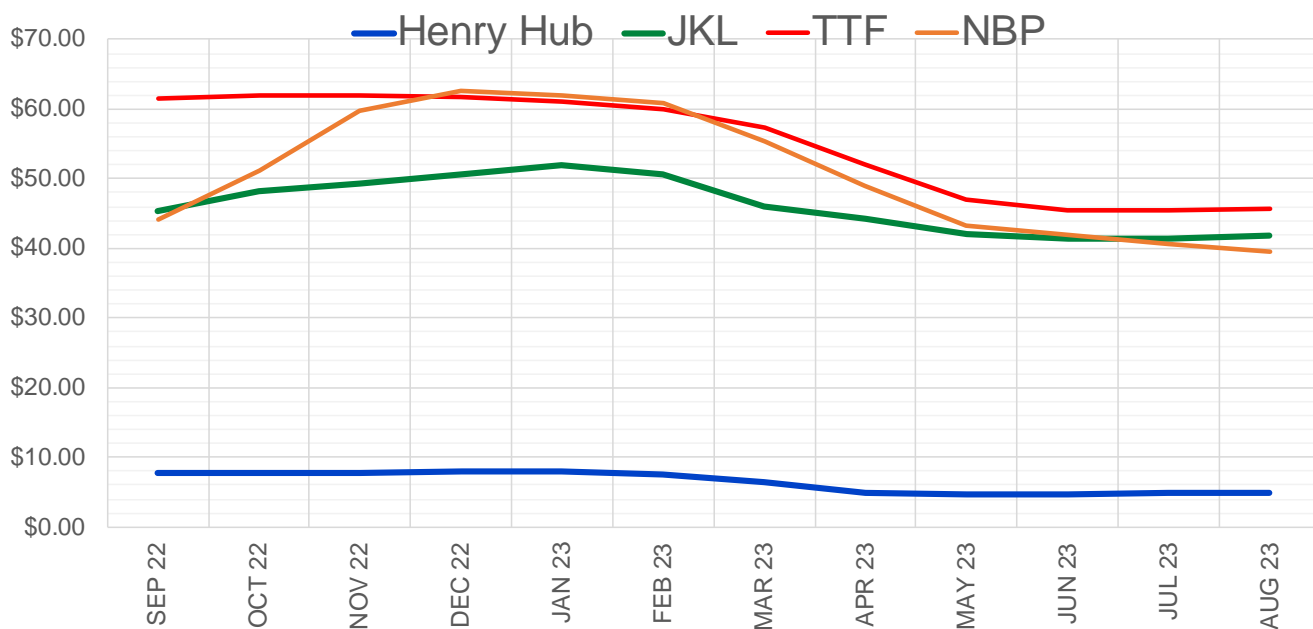
	Sep-22	Oct-22	Nov-22	Dec-22	Jan-23	Feb-23	Mar-23	Apr-23	May-23	Jun-23	Jul-23	Aug-23
Current Price	\$8.283	\$8.260	\$8.330	\$8.429	\$8.496	\$8.042	\$6.698	\$4.982	\$4.809	\$4.857	\$4.909	\$4.920
Last Week	\$8.727	\$8.571	\$8.552	\$8.626	\$8.706	\$8.769	\$8.321	\$6.969	\$5.240	\$5.057	\$5.107	\$5.159
vs. Last Week	-\$0.444	-\$0.311	-\$0.222	-\$0.197	-\$0.210	-\$0.727	-\$1.623	-\$1.987	-\$0.431	-\$0.200	-\$0.198	-\$0.239
4 Weeks Ago	\$5.730	\$5.712	\$5.729	\$5.837	\$5.969	\$6.066	\$5.852	\$5.215	\$4.339	\$4.257	\$4.319	\$4.381
vs. 4 Weeks Ago	\$2.553	\$2.548	\$2.601	\$2.592	\$2.527	\$1.976	\$0.846	-\$0.233	\$0.470	\$0.600	\$0.590	\$0.539
Last Year	\$3.935	\$3.938	\$3.998	\$4.101	\$4.170	\$4.091	\$3.854	\$3.301	\$3.223	\$3.253	\$3.289	\$3.296
vs. Last Year	\$4.348	\$4.322	\$4.332	\$4.328	\$4.326	\$3.951	\$2.844	\$1.681	\$1.586	\$1.604	\$1.620	\$1.624

	Units	Cash Settled	Prompt Settle	Cash to Prompt
AGT Citygate	\$/MMBtu	8.07	9.11	1.04
TETCO M3	\$/MMBtu	7.44	8.57	1.13
FGT Zone 3	\$/MMBtu	7.50	13.52	6.02
Zone 6 NY	\$/MMBtu	7.50	8.56	1.06
Chicago Citygate	\$/MMBtu	7.53	8.77	1.24
Michcon	\$/MMBtu	7.56	8.72	1.16
Columbia TCO Pool	\$/MMBtu	7.17	8.18	1.01
Ventura	\$/MMBtu	5.95	8.67	2.72
Rockies/Opal	\$/MMBtu	7.45	8.59	1.14
El Paso Permian Basin	\$/MMBtu	6.88	8.44	1.56
Socal Citygate	\$/MMBtu	9.04	9.95	0.91
Malin	\$/MMBtu	8.02	8.84	0.82
Houston Ship Channel	\$/MMBtu	7.24	8.71	1.47
Henry Hub Cash	\$/MMBtu	8.10	8.61	0.51
AECO Cash	C\$/GJ	4.37	4.70	0.33
Station2 Cash	C\$/GJ	3.94	8.71	4.77
Dawn Cash	C\$/GJ	7.54	8.76	1.22

Source: CME, Bloomberg

	Units	Current Price	vs. Last Week	vs. 4 Weeks Ago	vs. Last Year
NatGas Jul21/Oct21	\$/MMBtu	2.224	▲ 0.000	▲ 0.000	▲ 1.809
NatGas Oct21/Nov21	\$/MMBtu	0.361	▲ 0.000	▲ 0.000	▲ 0.304
NatGas Oct21/Jan22	\$/MMBtu	-1.817	▲ 0.000	▲ 0.000	▼ -2.041
NatGas Apr22/Oct22	\$/MMBtu	2.362	▼ -1.096	▲ 2.203	▲ 2.373
WTI Crude	\$/Bbl	94.42	▼ -0.560	▼ -5.080	▲ 23.860
Brent Crude	\$/Bbl	100.54	▼ -3.860	▼ -2.230	▲ 28.130
Fuel Oil, NY Harbour 1%	\$/Bbl	97.18	▲ 0.000	▲ 0.000	▲ 0.000
Heating Oil	cents/Gallon	338.04	▼ -20.350	▼ -22.120	▲ 125.400
Propane, Mt. Bel	cents/Gallon	1.11	▼ -0.027	▼ -0.059	▲ 0.023
Ethane, Mt. Bel	cents/Gallon	0.56	▼ -0.016	▲ 0.101	▲ 0.230
Coal, PRB	\$/MTon	12.30	▲ 0.000	▲ 0.000	▲ 0.000
Coal, PRB	\$/MMBtu	0.70			
Coal, ILB	\$/MTon	31.05	▲ 0.000	▲ 0.000	▲ 0.000
Coal, ILB	\$/MMBtu	1.32			

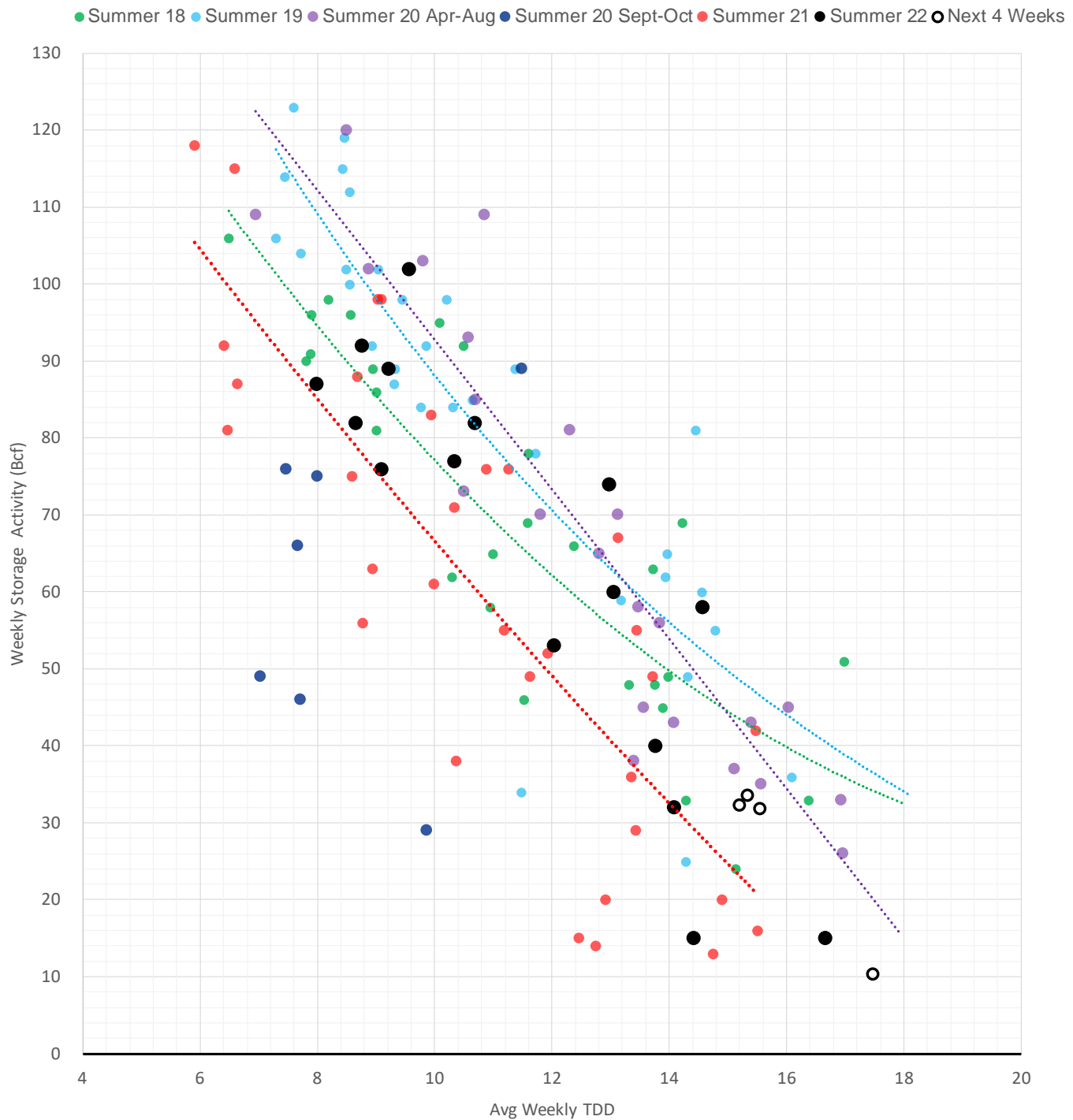
Nat Gas Term Structure (\$MMBTU)



	SEP 22	OCT 22	NOV 22	DEC 22	JAN 23	FEB 23	MAR 23	APR 23	MAY 23	JUN 23	JUL 23	AUG 23
Henry Hub	\$7.774	\$7.762	\$7.837	\$7.945	\$8.034	\$7.602	\$6.380	\$4.853	\$4.690	\$4.737	\$4.783	\$4.804
JKL	\$45.280	\$48.290	\$49.250	\$50.545	\$52.030	\$50.705	\$45.935	\$44.250	\$42.165	\$41.450	\$41.455	\$41.790
JKL-HHub	\$37.506	\$40.528	\$41.413	\$42.600	\$43.996	\$43.103	\$39.555	\$39.397	\$37.475	\$36.713	\$36.672	\$36.986
TTF	\$61.587	\$62.043	\$61.963	\$61.834	\$61.104	\$60.018	\$57.409	\$52.022	\$47.053	\$45.473	\$45.562	\$45.658
TTF-HHub	\$53.813	\$54.281	\$54.126	\$53.889	\$53.070	\$52.416	\$51.029	\$47.169	\$42.363	\$40.736	\$40.779	\$40.854
NBP	\$44.231	\$51.245	\$59.768	\$62.682	\$62.066	\$60.941	\$55.384	\$48.958	\$43.248	\$42.037	\$40.611	\$39.458
NBP-HHub	\$36.457	\$43.483	\$51.931	\$54.737	\$54.032	\$53.339	\$49.004	\$44.105	\$38.558	\$37.300	\$35.828	\$34.654

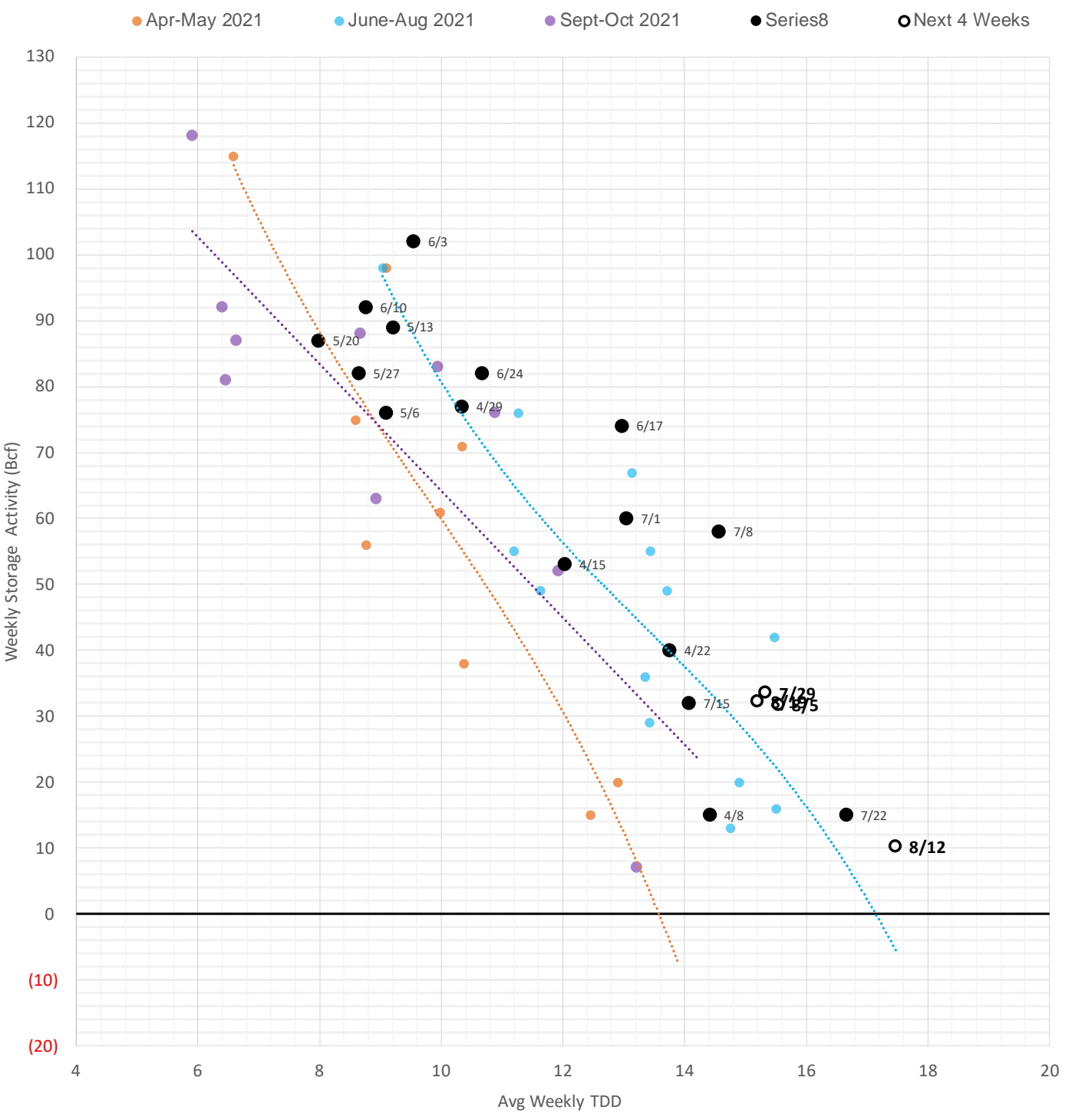
The risk of trading futures and options and other derivatives involves a substantial risk of loss and is not suitable for all persons. Each person must consider whether a particular trade, combination of trades, or strategy is suitable for that person's financial means and objectives. Past results are not necessarily indicative of future results. This communication may contain links to third party websites which are not under the control of and are not maintained by ION Energy Group, and ION Energy Group is not responsible for their content.

Weather Storage Model - Next 4 Week Forecast



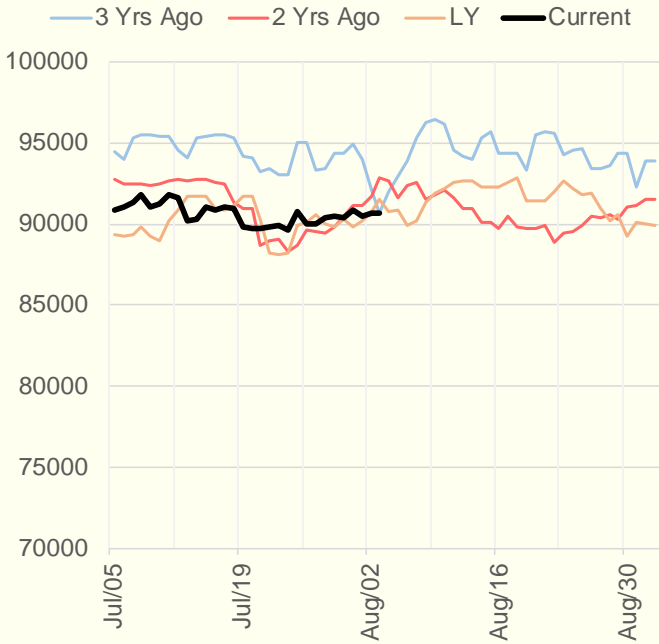
The risk of trading futures and options and other derivatives involves a substantial risk of loss and is not suitable for all persons. Each person must consider whether a particular trade, combination of trades, or strategy is suitable for that person's financial means and objectives. Past results are not necessarily indicative of future results. This communication may contain links to third party websites which are not under the control of and are not maintained by ION Energy Group, and ION Energy Group is not responsible for their content.

Weather Storage Model - Next 4 Week Forecast

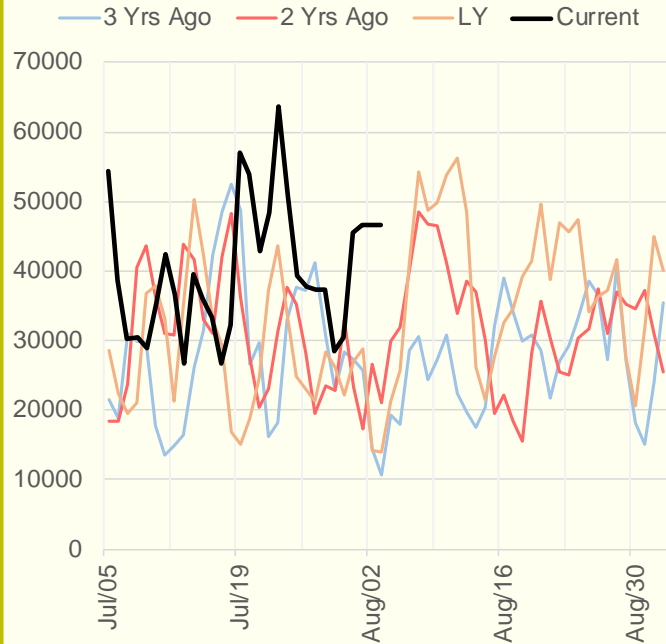


The risk of trading futures and options and other derivatives involves a substantial risk of loss and is not suitable for all persons. Each person must consider whether a particular trade, combination of trades, or strategy is suitable for that person's financial means and objectives. Past results are not necessarily indicative of future results. This communication may contain links to third party websites which are not under the control of and are not maintained by ION Energy Group, and ION Energy Group is not responsible for their content.

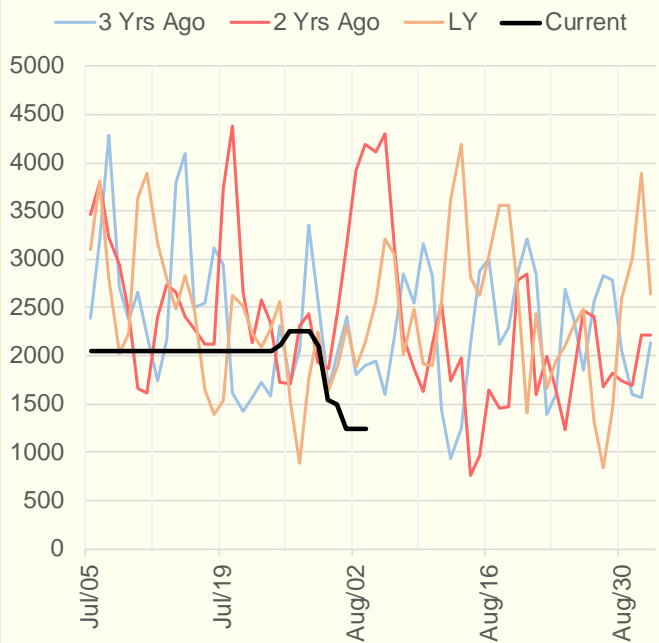
NRC Nuclear Daily Output



Genscape Wind



CALI Wind



TEXAS Wind

