

	Current	Δ from YD	Δ from 7D Avg
Nat Gas Prompt	\$ 9.03 ▲	\$ 0.30 ▲	\$ 0.47

	Current	Δ from YD	Δ from 7D Avg
WTI Prompt	\$ 90.13 ▲	\$ 0.72 ▼	\$ (1.6)

	Current	Δ from YD	Δ from 7D Avg
Brent Prompt	\$ 95.51 ▲	\$ 0.41 ▼	\$ (2.0)

Page Menu

[Short-term Weather Model Outlooks](#)

[Lower 48 Component Models](#)

[Regional S/D Models Storage Projection](#)

[Weather Model Storage Projection](#)

[Supply – Demand Trends](#)

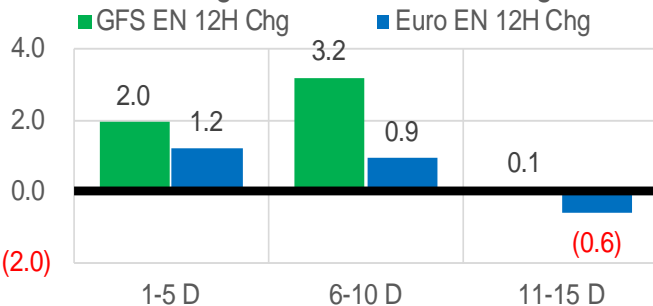
[Nat Gas Options Volume and Open Interest](#)

[Nat Gas Futures Open Interest](#)

[Price Summary](#)

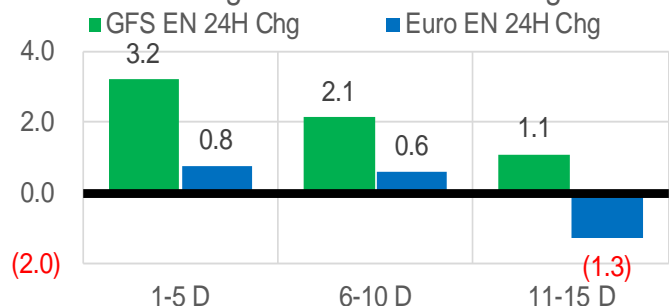
Vs. 12H Ago

L48 Region - 00z TDD vs 12H Ago



Vs. 24H Ago

L48 Region - 00z TDD vs 24H Ago



	Current	Δ from YD	Δ from 7D Avg
US Dry Production	96.1 ▼	-2.38 ▼	-2.28

	Current	Δ from YD	Δ from 7D Avg
US Power Burns	37.5 ▼	-0.47 ▼	-2.83

	Current	Δ from YD	Δ from 7D Avg
US ResComm	8.0 ▲	0.06 ▼	-0.09

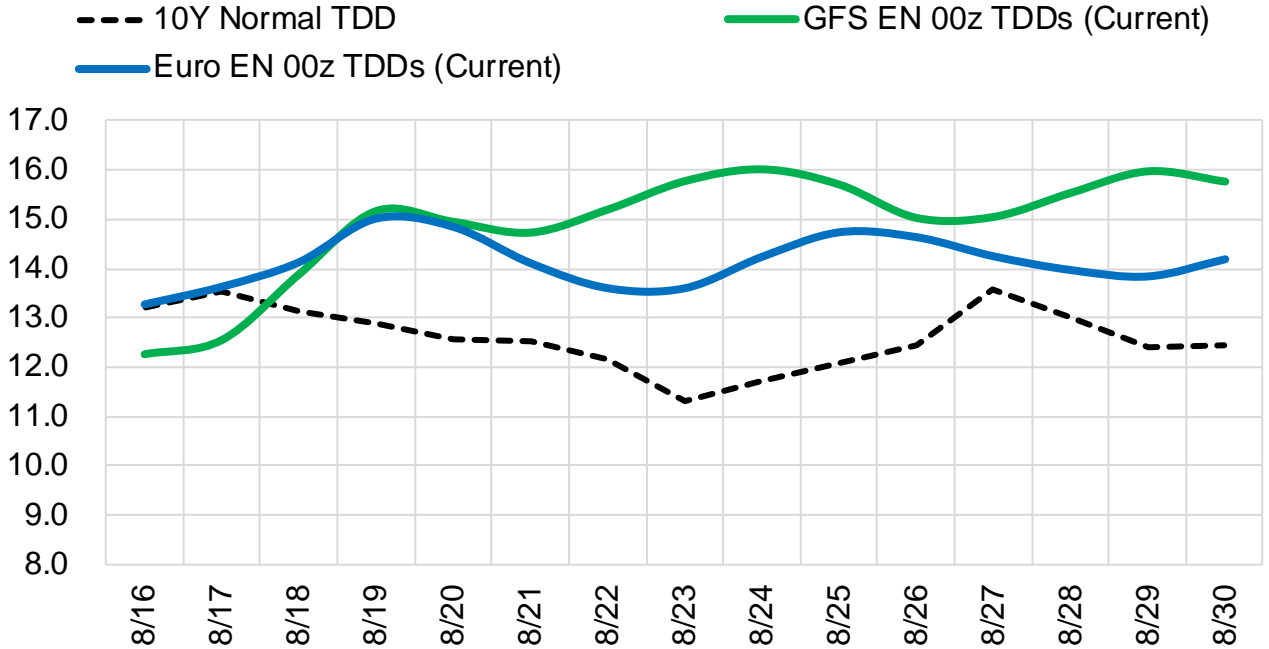
	Current	Δ from YD	Δ from 7D Avg
Canadian Imports	5.0 ▲	0.44 ▲	0.14

	Current	Δ from YD	Δ from 7D Avg
Net LNG Exports	10.9 ▲	0.14 ▼	-0.19

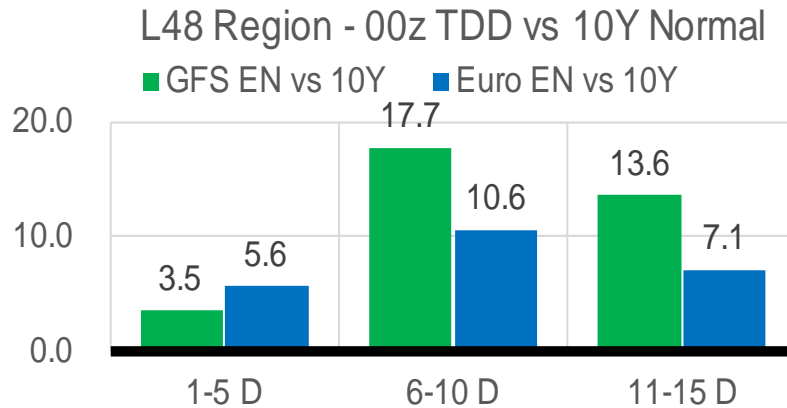
	Current	Δ from YD	Δ from 7D Avg
Mexican Exports	6.5 ▼	-0.35 ▼	-0.50

Short-term Weather Model Outlooks (00z)

L48 Region



Vs. 10Y Normal



Source: WSI , Bloomberg

Lower 48 Component Models

Daily Balances

	10-Aug	11-Aug	12-Aug	13-Aug	14-Aug	15-Aug	16-Aug	DoD	vs. 7D
Lower 48 Dry Production	98.4	97.9	98.4	98.4	98.4	98.5	96.1	▼ -2.4	▼ -2.2
Canadian Imports	5.0	5.1	4.9	4.5	4.6	4.5	5.0	▲ 0.4	▲ 0.2
L48 Power	45.7	43.6	40.4	32.9	33.8	37.9	37.5	▼ -0.5	▼ -1.6
L48 Residential & Commercial	8.5	8.3	7.9	7.6	7.6	7.9	8.0	▲ 0.1	▲ 0.0
L48 Industrial	21.5	22.5	23.5	24.3	24.9	25.1	25.0	▼ -0.1	▲ 1.4
L48 Lease and Plant Fuel	5.3	5.3	5.3	5.3	5.3	5.4	5.2	▼ -0.2	▼ -0.2
L48 Pipeline Distribution	2.9	2.8	2.6	2.2	2.2	2.4	2.4	▼ 0.0	▼ -0.1
L48 Regional Gas Consumption	83.9	82.5	79.8	72.4	73.8	78.8	78.1	▼ -0.7	▼ -0.5
Net LNG Delivered	11.30	11.37	11.15	11.28	10.70	10.78	10.92	▲ 0.1	▼ -0.2
Total Mexican Exports	7.2	7.2	7.1	6.9	6.6	6.8	6.5	▼ -0.4	▼ -0.5
Implied Daily Storage Activity	0.9	1.9	5.2	12.4	11.8	6.6	5.6		
EIA Reported Daily Storage Activity									
Daily Model Error									

EIA Storage Week Balances

	8-Jul	15-Jul	22-Jul	29-Jul	5-Aug	12-Aug	WoW	vs. 4W
Lower 48 Dry Production	97.1	96.5	97.1	97.4	98.7	98.6	▼ -0.2	▲ 1.1
Canadian Imports	5.6	6.0	6.2	5.9	5.7	5.4	▼ -0.3	▼ -0.6
L48 Power	41.0	42.9	45.5	44.7	44.1	45.6	▲ 1.5	▲ 1.3
L48 Residential & Commercial	8.4	8.4	8.7	8.6	8.3	8.4	▲ 0.1	▼ -0.1
L48 Industrial	20.1	20.5	21.0	19.5	20.6	20.8	▲ 0.2	▲ 0.4
L48 Lease and Plant Fuel	5.3	5.2	5.3	5.3	5.4	5.4	▼ 0.0	▲ 0.1
L48 Pipeline Distribution	2.6	2.7	2.9	2.8	2.8	2.9	▲ 0.1	▲ 0.1
L48 Regional Gas Consumption	77.4	79.7	83.3	80.9	81.2	83.1	▲ 1.9	▲ 1.8
Net LNG Exports	11.2	11.1	10.8	10.7	10.9	10.9	▼ -0.1	▼ 0.0
Total Mexican Exports	6.9	7.0	7.1	6.9	6.9	7.0	▲ 0.1	▼ 0.0
Implied Daily Storage Activity	7.4	4.7	2.0	4.8	5.4	3.0	-2.4	
EIA Reported Daily Storage Activity	8.3	4.6	2.1	5.9	6.3			
Daily Model Error	-0.9	0.1	-0.1	-1.1	-0.9			

Monthly Balances

	2Yr Ago Aug-20	LY Aug-21	Apr-22	May-22	Jun-22	Jul-22	MTD Aug-22	MoM	vs. LY
Lower 48 Dry Production	88.9	93.9	95.1	96.0	97.1	97.2	98.5	▲ 1.3	▲ 4.6
Canadian Imports	4.9	5.1	5.8	5.1	5.7	5.9	5.3	▼ -0.7	▲ 0.1
L48 Power	41.0	40.4	25.1	29.7	36.8	43.4	43.1	▼ -0.3	▲ 2.7
L48 Residential & Commercial	7.7	7.9	22.3	12.4	9.0	8.5	8.3	▼ -0.2	▲ 0.4
L48 Industrial	20.8	21.0	20.1	19.8	20.6	20.3	21.8	▲ 1.5	▲ 0.8
L48 Lease and Plant Fuel	4.8	5.1	5.2	5.3	5.2	5.3	5.4	▲ 0.1	▲ 0.3
L48 Pipeline Distribution	2.5	2.6	2.6	2.4	2.5	2.8	2.7	▼ 0.0	▲ 0.2
L48 Regional Gas Consumption	76.9	77.0	75.3	69.6	74.2	80.2	81.2	▲ 1.1	▲ 4.3
Net LNG Exports	4.0	10.5	12.3	12.5	11.2	10.9	10.9	▼ 0.0	▲ 0.5
Total Mexican Exports	6.0	6.9	6.7	7.0	7.1	7.0	6.9	▼ 0.0	▲ 0.1
Implied Daily Storage Activity	6.8	4.7	6.6	12.0	10.3	5.0	4.7		
EIA Reported Daily Storage Activity									
Daily Model Error									

Source: Bloomberg, analytix.ai

Daily Average Generation Data

Nuclear Generation Daily Average - GWh (NRC)

	8-Aug	9-Aug	10-Aug	11-Aug	12-Aug	13-Aug	14-Aug	DoD	vs. 7D
NRC Nuclear Daily Output	90.5	91.6	91.8	91.9	92.0	92.0	91.0	-1.0	-0.6
NRC Nuclear Max Capacity	104.9	104.9	104.9	104.9	104.9	104.9	104.9	0.0	0.0
NRC Nuclear Outage	14.4	13.3	13.1	12.9	12.8	12.8	12.8	0.0	-0.4
NRC % Nuclear Cap Utilization	92.0	93.1	93.3	93.5	93.6	93.6	92.6	-1.0	-0.6

Wind Generation Daily Average - MWh (EIA)

	8-Aug	9-Aug	10-Aug	11-Aug	12-Aug	13-Aug	14-Aug	DoD	vs. 7D
CALI Wind	1755	1916	1662	1863	2434	2134	2139	5	178
TEXAS Wind	8846	6643	5069	3873	4924	4526	7893	3367	2246
US Wind	32618	23052	18844	26060	34788	34011	27436	-6574	-792

Generation Daily Average - MWh (EIA)

	8-Aug	9-Aug	10-Aug	11-Aug	12-Aug	13-Aug	14-Aug	DoD	vs. 7D
US Wind	32618	23052	18844	26060	34788	34011	27436	-6574	-792
US Solar	17618	16570	17113	16426	16251	16905	17036	130	222
US Petroleum	2977	3323	1410	1185	1063	1045	1012	-33	-822
US Other	11066	11242	11087	10272	9746	9321	9127	-193	-1328
US Coal	126399	126609	119635	112248	111390	106936	110359	3423	-6844
US Nuke	92765	93701	94019	94489	94776	94801	93852	-949	-240
US Hydro	32135	30257	29285	29663	24815	25396	26023	626	-2569
US Gas	264905	264945	258266	246802	225316	196822	193959	-2862	-48883

See National Wind and Nuclear daily charts

Source: Bloomberg, analytix.ai

Storage Week Average Generation Data

Nuclear Generation Weekly Average - GWh (NRC)

	8-Jul	15-Jul	22-Jul	29-Jul	5-Aug	12-Aug	WoW	WoW Bcf/d Impact
NRC Nuclear Daily Output	90.6	91.2	90.5	90.1	90.6	90.7	0.2	0.0
NRC Nuclear Max Capacity	104.9	104.9	104.9	104.9	104.9	104.9	0.0	
NRC Nuclear Outage	14.2	13.7	14.4	14.8	14.3	14.1	-0.2	
NRC % Nuclear Cap Utilization	92.2	92.7	92.0	91.6	92.1	92.3	0.2	

Wind Generation Weekly Average - MWh (EIA)

	8-Jul	15-Jul	22-Jul	29-Jul	5-Aug	12-Aug	WoW	WoW Bcf/d Impact
CALI Wind	3521	2268	2470	3049	1933	1901	-33	0.0
TEXAS Wind	13920	7264	11182	14533	14443	8762	-5681	1.0
US Wind	42149	34828	40504	44004	43887	32799	-11088	2.0
							-25%	
							-0.4	

Generation Weekly Average - MWh (EIA)

	8-Jul	15-Jul	22-Jul	29-Jul	5-Aug	12-Aug	WoW	WoW Bcf/d Impact
						est.		
US Wind	42149	34828	40504	44004	43887	32799	-11088	2.0
US Solar	19503	18460	18727	18097	17575	17526	-50	0.0
US Petroleum	977	1015	1707	1465	1131	1737	606	-0.1
US Other	9329	9193	10492	10690	10470	10724	254	0.0
US Coal	114442	115861	121564	128742	122297	121628	-669	0.1
US Nuke	93305	93486	92543	92281	92607	92966	359	-0.1
US Hydro	35852	36439	33645	32210	31339	29840	-1499	0.3
US Gas	221886	237783	249141	238167	236187	251885	15698	2.8

See National Wind and Nuclear daily charts

Source: Bloomberg, analytix.ai

Monthly Average Generation Data

Nuclear Generation Monthly Average - GWh (NRC)

	2Yr Ago	LY					MTD		
	Same 30 days	Same 30 days	May-22	Jun-22	Jul-22	Aug-22	Last 30 days	MoM (MTD vs LY)	Last 30 days YoY
	NRC Nuclear Daily Output	90.7	90.8	81.7	88.5	90.6	90.9	90.6	0.3
NRC Nuclear Max Capacity	104.9	104.9	104.9	104.9	104.9	104.9	104.9	0.0	0.0
NRC Nuclear Outage	14.2	14.1	23.2	16.3	14.3	13.0	13.8	-1.3	-0.3
NRC % Nuclear Cap Utilization	92.2	92.4	83.0	90.0	92.1	92.4	92.1	0.3	-0.3

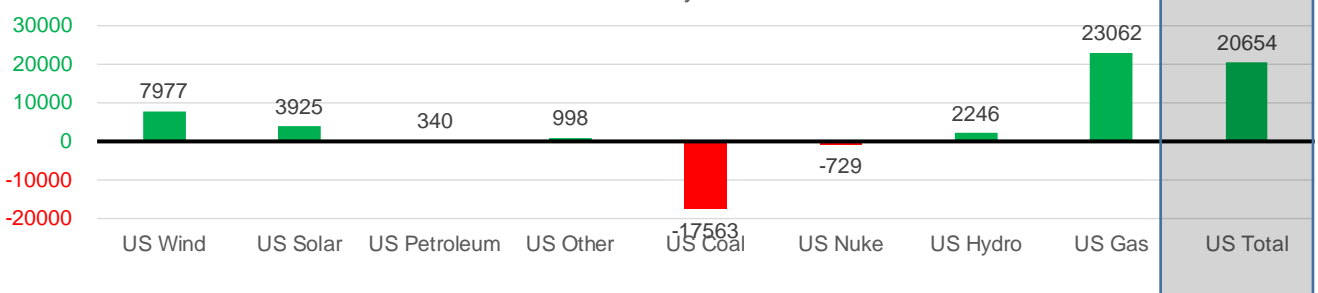
Wind Generation Monthly Average - MWh (EIA)

	2Yr Ago	LY					MTD		
	Same 30 days	Same 30 days	May-22	Jun-22	Jul-22	Aug-22	Last 30 days	MoM (MTD vs LY)	Last 30 days YoY
	CALI Wind	2490	2318	3361	2875	2719	2043	2368	-676
TEXAS Wind	9060	8416	16756	13441	11765	9945	11620	-1821	3205
US Wind	30843	31403	56649	47161	39701	36723	39380	-2978	7977

Generation Monthly Average - MWh (EIA)

	2Yr Ago	LY					MTD		
	Same 30 days	Same 30 days	May-22	Jun-22	Jul-22	Aug-22	Last 30 days	MoM (MTD vs LY)	Last 30 days YoY
	US Wind	30843	31403	56649	47161	39701	36723	39380	▲ 2657.1
US Solar	11699	13780	18211	18987	18593	17319	17706	▲ 386.3	▲ 3925
US Petroleum	1510	1151	518	998	1252	1411	1491	▲ 81	▲ 340
US Other	9965	9478	7724	7819	9961	10246	10476	▲ 230	▲ 998
US Coal	122014	139816	85695	104791	119791	119227	122253	▲ 3026	▼ -17563
US Nuke	92822	93529	85496	88305	92882	93255	92800	▼ -456	▼ -729
US Hydro	29943	28411	31811	37520	34188	28983	30657	▲ 1674	▲ 2246
US Gas	228302	214822	157670	194399	235791	233740	237885	▲ 7599	▲ 23062
US Total	524867	532230	443969	499528	548793	541756	552884	▲ 12541	▲ 20654

Last 30 days YoY



See National Wind and Nuclear daily charts

Source: Bloomberg, analytix.ai

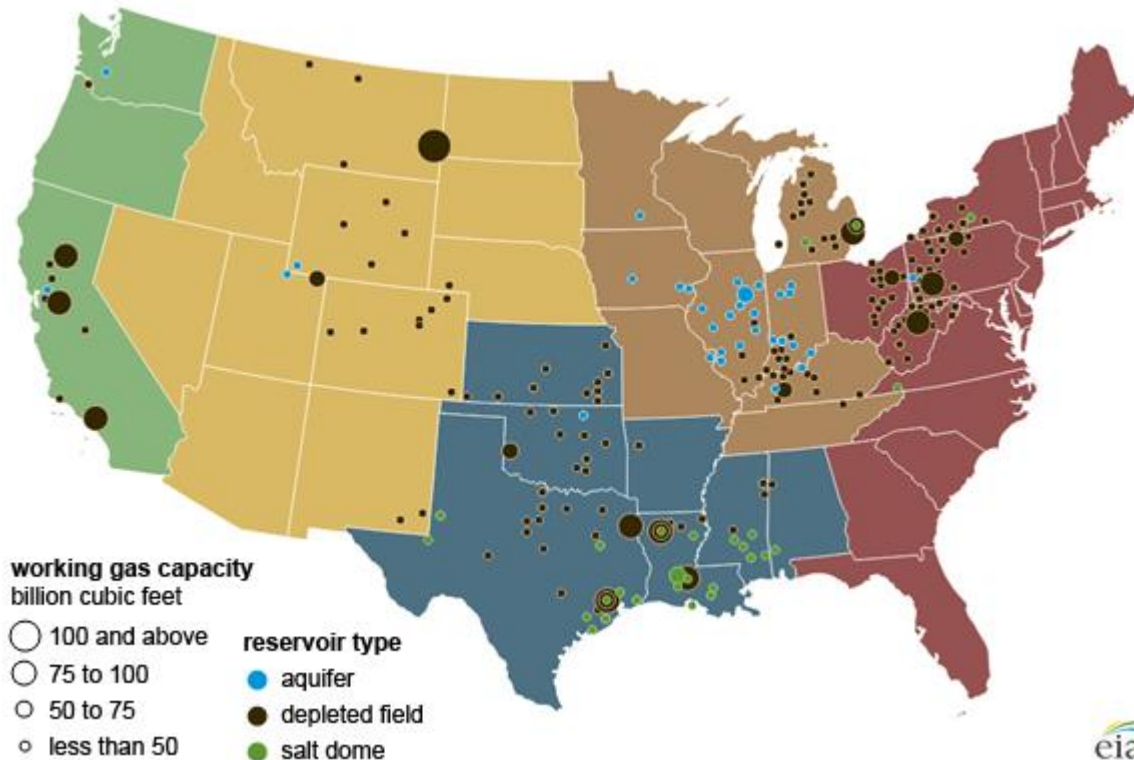
Regional S/D Models Storage Projection

Week Ending 12-Aug

	Daily Raw Storage	Daily Adjustment Factor	Daily Average Storage Activity (Adjusted) *	Weekly Adjusted Storage Activity
L48	3.5	-0.2	3.4	24
East	-0.8	2.1	1.3	9
Midwest	3.8	-0.7	3.1	22
Mountain	4.5	-4.3	0.3	2
South Central	-4.1	3.4	-0.7	-5
Pacific	0.1	-0.7	-0.6	-4

*Adjustment Factor is calculated based on historical regional deltas

U.S. underground natural gas storage facilities by type (July 2015)

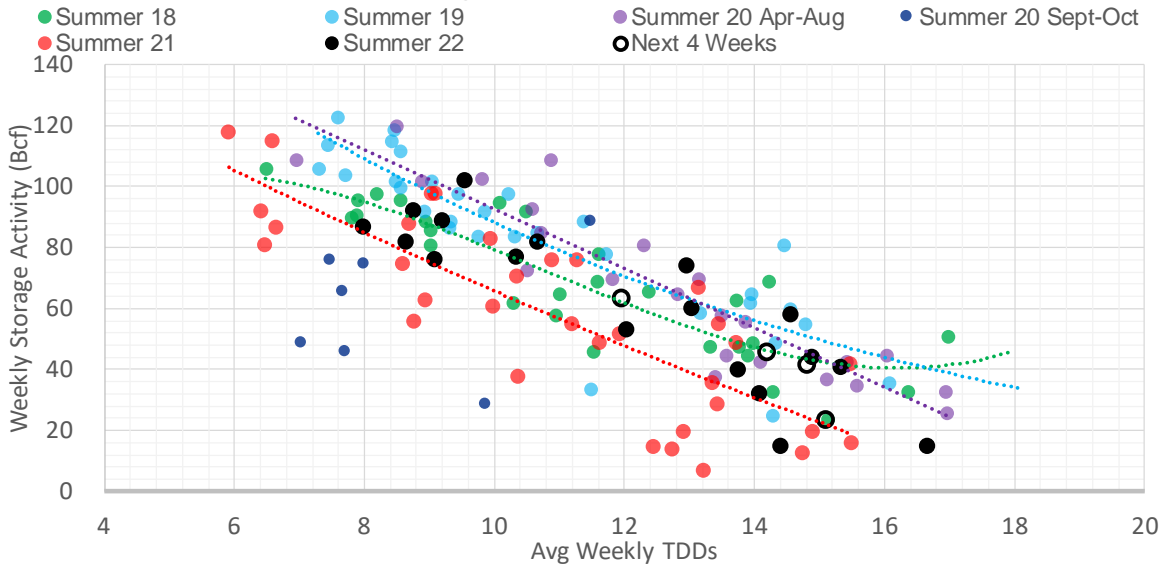


Weather Model Storage Projection

Next report
and beyond

Week Ending	GWDDs	Week Storage Projection
12-Aug	15.1	24
19-Aug	12.0	63
26-Aug	14.8	41
02-Sep	14.2	46

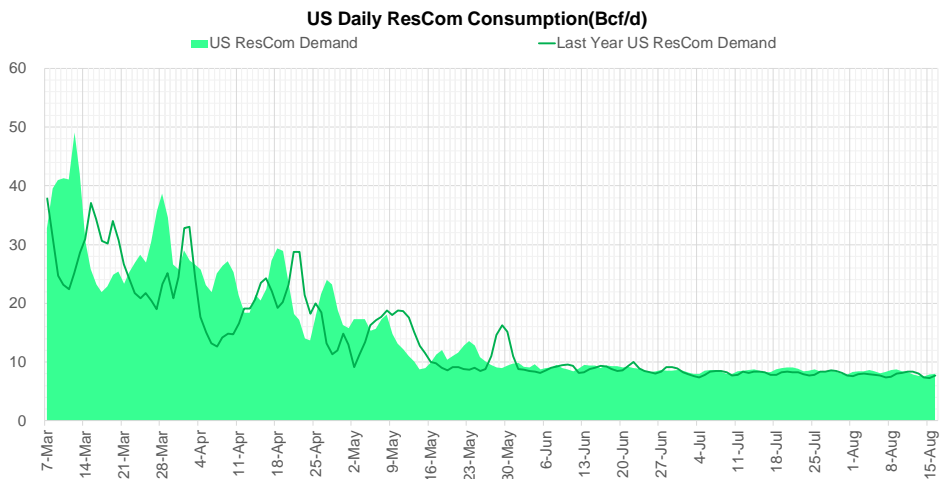
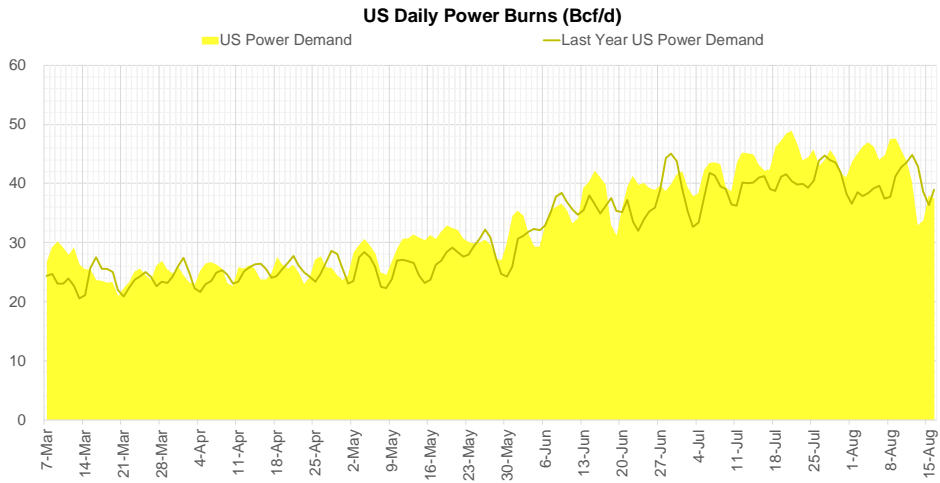
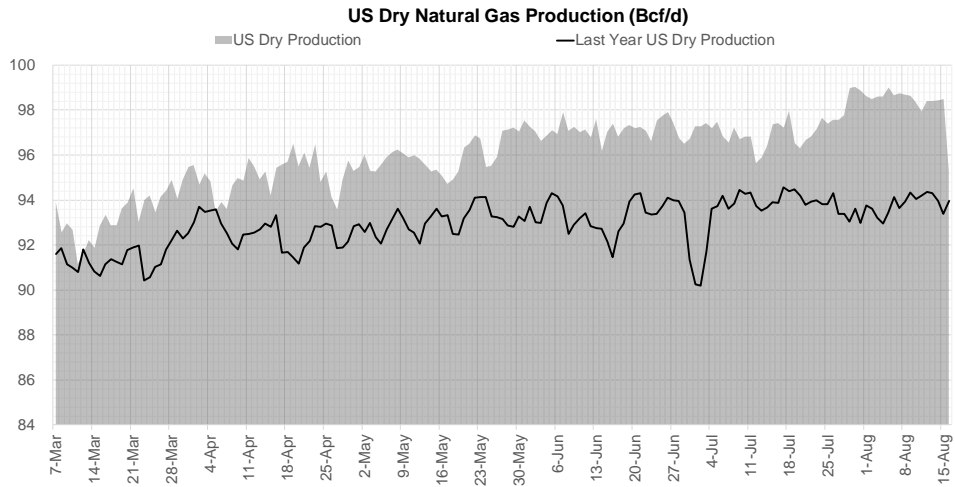
Weather Storage Model - Next 4 Week Forecast



Go to larger image



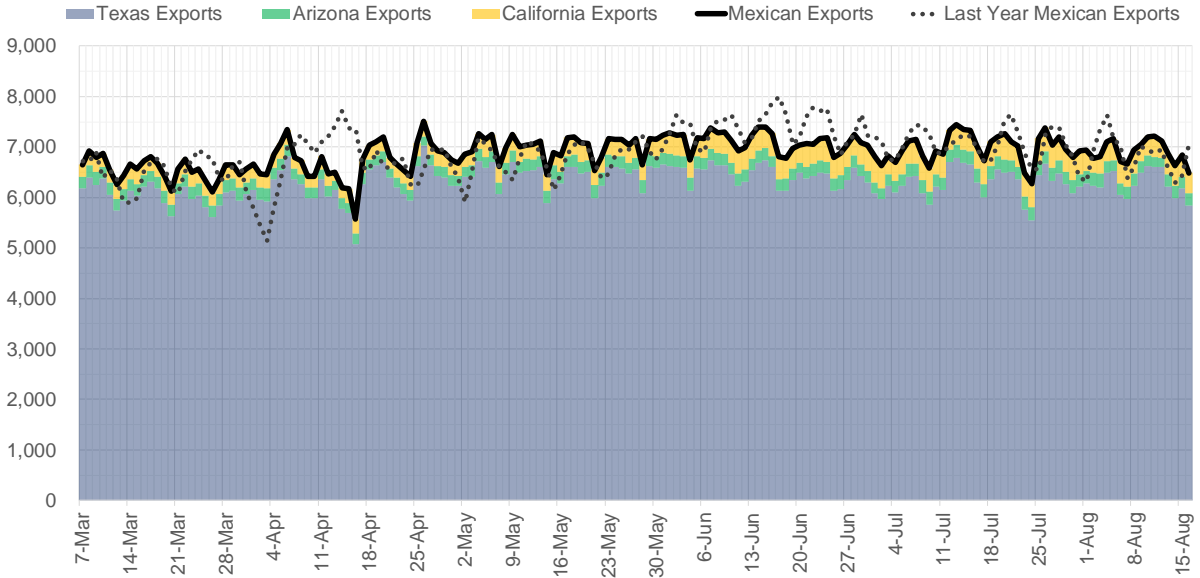
Supply – Demand Trends



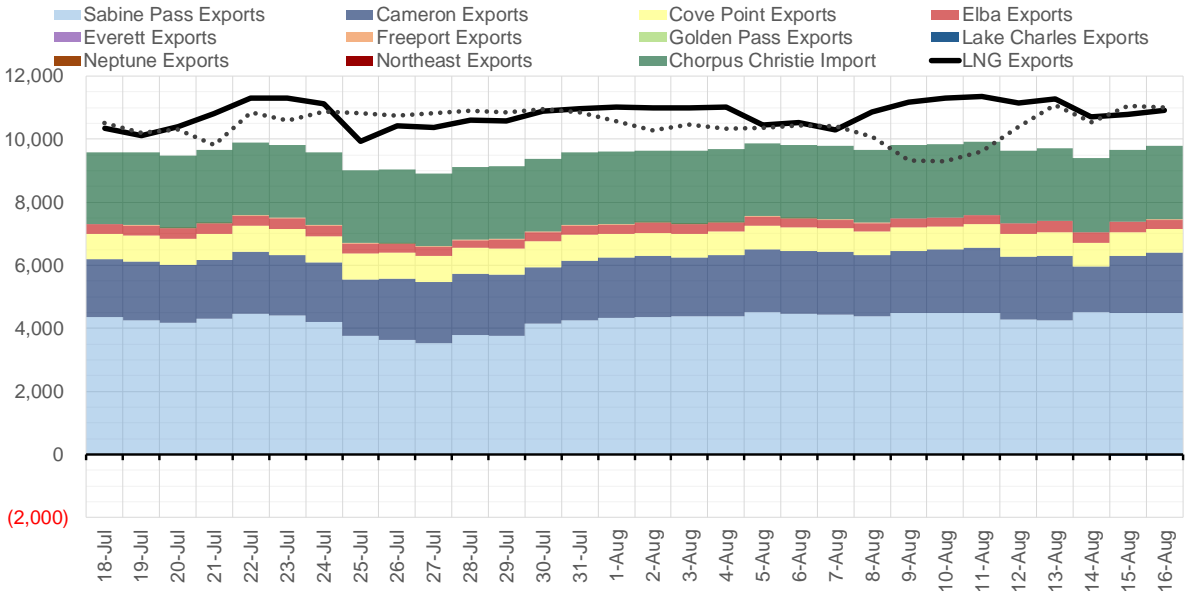
Source: Bloomberg

The risk of trading futures and options and other derivatives involves a substantial risk of loss and is not suitable for all persons. Each person must consider whether a particular trade, combination of trades, or strategy is suitable for that person's financial means and objectives. Past results are not necessarily indicative of future results. This communication may contain links to third party websites which are not under the control of and are not maintained by ION Energy Group, and ION Energy Group is not responsible for their content.

Mexican Exports (MMcf/d)



Net LNG Exports - Last 30 days (MMcf/d)



Source: Bloomberg

The risk of trading futures and options and other derivatives involves a substantial risk of loss and is not suitable for all persons. Each person must consider whether a particular trade, combination of trades, or strategy is suitable for that person's financial means and objectives. Past results are not necessarily indicative of future results. This communication may contain links to third party websites which are not under the control of and are not maintained by ION Energy Group, and ION Energy Group is not responsible for their content.

Nat Gas Options Volume and Open Interest CME and ICE Combined

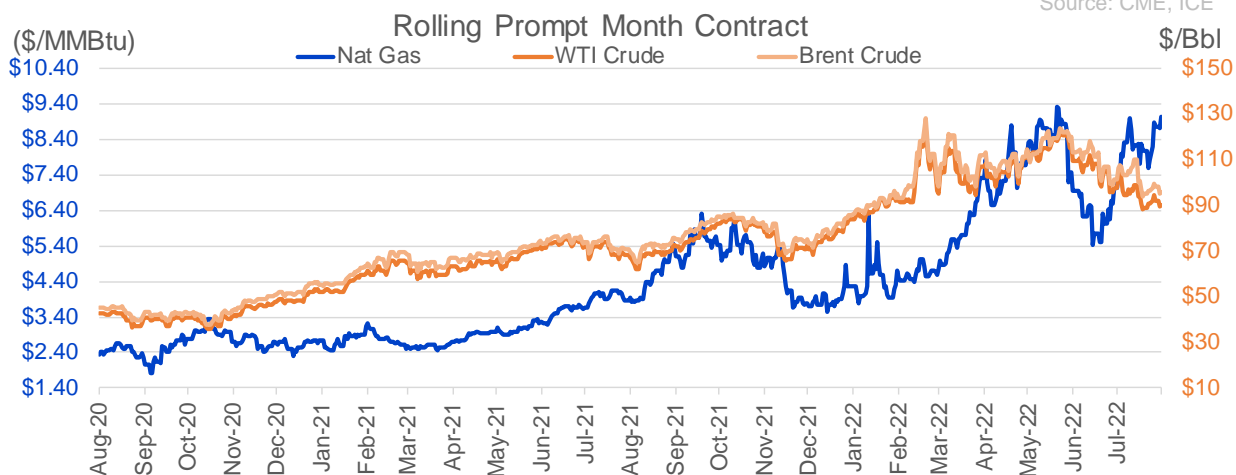
CONTRACT MONTH	CONTRACT YEAR	PUT/CALL	STRIKE	CUMULATIVE VOL	CONTRACT MONTH	CONTRACT YEAR	PUT/CALL	STRIKE	CUMULATIVE OI
9	2022	P	8.00	4660	10	2022	P	3.00	36594
9	2022	C	10.00	4345	10	2022	C	6.00	36016
10	2022	P	5.50	3426	10	2022	P	6.00	29161
10	2022	C	12.00	3048	10	2022	P	2.50	28111
9	2022	C	9.00	3035	10	2022	P	5.00	26676
10	2022	P	5.85	3001	9	2022	C	6.00	24369
9	2022	P	7.00	2394	10	2022	C	5.00	23268
9	2022	C	9.50	2341	3	2023	C	10.00	22970
9	2022	P	8.50	1866	10	2022	P	3.50	22683
10	2022	C	9.00	1825	9	2022	C	10.00	21780
10	2022	C	14.00	1788	10	2022	C	12.00	21629
11	2022	C	12.50	1351	10	2022	P	4.00	21080
11	2022	C	11.50	1300	5	2023	P	2.00	20747
12	2022	C	11.50	1300	9	2022	P	4.00	20467
12	2022	C	12.50	1300	10	2022	C	10.00	20100
1	2023	C	11.50	1300	9	2022	P	6.00	20058
1	2023	C	12.50	1300	11	2022	P	4.00	19685
2	2023	C	11.50	1300	9	2022	C	7.00	19572
2	2023	C	12.50	1300	12	2022	P	5.00	18694
10	2022	C	8.00	1250	12	2022	C	5.00	18218
9	2022	P	7.50	1229	9	2022	C	9.00	18089
9	2022	C	12.00	1137	3	2023	P	3.00	18072
1	2023	P	3.00	1050	10	2022	C	8.00	17167
10	2022	P	6.00	1030	2	2023	C	10.00	16999
10	2022	P	2.80	1000	1	2023	C	10.00	16885
9	2022	C	8.50	978	10	2022	P	2.00	16759
11	2022	C	10.00	958	9	2022	P	3.00	16612
10	2022	C	10.00	927	10	2023	P	2.50	16550
10	2022	C	15.00	909	4	2023	P	3.00	16084
10	2022	P	7.00	906	9	2022	C	4.00	15969
1	2023	C	10.00	890	9	2022	P	2.50	15478
2	2023	C	10.00	784	3	2023	C	20.00	15469
10	2022	C	9.50	753	10	2022	P	3.25	15350
1	2023	P	6.25	725	9	2022	P	7.00	15208
2	2023	P	6.25	725	10	2022	C	7.00	15073
11	2022	P	6.25	689	10	2023	P	2.00	14980
10	2022	C	7.00	650	9	2022	P	2.75	14887
12	2022	C	10.00	650	10	2023	P	3.00	14883
12	2022	P	6.25	650	11	2022	C	8.00	14791
1	2023	P	5.00	650	9	2022	C	12.00	14561
10	2022	C	11.00	636	9	2022	P	5.00	14513
10	2022	P	3.50	603	9	2022	C	9.50	14270
9	2022	C	8.75	585	4	2023	P	2.75	14195
11	2022	P	5.00	555	2	2023	C	9.00	14160
9	2022	C	11.00	551	9	2022	P	3.50	14015
9	2022	P	6.00	528	9	2022	P	6.50	13994
9	2022	C	8.00	515	12	2022	C	6.00	13987
10	2022	P	5.00	509	3	2023	P	4.00	13906
10	2022	P	4.75	502	11	2022	C	10.00	13820
					10	2022	C	4	13309

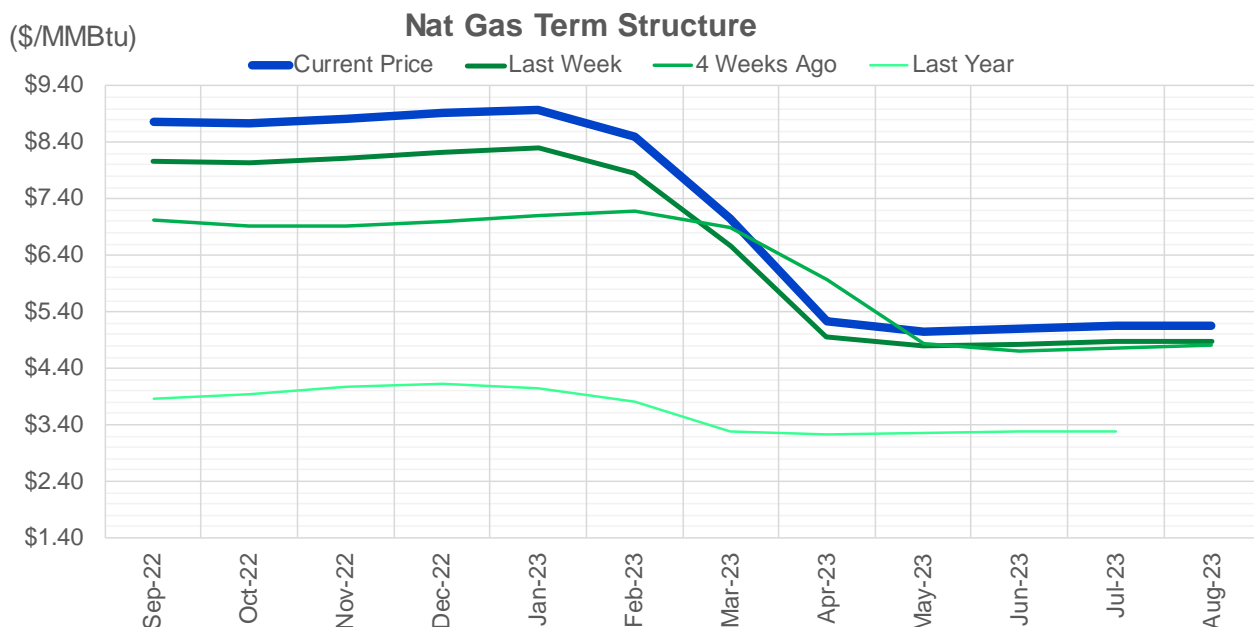
Source: CME, ICE

Nat Gas Futures Open Interest CME and ICE Combined

CME Henry Hub Futures (10,000 MMBtu)				ICE Henry Hub Futures Contract Equivalent (10,000 MM			
	Current	Prior	Daily Change		Current	Prior	Daily Change
SEP 22	65262	70825	-5563	SEP 22	81182	81556	-373
OCT 22	105624	102518	3106	OCT 22	78077	78843	-766
NOV 22	118402	118356	46	NOV 22	63381	63494	-113
DEC 22	64054	63305	749	DEC 22	67055	66918	137
JAN 23	82578	81221	1357	JAN 23	65933	66122	-189
FEB 23	36480	37097	-617	FEB 23	61413	61516	-103
MAR 23	54692	54095	597	MAR 23	54127	54032	96
APR 23	68991	68852	139	APR 23	55934	55740	193
MAY 23	72964	72678	286	MAY 23	54333	54303	30
JUN 23	23477	23726	-249	JUN 23	47726	47691	36
JUL 23	23841	24027	-186	JUL 23	46244	46278	-34
AUG 23	19158	19594	-436	AUG 23	45318	45328	-10
SEP 23	19837	19610	227	SEP 23	44660	44706	-47
OCT 23	47982	47595	387	OCT 23	51382	51501	-119
NOV 23	13207	13187	20	NOV 23	44966	44975	-9
DEC 23	12559	12561	-2	DEC 23	41023	41023	0
JAN 24	18106	18068	38	JAN 24	39959	40008	-49
FEB 24	7872	7844	28	FEB 24	30332	30332	1
MAR 24	17711	17673	38	MAR 24	34932	34957	-25
APR 24	14153	14061	92	APR 24	28439	28523	-84
MAY 24	6882	6888	-6	MAY 24	27198	27169	29
JUN 24	2607	2607	0	JUN 24	24118	24180	-62
JUL 24	2445	2450	-5	JUL 24	23768	23832	-64
AUG 24	3349	3349	0	AUG 24	23657	23720	-64
SEP 24	1954	1960	-6	SEP 24	23599	23661	-62
OCT 24	8925	8950	-25	OCT 24	26983	26894	89
NOV 24	4832	4832	0	NOV 24	24758	24743	15
DEC 24	7736	7730	6	DEC 24	28034	28023	12
JAN 25	16557	16553	4	JAN 25	21151	21011	139
FEB 25	992	993	-1	FEB 25	14308	14235	73

Source: CME, ICE





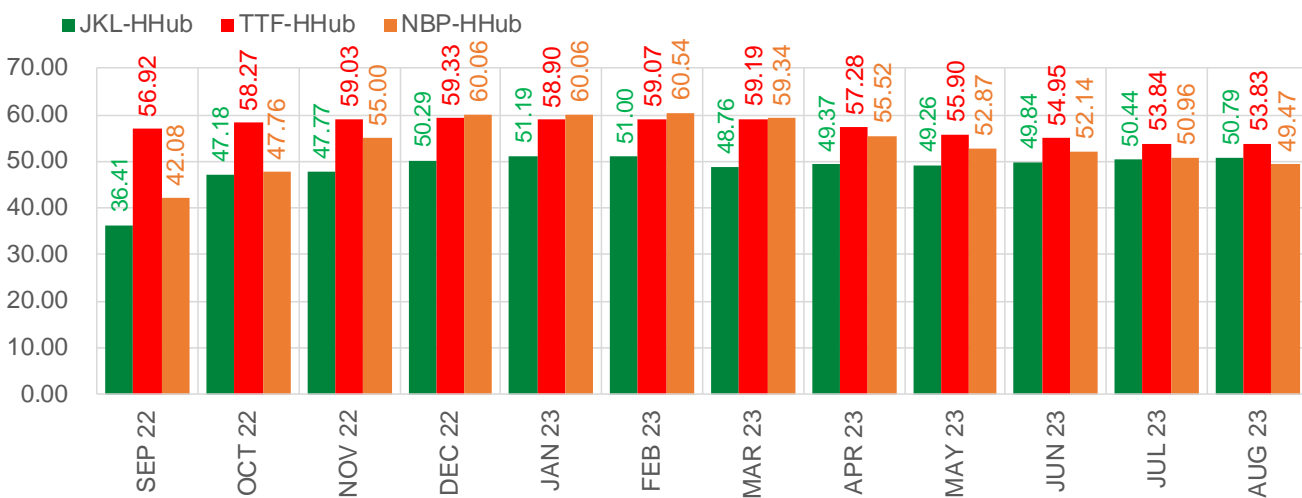
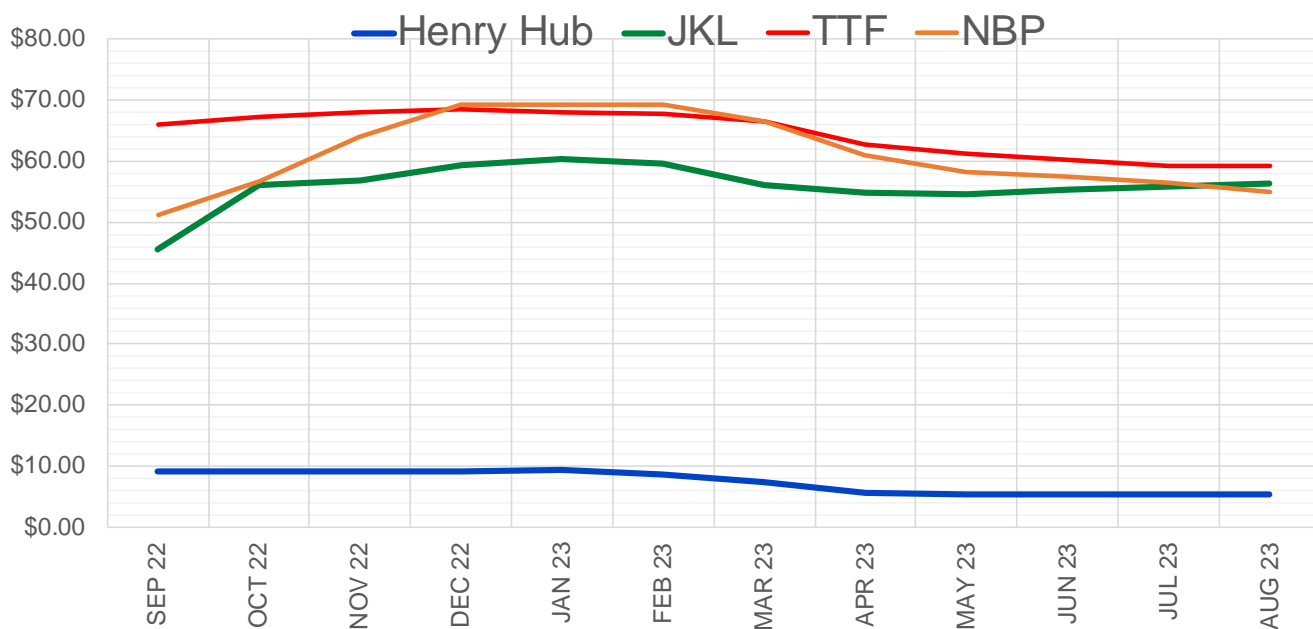
	Sep-22	Oct-22	Nov-22	Dec-22	Jan-23	Feb-23	Mar-23	Apr-23	May-23	Jun-23	Jul-23	Aug-23
Current Price	\$8.768	\$8.744	\$8.816	\$8.927	\$8.984	\$8.507	\$7.040	\$5.229	\$5.050	\$5.098	\$5.147	\$5.157
Last Week	\$8.064	\$8.051	\$8.120	\$8.230	\$8.294	\$7.860	\$6.565	\$4.954	\$4.786	\$4.829	\$4.873	\$4.886
vs. Last Week	\$0.704	\$0.693	\$0.696	\$0.697	\$0.690	\$0.647	\$0.475	\$0.275	\$0.264	\$0.269	\$0.274	\$0.271
4 Weeks Ago	\$7.016	\$6.926	\$6.917	\$6.997	\$7.096	\$7.184	\$6.881	\$5.961	\$4.825	\$4.697	\$4.748	\$4.800
vs. 4 Weeks Ago	\$1.752	\$1.818	\$1.899	\$1.930	\$1.888	\$1.323	\$0.159	-\$0.732	\$0.225	\$0.401	\$0.399	\$0.357
Last Year	\$3.861	\$3.875	\$3.949	\$4.070	\$4.135	\$4.058	\$3.808	\$3.289	\$3.222	\$3.251	\$3.285	\$3.293
vs. Last Year	\$4.907	\$4.869	\$4.867	\$4.857	\$4.849	\$4.449	\$3.232	\$1.940	\$1.828	\$1.847	\$1.862	\$1.864

	Units	Cash Settled	Prompt Settle	Cash to Prompt
AGT Citygate	\$/MMBtu	7.80	7.22	-0.58
TETCO M3	\$/MMBtu	7.66	6.59	-1.07
FGT Zone 3	\$/MMBtu	7.68	8.69	1.01
Zone 6 NY	\$/MMBtu	7.68	6.58	-1.10
Chicago Citygate	\$/MMBtu	8.08	7.31	-0.77
Michcon	\$/MMBtu	8.05	7.26	-0.79
Columbia TCO Pool	\$/MMBtu	7.60	6.63	-0.97
Ventura	\$/MMBtu	5.95	7.23	1.28
Rockies/Opal	\$/MMBtu	8.27	7.05	-1.22
El Paso Permian Basin	\$/MMBtu	7.85	6.53	-1.32
Socal Citygate	\$/MMBtu	12.50	7.98	-4.52
Malin	\$/MMBtu	8.70	7.25	-1.45
Houston Ship Channel	\$/MMBtu	8.04	7.17	-0.87
Henry Hub Cash	\$/MMBtu	8.54	7.07	-1.47
AECO Cash	C\$/GJ	2.75	3.61	0.86
Station2 Cash	C\$/GJ	0.27	6.92	6.65
Dawn Cash	C\$/GJ	8.11	7.34	-0.77

Source: CME, Bloomberg

	Units	Current Price	vs. Last Week	vs. 4 Weeks Ago	vs. Last Year
NatGas Jul21/Oct21	\$/MMBtu	2.224	▲ 0.000	▲ 0.000	▲ 1.881
NatGas Oct21/Nov21	\$/MMBtu	0.361	▲ 0.000	▲ 0.000	▲ 0.288
NatGas Oct21/Jan22	\$/MMBtu	-1.817	▲ 0.000	▲ 0.000	▼ -2.067
NatGas Apr22/Oct22	\$/MMBtu	3.376	▲ 1.134	▲ 1.345	▲ 3.371
WTI Crude	\$/Bbl	89.41	▼ -1.350	▼ -13.190	▲ 22.120
Brent Crude	\$/Bbl	95.10	▼ -1.550	▼ -11.170	▲ 25.590
Fuel Oil, NY Harbour 1%	\$/Bbl	97.18	▲ 0.000	▲ 0.000	▲ 0.000
Heating Oil	cents/Gallon	344.03	▲ 26.120	▼ -21.520	▲ 139.200
Propane, Mt. Bel	cents/Gallon	1.08	▲ 0.007	▼ -0.072	▼ -0.048
Ethane, Mt. Bel	cents/Gallon	0.59	▲ 0.041	▲ 0.007	▲ 0.251
Coal, PRB	\$/MTon	12.30	▲ 0.000	▲ 0.000	▲ 0.000
Coal, PRB	\$/MMBtu	0.70			
Coal, ILB	\$/MTon	31.05	▲ 0.000	▲ 0.000	▲ 0.000
Coal, ILB	\$/MMBtu	1.32			

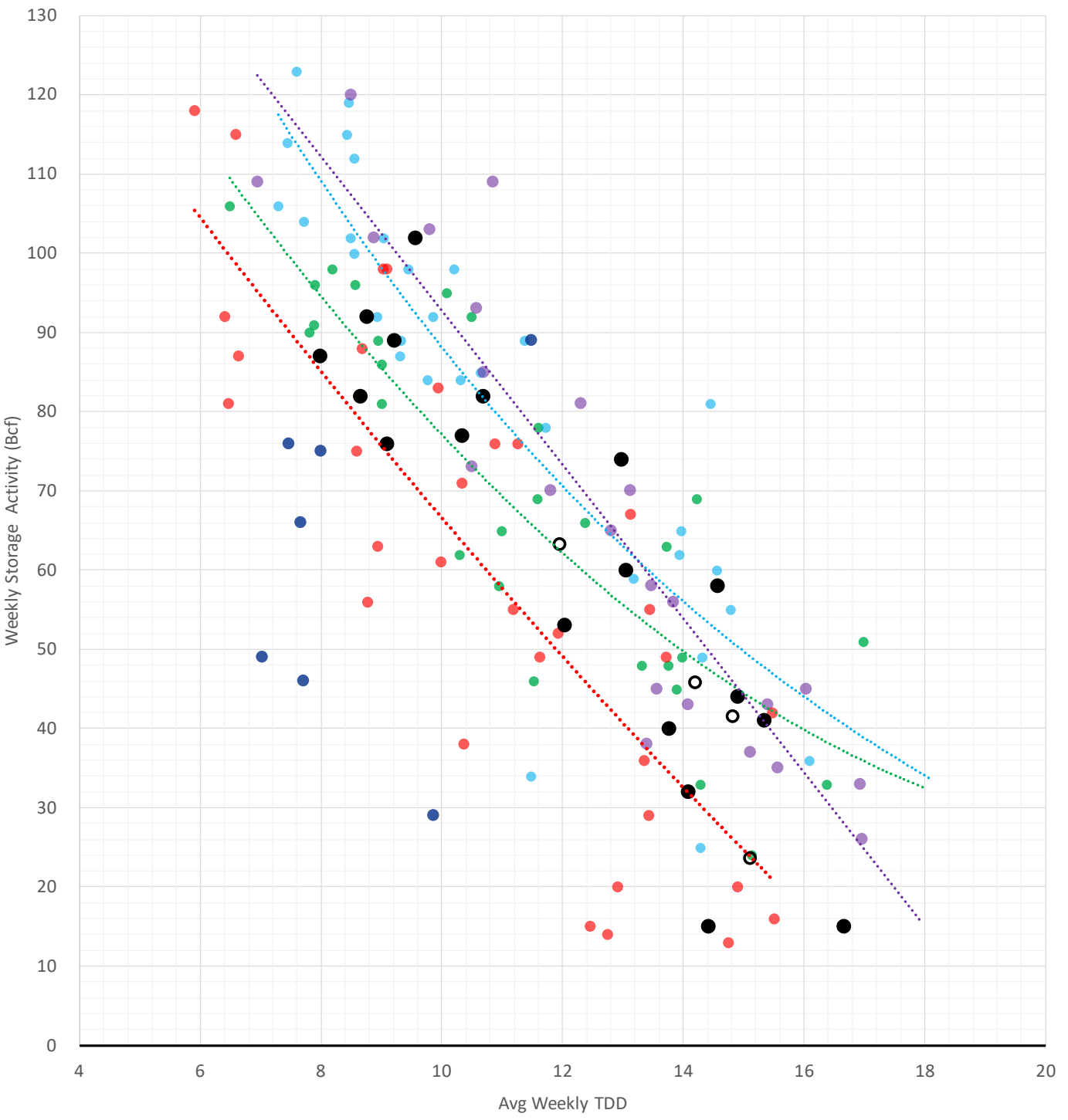
Nat Gas Term Structure (\$MMBTU)



	SEP 22	OCT 22	NOV 22	DEC 22	JAN 23	FEB 23	MAR 23	APR 23	MAY 23	JUN 23	JUL 23	AUG 23
Henry Hub	\$9.032	\$9.013	\$9.072	\$9.179	\$9.239	\$8.700	\$7.322	\$5.558	\$5.388	\$5.398	\$5.463	\$5.460
JKL	\$45.443	\$56.190	\$56.845	\$59.470	\$60.425	\$59.700	\$56.080	\$54.930	\$54.650	\$55.235	\$55.905	\$56.250
JKL-HHub	\$36.411	\$47.177	\$47.773	\$50.291	\$51.186	\$51.000	\$48.758	\$49.372	\$49.262	\$49.837	\$50.442	\$50.790
TTF	\$65.948	\$67.287	\$68.099	\$68.506	\$68.142	\$67.772	\$66.512	\$62.837	\$61.288	\$60.346	\$59.304	\$59.285
TTF-HHub	\$56.916	\$58.274	\$59.027	\$59.327	\$58.903	\$59.072	\$59.190	\$57.279	\$55.900	\$54.948	\$53.841	\$53.825
NBP	\$51.108	\$56.771	\$64.073	\$69.235	\$69.300	\$69.243	\$66.658	\$61.081	\$58.259	\$57.533	\$56.418	\$54.925
NBP-HHub	\$42.076	\$47.758	\$55.001	\$60.056	\$60.061	\$60.543	\$59.336	\$55.523	\$52.871	\$52.135	\$50.955	\$49.465

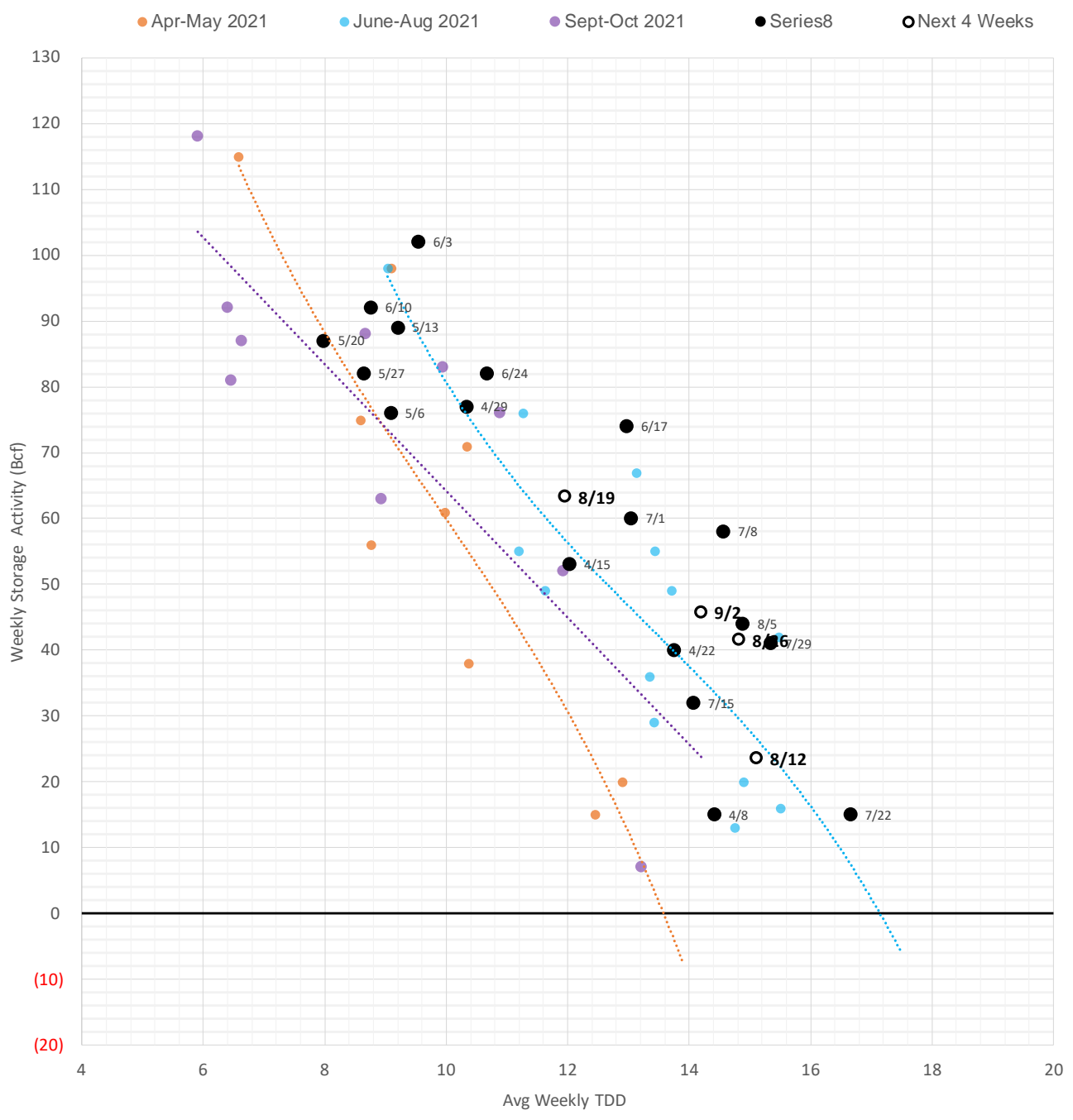
Weather Storage Model - Next 4 Week Forecast

● Summer 18 ● Summer 19 ● Summer 20 Apr-Aug ● Summer 20 Sept-Oct ● Summer 21 ● Summer 22 ○ Next 4 Weeks



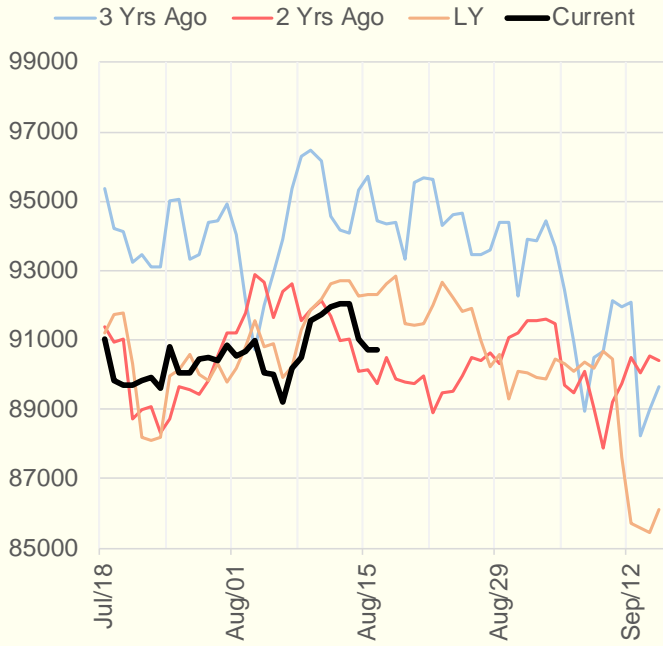
The risk of trading futures and options and other derivatives involves a substantial risk of loss and is not suitable for all persons. Each person must consider whether a particular trade, combination of trades, or strategy is suitable for that person's financial means and objectives. Past results are not necessarily indicative of future results. This communication may contain links to third party websites which are not under the control of and are not maintained by ION Energy Group, and ION Energy Group is not responsible for their content.

Weather Storage Model - Next 4 Week Forecast

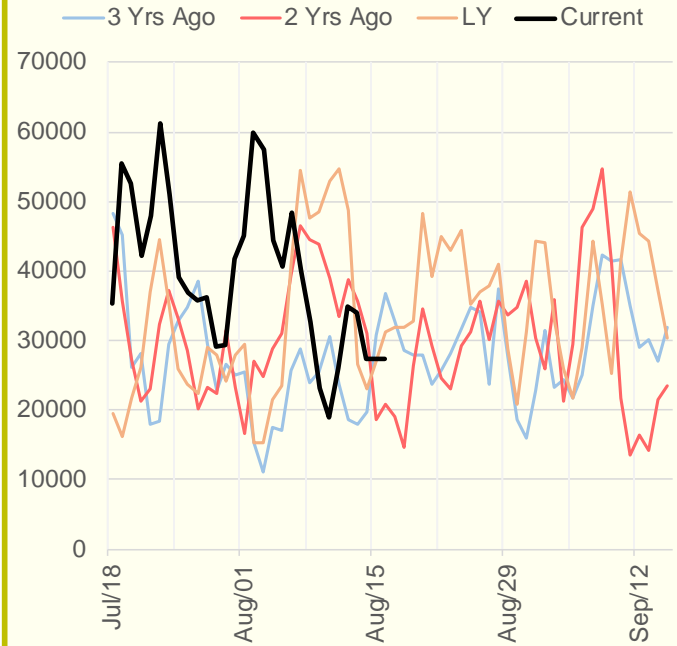


The risk of trading futures and options and other derivatives involves a substantial risk of loss and is not suitable for all persons. Each person must consider whether a particular trade, combination of trades, or strategy is suitable for that person's financial means and objectives. Past results are not necessarily indicative of future results. This communication may contain links to third party websites which are not under the control of and are not maintained by ION Energy Group, and ION Energy Group is not responsible for their content.

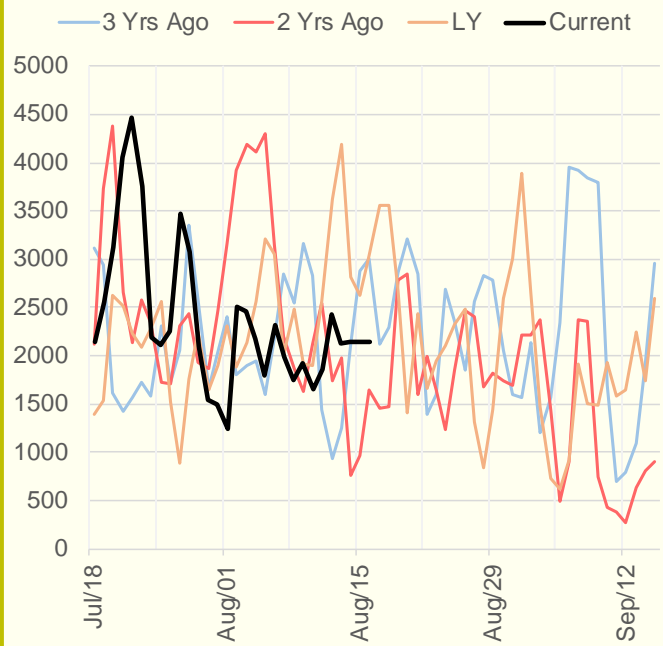
NRC Nuclear Daily Output



US Wind



CALI Wind



TEXAS Wind

