

	Current	Δ from YD	Δ from 7D Avg
Nat Gas Prompt	\$ 8.59	▼ \$ (0.18)	▲ \$ 0.19

	Current	Δ from YD	Δ from 7D Avg
WTI Prompt	\$ 87.41	▼ \$ (4.68)	▼ \$ (4.6)

	Current	Δ from YD	Δ from 7D Avg
Brent Prompt	\$ 93.24	▼ \$ (4.91)	▼ \$ (4.5)

Page Menu

[Short-term Weather Model Outlooks](#)

[Lower 48 Component Models](#)

[Regional S/D Models Storage Projection](#)

[Weather Model Storage Projection](#)

[Supply – Demand Trends](#)

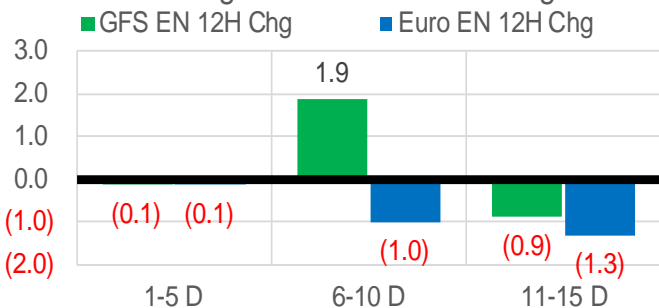
[Nat Gas Options Volume and Open Interest](#)

[Nat Gas Futures Open Interest](#)

[Price Summary](#)

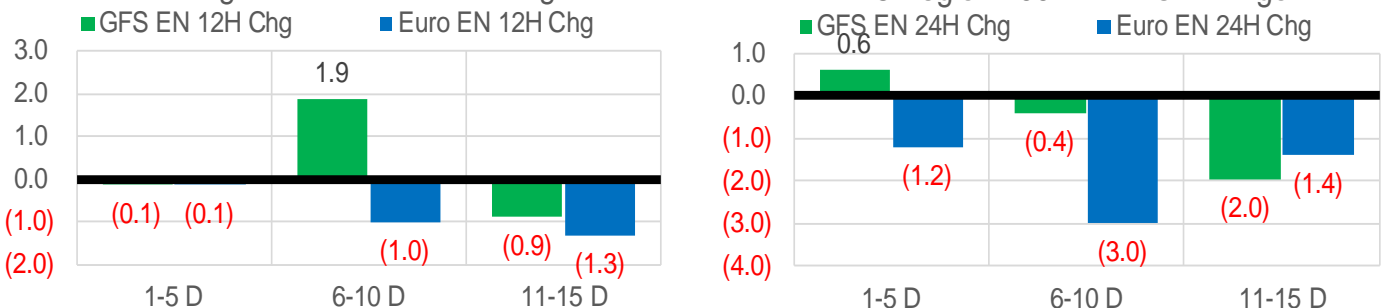
Vs. 12H Ago

L48 Region - 00z TDD vs 12H Ago



Vs. 24H Ago

L48 Region - 00z TDD vs 24H Ago



	Current	Δ from YD	Δ from 7D Avg
US Dry Production	98.6	▼ -0.02	▲ 0.12

	Current	Δ from YD	Δ from 7D Avg
US Power Burns	37.9	▲ 4.11	▼ -3.73

	Current	Δ from YD	Δ from 7D Avg
US ResComm	8.0	▲ 0.22	▼ -0.26

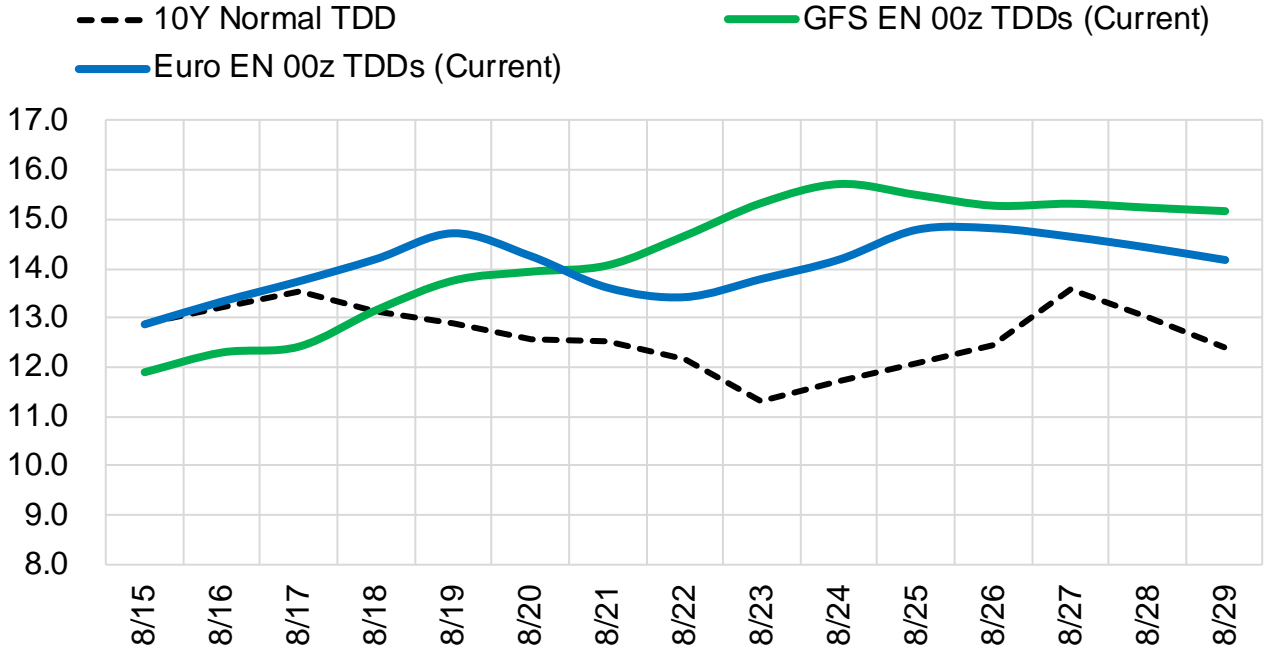
	Current	Δ from YD	Δ from 7D Avg
Canadian Imports	4.5	▼ -0.04	▼ -0.46

	Current	Δ from YD	Δ from 7D Avg
Net LNG Exports	11.2	▲ 0.22	▼ 0.00

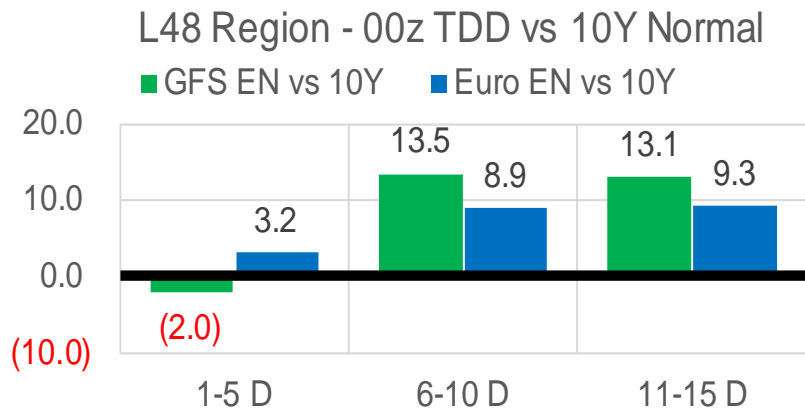
	Current	Δ from YD	Δ from 7D Avg
Mexican Exports	6.7	▼ -0.03	▼ -0.34

Short-term Weather Model Outlooks (00z)

L48 Region



Vs. 10Y Normal



Source: WSI , Bloomberg

Lower 48 Component Models

Daily Balances

	9-Aug	10-Aug	11-Aug	12-Aug	13-Aug	14-Aug	15-Aug	DoD	vs. 7D
Lower 48 Dry Production	98.6	98.3	98.0	98.4	98.5	98.6	98.6	▼ 0.0	▲ 0.2
Canadian Imports	5.4	5.0	5.1	4.9	4.5	4.6	4.5	▼ 0.0	▼ -0.4
L48 Power	47.6	45.7	43.6	40.4	32.9	33.8	37.9	▲ 4.1	▼ -2.8
L48 Residential & Commercial	8.7	8.5	8.3	7.9	7.7	7.8	8.0	▲ 0.2	▼ -0.2
L48 Industrial	20.7	21.4	22.5	23.7	24.7	25.3	25.7	▲ 0.4	▲ 2.7
L48 Lease and Plant Fuel	5.4	5.3	5.3	5.3	5.4	5.4	5.3	▼ 0.0	▼ 0.0
L48 Pipeline Distribution	3.0	2.9	2.8	2.6	2.2	2.2	2.4	▲ 0.2	▼ -0.2
L48 Regional Gas Consumption	85.3	83.8	82.5	80.0	72.8	74.4	79.3	▲ 4.9	▼ -0.5
Net LNG Delivered	11.19	11.30	11.37	11.15	11.28	10.93	11.15	▲ 0.2	▼ -0.1
Total Mexican Exports	7.1	7.2	7.2	7.2	6.9	6.7	6.7	▼ 0.0	▼ -0.4
Implied Daily Storage Activity	0.4	1.1	1.9	5.1	12.0	11.0	5.9		
EIA Reported Daily Storage Activity									
Daily Model Error									

EIA Storage Week Balances

	8-Jul	15-Jul	22-Jul	29-Jul	5-Aug	12-Aug	WoW	vs. 4W
Lower 48 Dry Production	97.2	96.5	97.1	97.4	98.7	98.6	▼ -0.2	▲ 1.1
Canadian Imports	5.6	6.0	6.2	5.9	5.7	5.4	▼ -0.3	▼ -0.6
L48 Power	41.0	42.9	45.5	44.7	44.1	45.6	▲ 1.5	▲ 1.3
L48 Residential & Commercial	8.4	8.4	8.7	8.6	8.3	8.4	▲ 0.1	▼ -0.1
L48 Industrial	20.1	20.5	21.0	19.4	20.6	20.6	▼ 0.0	▲ 0.2
L48 Lease and Plant Fuel	5.3	5.2	5.3	5.3	5.4	5.4	▼ 0.0	▲ 0.1
L48 Pipeline Distribution	2.6	2.7	2.9	2.8	2.8	2.9	▲ 0.1	▲ 0.1
L48 Regional Gas Consumption	77.4	79.7	83.3	80.8	81.2	82.9	▲ 1.7	▲ 1.6
Net LNG Exports	11.2	11.1	10.8	10.7	10.9	10.9	▼ -0.1	▼ 0.0
Total Mexican Exports	6.9	7.0	7.1	6.9	6.9	7.0	▲ 0.1	▲ 0.0
Implied Daily Storage Activity	7.4	4.7	2.1	4.9	5.4	3.2	-2.2	
EIA Reported Daily Storage Activity	8.3	4.6	2.1	5.9	6.3			
Daily Model Error	-0.9	0.1	-0.1	-0.9	-0.9			

Monthly Balances

	2Yr Ago Aug-20	LY Aug-21	Apr-22	May-22	Jun-22	Jul-22	MTD Aug-22	MoM	vs. LY
Lower 48 Dry Production	88.9	93.9	95.1	96.0	97.1	97.2	98.5	▲ 1.3	▲ 4.6
Canadian Imports	4.9	5.1	5.8	5.1	5.7	5.9	5.3	▼ -0.6	▲ 0.2
L48 Power	41.0	40.4	25.1	29.7	36.8	43.4	43.5	▲ 0.1	▲ 3.1
L48 Residential & Commercial	7.7	7.9	22.3	12.4	9.0	8.5	8.3	▼ -0.2	▲ 0.4
L48 Industrial	20.8	21.0	20.1	19.8	20.6	20.2	21.5	▲ 1.3	▲ 0.5
L48 Lease and Plant Fuel	4.8	5.1	5.2	5.3	5.2	5.3	5.4	▲ 0.1	▲ 0.3
L48 Pipeline Distribution	2.5	2.6	2.6	2.4	2.5	2.8	2.8	▼ 0.0	▲ 0.2
L48 Regional Gas Consumption	76.9	77.0	75.3	69.6	74.2	80.1	81.4	▲ 1.3	▲ 4.4
Net LNG Exports	4.0	10.5	12.3	12.5	11.2	10.9	11.0	▲ 0.0	▲ 0.5
Total Mexican Exports	6.0	6.9	6.7	7.0	7.1	7.0	7.0	▼ 0.0	▲ 0.1
Implied Daily Storage Activity	6.8	4.7	6.6	12.0	10.3	5.1	4.5		
EIA Reported Daily Storage Activity									
Daily Model Error									

Source: Bloomberg, analytix.ai

Daily Average Generation Data

Nuclear Generation Daily Average - GWh (NRC)

	7-Aug	8-Aug	9-Aug	10-Aug	11-Aug	12-Aug	13-Aug	DoD	vs. 7D
NRC Nuclear Daily Output	90.2	90.5	91.6	91.8	91.9	92.0	92.0	0.0	0.7
NRC Nuclear Max Capacity	104.9	104.9	104.9	104.9	104.9	104.9	104.9	0.0	0.0
NRC Nuclear Outage	14.7	14.4	13.3	13.1	12.9	12.8	12.8	0.0	-0.7
NRC % Nuclear Cap Utilization	91.7	92.0	93.1	93.3	93.5	93.6	93.6	0.0	0.7

Wind Generation Daily Average - MWh (EIA)

	7-Aug	8-Aug	9-Aug	10-Aug	11-Aug	12-Aug	13-Aug	DoD	vs. 7D
CALI Wind	1986	1755	1916	1662	1863	1911	2134	223	285
TEXAS Wind	12477	8846	6643	5069	3873	4071	4526	455	-2304
US Wind	40025	32618	23052	18844	25728	27390	33589	6199	5646

Generation Daily Average - MWh (EIA)

	7-Aug	8-Aug	9-Aug	10-Aug	11-Aug	12-Aug	13-Aug	DoD	vs. 7D
US Wind	40025	32618	23052	18844	25728	27390	33589	6199	5646
US Solar	18115	17107	15903	16374	16183	16054	16938	883	315
US Petroleum	1118	2977	3319	1410	1283	1103	1045	-58	-823
US Other	10357	10863	11021	10801	10715	9728	9337	-391	-1244
US Coal	121325	126399	126545	113595	116788	113867	106952	-6915	-12801
US Nuke	92304	92765	93697	88370	94151	94778	94800	23	2123
US Hydro	28075	32133	29481	28501	28508	7006	24422	17416	-1195
US Gas	236520	263644	262872	240744	247805	239072	197212	-41860	-51230

See National Wind and Nuclear daily charts

Source: Bloomberg, analytix.ai

Storage Week Average Generation Data

Nuclear Generation Weekly Average - GWh (NRC)

	8-Jul	15-Jul	22-Jul	29-Jul	5-Aug	12-Aug	WoW	WoW Bcf/d Impact
NRC Nuclear Daily Output	90.6	91.2	90.5	90.1	90.6	90.7	0.2	0.0
NRC Nuclear Max Capacity	104.9	104.9	104.9	104.9	104.9	104.9	0.0	
NRC Nuclear Outage	14.2	13.7	14.4	14.8	14.3	14.1	-0.2	
NRC % Nuclear Cap Utilization	92.2	92.7	92.0	91.6	92.1	92.3	0.2	

Wind Generation Weekly Average - MWh (EIA)

	8-Jul	15-Jul	22-Jul	29-Jul	5-Aug	12-Aug	WoW	WoW Bcf/d Impact
CALI Wind	3521	2268	2470	3049	1933	1901	-33	0.0
TEXAS Wind	13920	7264	11182	14533	14443	8762	-5681	1.0
US Wind	42149	34828	40504	44004	43887	32751	-11135	2.0
							-25%	
							-0.4	

Generation Weekly Average - MWh (EIA)

	8-Jul	15-Jul	22-Jul	29-Jul	5-Aug	12-Aug	WoW	WoW Bcf/d Impact
						est.		
US Wind	42149	34828	40504	44004	43887	32751	-11135	2.0
US Solar	19503	18460	18727	18097	17584	17151	-433	0.1
US Petroleum	977	1015	1707	1465	1131	1751	620	-0.1
US Other	9329	9193	10492	10690	10470	10653	183	0.0
US Coal	114442	115861	121564	128742	122297	121405	-892	0.2
US Nuke	93305	93486	92543	92281	92607	92110	-497	0.1
US Hydro	35852	36439	33645	32210	31338	29454	-1884	0.3
US Gas	221886	237785	249084	238163	236187	248889	12702	2.3

See National Wind and Nuclear daily charts

Source: Bloomberg, analytix.ai

Monthly Average Generation Data

Nuclear Generation Monthly Average - GWh (NRC)

	2Yr Ago	LY	MTD						
	Same 30 days	Same 30 days	May-22	Jun-22	Jul-22	Aug-22	Last 30 days	MoM (MTD vs LY)	Last 30 days YoY
NRC Nuclear Daily Output	90.8	90.8	81.7	88.5	90.6	91.0	90.6	0.5	-0.1
NRC Nuclear Max Capacity	104.9	104.9	104.9	104.9	104.9	104.9	104.9	0.0	0.0
NRC Nuclear Outage	14.1	14.1	23.2	16.3	14.3	13.8	14.2	-0.5	0.1
NRC % Nuclear Cap Utilization	92.3	92.3	83.0	90.0	92.1	92.6	92.2	0.5	-0.1

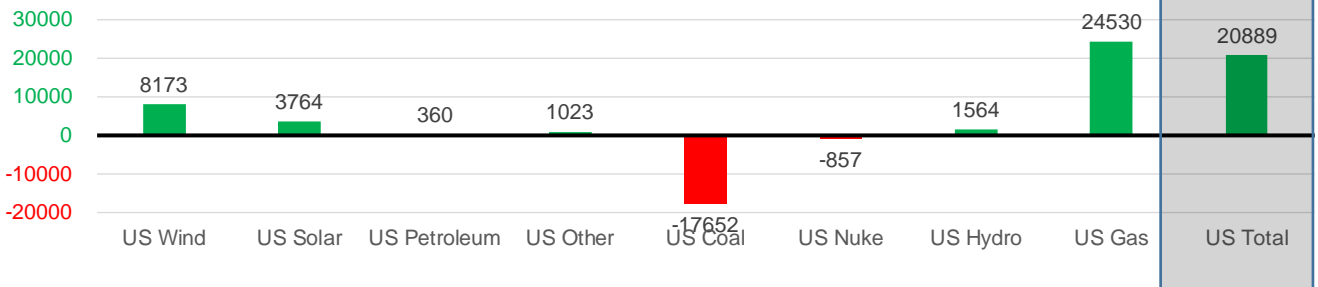
Wind Generation Monthly Average - MWh (EIA)

	2Yr Ago	LY	MTD						
	Same 30 days	Same 30 days	May-22	Jun-22	Jul-22	Aug-22	Last 30 days	MoM (MTD vs LY)	Last 30 days YoY
CALI Wind	2506	2271	3361	2875	2719	2001	2345	-718	74
TEXAS Wind	9217	8611	16756	13441	11765	9576	11464	-2190	2853
US Wind	31507	31382	56649	47161	39701	37619	39555	-2082	8173

Generation Monthly Average - MWh (EIA)

	2Yr Ago	LY	MTD						
	Same 30 days	Same 30 days	May-22	Jun-22	Jul-22	Aug-22	Last 30 days	MoM (MTD vs LY)	Last 30 days YoY
US Wind	31507	31382	56649	47161	39701	37619	39555	▲ 1935.9	▲ 8173
US Solar	11800	13894	18211	18987	18593	17144	17658	▲ 514.2	▲ 3764
US Petroleum	1535	1135	518	998	1252	1450	1495	▲ 44	▲ 360
US Other	9981	9468	7724	7819	9961	10315	10490	▲ 175	▲ 1023
US Coal	122133	139802	85695	104791	119791	119426	122150	▲ 2724	▼ -17652
US Nuke	92905	93497	85496	88305	92882	92943	92640	▼ -303	▼ -857
US Hydro	30054	28440	31811	37520	34188	27535	30004	▲ 2469	▲ 1564
US Gas	228934	214596	157670	194399	235778	236371	239126	▲ 7560	▲ 24530
US Total	526654	532077	443969	499528	548780	545080	552965	▲ 13184	▲ 20889

Last 30 days YoY



See National Wind and Nuclear daily charts

Source: Bloomberg, analytix.ai

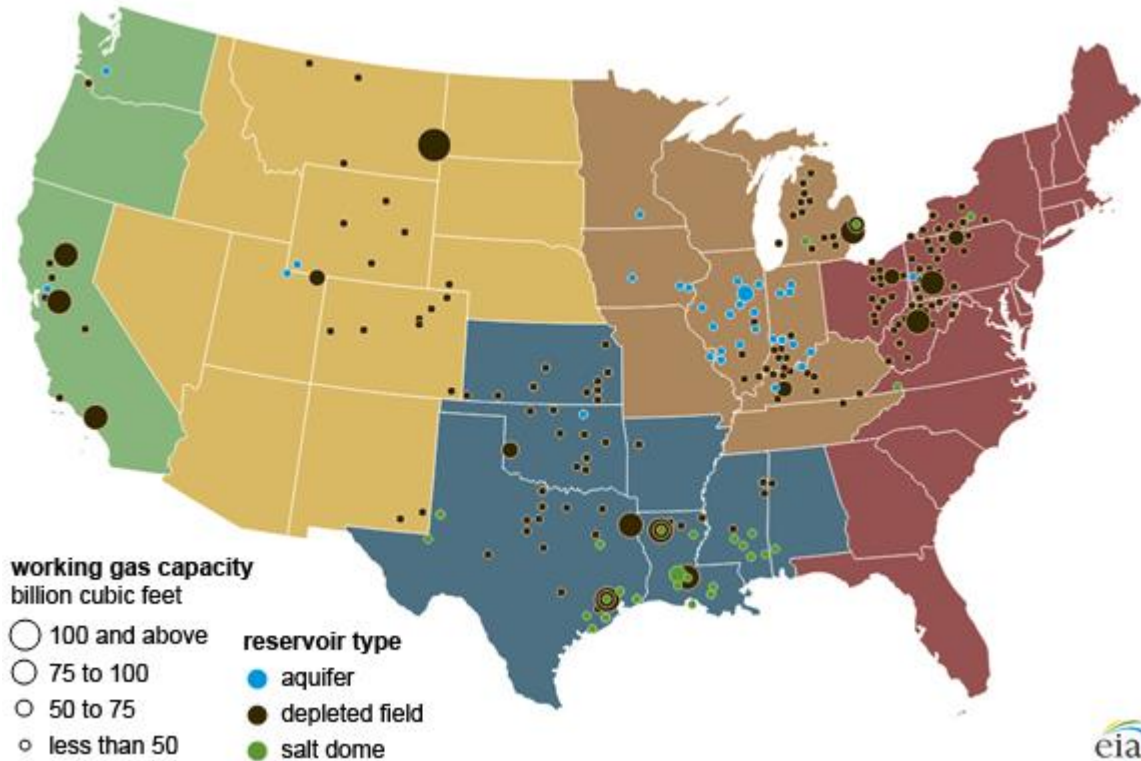
Regional S/D Models Storage Projection

Week Ending 12-Aug

	Daily Raw Storage	Daily Adjustment Factor	Daily Average Storage Activity (Adjusted) *	Weekly Adjusted Storage Activity
L48	3.7	-0.2	3.5	25
East	-0.8	2.1	1.3	9
Midwest	3.9	-0.7	3.2	22
Mountain	4.6	-4.3	0.3	2
South Central	-4.1	3.4	-0.7	-5
Pacific	0.1	-0.7	-0.6	-4

*Adjustment Factor is calculated based on historical regional deltas

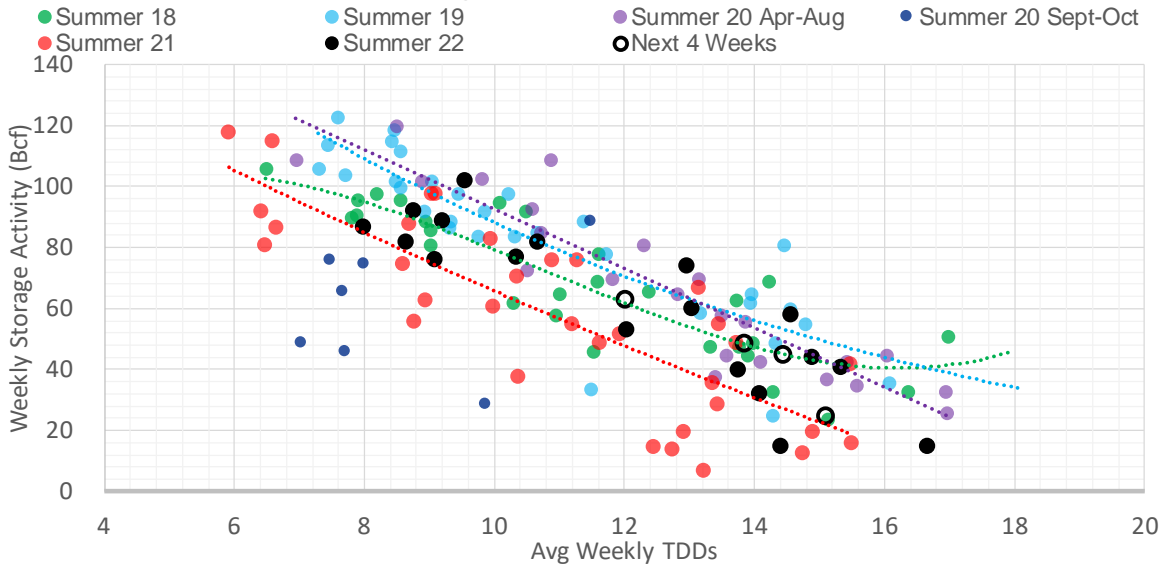
U.S. underground natural gas storage facilities by type (July 2015)



Weather Model Storage Projection

Next report and beyond		
Week Ending	GWDDs	Week Storage Projection
12-Aug	15.1	25
19-Aug	12.0	63
26-Aug	14.5	45
02-Sep	13.9	49

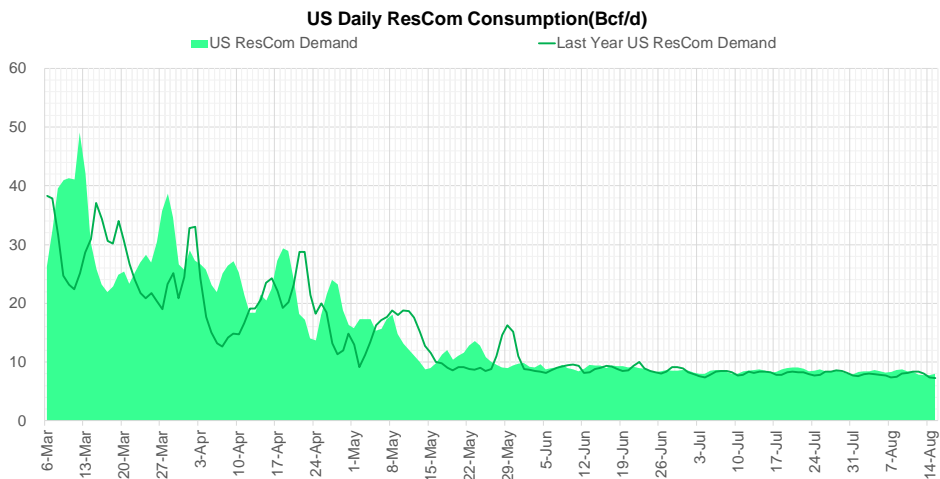
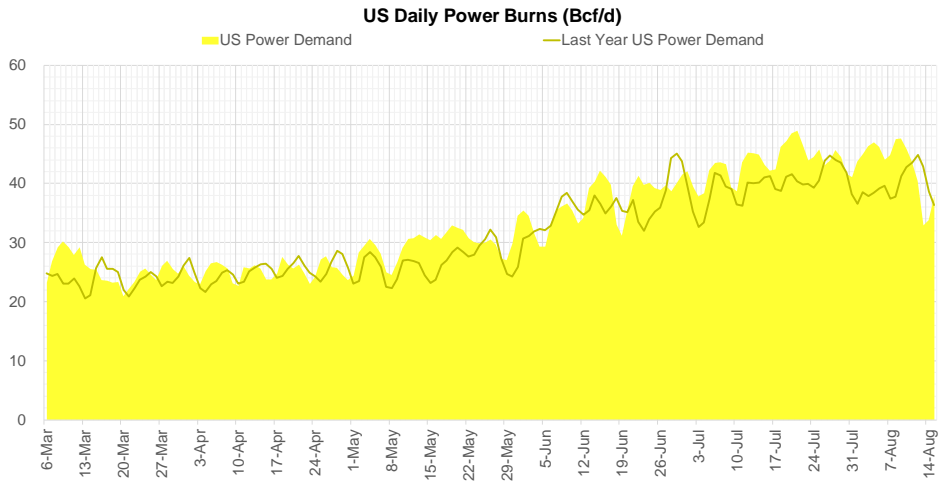
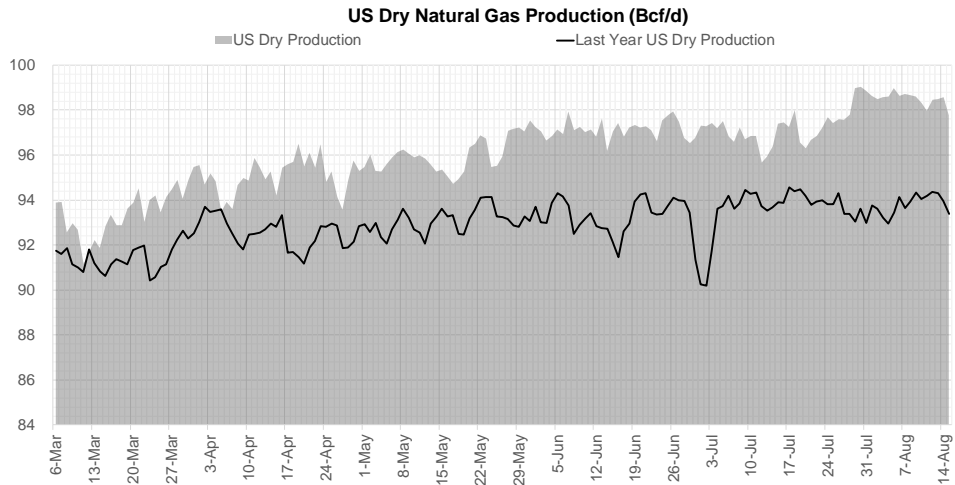
Weather Storage Model - Next 4 Week Forecast



Go to larger image



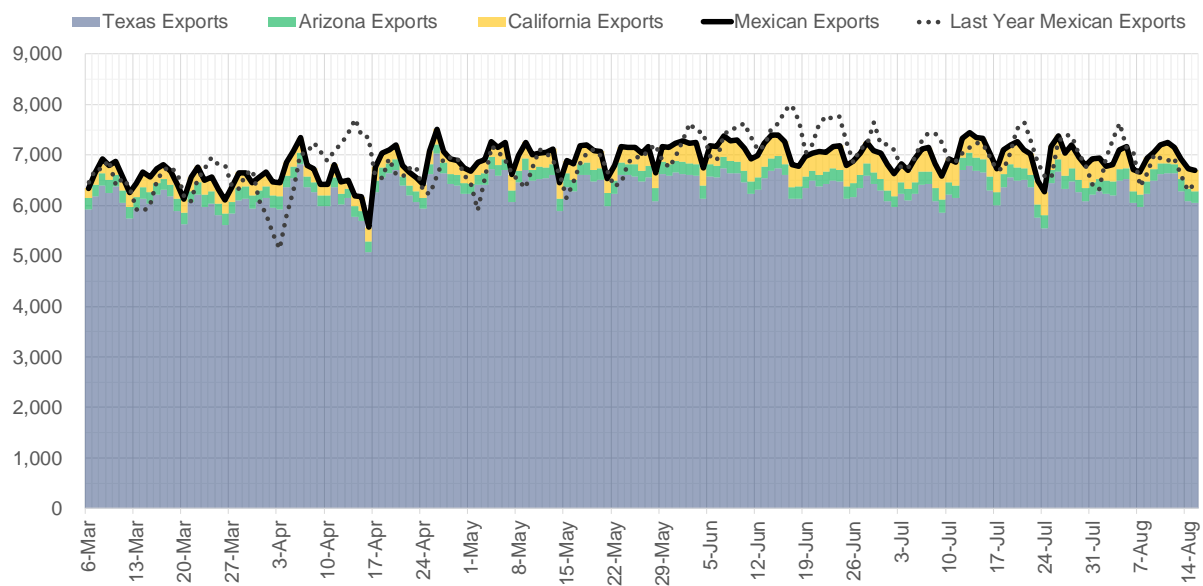
Supply – Demand Trends



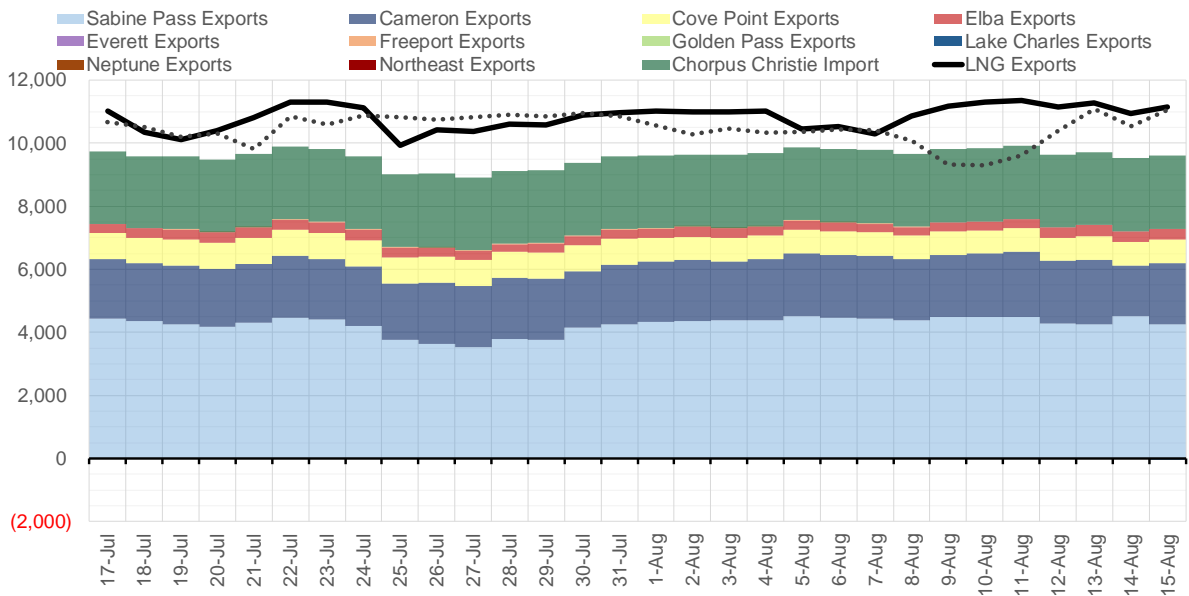
Source: Bloomberg

The risk of trading futures and options and other derivatives involves a substantial risk of loss and is not suitable for all persons. Each person must consider whether a particular trade, combination of trades, or strategy is suitable for that person's financial means and objectives. Past results are not necessarily indicative of future results. This communication may contain links to third party websites which are not under the control of and are not maintained by ION Energy Group, and ION Energy Group is not responsible for their content.

Mexican Exports (MMcf/d)



Net LNG Exports - Last 30 days (MMcf/d)



Source: Bloomberg

The risk of trading futures and options and other derivatives involves a substantial risk of loss and is not suitable for all persons. Each person must consider whether a particular trade, combination of trades, or strategy is suitable for that person's financial means and objectives. Past results are not necessarily indicative of future results. This communication may contain links to third party websites which are not under the control of and are not maintained by ION Energy Group, and ION Energy Group is not responsible for their content.

Nat Gas Options Volume and Open Interest CME and ICE Combined

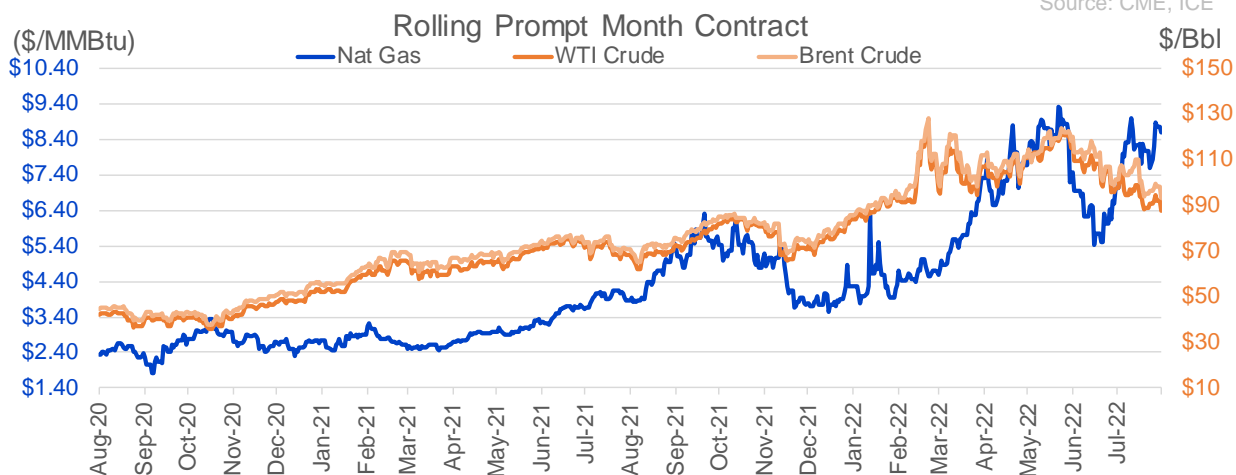
CONTRACT MONTH	CONTRACT YEAR	PUT/CALL	STRIKE	CUMULATIVE VOL	CONTRACT MONTH	CONTRACT YEAR	PUT/CALL	STRIKE	CUMULATIVE OI
9	2022	C	11.00	6277	10	2022	P	3.00	36594
9	2022	C	10.00	4460	10	2022	C	6.00	36016
9	2022	C	12.00	2990	10	2022	P	6.00	29080
9	2022	C	9.00	2767	10	2022	P	2.50	28111
9	2022	C	11.10	2500	10	2022	P	5.00	26721
9	2022	C	9.50	2314	9	2022	C	6.00	24369
10	2022	C	12.00	2207	10	2022	C	5.00	23268
10	2022	C	9.00	1911	3	2023	C	10.00	22805
10	2022	C	10.00	1850	10	2022	P	3.50	22683
9	2022	P	7.00	1702	10	2022	C	12.00	21782
4	2023	P	2.75	1650	10	2022	P	4.00	21187
5	2023	P	2.75	1650	5	2023	P	2.00	20747
6	2023	P	2.75	1650	9	2022	P	4.00	20465
7	2023	P	2.75	1650	9	2022	C	10.00	20292
8	2023	P	2.75	1650	10	2022	C	10.00	20098
9	2023	P	2.75	1650	9	2022	P	6.00	19961
10	2023	P	2.75	1650	11	2022	P	4.00	19690
3	2023	P	4.00	1550	9	2022	C	7.00	19572
10	2022	C	11.00	1549	12	2022	P	5.00	18694
11	2022	C	11.00	1424	12	2022	C	5.00	18218
11	2022	C	12.00	1415	9	2022	C	9.00	17886
9	2022	C	8.00	1343	10	2022	C	8.00	17812
5	2023	P	4.00	1275	3	2023	P	3.00	17712
6	2023	P	4.00	1275	1	2023	C	10.00	17159
7	2023	P	4.00	1275	10	2022	P	2.00	16759
8	2023	P	4.00	1275	9	2022	P	3.00	16612
9	2023	P	4.00	1275	10	2023	P	2.50	16550
10	2023	P	4.00	1275	4	2023	P	3.00	15984
4	2023	P	4.00	1250	9	2022	C	4.00	15970
9	2022	C	10.10	1202	2	2023	C	10.00	15898
10	2022	C	8.00	1155	9	2022	P	2.50	15478
9	2022	C	10.50	1131	3	2023	C	20.00	15469
10	2022	P	4.50	1051	10	2022	P	3.25	15350
9	2022	C	7.25	1050	10	2022	C	7.00	15148
10	2022	C	7.25	1050	9	2022	P	7.00	15067
3	2023	P	3.00	1000	10	2023	P	2.00	14980
10	2022	P	7.00	988	9	2022	P	2.75	14887
11	2022	P	3.50	950	9	2022	C	9.50	14826
9	2022	P	8.00	933	11	2022	C	8.00	14791
12	2022	C	15.00	914	10	2023	P	3.00	14780
9	2022	C	11.50	802	9	2022	C	12.00	14463
11	2022	P	4.00	764	9	2022	P	5.00	14463
11	2022	P	7.00	759	2	2023	C	9.00	14160
11	2022	C	9.00	750	9	2022	P	3.50	14015
3	2023	P	6.00	710	12	2022	C	6.00	13987
9	2022	P	7.25	649	9	2022	P	6.50	13971
12	2022	P	3.50	600	3	2023	P	4.00	13959
2	2023	P	6.00	560	4	2023	P	2.75	13945
9	2022	P	6.50	554	11	2022	C	10.00	13870
					12	2022	C	10	13637

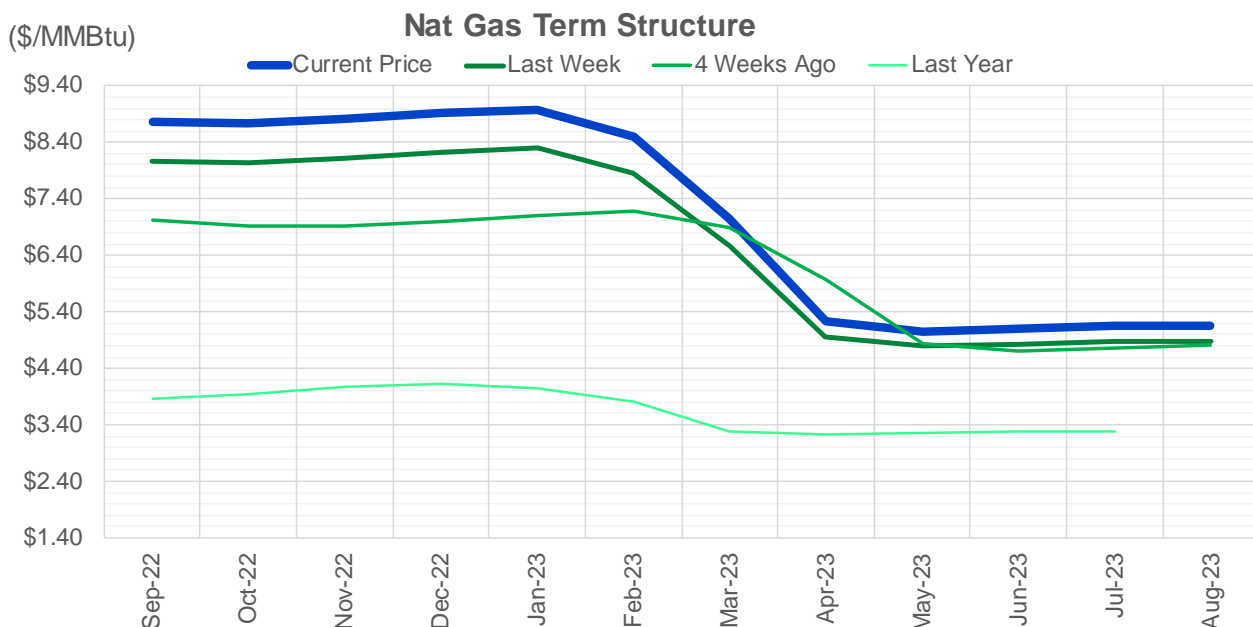
Source: CME, ICE

Nat Gas Futures Open Interest CME and ICE Combined

CME Henry Hub Futures (10,000 MMBtu)				ICE Henry Hub Futures Contract Equivalent (10,000 MM			
	Current	Prior	Daily Change		Current	Prior	Daily Change
SEP 22	70843	72943	-2100	SEP 22	81182	81556	-373
OCT 22	102518	100681	1837	OCT 22	78077	78843	-766
NOV 22	118356	116434	1922	NOV 22	63381	63494	-113
DEC 22	63305	63384	-79	DEC 22	67055	66918	137
JAN 23	81221	80640	581	JAN 23	65933	66122	-189
FEB 23	37097	36823	274	FEB 23	61413	61516	-103
MAR 23	54096	53816	280	MAR 23	54127	54032	96
APR 23	68852	69260	-408	APR 23	55934	55740	193
MAY 23	72679	72818	-139	MAY 23	54333	54303	30
JUN 23	23726	23456	270	JUN 23	47726	47691	36
JUL 23	24027	24148	-121	JUL 23	46244	46278	-34
AUG 23	19594	19732	-138	AUG 23	45318	45328	-10
SEP 23	19610	19490	120	SEP 23	44660	44706	-47
OCT 23	47595	47797	-202	OCT 23	51382	51501	-119
NOV 23	13187	13198	-11	NOV 23	44966	44975	-9
DEC 23	12561	12556	5	DEC 23	41023	41023	0
JAN 24	18068	17919	149	JAN 24	39959	40008	-49
FEB 24	7844	7858	-14	FEB 24	30332	30332	1
MAR 24	17673	17644	29	MAR 24	34932	34957	-25
APR 24	14061	14024	37	APR 24	28439	28523	-84
MAY 24	6888	6909	-21	MAY 24	27198	27169	29
JUN 24	2607	2607	0	JUN 24	24118	24180	-62
JUL 24	2450	2450	0	JUL 24	23768	23832	-64
AUG 24	3349	3349	0	AUG 24	23657	23720	-64
SEP 24	1960	1960	0	SEP 24	23599	23661	-62
OCT 24	8950	8534	416	OCT 24	26983	26894	89
NOV 24	4832	4832	0	NOV 24	24758	24743	15
DEC 24	7730	7730	0	DEC 24	28034	28023	12
JAN 25	16553	16053	500	JAN 25	21151	21011	139
FEB 25	993	992	1	FEB 25	14308	14235	73

Source: CME, ICE





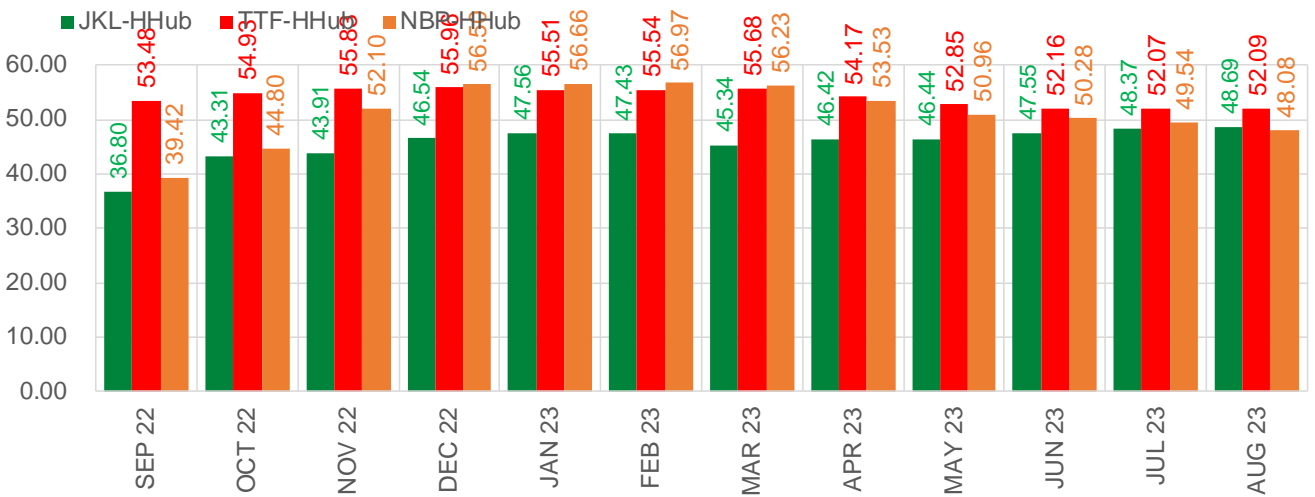
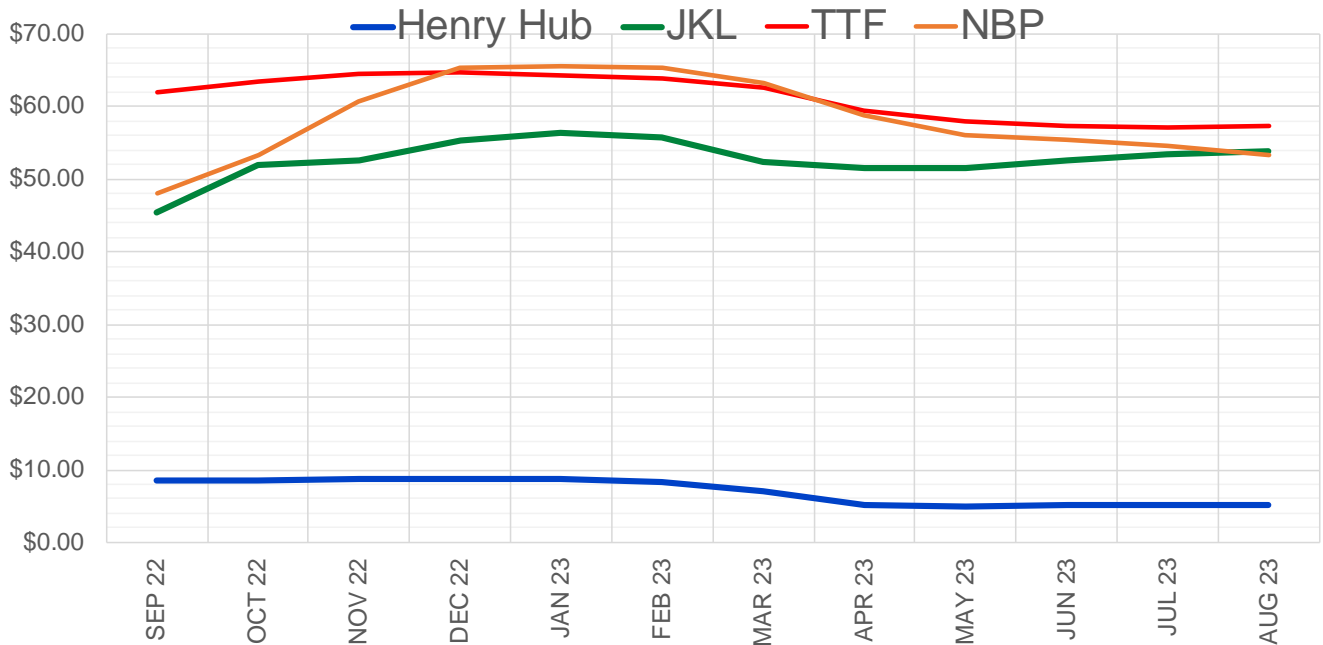
	Sep-22	Oct-22	Nov-22	Dec-22	Jan-23	Feb-23	Mar-23	Apr-23	May-23	Jun-23	Jul-23	Aug-23
Current Price	\$8.768	\$8.744	\$8.816	\$8.927	\$8.984	\$8.507	\$7.040	\$5.229	\$5.050	\$5.098	\$5.147	\$5.157
Last Week	\$8.064	\$8.051	\$8.120	\$8.230	\$8.294	\$7.860	\$6.565	\$4.954	\$4.786	\$4.829	\$4.873	\$4.886
vs. Last Week	\$0.704	\$0.693	\$0.696	\$0.697	\$0.690	\$0.647	\$0.475	\$0.275	\$0.264	\$0.269	\$0.274	\$0.271
4 Weeks Ago	\$7.016	\$6.926	\$6.917	\$6.997	\$7.096	\$7.184	\$6.881	\$5.961	\$4.825	\$4.697	\$4.748	\$4.800
vs. 4 Weeks Ago	\$1.752	\$1.818	\$1.899	\$1.930	\$1.888	\$1.323	\$0.159	-\$0.732	\$0.225	\$0.401	\$0.399	\$0.357
Last Year	\$3.861	\$3.875	\$3.949	\$4.070	\$4.135	\$4.058	\$3.808	\$3.289	\$3.222	\$3.251	\$3.285	\$3.293
vs. Last Year	\$4.907	\$4.869	\$4.867	\$4.857	\$4.849	\$4.449	\$3.232	\$1.940	\$1.828	\$1.847	\$1.862	\$1.864

	Units	Cash Settled	Prompt Settle	Cash to Prompt
AGT Citygate	\$/MMBtu	7.80	7.56	-0.24
TETCO M3	\$/MMBtu	7.51	6.93	-0.58
FGT Zone 3	\$/MMBtu	7.42	9.03	1.61
Zone 6 NY	\$/MMBtu	7.42	6.93	-0.49
Chicago Citygate	\$/MMBtu	8.26	7.67	-0.59
Michcon	\$/MMBtu	8.36	7.61	-0.75
Columbia TCO Pool	\$/MMBtu	7.67	6.98	-0.70
Ventura	\$/MMBtu	5.95	7.59	1.64
Rockies/Opal	\$/MMBtu	8.25	7.39	-0.87
El Paso Permian Basin	\$/MMBtu	7.59	6.89	-0.70
Socal Citygate	\$/MMBtu	11.00	8.33	-2.67
Malin	\$/MMBtu	8.55	7.60	-0.95
Houston Ship Channel	\$/MMBtu	8.35	7.53	-0.82
Henry Hub Cash	\$/MMBtu	8.75	7.43	-1.32
AECO Cash	C\$/GJ	2.82	4.12	1.30
Station2 Cash	C\$/GJ	2.37	7.27	4.90
Dawn Cash	C\$/GJ	8.36	7.70	-0.66

Source: CME, Bloomberg

	Units	Current Price	vs. Last Week	vs. 4 Weeks Ago	vs. Last Year
NatGas Jul21/Oct21	\$/MMBtu	2.224	▲ 0.000	▲ 0.000	▲ 1.966
NatGas Oct21/Nov21	\$/MMBtu	0.361	▲ 0.000	▲ 0.000	▲ 0.287
NatGas Oct21/Jan22	\$/MMBtu	-1.817	▲ 0.000	▲ 0.000	▼ -2.077
NatGas Apr22/Oct22	\$/MMBtu	3.408	▲ 0.693	▲ 1.827	▲ 3.396
WTI Crude	\$/Bbl	92.09	▲ 3.080	▼ -5.500	▲ 23.650
Brent Crude	\$/Bbl	98.15	▲ 3.230	▼ -3.010	▲ 27.560
Fuel Oil, NY Harbour 1%	\$/Bbl	97.18	▲ 0.000	▲ 0.000	▲ 0.000
Heating Oil	cents/Gallon	351.78	▲ 30.190	▼ -18.120	▲ 143.990
Propane, Mt. Bel	cents/Gallon	1.09	▲ 0.013	▼ -0.044	▼ -0.038
Ethane, Mt. Bel	cents/Gallon	0.59	▲ 0.029	▲ 0.046	▲ 0.254
Coal, PRB	\$/MTon	12.30	▲ 0.000	▲ 0.000	▲ 0.000
Coal, PRB	\$/MMBtu	0.70			
Coal, ILB	\$/MTon	31.05	▲ 0.000	▲ 0.000	▲ 0.000
Coal, ILB	\$/MMBtu	1.32			

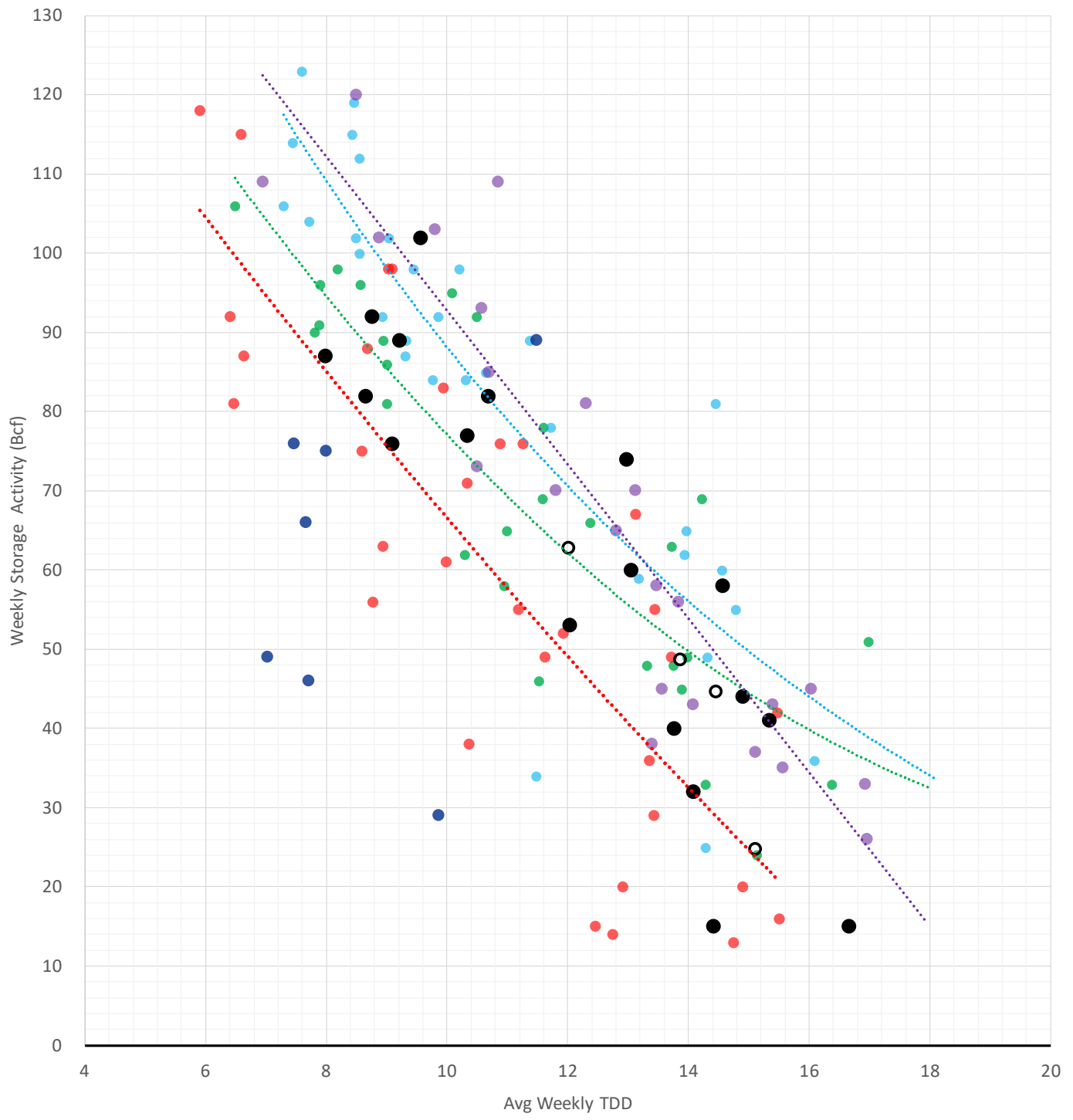
Nat Gas Term Structure (\$MMBTU)



	SEP 22	OCT 22	NOV 22	DEC 22	JAN 23	FEB 23	MAR 23	APR 23	MAY 23	JUN 23	JUL 23	AUG 23
Henry Hub	\$8.589	\$8.582	\$8.656	\$8.768	\$8.828	\$8.374	\$6.984	\$5.219	\$5.042	\$5.092	\$5.141	\$5.157
JKL	\$45.390	\$51.890	\$52.565	\$55.305	\$56.390	\$55.805	\$52.325	\$51.635	\$51.480	\$52.645	\$53.510	\$53.850
JKL-HHub	\$36.801	\$43.308	\$43.909	\$46.537	\$47.562	\$47.431	\$45.341	\$46.416	\$46.438	\$47.553	\$48.369	\$48.693
TTF	\$62.070	\$63.511	\$64.482	\$64.725	\$64.338	\$63.911	\$62.659	\$59.389	\$57.892	\$57.254	\$57.215	\$57.244
TTF-HHub	\$53.481	\$54.929	\$55.826	\$55.957	\$55.510	\$55.537	\$55.675	\$54.170	\$52.850	\$52.162	\$52.074	\$52.087
NBP	\$48.004	\$53.377	\$60.752	\$65.265	\$65.483	\$65.339	\$63.212	\$58.747	\$56.004	\$55.375	\$54.679	\$53.237
NBP-HHub	\$39.415	\$44.795	\$52.096	\$56.497	\$56.655	\$56.965	\$56.228	\$53.528	\$50.962	\$50.283	\$49.538	\$48.080

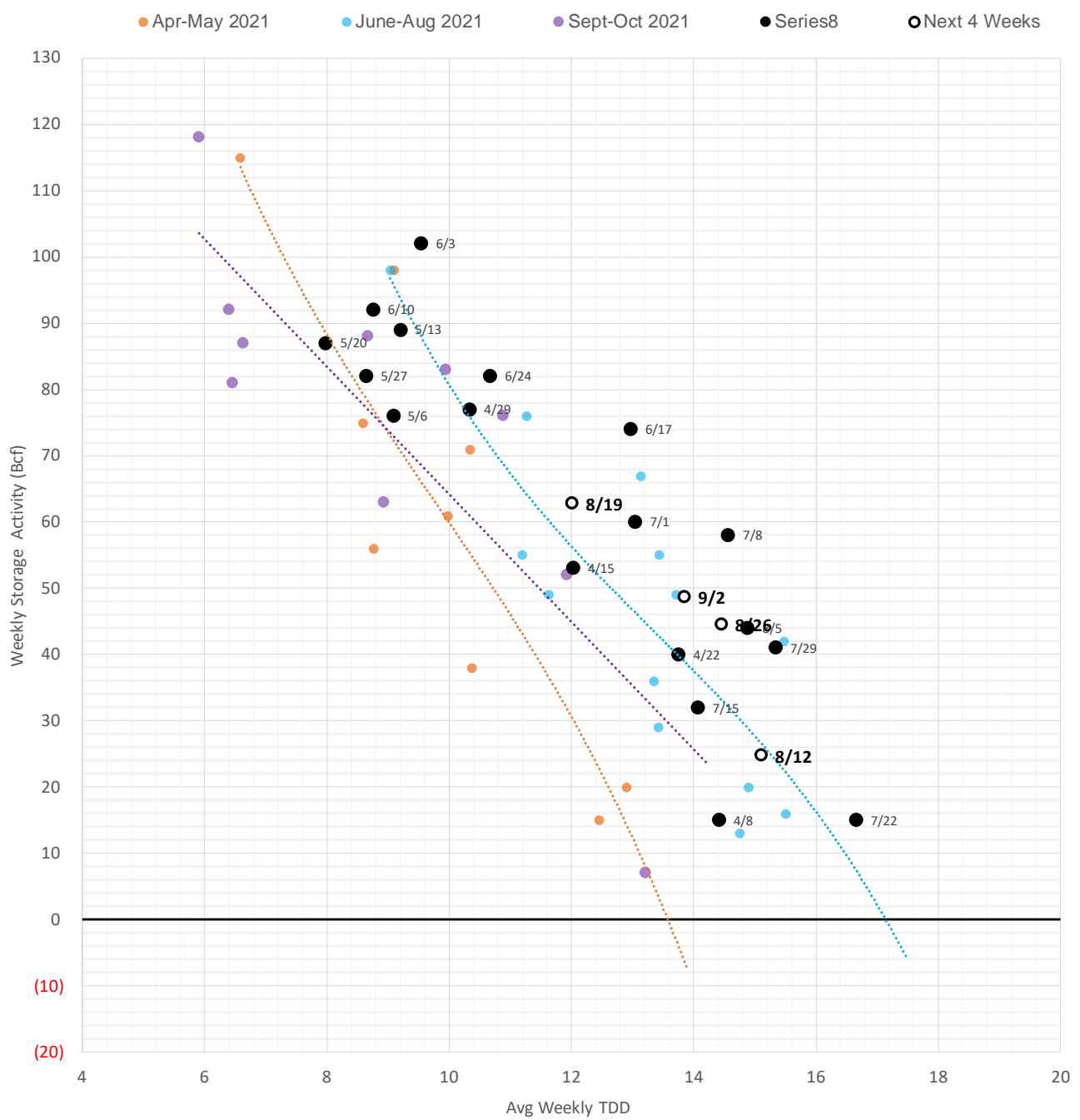
Weather Storage Model - Next 4 Week Forecast

● Summer 18 ● Summer 19 ● Summer 20 Apr-Aug ● Summer 20 Sept-Oct ● Summer 21 ● Summer 22 ○ Next 4 Weeks



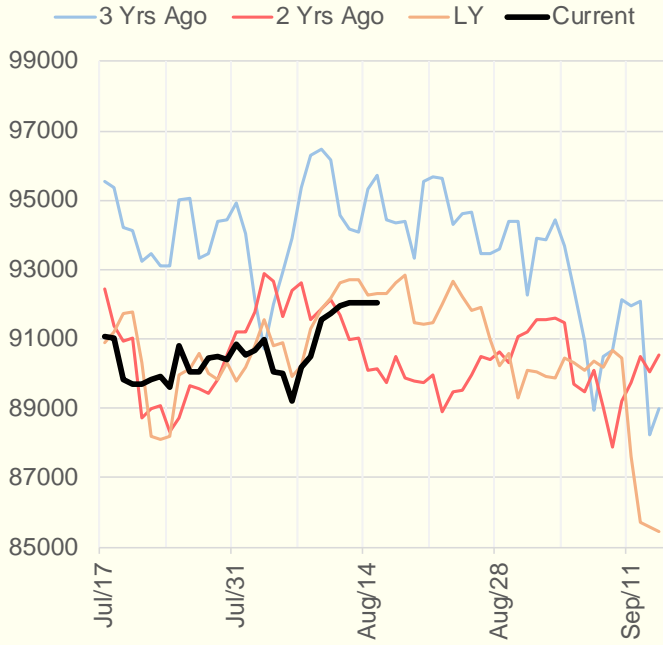
The risk of trading futures and options and other derivatives involves a substantial risk of loss and is not suitable for all persons. Each person must consider whether a particular trade, combination of trades, or strategy is suitable for that person's financial means and objectives. Past results are not necessarily indicative of future results. This communication may contain links to third party websites which are not under the control of and are not maintained by ION Energy Group, and ION Energy Group is not responsible for their content.

Weather Storage Model - Next 4 Week Forecast

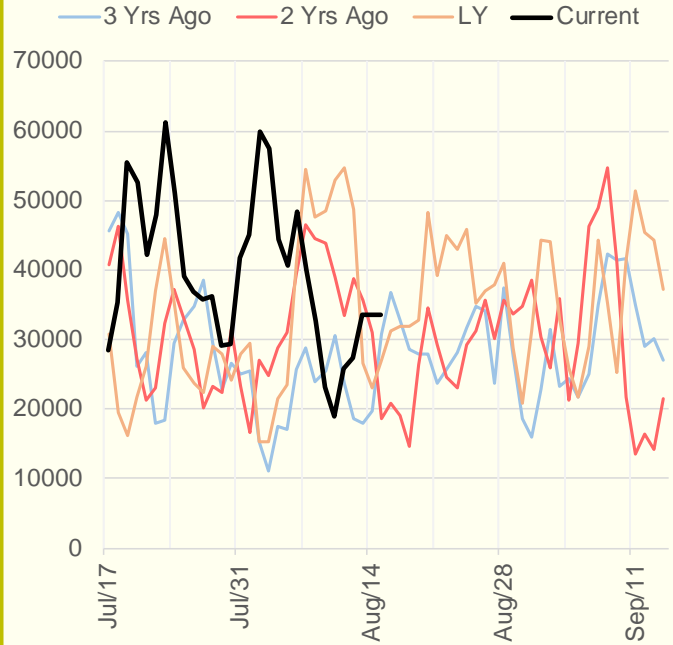


The risk of trading futures and options and other derivatives involves a substantial risk of loss and is not suitable for all persons. Each person must consider whether a particular trade, combination of trades, or strategy is suitable for that person's financial means and objectives. Past results are not necessarily indicative of future results. This communication may contain links to third party websites which are not under the control of and are not maintained by ION Energy Group, and ION Energy Group is not responsible for their content.

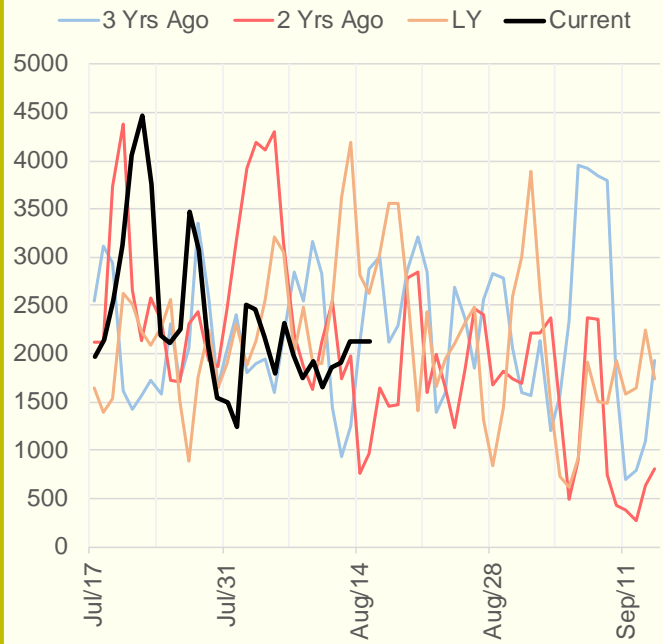
NRC Nuclear Daily Output



US Wind



CALI Wind



TEXAS Wind

