

	Current	Δ from YD	Δ from 7D Avg
Nat Gas Prompt	\$ 8.58	▼ \$ (0.29)	▲ \$ 0.48

	Current	Δ from YD	Δ from 7D Avg
WTI Prompt	\$ 92.69	▼ \$ (1.65)	▲ \$ 2.0

	Current	Δ from YD	Δ from 7D Avg
Brent Prompt	\$ 98.12	▼ \$ (1.48)	▲ \$ 1.7

Page Menu

[Short-term Weather Model Outlooks](#)

[Lower 48 Component Models](#)

[Regional S/D Models Storage Projection](#)

[Weather Model Storage Projection](#)

[Supply – Demand Trends](#)

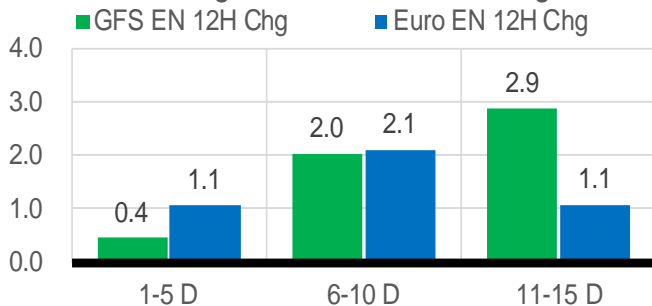
[Nat Gas Options Volume and Open Interest](#)

[Nat Gas Futures Open Interest](#)

[Price Summary](#)

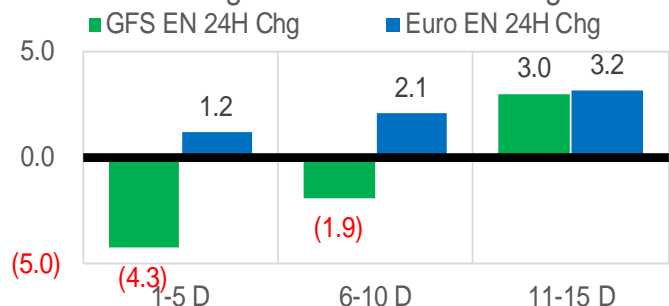
Vs. 12H Ago

L48 Region - 00z TDD vs 12H Ago



Vs. 24H Ago

L48 Region - 00z TDD vs 24H Ago



	Current	Δ from YD	Δ from 7D Avg
US Dry Production	97.5	▼ -0.19	▼ -0.88

	Current	Δ from YD	Δ from 7D Avg
US Power Burns	39.9	▼ -3.89	▼ -5.64

	Current	Δ from YD	Δ from 7D Avg
US ResComm	8.2	▼ -0.17	▼ -0.22

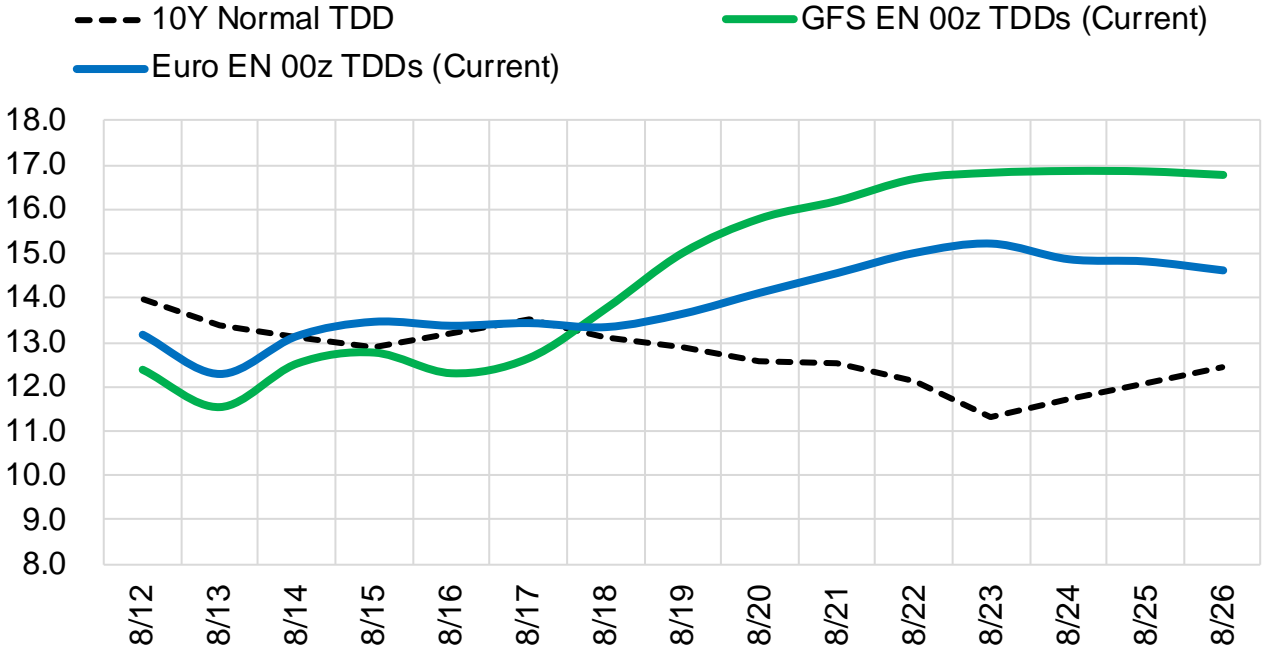
	Current	Δ from YD	Δ from 7D Avg
Canadian Imports	5.1	▲ 0.23	▼ -0.23

	Current	Δ from YD	Δ from 7D Avg
Net LNG Exports	11.4	▼ -0.04	▲ 0.50

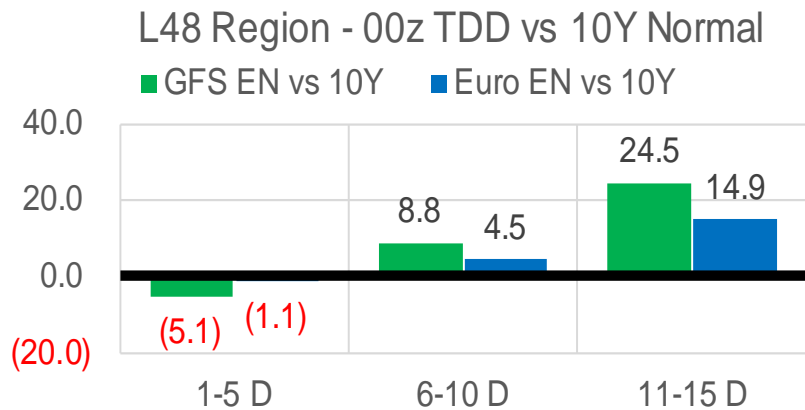
	Current	Δ from YD	Δ from 7D Avg
Mexican Exports	7.1	▼ -0.10	▲ 0.10

Short-term Weather Model Outlooks (00z)

L48 Region



Vs. 10Y Normal



Source: WSI , Bloomberg

Lower 48 Component Models

Daily Balances

	6-Aug	7-Aug	8-Aug	9-Aug	10-Aug	11-Aug	12-Aug	DoD	vs. 7D
Lower 48 Dry Production	98.4	98.5	98.4	98.4	98.1	97.7	97.5	▼ -0.2	▼ -0.8
Canadian Imports	5.4	5.6	5.4	5.4	5.0	4.9	5.1	▲ 0.2	▼ -0.2
L48 Power	43.9	44.6	47.3	47.4	45.7	43.8	39.9	▼ -3.9	▼ -5.5
L48 Residential & Commercial	8.1	8.2	8.7	8.7	8.4	8.4	8.2	▼ -0.2	▼ -0.2
L48 Industrial	19.9	19.6	20.1	20.4	20.7	21.4	21.8	▲ 0.4	▲ 1.5
L48 Lease and Plant Fuel	5.4	5.4	5.4	5.4	5.3	5.3	5.3	▼ -0.1	▼ -0.1
L48 Pipeline Distribution	2.8	2.8	3.0	3.0	2.9	2.8	2.6	▼ -0.2	▼ -0.3
L48 Regional Gas Consumption	80.0	80.6	84.3	84.8	83.1	81.6	77.7	▼ -3.9	▼ -4.7
Net LNG Delivered	10.52	10.30	10.85	11.19	11.30	11.40	11.36	▼ 0.0	▲ 0.4
Total Mexican Exports	6.7	6.7	6.9	7.1	7.2	7.2	7.1	▼ -0.1	▲ 0.1
Implied Daily Storage Activity	6.6	6.6	1.7	0.7	1.6	2.3	6.4		
EIA Reported Daily Storage Activity									
Daily Model Error									

EIA Storage Week Balances

	8-Jul	15-Jul	22-Jul	29-Jul	5-Aug	12-Aug	WoW	vs. 4W
Lower 48 Dry Production	97.0	96.3	96.9	97.3	98.5	98.4	▼ -0.2	▲ 1.1
Canadian Imports	5.6	6.0	6.2	5.9	5.7	5.3	▼ -0.3	▼ -0.6
L48 Power	41.0	42.9	45.5	44.7	44.0	45.5	▲ 1.5	▲ 1.3
L48 Residential & Commercial	8.4	8.4	8.7	8.6	8.3	8.4	▲ 0.1	▼ -0.1
L48 Industrial	20.1	20.5	21.0	19.3	20.5	20.3	▼ -0.2	▼ 0.0
L48 Lease and Plant Fuel	5.3	5.2	5.3	5.3	5.4	5.4	▼ 0.0	▲ 0.1
L48 Pipeline Distribution	2.6	2.7	2.9	2.8	2.8	2.9	▲ 0.1	▲ 0.1
L48 Regional Gas Consumption	77.4	79.7	83.3	80.7	80.9	82.5	▲ 1.5	▲ 1.3
Net LNG Exports	11.2	11.1	10.8	10.7	10.9	10.9	▼ -0.1	▼ 0.0
Total Mexican Exports	6.9	7.0	7.1	6.9	6.9	7.0	▲ 0.1	▼ 0.0
Implied Daily Storage Activity	7.2	4.5	1.9	4.8	5.5	3.4	-2.1	
EIA Reported Daily Storage Activity	8.3	4.6	2.1	5.9	6.3			
Daily Model Error	-1.1	-0.1	-0.3	-1.0	-0.8			

Monthly Balances

	2Yr Ago Aug-20	LY Aug-21	Apr-22	May-22	Jun-22	Jul-22	MTD Aug-22	MoM	vs. LY
Lower 48 Dry Production	88.8	93.8	94.9	95.8	97.0	97.1	98.4	▲ 1.3	▲ 4.6
Canadian Imports	4.9	5.1	5.8	5.1	5.7	5.9	5.5	▼ -0.4	▲ 0.3
L48 Power	41.0	40.4	25.1	29.7	36.8	43.4	45.5	▲ 2.1	▲ 5.1
L48 Residential & Commercial	7.7	7.9	22.3	12.4	9.0	8.5	8.4	▼ 0.0	▲ 0.5
L48 Industrial	20.8	21.0	20.1	19.8	20.6	20.2	20.4	▲ 0.2	▼ -0.6
L48 Lease and Plant Fuel	4.8	5.1	5.2	5.3	5.2	5.3	5.4	▲ 0.1	▲ 0.2
L48 Pipeline Distribution	2.5	2.6	2.6	2.4	2.5	2.8	2.9	▲ 0.1	▲ 0.3
L48 Regional Gas Consumption	76.9	77.0	75.3	69.6	74.2	80.1	82.5	▲ 2.4	▲ 5.6
Net LNG Exports	4.0	10.5	12.3	12.5	11.2	10.9	10.9	▼ 0.0	▲ 0.4
Total Mexican Exports	6.0	6.9	6.7	7.0	7.1	7.0	7.0	▼ 0.0	▲ 0.1
Implied Daily Storage Activity	6.7	4.6	6.4	11.9	10.2	4.9	3.4		
EIA Reported Daily Storage Activity									
Daily Model Error									

Source: Bloomberg, analytix.ai

Daily Average Generation Data

Nuclear Generation Daily Average - GWh (NRC)

	4-Aug	5-Aug	6-Aug	7-Aug	8-Aug	9-Aug	10-Aug	DoD	vs. 7D
NRC Nuclear Daily Output	90.1	90.0	89.2	90.2	90.5	91.6	91.8	0.2	1.5
NRC Nuclear Max Capacity	104.9	104.9	104.9	104.9	104.9	104.9	104.9	0.0	0.0
NRC Nuclear Outage	14.8	14.9	15.7	14.7	14.4	13.3	13.1	-0.2	-1.5
NRC % Nuclear Cap Utilization	91.6	91.5	90.7	91.7	92.0	93.1	93.3	0.2	1.5

Wind Generation Daily Average - MWh (EIA)

	4-Aug	5-Aug	6-Aug	7-Aug	8-Aug	9-Aug	10-Aug	DoD	vs. 7D
CALI Wind	2183	1797	2326	1986	1755	1916	1662	-255	-332
TEXAS Wind	13700	10997	13426	12477	8846	6643	5069	-1574	-5945
US Wind	44326	40558	48433	40025	32618	22975	19268	-3708	-18888

Generation Daily Average - MWh (EIA)

	4-Aug	5-Aug	6-Aug	7-Aug	8-Aug	9-Aug	10-Aug	DoD	vs. 7D
US Wind	44326	40558	48433	40025	32618	22975	19268	-3708	-18888
US Solar	15932	17535	18287	18115	17107	15944	16448	504	-706
US Petroleum	1545	1159	989	1118	2977	3319	1410	-1909	-441
US Other	10935	10341	10152	10345	10863	11017	10782	-235	173
US Coal	129339	127195	117986	121325	126399	126533	116874	-9658	-7922
US Nuke	92009	91949	91531	92304	92765	93697	88370	-5328	-4007
US Hydro	31506	31511	27970	28075	32135	29306	29281	-25	-803
US Gas	255753	254233	235229	236485	263644	262872	241241	-21631	-10129

See National Wind and Nuclear daily charts

Source: Bloomberg, analytix.ai

Storage Week Average Generation Data

Nuclear Generation Weekly Average - GWh (NRC)

	8-Jul	15-Jul	22-Jul	29-Jul	5-Aug	12-Aug	WoW	WoW Bcf/d Impact
NRC Nuclear Daily Output	90.6	91.2	90.5	90.1	90.6	90.7	0.2	0.0
NRC Nuclear Max Capacity	104.9	104.9	104.9	104.9	104.9	104.9	0.0	
NRC Nuclear Outage	14.2	13.7	14.4	14.8	14.3	14.1	-0.2	
NRC % Nuclear Cap Utilization	92.2	92.7	92.0	91.6	92.1	92.3	0.2	

Wind Generation Weekly Average - MWh (EIA)

	8-Jul	15-Jul	22-Jul	29-Jul	5-Aug	12-Aug	WoW	WoW Bcf/d Impact
CALI Wind	3521	2268	2470	3049	1933	1872	-61	0.0
TEXAS Wind	13920	7264	11182	14533	14443	8932	-5510	1.0
US Wind	42149	34828	40504	44004	43887	31878	-12009	2.2
							-27%	
							-0.4	

Generation Weekly Average - MWh (EIA)

	8-Jul	15-Jul	22-Jul	29-Jul	5-Aug	12-Aug	WoW	WoW Bcf/d Impact
						est.		
US Wind	42149	34828	40504	44004	43887	31878	-12009	2.2
US Solar	19503	18460	18727	18097	17582	17126	-456	0.1
US Petroleum	977	1015	1707	1465	1131	1769	638	-0.1
US Other	9329	9193	10492	10690	10468	10612	143	0.0
US Coal	114442	115861	121564	128742	122297	121884	-413	0.1
US Nuke	93305	93486	92543	92281	92607	91284	-1323	0.2
US Hydro	35852	36439	33645	32210	31338	29651	-1687	0.3
US Gas	221886	237785	249084	238163	236177	247849	11673	2.1

See National Wind and Nuclear daily charts

Source: Bloomberg, analytix.ai

Monthly Average Generation Data

Nuclear Generation Monthly Average - GWh (NRC)

	2Yr Ago		LY		MTD		Last 30 days	MoM (MTD vs LY)	Last 30 days YoY
	Same 30 days	Same 30 days	May-22	Jun-22	Jul-22	Aug-22			
	NRC Nuclear Daily Output	91.0	90.7	81.7	88.5	90.6			
NRC Nuclear Max Capacity	104.9	104.9	104.9	104.9	104.9	104.9	104.9	0.0	0.0
NRC Nuclear Outage	13.8	14.2	23.2	16.3	14.3	13.0	13.9	-1.3	-0.3
NRC % Nuclear Cap Utilization	92.6	92.2	83.0	90.0	92.1	92.3	92.0	0.2	-0.2

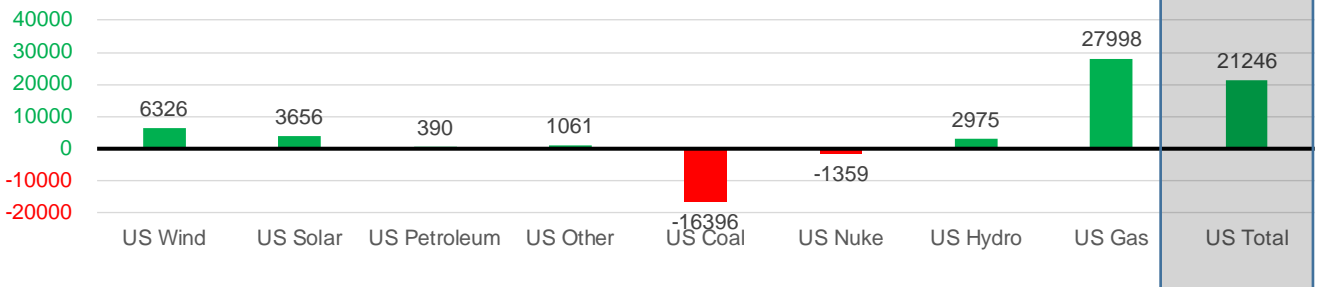
Wind Generation Monthly Average - MWh (EIA)

	2Yr Ago		LY		MTD		Last 30 days	MoM (MTD vs LY)	Last 30 days YoY
	Same 30 days	Same 30 days	May-22	Jun-22	Jul-22	Aug-22			
	CALI Wind	2628	2211	3361	2875	2719			
TEXAS Wind	9575	9573	16756	13441	11765	11021	11916	-744	2343
US Wind	32008	32982	56649	47161	39701	37440	39307	-2261	6326

Generation Monthly Average - MWh (EIA)

	2Yr Ago		LY		MTD		Last 30 days	MoM (MTD vs LY)	Last 30 days YoY
	Same 30 days	Same 30 days	May-22	Jun-22	Jul-22	Aug-22			
	US Wind	32008	32982	56649	47161	39701			
US Solar	12081	14152	18211	18987	18593	17212	17808	▲ 595.8	▲ 3656
US Petroleum	1582	1102	518	998	1252	1588	1492	▼ -96	▲ 390
US Other	9981	9488	7724	7819	9961	10622	10549	▼ -73	▲ 1061
US Coal	121470	139552	85695	104791	119791	123074	123156	▲ 82	▼ -16396
US Nuke	93200	93432	85496	88305	92882	91463	92073	▲ 610	▼ -1359
US Hydro	30503	28819	31811	37520	34188	30284	31795	▲ 1510	▲ 2975
US Gas	228555	214823	157670	194399	235778	245729	242822	▲ 4496	▲ 27998
US Total	527204	534259	443969	499528	548780	557067	555505	▲ 7125	▲ 21246

Last 30 days YoY



See National Wind and Nuclear daily charts

Source: Bloomberg, analytix.ai

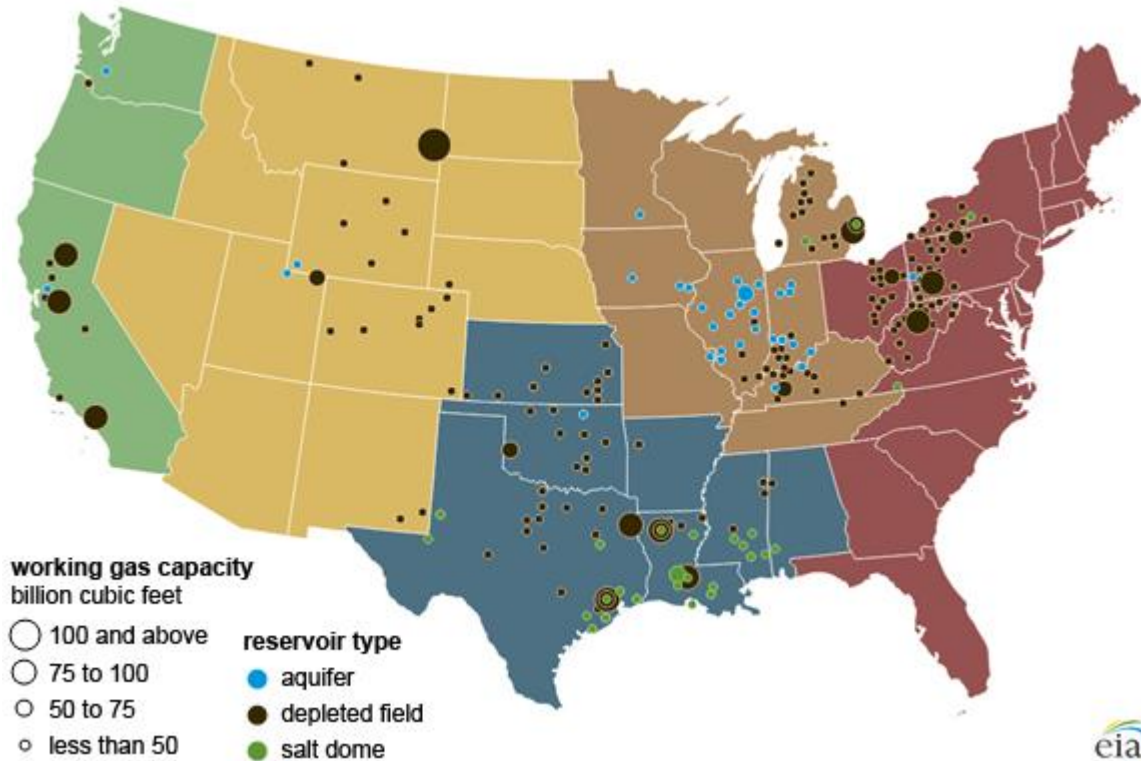
Regional S/D Models Storage Projection

Week Ending 12-Aug

	Daily Raw Storage	Daily Adjustment Factor	Daily Average Storage Activity (Adjusted) *	Weekly Adjusted Storage Activity
L48	4.1	-0.3	3.8	26
East	-0.8	2.1	1.2	9
Midwest	4.0	-0.7	3.3	23
Mountain	4.5	-4.3	0.2	1
South Central	-3.8	3.4	-0.4	-3
Pacific	0.2	-0.7	-0.5	-4

*Adjustment Factor is calculated based on historical regional deltas

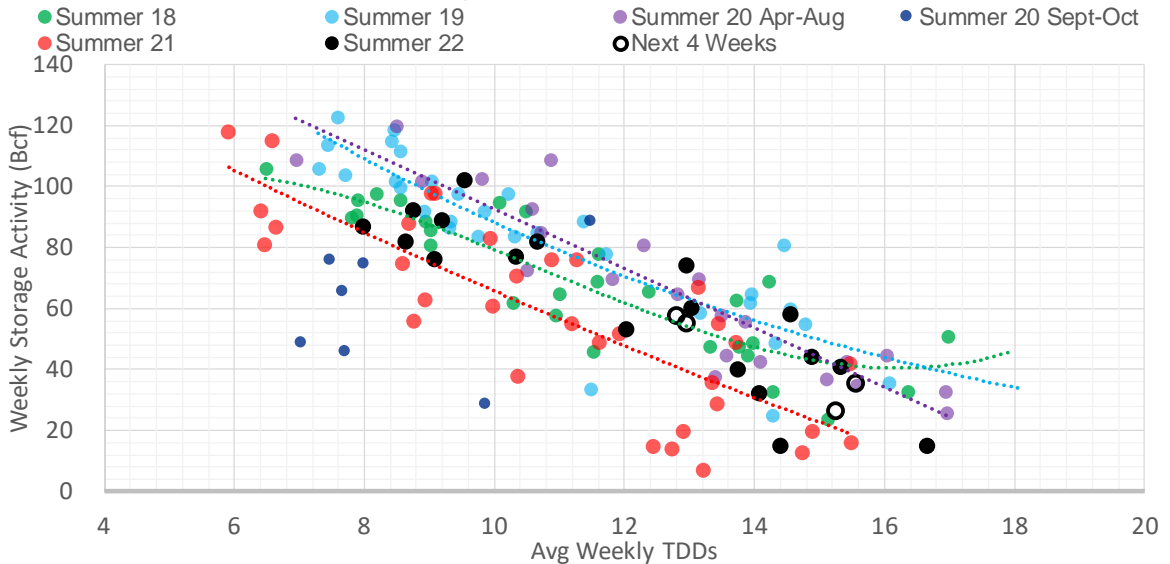
U.S. underground natural gas storage facilities by type (July 2015)



Weather Model Storage Projection

Next report and beyond		
Week Ending	GWDDs	Week Storage Projection
12-Aug	15.3	26
19-Aug	13.0	55
26-Aug	15.6	35
02-Sep	12.8	57

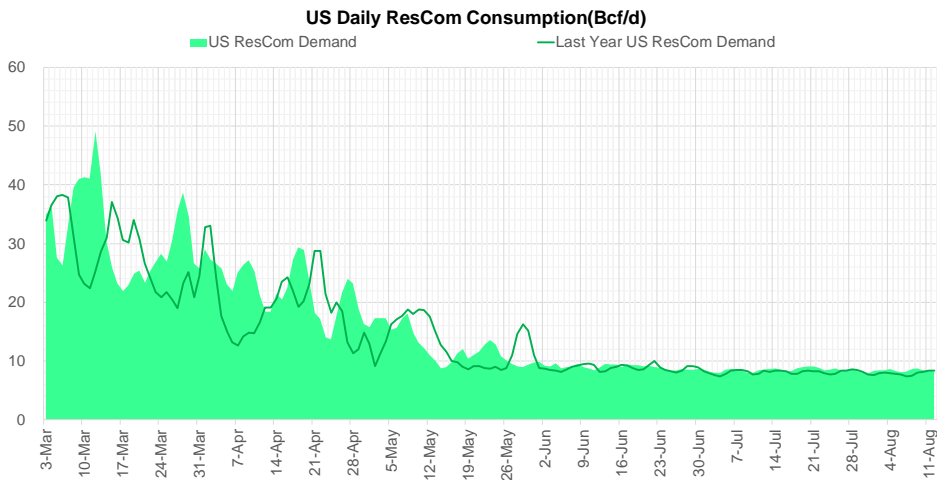
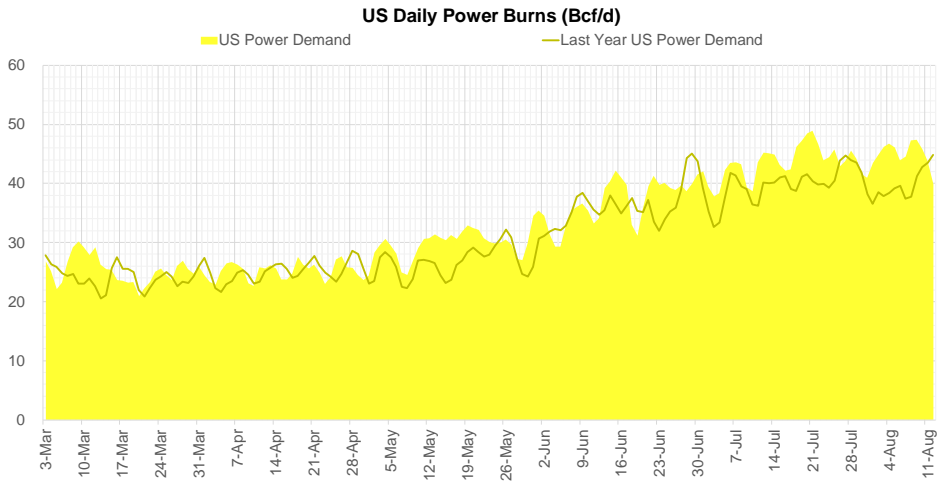
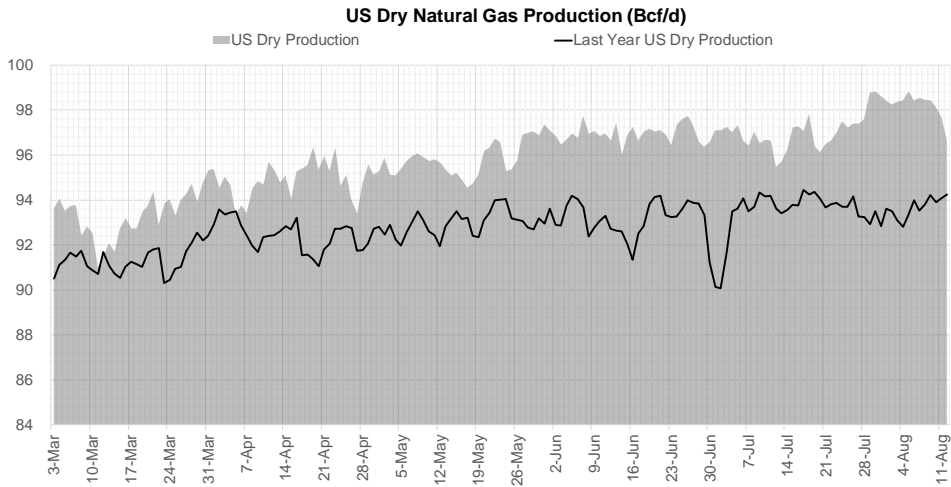
Weather Storage Model - Next 4 Week Forecast



Go to larger image



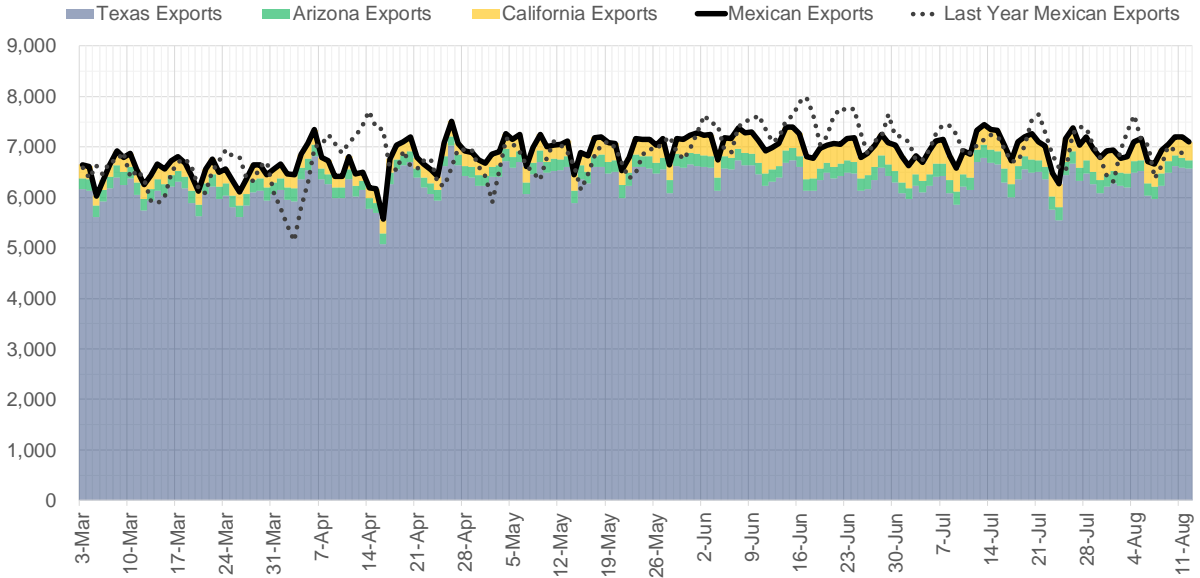
Supply – Demand Trends



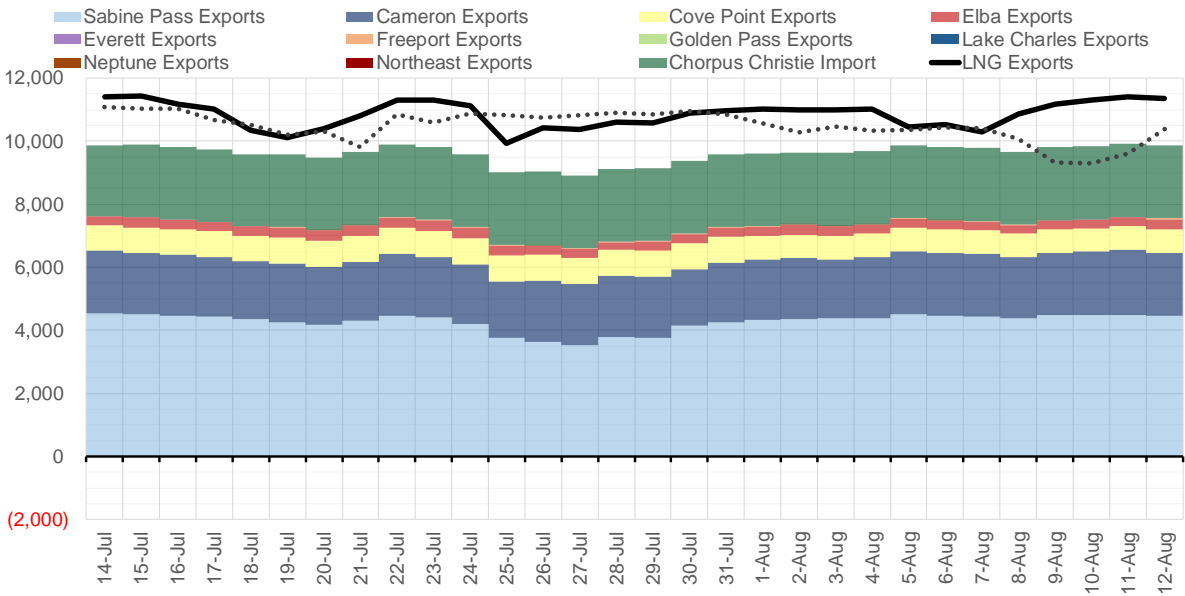
Source: Bloomberg

The risk of trading futures and options and other derivatives involves a substantial risk of loss and is not suitable for all persons. Each person must consider whether a particular trade, combination of trades, or strategy is suitable for that person's financial means and objectives. Past results are not necessarily indicative of future results. This communication may contain links to third party websites which are not under the control of and are not maintained by ION Energy Group, and ION Energy Group is not responsible for their content.

Mexican Exports (MMcf/d)



Net LNG Exports - Last 30 days (MMcf/d)



Source: Bloomberg

The risk of trading futures and options and other derivatives involves a substantial risk of loss and is not suitable for all persons. Each person must consider whether a particular trade, combination of trades, or strategy is suitable for that person's financial means and objectives. Past results are not necessarily indicative of future results. This communication may contain links to third party websites which are not under the control of and are not maintained by ION Energy Group, and ION Energy Group is not responsible for their content.

Nat Gas Options Volume and Open Interest CME and ICE Combined

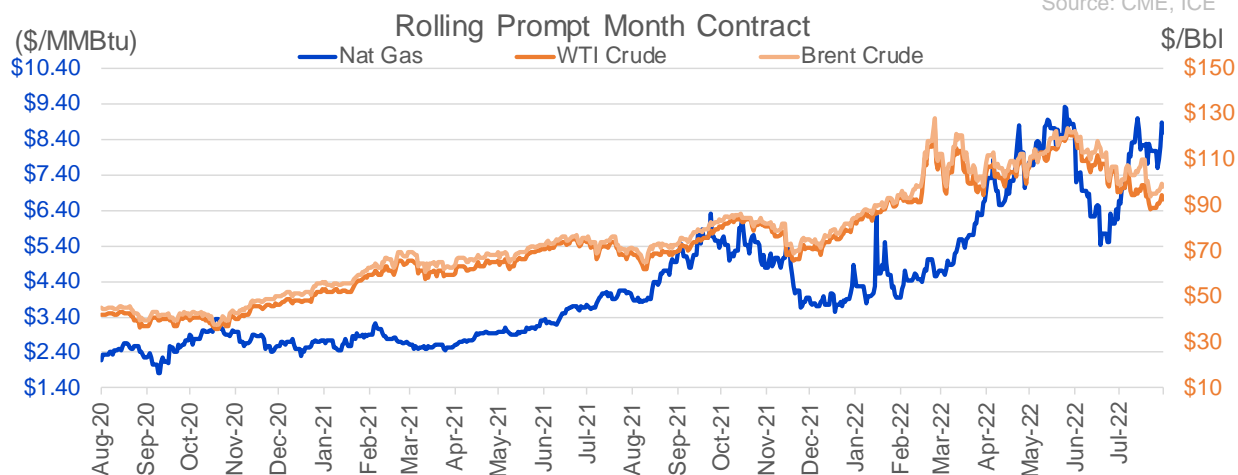
CONTRACT MONTH	CONTRACT YEAR	PUT/CALL	STRIKE	CUMULATIVE VOL	CONTRACT MONTH	CONTRACT YEAR	PUT/CALL	STRIKE	CUMULATIVE OI
9	2022	C	10.00	10170	10	2022	P	3.00	36594
9	2022	C	9.00	6534	10	2022	C	6.00	36016
9	2022	C	12.00	5595	10	2022	P	6.00	28569
9	2022	P	7.00	5530	10	2022	P	2.50	28111
9	2022	C	11.00	4904	10	2022	P	5.00	25446
9	2022	P	7.50	4587	9	2022	C	6.00	24369
10	2022	C	11.00	4092	10	2022	C	5.00	23268
10	2022	C	10.00	3720	3	2023	C	10.00	22992
10	2022	P	6.00	3711	10	2022	P	3.50	22634
10	2022	C	12.00	3703	10	2022	P	4.00	21470
9	2022	C	9.50	3590	9	2022	C	10.00	21355
9	2022	P	8.00	3096	5	2023	P	2.00	20747
10	2022	C	14.00	3037	9	2022	P	4.00	20465
11	2022	C	9.00	2789	10	2022	C	10.00	20460
10	2022	P	7.00	2739	9	2022	C	7.00	19572
9	2022	P	6.00	2349	9	2022	P	6.00	19476
11	2022	P	7.00	2248	11	2022	P	4.00	19284
10	2022	P	5.00	2083	10	2022	C	12.00	19121
9	2022	C	10.50	2001	10	2022	C	8.00	18744
11	2022	P	6.50	1785	12	2022	P	5.00	18594
3	2023	C	20.00	1685	9	2022	C	9.00	18590
3	2023	C	15.00	1490	12	2022	C	5.00	18218
10	2022	P	7.50	1451	3	2023	P	3.00	17912
11	2022	P	4.50	1201	1	2023	C	10.00	17283
10	2022	C	8.50	1143	10	2022	P	2.00	16759
9	2022	C	8.50	1102	9	2022	P	3.00	16612
10	2022	C	9.00	1082	10	2023	P	2.50	16600
10	2022	C	15.00	1005	4	2023	P	3.00	16084
9	2022	P	6.75	976	9	2022	C	4.00	15970
1	2023	C	15.00	965	2	2023	C	10.00	15857
11	2022	P	6.00	955	3	2023	C	20.00	15499
10	2022	P	5.50	948	9	2022	P	2.50	15478
10	2022	P	6.50	945	10	2022	P	3.25	15350
2	2023	C	15.00	944	10	2022	C	7.00	15089
1	2023	P	8.00	910	10	2023	P	2.00	14980
1	2023	P	7.00	901	9	2022	P	2.75	14887
10	2022	C	9.50	881	9	2022	P	7.00	14885
9	2022	C	13.00	861	10	2023	P	3.00	14880
11	2022	C	11.00	860	11	2022	C	8.00	14791
1	2023	C	20.00	853	9	2022	P	5.00	14463
10	2022	P	5.05	851	2	2023	C	9.00	14160
12	2022	P	4.50	851	9	2022	P	3.50	14015
12	2022	P	5.50	850	12	2022	C	6.00	13987
2	2023	P	6.25	800	9	2022	P	6.50	13964
2	2023	C	20.00	780	9	2022	C	9.50	13866
11	2022	C	10.00	724	3	2023	P	4.00	13734
9	2022	C	8.70	712	11	2022	C	10.00	13698
12	2022	P	3.50	701	4	2023	P	2.75	13645
9	2022	C	9.75	640	12	2022	C	10.00	13633
					10	2022	C	4	13309

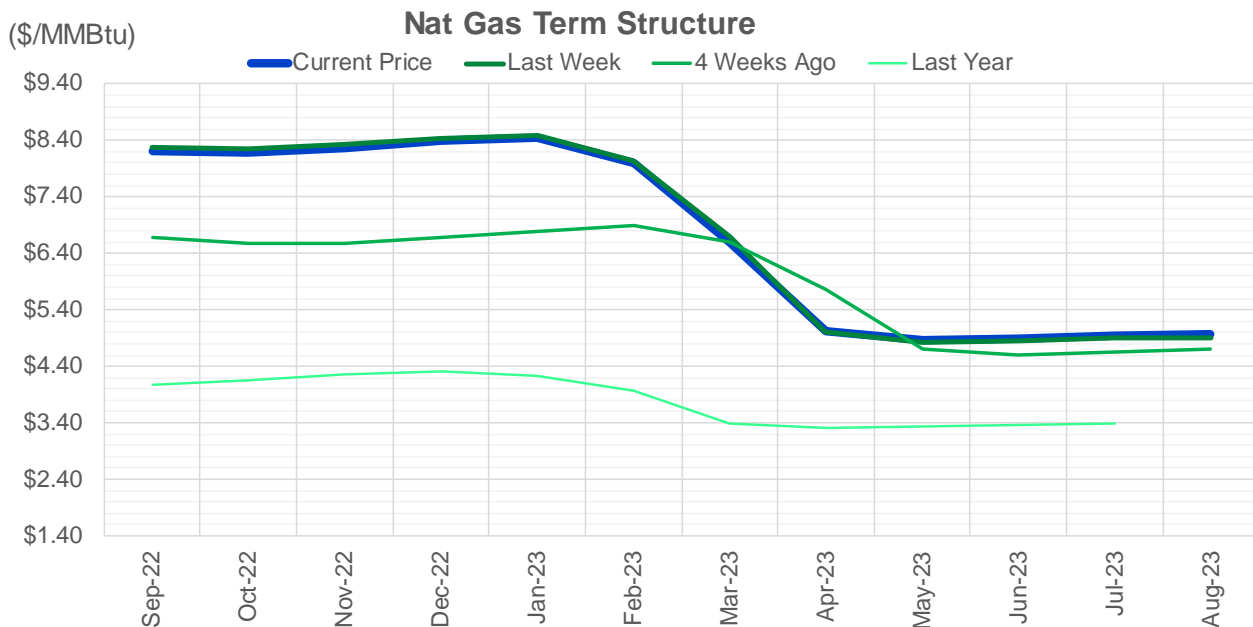
Source: CME, ICE

Nat Gas Futures Open Interest CME and ICE Combined

CME Henry Hub Futures (10,000 MMBtu)				ICE Henry Hub Futures Contract Equivalent (10,000 MM			
	Current	Prior	Daily Change		Current	Prior	Daily Change
SEP 22	73227	89874	-16647	SEP 22	81556	81250	306
OCT 22	100823	95385	5438	OCT 22	78843	77424	1419
NOV 22	116439	105769	10670	NOV 22	63494	64019	-525
DEC 22	63384	61757	1627	DEC 22	66918	66257	661
JAN 23	80636	78709	1927	JAN 23	66122	65535	587
FEB 23	36823	36770	53	FEB 23	61516	61024	492
MAR 23	53816	53932	-116	MAR 23	54032	53943	89
APR 23	69260	69856	-596	APR 23	55740	54018	1722
MAY 23	72818	71644	1174	MAY 23	54303	53251	1052
JUN 23	23456	23422	34	JUN 23	47691	46734	957
JUL 23	24148	23418	730	JUL 23	46278	44912	1366
AUG 23	19732	19470	262	AUG 23	45328	43984	1345
SEP 23	19490	19400	90	SEP 23	44706	43158	1548
OCT 23	47797	47745	52	OCT 23	51501	50070	1431
NOV 23	13198	13055	143	NOV 23	44975	44920	55
DEC 23	12556	12422	134	DEC 23	41023	40974	49
JAN 24	17919	17909	10	JAN 24	40008	39891	117
FEB 24	7858	7742	116	FEB 24	30332	30259	72
MAR 24	17644	17647	-3	MAR 24	34957	34940	17
APR 24	14024	14006	18	APR 24	28523	28442	81
MAY 24	6909	6864	45	MAY 24	27169	27102	68
JUN 24	2607	2534	73	JUN 24	24180	24113	67
JUL 24	2450	2419	31	JUL 24	23832	23763	69
AUG 24	3349	3333	16	AUG 24	23720	23652	69
SEP 24	1960	1920	40	SEP 24	23661	23594	67
OCT 24	8534	8514	20	OCT 24	26894	26846	48
NOV 24	4832	4782	50	NOV 24	24743	24941	-198
DEC 24	7730	7673	57	DEC 24	28023	27970	53
JAN 25	16053	16003	50	JAN 25	21011	20901	111
FEB 25	992	892	100	FEB 25	14235	14006	229

Source: CME, ICE





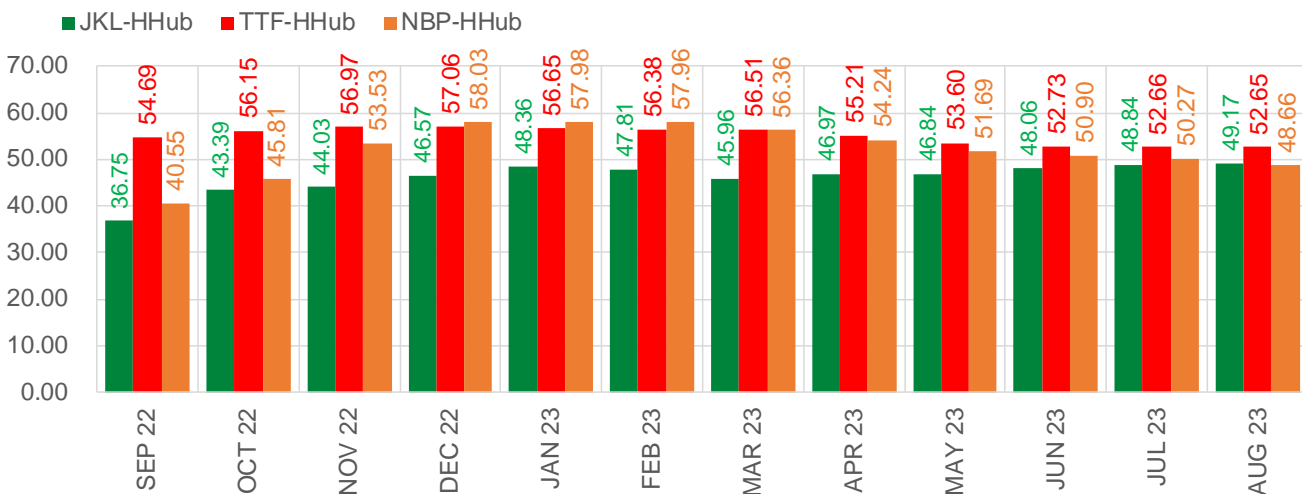
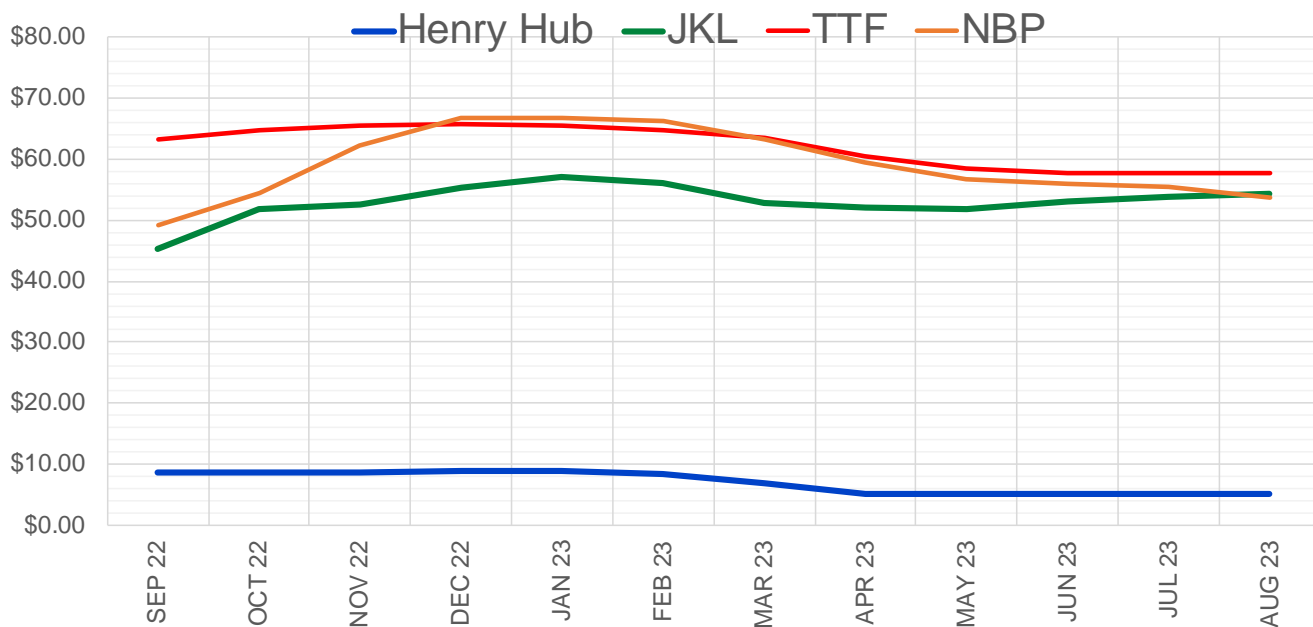
	Sep-22	Oct-22	Nov-22	Dec-22	Jan-23	Feb-23	Mar-23	Apr-23	May-23	Jun-23	Jul-23	Aug-23
Current Price	\$8.202	\$8.193	\$8.272	\$8.389	\$8.449	\$7.997	\$6.605	\$5.015	\$4.854	\$4.901	\$4.947	\$4.960
Last Week	\$8.266	\$8.262	\$8.331	\$8.429	\$8.490	\$8.035	\$6.692	\$5.002	\$4.812	\$4.853	\$4.897	\$4.911
vs. Last Week	-\$0.064	-\$0.069	-\$0.059	-\$0.040	-\$0.041	-\$0.038	-\$0.087	\$0.013	\$0.042	\$0.048	\$0.050	\$0.049
4 Weeks Ago	\$6.689	\$6.589	\$6.574	\$6.677	\$6.789	\$6.883	\$6.604	\$5.764	\$4.702	\$4.592	\$4.647	\$4.703
vs. 4 Weeks Ago	\$1.513	\$1.604	\$1.698	\$1.712	\$1.660	\$1.114	\$0.001	-\$0.749	\$0.152	\$0.309	\$0.300	\$0.257
Last Year	\$4.059	\$4.071	\$4.143	\$4.256	\$4.319	\$4.237	\$3.967	\$3.385	\$3.309	\$3.338	\$3.371	\$3.378
vs. Last Year	\$4.143	\$4.122	\$4.129	\$4.133	\$4.130	\$3.760	\$2.638	\$1.630	\$1.545	\$1.563	\$1.576	\$1.582

	Units	Cash Settled	Prompt Settle	Cash to Prompt
AGT Citygate	\$/MMBtu	7.80	7.67	-0.13
TETCO M3	\$/MMBtu	7.51	7.05	-0.46
FGT Zone 3	\$/MMBtu	7.50	9.18	1.68
Zone 6 NY	\$/MMBtu	7.50	7.06	-0.44
Chicago Citygate	\$/MMBtu	8.18	7.80	-0.38
Michcon	\$/MMBtu	8.10	7.73	-0.37
Columbia TCO Pool	\$/MMBtu	7.47	7.06	-0.41
Ventura	\$/MMBtu	5.95	7.71	1.76
Rockies/Opal	\$/MMBtu	7.78	7.50	-0.29
El Paso Permian Basin	\$/MMBtu	7.48	7.04	-0.44
Socal Citygate	\$/MMBtu	11.68	8.44	-3.25
Malin	\$/MMBtu	8.55	7.71	-0.85
Houston Ship Channel	\$/MMBtu	8.02	7.64	-0.38
Henry Hub Cash	\$/MMBtu	8.53	7.57	-0.96
AECO Cash	C\$/GJ	3.27	4.66	1.39
Station2 Cash	C\$/GJ	2.85	7.42	4.57
Dawn Cash	C\$/GJ	8.13	7.81	-0.32

Source: CME, Bloomberg

	Units	Current Price	vs. Last Week	vs. 4 Weeks Ago	vs. Last Year
NatGas Jul21/Oct21	\$/MMBtu	2.224	▲ 0.000	▲ 0.000	▲ 1.893
NatGas Oct21/Nov21	\$/MMBtu	0.361	▲ 0.000	▲ 0.000	▲ 0.288
NatGas Oct21/Jan22	\$/MMBtu	-1.817	▲ 0.000	▲ 0.000	▼ -2.077
NatGas Apr22/Oct22	\$/MMBtu	3.527	▲ 0.749	▲ 2.359	▲ 3.520
WTI Crude	\$/Bbl	94.34	▲ 5.800	▼ -1.440	▲ 25.250
Brent Crude	\$/Bbl	99.60	▲ 5.480	▲ 0.500	▲ 28.290
Fuel Oil, NY Harbour 1%	\$/Bbl	97.18	▲ 0.000	▲ 0.000	▲ 0.000
Heating Oil	cents/Gallon	348.40	▲ 14.680	▼ -16.540	▲ 138.010
Propane, Mt. Bel	cents/Gallon	1.09	▲ 0.007	▼ -0.047	▼ -0.030
Ethane, Mt. Bel	cents/Gallon	0.59	▲ 0.027	▲ 0.056	▲ 0.254
Coal, PRB	\$/MTon	12.30	▲ 0.000	▲ 0.000	▲ 0.000
Coal, PRB	\$/MMBtu	0.70			
Coal, ILB	\$/MTon	31.05	▲ 0.000	▲ 0.000	▲ 0.000
Coal, ILB	\$/MMBtu	1.32			

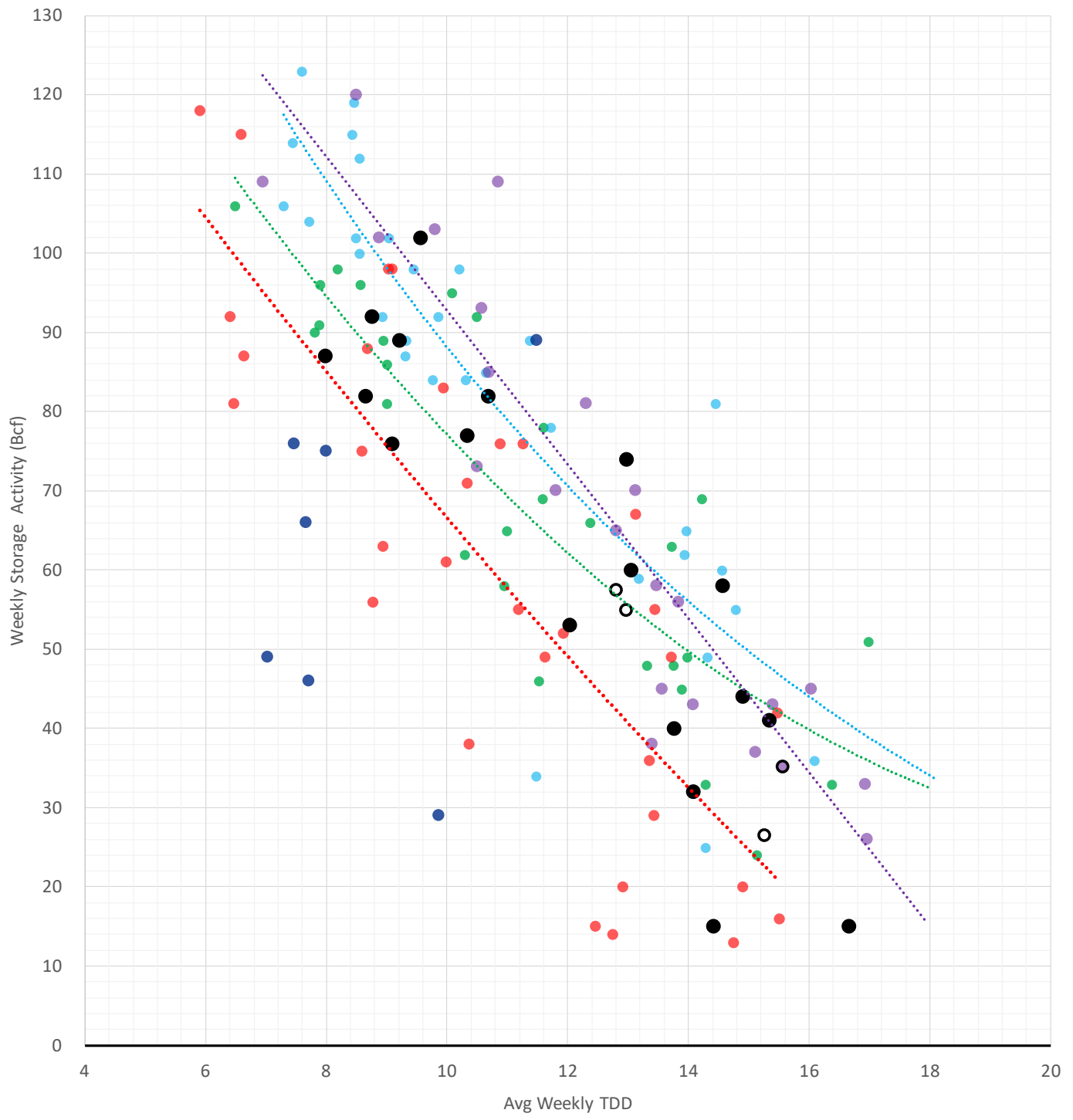
Nat Gas Term Structure (\$MMBTU)



	SEP 22	OCT 22	NOV 22	DEC 22	JAN 23	FEB 23	MAR 23	APR 23	MAY 23	JUN 23	JUL 23	AUG 23
Henry Hub	\$8.581	\$8.570	\$8.651	\$8.770	\$8.793	\$8.354	\$6.914	\$5.180	\$5.015	\$5.075	\$5.113	\$5.118
JKL	\$45.335	\$51.955	\$52.680	\$55.340	\$57.155	\$56.165	\$52.870	\$52.150	\$51.855	\$53.135	\$53.950	\$54.290
JKL-HHub	\$36.754	\$43.385	\$44.029	\$46.570	\$48.362	\$47.811	\$45.956	\$46.970	\$46.840	\$48.060	\$48.837	\$49.172
TTF	\$63.271	\$64.718	\$65.617	\$66.830	\$65.441	\$64.738	\$63.428	\$60.385	\$58.616	\$57.808	\$57.768	\$57.771
TTF-HHub	\$54.690	\$56.148	\$56.966	\$57.060	\$56.648	\$56.384	\$56.514	\$55.205	\$53.601	\$52.733	\$52.655	\$52.653
NBP	\$49.129	\$54.383	\$62.178	\$66.801	\$66.773	\$66.314	\$63.277	\$59.417	\$56.705	\$55.978	\$55.383	\$53.777
NBP-HHub	\$40.548	\$45.813	\$53.527	\$58.031	\$57.980	\$57.960	\$56.363	\$54.237	\$51.690	\$50.903	\$50.270	\$48.659

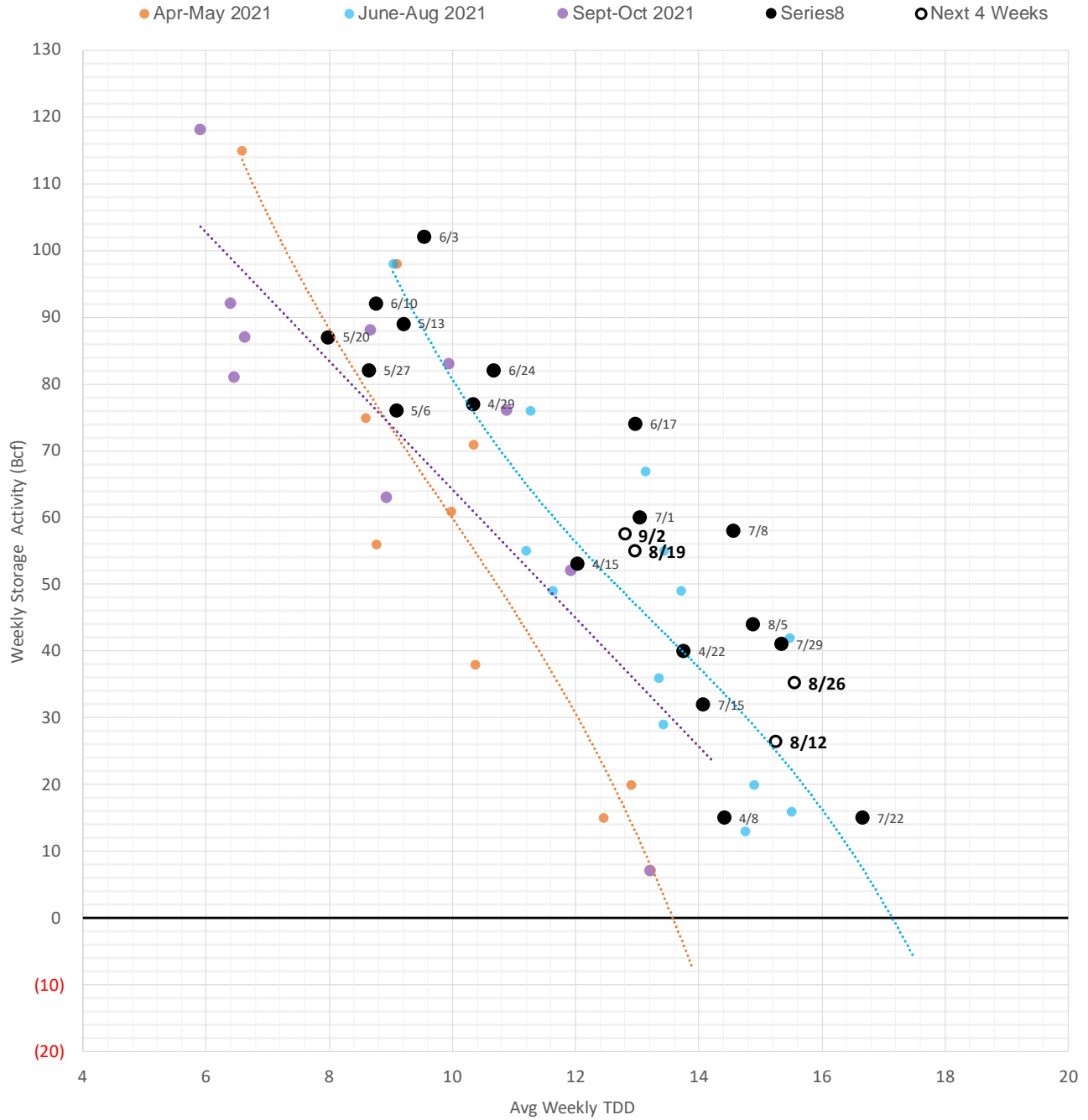
Weather Storage Model - Next 4 Week Forecast

● Summer 18 ● Summer 19 ● Summer 20 Apr-Aug ● Summer 20 Sept-Oct ● Summer 21 ● Summer 22 ● Next 4 Weeks



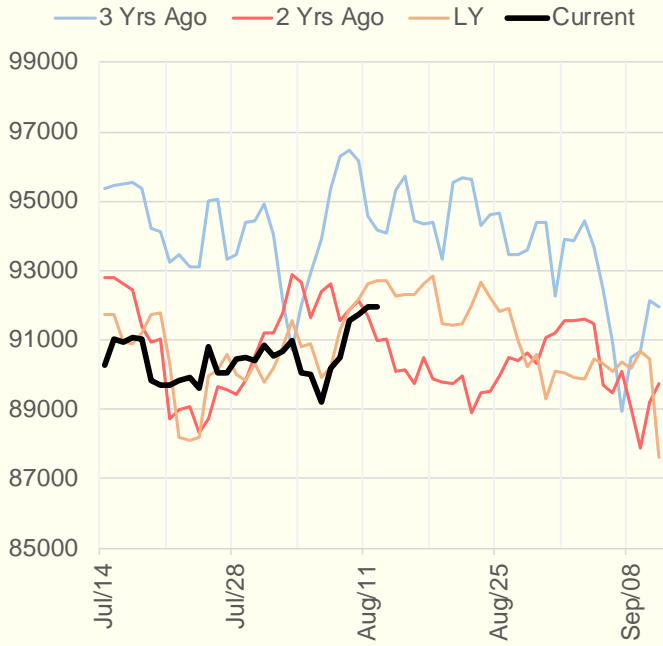
The risk of trading futures and options and other derivatives involves a substantial risk of loss and is not suitable for all persons. Each person must consider whether a particular trade, combination of trades, or strategy is suitable for that person's financial means and objectives. Past results are not necessarily indicative of future results. This communication may contain links to third party websites which are not under the control of and are not maintained by ION Energy Group, and ION Energy Group is not responsible for their content.

Weather Storage Model - Next 4 Week Forecast

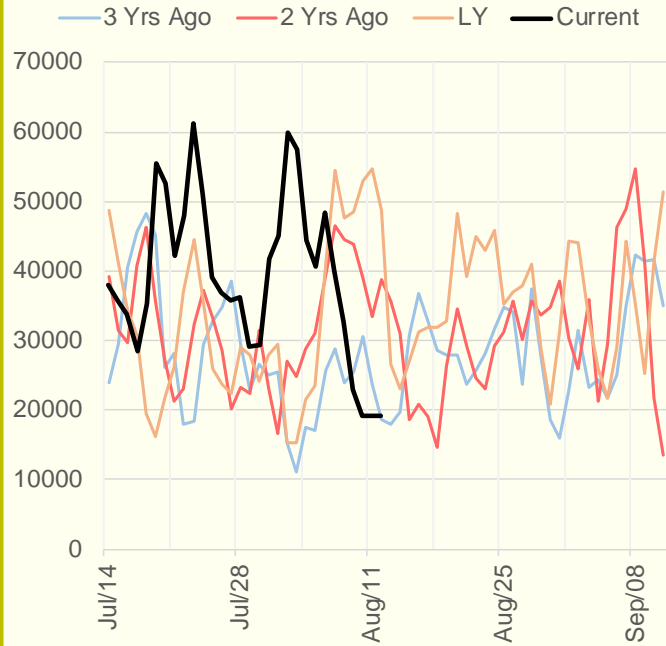


The risk of trading futures and options and other derivatives involves a substantial risk of loss and is not suitable for all persons. Each person must consider whether a particular trade, combination of trades, or strategy is suitable for that person's financial means and objectives. Past results are not necessarily indicative of future results. This communication may contain links to third party websites which are not under the control of and are not maintained by ION Energy Group, and ION Energy Group is not responsible for their content.

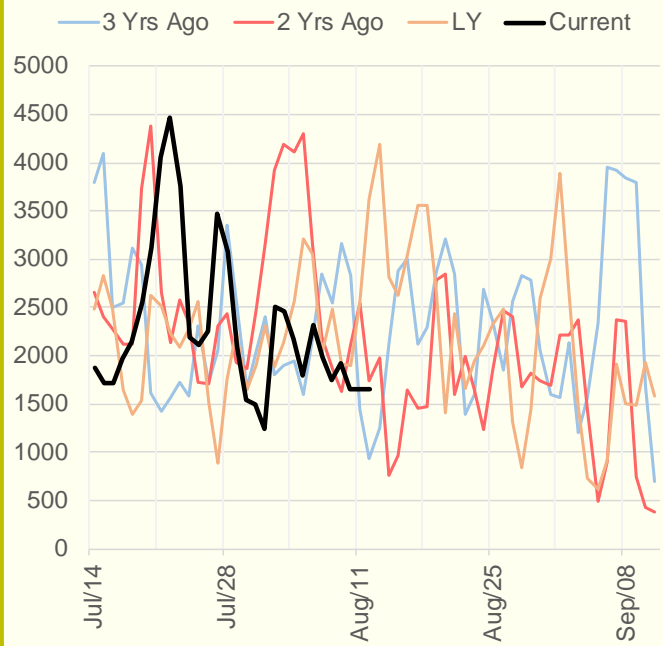
NRC Nuclear Daily Output



US Wind



CALI Wind



TEXAS Wind

