

# CFTC COMMITMENT OF TRADERS REPORT

As of 8/9/2022

## TRADITIONAL FUNDS net position changes

Wed to Tue, in 000 contracts

	Corn	Bean	Meal	Oil	Chi. Wheat	KC Wheat	Min Wheat
Futures Only	9.4	(3.6)	2.4	0.6	(2.7)	(1.3)	(0.3)
Futures & Options Combined	15.9	1.0	4.4	1.0	(5.1)	(1.8)	(0.4)

## TRADITIONAL COMMERCIAL net position changes

	Corn	Bean	Meal	Oil	Chi. Wheat	KC Wheat	Min Wheat
Futures Only	(11.2)	2.7	(3.0)	(4.4)	(0.9)	1.0	0.5
Futures & Options Combined	(19.1)	(3.0)	(5.6)	(4.9)	1.4	1.3	0.5

## MANAGED MONEY net position changes

	Corn	Bean	Meal	Oil	Chi. Wheat	KC Wheat	Min Wheat
Futures Only	16.7	2.3	3.9	0.3	(5.2)	(2.2)	(0.4)
Futures & Options Combined	12.1	2.0	4.4	0.1	(5.4)	(2.0)	(0.4)

## SWAP DEALERS net position changes

	Corn	Bean	Meal	Oil	Chi. Wheat	KC Wheat	Min Wheat
Futures Only	(5.3)	(0.3)	4.3	3.9	0.6	0.2	0.1
Futures & Options Combined	(7.6)	(1.3)	3.4	3.4	1.6	0.2	0.1

## PRODUCERS/END USERS net position changes

	Corn	Bean	Meal	Oil	Chi. Wheat	KC Wheat	Min Wheat
Futures Only	(5.9)	3.0	(7.3)	(8.3)	(1.6)	0.8	0.4
Futures & Options Combined	(11.5)	(1.7)	(9.0)	(8.3)	(0.2)	1.1	0.4

## INDEX net position changes

	Corn	Bean	Meal	Oil	Chi. Wheat	KC Wheat	Min Wheat
Futures & Options Combined	(8.5)	(0.1)	3.3	3.8	(0.8)	(0.4)	NA

## SUPPLEMENTAL NON-COMMERCIAL net position changes

	Corn	Bean	Meal	Oil	Chi. Wheat	KC Wheat	Min Wheat
Futures & Options Combined	19.4	0.5	4.6	(1.5)	(3.4)	(1.7)	NA

## OPEN INTEREST net position changes

Wed to Tue, in 000 contracts

	Corn	Bean	Meal	Oil	Chi. Wheat	KC Wheat	Min Wheat
Futures Only	(30.0)	10.3	10.9	24.6	4.5	(5.4)	(1.0)
Futures & Options Combined	(32.3)	15.5	11.8	29.5	6.7	(5.4)	(1.0)

Source: CFTC and FI

Wed to Tue, in 000 contracts

8/12/2022

**COMMITMENT OF TRADERS  
FUTURES ONLY NET POSITIONS  
AS OF 08/09/2022  
(IN THOUSAND CONTRACTS)**

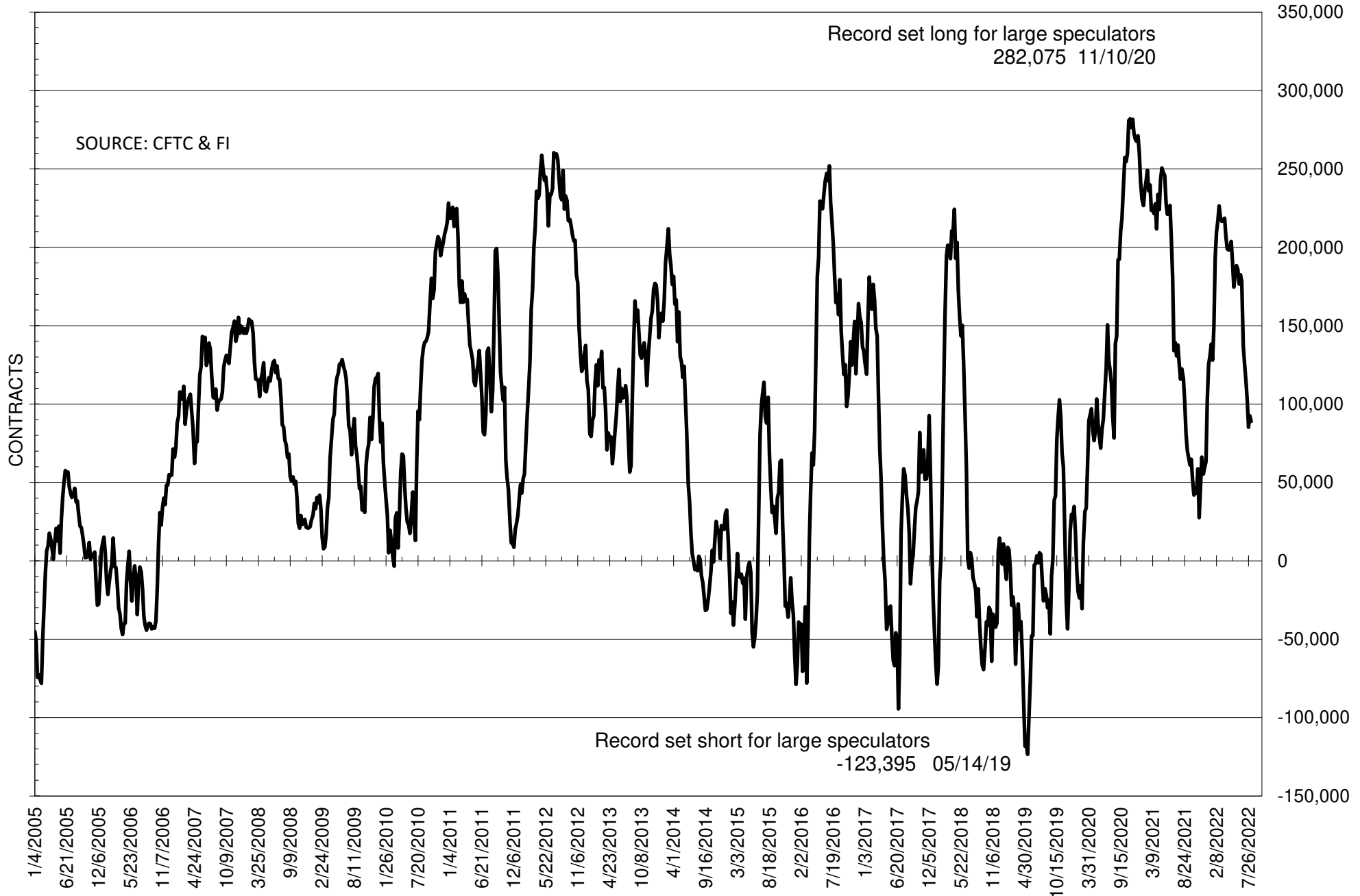
	COMMERCIAL				(FUND) NON COMMERCIAL				(SPEC) NON-REPORTABLE			
	9-Aug	2-Aug	26-Jul	19-Jul	9-Aug	2-Aug	26-Jul	19-Jul	9-Aug	2-Aug	26-Jul	19-Jul
	<b>WHEAT</b>											
Chicago	9.9	10.9	8.1	3.2	-3.4	-0.7	0.0	6.5	-6.5	-10.2	-8.1	-9.7
Kansas City	-2.1	-3.1	-2.7	-4.9	3.7	5.1	4.8	8.3	-1.6	-2.0	-2.1	-3.4
Minneapolis	0.2	-0.3	-2.1	-3.7	2.2	2.5	2.9	3.8	-2.4	-2.3	-0.7	-0.1
All Wheat	8.1	7.5	3.3	-5.4	2.5	6.9	7.7	18.6	-10.6	-14.4	-10.9	-13.2
<b>CORN</b>	-160.7	-149.4	-138.9	-165.6	210.8	201.4	186.5	209.9	-50.1	-51.9	-47.6	-44.3
<b>OATS</b>	#VALUE!	#VALUE!	#VALUE!	#VALUE!	#VALUE!	#####	#VALUE!	#VALUE!	#VALUE!	#VALUE!	#VALUE!	#VALUE!
<b>SOYBEANS</b>	-63.0	-65.6	-57.6	-74.4	88.9	92.5	85.2	102.6	-25.9	-26.9	-27.7	-28.2
<b>SOY OIL</b>	-36.0	-31.6	-23.5	-30.4	31.0	30.4	21.0	27.3	5.0	1.2	2.4	3.1
<b>SOY MEAL</b>	-135.2	-132.2	-126.4	-120.3	112.2	109.8	106.5	100.7	23.0	22.4	19.9	19.6

Oats positions thin to be reported

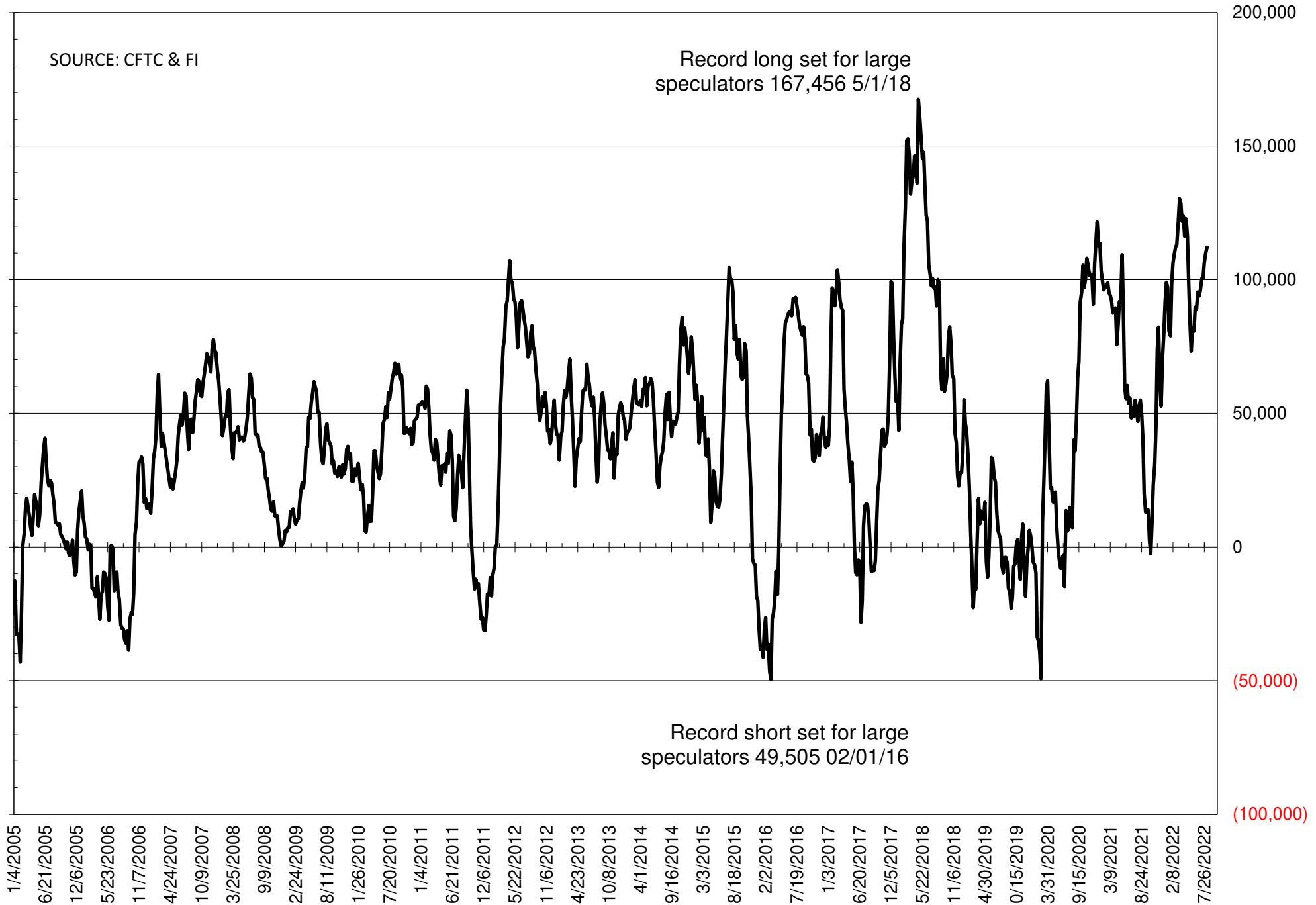
	TOTAL OPEN INTEREST				NEARBY FUTURES PRICE					9-Aug-22 LAST REPORTED % HELD BY TRADERS			
	9-Aug	2-Aug	26-Jul	19-Jul	U Latest	U 9-Aug	U 2-Aug	Q/U 26-Jul	Q/U 19-Jul	LARGE FUND		SMALL	
										LONG	SHORT	LONG	SHORT
<b>WHEAT</b>													
Chicago	320767	316244	301674	292700	806.00	781.50	774.75	803.75	812.25	0%	31%	0%	12%
Kansas City	162643	167999	163884	158686	889.25	851.75	842.25	877.00	869.25	0%	21%	0%	14%
Minneapolis	58167	59154	59840	59574	919.50	892.75	873.25	929.50	929.50	0%	8%	0%	22%
<b>CORN</b>	1317913	1347894	1320768	1308458	639.75	615.50	591.25	597.00	596.75	0%	11%	0%	13%
<b>OATS</b>	#VALUE!	#VALUE!	#VALUE!	#VALUE!	458.25	440.00	421.00	451.50	479.25	0%	#VALUE!	0%	#VALUE!
<b>SOYBEANS</b>	583208	572925	583850	602987	1535.00	15.12	1415.75	1532.75	1477.25	25%	10%	6%	11%
<b>SOY OIL</b>	398288	373640	368075	375032	69.53	65.76	62.33	60.42	61.89	0%	10%	0%	5%
<b>SOY MEAL</b>	405706	394764	396531	400587	464.70	449.10	434.20	472.40	435.00	0%	3%	0%	5%

SOURCE: CFTC & FI

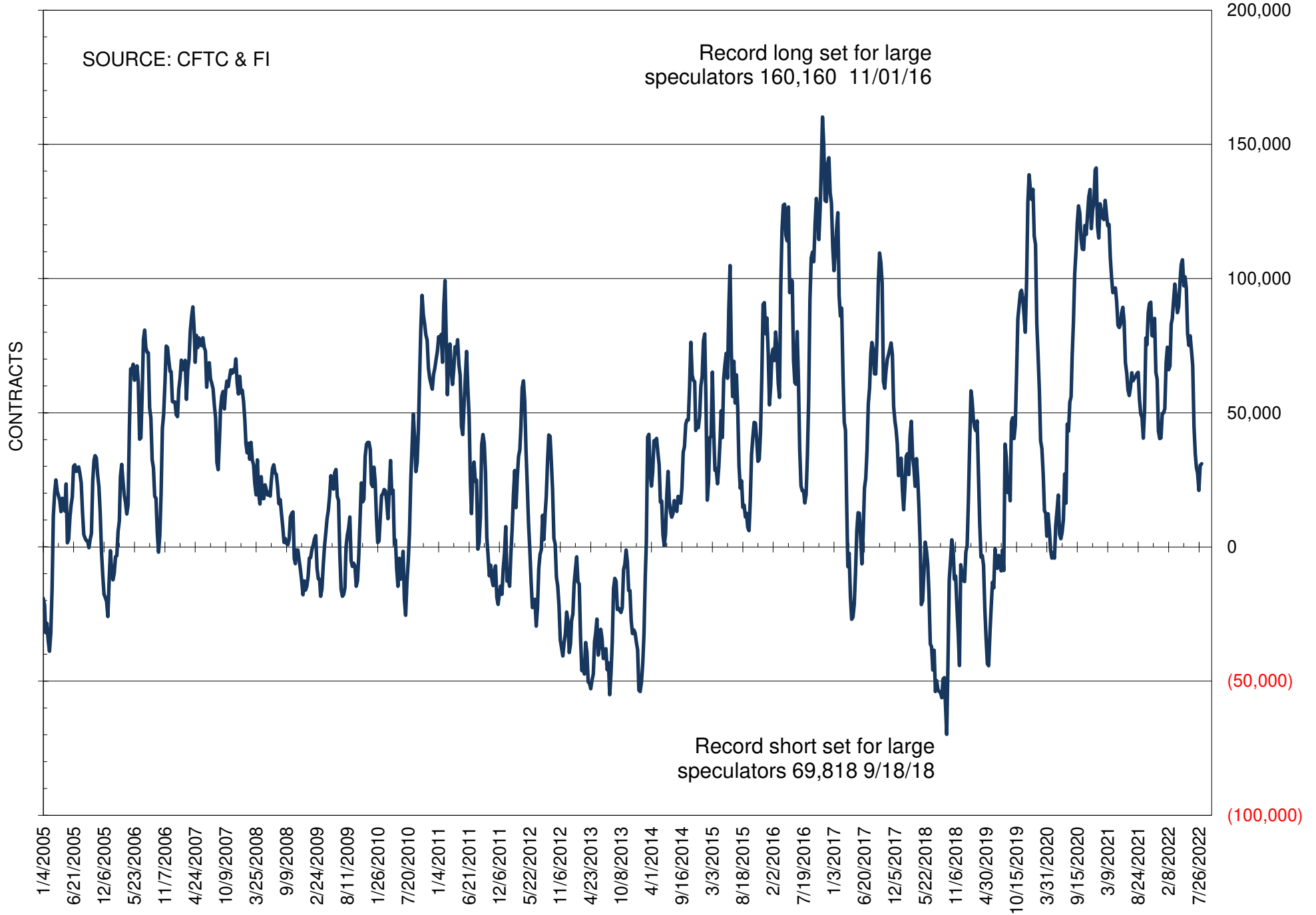
# NET POSITION OF FUTURES ONLY LARGE SPECS IN SOYBEANS



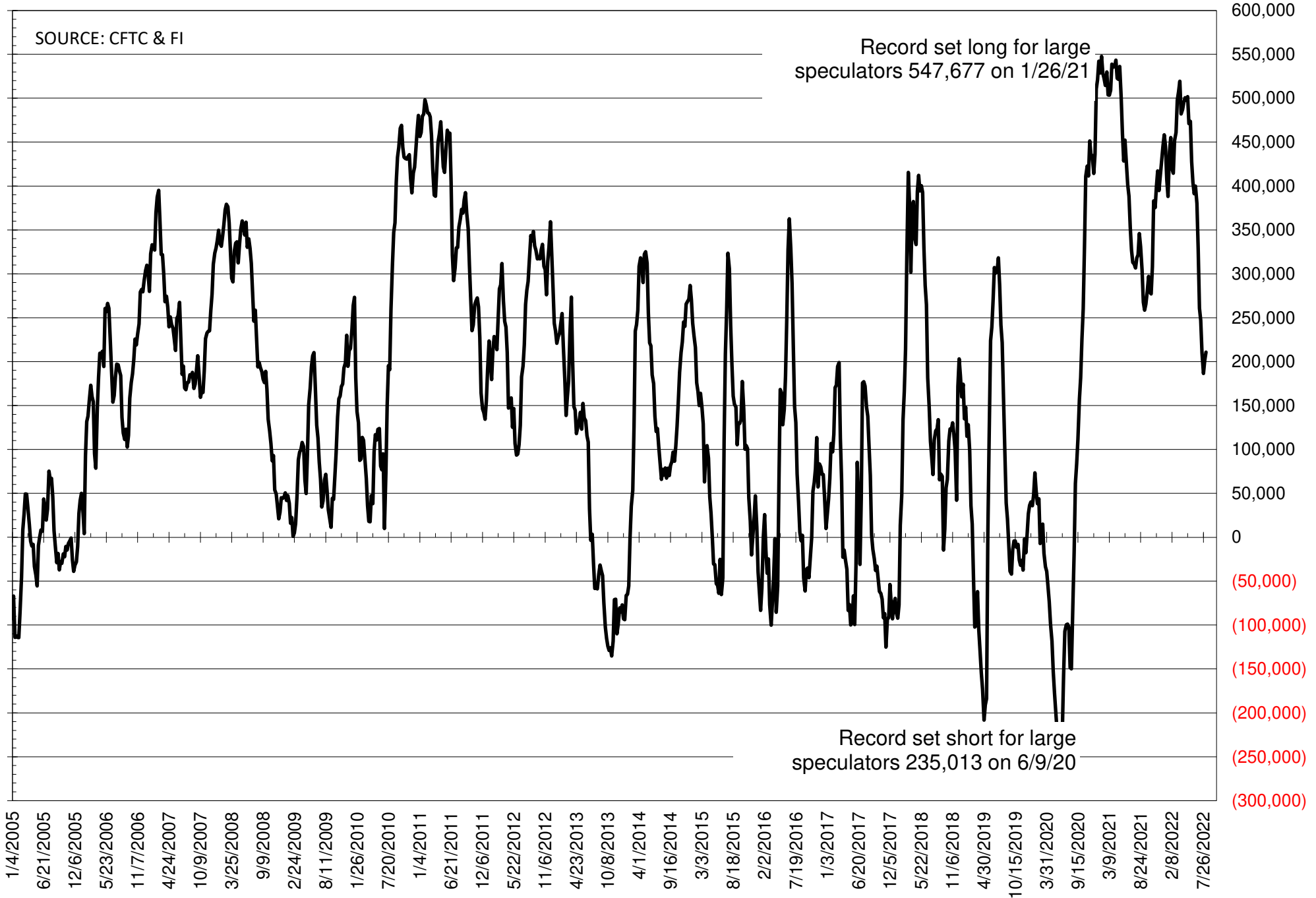
# NET POSITION OF FUTURES ONLY LARGE SPECS IN SOYMEAL



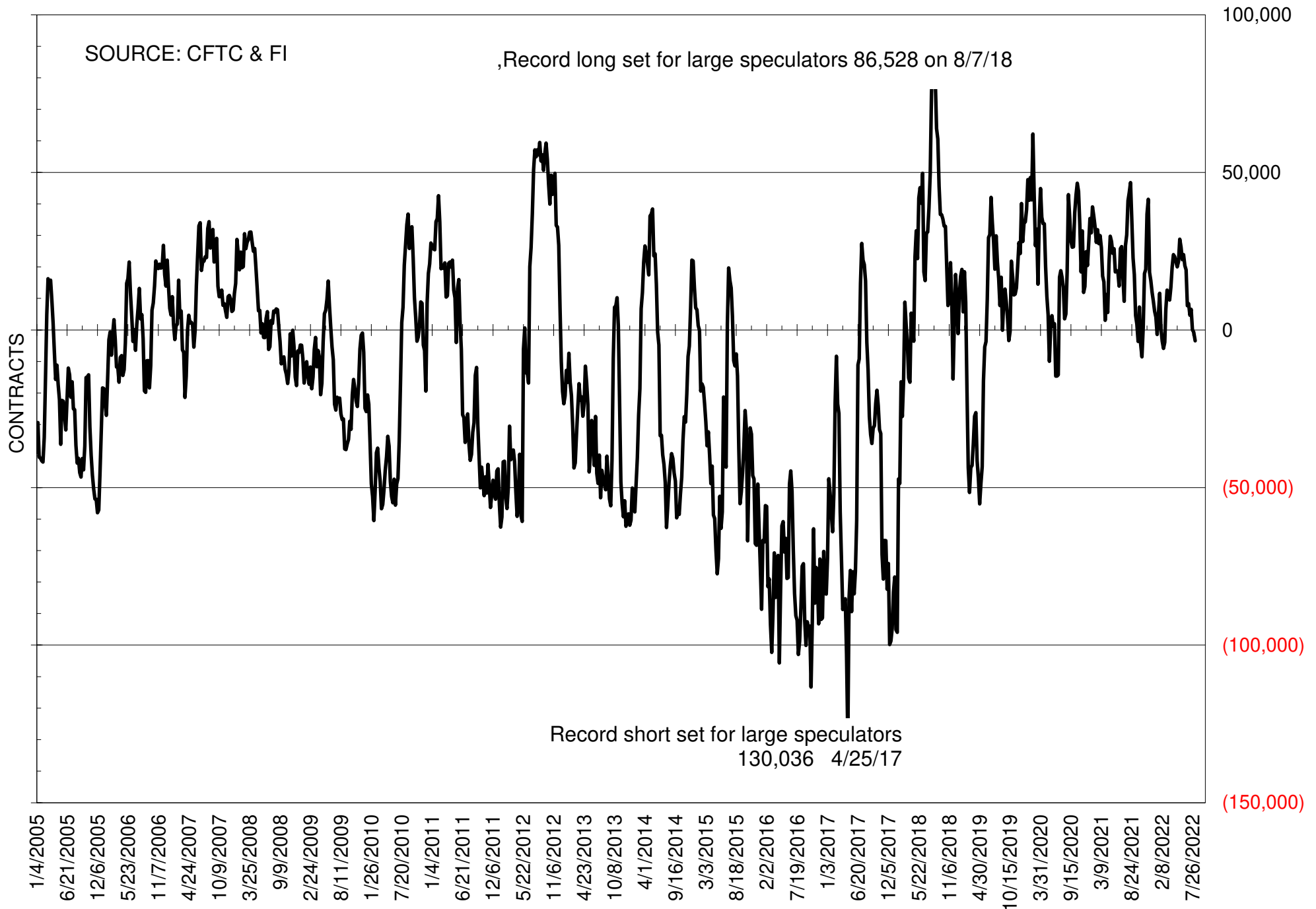
# NET POSITION OF FUTURES ONLY LARGE SPECS IN SOYOIL



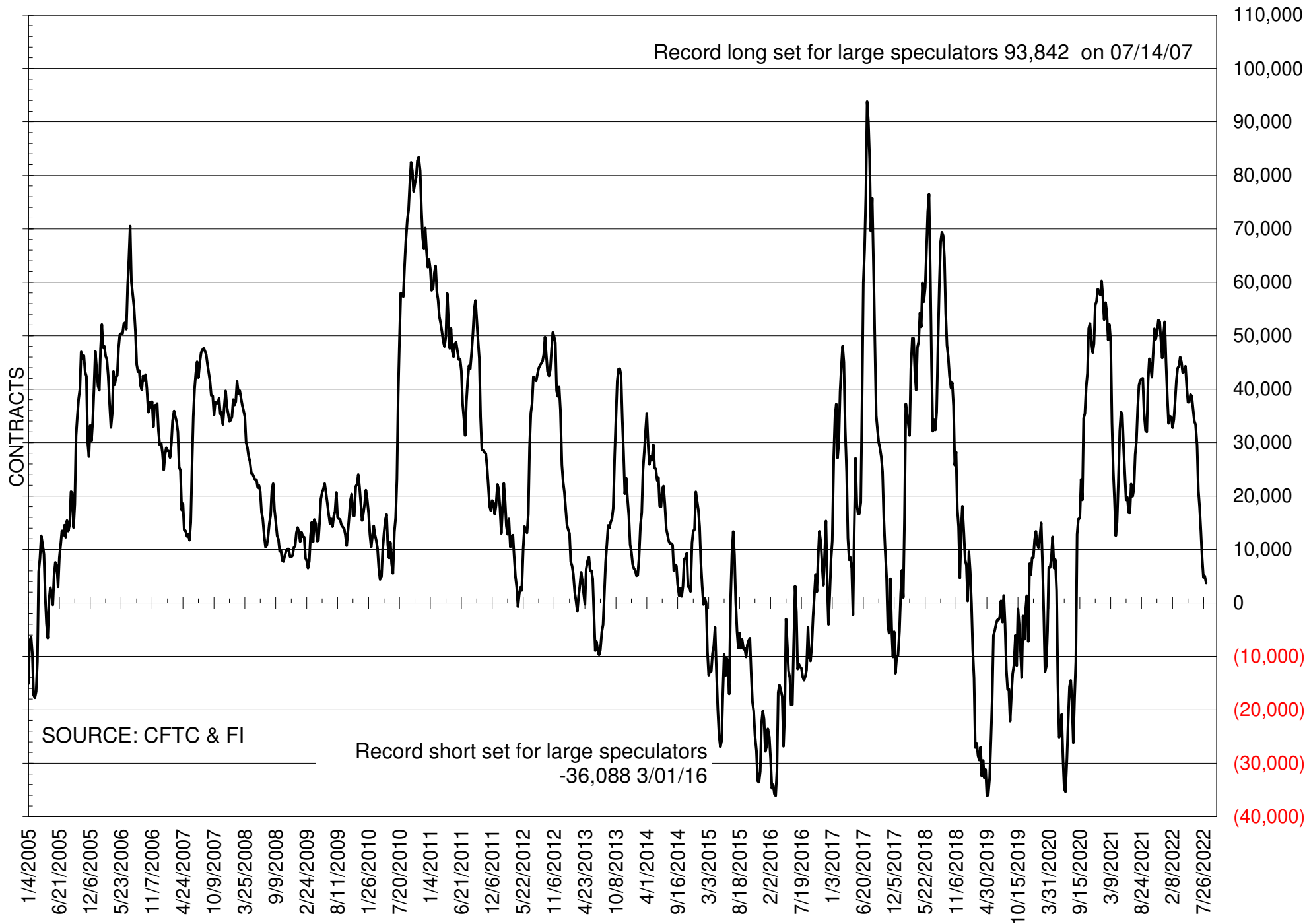
# NET POSITION OF LARGE SPECULATORS IN CORN



# NET POSITION OF FUTURES ONLY LARGE SPECS IN CHICAGO WHEAT

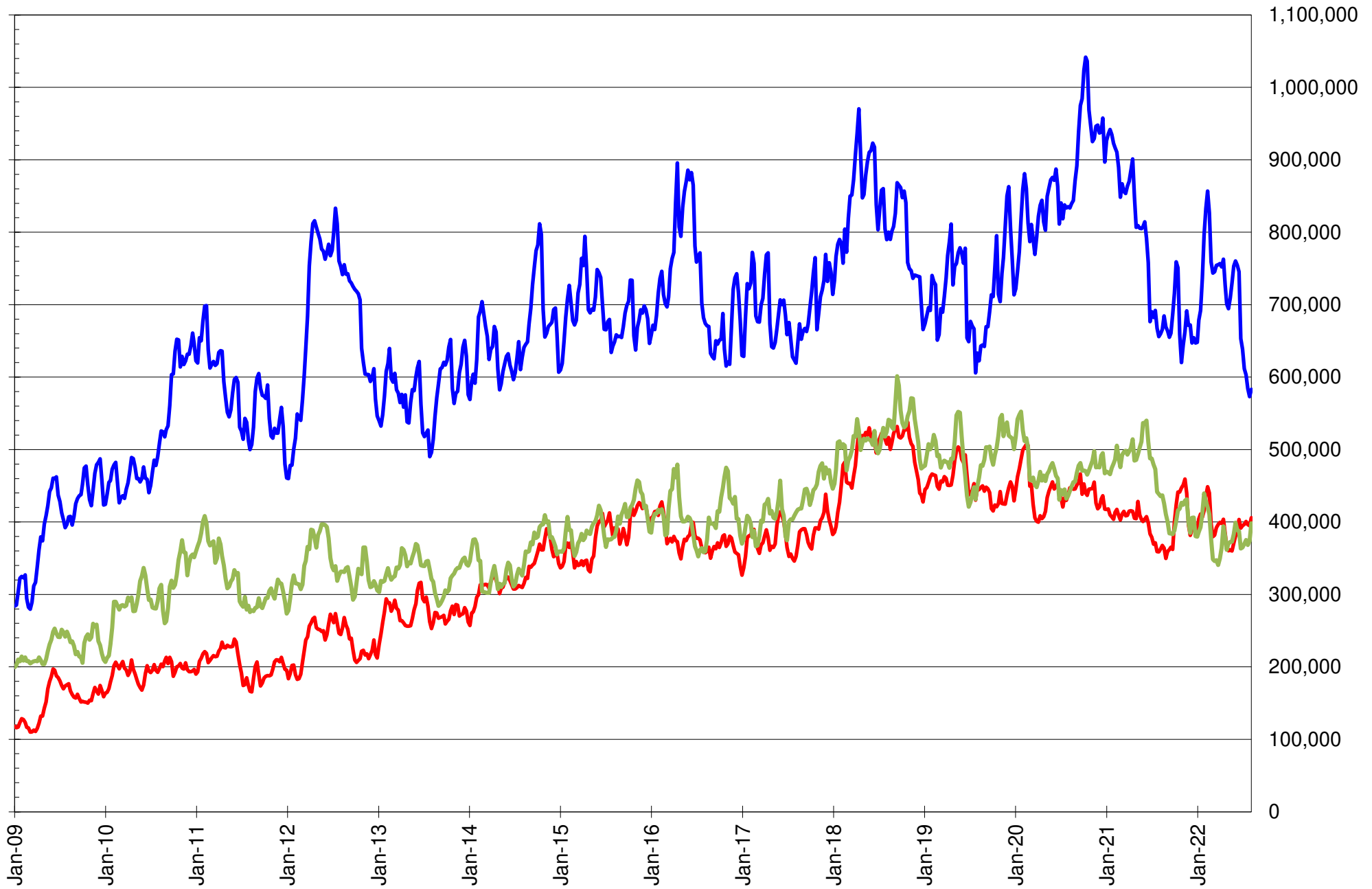


# NET POSITION OF LARGE SPECULATORS IN KANSAS CITY WHEAT





# TOTAL OPEN INTEREST IN SOYBEANS, MEAL AND OIL, FUTURES ONLY



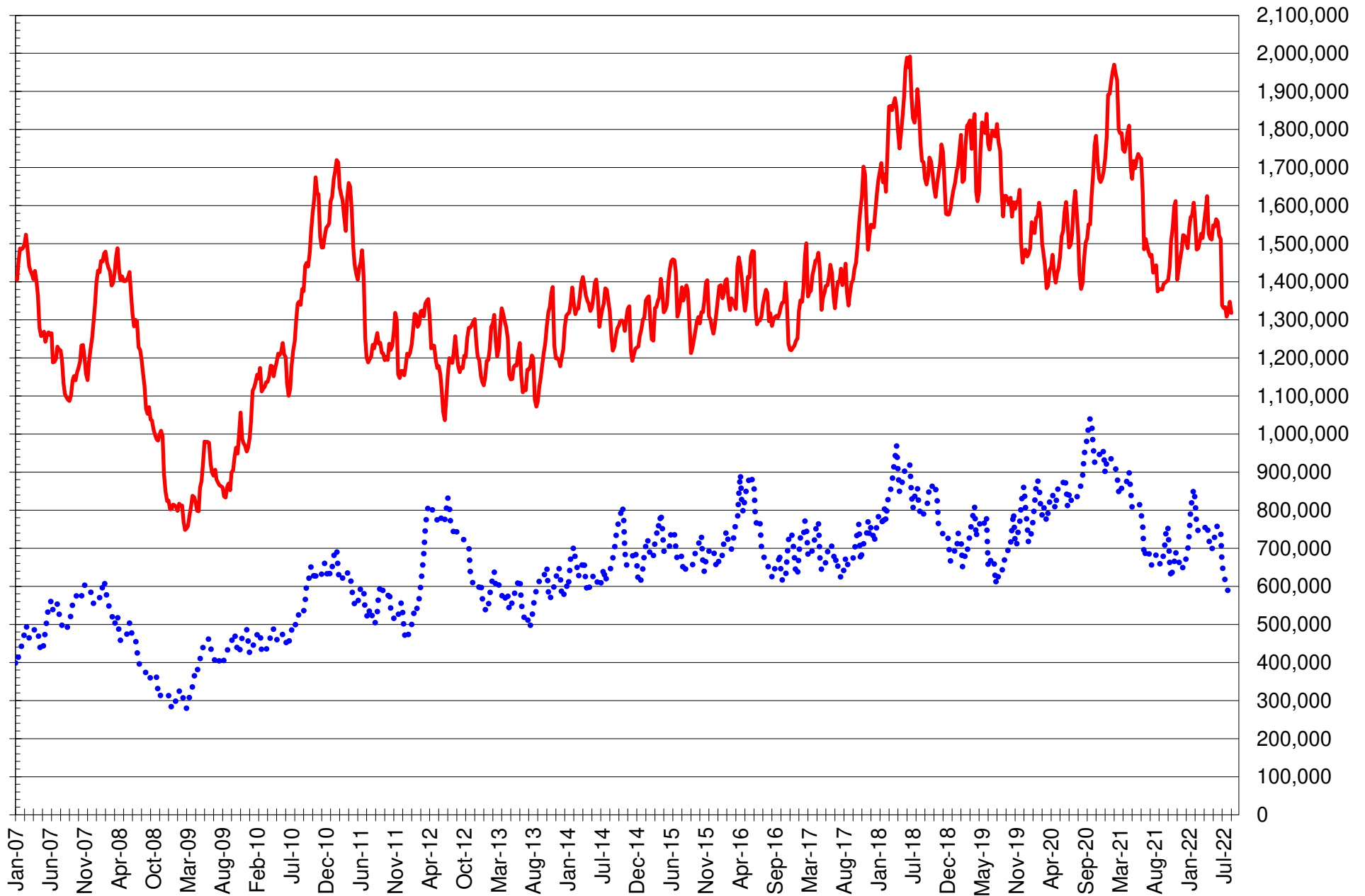
SOURCE: CFTC & FI

— SOYBEANS

— SOYBEAN MEAL

— SOYBEAN OIL

# TOTAL OPEN INTEREST IN CORN AND SOYBEANS, FUTURES ONLY



SOURCE: CFTC & FI

— CORN

••••• SOYBEANS

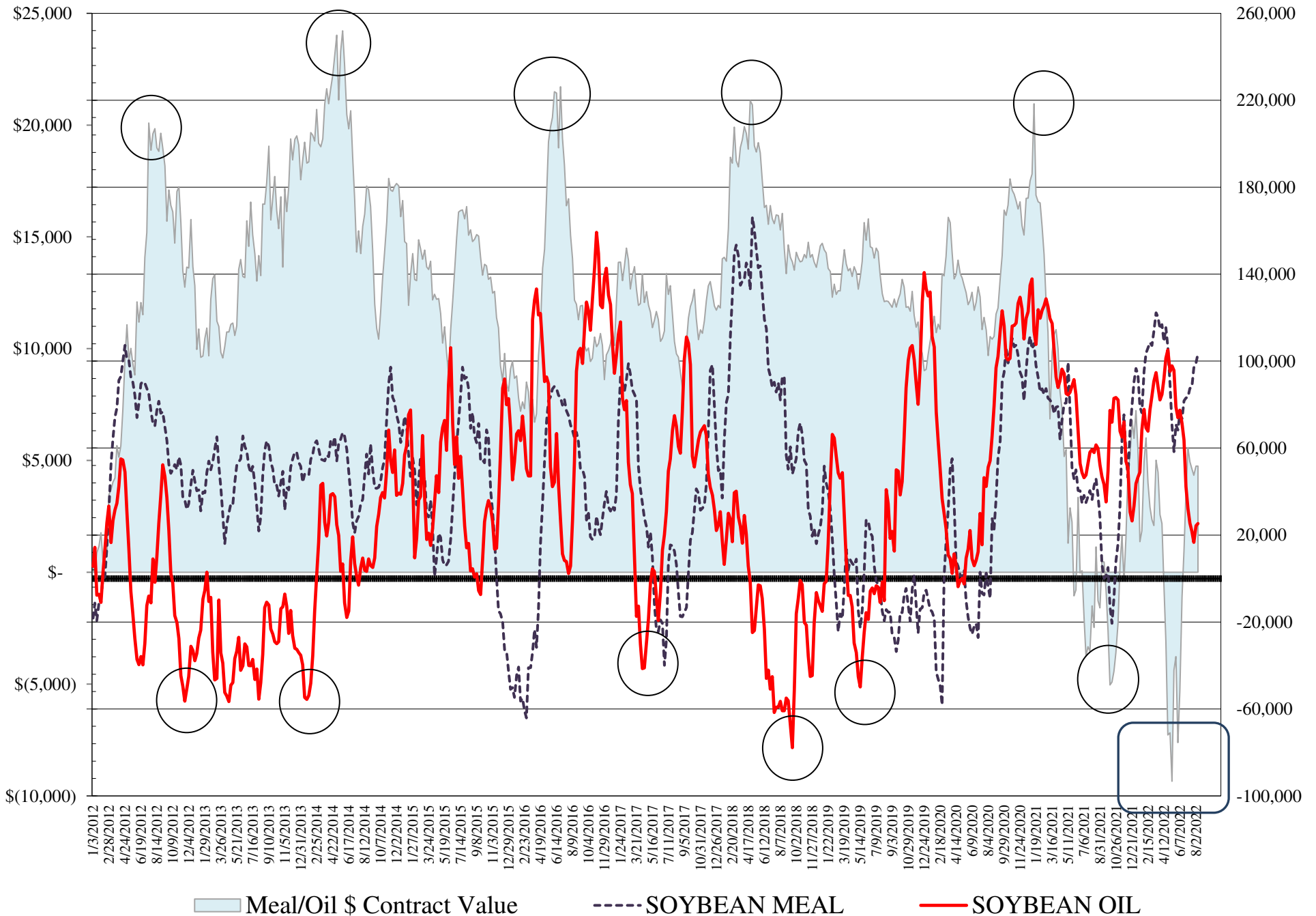
**COMMITMENT OF TRADERS  
FUTURES & OPTIONS NET POSITIONS  
AS OF 08/09/2022  
(IN THOUSAND CONTRACTS)**

	COMMERCIAL				(FUND) NON COMMERCIAL				(SPEC) NON-REPORTABLE			
	9-Aug	2-Aug	26-Jul	19-Jul	9-Aug	2-Aug	26-Jul	19-Jul	9-Aug	2-Aug	26-Jul	19-Jul
<b>WHEAT</b>												
Chicago	21.0	19.6	15.5	12.9	-15.7	-10.5	-8.4	-4.2	-5.3	-9.0	-7.1	-8.8
Kansas City	-1.5	-2.7	-2.7	-3.9	2.6	4.4	4.5	7.0	-1.2	-1.7	-1.8	-3.2
Minneapolis	1.0	0.5	-1.3	-2.9	1.5	1.9	2.1	3.0	-2.5	-2.4	-0.8	-0.1
All Wheat	20.5	17.3	11.4	6.2	-11.5	-4.2	-1.8	5.9	-9.0	-13.1	-9.6	-12.0
<b>CORN</b>	-130.6	-111.5	-104.4	-119.3	180.0	164.1	149.8	162.4	-49.4	-52.6	-45.4	-43.1
<b>OATS</b>	#VALUE!	#VALUE!	#VALUE!	#VALUE!	#VALUE!	#VALUE!	#VALUE!	#VALUE!	#VALUE!	#VALUE!	#VALUE!	#VALUE!
<b>SOYBEANS</b>	-62.2	-59.1	-49.5	-48.0	91.0	90.1	79.7	80.6	-28.9	-30.9	-30.2	-32.5
<b>SOY OIL</b>	-31.2	-26.4	-20.3	-25.9	25.3	24.3	16.6	21.7	6.0	2.1	3.7	4.2
<b>SOY MEAL</b>	-128.6	-123.0	-119.2	-109.8	103.5	99.1	97.0	87.9	25.1	24.0	22.3	21.8

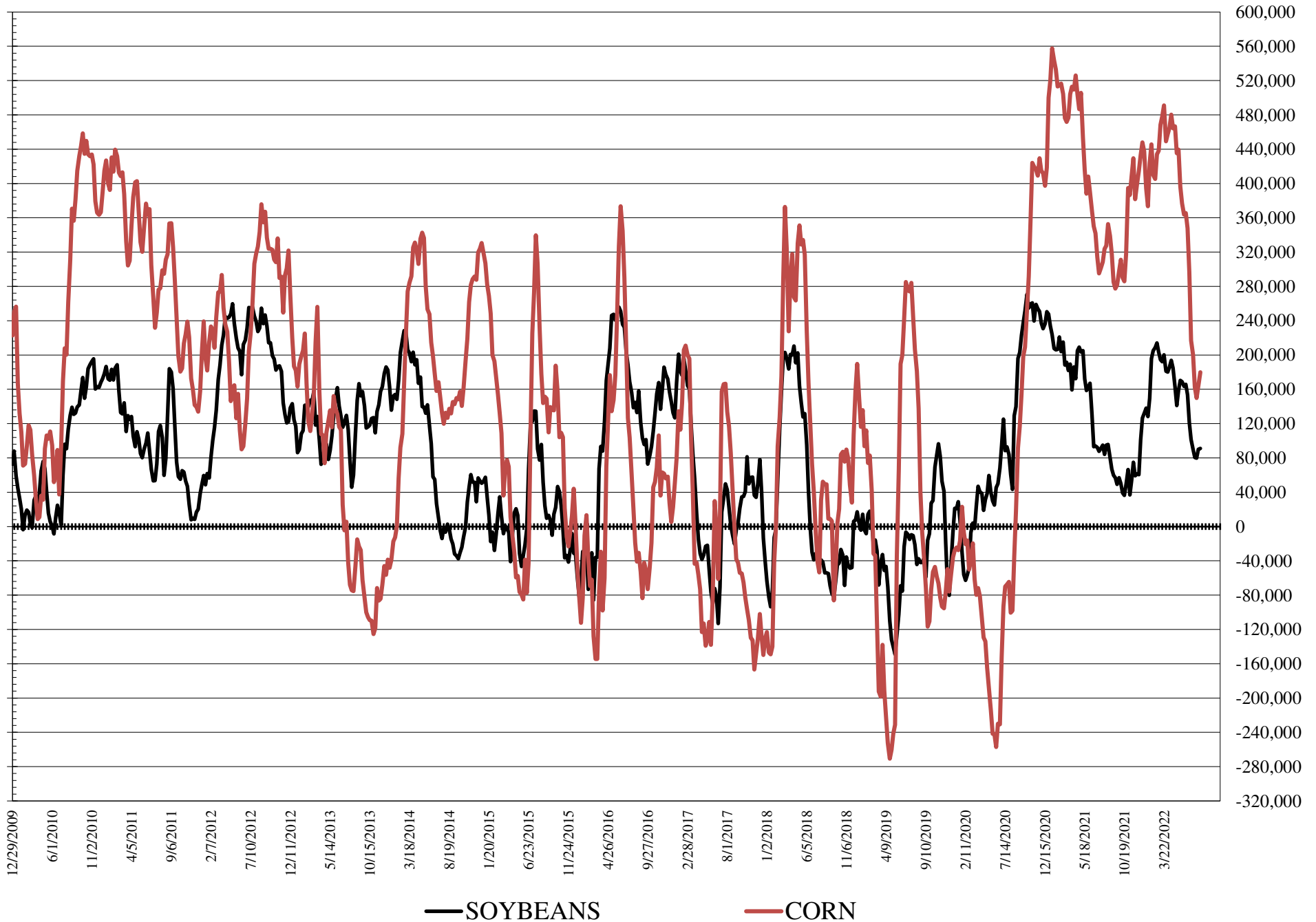
	TOTAL OPEN INTEREST				COMMERCIALS		% HELD BY TRADERS LARGE (FUNDS)		SMALL (NON-REP)	
	9-Aug	2-Aug	26-Jul	19-Jul	LONG	SHORT	LONG	SHORT	LONG	SHORT
<b>WHEAT</b>										
Chicago	429,529	422,808	404,440	411,445			19%	23%	8%	9%
Kansas City	180,595	186,023	181,353	178,991			21%	19%	12%	13%
Minneapolis	61,446	62,431	63,008	62,770			10%	8%	18%	22%
<b>CORN</b>	1,803,434	1,835,694	1,812,824	1,878,222			16%	6%	10%	12%
<b>OATS</b>	#VALUE!	#VALUE!	#VALUE!	#VALUE!						
<b>SOYBEANS</b>	749,412	733,897	724,199	782,719			19%	7%	6%	10%
<b>SOY OIL</b>	457,240	427,708	414,842	436,352			14%	8%	6%	5%
<b>SOY MEAL</b>	455,180	443,344	438,045	444,043			25%	3%	11%	6%

SOURCE: CFTC & FI

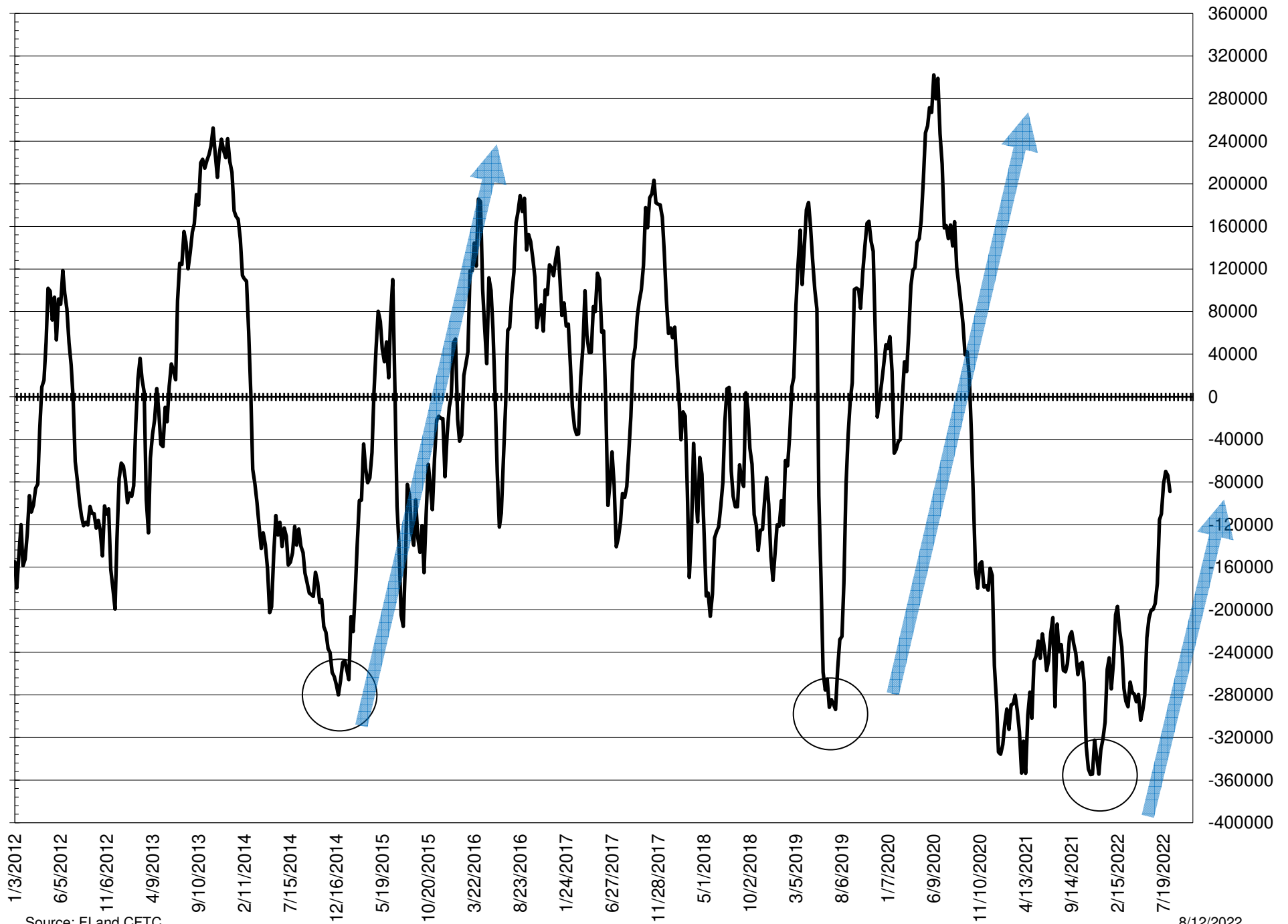
# NET POSITION FUTURES AND OPTIONS OF LARGE SPECULATORS IN SOYBEAN MEAL AND SOYBEAN OIL



# NET POSITION FUTURES AND OPTIONS OF LARGE SPECULATORS IN SOYBEANS AND CORN



# NET POSITION FUTURES AND OPTIONS SPREAD OF LARGE SPECULATORS IN SOYBEANS MINUS CORN



Source: FI and CFTC

8/12/2022



**DISAGGREGATED COMMITMENT OF TRADERS  
FUTURES & OPTIONS NET POSITIONS  
AS OF 08/09/2022  
(IN THOUSAND CONTRACTS)**

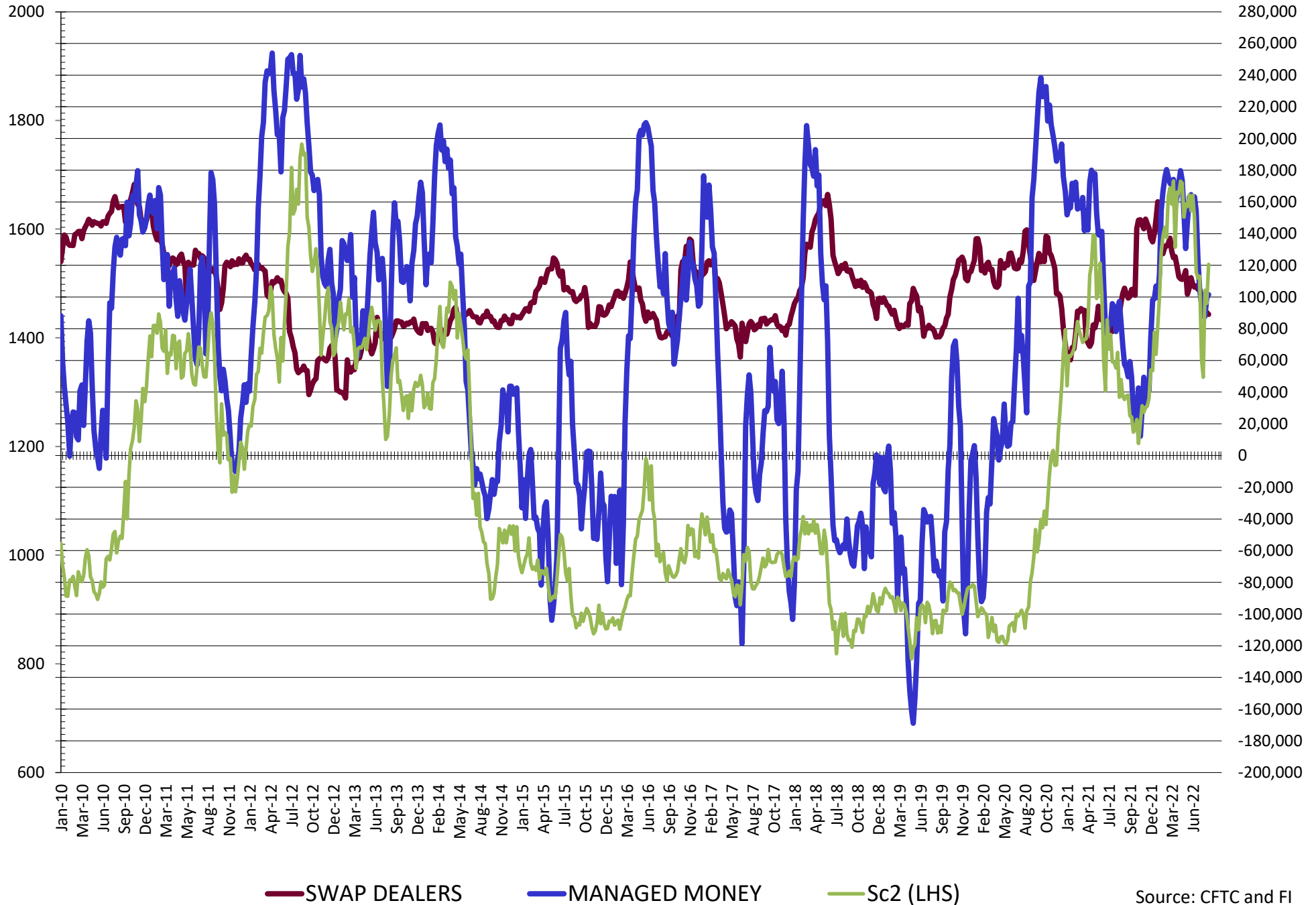
	PRODUCER / MERCHANT / PROCESSOR / USER				(INDEX/ETF) SWAP DEALERS				(CTA/CPO/OTHER UNREGISTERED) MANAGED MONEY			
	9-Aug	2-Aug	26-Jul	19-Jul	9-Aug	2-Aug	26-Jul	19-Jul	9-Aug	2-Aug	26-Jul	19-Jul
	WHEAT											
Chicago	(48.0)	(47.9)	(50.5)	(50.9)	69.0	67.4	66.0	63.8	(20.3)	(15.0)	(10.4)	(6.8)
Kansas City	(31.3)	(32.3)	(31.9)	(30.8)	29.8	29.6	29.2	26.9	8.0	10.0	11.0	11.9
Minneapolis	(0.5)	(0.9)	(2.5)	(4.2)	1.5	1.4	1.2	1.2	(1.0)	(0.7)	0.4	1.0
All Wheat	(79.8)	(81.1)	(85.0)	(85.8)	100.3	98.4	96.4	92.0	(13.3)	(5.6)	1.0	6.0
CORN	(373.5)	(362.1)	(358.1)	(375.9)	243.0	250.6	253.7	256.6	142.1	129.9	120.8	125.3
OATS	0.0	0.0	0.0	0.0	0.0	0.0	0.0	0.0	0.0	0.0	0.0	0.0
SOYBEANS	(151.2)	(149.4)	(140.5)	(143.1)	89.0	90.3	91.0	95.1	101.5	99.5	87.7	87.8
SOY OIL	(114.1)	(105.8)	(98.9)	(103.9)	82.9	79.4	78.6	78.0	22.2	22.1	14.9	17.8
SOY MEAL	(213.9)	(205.0)	(199.1)	(191.4)	85.3	81.9	79.9	81.6	84.4	80.0	73.4	66.6

	TOTAL OPEN INTEREST				OTHER REPORTABLE				NON REPORTABLE			
	9-Aug	2-Aug	26-Jul	19-Jul	9-Aug	2-Aug	26-Jul	19-Jul	9-Aug	2-Aug	26-Jul	19-Jul
	WHEAT											
Chicago	429,529	422,808	404,440	411,445	4.7	4.4	2.0	2.6	(5.3)	(9.0)	(7.1)	(8.8)
Kansas City	180,595	186,023	181,353	178,991	(5.4)	(5.6)	(6.5)	(4.8)	(1.2)	(1.7)	(1.8)	(3.2)
Minneapolis	61,446	62,431	63,008	62,770	2.5	2.6	1.7	2.0	(2.5)	(2.4)	(0.8)	(0.1)
All Wheat	671,570	671,262	648,801	653,206	1.8	1.4	(2.8)	(0.2)	(9.0)	(13.1)	(9.6)	(12.0)
CORN	1,803,434	1,835,694	1,812,824	1,878,222	37.9	34.2	29.1	37.1	(49.4)	(52.6)	(52.6)	(52.6)
OATS	0	0	0	0	0.0	0.0	0.0	0.0	0.0	0.0	0.0	0.0
SOYBEANS	749,412	733,897	724,199	782,719	(10.5)	(9.4)	(8.0)	(7.3)	(28.9)	(30.9)	(30.2)	(32.5)
SOY OIL	457,240	427,708	414,842	436,352	3.1	2.1	1.7	3.9	6.0	2.1	3.7	4.2
SOY MEAL	455,180	443,344	438,045	444,043	19.1	19.1	23.6	21.4	25.1	24.0	22.3	21.8

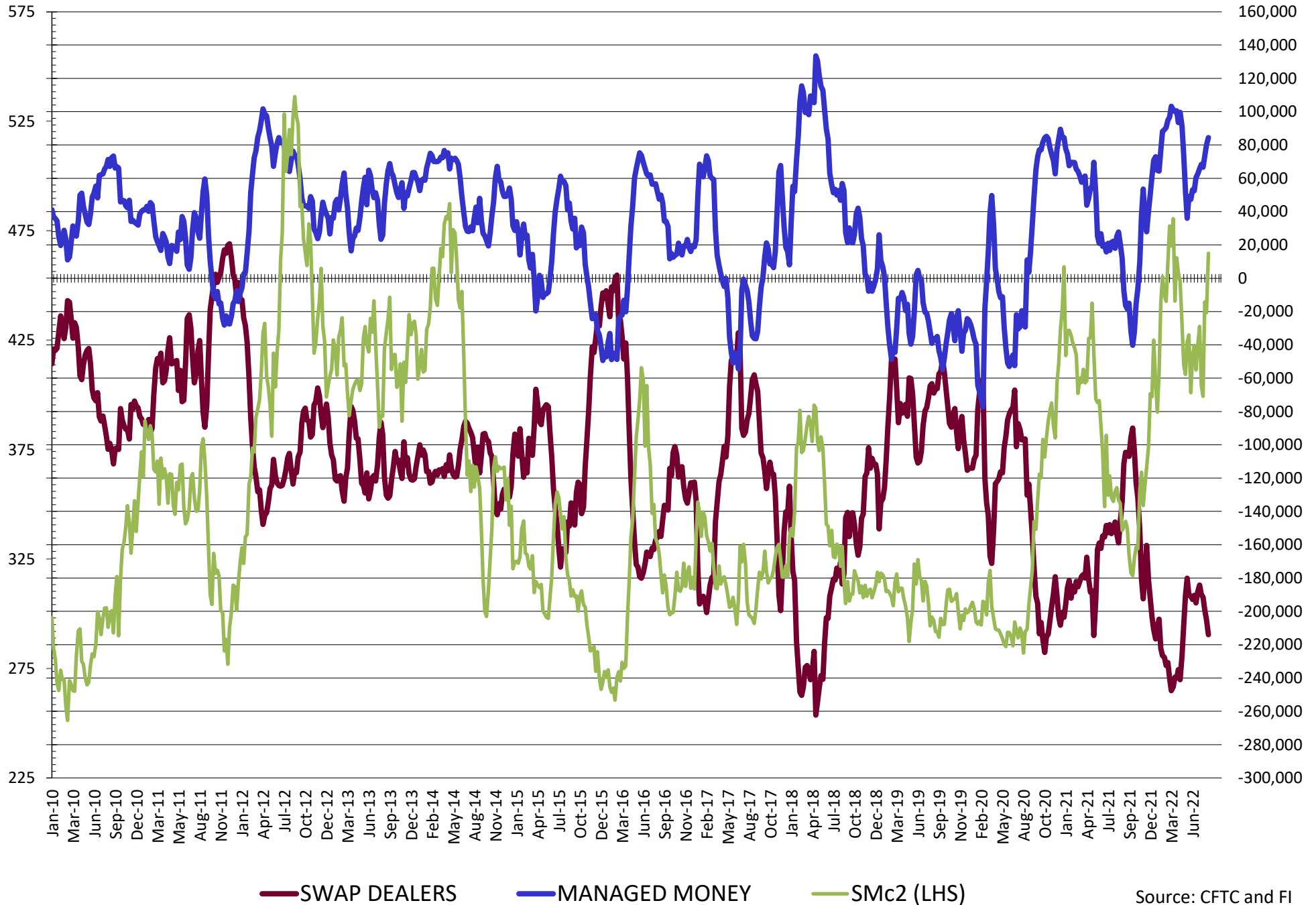
SOURCE: CFTC & FI



# NET POSITION FUTURES AND OPTIONS OF SWAP AND MANAGED FUNDS IN SOYBEANS

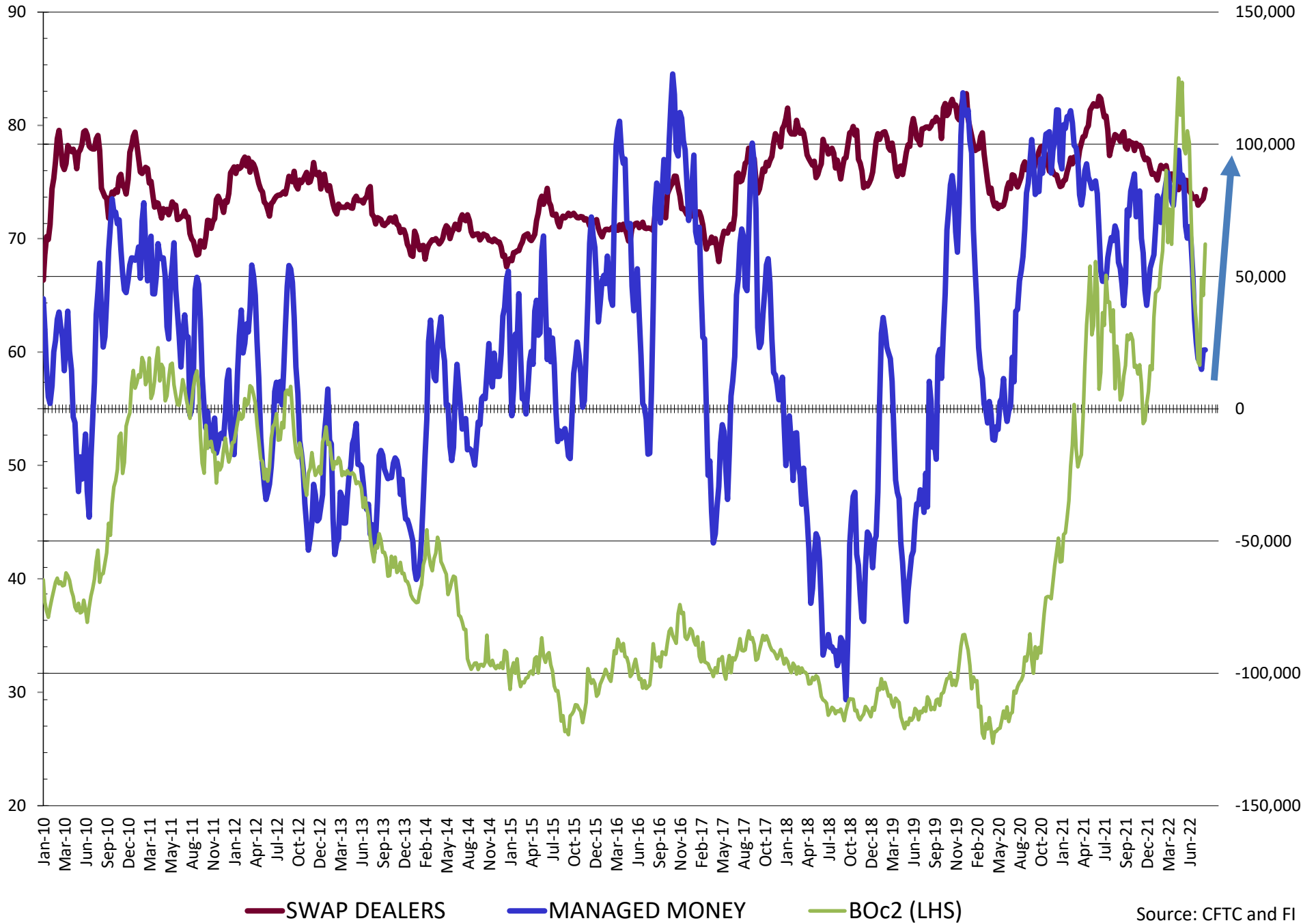


# NET POSITION FUTURES AND OPTIONS OF SWAP DEALERS AND MANAGED FUNDS IN SOYBEAN MEAL

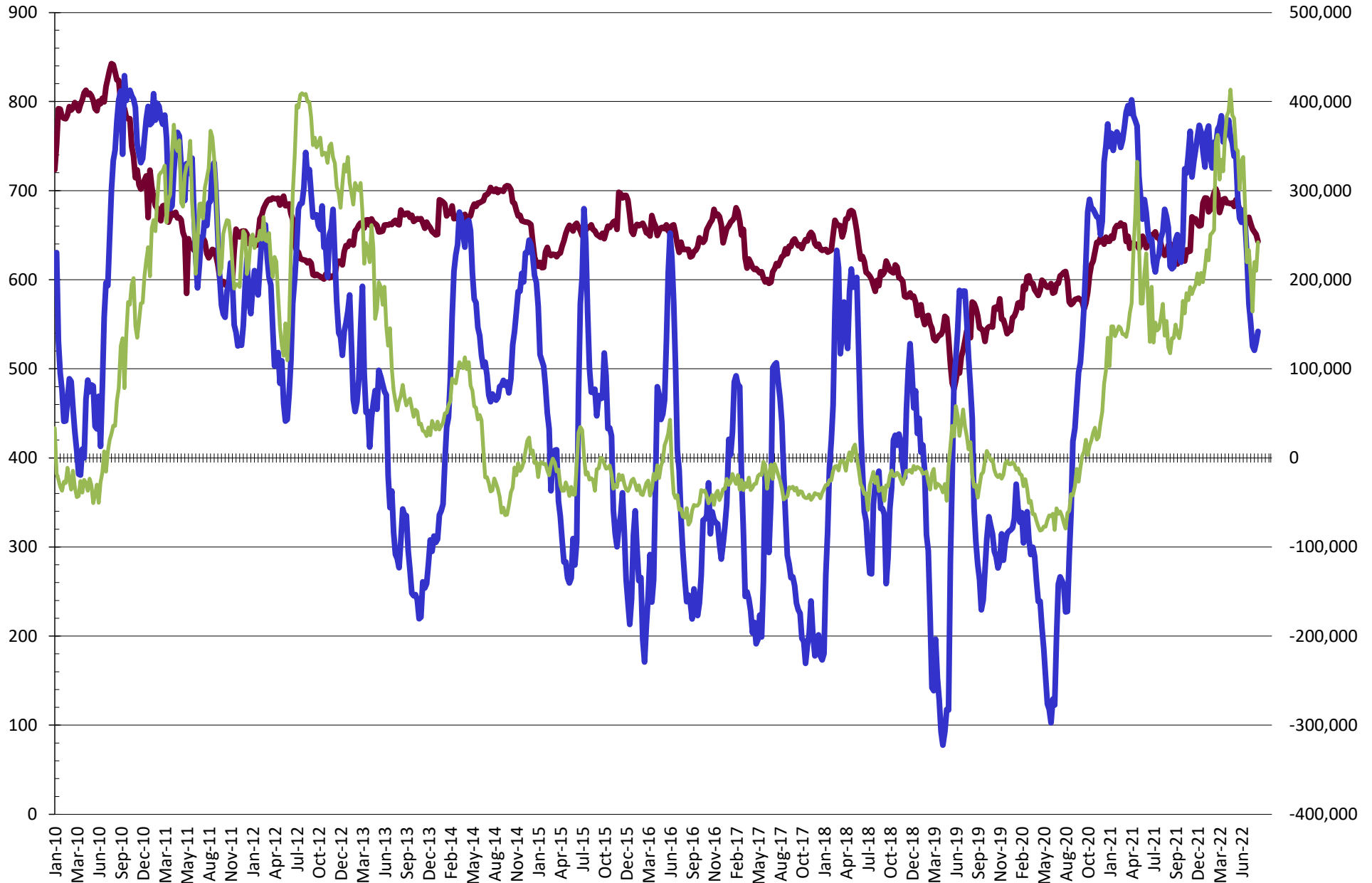


Source: CFTC and FI  
8/12/2022

# NET POSITION FUTURES AND OPTIONS OF SWAP AND MANAGED FUNDS IN SOYBEAN OIL

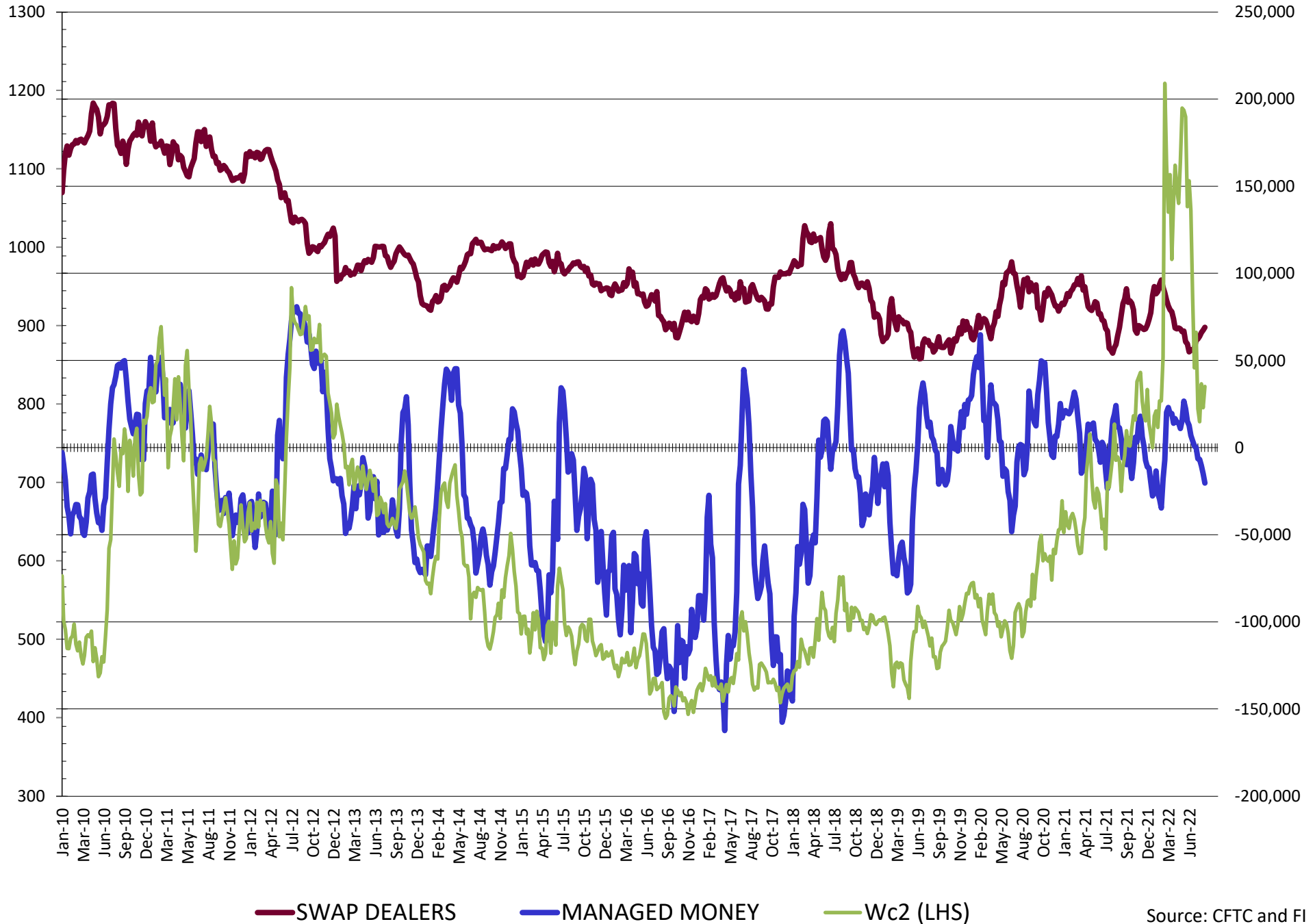


# NET POSITION FUTURES AND OPTIONS OF SWAP AND MANAGED FUNDS IN CORN

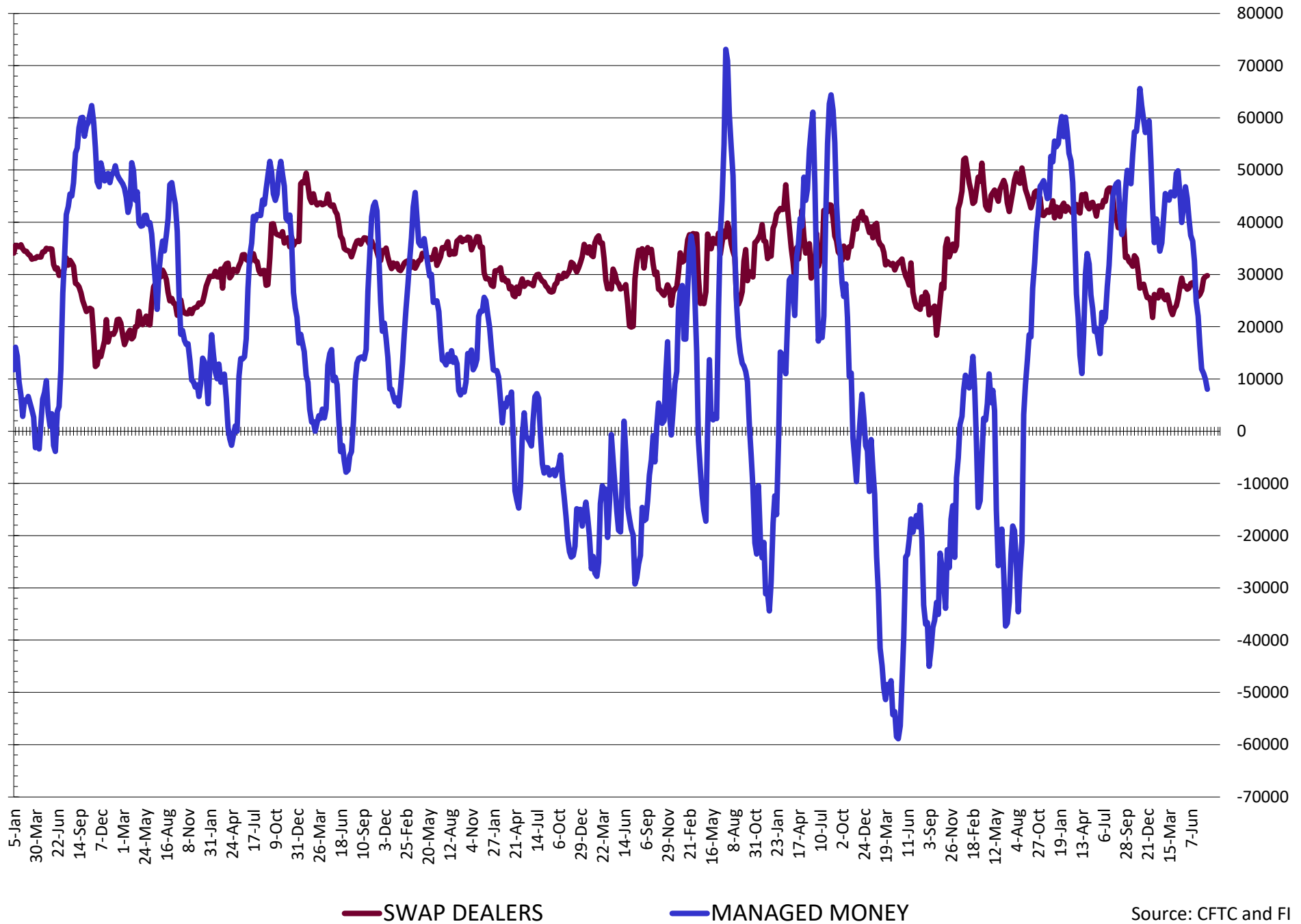


— SWAP DEALERS     
 — MANAGED MONEY     
 — Cc2 (LHS)

# NET POSITION FUTURES AND OPTIONS OF SWAP AND MANAGED FUNDS IN CHICAGO WHEAT

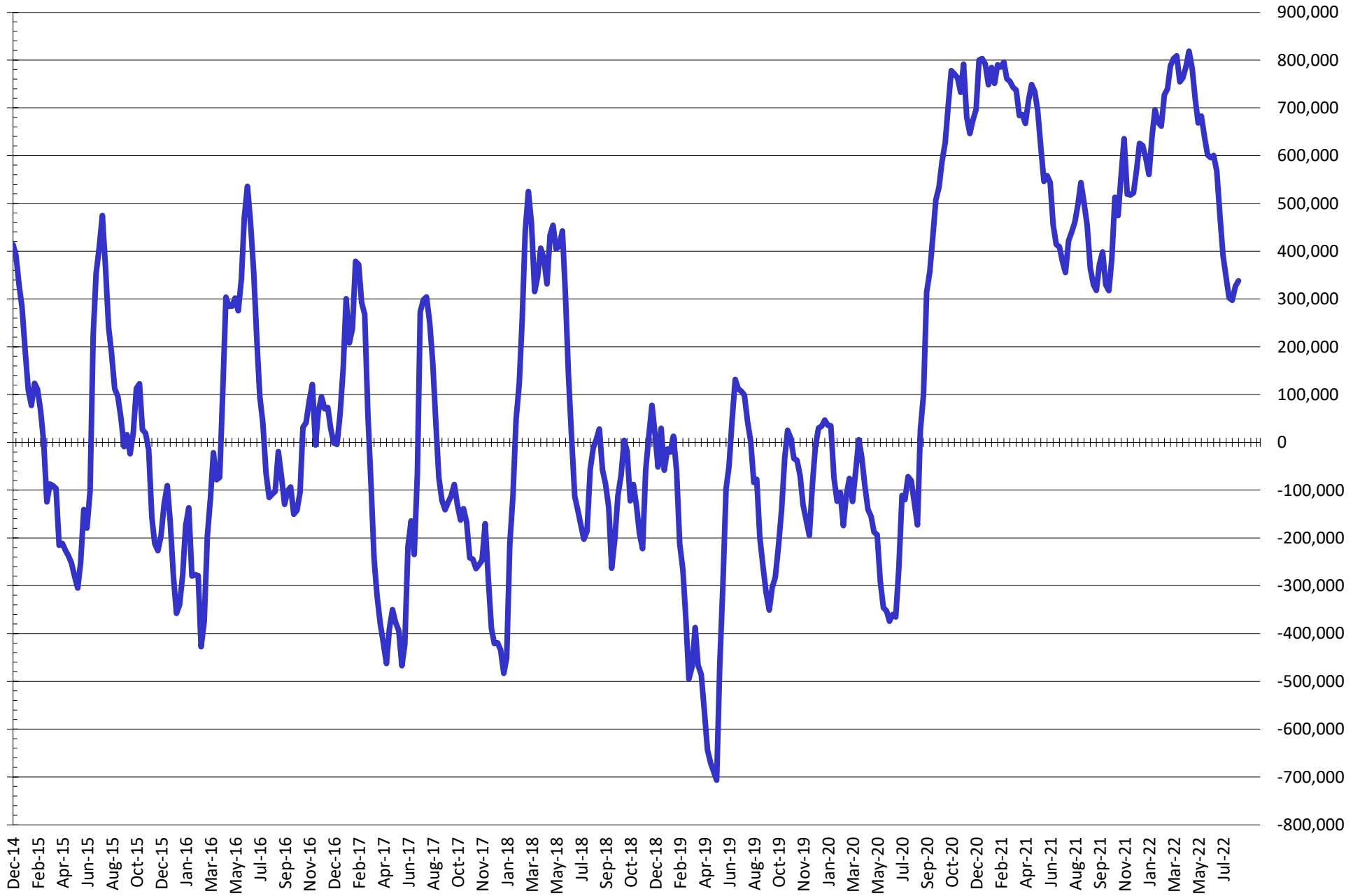


# NET POSITION FUTURES AND OPTIONS OF SWAP DEALERS AND MANAGED FUNDS IN KANSAS WHEAT



Source: CFTC and FI  
8/12/2022

# NET POSITION FUTURES AND OPTIONS OF SWAP AND MANAGED FUNDS IN COMBINED SRW, HRW, CORN, SOYBEANS, SOYMEAL AND SOYOIL



— Net Managed Money

Source: CFTC and FI  
8/12/2022

**COMMITMENT OF TRADERS**  
**FUTURES & OPTIONS NET POSITIONS (INDEX BROKEN OUT)**  
**AS OF 08/09/2022**  
(IN THOUSAND CONTRACTS)

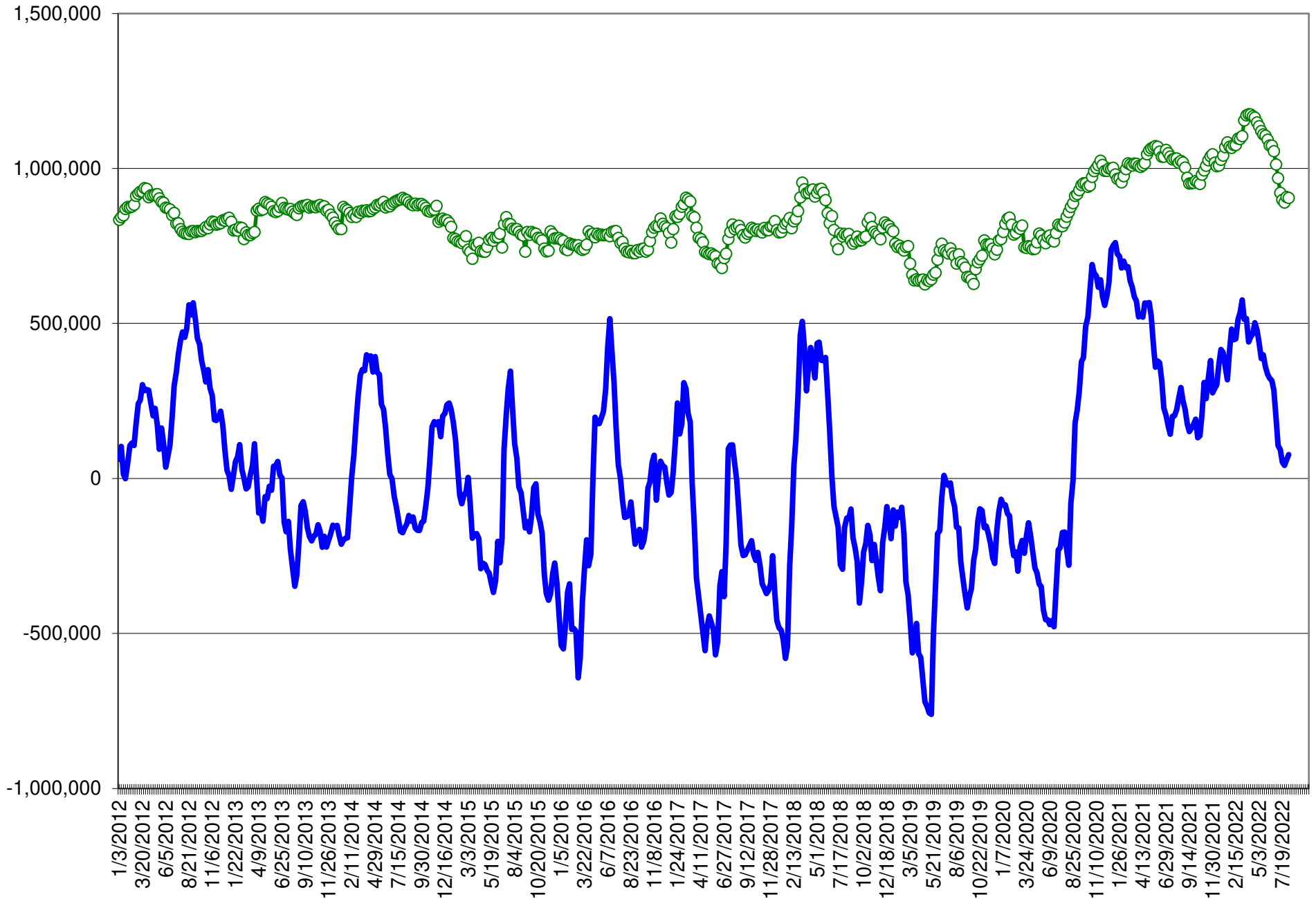
	COMMERCIAL				(FUND) NON COMMERCIAL				(SPEC) NON-REPORTABLE			
	9-Aug	2-Aug	26-Jul	19-Jul	9-Aug	2-Aug	26-Jul	19-Jul	9-Aug	2-Aug	26-Jul	19-Jul
	WHEAT											
Chicago	(55.4)	(55.9)	(59.9)	(62.7)	(57.9)	(54.5)	(51.3)	(47.2)	(5.3)	(9.0)	(7.1)	(8.8)
Kansas City	(35.1)	(36.7)	(36.4)	(36.7)	(13.6)	(11.9)	(12.1)	(9.7)	(1.2)	(1.7)	(1.8)	(3.2)
Minneapolis	-	-	-	-	-	-	-	-	-	-	-	-
All Wheat	(90.5)	(92.6)	(96.3)	(99.4)	(71.5)	(66.4)	(63.4)	(56.9)	(6.5)	(10.7)	(8.9)	(11.9)
CORN	(377.5)	(363.3)	(357.4)	(374.6)	54.7	35.2	26.1	35.9	(49.4)	(52.6)	(45.4)	(43.1)
OATS	-	-	-	-	-	-	-	-	-	-	-	-
SOYBEANS	(152.9)	(150.5)	(140.1)	(140.6)	35.0	34.5	28.1	26.5	(28.9)	(30.9)	(30.2)	(32.5)
SOY OIL	(100.7)	(94.5)	(86.2)	(91.8)	(3.9)	(2.5)	(7.0)	(2.5)	6.0	2.1	3.7	4.2
SOY MEAL	(206.7)	(197.7)	(193.1)	(182.8)	62.7	58.1	58.2	49.2	25.1	24.0	22.3	21.8

	TOTAL OPEN INTEREST				(INDEX) COMMERCIAL INDEX TRADERS				(INDEX) % NET OF TOTAL OPEN INTEREST			
	9-Aug	2-Aug	26-Jul	19-Jul	9-Aug	2-Aug	26-Jul	19-Jul	9-Aug	2-Aug	26-Jul	19-Jul
	WHEAT											
Chicago	429,529	422,808	404,440	411,445	118.6	119.4	118.3	118.7	27.6%	28.2%	29.3%	28.9%
Kansas City	180,595	186,023	181,353	178,991	49.9	50.3	50.3	49.6	27.6%	27.0%	27.7%	27.7%
Minneapolis	-	-	-	-	-	-	-	-	-	-	-	-
All Wheat	610,124	608,831	585,793	590,436	168.5	169.7	168.6	168.3	27.6%	27.9%	28.8%	28.5%
CORN	1,803,434	1,835,694	1,812,824	1,878,222	372.2	380.7	376.7	381.7	20.6%	20.7%	20.8%	20.3%
OATS	-	-	-	-	-	-	-	-	-	-	-	-
SOYBEANS	749,412	733,897	724,199	782,719	146.8	146.9	142.2	146.7	19.6%	20.0%	19.6%	18.7%
SOY OIL	457,240	427,708	414,842	436,352	98.6	94.8	89.5	90.1	21.6%	22.2%	21.6%	20.7%
SOY MEAL	455,180	443,344	438,045	444,043	118.9	115.7	112.7	111.7	26.1%	26.1%	25.7%	25.2%

SOURCE: CFTC & FI



# NET POSITION FUTURES AND OPTIONS OF SPECULATORS AND INDEX FUNDS IN COMBINED SRW, HRW, CORN, SOYBEANS, SOYMEAL AND SOYOIL



Source: CFTC and FI

○ Net Index

— Net Speculator

## Traditional Daily Estimate of Funds 8/9/22

	(Neg)-"Short"	Pos-"Long"			
Actual less Est.	(4.6)	(7.6)	0.3	6.4	(4.4)
	<b>Corn</b>	<b>Bean</b>	<b>Chi. Wheat</b>	<b>Meal</b>	<b>Oil</b>
<b>Actual</b>	210.8	88.9	(3.4)	112.2	31.0
10-Aug	4.0	1.0	8.0	1.0	2.0
11-Aug	5.0	9.0	4.0	4.0	3.0
12-Aug	6.0	3.0	(3.0)	4.0	0.0
15-Aug					
16-Aug					
<b>FI Est. of Futures Only 8/9/22</b>	<b>225.8</b>	<b>101.9</b>	<b>5.6</b>	<b>121.2</b>	<b>36.0</b>
<b>FI Est. Futures &amp; Options</b>	<b>195.0</b>	<b>104.0</b>	<b>(6.6)</b>	<b>112.5</b>	<b>30.3</b>
Futures only record long "Traditional Funds"	547.7 1/26/2021	280.9 11/10/2020	86.5 8/7/2018	167.5 5/1/2018	160.2 11/1/2016
Futures only record short	(235.0) 6/9/2020	(118.3) 4/30/2019	(130.0) 4/25/2017	(49.5) 3/1/2016	(69.8) 9/18/2018
Futures and options record net long	557.6 1/12/2021	270.9 10/6/2020	64.8 8/7/2012	132.1 5/1/2018	159.2 1/1/2016
Futures and options record net short	(270.6) 4/26/2019	(132.0) 4/30/2019	(143.3) 4/25/2017	(64.1) 3/1/2016	(77.8) 9/18/2018

## Managed Money Daily Estimate of Funds 8/9/22

	Corn	Bean	Chi. Wheat	Meal	Oil
Latest CFTC Fut. Only	134.8	102.4	(24.1)	83.0	21.9
Latest CFTC F&O	142.1	101.5	(20.3)	84.4	22.2
FI Est. Managed Fut. Only	150	115	(15)	92	27
FI Est. Managed Money F&O	157	115	(11)	93	27

## Index Funds Latest Positions (as of last Tuesday)

Index Futures & Options	372.2	146.8	118.6	NA	98.6
Change From Previous Week	(8.5)	(0.1)	(0.8)	NA	3.8

Source: Reuters, CFTC & FI (FI est. are noted with latest date)

# Disclaimer

TO CLIENTS/PROSPECTS OF FUTURES INTERNATIONAL, SEE RISK DISCLOSURE BELOW:

THIS COMMUNICATION IS CONVEYED AS A SOLICITATION FOR ENTERING INTO A DERIVATIVES TRANSACTION.

Any trading recommendations and market or other information to Customer by Futures International (FI), although based upon information obtained from sources believed by FI to be reliable may not be accurate and may be changed without notice to customer. FI makes no guarantee as to the accuracy or completeness of any of the information or recommendations furnished to Customer. Customer understands that FI, its managers, employees and/or affiliates may have a position in commodity futures, options or other derivatives which may not be consistent with the recommendations furnished by FI to Customer.

The risk of trading futures and options and other derivatives involves a substantial risk of loss and is not suitable for all persons. In purchasing an option, the risk is limited to the premium paid, and all commissions and fees involved with the trade. When an option is shorted or written, the writer of the option has unlimited risk with respect to the option written. The use of options strategies such as a straddles and strangles involve multiple option positions and may substantially increase the amount of commissions and fees paid to execute the strategy. Option prices do not necessarily move in tandem with cash or futures prices. Each person must consider whether a particular trade, combination of trades or strategy is suitable for that person's financial means and objectives.

This material may include discussions of seasonal patterns, however, futures prices have already factored in the seasonal aspects of supply and demand, and seasonal patterns are no indication of future market trends. Finally, past performance is not indicative of future results.

This communication may contain links to third party websites which are not under the control of FI and FI is not responsible for their content. Products and services are offered only in jurisdictions where solicitation and sale are lawful, and in accordance with applicable laws and regulations in each such jurisdiction.