

	Current	Δ from YD	Δ from 7D Avg
Nat Gas Prompt	\$ 6.82	▼ \$ (0.04)	▼ \$ (0.17)

	Current	Δ from YD	Δ from 7D Avg
WTI Prompt	\$ 106.28	▲ \$ 0.09	▼ \$ (4.1)

	Current	Δ from YD	Δ from 7D Avg
Brent Prompt	\$ 111.90	▲ \$ 0.16	▼ \$ (2.3)

### Page Menu

[Short-term Weather Model Outlooks](#)

[Lower 48 Component Models](#)

[Regional S/D Models Storage Projection](#)

[Weather Model Storage Projection](#)

[Supply – Demand Trends](#)

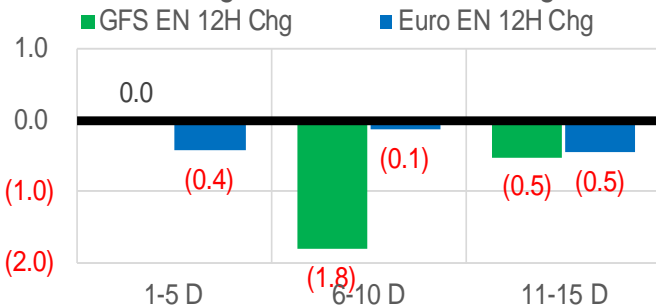
[Nat Gas Options Volume and Open Interest](#)

[Nat Gas Futures Open Interest](#)

[Price Summary](#)

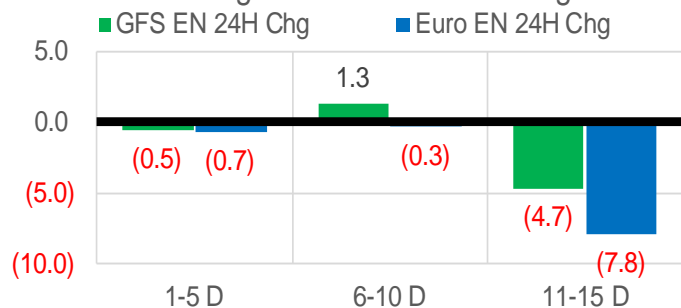
### Vs. 12H Ago

L48 Region - 00z TDD vs 12H Ago



### Vs. 24H Ago

L48 Region - 00z TDD vs 24H Ago



	Current	Δ from YD	Δ from 7D Avg
US Dry Production	95.5	▼ -0.62	▼ -0.54

	Current	Δ from YD	Δ from 7D Avg
US Power Burns	37.5	▼ -2.83	▲ 0.27

	Current	Δ from YD	Δ from 7D Avg
US ResComm	8.2	▼ -0.23	▼ -0.29

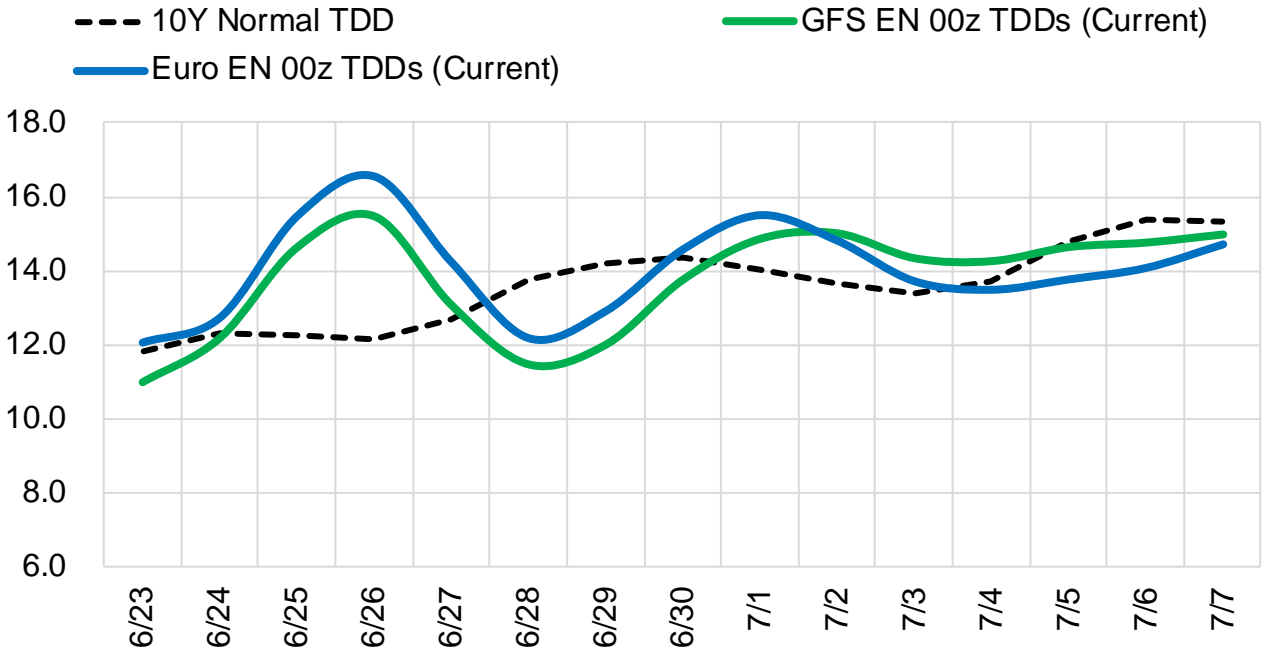
	Current	Δ from YD	Δ from 7D Avg
Canadian Imports	5.6	▲ 0.04	▼ -0.08

	Current	Δ from YD	Δ from 7D Avg
Net LNG Exports	10.6	▼ -0.03	▼ -0.09

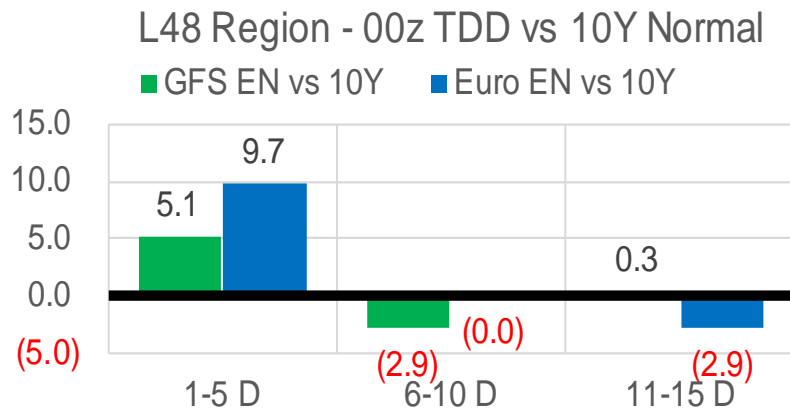
	Current	Δ from YD	Δ from 7D Avg
Mexican Exports	7.1	▼ -0.03	▲ 0.09

### Short-term Weather Model Outlooks (00z)

#### L48 Region



### Vs. 10Y Normal



Source: WSI , Bloomberg

### Lower 48 Component Models

#### Daily Balances

	17-Jun	18-Jun	19-Jun	20-Jun	21-Jun	22-Jun	23-Jun	DoD	vs. 7D
<b>Lower 48 Dry Production</b>	<b>95.7</b>	<b>95.9</b>	<b>96.0</b>	<b>96.0</b>	<b>96.1</b>	<b>96.1</b>	<b>95.5</b>	▼ -0.6	▼ -0.5
<b>Canadian Imports</b>	<b>5.8</b>	<b>5.4</b>	<b>5.4</b>	<b>5.6</b>	<b>5.6</b>	<b>5.5</b>	<b>5.6</b>	▲ 0.0	▲ 0.0
L48 Power	40.1	33.0	31.3	35.2	39.5	40.3	37.5	▼ -2.8	▲ 0.9
L48 Residential & Commercial	8.6	8.5	8.5	8.3	8.5	8.4	8.2	▼ -0.2	▼ -0.3
L48 Industrial	21.6	21.3	21.2	21.1	20.8	20.7	20.7	▲ 0.0	▼ -0.4
L48 Lease and Plant Fuel	5.2	5.2	5.2	5.2	5.2	5.2	5.1	▼ -0.1	▼ -0.1
L48 Pipeline Distribution	2.7	2.3	2.2	2.4	2.6	2.7	2.5	▼ -0.2	▲ 0.0
<b>L48 Regional Gas Consumption</b>	<b>78.2</b>	<b>70.2</b>	<b>68.3</b>	<b>72.3</b>	<b>76.6</b>	<b>77.3</b>	<b>74.0</b>	▼ -3.3	▲ 0.2
<b>Net LNG Delivered</b>	<b>10.92</b>	<b>10.63</b>	<b>10.58</b>	<b>10.75</b>	<b>10.53</b>	<b>10.65</b>	<b>10.63</b>	▼ 0.0	▼ -0.1
<b>Total Mexican Exports</b>	<b>7.0</b>	<b>6.7</b>	<b>6.8</b>	<b>7.0</b>	<b>7.1</b>	<b>7.1</b>	<b>7.1</b>	▼ 0.0	▲ 0.1
<b>Implied Daily Storage Activity</b>	<b>5.4</b>	<b>13.7</b>	<b>15.7</b>	<b>11.7</b>	<b>7.5</b>	<b>6.6</b>	<b>9.3</b>		
<b>EIA Reported Daily Storage Activity</b>									
<b>Daily Model Error</b>									

#### EIA Storage Week Balances

	13-May	20-May	27-May	3-Jun	10-Jun	17-Jun	WoW	vs. 4W
<b>Lower 48 Dry Production</b>	<b>96.2</b>	<b>95.3</b>	<b>96.3</b>	<b>97.0</b>	<b>96.4</b>	<b>95.9</b>	▼ -0.5	▼ -0.4
<b>Canadian Imports</b>	<b>5.2</b>	<b>4.9</b>	<b>4.9</b>	<b>4.8</b>	<b>5.4</b>	<b>6.1</b>	▲ 0.6	▲ 1.1
L48 Power	26.8	30.4	30.0	30.4	32.3	37.8	▲ 5.4	▲ 7.0
L48 Residential & Commercial	14.5	10.0	11.6	9.1	8.6	8.3	▼ -0.3	▼ -1.5
L48 Industrial	20.9	21.3	20.2	21.5	21.4	22.3	▲ 0.8	▲ 1.2
L48 Lease and Plant Fuel	5.2	5.1	5.2	5.2	5.2	5.2	▼ 0.0	▼ 0.0
L48 Pipeline Distribution	2.3	2.3	2.4	2.2	2.2	2.5	▲ 0.3	▲ 0.2
<b>L48 Regional Gas Consumption</b>	<b>69.6</b>	<b>69.1</b>	<b>69.4</b>	<b>68.4</b>	<b>69.8</b>	<b>76.0</b>	▲ 6.2	▲ 6.8
<b>Net LNG Exports</b>	<b>12.2</b>	<b>12.2</b>	<b>13.0</b>	<b>12.8</b>	<b>12.3</b>	<b>10.7</b>	▼ -1.6	▼ -1.9
<b>Total Mexican Exports</b>	<b>7.0</b>	<b>7.0</b>	<b>7.0</b>	<b>7.1</b>	<b>7.1</b>	<b>7.2</b>	▲ 0.1	▲ 0.1
<b>Implied Daily Storage Activity</b>	<b>12.5</b>	<b>11.9</b>	<b>11.6</b>	<b>13.5</b>	<b>12.6</b>	<b>8.1</b>	-4.5	
<b>EIA Reported Daily Storage Activity</b>	<b>12.7</b>	<b>12.4</b>	<b>11.7</b>	<b>14.6</b>	<b>13.1</b>			
<b>Daily Model Error</b>	<b>-0.2</b>	<b>-0.5</b>	<b>-0.1</b>	<b>-1.0</b>	<b>-0.5</b>			

#### Monthly Balances

	2Yr Ago Jun-20	LY Jun-21	Feb-22	Mar-22	Apr-22	May-22	MTD Jun-22	MoM	vs. LY
<b>Lower 48 Dry Production</b>	<b>87.9</b>	<b>93.2</b>	<b>92.7</b>	<b>93.5</b>	<b>96.0</b>	<b>96.1</b>	<b>96.2</b>	▲ 0.1	▲ 3.0
<b>Canadian Imports</b>	<b>4.0</b>	<b>4.8</b>	<b>6.5</b>	<b>5.2</b>	<b>5.8</b>	<b>5.1</b>	<b>5.6</b>	▲ 0.5	▲ 0.8
L48 Power	34.9	35.9	28.7	25.5	24.7	28.8	35.4	▲ 6.6	▼ -0.5
L48 Residential & Commercial	8.8	8.9	43.3	31.5	22.5	12.3	8.5	▼ -3.8	▼ -0.3
L48 Industrial	20.0	20.2	22.1	19.7	21.4	20.9	21.6	▲ 0.7	▲ 1.4
L48 Lease and Plant Fuel	4.8	5.0	5.1	5.2	5.2	5.2	5.2	▲ 0.0	▲ 0.2
L48 Pipeline Distribution	2.3	2.4	3.5	2.9	2.6	2.3	2.4	▲ 0.1	▼ 0.0
<b>L48 Regional Gas Consumption</b>	<b>70.8</b>	<b>72.5</b>	<b>102.7</b>	<b>84.7</b>	<b>76.4</b>	<b>69.5</b>	<b>73.1</b>	▲ 3.6	▲ 0.7
<b>Net LNG Exports</b>	<b>4.0</b>	<b>10.2</b>	<b>12.4</b>	<b>12.9</b>	<b>12.3</b>	<b>12.5</b>	<b>11.4</b>	▼ -1.1	▲ 1.2
<b>Total Mexican Exports</b>	<b>5.5</b>	<b>7.4</b>	<b>6.2</b>	<b>6.5</b>	<b>6.7</b>	<b>7.0</b>	<b>7.1</b>	▲ 0.1	▼ -0.3
<b>Implied Daily Storage Activity</b>	<b>11.5</b>	<b>8.0</b>	<b>-22.1</b>	<b>-5.4</b>	<b>6.3</b>	<b>12.2</b>	<b>10.2</b>		
<b>EIA Reported Daily Storage Activity</b>									
<b>Daily Model Error</b>									

Source: Bloomberg, analytix.ai

## Daily Average Generation Data

### Nuclear Generation Daily Average - GWh (NRC)

	15-Jun	16-Jun	17-Jun	18-Jun	19-Jun	20-Jun	21-Jun	DoD	vs. 7D
NRC Nuclear Daily Output	88.3	88.0	88.3	88.1	88.3	88.7	89.6	1.0	1.4
NRC Nuclear Max Capacity	104.9	104.9	104.9	104.9	104.9	104.9	104.9	0.0	0.0
NRC Nuclear Outage	16.6	16.8	16.6	16.8	16.6	16.2	15.2	-1.0	-1.4
NRC % Nuclear Cap Utilization	89.8	89.5	89.8	89.6	89.8	90.2	91.1	1.0	1.4

### Wind Generation Daily Average - MWh (EIA)

	15-Jun	16-Jun	17-Jun	18-Jun	19-Jun	20-Jun	21-Jun	DoD	vs. 7D
CALI Wind	2048	2048	2048	2048	2048	2048	2048	0	0
TEXAS Wind	22879	22879	22879	22879	22879	22879	22879	0	0
US Wind	63443	63443	63443	63443	63443	63443	63443	0	0

EIA 930 data is not being updated. EIA experiencing some issues.

### Generation Daily Average - MWh (EIA)

	15-Jun	16-Jun	17-Jun	18-Jun	19-Jun	20-Jun	21-Jun	DoD	vs. 7D
US Wind	63443	63443	63443	63443	63443	63443	63443	0	0
US Solar	19728	19728	19728	19728	19728	19728	19728	0	0
US Petroleum	1333	1333	1333	1333	1333	1333	1333	0	0
US Other	9775	9775	9775	9775	9775	9775	9775	0	0
US Coal	119543	119543	119543	119543	119543	119543	119543	0	0
US Nuke	90696	90696	90696	90696	90696	90696	90696	0	0
US Hydro	39690	39690	39690	39690	39690	39690	39690	0	0
<b>US Gas</b>	<b>220700</b>	<b>220700</b>	<b>220700</b>	<b>220700</b>	<b>220700</b>	<b>220700</b>	<b>220700</b>	<b>0</b>	<b>0</b>

See National Wind and Nuclear daily charts

Source: Bloomberg, analytix.ai

## Storage Week Average Generation Data

### Nuclear Generation Weekly Average - GWh (NRC)

	13-May	20-May	27-May	3-Jun	10-Jun	17-Jun	WoW	WoW Bcf/d Impact
NRC Nuclear Daily Output	79.3	81.7	84.2	86.2	88.3	88.2	-0.1	0.0
NRC Nuclear Max Capacity	104.9	104.9	104.9	104.9	104.9	104.9	0.0	
NRC Nuclear Outage	25.5	23.2	20.6	18.7	16.6	16.7	0.1	
NRC % Nuclear Cap Utilization	80.7	83.1	85.7	87.6	89.8	89.7	-0.1	

### Wind Generation Weekly Average - MWh (EIA)

	13-May	20-May	27-May	3-Jun	10-Jun	17-Jun	WoW	WoW Bcf/d Impact
CALI Wind	3983	3452	2798	3268	3842	3032	-810	0.1
TEXAS Wind	17705	15706	14010	17915	12449	20462	8012	-1.4
US Wind	64974	50251	50129	57939	37417	57090	19673	-3.5
							53%	
						0.6		

### Generation Weekly Average - MWh (EIA)

	13-May	20-May	27-May	3-Jun	10-Jun	17-Jun	WoW	WoW Bcf/d Impact
US Wind	64974	50251	50129	57939	37417	57090	19673	-3.5
US Solar	18000	19634	17534	18656	18807	18731	-75	0.0
US Petroleum	341	262	448	863	968	1244	276	0.0
US Other	7615	7871	7684	7866	8001	8688	687	-0.1
US Coal	81273	88922	88570	89706	95415	106566	11150	-2.0
US Nuke	83391	85510	88016	89728	91641	91235	-406	0.1
US Hydro	28968	31973	33772	35051	36328	37495	1167	-0.2
<b>US Gas</b>	<b>148473</b>	<b>172224</b>	<b>160070</b>	<b>163383</b>	<b>178204</b>	<b>201845</b>	<b>23641</b>	<b>4.3</b>

See National Wind and Nuclear daily charts

Source: Bloomberg, analytix.ai

### Monthly Average Generation Data

#### Nuclear Generation Monthly Average - GWh (NRC)

	2Yr Ago	LY	MTD				Last 30 days	MoM (MTD vs LY)	Last 30 days YoY
	Same 30 days	Same 30 days	Mar-22	Apr-22	May-22	Jun-22			
	NRC Nuclear Daily Output	88.8	88.4	81.3	73.3	81.7			
NRC Nuclear Max Capacity	104.9	104.9	104.9	104.9	104.9	104.9	104.9	0.0	0.0
NRC Nuclear Outage	16.1	16.5	23.6	31.6	23.2	24.3	23.3	1.1	6.8
NRC % Nuclear Cap Utilization	90.3	89.9	82.7	74.5	83.0	82.0	83.0	-1.1	-6.9

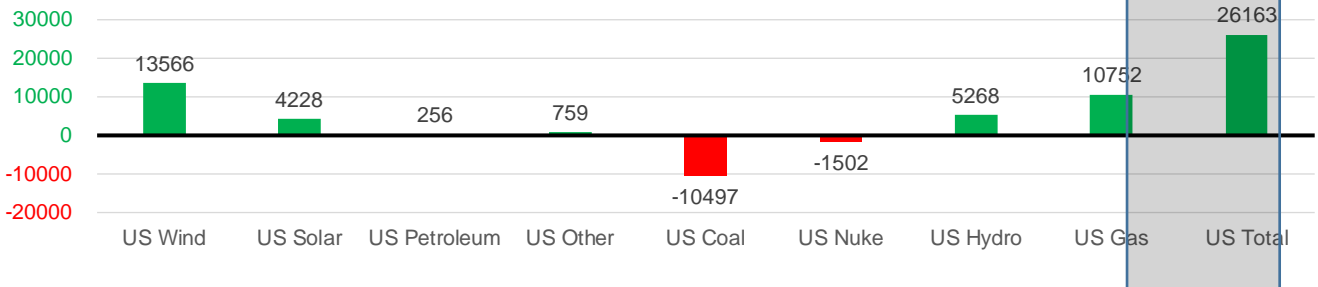
#### Wind Generation Monthly Average - MWh (EIA)

	2Yr Ago	LY	MTD				Last 30 days	MoM (MTD vs LY)	Last 30 days YoY
	Same 30 days	Same 30 days	Mar-22	Apr-22	May-22	Jun-22			
	CALI Wind	2393	3103	2250	3186	3361			
TEXAS Wind	9794	10189	14837	16311	16756	17914	17875	1158	7686
US Wind	38214	40104	58528	64183	56462	51145	53671	-5317	13566

#### Generation Monthly Average - MWh (EIA)

	2Yr Ago	LY	MTD				Last 30 days	MoM (MTD vs LY)	Last 30 days YoY
	Same 30 days	Same 30 days	Mar-22	Apr-22	May-22	Jun-22			
	US Wind	38214	40104	58528	64183	56462			
US Solar	11515	14672	14061	16296	18186	19061	18900	▼ -160.9	▲ 4228
US Petroleum	668	801	985	985	518	1165	1057	▼ -108	▲ 256
US Other	8154	7740	7206	7386	7724	8756	8499	▼ -258	▲ 759
US Coal	86436	112120	82290	77545	85273	106712	101623	▼ -5089	▼ -10497
US Nuke	92485	92102	85256	77217	85496	91188	90600	▼ -588	▼ -1502
US Hydro	37806	31814	33959	29022	31369	37685	37082	▼ -603	▲ 5268
<b>US Gas</b>	<b>177938</b>	<b>178098</b>	<b>137232</b>	<b>133068</b>	<b>157565</b>	<b>199789</b>	<b>188851</b>	<b>▼ -4281</b>	<b>▲ 10752</b>
<b>US Total</b>	<b>451882</b>	<b>477819</b>	<b>419838</b>	<b>406223</b>	<b>443965</b>	<b>519381</b>	<b>503982</b>	<b>▼ -11087</b>	<b>▲ 26163</b>

Last 30 days YoY



See National Wind and Nuclear daily charts

Source: Bloomberg, analytix.ai

### Regional S/D Models Storage Projection

Week Ending 17-Jun

	Daily Raw Storage	Daily Adjustment Factor	Daily Average Storage Activity (Adjusted) *	Weekly Adjusted Storage Activity
L48	9.2	-0.3	8.9	62
East	1.5	1.7	3.3	23
Midwest	4.3	-1.1	3.1	22
Mountain	4.6	-3.9	0.7	5
South Central	-3.3	3.8	0.5	4
Pacific	2.0	-0.8	1.2	8

\*Adjustment Factor is calculated based on historical regional deltas

U.S. underground natural gas storage facilities by type (July 2015)

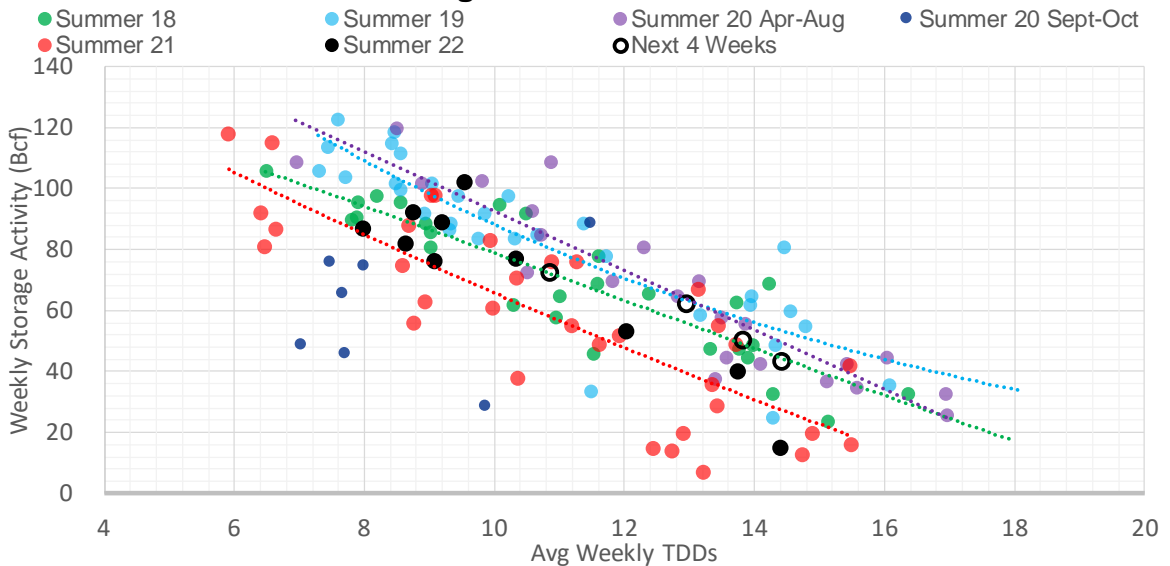


### Weather Model Storage Projection

Next report and beyond

Week Ending	GWDDs	Week Storage Projection
17-Jun	13	62
24-Jun	11	72
01-Jul	14	50
08-Jul	14	43

### Weather Storage Model - Next 4 Week Forecast

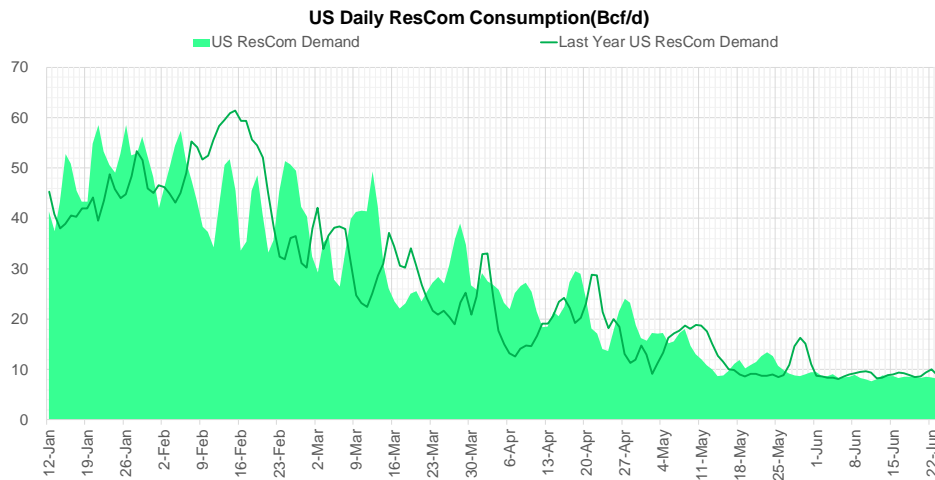
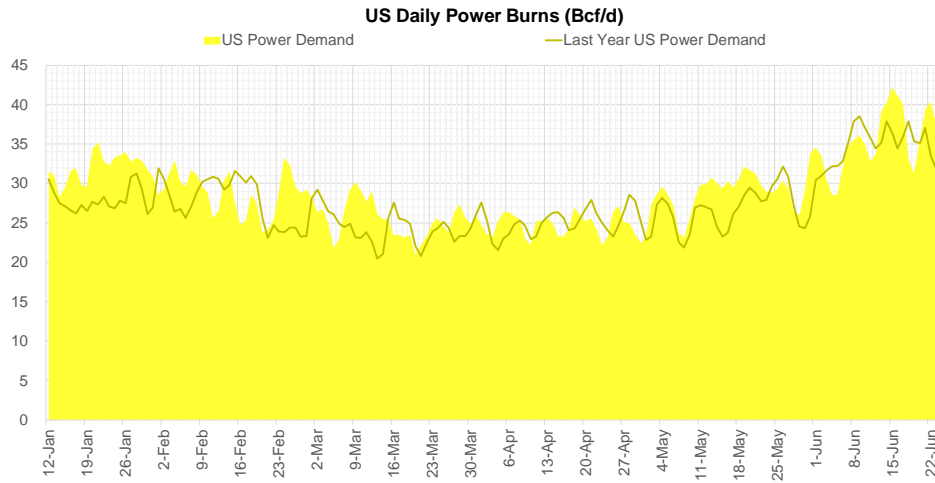
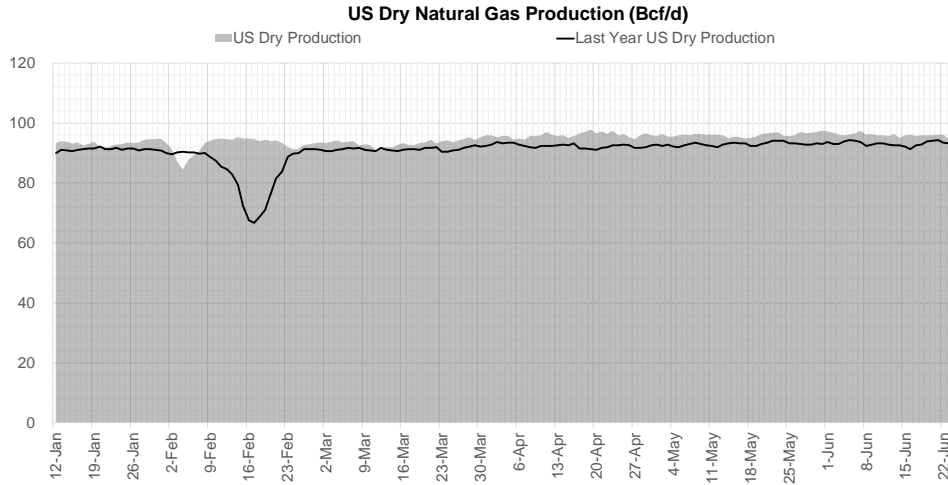


Go to larger image





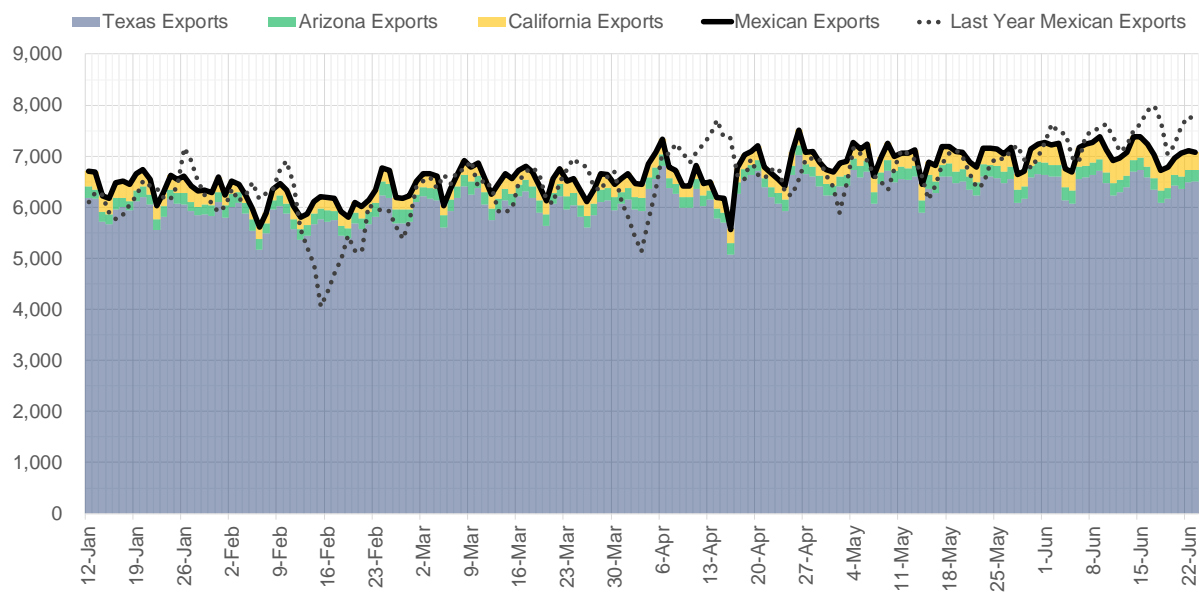
## Supply – Demand Trends



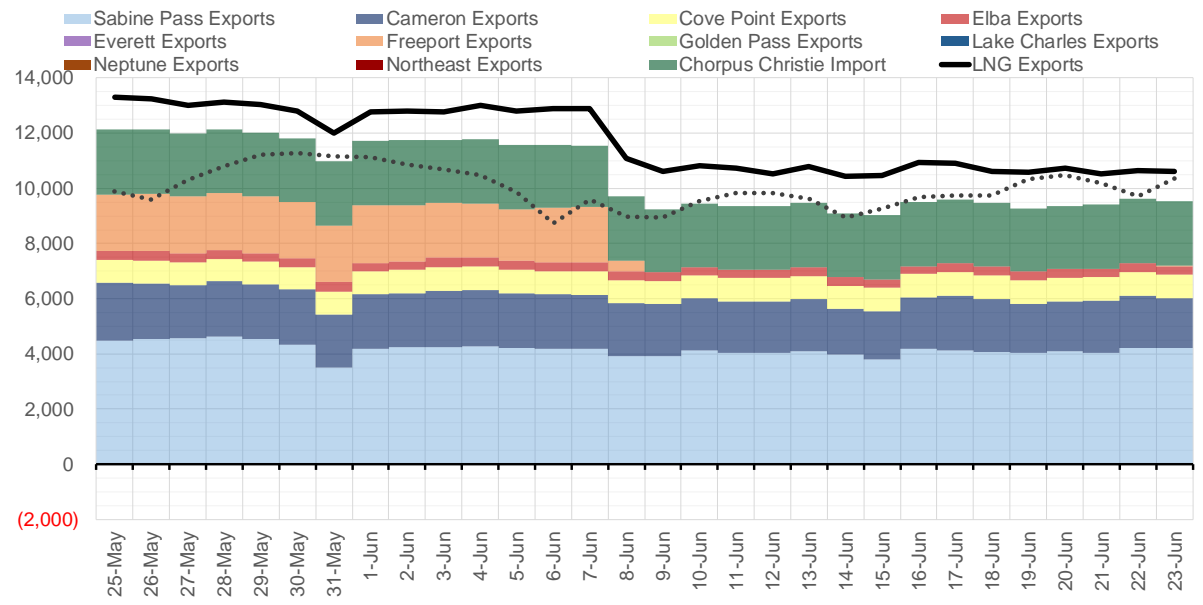
Source: Bloomberg

The risk of trading futures and options and other derivatives involves a substantial risk of loss and is not suitable for all persons. Each person must consider whether a particular trade, combination of trades, or strategy is suitable for that person's financial means and objectives. Past results are not necessarily indicative of future results. This communication may contain links to third party websites which are not under the control of and are not maintained by ION Energy Group, and ION Energy Group is not responsible for their content.

### Mexican Exports (MMcf/d)



### Net LNG Exports - Last 30 days (MMcf/d)



Source: Bloomberg

The risk of trading futures and options and other derivatives involves a substantial risk of loss and is not suitable for all persons. Each person must consider whether a particular trade, combination of trades, or strategy is suitable for that person's financial means and objectives. Past results are not necessarily indicative of future results. This communication may contain links to third party websites which are not under the control of and are not maintained by ION Energy Group, and ION Energy Group is not responsible for their content.

### Nat Gas Options Volume and Open Interest CME and ICE Combined

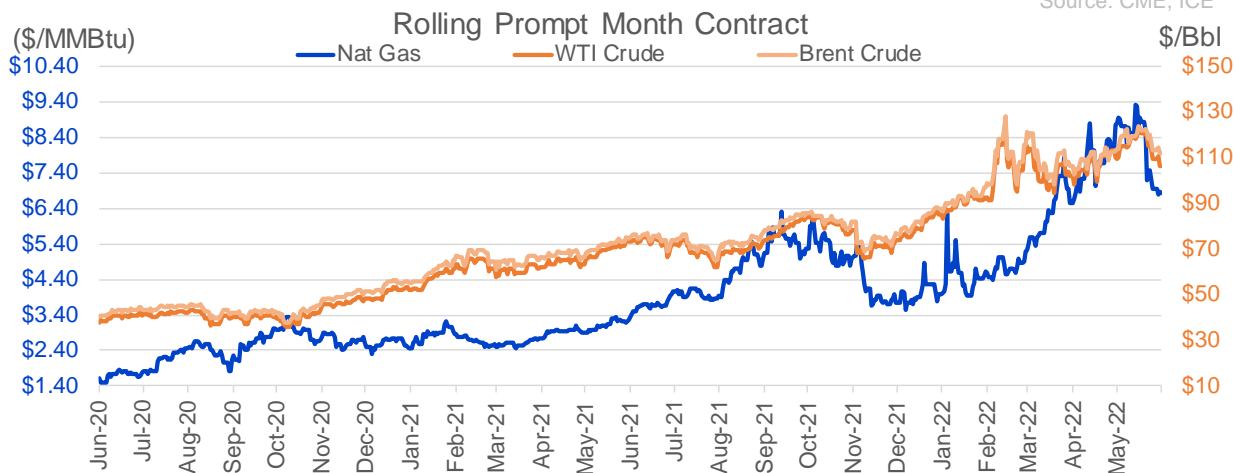
CONTRACT MONTH	CONTRACT YEAR	PUT/CALL	STRIKE	CUMULATIVE VOL	CONTRACT MONTH	CONTRACT YEAR	PUT/CALL	STRIKE	CUMULATIVE OI
1	2023	C	20.00	4195	8	2022	C	10.00	42169
7	2022	C	7.50	3842	7	2022	C	11.00	41655
11	2022	P	4.00	2958	8	2022	C	12.00	37127
4	2023	P	2.25	2750	10	2022	C	6.00	35450
5	2023	P	2.25	2750	8	2022	C	10.50	30296
6	2023	P	2.25	2750	10	2022	P	6.00	24215
7	2023	P	2.25	2750	7	2022	C	10.00	23753
8	2023	P	2.25	2750	9	2022	C	6.00	23666
9	2023	P	2.25	2750	10	2022	C	5.00	23565
10	2023	P	2.25	2750	7	2022	C	9.50	23414
7	2022	C	7.15	2530	7	2022	P	6.00	22965
10	2022	P	4.00	2480	7	2022	C	9.00	22887
5	2023	P	3.50	2400	8	2022	C	12.10	22003
4	2023	P	3.50	2350	10	2022	P	3.00	21686
6	2023	P	3.50	2350	8	2022	P	6.00	21581
7	2023	P	3.50	2350	9	2022	C	10.00	21468
8	2023	P	3.50	2350	10	2022	P	3.50	20652
9	2023	P	3.50	2350	7	2022	C	11.10	20511
10	2023	P	3.50	2350	10	2022	P	2.50	19870
8	2022	P	6.50	2171	8	2022	C	6.00	19647
8	2022	P	5.50	2115	5	2023	P	2.00	19402
8	2022	C	10.00	2105	9	2022	P	4.00	19391
7	2022	C	8.00	2095	7	2022	C	6.00	19180
7	2022	C	7.00	2031	7	2022	C	7.00	18804
12	2022	P	4.00	2008	7	2022	C	8.00	18445
10	2022	C	4.00	2000	12	2022	C	5.00	18221
11	2022	C	4.00	2000	9	2022	C	7.00	18188
12	2022	C	4.00	2000	8	2022	C	7.00	18070
9	2022	P	6.00	1756	8	2022	C	9.00	17641
7	2022	P	6.50	1703	7	2022	P	7.00	17264
7	2022	P	6.00	1665	7	2022	P	3.25	17194
8	2022	C	10.50	1608	10	2022	P	2.00	17158
10	2022	C	8.00	1608	3	2023	C	10.00	17048
8	2022	P	6.00	1497	7	2022	P	5.50	16805
8	2022	C	8.00	1423	10	2022	C	10.00	16604
9	2022	C	8.00	1399	8	2022	P	7.00	16188
8	2022	C	9.00	1332	10	2023	P	2.00	16105
9	2022	P	7.00	1303	9	2022	C	4.00	15970
7	2022	P	6.25	1290	2	2023	C	10.00	15924
1	2023	C	7.50	1250	10	2022	P	4.00	15738
1	2023	C	8.00	1250	1	2023	C	10.00	15303
10	2022	C	7.00	1207	9	2022	P	2.50	15292
10	2022	C	9.00	1184	7	2022	P	3.50	15279
8	2022	P	5.00	1169	9	2022	P	2.75	14887
7	2022	P	7.00	1167	7	2022	P	5.00	14879
7	2022	C	8.50	1137	7	2022	P	4.50	14843
4	2023	P	2.75	1100	7	2022	C	7.50	14675
5	2023	P	2.75	1100	12	2022	P	5.00	14670
6	2023	P	2.75	1100	9	2022	P	3.00	14600
					4	2023	P	3	14567

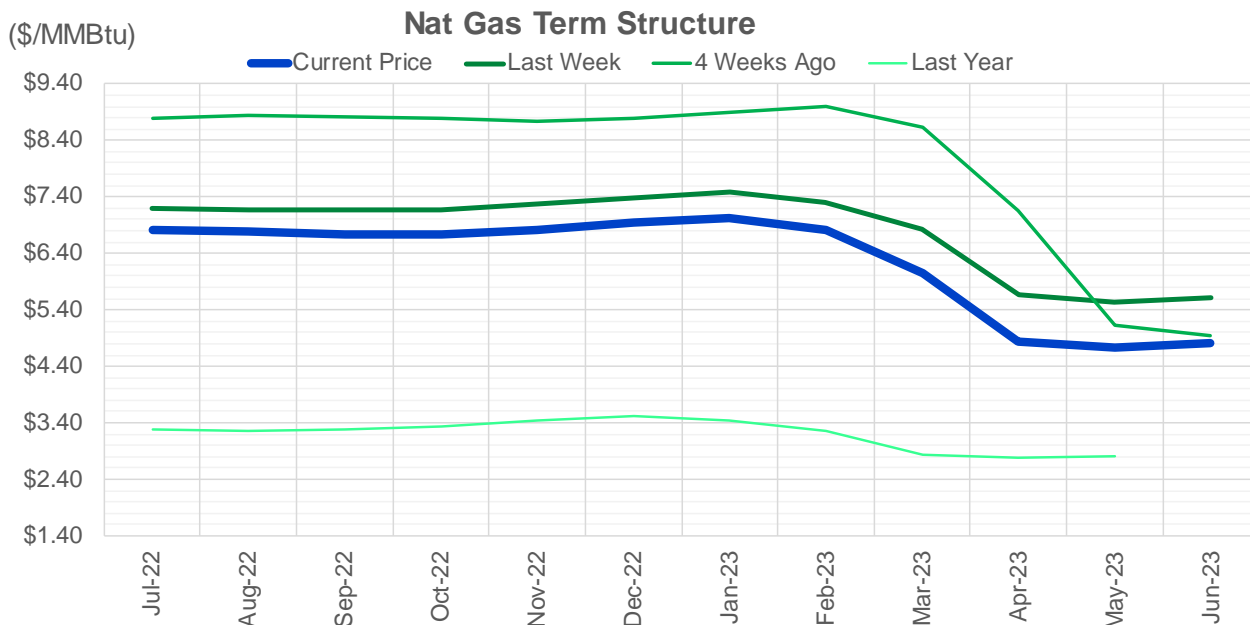
Source: CME, ICE

### Nat Gas Futures Open Interest CME and ICE Combined

CME Henry Hub Futures (10,000 MMBtu)				ICE Henry Hub Futures Contract Equivalent (10,000 MM			
	Current	Prior	Daily Change		Current	Prior	Daily Change
JUL 22	25235	37252	-12017	JUL 22	75451	77534	-2083
AUG 22	108465	107391	1074	AUG 22	73634	71991	1643
SEP 22	149017	147779	1238	SEP 22	78388	78276	112
OCT 22	97772	97919	-147	OCT 22	73941	73061	880
NOV 22	54501	53988	513	NOV 22	59187	58888	299
DEC 22	51036	50649	387	DEC 22	62723	62020	703
JAN 23	62679	61695	984	JAN 23	67102	66915	188
FEB 23	28032	28404	-372	FEB 23	54130	53952	179
MAR 23	45941	45874	67	MAR 23	52079	52642	-563
APR 23	66821	66660	161	APR 23	50886	51151	-265
MAY 23	61262	62542	-1280	MAY 23	51279	50960	320
JUN 23	22175	22032	143	JUN 23	44512	44568	-56
JUL 23	24857	24876	-19	JUL 23	43834	43736	98
AUG 23	15758	15587	171	AUG 23	42969	42888	81
SEP 23	17344	17286	58	SEP 23	42181	42094	87
OCT 23	39350	39107	243	OCT 23	49184	49247	-63
NOV 23	11680	11712	-32	NOV 23	44185	44122	63
DEC 23	12039	12133	-94	DEC 23	40193	40421	-228
JAN 24	19029	19371	-342	JAN 24	39537	39453	85
FEB 24	6480	6481	-1	FEB 24	27728	27676	52
MAR 24	14931	14847	84	MAR 24	32551	32417	135
APR 24	13194	13211	-17	APR 24	27323	27261	62
MAY 24	6520	6531	-11	MAY 24	26438	26366	71
JUN 24	2174	2171	3	JUN 24	22482	22413	69
JUL 24	1944	1951	-7	JUL 24	22650	22619	31
AUG 24	2928	2928	0	AUG 24	22670	22614	56
SEP 24	1343	1343	0	SEP 24	22223	22105	118
OCT 24	6997	7025	-28	OCT 24	25439	25125	314
NOV 24	4524	4541	-17	NOV 24	23459	23375	84
DEC 24	7091	7093	-2	DEC 24	25575	25489	86

Source: CME, ICE





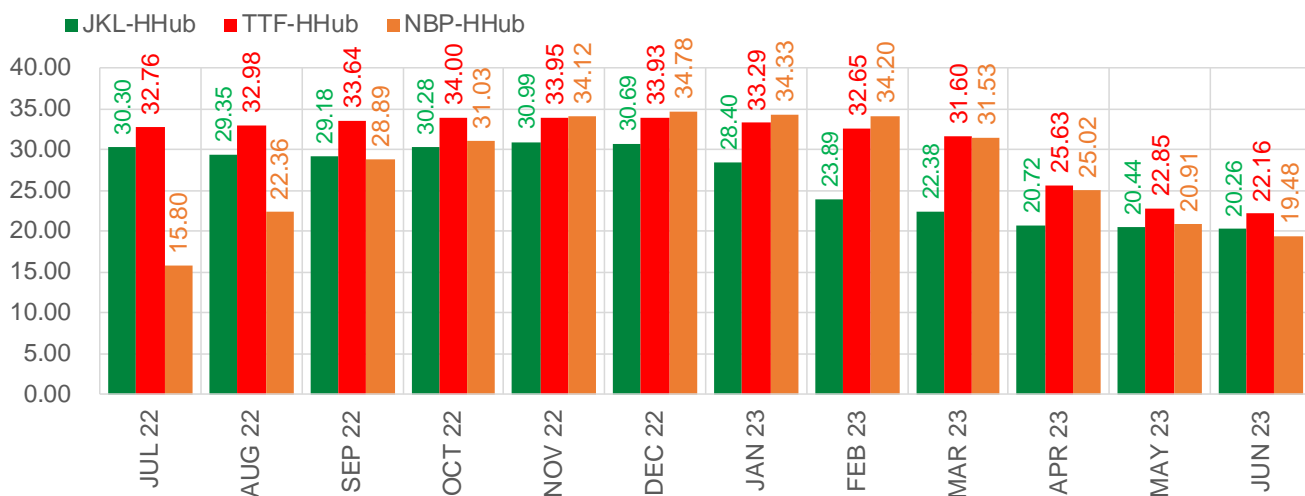
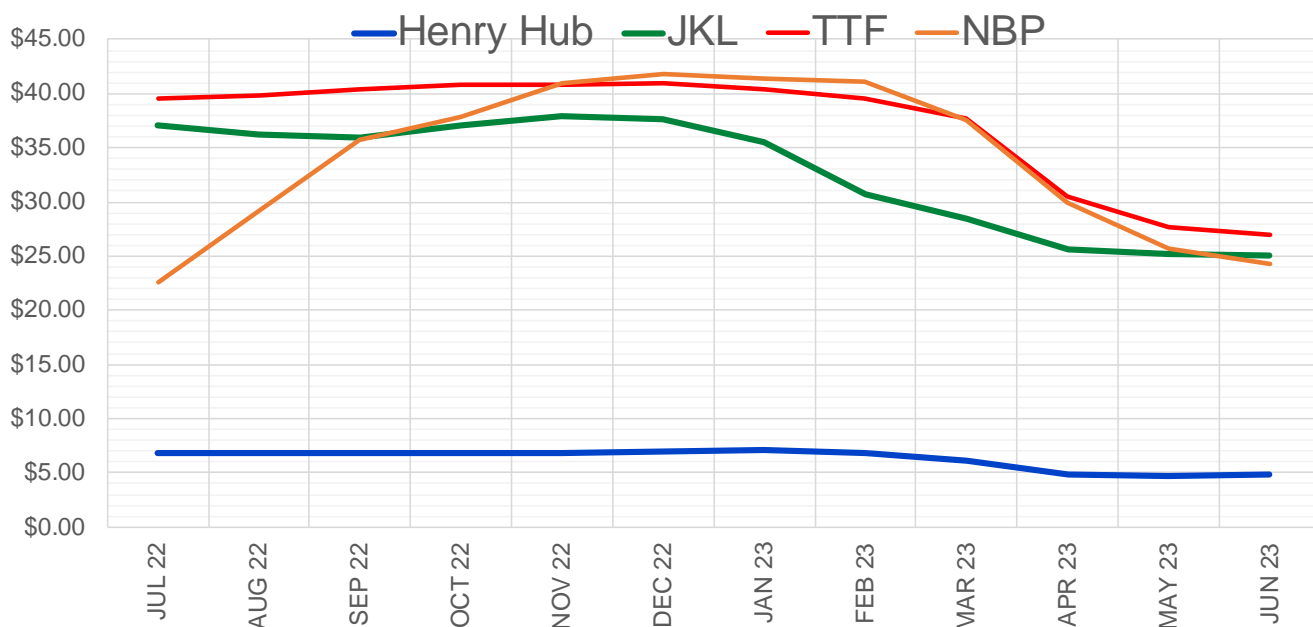
	Jul-22	Aug-22	Sep-22	Oct-22	Nov-22	Dec-22	Jan-23	Feb-23	Mar-23	Apr-23	May-23	Jun-23
<b>Current Price</b>	<b>\$6.808</b>	<b>\$6.783</b>	<b>\$6.743</b>	<b>\$6.735</b>	<b>\$6.820</b>	<b>\$6.936</b>	<b>\$7.027</b>	<b>\$6.804</b>	<b>\$6.057</b>	<b>\$4.841</b>	<b>\$4.740</b>	<b>\$4.807</b>
Last Week	\$7.189	\$7.180	\$7.164	\$7.170	\$7.266	\$7.384	\$7.486	\$7.303	\$6.818	\$5.669	\$5.548	\$5.604
vs. Last Week	-\$0.381	-\$0.397	-\$0.421	-\$0.435	-\$0.446	-\$0.448	-\$0.459	-\$0.499	-\$0.761	-\$0.828	-\$0.808	-\$0.797
4 Weeks Ago	\$8.796	\$8.836	\$8.822	\$8.780	\$8.750	\$8.795	\$8.898	\$8.996	\$8.641	\$7.153	\$5.136	\$4.932
vs. 4 Weeks Ago	-\$1.988	-\$2.053	-\$2.079	-\$2.045	-\$1.930	-\$1.859	-\$1.871	-\$2.192	-\$2.584	-\$2.312	-\$0.396	-\$0.125
Last Year	\$3.258	\$3.277	\$3.262	\$3.276	\$3.332	\$3.436	\$3.512	\$3.442	\$3.261	\$2.847	\$2.786	\$2.816
vs. Last Year	\$3.550	\$3.506	\$3.481	\$3.459	\$3.488	\$3.500	\$3.515	\$3.362	\$2.796	\$1.994	\$1.954	\$1.991

	Units	Cash Settled	Prompt Settle	Cash to Prompt
AGT Citygate	\$/MMBtu	7.85	7.21	-0.64
TETCO M3	\$/MMBtu	5.67	6.82	1.15
FGT Zone 3	\$/MMBtu	5.90	7.74	1.84
Zone 6 NY	\$/MMBtu	5.90	6.85	0.94
Chicago Citygate	\$/MMBtu	6.52	7.14	0.62
Michcon	\$/MMBtu	6.52	7.06	0.54
Columbia TCO Pool	\$/MMBtu	5.95	6.67	0.72
Ventura	\$/MMBtu	7.70	6.99	-0.71
Rockies/Opal	\$/MMBtu	6.21	6.80	0.59
El Paso Permian Basin	\$/MMBtu	6.12	6.54	0.42
Socal Citygate	\$/MMBtu	7.70	7.89	0.19
Malin	\$/MMBtu	6.19	7.02	0.82
Houston Ship Channel	\$/MMBtu	6.52	7.04	0.52
Henry Hub Cash	\$/MMBtu	6.60	6.97	0.37
AECO Cash	C\$/GJ	5.20	4.94	-0.26
Station2 Cash	C\$/GJ	4.92	6.74	1.82
Dawn Cash	C\$/GJ	6.52	7.18	0.66

Source: CME, Bloomberg

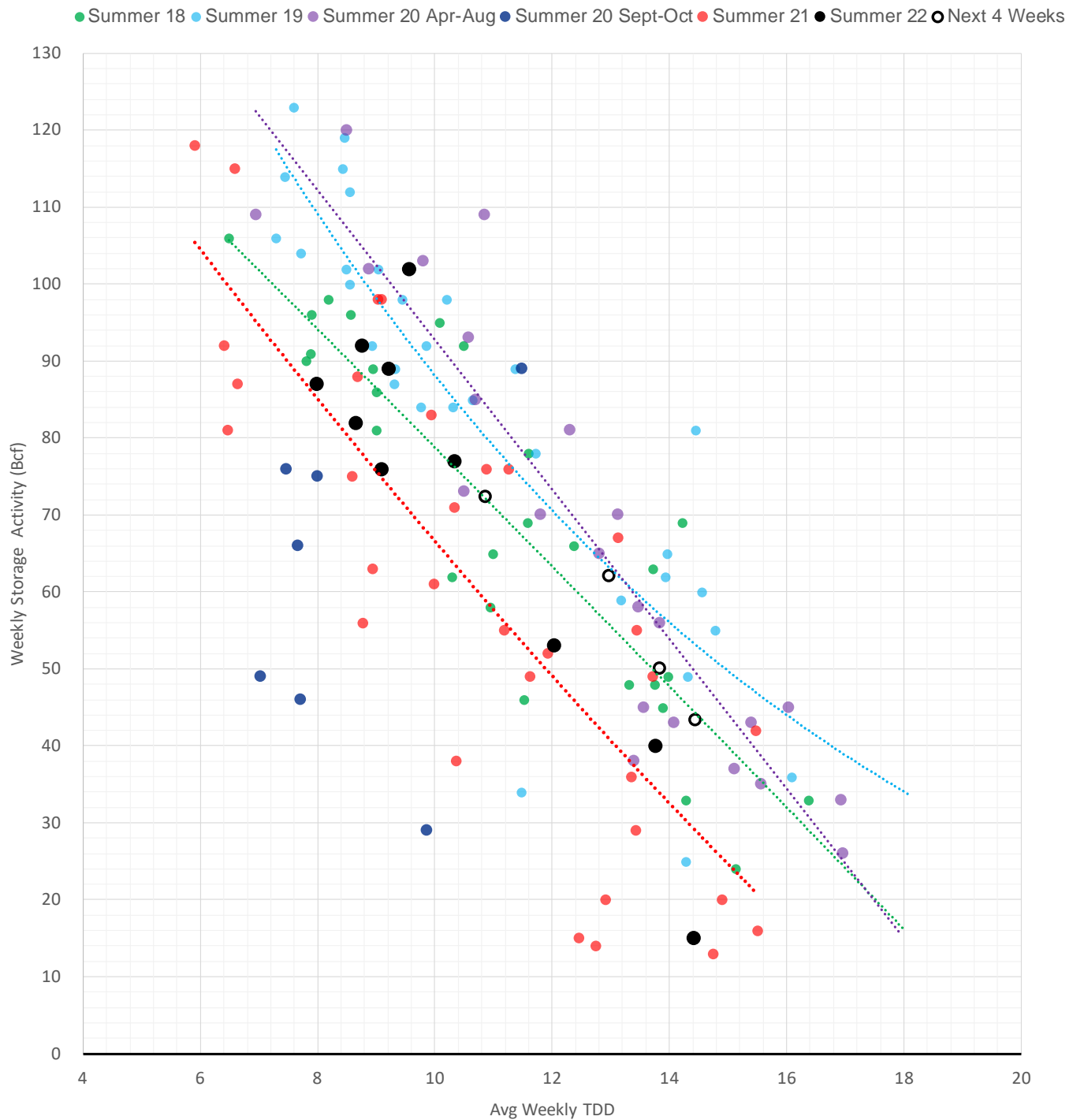
	Units	Current Price	vs. Last Week	vs. 4 Weeks Ago	vs. Last Year
NatGas Jul21/Oct21	\$/MMBtu	2.224	▲ 0.000	▲ 0.000	▲ 2.214
NatGas Oct21/Nov21	\$/MMBtu	0.361	▲ 0.000	▲ 0.000	▲ 0.310
NatGas Oct21/Jan22	\$/MMBtu	-1.817	▲ 0.000	▲ 0.000	▼ -2.039
NatGas Apr22/Oct22	\$/MMBtu	1.490	▼ -0.543	▼ -2.072	▲ 1.469
WTI Crude	\$/Bbl	106.19	▼ -9.120	▼ -4.140	▲ 33.110
Brent Crude	\$/Bbl	111.74	▼ -6.770	▼ -2.290	▲ 36.550
Fuel Oil, NY Harbour 1%	\$/Bbl	97.18	▲ 0.000	▲ 0.000	▲ 0.000
Heating Oil	cents/Gallon	440.46	▼ -14.240	▲ 53.820	▲ 224.520
Propane, Mt. Bel	cents/Gallon	1.22	▲ 0.011	▼ -0.011	▲ 0.253
Ethane, Mt. Bel	cents/Gallon	0.64	▼ -0.021	▲ 0.036	▲ 0.361
Coal, PRB	\$/MTon	12.30	▲ 0.000	▲ 0.000	▲ 0.000
Coal, PRB	\$/MMBtu	0.70			
Coal, ILB	\$/MTon	31.05	▲ 0.000	▲ 0.000	▲ 0.000
Coal, ILB	\$/MMBtu	1.32			

### Nat Gas Term Structure (\$MMBTU)



	JUL 22	AUG 22	SEP 22	OCT 22	NOV 22	DEC 22	JAN 23	FEB 23	MAR 23	APR 23	MAY 23	JUN 23
<b>Henry Hub</b>	\$6.815	\$6.826	\$6.793	\$6.802	\$6.872	\$6.982	\$7.086	\$6.861	\$6.107	\$4.871	\$4.768	\$4.833
<b>JKL</b>	\$37.110	\$36.180	\$35.970	\$37.080	\$37.865	\$37.675	\$35.490	\$30.755	\$28.485	\$25.590	\$25.205	\$25.090
<b>JKL-HHub</b>	\$30.295	\$29.354	\$29.177	\$30.278	\$30.993	\$30.693	\$28.404	\$23.894	\$22.378	\$20.719	\$20.437	\$20.257
<b>TTF</b>	\$39.576	\$39.810	\$40.435	\$40.803	\$40.822	\$40.907	\$40.373	\$39.515	\$37.710	\$30.504	\$27.614	\$26.996
<b>TTF-HHub</b>	\$32.761	\$32.984	\$33.642	\$34.001	\$33.950	\$33.925	\$33.287	\$32.654	\$31.603	\$25.633	\$22.846	\$22.163
<b>NBP</b>	\$22.611	\$29.185	\$35.683	\$37.836	\$40.991	\$41.758	\$41.419	\$41.060	\$37.634	\$29.887	\$25.674	\$24.309
<b>NBP-HHub</b>	\$15.796	\$22.359	\$28.890	\$31.034	\$34.119	\$34.776	\$34.333	\$34.199	\$31.527	\$25.016	\$20.906	\$19.476

### Weather Storage Model - Next 4 Week Forecast

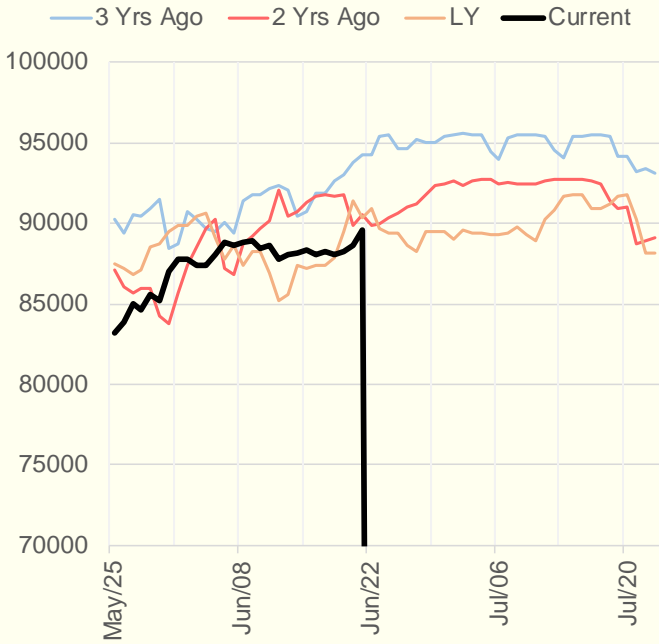


The risk of trading futures and options and other derivatives involves a substantial risk of loss and is not suitable for all persons. Each person must consider whether a particular trade, combination of trades, or strategy is suitable for that person's financial means and objectives. Past results are not necessarily indicative of future results. This communication may contain links to third party websites which are not under the control of and are not maintained by ION Energy Group, and ION Energy Group is not responsible for their content.

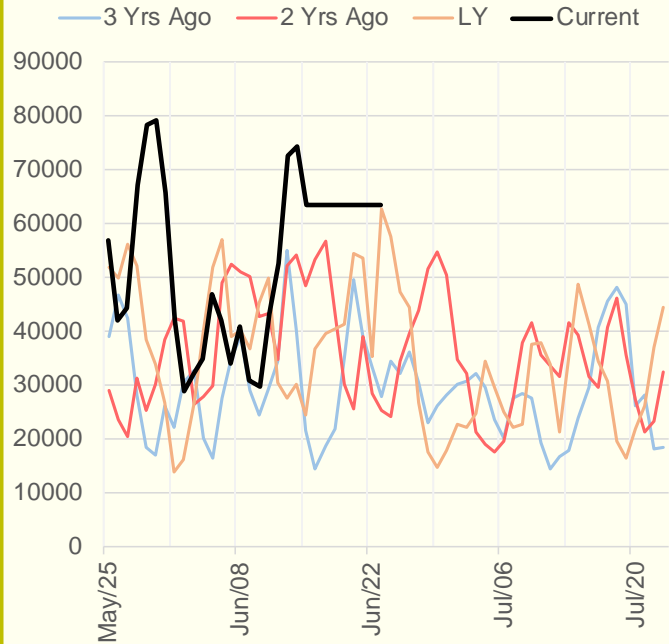


		06/23/2022	#####	#####	#####
NG1 Comdty		\$ 6.815	\$ 6.858	\$ 6.808	\$ 6.944
CL1 Comdty		\$ 106.28	\$ 106.19	\$ 110.65	\$ 109.56
CO1 Comdty		\$ 111.90	\$ 111.74	\$ 114.65	\$ 114.13
GSPRODUS Index		95.5	96.1	96.1	96.0
GSDEDUSP Index		37.5	40.3	39.5	35.2
GSDEDUSR Index		8.2	8.4	8.5	8.3
GSLIQTOT Index		10.6	10.7	10.5	10.7

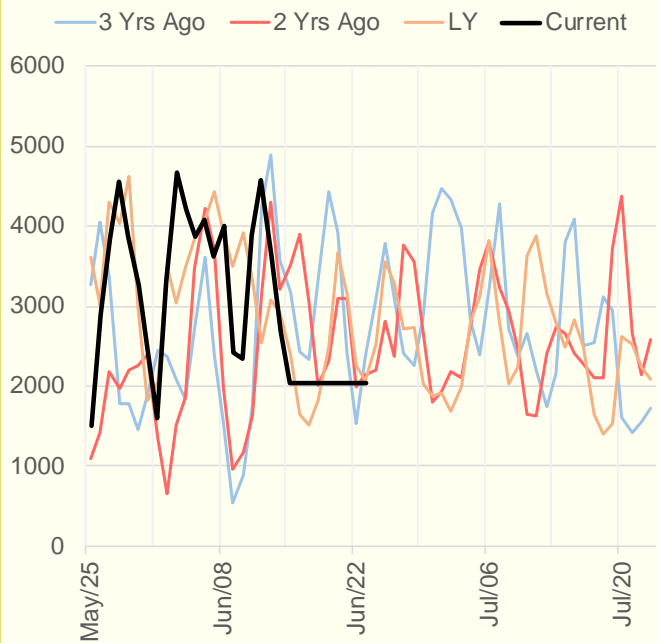
### NRC Nuclear Daily Output



### US Wind



### CALI Wind



### TEXAS Wind

