

	Current	Δ from YD	Δ from 7D Avg
Nat Gas Prompt	\$ 9.28	▼ \$ (0.02)	▲ \$ 0.51

	Current	Δ from YD	Δ from 7D Avg
WTI Prompt	\$ 120.66	▲ \$ 1.25	▲ \$ 2.6

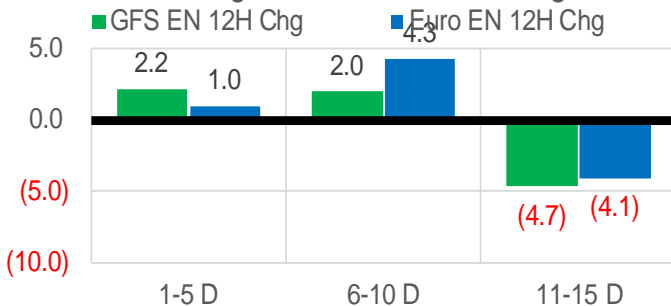
	Current	Δ from YD	Δ from 7D Avg
Brent Prompt	\$ 121.73	▲ \$ 1.16	▲ \$ 2.7

### Page Menu

- [Short-term Weather Model Outlooks](#)
- [Lower 48 Component Models](#)
- [Regional S/D Models Storage Projection](#)
- [Weather Model Storage Projection](#)
- [Supply – Demand Trends](#)
- [Nat Gas Options Volume and Open Interest](#)
- [Nat Gas Futures Open Interest](#)
- [Price Summary](#)

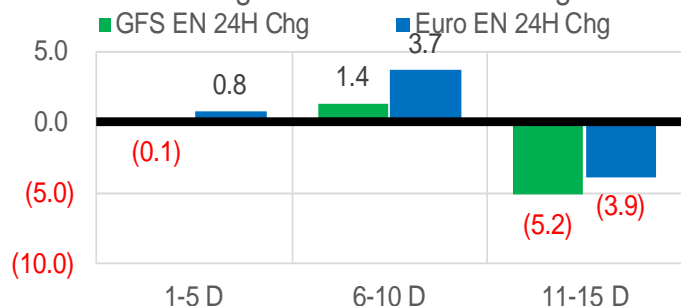
### Vs. 12H Ago

L48 Region - 00z TDD vs 12H Ago



### Vs. 24H Ago

L48 Region - 00z TDD vs 24H Ago



	Current	Δ from YD	Δ from 7D Avg
US Dry Production	96.0	▼ -0.97	▼ -0.23

	Current	Δ from YD	Δ from 7D Avg
US Power Burns	34.5	▲ 0.72	▲ 2.73

	Current	Δ from YD	Δ from 7D Avg
US ResComm	8.3	▼ -0.13	▼ -0.36

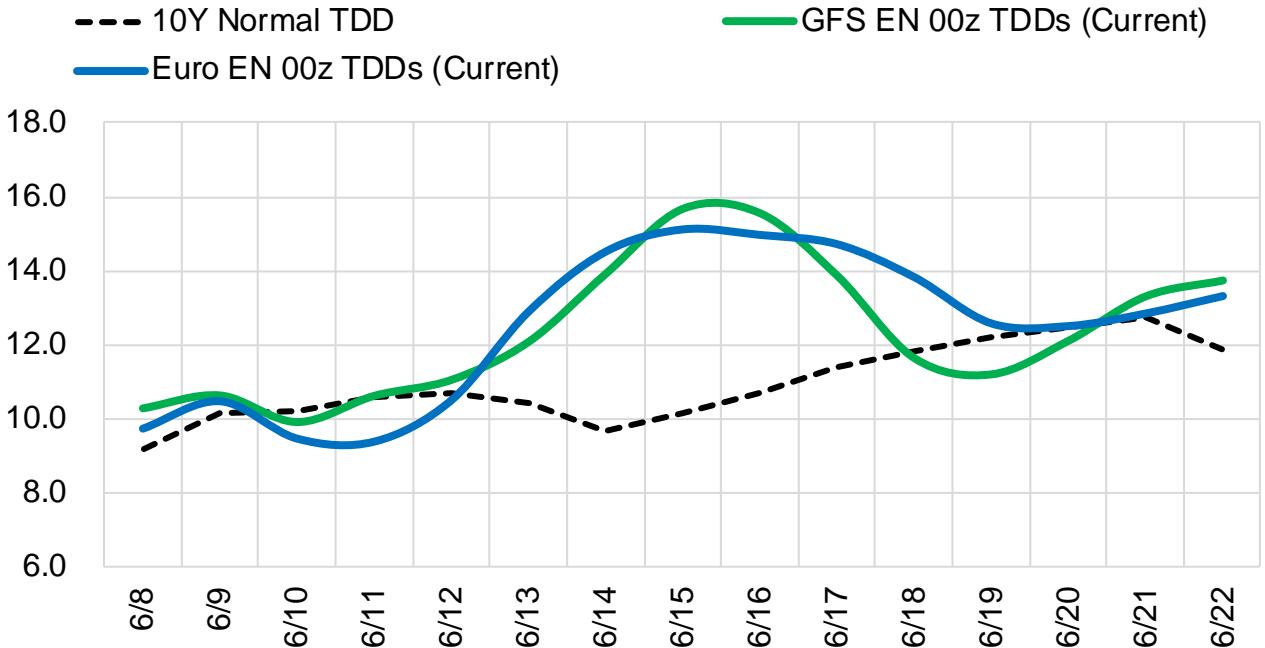
	Current	Δ from YD	Δ from 7D Avg
Canadian Imports	5.9	▲ 0.26	▲ 0.76

	Current	Δ from YD	Δ from 7D Avg
Net LNG Exports	13.0	▲ 0.13	▲ 0.13

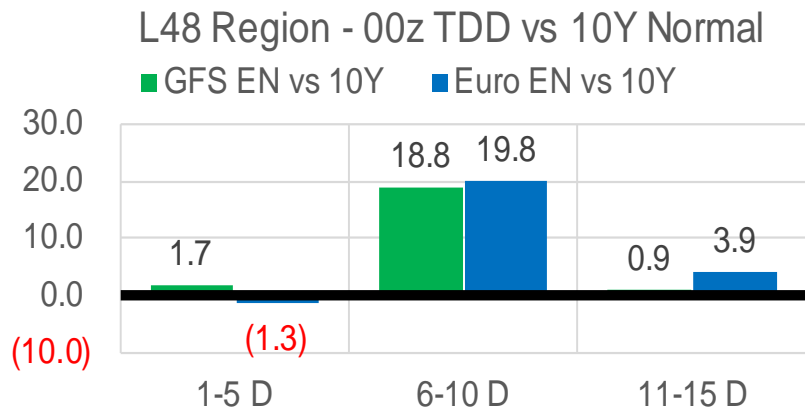
	Current	Δ from YD	Δ from 7D Avg
Mexican Exports	7.0	▼ -0.17	▼ -0.08

### Short-term Weather Model Outlooks (00z)

#### L48 Region



### Vs. 10Y Normal



Source: WSI, Bloomberg

### Lower 48 Component Models

#### Daily Balances

	2-Jun	3-Jun	4-Jun	5-Jun	6-Jun	7-Jun	8-Jun	DoD	vs. 7D
<b>Lower 48 Dry Production</b>	<b>96.4</b>	<b>95.7</b>	<b>95.8</b>	<b>95.8</b>	<b>96.1</b>	<b>96.9</b>	<b>96.0</b>	▼ -1.0	▼ -0.2
<b>Canadian Imports</b>	<b>4.9</b>	<b>5.0</b>	<b>4.8</b>	<b>5.1</b>	<b>5.3</b>	<b>5.6</b>	<b>5.9</b>	▲ 0.3	▲ 0.7
L48 Power	33.6	30.7	28.8	28.7	32.2	33.8	34.5	▲ 0.7	▲ 3.2
L48 Residential & Commercial	8.8	8.6	9.1	8.3	8.4	8.5	8.3	▼ -0.1	▼ -0.2
L48 Industrial	21.3	21.1	20.9	20.6	20.6	20.5	20.4	▼ -0.1	▼ -0.4
L48 Lease and Plant Fuel	5.2	5.2	5.2	5.2	5.2	5.2	5.2	▼ -0.1	▼ 0.0
L48 Pipeline Distribution	2.3	2.1	2.1	2.0	2.2	2.3	2.3	▲ 0.0	▲ 0.2
<b>L48 Regional Gas Consumption</b>	<b>71.2</b>	<b>67.7</b>	<b>66.0</b>	<b>64.8</b>	<b>68.6</b>	<b>70.3</b>	<b>70.8</b>	▲ 0.4	▲ 2.7
<b>Net LNG Delivered</b>	<b>12.79</b>	<b>12.77</b>	<b>13.01</b>	<b>12.79</b>	<b>12.89</b>	<b>12.84</b>	<b>12.97</b>	▲ 0.1	▲ 0.1
<b>Total Mexican Exports</b>	<b>7.3</b>	<b>7.1</b>	<b>6.9</b>	<b>6.7</b>	<b>7.3</b>	<b>7.2</b>	<b>7.0</b>	▼ -0.2	▼ -0.1
<b>Implied Daily Storage Activity</b>	<b>10.1</b>	<b>13.1</b>	<b>14.8</b>	<b>16.6</b>	<b>12.6</b>	<b>12.2</b>	<b>11.1</b>		
<b>EIA Reported Daily Storage Activity</b>									
<b>Daily Model Error</b>									

#### EIA Storage Week Balances

	4-Jun	6-May	13-May	20-May	27-May	3-Jun	WoW	vs. 4W
<b>Lower 48 Dry Production</b>	<b>93.1</b>	<b>95.5</b>	<b>95.8</b>	<b>94.8</b>	<b>95.8</b>	<b>96.5</b>	▲ 0.7	▲ 1.0
<b>Canadian Imports</b>	<b>3.9</b>	<b>5.9</b>	<b>5.2</b>	<b>4.9</b>	<b>4.9</b>	<b>4.8</b>	▼ 0.0	▼ -0.4
L48 Power	27.8	26.2	26.8	30.4	30.0	30.5	▲ 0.5	▲ 2.1
L48 Residential & Commercial	11.8	16.8	14.5	10.0	11.6	9.1	▼ -2.6	▼ -4.2
L48 Industrial	18.5	21.1	20.9	21.3	20.0	21.3	▲ 1.3	▲ 0.4
L48 Lease and Plant Fuel	5.0	5.2	5.2	5.1	5.2	5.2	▲ 0.0	▲ 0.1
L48 Pipeline Distribution	2.2	2.4	2.3	2.3	2.4	2.2	▼ -0.1	▼ -0.1
<b>L48 Regional Gas Consumption</b>	<b>65.4</b>	<b>71.8</b>	<b>69.6</b>	<b>69.1</b>	<b>69.2</b>	<b>68.2</b>	▼ -1.0	▼ -1.7
<b>Net LNG Exports</b>	<b>11.0</b>	<b>12.2</b>	<b>12.2</b>	<b>12.2</b>	<b>13.0</b>	<b>12.8</b>	▼ -0.2	▲ 0.4
<b>Total Mexican Exports</b>	<b>7.2</b>	<b>6.9</b>	<b>7.0</b>	<b>7.0</b>	<b>7.0</b>	<b>7.0</b>	▼ 0.0	▲ 0.0
<b>Implied Daily Storage Activity</b>	<b>13.4</b>	<b>10.6</b>	<b>12.1</b>	<b>11.4</b>	<b>11.5</b>	<b>13.3</b>	<b>1.8</b>	
<b>EIA Reported Daily Storage Activity</b>	<b>14.0</b>	<b>10.9</b>	<b>12.7</b>	<b>11.4</b>	<b>12.9</b>			
<b>Daily Model Error</b>	<b>-0.6</b>	<b>-0.3</b>	<b>-0.7</b>	<b>0.0</b>	<b>-1.4</b>			

#### Monthly Balances

	2Yr Ago Jun-20	LY Jun-21	Feb-22	Mar-22	Apr-22	May-22	MTD Jun-22	MoM	vs. LY
<b>Lower 48 Dry Production</b>	<b>87.9</b>	<b>93.2</b>	<b>92.7</b>	<b>93.5</b>	<b>95.9</b>	<b>95.6</b>	<b>96.2</b>	▲ 0.6	▲ 3.0
<b>Canadian Imports</b>	<b>4.0</b>	<b>4.8</b>	<b>6.5</b>	<b>5.2</b>	<b>5.8</b>	<b>5.1</b>	<b>5.1</b>	▲ 0.0	▲ 0.3
L48 Power	34.9	35.9	28.7	25.5	24.7	28.8	31.8	▲ 3.0	▼ -4.1
L48 Residential & Commercial	8.8	8.9	43.3	31.5	22.5	12.3	8.7	▼ -3.6	▼ -0.1
L48 Industrial	20.0	20.2	22.1	19.7	21.4	20.9	20.9	▲ 0.1	▲ 0.7
L48 Lease and Plant Fuel	4.8	5.0	5.1	5.2	5.2	5.2	5.2	▲ 0.0	▲ 0.2
L48 Pipeline Distribution	2.3	2.4	3.5	2.9	2.6	2.3	2.2	▼ -0.1	▼ -0.2
<b>L48 Regional Gas Consumption</b>	<b>70.8</b>	<b>72.5</b>	<b>102.7</b>	<b>84.7</b>	<b>76.4</b>	<b>69.5</b>	<b>68.8</b>	▼ -0.6	▼ -3.6
<b>Net LNG Exports</b>	<b>4.0</b>	<b>10.2</b>	<b>12.4</b>	<b>12.9</b>	<b>12.3</b>	<b>12.5</b>	<b>12.8</b>	▲ 0.3	▲ 2.7
<b>Total Mexican Exports</b>	<b>5.5</b>	<b>7.4</b>	<b>6.2</b>	<b>6.5</b>	<b>6.7</b>	<b>7.0</b>	<b>7.1</b>	▲ 0.1	▼ -0.4
<b>Implied Daily Storage Activity</b>	<b>11.5</b>	<b>8.0</b>	<b>-22.1</b>	<b>-5.4</b>	<b>6.2</b>	<b>11.8</b>	<b>12.6</b>		
<b>EIA Reported Daily Storage Activity</b>									
<b>Daily Model Error</b>									

Source: Bloomberg, analytix.ai

## Daily Average Generation Data

### Nuclear Generation Daily Average - GWh (NRC)

	31-May	1-Jun	2-Jun	3-Jun	4-Jun	5-Jun	6-Jun	DoD	vs. 7D
NRC Nuclear Daily Output	87.0	87.8	87.8	87.4	87.4	88.1	88.8	0.7	1.2
NRC Nuclear Max Capacity	104.9	104.9	104.9	104.9	104.9	104.9	104.9	0.0	0.0
NRC Nuclear Outage	17.9	17.1	17.1	17.5	17.4	16.8	16.1	-0.7	-1.2
NRC % Nuclear Cap Utilization	88.5	89.3	89.3	88.9	88.9	89.5	90.3	0.7	1.2

### Wind Generation Daily Average - MWh (EIA)

	31-May	1-Jun	2-Jun	3-Jun	4-Jun	5-Jun	6-Jun	DoD	vs. 7D
CALI Wind	2538	1802	3399	4789	4362	4100	4236	136	737
TEXAS Wind	21511	14995	6487	7108	8979	17332	15612	-1720	2876
US Wind	65862	42153	28806	32252	35121	47127	42618	-4509	731

### Generation Daily Average - MWh (EIA)

	31-May	1-Jun	2-Jun	3-Jun	4-Jun	5-Jun	6-Jun	DoD	vs. 7D
US Wind	65862	42153	28806	32252	35121	47127	42618	-4509	731
US Solar	19361	19336	23597	23379	23608	24641	25683	1042	3363
US Petroleum	1168	1005	991	1035	972	802	855	53	-141
US Other	8571	8080	10728	10751	10469	10491	10854	363	1006
US Coal	101772	102807	101062	96220	89743	84783	98837	14054	2772
US Nuke	90510	91515	89946	89628	89994	90940	90954	14	532
US Hydro	37068	36018	36022	35669	34013	33079	33090	12	-2221
<b>US Gas</b>	<b>183709</b>	<b>195322</b>	<b>208556</b>	<b>192287</b>	<b>168314</b>	<b>160401</b>	<b>190911</b>	<b>30509</b>	<b>6146</b>

See National Wind and Nuclear daily charts

Source: Bloomberg, analytix.ai

## Storage Week Average Generation Data

### Nuclear Generation Weekly Average - GWh (NRC)

	29-Apr	6-May	13-May	20-May	27-May	3-Jun	WoW	WoW Bcf/d Impact
NRC Nuclear Daily Output	73.5	76.7	79.3	81.7	84.2	86.2	1.9	-0.3
NRC Nuclear Max Capacity	104.9	104.9	104.9	104.9	104.9	104.9	0.0	
NRC Nuclear Outage	31.4	28.2	25.5	23.2	20.6	18.7	-1.9	
NRC % Nuclear Cap Utilization	74.8	78.0	80.7	83.1	85.7	87.6	1.9	

### Wind Generation Weekly Average - MWh (EIA)

	29-Apr	6-May	13-May	20-May	27-May	3-Jun	WoW	WoW Bcf/d Impact
CALI Wind	3153	2929	3983	3452	2798	3443	644	-0.1
TEXAS Wind	18327	16902	17705	15706	14010	17915	3905	-0.7
US Wind	66986	57244	64974	50251	50129	58109	7980	-1.4
							16%	
						0.3		

### Generation Weekly Average - MWh (EIA)

	29-Apr	6-May	13-May	20-May	27-May	3-Jun	WoW	WoW Bcf/d Impact
US Wind	66986	57244	64974	50251	50129	58109	7980	-1.4
US Solar	17117	17079	18000	19634	17491	19237	1746	-0.3
US Petroleum	992	931	341	262	448	863	415	-0.1
US Other	7717	7529	7615	7871	7684	8211	528	-0.1
US Coal	77533	78898	81273	88922	88570	89773	1203	-0.2
US Nuke	77438	80558	83391	85510	88016	89606	1591	-0.3
US Hydro	26721	26831	28968	31973	33772	35033	1261	-0.2
<b>US Gas</b>	<b>131482</b>	<b>145774</b>	<b>148473</b>	<b>172224</b>	<b>160070</b>	<b>165210</b>	<b>5140</b>	<b>0.9</b>

See National Wind and Nuclear daily charts

Source: Bloomberg, analytix.ai

## Monthly Average Generation Data

### Nuclear Generation Monthly Average - GWh (NRC)

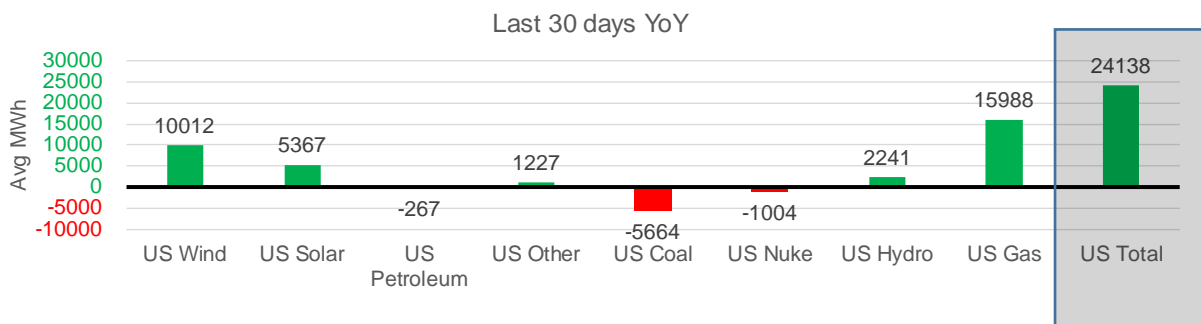
	2Yr Ago	LY	MTD				Last 30 days	Last 30 days YoY
	Same 30 days	Same 30 days	Mar-22	Apr-22	May-22	Jun-22		
	NRC Nuclear Daily Output	85.3	85.2	81.3	73.3	81.7		
NRC Nuclear Max Capacity	104.9	104.9	104.9	104.9	104.9	104.9	104.9	0.0
NRC Nuclear Outage	19.6	19.7	23.6	31.6	23.2	14.8	19.8	0.1
NRC % Nuclear Cap Utilization	86.7	86.6	82.7	74.5	83.0	89.5	85.9	-0.7

### Wind Generation Monthly Average - MWh (EIA)

	2Yr Ago	LY	MTD				Last 30 days	Last 30 days YoY
	Same 30 days	Same 30 days	Mar-22	Apr-22	May-22	Jun-22		
	CALI Wind	2496	3502	2250	3186	3391		
TEXAS Wind	9282	10939	14837	16311	16756	12717	15735	4796
US Wind	36840	41578	58528	64183	56491	39164	51591	10012

### Generation Monthly Average - MWh (EIA)

	2Yr Ago	LY	MTD				Last 30 days	Last 30 days YoY
	Same 30 days	Same 30 days	Mar-22	Apr-22	May-22	Jun-22		
	US Wind	36840	41578	58528	64183	56491		
US Solar	10952	14535	14055	16272	18133	23951	19901	▲ 5367
US Petroleum	610	844	985	985	518	921	577	▼ -267
US Other	8166	7256	7189	7386	7716	10385	8483	▲ 1227
US Coal	71774	95382	82290	77545	85284	96391	89717	▼ -5664
US Nuke	88950	88957	85256	77217	85496	90610	87953	▼ -1004
US Hydro	38317	31263	33958	29022	31369	34259	33504	▲ 2241
<b>US Gas</b>	<b>157229</b>	<b>152913</b>	<b>137230</b>	<b>133068</b>	<b>157526</b>	<b>187202</b>	<b>168901</b>	<b>▲ 15988</b>
<b>US Total</b>	<b>411610</b>	<b>433093</b>	<b>419836</b>	<b>406248</b>	<b>443905</b>	<b>466427</b>	<b>457231</b>	<b>▲ 24138</b>



See National Wind and Nuclear daily charts

Source: Bloomberg, analytix.ai

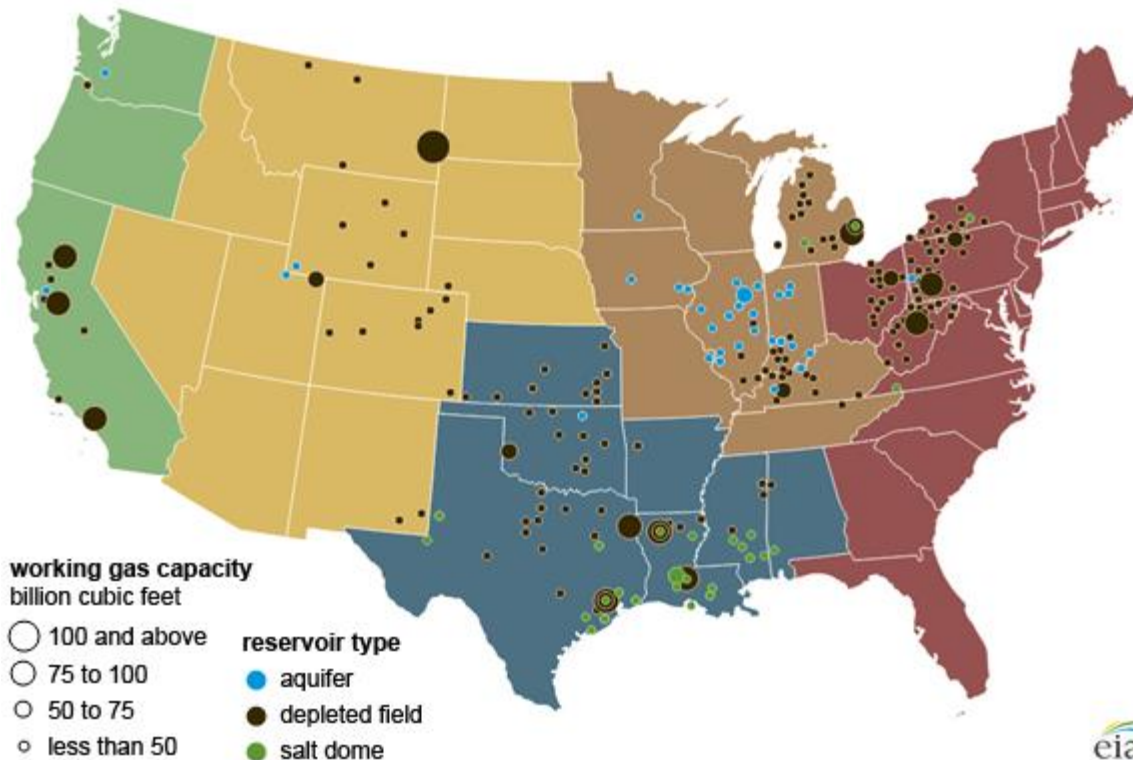
### Regional S/D Models Storage Projection

Week Ending 3-Jun

	Daily Raw Storage	Daily Adjustment Factor	Daily Average Storage Activity (Adjusted) *	Weekly Adjusted Storage Activity
L48	14.0	0.1	14.1	99
East	2.2	2.2	4.4	31
Midwest	5.7	-1.0	4.8	33
Mountain	4.4	-3.9	0.6	4
South Central	-0.7	3.4	2.8	19
Pacific	2.3	-0.7	1.5	11

\*Adjustment Factor is calculated based on historical regional deltas

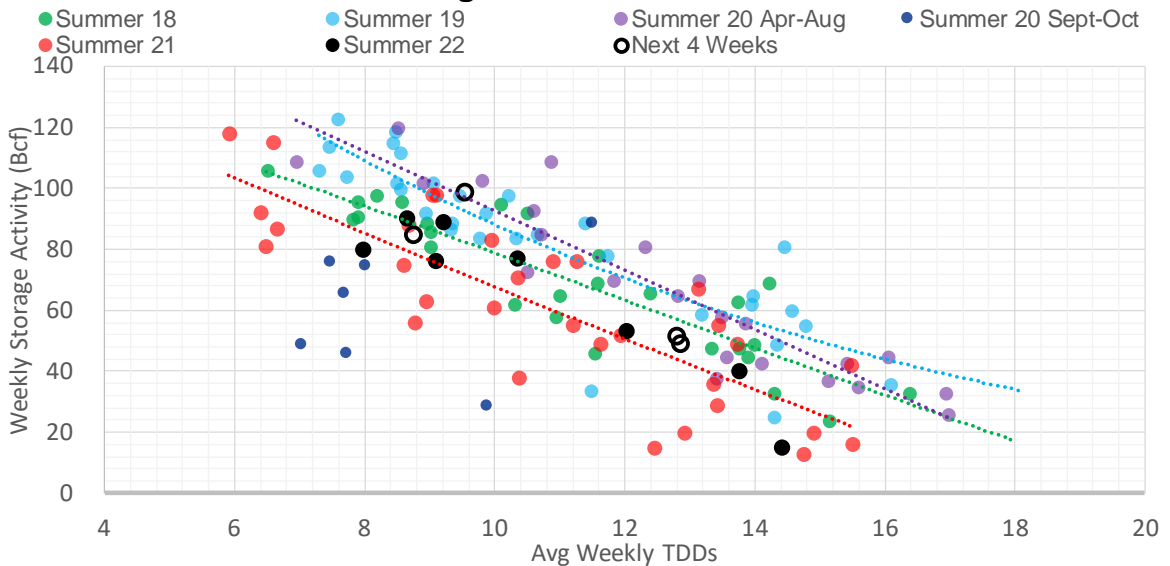
U.S. underground natural gas storage facilities by type (July 2015)



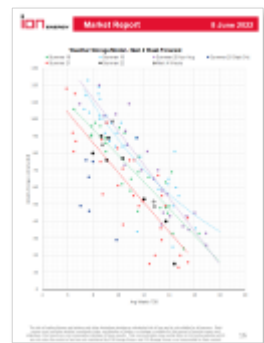
### Weather Model Storage Projection

Next report and beyond		
Week Ending	TDDs	Week Storage Projection
03-Jun	9.6	99
10-Jun	8.8	85
17-Jun	12.9	49
24-Jun	12.8	51

### Weather Storage Model - Next 4 Week Forecast

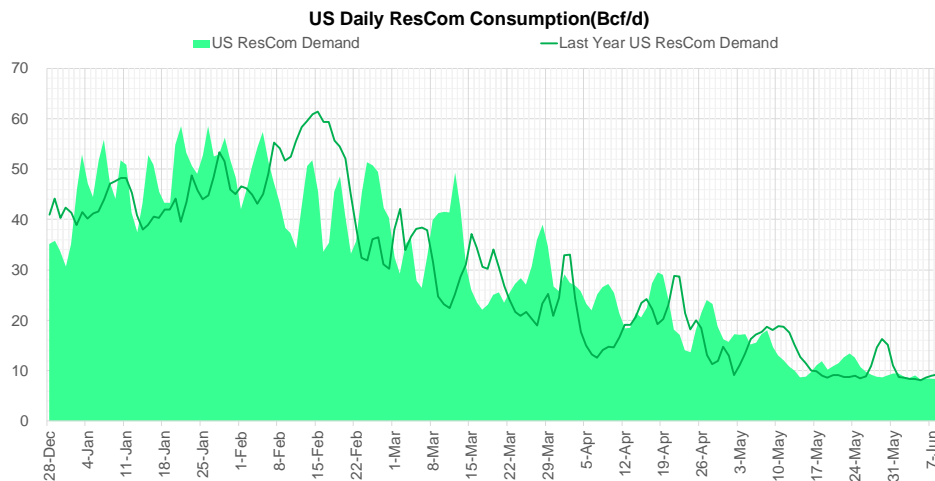
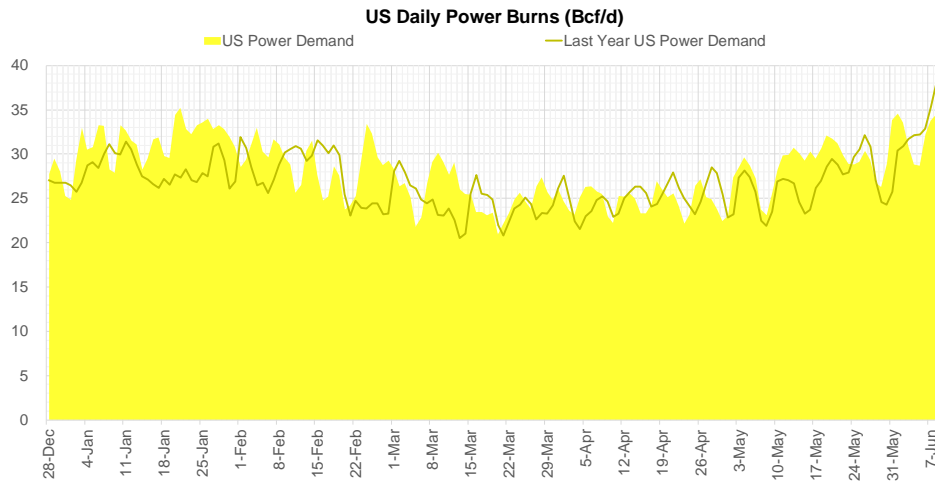
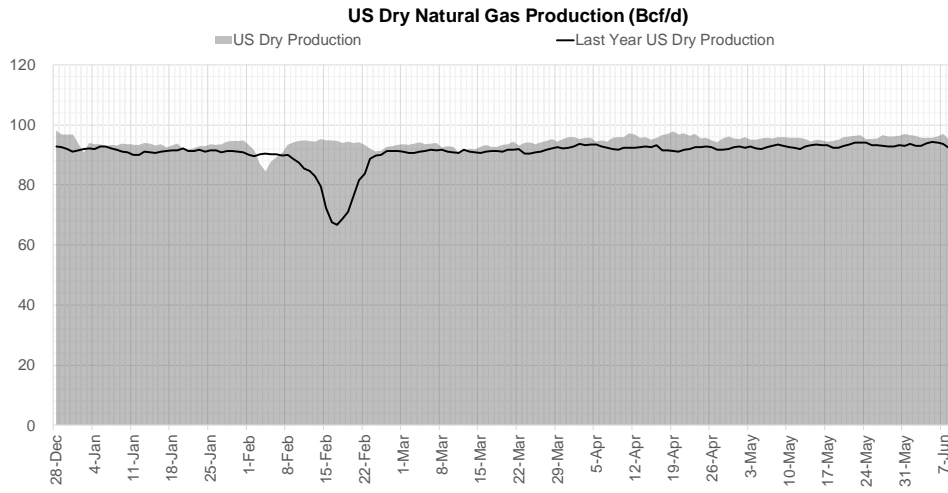


Go to larger image





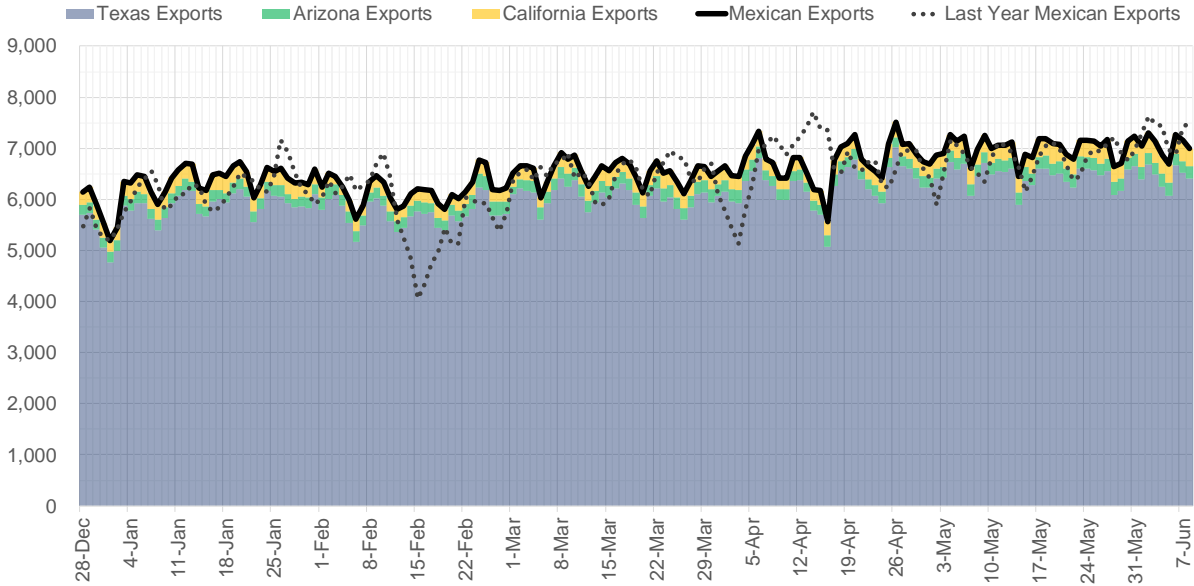
### Supply – Demand Trends



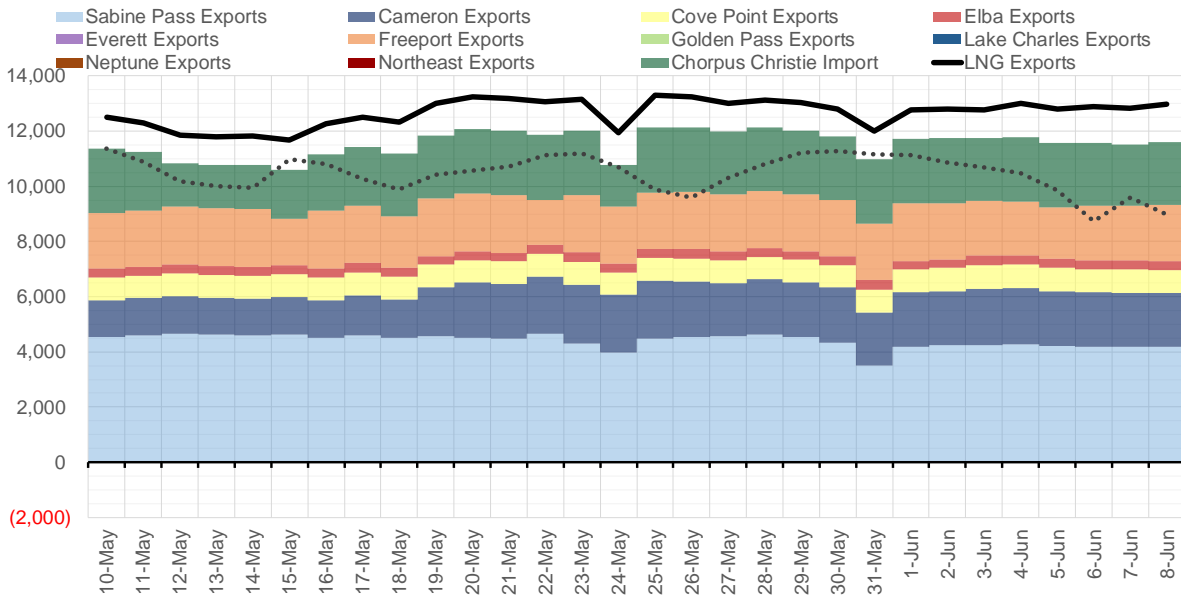
Source: Bloomberg

The risk of trading futures and options and other derivatives involves a substantial risk of loss and is not suitable for all persons. Each person must consider whether a particular trade, combination of trades, or strategy is suitable for that person's financial means and objectives. Past results are not necessarily indicative of future results. This communication may contain links to third party websites which are not under the control of and are not maintained by ION Energy Group, and ION Energy Group is not responsible for their content.

### Mexican Exports (MMcf/d)



### Net LNG Exports - Last 30 days (MMcf/d)



Source: Bloomberg

The risk of trading futures and options and other derivatives involves a substantial risk of loss and is not suitable for all persons. Each person must consider whether a particular trade, combination of trades, or strategy is suitable for that person's financial means and objectives. Past results are not necessarily indicative of future results. This communication may contain links to third party websites which are not under the control of and are not maintained by ION Energy Group, and ION Energy Group is not responsible for their content.

### Nat Gas Options Volume and Open Interest CME and ICE Combined

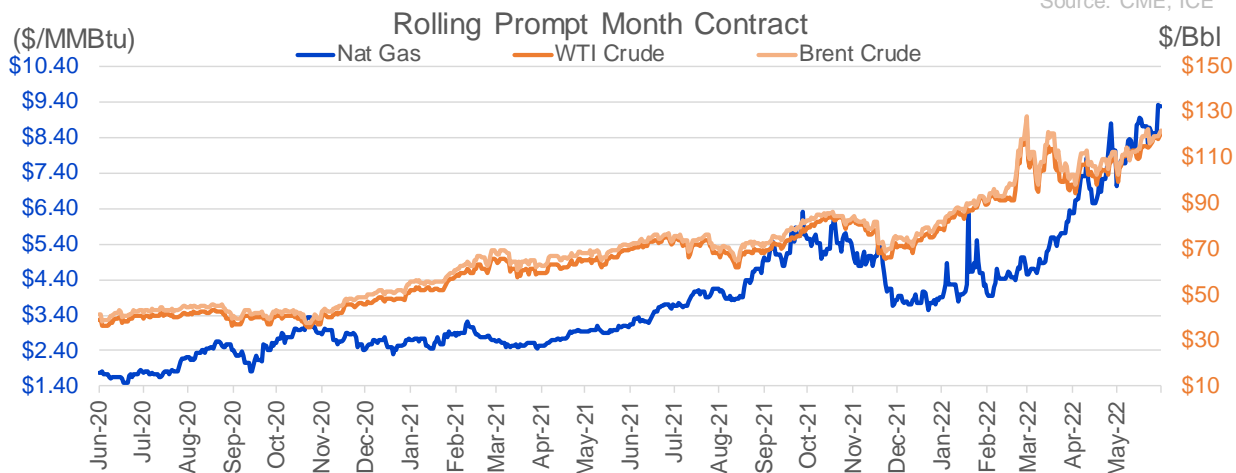
CONTRACT MONTH	CONTRACT YEAR	PUT/CALL	STRIKE	CUMULATIVE VOL	CONTRACT MONTH	CONTRACT YEAR	PUT/CALL	STRIKE	CUMULATIVE OI
8	2022	P	7.00	3425	8	2022	C	10.00	51012
7	2022	P	7.00	3143	8	2022	C	10.50	37566
8	2022	P	6.50	2724	10	2022	C	6.00	35685
8	2022	P	6.00	2723	8	2022	C	12.00	32294
7	2022	P	7.50	2605	7	2022	C	11.00	31563
9	2022	P	6.50	2054	10	2022	C	5.00	24069
9	2022	P	7.00	2023	9	2022	C	6.00	23675
9	2022	P	6.00	1835	7	2022	C	10.00	23653
7	2022	C	10.00	1725	7	2022	P	6.00	23556
10	2022	P	6.50	1246	10	2022	P	6.00	23198
9	2022	P	5.00	1230	7	2022	C	9.00	22464
10	2022	P	6.00	1219	8	2022	C	12.10	22003
7	2022	P	9.25	1009	8	2022	P	6.00	21404
7	2022	C	9.90	1002	10	2022	P	3.50	20524
7	2022	C	9.80	1000	7	2022	C	11.10	20502
8	2022	P	4.50	1000	10	2022	P	3.00	20275
1	2023	C	9.00	885	7	2022	P	7.00	20161
1	2023	C	10.00	880	10	2022	P	2.50	19868
8	2022	C	12.00	851	9	2022	C	10.00	19708
8	2022	C	10.00	843	9	2022	P	4.00	19550
7	2022	C	9.50	727	8	2022	C	6.00	19483
7	2022	P	8.25	723	7	2022	C	6.00	18910
10	2022	C	10.00	690	8	2022	C	7.00	18259
10	2022	P	5.00	626	7	2022	C	8.00	18231
8	2022	C	17.00	603	12	2022	C	5.00	18221
7	2022	P	8.50	584	9	2022	C	7.00	18091
7	2022	P	8.00	581	7	2022	C	7.00	17657
7	2022	C	9.25	571	5	2023	P	2.00	17436
4	2023	P	2.50	550	7	2022	P	3.25	17344
5	2023	P	2.50	550	10	2022	P	2.00	17258
6	2023	P	2.50	550	10	2022	P	4.00	16874
7	2023	P	2.50	550	1	2023	C	10.00	16525
8	2023	P	2.50	550	7	2022	P	5.50	16039
9	2023	P	2.50	550	8	2022	C	9.00	16014
10	2023	P	2.50	550	9	2022	C	4.00	15970
10	2022	P	7.00	501	10	2022	C	10.00	15751
7	2022	C	11.00	461	2	2023	C	10.00	15519
3	2023	P	6.00	450	3	2023	C	10.00	15361
8	2022	P	7.50	435	9	2022	P	2.50	15292
7	2022	C	13.00	398	7	2022	P	5.00	15194
8	2022	C	10.50	391	8	2022	P	7.00	15154
7	2022	C	6.00	388	10	2022	P	3.25	14919
8	2022	P	5.50	376	9	2022	P	2.75	14883
8	2022	C	15.00	360	10	2023	P	2.00	14730
7	2022	P	6.50	355	9	2022	P	3.00	14651
8	2022	P	8.65	350	7	2022	P	3.50	14604
8	2022	P	8.90	350	8	2022	P	3.00	14552
9	2022	C	10.00	335	11	2022	P	4.00	14494
8	2022	C	9.50	316	7	2022	P	3.00	14491
					7	2022	P	4.5	14400

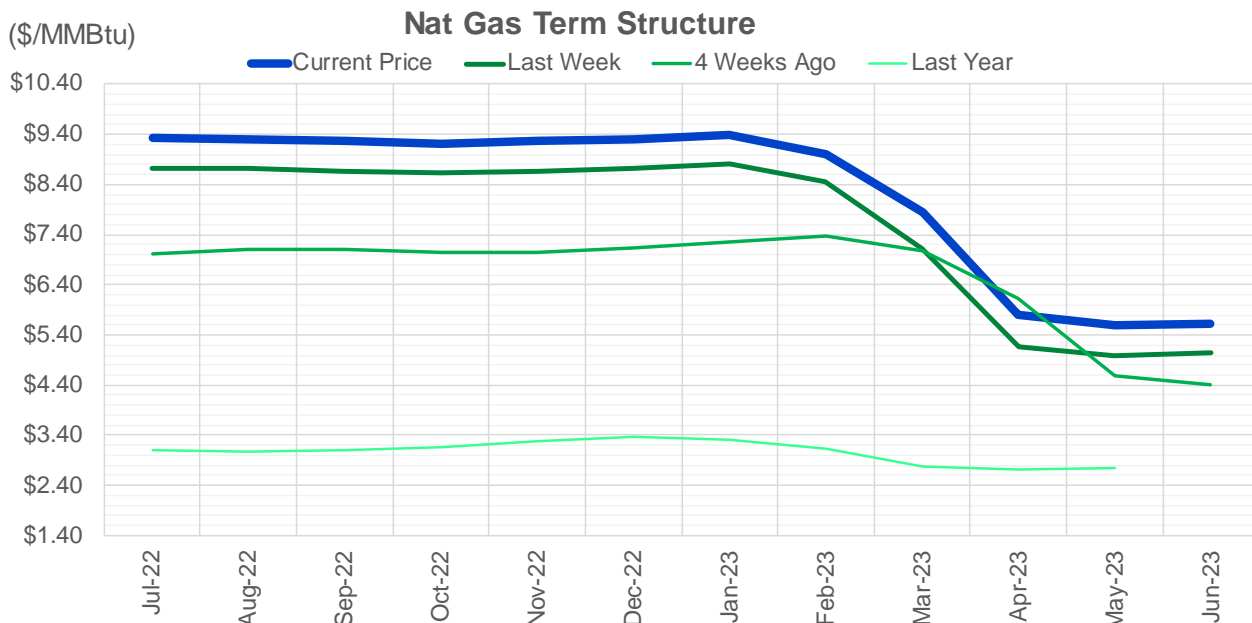
Source: CME, ICE

### Nat Gas Futures Open Interest CME and ICE Combined

CME Henry Hub Futures (10,000 MMBtu)				ICE Henry Hub Futures Contract Equivalent (10,000 MM			
	Current	Prior	Daily Change		Current	Prior	Daily Change
JUL 22	181862	200905	-19043	JUL 22	90860	89954	906
AUG 22	78480	74236	4244	AUG 22	61035	60171	863
SEP 22	115588	111464	4124	SEP 22	68451	66614	1837
OCT 22	98753	98268	485	OCT 22	71114	70840	274
NOV 22	50559	51285	-726	NOV 22	59283	59494	-211
DEC 22	52627	52268	359	DEC 22	64500	64560	-60
JAN 23	65787	66833	-1046	JAN 23	66305	66381	-77
FEB 23	28747	28692	55	FEB 23	53719	53688	31
MAR 23	45744	44341	1403	MAR 23	52973	52985	-12
APR 23	62896	62569	327	APR 23	52549	52136	413
MAY 23	66323	64374	1949	MAY 23	52875	52089	786
JUN 23	25532	25295	237	JUN 23	45759	45504	254
JUL 23	24217	23637	580	JUL 23	43776	43537	239
AUG 23	15513	15440	73	AUG 23	43744	43512	232
SEP 23	19121	19431	-310	SEP 23	42761	42507	254
OCT 23	41188	40799	389	OCT 23	48844	48776	68
NOV 23	13114	13003	111	NOV 23	43459	43468	-10
DEC 23	13798	13981	-183	DEC 23	39664	39689	-26
JAN 24	20049	20833	-784	JAN 24	39584	39724	-140
FEB 24	6145	6111	34	FEB 24	26947	26700	248
MAR 24	13752	14692	-940	MAR 24	31592	31459	133
APR 24	12739	12125	614	APR 24	27095	27324	-230
MAY 24	6610	6667	-57	MAY 24	25814	26046	-232
JUN 24	2025	2005	20	JUN 24	22198	22429	-231
JUL 24	1976	1990	-14	JUL 24	22405	22653	-248
AUG 24	2990	2998	-8	AUG 24	22402	22658	-256
SEP 24	1371	1367	4	SEP 24	21814	22067	-254
OCT 24	7386	6754	632	OCT 24	24959	24934	25
NOV 24	4513	4521	-8	NOV 24	23095	23288	-192
DEC 24	7386	7377	9	DEC 24	25101	25293	-192

Source: CME, ICE





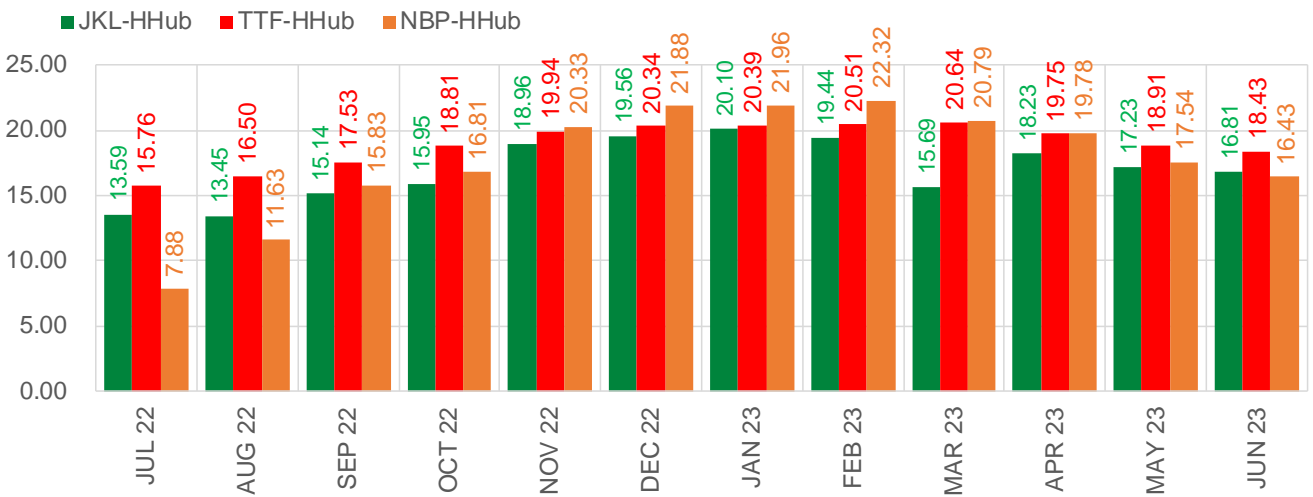
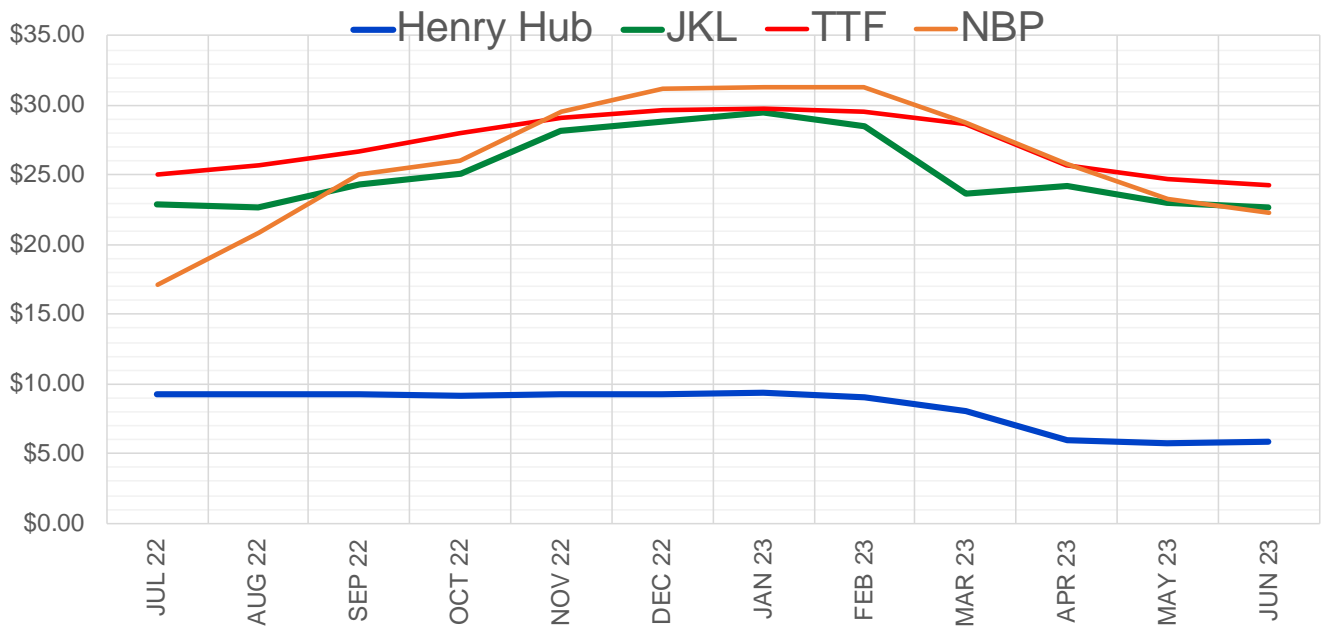
	Jul-22	Aug-22	Sep-22	Oct-22	Nov-22	Dec-22	Jan-23	Feb-23	Mar-23	Apr-23	May-23	Jun-23
<b>Current Price</b>	\$9.322	\$9.306	\$9.260	\$9.220	\$9.256	\$9.313	\$9.380	\$8.999	\$7.840	\$5.807	\$5.586	\$5.627
Last Week	\$8.727	\$8.712	\$8.673	\$8.640	\$8.668	\$8.735	\$8.810	\$8.467	\$7.105	\$5.176	\$4.980	\$5.034
vs. Last Week	\$0.595	\$0.594	\$0.587	\$0.580	\$0.588	\$0.578	\$0.570	\$0.532	\$0.735	\$0.631	\$0.606	\$0.593
4 Weeks Ago	\$7.026	\$7.106	\$7.091	\$7.054	\$7.052	\$7.126	\$7.263	\$7.362	\$7.082	\$6.128	\$4.571	\$4.412
vs. 4 Weeks Ago	\$2.296	\$2.200	\$2.169	\$2.166	\$2.204	\$2.187	\$2.117	\$1.637	\$0.758	-\$0.321	\$1.015	\$1.215
Last Year	\$3.070	\$3.089	\$3.082	\$3.104	\$3.171	\$3.293	\$3.377	\$3.318	\$3.147	\$2.765	\$2.715	\$2.745
vs. Last Year	\$6.252	\$6.217	\$6.178	\$6.116	\$6.085	\$6.020	\$6.003	\$5.681	\$4.693	\$3.042	\$2.871	\$2.882

	Units	Cash Settled	Prompt Settle	Cash to Prompt
AGT Citygate	\$/MMBtu	8.75	8.19	-0.56
TETCO M3	\$/MMBtu	8.05	7.70	-0.35
FGT Zone 3	\$/MMBtu	8.15	8.38	0.23
Zone 6 NY	\$/MMBtu	8.15	7.71	-0.45
Chicago Citygate	\$/MMBtu	8.90	8.05	-0.86
Michcon	\$/MMBtu	8.85	7.97	-0.88
Columbia TCO Pool	\$/MMBtu	8.03	7.47	-0.56
Ventura	\$/MMBtu	8.80	7.98	-0.83
Rockies/Opal	\$/MMBtu	8.49	7.73	-0.76
El Paso Permian Basin	\$/MMBtu	7.92	7.49	-0.42
Socal Citygate	\$/MMBtu	10.21	9.45	-0.76
Malin	\$/MMBtu	8.87	8.22	-0.65
Houston Ship Channel	\$/MMBtu	9.04	8.16	-0.88
Henry Hub Cash	\$/MMBtu	9.28	7.92	-1.37
AECO Cash	C\$/GJ	6.62	5.08	-1.54
Station2 Cash	C\$/GJ	5.71	7.90	2.19
Dawn Cash	C\$/GJ	8.85	8.01	-0.84

Source: CME, Bloomberg

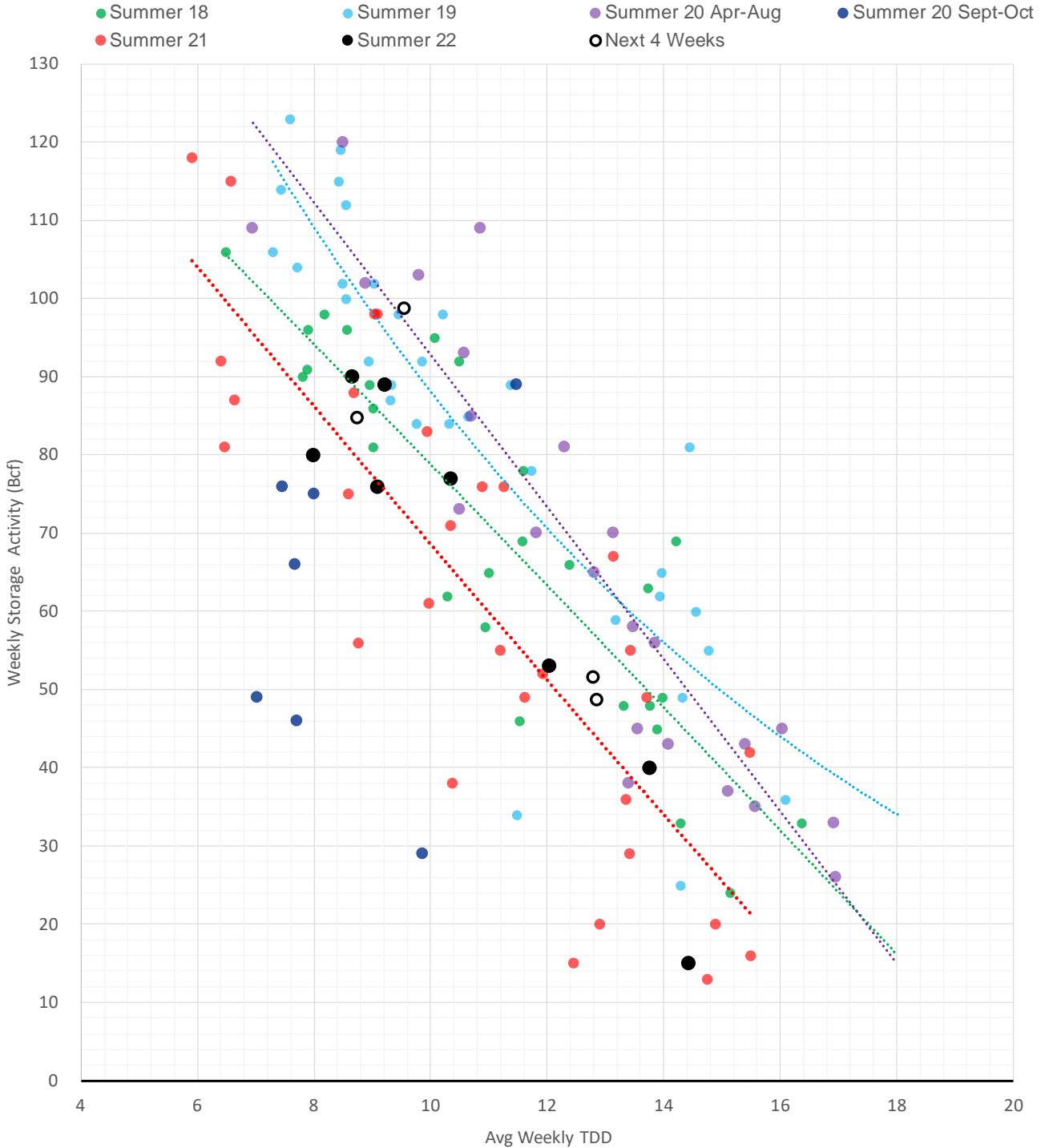
	Units	Current Price	vs. Last Week	vs. 4 Weeks Ago	vs. Last Year
NatGas Jul21/Oct21	\$/MMBtu	2.224	▲ 0.000	▲ 0.000	▲ 2.199
NatGas Oct21/Nov21	\$/MMBtu	0.361	▲ 0.000	▲ 0.000	▲ 0.298
NatGas Oct21/Jan22	\$/MMBtu	-1.817	▲ 0.000	▲ 0.000	▼ -2.078
NatGas Apr22/Oct22	\$/MMBtu	3.869	▲ 1.132	▲ 1.814	▲ 3.847
WTI Crude	\$/Bbl	119.41	▲ 4.740	▲ 19.650	▲ 49.360
Brent Crude	\$/Bbl	120.57	▼ -2.270	▲ 18.110	▲ 48.350
Fuel Oil, NY Harbour 1%	\$/Bbl	97.18	▲ 0.000	▲ 0.000	▲ 0.000
Heating Oil	cents/Gallon	432.06	▲ 22.970	▲ 38.840	▲ 218.560
Propane, Mt. Bel	cents/Gallon	1.24	▲ 0.003	▼ 0.000	▲ 0.305
Ethane, Mt. Bel	cents/Gallon	0.68	▲ 0.076	▲ 0.111	▲ 0.403
Coal, PRB	\$/MTon	12.30	▲ 0.000	▲ 0.000	▲ 0.000
Coal, PRB	\$/MMBtu	0.70			
Coal, ILB	\$/MTon	31.05	▲ 0.000	▲ 0.000	▲ 0.000
Coal, ILB	\$/MMBtu	1.32			

### Nat Gas Term Structure (\$MMBTU)



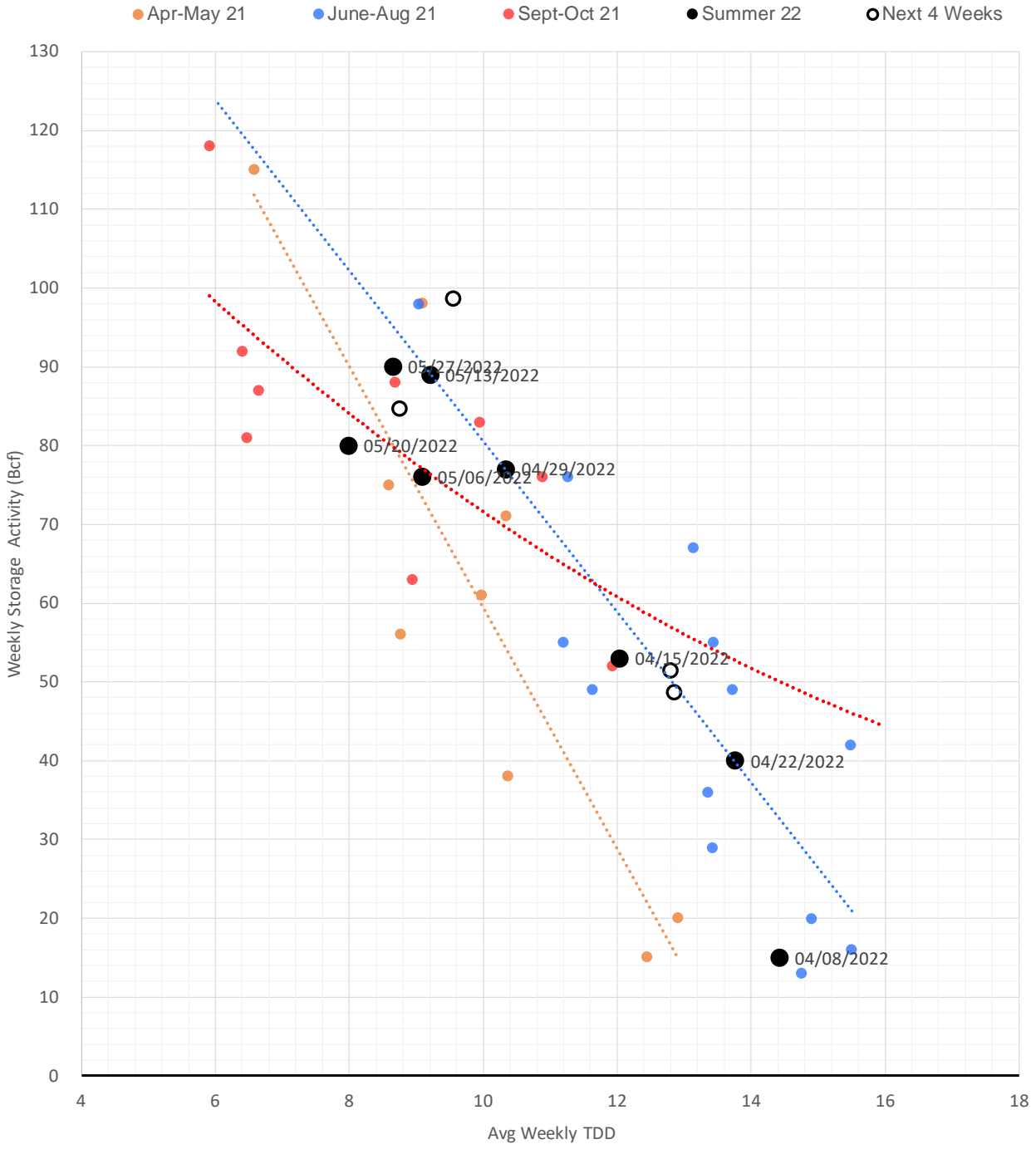
	JUL 22	AUG 22	SEP 22	OCT 22	NOV 22	DEC 22	JAN 23	FEB 23	MAR 23	APR 23	MAY 23	JUN 23
<b>Henry Hub</b>	\$9.277	\$9.252	\$9.211	\$9.183	\$9.213	\$9.296	\$9.362	\$9.046	\$8.011	\$5.996	\$5.789	\$5.826
<b>JKL</b>	\$22.870	\$22.700	\$24.350	\$25.135	\$28.170	\$28.860	\$29.465	\$28.490	\$23.705	\$24.230	\$23.020	\$22.635
<b>JKL-HHub</b>	\$13.593	\$13.448	\$15.139	\$15.952	\$18.957	\$19.564	\$20.103	\$19.444	\$15.694	\$18.234	\$17.231	\$16.809
<b>TTF</b>	\$25.041	\$25.755	\$26.743	\$27.990	\$29.152	\$29.638	\$29.748	\$29.551	\$28.655	\$25.742	\$24.694	\$24.257
<b>TTF-HHub</b>	\$15.764	\$16.503	\$17.532	\$18.807	\$19.939	\$20.342	\$20.386	\$20.505	\$20.644	\$19.746	\$18.905	\$18.431
<b>NBP</b>	\$17.152	\$20.879	\$25.042	\$25.994	\$29.538	\$31.174	\$31.325	\$31.361	\$28.801	\$25.777	\$23.332	\$22.257
<b>NBP-HHub</b>	\$7.875	\$11.627	\$15.831	\$16.811	\$20.325	\$21.878	\$21.963	\$22.315	\$20.790	\$19.781	\$17.543	\$16.431

### Weather Storage Model - Next 4 Week Forecast



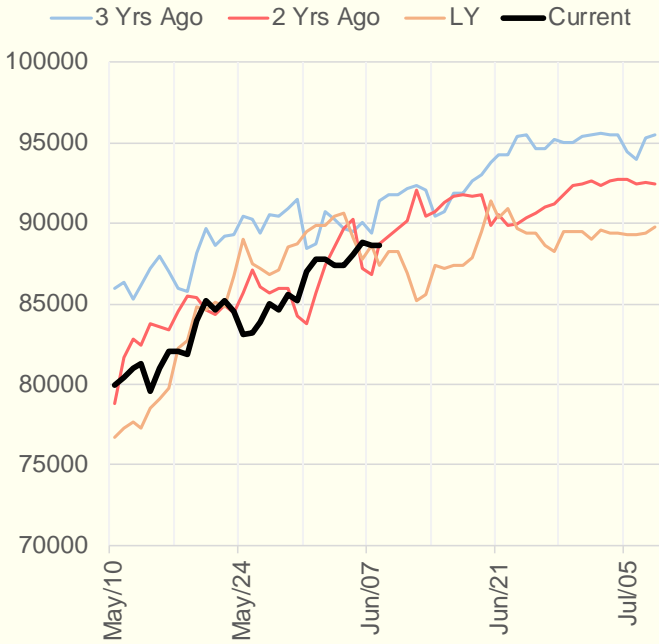


### Weather Storage Model for Summer 2021 & 2022

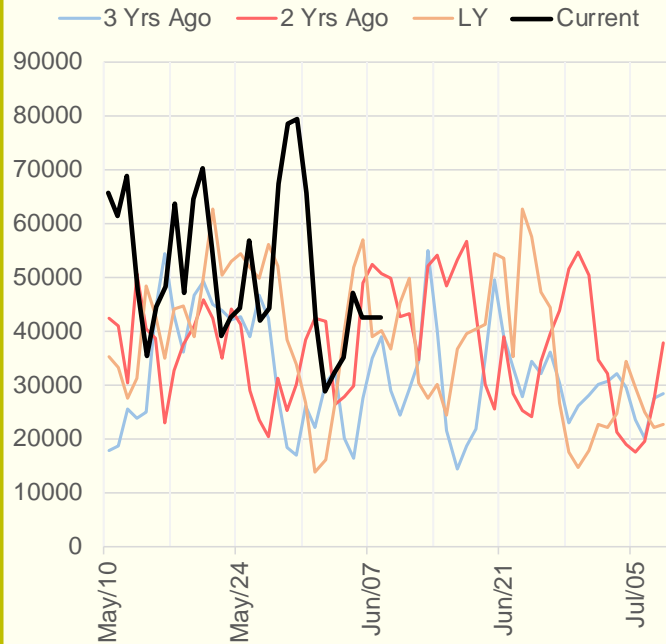


The risk of trading futures and options and other derivatives involves a substantial risk of loss and is not suitable for all persons. Each person must consider whether a particular trade, combination of trades, or strategy is suitable for that person's financial means and objectives. Past results are not necessarily indicative of future results. This communication may contain links to third party websites which are not under the control of and are not maintained by ION Energy Group, and ION Energy Group is not responsible for their content.

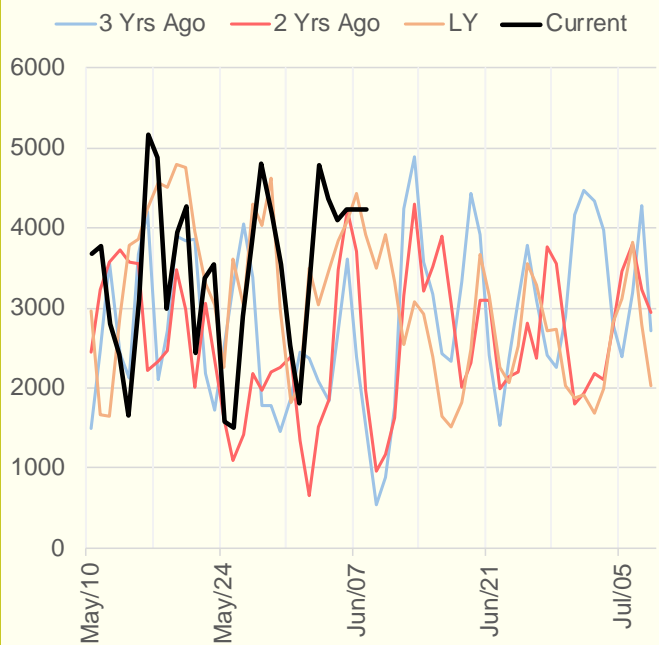
### NRC Nuclear Daily Output



### US Wind



### CALI Wind



### TEXAS Wind

