

	Current	Δ from YD	Δ from 7D Avg
Nat Gas Prompt	\$ 9.47 ▲	\$ 0.14 ▲	\$ 0.86

	Current	Δ from YD	Δ from 7D Avg
WTI Prompt	\$ 118.24 ▼	\$ (0.26) ▲	\$ 0.8

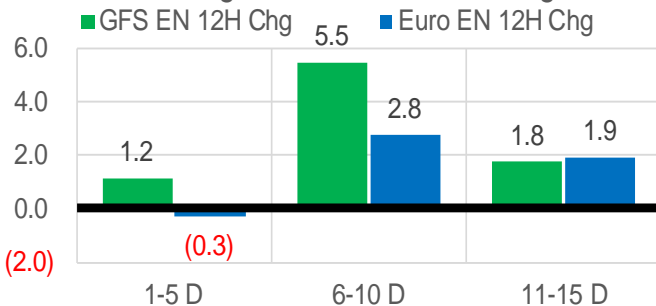
	Current	Δ from YD	Δ from 7D Avg
Brent Prompt	\$ 119.13 ▼	\$ (0.38) ▼	\$ (0.2)

Page Menu

- [Short-term Weather Model Outlooks](#)
- [Lower 48 Component Models](#)
- [Regional S/D Models Storage Projection](#)
- [Weather Model Storage Projection](#)
- [Supply – Demand Trends](#)
- [Nat Gas Options Volume and Open Interest](#)
- [Nat Gas Futures Open Interest](#)
- [Price Summary](#)

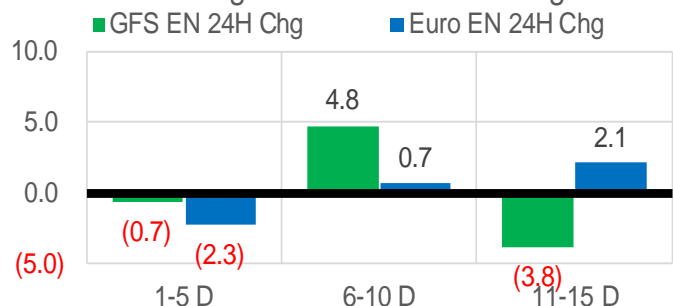
Vs. 12H Ago

L48 Region - 00z TDD vs 12H Ago



Vs. 24H Ago

L48 Region - 00z TDD vs 24H Ago



	Current	Δ from YD	Δ from 7D Avg
US Dry Production	95.2 ▼	-0.86 ▼	-1.02

	Current	Δ from YD	Δ from 7D Avg
US Power Burns	33.8 ▲	2.20 ▲	2.07

	Current	Δ from YD	Δ from 7D Avg
US ResComm	8.4 ▼	-0.10 ▼	-0.47

	Current	Δ from YD	Δ from 7D Avg
Canadian Imports	5.5 ▲	0.27 ▲	0.44

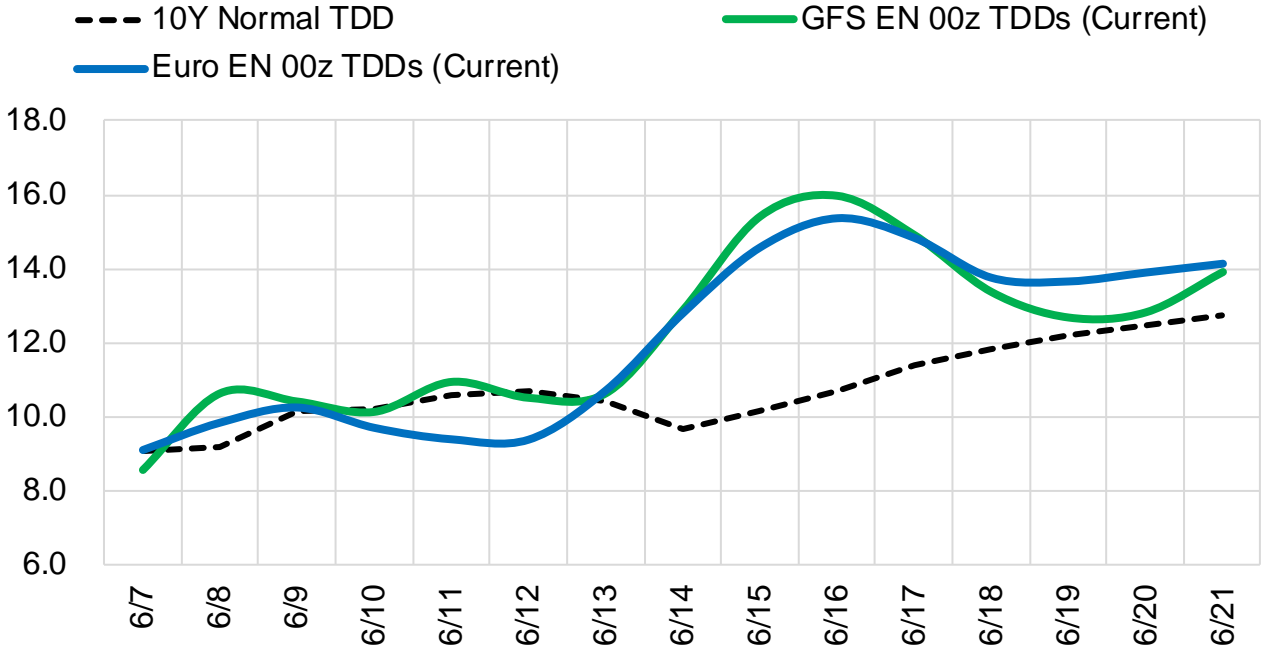
	Current	Δ from YD	Δ from 7D Avg
Net LNG Exports	12.8 ▲	0.06 ▲	0.13

	Current	Δ from YD	Δ from 7D Avg
Mexican Exports	6.6 ▼	-0.65 ▼	-0.45

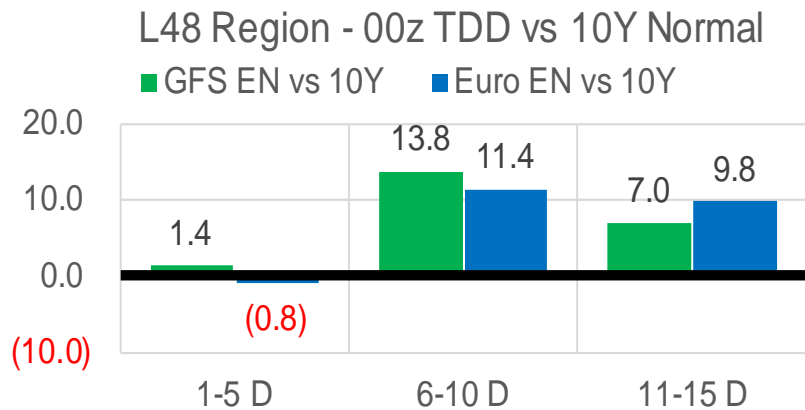
The risk of trading futures and options and other derivatives involves a substantial risk of loss and is not suitable for all persons. Each person must consider whether a particular trade, combination of trades, or strategy is suitable for that person's financial means and objectives. Past results are not necessarily indicative of future results. This communication may contain links to third party websites which are not under the control of and are not maintained by ION Energy Group, and ION Energy Group is not responsible for their content.

Short-term Weather Model Outlooks (00z)

L48 Region



Vs. 10Y Normal



Source: WSI, Bloomberg

Lower 48 Component Models

Daily Balances

	1-Jun	2-Jun	3-Jun	4-Jun	5-Jun	6-Jun	7-Jun	DoD	vs. 7D
Lower 48 Dry Production	96.6	96.5	95.7	95.8	95.8	96.0	95.2	▼ -0.9	▼ -0.9
Canadian Imports	5.0	4.9	5.0	4.8	5.1	5.2	5.5	▲ 0.3	▲ 0.4
L48 Power	34.6	33.6	30.7	28.8	28.7	31.6	33.8	▲ 2.2	▲ 2.4
L48 Residential & Commercial	9.4	8.7	8.6	9.1	8.3	8.5	8.4	▼ -0.1	▼ -0.4
L48 Industrial	21.6	21.2	21.0	20.8	20.5	20.5	20.4	▼ -0.1	▼ -0.5
L48 Lease and Plant Fuel	5.2	5.2	5.2	5.2	5.2	5.2	5.1	▼ -0.1	▼ -0.1
L48 Pipeline Distribution	2.4	2.3	2.1	2.1	2.0	2.2	2.3	▲ 0.1	▲ 0.1
L48 Regional Gas Consumption	73.2	71.1	67.6	65.9	64.7	67.9	69.9	▲ 2.0	▲ 1.5
Net LNG Delivered	12.78	12.79	12.77	13.01	12.79	12.77	12.83	▲ 0.1	▲ 0.0
Total Mexican Exports	7.0	7.3	7.1	6.9	6.7	7.3	6.6	▼ -0.6	▼ -0.4
Implied Daily Storage Activity	8.6	10.1	13.2	14.9	16.8	13.3	11.2		
EIA Reported Daily Storage Activity									
Daily Model Error									

EIA Storage Week Balances

	4-Jun	6-May	13-May	20-May	27-May	3-Jun	WoW	vs. 4W
Lower 48 Dry Production	93.1	95.5	95.8	94.8	95.8	96.5	▲ 0.6	▲ 1.0
Canadian Imports	3.9	5.9	5.2	4.9	4.9	4.8	▼ 0.0	▼ -0.4
L48 Power	27.8	26.2	26.8	30.4	30.0	30.5	▲ 0.5	▲ 2.1
L48 Residential & Commercial	11.8	16.8	14.5	10.0	11.6	9.1	▼ -2.6	▼ -4.2
L48 Industrial	18.5	21.1	20.9	21.3	20.0	21.3	▲ 1.3	▲ 0.4
L48 Lease and Plant Fuel	5.0	5.2	5.2	5.1	5.2	5.2	▲ 0.0	▲ 0.1
L48 Pipeline Distribution	2.2	2.4	2.3	2.3	2.4	2.2	▼ -0.1	▼ -0.1
L48 Regional Gas Consumption	65.4	71.8	69.6	69.1	69.2	68.2	▼ -1.0	▼ -1.7
Net LNG Exports	11.0	12.2	12.2	12.2	13.0	12.8	▼ -0.2	▲ 0.4
Total Mexican Exports	7.2	6.9	7.0	7.0	7.0	7.0	▼ 0.0	▲ 0.0
Implied Daily Storage Activity	13.4	10.6	12.1	11.4	11.5	13.3	1.8	
EIA Reported Daily Storage Activity	14.0	10.9	12.7	11.4	12.9			
Daily Model Error	-0.6	-0.3	-0.7	0.0	-1.4			

Monthly Balances

	2Yr Ago Jun-20	LY Jun-21	Feb-22	Mar-22	Apr-22	May-22	MTD Jun-22	MoM	vs. LY
Lower 48 Dry Production	87.9	93.2	92.7	93.5	95.9	95.6	96.1	▲ 0.4	▲ 2.8
Canadian Imports	4.0	4.8	6.5	5.2	5.8	5.1	5.0	▼ -0.1	▲ 0.2
L48 Power	34.9	35.9	28.7	25.5	24.7	28.8	31.3	▲ 2.5	▼ -4.6
L48 Residential & Commercial	8.8	8.9	43.3	31.5	22.5	12.3	8.8	▼ -3.5	▼ -0.1
L48 Industrial	20.0	20.2	22.1	19.7	21.4	20.9	20.9	▲ 0.1	▲ 0.7
L48 Lease and Plant Fuel	4.8	5.0	5.1	5.2	5.2	5.2	5.2	▲ 0.0	▲ 0.2
L48 Pipeline Distribution	2.3	2.4	3.5	2.9	2.6	2.3	2.2	▼ -0.1	▼ -0.3
L48 Regional Gas Consumption	70.8	72.5	102.7	84.7	76.4	69.5	68.4	▼ -1.1	▼ -4.1
Net LNG Exports	4.0	10.2	12.4	12.9	12.3	12.5	12.8	▲ 0.3	▲ 2.7
Total Mexican Exports	5.5	7.4	6.2	6.5	6.7	7.0	7.0	▲ 0.1	▼ -0.4
Implied Daily Storage Activity	11.5	8.0	-22.1	-5.4	6.2	11.8	12.8		
EIA Reported Daily Storage Activity									
Daily Model Error									

Source: Bloomberg, analytix.ai

Daily Average Generation Data

Nuclear Generation Daily Average - GWh (NRC)

	30-May	31-May	1-Jun	2-Jun	3-Jun	4-Jun	5-Jun	DoD	vs. 7D
NRC Nuclear Daily Output	85.2	87.0	87.8	87.8	87.4	87.4	88.1	0.6	0.9
NRC Nuclear Max Capacity	104.9	104.9	104.9	104.9	104.9	104.9	104.9	0.0	0.0
NRC Nuclear Outage	19.6	17.9	17.1	17.1	17.5	17.4	16.8	-0.6	-0.9
NRC % Nuclear Cap Utilization	86.7	88.5	89.3	89.3	88.9	88.9	89.5	0.6	1.0

Wind Generation Daily Average - MWh (EIA)

	30-May	31-May	1-Jun	2-Jun	3-Jun	4-Jun	5-Jun	DoD	vs. 7D
CALI Wind	3545	2538	1802	3399	4789	4362	4100	-261	694
TEXAS Wind	22862	21511	14995	6487	7108	8979	17332	8352	3674
US Wind	79602	65862	42153	28806	32252	35121	47405	12284	105

Generation Daily Average - MWh (EIA)

	30-May	31-May	1-Jun	2-Jun	3-Jun	4-Jun	5-Jun	DoD	vs. 7D
US Wind	79602	65862	42153	28806	32252	35121	47405	12284	105
US Solar	18350	19361	19336	23597	23380	23596	24679	1084	3409
US Petroleum	856	1168	1005	991	1035	972	802	-170	-202
US Other	7858	8560	8080	10728	10750	10465	10491	27	1085
US Coal	83828	101772	102807	101062	96210	89246	86294	-2952	-9526
US Nuke	89060	90510	91515	89946	89628	89994	90940	946	831
US Hydro	34449	37068	36018	36022	35668	34013	33700	-313	-1840
US Gas	143999	183668	195321	208556	192324	167569	159734	-7835	-22172

See National Wind and Nuclear daily charts

Source: Bloomberg, analytix.ai

Storage Week Average Generation Data

Nuclear Generation Weekly Average - GWh (NRC)

	29-Apr	6-May	13-May	20-May	27-May	3-Jun	WoW	WoW Bcf/d Impact
NRC Nuclear Daily Output	73.5	76.7	79.3	81.7	84.2	86.2	1.9	-0.3
NRC Nuclear Max Capacity	104.9	104.9	104.9	104.9	104.9	104.9	0.0	
NRC Nuclear Outage	31.4	28.2	25.5	23.2	20.6	18.7	-1.9	
NRC % Nuclear Cap Utilization	74.8	78.0	80.7	83.1	85.7	87.6	1.9	

Wind Generation Weekly Average - MWh (EIA)

	29-Apr	6-May	13-May	20-May	27-May	3-Jun	WoW	WoW Bcf/d Impact
CALI Wind	3153	2929	3983	3452	2798	3443	644	-0.1
TEXAS Wind	18327	16902	17705	15706	14010	17915	3905	-0.7
US Wind	66986	57244	64974	50251	50129	58109	7980	-1.4
							16%	
						0.3		

Generation Weekly Average - MWh (EIA)

	29-Apr	6-May	13-May	20-May	27-May	3-Jun	WoW	WoW Bcf/d Impact
US Wind	66986	57244	64974	50251	50129	58109	7980	-1.4
US Solar	16968	17033	18000	19634	17491	19138	1647	-0.3
US Petroleum	992	931	341	262	448	863	415	-0.1
US Other	7717	7529	7615	7871	7684	8174	491	-0.1
US Coal	77533	78898	81273	88922	88570	89773	1203	-0.2
US Nuke	77438	80558	83391	85510	88016	89606	1591	-0.3
US Hydro	26721	26831	28968	31973	33772	35031	1259	-0.2
US Gas	131482	145774	148473	172224	160070	165072	5002	0.9

See National Wind and Nuclear daily charts

Source: Bloomberg, analytix.ai

Monthly Average Generation Data

Nuclear Generation Monthly Average - GWh (NRC)

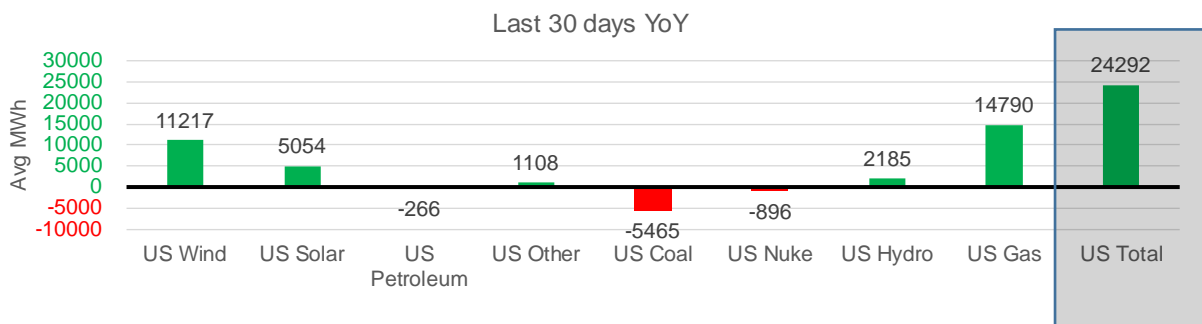
	2Yr Ago	LY	MTD				Last 30 days	Last 30 days YoY
	Same 30 days	Same 30 days	Mar-22	Apr-22	May-22	Jun-22		
NRC Nuclear Daily Output	85.0	84.8	81.3	73.3	81.7	88.0	84.2	-0.6
NRC Nuclear Max Capacity	104.9	104.9	104.9	104.9	104.9	104.9	104.9	0.0
NRC Nuclear Outage	19.9	20.1	23.6	31.6	23.2	16.9	20.7	0.6
NRC % Nuclear Cap Utilization	86.5	86.2	82.7	74.5	83.0	89.5	85.6	-0.6

Wind Generation Monthly Average - MWh (EIA)

	2Yr Ago	LY	MTD				Last 30 days	Last 30 days YoY
	Same 30 days	Same 30 days	Mar-22	Apr-22	May-22	Jun-22		
CALI Wind	2488	3484	2250	3186	3391	3807	3452	-32
TEXAS Wind	9143	10971	14837	16311	16756	12795	16035	5064
US Wind	36323	41988	58528	64183	56491	40078	53205	11217

Generation Monthly Average - MWh (EIA)

	2Yr Ago	LY	MTD				Last 30 days	Last 30 days YoY
	Same 30 days	Same 30 days	Mar-22	Apr-22	May-22	Jun-22		
US Wind	36323	41988	58528	64183	56491	40078	53205	▲ 11217
US Solar	10983	14538	14057	16212	18111	23421	19592	▲ 5054
US Petroleum	624	820	985	985	518	916	554	▼ -266
US Other	8166	7222	7206	7386	7707	10214	8329	▲ 1108
US Coal	70548	93619	82290	77545	85284	92601	88154	▼ -5465
US Nuke	88709	88605	85256	77217	85496	90557	87709	▼ -896
US Hydro	38301	31206	33959	29022	31368	34689	33391	▲ 2185
US Gas	155512	150162	137232	133068	157495	177567	164952	▲ 14790
US Total	407927	428546	419842	406189	443843	452021	452838	▲ 24292



See National Wind and Nuclear daily charts

Source: Bloomberg, analytix.ai

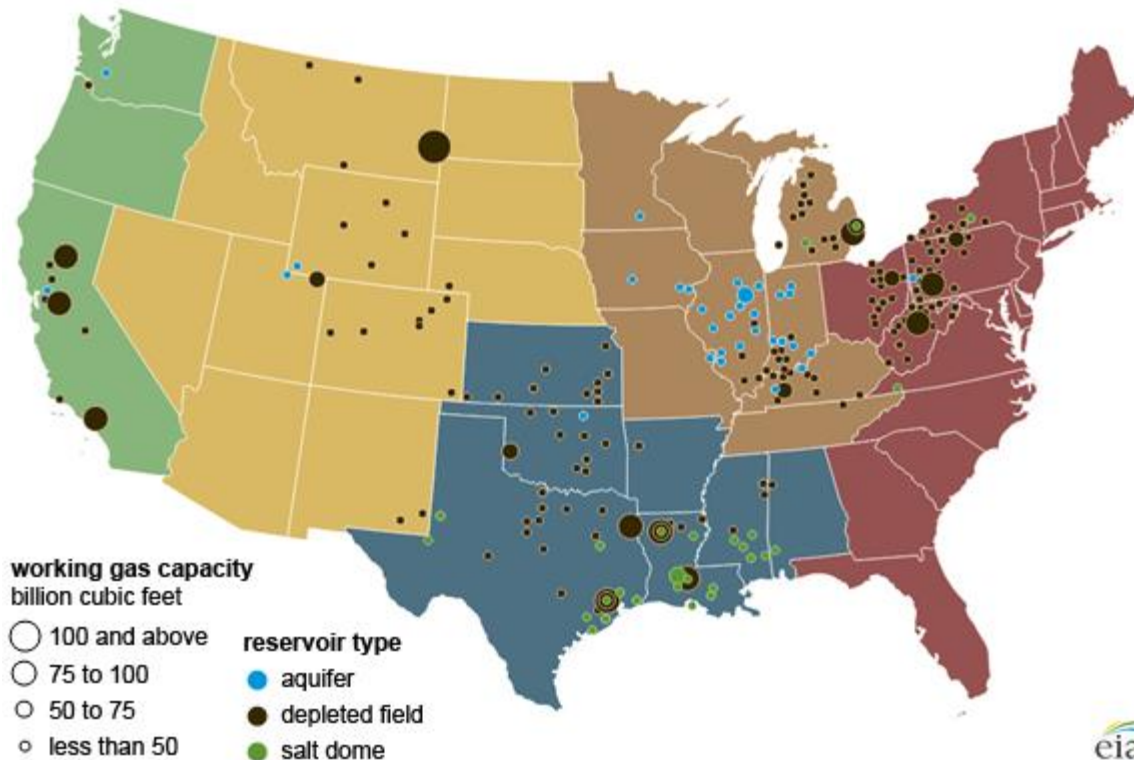
Regional S/D Models Storage Projection

Week Ending 3-Jun

	Daily Raw Storage	Daily Adjustment Factor	Daily Average Storage Activity (Adjusted) *	Weekly Adjusted Storage Activity
L48	14.0	0.1	14.1	99
East	2.2	2.2	4.5	31
Midwest	5.7	-1.0	4.8	33
Mountain	4.4	-3.9	0.6	4
South Central	-0.7	3.4	2.7	19
Pacific	2.3	-0.7	1.5	11

*Adjustment Factor is calculated based on historical regional deltas

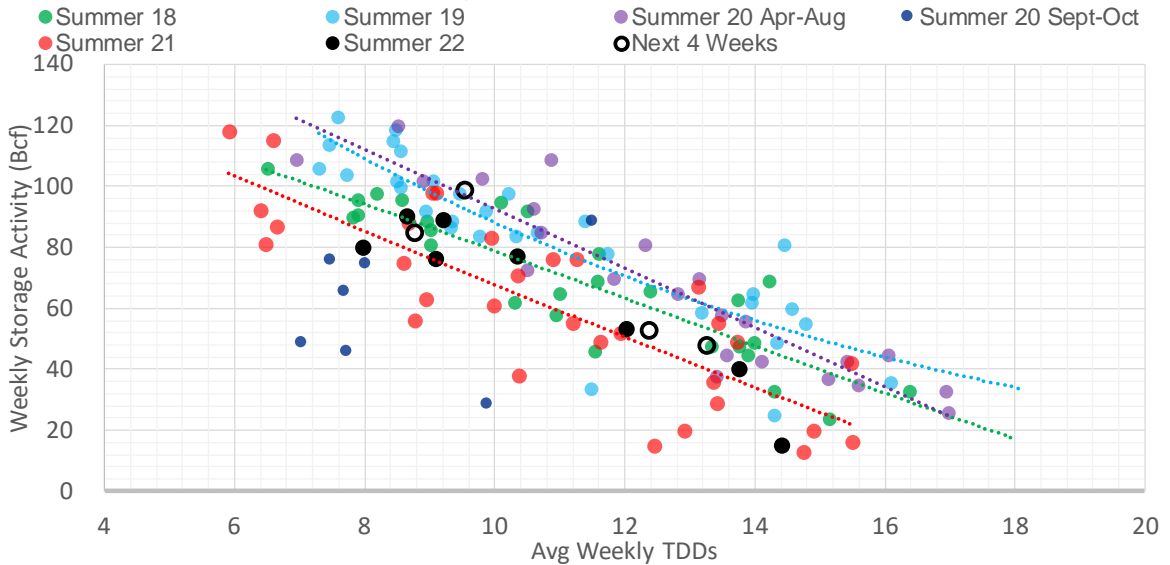
U.S. underground natural gas storage facilities by type (July 2015)



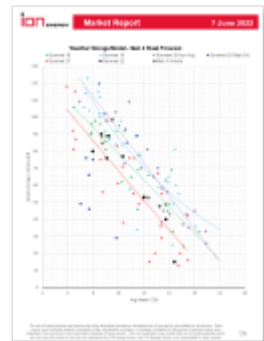
Weather Model Storage Projection

Next report and beyond		
Week Ending	TDDs	Week Storage Projection
03-Jun	9.6	99
10-Jun	8.8	85
17-Jun	12.4	53
24-Jun	13.3	48

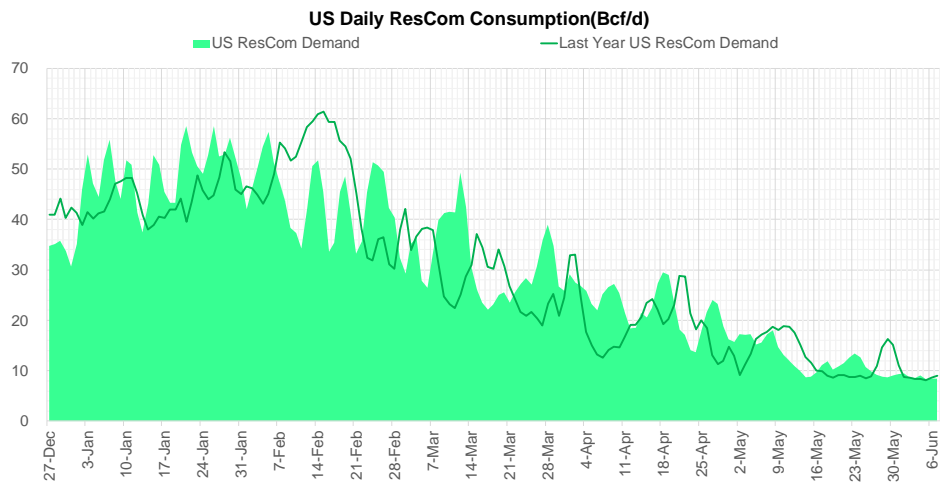
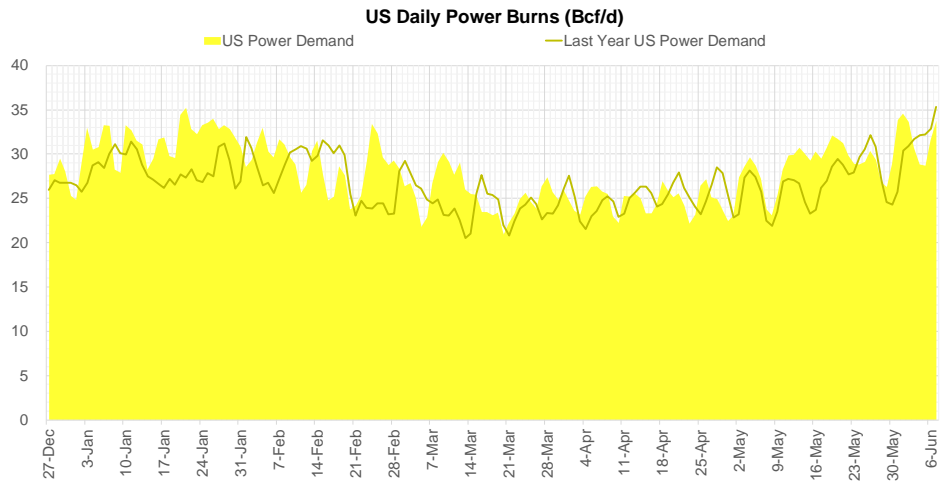
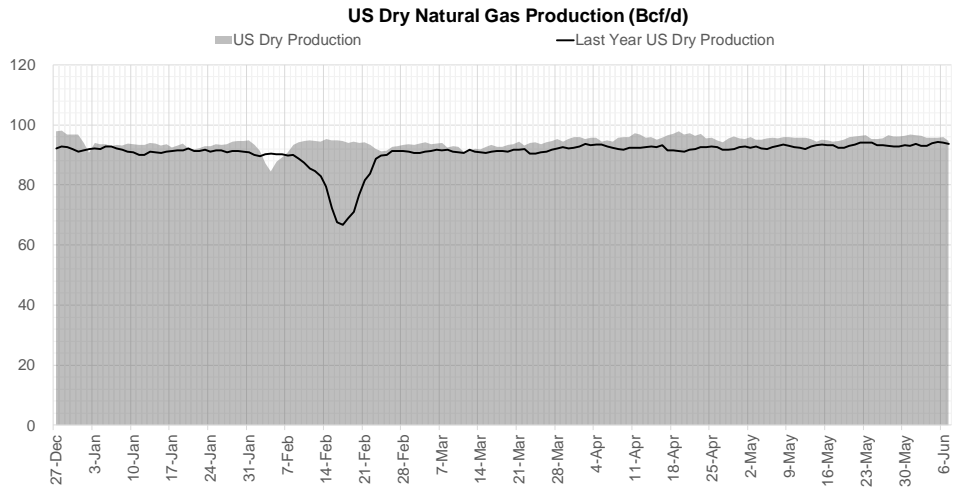
Weather Storage Model - Next 4 Week Forecast



Go to larger image

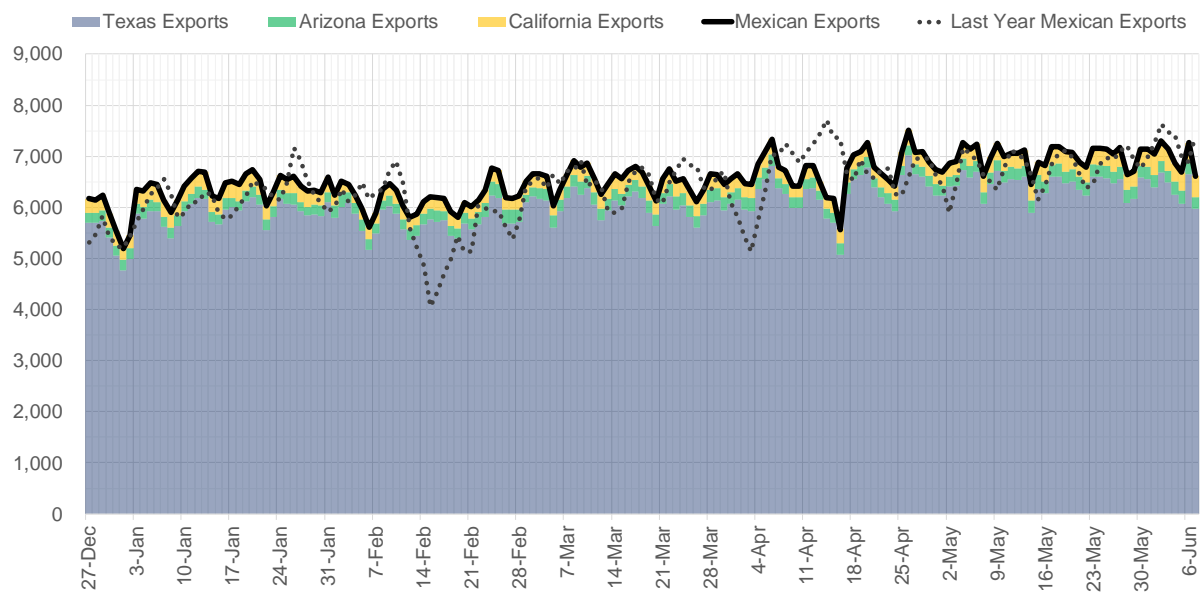


Supply – Demand Trends

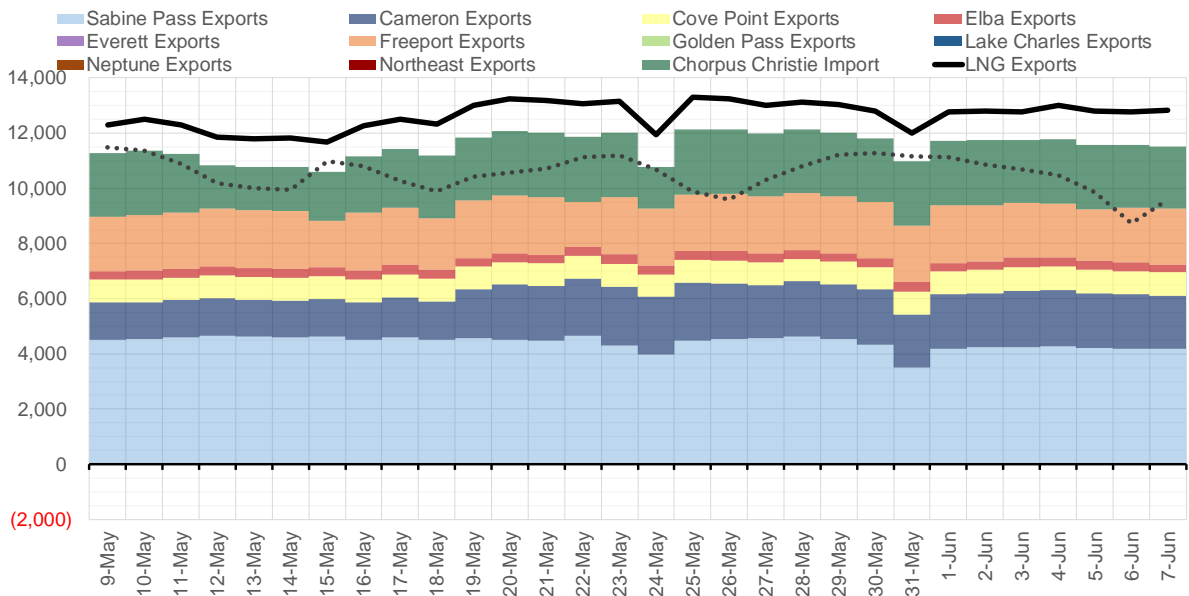


Source: Bloomberg

Mexican Exports (MMcf/d)



Net LNG Exports - Last 30 days (MMcf/d)



Source: Bloomberg

The risk of trading futures and options and other derivatives involves a substantial risk of loss and is not suitable for all persons. Each person must consider whether a particular trade, combination of trades, or strategy is suitable for that person's financial means and objectives. Past results are not necessarily indicative of future results. This communication may contain links to third party websites which are not under the control of and are not maintained by ION Energy Group, and ION Energy Group is not responsible for their content.

Nat Gas Options Volume and Open Interest CME and ICE Combined

CONTRACT MONTH	CONTRACT YEAR	PUT/CALL	STRIKE	CUMULATIVE VOL	CONTRACT MONTH	CONTRACT YEAR	PUT/CALL	STRIKE	CUMULATIVE OI
7	2022	P	7.00	6890	8	2022	C	10.00	51312
7	2022	C	10.00	5877	8	2022	C	10.50	37566
8	2022	P	6.50	3762	10	2022	C	6.00	35683
8	2022	C	10.00	3387	8	2022	C	12.00	32294
7	2022	P	7.50	3143	7	2022	C	11.00	31463
7	2022	C	10.50	3002	10	2022	C	5.00	24069
7	2022	C	12.00	2089	9	2022	C	6.00	23673
9	2022	C	10.00	2017	7	2022	C	10.00	23659
8	2022	C	15.00	1782	7	2022	P	6.00	23556
7	2022	C	11.00	1769	10	2022	P	6.00	23041
10	2022	P	6.00	1717	7	2022	C	9.00	22439
10	2022	C	10.00	1669	8	2022	C	12.10	22003
8	2022	P	7.00	1625	8	2022	P	6.00	21426
8	2022	C	9.50	1526	7	2022	P	7.00	20621
10	2022	P	5.00	1514	10	2022	P	3.50	20524
7	2022	C	11.50	1486	7	2022	C	11.10	20502
4	2023	P	5.00	1475	10	2022	P	3.00	20275
10	2022	C	9.00	1392	10	2022	P	2.50	19868
7	2022	C	9.50	1360	9	2022	C	10.00	19708
10	2022	C	15.00	1332	9	2022	P	4.00	19550
7	2022	P	8.00	1327	8	2022	C	6.00	19483
7	2022	P	8.50	1229	7	2022	C	6.00	18943
7	2022	C	9.00	1214	8	2022	C	7.00	18259
8	2022	P	5.50	1190	7	2022	C	8.00	18231
4	2023	C	6.00	1175	12	2022	C	5.00	18221
5	2023	C	6.00	1175	9	2022	C	7.00	18091
6	2023	C	6.00	1175	7	2022	C	7.00	17657
7	2023	C	6.00	1175	5	2023	P	2.00	17436
8	2023	C	6.00	1175	7	2022	P	3.25	17344
9	2023	C	6.00	1175	10	2022	P	2.00	17258
10	2023	C	6.00	1175	10	2022	P	4.00	16874
2	2023	C	13.00	1117	1	2023	C	10.00	16148
2	2023	C	14.00	1117	7	2022	P	5.50	16039
4	2023	P	2.00	1050	8	2022	C	9.00	16014
5	2023	P	2.00	1050	9	2022	C	4.00	15970
6	2023	P	2.00	1050	10	2022	C	10.00	15751
7	2023	P	2.00	1050	2	2023	C	10.00	15724
8	2023	P	2.00	1050	3	2023	C	10.00	15361
9	2023	P	2.00	1050	9	2022	P	2.50	15292
10	2023	P	2.00	1050	7	2022	P	5.00	15194
8	2022	P	8.50	1020	10	2022	P	3.25	14919
7	2022	P	6.75	1013	9	2022	P	2.75	14883
7	2022	C	10.60	1005	10	2023	P	2.00	14830
8	2022	P	7.50	1005	9	2022	P	3.00	14651
5	2023	P	5.00	975	7	2022	P	3.50	14604
6	2023	P	5.00	975	8	2022	P	7.00	14554
7	2023	P	5.00	975	8	2022	P	3.00	14552
8	2023	P	5.00	975	11	2022	P	4.00	14494
9	2023	P	5.00	975	7	2022	P	3.00	14491
					7	2022	P	4.5	14400

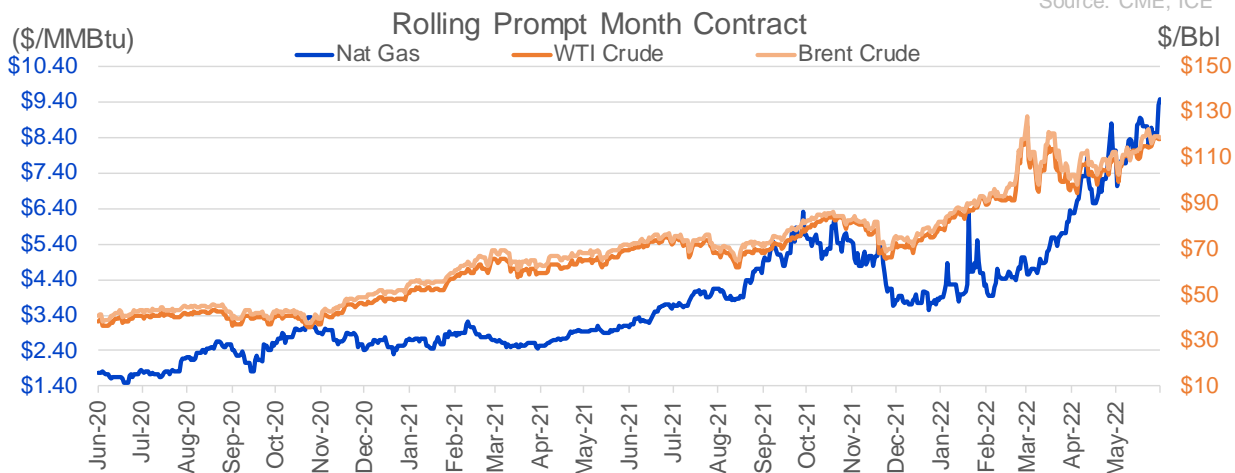
Source: CME, ICE

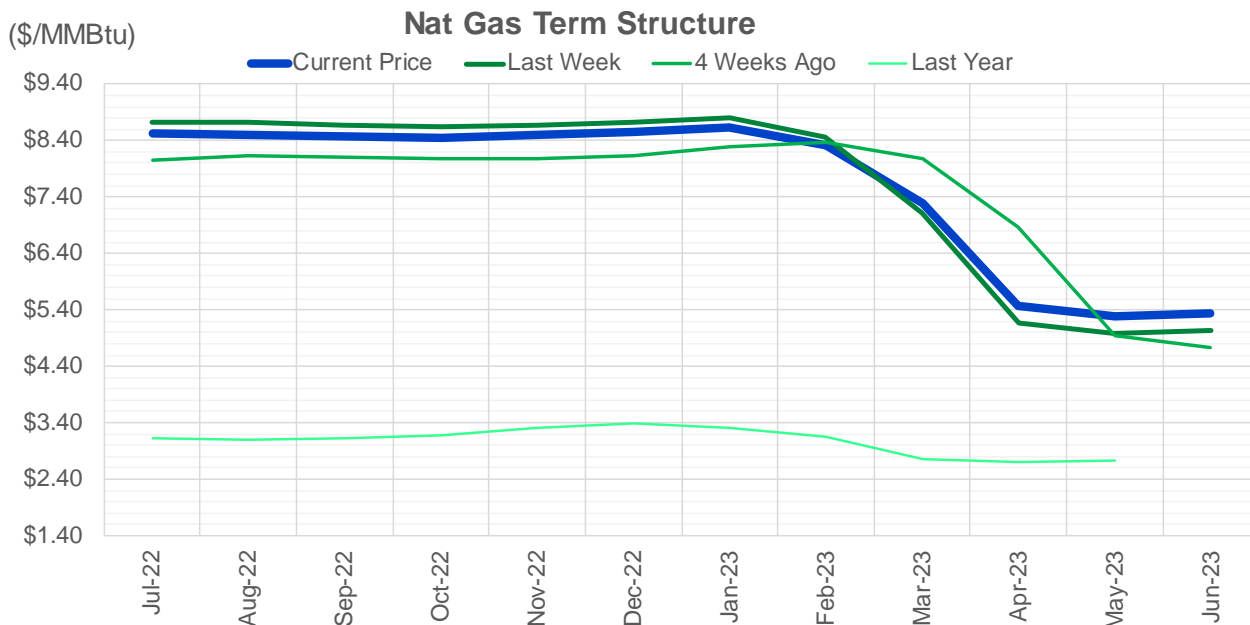
Nat Gas Futures Open Interest

CME and ICE Combined

CME Henry Hub Futures (10,000 MMBtu)				ICE Henry Hub Futures Contract Equivalent (10,000 MM			
	Current	Prior	Daily Change		Current	Prior	Daily Change
JUL 22	200914	202329	-1415	JUL 22	89954	93779	-3825
AUG 22	74236	72653	1583	AUG 22	60171	60008	163
SEP 22	111464	109077	2387	SEP 22	66614	66575	40
OCT 22	98268	95708	2560	OCT 22	70840	71243	-403
NOV 22	51285	51070	215	NOV 22	59494	59677	-183
DEC 22	52268	52229	39	DEC 22	64560	64311	249
JAN 23	66833	66575	258	JAN 23	66381	66115	266
FEB 23	28692	28244	448	FEB 23	53688	54031	-344
MAR 23	44341	42827	1514	MAR 23	52985	53212	-227
APR 23	62569	60525	2044	APR 23	52136	52130	6
MAY 23	64374	62032	2342	MAY 23	52089	51867	223
JUN 23	25295	25499	-204	JUN 23	45504	45408	96
JUL 23	23637	23212	425	JUL 23	43537	43258	279
AUG 23	15435	15413	22	AUG 23	43512	43342	171
SEP 23	19431	18926	505	SEP 23	42507	42246	261
OCT 23	40799	38665	2134	OCT 23	48776	49077	-301
NOV 23	13003	12814	189	NOV 23	43468	43440	28
DEC 23	13981	14052	-71	DEC 23	39689	39629	60
JAN 24	20833	21024	-191	JAN 24	39724	39925	-201
FEB 24	6111	6141	-30	FEB 24	26700	26770	-70
MAR 24	14692	14669	23	MAR 24	31459	31340	119
APR 24	12125	12427	-302	APR 24	27324	27333	-9
MAY 24	6667	6661	6	MAY 24	26046	26112	-66
JUN 24	2005	2007	-2	JUN 24	22429	22542	-113
JUL 24	1990	2007	-17	JUL 24	22653	22764	-111
AUG 24	2998	3012	-14	AUG 24	22658	22769	-111
SEP 24	1367	1372	-5	SEP 24	22067	22180	-113
OCT 24	6754	7016	-262	OCT 24	24934	24926	8
NOV 24	4521	4556	-35	NOV 24	23288	23370	-83
DEC 24	7377	7373	4	DEC 24	25293	25627	-335

Source: CME, ICE





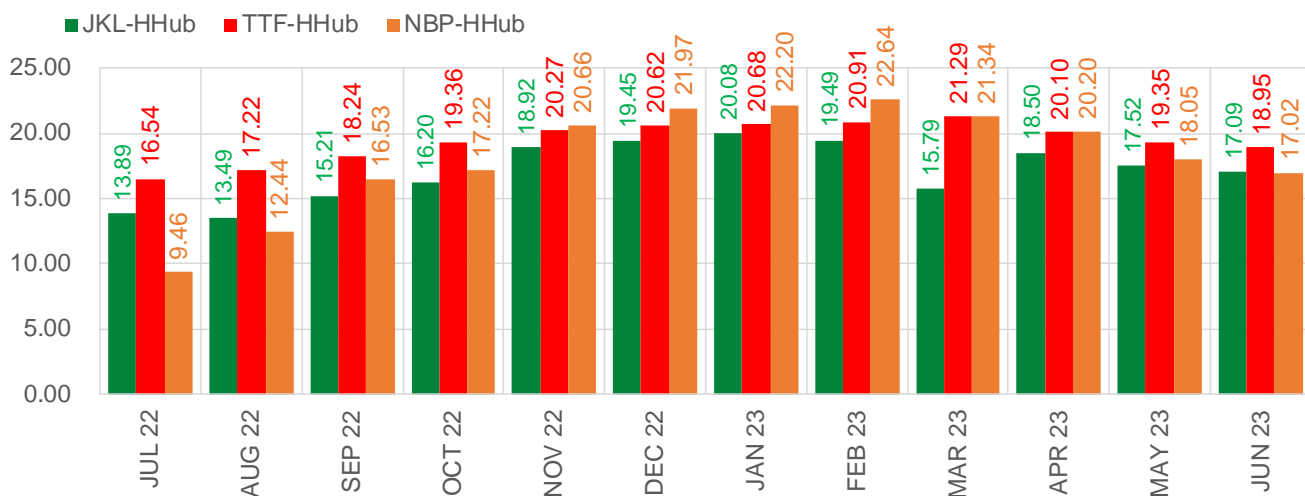
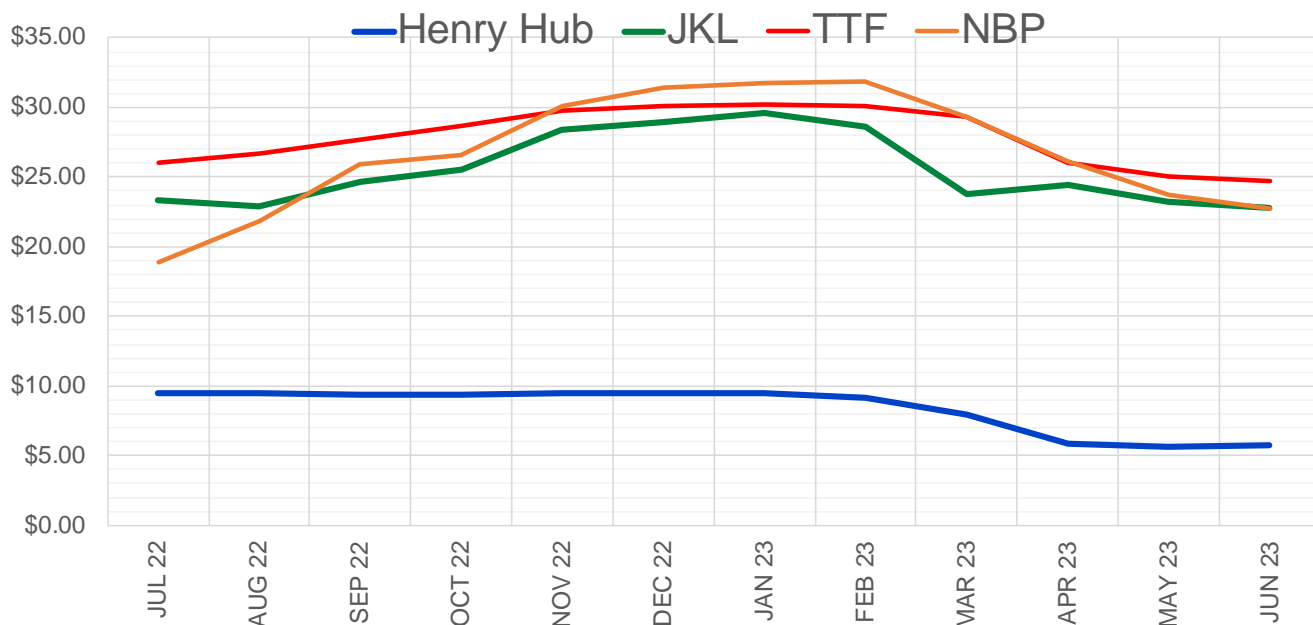
	Jul-22	Aug-22	Sep-22	Oct-22	Nov-22	Dec-22	Jan-23	Feb-23	Mar-23	Apr-23	May-23	Jun-23
Current Price	\$8.523	\$8.510	\$8.473	\$8.446	\$8.492	\$8.562	\$8.635	\$8.310	\$7.278	\$5.481	\$5.296	\$5.343
Last Week	\$8.727	\$8.712	\$8.673	\$8.640	\$8.668	\$8.735	\$8.810	\$8.467	\$7.105	\$5.176	\$4.980	\$5.034
vs. Last Week	-\$0.204	-\$0.202	-\$0.200	-\$0.194	-\$0.176	-\$0.173	-\$0.175	-\$0.157	\$0.173	\$0.305	\$0.316	\$0.309
4 Weeks Ago	\$8.043	\$8.128	\$8.110	\$8.068	\$8.069	\$8.142	\$8.278	\$8.380	\$8.083	\$6.862	\$4.937	\$4.742
vs. 4 Weeks Ago	\$0.480	\$0.382	\$0.363	\$0.378	\$0.423	\$0.420	\$0.357	-\$0.070	-\$0.805	-\$1.381	\$0.359	\$0.601
Last Year	\$3.097	\$3.114	\$3.105	\$3.124	\$3.184	\$3.303	\$3.386	\$3.322	\$3.140	\$2.755	\$2.704	\$2.735
vs. Last Year	\$5.426	\$5.396	\$5.368	\$5.322	\$5.308	\$5.259	\$5.249	\$4.988	\$4.138	\$2.726	\$2.592	\$2.608

	Units	Cash Settled	Prompt Settle	Cash to Prompt
AGT Citygate	\$/MMBtu	10.39	8.63	-1.76
TETCO M3	\$/MMBtu	7.81	8.15	0.34
FGT Zone 3	\$/MMBtu	7.30	8.79	1.49
Zone 6 NY	\$/MMBtu	7.30	8.12	0.83
Chicago Citygate	\$/MMBtu	8.68	8.45	-0.23
Michcon	\$/MMBtu	8.67	8.38	-0.29
Columbia TCO Pool	\$/MMBtu	8.01	7.99	-0.02
Ventura	\$/MMBtu	8.80	8.38	-0.42
Rockies/Opal	\$/MMBtu	8.48	8.18	-0.30
El Paso Permian Basin	\$/MMBtu	7.62	7.90	0.28
Socal Citygate	\$/MMBtu	9.70	9.85	0.15
Malin	\$/MMBtu	8.57	8.63	0.06
Houston Ship Channel	\$/MMBtu	8.90	8.57	-0.33
Henry Hub Cash	\$/MMBtu	8.96	8.32	-0.64
AECO Cash	C\$/GJ	6.70	5.79	-0.91
Station2 Cash	C\$/GJ	5.96	8.31	2.35
Dawn Cash	C\$/GJ	8.65	8.42	-0.23

Source: CME, Bloomberg

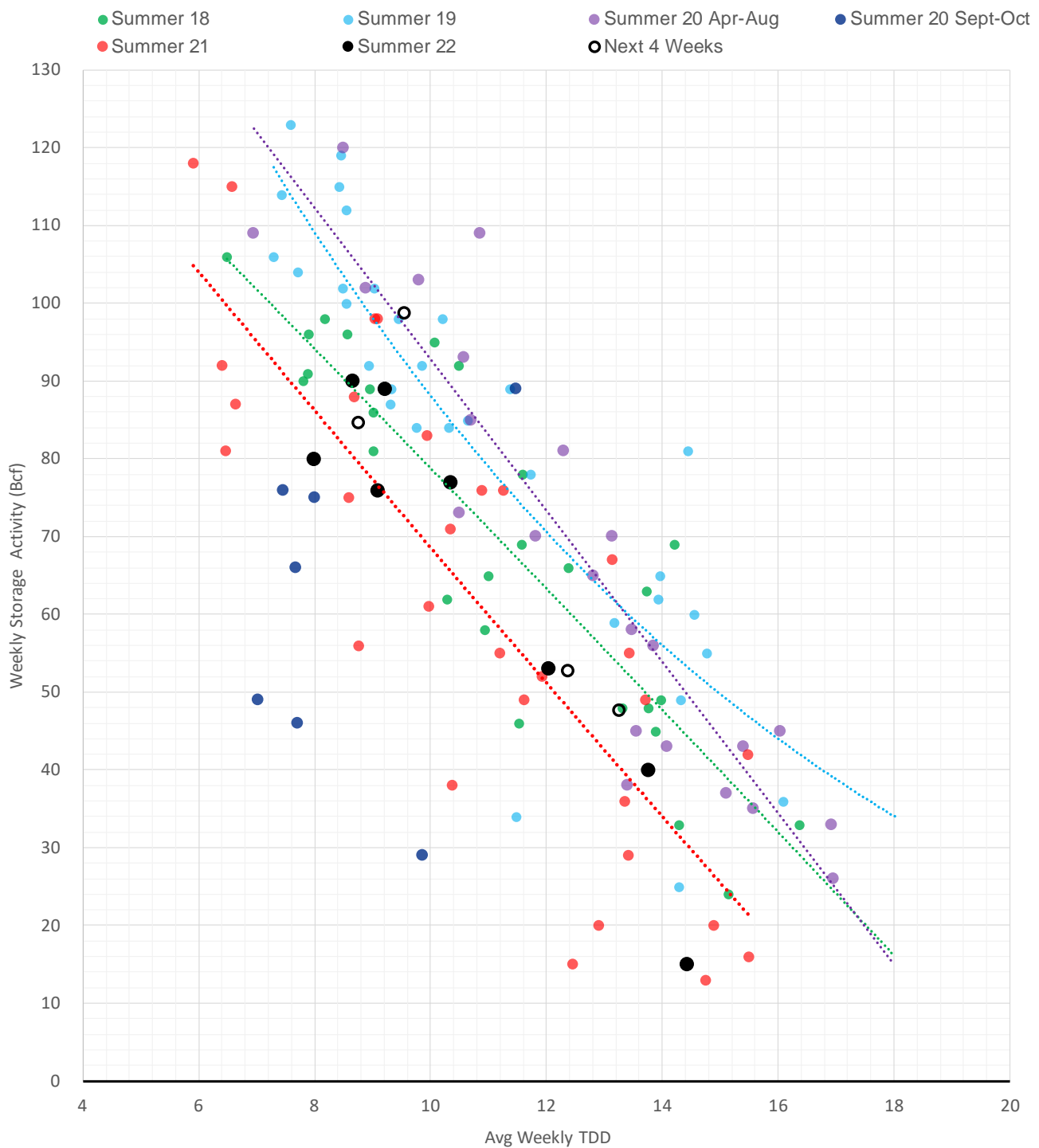
	Units	Current Price	vs. Last Week	vs. 4 Weeks Ago	vs. Last Year
NatGas Jul21/Oct21	\$/MMBtu	2.224	▲ 0.000	▲ 0.000	▲ 2.190
NatGas Oct21/Nov21	\$/MMBtu	0.361	▲ 0.000	▲ 0.000	▲ 0.294
NatGas Oct21/Jan22	\$/MMBtu	-1.817	▲ 0.000	▲ 0.000	▼ -2.090
NatGas Apr22/Oct22	\$/MMBtu	3.884	▲ 0.580	▲ 2.168	▲ 3.854
WTI Crude	\$/Bbl	118.50	▲ 3.430	▲ 15.410	▲ 49.270
Brent Crude	\$/Bbl	119.51	▼ -2.160	▲ 13.570	▲ 48.020
Fuel Oil, NY Harbour 1%	\$/Bbl	97.18	▲ 0.000	▲ 0.000	▲ 0.000
Heating Oil	cents/Gallon	436.01	▲ 35.720	▲ 52.520	▲ 224.450
Propane, Mt. Bel	cents/Gallon	1.24	▲ 0.004	▼ -0.005	▲ 0.322
Ethane, Mt. Bel	cents/Gallon	0.68	▲ 0.075	▲ 0.117	▲ 0.407
Coal, PRB	\$/MTon	12.30	▲ 0.000	▲ 0.000	▲ 0.000
Coal, PRB	\$/MMBtu	0.70			
Coal, ILB	\$/MTon	31.05	▲ 0.000	▲ 0.000	▲ 0.000
Coal, ILB	\$/MMBtu	1.32			

Nat Gas Term Structure (\$MMBTU)



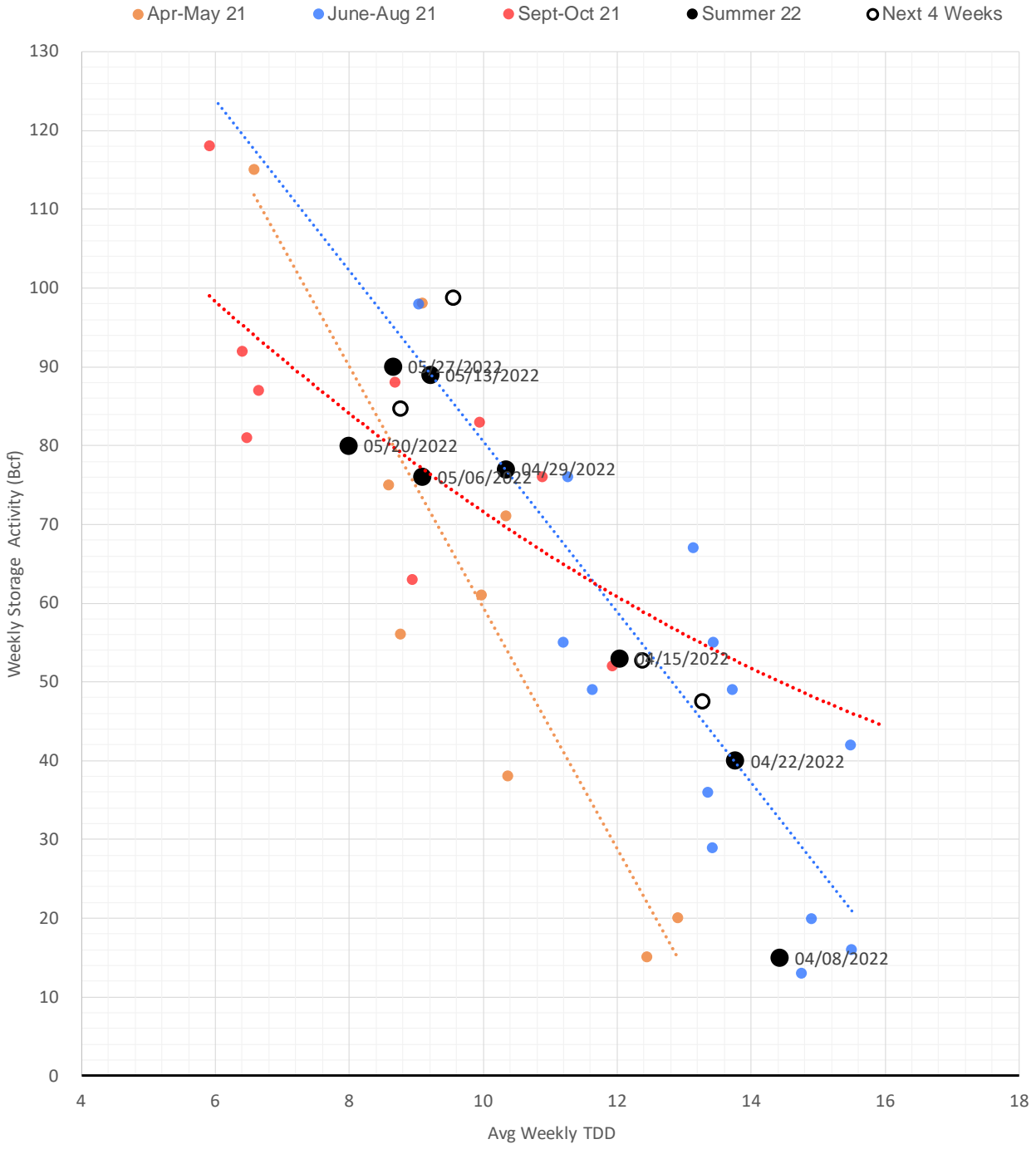
	JUL 22	AUG 22	SEP 22	OCT 22	NOV 22	DEC 22	JAN 23	FEB 23	MAR 23	APR 23	MAY 23	JUN 23
Henry Hub	\$9.465	\$9.449	\$9.404	\$9.361	\$9.448	\$9.478	\$9.529	\$9.181	\$7.985	\$5.902	\$5.675	\$5.712
JKL	\$23.355	\$22.940	\$24.610	\$25.560	\$28.370	\$28.930	\$29.610	\$28.670	\$23.775	\$24.405	\$23.195	\$22.805
JKL-HHub	\$13.890	\$13.491	\$15.206	\$16.199	\$18.922	\$19.452	\$20.081	\$19.489	\$15.790	\$18.503	\$17.520	\$17.093
TTF	\$26.004	\$26.665	\$27.639	\$28.721	\$29.719	\$30.101	\$30.211	\$30.095	\$29.279	\$26.002	\$25.022	\$24.664
TTF-HHub	\$16.539	\$17.216	\$18.235	\$19.360	\$20.271	\$20.623	\$20.682	\$20.914	\$21.294	\$20.100	\$19.347	\$18.952
NBP	\$18.926	\$21.889	\$25.936	\$26.576	\$30.110	\$31.448	\$31.725	\$31.822	\$29.326	\$26.102	\$23.726	\$22.729
NBP-HHub	\$9.461	\$12.440	\$16.532	\$17.215	\$20.662	\$21.970	\$22.196	\$22.641	\$21.341	\$20.200	\$18.051	\$17.017

Weather Storage Model - Next 4 Week Forecast



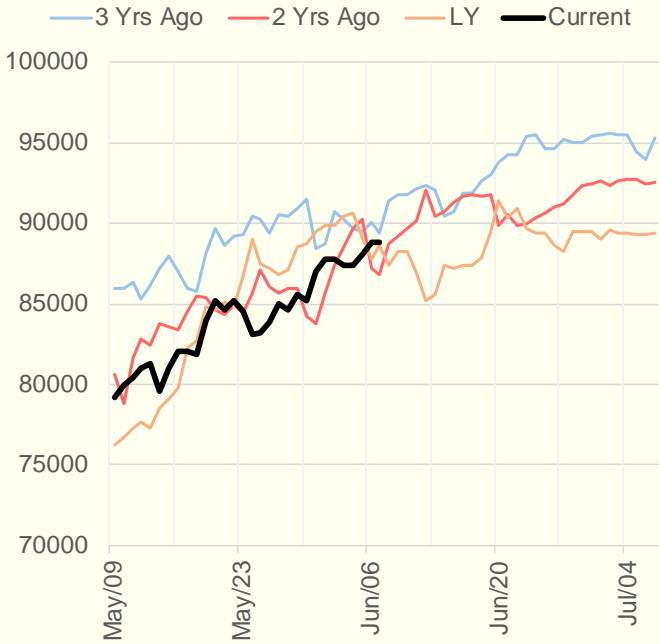
The risk of trading futures and options and other derivatives involves a substantial risk of loss and is not suitable for all persons. Each person must consider whether a particular trade, combination of trades, or strategy is suitable for that person's financial means and objectives. Past results are not necessarily indicative of future results. This communication may contain links to third party websites which are not under the control of and are not maintained by ION Energy Group, and ION Energy Group is not responsible for their content.

Weather Storage Model for Summer 2021 & 2022

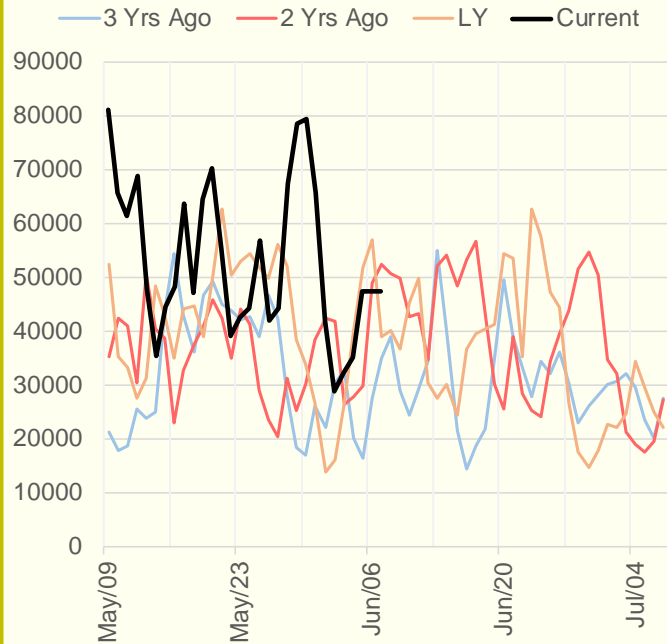


The risk of trading futures and options and other derivatives involves a substantial risk of loss and is not suitable for all persons. Each person must consider whether a particular trade, combination of trades, or strategy is suitable for that person's financial means and objectives. Past results are not necessarily indicative of future results. This communication may contain links to third party websites which are not under the control of and are not maintained by ION Energy Group, and ION Energy Group is not responsible for their content.

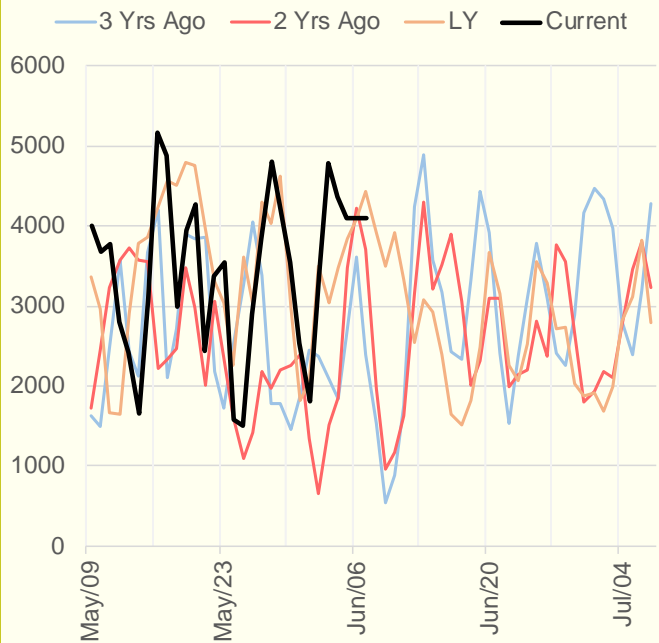
NRC Nuclear Daily Output



US Wind



CALI Wind



TEXAS Wind

