

	Current	Δ from YD	Δ from 7D Avg
Nat Gas Prompt	\$ 8.02 ▲	\$ 0.09 ▲	\$ 0.63

	Current	Δ from YD	Δ from 7D Avg
WTI Prompt	\$ 95.30 ▼	\$ (1.05) ▼	\$ (4.4)

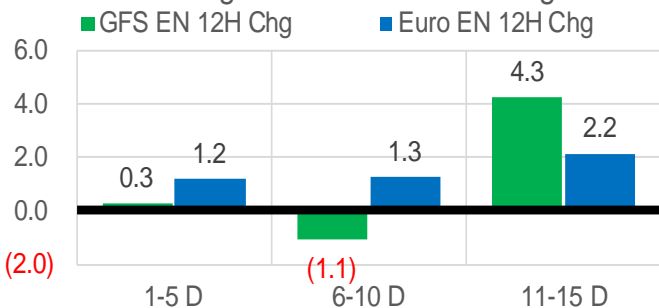
	Current	Δ from YD	Δ from 7D Avg
Brent Prompt	\$ 103.01 ▼	\$ (0.85) ▼	\$ (1.0)

Page Menu

- [Short-term Weather Model Outlooks](#)
- [Lower 48 Component Models](#)
- [Regional S/D Models Storage Projection](#)
- [Weather Model Storage Projection](#)
- [Supply – Demand Trends](#)
- [Nat Gas Options Volume and Open Interest](#)
- [Nat Gas Futures Open Interest](#)
- [Price Summary](#)

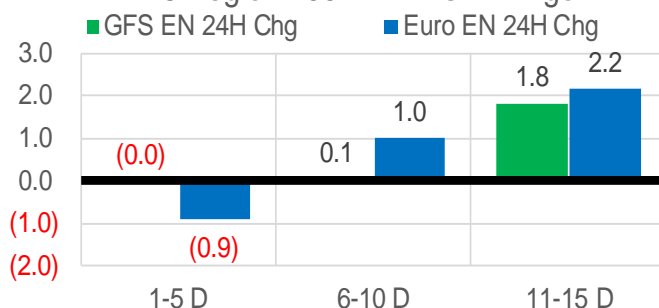
Vs. 12H Ago

L48 Region - 00z TDD vs 12H Ago



Vs. 24H Ago

L48 Region - 00z TDD vs 24H Ago



	Current	Δ from YD	Δ from 7D Avg
US Dry Production	96.9 ▲	0.08	-0.23 ▼

	Current	Δ from YD	Δ from 7D Avg
US Power Burns	45.6 ▼	-2.48	0.19 ▲

	Current	Δ from YD	Δ from 7D Avg
US ResComm	9.0 ▼	-0.14	0.28 ▲

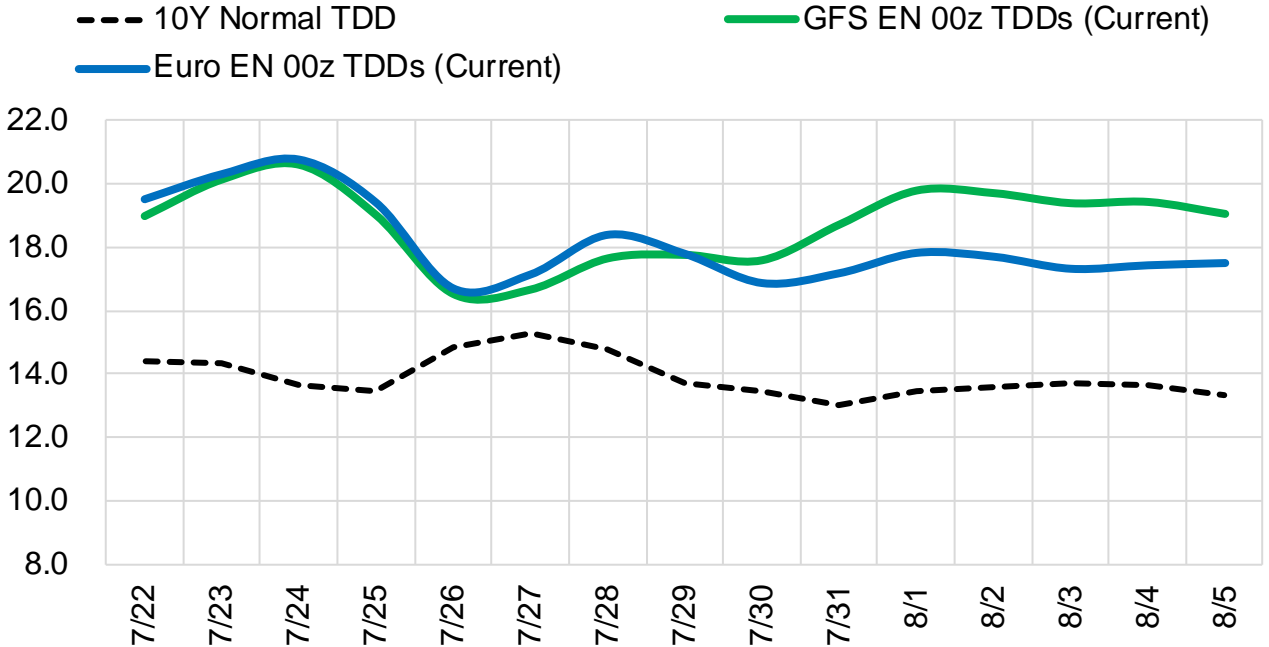
	Current	Δ from YD	Δ from 7D Avg
Canadian Imports	6.0 ▼	-0.64	-0.15 ▼

	Current	Δ from YD	Δ from 7D Avg
Net LNG Exports	10.9 ▼	-0.01	0.10 ▲

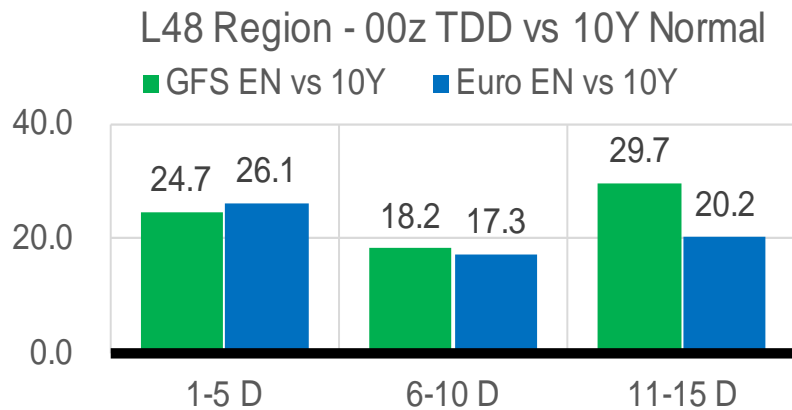
	Current	Δ from YD	Δ from 7D Avg
Mexican Exports	7.3 ▲	0.22	0.24 ▲

Short-term Weather Model Outlooks (00z)

L48 Region



Vs. 10Y Normal



Source: WSI , Bloomberg

Lower 48 Component Models

Daily Balances

	16-Jul	17-Jul	18-Jul	19-Jul	20-Jul	21-Jul	22-Jul	DoD	vs. 7D
Lower 48 Dry Production	97.5	97.3	98.0	96.6	96.4	96.9	96.9	▲ 0.1	▼ -0.2
Canadian Imports	5.8	5.6	5.8	6.6	6.5	6.7	6.0	▼ -0.6	▼ -0.1
L48 Power	42.2	42.3	46.2	47.1	48.4	48.0	45.6	▼ -2.5	▼ -0.2
L48 Residential & Commercial	8.2	8.3	8.7	8.9	9.1	9.1	9.0	▼ -0.1	▲ 0.2
L48 Industrial	21.1	21.1	21.1	20.9	21.0	21.3	21.3	▼ 0.0	▲ 0.2
L48 Lease and Plant Fuel	5.3	5.3	5.3	5.2	5.2	5.3	5.2	▼ 0.0	▼ 0.0
L48 Pipeline Distribution	2.7	2.7	2.9	3.0	3.1	3.0	2.9	▼ -0.1	▲ 0.0
L48 Regional Gas Consumption	79.5	79.7	84.3	85.1	86.8	86.7	83.9	▼ -2.8	▲ 0.2
Net LNG Delivered	11.28	11.02	10.36	10.13	10.70	10.95	10.94	▼ 0.0	▲ 0.2
Total Mexican Exports	7.0	6.7	7.1	7.1	7.3	7.1	7.3	▲ 0.2	▲ 0.3
Implied Daily Storage Activity	5.5	5.4	2.1	0.9	-1.9	-1.2	0.8		
EIA Reported Daily Storage Activity									
Daily Model Error									

EIA Storage Week Balances

	17-Jun	24-Jun	1-Jul	8-Jul	15-Jul	22-Jul	WoW	vs. 4W
Lower 48 Dry Production	96.7	96.7	97.0	97.0	96.3	97.2	▲ 0.9	▲ 0.4
Canadian Imports	6.1	5.6	5.7	5.6	6.0	6.2	▲ 0.1	▲ 0.4
L48 Power	37.8	37.7	40.1	41.1	42.8	45.4	▲ 2.6	▲ 5.0
L48 Residential & Commercial	8.3	8.7	8.2	8.3	8.4	8.7	▲ 0.3	▲ 0.3
L48 Industrial	21.5	20.1	20.1	20.2	21.6	21.1	▼ -0.5	▲ 0.6
L48 Lease and Plant Fuel	5.2	5.2	5.3	5.3	5.2	5.3	▲ 0.0	▲ 0.0
L48 Pipeline Distribution	2.5	2.5	2.6	2.6	2.7	2.9	▲ 0.2	▲ 0.3
L48 Regional Gas Consumption	75.3	74.2	76.3	77.4	80.7	83.3	▲ 2.6	▲ 6.1
Net LNG Exports	10.7	10.6	10.6	11.2	11.1	10.8	▼ -0.3	▼ -0.1
Total Mexican Exports	7.2	7.0	7.0	6.9	7.0	7.1	▲ 0.1	▲ 0.1
Implied Daily Storage Activity	9.6	10.5	8.8	7.2	3.5	2.1	-1.4	
EIA Reported Daily Storage Activity	10.6	11.7	8.6	8.3	4.6			
Daily Model Error	-1.0	-1.2	0.2	-1.1	-1.1			

Monthly Balances

	2Yr Ago Jul-20	LY Jul-21	Mar-22	Apr-22	May-22	Jun-22	MTD Jul-22	MoM	vs. LY
Lower 48 Dry Production	89.0	93.5	93.4	95.2	96.2	96.8	96.8	▼ 0.0	▲ 3.3
Canadian Imports	4.4	5.2	5.2	5.8	5.1	5.7	5.9	▲ 0.3	▲ 0.8
L48 Power	43.8	39.7	25.4	24.7	28.8	36.8	43.1	▲ 6.3	▲ 3.4
L48 Residential & Commercial	7.9	8.1	31.5	22.5	12.3	8.5	8.4	▼ -0.1	▲ 0.3
L48 Industrial	20.1	20.8	19.7	21.5	21.1	20.8	20.6	▼ -0.2	▼ -0.2
L48 Lease and Plant Fuel	4.9	5.1	5.2	5.2	5.2	5.2	5.2	▲ 0.0	▲ 0.2
L48 Pipeline Distribution	2.6	2.5	2.9	2.6	2.3	2.5	2.7	▲ 0.3	▲ 0.2
L48 Regional Gas Consumption	79.3	76.2	84.7	76.6	69.8	73.8	80.1	▲ 6.3	▲ 3.9
Net LNG Exports	3.3	10.8	12.9	12.3	12.5	11.2	11.1	▼ -0.1	▲ 0.2
Total Mexican Exports	5.9	7.1	6.5	6.7	7.0	7.1	7.0	▼ -0.1	▼ -0.1
Implied Daily Storage Activity	4.9	4.6	-5.4	5.4	12.0	10.5	4.6		
EIA Reported Daily Storage Activity									
Daily Model Error									

Source: Bloomberg, analytix.ai

Daily Average Generation Data

Nuclear Generation Daily Average - GWh (NRC)

	14-Jul	15-Jul	16-Jul	17-Jul	18-Jul	19-Jul	20-Jul	DoD	vs. 7D
NRC Nuclear Daily Output	90.3	91.0	90.9	91.1	91.0	89.8	89.7	-0.1	-1.0
NRC Nuclear Max Capacity	104.9	104.9	104.9	104.9	104.9	104.9	104.9	0.0	0.0
NRC Nuclear Outage	14.6	13.8	14.0	13.8	13.9	15.1	15.2	0.1	1.0
NRC % Nuclear Cap Utilization	91.8	92.6	92.5	92.6	92.5	91.3	91.2	-0.1	-1.0

Wind Generation Daily Average - MWh (EIA)

	14-Jul	15-Jul	16-Jul	17-Jul	18-Jul	19-Jul	20-Jul	DoD	vs. 7D
CALI Wind	2048	2048	2048	2048	2048	2048	2048	0	0
TEXAS Wind	22879	22879	22879	22879	22879	22879	22879	0	0
US Wind	63443	63443	63443	63443	63443	63443	63443	0	0

EIA 930 data is not being updated. EIA experiencing some issues.

Generation Daily Average - MWh (EIA)

	14-Jul	15-Jul	16-Jul	17-Jul	18-Jul	19-Jul	20-Jul	DoD	vs. 7D
Genscape Wind	39440	35977	33329	26622	32157	56924	53890	-3034	16482
US Solar	19728	19728	19728	19728	19728	19728	19728	0	0
US Petroleum	1333	1333	1333	1333	1333	1333	1333	0	0
US Other	9775	9775	9775	9775	9775	9775	9775	0	0
US Coal	119543	119543	119543	119543	119543	119543	119543	0	0
US Nuke	90696	90696	90696	90696	90696	90696	90696	0	0
US Hydro	39690	39690	39690	39690	39690	39690	39690	0	0
US Gas	220700	220700	220700	220700	220700	220700	220700	0	0

See National Wind and Nuclear daily charts

Source: Bloomberg, analytix.ai

Storage Week Average Generation Data

Nuclear Generation Weekly Average - GWh (NRC)

	17-Jun	24-Jun	1-Jul	8-Jul	15-Jul	22-Jul	WoW	WoW Bcf/d Impact
NRC Nuclear Daily Output	88.2	89.0	88.9	90.6	91.2	90.5	-0.7	0.1
NRC Nuclear Max Capacity	104.9	104.9	104.9	104.9	104.9	104.9	0.0	
NRC Nuclear Outage	16.7	15.9	16.0	14.2	13.7	14.4	0.7	
NRC % Nuclear Cap Utilization	89.7	90.5	90.4	92.2	92.7	92.0	-0.7	

Wind Generation Weekly Average - MWh (EIA)

	17-Jun	24-Jun	1-Jul	8-Jul	15-Jul	22-Jul	WoW	WoW Bcf/d Impact
CALI Wind	3032	2048	2048	2048	2048	2048	0	0.0
TEXAS Wind	20462	22879	22879	22879	22879	22879	0	0.0
US Wind	57090	63443	63443	63443	63443	63443	0	0.0

0%

0.0

Generation Weekly Average - MWh (EIA)

EIA 930 data is not being updated. EIA experiencing some issues.

	17-Jun	24-Jun	1-Jul	8-Jul	15-Jul	22-Jul	WoW	WoW Bcf/d Impact
Genscape Wind	57792	50581	45558	42730	34294	41827	7533	-1.4
US Solar	18731	19728	19728	19728	19728	19728	0	0.0
US Petroleum	1244	1333	1333	1333	1333	1333	0	0.0
US Other	8688	9775	9775	9775	9775	9775	0	0.0
US Coal	106566	119543	119543	119543	119543	119543	0	0.0
US Nuke	91235	90696	90696	90696	90696	90696	0	0.0
US Hydro	37495	39690	39690	39690	39690	39690	0	0.0
US Gas	201845	220700	220700	220700	220700	220700	0	0.0

See National Wind and Nuclear daily charts

Source: Bloomberg, analytix.ai

Monthly Average Generation Data

Nuclear Generation Monthly Average - GWh (NRC)

	2Yr Ago	LY	MTD						
	Same 30 days	Same 30 days	Apr-22	May-22	Jun-22	Jul-22	Last 30 days	MoM (MTD vs LY)	Last 30 days YoY
NRC Nuclear Daily Output	91.8	90.0	73.4	81.7	88.5	90.7	90.3	2.2	0.3
NRC Nuclear Max Capacity	104.9	104.9	104.9	104.9	104.9	104.9	104.9	0.0	0.0
NRC Nuclear Outage	13.0	14.9	31.5	23.2	16.3	14.2	14.6	-2.2	-0.3
NRC % Nuclear Cap Utilization	93.4	91.5	74.6	83.0	90.0	92.2	91.8	2.2	0.3

Wind Generation Monthly Average - MWh (EIA)

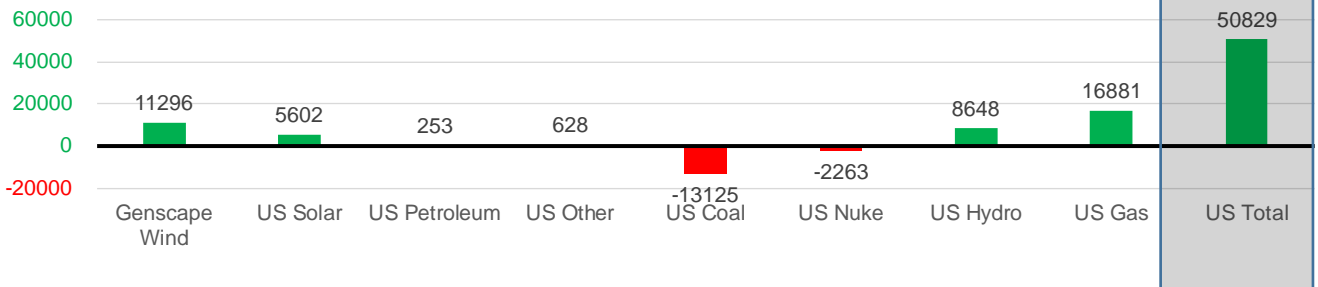
	2Yr Ago	LY	MTD						
	Same 30 days	Same 30 days	Apr-22	May-22	Jun-22	Jul-22	Last 30 days	MoM (MTD vs LY)	Last 30 days YoY
CALI Wind	2637	2547	3218	3361	2724	2048	2048	-676	-499
TEXAS Wind	10725	8184	16384	16756	19072	22879	22879	3807	14696
US Wind	33746	31120	64240	56462	54014	63443	63443	9428	32323

Generation Monthly Average - MWh (EIA)

	2Yr Ago	LY	MTD						
	Same 30 days	Same 30 days	Apr-22	May-22	Jun-22	Jul-22	Last 30 days	MoM (MTD vs LY)	Last 30 days YoY
Genscape Wind	34534	30285	63684	56803	47280	40266	41582	▲ 1315.7	▲ 11296
US Solar	12357	14126	16265	18186	19216	19728	19728	▲ 0.0	▲ 5602
US Petroleum	1501	1079	979	518	1204	1222	1222	▲ 0.0	▲ 253
US Other	9710	9147	7373	7724	8994	8994	8994	▲ 0.0	▲ 83
US Coal	114546	132669	77400	85273	109706	109706	109706	▲ 0.0	▲ 25
US Nuke	94419	92958	77317	85496	91073	91073	91073	▲ 0.0	▲ 63
US Hydro	34615	31042	28877	31369	38153	39690	39690	▲ 0.0	▲ 8648
US Gas	223483	203818	132665	157565	204668	220700	220700	▲ 1316	▲ 16881
US Total	522525	516140	405650	443965	530484	566968	566968	▲ 1316	▲ 50829

EIA 930 data is not being updated. EIA experiencing some issues.

Last 30 days YoY



See National Wind and Nuclear daily charts

Source: Bloomberg, analytix.ai

Regional S/D Models Storage Projection

Week Ending 22-Jul

	Daily Raw Storage	Daily Adjustment Factor	Daily Average Storage Activity (Adjusted) *	Weekly Adjusted Storage Activity
L48	3.0	-0.8	2.2	15
East	0.3	1.8	2.1	15
Midwest	3.0	-0.9	2.1	15
Mountain	4.4	-4.1	0.3	2
South Central	-5.4	3.2	-2.2	-16
Pacific	0.6	-0.8	-0.2	-1

*Adjustment Factor is calculated based on historical regional deltas

U.S. underground natural gas storage facilities by type (July 2015)

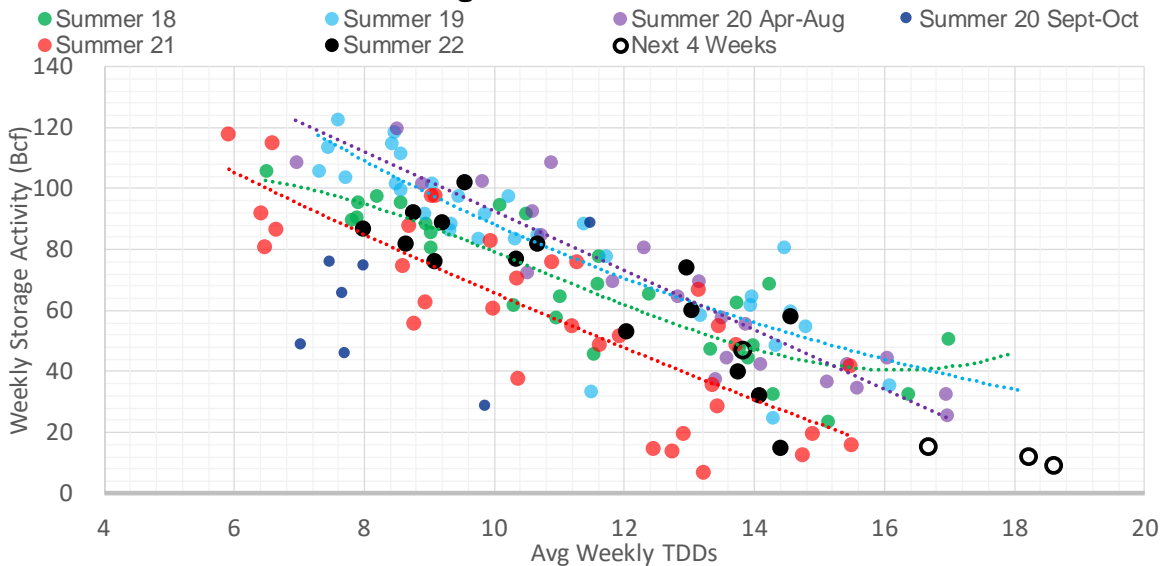


Weather Model Storage Projection

Next report and beyond

Week Ending	GWDDs	Week Storage Projection
22-Jul	16.7	15
29-Jul	18.6	9
05-Aug	18.2	12
12-Aug	13.8	47

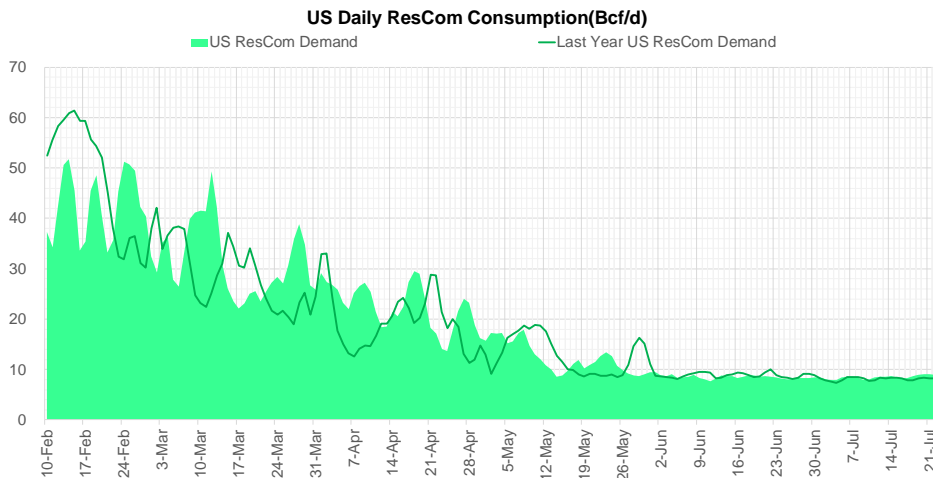
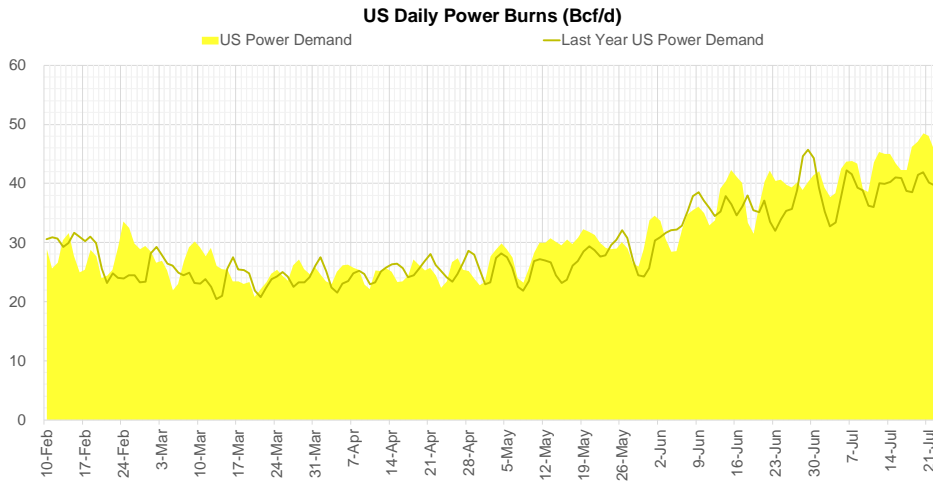
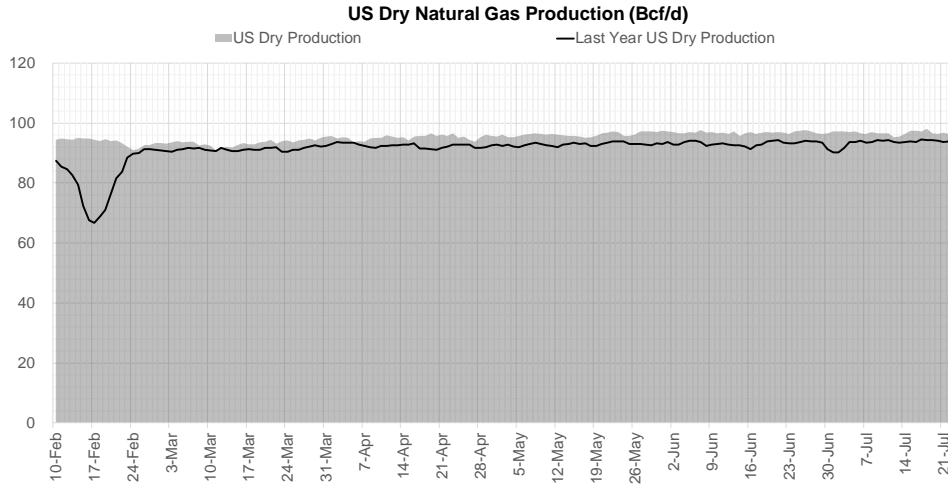
Weather Storage Model - Next 4 Week Forecast



Go to larger image



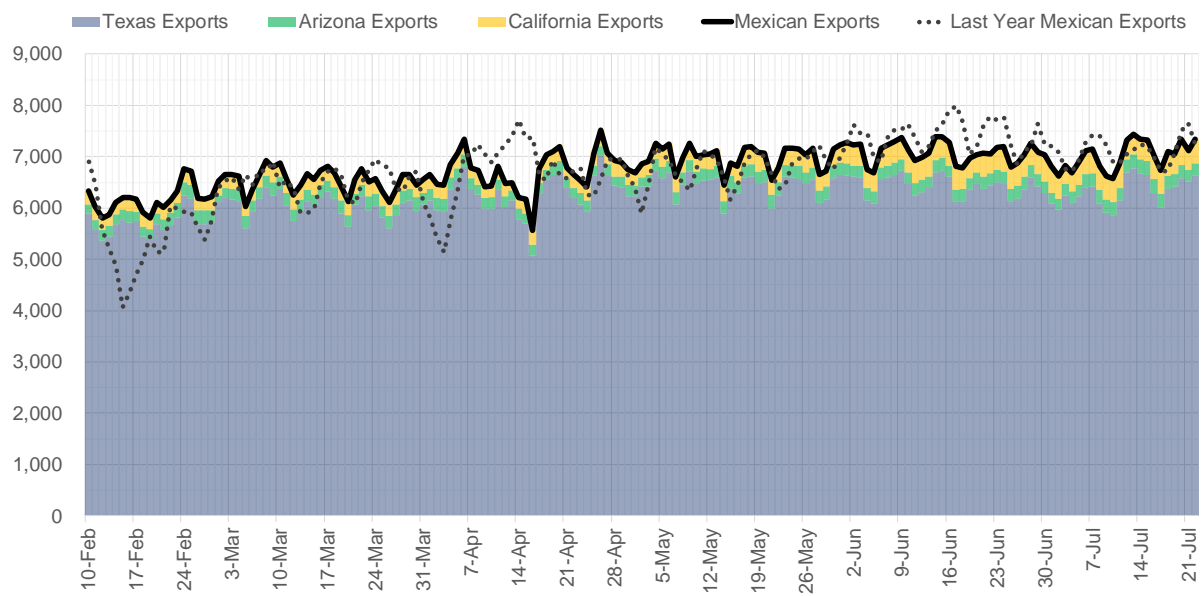
Supply – Demand Trends



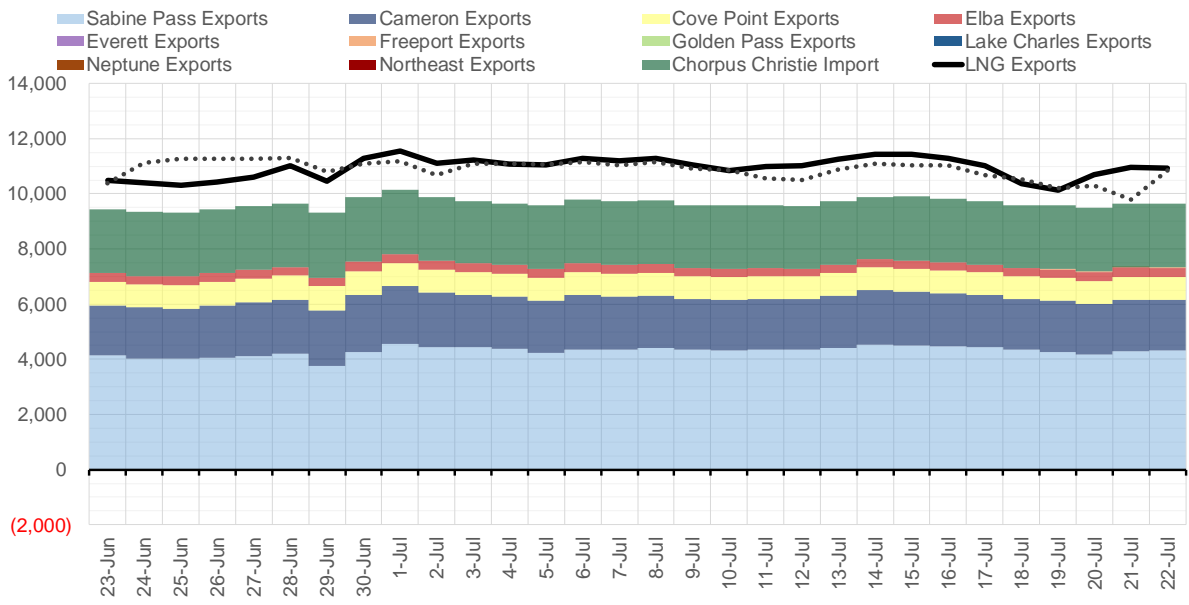
Source: Bloomberg

The risk of trading futures and options and other derivatives involves a substantial risk of loss and is not suitable for all persons. Each person must consider whether a particular trade, combination of trades, or strategy is suitable for that person's financial means and objectives. Past results are not necessarily indicative of future results. This communication may contain links to third party websites which are not under the control of and are not maintained by ION Energy Group, and ION Energy Group is not responsible for their content.

Mexican Exports (MMcf/d)



Net LNG Exports - Last 30 days (MMcf/d)



Source: Bloomberg

The risk of trading futures and options and other derivatives involves a substantial risk of loss and is not suitable for all persons. Each person must consider whether a particular trade, combination of trades, or strategy is suitable for that person's financial means and objectives. Past results are not necessarily indicative of future results. This communication may contain links to third party websites which are not under the control of and are not maintained by ION Energy Group, and ION Energy Group is not responsible for their content.

Nat Gas Options Volume and Open Interest CME and ICE Combined

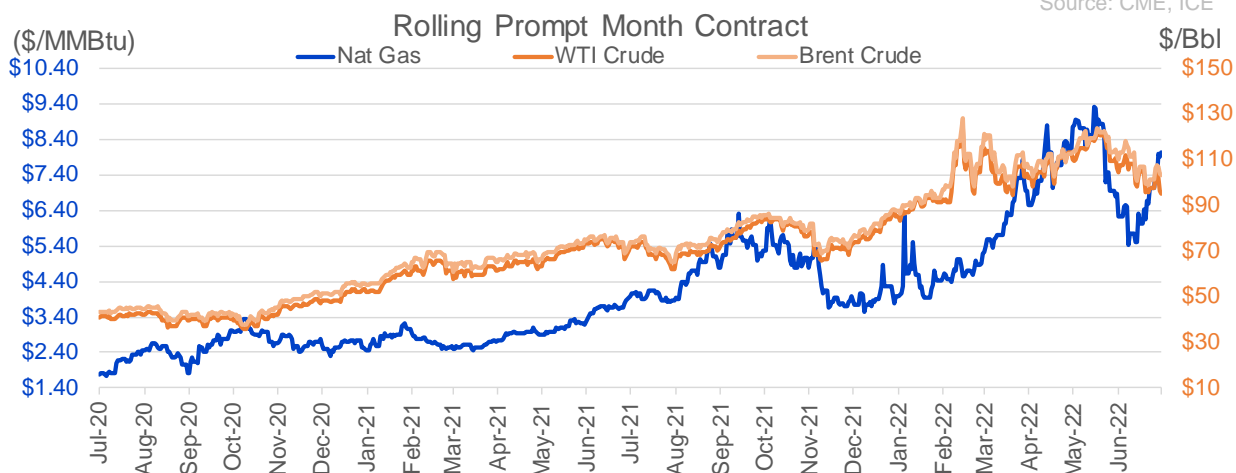
CONTRACT MONTH	CONTRACT YEAR	PUT/CALL	STRIKE	CUMULATIVE VOL	CONTRACT MONTH	CONTRACT YEAR	PUT/CALL	STRIKE	CUMULATIVE OI
8	2022	C	10.00	7508	8	2022	C	10.00	42265
8	2022	C	9.00	6930	8	2022	C	12.00	36981
8	2022	C	10.50	5710	10	2022	C	6.00	35992
8	2022	C	8.00	5169	10	2022	P	3.00	32165
8	2022	P	7.00	5014	8	2022	C	10.50	29686
8	2022	C	8.50	4321	10	2022	P	2.50	28388
8	2022	P	7.50	3608	8	2022	C	7.00	28350
9	2022	P	5.00	2360	10	2022	P	6.00	24393
10	2022	P	3.00	1898	9	2022	C	6.00	24373
8	2022	C	8.75	1828	9	2022	C	10.00	23450
8	2022	P	8.00	1755	10	2022	C	5.00	23268
10	2022	P	7.00	1753	8	2022	C	12.10	22001
9	2022	P	6.50	1677	5	2023	P	2.00	21027
4	2023	P	4.00	1665	10	2022	P	3.50	20940
8	2022	C	7.50	1632	8	2022	C	9.00	20573
8	2022	P	6.50	1585	9	2022	P	4.00	20225
8	2022	P	7.25	1555	8	2022	P	6.00	19831
4	2023	P	3.50	1555	9	2022	C	7.00	19784
9	2022	C	9.00	1517	10	2022	P	4.00	19782
10	2022	C	11.00	1517	8	2022	C	6.00	19779
10	2022	C	9.00	1436	3	2023	C	10.00	19238
8	2022	P	6.75	1427	9	2022	C	9.00	19170
9	2022	C	8.00	1427	8	2022	P	7.00	19050
8	2022	C	9.50	1342	1	2023	C	10.00	18602
10	2022	P	3.50	1327	12	2022	C	5.00	18218
10	2022	C	10.00	1235	10	2022	P	5.00	18128
3	2023	C	10.00	1171	3	2023	P	3.00	18012
8	2022	P	7.10	1134	8	2022	C	8.00	17927
3	2023	C	20.00	1100	10	2022	C	10.00	17569
9	2022	C	11.00	1075	8	2022	P	5.00	16934
9	2022	P	3.50	1004	10	2022	P	2.00	16679
10	2022	P	2.80	1000	9	2022	P	3.00	16601
10	2022	C	8.00	996	10	2022	C	8.00	16547
2	2023	C	8.00	950	2	2023	C	10.00	16289
8	2022	C	11.00	930	8	2022	P	4.00	16119
8	2022	C	8.25	911	9	2022	C	4.00	15970
10	2022	C	7.75	813	10	2023	P	2.50	15705
10	2022	C	7.55	801	12	2022	P	5.00	15488
11	2022	C	8.00	800	9	2022	P	2.50	15476
11	2022	C	11.00	800	8	2022	P	3.00	15408
1	2023	C	12.00	800	10	2022	C	7.00	15131
2	2023	C	12.00	800	10	2022	P	3.25	15117
10	2022	P	2.50	789	4	2023	P	3.00	14929
9	2022	C	10.00	768	9	2022	C	9.50	14901
9	2022	C	12.00	750	9	2022	P	2.75	14887
12	2022	P	4.00	750	9	2022	P	5.00	14772
12	2022	P	4.00	750	10	2023	P	2.00	14254
1	2023	P	4.00	750	8	2022	P	5.50	14223
3	2023	C	12.00	750	12	2022	C	6.00	13937
9	2022	P	6.00	724	10	2023	P	3	13755

Source: CME, ICE

Nat Gas Futures Open Interest CME and ICE Combined

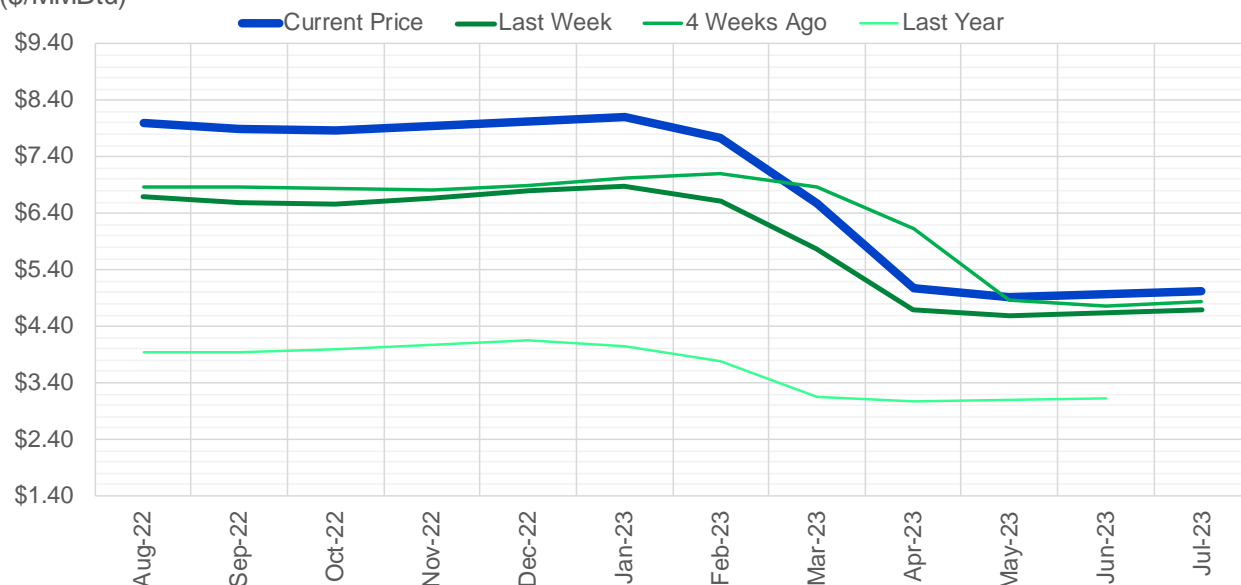
CME Henry Hub Futures (10,000 MMBtu)				ICE Henry Hub Futures Contract Equivalent (10,000 MM			
	Current	Prior	Daily Change		Current	Prior	Daily Change
AUG 22	19145	25793	-6648	AUG 22	76360	74567	1794
SEP 22	164529	163843	686	SEP 22	76556	77637	-1081
OCT 22	92307	93279	-972	OCT 22	73721	73168	554
NOV 22	67669	67128	541	NOV 22	59966	61127	-1161
DEC 22	49887	49575	312	DEC 22	64729	64417	312
JAN 23	71157	71572	-415	JAN 23	64047	63871	176
FEB 23	32823	32560	263	FEB 23	56583	55890	693
MAR 23	48597	47947	650	MAR 23	52026	52041	-15
APR 23	62069	62449	-380	APR 23	51782	51930	-148
MAY 23	58804	56493	2311	MAY 23	50773	50617	157
JUN 23	21512	21254	258	JUN 23	45153	45080	73
JUL 23	19987	19577	410	JUL 23	43777	43783	-7
AUG 23	18910	18811	99	AUG 23	42930	42814	115
SEP 23	16456	16294	162	SEP 23	42026	42036	-10
OCT 23	44304	43722	582	OCT 23	48749	48592	156
NOV 23	12500	12430	70	NOV 23	44610	44896	-286
DEC 23	11262	11594	-332	DEC 23	40340	40323	17
JAN 24	17395	17523	-128	JAN 24	39381	39205	177
FEB 24	7547	7525	22	FEB 24	29073	28958	115
MAR 24	16065	16598	-533	MAR 24	33796	33757	39
APR 24	13747	14009	-262	APR 24	28037	28029	8
MAY 24	6635	6621	14	MAY 24	26961	26953	8
JUN 24	2400	2429	-29	JUN 24	23877	23860	17
JUL 24	2184	2181	3	JUL 24	23988	23588	400
AUG 24	3183	3180	3	AUG 24	23518	23910	-393
SEP 24	1845	1838	7	SEP 24	23464	23449	15
OCT 24	8526	8521	5	OCT 24	26370	26632	-262
NOV 24	4708	4711	-3	NOV 24	24743	24562	182
DEC 24	7138	7133	5	DEC 24	27764	27601	163
JAN 25	14900	14904	-4	JAN 25	19932	19884	49

Source: CME, ICE



(\$/MMBtu)

Nat Gas Term Structure



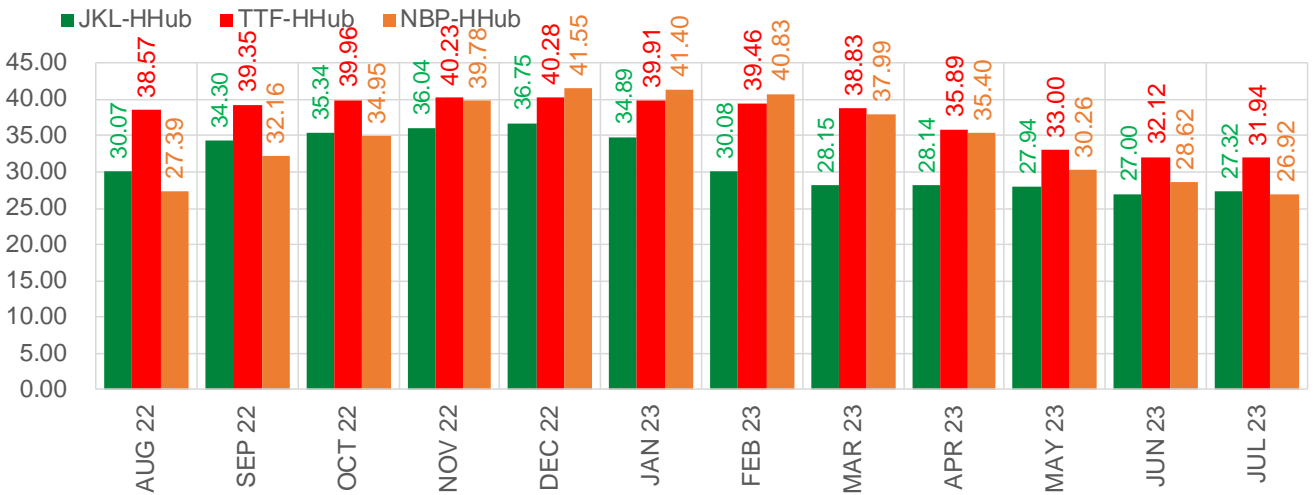
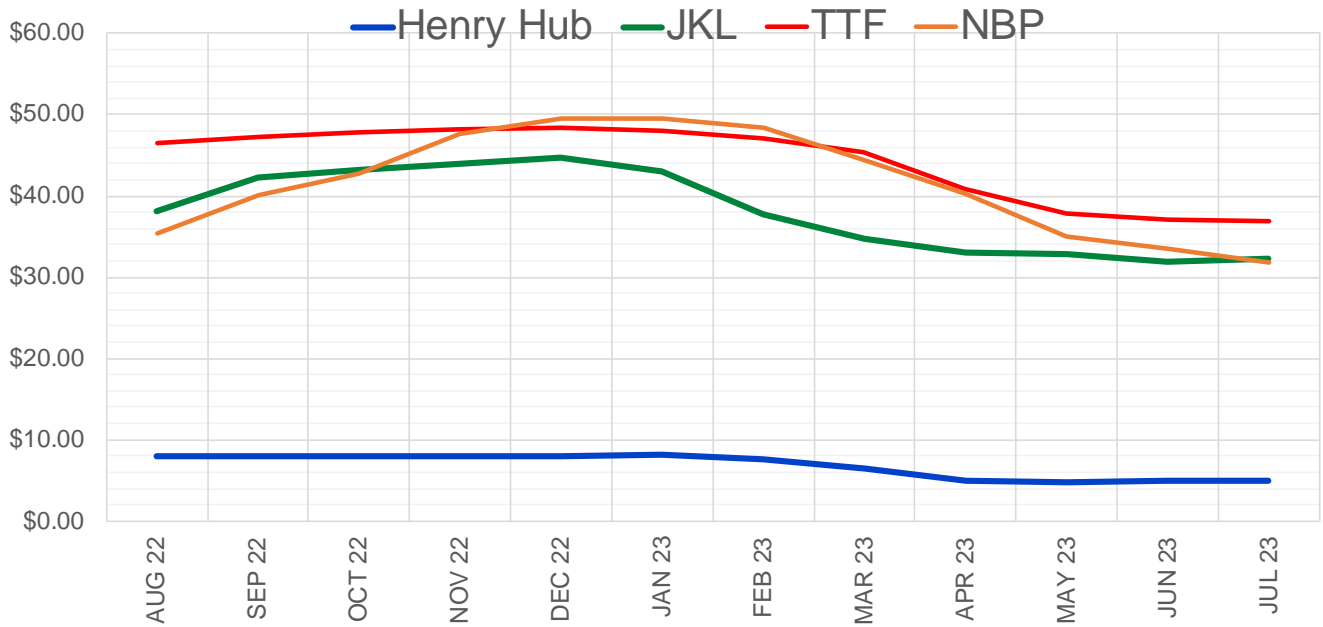
	Aug-22	Sep-22	Oct-22	Nov-22	Dec-22	Jan-23	Feb-23	Mar-23	Apr-23	May-23	Jun-23	Jul-23
Current Price	\$8.007	\$7.899	\$7.870	\$7.944	\$8.030	\$8.109	\$7.726	\$6.588	\$5.074	\$4.923	\$4.975	\$5.028
Last Week	\$6.689	\$6.589	\$6.574	\$6.677	\$6.789	\$6.883	\$6.604	\$5.764	\$4.702	\$4.592	\$4.647	\$4.703
vs. Last Week	\$1.318	\$1.310	\$1.296	\$1.267	\$1.241	\$1.226	\$1.122	\$0.824	\$0.372	\$0.331	\$0.328	\$0.325
4 Weeks Ago	\$6.858	\$6.872	\$6.835	\$6.826	\$6.905	\$7.019	\$7.110	\$6.876	\$6.121	\$4.873	\$4.770	\$4.836
vs. 4 Weeks Ago	\$1.149	\$1.027	\$1.035	\$1.118	\$1.125	\$1.090	\$0.616	-\$0.288	-\$1.047	\$0.050	\$0.205	\$0.192
Last Year	\$3.959	\$3.938	\$3.935	\$3.990	\$4.084	\$4.141	\$4.053	\$3.781	\$3.157	\$3.064	\$3.092	\$3.126
vs. Last Year	\$4.048	\$3.961	\$3.935	\$3.954	\$3.946	\$3.968	\$3.673	\$2.807	\$1.917	\$1.859	\$1.883	\$1.902

	Units	Cash Settled	Prompt Settle	Cash to Prompt
AGT Citygate	\$/MMBtu	11.00	6.43	-4.57
TETCO M3	\$/MMBtu	8.34	6.15	-2.19
FGT Zone 3	\$/MMBtu	9.43	10.50	1.07
Zone 6 NY	\$/MMBtu	9.43	6.21	-3.22
Chicago Citygate	\$/MMBtu	7.76	6.48	-1.28
Michcon	\$/MMBtu	7.58	6.41	-1.17
Columbia TCO Pool	\$/MMBtu	7.56	5.97	-1.59
Ventura	\$/MMBtu	5.95	6.34	0.39
Rockies/Opal	\$/MMBtu	7.23	6.28	-0.95
El Paso Permian Basin	\$/MMBtu	7.55	6.14	-1.41
Socal Citygate	\$/MMBtu	8.71	7.63	-1.08
Malin	\$/MMBtu	7.40	6.61	-0.79
Houston Ship Channel	\$/MMBtu	7.28	6.41	-0.87
Henry Hub Cash	\$/MMBtu	8.00	6.35	-1.65
AECO Cash	C\$/GJ	4.28	3.58	-0.71
Station2 Cash	C\$/GJ	4.46	6.48	2.02
Dawn Cash	C\$/GJ	7.89	6.44	-1.45

Source: CME, Bloomberg

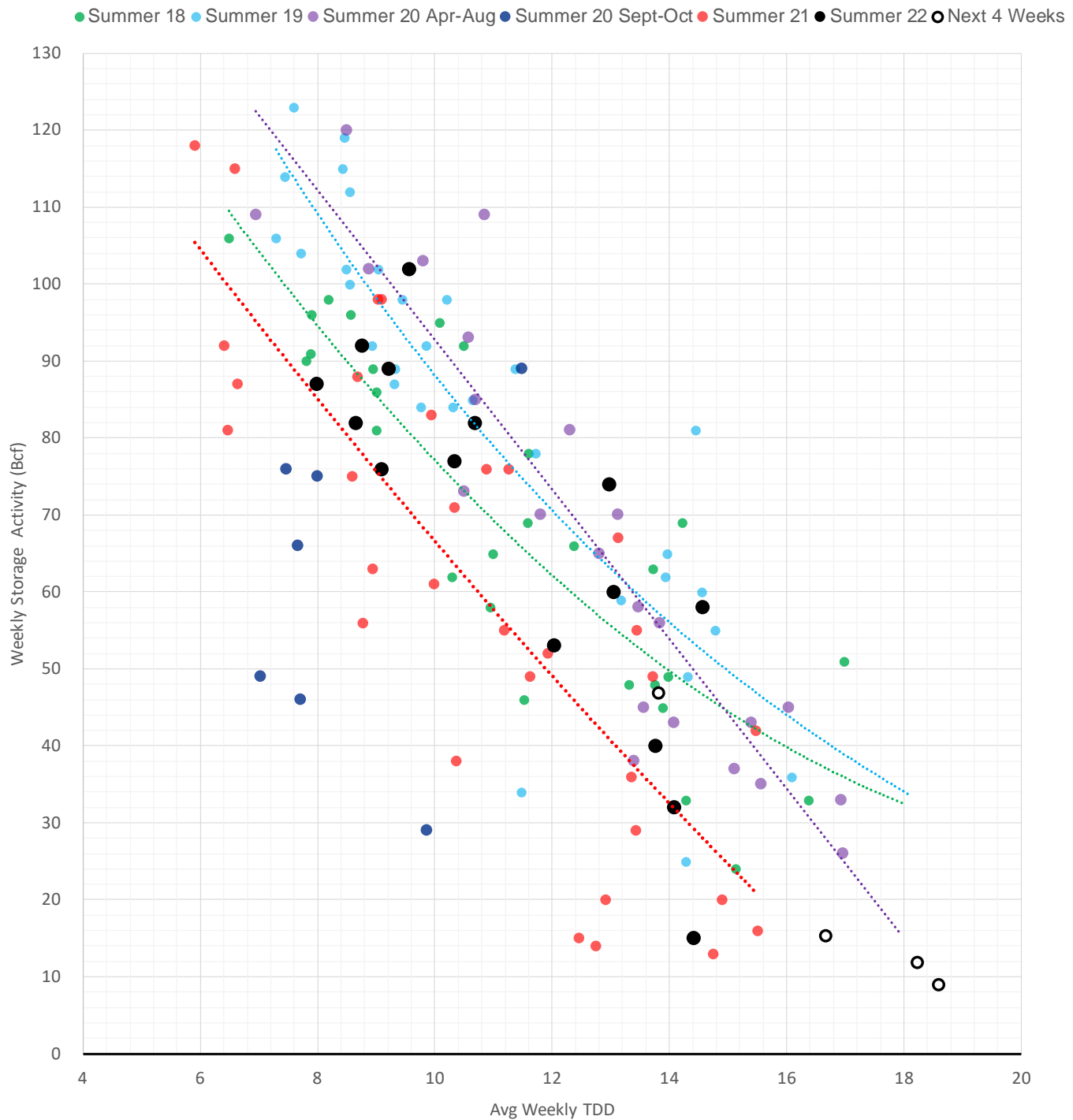
	Units	Current Price	vs. Last Week	vs. 4 Weeks Ago	vs. Last Year
NatGas Jul21/Oct21	\$/MMBtu	2.224	▲ 0.000	▲ 0.000	▲ 1.865
NatGas Oct21/Nov21	\$/MMBtu	0.361	▲ 0.000	▲ 0.000	▲ 0.304
NatGas Oct21/Jan22	\$/MMBtu	-1.817	▲ 0.000	▲ 0.000	▼ -2.022
NatGas Apr22/Oct22	\$/MMBtu	2.448	▲ 1.280	▲ 1.495	▲ 2.467
WTI Crude	\$/Bbl	96.35	▲ 0.570	▼ -7.920	▲ 24.440
Brent Crude	\$/Bbl	103.86	▲ 4.760	▼ -6.190	▲ 30.070
Fuel Oil, NY Harbour 1%	\$/Bbl	97.18	▲ 0.000	▲ 0.000	▲ 0.000
Heating Oil	cents/Gallon	359.03	▼ -5.910	▼ -74.760	▲ 145.770
Propane, Mt. Bel	cents/Gallon	1.14	▲ 0.002	▼ -0.069	▲ 0.050
Ethane, Mt. Bel	cents/Gallon	0.57	▲ 0.034	▼ -0.066	▲ 0.258
Coal, PRB	\$/MTon	12.30	▲ 0.000	▲ 0.000	▲ 0.000
Coal, PRB	\$/MMBtu	0.70			
Coal, ILB	\$/MTon	31.05	▲ 0.000	▲ 0.000	▲ 0.000
Coal, ILB	\$/MMBtu	1.32			

Nat Gas Term Structure (\$MMBTU)



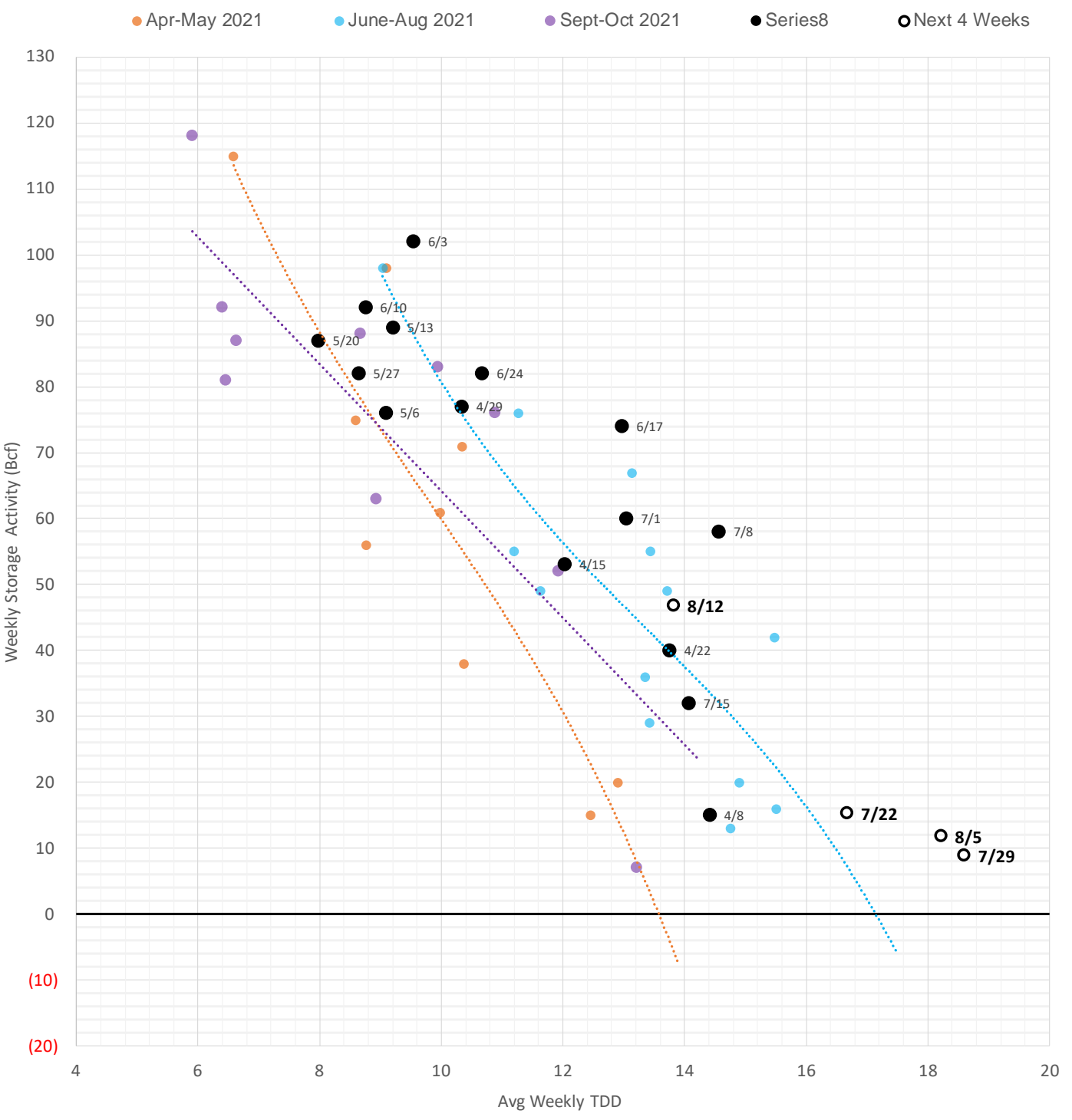
	AUG 22	SEP 22	OCT 22	NOV 22	DEC 22	JAN 23	FEB 23	MAR 23	APR 23	MAY 23	JUN 23	JUL 23
Henry Hub	\$8.024	\$7.895	\$7.876	\$7.946	\$8.030	\$8.093	\$7.611	\$6.527	\$4.982	\$4.845	\$4.897	\$4.925
JKL	\$38.095	\$42.190	\$43.220	\$43.990	\$44.780	\$42.980	\$37.690	\$34.675	\$33.120	\$32.785	\$31.900	\$32.240
JKL-HHub	\$30.071	\$34.295	\$35.344	\$36.044	\$36.750	\$34.887	\$30.079	\$28.148	\$28.138	\$27.940	\$27.003	\$27.315
TTF	\$46.591	\$47.244	\$47.837	\$48.172	\$48.312	\$48.000	\$47.075	\$45.355	\$40.868	\$37.848	\$37.012	\$36.867
TTF-HHub	\$38.567	\$39.349	\$39.961	\$40.226	\$40.282	\$39.907	\$39.464	\$38.828	\$35.886	\$33.003	\$32.115	\$31.942
NBP	\$35.411	\$40.054	\$42.821	\$47.728	\$49.576	\$49.494	\$48.437	\$44.521	\$40.385	\$35.107	\$33.521	\$31.842
NBP-HHub	\$27.387	\$32.159	\$34.945	\$39.782	\$41.546	\$41.401	\$40.826	\$37.994	\$35.403	\$30.262	\$28.624	\$26.917

Weather Storage Model - Next 4 Week Forecast



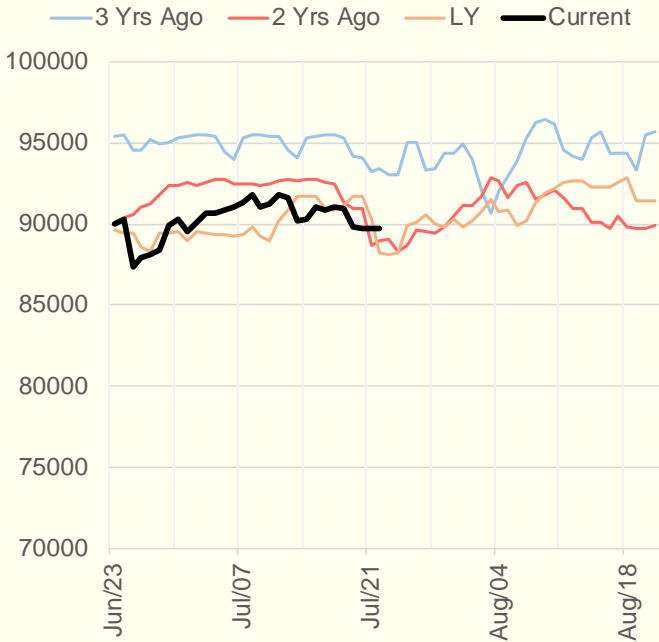
The risk of trading futures and options and other derivatives involves a substantial risk of loss and is not suitable for all persons. Each person must consider whether a particular trade, combination of trades, or strategy is suitable for that person's financial means and objectives. Past results are not necessarily indicative of future results. This communication may contain links to third party websites which are not under the control of and are not maintained by ION Energy Group, and ION Energy Group is not responsible for their content.

Weather Storage Model - Next 4 Week Forecast

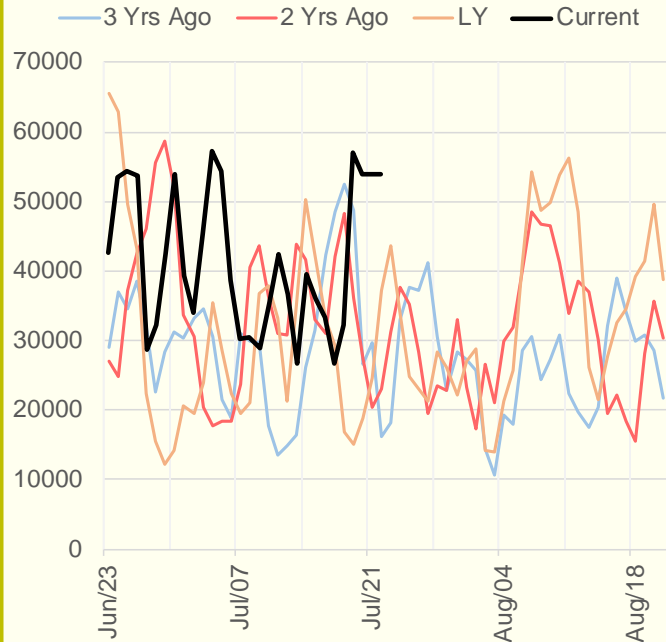


The risk of trading futures and options and other derivatives involves a substantial risk of loss and is not suitable for all persons. Each person must consider whether a particular trade, combination of trades, or strategy is suitable for that person's financial means and objectives. Past results are not necessarily indicative of future results. This communication may contain links to third party websites which are not under the control of and are not maintained by ION Energy Group, and ION Energy Group is not responsible for their content.

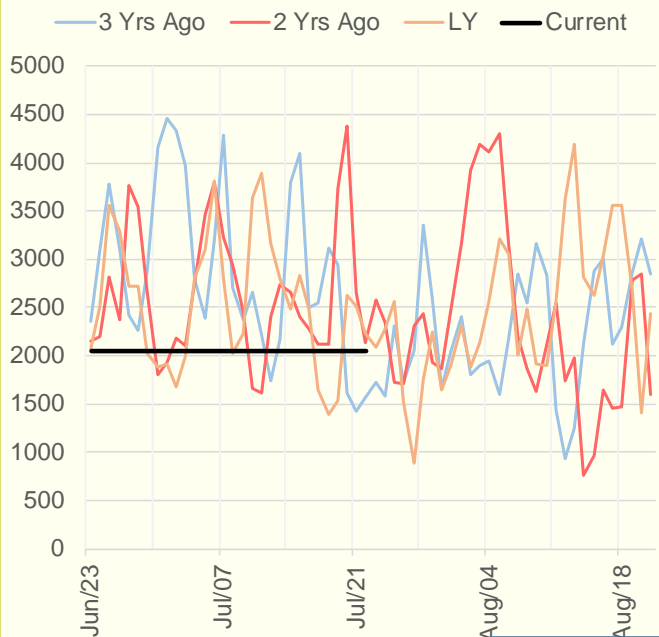
NRC Nuclear Daily Output



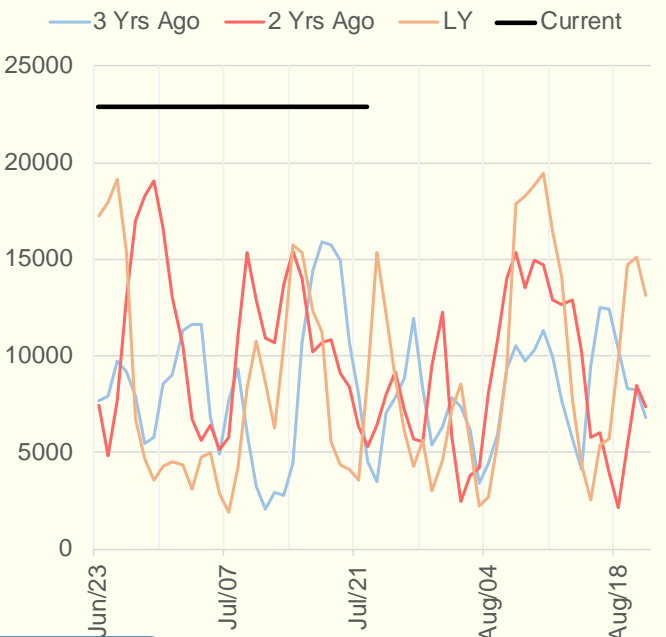
Genscape Wind



CALI Wind



TEXAS Wind



EIA 930 data is not being updated. EIA experiencing some issues.

The risk of trading futures and options and other derivatives involves a substantial risk of loss and is not suitable for all persons. Each person must consider whether a particular trade, combination of trades, or strategy is suitable for that person's financial means and objectives. Past results are not necessarily indicative of future results. This communication may contain links to third party websites which are not under the control of and are not maintained by ION Energy Group, and ION Energy Group is not responsible for their content.