

	Current	Δ from YD	Δ from 7D Avg
Nat Gas Prompt	\$ 7.66	▼ \$ (0.34)	▲ \$ 0.46

	Current	Δ from YD	Δ from 7D Avg
WTI Prompt	\$ 95.44	▼ \$ (6.82)	▼ \$ (4.2)

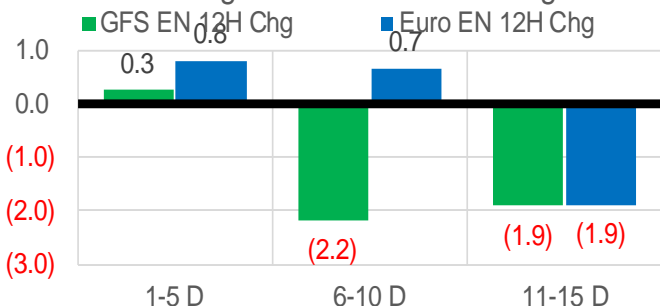
	Current	Δ from YD	Δ from 7D Avg
Brent Prompt	\$ 102.50	▼ \$ (4.42)	▼ \$ (0.8)

### Page Menu

- [Short-term Weather Model Outlooks](#)
- [Lower 48 Component Models](#)
- [Regional S/D Models Storage Projection](#)
- [Weather Model Storage Projection](#)
- [Supply – Demand Trends](#)
- [Nat Gas Options Volume and Open Interest](#)
- [Nat Gas Futures Open Interest](#)
- [Price Summary](#)

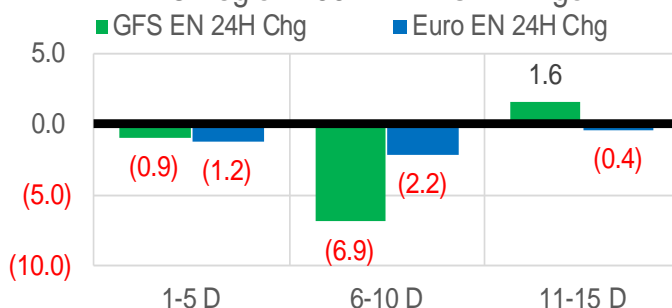
### Vs. 12H Ago

L48 Region - 00z TDD vs 12H Ago



### Vs. 24H Ago

L48 Region - 00z TDD vs 24H Ago



	Current	Δ from YD	Δ from 7D Avg
US Dry Production	96.3	▼ -0.12	▼ -0.75

	Current	Δ from YD	Δ from 7D Avg
US Power Burns	45.7	▼ -1.45	▲ 0.98

	Current	Δ from YD	Δ from 7D Avg
US ResComm	8.9	▼ -0.14	▲ 0.32

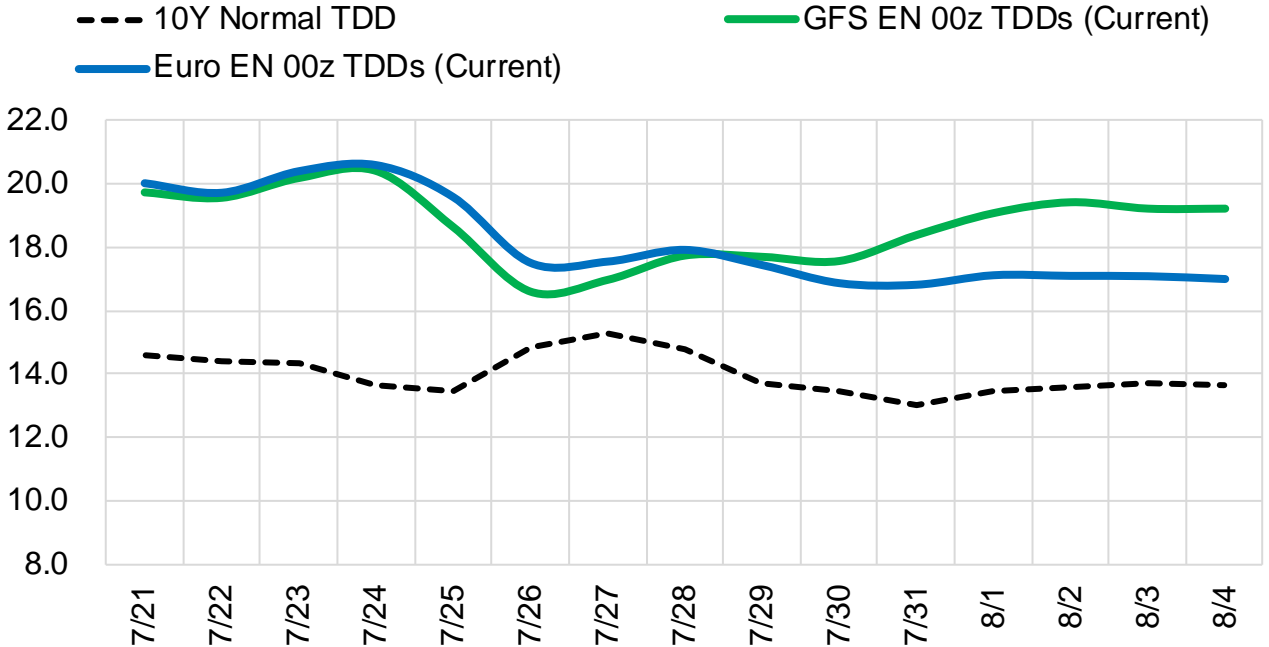
	Current	Δ from YD	Δ from 7D Avg
Canadian Imports	6.6	▲ 0.32	▲ 0.52

	Current	Δ from YD	Δ from 7D Avg
Net LNG Exports	11.0	▲ 0.32	▲ 0.12

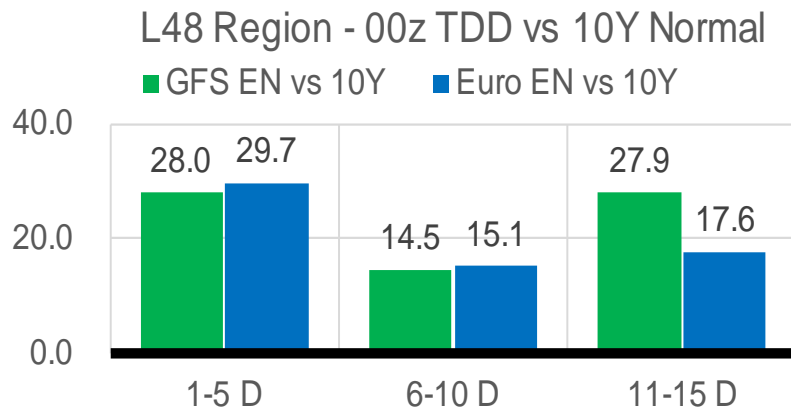
	Current	Δ from YD	Δ from 7D Avg
Mexican Exports	7.1	▼ -0.20	▲ 0.02

## Short-term Weather Model Outlooks (00z)

### L48 Region



## Vs. 10Y Normal



Source: WSI , Bloomberg

### Lower 48 Component Models

#### Daily Balances

	15-Jul	16-Jul	17-Jul	18-Jul	19-Jul	20-Jul	21-Jul	DoD	vs. 7D
<b>Lower 48 Dry Production</b>	<b>97.4</b>	<b>97.5</b>	<b>97.3</b>	<b>98.0</b>	<b>96.6</b>	<b>96.5</b>	<b>96.3</b>	▼ -0.1	▼ -0.9
<b>Canadian Imports</b>	<b>6.2</b>	<b>5.8</b>	<b>5.6</b>	<b>5.8</b>	<b>6.6</b>	<b>6.3</b>	<b>6.6</b>	▲ 0.3	▲ 0.6
L48 Power	43.3	42.2	42.3	46.0	47.1	47.1	45.7	▼ -1.4	▲ 1.0
L48 Residential & Commercial	8.5	8.2	8.3	8.7	8.9	9.1	8.9	▼ -0.1	▲ 0.3
L48 Industrial	20.7	21.0	21.3	21.4	21.0	21.2	21.0	▼ -0.2	▼ -0.1
L48 Lease and Plant Fuel	5.3	5.3	5.3	5.3	5.2	5.2	5.2	▼ -0.1	▼ -0.1
L48 Pipeline Distribution	2.8	2.7	2.7	2.9	3.0	3.0	2.9	▼ -0.1	▲ 0.1
<b>L48 Regional Gas Consumption</b>	<b>80.5</b>	<b>79.4</b>	<b>79.8</b>	<b>84.3</b>	<b>85.2</b>	<b>85.6</b>	<b>83.7</b>	▼ -1.9	▲ 1.2
<b>Net LNG Delivered</b>	<b>11.43</b>	<b>11.28</b>	<b>11.02</b>	<b>10.36</b>	<b>10.13</b>	<b>10.70</b>	<b>11.02</b>	▲ 0.3	▲ 0.2
<b>Total Mexican Exports</b>	<b>7.3</b>	<b>7.0</b>	<b>6.7</b>	<b>7.1</b>	<b>7.1</b>	<b>7.3</b>	<b>7.1</b>	▼ -0.2	▲ 0.1
Implied Daily Storage Activity	4.4	5.5	5.3	2.0	0.8	-0.9	1.1		
EIA Reported Daily Storage Activity									
Daily Model Error									

#### EIA Storage Week Balances

	10-Jun	17-Jun	24-Jun	1-Jul	8-Jul	15-Jul	WoW	vs. 4W
<b>Lower 48 Dry Production</b>	<b>96.9</b>	<b>96.7</b>	<b>96.7</b>	<b>97.0</b>	<b>97.0</b>	<b>96.3</b>	▼ -0.7	▼ -0.6
<b>Canadian Imports</b>	<b>5.5</b>	<b>6.1</b>	<b>5.6</b>	<b>5.7</b>	<b>5.6</b>	<b>6.0</b>	▲ 0.4	▲ 0.3
L48 Power	32.3	37.8	37.7	40.1	41.1	42.8	▲ 1.8	▲ 3.7
L48 Residential & Commercial	8.6	8.3	8.7	8.2	8.3	8.4	▲ 0.1	▼ 0.0
L48 Industrial	21.3	21.5	20.1	20.1	21.1	19.6	▼ -1.5	▼ -1.1
L48 Lease and Plant Fuel	5.2	5.2	5.2	5.3	5.3	5.2	▼ 0.0	▼ 0.0
L48 Pipeline Distribution	2.2	2.5	2.5	2.6	2.6	2.7	▲ 0.1	▲ 0.2
<b>L48 Regional Gas Consumption</b>	<b>69.7</b>	<b>75.3</b>	<b>74.2</b>	<b>76.3</b>	<b>78.3</b>	<b>78.7</b>	▲ 0.4	▲ 2.7
<b>Net LNG Exports</b>	<b>12.3</b>	<b>10.7</b>	<b>10.6</b>	<b>10.6</b>	<b>11.2</b>	<b>11.1</b>	▼ -0.1	▲ 0.3
<b>Total Mexican Exports</b>	<b>7.1</b>	<b>7.2</b>	<b>7.0</b>	<b>7.0</b>	<b>6.9</b>	<b>7.0</b>	▲ 0.1	▼ 0.0
Implied Daily Storage Activity	13.2	9.6	10.5	8.8	6.2	5.5	-0.7	
EIA Reported Daily Storage Activity	13.1	10.6	11.7	8.6	8.3			
Daily Model Error	0.1	-1.0	-1.2	0.2	-2.1			

#### Monthly Balances

	2Yr Ago Jul-20	LY Jul-21	Mar-22	Apr-22	May-22	Jun-22	MTD Jul-22	MoM	vs. LY
<b>Lower 48 Dry Production</b>	<b>89.0</b>	<b>93.5</b>	<b>93.4</b>	<b>95.2</b>	<b>96.2</b>	<b>96.8</b>	<b>96.8</b>	▼ 0.0	▲ 3.3
<b>Canadian Imports</b>	<b>4.4</b>	<b>5.2</b>	<b>5.2</b>	<b>5.8</b>	<b>5.1</b>	<b>5.7</b>	<b>5.9</b>	▲ 0.2	▲ 0.7
L48 Power	43.8	39.7	25.4	24.7	28.8	36.8	42.8	▲ 6.0	▲ 3.1
L48 Residential & Commercial	7.9	8.1	31.5	22.5	12.3	8.5	8.4	▼ -0.1	▲ 0.3
L48 Industrial	20.1	20.8	19.7	21.5	21.1	20.8	20.2	▼ -0.6	▼ -0.6
L48 Lease and Plant Fuel	4.9	5.1	5.2	5.2	5.2	5.2	5.2	▲ 0.0	▲ 0.2
L48 Pipeline Distribution	2.6	2.5	2.9	2.6	2.3	2.5	2.7	▲ 0.3	▲ 0.2
<b>L48 Regional Gas Consumption</b>	<b>79.3</b>	<b>76.2</b>	<b>84.7</b>	<b>76.6</b>	<b>69.8</b>	<b>73.8</b>	<b>79.4</b>	▲ 5.6	▲ 3.2
<b>Net LNG Exports</b>	<b>3.3</b>	<b>10.8</b>	<b>12.9</b>	<b>12.3</b>	<b>12.5</b>	<b>11.2</b>	<b>11.1</b>	▼ -0.1	▲ 0.3
<b>Total Mexican Exports</b>	<b>5.9</b>	<b>7.1</b>	<b>6.5</b>	<b>6.7</b>	<b>7.0</b>	<b>7.1</b>	<b>7.0</b>	▼ -0.1	▼ -0.1
Implied Daily Storage Activity	4.9	4.6	-5.4	5.4	12.0	10.5	5.3		
EIA Reported Daily Storage Activity									
Daily Model Error									

Source: Bloomberg, analytix.ai

## Daily Average Generation Data

### Nuclear Generation Daily Average - GWh (NRC)

	13-Jul	14-Jul	15-Jul	16-Jul	17-Jul	18-Jul	19-Jul	DoD	vs. 7D
NRC Nuclear Daily Output	90.2	90.3	91.0	90.9	91.1	91.0	89.8	-1.2	-0.9
NRC Nuclear Max Capacity	104.9	104.9	104.9	104.9	104.9	104.9	104.9	0.0	0.0
NRC Nuclear Outage	14.7	14.6	13.8	14.0	13.8	13.9	15.1	1.2	0.9
NRC % Nuclear Cap Utilization	91.7	91.8	92.6	92.5	92.6	92.5	91.3	-1.2	-1.0

### Wind Generation Daily Average - MWh (EIA)

	13-Jul	14-Jul	15-Jul	16-Jul	17-Jul	18-Jul	19-Jul	DoD	vs. 7D
CALI Wind	2048	2048	2048	2048	2048	2048	2048	0	0
TEXAS Wind	22879	22879	22879	22879	22879	22879	22879	0	0
US Wind	63443	63443	63443	63443	63443	63443	63443	0	0

EIA 930 data is not being updated. EIA experiencing some issues.

### Generation Daily Average - MWh (EIA)

	13-Jul	14-Jul	15-Jul	16-Jul	17-Jul	18-Jul	19-Jul	DoD	vs. 7D
Genscape Wind	26663	39440	35977	33329	26622	32157	56924	24767	24560
US Solar	19728	19728	19728	19728	19728	19728	19728	0	0
US Petroleum	1333	1333	1333	1333	1333	1333	1333	0	0
US Other	9775	9775	9775	9775	9775	9775	9775	0	0
US Coal	119543	119543	119543	119543	119543	119543	119543	0	0
US Nuke	90696	90696	90696	90696	90696	90696	90696	0	0
US Hydro	39690	39690	39690	39690	39690	39690	39690	0	0
<b>US Gas</b>	<b>220700</b>	<b>220700</b>	<b>220700</b>	<b>220700</b>	<b>220700</b>	<b>220700</b>	<b>220700</b>	<b>0</b>	<b>0</b>

See National Wind and Nuclear daily charts

Source: Bloomberg, analytix.ai

## Storage Week Average Generation Data

### Nuclear Generation Weekly Average - GWh (NRC)

	10-Jun	17-Jun	24-Jun	1-Jul	8-Jul	15-Jul	WoW	WoW Bcf/d Impact
NRC Nuclear Daily Output	88.3	88.2	89.0	88.9	90.6	91.2	0.5	-0.1
NRC Nuclear Max Capacity	104.9	104.9	104.9	104.9	104.9	104.9	0.0	
NRC Nuclear Outage	16.6	16.7	15.9	16.0	14.2	13.7	-0.5	
NRC % Nuclear Cap Utilization	89.8	89.7	90.5	90.4	92.2	92.7	0.5	

### Wind Generation Weekly Average - MWh (EIA)

	10-Jun	17-Jun	24-Jun	1-Jul	8-Jul	15-Jul	WoW	WoW Bcf/d Impact
CALI Wind	3842	3032	2048	2048	2048	2048	0	0.0
TEXAS Wind	12449	20462	22879	22879	22879	22879	0	0.0
US Wind	37417	57090	63443	63443	63443	63443	0	0.0
							0%	

### Generation Weekly Average - MWh (EIA)

	10-Jun	17-Jun	24-Jun	1-Jul	8-Jul	15-Jul	WoW	WoW Bcf/d Impact
Genscape Wind	38198	57792	50581	45558	42730	34294	-8436	1.5
US Solar	18807	18731	19728	19728	19728	19728	0	0.0
US Petroleum	968	1244	1333	1333	1333	1333	0	0.0
US Other	8001	8688	9775	9775	9775	9775	0	0.0
US Coal	95415	106566	119543	119543	119543	119543	0	0.0
US Nuke	91641	91235	90696	90696	90696	90696	0	0.0
US Hydro	36328	37495	39690	39690	39690	39690	0	0.0
<b>US Gas</b>	<b>178204</b>	<b>201845</b>	<b>220700</b>	<b>220700</b>	<b>220700</b>	<b>220700</b>	<b>0</b>	<b>0.0</b>

EIA 930 data is not being updated. EIA experiencing some issues.

See National Wind and Nuclear daily charts

Source: Bloomberg, analytix.ai

## Monthly Average Generation Data

### Nuclear Generation Monthly Average - GWh (NRC)

	2Yr Ago	LY	MTD						
	Same 30 days	Same 30 days	Apr-22	May-22	Jun-22	Jul-22	Last 30 days	MoM (MTD vs LY)	Last 30 days YoY
	NRC Nuclear Daily Output	91.9	90.1	73.4	81.7	88.5	90.8	90.3	2.2
NRC Nuclear Max Capacity	104.9	104.9	104.9	104.9	104.9	104.9	104.9	0.0	0.0
NRC Nuclear Outage	13.0	14.8	31.5	23.2	16.3	14.1	14.6	-2.2	-0.2
NRC % Nuclear Cap Utilization	93.4	91.6	74.6	83.0	90.0	92.3	91.8	2.2	0.2

### Wind Generation Monthly Average - MWh (EIA)

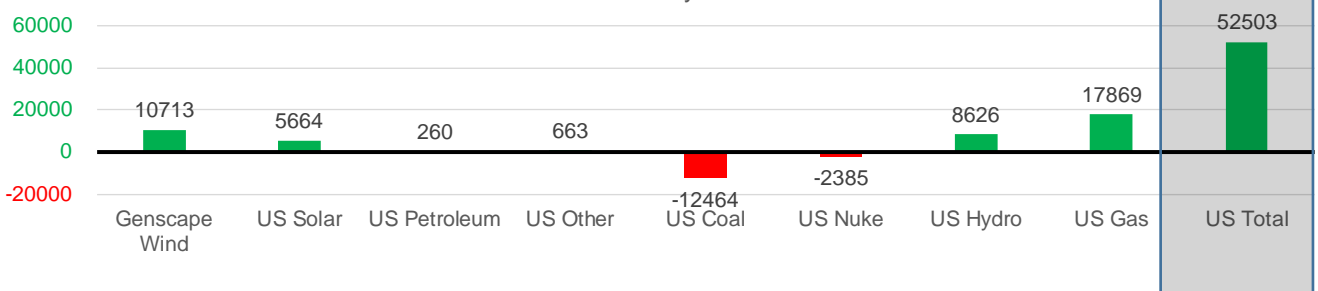
	2Yr Ago	LY	MTD						
	Same 30 days	Same 30 days	Apr-22	May-22	Jun-22	Jul-22	Last 30 days	MoM (MTD vs LY)	Last 30 days YoY
	CALI Wind	2632	2548	3218	3361	2724	2048	2048	-676
TEXAS Wind	11003	8110	16384	16756	19072	22879	22879	3807	14769
US Wind	33927	31057	64240	56462	54014	63443	63443	9428	32385

### Generation Monthly Average - MWh (EIA)

	2Yr Ago	LY	MTD						
	Same 30 days	Same 30 days	Apr-22	May-22	Jun-22	Jul-22	Last 30 days	MoM (MTD vs LY)	Last 30 days YoY
	Genscape Wind	34768	30244	63684	56803	47280	39906	40958	▲ 1051.6
US Solar	12391	14064	16265	18186	19216	19728	19728	▲ 0.0	▲ 5664
US Petroleum	1475	1072	979	518	1204	1222	1222	▲ 0.0	▲ 260
US Other	9685	9113	7373	7724	8994	8994	8994	▲ 0.0	▲ 3
US Coal	113674	132007	77400	85273	109706	109706	109706	▲ 0.0	▲ 64
US Nuke	94478	93081	77317	85496	91073	91073	91073	▲ 0.0	▲ 35
US Hydro	34801	31063	28877	31369	38153	39690	39690	▲ 0.0	▲ 8626
<b>US Gas</b>	<b>222519</b>	<b>202831</b>	<b>132665</b>	<b>157565</b>	<b>204668</b>	<b>220700</b>	<b>220700</b>	▲ 1052	▲ 17869
<b>US Total</b>	<b>521111</b>	<b>514466</b>	<b>405650</b>	<b>443965</b>	<b>530484</b>	<b>566968</b>	<b>566968</b>	▲ 1052	▲ 52503

EIA 930 data is not being updated. EIA experiencing some issues.

Last 30 days YoY



See National Wind and Nuclear daily charts

Source: Bloomberg, analytix.ai

### Regional S/D Models Storage Projection

Week Ending 15-Jul

	Daily Raw Storage	Daily Adjustment Factor	Daily Average Storage Activity (Adjusted) *	Weekly Adjusted Storage Activity
L48	6.6	-0.2	6.4	45
East	1.3	1.9	3.2	22
Midwest	3.9	-1.2	2.6	19
Mountain	4.4	-4.0	0.4	3
South Central	-4.3	3.9	-0.4	-3
Pacific	1.4	-0.9	0.5	4

\*Adjustment Factor is calculated based on historical regional deltas

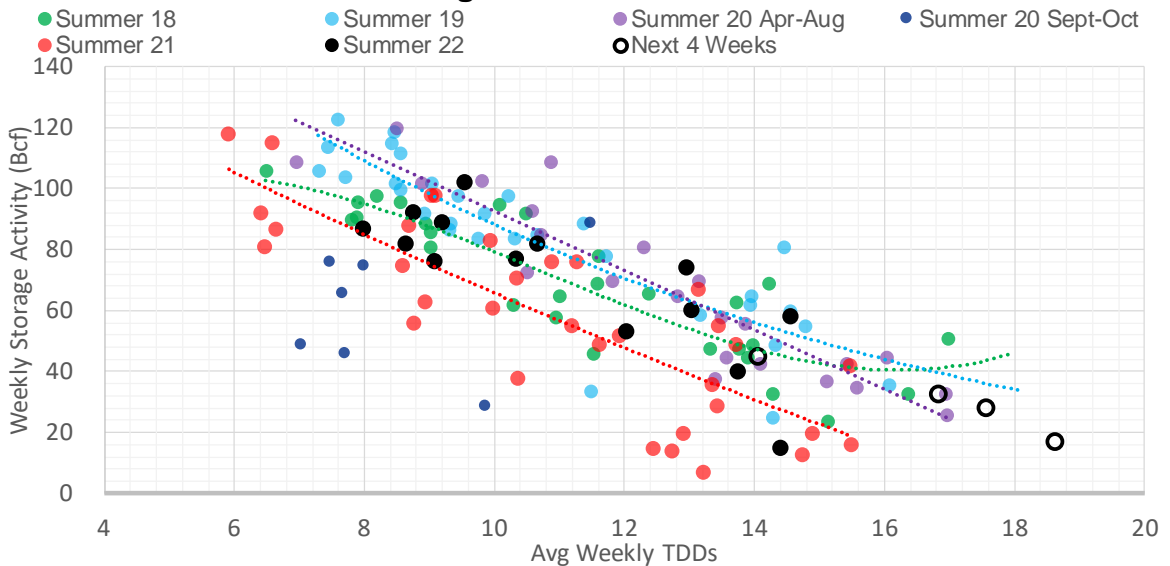
U.S. underground natural gas storage facilities by type (July 2015)



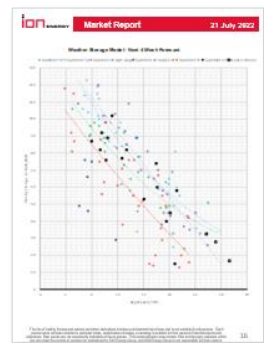
### Weather Model Storage Projection

Next report and beyond		
Week Ending	GWDDs	Week Storage Projection
15-Jul	14.1	45
22-Jul	16.9	32
29-Jul	18.7	17
05-Aug	17.6	28

### Weather Storage Model - Next 4 Week Forecast

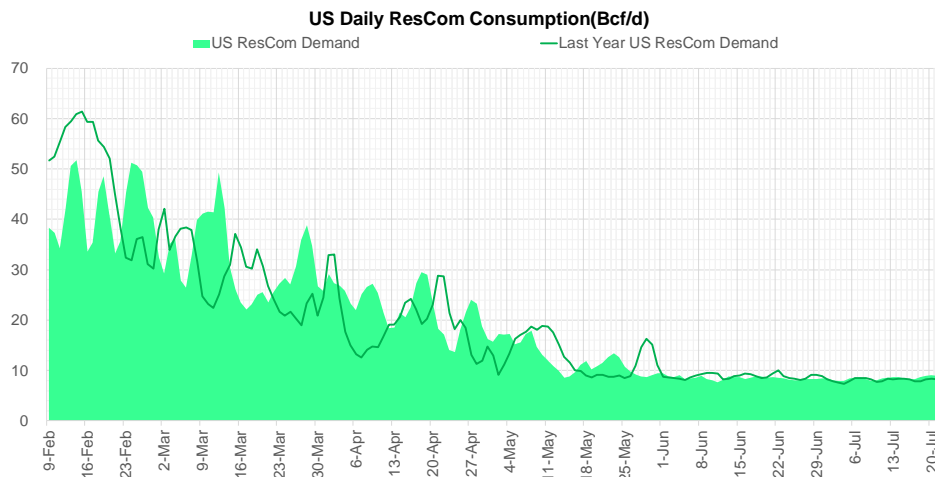
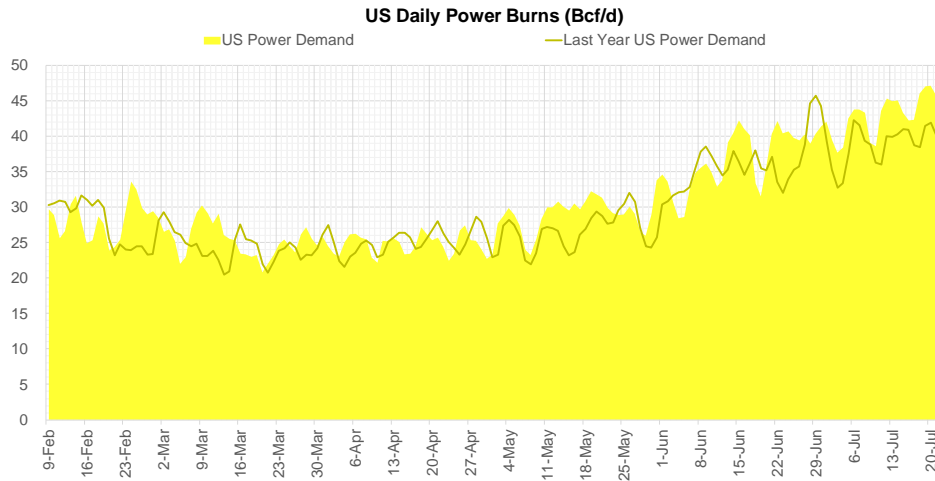
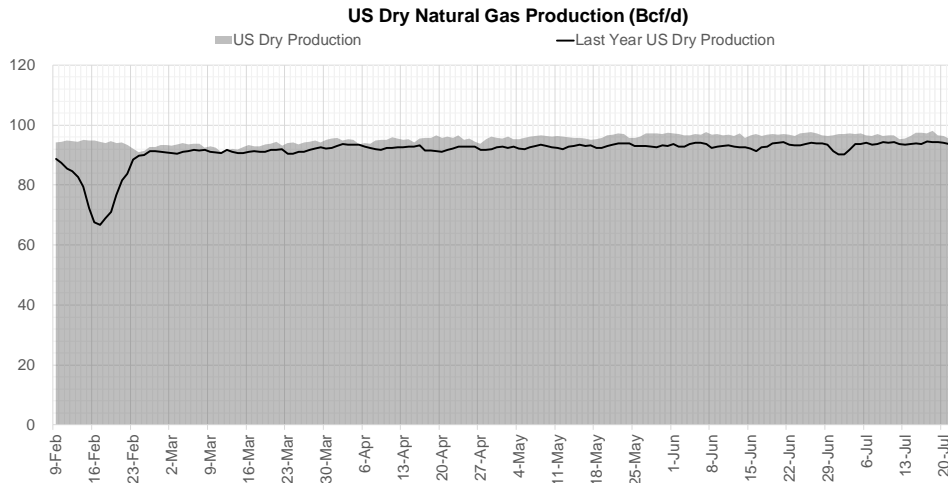


Go to larger image





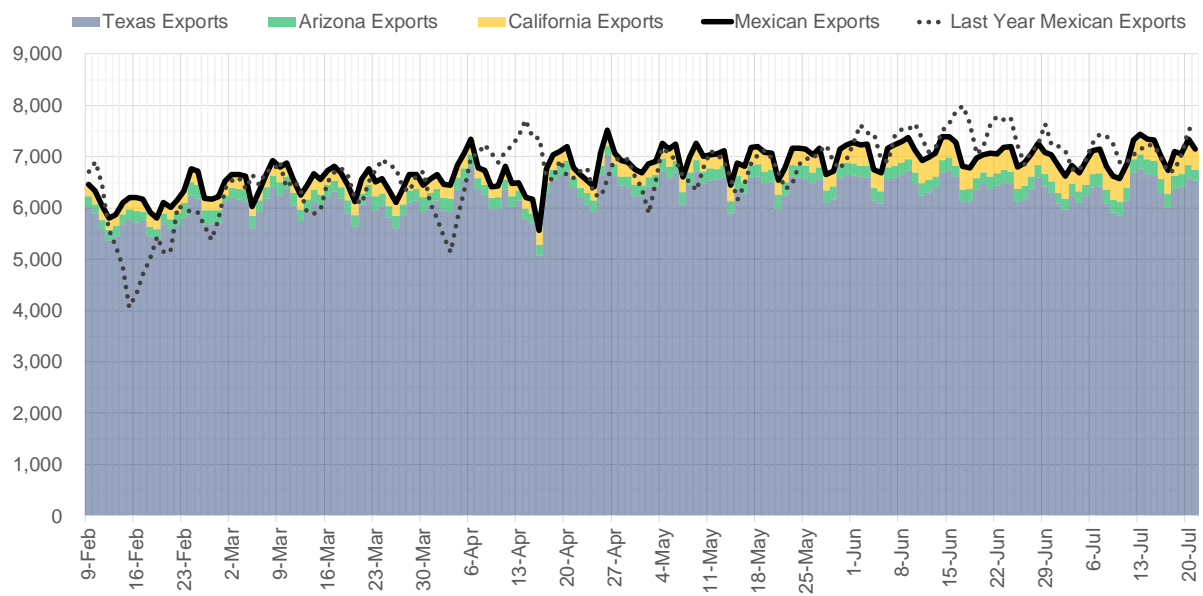
## Supply – Demand Trends



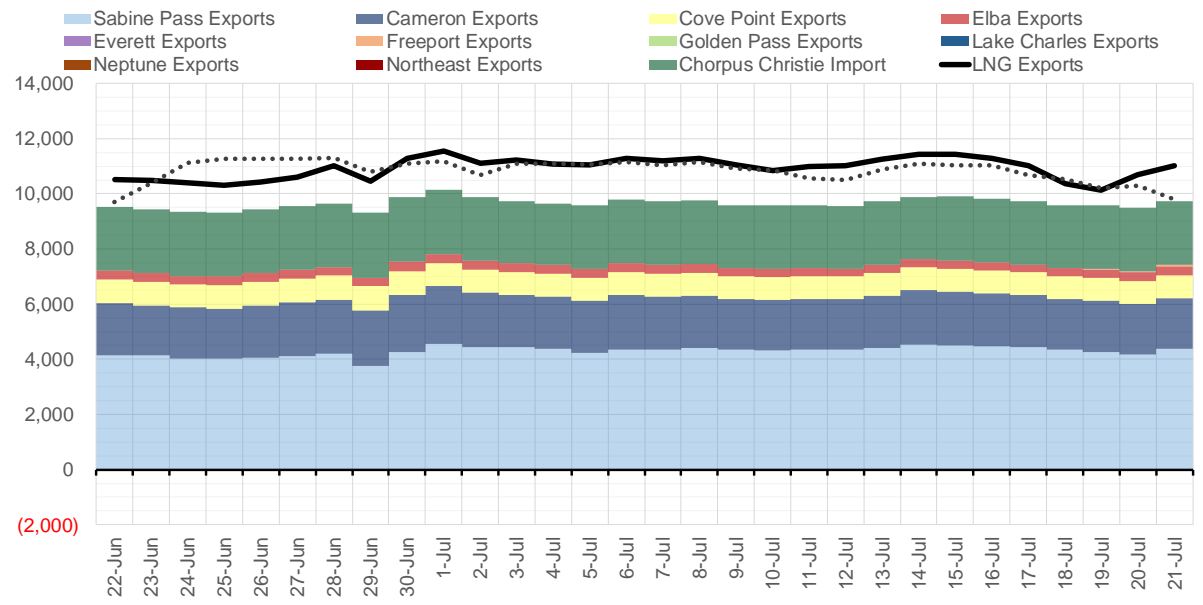
Source: Bloomberg

The risk of trading futures and options and other derivatives involves a substantial risk of loss and is not suitable for all persons. Each person must consider whether a particular trade, combination of trades, or strategy is suitable for that person's financial means and objectives. Past results are not necessarily indicative of future results. This communication may contain links to third party websites which are not under the control of and are not maintained by ION Energy Group, and ION Energy Group is not responsible for their content.

### Mexican Exports (MMcf/d)



### Net LNG Exports - Last 30 days (MMcf/d)



Source: Bloomberg

The risk of trading futures and options and other derivatives involves a substantial risk of loss and is not suitable for all persons. Each person must consider whether a particular trade, combination of trades, or strategy is suitable for that person's financial means and objectives. Past results are not necessarily indicative of future results. This communication may contain links to third party websites which are not under the control of and are not maintained by ION Energy Group, and ION Energy Group is not responsible for their content.

## Nat Gas Options Volume and Open Interest CME and ICE Combined

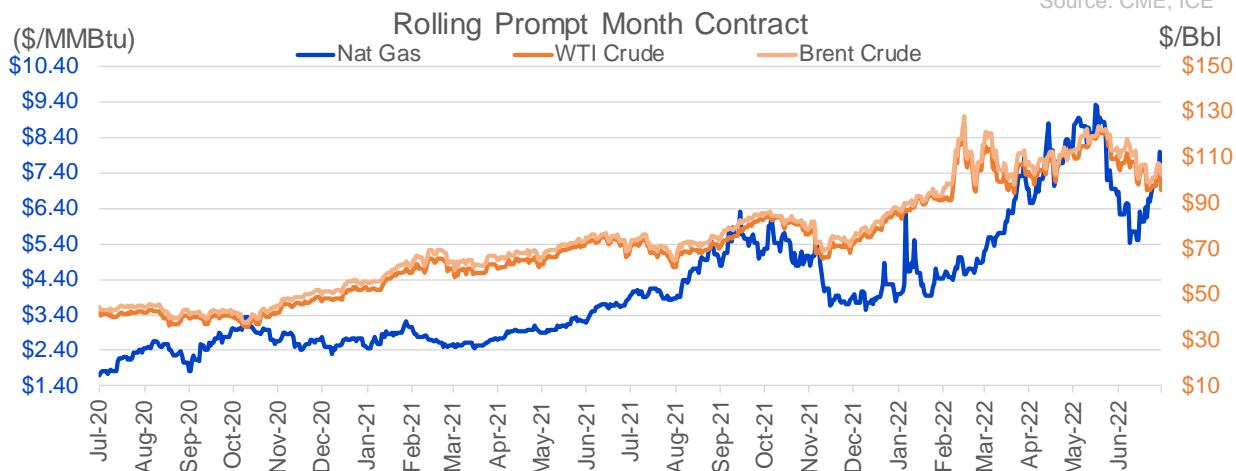
CONTRACT MONTH	CONTRACT YEAR	PUT/CALL	STRIKE	CUMULATIVE VOL	CONTRACT MONTH	CONTRACT YEAR	PUT/CALL	STRIKE	CUMULATIVE OI
8	2022	C	8.50	12318	8	2022	C	10.00	43281
8	2022	C	8.00	9612	8	2022	C	12.00	37402
8	2022	C	10.00	8051	10	2022	C	6.00	35993
8	2022	C	9.00	5951	10	2022	P	3.00	32154
8	2022	C	8.40	5510	8	2022	C	10.50	31718
8	2022	C	9.50	4785	8	2022	C	7.00	28400
8	2022	C	10.50	3659	10	2022	P	2.50	28388
8	2022	P	6.50	3438	9	2022	C	6.00	24375
9	2022	C	9.00	3278	10	2022	P	6.00	24287
8	2022	C	12.00	3039	8	2022	C	9.00	23884
8	2022	C	11.00	2817	9	2022	C	10.00	23410
9	2022	C	8.00	2479	10	2022	C	5.00	23368
8	2022	C	8.10	2320	8	2022	C	12.10	22001
8	2022	P	7.00	1986	5	2023	P	2.00	21027
9	2022	P	5.50	1735	10	2022	P	3.50	20925
12	2022	P	5.50	1700	9	2022	P	4.00	20223
4	2023	P	3.00	1600	8	2022	P	6.00	19935
9	2022	C	10.00	1584	9	2022	C	7.00	19785
8	2022	P	7.25	1572	8	2022	C	6.00	19779
10	2022	P	5.50	1502	10	2022	P	4.00	19582
4	2023	C	7.00	1475	1	2023	C	10.00	19027
5	2023	C	7.00	1475	3	2023	C	10.00	18291
6	2023	C	7.00	1475	12	2022	C	5.00	18218
7	2023	C	7.00	1475	10	2022	P	5.00	18124
8	2023	C	7.00	1475	8	2022	P	7.00	18098
9	2023	C	7.00	1475	3	2023	P	3.00	18012
10	2023	C	7.00	1475	10	2022	C	10.00	17553
8	2022	P	6.75	1447	9	2022	C	9.00	17476
10	2022	P	5.00	1429	8	2022	C	8.00	17032
8	2022	C	7.50	1411	8	2022	P	5.00	16973
3	2023	P	5.00	1400	10	2022	P	2.00	16679
10	2022	C	9.00	1379	9	2022	P	3.00	16605
1	2023	C	10.00	1156	2	2023	C	10.00	16289
10	2022	P	6.50	1104	10	2022	C	8.00	16174
1	2023	C	15.00	1075	8	2022	P	4.00	16119
4	2023	P	2.00	1050	9	2022	C	4.00	15970
5	2023	P	2.00	1050	10	2023	P	2.50	15705
6	2023	P	2.00	1050	9	2022	P	2.50	15476
7	2023	P	2.00	1050	8	2022	P	3.00	15408
8	2023	P	2.00	1050	12	2022	P	5.00	15388
9	2023	P	2.00	1050	10	2022	P	3.25	15117
10	2023	P	2.00	1050	10	2022	C	7.00	15114
10	2022	P	4.50	1006	9	2022	P	2.75	14887
12	2022	P	5.25	1000	9	2022	C	9.50	14814
1	2023	C	9.00	1000	4	2023	P	3.00	14727
10	2022	P	3.50	993	10	2023	P	2.00	14679
8	2022	C	7.75	987	8	2022	P	5.50	14239
8	2022	P	7.10	970	9	2022	P	5.00	14124
10	2022	C	15.00	802	12	2022	C	6.00	13937
					10	2023	P	3	13755

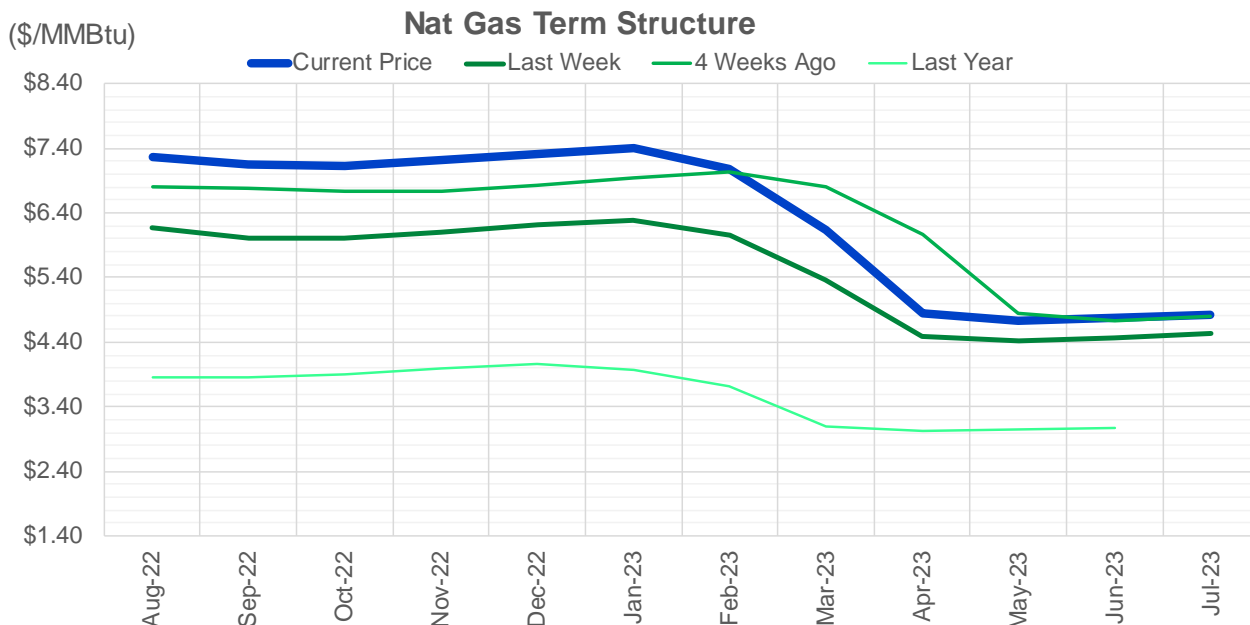
Source: CME, ICE

### Nat Gas Futures Open Interest CME and ICE Combined

CME Henry Hub Futures (10,000 MMBtu)				ICE Henry Hub Futures Contract Equivalent (10,000 MM			
	Current	Prior	Daily Change		Current	Prior	Daily Change
AUG 22	25795	35742	-9947	AUG 22	74567	75928	-1361
SEP 22	163868	157314	6554	SEP 22	77637	76972	665
OCT 22	93279	91784	1495	OCT 22	73168	72726	442
NOV 22	67111	66106	1005	NOV 22	61127	62497	-1370
DEC 22	49575	50219	-644	DEC 22	64417	64329	89
JAN 23	71533	70539	994	JAN 23	63871	63773	98
FEB 23	32560	32996	-436	FEB 23	55890	55814	76
MAR 23	47947	47543	404	MAR 23	52041	51762	279
APR 23	62452	62506	-54	APR 23	51930	51812	118
MAY 23	56493	56031	462	MAY 23	50617	50400	217
JUN 23	21254	21116	138	JUN 23	45080	44917	163
JUL 23	19577	19316	261	JUL 23	43783	43624	159
AUG 23	18811	18755	56	AUG 23	42814	42624	190
SEP 23	16294	15684	610	SEP 23	42036	41919	117
OCT 23	43722	42432	1290	OCT 23	48592	48585	7
NOV 23	12430	12367	63	NOV 23	44896	44693	203
DEC 23	11661	11668	-7	DEC 23	40323	40120	203
JAN 24	17523	17706	-183	JAN 24	39205	39206	-2
FEB 24	7525	7654	-129	FEB 24	28958	28819	140
MAR 24	16598	16599	-1	MAR 24	33757	33800	-42
APR 24	14009	14011	-2	APR 24	28029	27841	188
MAY 24	6621	6617	4	MAY 24	26953	26758	195
JUN 24	2429	2432	-3	JUN 24	23860	23680	180
JUL 24	2181	2181	0	JUL 24	23588	23418	171
AUG 24	3180	3174	6	AUG 24	23910	23740	171
SEP 24	1838	1798	40	SEP 24	23449	23284	165
OCT 24	8521	8519	2	OCT 24	26632	26653	-21
NOV 24	4711	4711	0	NOV 24	24562	24422	139
DEC 24	7133	7132	1	DEC 24	27601	27487	114
JAN 25	14904	14904	0	JAN 25	19884	19852	32

Source: CME, ICE





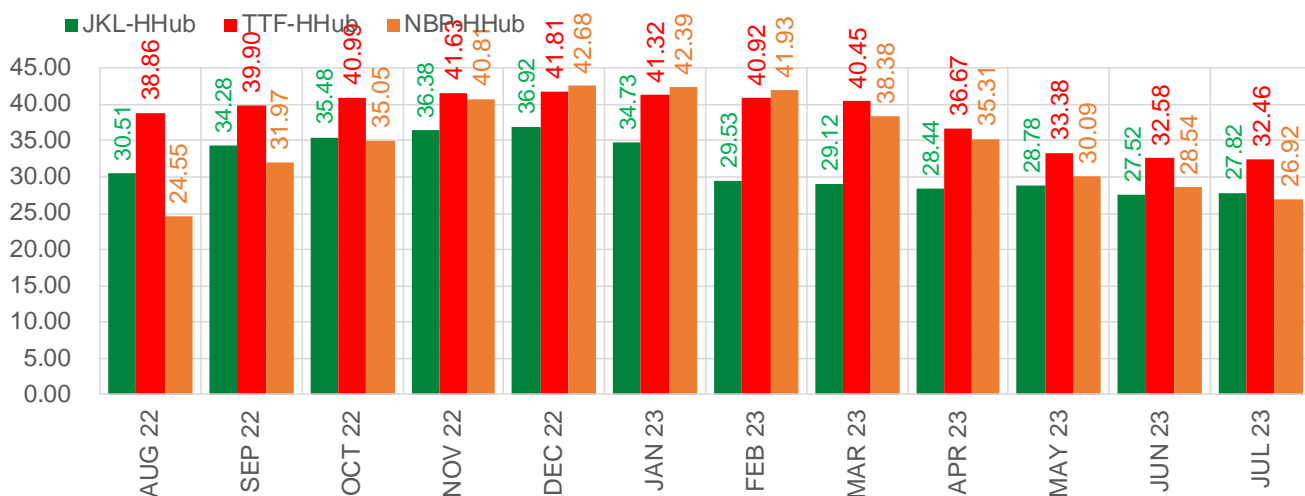
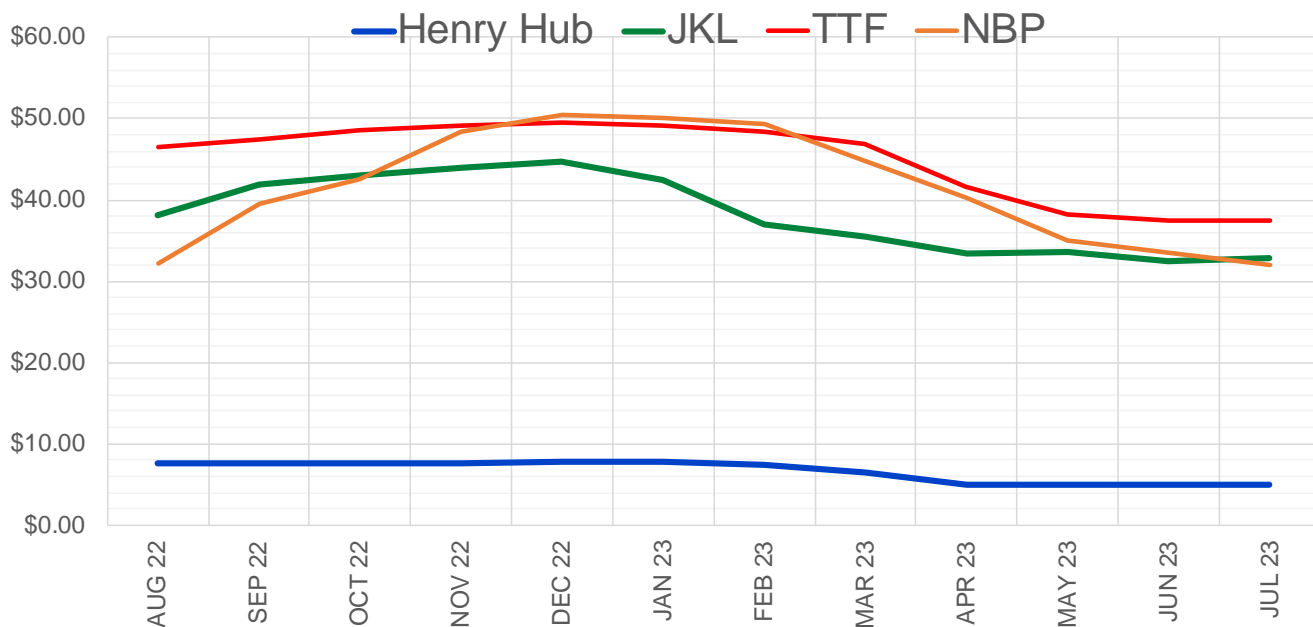
	Aug-22	Sep-22	Oct-22	Nov-22	Dec-22	Jan-23	Feb-23	Mar-23	Apr-23	May-23	Jun-23	Jul-23
<b>Current Price</b>	<b>\$7.264</b>	<b>\$7.150</b>	<b>\$7.130</b>	<b>\$7.210</b>	<b>\$7.313</b>	<b>\$7.399</b>	<b>\$7.089</b>	<b>\$6.146</b>	<b>\$4.854</b>	<b>\$4.726</b>	<b>\$4.775</b>	<b>\$4.826</b>
Last Week	\$6.163	\$6.021	\$6.003	\$6.100	\$6.211	\$6.294	\$6.065	\$5.376	\$4.489	\$4.409	\$4.469	\$4.528
vs. Last Week	\$1.101	\$1.129	\$1.127	\$1.110	\$1.102	\$1.105	\$1.024	\$0.770	\$0.365	\$0.317	\$0.306	\$0.298
4 Weeks Ago	\$6.808	\$6.783	\$6.743	\$6.735	\$6.820	\$6.936	\$7.027	\$6.804	\$6.057	\$4.841	\$4.740	\$4.807
vs. 4 Weeks Ago	\$0.456	\$0.367	\$0.387	\$0.475	\$0.493	\$0.463	\$0.062	-\$0.658	-\$1.203	-\$0.115	\$0.035	\$0.019
Last Year	\$3.876	\$3.852	\$3.849	\$3.904	\$3.998	\$4.056	\$3.970	\$3.711	\$3.105	\$3.014	\$3.043	\$3.078
vs. Last Year	\$3.388	\$3.298	\$3.281	\$3.306	\$3.315	\$3.343	\$3.119	\$2.435	\$1.749	\$1.712	\$1.732	\$1.748

	Units	Cash Settled	Prompt Settle	Cash to Prompt
AGT Citygate	\$/MMBtu	27.74	6.54	-21.21
TETCO M3	\$/MMBtu	7.31	6.18	-1.13
FGT Zone 3	\$/MMBtu	8.24	9.17	0.93
Zone 6 NY	\$/MMBtu	8.24	6.17	-2.07
Chicago Citygate	\$/MMBtu	7.35	6.47	-0.88
Michcon	\$/MMBtu	7.25	6.43	-0.82
Columbia TCO Pool	\$/MMBtu	7.03	5.98	-1.05
Ventura	\$/MMBtu	5.95	6.35	0.40
Rockies/Opal	\$/MMBtu	7.29	6.28	-1.01
El Paso Permian Basin	\$/MMBtu	7.15	6.16	-0.99
Socal Citygate	\$/MMBtu	8.76	7.63	-1.13
Malin	\$/MMBtu	7.40	6.70	-0.70
Houston Ship Channel	\$/MMBtu	7.26	6.46	-0.81
Henry Hub Cash	\$/MMBtu	7.58	6.37	-1.21
AECO Cash	C\$/GJ	4.09	3.39	-0.70
Station2 Cash	C\$/GJ	4.32	6.54	2.22
Dawn Cash	C\$/GJ	7.32	6.45	-0.87

Source: CME, Bloomberg

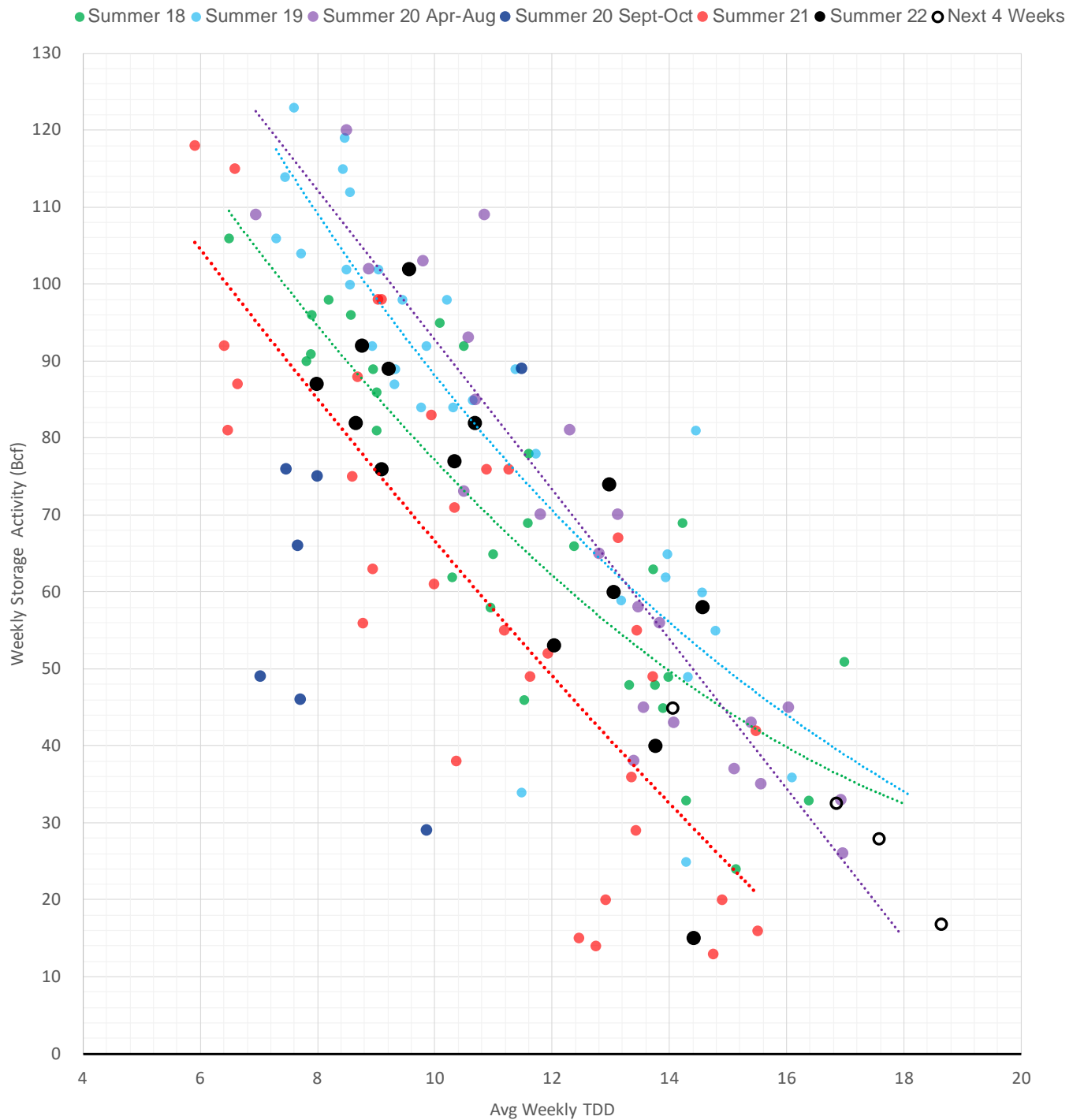
	Units	Current Price	vs. Last Week	vs. 4 Weeks Ago	vs. Last Year
NatGas Jul21/Oct21	\$/MMBtu	2.224	▲ 0.000	▲ 0.000	▲ 1.906
NatGas Oct21/Nov21	\$/MMBtu	0.361	▲ 0.000	▲ 0.000	▲ 0.306
NatGas Oct21/Jan22	\$/MMBtu	-1.817	▲ 0.000	▲ 0.000	▼ -2.023
NatGas Apr22/Oct22	\$/MMBtu	2.534	▲ 1.296	▲ 1.044	▲ 2.553
WTI Crude	\$/Bbl	102.26	▲ 5.960	▼ -3.930	▲ 31.960
Brent Crude	\$/Bbl	106.92	▲ 7.350	▼ -4.820	▲ 34.690
Fuel Oil, NY Harbour 1%	\$/Bbl	97.18	▲ 0.000	▲ 0.000	▲ 0.000
Heating Oil	cents/Gallon	360.43	▼ -6.160	▼ -80.030	▲ 151.730
Propane, Mt. Bel	cents/Gallon	1.14	▼ 0.000	▼ -0.073	▲ 0.060
Ethane, Mt. Bel	cents/Gallon	0.58	▲ 0.062	▼ -0.056	▲ 0.268
Coal, PRB	\$/MTon	12.30	▲ 0.000	▲ 0.000	▲ 0.000
Coal, PRB	\$/MMBtu	0.70			
Coal, ILB	\$/MTon	31.05	▲ 0.000	▲ 0.000	▲ 0.000
Coal, ILB	\$/MMBtu	1.32			

### Nat Gas Term Structure (\$MMBTU)



	AUG 22	SEP 22	OCT 22	NOV 22	DEC 22	JAN 23	FEB 23	MAR 23	APR 23	MAY 23	JUN 23	JUL 23
<b>Henry Hub</b>	\$7.664	\$7.544	\$7.550	\$7.600	\$7.729	\$7.769	\$7.416	\$6.405	\$5.027	\$4.872	\$4.937	\$4.992
<b>JKL</b>	\$38.170	\$41.820	\$43.025	\$43.980	\$44.650	\$42.500	\$36.950	\$35.520	\$33.465	\$33.655	\$32.460	\$32.815
<b>JKL-HHub</b>	\$30.506	\$34.276	\$35.475	\$36.380	\$36.921	\$34.731	\$29.534	\$29.115	\$28.438	\$28.783	\$27.523	\$27.823
<b>TTF</b>	\$46.521	\$47.444	\$48.541	\$49.225	\$49.539	\$49.091	\$48.331	\$46.853	\$41.695	\$38.254	\$37.520	\$37.455
<b>TTF-HHub</b>	\$38.857	\$39.900	\$40.991	\$41.625	\$41.810	\$41.322	\$40.915	\$40.448	\$36.668	\$33.382	\$32.583	\$32.463
<b>NBP</b>	\$32.215	\$39.510	\$42.598	\$48.407	\$50.407	\$50.160	\$49.341	\$44.783	\$40.336	\$34.965	\$33.474	\$31.916
<b>NBP-HHub</b>	\$24.551	\$31.966	\$35.048	\$40.807	\$42.678	\$42.391	\$41.925	\$38.378	\$35.309	\$30.093	\$28.537	\$26.924

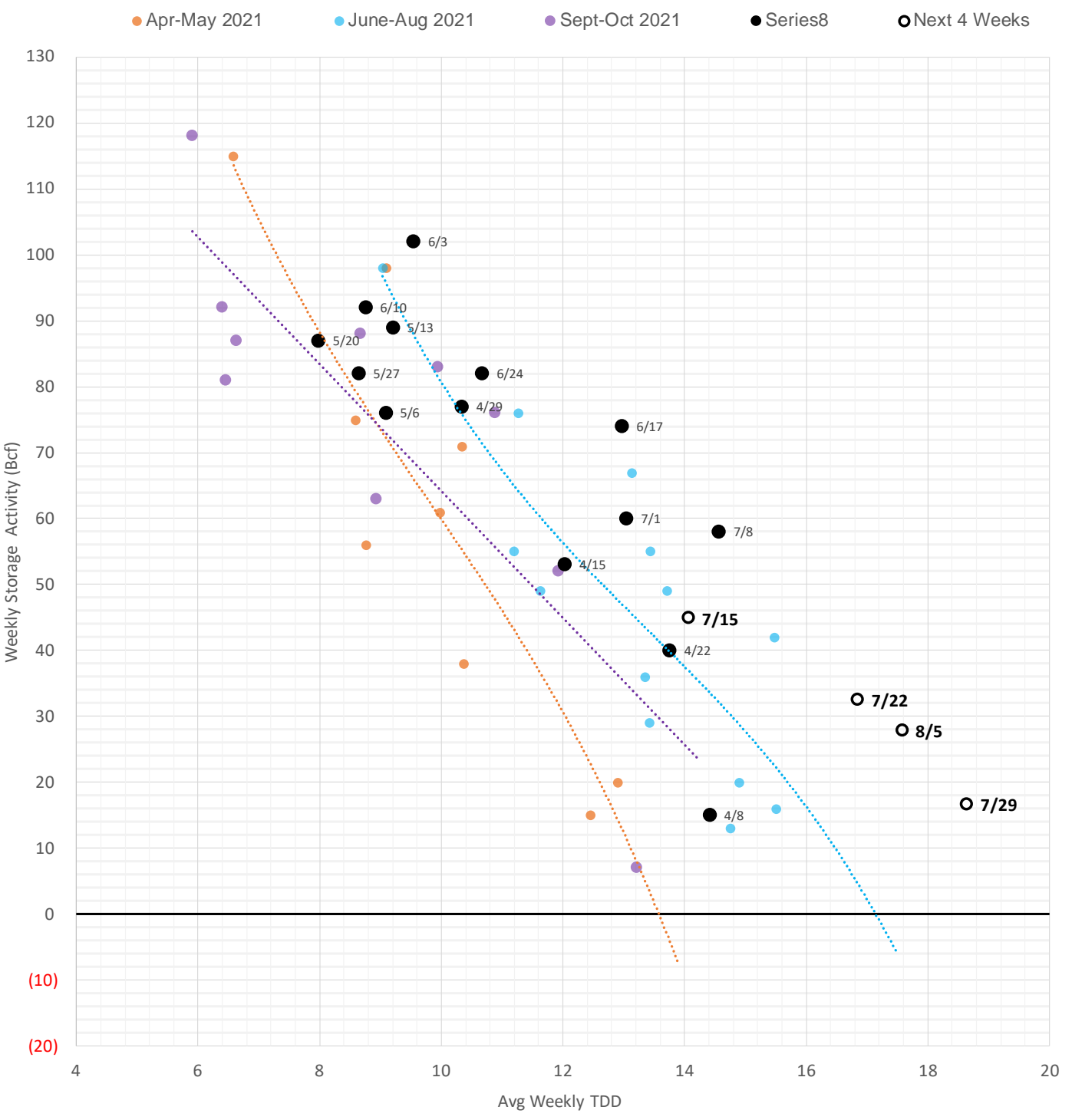
### Weather Storage Model - Next 4 Week Forecast



The risk of trading futures and options and other derivatives involves a substantial risk of loss and is not suitable for all persons. Each person must consider whether a particular trade, combination of trades, or strategy is suitable for that person's financial means and objectives. Past results are not necessarily indicative of future results. This communication may contain links to third party websites which are not under the control of and are not maintained by ION Energy Group, and ION Energy Group is not responsible for their content.

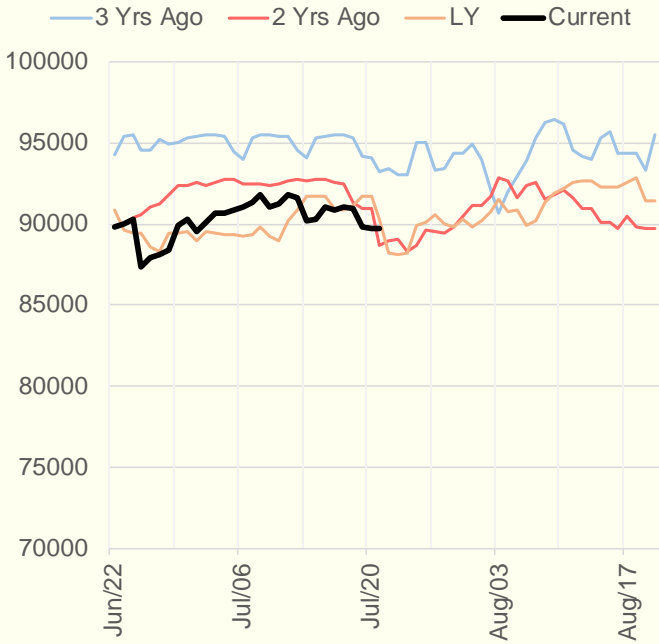


### Weather Storage Model - Next 4 Week Forecast

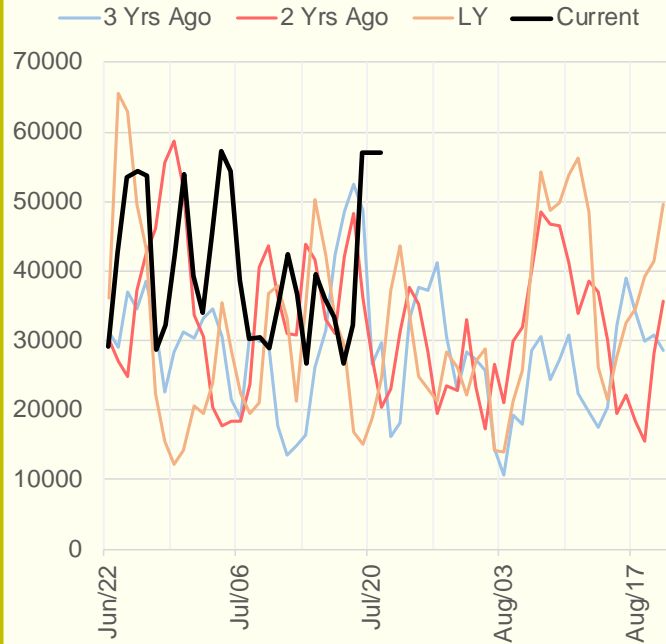


The risk of trading futures and options and other derivatives involves a substantial risk of loss and is not suitable for all persons. Each person must consider whether a particular trade, combination of trades, or strategy is suitable for that person's financial means and objectives. Past results are not necessarily indicative of future results. This communication may contain links to third party websites which are not under the control of and are not maintained by ION Energy Group, and ION Energy Group is not responsible for their content.

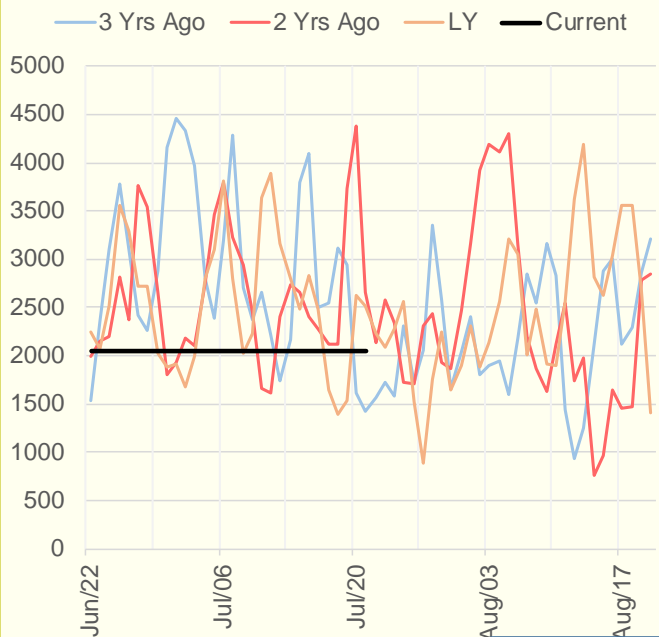
### NRC Nuclear Daily Output



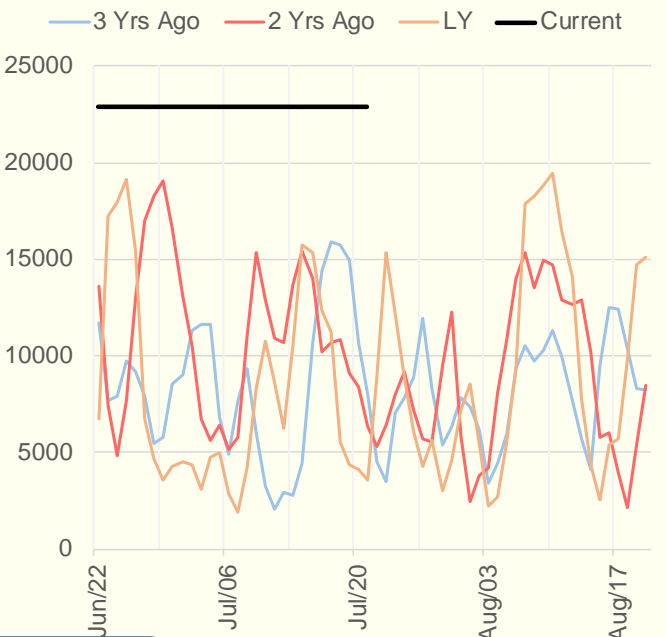
### Genscape Wind



### CALI Wind



### TEXAS Wind



EIA 930 data is not being updated. EIA experiencing some issues.

The risk of trading futures and options and other derivatives involves a substantial risk of loss and is not suitable for all persons. Each person must consider whether a particular trade, combination of trades, or strategy is suitable for that person's financial means and objectives. Past results are not necessarily indicative of future results. This communication may contain links to third party websites which are not under the control of and are not maintained by ION Energy Group, and ION Energy Group is not responsible for their content.