

CFTC COMMITMENT OF TRADERS REPORT

As of 7/26/2022

TRADITIONAL FUNDS net position changes

Wed to Tue, in 000 contracts

	Corn	Bean	Meal	Oil	Chi. Wheat	KC Wheat	Min Wheat
Futures Only	(23.4)	(17.4)	5.8	(6.3)	(6.5)	(3.5)	(0.9)
Futures & Options Combined	(12.5)	(0.9)	9.0	(5.1)	(4.2)	(2.5)	(0.9)

TRADITIONAL COMMERCIAL net position changes

	Corn	Bean	Meal	Oil	Chi. Wheat	KC Wheat	Min Wheat
Futures Only	26.7	16.9	(6.1)	7.0	4.9	2.2	1.6
Futures & Options Combined	14.9	(1.5)	(9.4)	5.6	2.5	1.1	1.6

MANAGED MONEY net position changes

	Corn	Bean	Meal	Oil	Chi. Wheat	KC Wheat	Min Wheat
Futures Only	8.5	2.9	5.8	(3.1)	(3.0)	(0.9)	(0.6)
Futures & Options Combined	(4.5)	(0.2)	6.8	(2.9)	(3.6)	(0.8)	(0.6)

SWAP DEALERS net position changes

	Corn	Bean	Meal	Oil	Chi. Wheat	KC Wheat	Min Wheat
Futures Only	1.2	(2.9)	(1.4)	0.9	2.1	2.4	(0.0)
Futures & Options Combined	(2.9)	(4.1)	(1.7)	0.7	2.2	2.2	(0.0)

PRODUCERS/END USERS net position changes

	Corn	Bean	Meal	Oil	Chi. Wheat	KC Wheat	Min Wheat
Futures Only	25.5	19.7	(4.6)	6.0	2.8	(0.1)	1.6
Futures & Options Combined	17.9	2.6	(7.7)	5.0	0.3	(1.1)	1.6

INDEX net position changes

	Corn	Bean	Meal	Oil	Chi. Wheat	KC Wheat	Min Wheat
Futures & Options Combined	(5.0)	(4.5)	1.0	(0.6)	(0.4)	0.7	NA

SUPPLEMENTAL NON-COMMERCIAL net position changes

	Corn	Bean	Meal	Oil	Chi. Wheat	KC Wheat	Min Wheat
Futures & Options Combined	(9.9)	1.6	9.0	(4.5)	(4.1)	(2.4)	NA

OPEN INTEREST net position changes

Wed to Tue, in 000 contracts

	Corn	Bean	Meal	Oil	Chi. Wheat	KC Wheat	Min Wheat
Futures Only	12.3	(19.1)	(4.1)	(7.0)	9.0	5.2	0.3
Futures & Options Combined	(65.4)	(58.5)	(6.0)	(21.5)	(7.0)	2.4	0.2

Source: CFTC and FI

Wed to Tue, in 000 contracts

7/29/2022

**COMMITMENT OF TRADERS
FUTURES ONLY NET POSITIONS
AS OF 07/26/2022
(IN THOUSAND CONTRACTS)**

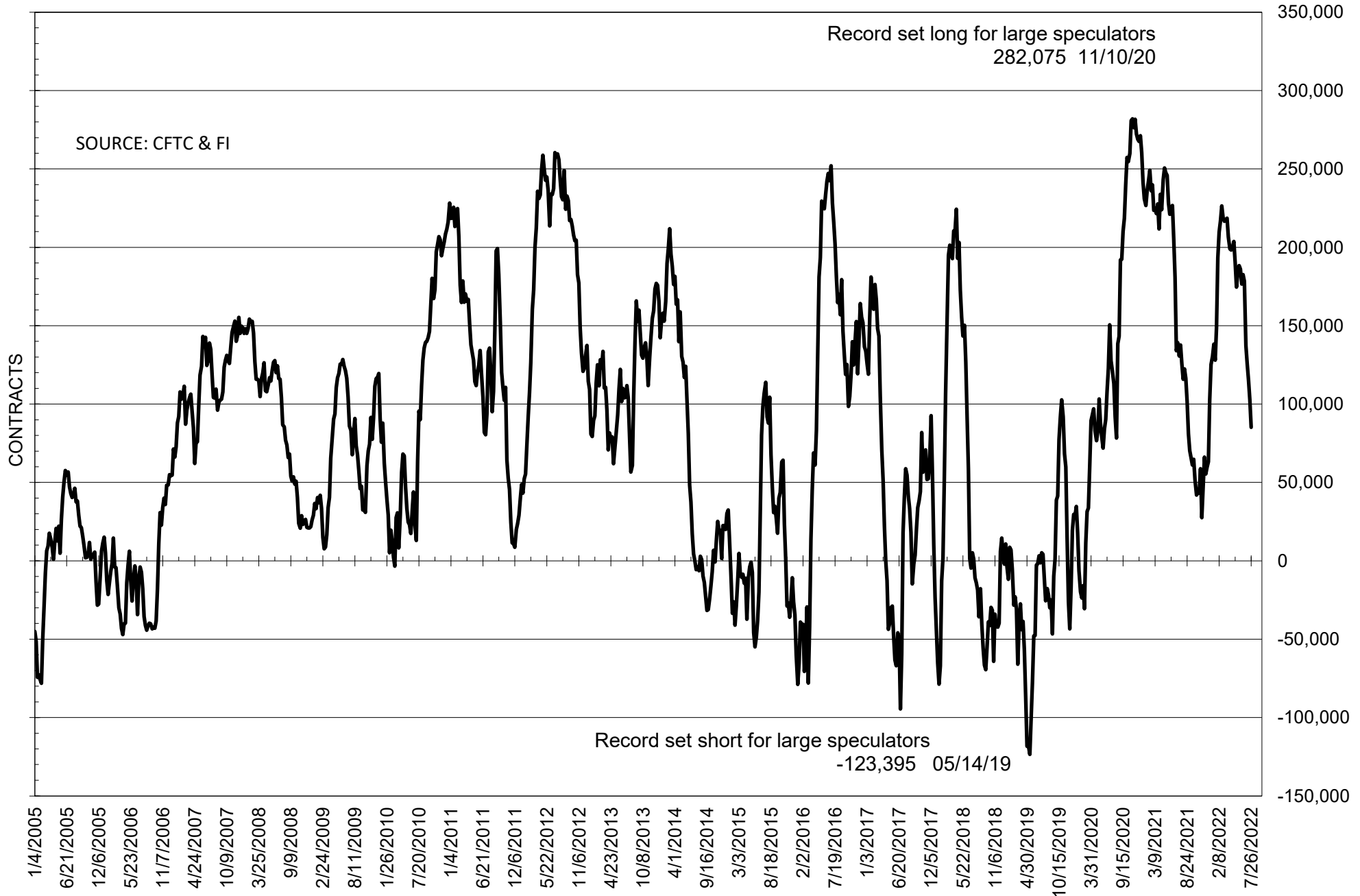
	COMMERCIAL				(FUND) NON COMMERCIAL				(SPEC) NON-REPORTABLE			
	26-Jul	19-Jul	12-Jul	5-Jul	26-Jul	19-Jul	12-Jul	5-Jul	26-Jul	19-Jul	12-Jul	5-Jul
	WHEAT											
Chicago	8.1	3.2	5.0	0.6	0.0	6.5	4.6	8.4	-8.1	-9.7	-9.7	-9.0
Kansas City	-2.7	-4.9	-10.5	-14.9	4.8	8.3	13.4	17.9	-2.1	-3.4	-2.9	-3.0
Minneapolis	-2.1	-3.7	-4.9	-6.5	2.9	3.8	6.0	7.9	-0.7	-0.1	-1.1	-1.4
All Wheat	3.3	-5.4	-10.3	-20.8	7.7	18.6	24.1	34.2	-10.9	-13.2	-13.7	-13.4
CORN	-138.9	-165.6	-196.5	-207.4	186.5	209.9	247.2	260.7	-47.6	-44.3	-50.6	-53.3
OATS	#VALUE!	#VALUE!	#VALUE!	#VALUE!	#VALUE!	#####	#VALUE!	#VALUE!	#VALUE!	#VALUE!	#VALUE!	#VALUE!
SOYBEANS	-57.6	-74.4	-87.3	-93.6	85.2	102.6	115.1	125.5	-27.7	-28.2	-27.8	-31.9
SOY OIL	-23.5	-30.4	-32.2	-38.6	21.0	27.3	29.8	34.7	2.4	3.1	2.4	3.9
SOY MEAL	-126.4	-120.3	-119.8	-112.8	106.5	100.7	100.4	95.9	19.9	19.6	19.4	16.8

Oats positions thin to be reported

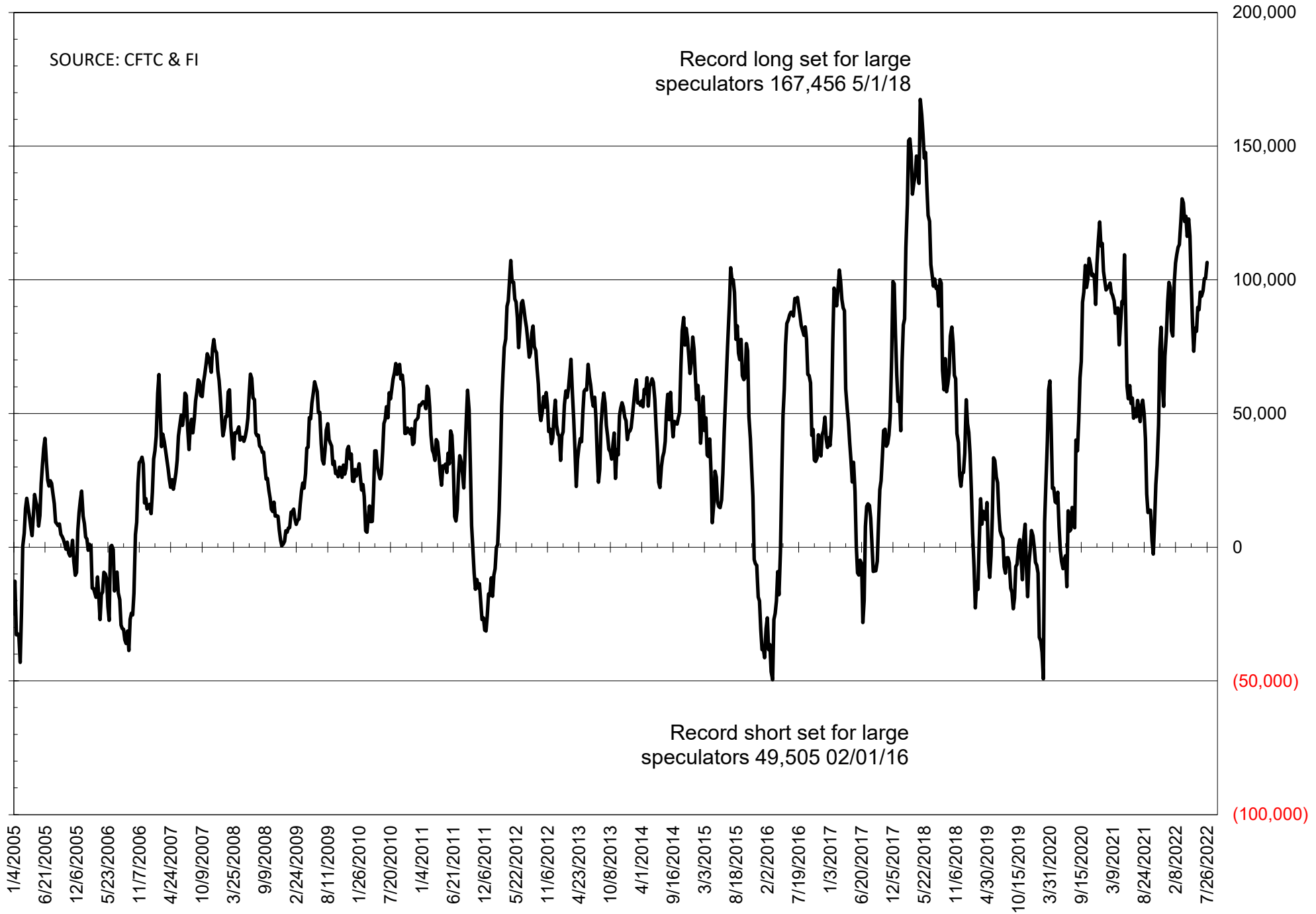
	TOTAL OPEN INTEREST				NEARBY FUTURES PRICE					26-Jul-22 LAST REPORTED % HELD BY TRADERS			
	26-Jul	19-Jul	12-Jul	5-Jul	U Latest	Q/U 26-Jul	Q/U 19-Jul	Q/U 12-Jul	Q/U 5-Jul	LARGE FUND		SMALL	
										LONG	SHORT	LONG	SHORT
WHEAT													
Chicago	301674	292700	288182	288754	807.75	803.75	812.25	814.25	807.00	0%	29%	0%	12%
Kansas City	163884	158686	153758	153674	874.50	877.00	869.25	867.75	862.00	0%	20%	0%	13%
Minneapolis	59840	59574	60135	62879	900.00	929.50	929.50	918.75	890.00	0%	9%	0%	18%
CORN	1320768	1308458	1333199	1331035	616.25	597.00	596.75	594.00	592.25	0%	11%	0%	13%
OATS	#VALUE!	#VALUE!	#VALUE!	#VALUE!	448.00	451.50	479.25	463.25	463.50	0%	#VALUE!	0%	#VALUE!
SOYBEANS	583850	602987	611751	638675	1487.25	1532.75	1477.25	1468.25	1439.25	25%	10%	6%	11%
SOY OIL	368075	375032	369766	364800	66.50	60.42	61.89	60.11	59.62	0%	12%	0%	6%
SOY MEAL	396531	400587	396719	394947	442.40	472.40	435.00	424.80	410.40	0%	3%	0%	7%

SOURCE: CFTC & FI

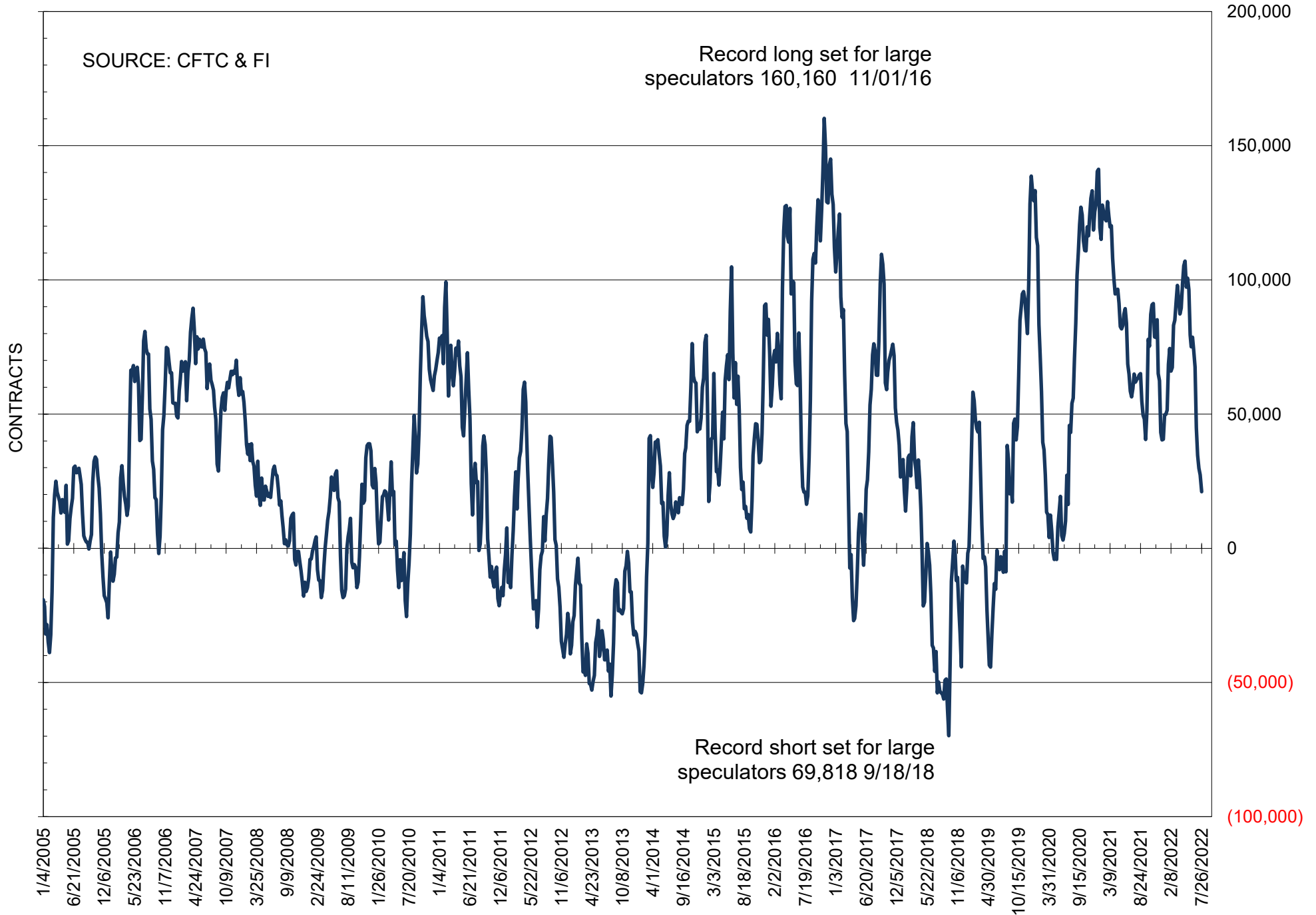
NET POSITION OF FUTURES ONLY LARGE SPECS IN SOYBEANS



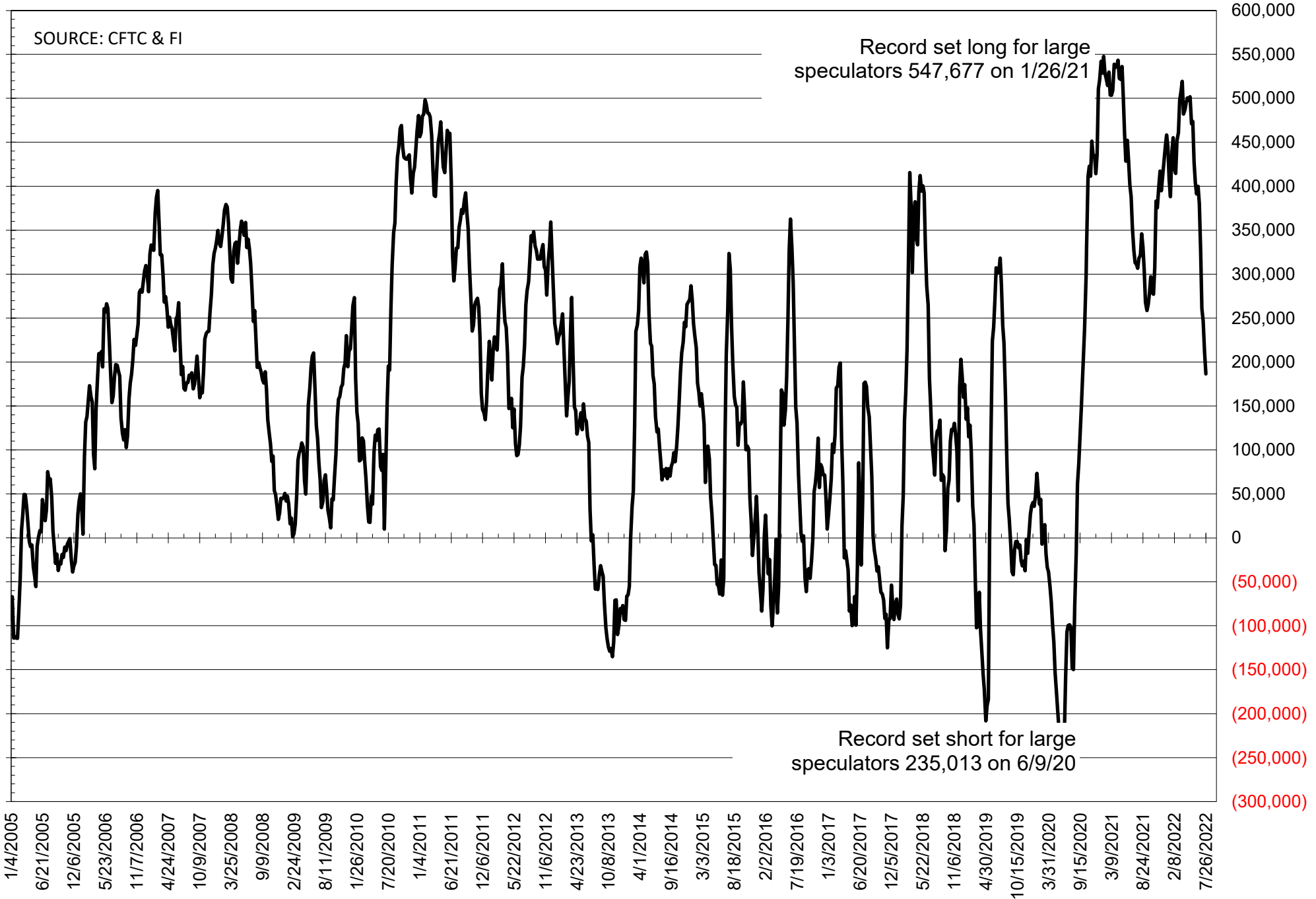
NET POSITION OF FUTURES ONLY LARGE SPECS IN SOYMEAL



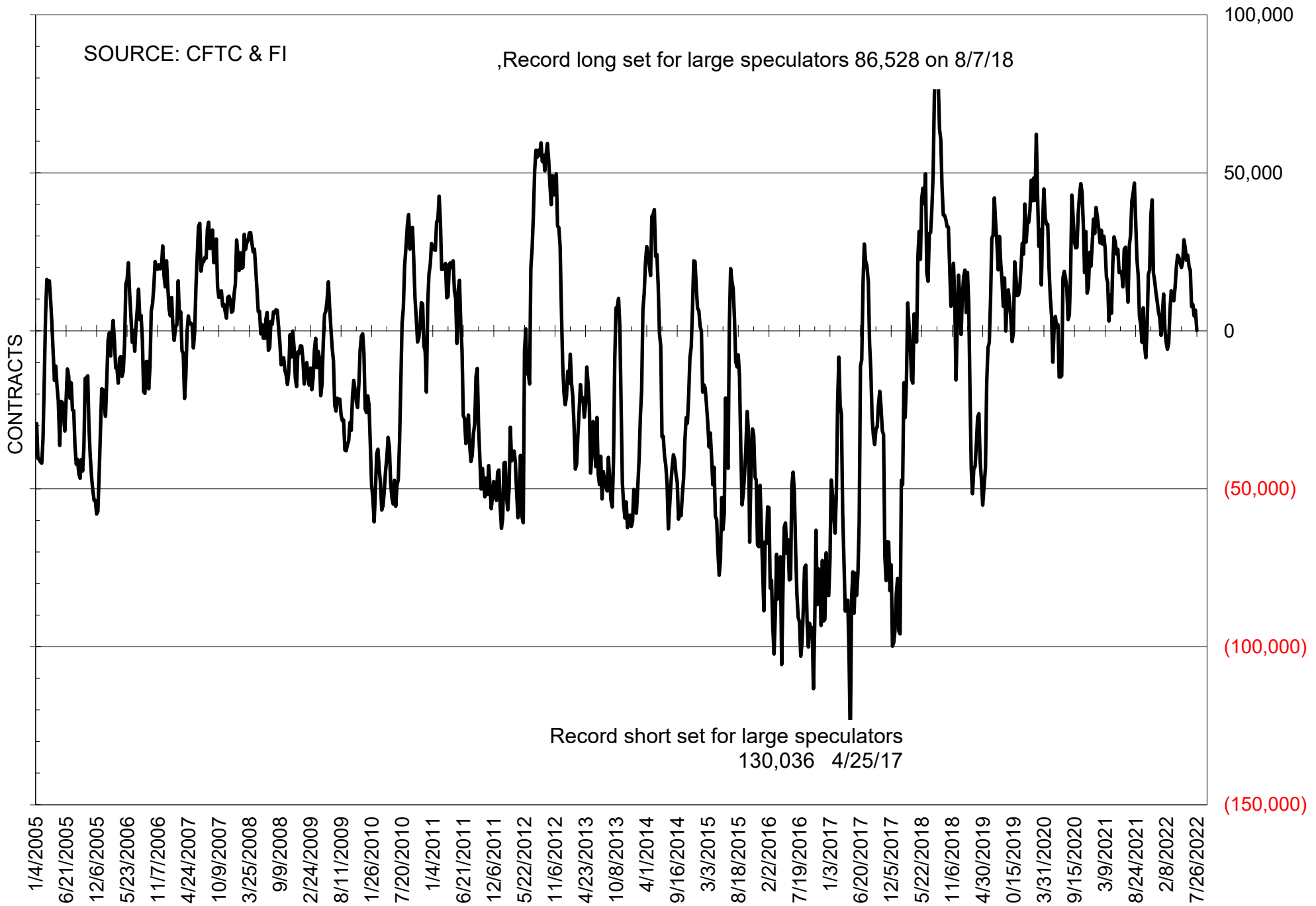
NET POSITION OF FUTURES ONLY LARGE SPECS IN SOYOIL



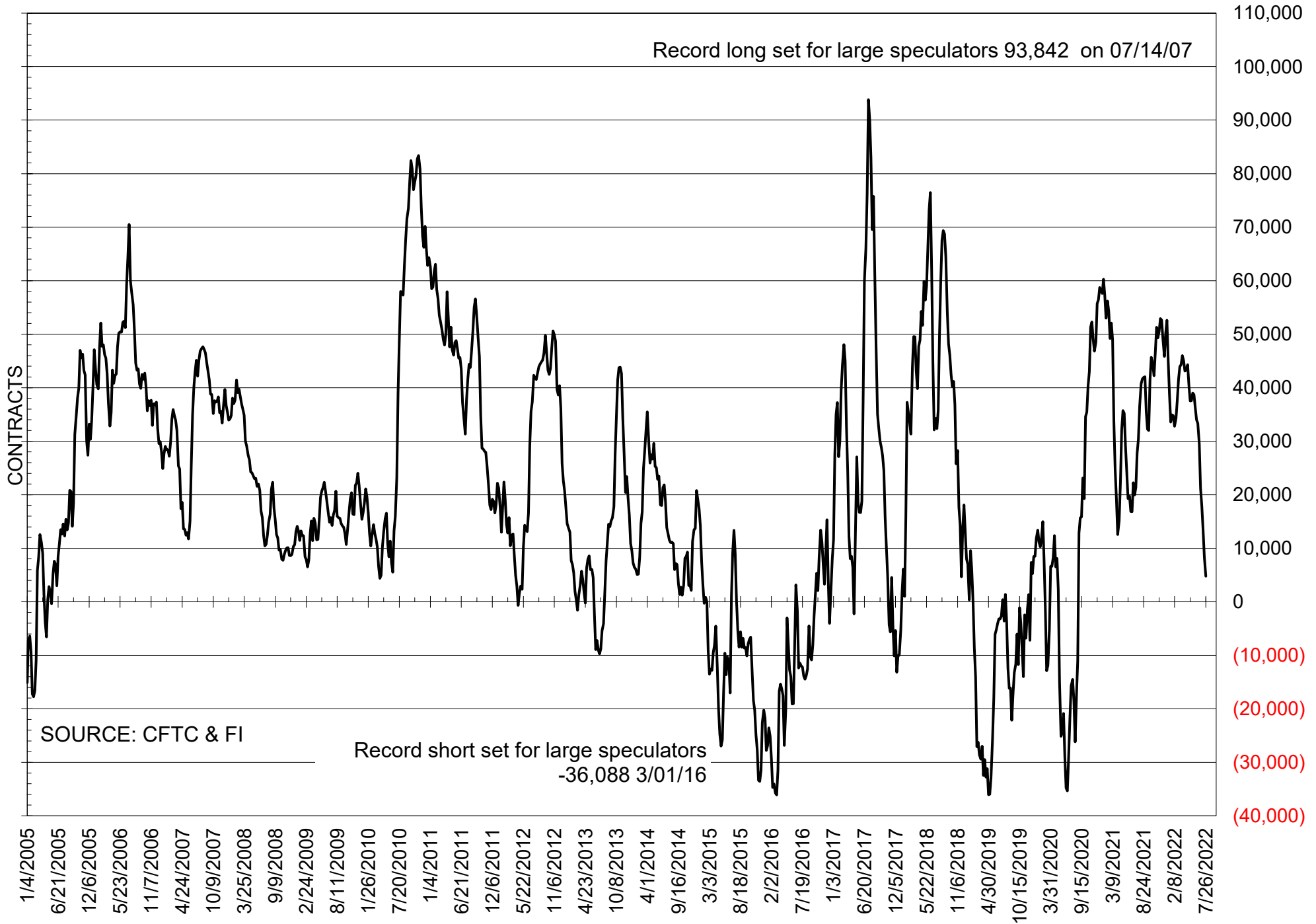
NET POSITION OF LARGE SPECULATORS IN CORN



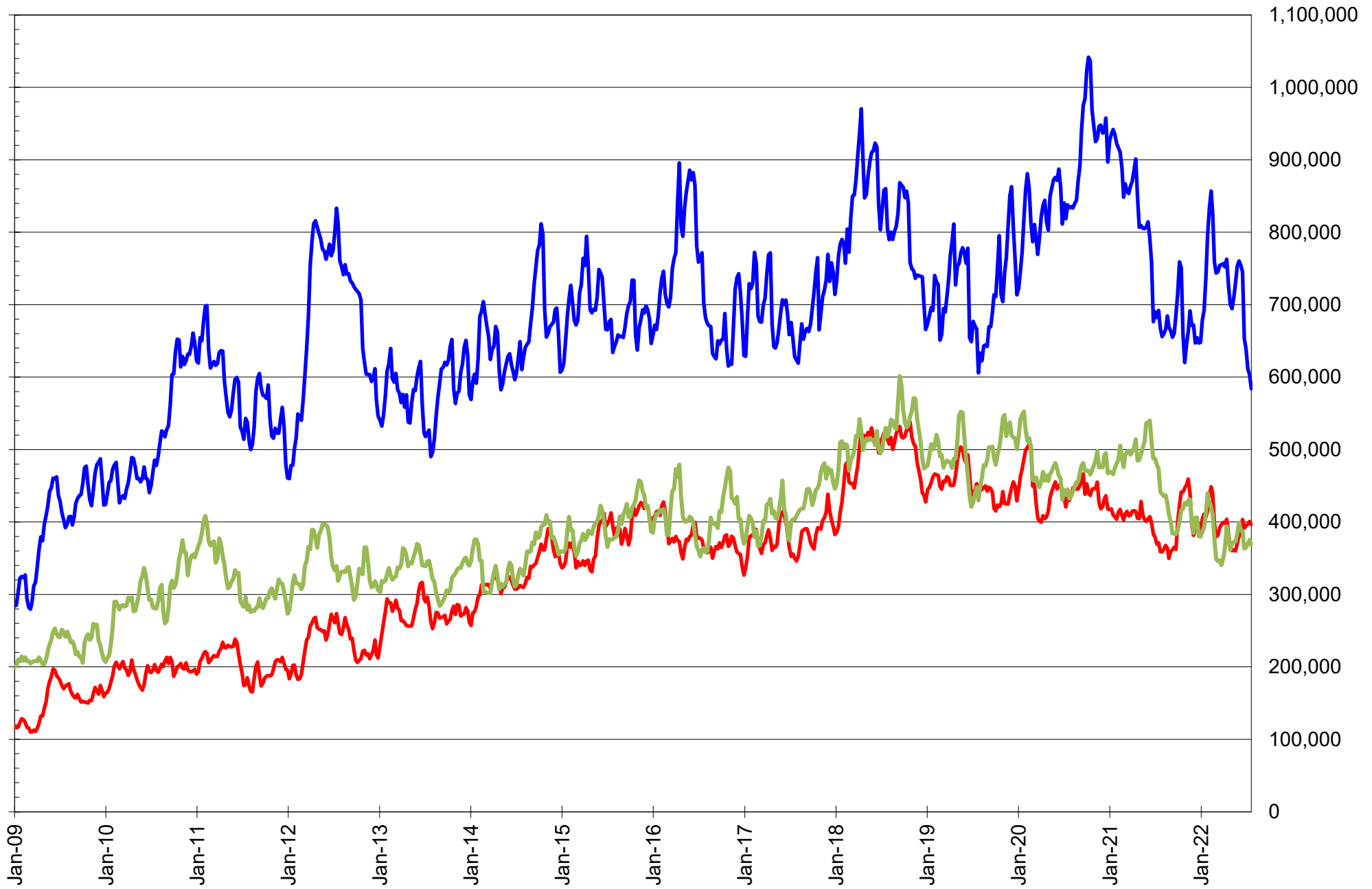
NET POSITION OF FUTURES ONLY LARGE SPECS IN CHICAGO WHEAT



NET POSITION OF LARGE SPECULATORS IN KANSAS CITY WHEAT



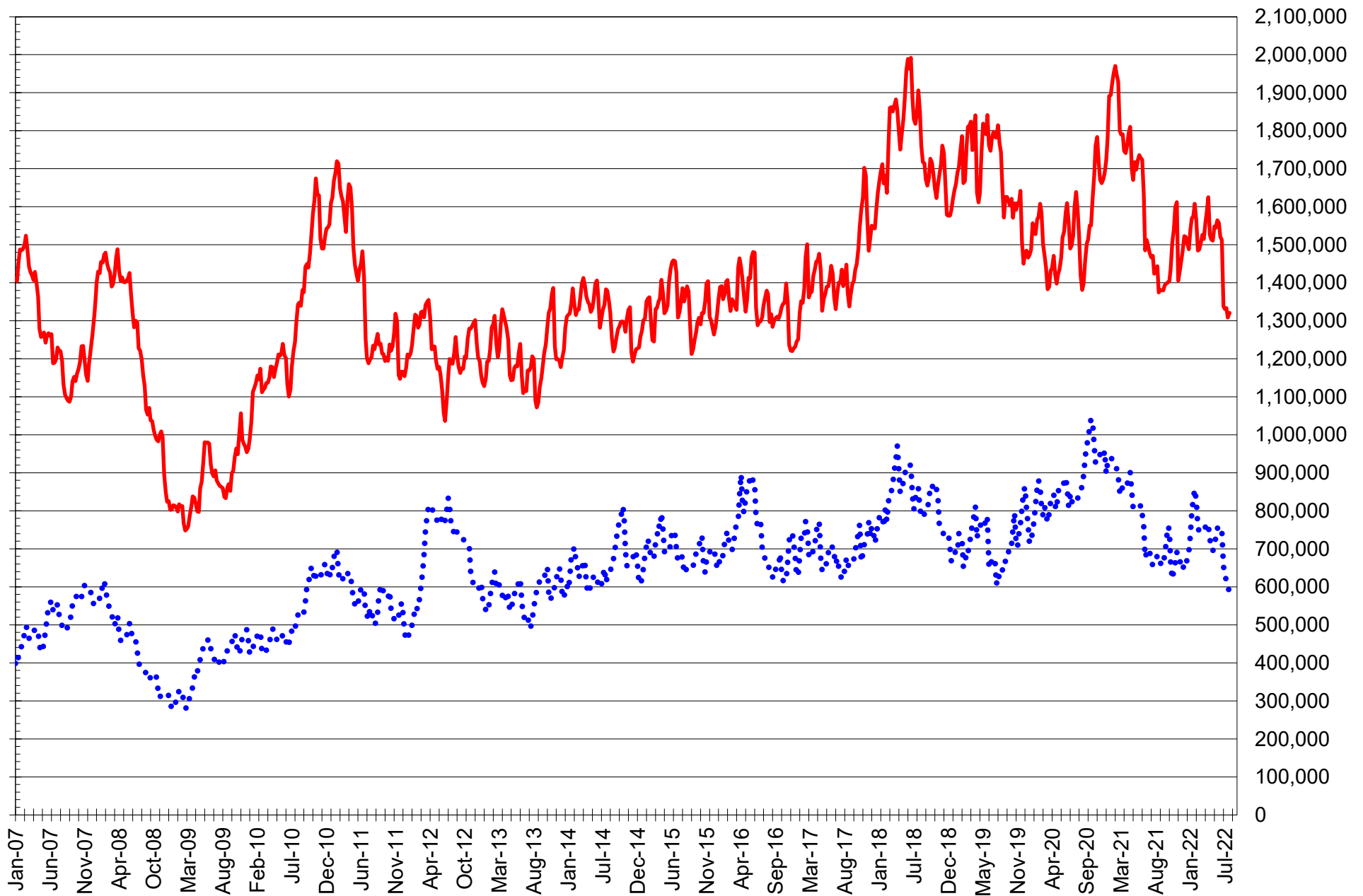
TOTAL OPEN INTEREST IN SOYBEANS, MEAL AND OIL, FUTURES ONLY



SOURCE: CFTC & FI

— SOYBEANS — SOYBEAN MEAL — SOYBEAN OIL

TOTAL OPEN INTEREST IN CORN AND SOYBEANS, FUTURES ONLY



SOURCE: CFTC & FI

— CORN

•••• SOYBEANS

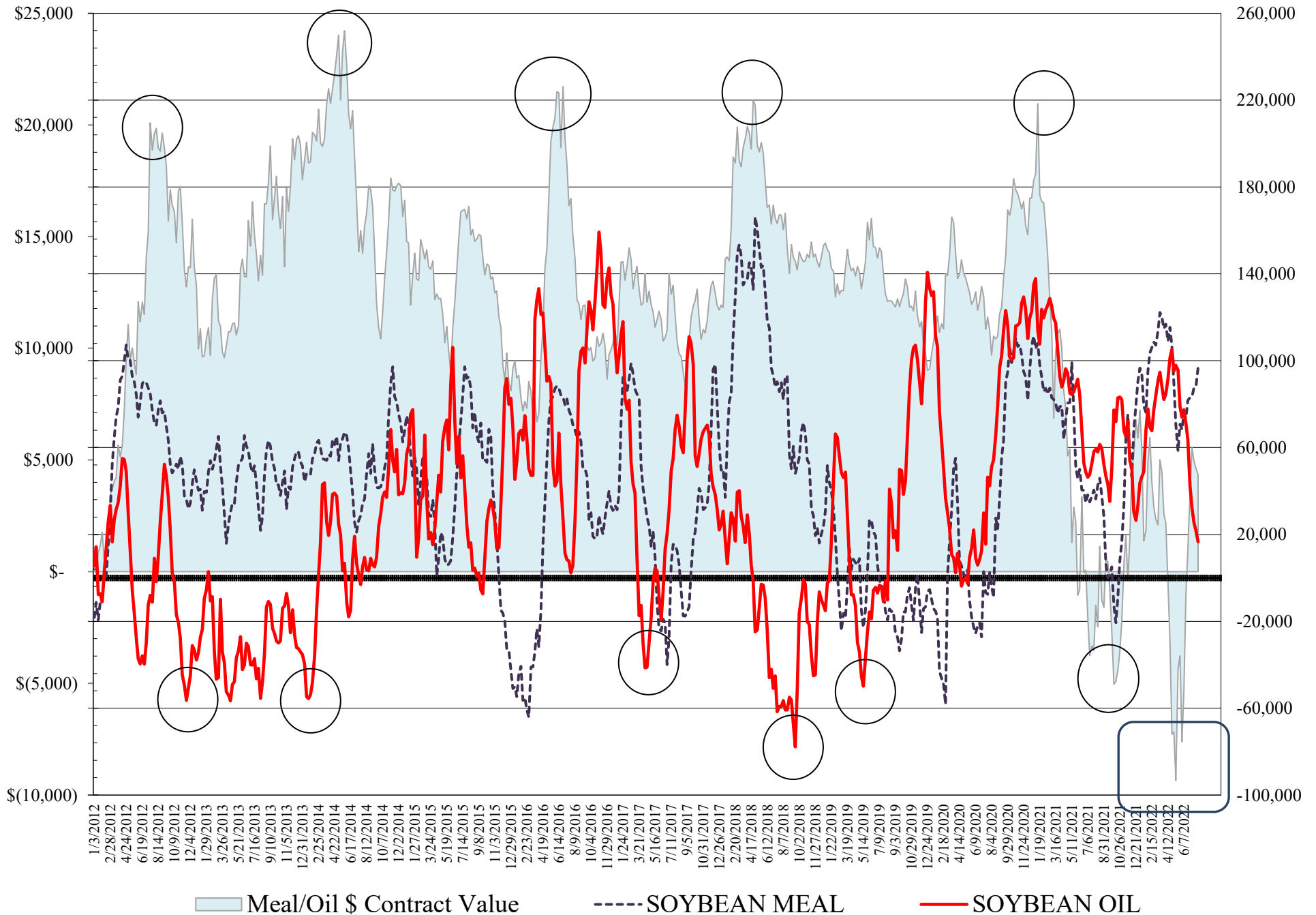
**COMMITMENT OF TRADERS
FUTURES & OPTIONS NET POSITIONS
AS OF 07/26/2022
(IN THOUSAND CONTRACTS)**

	COMMERCIAL				(FUND) NON COMMERCIAL				(SPEC) NON-REPORTABLE			
	26-Jul	19-Jul	12-Jul	5-Jul	26-Jul	19-Jul	12-Jul	5-Jul	26-Jul	19-Jul	12-Jul	5-Jul
	WHEAT											
Chicago	15.5	12.9	11.2	2.8	-8.4	-4.2	-2.4	5.7	-7.1	-8.8	-8.9	-8.5
Kansas City	-2.7	-3.9	-9.2	-13.8	4.5	7.0	11.9	17.0	-1.8	-3.2	-2.7	-3.2
Minneapolis	-1.3	-2.9	-4.1	-5.8	2.1	3.0	5.3	7.3	-0.8	-0.1	-1.2	-1.5
All Wheat	11.4	6.2	-2.0	-16.8	-1.8	5.9	14.9	30.0	-9.6	-12.0	-12.8	-13.2
CORN	-104.4	-119.3	-148.7	-158.7	149.8	162.4	200.0	216.9	-45.4	-43.1	-51.3	-58.2
OATS	#VALUE!	#VALUE!	#VALUE!	#VALUE!	#VALUE!	#VALUE!	#VALUE!	#VALUE!	#VALUE!	#VALUE!	#VALUE!	#VALUE!
SOYBEANS	-49.5	-48.0	-57.1	-63.3	79.7	80.6	90.0	101.4	-30.2	-32.5	-32.9	-38.1
SOY OIL	-20.3	-25.9	-28.6	-36.6	16.6	21.7	25.5	32.3	3.7	4.2	3.2	4.4
SOY MEAL	-119.2	-109.8	-109.2	-102.1	97.0	87.9	87.5	83.5	22.3	21.8	21.7	18.7

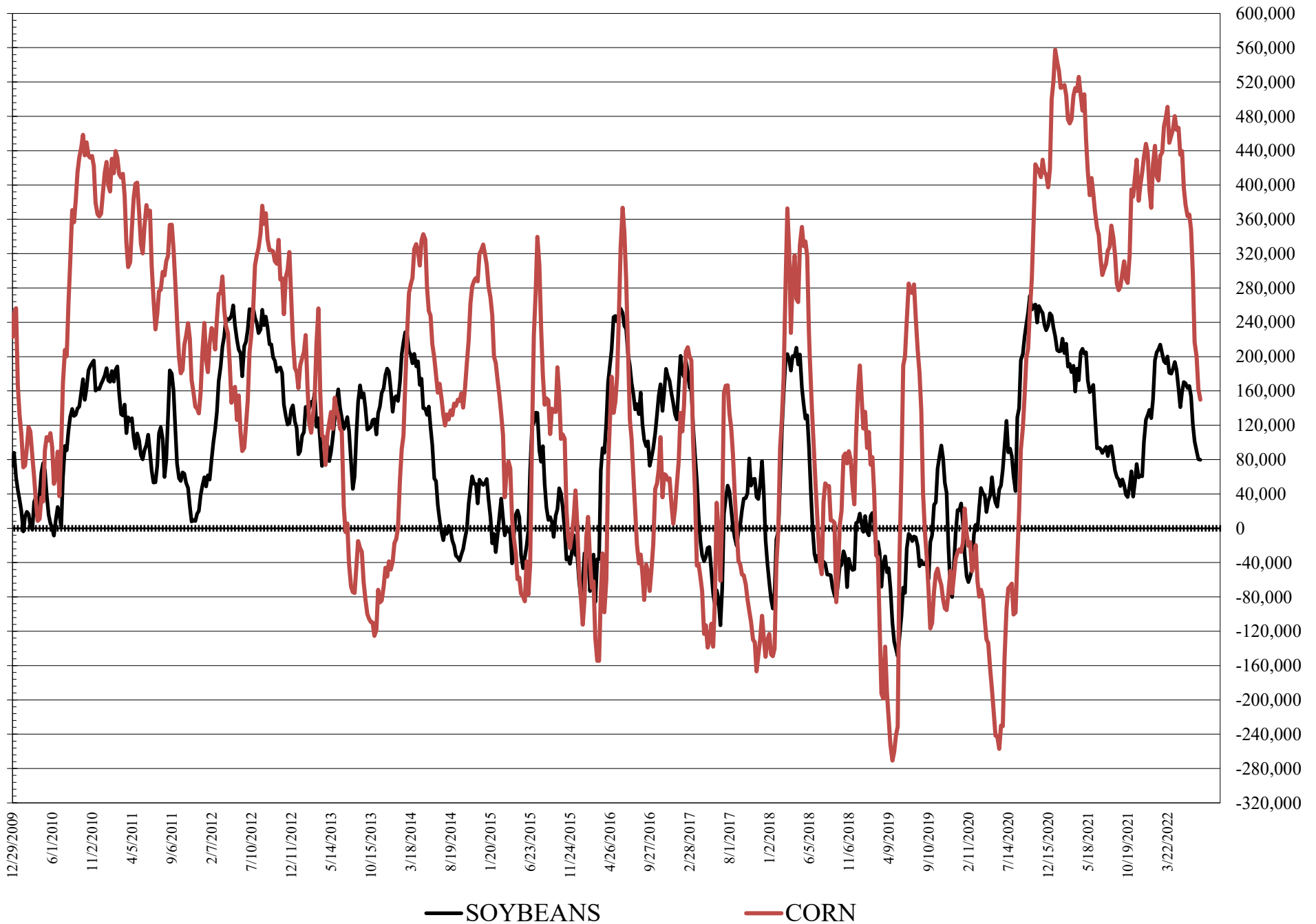
	TOTAL OPEN INTEREST				COMMERCIALS		% HELD BY TRADERS LARGE (FUNDS)		SMALL (NON-REP)	
	26-Jul	19-Jul	12-Jul	5-Jul	LONG	SHORT	LONG	SHORT	LONG	SHORT
	WHEAT									
Chicago	404,440	411,445	398,172	387,076			19%	21%	8%	10%
Kansas City	181,353	178,991	172,630	170,838			21%	18%	11%	12%
Minneapolis	63,008	62,770	63,187	65,698			12%	9%	16%	18%
CORN	1,812,824	1,878,222	1,906,814	1,854,508			15%	6%	10%	12%
OATS	#VALUE!	#VALUE!	#VALUE!	#VALUE!						
SOYBEANS	724,199	782,719	790,441	805,841			18%	7%	6%	11%
SOY OIL	414,842	436,352	427,432	414,025			14%	10%	7%	6%
SOY MEAL	438,045	444,043	440,090	435,036			25%	3%	12%	7%

SOURCE: CFTC & FI

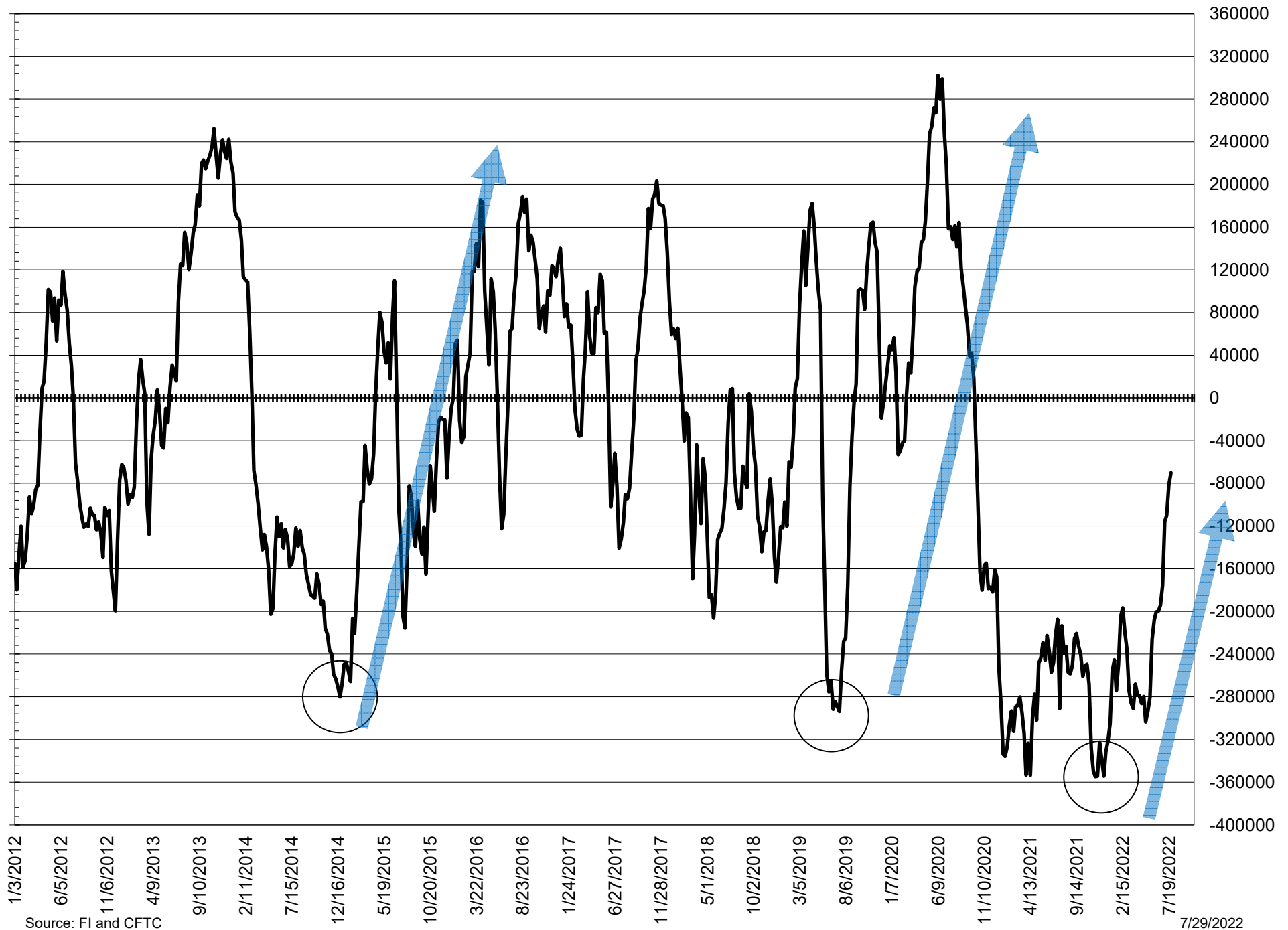
NET POSITION FUTURES AND OPTIONS OF LARGE SPECULATORS IN SOYBEAN MEAL AND SOYBEAN OIL



NET POSITION FUTURES AND OPTIONS OF LARGE SPECULATORS IN SOYBEANS AND CORN



NET POSITION FUTURES AND OPTIONS SPREAD OF LARGE SPECULATORS IN SOYBEANS MINUS CORN



Source: FI and CFTC

7/29/2022

DISAGGREGATED COMMITMENT OF TRADERS
FUTURES ONLY NET POSITIONS
AS OF 07/26/2022
(IN THOUSAND CONTRACTS)

	PRODUCER / MERCHANT / PROCESSOR / USER				(INDEX/ETF) SWAP DEALERS				(CTA/CPO/OTHER UNREGISTERED) MANAGED MONEY				
	26-Jul	19-Jul	12-Jul	5-Jul	26-Jul	19-Jul	12-Jul	5-Jul	26-Jul	19-Jul	12-Jul	5-Jul	
WHEAT													
Chicago	(50.9)	(53.7)	(51.1)	(55.5)	58.9	56.9	56.2	56.1	(14.5)	(11.6)	(10.4)	(2.0)	
Kansas City	(32.3)	(32.2)	(36.9)	(40.9)	29.7	27.3	26.4	26.0	10.9	11.8	16.3	22.0	
Minneapolis	(3.3)	(4.9)	(6.1)	(7.2)	1.2	1.2	1.2	0.6	0.4	1.0	2.7	5.1	
All Wheat	(86.5)	(90.8)	(94.1)	(103.5)	89.8	85.4	83.7	82.7	(3.3)	1.2	8.5	25.1	
CORN	(390.6)	(416.1)	(451.7)	(472.1)	251.7	250.5	255.2	264.7	111.8	103.3	128.5	158.0	
OATS	-	-	-	-	-	-	-	-	-	-	-	-	
SOYBEANS	(148.9)	(168.6)	(186.2)	(197.9)	91.3	94.2	98.9	104.3	86.0	83.1	90.7	101.7	
SOY OIL	(100.1)	(106.2)	(107.5)	(117.8)	76.7	75.7	75.3	79.2	14.5	17.7	17.8	24.8	
SOY MEAL	(204.6)	(200.0)	(198.8)	(193.8)	78.2	79.7	79.1	81.0	72.2	66.5	67.6	65.2	
									Managed % of OI				
									Chicago W	-5%	-4%	-4%	-1%
									Corn	8%	8%	10%	12%
	TOTAL OPEN INTEREST				OTHER REPORTABLE				NON REPORTABLE				
	26-Jul	19-Jul	12-Jul	5-Jul	26-Jul	19-Jul	12-Jul	5-Jul	26-Jul	19-Jul	12-Jul	5-Jul	
WHEAT													
Chicago	301,674	292,700	288,182	288,754	14.6	18.1	15.1	10.4	(8.1)	(9.7)	(9.7)	(9.0)	
Kansas City	163,884	158,686	153,758	153,674	(6.1)	(3.5)	(2.9)	(4.1)	(2.1)	(3.4)	(2.9)	(3.0)	
Minneapolis	59,840	59,574	60,135	62,879	2.5	2.8	3.4	2.8	(0.7)	(0.1)	(1.1)	(1.4)	
All Wheat	525,398	510,960	502,075	505,307	11.0	17.4	15.5	9.1	(10.9)	(13.2)	(13.7)	(13.4)	
CORN	1,320,768	1,308,458	1,333,199	1,331,035	74.7	106.6	118.6	102.7	(47.6)	(44.3)	(50.6)	(53.3)	
OATS	-	-	-	-	-	-	-	-	-	-	-	-	
SOYBEANS	583,850	602,987	611,751	638,675	(0.7)	19.5	24.4	23.8	(27.7)	(28.2)	(27.8)	(31.9)	
SOY OIL	368,075	375,032	369,766	364,800	6.5	9.7	12.0	9.9	2.4	3.1	2.4	3.9	
SOY MEAL	396,531	400,587	396,719	394,947	34.3	34.2	32.8	30.8	19.9	19.6	19.4	16.8	

SOURCE: CFTC & FI

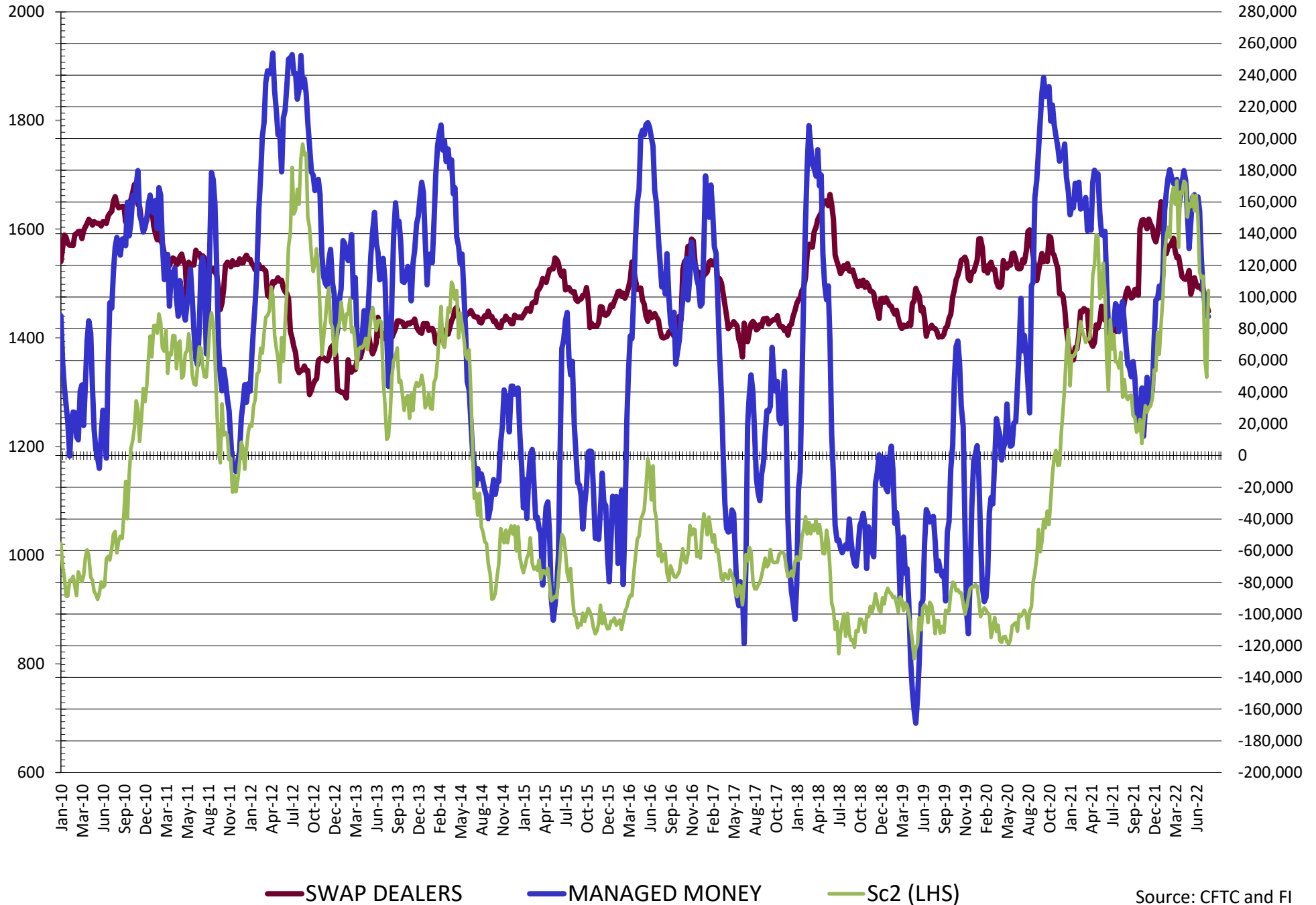
**DISAGGREGATED COMMITMENT OF TRADERS
FUTURES & OPTIONS NET POSITIONS
AS OF 07/26/2022
(IN THOUSAND CONTRACTS)**

	PRODUCER / MERCHANT / PROCESSOR / USER				(INDEX/ETF) SWAP DEALERS				(CTA/CPO/OTHER UNREGISTERED) MANAGED MONEY			
	26-Jul	19-Jul	12-Jul	5-Jul	26-Jul	19-Jul	12-Jul	5-Jul	26-Jul	19-Jul	12-Jul	5-Jul
	WHEAT											
Chicago	(50.5)	(50.9)	(51.1)	(58.7)	66.0	63.8	62.3	61.5	(10.4)	(6.8)	(6.4)	(0.0)
Kansas City	(31.9)	(30.8)	(35.4)	(39.5)	29.2	26.9	26.2	25.8	11.0	11.9	16.4	22.0
Minneapolis	(2.5)	(4.2)	(5.3)	(6.4)	1.2	1.2	1.2	0.7	0.4	1.0	2.7	5.1
All Wheat	(85.0)	(85.8)	(91.8)	(104.7)	96.4	92.0	89.7	87.9	1.0	6.0	12.6	27.1
CORN	(358.1)	(375.9)	(411.5)	(428.7)	253.7	256.6	262.8	270.0	120.8	125.3	151.2	172.9
OATS	0.0	0.0	0.0	0.0	0.0	0.0	0.0	0.0	0.0	0.0	0.0	0.0
SOYBEANS	(140.5)	(143.1)	(157.2)	(168.3)	91.0	95.1	100.1	105.1	87.7	87.8	95.7	105.0
SOY OIL	(98.9)	(103.9)	(105.6)	(116.8)	78.6	78.0	77.0	80.2	14.9	17.8	18.9	24.9
SOY MEAL	(199.1)	(191.4)	(189.9)	(184.3)	79.9	81.6	80.7	82.1	73.4	66.6	68.3	65.8

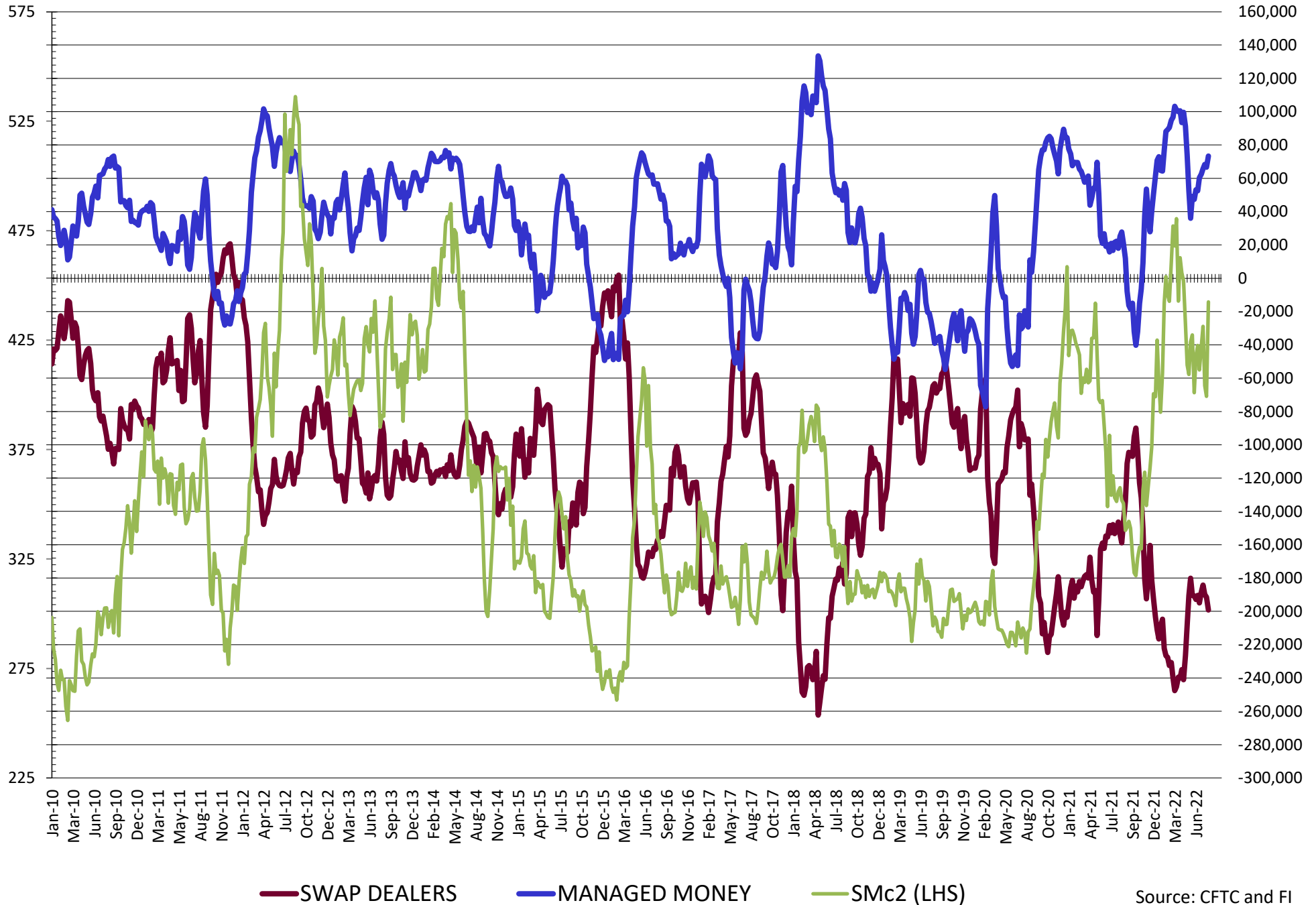
	TOTAL OPEN INTEREST				OTHER REPORTABLE				NON REPORTABLE			
	26-Jul	19-Jul	12-Jul	5-Jul	26-Jul	19-Jul	12-Jul	5-Jul	26-Jul	19-Jul	12-Jul	5-Jul
	WHEAT											
Chicago	404,440	411,445	398,172	387,076	2.0	2.6	4.1	5.8	(7.1)	(8.8)	(8.9)	(8.5)
Kansas City	181,353	178,991	172,630	170,838	(6.5)	(4.8)	(4.5)	(5.1)	(1.8)	(3.2)	(2.7)	(3.2)
Minneapolis	63,008	62,770	63,187	65,698	1.7	2.0	2.7	2.2	(0.8)	(0.1)	(1.2)	(1.5)
All Wheat	648,801	653,206	633,989	623,612	(2.8)	(0.2)	2.3	2.8	(9.6)	(12.0)	(12.8)	(13.2)
CORN	1,812,824	1,878,222	1,906,814	1,854,508	29.1	37.1	48.9	44.1	(45.4)	(43.1)	(43.1)	(43.1)
OATS	0	0	0	0	0.0	0.0	0.0	0.0	0.0	0.0	0.0	0.0
SOYBEANS	724,199	782,719	790,441	805,841	(8.0)	(7.3)	(5.7)	(3.6)	(30.2)	(32.5)	(32.9)	(38.1)
SOY OIL	414,842	436,352	427,432	414,025	1.7	3.9	6.6	7.3	3.7	4.2	3.2	4.4
SOY MEAL	438,045	444,043	440,090	435,036	23.6	21.4	19.2	17.7	22.3	21.8	21.7	18.7

SOURCE: CFTC & FI

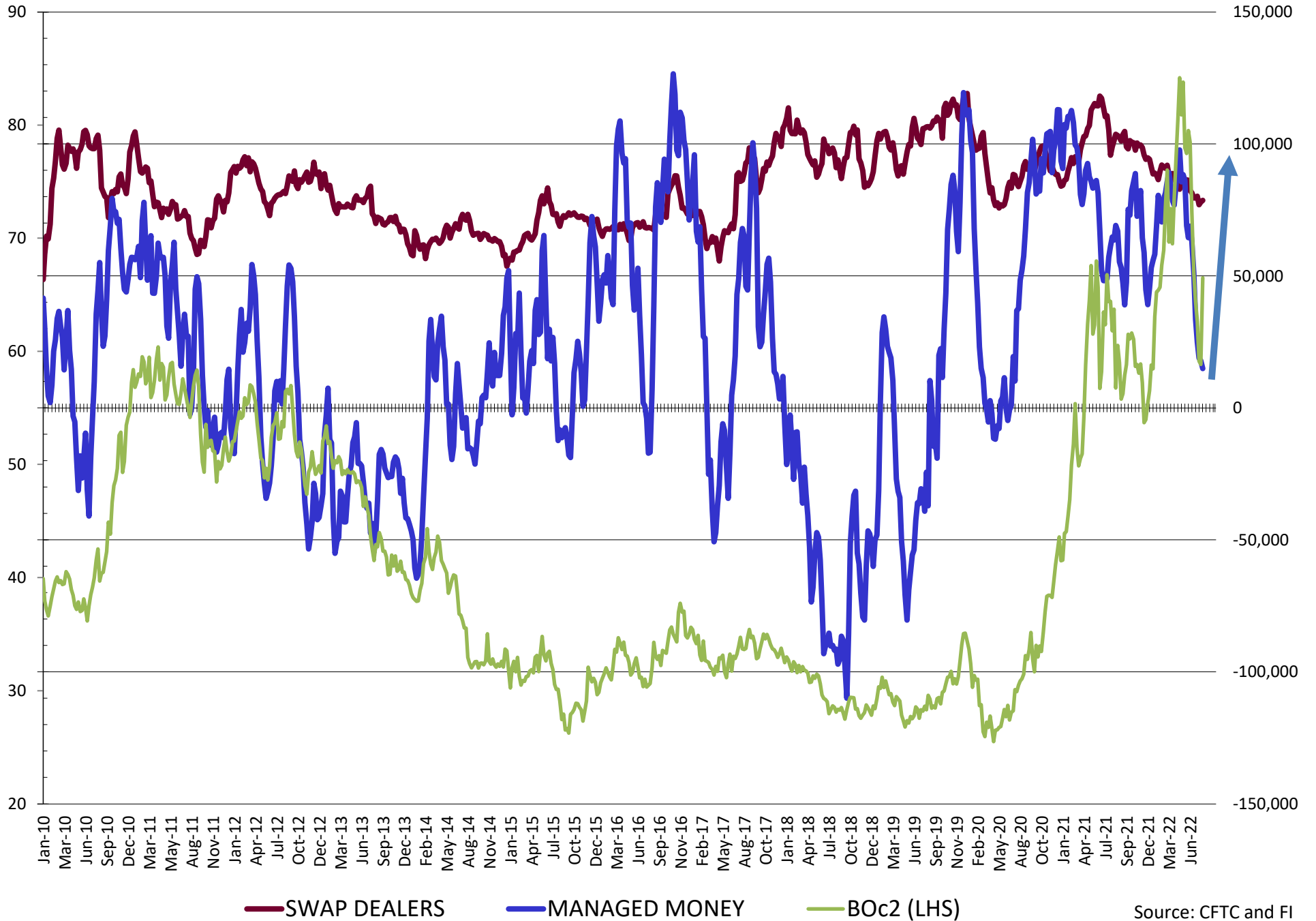
NET POSITION FUTURES AND OPTIONS OF SWAP AND MANAGED FUNDS IN SOYBEANS



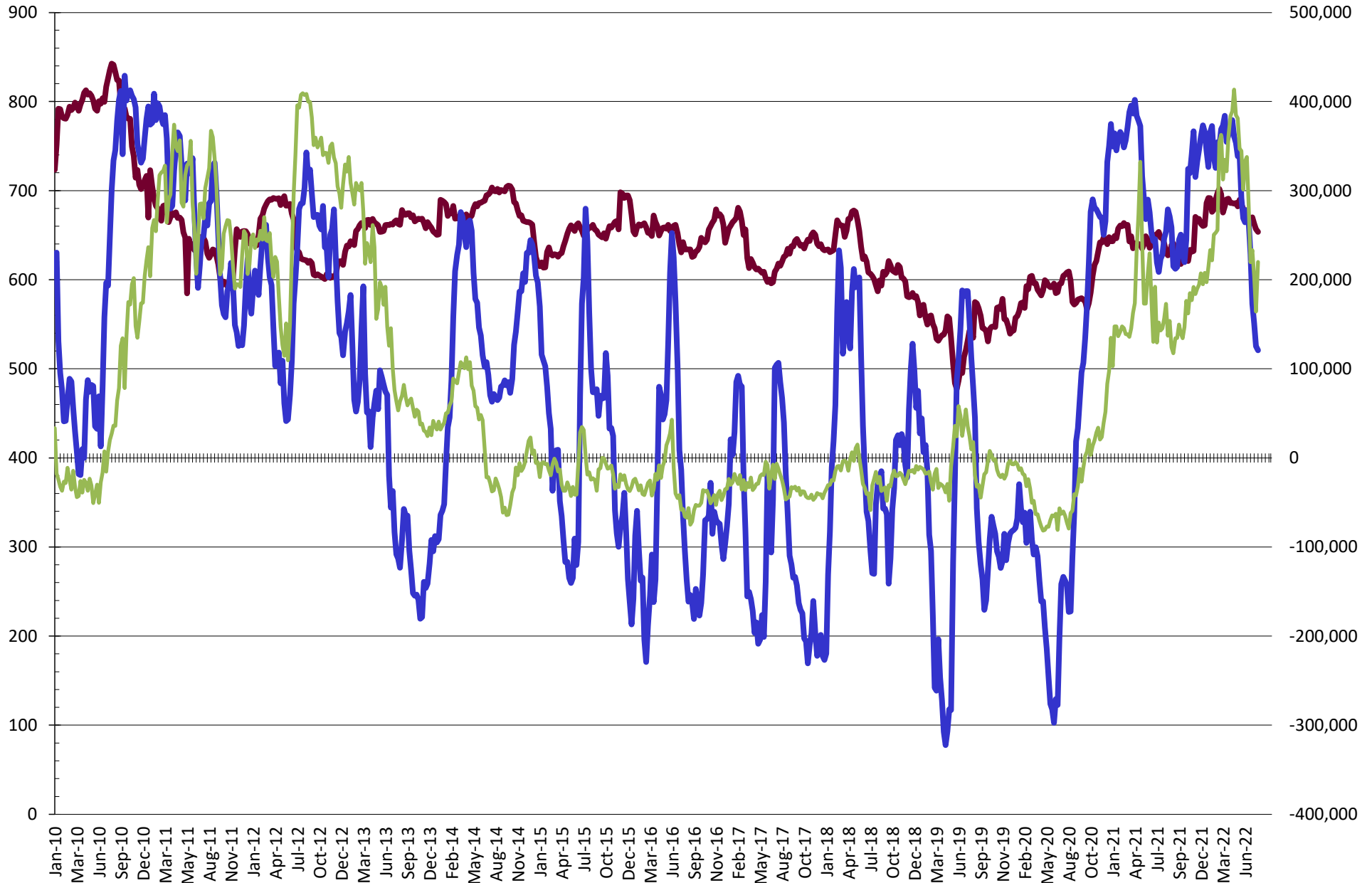
NET POSITION FUTURES AND OPTIONS OF SWAP AND MANAGED FUNDS IN SOYBEAN MEAL



NET POSITION FUTURES AND OPTIONS OF SWAP AND MANAGED FUNDS IN SOYBEAN OIL

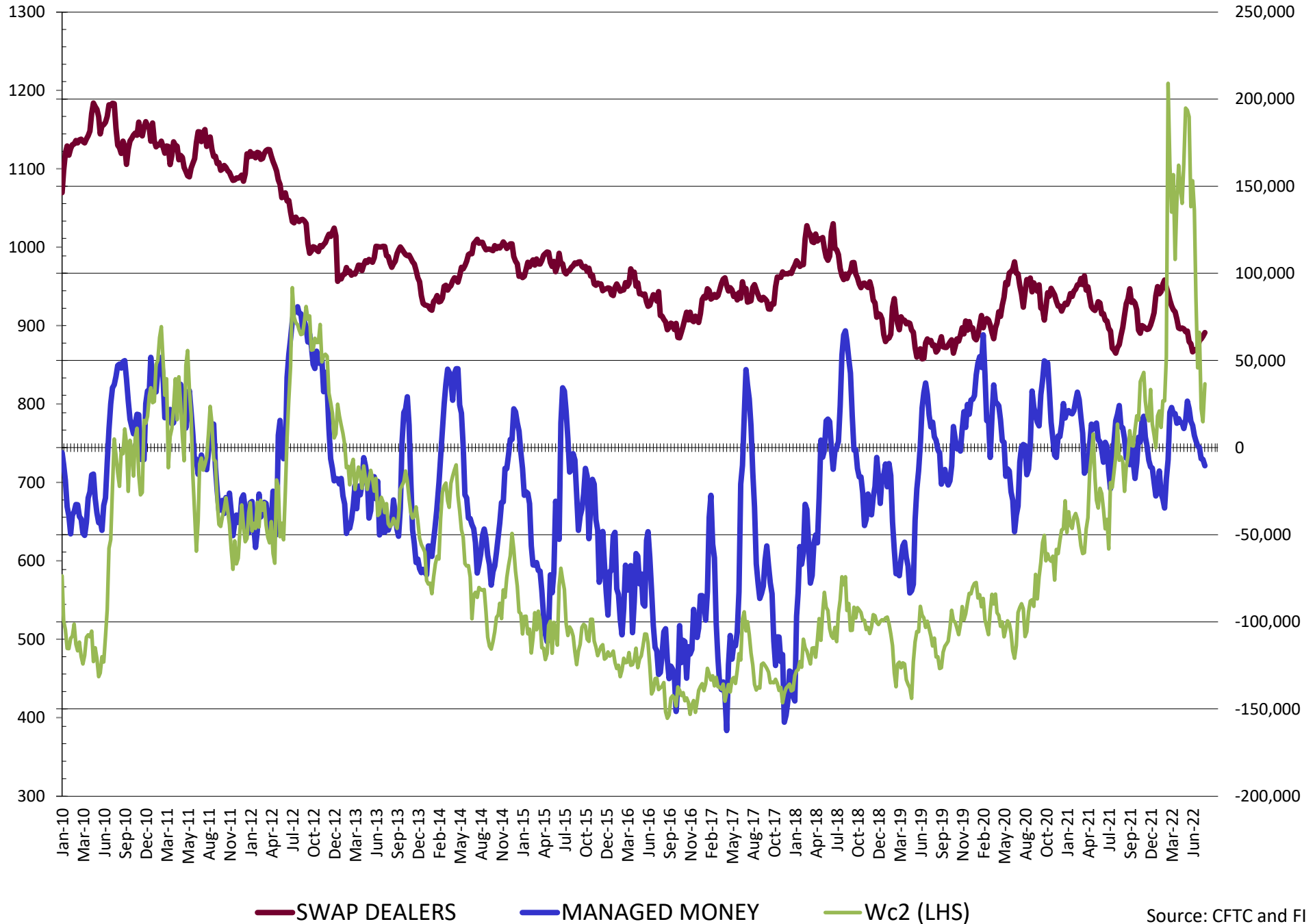


NET POSITION FUTURES AND OPTIONS OF SWAP AND MANAGED FUNDS IN CORN

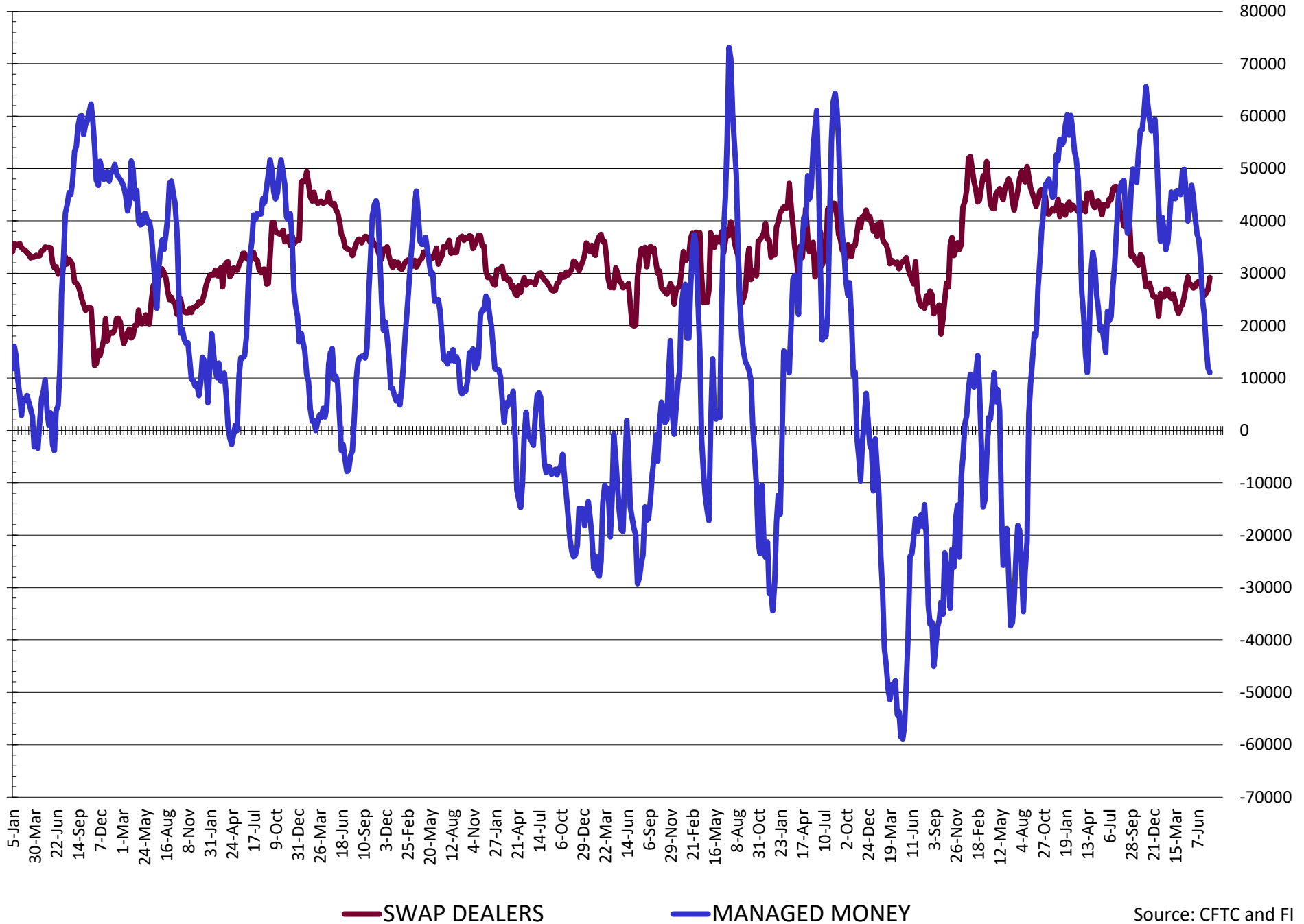


— SWAP DEALERS
 — MANAGED MONEY
 — Cc2 (LHS)

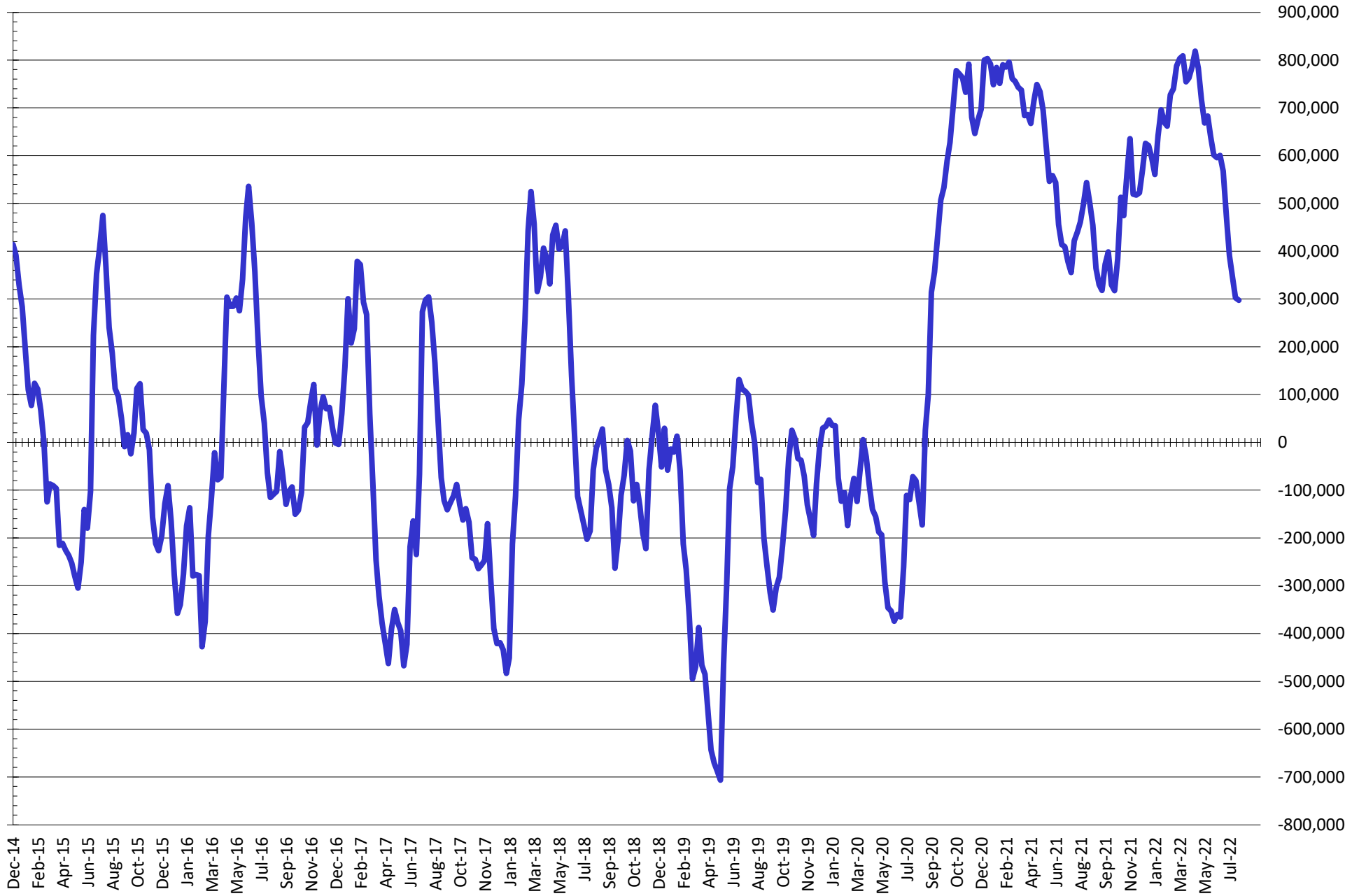
NET POSITION FUTURES AND OPTIONS OF SWAP AND MANAGED FUNDS IN CHICAGO WHEAT



NET POSITION FUTURES AND OPTIONS OF SWAP DEALERS AND MANAGED FUNDS IN KANSAS WHEAT



NET POSITION FUTURES AND OPTIONS OF SWAP AND MANAGED FUNDS IN COMBINED SRW, HRW, CORN, SOYBEANS, SOYMEAL AND SOYOIL



— Net Managed Money

Source: CFTC and FI
7/29/2022

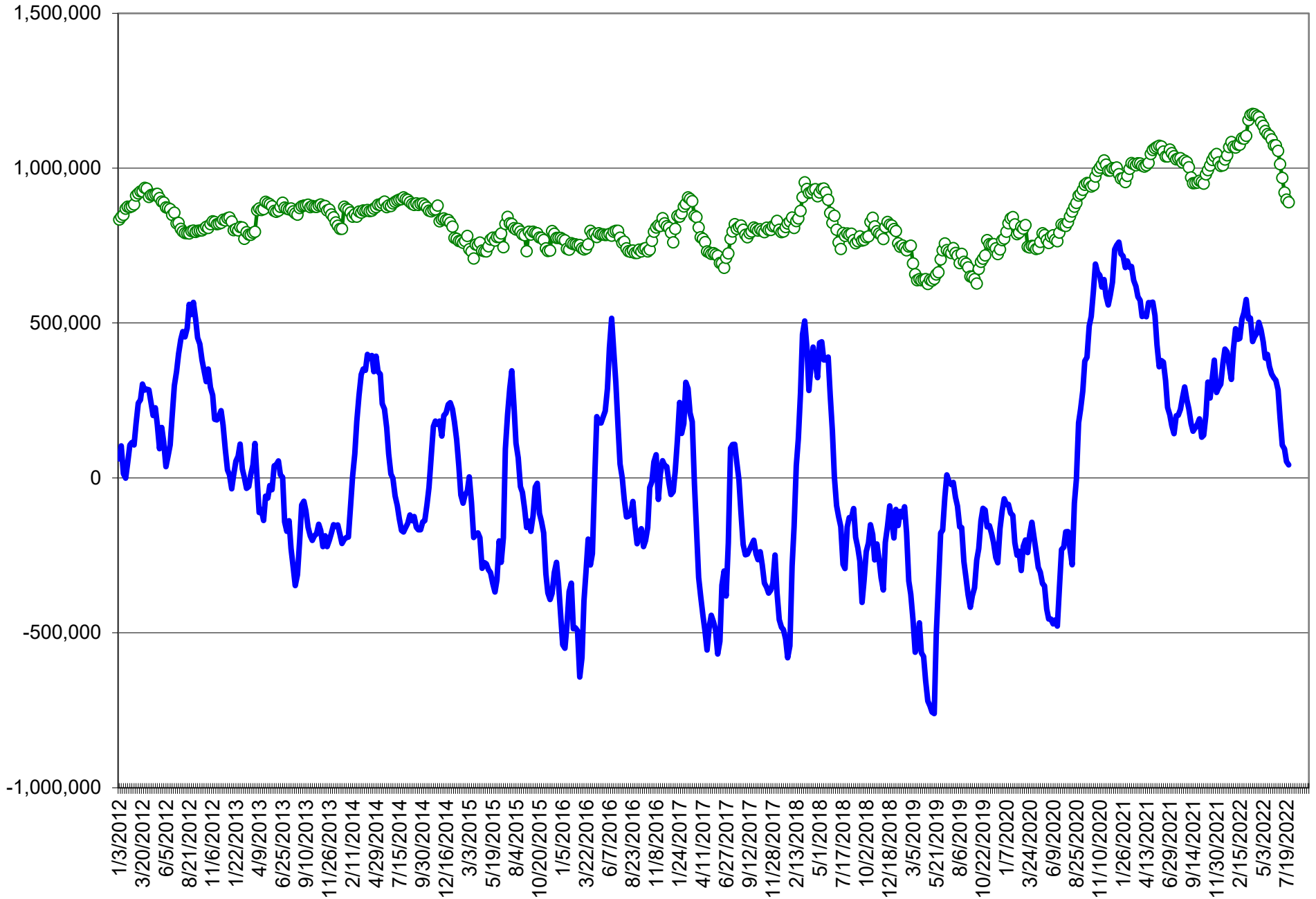
COMMITMENT OF TRADERS
FUTURES & OPTIONS NET POSITIONS (INDEX BROKEN OUT)
AS OF 07/26/2022
(IN THOUSAND CONTRACTS)

	COMMERCIAL				(FUND) NON COMMERCIAL				(SPEC) NON-REPORTABLE			
	26-Jul	19-Jul	12-Jul	5-Jul	26-Jul	19-Jul	12-Jul	5-Jul	26-Jul	19-Jul	12-Jul	5-Jul
	WHEAT											
Chicago	(59.9)	(62.7)	(64.5)	(73.5)	(51.3)	(47.2)	(48.2)	(47.4)	(7.1)	(8.8)	(8.9)	(8.5)
Kansas City	(36.4)	(36.7)	(41.5)	(46.6)	(12.1)	(9.7)	(5.5)	(3.0)	(1.8)	(3.2)	(2.7)	(3.2)
Minneapolis	-	-	-	-	-	-	-	-	-	-	-	-
All Wheat	(96.3)	(99.4)	(106.0)	(120.1)	(63.4)	(56.9)	(53.7)	(50.4)	(8.9)	(11.9)	(11.6)	(11.7)
CORN	(357.4)	(374.6)	(407.1)	(420.8)	26.1	35.9	66.9	73.4	(45.4)	(43.1)	(51.3)	(58.2)
OATS	-	-	-	-	-	-	-	-	-	-	-	-
SOYBEANS	(140.1)	(140.6)	(154.1)	(165.6)	28.1	26.5	30.7	33.6	(30.2)	(32.5)	(32.9)	(38.1)
SOY OIL	(86.2)	(91.8)	(95.6)	(107.3)	(7.0)	(2.5)	0.5	6.3	3.7	4.2	3.2	4.4
SOY MEAL	(193.1)	(182.8)	(181.2)	(175.4)	58.2	49.2	49.0	42.5	22.3	21.8	21.7	18.7

	TOTAL OPEN INTEREST				(INDEX) COMMERCIAL INDEX TRADERS				(INDEX) % NET OF TOTAL OPEN INTEREST			
	26-Jul	19-Jul	12-Jul	5-Jul	26-Jul	19-Jul	12-Jul	5-Jul	26-Jul	19-Jul	12-Jul	5-Jul
	WHEAT											
Chicago	404,440	411,445	398,172	387,076	118.3	118.7	121.5	129.4	29.3%	28.9%	30.5%	33.4%
Kansas City	181,353	178,991	172,630	170,838	50.3	49.6	49.7	52.8	27.7%	27.7%	28.8%	30.9%
Minneapolis	-	-	-	-	-	-	-	-	-	-	-	-
All Wheat	585,793	590,436	570,802	557,914	168.6	168.3	171.2	182.2	28.8%	28.5%	30.0%	32.7%
CORN	1,812,824	1,878,222	1,906,814	1,854,508	376.7	381.7	391.6	405.6	20.8%	20.3%	20.5%	21.9%
OATS	-	-	-	-	-	-	-	-	-	-	-	-
SOYBEANS	724,199	782,719	790,441	805,841	142.2	146.7	156.3	170.2	19.6%	18.7%	19.8%	21.1%
SOY OIL	414,842	436,352	427,432	414,025	89.5	90.1	92.0	96.6	21.6%	20.7%	21.5%	23.3%
SOY MEAL	438,045	444,043	440,090	435,036	112.7	111.7	110.5	114.2	25.7%	25.2%	25.1%	26.2%

SOURCE: CFTC & FI

NET POSITION FUTURES AND OPTIONS OF SPECULATORS AND INDEX FUNDS IN COMBINED SRW, HRW, CORN, SOYBEANS, SOYMEAL AND SOYOIL



Source: CFTC and FI

○ Net Index

— Net Speculator

7/29/2022

Traditional Daily Estimate of Funds 7/26/22

	(Neg)-"Short"	Pos-"Long"			
Actual less Est.	(20.4)	(21.4)	(4.5)	(2.2)	(6.3)
	Corn	Bean	Chi. Wheat	Meal	Oil
Actual	186.5	85.2	0.0	106.5	21.0
27-Jul	1.0	10.0	(7.0)	2.0	4.0
28-Jul	11.0	11.0	9.0	(2.0)	9.0
29-Jul	3.0	9.0	(6.0)	2.0	8.0
1-Aug					
2-Aug					
FI Est. of Futures Only 7/26/22	201.5	115.2	(4.0)	108.5	42.0
FI Est. Futures & Options	164.8	109.6	(12.4)	99.0	37.6
Futures only record long "Traditional Funds"	547.7 1/26/2021	280.9 11/10/2020	86.5 8/7/2018	167.5 5/1/2018	160.2 11/1/2016
Futures only record short	(235.0) 6/9/2020	(118.3) 4/30/2019	(130.0) 4/25/2017	(49.5) 3/1/2016	(69.8) 9/18/2018
Futures and options record net long	557.6 1/12/2021	270.9 10/6/2020	64.8 8/7/2012	132.1 5/1/2018	159.2 1/1/2016
Futures and options record net short	(270.6) 4/26/2019	(132.0) 4/30/2019	(143.3) 4/25/2017	(64.1) 3/1/2016	(77.8) 9/18/2018

Managed Money Daily Estimate of Funds 7/26/22

	Corn	Bean	Chi. Wheat	Meal	Oil
Latest CFTC Fut. Only	111.8	86.0	(14.5)	72.2	14.5
Latest CFTC F&O	120.8	87.7	(10.4)	73.4	14.9
FI Est. Managed Fut. Only	127	116	(19)	74	36
FI Est. Managed Money F&O	136	118	(14)	75	36

Index Funds Latest Positions (as of last Tuesday)

Index Futures & Options	376.7	142.2	118.3	NA	89.5
Change From Previous Week	(5.0)	(4.5)	(0.4)	NA	(0.6)

Source: Reuters, CFTC & FI (FI est. are noted with latest date)

Disclaimer

TO CLIENTS/PROSPECTS OF FUTURES INTERNATIONAL, SEE RISK DISCLOSURE BELOW:

THIS COMMUNICATION IS CONVEYED AS A SOLICITATION FOR ENTERING INTO A DERIVATIVES TRANSACTION.

Any trading recommendations and market or other information to Customer by Futures International (FI), although based upon information obtained from sources believed by FI to be reliable may not be accurate and may be changed without notice to customer. FI makes no guarantee as to the accuracy or completeness of any of the information or recommendations furnished to Customer. Customer understands that FI, its managers, employees and/or affiliates may have a position in commodity futures, options or other derivatives which may not be consistent with the recommendations furnished by FI to Customer.

The risk of trading futures and options and other derivatives involves a substantial risk of loss and is not suitable for all persons. In purchasing an option, the risk is limited to the premium paid, and all commissions and fees involved with the trade. When an option is shorted or written, the writer of the option has unlimited risk with respect to the option written. The use of options strategies such as a straddles and strangles involve multiple option positions and may substantially increase the amount of commissions and fees paid to execute the strategy. Option prices do not necessarily move in tandem with cash or futures prices. Each person must consider whether a particular trade, combination of trades or strategy is suitable for that person's financial means and objectives.

This material may include discussions of seasonal patterns, however, futures prices have already factored in the seasonal aspects of supply and demand, and seasonal patterns are no indication of future market trends. Finally, past performance is not indicative of future results.

This communication may contain links to third party websites which are not under the control of FI and FI is not responsible for their content. Products and services are offered only in jurisdictions where solicitation and sale are lawful, and in accordance with applicable laws and regulations in each such jurisdiction.