

CFTC COMMITMENT OF TRADERS REPORT

As of 6/28/2022

TRADITIONAL FUNDS net position changes

Wed to Tue, in 000 contracts

	Corn	Bean	Meal	Oil	Chi. Wheat	KC Wheat	Min Wheat
Futures Only	(52.1)	(41.2)	(1.4)	(22.6)	(11.4)	(8.4)	(5.3)
Futures & Options Combined	(51.1)	(32.3)	1.3	(21.5)	(8.6)	(8.2)	(4.5)

TRADITIONAL COMMERCIAL net position changes

	Corn	Bean	Meal	Oil	Chi. Wheat	KC Wheat	Min Wheat
Futures Only	52.4	46.3	4.9	24.6	13.5	7.7	8.1
Futures & Options Combined	55.2	38.8	2.7	23.8	10.6	6.7	7.5

MANAGED MONEY net position changes

	Corn	Bean	Meal	Oil	Chi. Wheat	KC Wheat	Min Wheat
Futures Only	(29.8)	(26.7)	1.6	(18.0)	(4.4)	(6.4)	(4.4)
Futures & Options Combined	(36.6)	(29.9)	2.1	(17.3)	(2.9)	(7.7)	(4.4)

SWAP DEALERS net position changes

	Corn	Bean	Meal	Oil	Chi. Wheat	KC Wheat	Min Wheat
Futures Only	(4.4)	(5.3)	(4.6)	(1.4)	1.6	(0.9)	0.0
Futures & Options Combined	(2.8)	(2.1)	(3.9)	0.0	1.1	(1.6)	(0.3)

PRODUCERS/END USERS net position changes

	Corn	Bean	Meal	Oil	Chi. Wheat	KC Wheat	Min Wheat
Futures Only	56.7	51.5	9.6	26.1	12.0	8.6	8.1
Futures & Options Combined	58.0	40.9	6.6	23.8	9.5	8.4	7.8

INDEX net position changes

	Corn	Bean	Meal	Oil	Chi. Wheat	KC Wheat	Min Wheat
Futures & Options Combined	(17.6)	(15.9)	1.5	0.4	(5.9)	(5.4)	NA

SUPPLEMENTAL NON-COMMERCIAL net position changes

	Corn	Bean	Meal	Oil	Chi. Wheat	KC Wheat	Min Wheat
Futures & Options Combined	(39.9)	(20.2)	(0.1)	(22.0)	(5.4)	(2.9)	NA

OPEN INTEREST net position changes

Wed to Tue, in 000 contracts

	Corn	Bean	Meal	Oil	Chi. Wheat	KC Wheat	Min Wheat
Futures Only	(174.1)	(92.2)	(11.8)	(24.0)	(29.3)	(17.2)	(3.6)
Futures & Options Combined	(343.8)	(159.4)	(26.0)	(46.8)	(77.5)	(28.4)	(5.0)

Source: CFTC and FI

Wed to Tue, in 000 contracts

**COMMITMENT OF TRADERS
FUTURES ONLY NET POSITIONS
AS OF 06/28/2022
(IN THOUSAND CONTRACTS)**

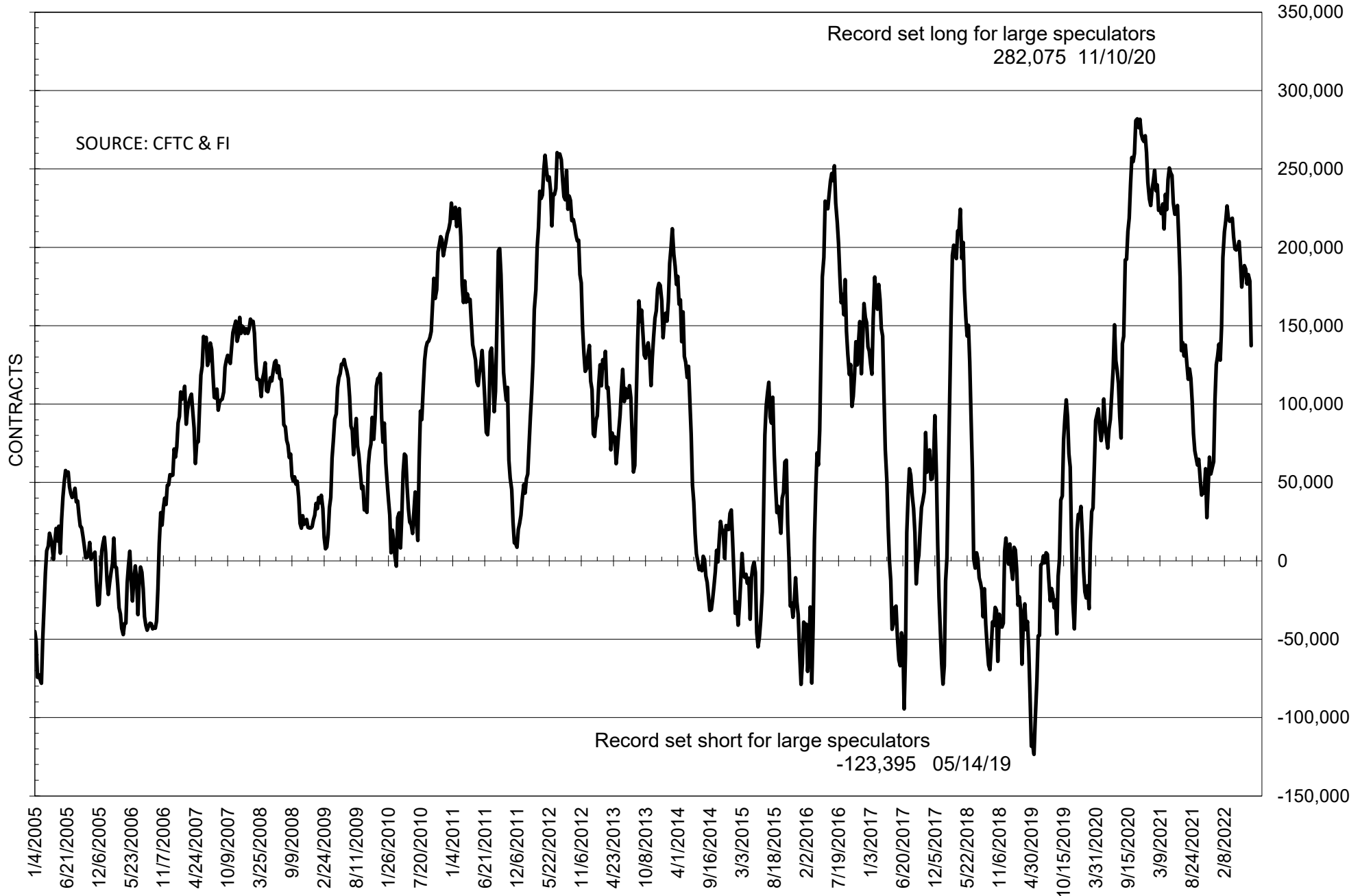
	COMMERCIAL				(FUND) NON COMMERCIAL				(SPEC) NON-REPORTABLE			
	28-Jun	21-Jun	14-Jun	7-Jun	28-Jun	21-Jun	14-Jun	7-Jun	28-Jun	21-Jun	14-Jun	7-Jun
	WHEAT											
Chicago	-1.9	-15.4	-18.1	-19.9	7.7	19.1	20.4	23.9	-5.8	-3.7	-2.3	-4.0
Kansas City	-18.3	-26.0	-31.1	-32.9	21.2	29.5	33.4	34.0	-2.8	-3.5	-2.3	-1.1
Minneapolis	-12.4	-20.4	-23.6	-25.4	11.7	16.9	17.8	18.5	0.7	3.5	5.9	6.9
All Wheat	-32.6	-61.9	-72.8	-78.2	40.5	65.5	71.6	76.4	-7.9	-3.7	1.2	1.8
CORN	-274.1	-326.5	-344.2	-337.1	328.1	380.2	399.8	391.3	-54.0	-53.7	-55.6	-54.1
OATS	-0.3	#VALUE!	#VALUE!	#VALUE!	0.2	#####	#VALUE!	#VALUE!	0.0	#VALUE!	#VALUE!	#VALUE!
SOYBEANS	-106.7	-153.0	-155.7	-148.4	137.2	178.4	182.7	176.6	-30.5	-25.4	-27.0	-28.3
SOY OIL	-53.2	-77.9	-87.1	-95.3	44.9	67.5	73.4	78.6	8.3	10.3	13.7	16.6
SOY MEAL	-114.9	-119.8	-114.7	-115.3	93.9	95.4	88.8	89.7	20.9	24.4	25.9	25.6

Oats positions thin to be reported

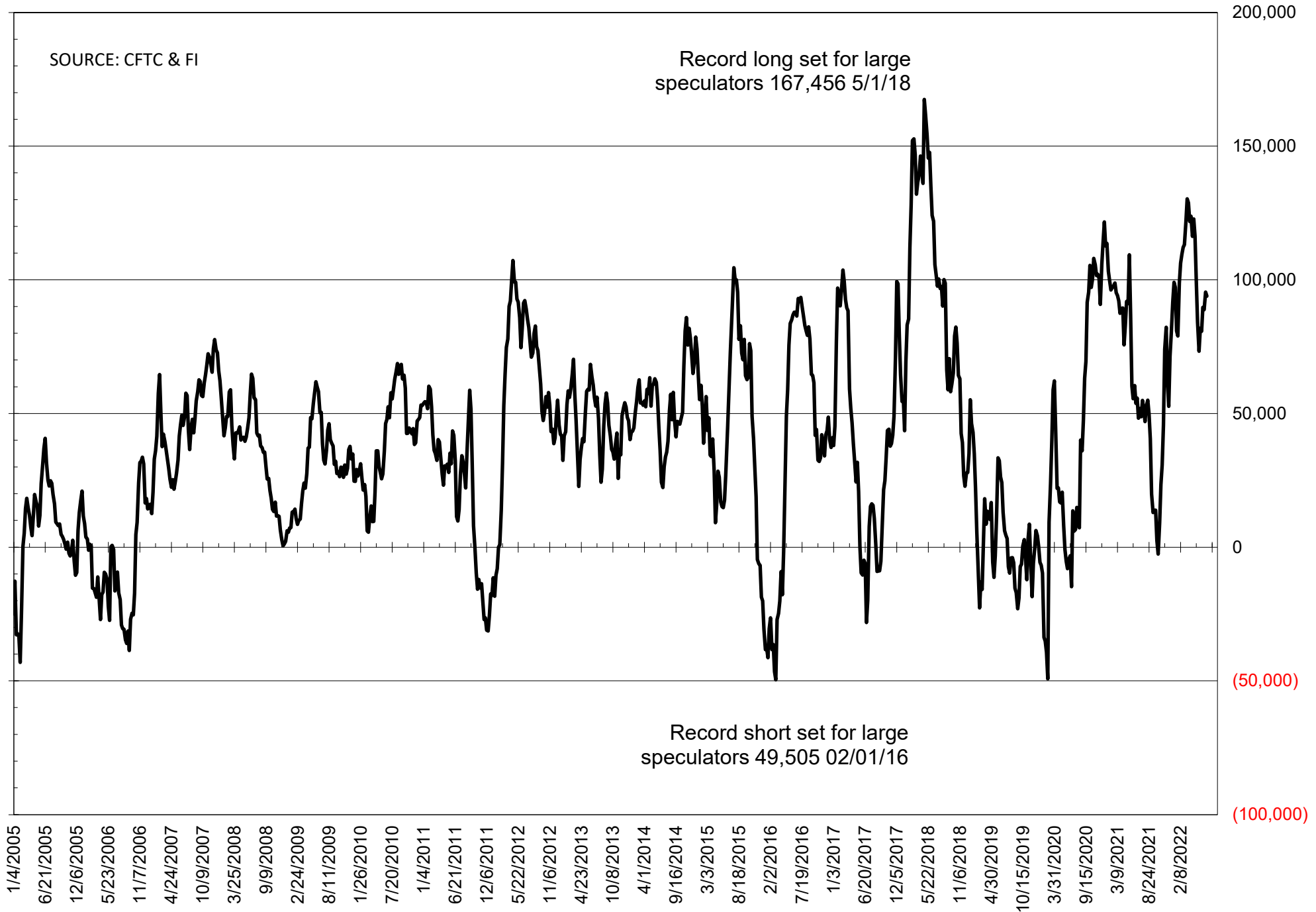
	TOTAL OPEN INTEREST				NEARBY FUTURES PRICE					28-Jun-22 LAST REPORTED % HELD BY TRADERS			
	28-Jun	21-Jun	14-Jun	7-Jun	Q/U Latest	N 28-Jun	N 21-Jun	N 14-Jun	N 7-Jun	LARGE FUND		SMALL	
										LONG	SHORT	LONG	SHORT
WHEAT													
Chicago	291041	320326	336890	333705	846.00	921.25	923.75	1050.25	1071.75	0%	28%	0%	12%
Kansas City	155953	173165	177793	180335	913.50	983.75	992.50	1142.25	1149.25	0%	15%	0%	14%
Minneapolis	64642	68258	69679	69232	946.00	1033.25	1070.75	1208.50	1227.25	0%	5%	0%	16%
CORN	1338054	1512152	1521565	1557167	619.75	759.50	750.25	768.25	757.00	0%	8%	0%	13%
OATS	2675	#VALUE!	#VALUE!	#VALUE!	505.00	629.75	597.00	666.75	668.00	0%	7%	0%	37%
SOYBEANS	653337	745494	754428	760444	1509.75	1663.75	1610.75	1698.50	1728.25	29%	8%	6%	11%
SOY OIL	363276	387319	388690	399283	64.43	72.09	69.75	78.28	81.44	0%	10%	0%	6%
SOY MEAL	391532	403330	384925	380689	422.10	455.10	432.60	411.00	417.40	0%	3%	0%	6%

SOURCE: CFTC & FI

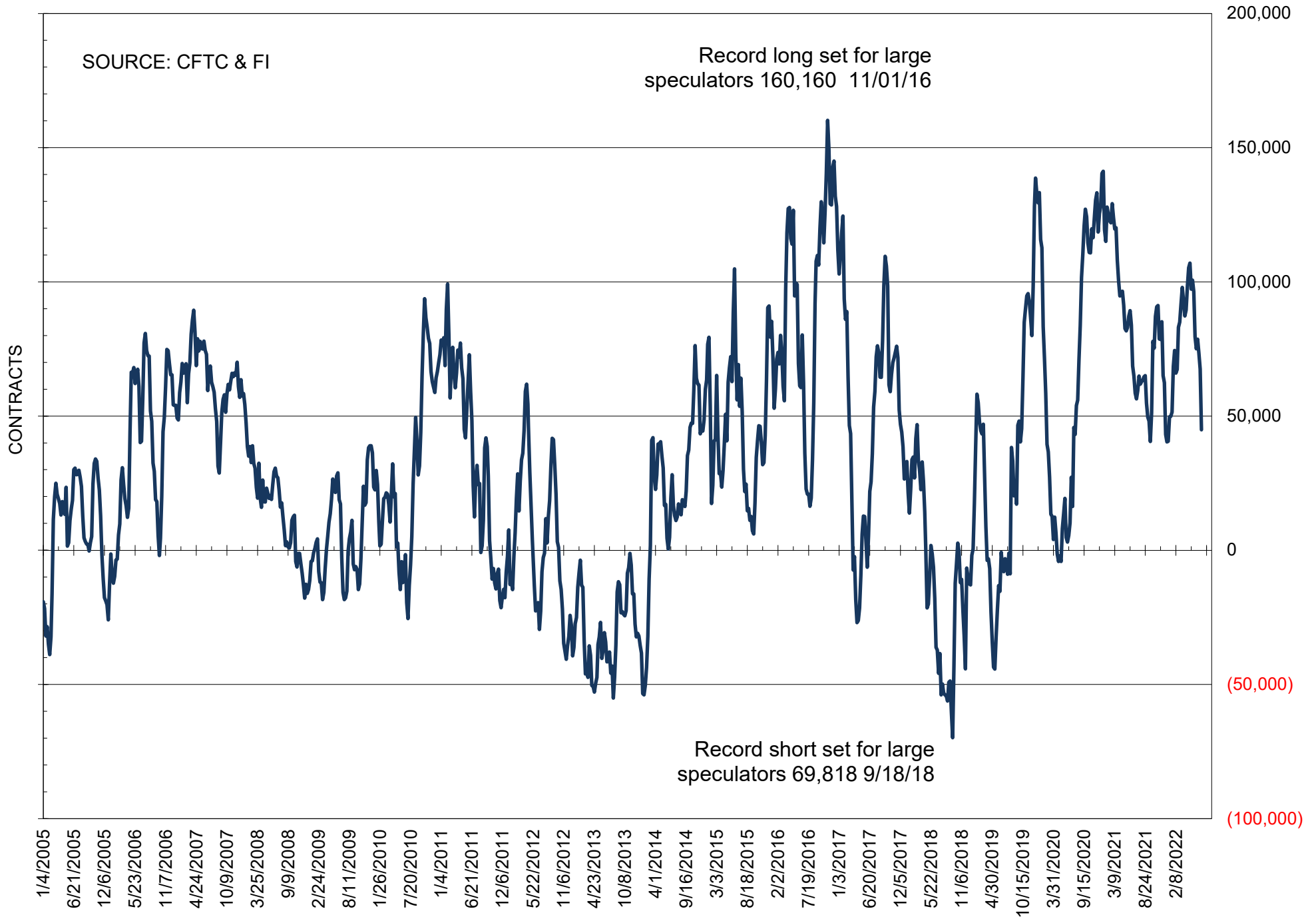
NET POSITION OF FUTURES ONLY LARGE SPECS IN SOYBEANS



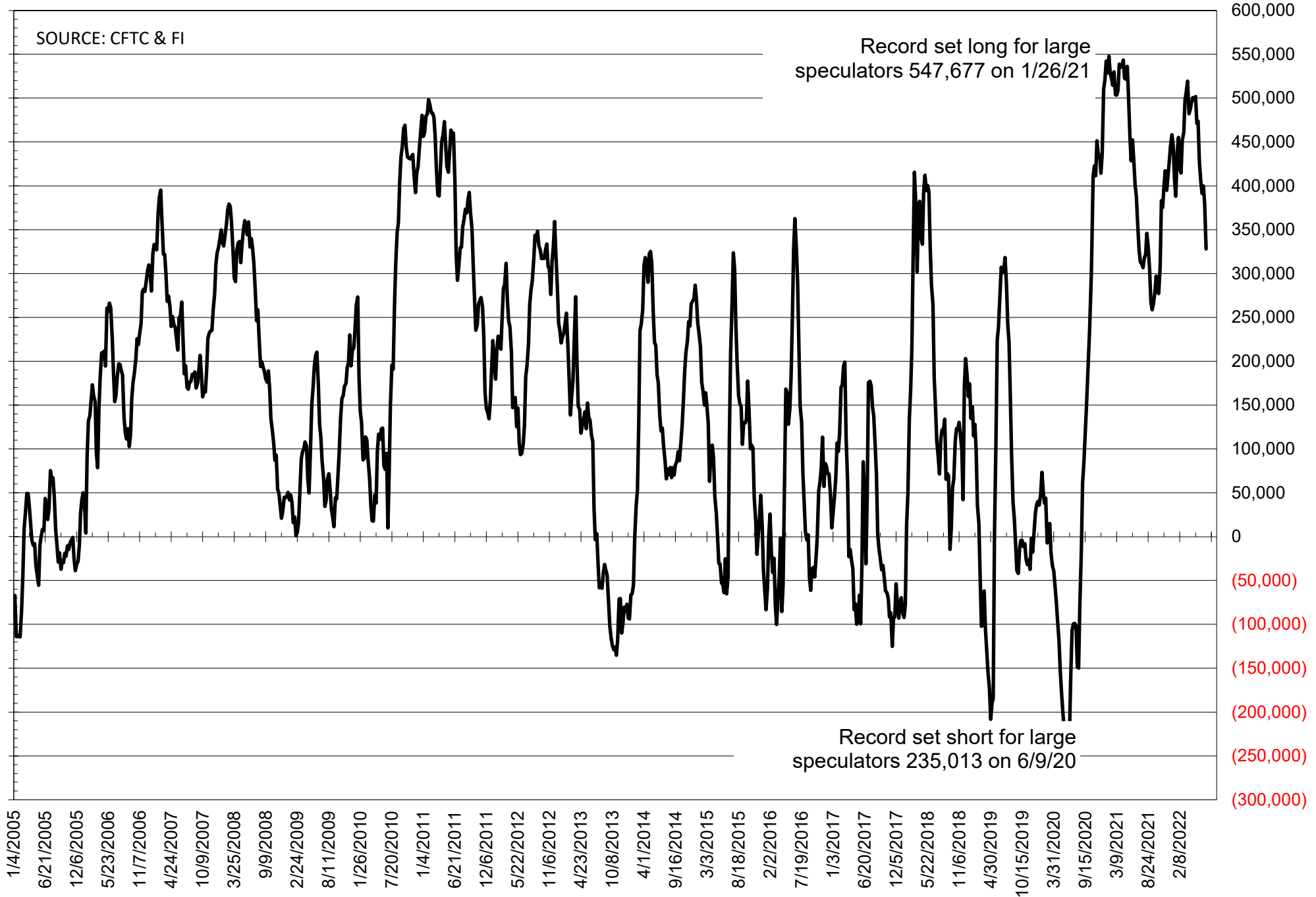
NET POSITION OF FUTURES ONLY LARGE SPECS IN SOYMEAL



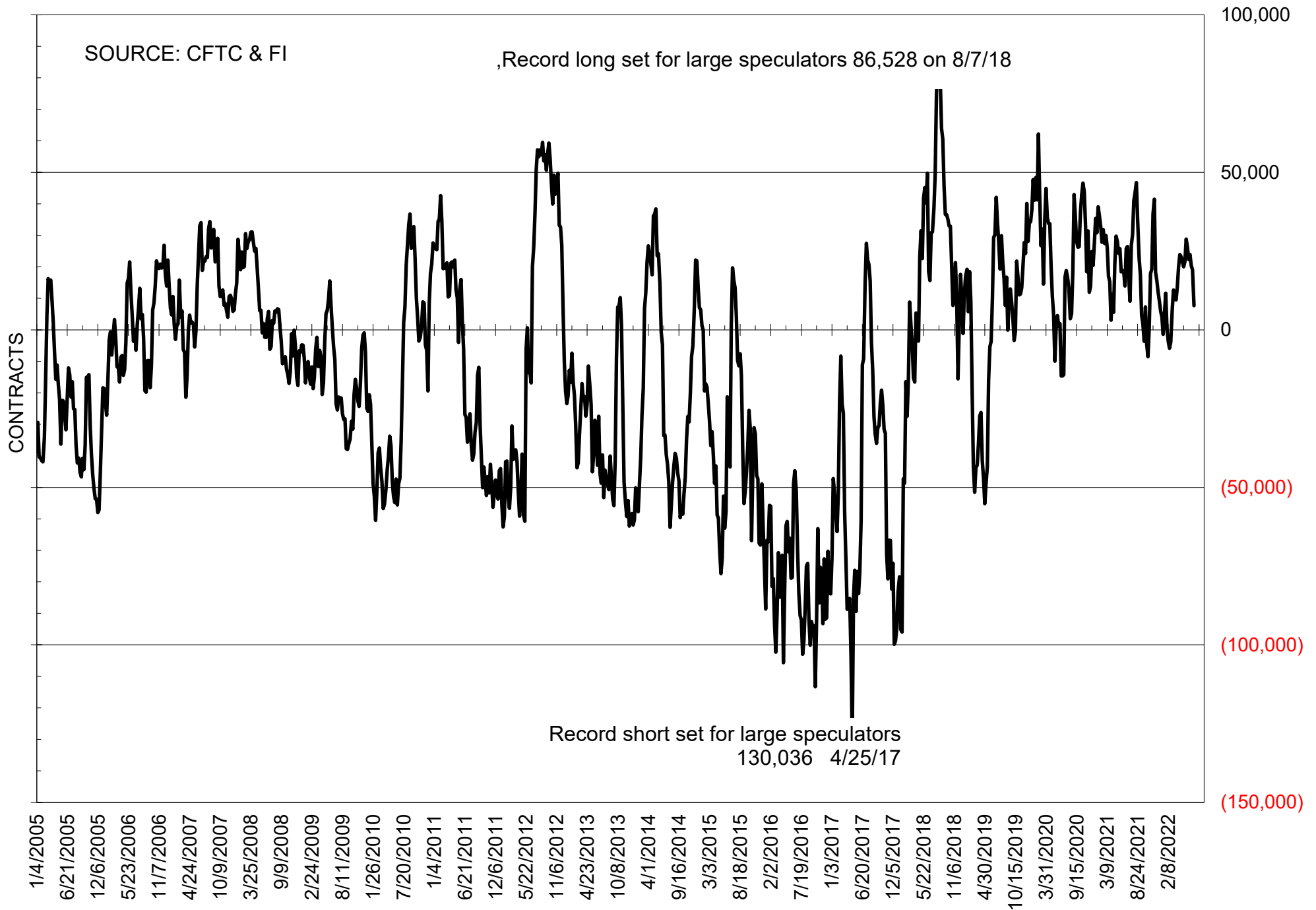
NET POSITION OF FUTURES ONLY LARGE SPECS IN SOYOIL



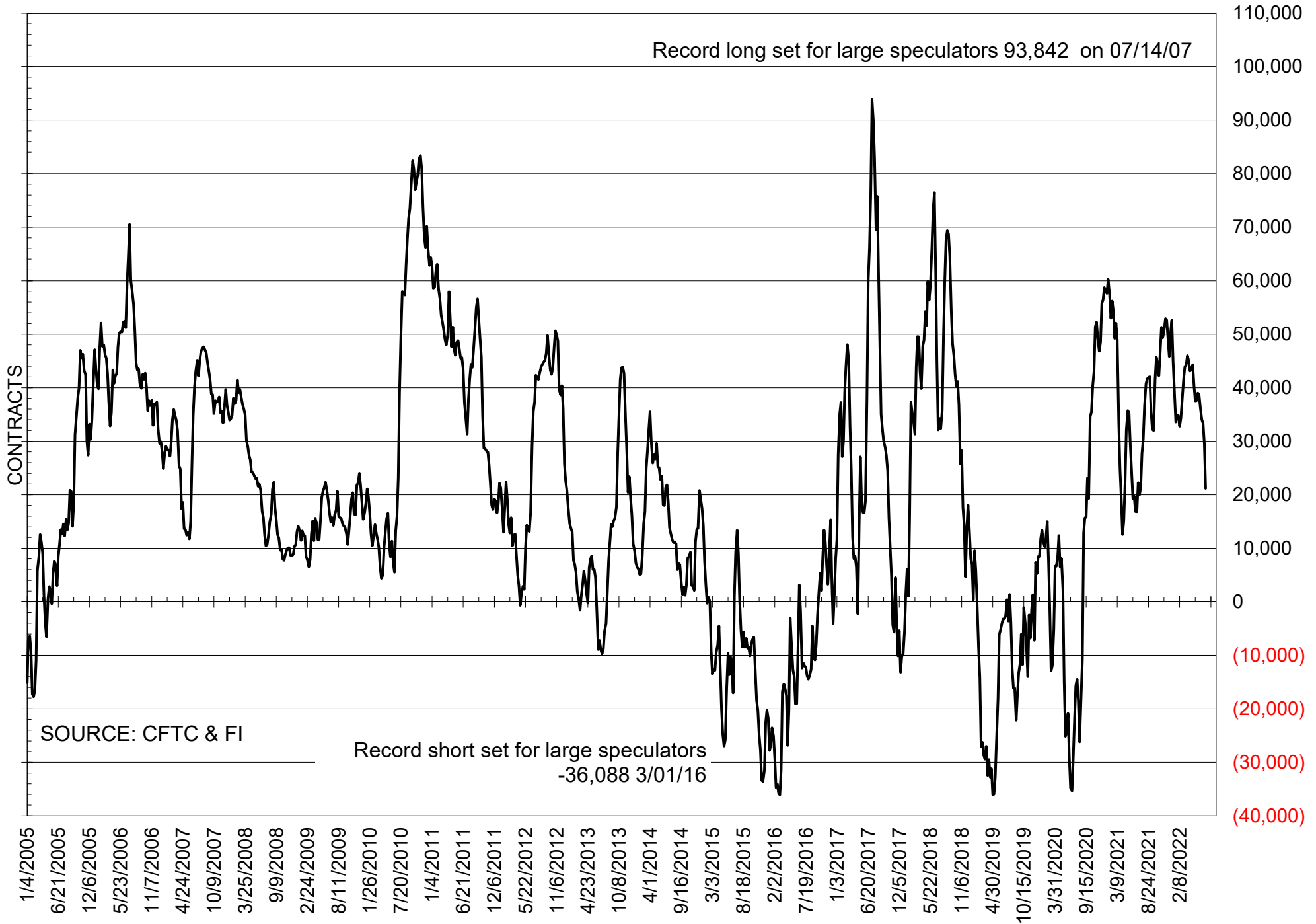
NET POSITION OF LARGE SPECULATORS IN CORN



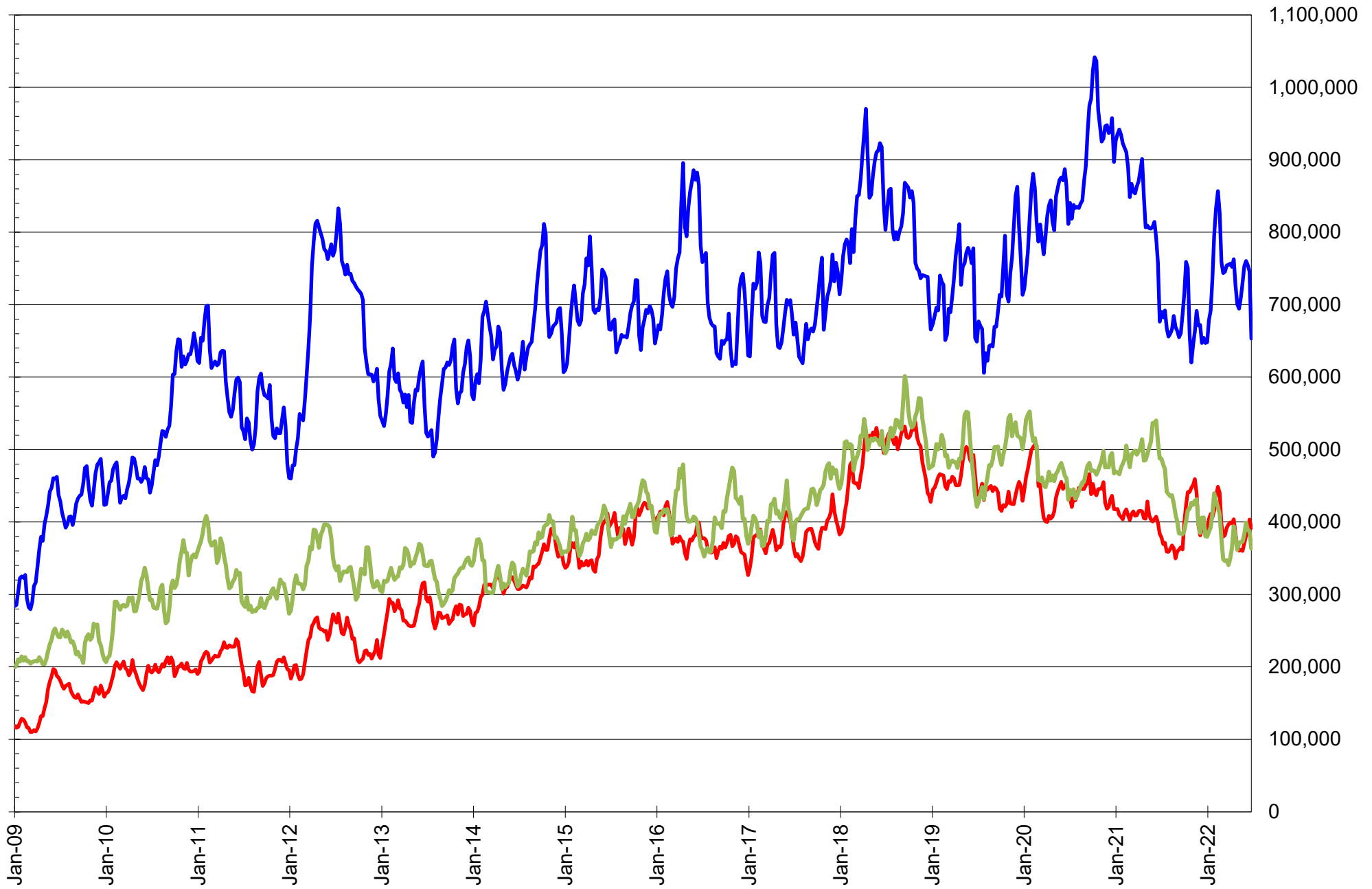
NET POSITION OF FUTURES ONLY LARGE SPECS IN CHICAGO WHEAT



NET POSITION OF LARGE SPECULATORS IN KANSAS CITY WHEAT



TOTAL OPEN INTEREST IN SOYBEANS, MEAL AND OIL, FUTURES ONLY



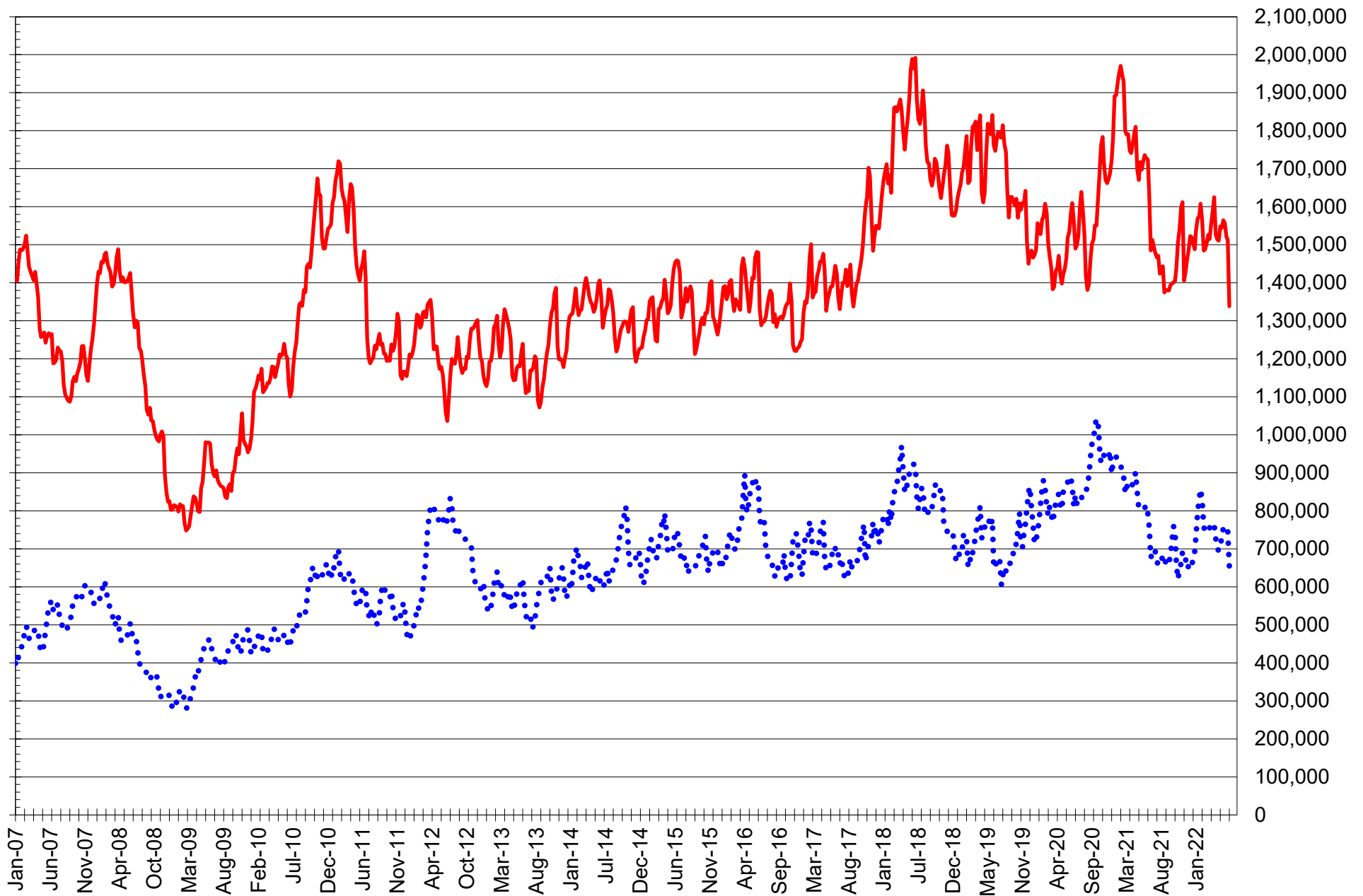
SOURCE: CFTC & FI

— SOYBEANS

— SOYBEAN MEAL

— SOYBEAN OIL

TOTAL OPEN INTEREST IN CORN AND SOYBEANS, FUTURES ONLY



SOURCE: CFTC & FI

— CORN

•••• SOYBEANS

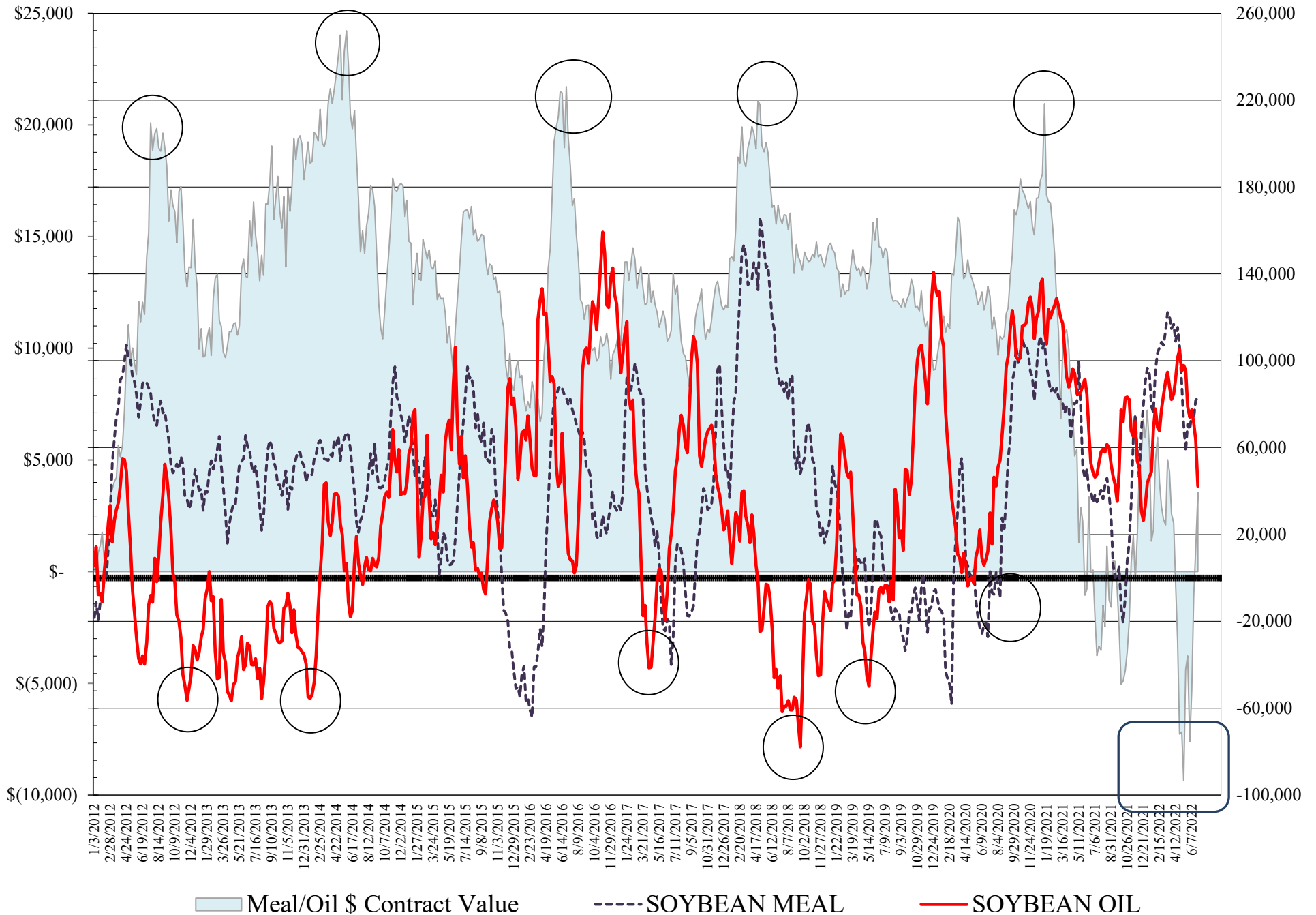
**COMMITMENT OF TRADERS
FUTURES & OPTIONS NET POSITIONS
AS OF 06/28/2022
(IN THOUSAND CONTRACTS)**

	COMMERCIAL				(FUND) NON COMMERCIAL				(SPEC) NON-REPORTABLE			
	28-Jun	21-Jun	14-Jun	7-Jun	28-Jun	21-Jun	14-Jun	7-Jun	28-Jun	21-Jun	14-Jun	7-Jun
WHEAT												
Chicago	-3.7	-14.3	-18.6	-22.0	9.3	17.9	20.5	25.8	-5.5	-3.5	-1.9	-3.8
Kansas City	-17.6	-24.3	-30.6	-33.2	20.3	28.6	33.0	34.7	-2.8	-4.3	-2.4	-1.4
Minneapolis	-11.8	-19.3	-23.1	-25.1	11.1	15.6	17.0	18.0	0.7	3.7	6.0	7.1
All Wheat	-33.1	-57.9	-72.3	-80.3	40.7	62.0	70.5	78.5	-7.6	-4.1	1.8	1.9
CORN	-243.3	-298.5	-319.7	-318.8	296.5	347.7	365.6	363.8	-53.2	-49.2	-45.8	-45.0
OATS	-0.2	#VALUE!	#VALUE!	#VALUE!	0.2	#VALUE!	#VALUE!	#VALUE!	0.1	#VALUE!	#VALUE!	#VALUE!
SOYBEANS	-87.0	-125.8	-137.1	-134.1	121.2	153.4	165.7	163.4	-34.2	-27.6	-28.5	-29.3
SOY OIL	-50.5	-74.3	-85.4	-94.1	42.2	63.7	71.3	77.4	8.3	10.6	14.1	16.7
SOY MEAL	-106.4	-109.1	-102.6	-104.6	83.0	81.7	73.5	75.9	23.4	27.4	29.1	28.7

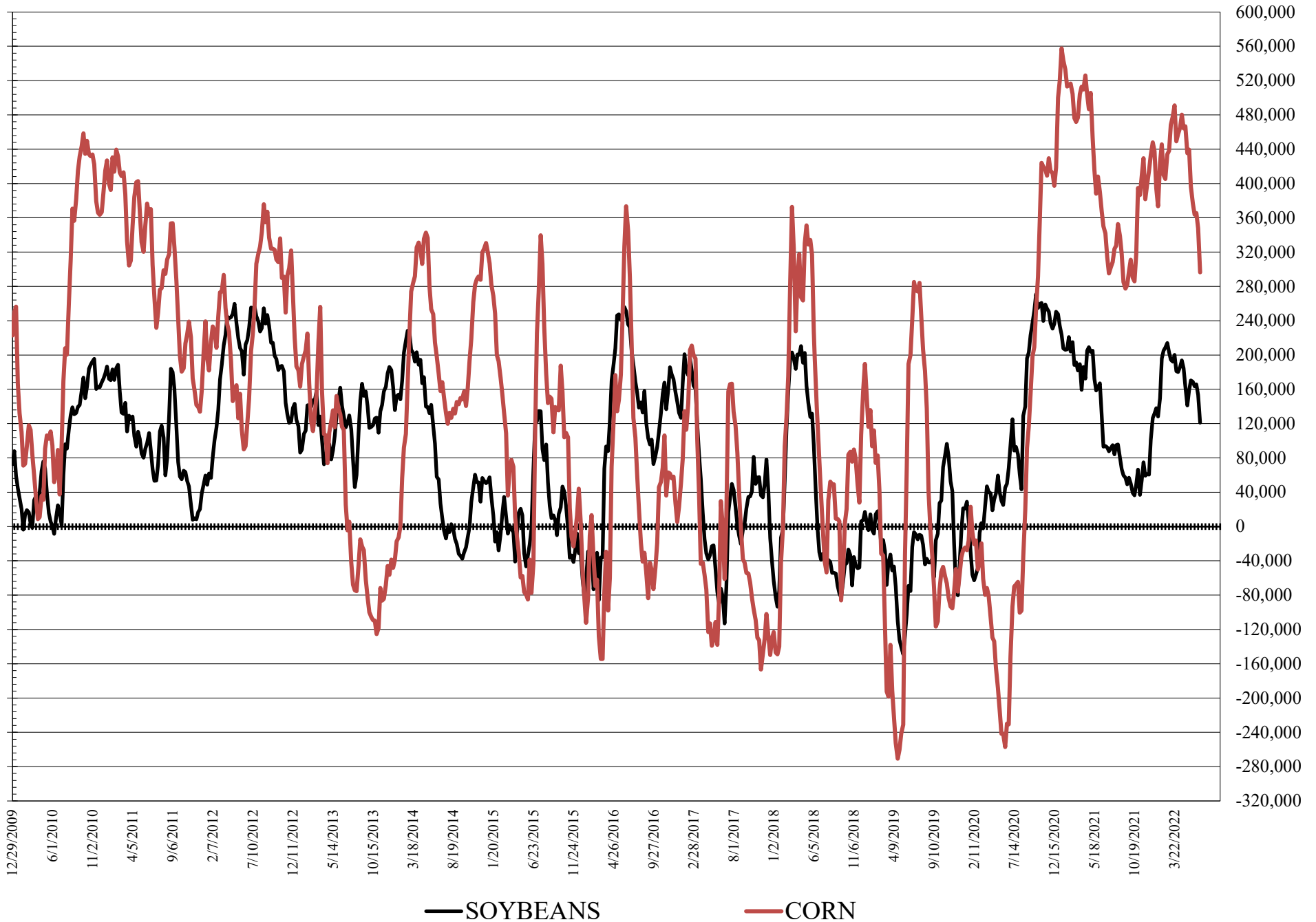
	TOTAL OPEN INTEREST				COMMERCIALS		% HELD BY TRADERS LARGE (FUNDS)		SMALL (NON-REP)	
	28-Jun	21-Jun	14-Jun	7-Jun	LONG	SHORT	LONG	SHORT	LONG	SHORT
WHEAT										
Chicago	375,548	453,012	465,751	462,463			24%	21%	9%	10%
Kansas City	171,480	199,865	202,723	205,338			26%	14%	11%	13%
Minneapolis	67,349	72,303	73,779	73,168			21%	5%	17%	16%
CORN	1,855,971	2,199,804	2,214,773	2,217,675			20%	4%	10%	12%
OATS	2,777	#VALUE!	#VALUE!	#VALUE!						
SOYBEANS	800,466	959,863	971,426	979,103			22%	7%	6%	10%
SOY OIL	404,637	451,454	453,471	471,053			19%	9%	8%	6%
SOY MEAL	430,815	456,803	435,560	429,842			22%	3%	12%	6%

SOURCE: CFTC & FI

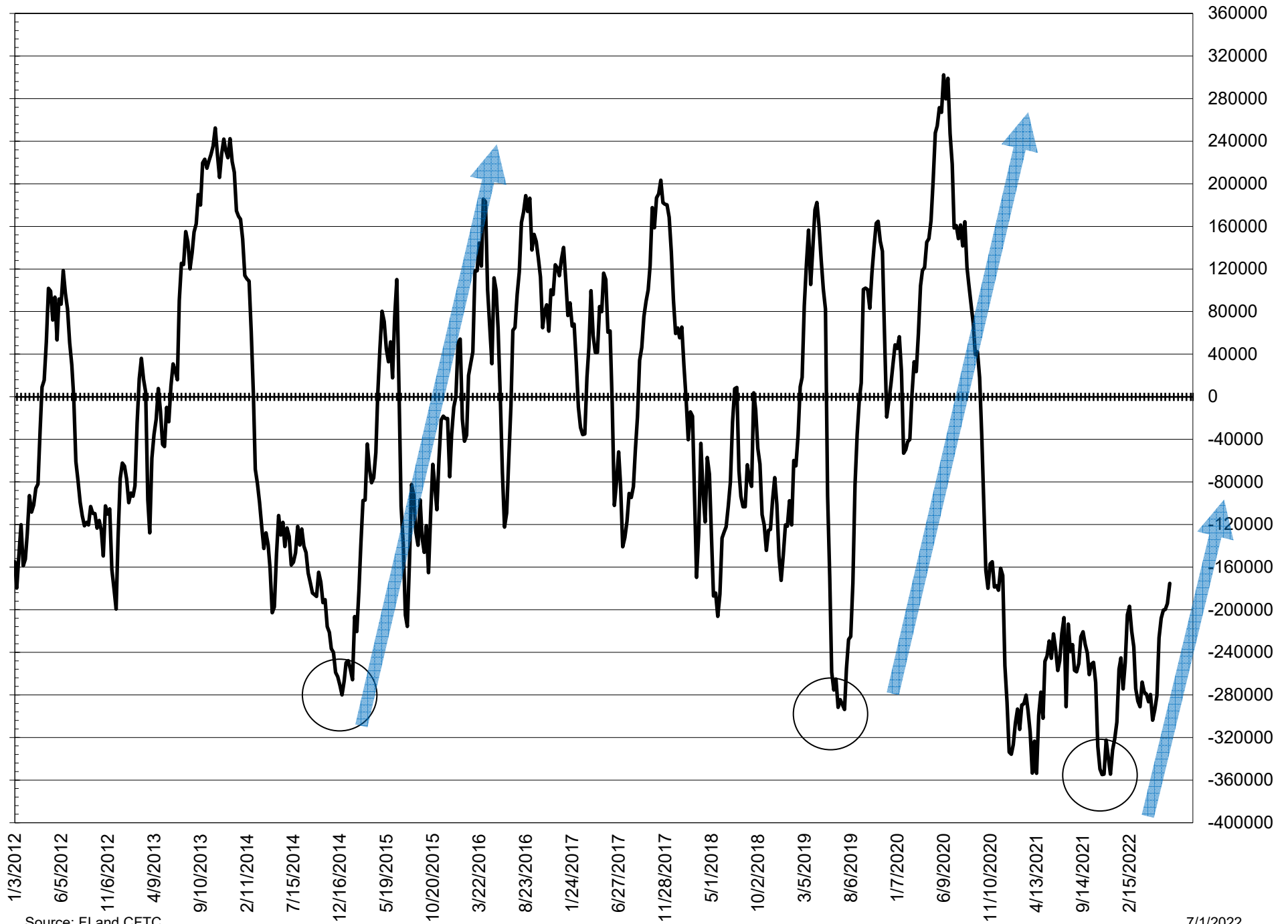
NET POSITION FUTURES AND OPTIONS OF LARGE SPECULATORS IN SOYBEAN MEAL AND SOYBEAN OIL



NET POSITION FUTURES AND OPTIONS OF LARGE SPECULATORS IN SOYBEANS AND CORN



NET POSITION FUTURES AND OPTIONS SPREAD OF LARGE SPECULATORS IN SOYBEANS MINUS CORN



Source: FI and CFTC

7/1/2022

**DISAGGREGATED COMMITMENT OF TRADERS
FUTURES ONLY NET POSITIONS
AS OF 06/28/2022
(IN THOUSAND CONTRACTS)**

	PRODUCER / MERCHANT / PROCESSOR / USER				(INDEX/ETF) SWAP DEALERS				(CTA/CPO/OTHER UNREGISTERED) MANAGED MONEY			
	28-Jun	21-Jun	14-Jun	7-Jun	28-Jun	21-Jun	14-Jun	7-Jun	28-Jun	21-Jun	14-Jun	7-Jun
WHEAT												
Chicago	(59.5)	(71.4)	(74.8)	(76.0)	57.6	56.0	56.7	56.2	(1.2)	3.2	7.0	13.8
Kansas City	(45.4)	(54.0)	(59.6)	(61.6)	27.0	28.0	28.5	28.7	24.7	31.1	34.9	36.2
Minneapolis	(12.7)	(20.8)	(23.7)	(25.3)	0.3	0.3	0.0	(0.1)	8.1	12.4	13.2	13.8
All Wheat	(117.6)	(146.2)	(158.0)	(163.0)	85.0	84.3	85.2	84.8	31.6	46.8	55.1	63.8
CORN	(537.6)	(594.3)	(621.6)	(618.4)	263.5	267.8	277.4	281.2	211.9	241.7	253.2	239.6
OATS	(0.4)	-	-	-	0.1	-	-	-	(0.1)	-	-	-
SOYBEANS	(212.7)	(264.2)	(267.8)	(262.1)	106.0	111.3	112.2	113.7	122.6	149.3	158.4	153.7
SOY OIL	(131.4)	(157.4)	(168.8)	(177.8)	78.1	79.5	81.7	82.6	33.1	51.1	62.3	67.9
SOY MEAL	(195.9)	(205.4)	(201.5)	(203.0)	81.0	85.6	86.8	87.7	61.4	59.8	52.5	53.3

Managed % of OI				
Chicago W	0%	1%	2%	4%
Corn	16%	16%	17%	15%

	TOTAL OPEN INTEREST				OTHER REPORTABLE				NON REPORTABLE			
	28-Jun	21-Jun	14-Jun	7-Jun	28-Jun	21-Jun	14-Jun	7-Jun	28-Jun	21-Jun	14-Jun	7-Jun
WHEAT												
Chicago	291,041	320,326	336,890	333,705	8.8	15.8	13.5	10.1	(5.8)	(3.7)	(2.3)	(4.0)
Kansas City	155,953	173,165	177,793	180,335	(3.5)	(1.6)	(1.6)	(2.2)	(2.8)	(3.5)	(2.3)	(1.1)
Minneapolis	64,642	68,258	69,679	69,232	3.6	4.5	4.6	4.7	0.7	3.5	5.9	6.9
All Wheat	511,636	561,749	584,362	583,272	8.9	18.8	16.5	12.6	(7.9)	(3.7)	1.2	1.8
CORN	1,338,054	1,512,152	1,521,565	1,557,167	116.2	138.5	146.5	151.7	(54.0)	(53.7)	(55.6)	(54.1)
OATS	2,675	-	-	-	0.3	-	-	-	0.0	-	-	-
SOYBEANS	653,337	745,494	754,428	760,444	14.6	29.1	24.3	23.0	(30.5)	(25.4)	(27.0)	(28.3)
SOY OIL	363,276	387,319	388,690	399,283	11.8	16.4	11.1	10.8	8.3	10.3	13.7	16.6
SOY MEAL	391,532	403,330	384,925	380,689	32.6	35.6	36.3	36.4	20.9	24.4	25.9	25.6

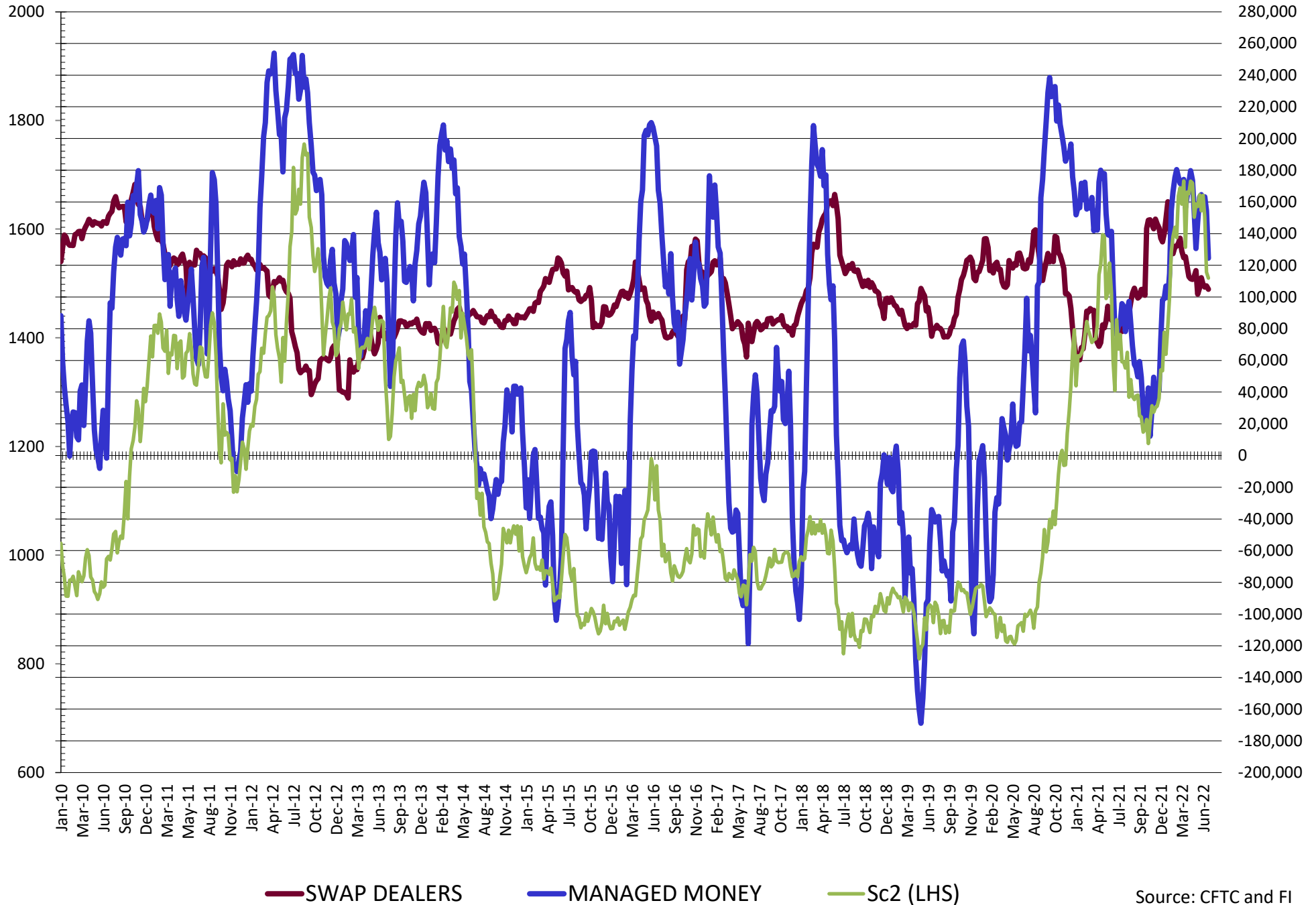
SOURCE: CFTC & FI

**DISAGGREGATED COMMITMENT OF TRADERS
FUTURES & OPTIONS NET POSITIONS
AS OF 06/28/2022
(IN THOUSAND CONTRACTS)**

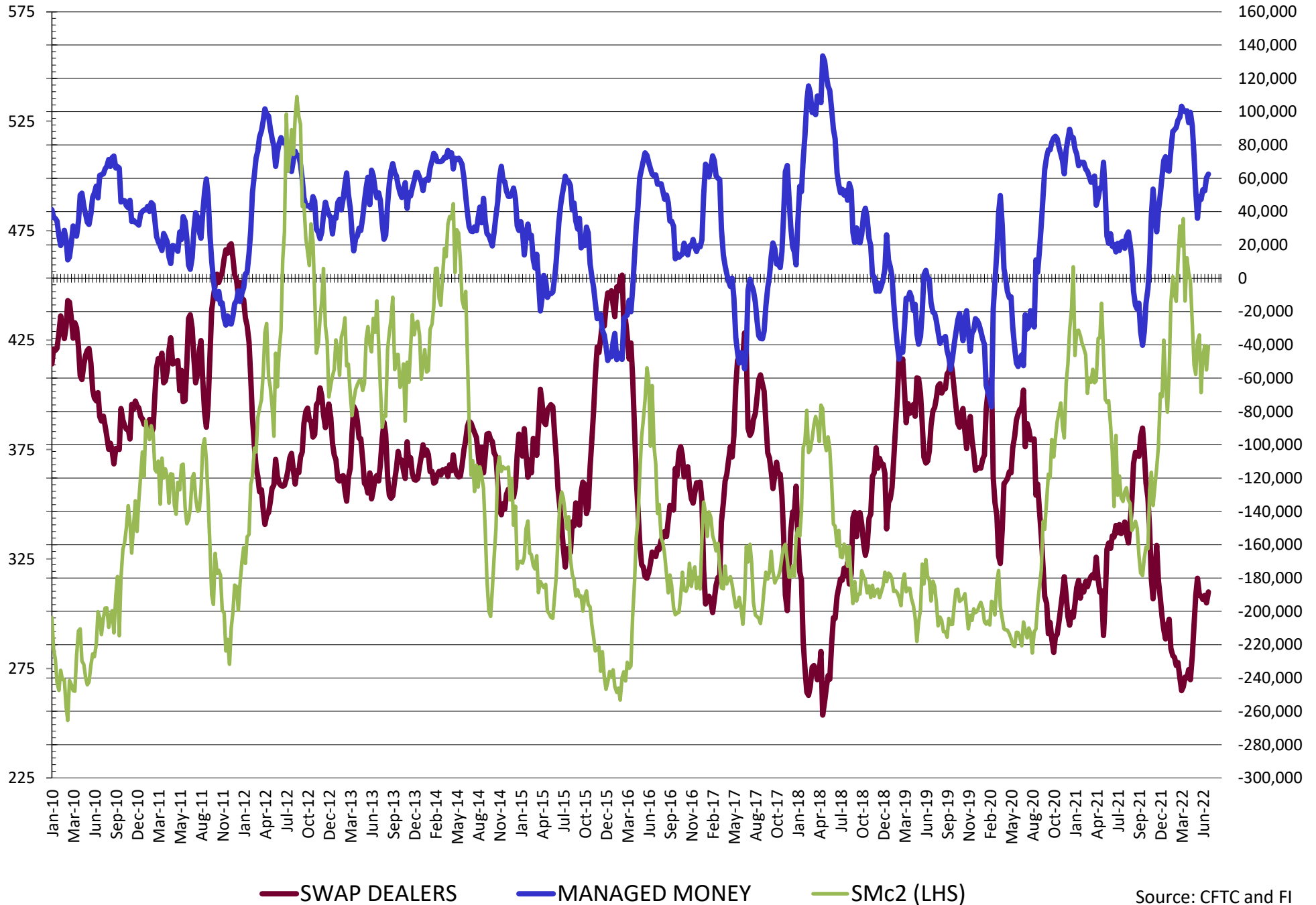
	PRODUCER / MERCHANT / PROCESSOR / USER				(INDEX/ETF) SWAP DEALERS				(CTA/CPO/OTHER UNREGISTERED) MANAGED MONEY			
	28-Jun	21-Jun	14-Jun	7-Jun	28-Jun	21-Jun	14-Jun	7-Jun	28-Jun	21-Jun	14-Jun	7-Jun
	WHEAT											
Chicago	(60.8)	(70.3)	(74.7)	(76.9)	57.0	55.9	56.1	54.9	1.0	3.9	6.9	12.7
Kansas City	(44.1)	(52.5)	(59.0)	(61.5)	26.6	28.2	28.4	28.3	24.9	32.6	36.4	37.5
Minneapolis	(12.2)	(20.0)	(23.4)	(25.2)	0.4	0.7	0.3	0.2	8.1	12.4	13.2	13.9
All Wheat	(117.1)	(142.8)	(157.1)	(163.7)	84.0	84.9	84.8	83.3	34.0	49.0	56.5	64.1
CORN	(507.5)	(565.5)	(594.9)	(594.1)	264.2	267.0	275.2	275.4	228.6	265.3	278.2	264.3
OATS	(0.4)	0.0	0.0	0.0	0.1	0.0	0.0	0.0	(0.1)	0.0	0.0	0.0
SOYBEANS	(191.9)	(232.9)	(243.4)	(242.1)	104.9	107.0	106.3	108.0	124.5	154.4	163.1	158.9
SOY OIL	(130.0)	(153.8)	(166.9)	(176.4)	79.6	79.5	81.5	82.2	33.6	50.9	63.0	68.8
SOY MEAL	(188.4)	(195.0)	(190.5)	(192.9)	82.0	85.9	87.8	88.3	62.5	60.4	52.5	53.2
	TOTAL				OTHER REPORTABLE				NON REPORTABLE			
	OPEN INTEREST				SWAP DEALERS				MANAGED MONEY			
	28-Jun	21-Jun	14-Jun	7-Jun	28-Jun	21-Jun	14-Jun	7-Jun	28-Jun	21-Jun	14-Jun	7-Jun
WHEAT												
Chicago	375,548	453,012	465,751	462,463	8.2	13.9	13.6	13.1	(5.5)	(3.5)	(1.9)	(3.8)
Kansas City	171,480	199,865	202,723	205,338	(4.5)	(4.0)	(3.4)	(2.8)	(2.8)	(4.3)	(2.4)	(1.4)
Minneapolis	67,349	72,303	73,779	73,168	3.1	3.2	3.9	4.1	0.7	3.7	6.0	7.1
All Wheat	614,377	725,180	742,253	740,969	6.8	13.1	14.0	14.4	(7.6)	(4.1)	1.8	1.9
CORN	1,855,971	2,199,804	2,214,773	2,217,675	67.9	82.4	87.4	99.5	(53.2)	(49.2)	(49.2)	(49.2)
OATS	2,777	0	0	0	0.2	0.0	0.0	0.0	0.1	0.0	0.0	0.0
SOYBEANS	800,466	959,863	971,426	979,103	(3.3)	(1.0)	2.5	4.4	(34.2)	(27.6)	(28.5)	(29.3)
SOY OIL	404,637	451,454	453,471	471,053	8.6	12.8	8.3	8.6	8.3	10.6	14.1	16.7
SOY MEAL	430,815	456,803	435,560	429,842	20.6	21.3	21.0	22.7	23.4	27.4	29.1	28.7

SOURCE: CFTC & FI

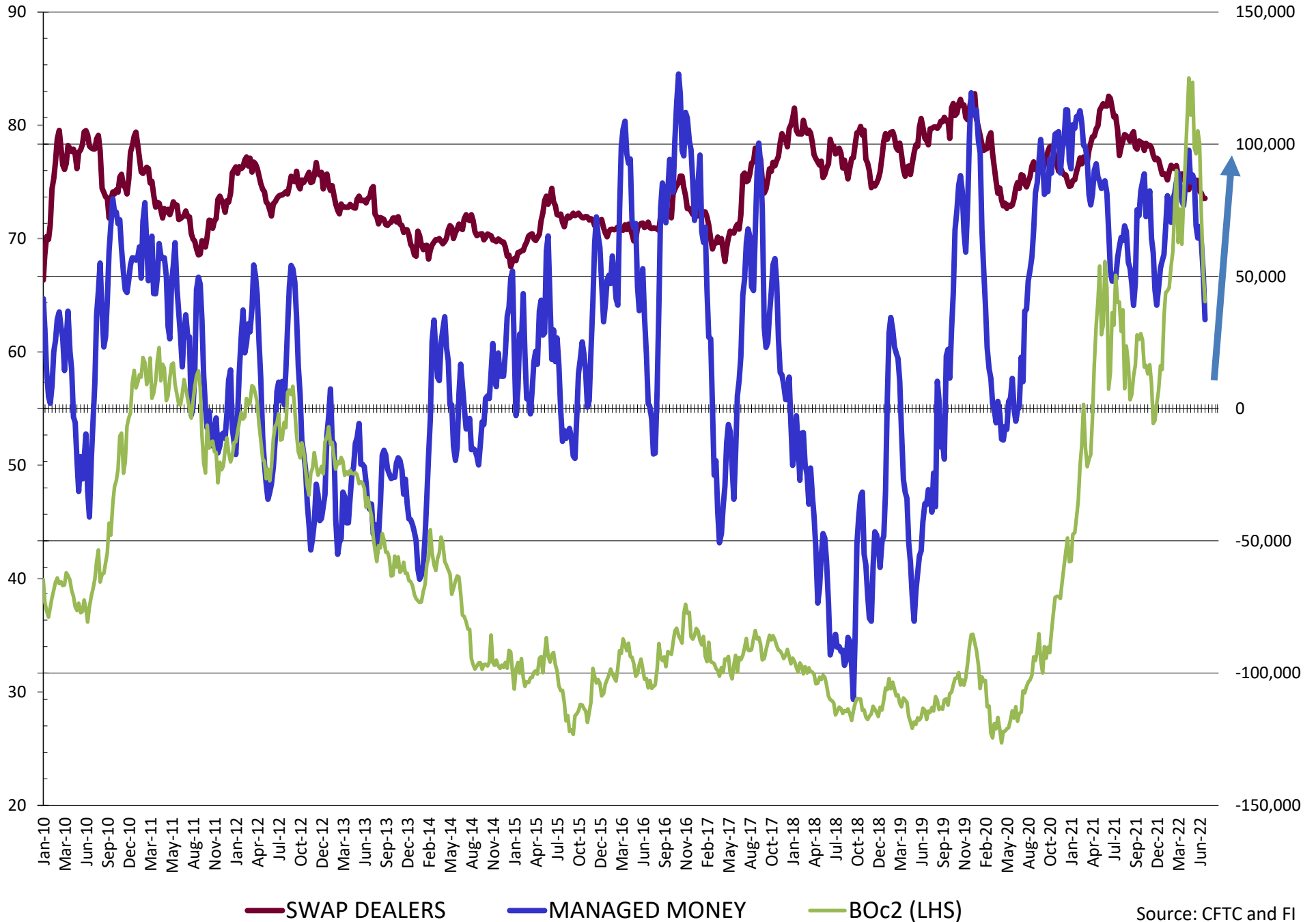
NET POSITION FUTURES AND OPTIONS OF SWAP AND MANAGED FUNDS IN SOYBEANS



NET POSITION FUTURES AND OPTIONS OF SWAP AND MANAGED FUNDS IN SOYBEAN MEAL

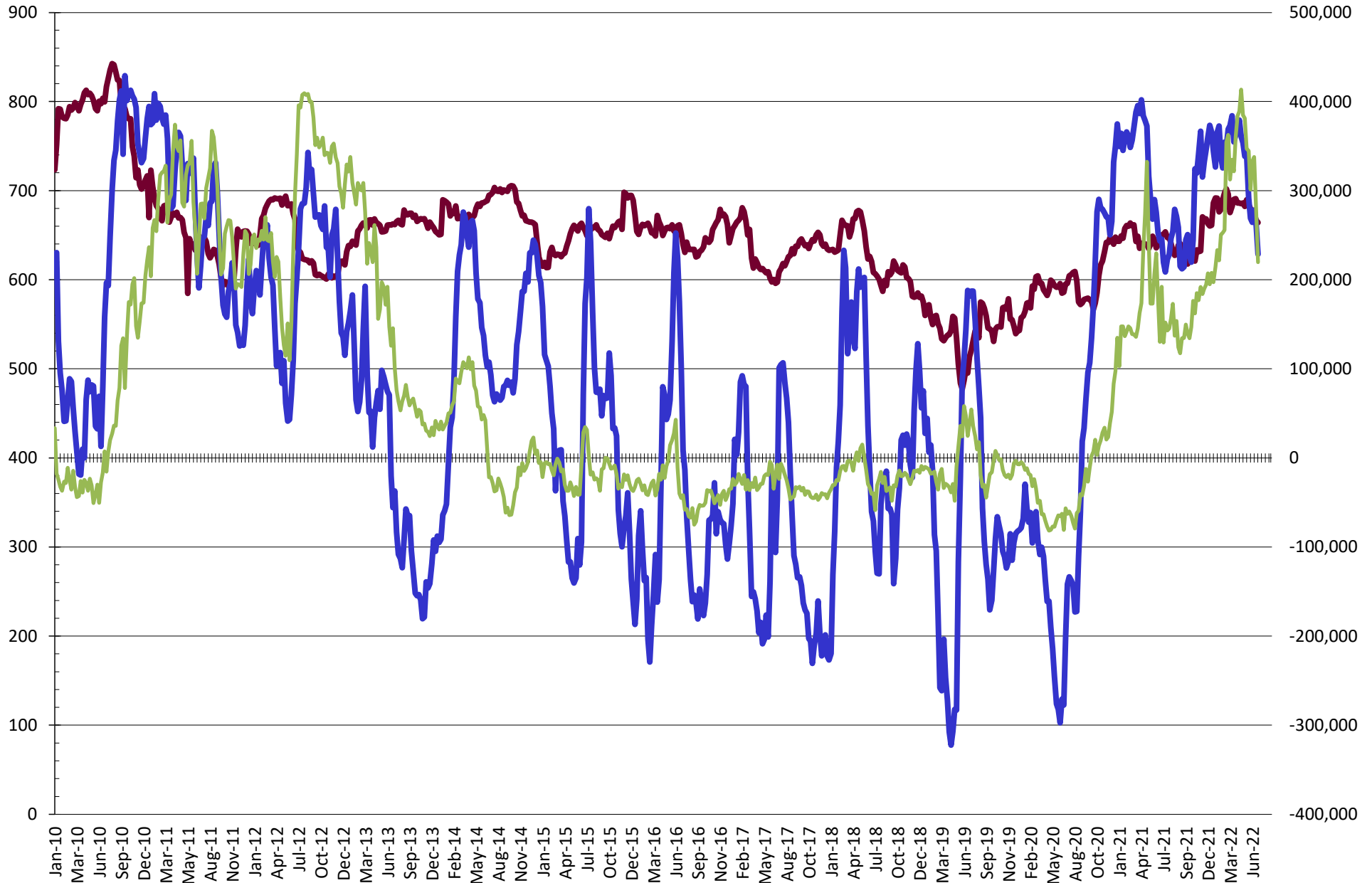


NET POSITION FUTURES AND OPTIONS OF SWAP AND MANAGED FUNDS IN SOYBEAN OIL



Source: CFTC and FI
7/1/2022

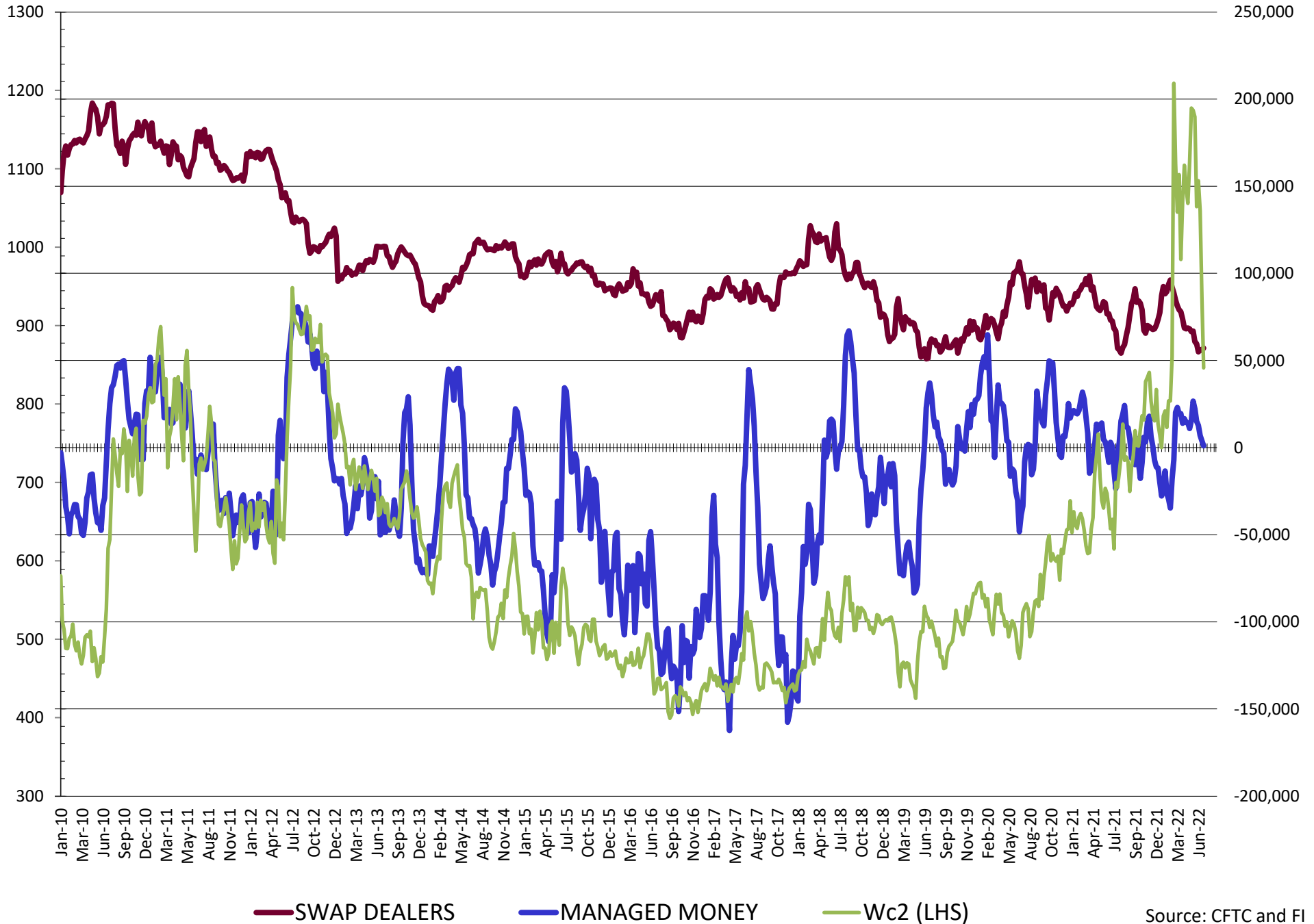
NET POSITION FUTURES AND OPTIONS OF SWAP AND MANAGED FUNDS IN CORN



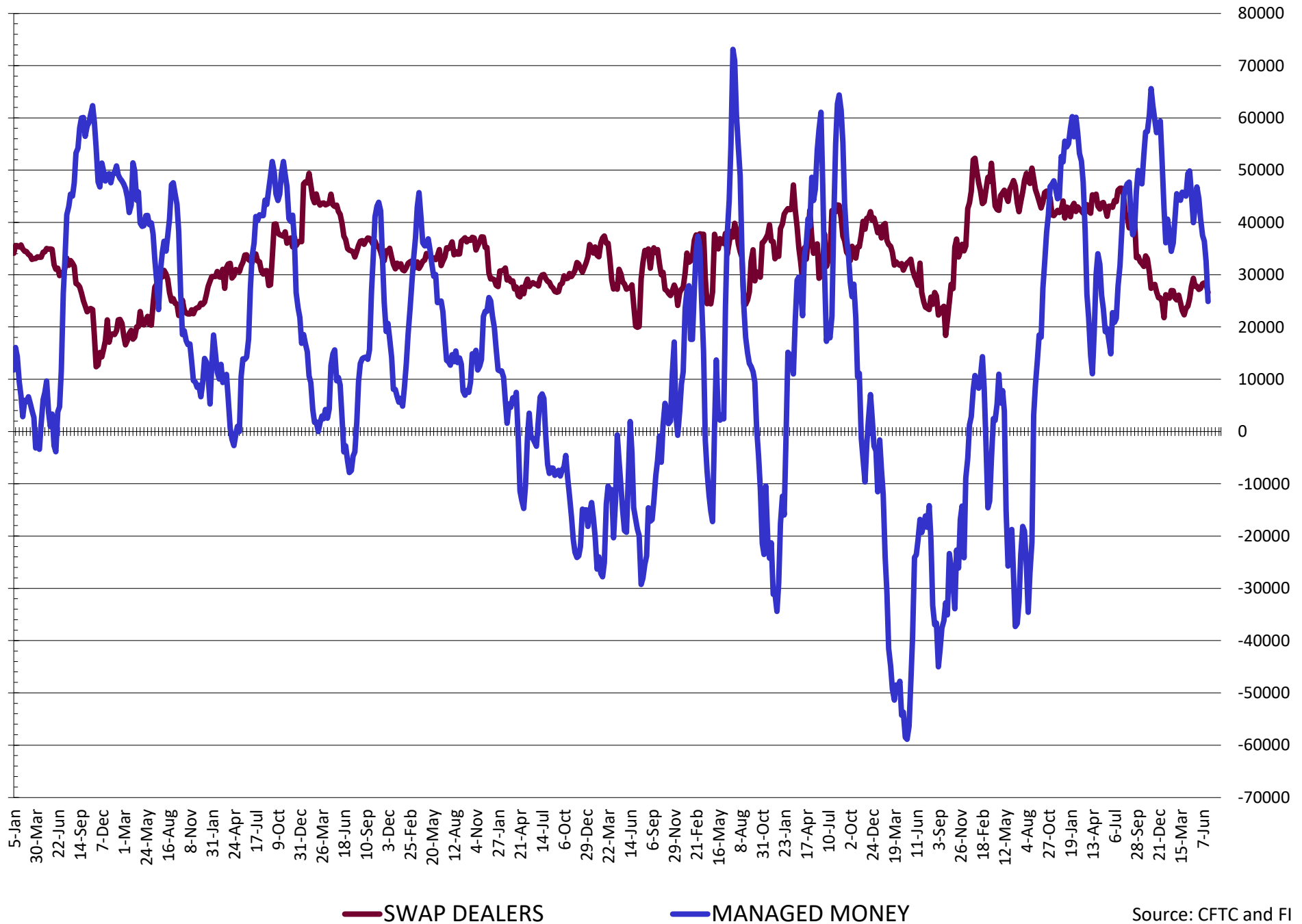
— SWAP DEALERS
 — MANAGED MONEY
 — Cc2 (LHS)

Source: CFTC and FI
7/1/2022

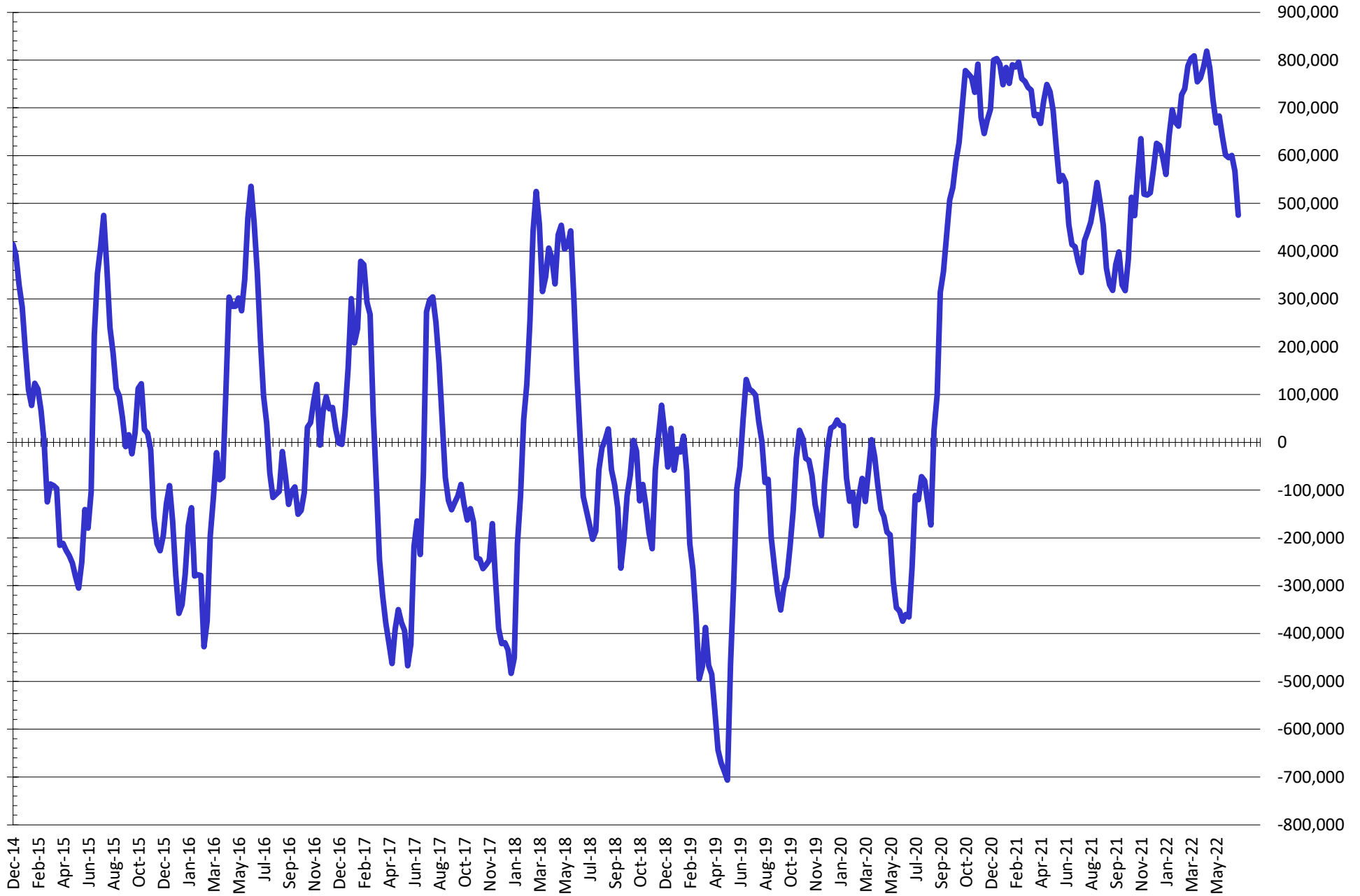
NET POSITION FUTURES AND OPTIONS OF SWAP AND MANAGED FUNDS IN CHICAGO WHEAT



NET POSITION FUTURES AND OPTIONS OF SWAP AND MANAGED FUNDS IN KANSAS WHEAT



NET POSITION FUTURES AND OPTIONS OF SWAP AND MANAGED FUNDS IN COMBINED SRW, HRW, CORN, SOYBEANS, SOYMEAL AND SOYOIL



— Net Managed Money

Source: CFTC and FI
7/1/2022

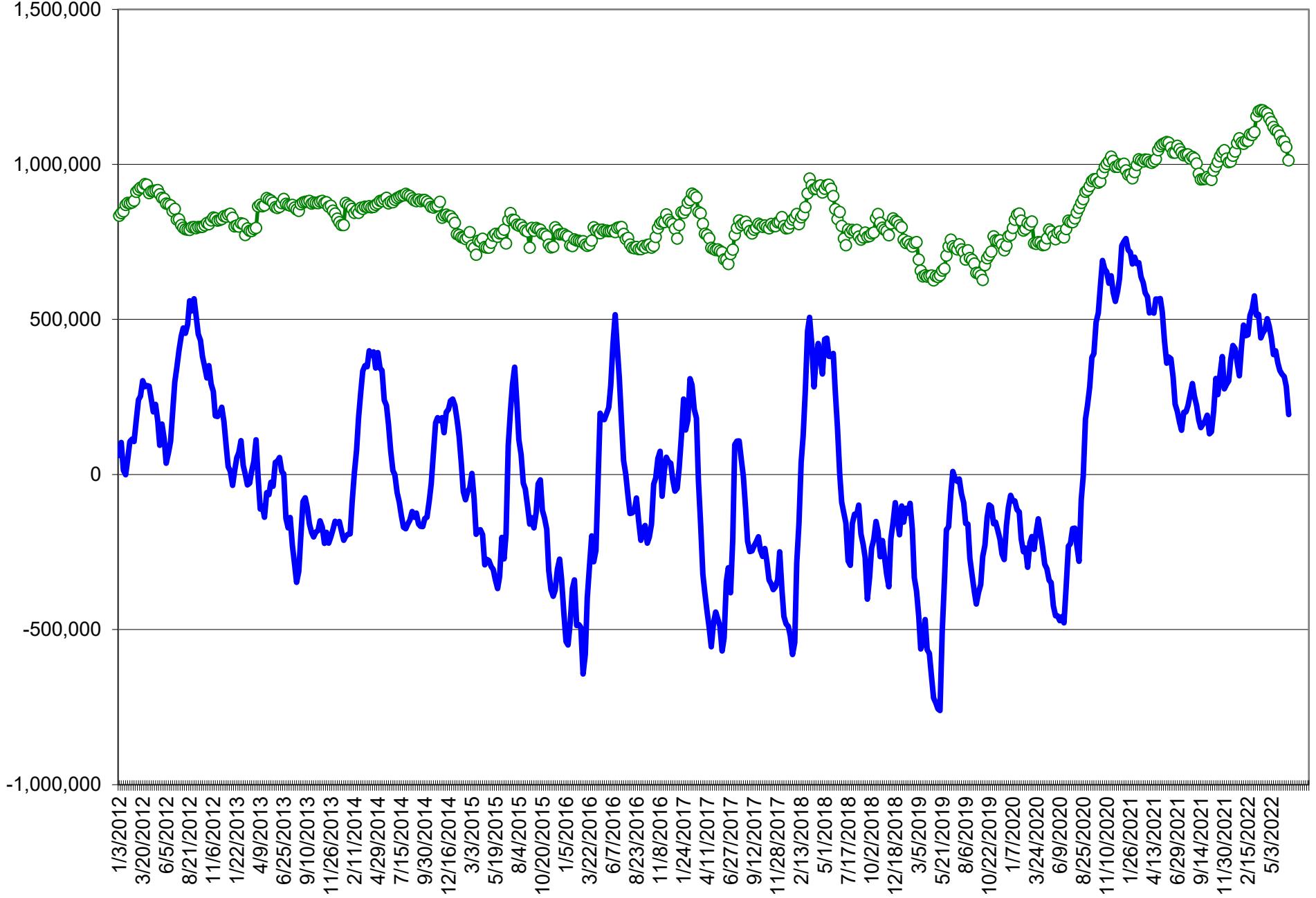
COMMITMENT OF TRADERS
FUTURES & OPTIONS NET POSITIONS (INDEX BROKEN OUT)
AS OF 06/28/2022
(IN THOUSAND CONTRACTS)

	COMMERCIAL				(FUND) NON COMMERCIAL				(SPEC) NON-REPORTABLE			
	28-Jun	21-Jun	14-Jun	7-Jun	28-Jun	21-Jun	14-Jun	7-Jun	28-Jun	21-Jun	14-Jun	7-Jun
	WHEAT											
Chicago	(82.8)	(96.1)	(102.6)	(104.0)	(47.7)	(42.4)	(41.2)	(40.6)	(5.5)	(3.5)	(1.9)	(3.8)
Kansas City	(51.8)	(58.6)	(66.1)	(69.1)	(0.8)	2.1	5.6	6.8	(2.8)	(4.3)	(2.4)	(1.4)
Minneapolis	-	-	-	-	-	-	-	-	-	-	-	-
All Wheat	(134.6)	(154.7)	(168.7)	(173.1)	(48.5)	(40.3)	(35.6)	(33.8)	(8.3)	(7.8)	(4.3)	(5.2)
CORN	(509.9)	(571.4)	(599.9)	(597.2)	138.4	178.3	192.1	184.4	(53.2)	(49.2)	(45.8)	(45.0)
OATS	-	-	-	-	-	-	-	-	-	-	-	-
SOYBEANS	(193.3)	(235.9)	(247.7)	(244.2)	46.1	66.3	77.6	83.6	(34.2)	(27.6)	(28.5)	(29.3)
SOY OIL	(123.0)	(146.9)	(159.0)	(168.0)	15.2	37.2	43.8	47.3	8.3	10.6	14.1	16.7
SOY MEAL	(181.0)	(183.6)	(178.2)	(180.1)	42.1	42.2	37.4	41.3	23.4	27.4	29.1	28.7

	TOTAL OPEN INTEREST				(INDEX) COMMERCIAL INDEX TRADERS				(INDEX) % NET OF TOTAL OPEN INTEREST			
	28-Jun	21-Jun	14-Jun	7-Jun	28-Jun	21-Jun	14-Jun	7-Jun	28-Jun	21-Jun	14-Jun	7-Jun
	WHEAT											
Chicago	375,548	453,012	465,751	462,463	136.0	141.9	145.7	148.4	36.2%	31.3%	31.3%	32.1%
Kansas City	171,480	199,865	202,723	205,338	55.4	60.8	62.9	63.8	32.3%	30.4%	31.0%	31.1%
Minneapolis	-	-	-	-	-	-	-	-	-	-	-	-
All Wheat	547,028	652,877	668,474	667,801	191.4	202.7	208.6	212.1	35.0%	31.1%	31.2%	31.8%
CORN	1,855,971	2,199,804	2,214,773	2,217,675	424.7	442.3	453.6	457.8	22.9%	20.1%	20.5%	20.6%
OATS	-	-	-	-	-	-	-	-	-	-	-	-
SOYBEANS	800,466	959,863	971,426	979,103	181.4	197.3	198.6	189.9	22.7%	20.6%	20.4%	19.4%
SOY OIL	404,637	451,454	453,471	471,053	99.5	99.1	101.1	104.0	24.6%	22.0%	22.3%	22.1%
SOY MEAL	430,815	456,803	435,560	429,842	115.6	114.0	111.8	110.0	26.8%	25.0%	25.7%	25.6%

SOURCE: CFTC & FI

NET POSITION FUTURES AND OPTIONS OF SPECULATORS AND INDEX FUNDS IN COMBINED SRW, HRW, CORN, SOYBEANS, SOYMEAL AND SOYOIL



Source: CFTC and FI

○ Net Index

— Net Speculator

Traditional Daily Estimate of Funds 6/28/22

	(Neg)-"Short"	Pos-"Long"			
Actual less Est.	(29.1)	(32.2)	(4.4)	(10.5)	(16.6)
	Corn	Bean	Chi. Wheat	Meal	Oil
Actual	328.1	137.2	7.7	93.9	44.9
29-Jun	0.0	9.0	(2.0)	4.0	2.0
30-Jun	(18.0)	(2.0)	(12.0)	2.0	(6.0)
1-Jul	(14.0)	(18.0)	(14.0)	(7.0)	(8.0)
4-Jul					
5-Jul					
FI Est. of Futures Only 6/28/22	296.1	126.2	(20.3)	92.9	32.9
FI Est. Futures & Options	264.5	110.2	(18.7)	82.0	30.2
Futures only record long "Traditional Funds"	547.7 1/26/2021	280.9 11/10/2020	86.5 8/7/2018	167.5 5/1/2018	160.2 11/1/2016
Futures only record short	(235.0) 6/9/2020	(118.3) 4/30/2019	(130.0) 4/25/2017	(49.5) 3/1/2016	(69.8) 9/18/2018
Futures and options record net long	557.6 1/12/2021	270.9 10/6/2020	64.8 8/7/2012	132.1 5/1/2018	159.2 1/1/2016
Futures and options record net short	(270.6) 4/26/2019	(132.0) 4/30/2019	(143.3) 4/25/2017	(64.1) 3/1/2016	(77.8) 9/18/2018

Managed Money Daily Estimate of Funds 6/28/22

	Corn	Bean	Chi. Wheat	Meal	Oil
Latest CFTC Fut. Only	211.9	122.6	(1.2)	61.4	33.1
Latest CFTC F&O	228.6	124.5	1.0	62.5	33.6
FI Est. Managed Fut. Only	180	112	(29)	60	21
FI Est. Managed Money F&O	197	113	(27)	61	22

Index Funds Latest Positions (as of last Tuesday)

Index Futures & Options	424.7	181.4	136.0	NA	99.5
-------------------------	-------	-------	-------	----	------

Source: Reuters, CFTC & FI (FI est. are noted with latest date)

Disclaimer

TO CLIENTS/PROSPECTS OF FUTURES INTERNATIONAL, SEE RISK DISCLOSURE BELOW:

THIS COMMUNICATION IS CONVEYED AS A SOLICITATION FOR ENTERING INTO A DERIVATIVES TRANSACTION.

Any trading recommendations and market or other information to Customer by Futures International (FI), although based upon information obtained from sources believed by FI to be reliable may not be accurate and may be changed without notice to customer. FI makes no guarantee as to the accuracy or completeness of any of the information or recommendations furnished to Customer. Customer understands that FI, its managers, employees and/or affiliates may have a position in commodity futures, options or other derivatives which may not be consistent with the recommendations furnished by FI to Customer.

The risk of trading futures and options and other derivatives involves a substantial risk of loss and is not suitable for all persons. In purchasing an option, the risk is limited to the premium paid, and all commissions and fees involved with the trade. When an option is shorted or written, the writer of the option has unlimited risk with respect to the option written. The use of options strategies such as a straddles and strangles involve multiple option positions and may substantially increase the amount of commissions and fees paid to execute the strategy. Option prices do not necessarily move in tandem with cash or futures prices. Each person must consider whether a particular trade, combination of trades or strategy is suitable for that person's financial means and objectives.

This material may include discussions of seasonal patterns, however, futures prices have already factored in the seasonal aspects of supply and demand, and seasonal patterns are no indication of future market trends. Finally, past performance is not indicative of future results.

This communication may contain links to third party websites which are not under the control of FI and FI is not responsible for their content. Products and services are offered only in jurisdictions where solicitation and sale are lawful, and in accordance with applicable laws and regulations in each such jurisdiction.