

CFTC COMMITMENT OF TRADERS REPORT

As of 6/7/2022

TRADITIONAL FUNDS net position changes

Wed to Tue, in 000 contracts

	Corn	Bean	Meal	Oil	Chi. Wheat	KC Wheat	Min Wheat
Futures Only	(12.9)	(9.4)	8.9	3.6	1.6	(2.2)	(2.2)
Futures & Options Combined	(13.1)	(5.4)	7.6	3.4	(2.9)	(2.4)	(2.1)

TRADITIONAL COMMERCIAL net position changes

	Corn	Bean	Meal	Oil	Chi. Wheat	KC Wheat	Min Wheat
Futures Only	16.2	10.4	(5.9)	(3.0)	(1.2)	3.8	0.5
Futures & Options Combined	15.3	5.4	(4.8)	(2.6)	3.2	4.1	0.5

MANAGED MONEY net position changes

	Corn	Bean	Meal	Oil	Chi. Wheat	KC Wheat	Min Wheat
Futures Only	(7.1)	(6.5)	5.9	4.4	(2.9)	(3.5)	(1.6)
Futures & Options Combined	(4.6)	(5.7)	5.8	4.4	(2.3)	(3.2)	(1.6)

SWAP DEALERS net position changes

	Corn	Bean	Meal	Oil	Chi. Wheat	KC Wheat	Min Wheat
Futures Only	(3.9)	(3.0)	(2.6)	(3.9)	(5.4)	0.8	(0.8)
Futures & Options Combined	(4.3)	(4.2)	(2.7)	(4.0)	(4.7)	0.9	(0.7)

PRODUCERS/END USERS net position changes

	Corn	Bean	Meal	Oil	Chi. Wheat	KC Wheat	Min Wheat
Futures Only	20.1	13.3	(3.2)	0.9	4.2	3.0	1.3
Futures & Options Combined	19.6	9.6	(2.1)	1.4	7.9	3.2	1.3

INDEX net position changes

	Corn	Bean	Meal	Oil	Chi. Wheat	KC Wheat	Min Wheat
Futures & Options Combined	(9.3)	(0.9)	(3.3)	(4.7)	(1.6)	0.9	NA

SUPPLEMENTAL NON-COMMERCIAL net position changes

	Corn	Bean	Meal	Oil	Chi. Wheat	KC Wheat	Min Wheat
Futures & Options Combined	(8.1)	(6.7)	8.8	3.1	(6.5)	(2.8)	NA

OPEN INTEREST net position changes

Wed to Tue, in 000 contracts

	Corn	Bean	Meal	Oil	Chi. Wheat	KC Wheat	Min Wheat
Futures Only	(7.1)	7.1	10.0	16.1	2.6	(0.3)	(4.5)
Futures & Options Combined	4.7	16.0	10.9	24.5	8.1	0.1	(4.2)

Source: CFTC and FI

Wed to Tue, in 000 contracts

6/10/2022

**COMMITMENT OF TRADERS
FUTURES ONLY NET POSITIONS
AS OF 06/07/2022
(IN THOUSAND CONTRACTS)**

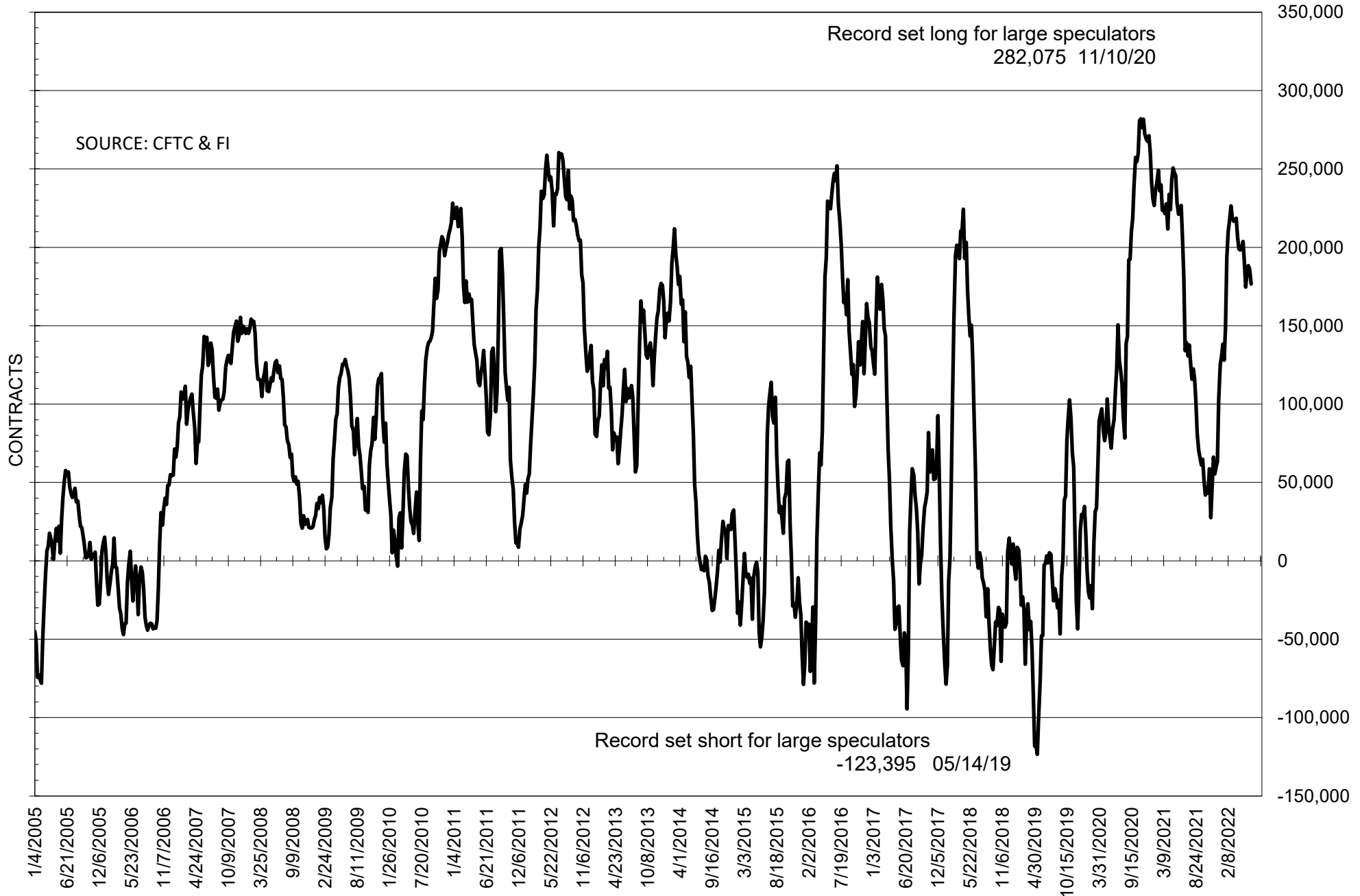
	COMMERCIAL				(FUND) NON COMMERCIAL				(SPEC) NON-REPORTABLE			
	7-Jun	31-May	24-May	17-May	7-Jun	31-May	24-May	17-May	7-Jun	31-May	24-May	17-May
	WHEAT											
Chicago	-19.9	-18.6	-24.3	-26.0	23.9	22.3	26.3	28.8	-4.0	-3.7	-2.0	-2.8
Kansas City	-32.9	-36.7	-39.9	-41.3	34.0	36.3	38.7	39.0	-1.1	0.5	1.3	2.3
Minneapolis	-25.4	-25.9	-26.4	-29.7	18.5	20.6	20.8	24.3	6.9	5.3	5.6	5.4
All Wheat	-78.2	-81.3	-90.7	-97.0	76.4	79.2	85.8	92.1	1.8	2.1	4.9	4.9
CORN	-337.1	-353.3	-372.5	-424.8	391.3	404.2	427.8	473.7	-54.1	-50.9	-55.3	-49.0
OATS	#VALUE!	#VALUE!	#VALUE!	#VALUE!	#VALUE!	#####	#VALUE!	#VALUE!	#VALUE!	#VALUE!	#VALUE!	#VALUE!
SOYBEANS	-148.4	-158.8	-159.0	-156.9	176.6	186.1	188.4	183.6	-28.3	-27.3	-29.3	-26.7
SOY OIL	-95.3	-92.3	-98.7	-117.7	78.6	75.0	79.5	96.3	16.6	17.2	19.2	21.4
SOY MEAL	-115.3	-109.4	-108.4	-100.7	89.7	80.8	81.9	73.3	25.6	28.6	26.5	27.4

Oats positions thin to be reported

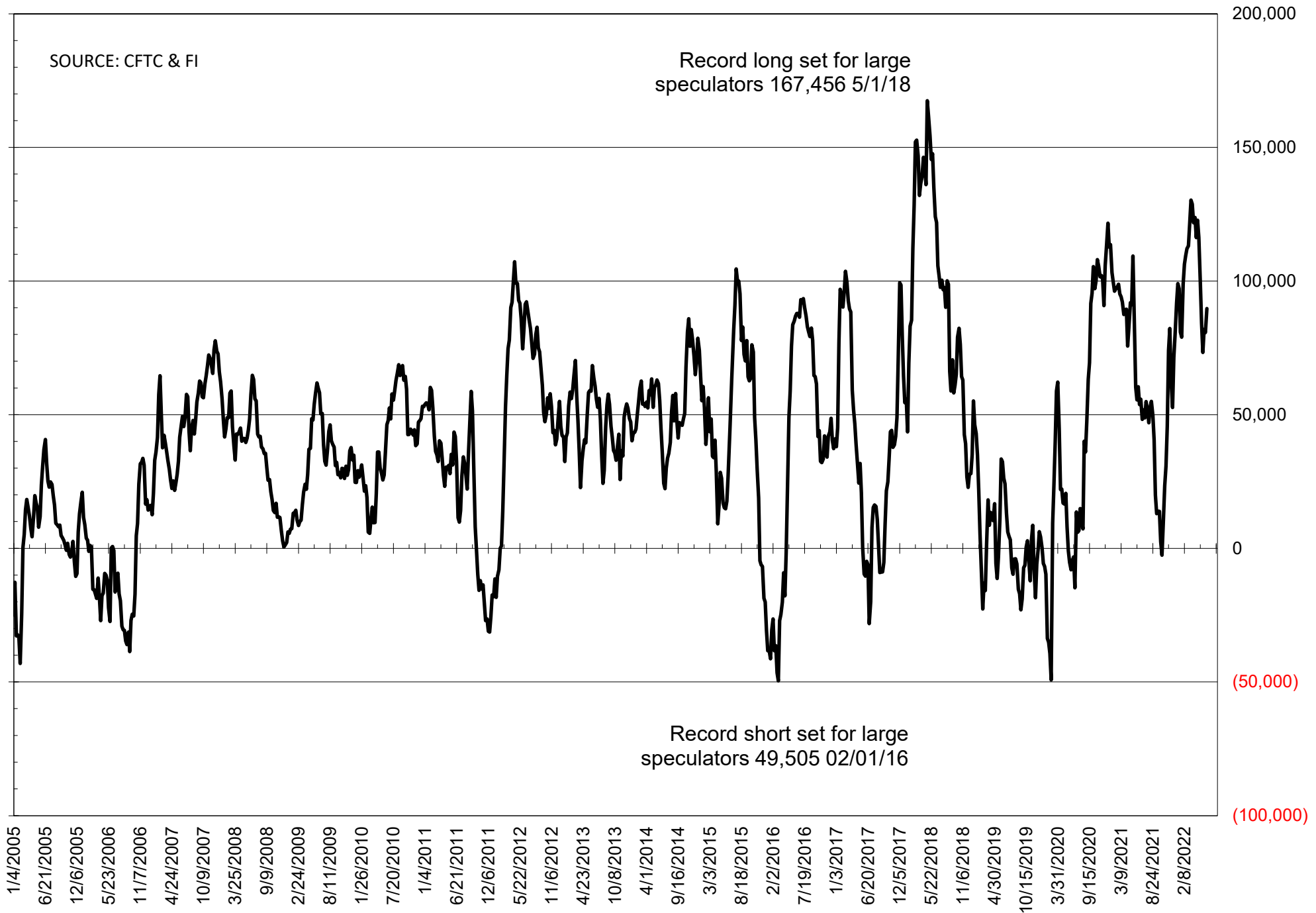
	TOTAL OPEN INTEREST				NEARBY FUTURES PRICE					7-Jun-22 LAST REPORTED % HELD BY TRADERS			
	7-Jun	31-May	24-May	17-May	N Latest	N 7-Jun	N 31-May	N 24-May	N 17-May	LARGE FUND		SMALL	
										LONG	SHORT	LONG	SHORT
WHEAT													
Chicago	333705	331136	326607	326651	1070.75	1071.75	1087.50	1154.75	1277.50	0%	26%	0%	12%
Kansas City	180335	180591	177697	174905	1162.50	1149.25	1165.50	1237.75	1367.75	0%	12%	0%	12%
Minneapolis	69232	73707	74892	75684	1223.25	1227.25	1245.50	1277.50	1394.25	0%	3%	0%	13%
CORN	1557167	1564217	1544885	1548438	773.25	757.00	753.50	771.75	800.75	0%	8%	0%	12%
OATS	#VALUE!	#VALUE!	#VALUE!	#VALUE!	651.25	668.00	669.75	674.25	653.75	0%	#VALUE!	0%	#VALUE!
SOYBEANS	760444	753373	729900	709144	1745.50	1728.25	1683.25	1693.00	1678.00	30%	7%	6%	10%
SOY OIL	399283	383135	372707	372545	80.81	81.44	77.92	80.12	83.49	0%	7%	0%	5%
SOY MEAL	380689	370669	360050	361553	429.10	417.40	414.80	427.10	411.80	0%	5%	0%	6%

SOURCE: CFTC & FI

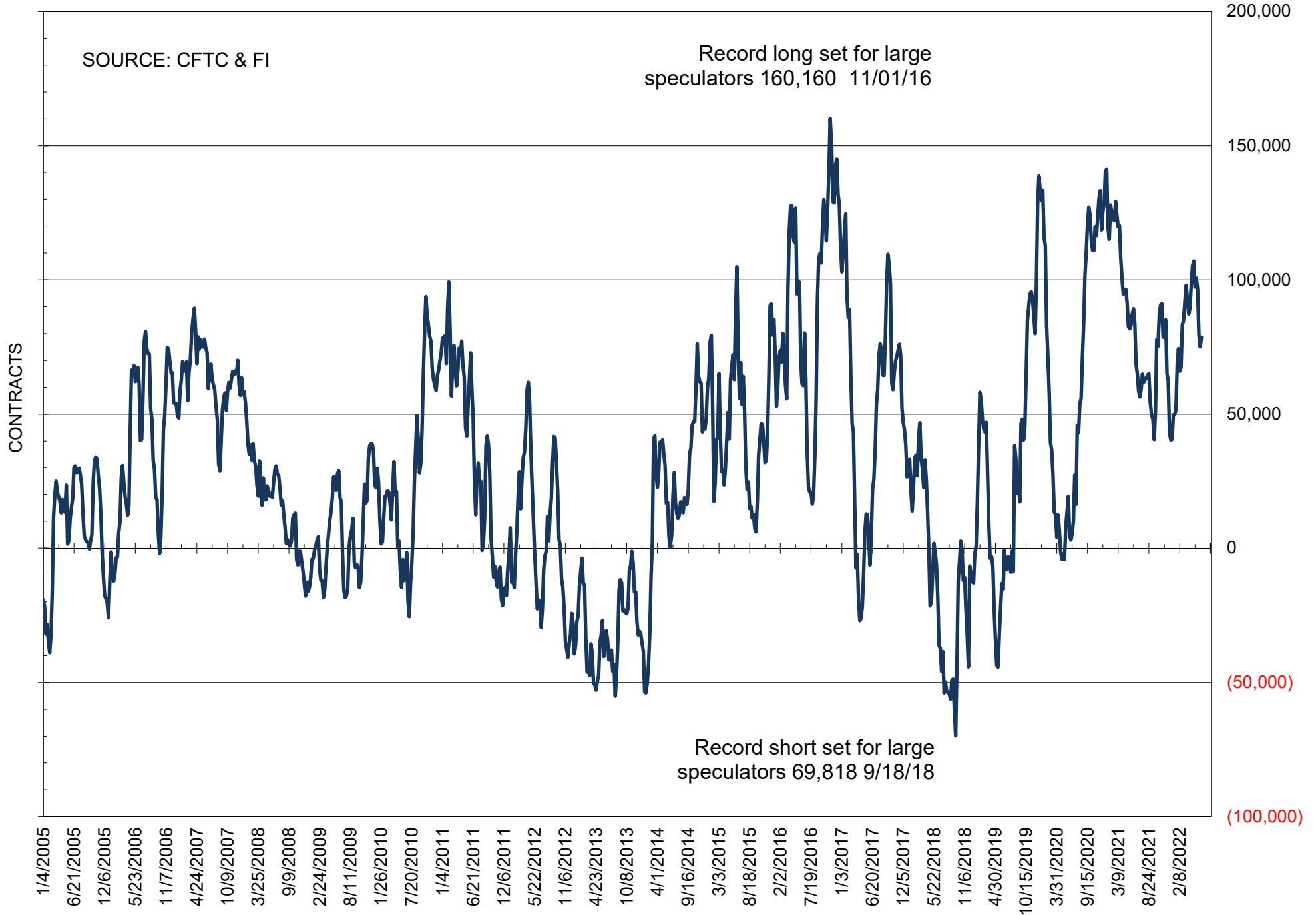
NET POSITION OF FUTURES ONLY LARGE SPECS IN SOYBEANS



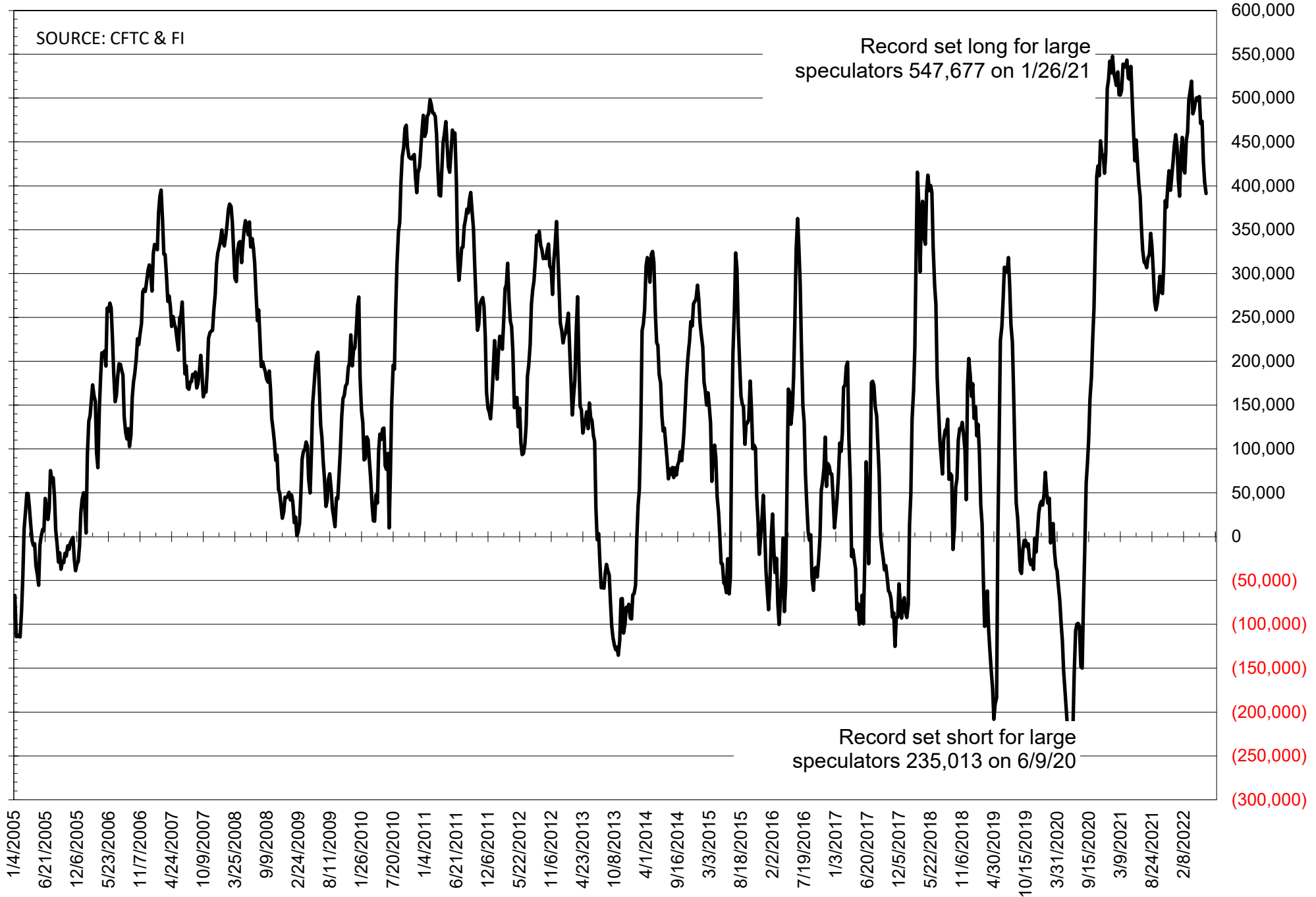
NET POSITION OF FUTURES ONLY LARGE SPECS IN SOYMEAL



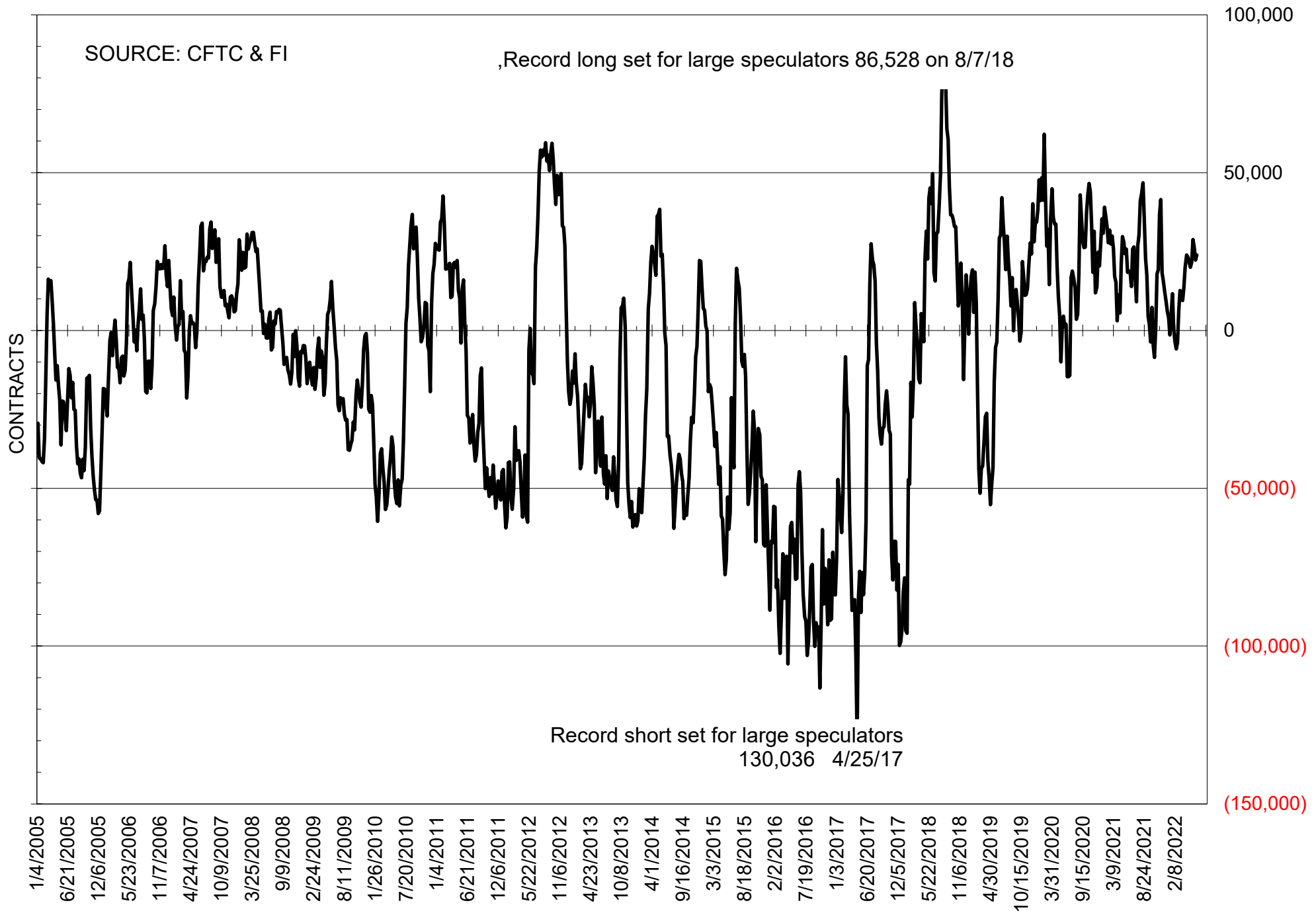
NET POSITION OF FUTURES ONLY LARGE SPECS IN SOYOIL



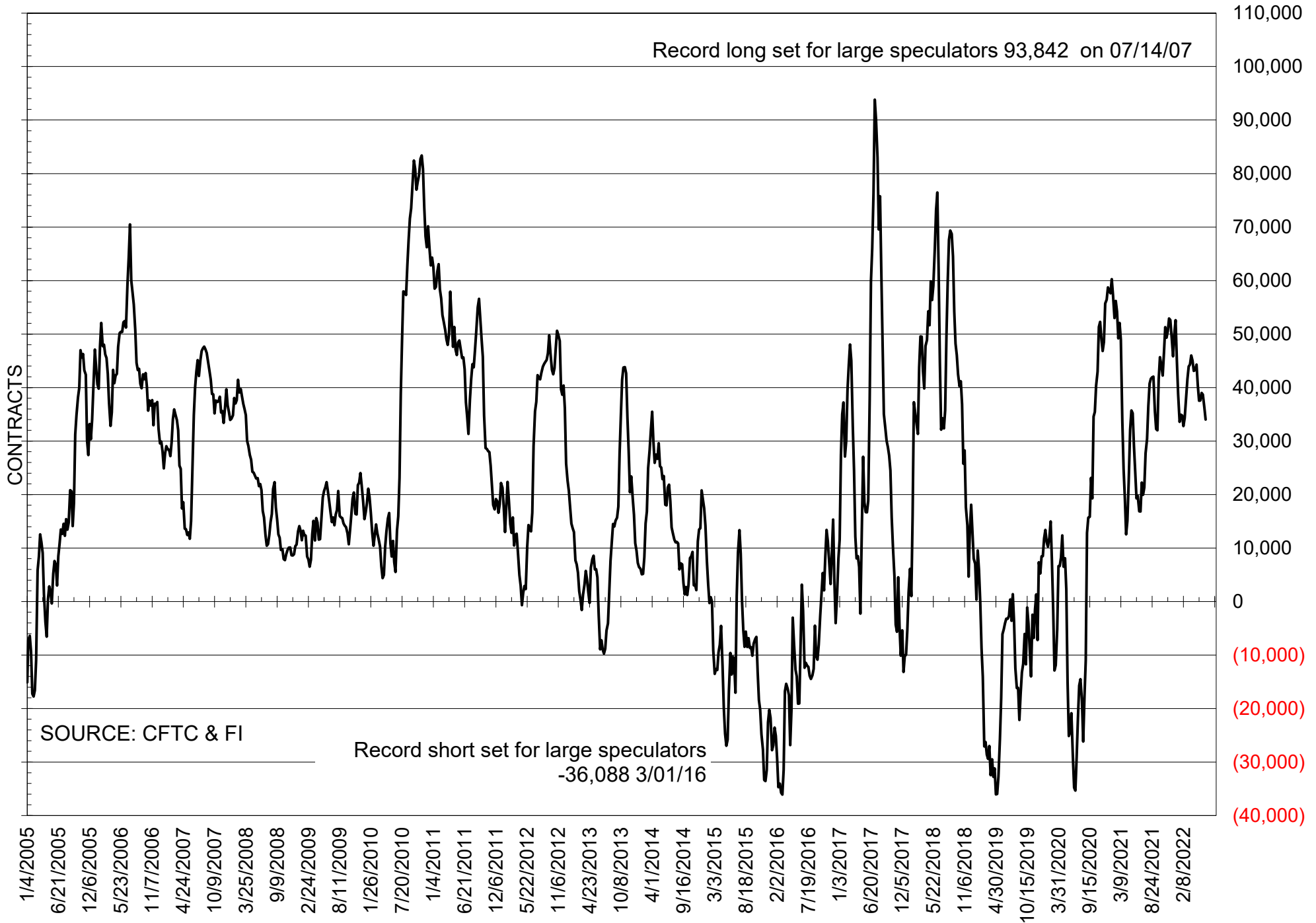
NET POSITION OF LARGE SPECULATORS IN CORN



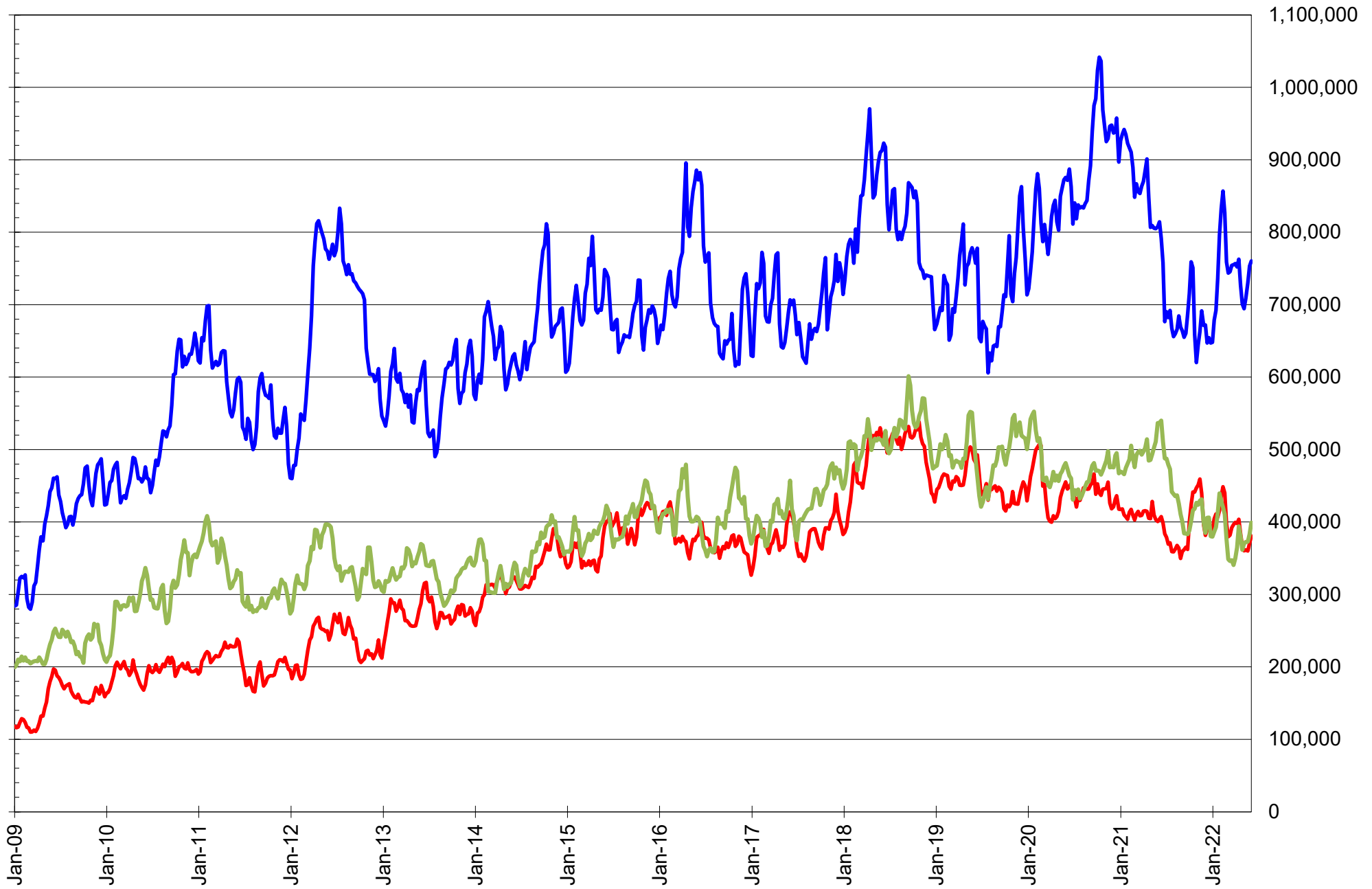
NET POSITION OF FUTURES ONLY LARGE SPECS IN CHICAGO WHEAT



NET POSITION OF LARGE SPECULATORS IN KANSAS CITY WHEAT



TOTAL OPEN INTEREST IN SOYBEANS, MEAL AND OIL, FUTURES ONLY



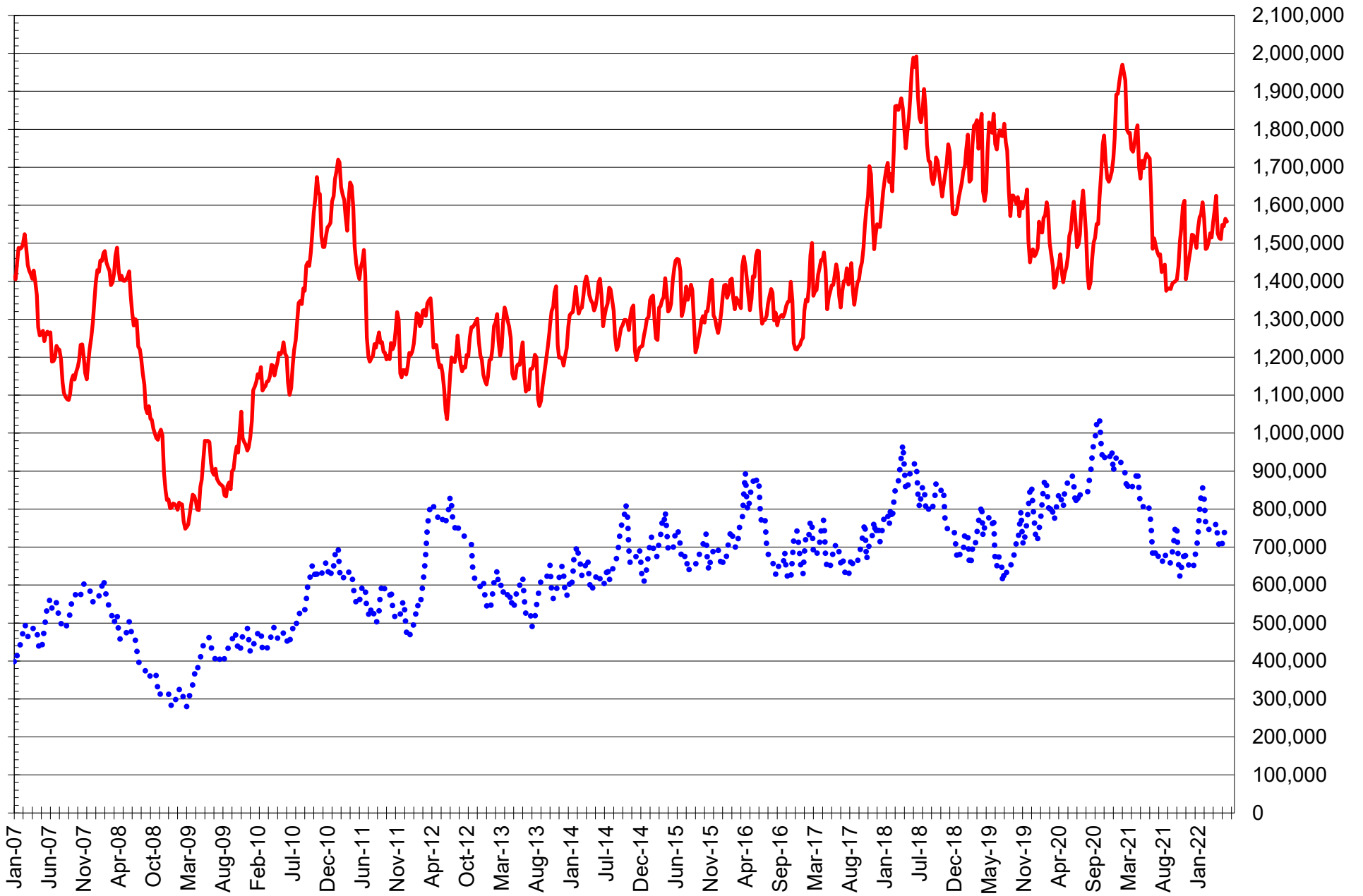
SOURCE: CFTC & FI

— SOYBEANS

— SOYBEAN MEAL

— SOYBEAN OIL

TOTAL OPEN INTEREST IN CORN AND SOYBEANS, FUTURES ONLY



SOURCE: CFTC & FI

— CORN

•••• SOYBEANS

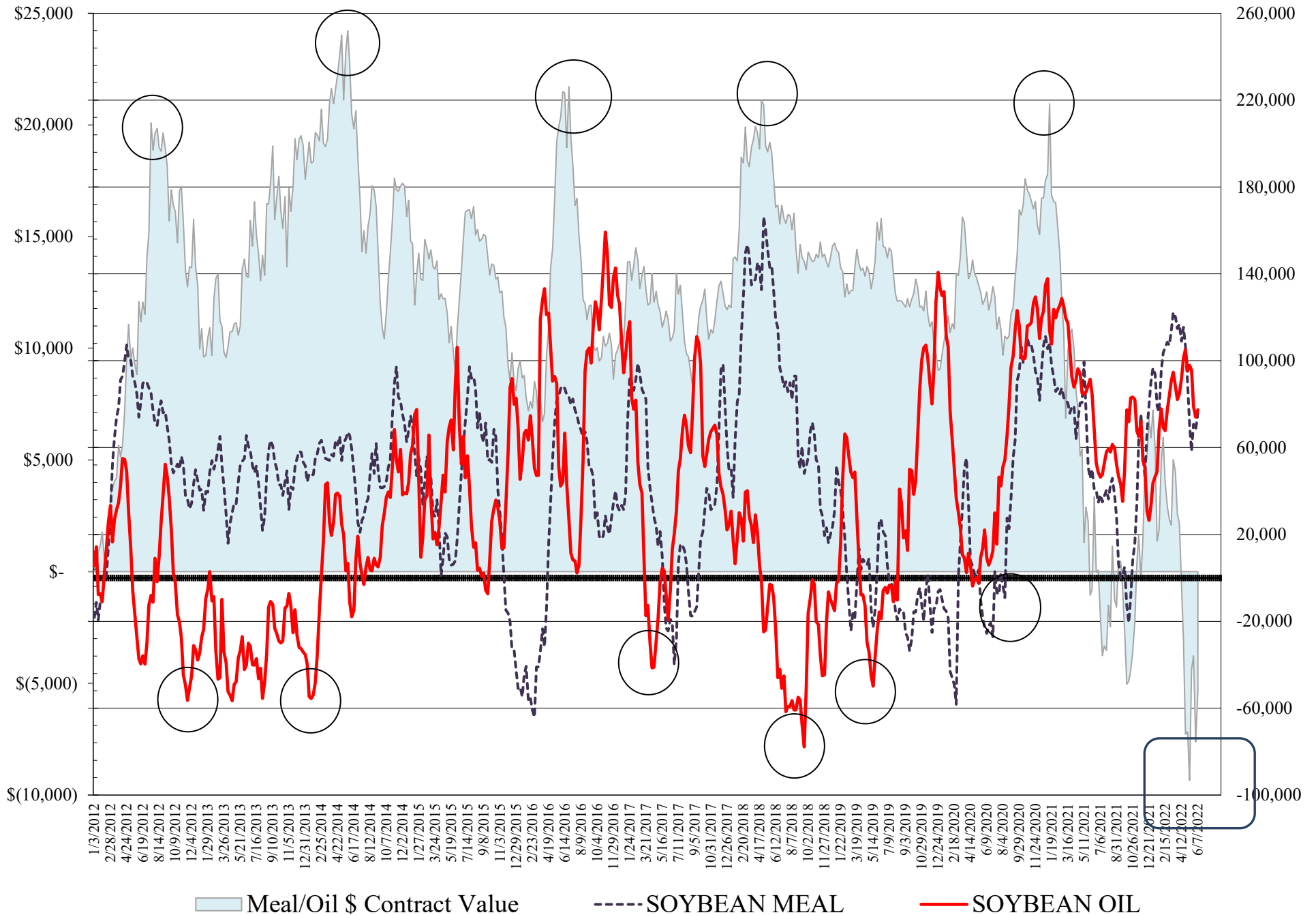
COMMITMENT OF TRADERS
FUTURES & OPTIONS NET POSITIONS
AS OF 06/07/2022
 (IN THOUSAND CONTRACTS)

	COMMERCIAL				(FUND) NON COMMERCIAL				(SPEC) NON-REPORTABLE			
	7-Jun	31-May	24-May	17-May	7-Jun	31-May	24-May	17-May	7-Jun	31-May	24-May	17-May
	WHEAT											
Chicago	-22.0	-25.2	-31.3	-28.5	25.8	28.7	33.2	31.4	-3.8	-3.5	-1.9	-2.9
Kansas City	-33.2	-37.4	-41.6	-43.7	34.7	37.1	40.5	41.4	-1.4	0.3	1.1	2.3
Minneapolis	-25.1	-25.6	-26.2	-29.4	18.0	20.1	20.4	23.9	7.1	5.5	5.8	5.5
All Wheat	-80.3	-88.2	-99.0	-101.6	78.5	85.9	94.1	96.7	1.9	2.3	5.0	4.9
CORN	-318.8	-334.0	-351.1	-403.9	363.8	376.9	396.7	439.4	-45.0	-42.8	-45.6	-35.5
OATS	#VALUE!	#VALUE!	#VALUE!	#VALUE!	#VALUE!	#VALUE!	#VALUE!	#VALUE!	#VALUE!	#VALUE!	#VALUE!	#VALUE!
SOYBEANS	-134.1	-139.4	-140.0	-131.7	163.4	168.7	170.3	158.9	-29.3	-29.3	-30.3	-27.1
SOY OIL	-94.1	-91.6	-98.4	-117.2	77.4	74.0	78.9	95.7	16.7	17.6	19.5	21.5
SOY MEAL	-104.6	-99.8	-100.3	-89.2	75.9	68.2	70.8	58.3	28.7	31.6	29.6	30.8

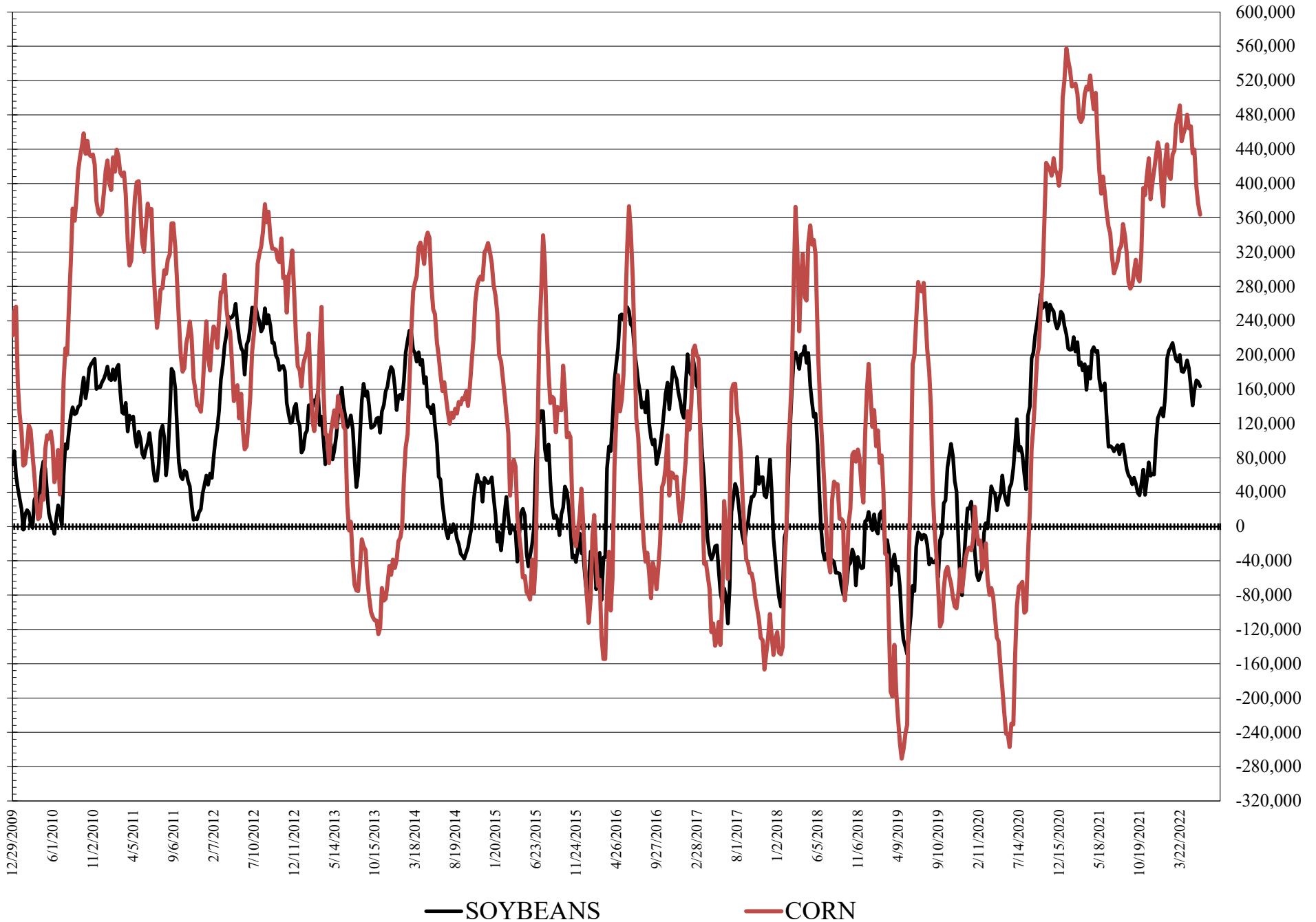
	TOTAL OPEN INTEREST				COMMERCIALS		% HELD BY TRADERS LARGE (FUNDS)		SMALL (NON-REP)	
	7-Jun	31-May	24-May	17-May	LONG	SHORT	LONG	SHORT	LONG	SHORT
	WHEAT									
Chicago	462,463	454,385	453,693	483,434			24%	18%	8%	9%
Kansas City	205,338	205,209	203,755	204,633			26%	10%	11%	12%
Minneapolis	73,168	77,337	78,292	78,982			27%	2%	22%	12%
CORN	2,217,675	2,212,940	2,188,145	2,256,288			20%	4%	9%	11%
OATS	#VALUE!	#VALUE!	#VALUE!	#VALUE!						
SOYBEANS	979,103	963,118	932,993	920,248			22%	5%	6%	9%
SOY OIL	471,053	446,521	436,457	447,084			22%	6%	8%	5%
SOY MEAL	429,842	418,915	405,915	413,267			22%	4%	12%	6%

SOURCE: CFTC & FI

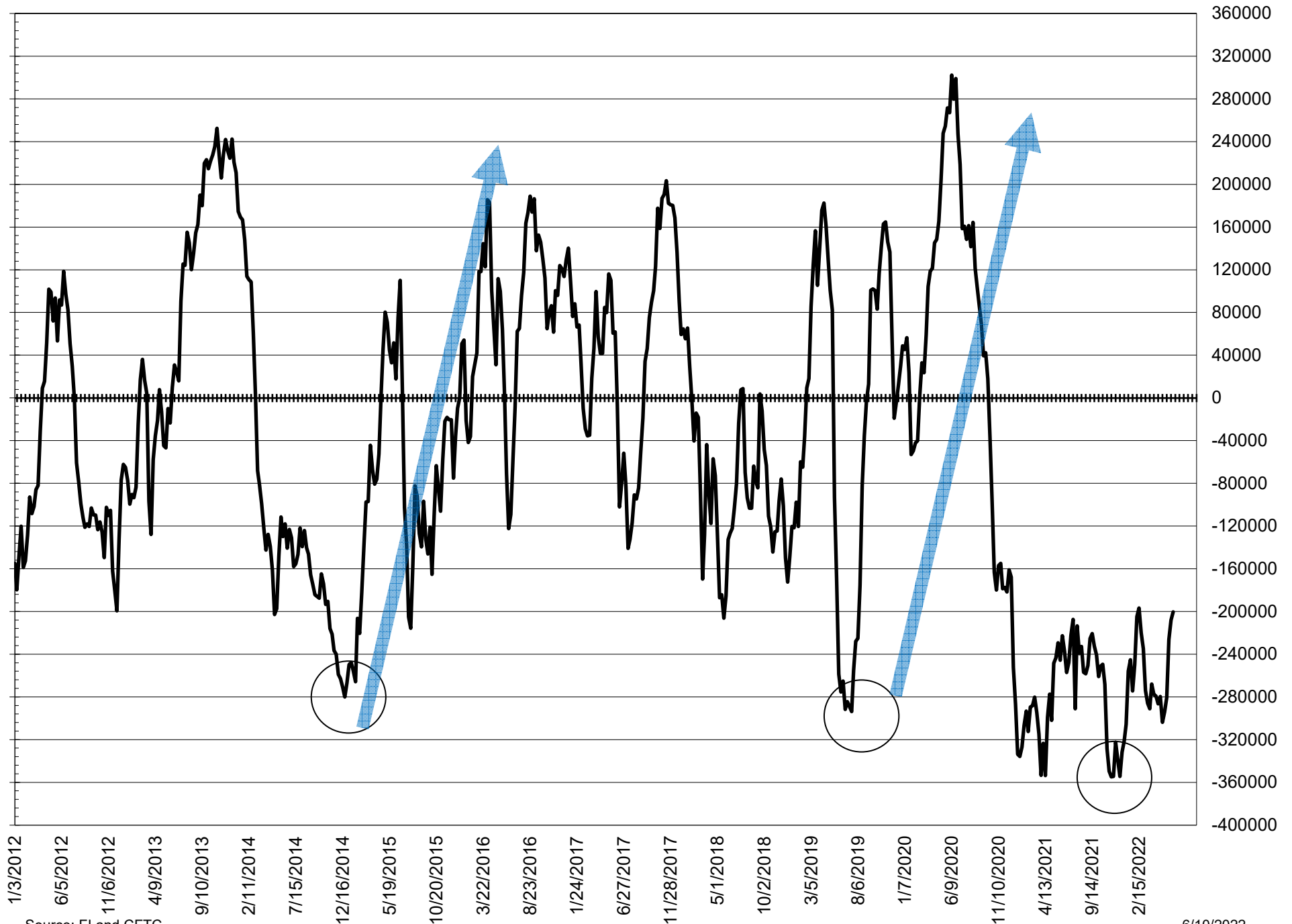
NET POSITION FUTURES AND OPTIONS OF LARGE SPECULATORS IN SOYBEAN MEAL AND SOYBEAN OIL



NET POSITION FUTURES AND OPTIONS OF LARGE SPECULATORS IN SOYBEANS AND CORN



NET POSITION FUTURES AND OPTIONS SPREAD OF LARGE SPECULATORS IN SOYBEANS MINUS CORN



Source: FI and CFTC

6/10/2022

**DISAGGREGATED COMMITMENT OF TRADERS
FUTURES ONLY NET POSITIONS
AS OF 06/07/2022
(IN THOUSAND CONTRACTS)**

	PRODUCER / MERCHANT / PROCESSOR / USER				(INDEX/ETF) SWAP DEALERS				(CTA/CPO/OTHER UNREGISTERED) MANAGED MONEY											
	7-Jun	31-May	24-May	17-May	7-Jun	31-May	24-May	17-May	7-Jun	31-May	24-May	17-May								
WHEAT																				
Chicago	(76.0)	(80.3)	(87.0)	(94.3)	56.2	61.6	62.7	68.3	13.8	16.7	24.8	31.5								
Kansas City	(61.6)	(64.6)	(67.9)	(69.8)	28.7	27.9	28.0	28.6	36.2	39.7	43.7	46.1								
Minneapolis	(25.3)	(26.6)	(27.2)	(30.5)	(0.1)	0.7	0.7	0.8	13.8	15.4	15.1	18.0								
All Wheat	(163.0)	(171.5)	(182.1)	(194.6)	84.8	90.2	91.4	97.6	63.8	71.7	83.6	95.6								
CORN	(618.4)	(638.4)	(663.6)	(723.9)	281.2	285.1	291.1	299.1	239.6	246.7	267.5	312.4								
OATS	-	-	-	-	-	-	-	-	-	-	-	-								
SOYBEANS	(262.1)	(275.4)	(269.1)	(263.1)	113.7	116.7	110.0	106.1	153.7	160.2	158.5	142.0								
SOY OIL	(177.8)	(178.8)	(185.5)	(203.7)	82.6	86.5	86.8	86.0	67.9	63.4	67.8	84.8								
SOY MEAL	(203.0)	(199.8)	(198.4)	(190.4)	87.7	90.4	90.0	89.7	53.3	47.4	49.2	35.9								
									Managed % of OI											
									Chicago W	4%	5%	8%	10%							
									Corn	15%	16%	17%	20%							
	TOTAL				OTHER REPORTABLE				NON REPORTABLE											
	OPEN INTEREST				7-Jun				31-May				24-May				17-May			
	7-Jun	31-May	24-May	17-May	7-Jun	31-May	24-May	17-May	7-Jun	31-May	24-May	17-May	7-Jun	31-May	24-May	17-May				
WHEAT																				
Chicago	333,705	331,136	326,607	326,651	10.1	5.6	1.6	(2.7)	(4.0)	(3.7)	(2.0)	(2.8)								
Kansas City	180,335	180,591	177,697	174,905	(2.2)	(3.4)	(5.1)	(7.1)	(1.1)	0.5	1.3	2.3								
Minneapolis	69,232	73,707	74,892	75,684	4.7	5.3	5.7	6.3	6.9	5.3	5.6	5.4								
All Wheat	583,272	585,434	579,196	577,240	12.6	7.5	2.2	(3.5)	1.8	2.1	4.9	4.9								
CORN	1,557,167	1,564,217	1,544,885	1,548,438	151.7	157.5	160.4	161.4	(54.1)	(50.9)	(55.3)	(49.0)								
OATS	-	-	-	-	-	-	-	-	-	-	-	-								
SOYBEANS	760,444	753,373	729,900	709,144	23.0	25.9	29.9	41.6	(28.3)	(27.3)	(29.3)	(26.7)								
SOY OIL	399,283	383,135	372,707	372,545	10.8	11.6	11.7	11.5	16.6	17.2	19.2	21.4								
SOY MEAL	380,689	370,669	360,050	361,553	36.4	33.4	32.7	37.4	25.6	28.6	26.5	27.4								

SOURCE: CFTC & FI

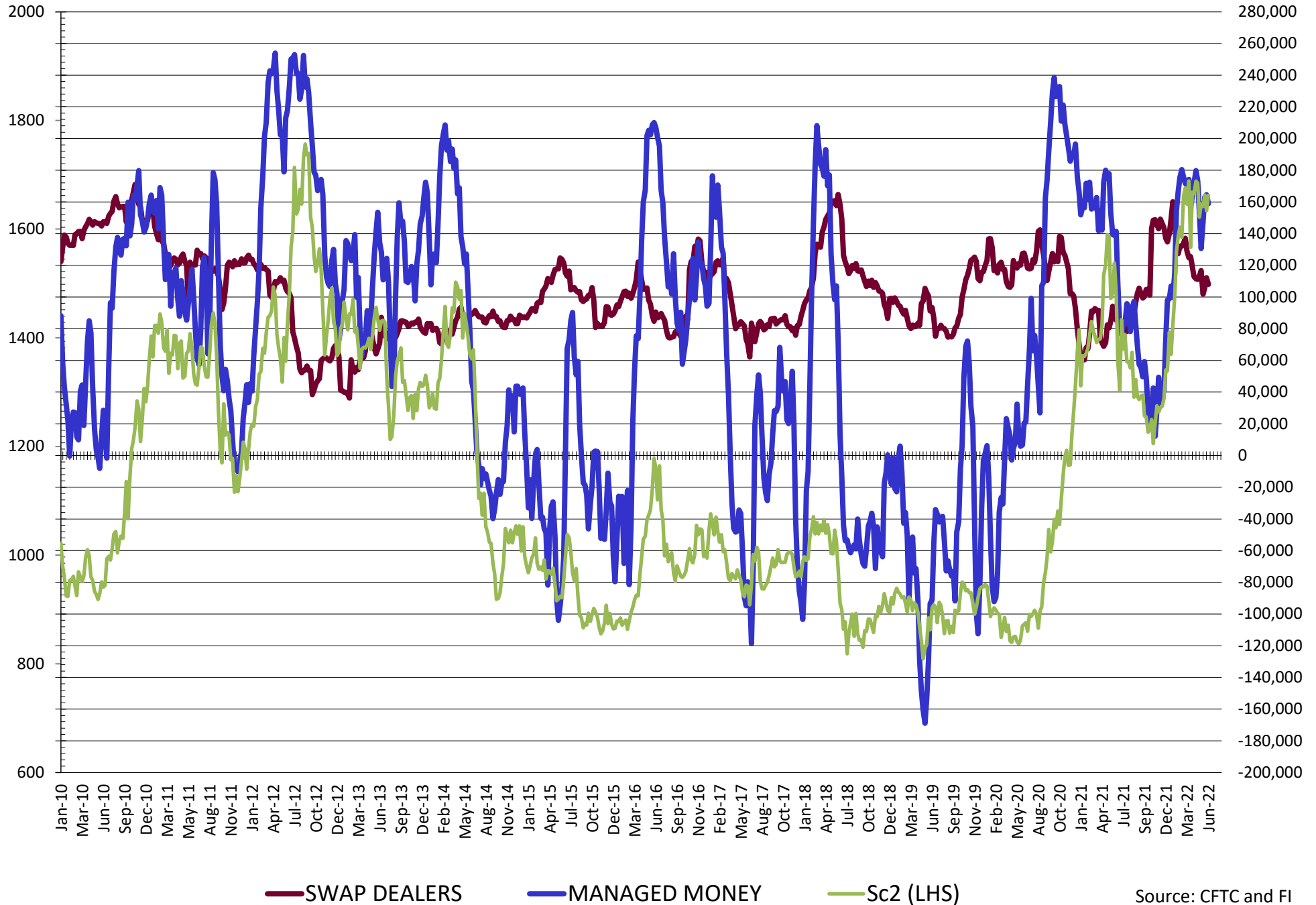
**DISAGGREGATED COMMITMENT OF TRADERS
FUTURES & OPTIONS NET POSITIONS
AS OF 06/07/2022
(IN THOUSAND CONTRACTS)**

	PRODUCER / MERCHANT / PROCESSOR / USER				(INDEX/ETF) SWAP DEALERS				(CTA/CPO/OTHER UNREGISTERED) MANAGED MONEY			
	7-Jun	31-May	24-May	17-May	7-Jun	31-May	24-May	17-May	7-Jun	31-May	24-May	17-May
	WHEAT											
Chicago	(76.9)	(84.8)	(92.0)	(95.4)	54.9	59.6	60.8	66.9	12.7	15.0	22.3	26.6
Kansas City	(61.5)	(64.8)	(68.8)	(71.5)	28.3	27.4	27.2	27.8	37.5	40.7	44.5	46.8
Minneapolis	(25.2)	(26.5)	(27.0)	(30.2)	0.2	0.9	0.8	0.8	13.9	15.5	15.2	18.2
All Wheat	(163.7)	(176.1)	(187.8)	(197.0)	83.3	87.9	88.8	95.4	64.1	71.2	82.0	91.6
CORN	(594.1)	(613.7)	(635.5)	(693.5)	275.4	279.7	284.4	289.7	264.3	269.0	291.5	339.7
OATS	0.0	0.0	0.0	0.0	0.0	0.0	0.0	0.0	0.0	0.0	0.0	0.0
SOYBEANS	(242.1)	(251.7)	(245.8)	(233.5)	108.0	112.2	105.8	101.8	158.9	164.6	163.1	147.3
SOY OIL	(176.4)	(177.8)	(184.8)	(202.7)	82.2	86.2	86.4	85.5	68.8	64.5	69.0	86.2
SOY MEAL	(192.9)	(190.8)	(190.3)	(180.1)	88.3	91.0	90.0	90.9	53.2	47.4	49.2	35.9

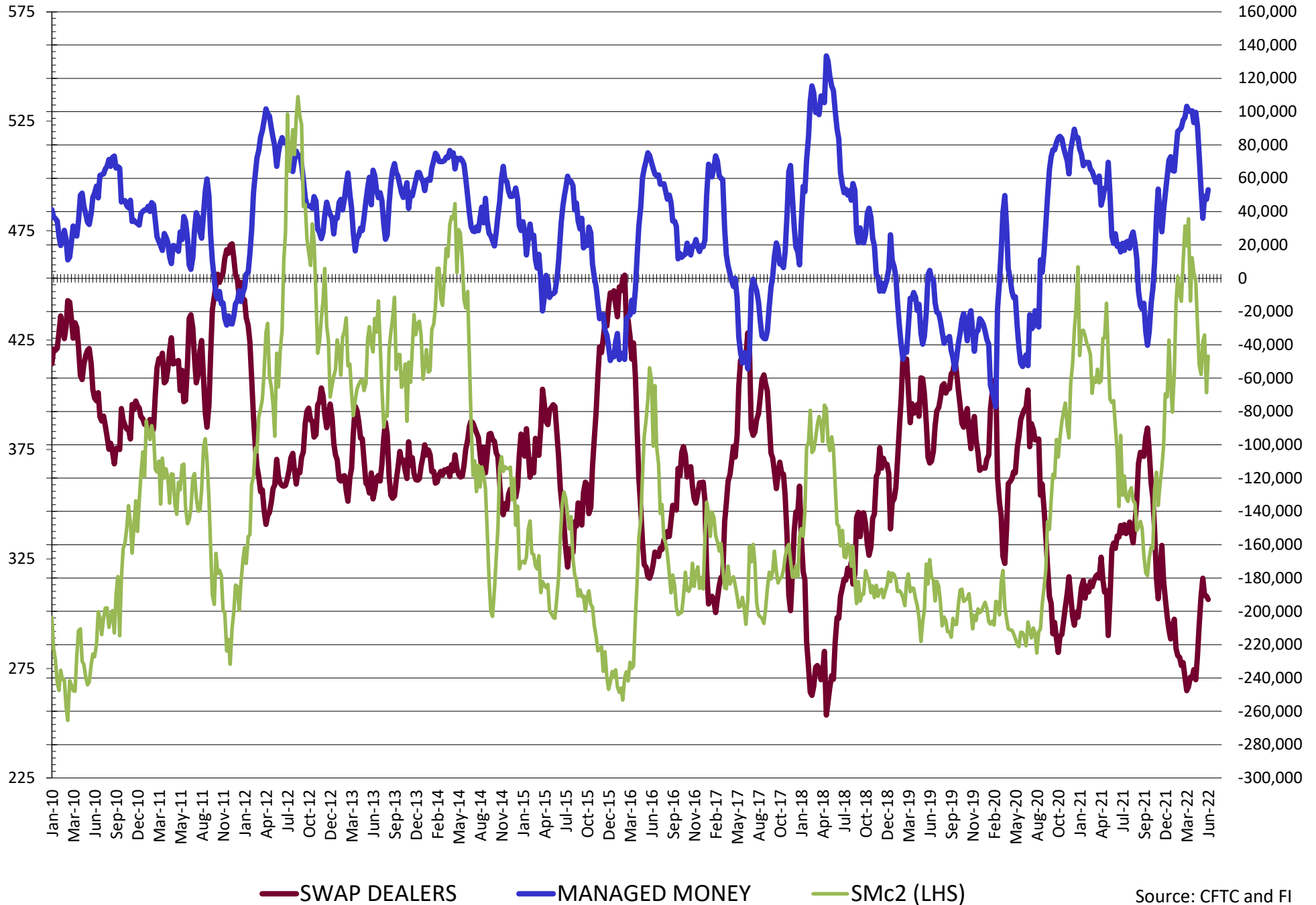
	TOTAL OPEN INTEREST				OTHER REPORTABLE				NON REPORTABLE			
	7-Jun	31-May	24-May	17-May	7-Jun	31-May	24-May	17-May	7-Jun	31-May	24-May	17-May
	WHEAT											
Chicago	462,463	454,385	453,693	483,434	13.1	13.7	10.9	4.8	(3.8)	(3.5)	(1.9)	(2.9)
Kansas City	205,338	205,209	203,755	204,633	(2.8)	(3.5)	(4.1)	(5.4)	(1.4)	0.3	1.1	2.3
Minneapolis	73,168	77,337	78,292	78,982	4.1	4.6	5.2	5.7	7.1	5.5	5.8	5.5
All Wheat	740,969	736,931	735,740	767,049	14.4	14.7	12.0	5.2	1.9	2.3	5.0	4.9
CORN	2,217,675	2,212,940	2,188,145	2,256,288	99.5	107.9	105.2	99.7	(45.0)	(42.8)	(42.8)	(42.8)
OATS	0	0	0	0	0.0	0.0	0.0	0.0	0.0	0.0	0.0	0.0
SOYBEANS	979,103	963,118	932,993	920,248	4.4	4.1	7.3	11.5	(29.3)	(29.3)	(30.3)	(27.1)
SOY OIL	471,053	446,521	436,457	447,084	8.6	9.5	9.9	9.4	16.7	17.6	19.5	21.5
SOY MEAL	429,842	418,915	405,915	413,267	22.7	20.9	21.6	22.4	28.7	31.6	29.6	30.8

SOURCE: CFTC & FI

NET POSITION FUTURES AND OPTIONS OF SWAP AND MANAGED FUNDS IN SOYBEANS

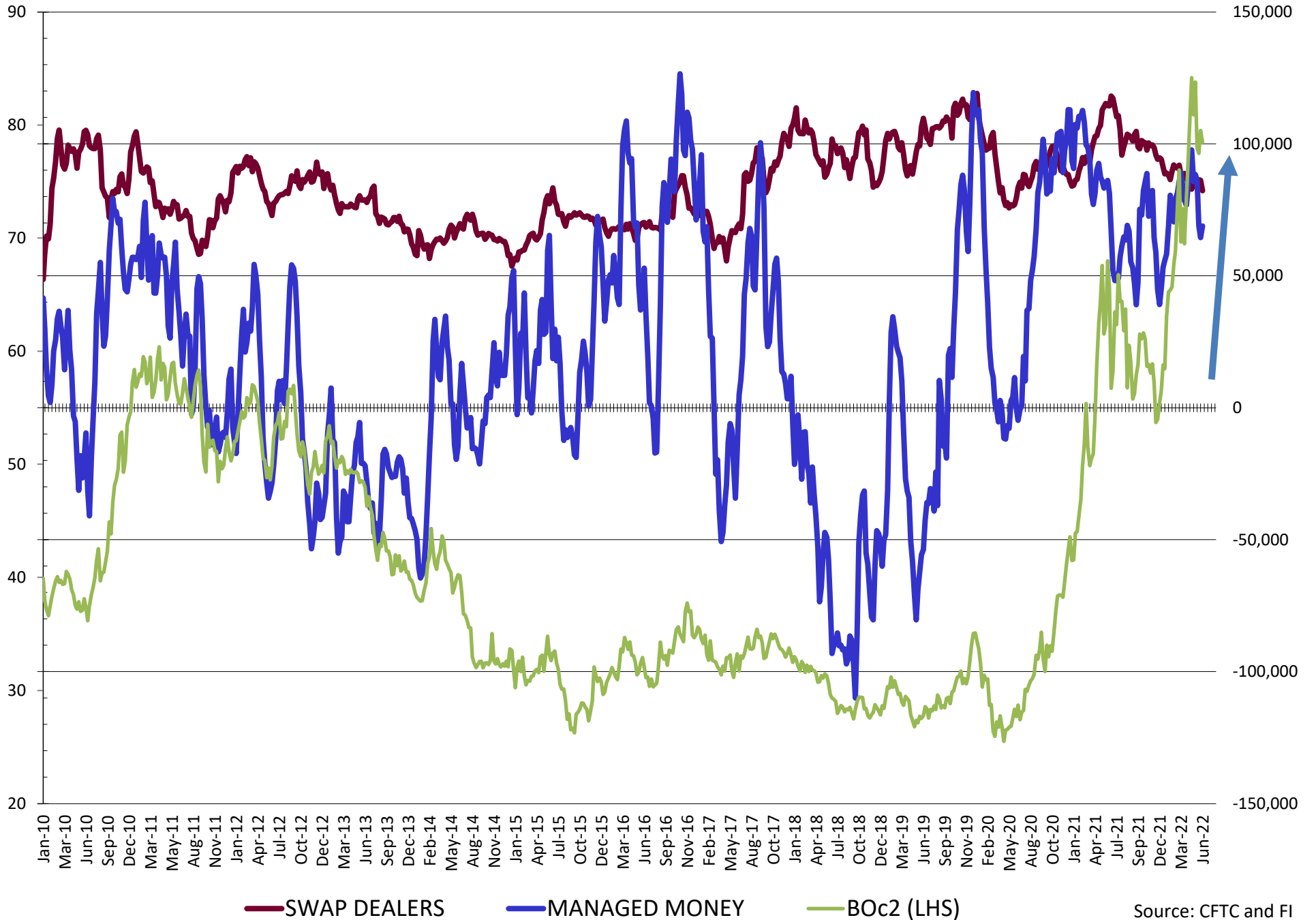


NET POSITION FUTURES AND OPTIONS OF SWAP AND MANAGED FUNDS IN SOYBEAN MEAL

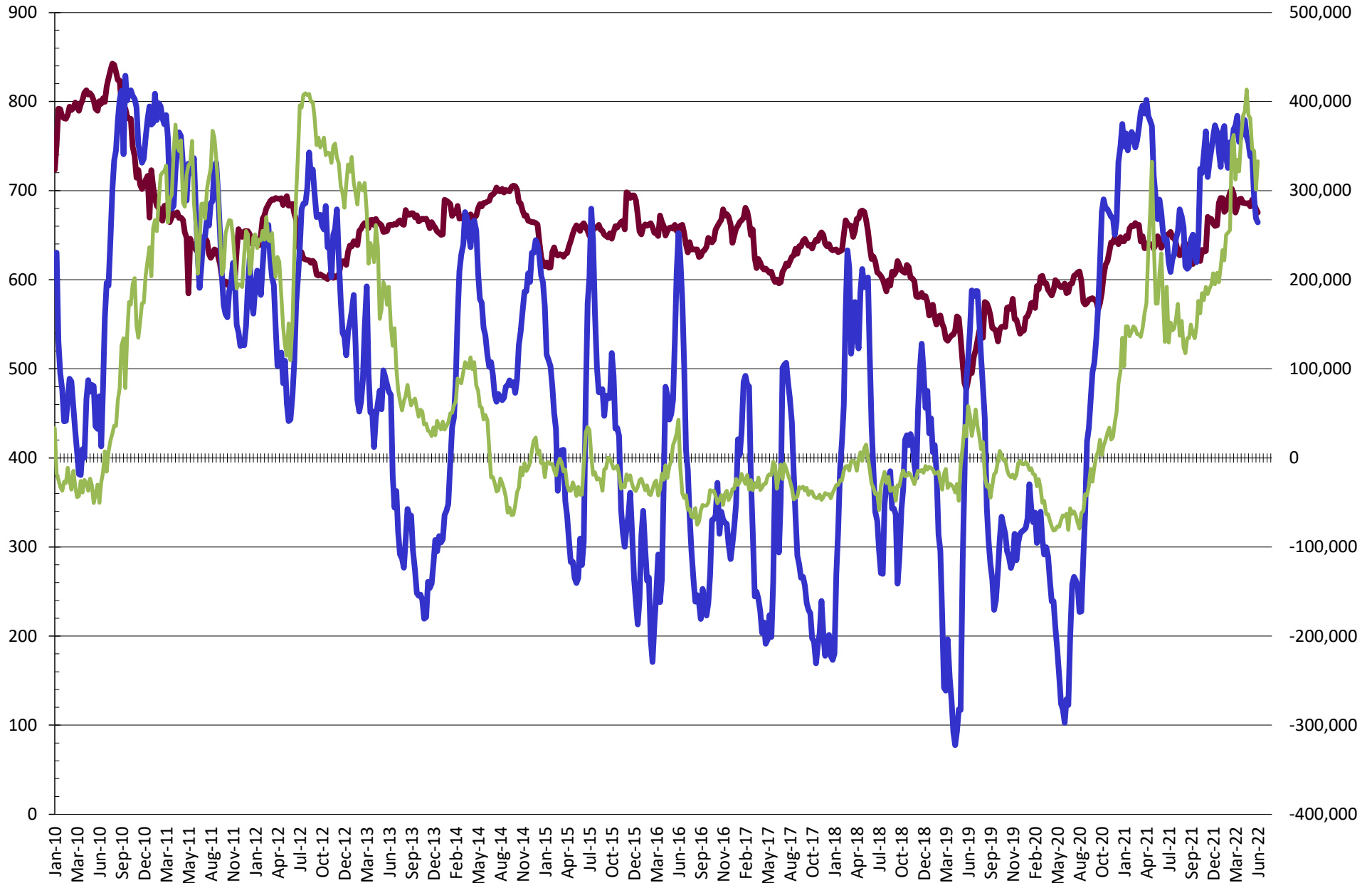


Source: CFTC and FI
6/10/2022

NET POSITION FUTURES AND OPTIONS OF SWAP AND MANAGED FUNDS IN SOYBEAN OIL

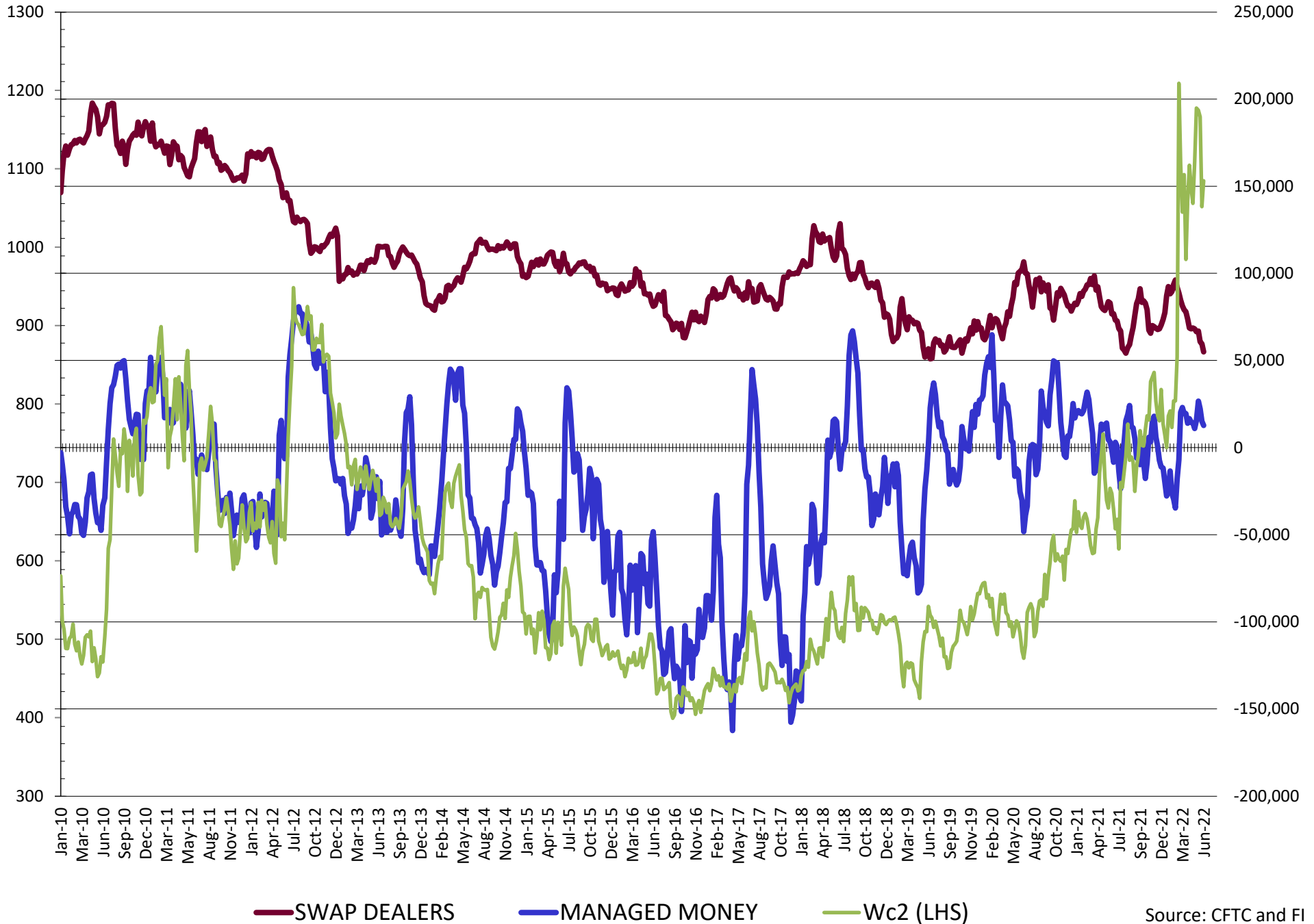


NET POSITION FUTURES AND OPTIONS OF SWAP AND MANAGED FUNDS IN CORN

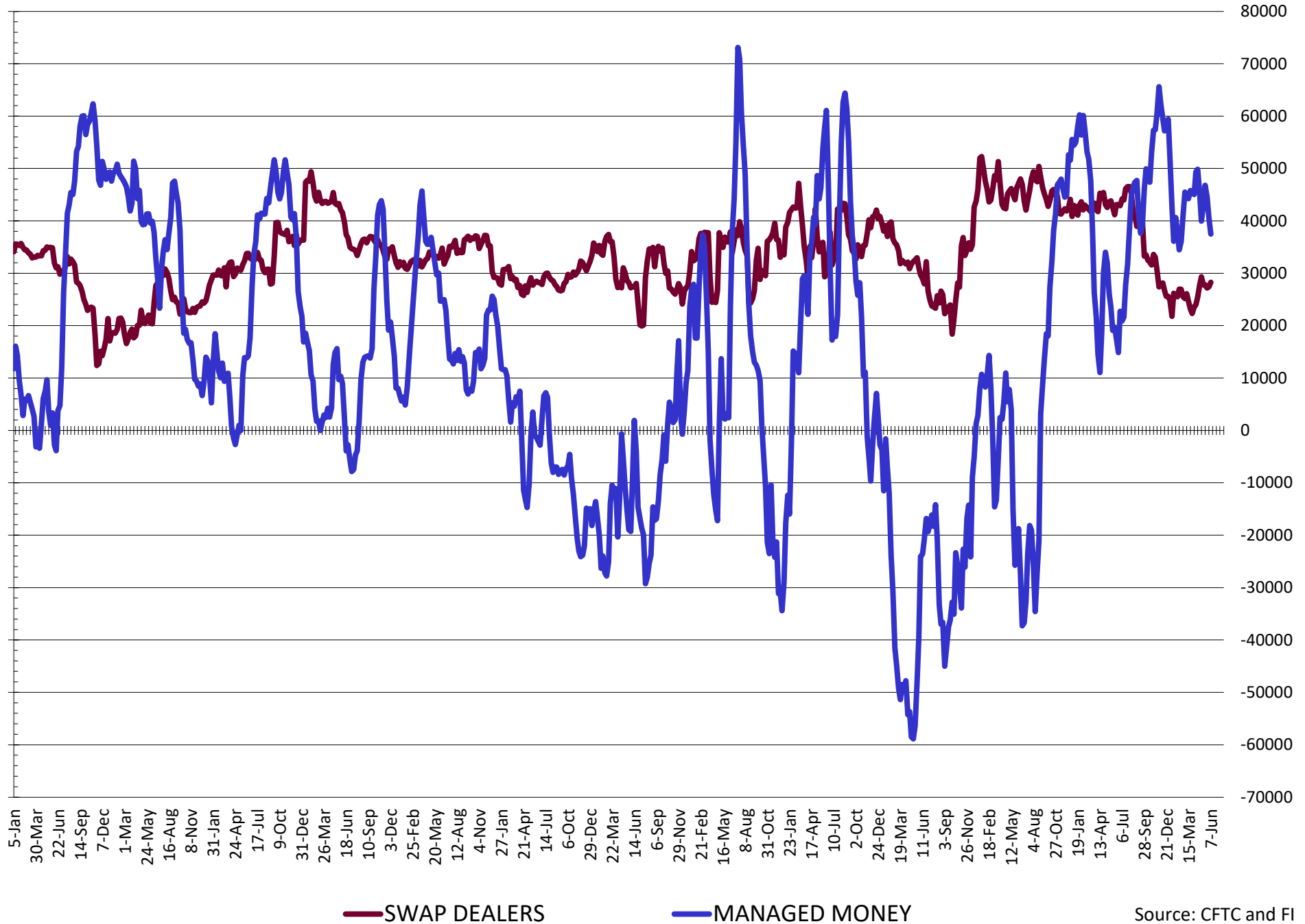


— SWAP DEALERS
 — MANAGED MONEY
 — Cc2 (LHS)

NET POSITION FUTURES AND OPTIONS OF SWAP AND MANAGED FUNDS IN CHICAGO WHEAT

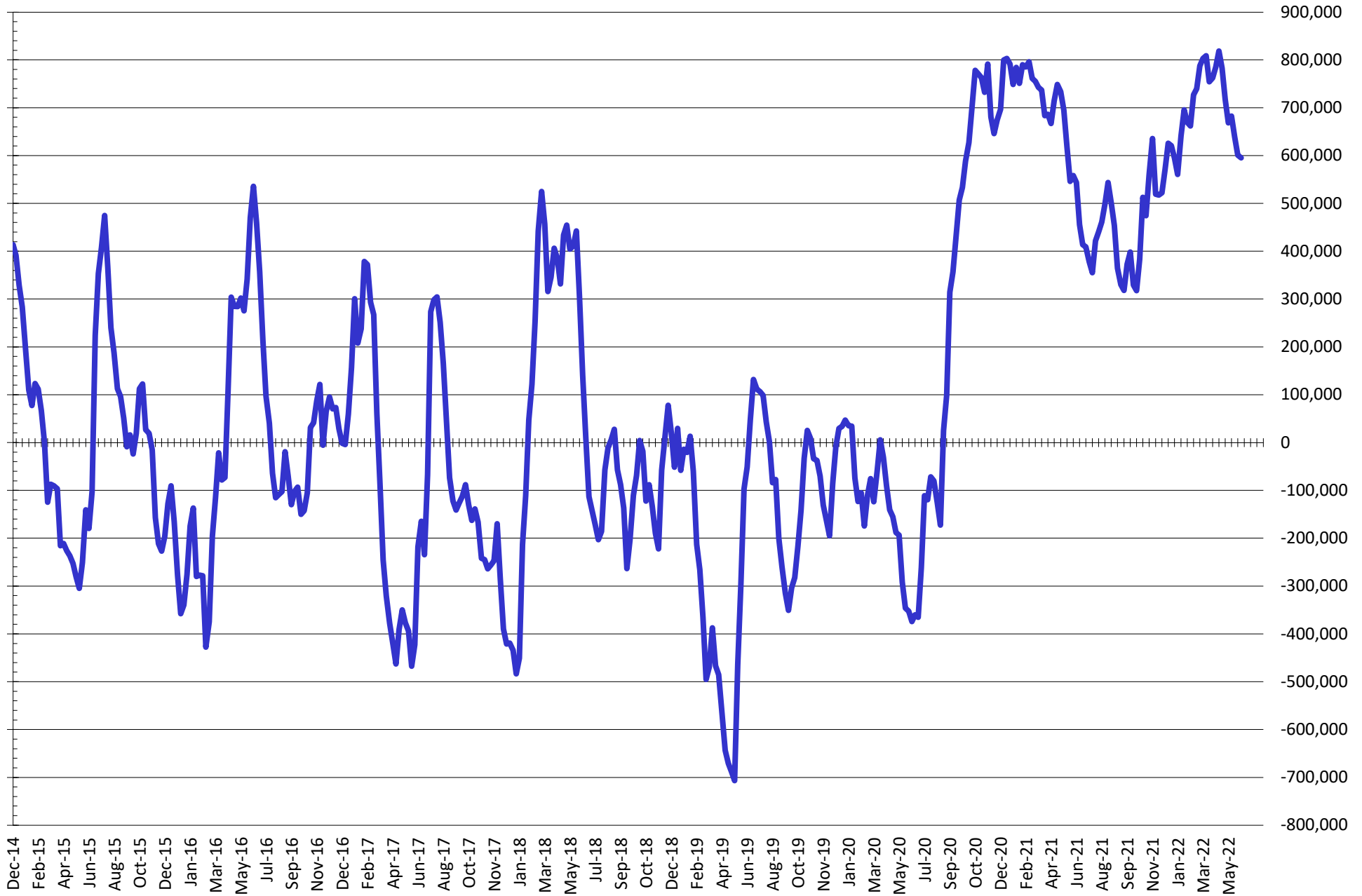


NET POSITION FUTURES AND OPTIONS OF SWAP AND MANAGED FUNDS IN KANSAS WHEAT



Source: CFTC and FI
6/10/2022

NET POSITION FUTURES AND OPTIONS OF SWAP AND MANAGED FUNDS IN COMBINED SRW, HRW, CORN, SOYBEANS, SOYMEAL AND SOYOIL



— Net Managed Money

Source: CFTC and FI
6/10/2022

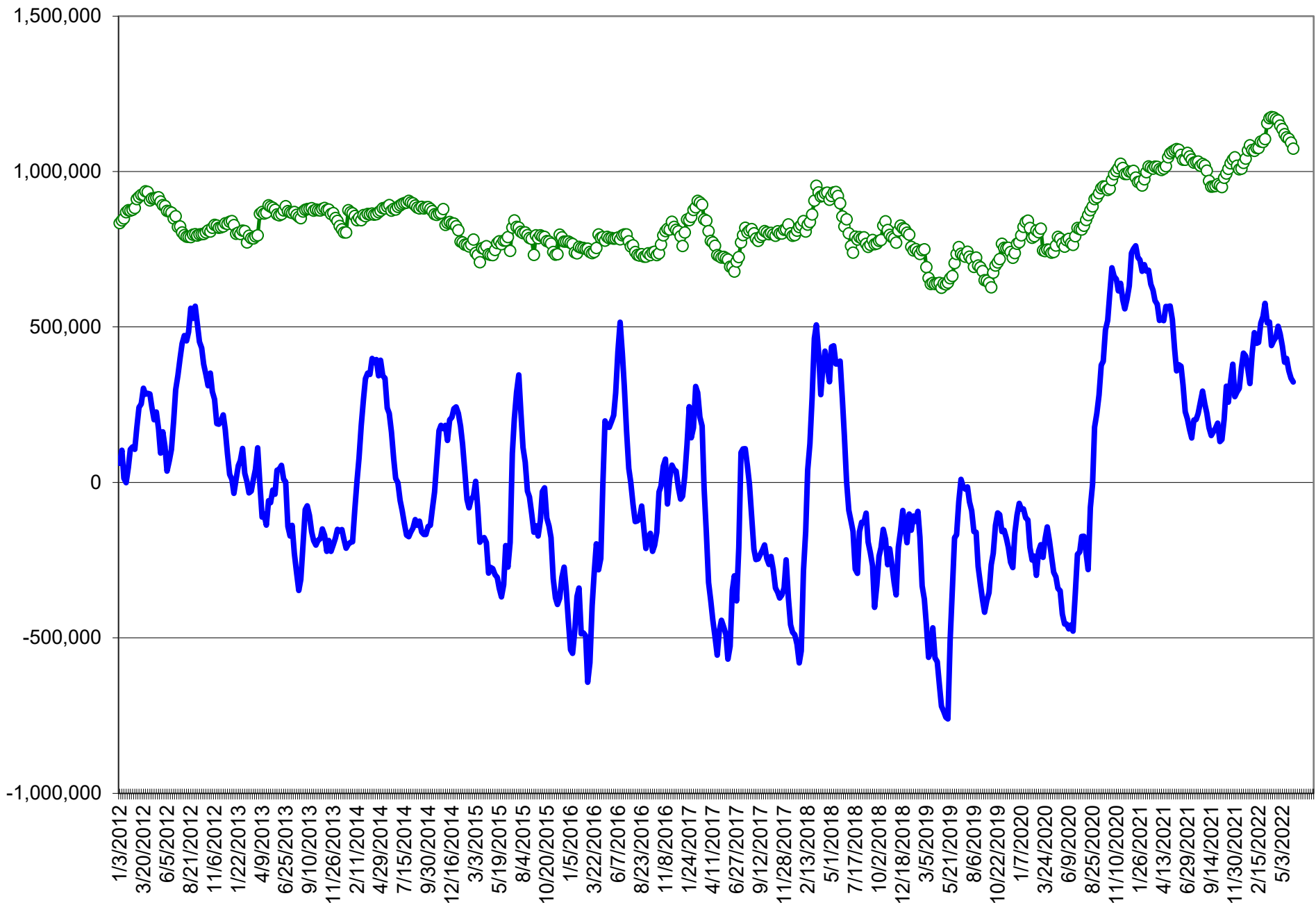
COMMITMENT OF TRADERS
FUTURES & OPTIONS NET POSITIONS (INDEX BROKEN OUT)
AS OF 06/07/2022
(IN THOUSAND CONTRACTS)

	COMMERCIAL				(FUND) NON COMMERCIAL				(SPEC) NON-REPORTABLE			
	7-Jun	31-May	24-May	17-May	7-Jun	31-May	24-May	17-May	7-Jun	31-May	24-May	17-May
	WHEAT											
Chicago	(104.0)	(112.5)	(119.8)	(121.2)	(40.6)	(34.1)	(31.6)	(32.1)	(3.8)	(3.5)	(1.9)	(2.9)
Kansas City	(69.1)	(72.7)	(77.4)	(79.7)	6.8	9.6	12.4	12.3	(1.4)	0.3	1.1	2.3
Minneapolis	-	-	-	-	-	-	-	-	-	-	-	-
All Wheat	(173.1)	(185.2)	(197.2)	(201.0)	(33.8)	(24.5)	(19.2)	(19.8)	(5.2)	(3.2)	(0.8)	(0.6)
CORN	(597.2)	(616.8)	(635.7)	(698.1)	184.4	192.5	204.5	250.7	(45.0)	(42.8)	(45.6)	(35.5)
OATS	-	-	-	-	-	-	-	-	-	-	-	-
SOYBEANS	(244.2)	(251.8)	(249.2)	(236.6)	83.6	90.3	90.0	82.2	(29.3)	(29.3)	(30.3)	(27.1)
SOY OIL	(168.0)	(170.4)	(178.3)	(196.5)	47.3	44.1	48.5	62.4	16.7	17.6	19.5	21.5
SOY MEAL	(180.1)	(177.4)	(176.8)	(165.5)	41.3	32.5	35.6	23.0	28.7	31.6	29.6	30.8

	TOTAL OPEN INTEREST				(INDEX) COMMERCIAL INDEX TRADERS				(INDEX) % NET OF TOTAL OPEN INTEREST			
	7-Jun	31-May	24-May	17-May	7-Jun	31-May	24-May	17-May	7-Jun	31-May	24-May	17-May
	WHEAT											
Chicago	462,463	454,385	453,693	483,434	148.4	150.0	153.3	156.2	32.1%	33.0%	33.8%	32.3%
Kansas City	205,338	205,209	203,755	204,633	63.8	62.9	63.9	65.1	31.1%	30.6%	31.3%	31.8%
Minneapolis	-	-	-	-	-	-	-	-	-	-	-	-
All Wheat	667,801	659,594	657,448	688,067	212.1	212.9	217.2	221.3	31.8%	32.3%	33.0%	32.2%
CORN	2,217,675	2,212,940	2,188,145	2,256,288	457.8	467.1	476.8	482.9	20.6%	21.1%	21.8%	21.4%
OATS	-	-	-	-	-	-	-	-	-	-	-	-
SOYBEANS	979,103	963,118	932,993	920,248	189.9	190.8	189.5	181.4	19.4%	19.8%	20.3%	19.7%
SOY OIL	471,053	446,521	436,457	447,084	104.0	108.6	110.2	112.6	22.1%	24.3%	25.3%	25.2%
SOY MEAL	429,842	418,915	405,915	413,267	110.0	113.3	111.7	111.6	25.6%	27.0%	27.5%	27.0%

SOURCE: CFTC & FI

NET POSITION FUTURES AND OPTIONS OF SPECULATORS AND INDEX FUNDS IN COMBINED SRW, HRW, CORN, SOYBEANS, SOYMEAL AND SOYOIL



Source: CFTC and FI

○ Net Index

— Net Speculator

Traditional Daily Estimate of Funds 6/7/22

	(Neg)-"Short"	Pos-"Long"			
Actual less Est.	(11.9)	(22.5)	3.6	10.9	(9.4)
	Corn	Bean	Chi. Wheat	Meal	Oil
Actual	391.3	176.6	23.9	89.7	78.6
8-Jun	4.0	6.0	3.0	(2.0)	6.0
9-Jun	5.0	11.0	(4.0)	4.0	(3.0)
10-Jun	1.0	(14.0)	0.0	2.0	(7.0)
13-Jun					
14-Jun					
FI Est. of Futures Only 6/7/22	401.3	179.6	22.9	93.7	74.6
FI Est. Futures & Options	373.8	166.3	24.8	79.9	73.4
Futures only record long "Traditional Funds"	547.7 1/26/2021	280.9 11/10/2020	86.5 8/7/2018	167.5 5/1/2018	160.2 11/1/2016
Futures only record short	(235.0) 6/9/2020	(118.3) 4/30/2019	(130.0) 4/25/2017	(49.5) 3/1/2016	(69.8) 9/18/2018
Futures and options record net long	557.6 1/12/2021	270.9 10/6/2020	64.8 8/7/2012	132.1 5/1/2018	159.2 1/1/2016
Futures and options record net short	(270.6) 4/26/2019	(132.0) 4/30/2019	(143.3) 4/25/2017	(64.1) 3/1/2016	(77.8) 9/18/2018

Managed Money Daily Estimate of Funds 6/7/22

	Corn	Bean	Chi. Wheat	Meal	Oil
Latest CFTC Fut. Only	239.6	153.7	13.8	53.3	67.9
Latest CFTC F&O	264.3	158.9	12.7	53.2	68.8
FI Est. Managed Fut. Only	250	157	13	57	64
FI Est. Managed Money F&O	274	162	12	57	65

Index Funds Latest Positions (as of last Tuesday)

Index Futures & Options	457.8	189.9	148.4	NA	104.0
-------------------------	-------	-------	-------	----	-------

Source: Reuters, CFTC & FI (FI est. are noted with latest date)

Disclaimer

TO CLIENTS/PROSPECTS OF FUTURES INTERNATIONAL, SEE RISK DISCLOSURE BELOW:

THIS COMMUNICATION IS CONVEYED AS A SOLICITATION FOR ENTERING INTO A DERIVATIVES TRANSACTION.

Any trading recommendations and market or other information to Customer by Futures International (FI), although based upon information obtained from sources believed by FI to be reliable may not be accurate and may be changed without notice to customer. FI makes no guarantee as to the accuracy or completeness of any of the information or recommendations furnished to Customer. Customer understands that FI, its managers, employees and/or affiliates may have a position in commodity futures, options or other derivatives which may not be consistent with the recommendations furnished by FI to Customer.

The risk of trading futures and options and other derivatives involves a substantial risk of loss and is not suitable for all persons. In purchasing an option, the risk is limited to the premium paid, and all commissions and fees involved with the trade. When an option is shorted or written, the writer of the option has unlimited risk with respect to the option written. The use of options strategies such as a straddles and strangles involve multiple option positions and may substantially increase the amount of commissions and fees paid to execute the strategy. Option prices do not necessarily move in tandem with cash or futures prices. Each person must consider whether a particular trade, combination of trades or strategy is suitable for that person's financial means and objectives.

This material may include discussions of seasonal patterns, however, futures prices have already factored in the seasonal aspects of supply and demand, and seasonal patterns are no indication of future market trends. Finally, past performance is not indicative of future results.

This communication may contain links to third party websites which are not under the control of FI and FI is not responsible for their content. Products and services are offered only in jurisdictions where solicitation and sale are lawful, and in accordance with applicable laws and regulations in each such jurisdiction.