

	Current	Δ from YD	Δ from 7D Avg
Nat Gas Prompt	\$ 9.00 ▲	\$ 0.48 ▲	\$ 0.48

### Page Menu

[Short-term Weather Model Outlooks](#)

[Lower 48 Component Models](#)

[Regional S/D Models Storage Projection](#)

[Weather Model Storage Projection](#)

[Supply – Demand Trends](#)

[Nat Gas Options Volume and Open Interest](#)

[Nat Gas Futures Open Interest](#)

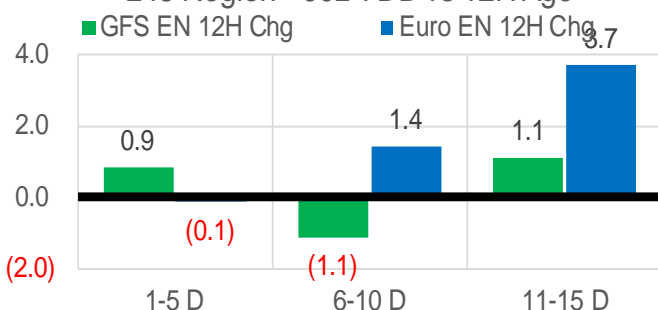
[Price Summary](#)

	Current	Δ from YD	Δ from 7D Avg
WTI Prompt	\$ 119.08 ▲	\$ 0.21 ▲	\$ 2.2

	Current	Δ from YD	Δ from 7D Avg
Brent Prompt	\$ 119.93 ▲	\$ 0.21 ▲	\$ 0.3

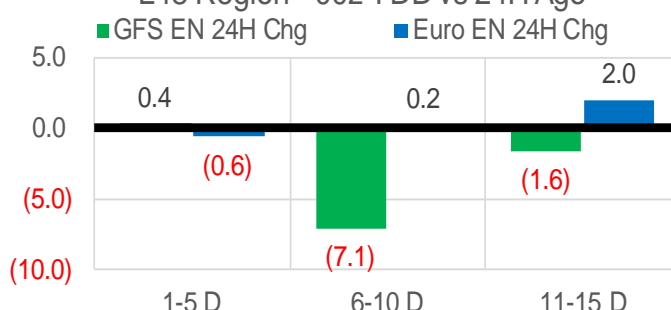
### Vs. 12H Ago

L48 Region - 00z TDD vs 12H Ago



### Vs. 24H Ago

L48 Region - 00z TDD vs 24H Ago



	Current	Δ from YD	Δ from 7D Avg
US Dry Production	95.4 ▼	-0.36 ▼	-0.80

	Current	Δ from YD	Δ from 7D Avg
US Power Burns	30.4 ▲	1.31 ▼	-0.98

	Current	Δ from YD	Δ from 7D Avg
US ResComm	8.4 ▼	0.00 ▼	-0.55

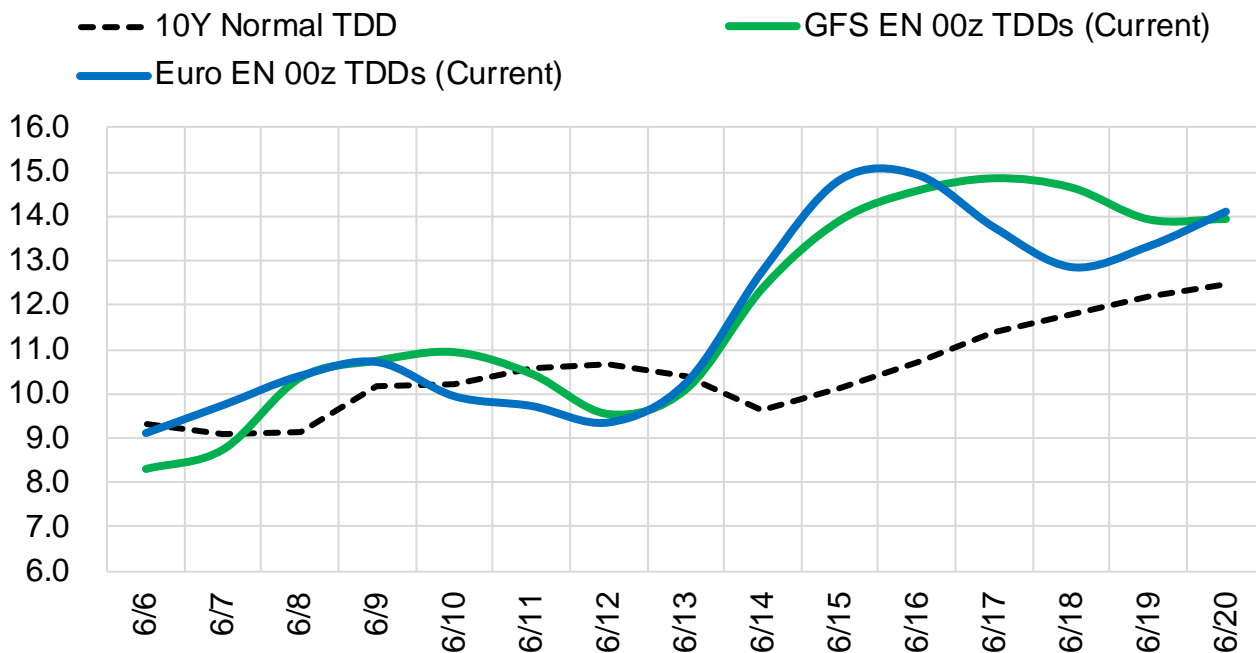
	Current	Δ from YD	Δ from 7D Avg
Canadian Imports	5.2 ▲	0.07 ▲	0.23

	Current	Δ from YD	Δ from 7D Avg
Net LNG Exports	12.7 ▼	-0.22 ▼	-0.05

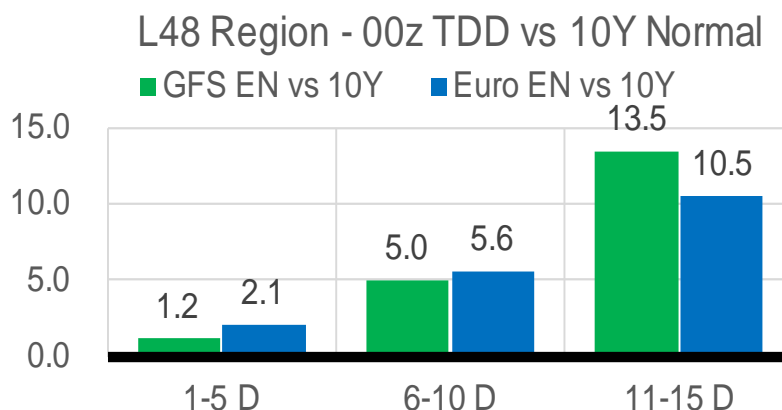
	Current	Δ from YD	Δ from 7D Avg
Mexican Exports	7.0 ▲	0.30 ▼	-0.07

### Short-term Weather Model Outlooks (00z)

#### L48 Region



### Vs. 10Y Normal



Source: WSI, Bloomberg

### Lower 48 Component Models

#### Daily Balances

	31-May	1-Jun	2-Jun	3-Jun	4-Jun	5-Jun	6-Jun	DoD	vs. 7D
Lower 48 Dry Production	96.8	96.5	96.4	95.7	95.8	95.8	95.4	▼ -0.4	▼ -0.7
Canadian Imports	5.0	5.0	4.9	5.0	4.8	5.1	5.2	▲ 0.1	▲ 0.2
L48 Power	33.8	34.5	33.5	30.8	28.8	29.1	30.4	▲ 1.3	▼ -1.4
L48 Residential & Commercial	9.4	9.4	8.8	8.6	9.2	8.4	8.4	▼ 0.0	▼ -0.5
L48 Industrial	21.4	21.9	22.0	22.3	22.5	22.5	22.5	▲ 0.0	▲ 0.4
L48 Lease and Plant Fuel	5.2	5.2	5.2	5.2	5.2	5.2	5.1	▼ -0.1	▼ -0.1
L48 Pipeline Distribution	2.4	2.4	2.3	2.1	2.1	2.0	2.1	▲ 0.1	▼ -0.1
L48 Regional Gas Consumption	72.3	73.4	71.8	69.0	67.7	67.2	68.5	▲ 1.4	▼ -1.7
Net LNG Delivered	11.99	12.78	12.79	12.77	13.00	12.88	12.66	▼ -0.2	▼ 0.0
Total Mexican Exports	7.1	7.0	7.3	7.1	6.9	6.7	7.0	▲ 0.3	▼ 0.0
Implied Daily Storage Activity	10.4	8.3	9.3	11.9	13.0	14.2	12.4		
EIA Reported Daily Storage Activity									
Daily Model Error									

#### EIA Storage Week Balances

	4-Jun	6-May	13-May	20-May	27-May	3-Jun	WoW	vs. 4W
Lower 48 Dry Production	93.1	95.5	95.8	94.8	95.8	96.5	▲ 0.6	▲ 1.0
Canadian Imports	3.9	5.9	5.2	4.9	4.9	4.8	▼ 0.0	▼ -0.4
L48 Power	27.8	26.2	26.8	30.4	30.0	30.4	▲ 0.4	▲ 2.1
L48 Residential & Commercial	11.8	16.8	14.5	10.0	11.6	9.0	▼ -2.6	▼ -4.2
L48 Industrial	18.5	21.1	20.9	21.3	20.0	21.3	▲ 1.3	▲ 0.5
L48 Lease and Plant Fuel	5.0	5.2	5.2	5.1	5.2	5.2	▲ 0.0	▲ 0.1
L48 Pipeline Distribution	2.2	2.4	2.3	2.3	2.4	2.2	▼ -0.2	▼ -0.1
L48 Regional Gas Consumption	65.4	71.8	69.6	69.1	69.2	68.2	▼ -1.0	▼ -1.7
Net LNG Exports	11.0	12.2	12.2	12.2	13.0	12.8	▼ -0.2	▲ 0.4
Total Mexican Exports	7.2	6.9	7.0	7.0	7.0	7.0	▼ 0.0	▲ 0.0
Implied Daily Storage Activity	13.4	10.6	12.1	11.5	11.4	13.3	1.8	
EIA Reported Daily Storage Activity	14.0	10.9	12.7	11.4	12.9			
Daily Model Error	-0.6	-0.3	-0.7	0.0	-1.4			

#### Monthly Balances

	2Yr Ago Jun-20	LY Jun-21	Feb-22	Mar-22	Apr-22	May-22	MTD Jun-22	MoM	vs. LY
Lower 48 Dry Production	87.9	93.2	92.7	93.5	95.9	95.6	96.0	▲ 0.4	▲ 2.8
Canadian Imports	4.0	4.8	6.5	5.2	5.8	5.1	5.0	▼ -0.1	▲ 0.1
L48 Power	34.9	35.9	28.7	25.5	24.7	28.8	31.3	▲ 2.6	▼ -4.6
L48 Residential & Commercial	8.8	8.9	43.3	31.5	22.5	12.3	8.9	▼ -3.4	▲ 0.0
L48 Industrial	20.0	20.2	22.1	19.7	21.4	20.8	22.2	▲ 1.4	▲ 2.0
L48 Lease and Plant Fuel	4.8	5.0	5.1	5.2	5.2	5.2	5.2	▲ 0.0	▲ 0.2
L48 Pipeline Distribution	2.3	2.4	3.5	2.9	2.6	2.3	2.2	▼ -0.1	▼ -0.2
L48 Regional Gas Consumption	70.8	72.5	102.7	84.7	76.4	69.4	69.8	▲ 0.4	▼ -2.6
Net LNG Exports	4.0	10.2	12.4	12.9	12.3	12.5	12.8	▲ 0.4	▲ 2.7
Total Mexican Exports	5.5	7.4	6.2	6.5	6.7	7.0	7.0	▲ 0.0	▼ -0.4
Implied Daily Storage Activity	11.5	8.0	-22.1	-5.4	6.2	11.8	11.3		
EIA Reported Daily Storage Activity									
Daily Model Error									

Source: Bloomberg, analytix.ai

## Daily Average Generation Data

### Nuclear Generation Daily Average - GWh (NRC)

	29-May	30-May	31-May	1-Jun	2-Jun	3-Jun	4-Jun	DoD	vs. 7D
NRC Nuclear Daily Output	85.6	85.2	87.0	87.8	87.8	87.4	87.4	0.0	0.6
NRC Nuclear Max Capacity	104.9	104.9	104.9	104.9	104.9	104.9	104.9	0.0	0.0
NRC Nuclear Outage	19.3	19.6	17.9	17.1	17.1	17.5	17.5	0.0	-0.6
NRC % Nuclear Cap Utilization	87.0	86.7	88.5	89.3	89.3	88.9	88.9	0.0	0.6

### Wind Generation Daily Average - MWh (EIA)

	29-May	30-May	31-May	1-Jun	2-Jun	3-Jun	4-Jun	DoD	vs. 7D
CALI Wind	4175	3545	2538	1802	3399	4789	4362	-427	987
TEXAS Wind	24730	22862	21511	14995	6487	7108	8979	1871	-7303
US Wind	78621	79602	65862	42153	28806	32252	35379	3127	-19170

### Generation Daily Average - MWh (EIA)

	29-May	30-May	31-May	1-Jun	2-Jun	3-Jun	4-Jun	DoD	vs. 7D
US Wind	78621	79602	65862	42153	28806	32252	35379	3127	-19170
US Solar	16260	18350	19361	19336	23597	23380	23667	288	3620
US Petroleum	643	856	1168	1005	991	1035	972	-63	23
US Other	7439	7847	8560	8080	10728	10750	10461	-289	1560
US Coal	74893	83828	101772	102807	101062	96210	91313	-4896	-2115
US Nuke	88689	89060	90510	91515	89946	89628	89994	366	102
US Hydro	31904	34449	37068	36018	36021	35668	34670	-998	-518
<b>US Gas</b>	<b>126916</b>	<b>143968</b>	<b>183668</b>	<b>195321</b>	<b>208556</b>	<b>192324</b>	<b>167635</b>	<b>-24688</b>	<b>-7490</b>

See National Wind and Nuclear daily charts

Source: Bloomberg, analytix.ai

### Storage Week Average Generation Data

#### Nuclear Generation Weekly Average - GWh (NRC)

	29-Apr	6-May	13-May	20-May	27-May	3-Jun	WoW	WoW Bcf/d Impact
NRC Nuclear Daily Output	73.5	76.7	79.3	81.7	84.2	86.2	1.9	-0.3
NRC Nuclear Max Capacity	104.9	104.9	104.9	104.9	104.9	104.9	0.0	
NRC Nuclear Outage	31.4	28.2	25.5	23.2	20.6	18.7	-1.9	
NRC % Nuclear Cap Utilization	74.8	78.0	80.7	83.1	85.7	87.6	1.9	

#### Wind Generation Weekly Average - MWh (EIA)

	29-Apr	6-May	13-May	20-May	27-May	3-Jun	WoW	WoW Bcf/d Impact
CALI Wind	3153	2929	3983	3452	2798	3443	644	-0.1
TEXAS Wind	18327	16902	17705	15706	14010	17915	3905	-0.7
US Wind	66986	57244	64974	50251	50129	58109	7980	-1.4
						0.3	16%	

#### Generation Weekly Average - MWh (EIA)

	29-Apr	6-May	13-May	20-May	27-May	3-Jun	WoW	WoW Bcf/d Impact
						est.		
US Wind	66986	57244	64974	50251	50129	58109	7980	-1.4
US Solar	16968	17033	18000	19634	17491	19031	1541	-0.3
US Petroleum	992	931	341	262	448	863	415	-0.1
US Other	7717	7529	7615	7871	7684	8136	453	-0.1
US Coal	77533	78898	81273	88922	88570	89773	1203	-0.2
US Nuke	77438	80558	83391	85510	88016	89606	1591	-0.3
US Hydro	26721	26831	28968	31973	33774	35030	1256	-0.2
US Gas	131482	145774	148473	172224	160070	164946	4876	0.9

See National Wind and Nuclear daily charts

Source: Bloomberg, analytix.ai

### Monthly Average Generation Data

#### Nuclear Generation Monthly Average - GWh (NRC)

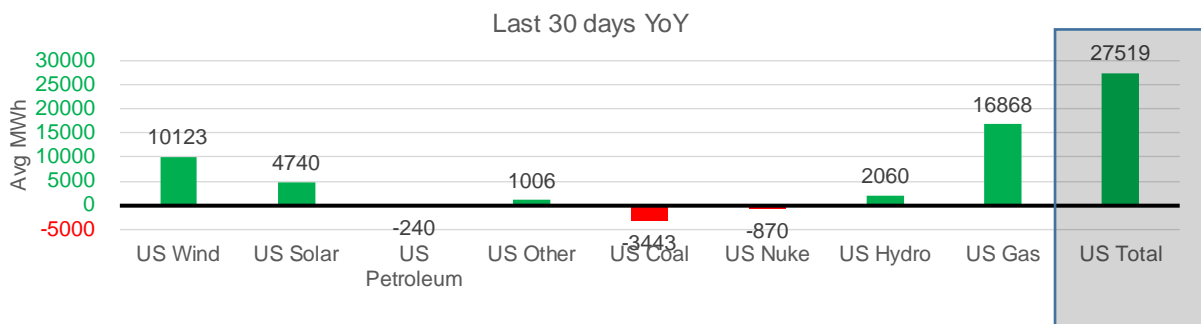
	2Yr Ago	LY	MTD				Last 30 days	Last 30 days YoY
	Same 30 days	Same 30 days	Mar-22	Apr-22	May-22	Jun-22		
NRC Nuclear Daily Output	84.9	84.4	81.3	73.3	81.7	87.5	83.8	-0.7
NRC Nuclear Max Capacity	104.9	104.9	104.9	104.9	104.9	104.9	104.9	0.0
NRC Nuclear Outage	20.0	20.5	23.6	31.6	23.2	17.3	21.1	0.7
NRC % Nuclear Cap Utilization	86.3	85.8	82.7	74.5	83.0	89.0	85.2	-0.7

#### Wind Generation Monthly Average - MWh (EIA)

	2Yr Ago	LY	MTD				Last 30 days	Last 30 days YoY
	Same 30 days	Same 30 days	Mar-22	Apr-22	May-22	Jun-22		
CALI Wind	2401	3456	2250	3186	3391	3846	3487	30
TEXAS Wind	9348	11280	14837	16311	16756	9255	15569	4289
US Wind	36260	42987	58528	64183	56491	34891	53110	10123

#### Generation Monthly Average - MWh (EIA)

	2Yr Ago	LY	MTD				Last 30 days	Last 30 days YoY
	Same 30 days	Same 30 days	Mar-22	Apr-22	May-22	Jun-22		
US Wind	36260	42987	58528	64183	56491	34891	53110	▲ 10123
US Solar	11029	14546	14057	16212	18087	22886	19286	▲ 4740
US Petroleum	655	784	985	985	518	991	544	▼ -240
US Other	8173	7208	7206	7386	7699	10157	8214	▲ 1006
US Coal	69638	91662	82290	77545	85284	95670	88219	▼ -3443
US Nuke	88535	88229	85256	77217	85496	90178	87359	▼ -870
US Hydro	38397	31117	33959	29022	31369	35286	33176	▲ 2060
<b>US Gas</b>	<b>154479</b>	<b>147311</b>	<b>137232</b>	<b>133068</b>	<b>157467</b>	<b>183185</b>	<b>164179</b>	<b>▲ 16868</b>
<b>US Total</b>	<b>405933</b>	<b>424237</b>	<b>419842</b>	<b>406189</b>	<b>443782</b>	<b>455396</b>	<b>451756</b>	<b>▲ 27519</b>



See National Wind and Nuclear daily charts

Source: Bloomberg, analytix.ai

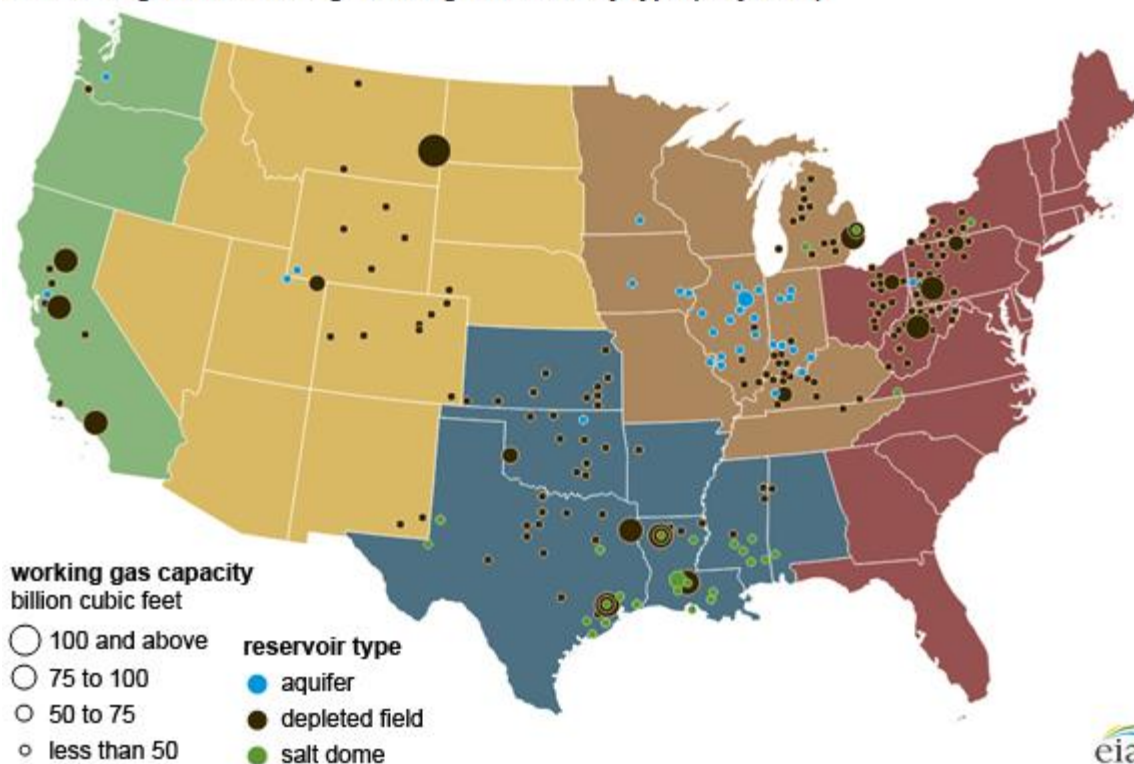
### Regional S/D Models Storage Projection

Week Ending 3-Jun

	Daily Raw Storage	Daily Adjustment Factor	Daily Average Storage Activity (Adjusted) *	Weekly Adjusted Storage Activity
L48	14.0	0.1	14.1	99
East	2.2	2.2	4.5	31
Midwest	5.7	-1.0	4.8	34
Mountain	4.4	-3.9	0.6	4
South Central	-0.7	3.4	2.7	19
Pacific	2.3	-0.7	1.5	11

\*Adjustment Factor is calculated based on historical regional deltas

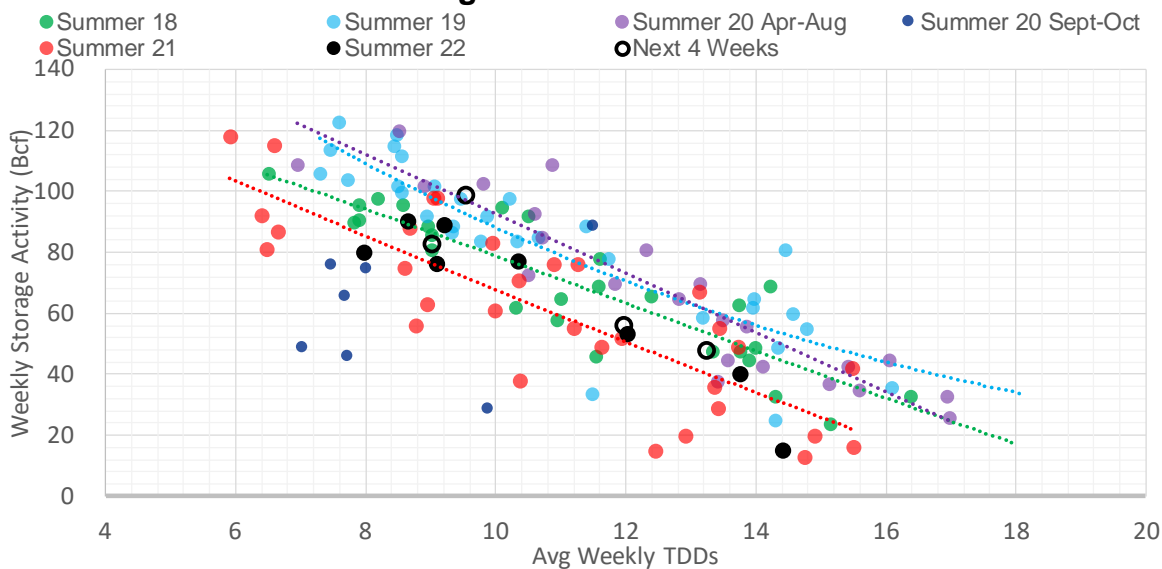
U.S. underground natural gas storage facilities by type (July 2015)



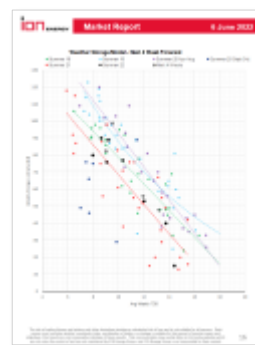
### Weather Model Storage Projection

Next report and beyond		
Week Ending	TDDs	Week Storage Projection
03-Jun	9.6	99
10-Jun	9.0	82
17-Jun	12.0	56
24-Jun	13.2	48

### Weather Storage Model - Next 4 Week Forecast

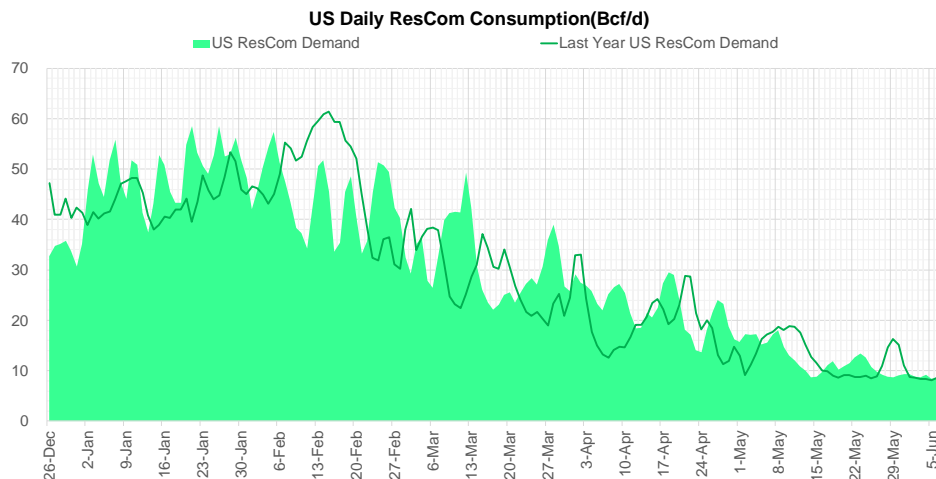
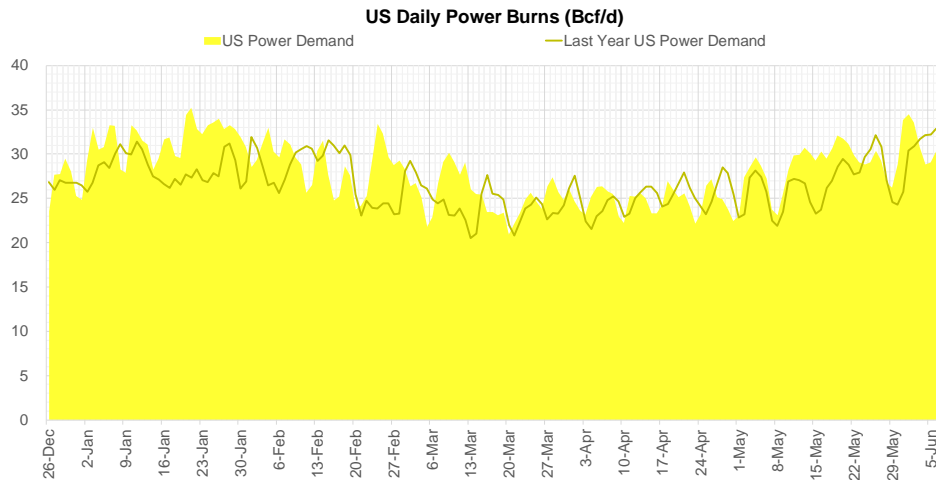
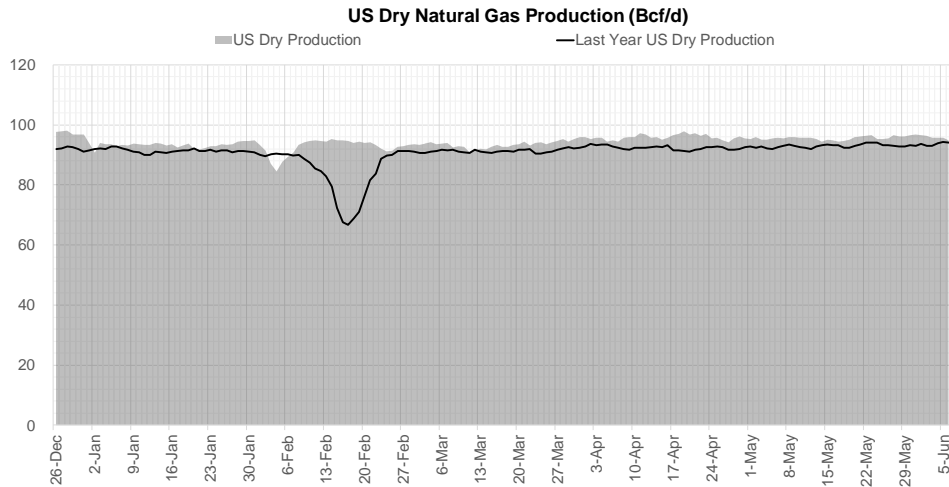


[Go to larger image](#)



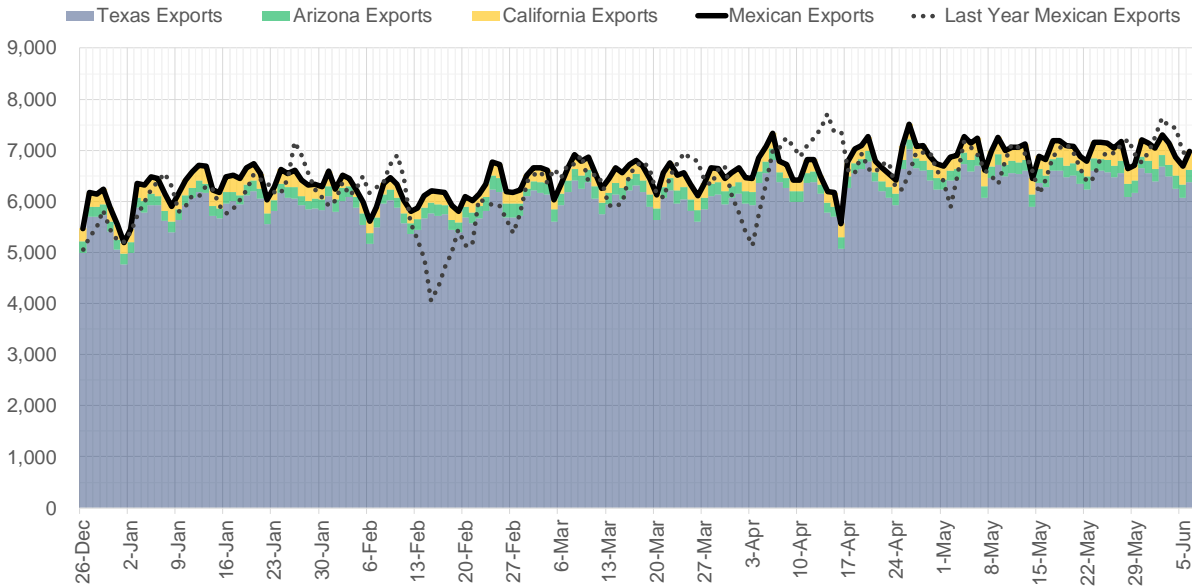


### Supply – Demand Trends

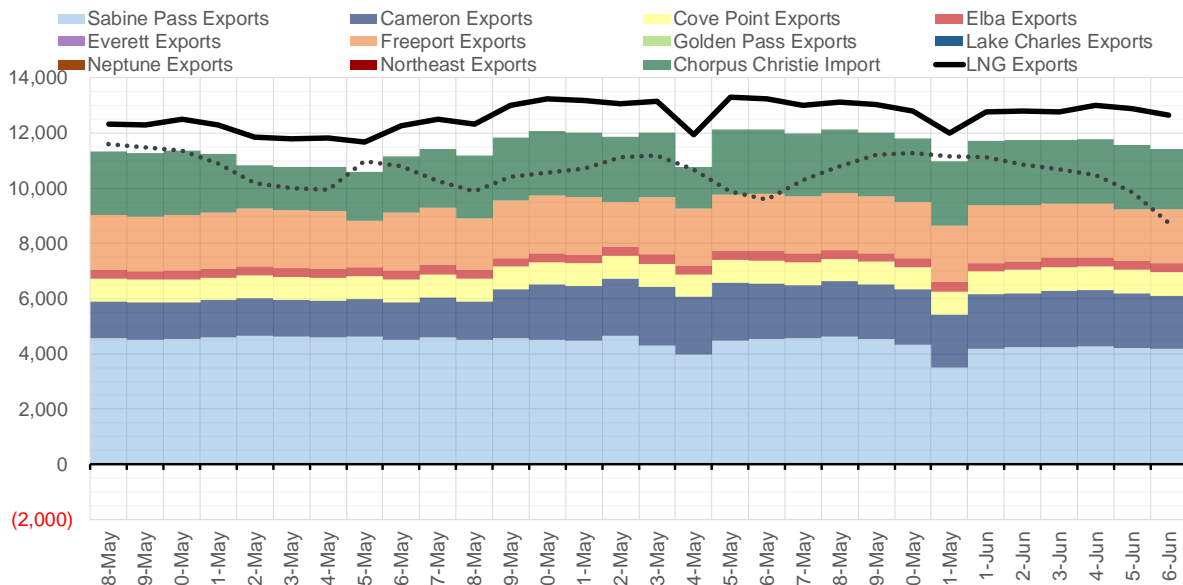


Source: Bloomberg

### Mexican Exports (MMcf/d)



### Net LNG Exports - Last 30 days (MMcf/d)



Source: Bloomberg

The risk of trading futures and options and other derivatives involves a substantial risk of loss and is not suitable for all persons. Each person must consider whether a particular trade, combination of trades, or strategy is suitable for that person's financial means and objectives. Past results are not necessarily indicative of future results. This communication may contain links to third party websites which are not under the control of and are not maintained by ION Energy Group, and ION Energy Group is not responsible for their content.

### Nat Gas Options Volume and Open Interest CME and ICE Combined

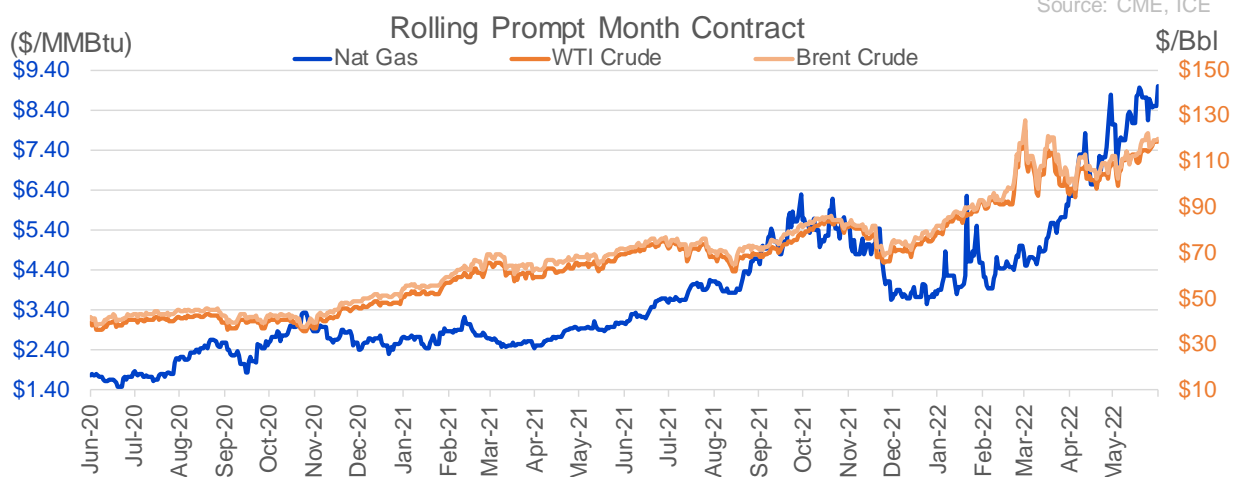
CONTRACT MONTH	CONTRACT YEAR	PUT/CALL	STRIKE	CUMULATIVE VOL	CONTRACT MONTH	CONTRACT YEAR	PUT/CALL	STRIKE	CUMULATIVE OI
7	2022	C	9.50	7715	8	2022	C	10.00	51312
7	2022	C	10.00	5890	8	2022	C	10.50	37566
7	2022	P	7.00	5524	10	2022	C	6.00	35683
7	2022	C	9.25	5500	8	2022	C	12.00	32304
7	2022	P	7.50	3925	7	2022	C	11.00	31463
7	2022	C	9.00	3663	10	2022	C	5.00	24069
7	2022	P	6.50	3286	7	2022	C	10.00	23934
3	2023	P	4.00	2501	9	2022	C	6.00	23673
3	2023	P	3.50	2500	7	2022	P	6.00	23556
7	2022	C	8.50	2015	10	2022	P	6.00	23041
8	2022	C	10.00	1894	7	2022	C	9.00	22476
7	2022	P	6.00	1813	8	2022	C	12.10	22003
7	2022	C	11.50	1805	8	2022	P	6.00	20926
8	2022	C	12.00	1805	10	2022	P	3.50	20524
9	2022	C	10.00	1355	7	2022	C	11.10	20502
8	2022	C	15.00	1334	9	2022	C	10.00	20408
7	2022	C	11.00	1285	10	2022	P	3.00	20275
2	2023	C	8.50	1250	7	2022	P	7.00	19986
9	2022	C	15.00	1239	10	2022	P	2.50	19868
8	2022	P	6.00	1184	9	2022	P	4.00	19550
7	2022	P	6.75	1155	8	2022	C	6.00	19483
9	2022	C	11.00	1153	7	2022	C	6.00	18943
7	2022	P	8.00	1152	8	2022	C	7.00	18259
8	2022	C	11.00	1046	7	2022	C	8.00	18231
7	2022	C	8.00	1009	12	2022	C	5.00	18221
9	2022	P	5.00	979	9	2022	C	7.00	18091
9	2022	P	8.00	970	7	2022	C	7.00	17657
7	2022	C	12.00	911	7	2022	P	3.25	17344
7	2022	P	7.25	889	10	2022	P	2.00	17258
8	2022	P	8.00	852	5	2023	P	2.00	17136
8	2022	C	9.00	844	10	2022	P	4.00	16874
10	2022	P	4.00	830	10	2022	C	10.00	16251
8	2022	C	20.00	827	1	2023	C	10.00	16148
10	2022	C	9.00	784	7	2022	P	5.50	16039
7	2022	P	7.75	770	8	2022	C	9.00	16014
7	2022	P	7.70	716	9	2022	C	4.00	15970
7	2022	P	5.00	704	2	2023	C	10.00	15724
11	2022	C	12.00	700	3	2023	C	10.00	15361
3	2023	C	20.00	681	9	2022	P	2.50	15292
3	2023	C	18.00	680	7	2022	P	5.00	15194
9	2022	P	6.00	630	10	2022	P	3.25	14919
9	2022	P	7.50	621	9	2022	P	2.75	14883
10	2022	P	5.00	597	9	2022	P	3.00	14651
7	2022	P	7.20	586	7	2022	P	3.50	14604
10	2022	P	6.00	527	8	2022	P	3.00	14552
7	2022	P	8.50	505	10	2022	C	8.00	14530
7	2022	C	9.60	501	10	2023	P	2.00	14530
12	2022	C	15.00	501	11	2022	P	4.00	14494
8	2022	C	17.00	500	7	2022	P	3.00	14491
					7	2022	P	4.5	14400

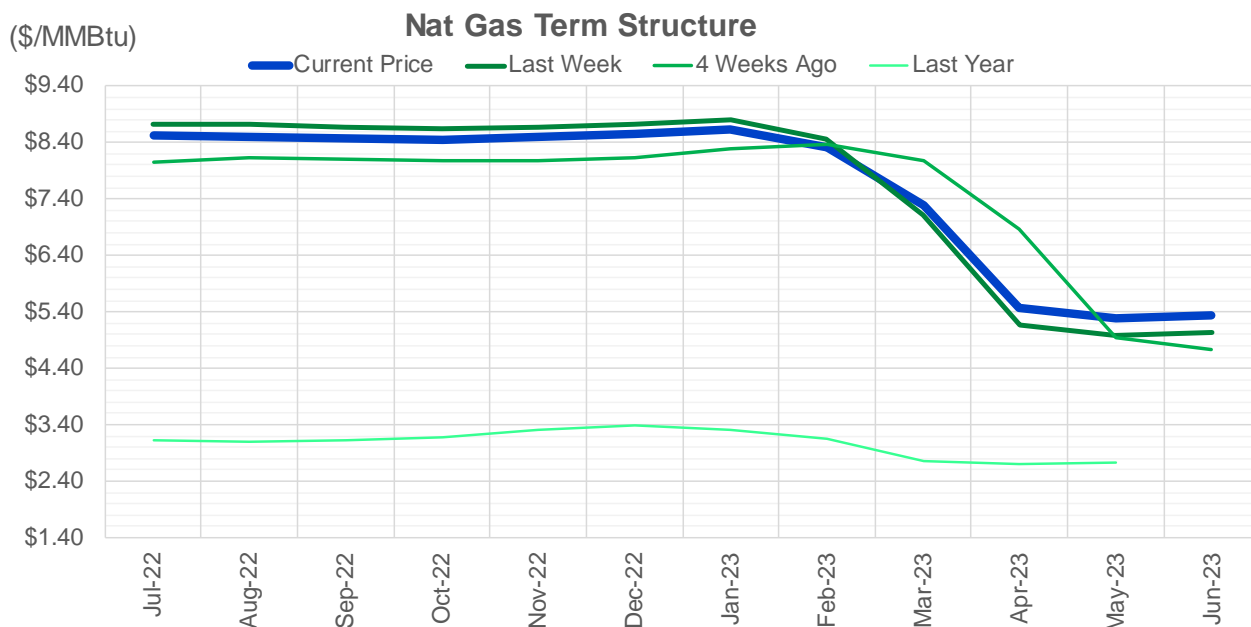
Source: CME, ICE

### Nat Gas Futures Open Interest

#### CME and ICE Combined

CME Henry Hub Futures (10,000 MMBtu)				ICE Henry Hub Futures Contract Equivalent (10,000 MM			
	Current	Prior	Daily Change		Current	Prior	Daily Change
JUL 22	202347	205638	-3291	JUL 22	93779	96824	-3044
AUG 22	72651	72260	391	AUG 22	60008	60588	-580
SEP 22	109076	108172	904	SEP 22	66575	66918	-343
OCT 22	95708	95142	566	OCT 22	71243	71421	-178
NOV 22	51081	50736	345	NOV 22	59677	59736	-58
DEC 22	52229	52145	84	DEC 22	64311	64084	228
JAN 23	66575	66258	317	JAN 23	66115	65771	344
FEB 23	28244	28018	226	FEB 23	54031	53936	95
MAR 23	42827	43010	-183	MAR 23	53212	53354	-142
APR 23	60525	59838	687	APR 23	52130	51986	144
MAY 23	62032	62207	-175	MAY 23	51867	51786	81
JUN 23	25499	25775	-276	JUN 23	45408	45598	-190
JUL 23	23212	23209	3	JUL 23	43258	43109	149
AUG 23	15408	15298	110	AUG 23	43342	43289	53
SEP 23	18926	18912	14	SEP 23	42246	42195	51
OCT 23	38665	39055	-390	OCT 23	49077	49022	56
NOV 23	12814	12911	-97	NOV 23	43440	43407	34
DEC 23	14052	14052	0	DEC 23	39629	39564	65
JAN 24	21024	20548	476	JAN 24	39925	39912	13
FEB 24	6141	6169	-28	FEB 24	26770	26729	41
MAR 24	14669	14404	265	MAR 24	31340	31331	9
APR 24	12427	12230	197	APR 24	27333	27335	-2
MAY 24	6661	6663	-2	MAY 24	26112	26141	-30
JUN 24	2007	2012	-5	JUN 24	22542	22540	2
JUL 24	2007	2013	-6	JUL 24	22764	22763	2
AUG 24	3012	3017	-5	AUG 24	22769	22767	2
SEP 24	1372	1377	-5	SEP 24	22180	22178	2
OCT 24	7016	6937	79	OCT 24	24926	24941	-16
NOV 24	4556	4511	45	NOV 24	23370	23369	1
DEC 24	7373	7378	-5	DEC 24	25627	25634	-7





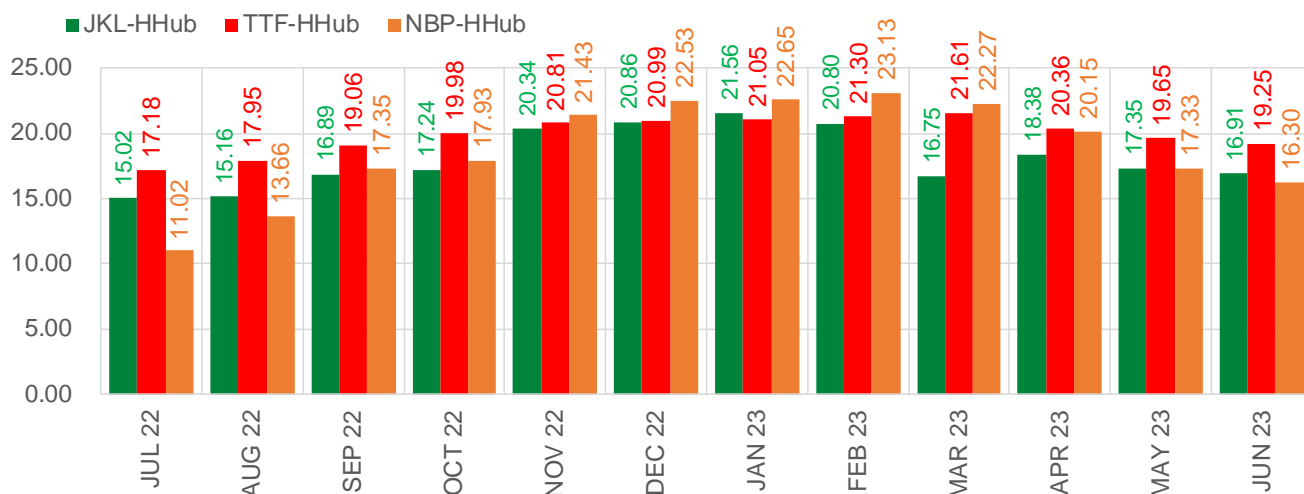
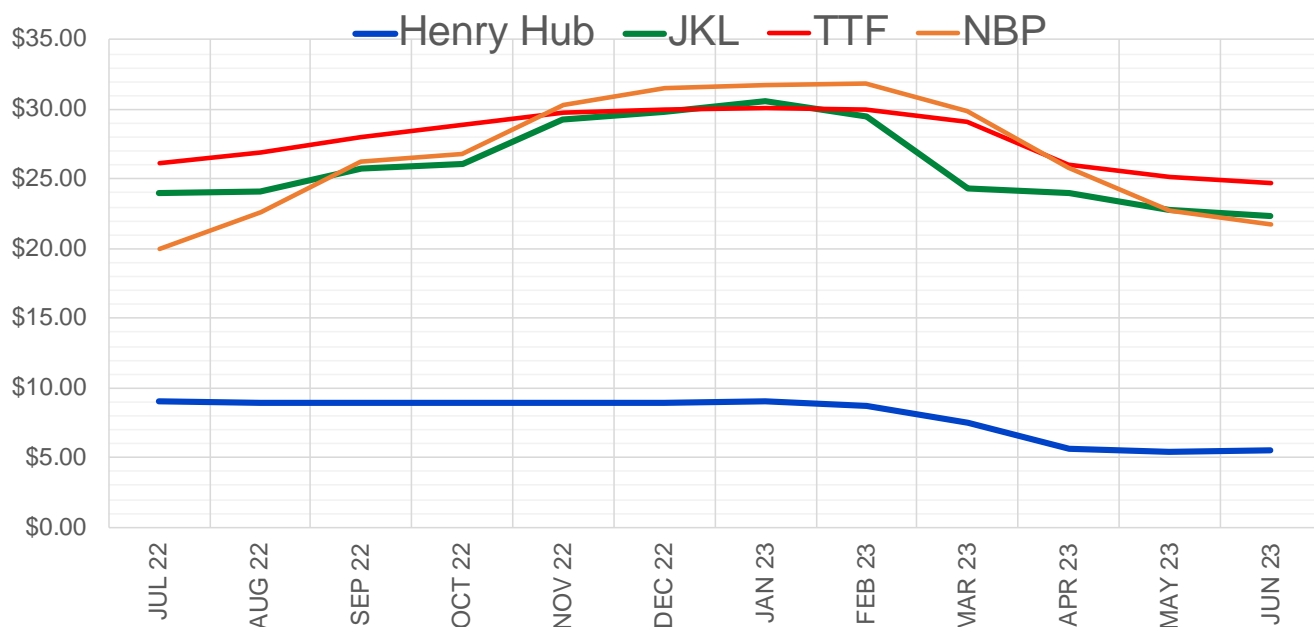
	Jul-22	Aug-22	Sep-22	Oct-22	Nov-22	Dec-22	Jan-23	Feb-23	Mar-23	Apr-23	May-23	Jun-23
Current Price	\$8.523	\$8.510	\$8.473	\$8.446	\$8.492	\$8.562	\$8.635	\$8.310	\$7.278	\$5.481	\$5.296	\$5.343
Last Week	\$8.727	\$8.712	\$8.673	\$8.640	\$8.668	\$8.735	\$8.810	\$8.467	\$7.105	\$5.176	\$4.980	\$5.034
vs. Last Week	-\$0.204	-\$0.202	-\$0.200	-\$0.194	-\$0.176	-\$0.173	-\$0.175	-\$0.157	\$0.173	\$0.305	\$0.316	\$0.309
4 Weeks Ago	\$8.043	\$8.128	\$8.110	\$8.068	\$8.069	\$8.142	\$8.278	\$8.380	\$8.083	\$6.862	\$4.937	\$4.742
vs. 4 Weeks Ago	\$0.480	\$0.382	\$0.363	\$0.378	\$0.423	\$0.420	\$0.357	-\$0.070	-\$0.805	-\$1.381	\$0.359	\$0.601
Last Year	\$3.097	\$3.114	\$3.105	\$3.124	\$3.184	\$3.303	\$3.386	\$3.322	\$3.140	\$2.755	\$2.704	\$2.735
vs. Last Year	\$5.426	\$5.396	\$5.368	\$5.322	\$5.308	\$5.259	\$5.249	\$4.988	\$4.138	\$2.726	\$2.592	\$2.608

	Units	Cash Settled	Prompt Settle	Cash to Prompt
AGT Citygate	\$/MMBtu	10.39	8.68	-1.71
TETCO M3	\$/MMBtu	7.27	8.20	0.93
FGT Zone 3	\$/MMBtu	7.26	8.84	1.58
Zone 6 NY	\$/MMBtu	7.26	8.17	0.91
Chicago Citygate	\$/MMBtu	7.94	8.51	0.57
Michcon	\$/MMBtu	8.02	8.44	0.42
Columbia TCO Pool	\$/MMBtu	7.42	8.05	0.63
Ventura	\$/MMBtu	8.80	8.44	-0.36
Rockies/Opal	\$/MMBtu	8.52	8.25	-0.27
El Paso Permian Basin	\$/MMBtu	7.64	7.96	0.32
Socal Citygate	\$/MMBtu	8.70	9.91	1.21
Malin	\$/MMBtu	8.80	8.69	-0.11
Houston Ship Channel	\$/MMBtu	8.19	8.63	0.44
Henry Hub Cash	\$/MMBtu	8.34	8.38	0.04
AECO Cash	C\$/GJ	6.17	6.07	-0.10
Station2 Cash	C\$/GJ	5.92	8.37	2.45
Dawn Cash	C\$/GJ	8.04	8.47	0.43

Source: CME, Bloomberg

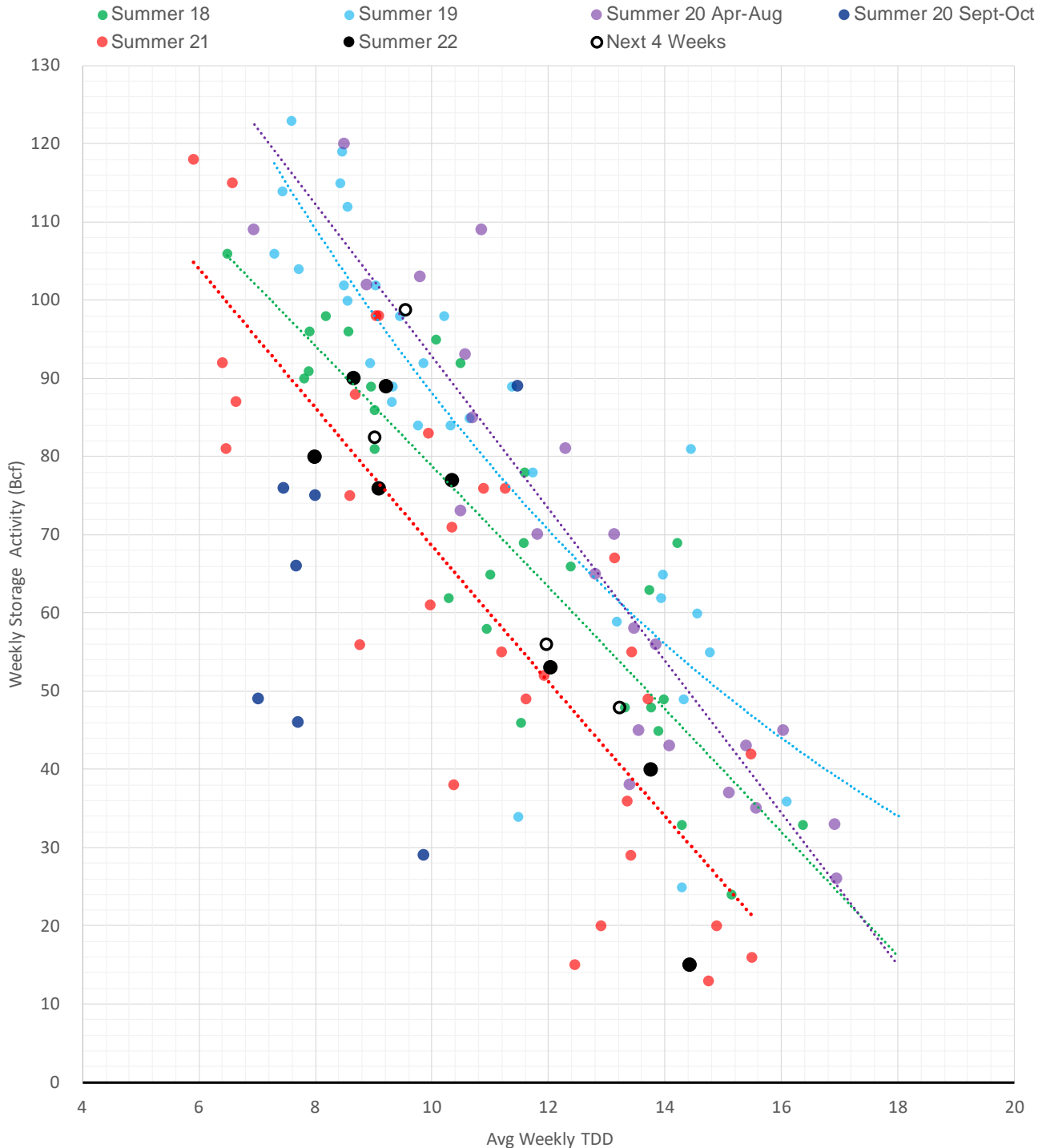
	Units	Current Price	vs. 4 Weeks			
			vs. Last Week	Ago	vs. Last Year	
NatGas Jul21/Oct21	\$/MMBtu	2.224	▲ 0.000	▲ 0.000	▲ 2.197	
NatGas Oct21/Nov21	\$/MMBtu	0.361	▲ 0.000	▲ 0.000	▲ 0.301	
NatGas Oct21/Jan22	\$/MMBtu	-1.817	▲ 0.000	▲ 0.000	▼ -2.079	
NatGas Apr22/Oct22	\$/MMBtu	3.110	▼ -0.194	▲ 0.377	▲ 3.075	
WTI Crude	\$/Bbl	118.87	▲ 3.800	▲ 9.100	▲ 49.250	
Brent Crude	\$/Bbl	119.72	▲ 0.290	▲ 7.330	▲ 47.830	
Fuel Oil, NY Harbour 1%	\$/Bbl	97.18	▲ 0.000	▲ 0.000	▲ 0.000	
Heating Oil	cents/Gallon	428.03	▲ 27.740	▲ 32.600	▲ 216.040	
Propane, Mt. Bel	cents/Gallon	1.25	▲ 0.012	▼ -0.028	▲ 0.329	
Ethane, Mt. Bel	cents/Gallon	0.64	▲ 0.040	▲ 0.041	▲ 0.372	
Coal, PRB	\$/MTon	12.30	▲ 0.000	▲ 0.000	▲ 0.000	
Coal, PRB	\$/MMBtu	0.70				
Coal, ILB	\$/MTon	31.05	▲ 0.000	▲ 0.000	▲ 0.000	
Coal, ILB	\$/MMBtu	1.32				

### Nat Gas Term Structure (\$MMBTU)



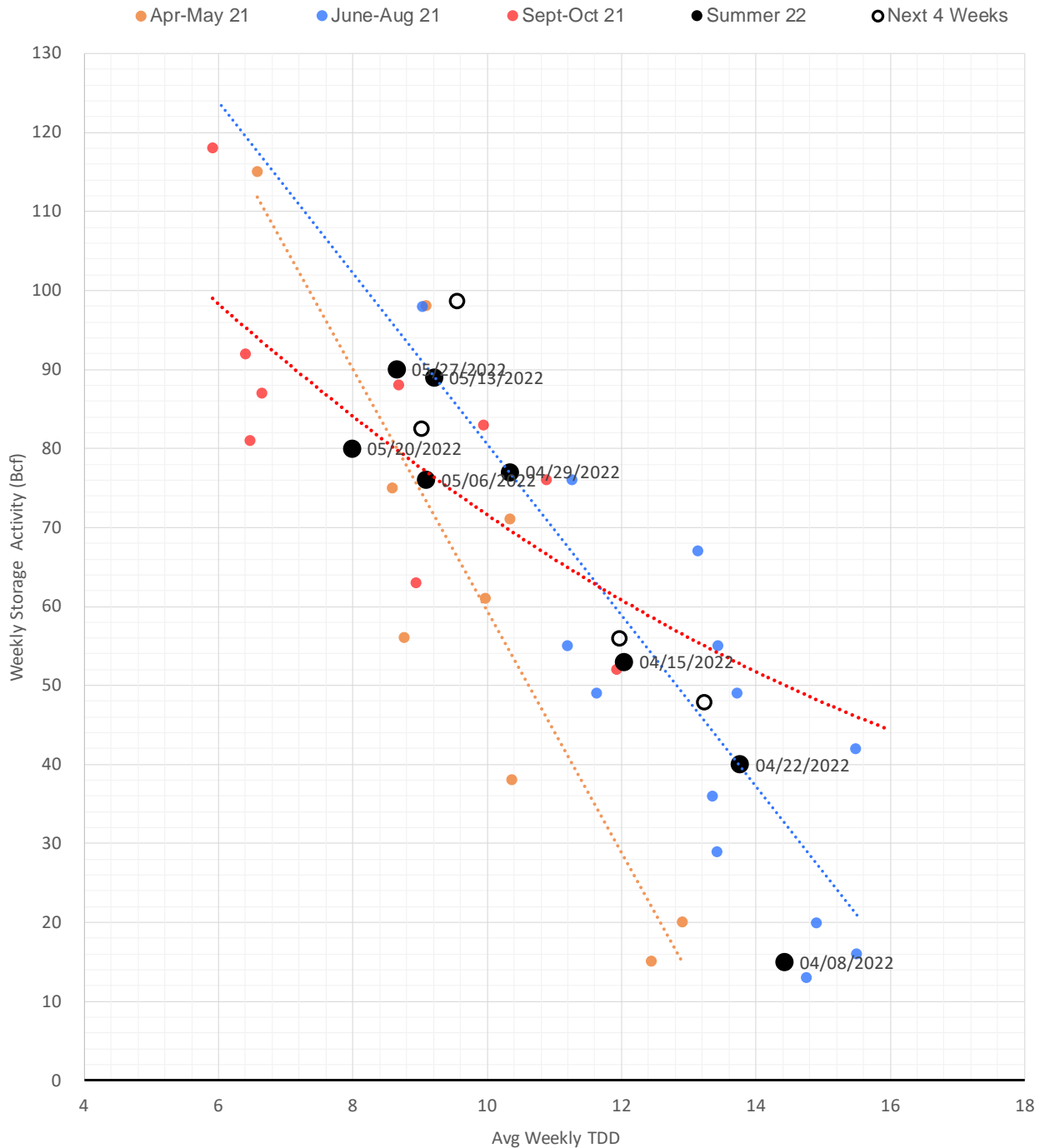
	JUL 22	AUG 22	SEP 22	OCT 22	NOV 22	DEC 22	JAN 23	FEB 23	MAR 23	APR 23	MAY 23	JUN 23
Henry Hub	\$9.000	\$8.970	\$8.917	\$8.890	\$8.915	\$8.981	\$9.055	\$8.722	\$7.555	\$5.643	\$5.449	\$5.492
JKL	\$24.015	\$24.130	\$25.810	\$26.130	\$29.255	\$29.840	\$30.610	\$29.520	\$24.300	\$24.025	\$22.795	\$22.400
JKL-HHub	\$15.015	\$15.160	\$16.893	\$17.240	\$20.340	\$20.859	\$21.555	\$20.798	\$16.745	\$18.382	\$17.346	\$16.908
TTF	\$26.179	\$26.915	\$27.978	\$28.872	\$29.724	\$29.969	\$30.109	\$30.020	\$29.165	\$26.006	\$25.102	\$24.742
TTF-HHub	\$17.179	\$17.945	\$19.061	\$19.982	\$20.809	\$20.988	\$21.054	\$21.298	\$21.610	\$20.363	\$19.653	\$19.250
NBP	\$20.018	\$22.626	\$26.268	\$26.817	\$30.341	\$31.510	\$31.707	\$31.852	\$29.829	\$25.789	\$22.782	\$21.787
NBP-HHub	\$11.018	\$13.656	\$17.351	\$17.927	\$21.426	\$22.529	\$22.652	\$23.130	\$22.274	\$20.146	\$17.333	\$16.295

### Weather Storage Model - Next 4 Week Forecast

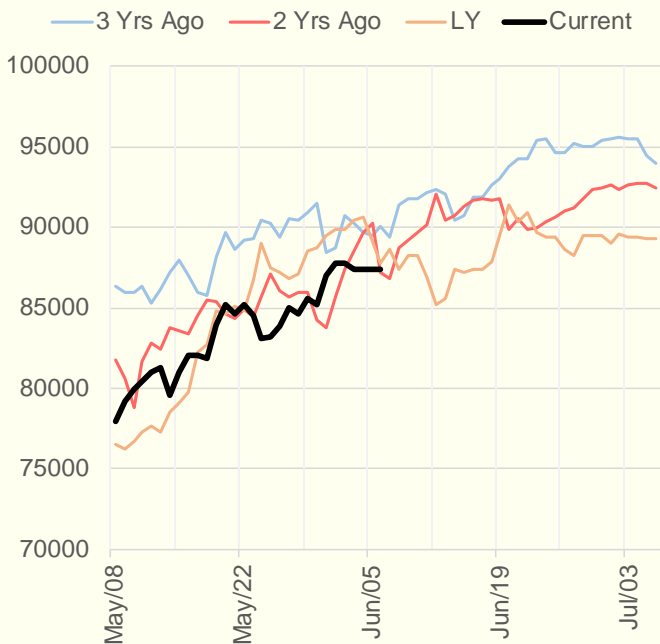




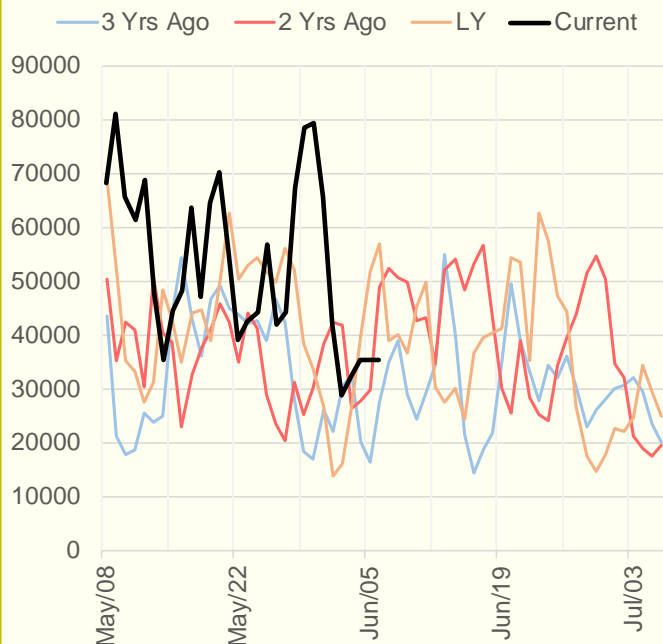
### Weather Storage Model for Summer 2021 & 2022



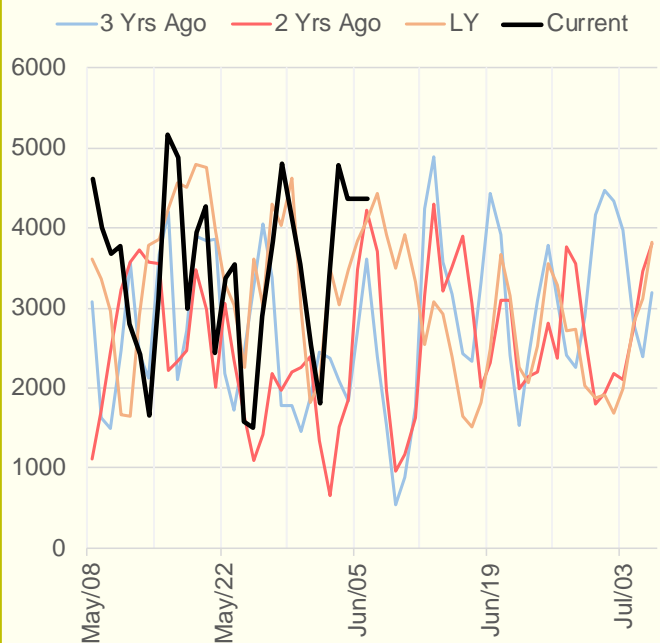
### NRC Nuclear Daily Output



### US Wind



### CALI Wind



### TEXAS Wind

