

	Current	Δ from YD	Δ from 7D Avg
Nat Gas Prompt	\$ 8.27	▲ \$ 0.13	▼ \$ (0.43)

	Current	Δ from YD	Δ from 7D Avg
WTI Prompt	\$ 115.51	▲ \$ 0.84	▲ \$ 1.3

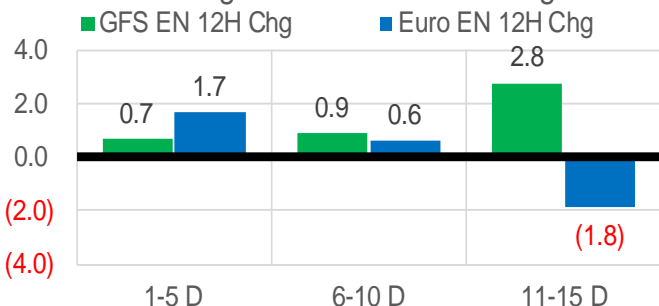
	Current	Δ from YD	Δ from 7D Avg
Brent Prompt	\$ 116.78	▼ \$ (6.06)	▼ \$ (2.4)

### Page Menu

- [Short-term Weather Model Outlooks](#)
- [Lower 48 Component Models](#)
- [Regional S/D Models Storage Projection](#)
- [Weather Model Storage Projection](#)
- [Supply – Demand Trends](#)
- [Nat Gas Options Volume and Open Interest](#)
- [Nat Gas Futures Open Interest](#)
- [Price Summary](#)

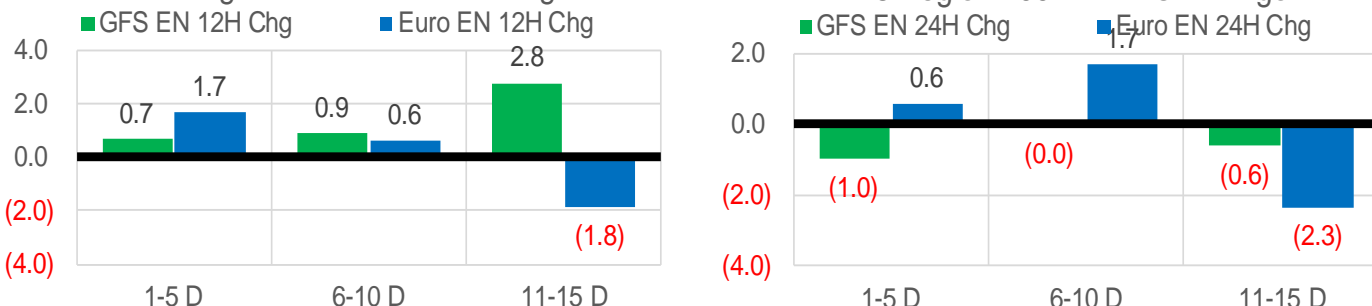
### Vs. 12H Ago

L48 Region - 00z TDD vs 12H Ago



### Vs. 24H Ago

L48 Region - 00z TDD vs 24H Ago



	Current	Δ from YD	Δ from 7D Avg
US Dry Production	95.1	▼ -1.81	▼ -1.27

	Current	Δ from YD	Δ from 7D Avg
US Power Burns	32.2	▼ -0.74	▲ 3.02

	Current	Δ from YD	Δ from 7D Avg
US ResComm	8.7	▼ -0.60	▼ -0.67

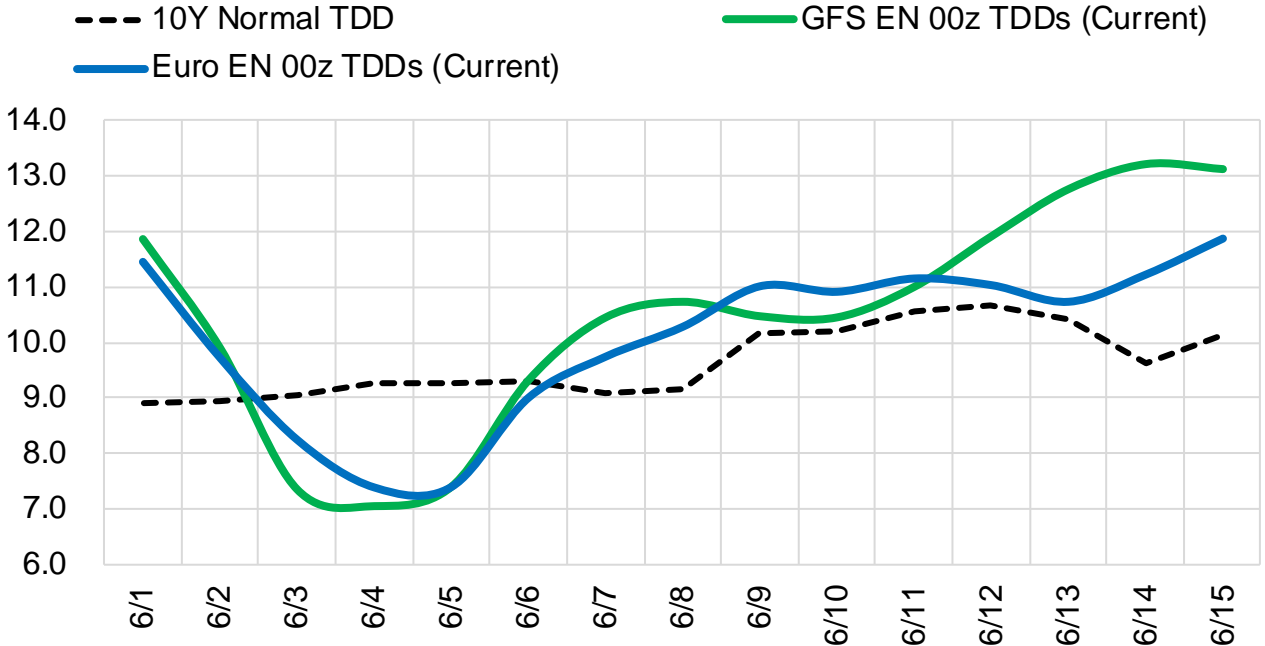
	Current	Δ from YD	Δ from 7D Avg
Canadian Imports	4.8	▼ -0.07	▲ 0.10

	Current	Δ from YD	Δ from 7D Avg
Net LNG Exports	12.7	▲ 0.71	▼ -0.26

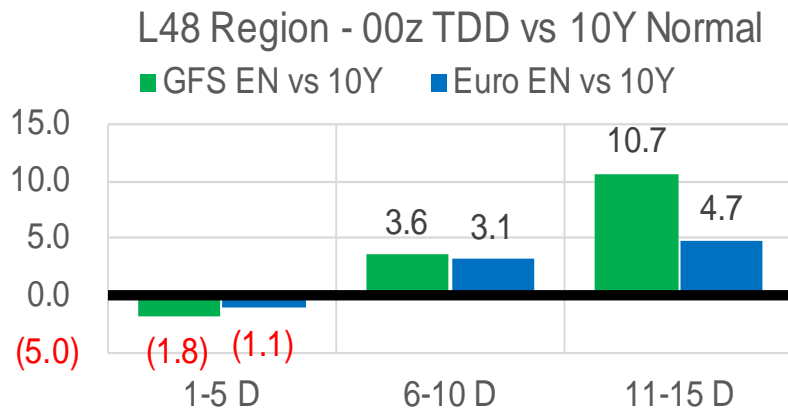
	Current	Δ from YD	Δ from 7D Avg
Mexican Exports	7.2	▲ 0.04	▲ 0.10

## Short-term Weather Model Outlooks (00z)

### L48 Region



## Vs. 10Y Normal



Source: WSI, Bloomberg

## Lower 48 Component Models

### Daily Balances

	26-May	27-May	28-May	29-May	30-May	31-May	1-Jun	DoD	vs. 7D
<b>Lower 48 Dry Production</b>	<b>95.8</b>	<b>96.7</b>	<b>96.9</b>	<b>96.4</b>	<b>96.7</b>	<b>96.9</b>	<b>95.1</b>	▼ -1.8	▼ -1.4
<b>Canadian Imports</b>	<b>4.8</b>	<b>4.8</b>	<b>4.7</b>	<b>4.6</b>	<b>4.8</b>	<b>4.9</b>	<b>4.8</b>	▼ -0.1	▲ 0.1
L48 Power	30.3	29.4	27.0	26.5	28.9	32.9	32.2	▼ -0.7	▲ 3.0
L48 Residential & Commercial	9.8	9.3	8.9	8.7	9.0	9.3	8.7	▼ -0.6	▼ -0.5
L48 Industrial	20.6	21.1	21.5	21.7	22.0	21.9	21.7	▼ -0.2	▲ 0.2
L48 Lease and Plant Fuel	5.2	5.2	5.2	5.2	5.2	5.3	5.1	▼ -0.1	▼ -0.1
L48 Pipeline Distribution	2.3	2.2	2.0	2.0	2.2	2.4	2.2	▼ -0.2	▲ 0.1
<b>L48 Regional Gas Consumption</b>	<b>68.2</b>	<b>67.1</b>	<b>64.7</b>	<b>64.1</b>	<b>67.3</b>	<b>71.8</b>	<b>69.9</b>	▼ -1.9	▲ 2.7
<b>Net LNG Delivered</b>	<b>13.23</b>	<b>13.01</b>	<b>13.12</b>	<b>13.03</b>	<b>12.82</b>	<b>11.95</b>	<b>12.66</b>	▲ 0.7	▼ -0.2
<b>Total Mexican Exports</b>	<b>7.1</b>	<b>7.1</b>	<b>7.1</b>	<b>6.7</b>	<b>7.2</b>	<b>7.2</b>	<b>7.2</b>	▲ 0.0	▲ 0.1
Implied Daily Storage Activity	12.1	14.2	16.6	17.1	14.2	10.9	10.2		
EIA Reported Daily Storage Activity									
Daily Model Error									

### EIA Storage Week Balances

	22-Apr	29-Apr	6-May	13-May	20-May	27-May	WoW	vs. 4W
<b>Lower 48 Dry Production</b>	<b>96.6</b>	<b>95.6</b>	<b>95.5</b>	<b>95.7</b>	<b>94.8</b>	<b>95.9</b>	▲ 1.1	▲ 0.5
<b>Canadian Imports</b>	<b>5.8</b>	<b>6.1</b>	<b>5.9</b>	<b>5.2</b>	<b>4.9</b>	<b>4.9</b>	▼ 0.0	▼ -0.7
L48 Power	24.9	24.7	26.2	26.8	30.4	30.0	▼ -0.4	▲ 3.0
L48 Residential & Commercial	24.4	18.8	16.8	14.5	10.0	11.6	▲ 1.6	▼ -3.4
L48 Industrial	21.5	21.7	21.1	20.9	21.3	20.0	▼ -1.3	▼ -1.3
L48 Lease and Plant Fuel	5.3	5.2	5.2	5.2	5.1	5.2	▲ 0.1	▲ 0.0
L48 Pipeline Distribution	2.7	2.4	2.4	2.3	2.3	2.4	▲ 0.1	▼ 0.0
<b>L48 Regional Gas Consumption</b>	<b>78.9</b>	<b>72.8</b>	<b>71.8</b>	<b>69.6</b>	<b>69.1</b>	<b>69.2</b>	▲ 0.0	▼ -1.7
<b>Net LNG Exports</b>	<b>12.1</b>	<b>12.2</b>	<b>12.2</b>	<b>12.2</b>	<b>12.2</b>	<b>13.0</b>	▲ 0.8	▲ 0.8
<b>Total Mexican Exports</b>	<b>6.7</b>	<b>6.9</b>	<b>6.9</b>	<b>7.0</b>	<b>7.0</b>	<b>7.1</b>	▲ 0.1	▲ 0.1
Implied Daily Storage Activity	4.7	9.7	10.6	12.1	11.4	11.5	0.1	
EIA Reported Daily Storage Activity	5.7	11.0	10.9	12.7	11.4			
Daily Model Error	-1.0	-1.3	-0.3	-0.7	0.0			

### Monthly Balances

	2Yr Ago Jun-20	LY Jun-21	Jan-22	Feb-22	Mar-22	Apr-22	MTD May-22	MoM	vs. LY
<b>Lower 48 Dry Production</b>	<b>87.9</b>	<b>93.2</b>	<b>93.4</b>	<b>92.6</b>	<b>93.5</b>	<b>95.9</b>	<b>95.7</b>	▼ -0.2	▲ 2.5
<b>Canadian Imports</b>	<b>4.0</b>	<b>4.8</b>	<b>6.7</b>	<b>6.6</b>	<b>5.2</b>	<b>5.8</b>	<b>5.1</b>	▼ -0.7	▲ 0.3
L48 Power	34.9	35.9	31.5	28.8	25.5	24.7	28.8	▲ 4.1	▼ -7.1
L48 Residential & Commercial	8.8	8.9	49.2	44.5	31.5	22.5	12.3	▼ -10.3	▲ 3.4
L48 Industrial	20.0	20.2	24.7	22.4	19.7	21.4	20.9	▼ -0.4	▲ 0.7
L48 Lease and Plant Fuel	4.8	5.0	5.1	5.1	5.2	5.2	5.2	▼ -0.1	▲ 0.1
L48 Pipeline Distribution	2.3	2.4	3.8	3.6	2.9	2.6	2.3	▼ -0.3	▼ -0.1
<b>L48 Regional Gas Consumption</b>	<b>70.8</b>	<b>72.5</b>	<b>114.3</b>	<b>104.4</b>	<b>84.7</b>	<b>76.4</b>	<b>69.5</b>	▼ -6.9	▼ -3.0
<b>Net LNG Exports</b>	<b>4.0</b>	<b>10.2</b>	<b>12.4</b>	<b>12.4</b>	<b>12.9</b>	<b>12.3</b>	<b>12.5</b>	▲ 0.2	▲ 2.3
<b>Total Mexican Exports</b>	<b>5.5</b>	<b>7.4</b>	<b>6.3</b>	<b>6.2</b>	<b>6.5</b>	<b>6.7</b>	<b>7.0</b>	▲ 0.3	▼ -0.4
Implied Daily Storage Activity	11.5	8.0	-32.9	-23.7	-5.4	6.2	11.8		
EIA Reported Daily Storage Activity									
Daily Model Error									

Source: Bloomberg, analytix.ai

## Daily Average Generation Data

### Nuclear Generation Daily Average - GWh (NRC)

	24-May	25-May	26-May	27-May	28-May	29-May	30-May	DoD	vs. 7D
NRC Nuclear Daily Output	83.1	83.2	83.8	85.0	84.6	85.6	85.2	-0.3	1.0
NRC Nuclear Max Capacity	104.9	104.9	104.9	104.9	104.9	104.9	104.9	0.0	0.0
NRC Nuclear Outage	21.8	21.7	21.0	19.8	20.3	19.3	19.6	0.3	-1.0
NRC % Nuclear Cap Utilization	84.5	84.6	85.3	86.5	86.0	87.0	86.7	-0.3	1.0

### Wind Generation Daily Average - MWh (EIA)

	24-May	25-May	26-May	27-May	28-May	29-May	30-May	DoD	vs. 7D
CALI Wind	1574	1508	2889	3837	4802	4175	3545	-630	414
TEXAS Wind	13490	13464	6857	12960	21861	24730	22862	-1868	7302
US Wind	44206	56894	41999	44188	67528	79029	80197	1168	24556

### Generation Daily Average - MWh (EIA)

	24-May	25-May	26-May	27-May	28-May	29-May	30-May	DoD	vs. 7D
US Wind	44206	56894	41999	44188	67528	79029	80197	1168	24556
US Solar	16359	16338	18200	17184	17573	16230	18363	2133	1382
US Petroleum	432	478	392	643	733	643	856	214	303
US Other	7042	7131	6939	7029	6735	7423	7843	420	794
US Coal	88562	82232	87011	88804	75152	75350	85518	10168	2667
US Nuke	86890	87125	87771	88827	88698	88689	89060	372	1060
US Hydro	35039	34945	37534	36066	33613	31721	35118	3398	299
<b>US Gas</b>	<b>155662</b>	<b>152243</b>	<b>162171</b>	<b>163178</b>	<b>131189</b>	<b>126941</b>	<b>144006</b>	<b>17065</b>	<b>-4558</b>

See National Wind and Nuclear daily charts

Source: Bloomberg, analytix.ai

## Storage Week Average Generation Data

### Nuclear Generation Weekly Average - GWh (NRC)

	22-Apr	29-Apr	6-May	13-May	20-May	27-May	WoW	WoW Bcf/d Impact
NRC Nuclear Daily Output	72.3	73.5	76.7	79.3	81.7	84.2	2.5	-0.5
NRC Nuclear Max Capacity	104.9	104.9	104.9	104.9	104.9	104.9	0.0	
NRC Nuclear Outage	32.6	31.4	28.2	25.5	23.2	20.6	-2.5	
NRC % Nuclear Cap Utilization	73.5	74.8	78.0	80.7	83.1	85.7	2.6	

### Wind Generation Weekly Average - MWh (EIA)

	22-Apr	29-Apr	6-May	13-May	20-May	27-May	WoW	WoW Bcf/d Impact
CALI Wind	3613	3153	2929	3983	3452	2798	-654	0.1
TEXAS Wind	15612	18327	16902	17705	15706	14010	-1696	0.3
US Wind	61570	66986	57244	64974	50251	50129	-122	0.0
							0%	
							-0.1	

### Generation Weekly Average - MWh (EIA)

	22-Apr	29-Apr	6-May	13-May	20-May	27-May	WoW	WoW Bcf/d Impact
						est.		
US Wind	61570	66986	57244	64974	50251	50129	-122	<b>0.0</b>
US Solar	15897	16968	17033	18000	19634	17310	-2324	<b>0.4</b>
US Petroleum	984	992	931	341	262	448	186	<b>0.0</b>
US Other	7544	7717	7529	7615	7871	7568	-303	0.1
US Coal	79575	77533	78898	81273	88922	88449	-474	0.1
US Nuke	76478	77438	80558	83391	85510	88021	2511	<b>-0.5</b>
US Hydro	28355	26721	26831	28968	31973	33763	1790	-0.3
<b>US Gas</b>	<b>133401</b>	<b>131482</b>	<b>145774</b>	<b>148473</b>	<b>172224</b>	<b>159667</b>	<b>-12557</b>	<b>-2.3</b>

See National Wind and Nuclear daily charts

Source: Bloomberg, analytix.ai

## Monthly Average Generation Data

### Nuclear Generation Monthly Average - GWh (NRC)

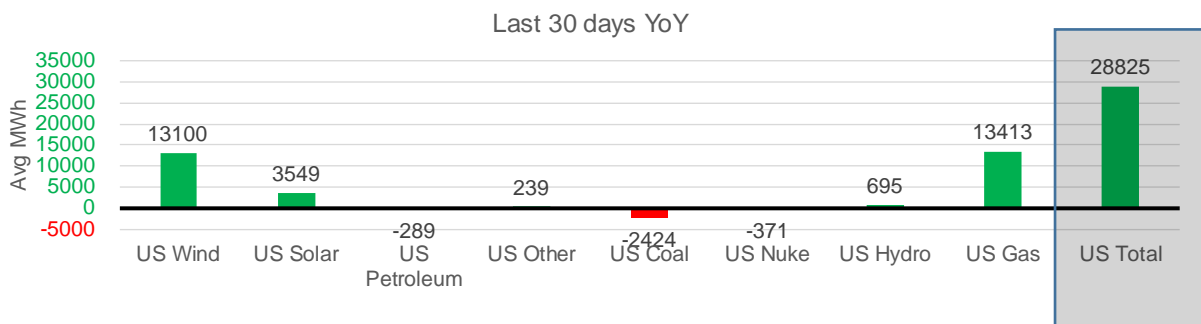
	2Yr Ago	LY	MTD				Last 30 days	Last 30 days YoY
	Same 30 days	Same 30 days	Feb-22	Mar-22	Apr-22	May-22		
NRC Nuclear Daily Output	83.2	82.5	87.3	81.3	73.3	76.3	82.2	-0.3
NRC Nuclear Max Capacity	104.9	104.9	104.9	104.9	104.9	104.9	104.9	0.0
NRC Nuclear Outage	21.7	22.4	17.5	23.6	31.6	28.6	22.7	0.3
NRC % Nuclear Cap Utilization	84.6	83.8	88.8	82.7	74.5	77.6	83.6	-0.3

### Wind Generation Monthly Average - MWh (EIA)

	2Yr Ago	LY	MTD				Last 30 days	Last 30 days YoY
	Same 30 days	Same 30 days	Feb-22	Mar-22	Apr-22	May-22		
CALI Wind	2427	3277	1495	2250	3186	4170	3400	123
TEXAS Wind	9998	12243	11750	14837	16311	18569	16805	4561
US Wind	37098	44246	54543	58528	64183	65967	57346	13100

### Generation Monthly Average - MWh (EIA)

	2Yr Ago	LY	MTD				Last 30 days	Last 30 days YoY
	Same 30 days	Same 30 days	Feb-22	Mar-22	Apr-22	May-22		
US Wind	37098	44246	54543	58528	64183	65967	57346	▲ 13100
US Solar	11268	14523	12442	14057	16208	15329	18071	▲ 3549
US Petroleum	747	783	1331	985	985	795	494	▼ -289
US Other	8284	7414	8632	7206	7386	6999	7653	▲ 239
US Coal	63576	87876	105631	82290	77545	73050	85452	▼ -2424
US Nuke	86983	86240	92027	85256	77217	80302	85869	▼ -371
US Hydro	38030	31095	32284	33959	29022	24512	31791	▲ 695
<b>US Gas</b>	<b>145802</b>	<b>143546</b>	<b>153733</b>	<b>137232</b>	<b>133068</b>	<b>120576</b>	<b>156960</b>	<b>▲ 13413</b>
<b>US Total</b>	<b>390560</b>	<b>416071</b>	<b>461069</b>	<b>419842</b>	<b>406184</b>	<b>388454</b>	<b>444896</b>	<b>▲ 28825</b>



See National Wind and Nuclear daily charts

Source: Bloomberg, analytix.ai

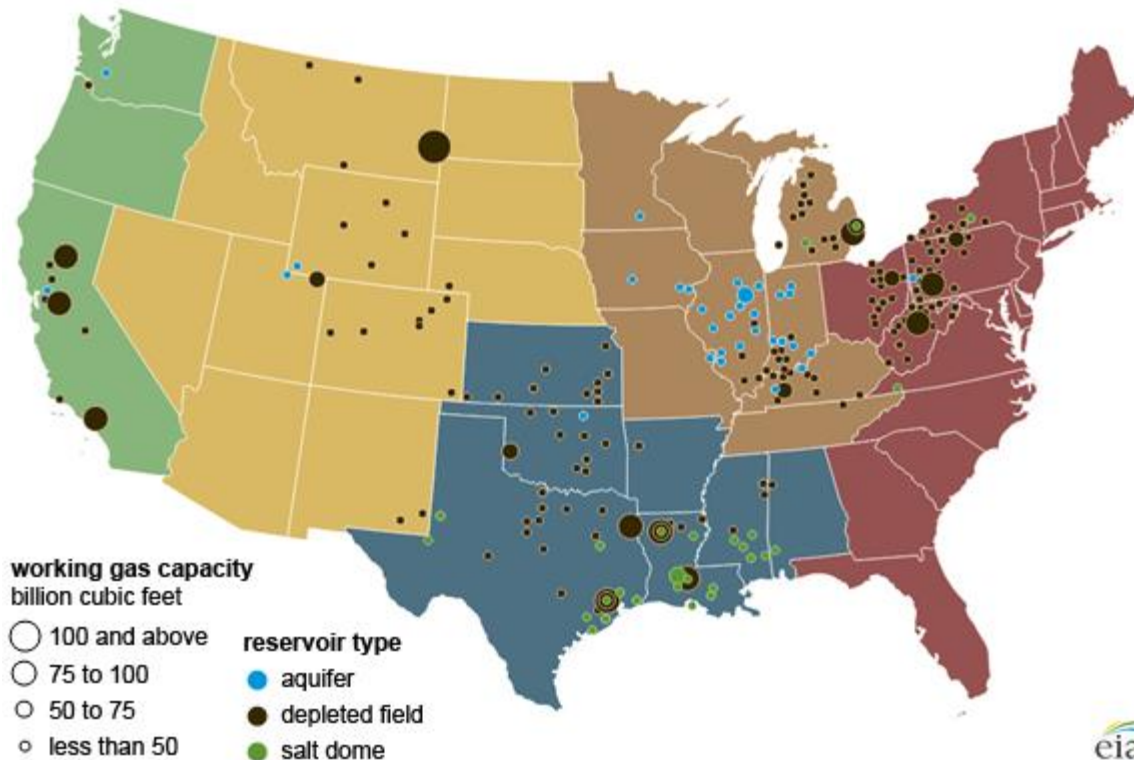
## Regional S/D Models Storage Projection

Week Ending 27-May

	Daily Raw Storage	Daily Adjustment Factor	Daily Average Storage Activity (Adjusted) *	Weekly Adjusted Storage Activity
L48	12.4	-0.3	12.1	84
East	2.5	2.3	4.8	33
Midwest	4.9	-1.0	3.8	27
Mountain	4.4	-3.9	0.5	3
South Central	-1.0	3.0	2.0	14
Pacific	1.6	-0.6	1.0	7

\*Adjustment Factor is calculated based on historical regional deltas

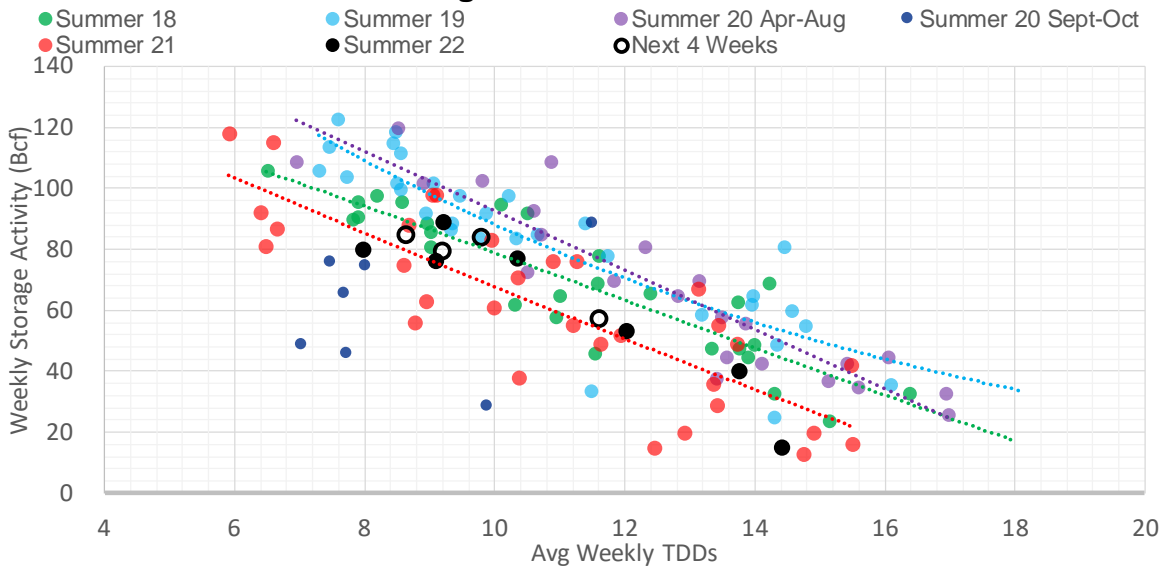
U.S. underground natural gas storage facilities by type (July 2015)



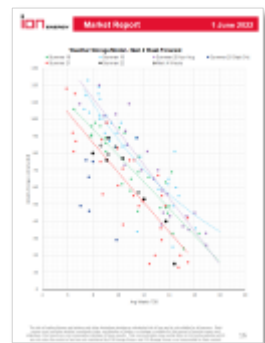
## Weather Model Storage Projection

Next report and beyond		
Week Ending	TDDs	Week Storage Projection
27-May	8.6	84
03-Jun	9.8	84
10-Jun	9.2	79
17-Jun	11.6	57

### Weather Storage Model - Next 4 Week Forecast

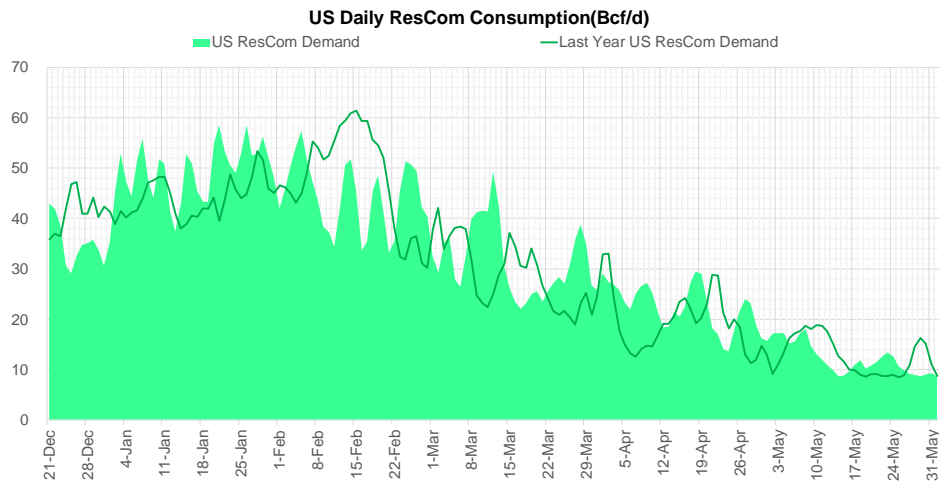
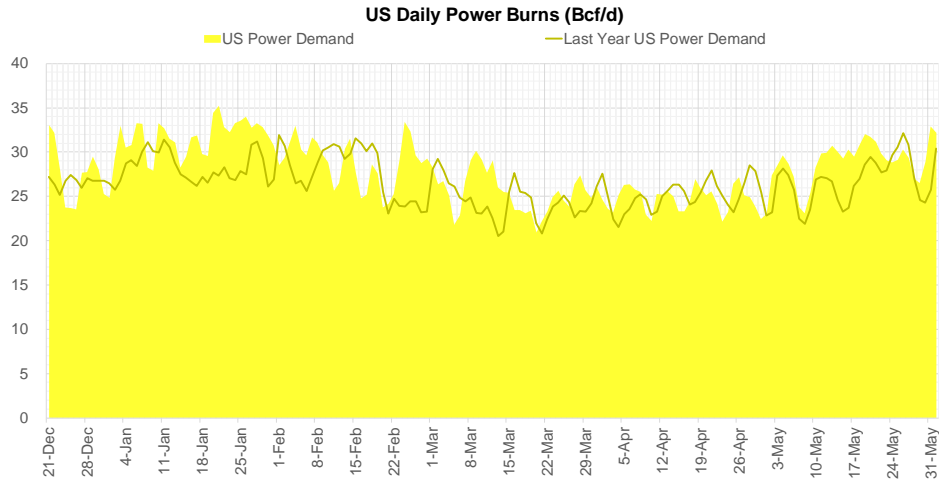
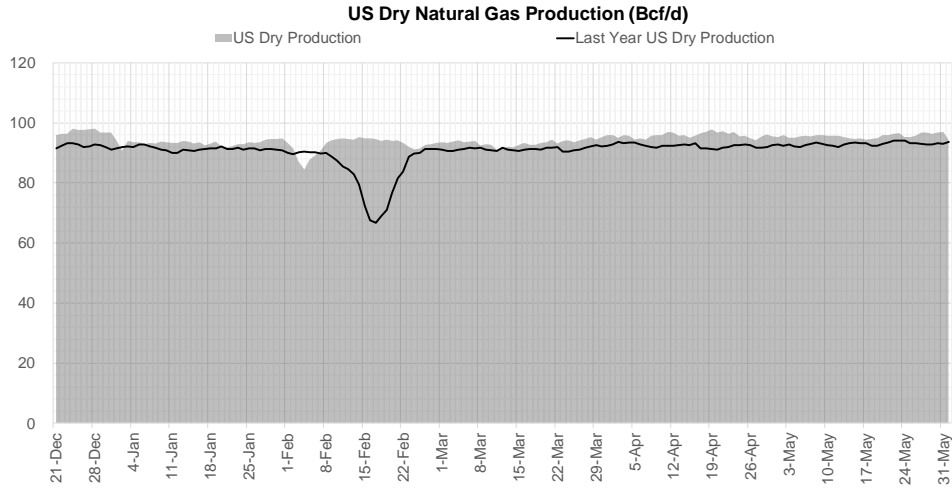


Go to larger image





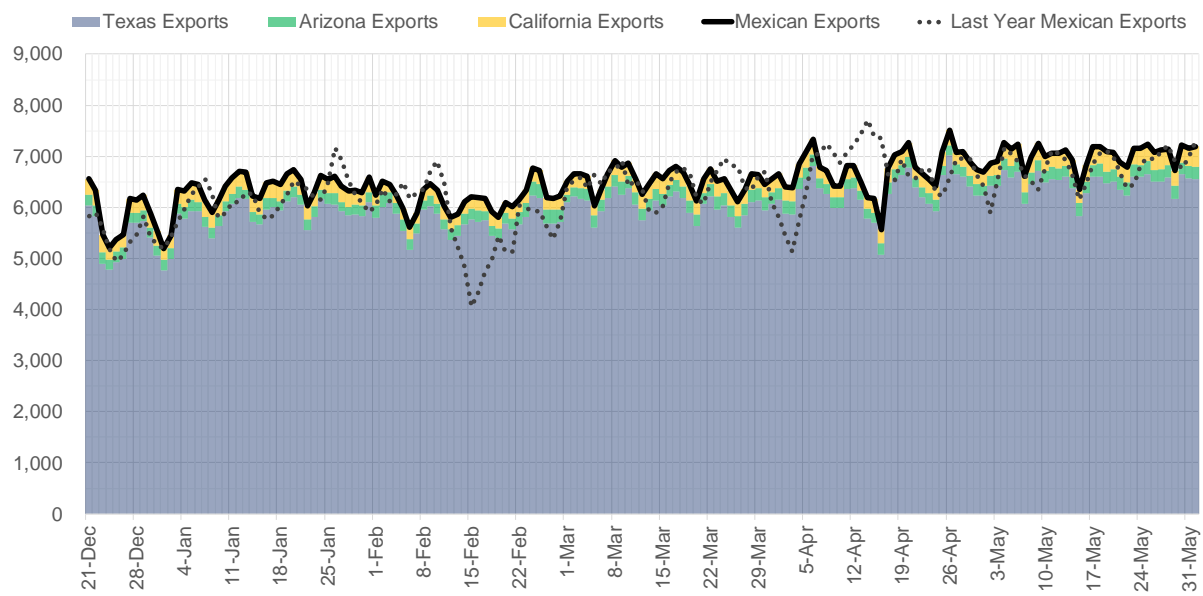
## Supply – Demand Trends



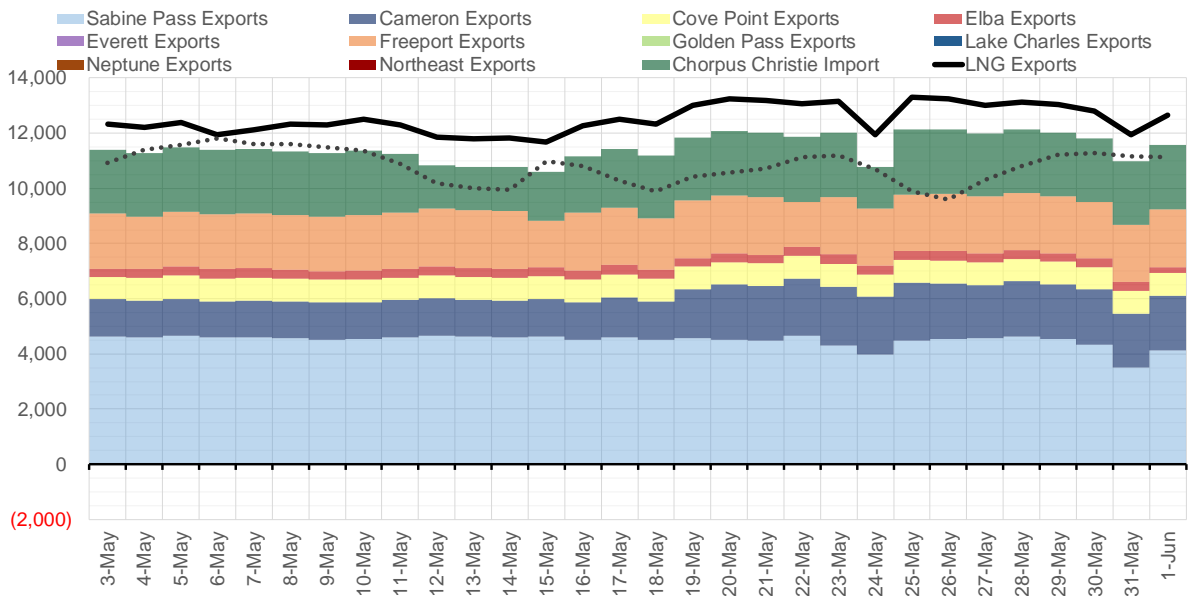
Source: Bloomberg

The risk of trading futures and options and other derivatives involves a substantial risk of loss and is not suitable for all persons. Each person must consider whether a particular trade, combination of trades, or strategy is suitable for that person's financial means and objectives. Past results are not necessarily indicative of future results. This communication may contain links to third party websites which are not under the control of and are not maintained by ION Energy Group, and ION Energy Group is not responsible for their content.

### Mexican Exports (MMcf/d)



### Net LNG Exports - Last 30 days (MMcf/d)



Source: Bloomberg

The risk of trading futures and options and other derivatives involves a substantial risk of loss and is not suitable for all persons. Each person must consider whether a particular trade, combination of trades, or strategy is suitable for that person's financial means and objectives. Past results are not necessarily indicative of future results. This communication may contain links to third party websites which are not under the control of and are not maintained by ION Energy Group, and ION Energy Group is not responsible for their content.

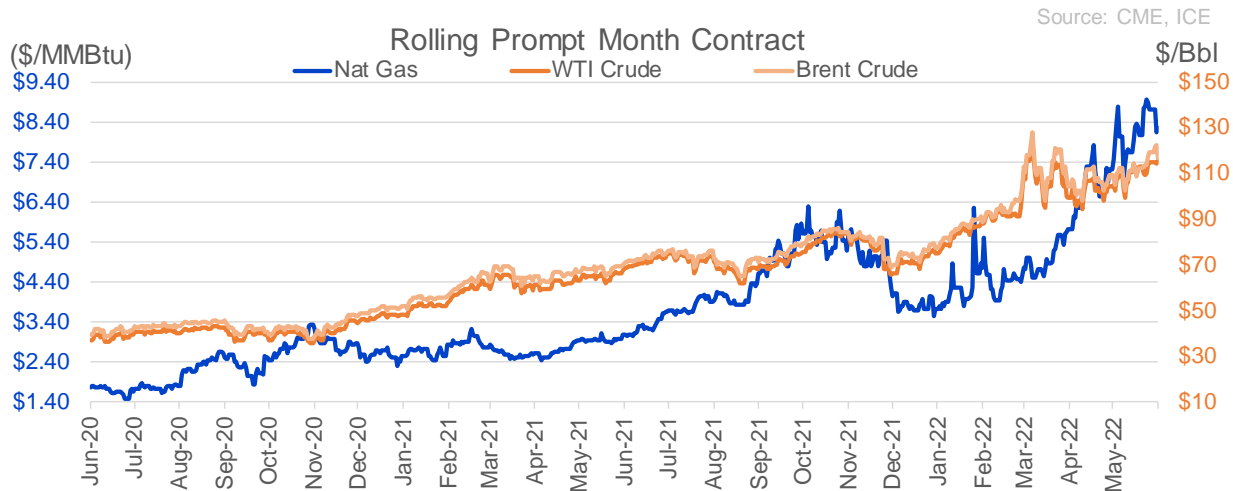
## Nat Gas Options Volume and Open Interest CME and ICE Combined

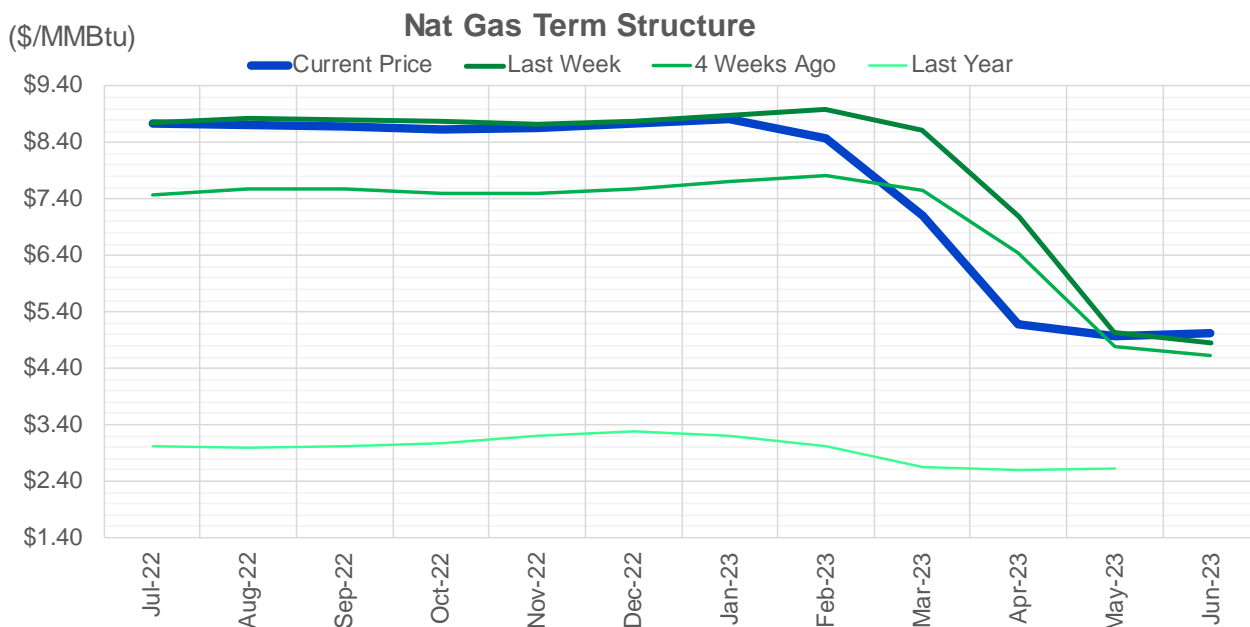
CONTRACT MONTH	CONTRACT YEAR	PUT/CALL	STRIKE	CUMULATIVE VOL	CONTRACT MONTH	CONTRACT YEAR	PUT/CALL	STRIKE	CUMULATIVE OI
7	2022	P	7.00	4367	8	2022	C	10.00	49951
7	2022	C	10.00	3249	8	2022	C	10.50	37432
7	2022	C	9.00	3016	10	2022	C	6.00	35308
8	2022	C	10.00	2858	8	2022	C	12.00	31681
7	2022	C	11.00	2749	7	2022	C	11.00	31277
8	2022	C	12.00	2697	10	2022	C	5.00	24089
8	2022	P	5.50	2412	9	2022	C	6.00	23673
8	2022	C	17.00	2400	8	2022	C	12.10	22302
7	2022	P	6.50	2274	7	2022	C	10.00	21996
8	2022	C	15.00	2236	7	2022	C	9.00	21954
8	2022	P	5.00	1926	10	2022	P	3.00	20785
7	2022	P	7.50	1808	10	2022	P	6.00	20643
7	2022	P	7.25	1791	10	2022	P	3.50	20524
8	2022	P	6.00	1512	7	2022	C	11.10	20200
8	2022	C	20.00	1510	9	2022	C	10.00	20066
8	2022	C	9.50	1500	7	2022	P	6.00	20054
7	2022	C	12.00	1441	10	2022	P	2.50	19868
8	2022	P	7.00	1370	8	2022	C	6.00	19483
8	2022	P	6.50	1226	7	2022	C	6.00	18943
3	2023	C	7.00	1225	7	2022	P	7.00	18722
3	2023	C	8.00	1100	8	2022	C	7.00	18259
8	2022	C	10.50	1084	12	2022	C	5.00	18221
10	2022	C	10.00	1054	7	2022	C	8.00	18132
10	2022	P	6.00	1017	9	2022	C	7.00	18091
10	2022	C	11.00	1006	7	2022	C	7.00	17660
9	2022	P	5.00	965	10	2022	P	2.00	17408
7	2022	C	15.00	938	7	2022	P	3.25	17344
9	2022	P	6.00	922	10	2022	P	4.00	17068
7	2022	C	13.25	902	8	2022	C	9.00	17021
1	2023	C	9.00	800	5	2023	P	2.00	16336
3	2023	C	10.00	800	8	2022	P	6.00	16166
9	2022	C	10.00	793	1	2023	C	10.00	16099
8	2022	P	8.00	774	2	2023	C	10.00	16074
8	2022	P	7.50	703	7	2022	P	5.50	15601
7	2022	P	8.50	662	7	2022	P	5.00	15492
8	2022	P	4.00	652	9	2022	P	2.50	15291
7	2022	P	6.00	636	3	2023	C	10.00	14911
8	2022	P	4.50	634	9	2022	P	2.75	14883
8	2022	C	13.00	629	10	2022	P	3.25	14817
11	2022	C	10.00	609	10	2022	C	10.00	14665
7	2022	P	4.00	607	9	2022	P	3.00	14626
10	2022	P	4.50	600	7	2022	P	3.50	14604
3	2023	C	9.00	600	8	2022	P	3.00	14552
12	2022	C	10.00	599	10	2022	C	8.00	14530
7	2022	C	8.50	594	11	2022	P	4.00	14494
7	2022	P	4.50	594	7	2022	P	3.00	14491
7	2022	C	17.00	589	12	2022	C	6.00	13934
10	2022	C	12.00	579	8	2022	C	8.00	13880
7	2022	C	9.50	576	10	2023	P	2.00	13680
					10	2022	P	5	13504

Source: CME, ICE

## Nat Gas Futures Open Interest CME and ICE Combined

CME Henry Hub Futures (10,000 MMBtu)				ICE Henry Hub Futures Contract Equivalent (10,000 MM			
	Current	Prior	Daily Change		Current	Prior	Daily Change
JUL 22	210103	209358	745	JUL 22	93914	91504	2411
AUG 22	71197	68140	3057	AUG 22	59706	59349	357
SEP 22	107122	107122	0	SEP 22	66266	65751	515
OCT 22	94276	93990	286	OCT 22	72390	72488	-98
NOV 22	49914	49636	278	NOV 22	59607	59298	309
DEC 22	50028	50487	-459	DEC 22	62369	62292	78
JAN 23	64370	64207	163	JAN 23	64349	64741	-392
FEB 23	27776	27823	-47	FEB 23	54724	55351	-628
MAR 23	40492	39791	701	MAR 23	54234	54473	-240
APR 23	59213	59342	-129	APR 23	51839	51798	41
MAY 23	61661	61323	338	MAY 23	51981	52042	-61
JUN 23	26246	26086	160	JUN 23	45696	45592	104
JUL 23	23718	24023	-305	JUL 23	43215	43170	45
AUG 23	16106	15713	393	AUG 23	43372	43297	75
SEP 23	19089	18949	140	SEP 23	42237	42163	74
OCT 23	38935	38369	566	OCT 23	49045	48909	136
NOV 23	12962	12787	175	NOV 23	43354	43728	-373
DEC 23	14336	14552	-216	DEC 23	39413	39633	-221
JAN 24	20887	20160	727	JAN 24	39673	39592	81
FEB 24	6136	6094	42	FEB 24	26708	26701	7
MAR 24	14060	14033	27	MAR 24	31164	31180	-16
APR 24	12105	12125	-20	APR 24	27242	27273	-31
MAY 24	6624	6569	55	MAY 24	26048	26033	15
JUN 24	1895	1845	50	JUN 24	22437	22412	25
JUL 24	2022	1966	56	JUL 24	22673	22648	25
AUG 24	3027	2983	44	AUG 24	22708	22683	25
SEP 24	1376	1330	46	SEP 24	22088	22063	25
OCT 24	6843	6846	-3	OCT 24	24930	24905	25
NOV 24	4491	4441	50	NOV 24	23253	23221	32
DEC 24	7370	7325	45	DEC 24	25470	25436	34





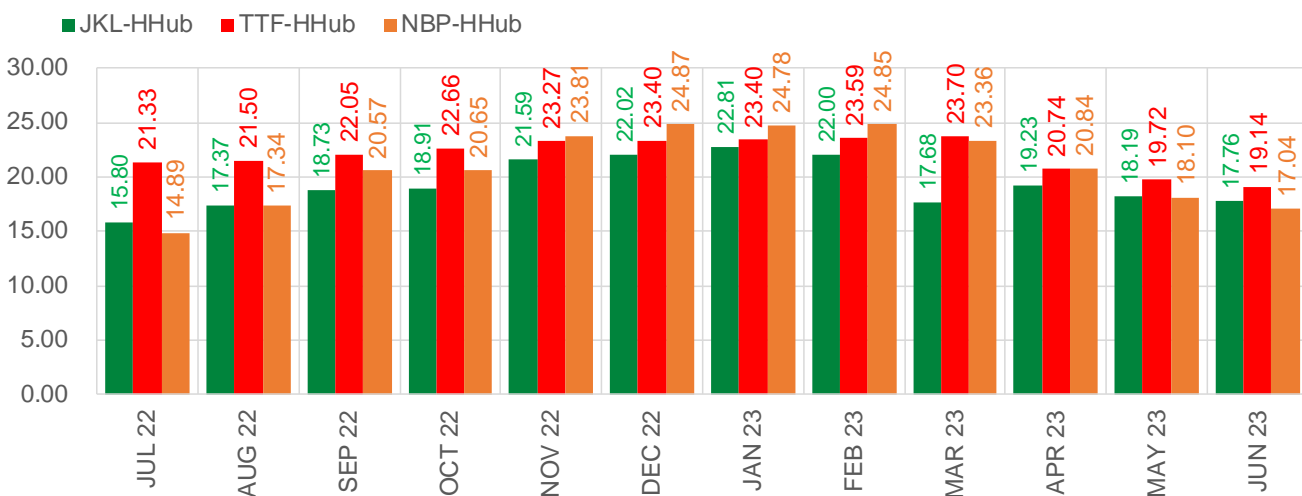
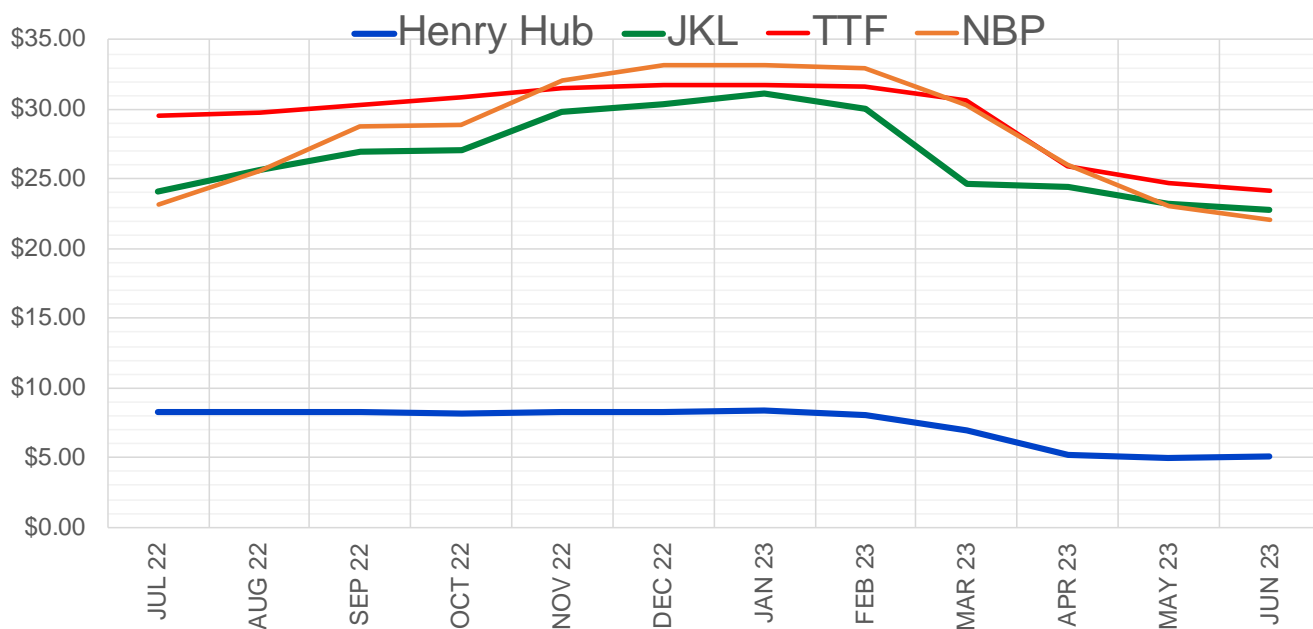
	Jul-22	Aug-22	Sep-22	Oct-22	Nov-22	Dec-22	Jan-23	Feb-23	Mar-23	Apr-23	May-23	Jun-23
<b>Current Price</b>	<b>\$8.727</b>	<b>\$8.712</b>	<b>\$8.673</b>	<b>\$8.640</b>	<b>\$8.668</b>	<b>\$8.735</b>	<b>\$8.810</b>	<b>\$8.467</b>	<b>\$7.105</b>	<b>\$5.176</b>	<b>\$4.980</b>	<b>\$5.034</b>
Last Week	\$8.744	\$8.827	\$8.813	\$8.767	\$8.735	\$8.783	\$8.889	\$8.987	\$8.618	\$7.098	\$5.045	\$4.846
vs. Last Week	-\$0.017	-\$0.115	-\$0.140	-\$0.127	-\$0.067	-\$0.048	-\$0.079	-\$0.520	-\$1.513	-\$1.922	-\$0.065	\$0.188
4 Weeks Ago	\$7.475	\$7.566	\$7.566	\$7.507	\$7.506	\$7.568	\$7.716	\$7.821	\$7.543	\$6.446	\$4.779	\$4.632
vs. 4 Weeks Ago	\$1.252	\$1.146	\$1.107	\$1.133	\$1.162	\$1.167	\$1.094	\$0.646	-\$0.438	-\$1.270	\$0.201	\$0.402
Last Year	\$2.986	\$3.007	\$3.002	\$3.017	\$3.080	\$3.198	\$3.279	\$3.210	\$3.026	\$2.646	\$2.598	\$2.632
vs. Last Year	\$5.741	\$5.705	\$5.671	\$5.623	\$5.588	\$5.537	\$5.531	\$5.257	\$4.079	\$2.530	\$2.382	\$2.402

	Units	Cash Settled	Prompt Settle	Cash to Prompt
AGT Citygate	\$/MMBtu	8.65	8.38	-0.27
TETCO M3	\$/MMBtu	7.78	8.14	0.36
FGT Zone 3	\$/MMBtu	7.78	8.88	1.10
Zone 6 NY	\$/MMBtu	7.78	8.10	0.32
Chicago Citygate	\$/MMBtu	8.05	8.61	0.56
Michcon	\$/MMBtu	8.11	8.58	0.47
Columbia TCO Pool	\$/MMBtu	7.64	8.11	0.47
Ventura	\$/MMBtu	8.80	8.45	-0.35
Rockies/Opal	\$/MMBtu	7.90	8.35	0.45
El Paso Permian Basin	\$/MMBtu	7.40	8.09	0.69
Socal Citygate	\$/MMBtu	9.03	9.50	0.47
Malin	\$/MMBtu	8.24	8.57	0.33
Houston Ship Channel	\$/MMBtu	8.20	8.67	0.47
Henry Hub Cash	\$/MMBtu	8.46	8.44	-0.02
AECO Cash	C\$/GJ	5.90	6.42	0.52
Station2 Cash	C\$/GJ	5.59	8.42	2.83
Dawn Cash	C\$/GJ	8.11	8.60	0.49

Source: CME, Bloomberg

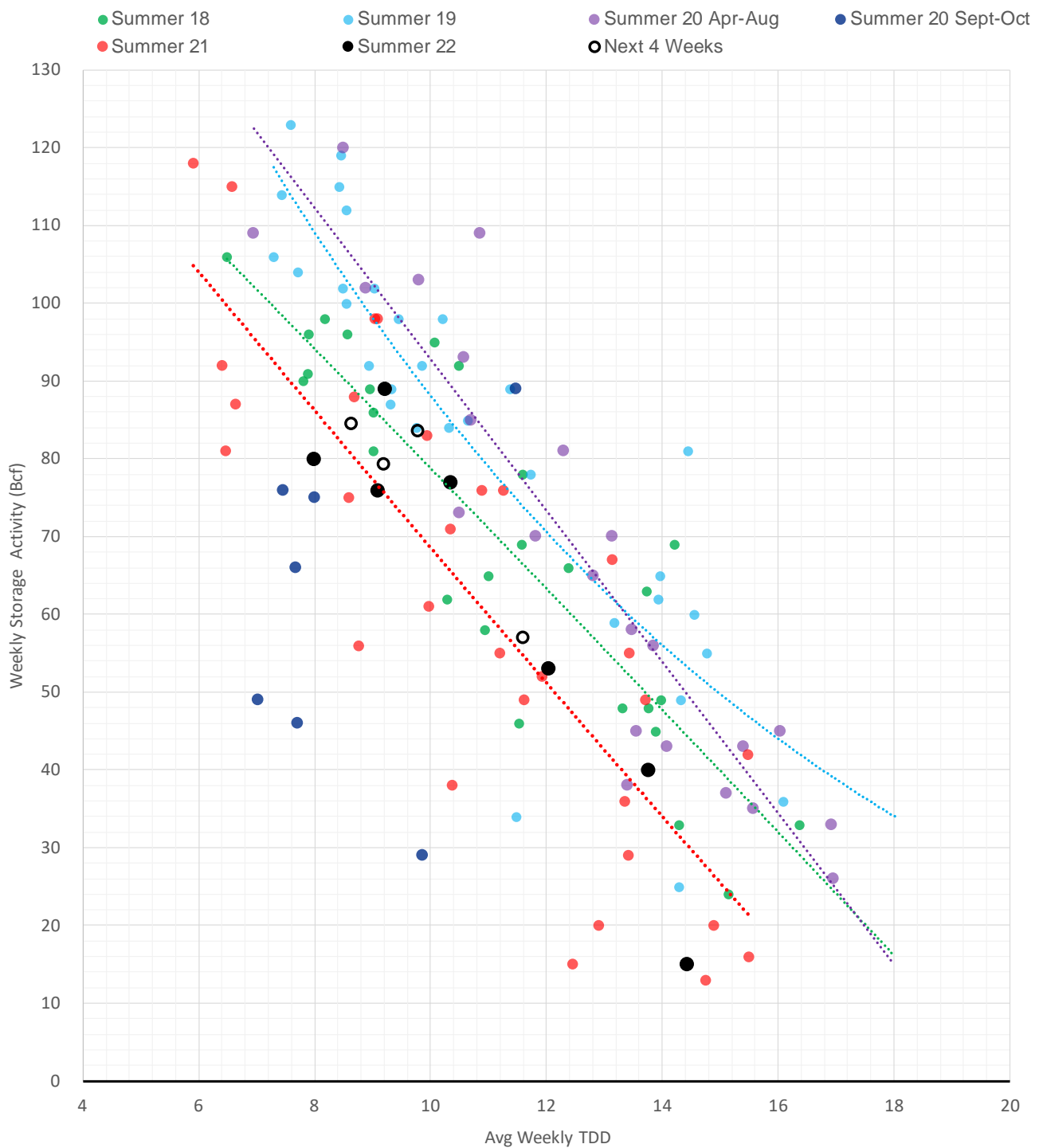
	Units	Current Price	vs. Last Week	vs. 4 Weeks Ago	vs. Last Year
NatGas Jul21/Oct21	\$/MMBtu	2.224	▲ 0.000	▲ 0.000	▲ 2.198
NatGas Oct21/Nov21	\$/MMBtu	0.361	▲ 0.000	▲ 0.000	▲ 0.308
NatGas Oct21/Jan22	\$/MMBtu	-1.817	▲ 0.000	▲ 0.000	▼ -2.062
NatGas Apr22/Oct22	\$/MMBtu	2.737	▼ -0.677	▲ 0.122	▲ 2.716
WTI Crude	\$/Bbl	114.67	▲ 4.900	▲ 12.260	▲ 46.950
Brent Crude	\$/Bbl	122.84	▲ 9.280	▲ 17.870	▲ 52.590
Fuel Oil, NY Harbour 1%	\$/Bbl	97.18	▲ 0.000	▲ 0.000	▲ 0.000
Heating Oil	cents/Gallon	409.09	▲ 30.910	▲ 0.820	▲ 201.940
Propane, Mt. Bel	cents/Gallon	1.23	▲ 0.004	▼ -0.029	▲ 0.318
Ethane, Mt. Bel	cents/Gallon	0.60	▲ 0.002	▲ 0.012	▲ 0.331
Coal, PRB	\$/MTon	12.30	▲ 0.000	▲ 0.000	▲ 0.000
Coal, PRB	\$/MMBtu	0.70			
Coal, ILB	\$/MTon	31.05	▲ 0.000	▲ 0.000	▲ 0.000
Coal, ILB	\$/MMBtu	1.32			

### Nat Gas Term Structure (\$MMBTU)



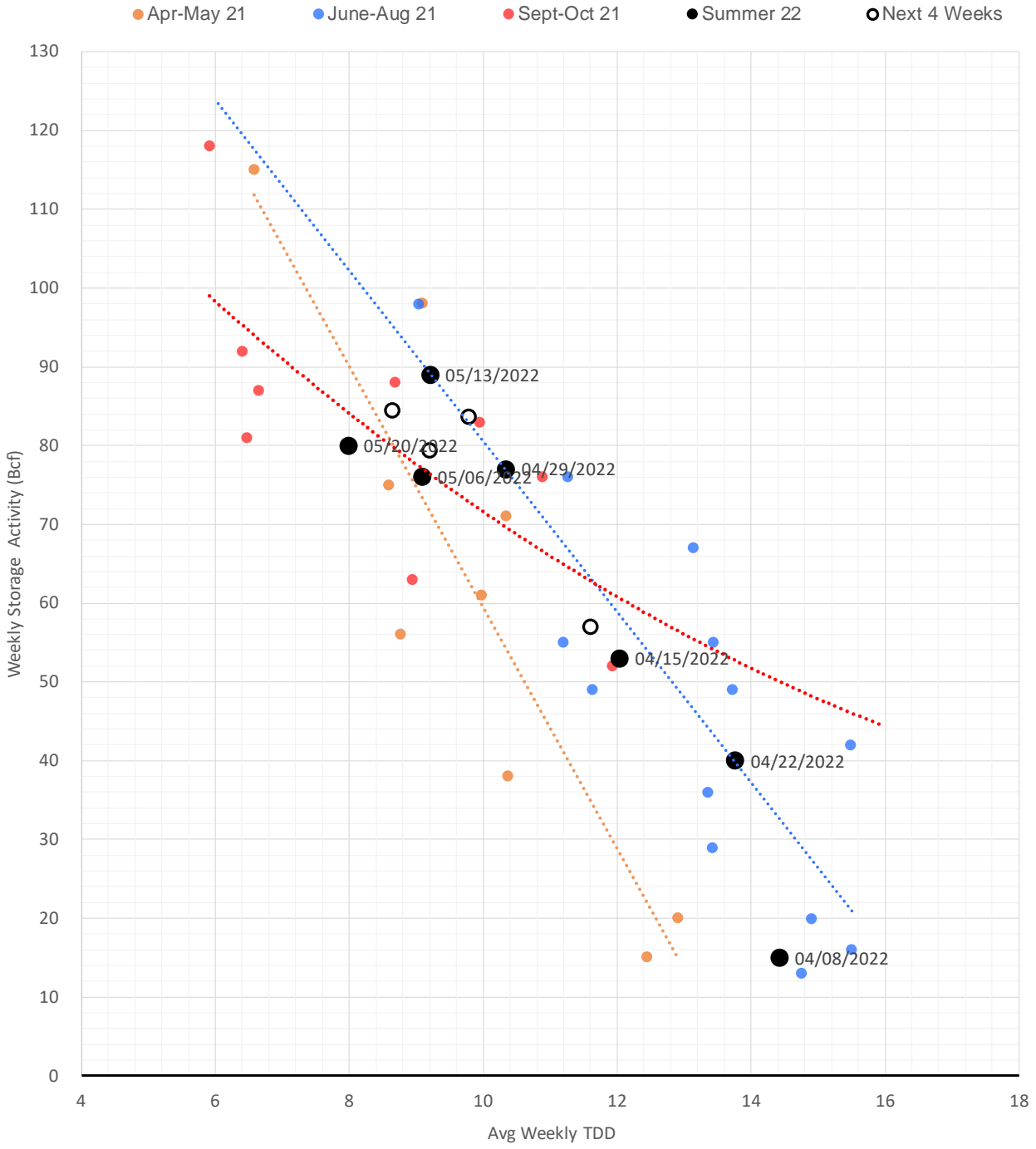
	JUL 22	AUG 22	SEP 22	OCT 22	NOV 22	DEC 22	JAN 23	FEB 23	MAR 23	APR 23	MAY 23	JUN 23
<b>Henry Hub</b>	\$8.274	\$8.267	\$8.229	\$8.215	\$8.220	\$8.311	\$8.368	\$8.057	\$6.970	\$5.165	\$4.993	\$5.037
<b>JKL</b>	\$24.075	\$25.640	\$26.955	\$27.120	\$29.805	\$30.335	\$31.175	\$30.055	\$24.650	\$24.395	\$23.180	\$22.795
<b>JKL-HHub</b>	\$15.801	\$17.373	\$18.726	\$18.905	\$21.585	\$22.024	\$22.807	\$21.998	\$17.680	\$19.230	\$18.187	\$17.758
<b>TTF</b>	\$29.605	\$29.765	\$30.282	\$30.876	\$31.493	\$31.710	\$31.771	\$31.643	\$30.668	\$25.905	\$24.712	\$24.172
<b>TTF-HHub</b>	\$21.331	\$21.498	\$22.053	\$22.661	\$23.273	\$23.399	\$23.403	\$23.586	\$23.698	\$20.740	\$19.719	\$19.135
<b>NBP</b>	\$23.166	\$25.611	\$28.800	\$28.861	\$32.031	\$33.178	\$33.146	\$32.911	\$30.334	\$26.001	\$23.092	\$22.073
<b>NBP-HHub</b>	\$14.892	\$17.344	\$20.571	\$20.646	\$23.811	\$24.867	\$24.778	\$24.854	\$23.364	\$20.836	\$18.099	\$17.036

## Weather Storage Model - Next 4 Week Forecast



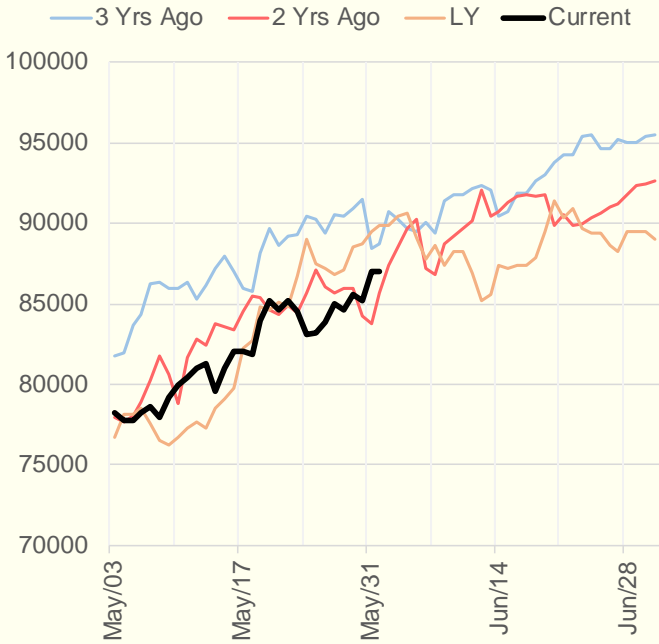


## Weather Storage Model for Summer 2021 & 2022

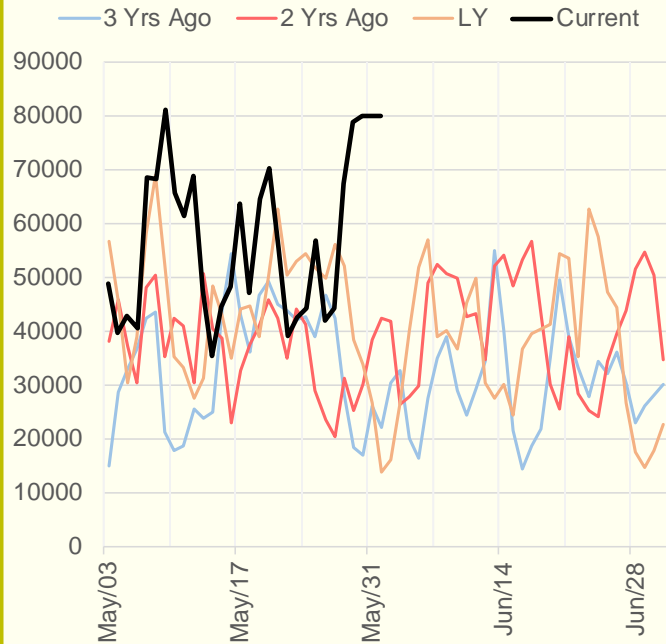


The risk of trading futures and options and other derivatives involves a substantial risk of loss and is not suitable for all persons. Each person must consider whether a particular trade, combination of trades, or strategy is suitable for that person's financial means and objectives. Past results are not necessarily indicative of future results. This communication may contain links to third party websites which are not under the control of and are not maintained by ION Energy Group, and ION Energy Group is not responsible for their content.

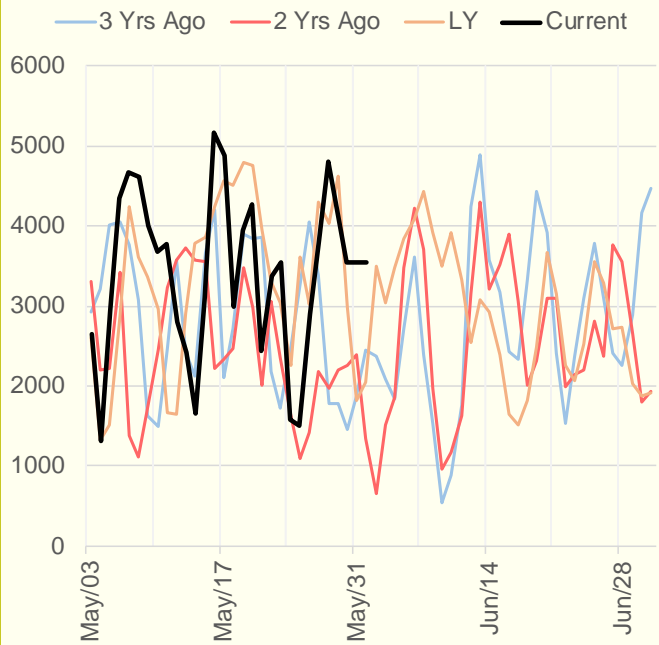
### NRC Nuclear Daily Output



### US Wind



### CALI Wind



### TEXAS Wind

