

	Current	Δ from YD	Δ from 7D Avg
Nat Gas Prompt	\$ 9.11 ▲	\$ 0.14 ▲	\$ 0.68

Page Menu

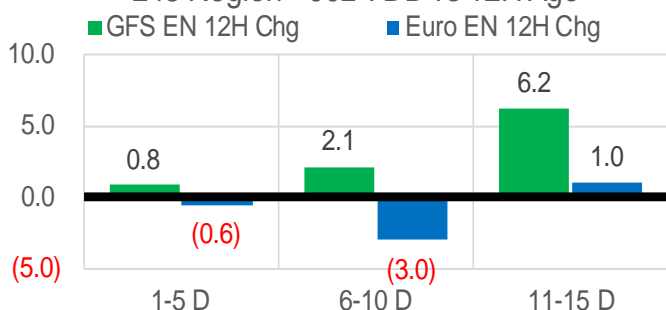
[Short-term Weather Model Outlooks](#)
[Lower 48 Component Models](#)
[Regional S/D Models Storage Projection](#)
[Weather Model Storage Projection](#)
[Supply – Demand Trends](#)
[Nat Gas Options Volume and Open Interest](#)
[Nat Gas Futures Open Interest](#)
[Price Summary](#)

	Current	Δ from YD	Δ from 7D Avg
WTI Prompt	\$ 111.14 ▲	\$ 0.81 ▼	\$ (0.6)

	Current	Δ from YD	Δ from 7D Avg
Brent Prompt	\$ 114.73 ▲	\$ 0.70 ▲	\$ 1.8

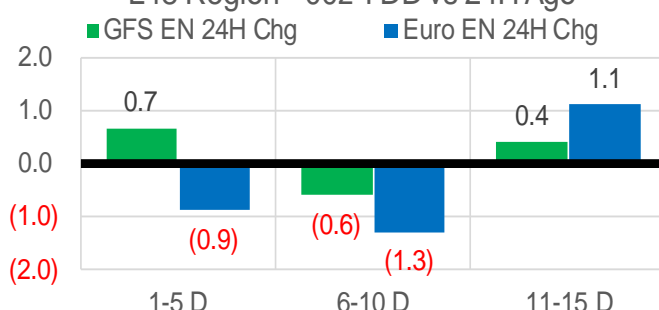
Vs. 12H Ago

L48 Region - 00z TDD vs 12H Ago



Vs. 24H Ago

L48 Region - 00z TDD vs 24H Ago



	Current	Δ from YD	Δ from 7D Avg
US Dry Production	95.2 ▼	-0.30 ▼	-0.56

	Current	Δ from YD	Δ from 7D Avg
US Power Burns	28.8 ▼	-0.23 ▼	-1.44

	Current	Δ from YD	Δ from 7D Avg
US ResComm	9.4 ▼	-1.14 ▼	-2.13

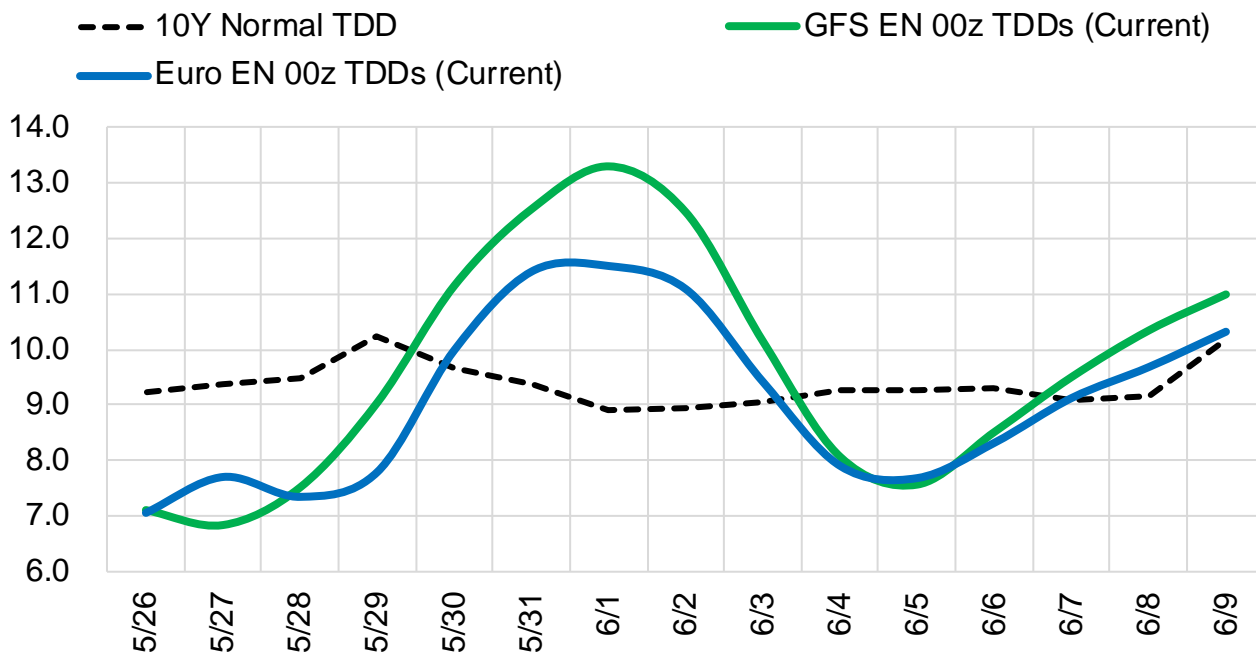
	Current	Δ from YD	Δ from 7D Avg
Canadian Imports	4.8 ▲	0.15 ▼	-0.14

	Current	Δ from YD	Δ from 7D Avg
Net LNG Exports	13.3 ▲	0.13 ▲	0.37

	Current	Δ from YD	Δ from 7D Avg
Mexican Exports	6.7 ▼	-0.46 ▼	-0.25

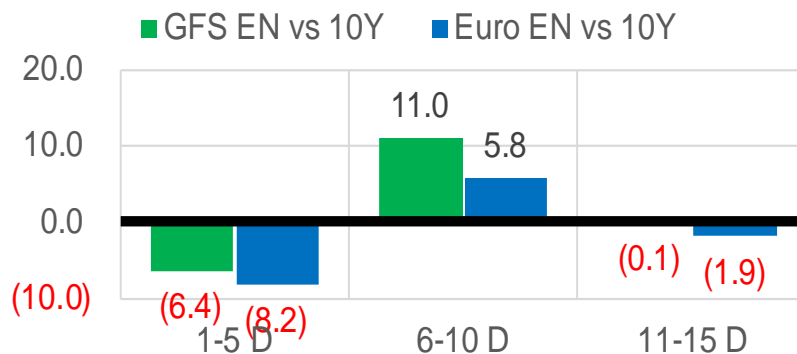
Short-term Weather Model Outlooks (00z)

L48 Region



Vs. 10Y Normal

L48 Region - 00z TDD vs 10Y Normal



Source: WSI, Bloomberg

Lower 48 Component Models

Daily Balances

	20-May	21-May	22-May	23-May	24-May	25-May	26-May	DoD	vs. 7D
Lower 48 Dry Production	96.0	96.1	96.2	96.3	95.3	95.5	95.2	▼ -0.3	▼ -0.7
Canadian Imports	4.8	5.1	5.1	4.8	4.8	4.6	4.8	▲ 0.2	▼ -0.1
L48 Power	31.7	31.2	29.9	29.1	28.6	29.0	28.8	▼ -0.2	▼ -1.1
L48 Residential & Commercial	10.7	11.3	12.4	13.2	12.3	10.5	9.4	▼ -1.1	▼ -2.4
L48 Industrial	20.7	20.8	20.9	21.0	20.9	20.6	20.4	▼ -0.2	▼ -0.4
L48 Lease and Plant Fuel	5.2	5.2	5.2	5.2	5.2	5.2	5.1	▼ 0.0	▼ -0.1
L48 Pipeline Distribution	2.4	2.4	2.4	2.4	2.3	2.2	2.2	▼ -0.1	▼ -0.2
L48 Regional Gas Consumption	70.6	70.9	70.7	70.9	69.3	67.5	65.8	▼ -1.7	▼ -4.1
Net LNG Delivered	13.26	13.18	13.06	13.17	11.95	13.22	13.34	▲ 0.1	▲ 0.4
Total Mexican Exports	7.1	6.9	6.5	6.8	7.1	7.2	6.7	▼ -0.5	▼ -0.2
Implied Daily Storage Activity	9.9	10.2	11.0	10.3	11.8	12.3	14.1		
EIA Reported Daily Storage Activity									
Daily Model Error									

EIA Storage Week Balances

	15-Apr	22-Apr	29-Apr	6-May	13-May	20-May	WoW	vs. 4W
Lower 48 Dry Production	96.4	96.8	95.8	95.7	95.9	94.9	▼ -1.0	▼ -1.2
Canadian Imports	5.6	5.8	6.1	5.9	5.2	4.9	▼ -0.3	▼ -0.9
L48 Power	24.6	25.1	24.9	26.2	26.8	30.4	▲ 3.6	▲ 4.6
L48 Residential & Commercial	22.4	24.1	18.5	16.6	14.2	9.9	▼ -4.4	▼ -8.5
L48 Industrial	21.7	21.8	22.0	21.6	21.3	20.8	▼ -0.5	▼ -0.9
L48 Lease and Plant Fuel	5.3	5.3	5.2	5.2	5.2	5.1	▼ -0.1	▼ -0.1
L48 Pipeline Distribution	2.6	2.7	2.4	2.4	2.3	2.3	▼ 0.0	▼ -0.2
L48 Regional Gas Consumption	76.5	79.0	73.0	72.0	69.8	68.5	▼ -1.3	▼ -5.0
Net LNG Exports	12.5	12.1	12.2	12.2	12.2	12.2	▲ 0.0	▲ 0.0
Total Mexican Exports	6.6	6.7	6.9	6.9	7.0	7.0	▼ -0.1	▲ 0.1
Implied Daily Storage Activity	6.5	4.7	9.8	10.6	12.1	12.2	0.1	
EIA Reported Daily Storage Activity	7.6	5.7	11.0	10.9	12.7			
Daily Model Error	-1.1	-1.0	-1.2	-0.3	-0.6			

Monthly Balances

	2Yr Ago May-20	LY May-21	Jan-22	Feb-22	Mar-22	Apr-22	MTD May-22	MoM	vs. LY
Lower 48 Dry Production	87.0	93.0	93.4	92.6	94.9	96.2	95.6	▼ -0.6	▲ 2.6
Canadian Imports	3.9	4.5	6.7	6.6	5.2	5.8	5.2	▼ -0.6	▲ 0.7
L48 Power	26.9	26.5	31.5	28.9	25.6	24.8	28.7	▲ 3.9	▲ 2.2
L48 Residential & Commercial	12.8	12.8	49.1	44.4	30.7	22.2	12.8	▼ -9.4	▲ 0.0
L48 Industrial	19.4	20.9	24.7	22.5	21.8	22.0	21.1	▼ -0.9	▲ 0.2
L48 Lease and Plant Fuel	4.7	5.0	5.1	5.1	5.2	5.2	5.2	▼ -0.1	▲ 0.1
L48 Pipeline Distribution	2.2	2.2	3.8	3.6	2.9	2.6	2.4	▼ -0.2	▲ 0.1
L48 Regional Gas Consumption	65.9	67.5	114.3	104.4	86.2	76.8	70.1	▼ -6.7	▲ 2.6
Net LNG Exports	6.7	10.8	12.4	12.4	12.9	12.3	12.4	▲ 0.1	▲ 1.6
Total Mexican Exports	4.8	6.8	6.3	6.2	6.5	6.7	7.0	▲ 0.2	▲ 0.2
Implied Daily Storage Activity	13.6	12.4	-32.9	-23.7	-5.5	6.2	11.3		
EIA Reported Daily Storage Activity									
Daily Model Error									

Source: Bloomberg, analytix.ai

Daily Average Generation Data

Nuclear Generation Daily Average - GWh (NRC)

	18-May	19-May	20-May	21-May	22-May	23-May	24-May	DoD	vs. 7D
NRC Nuclear Daily Output	81.8	83.9	85.2	84.6	85.2	84.5	83.1	-1.4	-1.2
NRC Nuclear Max Capacity	104.9	104.9	104.9	104.9	104.9	104.9	104.9	0.0	0.0
NRC Nuclear Outage	23.0	20.9	19.6	20.2	19.7	20.4	21.8	1.4	1.2
NRC % Nuclear Cap Utilization	83.2	85.3	86.7	86.1	86.6	85.9	84.5	-1.5	-1.2

Wind Generation Daily Average - MWh (EIA)

	18-May	19-May	20-May	21-May	22-May	23-May	24-May	DoD	vs. 7D
CALI Wind	2994	3953	4264	2430	3369	3554	1574	-1981	-1854
TEXAS Wind	17845	18616	18899	20257	12626	12479	13490	1012	-3297
US Wind	47320	64658	70425	55599	39071	42707	44206	1498	-9091

Generation Daily Average - MWh (EIA)

	18-May	19-May	20-May	21-May	22-May	23-May	24-May	DoD	vs. 7D
US Wind	47320	64658	70425	55599	39071	42707	44206	1498	-9091
US Solar	19406	18985	18232	16920	16238	16333	16336	3	-1349
US Petroleum	284	258	352	608	558	316	432	117	36
US Other	7503	7605	7936	7724	7588	7250	6633	-618	-969
US Coal	92366	93594	94046	90231	87442	89618	88561	-1057	-2655
US Nuke	85660	87482	88870	88672	89020	87796	86890	-906	-1027
US Hydro	32413	33132	33298	32103	31024	32285	34982	2697	2606
US Gas	174819	175718	169757	165060	154164	155774	155460	-315	-10422

See National Wind and Nuclear daily charts

Source: Bloomberg, analytix.ai

Storage Week Average Generation Data

Nuclear Generation Weekly Average - GWh (NRC)

	15-Apr	22-Apr	29-Apr	6-May	13-May	20-May	WoW	WoW Bcf/d Impact
NRC Nuclear Daily Output	71.9	72.3	73.5	76.7	79.3	81.7	2.4	-0.4
NRC Nuclear Max Capacity	104.9	104.9	104.9	104.9	104.9	104.9	0.0	
NRC Nuclear Outage	32.9	32.6	31.4	28.2	25.5	23.2	-2.4	
NRC % Nuclear Cap Utilization	73.2	73.5	74.8	78.0	80.7	83.1	2.4	

Wind Generation Weekly Average - MWh (EIA)

	15-Apr	22-Apr	29-Apr	6-May	13-May	20-May	WoW	WoW Bcf/d Impact
CALI Wind	3434	3613	3153	2929	3983	3452	-531	0.1
TEXAS Wind	16530	15612	18327	16902	17705	15706	-1999	0.4
US Wind	66240	61570	66986	57243	64974	50250	-14724	2.7
							-23%	
							-0.1	

Generation Weekly Average - MWh (EIA)

	15-Apr	22-Apr	29-Apr	6-May	13-May	20-May	WoW	WoW Bcf/d Impact
						est.		
US Wind	66240	61570	66986	57243	64974	50250	-14724	2.7
US Solar	16118	15897	16968	16920	17846	19278	1432	-0.3
US Petroleum	964	984	992	931	341	262	-79	0.0
US Other	7154	7544	7717	7528	7615	7808	193	0.0
US Coal	77087	79575	77533	78898	81273	88922	7649	-1.4
US Nuke	75674	76478	77438	80545	83391	85510	2119	-0.4
US Hydro	29415	28355	26721	26824	28968	31943	2974	-0.5
US Gas	134338	133401	131482	145738	148473	172026	23552	4.2

See National Wind and Nuclear daily charts

Source: Bloomberg, analytix.ai

Monthly Average Generation Data

Nuclear Generation Monthly Average - GWh (NRC)

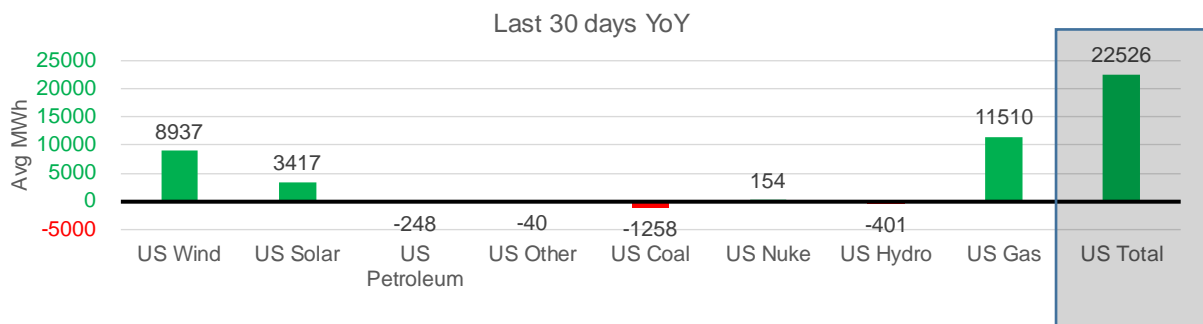
	2Yr Ago	LY	MTD				Last 30 days	Last 30 days YoY
	Same 30 days	Same 30 days	Feb-22	Mar-22	Apr-22	May-22		
NRC Nuclear Daily Output	82.1	80.2	87.3	81.3	73.3	80.9	80.1	-0.1
NRC Nuclear Max Capacity	104.9	104.9	104.9	104.9	104.9	104.9	104.9	0.0
NRC Nuclear Outage	22.8	24.7	17.5	23.6	31.6	24.0	24.8	0.1
NRC % Nuclear Cap Utilization	83.5	81.5	88.8	82.7	74.5	82.3	81.4	-0.1

Wind Generation Monthly Average - MWh (EIA)

	2Yr Ago	LY	MTD				Last 30 days	Last 30 days YoY
	Same 30 days	Same 30 days	Feb-22	Mar-22	Apr-22	May-22		
CALI Wind	2686	3261	1495	2250	3186	3269	3346	84
TEXAS Wind	11358	12455	11750	14837	16311	16237	16520	4065
US Wind	40460	47261	54543	58528	64183	54036	56198	8937

Generation Monthly Average - MWh (EIA)

	2Yr Ago	LY	MTD				Last 30 days	Last 30 days YoY
	Same 30 days	Same 30 days	Feb-22	Mar-22	Apr-22	May-22		
US Wind	40460	47261	54543	58528	64183	54036	56198	▲ 8937
US Solar	11342	14280	12442	14058	16208	17705	17697	▲ 3417
US Petroleum	761	778	1331	985	985	462	530	▼ -248
US Other	8193	7578	8632	7206	7386	7565	7538	▼ -40
US Coal	59111	85488	105631	82291	77545	85626	84230	▼ -1258
US Nuke	86015	83763	92027	85256	77217	84746	83917	▲ 154
US Hydro	37110	30480	32284	33959	29022	30624	30080	▼ -401
US Gas	138404	143176	153733	137232	133068	158451	154686	▲ 11510
US Total	380232	413193	461069	419842	406184	440091	435719	▲ 22526



See National Wind and Nuclear daily charts

Source: Bloomberg, analytix.ai

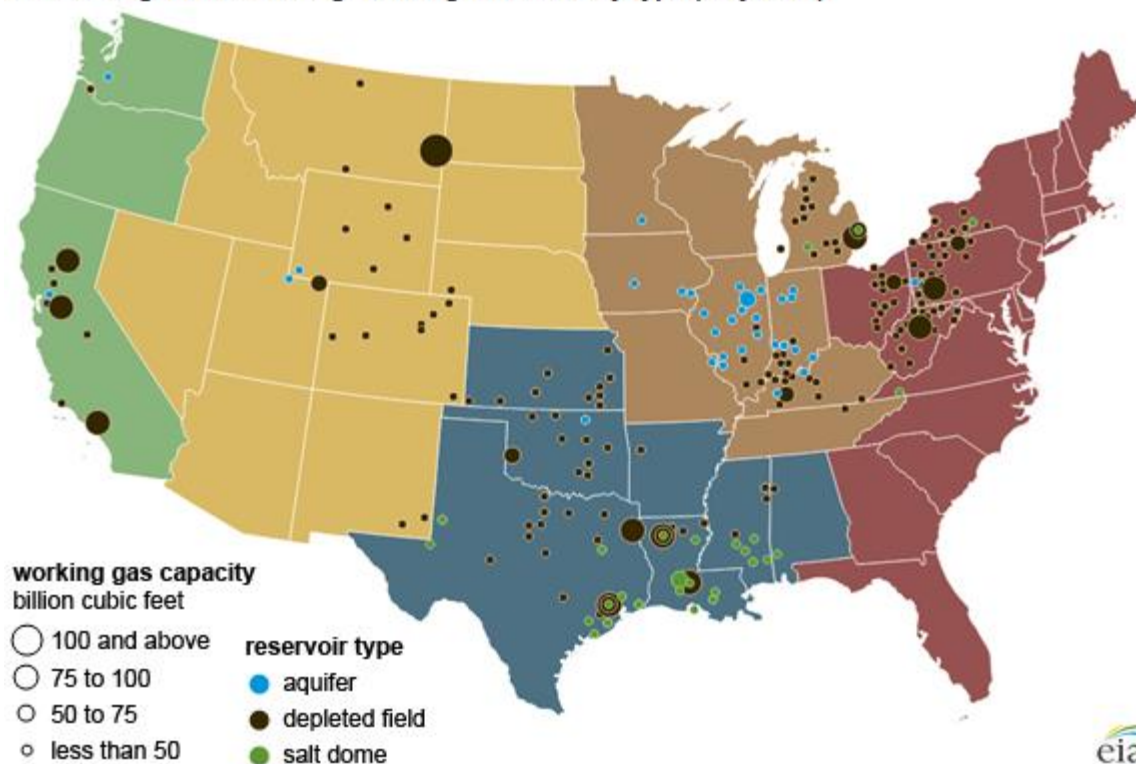
Regional S/D Models Storage Projection

Week Ending 20-May

	Daily Raw Storage	Daily Adjustment Factor	Daily Average Storage Activity (Adjusted) *	Weekly Adjusted Storage Activity
L48	13.0	0.0	13.0	91
East	2.0	2.6	4.6	32
Midwest	4.9	-0.9	4.0	28
Mountain	4.9	-3.6	1.2	9
South Central	-0.1	2.6	2.5	17
Pacific	1.3	-0.6	0.8	5

*Adjustment Factor is calculated based on historical regional deltas

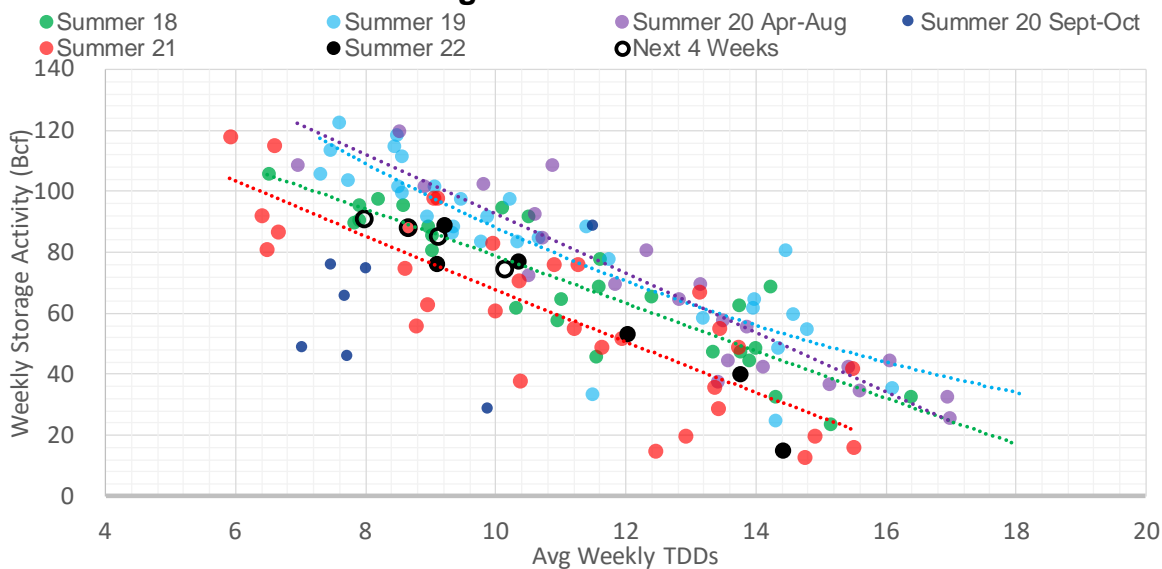
U.S. underground natural gas storage facilities by type (July 2015)



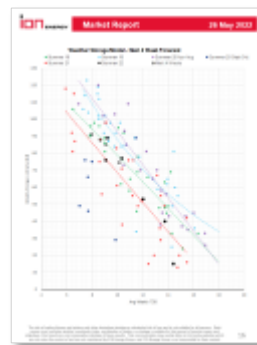
Weather Model Storage Projection

Next report and beyond		
Week Ending	TDDs	Week Storage Projection
20-May	8.0	91
27-May	8.7	88
03-Jun	10.2	74
10-Jun	9.1	85

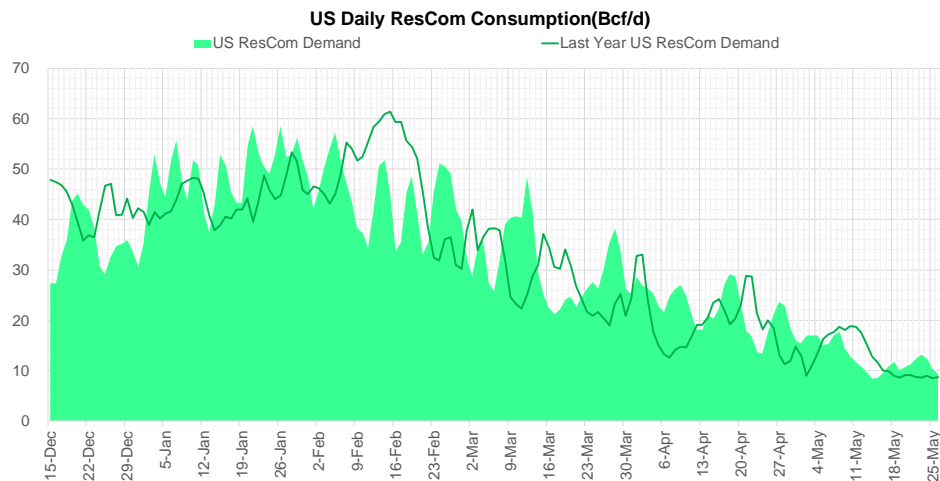
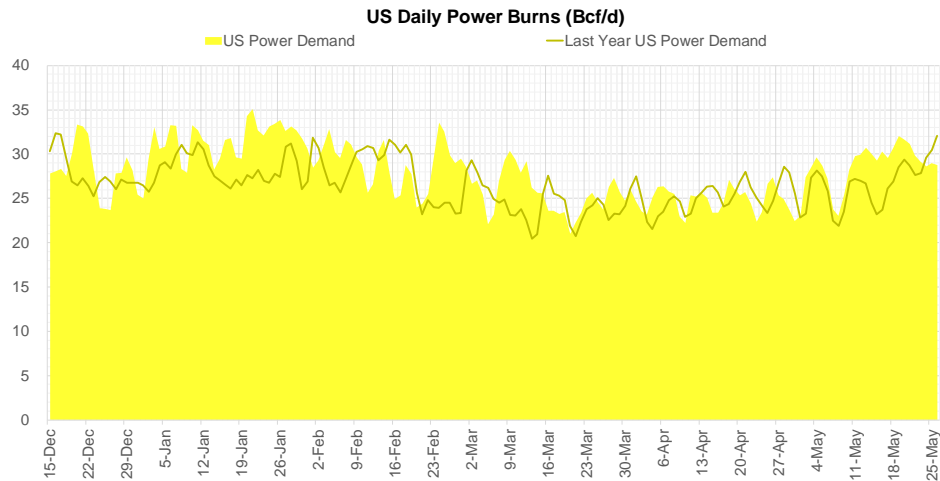
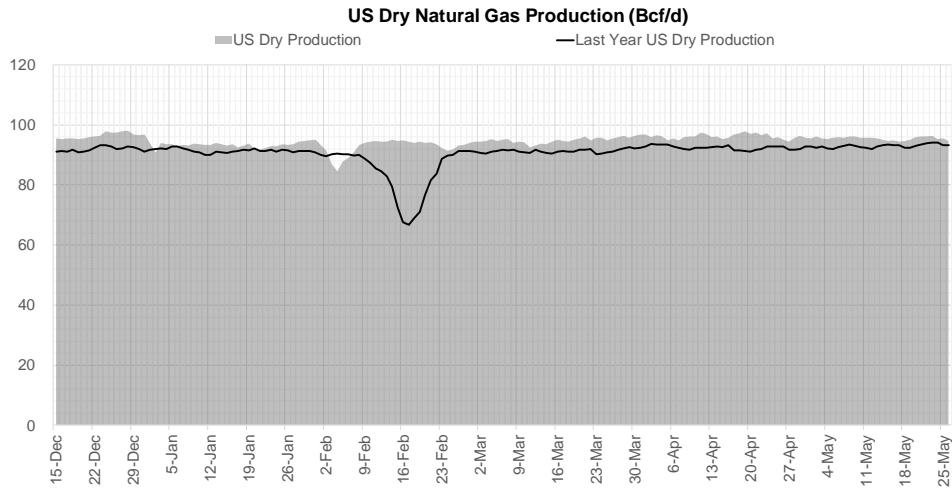
Weather Storage Model - Next 4 Week Forecast



[Go to larger image](#)

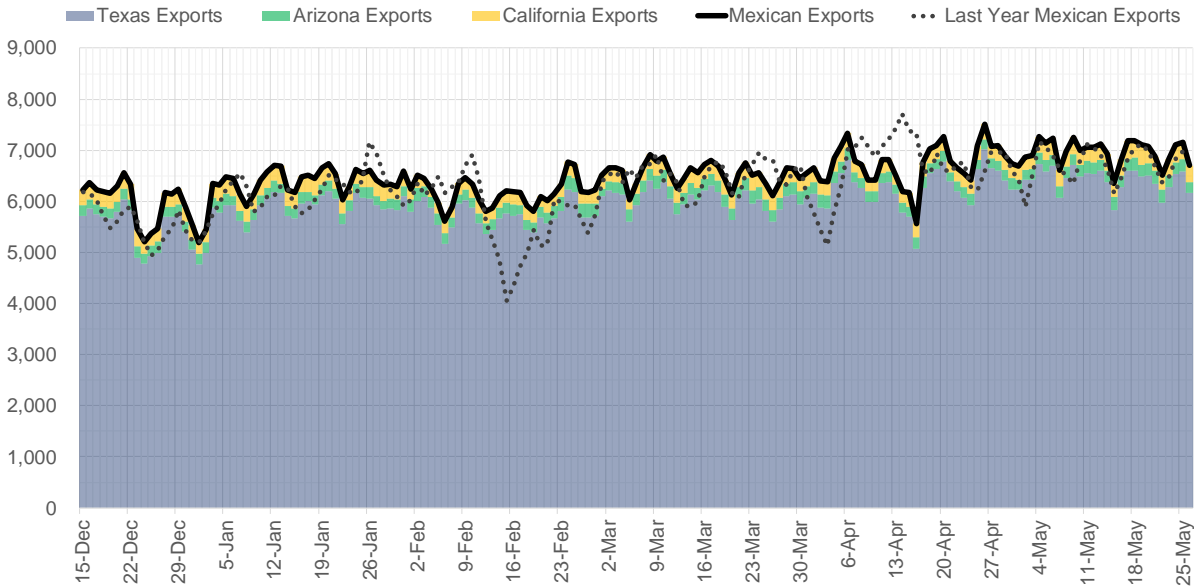


Supply – Demand Trends

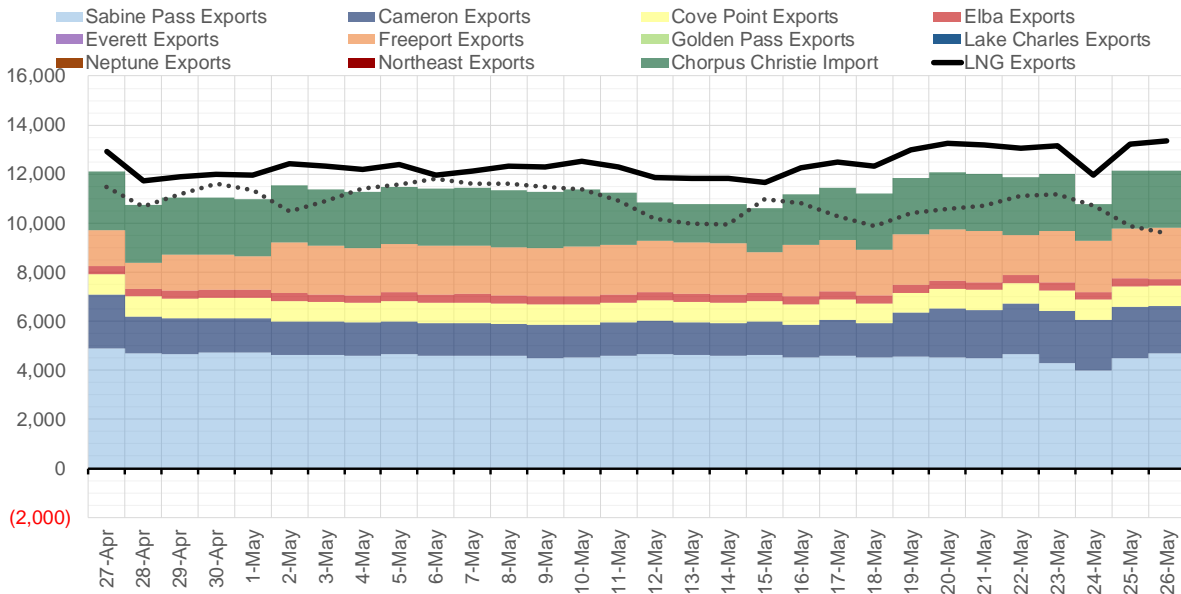


Source: Bloomberg

Mexican Exports (MMcf/d)



Net LNG Exports - Last 30 days (MMcf/d)



Source: Bloomberg

The risk of trading futures and options and other derivatives involves a substantial risk of loss and is not suitable for all persons. Each person must consider whether a particular trade, combination of trades, or strategy is suitable for that person's financial means and objectives. Past results are not necessarily indicative of future results. This communication may contain links to third party websites which are not under the control of and are not maintained by ION Energy Group, and ION Energy Group is not responsible for their content.

Nat Gas Options Volume and Open Interest CME and ICE Combined

CONTRACT MONTH	CONTRACT YEAR	PUT/CALL	STRIKE	CUMULATIVE VOL	CONTRACT MONTH	CONTRACT YEAR	PUT/CALL	STRIKE	CUMULATIVE OI
7	2022	C	11.00	23117	8	2022	C	10.00	46962
8	2022	C	12.00	21896	8	2022	C	10.50	37717
8	2022	C	12.10	20180	10	2022	C	6.00	35395
7	2022	C	11.10	20048	6	2022	C	10.00	31888
9	2022	C	15.00	10300	6	2022	C	6.00	25031
9	2022	C	15.50	10000	10	2022	C	5.00	24089
7	2022	P	7.00	9756	9	2022	C	6.00	23663
7	2022	P	7.25	8188	10	2022	P	3.00	21052
8	2022	C	10.00	7471	6	2022	P	7.00	20910
6	2022	C	9.00	5330	7	2022	C	9.00	20771
9	2022	C	14.00	5000	7	2022	C	10.00	20751
7	2022	C	10.00	4845	10	2022	P	3.50	20474
6	2022	C	10.00	3292	10	2022	P	6.00	19982
7	2022	P	7.50	3230	10	2022	P	2.50	19868
8	2022	C	9.50	2935	6	2022	P	5.50	19658
8	2022	C	10.50	2935	6	2022	P	4.00	19629
10	2022	C	10.00	2526	6	2022	P	6.00	19587
7	2022	P	7.30	2520	8	2022	C	6.00	19483
6	2022	C	9.50	2516	6	2022	C	7.00	19329
8	2022	C	10.10	2501	9	2022	C	10.00	18986
10	2022	C	15.00	2350	7	2022	C	6.00	18937
10	2022	P	6.00	2316	8	2022	C	7.00	18256
7	2022	P	6.50	2165	12	2022	C	5.00	18221
7	2022	C	13.00	2076	7	2022	C	8.00	18175
7	2022	C	11.50	2027	9	2022	C	7.00	18096
9	2022	P	6.00	1934	7	2022	C	7.00	17663
9	2022	C	10.00	1931	6	2022	C	5.00	17641
1	2023	P	3.00	1800	10	2022	P	2.00	17558
2	2023	P	3.00	1800	8	2022	C	9.00	17451
3	2023	P	3.00	1800	7	2022	P	3.25	17344
8	2022	P	7.00	1755	6	2022	P	3.00	17223
7	2022	P	8.00	1684	7	2022	P	6.00	17149
8	2022	C	15.00	1667	6	2022	P	4.75	17111
7	2022	P	6.00	1657	10	2022	P	4.00	16901
9	2022	C	9.50	1651	5	2023	P	2.00	16336
7	2022	C	12.00	1647	1	2023	C	10.00	16285
10	2022	C	12.00	1524	2	2023	C	10.00	16024
7	2022	C	10.50	1452	6	2022	P	3.50	15958
7	2022	P	6.25	1424	7	2022	P	5.00	15728
7	2022	P	7.20	1307	6	2022	P	5.00	15596
9	2022	C	12.00	1305	9	2022	P	2.50	15291
6	2022	C	20.00	1300	10	2022	C	10.00	15089
8	2022	P	6.00	1281	10	2022	P	3.25	14967
7	2022	C	9.00	1208	9	2022	P	2.75	14883
9	2022	P	7.00	1152	6	2022	C	10.10	14760
6	2022	C	9.25	1049	10	2022	C	8.00	14656
7	2022	P	5.00	1049	9	2022	P	3.00	14626
10	2022	P	7.00	1031	7	2022	P	3.50	14604
8	2022	P	8.00	1002	8	2022	P	3.00	14553
					11	2022	P	4	14494

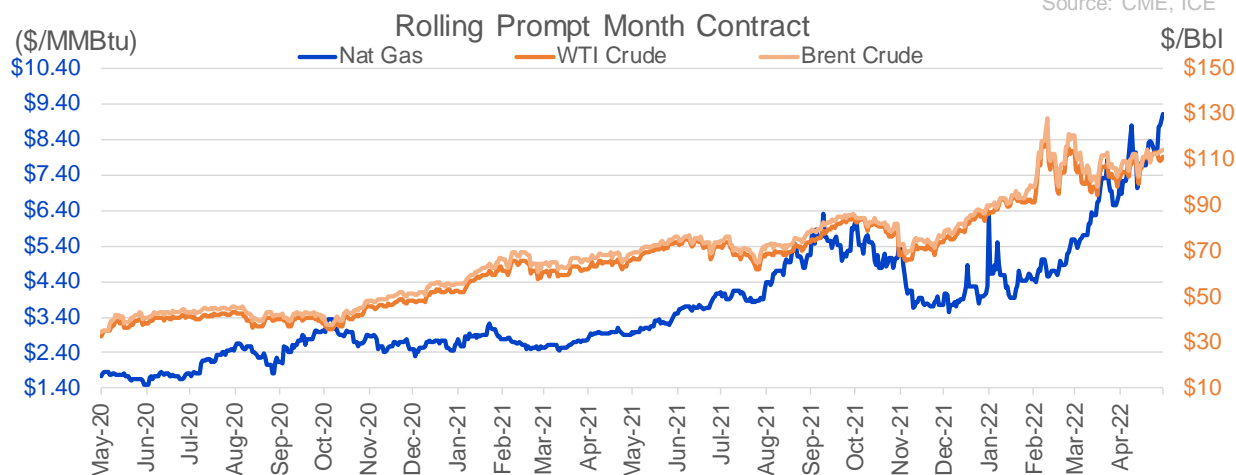
Source: CME, ICE

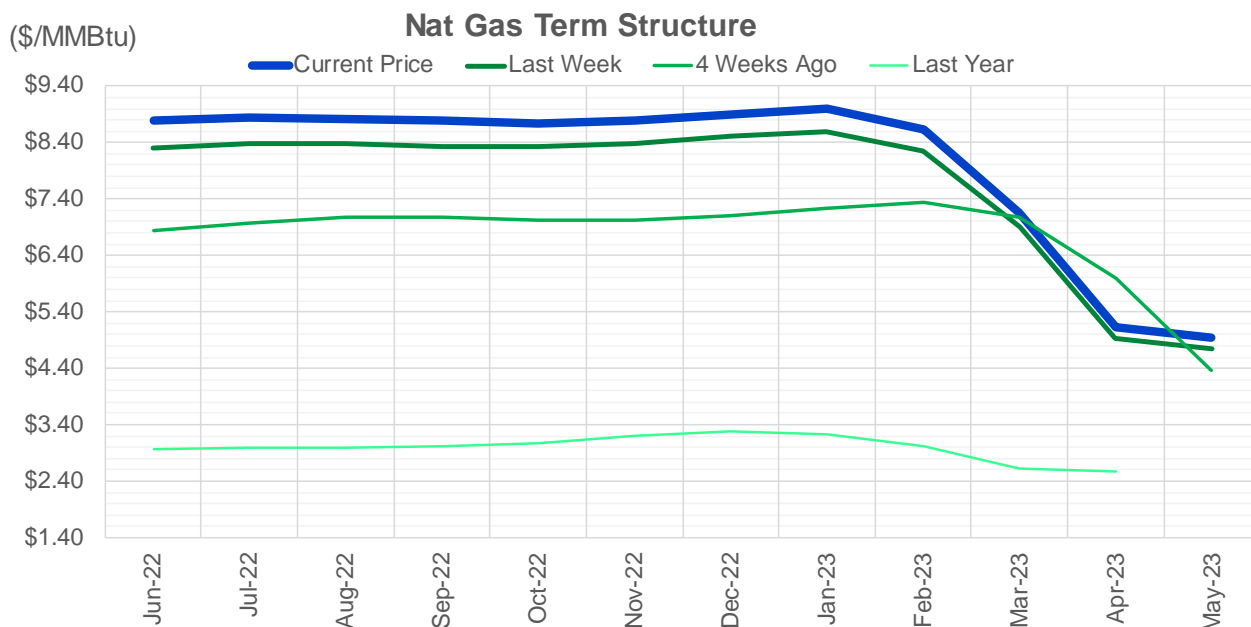
Nat Gas Futures Open Interest

CME and ICE Combined

CME Henry Hub Futures (10,000 MMBtu)				ICE Henry Hub Futures Contract Equivalent (10,000 MM			
	Current	Prior	Daily Change		Current	Prior	Daily Change
JUN 22	1000	12544	-11544	JUN 22	84485	80395	4090
JUL 22	211737	211788	-51	JUL 22	90552	86142	4411
AUG 22	64681	63927	754	AUG 22	60542	60084	458
SEP 22	99575	98222	1353	SEP 22	64482	64845	-363
OCT 22	94643	96567	-1924	OCT 22	74079	74620	-541
NOV 22	49442	50237	-795	NOV 22	59622	60051	-429
DEC 22	50683	51230	-547	DEC 22	62741	62903	-162
JAN 23	63946	63783	163	JAN 23	65054	65684	-630
FEB 23	28104	28286	-182	FEB 23	56546	56394	152
MAR 23	39454	39279	175	MAR 23	55269	55078	191
APR 23	60503	59946	557	APR 23	52569	52603	-34
MAY 23	60942	60428	514	MAY 23	52305	52162	143
JUN 23	26510	26583	-73	JUN 23	45336	45171	165
JUL 23	23592	23105	487	JUL 23	43530	43368	162
AUG 23	14918	14290	628	AUG 23	43563	43393	170
SEP 23	18369	17953	416	SEP 23	42634	42471	164
OCT 23	37060	35739	1321	OCT 23	49405	49397	8
NOV 23	12894	12484	410	NOV 23	43552	43465	87
DEC 23	14594	14481	113	DEC 23	39381	39430	-50
JAN 24	20387	20025	362	JAN 24	39412	39182	230
FEB 24	6099	6122	-23	FEB 24	26576	26569	7
MAR 24	14136	14267	-131	MAR 24	30934	30806	128
APR 24	12147	12135	12	APR 24	27216	27073	143
MAY 24	6509	6504	5	MAY 24	25950	25802	148
JUN 24	1783	1784	-1	JUN 24	22309	22153	156
JUL 24	1962	1962	0	JUL 24	22484	22331	154
AUG 24	2943	2943	0	AUG 24	22571	22417	154
SEP 24	1332	1332	0	SEP 24	21967	21818	149
OCT 24	6846	6846	0	OCT 24	24729	24590	140
NOV 24	4416	4417	-1	NOV 24	23147	23164	-17

Source: CME, ICE





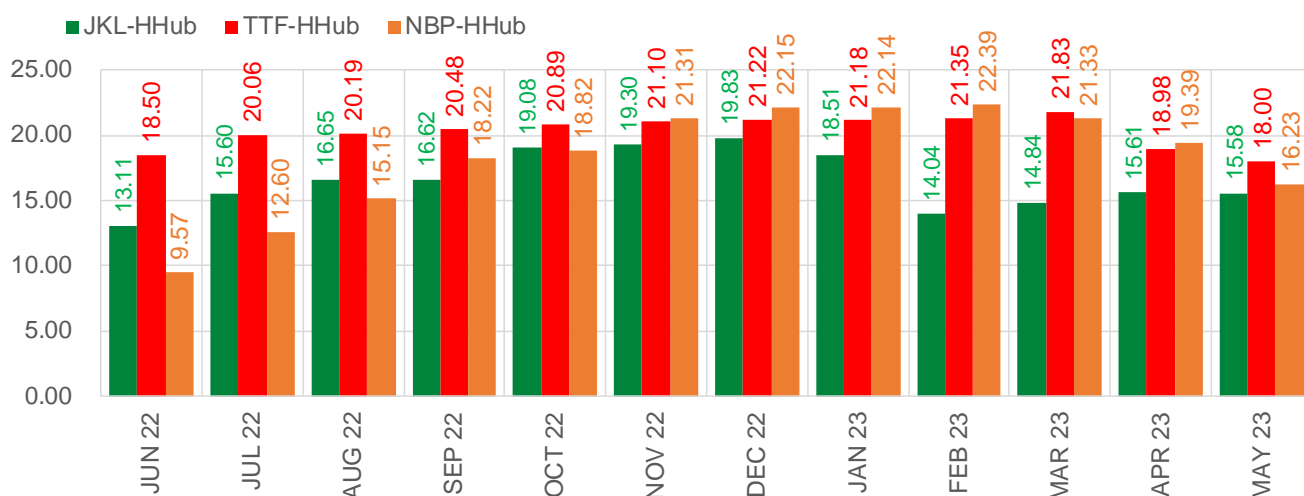
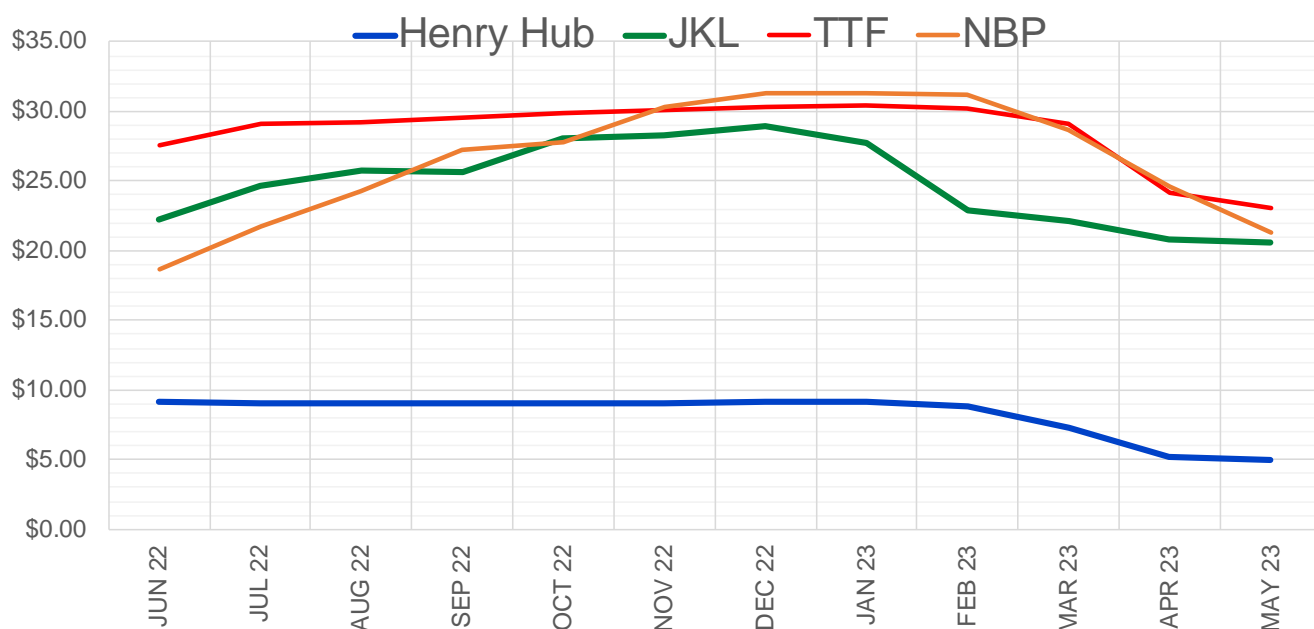
	Jun-22	Jul-22	Aug-22	Sep-22	Oct-22	Nov-22	Dec-22	Jan-23	Feb-23	Mar-23	Apr-23	May-23
Current Price	\$8.796	\$8.836	\$8.822	\$8.780	\$8.750	\$8.795	\$8.898	\$8.996	\$8.641	\$7.153	\$5.136	\$4.932
Last Week	\$8.304	\$8.394	\$8.380	\$8.339	\$8.322	\$8.380	\$8.500	\$8.598	\$8.245	\$6.910	\$4.935	\$4.737
vs. Last Week	\$0.492	\$0.442	\$0.442	\$0.441	\$0.428	\$0.415	\$0.398	\$0.398	\$0.396	\$0.243	\$0.201	\$0.195
4 Weeks Ago	\$6.850	\$6.978	\$7.068	\$7.068	\$7.024	\$7.029	\$7.103	\$7.245	\$7.350	\$7.074	\$5.986	\$4.367
vs. 4 Weeks Ago	\$1.946	\$1.858	\$1.754	\$1.712	\$1.726	\$1.766	\$1.795	\$1.751	\$1.291	\$0.079	-\$0.850	\$0.565
Last Year	\$2.913	\$2.974	\$2.993	\$2.990	\$3.009	\$3.081	\$3.207	\$3.287	\$3.217	\$3.025	\$2.631	\$2.581
vs. Last Year	\$5.883	\$5.862	\$5.829	\$5.790	\$5.741	\$5.714	\$5.691	\$5.709	\$5.424	\$4.128	\$2.505	\$2.351

	Units	Cash Settled	Prompt Settle	Cash to Prompt
AGT Citygate	\$/MMBtu	8.57	7.84	-0.73
TETCO M3	\$/MMBtu	8.18	7.58	-0.61
FGT Zone 3	\$/MMBtu	8.26	8.29	0.03
Zone 6 NY	\$/MMBtu	8.26	7.50	-0.77
Chicago Citygate	\$/MMBtu	8.93	8.04	-0.89
Michcon	\$/MMBtu	8.98	8.04	-0.94
Columbia TCO Pool	\$/MMBtu	8.22	7.58	-0.64
Ventura	\$/MMBtu	8.80	7.88	-0.92
Rockies/Opal	\$/MMBtu	8.60	7.76	-0.84
El Paso Permian Basin	\$/MMBtu	8.72	7.59	-1.13
Socal Citygate	\$/MMBtu	10.15	8.39	-1.76
Malin	\$/MMBtu	8.80	7.98	-0.83
Houston Ship Channel	\$/MMBtu	9.09	8.14	-0.95
Henry Hub Cash	\$/MMBtu	9.40	7.93	-1.47
AECO Cash	C\$/GJ	6.10	5.96	-0.14
Station2 Cash	C\$/GJ	6.05	7.67	1.62
Dawn Cash	C\$/GJ	8.93	8.05	-0.89

Source: CME, Bloomberg

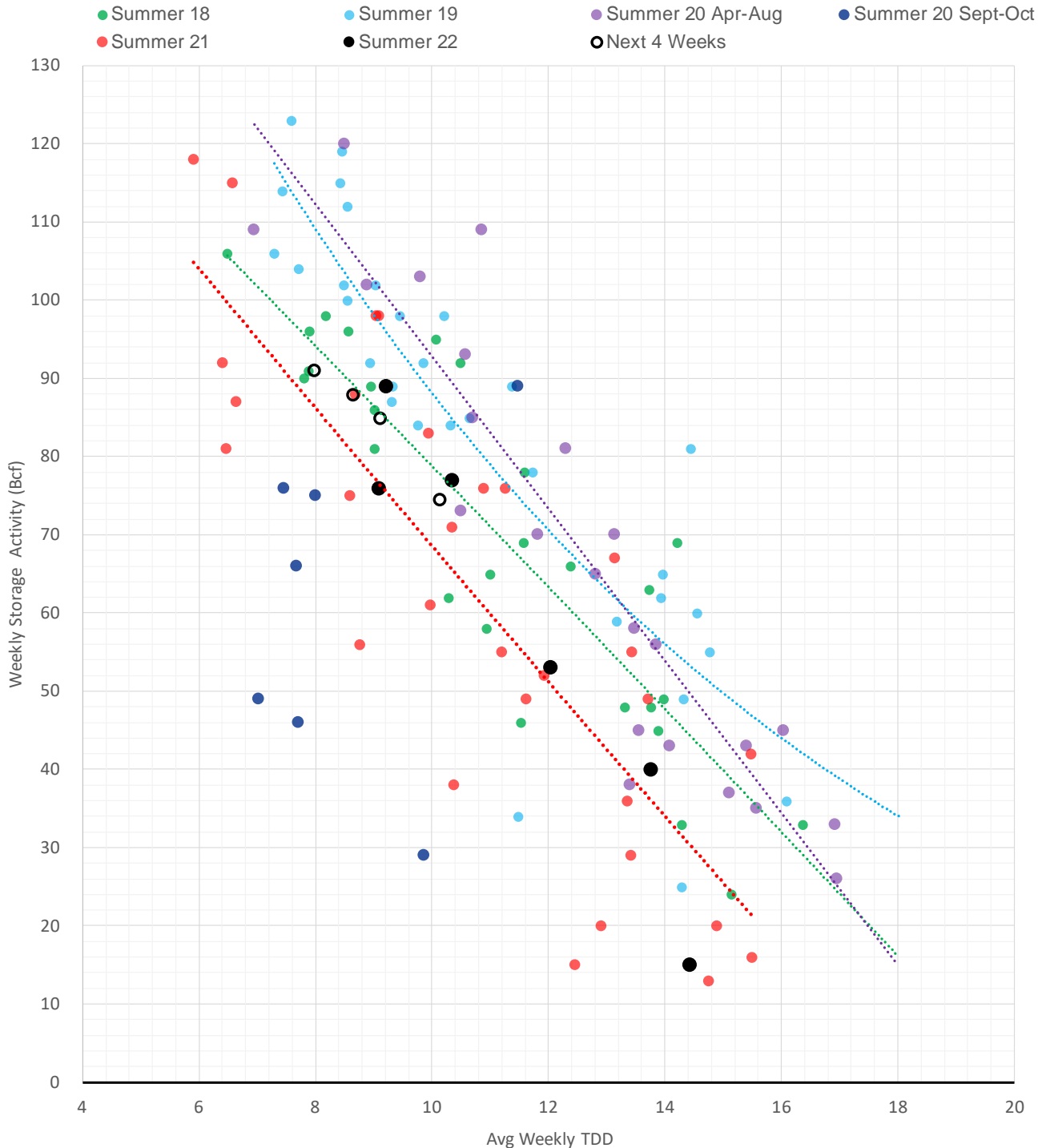
	Units	Current Price	vs. 4 Weeks			
			vs. Last Week	Ago	vs. Last Year	
NatGas Jul21/Oct21	\$/MMBtu	2.224	▲ 0.000	▲ 0.000	▲ 2.194	
NatGas Oct21/Nov21	\$/MMBtu	0.361	▲ 0.000	▲ 0.000	▲ 0.296	
NatGas Oct21/Jan22	\$/MMBtu	-1.817	▲ 0.000	▲ 0.000	▼ -2.079	
NatGas Apr22/Oct22	\$/MMBtu	3.562	▲ 0.515	▲ 1.511	▲ 3.529	
WTI Crude	\$/Bbl	110.33	▲ 0.740	▲ 8.310	▲ 44.120	
Brent Crude	\$/Bbl	114.03	▲ 4.920	▲ 8.710	▲ 45.160	
Fuel Oil, NY Harbour 1%	\$/Bbl	97.18	▲ 0.000	▲ 0.000	▲ 0.000	
Heating Oil	cents/Gallon	386.64	▲ 19.830	▼ -80.790	▲ 182.120	
Propane, Mt. Bel	cents/Gallon	1.23	▼ -0.003	▼ -0.081	▲ 0.404	
Ethane, Mt. Bel	cents/Gallon	0.60	▲ 0.005	▲ 0.093	▲ 0.340	
Coal, PRB	\$/MTon	12.30	▲ 0.000	▲ 0.000	▲ 0.000	
Coal, PRB	\$/MMBtu	0.70				
Coal, ILB	\$/MTon	31.05	▲ 0.000	▲ 0.000	▲ 0.000	
Coal, ILB	\$/MMBtu	1.32				

Nat Gas Term Structure (\$MMBTU)

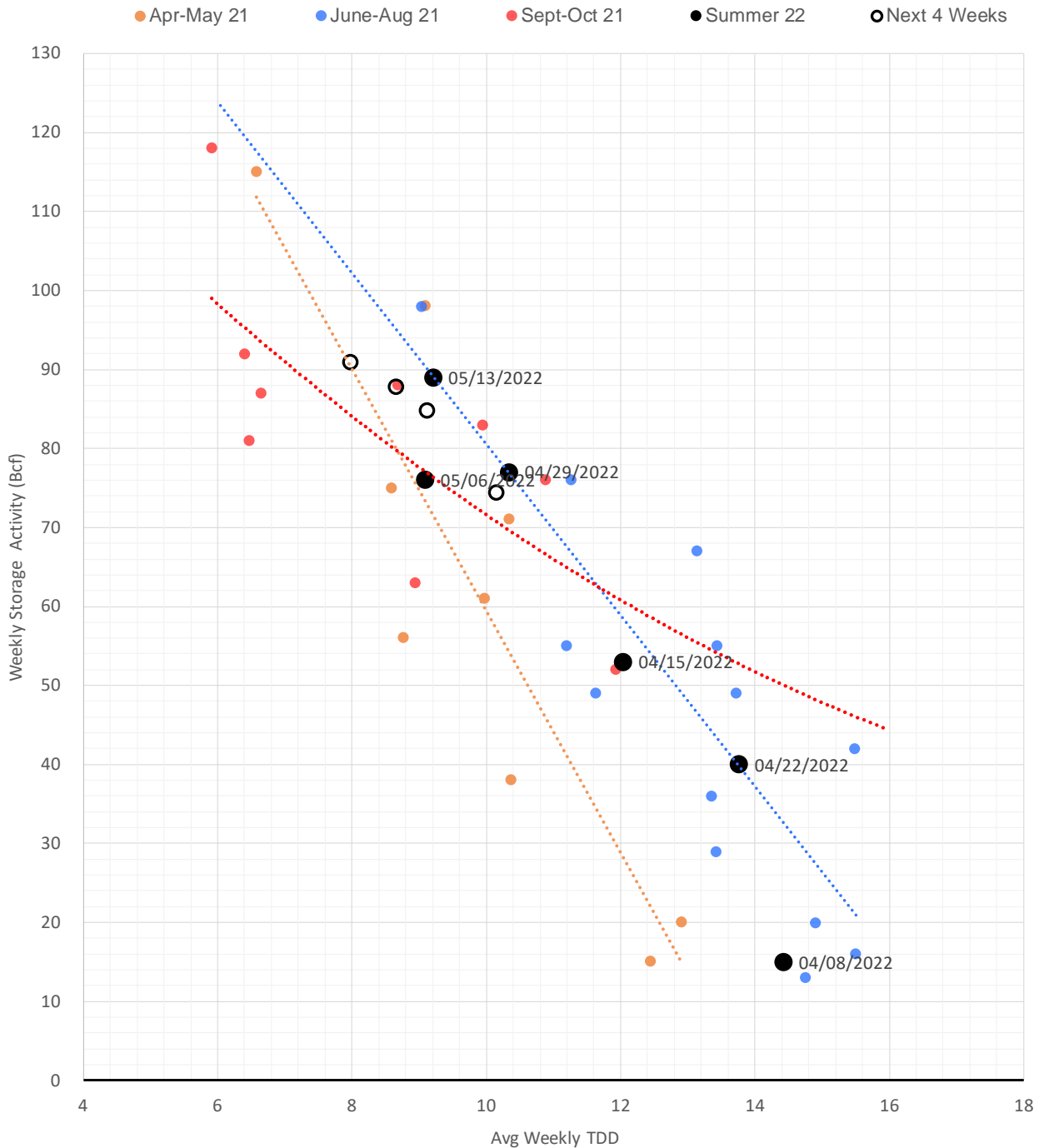


	JUN 22	JUL 22	AUG 22	SEP 22	OCT 22	NOV 22	DEC 22	JAN 23	FEB 23	MAR 23	APR 23	MAY 23
Henry Hub	\$9.114	\$9.094	\$9.069	\$9.023	\$9.002	\$9.039	\$9.120	\$9.198	\$8.838	\$7.305	\$5.239	\$5.026
JKL	\$22.220	\$24.695	\$25.715	\$25.645	\$28.080	\$28.335	\$28.945	\$27.705	\$22.875	\$22.145	\$20.850	\$20.610
JKL-HHub	\$13.106	\$15.601	\$16.646	\$16.622	\$19.078	\$19.296	\$19.825	\$18.507	\$14.037	\$14.840	\$15.611	\$15.584
TTF	\$27.612	\$29.156	\$29.258	\$29.504	\$29.887	\$30.143	\$30.343	\$30.377	\$30.183	\$29.138	\$24.215	\$23.027
TTF-HHub	\$18.498	\$20.062	\$20.189	\$20.481	\$20.885	\$21.104	\$21.223	\$21.179	\$21.345	\$21.833	\$18.976	\$18.001
NBP	\$18.679	\$21.696	\$24.221	\$27.245	\$27.819	\$30.349	\$31.269	\$31.338	\$31.232	\$28.637	\$24.625	\$21.260
NBP-HHub	\$9.565	\$12.602	\$15.152	\$18.222	\$18.817	\$21.310	\$22.149	\$22.140	\$22.394	\$21.332	\$19.386	\$16.234

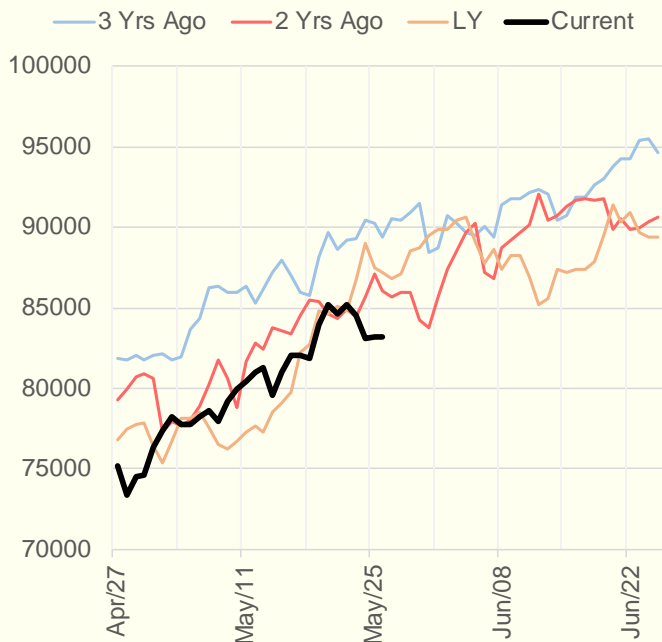
Weather Storage Model - Next 4 Week Forecast



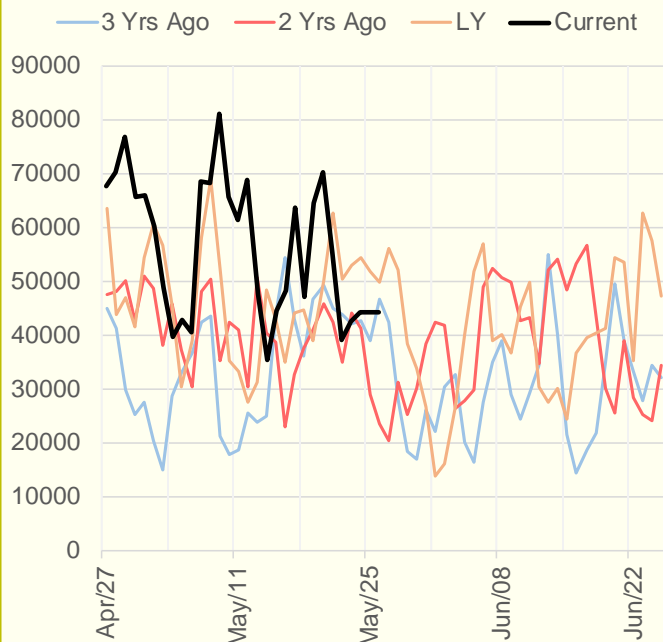
Weather Storage Model for Summer 2021 & 2022



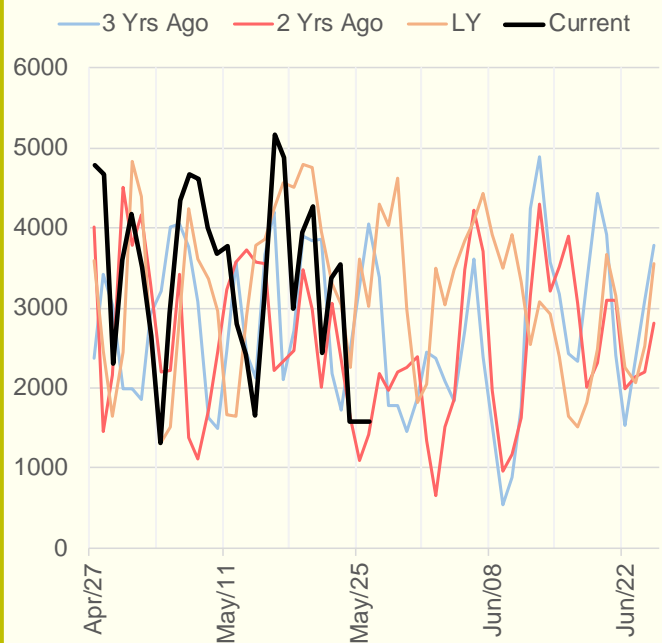
NRC Nuclear Daily Output



US Wind



CALI Wind



TEXAS Wind

