

	Current	Δ from YD	Δ from 7D Avg
Nat Gas Prompt	\$ 8.64	▼ \$ (0.10)	▲ \$ 0.36

	Current	Δ from YD	Δ from 7D Avg
WTI Prompt	\$ 110.82	▲ \$ 0.53	▼ \$ (1.2)

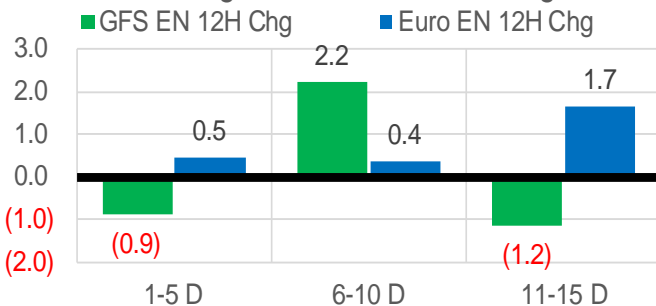
	Current	Δ from YD	Δ from 7D Avg
Brent Prompt	\$ 114.05	▲ \$ 0.63	▲ \$ 2.0

Page Menu

- [Short-term Weather Model Outlooks](#)
- [Lower 48 Component Models](#)
- [Regional S/D Models Storage Projection](#)
- [Weather Model Storage Projection](#)
- [Supply – Demand Trends](#)
- [Nat Gas Options Volume and Open Interest](#)
- [Nat Gas Futures Open Interest](#)
- [Price Summary](#)

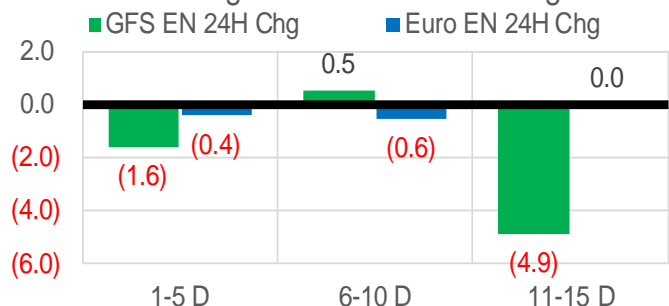
Vs. 12H Ago

L48 Region - 00z TDD vs 12H Ago



Vs. 24H Ago

L48 Region - 00z TDD vs 24H Ago



	Current	Δ from YD	Δ from 7D Avg
US Dry Production	95.3	▼ -1.10	▼ -0.39

	Current	Δ from YD	Δ from 7D Avg
US Power Burns	28.6	▼ -0.45	▼ -1.86

	Current	Δ from YD	Δ from 7D Avg
US ResComm	11.7	▼ -1.47	▲ 0.25

	Current	Δ from YD	Δ from 7D Avg
Canadian Imports	4.7	▼ -0.30	▼ -0.22

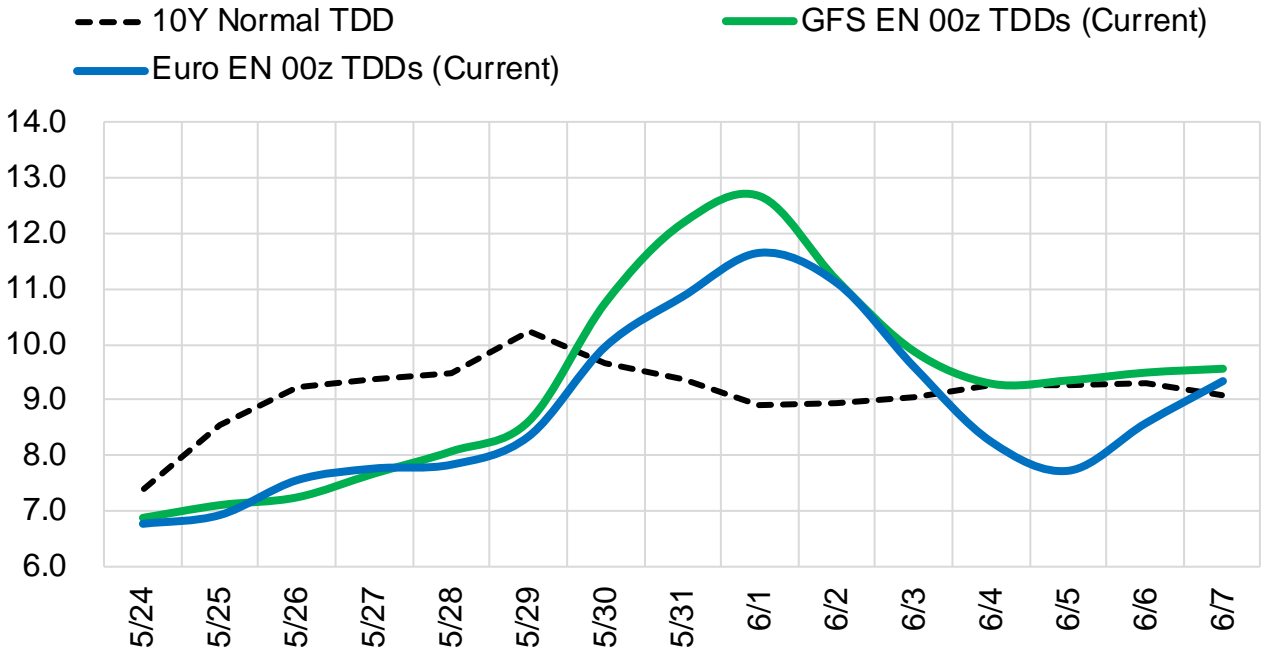
	Current	Δ from YD	Δ from 7D Avg
Net LNG Exports	12.4	▼ -0.77	▼ -0.51

	Current	Δ from YD	Δ from 7D Avg
Mexican Exports	6.8	▲ 0.03	▼ -0.18

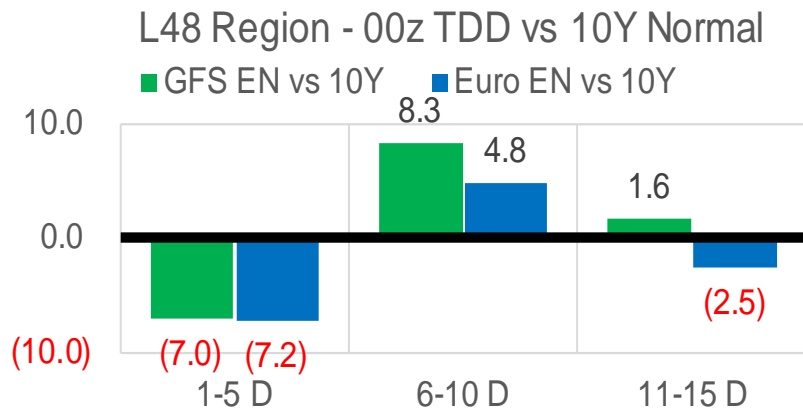
The risk of trading futures and options and other derivatives involves a substantial risk of loss and is not suitable for all persons. Each person must consider whether a particular trade, combination of trades, or strategy is suitable for that person's financial means and objectives. Past results are not necessarily indicative of future results. This communication may contain links to third party websites which are not under the control of and are not maintained by ION Energy Group, and ION Energy Group is not responsible for their content.

Short-term Weather Model Outlooks (00z)

L48 Region



Vs. 10Y Normal



Source: WSI, Bloomberg

Lower 48 Component Models

Daily Balances

	18-May	19-May	20-May	21-May	22-May	23-May	24-May	DoD	vs. 7D
Lower 48 Dry Production	94.7	95.1	96.0	96.2	96.6	96.4	95.3	▼ -1.1	▼ -0.6
Canadian Imports	4.9	5.0	4.8	5.1	5.1	5.0	4.7	▼ -0.3	▼ -0.2
L48 Power	30.6	32.1	31.6	31.0	29.7	29.1	28.6	▼ -0.4	▼ -2.0
L48 Residential & Commercial	11.8	10.1	10.7	11.3	12.3	13.2	11.7	▼ -1.5	▲ 0.2
L48 Industrial	20.9	21.0	21.1	21.4	21.6	21.7	21.4	▼ -0.2	▲ 0.2
L48 Lease and Plant Fuel	5.1	5.1	5.2	5.2	5.2	5.2	5.1	▼ -0.1	▼ -0.1
L48 Pipeline Distribution	2.4	2.4	2.4	2.4	2.4	2.4	2.3	▼ -0.1	▼ -0.1
L48 Regional Gas Consumption	70.8	70.6	71.0	71.3	71.2	71.6	69.2	▼ -2.3	▼ -1.9
Net LNG Delivered	12.33	13.00	13.26	13.18	13.06	13.19	12.42	▼ -0.8	▼ -0.6
Total Mexican Exports	7.2	7.1	7.1	6.9	6.9	6.8	6.8	▲ 0.0	▼ -0.2
Implied Daily Storage Activity	9.3	9.4	9.5	9.9	10.6	9.9	11.5		
EIA Reported Daily Storage Activity									
Daily Model Error									

EIA Storage Week Balances

	15-Apr	22-Apr	29-Apr	6-May	13-May	20-May	WoW	vs. 4W
Lower 48 Dry Production	96.4	96.7	95.8	95.8	95.9	94.9	▼ -1.0	▼ -1.1
Canadian Imports	5.6	5.8	6.1	5.9	5.2	4.9	▼ -0.3	▼ -0.9
L48 Power	24.6	25.1	24.9	26.2	26.8	30.3	▲ 3.6	▲ 4.6
L48 Residential & Commercial	22.4	24.1	18.5	16.6	14.2	9.9	▼ -4.4	▼ -8.5
L48 Industrial	21.7	21.8	22.0	21.6	21.3	20.8	▼ -0.5	▼ -0.9
L48 Lease and Plant Fuel	5.3	5.3	5.2	5.2	5.2	5.1	▼ -0.1	▼ -0.1
L48 Pipeline Distribution	2.6	2.7	2.4	2.4	2.3	2.3	▼ 0.0	▼ -0.2
L48 Regional Gas Consumption	76.5	79.0	73.0	72.0	69.8	68.4	▼ -1.4	▼ -5.0
Net LNG Exports	12.5	12.1	12.2	12.2	12.2	12.2	▲ 0.0	▲ 0.0
Total Mexican Exports	6.6	6.7	6.9	6.9	7.0	7.0	▼ -0.1	▲ 0.1
Implied Daily Storage Activity	6.5	4.7	9.8	10.6	12.1	12.2	0.2	
EIA Reported Daily Storage Activity	7.6	5.7	11.0	10.9	12.7			
Daily Model Error	-1.1	-1.0	-1.2	-0.3	-0.7			

Monthly Balances

	2Yr Ago May-20	LY May-21	Jan-22	Feb-22	Mar-22	Apr-22	MTD May-22	MoM	vs. LY
Lower 48 Dry Production	87.0	93.0	93.4	92.6	94.9	96.2	95.6	▼ -0.6	▲ 2.7
Canadian Imports	3.9	4.5	6.7	6.6	5.2	5.8	5.2	▼ -0.6	▲ 0.7
L48 Power	26.9	26.5	31.5	28.9	25.6	24.8	28.6	▲ 3.9	▲ 2.1
L48 Residential & Commercial	12.8	12.8	49.1	44.4	30.7	22.2	12.9	▼ -9.3	▲ 0.2
L48 Industrial	19.4	20.9	24.7	22.5	21.8	22.0	21.2	▼ -0.7	▲ 0.3
L48 Lease and Plant Fuel	4.7	5.0	5.1	5.1	5.2	5.2	5.2	▼ -0.1	▲ 0.1
L48 Pipeline Distribution	2.2	2.2	3.8	3.6	2.9	2.6	2.4	▼ -0.2	▲ 0.1
L48 Regional Gas Consumption	65.9	67.5	114.3	104.4	86.2	76.8	70.3	▼ -6.4	▲ 2.9
Net LNG Exports	6.7	10.8	12.4	12.4	12.9	12.3	12.4	▲ 0.1	▲ 1.6
Total Mexican Exports	4.8	6.8	6.3	6.2	6.5	6.7	7.0	▲ 0.2	▲ 0.2
Implied Daily Storage Activity	13.6	12.4	-32.9	-23.7	-5.5	6.2	11.2		
EIA Reported Daily Storage Activity									
Daily Model Error									

Source: Bloomberg, analytix.ai

Daily Average Generation Data

Nuclear Generation Daily Average - GWh (NRC)

	16-May	17-May	18-May	19-May	20-May	21-May	22-May	DoD	vs. 7D
NRC Nuclear Daily Output	82.1	82.1	81.8	83.9	85.2	84.6	85.2	0.5	1.9
NRC Nuclear Max Capacity	104.9	104.9	104.9	104.9	104.9	104.9	104.9	0.0	0.0
NRC Nuclear Outage	22.8	22.8	23.0	20.9	19.6	20.2	19.7	-0.5	-1.9
NRC % Nuclear Cap Utilization	83.5	83.5	83.2	85.3	86.7	86.1	86.6	0.5	1.9

Wind Generation Daily Average - MWh (EIA)

	16-May	17-May	18-May	19-May	20-May	21-May	22-May	DoD	vs. 7D
CALI Wind	5161	4880	2994	3953	4264	2430	3369	939	-577
TEXAS Wind	12905	21221	17845	18616	18899	20257	12626	-7632	-5665
US Wind	48299	63694	47320	64658	70425	55599	39550	-16049	-18782

Generation Daily Average - MWh (EIA)

	16-May	17-May	18-May	19-May	20-May	21-May	22-May	DoD	vs. 7D
US Wind	48299	63694	47320	64658	70425	55599	39550	-16049	-18782
US Solar	19384	18772	19404	18983	18226	16914	16268	-646	-2346
US Petroleum	220	198	284	258	352	608	558	-50	238
US Other	7624	7993	7493	7605	7936	7724	7581	-143	-148
US Coal	91689	87363	92366	93594	94046	90230	89529	-702	-2019
US Nuke	85474	87290	85660	87482	88870	88672	89020	348	1779
US Hydro	30842	31474	32413	33132	33283	32085	31691	-394	-514
US Gas	173241	160300	174798	175718	169752	165053	154213	-10840	-15597

See National Wind and Nuclear daily charts

Source: Bloomberg, analytix.ai

Storage Week Average Generation Data

Nuclear Generation Weekly Average - GWh (NRC)

	15-Apr	22-Apr	29-Apr	6-May	13-May	20-May	WoW	WoW Bcf/d Impact
NRC Nuclear Daily Output	71.9	72.3	73.5	76.7	79.3	81.7	2.4	-0.4
NRC Nuclear Max Capacity	104.9	104.9	104.9	104.9	104.9	104.9	0.0	
NRC Nuclear Outage	32.9	32.6	31.4	28.2	25.5	23.2	-2.4	
NRC % Nuclear Cap Utilization	73.2	73.5	74.8	78.0	80.7	83.1	2.4	

Wind Generation Weekly Average - MWh (EIA)

	15-Apr	22-Apr	29-Apr	6-May	13-May	20-May	WoW	WoW Bcf/d Impact
CALI Wind	3434	3613	3153	2929	3983	3452	-531	0.1
TEXAS Wind	16530	15612	18327	16902	17705	15706	-1999	0.4
US Wind	66240	61570	66986	57243	64974	50239	-14735	2.7
							-23%	

Generation Weekly Average - MWh (EIA)

	15-Apr	22-Apr	29-Apr	6-May	13-May	20-May	WoW	WoW Bcf/d Impact
						est.		
US Wind	66240	61570	66986	57243	64974	50239	-14735	2.7
US Solar	16118	15897	16968	16920	17846	19053	1207	-0.2
US Petroleum	964	984	992	931	341	262	-79	0.0
US Other	7154	7544	7717	7528	7615	7742	127	0.0
US Coal	77087	79575	77533	78898	81273	88922	7649	-1.4
US Nuke	75674	76478	77438	80545	83391	85510	2119	-0.4
US Hydro	29415	28355	26721	26824	28968	31881	2912	-0.5
US Gas	134338	133401	131482	145738	148473	171831	23358	4.2

See National Wind and Nuclear daily charts

Source: Bloomberg, analytix.ai

Monthly Average Generation Data

Nuclear Generation Monthly Average - GWh (NRC)

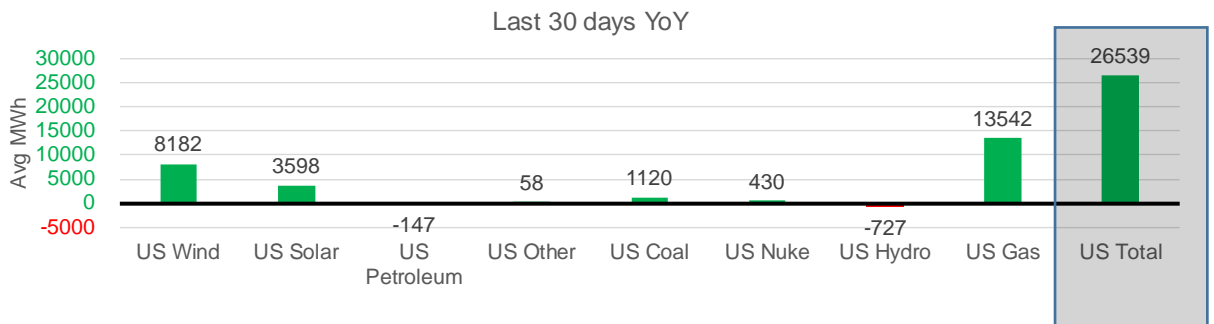
	2Yr Ago	LY	MTD				Last 30 days	Last 30 days YoY
	Same 30 days	Same 30 days	Feb-22	Mar-22	Apr-22	May-22		
NRC Nuclear Daily Output	81.6	79.4	87.3	81.3	73.3	80.8	79.5	0.1
NRC Nuclear Max Capacity	104.9	104.9	104.9	104.9	104.9	104.9	104.9	0.0
NRC Nuclear Outage	23.3	25.5	17.5	23.6	31.6	24.1	25.4	-0.1
NRC % Nuclear Cap Utilization	83.0	80.7	88.8	82.7	74.5	82.1	80.8	0.1

Wind Generation Monthly Average - MWh (EIA)

	2Yr Ago	LY	MTD				Last 30 days	Last 30 days YoY
	Same 30 days	Same 30 days	Feb-22	Mar-22	Apr-22	May-22		
CALI Wind	2756	3289	1495	2250	3186	3477	3442	153
TEXAS Wind	11687	12734	11750	14837	16311	16436	16515	3782
US Wind	41104	48356	54543	58528	64183	54546	56538	8182

Generation Monthly Average - MWh (EIA)

	2Yr Ago	LY	MTD				Last 30 days	Last 30 days YoY
	Same 30 days	Same 30 days	Feb-22	Mar-22	Apr-22	May-22		
US Wind	41104	48356	54543	58528	64183	54546	56538	▲ 8182
US Solar	11321	14065	12442	14058	16208	17748	17663	▲ 3598
US Petroleum	758	728	1331	985	985	480	581	▼ -147
US Other	8115	7591	8632	7206	7386	7676	7649	▲ 58
US Coal	57737	82706	105631	82291	77545	85505	83826	▲ 1120
US Nuke	85590	82998	92027	85256	77217	84708	83428	▲ 430
US Hydro	36553	30176	32284	33959	29022	30108	29449	▼ -727
US Gas	136364	140408	153733	137232	133068	158528	153950	▲ 13542
US Total	376363	407351	461069	419842	406184	440180	433889	▲ 26539



See National Wind and Nuclear daily charts

Source: Bloomberg, analytix.ai

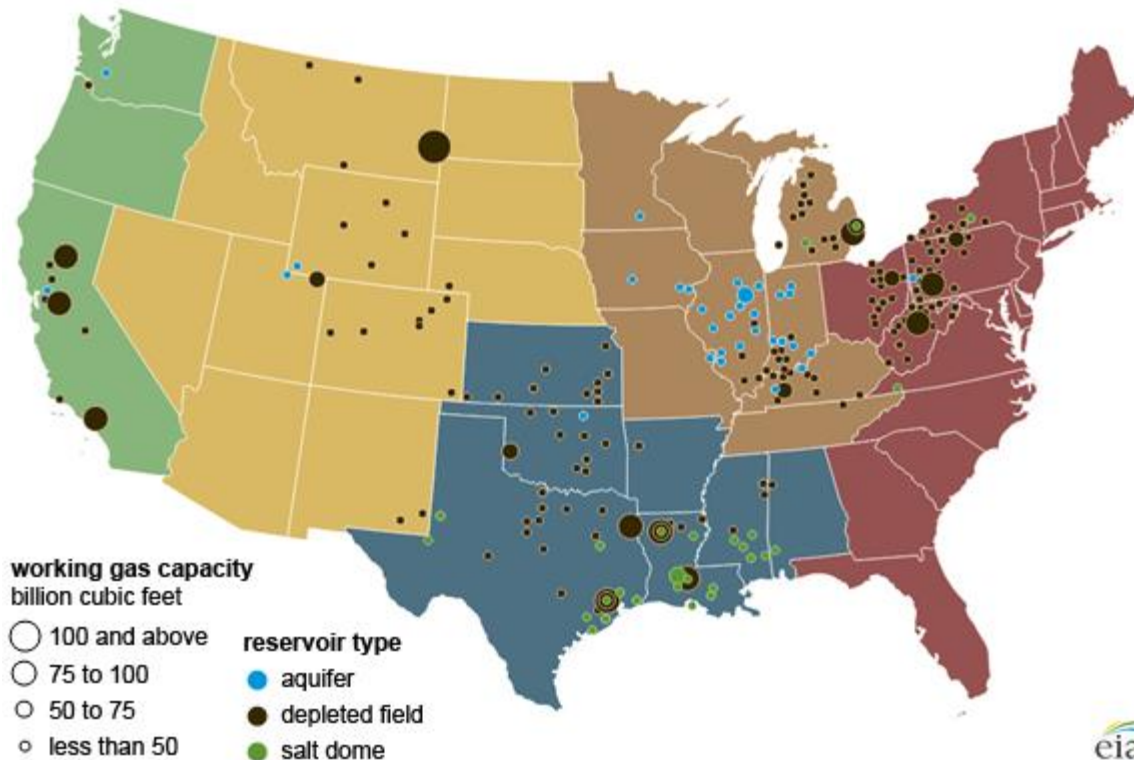
Regional S/D Models Storage Projection

Week Ending 20-May

	Daily Raw Storage	Daily Adjustment Factor	Daily Average Storage Activity (Adjusted) *	Weekly Adjusted Storage Activity
L48	13.0	0.0	13.0	91
East	2.0	2.6	4.6	32
Midwest	4.9	-0.9	4.0	28
Mountain	4.9	-3.6	1.2	9
South Central	-0.1	2.6	2.5	18
Pacific	1.3	-0.6	0.8	5

*Adjustment Factor is calculated based on historical regional deltas

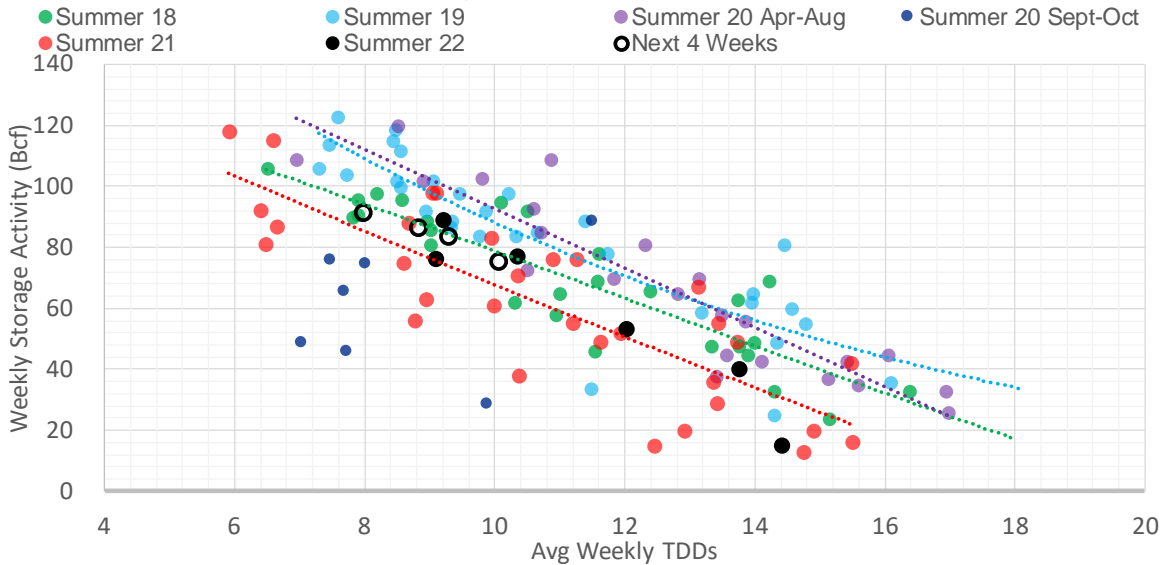
U.S. underground natural gas storage facilities by type (July 2015)



Weather Model Storage Projection

Next report and beyond		
Week Ending	TDDs	Week Storage Projection
20-May	8.0	91
27-May	8.8	86
03-Jun	10.1	75
10-Jun	9.3	83

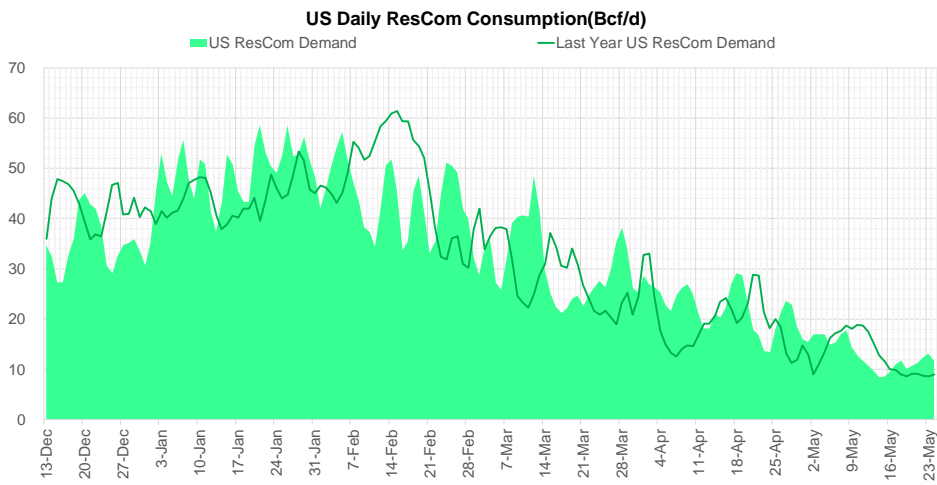
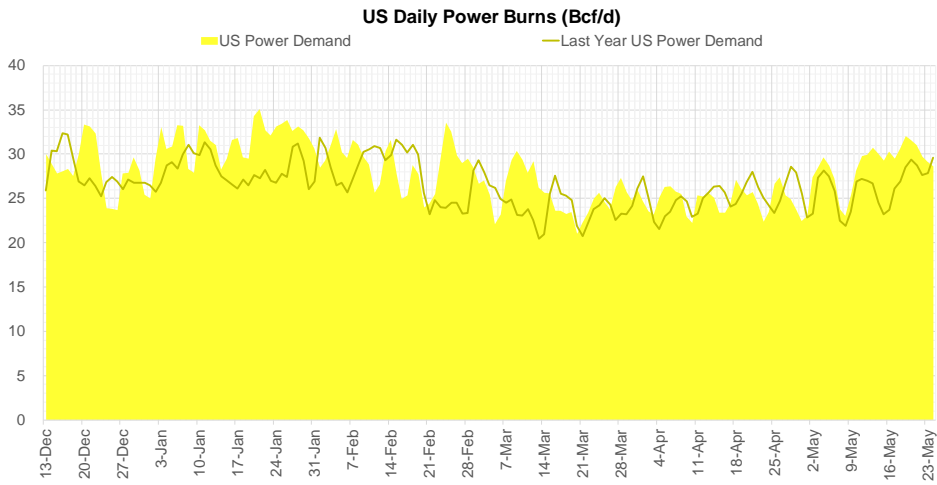
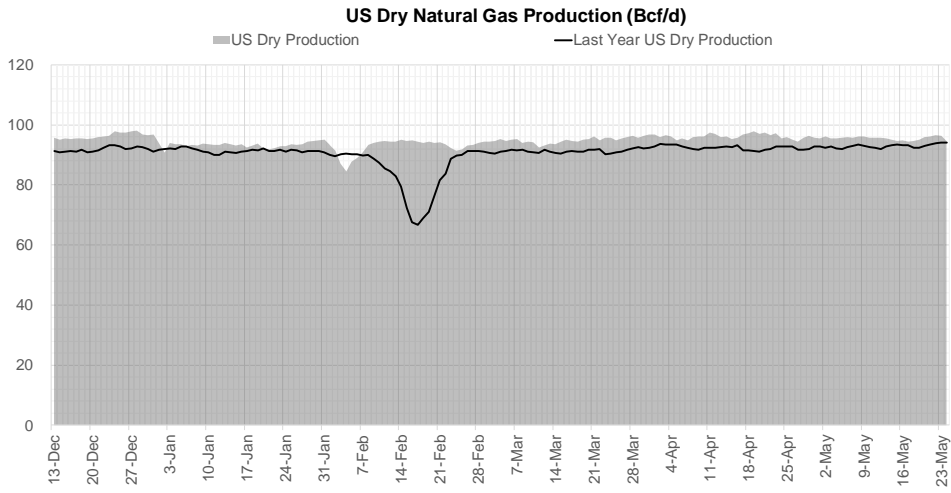
Weather Storage Model - Next 4 Week Forecast



[Go to larger image](#)



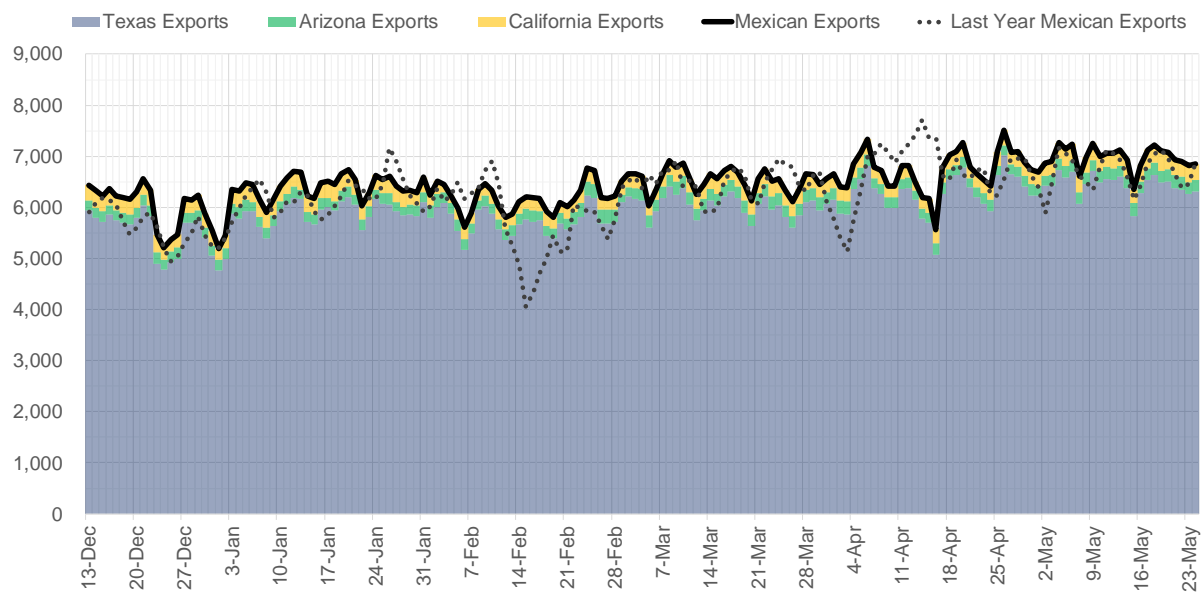
Supply – Demand Trends



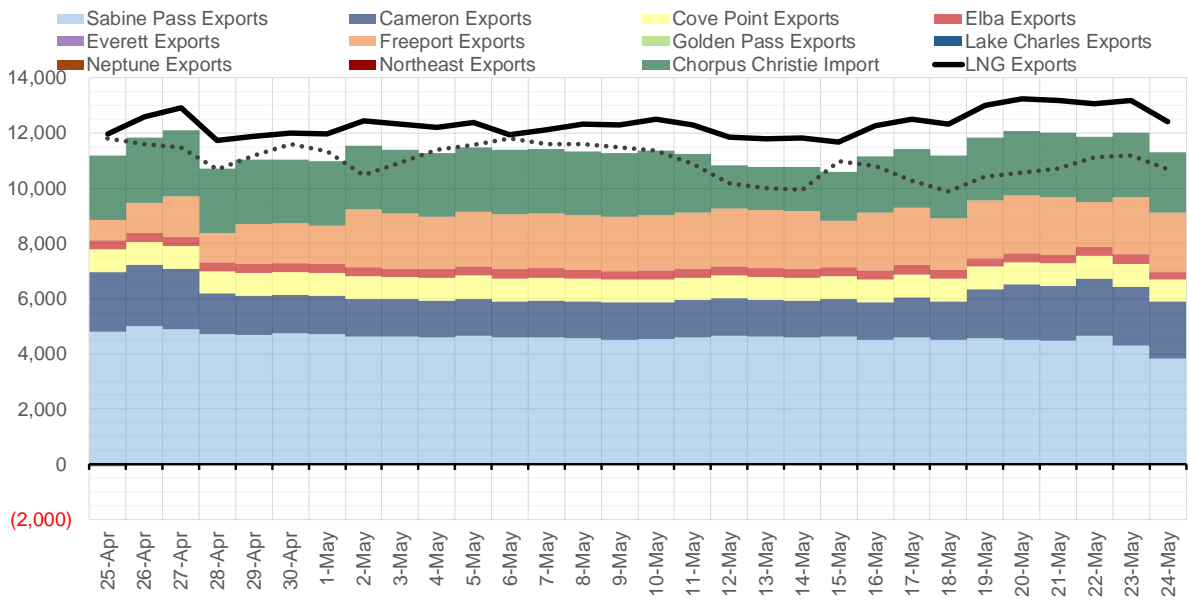
Source: Bloomberg

The risk of trading futures and options and other derivatives involves a substantial risk of loss and is not suitable for all persons. Each person must consider whether a particular trade, combination of trades, or strategy is suitable for that person's financial means and objectives. Past results are not necessarily indicative of future results. This communication may contain links to third party websites which are not under the control of and are not maintained by ION Energy Group, and ION Energy Group is not responsible for their content.

Mexican Exports (MMcf/d)



Net LNG Exports - Last 30 days (MMcf/d)



Source: Bloomberg

The risk of trading futures and options and other derivatives involves a substantial risk of loss and is not suitable for all persons. Each person must consider whether a particular trade, combination of trades, or strategy is suitable for that person's financial means and objectives. Past results are not necessarily indicative of future results. This communication may contain links to third party websites which are not under the control of and are not maintained by ION Energy Group, and ION Energy Group is not responsible for their content.

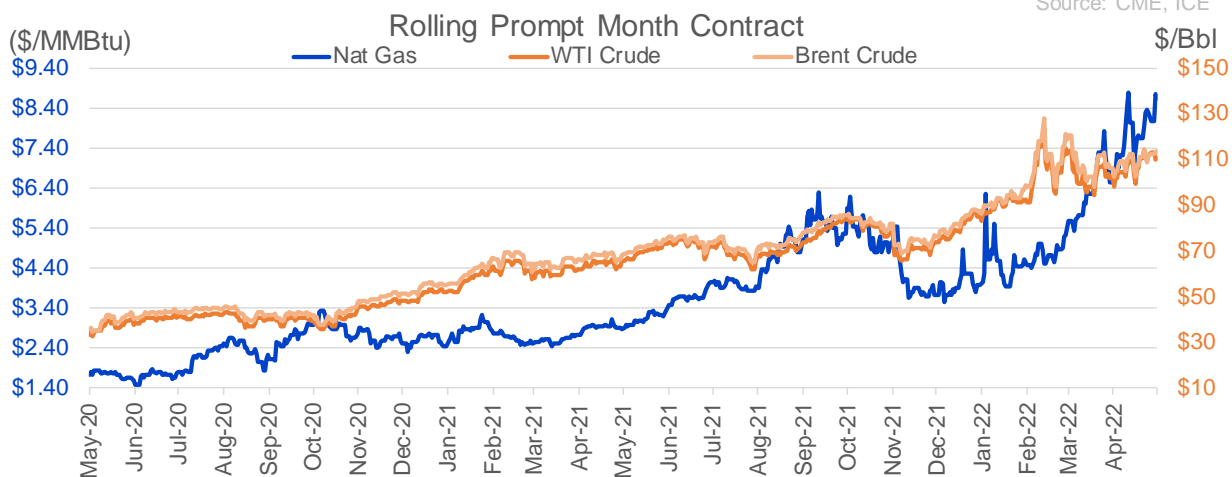
Nat Gas Options Volume and Open Interest CME and ICE Combined

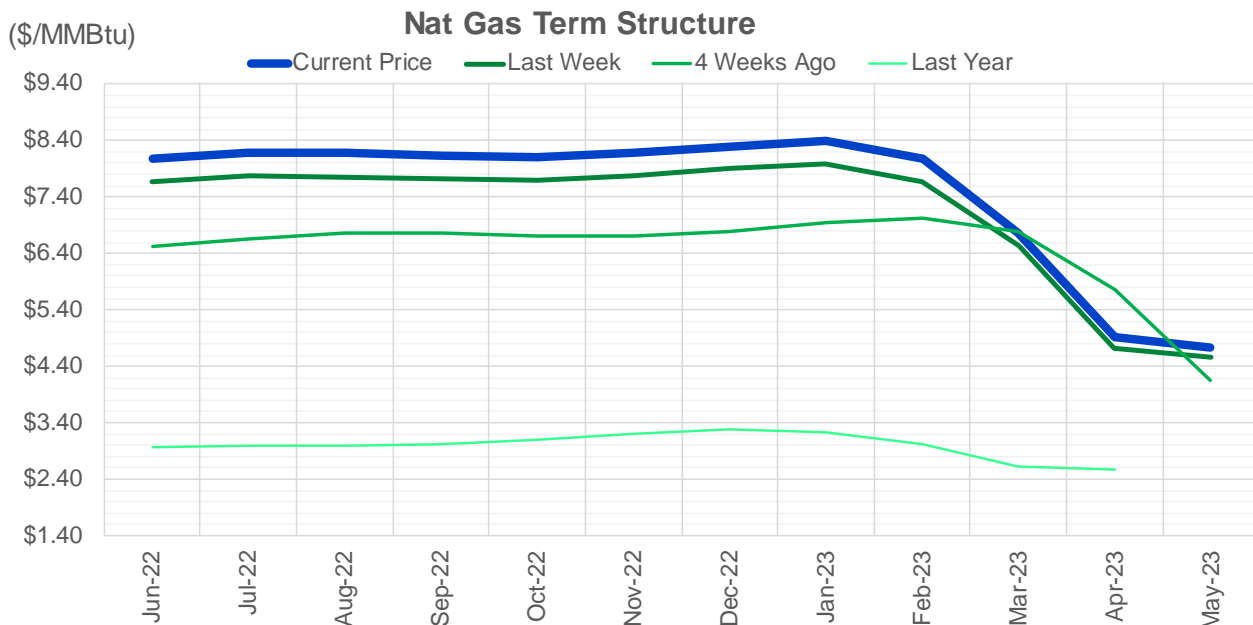
CONTRACT MONTH	CONTRACT YEAR	PUT/CALL	STRIKE	CUMULATIVE VOL	CONTRACT MONTH	CONTRACT YEAR	PUT/CALL	STRIKE	CUMULATIVE OI
7	2022	C	10.00	6628	8	2022	C	10.00	51335
8	2022	C	10.00	6048	8	2022	C	10.50	42423
6	2022	C	9.00	4322	10	2022	C	6.00	35395
7	2022	C	9.00	4257	6	2022	C	10.00	32951
8	2022	C	10.50	3794	7	2022	C	10.00	25042
6	2022	C	9.50	2977	6	2022	C	6.00	25034
7	2022	C	11.00	2793	10	2022	C	5.00	24089
6	2022	P	7.50	2559	9	2022	C	6.00	23663
6	2022	P	8.00	2554	7	2022	C	9.00	22147
6	2022	P	5.50	2502	10	2022	P	3.50	20919
10	2022	P	4.00	2400	10	2022	P	3.00	20642
7	2022	P	7.00	2084	6	2022	P	7.00	20096
6	2022	C	10.00	2028	10	2022	P	2.50	19868
11	2022	P	4.00	1800	6	2022	P	5.50	19659
12	2022	P	4.00	1800	6	2022	P	4.00	19629
7	2022	C	12.00	1762	6	2022	P	6.00	19588
8	2022	P	6.00	1660	8	2022	C	6.00	19483
7	2022	P	6.00	1633	6	2022	C	7.00	19400
6	2022	C	8.50	1593	10	2022	P	6.00	19057
8	2022	C	8.75	1547	7	2022	C	6.00	18936
7	2022	C	9.10	1503	7	2022	C	8.00	18695
6	2022	P	7.00	1445	8	2022	C	7.00	18255
6	2022	C	9.25	1350	9	2022	C	10.00	18244
6	2022	C	9.75	1277	12	2022	C	5.00	18221
6	2022	C	11.00	1206	9	2022	C	7.00	18096
9	2022	P	3.50	1200	7	2022	C	7.00	17664
6	2022	C	10.10	1173	6	2022	C	5.00	17647
6	2022	P	7.75	1121	10	2022	P	2.00	17558
12	2022	C	10.00	1101	7	2022	P	3.25	17344
10	2022	P	3.00	1000	6	2022	P	3.00	17223
6	2022	C	8.00	932	6	2022	P	4.75	17111
8	2022	C	12.00	890	10	2022	P	4.00	16901
10	2022	C	10.00	857	7	2022	P	6.00	16832
7	2022	P	3.50	852	7	2022	P	7.00	16419
7	2022	C	10.50	850	5	2023	P	2.00	16261
8	2022	P	3.50	850	1	2023	C	10.00	16234
10	2022	P	3.50	850	6	2022	P	3.50	15958
6	2022	C	8.75	839	6	2022	P	5.00	15596
8	2022	C	9.00	832	2	2023	C	10.00	15524
12	2022	C	9.00	800	7	2022	P	5.00	15478
9	2022	P	6.00	751	9	2022	P	2.50	15291
7	2022	P	6.50	744	7	2022	P	3.50	15026
8	2022	P	7.00	743	10	2022	P	3.25	14967
10	2022	P	7.00	704	9	2022	P	2.75	14883
8	2022	C	8.50	656	6	2022	C	10.10	14760
7	2022	C	8.50	655	8	2022	C	9.00	14655
9	2022	C	12.00	650	9	2022	P	3.00	14626
4	2023	C	6.00	650	8	2022	P	3.00	14553
5	2023	C	6.00	650	11	2022	P	4.00	14494
					7	2022	P	3	14491

Source: CME, ICE

Nat Gas Futures Open Interest CME and ICE Combined

CME Henry Hub Futures (10,000 MMBtu)				ICE Henry Hub Futures Contract Equivalent (10,000 MM			
	Current	Prior	Daily Change		Current	Prior	Daily Change
JUN 22	17912	30317	-12405	JUN 22	82087	84414	-2327
JUL 22	210775	203931	6844	JUL 22	84294	82574	1720
AUG 22	63753	63468	285	AUG 22	59726	59416	310
SEP 22	94983	92751	2232	SEP 22	65534	63193	2341
OCT 22	97959	97717	242	OCT 22	75874	76496	-622
NOV 22	50940	50576	364	NOV 22	59839	59470	369
DEC 22	51109	51067	42	DEC 22	62785	62465	320
JAN 23	63365	63507	-142	JAN 23	65662	65631	31
FEB 23	28191	28142	49	FEB 23	55876	56245	-369
MAR 23	39172	39087	85	MAR 23	55062	55126	-64
APR 23	59466	58517	949	APR 23	52406	52695	-289
MAY 23	60384	61022	-638	MAY 23	51628	51724	-96
JUN 23	26186	25551	635	JUN 23	44947	44653	294
JUL 23	22805	22594	211	JUL 23	43019	43631	-613
AUG 23	13814	13680	134	AUG 23	43129	43319	-190
SEP 23	17489	17685	-196	SEP 23	42268	42466	-199
OCT 23	35517	34759	758	OCT 23	49258	49504	-246
NOV 23	12435	12510	-75	NOV 23	43430	43384	47
DEC 23	14590	14665	-75	DEC 23	39372	39401	-30
JAN 24	19914	19799	115	JAN 24	39090	38965	125
FEB 24	6119	6069	50	FEB 24	26555	26338	218
MAR 24	14233	14252	-19	MAR 24	30800	30646	153
APR 24	12064	12079	-15	APR 24	26991	26968	23
MAY 24	6514	6448	66	MAY 24	25708	25669	39
JUN 24	1782	1771	11	JUN 24	22064	21996	68
JUL 24	1962	1953	9	JUL 24	22269	22199	70
AUG 24	2941	2932	9	AUG 24	22355	22285	70
SEP 24	1333	1333	0	SEP 24	21729	21661	68
OCT 24	6720	6709	11	OCT 24	24498	24381	118
NOV 24	4397	4649	-252	NOV 24	23067	22489	578





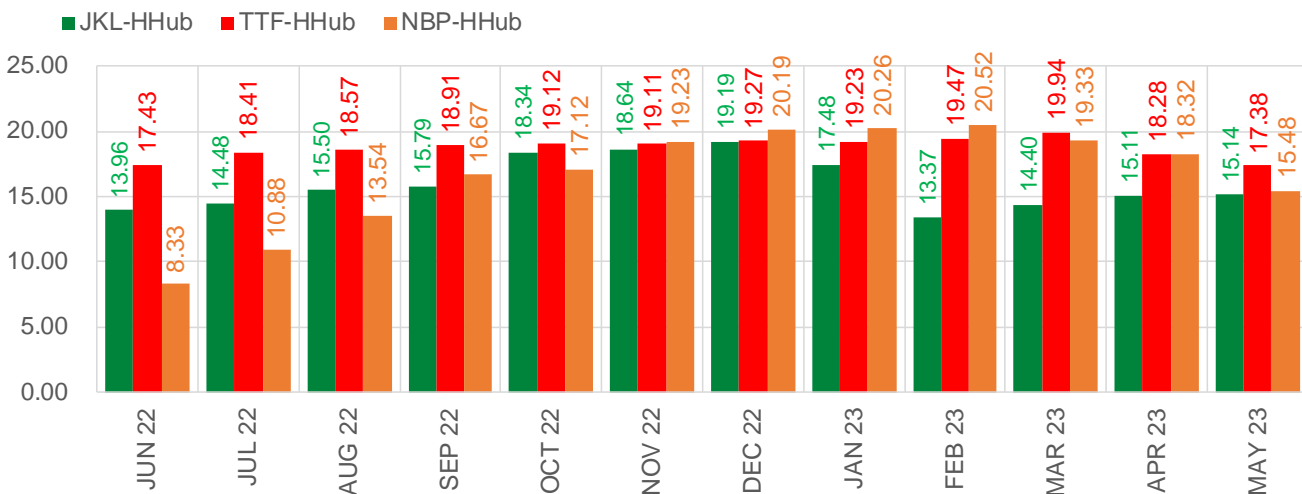
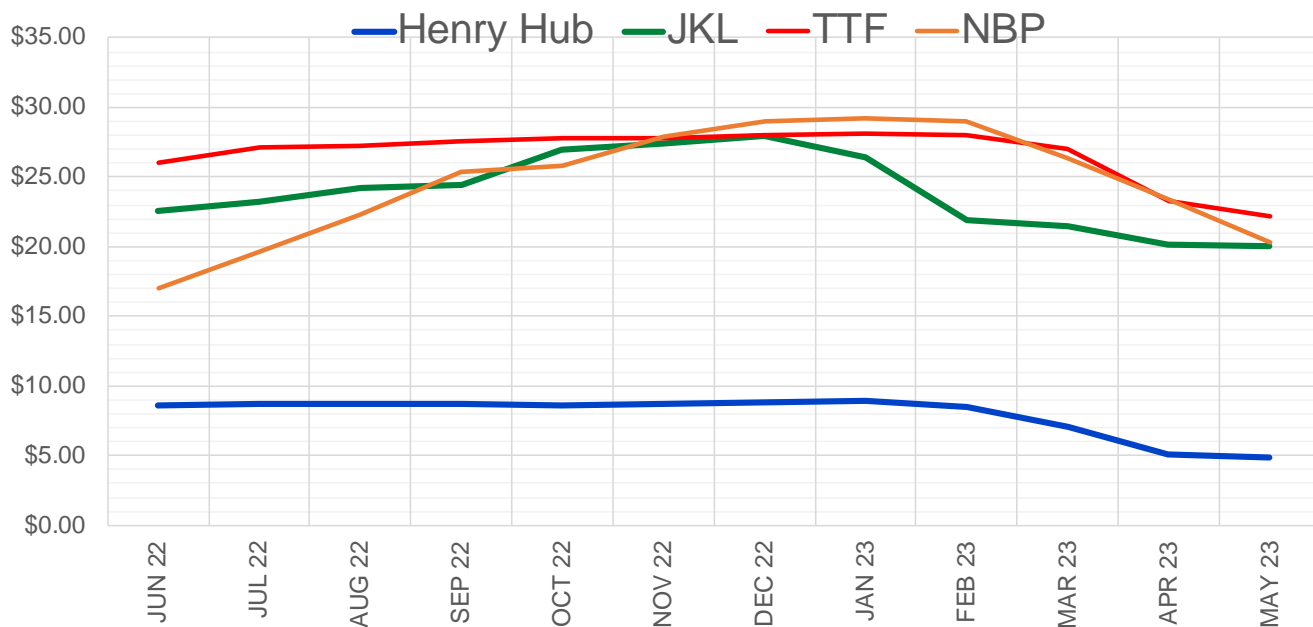
	Jun-22	Jul-22	Aug-22	Sep-22	Oct-22	Nov-22	Dec-22	Jan-23	Feb-23	Mar-23	Apr-23	May-23
Current Price	\$8.083	\$8.178	\$8.171	\$8.136	\$8.115	\$8.176	\$8.298	\$8.397	\$8.068	\$6.774	\$4.911	\$4.725
Last Week	\$7.663	\$7.765	\$7.754	\$7.714	\$7.704	\$7.774	\$7.896	\$7.995	\$7.678	\$6.546	\$4.724	\$4.558
vs. Last Week	\$0.420	\$0.413	\$0.417	\$0.422	\$0.411	\$0.402	\$0.402	\$0.402	\$0.390	\$0.228	\$0.187	\$0.167
4 Weeks Ago	\$6.534	\$6.663	\$6.753	\$6.754	\$6.702	\$6.713	\$6.788	\$6.939	\$7.034	\$6.776	\$5.747	\$4.149
vs. 4 Weeks Ago	\$1.549	\$1.515	\$1.418	\$1.382	\$1.413	\$1.463	\$1.510	\$1.458	\$1.034	-\$0.002	-\$0.836	\$0.576
Last Year	\$2.906	\$2.977	\$2.996	\$2.993	\$3.013	\$3.087	\$3.215	\$3.295	\$3.225	\$3.031	\$2.631	\$2.576
vs. Last Year	\$5.177	\$5.201	\$5.175	\$5.143	\$5.102	\$5.089	\$5.083	\$5.102	\$4.843	\$3.743	\$2.280	\$2.149

	Units	Cash Settled	Prompt Settle	Cash to Prompt
AGT Citygate	\$/MMBtu	8.57	7.72	-0.86
TETCO M3	\$/MMBtu	7.43	7.31	-0.12
FGT Zone 3	\$/MMBtu	7.27	8.08	0.81
Zone 6 NY	\$/MMBtu	7.27	7.25	-0.02
Chicago Citygate	\$/MMBtu	8.07	7.83	-0.24
Michcon	\$/MMBtu	7.91	7.84	-0.07
Columbia TCO Pool	\$/MMBtu	7.62	7.35	-0.27
Ventura	\$/MMBtu	8.03	7.67	-0.36
Rockies/Opal	\$/MMBtu	8.05	7.56	-0.49
El Paso Permian Basin	\$/MMBtu	7.28	7.24	-0.04
Socal Citygate	\$/MMBtu	8.71	8.10	-0.61
Malin	\$/MMBtu	8.20	7.77	-0.43
Houston Ship Channel	\$/MMBtu	8.02	7.93	-0.09
Henry Hub Cash	\$/MMBtu	8.26	7.72	-0.54
AECO Cash	C\$/GJ	5.17	5.83	0.66
Station2 Cash	C\$/GJ	3.72	7.45	3.73
Dawn Cash	C\$/GJ	8.04	7.83	-0.21

Source: CME, Bloomberg

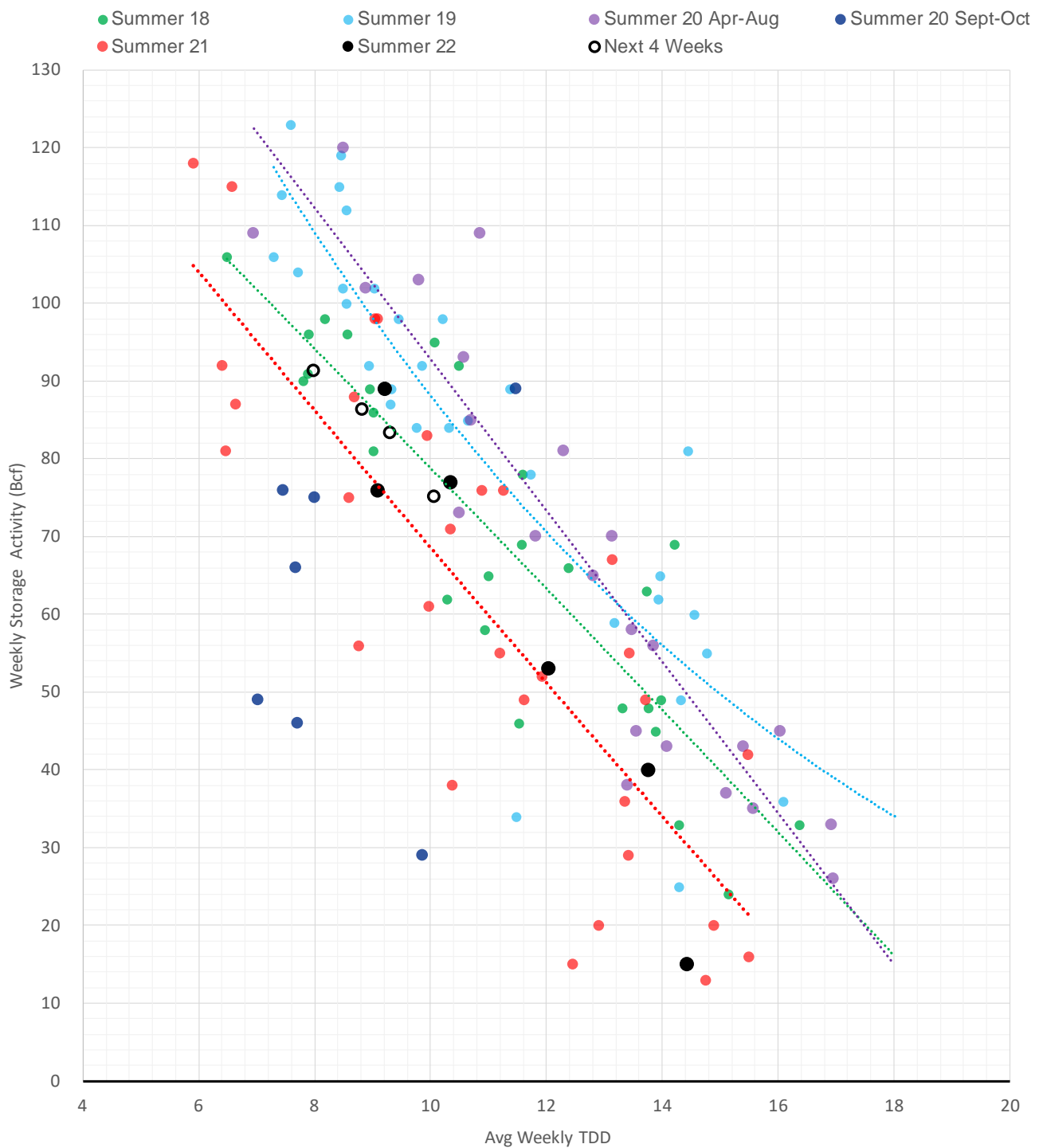
	Units	Current Price	vs. Last Week	vs. 4 Weeks Ago	vs. Last Year
NatGas Jul21/Oct21	\$/MMBtu	2.224	▲ 0.000	▲ 0.000	▲ 2.189
NatGas Oct21/Nov21	\$/MMBtu	0.361	▲ 0.000	▲ 0.000	▲ 0.288
NatGas Oct21/Jan22	\$/MMBtu	-1.817	▲ 0.000	▲ 0.000	▼ -2.099
NatGas Apr22/Oct22	\$/MMBtu	3.399	▲ 0.751	▲ 1.883	▲ 3.366
WTI Crude	\$/Bbl	110.29	▼ -3.910	▲ 11.750	▲ 44.240
Brent Crude	\$/Bbl	113.42	▼ -0.820	▲ 11.100	▲ 44.960
Fuel Oil, NY Harbour 1%	\$/Bbl	97.18	▲ 0.000	▲ 0.000	▲ 0.000
Heating Oil	cents/Gallon	376.88	▼ -13.870	▼ -32.210	▲ 172.680
Propane, Mt. Bel	cents/Gallon	1.23	▼ -0.018	▼ -0.070	▲ 0.410
Ethane, Mt. Bel	cents/Gallon	0.60	▲ 0.013	▲ 0.098	▲ 0.340
Coal, PRB	\$/MTon	12.30	▲ 0.000	▲ 0.000	▲ 0.000
Coal, PRB	\$/MMBtu	0.70			
Coal, ILB	\$/MTon	31.05	▲ 0.000	▲ 0.000	▲ 0.000
Coal, ILB	\$/MMBtu	1.32			

Nat Gas Term Structure (\$MMBTU)

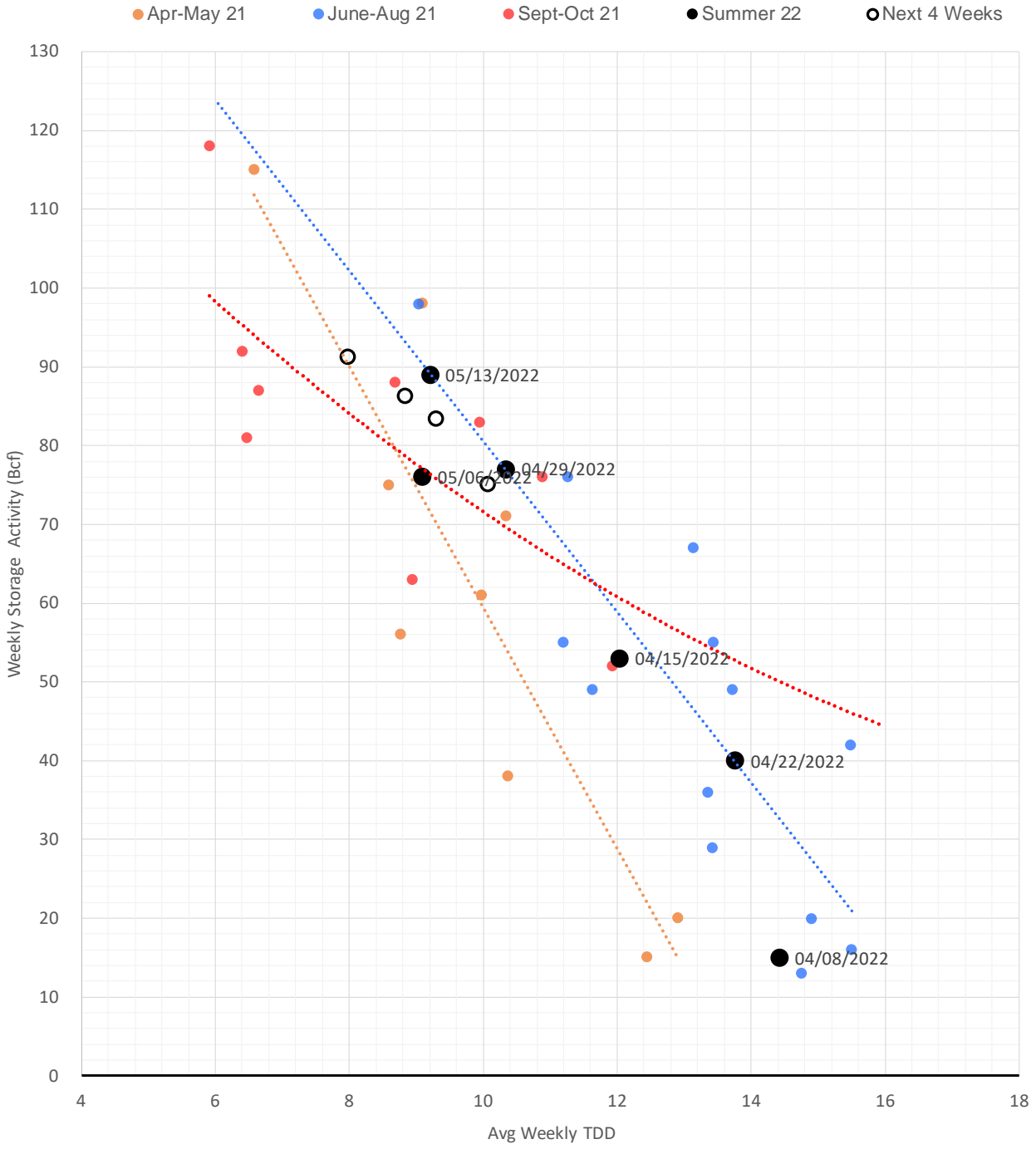


	JUN 22	JUL 22	AUG 22	SEP 22	OCT 22	NOV 22	DEC 22	JAN 23	FEB 23	MAR 23	APR 23	MAY 23
Henry Hub	\$8.644	\$8.724	\$8.715	\$8.675	\$8.636	\$8.723	\$8.785	\$8.914	\$8.531	\$7.050	\$5.050	\$4.853
JKL	\$22.600	\$23.205	\$24.215	\$24.460	\$26.980	\$27.365	\$27.975	\$26.395	\$21.905	\$21.445	\$20.155	\$19.995
JKL-HHub	\$13.956	\$14.481	\$15.500	\$15.785	\$18.344	\$18.642	\$19.190	\$17.481	\$13.374	\$14.395	\$15.105	\$15.142
TTF	\$26.075	\$27.134	\$27.288	\$27.586	\$27.753	\$27.828	\$28.050	\$28.145	\$28.001	\$26.992	\$23.328	\$22.228
TTF-HHub	\$17.431	\$18.410	\$18.573	\$18.911	\$19.117	\$19.105	\$19.265	\$19.231	\$19.470	\$19.942	\$18.278	\$17.375
NBP	\$16.970	\$19.605	\$22.254	\$25.342	\$25.758	\$27.956	\$28.973	\$29.178	\$29.051	\$26.382	\$23.365	\$20.337
NBP-HHub	\$8.326	\$10.881	\$13.539	\$16.667	\$17.122	\$19.233	\$20.188	\$20.264	\$20.520	\$19.332	\$18.315	\$15.484

Weather Storage Model - Next 4 Week Forecast

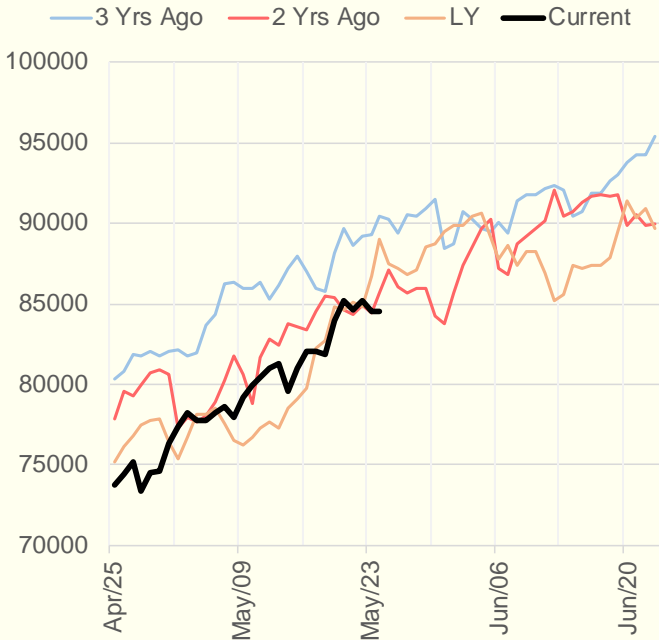


Weather Storage Model for Summer 2021 & 2022

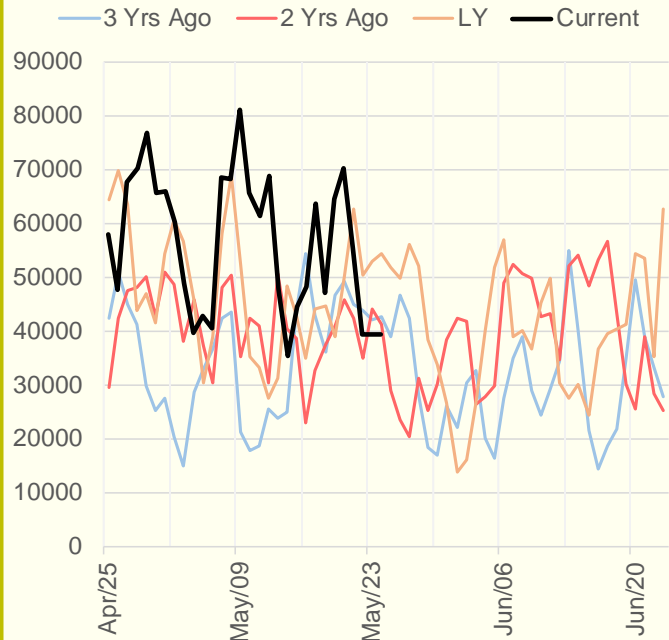


The risk of trading futures and options and other derivatives involves a substantial risk of loss and is not suitable for all persons. Each person must consider whether a particular trade, combination of trades, or strategy is suitable for that person's financial means and objectives. Past results are not necessarily indicative of future results. This communication may contain links to third party websites which are not under the control of and are not maintained by ION Energy Group, and ION Energy Group is not responsible for their content.

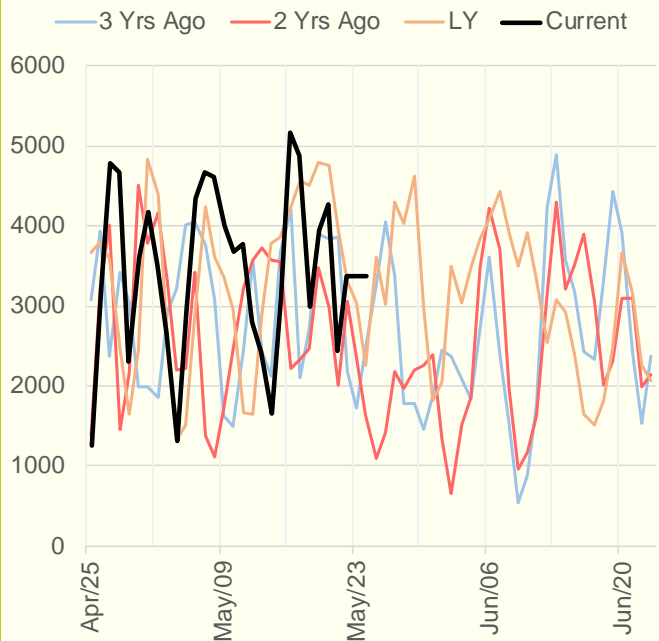
NRC Nuclear Daily Output



US Wind



CALI Wind



TEXAS Wind

