

	Current	Δ from YD	Δ from 7D Avg
Nat Gas Prompt	\$ 8.05	▼ \$ (0.32)	▲ \$ 0.14

	Current	Δ from YD	Δ from 7D Avg
WTI Prompt	\$ 107.81	▼ \$ (1.78)	▼ \$ (2.7)

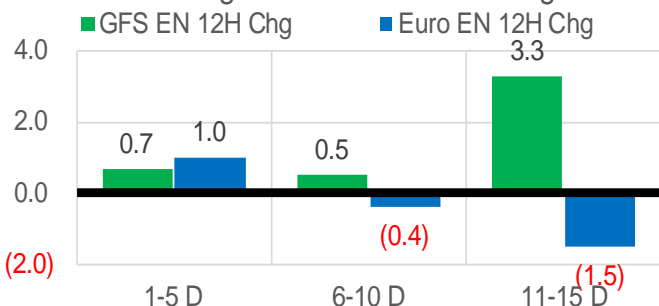
	Current	Δ from YD	Δ from 7D Avg
Brent Prompt	\$ 108.05	▼ \$ (1.06)	▼ \$ (3.0)

Page Menu

- [Short-term Weather Model Outlooks](#)
- [Lower 48 Component Models](#)
- [Regional S/D Models Storage Projection](#)
- [Weather Model Storage Projection](#)
- [Supply – Demand Trends](#)
- [Nat Gas Options Volume and Open Interest](#)
- [Nat Gas Futures Open Interest](#)
- [Price Summary](#)

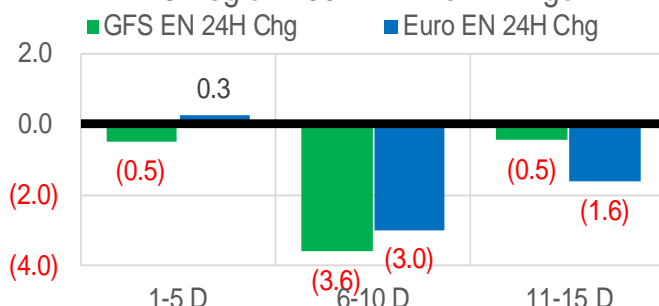
Vs. 12H Ago

L48 Region - 00z TDD vs 12H Ago



Vs. 24H Ago

L48 Region - 00z TDD vs 24H Ago



	Current	Δ from YD	Δ from 7D Avg
US Dry Production	94.8	▼ -0.04	▼ -0.34

	Current	Δ from YD	Δ from 7D Avg
US Power Burns	32.1	▲ 1.73	▲ 2.15

	Current	Δ from YD	Δ from 7D Avg
US ResComm	9.7	▼ -1.97	▼ -0.20

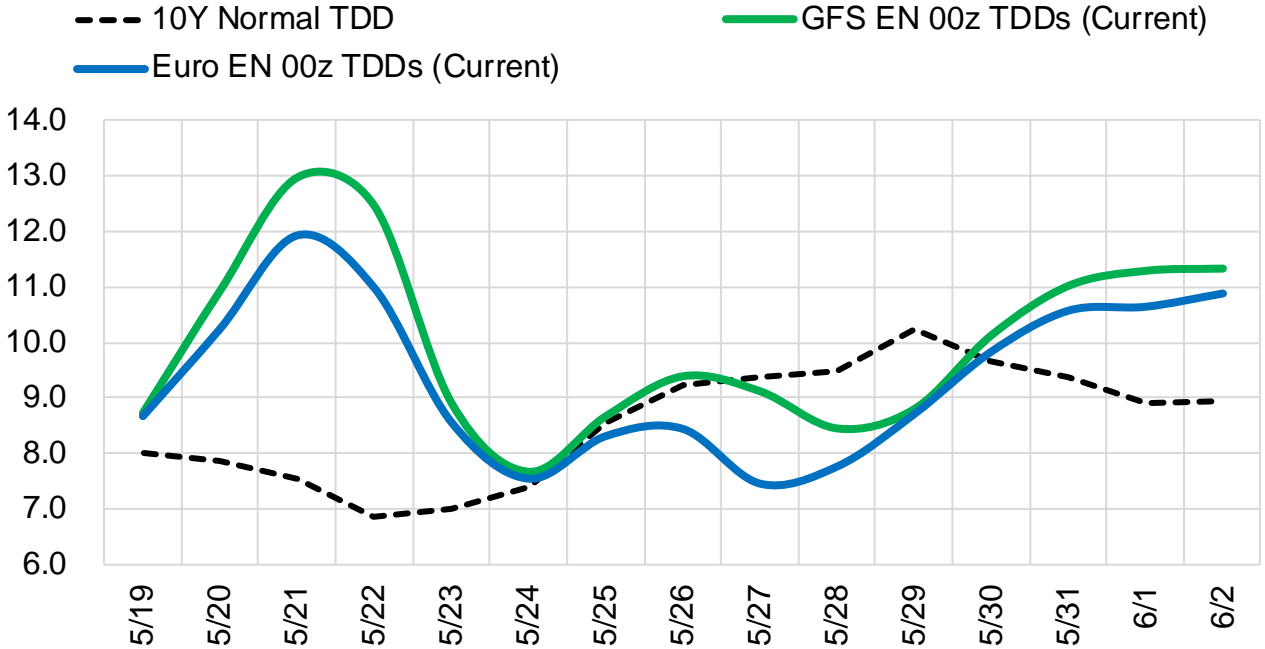
	Current	Δ from YD	Δ from 7D Avg
Canadian Imports	5.2	▲ 0.31	▲ 0.27

	Current	Δ from YD	Δ from 7D Avg
Net LNG Exports	13.0	▲ 0.61	▲ 1.00

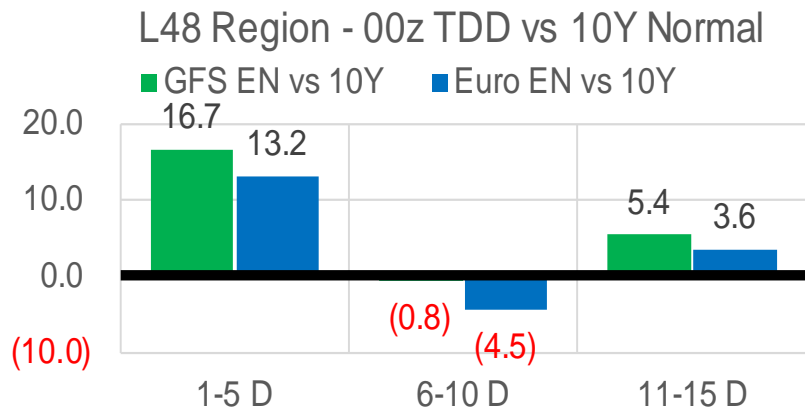
	Current	Δ from YD	Δ from 7D Avg
Mexican Exports	6.6	▼ -0.61	▼ -0.32

Short-term Weather Model Outlooks (00z)

L48 Region



Vs. 10Y Normal



Source: WSI, Bloomberg

Lower 48 Component Models

Daily Balances

	13-May	14-May	15-May	16-May	17-May	18-May	19-May	DoD	vs. 7D
Lower 48 Dry Production	95.7	95.2	94.8	95.1	94.6	94.9	94.8	▼ 0.0	▼ -0.2
Canadian Imports	5.1	4.9	4.8	4.9	4.8	4.9	5.2	▲ 0.3	▲ 0.3
L48 Power	30.6	30.0	29.2	30.3	29.3	30.4	32.1	▲ 1.7	▲ 2.1
L48 Residential & Commercial	9.7	8.4	8.6	9.5	10.8	11.7	9.7	▼ -2.0	▼ -0.1
L48 Industrial	21.0	21.0	21.0	20.9	20.9	20.9	20.6	▼ -0.3	▼ -0.4
L48 Lease and Plant Fuel	5.2	5.2	5.1	5.2	5.1	5.1	5.1	▼ 0.0	▼ -0.1
L48 Pipeline Distribution	2.3	2.2	2.1	2.3	2.3	2.4	2.4	▼ 0.0	▲ 0.1
L48 Regional Gas Consumption	68.9	66.8	66.1	68.0	68.4	70.4	69.9	▼ -0.6	▲ 1.8
Net LNG Delivered	11.81	11.83	11.67	12.26	12.40	12.44	13.04	▲ 0.6	▲ 1.0
Total Mexican Exports	7.1	6.9	6.3	6.9	7.1	7.2	6.6	▼ -0.6	▼ -0.3
Implied Daily Storage Activity	12.9	14.5	15.6	12.8	11.5	9.7	10.5		
EIA Reported Daily Storage Activity									
Daily Model Error									

EIA Storage Week Balances

	8-Apr	15-Apr	22-Apr	29-Apr	6-May	13-May	WoW	vs. 4W
Lower 48 Dry Production	95.8	96.4	96.7	95.8	95.8	96.0	▲ 0.2	▼ -0.2
Canadian Imports	5.8	5.6	5.8	6.1	5.9	5.2	▼ -0.8	▼ -0.7
L48 Power	25.0	24.6	25.1	24.9	26.2	26.7	▲ 0.6	▲ 1.5
L48 Residential & Commercial	25.2	22.4	24.1	18.5	16.5	14.2	▼ -2.3	▼ -6.2
L48 Industrial	22.5	21.7	21.8	22.0	21.8	21.4	▼ -0.4	▼ -0.4
L48 Lease and Plant Fuel	5.2	5.3	5.3	5.2	5.2	5.2	▲ 0.0	▼ 0.0
L48 Pipeline Distribution	2.8	2.6	2.7	2.4	2.4	2.3	▼ -0.1	▼ -0.2
L48 Regional Gas Consumption	80.7	76.5	79.0	73.0	72.1	69.8	▼ -2.2	▼ -5.3
Net LNG Exports	12.4	12.5	12.1	12.2	12.2	12.2	▲ 0.0	▼ 0.0
Total Mexican Exports	6.8	6.6	6.7	6.9	6.9	7.0	▲ 0.1	▲ 0.3
Implied Daily Storage Activity	1.7	6.5	4.7	9.8	10.6	12.1	1.6	
EIA Reported Daily Storage Activity	2.1	7.6	5.7	11.0	10.9			
Daily Model Error	-0.4	-1.1	-1.0	-1.2	-0.3			

Monthly Balances

	2Yr Ago May-20	LY May-21	Jan-22	Feb-22	Mar-22	Apr-22	MTD May-22	MoM	vs. LY
Lower 48 Dry Production	87.0	93.0	93.4	92.7	95.0	96.2	95.6	▼ -0.6	▲ 2.7
Canadian Imports	3.9	4.5	6.7	6.6	5.2	5.8	5.3	▼ -0.5	▲ 0.8
L48 Power	26.9	26.5	31.5	28.9	25.6	24.8	28.0	▲ 3.2	▲ 1.5
L48 Residential & Commercial	12.8	12.8	49.1	44.4	30.7	22.2	13.3	▼ -8.9	▲ 0.5
L48 Industrial	19.4	20.9	24.7	22.5	21.8	22.0	21.3	▼ -0.6	▲ 0.4
L48 Lease and Plant Fuel	4.7	5.0	5.1	5.1	5.2	5.2	5.2	▼ -0.1	▲ 0.1
L48 Pipeline Distribution	2.2	2.2	3.8	3.6	2.9	2.6	2.3	▼ -0.2	▲ 0.1
L48 Regional Gas Consumption	65.9	67.5	114.3	104.4	86.2	76.8	70.2	▼ -6.6	▲ 2.7
Net LNG Exports	6.7	10.8	12.4	12.4	12.9	12.3	12.2	▼ -0.1	▲ 1.3
Total Mexican Exports	4.8	6.8	6.3	6.2	6.5	6.7	7.0	▲ 0.2	▲ 0.2
Implied Daily Storage Activity	13.6	12.4	-32.9	-23.7	-5.4	6.2	11.6		
EIA Reported Daily Storage Activity									
Daily Model Error									

Source: Bloomberg, analytix.ai

Daily Average Generation Data

Nuclear Generation Daily Average - GWh (NRC)

	11-May	12-May	13-May	14-May	15-May	16-May	17-May	DoD	vs. 7D
NRC Nuclear Daily Output	80.4	81.0	81.3	79.6	81.0	82.1	82.1	0.0	1.2
NRC Nuclear Max Capacity	104.9	104.9	104.9	104.9	104.9	104.9	104.9	0.0	0.0
NRC Nuclear Outage	24.5	23.9	23.5	25.3	23.8	22.8	22.8	0.0	-1.2
NRC % Nuclear Cap Utilization	81.7	82.4	82.7	80.9	82.4	83.5	83.5	0.0	1.2

Wind Generation Daily Average - MWh (EIA)

	11-May	12-May	13-May	14-May	15-May	16-May	17-May	DoD	vs. 7D
CALI Wind	3767	2800	2413	1662	3103	5161	4880	-281	1729
TEXAS Wind	18474	19001	12388	11449	15517	12905	21221	8316	6265
US Wind	61454	68832	47704	35389	44607	48299	63621	15322	12573

Generation Daily Average - MWh (EIA)

	11-May	12-May	13-May	14-May	15-May	16-May	17-May	DoD	vs. 7D
US Wind	61454	68832	47704	35389	44607	48299	63621	15322	12573
US Solar	16719	16402	18239	18710	18204	19380	18708	-672	766
US Petroleum	386	268	357	265	249	220	198	-22	-93
US Other	7798	8112	8224	7401	7134	7613	7963	349	249
US Coal	85465	83318	85557	86495	85391	91689	87363	-4326	1044
US Nuke	84471	84722	84133	83587	84942	85474	87114	1640	2559
US Hydro	32625	33198	33307	31023	30946	30827	31362	535	-625
US Gas	168515	166557	178411	175680	162739	173220	159860	-13360	-10993

See National Wind and Nuclear daily charts

Source: Bloomberg, analytix.ai

Storage Week Average Generation Data

Nuclear Generation Weekly Average - GWh (NRC)

	8-Apr	15-Apr	22-Apr	29-Apr	6-May	13-May	WoW	WoW Bcf/d Impact
NRC Nuclear Daily Output	75.0	71.9	72.3	73.5	76.7	79.3	2.7	-0.5
NRC Nuclear Max Capacity	104.9	104.9	104.9	104.9	104.9	104.9	0.0	
NRC Nuclear Outage	29.9	32.9	32.6	31.4	28.2	25.5	-2.7	
NRC % Nuclear Cap Utilization	76.3	73.2	73.5	74.8	78.0	80.7	2.7	

Wind Generation Weekly Average - MWh (EIA)

	8-Apr	15-Apr	22-Apr	29-Apr	6-May	13-May	WoW	WoW Bcf/d Impact
CALI Wind	2611	3434	3613	3153	2929	3983	1055	-0.2
TEXAS Wind	14468	16530	15612	18327	16902	17705	802	-0.1
US Wind	59878	66240	61570	66986	57243	64974	7731	-1.4
							14%	
						0.0		

Generation Weekly Average - MWh (EIA)

	8-Apr	15-Apr	22-Apr	29-Apr	6-May	13-May	WoW	WoW Bcf/d Impact
US Wind	59878	66240	61570	66986	57243	64974	7731	-1.4
US Solar	15518	16118	15897	16968	16920	17612	692	-0.1
US Petroleum	1015	964	984	992	931	341	-590	0.1
US Other	7183	7154	7544	7717	7528	7565	37	0.0
US Coal	77514	77087	79575	77533	78898	81273	2375	-0.4
US Nuke	78807	75674	76478	77438	80545	83391	2846	-0.5
US Hydro	32524	29415	28355	26722	26824	28937	2112	-0.4
US Gas	134633	134338	133401	131482	145738	148309	2571	0.5

See National Wind and Nuclear daily charts

Source: Bloomberg, analytix.ai

Monthly Average Generation Data

Nuclear Generation Monthly Average - GWh (NRC)

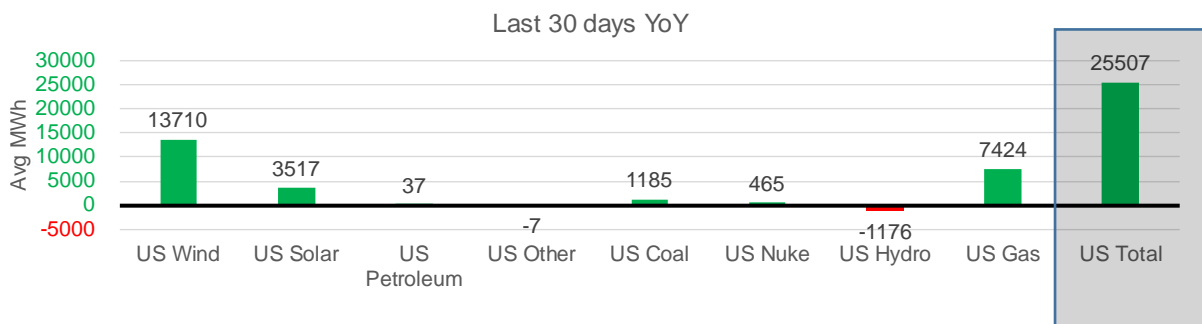
	2Yr Ago	LY	MTD				Last 30 days	Last 30 days YoY
	Same 30 days	Same 30 days	Feb-22	Mar-22	Apr-22	May-22		
NRC Nuclear Daily Output	80.5	77.5	87.3	81.3	73.3	79.6	77.4	-0.1
NRC Nuclear Max Capacity	104.9	104.9	104.9	104.9	104.9	104.9	104.9	0.0
NRC Nuclear Outage	24.4	27.4	17.5	23.6	31.6	25.3	27.5	0.1
NRC % Nuclear Cap Utilization	81.9	78.8	88.8	82.7	74.5	81.0	78.7	-0.1

Wind Generation Monthly Average - MWh (EIA)

	2Yr Ago	LY	MTD				Last 30 days	Last 30 days YoY
	Same 30 days	Same 30 days	Feb-22	Mar-22	Apr-22	May-22		
CALI Wind	2851	3379	1495	2250	3186	3656	3493	114
TEXAS Wind	11054	12439	11750	14837	16311	17022	17531	5091
US Wind	40586	47140	54543	58528	64183	56822	60850	13710

Generation Monthly Average - MWh (EIA)

	2Yr Ago	LY	MTD				Last 30 days	Last 30 days YoY
	Same 30 days	Same 30 days	Feb-22	Mar-22	Apr-22	May-22		
US Wind	40586	47140	54543	58528	64183	56822	60850	▲ 13710
US Solar	11242	13974	12442	14058	16208	17772	17491	▲ 3517
US Petroleum	756	615	1331	985	985	460	652	▲ 37
US Other	8000	7649	8632	7206	7386	7660	7642	▼ -7
US Coal	56800	80040	105631	82291	77545	83581	81226	▲ 1185
US Nuke	84588	80975	92027	85256	77217	83647	81441	▲ 465
US Hydro	35572	29662	32284	33959	29023	29418	28486	▼ -1176
US Gas	136598	139984	153733	137232	133068	156468	147408	▲ 7424
US Total	372833	400289	461069	419842	406185	436469	425795	▲ 25507



See National Wind and Nuclear daily charts

Source: Bloomberg, analytix.ai

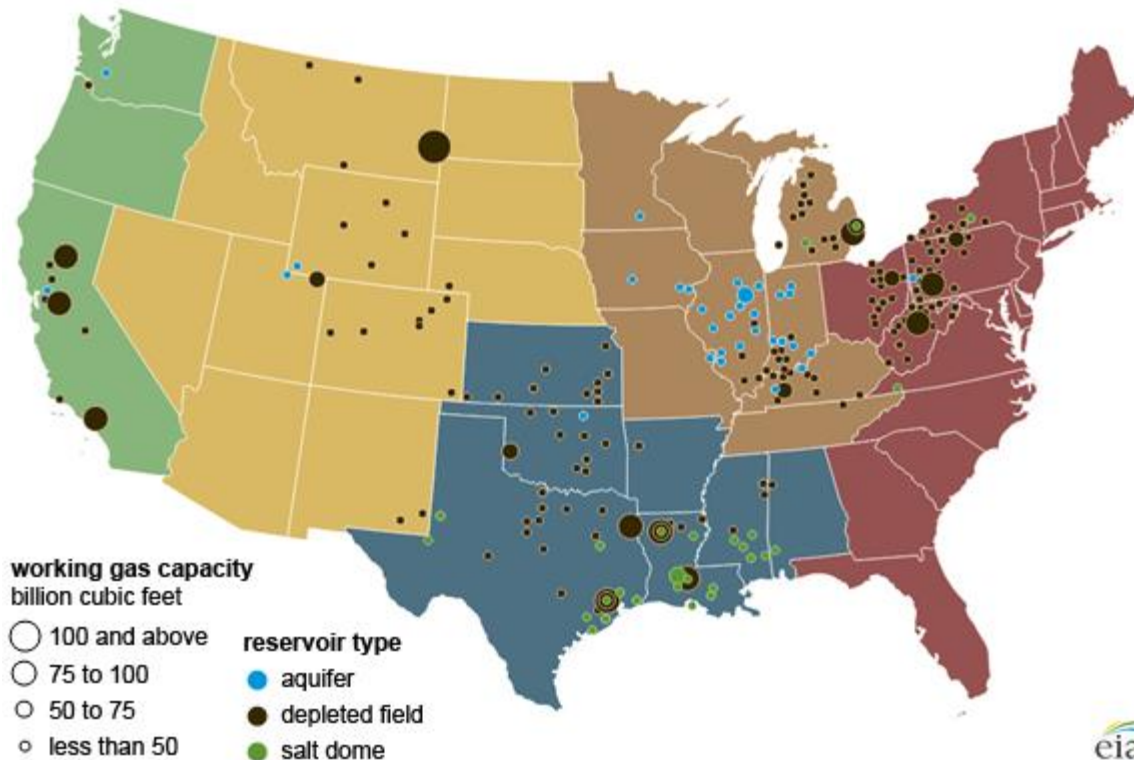
Regional S/D Models Storage Projection

Week Ending 13-May

	Daily Raw Storage	Daily Adjustment Factor	Daily Average Storage Activity (Adjusted) *	Weekly Adjusted Storage Activity
L48	12.8	0.2	13.0	91
East	0.5	2.5	3.0	21
Midwest	4.6	-0.5	4.1	29
Mountain	4.8	-3.4	1.4	10
South Central	1.9	2.3	4.2	29
Pacific	1.0	-0.7	0.4	3

*Adjustment Factor is calculated based on historical regional deltas

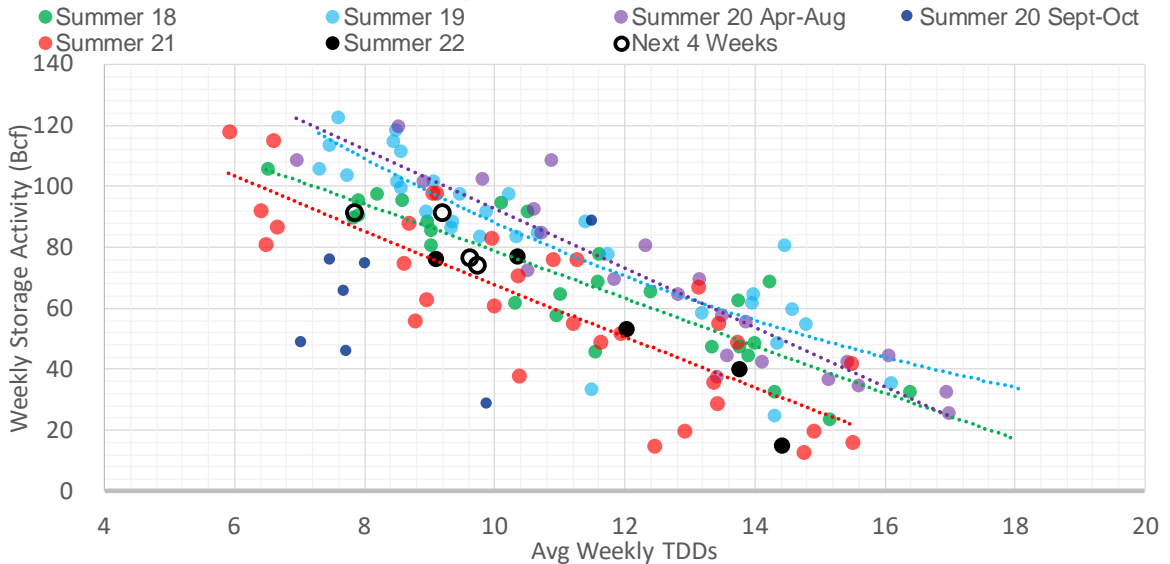
U.S. underground natural gas storage facilities by type (July 2015)



Weather Model Storage Projection

Next report and beyond		
Week Ending	TDDs	Week Storage Projection
13-May	9.2	91
20-May	7.8	91
27-May	9.6	77
03-Jun	9.7	74

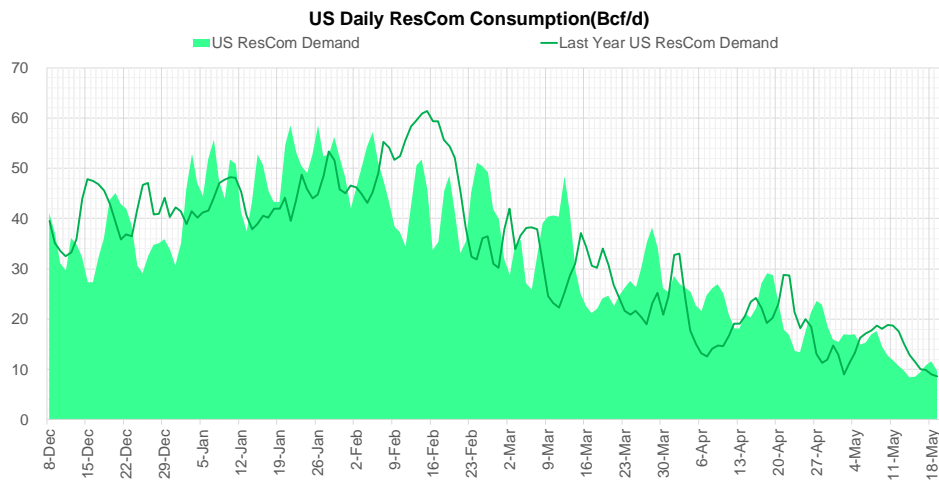
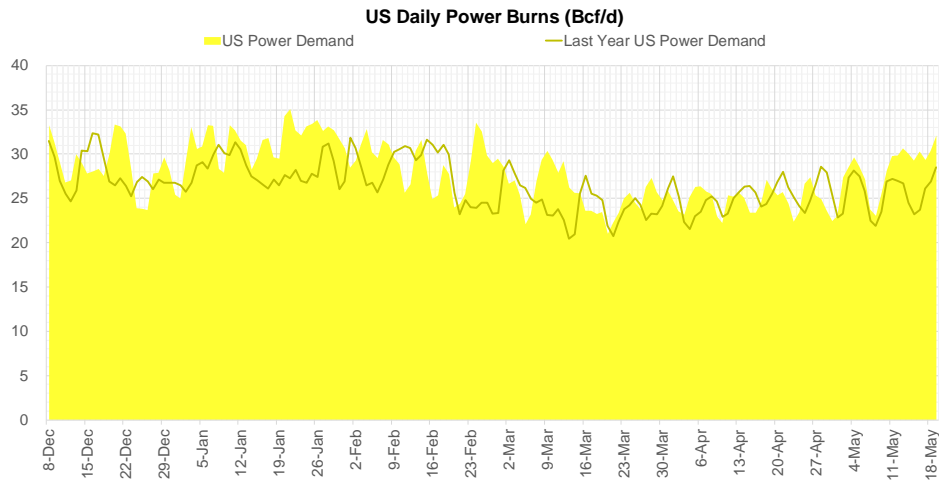
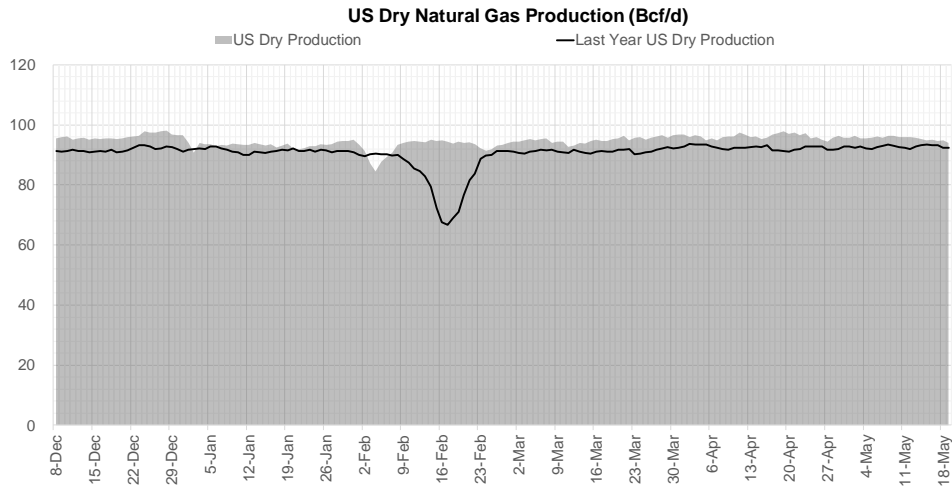
Weather Storage Model - Next 4 Week Forecast



Go to larger image



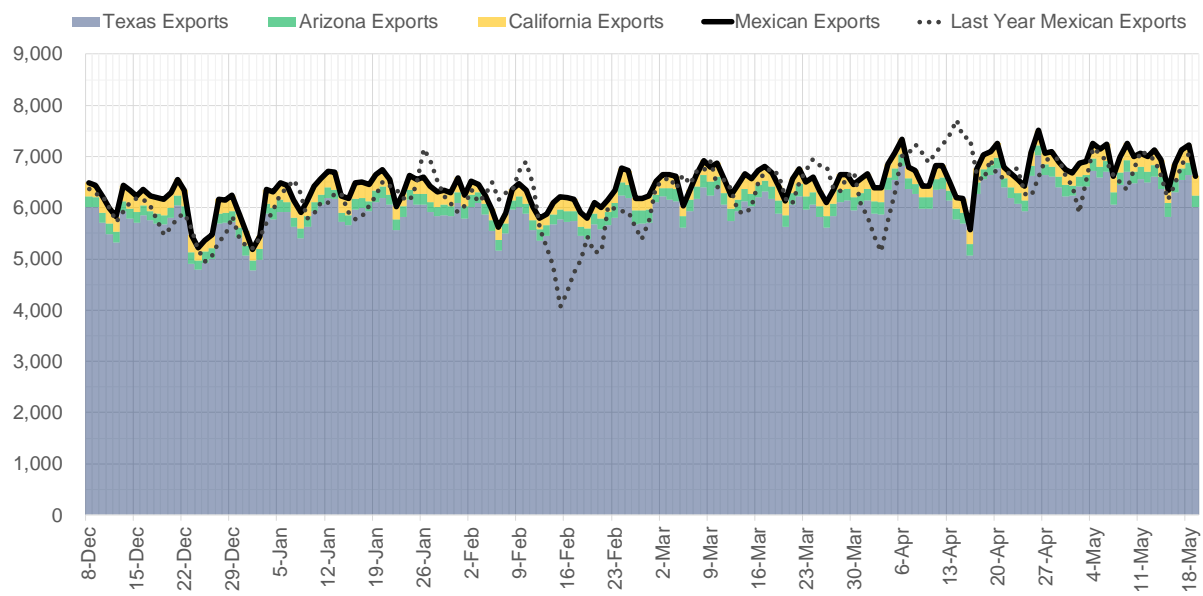
Supply – Demand Trends



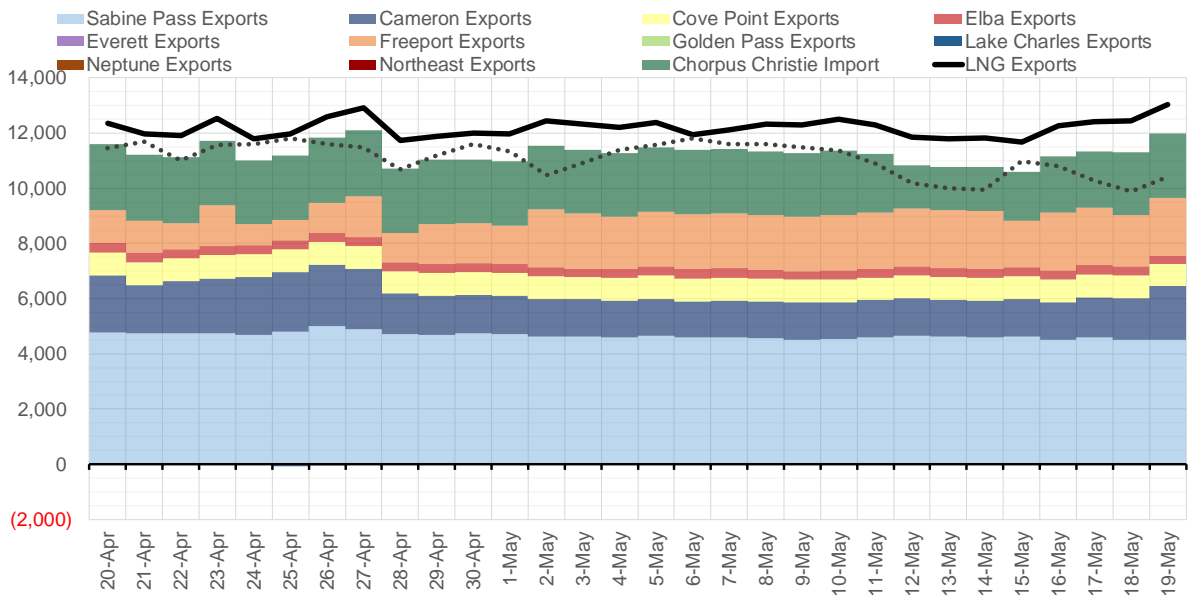
Source: Bloomberg

The risk of trading futures and options and other derivatives involves a substantial risk of loss and is not suitable for all persons. Each person must consider whether a particular trade, combination of trades, or strategy is suitable for that person's financial means and objectives. Past results are not necessarily indicative of future results. This communication may contain links to third party websites which are not under the control of and are not maintained by ION Energy Group, and ION Energy Group is not responsible for their content.

Mexican Exports (MMcf/d)



Net LNG Exports - Last 30 days (MMcf/d)



Source: Bloomberg

The risk of trading futures and options and other derivatives involves a substantial risk of loss and is not suitable for all persons. Each person must consider whether a particular trade, combination of trades, or strategy is suitable for that person's financial means and objectives. Past results are not necessarily indicative of future results. This communication may contain links to third party websites which are not under the control of and are not maintained by ION Energy Group, and ION Energy Group is not responsible for their content.

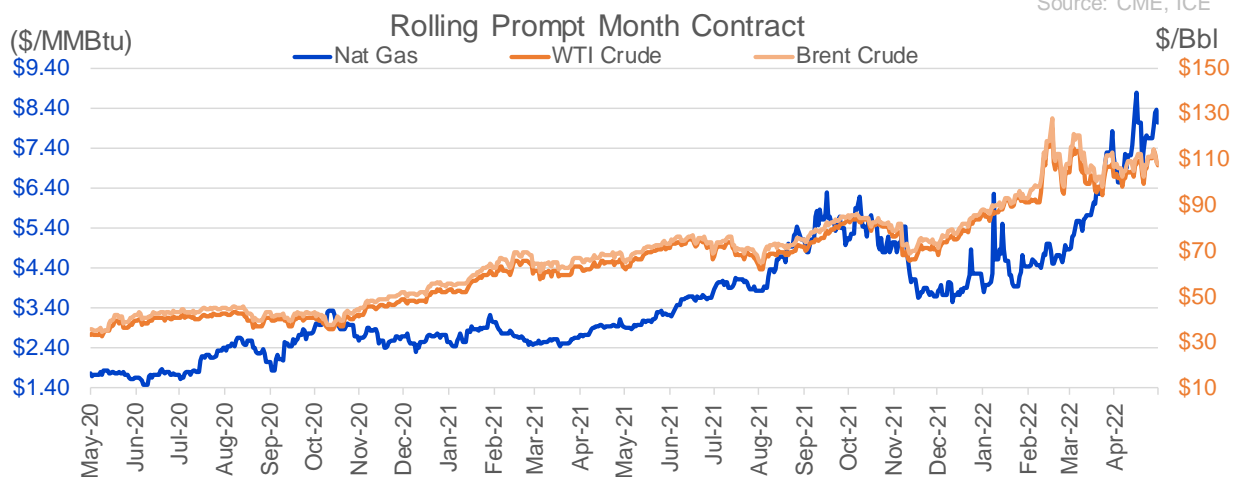
Nat Gas Options Volume and Open Interest CME and ICE Combined

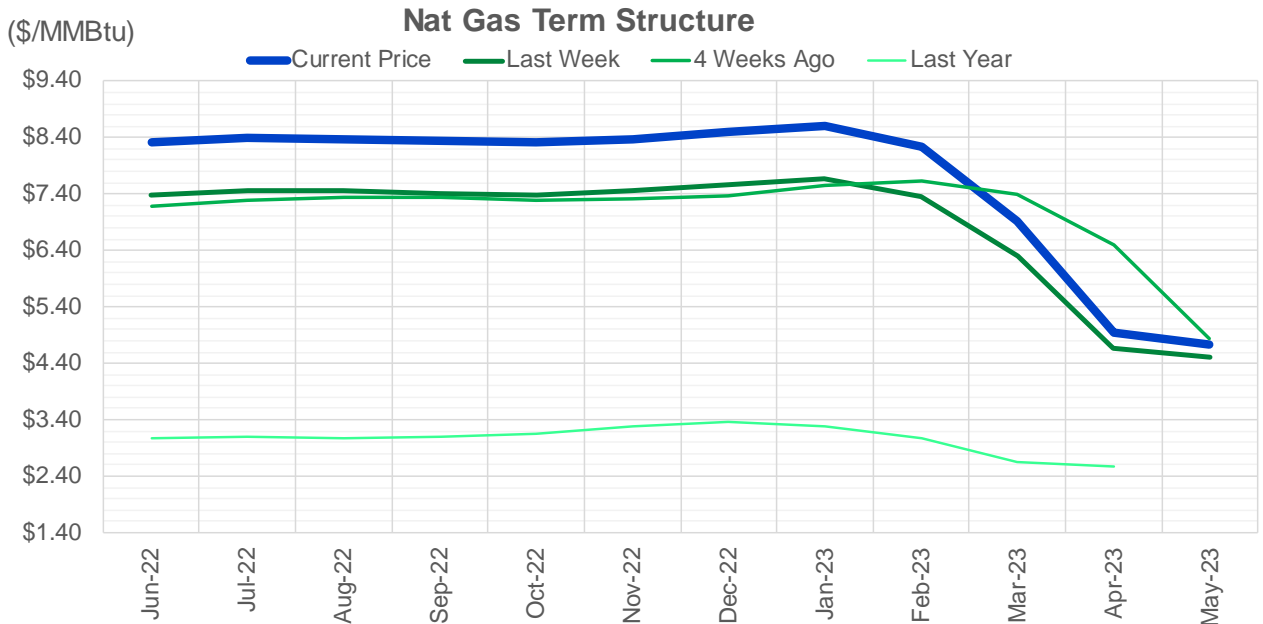
CONTRACT MONTH	CONTRACT YEAR	PUT/CALL	STRIKE	CUMULATIVE VOL	CONTRACT MONTH	CONTRACT YEAR	PUT/CALL	STRIKE	CUMULATIVE OI
6	2022	C	9.00	8886	8	2022	C	10.00	51361
7	2022	P	7.00	5264	8	2022	C	10.50	41548
6	2022	P	8.00	4563	10	2022	C	6.00	35395
6	2022	C	10.00	4447	6	2022	C	6.00	25035
7	2022	P	6.00	3441	10	2022	C	5.00	24089
6	2022	P	7.00	2980	9	2022	C	6.00	23663
7	2022	P	7.25	2713	10	2022	P	3.00	21017
6	2022	P	6.00	2704	10	2022	P	3.50	20919
6	2022	C	11.00	2509	7	2022	C	8.00	20736
6	2022	P	5.50	2000	6	2022	P	6.00	20112
7	2022	C	10.00	1736	10	2022	P	2.50	19730
6	2022	P	6.50	1728	6	2022	C	10.00	19692
6	2022	C	8.50	1500	6	2022	P	4.00	19629
6	2022	P	7.50	1420	6	2022	C	7.00	19575
7	2022	P	6.50	1302	8	2022	C	6.00	19483
8	2022	C	10.00	1246	6	2022	P	7.00	19110
8	2022	C	12.00	1105	7	2022	C	6.00	18936
6	2022	C	9.10	1103	10	2022	P	6.00	18903
7	2022	C	13.25	1103	12	2022	C	5.00	18221
8	2022	P	7.00	1101	8	2022	C	7.00	18113
6	2022	C	12.00	1076	9	2022	C	7.00	18096
8	2022	C	9.00	1041	9	2022	C	10.00	17840
7	2022	P	5.00	1037	7	2022	C	7.00	17664
8	2022	P	6.50	1000	6	2022	C	5.00	17647
8	2022	P	5.50	951	10	2022	P	4.00	17463
3	2023	P	5.00	900	10	2022	P	2.00	17420
2	2023	P	5.00	850	7	2022	P	3.25	17344
8	2022	P	5.00	801	6	2022	P	5.50	17287
6	2022	C	8.00	787	6	2022	C	10.00	17243
6	2022	C	9.25	783	6	2022	P	3.00	17223
7	2022	P	8.00	763	6	2022	P	4.75	17117
6	2022	C	8.75	757	1	2023	C	10.00	16034
12	2022	C	15.00	753	6	2022	P	3.50	15958
11	2022	C	11.00	750	5	2023	P	2.00	15761
11	2022	P	7.00	750	11	2022	P	4.00	15744
1	2023	P	5.00	750	6	2022	P	5.00	15679
9	2022	P	6.50	725	2	2023	C	10.00	15499
7	2022	P	5.50	706	7	2022	C	9.00	15329
10	2022	P	5.50	667	9	2022	P	2.50	15291
8	2022	P	4.00	653	6	2022	C	9.00	15072
12	2022	C	10.00	650	7	2022	P	5.00	15046
8	2022	C	8.00	614	7	2022	P	3.50	14978
10	2022	C	20.00	600	9	2022	P	2.75	14933
8	2022	P	6.00	556	9	2022	P	3.00	14826
6	2022	C	10.50	546	7	2022	P	6.00	14718
7	2022	C	12.00	532	10	2022	P	3.25	14717
4	2024	C	5.00	525	7	2022	P	3.00	14641
5	2024	C	5.00	525	8	2022	P	3.00	14603
6	2024	C	5.00	525	8	2022	C	8.00	14474
					7	2022	P	7	14404

Source: CME, ICE

Nat Gas Futures Open Interest CME and ICE Combined

CME Henry Hub Futures (10,000 MMBtu)				ICE Henry Hub Futures Contract Equivalent (10,000 MM			
	Current	Prior	Daily Change		Current	Prior	Daily Change
JUN 22	48692	53417	-4725	JUN 22	84008	84777	-769
JUL 22	200267	200775	-508	JUL 22	80267	76879	3389
AUG 22	61711	60310	1401	AUG 22	59486	59297	188
SEP 22	88627	88337	290	SEP 22	63615	64075	-460
OCT 22	97956	96432	1524	OCT 22	76302	76660	-359
NOV 22	51931	51941	-10	NOV 22	58305	58226	79
DEC 22	50965	50546	419	DEC 22	62599	62860	-262
JAN 23	63180	62793	387	JAN 23	65166	66480	-1315
FEB 23	27846	27319	527	FEB 23	56210	55926	284
MAR 23	39110	38774	336	MAR 23	54712	54906	-194
APR 23	59311	58809	502	APR 23	52898	53315	-417
MAY 23	62217	62372	-155	MAY 23	52065	52186	-121
JUN 23	25503	25516	-13	JUN 23	44810	45024	-214
JUL 23	21593	21360	233	JUL 23	43756	43956	-200
AUG 23	13918	13854	64	AUG 23	43459	43667	-208
SEP 23	17794	17676	118	SEP 23	42665	42931	-267
OCT 23	33443	33746	-303	OCT 23	49600	49724	-124
NOV 23	12827	13036	-209	NOV 23	43528	43681	-153
DEC 23	14446	14476	-30	DEC 23	39521	39572	-52
JAN 24	20469	20779	-310	JAN 24	39062	39128	-66
FEB 24	5913	5866	47	FEB 24	26289	26456	-167
MAR 24	14263	14094	169	MAR 24	30672	30797	-125
APR 24	12094	12008	86	APR 24	27038	27141	-103
MAY 24	6441	6441	0	MAY 24	25739	25734	5
JUN 24	1803	1803	0	JUN 24	22032	22114	-83
JUL 24	1986	1986	0	JUL 24	22173	22258	-85
AUG 24	2965	2965	0	AUG 24	22281	22366	-85
SEP 24	1367	1367	0	SEP 24	21659	21742	-83
OCT 24	6729	6703	26	OCT 24	24349	24436	-87
NOV 24	4683	4683	0	NOV 24	22474	22564	-91





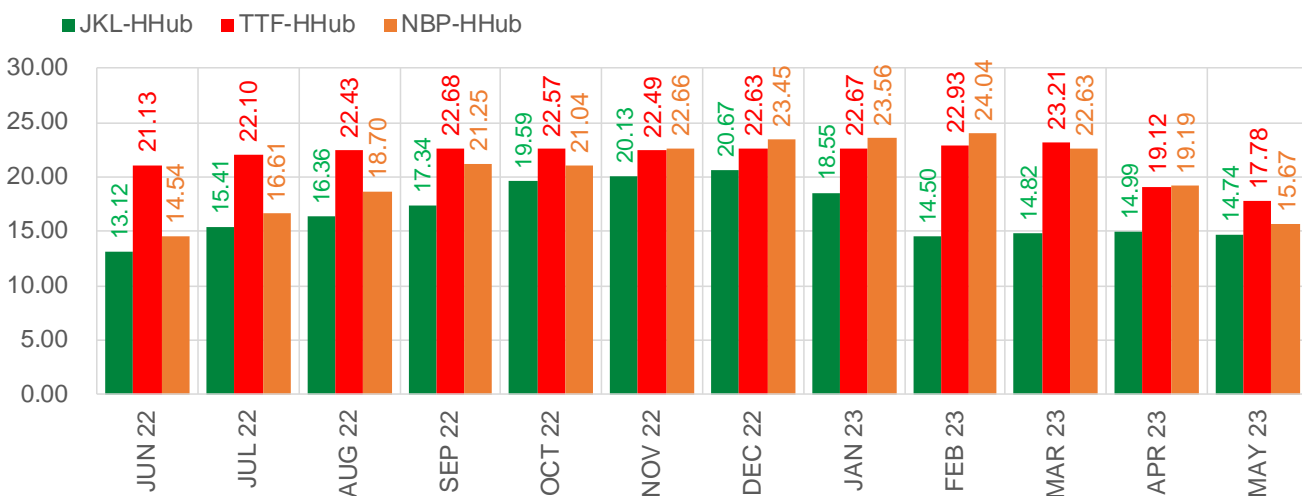
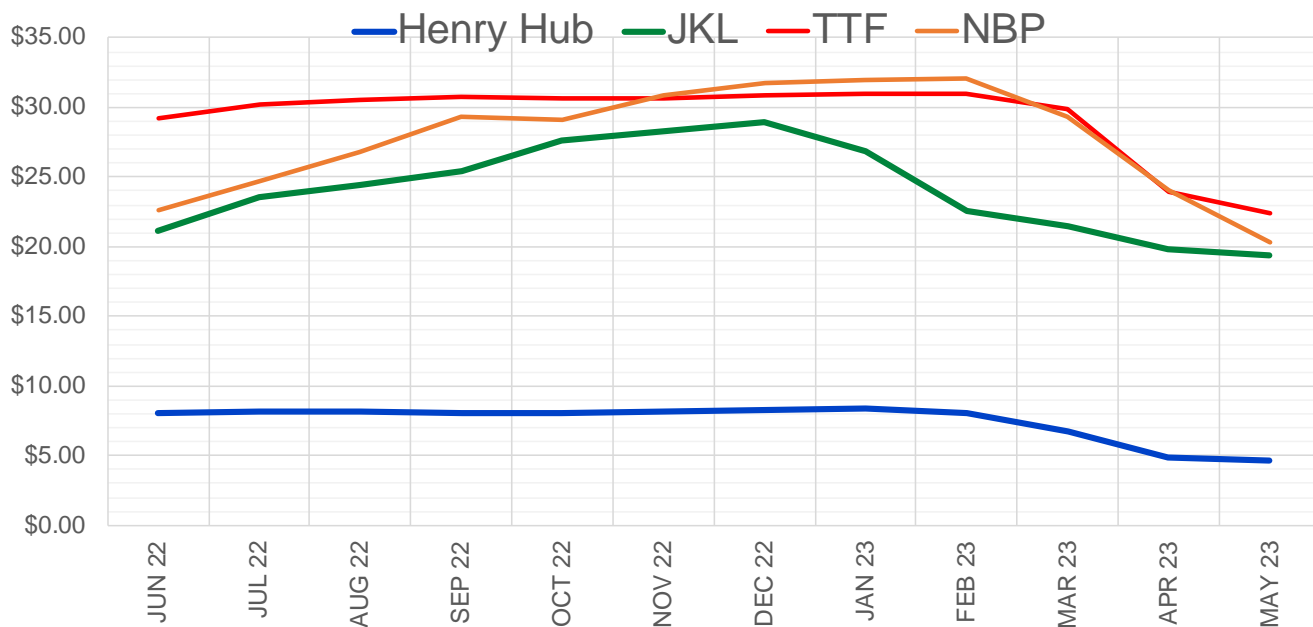
	Jun-22	Jul-22	Aug-22	Sep-22	Oct-22	Nov-22	Dec-22	Jan-23	Feb-23	Mar-23	Apr-23	May-23
Current Price	\$8.304	\$8.394	\$8.380	\$8.339	\$8.322	\$8.380	\$8.500	\$8.598	\$8.245	\$6.910	\$4.935	\$4.737
Last Week	\$7.385	\$7.467	\$7.446	\$7.400	\$7.391	\$7.457	\$7.571	\$7.663	\$7.342	\$6.302	\$4.659	\$4.496
vs. Last Week	\$0.919	\$0.927	\$0.934	\$0.939	\$0.931	\$0.923	\$0.929	\$0.935	\$0.903	\$0.608	\$0.276	\$0.241
4 Weeks Ago	\$7.176	\$7.277	\$7.352	\$7.346	\$7.296	\$7.303	\$7.378	\$7.539	\$7.639	\$7.388	\$6.486	\$4.843
vs. 4 Weeks Ago	\$1.128	\$1.117	\$1.028	\$0.993	\$1.026	\$1.077	\$1.122	\$1.059	\$0.606	-\$0.478	-\$1.551	-\$0.106
Last Year	\$3.012	\$3.078	\$3.091	\$3.082	\$3.098	\$3.160	\$3.280	\$3.357	\$3.277	\$3.067	\$2.639	\$2.579
vs. Last Year	\$5.292	\$5.316	\$5.289	\$5.257	\$5.224	\$5.220	\$5.220	\$5.241	\$4.968	\$3.843	\$2.296	\$2.158

	Units	Cash Settled	Prompt Settle	Cash to Prompt
AGT Citygate	\$/MMBtu	8.15	7.26	-0.89
TETCO M3	\$/MMBtu	7.77	6.92	-0.85
FGT Zone 3	\$/MMBtu	7.80	7.70	-0.10
Zone 6 NY	\$/MMBtu	7.80	6.86	-0.94
Chicago Citygate	\$/MMBtu	8.13	7.42	-0.72
Michcon	\$/MMBtu	8.18	7.42	-0.77
Columbia TCO Pool	\$/MMBtu	7.64	6.96	-0.68
Ventura	\$/MMBtu	8.03	7.28	-0.75
Rockies/Opal	\$/MMBtu	8.21	7.15	-1.06
El Paso Permian Basin	\$/MMBtu	8.00	6.85	-1.15
Socal Citygate	\$/MMBtu	8.68	7.74	-0.94
Malin	\$/MMBtu	8.00	7.40	-0.60
Houston Ship Channel	\$/MMBtu	8.35	7.57	-0.78
Henry Hub Cash	\$/MMBtu	8.42	7.34	-1.08
AECO Cash	C\$/GJ	6.40	5.91	-0.50
Station2 Cash	C\$/GJ	5.74	7.04	1.30
Dawn Cash	C\$/GJ	8.12	7.43	-0.69

Source: CME, Bloomberg

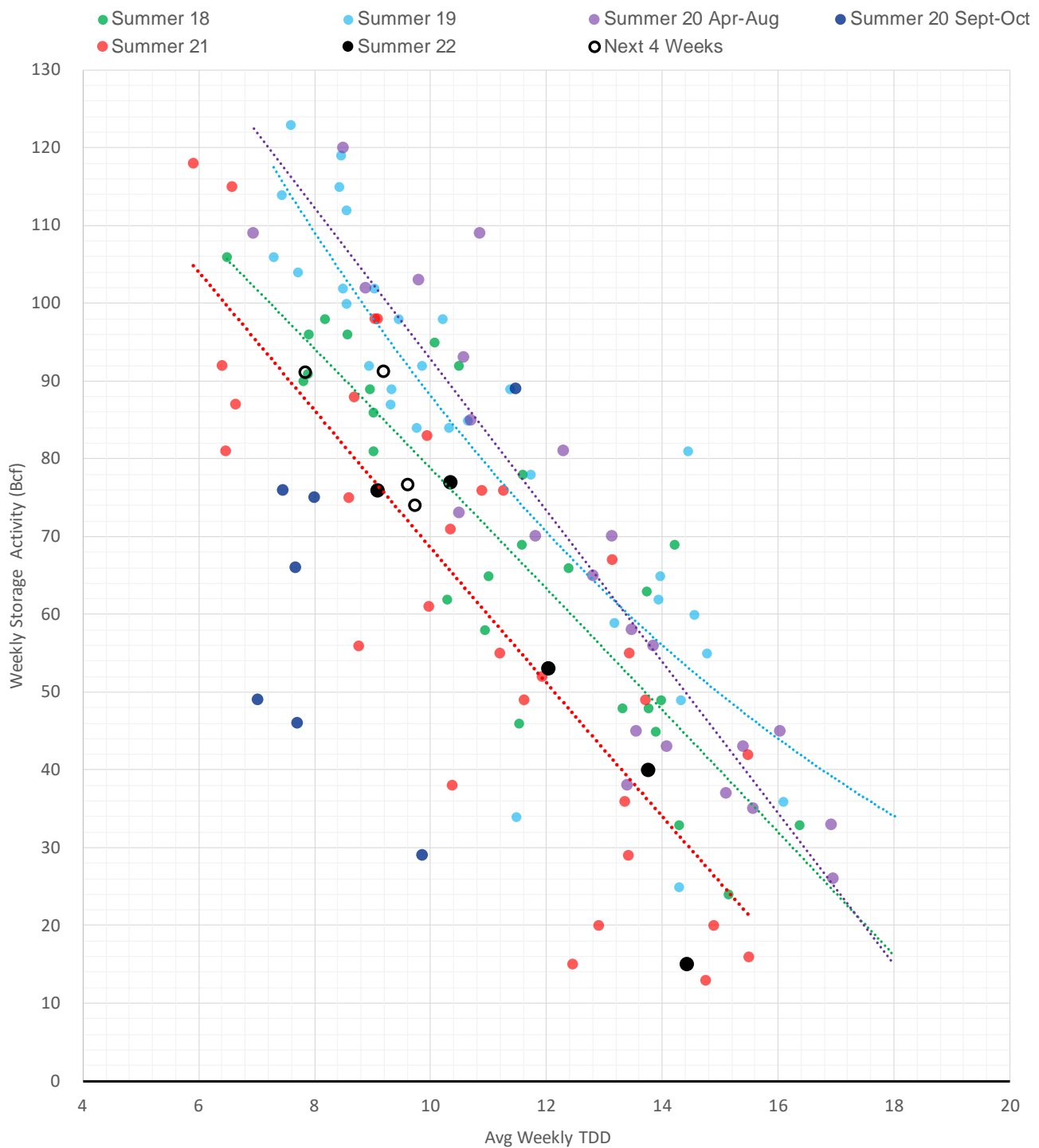
	Units	Current Price	vs. Last Week	vs. 4 Weeks Ago	vs. Last Year
NatGas Jul21/Oct21	\$/MMBtu	2.224	▲ 0.000	▲ 0.000	▲ 2.201
NatGas Oct21/Nov21	\$/MMBtu	0.361	▲ 0.000	▲ 0.000	▲ 0.297
NatGas Oct21/Jan22	\$/MMBtu	-1.817	▲ 0.000	▲ 0.000	▼ -2.083
NatGas Apr22/Oct22	\$/MMBtu	3.047	▲ 0.733	▲ 1.271	▲ 3.020
WTI Crude	\$/Bbl	109.59	▲ 3.880	▲ 6.840	▲ 46.230
Brent Crude	\$/Bbl	109.11	▲ 1.600	▲ 2.310	▲ 42.450
Fuel Oil, NY Harbour 1%	\$/Bbl	97.18	▲ 0.000	▲ 0.000	▲ 0.000
Heating Oil	cents/Gallon	366.81	▼ -28.310	▼ -30.500	▲ 166.100
Propane, Mt. Bel	cents/Gallon	1.23	▼ -0.020	▼ -0.087	▲ 0.414
Ethane, Mt. Bel	cents/Gallon	0.60	▲ 0.019	▲ 0.094	▲ 0.335
Coal, PRB	\$/MTon	12.30	▲ 0.000	▲ 0.000	▲ 0.000
Coal, PRB	\$/MMBtu	0.70			
Coal, ILB	\$/MTon	31.05	▲ 0.000	▲ 0.000	▲ 0.000
Coal, ILB	\$/MMBtu	1.32			

Nat Gas Term Structure (\$MMBTU)



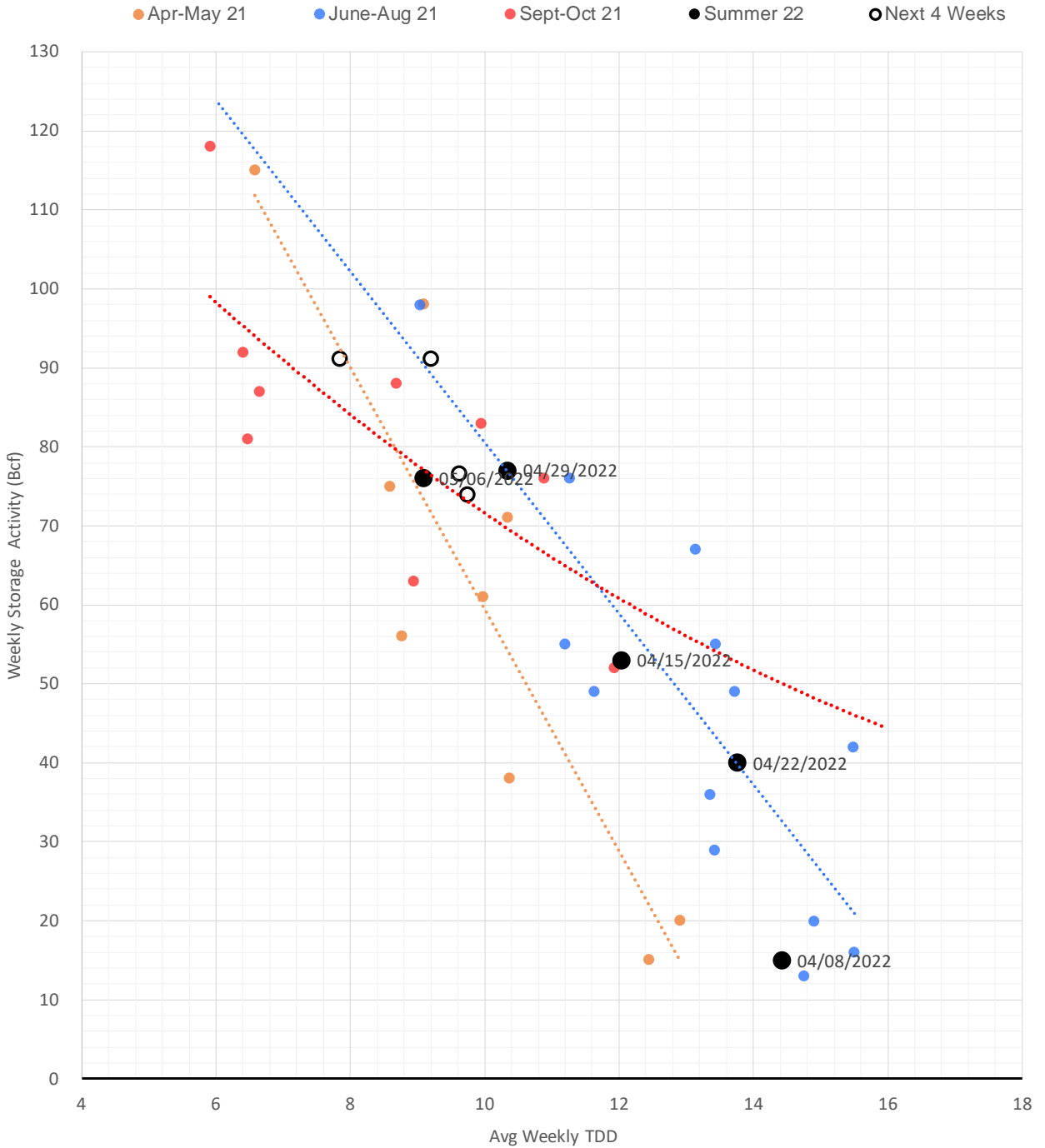
	JUN 22	JUL 22	AUG 22	SEP 22	OCT 22	NOV 22	DEC 22	JAN 23	FEB 23	MAR 23	APR 23	MAY 23
Henry Hub	\$8.050	\$8.144	\$8.130	\$8.084	\$8.073	\$8.208	\$8.250	\$8.356	\$8.058	\$6.700	\$4.843	\$4.658
JKL	\$21.165	\$23.555	\$24.485	\$25.420	\$27.660	\$28.335	\$28.915	\$26.905	\$22.555	\$21.515	\$19.830	\$19.395
JKL-HHub	\$13.115	\$15.411	\$16.355	\$17.336	\$19.587	\$20.127	\$20.665	\$18.549	\$14.497	\$14.815	\$14.987	\$14.737
TTF	\$29.180	\$30.247	\$30.557	\$30.766	\$30.640	\$30.693	\$30.877	\$31.027	\$30.983	\$29.906	\$23.967	\$22.439
TTF-HHub	\$21.130	\$22.103	\$22.427	\$22.682	\$22.567	\$22.485	\$22.627	\$22.671	\$22.925	\$23.206	\$19.124	\$17.781
NBP	\$22.587	\$24.751	\$26.834	\$29.338	\$29.110	\$30.863	\$31.703	\$31.919	\$32.093	\$29.326	\$24.029	\$20.331
NBP-HHub	\$14.537	\$16.607	\$18.704	\$21.254	\$21.037	\$22.655	\$23.453	\$23.563	\$24.035	\$22.626	\$19.186	\$15.673

Weather Storage Model - Next 4 Week Forecast



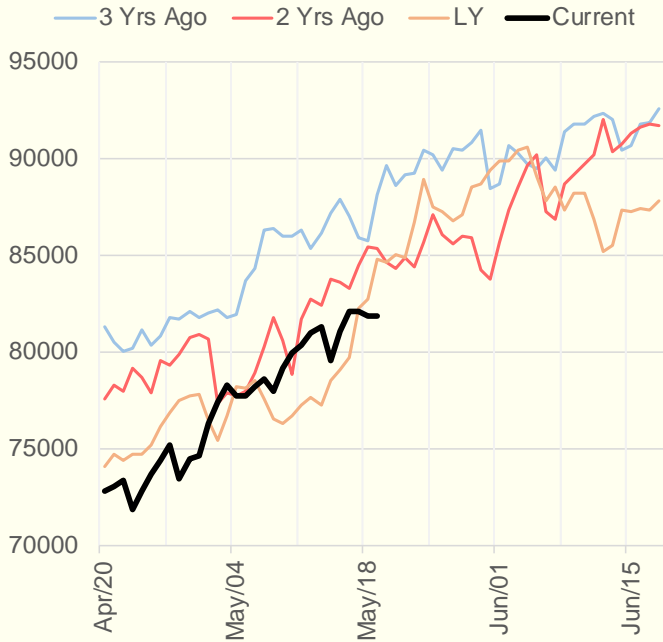
The risk of trading futures and options and other derivatives involves a substantial risk of loss and is not suitable for all persons. Each person must consider whether a particular trade, combination of trades, or strategy is suitable for that person's financial means and objectives. Past results are not necessarily indicative of future results. This communication may contain links to third party websites which are not under the control of and are not maintained by ION Energy Group, and ION Energy Group is not responsible for their content.

Weather Storage Model for Summer 2021 & 2022

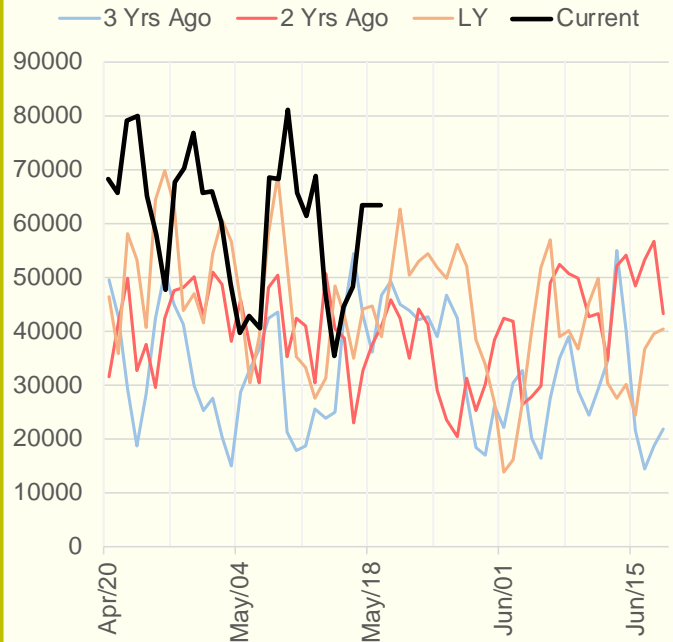


The risk of trading futures and options and other derivatives involves a substantial risk of loss and is not suitable for all persons. Each person must consider whether a particular trade, combination of trades, or strategy is suitable for that person's financial means and objectives. Past results are not necessarily indicative of future results. This communication may contain links to third party websites which are not under the control of and are not maintained by ION Energy Group, and ION Energy Group is not responsible for their content.

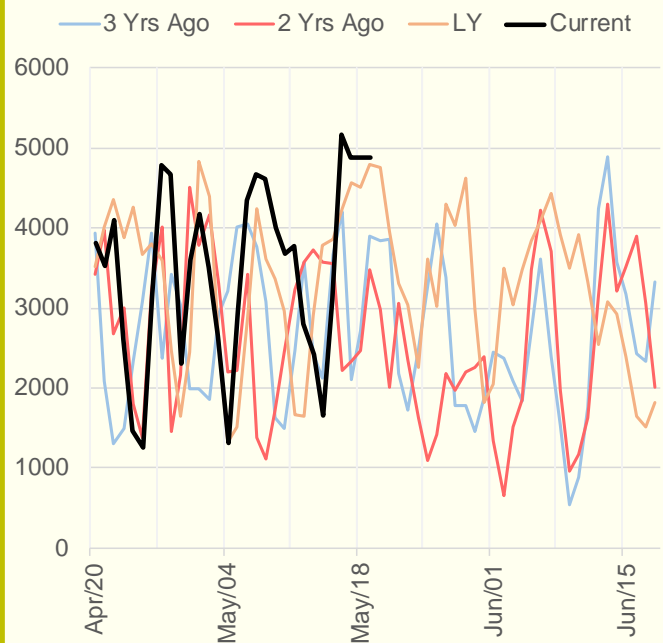
NRC Nuclear Daily Output



US Wind



CALI Wind



TEXAS Wind

