

	Current	Δ from YD	Δ from 7D Avg
Nat Gas Prompt	\$ 8.42 ▲	\$ 0.11 ▲	\$ 0.61

Page Menu

[Short-term Weather Model Outlooks](#)

[Lower 48 Component Models](#)

[Regional S/D Models Storage Projection](#)

[Weather Model Storage Projection](#)

[Supply – Demand Trends](#)

[Nat Gas Options Volume and Open Interest](#)

[Nat Gas Futures Open Interest](#)

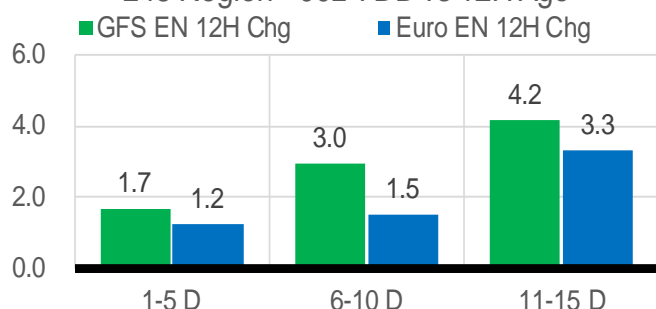
[Price Summary](#)

	Current	Δ from YD	Δ from 7D Avg
WTI Prompt	\$ 114.85 ▲	\$ 2.45 ▲	\$ 4.9

	Current	Δ from YD	Δ from 7D Avg
Brent Prompt	\$ 113.58 ▲	\$ 1.65 ▲	\$ 2.8

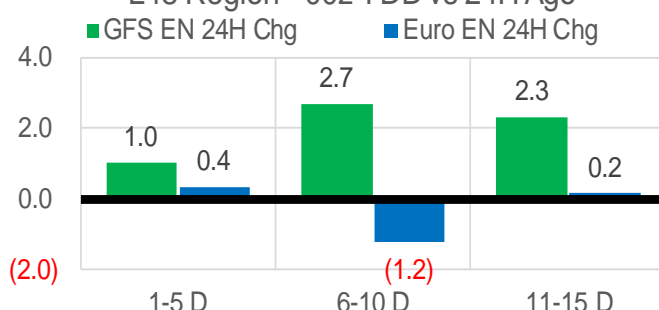
Vs. 12H Ago

L48 Region - 00z TDD vs 12H Ago



Vs. 24H Ago

L48 Region - 00z TDD vs 24H Ago



	Current	Δ from YD	Δ from 7D Avg
US Dry Production	94.5 ▼	-0.09 ▼	-0.86

	Current	Δ from YD	Δ from 7D Avg
US Power Burns	30.6 ▲	1.23 ▲	0.72

	Current	Δ from YD	Δ from 7D Avg
US ResComm	10.9 ▼	-0.02 ▼	0.91 ▲

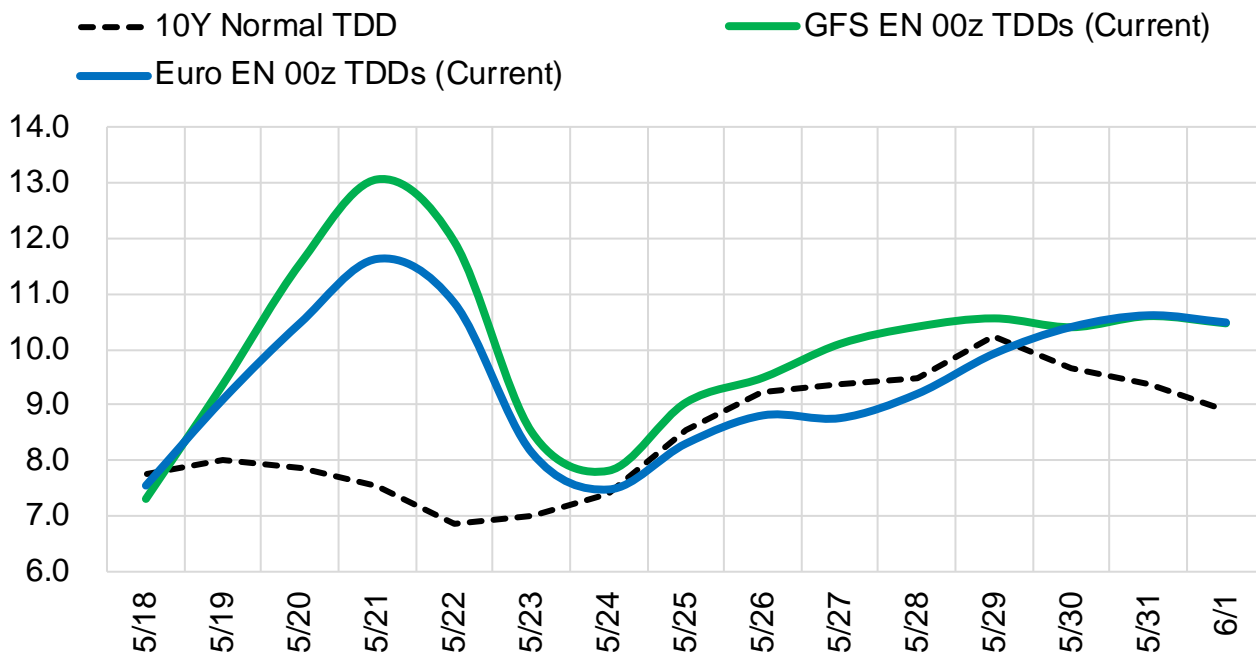
	Current	Δ from YD	Δ from 7D Avg
Canadian Imports	4.8 ▲	0.03 ▲	-0.09 ▼

	Current	Δ from YD	Δ from 7D Avg
Net LNG Exports	12.9 ▲	0.53 ▲	0.90

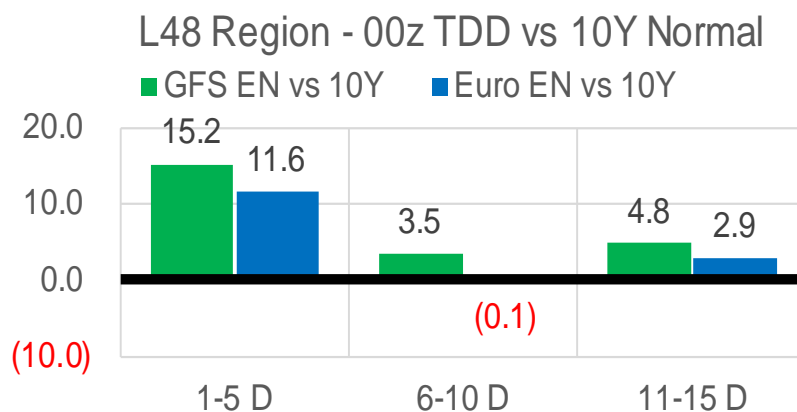
	Current	Δ from YD	Δ from 7D Avg
Mexican Exports	7.0 ▼	-0.15 ▼	0.06 ▲

Short-term Weather Model Outlooks (00z)

L48 Region



Vs. 10Y Normal



Source: WSI, Bloomberg

Lower 48 Component Models

Daily Balances

	12-May	13-May	14-May	15-May	16-May	17-May	18-May	DoD	vs. 7D
Lower 48 Dry Production	96.0	95.7	95.2	94.9	95.1	94.6	94.5	▼ -0.1	▼ -0.7
Canadian Imports	5.2	5.1	4.9	4.8	4.9	4.8	4.8	▲ 0.0	▼ -0.1
L48 Power	29.8	30.6	30.0	29.3	30.3	29.4	30.6	▲ 1.2	▲ 0.7
L48 Residential & Commercial	10.7	9.8	8.5	8.6	9.5	10.9	10.9	▼ 0.0	▲ 1.2
L48 Industrial	21.2	21.2	21.2	21.2	21.1	21.0	20.9	▼ -0.1	▼ -0.2
L48 Lease and Plant Fuel	5.2	5.2	5.2	5.1	5.2	5.1	5.1	▼ 0.0	▼ -0.1
L48 Pipeline Distribution	2.3	2.3	2.2	2.2	2.3	2.3	2.4	▲ 0.1	▲ 0.1
L48 Regional Gas Consumption	69.3	69.0	67.0	66.4	68.3	68.7	69.8	▲ 1.1	▲ 1.7
Net LNG Delivered	11.87	11.81	11.83	11.67	12.26	12.39	12.92	▲ 0.5	▲ 0.9
Total Mexican Exports	7.0	7.1	6.9	6.3	6.9	7.1	7.0	▼ -0.2	▲ 0.1
Implied Daily Storage Activity	13.0	12.9	14.3	15.3	12.6	11.2	9.6		
EIA Reported Daily Storage Activity									
Daily Model Error									

EIA Storage Week Balances

	8-Apr	15-Apr	22-Apr	29-Apr	6-May	13-May	WoW	vs. 4W
Lower 48 Dry Production	95.8	96.4	96.7	95.8	95.8	96.1	▲ 0.2	▼ -0.1
Canadian Imports	5.8	5.6	5.8	6.1	5.9	5.2	▼ -0.8	▼ -0.7
L48 Power	25.0	24.6	25.1	24.9	26.2	26.7	▲ 0.6	▲ 1.6
L48 Residential & Commercial	25.2	22.4	24.1	18.5	16.5	14.2	▼ -2.3	▼ -6.2
L48 Industrial	22.5	21.7	21.8	22.0	21.8	21.4	▼ -0.4	▼ -0.4
L48 Lease and Plant Fuel	5.2	5.3	5.3	5.2	5.2	5.2	▲ 0.0	▼ 0.0
L48 Pipeline Distribution	2.8	2.6	2.7	2.4	2.4	2.3	▼ -0.1	▼ -0.2
L48 Regional Gas Consumption	80.7	76.5	79.0	73.0	72.1	69.9	▼ -2.2	▼ -5.3
Net LNG Exports	12.4	12.5	12.1	12.2	12.2	12.2	▲ 0.0	▼ 0.0
Total Mexican Exports	6.8	6.6	6.7	6.9	6.9	7.0	▲ 0.1	▲ 0.3
Implied Daily Storage Activity	1.7	6.5	4.7	9.8	10.6	12.1	1.6	
EIA Reported Daily Storage Activity	2.1	7.6	5.7	11.0	10.9			
Daily Model Error	-0.4	-1.1	-1.0	-1.2	-0.3			

Monthly Balances

	2Yr Ago May-20	LY May-21	Jan-22	Feb-22	Mar-22	Apr-22	MTD May-22	MoM	vs. LY
Lower 48 Dry Production	87.0	93.0	93.4	92.7	95.0	96.2	95.7	▼ -0.5	▲ 2.7
Canadian Imports	3.9	4.5	6.7	6.6	5.2	5.8	5.3	▼ -0.5	▲ 0.8
L48 Power	26.9	26.5	31.5	28.9	25.6	24.8	27.9	▲ 3.1	▲ 1.4
L48 Residential & Commercial	12.8	12.8	49.1	44.4	30.7	22.2	13.4	▼ -8.8	▲ 0.6
L48 Industrial	19.4	20.9	24.7	22.5	21.8	22.0	21.4	▼ -0.5	▲ 0.5
L48 Lease and Plant Fuel	4.7	5.0	5.1	5.1	5.2	5.2	5.2	▼ -0.1	▲ 0.1
L48 Pipeline Distribution	2.2	2.2	3.8	3.6	2.9	2.6	2.3	▼ -0.2	▲ 0.1
L48 Regional Gas Consumption	65.9	67.5	114.3	104.4	86.2	76.8	70.2	▼ -6.5	▲ 2.8
Net LNG Exports	6.7	10.8	12.4	12.4	12.9	12.3	12.2	▼ -0.1	▲ 1.3
Total Mexican Exports	4.8	6.8	6.3	6.2	6.5	6.7	7.0	▲ 0.2	▲ 0.2
Implied Daily Storage Activity	13.6	12.4	-32.9	-23.7	-5.4	6.2	11.6		
EIA Reported Daily Storage Activity									
Daily Model Error									

Source: Bloomberg, analytix.ai

Daily Average Generation Data

Nuclear Generation Daily Average - GWh (NRC)

	10-May	11-May	12-May	13-May	14-May	15-May	16-May	DoD	vs. 7D
NRC Nuclear Daily Output	79.9	80.4	81.0	81.3	79.6	81.0	82.1	1.0	1.5
NRC Nuclear Max Capacity	104.9	104.9	104.9	104.9	104.9	104.9	104.9	0.0	0.0
NRC Nuclear Outage	24.9	24.5	23.9	23.5	25.3	23.8	22.8	-1.0	-1.5
NRC % Nuclear Cap Utilization	81.3	81.7	82.4	82.7	80.9	82.4	83.5	1.0	1.6

Wind Generation Daily Average - MWh (EIA)

	10-May	11-May	12-May	13-May	14-May	15-May	16-May	DoD	vs. 7D
CALI Wind	3684	3767	2800	2413	1662	3103	5161	2059	2256
TEXAS Wind	20896	18474	19001	12388	11449	15517	12905	-2612	-3383
US Wind	65666	61454	68832	47704	35389	44607	48299	3692	-5643

Generation Daily Average - MWh (EIA)

	10-May	11-May	12-May	13-May	14-May	15-May	16-May	DoD	vs. 7D
US Wind	65666	61454	68832	47704	35389	44607	48299	3692	-5643
US Solar	17690	16719	16402	18239	18710	18206	19380	1174	1719
US Petroleum	282	386	268	357	265	249	220	-29	-81
US Other	7417	7790	8112	8224	7400	7133	7613	480	-66
US Coal	84621	85465	83318	85557	86495	85391	91689	6298	6548
US Nuke	84062	84471	84722	84133	83587	84942	85474	532	1155
US Hydro	31633	32624	33198	33307	31024	30933	30821	-112	-1299
US Gas	154016	168496	166557	178411	175680	162735	173220	10485	5571

See National Wind and Nuclear daily charts

Source: Bloomberg, analytix.ai

Storage Week Average Generation Data

Nuclear Generation Weekly Average - GWh (NRC)

	8-Apr	15-Apr	22-Apr	29-Apr	6-May	13-May	WoW	WoW Bcf/d Impact
NRC Nuclear Daily Output	75.0	71.9	72.3	73.5	76.7	79.3	2.7	-0.5
NRC Nuclear Max Capacity	104.9	104.9	104.9	104.9	104.9	104.9	0.0	
NRC Nuclear Outage	29.9	32.9	32.6	31.4	28.2	25.5	-2.7	
NRC % Nuclear Cap Utilization	76.3	73.2	73.5	74.8	78.0	80.7	2.7	

Wind Generation Weekly Average - MWh (EIA)

	8-Apr	15-Apr	22-Apr	29-Apr	6-May	13-May	WoW	WoW Bcf/d Impact
CALI Wind	2611	3434	3613	3153	2929	3983	1055	-0.2
TEXAS Wind	14468	16530	15612	18327	16902	17705	802	-0.1
US Wind	59878	66240	61570	66986	57243	64974	7731	-1.4
							14%	
						0.0		

Generation Weekly Average - MWh (EIA)

	8-Apr	15-Apr	22-Apr	29-Apr	6-May	13-May	WoW	WoW Bcf/d Impact
US Wind	59878	66240	61570	66986	57243	64974	7731	-1.4
US Solar	15518	16118	15897	16968	16920	17481	561	-0.1
US Petroleum	1015	964	984	992	931	341	-590	0.1
US Other	7183	7154	7544	7717	7528	7539	11	0.0
US Coal	77514	77087	79575	77533	78898	81273	2375	-0.4
US Nuke	78807	75674	76478	77438	80545	83391	2846	-0.5
US Hydro	32524	29415	28355	26722	26824	28935	2111	-0.4
US Gas	134633	134338	133401	131482	145738	148229	2491	0.4

See National Wind and Nuclear daily charts

Source: Bloomberg, analytix.ai

Monthly Average Generation Data

Nuclear Generation Monthly Average - GWh (NRC)

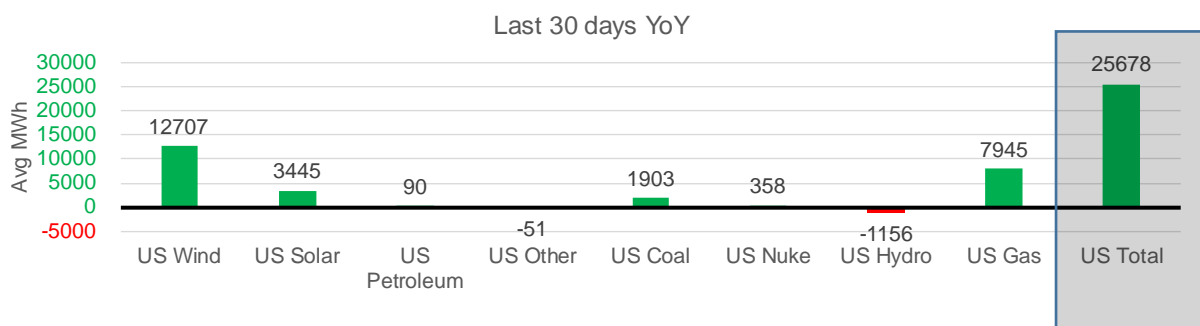
	2Yr Ago	LY	MTD					
	Same 30 days	Same 30 days	Feb-22	Mar-22	Apr-22	May-22	Last 30 days	Last 30 days YoY
NRC Nuclear Daily Output	80.3	77.1	87.3	81.3	73.3	79.5	77.1	0.0
NRC Nuclear Max Capacity	104.9	104.9	104.9	104.9	104.9	104.9	104.9	0.0
NRC Nuclear Outage	24.6	27.8	17.5	23.6	31.6	25.4	27.8	0.0
NRC % Nuclear Cap Utilization	81.6	78.4	88.8	82.7	74.5	80.8	78.4	0.0

Wind Generation Monthly Average - MWh (EIA)

	2Yr Ago	LY	MTD					
	Same 30 days	Same 30 days	Feb-22	Mar-22	Apr-22	May-22	Last 30 days	Last 30 days YoY
CALI Wind	2833	3323	1495	2250	3186	3619	3490	166
TEXAS Wind	11015	12413	11750	14837	16311	15864	16966	4553
US Wind	40465	47453	54543	58528	64183	54742	60160	12707

Generation Monthly Average - MWh (EIA)

	2Yr Ago	LY	MTD					
	Same 30 days	Same 30 days	Feb-22	Mar-22	Apr-22	May-22	Last 30 days	Last 30 days YoY
US Wind	40465	47453	54543	58528	64183	54742	60160	▲ 12707
US Solar	11208	13943	12442	14058	16208	17744	17387	▲ 3445
US Petroleum	758	590	1331	985	985	477	680	▲ 90
US Other	7974	7658	8632	7206	7386	7594	7608	▼ -51
US Coal	56516	79406	105631	82291	77545	83851	81309	▲ 1903
US Nuke	84385	80621	92027	85256	77217	83272	80980	▲ 358
US Hydro	35306	29534	32284	33959	29023	29248	28378	▼ -1156
US Gas	136064	139488	153733	137232	133068	157733	147433	▲ 7945
US Total	371342	398933	461069	419842	406185	435427	424611	▲ 25678



See National Wind and Nuclear daily charts

Source: Bloomberg, analytix.ai

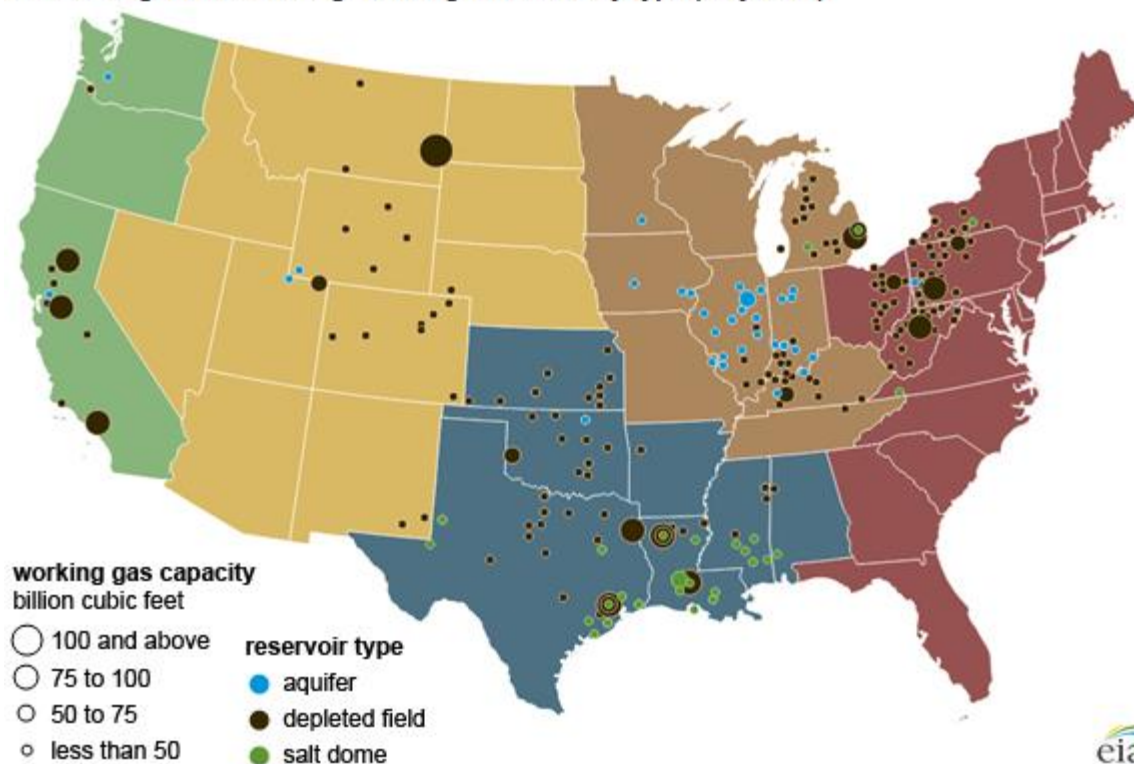
Regional S/D Models Storage Projection

Week Ending 13-May

	Daily Raw Storage	Daily Adjustment Factor	Daily Average Storage Activity (Adjusted) *	Weekly Adjusted Storage Activity
L48	12.8	0.2	13.0	91
East	0.4	2.5	2.9	21
Midwest	4.6	-0.5	4.1	29
Mountain	4.8	-3.4	1.4	10
South Central	1.9	2.3	4.2	29
Pacific	1.0	-0.7	0.4	3

*Adjustment Factor is calculated based on historical regional deltas

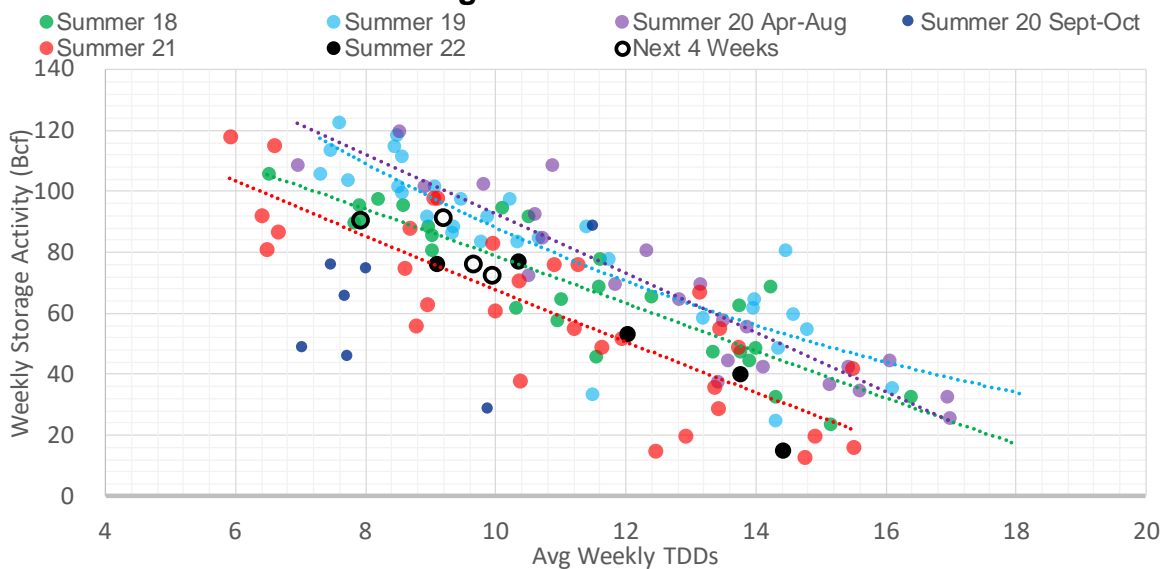
U.S. underground natural gas storage facilities by type (July 2015)



Weather Model Storage Projection

Next report and beyond		
Week Ending	TDDs	Week Storage Projection
13-May	9.2	91
20-May	7.9	90
27-May	9.7	76
03-Jun	10.0	72

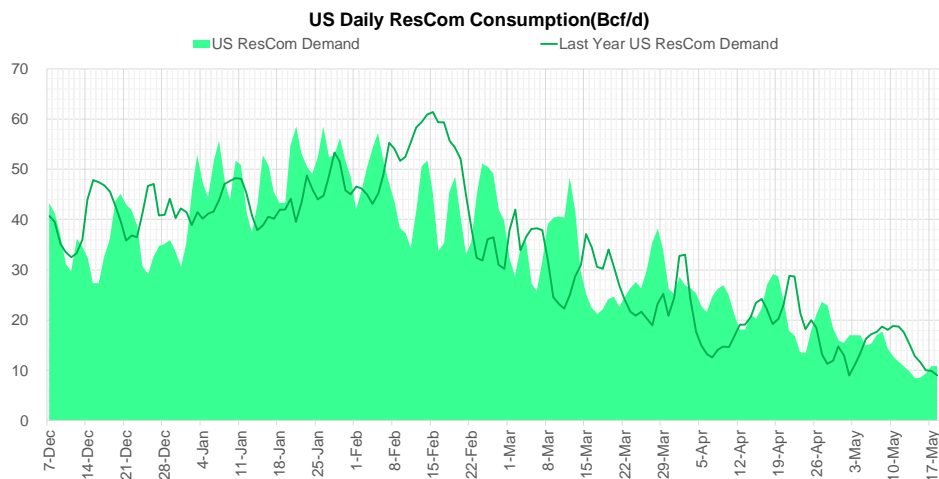
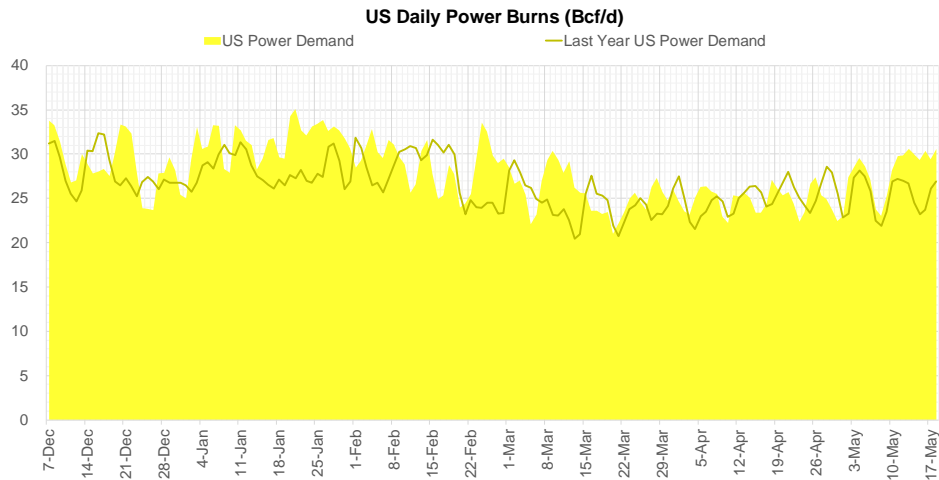
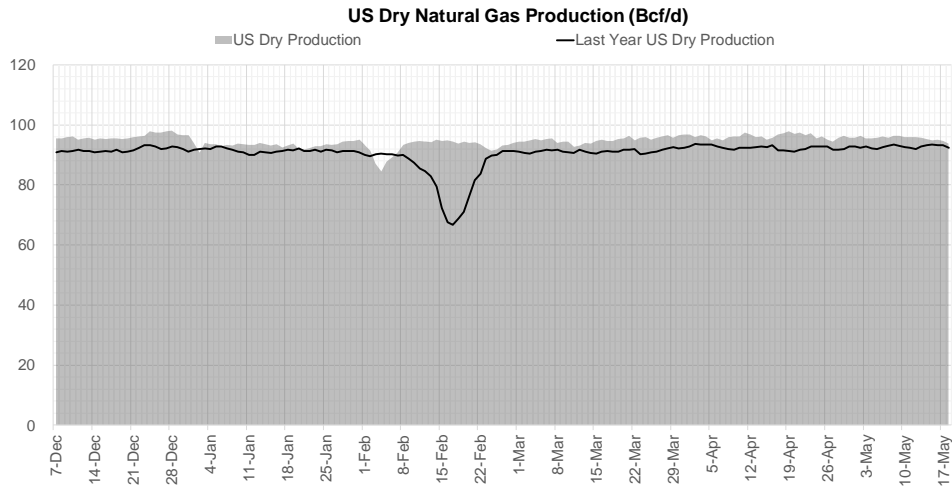
Weather Storage Model - Next 4 Week Forecast



[Go to larger image](#)

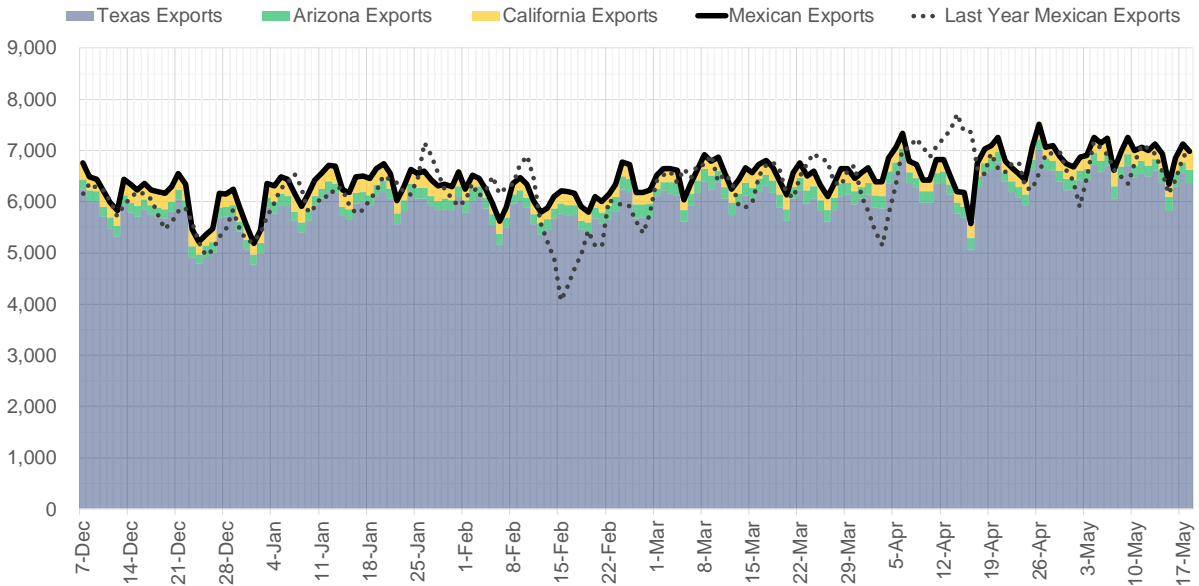


Supply – Demand Trends

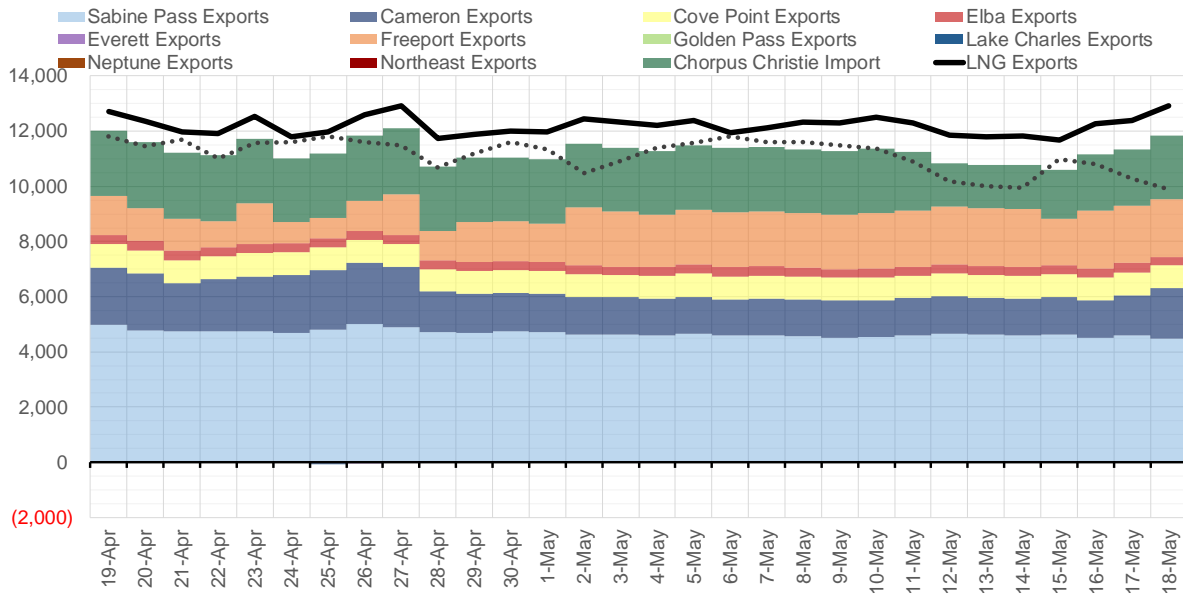


Source: Bloomberg

Mexican Exports (MMcf/d)



Net LNG Exports - Last 30 days (MMcf/d)



Source: Bloomberg

The risk of trading futures and options and other derivatives involves a substantial risk of loss and is not suitable for all persons. Each person must consider whether a particular trade, combination of trades, or strategy is suitable for that person's financial means and objectives. Past results are not necessarily indicative of future results. This communication may contain links to third party websites which are not under the control of and are not maintained by ION Energy Group, and ION Energy Group is not responsible for their content.

Nat Gas Options Volume and Open Interest CME and ICE Combined

CONTRACT MONTH	CONTRACT YEAR	PUT/CALL	STRIKE	CUMULATIVE VOL	CONTRACT MONTH	CONTRACT YEAR	PUT/CALL	STRIKE	CUMULATIVE OI
6	2022	P	7.00	7448	8	2022	C	10.00	50517
6	2022	C	12.00	6891	8	2022	C	10.50	41548
6	2022	C	9.00	4011	10	2022	C	6.00	35195
6	2022	P	6.00	3532	6	2022	C	6.00	25039
6	2022	C	10.00	3294	10	2022	C	5.00	24289
7	2022	C	10.00	2661	9	2022	C	6.00	23680
6	2022	C	9.50	2416	10	2022	P	3.00	20967
8	2022	P	5.00	2012	10	2022	P	3.50	20919
6	2022	C	11.50	1953	7	2022	C	8.00	20793
10	2022	P	6.00	1600	10	2022	P	2.50	19730
6	2022	P	8.00	1280	6	2022	C	7.00	19565
6	2022	C	11.00	1270	6	2022	P	4.00	19538
7	2022	C	9.00	1168	8	2022	C	6.00	19501
7	2022	C	11.00	1123	10	2022	P	6.00	19303
6	2022	C	7.75	1100	6	2022	C	10.00	19060
8	2022	P	6.50	1062	7	2022	C	6.00	18954
7	2022	C	12.00	1054	12	2022	C	5.00	18221
6	2022	P	6.25	1033	8	2022	C	7.00	18113
7	2022	C	14.00	1001	9	2022	C	7.00	18096
8	2022	C	10.00	969	6	2022	P	7.00	18029
6	2022	C	8.25	815	6	2022	P	6.00	17849
10	2022	C	10.00	748	9	2022	C	10.00	17806
7	2022	C	9.50	712	6	2022	C	12.00	17662
6	2022	C	9.25	594	6	2022	C	5.00	17647
7	2022	P	6.00	571	10	2022	P	2.00	17420
6	2022	P	7.25	567	7	2022	P	3.25	17344
6	2022	C	7.25	555	6	2022	P	5.50	17288
6	2022	P	7.50	541	10	2022	P	4.00	17239
7	2022	C	10.50	503	6	2022	P	3.00	17223
8	2022	C	11.00	500	7	2022	C	7.00	17168
6	2022	C	10.50	497	6	2022	P	4.75	17117
6	2022	C	8.50	491	6	2022	C	9.00	17086
7	2022	C	8.50	478	7	2022	C	10.00	16656
10	2022	C	15.00	431	1	2023	C	10.00	16049
6	2022	P	6.50	417	6	2022	P	3.50	15958
9	2022	C	10.00	375	5	2023	P	2.00	15761
7	2022	P	7.00	348	6	2022	P	5.00	15678
10	2022	C	6.00	339	11	2022	P	4.00	15594
8	2022	C	9.00	321	2	2023	C	10.00	15499
7	2022	P	7.25	314	7	2022	C	9.00	15479
10	2022	C	20.00	306	8	2022	C	8.00	15374
6	2022	C	7.50	304	9	2022	P	2.50	15291
6	2022	C	8.00	301	7	2022	P	3.50	14978
9	2022	C	11.00	300	9	2022	P	2.75	14933
10	2022	C	11.00	300	9	2022	P	3.00	14916
9	2022	P	3.00	290	10	2022	P	3.25	14717
8	2022	C	12.00	250	7	2022	P	3.00	14641
10	2022	P	3.00	250	8	2022	P	3.00	14603
4	2023	P	3.50	250	10	2022	C	8.00	14515
					7	2022	P	6	14446

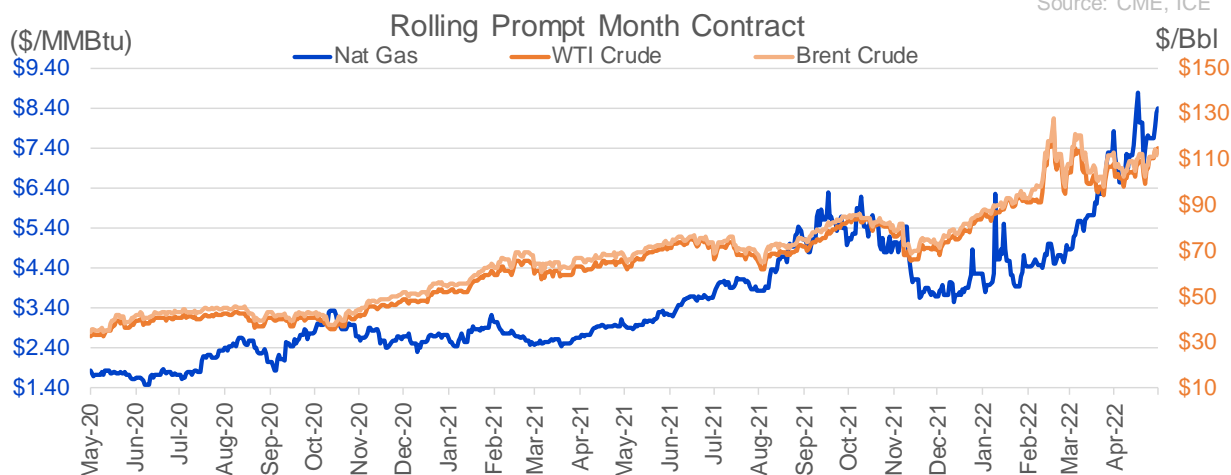
Source: CME, ICE

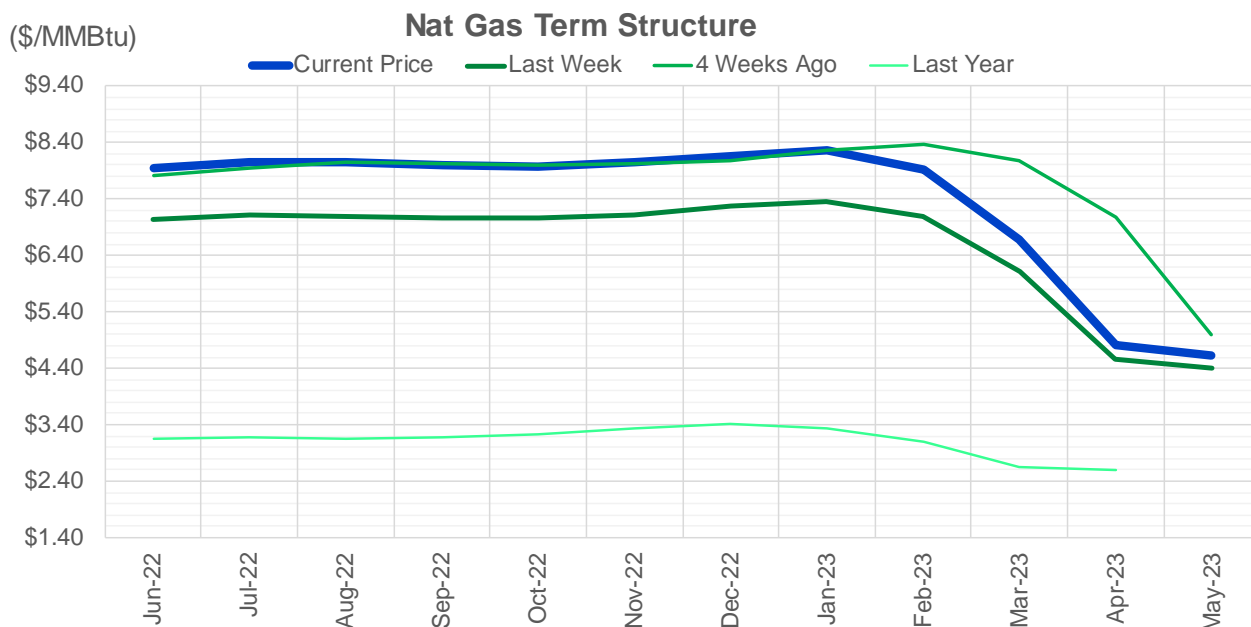
Nat Gas Futures Open Interest

CME and ICE Combined

CME Henry Hub Futures (10,000 MMBtu)				ICE Henry Hub Futures Contract Equivalent (10,000 MM			
	Current	Prior	Daily Change		Current	Prior	Daily Change
JUN 22	53395	56194	-2799	JUN 22	84777	85152	-375
JUL 22	200777	199168	1609	JUL 22	76879	76790	89
AUG 22	60310	60206	104	AUG 22	59297	58954	344
SEP 22	88337	86965	1372	SEP 22	64075	64170	-95
OCT 22	96432	96040	392	OCT 22	76660	76973	-313
NOV 22	51941	51939	2	NOV 22	58226	58186	40
DEC 22	50546	49459	1087	DEC 22	62860	62462	399
JAN 23	62793	62496	297	JAN 23	66480	66230	251
FEB 23	27319	27773	-454	FEB 23	55926	56007	-81
MAR 23	38774	38803	-29	MAR 23	54906	55164	-258
APR 23	58809	58188	621	APR 23	53315	53452	-138
MAY 23	62372	61554	818	MAY 23	52186	52664	-478
JUN 23	25516	25465	51	JUN 23	45024	45070	-46
JUL 23	21360	21065	295	JUL 23	43956	43989	-34
AUG 23	13854	13503	351	AUG 23	43667	43693	-26
SEP 23	17676	18017	-341	SEP 23	42931	42930	2
OCT 23	33746	33448	298	OCT 23	49724	50342	-619
NOV 23	13036	12813	223	NOV 23	43681	43902	-221
DEC 23	14476	14233	243	DEC 23	39572	40169	-597
JAN 24	20779	20550	229	JAN 24	39128	39221	-93
FEB 24	5866	5842	24	FEB 24	26456	26334	122
MAR 24	14094	14337	-243	MAR 24	30797	30738	59
APR 24	12008	11881	127	APR 24	27141	26369	773
MAY 24	6441	6379	62	MAY 24	25734	25683	51
JUN 24	1803	1803	0	JUN 24	22114	22050	64
JUL 24	1986	1985	1	JUL 24	22258	22192	66
AUG 24	2965	2962	3	AUG 24	22366	22300	66
SEP 24	1367	1367	0	SEP 24	21742	21678	64
OCT 24	6703	6703	0	OCT 24	24436	24207	229
NOV 24	4683	4683	0	NOV 24	22564	22521	44

Source: CME, ICE





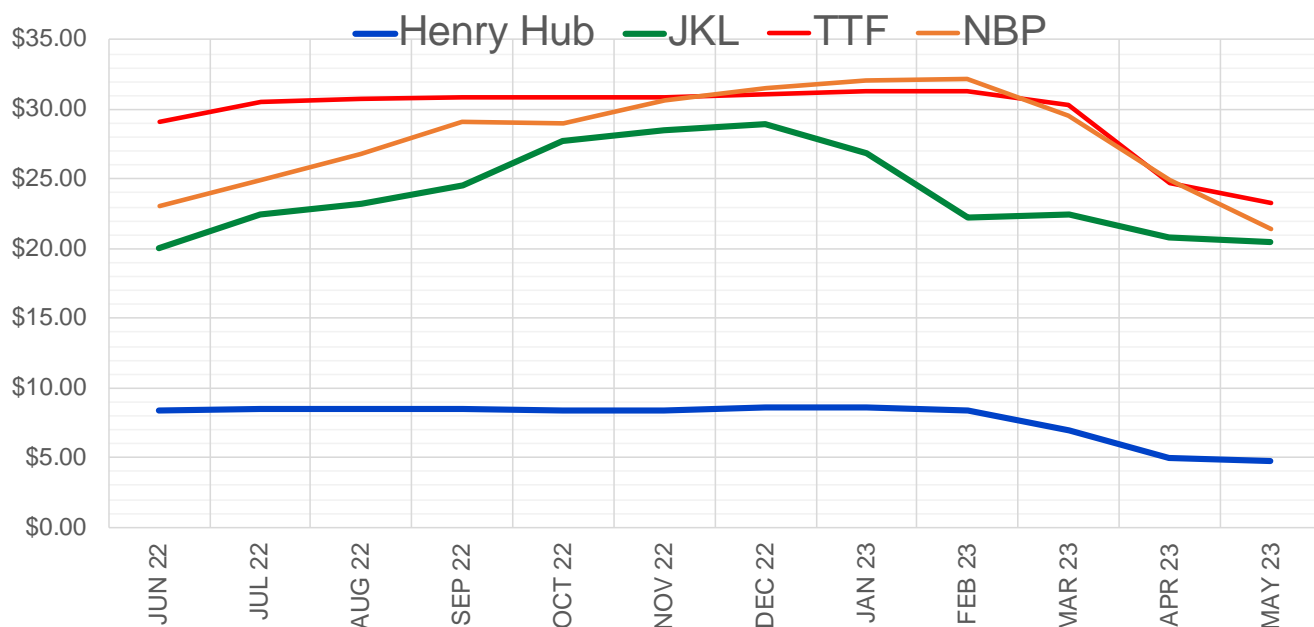
	Jun-22	Jul-22	Aug-22	Sep-22	Oct-22	Nov-22	Dec-22	Jan-23	Feb-23	Mar-23	Apr-23	May-23
Current Price	\$7.956	\$8.053	\$8.040	\$7.999	\$7.984	\$8.044	\$8.167	\$8.264	\$7.929	\$6.686	\$4.808	\$4.627
Last Week	\$7.026	\$7.106	\$7.091	\$7.054	\$7.052	\$7.126	\$7.263	\$7.362	\$7.082	\$6.128	\$4.571	\$4.412
vs. Last Week	\$0.930	\$0.947	\$0.949	\$0.945	\$0.932	\$0.918	\$0.904	\$0.902	\$0.847	\$0.558	\$0.237	\$0.215
4 Weeks Ago	\$7.820	\$7.958	\$8.042	\$8.038	\$8.003	\$8.013	\$8.086	\$8.263	\$8.367	\$8.091	\$7.084	\$5.003
vs. 4 Weeks Ago	\$0.136	\$0.095	-\$0.002	-\$0.039	-\$0.019	\$0.031	\$0.081	\$0.001	-\$0.438	-\$1.405	-\$2.276	-\$0.376
Last Year	\$3.109	\$3.164	\$3.170	\$3.157	\$3.169	\$3.224	\$3.339	\$3.416	\$3.329	\$3.103	\$2.650	\$2.585
vs. Last Year	\$4.847	\$4.889	\$4.870	\$4.842	\$4.815	\$4.820	\$4.828	\$4.848	\$4.600	\$3.583	\$2.158	\$2.042

	Units	Cash Settled	Prompt Settle	Cash to Prompt
AGT Citygate	\$/MMBtu	8.10	6.95	-1.15
TETCO M3	\$/MMBtu	7.50	6.62	-0.88
FGT Zone 3	\$/MMBtu	7.74	7.39	-0.35
Zone 6 NY	\$/MMBtu	7.74	6.50	-1.24
Chicago Citygate	\$/MMBtu	8.04	7.11	-0.93
Michcon	\$/MMBtu	8.03	7.11	-0.92
Columbia TCO Pool	\$/MMBtu	7.58	6.68	-0.90
Ventura	\$/MMBtu	8.03	6.97	-1.06
Rockies/Opal	\$/MMBtu	8.02	6.86	-1.16
El Paso Permian Basin	\$/MMBtu	7.75	6.54	-1.21
Socal Citygate	\$/MMBtu	8.50	7.43	-1.07
Malin	\$/MMBtu	7.53	7.09	-0.44
Houston Ship Channel	\$/MMBtu	8.19	7.26	-0.93
Henry Hub Cash	\$/MMBtu	8.26	7.03	-1.23
AECO Cash	C\$/GJ	6.28	5.26	-1.02
Station2 Cash	C\$/GJ	5.65	6.74	1.09
Dawn Cash	C\$/GJ	8.06	7.12	-0.94

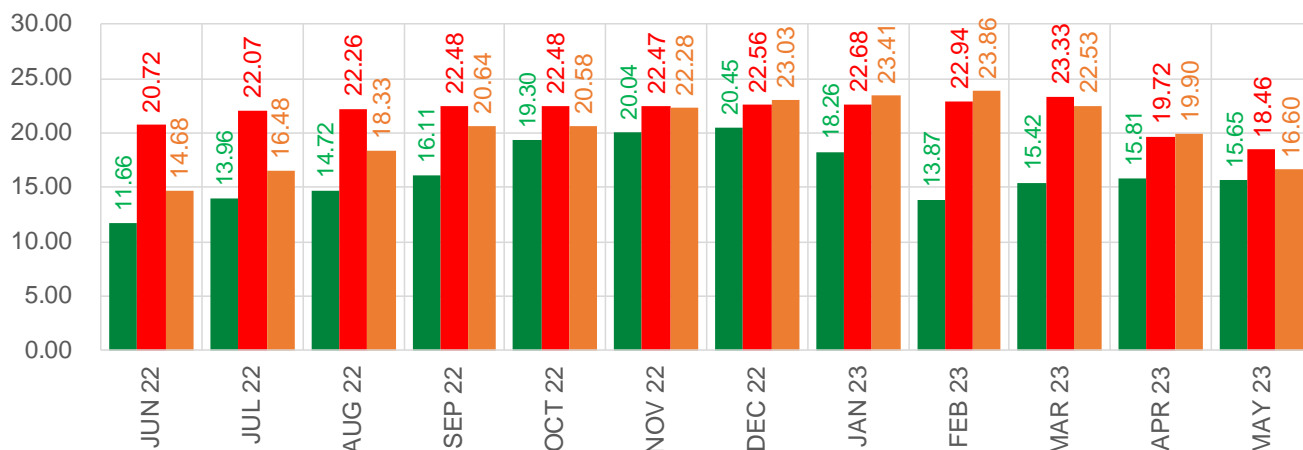
Source: CME, Bloomberg

	Units	Current Price	vs. 4 Weeks			
			vs. Last Week	Ago	vs. Last Year	
NatGas Jul21/Oct21	\$/MMBtu	2.224	▲ 0.000	▲ 0.000	▲ 2.204	
NatGas Oct21/Nov21	\$/MMBtu	0.361	▲ 0.000	▲ 0.000	▲ 0.299	
NatGas Oct21/Jan22	\$/MMBtu	-1.817	▲ 0.000	▲ 0.000	▼ -2.076	
NatGas Apr22/Oct22	\$/MMBtu	2.986	▲ 0.931	▲ 1.019	▲ 2.965	
WTI Crude	\$/Bbl	112.40	▲ 12.640	▲ 9.840	▲ 46.910	
Brent Crude	\$/Bbl	111.93	▲ 9.470	▲ 4.680	▲ 43.220	
Fuel Oil, NY Harbour 1%	\$/Bbl	97.18	▲ 0.000	▲ 0.000	▲ 0.000	
Heating Oil	cents/Gallon	379.93	▼ -13.290	▼ -6.260	▲ 174.290	
Propane, Mt. Bel	cents/Gallon	1.24	▲ 0.004	▼ -0.080	▲ 0.423	
Ethane, Mt. Bel	cents/Gallon	0.59	▲ 0.031	▲ 0.089	▲ 0.332	
Coal, PRB	\$/MTon	12.30	▲ 0.000	▲ 0.000	▲ 0.000	
Coal, PRB	\$/MMBtu	0.70				
Coal, ILB	\$/MTon	31.05	▲ 0.000	▲ 0.000	▲ 0.000	
Coal, ILB	\$/MMBtu	1.32				

Nat Gas Term Structure (\$MMBTU)

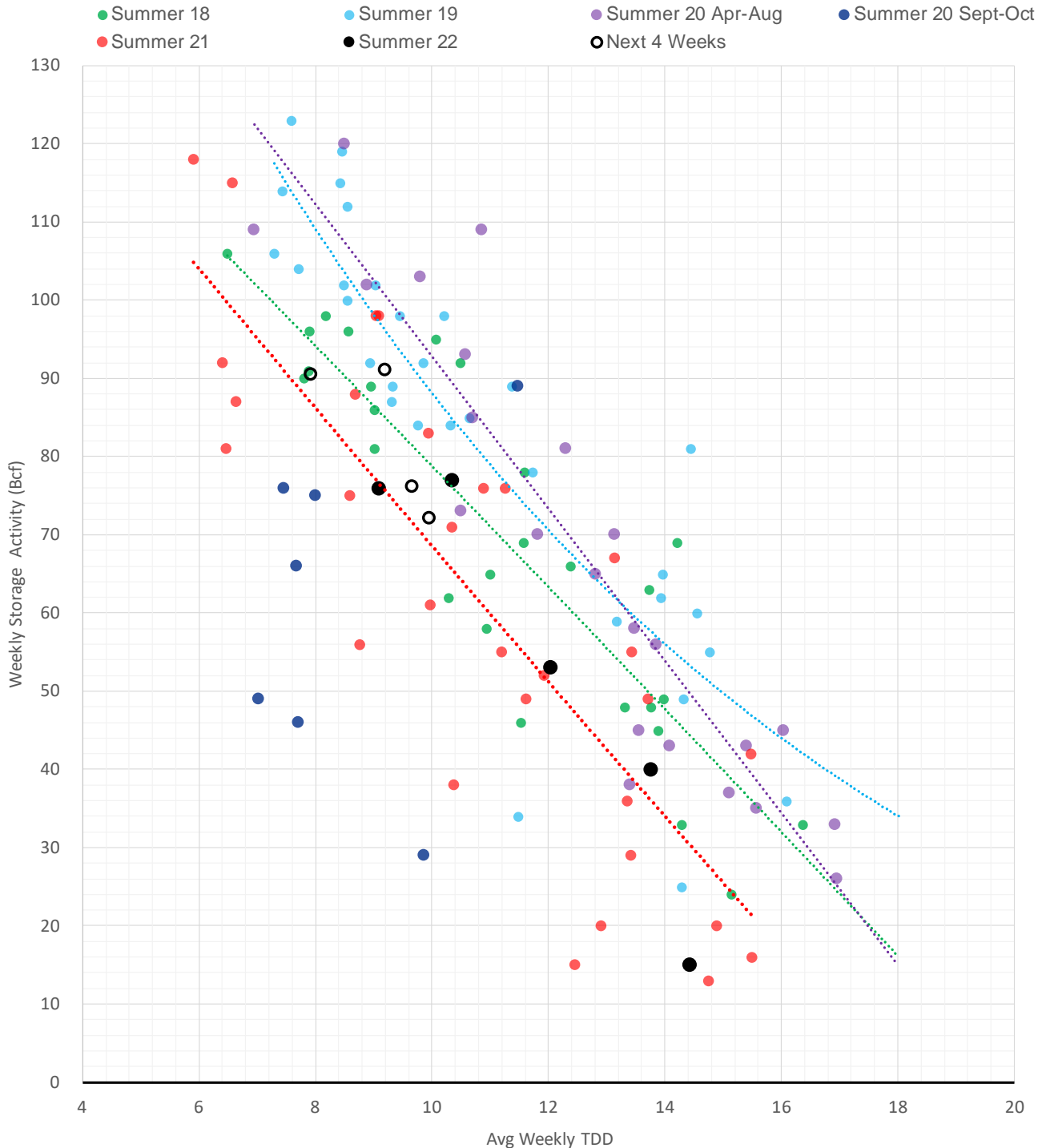


JKL-HHub TTF-HHub NBP-HHub

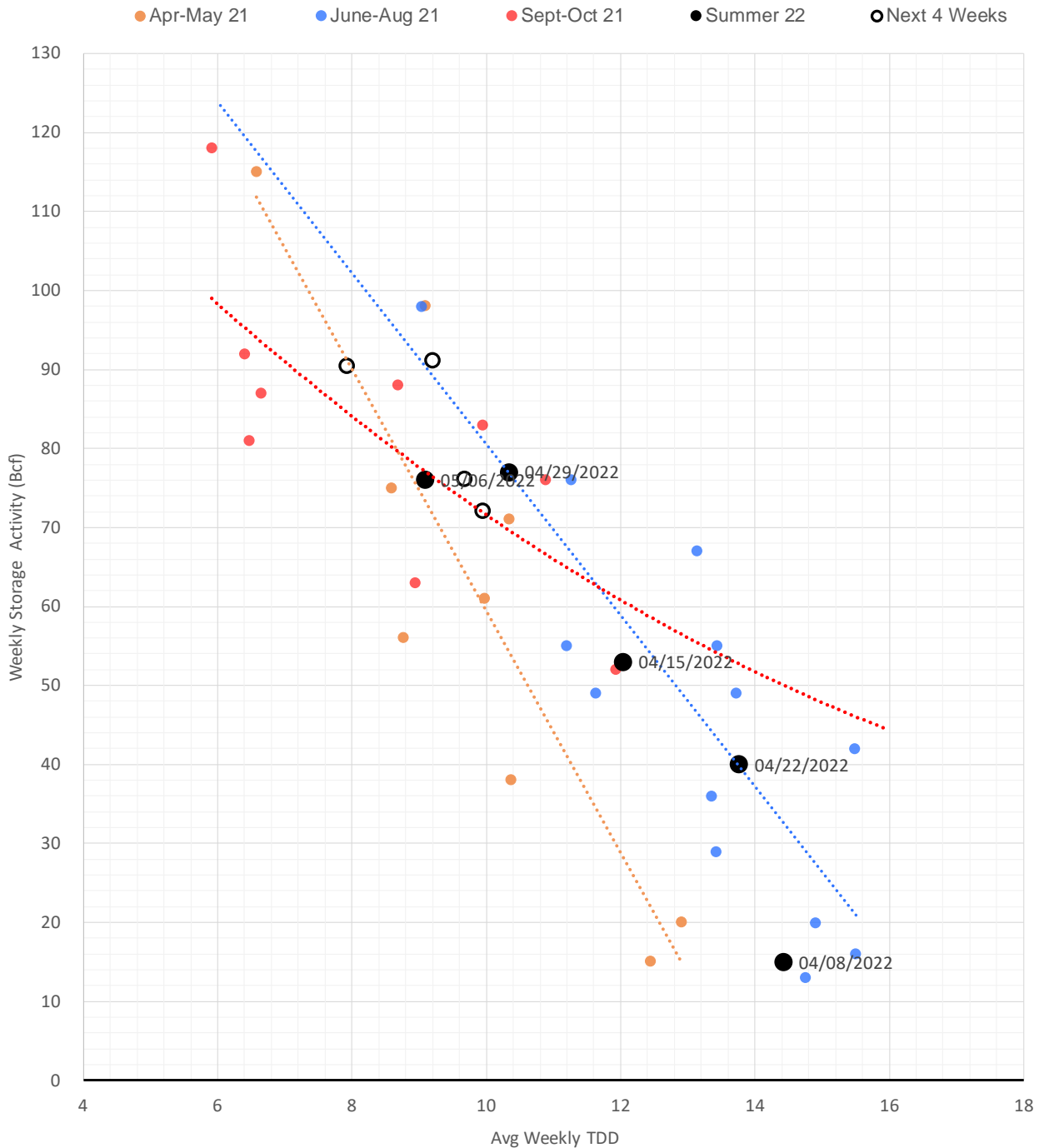


	JUN 22	JUL 22	AUG 22	SEP 22	OCT 22	NOV 22	DEC 22	JAN 23	FEB 23	MAR 23	APR 23	MAY 23
Henry Hub	\$8.417	\$8.509	\$8.498	\$8.442	\$8.402	\$8.420	\$8.554	\$8.638	\$8.330	\$6.987	\$4.992	\$4.795
JKL	\$20.075	\$22.470	\$23.215	\$24.555	\$27.700	\$28.460	\$29.000	\$26.900	\$22.195	\$22.410	\$20.805	\$20.445
JKL-HHub	\$11.658	\$13.961	\$14.717	\$16.113	\$19.298	\$20.040	\$20.446	\$18.262	\$13.865	\$15.423	\$15.813	\$15.650
TTF	\$29.135	\$30.582	\$30.754	\$30.920	\$30.877	\$30.890	\$31.117	\$31.315	\$31.270	\$30.316	\$24.707	\$23.258
TTF-HHub	\$20.718	\$22.073	\$22.256	\$22.478	\$22.475	\$22.470	\$22.563	\$22.677	\$22.940	\$23.329	\$19.715	\$18.463
NBP	\$23.101	\$24.985	\$26.829	\$29.085	\$28.980	\$30.696	\$31.581	\$32.045	\$32.188	\$29.520	\$24.896	\$21.397
NBP-HHub	\$14.684	\$16.476	\$18.331	\$20.643	\$20.578	\$22.276	\$23.027	\$23.407	\$23.858	\$22.533	\$19.904	\$16.602

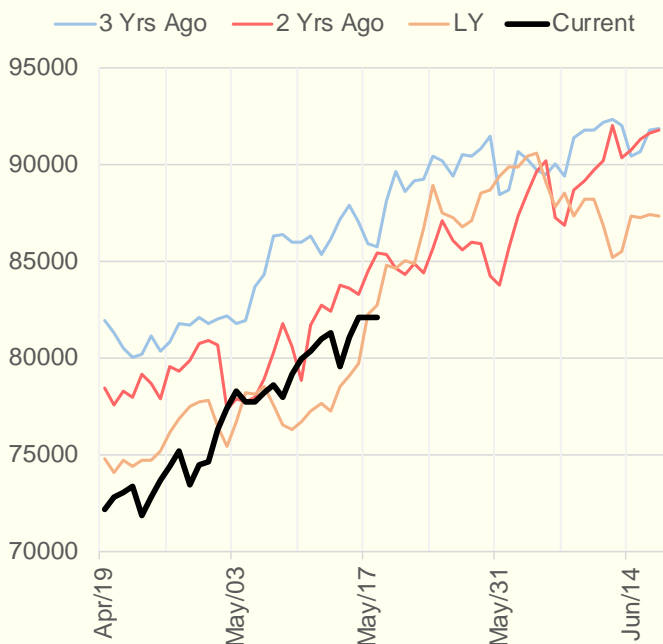
Weather Storage Model - Next 4 Week Forecast



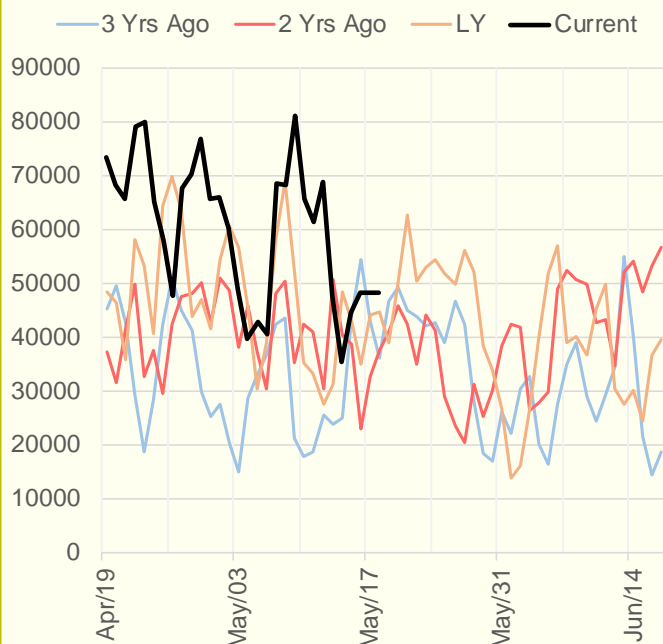
Weather Storage Model for Summer 2021 & 2022



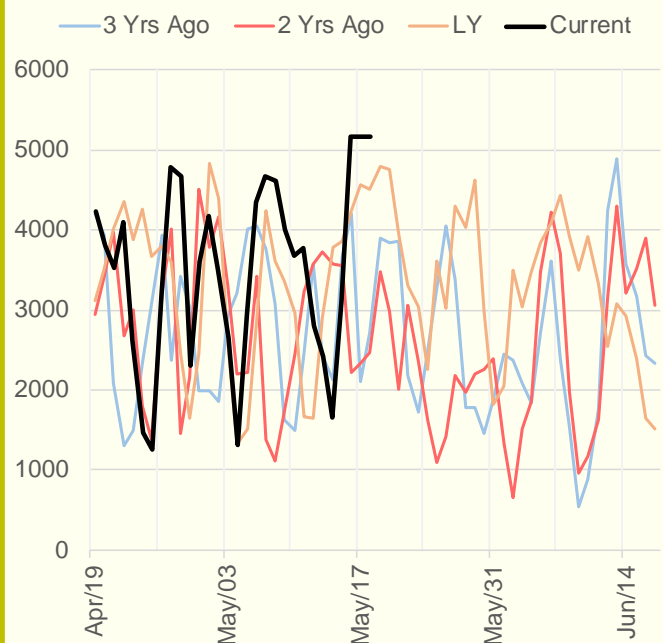
NRC Nuclear Daily Output



US Wind



CALI Wind



TEXAS Wind

