

	Current	Δ from YD	Δ from 7D Avg
Nat Gas Prompt	\$ 8.25 ▲	\$ 0.29 ▲	\$ 0.57

	Current	Δ from YD	Δ from 7D Avg
WTI Prompt	\$ 114.86 ▲	\$ 0.66 ▲	\$ 6.7

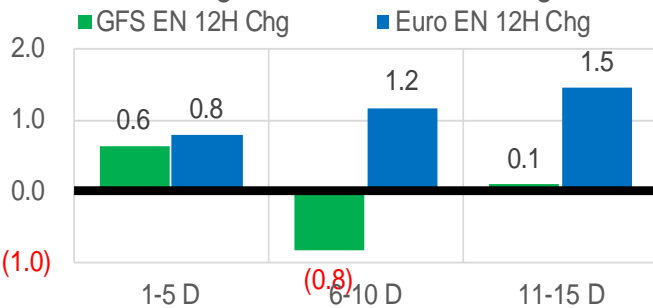
	Current	Δ from YD	Δ from 7D Avg
Brent Prompt	\$ 115.12 ▲	\$ 0.88 ▲	\$ 5.6

Page Menu

- [Short-term Weather Model Outlooks](#)
- [Lower 48 Component Models](#)
- [Regional S/D Models Storage Projection](#)
- [Weather Model Storage Projection](#)
- [Supply – Demand Trends](#)
- [Nat Gas Options Volume and Open Interest](#)
- [Nat Gas Futures Open Interest](#)
- [Price Summary](#)

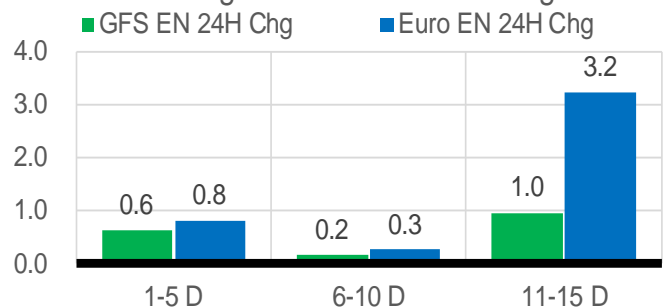
Vs. 12H Ago

L48 Region - 00z TDD vs 12H Ago



Vs. 24H Ago

L48 Region - 00z TDD vs 24H Ago



	Current	Δ from YD	Δ from 7D Avg
US Dry Production	94.2 ▼	-0.93 ▼	-1.35

	Current	Δ from YD	Δ from 7D Avg
US Power Burns	29.5 ▼	-0.41 ▼	-0.14

	Current	Δ from YD	Δ from 7D Avg
US ResComm	10.6 ▲	1.08 ▲	0.37

	Current	Δ from YD	Δ from 7D Avg
Canadian Imports	4.5 ▼	-0.18 ▼	-0.43

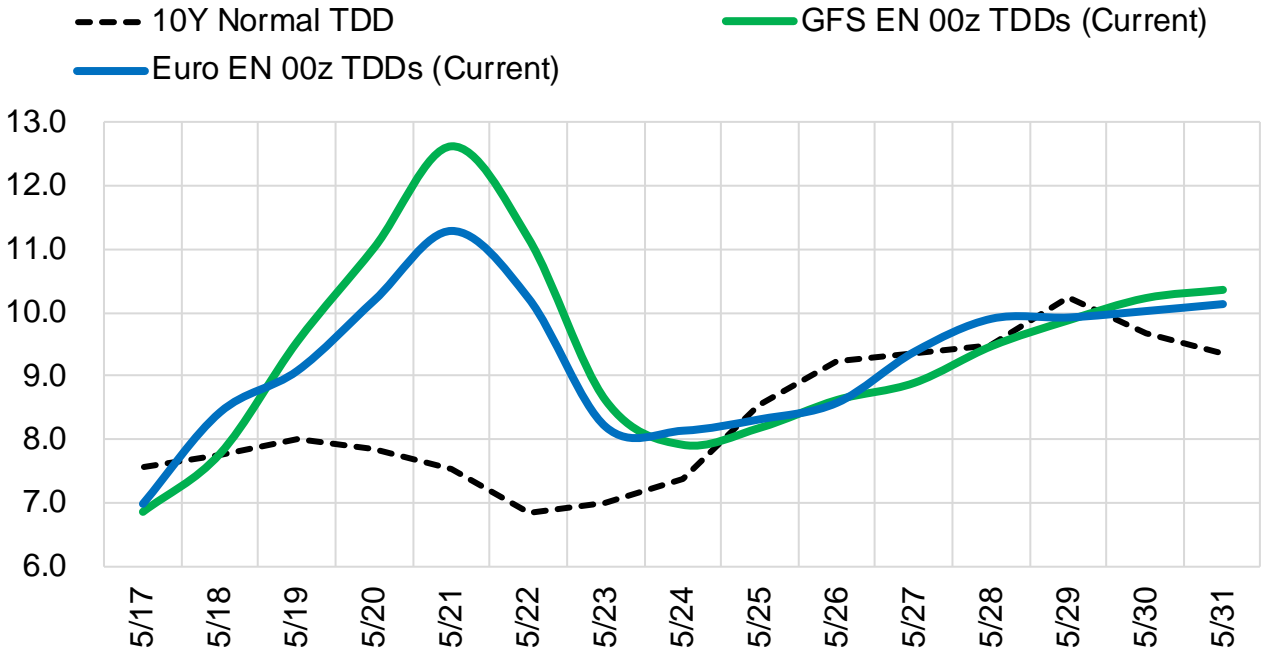
	Current	Δ from YD	Δ from 7D Avg
Net LNG Exports	12.4 ▲	0.19 ▲	0.39

	Current	Δ from YD	Δ from 7D Avg
Mexican Exports	6.8 ▼	-0.09 ▼	-0.16

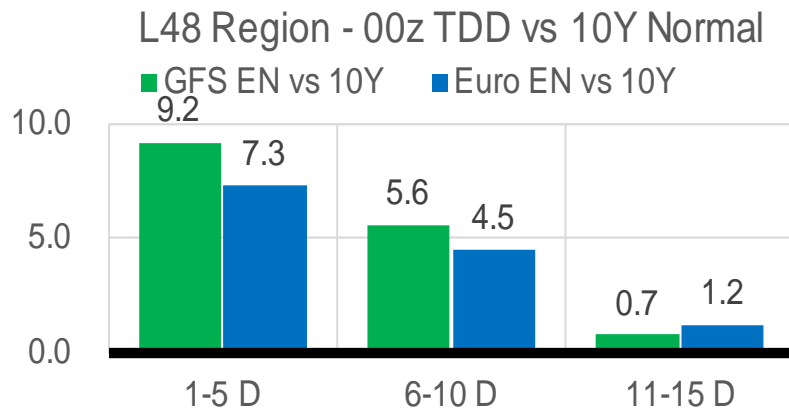
The risk of trading futures and options and other derivatives involves a substantial risk of loss and is not suitable for all persons. Each person must consider whether a particular trade, combination of trades, or strategy is suitable for that person's financial means and objectives. Past results are not necessarily indicative of future results. This communication may contain links to third party websites which are not under the control of and are not maintained by ION Energy Group, and ION Energy Group is not responsible for their content.

Short-term Weather Model Outlooks (00z)

L48 Region



Vs. 10Y Normal



Source: WSI, Bloomberg

Lower 48 Component Models

Daily Balances

	11-May	12-May	13-May	14-May	15-May	16-May	17-May	DoD	vs. 7D
Lower 48 Dry Production	96.0	96.0	95.7	95.2	94.8	95.2	94.2	▼ -0.9	▼ -1.3
Canadian Imports	4.9	5.2	5.1	4.9	4.8	4.7	4.5	▼ -0.2	▼ -0.4
L48 Power	29.9	29.9	30.4	30.0	29.3	29.9	29.5	▼ -0.4	▼ -0.4
L48 Residential & Commercial	11.8	10.7	9.8	8.5	8.6	9.5	10.6	▲ 1.1	▲ 0.8
L48 Industrial	21.2	21.5	21.6	21.8	21.9	21.8	21.7	▼ -0.2	▲ 0.0
L48 Lease and Plant Fuel	5.2	5.2	5.2	5.2	5.1	5.2	5.1	▼ -0.1	▼ -0.1
L48 Pipeline Distribution	2.4	2.3	2.3	2.2	2.2	2.2	2.3	▲ 0.0	▲ 0.0
L48 Regional Gas Consumption	70.4	69.6	69.2	67.6	67.0	68.7	69.1	▲ 0.4	▲ 0.4
Net LNG Delivered	12.31	11.87	11.81	11.83	11.67	12.23	12.43	▲ 0.2	▲ 0.5
Total Mexican Exports	7.1	7.0	7.1	6.9	6.3	6.9	6.8	▼ -0.1	▼ -0.1
Implied Daily Storage Activity	11.2	12.7	12.6	13.7	14.6	12.1	10.4		
EIA Reported Daily Storage Activity									
Daily Model Error									

EIA Storage Week Balances

	8-Apr	15-Apr	22-Apr	29-Apr	6-May	13-May	WoW	vs. 4W
Lower 48 Dry Production	95.8	96.4	96.7	95.8	95.8	96.1	▲ 0.3	▼ -0.1
Canadian Imports	5.8	5.6	5.8	6.1	5.9	5.2	▼ -0.8	▼ -0.7
L48 Power	25.0	24.6	25.1	25.0	26.4	26.9	▲ 0.4	▲ 1.6
L48 Residential & Commercial	25.2	22.4	24.1	18.5	16.5	14.2	▼ -2.3	▼ -6.2
L48 Industrial	22.5	21.7	21.8	21.9	21.5	21.3	▼ -0.2	▼ -0.4
L48 Lease and Plant Fuel	5.2	5.3	5.3	5.2	5.2	5.2	▲ 0.0	▼ 0.0
L48 Pipeline Distribution	2.8	2.6	2.7	2.4	2.4	2.3	▼ -0.1	▼ -0.2
L48 Regional Gas Consumption	80.7	76.5	79.0	73.0	72.1	69.9	▼ -2.2	▼ -5.3
Net LNG Exports	12.4	12.5	12.1	12.2	12.2	12.2	▲ 0.0	▼ 0.0
Total Mexican Exports	6.8	6.6	6.7	6.9	6.9	7.1	▲ 0.1	▲ 0.3
Implied Daily Storage Activity	1.7	6.5	4.7	9.8	10.6	12.1	1.5	
EIA Reported Daily Storage Activity	2.1	7.6	5.7	11.0	10.9			
Daily Model Error	-0.4	-1.1	-1.0	-1.2	-0.3			

Monthly Balances

	2Yr Ago May-20	LY May-21	Jan-22	Feb-22	Mar-22	Apr-22	MTD May-22	MoM	vs. LY
Lower 48 Dry Production	87.0	93.0	93.4	92.7	95.0	96.2	95.8	▼ -0.4	▲ 2.8
Canadian Imports	3.9	4.5	6.7	6.6	5.2	5.8	5.3	▼ -0.5	▲ 0.8
L48 Power	26.9	26.5	31.5	28.9	25.6	24.8	27.9	▲ 3.1	▲ 1.4
L48 Residential & Commercial	12.8	12.8	49.1	44.4	30.7	22.2	13.6	▼ -8.6	▲ 0.8
L48 Industrial	19.4	20.9	24.7	22.5	21.8	21.9	21.5	▼ -0.4	▲ 0.6
L48 Lease and Plant Fuel	4.7	5.0	5.1	5.1	5.2	5.2	5.2	▼ -0.1	▲ 0.2
L48 Pipeline Distribution	2.2	2.2	3.8	3.6	2.9	2.6	2.4	▼ -0.2	▲ 0.1
L48 Regional Gas Consumption	65.9	67.5	114.3	104.4	86.2	76.8	70.5	▼ -6.3	▲ 3.0
Net LNG Exports	6.7	10.8	12.4	12.4	12.9	12.3	12.1	▼ -0.1	▲ 1.3
Total Mexican Exports	4.8	6.8	6.3	6.2	6.5	6.7	7.0	▲ 0.2	▲ 0.2
Implied Daily Storage Activity	13.6	12.4	-32.9	-23.7	-5.4	6.2	11.5		
EIA Reported Daily Storage Activity									
Daily Model Error									

Source: Bloomberg, analytix.ai

Daily Average Generation Data

Nuclear Generation Daily Average - GWh (NRC)

	9-May	10-May	11-May	12-May	13-May	14-May	15-May	DoD	vs. 7D
NRC Nuclear Daily Output	79.2	79.9	80.4	81.0	81.3	79.6	81.0	1.5	0.8
NRC Nuclear Max Capacity	104.9	104.9	104.9	104.9	104.9	104.9	104.9	0.0	0.0
NRC Nuclear Outage	25.7	24.9	24.5	23.9	23.5	25.3	23.8	-1.5	-0.8
NRC % Nuclear Cap Utilization	80.5	81.3	81.7	82.4	82.7	80.9	82.4	1.5	0.8

Wind Generation Daily Average - MWh (EIA)

	9-May	10-May	11-May	12-May	13-May	14-May	15-May	DoD	vs. 7D
CALI Wind	3997	3684	3767	2800	2413	1662	3103	1440	49
TEXAS Wind	21168	20896	18474	19001	12388	11449	15517	4068	-1713
US Wind	81201	65666	61454	68832	47704	35389	44607	9219	-15434

Generation Daily Average - MWh (EIA)

	9-May	10-May	11-May	12-May	13-May	14-May	15-May	DoD	vs. 7D
US Wind	81201	65666	61454	68832	47704	35389	44607	9219	-15434
US Solar	18103	17690	16718	16402	18239	18710	18173	-537	529
US Petroleum	248	282	386	268	357	265	249	-16	-52
US Other	7061	7409	7790	8112	8224	7400	7129	-271	-537
US Coal	76009	84621	85465	83318	85557	86495	85391	-1104	1814
US Nuke	83649	84062	84471	84722	84133	83587	84942	1354	838
US Hydro	27833	31633	32624	33198	33294	31008	30931	-77	-667
US Gas	136633	154001	168496	166557	178406	175675	162735	-12940	-560

See National Wind and Nuclear daily charts

Source: Bloomberg, analytix.ai

Storage Week Average Generation Data

Nuclear Generation Weekly Average - GWh (NRC)

	8-Apr	15-Apr	22-Apr	29-Apr	6-May	13-May	WoW	WoW Bcf/d Impact
NRC Nuclear Daily Output	75.0	71.9	72.3	73.5	76.7	79.3	2.7	-0.5
NRC Nuclear Max Capacity	104.9	104.9	104.9	104.9	104.9	104.9	0.0	
NRC Nuclear Outage	29.9	32.9	32.6	31.4	28.2	25.5	-2.7	
NRC % Nuclear Cap Utilization	76.3	73.2	73.5	74.8	78.0	80.7	2.7	

Wind Generation Weekly Average - MWh (EIA)

	8-Apr	15-Apr	22-Apr	29-Apr	6-May	13-May	WoW	WoW Bcf/d Impact
CALI Wind	2611	3434	3613	3153	2929	3983	1055	-0.2
TEXAS Wind	14468	16530	15612	18327	16902	17705	802	-0.1
US Wind	59878	66240	61570	66986	57243	64974	7731	-1.4
							14%	
						0.0		

Generation Weekly Average - MWh (EIA)

	8-Apr	15-Apr	22-Apr	29-Apr	6-May	13-May	WoW	WoW Bcf/d Impact
US Wind	59878	66240	61570	66986	57243	64974	7731	-1.4
US Solar	15518	16118	15897	16968	16920	17364	443	-0.1
US Petroleum	1015	964	984	992	931	341	-590	0.1
US Other	7183	7154	7544	7717	7528	7512	-16	0.0
US Coal	77514	77087	79575	77533	78898	81273	2375	-0.4
US Nuke	78807	75674	76478	77438	80545	83391	2846	-0.5
US Hydro	32524	29415	28355	26722	26824	28933	2109	-0.4
US Gas	134633	134338	133401	131482	145738	148155	2417	0.4

See National Wind and Nuclear daily charts

Source: Bloomberg, analytix.ai

Monthly Average Generation Data

Nuclear Generation Monthly Average - GWh (NRC)

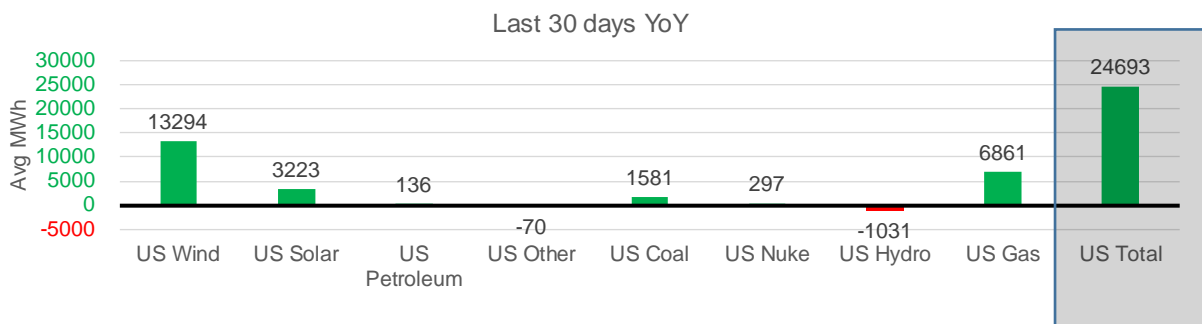
	2Yr Ago	LY	MTD				Last 30 days	Last 30 days YoY
	Same 30 days	Same 30 days	Feb-22	Mar-22	Apr-22	May-22		
NRC Nuclear Daily Output	80.1	76.9	87.3	81.3	73.3	79.3	76.8	-0.1
NRC Nuclear Max Capacity	104.9	104.9	104.9	104.9	104.9	104.9	104.9	0.0
NRC Nuclear Outage	24.8	28.0	17.5	23.6	31.6	25.5	28.1	0.1
NRC % Nuclear Cap Utilization	81.4	78.1	88.8	82.7	74.5	80.7	78.1	-0.1

Wind Generation Monthly Average - MWh (EIA)

	2Yr Ago	LY	MTD				Last 30 days	Last 30 days YoY
	Same 30 days	Same 30 days	Feb-22	Mar-22	Apr-22	May-22		
CALI Wind	2846	3220	1495	2250	3186	3286	3292	71
TEXAS Wind	10897	12191	11750	14837	16311	16346	17162	4971
US Wind	40741	46878	54543	58528	64183	54687	60172	13294

Generation Monthly Average - MWh (EIA)

	2Yr Ago	LY	MTD				Last 30 days	Last 30 days YoY
	Same 30 days	Same 30 days	Feb-22	Mar-22	Apr-22	May-22		
US Wind	40741	46878	54543	58528	64183	54687	60172	▲ 13294
US Solar	11172	13909	12442	14058	16208	17455	17132	▲ 3223
US Petroleum	734	573	1331	985	985	495	710	▲ 136
US Other	7962	7645	8632	7206	7386	7524	7575	▼ -70
US Coal	56154	79021	105631	82291	77545	82649	80602	▲ 1581
US Nuke	84175	80337	92027	85256	77217	83080	80633	▲ 297
US Hydro	35037	29389	32284	33959	29023	29166	28357	▼ -1031
US Gas	135439	139023	153733	137232	133068	155557	145884	▲ 6861
US Total	370070	397030	461069	419842	406185	431364	421723	▲ 24693



See National Wind and Nuclear daily charts

Source: Bloomberg, analytix.ai

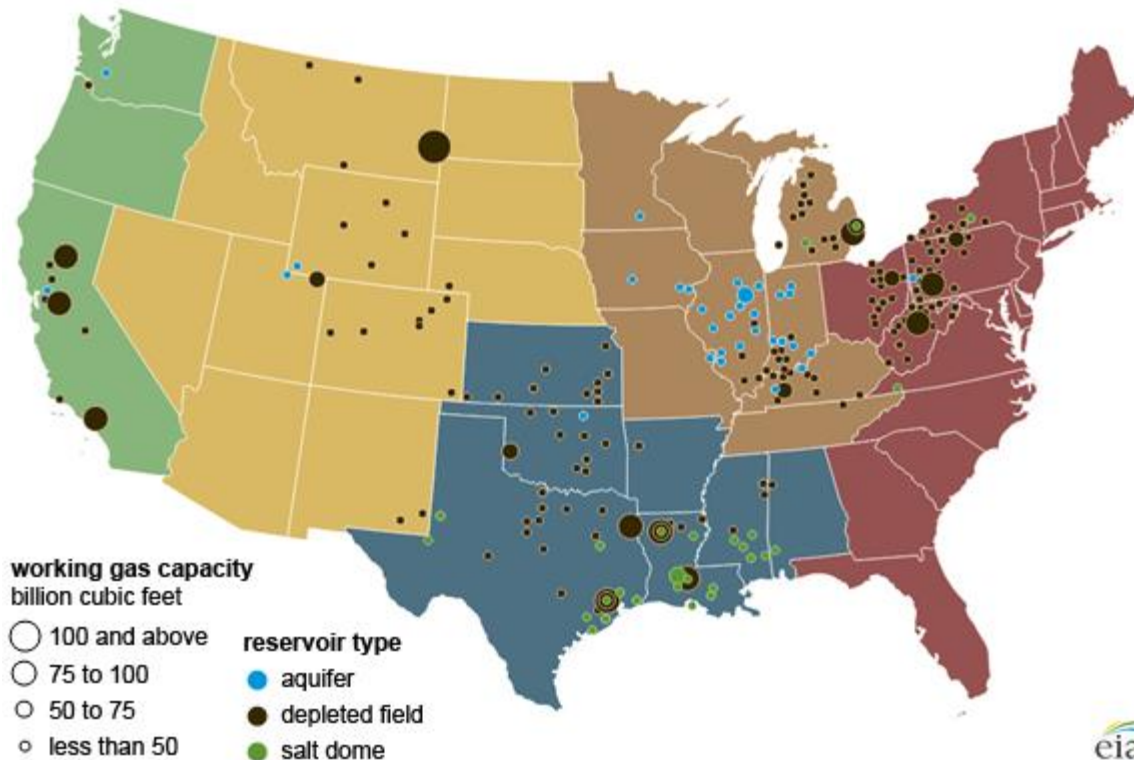
Regional S/D Models Storage Projection

Week Ending 13-May

	Daily Raw Storage	Daily Adjustment Factor	Daily Average Storage Activity (Adjusted) *	Weekly Adjusted Storage Activity
L48	12.7	0.2	13.0	91
East	0.4	2.5	2.9	21
Midwest	4.6	-0.5	4.1	29
Mountain	4.8	-3.4	1.4	10
South Central	1.8	2.3	4.2	29
Pacific	1.0	-0.7	0.4	3

*Adjustment Factor is calculated based on historical regional deltas

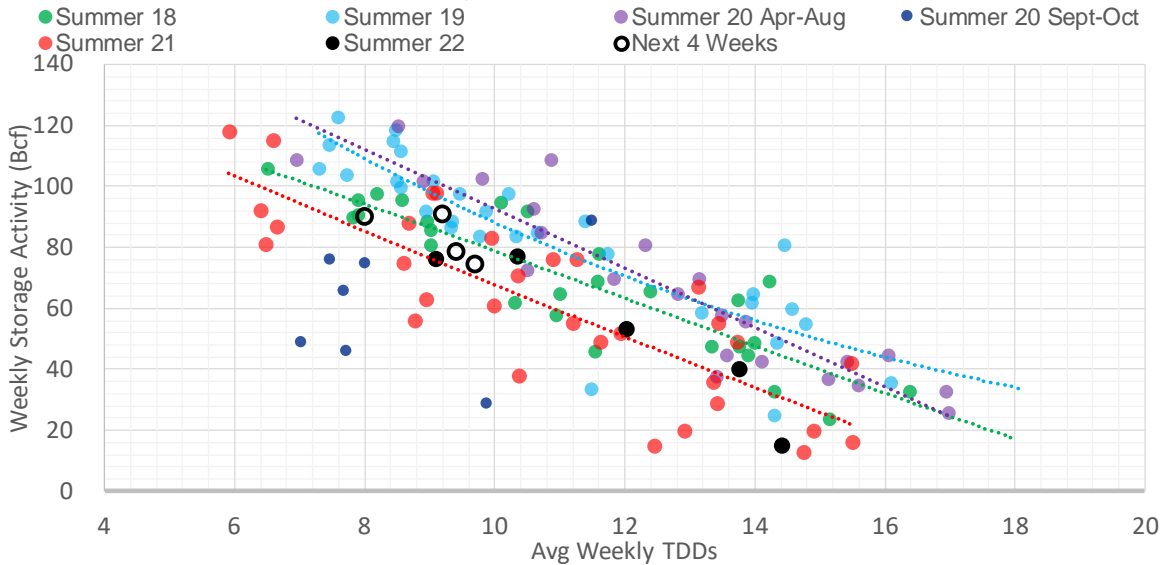
U.S. underground natural gas storage facilities by type (July 2015)



Weather Model Storage Projection

Next report and beyond		
Week Ending	TDDs	Week Storage Projection
13-May	9.2	91
20-May	8.0	90
27-May	9.4	78
03-Jun	9.7	74

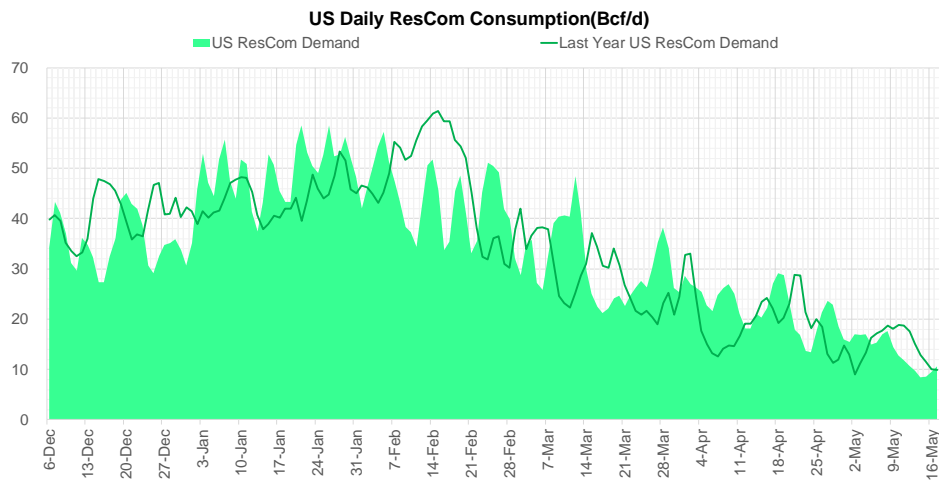
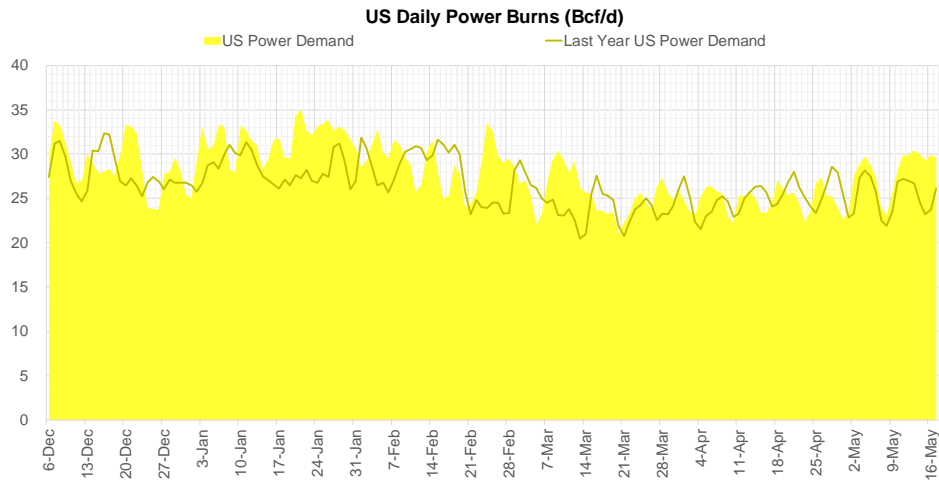
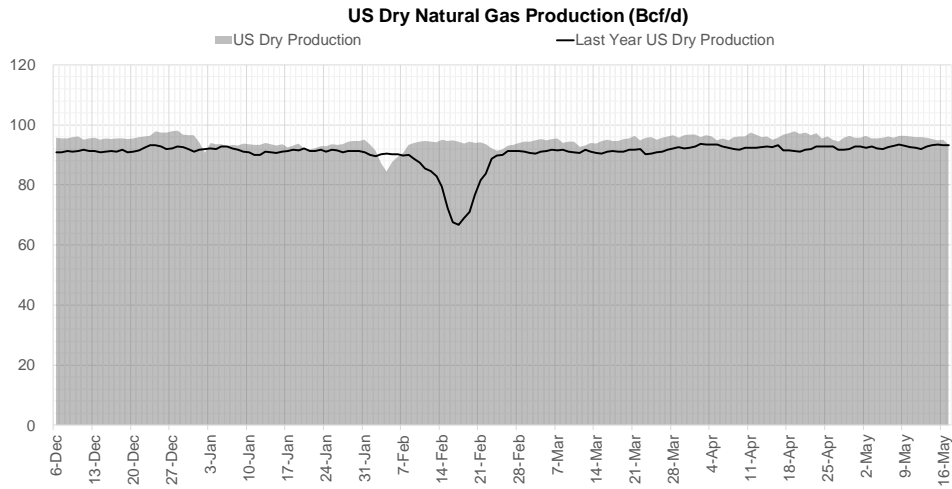
Weather Storage Model - Next 4 Week Forecast



Go to larger image



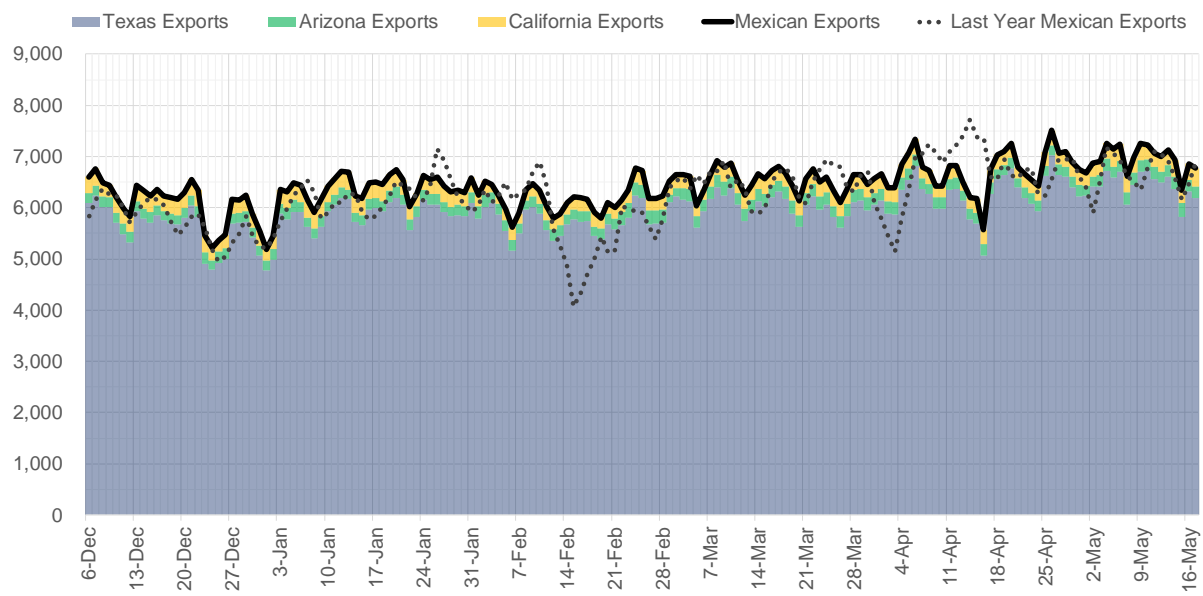
Supply – Demand Trends



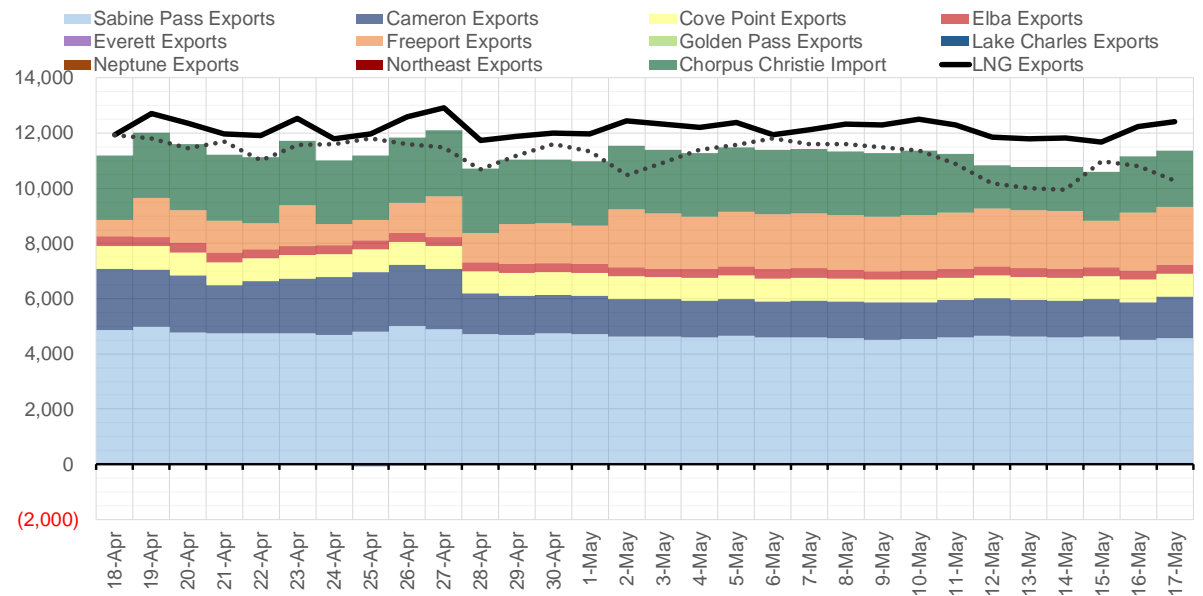
Source: Bloomberg

The risk of trading futures and options and other derivatives involves a substantial risk of loss and is not suitable for all persons. Each person must consider whether a particular trade, combination of trades, or strategy is suitable for that person's financial means and objectives. Past results are not necessarily indicative of future results. This communication may contain links to third party websites which are not under the control of and are not maintained by ION Energy Group, and ION Energy Group is not responsible for their content.

Mexican Exports (MMcf/d)



Net LNG Exports - Last 30 days (MMcf/d)



Source: Bloomberg

The risk of trading futures and options and other derivatives involves a substantial risk of loss and is not suitable for all persons. Each person must consider whether a particular trade, combination of trades, or strategy is suitable for that person's financial means and objectives. Past results are not necessarily indicative of future results. This communication may contain links to third party websites which are not under the control of and are not maintained by ION Energy Group, and ION Energy Group is not responsible for their content.

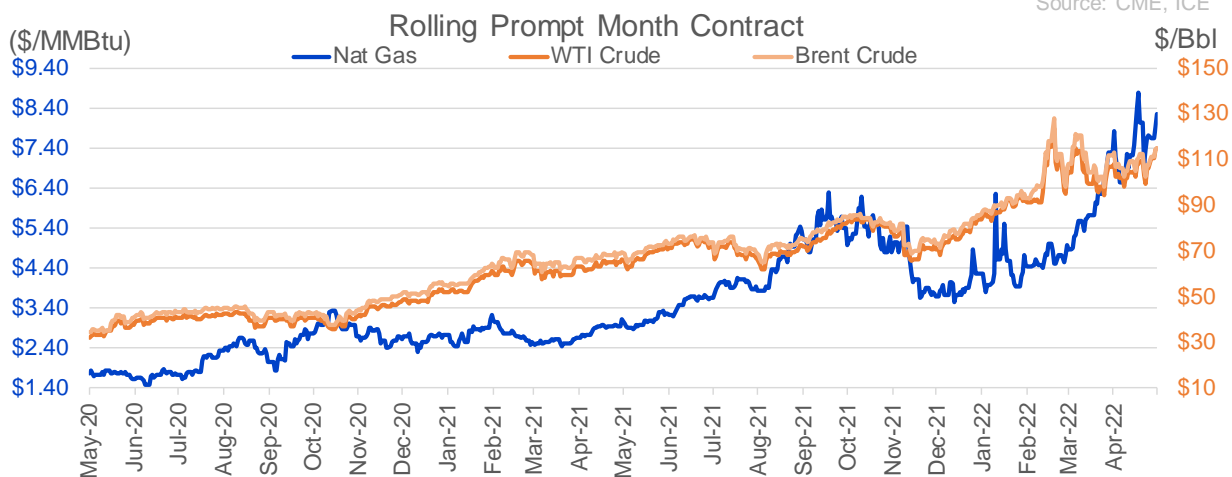
Nat Gas Options Volume and Open Interest CME and ICE Combined

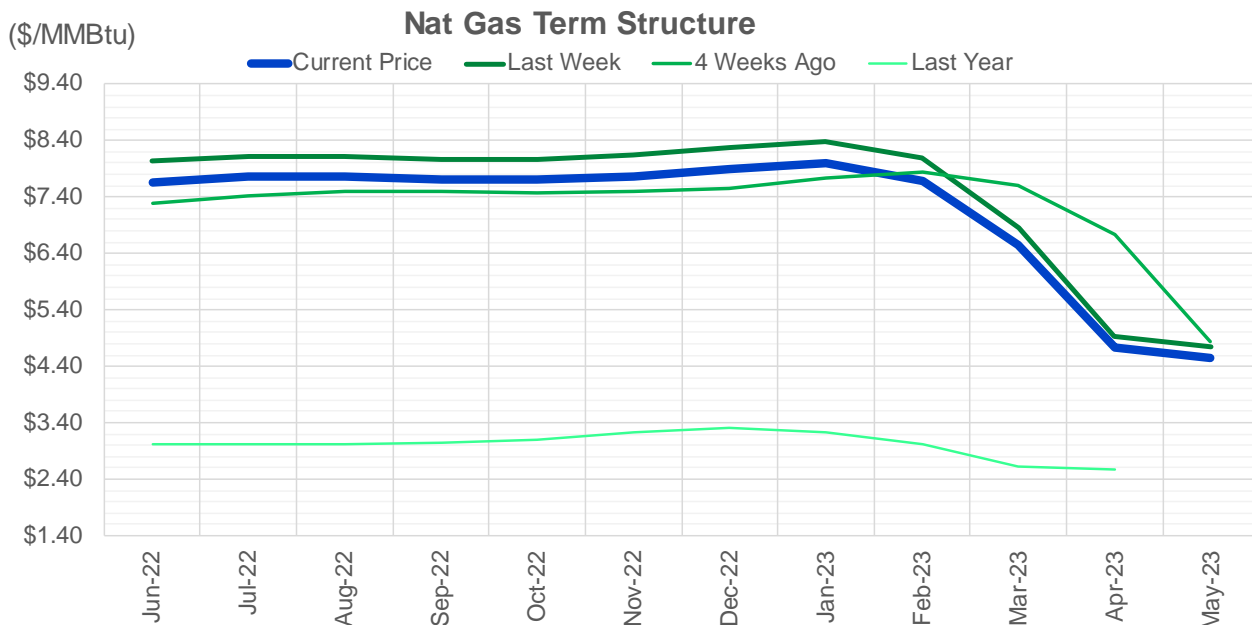
CONTRACT MONTH	CONTRACT YEAR	PUT/CALL	STRIKE	CUMULATIVE VOL	CONTRACT MONTH	CONTRACT YEAR	PUT/CALL	STRIKE	CUMULATIVE OI
6	2022	C	9.00	6562	8	2022	C	10.00	50901
6	2022	C	12.00	5936	8	2022	C	10.50	41548
7	2022	P	7.00	4653	10	2022	C	6.00	35195
8	2022	C	8.00	3050	6	2022	C	6.00	25039
7	2022	P	7.25	3015	10	2022	C	5.00	24289
6	2022	P	7.00	2965	9	2022	C	6.00	23680
8	2022	C	8.10	2551	10	2022	P	3.00	21067
6	2022	C	10.00	2388	10	2022	P	3.50	20919
7	2022	P	6.00	2364	7	2022	C	8.00	20171
6	2022	C	9.50	1459	10	2022	P	2.50	19730
6	2022	P	6.00	1394	6	2022	C	7.00	19709
6	2022	C	8.00	1320	6	2022	C	10.00	19686
7	2022	C	10.00	1202	6	2022	P	4.00	19539
6	2022	C	10.50	990	8	2022	C	6.00	19501
7	2022	C	8.00	984	7	2022	C	6.00	18954
8	2022	C	10.00	948	10	2022	P	6.00	18945
3	2023	C	5.00	905	6	2022	C	9.00	18578
3	2023	C	6.00	905	6	2022	P	6.00	18315
7	2022	C	12.00	856	12	2022	C	5.00	18221
8	2022	C	9.00	828	8	2022	C	7.00	18113
10	2022	C	7.00	800	9	2022	C	7.00	18099
12	2022	P	5.00	750	6	2022	C	12.00	18073
6	2022	P	7.25	731	6	2022	C	5.00	17647
6	2022	P	8.00	730	9	2022	C	10.00	17581
10	2022	C	10.00	658	6	2022	P	7.00	17542
10	2022	C	12.00	608	10	2022	P	2.00	17420
6	2022	C	6.50	602	7	2022	P	3.25	17344
7	2022	C	9.00	571	6	2022	P	5.50	17292
8	2022	C	12.00	559	10	2022	P	4.00	17239
7	2022	C	11.00	556	6	2022	P	3.00	17223
10	2022	C	7.10	550	7	2022	C	7.00	17169
10	2022	P	6.00	550	6	2022	P	4.75	17117
6	2022	C	11.00	537	7	2022	C	10.00	16530
6	2022	C	8.75	519	1	2023	C	10.00	16049
6	2022	C	9.75	519	6	2022	P	3.50	15958
7	2022	C	8.10	515	5	2023	P	2.00	15761
6	2022	C	8.50	505	6	2022	P	5.00	15740
6	2022	C	8.25	501	11	2022	P	4.00	15571
7	2022	C	6.50	500	2	2023	C	10.00	15499
8	2022	C	6.50	500	7	2022	C	9.00	15480
8	2022	C	6.50	500	9	2022	P	2.50	15291
8	2022	C	9.10	500	7	2022	P	3.50	14978
9	2022	C	6.50	500	9	2022	P	2.75	14933
10	2022	C	6.50	500	10	2022	P	3.25	14717
12	2022	P	3.50	500	9	2022	P	3.00	14716
12	2022	P	6.00	500	7	2022	P	3.00	14641
6	2022	P	6.75	475	8	2022	P	3.00	14603
8	2022	C	15.00	455	8	2022	C	9.00	14584
6	2022	C	7.00	453	10	2022	C	8.00	14528
6	2022	C	20.00	450	8	2022	C	8	14424

Source: CME, ICE

Nat Gas Futures Open Interest CME and ICE Combined

CME Henry Hub Futures (10,000 MMBtu)				ICE Henry Hub Futures Contract Equivalent (10,000 MM			
	Current	Prior	Daily Change		Current	Prior	Daily Change
JUN 22	56222	60473	-4251	JUN 22	85152	82401	2751
JUL 22	199169	193773	5396	JUL 22	76790	76609	181
AUG 22	60206	59916	290	AUG 22	58954	59340	-387
SEP 22	86965	85796	1169	SEP 22	64170	64378	-208
OCT 22	96041	95659	382	OCT 22	76973	77087	-114
NOV 22	51939	52148	-209	NOV 22	58186	58524	-338
DEC 22	49459	48568	891	DEC 22	62462	62443	19
JAN 23	62496	62591	-95	JAN 23	66230	66276	-47
FEB 23	27773	27333	440	FEB 23	56007	56412	-405
MAR 23	38803	38971	-168	MAR 23	55164	55245	-81
APR 23	58188	58473	-285	APR 23	53452	53667	-215
MAY 23	61554	61468	86	MAY 23	52664	52856	-192
JUN 23	25465	24950	515	JUN 23	45070	45232	-163
JUL 23	21065	21151	-86	JUL 23	43989	44175	-186
AUG 23	13503	13493	10	AUG 23	43693	43887	-194
SEP 23	18017	18090	-73	SEP 23	42930	43124	-195
OCT 23	33447	33056	391	OCT 23	50342	50489	-147
NOV 23	12813	12894	-81	NOV 23	43902	44217	-315
DEC 23	14233	13974	259	DEC 23	40169	40245	-75
JAN 24	20550	20315	235	JAN 24	39221	38887	334
FEB 24	5842	5848	-6	FEB 24	26334	26129	205
MAR 24	14337	14435	-98	MAR 24	30738	30405	334
APR 24	11881	11896	-15	APR 24	26369	26292	77
MAY 24	6379	6363	16	MAY 24	25683	25624	59
JUN 24	1803	1801	2	JUN 24	22050	22033	17
JUL 24	1985	1993	-8	JUL 24	22192	22133	59
AUG 24	2962	2962	0	AUG 24	22300	22241	59
SEP 24	1367	1367	0	SEP 24	21678	21621	57
OCT 24	6703	6708	-5	OCT 24	24207	24005	202
NOV 24	4683	4678	5	NOV 24	22521	22474	47





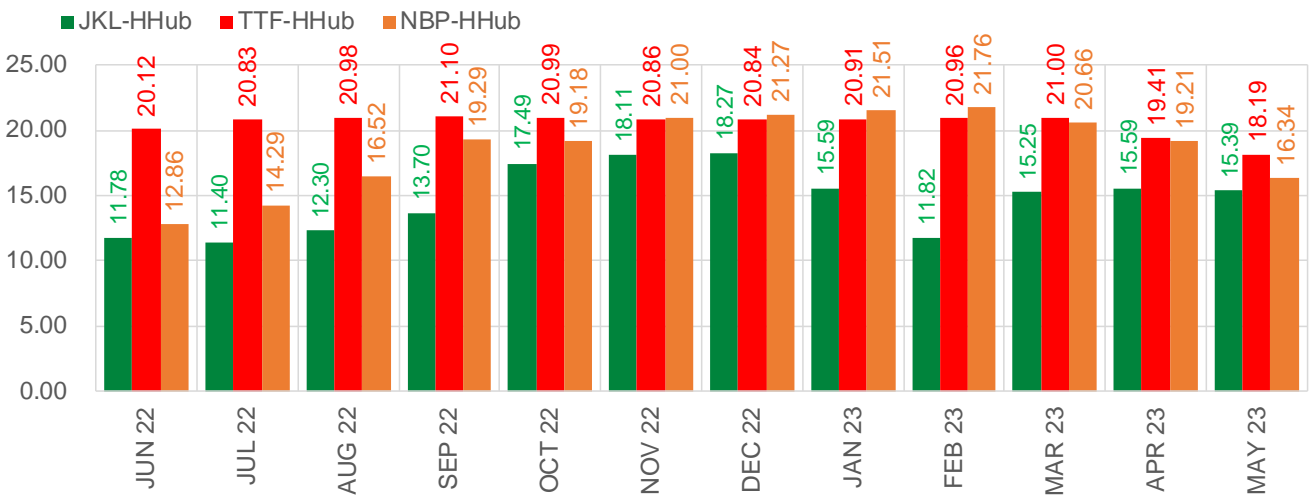
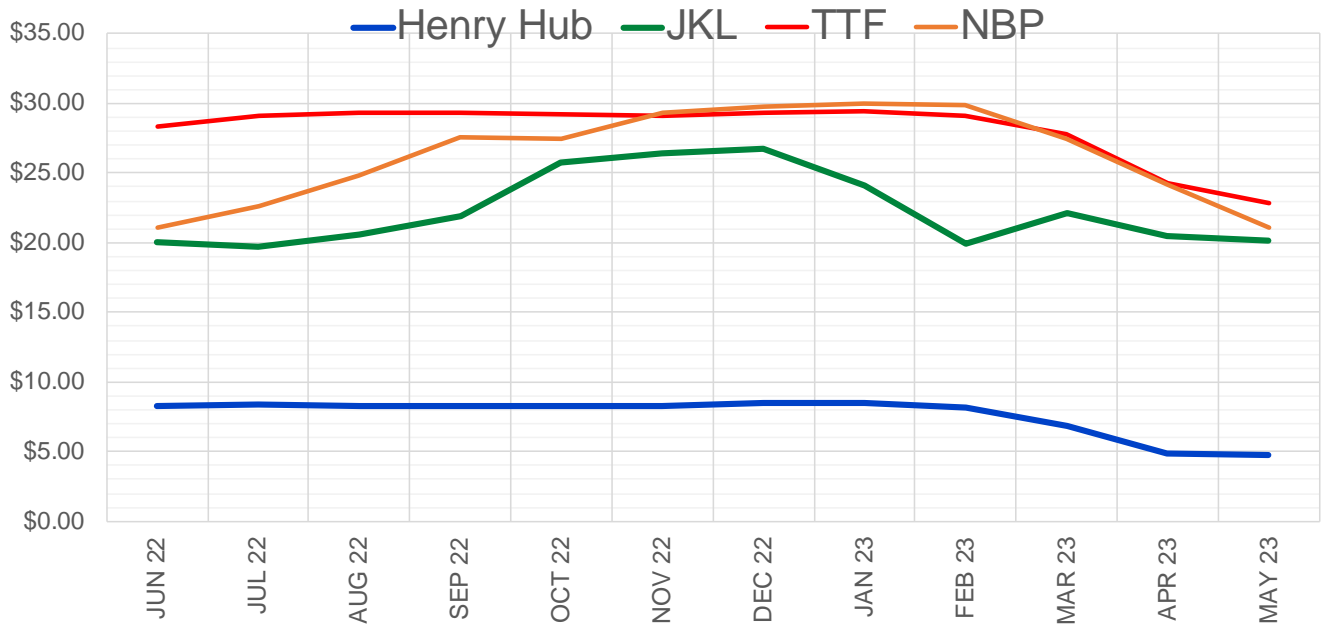
	Jun-22	Jul-22	Aug-22	Sep-22	Oct-22	Nov-22	Dec-22	Jan-23	Feb-23	Mar-23	Apr-23	May-23
Current Price	\$7.663	\$7.765	\$7.754	\$7.714	\$7.704	\$7.774	\$7.896	\$7.995	\$7.678	\$6.546	\$4.724	\$4.558
Last Week	\$8.043	\$8.128	\$8.110	\$8.068	\$8.069	\$8.142	\$8.278	\$8.380	\$8.083	\$6.862	\$4.937	\$4.742
vs. Last Week	-\$0.380	-\$0.363	-\$0.356	-\$0.354	-\$0.365	-\$0.368	-\$0.382	-\$0.385	-\$0.405	-\$0.316	-\$0.213	-\$0.184
4 Weeks Ago	\$7.300	\$7.423	\$7.501	\$7.499	\$7.473	\$7.486	\$7.561	\$7.740	\$7.846	\$7.610	\$6.734	\$4.841
vs. 4 Weeks Ago	\$0.363	\$0.342	\$0.253	\$0.215	\$0.231	\$0.288	\$0.335	\$0.255	-\$0.168	-\$1.064	-\$2.010	-\$0.283
Last Year	\$2.961	\$3.018	\$3.029	\$3.020	\$3.038	\$3.104	\$3.232	\$3.311	\$3.233	\$3.023	\$2.619	\$2.563
vs. Last Year	\$4.702	\$4.747	\$4.725	\$4.694	\$4.666	\$4.670	\$4.664	\$4.684	\$4.445	\$3.523	\$2.105	\$1.995

	Units	Cash Settled	Prompt Settle	Cash to Prompt
AGT Citygate	\$/MMBtu	8.10	6.67	-1.43
TETCO M3	\$/MMBtu	7.61	6.35	-1.26
FGT Zone 3	\$/MMBtu	7.78	7.12	-0.67
Zone 6 NY	\$/MMBtu	7.78	6.28	-1.50
Chicago Citygate	\$/MMBtu	7.80	6.82	-0.98
Michcon	\$/MMBtu	7.85	6.79	-1.07
Columbia TCO Pool	\$/MMBtu	7.50	6.37	-1.13
Ventura	\$/MMBtu	8.03	6.70	-1.33
Rockies/Opal	\$/MMBtu	7.32	6.59	-0.72
El Paso Permian Basin	\$/MMBtu	7.15	6.24	-0.91
Socal Citygate	\$/MMBtu	7.98	7.07	-0.92
Malin	\$/MMBtu	7.53	6.79	-0.74
Houston Ship Channel	\$/MMBtu	7.93	6.99	-0.94
Henry Hub Cash	\$/MMBtu	7.99	6.74	-1.25
AECO Cash	C\$/GJ	6.33	4.71	-1.62
Station2 Cash	C\$/GJ	5.84	6.47	0.63
Dawn Cash	C\$/GJ	7.88	6.81	-1.07

Source: CME, Bloomberg

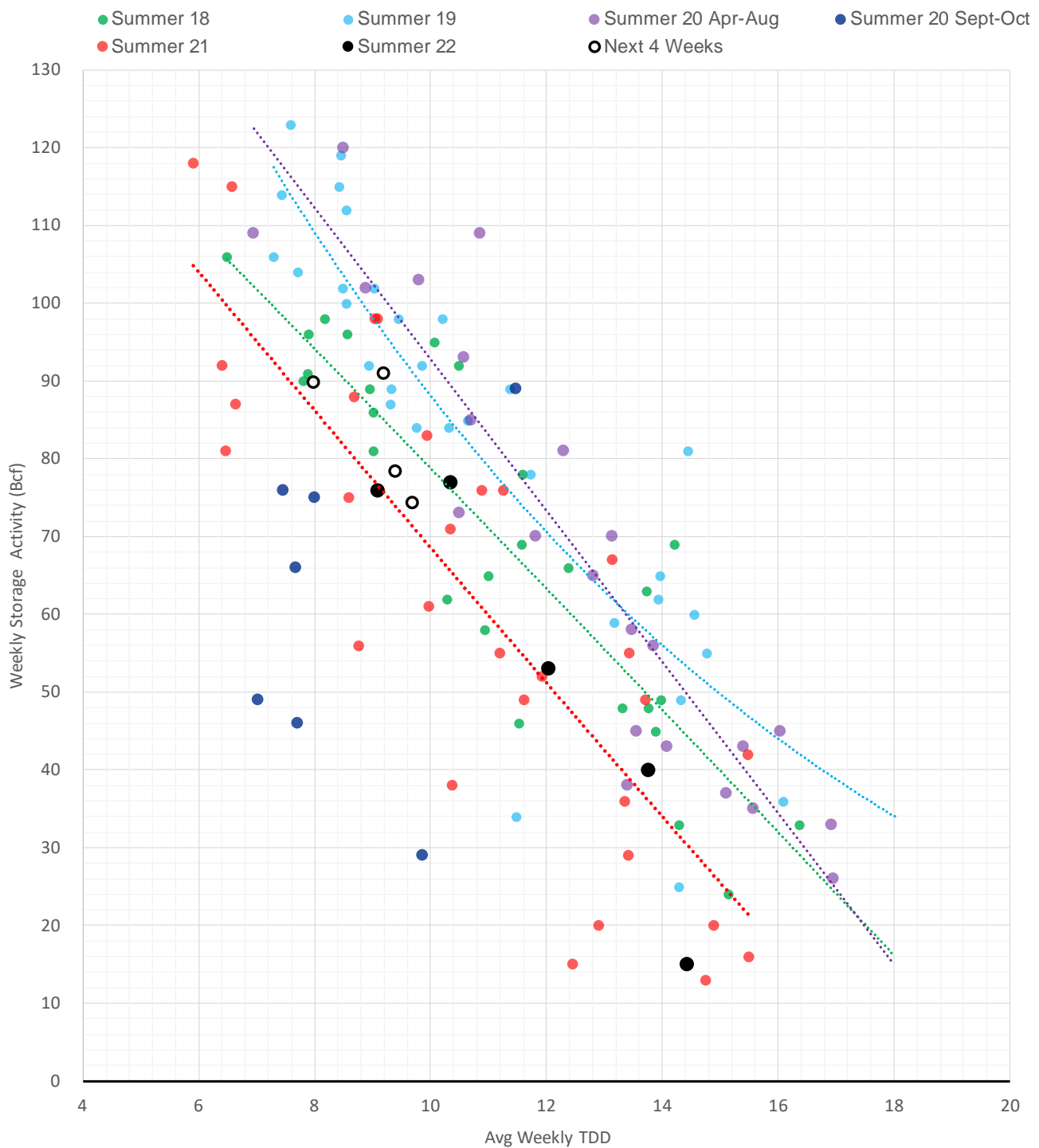
	Units	Current Price	vs. Last Week	vs. 4 Weeks Ago	vs. Last Year
NatGas Jul21/Oct21	\$/MMBtu	2.224	▲ 0.000	▲ 0.000	▲ 2.219
NatGas Oct21/Nov21	\$/MMBtu	0.361	▲ 0.000	▲ 0.000	▲ 0.306
NatGas Oct21/Jan22	\$/MMBtu	-1.817	▲ 0.000	▲ 0.000	▼ -2.064
NatGas Apr22/Oct22	\$/MMBtu	2.648	▲ 0.932	▼ -0.029	▲ 2.633
WTI Crude	\$/Bbl	114.20	▲ 11.110	▲ 5.990	▲ 47.930
Brent Crude	\$/Bbl	114.24	▲ 8.300	▲ 1.080	▲ 44.780
Fuel Oil, NY Harbour 1%	\$/Bbl	97.18	▲ 0.000	▲ 0.000	▲ 0.000
Heating Oil	cents/Gallon	390.75	▲ 7.260	▲ 1.670	▲ 184.710
Propane, Mt. Bel	cents/Gallon	1.25	▲ 0.005	▼ -0.098	▲ 0.432
Ethane, Mt. Bel	cents/Gallon	0.59	▲ 0.027	▲ 0.059	▲ 0.322
Coal, PRB	\$/MTon	12.30	▲ 0.000	▲ 0.000	▲ 0.000
Coal, PRB	\$/MMBtu	0.70			
Coal, ILB	\$/MTon	31.05	▲ 0.000	▲ 0.000	▲ 0.000
Coal, ILB	\$/MMBtu	1.32			

Nat Gas Term Structure (\$MMBTU)



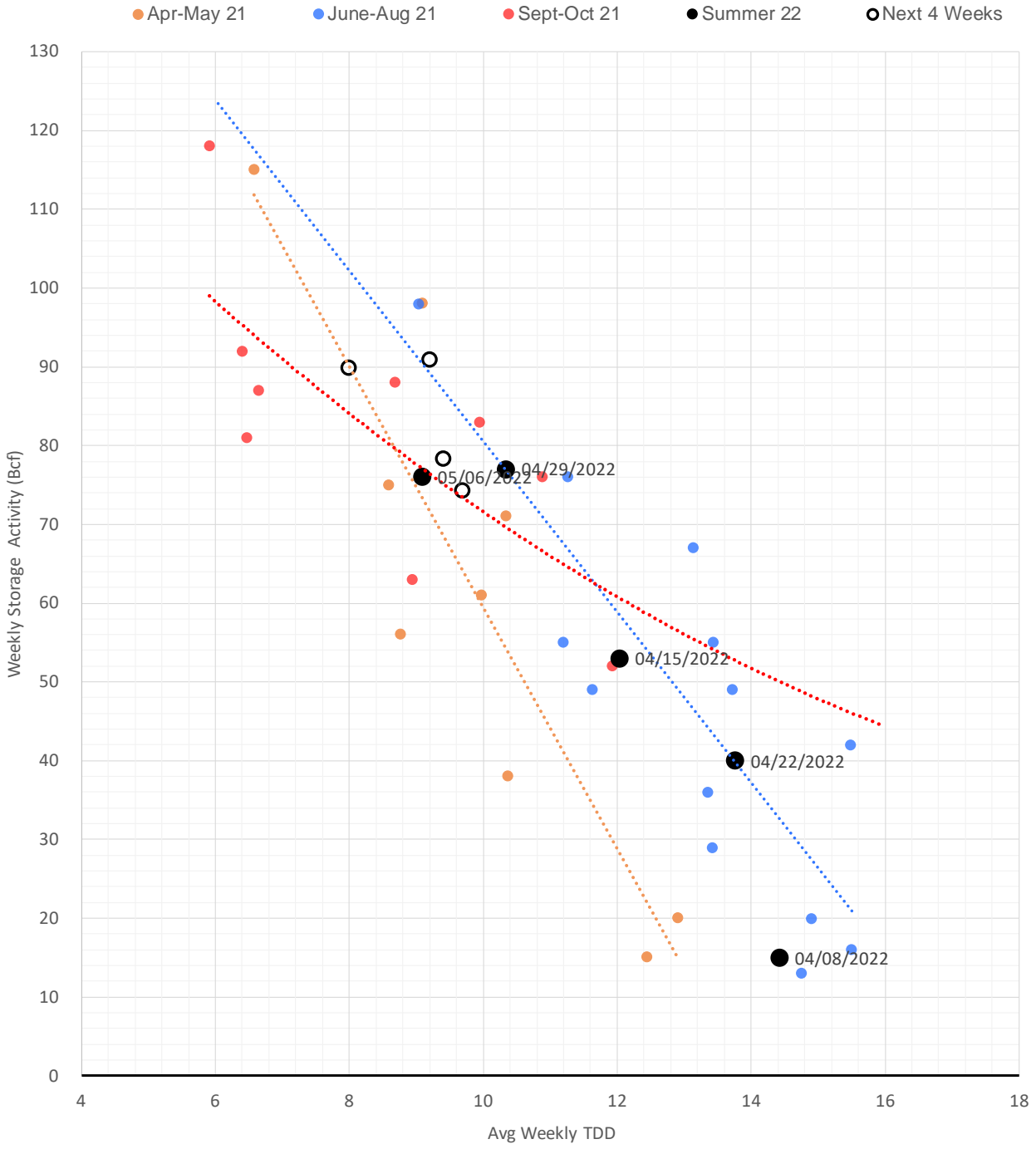
	JUN 22	JUL 22	AUG 22	SEP 22	OCT 22	NOV 22	DEC 22	JAN 23	FEB 23	MAR 23	APR 23	MAY 23
Henry Hub	\$8.247	\$8.333	\$8.322	\$8.253	\$8.265	\$8.298	\$8.461	\$8.496	\$8.156	\$6.832	\$4.910	\$4.705
JKL	\$20.025	\$19.730	\$20.620	\$21.950	\$25.755	\$26.405	\$26.735	\$24.090	\$19.975	\$22.085	\$20.495	\$20.095
JKL-HHub	\$11.778	\$11.397	\$12.298	\$13.697	\$17.490	\$18.107	\$18.274	\$15.594	\$11.819	\$15.253	\$15.585	\$15.390
TTF	\$28.366	\$29.166	\$29.301	\$29.356	\$29.252	\$29.158	\$29.305	\$29.408	\$29.111	\$27.827	\$24.316	\$22.894
TTF-HHub	\$20.119	\$20.833	\$20.979	\$21.103	\$20.987	\$20.860	\$20.844	\$20.912	\$20.955	\$20.995	\$19.406	\$18.189
NBP	\$21.108	\$22.620	\$24.845	\$27.543	\$27.440	\$29.301	\$29.728	\$30.007	\$29.920	\$27.495	\$24.115	\$21.048
NBP-HHub	\$12.861	\$14.287	\$16.523	\$19.290	\$19.175	\$21.003	\$21.267	\$21.511	\$21.764	\$20.663	\$19.205	\$16.343

Weather Storage Model - Next 4 Week Forecast



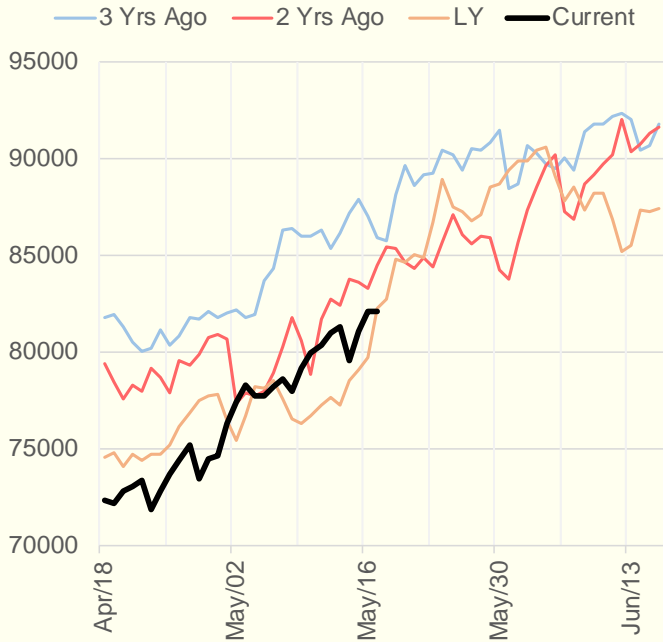
The risk of trading futures and options and other derivatives involves a substantial risk of loss and is not suitable for all persons. Each person must consider whether a particular trade, combination of trades, or strategy is suitable for that person's financial means and objectives. Past results are not necessarily indicative of future results. This communication may contain links to third party websites which are not under the control of and are not maintained by ION Energy Group, and ION Energy Group is not responsible for their content.

Weather Storage Model for Summer 2021 & 2022

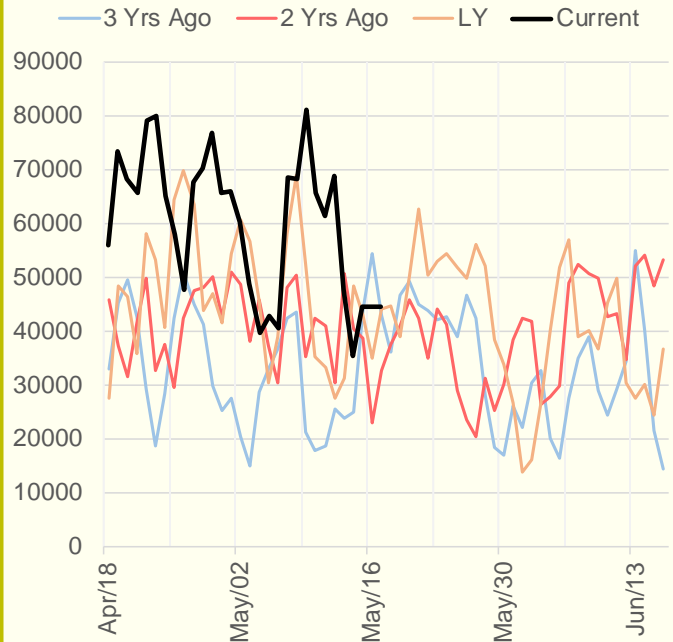


The risk of trading futures and options and other derivatives involves a substantial risk of loss and is not suitable for all persons. Each person must consider whether a particular trade, combination of trades, or strategy is suitable for that person's financial means and objectives. Past results are not necessarily indicative of future results. This communication may contain links to third party websites which are not under the control of and are not maintained by ION Energy Group, and ION Energy Group is not responsible for their content.

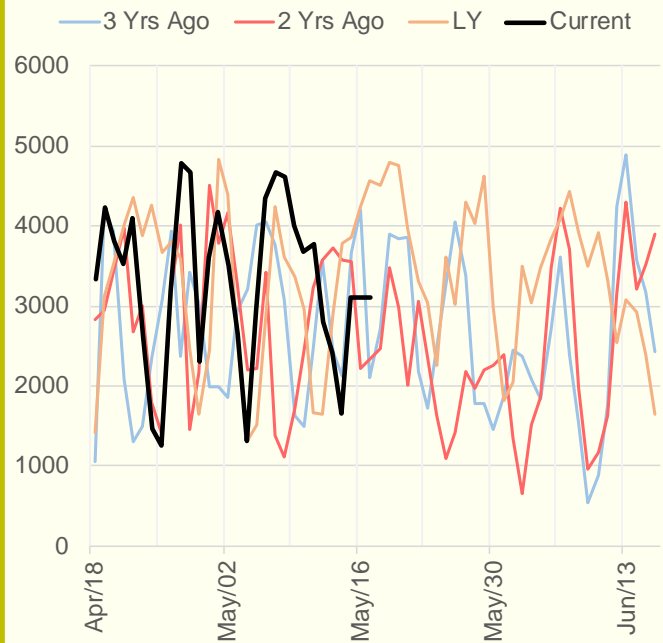
NRC Nuclear Daily Output



US Wind



CALI Wind



TEXAS Wind

