

	Current	Δ from YD	Δ from 7D Avg
Nat Gas Prompt	\$ 7.57	▲ \$ 0.19	▼ \$ (0.39)

	Current	Δ from YD	Δ from 7D Avg
WTI Prompt	\$ 103.81	▲ \$ 4.05	▼ \$ (3.1)

	Current	Δ from YD	Δ from 7D Avg
Brent Prompt	\$ 106.35	▲ \$ 3.89	▼ \$ (3.2)

Page Menu

[Short-term Weather Model Outlooks](#)

[Lower 48 Component Models](#)

[Regional S/D Models Storage Projection](#)

[Weather Model Storage Projection](#)

[Supply – Demand Trends](#)

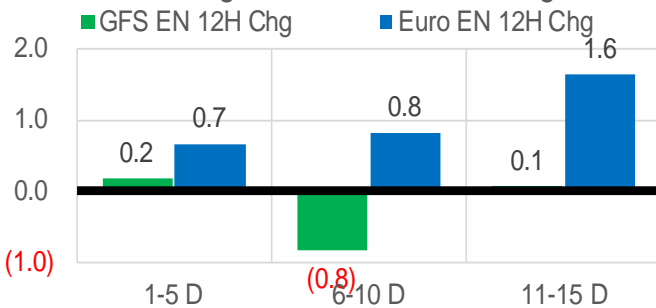
[Nat Gas Options Volume and Open Interest](#)

[Nat Gas Futures Open Interest](#)

[Price Summary](#)

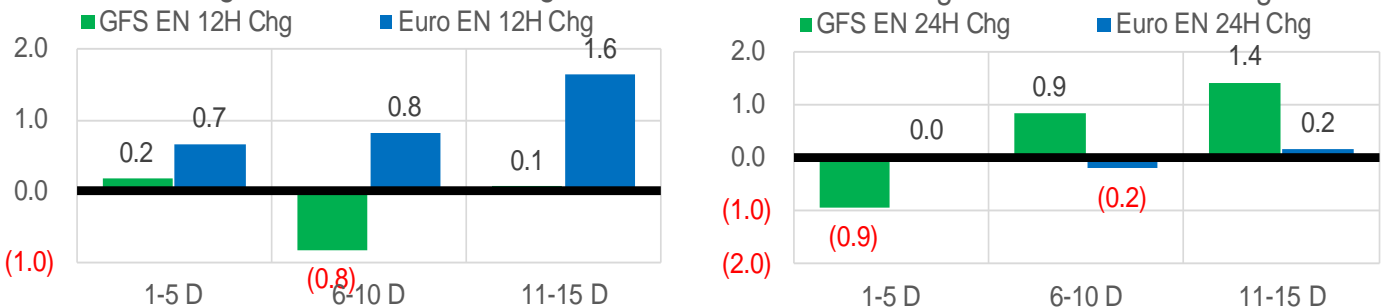
Vs. 12H Ago

L48 Region - 00z TDD vs 12H Ago



Vs. 24H Ago

L48 Region - 00z TDD vs 24H Ago



	Current	Δ from YD	Δ from 7D Avg
US Dry Production	95.6	▼ -0.57	▼ -0.39

	Current	Δ from YD	Δ from 7D Avg
US Power Burns	27.2	▼ -0.45	▲ 0.59

	Current	Δ from YD	Δ from 7D Avg
US ResComm	12.4	▼ -0.51	▼ -3.23

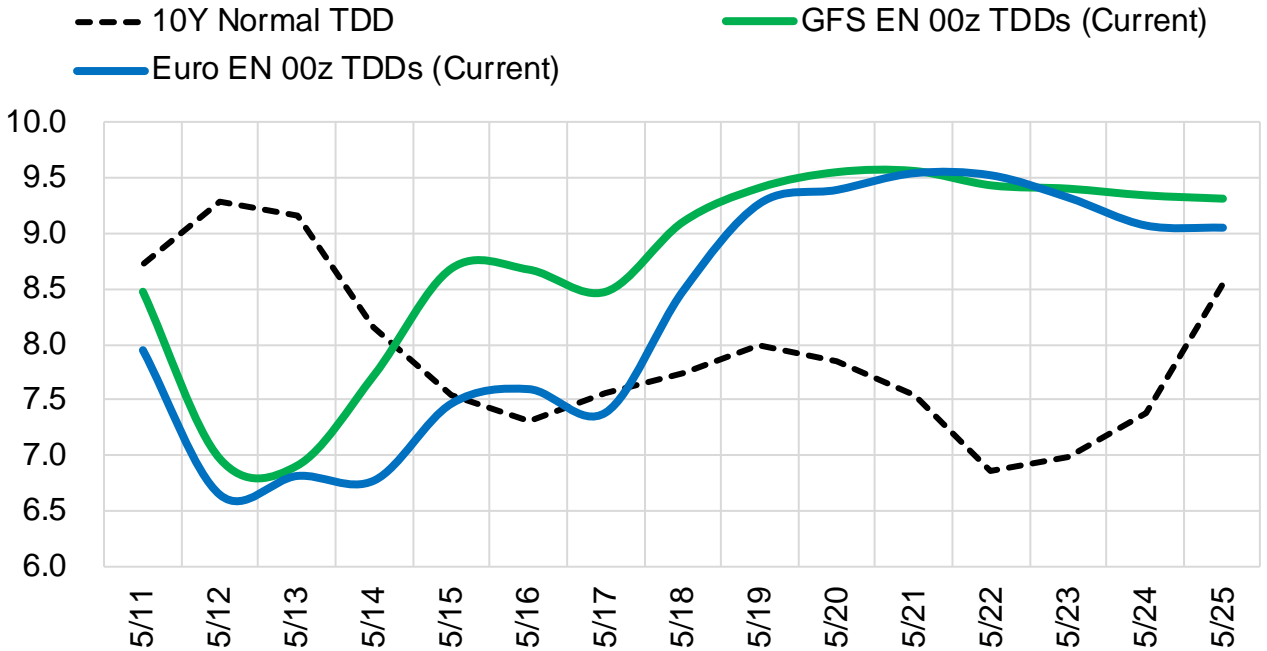
	Current	Δ from YD	Δ from 7D Avg
Canadian Imports	4.7	▼ -0.44	▼ -0.86

	Current	Δ from YD	Δ from 7D Avg
Net LNG Exports	12.3	▼ -0.28	▲ 0.02

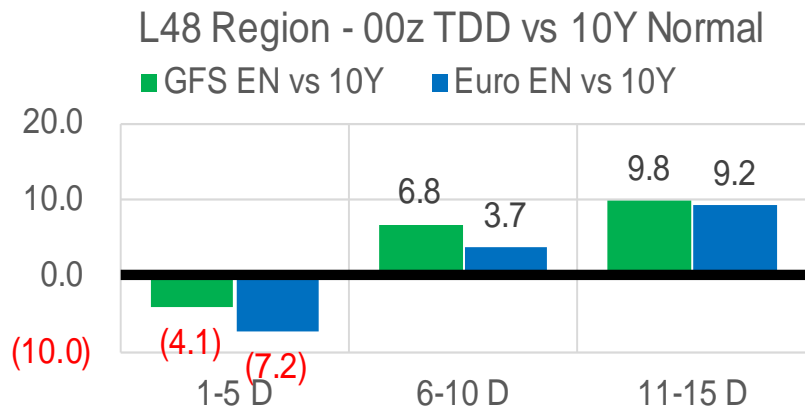
	Current	Δ from YD	Δ from 7D Avg
Mexican Exports	7.0	▼ -0.25	▼ -0.06

Short-term Weather Model Outlooks (00z)

L48 Region



Vs. 10Y Normal



Source: WSI, Bloomberg

Lower 48 Component Models

Daily Balances

	5-May	6-May	7-May	8-May	9-May	10-May	11-May	DoD	vs. 7D
Lower 48 Dry Production	95.8	96.1	96.2	96.0	96.3	96.2	95.6	▼ -0.6	▼ -0.5
Canadian Imports	6.1	5.7	5.1	5.1	5.2	5.1	4.7	▼ -0.4	▼ -0.7
L48 Power	28.9	27.4	24.0	23.2	25.5	27.6	27.2	▼ -0.4	▲ 1.1
L48 Residential & Commercial	15.0	15.4	17.0	17.7	14.5	12.9	12.4	▼ -0.5	▼ -3.0
L48 Industrial	21.9	21.7	21.9	22.0	21.7	21.5	21.1	▼ -0.4	▼ -0.6
L48 Lease and Plant Fuel	5.2	5.2	5.2	5.2	5.2	5.2	5.2	▼ -0.1	▼ 0.0
L48 Pipeline Distribution	2.5	2.4	2.3	2.3	2.3	2.3	2.2	▼ -0.1	▼ -0.1
L48 Regional Gas Consumption	73.4	72.1	70.3	70.4	69.1	69.6	68.2	▼ -1.4	▼ -2.7
Net LNG Delivered	12.39	11.95	12.12	12.34	12.29	12.57	12.29	▼ -0.3	▲ 0.0
Total Mexican Exports	7.1	7.2	6.9	6.6	7.0	7.2	7.0	▼ -0.2	▼ 0.0
Implied Daily Storage Activity	9.0	10.6	11.9	11.6	13.0	11.9	12.9		
EIA Reported Daily Storage Activity									
Daily Model Error									

EIA Storage Week Balances

	1-Apr	8-Apr	15-Apr	22-Apr	29-Apr	6-May	WoW	vs. 4W
Lower 48 Dry Production	96.1	95.8	96.4	96.7	95.8	95.9	▲ 0.0	▼ -0.3
Canadian Imports	5.7	5.8	5.6	5.8	6.1	5.9	▼ -0.2	▲ 0.1
L48 Power	25.5	25.0	24.6	25.1	25.0	26.4	▲ 1.5	▲ 1.5
L48 Residential & Commercial	30.8	25.2	22.4	24.1	18.5	16.5	▼ -2.0	▼ -6.0
L48 Industrial	22.9	22.5	21.7	21.8	22.0	21.5	▼ -0.5	▼ -0.5
L48 Lease and Plant Fuel	5.2	5.2	5.3	5.3	5.2	5.2	▼ 0.0	▼ 0.0
L48 Pipeline Distribution	2.9	2.8	2.6	2.7	2.4	2.4	▲ 0.0	▼ -0.2
L48 Regional Gas Consumption	87.3	80.7	76.5	79.0	73.1	72.1	▼ -1.0	▼ -5.2
Net LNG Exports	13.1	12.4	12.5	12.1	12.2	12.2	▼ 0.0	▼ -0.1
Total Mexican Exports	6.4	6.8	6.6	6.7	6.9	6.9	▲ 0.0	▲ 0.2
Implied Daily Storage Activity	-5.1	1.7	6.4	4.7	9.8	10.6	0.9	
EIA Reported Daily Storage Activity	-4.7	2.1	7.6	5.7	11.0			
Daily Model Error	-0.4	-0.4	-1.1	-1.0	-1.2			

Monthly Balances

	2Yr Ago May-20	LY May-21	Jan-22	Feb-22	Mar-22	Apr-22	MTD May-22	MoM	vs. LY
Lower 48 Dry Production	87.0	93.0	93.4	92.7	95.0	96.2	96.0	▼ -0.2	▲ 3.0
Canadian Imports	3.9	4.5	6.7	6.6	5.2	5.8	5.6	▼ -0.2	▲ 1.1
L48 Power	26.9	26.5	31.5	28.9	25.6	24.8	26.6	▲ 1.8	▲ 0.1
L48 Residential & Commercial	12.8	12.8	49.1	44.4	30.7	22.2	15.9	▼ -6.3	▲ 3.1
L48 Industrial	19.4	20.9	24.7	22.5	21.8	22.0	21.6	▼ -0.3	▲ 0.7
L48 Lease and Plant Fuel	4.7	5.0	5.1	5.1	5.2	5.2	5.2	▼ -0.1	▲ 0.2
L48 Pipeline Distribution	2.2	2.2	3.8	3.6	2.9	2.6	2.4	▼ -0.2	▲ 0.2
L48 Regional Gas Consumption	65.9	67.5	114.3	104.4	86.2	76.8	71.7	▼ -5.1	▲ 4.3
Net LNG Exports	6.7	10.8	12.4	12.4	12.9	12.3	12.3	▼ 0.0	▲ 1.4
Total Mexican Exports	4.8	6.8	6.3	6.2	6.5	6.7	7.0	▲ 0.2	▲ 0.2
Implied Daily Storage Activity	13.6	12.4	-32.9	-23.7	-5.4	6.2	10.6		
EIA Reported Daily Storage Activity									
Daily Model Error									

Source: Bloomberg, analytix.ai

Daily Average Generation Data

Nuclear Generation Daily Average - GWh (NRC)

	3-May	4-May	5-May	6-May	7-May	8-May	9-May	DoD	vs. 7D
NRC Nuclear Daily Output	78.3	77.7	77.8	78.2	78.2	78.2	79.2	0.9	1.1
NRC Nuclear Max Capacity	104.9	104.9	104.9	104.9	104.9	104.9	104.9	0.0	0.0
NRC Nuclear Outage	26.6	27.1	27.1	26.6	26.6	26.6	25.7	-0.9	-1.1
NRC % Nuclear Cap Utilization	79.6	79.0	79.1	79.6	79.6	79.6	80.5	1.0	1.1

Wind Generation Daily Average - MWh (EIA)

	3-May	4-May	5-May	6-May	7-May	8-May	9-May	DoD	vs. 7D
CALI Wind	2655	1322	2941	4342	4672	4621	3997	-624	571
TEXAS Wind	12638	16925	14500	8908	15424	20061	21168	1106	6425
US Wind	49015	39659	42897	40592	68633	67856	81548	13692	30106

Generation Daily Average - MWh (EIA)

	3-May	4-May	5-May	6-May	7-May	8-May	9-May	DoD	vs. 7D
US Wind	49015	39659	42897	40592	68633	67856	81548	13692	30106
US Solar	16041	16603	16197	17119	16372	17257	18125	868	1526
US Petroleum	985	903	990	828	187	187	248	62	-432
US Other	7404	7687	7693	7309	7188	7188	7049	-139	-362
US Coal	81083	87450	88667	88525	74987	74092	77860	3768	-4607
US Nuke	81088	81408	81629	82169	82325	82340	83649	1309	1822
US Hydro	25750	29371	28851	28345	23660	24523	28437	3914	1687
US Gas	161259	167274	160830	159472	128594	121031	136644	15613	-13099

See National Wind and Nuclear daily charts

Source: Bloomberg, analytix.ai

Storage Week Average Generation Data

Nuclear Generation Weekly Average - GWh (NRC)

	1-Apr	8-Apr	15-Apr	22-Apr	29-Apr	6-May	WoW	WoW Bcf/d Impact
NRC Nuclear Daily Output	79.3	75.0	71.9	72.3	73.5	76.7	3.1	-0.6
NRC Nuclear Max Capacity	104.9	104.9	104.9	104.9	104.9	104.9	0.0	
NRC Nuclear Outage	25.5	29.9	32.9	32.6	31.4	28.2	-3.1	
NRC % Nuclear Cap Utilization	80.7	76.3	73.2	73.5	74.8	78.0	3.2	

Wind Generation Weekly Average - MWh (EIA)

	1-Apr	8-Apr	15-Apr	22-Apr	29-Apr	6-May	WoW	WoW Bcf/d Impact
CALI Wind	2643	2611	3434	3613	3153	2929	-225	0.0
TEXAS Wind	14530	14468	16530	15612	18327	16902	-1425	0.3
US Wind	61679	59878	66240	61556	66986	57256	-9731	1.8
							-15%	
							-0.1	

Generation Weekly Average - MWh (EIA)

	1-Apr	8-Apr	15-Apr	22-Apr	29-Apr	6-May	WoW	WoW Bcf/d Impact
US Wind	61679	59878	66240	61556	66986	57256	-9731	1.8
US Solar	15451	15518	16118	15897	16968	16616	-352	0.1
US Petroleum	1048	1015	964	984	992	931	-61	0.0
US Other	7481	7183	7154	7544	7717	7429	-287	0.1
US Coal	77743	77514	77087	79632	77532	78889	1357	-0.2
US Nuke	83506	78807	75674	76478	77438	80545	3107	-0.6
US Hydro	33463	32524	29415	28355	26722	26753	31	0.0
US Gas	136004	134633	134338	133367	131482	145265	13782	2.5

See National Wind and Nuclear daily charts

Source: Bloomberg, analytix.ai

Monthly Average Generation Data

Nuclear Generation Monthly Average - GWh (NRC)

	2Yr Ago	LY	MTD				Last 30 days	Last 30 days YoY
	Same 30 days	Same 30 days	Feb-22	Mar-22	Apr-22	May-22		
NRC Nuclear Daily Output	78.7	76.0	87.3	81.3	73.3	78.3	74.9	-1.1
NRC Nuclear Max Capacity	104.9	104.9	104.9	104.9	104.9	104.9	104.9	0.0
NRC Nuclear Outage	26.2	28.9	17.5	23.6	31.6	26.6	30.0	1.1
NRC % Nuclear Cap Utilization	80.0	77.3	88.8	82.7	74.5	79.6	76.2	-1.1

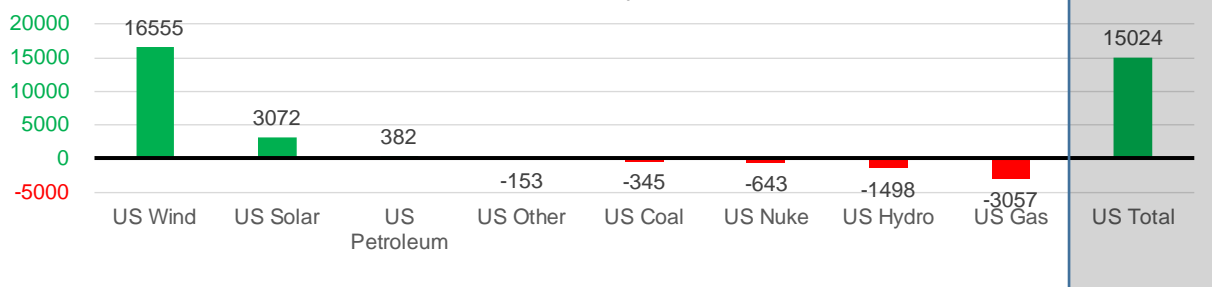
Wind Generation Monthly Average - MWh (EIA)

	2Yr Ago	LY	MTD				Last 30 days	Last 30 days YoY
	Same 30 days	Same 30 days	Feb-22	Mar-22	Apr-22	May-22		
CALI Wind	2647	3096	1495	2250	3186	3656	3443	347
TEXAS Wind	11183	11873	11750	14837	16311	17405	17183	5310
US Wind	41690	47874	54541	58515	64179	61796	64429	16555

Generation Monthly Average - MWh (EIA)

	2Yr Ago	LY	MTD				Last 30 days	Last 30 days YoY
	Same 30 days	Same 30 days	Feb-22	Mar-22	Apr-22	May-22		
US Wind	41690	47874	54541	58515	64179	61796	64429	▲ 16555
US Solar	10797	13487	12442	14054	16208	16974	16559	▲ 3072
US Petroleum	622	457	1328	981	985	600	840	▲ 382
US Other	7914	7614	8629	7187	7386	7315	7461	▼ -153
US Coal	56602	78855	105630	82291	77558	79911	78509	▼ -345
US Nuke	82883	79515	92013	85157	77217	82169	78872	▼ -643
US Hydro	33881	28924	32280	33927	29023	27049	27426	▼ -1498
US Gas	135398	139986	153708	137092	133060	143711	136929	▼ -3057
US Total	368453	396904	461067	419866	406190	421062	411928	▲ 15024

Last 30 days YoY



See National Wind and Nuclear daily charts

Source: Bloomberg, analytix.ai

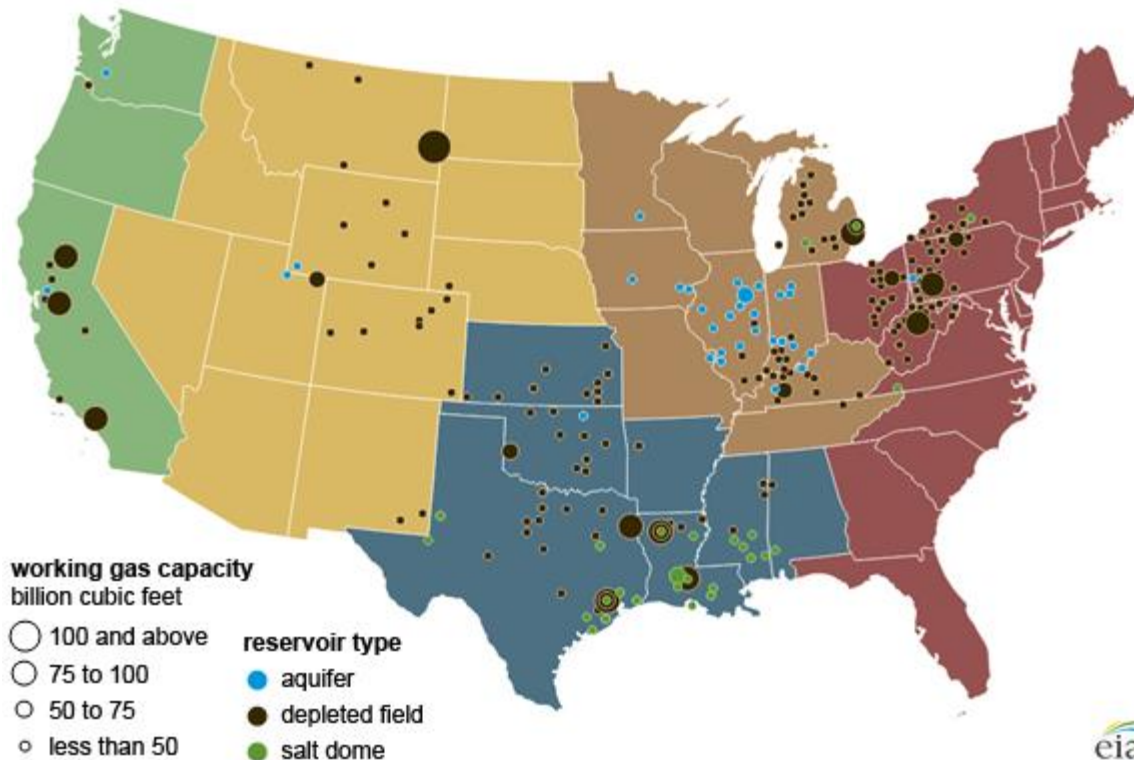
Regional S/D Models Storage Projection

Week Ending 6-May

	Daily Raw Storage	Daily Adjustment Factor	Daily Average Storage Activity (Adjusted) *	Weekly Adjusted Storage Activity
L48	11.3	0.5	11.8	83
East	0.3	2.3	2.5	18
Midwest	3.2	-0.3	3.0	21
Mountain	3.9	-3.5	0.4	3
South Central	2.1	2.7	4.8	34
Pacific	1.7	-0.7	1.0	7

*Adjustment Factor is calculated based on historical regional deltas

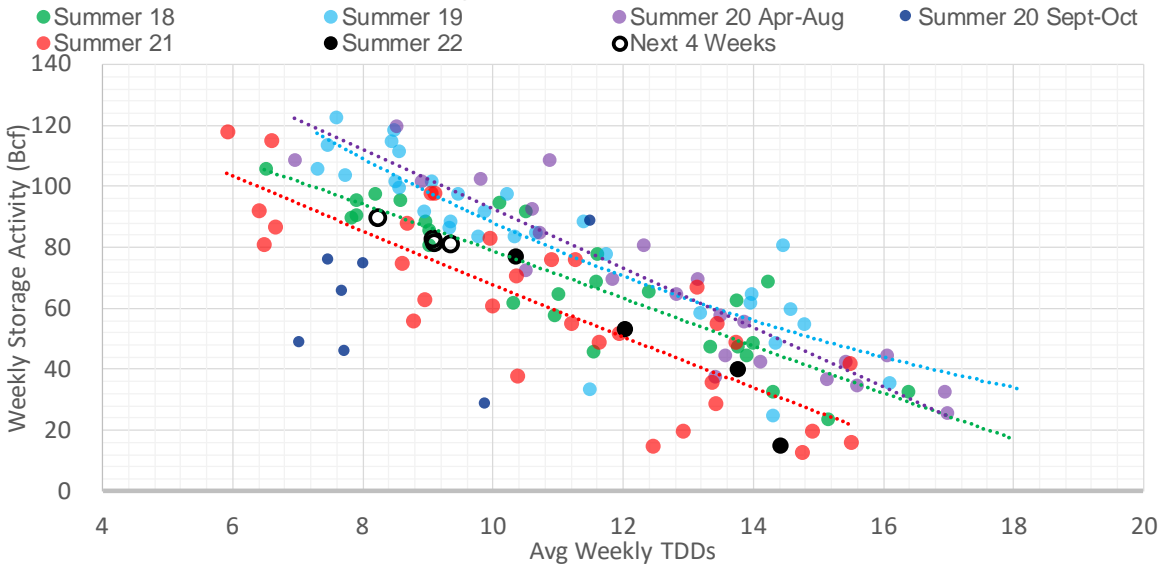
U.S. underground natural gas storage facilities by type (July 2015)



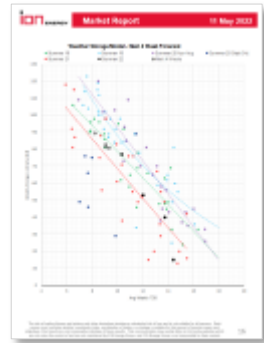
Weather Model Storage Projection

Next report and beyond		
Week Ending	TDDs	Week Storage Projection
06-May	9.1	83
13-May	9.1	81
20-May	8.2	89
27-May	9.4	81

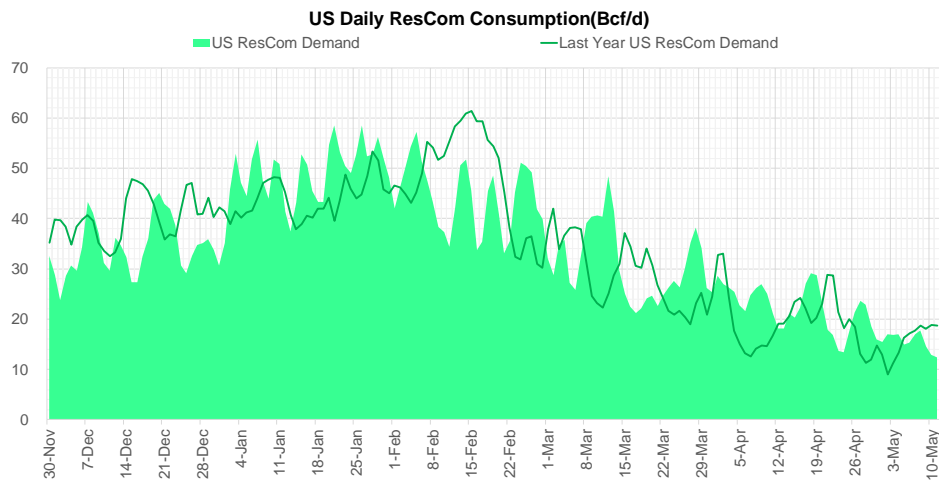
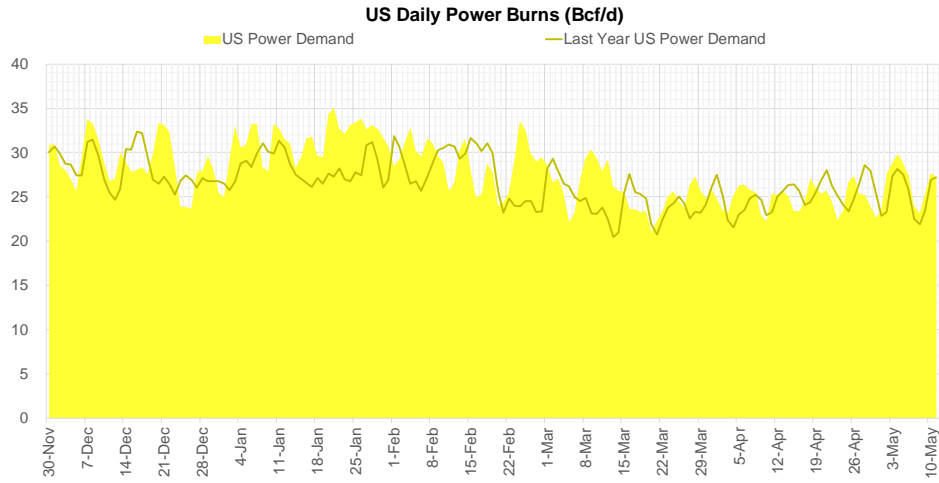
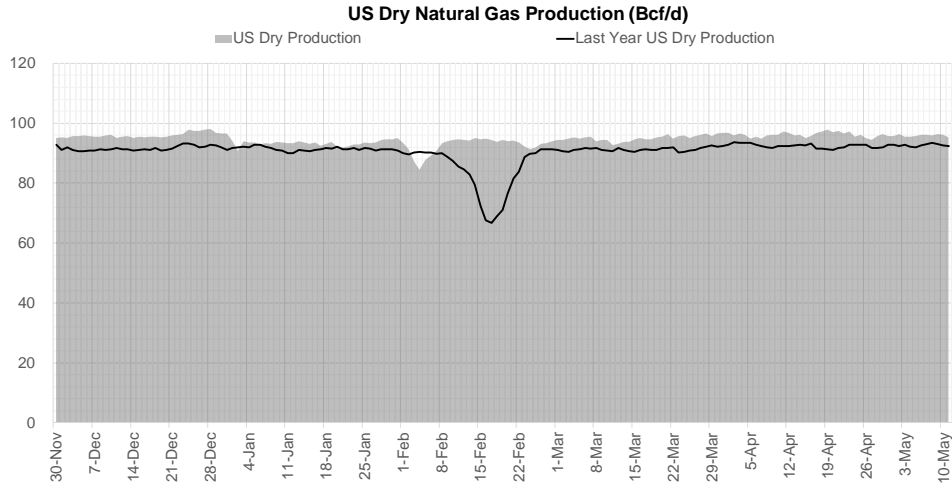
Weather Storage Model - Next 4 Week Forecast



Go to larger image



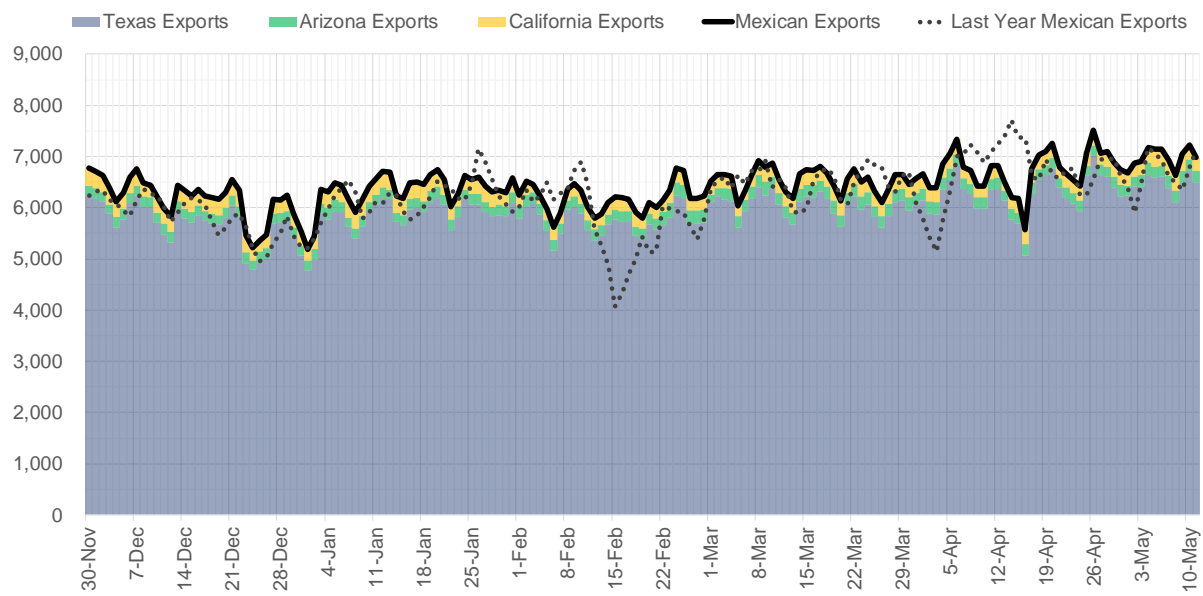
Supply – Demand Trends



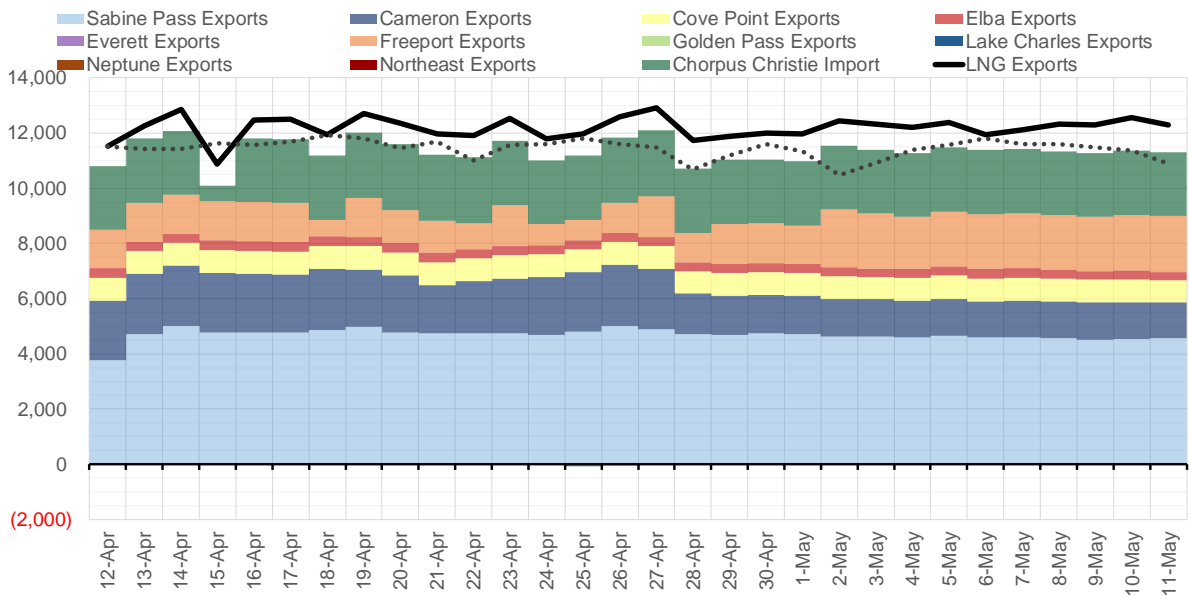
Source: Bloomberg

The risk of trading futures and options and other derivatives involves a substantial risk of loss and is not suitable for all persons. Each person must consider whether a particular trade, combination of trades, or strategy is suitable for that person's financial means and objectives. Past results are not necessarily indicative of future results. This communication may contain links to third party websites which are not under the control of and are not maintained by ION Energy Group, and ION Energy Group is not responsible for their content.

Mexican Exports (MMcf/d)



Net LNG Exports - Last 30 days (MMcf/d)



Source: Bloomberg

The risk of trading futures and options and other derivatives involves a substantial risk of loss and is not suitable for all persons. Each person must consider whether a particular trade, combination of trades, or strategy is suitable for that person's financial means and objectives. Past results are not necessarily indicative of future results. This communication may contain links to third party websites which are not under the control of and are not maintained by ION Energy Group, and ION Energy Group is not responsible for their content.

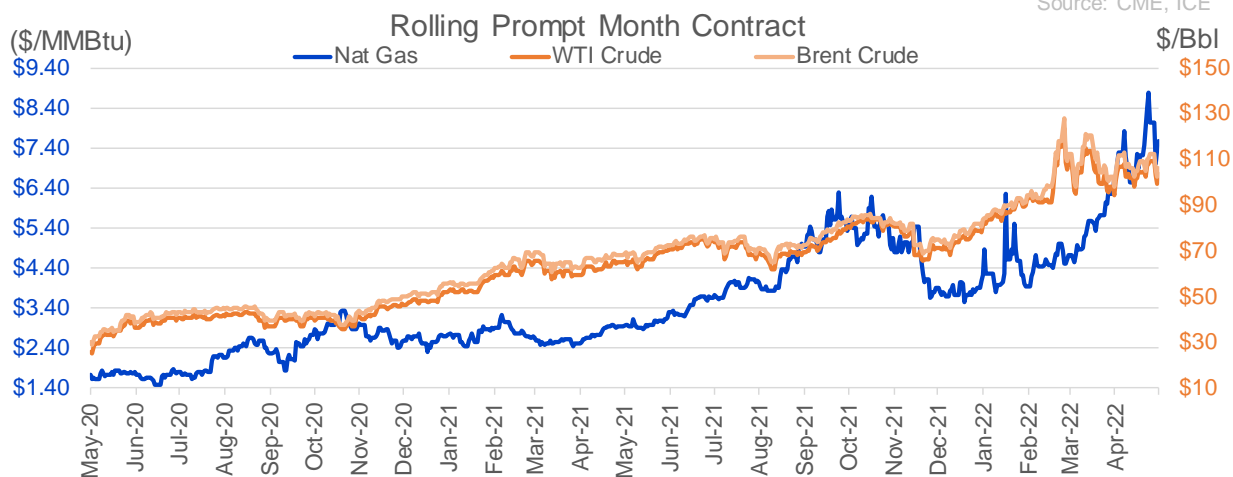
Nat Gas Options Volume and Open Interest CME and ICE Combined

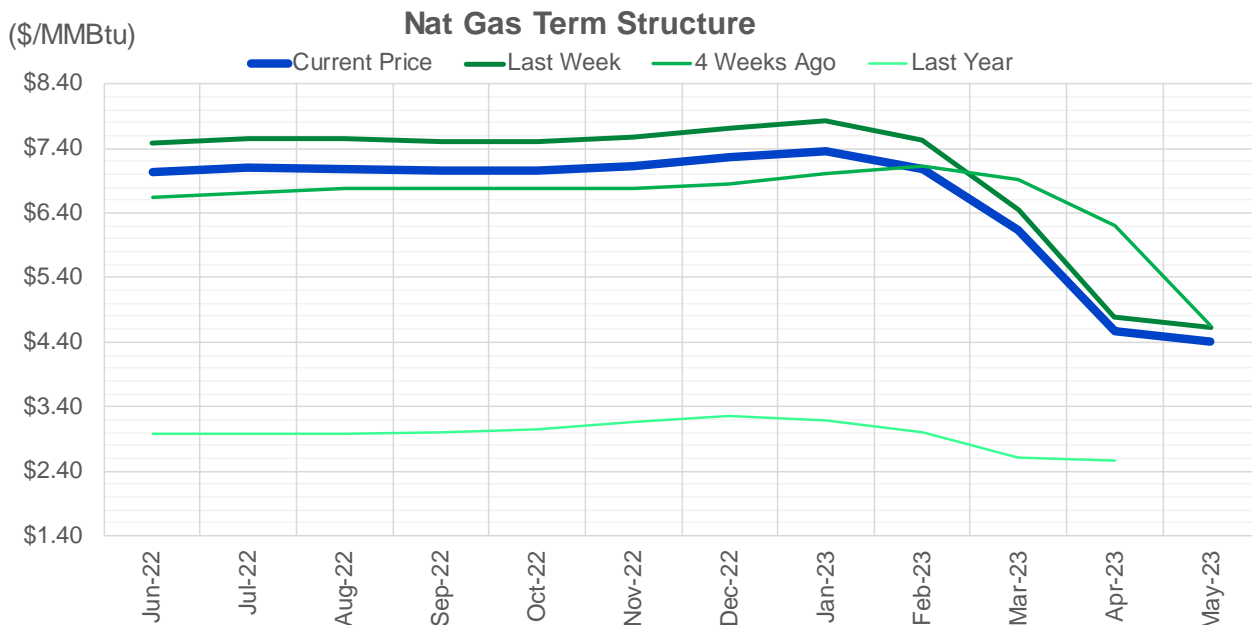
CONTRACT MONTH	CONTRACT YEAR	PUT/CALL	STRIKE	CUMULATIVE VOL	CONTRACT MONTH	CONTRACT YEAR	PUT/CALL	STRIKE	CUMULATIVE OI
6	2022	P	6.00	3344	8	2022	C	10.00	52677
6	2022	P	6.25	3278	8	2022	C	10.50	44125
7	2022	C	9.00	2168	10	2022	C	6.00	34882
6	2022	C	8.00	2050	6	2022	C	6.00	25146
6	2022	P	5.50	1781	10	2022	C	5.00	24389
7	2022	C	10.00	1567	9	2022	C	6.00	23730
6	2022	C	9.00	1408	10	2022	P	3.00	20817
6	2022	C	10.00	1189	10	2022	P	3.50	20509
6	2022	C	12.00	1088	6	2022	P	4.00	20398
10	2022	P	4.00	1048	6	2022	P	6.00	19851
7	2022	C	8.00	1027	8	2022	C	6.00	19667
7	2022	P	6.00	1014	10	2022	P	2.50	19630
9	2022	P	5.00	969	6	2022	C	7.00	19469
7	2022	P	5.00	958	7	2022	C	8.00	19110
6	2022	P	7.00	955	7	2022	C	6.00	19029
6	2022	P	4.50	953	6	2022	C	10.00	18768
6	2022	C	8.25	903	12	2022	C	5.00	18221
6	2022	C	7.00	873	8	2022	C	7.00	18212
6	2022	P	5.25	864	6	2022	P	4.75	18193
6	2022	C	20.00	801	9	2022	C	7.00	17849
8	2022	P	5.00	767	6	2022	C	5.00	17847
7	2022	P	7.00	748	9	2022	C	10.00	17667
6	2022	P	4.75	708	7	2022	P	3.25	17645
8	2022	P	7.00	700	7	2022	C	7.00	17470
11	2022	P	4.00	700	10	2022	P	6.00	17406
11	2022	P	5.00	700	10	2022	P	2.00	17320
3	2023	C	9.00	700	6	2022	P	3.00	17223
8	2022	P	4.00	669	6	2022	P	7.00	16966
9	2022	P	6.00	661	10	2022	P	4.00	16914
6	2022	C	7.50	660	6	2022	P	5.50	16679
6	2022	P	6.50	634	6	2022	C	12.00	16487
7	2022	C	7.00	623	7	2022	C	10.00	16406
8	2022	C	8.50	613	7	2022	C	9.00	16380
8	2022	P	4.50	600	6	2022	P	5.00	16174
9	2022	P	4.00	600	1	2023	C	10.00	16014
9	2022	P	4.50	600	6	2022	P	3.50	15955
10	2022	P	4.50	600	6	2022	C	9.00	15840
10	2022	P	3.25	589	5	2023	P	2.00	15686
6	2022	P	5.00	581	2	2023	C	10.00	15669
10	2022	P	5.00	580	11	2022	P	4.00	15346
8	2022	C	12.00	536	9	2022	P	2.50	15291
7	2022	P	6.25	504	9	2022	P	2.75	14933
10	2022	P	2.00	500	7	2022	P	3.50	14931
10	2022	P	6.00	500	7	2022	P	3.00	14550
6	2022	C	7.25	477	8	2022	P	3.00	14503
10	2022	P	3.50	458	9	2022	P	3.00	14391
6	2022	C	9.75	452	8	2022	C	9.00	14335
7	2022	C	15.00	433	6	2022	P	3.75	14266
6	2022	C	8.45	415	10	2022	P	3.25	14249
					6	2022	C	8	14158.75

Source: CME, ICE

Nat Gas Futures Open Interest CME and ICE Combined

CME Henry Hub Futures (10,000 MMBtu)				ICE Henry Hub Futures Contract Equivalent (10,000 MM			
	Current	Prior	Daily Change		Current	Prior	Daily Change
JUN 22	84500	95626	-11126	JUN 22	81733	84556	-2822
JUL 22	177589	175399	2190	JUL 22	73366	72567	798
AUG 22	58783	58878	-95	AUG 22	59580	59757	-177
SEP 22	85037	85655	-618	SEP 22	65694	65669	25
OCT 22	95136	94728	408	OCT 22	77398	76998	400
NOV 22	49964	48056	1908	NOV 22	58561	58649	-88
DEC 22	48512	48260	252	DEC 22	62410	62584	-174
JAN 23	62655	63074	-419	JAN 23	65487	65703	-217
FEB 23	26948	27260	-312	FEB 23	56403	56708	-305
MAR 23	38522	39219	-697	MAR 23	55743	56253	-510
APR 23	57812	57937	-125	APR 23	53849	53474	374
MAY 23	60719	61026	-307	MAY 23	52508	52401	108
JUN 23	24636	24364	272	JUN 23	44780	44751	29
JUL 23	20820	20883	-63	JUL 23	44164	44029	135
AUG 23	13314	13461	-147	AUG 23	43953	43888	65
SEP 23	18070	17994	76	SEP 23	43450	43327	123
OCT 23	33226	32981	245	OCT 23	50246	50206	40
NOV 23	12750	12708	42	NOV 23	44167	43815	352
DEC 23	13950	13804	146	DEC 23	40212	40067	145
JAN 24	20115	20054	61	JAN 24	38492	38052	440
FEB 24	5752	5992	-240	FEB 24	26134	26074	60
MAR 24	14364	14755	-391	MAR 24	30563	30604	-42
APR 24	11660	11558	102	APR 24	26158	26035	123
MAY 24	6252	6345	-93	MAY 24	25567	25558	9
JUN 24	1716	1815	-99	JUN 24	22052	22022	30
JUL 24	1980	1892	88	JUL 24	22148	22117	31
AUG 24	2949	3062	-113	AUG 24	22252	22221	31
SEP 24	1367	1371	-4	SEP 24	21637	21607	30
OCT 24	6690	6730	-40	OCT 24	24050	23984	66
NOV 24	4672	4812	-140	NOV 24	22441	22391	50





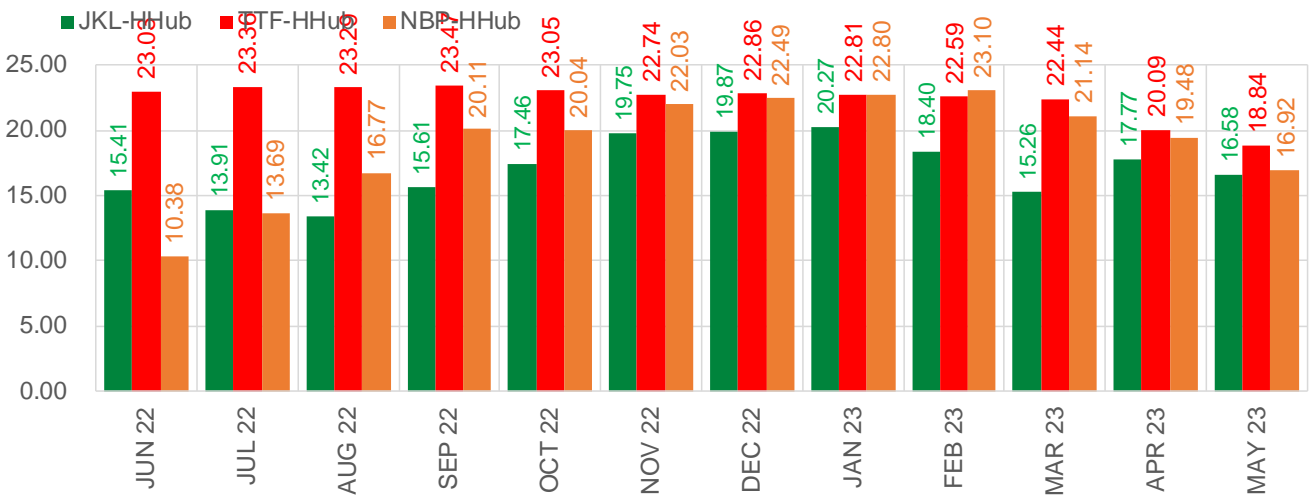
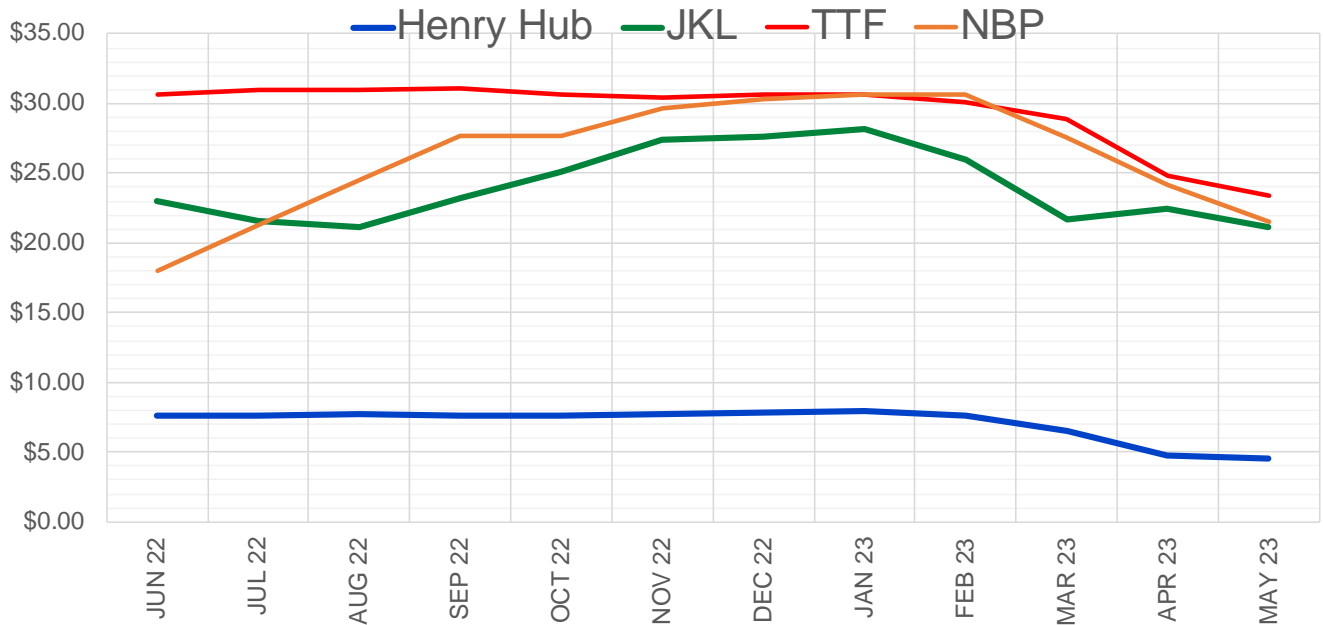
	Jun-22	Jul-22	Aug-22	Sep-22	Oct-22	Nov-22	Dec-22	Jan-23	Feb-23	Mar-23	Apr-23	May-23
Current Price	\$7.026	\$7.106	\$7.091	\$7.054	\$7.052	\$7.126	\$7.263	\$7.362	\$7.082	\$6.128	\$4.571	\$4.412
Last Week	\$7.475	\$7.566	\$7.566	\$7.507	\$7.506	\$7.568	\$7.716	\$7.821	\$7.543	\$6.446	\$4.779	\$4.632
vs. Last Week	-\$0.449	-\$0.460	-\$0.475	-\$0.453	-\$0.454	-\$0.442	-\$0.453	-\$0.459	-\$0.461	-\$0.318	-\$0.208	-\$0.220
4 Weeks Ago	\$6.643	\$6.723	\$6.787	\$6.791	\$6.771	\$6.785	\$6.855	\$7.018	\$7.117	\$6.925	\$6.196	\$4.671
vs. 4 Weeks Ago	\$0.383	\$0.383	\$0.304	\$0.263	\$0.281	\$0.341	\$0.408	\$0.344	-\$0.035	-\$0.797	-\$1.625	-\$0.259
Last Year	\$2.932	\$2.978	\$2.986	\$2.973	\$2.990	\$3.052	\$3.174	\$3.257	\$3.188	\$2.994	\$2.610	\$2.558
vs. Last Year	\$4.094	\$4.128	\$4.105	\$4.081	\$4.062	\$4.074	\$4.089	\$4.105	\$3.894	\$3.134	\$1.961	\$1.854

	Units	Cash Settled	Prompt Settle	Cash to Prompt
AGT Citygate	\$/MMBtu	8.15	7.46	-0.69
TETCO M3	\$/MMBtu	6.20	7.16	0.96
FGT Zone 3	\$/MMBtu	6.40	7.83	1.43
Zone 6 NY	\$/MMBtu	6.40	7.05	0.65
Chicago Citygate	\$/MMBtu	6.73	7.58	0.85
Michcon	\$/MMBtu	6.66	7.55	0.89
Columbia TCO Pool	\$/MMBtu	6.24	7.12	0.88
Ventura	\$/MMBtu	8.03	7.47	-0.56
Rockies/Opal	\$/MMBtu	6.53	7.28	0.75
El Paso Permian Basin	\$/MMBtu	6.00	6.95	0.95
Socal Citygate	\$/MMBtu	6.64	7.61	0.97
Malin	\$/MMBtu	6.48	7.37	0.89
Houston Ship Channel	\$/MMBtu	6.68	7.64	0.96
Henry Hub Cash	\$/MMBtu	7.00	7.46	0.46
AECO Cash	C\$/GJ	5.32	5.86	0.54
Station2 Cash	C\$/GJ	5.10	6.97	1.87
Dawn Cash	C\$/GJ	6.61	7.55	0.94

Source: CME, Bloomberg

	Units	Current Price	vs. Last Week	vs. 4 Weeks Ago	vs. Last Year
NatGas Jul21/Oct21	\$/MMBtu	2.224	▲ 0.000	▲ 0.000	▲ 2.212
NatGas Oct21/Nov21	\$/MMBtu	0.361	▲ 0.000	▲ 0.000	▲ 0.299
NatGas Oct21/Jan22	\$/MMBtu	-1.817	▲ 0.000	▲ 0.000	▼ -2.081
NatGas Apr22/Oct22	\$/MMBtu	2.055	▼ -0.560	▲ 0.561	▲ 2.033
WTI Crude	\$/Bbl	99.76	▼ -2.650	▼ -0.840	▲ 34.480
Brent Crude	\$/Bbl	102.46	▼ -2.510	▼ -2.180	▲ 33.910
Fuel Oil, NY Harbour 1%	\$/Bbl	97.18	▲ 0.000	▲ 0.000	▲ 0.000
Heating Oil	cents/Gallon	393.22	▼ -15.050	▲ 46.780	▲ 189.050
Propane, Mt. Bel	cents/Gallon	1.24	▼ -0.025	▼ -0.083	▲ 0.429
Ethane, Mt. Bel	cents/Gallon	0.56	▼ -0.024	▲ 0.073	▲ 0.308
Coal, PRB	\$/MTon	12.30	▲ 0.000	▲ 0.000	▲ 0.000
Coal, PRB	\$/MMBtu	0.70			
Coal, ILB	\$/MTon	31.05	▲ 0.000	▲ 0.000	▲ 0.000
Coal, ILB	\$/MMBtu	1.32			

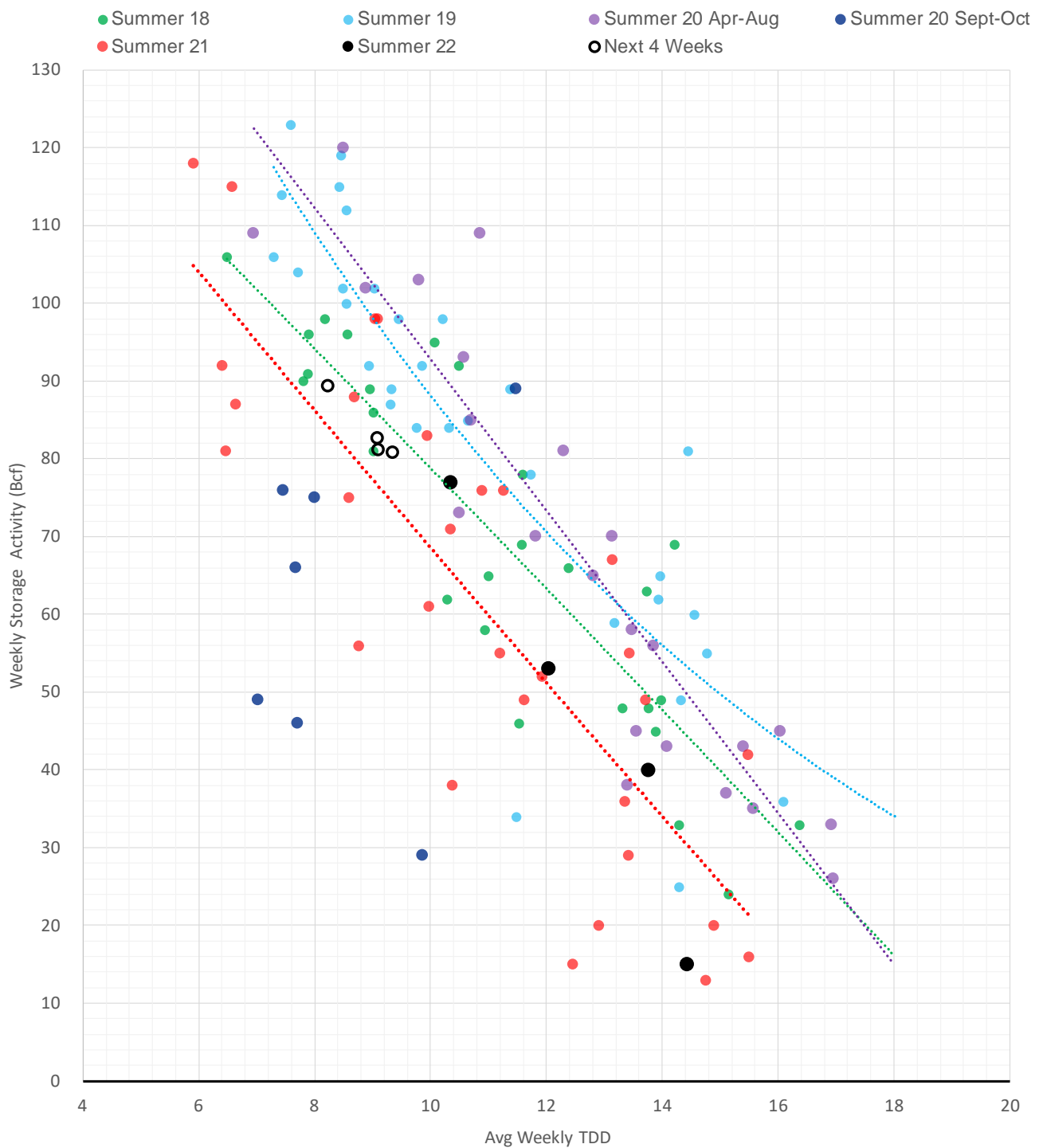
Nat Gas Term Structure (\$MMBTU)



	JUN 22	JUL 22	AUG 22	SEP 22	OCT 22	NOV 22	DEC 22	JAN 23	FEB 23	MAR 23	APR 23	MAY 23
Henry Hub	\$7.571	\$7.661	\$7.702	\$7.609	\$7.629	\$7.683	\$7.810	\$7.895	\$7.561	\$6.478	\$4.719	\$4.550
JKL	\$22.980	\$21.575	\$21.120	\$23.215	\$25.090	\$27.430	\$27.680	\$28.165	\$25.960	\$21.735	\$22.490	\$21.130
JKL-HHub	\$15.409	\$13.914	\$13.418	\$15.606	\$17.461	\$19.747	\$19.870	\$20.270	\$18.399	\$15.257	\$17.771	\$16.580
TTF	\$30.597	\$31.021	\$30.989	\$31.074	\$30.682	\$30.425	\$30.667	\$30.701	\$30.152	\$28.919	\$24.805	\$23.388
TTF-HHub	\$23.026	\$23.360	\$23.287	\$23.465	\$23.053	\$22.742	\$22.857	\$22.806	\$22.591	\$22.441	\$20.086	\$18.838
NBP	\$17.951	\$21.348	\$24.470	\$27.720	\$27.672	\$29.712	\$30.304	\$30.698	\$30.663	\$27.617	\$24.203	\$21.471
NBP-HHub	\$10.380	\$13.687	\$16.768	\$20.111	\$20.043	\$22.029	\$22.494	\$22.803	\$23.102	\$21.139	\$19.484	\$16.921

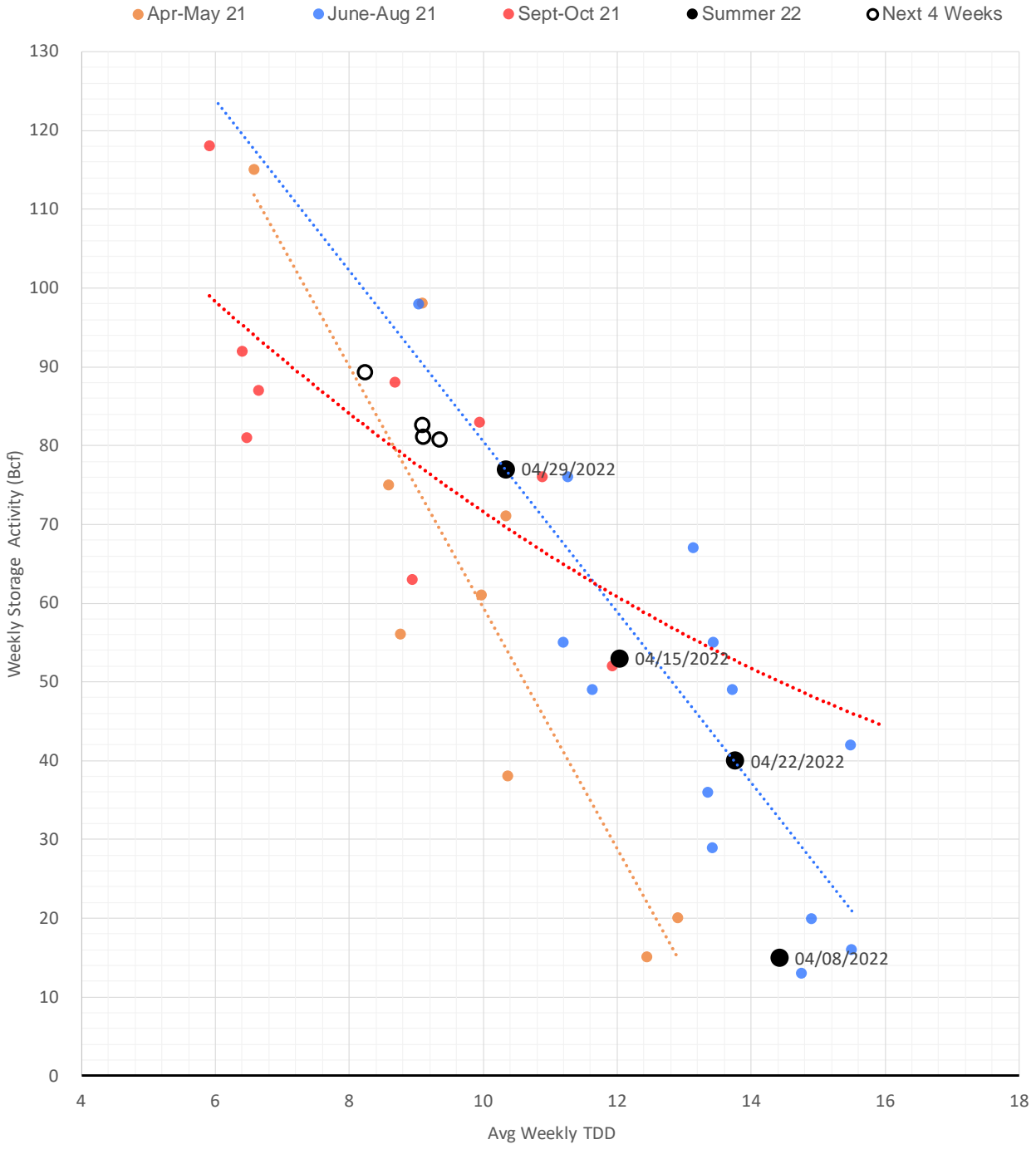
The risk of trading futures and options and other derivatives involves a substantial risk of loss and is not suitable for all persons. Each person must consider whether a particular trade, combination of trades, or strategy is suitable for that person's financial means and objectives. Past results are not necessarily indicative of future results. This communication may contain links to third party websites which are not under the control of and are not maintained by ION Energy Group, and ION Energy Group is not responsible for their content.

Weather Storage Model - Next 4 Week Forecast



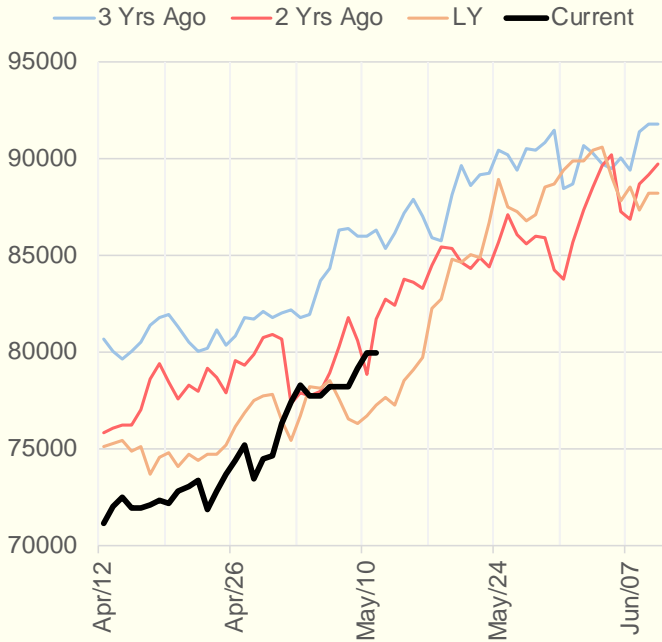
The risk of trading futures and options and other derivatives involves a substantial risk of loss and is not suitable for all persons. Each person must consider whether a particular trade, combination of trades, or strategy is suitable for that person's financial means and objectives. Past results are not necessarily indicative of future results. This communication may contain links to third party websites which are not under the control of and are not maintained by ION Energy Group, and ION Energy Group is not responsible for their content.

Weather Storage Model for Summer 2021 & 2022

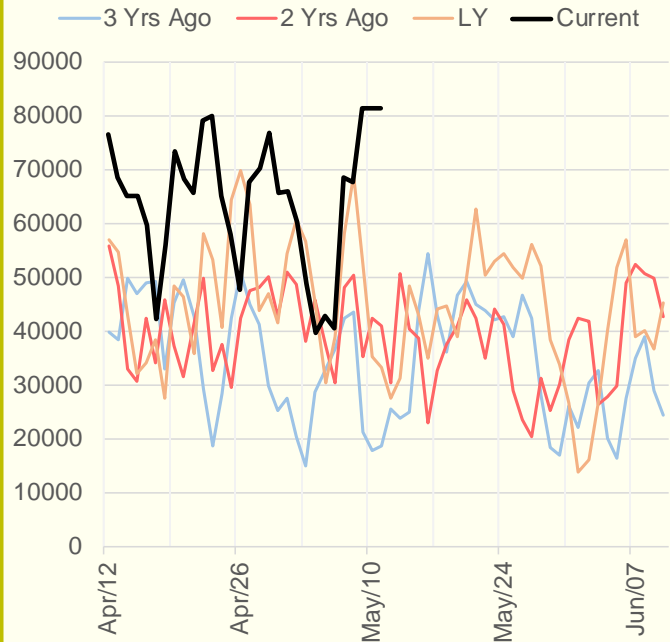


The risk of trading futures and options and other derivatives involves a substantial risk of loss and is not suitable for all persons. Each person must consider whether a particular trade, combination of trades, or strategy is suitable for that person's financial means and objectives. Past results are not necessarily indicative of future results. This communication may contain links to third party websites which are not under the control of and are not maintained by ION Energy Group, and ION Energy Group is not responsible for their content.

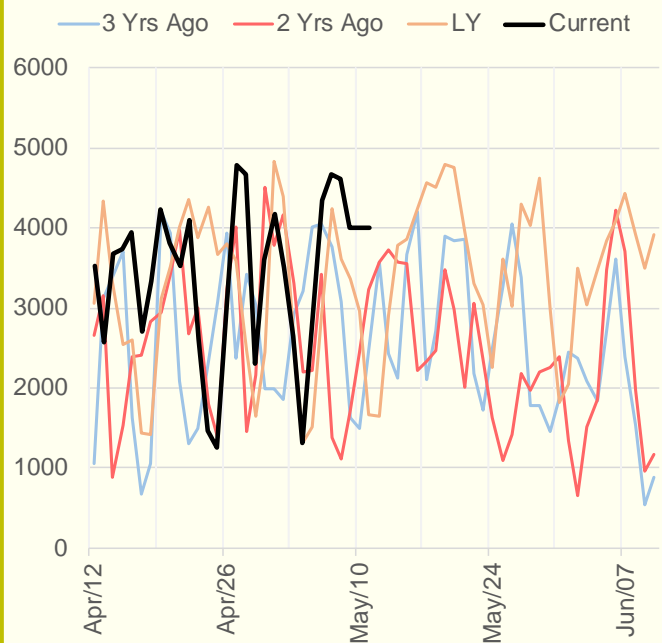
NRC Nuclear Daily Output



US Wind



CALI Wind



TEXAS Wind

