

	Current	Δ from YD	Δ from 7D Avg
Nat Gas Prompt	\$ 8.03	▼ \$ (0.01)	▼ \$ (0.08)

	Current	Δ from YD	Δ from 7D Avg
WTI Prompt	\$ 106.67	▼ \$ (3.10)	▼ \$ (0.9)

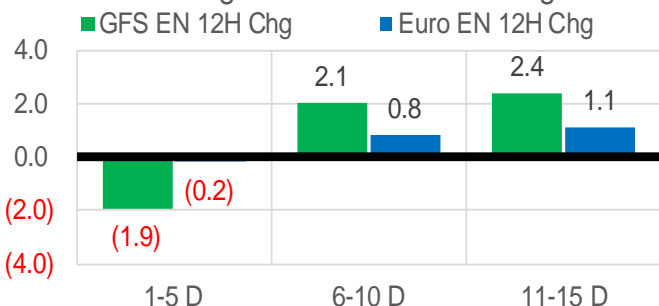
	Current	Δ from YD	Δ from 7D Avg
Brent Prompt	\$ 109.43	▼ \$ (2.96)	▼ \$ (0.7)

Page Menu

- [Short-term Weather Model Outlooks](#)
- [Lower 48 Component Models](#)
- [Regional S/D Models Storage Projection](#)
- [Weather Model Storage Projection](#)
- [Supply – Demand Trends](#)
- [Nat Gas Options Volume and Open Interest](#)
- [Nat Gas Futures Open Interest](#)
- [Price Summary](#)

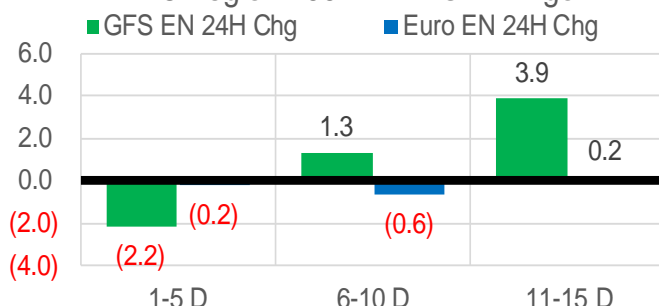
Vs. 12H Ago

L48 Region - 00z TDD vs 12H Ago



Vs. 24H Ago

L48 Region - 00z TDD vs 24H Ago



	Current	Δ from YD	Δ from 7D Avg
US Dry Production	96.3	▲ 0.37	▲ 0.46

	Current	Δ from YD	Δ from 7D Avg
US Power Burns	25.8	▲ 1.14	▼ -1.53

	Current	Δ from YD	Δ from 7D Avg
US ResComm	15.1	▼ -2.74	▼ -1.47

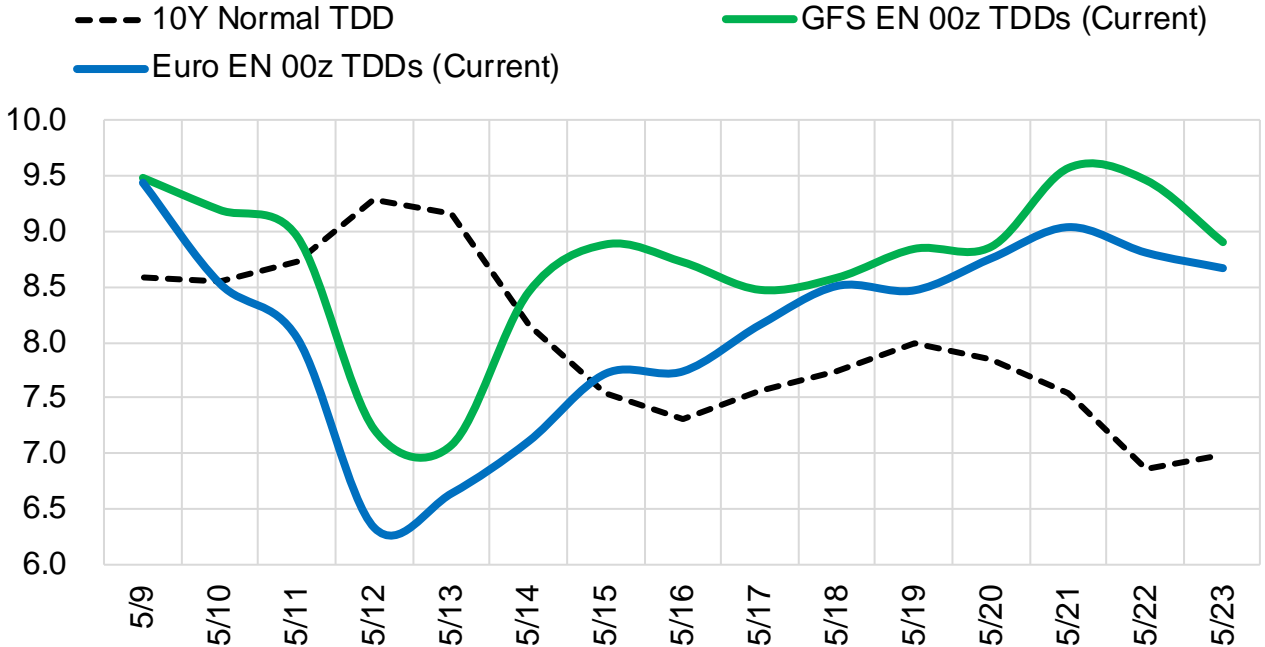
	Current	Δ from YD	Δ from 7D Avg
Canadian Imports	5.0	▲ 0.07	▼ -0.72

	Current	Δ from YD	Δ from 7D Avg
Net LNG Exports	12.4	▲ 0.00	▲ 0.13

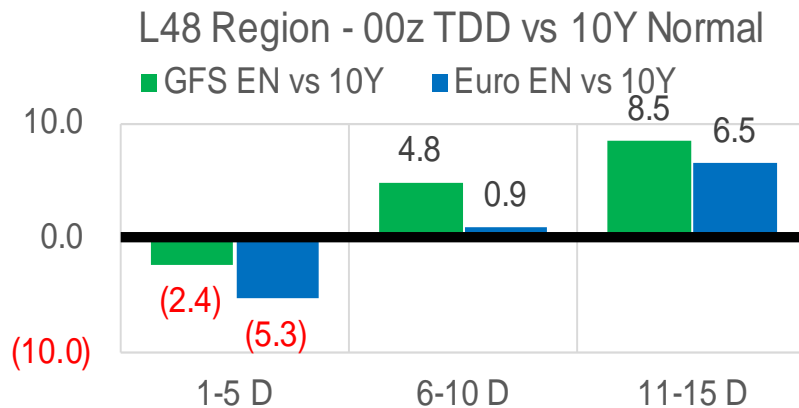
	Current	Δ from YD	Δ from 7D Avg
Mexican Exports	7.1	▲ 0.45	▲ 0.12

Short-term Weather Model Outlooks (00z)

L48 Region



Vs. 10Y Normal



Source: WSI, Bloomberg

Lower 48 Component Models

Daily Balances

	3-May	4-May	5-May	6-May	7-May	8-May	9-May	DoD	vs. 7D
Lower 48 Dry Production	95.4	95.5	95.8	96.1	96.2	96.0	96.3	▲ 0.4	▲ 0.5
Canadian Imports	6.3	6.5	6.1	5.7	5.1	4.9	5.0	▲ 0.1	▼ -0.7
L48 Power	28.8	29.9	28.8	27.4	24.0	24.6	25.8	▲ 1.1	▼ -1.5
L48 Residential & Commercial	16.9	17.0	15.1	15.4	17.0	17.9	15.1	▼ -2.7	▼ -1.4
L48 Industrial	21.2	21.5	21.9	22.0	22.3	22.6	22.5	▼ -0.2	▲ 0.5
L48 Lease and Plant Fuel	5.2	5.2	5.2	5.2	5.2	5.2	5.2	▼ 0.0	▲ 0.0
L48 Pipeline Distribution	2.6	2.7	2.5	2.4	2.3	2.4	2.3	▼ -0.1	▼ -0.2
L48 Regional Gas Consumption	74.6	76.2	73.5	72.4	70.8	72.7	70.9	▼ -1.9	▼ -2.5
Net LNG Delivered	12.32	12.20	12.39	11.95	12.12	12.38	12.39	▲ 0.0	▲ 0.2
Total Mexican Exports	6.9	7.2	7.1	7.2	6.9	6.6	7.1	▲ 0.4	▲ 0.1
Implied Daily Storage Activity	7.9	6.4	8.9	10.3	11.4	9.2	11.0		
EIA Reported Daily Storage Activity									
Daily Model Error									

EIA Storage Week Balances

	1-Apr	8-Apr	15-Apr	22-Apr	29-Apr	6-May	WoW	vs. 4W
Lower 48 Dry Production	96.1	95.8	96.4	96.7	95.8	95.8	▼ 0.0	▼ -0.4
Canadian Imports	5.7	5.8	5.6	5.8	6.1	5.9	▼ -0.2	▲ 0.1
L48 Power	25.5	25.0	24.6	25.1	25.0	26.4	▲ 1.5	▲ 1.6
L48 Residential & Commercial	30.8	25.2	22.4	24.1	18.5	16.6	▼ -2.0	▼ -6.0
L48 Industrial	22.9	22.5	21.7	21.8	22.0	21.2	▼ -0.7	▼ -0.7
L48 Lease and Plant Fuel	5.2	5.2	5.3	5.3	5.2	5.2	▼ 0.0	▼ 0.0
L48 Pipeline Distribution	2.9	2.8	2.6	2.7	2.4	2.4	▲ 0.0	▼ -0.2
L48 Regional Gas Consumption	87.3	80.7	76.5	79.0	73.1	71.9	▼ -1.2	▼ -5.4
Net LNG Exports	13.1	12.4	12.5	12.1	12.2	12.2	▼ 0.0	▼ -0.1
Total Mexican Exports	6.4	6.8	6.6	6.7	6.9	6.9	▼ 0.0	▲ 0.2
Implied Daily Storage Activity	-5.1	1.7	6.5	4.7	9.8	10.8	1.1	
EIA Reported Daily Storage Activity	-4.7	2.1	7.6	5.7	11.0			
Daily Model Error	-0.4	-0.4	-1.1	-1.0	-1.2			

Monthly Balances

	2Yr Ago May-20	LY May-21	Jan-22	Feb-22	Mar-22	Apr-22	MTD May-22	MoM	vs. LY
Lower 48 Dry Production	87.0	93.0	93.4	92.7	95.0	96.2	95.9	▼ -0.3	▲ 2.9
Canadian Imports	3.9	4.5	6.7	6.6	5.2	5.8	5.7	▼ -0.1	▲ 1.2
L48 Power	26.9	26.5	31.5	28.9	25.6	24.8	26.8	▲ 2.0	▲ 0.3
L48 Residential & Commercial	12.8	12.8	49.1	44.4	30.7	22.2	16.5	▼ -5.7	▲ 3.7
L48 Industrial	19.4	20.9	24.7	22.5	21.8	21.9	21.7	▼ -0.3	▲ 0.8
L48 Lease and Plant Fuel	4.7	5.0	5.1	5.1	5.2	5.2	5.2	▼ -0.1	▲ 0.2
L48 Pipeline Distribution	2.2	2.2	3.8	3.6	2.9	2.6	2.5	▼ -0.1	▲ 0.2
L48 Regional Gas Consumption	65.9	67.5	114.3	104.4	86.2	76.8	72.6	▼ -4.2	▲ 5.1
Net LNG Exports	6.7	10.8	12.4	12.4	12.9	12.3	12.2	▼ -0.1	▲ 1.4
Total Mexican Exports	4.8	6.8	6.3	6.2	6.5	6.7	6.9	▲ 0.2	▲ 0.2
Implied Daily Storage Activity	13.6	12.4	-32.9	-23.7	-5.4	6.2	9.8		
EIA Reported Daily Storage Activity									
Daily Model Error									

Source: Bloomberg, analytix.ai

Daily Average Generation Data

Nuclear Generation Daily Average - GWh (NRC)

	1-May	2-May	3-May	4-May	5-May	6-May	7-May	DoD	vs. 7D
NRC Nuclear Daily Output	76.3	77.4	78.3	77.7	77.8	78.2	78.2	0.0	0.6
NRC Nuclear Max Capacity	104.9	104.9	104.9	104.9	104.9	104.9	104.9	0.0	0.0
NRC Nuclear Outage	28.6	27.5	26.6	27.1	27.1	26.6	26.6	0.0	-0.6
NRC % Nuclear Cap Utilization	77.6	78.7	79.6	79.0	79.1	79.6	79.6	0.0	0.6

Wind Generation Daily Average - MWh (EIA)

	1-May	2-May	3-May	4-May	5-May	6-May	7-May	DoD	vs. 7D
CALI Wind	4170	3505	2655	1322	2941	4342	4672	330	1516
TEXAS Wind	18569	20925	12638	16925	14500	8908	15424	6516	13
US Wind	66126	60334	49015	39659	42897	40592	68728	28136	18957

Generation Daily Average - MWh (EIA)

	1-May	2-May	3-May	4-May	5-May	6-May	7-May	DoD	vs. 7D
US Wind	66126	60334	49015	39659	42897	40592	68728	28136	18957
US Solar	14664	16912	16046	16603	16197	17119	16381	-738	124
US Petroleum	795	985	985	903	990	828	187	-642	-728
US Other	6799	7648	7394	7687	7693	7309	7185	-123	-236
US Coal	72010	77211	81083	87450	88667	88525	74807	-13718	-7684
US Nuke	80302	81648	81088	81408	81629	82169	82325	156	951
US Hydro	24085	27631	25750	29371	28851	28344	24213	-4131	-3125
US Gas	119291	150385	161208	167274	160830	159472	128571	-30900	-24506

See National Wind and Nuclear daily charts

Source: Bloomberg, analytix.ai

Storage Week Average Generation Data

Nuclear Generation Weekly Average - GWh (NRC)

	1-Apr	8-Apr	15-Apr	22-Apr	29-Apr	6-May	WoW	WoW Bcf/d Impact
NRC Nuclear Daily Output	79.3	75.0	71.9	72.3	73.5	76.7	3.1	-0.6
NRC Nuclear Max Capacity	104.9	104.9	104.9	104.9	104.9	104.9	0.0	
NRC Nuclear Outage	25.5	29.9	32.9	32.6	31.4	28.2	-3.1	
NRC % Nuclear Cap Utilization	80.7	76.3	73.2	73.5	74.8	78.0	3.2	

Wind Generation Weekly Average - MWh (EIA)

	1-Apr	8-Apr	15-Apr	22-Apr	29-Apr	6-May	WoW	WoW Bcf/d Impact
CALI Wind	2643	2611	3434	3613	3153	2929	-225	0.0
TEXAS Wind	14530	14468	16530	15612	18327	16902	-1425	0.3
US Wind	61679	59878	66240	61556	66986	57256	-9731	1.8
							-15%	
							-0.1	

Generation Weekly Average - MWh (EIA)

	1-Apr	8-Apr	15-Apr	22-Apr	29-Apr	6-May	WoW	WoW Bcf/d Impact
US Wind	61679	59878	66240	61556	66986	57256	-9731	1.8
US Solar	15451	15518	16118	15897	16968	16448	-520	0.1
US Petroleum	1048	1015	964	984	992	931	-61	0.0
US Other	7481	7183	7154	7544	7716	7371	-345	0.1
US Coal	77743	77514	77087	79632	77532	78547	1014	-0.2
US Nuke	83506	78807	75674	76478	77438	80545	3107	-0.6
US Hydro	33463	32524	29415	28355	26722	26752	30	0.0
US Gas	136004	134633	134338	133367	131482	144737	13255	2.4

See National Wind and Nuclear daily charts

Source: Bloomberg, analytix.ai

Monthly Average Generation Data

Nuclear Generation Monthly Average - GWh (NRC)

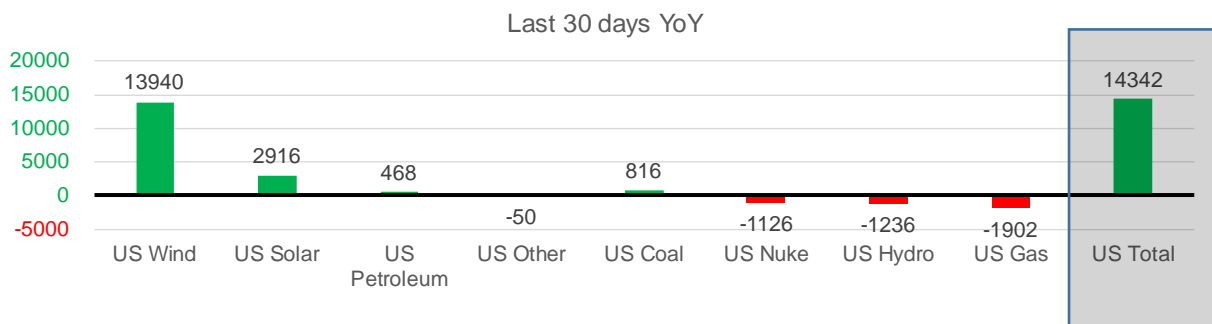
	2Yr Ago	LY	MTD				Last 30 days	Last 30 days YoY
	Same 30 days	Same 30 days	Feb-22	Mar-22	Apr-22	May-22		
NRC Nuclear Daily Output	78.5	75.9	87.3	81.3	73.3	77.8	74.3	-1.6
NRC Nuclear Max Capacity	104.9	104.9	104.9	104.9	104.9	104.9	104.9	0.0
NRC Nuclear Outage	26.4	29.0	17.5	23.6	31.6	27.0	30.6	1.6
NRC % Nuclear Cap Utilization	79.8	77.1	88.8	82.7	74.5	79.1	75.5	-1.6

Wind Generation Monthly Average - MWh (EIA)

	2Yr Ago	LY	MTD				Last 30 days	Last 30 days YoY
	Same 30 days	Same 30 days	Feb-22	Mar-22	Apr-22	May-22		
CALI Wind	2583	3148	1495	2250	3186	3661	3481	333
TEXAS Wind	11208	11805	11750	14837	16311	15415	16561	4756
US Wind	41867	48937	54541	58515	64179	56090	62877	13940

Generation Monthly Average - MWh (EIA)

	2Yr Ago	LY	MTD				Last 30 days	Last 30 days YoY
	Same 30 days	Same 30 days	Feb-22	Mar-22	Apr-22	May-22		
US Wind	41867	48937	54541	58515	64179	56090	62877	▲ 13940
US Solar	10619	13438	12442	14054	16208	16298	16354	▲ 2916
US Petroleum	594	417	1328	981	985	672	885	▲ 468
US Other	7877	7504	8629	7187	7385	7343	7454	▼ -50
US Coal	56371	77408	105630	82291	77526	79930	78224	▲ 816
US Nuke	82658	79357	92013	85157	77217	81691	78231	▼ -1126
US Hydro	33345	28546	32280	33927	29023	26297	27310	▼ -1236
US Gas	135878	138251	153708	137092	133030	144908	136350	▼ -1902
US Total	367887	394017	461067	419866	406146	414186	408359	▲ 14342



See National Wind and Nuclear daily charts

Source: Bloomberg, analytix.ai

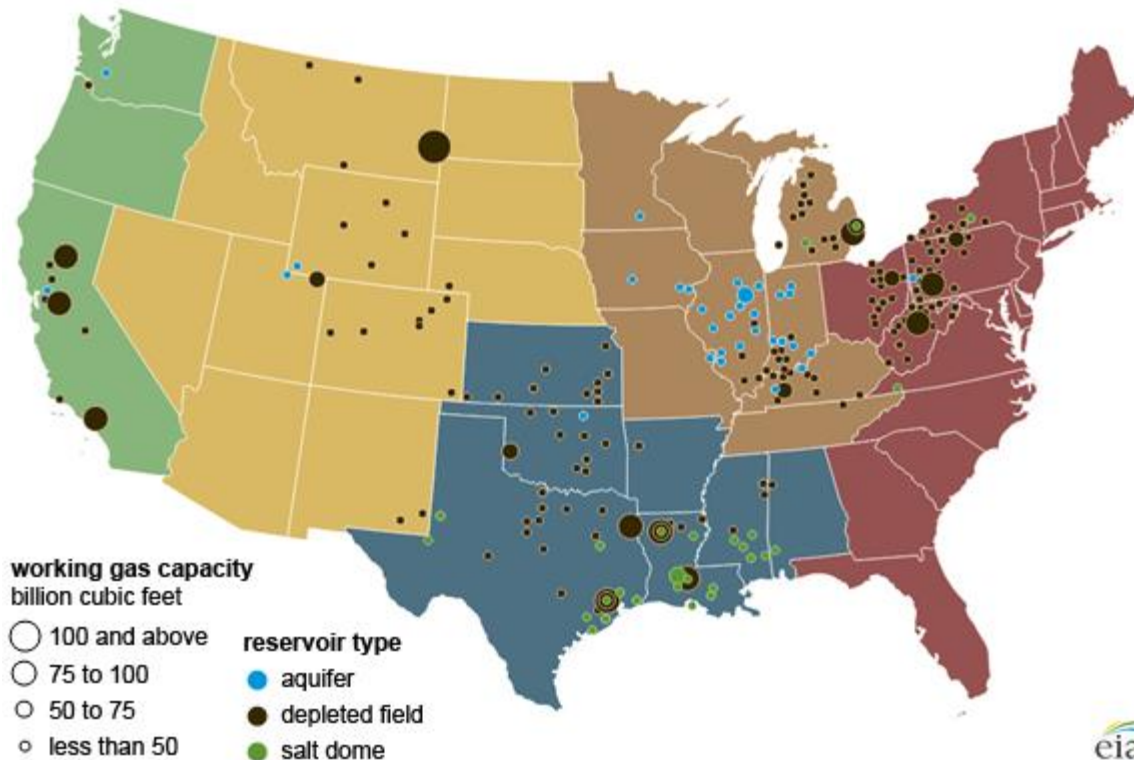
Regional S/D Models Storage Projection

Week Ending 6-May

	Daily Raw Storage	Daily Adjustment Factor	Daily Average Storage Activity (Adjusted) *	Weekly Adjusted Storage Activity
L48	11.5	0.5	12.0	84
East	0.3	2.3	2.6	18
Midwest	3.3	-0.3	3.0	21
Mountain	4.0	-3.5	0.4	3
South Central	2.2	2.7	4.9	34
Pacific	1.7	-0.7	1.1	7

*Adjustment Factor is calculated based on historical regional deltas

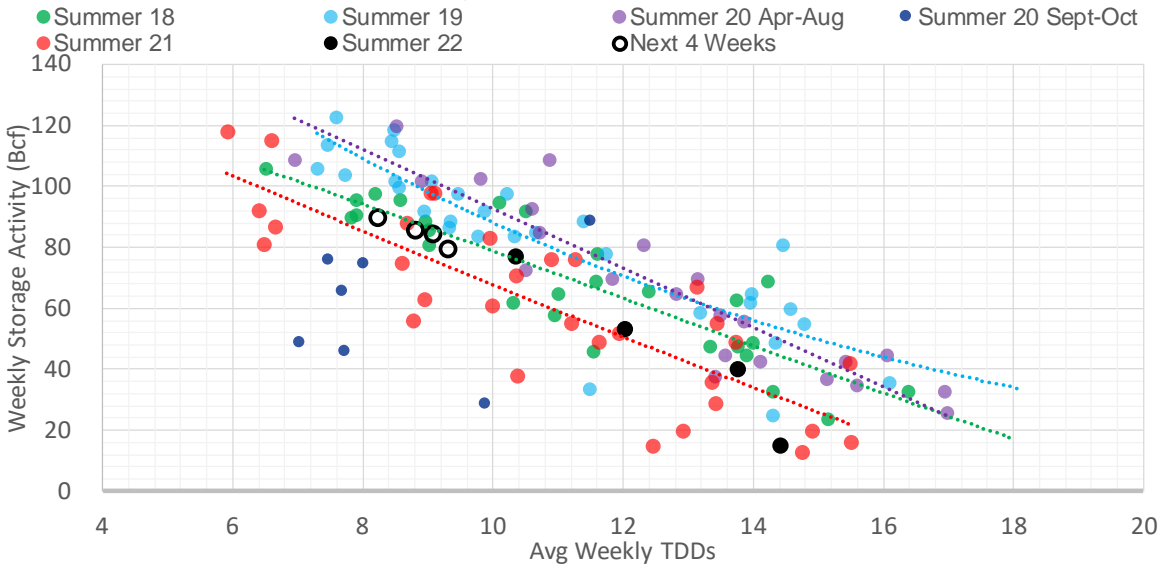
U.S. underground natural gas storage facilities by type (July 2015)



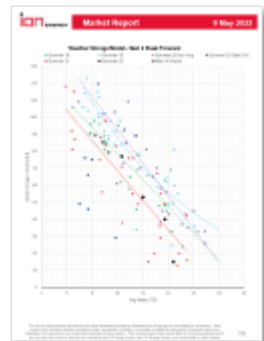
Weather Model Storage Projection

Next report and beyond		
Week Ending	TDDs	Week Storage Projection
06-May	9.1	84
13-May	9.3	79
20-May	8.2	89
27-May	8.8	85

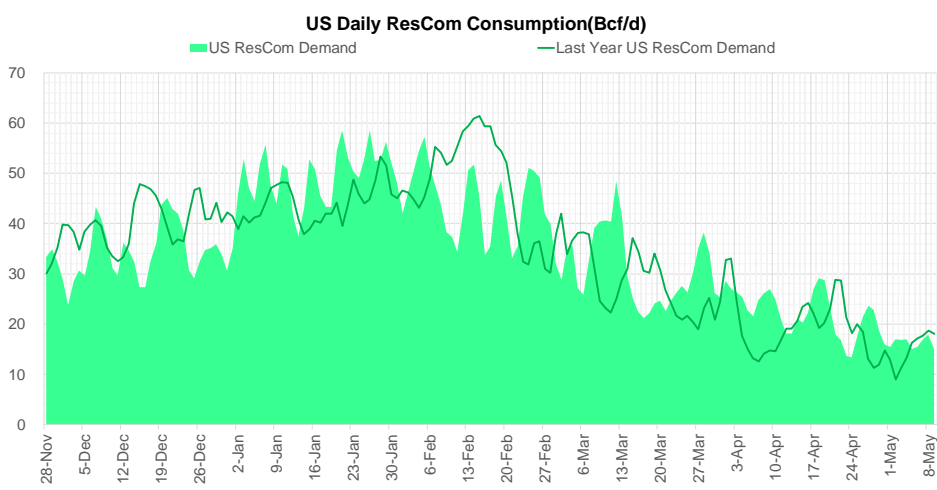
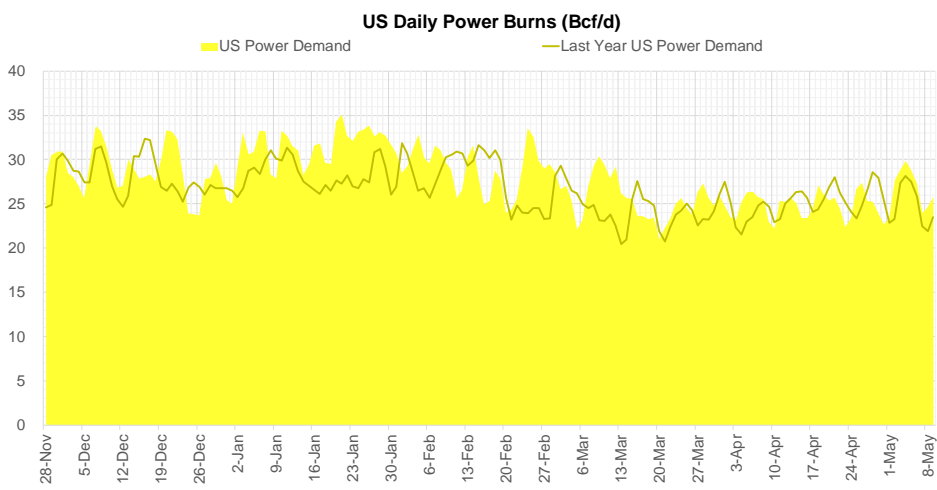
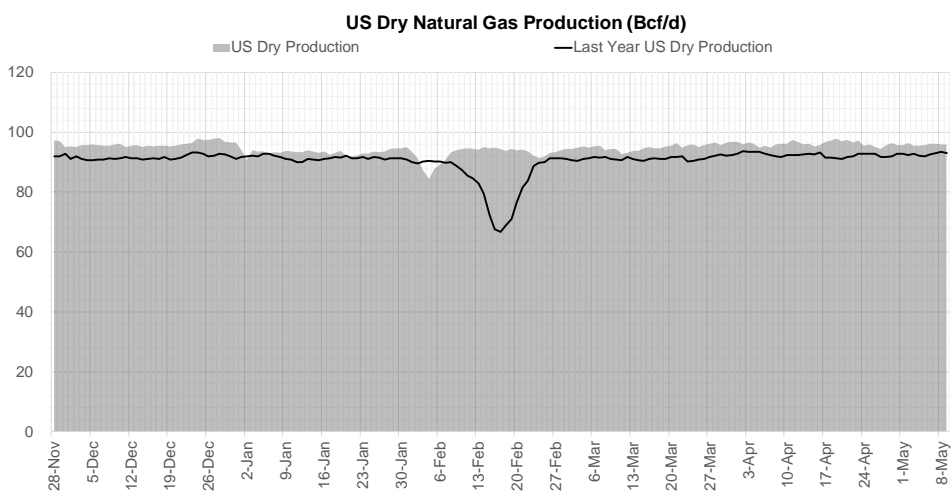
Weather Storage Model - Next 4 Week Forecast



Go to larger image

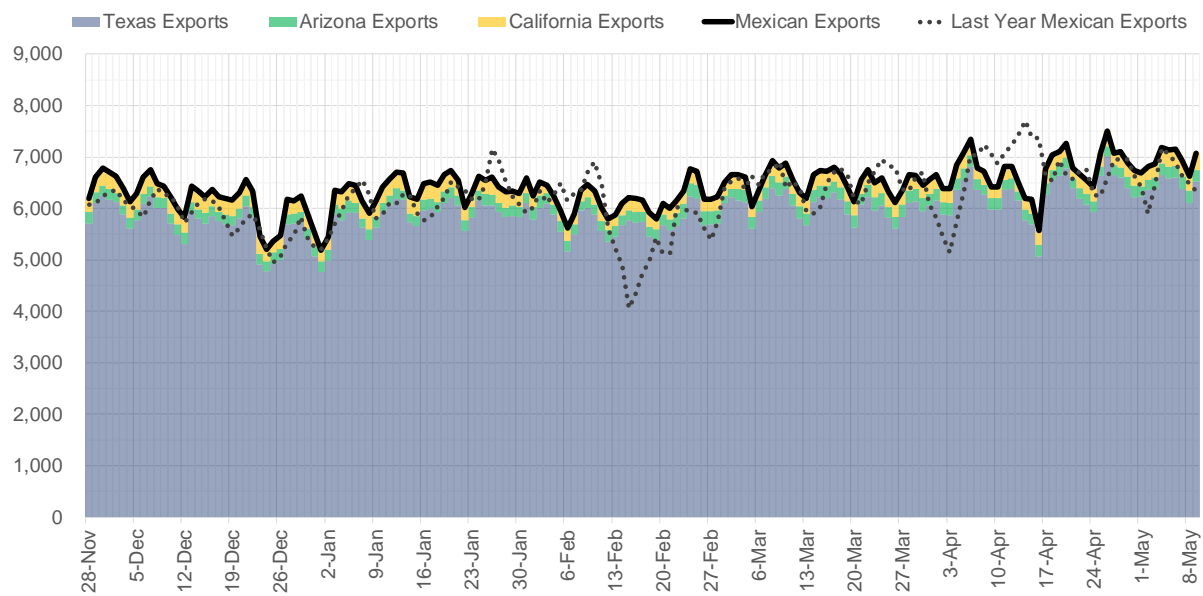


Supply – Demand Trends

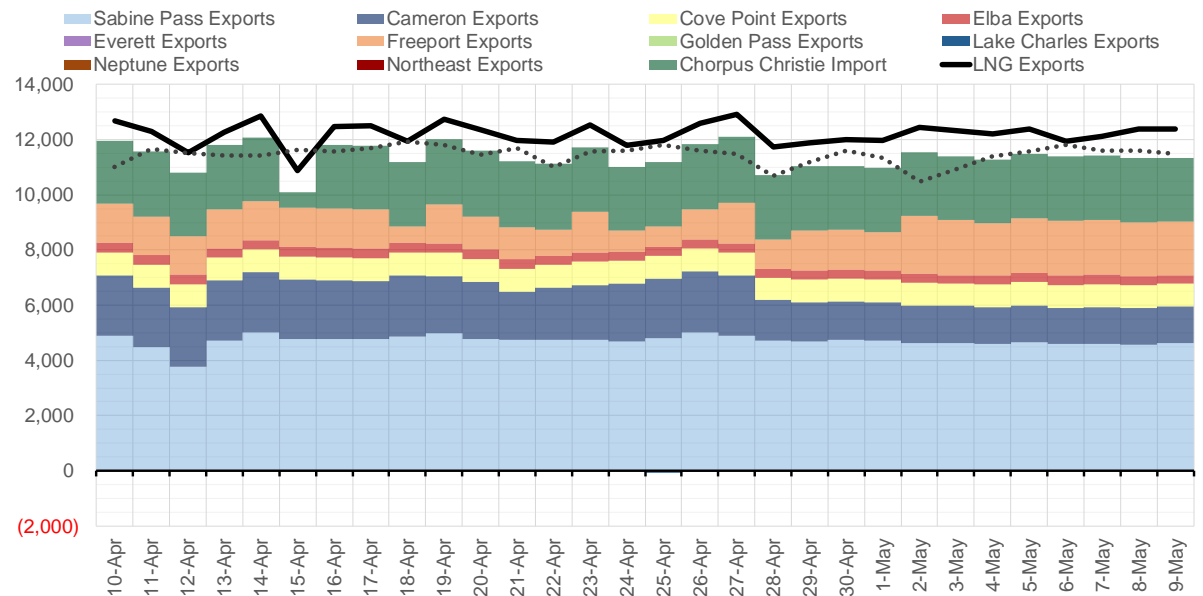


Source: Bloomberg

Mexican Exports (MMcf/d)



Net LNG Exports - Last 30 days (MMcf/d)



Source: Bloomberg

The risk of trading futures and options and other derivatives involves a substantial risk of loss and is not suitable for all persons. Each person must consider whether a particular trade, combination of trades, or strategy is suitable for that person's financial means and objectives. Past results are not necessarily indicative of future results. This communication may contain links to third party websites which are not under the control of and are not maintained by ION Energy Group, and ION Energy Group is not responsible for their content.

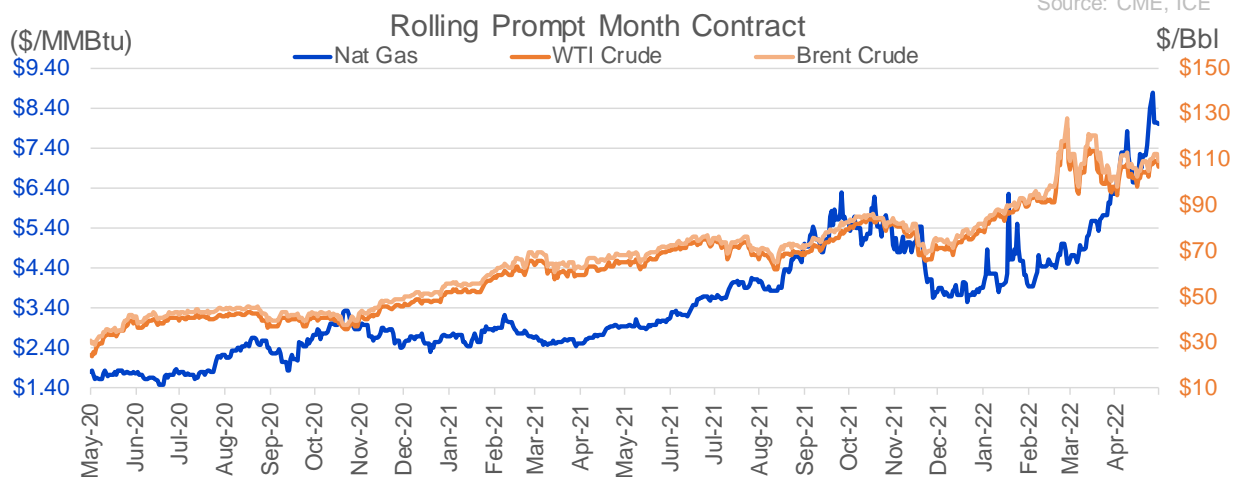
Nat Gas Options Volume and Open Interest CME and ICE Combined

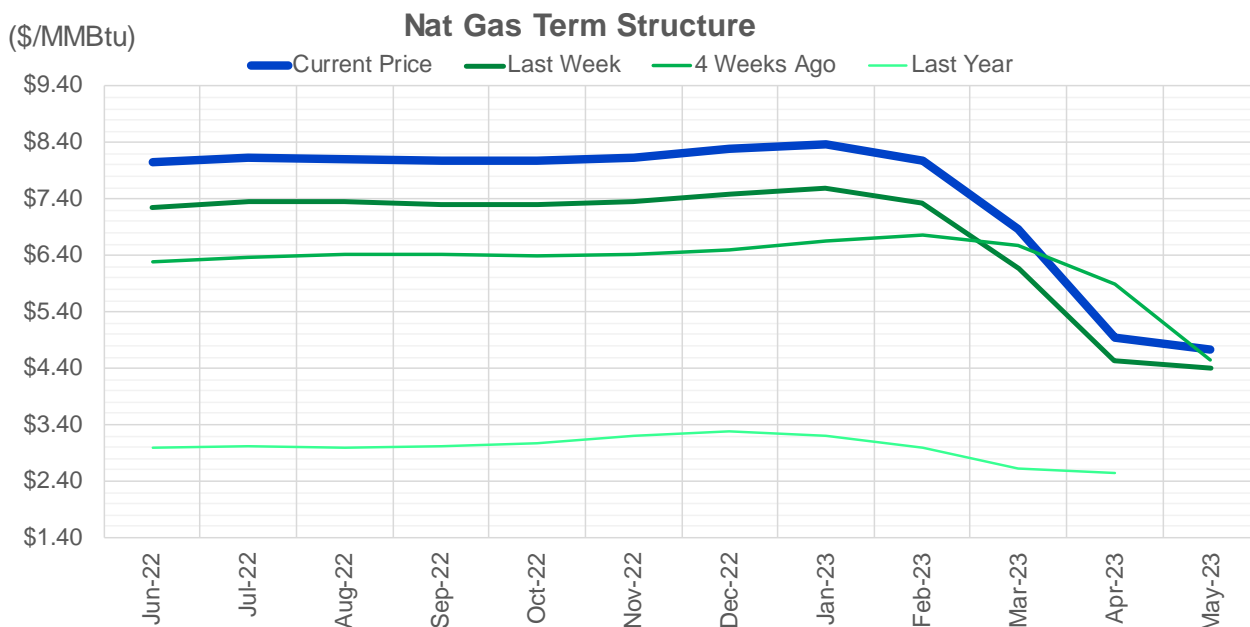
CONTRACT MONTH	CONTRACT YEAR	PUT/CALL	STRIKE	CUMULATIVE VOL	CONTRACT MONTH	CONTRACT YEAR	PUT/CALL	STRIKE	CUMULATIVE OI
6	2022	C	10.00	4337	8	2022	C	10.00	53163
6	2022	P	8.00	3916	8	2022	C	10.50	44125
7	2022	C	10.00	3089	10	2022	C	6.00	34882
6	2022	P	5.00	2903	10	2022	C	5.00	25524
6	2022	P	6.00	2805	6	2022	C	6.00	25146
6	2022	P	4.75	2300	9	2022	C	6.00	23730
7	2022	C	9.00	2285	6	2022	C	10.00	22380
6	2022	C	9.50	1908	10	2022	P	3.00	20977
6	2022	P	7.50	1817	6	2022	P	4.00	20397
7	2022	P	8.00	1718	10	2022	P	3.50	20204
6	2022	P	6.50	1637	8	2022	C	6.00	19667
6	2022	C	9.00	1578	7	2022	C	8.00	19419
7	2022	C	8.50	1547	10	2022	P	2.50	19254
6	2022	C	12.00	1408	6	2022	C	7.00	19237
3	2023	P	6.00	1400	6	2022	P	6.00	19034
6	2022	P	7.00	1392	7	2022	C	6.00	19029
10	2022	C	10.00	1353	12	2022	C	5.00	18221
7	2022	P	6.00	1351	8	2022	C	7.00	18114
7	2022	C	12.50	1308	6	2022	P	4.75	17971
4	2023	C	5.00	1200	6	2022	C	5.00	17852
5	2023	C	5.00	1200	9	2022	C	7.00	17849
6	2023	C	5.00	1200	7	2022	C	7.00	17772
7	2023	C	5.00	1200	6	2022	P	5.50	17709
8	2023	C	5.00	1200	7	2022	P	3.25	17645
9	2023	C	5.00	1200	9	2022	C	10.00	17590
10	2023	C	5.00	1200	10	2022	P	6.00	17374
7	2022	P	6.50	1196	10	2022	P	2.00	17263
7	2022	P	5.50	1176	6	2022	P	3.00	17223
9	2022	P	5.00	1108	6	2022	P	7.00	16579
7	2022	C	12.00	1070	10	2022	P	4.00	16409
7	2022	P	5.00	1061	6	2022	C	9.00	16282
6	2022	P	7.25	1024	7	2022	C	10.00	16278
7	2022	P	7.00	1019	1	2023	C	10.00	16163
9	2022	P	4.50	1000	6	2022	P	3.50	15957
1	2025	C	5.00	1000	2	2023	C	10.00	15644
1	2025	C	6.00	1000	5	2023	P	2.00	15436
2	2025	C	5.00	1000	11	2022	P	4.00	15371
2	2025	C	6.00	1000	9	2022	P	2.50	15291
3	2025	C	5.00	1000	6	2022	P	5.00	15204
3	2025	C	6.00	1000	7	2022	C	9.00	14982
4	2025	C	5.00	1000	9	2022	P	2.75	14933
4	2025	C	6.00	1000	7	2022	P	3.50	14931
5	2025	C	5.00	1000	7	2022	P	3.00	14550
5	2025	C	6.00	1000	8	2022	P	3.00	14503
6	2025	C	5.00	1000	9	2022	P	3.00	14391
6	2025	C	6.00	1000	6	2022	P	3.75	14266
7	2025	C	5.00	1000	10	2022	P	3.25	14249
7	2025	C	6.00	1000	7	2022	P	5.00	14101
7	2025	C	6.00	1000	3	2023	C	10.00	14041
8	2025	C	5.00	1000	12	2022	C	6	13951

Source: CME, ICE

Nat Gas Futures Open Interest CME and ICE Combined

CME Henry Hub Futures (10,000 MMBtu)				ICE Henry Hub Futures Contract Equivalent (10,000 MM			
	Current	Prior	Daily Change		Current	Prior	Daily Change
JUN 22	106321	118206	-11885	JUN 22	84910	82988	1922
JUL 22	171253	173911	-2658	JUL 22	73779	74023	-244
AUG 22	57727	59092	-1365	AUG 22	59155	59449	-294
SEP 22	83825	85161	-1336	SEP 22	65725	66033	-308
OCT 22	95881	97685	-1804	OCT 22	77110	76893	218
NOV 22	46988	46354	634	NOV 22	58997	58878	118
DEC 22	48388	47535	853	DEC 22	62434	62772	-338
JAN 23	63598	64480	-882	JAN 23	65515	65814	-299
FEB 23	26638	26749	-111	FEB 23	56744	56459	285
MAR 23	40017	39889	128	MAR 23	55676	55312	364
APR 23	57943	57584	359	APR 23	53432	53552	-120
MAY 23	61312	61462	-150	MAY 23	52096	51794	302
JUN 23	24201	23335	866	JUN 23	44606	44546	60
JUL 23	20429	20251	178	JUL 23	43816	43927	-110
AUG 23	13301	13477	-176	AUG 23	43691	43686	6
SEP 23	18223	18305	-82	SEP 23	43127	43121	6
OCT 23	33041	33000	41	OCT 23	49653	49748	-95
NOV 23	12847	12738	109	NOV 23	43553	43536	17
DEC 23	13479	13398	81	DEC 23	39801	39784	17
JAN 24	20197	20141	56	JAN 24	38079	38019	61
FEB 24	5929	5888	41	FEB 24	25968	26011	-44
MAR 24	14636	14725	-89	MAR 24	30512	30440	72
APR 24	11231	11161	70	APR 24	26025	26028	-4
MAY 24	6393	6360	33	MAY 24	25548	25540	8
JUN 24	1861	1864	-3	JUN 24	22011	22026	-15
JUL 24	1928	1933	-5	JUL 24	22090	22106	-16
AUG 24	3116	3117	-1	AUG 24	22203	22218	-16
SEP 24	1398	1403	-5	SEP 24	21589	21604	-15
OCT 24	6682	6671	11	OCT 24	23995	23936	60
NOV 24	4843	4828	15	NOV 24	22358	22361	-3





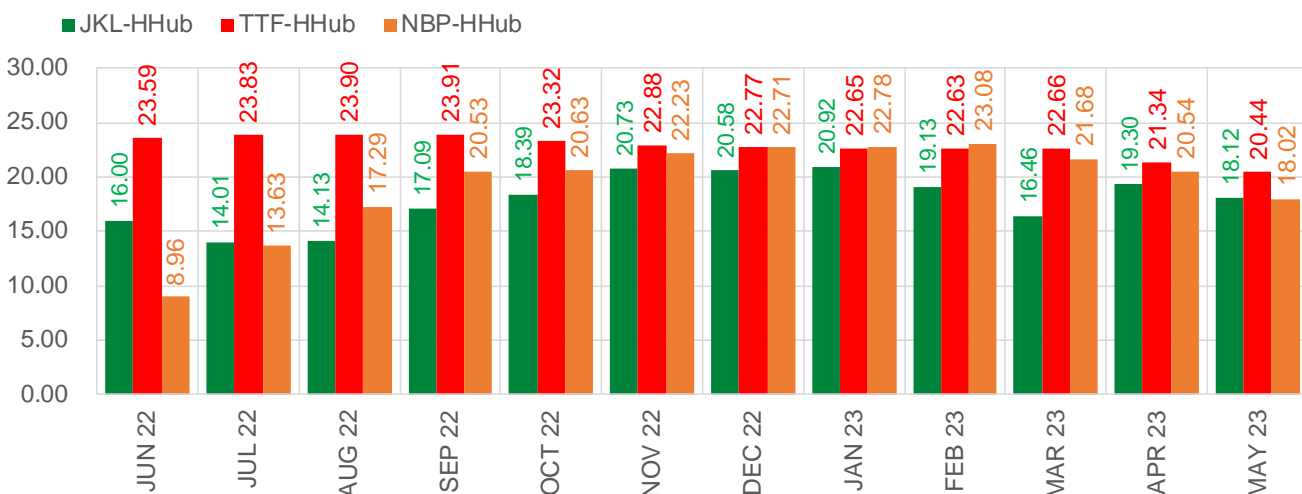
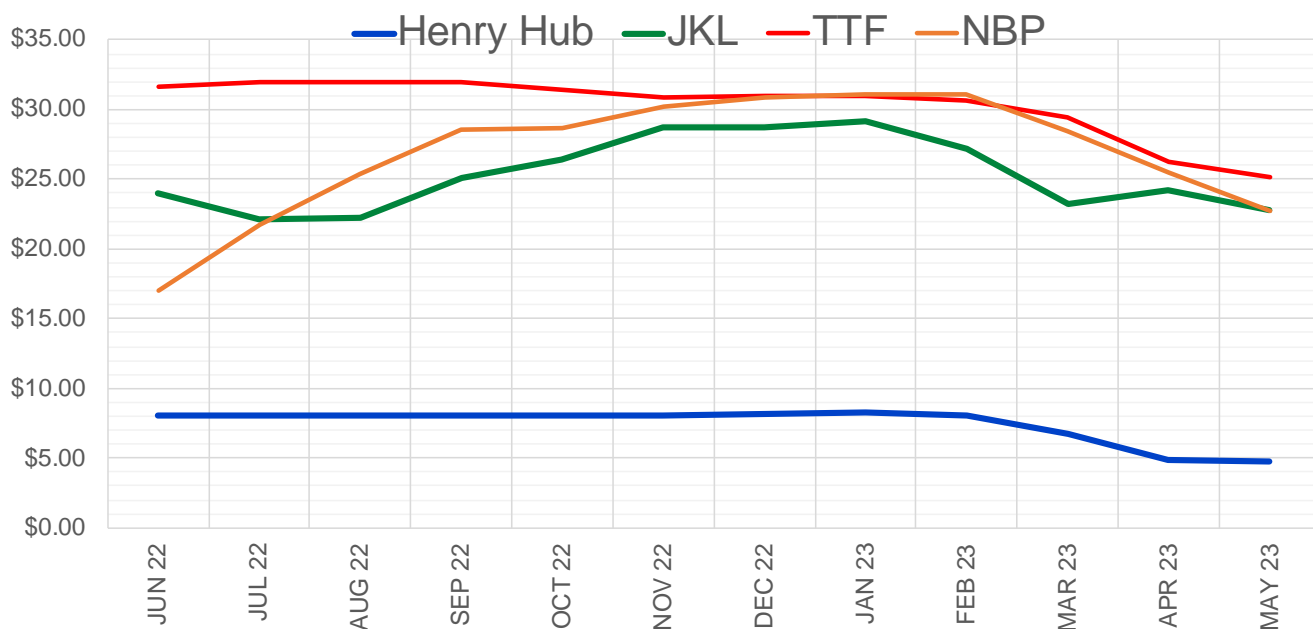
	Jun-22	Jul-22	Aug-22	Sep-22	Oct-22	Nov-22	Dec-22	Jan-23	Feb-23	Mar-23	Apr-23	May-23
Current Price	\$8.043	\$8.128	\$8.110	\$8.068	\$8.069	\$8.142	\$8.278	\$8.380	\$8.083	\$6.862	\$4.937	\$4.742
Last Week	\$7.244	\$7.355	\$7.354	\$7.299	\$7.299	\$7.358	\$7.493	\$7.600	\$7.320	\$6.166	\$4.538	\$4.393
vs. Last Week	\$0.799	\$0.773	\$0.756	\$0.769	\$0.770	\$0.784	\$0.785	\$0.780	\$0.763	\$0.696	\$0.399	\$0.349
4 Weeks Ago	\$6.278	\$6.356	\$6.420	\$6.423	\$6.402	\$6.418	\$6.487	\$6.651	\$6.751	\$6.566	\$5.896	\$4.557
vs. 4 Weeks Ago	\$1.765	\$1.772	\$1.690	\$1.645	\$1.667	\$1.724	\$1.791	\$1.729	\$1.332	\$0.296	-\$0.959	\$0.185
Last Year	\$2.958	\$3.004	\$3.011	\$2.997	\$3.015	\$3.074	\$3.195	\$3.277	\$3.204	\$3.004	\$2.611	\$2.557
vs. Last Year	\$5.085	\$5.124	\$5.099	\$5.071	\$5.054	\$5.068	\$5.083	\$5.103	\$4.879	\$3.858	\$2.326	\$2.185

	Units	Cash Settled	Prompt Settle	Cash to Prompt
AGT Citygate	\$/MMBtu	8.15	6.74	-1.41
TETCO M3	\$/MMBtu	7.71	6.53	-1.19
FGT Zone 3	\$/MMBtu	7.53	7.28	-0.25
Zone 6 NY	\$/MMBtu	7.53	6.43	-1.10
Chicago Citygate	\$/MMBtu	8.07	6.99	-1.08
Michcon	\$/MMBtu	8.12	6.97	-1.15
Columbia TCO Pool	\$/MMBtu	7.70	6.53	-1.17
Ventura	\$/MMBtu	8.03	6.90	-1.13
Rockies/Opal	\$/MMBtu	7.96	6.68	-1.29
El Paso Permian Basin	\$/MMBtu	7.70	6.45	-1.25
Socal Citygate	\$/MMBtu	8.14	7.19	-0.95
Malin	\$/MMBtu	8.10	6.88	-1.22
Houston Ship Channel	\$/MMBtu	8.22	7.09	-1.13
Henry Hub Cash	\$/MMBtu	8.41	6.90	-1.51
AECO Cash	C\$/GJ	6.77	5.25	-1.53
Station2 Cash	C\$/GJ	6.74	6.53	-0.21
Dawn Cash	C\$/GJ	8.19	6.96	-1.23

Source: CME, Bloomberg

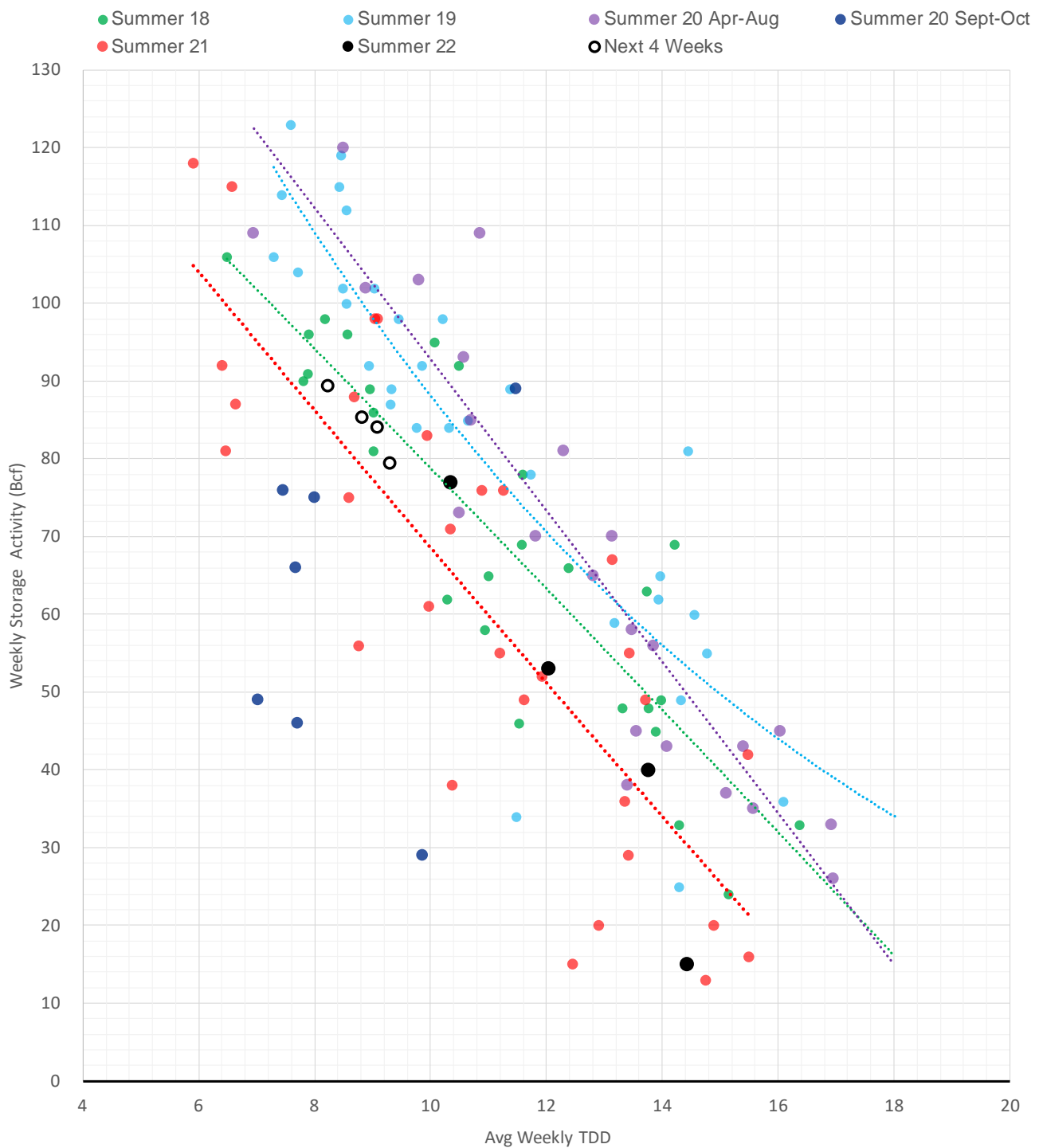
	Units	Current Price	vs. Last Week	vs. 4 Weeks Ago	vs. Last Year
NatGas Jul21/Oct21	\$/MMBtu	2.224	▲ 0.000	▲ 0.000	▲ 2.213
NatGas Oct21/Nov21	\$/MMBtu	0.361	▲ 0.000	▲ 0.000	▲ 0.302
NatGas Oct21/Jan22	\$/MMBtu	-1.817	▲ 0.000	▲ 0.000	▼ -2.079
NatGas Apr22/Oct22	\$/MMBtu	2.733	▲ 0.770	▲ 1.651	▲ 2.713
WTI Crude	\$/Bbl	109.77	▲ 5.080	▲ 11.510	▲ 44.870
Brent Crude	\$/Bbl	112.39	▲ 3.050	▲ 9.610	▲ 44.110
Fuel Oil, NY Harbour 1%	\$/Bbl	97.18	▲ 0.000	▲ 0.000	▲ 0.000
Heating Oil	cents/Gallon	395.43	▼ -82.740	▲ 63.670	▲ 194.370
Propane, Mt. Bel	cents/Gallon	1.27	▼ -0.034	▼ -0.022	▲ 0.474
Ethane, Mt. Bel	cents/Gallon	0.60	▲ 0.091	▲ 0.114	▲ 0.344
Coal, PRB	\$/MTon	12.30	▲ 0.000	▲ 0.000	▲ 0.000
Coal, PRB	\$/MMBtu	0.70			
Coal, ILB	\$/MTon	31.05	▲ 0.000	▲ 0.000	▲ 0.000
Coal, ILB	\$/MMBtu	1.32			

Nat Gas Term Structure (\$MMBTU)



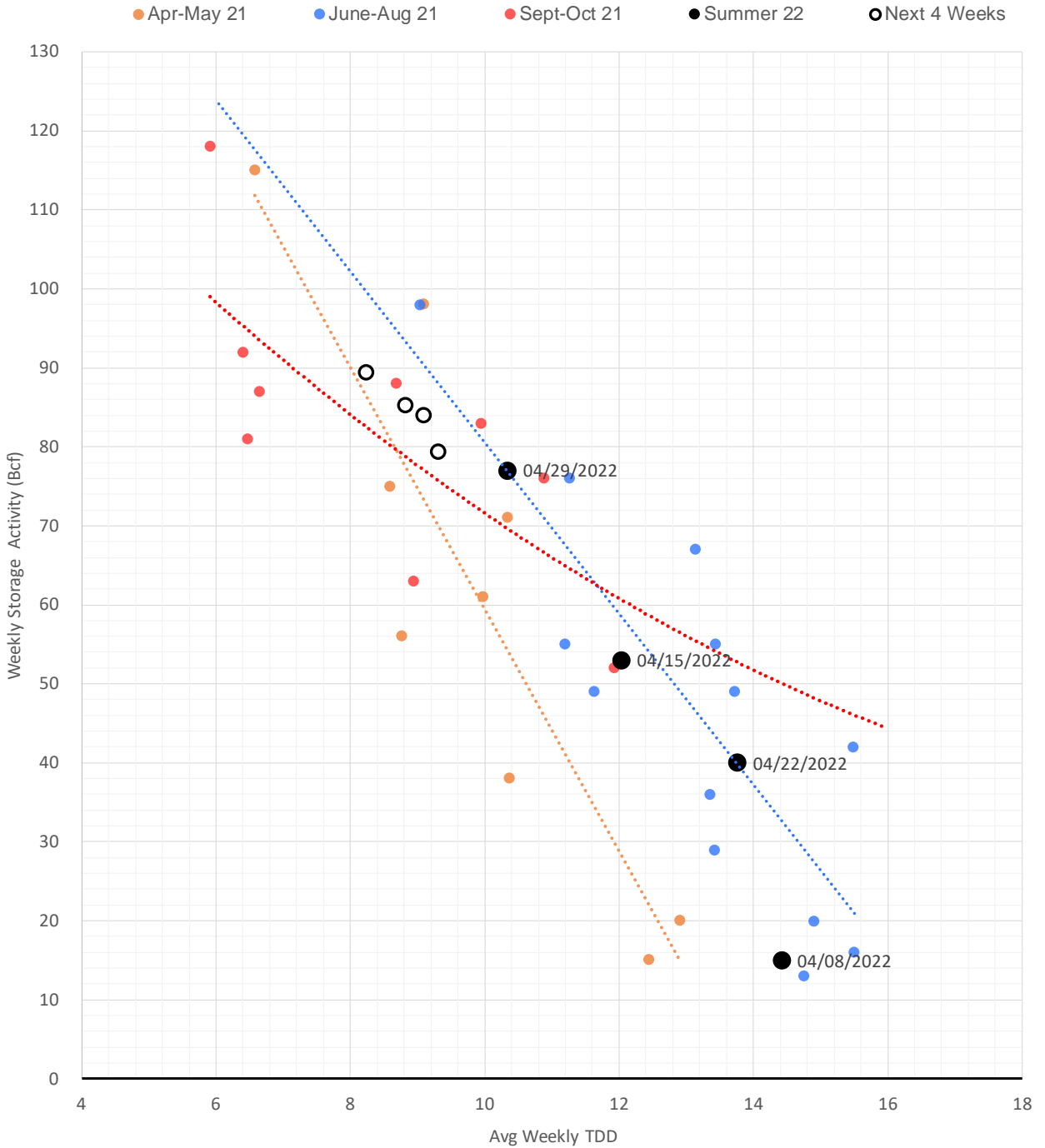
	JUN 22	JUL 22	AUG 22	SEP 22	OCT 22	NOV 22	DEC 22	JAN 23	FEB 23	MAR 23	APR 23	MAY 23
Henry Hub	\$8.028	\$8.083	\$8.063	\$8.052	\$8.065	\$8.030	\$8.178	\$8.280	\$8.002	\$6.783	\$4.910	\$4.720
JKL	\$24.030	\$22.095	\$22.195	\$25.140	\$26.455	\$28.760	\$28.755	\$29.200	\$27.135	\$23.240	\$24.210	\$22.840
JKL-HHub	\$16.002	\$14.012	\$14.132	\$17.088	\$18.390	\$20.730	\$20.577	\$20.920	\$19.133	\$16.457	\$19.300	\$18.120
TTF	\$31.617	\$31.916	\$31.963	\$31.961	\$31.382	\$30.908	\$30.947	\$30.926	\$30.627	\$29.444	\$26.248	\$25.156
TTF-HHub	\$23.589	\$23.833	\$23.900	\$23.909	\$23.317	\$22.878	\$22.769	\$22.646	\$22.625	\$22.661	\$21.338	\$20.436
NBP	\$16.985	\$21.709	\$25.354	\$28.581	\$28.694	\$30.261	\$30.888	\$31.063	\$31.084	\$28.464	\$25.453	\$22.736
NBP-HHub	\$8.957	\$13.626	\$17.291	\$20.529	\$20.629	\$22.231	\$22.710	\$22.783	\$23.082	\$21.681	\$20.543	\$18.016

Weather Storage Model - Next 4 Week Forecast

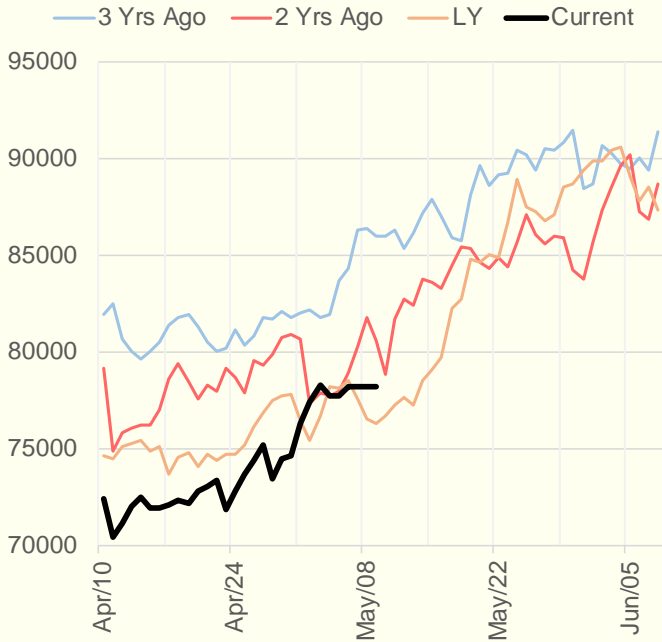


The risk of trading futures and options and other derivatives involves a substantial risk of loss and is not suitable for all persons. Each person must consider whether a particular trade, combination of trades, or strategy is suitable for that person's financial means and objectives. Past results are not necessarily indicative of future results. This communication may contain links to third party websites which are not under the control of and are not maintained by ION Energy Group, and ION Energy Group is not responsible for their content.

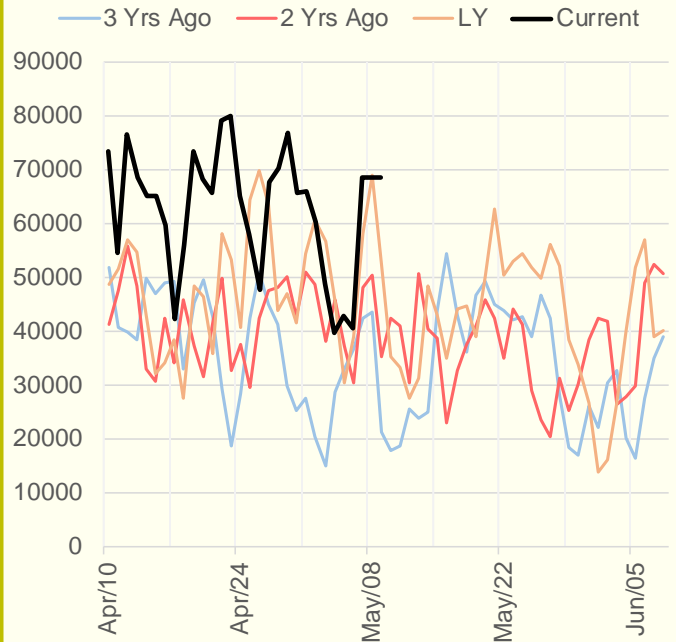
Weather Storage Model for Summer 2021 & 2022



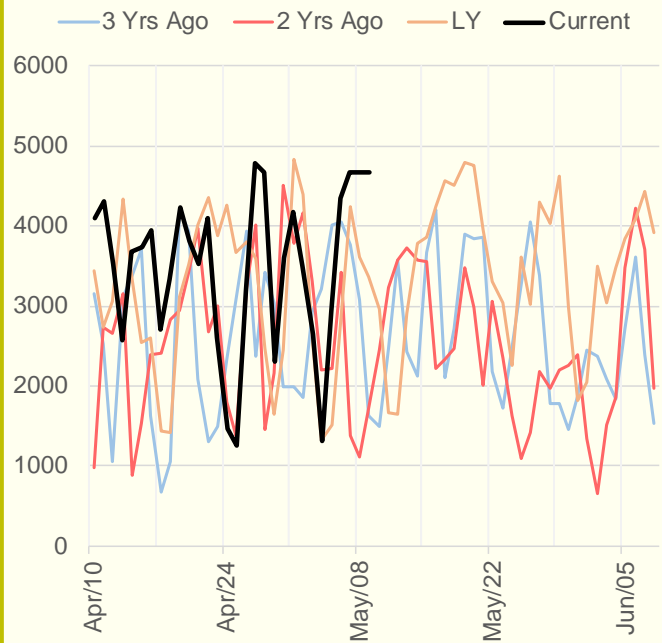
NRC Nuclear Daily Output



US Wind



CALI Wind



TEXAS Wind

