

	Current	Δ from YD	Δ from 7D Avg
Nat Gas Prompt	\$ 8.76	▼ \$ (0.02)	▲ \$ 0.99

	Current	Δ from YD	Δ from 7D Avg
WTI Prompt	\$ 109.96	▲ \$ 1.70	▲ \$ 4.6

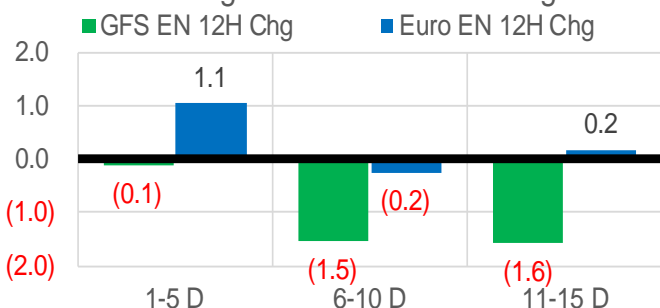
	Current	Δ from YD	Δ from 7D Avg
Brent Prompt	\$ 112.80	▲ \$ 1.90	▲ \$ 4.0

### Page Menu

- [Short-term Weather Model Outlooks](#)
- [Lower 48 Component Models](#)
- [Regional S/D Models Storage Projection](#)
- [Weather Model Storage Projection](#)
- [Supply – Demand Trends](#)
- [Nat Gas Options Volume and Open Interest](#)
- [Nat Gas Futures Open Interest](#)
- [Price Summary](#)

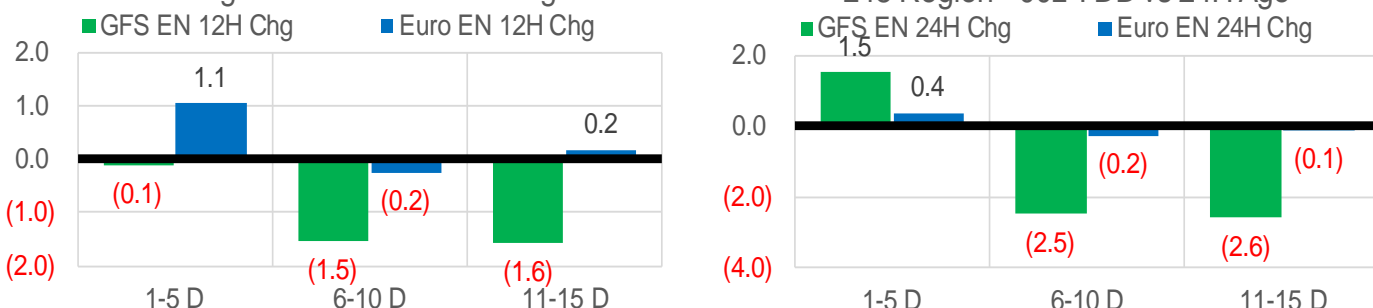
### Vs. 12H Ago

L48 Region - 00z TDD vs 12H Ago



### Vs. 24H Ago

L48 Region - 00z TDD vs 24H Ago



	Current	Δ from YD	Δ from 7D Avg
US Dry Production	95.9	▲ 0.08	▲ 0.08

	Current	Δ from YD	Δ from 7D Avg
US Power Burns	28.6	▼ -0.63	▲ 2.16

	Current	Δ from YD	Δ from 7D Avg
US ResComm	14.5	▼ -0.70	▼ -2.11

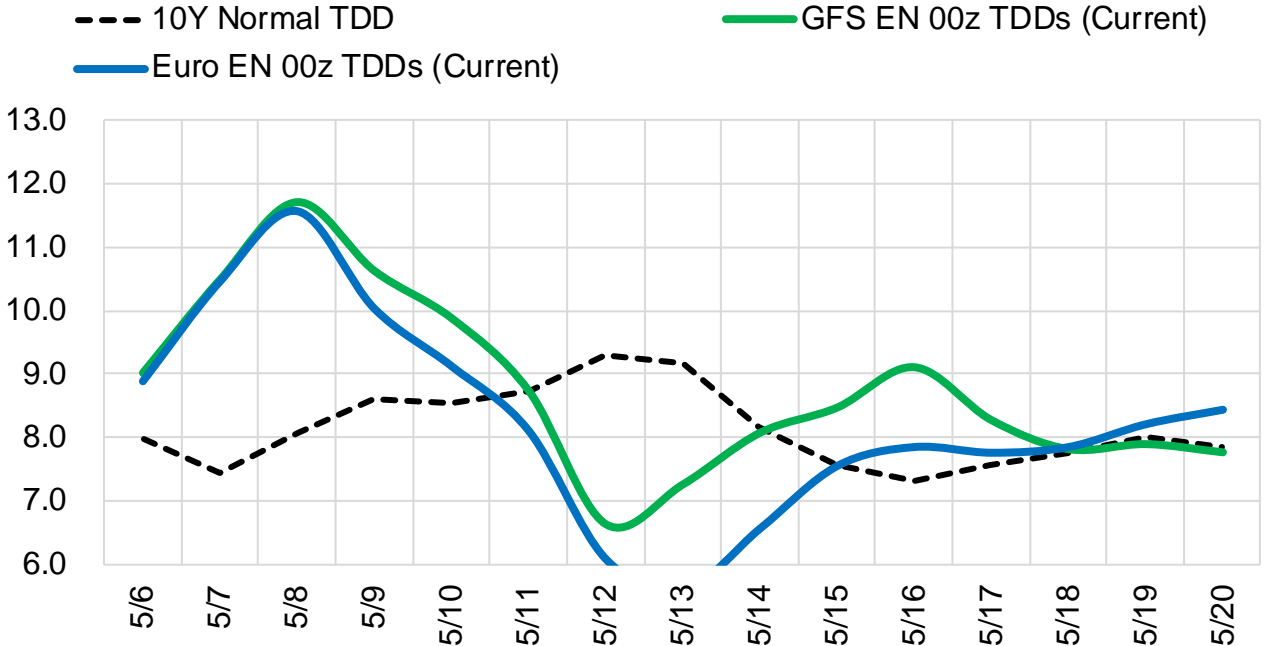
	Current	Δ from YD	Δ from 7D Avg
Canadian Imports	5.7	▼ -0.54	▼ -0.27

	Current	Δ from YD	Δ from 7D Avg
Net LNG Exports	12.3	▼ -0.02	▲ 0.18

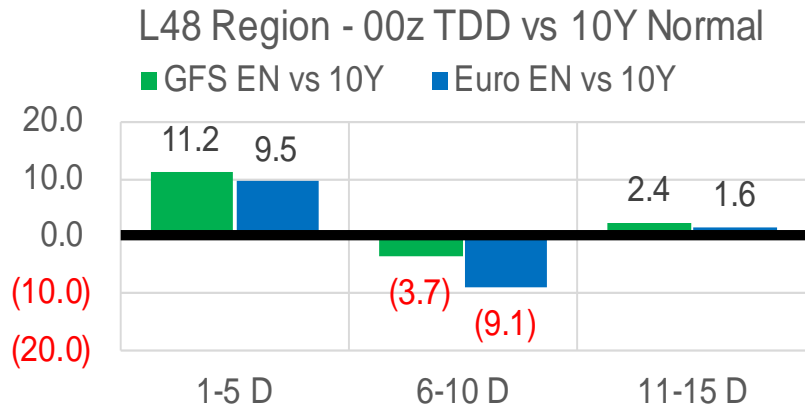
	Current	Δ from YD	Δ from 7D Avg
Mexican Exports	6.7	▼ -0.40	▼ -0.15

### Short-term Weather Model Outlooks (00z)

#### L48 Region



### Vs. 10Y Normal



Source: WSI, Bloomberg

### Lower 48 Component Models

#### Daily Balances

	30-Apr	1-May	2-May	3-May	4-May	5-May	6-May	DoD	vs. 7D
<b>Lower 48 Dry Production</b>	<b>96.0</b>	<b>95.4</b>	<b>96.3</b>	<b>95.5</b>	<b>95.5</b>	<b>95.9</b>	<b>95.9</b>	▲ 0.1	▲ 0.2
<b>Canadian Imports</b>	<b>6.0</b>	<b>5.4</b>	<b>5.6</b>	<b>6.3</b>	<b>6.5</b>	<b>6.2</b>	<b>5.7</b>	▼ -0.5	▼ -0.3
L48 Power	22.6	23.2	27.6	28.8	29.9	29.2	28.6	▼ -0.6	▲ 1.7
L48 Residential & Commercial	16.0	15.5	16.9	17.0	17.0	15.2	14.5	▼ -0.7	▼ -1.8
L48 Industrial	21.4	21.4	21.6	21.5	21.6	21.6	21.4	▼ -0.2	▼ -0.1
L48 Lease and Plant Fuel	5.2	5.2	5.2	5.2	5.2	5.2	5.2	▼ 0.0	▼ 0.0
L48 Pipeline Distribution	2.1	2.2	2.5	2.6	2.7	2.5	2.4	▼ -0.1	▲ 0.0
<b>L48 Regional Gas Consumption</b>	<b>67.3</b>	<b>67.4</b>	<b>73.8</b>	<b>75.0</b>	<b>76.3</b>	<b>73.7</b>	<b>72.1</b>	▼ -1.6	▼ -0.1
<b>Net LNG Delivered</b>	<b>12.00</b>	<b>11.96</b>	<b>12.44</b>	<b>12.28</b>	<b>12.17</b>	<b>12.36</b>	<b>12.34</b>	▼ 0.0	▲ 0.1
<b>Total Mexican Exports</b>	<b>6.9</b>	<b>6.5</b>	<b>6.8</b>	<b>6.9</b>	<b>7.2</b>	<b>7.1</b>	<b>6.7</b>	▼ -0.4	▼ -0.2
<b>Implied Daily Storage Activity</b>	<b>15.8</b>	<b>15.0</b>	<b>8.8</b>	<b>7.6</b>	<b>6.4</b>	<b>8.9</b>	<b>10.4</b>		
<b>EIA Reported Daily Storage Activity</b>									
<b>Daily Model Error</b>									

#### EIA Storage Week Balances

	1-Apr	8-Apr	15-Apr	22-Apr	29-Apr	6-May	WoW	vs. 4W
<b>Lower 48 Dry Production</b>	<b>96.0</b>	<b>95.8</b>	<b>96.4</b>	<b>96.7</b>	<b>95.8</b>	<b>95.9</b>	▲ 0.0	▼ -0.3
<b>Canadian Imports</b>	<b>5.7</b>	<b>5.8</b>	<b>5.6</b>	<b>5.8</b>	<b>6.1</b>	<b>6.0</b>	▼ -0.2	▲ 0.1
L48 Power	25.5	25.0	24.6	25.1	25.0	26.5	▲ 1.5	▲ 1.6
L48 Residential & Commercial	30.8	25.2	22.4	24.1	18.5	16.6	▼ -1.9	▼ -6.0
L48 Industrial	22.9	22.5	21.7	21.9	21.9	21.5	▼ -0.4	▼ -0.5
L48 Lease and Plant Fuel	5.2	5.2	5.3	5.3	5.2	5.2	▼ 0.0	▼ 0.0
L48 Pipeline Distribution	2.9	2.8	2.6	2.7	2.4	2.4	▲ 0.0	▼ -0.2
<b>L48 Regional Gas Consumption</b>	<b>87.3</b>	<b>80.7</b>	<b>76.5</b>	<b>79.1</b>	<b>73.1</b>	<b>72.2</b>	▼ -0.9	▼ -5.1
<b>Net LNG Exports</b>	<b>13.1</b>	<b>12.4</b>	<b>12.5</b>	<b>12.1</b>	<b>12.2</b>	<b>12.2</b>	▼ -0.1	▼ -0.2
<b>Total Mexican Exports</b>	<b>6.4</b>	<b>6.8</b>	<b>6.6</b>	<b>6.7</b>	<b>6.9</b>	<b>6.9</b>	▼ 0.0	▲ 0.2
<b>Implied Daily Storage Activity</b>	<b>-5.1</b>	<b>1.7</b>	<b>6.5</b>	<b>4.7</b>	<b>9.8</b>	<b>10.6</b>	<b>0.8</b>	
<b>EIA Reported Daily Storage Activity</b>	<b>-4.7</b>	<b>2.1</b>	<b>7.6</b>	<b>5.7</b>	<b>11.0</b>			
<b>Daily Model Error</b>	<b>-0.4</b>	<b>-0.4</b>	<b>-1.1</b>	<b>-1.0</b>	<b>-1.2</b>			

#### Monthly Balances

	2Yr Ago May-20	LY May-21	Jan-22	Feb-22	Mar-22	Apr-22	MTD May-22	MoM	vs. LY
<b>Lower 48 Dry Production</b>	<b>87.0</b>	<b>93.0</b>	<b>93.4</b>	<b>92.7</b>	<b>95.0</b>	<b>96.2</b>	<b>95.7</b>	▼ -0.5	▲ 2.8
<b>Canadian Imports</b>	<b>3.9</b>	<b>4.5</b>	<b>6.7</b>	<b>6.6</b>	<b>5.2</b>	<b>5.8</b>	<b>6.0</b>	▲ 0.2	▲ 1.5
L48 Power	26.9	26.5	31.5	28.9	25.6	24.8	27.7	▲ 2.9	▲ 1.2
L48 Residential & Commercial	12.8	12.8	49.1	44.4	30.7	22.2	16.3	▼ -5.9	▲ 3.5
L48 Industrial	19.4	20.9	24.7	22.5	21.8	22.0	21.5	▼ -0.4	▲ 0.6
L48 Lease and Plant Fuel	4.7	5.0	5.1	5.1	5.2	5.3	5.2	▼ -0.1	▲ 0.1
L48 Pipeline Distribution	2.2	2.2	3.8	3.6	2.9	2.6	2.5	▼ -0.1	▲ 0.3
<b>L48 Regional Gas Consumption</b>	<b>65.9</b>	<b>67.5</b>	<b>114.3</b>	<b>104.4</b>	<b>86.2</b>	<b>76.8</b>	<b>73.2</b>	▼ -3.6	▲ 5.8
<b>Net LNG Exports</b>	<b>6.7</b>	<b>10.8</b>	<b>12.4</b>	<b>12.4</b>	<b>12.9</b>	<b>12.3</b>	<b>12.2</b>	▼ 0.0	▲ 1.4
<b>Total Mexican Exports</b>	<b>4.8</b>	<b>6.8</b>	<b>6.3</b>	<b>6.2</b>	<b>6.5</b>	<b>6.7</b>	<b>6.9</b>	▲ 0.2	▲ 0.1
<b>Implied Daily Storage Activity</b>	<b>13.6</b>	<b>12.4</b>	<b>-32.9</b>	<b>-23.7</b>	<b>-5.4</b>	<b>6.2</b>	<b>9.3</b>		
<b>EIA Reported Daily Storage Activity</b>									
<b>Daily Model Error</b>									

Source: Bloomberg, analytix.ai

## Daily Average Generation Data

### Nuclear Generation Daily Average - GWh (NRC)

	28-Apr	29-Apr	30-Apr	1-May	2-May	3-May	4-May	DoD	vs. 7D
NRC Nuclear Daily Output	73.4	74.5	74.6	76.3	77.4	78.3	77.7	-0.5	2.0
NRC Nuclear Max Capacity	104.9	104.9	104.9	104.9	104.9	104.9	104.9	0.0	0.0
NRC Nuclear Outage	31.5	30.4	30.3	28.6	27.5	26.6	27.1	0.5	-2.0
NRC % Nuclear Cap Utilization	74.6	75.8	75.9	77.6	78.7	79.6	79.0	-0.5	2.0

### Wind Generation Daily Average - MWh (EIA)

	28-Apr	29-Apr	30-Apr	1-May	2-May	3-May	4-May	DoD	vs. 7D
CALI Wind	4682	2301	3607	4170	3505	2655	1322	-1333	-2165
TEXAS Wind	21087	21568	13192	18569	20925	12638	16925	4287	-1071
US Wind	70064	76301	64883	65393	60290	49012	39659	-9353	-24664

### Generation Daily Average - MWh (EIA)

	28-Apr	29-Apr	30-Apr	1-May	2-May	3-May	4-May	DoD	vs. 7D
US Wind	70064	76301	64883	65393	60290	49012	39659	-9353	-24664
US Solar	17074	16778	16334	14496	16830	15963	16538	575	293
US Petroleum	1036	1026	834	795	985	985	901	-84	-42
US Other	7118	7016	6856	6790	7648	7368	7681	313	548
US Coal	75742	69576	68843	69667	76852	81028	86986	5959	13368
US Nuke	78176	78702	79037	80302	81648	80999	81408	409	1597
US Hydro	27426	25305	23684	23848	27632	25765	29355	3589	3744
<b>US Gas</b>	<b>131110</b>	<b>129018</b>	<b>122825</b>	<b>118606</b>	<b>150297</b>	<b>160889</b>	<b>166497</b>	<b>5608</b>	<b>31040</b>

See National Wind and Nuclear daily charts

Source: Bloomberg, analytix.ai

## Storage Week Average Generation Data

### Nuclear Generation Weekly Average - GWh (NRC)

	1-Apr	8-Apr	15-Apr	22-Apr	29-Apr	6-May	WoW	WoW Bcf/d Impact
NRC Nuclear Daily Output	79.3	75.0	71.9	72.3	73.5	76.7	3.1	-0.6
NRC Nuclear Max Capacity	104.9	104.9	104.9	104.9	104.9	104.9	0.0	
NRC Nuclear Outage	25.5	29.9	32.9	32.6	31.4	28.2	-3.1	
NRC % Nuclear Cap Utilization	80.7	76.3	73.2	73.5	74.8	78.0	3.2	

### Wind Generation Weekly Average - MWh (EIA)

	1-Apr	8-Apr	15-Apr	22-Apr	29-Apr	6-May	WoW	WoW Bcf/d Impact
CALI Wind	2643	2611	3434	3613	3153	2697	-456	0.1
TEXAS Wind	14530	14468	16530	15612	18327	17249	-1079	0.2
US Wind	61679	59878	66240	61556	66964	56457	-10507	1.9
							-16%	

### Generation Weekly Average - MWh (EIA)

	1-Apr	8-Apr	15-Apr	22-Apr	29-Apr	6-May	WoW	WoW Bcf/d Impact
						est.		
US Wind	61679	59878	66240	61556	66964	56457	-10507	1.9
US Solar	15451	15518	16118	15897	16827	16211	-616	0.1
US Petroleum	1048	1015	964	984	992	918	-74	0.0
US Other	7481	7183	7154	7544	7682	7291	-390	0.1
US Coal	77743	77514	77087	79632	77126	77134	8	0.0
US Nuke	83506	78807	75674	76478	77438	80500	3063	-0.6
US Hydro	33463	32524	29415	28355	26595	26421	-175	0.0
<b>US Gas</b>	<b>136004</b>	<b>134633</b>	<b>134338</b>	<b>133367</b>	<b>131356</b>	<b>144947</b>	<b>13591</b>	<b>2.4</b>

See National Wind and Nuclear daily charts

Source: Bloomberg, analytix.ai

## Monthly Average Generation Data

### Nuclear Generation Monthly Average - GWh (NRC)

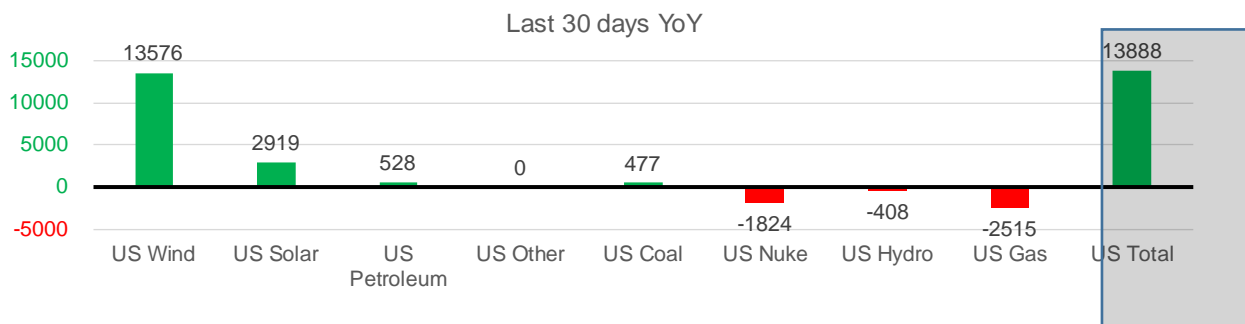
	2Yr Ago	LY	MTD				Last 30 days	Last 30 days YoY
	Same 30 days	Same 30 days	Feb-22	Mar-22	Apr-22	May-22		
NRC Nuclear Daily Output	78.3	75.9	87.3	81.3	73.3	77.5	73.8	-2.2
NRC Nuclear Max Capacity	104.9	104.9	104.9	104.9	104.9	104.9	104.9	0.0
NRC Nuclear Outage	26.6	28.9	17.5	23.6	31.6	27.3	31.1	2.2
NRC % Nuclear Cap Utilization	79.6	77.2	88.8	82.7	74.5	78.9	75.0	-2.2

### Wind Generation Monthly Average - MWh (EIA)

	2Yr Ago	LY	MTD				Last 30 days	Last 30 days YoY
	Same 30 days	Same 30 days	Feb-22	Mar-22	Apr-22	May-22		
CALI Wind	2521	3128	1495	2250	3186	2383	3086	-42
TEXAS Wind	10601	11261	11750	14837	16311	17151	16835	5573
US Wind	41234	48661	54541	58515	64122	48946	62238	13576

### Generation Monthly Average - MWh (EIA)

	2Yr Ago	LY	MTD				Last 30 days	Last 30 days YoY
	Same 30 days	Same 30 days	Feb-22	Mar-22	Apr-22	May-22		
US Wind	41234	48661	54541	58515	64122	48946	62238	▲ 13576
US Solar	10213	13366	12442	14054	16121	16151	16285	▲ 2919
US Petroleum	527	437	1328	981	985	912	965	▲ 528
US Other	7849	7412	8629	7187	7361	7475	7412	▲ 0
US Coal	56687	77441	105630	82291	77265	81417	77919	▲ 477
US Nuke	82415	79467	92013	85157	77217	81195	77643	▼ -1824
US Hydro	32536	28388	32280	33927	28907	27552	27979	▼ -408
<b>US Gas</b>	<b>138612</b>	<b>139627</b>	<b>153708</b>	<b>137092</b>	<b>132923</b>	<b>154881</b>	<b>137112</b>	<b>▼ -2515</b>
<b>US Total</b>	<b>368668</b>	<b>394893</b>	<b>461067</b>	<b>419866</b>	<b>405937</b>	<b>420241</b>	<b>408780</b>	<b>▲ 13888</b>



See National Wind and Nuclear daily charts

Source: Bloomberg, analytix.ai

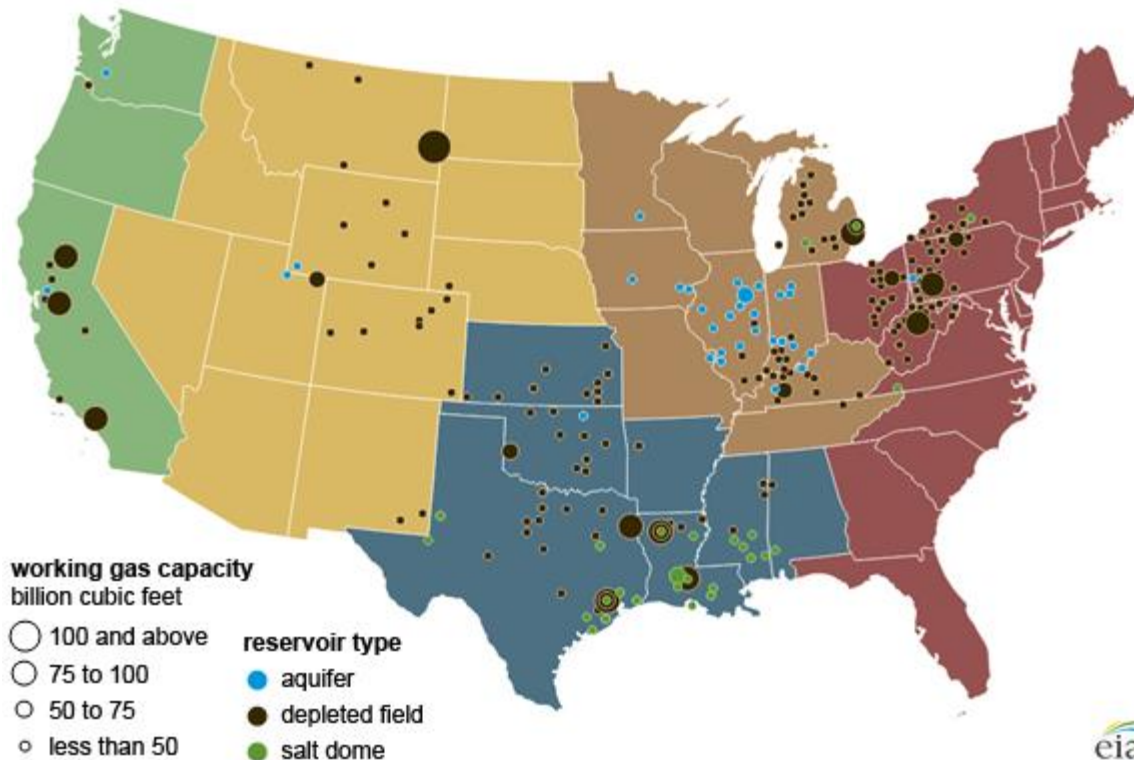
### Regional S/D Models Storage Projection

Week Ending 6-May

	Daily Raw Storage	Daily Adjustment Factor	Daily Average Storage Activity (Adjusted) *	Weekly Adjusted Storage Activity
L48	11.2	0.5	11.8	82
East	0.2	2.3	2.4	17
Midwest	3.3	-0.3	3.0	21
Mountain	3.9	-3.5	0.4	3
South Central	2.1	2.7	4.9	34
Pacific	1.7	-0.7	1.0	7

\*Adjustment Factor is calculated based on historical regional deltas

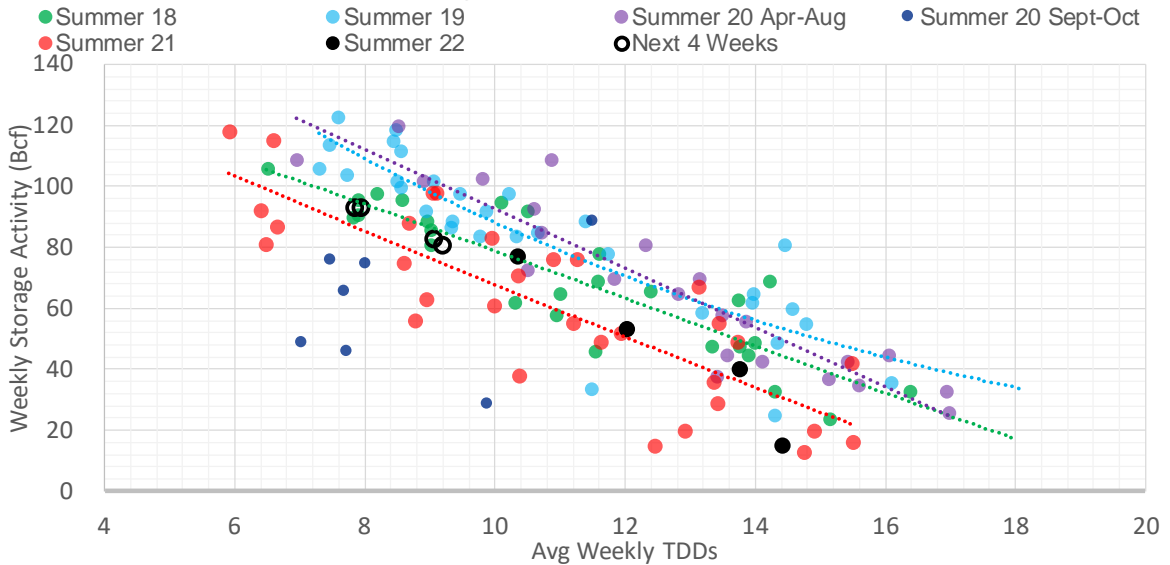
U.S. underground natural gas storage facilities by type (July 2015)



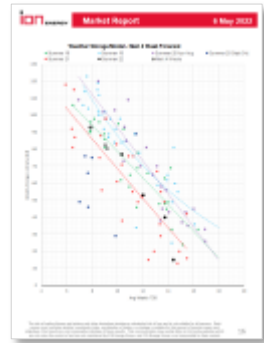
### Weather Model Storage Projection

Next report and beyond		
Week Ending	TDDs	Week Storage Projection
06-May	9.1	82
13-May	9.2	80
20-May	7.8	93
27-May	7.9	93

### Weather Storage Model - Next 4 Week Forecast

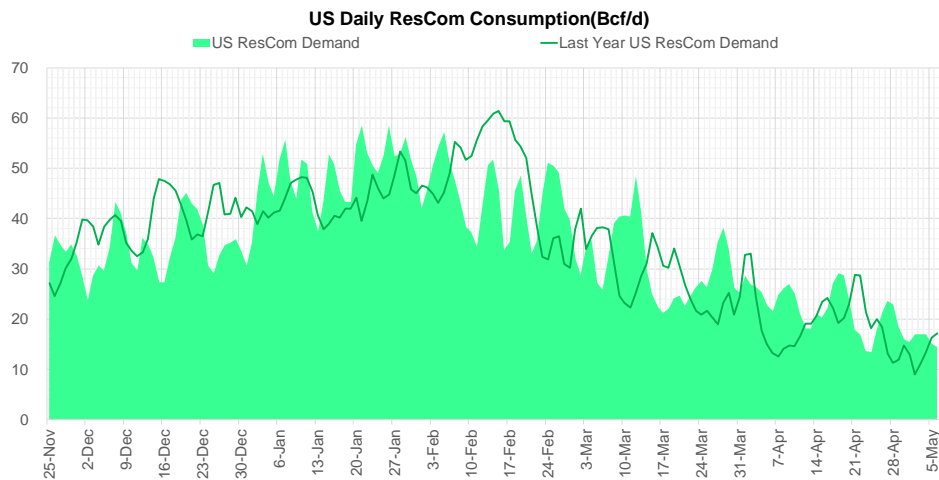
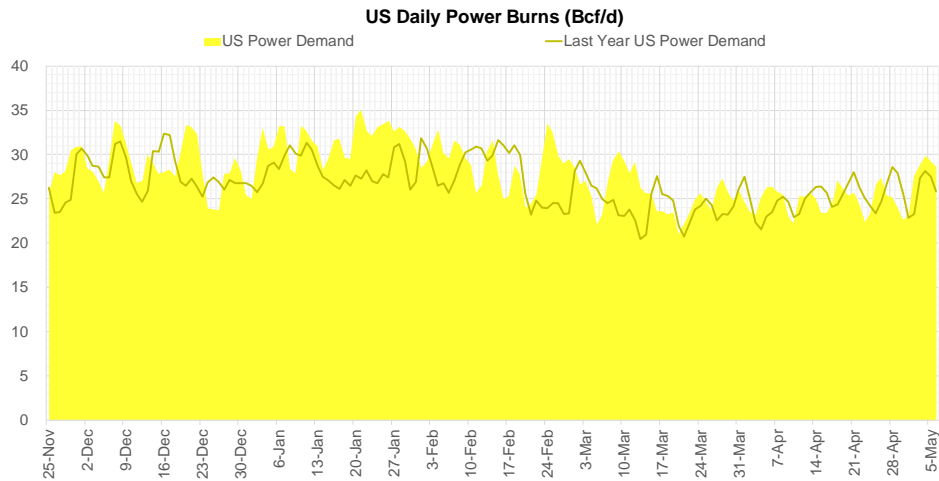
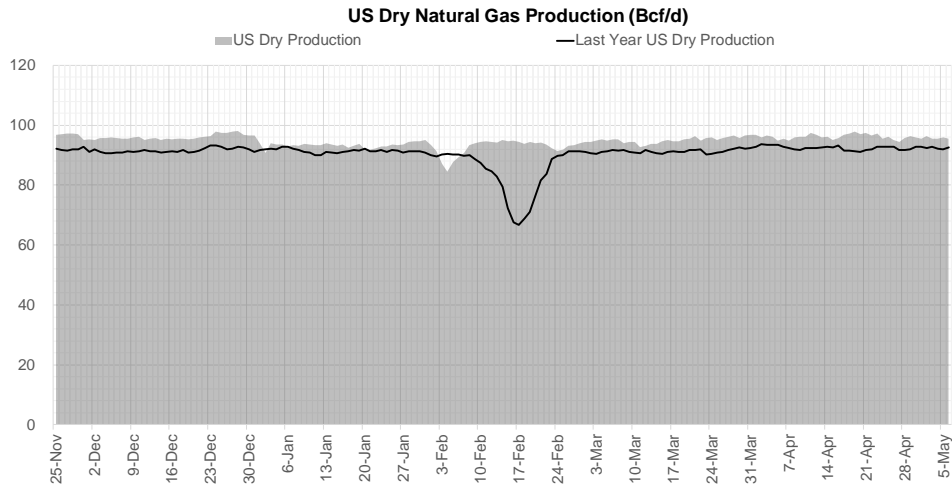


Go to larger image





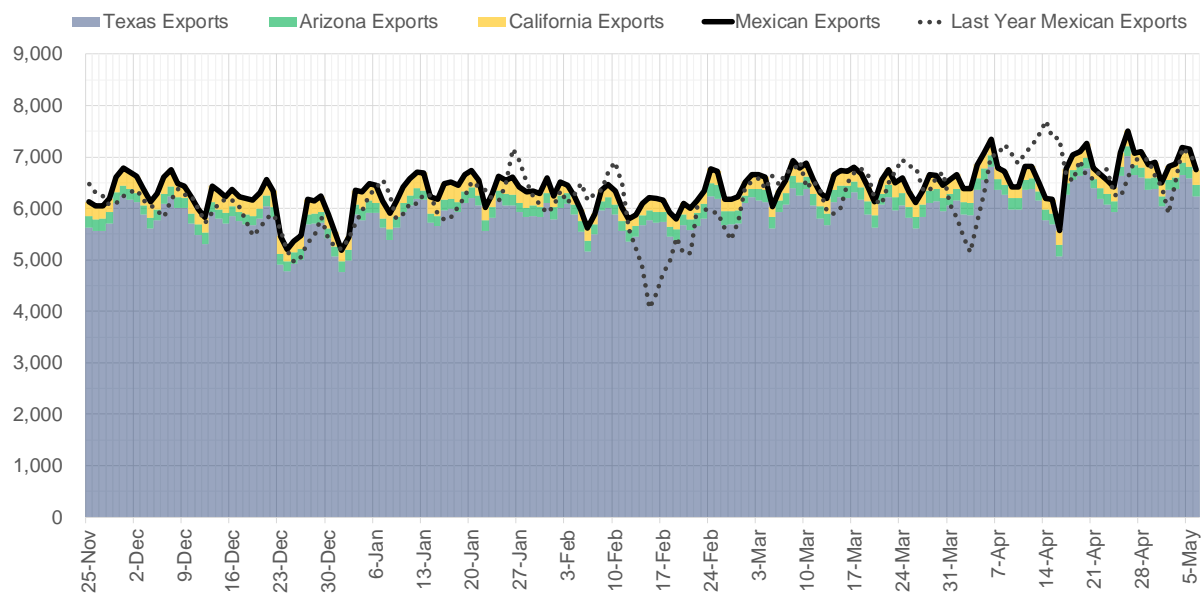
## Supply – Demand Trends



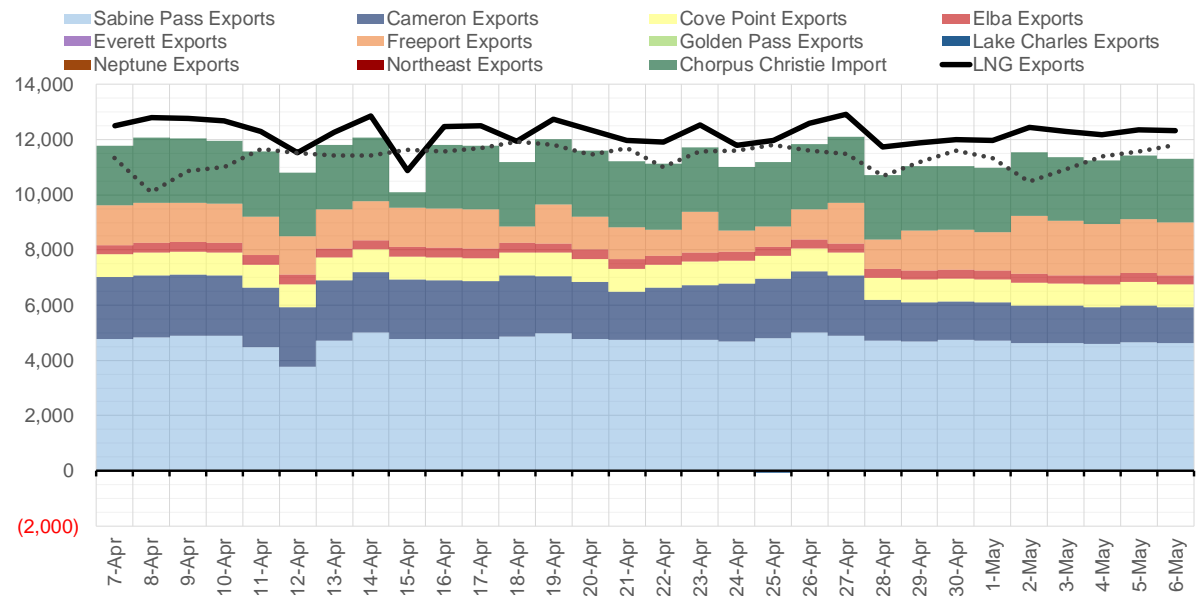
Source: Bloomberg

The risk of trading futures and options and other derivatives involves a substantial risk of loss and is not suitable for all persons. Each person must consider whether a particular trade, combination of trades, or strategy is suitable for that person's financial means and objectives. Past results are not necessarily indicative of future results. This communication may contain links to third party websites which are not under the control of and are not maintained by ION Energy Group, and ION Energy Group is not responsible for their content.

### Mexican Exports (MMcf/d)



### Net LNG Exports - Last 30 days (MMcf/d)



Source: Bloomberg

The risk of trading futures and options and other derivatives involves a substantial risk of loss and is not suitable for all persons. Each person must consider whether a particular trade, combination of trades, or strategy is suitable for that person's financial means and objectives. Past results are not necessarily indicative of future results. This communication may contain links to third party websites which are not under the control of and are not maintained by ION Energy Group, and ION Energy Group is not responsible for their content.

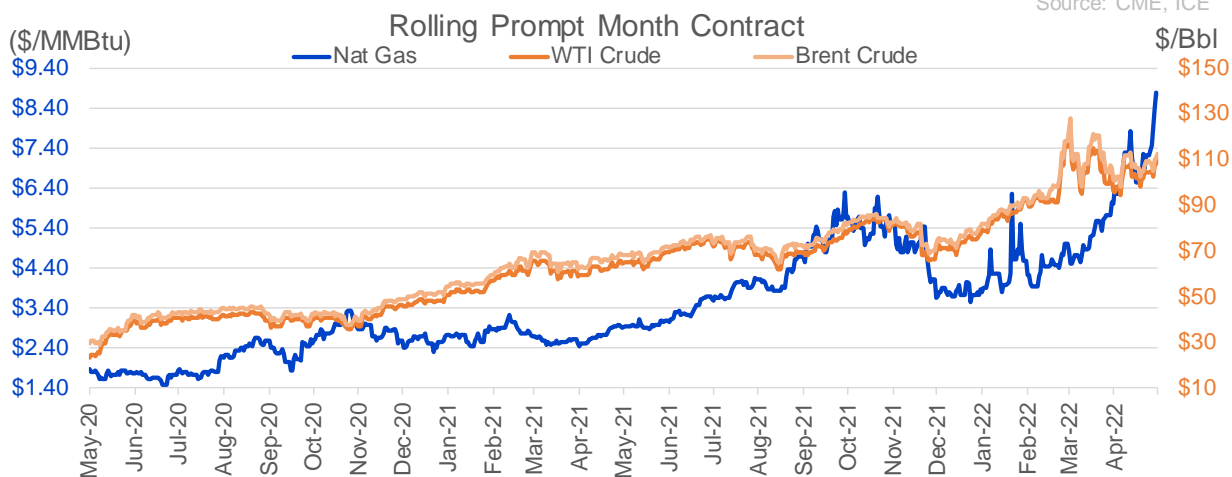
### Nat Gas Options Volume and Open Interest CME and ICE Combined

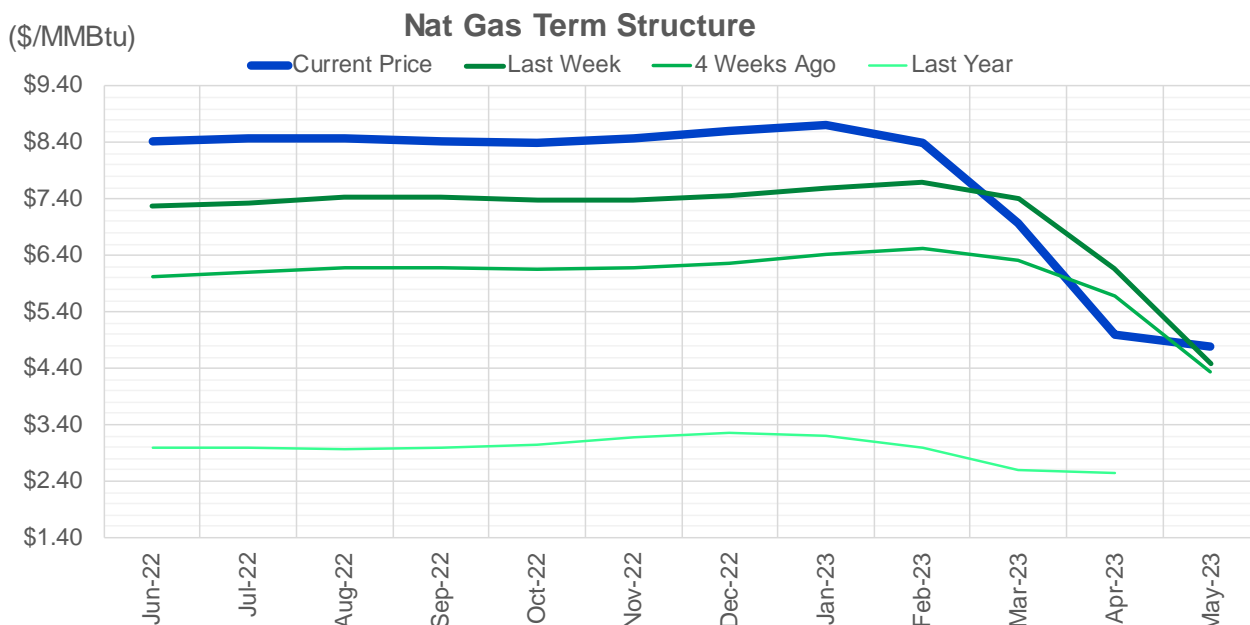
CONTRACT MONTH	CONTRACT YEAR	PUT/CALL	STRIKE	CUMULATIVE VOL	CONTRACT MONTH	CONTRACT YEAR	PUT/CALL	STRIKE	CUMULATIVE OI
6	2022	C	10.00	3418	8	2022	C	10.00	54157
7	2022	P	6.00	3389	8	2022	C	10.50	45125
7	2022	P	7.00	3328	10	2022	C	6.00	34882
6	2022	P	6.00	2797	10	2022	C	5.00	25524
6	2022	C	12.00	2780	6	2022	C	6.00	25146
8	2022	C	10.00	2627	9	2022	C	6.00	23730
7	2022	C	9.00	2597	10	2022	P	3.00	20975
10	2022	C	12.00	2350	6	2022	C	10.00	20793
7	2022	C	10.00	2274	6	2022	P	4.00	20397
2	2023	C	9.00	2189	7	2022	C	8.00	20215
7	2022	P	6.50	2027	10	2022	P	3.50	20204
6	2022	C	9.00	1863	8	2022	C	6.00	19669
10	2022	C	10.00	1821	10	2022	P	2.50	19254
10	2022	P	5.00	1716	6	2022	C	7.00	19238
7	2022	P	7.25	1703	7	2022	C	6.00	19029
9	2022	P	6.00	1678	6	2022	P	6.00	18815
7	2022	C	8.00	1552	12	2022	C	5.00	18221
8	2022	P	5.50	1518	8	2022	C	7.00	18139
7	2022	P	7.50	1444	6	2022	P	4.75	17971
11	2022	P	5.00	1325	6	2022	C	5.00	17862
8	2022	C	10.50	1250	9	2022	C	7.00	17849
7	2022	C	7.50	1245	7	2022	C	7.00	17773
6	2022	P	6.50	1236	7	2022	P	3.25	17645
7	2022	P	5.00	1191	6	2022	P	5.50	17572
8	2022	P	6.50	1093	9	2022	C	10.00	17464
6	2022	C	11.75	1068	10	2022	P	6.00	17302
8	2022	P	6.00	1051	10	2022	P	2.00	17263
8	2022	C	9.50	944	6	2022	P	3.00	17223
7	2022	C	11.00	940	7	2022	C	10.00	17048
11	2022	P	6.00	915	6	2022	P	7.00	16925
10	2022	P	6.00	900	10	2022	P	4.00	16309
2	2023	C	11.00	900	1	2023	C	10.00	16063
6	2022	C	11.00	881	6	2022	P	3.50	15957
6	2022	P	8.00	875	6	2022	C	9.00	15837
6	2022	P	7.00	803	2	2023	C	10.00	15694
11	2022	C	20.00	800	11	2022	P	4.00	15371
6	2022	P	7.50	793	9	2022	P	2.50	15291
7	2022	C	15.00	730	5	2023	P	2.00	15236
8	2022	C	9.00	724	6	2022	P	5.00	15152
8	2022	C	12.00	710	9	2022	P	2.75	14933
7	2022	C	12.50	702	7	2022	P	3.50	14931
2	2023	C	10.00	685	7	2022	P	3.00	14550
10	2022	C	8.50	672	8	2022	P	3.00	14503
6	2022	C	15.00	652	9	2022	P	3.00	14391
8	2022	P	5.00	652	7	2022	C	9.00	14322
1	2023	P	7.50	650	6	2022	P	3.75	14266
2	2023	P	7.50	650	10	2022	P	3.25	14249
3	2023	P	7.50	650	3	2023	C	10.00	14041
6	2022	P	5.50	645	8	2022	C	9.00	14033
					7	2022	P	5	13951

Source: CME, ICE

## Nat Gas Futures Open Interest CME and ICE Combined

CME Henry Hub Futures (10,000 MMBtu)				ICE Henry Hub Futures Contract Equivalent (10,000 MM			
	Current	Prior	Daily Change		Current	Prior	Daily Change
JUN 22	121420	122561	-1141	JUN 22	82988	83746	-758
JUL 22	175102	172843	2259	JUL 22	74023	74435	-412
AUG 22	59623	58656	967	AUG 22	59449	61695	-2246
SEP 22	86862	88486	-1624	SEP 22	66033	66549	-516
OCT 22	99312	97584	1728	OCT 22	76893	76746	146
NOV 22	46584	46165	419	NOV 22	58878	59170	-292
DEC 22	47806	47422	384	DEC 22	62772	63202	-431
JAN 23	65327	65727	-400	JAN 23	65814	65991	-177
FEB 23	27055	26600	455	FEB 23	56459	55798	661
MAR 23	40224	38879	1345	MAR 23	55312	54797	515
APR 23	58152	59056	-904	APR 23	53552	53036	516
MAY 23	62036	60266	1770	MAY 23	51794	49354	2440
JUN 23	23796	22704	1092	JUN 23	44546	44302	244
JUL 23	20503	19366	1137	JUL 23	43927	43644	282
AUG 23	13735	13617	118	AUG 23	43686	43465	221
SEP 23	18511	17943	568	SEP 23	43121	42842	279
OCT 23	33247	33965	-718	OCT 23	49748	50109	-362
NOV 23	12828	12326	502	NOV 23	43536	43299	237
DEC 23	13462	13473	-11	DEC 23	39784	39560	223
JAN 24	20235	20682	-447	JAN 24	38019	37891	128
FEB 24	5897	5914	-17	FEB 24	26011	25498	513
MAR 24	14762	14817	-55	MAR 24	30440	30358	82
APR 24	11178	11135	43	APR 24	26028	25901	127
MAY 24	6364	6362	2	MAY 24	25540	25455	85
JUN 24	1867	1862	5	JUN 24	22026	21943	83
JUL 24	1936	1948	-12	JUL 24	22106	22043	63
AUG 24	3117	3144	-27	AUG 24	22218	22156	63
SEP 24	1403	1397	6	SEP 24	21604	21544	61
OCT 24	6671	6661	10	OCT 24	23936	23921	15
NOV 24	4828	4844	-16	NOV 24	22361	22306	55





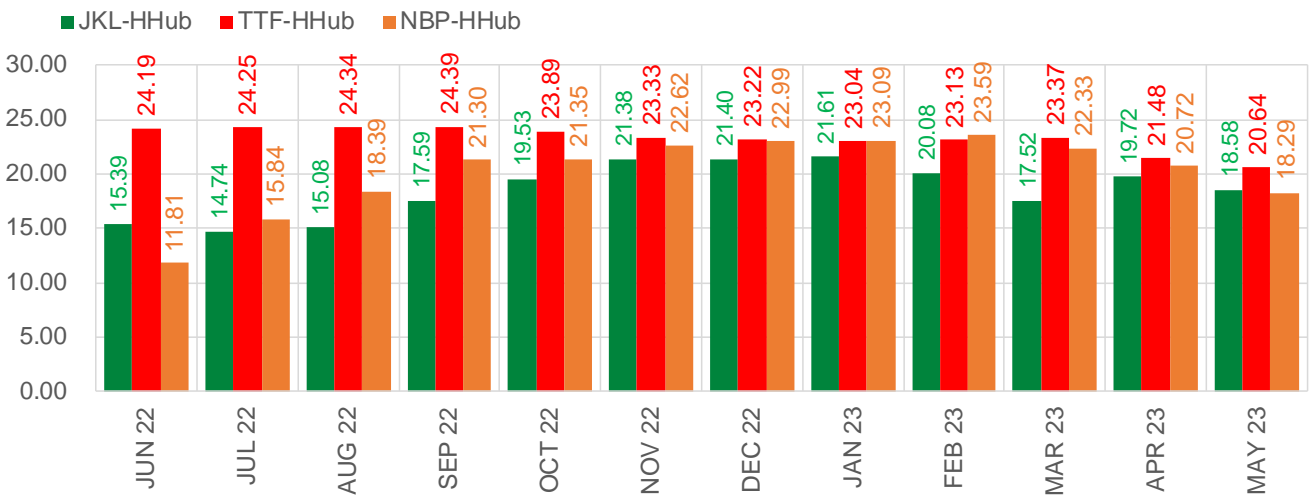
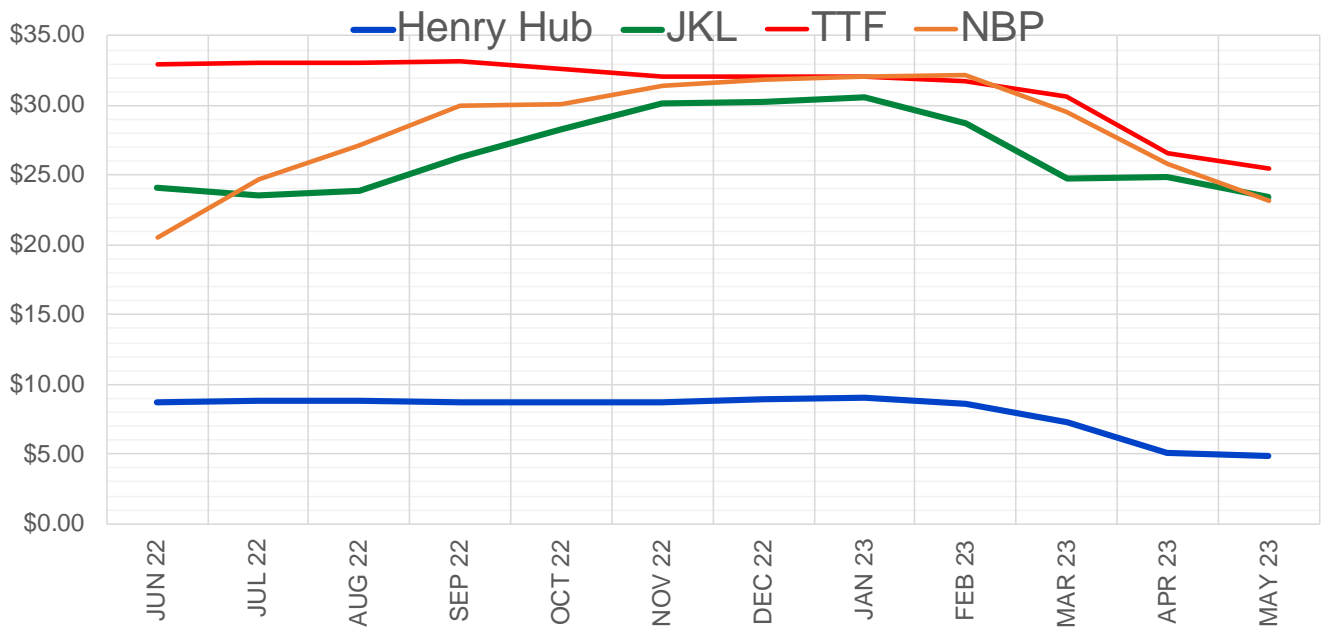
	Jun-22	Jul-22	Aug-22	Sep-22	Oct-22	Nov-22	Dec-22	Jan-23	Feb-23	Mar-23	Apr-23	May-23
<b>Current Price</b>	<b>\$8.415</b>	<b>\$8.472</b>	<b>\$8.461</b>	<b>\$8.412</b>	<b>\$8.407</b>	<b>\$8.463</b>	<b>\$8.600</b>	<b>\$8.703</b>	<b>\$8.392</b>	<b>\$6.968</b>	<b>\$4.988</b>	<b>\$4.796</b>
Last Week	\$7.267	\$7.339	\$7.436	\$7.435	\$7.385	\$7.387	\$7.456	\$7.589	\$7.692	\$7.405	\$6.165	\$4.470
vs. Last Week	\$1.148	\$1.133	\$1.025	\$0.977	\$1.022	\$1.076	\$1.144	\$1.114	\$0.700	-\$0.437	-\$1.177	\$0.326
4 Weeks Ago	\$6.029	\$6.107	\$6.172	\$6.176	\$6.157	\$6.177	\$6.254	\$6.413	\$6.512	\$6.325	\$5.687	\$4.340
vs. 4 Weeks Ago	\$2.386	\$2.365	\$2.289	\$2.236	\$2.250	\$2.286	\$2.346	\$2.290	\$1.880	\$0.643	-\$0.699	\$0.456
Last Year	\$2.938	\$2.982	\$2.992	\$2.978	\$2.995	\$3.056	\$3.184	\$3.264	\$3.193	\$2.991	\$2.602	\$2.546
vs. Last Year	\$5.477	\$5.490	\$5.469	\$5.434	\$5.412	\$5.407	\$5.416	\$5.439	\$5.199	\$3.977	\$2.386	\$2.250

	Units	Cash Settled	Prompt Settle	Cash to Prompt
AGT Citygate	\$/MMBtu	8.15	6.45	-1.70
TETCO M3	\$/MMBtu	7.49	6.24	-1.25
FGT Zone 3	\$/MMBtu	7.50	6.99	-0.52
Zone 6 NY	\$/MMBtu	7.50	6.10	-1.40
Chicago Citygate	\$/MMBtu	8.06	6.68	-1.38
Michcon	\$/MMBtu	8.07	6.67	-1.40
Columbia TCO Pool	\$/MMBtu	7.59	6.25	-1.34
Ventura	\$/MMBtu	8.03	6.59	-1.44
Rockies/Opal	\$/MMBtu	8.23	6.39	-1.85
El Paso Permian Basin	\$/MMBtu	7.90	6.21	-1.69
Socal Citygate	\$/MMBtu	8.25	6.89	-1.36
Malin	\$/MMBtu	8.10	6.57	-1.53
Houston Ship Channel	\$/MMBtu	8.22	6.80	-1.42
Henry Hub Cash	\$/MMBtu	8.47	6.61	-1.86
AECO Cash	C\$/GJ	6.69	4.99	-1.71
Station2 Cash	C\$/GJ	6.66	6.22	-0.44
Dawn Cash	C\$/GJ	8.10	6.66	-1.44

Source: CME, Bloomberg

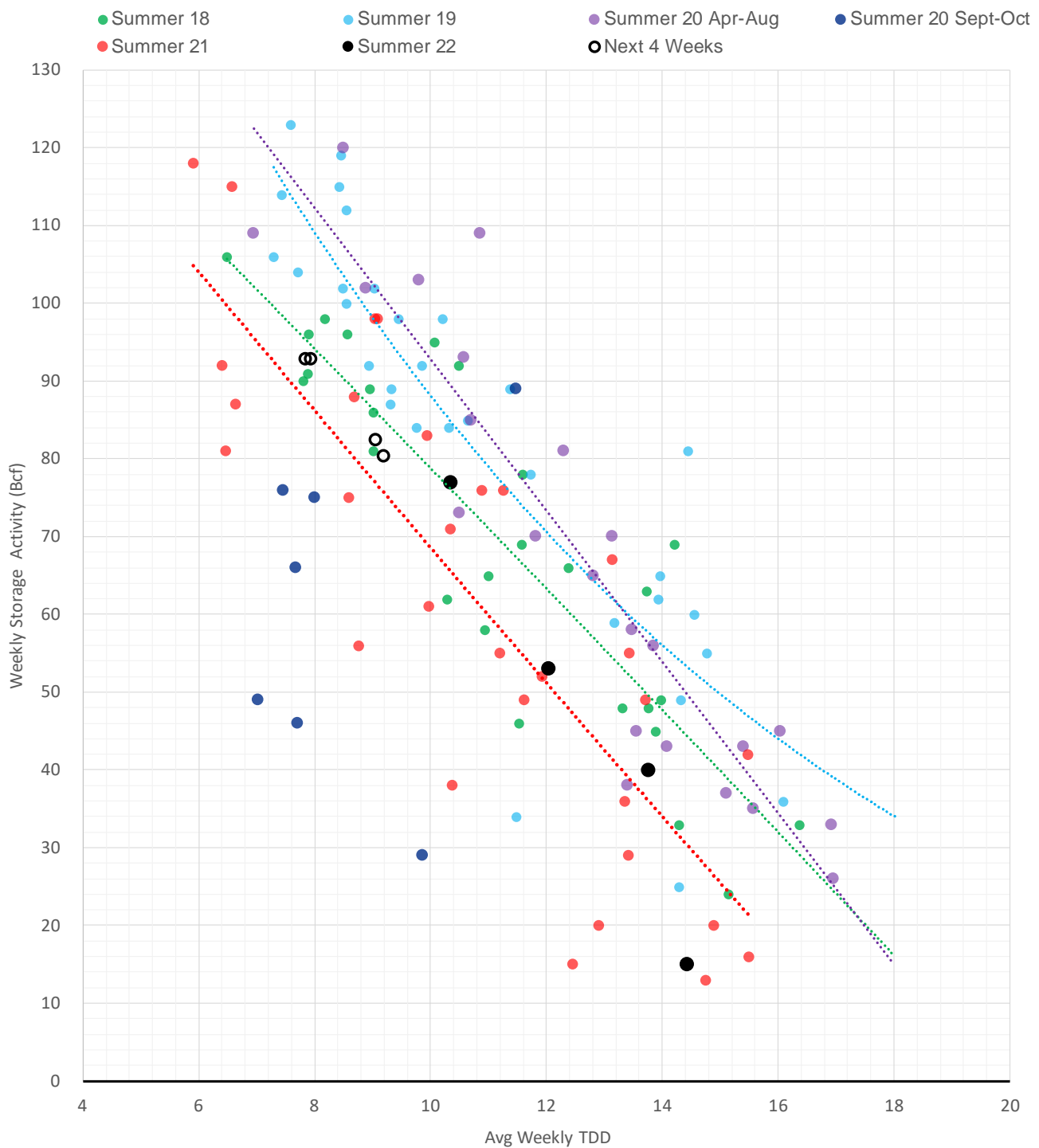
	Units	Current Price	vs. Last Week	vs. 4 Weeks Ago	vs. Last Year
NatGas Jul21/Oct21	\$/MMBtu	2.224	▲ 0.000	▲ 0.000	▲ 2.208
NatGas Oct21/Nov21	\$/MMBtu	0.361	▲ 0.000	▲ 0.000	▲ 0.299
NatGas Oct21/Jan22	\$/MMBtu	-1.817	▲ 0.000	▲ 0.000	▼ -2.090
NatGas Apr22/Oct22	\$/MMBtu	3.431	▲ 1.808	▲ 2.269	▲ 3.409
WTI Crude	\$/Bbl	108.26	▲ 2.900	▲ 12.230	▲ 43.550
Brent Crude	\$/Bbl	110.90	▲ 3.310	▲ 10.320	▲ 42.810
Fuel Oil, NY Harbour 1%	\$/Bbl	97.18	▲ 0.000	▲ 0.000	▲ 0.000
Heating Oil	cents/Gallon	404.13	▼ -109.410	▲ 77.350	▲ 205.180
Propane, Mt. Bel	cents/Gallon	1.28	▼ -0.033	▼ -0.011	▲ 0.471
Ethane, Mt. Bel	cents/Gallon	0.63	▲ 0.119	▲ 0.138	▲ 0.369
Coal, PRB	\$/MTon	12.30	▲ 0.000	▲ 0.000	▲ 0.000
Coal, PRB	\$/MMBtu	0.70			
Coal, ILB	\$/MTon	31.05	▲ 0.000	▲ 0.000	▲ 0.000
Coal, ILB	\$/MMBtu	1.32			

### Nat Gas Term Structure (\$MMBTU)



	JUN 22	JUL 22	AUG 22	SEP 22	OCT 22	NOV 22	DEC 22	JAN 23	FEB 23	MAR 23	APR 23	MAY 23
<b>Henry Hub</b>	\$8.759	\$8.815	\$8.786	\$8.742	\$8.707	\$8.758	\$8.893	\$8.992	\$8.646	\$7.257	\$5.105	\$4.880
<b>JKL</b>	\$24.145	\$23.550	\$23.865	\$26.330	\$28.240	\$30.135	\$30.290	\$30.605	\$28.730	\$24.780	\$24.825	\$23.460
<b>JKL-HHub</b>	\$15.386	\$14.735	\$15.079	\$17.588	\$19.533	\$21.377	\$21.397	\$21.613	\$20.084	\$17.523	\$19.720	\$18.580
<b>TTF</b>	\$32.946	\$33.068	\$33.124	\$33.129	\$32.594	\$32.092	\$32.113	\$32.032	\$31.774	\$30.625	\$26.585	\$25.524
<b>TTF-HHub</b>	\$24.187	\$24.253	\$24.338	\$24.387	\$23.887	\$23.334	\$23.220	\$23.040	\$23.128	\$23.368	\$21.480	\$20.644
<b>NBP</b>	\$20.571	\$24.659	\$27.180	\$30.041	\$30.055	\$31.373	\$31.887	\$32.083	\$32.232	\$29.585	\$25.822	\$23.165
<b>NBP-HHub</b>	\$11.812	\$15.844	\$18.394	\$21.299	\$21.348	\$22.615	\$22.994	\$23.091	\$23.586	\$22.328	\$20.717	\$18.285

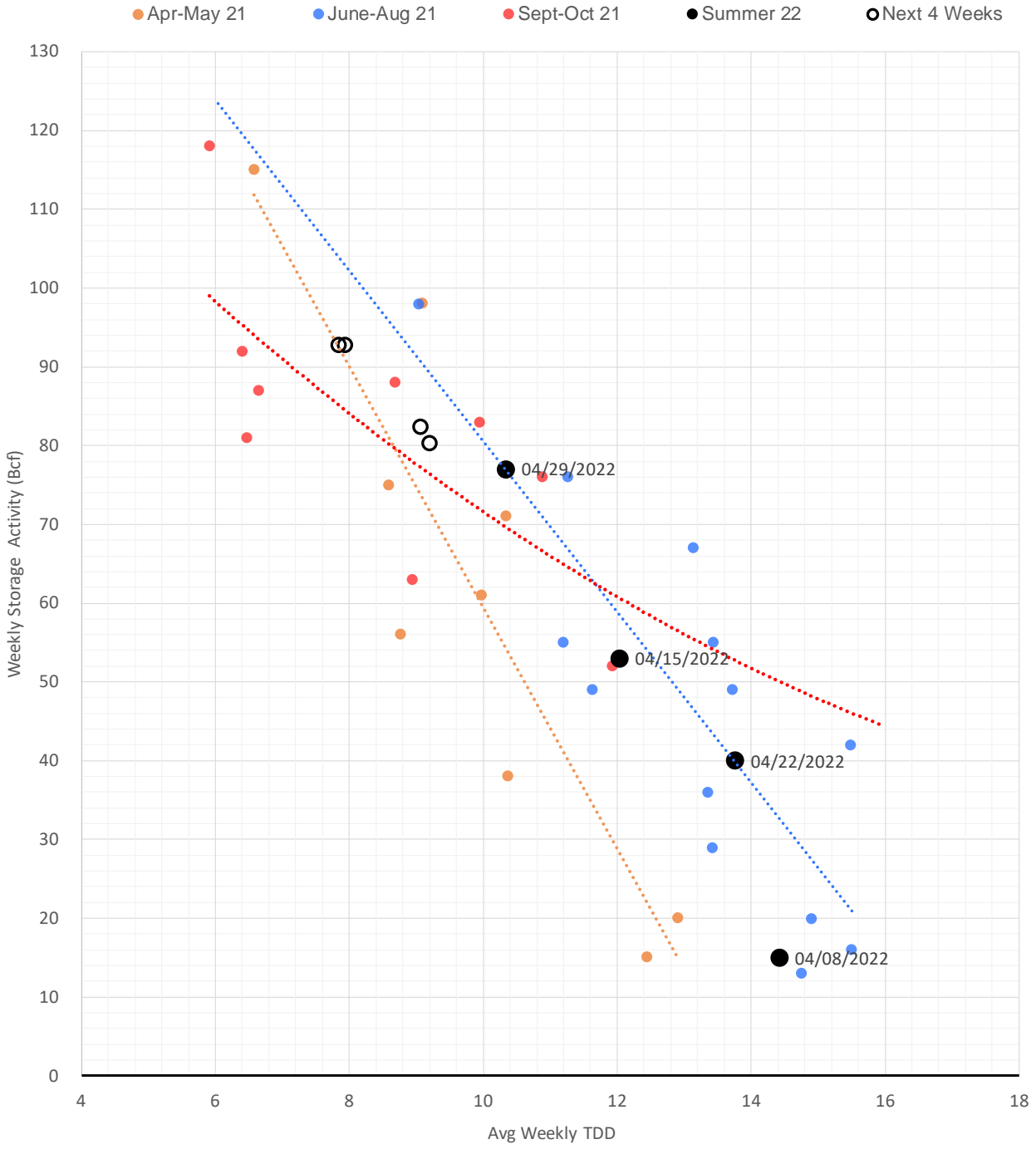
### Weather Storage Model - Next 4 Week Forecast



The risk of trading futures and options and other derivatives involves a substantial risk of loss and is not suitable for all persons. Each person must consider whether a particular trade, combination of trades, or strategy is suitable for that person's financial means and objectives. Past results are not necessarily indicative of future results. This communication may contain links to third party websites which are not under the control of and are not maintained by ION Energy Group, and ION Energy Group is not responsible for their content.

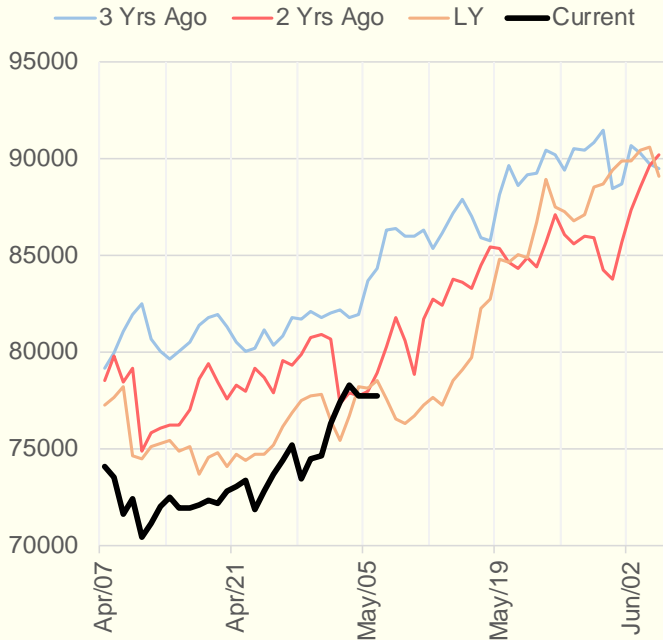


### Weather Storage Model for Summer 2021 & 2022

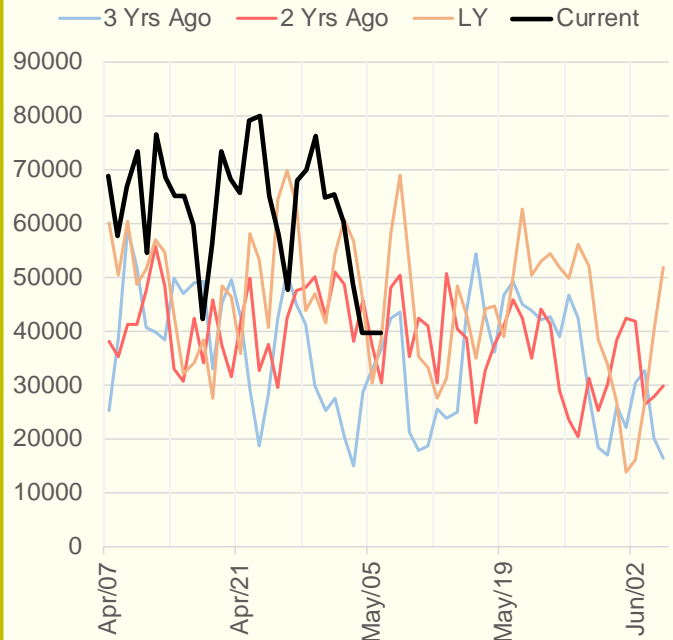


The risk of trading futures and options and other derivatives involves a substantial risk of loss and is not suitable for all persons. Each person must consider whether a particular trade, combination of trades, or strategy is suitable for that person's financial means and objectives. Past results are not necessarily indicative of future results. This communication may contain links to third party websites which are not under the control of and are not maintained by ION Energy Group, and ION Energy Group is not responsible for their content.

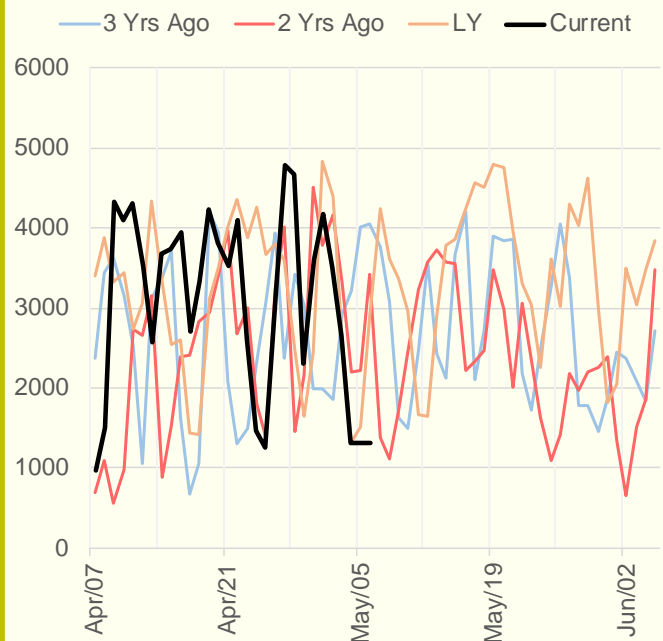
### NRC Nuclear Daily Output



### US Wind



### CALI Wind



### TEXAS Wind

