

	Current	Δ from YD	Δ from 7D Avg
Nat Gas Prompt	\$ 8.26 ▲	\$ 0.31 ▲	\$ 0.93

	Current	Δ from YD	Δ from 7D Avg
WTI Prompt	\$ 106.99 ▲	\$ 4.58 ▲	\$ 2.8

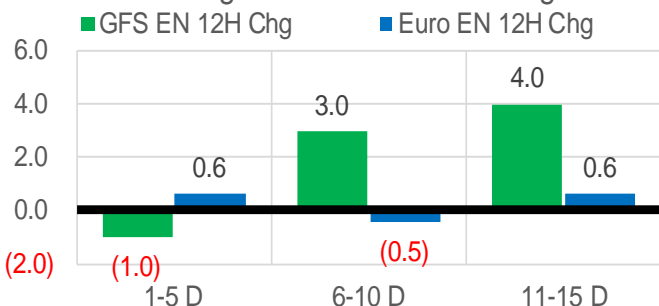
	Current	Δ from YD	Δ from 7D Avg
Brent Prompt	\$ 109.52 ▲	\$ 4.55 ▲	\$ 1.9

Page Menu

- [Short-term Weather Model Outlooks](#)
- [Lower 48 Component Models](#)
- [Regional S/D Models Storage Projection](#)
- [Weather Model Storage Projection](#)
- [Supply – Demand Trends](#)
- [Nat Gas Options Volume and Open Interest](#)
- [Nat Gas Futures Open Interest](#)
- [Price Summary](#)

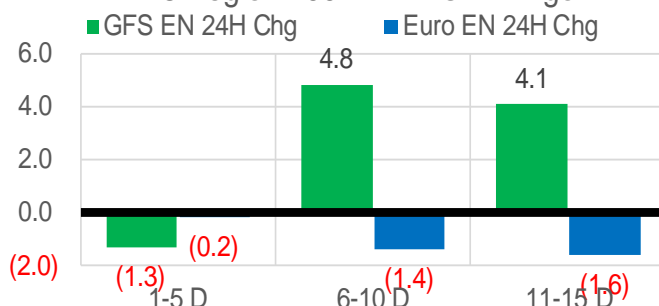
Vs. 12H Ago

L48 Region - 00z TDD vs 12H Ago



Vs. 24H Ago

L48 Region - 00z TDD vs 24H Ago



	Current	Δ from YD	Δ from 7D Avg
US Dry Production	94.8 ▼	-0.62 ▼	-0.92

	Current	Δ from YD	Δ from 7D Avg
US Power Burns	31.3 ▲	0.44 ▲	3.93

	Current	Δ from YD	Δ from 7D Avg
US ResComm	15.6 ▼	-1.21 ▼	-3.05

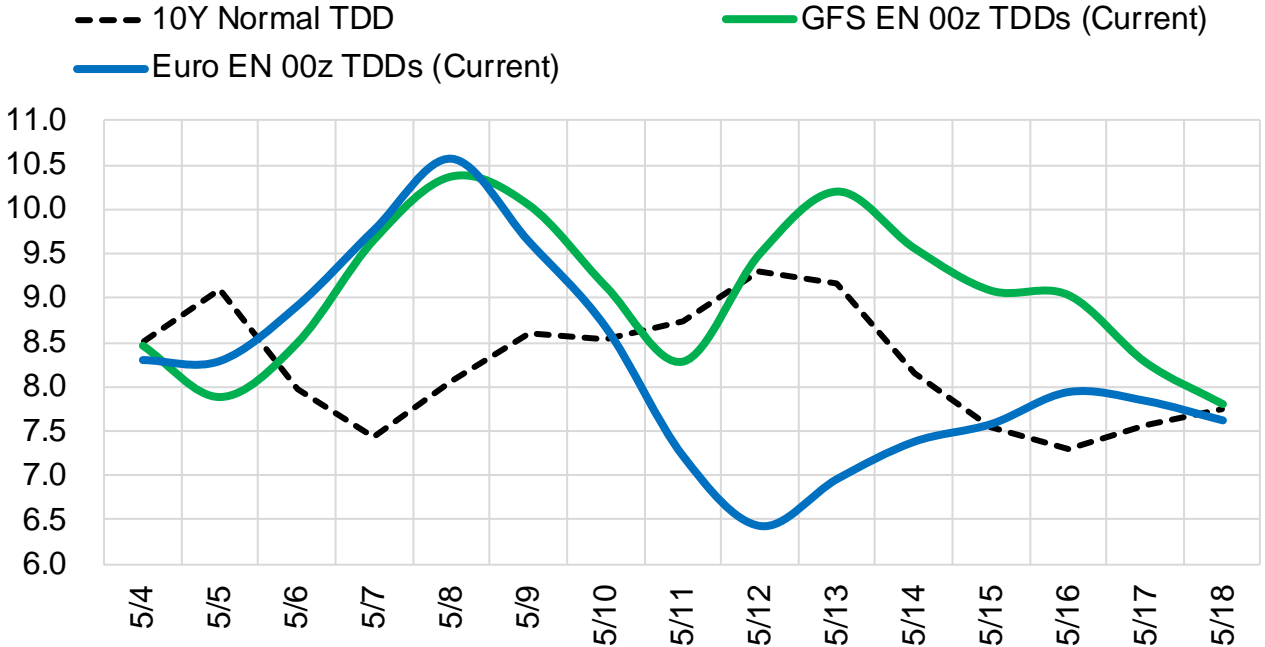
	Current	Δ from YD	Δ from 7D Avg
Canadian Imports	6.2 ▼	-0.03 ▼	0.23 ▲

	Current	Δ from YD	Δ from 7D Avg
Net LNG Exports	12.1 ▼	-0.14 ▼	-0.03

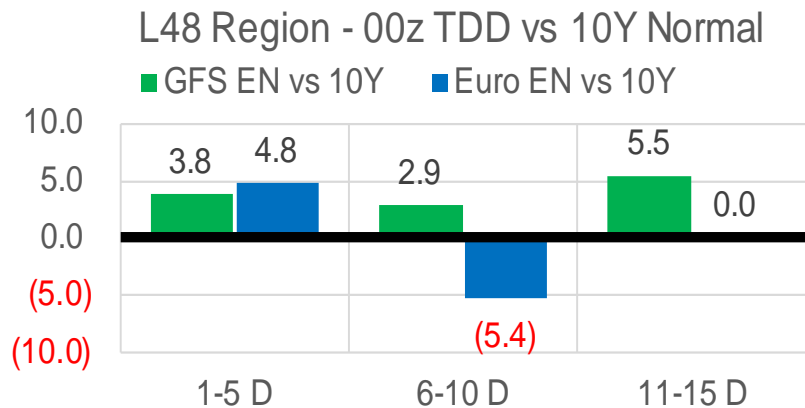
	Current	Δ from YD	Δ from 7D Avg
Mexican Exports	7.0 ▲	0.10 ▲	0.09

Short-term Weather Model Outlooks (00z)

L48 Region



Vs. 10Y Normal



Source: WSI, Bloomberg

Lower 48 Component Models

Daily Balances

	28-Apr	29-Apr	30-Apr	1-May	2-May	3-May	4-May	DoD	vs. 7D
Lower 48 Dry Production	95.8	96.4	96.0	95.4	96.3	95.4	94.8	▼ -0.6	▼ -1.1
Canadian Imports	6.4	5.8	6.0	5.4	5.6	6.2	6.2	▼ 0.0	▲ 0.3
L48 Power	26.9	26.1	25.1	26.5	29.0	30.9	31.3	▲ 0.4	▲ 3.9
L48 Residential & Commercial	23.0	18.6	16.1	15.5	16.7	16.8	15.6	▼ -1.2	▼ -2.2
L48 Industrial	20.3	19.5	19.1	18.9	18.9	19.0	19.3	▲ 0.3	▲ 0.1
L48 Lease and Plant Fuel	5.2	5.3	5.2	5.2	5.2	5.2	5.1	▼ -0.1	▼ -0.1
L48 Pipeline Distribution	2.8	2.5	2.3	2.4	2.6	2.7	2.7	▼ 0.0	▲ 0.1
L48 Regional Gas Consumption	78.2	71.8	67.8	68.4	72.5	74.5	74.0	▼ -0.6	▲ 1.8
Net LNG Delivered	11.73	11.90	12.00	11.96	12.44	12.28	12.14	▼ -0.1	▲ 0.1
Total Mexican Exports	7.1	6.9	6.9	6.5	6.8	6.9	7.0	▲ 0.1	▲ 0.1
Implied Daily Storage Activity	5.2	11.6	15.3	14.0	10.1	7.9	7.9		
EIA Reported Daily Storage Activity									
Daily Model Error									

EIA Storage Week Balances

	25-Mar	1-Apr	8-Apr	15-Apr	22-Apr	29-Apr	WoW	vs. 4W
Lower 48 Dry Production	95.5	96.1	95.9	96.4	96.8	95.9	▼ -0.9	▼ -0.4
Canadian Imports	4.8	5.7	5.8	5.6	5.8	6.1	▲ 0.3	▲ 0.4
L48 Power	25.5	26.8	26.7	26.7	26.8	26.8	▼ 0.0	▲ 0.0
L48 Residential & Commercial	24.6	30.8	25.2	22.4	24.1	18.5	▼ -5.6	▼ -7.1
L48 Industrial	19.7	21.5	20.7	19.5	20.0	20.4	▲ 0.3	▼ -0.1
L48 Lease and Plant Fuel	5.2	5.2	5.2	5.3	5.3	5.2	▼ 0.0	▼ 0.0
L48 Pipeline Distribution	2.6	3.0	2.9	2.7	2.8	2.5	▼ -0.3	▼ -0.3
L48 Regional Gas Consumption	77.6	87.3	80.7	76.6	79.1	73.4	▼ -5.7	▼ -7.5
Net LNG Exports	13.0	13.1	12.4	12.5	12.1	12.2	▲ 0.1	▼ -0.3
Total Mexican Exports	6.5	6.4	6.8	6.6	6.7	6.9	▲ 0.2	▲ 0.3
Implied Daily Storage Activity	3.2	-5.0	1.8	6.4	4.7	9.4	4.7	
EIA Reported Daily Storage Activity	3.7	-4.7	2.1	7.6	5.7			
Daily Model Error	-0.5	-0.3	-0.4	-1.2	-1.0			

Monthly Balances

	2Yr Ago May-20	LY May-21	Jan-22	Feb-22	Mar-22	Apr-22	MTD May-22	MoM	vs. LY
Lower 48 Dry Production	87.0	93.0	93.4	92.7	95.1	96.2	95.7	▼ -0.5	▲ 2.7
Canadian Imports	3.9	4.5	6.7	6.6	5.2	5.8	5.7	▼ -0.1	▲ 1.2
L48 Power	26.9	26.7	31.3	29.1	26.9	26.7	28.8	▲ 2.1	▲ 2.1
L48 Residential & Commercial	12.8	12.8	49.1	44.4	30.7	22.2	16.3	▼ -5.9	▲ 3.5
L48 Industrial	19.4	20.7	24.8	22.5	20.5	20.1	18.9	▼ -1.2	▼ -1.8
L48 Lease and Plant Fuel	4.7	5.0	5.1	5.1	5.2	5.3	5.2	▼ -0.1	▲ 0.1
L48 Pipeline Distribution	2.2	2.2	3.8	3.6	3.0	2.7	2.6	▼ -0.1	▲ 0.3
L48 Regional Gas Consumption	65.9	67.5	114.2	104.6	86.3	76.9	71.8	▼ -5.1	▲ 4.4
Net LNG Exports	6.7	10.8	12.4	12.4	12.9	12.3	12.2	▼ -0.1	▲ 1.4
Total Mexican Exports	4.8	6.8	6.3	6.2	6.5	6.7	6.7	▼ 0.0	▼ 0.0
Implied Daily Storage Activity	13.6	12.4	-32.8	-23.8	-5.4	6.1	10.7		
EIA Reported Daily Storage Activity									
Daily Model Error									

Source: Bloomberg, analytix.ai

Daily Average Generation Data

Nuclear Generation Daily Average - GWh (NRC)

	26-Apr	27-Apr	28-Apr	29-Apr	30-Apr	1-May	2-May	DoD	vs. 7D
NRC Nuclear Daily Output	74.4	75.2	73.4	74.5	74.6	76.3	77.4	1.1	2.7
NRC Nuclear Max Capacity	104.9	104.9	104.9	104.9	104.9	104.9	104.9	0.0	0.0
NRC Nuclear Outage	30.5	29.7	31.5	30.4	30.3	28.6	27.5	-1.1	-2.7
NRC % Nuclear Cap Utilization	75.6	76.4	74.6	75.8	75.9	77.6	78.7	1.1	2.7

Wind Generation Daily Average - MWh (EIA)

	26-Apr	27-Apr	28-Apr	29-Apr	30-Apr	1-May	2-May	DoD	vs. 7D
CALI Wind	3181	4796	4682	2301	3607	4170	3505	-665	-284
TEXAS Wind	10426	17588	21087	21568	13192	18569	20925	2356	3854
US Wind	47893	68033	70064	76301	64883	65393	60290	-5103	-5138

Generation Daily Average - MWh (EIA)

	26-Apr	27-Apr	28-Apr	29-Apr	30-Apr	1-May	2-May	DoD	vs. 7D
US Wind	47893	68033	70064	76301	64883	65393	60290	-5103	-5138
US Solar	15450	16977	17074	16778	16334	14496	16818	2322	633
US Petroleum	993	994	1036	1026	834	795	985	189	38
US Other	7743	7464	7107	7016	6856	6790	7645	855	482
US Coal	82138	77520	75742	69576	68843	69651	76838	7187	2926
US Nuke	78059	78196	78176	78702	79037	80302	81648	1347	2903
US Hydro	27189	26263	27426	25305	23682	23836	27619	3783	2002
US Gas	148241	132916	131079	129018	122825	118600	150290	31690	19844

See National Wind and Nuclear daily charts

Source: Bloomberg, analytix.ai

Storage Week Average Generation Data

Nuclear Generation Weekly Average - GWh (NRC)

	25-Mar	1-Apr	8-Apr	15-Apr	22-Apr	29-Apr	WoW	WoW Bcf/d Impact
NRC Nuclear Daily Output	80.9	79.3	75.0	71.9	72.3	73.5	1.2	-0.2
NRC Nuclear Max Capacity	104.9	104.9	104.9	104.9	104.9	104.9	0.0	
NRC Nuclear Outage	24.0	25.5	29.9	32.9	32.6	31.4	-1.2	
NRC % Nuclear Cap Utilization	82.3	80.7	76.3	73.2	73.5	74.8	1.2	

Wind Generation Weekly Average - MWh (EIA)

	25-Mar	1-Apr	8-Apr	15-Apr	22-Apr	29-Apr	WoW	WoW Bcf/d Impact
CALI Wind	2037	2643	2611	3434	3613	3153	-460	0.1
TEXAS Wind	16108	14530	14468	16530	15612	18327	2715	-0.5
US Wind	62107	61679	59878	66240	61556	66968	5412	-1.0
							9%	

Generation Weekly Average - MWh (EIA)

	25-Mar	1-Apr	8-Apr	15-Apr	22-Apr	29-Apr	WoW	WoW Bcf/d Impact
US Wind	62107	61679	59878	66240	61556	66968	5412	-1.0
US Solar	13805	15451	15518	16118	15897	16620	723	-0.1
US Petroleum	864	1048	1015	964	984	992	8	0.0
US Other	7745	7481	7183	7154	7544	7612	68	0.0
US Coal	72503	77743	77514	77087	79632	77094	-2538	0.5
US Nuke	84027	83506	78807	75674	76478	77438	959	-0.2
US Hydro	33229	33463	32524	29415	28355	26594	-1761	0.3
US Gas	126230	136004	134633	134338	133367	131101	-2266	-0.4

See National Wind and Nuclear daily charts

Source: Bloomberg, analytix.ai

Monthly Average Generation Data

Nuclear Generation Monthly Average - GWh (NRC)

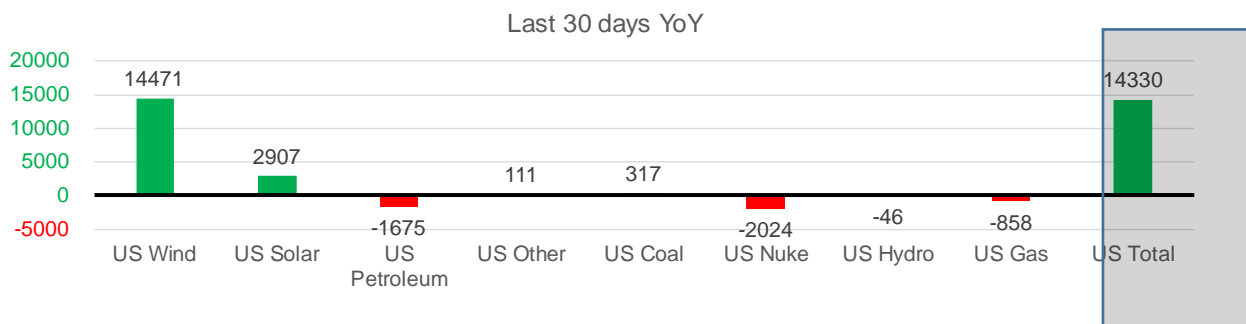
	2Yr Ago	LY	MTD				Last 30 days	Last 30 days YoY
	Same 30 days	Same 30 days	Feb-22	Mar-22	Apr-22	May-22		
NRC Nuclear Daily Output	78.3	75.8	87.3	81.3	73.3	77.6	73.5	-2.4
NRC Nuclear Max Capacity	104.9	104.9	104.9	104.9	104.9	104.9	104.9	0.0
NRC Nuclear Outage	26.6	29.0	17.5	23.6	31.6	27.3	31.4	2.4
NRC % Nuclear Cap Utilization	79.6	77.1	88.8	82.7	74.5	78.9	74.7	-2.4

Wind Generation Monthly Average - MWh (EIA)

	2Yr Ago	LY	MTD				Last 30 days	Last 30 days YoY
	Same 30 days	Same 30 days	Feb-22	Mar-22	Apr-22	May-22		
CALI Wind	2420	3205	1495	2250	3186	3671	3259	54
TEXAS Wind	10491	11977	11750	14837	16311	20336	17197	5220
US Wind	41267	50875	54541	58515	64123	61566	65346	14471

Generation Monthly Average - MWh (EIA)

	2Yr Ago	LY	MTD				Last 30 days	Last 30 days YoY
	Same 30 days	Same 30 days	Feb-22	Mar-22	Apr-22	May-22		
US Wind	41267	50875	54541	58515	64123	61566	65346	▲ 14471
US Solar	9954	13217	12442	14054	16073	16237	16124	▲ 2907
US Petroleum	3037	2652	1328	981	985	937	977	▼ -1675
US Other	7731	7280	8629	7187	7344	7431	7390	▲ 111
US Coal	56099	76401	105630	82291	77257	75041	76718	▲ 317
US Nuke	82358	79415	92013	85157	77217	81312	77391	▼ -2024
US Hydro	31983	28246	32280	33927	28907	26673	28199	▼ -46
US Gas	135471	135353	153708	137092	132864	142368	134496	▼ -858
US Total	366437	393497	461067	419866	405806	413538	407828	▲ 14330



See National Wind and Nuclear daily charts

Source: Bloomberg, analytix.ai

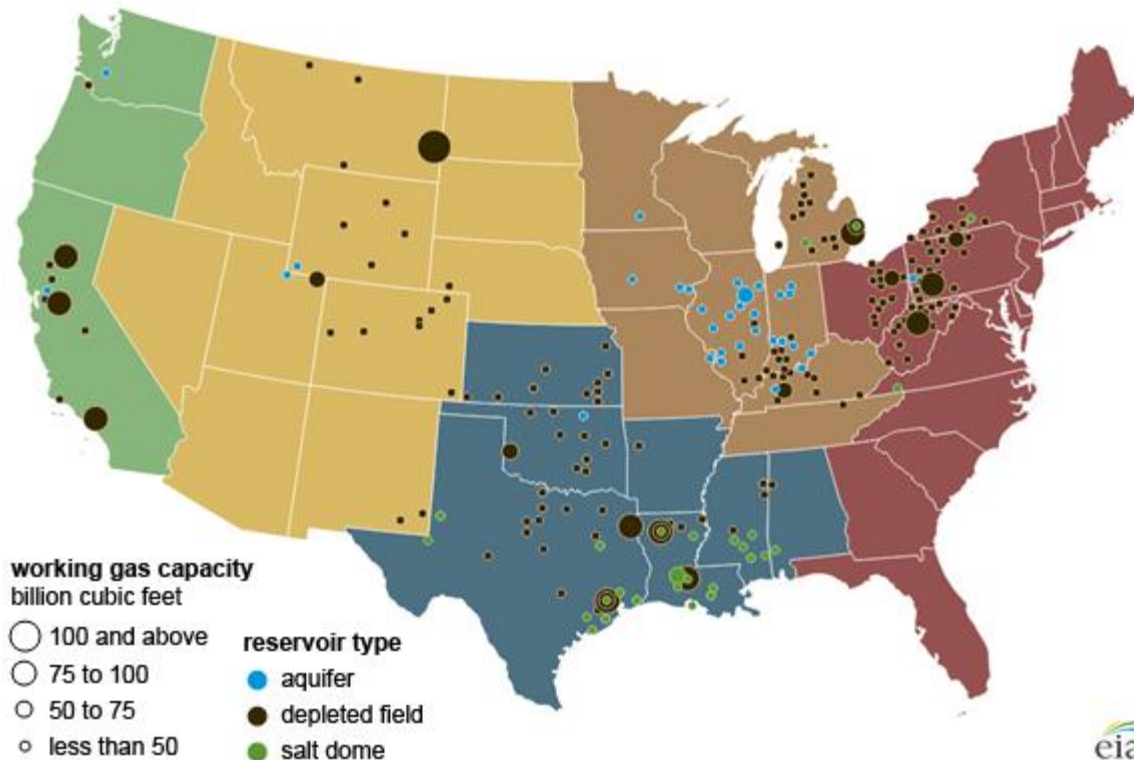
Regional S/D Models Storage Projection

Week Ending 29-Apr

	Daily Raw Storage	Daily Adjustment Factor	Daily Average Storage Activity (Adjusted) *	Weekly Adjusted Storage Activity
L48	10.0	0.3	10.3	72
East	0.1	2.0	2.2	15
Midwest	2.7	-0.3	2.3	16
Mountain	3.8	-3.4	0.4	3
South Central	3.1	1.6	4.7	33
Pacific	0.3	0.4	0.7	5

*Adjustment Factor is calculated based on historical regional deltas

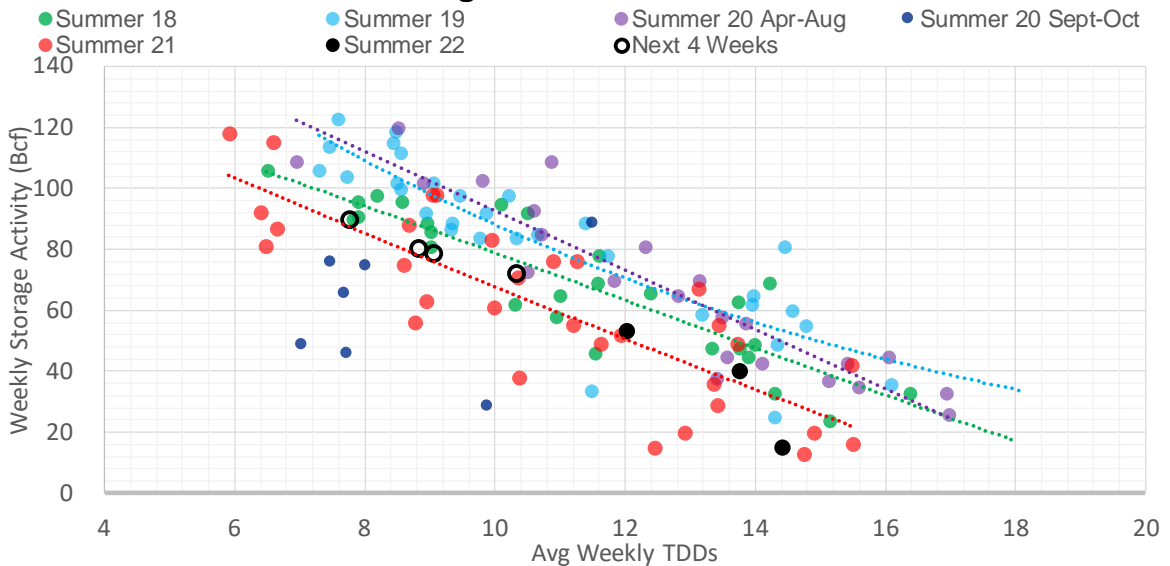
U.S. underground natural gas storage facilities by type (July 2015)



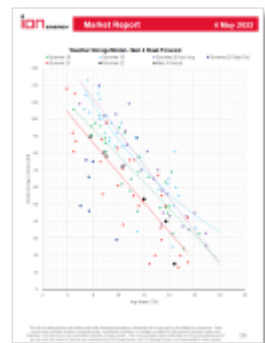
Weather Model Storage Projection

Next report and beyond		
Week Ending	TDDs	Week Storage Projection
29-Apr	10.3	72
06-May	9.1	78
13-May	8.8	80
20-May	7.8	89

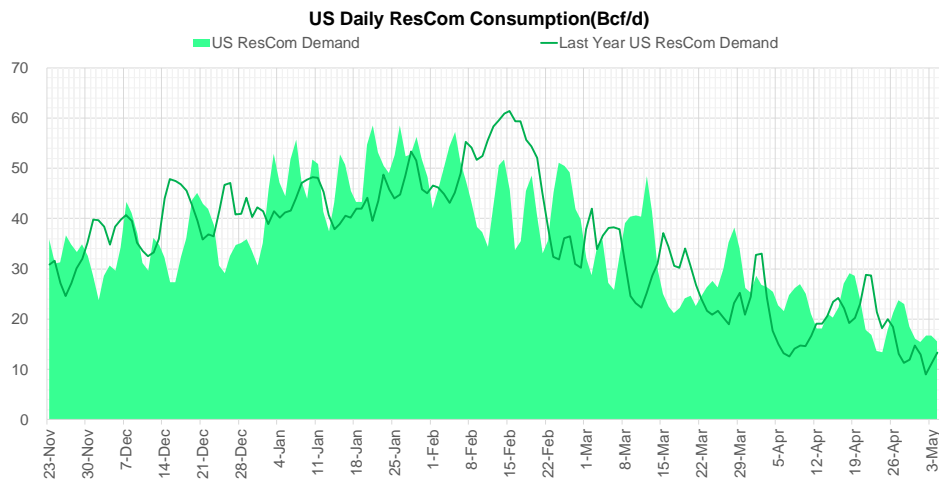
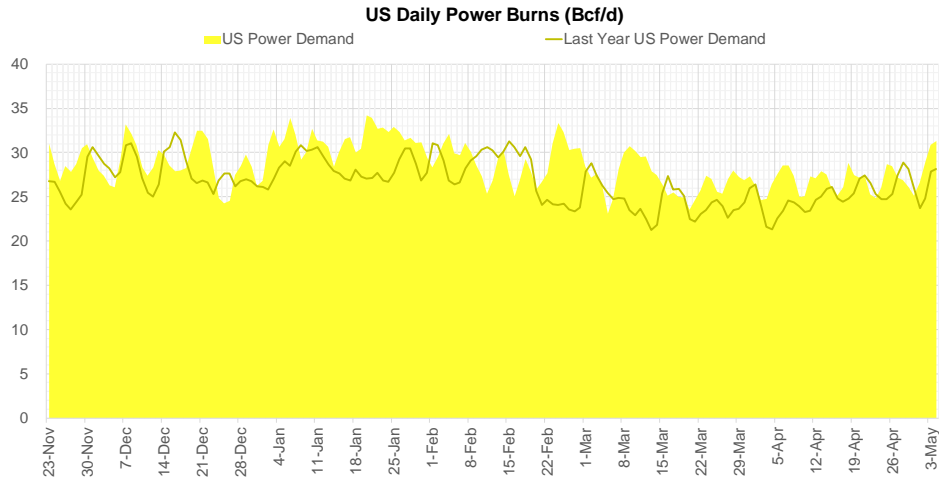
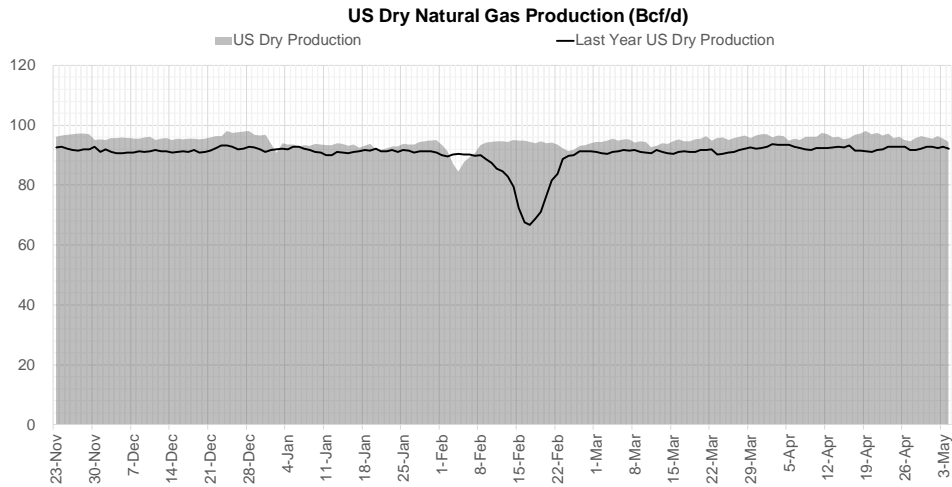
Weather Storage Model - Next 4 Week Forecast



[Go to larger image](#)



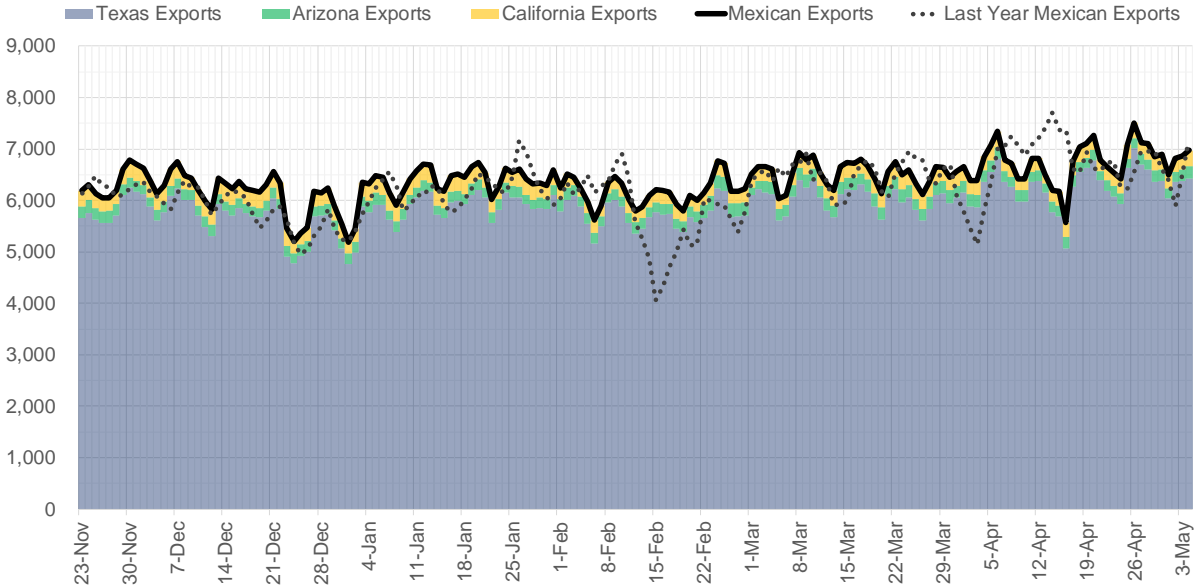
Supply – Demand Trends



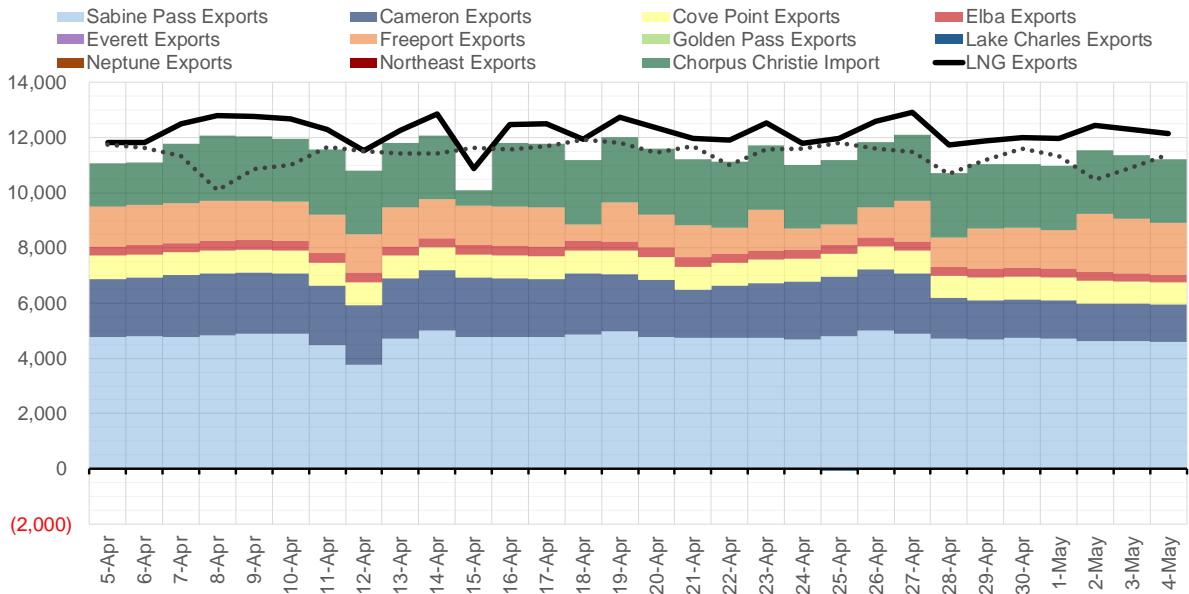
Source: Bloomberg

The risk of trading futures and options and other derivatives involves a substantial risk of loss and is not suitable for all persons. Each person must consider whether a particular trade, combination of trades, or strategy is suitable for that person's financial means and objectives. Past results are not necessarily indicative of future results. This communication may contain links to third party websites which are not under the control of and are not maintained by ION Energy Group, and ION Energy Group is not responsible for their content.

Mexican Exports (MMcf/d)



Net LNG Exports - Last 30 days (MMcf/d)



Source: Bloomberg

The risk of trading futures and options and other derivatives involves a substantial risk of loss and is not suitable for all persons. Each person must consider whether a particular trade, combination of trades, or strategy is suitable for that person's financial means and objectives. Past results are not necessarily indicative of future results. This communication may contain links to third party websites which are not under the control of and are not maintained by ION Energy Group, and ION Energy Group is not responsible for their content.

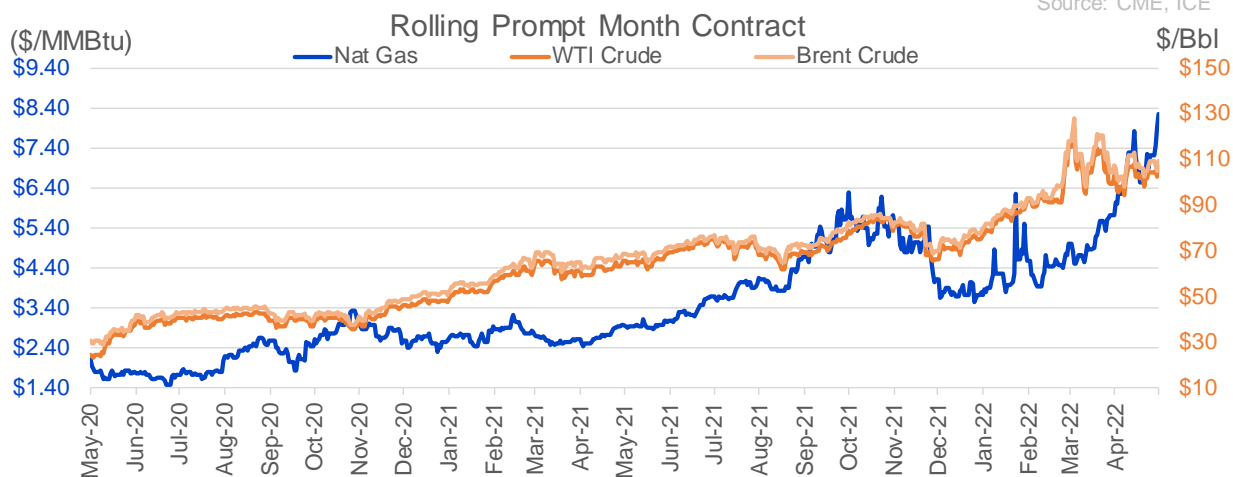
Nat Gas Options Volume and Open Interest CME and ICE Combined

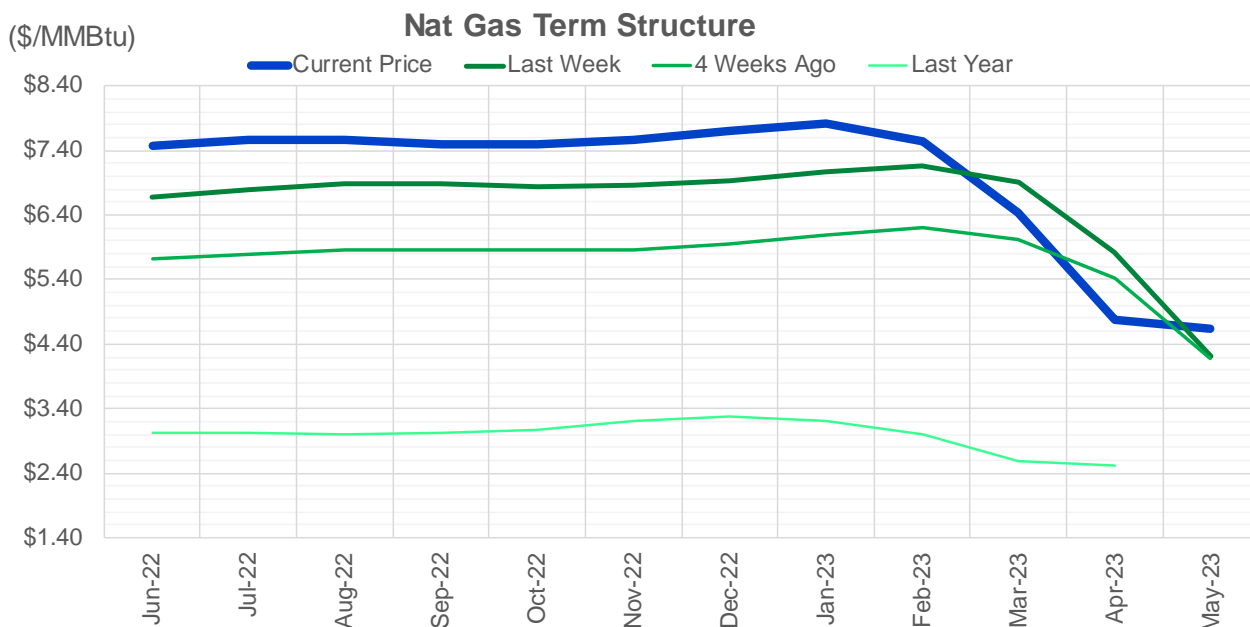
CONTRACT MONTH	CONTRACT YEAR	PUT/CALL	STRIKE	CUMULATIVE VOL	CONTRACT MONTH	CONTRACT YEAR	PUT/CALL	STRIKE	CUMULATIVE OI
6	2022	C	10.00	11779	8	2022	C	10.00	51621
6	2022	C	9.50	8732	8	2022	C	10.50	44026
6	2022	P	7.00	7588	10	2022	C	6.00	34834
6	2022	P	6.25	6408	10	2022	C	5.00	25500
10	2022	C	11.00	4054	6	2022	C	6.00	25146
6	2022	P	4.00	4000	9	2022	C	6.00	23730
7	2022	C	10.00	3553	10	2022	P	3.00	21535
6	2022	P	4.50	3005	7	2022	C	8.00	20870
6	2022	C	9.00	2810	6	2022	C	10.00	20486
6	2022	C	8.00	2725	6	2022	P	4.00	20397
6	2022	P	6.50	2674	8	2022	C	6.00	19670
8	2022	C	10.00	2340	6	2022	C	7.00	19196
6	2022	P	6.00	2286	7	2022	C	6.00	19058
10	2022	P	5.00	2154	6	2022	P	6.00	18383
9	2022	C	10.00	2099	9	2022	C	10.00	18364
6	2022	C	8.50	1843	12	2022	C	5.00	18221
6	2022	C	12.00	1707	10	2022	P	3.50	18212
7	2022	C	8.00	1672	6	2022	P	4.75	18119
10	2022	C	8.00	1661	8	2022	C	7.00	18115
7	2022	P	6.00	1632	9	2022	C	7.00	17870
6	2022	C	11.00	1482	6	2022	C	5.00	17862
8	2022	C	8.00	1480	7	2022	C	10.00	17806
6	2022	P	8.00	1468	7	2022	C	7.00	17771
7	2022	P	7.00	1373	7	2022	P	3.25	17645
11	2022	C	9.00	1325	10	2022	P	2.50	17436
10	2022	C	9.00	1280	6	2022	P	3.00	17223
6	2022	P	5.50	1270	10	2022	P	4.00	16452
6	2022	P	7.50	1147	6	2022	P	5.50	16200
10	2022	C	10.00	1094	1	2023	C	10.00	15980
10	2022	C	8.50	1075	6	2022	P	3.50	15976
8	2022	C	10.50	1050	2	2023	C	10.00	15664
3	2023	C	10.00	1018	7	2022	P	5.00	15640
11	2022	P	6.00	1000	10	2022	P	6.00	15460
11	2022	P	7.00	1000	11	2022	P	4.00	15371
12	2022	P	6.00	1000	9	2022	P	2.50	15291
12	2022	P	7.00	1000	5	2023	P	2.00	15236
6	2022	P	7.20	960	8	2022	C	9.00	15234
10	2022	P	4.00	953	6	2022	C	9.00	15060
3	2023	C	9.00	925	9	2022	P	2.75	14933
8	2022	C	12.00	912	7	2022	P	3.50	14931
7	2022	C	12.00	811	10	2022	P	2.00	14664
7	2022	C	9.00	807	7	2022	P	3.00	14500
10	2022	P	3.00	795	8	2022	P	3.00	14453
8	2022	P	7.50	776	9	2022	P	3.00	14341
9	2022	C	7.00	771	6	2022	P	3.75	14279
10	2022	P	2.00	750	10	2022	P	3.25	14249
10	2022	P	2.50	750	10	2022	C	8.00	14017
11	2022	C	10.00	714	3	2023	C	10.00	13992
10	2022	P	2.80	664	12	2022	C	6.00	13951
					7	2022	C	9	13850.25

Source: CME, ICE

Nat Gas Futures Open Interest CME and ICE Combined

CME Henry Hub Futures (10,000 MMBtu)				ICE Henry Hub Futures Contract Equivalent (10,000 MM			
	Current	Prior	Daily Change		Current	Prior	Daily Change
JUN 22	123847	125619	-1772	JUN 22	83744	83603	141
JUL 22	168905	169400	-495	JUL 22	73916	75388	-1473
AUG 22	60642	63514	-2872	AUG 22	61984	61891	94
SEP 22	88444	87136	1308	SEP 22	66947	67202	-255
OCT 22	96267	94708	1559	OCT 22	78464	76260	2205
NOV 22	45359	44840	519	NOV 22	58769	58531	238
DEC 22	47423	47595	-172	DEC 22	62783	62351	432
JAN 23	64583	62997	1586	JAN 23	65862	65202	661
FEB 23	26122	25668	454	FEB 23	54349	52901	1448
MAR 23	38516	38547	-31	MAR 23	54743	54435	308
APR 23	58628	57660	968	APR 23	52398	52209	189
MAY 23	59283	58956	327	MAY 23	48420	47775	645
JUN 23	23522	23404	118	JUN 23	44088	43419	669
JUL 23	19187	19161	26	JUL 23	43524	42969	555
AUG 23	13423	13617	-194	AUG 23	43244	42909	335
SEP 23	17656	17860	-204	SEP 23	42620	42277	344
OCT 23	33781	33100	681	OCT 23	50255	49809	445
NOV 23	12359	12429	-70	NOV 23	43279	43018	261
DEC 23	13496	14293	-797	DEC 23	39599	39272	327
JAN 24	20466	20641	-175	JAN 24	37435	36702	733
FEB 24	5969	5771	198	FEB 24	25408	25442	-34
MAR 24	15079	15154	-75	MAR 24	30355	30402	-47
APR 24	11067	11008	59	APR 24	25740	25708	33
MAY 24	6409	6410	-1	MAY 24	25342	25293	49
JUN 24	1862	1861	1	JUN 24	21856	21794	63
JUL 24	1948	1949	-1	JUL 24	21961	21928	34
AUG 24	3143	3143	0	AUG 24	22373	22340	34
SEP 24	1398	1421	-23	SEP 24	21463	21431	33
OCT 24	6661	6643	18	OCT 24	23887	23766	121
NOV 24	4843	4839	4	NOV 24	22138	22120	18





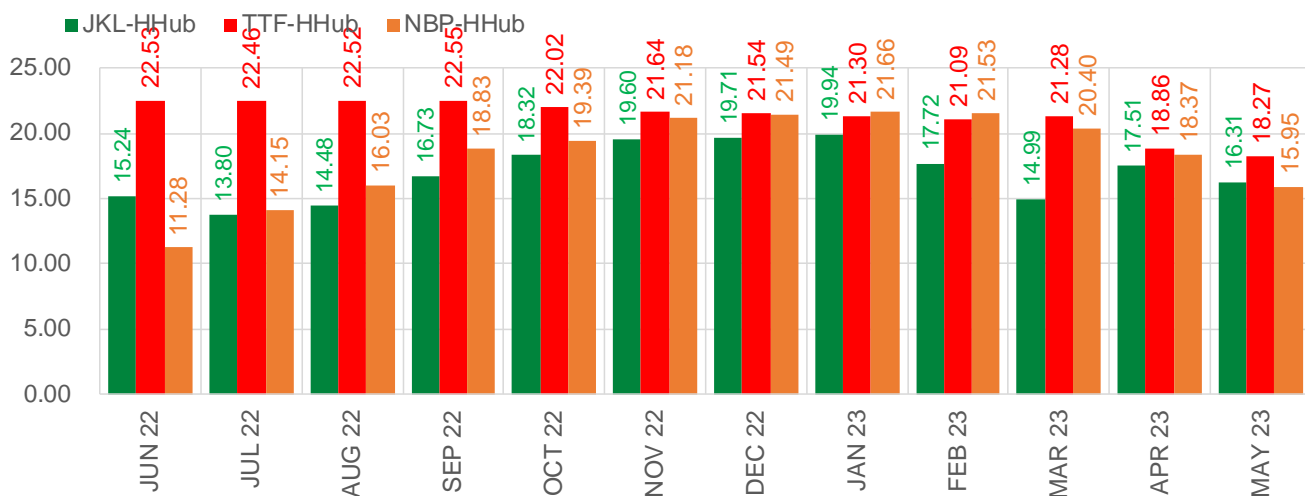
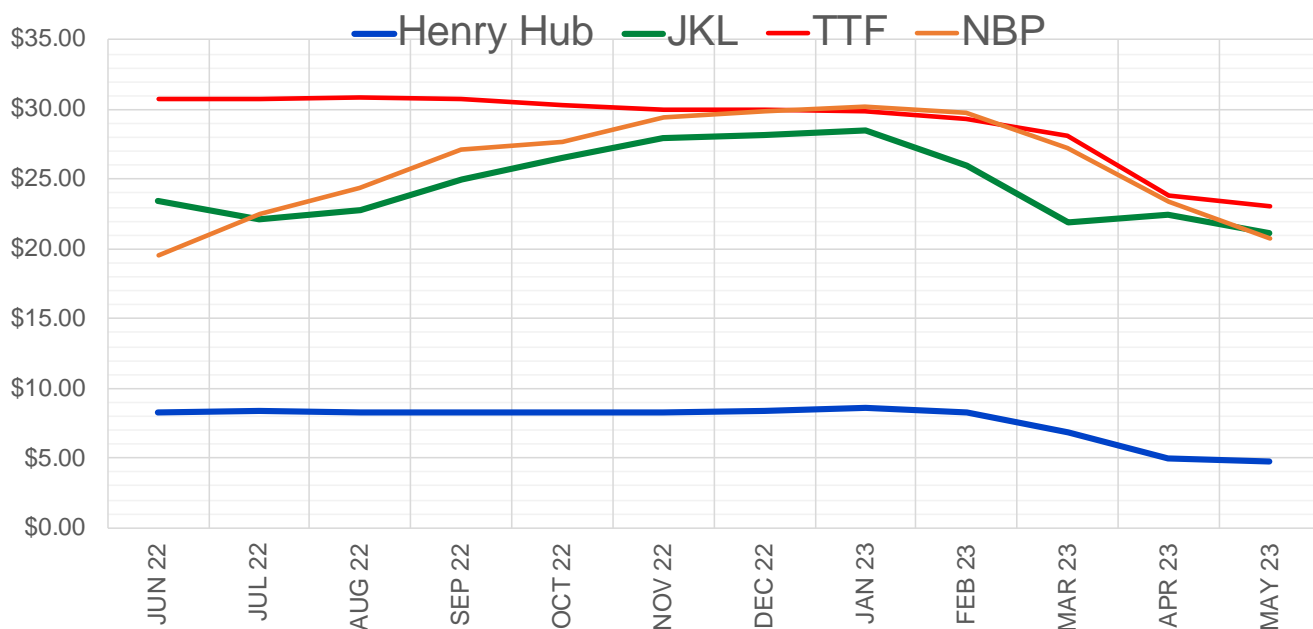
	Jun-22	Jul-22	Aug-22	Sep-22	Oct-22	Nov-22	Dec-22	Jan-23	Feb-23	Mar-23	Apr-23	May-23
Current Price	\$7.475	\$7.566	\$7.566	\$7.507	\$7.506	\$7.568	\$7.716	\$7.821	\$7.543	\$6.446	\$4.779	\$4.632
Last Week	\$6.669	\$6.805	\$6.891	\$6.892	\$6.845	\$6.852	\$6.924	\$7.070	\$7.169	\$6.907	\$5.827	\$4.213
vs. Last Week	\$0.806	\$0.761	\$0.675	\$0.615	\$0.661	\$0.716	\$0.792	\$0.751	\$0.374	-\$0.461	-\$1.048	\$0.419
4 Weeks Ago	\$5.712	\$5.793	\$5.858	\$5.865	\$5.849	\$5.867	\$5.941	\$6.097	\$6.196	\$6.019	\$5.428	\$4.170
vs. 4 Weeks Ago	\$1.763	\$1.773	\$1.708	\$1.642	\$1.657	\$1.701	\$1.775	\$1.724	\$1.347	\$0.427	-\$0.649	\$0.462
Last Year	\$2.966	\$3.014	\$3.022	\$3.004	\$3.019	\$3.077	\$3.203	\$3.282	\$3.206	\$2.997	\$2.585	\$2.528
vs. Last Year	\$4.509	\$4.552	\$4.544	\$4.503	\$4.487	\$4.491	\$4.513	\$4.539	\$4.337	\$3.449	\$2.194	\$2.104

	Units	Cash Settled	Prompt Settle	Cash to Prompt
AGT Citygate	\$/MMBtu	8.55	6.25	-2.30
TETCO M3	\$/MMBtu	7.49	6.04	-1.45
FGT Zone 3	\$/MMBtu	7.60	6.85	-0.75
Zone 6 NY	\$/MMBtu	7.60	6.03	-1.57
Chicago Citygate	\$/MMBtu	7.90	6.67	-1.23
Michcon	\$/MMBtu	7.87	6.62	-1.25
Columbia TCO Pool	\$/MMBtu	7.44	6.16	-1.28
Ventura	\$/MMBtu	7.16	6.49	-0.67
Rockies/Opal	\$/MMBtu	7.91	6.30	-1.61
El Paso Permian Basin	\$/MMBtu	6.40	5.96	-0.45
Socal Citygate	\$/MMBtu	8.24	6.58	-1.66
Malin	\$/MMBtu	7.90	6.46	-1.44
Houston Ship Channel	\$/MMBtu	7.82	6.64	-1.18
Henry Hub Cash	\$/MMBtu	7.80	6.45	-1.35
AECO Cash	C\$/GJ	6.53	4.94	-1.60
Station2 Cash	C\$/GJ	5.28	6.15	0.87
Dawn Cash	C\$/GJ	7.87	6.66	-1.21

Source: CME, Bloomberg

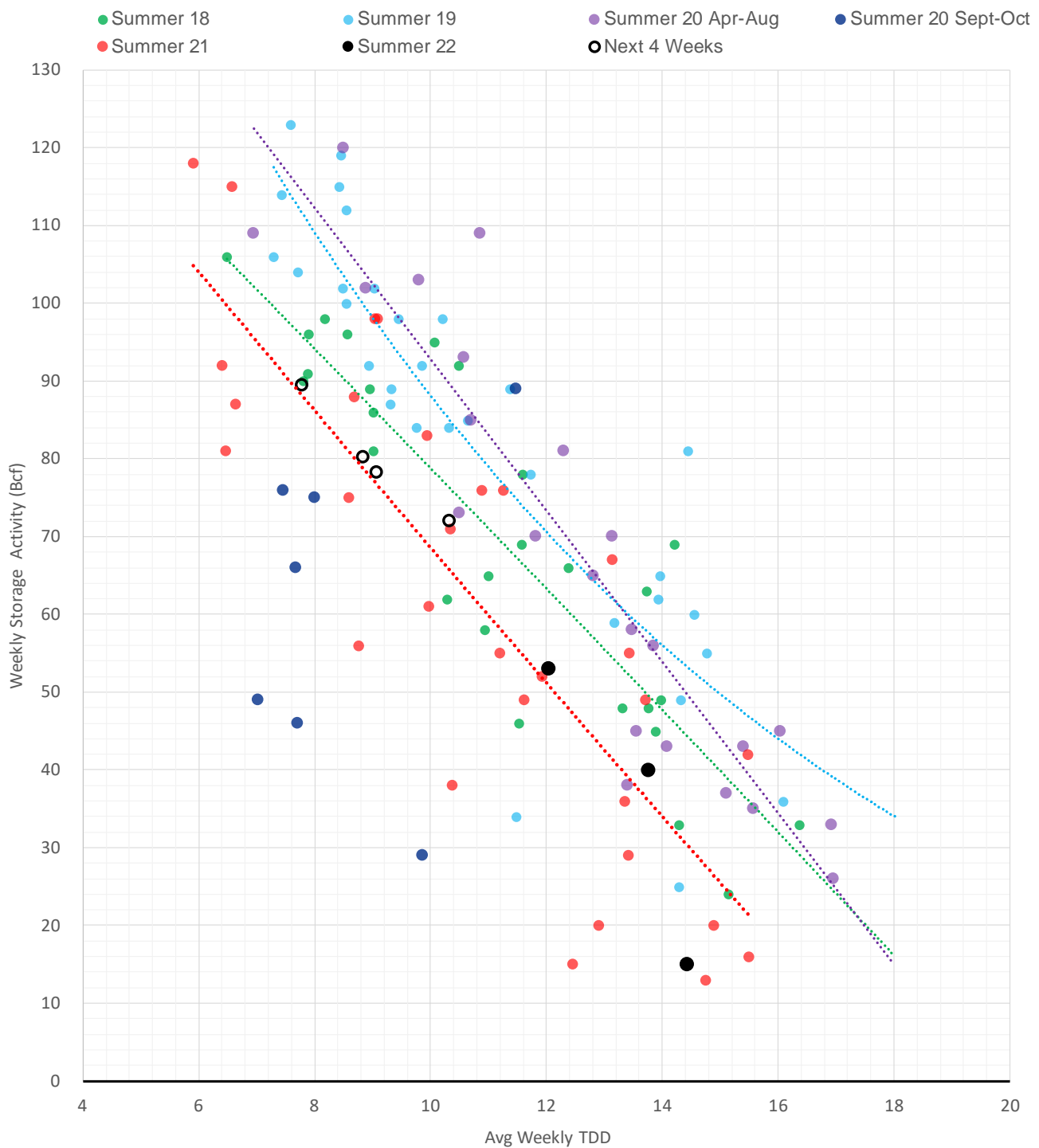
	Units	Current Price	vs. Last Week	vs. 4 Weeks Ago	vs. Last Year
NatGas Jul21/Oct21	\$/MMBtu	2.224	▲ 0.000	▲ 0.000	▲ 2.215
NatGas Oct21/Nov21	\$/MMBtu	0.361	▲ 0.000	▲ 0.000	▲ 0.301
NatGas Oct21/Jan22	\$/MMBtu	-1.817	▲ 0.000	▲ 0.000	▼ -2.088
NatGas Apr22/Oct22	\$/MMBtu	2.615	▲ 0.922	▲ 1.779	▲ 2.595
WTI Crude	\$/Bbl	102.41	▲ 0.710	▲ 0.450	▲ 36.720
Brent Crude	\$/Bbl	104.97	▼ -0.020	▼ -1.670	▲ 36.090
Fuel Oil, NY Harbour 1%	\$/Bbl	97.18	▲ 0.000	▲ 0.000	▲ 0.000
Heating Oil	cents/Gallon	408.27	▼ -38.520	▲ 61.450	▲ 208.390
Propane, Mt. Bel	cents/Gallon	1.26	▼ -0.046	▼ -0.073	▲ 0.443
Ethane, Mt. Bel	cents/Gallon	0.59	▲ 0.084	▲ 0.107	▲ 0.334
Coal, PRB	\$/MTon	12.30	▲ 0.000	▲ 0.000	▲ 0.000
Coal, PRB	\$/MMBtu	0.70			
Coal, ILB	\$/MTon	31.05	▲ 0.000	▲ 0.000	▲ 0.000
Coal, ILB	\$/MMBtu	1.32			

Nat Gas Term Structure (\$MMBTU)



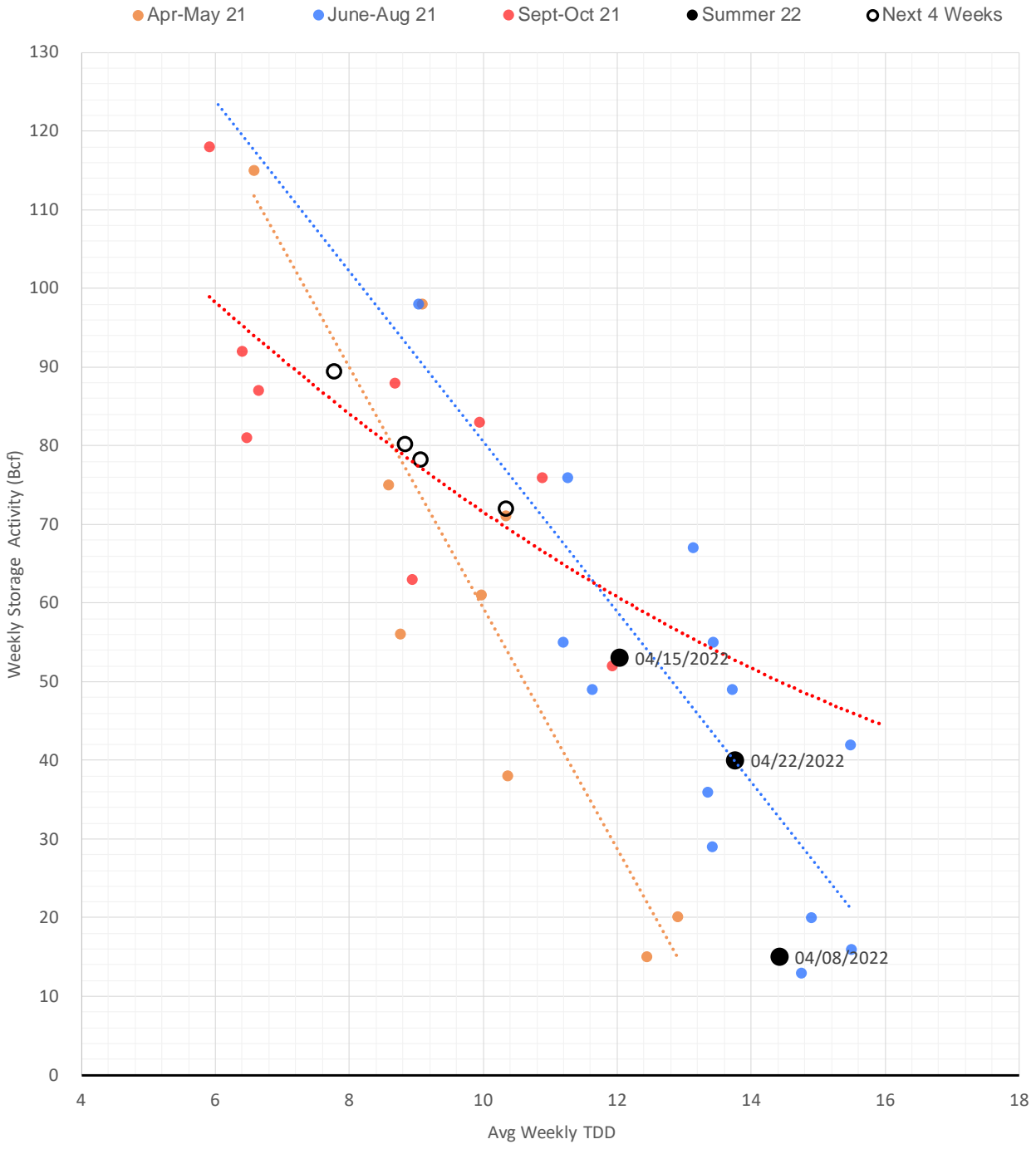
	JUN 22	JUL 22	AUG 22	SEP 22	OCT 22	NOV 22	DEC 22	JAN 23	FEB 23	MAR 23	APR 23	MAY 23
Henry Hub	\$8.264	\$8.331	\$8.325	\$8.254	\$8.251	\$8.316	\$8.428	\$8.550	\$8.262	\$6.863	\$4.979	\$4.794
JKL	\$23.500	\$22.130	\$22.800	\$24.980	\$26.575	\$27.920	\$28.135	\$28.490	\$25.980	\$21.855	\$22.485	\$21.100
JKL-HHub	\$15.236	\$13.799	\$14.475	\$16.726	\$18.324	\$19.604	\$19.707	\$19.940	\$17.718	\$14.992	\$17.506	\$16.306
TTF	\$30.794	\$30.795	\$30.847	\$30.802	\$30.270	\$29.954	\$29.965	\$29.854	\$29.356	\$28.147	\$23.838	\$23.061
TTF-HHub	\$22.530	\$22.464	\$22.522	\$22.548	\$22.019	\$21.638	\$21.537	\$21.304	\$21.094	\$21.284	\$18.859	\$18.267
NBP	\$19.544	\$22.480	\$24.355	\$27.079	\$27.643	\$29.496	\$29.917	\$30.205	\$29.796	\$27.264	\$23.349	\$20.741
NBP-HHub	\$11.280	\$14.149	\$16.030	\$18.825	\$19.392	\$21.180	\$21.489	\$21.655	\$21.534	\$20.401	\$18.370	\$15.947

Weather Storage Model - Next 4 Week Forecast



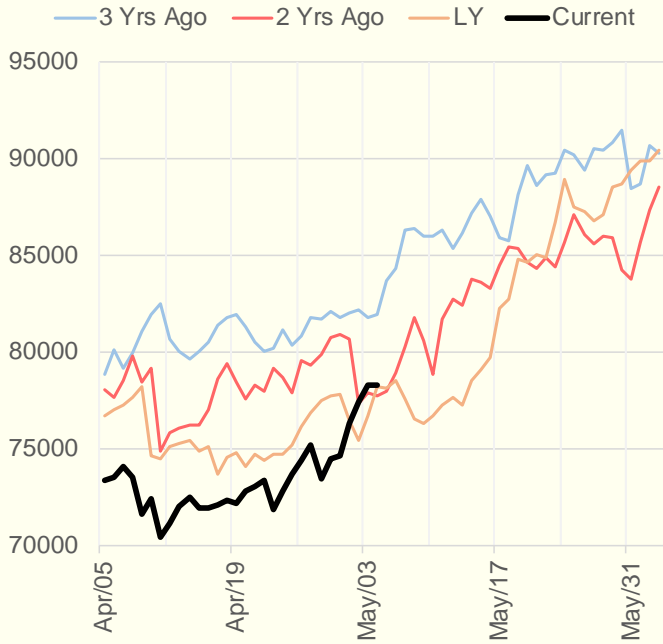
The risk of trading futures and options and other derivatives involves a substantial risk of loss and is not suitable for all persons. Each person must consider whether a particular trade, combination of trades, or strategy is suitable for that person's financial means and objectives. Past results are not necessarily indicative of future results. This communication may contain links to third party websites which are not under the control of and are not maintained by ION Energy Group, and ION Energy Group is not responsible for their content.

Weather Storage Model for Summer 2021 & 2022

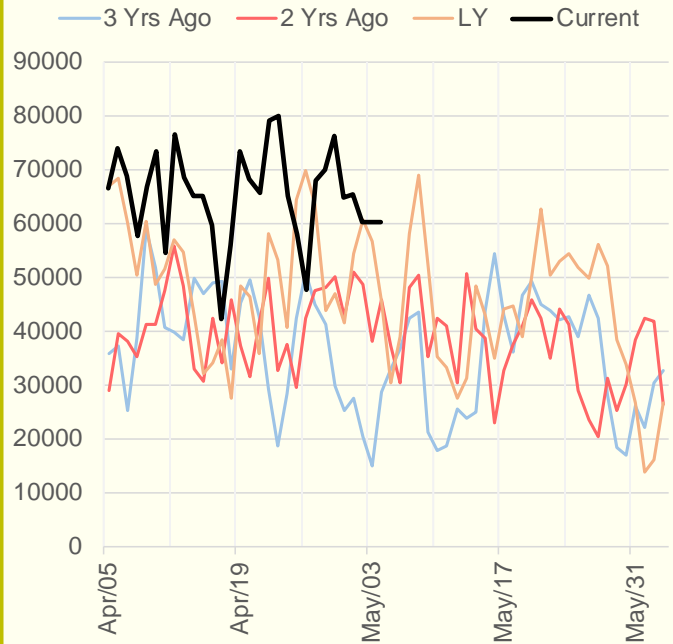


The risk of trading futures and options and other derivatives involves a substantial risk of loss and is not suitable for all persons. Each person must consider whether a particular trade, combination of trades, or strategy is suitable for that person's financial means and objectives. Past results are not necessarily indicative of future results. This communication may contain links to third party websites which are not under the control of and are not maintained by ION Energy Group, and ION Energy Group is not responsible for their content.

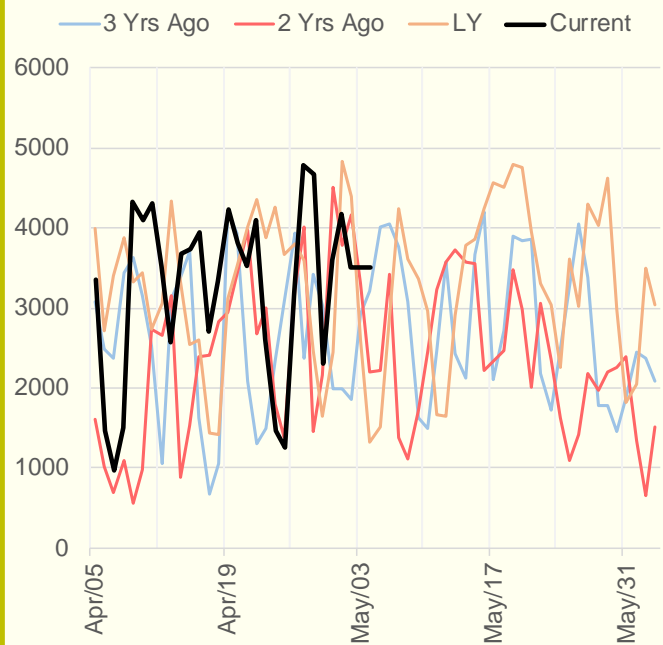
NRC Nuclear Daily Output



US Wind



CALI Wind



TEXAS Wind

