

# CFTC COMMITMENT OF TRADERS REPORT

As of 5/17/2022

## TRADITIONAL FUNDS net position changes

Wed to Tue, in 000 contracts

	Corn	Bean	Meal	Oil	Chi. Wheat	KC Wheat	Min Wheat
Futures Only	2.8	9.0	(10.8)	(4.3)	7.1	1.4	(0.8)
Futures & Options Combined	4.1	17.6	(12.2)	(2.1)	5.3	3.2	(0.7)

## TRADITIONAL COMMERCIAL net position changes

	Corn	Bean	Meal	Oil	Chi. Wheat	KC Wheat	Min Wheat
Futures Only	(9.4)	(9.2)	7.3	1.1	(8.2)	(0.9)	0.3
Futures & Options Combined	(14.6)	(19.0)	8.0	(0.9)	(6.2)	(2.5)	0.2

## MANAGED MONEY net position changes

	Corn	Bean	Meal	Oil	Chi. Wheat	KC Wheat	Min Wheat
Futures Only	(1.0)	15.5	(16.2)	(2.7)	15.5	4.2	(0.2)
Futures & Options Combined	1.1	16.7	(16.4)	(2.1)	11.0	3.9	(0.1)

## SWAP DEALERS net position changes

	Corn	Bean	Meal	Oil	Chi. Wheat	KC Wheat	Min Wheat
Futures Only	10.5	(12.7)	(2.3)	0.8	(0.4)	0.3	0.1
Futures & Options Combined	7.3	(14.9)	(2.5)	(0.1)	0.4	0.1	0.0

## PRODUCERS/END USERS net position changes

	Corn	Bean	Meal	Oil	Chi. Wheat	KC Wheat	Min Wheat
Futures Only	(19.9)	3.4	9.6	0.3	(7.8)	(1.2)	0.2
Futures & Options Combined	(21.9)	(4.1)	10.5	(0.8)	(6.6)	(2.6)	0.2

## INDEX net position changes

	Corn	Bean	Meal	Oil	Chi. Wheat	KC Wheat	Min Wheat
Futures & Options Combined	1.2	(8.2)	(5.2)	(1.2)	2.5	0.6	NA

## SUPPLEMENTAL NON-COMMERCIAL net position changes

	Corn	Bean	Meal	Oil	Chi. Wheat	KC Wheat	Min Wheat
Futures & Options Combined	1.4	16.4	(10.1)	(1.9)	3.6	2.8	NA

## OPEN INTEREST net position changes

Wed to Tue, in 000 contracts

	Corn	Bean	Meal	Oil	Chi. Wheat	KC Wheat	Min Wheat
Futures Only	37.7	14.7	1.4	1.9	18.3	2.3	1.0
Futures & Options Combined	87.7	24.4	3.4	9.5	59.4	7.0	1.8

Source: CFTC and FI

Wed to Tue, in 000 contracts

**COMMITMENT OF TRADERS  
FUTURES ONLY NET POSITIONS  
AS OF 05/17/2022  
(IN THOUSAND CONTRACTS)**

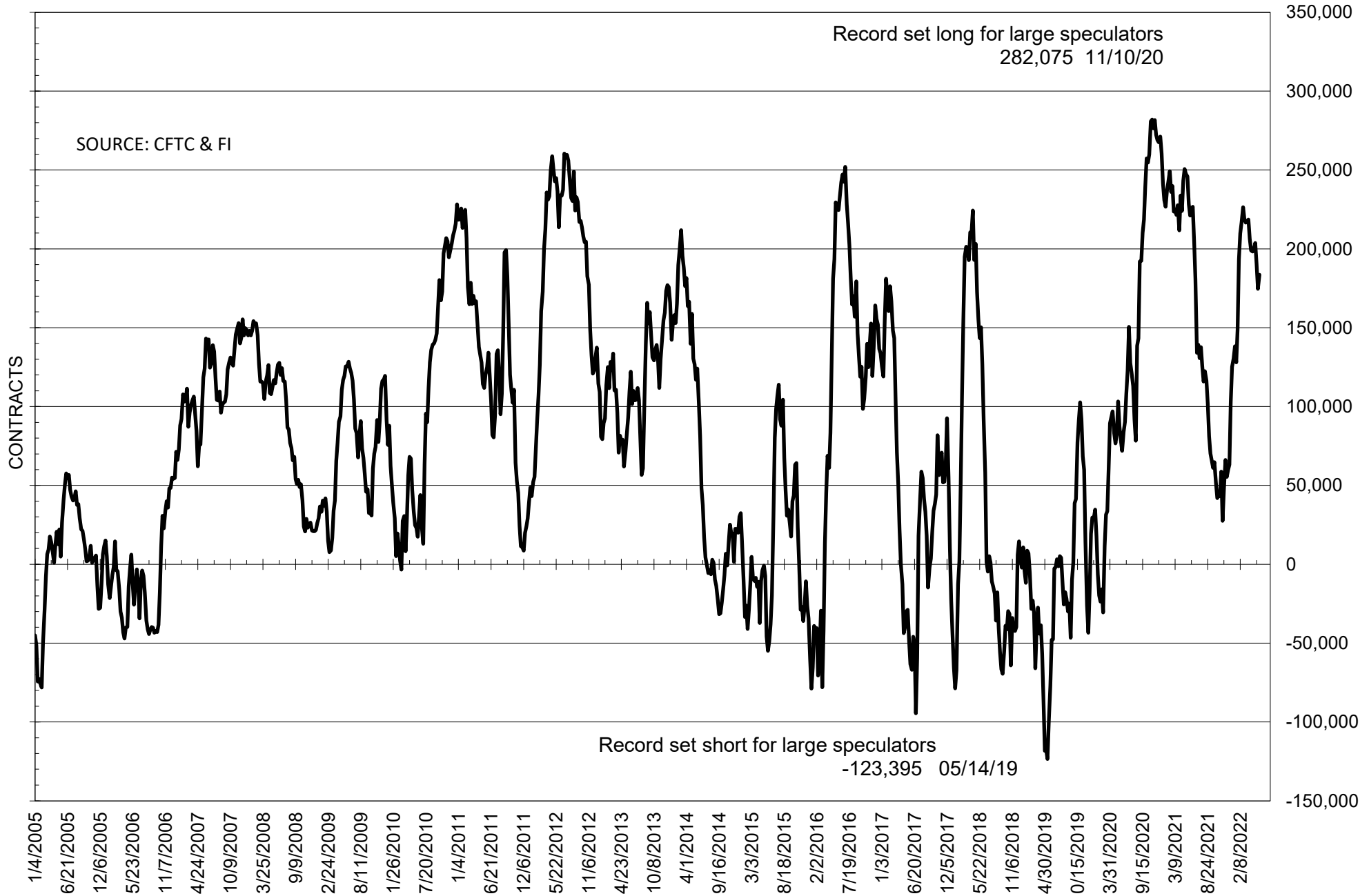
	COMMERCIAL				(FUND) NON COMMERCIAL				(SPEC) NON-REPORTABLE			
	17-May	10-May	3-May	26-Apr	17-May	10-May	3-May	26-Apr	17-May	10-May	3-May	26-Apr
	<b>WHEAT</b>											
Chicago	-26.0	-17.8	-14.2	-17.4	28.8	21.7	20.0	21.7	-2.8	-3.9	-5.8	-4.3
Kansas City	-41.3	-40.4	-40.2	-44.1	39.0	37.6	37.5	40.4	2.3	2.8	2.7	3.7
Minneapolis	-29.7	-30.0	-29.5	-29.1	24.3	25.1	24.8	23.9	5.4	4.9	4.7	5.2
All Wheat	-97.0	-88.2	-83.9	-90.6	92.1	84.4	82.3	86.0	4.9	3.8	1.6	4.6
<b>CORN</b>	-424.8	-415.3	-451.2	-447.3	473.7	470.9	501.9	497.6	-49.0	-55.6	-50.7	-50.4
<b>OATS</b>	#VALUE!	#VALUE!	#VALUE!	#VALUE!	#VALUE!	#####	#VALUE!	#VALUE!	#VALUE!	#VALUE!	#VALUE!	#VALUE!
<b>SOYBEANS</b>	-156.9	-147.7	-165.4	-177.8	183.6	174.6	190.4	203.8	-26.7	-26.9	-25.0	-26.0
<b>SOY OIL</b>	-117.7	-118.8	-111.3	-123.9	96.3	100.6	97.3	107.0	21.4	18.2	14.0	16.9
<b>SOY MEAL</b>	-100.7	-108.1	-119.7	-142.1	73.3	84.1	99.6	116.3	27.4	23.9	20.2	25.8

Oats positions thin to be reported

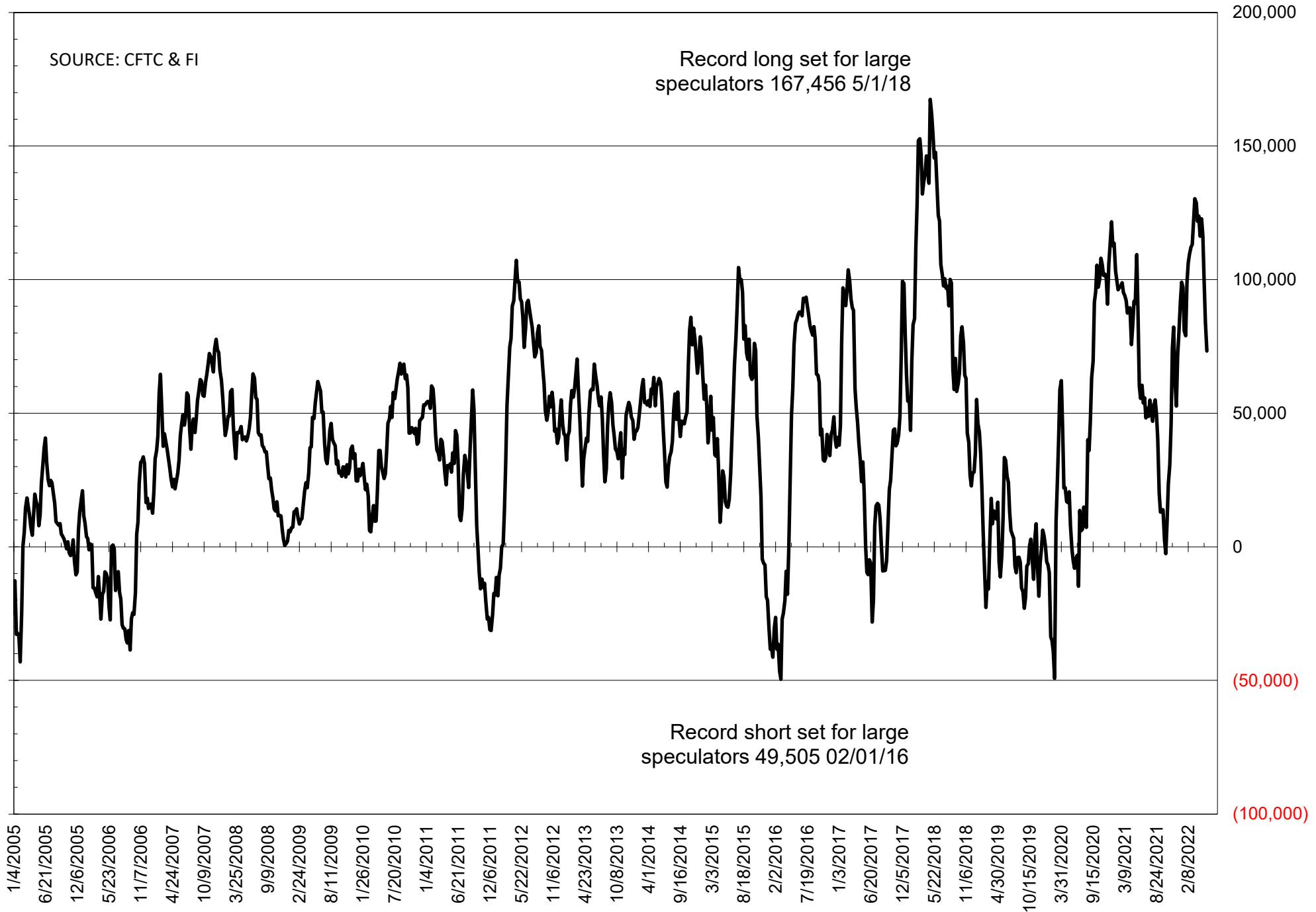
	TOTAL OPEN INTEREST				NEARBY FUTURES PRICE					17-May-22 LAST REPORTED % HELD BY TRADERS			
	17-May	10-May	3-May	26-Apr	N Latest	N 17-May	N 10-May	N 3-May	K 26-Apr	LARGE FUND		SMALL	
										LONG	SHORT	LONG	SHORT
<b>WHEAT</b>													
Chicago	326651	308326	319233	325594	1168.75	1277.50	1092.75	1045.50	1083.25	0%	28%	0%	11%
Kansas City	174905	172577	171872	173692	1252.75	1367.75	1175.00	1092.50	1157.75	0%	12%	0%	12%
Minneapolis	75684	74673	71220	71085	1279.00	1394.25	1213.50	1157.00	1184.75	0%	2%	0%	14%
<b>CORN</b>	1548438	1510783	1513880	1525877	778.75	800.75	775.25	793.00	803.25	0%	7%	0%	12%
<b>OATS</b>	#VALUE!	#VALUE!	#VALUE!	#VALUE!	612.75	653.75	599.25	672.50	694.00	0%	#VALUE!	0%	#VALUE!
<b>SOYBEANS</b>	709144	694454	700856	726717	1705.25	1678.00	1592.25	1630.50	1705.25	33%	7%	7%	11%
<b>SOY OIL</b>	372545	370664	361527	380147	80.93	83.49	81.04	80.28	85.29	0%	5%	0%	5%
<b>SOY MEAL</b>	361553	360150	366569	383905	429.90	411.80	401.50	423.90	444.80	0%	8%	0%	6%

SOURCE: CFTC & FI

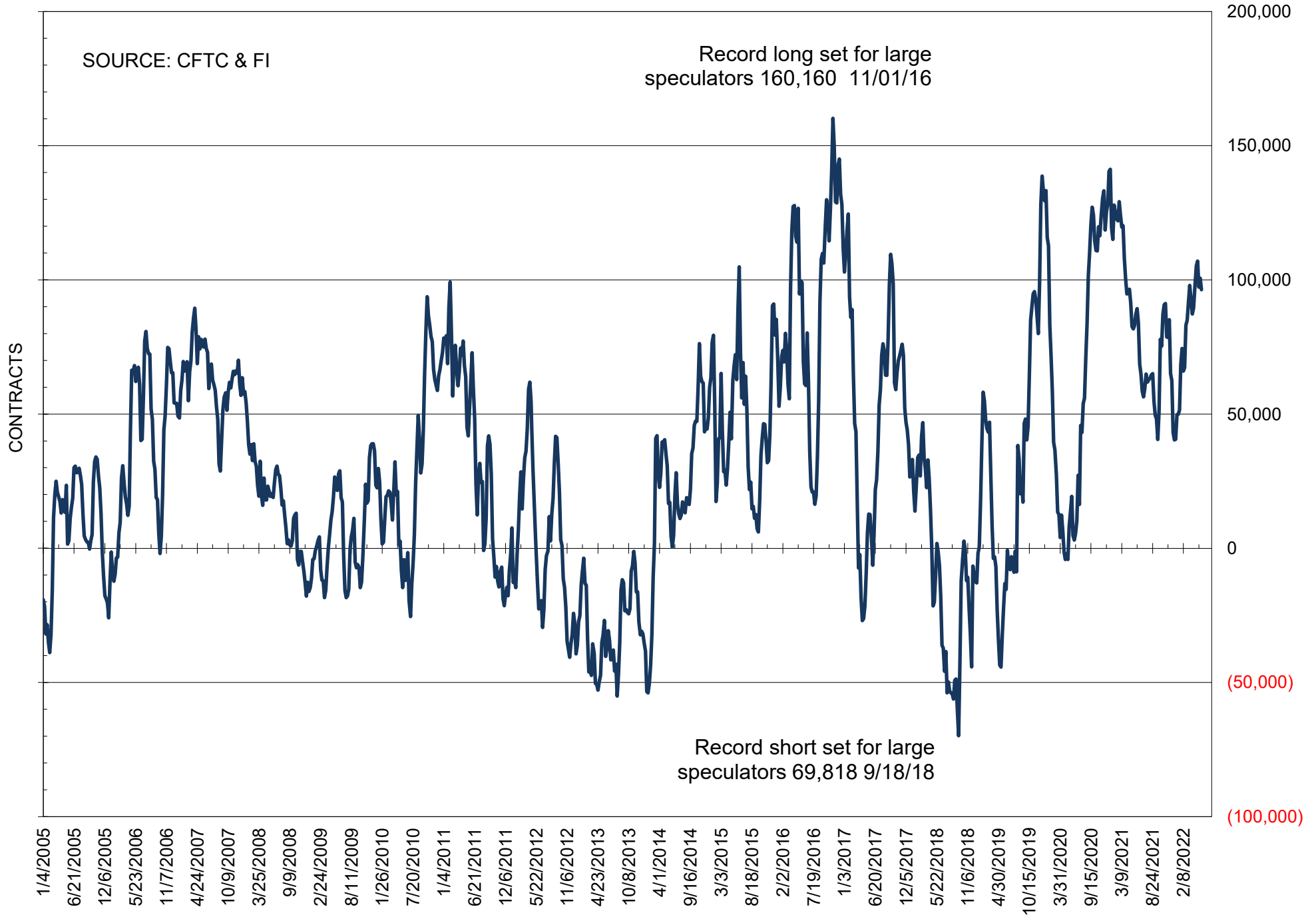
# NET POSITION OF FUTURES ONLY LARGE SPECS IN SOYBEANS



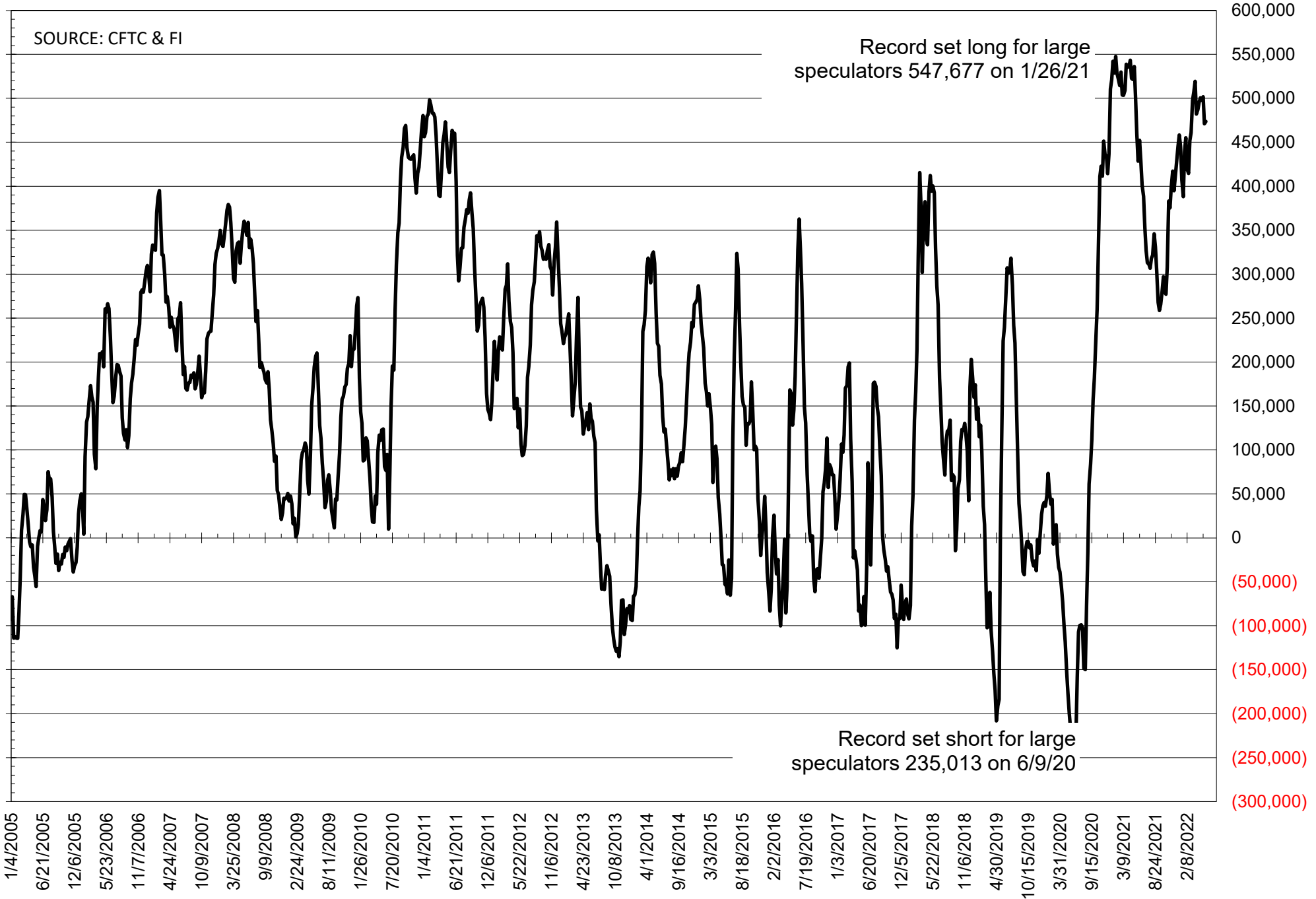
# NET POSITION OF FUTURES ONLY LARGE SPECS IN SOYMEAL



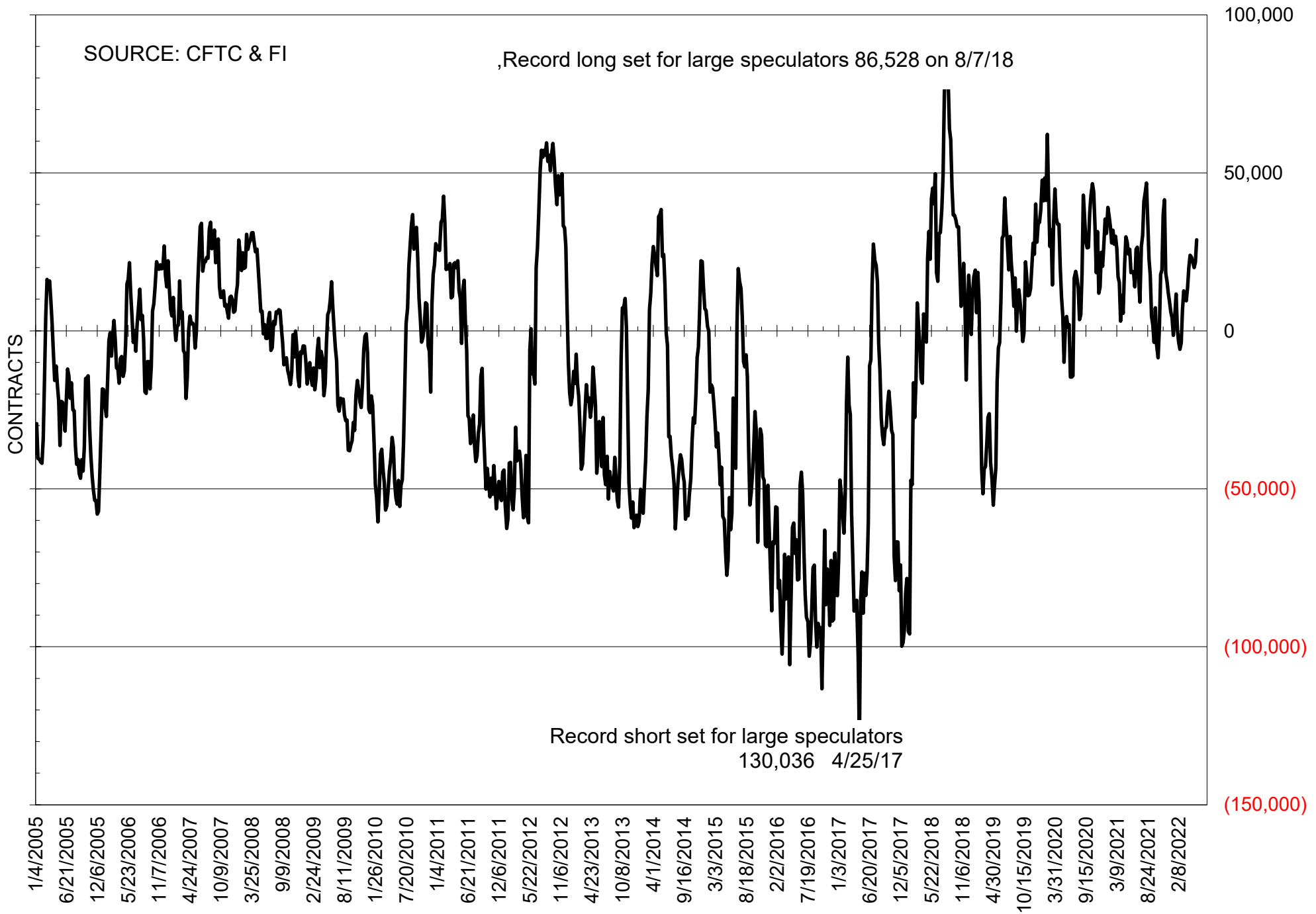
# NET POSITION OF FUTURES ONLY LARGE SPECS IN SOYOIL



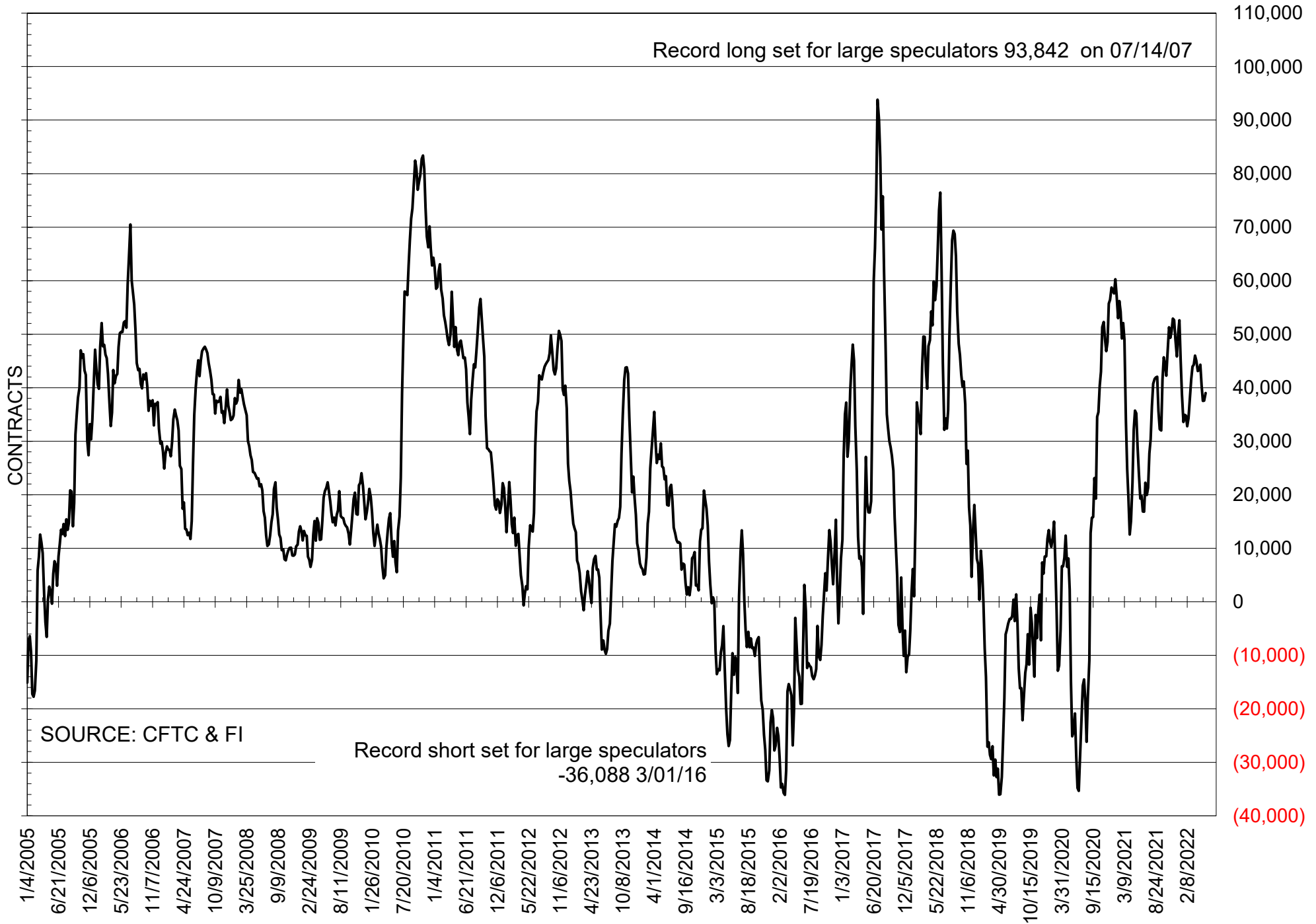
# NET POSITION OF LARGE SPECULATORS IN CORN



# NET POSITION OF FUTURES ONLY LARGE SPECS IN CHICAGO WHEAT

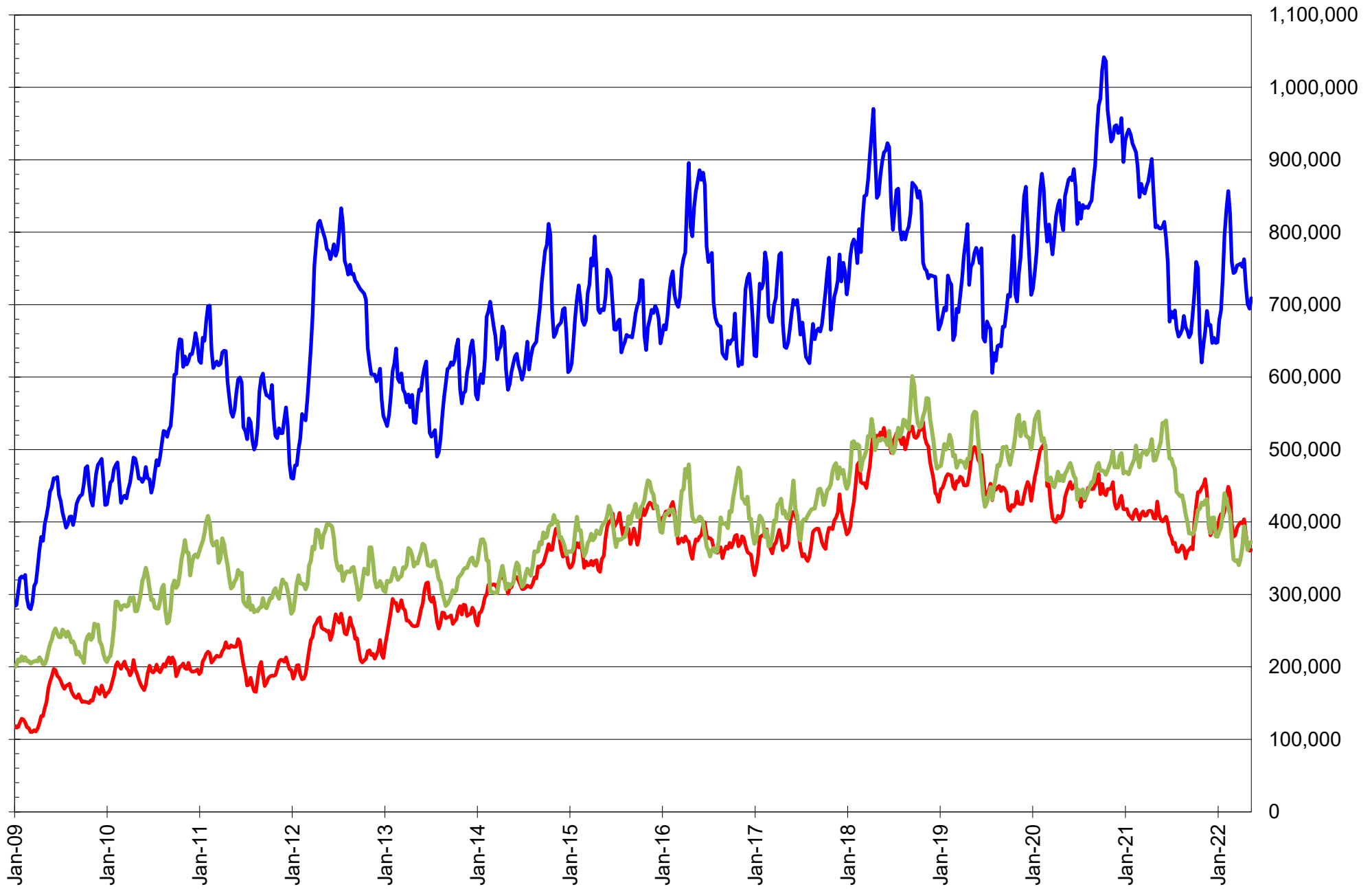


# NET POSITION OF LARGE SPECULATORS IN KANSAS CITY WHEAT





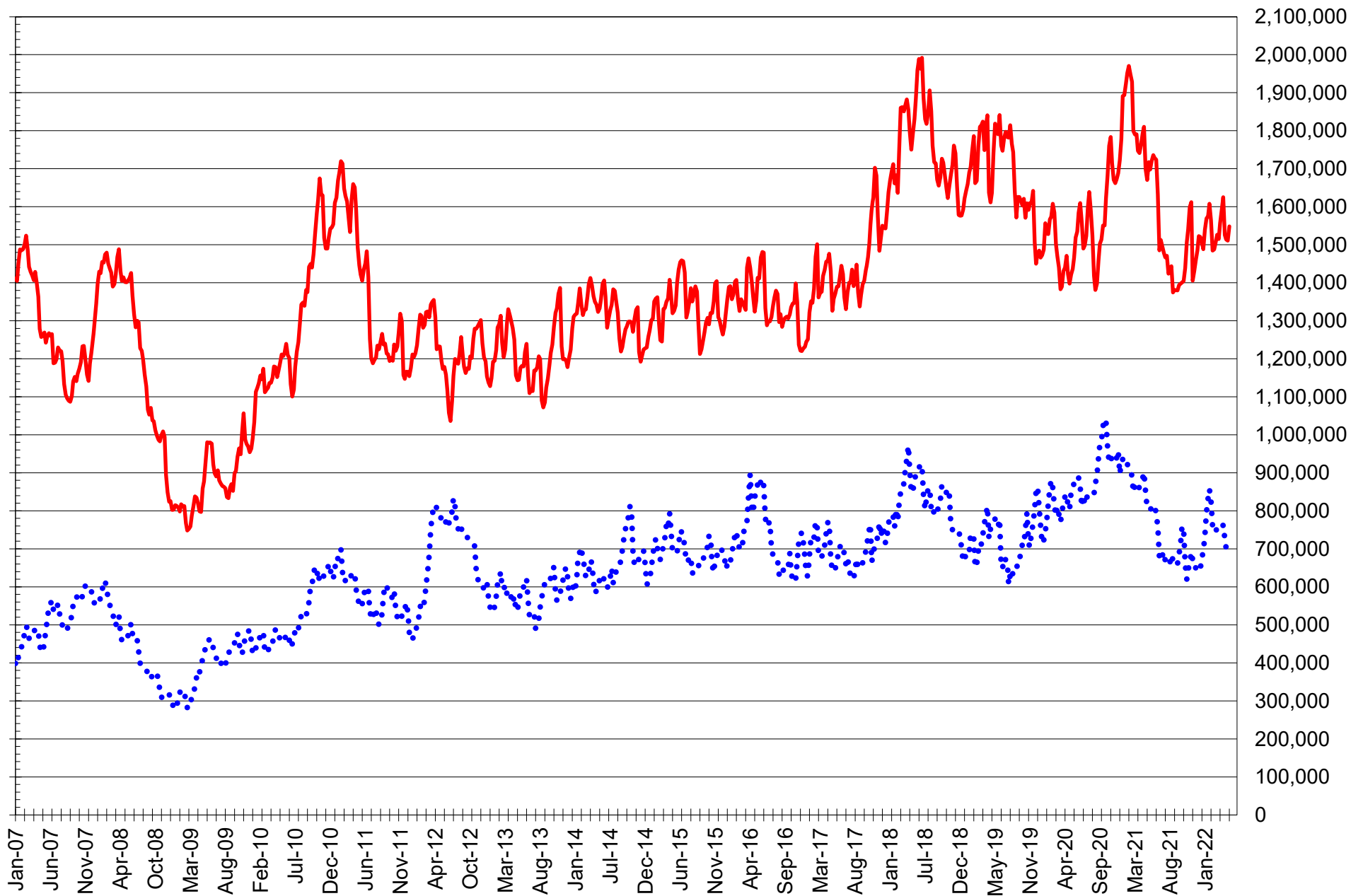
# TOTAL OPEN INTEREST IN SOYBEANS, MEAL AND OIL, FUTURES ONLY



SOURCE: CFTC & FI

— SOYBEANS — SOYBEAN MEAL — SOYBEAN OIL

# TOTAL OPEN INTEREST IN CORN AND SOYBEANS, FUTURES ONLY



SOURCE: CFTC & FI

— CORN

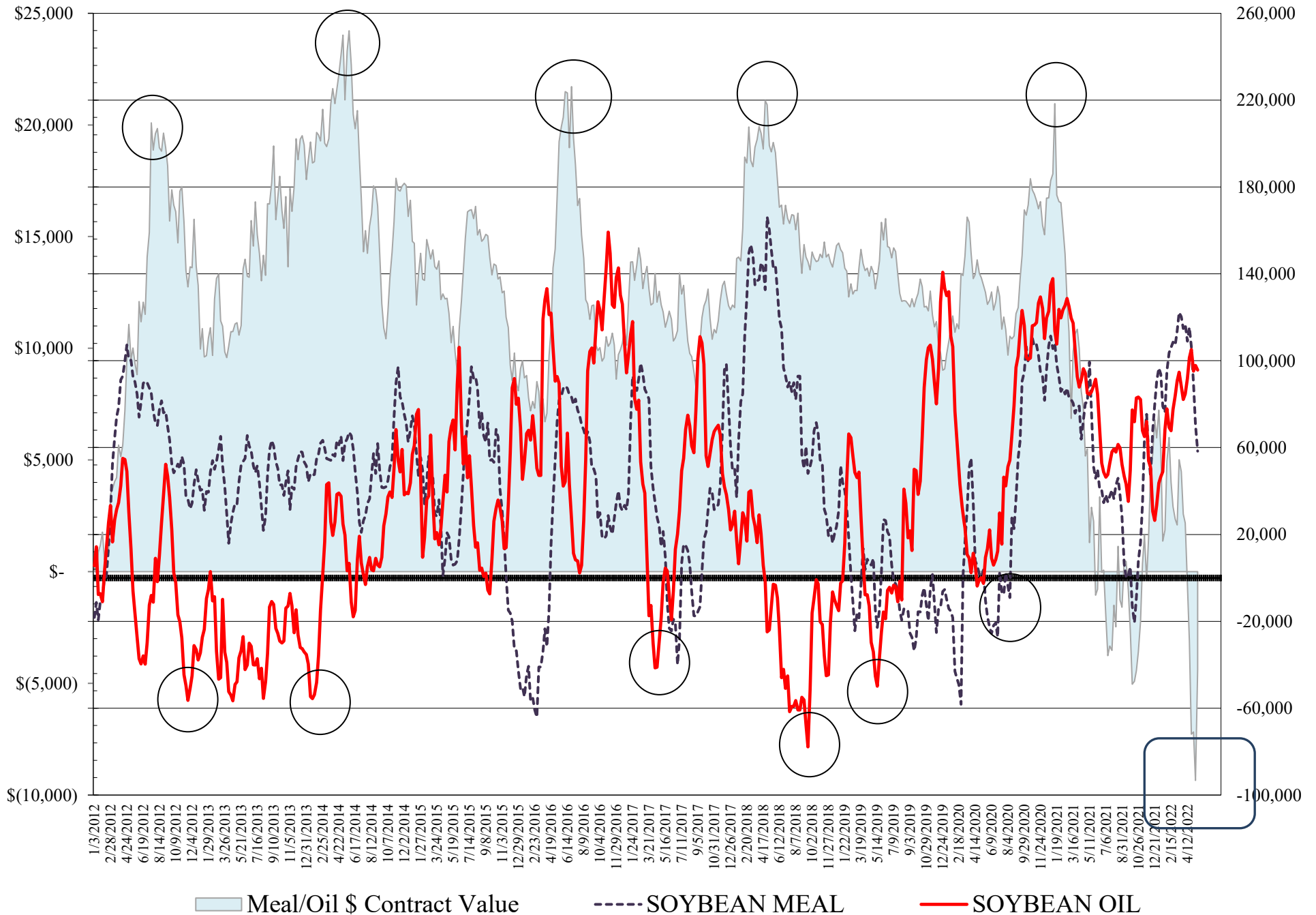
•••• SOYBEANS

**COMMITMENT OF TRADERS  
FUTURES & OPTIONS NET POSITIONS  
AS OF 05/17/2022  
(IN THOUSAND CONTRACTS)**

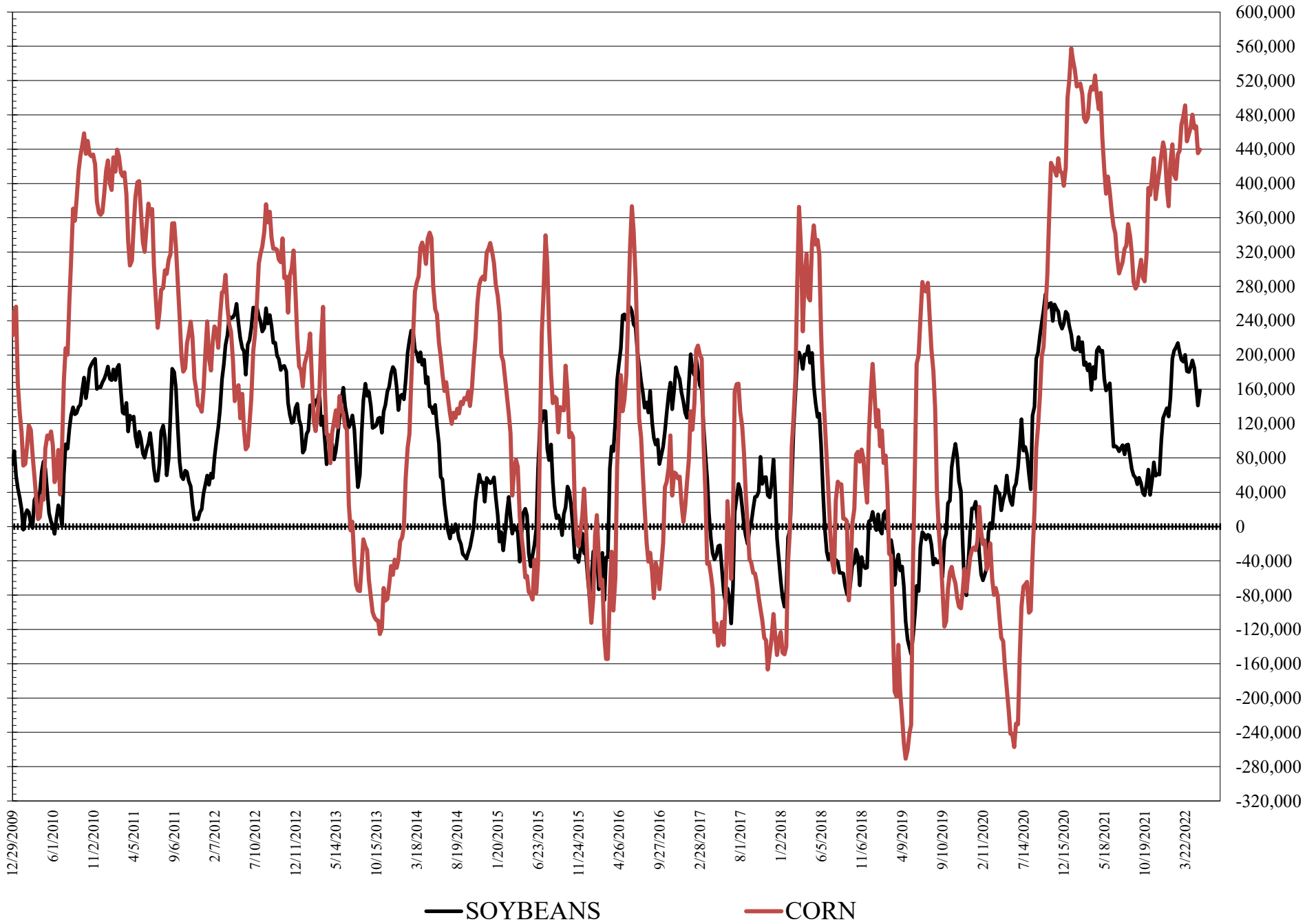
	COMMERCIAL				<b>(FUND)</b> NON COMMERCIAL				<b>(SPEC)</b> NON-REPORTABLE			
	17-May	10-May	3-May	26-Apr	17-May	10-May	3-May	26-Apr	17-May	10-May	3-May	26-Apr
	<b>WHEAT</b>											
Chicago	-28.5	-22.3	-18.8	-22.3	31.4	26.1	24.4	26.3	-2.9	-3.7	-5.6	-4.0
Kansas City	-43.7	-41.1	-40.0	-45.2	41.4	38.3	37.7	41.7	2.3	2.9	2.3	3.5
Minneapolis	-29.4	-29.6	-29.0	-28.7	23.9	24.5	24.1	23.4	5.5	5.1	4.9	5.3
All Wheat	-101.6	-93.1	-87.8	-96.2	96.7	88.9	86.3	91.4	4.9	4.2	1.5	4.8
<b>CORN</b>	-403.9	-389.3	-427.1	-426.7	439.4	435.3	466.5	464.3	-35.5	-46.1	-39.4	-37.7
<b>OATS</b>	#VALUE!	#VALUE!	#VALUE!	#VALUE!	#VALUE!	#VALUE!	#VALUE!	#VALUE!	#VALUE!	#VALUE!	#VALUE!	#VALUE!
<b>SOYBEANS</b>	-131.7	-112.7	-136.5	-157.8	158.9	141.2	162.8	184.7	-27.1	-28.5	-26.3	-26.8
<b>SOY OIL</b>	-117.2	-116.2	-109.6	-122.4	95.7	97.8	95.2	105.2	21.5	18.4	14.4	17.2
<b>SOY MEAL</b>	-89.2	-97.1	-112.5	-135.7	58.3	70.5	89.4	106.5	30.8	26.6	23.1	29.2
		<b>TOTAL</b>				<b>% HELD BY TRADERS</b>						
		<b>OPEN INTEREST</b>				<b>COMMERCIALS</b>	<b>LARGE (FUNDS)</b>		<b>SMALL (NON-REP)</b>			
		<b>17-May</b>	<b>10-May</b>	<b>3-May</b>	<b>26-Apr</b>	<b>LONG</b>	<b>SHORT</b>	<b>LONG</b>	<b>SHORT</b>	<b>LONG</b>	<b>SHORT</b>	
<b>WHEAT</b>												
Chicago	483,434	424,000	425,804	431,253	31%	37%	25%	19%	8%	9%		
Kansas City	204,633	197,589	193,800	195,409	35%	56%	30%	9%	12%	11%		
Minneapolis	78,982	77,191	73,495	73,326	42%	80%	32%	2%	21%	14%		
<b>CORN</b>	2,256,288	2,168,588	2,172,898	2,157,559	36%	54%	23%	4%	10%	11%		
<b>OATS</b>	#VALUE!	#VALUE!	#VALUE!	#VALUE!								
<b>SOYBEANS</b>	920,248	895,823	888,673	904,744	44%	58%	22%	5%	7%	9%		
<b>SOY OIL</b>	447,084	437,582	425,185	440,799	44%	70%	26%	4%	10%	5%		
<b>SOY MEAL</b>	413,267	409,858	410,282	424,438	46%	68%	21%	7%	14%	6%		

SOURCE: CFTC & FI

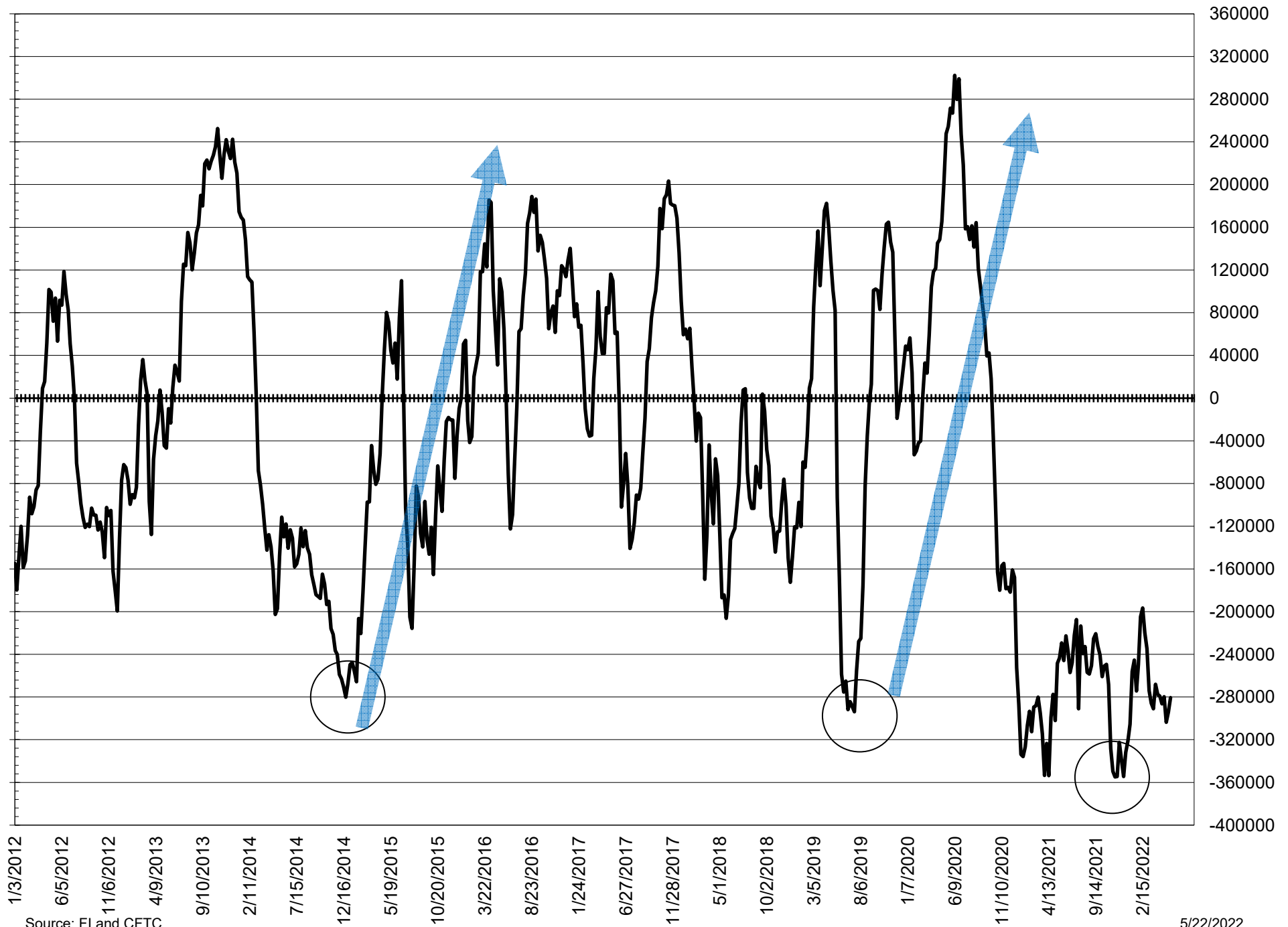
# NET POSITION FUTURES AND OPTIONS OF LARGE SPECULATORS IN SOYBEAN MEAL AND SOYBEAN OIL



# NET POSITION FUTURES AND OPTIONS OF LARGE SPECULATORS IN SOYBEANS AND CORN



# NET POSITION FUTURES AND OPTIONS SPREAD OF LARGE SPECULATORS IN SOYBEANS MINUS CORN



Source: FI and CFTC

5/22/2022

**DISAGGREGATED COMMITMENT OF TRADERS  
FUTURES ONLY NET POSITIONS  
AS OF 05/17/2022  
(IN THOUSAND CONTRACTS)**

	PRODUCER / MERCHANT / PROCESSOR / USER				(INDEX/ETF) SWAP DEALERS				(CTA/CPO/OTHER UNREGISTERED) MANAGED MONEY			
	17-May	10-May	3-May	26-Apr	17-May	10-May	3-May	26-Apr	17-May	10-May	3-May	26-Apr
	WHEAT											
Chicago	(94.3)	(86.5)	(84.4)	(88.1)	68.3	68.7	70.2	70.7	31.5	15.9	10.7	15.0
Kansas City	(69.8)	(68.6)	(69.8)	(72.5)	28.6	28.3	29.6	28.3	46.1	41.9	39.5	44.9
Minneapolis	(30.5)	(30.7)	(30.2)	(30.3)	0.8	0.7	0.7	1.2	18.0	18.3	18.6	18.3
All Wheat	(194.6)	(185.8)	(184.4)	(190.9)	97.6	97.7	100.5	100.3	95.6	76.1	68.8	78.1
CORN	(723.9)	(704.0)	(747.2)	(742.0)	299.1	288.7	296.0	294.8	312.4	313.4	327.8	338.6
OATS	-	-	-	-	-	-	-	-	-	-	-	-
SOYBEANS	(263.1)	(266.5)	(281.5)	(293.1)	106.1	118.8	116.2	115.3	142.0	126.6	148.0	166.7
SOY OIL	(203.7)	(204.1)	(195.8)	(206.9)	86.0	85.2	84.5	83.0	84.8	87.4	84.8	96.2
SOY MEAL	(190.4)	(200.0)	(214.7)	(232.6)	89.7	92.0	95.0	90.5	35.9	52.0	73.4	90.9

	Managed % of OI			
Chicago W	10%	5%	3%	5%
Corn	20%	21%	22%	22%

	TOTAL OPEN INTEREST				OTHER REPORTABLE				NON REPORTABLE			
	17-May	10-May	3-May	26-Apr	17-May	10-May	3-May	26-Apr	17-May	10-May	3-May	26-Apr
WHEAT												
Chicago	326,651	308,326	319,233	325,594	(2.7)	5.8	9.3	6.7	(2.8)	(3.9)	(5.8)	(4.3)
Kansas City	174,905	172,577	171,872	173,692	(7.1)	(4.4)	(2.0)	(4.5)	2.3	2.8	2.7	3.7
Minneapolis	75,684	74,673	71,220	71,085	6.3	6.8	6.2	5.6	5.4	4.9	4.7	5.2
All Wheat	577,240	555,576	562,325	570,371	(3.5)	8.2	13.5	7.9	4.9	3.8	1.6	4.6
CORN	1,548,438	1,510,783	1,513,880	1,525,877	161.4	157.5	174.1	159.0	(49.0)	(55.6)	(50.7)	(50.4)
OATS	-	-	-	-	-	-	-	-	-	-	-	-
SOYBEANS	709,144	694,454	700,856	726,717	41.6	48.1	42.4	37.1	(26.7)	(26.9)	(25.0)	(26.0)
SOY OIL	372,545	370,664	361,527	380,147	11.5	13.2	12.5	10.7	21.4	18.2	14.0	16.9
SOY MEAL	361,553	360,150	366,569	383,905	37.4	32.1	26.2	25.4	27.4	23.9	20.2	25.8

SOURCE: CFTC & FI

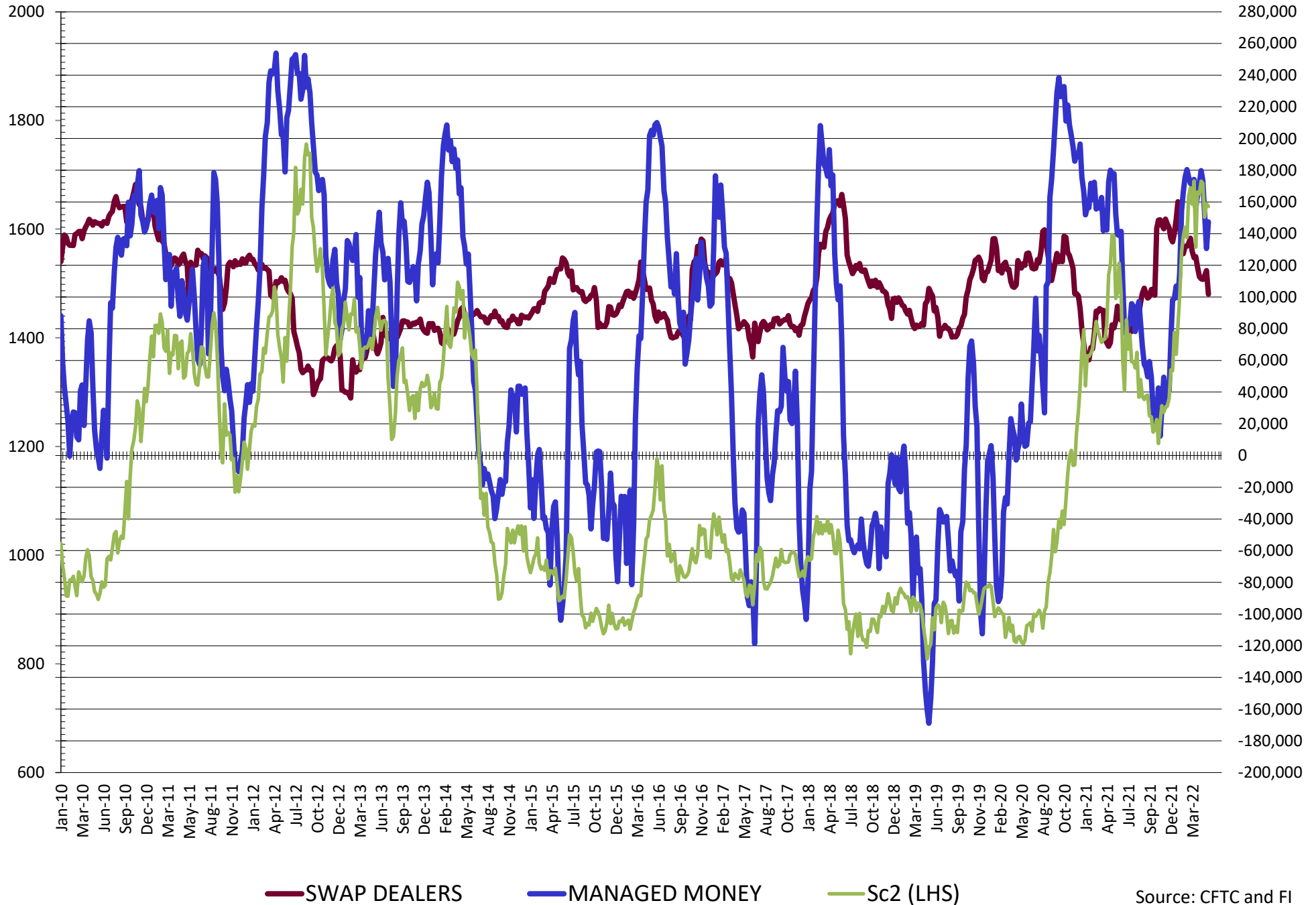
**DISAGGREGATED COMMITMENT OF TRADERS  
FUTURES & OPTIONS NET POSITIONS  
AS OF 05/17/2022  
(IN THOUSAND CONTRACTS)**

	PRODUCER / MERCHANT / PROCESSOR / USER				(INDEX/ETF) SWAP DEALERS				(CTA/CPO/OTHER UNREGISTERED) MANAGED MONEY			
	17-May	10-May	3-May	26-Apr	17-May	10-May	3-May	26-Apr	17-May	10-May	3-May	26-Apr
	WHEAT											
Chicago	(95.4)	(88.8)	(87.0)	(90.9)	66.9	66.4	68.2	68.6	26.6	15.5	10.9	14.2
Kansas City	(71.5)	(68.9)	(69.3)	(72.9)	27.8	27.8	29.3	27.7	46.8	42.9	39.9	45.4
Minneapolis	(30.2)	(30.3)	(29.8)	(29.9)	0.8	0.7	0.8	1.3	18.2	18.3	18.6	18.3
All Wheat	(197.0)	(188.0)	(186.1)	(193.8)	95.4	94.9	98.3	97.6	91.6	76.7	69.4	77.9
CORN	(693.5)	(671.7)	(713.4)	(711.9)	289.7	282.4	286.2	285.3	339.7	338.6	353.5	360.7
OATS	0.0	#REF!	0.0	0.0	0.0	#REF!	0.0	0.0	0.0	#REF!	0.0	0.0
SOYBEANS	(233.5)	(229.4)	(249.7)	(268.9)	101.8	116.7	113.2	111.1	147.3	130.7	153.3	173.5
SOY OIL	(202.7)	(201.8)	(194.5)	(205.2)	85.5	85.6	84.9	82.8	86.2	88.4	85.6	97.7
SOY MEAL	(180.1)	(190.5)	(208.2)	(226.6)	90.9	93.4	95.6	90.9	35.9	52.3	73.8	91.3
	TOTAL				OTHER REPORTABLE				NON REPORTABLE			
	OPEN INTEREST				SWAP DEALERS				MANAGED MONEY			
	17-May	10-May	3-May	26-Apr	17-May	10-May	3-May	26-Apr	17-May	10-May	3-May	26-Apr
WHEAT												
Chicago	483,434	424,000	425,804	431,253	4.8	10.5	13.5	12.1	(2.9)	(3.7)	(5.6)	(4.0)
Kansas City	204,633	197,589	193,800	195,409	(5.4)	(4.7)	(2.2)	(3.7)	2.3	2.9	2.3	3.5
Minneapolis	78,982	77,191	73,495	73,326	5.7	6.3	5.6	5.1	5.5	5.1	4.9	5.3
All Wheat	767,049	698,780	693,099	699,988	5.2	12.1	16.8	13.6	4.9	4.2	1.5	4.8
CORN	2,256,288	2,168,588	2,172,898	2,157,559	99.7	96.8	113.0	103.7	(35.5)	(46.1)	(46.1)	(46.1)
OATS	0	#REF!	0	0	0.0	#REF!	0.0	0.0	0.0	#REF!	0.0	0.0
SOYBEANS	920,248	895,823	888,673	904,744	11.5	10.6	9.6	11.2	(27.1)	(28.5)	(26.3)	(26.8)
SOY OIL	447,084	437,582	425,185	440,799	9.4	9.4	9.5	7.5	21.5	18.4	14.4	17.2
SOY MEAL	413,267	409,858	410,282	424,438	22.4	18.2	15.6	15.2	30.8	26.6	23.1	29.2

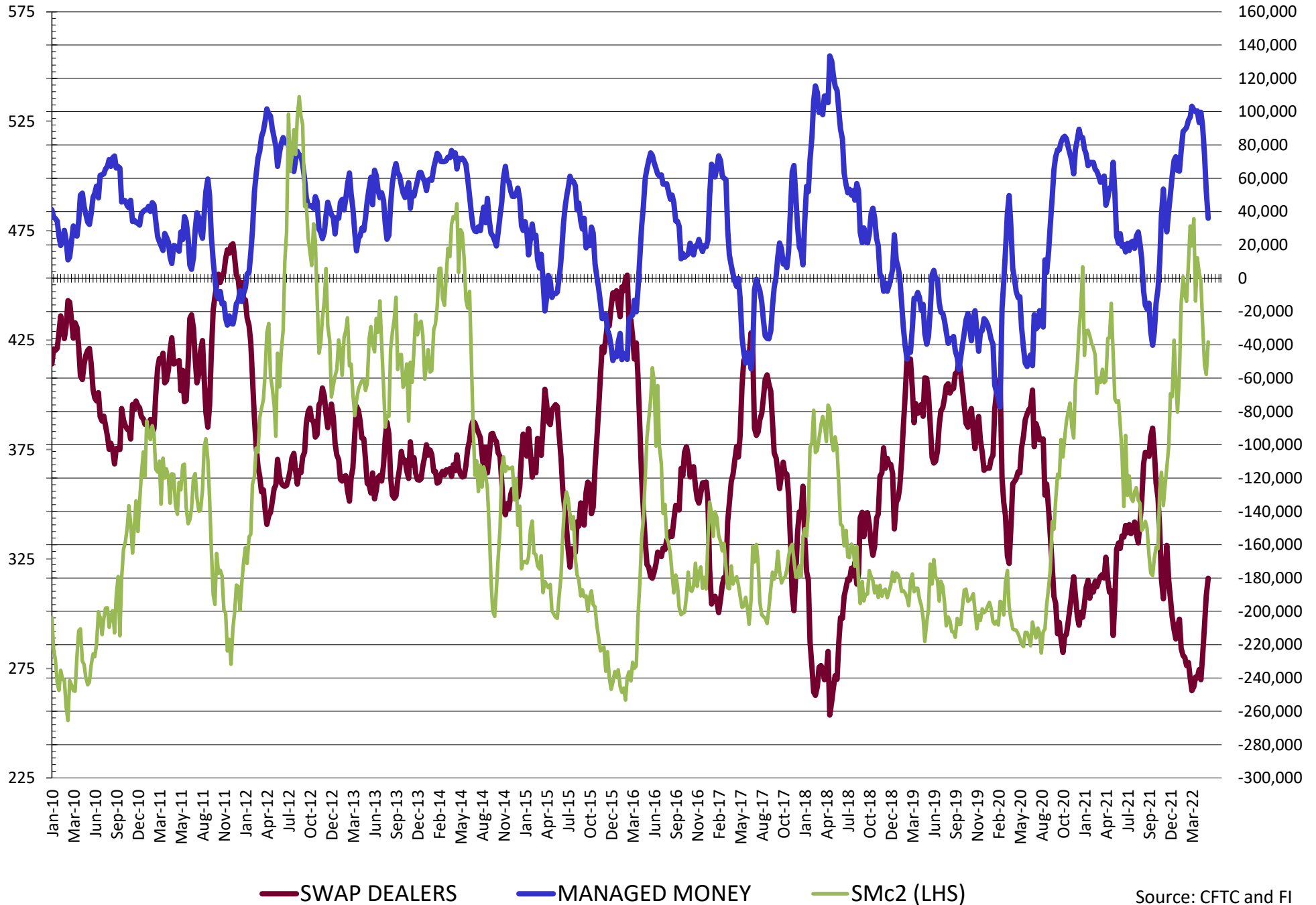
SOURCE: CFTC & FI



# NET POSITION FUTURES AND OPTIONS OF SWAP AND MANAGED FUNDS IN SOYBEANS

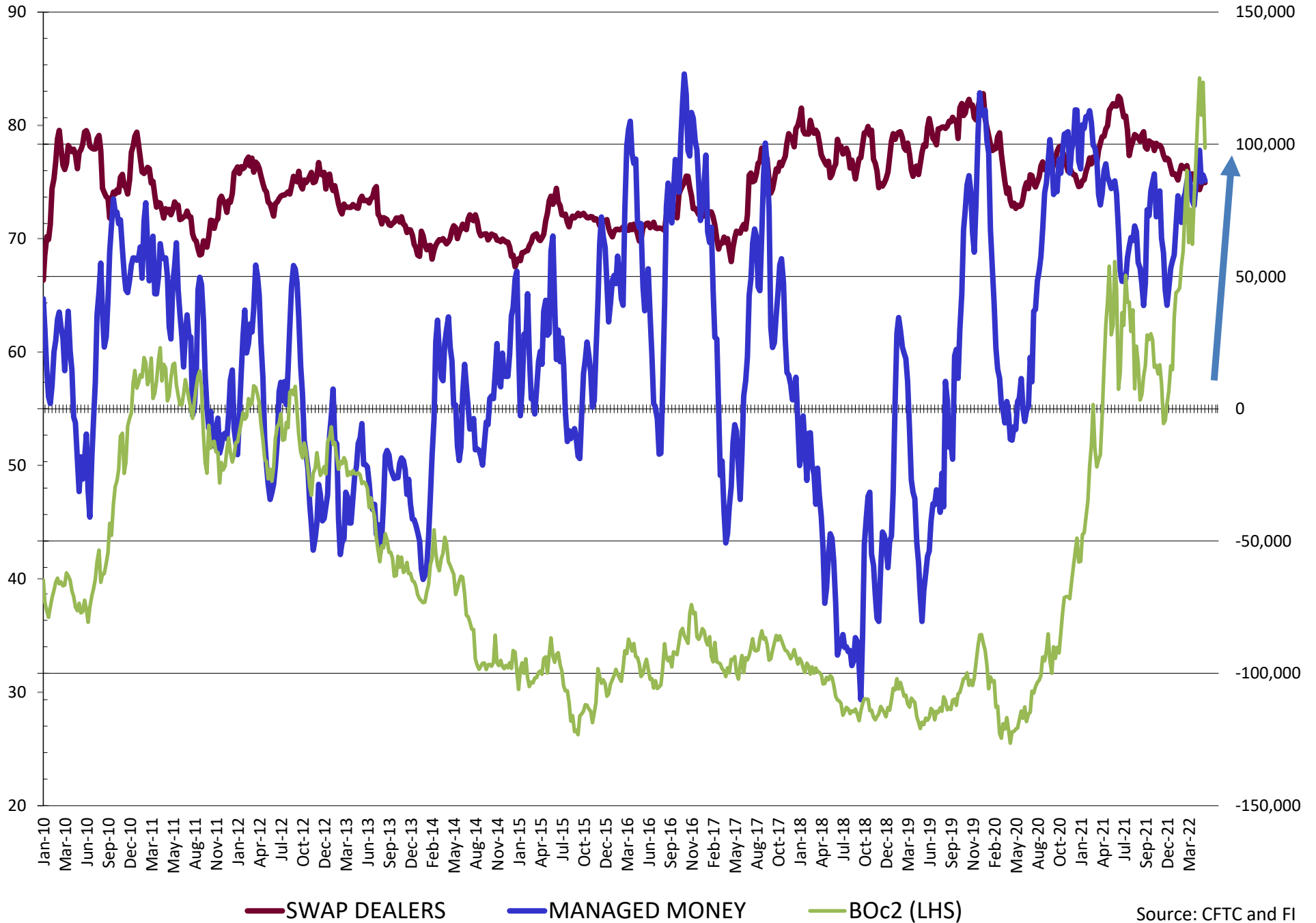


# NET POSITION FUTURES AND OPTIONS OF SWAP AND MANAGED FUNDS IN SOYBEAN MEAL



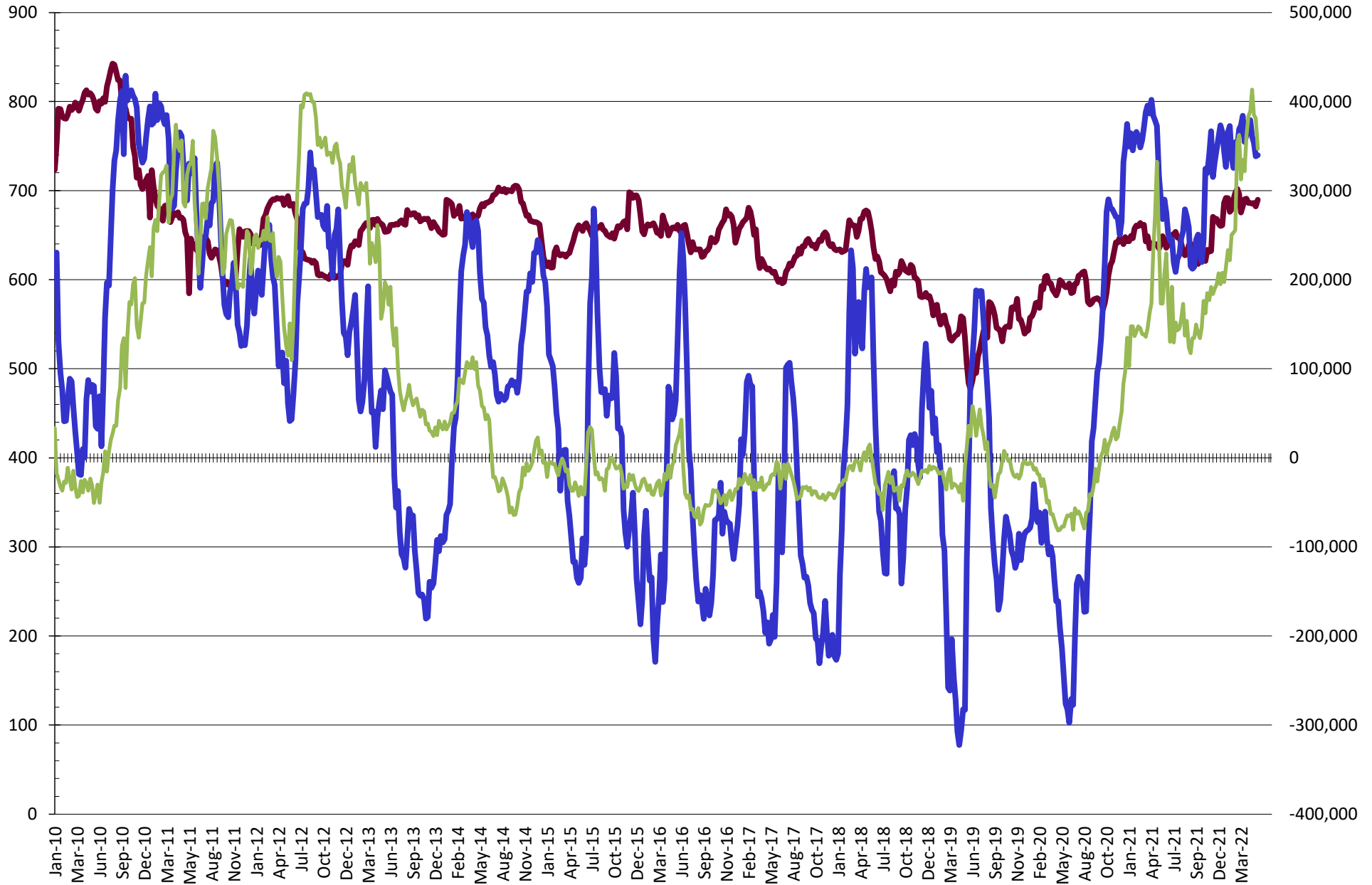
Source: CFTC and FI  
5/22/2022

# NET POSITION FUTURES AND OPTIONS OF SWAP AND MANAGED FUNDS IN SOYBEAN OIL



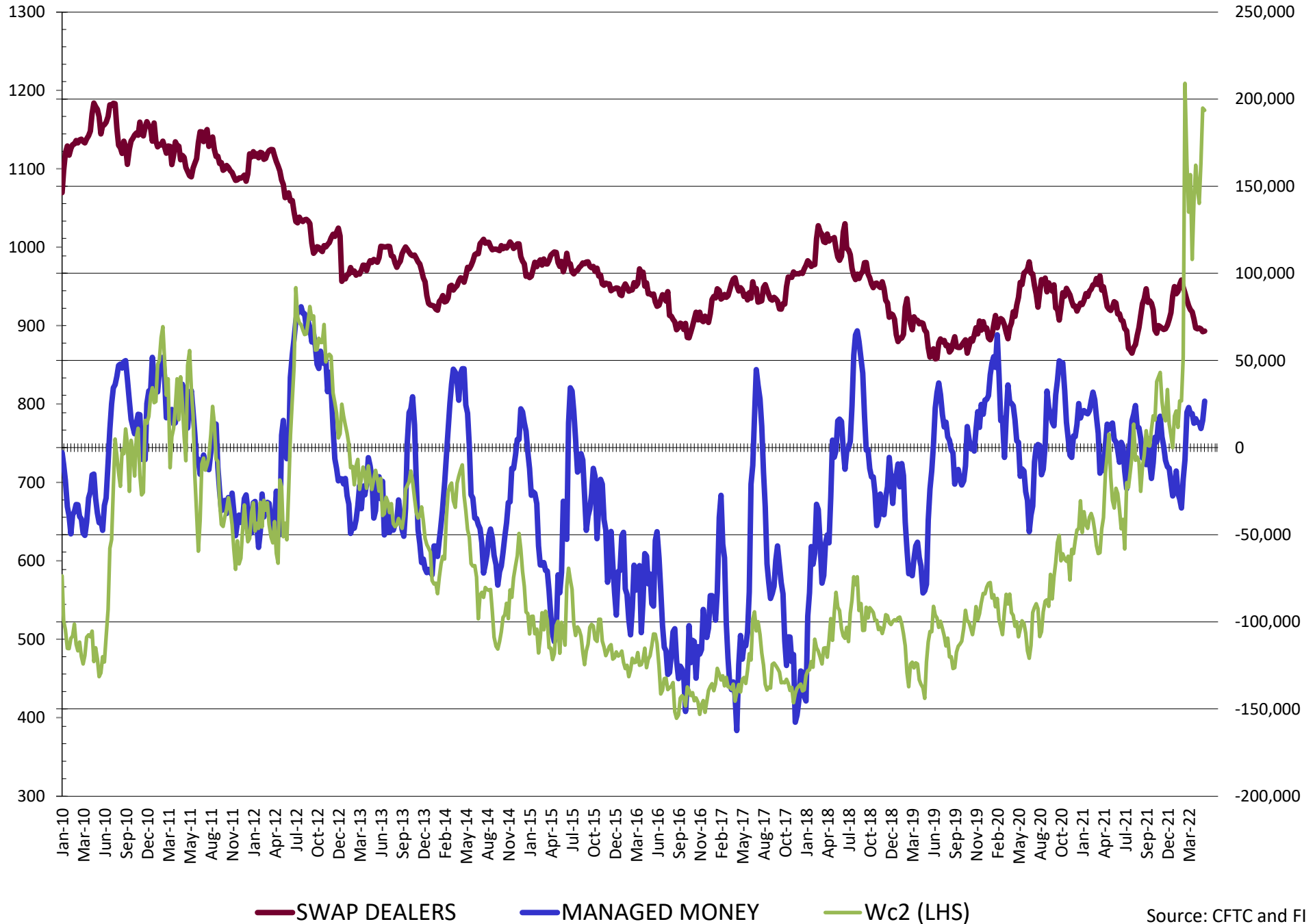
Source: CFTC and FI  
5/22/2022

# NET POSITION FUTURES AND OPTIONS OF SWAP AND MANAGED FUNDS IN CORN

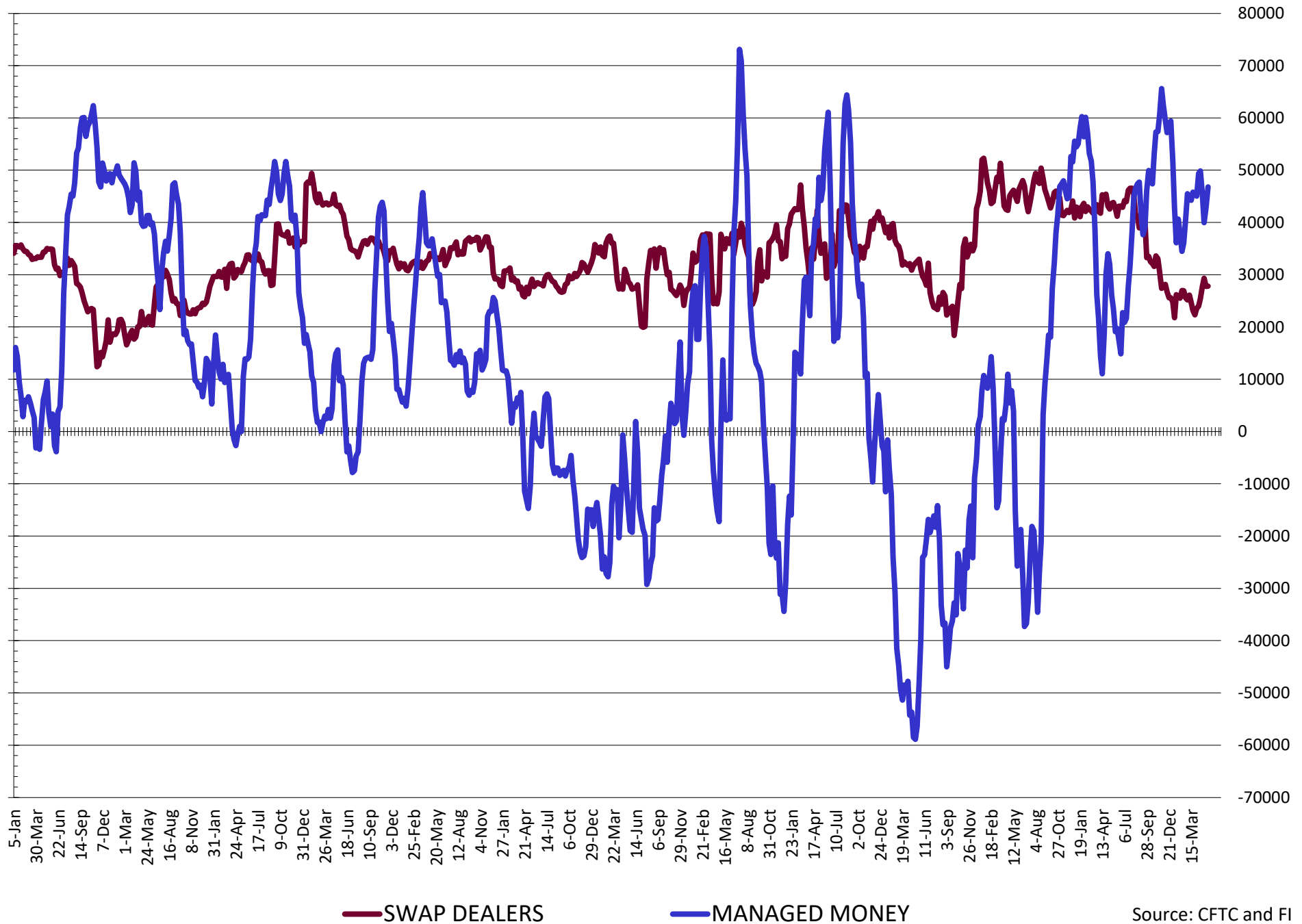


— SWAP DEALERS     
 — MANAGED MONEY     
 — Cc2 (LHS)

# NET POSITION FUTURES AND OPTIONS OF SWAP AND MANAGED FUNDS IN CHICAGO WHEAT

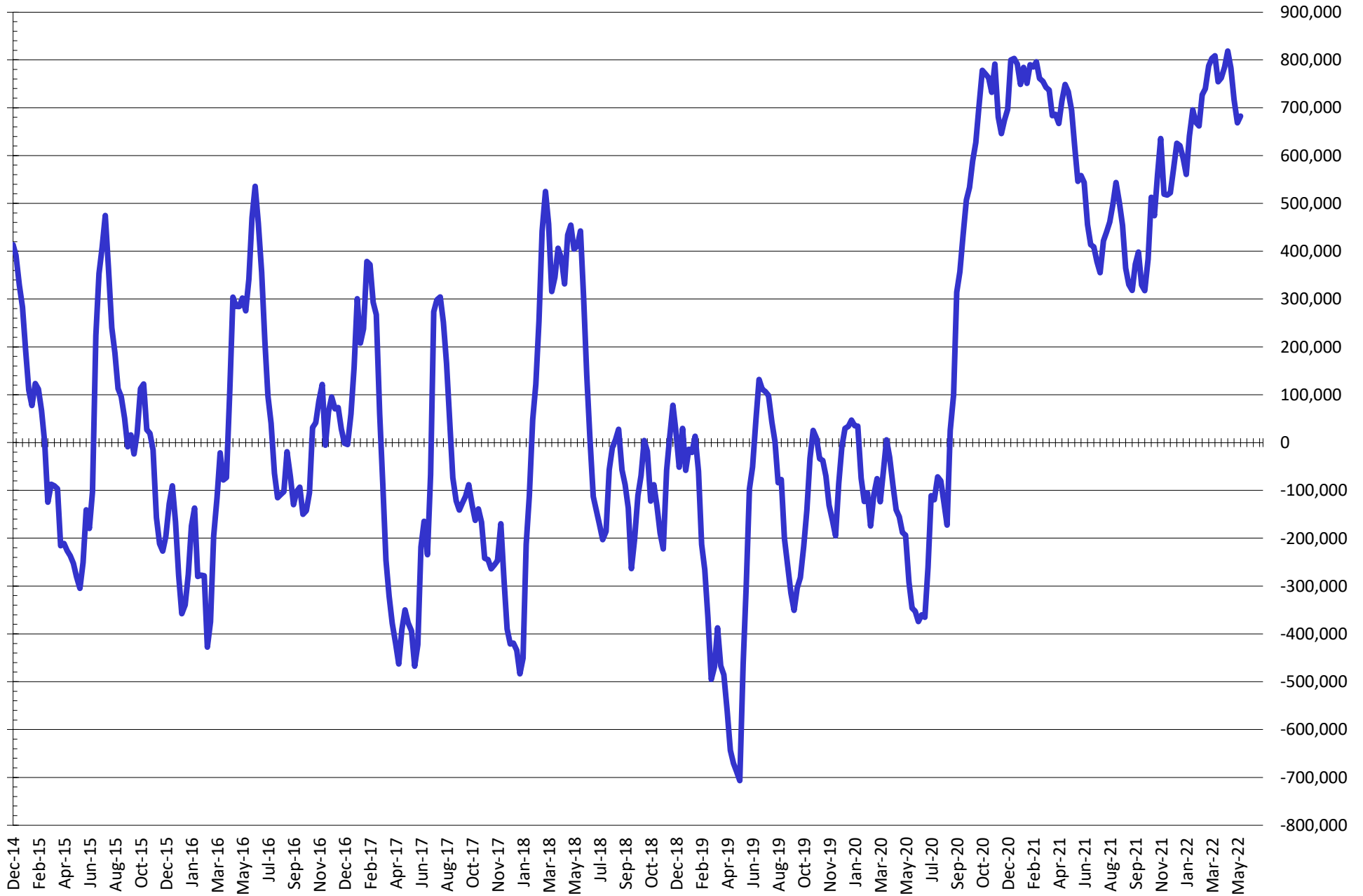


# NET POSITION FUTURES AND OPTIONS OF SWAP DEALERS AND MANAGED FUNDS IN KANSAS WHEAT



Source: CFTC and FI  
5/22/2022

# NET POSITION FUTURES AND OPTIONS OF SWAP AND MANAGED FUNDS IN COMBINED SRW, HRW, CORN, SOYBEANS, SOYMEAL AND SOYOIL



— Net Managed Money

Source: CFTC and FI  
5/22/2022

**COMMITMENT OF TRADERS**  
**FUTURES & OPTIONS NET POSITIONS (INDEX BROKEN OUT)**  
**AS OF 05/17/2022**  
(IN THOUSAND CONTRACTS)

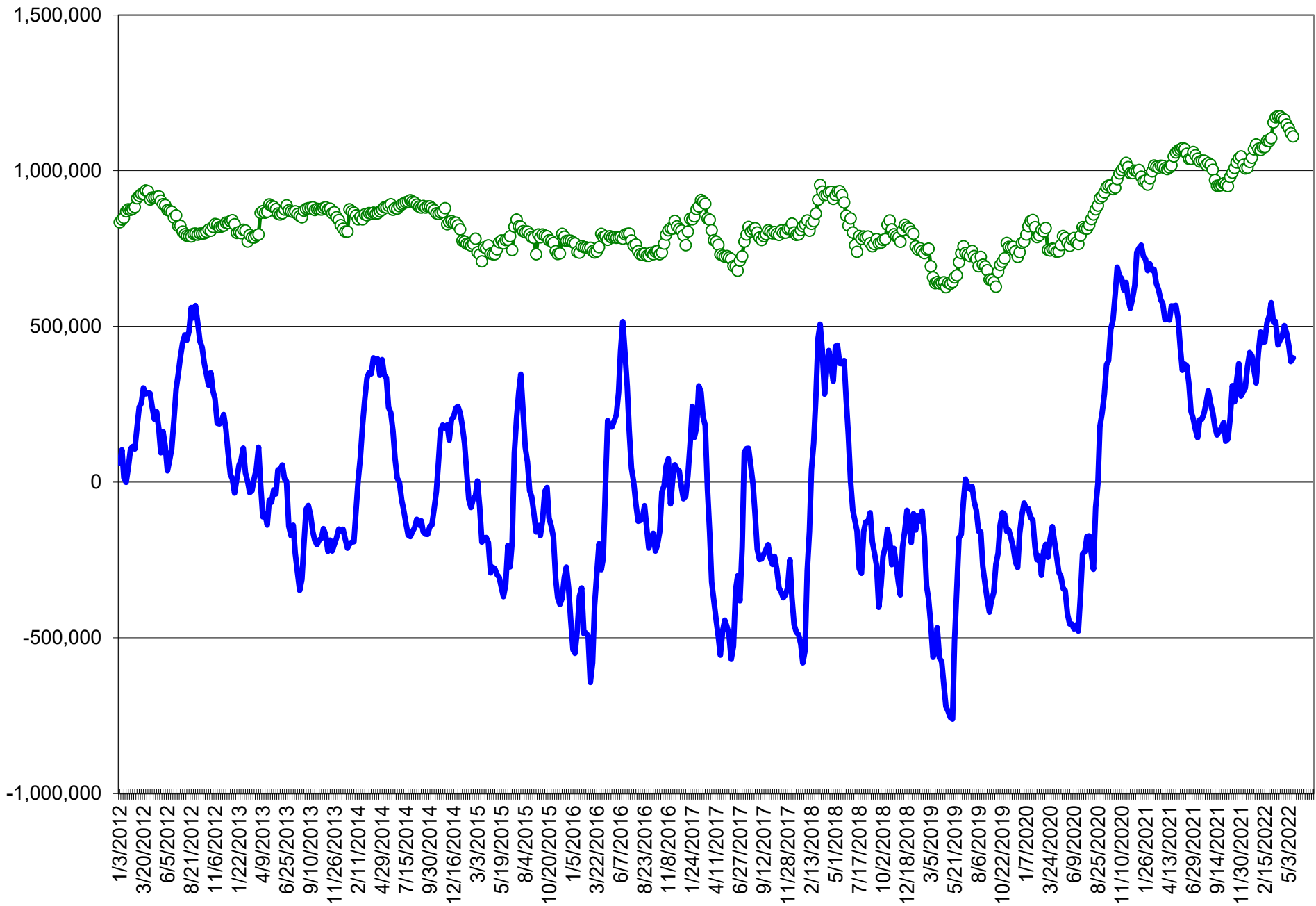
	COMMERCIAL				(FUND) NON COMMERCIAL				(SPEC) NON-REPORTABLE			
	17-May	10-May	3-May	26-Apr	17-May	10-May	3-May	26-Apr	17-May	10-May	3-May	26-Apr
	WHEAT											
Chicago	(121.2)	(114.3)	(111.9)	(116.8)	(32.1)	(35.7)	(37.9)	(37.5)	(2.9)	(3.7)	(5.6)	(4.0)
Kansas City	(79.7)	(76.9)	(76.7)	(80.8)	12.3	9.5	8.1	11.9	2.3	2.9	2.3	3.5
Minneapolis	-	-	-	-	-	-	-	-	-	-	-	-
All Wheat	(201.0)	(191.2)	(188.6)	(197.6)	(19.8)	(26.2)	(29.8)	(25.6)	(0.6)	(0.9)	(3.3)	(0.5)
CORN	(698.1)	(685.0)	(719.6)	(720.2)	250.7	249.3	276.8	272.2	(35.5)	(46.1)	(39.4)	(37.7)
OATS	-	-	-	-	-	-	-	-	-	-	-	-
SOYBEANS	(236.6)	(227.0)	(249.3)	(270.5)	82.2	65.9	80.6	97.8	(27.1)	(28.5)	(26.3)	(26.8)
SOY OIL	(196.5)	(196.5)	(190.3)	(203.3)	62.4	64.3	61.4	69.2	21.5	18.4	14.4	17.2
SOY MEAL	(165.5)	(176.5)	(195.6)	(215.8)	23.0	33.1	49.7	64.3	30.8	26.6	23.1	29.2

	TOTAL OPEN INTEREST				(INDEX) COMMERCIAL INDEX TRADERS				(INDEX) % NET OF TOTAL OPEN INTEREST			
	17-May	10-May	3-May	26-Apr	17-May	10-May	3-May	26-Apr	17-May	10-May	3-May	26-Apr
	WHEAT											
Chicago	483,434	424,000	425,804	431,253	156.2	153.8	155.4	158.3	32.3%	36.3%	36.5%	36.7%
Kansas City	204,633	197,589	193,800	195,409	65.1	64.6	66.3	65.4	31.8%	32.7%	34.2%	33.5%
Minneapolis	-	-	-	-	-	-	-	-	-	-	-	-
All Wheat	688,067	621,589	619,604	626,662	221.3	218.3	221.8	223.7	32.2%	35.1%	35.8%	35.7%
CORN	2,256,288	2,168,588	2,172,898	2,157,559	482.9	481.8	482.2	485.7	21.4%	22.2%	22.2%	22.5%
OATS	-	-	-	-	-	-	-	-	-	-	-	-
SOYBEANS	920,248	895,823	888,673	904,744	181.4	189.6	195.0	199.5	19.7%	21.2%	21.9%	22.0%
SOY OIL	447,084	437,582	425,185	440,799	112.6	113.8	114.5	116.9	25.2%	26.0%	26.9%	26.5%
SOY MEAL	413,267	409,858	410,282	424,438	111.6	116.8	122.8	122.3	27.0%	28.5%	29.9%	28.8%

SOURCE: CFTC & FI



# NET POSITION FUTURES AND OPTIONS OF SPECULATORS AND INDEX FUNDS IN COMBINED SRW, HRW, CORN, SOYBEANS, SOYMEAL AND SOYOIL



Source: CFTC and FI

○ Net Index

— Net Speculator

5/22/2022

## Traditional Daily Estimate of Funds 5/17/22

	(Neg)-"Short"	Pos-"Long"			
Actual less Est.	(22.2)	(31.0)	(65.9)	(16.8)	(12.3)
	<b>Corn</b>	<b>Bean</b>	<b>Chi. Wheat</b>	<b>Meal</b>	<b>Oil</b>
Actual	473.7	183.6	28.8	73.3	96.3
18-May	(21.0)	(8.0)	(15.0)	2.0	(7.0)
19-May	0.0	9.0	(12.0)	8.0	(4.0)
20-May	(6.0)	4.0	(11.0)	2.0	4.0
23-May					
24-May					
<b>FI Est. of Futures Only 5/17/22</b>	<b>446.7</b>	<b>188.6</b>	<b>(9.2)</b>	<b>85.3</b>	<b>89.3</b>
<b>FI Est. Futures &amp; Options</b>	<b>412.4</b>	<b>163.8</b>	<b>(6.6)</b>	<b>70.3</b>	<b>88.7</b>
Futures only record long "Traditional Funds"	547.7 1/26/2021	280.9 11/10/2020	86.5 8/7/2018	167.5 5/1/2018	160.2 11/1/2016
Futures only record short	(235.0) 6/9/2020	(118.3) 4/30/2019	(130.0) 4/25/2017	(49.5) 3/1/2016	(69.8) 9/18/2018
Futures and options record net long	557.6 1/12/2021	270.9 10/6/2020	64.8 8/7/2012	132.1 5/1/2018	159.2 1/1/2016
Futures and options record net short	(270.6) 4/26/2019	(132.0) 4/30/2019	(143.3) 4/25/2017	(64.1) 3/1/2016	(77.8) 9/18/2018

## Managed Money Daily Estimate of Funds 5/17/22

	Corn	Bean	Chi. Wheat	Meal	Oil
Latest CFTC Fut. Only	312.4	142.0	31.5	35.9	84.8
Latest CFTC F&O	339.7	147.3	26.6	35.9	86.2
	Corn	Bean	Chi. Wheat	Meal	Oil
FI Est. Managed Fut. Only	285	147	(7)	48	78
FI Est. Managed Money F&O	313	152	(11)	48	79

## Index Funds Latest Positions (as of last Tuesday)

Index Futures & Options	482.9	181.4	156.2	NA	112.6
Change From Previous Week	1.2	(8.2)	2.5	NA	(1.2)

Source: Reuters, CFTC & FI (FI est. are noted with latest date)

# Disclaimer

TO CLIENTS/PROSPECTS OF FUTURES INTERNATIONAL, SEE RISK DISCLOSURE BELOW:

THIS COMMUNICATION IS CONVEYED AS A SOLICITATION FOR ENTERING INTO A DERIVATIVES TRANSACTION.

Any trading recommendations and market or other information to Customer by Futures International (FI), although based upon information obtained from sources believed by FI to be reliable may not be accurate and may be changed without notice to customer. FI makes no guarantee as to the accuracy or completeness of any of the information or recommendations furnished to Customer. Customer understands that FI, its managers, employees and/or affiliates may have a position in commodity futures, options or other derivatives which may not be consistent with the recommendations furnished by FI to Customer.

The risk of trading futures and options and other derivatives involves a substantial risk of loss and is not suitable for all persons. In purchasing an option, the risk is limited to the premium paid, and all commissions and fees involved with the trade. When an option is shorted or written, the writer of the option has unlimited risk with respect to the option written. The use of options strategies such as a straddles and strangles involve multiple option positions and may substantially increase the amount of commissions and fees paid to execute the strategy. Option prices do not necessarily move in tandem with cash or futures prices. Each person must consider whether a particular trade, combination of trades or strategy is suitable for that person's financial means and objectives.

This material may include discussions of seasonal patterns, however, futures prices have already factored in the seasonal aspects of supply and demand, and seasonal patterns are no indication of future market trends. Finally, past performance is not indicative of future results.

This communication may contain links to third party websites which are not under the control of FI and FI is not responsible for their content. Products and services are offered only in jurisdictions where solicitation and sale are lawful, and in accordance with applicable laws and regulations in each such jurisdiction.