

	Current	Δ from YD	Δ from 7D Avg
Nat Gas Prompt	\$ 6.94	▼ \$ (0.02)	▼ \$ (0.32)

	Current	Δ from YD	Δ from 7D Avg
WTI Prompt	\$ 102.19	▼ \$ (1.60)	▼ \$ (3.3)

	Current	Δ from YD	Δ from 7D Avg
Brent Prompt	\$ 106.73	▼ \$ (1.60)	▼ \$ (3.4)

Page Menu

[Short-term Weather Model Outlooks](#)

[Lower 48 Component Models](#)

[Regional S/D Models Storage Projection](#)

[Weather Model Storage Projection](#)

[Supply – Demand Trends](#)

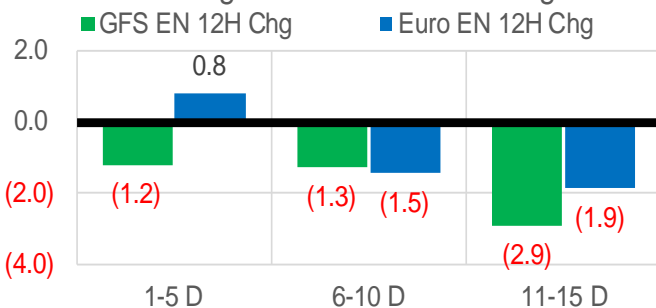
[Nat Gas Options Volume and Open Interest](#)

[Nat Gas Futures Open Interest](#)

[Price Summary](#)

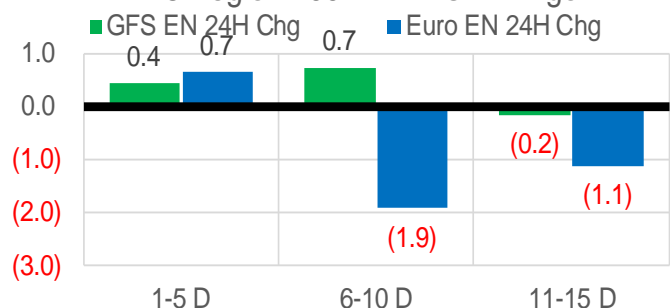
Vs. 12H Ago

L48 Region - 00z TDD vs 12H Ago



Vs. 24H Ago

L48 Region - 00z TDD vs 24H Ago



	Current	Δ from YD	Δ from 7D Avg
US Dry Production	96.7	▼ -0.72	▲ 0.01

	Current	Δ from YD	Δ from 7D Avg
US Power Burns	26.1	▼ -1.05	▼ -0.67

	Current	Δ from YD	Δ from 7D Avg
US ResComm	16.8	▼ -0.68	▼ -6.56

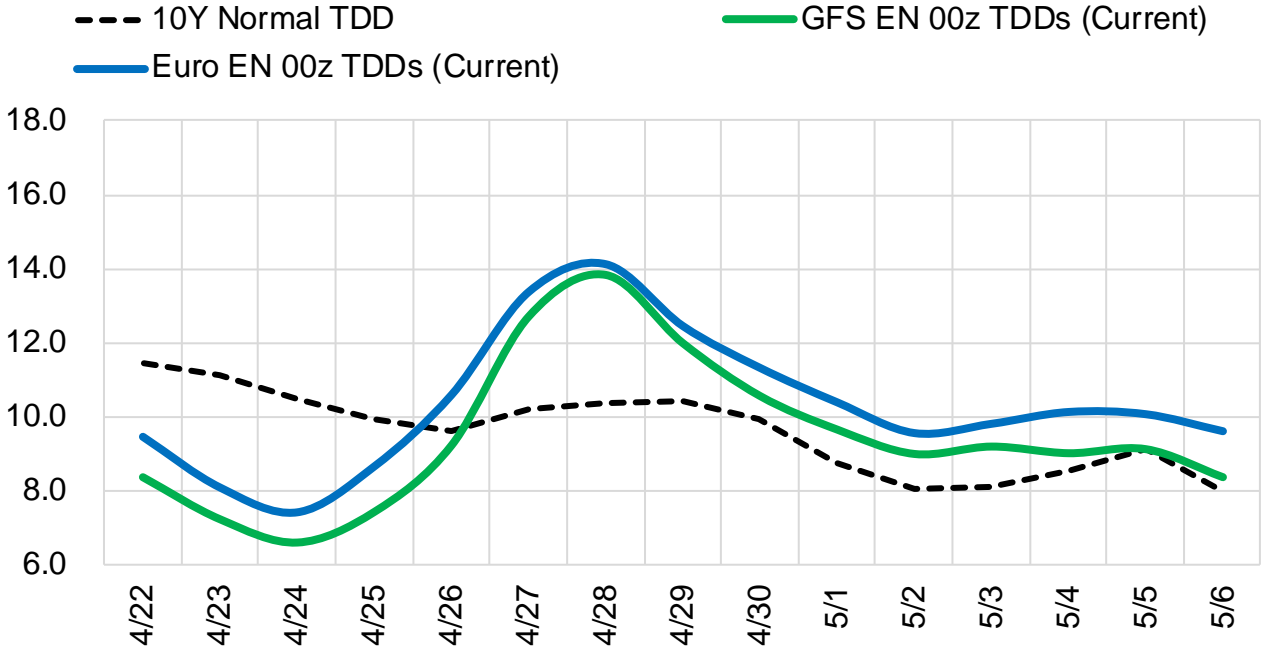
	Current	Δ from YD	Δ from 7D Avg
Canadian Imports	5.5	▲ 0.19	▼ -0.31

	Current	Δ from YD	Δ from 7D Avg
Net LNG Exports	12.5	▲ 0.47	▲ 0.37

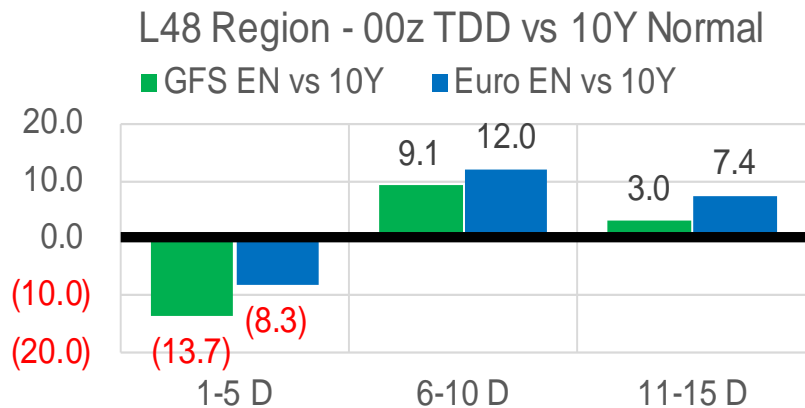
	Current	Δ from YD	Δ from 7D Avg
Mexican Exports	6.7	▼ -0.12	▲ 0.13

Short-term Weather Model Outlooks (00z)

L48 Region



Vs. 10Y Normal



Source: WSI, Bloomberg

Lower 48 Component Models

Daily Balances

	16-Apr	17-Apr	18-Apr	19-Apr	20-Apr	21-Apr	22-Apr	DoD	vs. 7D
Lower 48 Dry Production	96.6	96.3	97.2	97.6	96.5	97.4	96.7	▼ -0.7	▼ -0.2
Canadian Imports	5.9	6.1	5.9	5.9	6.0	5.3	5.5	▲ 0.2	▼ -0.3
L48 Power	25.2	26.1	28.6	27.4	27.2	27.1	26.1	▼ -1.0	▼ -0.8
L48 Residential & Commercial	21.5	26.2	28.2	27.7	23.1	17.5	16.8	▼ -0.7	▼ -7.2
L48 Industrial	21.0	21.5	21.9	22.1	21.9	21.9	22.3	▲ 0.4	▲ 0.6
L48 Lease and Plant Fuel	5.3	5.3	5.3	5.3	5.3	5.3	5.3	▼ -0.1	▼ 0.0
L48 Pipeline Distribution	2.6	2.9	3.1	3.0	2.8	2.5	2.4	▼ -0.1	▼ -0.4
L48 Regional Gas Consumption	75.4	82.0	87.1	85.6	80.3	74.3	72.9	▼ -1.5	▼ -7.9
Net LNG Delivered	12.47	12.52	11.94	12.73	12.37	12.02	12.50	▲ 0.5	▲ 0.2
Total Mexican Exports	6.2	5.9	6.9	7.1	7.3	6.9	6.7	▼ -0.1	▲ 0.0
Implied Daily Storage Activity	8.4	2.0	-2.9	-1.9	2.6	9.5	10.1		
EIA Reported Daily Storage Activity									
Daily Model Error									

EIA Storage Week Balances

	18-Mar	25-Mar	1-Apr	8-Apr	15-Apr	22-Apr	WoW	vs. 4W
Lower 48 Dry Production	93.9	95.4	96.1	96.0	96.5	96.7	▲ 0.2	▲ 0.7
Canadian Imports	5.2	4.8	5.7	5.8	5.6	5.8	▲ 0.3	▲ 0.4
L48 Power	27.3	25.6	26.9	26.7	26.7	26.8	▲ 0.0	▲ 0.3
L48 Residential & Commercial	31.5	23.5	29.7	24.3	21.6	23.4	▲ 1.9	▼ -1.3
L48 Industrial	20.7	20.8	22.5	21.8	20.5	21.6	▲ 1.0	▲ 0.2
L48 Lease and Plant Fuel	5.1	5.2	5.2	5.2	5.3	5.3	▲ 0.0	▲ 0.0
L48 Pipeline Distribution	3.1	2.6	2.9	2.8	2.7	2.8	▲ 0.1	▲ 0.0
L48 Regional Gas Consumption	87.7	77.5	87.3	80.8	76.7	79.8	▲ 3.0	▼ -0.8
Net LNG Exports	12.9	13.0	13.1	12.4	12.5	12.1	▼ -0.3	▼ -0.6
Total Mexican Exports	6.6	6.5	6.4	6.8	6.6	6.6	▲ 0.1	▲ 0.0
Implied Daily Storage Activity	-7.9	3.2	-5.0	1.7	6.3	4.0	-2.3	
EIA Reported Daily Storage Activity	-7.3	3.7	-4.7	2.1	7.6			
Daily Model Error	-0.7	-0.5	-0.3	-0.4	-1.3			

Monthly Balances

	2Yr Ago	LY	MTD					MoM	vs. LY
	Apr-20	Apr-21	Dec-21	Jan-22	Feb-22	Mar-22	Apr-22		
Lower 48 Dry Production	92.7	92.5	96.1	93.6	93.6	95.1	96.4	▲ 1.3	▲ 4.0
Canadian Imports	4.0	4.7	4.8	6.7	6.6	5.2	5.7	▲ 0.5	▲ 1.1
L48 Power	25.6	25.0	28.7	31.4	29.0	26.9	26.7	▼ -0.2	▲ 1.7
L48 Residential & Commercial	20.5	19.6	33.9	48.6	42.7	29.6	23.1	▼ -6.5	▲ 3.5
L48 Industrial	20.4	21.4	22.5	25.5	25.3	21.7	21.3	▼ -0.4	▼ -0.1
L48 Lease and Plant Fuel	5.0	5.0	5.3	5.1	5.1	5.2	5.3	▲ 0.1	▲ 0.2
L48 Pipeline Distribution	2.4	2.5	3.2	3.8	3.4	2.9	2.7	▼ -0.2	▲ 0.3
L48 Regional Gas Consumption	74.0	73.5	93.6	114.4	105.5	86.3	79.1	▼ -7.2	▲ 5.7
Net LNG Exports	8.2	11.5	12.1	12.4	12.4	12.9	12.3	▼ -0.5	▲ 0.9
Total Mexican Exports	4.8	6.7	6.2	6.3	6.2	6.5	6.7	▲ 0.1	▼ -0.1
Implied Daily Storage Activity	9.7	5.5	-11.0	-32.8	-23.8	-5.4	4.0		
EIA Reported Daily Storage Activity									
Daily Model Error									

Source: Bloomberg, analytix.ai

Daily Average Generation Data

Nuclear Generation Daily Average - GWh (NRC)

	14-Apr	15-Apr	16-Apr	17-Apr	18-Apr	19-Apr	20-Apr	DoD	vs. 7D
NRC Nuclear Daily Output	72.5	71.9	71.9	72.1	72.3	72.2	72.8	0.6	0.6
NRC Nuclear Max Capacity	104.9	104.9	104.9	104.9	104.9	104.9	104.9	0.0	0.0
NRC Nuclear Outage	32.4	33.0	32.9	32.8	32.6	32.7	32.1	-0.6	-0.6
NRC % Nuclear Cap Utilization	73.7	73.1	73.1	73.3	73.5	73.4	74.0	0.6	0.7

Wind Generation Daily Average - MWh (EIA)

	14-Apr	15-Apr	16-Apr	17-Apr	18-Apr	19-Apr	20-Apr	DoD	vs. 7D
CALI Wind	3812	3918	4112	2949	3528	4461	3822	-639	25
TEXAS Wind	15113	15603	12940	6807	13553	20931	18570	-2361	4413
US Wind	65604	65506	59825	42005	55492	73027	67594	-5432	7351

Generation Daily Average - MWh (EIA)

	14-Apr	15-Apr	16-Apr	17-Apr	18-Apr	19-Apr	20-Apr	DoD	vs. 7D
US Wind	65604	65506	59825	42005	55492	73027	67594	-5432	7351
US Solar	15467	16008	13774	16124	14333	14222	16699	2477	1711
US Petroleum	960	944	935	937	1041	1000	1022	22	53
US Other	7300	7212	7120	7021	7632	7587	7387	-200	75
US Coal	77270	75685	76046	77172	81369	78729	76825	-1904	-887
US Nuke	76070	76012	76018	76472	76154	76561	76944	383	730
US Hydro	29203	28310	26042	25811	28784	27897	28084	187	409
US Gas	140813	124541	122585	127522	146784	133169	135885	2716	3316

See National Wind and Nuclear daily charts

Source: Bloomberg, analytix.ai

Storage Week Average Generation Data

Nuclear Generation Weekly Average - GWh (NRC)

	18-Mar	25-Mar	1-Apr	8-Apr	15-Apr	22-Apr	WoW	WoW Bcf/d Impact
NRC Nuclear Daily Output	80.9	80.9	79.3	75.0	71.9	72.3	0.4	-0.1
NRC Nuclear Max Capacity	104.9	104.9	104.9	104.9	104.9	104.9	0.0	
NRC Nuclear Outage	23.9	24.0	25.5	29.9	32.9	32.6	-0.4	
NRC % Nuclear Cap Utilization	82.3	82.3	80.7	76.3	73.2	73.5	0.4	

Wind Generation Weekly Average - MWh (EIA)

	18-Mar	25-Mar	1-Apr	8-Apr	15-Apr	22-Apr	WoW	WoW Bcf/d Impact
CALI Wind	2297	2037	2643	2611	3482	3802	320	-0.1
TEXAS Wind	17742	16108	14530	14468	16530	15282	-1248	0.2
US Wind	63171	62107	61695	60009	66412	61578	-4834	0.9
							-7%	
							-0.1	

Generation Weekly Average - MWh (EIA)

	18-Mar	25-Mar	1-Apr	8-Apr	15-Apr	22-Apr	WoW	WoW Bcf/d Impact
							est.	
US Wind	63171	62107	61695	60009	66412	61578	-4834	0.9
US Solar	13919	13805	15451	15518	16072	15408	-663	0.1
US Petroleum	961	864	1048	1015	964	986	22	0.0
US Other	7120	7745	7481	7183	7132	7335	203	0.0
US Coal	86035	72503	77743	77514	77050	77521	471	-0.1
US Nuke	84775	84027	83506	78807	75674	76444	770	-0.1
US Hydro	34883	33229	33463	32524	29417	27573	-1844	0.3
US Gas	137079	124817	134886	134633	134237	132339	-1899	-0.3

See National Wind and Nuclear daily charts

Source: Bloomberg, analytix.ai

Monthly Average Generation Data

Nuclear Generation Monthly Average - GWh (NRC)

	2Yr Ago	LY	MTD				Last 30 days	MoM (MTD vs LY)	Last 30 days YoY
	Same 30 days	Same 30 days	Jan-22	Feb-22	Mar-22	Apr-22			
	NRC Nuclear Daily Output	78.7	76.3	90.2	87.6	81.3			
NRC Nuclear Max Capacity	104.9	104.9	104.9	104.9	104.9	104.9	104.9	0.0	0.0
NRC Nuclear Outage	26.1	28.6	14.7	17.3	23.6	31.8	30.1	8.2	1.5
NRC % Nuclear Cap Utilization	80.1	77.6	91.7	89.0	82.7	74.3	76.1	-8.4	-1.5

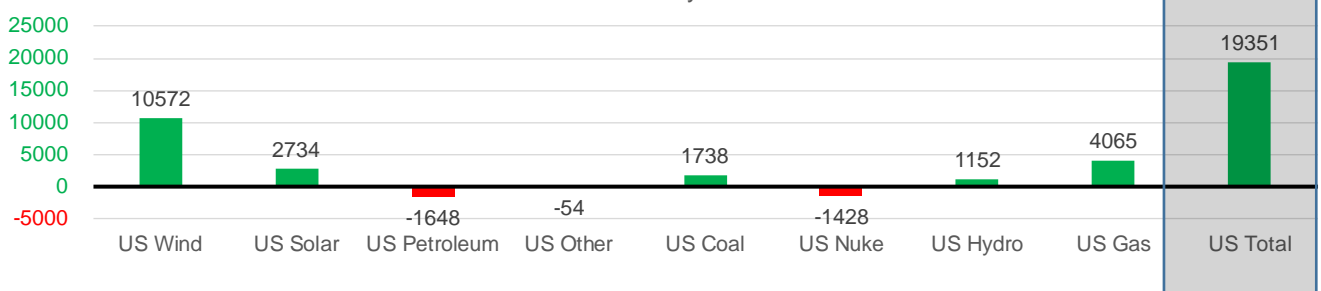
Wind Generation Monthly Average - MWh (EIA)

	2Yr Ago	LY	MTD				Last 30 days	MoM (MTD vs LY)	Last 30 days YoY
	Same 30 days	Same 30 days	Jan-22	Feb-22	Mar-22	Apr-22			
	CALI Wind	2316	2764	1244	1559	2250			
TEXAS Wind	10076	12288	11355	12294	14837	15570	15141	733	2853
US Wind	40621	51516	51045	56539	58520	62890	62088	4370	10572

Generation Monthly Average - MWh (EIA)

	2Yr Ago	LY	MTD				Last 30 days	MoM (MTD vs LY)	Last 30 days YoY
	Same 30 days	Same 30 days	Jan-22	Feb-22	Mar-22	Apr-22			
	US Wind	40621	51516	51045	56539	58520			
US Solar	9040	12865	9541	12188	14053	15713	15599	▼ -113.7	▲ 2734
US Petroleum	3012	2651	5021	3451	1335	990	1004	▲ 14	▼ -1648
US Other	7303	7363	8792	8839	7187	7225	7308	▲ 84	▼ -54
US Coal	57809	75802	117971	106588	82291	77337	77539	▲ 202	▲ 1738
US Nuke	82632	80183	95259	92280	85157	76973	78755	▲ 1781	▼ -1428
US Hydro	30811	29601	34040	32213	33927	29758	30752	▲ 994	▲ 1152
US Gas	140462	130405	164024	152058	135583	133834	134470	▲ 2158	▲ 4065
US Total	370014	389917	485878	464684	419867	406535	409268	▲ 5119	▲ 19351

Last 30 days YoY



See National Wind and Nuclear daily charts

Source: Bloomberg, analytix.ai

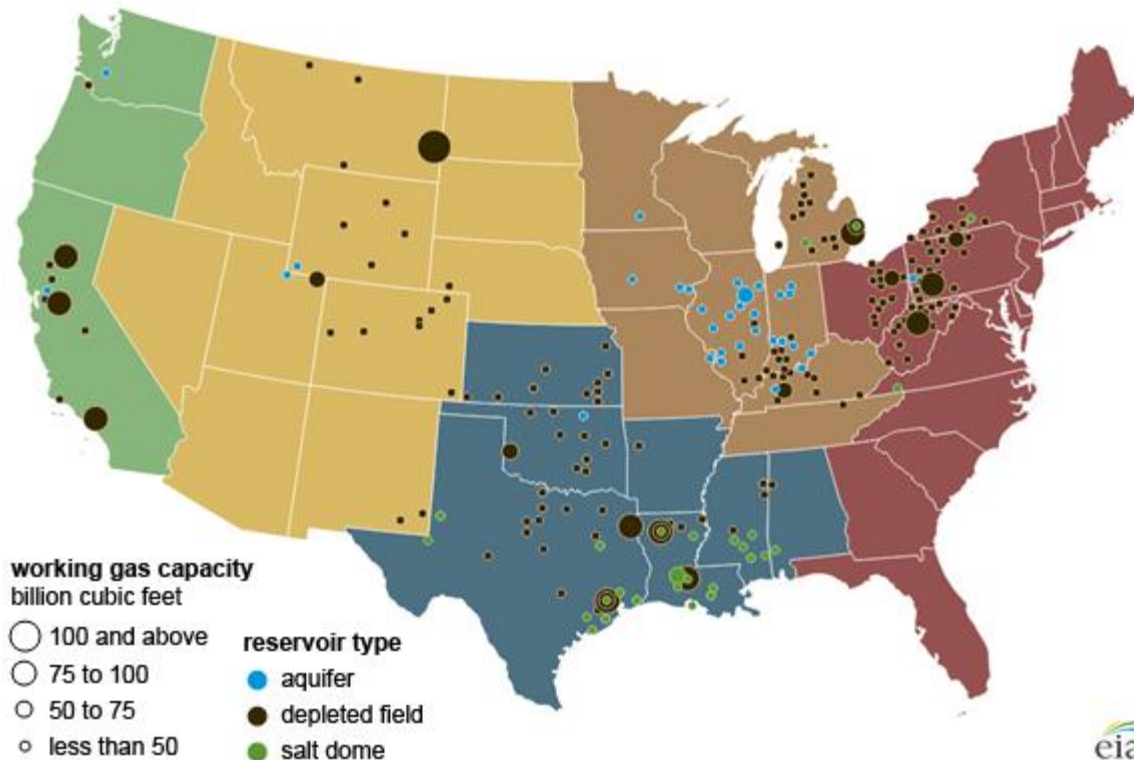
Regional S/D Models Storage Projection

Week Ending 22-Apr

	Daily Raw Storage	Daily Adjustment Factor	Daily Average Storage Activity (Adjusted) *	Weekly Adjusted Storage Activity
L48	4.5	0.3	4.8	34
East	-1.8	1.6	-0.1	-1
Midwest	1.2	-0.6	0.6	4
Mountain	3.5	-3.5	0.1	1
South Central	1.7	2.4	4.1	29
Pacific	-0.2	0.3	0.1	1

*Adjustment Factor is calculated based on historical regional deltas

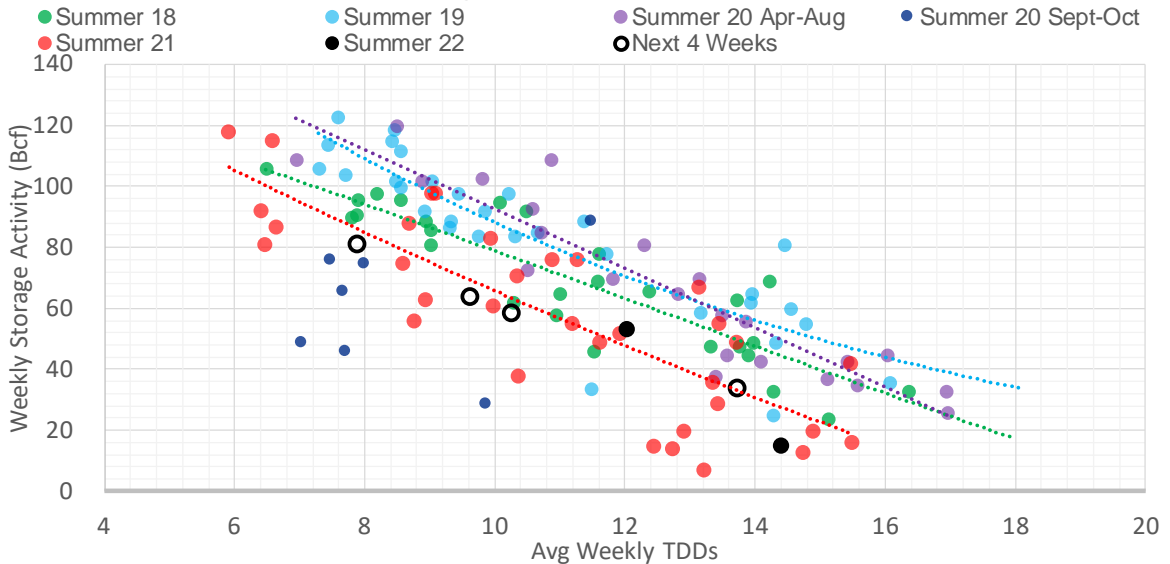
U.S. underground natural gas storage facilities by type (July 2015)



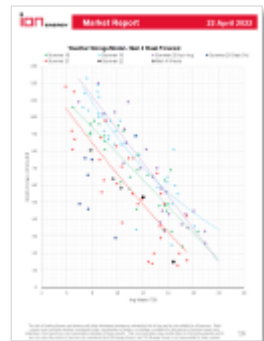
Weather Model Storage Projection

Next report and beyond		
Week Ending	TDDs	Week Storage Projection
22-Apr	13.7	34
29-Apr	10.3	58
06-May	9.6	64
13-May	7.9	81

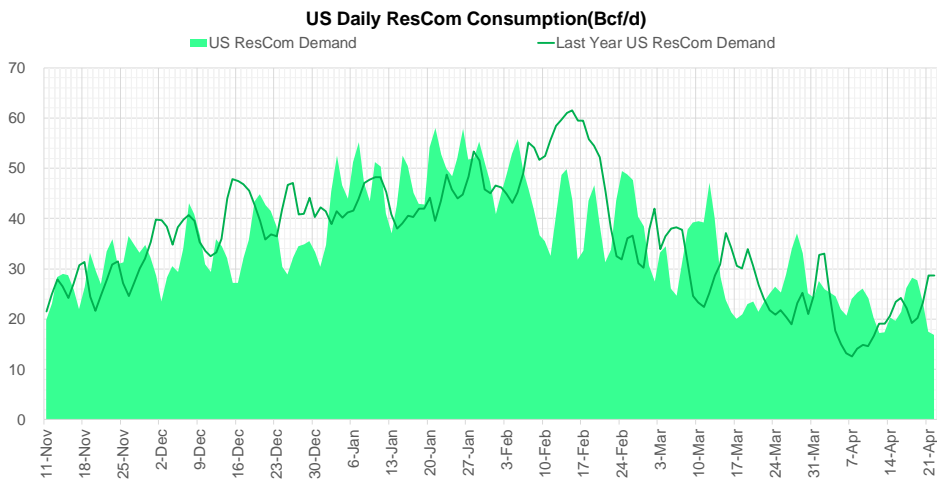
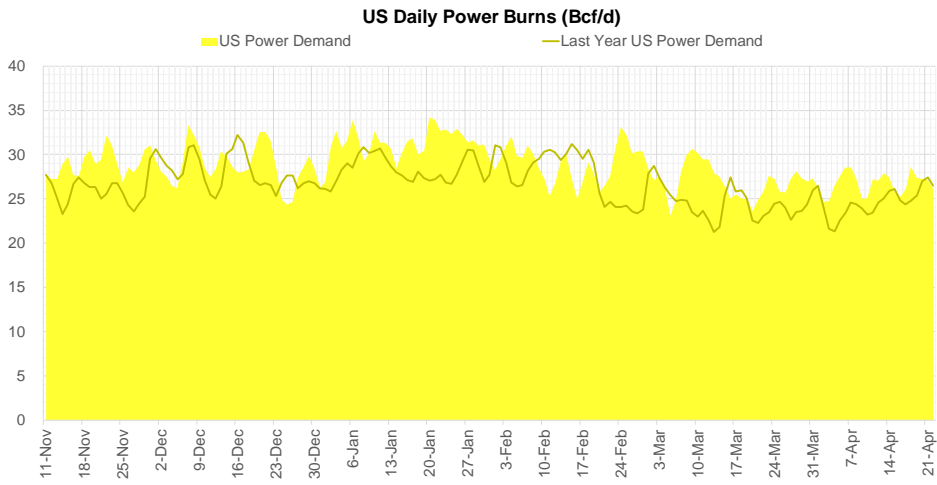
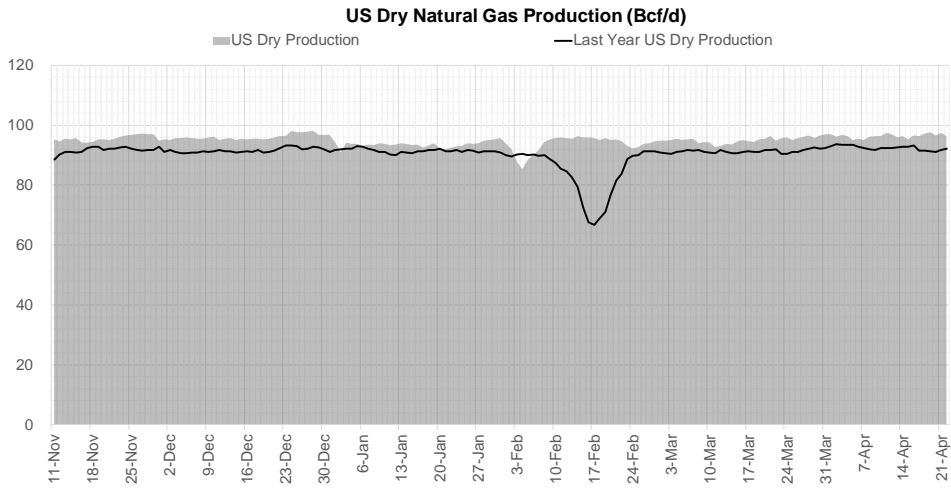
Weather Storage Model - Next 4 Week Forecast



Go to larger image



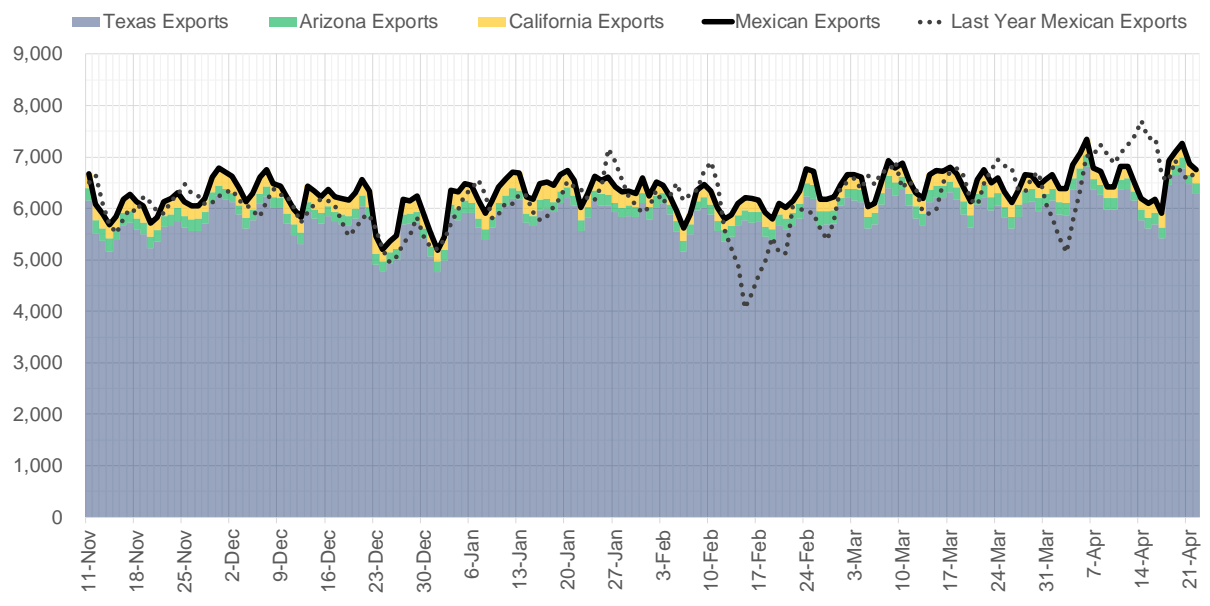
Supply – Demand Trends



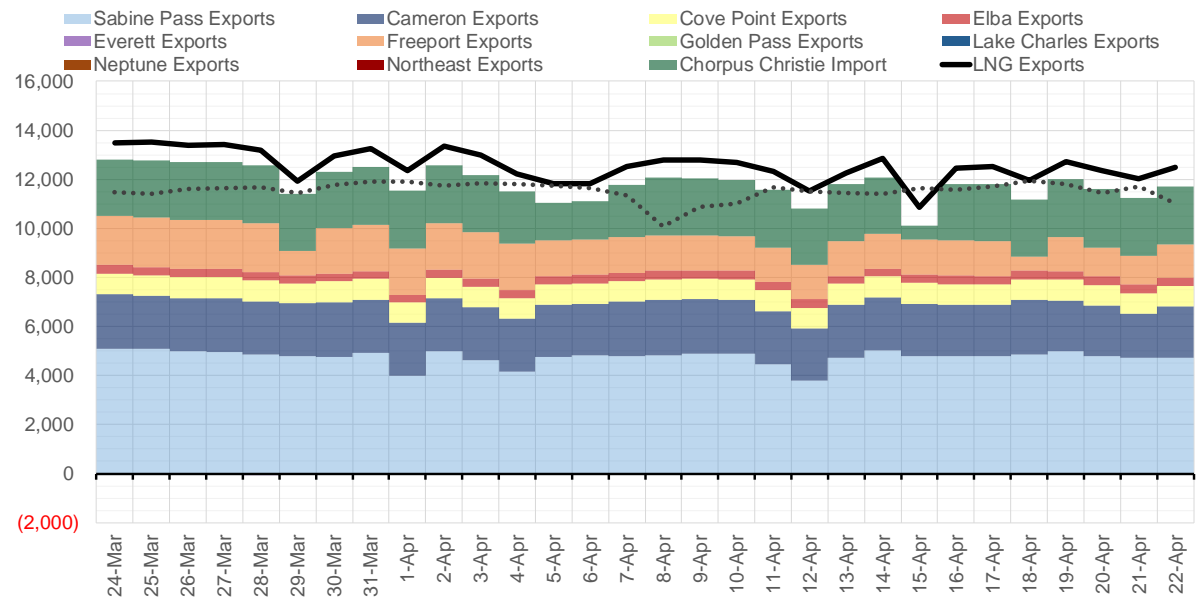
Source: Bloomberg

The risk of trading futures and options and other derivatives involves a substantial risk of loss and is not suitable for all persons. Each person must consider whether a particular trade, combination of trades, or strategy is suitable for that person's financial means and objectives. Past results are not necessarily indicative of future results. This communication may contain links to third party websites which are not under the control of and are not maintained by ION Energy Group, and ION Energy Group is not responsible for their content.

Mexican Exports (MMcf/d)



Net LNG Exports - Last 30 days (MMcf/d)



Source: Bloomberg

The risk of trading futures and options and other derivatives involves a substantial risk of loss and is not suitable for all persons. Each person must consider whether a particular trade, combination of trades, or strategy is suitable for that person's financial means and objectives. Past results are not necessarily indicative of future results. This communication may contain links to third party websites which are not under the control of and are not maintained by ION Energy Group, and ION Energy Group is not responsible for their content.

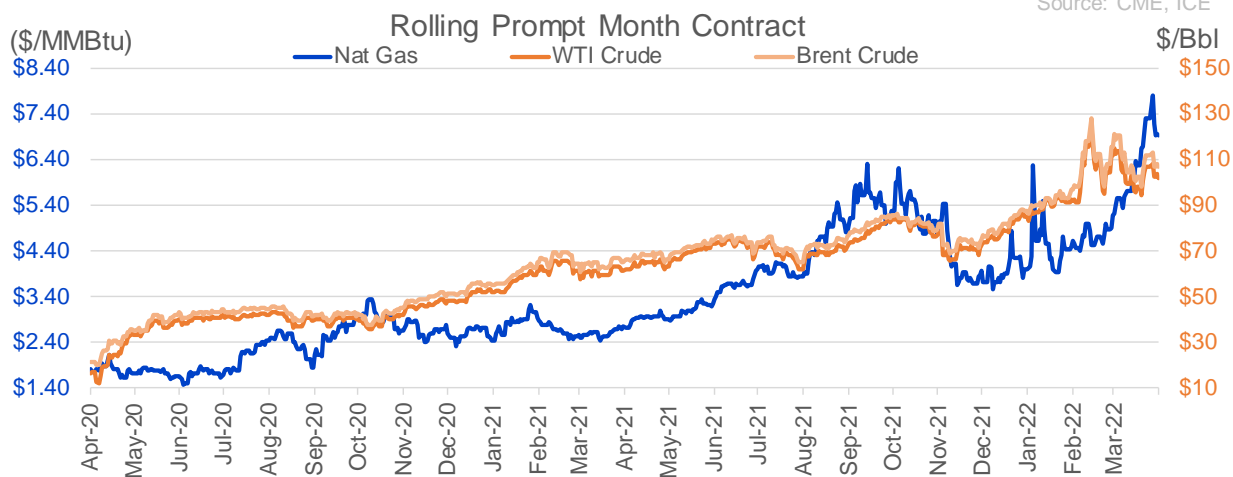
Nat Gas Options Volume and Open Interest CME and ICE Combined

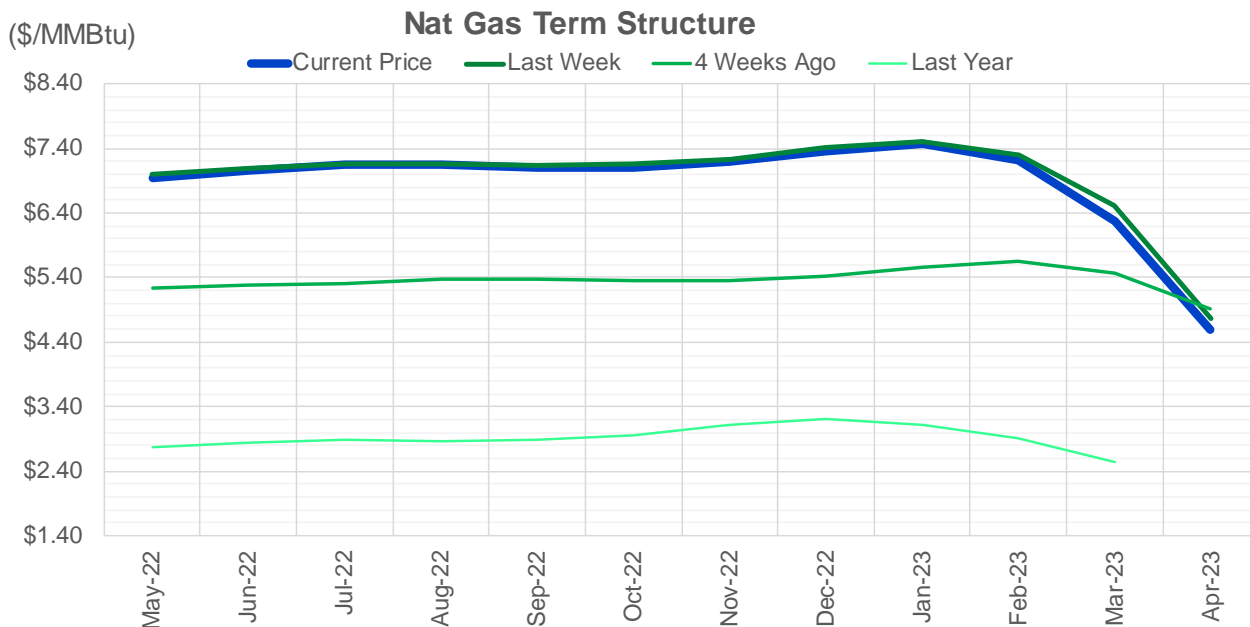
CONTRACT MONTH	CONTRACT YEAR	PUT/CALL	STRIKE	CUMULATIVE VOL	CONTRACT MONTH	CONTRACT YEAR	PUT/CALL	STRIKE	CUMULATIVE OI
10	2022	P	3.50	4003	8	2022	C	10.00	48636
5	2022	C	7.50	3492	8	2022	C	10.50	41503
5	2022	C	8.00	3223	10	2022	C	6.00	34708
6	2022	C	9.00	2722	5	2022	P	4.00	25938
5	2022	P	6.25	2306	10	2022	C	5.00	25550
2	2023	C	8.00	2201	6	2022	C	6.00	24648
7	2022	C	8.00	2138	9	2022	C	6.00	23490
11	2022	P	3.50	2000	5	2022	P	3.00	22811
12	2022	P	3.50	2000	7	2022	C	8.00	22414
1	2023	P	2.50	2000	10	2022	P	3.00	21412
1	2023	P	4.00	2000	5	2022	C	5.00	21313
2	2023	P	2.50	2000	5	2022	C	6.00	21043
2	2023	P	4.00	2000	8	2022	C	6.00	20906
3	2023	P	2.50	2000	6	2022	P	4.00	19926
3	2023	P	4.00	2000	5	2022	P	2.50	19874
6	2022	C	10.00	1997	5	2022	C	7.00	19295
7	2022	P	5.00	1969	8	2022	C	7.00	18758
5	2022	C	7.00	1841	12	2022	C	5.00	18421
10	2022	P	2.75	1800	5	2022	C	8.00	18348
6	2022	C	8.00	1776	6	2022	C	10.00	18329
5	2022	P	6.00	1724	9	2022	C	10.00	18285
5	2022	C	9.00	1706	7	2022	C	7.00	18058
10	2023	P	2.00	1650	6	2022	C	7.00	17865
7	2022	C	10.50	1551	6	2022	C	5.00	17847
7	2022	C	10.60	1500	7	2022	C	6.00	17805
4	2023	P	2.00	1500	7	2022	P	3.25	17644
5	2023	P	2.00	1500	5	2022	P	2.75	17585
6	2023	P	2.00	1500	10	2022	P	2.50	17436
7	2023	P	2.00	1500	5	2022	P	3.50	17295
8	2023	P	2.00	1500	10	2022	P	4.00	17246
9	2023	P	2.00	1500	6	2022	P	3.00	17223
5	2022	P	6.50	1497	10	2022	P	3.50	17171
6	2022	C	12.00	1410	5	2022	P	4.50	17044
7	2022	C	10.00	1322	9	2022	C	7.00	16782
7	2022	C	7.00	1286	5	2022	P	3.75	16402
5	2022	P	6.75	1230	5	2022	P	5.00	16382
5	2022	C	7.25	1229	6	2022	P	3.50	16022
5	2022	P	7.00	1178	1	2023	C	10.00	15564
7	2022	C	12.00	1149	9	2022	P	2.50	15291
6	2022	C	13.00	1044	6	2022	C	9.00	15215
8	2022	C	10.00	971	2	2023	C	10.00	15194
10	2022	P	5.00	960	5	2022	C	9.00	15156
7	2022	P	5.50	946	6	2022	P	5.50	15030
5	2022	P	5.50	943	6	2022	P	4.75	15024
6	2022	C	7.00	913	7	2022	P	3.50	14935
10	2022	P	4.50	871	9	2022	P	2.75	14933
10	2022	P	4.00	851	7	2022	C	10.00	14930
7	2022	P	4.50	817	10	2022	P	2.00	14763
5	2022	C	7.30	813	7	2022	P	3.00	14507
					8	2022	P	3	14375

Source: CME, ICE

Nat Gas Futures Open Interest CME and ICE Combined

CME Henry Hub Futures (10,000 MMBtu)				ICE Henry Hub Futures Contract Equivalent (10,000 MM			
	Current	Prior	Daily Change		Current	Prior	Daily Change
MAY 22	29924	37952	-8028	MAY 22	80050	77459	2592
JUN 22	129798	128993	805	JUN 22	73703	73805	-102
JUL 22	162030	161432	598	JUL 22	76689	84548	-7858
AUG 22	53922	53335	587	AUG 22	62329	62377	-48
SEP 22	81171	79879	1292	SEP 22	66595	66742	-148
OCT 22	92337	95760	-3423	OCT 22	75198	75236	-39
NOV 22	42283	41889	394	NOV 22	56245	56128	118
DEC 22	47484	47198	286	DEC 22	60992	60904	88
JAN 23	61124	60962	162	JAN 23	66569	67674	-1105
FEB 23	22298	21369	929	FEB 23	47870	47253	617
MAR 23	40293	40401	-108	MAR 23	53238	53202	36
APR 23	56125	55287	838	APR 23	51693	52101	-408
MAY 23	54823	52796	2027	MAY 23	47535	47163	371
JUN 23	23144	22510	634	JUN 23	43961	44059	-99
JUL 23	17846	17539	307	JUL 23	43483	43554	-71
AUG 23	14792	15076	-284	AUG 23	43275	43344	-69
SEP 23	17732	17584	148	SEP 23	42925	43023	-98
OCT 23	37038	38332	-1294	OCT 23	50080	50355	-275
NOV 23	12397	12660	-263	NOV 23	42347	41912	435
DEC 23	15072	14721	351	DEC 23	38415	38386	30
JAN 24	23114	23639	-525	JAN 24	37423	36918	505
FEB 24	5515	5242	273	FEB 24	25137	25144	-7
MAR 24	15135	14895	240	MAR 24	29783	30341	-558
APR 24	10745	10471	274	APR 24	24125	23588	537
MAY 24	6124	6122	2	MAY 24	24227	24162	65
JUN 24	1794	1793	1	JUN 24	21463	21430	33
JUL 24	1887	1879	8	JUL 24	21573	21516	57
AUG 24	3077	3050	27	AUG 24	22572	22515	57
SEP 24	1386	1389	-3	SEP 24	21322	21335	-13
OCT 24	6759	6862	-103	OCT 24	23289	23125	165





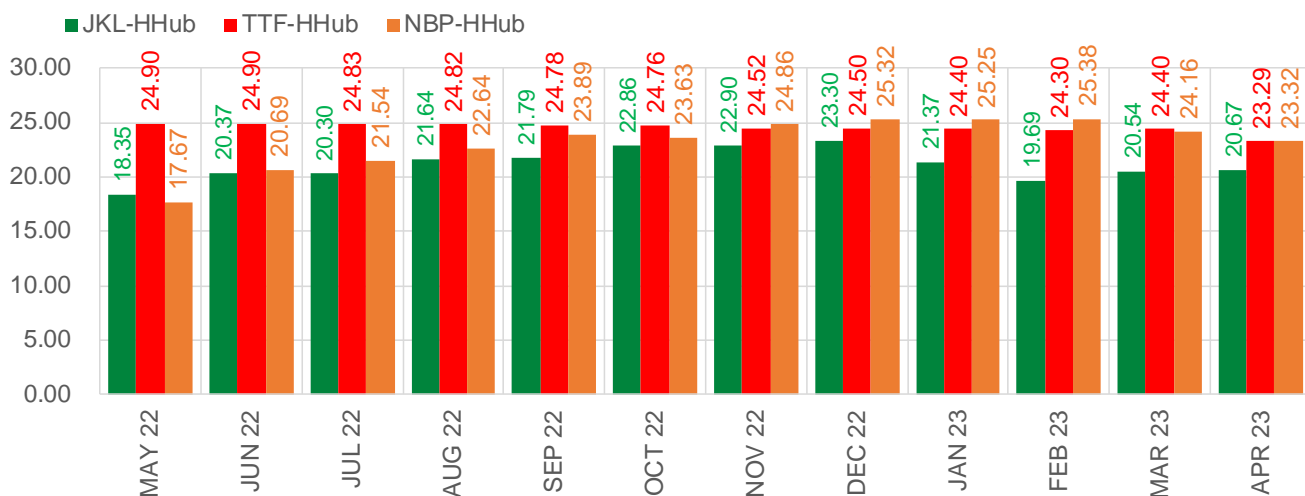
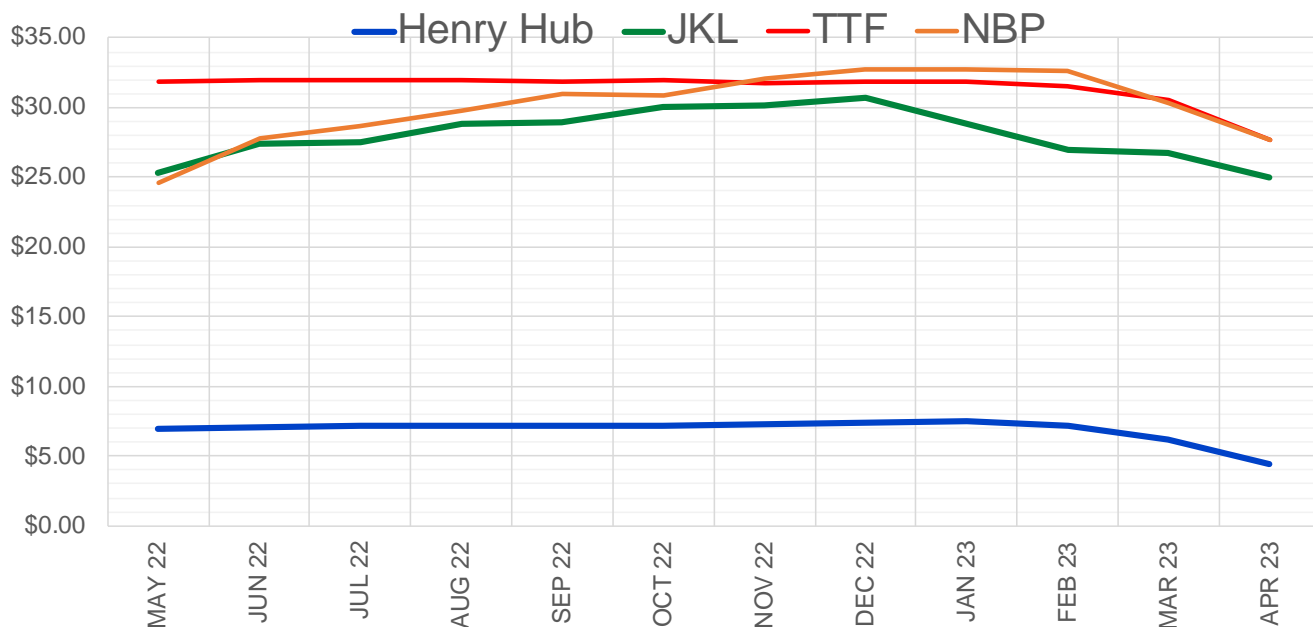
	May-22	Jun-22	Jul-22	Aug-22	Sep-22	Oct-22	Nov-22	Dec-22	Jan-23	Feb-23	Mar-23	Apr-23
Current Price	\$6.937	\$7.065	\$7.158	\$7.151	\$7.102	\$7.112	\$7.198	\$7.365	\$7.469	\$7.225	\$6.278	\$4.585
Last Week	\$6.997	\$7.096	\$7.173	\$7.174	\$7.151	\$7.163	\$7.238	\$7.414	\$7.516	\$7.307	\$6.511	\$4.755
vs. Last Week	-\$0.060	-\$0.031	-\$0.015	-\$0.023	-\$0.049	-\$0.051	-\$0.040	-\$0.049	-\$0.047	-\$0.082	-\$0.233	-\$0.170
4 Weeks Ago	\$5.232	\$5.274	\$5.316	\$5.366	\$5.371	\$5.350	\$5.362	\$5.423	\$5.562	\$5.653	\$5.474	\$4.925
vs. 4 Weeks Ago	\$1.705	\$1.791	\$1.842	\$1.785	\$1.731	\$1.762	\$1.836	\$1.942	\$1.907	\$1.572	\$0.804	-\$0.340
Last Year	\$2.692	\$2.776	\$2.846	\$2.876	\$2.863	\$2.881	\$2.964	\$3.111	\$3.199	\$3.124	\$2.920	\$2.539
vs. Last Year	\$4.245	\$4.289	\$4.312	\$4.275	\$4.239	\$4.231	\$4.234	\$4.254	\$4.270	\$4.101	\$3.358	\$2.046

	Units	Cash Settled	Prompt Settle	Cash to Prompt
AGT Citygate	\$/MMBtu	7.90	6.83	-1.07
TETCO M3	\$/MMBtu	6.15	6.70	0.55
FGT Zone 3	\$/MMBtu	6.79	7.33	0.54
Zone 6 NY	\$/MMBtu	6.79	6.63	-0.16
Chicago Citygate	\$/MMBtu	6.60	7.05	0.45
Michcon	\$/MMBtu	6.71	7.06	0.35
Columbia TCO Pool	\$/MMBtu	6.40	6.73	0.33
Ventura	\$/MMBtu	6.10	6.98	0.88
Rockies/Opal	\$/MMBtu	6.50	6.78	0.28
El Paso Permian Basin	\$/MMBtu	6.20	6.31	0.11
Socal Citygate	\$/MMBtu	7.28	6.88	-0.40
Malin	\$/MMBtu	6.85	6.84	-0.01
Houston Ship Channel	\$/MMBtu	6.53	7.14	0.61
Henry Hub Cash	\$/MMBtu	6.88	6.99	0.11
AECO Cash	C\$/GJ	5.03	5.60	0.57
Station2 Cash	C\$/GJ	4.94	6.63	1.69
Dawn Cash	C\$/GJ	6.75	7.13	0.38

Source: CME, Bloomberg

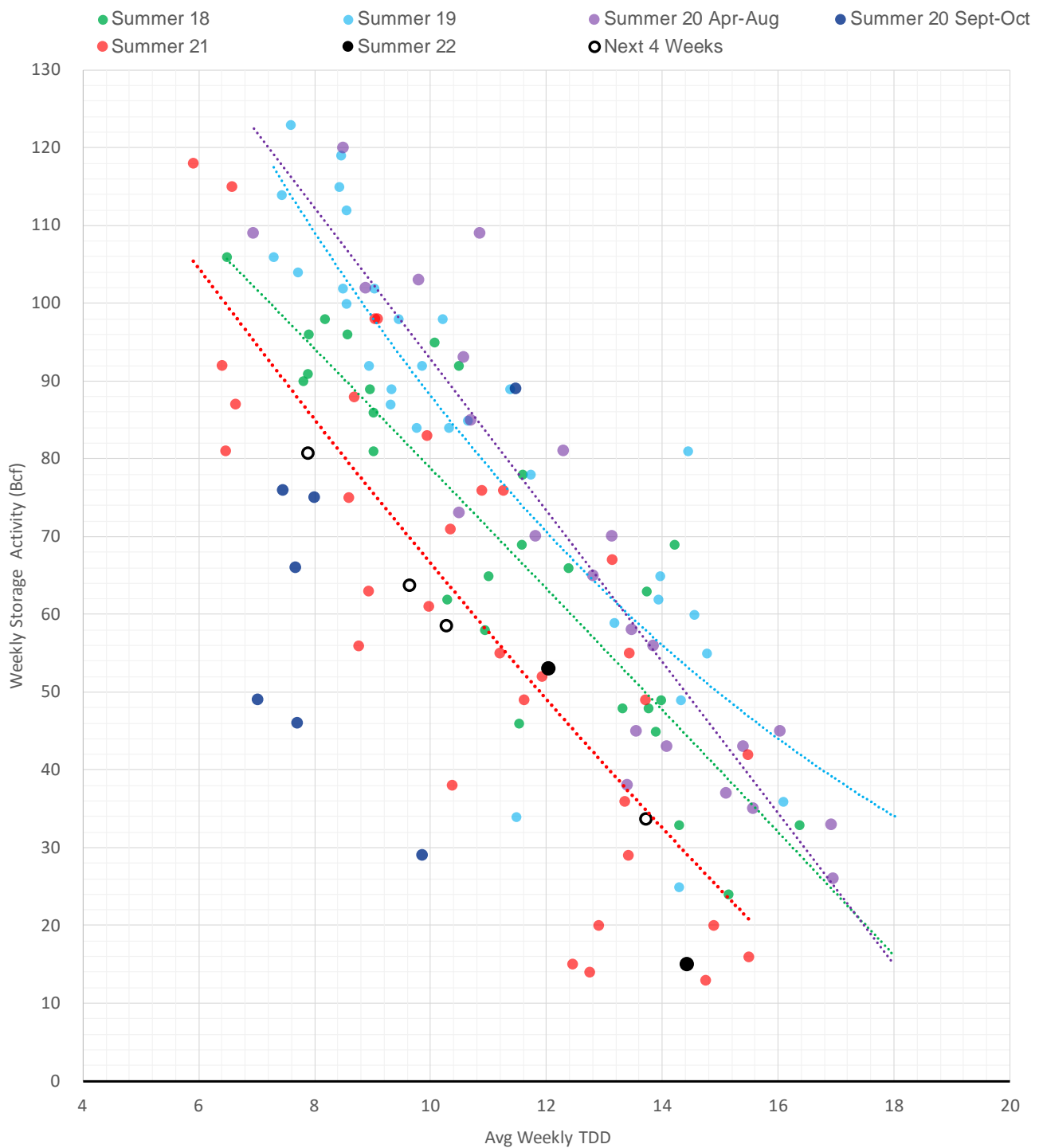
	Units	Current Price	vs. Last Week	vs. 4 Weeks Ago	vs. Last Year
NatGas Jul21/Oct21	\$/MMBtu	2.224	▲ 0.000	▲ 0.000	▲ 2.193
NatGas Oct21/Nov21	\$/MMBtu	0.361	▲ 0.000	▲ 0.000	▲ 0.289
NatGas Oct21/Jan22	\$/MMBtu	-1.817	▲ 0.000	▲ 0.000	▼ -2.115
NatGas Apr22/Oct22	\$/MMBtu	1.819	▼ -0.331	▲ 1.691	▲ 1.791
WTI Crude	\$/Bbl	103.79	▼ -3.160	▼ -8.550	▲ 42.360
Brent Crude	\$/Bbl	108.33	▼ -3.370	▼ -10.700	▲ 42.930
Fuel Oil, NY Harbour 1%	\$/Bbl	97.18	▲ 0.000	▲ 0.000	▲ 0.000
Heating Oil	cents/Gallon	390.08	▲ 4.600	▼ -25.260	▲ 204.000
Propane, Mt. Bel	cents/Gallon	1.32	▼ -0.021	▼ -0.123	▲ 0.515
Ethane, Mt. Bel	cents/Gallon	0.50	▼ -0.001	▲ 0.077	▲ 0.271
Coal, PRB	\$/MTon	12.30	▲ 0.000	▲ 0.000	▲ 0.000
Coal, PRB	\$/MMBtu	0.70			
Coal, ILB	\$/MTon	31.05	▲ 0.000	▲ 0.000	▲ 0.000
Coal, ILB	\$/MMBtu	1.32			

Nat Gas Term Structure (\$MMBTU)



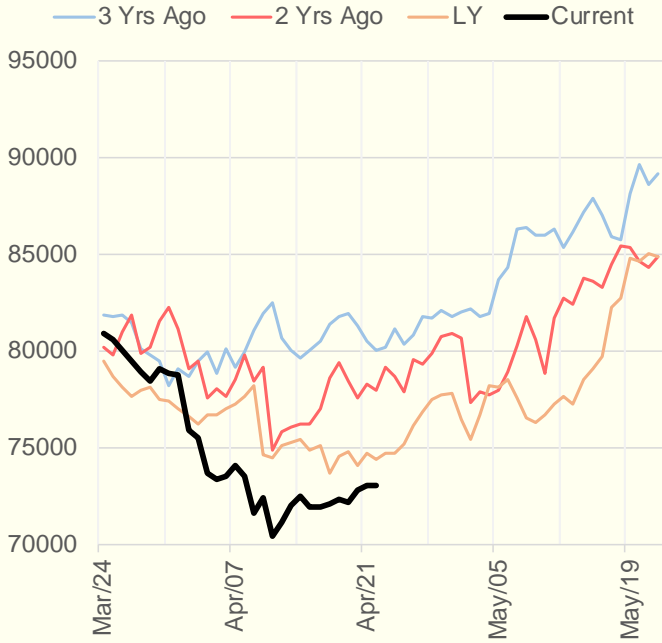
	MAY 22	JUN 22	JUL 22	AUG 22	SEP 22	OCT 22	NOV 22	DEC 22	JAN 23	FEB 23	MAR 23	APR 23
Henry Hub	\$6.940	\$7.080	\$7.175	\$7.165	\$7.129	\$7.195	\$7.272	\$7.400	\$7.496	\$7.225	\$6.175	\$4.375
JKL	\$25.290	\$27.450	\$27.475	\$28.800	\$28.915	\$30.050	\$30.170	\$30.700	\$28.865	\$26.915	\$26.715	\$25.040
JKL-HHub	\$18.350	\$20.370	\$20.300	\$21.635	\$21.786	\$22.855	\$22.898	\$23.300	\$21.369	\$19.690	\$20.540	\$20.665
TTF	\$31.841	\$31.982	\$32.001	\$31.983	\$31.910	\$31.957	\$31.787	\$31.900	\$31.894	\$31.523	\$30.576	\$27.662
TTF-HHub	\$24.901	\$24.902	\$24.826	\$24.818	\$24.781	\$24.762	\$24.515	\$24.500	\$24.398	\$24.298	\$24.401	\$23.287
NBP	\$24.610	\$27.770	\$28.715	\$29.802	\$31.014	\$30.829	\$32.134	\$32.723	\$32.742	\$32.609	\$30.336	\$27.698
NBP-HHub	\$17.670	\$20.690	\$21.540	\$22.637	\$23.885	\$23.634	\$24.862	\$25.323	\$25.246	\$25.384	\$24.161	\$23.323

Weather Storage Model - Next 4 Week Forecast

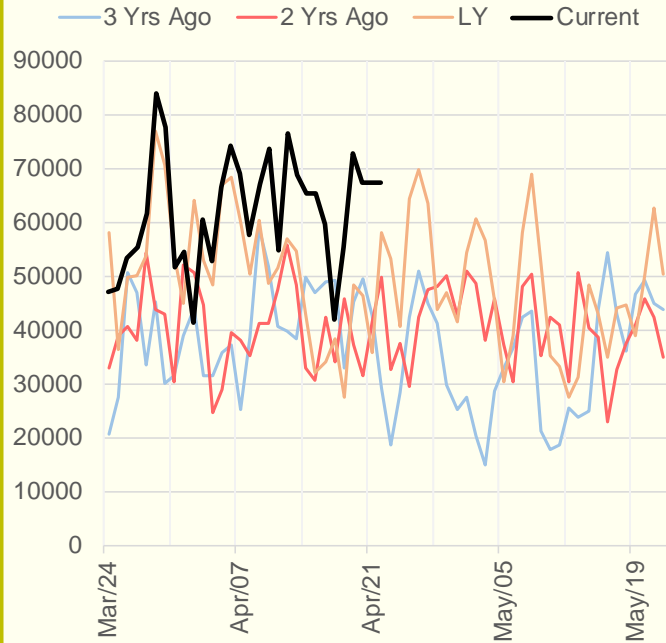


The risk of trading futures and options and other derivatives involves a substantial risk of loss and is not suitable for all persons. Each person must consider whether a particular trade, combination of trades, or strategy is suitable for that person's financial means and objectives. Past results are not necessarily indicative of future results. This communication may contain links to third party websites which are not under the control of and are not maintained by ION Energy Group, and ION Energy Group is not responsible for their content.

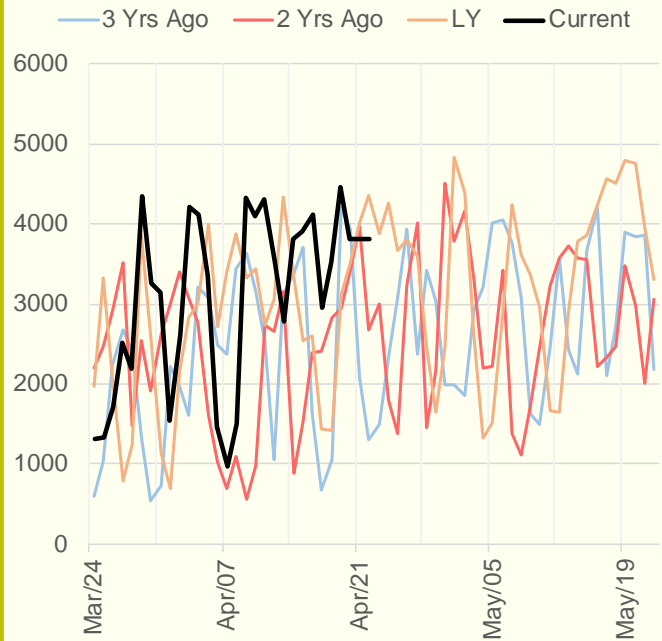
NRC Nuclear Daily Output



US Wind



CALI Wind



TEXAS Wind

