

	Current	Δ from YD	Δ from 7D Avg
Nat Gas Prompt	\$ 7.34	▲ \$ 0.16	▲ \$ 0.02

	Current	Δ from YD	Δ from 7D Avg
WTI Prompt	\$ 104.16	▲ \$ 1.60	▼ \$ (2.0)

	Current	Δ from YD	Δ from 7D Avg
Brent Prompt	\$ 108.95	▲ \$ 1.70	▼ \$ (1.9)

Page Menu

[Short-term Weather Model Outlooks](#)

[Lower 48 Component Models](#)

[Regional S/D Models Storage Projection](#)

[Weather Model Storage Projection](#)

[Supply – Demand Trends](#)

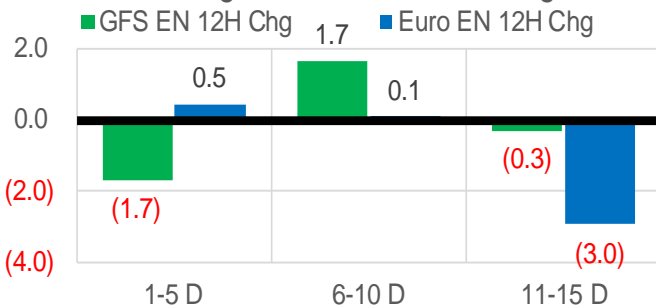
[Nat Gas Options Volume and Open Interest](#)

[Nat Gas Futures Open Interest](#)

[Price Summary](#)

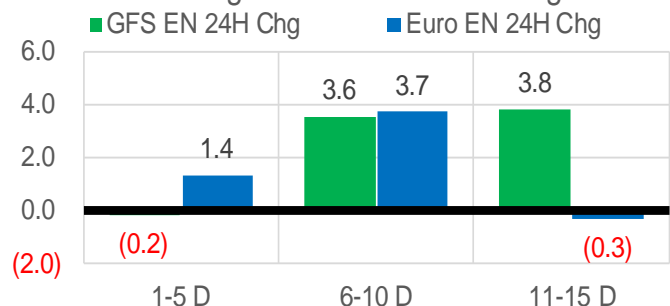
Vs. 12H Ago

L48 Region - 00z TDD vs 12H Ago



Vs. 24H Ago

L48 Region - 00z TDD vs 24H Ago



	Current	Δ from YD	Δ from 7D Avg
US Dry Production	96.6	▼ -0.91	▲ 0.12

	Current	Δ from YD	Δ from 7D Avg
US Power Burns	27.8	▲ 0.52	▲ 0.92

	Current	Δ from YD	Δ from 7D Avg
US ResComm	23.3	▼ -4.26	▲ 0.38

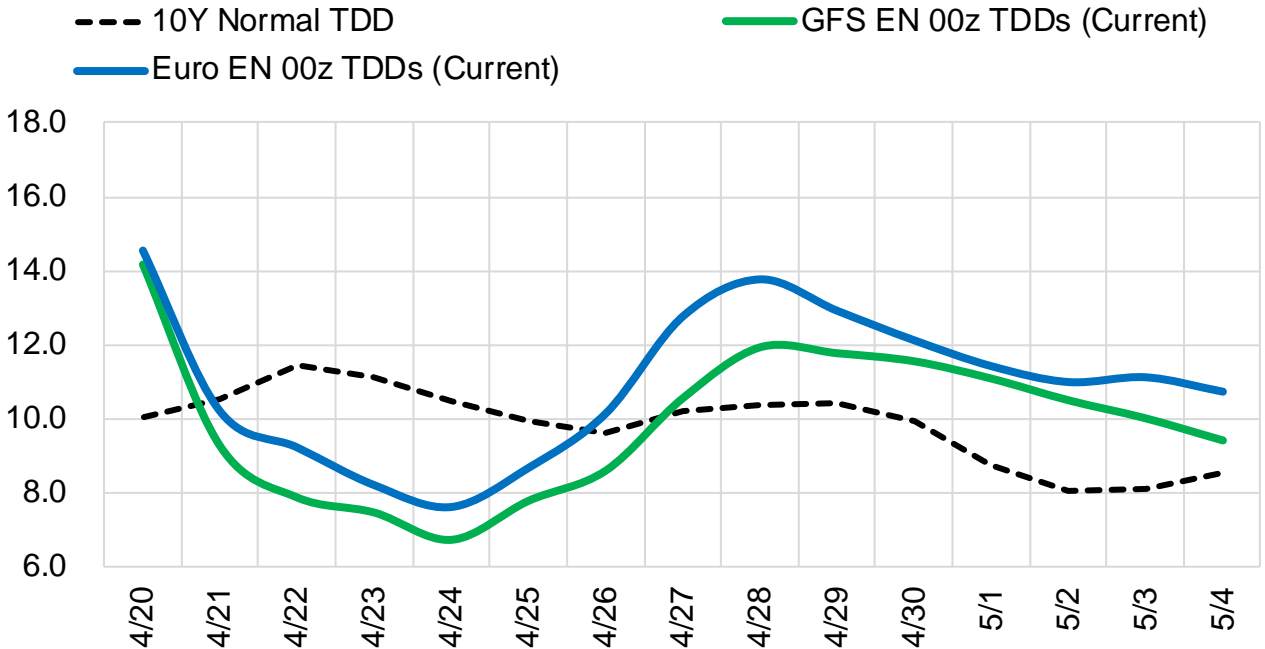
	Current	Δ from YD	Δ from 7D Avg
Canadian Imports	5.6	▼ -0.25	▼ -0.27

	Current	Δ from YD	Δ from 7D Avg
Net LNG Exports	12.7	▼ -0.24	▲ 0.44

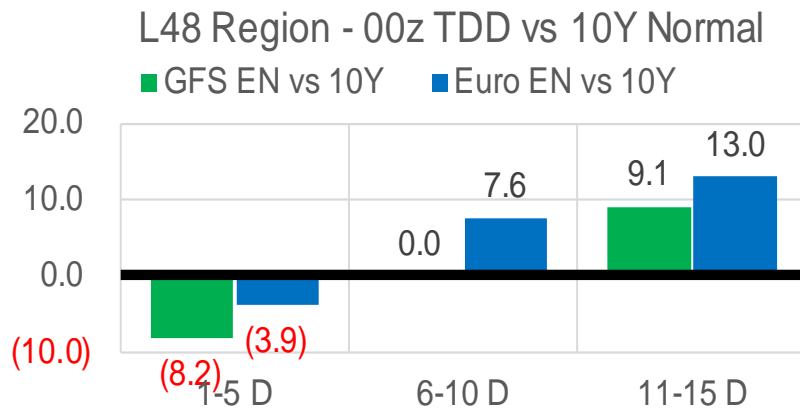
	Current	Δ from YD	Δ from 7D Avg
Mexican Exports	7.1	▲ 0.01	▲ 0.61

Short-term Weather Model Outlooks (00z)

L48 Region



Vs. 10Y Normal



Source: WSI, Bloomberg

Lower 48 Component Models

Daily Balances

	14-Apr	15-Apr	16-Apr	17-Apr	18-Apr	19-Apr	20-Apr	DoD	vs. 7D
Lower 48 Dry Production	96.5	95.3	96.6	96.2	97.2	97.5	96.6	▼ -0.9	▲ 0.0
Canadian Imports	6.1	5.8	5.9	6.1	5.9	5.8	5.6	▼ -0.3	▼ -0.4
L48 Power	27.5	25.8	25.2	26.0	28.5	27.3	27.8	▲ 0.5	▲ 1.1
L48 Residential & Commercial	20.4	19.6	21.5	26.2	27.8	27.6	23.3	▼ -4.3	▼ -0.5
L48 Industrial	20.6	20.6	20.8	21.3	21.5	21.5	21.0	▼ -0.5	▼ -0.1
L48 Lease and Plant Fuel	5.3	5.2	5.3	5.2	5.3	5.3	5.2	▼ -0.1	▼ 0.0
L48 Pipeline Distribution	2.6	2.5	2.6	2.9	3.1	3.0	2.8	▼ -0.2	▲ 0.0
L48 Regional Gas Consumption	76.5	73.7	75.5	81.5	86.2	84.7	80.2	▼ -4.5	▲ 0.5
Net LNG Delivered	12.86	10.87	12.47	12.52	11.94	12.94	12.71	▼ -0.2	▲ 0.4
Total Mexican Exports	6.5	6.1	6.2	5.9	6.9	7.1	7.1	▲ 0.0	▲ 0.6
Implied Daily Storage Activity	6.7	10.4	8.4	2.4	-2.0	-1.4	2.2		
EIA Reported Daily Storage Activity									
Daily Model Error									

EIA Storage Week Balances

	11-Mar	18-Mar	25-Mar	1-Apr	8-Apr	15-Apr	WoW	vs. 4W
Lower 48 Dry Production	94.8	93.9	95.4	96.1	96.0	96.5	▲ 0.5	▲ 1.2
Canadian Imports	5.2	5.2	4.8	5.7	5.8	5.6	▼ -0.2	▲ 0.2
L48 Power	27.6	27.3	25.6	26.9	26.7	26.8	▲ 0.1	▲ 0.1
L48 Residential & Commercial	33.2	31.5	23.5	29.7	24.3	21.6	▼ -2.7	▼ -5.6
L48 Industrial	22.7	20.7	20.8	22.5	21.8	20.7	▼ -1.1	▼ -0.8
L48 Lease and Plant Fuel	5.2	5.1	5.2	5.2	5.2	5.3	▲ 0.0	▲ 0.1
L48 Pipeline Distribution	3.2	3.1	2.6	2.9	2.8	2.7	▼ -0.1	▼ -0.2
L48 Regional Gas Consumption	91.8	87.7	77.5	87.3	80.8	77.0	▼ -3.9	▼ -6.4
Net LNG Exports	12.8	12.9	13.0	13.1	12.4	12.5	▲ 0.0	▼ -0.4
Total Mexican Exports	6.6	6.6	6.5	6.4	6.8	6.6	▼ -0.2	▲ 0.0
Implied Daily Storage Activity	-11.2	-7.9	3.2	-5.0	1.7	6.1	4.3	
EIA Reported Daily Storage Activity	-11.3	-7.3	3.7	-4.7	2.1			
Daily Model Error	0.1	-0.7	-0.5	-0.3	-0.4			

Monthly Balances

	2Yr Ago Apr-20	LY Apr-21	Dec-21	Jan-22	Feb-22	Mar-22	MTD Apr-22	MoM	vs. LY
Lower 48 Dry Production	92.7	92.5	96.1	93.6	93.6	95.1	96.4	▲ 1.3	▲ 3.9
Canadian Imports	4.0	4.7	4.8	6.7	6.6	5.2	5.7	▲ 0.5	▲ 1.1
L48 Power	25.6	25.0	28.7	31.4	29.0	26.9	26.7	▼ -0.2	▲ 1.7
L48 Residential & Commercial	20.5	19.6	33.9	48.6	42.7	29.6	23.4	▼ -6.2	▲ 3.8
L48 Industrial	20.4	21.4	22.5	25.5	25.3	21.7	21.2	▼ -0.5	▼ -0.2
L48 Lease and Plant Fuel	5.0	5.0	5.3	5.1	5.1	5.2	5.3	▲ 0.1	▲ 0.2
L48 Pipeline Distribution	2.4	2.5	3.2	3.8	3.4	2.9	2.8	▼ -0.2	▲ 0.3
L48 Regional Gas Consumption	74.0	73.5	93.6	114.4	105.5	86.3	79.3	▼ -7.0	▲ 5.8
Net LNG Exports	8.2	11.5	12.1	12.4	12.4	12.9	12.4	▼ -0.5	▲ 0.9
Total Mexican Exports	4.8	6.7	6.2	6.3	6.2	6.5	6.6	▲ 0.1	▼ -0.1
Implied Daily Storage Activity	9.7	5.5	-11.0	-32.8	-23.8	-5.4	3.8		
EIA Reported Daily Storage Activity									
Daily Model Error									

Source: Bloomberg, analytix.ai

Daily Average Generation Data

Nuclear Generation Daily Average - GWh (NRC)

	12-Apr	13-Apr	14-Apr	15-Apr	16-Apr	17-Apr	18-Apr	DoD	vs. 7D
NRC Nuclear Daily Output	71.1	72.0	72.5	71.9	71.9	72.1	72.3	0.2	0.4
NRC Nuclear Max Capacity	104.9	104.9	104.9	104.9	104.9	104.9	104.9	0.0	0.0
NRC Nuclear Outage	33.8	32.9	32.4	33.0	32.9	32.8	32.6	-0.2	-0.4
NRC % Nuclear Cap Utilization	72.3	73.2	73.7	73.1	73.1	73.3	73.5	0.2	0.4

Wind Generation Daily Average - MWh (EIA)

	12-Apr	13-Apr	14-Apr	15-Apr	16-Apr	17-Apr	18-Apr	DoD	vs. 7D
CALI Wind	3526	2788	3812	3918	4112	2949	3528	579	10
TEXAS Wind	20706	15878	15113	15603	12940	6807	13553	6747	-954
US Wind	76686	68817	65604	65507	59824	41948	55464	13517	-7600

Generation Daily Average - MWh (EIA)

	12-Apr	13-Apr	14-Apr	15-Apr	16-Apr	17-Apr	18-Apr	DoD	vs. 7D
US Wind	76686	68817	65604	65507	59824	41948	55464	13517	-7600
US Solar	13376	14725	15341	15855	13611	15960	14350	-1610	-461
US Petroleum	983	957	960	944	935	937	1041	104	88
US Other	7046	7293	7292	7212	7120	7021	7640	619	476
US Coal	76496	77353	77252	75685	76043	77154	81626	4472	4963
US Nuke	75125	75970	76070	76012	76018	76472	75985	-487	40
US Hydro	29468	29477	29202	28309	26041	25802	28711	2909	661
US Gas	134390	140553	140785	124541	122585	127522	146569	19047	14840

See National Wind and Nuclear daily charts

Source: Bloomberg, analytix.ai

Storage Week Average Generation Data

Nuclear Generation Weekly Average - GWh (NRC)

	11-Mar	18-Mar	25-Mar	1-Apr	8-Apr	15-Apr	WoW	WoW Bcf/d Impact
NRC Nuclear Daily Output	82.3	80.9	80.9	79.3	75.0	71.9	-3.1	0.5
NRC Nuclear Max Capacity	104.9	104.9	104.9	104.9	104.9	104.9	0.0	
NRC Nuclear Outage	22.5	23.9	24.0	25.5	29.9	32.9	3.1	
NRC % Nuclear Cap Utilization	83.7	82.3	82.3	80.7	76.3	73.2	-3.1	

Wind Generation Weekly Average - MWh (EIA)

	11-Mar	18-Mar	25-Mar	1-Apr	8-Apr	15-Apr	WoW	WoW Bcf/d Impact
CALI Wind	2602	2297	2037	2643	2611	3482	871	-0.2
TEXAS Wind	14469	17742	16108	14530	14468	16530	2062	-0.4
US Wind	56828	63171	62107	61695	60009	66412	6403	-1.2
							11%	
						0.1		

Generation Weekly Average - MWh (EIA)

	11-Mar	18-Mar	25-Mar	1-Apr	8-Apr	15-Apr	WoW	WoW Bcf/d Impact
US Wind	56828	63171	62107	61695	60009	66412	6403	-1.2
US Solar	12720	13919	13805	15451	15518	15813	295	-0.1
US Petroleum	1742	961	864	1048	1015	964	-50	0.0
US Other	6623	7120	7745	7481	7183	7077	-107	0.0
US Coal	86717	86035	72503	77743	77514	76999	-515	0.1
US Nuke	86449	84775	84027	83506	78807	75674	-3133	0.6
US Hydro	34571	34883	33229	33463	32524	29415	-3109	0.6
US Gas	140401	137079	124817	134886	134633	134009	-624	-0.1

See National Wind and Nuclear daily charts

Source: Bloomberg, analytix.ai

Monthly Average Generation Data

Nuclear Generation Monthly Average - GWh (NRC)

	2Yr Ago	LY	MTD				Last 30 days	MoM (MTD vs LY)	Last 30 days YoY
	Same 30 days	Same 30 days	Jan-22	Feb-22	Mar-22	Apr-22			
	NRC Nuclear Daily Output	78.9	76.6	90.2	87.6	81.3			
NRC Nuclear Max Capacity	104.9	104.9	104.9	104.9	104.9	104.9	104.9	0.0	0.0
NRC Nuclear Outage	26.0	28.3	14.7	17.3	23.6	31.8	29.6	8.3	1.3
NRC % Nuclear Cap Utilization	80.2	77.9	91.7	89.0	82.7	74.3	76.6	-8.4	-1.3

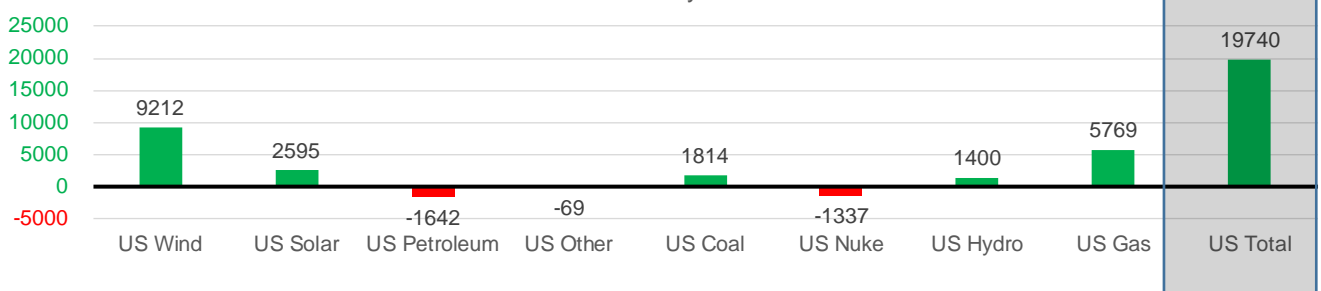
Wind Generation Monthly Average - MWh (EIA)

	2Yr Ago	LY	MTD				Last 30 days	MoM (MTD vs LY)	Last 30 days YoY
	Same 30 days	Same 30 days	Jan-22	Feb-22	Mar-22	Apr-22			
	CALI Wind	2197	2722	1244	1559	2250			
TEXAS Wind	9757	12478	11355	12294	14837	14650	14738	-187	2259
US Wind	39322	52190	51045	56539	58520	60931	61402	2411	9212

Generation Monthly Average - MWh (EIA)

	2Yr Ago	LY	MTD				Last 30 days	MoM (MTD vs LY)	Last 30 days YoY
	Same 30 days	Same 30 days	Jan-22	Feb-22	Mar-22	Apr-22			
	US Wind	39322	52190	51045	56539	58520			
US Solar	8784	12629	9541	12188	14053	15390	15225	▼ -165.2	▲ 2595
US Petroleum	3075	2649	5021	3451	1335	990	1007	▲ 17	▼ -1642
US Other	7183	7370	8792	8839	7187	7205	7301	▲ 96	▼ -69
US Coal	58756	75575	117971	106588	82279	77767	77389	▼ -379	▲ 1814
US Nuke	82755	80539	95259	92280	85157	76891	79202	▲ 2311	▼ -1337
US Hydro	30643	29799	34040	32213	33927	29993	31198	▲ 1206	▲ 1400
US Gas	142058	128841	164024	152058	135574	134743	134610	▲ 3557	▲ 5769
US Total	370874	389078	485878	464684	419855	405317	408819	▲ 6643	▲ 19740

Last 30 days YoY



See National Wind and Nuclear daily charts

Source: Bloomberg, analytix.ai

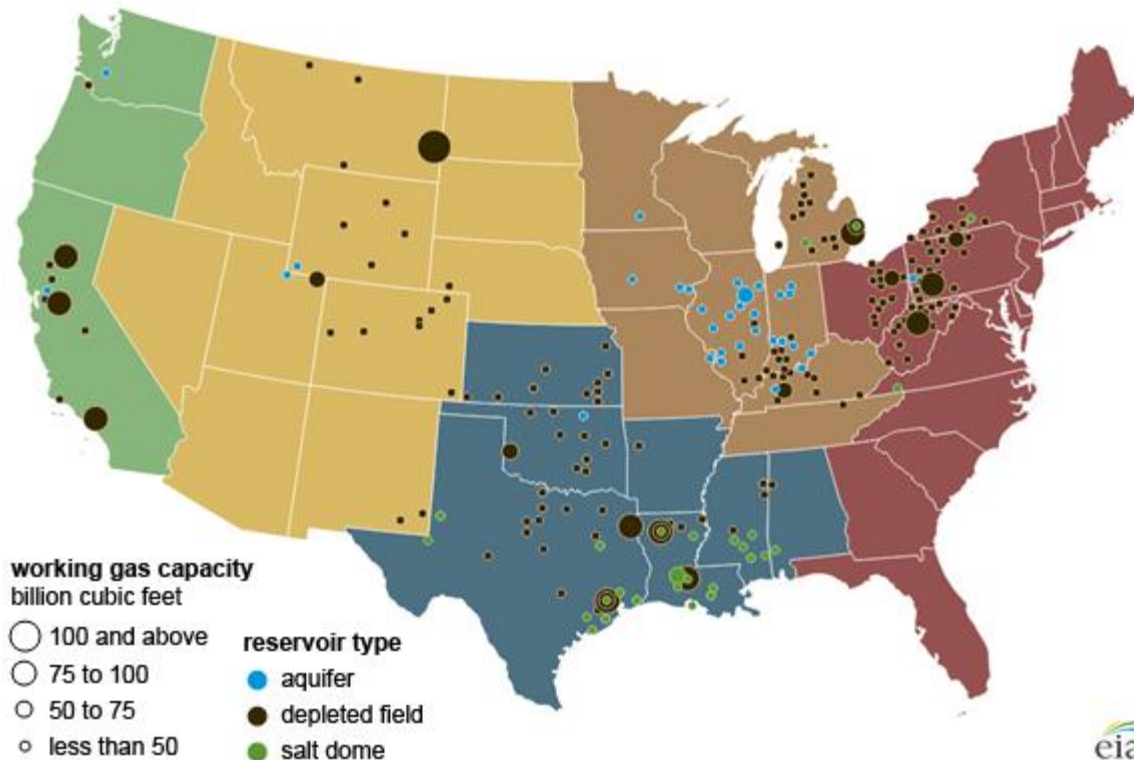
Regional S/D Models Storage Projection

Week Ending 15-Apr

	Daily Raw Storage	Daily Adjustment Factor	Daily Average Storage Activity (Adjusted) *	Weekly Adjusted Storage Activity
L48	6.5	0.0	6.5	46
East	-0.2	1.7	1.5	11
Midwest	2.2	-0.4	1.8	12
Mountain	3.5	-3.4	0.1	0
South Central	1.6	2.0	3.6	25
Pacific	-0.5	0.1	-0.4	-3

*Adjustment Factor is calculated based on historical regional deltas

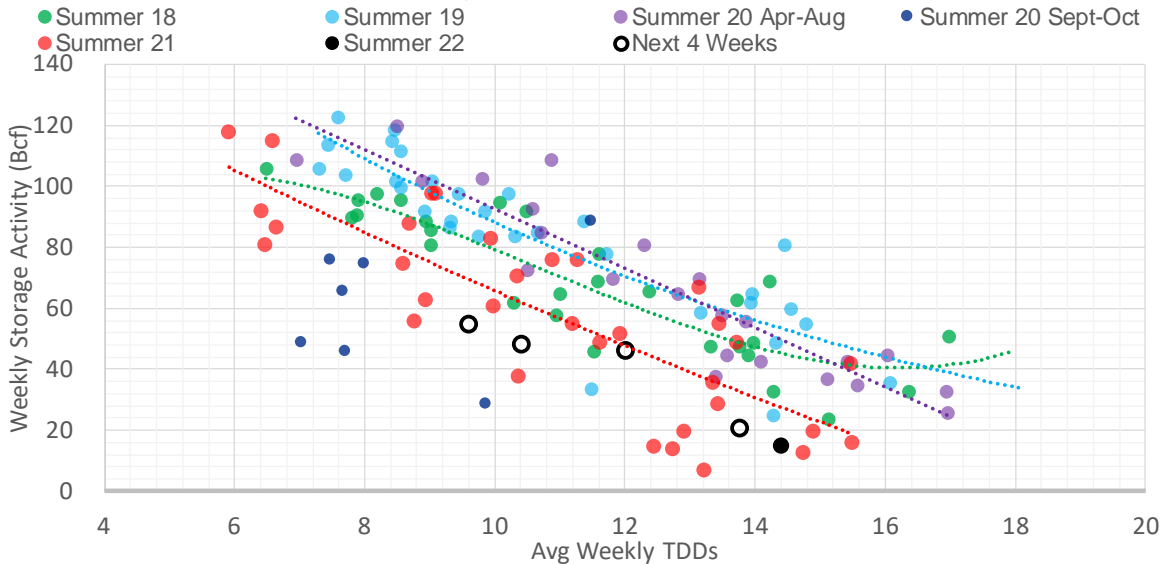
U.S. underground natural gas storage facilities by type (July 2015)



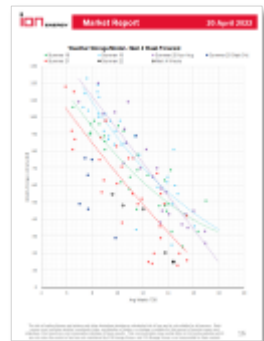
Weather Model Storage Projection

Next report and beyond		
Week Ending	TDDs	Week Storage Projection
15-Apr	12.0	46
22-Apr	13.8	20
29-Apr	9.6	55
06-May	10.4	48

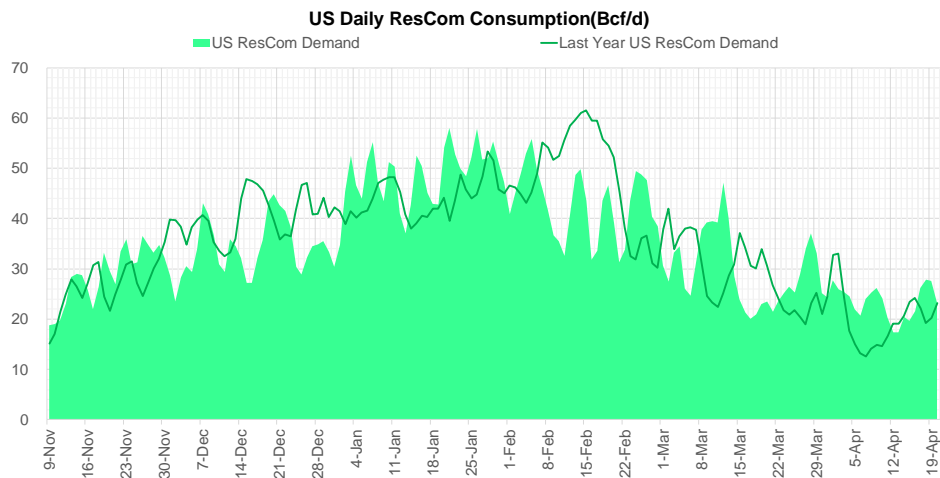
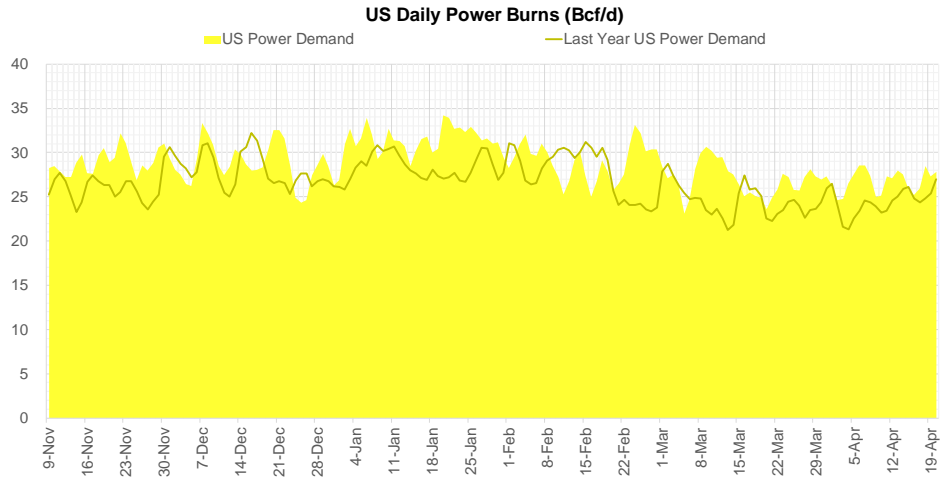
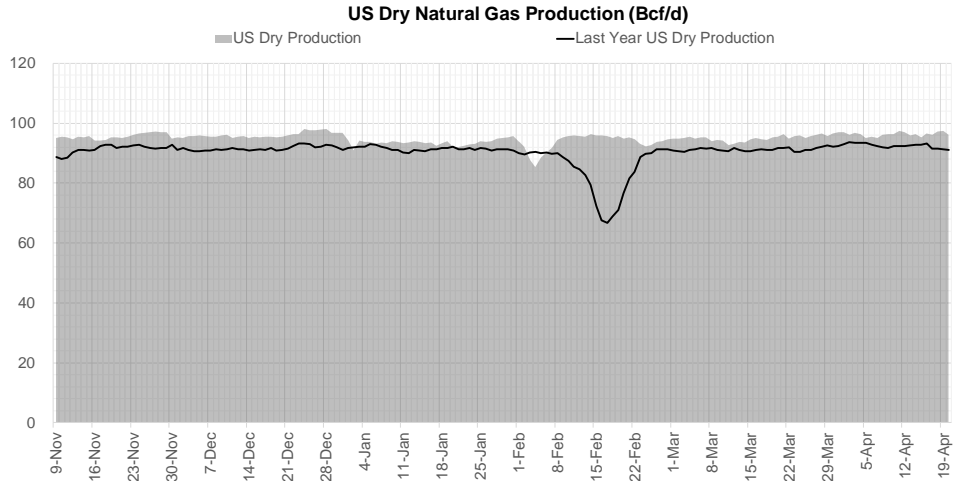
Weather Storage Model - Next 4 Week Forecast



Go to larger image



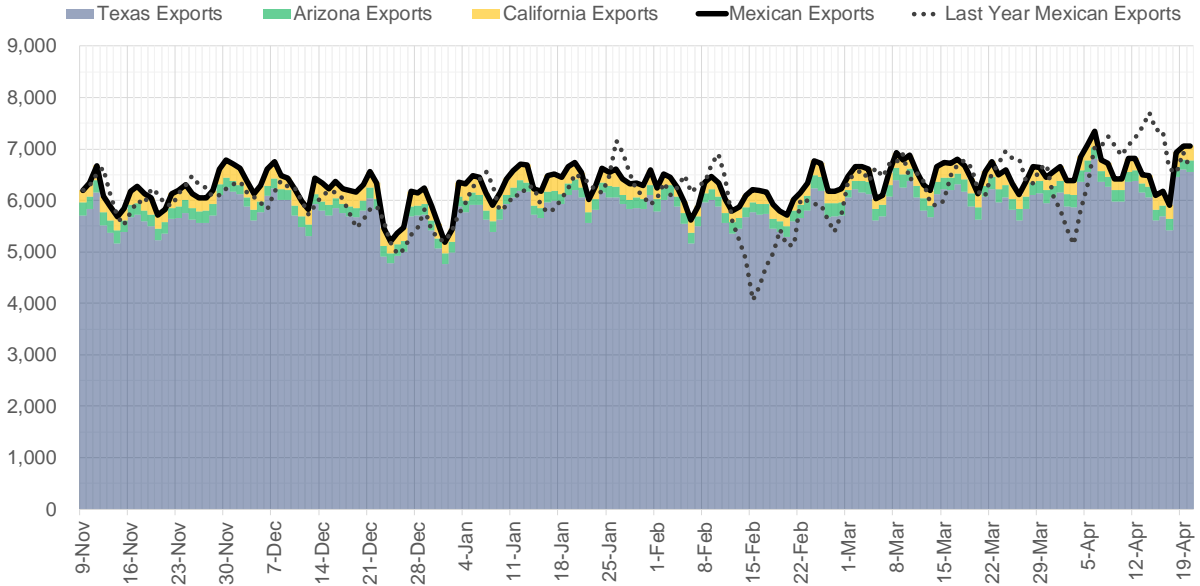
Supply – Demand Trends



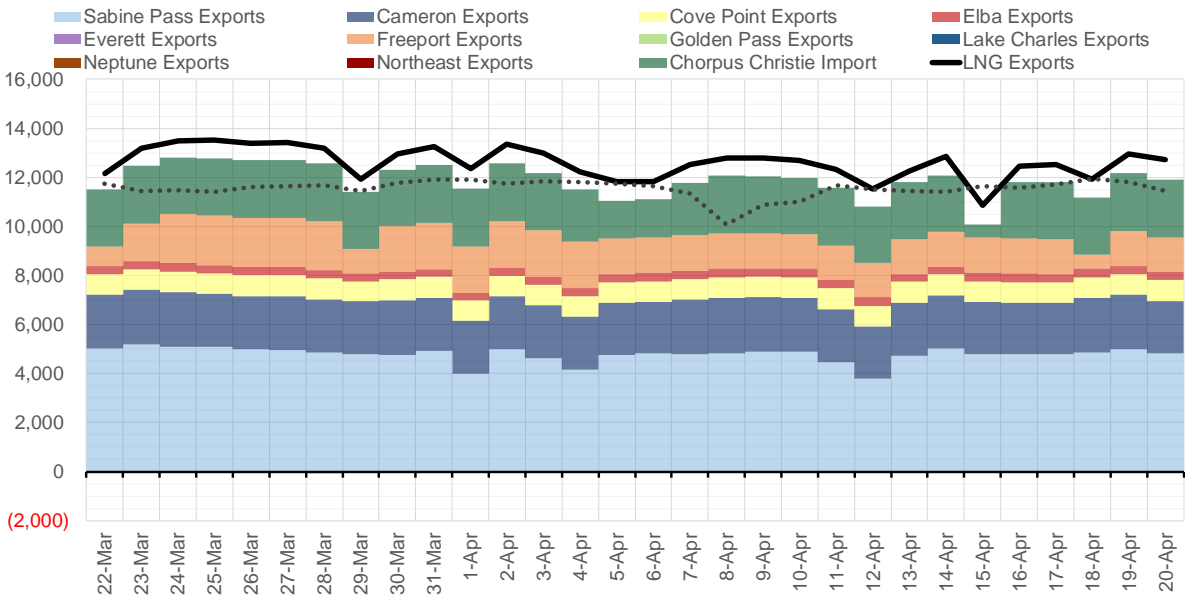
Source: Bloomberg

The risk of trading futures and options and other derivatives involves a substantial risk of loss and is not suitable for all persons. Each person must consider whether a particular trade, combination of trades, or strategy is suitable for that person's financial means and objectives. Past results are not necessarily indicative of future results. This communication may contain links to third party websites which are not under the control of and are not maintained by ION Energy Group, and ION Energy Group is not responsible for their content.

Mexican Exports (MMcf/d)



Net LNG Exports - Last 30 days (MMcf/d)



Source: Bloomberg

The risk of trading futures and options and other derivatives involves a substantial risk of loss and is not suitable for all persons. Each person must consider whether a particular trade, combination of trades, or strategy is suitable for that person's financial means and objectives. Past results are not necessarily indicative of future results. This communication may contain links to third party websites which are not under the control of and are not maintained by ION Energy Group, and ION Energy Group is not responsible for their content.

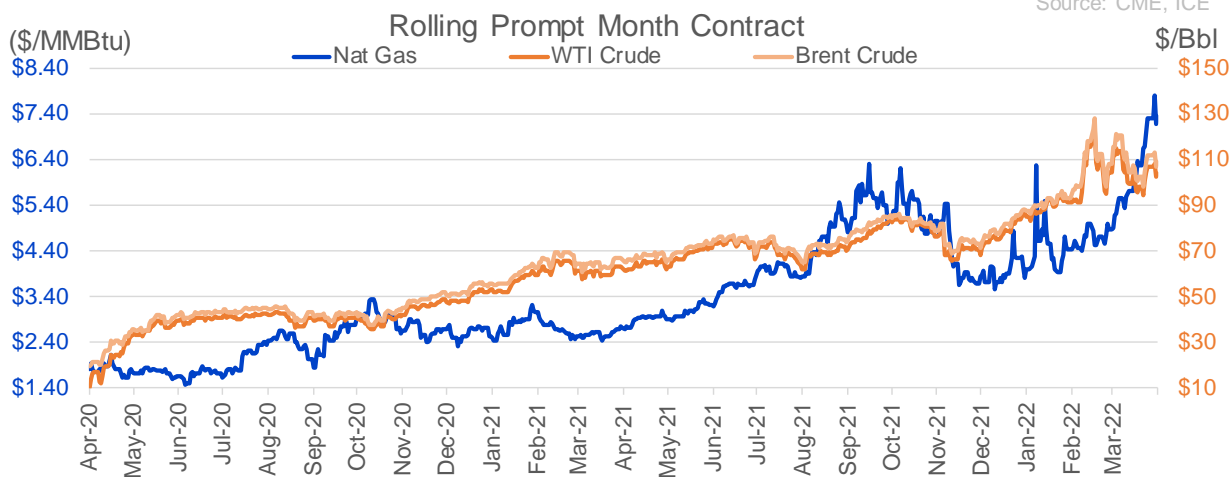
Nat Gas Options Volume and Open Interest CME and ICE Combined

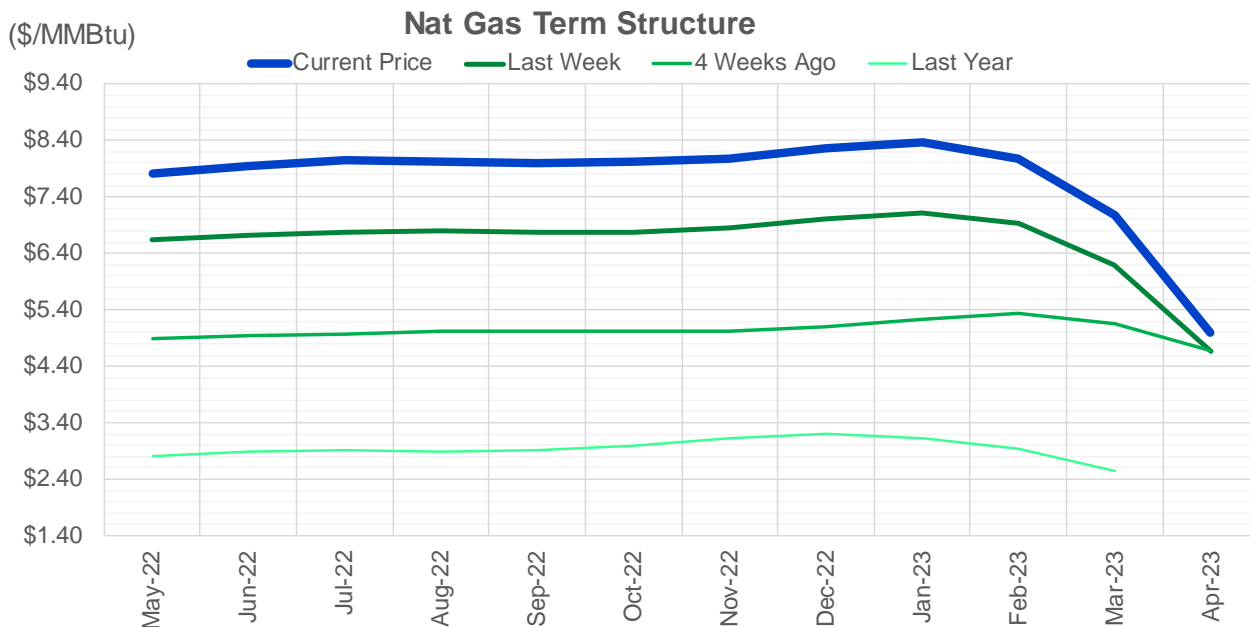
CONTRACT MONTH	CONTRACT YEAR	PUT/CALL	STRIKE	CUMULATIVE VOL	CONTRACT MONTH	CONTRACT YEAR	PUT/CALL	STRIKE	CUMULATIVE OI
5	2022	C	8.00	6633	8	2022	C	10.00	48452
5	2022	P	6.00	6385	8	2022	C	10.50	41500
5	2022	P	6.50	4649	10	2022	C	6.00	34676
6	2022	C	8.00	4247	10	2022	C	5.00	26050
5	2022	C	9.00	4089	5	2022	P	4.00	25938
12	2022	C	1.00	3750	6	2022	C	6.00	23864
12	2022	P	1.00	3750	9	2022	C	6.00	23506
5	2022	C	7.00	3324	5	2022	P	3.00	22811
6	2022	C	10.00	3310	5	2022	C	5.00	21317
7	2022	C	8.00	3051	5	2022	C	6.00	21044
5	2022	C	7.50	2919	10	2022	P	3.00	21012
8	2022	P	5.00	2659	8	2022	C	6.00	20905
5	2022	P	7.00	2608	6	2022	P	4.00	19986
1	2023	C	6.00	2500	5	2022	P	2.50	19874
1	2023	C	20.00	2500	8	2022	C	7.00	19740
7	2022	P	5.00	2328	7	2022	C	8.00	19498
6	2022	P	5.00	2323	5	2022	C	7.00	19407
7	2022	P	6.00	2258	9	2022	C	10.00	19144
5	2022	C	10.00	2174	6	2022	C	7.00	18496
6	2022	P	6.00	2023	7	2022	C	7.00	18240
11	2022	C	10.00	2000	7	2022	C	6.00	17955
7	2022	C	10.00	1959	6	2022	C	5.00	17849
5	2022	P	6.75	1917	12	2022	C	5.00	17771
8	2022	P	4.75	1889	7	2022	P	3.25	17655
7	2022	C	8.50	1737	5	2022	P	2.75	17585
6	2022	C	12.00	1696	10	2022	P	2.50	17361
10	2022	P	6.00	1642	6	2022	C	10.00	17301
6	2022	C	11.75	1531	5	2022	P	3.50	17295
10	2022	P	4.50	1525	6	2022	P	3.00	17223
5	2022	C	8.50	1509	5	2022	P	4.50	16994
6	2022	P	4.50	1507	9	2022	C	7.00	16782
7	2022	P	5.50	1364	5	2022	P	3.75	16402
7	2022	P	4.50	1303	5	2022	P	5.00	16315
11	2022	P	5.00	1300	5	2022	C	8.00	16203
8	2022	P	4.50	1275	6	2022	P	3.50	16017
9	2022	P	4.50	1275	10	2022	P	3.50	15867
5	2022	P	5.75	1260	1	2023	C	10.00	15414
5	2022	P	5.50	1179	9	2022	P	2.50	15366
12	2022	C	5.25	1107	1	2023	C	5.00	15277
12	2022	C	6.25	1107	6	2022	P	5.50	15185
11	2022	C	8.00	1104	7	2022	P	3.50	14935
6	2022	C	9.00	1052	9	2022	P	2.75	14933
6	2022	P	5.50	1038	10	2022	P	4.00	14783
5	2022	P	8.00	1009	10	2022	P	2.00	14748
6	2022	C	13.00	1009	2	2023	C	10.00	14744
12	2022	C	11.00	1000	7	2022	C	10.00	14336
2	2023	C	13.00	1000	8	2022	P	3.00	14300
2	2023	C	14.00	1000	7	2022	P	3.00	14298
8	2022	P	7.00	927	9	2022	P	3.00	14241
					6	2022	P	3.75	14210.5

Source: CME, ICE

Nat Gas Futures Open Interest CME and ICE Combined

CME Henry Hub Futures (10,000 MMBtu)				ICE Henry Hub Futures Contract Equivalent (10,000 MM			
	Current	Prior	Daily Change		Current	Prior	Daily Change
MAY 22	46683	61714	-15031	MAY 22	78466	77792	675
JUN 22	124571	126521	-1950	JUN 22	72719	70527	2193
JUL 22	161631	162346	-715	JUL 22	86271	86201	70
AUG 22	53492	53580	-88	AUG 22	62914	62779	135
SEP 22	81245	81517	-272	SEP 22	66787	66101	686
OCT 22	97824	97864	-40	OCT 22	75003	75194	-191
NOV 22	41815	42152	-337	NOV 22	56063	55319	744
DEC 22	46876	45898	978	DEC 22	60602	60680	-77
JAN 23	61205	62668	-1463	JAN 23	67648	68564	-916
FEB 23	21158	21656	-498	FEB 23	47430	47547	-118
MAR 23	41813	43164	-1351	MAR 23	53711	53533	178
APR 23	55384	55449	-65	APR 23	51967	52065	-98
MAY 23	54130	53870	260	MAY 23	46770	46939	-169
JUN 23	22124	22041	83	JUN 23	43805	43892	-87
JUL 23	17526	17583	-57	JUL 23	43361	43518	-157
AUG 23	15017	15054	-37	AUG 23	43148	43337	-189
SEP 23	17831	18111	-280	SEP 23	42854	43012	-159
OCT 23	37007	37367	-360	OCT 23	49630	49505	125
NOV 23	12552	12481	71	NOV 23	41874	41871	3
DEC 23	14713	14685	28	DEC 23	38461	38397	65
JAN 24	23081	22810	271	JAN 24	36330	36228	102
FEB 24	5226	5280	-54	FEB 24	25179	25112	68
MAR 24	15133	15340	-207	MAR 24	30372	30300	72
APR 24	10420	11435	-1015	APR 24	24578	24554	24
MAY 24	6115	6142	-27	MAY 24	24215	24193	23
JUN 24	1790	1781	9	JUN 24	21489	21496	-7
JUL 24	1875	1877	-2	JUL 24	21569	21530	39
AUG 24	3045	3045	0	AUG 24	22568	22529	39
SEP 24	1389	1390	-1	SEP 24	21197	21079	118
OCT 24	6832	6943	-111	OCT 24	22989	22991	-3





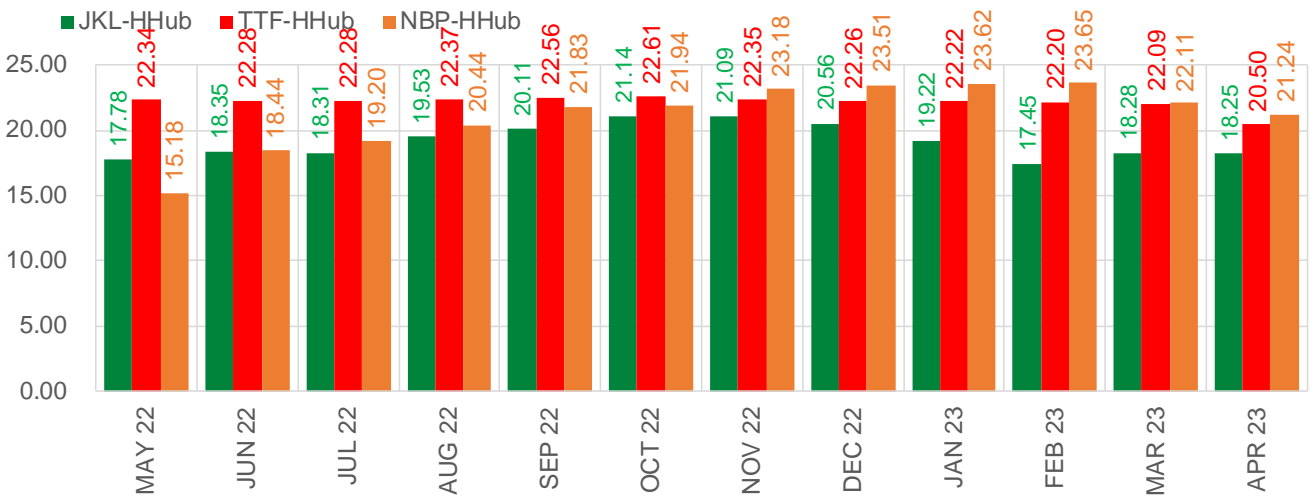
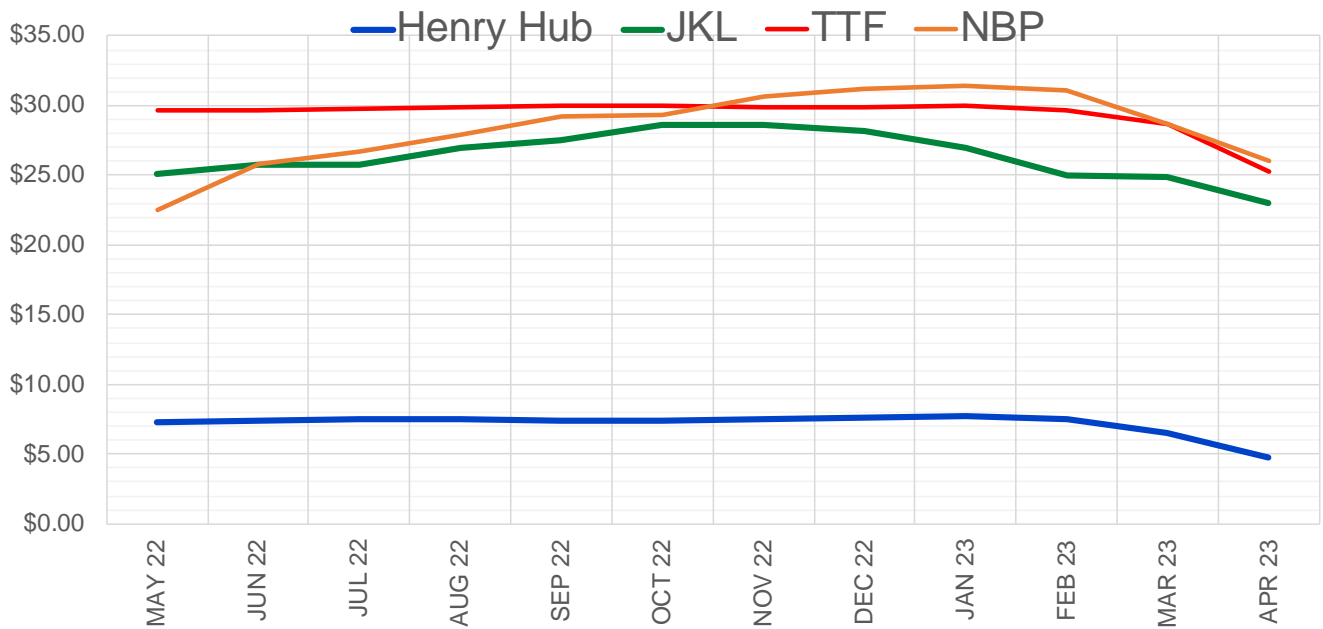
	May-22	Jun-22	Jul-22	Aug-22	Sep-22	Oct-22	Nov-22	Dec-22	Jan-23	Feb-23	Mar-23	Apr-23
Current Price	\$7.820	\$7.958	\$8.042	\$8.038	\$8.003	\$8.013	\$8.086	\$8.263	\$8.367	\$8.091	\$7.084	\$5.003
Last Week	\$6.643	\$6.723	\$6.787	\$6.791	\$6.771	\$6.785	\$6.855	\$7.018	\$7.117	\$6.925	\$6.196	\$4.671
vs. Last Week	\$1.177	\$1.235	\$1.255	\$1.247	\$1.232	\$1.228	\$1.231	\$1.245	\$1.250	\$1.166	\$0.888	\$0.332
4 Weeks Ago	\$4.900	\$4.934	\$4.975	\$5.025	\$5.033	\$5.014	\$5.028	\$5.099	\$5.237	\$5.329	\$5.151	\$4.669
vs. 4 Weeks Ago	\$2.920	\$3.024	\$3.067	\$3.013	\$2.970	\$2.999	\$3.058	\$3.164	\$3.130	\$2.762	\$1.933	\$0.334
Last Year	\$2.749	\$2.818	\$2.885	\$2.912	\$2.895	\$2.912	\$2.982	\$3.121	\$3.208	\$3.134	\$2.929	\$2.546
vs. Last Year	\$5.071	\$5.140	\$5.157	\$5.126	\$5.108	\$5.101	\$5.104	\$5.142	\$5.159	\$4.957	\$4.155	\$2.457

	Units	Cash Settled	Prompt Settle	Cash to Prompt
AGT Citygate	\$/MMBtu	7.90	6.18	-1.72
TETCO M3	\$/MMBtu	6.72	6.06	-0.66
FGT Zone 3	\$/MMBtu	6.78	6.72	-0.07
Zone 6 NY	\$/MMBtu	6.78	5.99	-0.79
Chicago Citygate	\$/MMBtu	7.05	6.46	-0.60
Michcon	\$/MMBtu	7.11	6.46	-0.65
Columbia TCO Pool	\$/MMBtu	6.54	6.12	-0.42
Ventura	\$/MMBtu	6.10	6.34	0.24
Rockies/Opal	\$/MMBtu	6.93	6.15	-0.78
El Paso Permian Basin	\$/MMBtu	6.71	5.75	-0.96
Socal Citygate	\$/MMBtu	7.30	6.28	-1.03
Malin	\$/MMBtu	6.85	6.20	-0.65
Houston Ship Channel	\$/MMBtu	6.85	6.51	-0.34
Henry Hub Cash	\$/MMBtu	7.36	6.35	-1.01
AECO Cash	C\$/GJ	5.75	5.15	-0.60
Station2 Cash	C\$/GJ	5.60	6.00	0.40
Dawn Cash	C\$/GJ	6.90	6.46	-0.44

Source: CME, Bloomberg

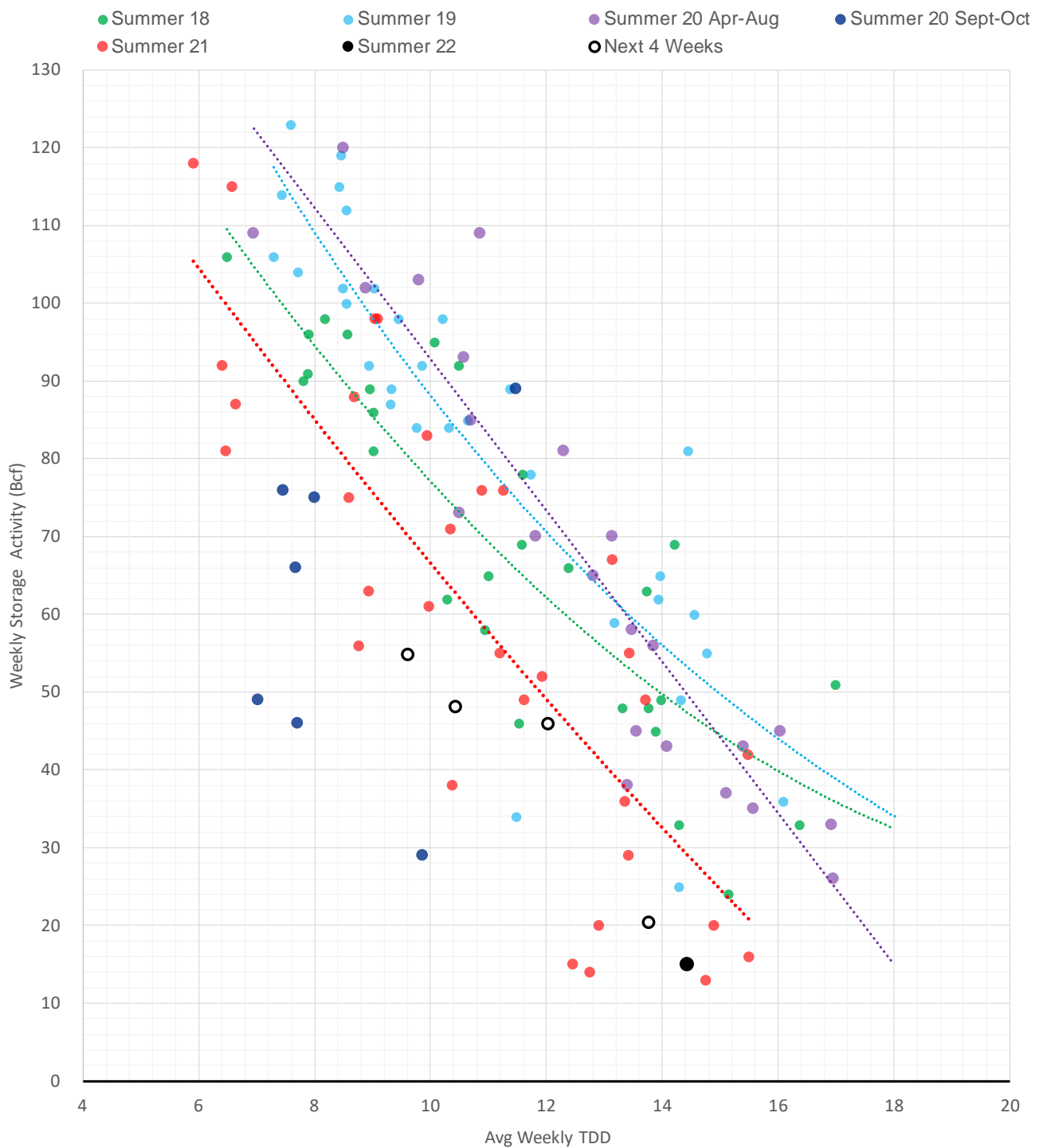
	Units	Current Price	vs. Last Week	vs. 4 Weeks Ago	vs. Last Year
NatGas Jul21/Oct21	\$/MMBtu	2.224	▲ 0.000	▲ 0.000	▲ 2.193
NatGas Oct21/Nov21	\$/MMBtu	0.361	▲ 0.000	▲ 0.000	▲ 0.282
NatGas Oct21/Jan22	\$/MMBtu	-1.817	▲ 0.000	▲ 0.000	▼ -2.130
NatGas Apr22/Oct22	\$/MMBtu	1.967	▲ 0.473	▲ 1.844	▲ 1.932
WTI Crude	\$/Bbl	102.56	▲ 1.960	▼ -9.200	▲ 40.120
Brent Crude	\$/Bbl	107.25	▲ 2.610	▼ -8.230	▲ 40.680
Fuel Oil, NY Harbour 1%	\$/Bbl	97.18	▲ 0.000	▲ 0.000	▲ 0.000
Heating Oil	cents/Gallon	386.19	▲ 39.750	▼ -0.230	▲ 198.180
Propane, Mt. Bel	cents/Gallon	1.32	▲ 0.001	▼ -0.115	▲ 0.524
Ethane, Mt. Bel	cents/Gallon	0.51	▲ 0.014	▲ 0.076	▲ 0.273
Coal, PRB	\$/MTon	12.30	▲ 0.000	▲ 0.000	▲ 0.000
Coal, PRB	\$/MMBtu	0.70			
Coal, ILB	\$/MTon	31.05	▲ 0.000	▲ 0.000	▲ 0.000
Coal, ILB	\$/MMBtu	1.32			

Nat Gas Term Structure (\$MMBTU)



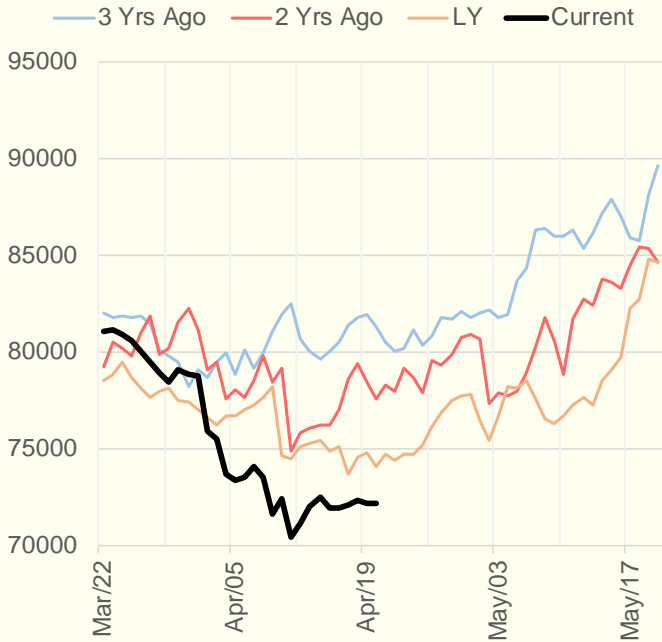
	MAY 22	JUN 22	JUL 22	AUG 22	SEP 22	OCT 22	NOV 22	DEC 22	JAN 23	FEB 23	MAR 23	APR 23
Henry Hub	\$7.338	\$7.420	\$7.489	\$7.479	\$7.423	\$7.427	\$7.495	\$7.653	\$7.751	\$7.488	\$6.560	\$4.800
JKL	\$25.120	\$25.765	\$25.800	\$27.010	\$27.530	\$28.565	\$28.580	\$28.210	\$26.975	\$24.940	\$24.840	\$23.050
JKL-HHub	\$17.782	\$18.345	\$18.311	\$19.531	\$20.107	\$21.138	\$21.085	\$20.557	\$19.224	\$17.452	\$18.280	\$18.250
TTF	\$29.679	\$29.703	\$29.770	\$29.851	\$29.980	\$30.040	\$29.847	\$29.916	\$29.970	\$29.687	\$28.646	\$25.303
TTF-HHub	\$22.341	\$22.283	\$22.281	\$22.372	\$22.557	\$22.613	\$22.352	\$22.263	\$22.219	\$22.199	\$22.086	\$20.503
NBP	\$22.513	\$25.862	\$26.689	\$27.921	\$29.250	\$29.368	\$30.671	\$31.163	\$31.372	\$31.134	\$28.671	\$26.039
NBP-HHub	\$15.175	\$18.442	\$19.200	\$20.442	\$21.827	\$21.941	\$23.176	\$23.510	\$23.621	\$23.646	\$22.111	\$21.239

Weather Storage Model - Next 4 Week Forecast

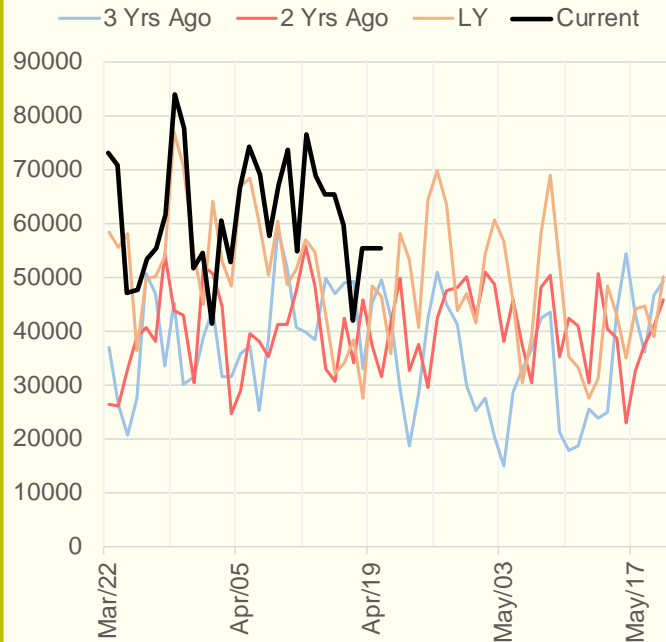


The risk of trading futures and options and other derivatives involves a substantial risk of loss and is not suitable for all persons. Each person must consider whether a particular trade, combination of trades, or strategy is suitable for that person's financial means and objectives. Past results are not necessarily indicative of future results. This communication may contain links to third party websites which are not under the control of and are not maintained by ION Energy Group, and ION Energy Group is not responsible for their content.

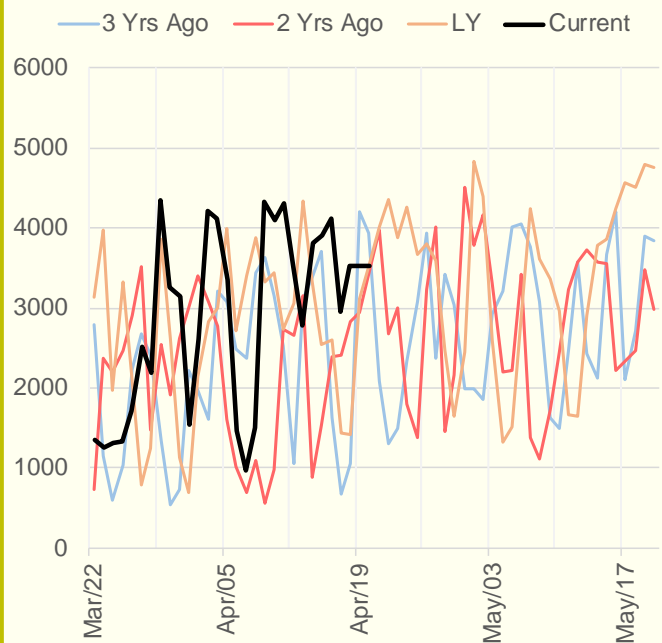
NRC Nuclear Daily Output



US Wind



CALI Wind



TEXAS Wind

