

	Current	Δ from YD	Δ from 7D Avg
Nat Gas Prompt	\$ 6.33 ▲	\$ 0.30 ▲	\$ 0.60 ▲

	Current	Δ from YD	Δ from 7D Avg
WTI Prompt	\$ 103.11 ▲	\$ 1.15 ▲	\$ 1.5 ▲

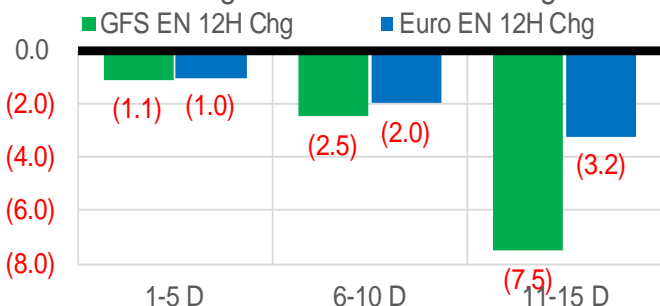
	Current	Δ from YD	Δ from 7D Avg
Brent Prompt	\$ 107.60 ▲	\$ 0.96 ▲	\$ 0.6 ▲

Page Menu

- [Short-term Weather Model Outlooks](#)
- [Lower 48 Component Models](#)
- [Regional S/D Models Storage Projection](#)
- [Weather Model Storage Projection](#)
- [Supply – Demand Trends](#)
- [Nat Gas Options Volume and Open Interest](#)
- [Nat Gas Futures Open Interest](#)
- [Price Summary](#)

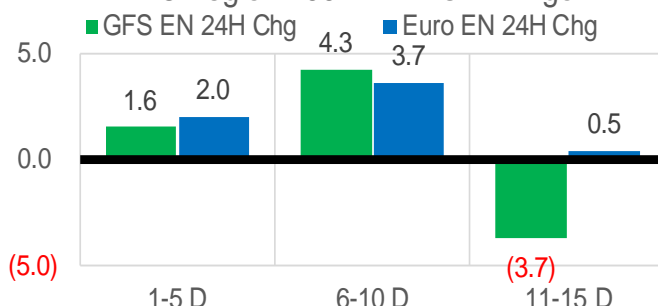
Vs. 12H Ago

L48 Region - 00z TDD vs 12H Ago



Vs. 24H Ago

L48 Region - 00z TDD vs 24H Ago



	Current	Δ from YD	Δ from 7D Avg
US Dry Production	95.1 ▲	0.04 ▲	-1.18 ▼

	Current	Δ from YD	Δ from 7D Avg
US Power Burns	28.9 ▲	1.62 ▲	2.59 ▲

	Current	Δ from YD	Δ from 7D Avg
US ResComm	19.7 ▼	-2.39 ▼	-5.30 ▼

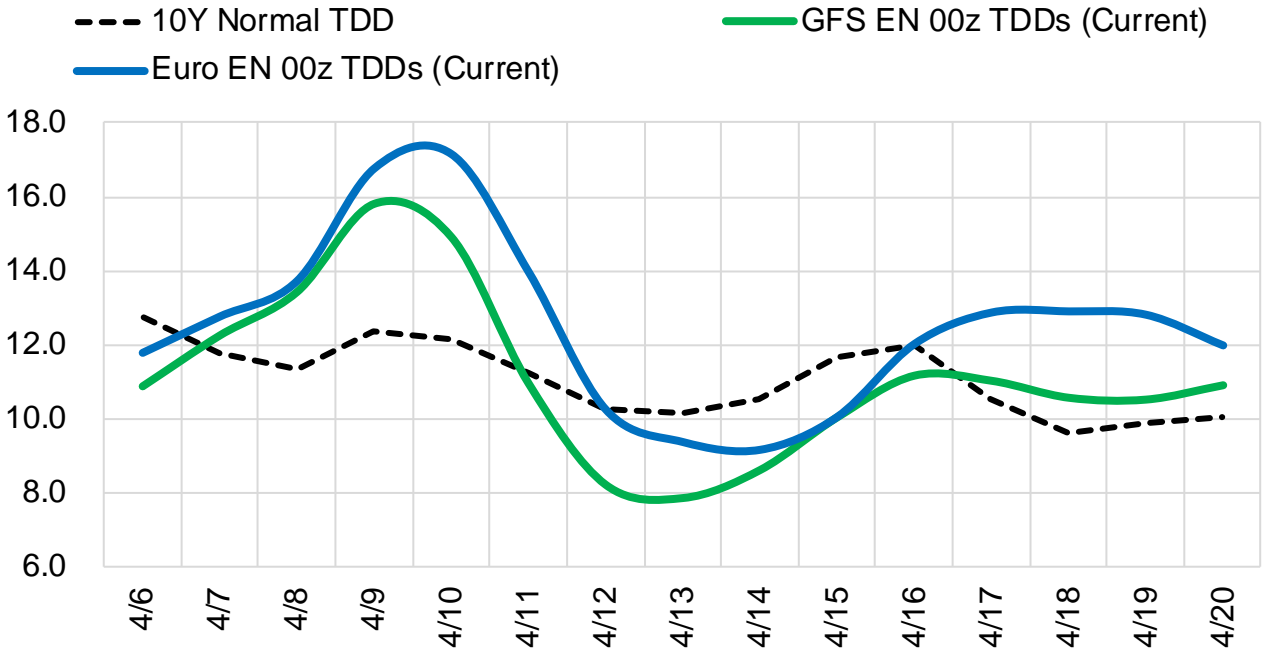
	Current	Δ from YD	Δ from 7D Avg
Canadian Imports	5.4 ▼	-0.30 ▼	-0.19 ▼

	Current	Δ from YD	Δ from 7D Avg
Net LNG Exports	11.9 ▲	0.05 ▲	-0.80 ▼

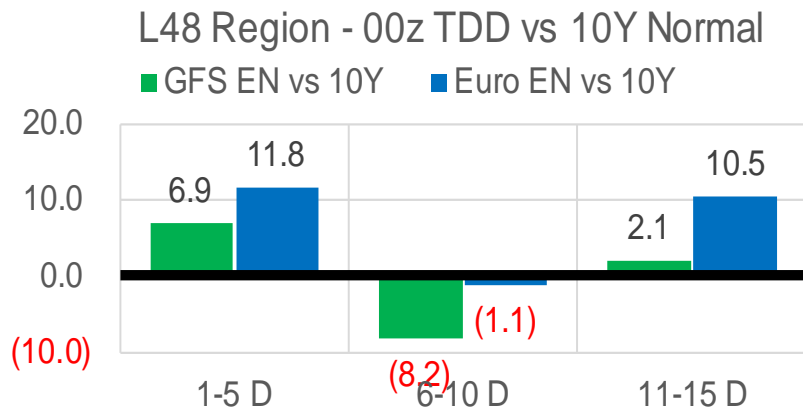
	Current	Δ from YD	Δ from 7D Avg
Mexican Exports	6.8 ▼	-0.17 ▼	0.25 ▲

Short-term Weather Model Outlooks (00z)

L48 Region



Vs. 10Y Normal



Source: WSI , Bloomberg

Lower 48 Component Models

Daily Balances

	31-Mar	1-Apr	2-Apr	3-Apr	4-Apr	5-Apr	6-Apr	DoD	vs. 7D
Lower 48 Dry Production	96.4	97.2	96.2	96.6	96.2	95.1	95.1	▲ 0.0	▼ -1.1
Canadian Imports	5.4	6.1	5.4	5.6	5.4	5.7	5.4	▼ -0.3	▼ -0.2
L48 Power	27.6	26.3	24.7	24.8	26.2	27.2	28.9	▲ 1.6	▲ 2.7
L48 Residential & Commercial	24.4	27.7	26.1	25.2	24.5	22.1	19.7	▼ -2.4	▼ -5.3
L48 Industrial	22.0	22.0	21.4	21.0	20.7	20.6	20.6	▼ 0.0	▼ -0.7
L48 Lease and Plant Fuel	5.2	5.3	5.2	5.3	5.3	5.2	5.2	▼ 0.0	▼ -0.1
L48 Pipeline Distribution	2.7	3.0	2.8	2.8	2.8	2.7	2.7	▼ 0.0	▼ -0.1
L48 Regional Gas Consumption	82.0	84.2	80.3	79.0	79.4	77.9	77.0	▼ -0.8	▼ -3.4
Net LNG Delivered	13.24	12.35	13.36	13.01	12.22	11.86	11.91	▲ 0.1	▼ -0.8
Total Mexican Exports	6.6	6.8	6.4	6.3	6.5	7.0	6.8	▼ -0.2	▲ 0.2
Implied Daily Storage Activity	0.0	0.0	1.5	3.9	3.5	4.1	4.8		
EIA Reported Daily Storage Activity									
Daily Model Error									

EIA Storage Week Balances

	25-Feb	4-Mar	11-Mar	18-Mar	25-Mar	1-Apr	WoW	vs. 4W
Lower 48 Dry Production	94.4	94.2	94.8	93.9	95.4	96.0	▲ 0.6	▲ 1.4
Canadian Imports	6.4	5.9	5.2	5.2	4.8	5.7	▲ 0.9	▲ 0.4
L48 Power	28.7	29.4	27.6	27.3	25.6	27.0	▲ 1.4	▼ -0.5
L48 Residential & Commercial	41.1	38.1	33.2	31.5	23.4	29.7	▲ 6.3	▼ -1.9
L48 Industrial	25.4	23.1	22.7	20.7	20.8	21.2	▲ 0.5	▼ -0.6
L48 Lease and Plant Fuel	5.2	5.1	5.2	5.1	5.2	5.2	▲ 0.0	▲ 0.1
L48 Pipeline Distribution	3.3	3.3	3.2	3.1	2.6	3.0	▲ 0.4	▼ -0.1
L48 Regional Gas Consumption	103.6	99.1	91.8	87.7	77.5	86.1	▲ 8.6	▼ -3.0
Net LNG Exports	11.7	12.5	12.8	12.9	13.0	13.1	▲ 0.1	▲ 0.3
Total Mexican Exports	6.1	6.4	6.6	6.6	6.5	6.5	▼ -0.1	▼ -0.1
Implied Daily Storage Activity	-20.6	-17.9	-11.1	-7.9	3.2	-3.9	-7.1	
EIA Reported Daily Storage Activity	-19.9	-17.7	-11.3	-7.3	3.7			
Daily Model Error	-0.8	-0.2	0.1	-0.6	-0.5			

Monthly Balances

	2Yr Ago Apr-20	LY Apr-21	Dec-21	Jan-22	Feb-22	Mar-22	MTD Apr-22	MoM	vs. LY
Lower 48 Dry Production	92.7	92.5	96.1	93.6	93.6	95.0	96.3	▲ 1.2	▲ 3.8
Canadian Imports	4.0	4.7	4.8	6.7	6.6	5.2	5.6	▲ 0.4	▲ 1.0
L48 Power	25.6	25.0	28.7	31.4	29.0	26.9	25.8	▼ -1.1	▲ 0.8
L48 Residential & Commercial	20.5	19.6	33.9	48.6	42.7	29.6	25.1	▼ -4.4	▲ 5.6
L48 Industrial	20.4	21.4	22.5	25.5	25.3	21.7	21.1	▼ -0.5	▼ -0.2
L48 Lease and Plant Fuel	5.0	5.0	5.3	5.1	5.1	5.2	5.3	▲ 0.1	▲ 0.2
L48 Pipeline Distribution	2.4	2.5	3.2	3.8	3.4	2.9	2.8	▼ -0.1	▲ 0.3
L48 Regional Gas Consumption	74.0	73.5	93.6	114.4	105.5	86.3	80.1	▼ -6.1	▲ 6.7
Net LNG Exports	8.2	11.5	12.1	12.4	12.4	12.9	12.6	▼ -0.3	▲ 1.1
Total Mexican Exports	4.8	6.7	6.2	6.3	6.2	6.5	6.6	▲ 0.1	▼ -0.1
Implied Daily Storage Activity	9.7	5.5	-11.0	-32.8	-23.8	-5.4	2.6		
EIA Reported Daily Storage Activity									
Daily Model Error									

Source: Bloomberg, analytix.ai

Daily Average Generation Data

Nuclear Generation Daily Average - GWh (NRC)

	29-Mar	30-Mar	31-Mar	1-Apr	2-Apr	3-Apr	4-Apr	DoD	vs. 7D
NRC Nuclear Daily Output	78.4	79.1	78.8	78.8	75.9	75.5	73.7	-1.8	-4.1
NRC Nuclear Max Capacity	104.9	104.9	104.9	104.9	104.9	104.9	104.9	0.0	0.0
NRC Nuclear Outage	26.5	25.8	26.1	26.1	28.9	29.3	31.2	1.8	4.1
NRC % Nuclear Cap Utilization	79.7	80.4	80.1	80.1	77.2	76.8	75.0	-1.9	-4.1

Wind Generation Daily Average - MWh (EIA)

	29-Mar	30-Mar	31-Mar	1-Apr	2-Apr	3-Apr	4-Apr	DoD	vs. 7D
CALI Wind	4353	3257	3143	1540	2615	4218	4120	-99	932
TEXAS Wind	23399	17439	6087	19130	6752	18760	10130	-8630	-5131
US Wind	84046	77952	51776	54689	41509	60661	52916	-7745	-8856

Generation Daily Average - MWh (EIA)

	29-Mar	30-Mar	31-Mar	1-Apr	2-Apr	3-Apr	4-Apr	DoD	vs. 7D
US Wind	84046	77952	51776	54689	41509	60661	52916	-7745	-8856
US Solar	13004	12777	13676	15296	16052	14573	14816	243	586
US Petroleum	1411	1089	858	915	934	961	1165	204	137
US Other	7371	7090	6865	6905	6875	6700	6870	169	-98
US Coal	75804	74209	79600	79898	81477	73445	81487	8042	4082
US Nuke	82890	83107	82852	82646	79972	79480	77932	-1548	-3892
US Hydro	34304	33861	33741	34254	30530	30778	32239	1460	-673
US Gas	136294	132911	143416	132768	130132	115074	139839	24765	8073

See National Wind and Nuclear daily charts

Source: Bloomberg, analytix.ai

Storage Week Average Generation Data

Nuclear Generation Weekly Average - GWh (NRC)

	25-Feb	4-Mar	11-Mar	18-Mar	25-Mar	1-Apr	WoW	WoW Bcf/d Impact
NRC Nuclear Daily Output	86.9	85.8	82.3	80.9	80.9	79.3	-1.6	0.3
NRC Nuclear Max Capacity	104.9	104.9	104.9	104.9	104.9	104.9	0.0	
NRC Nuclear Outage	18.0	19.1	22.5	23.9	24.0	25.5	1.6	
NRC % Nuclear Cap Utilization	88.3	87.2	83.7	82.3	82.3	80.7	-1.6	

Wind Generation Weekly Average - MWh (EIA)

	25-Feb	4-Mar	11-Mar	18-Mar	25-Mar	1-Apr	WoW	WoW Bcf/d Impact
CALI Wind	2049	815	2602	2297	2037	2643	606	-0.1
TEXAS Wind	13068	6269	14469	17742	16108	14530	-1578	0.3
US Wind	60313	36019	56828	63171	62107	61695	-411	0.1
							-1%	

Generation Weekly Average - MWh (EIA)

	25-Feb	4-Mar	11-Mar	18-Mar	25-Mar	1-Apr	WoW	WoW Bcf/d Impact
						est.		
US Wind	60313	36019	56828	63171	62107	61695	-411	0.1
US Solar	11899	13922	12600	13807	13675	15056	1381	-0.2
US Petroleum	2961	3130	1742	961	864	1048	184	0.0
US Other	8211	7512	6628	7113	7738	7366	-372	0.1
US Coal	99888	103399	86717	86035	72503	77700	5197	-0.9
US Nuke	91458	90157	86449	84775	84027	83506	-521	0.1
US Hydro	33214	32196	34570	34883	33230	33460	230	0.0
US Gas	147276	158688	140400	137079	124819	134602	9784	1.8

See National Wind and Nuclear daily charts

Source: Bloomberg, analytix.ai

Monthly Average Generation Data

Nuclear Generation Monthly Average - GWh (NRC)

	2Yr Ago	LY	MTD				Last 30 days	MoM (MTD vs LY)	Last 30 days YoY
	Same 30 days	Same 30 days	Jan-22	Feb-22	Mar-22	Apr-22			
	NRC Nuclear Daily Output	80.9	80.0	90.2	87.6	81.3			
NRC Nuclear Max Capacity	104.9	104.9	104.9	104.9	104.9	104.9	104.9	0.0	0.0
NRC Nuclear Outage	23.9	24.9	14.7	17.3	23.6	29.8	25.4	6.2	0.5
NRC % Nuclear Cap Utilization	82.3	81.3	91.7	89.0	82.7	76.4	80.8	-6.3	-0.5

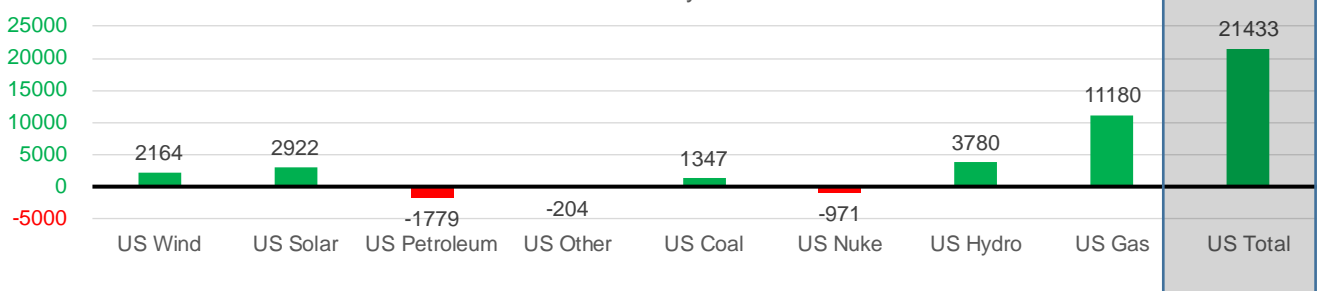
Wind Generation Monthly Average - MWh (EIA)

	2Yr Ago	LY	MTD				Last 30 days	MoM (MTD vs LY)	Last 30 days YoY
	Same 30 days	Same 30 days	Jan-22	Feb-22	Mar-22	Apr-22			
	CALI Wind	1781	2553	1244	1559	2250			
TEXAS Wind	9943	14803	11355	12294	14837	12505	14754	-2332	-48
US Wind	37659	56256	51045	56539	58520	52601	58420	-5919	2164

Generation Monthly Average - MWh (EIA)

	2Yr Ago	LY	MTD				Last 30 days	MoM (MTD vs LY)	Last 30 days YoY
	Same 30 days	Same 30 days	Jan-22	Feb-22	Mar-22	Apr-22			
	US Wind	37659	56256	51045	56539	58520			
US Solar	7766	11343	9476	12088	13871	15061	14265	▼ -796.8	▲ 2922
US Petroleum	3217	2785	5021	3451	1335	1051	1007	▼ -44	▼ -1779
US Other	7188	7461	8792	8832	7159	6848	7257	▲ 409	▼ -204
US Coal	65112	79254	117971	106588	82269	79880	80601	▲ 721	▲ 1347
US Nuke	83741	84291	95259	92280	85157	79316	83320	▲ 4004	▼ -971
US Hydro	31296	29893	34040	32213	33926	32046	33673	▲ 1627	▲ 3780
US Gas	149346	124292	164024	152058	135511	132915	135472	▲ 11739	▲ 11180
US Total	383495	394372	485812	464578	419563	400119	415805	▲ 17659	▲ 21433

Last 30 days YoY



See National Wind and Nuclear daily charts

Source: Bloomberg, analytix.ai

Regional S/D Models Storage Projection

Week Ending 1-Apr

	Daily Raw Storage	Daily Adjustment Factor	Daily Average Storage Activity (Adjusted) *	Weekly Adjusted Storage Activity
L48	-3.5	0.1	-3.4	-23
East	-5.7	1.8	-3.9	-27
Midwest	-1.9	-0.7	-2.6	-18
Mountain	3.4	-3.2	0.2	2
South Central	0.2	2.0	2.2	16
Pacific	0.5	0.2	0.7	5

*Adjustment Factor is calculated based on historical regional deltas

U.S. underground natural gas storage facilities by type (July 2015)

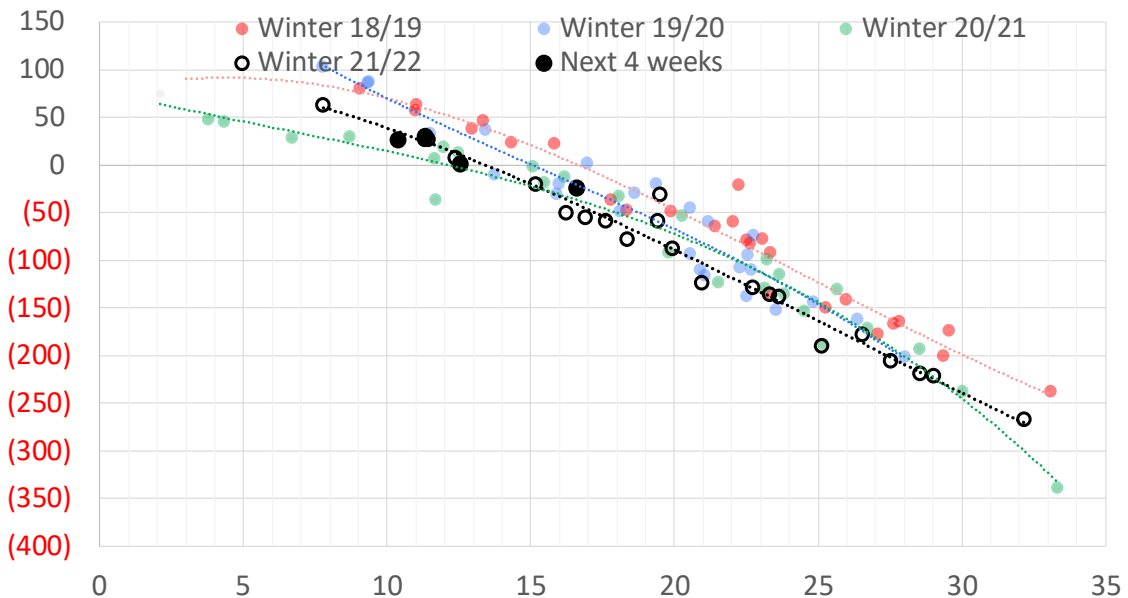


Weather Model Storage Projection

Next report and beyond

Week Ending	GWDDs	Week Storage Projection
01-Apr	17	-23
08-Apr	13	2
15-Apr	10	27
22-Apr	11	31

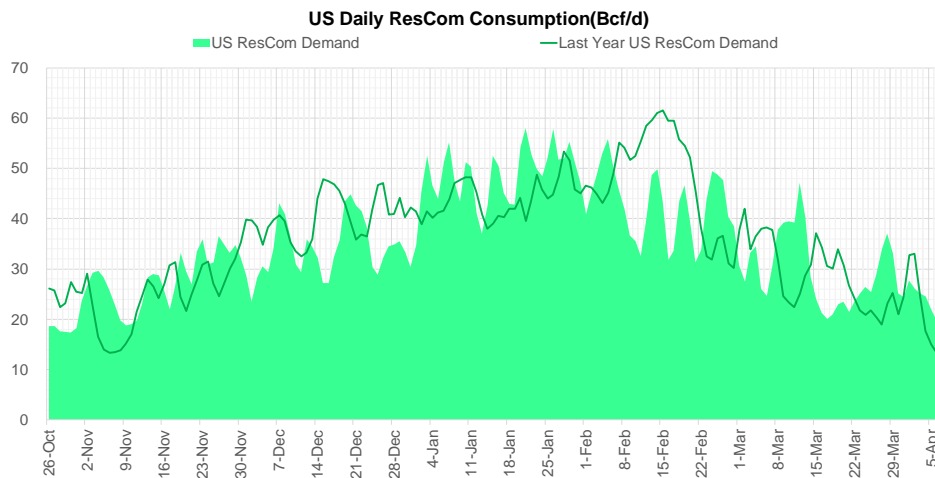
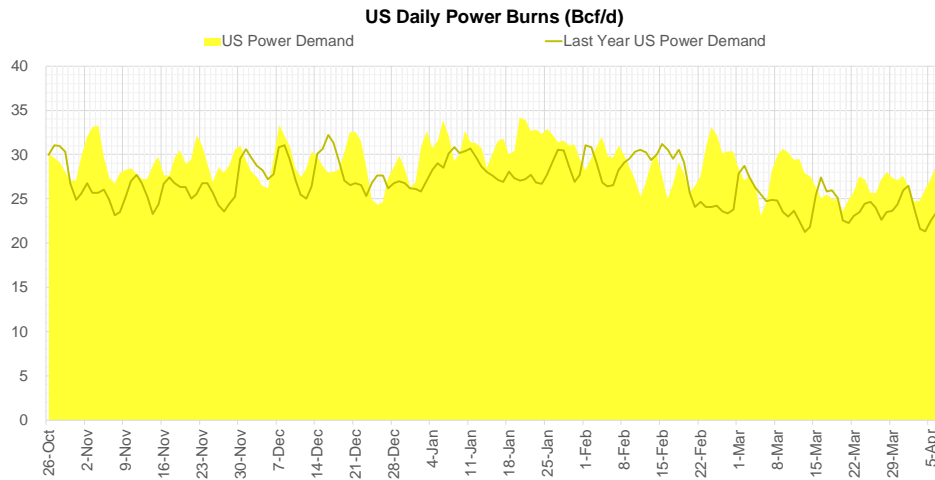
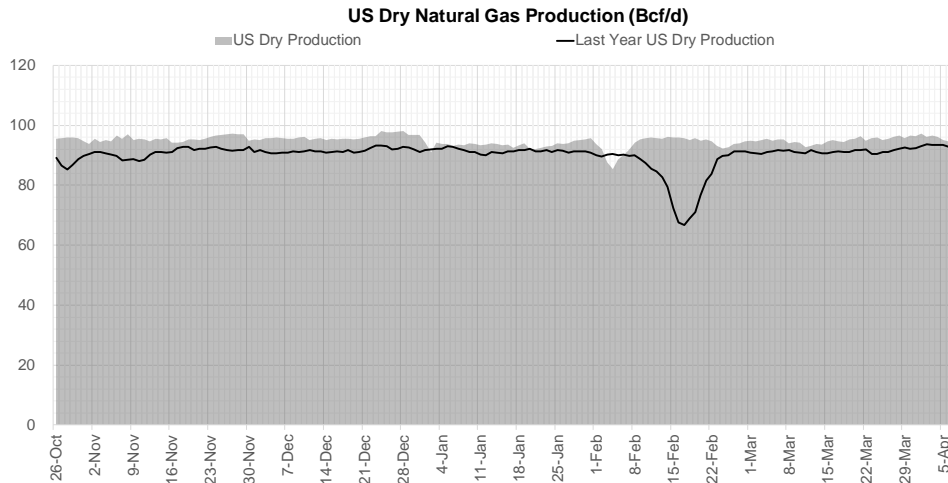
Weather Storage Model - Next 4 Week Forecast



Go to larger image



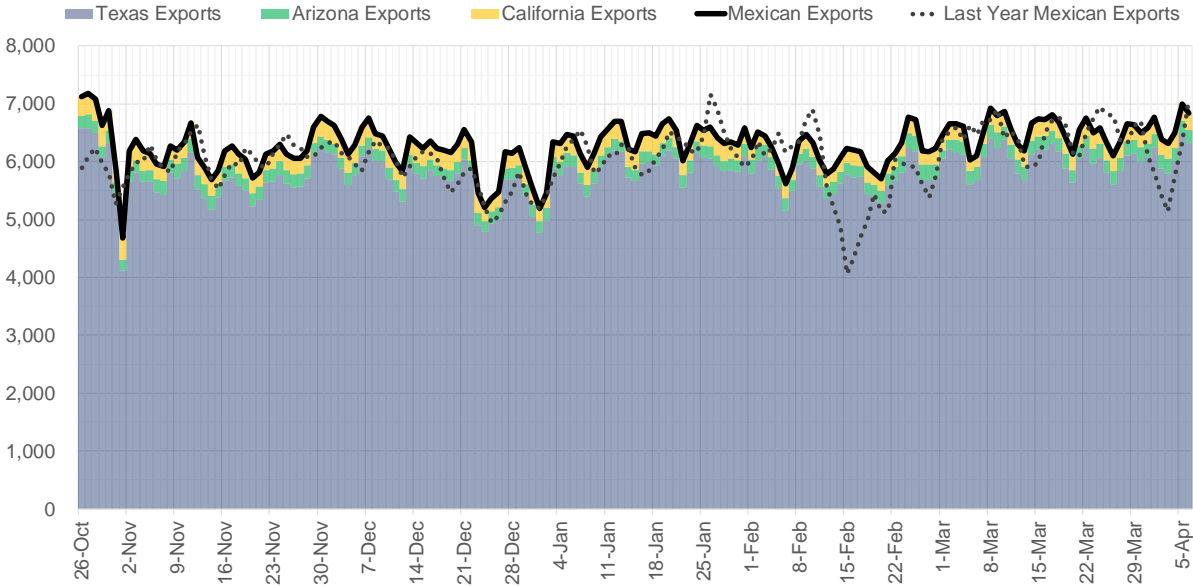
Supply – Demand Trends



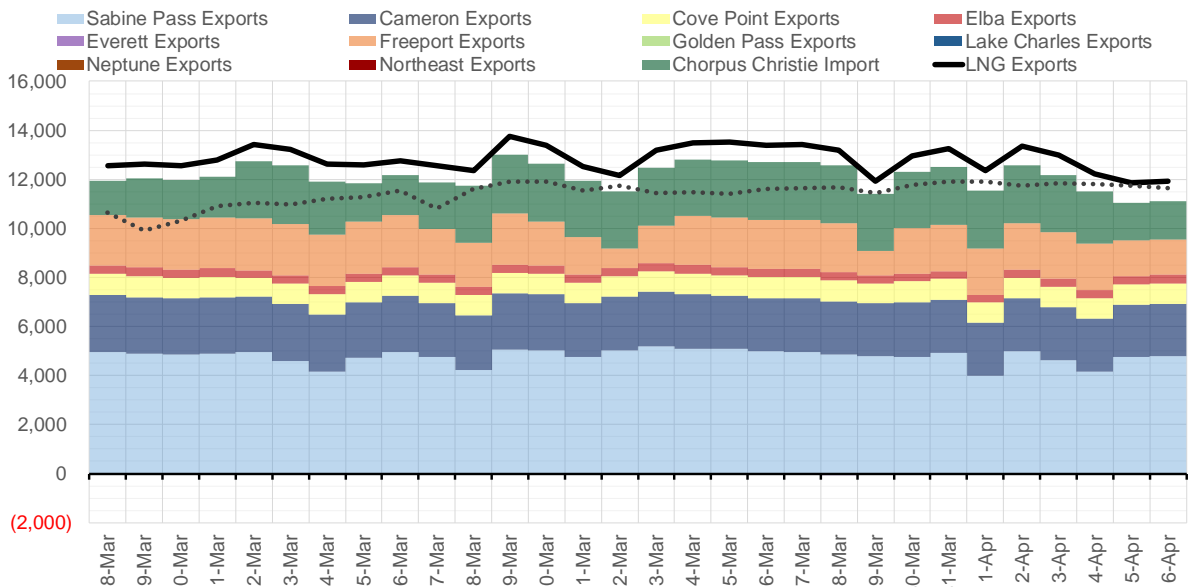
Source: Bloomberg

The risk of trading futures and options and other derivatives involves a substantial risk of loss and is not suitable for all persons. Each person must consider whether a particular trade, combination of trades, or strategy is suitable for that person's financial means and objectives. Past results are not necessarily indicative of future results. This communication may contain links to third party websites which are not under the control of and are not maintained by ION Energy Group, and ION Energy Group is not responsible for their content.

Mexican Exports (MMcf/d)



Net LNG Exports - Last 30 days (MMcf/d)



Source: Bloomberg

The risk of trading futures and options and other derivatives involves a substantial risk of loss and is not suitable for all persons. Each person must consider whether a particular trade, combination of trades, or strategy is suitable for that person's financial means and objectives. Past results are not necessarily indicative of future results. This communication may contain links to third party websites which are not under the control of and are not maintained by ION Energy Group, and ION Energy Group is not responsible for their content.

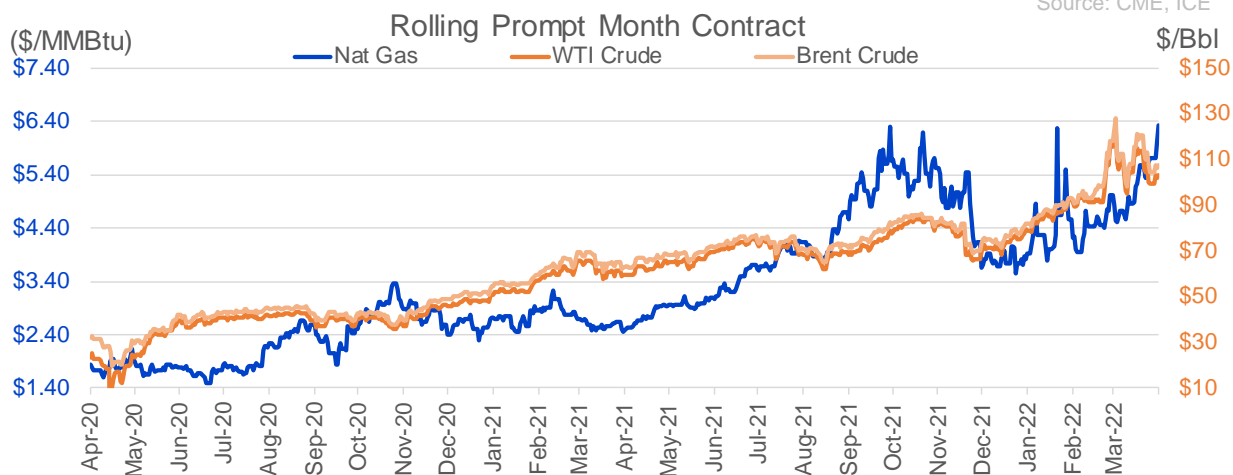
Nat Gas Options Volume and Open Interest CME and ICE Combined

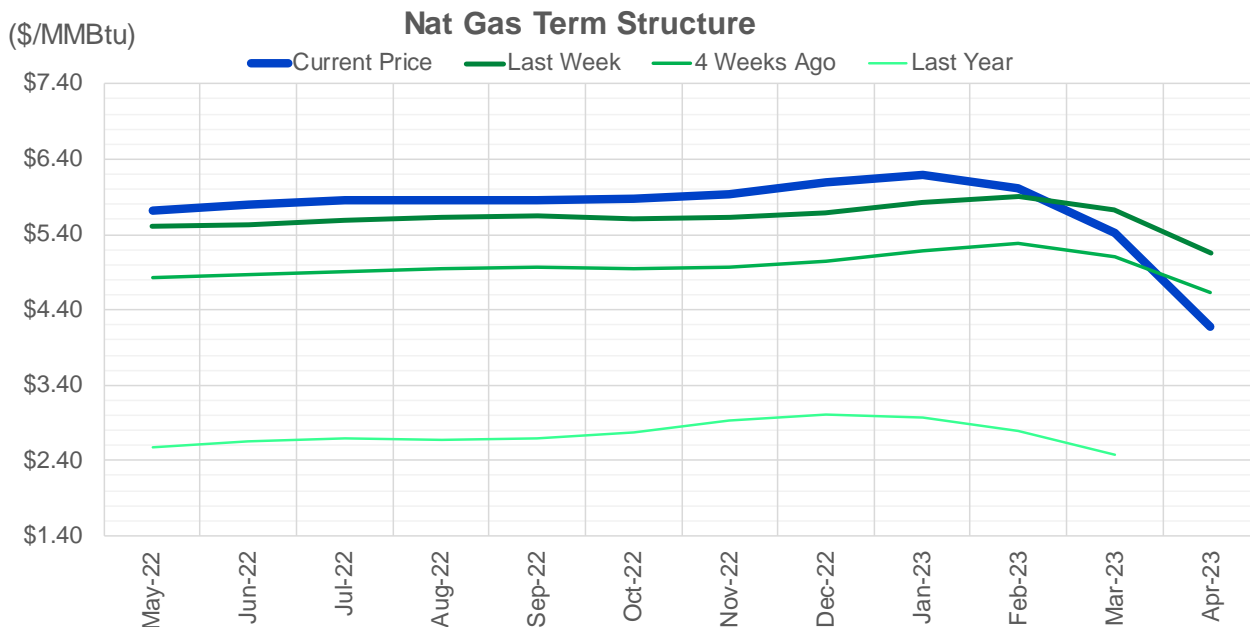
CONTRACT MONTH	CONTRACT YEAR	PUT/CALL	STRIKE	CUMULATIVE VOL	CONTRACT MONTH	CONTRACT YEAR	PUT/CALL	STRIKE	CUMULATIVE OI
5	2022	P	5.00	8644	8	2022	C	10.00	43870
5	2022	C	7.00	6926	8	2022	C	10.50	40500
6	2022	C	8.00	6663	10	2022	C	6.00	29209
5	2022	P	5.50	6624	5	2022	P	4.00	27240
5	2022	C	6.00	5983	10	2022	C	5.00	26880
5	2022	C	6.50	5915	5	2022	C	6.00	25360
5	2022	C	6.75	4559	9	2022	C	6.00	22927
7	2022	C	8.00	4420	5	2022	P	3.00	22636
5	2022	P	5.25	4184	5	2022	C	5.00	21774
6	2022	C	10.00	4033	6	2022	C	6.00	21602
6	2022	C	9.00	3804	10	2022	P	3.00	20875
6	2022	C	6.00	3356	8	2022	C	6.00	20864
12	2022	P	5.00	3330	5	2022	P	4.50	20713
6	2022	P	5.00	3133	5	2022	C	7.00	20577
5	2022	C	6.10	3111	5	2022	P	2.50	19874
7	2022	P	5.00	3019	6	2022	P	4.00	19269
5	2022	C	8.00	2952	7	2022	C	6.00	19030
10	2022	C	7.00	2864	5	2022	P	3.50	18270
8	2022	C	10.00	2670	12	2022	C	5.00	17771
7	2022	P	4.75	2590	1	2023	C	6.00	17769
5	2022	P	4.75	2543	8	2022	C	7.00	17698
10	2022	C	8.00	2480	5	2022	P	2.75	17685
7	2022	C	7.00	2450	7	2022	C	7.00	17589
12	2022	P	4.00	2420	7	2022	P	3.25	17505
4	2024	C	7.00	2400	6	2022	C	5.00	17374
4	2024	C	10.00	2400	10	2022	P	2.50	17361
5	2024	C	7.00	2400	6	2022	P	3.00	17185
5	2024	C	10.00	2400	10	2022	P	4.00	16436
6	2024	C	7.00	2400	5	2022	P	3.75	16132
6	2024	C	10.00	2400	6	2022	C	7.00	15940
7	2024	C	7.00	2400	9	2022	C	7.00	15767
7	2024	C	10.00	2400	6	2022	P	3.50	15720
8	2024	C	7.00	2400	6	2022	C	8.00	15683
8	2024	C	10.00	2400	10	2022	C	7.00	15625
9	2024	C	7.00	2400	5	2022	C	8.00	15552
9	2024	C	10.00	2400	9	2022	P	2.50	15366
10	2024	C	7.00	2400	1	2023	C	5.00	15127
10	2024	C	10.00	2400	9	2022	P	2.75	14933
5	2022	P	6.00	2396	6	2022	P	4.75	14748
8	2022	C	6.00	2350	10	2022	P	2.00	14675
5	2022	P	5.75	2275	10	2022	P	3.50	14622
1	2023	C	8.00	2215	7	2022	P	3.50	14531
3	2023	C	20.00	2200	12	2022	C	6.00	14509
1	2023	C	6.00	2190	8	2022	P	3.00	14172
8	2022	C	7.00	2177	6	2022	P	3.75	14095
8	2022	C	6.50	2126	7	2022	C	8.00	13773
3	2023	P	3.00	2025	5	2022	C	3.00	13733
8	2022	C	10.50	2018	7	2022	P	3.00	13663
1	2023	C	20.00	2015	5	2022	P	5.00	13655
					7	2022	C	10	13576.75

Source: CME, ICE

Nat Gas Futures Open Interest CME and ICE Combined

CME Henry Hub Futures (10,000 MMBtu)				ICE Henry Hub Futures Contract Equivalent (10,000 MM			
	Current	Prior	Daily Change		Current	Prior	Daily Change
MAY 22	229498	230645	-1147	MAY 22	80272	79654	618
JUN 22	81707	79787	1920	JUN 22	65230	65749	-519
JUL 22	100961	100975	-14	JUL 22	68998	69473	-475
AUG 22	47878	48595	-717	AUG 22	60576	60443	133
SEP 22	76319	75839	480	SEP 22	64565	64899	-334
OCT 22	94538	95630	-1092	OCT 22	72379	72688	-309
NOV 22	45071	44702	369	NOV 22	53440	53388	52
DEC 22	44920	44521	399	DEC 22	59744	59649	95
JAN 23	64876	64774	102	JAN 23	67015	67327	-312
FEB 23	20633	20267	366	FEB 23	46695	46911	-217
MAR 23	40250	39739	511	MAR 23	52245	52131	114
APR 23	52189	52883	-694	APR 23	50937	51290	-353
MAY 23	38176	35393	2783	MAY 23	45251	45090	161
JUN 23	19837	18398	1439	JUN 23	42566	42088	478
JUL 23	15743	15869	-126	JUL 23	42206	41643	563
AUG 23	13320	12121	1199	AUG 23	41706	41240	466
SEP 23	16386	15388	998	SEP 23	41655	41140	515
OCT 23	33837	33821	16	OCT 23	46105	46318	-214
NOV 23	11932	11959	-27	NOV 23	41670	41157	513
DEC 23	14640	14118	522	DEC 23	37519	36847	672
JAN 24	21299	20582	717	JAN 24	35315	34834	481
FEB 24	4365	4679	-314	FEB 24	23723	23806	-83
MAR 24	15790	15618	172	MAR 24	30035	29749	286
APR 24	10715	10674	41	APR 24	22345	22412	-68
MAY 24	2542	2534	8	MAY 24	21101	21115	-14
JUN 24	1703	1729	-26	JUN 24	21220	21165	55
JUL 24	1676	1683	-7	JUL 24	21877	21947	-70
AUG 24	2981	2980	1	AUG 24	22043	22113	-70
SEP 24	1318	1320	-2	SEP 24	20608	20676	-68
OCT 24	6847	6696	151	OCT 24	22624	22429	195





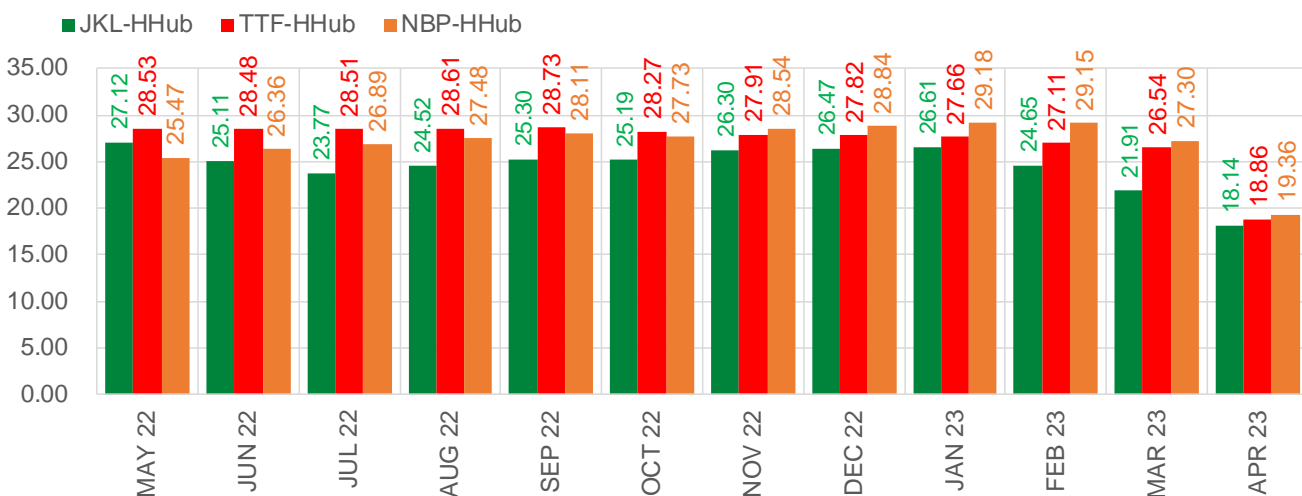
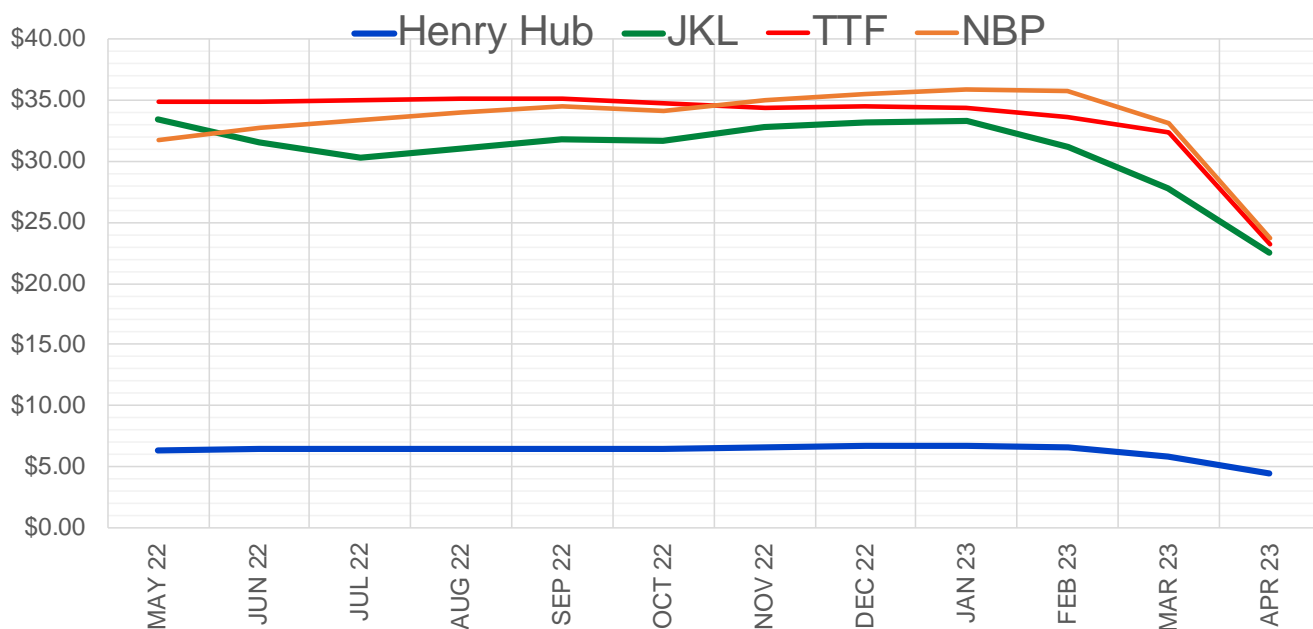
	May-22	Jun-22	Jul-22	Aug-22	Sep-22	Oct-22	Nov-22	Dec-22	Jan-23	Feb-23	Mar-23	Apr-23
Current Price	\$5.712	\$5.793	\$5.858	\$5.865	\$5.849	\$5.867	\$5.941	\$6.097	\$6.196	\$6.019	\$5.428	\$4.170
Last Week	\$5.508	\$5.538	\$5.582	\$5.636	\$5.639	\$5.616	\$5.626	\$5.686	\$5.820	\$5.908	\$5.726	\$5.144
vs. Last Week	\$0.204	\$0.255	\$0.276	\$0.229	\$0.210	\$0.251	\$0.315	\$0.411	\$0.376	\$0.111	-\$0.298	-\$0.974
4 Weeks Ago	\$4.833	\$4.858	\$4.901	\$4.952	\$4.962	\$4.943	\$4.961	\$5.037	\$5.186	\$5.280	\$5.095	\$4.639
vs. 4 Weeks Ago	\$0.879	\$0.935	\$0.957	\$0.913	\$0.887	\$0.924	\$0.980	\$1.060	\$1.010	\$0.739	\$0.333	-\$0.469
Last Year	\$2.511	\$2.582	\$2.657	\$2.688	\$2.681	\$2.702	\$2.782	\$2.921	\$3.014	\$2.961	\$2.794	\$2.479
vs. Last Year	\$3.201	\$3.211	\$3.201	\$3.177	\$3.168	\$3.165	\$3.159	\$3.176	\$3.182	\$3.058	\$2.634	\$1.691

	Units	Cash Settled	Prompt Settle	Cash to Prompt
AGT Citygate	\$/MMBtu	5.55	5.06	-0.49
TETCO M3	\$/MMBtu	5.70	4.58	-1.12
FGT Zone 3	\$/MMBtu	5.75	5.33	-0.42
Zone 6 NY	\$/MMBtu	5.75	4.56	-1.19
Chicago Citygate	\$/MMBtu	5.85	5.09	-0.76
Michcon	\$/MMBtu	5.90	5.05	-0.85
Columbia TCO Pool	\$/MMBtu	5.60	4.62	-0.98
Ventura	\$/MMBtu	5.78	4.90	-0.88
Rockies/Opal	\$/MMBtu	5.76	4.69	-1.07
El Paso Permian Basin	\$/MMBtu	5.42	4.28	-1.14
Socal Citygate	\$/MMBtu	5.98	4.87	-1.11
Malin	\$/MMBtu	5.70	4.77	-0.93
Houston Ship Channel	\$/MMBtu	5.88	5.00	-0.88
Henry Hub Cash	\$/MMBtu	5.94	4.90	-1.04
AECO Cash	C\$/GJ	5.03	3.58	-1.45
Station2 Cash	C\$/GJ	4.75	4.58	-0.17
Dawn Cash	C\$/GJ	5.89	5.11	-0.78

Source: CME, Bloomberg

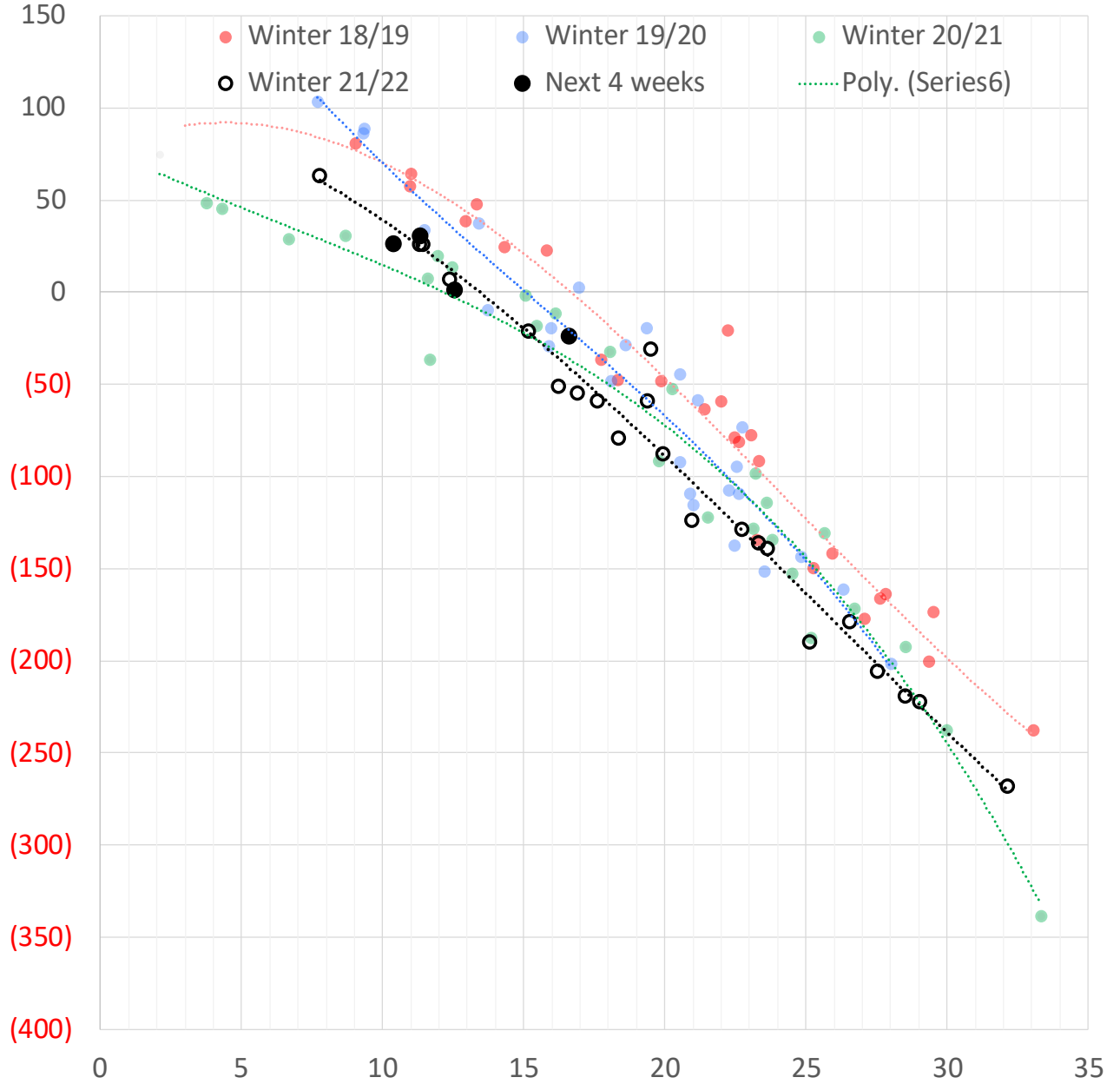
	Units	Current Price	vs. Last Week	vs. 4 Weeks Ago	vs. Last Year
NatGas Jul21/Oct21	\$/MMBtu	2.224	▲ 0.000	▲ 0.000	▲ 2.181
NatGas Oct21/Nov21	\$/MMBtu	0.361	▲ 0.000	▲ 0.000	▲ 0.271
NatGas Oct21/Jan22	\$/MMBtu	-1.817	▲ 0.000	▲ 0.000	▼ -2.152
NatGas Apr22/Oct22	\$/MMBtu	0.836	▲ 0.737	▲ 0.680	▲ 0.796
WTI Crude	\$/Bbl	101.96	▼ -2.280	▼ -21.740	▲ 42.630
Brent Crude	\$/Bbl	106.64	▼ -3.590	▼ -21.340	▲ 43.900
Fuel Oil, NY Harbour 1%	\$/Bbl	97.18	▲ 0.000	▲ 0.000	▲ 0.000
Heating Oil	cents/Gallon	346.82	▼ -24.790	▼ -96.910	▲ 167.410
Propane, Mt. Bel	cents/Gallon	1.33	▼ -0.103	▼ -0.264	▲ 0.410
Ethane, Mt. Bel	cents/Gallon	0.48	▲ 0.055	▲ 0.065	▲ 0.259
Coal, PRB	\$/MTon	12.30	▲ 0.000	▲ 0.000	▲ 0.000
Coal, PRB	\$/MMBtu	0.70			
Coal, ILB	\$/MTon	31.05	▲ 0.000	▲ 0.000	▲ 0.000
Coal, ILB	\$/MMBtu	1.32			

Nat Gas Term Structure (\$MMBTU)



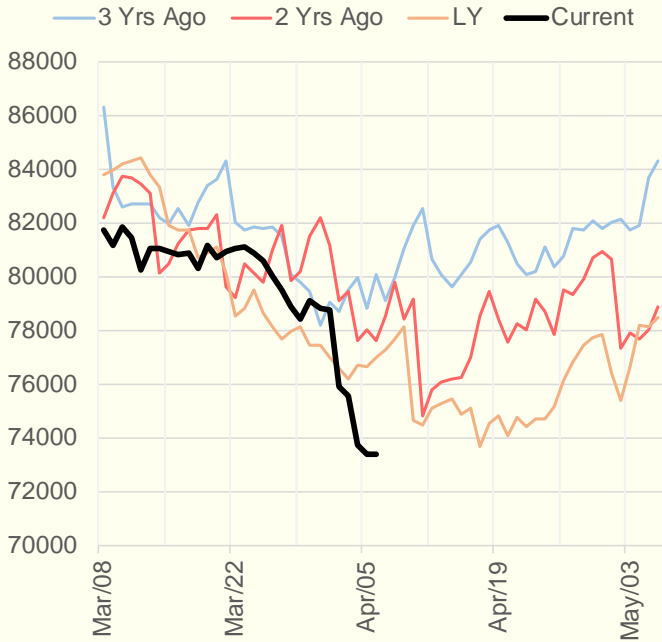
	MAY 22	JUN 22	JUL 22	AUG 22	SEP 22	OCT 22	NOV 22	DEC 22	JAN 23	FEB 23	MAR 23	APR 23
Henry Hub	\$6.332	\$6.419	\$6.486	\$6.496	\$6.474	\$6.469	\$6.534	\$6.707	\$6.745	\$6.592	\$5.860	\$4.400
JKL	\$33.455	\$31.525	\$30.255	\$31.020	\$31.770	\$31.660	\$32.830	\$33.180	\$33.350	\$31.245	\$27.770	\$22.540
JKL-HHub	\$27.123	\$25.106	\$23.769	\$24.524	\$25.296	\$25.191	\$26.296	\$26.473	\$26.605	\$24.653	\$21.910	\$18.140
TTF	\$34.862	\$34.895	\$35.000	\$35.104	\$35.203	\$34.742	\$34.440	\$34.522	\$34.402	\$33.698	\$32.401	\$23.264
TTF-HHub	\$28.530	\$28.476	\$28.514	\$28.608	\$28.729	\$28.273	\$27.906	\$27.815	\$27.657	\$27.106	\$26.541	\$18.864
NBP	\$31.798	\$32.776	\$33.380	\$33.972	\$34.585	\$34.194	\$35.073	\$35.546	\$35.920	\$35.740	\$33.159	\$23.761
NBP-HHub	\$25.466	\$26.357	\$26.894	\$27.476	\$28.111	\$27.725	\$28.539	\$28.839	\$29.175	\$29.148	\$27.299	\$19.361

Weather Storage Model - Next 4 Week Forecast

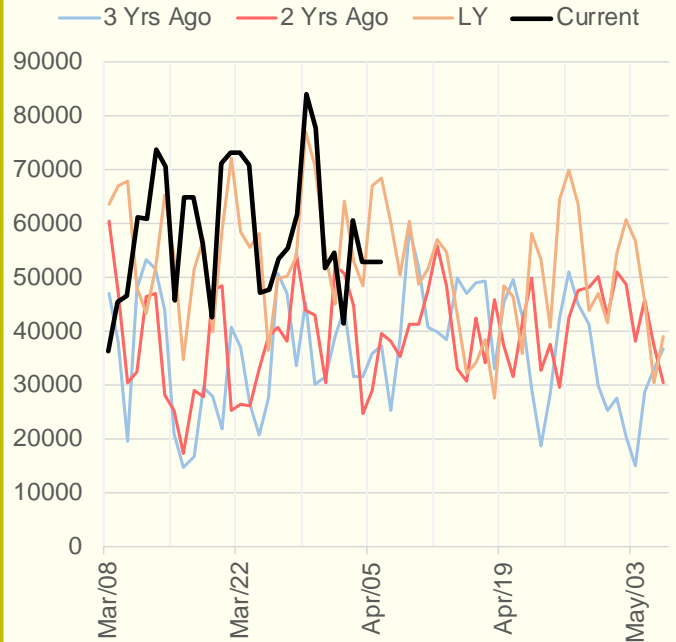


The risk of trading futures and options and other derivatives involves a substantial risk of loss and is not suitable for all persons. Each person must consider whether a particular trade, combination of trades, or strategy is suitable for that person's financial means and objectives. Past results are not necessarily indicative of future results. This communication may contain links to third party websites which are not under the control of and are not maintained by ION Energy Group, and ION Energy Group is not responsible for their content.

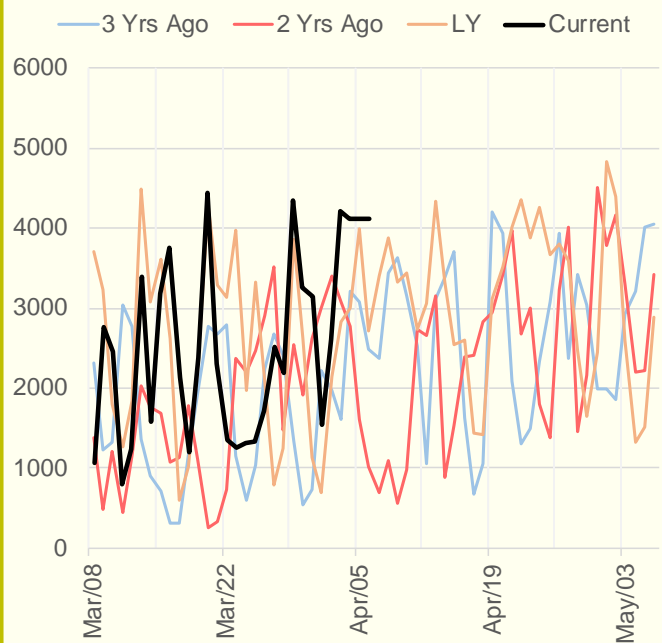
NRC Nuclear Daily Output



US Wind



CALI Wind



TEXAS Wind

