

CFTC COMMITMENT OF TRADERS REPORT

As of 3/29/2022

TRADITIONAL FUNDS net position changes

Wed to Tue, in 000 contracts

	Corn	Bean	Meal	Oil	Chi. Wheat	KC Wheat	Min Wheat
Futures Only	(37.3)	(12.2)	(7.0)	(5.3)	4.1	(1.0)	(0.3)
Futures & Options Combined	(42.0)	(19.0)	(5.4)	(6.0)	0.6	(1.3)	(0.5)

TRADITIONAL COMMERCIAL net position changes

	Corn	Bean	Meal	Oil	Chi. Wheat	KC Wheat	Min Wheat
Futures Only	46.0	14.9	6.3	8.6	(2.4)	0.1	1.5
Futures & Options Combined	50.8	22.0	5.2	9.0	0.8	0.6	1.6

MANAGED MONEY net position changes

	Corn	Bean	Meal	Oil	Chi. Wheat	KC Wheat	Min Wheat
Futures Only	(30.3)	(13.2)	(0.9)	(4.8)	(3.0)	(0.4)	(0.2)
Futures & Options Combined	(29.5)	(17.9)	(1.2)	(5.5)	(0.1)	(0.5)	(0.2)

SWAP DEALERS net position changes

	Corn	Bean	Meal	Oil	Chi. Wheat	KC Wheat	Min Wheat
Futures Only	4.6	(2.9)	(1.3)	0.5	(2.7)	(1.0)	(0.2)
Futures & Options Combined	8.0	0.6	(0.6)	0.5	(1.1)	(0.8)	(0.2)

PRODUCERS/END USERS net position changes

	Corn	Bean	Meal	Oil	Chi. Wheat	KC Wheat	Min Wheat
Futures Only	41.4	17.8	7.6	8.1	0.3	1.1	1.7
Futures & Options Combined	42.8	21.4	5.7	8.4	1.9	1.4	1.8

INDEX net position changes

	Corn	Bean	Meal	Oil	Chi. Wheat	KC Wheat	Min Wheat
Futures & Options Combined	10.8	(4.3)	(0.5)	(1.9)	1.2	(1.6)	NA

SUPPLEMENTAL NON-COMMERCIAL net position changes

	Corn	Bean	Meal	Oil	Chi. Wheat	KC Wheat	Min Wheat
Futures & Options Combined	(43.4)	(18.6)	(5.8)	(5.6)	(1.9)	(0.5)	NA

OPEN INTEREST net position changes

Wed to Tue, in 000 contracts

	Corn	Bean	Meal	Oil	Chi. Wheat	KC Wheat	Min Wheat
Futures Only	(11.1)	0.8	4.3	(6.6)	(4.1)	0.2	0.5
Futures & Options Combined	(87.3)	(34.0)	(2.4)	(15.2)	(47.0)	(4.6)	0.2

Source: CFTC and FI

Wed to Tue, in 000 contracts

**COMMITMENT OF TRADERS
FUTURES ONLY NET POSITIONS
AS OF 03/29/2022
(IN THOUSAND CONTRACTS)**

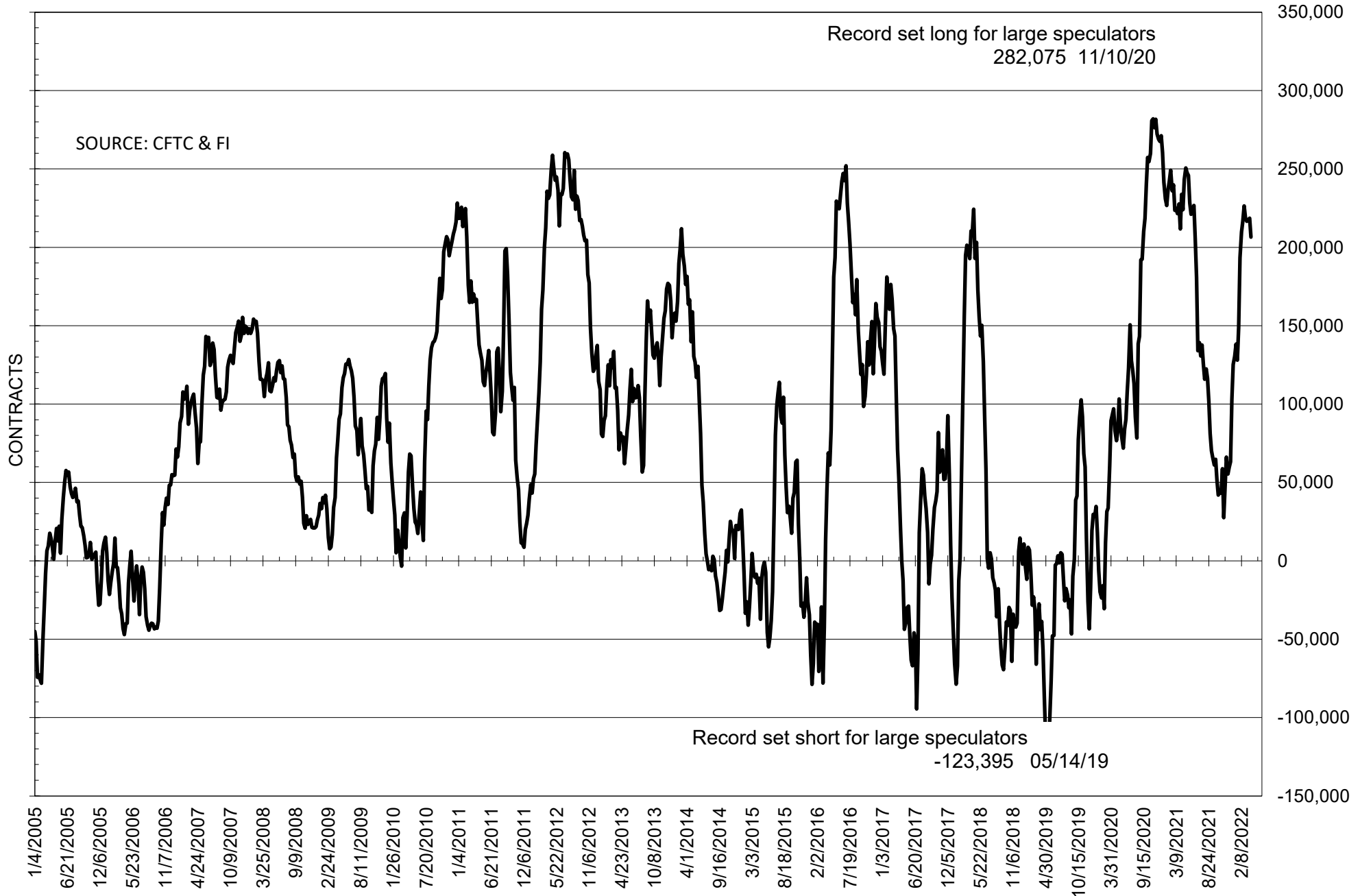
	COMMERCIAL				(FUND) NON COMMERCIAL				(SPEC) NON-REPORTABLE			
	29-Mar	22-Mar	15-Mar	8-Mar	29-Mar	22-Mar	15-Mar	8-Mar	29-Mar	22-Mar	15-Mar	8-Mar
	WHEAT											
Chicago	-9.4	-7.0	-5.3	-5.5	13.6	9.5	10.9	12.6	-4.1	-2.5	-5.7	-7.1
Kansas City	-45.7	-45.8	-45.3	-44.5	45.0	46.0	44.3	43.9	0.7	-0.2	1.0	0.6
Minneapolis	-25.5	-27.0	-27.2	-24.0	21.5	21.7	22.6	19.1	4.1	5.3	4.6	5.0
All Wheat	-80.6	-79.9	-77.7	-74.0	80.1	77.2	77.8	75.6	0.6	2.6	-0.1	-1.6
CORN	-424.7	-470.7	-468.8	-456.7	482.1	519.4	507.2	498.0	-57.4	-48.6	-38.4	-41.3
OATS	#VALUE!	#VALUE!	#VALUE!	#VALUE!	#VALUE!	#####	#VALUE!	#VALUE!	#VALUE!	#VALUE!	#VALUE!	#VALUE!
SOYBEANS	-178.8	-193.6	-194.0	-189.2	206.5	218.6	217.6	216.6	-27.7	-25.0	-23.6	-27.4
SOY OIL	-102.9	-111.5	-113.3	-108.5	87.3	92.6	97.9	91.7	15.6	18.9	15.4	16.8
SOY MEAL	-150.7	-157.1	-159.5	-150.6	121.8	128.8	130.3	121.6	28.9	28.3	29.2	29.0

Oats positions thin to be reported

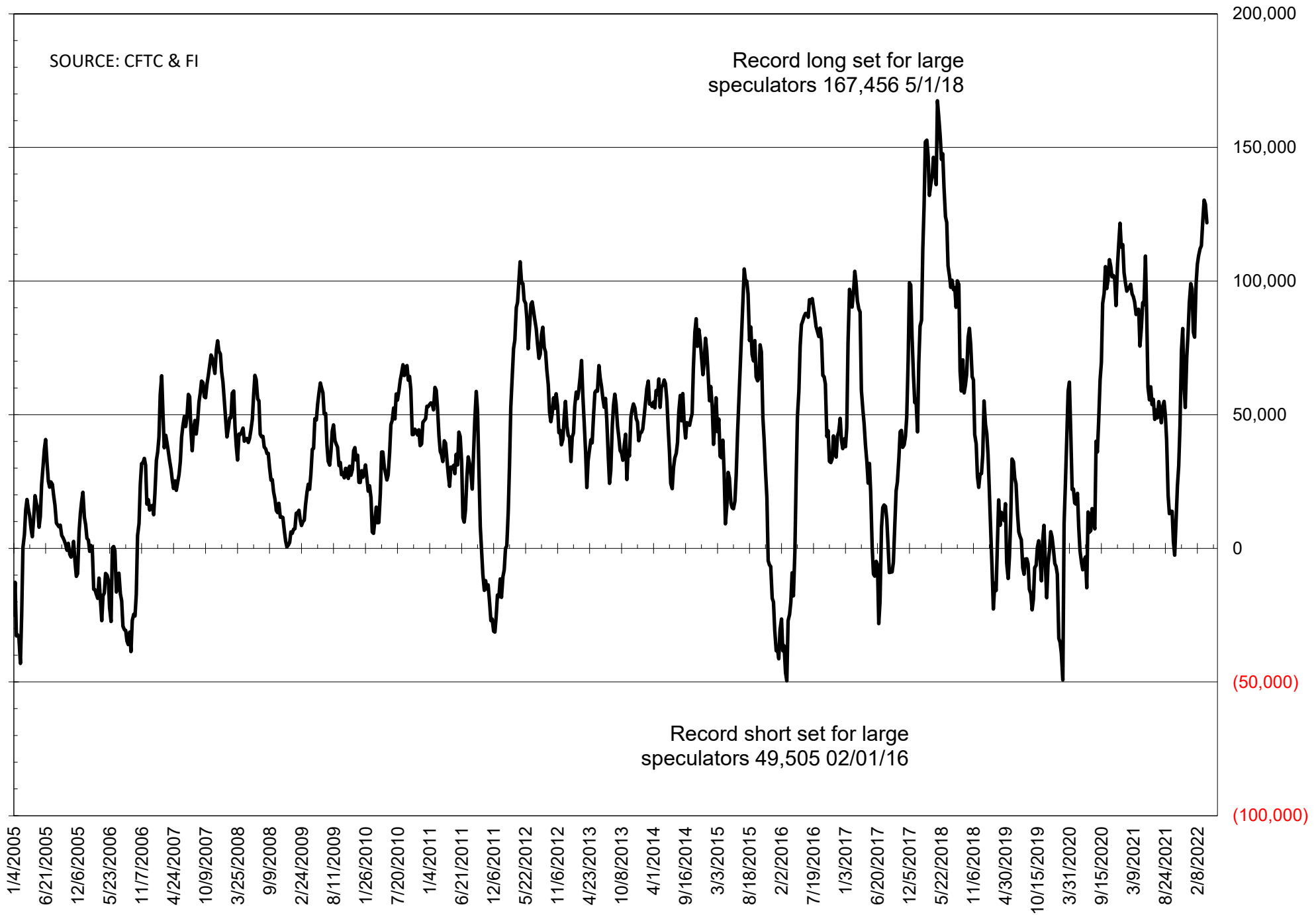
	TOTAL OPEN INTEREST				NEARBY FUTURES PRICE					29-Mar-22 LAST REPORTED % HELD BY TRADERS			
	29-Mar	22-Mar	15-Mar	8-Mar	K Latest	K 29-Mar	K 22-Mar	K 15-Mar	K 8-Mar	LARGE FUND		SMALL	
										LONG	SHORT	LONG	SHORT
WHEAT													
Chicago	341224	345345	339904	342996	984.50	1014.25	1118.25	1154.25	1286.50	0%	29%	0%	10%
Kansas City	178444	178217	178859	184723	1013.00	1024.50	1116.50	1157.50	1199.50	0%	10%	0%	10%
Minneapolis	65531	65049	64458	66448	1065.25	1043.25	1095.75	1099.25	1144.00	0%	3%	0%	15%
CORN	1515106	1526201	1504159	1487815	735.00	726.25	753.00	758.00	853.00	0%	5%	0%	13%
OATS	#VALUE!	#VALUE!	#VALUE!	#VALUE!	740.00	719.00	724.00	661.50	642.75	0%	#VALUE!	0%	#VALUE!
SOYBEANS	755139	754382	745345	743566	1582.75	1643.00	1696.50	1658.75	1689.75	34%	6%	7%	11%
SOY OIL	340690	347240	346129	348593	71.20	71.66	74.54	73.68	75.75	0%	5%	0%	5%
SOY MEAL	396516	392169	381928	379713	450.00	466.00	476.80	484.00	473.30	0%	4%	0%	5%

SOURCE: CFTC & FI

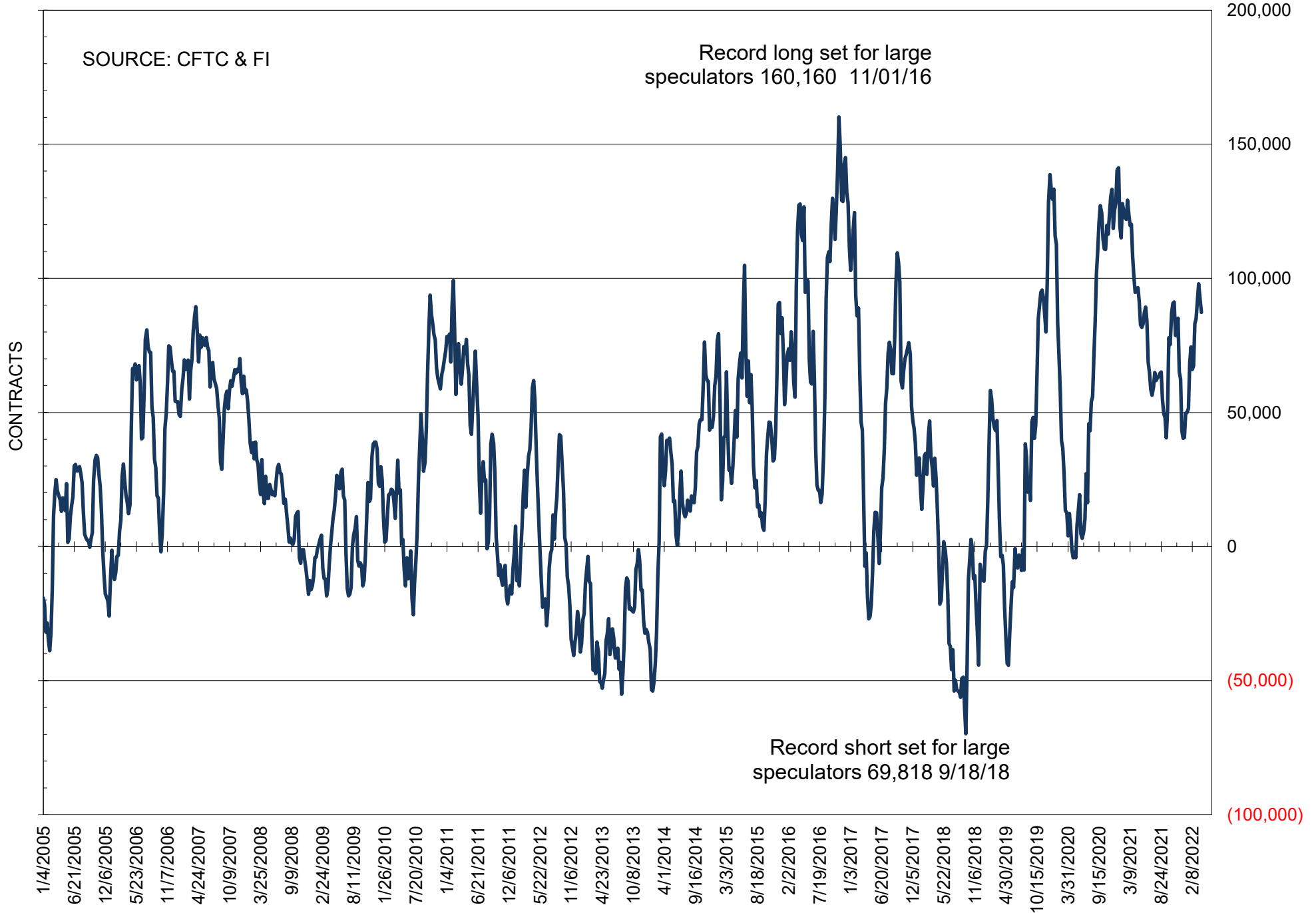
NET POSITION OF FUTURES ONLY LARGE SPECS IN SOYBEANS



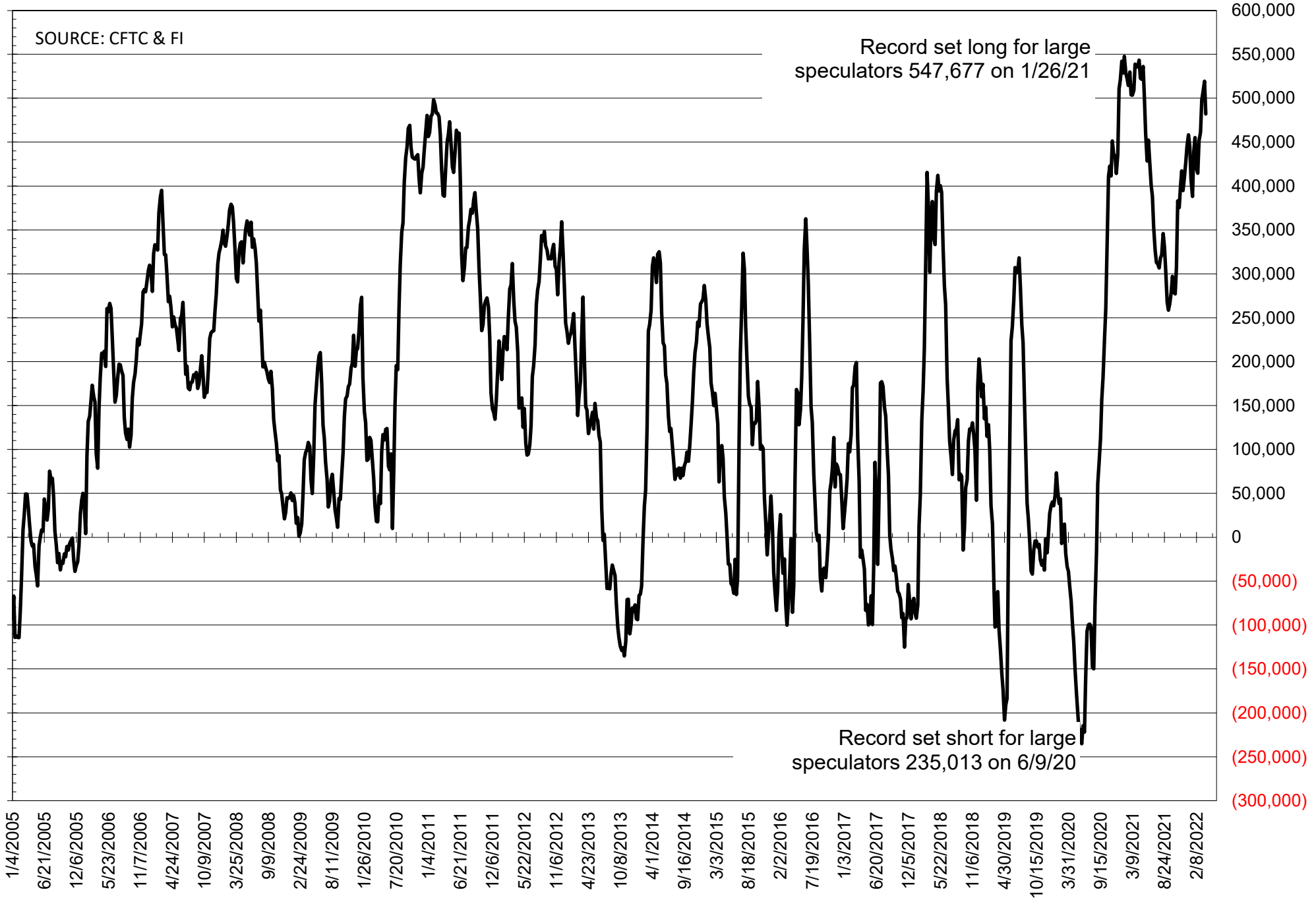
NET POSITION OF FUTURES ONLY LARGE SPECS IN SOYMEAL



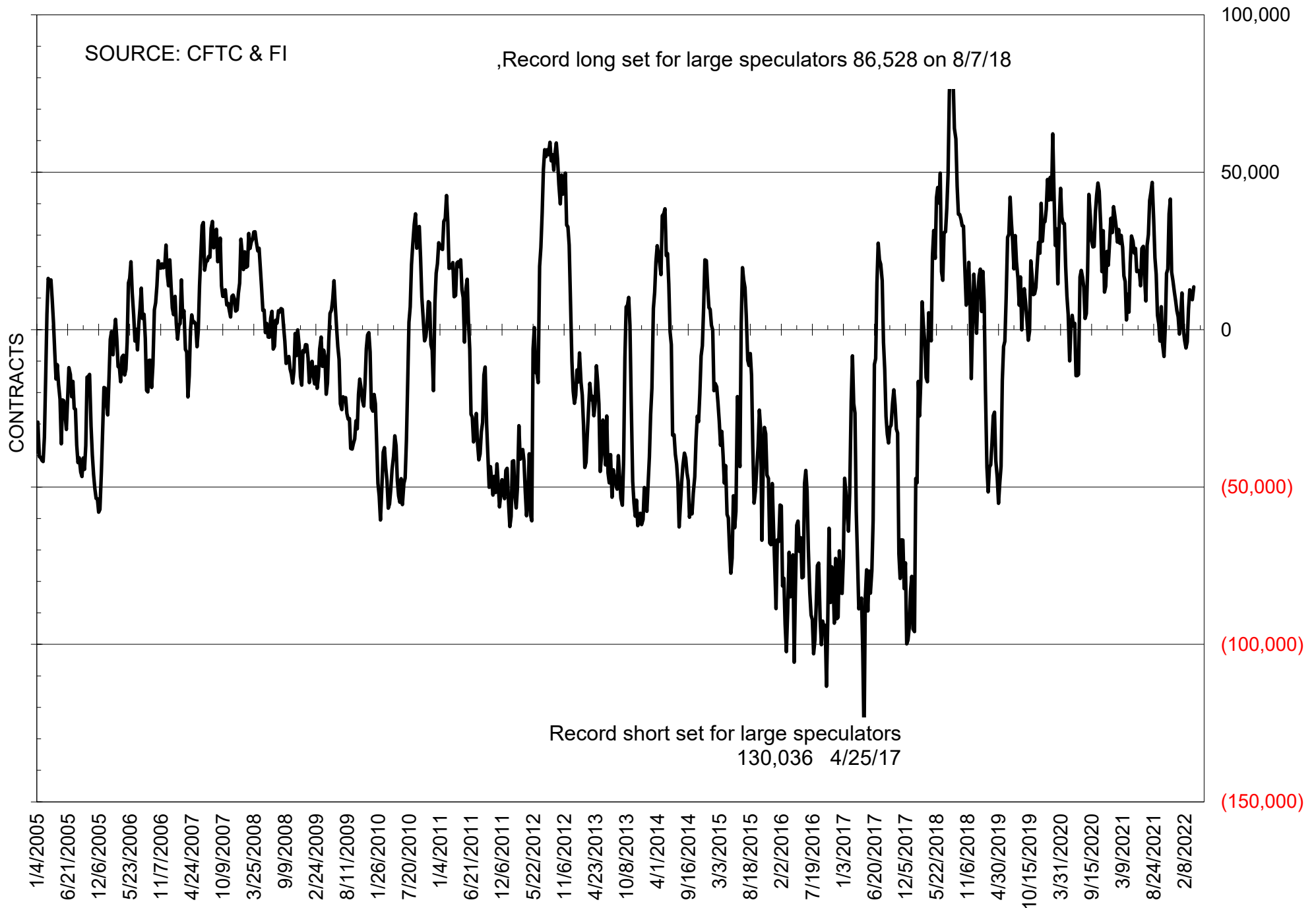
NET POSITION OF FUTURES ONLY LARGE SPECS IN SOYOIL



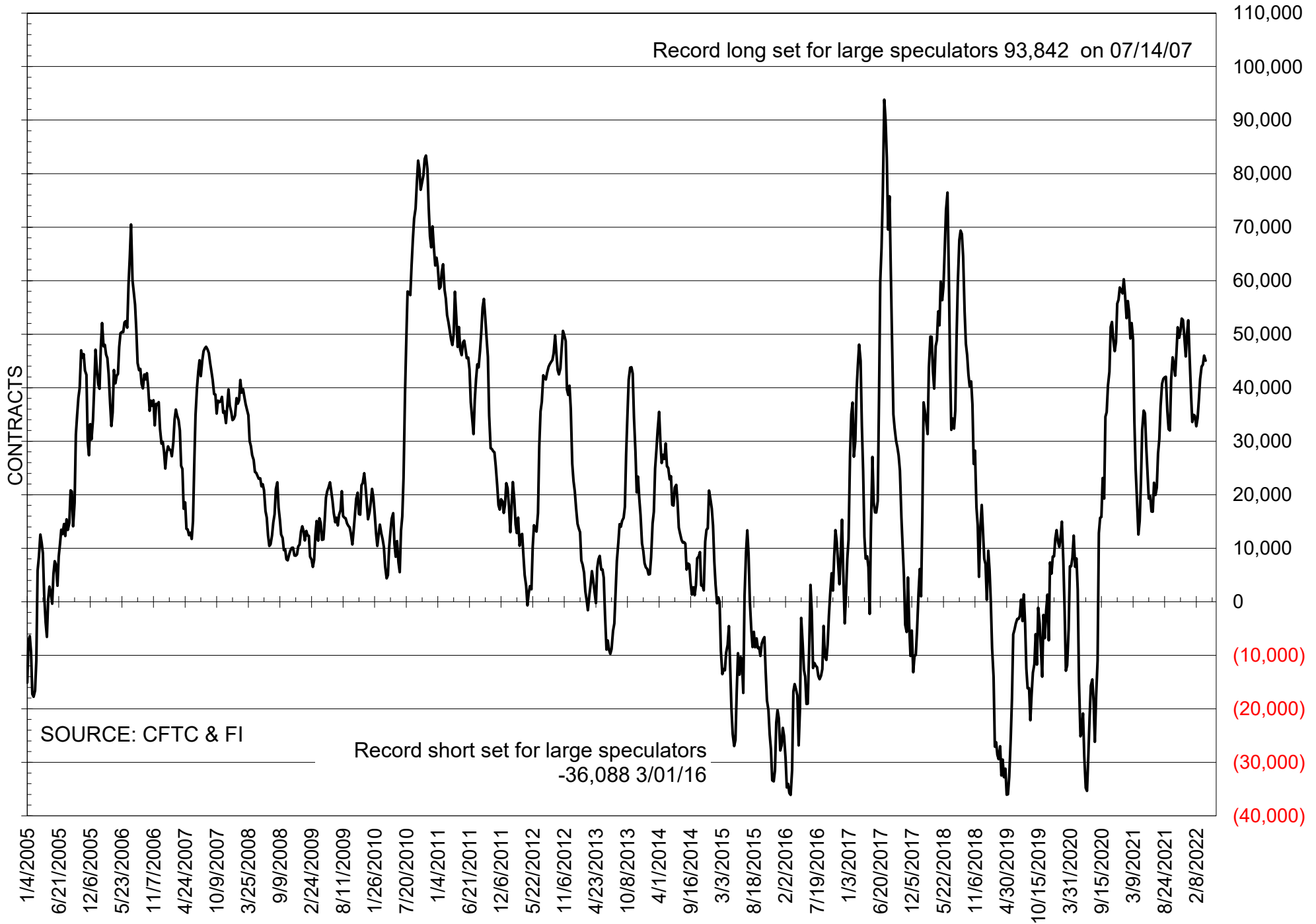
NET POSITION OF LARGE SPECULATORS IN CORN



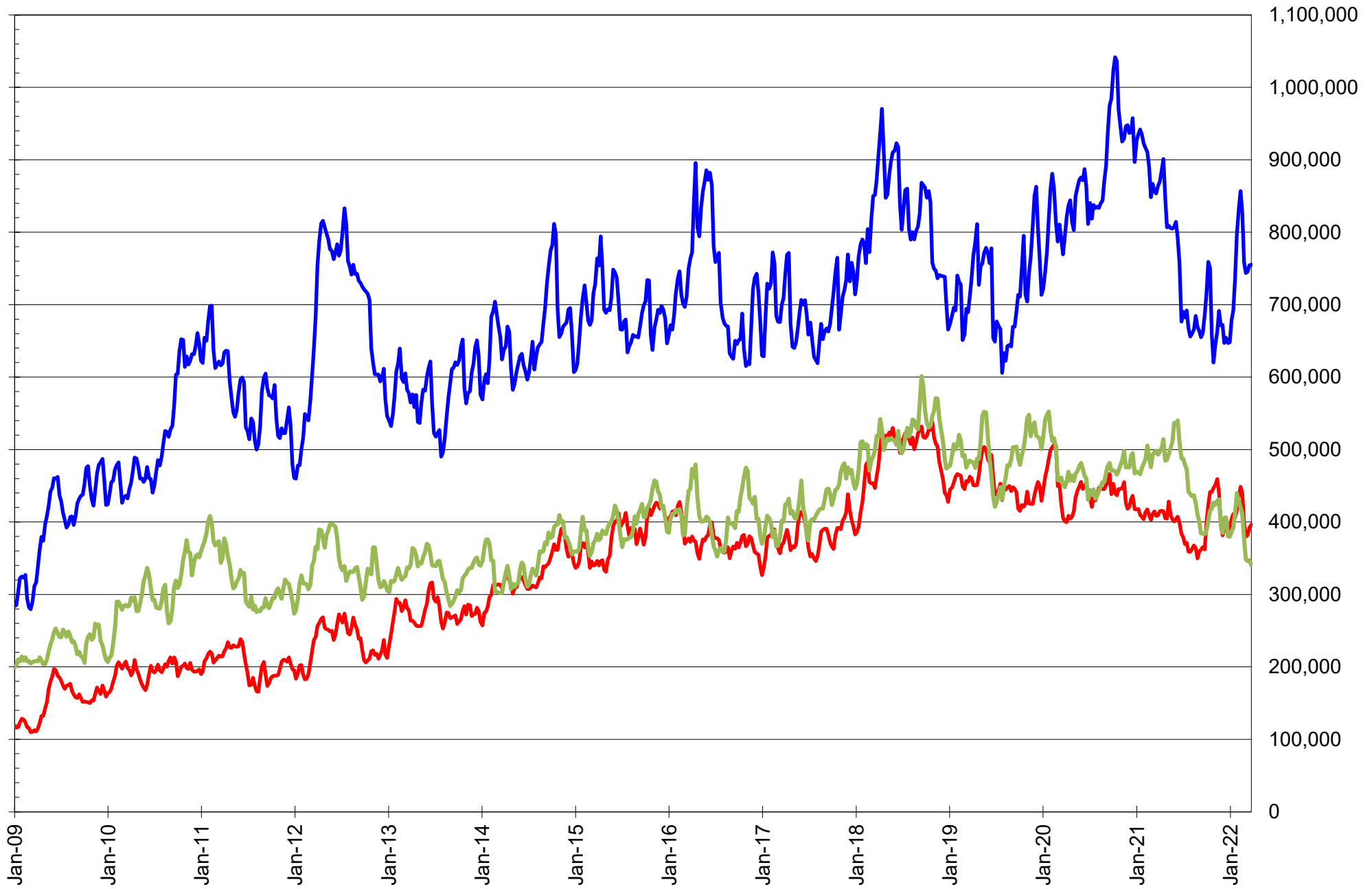
NET POSITION OF FUTURES ONLY LARGE SPECS IN CHICAGO WHEAT



NET POSITION OF LARGE SPECULATORS IN KANSAS CITY WHEAT



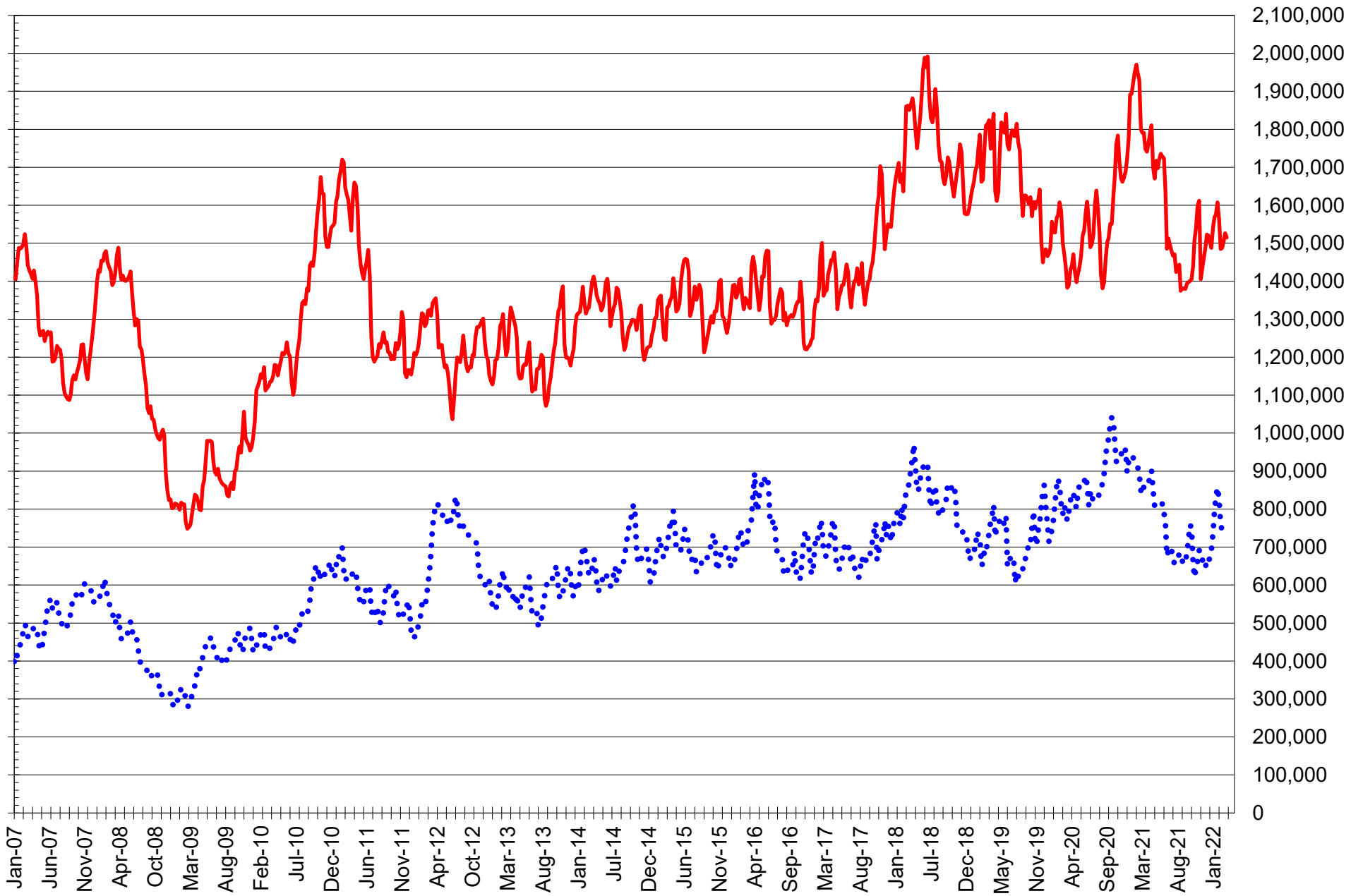
TOTAL OPEN INTEREST IN SOYBEANS, MEAL AND OIL, FUTURES ONLY



SOURCE: CFTC & FI

— SOYBEANS — SOYBEAN MEAL — SOYBEAN OIL

TOTAL OPEN INTEREST IN CORN AND SOYBEANS, FUTURES ONLY



SOURCE: CFTC & FI

— CORN

..... SOYBEANS

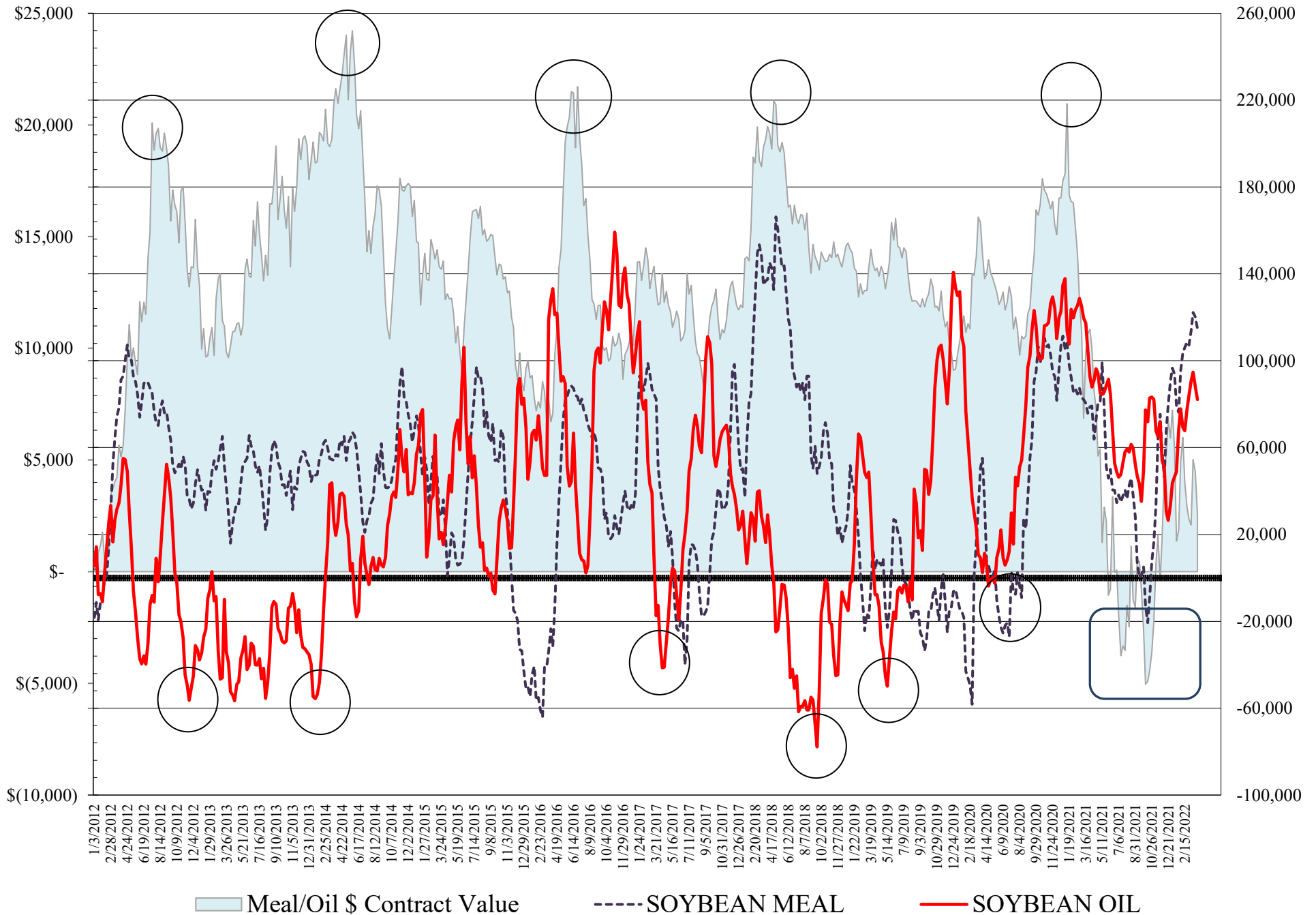
COMMITMENT OF TRADERS
FUTURES & OPTIONS NET POSITIONS
AS OF 03/29/2022
(IN THOUSAND CONTRACTS)

	<u>COMMERCIAL</u>				<u>(FUND)</u> <u>NON COMMERCIAL</u>				<u>(SPEC)</u> <u>NON-REPORTABLE</u>			
	<u>29-Mar</u>	<u>22-Mar</u>	<u>15-Mar</u>	<u>8-Mar</u>	<u>29-Mar</u>	<u>22-Mar</u>	<u>15-Mar</u>	<u>8-Mar</u>	<u>29-Mar</u>	<u>22-Mar</u>	<u>15-Mar</u>	<u>8-Mar</u>
WHEAT												
Chicago	-15.6	-16.3	-15.9	-14.5	20.0	19.4	22.3	23.0	-4.4	-3.1	-6.5	-8.5
Kansas City	-47.4	-47.9	-47.7	-46.7	47.2	48.5	47.3	47.2	0.2	-0.6	0.3	-0.5
Minneapolis	-24.8	-26.4	-26.6	-23.9	20.7	21.1	22.0	19.0	4.1	5.3	4.6	5.0
All Wheat	-87.7	-90.6	-90.1	-85.2	87.8	89.0	91.6	89.2	-0.1	1.6	-1.5	-4.0
CORN	-404.0	-454.8	-450.9	-435.8	449.1	491.1	478.2	468.6	-45.2	-36.4	-27.3	-32.8
OATS	#VALUE!	#VALUE!	#VALUE!	#VALUE!	#VALUE!	#VALUE!	#VALUE!	#VALUE!	#VALUE!	#VALUE!	#VALUE!	#VALUE!
SOYBEANS	-151.5	-173.5	-166.5	-165.1	181.1	200.0	192.3	194.6	-29.6	-26.6	-25.8	-29.5
SOY OIL	-97.3	-106.3	-109.3	-107.2	82.2	88.1	94.7	90.7	15.2	18.1	14.6	16.6
SOY MEAL	-147.3	-152.4	-155.2	-146.2	114.8	120.3	122.3	113.7	32.4	32.2	33.0	32.5

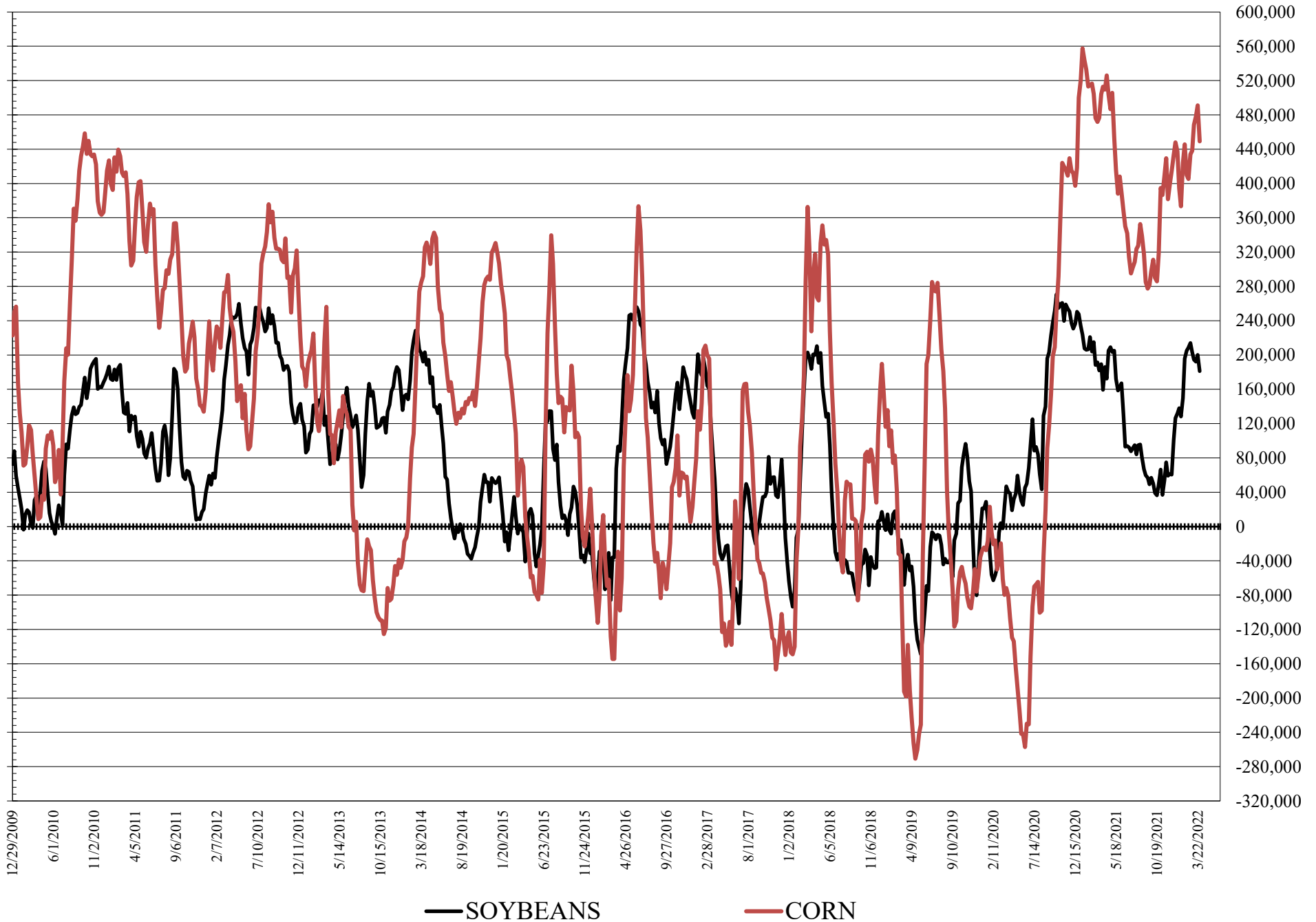
	<u>TOTAL</u> <u>OPEN INTEREST</u>				<u>% HELD BY TRADERS</u>					
	<u>29-Mar</u>	<u>22-Mar</u>	<u>15-Mar</u>	<u>8-Mar</u>	<u>COMMERCIALS</u>		<u>LARGE (FUNDS)</u>		<u>SMALL (NON-REP)</u>	
					<u>LONG</u>	<u>SHORT</u>	<u>LONG</u>	<u>SHORT</u>	<u>LONG</u>	<u>SHORT</u>
WHEAT										
Chicago	471,606	518,617	513,596	518,859	35%	38%	24%	20%	7%	8%
Kansas City	204,327	208,907	209,692	214,381	36%	59%	31%	8%	10%	10%
Minneapolis	68,710	68,469	67,915	69,700	42%	78%	33%	3%	21%	15%
CORN	2,062,031	2,149,285	2,083,011	2,054,595	40%	60%	24%	3%	10%	12%
OATS	#VALUE!	#VALUE!	#VALUE!	#VALUE!						
SOYBEANS	982,306	1,016,326	999,098	1,003,054	43%	58%	23%	5%	6%	9%
SOY OIL	400,221	415,464	414,017	418,231	47%	71%	25%	5%	9%	5%
SOY MEAL	455,338	457,776	447,497	439,326	40%	72%	28%	3%	12%	5%

SOURCE: CFTC & FI

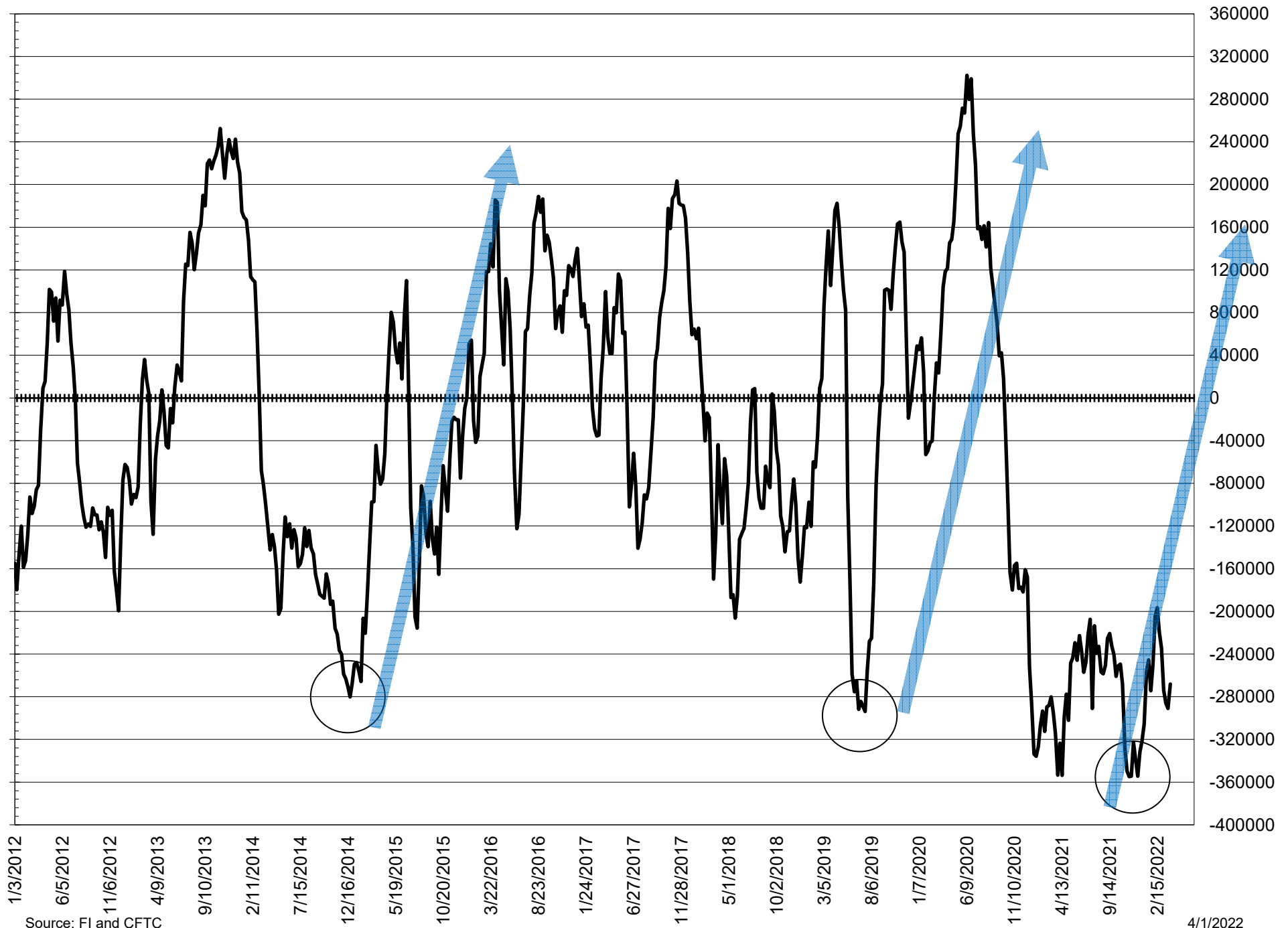
NET POSITION FUTURES AND OPTIONS OF LARGE SPECULATORS IN SOYBEAN MEAL AND SOYBEAN OIL



NET POSITION FUTURES AND OPTIONS OF LARGE SPECULATORS IN SOYBEANS AND CORN



NET POSITION FUTURES AND OPTIONS SPREAD OF LARGE SPECULATORS IN SOYBEANS MINUS CORN



Source: FI and CFTC

4/1/2022

DISAGGREGATED COMMITMENT OF TRADERS
FUTURES ONLY NET POSITIONS
AS OF 03/29/2022
(IN THOUSAND CONTRACTS)

	PRODUCER / MERCHANT / PROCESSOR / USER				(INDEX/ETF) SWAP DEALERS				(CTA/CPO/OTHER UNREGISTERED) MANAGED MONEY				
	29-Mar	22-Mar	15-Mar	8-Mar	29-Mar	22-Mar	15-Mar	8-Mar	29-Mar	22-Mar	15-Mar	8-Mar	
	WHEAT												
Chicago	(89.7)	(89.9)	(90.9)	(94.0)	80.2	82.9	85.7	88.5	19.6	22.7	25.0	21.8	
Kansas City	(68.2)	(69.3)	(70.3)	(70.9)	22.5	23.5	25.1	26.4	45.0	45.3	43.8	44.4	
Minneapolis	(25.8)	(27.5)	(27.8)	(25.0)	0.3	0.5	0.6	0.9	14.0	14.2	14.4	12.9	
All Wheat	(183.7)	(186.7)	(189.1)	(189.9)	103.0	106.8	111.4	115.9	78.6	82.2	83.2	79.1	
CORN	(726.6)	(768.0)	(759.6)	(766.7)	301.9	297.3	290.9	310.0	341.6	371.9	361.3	355.8	
OATS	-	-	-	-	-	-	-	-	-	-	-	-	
SOYBEANS	(308.6)	(326.4)	(329.8)	(334.0)	129.9	132.7	135.8	144.7	151.0	164.2	161.9	161.7	
SOY OIL	(193.0)	(201.1)	(203.3)	(202.7)	90.2	89.6	90.0	94.2	79.7	84.4	89.5	85.4	
SOY MEAL	(244.4)	(252.1)	(254.0)	(246.4)	93.7	95.0	94.5	95.8	99.6	100.6	102.5	96.2	
									Managed % of OI				
									Chicago W	6%	7%	7%	6%
									Corn	23%	24%	24%	24%
	TOTAL OPEN INTEREST				OTHER REPORTABLE				NON REPORTABLE				
	29-Mar	22-Mar	15-Mar	8-Mar	29-Mar	22-Mar	15-Mar	8-Mar	29-Mar	22-Mar	15-Mar	8-Mar	
	WHEAT												
Chicago	341,224	345,345	339,904	342,996	(6.1)	(13.2)	(14.0)	(9.1)	(4.1)	(2.5)	(5.7)	(7.1)	
Kansas City	178,444	178,217	178,859	184,723	0.1	0.7	0.5	(0.5)	0.7	(0.2)	1.0	0.6	
Minneapolis	65,531	65,049	64,458	66,448	7.5	7.5	8.2	6.1	4.1	5.3	4.6	5.0	
All Wheat	585,199	588,611	583,221	594,167	1.4	(5.0)	(5.4)	(3.5)	0.6	2.6	(0.1)	(1.6)	
CORN	1,515,106	1,526,201	1,504,159	1,487,815	140.5	147.4	146.0	142.2	(57.4)	(48.6)	(38.4)	(41.3)	
OATS	-	-	-	-	-	-	-	-	-	-	-	-	
SOYBEANS	755,139	754,382	745,345	743,566	55.4	54.4	55.7	54.9	(27.7)	(25.0)	(23.6)	(27.4)	
SOY OIL	340,690	347,240	346,129	348,593	7.6	8.1	8.5	6.3	15.6	18.9	15.4	16.8	
SOY MEAL	396,516	392,169	381,928	379,713	22.1	28.2	27.7	25.4	28.9	28.3	29.2	29.0	

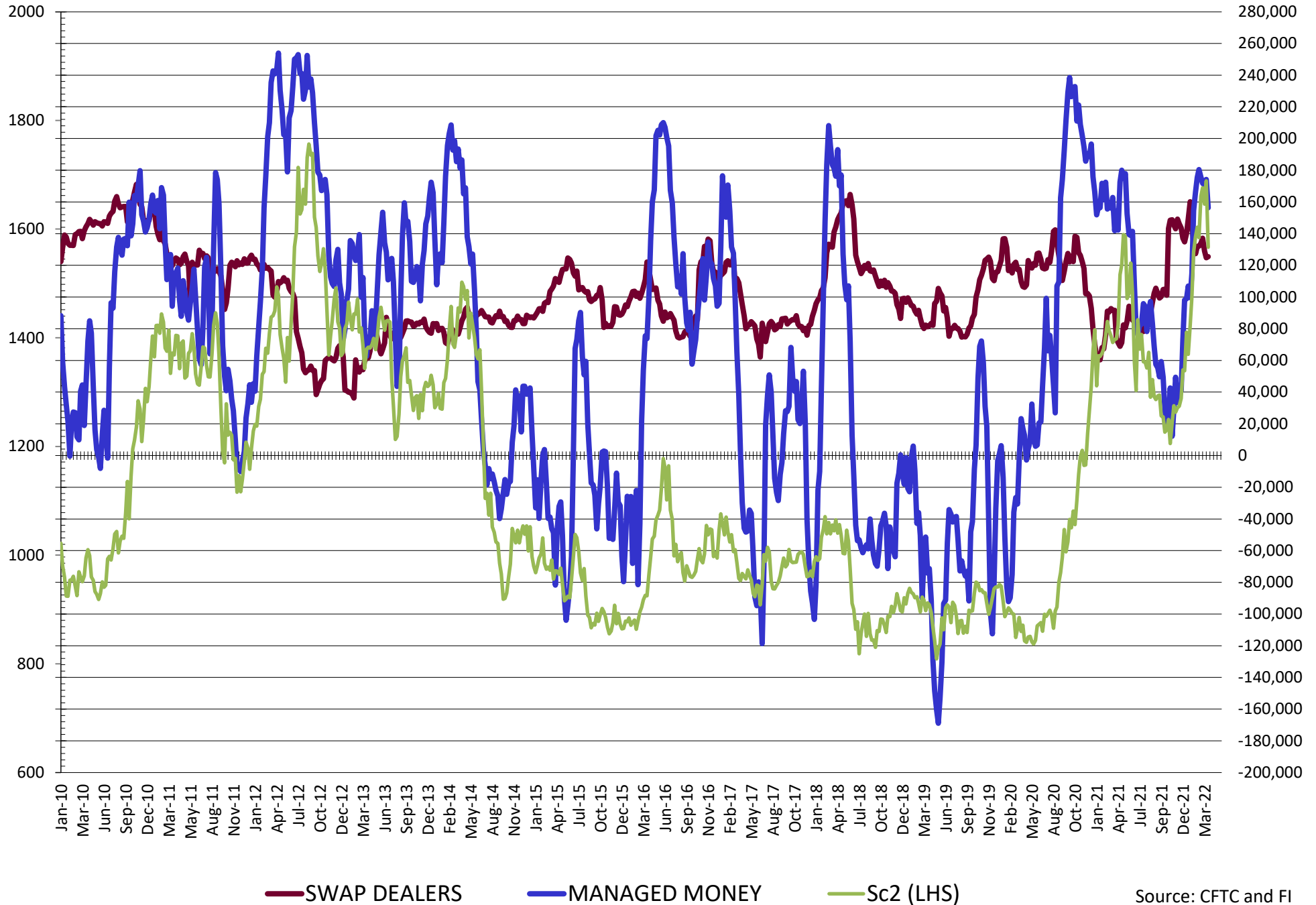
SOURCE: CFTC & FI

DISAGGREGATED COMMITMENT OF TRADERS
FUTURES & OPTIONS NET POSITIONS
AS OF 03/29/2022
(IN THOUSAND CONTRACTS)

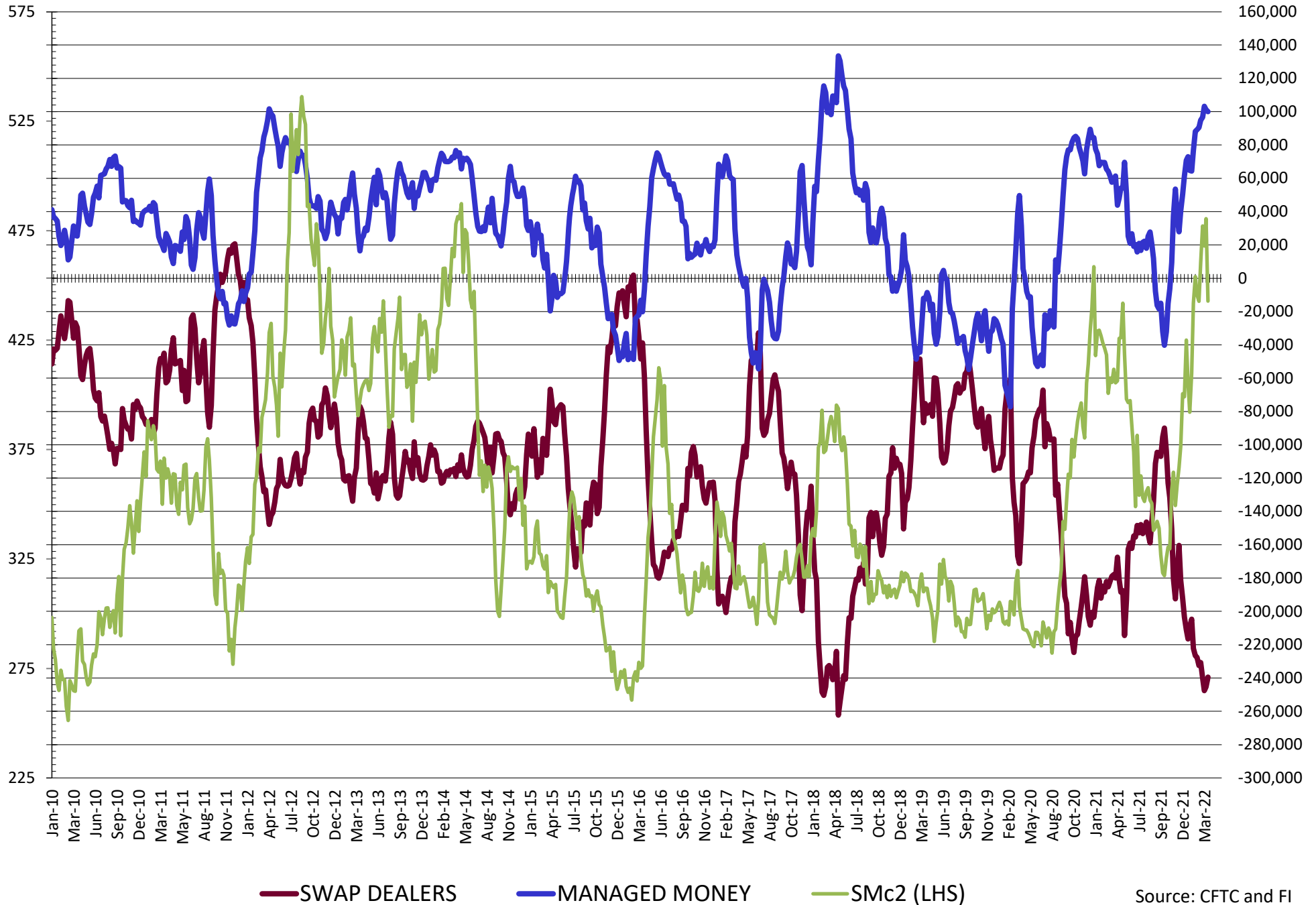
	PRODUCER / MERCHANT / PROCESSOR / USER				(INDEX/ETF) SWAP DEALERS				(CTA/CPO/OTHER UNREGISTERED) MANAGED MONEY											
	29-Mar	22-Mar	15-Mar	8-Mar	29-Mar	22-Mar	15-Mar	8-Mar	29-Mar	22-Mar	15-Mar	8-Mar								
	WHEAT																			
Chicago	(93.5)	(95.4)	(97.1)	(99.1)	78.0	79.1	81.3	84.6	19.4	19.5	22.9	20.2								
Kansas City	(69.7)	(71.0)	(72.3)	(72.8)	22.3	23.1	24.7	26.1	45.3	45.8	44.2	44.7								
Minneapolis	(25.2)	(27.0)	(27.3)	(24.9)	0.4	0.6	0.8	0.9	14.0	14.2	14.4	12.9								
All Wheat	(188.4)	(193.5)	(196.8)	(196.8)	100.7	102.8	106.7	111.6	78.8	79.5	81.6	77.8								
CORN	(694.3)	(737.1)	(726.3)	(732.0)	290.3	282.3	275.4	296.2	354.6	384.1	372.9	368.8								
OATS	0.0	0.0	0.0	0.0	0.0	0.0	0.0	0.0	0.0	0.0	0.0	0.0								
SOYBEANS	(276.9)	(298.3)	(295.5)	(302.2)	125.4	124.8	129.0	137.1	156.3	174.2	170.7	171.7								
SOY OIL	(186.1)	(194.5)	(197.5)	(199.1)	88.8	88.2	88.2	91.9	78.6	84.1	89.2	85.7								
SOY MEAL	(239.5)	(245.3)	(247.6)	(240.0)	92.3	92.8	92.4	93.8	99.9	101.2	103.2	96.6								
	TOTAL				OTHER REPORTABLE				NON REPORTABLE											
	OPEN INTEREST				29-Mar				22-Mar				15-Mar				8-Mar			
	29-Mar	22-Mar	15-Mar	8-Mar	29-Mar	22-Mar	15-Mar	8-Mar	29-Mar	22-Mar	15-Mar	8-Mar	29-Mar	22-Mar	15-Mar	8-Mar				
WHEAT																				
Chicago	471,606	518,617	513,596	518,859	0.6	(0.1)	(0.6)	2.8	(4.4)	(3.1)	(6.5)	(8.5)								
Kansas City	204,327	208,907	209,692	214,381	1.9	2.7	3.1	2.5	0.2	(0.6)	0.3	(0.5)								
Minneapolis	68,710	68,469	67,915	69,700	6.6	6.9	7.6	6.1	4.1	5.3	4.6	5.0								
All Wheat	744,643	795,993	791,203	802,940	9.1	9.5	10.0	11.3	(0.1)	1.6	(1.5)	(4.0)								
CORN	2,062,031	2,149,285	2,083,011	2,054,595	94.5	107.0	105.3	99.8	(45.2)	(36.4)	(36.4)	(36.4)								
OATS	0	0	0	0	0.0	0.0	0.0	0.0	0.0	0.0	0.0	0.0								
SOYBEANS	982,306	1,016,326	999,098	1,003,054	24.8	25.8	21.6	22.9	(29.6)	(26.6)	(25.8)	(29.5)								
SOY OIL	400,221	415,464	414,017	418,231	3.6	4.1	5.5	5.0	15.2	18.1	14.6	16.6								
SOY MEAL	455,338	457,776	447,497	439,326	14.9	19.1	19.1	17.1	32.4	32.2	33.0	32.5								

SOURCE: CFTC & FI

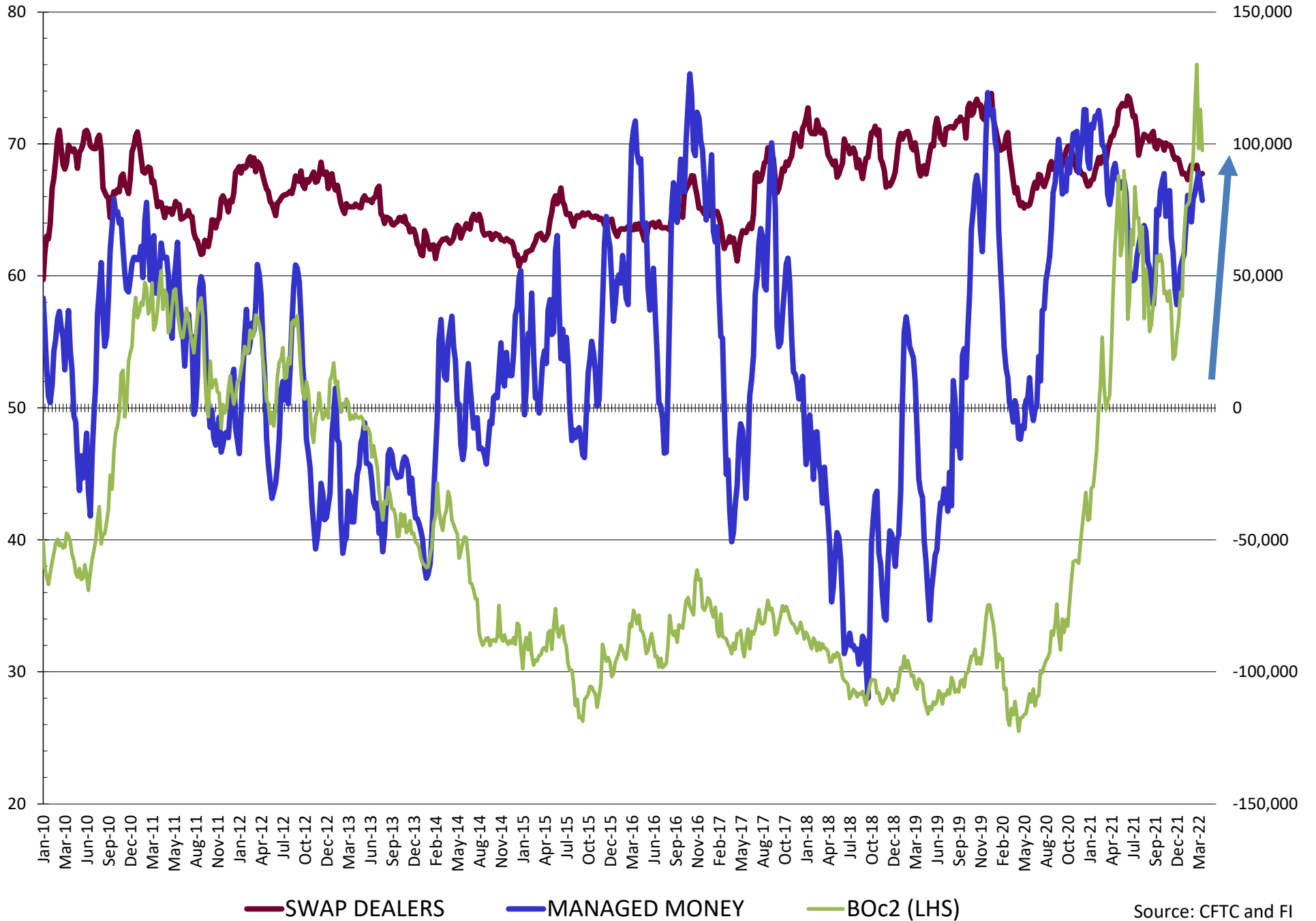
NET POSITION FUTURES AND OPTIONS OF SWAP AND MANAGED FUNDS IN SOYBEANS



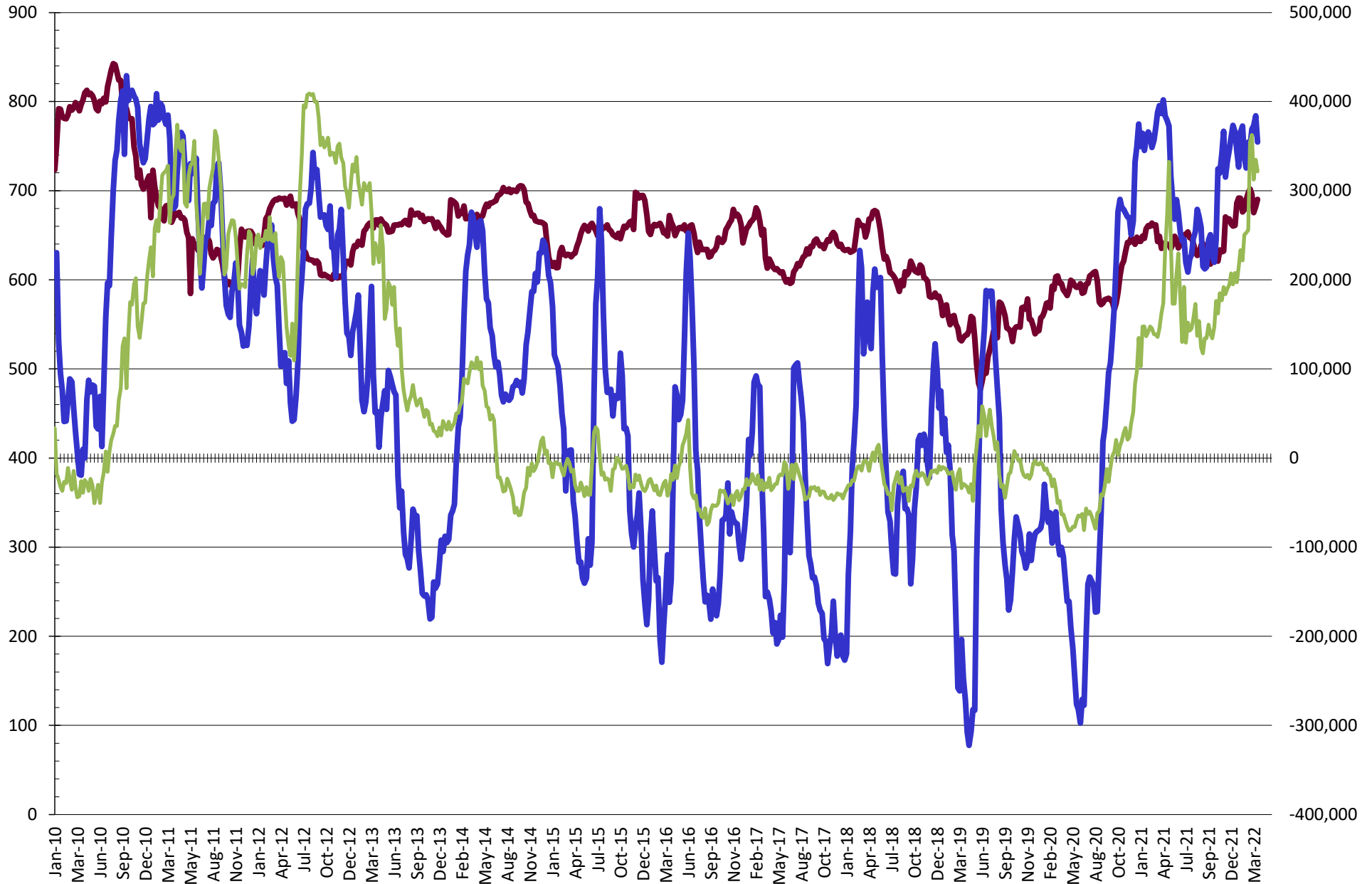
NET POSITION FUTURES AND OPTIONS OF SWAP AND MANAGED FUNDS IN SOYBEAN MEAL



NET POSITION FUTURES AND OPTIONS OF SWAP AND MANAGED FUNDS IN SOYBEAN OIL

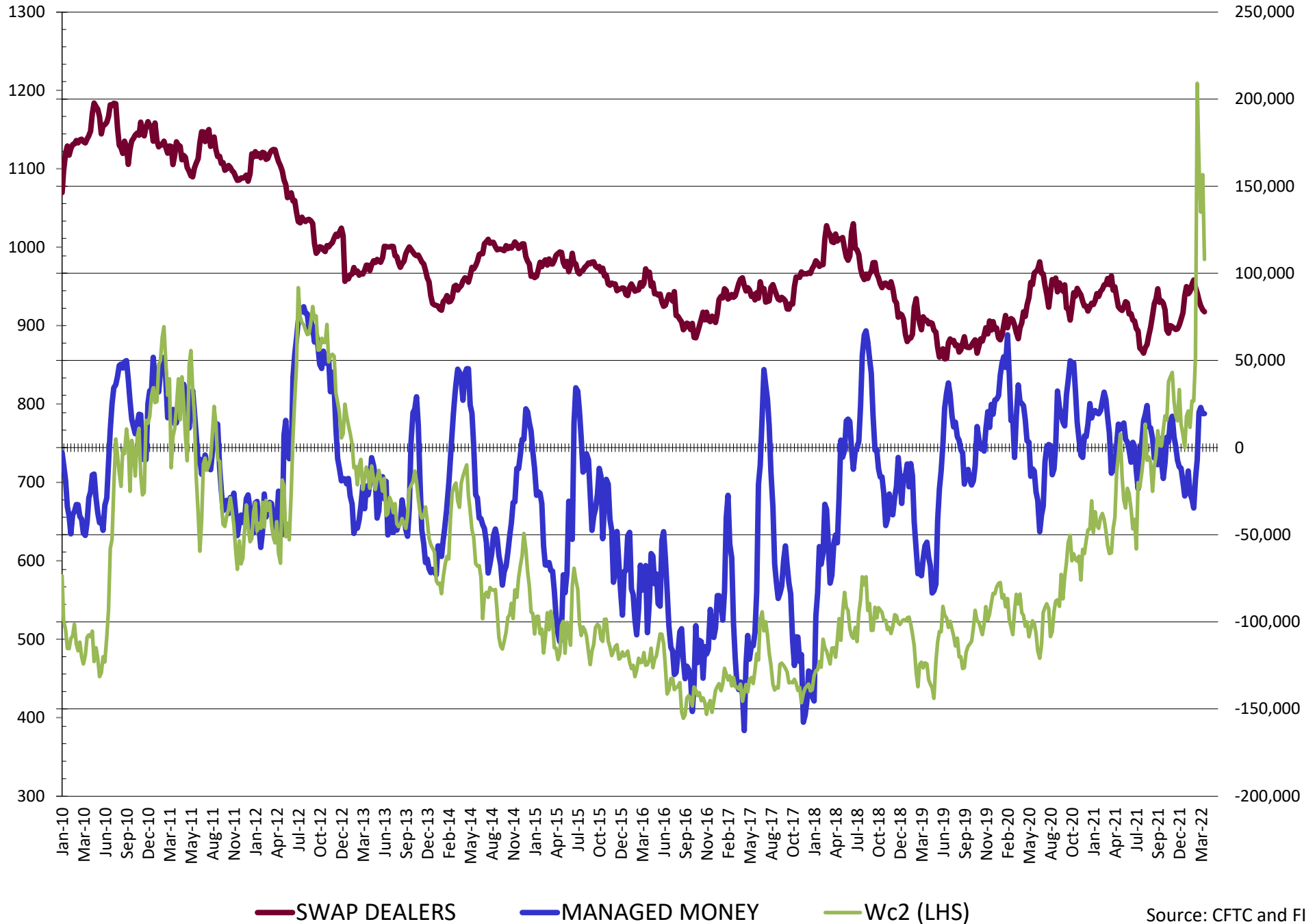


NET POSITION FUTURES AND OPTIONS OF SWAP AND MANAGED FUNDS IN CORN

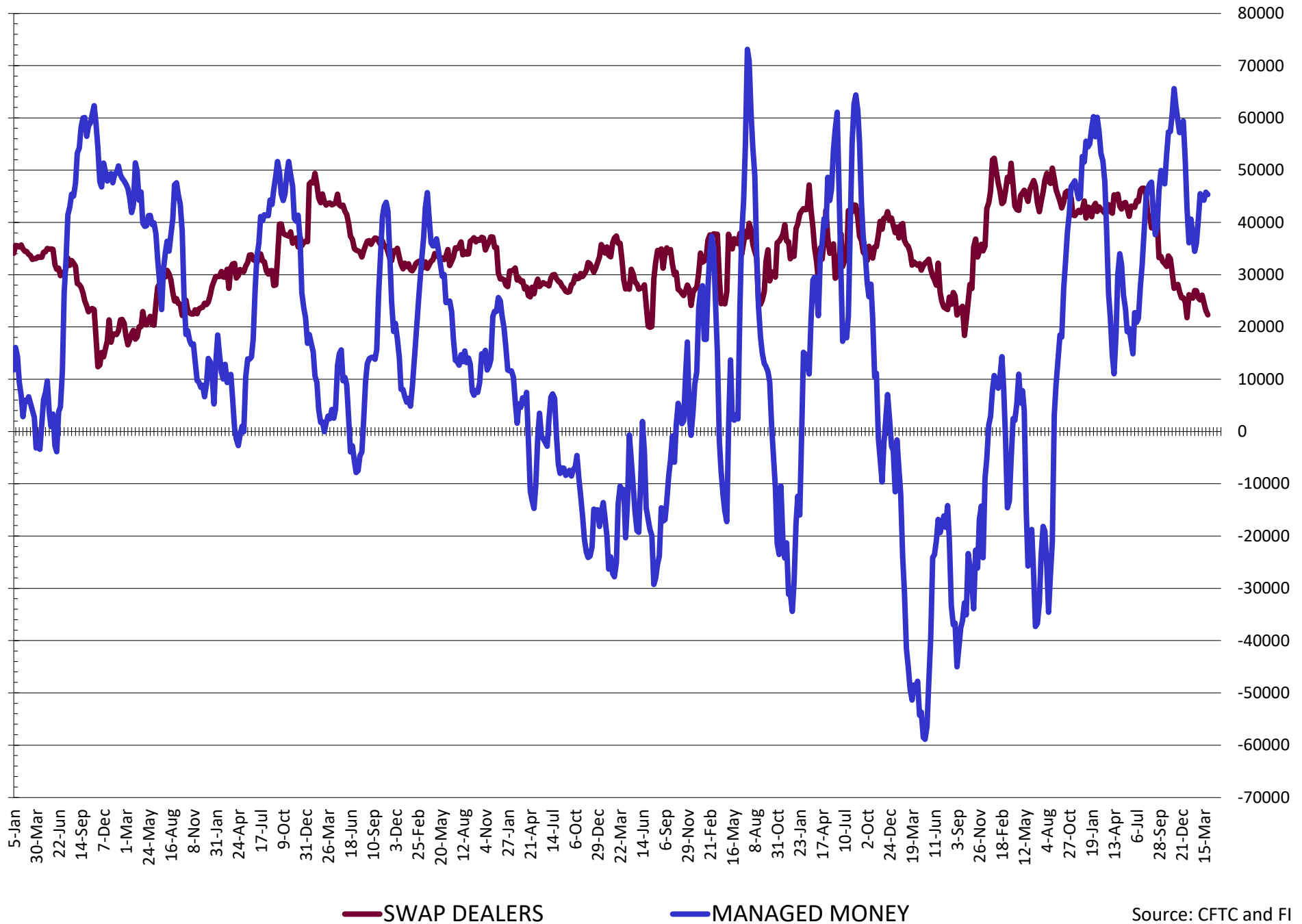


— SWAP DEALERS
 — MANAGED MONEY
 — Cc2 (LHS)

NET POSITION FUTURES AND OPTIONS OF SWAP AND MANAGED FUNDS IN CHICAGO WHEAT

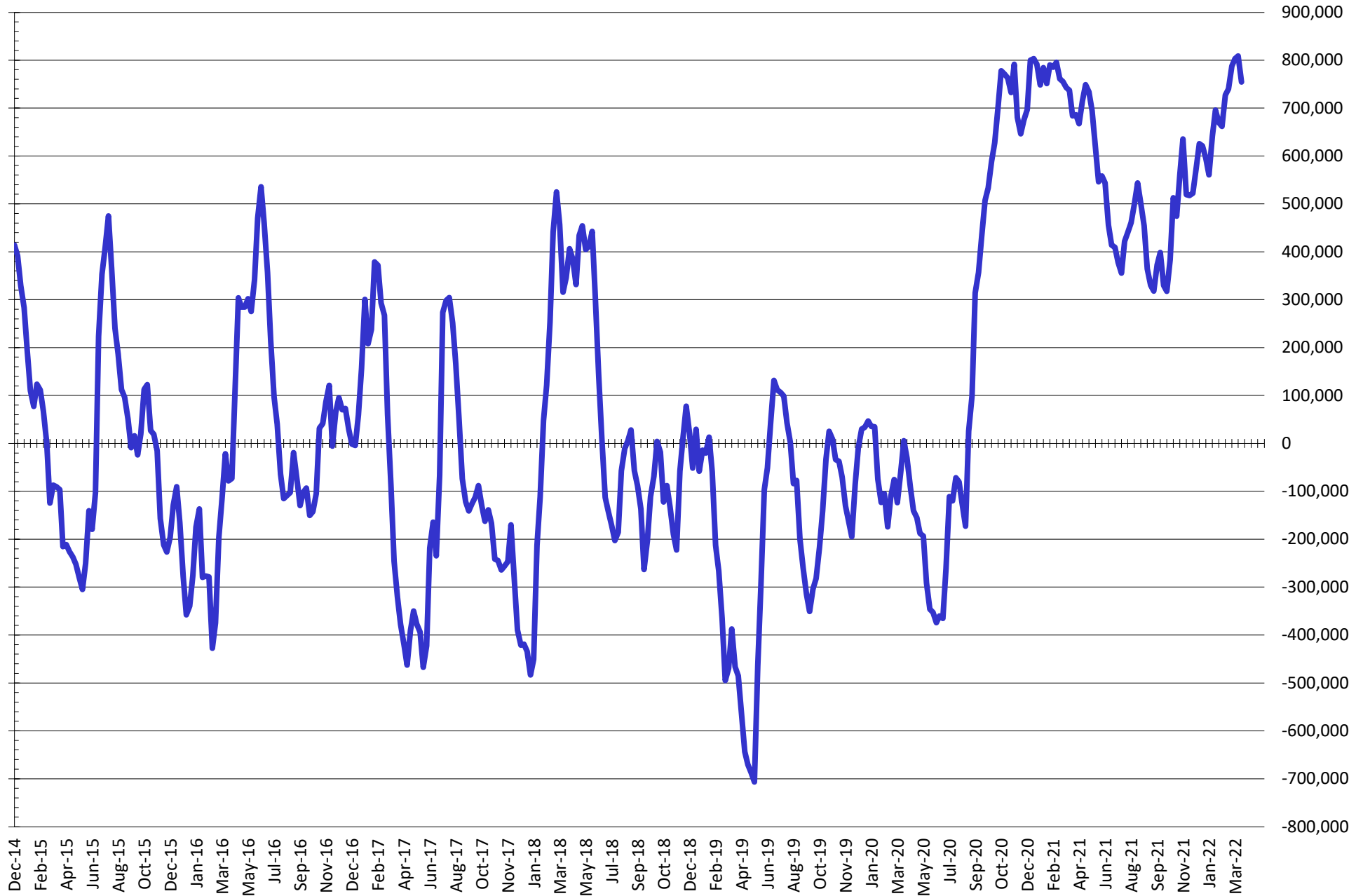


NET POSITION FUTURES AND OPTIONS OF SWAP DEALERS AND MANAGED FUNDS IN KANSAS WHEAT



Source: CFTC and FI
4/1/2022

NET POSITION FUTURES AND OPTIONS OF SWAP AND MANAGED FUNDS IN COMBINED SRW, HRW, CORN, SOYBEANS, SOYMEAL AND SOYOIL



— Net Managed Money

Source: CFTC and FI
4/1/2022

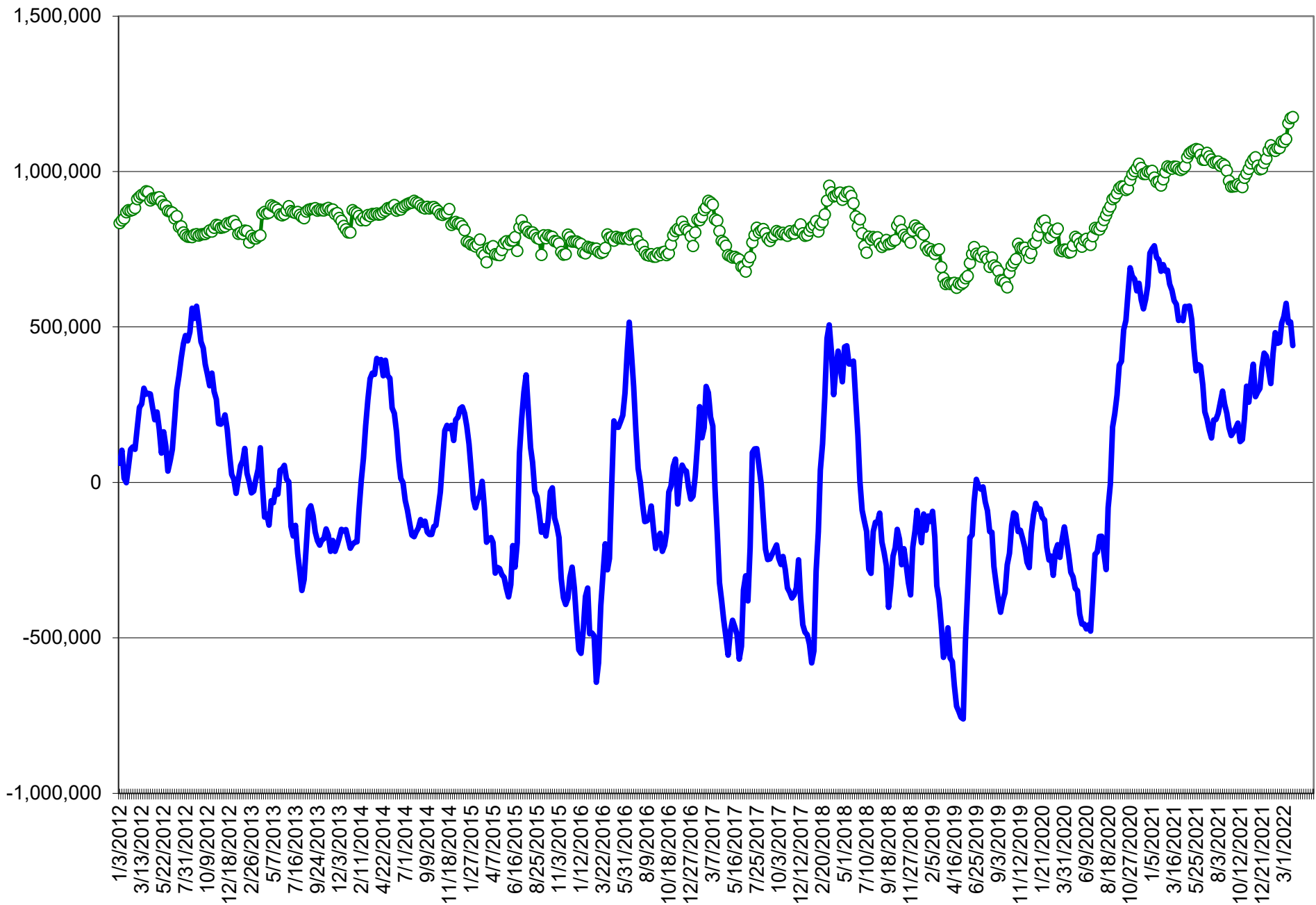
COMMITMENT OF TRADERS
FUTURES & OPTIONS NET POSITIONS (INDEX BROKEN OUT)
AS OF 03/29/2022
(IN THOUSAND CONTRACTS)

	COMMERCIAL				(FUND) NON COMMERCIAL				(SPEC) NON-REPORTABLE			
	29-Mar	22-Mar	15-Mar	8-Mar	29-Mar	22-Mar	15-Mar	8-Mar	29-Mar	22-Mar	15-Mar	8-Mar
	WHEAT											
Chicago	(118.6)	(120.7)	(121.5)	(122.8)	(43.2)	(41.3)	(37.5)	(27.4)	(4.4)	(3.1)	(6.5)	(8.5)
Kansas City	(79.3)	(80.7)	(81.2)	(84.3)	15.8	16.3	15.6	25.3	0.2	(0.6)	0.3	(0.5)
Minneapolis	-	-	-	-	-	-	-	-	-	-	-	-
All Wheat	(197.9)	(201.4)	(202.7)	(207.1)	(27.4)	(25.0)	(21.9)	(2.1)	(4.3)	(3.7)	(6.1)	(8.9)
CORN	(701.7)	(743.1)	(735.8)	(733.9)	261.3	304.7	296.0	324.1	(45.2)	(36.4)	(27.3)	(32.8)
OATS	-	-	-	-	-	-	-	-	-	-	-	-
SOYBEANS	(276.8)	(302.8)	(288.3)	(294.1)	93.5	112.1	106.0	129.2	(29.6)	(26.6)	(25.8)	(29.5)
SOY OIL	(179.0)	(189.4)	(192.8)	(193.1)	47.8	53.4	59.3	57.5	15.2	18.1	14.6	16.6
SOY MEAL	(228.5)	(234.4)	(236.6)	(229.9)	65.2	70.9	73.3	67.3	32.4	32.2	33.0	32.5

	TOTAL OPEN INTEREST				(INDEX) COMMERCIAL INDEX TRADERS				(INDEX) % NET OF TOTAL OPEN INTEREST			
	29-Mar	22-Mar	15-Mar	8-Mar	29-Mar	22-Mar	15-Mar	8-Mar	29-Mar	22-Mar	15-Mar	8-Mar
	WHEAT											
Chicago	471,606	518,617	513,596	518,859	166.2	165.0	165.4	158.6	35.2%	31.8%	32.2%	30.6%
Kansas City	204,327	208,907	209,692	214,381	63.4	65.0	65.3	59.5	31.0%	31.1%	31.1%	27.8%
Minneapolis	-	-	-	-	-	-	-	-	-	-	-	-
All Wheat	675,933	727,524	723,288	733,240	229.6	230.0	230.8	218.1	34.0%	31.6%	31.9%	29.7%
CORN	2,062,031	2,149,285	2,083,011	2,054,595	485.5	474.8	467.0	442.5	23.5%	22.1%	22.4%	21.5%
OATS	-	-	-	-	-	-	-	-	-	-	-	-
SOYBEANS	982,306	1,016,326	999,098	1,003,054	212.9	217.2	208.0	194.4	21.7%	21.4%	20.8%	19.4%
SOY OIL	400,221	415,464	414,017	418,231	116.0	117.9	118.9	119.0	29.0%	28.4%	28.7%	28.4%
SOY MEAL	455,338	457,776	447,497	439,326	130.8	131.3	130.3	130.1	28.7%	28.7%	29.1%	29.6%

SOURCE: CFTC & FI

NET POSITION FUTURES AND OPTIONS OF SPECULATORS AND INDEX FUNDS IN COMBINED SRW, HRW, CORN, SOYBEANS, SOYMEAL AND SOYOIL



Source: CFTC and FI

○ Net Index

— Net Speculator

Traditional Daily Estimate of Funds 3/29/22

	(Neg)-"Short"	Pos-"Long"			
Actual less Est.	(10.3)	10.9	43.1	(3.0)	3.7
	Corn	Bean	Chi. Wheat	Meal	Oil
Actual	482.1	206.5	13.6	121.8	87.3
30-Mar	11.0	9.0	7.0	5.0	3.0
31-Mar	15.0	(23.0)	(5.0)	(5.0)	(8.0)
1-Apr	(4.0)	(15.0)	(4.0)	(9.0)	4.0
4-Apr					
5-Apr					
FI Est. of Futures Only 3/29/22	504.1	177.5	11.6	112.8	86.3
FI Est. Futures & Options	471.1	152.1	18.0	105.8	81.2
Futures only record long "Traditional Funds"	547.7 1/26/2021	280.9 11/10/2020	86.5 8/7/2018	167.5 5/1/2018	160.2 11/1/2016
Futures only record short	(235.0) 6/9/2020	(118.3) 4/30/2019	(130.0) 4/25/2017	(49.5) 3/1/2016	(69.8) 9/18/2018
Futures and options record net long	557.6 1/12/2021	270.9 10/6/2020	64.8 8/7/2012	132.1 5/1/2018	159.2 1/1/2016
Futures and options record net short	(270.6) 4/26/2019	(132.0) 4/30/2019	(143.3) 4/25/2017	(64.1) 3/1/2016	(77.8) 9/18/2018

Managed Money Daily Estimate of Funds 3/29/22

	Corn	Bean	Chi. Wheat	Meal	Oil
Latest CFTC Fut. Only	341.6	151.0	19.6	99.6	79.7
Latest CFTC F&O	354.6	156.3	19.4	99.9	78.6
FI Est. Managed Fut. Only	364	122	18	91	79
FI Est. Managed Money F&O	377	127	17	91	78

Index Funds Latest Positions (as of last Tuesday)

Index Futures & Options	485.5	212.9	166.2	NA	116.0
Change From Previous Week	10.8	(4.3)	1.2	NA	(1.9)

Source: Reuters, CFTC & FI (FI est. are noted with latest date)

Disclaimer

TO CLIENTS/PROSPECTS OF FUTURES INTERNATIONAL, SEE RISK DISCLOSURE BELOW:

THIS COMMUNICATION IS CONVEYED AS A SOLICITATION FOR ENTERING INTO A DERIVATIVES TRANSACTION.

Any trading recommendations and market or other information to Customer by Futures International (FI), although based upon information obtained from sources believed by FI to be reliable may not be accurate and may be changed without notice to customer. FI makes no guarantee as to the accuracy or completeness of any of the information or recommendations furnished to Customer. Customer understands that FI, its managers, employees and/or affiliates may have a position in commodity futures, options or other derivatives which may not be consistent with the recommendations furnished by FI to Customer.

The risk of trading futures and options and other derivatives involves a substantial risk of loss and is not suitable for all persons. In purchasing an option, the risk is limited to the premium paid, and all commissions and fees involved with the trade. When an option is shorted or written, the writer of the option has unlimited risk with respect to the option written. The use of options strategies such as a straddles and strangles involve multiple option positions and may substantially increase the amount of commissions and fees paid to execute the strategy. Option prices do not necessarily move in tandem with cash or futures prices. Each person must consider whether a particular trade, combination of trades or strategy is suitable for that person's financial means and objectives.

This material may include discussions of seasonal patterns, however, futures prices have already factored in the seasonal aspects of supply and demand, and seasonal patterns are no indication of future market trends. Finally, past performance is not indicative of future results.

This communication may contain links to third party websites which are not under the control of FI and FI is not responsible for their content. Products and services are offered only in jurisdictions where solicitation and sale are lawful, and in accordance with applicable laws and regulations in each such jurisdiction.