

US Weekly Petroleum Status Report - Ethanol

	Ethanol Production		Change		Ethanol Stocks		Change		Days of Ethanol
	Mbbl	Last Week	Last Year	Mbbl	Last Week	Last Year			
1/21/2022	1035	(18)	10.9%	24,476	884	3.7%	22.8		
1/28/2022	1041	6	11.2%	25,854	1,378	6.3%	23.5		
2/4/2022	994	(47)	6.1%	24,799	(1,055)	4.2%	26.0		
2/11/2022	1009	15	10.8%	25,483	684	4.9%	24.6		
2/18/2022	1024	15	55.6%	25,507	24	11.9%	24.9		
2/25/2022	997	(27)	17.4%	24,933	(574)	11.2%	25.6		
3/4/2022	1028	31	9.6%	25,271	338	14.5%	24.3		
3/11/2022	1026	(2)	5.7%	25,945	674	21.6%	24.6		
3/18/2022	1042	16	13.0%	26,148	203	19.9%	24.9		
3/25/2022	1036	(6)	7.4%	26,529	381	25.6%	25.2		

Source: EIA and FI

US Weekly Ethanol By PADD

	25-Mar	18-Mar		Weekly	4-Week	YOY
	2022	2022	Change	Percent	Percent	Percent
Ethanol Stocks						
Total Stocks	26529	26148	381	1.5%	5.0%	25.6%
East Coast PADD 1	8431	7962	469	5.9%	7.4%	14.0%
Midwest PADD 2	10557	10178	379	3.7%	3.3%	47.8%
Gulf Coast PADD 3	4364	4999	(635)	-12.7%	6.1%	0.9%
Rocky Mt. PADD 4	369	357	12	3.4%	-2.1%	10.8%
West Coast PADD 5	2808	2652	156	5.9%	3.6%	46.6%
	25-Mar	18-Mar		Weekly	4-Week	Percent
Plant Production	2022	2022	Change	Percent	Percent	Percent
Total Production	1036	1042	(6)	-0.6%	0.8%	7.4%
East Coast PADD 1	12	11	1	9.1%	0.0%	
Midwest PADD 2	982	988	(6)	-0.6%	0.5%	7.1%
Gulf Coast PADD 3	19	21	(2)	-9.5%	11.8%	
Rocky Mt. PADD 4	15	13	2	15.4%	7.1%	
West Coast PADD 5	8	9	(1)	-11.1%	0.0%	

Source: EIA and FI

Source: EIA and FI

Page 1	Weekly Ethanol Snapshot	Page 12	Net Ethanol Blend
Page 2	Ethanol Table	Page 13	Selected Commodities Indexed vs. WTI \$
Page 3	Production Chart	Page 14	Ethanol-RBOB
Page 4	Production and Stocks	Page 15	Ethanol Crush with implied costs
Page 5	Ethanol Stocks	Page 16	Chicago Ethanol with straight corn crush
Page 6	PADD Ethanol Stocks	Page 17	CBOT corn crush with IL DDGS
Page 7	Gasoline Ethanol Stocks	Page 18	Disclaimer
Page 8	Gasoline Supplied		
Page 9	Ethanol Imports		
Page 10	US Annualized Implied Corn Use		
Page 11	Net Ethanol Consumption		

Source: Reuters, Bloomberg, EIA, CME and FI

Created by Terry Reilly

Futures International

treilly@futures-int.com

US Weekly Petroleum Status Report

	Ethanol Production 000 Barrels Per Day	Change from Last Week	Change from Last Month	Change from Last Year	Ethanol Stocks 000 Barrels	Change from Last Week	Change from Last Month	Change from Last Year	Days of Ethanol Inventory
3/12/2021	971	33	6.6%	-6.2%	21,340	(730)	-12.2%	-13.2%	22.7
3/19/2021	922	(49)	40.1%	-8.3%	21,809	469	-4.3%	-9.7%	23.1
3/26/2021	965	43	13.7%	14.9%	21,114	(695)	-5.8%	-17.9%	22.6
4/2/2021	975	10	3.9%	45.1%	20,642	(472)	-6.5%	-23.8%	21.7
4/9/2021	941	(34)	-3.1%	65.1%	20,518	(124)	-3.9%	-25.3%	21.9
4/16/2021	941	0	2.1%	67.1%	20,447	(71)	-6.2%	-26.2%	21.8
4/23/2021	945	4	-2.1%	76.0%	19,736	(711)	-6.5%	-25.1%	21.6
4/30/2021	952	7	-2.4%	59.2%	20,440	704	-1.0%	-20.2%	20.7
5/7/2021	979	27	4.0%	58.7%	19,393	(1047)	-5.5%	-19.8%	20.9
5/14/2021	1032	53	9.7%	55.7%	19,433	40	-5.0%	-17.7%	18.8
5/21/2021	1011	(21)	7.0%	39.6%	18,980	(453)	-3.8%	-18.1%	19.2
5/28/2021	1034	23	8.6%	35.2%	19,588	608	-4.2%	-12.8%	18.4
6/4/2021	1067	33	9.0%	27.5%	19,960	372	2.9%	-8.4%	18.4
6/11/2021	1025	(42)	-0.7%	21.9%	20,602	642	6.0%	-3.5%	19.5
6/18/2021	1048	23	3.7%	17.4%	21,120	518	11.3%	0.4%	19.7
6/25/2021	1058	10	2.3%	17.6%	21,572	452	10.1%	7.0%	20.0
7/2/2021	1067	9	0.0%	16.7%	21,149	(423)	6.0%	2.6%	20.2
7/9/2021	1041	(26)	1.6%	11.8%	21,134	(15)	2.6%	2.6%	20.3
7/16/2021	1028	(13)	-1.9%	13.2%	22,518	1384	6.6%	13.7%	20.6
7/23/2021	1014	(14)	-4.2%	5.8%	22,733	215	5.4%	12.1%	22.2
7/30/2021	1013	(1)	-5.1%	8.8%	22,649	(84)	7.1%	11.3%	22.4
8/6/2021	986	(27)	-5.3%	7.4%	22,276	(373)	5.4%	12.8%	23.0
8/13/2021	973	(13)	-5.4%	5.1%	21,558	(718)	-4.3%	6.4%	22.9
8/20/2021	933	(40)	-8.0%	0.2%	21,223	(335)	-6.6%	4.0%	23.1
8/27/2021	905	(28)	-10.7%	-1.8%	21,110	(113)	-6.8%	1.1%	23.5
9/3/2021	923	18	-6.4%	-1.9%	20,390	(720)	-8.5%	2.0%	22.9
9/10/2021	937	14	-3.7%	1.2%	20,010	(380)	-7.2%	1.1%	21.8
9/17/2021	926	(11)	-0.8%	2.2%	20,111	101	-5.2%	0.6%	21.6
9/24/2021	914	(12)	1.0%	3.7%	20,220	109	-4.2%	2.7%	22.0
10/1/2021	978	64	6.0%	6.0%	19,931	(289)	-2.3%	1.3%	20.7
10/8/2021	1032	54	10.1%	10.1%	19,847	(84)	-0.8%	-0.8%	19.3
10/15/2021	1096	64	18.4%	20.0%	20,080	233	-0.2%	1.8%	18.1
10/22/2021	1106	10	21.0%	17.5%	19,925	(155)	-1.5%	1.7%	18.2
10/29/2021	1107	1	13.2%	15.2%	20,129	204	1.0%	2.3%	18.0
11/5/2021	1039	(68)	0.7%	6.3%	20,286	157	2.2%	0.6%	19.4
11/12/2021	1060	21	-3.3%	10.2%	20,081	(205)	0.0%	-0.6%	19.1
11/19/2021	1079	19	-2.4%	9.0%	20,164	83	1.2%	-3.4%	18.6
11/26/2021	1035	(44)	-6.5%	6.3%	20,301	137	0.9%	-4.4%	19.5
12/3/2021	1090	55	4.9%	10.0%	20,464	163	0.9%	-7.3%	18.6
12/10/2021	1087	(3)	2.5%	13.6%	20,883	419	4.0%	-9.0%	18.8
12/17/2021	1051	(36)	-2.6%	7.7%	20,705	(178)	2.7%	-10.6%	19.9
12/24/2021	1059	8	2.3%	13.4%	20,676	(29)	1.8%	-12.0%	19.6
12/31/2021	1048	(11)	-3.9%	12.1%	21,359	683	4.4%	-8.3%	19.7
1/7/2022	1006	(42)	-7.5%	6.9%	22,911	1552	9.7%	-3.3%	21.2
1/14/2022	1053	47	0.2%	11.4%	23,592	681	13.9%	-0.2%	21.8
1/21/2022	1035	(18)	-2.3%	10.9%	24,476	884	18.4%	3.7%	22.8
1/28/2022	1041	6	-0.7%	11.2%	25,854	1378	21.0%	6.3%	23.5
2/4/2022	994	(47)	-1.2%	6.1%	24,799	(1055)	8.2%	4.2%	26.0
2/11/2022	1009	15	-4.2%	10.8%	25,483	684	8.0%	4.9%	24.6
2/18/2022	1024	15	-1.1%	55.6%	25,507	24	4.2%	11.9%	24.9
2/25/2022	997	(27)	-4.2%	17.4%	24,933	(574)	-3.6%	11.2%	25.6
3/4/2022	1028	31	3.4%	9.6%	25,271	338	1.9%	14.5%	24.3
3/11/2022	1026	(2)	1.7%	5.7%	25,945	674	1.8%	21.6%	24.6
3/18/2022	1042	16	1.8%	13.0%	26,148	203	2.5%	19.9%	24.9
3/25/2022	1036	(6)	3.9%	7.4%	26,529	381	6.4%	25.6%	25.2

4-week average change:

10

4-week average change:

399

YOY Δ

CY 929 2019-20 season average

-10.3%

CY 959 2020-21 season average

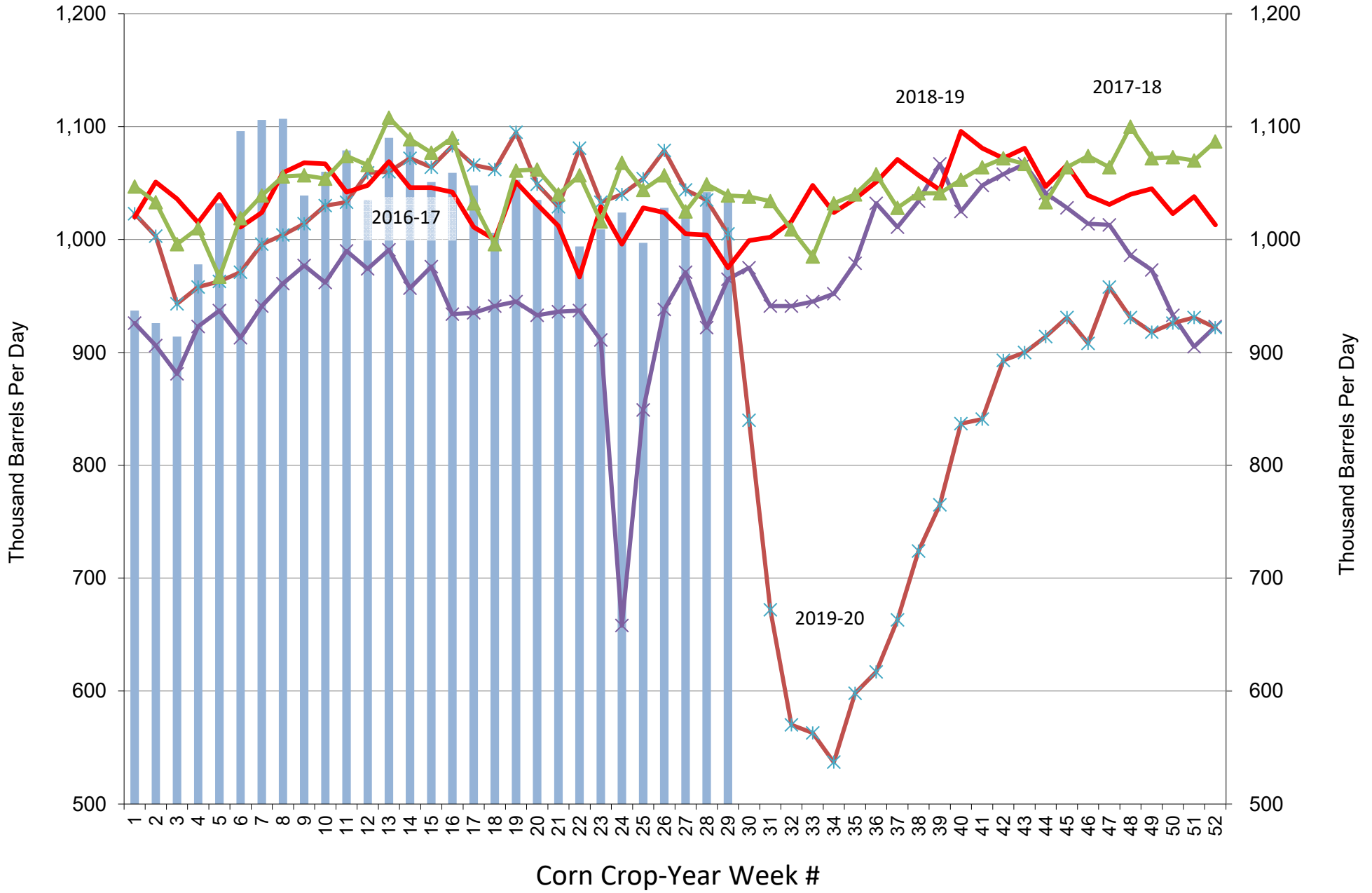
3.3%

CY to Date: 1032 2021-22 season average

7.6%

Source: Reuters, EIA, FI

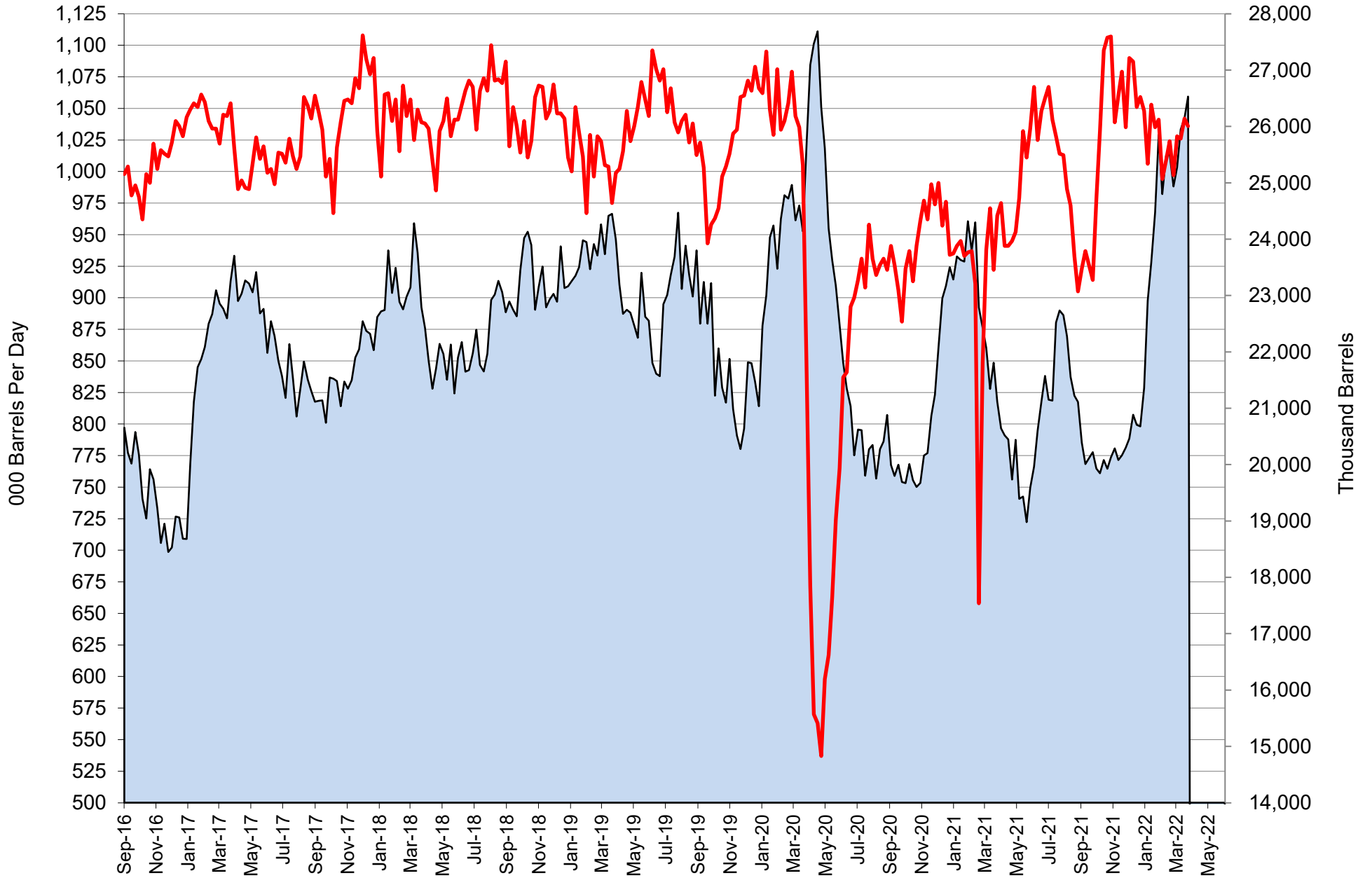
US Weekly Ethanol Production



Source: EIA & FI

■ 2021-22
 ✕ 2020-21
 ✕ 2019-20
 — 2018-19
 ▲ 2017-18

US Weekly Ethanol Production and Stocks

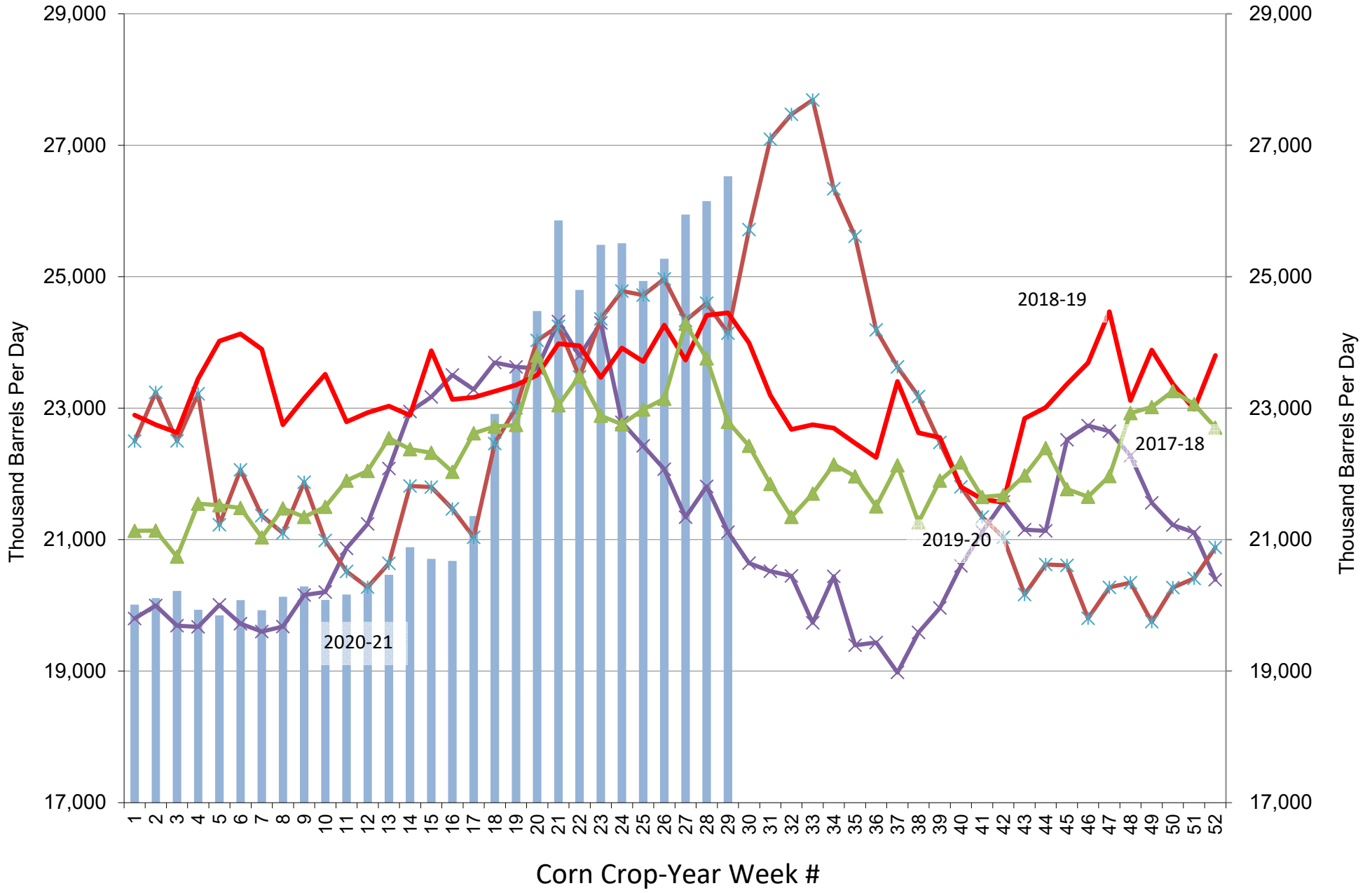


Source: EIA & FI

Stocks (1000bd)

Production (1000bd)

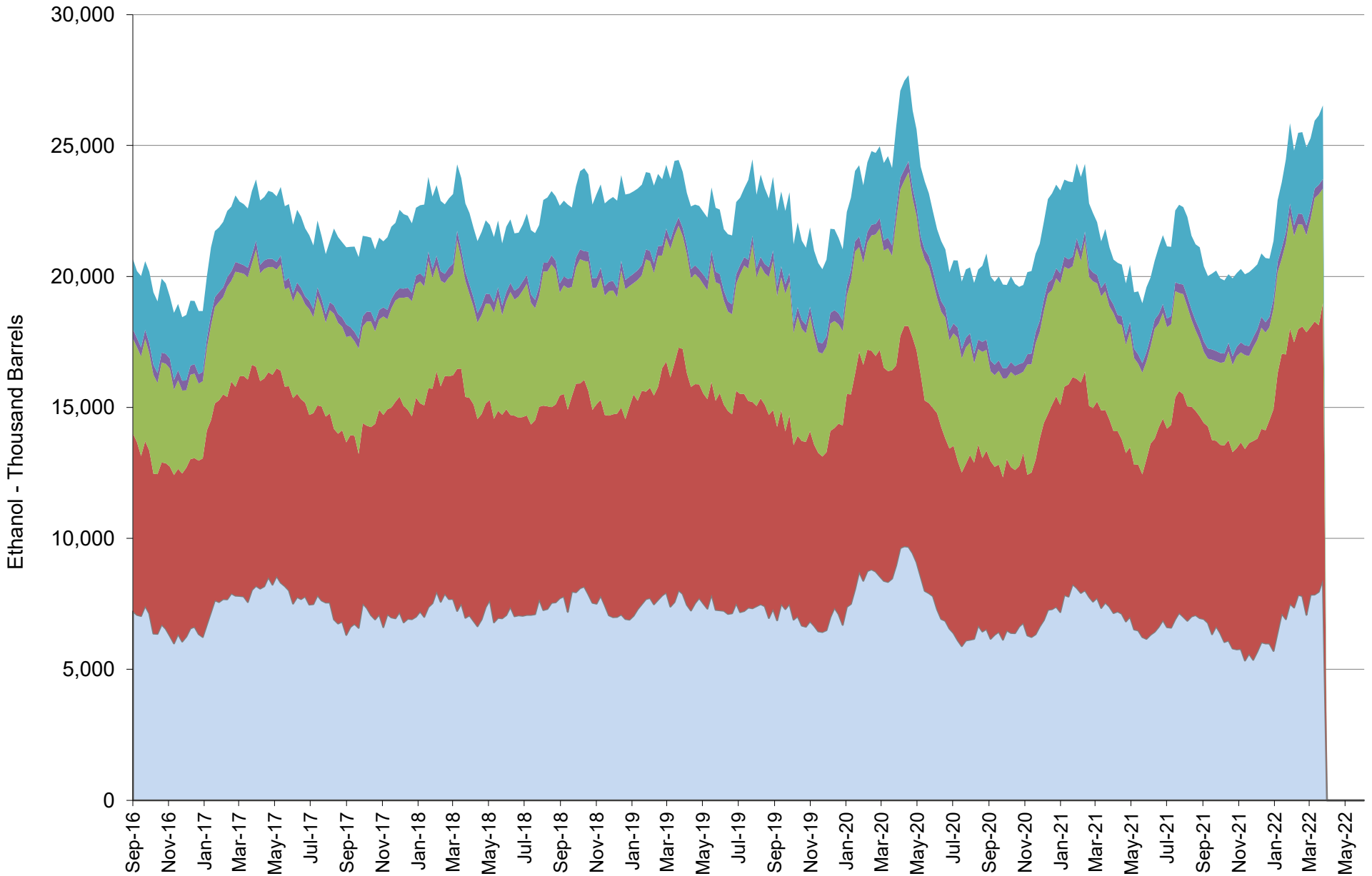
US Weekly Ethanol Stocks (corn crop year)



Source: EIA & FI

■ 2021-22
 ✕ 2020-21
 ✕ 2019-20
 — 2018-19
 ▲ 2017-18

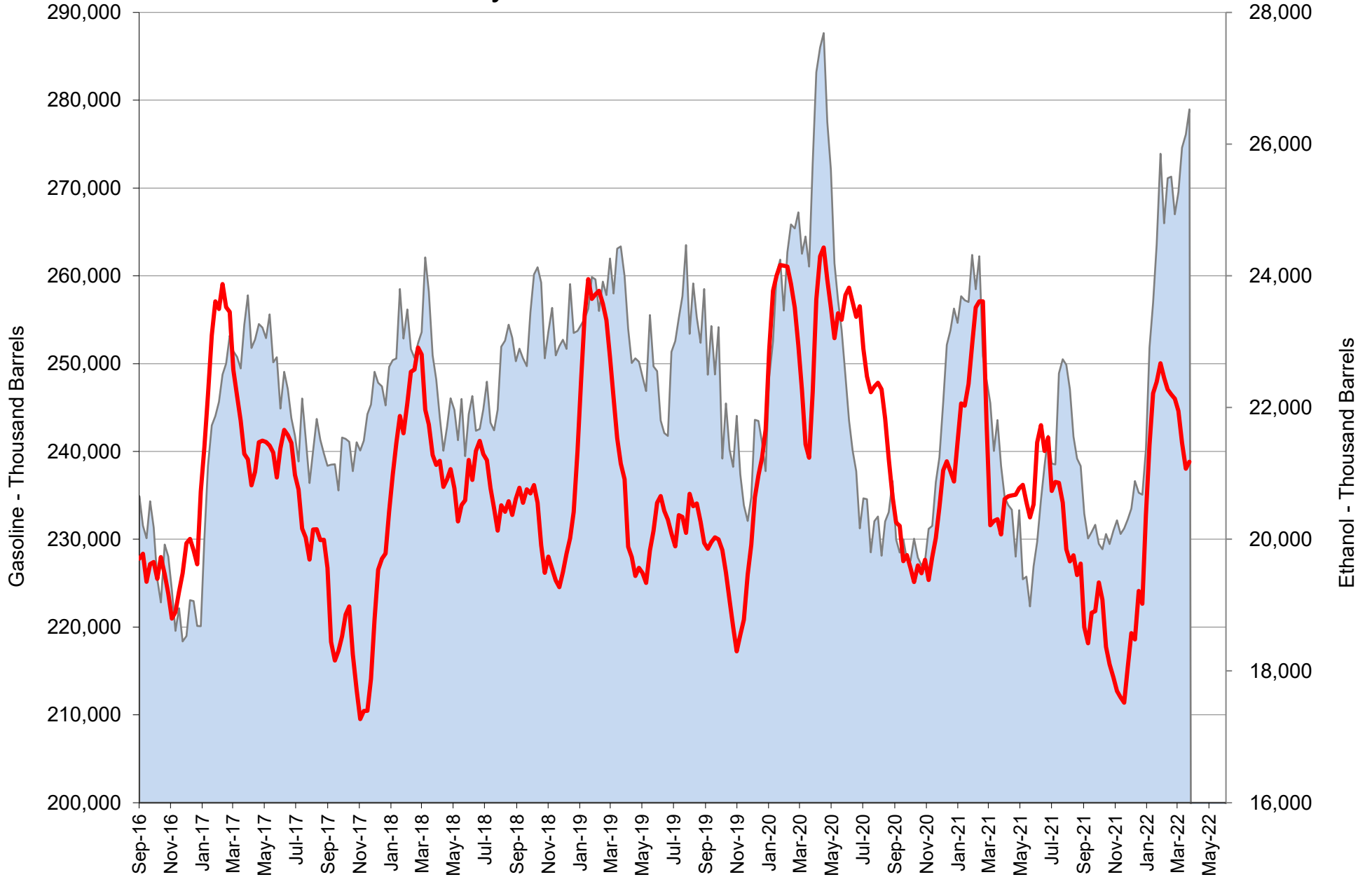
US Weekly Ethanol Stocks by PADD



Source: EIA & FI

■ PADD1 ■ PADD2 ■ PADD3 ■ PADD4 ■ PADD5

US Weekly Gasoline and Ethanol Stocks

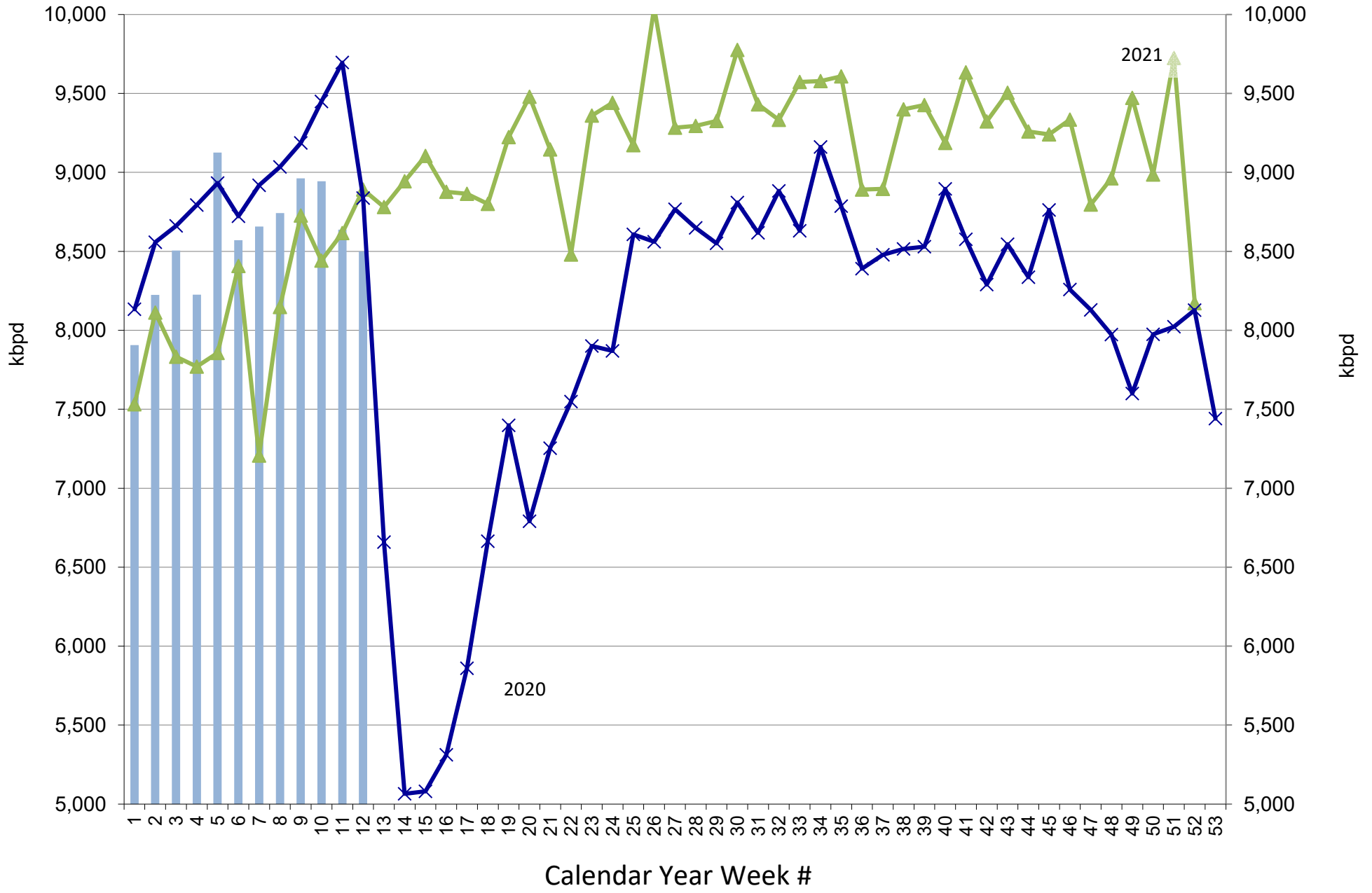


Source: EIA & FI

Stocks (1000bd)

US Gasoline Ending Stocks (thousand barrels)

US Weekly Gasoline Product Supplied



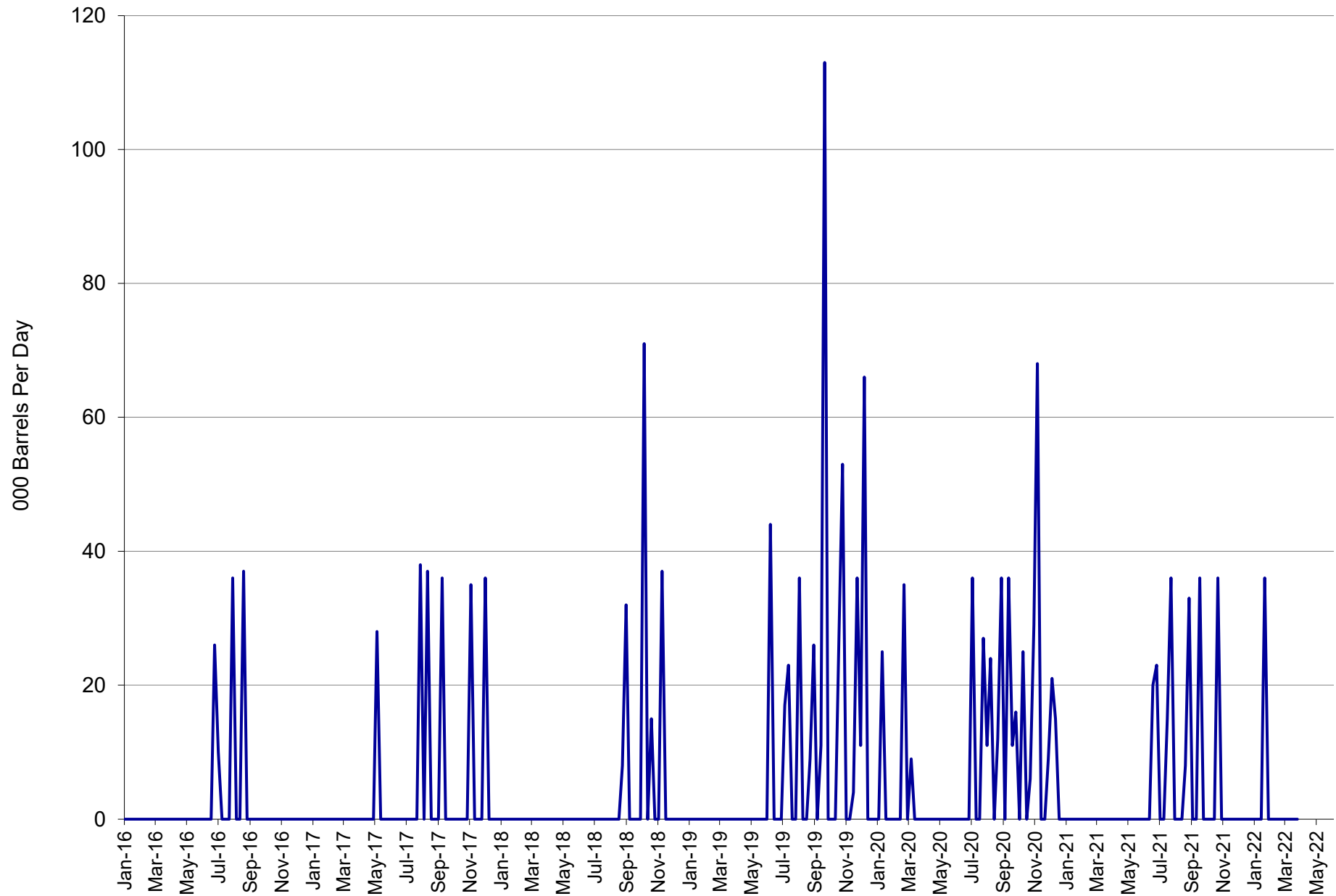
Source: EIA & FI

Gasoline Product Supplied (kbpd)

2021

2020

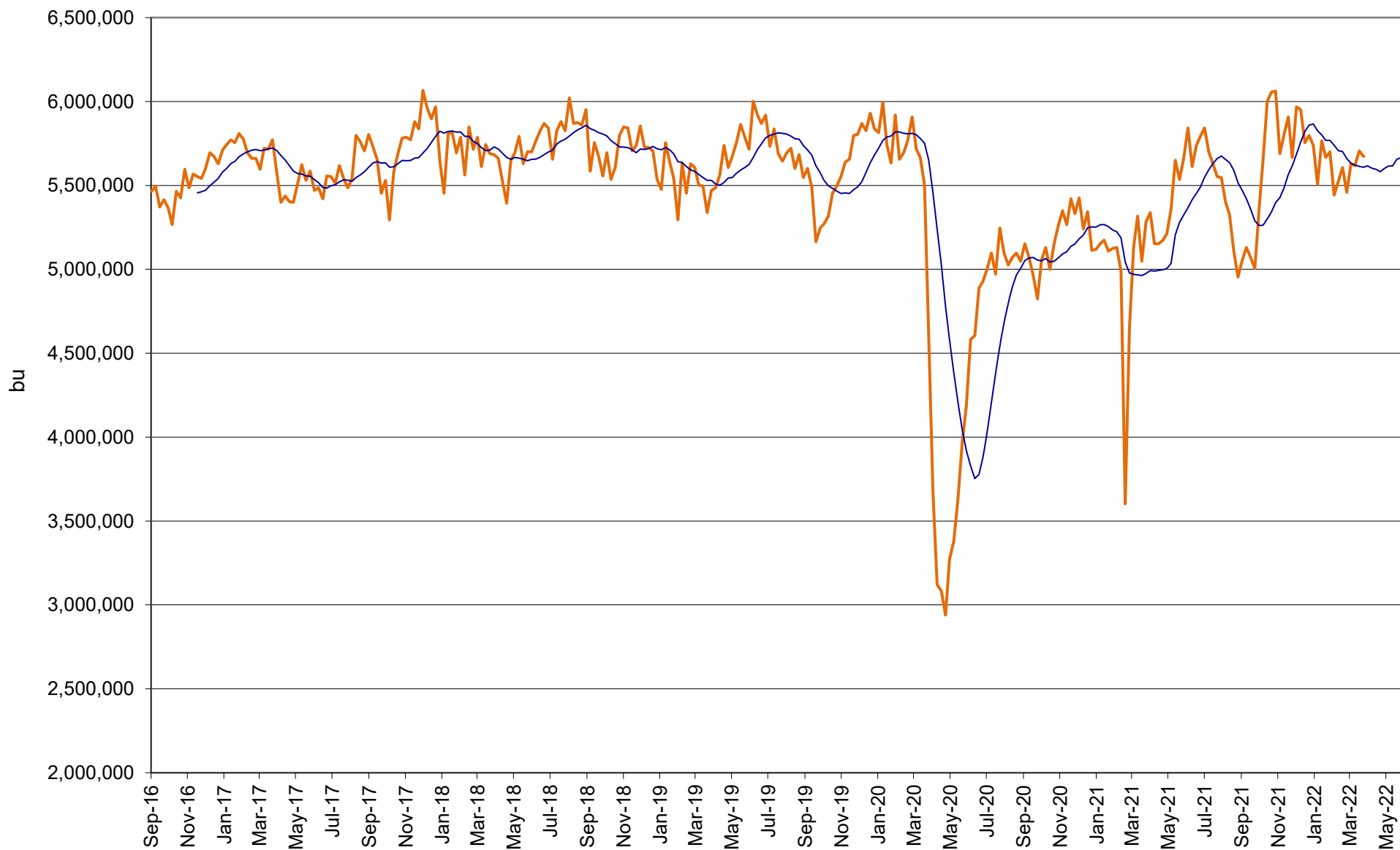
US Weekly Ethanol Imports



Source: EIA & FI

— Imports (BPD)

US Annualized Implied Corn Use

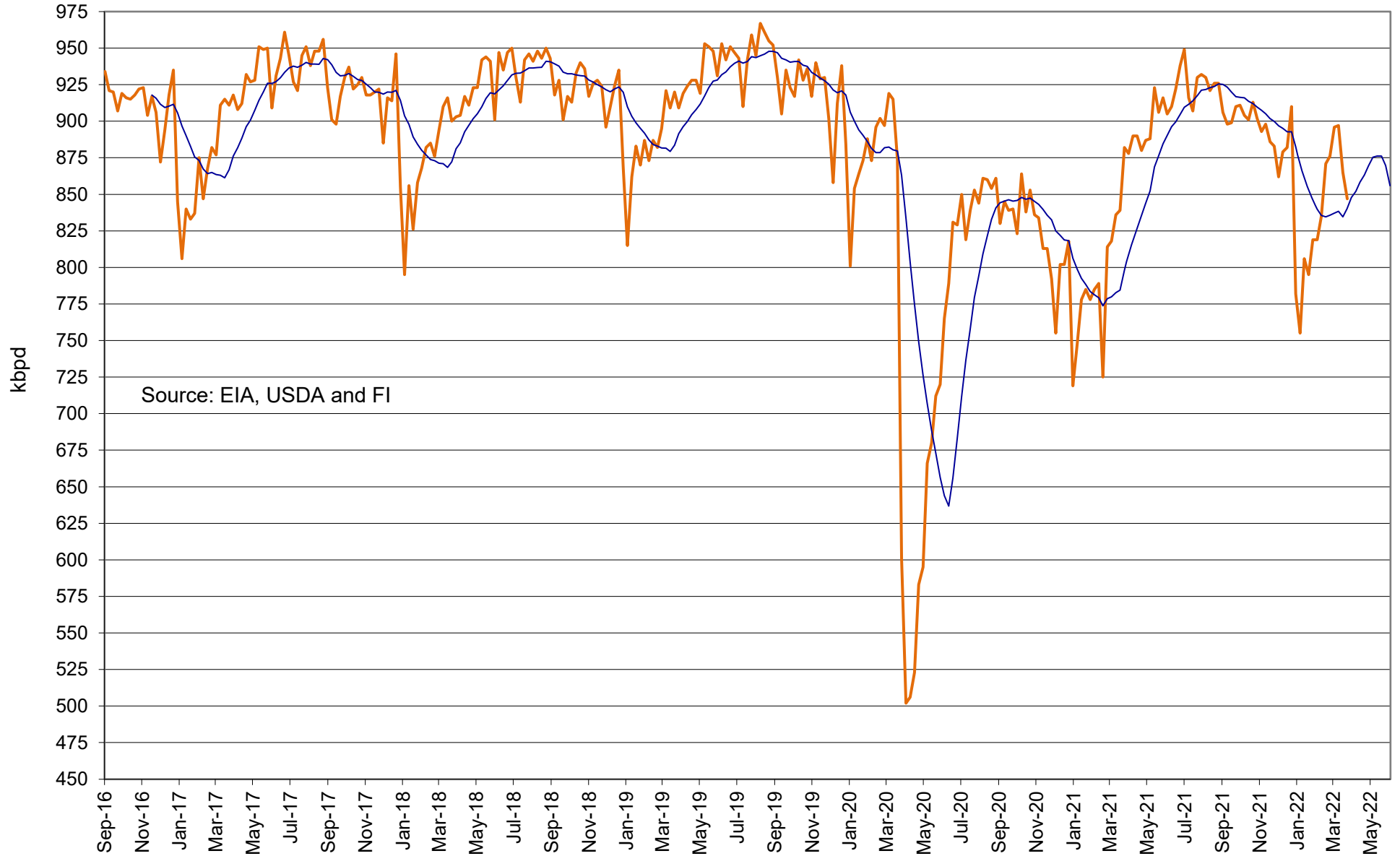


Source: EIA, USDA and FI

— US

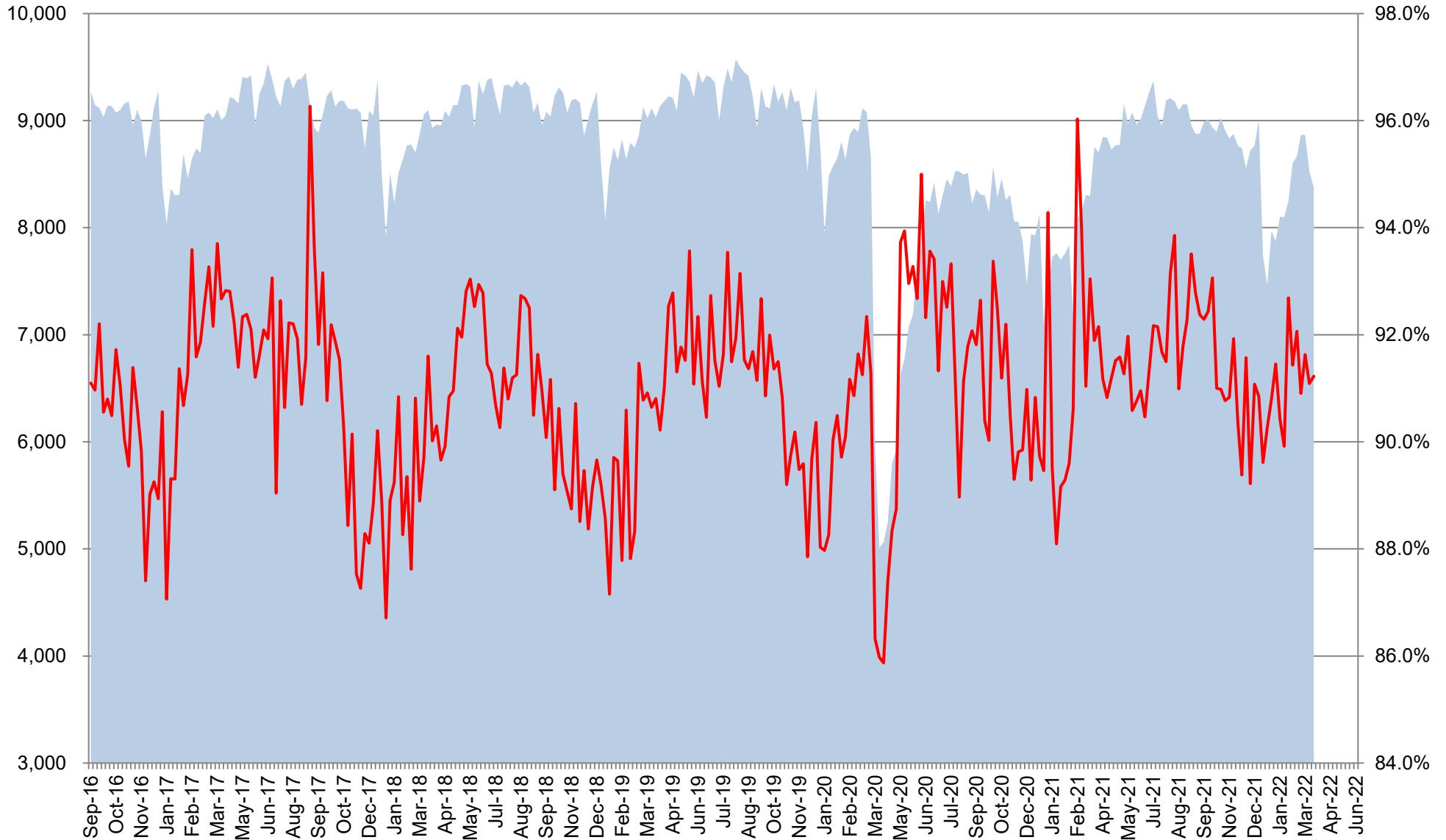
— 12 per. Mov. Avg. (US)

Refinery and Blender Net Input of Oxygenates Fuel Ethanol



— Refinery and Blender Net Input of Oxygenates Fuel Ethanol — 12 per. Mov. Avg.

US Net Blender Input of Fuel Ethanol and % Blend of Net Production of Finished Motor Gasoline



Source: EIA, USDA and FI

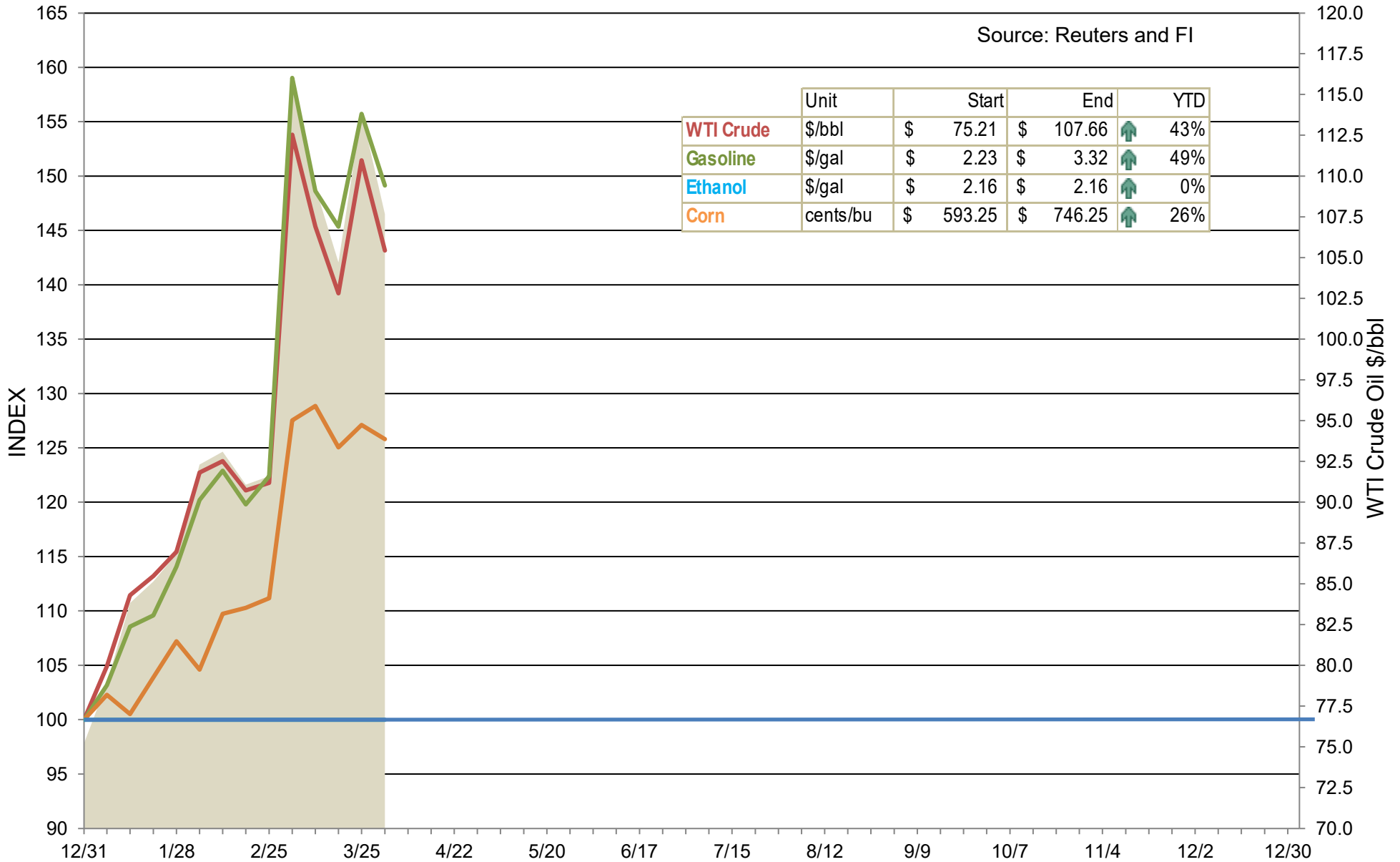
■ Total Blend Etoh

— Etoh Blend %

Indexed Commodity Prices Starting January 2021 versus WTI Crude Nearby Futures

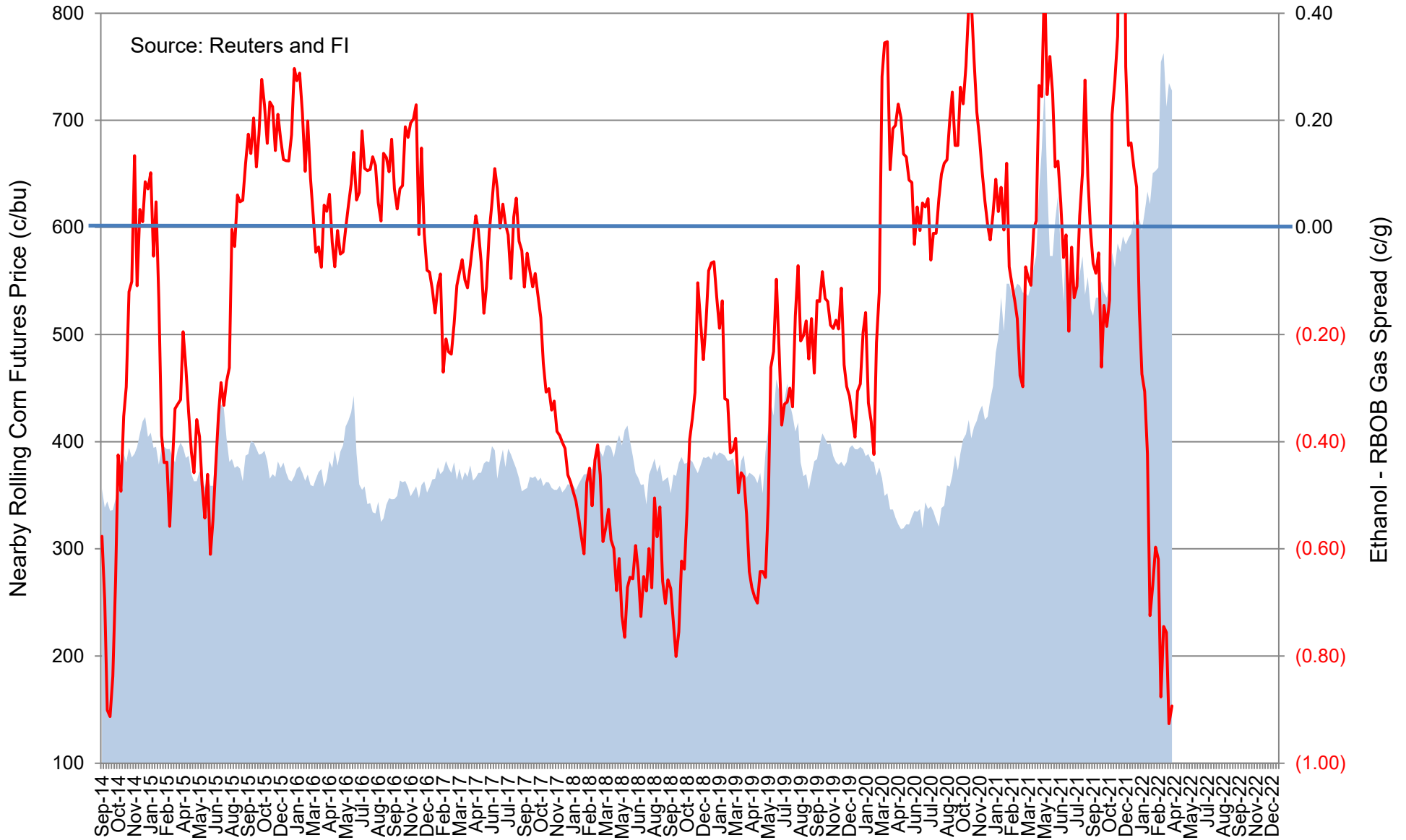
Source: Reuters and FI

	Unit	Start	End	YTD
WTI Crude	\$/bbl	\$ 75.21	\$ 107.66	↑ 43%
Gasoline	\$/gal	\$ 2.23	\$ 3.32	↑ 49%
Ethanol	\$/gal	\$ 2.16	\$ 2.16	↑ 0%
Corn	cents/bu	\$ 593.25	\$ 746.25	↑ 26%



WTI Crude \$/bbl
 WTI Crude Index
 Gasoline Index
 Corn Index
 Ethanol Index

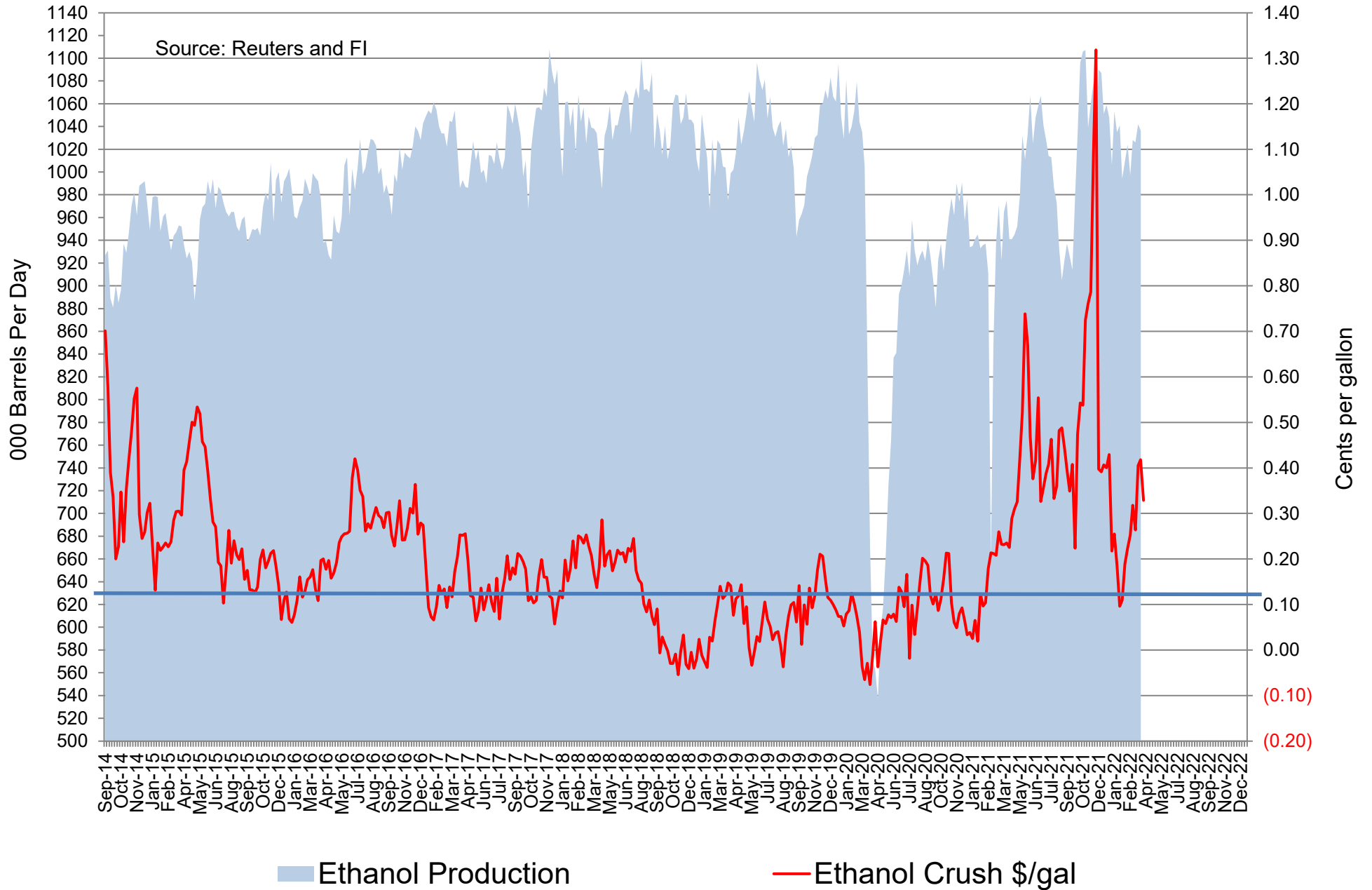
CBOT Second Month Corn Futures versus Second Month Ethanol - RBOB Futures Spread



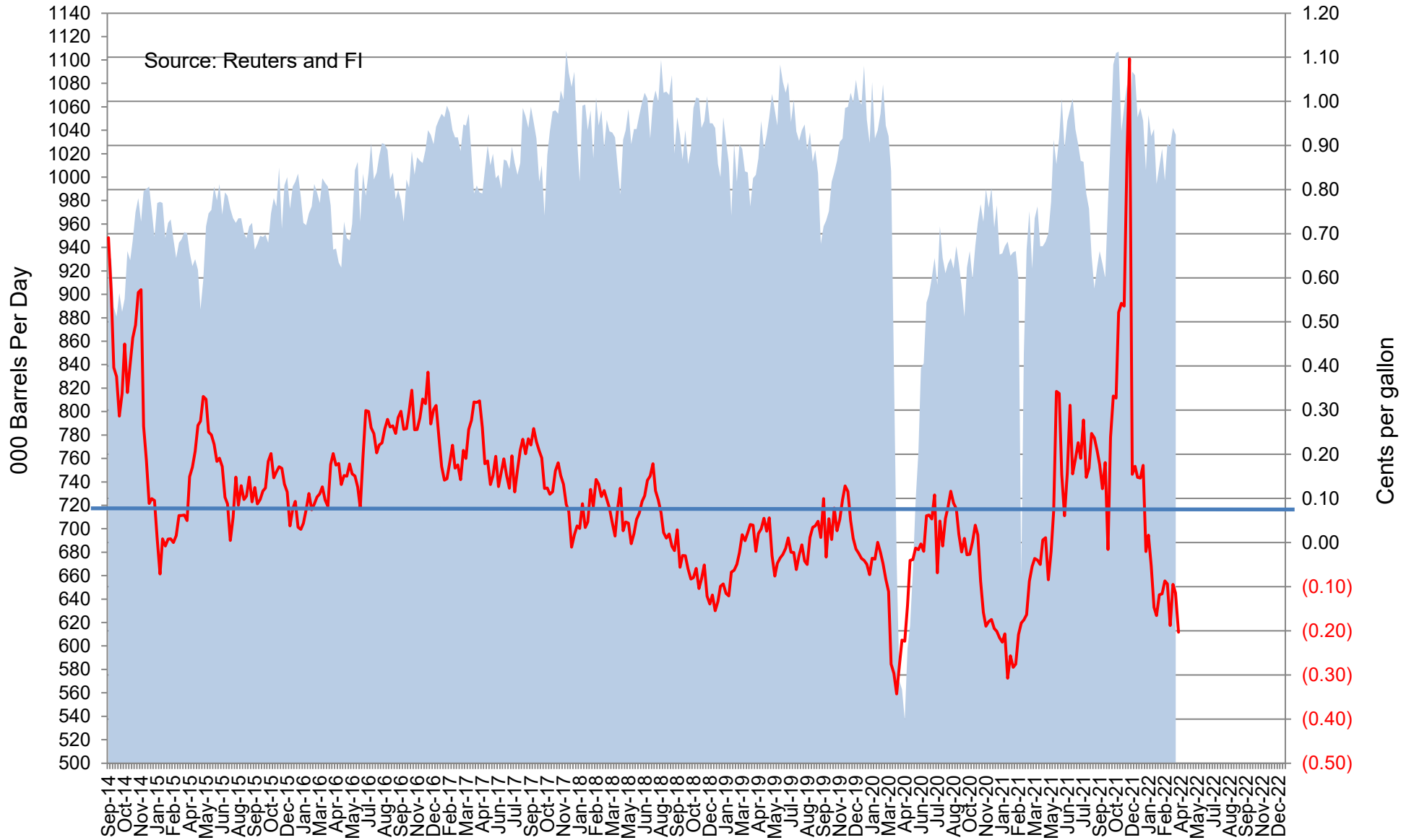
■ Nearby CBOT corn

— Rolling 2nd Month Ethanol-RBOB Spread

CBOT Second Month Corn Crush Spread versus Weekly Ethanol Production (uses Chicago ethanol and IL DDGS w/ implied costs)



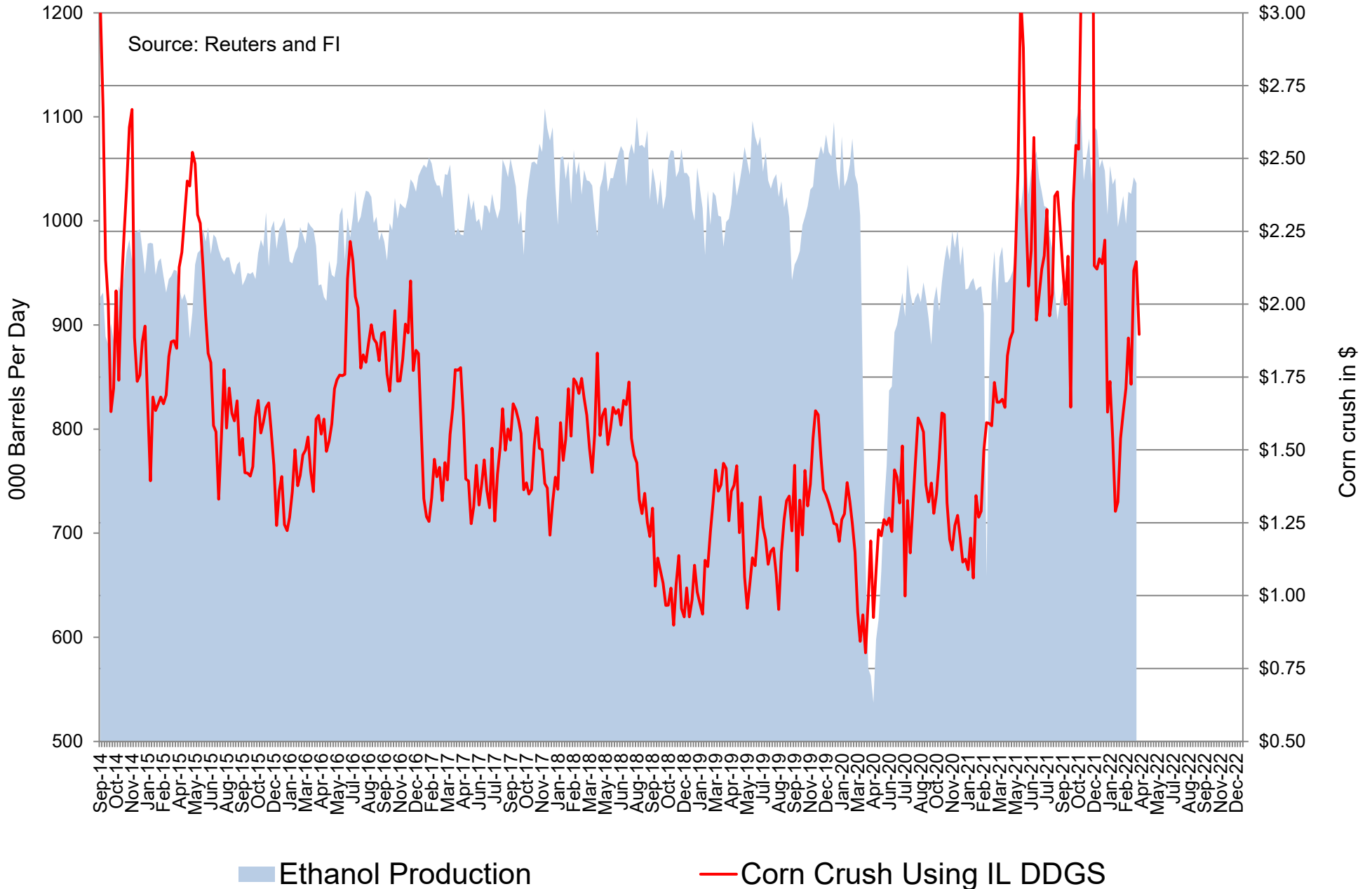
Chicago Platts Second Month Corn Crush Spread versus Weekly Ethanol Production (Straight Calculation)



■ Ethanol Production

— Ethanol Crush Spread, Second Month

CBOT Second Month Corn Crush Spread with IL DDGS versus Weekly Ethanol Production (straight 3-commodity calculation)



Disclaimer

TO CLIENTS/PROSPECTS OF FUTURES INTERNATIONAL, SEE RISK DISCLOSURE BELOW:

THIS COMMUNICATION IS CONVEYED AS A SOLICITATION FOR ENTERING INTO A DERIVATIVES TRANSACTION.

Any trading recommendations and market or other information to Customer by Futures International (FI), although based upon information obtained from sources believed by FI to be reliable may not be accurate and may be changed without notice to customer. FI makes no guarantee as to the accuracy or completeness of any of the information or recommendations furnished to Customer. Customer understands that FI, its managers, employees and/or affiliates may have a position in commodity futures, options or other derivatives which may not be consistent with the recommendations furnished by FI to Customer.

The risk of trading futures and options and other derivatives involves a substantial risk of loss and is not suitable for all persons. In purchasing an option, the risk is limited to the premium paid, and all commissions and fees involved with the trade. When an option is shorted or written, the writer of the option has unlimited risk with respect to the option written. The use of options strategies such as a straddles and strangles involve multiple option positions and may substantially increase the amount of commissions and fees paid to execute the strategy. Option prices do not necessarily move in tandem with cash or futures prices. Each person must consider whether a particular trade, combination of trades or strategy is suitable for that person's financial means and objectives.

This material may include discussions of seasonal patterns, however, futures prices have already factored in the seasonal aspects of supply and demand, and seasonal patterns are no indication of future market trends. Finally, past performance is not indicative of future results.

This communication may contain links to third party websites which are not under the control of FI and FI is not responsible for their content. Products and services are offered only in jurisdictions where solicitation and sale are lawful, and in accordance with applicable laws and regulations in each such jurisdiction.