

	Current	Δ from YD	Δ from 7D Avg
Nat Gas Prompt	\$ 4.64	▲ \$ 0.07	▼ \$ (0.01)

	Current	Δ from YD	Δ from 7D Avg
WTI Prompt	\$ 96.61	▲ \$ 0.17	▼ \$ (9.4)

	Current	Δ from YD	Δ from 7D Avg
Brent Prompt	\$ 99.98	▲ \$ 0.07	▼ \$ (9.3)

### Page Menu

[Short-term Weather Model Outlooks](#)

[Lower 48 Component Models](#)

[Regional S/D Models Storage Projection](#)

[Weather Model Storage Projection](#)

[Supply – Demand Trends](#)

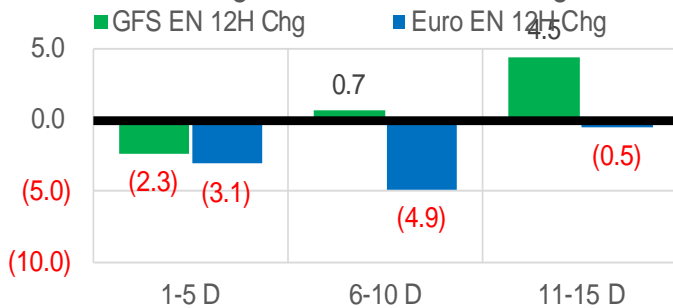
[Nat Gas Options Volume and Open Interest](#)

[Nat Gas Futures Open Interest](#)

[Price Summary](#)

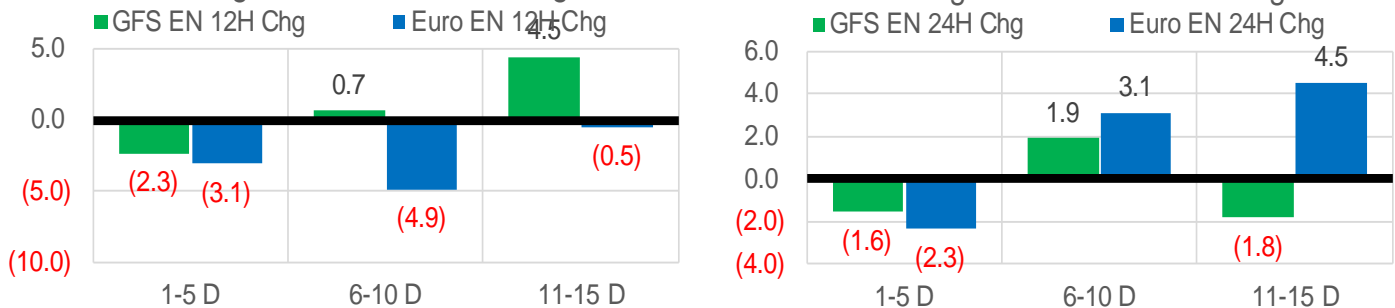
### Vs. 12H Ago

L48 Region - 00z TDD vs 12H Ago



### Vs. 24H Ago

L48 Region - 00z TDD vs 24H Ago



	Current	Δ from YD	Δ from 7D Avg
US Dry Production	93.9	▼ -0.42	▲ 0.20

	Current	Δ from YD	Δ from 7D Avg
US Power Burns	25.1	▼ -0.39	▼ -2.69

	Current	Δ from YD	Δ from 7D Avg
US ResComm	23.0	▼ -1.84	▼ -14.33

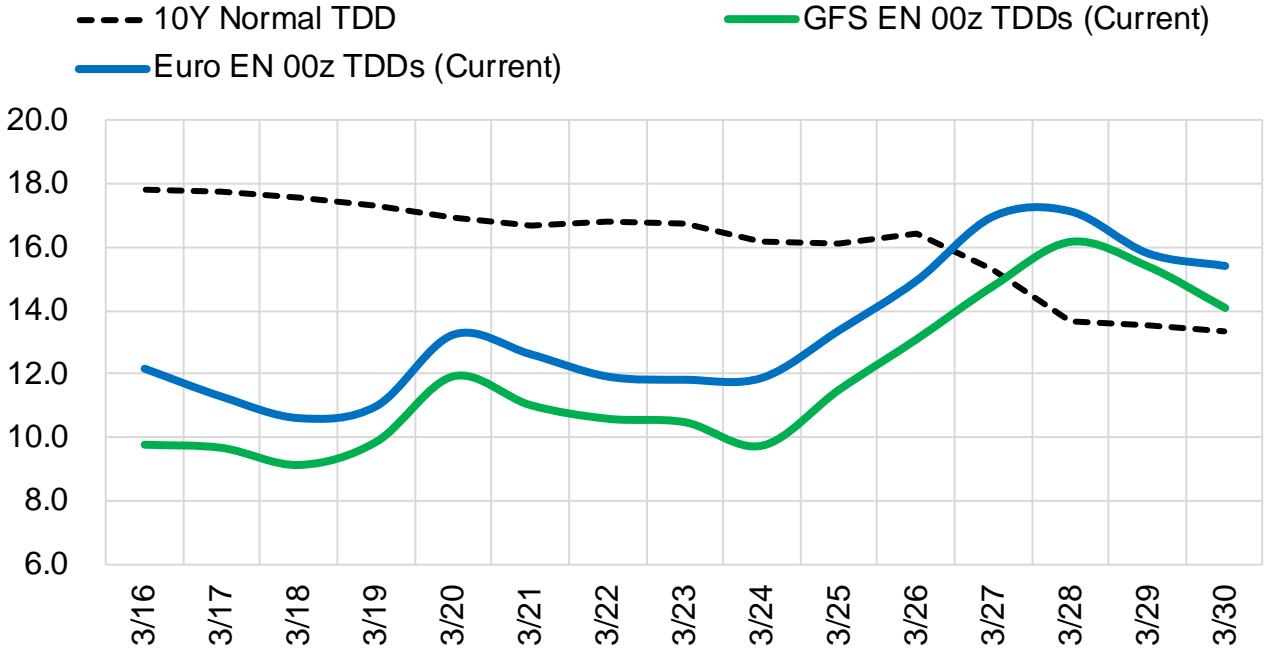
	Current	Δ from YD	Δ from 7D Avg
Canadian Imports	4.6	▼ -0.21	▼ -0.88

	Current	Δ from YD	Δ from 7D Avg
Net LNG Exports	12.6	▲ 0.07	▼ -0.21

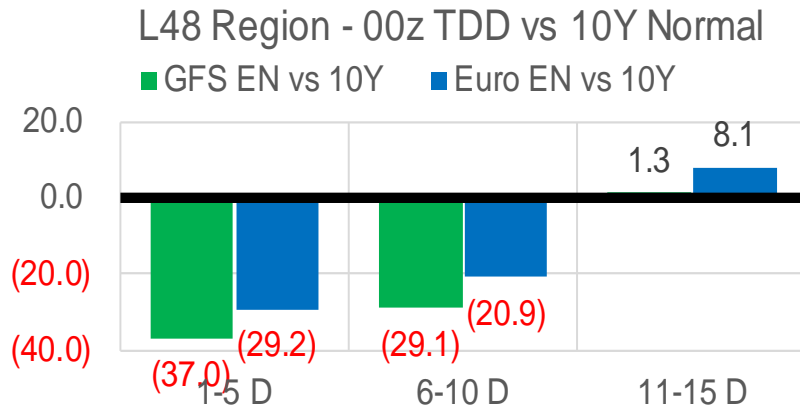
	Current	Δ from YD	Δ from 7D Avg
Mexican Exports	6.7	▼ -0.03	▲ 0.10

## Short-term Weather Model Outlooks (00z)

### L48 Region



## Vs. 10Y Normal



Source: WSI , Bloomberg

## Lower 48 Component Models

### Daily Balances

	10-Mar	11-Mar	12-Mar	13-Mar	14-Mar	15-Mar	16-Mar	DoD	vs. 7D
<b>Lower 48 Dry Production</b>	<b>94.3</b>	<b>92.7</b>	<b>93.0</b>	<b>93.6</b>	<b>93.3</b>	<b>94.3</b>	<b>93.9</b>	▼ -0.4	▲ 0.3
<b>Canadian Imports</b>	<b>5.6</b>	<b>5.4</b>	<b>5.8</b>	<b>5.8</b>	<b>5.5</b>	<b>4.8</b>	<b>4.6</b>	▼ -0.2	▼ -0.9
L48 Power	29.1	28.4	28.6	27.1	26.6	25.5	25.1	▼ -0.4	▼ -2.4
L48 Residential & Commercial	39.7	39.5	47.5	40.6	29.4	24.8	23.0	▼ -1.8	▼ -14.0
L48 Industrial	23.7	23.5	23.8	22.6	21.4	20.9	20.8	▼ -0.1	▼ -1.9
L48 Lease and Plant Fuel	5.1	5.0	5.1	5.1	5.1	5.1	5.1	▼ -0.1	▼ 0.0
L48 Pipeline Distribution	3.6	3.5	4.0	3.5	2.9	2.6	2.5	▼ -0.1	▼ -0.9
<b>L48 Regional Gas Consumption</b>	<b>101.2</b>	<b>100.0</b>	<b>108.9</b>	<b>98.9</b>	<b>85.4</b>	<b>79.0</b>	<b>76.5</b>	▼ -2.5	▼ -19.1
<b>Net LNG Delivered</b>	<b>12.57</b>	<b>12.80</b>	<b>13.43</b>	<b>13.22</b>	<b>12.62</b>	<b>12.55</b>	<b>12.62</b>	▲ 0.1	▼ -0.2
<b>Total Mexican Exports</b>	<b>6.8</b>	<b>6.8</b>	<b>6.3</b>	<b>6.2</b>	<b>6.5</b>	<b>6.7</b>	<b>6.7</b>	▼ 0.0	▲ 0.1
<b>Implied Daily Storage Activity</b>	<b>-20.8</b>	<b>-21.4</b>	<b>-29.9</b>	<b>-18.9</b>	<b>-5.8</b>	<b>0.9</b>	<b>2.7</b>		
<b>EIA Reported Daily Storage Activity</b>									
<b>Daily Model Error</b>									

### EIA Storage Week Balances

	4-Feb	11-Feb	18-Feb	25-Feb	4-Mar	11-Mar	WoW	vs. 4W
<b>Lower 48 Dry Production</b>	<b>93.8</b>	<b>91.5</b>	<b>95.6</b>	<b>94.2</b>	<b>94.1</b>	<b>94.8</b>	▲ 0.6	▲ 0.9
<b>Canadian Imports</b>	<b>7.1</b>	<b>7.1</b>	<b>6.2</b>	<b>6.4</b>	<b>5.9</b>	<b>5.2</b>	▼ -0.7	▼ -1.2
L48 Power	29.7	29.4	26.8	27.3	28.2	26.6	▼ -1.6	▼ -1.3
L48 Residential & Commercial	49.0	45.8	40.3	41.4	38.6	33.5	▼ -5.1	▼ -8.0
L48 Industrial	27.0	24.6	26.1	26.2	23.8	23.4	▼ -0.5	▼ -1.8
L48 Lease and Plant Fuel	5.1	5.0	5.2	5.1	5.1	5.2	▲ 0.0	▲ 0.0
L48 Pipeline Distribution	3.8	3.5	3.2	3.2	3.3	3.1	▼ -0.1	▼ -0.2
<b>L48 Regional Gas Consumption</b>	<b>114.6</b>	<b>108.3</b>	<b>101.6</b>	<b>103.2</b>	<b>99.0</b>	<b>91.8</b>	▼ -7.3	▼ -11.3
<b>Net LNG Exports</b>	<b>12.1</b>	<b>12.4</b>	<b>13.0</b>	<b>11.7</b>	<b>12.5</b>	<b>12.8</b>	▲ 0.3	▲ 0.4
<b>Total Mexican Exports</b>	<b>6.4</b>	<b>6.1</b>	<b>6.1</b>	<b>6.1</b>	<b>6.4</b>	<b>6.6</b>	▲ 0.1	▲ 0.4
<b>Implied Daily Storage Activity</b>	<b>-32.2</b>	<b>-28.2</b>	<b>-18.9</b>	<b>-20.5</b>	<b>-17.9</b>	<b>-11.1</b>	<b>6.8</b>	
<b>EIA Reported Daily Storage Activity</b>	<b>-31.7</b>	<b>-27.1</b>	<b>-18.4</b>	<b>-19.9</b>	<b>-17.7</b>			
<b>Daily Model Error</b>	<b>-0.5</b>	<b>-1.1</b>	<b>-0.4</b>	<b>-0.6</b>	<b>-0.2</b>			

### Monthly Balances

	2Yr Ago Mar-20	LY Mar-21	Nov-21	Dec-21	Jan-22	Feb-22	MTD Mar-22	MoM	vs. LY
<b>Lower 48 Dry Production</b>	<b>94.2</b>	<b>91.3</b>	<b>95.7</b>	<b>96.2</b>	<b>94.3</b>	<b>93.5</b>	<b>94.3</b>	▲ 0.9	▲ 3.0
<b>Canadian Imports</b>	<b>4.1</b>	<b>4.8</b>	<b>5.3</b>	<b>4.8</b>	<b>6.7</b>	<b>6.6</b>	<b>5.3</b>	▼ -1.3	▲ 0.6
L48 Power	28.3	24.5	29.2	28.5	30.7	28.2	26.8	▼ -1.4	▲ 2.3
L48 Residential & Commercial	27.6	28.9	28.4	33.8	49.1	43.0	34.0	▼ -9.1	▲ 5.1
L48 Industrial	22.3	19.3	23.0	22.9	26.4	25.6	23.1	▼ -2.5	▲ 3.8
L48 Lease and Plant Fuel	5.1	5.0	5.3	5.3	5.2	5.1	5.1	▲ 0.0	▲ 0.2
L48 Pipeline Distribution	2.9	2.8	2.9	3.2	3.9	3.4	3.2	▼ -0.2	▲ 0.4
<b>L48 Regional Gas Consumption</b>	<b>86.2</b>	<b>80.4</b>	<b>88.8</b>	<b>93.7</b>	<b>115.2</b>	<b>105.3</b>	<b>92.1</b>	▼ -13.2	▲ 11.7
<b>Net LNG Exports</b>	<b>8.5</b>	<b>11.1</b>	<b>11.4</b>	<b>12.1</b>	<b>12.4</b>	<b>12.4</b>	<b>12.7</b>	▲ 0.3	▲ 1.6
<b>Total Mexican Exports</b>	<b>5.4</b>	<b>6.5</b>	<b>6.1</b>	<b>6.2</b>	<b>6.3</b>	<b>6.2</b>	<b>6.5</b>	▲ 0.4	▲ 0.1
<b>Implied Daily Storage Activity</b>	<b>-1.9</b>	<b>-2.0</b>	<b>-5.3</b>	<b>-11.0</b>	<b>-32.9</b>	<b>-23.8</b>	<b>-11.8</b>		
<b>EIA Reported Daily Storage Activity</b>									
<b>Daily Model Error</b>									

Source: Bloomberg, analytix.ai

## Daily Average Generation Data

### Nuclear Generation Daily Average - GWh (NRC)

	8-Mar	9-Mar	10-Mar	11-Mar	12-Mar	13-Mar	14-Mar	DoD	vs. 7D
NRC Nuclear Daily Output	81.7	81.2	81.9	81.5	80.3	81.1	81.0	0.0	-0.2
NRC Nuclear Max Capacity	104.9	104.9	104.9	104.9	104.9	104.9	104.9	0.0	0.0
NRC Nuclear Outage	23.1	23.7	23.0	23.4	24.6	23.8	23.8	0.0	0.2
NRC % Nuclear Cap Utilization	83.1	82.5	83.3	82.9	81.6	82.4	82.4	0.0	-0.2

### Wind Generation Daily Average - MWh (EIA)

	8-Mar	9-Mar	10-Mar	11-Mar	12-Mar	13-Mar	14-Mar	DoD	vs. 7D
CALI Wind	1060	2759	2467	802	1237	3389	1578	-1811	-375
TEXAS Wind	4680	11044	13224	17888	13743	21867	20939	-928	7198
US Wind	36253	45684	46546	61234	60779	73673	70615	-3058	16586

### Generation Daily Average - MWh (EIA)

	8-Mar	9-Mar	10-Mar	11-Mar	12-Mar	13-Mar	14-Mar	DoD	vs. 7D
US Wind	36253	45684	46546	61234	60779	73673	70615	-3058	16586
US Solar	13957	12156	12887	13471	14659	11009	17021	6012	3998
US Petroleum	2251	802	822	1089	901	1129	1092	-37	-74
US Other	6593	6778	6915	6123	6525	7303	7135	-168	429
US Coal	95443	94165	95472	93232	97508	90186	83643	-6543	-10691
US Nuke	85950	85576	86043	85197	84459	84752	85050	297	-280
US Hydro	33965	32368	37038	36301	36439	30253	34985	4732	591
<b>US Gas</b>	<b>166506</b>	<b>165883</b>	<b>155830</b>	<b>151561</b>	<b>156180</b>	<b>135780</b>	<b>127484</b>	<b>-8296</b>	<b>-27806</b>

See National Wind and Nuclear daily charts

Source: Bloomberg, analytix.ai

## Storage Week Average Generation Data

### Nuclear Generation Weekly Average - GWh (NRC)

	4-Feb	11-Feb	18-Feb	25-Feb	4-Mar	11-Mar	WoW	WoW Bcf/d Impact
NRC Nuclear Daily Output	89.5	87.6	88.2	86.9	85.8	82.3	-3.5	0.6
NRC Nuclear Max Capacity	104.9	104.9	104.9	104.9	104.9	104.9	0.0	
NRC Nuclear Outage	15.4	17.3	16.7	18.0	19.1	22.5	3.5	
NRC % Nuclear Cap Utilization	91.0	89.1	89.7	88.3	87.2	83.7	-3.5	

### Wind Generation Weekly Average - MWh (EIA)

	4-Feb	11-Feb	18-Feb	25-Feb	4-Mar	11-Mar	WoW	WoW Bcf/d Impact
CALI Wind	1507	999	1900	2049	815	2602	1787	-0.3
TEXAS Wind	12223	9259	16874	13068	6269	14469	8200	-1.5
US Wind	53792	53792	63113	60313	36020	56872	20851	-3.8

1.3

### Generation Weekly Average - MWh (EIA)

	4-Feb	11-Feb	18-Feb	25-Feb	4-Mar	11-Mar	WoW	WoW Bcf/d Impact
US Wind	53792	53792	63113	60313	36020	56872	20851	<b>-3.8</b>
US Solar	10459	12287	12313	11899	13919	12474	-1445	<b>0.3</b>
US Petroleum	4672	3554	4126	2961	3130	1754	-1376	<b>0.2</b>
US Other	9661	9373	9134	8211	7510	6504	-1006	0.2
US Coal	124780	113776	101700	99888	103399	86717	-16681	3.0
US Nuke	94661	92640	92758	91458	90165	86461	-3704	<b>0.7</b>
US Hydro	31801	32213	31952	33214	32196	34064	1868	-0.3
<b>US Gas</b>	<b>159394</b>	<b>162266</b>	<b>137939</b>	<b>147276</b>	<b>158687</b>	<b>139978</b>	<b>-18709</b>	3.4

est.

See National Wind and Nuclear daily charts

Source: Bloomberg, analytix.ai

## Monthly Average Generation Data

### Nuclear Generation Monthly Average - GWh (NRC)

	2Yr Ago	LY					MTD		
	Same 30 days	Same 30 days	Dec-21	Jan-22	Feb-22	Mar-22	Last 30 days	MoM (MTD vs LY)	Last 30 days YoY
NRC Nuclear Daily Output	85.9	85.7	90.3	90.2	87.6	82.4	84.5	-5.2	-1.2
NRC Nuclear Max Capacity	104.9	104.9	104.9	104.9	104.9	104.9	104.9	0.0	0.0
NRC Nuclear Outage	18.9	19.2	14.6	14.7	17.3	22.5	20.4	5.2	1.2
NRC % Nuclear Cap Utilization	87.4	87.1	91.8	91.7	89.0	83.8	85.9	-5.2	-1.2

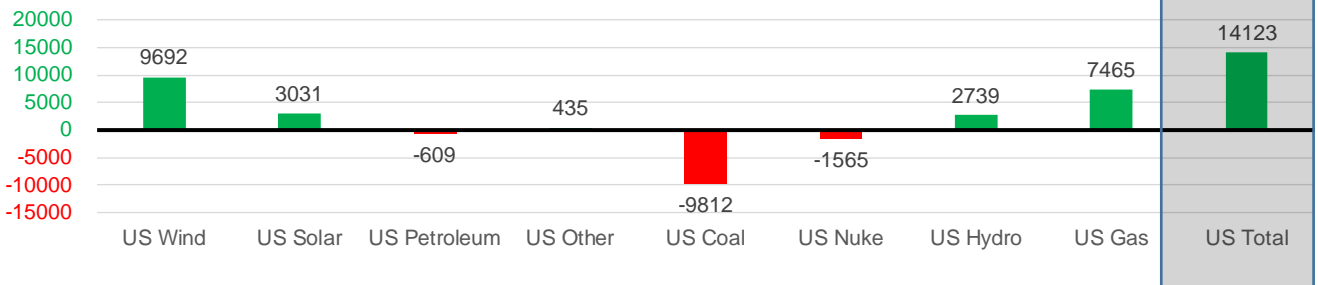
### Wind Generation Monthly Average - MWh (EIA)

	2Yr Ago	LY					MTD		
	Same 30 days	Same 30 days	Dec-21	Jan-22	Feb-22	Mar-22	Last 30 days	MoM (MTD vs LY)	Last 30 days YoY
CALI Wind	1244	2211	1482	1244	1559	1942	1911	384	-301
TEXAS Wind	10161	11944	12927	11355	12294	14850	13811	2556	1867
US Wind	40015	47334	54708	51045	56538	57072	57026	534	9692

### Generation Monthly Average - MWh (EIA)

	2Yr Ago	LY					MTD		
	Same 30 days	Same 30 days	Dec-21	Jan-22	Feb-22	Mar-22	Last 30 days	MoM (MTD vs LY)	Last 30 days YoY
US Wind	40015	47334	54708	51045	56538	57072	57026	▼ -46.3	▲ 9692
US Solar	7089	10001	7375	9476	12088	13847	13033	▼ -814.1	▲ 3031
US Petroleum	3249	3047	3135	5021	3449	1734	2438	▲ 704	▼ -609
US Other	6622	7030	8222	8792	8831	6681	7465	▲ 785	▲ 435
US Coal	75254	105171	81462	117971	106587	89283	95359	▲ 6077	▼ -9812
US Nuke	86959	90423	95449	95259	92275	86462	88858	▲ 2396	▼ -1565
US Hydro	34553	30605	30824	34102	32212	34070	33344	▼ -726	▲ 2739
<b>US Gas</b>	<b>158028</b>	<b>137045</b>	<b>152639</b>	<b>164023</b>	<b>152048</b>	<b>140522</b>	<b>144510</b>	<b>▲ 8375</b>	<b>▲ 7465</b>
<b>US Total</b>	<b>410120</b>	<b>428941</b>	<b>433931</b>	<b>485813</b>	<b>464579</b>	<b>431174</b>	<b>443063</b>	<b>▲ 16796</b>	<b>▲ 14123</b>

Last 30 days YoY



See National Wind and Nuclear daily charts

Source: Bloomberg, analytix.ai

## Regional S/D Models Storage Projection

Week Ending 11-Mar

	Daily Raw Storage	Daily Adjustment Factor	Daily Average Storage Activity (Adjusted) *	Weekly Adjusted Storage Activity
L48	-10.9	0.3	-10.6	-74
East	-6.1	2.2	-3.9	-27
Midwest	-3.8	-0.3	-4.1	-28
Mountain	2.9	-3.7	-0.7	-5
South Central	-3.2	2.6	-0.6	-4
Pacific	-0.8	-0.5	-1.3	-9

\*Adjustment Factor is calculated based on historical regional deltas

U.S. underground natural gas storage facilities by type (July 2015)

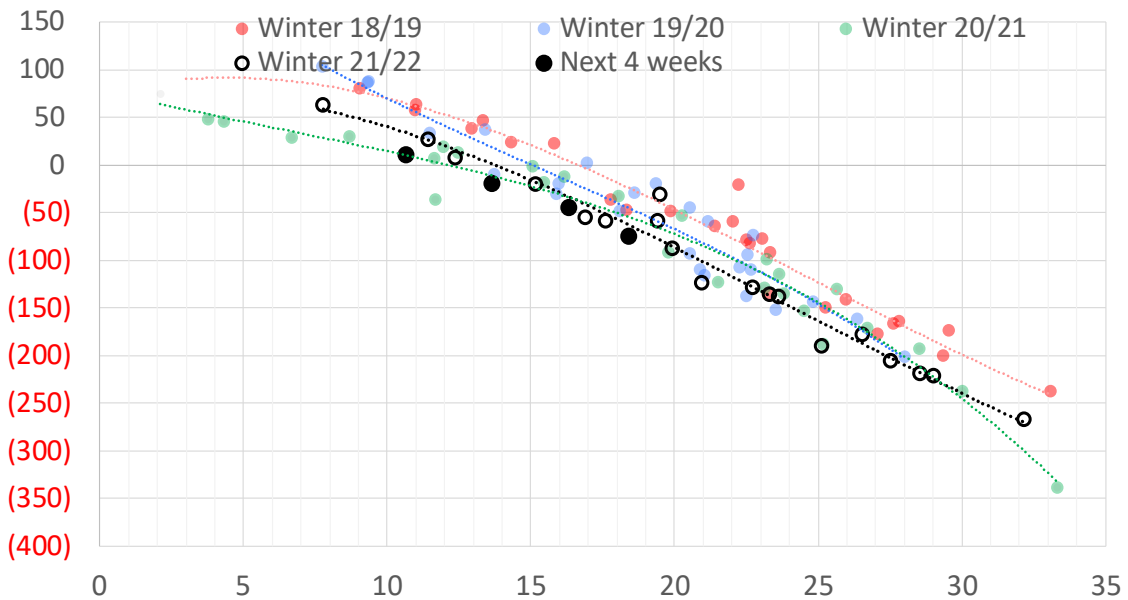


## Weather Model Storage Projection

Next report  
and beyond

Week Ending	GWDDs	Week Storage Projection
11-Mar	18	-74
18-Mar	16	-44
25-Mar	11	11
01-Apr	14	-18

Weather Storage Model - Next 4 Week Forecast

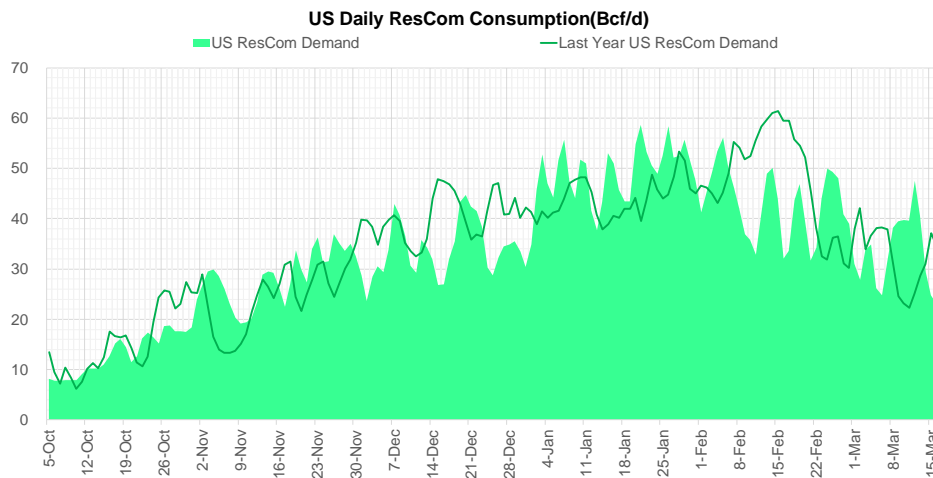
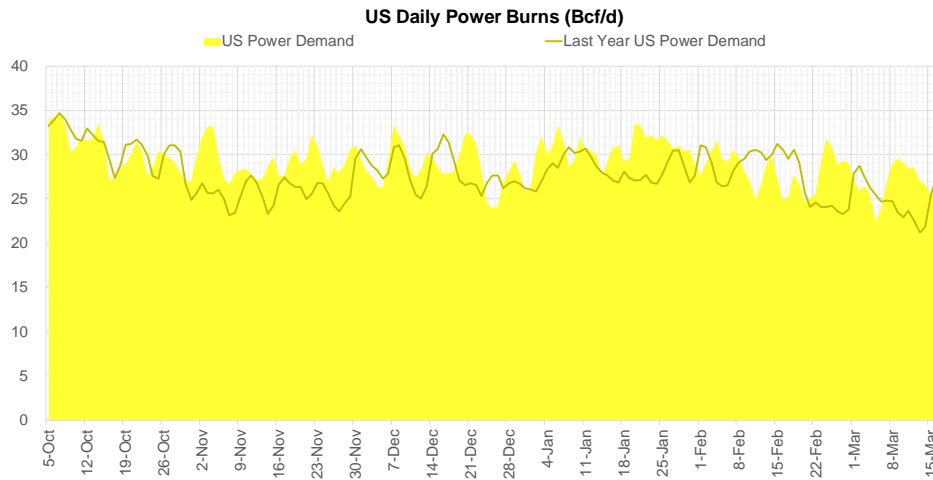
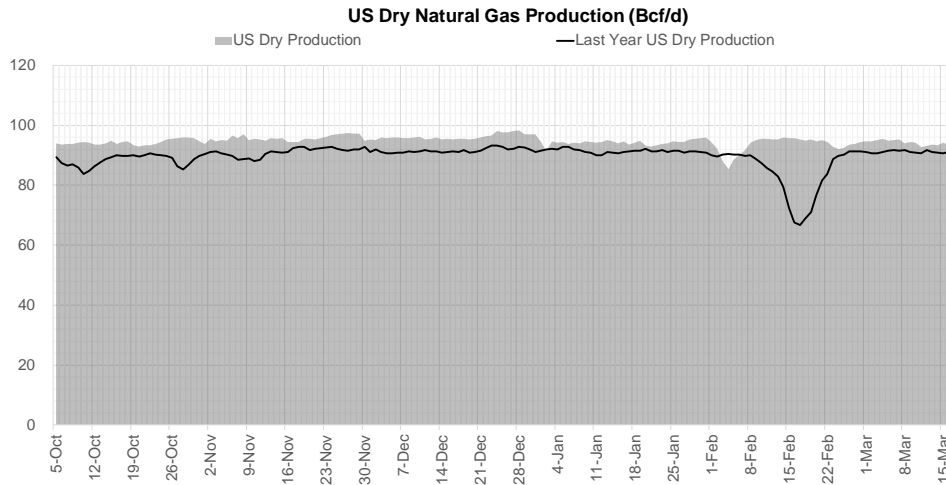


Go to larger image





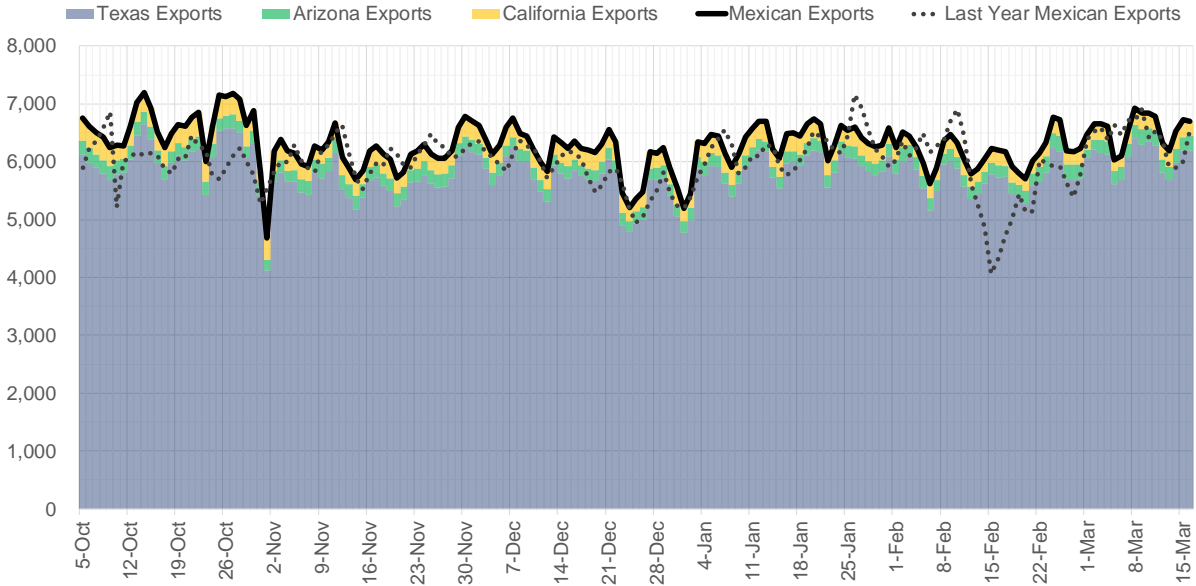
## Supply – Demand Trends



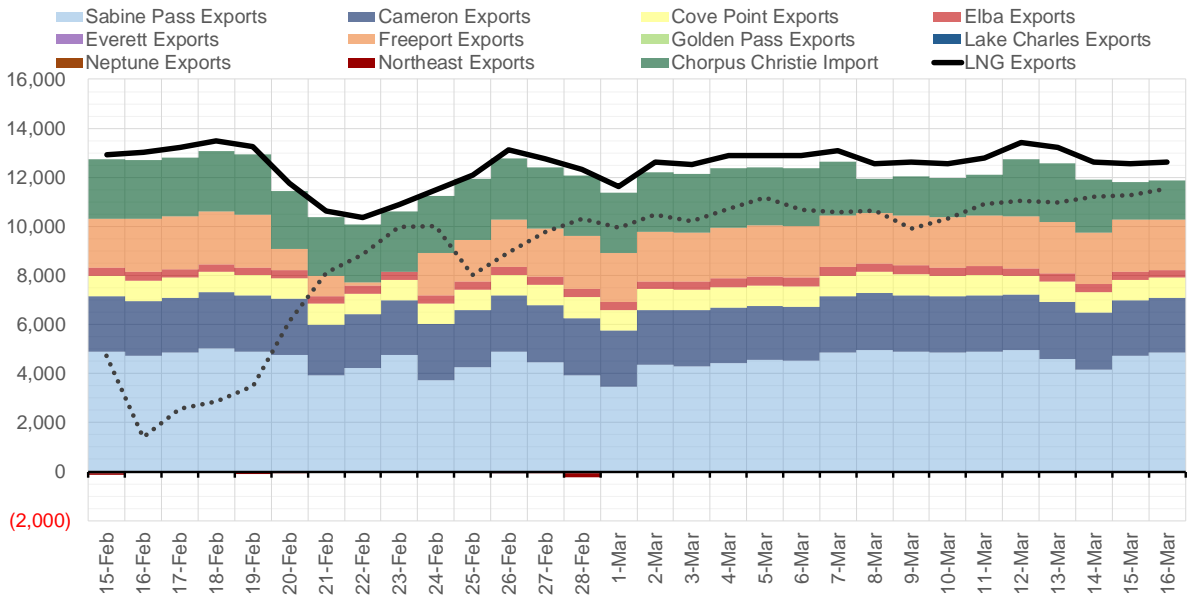
Source: Bloomberg

The risk of trading futures and options and other derivatives involves a substantial risk of loss and is not suitable for all persons. Each person must consider whether a particular trade, combination of trades, or strategy is suitable for that person's financial means and objectives. Past results are not necessarily indicative of future results. This communication may contain links to third party websites which are not under the control of and are not maintained by ION Energy Group, and ION Energy Group is not responsible for their content.

### Mexican Exports (MMcf/d)



### Net LNG Exports - Last 30 days (MMcf/d)



Source: Bloomberg

The risk of trading futures and options and other derivatives involves a substantial risk of loss and is not suitable for all persons. Each person must consider whether a particular trade, combination of trades, or strategy is suitable for that person's financial means and objectives. Past results are not necessarily indicative of future results. This communication may contain links to third party websites which are not under the control of and are not maintained by ION Energy Group, and ION Energy Group is not responsible for their content.

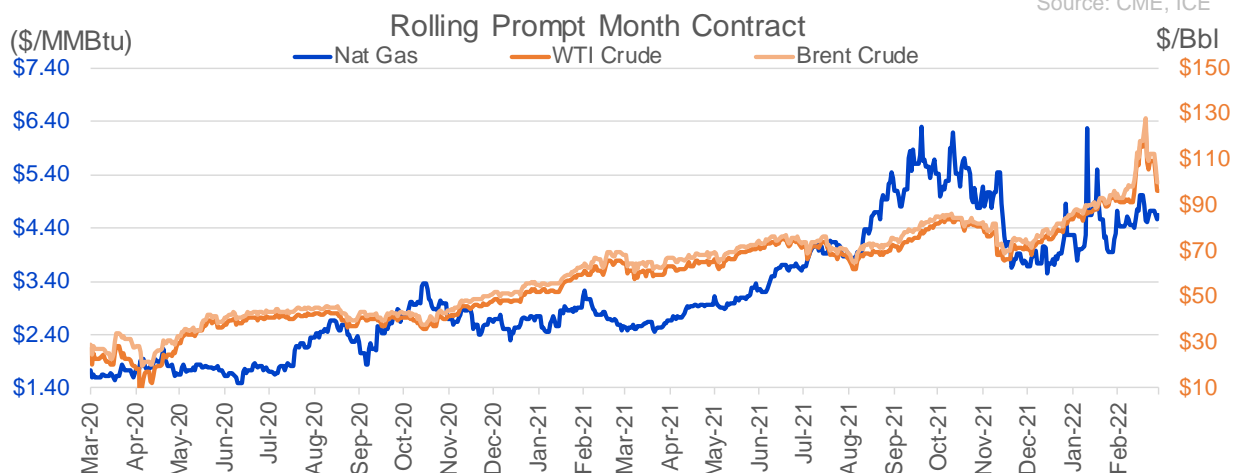
## Nat Gas Options Volume and Open Interest CME and ICE Combined

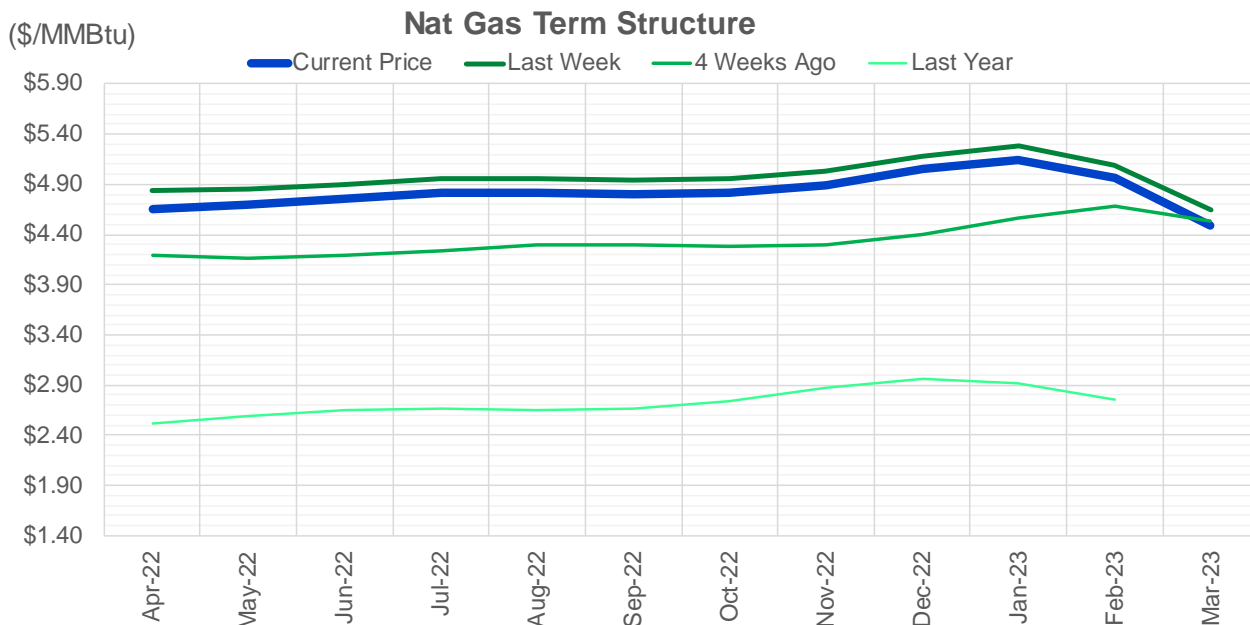
CONTRACT MONTH	CONTRACT YEAR	PUT/CALL	STRIKE	CUMULATIVE VOL	CONTRACT MONTH	CONTRACT YEAR	PUT/CALL	STRIKE	CUMULATIVE OI
5	2022	C	7.00	3863	4	2022	P	3.50	35068
4	2022	C	5.30	3241	4	2022	C	5.00	34575
4	2022	C	5.00	2958	4	2022	C	4.75	30336
4	2022	C	5.20	2742	4	2022	P	3.00	28602
4	2022	P	4.00	2723	10	2022	C	6.00	27336
4	2022	P	4.50	2538	10	2022	C	5.00	26034
4	2022	P	4.25	2373	4	2022	P	3.75	24245
5	2022	C	6.00	2369	4	2022	P	4.00	23813
1	2023	C	7.00	2200	6	2022	C	6.00	23036
1	2023	C	6.00	2000	5	2022	P	3.00	22815
6	2022	P	4.50	1947	5	2022	P	4.00	22573
4	2022	C	5.25	1643	5	2022	C	5.00	22538
5	2022	P	4.00	1534	4	2022	C	6.00	22255
5	2022	P	4.50	1444	5	2022	C	6.00	21956
4	2022	C	5.05	1317	7	2022	C	6.00	21549
6	2022	P	4.00	1291	9	2022	C	6.00	20370
6	2022	C	7.00	1244	5	2022	P	2.50	19938
6	2022	P	3.75	1201	8	2022	C	6.00	19497
4	2022	C	4.75	1167	5	2022	P	3.50	19278
5	2022	C	5.25	1135	6	2022	P	4.00	18895
5	2022	P	3.75	1124	10	2022	P	3.00	18647
5	2022	C	5.00	1094	4	2022	P	4.50	18442
5	2022	C	4.50	1026	6	2022	C	5.00	18394
4	2022	C	4.80	1023	4	2022	C	5.50	18215
8	2022	C	6.00	1000	12	2022	C	5.00	17968
4	2022	C	6.00	937	6	2022	P	3.00	17945
6	2022	C	6.00	923	4	2022	C	4.50	17741
7	2022	C	7.00	870	5	2022	P	2.75	17685
8	2022	C	7.00	859	4	2022	C	3.00	17511
10	2022	C	5.35	797	4	2022	P	2.50	17245
10	2022	C	5.75	797	10	2022	C	7.00	16457
4	2022	P	3.50	787	7	2022	P	3.25	16411
5	2022	C	5.50	772	4	2022	P	4.25	15854
4	2022	C	4.70	759	5	2022	C	7.00	15705
4	2022	C	5.10	753	12	2022	C	6.00	15470
5	2022	P	4.25	674	9	2022	P	2.50	15386
4	2022	P	4.40	655	4	2022	C	8.00	15347
4	2022	C	4.50	652	8	2022	P	3.00	15091
5	2022	P	3.65	600	6	2022	P	3.50	14899
8	2022	C	5.00	567	4	2022	P	3.25	14634
9	2022	C	7.00	550	7	2022	P	3.00	14598
10	2022	C	7.00	550	10	2022	P	2.00	14421
4	2022	C	4.90	510	1	2023	C	5.00	14379
4	2022	C	5.50	501	5	2022	P	3.75	14190
4	2022	P	3.00	501	6	2022	C	4.50	13948
3	2023	C	20.00	500	9	2022	P	2.75	13933
1	2024	P	3.25	500	5	2022	C	3.00	13733
2	2024	P	3.25	500	6	2022	P	3.75	13716
3	2024	P	3.25	500	7	2022	C	5.00	13555
					6	2022	C	3	13438

Source: CME, ICE

### Nat Gas Futures Open Interest CME and ICE Combined

CME Henry Hub Futures (10,000 MMBtu)				ICE Henry Hub Futures Contract Equivalent (10,000 MM			
	Current	Prior	Daily Change		Current	Prior	Daily Change
APR 22	70243	79439	-9196	APR 22	74712	75560	-849
MAY 22	208232	205038	3194	MAY 22	78168	78914	-745
JUN 22	70362	70079	283	JUN 22	70663	70525	138
JUL 22	88359	88041	318	JUL 22	66630	66350	279
AUG 22	42061	42521	-460	AUG 22	60059	59945	114
SEP 22	73876	73415	461	SEP 22	63433	63733	-300
OCT 22	83022	82426	596	OCT 22	69214	69413	-199
NOV 22	42857	43603	-746	NOV 22	54063	54206	-143
DEC 22	44830	44899	-69	DEC 22	63087	63164	-77
JAN 23	58204	58901	-697	JAN 23	62944	63729	-785
FEB 23	19690	19668	22	FEB 23	45759	45742	17
MAR 23	37350	36862	488	MAR 23	50777	50796	-19
APR 23	44687	44416	271	APR 23	49236	49264	-28
MAY 23	24315	24196	119	MAY 23	44325	44323	2
JUN 23	14223	14371	-148	JUN 23	40894	40862	32
JUL 23	11303	11257	46	JUL 23	40305	40291	15
AUG 23	9508	9462	46	AUG 23	39810	39747	63
SEP 23	12726	12633	93	SEP 23	39692	39631	62
OCT 23	24176	24382	-206	OCT 23	44327	44312	16
NOV 23	10198	10191	7	NOV 23	40833	40795	38
DEC 23	14345	14316	29	DEC 23	36241	36237	5
JAN 24	18221	18362	-141	JAN 24	31915	31701	214
FEB 24	3424	3431	-7	FEB 24	22247	22150	97
MAR 24	14132	14123	9	MAR 24	27028	27011	17
APR 24	7378	7385	-7	APR 24	20459	20436	23
MAY 24	2271	2271	0	MAY 24	19600	19536	63
JUN 24	1116	1111	5	JUN 24	19454	19439	15
JUL 24	1363	1358	5	JUL 24	19970	19907	63
AUG 24	1051	1046	5	AUG 24	20030	20015	16
SEP 24	1162	1156	6	SEP 24	19500	19439	61





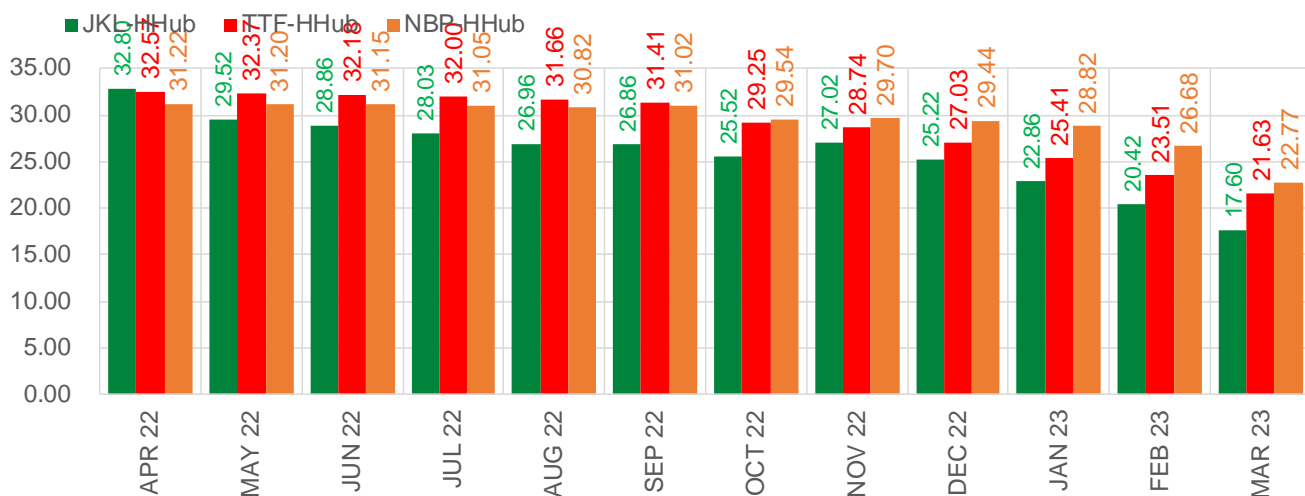
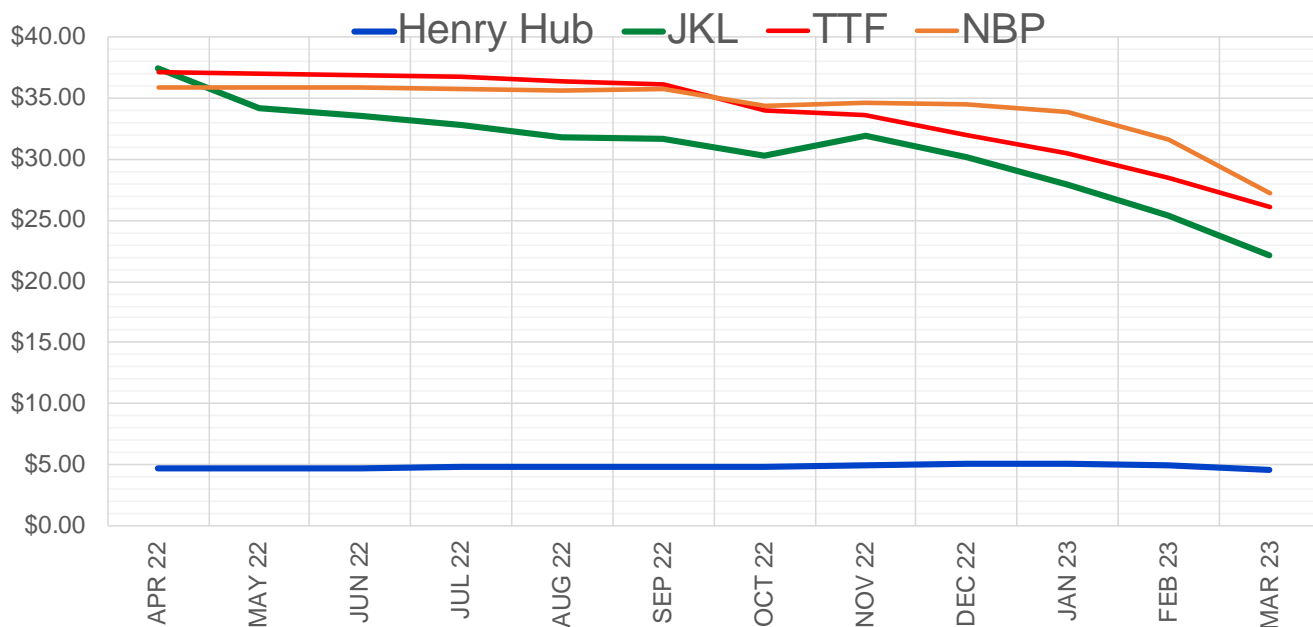
	Apr-22	May-22	Jun-22	Jul-22	Aug-22	Sep-22	Oct-22	Nov-22	Dec-22	Jan-23	Feb-23	Mar-23
<b>Current Price</b>	<b>\$4.658</b>	<b>\$4.702</b>	<b>\$4.752</b>	<b>\$4.809</b>	<b>\$4.819</b>	<b>\$4.803</b>	<b>\$4.819</b>	<b>\$4.897</b>	<b>\$5.048</b>	<b>\$5.146</b>	<b>\$4.968</b>	<b>\$4.496</b>
Last Week	\$4.833	\$4.858	\$4.901	\$4.952	\$4.962	\$4.943	\$4.961	\$5.037	\$5.186	\$5.280	\$5.095	\$4.639
vs. Last Week	-\$0.175	-\$0.156	-\$0.149	-\$0.143	-\$0.143	-\$0.140	-\$0.142	-\$0.140	-\$0.138	-\$0.134	-\$0.127	-\$0.143
4 Weeks Ago	\$4.195	\$4.160	\$4.189	\$4.238	\$4.290	\$4.300	\$4.282	\$4.304	\$4.400	\$4.569	\$4.675	\$4.535
vs. 4 Weeks Ago	\$0.463	\$0.542	\$0.563	\$0.571	\$0.529	\$0.503	\$0.537	\$0.593	\$0.648	\$0.577	\$0.293	-\$0.039
Last Year	\$2.484	\$2.523	\$2.586	\$2.646	\$2.666	\$2.656	\$2.670	\$2.745	\$2.878	\$2.970	\$2.917	\$2.755
vs. Last Year	\$2.174	\$2.179	\$2.166	\$2.163	\$2.153	\$2.147	\$2.149	\$2.152	\$2.170	\$2.176	\$2.051	\$1.741

	Units	Cash Settled	Prompt Settle	Cash to Prompt
AGT Citygate	\$/MMBtu	4.05	4.70	0.65
TETCO M3	\$/MMBtu	3.80	3.98	0.18
FGT Zone 3	\$/MMBtu	3.78	4.60	0.82
Zone 6 NY	\$/MMBtu	3.78	3.97	0.19
Chicago Citygate	\$/MMBtu	4.26	4.37	0.11
Michcon	\$/MMBtu	4.25	4.36	0.11
Columbia TCO Pool	\$/MMBtu	3.78	3.98	0.20
Ventura	\$/MMBtu	3.96	4.32	0.36
Rockies/Opal	\$/MMBtu	3.90	4.10	0.20
El Paso Permian Basin	\$/MMBtu	3.71	3.86	0.15
Socal Citygate	\$/MMBtu	4.16	4.15	-0.01
Malin	\$/MMBtu	4.10	4.14	0.04
Houston Ship Channel	\$/MMBtu	4.14	4.34	0.20
Henry Hub Cash	\$/MMBtu	4.47	4.27	-0.20
AECO Cash	C\$/GJ	3.69	3.32	-0.37
Station2 Cash	C\$/GJ	3.65	4.08	0.43
Dawn Cash	C\$/GJ	4.33	4.41	0.08

Source: CME, Bloomberg

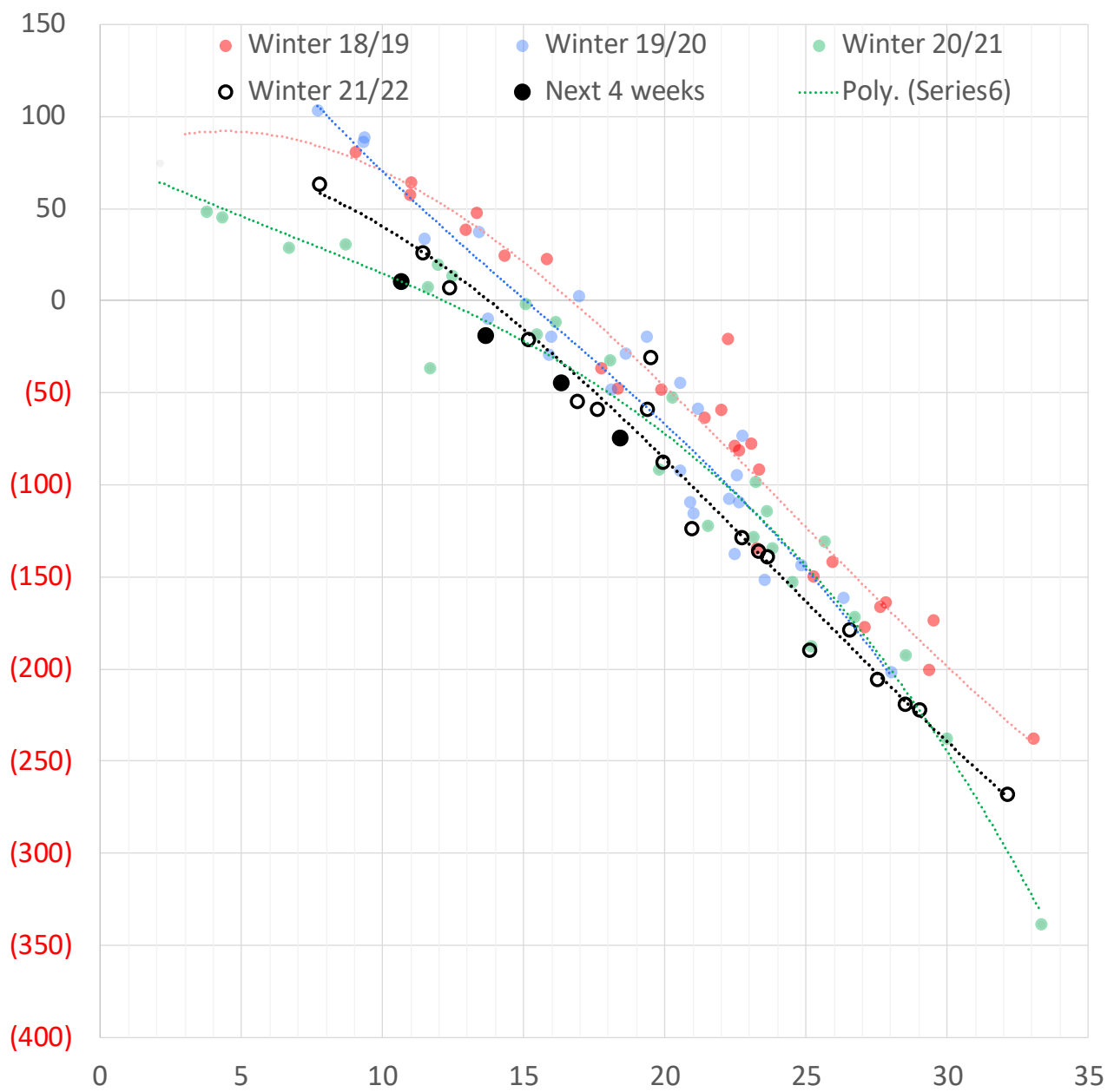
	Units	Current Price	vs. Last Week	vs. 4 Weeks Ago	vs. Last Year
NatGas Jul21/Oct21	\$/MMBtu	2.224	▲ 0.000	▲ 0.000	▲ 2.203
NatGas Oct21/Nov21	\$/MMBtu	0.361	▲ 0.000	▲ 0.000	▲ 0.292
NatGas Oct21/Jan22	\$/MMBtu	-1.817	▲ 0.000	▲ 0.000	▼ -2.104
NatGas Apr22/Oct22	\$/MMBtu	0.168	▲ 0.012	▲ 0.031	▲ 0.117
WTI Crude	\$/Bbl	96.44	▼ -27.260	▲ 4.370	▲ 31.640
Brent Crude	\$/Bbl	99.91	▼ -28.070	▲ 6.630	▲ 31.520
Fuel Oil, NY Harbour 1%	\$/Bbl	97.18	▲ 0.000	▲ 0.000	▲ 0.000
Heating Oil	cents/Gallon	302.97	▼ -140.760	▲ 17.020	▲ 109.700
Propane, Mt. Bel	cents/Gallon	1.36	▼ -0.237	▲ 0.115	▲ 0.423
Ethane, Mt. Bel	cents/Gallon	0.41	▼ -0.008	▲ 0.020	▲ 0.191
Coal, PRB	\$/MTon	12.30	▲ 0.000	▲ 0.000	▲ 0.000
Coal, PRB	\$/MMBtu	0.70			
Coal, ILB	\$/MTon	31.05	▲ 0.000	▲ 0.000	▲ 0.000
Coal, ILB	\$/MMBtu	1.32			

### Nat Gas Term Structure (\$MMBTU)



	APR 22	MAY 22	JUN 22	JUL 22	AUG 22	SEP 22	OCT 22	NOV 22	DEC 22	JAN 23	FEB 23	MAR 23
<b>Henry Hub</b>	\$4.642	\$4.691	\$4.743	\$4.796	\$4.810	\$4.787	\$4.806	\$4.896	\$5.027	\$5.119	\$4.947	\$4.498
<b>JKL</b>	\$37.445	\$34.215	\$33.600	\$32.830	\$31.765	\$31.645	\$30.330	\$31.920	\$30.245	\$27.975	\$25.365	\$22.100
<b>JKL-HHub</b>	\$32.803	\$29.524	\$28.857	\$28.034	\$26.955	\$26.858	\$25.524	\$27.024	\$25.218	\$22.856	\$20.418	\$17.602
<b>TTF</b>	\$37.208	\$37.058	\$36.918	\$36.793	\$36.468	\$36.193	\$34.051	\$33.632	\$32.060	\$30.533	\$28.458	\$26.130
<b>TTF-HHub</b>	\$32.566	\$32.367	\$32.175	\$31.997	\$31.658	\$31.406	\$29.245	\$28.736	\$27.033	\$25.414	\$23.511	\$21.632
<b>NBP</b>	\$35.857	\$35.888	\$35.892	\$35.845	\$35.626	\$35.811	\$34.343	\$34.591	\$34.467	\$33.939	\$31.631	\$27.272
<b>NBP-HHub</b>	\$31.215	\$31.197	\$31.149	\$31.049	\$30.816	\$31.024	\$29.537	\$29.695	\$29.440	\$28.820	\$26.684	\$22.774

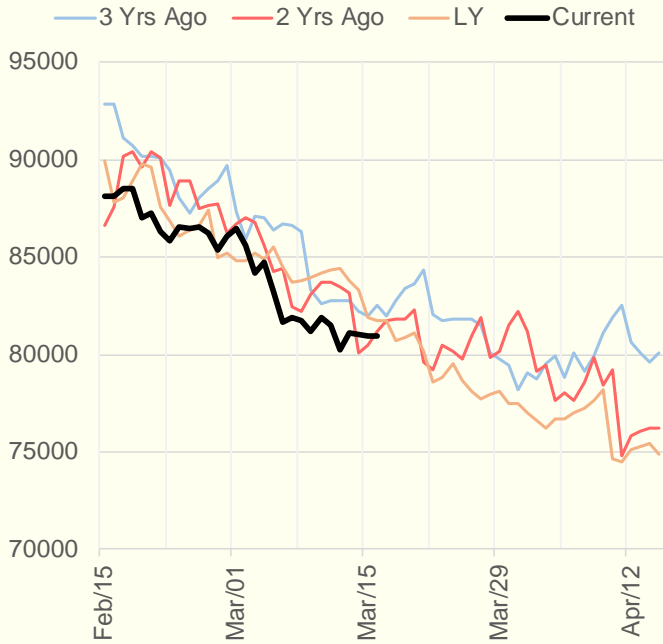
## Weather Storage Model - Next 4 Week Forecast



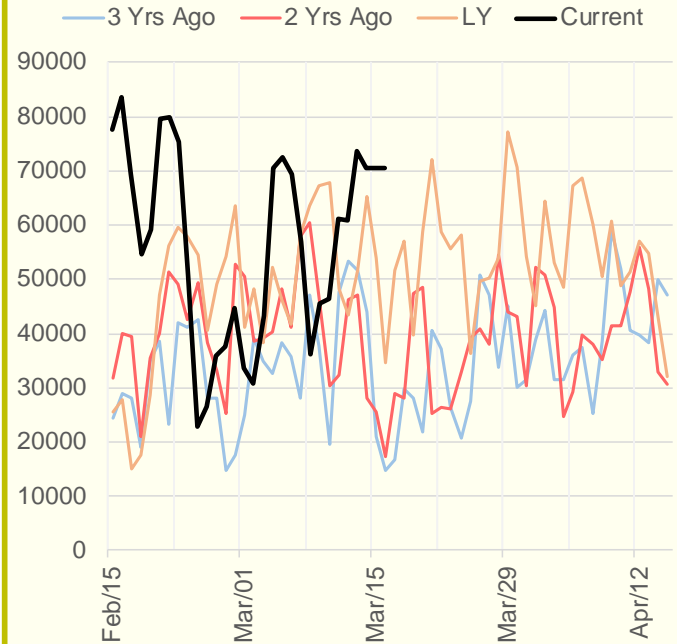
The risk of trading futures and options and other derivatives involves a substantial risk of loss and is not suitable for all persons. Each person must consider whether a particular trade, combination of trades, or strategy is suitable for that person's financial means and objectives. Past results are not necessarily indicative of future results. This communication may contain links to third party websites which are not under the control of and are not maintained by ION Energy Group, and ION Energy Group is not responsible for their content.



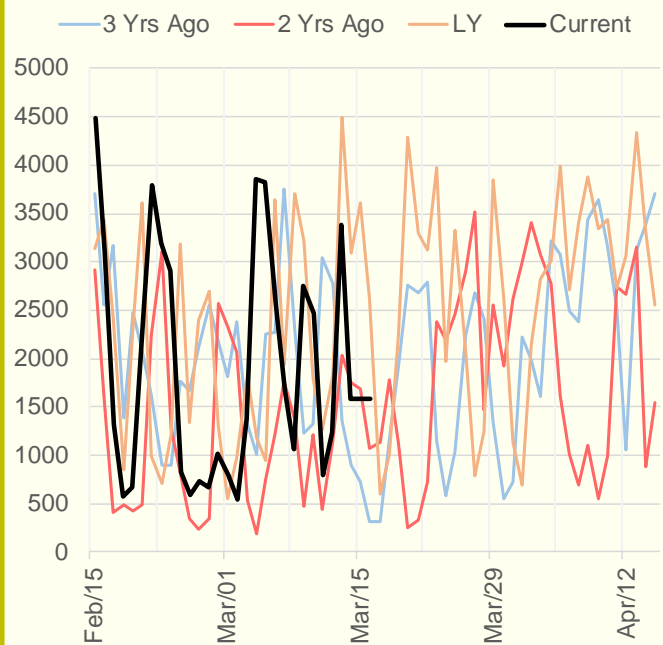
### NRC Nuclear Daily Output



### US Wind



### CALI Wind



### TEXAS Wind

