

CFTC COMMITMENT OF TRADERS REPORT

As of 2/22/2022

TRADITIONAL FUNDS net position changes

Wed to Tue, in 000 contracts

	Corn	Bean	Meal	Oil	Chi. Wheat	KC Wheat	Min Wheat
Futures Only	37.3	9.7	2.6	15.8	1.9	3.4	0.7
Futures & Options Combined	28.8	5.5	2.6	9.7	17.8	5.1	1.8

TRADITIONAL COMMERCIAL net position changes

	Corn	Bean	Meal	Oil	Chi. Wheat	KC Wheat	Min Wheat
Futures Only	(36.0)	(10.3)	(2.7)	(16.6)	0.6	(3.8)	(0.5)
Futures & Options Combined	(28.1)	(8.0)	(2.6)	(10.3)	(14.5)	(5.1)	(1.5)

MANAGED MONEY net position changes

	Corn	Bean	Meal	Oil	Chi. Wheat	KC Wheat	Min Wheat
Futures Only	21.6	(1.5)	(0.4)	8.6	17.1	4.6	1.7
Futures & Options Combined	28.9	5.0	1.2	8.8	16.6	4.7	1.7

SWAP DEALERS net position changes

	Corn	Bean	Meal	Oil	Chi. Wheat	KC Wheat	Min Wheat
Futures Only	5.6	(4.0)	2.6	0.9	(1.7)	(0.8)	0.1
Futures & Options Combined	7.4	0.4	2.4	(0.7)	(4.2)	(1.4)	0.4

PRODUCERS/END USERS net position changes

	Corn	Bean	Meal	Oil	Chi. Wheat	KC Wheat	Min Wheat
Futures Only	(41.6)	(6.3)	(5.3)	(17.5)	2.3	(3.1)	(0.6)
Futures & Options Combined	(35.5)	(8.3)	(5.0)	(9.5)	(10.3)	(3.7)	(1.8)

INDEX net position changes

	Corn	Bean	Meal	Oil	Chi. Wheat	KC Wheat	Min Wheat
Futures & Options Combined	10.1	2.3	5.8	2.7	(1.1)	0.9	NA

SUPPLEMENTAL NON-COMMERCIAL net position changes

	Corn	Bean	Meal	Oil	Chi. Wheat	KC Wheat	Min Wheat
Futures & Options Combined	27.2	4.6	1.1	9.3	15.7	4.4	NA

OPEN INTEREST net position changes

Wed to Tue, in 000 contracts

	Corn	Bean	Meal	Oil	Chi. Wheat	KC Wheat	Min Wheat
Futures Only	(43.8)	(30.1)	(8.3)	(9.7)	(22.9)	(7.7)	(0.7)
Futures & Options Combined	(115.4)	(87.9)	(35.4)	(28.9)	(39.1)	(15.1)	(3.1)

Source: CFTC and FI

Wed to Tue, in 000 contracts

2/25/2022

**COMMITMENT OF TRADERS
FUTURES ONLY NET POSITIONS
AS OF 02/22/2022
(IN THOUSAND CONTRACTS)**

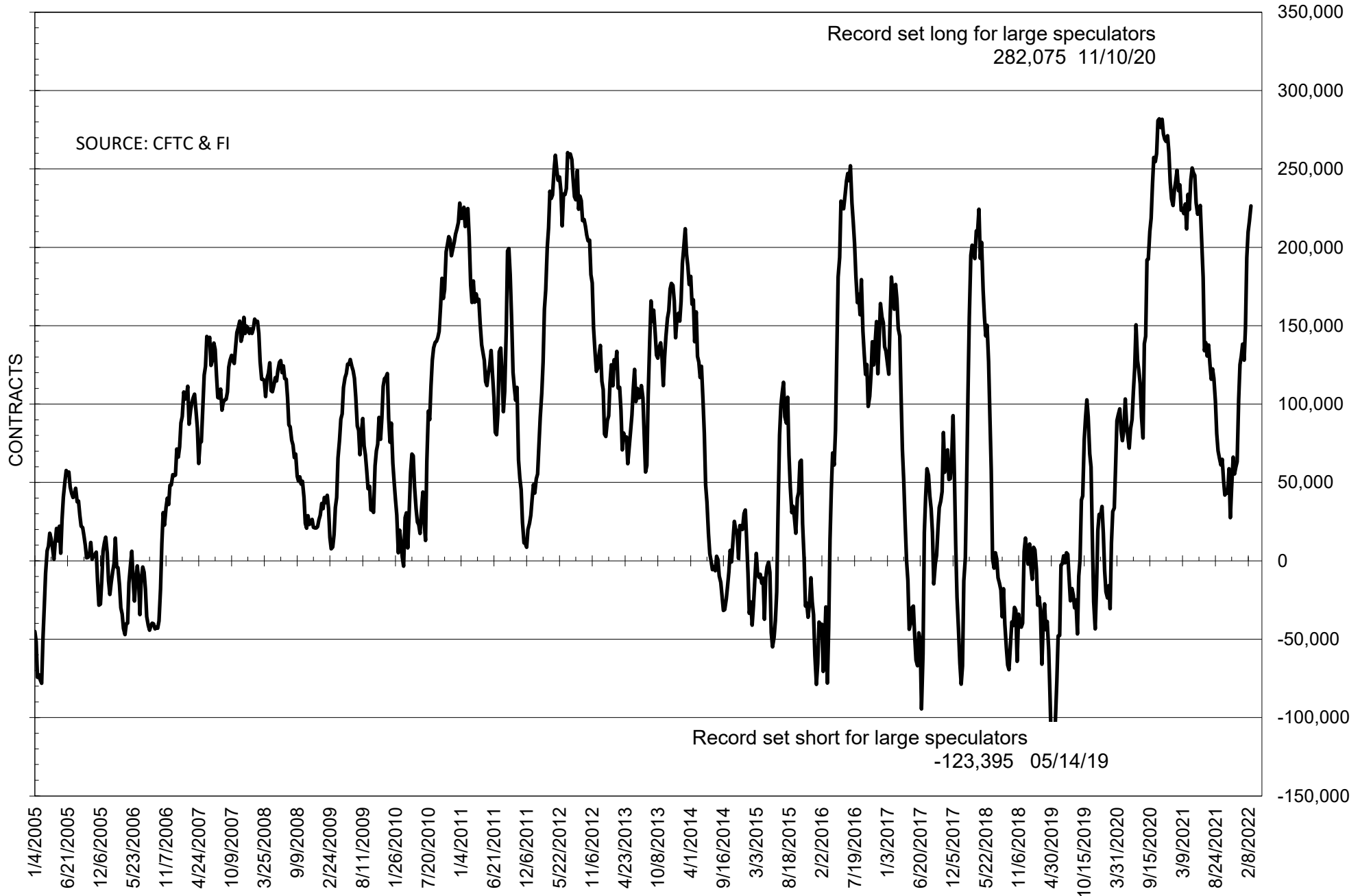
	COMMERCIAL				(FUND) NON COMMERCIAL				(SPEC) NON-REPORTABLE			
	22-Feb	15-Feb	8-Feb	1-Feb	22-Feb	15-Feb	8-Feb	1-Feb	22-Feb	15-Feb	8-Feb	1-Feb
	WHEAT											
Chicago	10.6	10.0	8.0	5.1	-3.9	-5.8	-3.6	0.4	-6.7	-4.2	-4.4	-5.5
Kansas City	-38.0	-34.2	-34.9	-36.0	37.7	34.3	32.8	34.8	0.3	-0.1	2.1	1.2
Minneapolis	-16.8	-16.3	-13.7	-12.7	12.5	11.8	9.2	9.3	4.4	4.5	4.5	3.3
All Wheat	-44.2	-40.5	-40.6	-43.6	46.3	40.3	38.4	44.5	-2.0	0.2	2.2	-0.9
CORN	-411.0	-375.0	-382.9	-407.7	451.7	414.5	419.6	455.2	-40.8	-39.5	-36.7	-47.6
OATS	#VALUE!	#VALUE!	#VALUE!	#VALUE!	#VALUE!	#####	#VALUE!	#VALUE!	#VALUE!	#VALUE!	#VALUE!	#VALUE!
SOYBEANS	-196.8	-186.4	-176.1	-155.6	226.5	216.7	209.7	193.4	-29.7	-30.3	-33.7	-37.8
SOY OIL	-97.3	-80.7	-77.8	-86.6	83.1	67.3	66.0	74.4	14.2	13.3	11.7	12.2
SOY MEAL	-138.5	-135.8	-132.5	-127.0	112.1	109.5	106.3	98.8	26.4	26.2	26.3	28.1

Oats positions thin to be reported

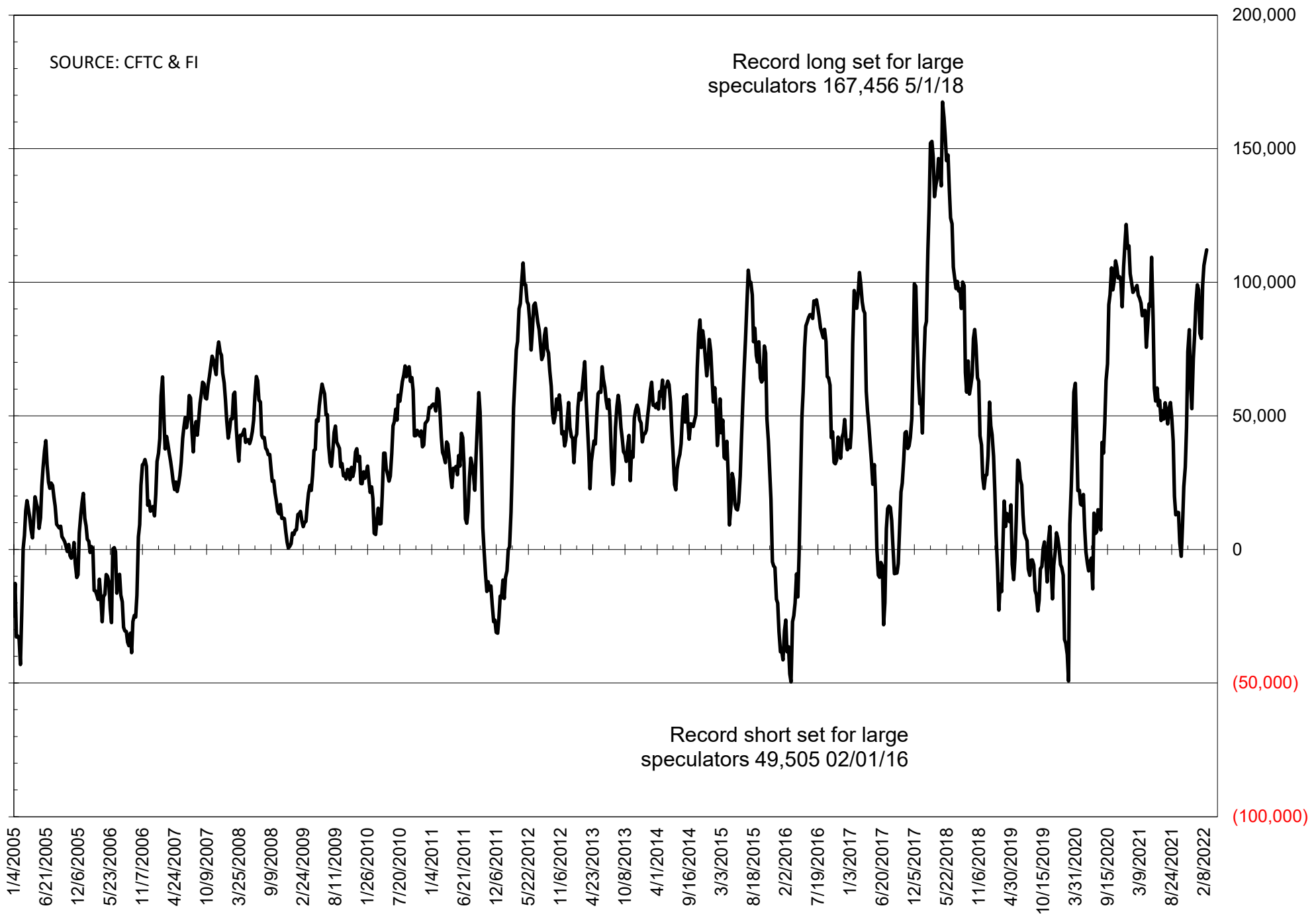
	TOTAL OPEN INTEREST				NEARBY FUTURES PRICE					22-Feb-22 LAST REPORTED % HELD BY TRADERS			
	22-Feb	15-Feb	8-Feb	1-Feb	H Latest	H 22-Feb	H 15-Feb	H 8-Feb	H 1-Feb	LARGE FUND		SMALL	
										LONG	SHORT	LONG	SHORT
WHEAT													
Chicago	379308	402232	385172	391162	843.00	844.25	779.75	778.75	769.00	0%	27%	0%	11%
Kansas City	213586	221307	212689	218513	886.75	881.75	806.00	801.25	786.25	0%	12%	0%	11%
Minneapolis	68647	69334	68004	67962	956.00	985.75	953.00	940.50	916.50	0%	7%	0%	17%
CORN	1563758	1607591	1575318	1568959	659.50	674.75	638.00	632.25	634.75	0%	5%	0%	12%
OATS	#VALUE!	#VALUE!	#VALUE!	#VALUE!	644.25	680.25	719.25	745.75	715.00	0%	#VALUE!	0%	#VALUE!
SOYBEANS	826824	856917	832618	796285	1590.25	1635.00	1551.25	1569.00	1528.50	33%	6%	7%	11%
SOY OIL	410654	420333	429012	439646	68.75	70.15	65.63	63.35	65.83	0%	8%	0%	6%
SOY MEAL	440199	448483	435938	415978	448.30	453.70	438.80	454.10	436.00	0%	4%	0%	5%

SOURCE: CFTC & FI

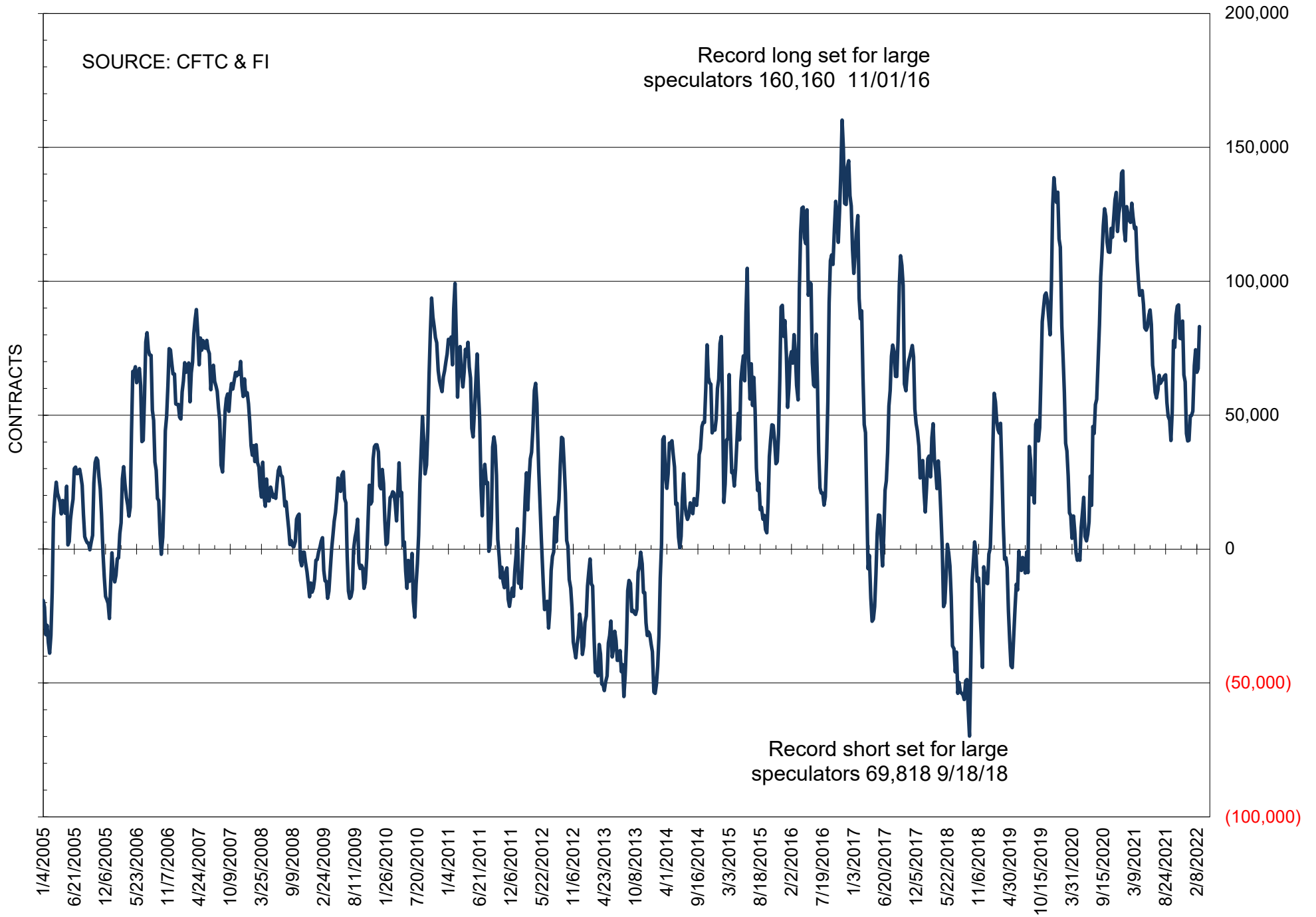
NET POSITION OF FUTURES ONLY LARGE SPECS IN SOYBEANS



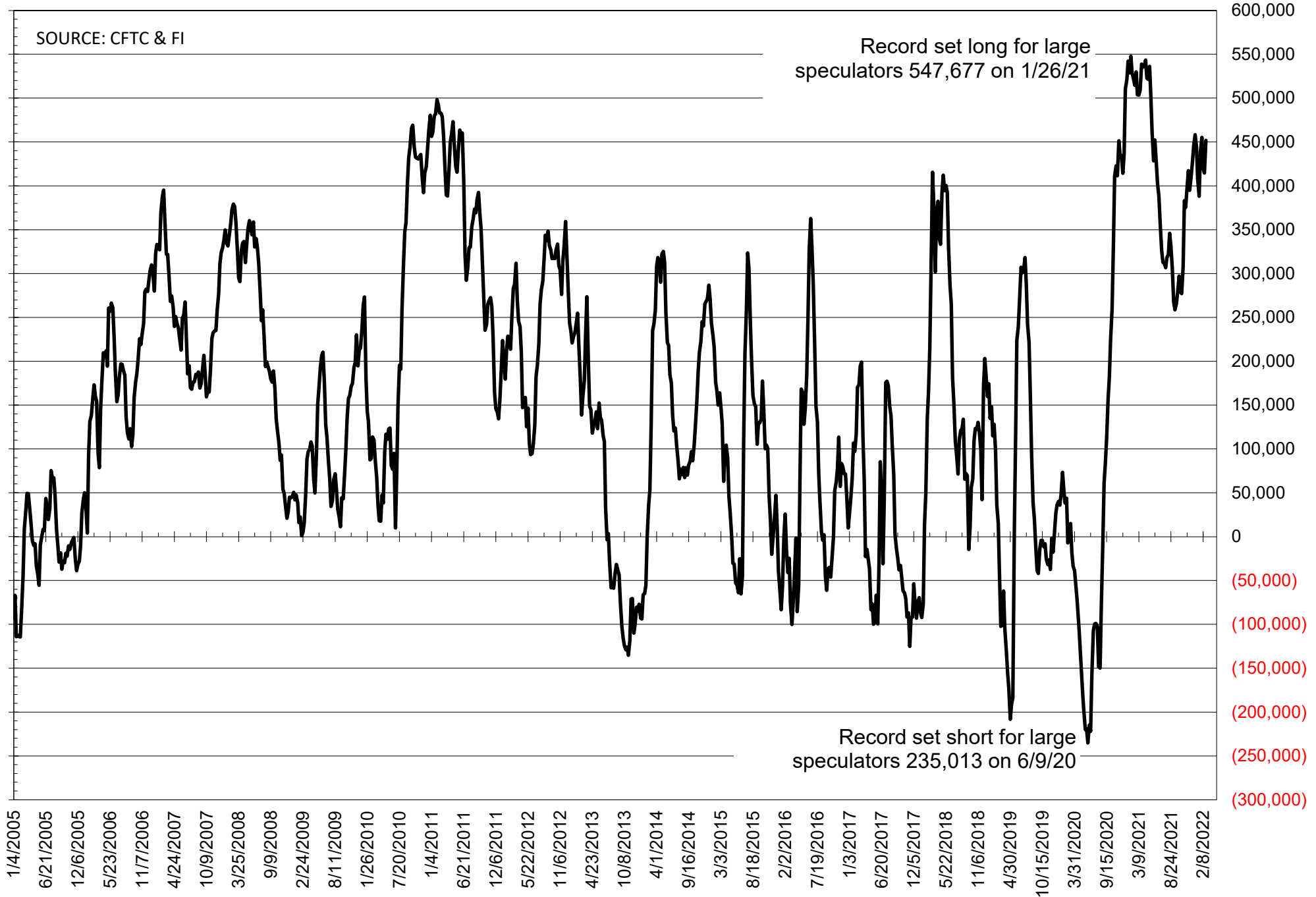
NET POSITION OF FUTURES ONLY LARGE SPECS IN SOYMEAL



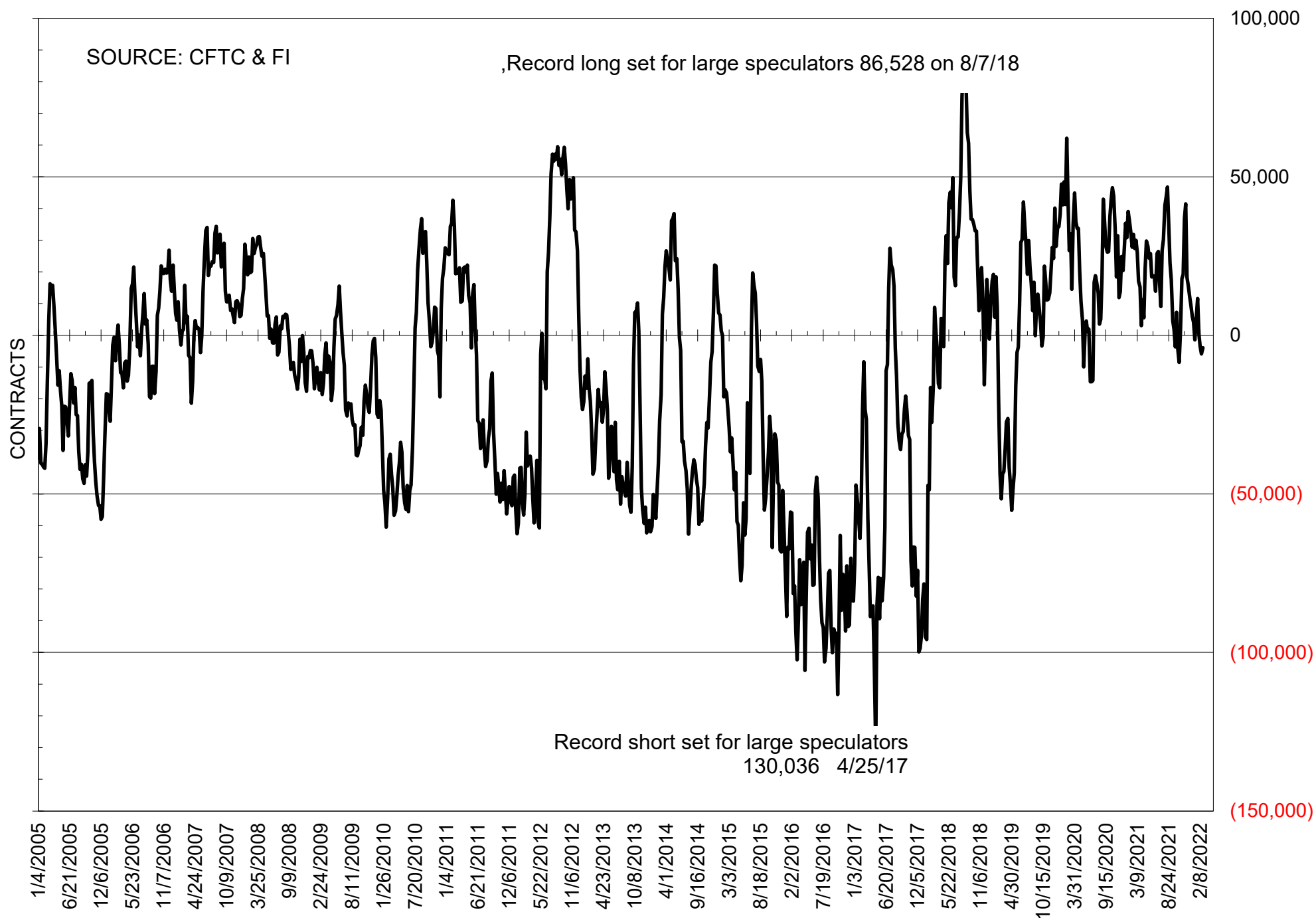
NET POSITION OF FUTURES ONLY LARGE SPECS IN SOYOIL



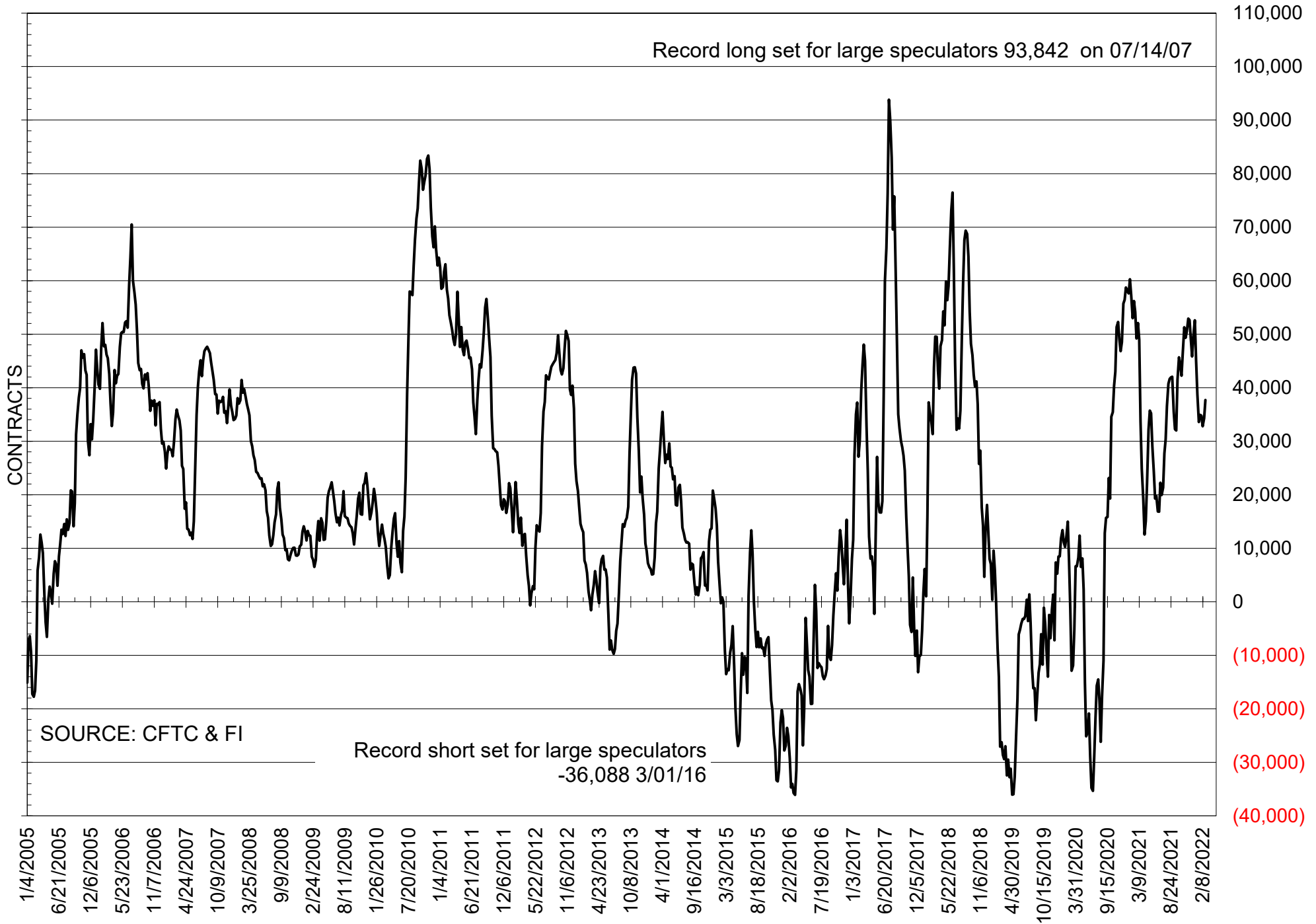
NET POSITION OF LARGE SPECULATORS IN CORN



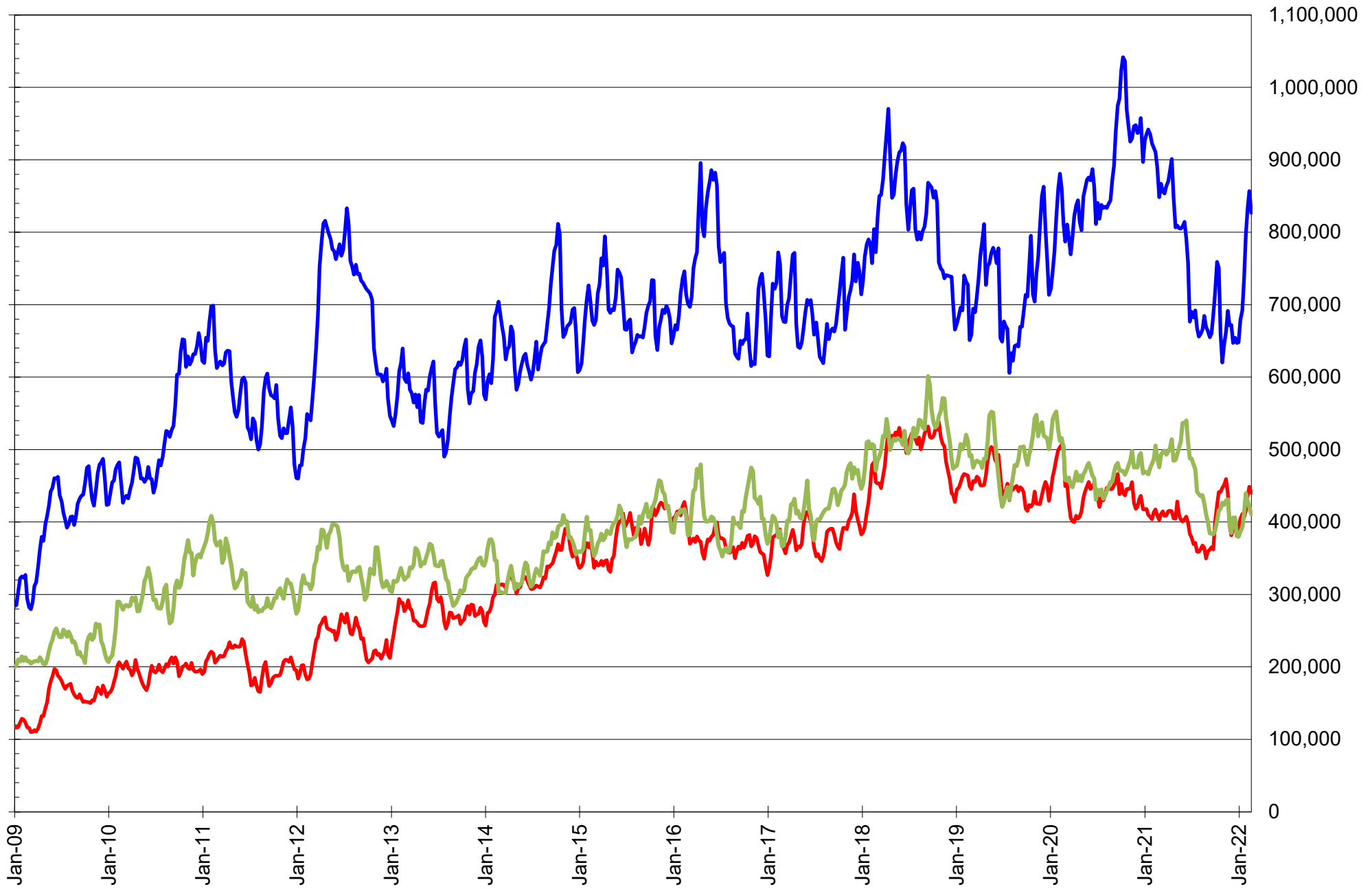
NET POSITION OF FUTURES ONLY LARGE SPECS IN CHICAGO WHEAT



NET POSITION OF LARGE SPECULATORS IN KANSAS CITY WHEAT



TOTAL OPEN INTEREST IN SOYBEANS, MEAL AND OIL, FUTURES ONLY



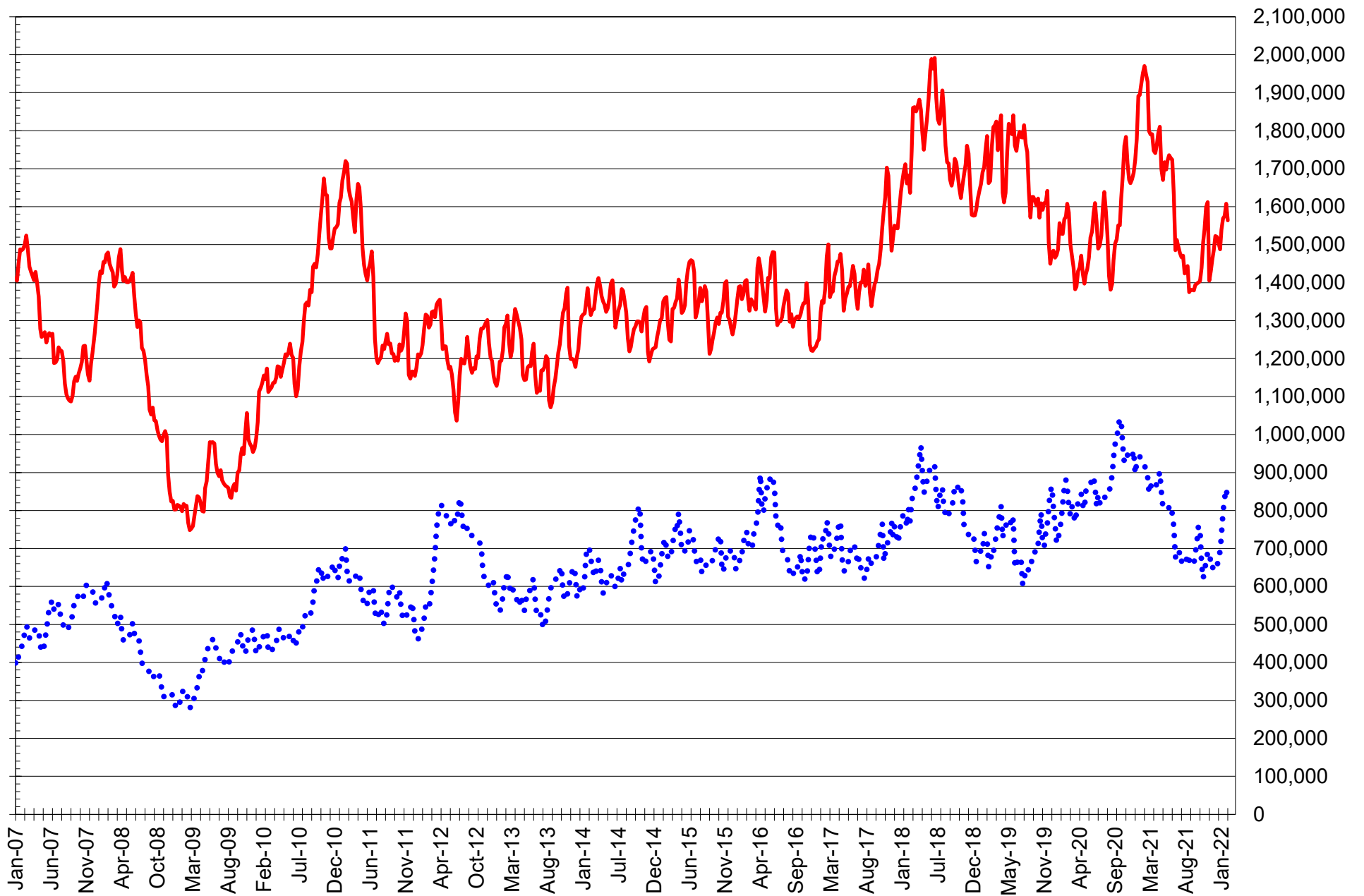
SOURCE: CFTC & FI

— SOYBEANS

— SOYBEAN MEAL

— SOYBEAN OIL

TOTAL OPEN INTEREST IN CORN AND SOYBEANS, FUTURES ONLY



SOURCE: CFTC & FI

— CORN

•••• SOYBEANS

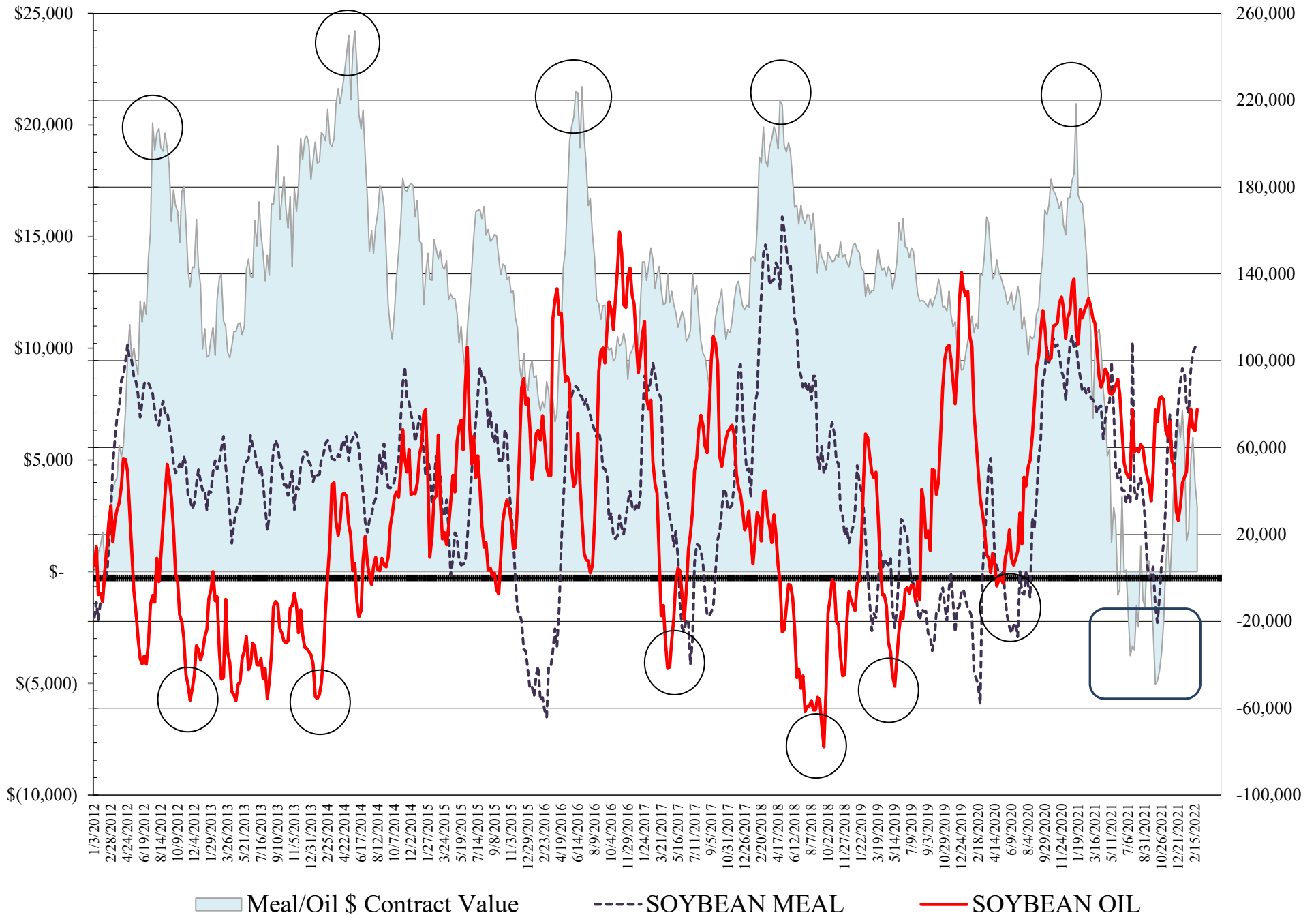
**COMMITMENT OF TRADERS
FUTURES & OPTIONS NET POSITIONS
AS OF 02/22/2022
(IN THOUSAND CONTRACTS)**

	COMMERCIAL				(FUND) NON COMMERCIAL				(SPEC) NON-REPORTABLE			
	22-Feb	15-Feb	8-Feb	1-Feb	22-Feb	15-Feb	8-Feb	1-Feb	22-Feb	15-Feb	8-Feb	1-Feb
WHEAT												
Chicago	10.3	24.9	20.7	17.2	-3.6	-21.4	-17.0	-12.8	-6.8	-3.5	-3.7	-4.4
Kansas City	-39.2	-34.1	-34.8	-35.9	38.7	33.6	31.9	34.1	0.6	0.6	2.9	1.8
Minneapolis	-16.4	-14.9	-12.4	-11.3	11.8	10.1	7.5	7.6	4.5	4.8	4.9	3.7
All Wheat	-45.3	-24.1	-26.5	-30.1	47.0	22.2	22.4	29.0	-1.7	1.9	4.1	1.2
CORN	-405.2	-377.1	-384.2	-409.4	434.1	405.4	409.9	445.5	-28.9	-28.2	-25.7	-36.1
OATS	#VALUE!	#VALUE!	#VALUE!	#VALUE!	#VALUE!	#VALUE!	#VALUE!	#VALUE!	#VALUE!	#VALUE!	#VALUE!	#VALUE!
SOYBEANS	-183.0	-175.1	-169.2	-156.0	214.1	208.6	205.0	195.8	-31.1	-33.6	-35.8	-39.8
SOY OIL	-91.9	-81.7	-81.7	-91.1	77.5	67.8	69.3	77.8	14.4	13.9	12.4	13.3
SOY MEAL	-137.9	-135.3	-133.7	-127.2	108.6	106.0	103.6	95.3	29.3	29.3	30.1	31.9

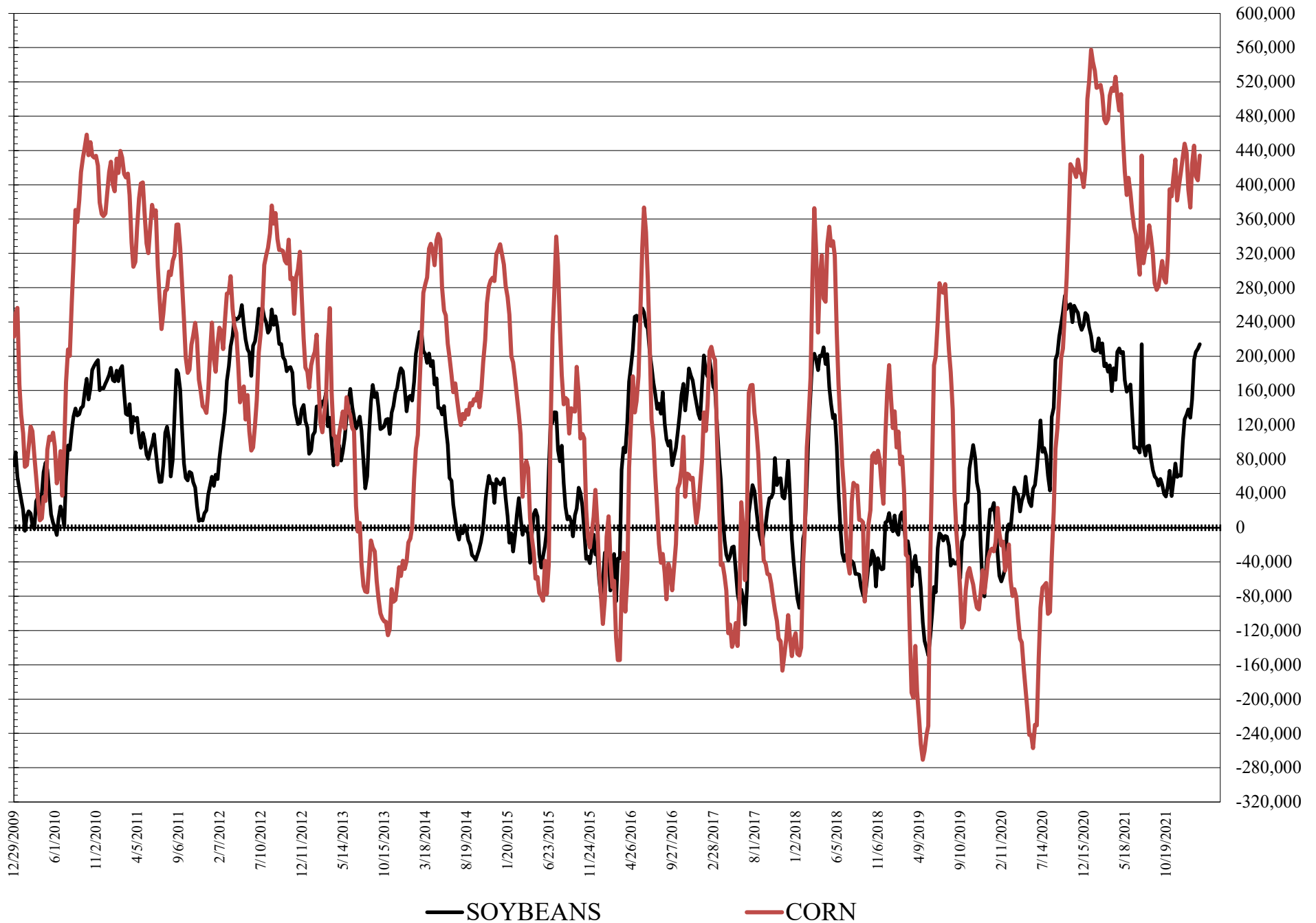
	TOTAL OPEN INTEREST				COMMERCIALS		% HELD BY TRADERS LARGE (FUNDS)		SMALL (NON-REP)	
	22-Feb	15-Feb	8-Feb	1-Feb	LONG	SHORT	LONG	SHORT	LONG	SHORT
WHEAT										
Chicago	471,913	511,039	486,477	492,052	39%	36%	21%	22%	8%	9%
Kansas City	233,966	249,029	240,374	246,168	36%	53%	28%	11%	12%	11%
Minneapolis	70,932	74,066	72,269	71,980	46%	69%	23%	6%	24%	17%
CORN	1,947,320	2,062,677	1,998,012	1,979,521	40%	61%	27%	4%	10%	12%
OATS	#VALUE!	#VALUE!	#VALUE!	#VALUE!						
SOYBEANS	1,036,939	1,124,836	1,078,690	1,006,519	40%	58%	25%	4%	6%	9%
SOY OIL	457,440	486,365	484,568	496,168	44%	64%	24%	7%	9%	6%
SOY MEAL	489,168	524,560	510,347	478,164	40%	69%	26%	4%	12%	6%

SOURCE: CFTC & FI

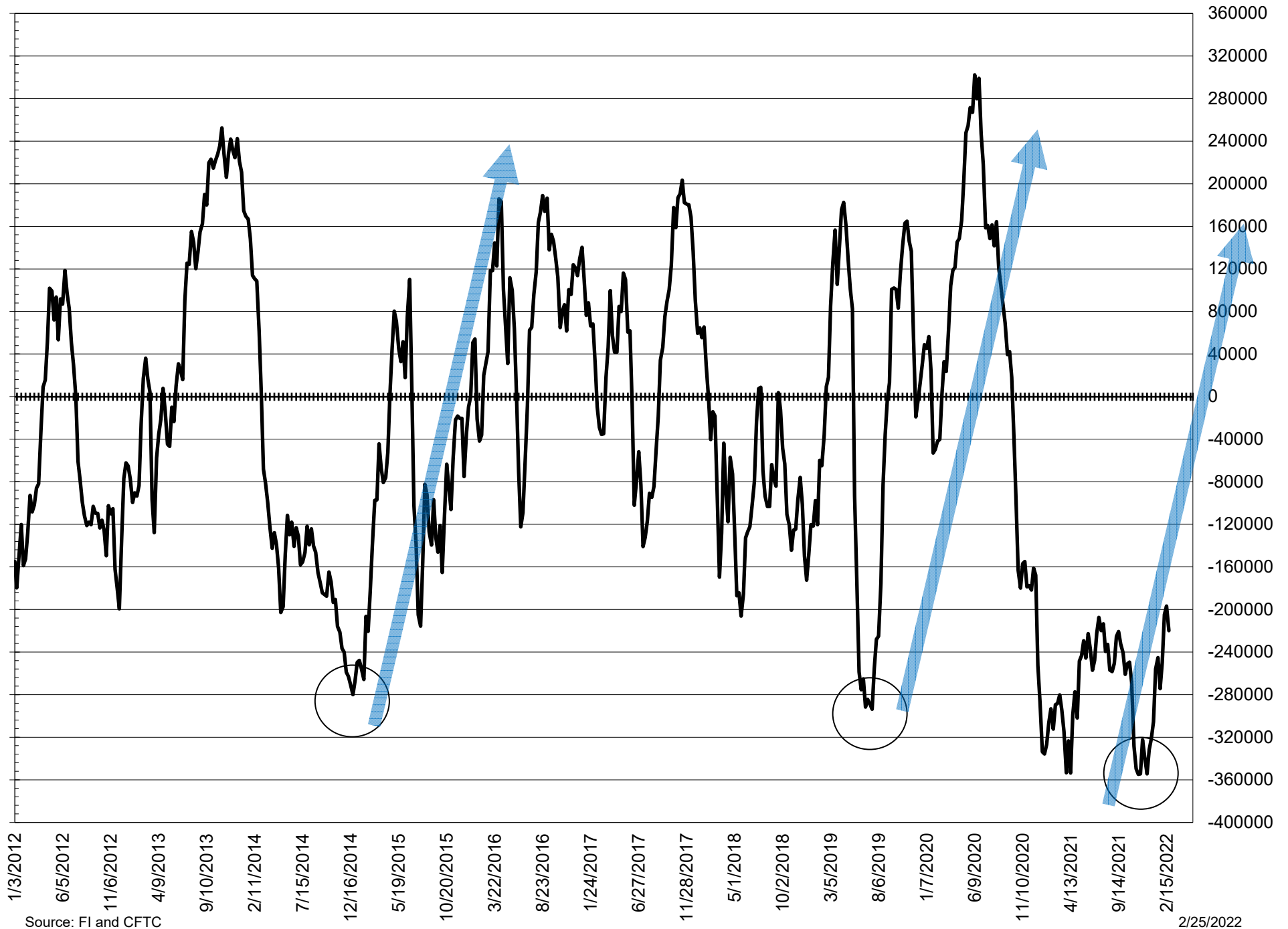
NET POSITION FUTURES AND OPTIONS OF LARGE SPECULATORS IN SOYBEAN MEAL AND SOYBEAN OIL



NET POSITION FUTURES AND OPTIONS OF LARGE SPECULATORS IN SOYBEANS AND CORN



NET POSITION FUTURES AND OPTIONS SPREAD OF LARGE SPECULATORS IN SOYBEANS MINUS CORN



Source: FI and CFTC

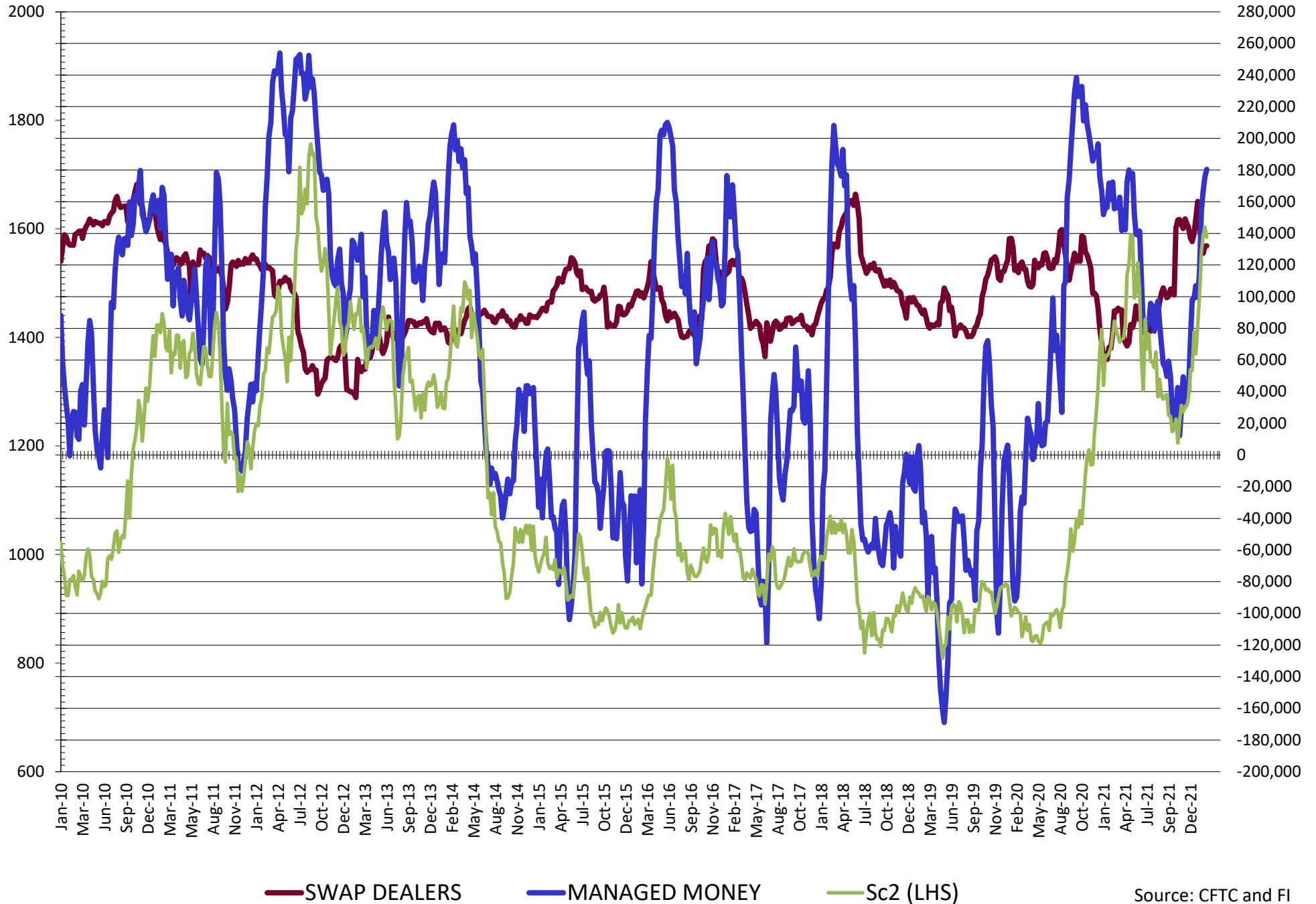
2/25/2022

**DISAGGREGATED COMMITMENT OF TRADERS
FUTURES & OPTIONS NET POSITIONS
AS OF 02/22/2022
(IN THOUSAND CONTRACTS)**

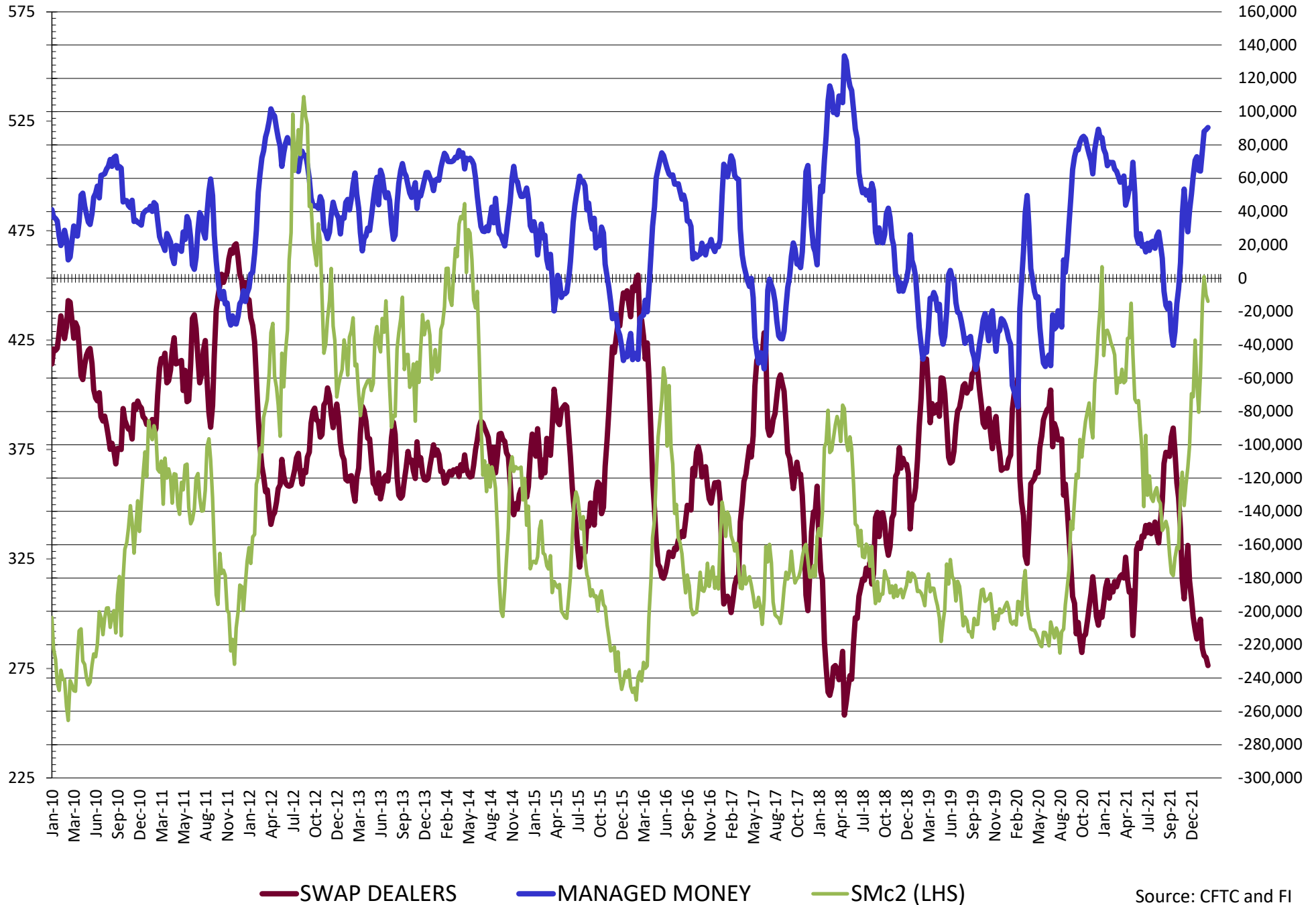
	PRODUCER / MERCHANT / PROCESSOR / USER				(INDEX/ETF) SWAP DEALERS				(CTA/CPO/OTHER UNREGISTERED) MANAGED MONEY			
	22-Feb	15-Feb	8-Feb	1-Feb	22-Feb	15-Feb	8-Feb	1-Feb	22-Feb	15-Feb	8-Feb	1-Feb
	WHEAT											
Chicago	(81.6)	(71.3)	(72.9)	(72.3)	92.0	96.2	93.6	89.4	(18.1)	(34.7)	(29.6)	(26.5)
Kansas City	(64.8)	(61.0)	(61.8)	(61.4)	25.5	26.9	27.0	25.5	40.8	36.1	34.5	37.8
Minneapolis	(18.8)	(17.0)	(14.7)	(13.8)	2.5	2.1	2.4	2.4	7.0	5.3	3.6	4.0
All Wheat	(165.2)	(149.3)	(149.5)	(147.5)	120.0	125.2	123.0	117.4	29.7	6.7	8.5	15.3
CORN	(702.6)	(667.1)	(662.9)	(685.6)	297.4	290.0	278.7	276.2	354.4	325.5	337.3	372.6
OATS	0.0	0.0	0.0	0.0	0.0	0.0	0.0	0.0	0.0	0.0	0.0	0.0
SOYBEANS	(315.2)	(306.8)	(296.5)	(290.7)	132.1	131.8	127.3	134.7	180.3	175.4	166.3	154.5
SOY OIL	(183.2)	(173.7)	(171.3)	(177.5)	91.2	92.0	89.6	86.4	79.2	70.4	72.8	80.5
SOY MEAL	(232.6)	(227.6)	(226.7)	(222.2)	94.7	92.3	93.0	95.0	90.4	89.2	88.1	76.7
	TOTAL				OTHER REPORTABLE				NON REPORTABLE			
	OPEN INTEREST				NON REPORTABLE				NON REPORTABLE			
	22-Feb	15-Feb	8-Feb	1-Feb	22-Feb	15-Feb	8-Feb	1-Feb	22-Feb	15-Feb	8-Feb	1-Feb
WHEAT												
Chicago	471,913	511,039	486,477	492,052	14.5	13.3	12.5	13.7	(6.8)	(3.5)	(3.7)	(4.4)
Kansas City	233,966	249,029	240,374	246,168	(2.1)	(2.5)	(2.6)	(3.7)	0.6	0.6	2.9	1.8
Minneapolis	70,932	74,066	72,269	71,980	4.9	4.8	3.9	3.6	4.5	4.8	4.9	3.7
All Wheat	776,811	834,134	799,120	810,200	17.2	15.6	13.9	13.6	(1.7)	1.9	4.1	1.2
CORN	1,947,320	2,062,677	1,998,012	1,979,521	79.7	79.9	72.6	73.0	(28.9)	(28.2)	(28.2)	(28.2)
OATS	0	0	0	0	0.0	0.0	0.0	0.0	0.0	0.0	0.0	0.0
SOYBEANS	1,036,939	1,124,836	1,078,690	1,006,519	33.8	33.3	38.7	41.3	(31.1)	(33.6)	(35.8)	(39.8)
SOY OIL	457,440	486,365	484,568	496,168	(1.7)	(2.6)	(3.5)	(2.7)	14.4	13.9	12.4	13.3
SOY MEAL	489,168	524,560	510,347	478,164	18.2	16.9	15.5	18.6	29.3	29.3	30.1	31.9

SOURCE: CFTC & FI

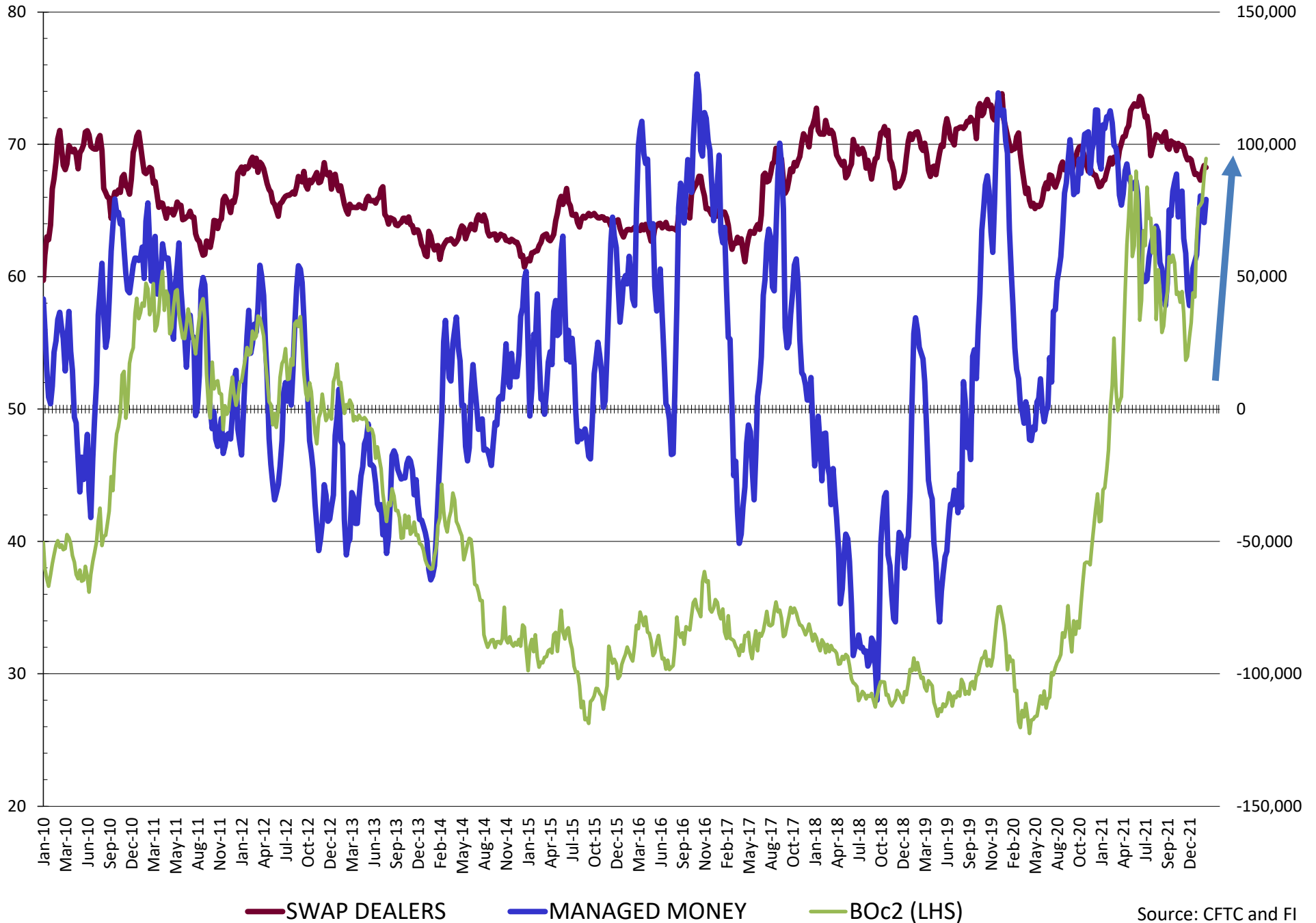
NET POSITION FUTURES AND OPTIONS OF SWAP AND MANAGED FUNDS IN SOYBEANS



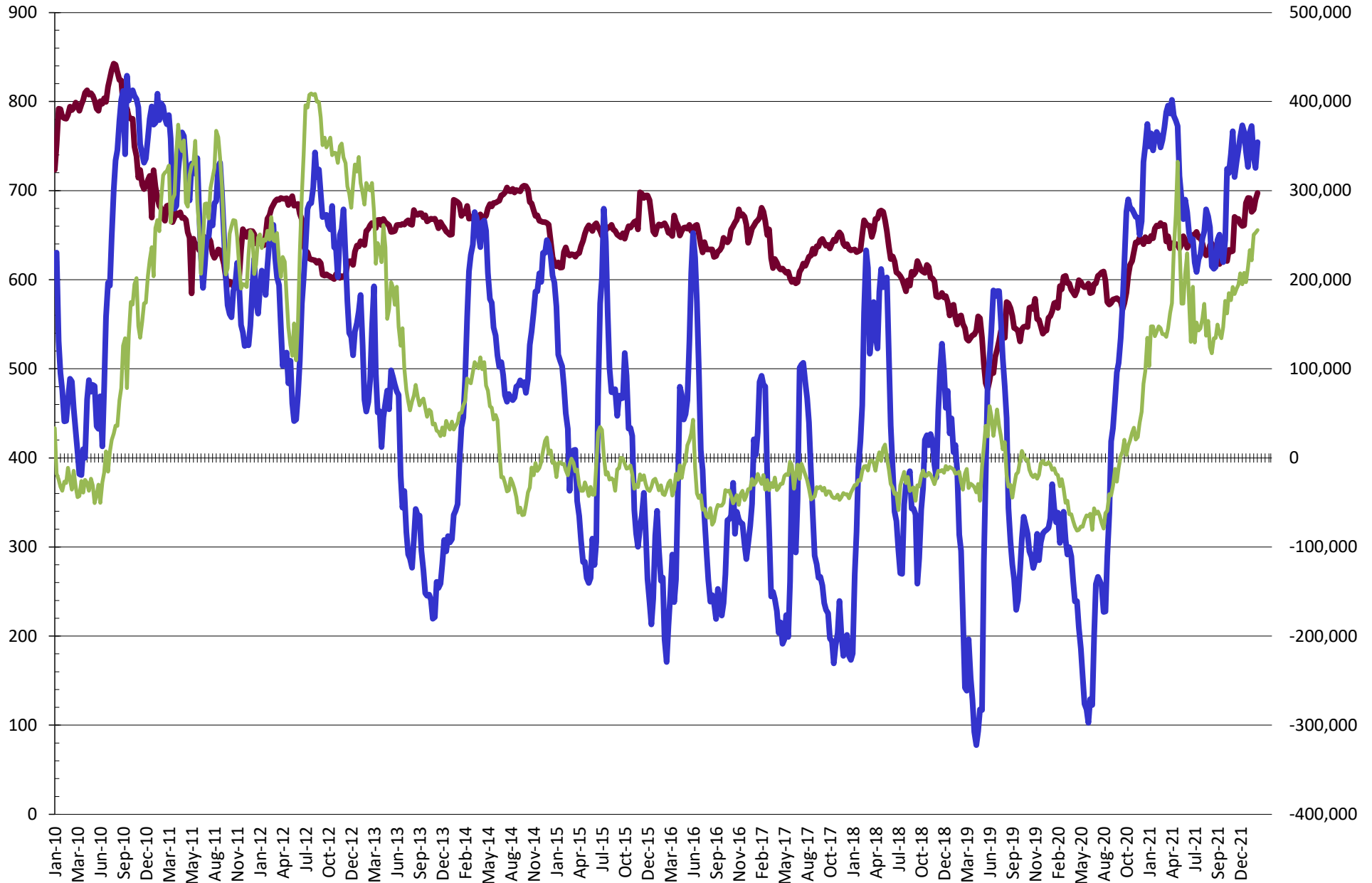
NET POSITION FUTURES AND OPTIONS OF SWAP AND MANAGED FUNDS IN SOYBEAN MEAL



NET POSITION FUTURES AND OPTIONS OF SWAP AND MANAGED FUNDS IN SOYBEAN OIL

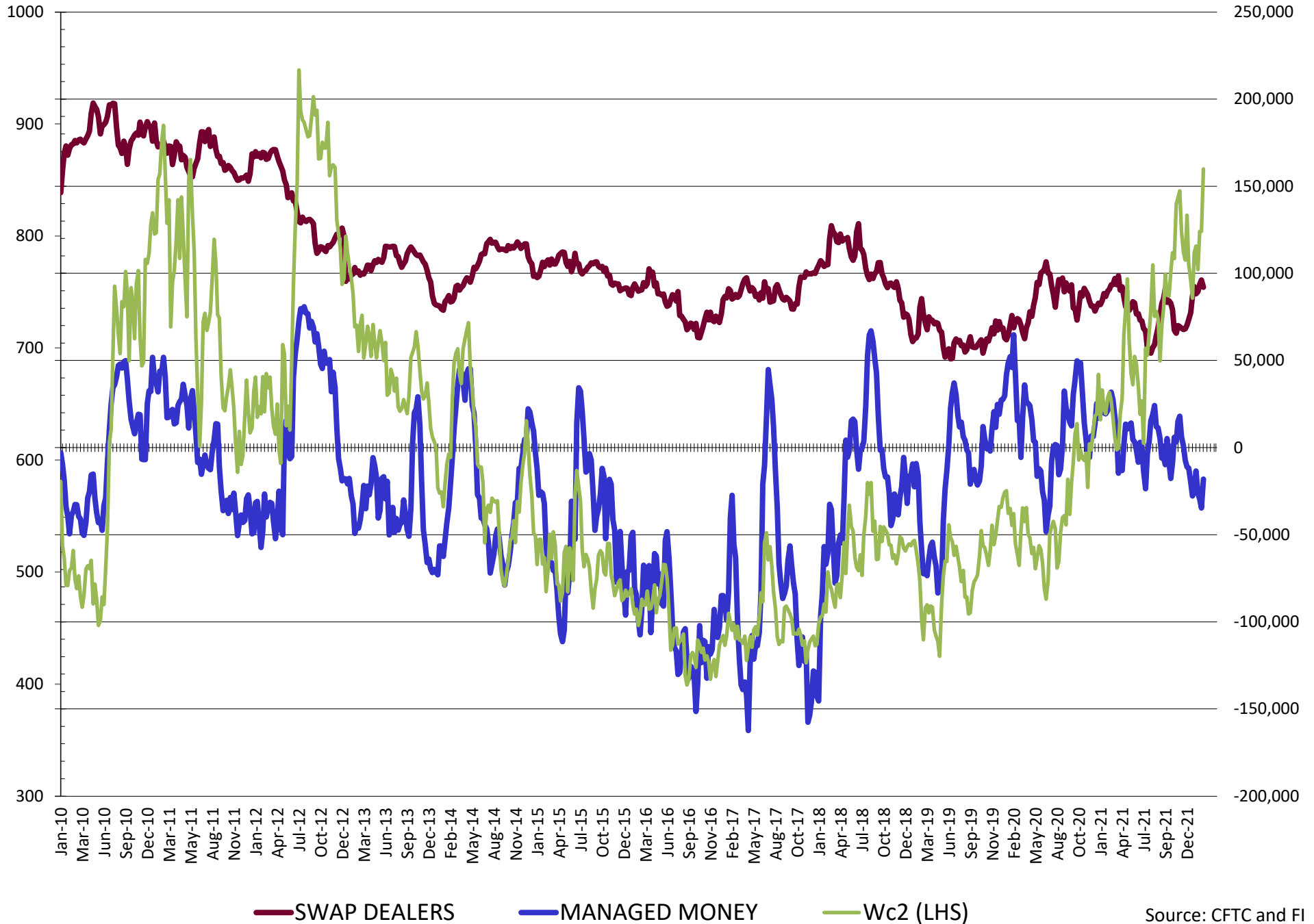


NET POSITION FUTURES AND OPTIONS OF SWAP AND MANAGED FUNDS IN CORN

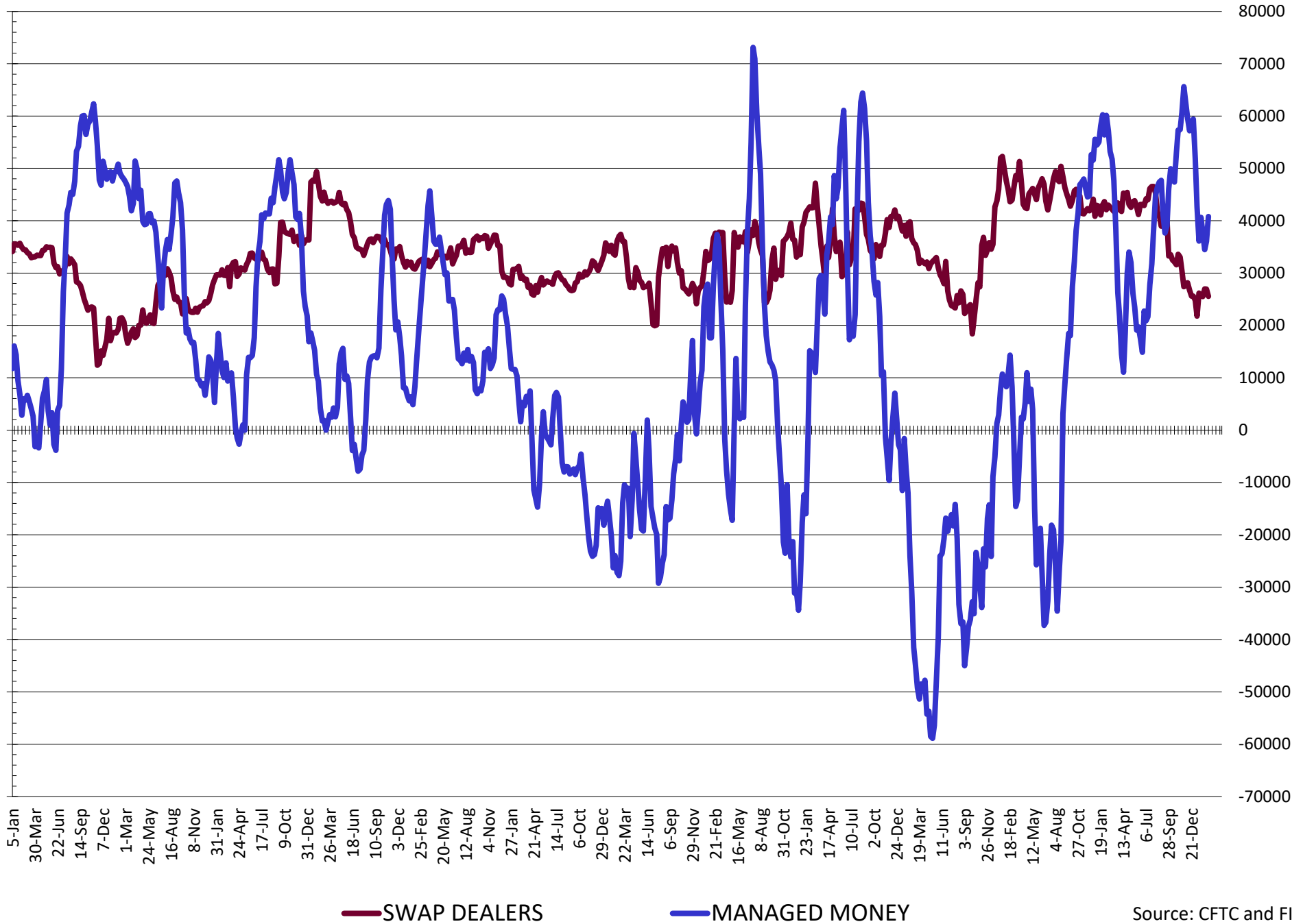


— SWAP DEALERS
 — MANAGED MONEY
 — Cc2 (LHS)

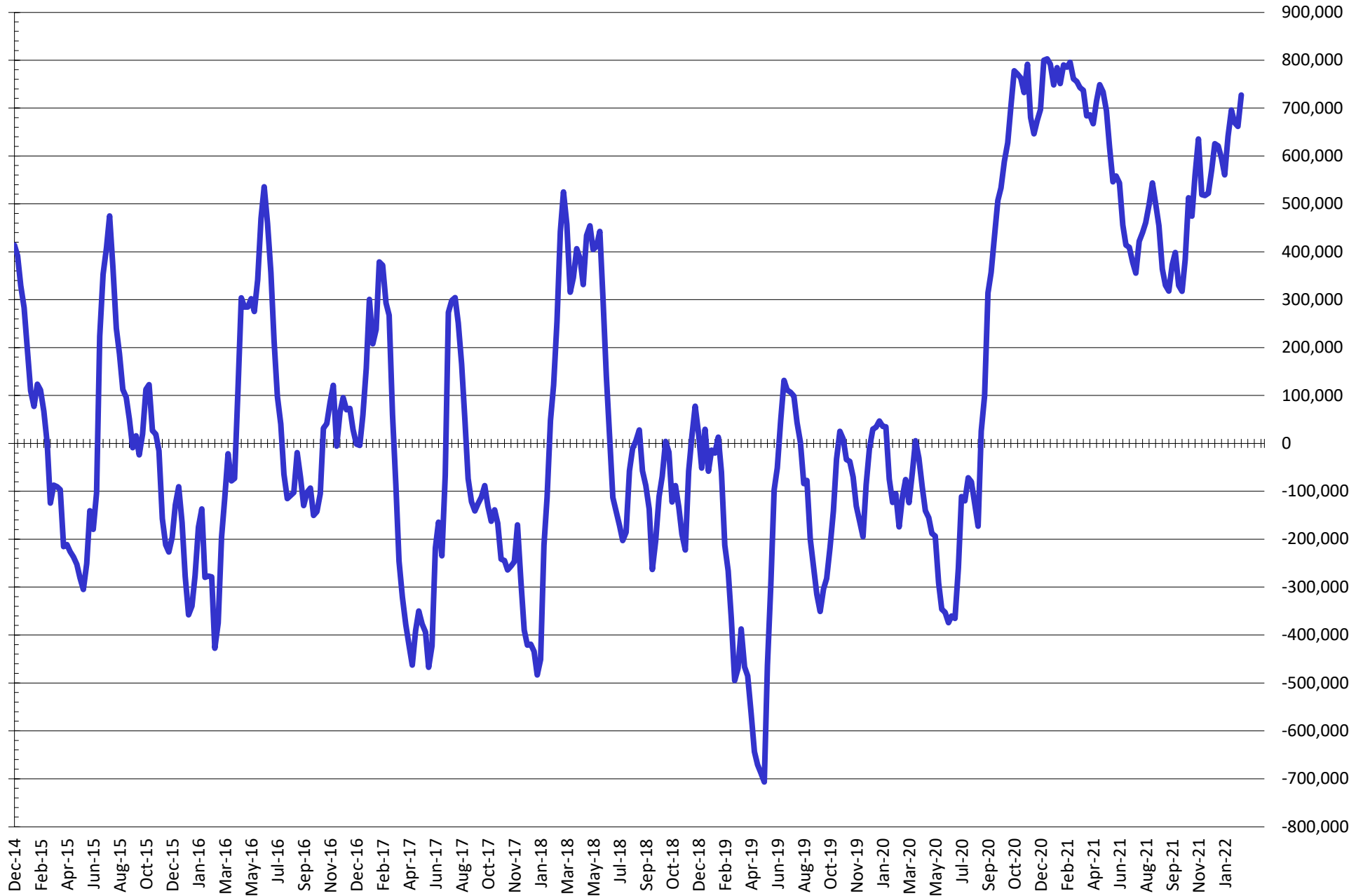
NET POSITION FUTURES AND OPTIONS OF SWAP AND MANAGED FUNDS IN CHICAGO WHEAT



NET POSITION FUTURES AND OPTIONS OF SWAP AND MANAGED FUNDS IN KANSAS WHEAT



NET POSITION FUTURES AND OPTIONS OF SWAP AND MANAGED FUNDS IN COMBINED SRW, HRW, CORN, SOYBEANS, SOYMEAL AND SOYOIL



— Net Managed Money

Source: CFTC and FI
2/25/2022

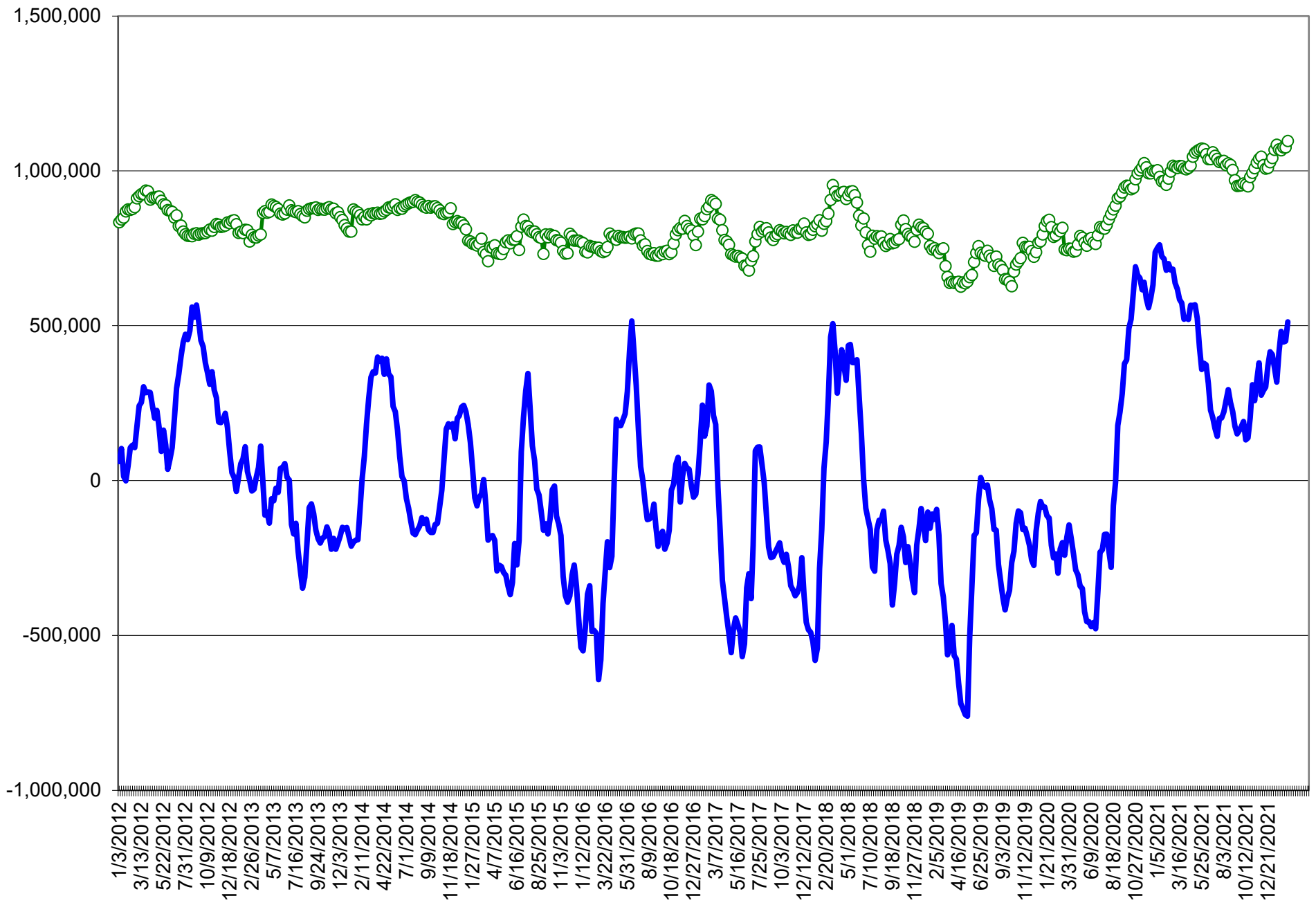
COMMITMENT OF TRADERS
FUTURES & OPTIONS NET POSITIONS (INDEX BROKEN OUT)
AS OF 02/22/2022
(IN THOUSAND CONTRACTS)

	COMMERCIAL				(FUND) NON COMMERCIAL				(SPEC) NON-REPORTABLE			
	22-Feb	15-Feb	8-Feb	1-Feb	22-Feb	15-Feb	8-Feb	1-Feb	22-Feb	15-Feb	8-Feb	1-Feb
	WHEAT											
Chicago	(98.6)	(87.3)	(89.2)	(88.8)	(40.3)	(56.0)	(50.2)	(46.5)	(6.8)	(3.5)	(3.7)	(4.4)
Kansas City	(75.9)	(70.6)	(71.9)	(71.8)	17.0	12.6	11.9	14.4	0.6	0.6	2.9	1.8
Minneapolis	-	-	-	-	-	-	-	-	-	-	-	-
All Wheat	(174.5)	(157.9)	(161.1)	(160.6)	(23.3)	(43.4)	(38.4)	(32.0)	(6.2)	(2.9)	(0.8)	(2.6)
CORN	(702.8)	(666.1)	(669.7)	(688.8)	286.7	259.5	253.6	289.3	(28.9)	(28.2)	(25.7)	(36.1)
OATS	-	-	-	-	-	-	-	-	-	-	-	-
SOYBEANS	(306.4)	(297.1)	(291.5)	(284.6)	144.9	140.3	139.5	132.5	(31.1)	(33.6)	(35.8)	(39.8)
SOY OIL	(178.9)	(166.3)	(163.9)	(170.4)	41.0	31.7	32.5	38.1	14.4	13.9	12.4	13.3
SOY MEAL	(223.7)	(216.8)	(217.0)	(210.2)	63.0	61.9	59.9	53.7	29.3	29.3	30.1	31.9

	TOTAL OPEN INTEREST				(INDEX) COMMERCIAL INDEX TRADERS				(INDEX) % NET OF TOTAL OPEN INTEREST			
	22-Feb	15-Feb	8-Feb	1-Feb	22-Feb	15-Feb	8-Feb	1-Feb	22-Feb	15-Feb	8-Feb	1-Feb
	WHEAT											
Chicago	471,913	511,039	486,477	492,052	145.7	146.8	143.2	139.7	30.9%	28.7%	29.4%	28.4%
Kansas City	233,966	249,029	240,374	246,168	58.4	57.4	57.1	55.5	24.9%	23.1%	23.8%	22.6%
Minneapolis	-	-	-	-	-	-	-	-	-	-	-	-
All Wheat	705,879	760,068	726,851	738,220	204.0	204.2	200.3	195.2	28.9%	26.9%	27.6%	26.4%
CORN	1,947,320	2,062,677	1,998,012	1,979,521	445.0	434.9	441.8	435.6	22.9%	21.1%	22.1%	22.0%
OATS	-	-	-	-	-	-	-	-	-	-	-	-
SOYBEANS	1,036,939	1,124,836	1,078,690	1,006,519	192.7	190.4	187.8	191.9	18.6%	16.9%	17.4%	19.1%
SOY OIL	457,440	486,365	484,568	496,168	123.4	120.7	119.0	119.0	27.0%	24.8%	24.6%	24.0%
SOY MEAL	489,168	524,560	510,347	478,164	131.4	125.6	126.9	124.6	26.9%	23.9%	24.9%	26.1%

SOURCE: CFTC & FI

NET POSITION FUTURES AND OPTIONS OF SPECULATORS AND INDEX FUNDS IN
COMBINED SRW, HRW, CORN, SOYBEANS, SOYMEAL AND SOYOIL



Source: CFTC and FI

○ Net Index — Net Speculator

Traditional Daily Estimate of Funds 2/22/22

	(Neg)-"Short"	Pos-"Long"			
Actual less Est.	(1.8)	(36.2)	(27.1)	(5.4)	1.8
	Corn	Bean	Chi. Wheat	Meal	Oil
Actual	451.7	226.5	(3.9)	112.1	83.1
23-Feb	15.0	17.0	15.0	9.0	2.0
24-Feb	18.0	(14.0)	21.0	(4.0)	7.0
25-Feb	(45.0)	(30.0)	(25.0)	(8.0)	(10.0)
28-Feb					
1-Mar					
FI Est. of Futures Only 2/22/22	439.7	199.5	7.1	109.1	82.1
FI Est. Futures & Options	422.1	187.2	7.4	105.6	76.5
Futures only record long "Traditional Funds"	547.7 1/26/2021	280.9 11/10/2020	86.5 8/7/2018	167.5 5/1/2018	160.2 11/1/2016
Futures only record short	(235.0) 6/9/2020	(118.3) 4/30/2019	(130.0) 4/25/2017	(49.5) 3/1/2016	(69.8) 9/18/2018
Futures and options record net long	557.6 1/12/2021	270.9 10/6/2020	64.8 8/7/2012	132.1 5/1/2018	159.2 1/1/2016
Futures and options record net short	(270.6) 4/26/2019	(132.0) 4/30/2019	(143.3) 4/25/2017	(64.1) 3/1/2016	(77.8) 9/18/2018

Managed Money Daily Estimate of Funds 2/22/22

	Corn	Bean	Chi. Wheat	Meal	Oil
Latest CFTC Fut. Only	344.8	171.4	(19.5)	89.4	78.3
Latest CFTC F&O	354.4	180.3	(18.1)	90.4	79.2
FI Est. Managed Fut. Only	333	144	(9)	86	77
FI Est. Managed Money F&O	342	153	(7)	87	78

Index Funds Latest Positions (as of last Tuesday)

Index Futures & Options	445.0	192.7	145.7	NA	123.4
Change From Previous Week	10.1	2.3	(1.1)	NA	2.7

Source: Reuters, CFTC & FI (FI est. are noted with latest date)

Disclaimer

TO CLIENTS/PROSPECTS OF FUTURES INTERNATIONAL, SEE RISK DISCLOSURE BELOW:

THIS COMMUNICATION IS CONVEYED AS A SOLICITATION FOR ENTERING INTO A DERIVATIVES TRANSACTION.

Any trading recommendations and market or other information to Customer by Futures International (FI), although based upon information obtained from sources believed by FI to be reliable may not be accurate and may be changed without notice to customer. FI makes no guarantee as to the accuracy or completeness of any of the information or recommendations furnished to Customer. Customer understands that FI, its managers, employees and/or affiliates may have a position in commodity futures, options or other derivatives which may not be consistent with the recommendations furnished by FI to Customer.

The risk of trading futures and options and other derivatives involves a substantial risk of loss and is not suitable for all persons. In purchasing an option, the risk is limited to the premium paid, and all commissions and fees involved with the trade. When an option is shorted or written, the writer of the option has unlimited risk with respect to the option written. The use of options strategies such as a straddles and strangles involve multiple option positions and may substantially increase the amount of commissions and fees paid to execute the strategy. Option prices do not necessarily move in tandem with cash or futures prices. Each person must consider whether a particular trade, combination of trades or strategy is suitable for that person's financial means and objectives.

This material may include discussions of seasonal patterns, however, futures prices have already factored in the seasonal aspects of supply and demand, and seasonal patterns are no indication of future market trends. Finally, past performance is not indicative of future results.

This communication may contain links to third party websites which are not under the control of FI and FI is not responsible for their content. Products and services are offered only in jurisdictions where solicitation and sale are lawful, and in accordance with applicable laws and regulations in each such jurisdiction.