

	Current	Δ from YD	Δ from 7D Avg
Nat Gas Prompt	\$ 3.91	▼ \$ (0.12)	▼ \$ (0.32)

	Current	Δ from YD	Δ from 7D Avg
WTI Prompt	\$ 86.34	▼ \$ (0.62)	▲ \$ 2.1

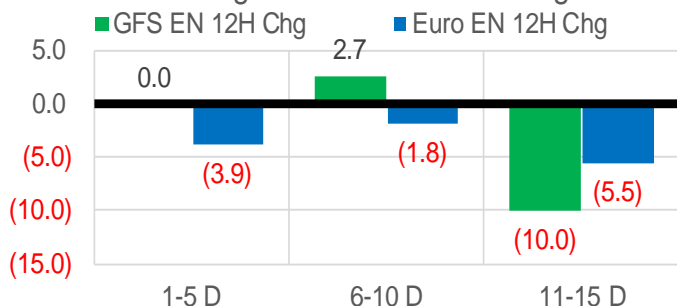
	Current	Δ from YD	Δ from 7D Avg
Brent Prompt	\$ 87.86	▼ \$ (0.58)	▲ \$ 1.4

### Page Menu

- [Short-term Weather Model Outlooks](#)
- [Lower 48 Component Models](#)
- [Regional S/D Models Storage Projection](#)
- [Weather Model Storage Projection](#)
- [Supply – Demand Trends](#)
- [Nat Gas Options Volume and Open Interest](#)
- [Nat Gas Futures Open Interest](#)
- [Price Summary](#)

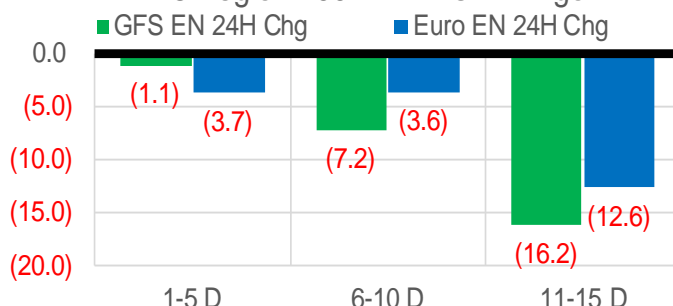
### Vs. 12H Ago

L48 Region - 00z TDD vs 12H Ago



### Vs. 24H Ago

L48 Region - 00z TDD vs 24H Ago



	Current	Δ from YD	Δ from 7D Avg
US Dry Production	92.9	▼ -2.76	▼ -2.41

	Current	Δ from YD	Δ from 7D Avg
US Power Burns	32.6	▲ 3.26	▲ 2.99

	Current	Δ from YD	Δ from 7D Avg
US ResComm	51.3	▲ 8.34	▲ 5.85

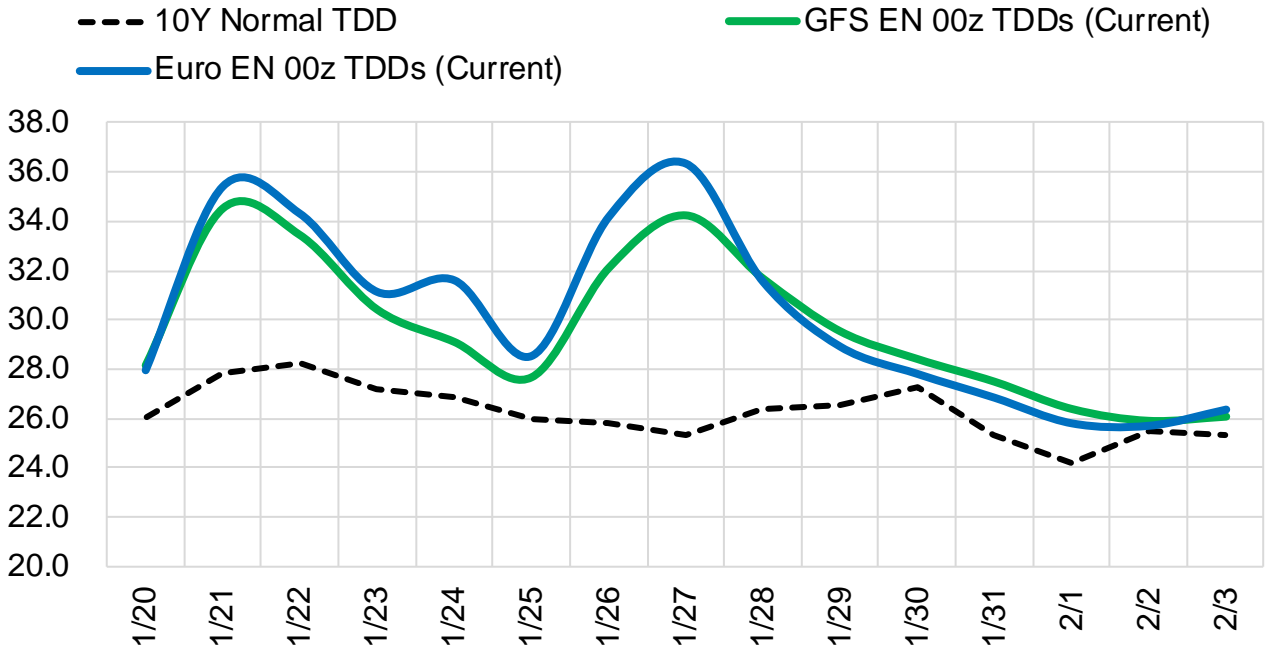
	Current	Δ from YD	Δ from 7D Avg
Canadian Imports	7.9	▲ 1.49	▲ 1.11

	Current	Δ from YD	Δ from 7D Avg
Net LNG Exports	13.2	▲ 0.59	▲ 0.37

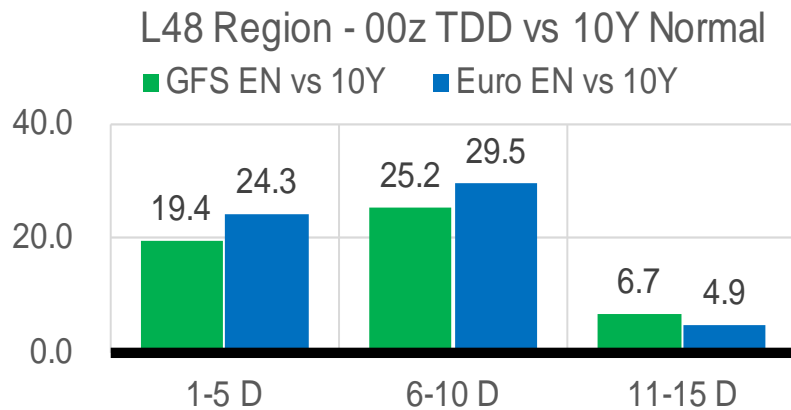
	Current	Δ from YD	Δ from 7D Avg
Mexican Exports	6.5	▼ -0.16	▲ 0.09

## Short-term Weather Model Outlooks (00z)

### L48 Region



## Vs. 10Y Normal



Source: WSI , Bloomberg

## Lower 48 Component Models

### Daily Balances

	14-Jan	15-Jan	16-Jan	17-Jan	18-Jan	19-Jan	20-Jan	DoD	vs. 7D
<b>Lower 48 Dry Production</b>	<b>95.9</b>	<b>95.1</b>	<b>95.4</b>	<b>94.2</b>	<b>94.9</b>	<b>95.7</b>	<b>92.9</b>	▼ -2.8	▼ -2.3
<b>Canadian Imports</b>	<b>6.7</b>	<b>7.2</b>	<b>6.9</b>	<b>6.9</b>	<b>6.9</b>	<b>6.4</b>	<b>7.9</b>	▲ 1.5	▲ 1.0
L48 Power	27.7	29.5	30.8	30.9	29.2	29.3	32.6	▲ 3.3	▲ 3.0
L48 Residential & Commercial	43.7	53.4	51.3	45.8	43.2	43.0	51.3	▲ 8.3	▲ 4.6
L48 Industrial	26.5	28.0	28.0	27.1	26.2	25.7	26.3	▲ 0.6	▼ -0.6
L48 Lease and Plant Fuel	5.2	5.2	5.2	5.2	5.2	5.2	5.1	▼ -0.2	▼ -0.2
L48 Pipeline Distribution	3.5	4.0	4.0	3.7	3.5	3.5	4.1	▲ 0.6	▲ 0.4
<b>L48 Regional Gas Consumption</b>	<b>106.6</b>	<b>120.1</b>	<b>119.3</b>	<b>112.6</b>	<b>107.3</b>	<b>106.7</b>	<b>119.4</b>	▲ 12.6	▲ 7.3
<b>Net LNG Delivered</b>	<b>13.05</b>	<b>13.10</b>	<b>13.22</b>	<b>12.96</b>	<b>12.17</b>	<b>12.58</b>	<b>13.16</b>	▲ 0.6	▲ 0.3
<b>Total Mexican Exports</b>	<b>6.5</b>	<b>6.1</b>	<b>6.3</b>	<b>6.3</b>	<b>6.4</b>	<b>6.6</b>	<b>6.5</b>	▼ -0.2	▲ 0.1
<b>Implied Daily Storage Activity</b>	<b>-23.6</b>	<b>-36.9</b>	<b>-36.4</b>	<b>-30.8</b>	<b>-23.9</b>	<b>-23.9</b>	<b>-38.2</b>		
<b>EIA Reported Daily Storage Activity</b>									
<b>Daily Model Error</b>									

### EIA Storage Week Balances

	10-Dec	17-Dec	24-Dec	31-Dec	7-Jan	14-Jan	WoW	vs. 4W
<b>Lower 48 Dry Production</b>	<b>96.6</b>	<b>96.5</b>	<b>96.7</b>	<b>98.7</b>	<b>95.4</b>	<b>95.5</b>	▲ 0.1	▼ -1.4
<b>Canadian Imports</b>	<b>5.3</b>	<b>4.6</b>	<b>5.0</b>	<b>4.2</b>	<b>5.7</b>	<b>6.5</b>	▲ 0.9	▲ 1.7
L48 Power	29.1	28.4	29.9	26.4	29.9	30.4	▲ 0.5	▲ 1.8
L48 Residential & Commercial	35.4	31.4	40.3	33.4	44.2	47.4	▲ 3.2	▲ 10.0
L48 Industrial	23.7	23.7	24.0	22.2	26.3	25.9	▼ -0.4	▲ 1.9
L48 Lease and Plant Fuel	5.2	5.2	5.2	5.4	5.2	5.2	▲ 0.0	▼ 0.0
L48 Pipeline Distribution	3.2	3.0	3.5	3.0	3.6	3.8	▲ 0.2	▲ 0.5
<b>L48 Regional Gas Consumption</b>	<b>96.7</b>	<b>91.7</b>	<b>103.0</b>	<b>90.3</b>	<b>109.2</b>	<b>112.7</b>	▲ 3.5	▲ 14.1
<b>Net LNG Exports</b>	<b>12.0</b>	<b>11.9</b>	<b>12.7</b>	<b>12.3</b>	<b>11.9</b>	<b>12.3</b>	▲ 0.4	▲ 0.2
<b>Total Mexican Exports</b>	<b>6.4</b>	<b>6.2</b>	<b>6.1</b>	<b>5.8</b>	<b>5.9</b>	<b>6.3</b>	▲ 0.4	▲ 0.3
<b>Implied Daily Storage Activity</b>	<b>-13.2</b>	<b>-8.8</b>	<b>-20.0</b>	<b>-5.5</b>	<b>-25.9</b>	<b>-29.3</b>	<b>-3.4</b>	
<b>EIA Reported Daily Storage Activity</b>	<b>-12.6</b>	<b>-7.9</b>	<b>-19.4</b>	<b>-4.4</b>	<b>-25.6</b>			
<b>Daily Model Error</b>	<b>-0.6</b>	<b>-0.9</b>	<b>-0.5</b>	<b>-1.1</b>	<b>-0.4</b>			

### Monthly Balances

	2Yr Ago Jan-20	LY Jan-21	Sep-21	Oct-21	Nov-21	Dec-21	MTD Jan-22	MoM	vs. LY
<b>Lower 48 Dry Production</b>	<b>94.6</b>	<b>91.4</b>	<b>93.4</b>	<b>94.3</b>	<b>95.9</b>	<b>97.1</b>	<b>95.2</b>	▼ -1.9	▲ 3.8
<b>Canadian Imports</b>	<b>4.8</b>	<b>6.3</b>	<b>5.1</b>	<b>5.4</b>	<b>5.3</b>	<b>4.8</b>	<b>6.4</b>	▲ 1.7	▲ 0.2
L48 Power	29.9	28.3	33.1	30.5	28.8	28.4	30.2	▲ 1.8	▲ 1.9
L48 Residential & Commercial	41.7	44.0	8.8	12.5	29.4	34.5	46.9	▲ 12.4	▲ 2.9
L48 Industrial	24.5	23.8	20.2	21.0	22.4	23.3	26.5	▲ 3.2	▲ 2.7
L48 Lease and Plant Fuel	5.1	5.0	5.1	5.2	5.2	5.3	5.2	▼ -0.1	▲ 0.2
L48 Pipeline Distribution	3.6	3.5	2.3	2.4	3.1	3.1	3.7	▲ 0.6	▲ 0.2
<b>L48 Regional Gas Consumption</b>	<b>104.8</b>	<b>104.6</b>	<b>69.4</b>	<b>71.5</b>	<b>88.9</b>	<b>94.5</b>	<b>112.5</b>	▲ 17.9	▲ 7.9
<b>Net LNG Exports</b>	<b>8.4</b>	<b>10.5</b>	<b>10.3</b>	<b>10.6</b>	<b>11.4</b>	<b>12.1</b>	<b>12.4</b>	▲ 0.2	▲ 1.9
<b>Total Mexican Exports</b>	<b>5.1</b>	<b>6.2</b>	<b>6.7</b>	<b>6.6</b>	<b>6.1</b>	<b>6.1</b>	<b>6.2</b>	▲ 0.1	▲ 0.1
<b>Implied Daily Storage Activity</b>	<b>-18.9</b>	<b>-23.5</b>	<b>12.1</b>	<b>11.0</b>	<b>-5.2</b>	<b>-11.0</b>	<b>-29.4</b>		
<b>EIA Reported Daily Storage Activity</b>									
<b>Daily Model Error</b>									

Source: Bloomberg, analytix.ai

## Daily Average Generation Data

### Nuclear Generation Daily Average - GWh (NRC)

	12-Jan	13-Jan	14-Jan	15-Jan	16-Jan	17-Jan	18-Jan	DoD	vs. 7D
NRC Nuclear Daily Output	91.5	91.4	91.5	89.1	89.4	89.4	89.3	-0.1	-1.0
NRC Nuclear Max Capacity	104.9	104.9	104.9	104.9	104.9	104.9	104.9	0.0	0.0
NRC Nuclear Outage	13.4	13.5	13.4	15.8	15.5	15.5	15.5	0.1	1.0
NRC % Nuclear Cap Utilization	93.1	92.9	93.0	90.6	90.9	90.9	90.8	-0.1	-1.1

### Wind Generation Daily Average - MWh (EIA)

	12-Jan	13-Jan	14-Jan	15-Jan	16-Jan	17-Jan	18-Jan	DoD	vs. 7D
CALI Wind	640	905	2010	1011	467	1029	2710	1681	1700
TEXAS Wind	4804	2637	17366	21278	6333	9975	19238	9263	8839
US Wind	41285	29134	57108	62947	39222	44867	44867	0	-894

### Generation Daily Average - MWh (EIA)

	12-Jan	13-Jan	14-Jan	15-Jan	16-Jan	17-Jan	18-Jan	DoD	vs. 7D
US Wind	41285	29134	57108	62947	39222	44867	44867	0	-894
US Solar	9451	8830	8921	5975	7872	8480	8480	0	225
US Petroleum	4536	4448	4159	6337	6532	5541	5541	0	282
US Other	7503	6150	6574	7138	7640	8666	8666	0	1387
US Coal	116805	113799	109086	112359	123990	123242	123242	0	6695
US Nuke	96705	96343	95928	94104	94240	94199	94199	0	-1054
US Hydro	33655	32750	33733	34968	34158	34920	34920	0	889
<b>US Gas</b>	<b>167201</b>	<b>167271</b>	<b>140984</b>	<b>148947</b>	<b>167474</b>	<b>165522</b>	<b>165522</b>	<b>0</b>	<b>5956</b>

See National Wind and Nuclear daily charts

Source: Bloomberg, analytix.ai

## Storage Week Average Generation Data

### Nuclear Generation Weekly Average - GWh (NRC)

	10-Dec	17-Dec	24-Dec	31-Dec	7-Jan	14-Jan	WoW	WoW Bcf/d Impact
NRC Nuclear Daily Output	88.0	90.0	92.1	92.1	91.3	90.6	-0.7	0.1
NRC Nuclear Max Capacity	104.9	104.9	104.9	104.9	104.9	104.9	0.0	
NRC Nuclear Outage	16.9	14.9	12.8	12.8	13.6	14.3	0.7	
NRC % Nuclear Cap Utilization	0.1	0.1	0.1	0.1	0.1	0.1	0.0	

### Wind Generation Weekly Average - MWh (EIA)

	10-Dec	17-Dec	24-Dec	31-Dec	7-Jan	14-Jan	WoW	WoW Bcf/d Impact
CALI Wind	1263	1709	943	2591	1603	1266	-338	0.1
TEXAS Wind	12216	16176	11007	13891	13603	10192	-3410	0.6
US Wind	51470	68412	48727	53100	57154	50730	-6423	1.2
					4053.3			
					8%			

### Generation Weekly Average - MWh (EIA)

	10-Dec	17-Dec	24-Dec	31-Dec	7-Jan	14-Jan	WoW	WoW Bcf/d Impact
US Wind	51470	68412	48727	53100	57154	50730	-6423	1.2
US Solar	7413	7570	7098	6957	8464	9189	725	-0.1
US Petroleum	3440	2700	3581	3084	3038	4915	1877	-0.3
US Other	8398	8301	8532	7584	8301	8220	-81	0.0
US Coal	82743	76931	87380	80024	94989	115106	20117	-3.6
US Nuke	92983	95054	97422	97083	96342	95714	-628	0.1
US Hydro	29626	30257	32560	31279	34504	34139	-364	0.1
<b>US Gas</b>	<b>159457</b>	<b>148807</b>	<b>166457</b>	<b>135611</b>	<b>154294</b>	<b>161566</b>	<b>7272</b>	

See National Wind and Nuclear daily charts

Source: Bloomberg, analytix.ai

## Monthly Average Generation Data

### Nuclear Generation Monthly Average - GWh (NRC)

	2Yr Ago	LY	MTD						
	Same 30 days	Same 30 days	Oct-21	Nov-21	Dec-21	Jan-22	Last 30 days	MoM (MTD vs LY)	Last 30 days YoY
	NRC Nuclear Daily Output	94.5	91.2	75.5	82.7	90.3	90.5	91.0	0.2
NRC Nuclear Max Capacity	104.9	104.9	104.9	104.9	104.9	104.9	104.9	0.0	0.0
NRC Nuclear Outage	10.3	13.7	29.4	22.2	14.6	14.4	13.9	-0.2	0.2
NRC % Nuclear Cap Utilization	96.1	92.7	76.8	84.1	91.8	92.0	92.5	0.2	-0.2

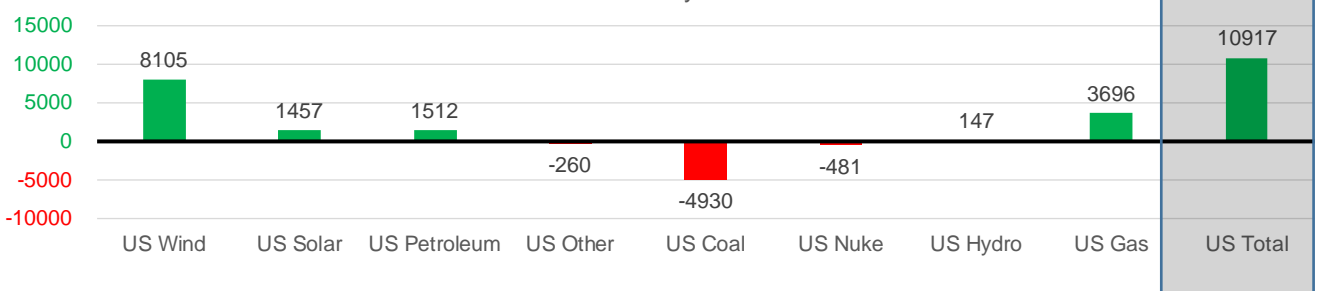
### Wind Generation Monthly Average - MWh (EIA)

	2Yr Ago	LY	MTD						
	Same 30 days	Same 30 days	Oct-21	Nov-21	Dec-21	Jan-22	Last 30 days	MoM (MTD vs LY)	Last 30 days YoY
	CALI Wind	1323	1055	1765	1252	1585	1488	1798	-96
TEXAS Wind	10462	11851	11565	11869	12927	13268	13410	341	1560
US Wind	40129	44435	43142	49974	54821	51972	52540	-2849	8105

### Generation Monthly Average - MWh (EIA)

	2Yr Ago	LY	MTD						
	Same 30 days	Same 30 days	Oct-21	Nov-21	Dec-21	Jan-22	Last 30 days	MoM (MTD vs LY)	Last 30 days YoY
	US Wind	40129	44435	43142	49974	54821	51972	52540	▲ 568.3
US Solar	4741	6709	11059	9690	7376	8725	8166	▼ -558.2	▲ 1457
US Petroleum	3633	2590	3239	3045	3134	4630	4101	▼ -529	▲ 1512
US Other	8008	8338	11109	8435	8214	8199	8079	▼ -120	▼ -260
US Coal	78333	106613	84432	80848	81683	111382	101683	▼ -9699	▼ -4930
US Nuke	96930	96511	77089	87404	95408	95453	96029	▲ 577	▼ -481
US Hydro	31038	33323	24078	26593	30805	34470	33470	▲ -1000	▲ 147
<b>US Gas</b>	<b>145989</b>	<b>149807</b>	<b>159049</b>	<b>151462</b>	<b>152399</b>	<b>159943</b>	<b>153503</b>	▼ -10762	▲ 3696
<b>US Total</b>	<b>422303</b>	<b>446895</b>	<b>413353</b>	<b>417925</b>	<b>434098</b>	<b>474969</b>	<b>457812</b>	▼ -22093	▲ 10917

Last 30 days YoY



See National Wind and Nuclear daily charts

Source: Bloomberg, analytix.ai

### Regional S/D Models Storage Projection

Week Ending 14-Jan

	Daily Raw Storage	Daily Adjustment Factor	Daily Average Storage Activity (Adjusted) *	Weekly Adjusted Storage Activity
L48	-29.6	0.9	-28.7	-201
East	-11.5	2.5	-9.0	-63
Midwest	-8.1	0.1	-8.0	-56
Mountain	1.9	-2.9	-1.0	-7
South Central	-11.8	2.0	-9.7	-68
Pacific	-0.2	-0.8	-0.9	-7

\*Adjustment Factor is calculated based on historical regional deltas

U.S. underground natural gas storage facilities by type (July 2015)

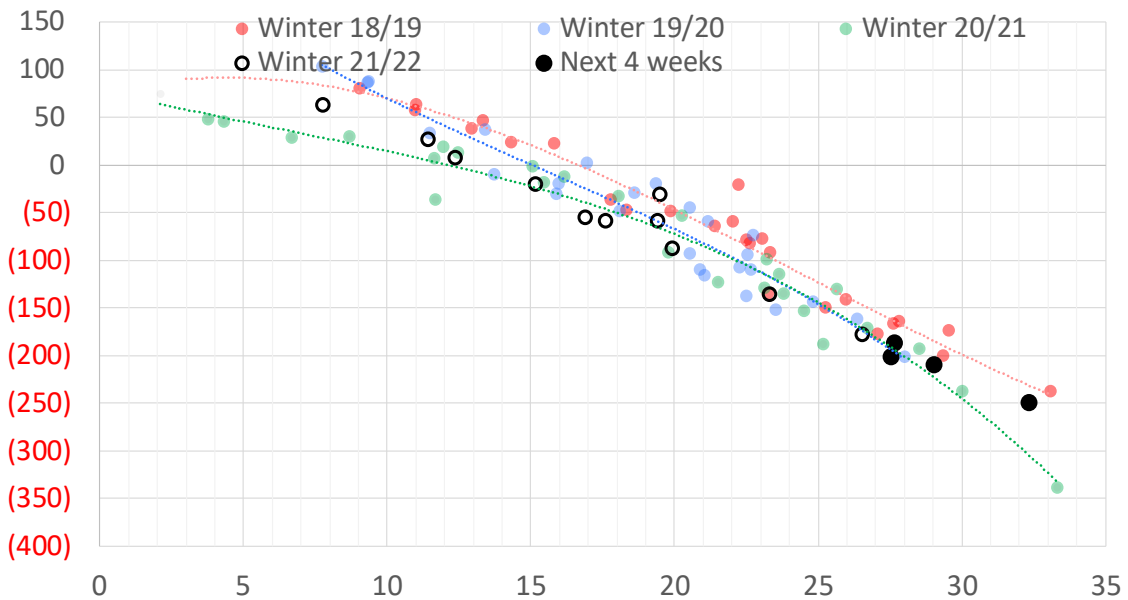


### Weather Model Storage Projection

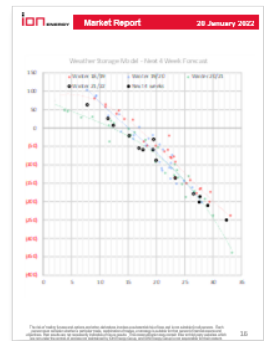
Next report  
and beyond

Week Ending	GWDDs	Week Storage Projection
14-Jan	28	-201
21-Jan	28	-186
28-Jan	32	-249
04-Feb	29	-210

Weather Storage Model - Next 4 Week Forecast

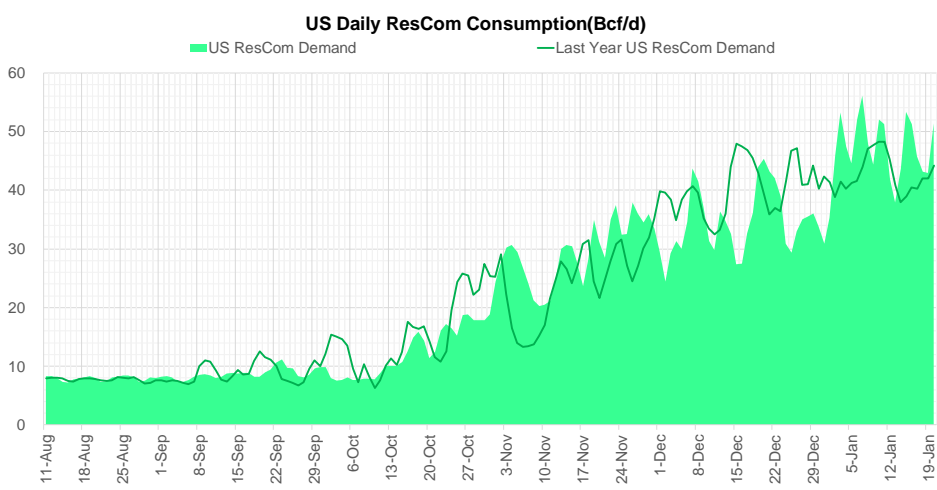
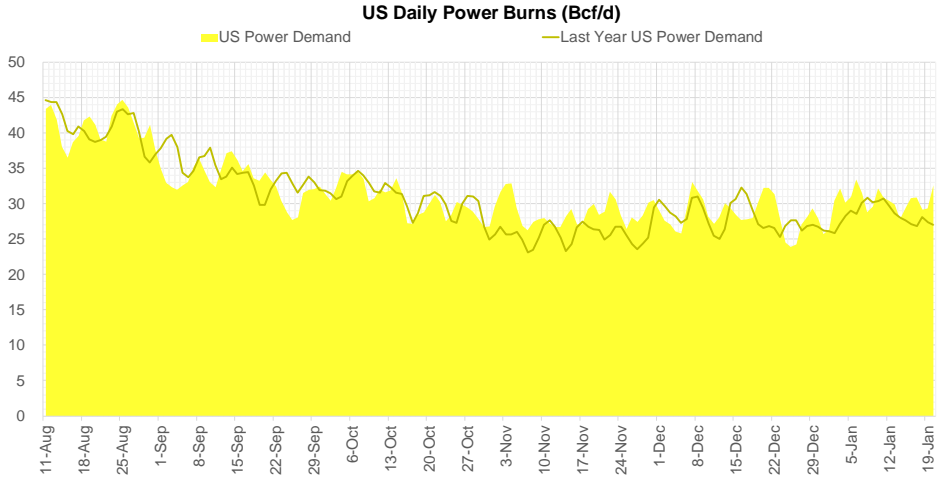
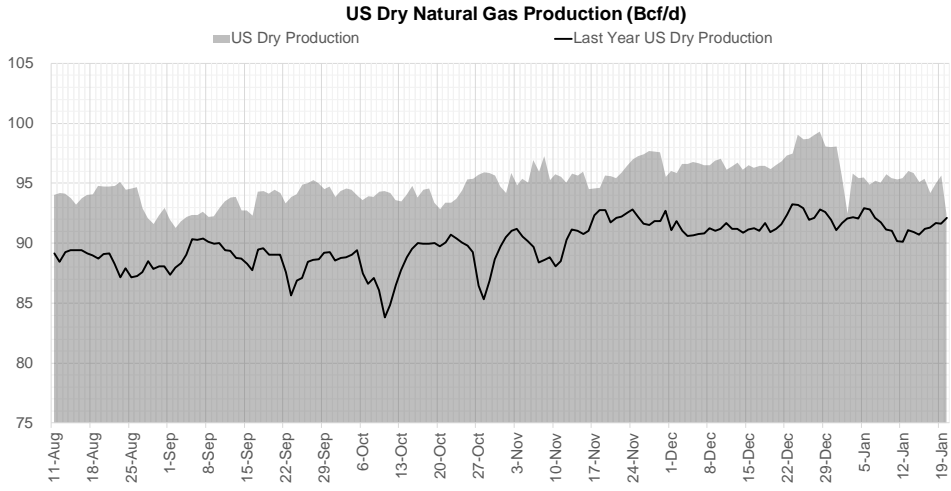


Go to larger image





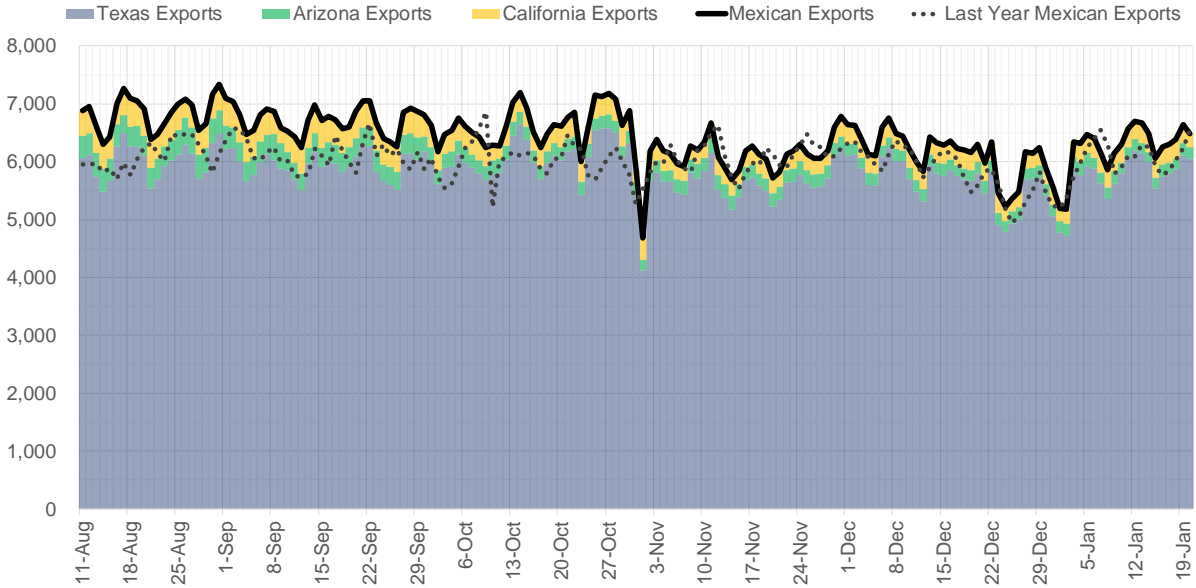
## Supply – Demand Trends



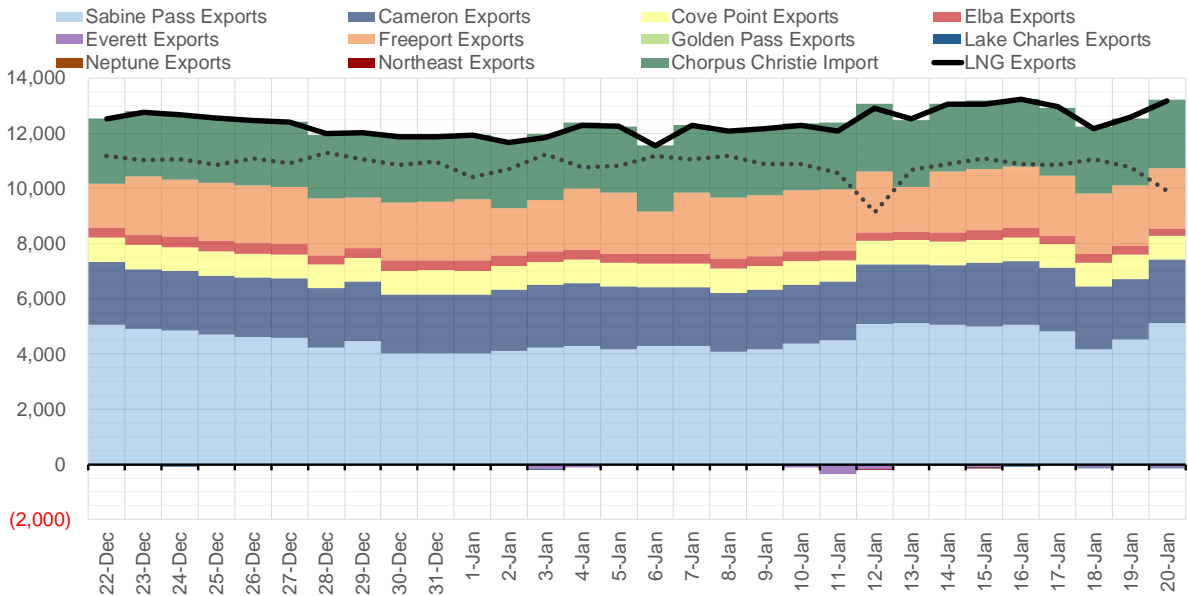
Source: Bloomberg

The risk of trading futures and options and other derivatives involves a substantial risk of loss and is not suitable for all persons. Each person must consider whether a particular trade, combination of trades, or strategy is suitable for that person's financial means and objectives. Past results are not necessarily indicative of future results. This communication may contain links to third party websites which are not under the control of and are not maintained by ION Energy Group, and ION Energy Group is not responsible for their content.

### Mexican Exports (MMcf/d)



### Net LNG Exports - Last 30 days (MMcf/d)



Source: Bloomberg

The risk of trading futures and options and other derivatives involves a substantial risk of loss and is not suitable for all persons. Each person must consider whether a particular trade, combination of trades, or strategy is suitable for that person's financial means and objectives. Past results are not necessarily indicative of future results. This communication may contain links to third party websites which are not under the control of and are not maintained by ION Energy Group, and ION Energy Group is not responsible for their content.

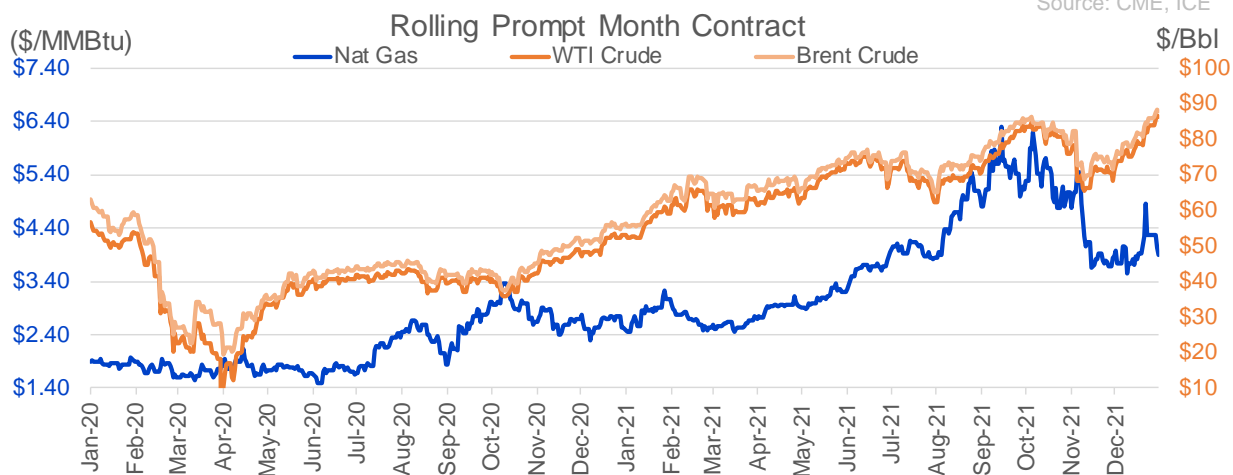
## Nat Gas Options Volume and Open Interest CME and ICE Combined

CONTRACT MONTH	CONTRACT YEAR	PUT/CALL	STRIKE	CUMULATIVE VOL	CONTRACT MONTH	CONTRACT YEAR	PUT/CALL	STRIKE	CUMULATIVE OI
3	2022	C	4.00	8215	3	2022	C	5.00	36583
2	2022	C	5.00	5416	3	2022	C	10.00	34866
2	2022	C	6.00	5217	3	2022	C	8.00	32823
6	2022	C	5.00	5020	2	2022	C	4.00	26282
4	2022	C	5.00	4777	2	2022	C	5.00	25367
4	2022	P	3.50	4664	3	2022	C	4.00	23852
3	2022	P	3.75	4486	2	2022	P	3.50	22907
3	2022	C	5.00	4157	3	2022	P	3.00	21819
5	2022	C	5.00	4079	3	2022	P	2.50	21489
2	2022	C	4.50	4076	3	2022	C	6.00	20652
9	2022	C	5.00	3870	10	2022	C	6.00	20530
10	2022	C	5.00	3822	3	2022	P	4.00	20511
7	2022	C	5.00	3820	2	2022	P	4.00	20484
8	2022	C	5.00	3820	2	2022	C	6.00	20185
2	2022	P	4.00	3610	12	2022	C	5.00	19847
3	2022	C	6.00	3407	4	2022	C	3.00	19710
3	2022	P	4.00	3374	3	2022	P	3.50	18688
2	2022	C	5.50	3331	4	2022	P	2.50	17487
3	2022	P	3.25	3310	5	2022	P	3.00	17362
2	2022	C	4.25	2831	4	2022	P	3.00	17221
3	2022	C	4.25	2722	2	2022	C	4.50	16810
3	2022	P	3.00	2638	4	2022	C	5.00	16687
3	2022	P	3.50	2540	3	2022	C	7.00	16210
2	2022	C	6.50	2324	3	2022	C	4.50	15946
2	2022	P	3.80	1851	6	2022	C	5.00	15520
3	2022	C	4.50	1829	3	2022	P	2.00	14981
3	2022	C	8.00	1827	2	2022	P	3.00	14867
5	2022	P	3.75	1800	2	2022	C	8.00	14671
3	2022	P	3.70	1711	2	2022	C	7.00	14657
4	2022	P	2.50	1657	3	2022	P	3.75	14569
4	2022	P	3.00	1615	2	2022	C	10.00	14444
2	2022	C	4.75	1575	3	2022	P	3.25	14062
2	2022	C	5.25	1398	4	2022	C	6.00	13963
4	2022	C	4.50	1374	10	2022	P	2.00	13921
4	2022	C	4.25	1309	3	2022	P	2.25	13917
4	2022	P	2.85	1300	2	2022	C	4.25	13811
4	2022	P	3.35	1300	5	2022	C	3.00	13733
4	2022	P	3.75	1214	2	2022	P	3.75	13731
2	2022	P	3.50	1156	4	2022	P	3.50	13681
6	2022	P	3.00	1051	2	2022	C	5.50	13640
5	2022	P	3.90	1000	4	2022	C	4.00	13634
5	2022	P	3.00	973	3	2022	P	5.00	13592
7	2022	P	3.00	950	5	2022	P	2.50	13548
8	2022	P	3.00	950	6	2022	C	3.00	13438
9	2022	P	3.00	950	3	2022	C	3.50	13316
10	2022	P	3.00	950	5	2022	P	3.50	13294
3	2022	P	3.85	929	12	2022	C	4.50	13287
3	2022	P	3.10	928	3	2022	C	3.00	13267
4	2022	C	4.00	920	7	2022	C	3.00	13230
					8	2022	C	3	13226

Source: CME, ICE

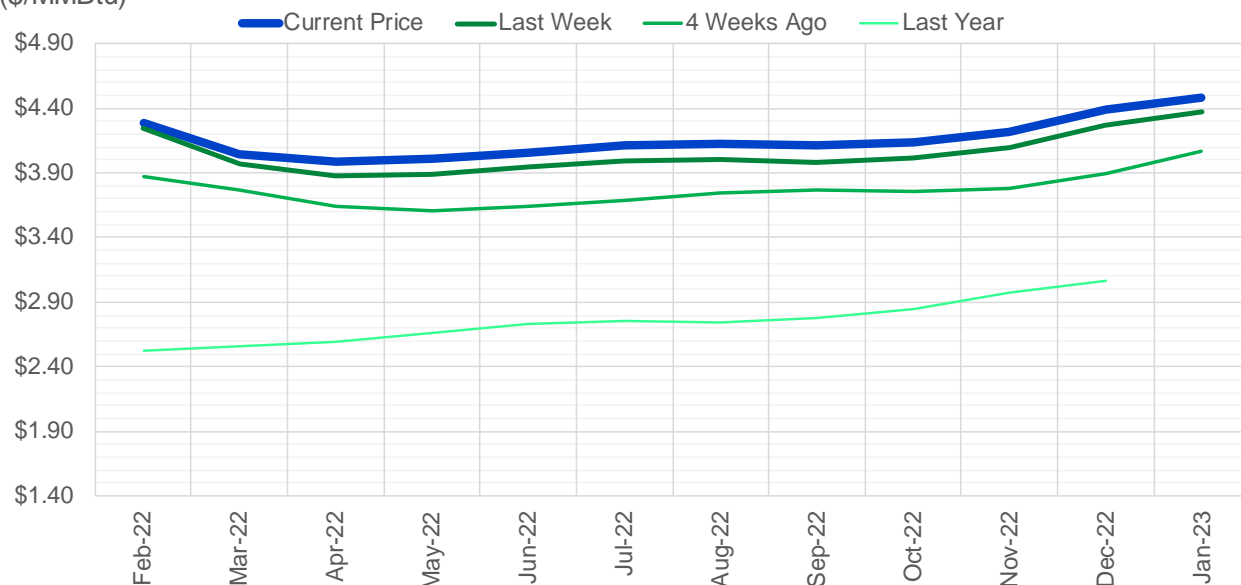
## Nat Gas Futures Open Interest CME and ICE Combined

CME Henry Hub Futures (10,000 MMBtu)				ICE Henry Hub Futures Contract Equivalent (10,000 MM			
	Current	Prior	Daily Change		Current	Prior	Daily Change
FEB 22	43753	55088	-11335	FEB 22	73461	74604	-1143
MAR 22	285864	284250	1614	MAR 22	94101	90054	4048
APR 22	82735	85162	-2427	APR 22	73488	73657	-169
MAY 22	113085	112977	108	MAY 22	69278	69421	-143
JUN 22	63316	59691	3625	JUN 22	57343	57349	-6
JUL 22	62842	62033	809	JUL 22	60244	60127	118
AUG 22	39069	38846	223	AUG 22	57304	57411	-107
SEP 22	49512	49337	175	SEP 22	58277	58329	-52
OCT 22	83594	84259	-665	OCT 22	62993	62766	227
NOV 22	36522	36287	235	NOV 22	52508	52443	65
DEC 22	38788	38460	328	DEC 22	61663	61618	45
JAN 23	54787	53109	1678	JAN 23	49138	49556	-418
FEB 23	17154	16997	157	FEB 23	39810	39636	175
MAR 23	30990	31402	-412	MAR 23	44974	44889	85
APR 23	31877	31263	614	APR 23	45872	45767	105
MAY 23	17292	17975	-683	MAY 23	38774	38661	113
JUN 23	11075	10882	193	JUN 23	36563	36451	112
JUL 23	9885	9829	56	JUL 23	36083	35936	146
AUG 23	6870	6645	225	AUG 23	35418	35376	42
SEP 23	9588	9358	230	SEP 23	35399	35287	112
OCT 23	13289	13506	-217	OCT 23	39362	39237	125
NOV 23	8828	8774	54	NOV 23	38153	38132	20
DEC 23	11273	11064	209	DEC 23	34116	34095	21
JAN 24	7973	7431	542	JAN 24	24110	24056	54
FEB 24	1606	1791	-185	FEB 24	17574	17528	46
MAR 24	10206	10118	88	MAR 24	23501	23453	49
APR 24	5587	5538	49	APR 24	16378	16445	-68
MAY 24	2076	2079	-3	MAY 24	16764	16827	-62
JUN 24	921	921	0	JUN 24	16962	16945	17
JUL 24	564	564	0	JUL 24	17573	17555	18



(\$/MMBtu)

### Nat Gas Term Structure



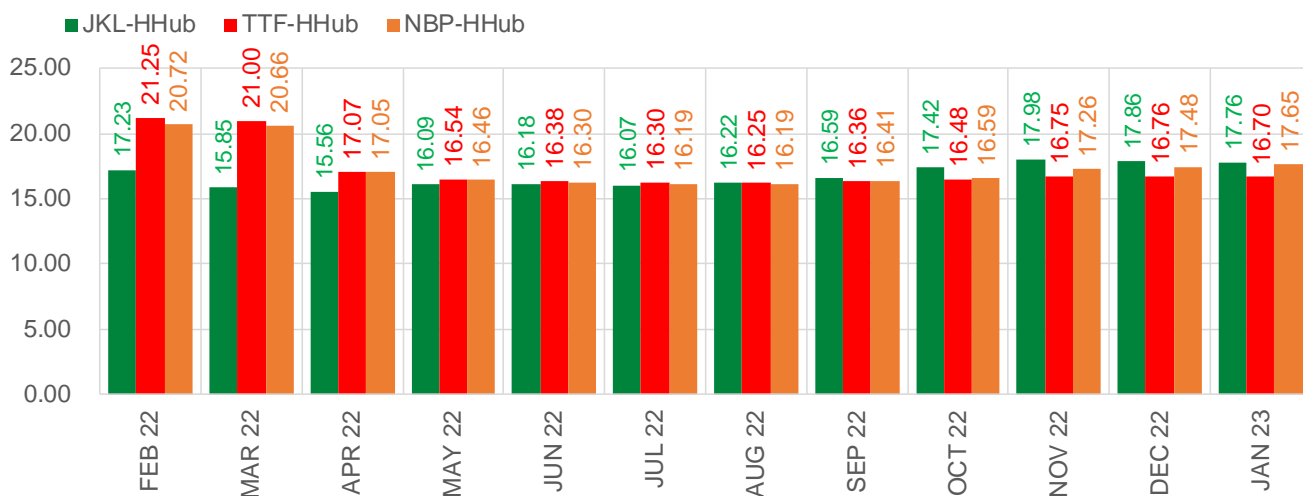
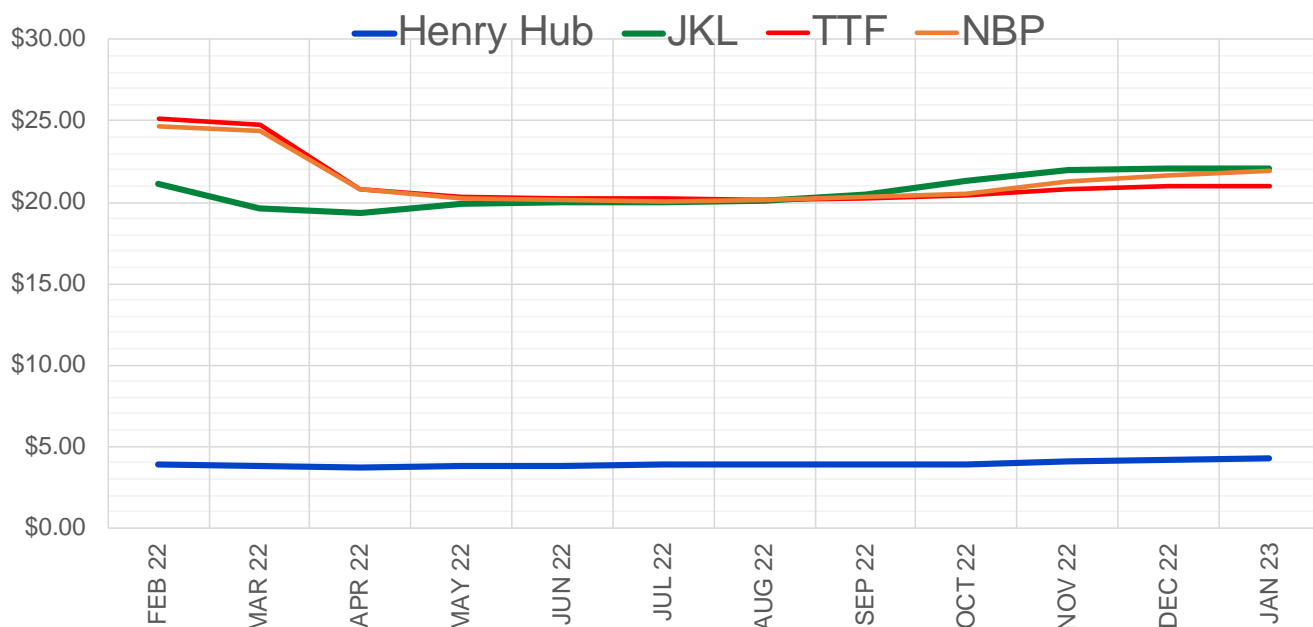
	Feb-22	Mar-22	Apr-22	May-22	Jun-22	Jul-22	Aug-22	Sep-22	Oct-22	Nov-22	Dec-22	Jan-23
<b>Current Price</b>	<b>\$4.283</b>	<b>\$4.048</b>	<b>\$3.983</b>	<b>\$4.008</b>	<b>\$4.057</b>	<b>\$4.113</b>	<b>\$4.128</b>	<b>\$4.110</b>	<b>\$4.132</b>	<b>\$4.218</b>	<b>\$4.386</b>	<b>\$4.481</b>
Last Week	\$4.249	\$3.968	\$3.881	\$3.893	\$3.942	\$3.998	\$4.006	\$3.986	\$4.013	\$4.098	\$4.271	\$4.374
vs. Last Week	\$0.034	\$0.080	\$0.102	\$0.115	\$0.115	\$0.115	\$0.122	\$0.124	\$0.119	\$0.120	\$0.115	\$0.107
4 Weeks Ago	\$3.869	\$3.774	\$3.644	\$3.608	\$3.640	\$3.690	\$3.746	\$3.765	\$3.754	\$3.783	\$3.890	\$4.070
vs. 4 Weeks Ago	\$0.414	\$0.274	\$0.339	\$0.400	\$0.417	\$0.423	\$0.382	\$0.345	\$0.378	\$0.435	\$0.496	\$0.411
Last Year	\$2.546	\$2.529	\$2.554	\$2.596	\$2.661	\$2.733	\$2.756	\$2.744	\$2.773	\$2.844	\$2.977	\$3.068
vs. Last Year	\$1.737	\$1.519	\$1.429	\$1.412	\$1.396	\$1.380	\$1.372	\$1.366	\$1.359	\$1.374	\$1.409	\$1.413

	Units	Cash Settled	Prompt Settle	Cash to Prompt
AGT Citygate	\$/MMBtu	15.00	20.87	5.87
TETCO M3	\$/MMBtu	15.03	7.71	-7.32
FGT Zone 3	\$/MMBtu	15.14	4.91	-10.23
Zone 6 NY	\$/MMBtu	15.14	10.41	-4.73
Chicago Citygate	\$/MMBtu	4.65	5.99	1.34
Michcon	\$/MMBtu	4.32	4.65	0.33
Columbia TCO Pool	\$/MMBtu	4.12	4.31	0.19
Ventura	\$/MMBtu	5.30	7.26	1.96
Rockies/Opal	\$/MMBtu	4.82	5.58	0.76
El Paso Permian Basin	\$/MMBtu	4.90	4.95	0.04
Socal Citygate	\$/MMBtu	5.29	6.51	1.22
Malin	\$/MMBtu	4.73	5.98	1.25
Houston Ship Channel	\$/MMBtu	4.71	4.91	0.20
Henry Hub Cash	\$/MMBtu	4.78	4.71	-0.07
AECO Cash	C\$/GJ	3.62	4.25	0.63
Station2 Cash	C\$/GJ	3.44	6.35	2.91
Dawn Cash	C\$/GJ	4.44	4.89	0.45

Source: CME, Bloomberg

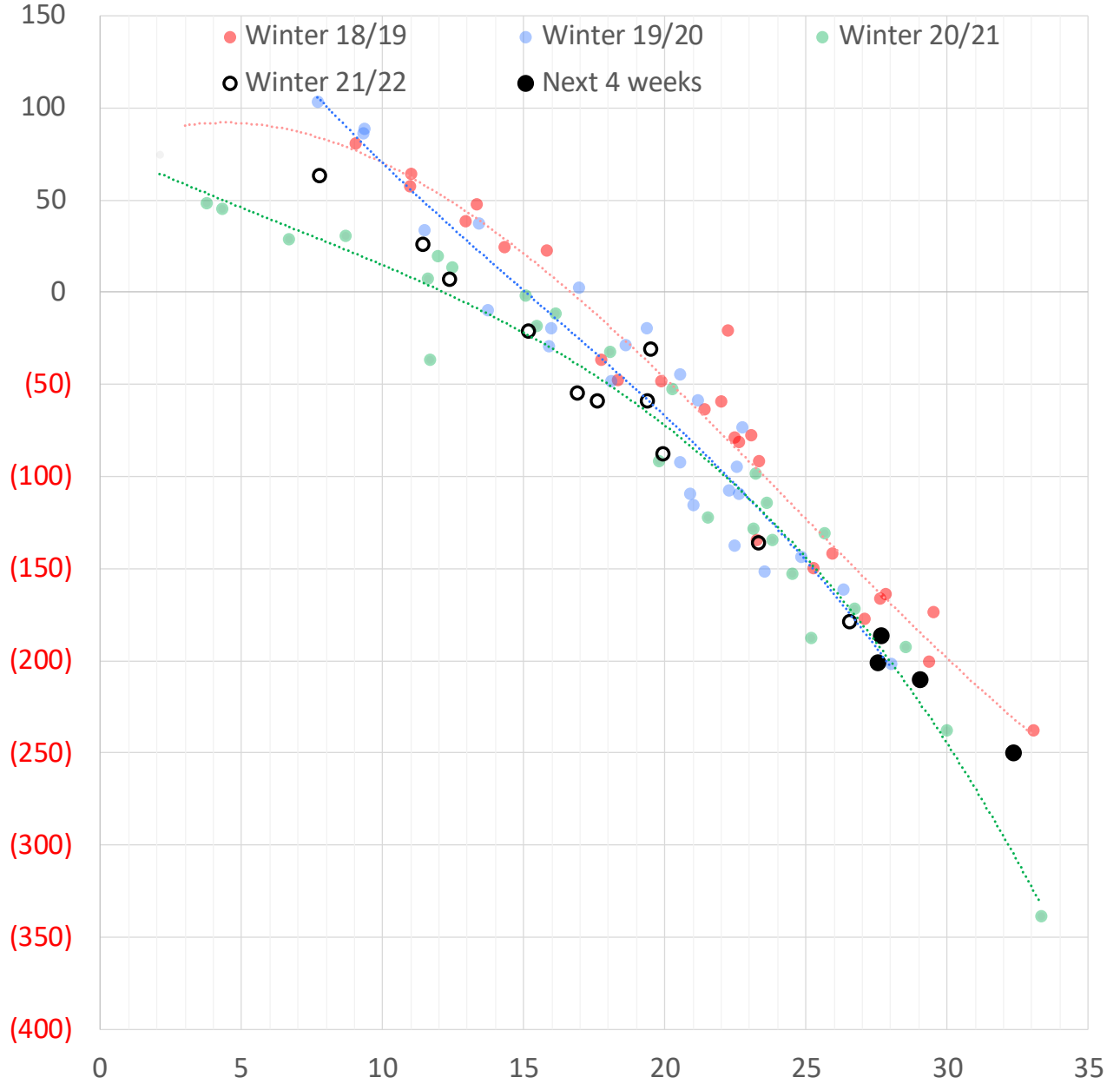
	Units	Current Price	vs. Last Week	vs. 4 Weeks Ago	vs. Last Year
NatGas Jul21/Oct21	\$/MMBtu	2.224	▲ 0.000	▲ 0.000	▲ 2.184
NatGas Oct21/Nov21	\$/MMBtu	0.361	▲ 0.000	▲ 0.000	▲ 0.294
NatGas Oct21/Jan22	\$/MMBtu	-1.817	▲ 0.000	▲ 0.048	▼ -2.105
NatGas Apr22/Oct22	\$/MMBtu	0.178	▲ 0.076	▲ 0.030	▲ 0.142
WTI Crude	\$/Bbl	86.96	▲ 4.320	▲ 14.200	▲ 33.720
Brent Crude	\$/Bbl	88.44	▲ 3.770	▲ 13.150	▲ 32.360
Fuel Oil, NY Harbour 1%	\$/Bbl	97.18	▲ 0.000	▲ 0.000	▲ 0.000
Heating Oil	cents/Gallon	269.23	▲ 9.810	▲ 38.450	▲ 109.190
Propane, Mt. Bel	cents/Gallon	1.15	▼ -0.018	▲ 0.124	▲ 0.287
Ethane, Mt. Bel	cents/Gallon	0.37	▼ -0.012	▲ 0.033	▲ 0.141
Coal, PRB	\$/MTon	12.30	▲ 0.000	▲ 0.000	▲ 0.000
Coal, PRB	\$/MMBtu	0.70			
Coal, ILB	\$/MTon	31.05	▲ 0.000	▲ 0.000	▲ 0.000
Coal, ILB	\$/MMBtu	1.32			

### Nat Gas Term Structure (\$MMBTU)



	FEB 22	MAR 22	APR 22	MAY 22	JUN 22	JUL 22	AUG 22	SEP 22	OCT 22	NOV 22	DEC 22	JAN 23
<b>Henry Hub</b>	\$3.909	\$3.748	\$3.736	\$3.779	\$3.830	\$3.894	\$3.923	\$3.906	\$3.921	\$4.032	\$4.210	\$4.299
<b>JKL</b>	\$21.140	\$19.600	\$19.300	\$19.870	\$20.010	\$19.965	\$20.140	\$20.500	\$21.345	\$22.015	\$22.065	\$22.060
<b>JKL-HHub</b>	\$17.231	\$15.852	\$15.564	\$16.091	\$16.180	\$16.071	\$16.217	\$16.594	\$17.424	\$17.983	\$17.855	\$17.761
<b>TTF</b>	\$25.159	\$24.743	\$20.809	\$20.314	\$20.214	\$20.194	\$20.169	\$20.266	\$20.404	\$20.785	\$20.969	\$20.998
<b>TTF-HHub</b>	\$21.250	\$20.995	\$17.073	\$16.535	\$16.384	\$16.300	\$16.246	\$16.360	\$16.483	\$16.753	\$16.759	\$16.699
<b>NBP</b>	\$24.628	\$24.410	\$20.788	\$20.239	\$20.125	\$20.086	\$20.115	\$20.315	\$20.515	\$21.296	\$21.685	\$21.951
<b>NBP-HHub</b>	\$20.719	\$20.662	\$17.052	\$16.460	\$16.295	\$16.192	\$16.192	\$16.409	\$16.594	\$17.264	\$17.475	\$17.652

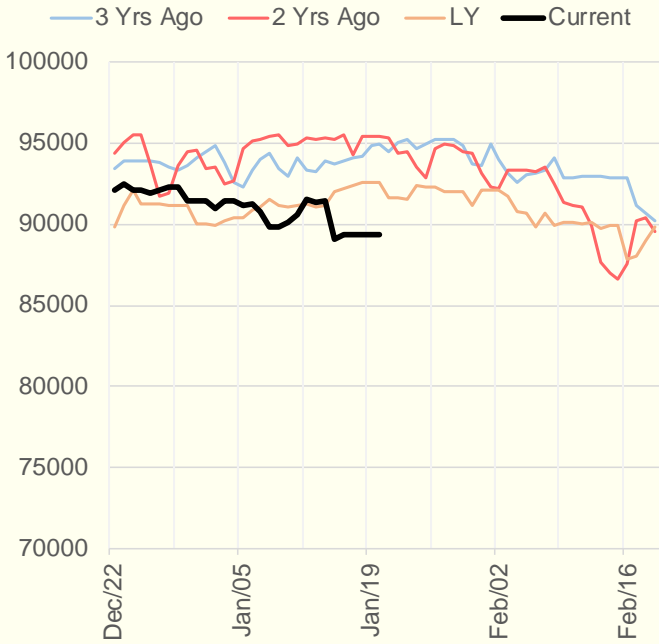
### Weather Storage Model - Next 4 Week Forecast



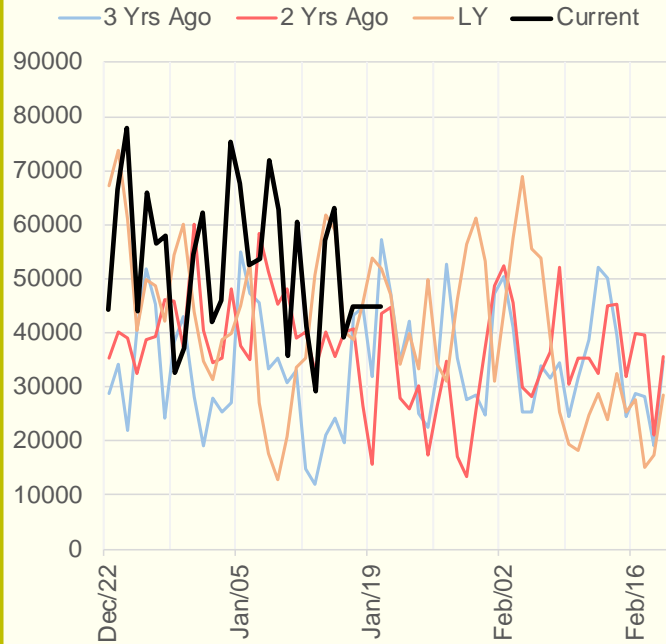
The risk of trading futures and options and other derivatives involves a substantial risk of loss and is not suitable for all persons. Each person must consider whether a particular trade, combination of trades, or strategy is suitable for that person's financial means and objectives. Past results are not necessarily indicative of future results. This communication may contain links to third party websites which are not under the control of and are not maintained by ION Energy Group, and ION Energy Group is not responsible for their content.



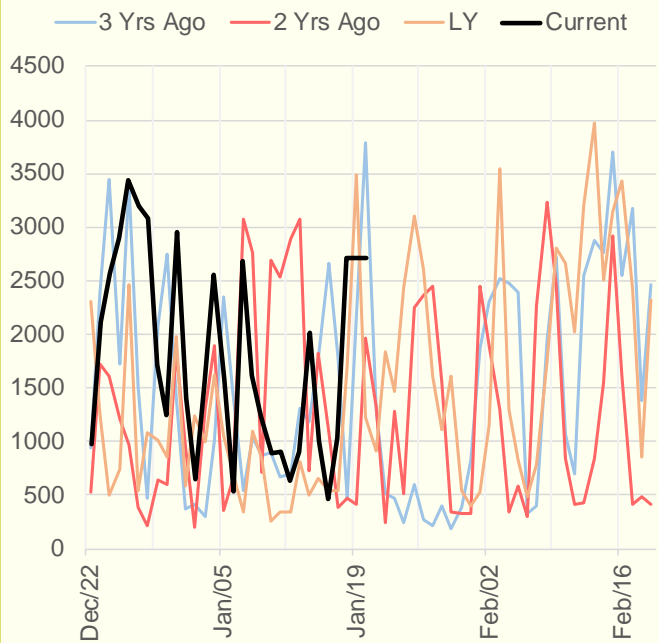
### NRC Nuclear Daily Output



### US Wind



### CALI Wind



### TEXAS Wind

