

	Current	Δ from YD	Δ from 7D Avg
Nat Gas Prompt	\$ 4.67	▼ \$ (0.19)	▲ \$ 0.56

	Current	Δ from YD	Δ from 7D Avg
WTI Prompt	\$ 82.27	▼ \$ (0.37)	▲ \$ 2.5

	Current	Δ from YD	Δ from 7D Avg
Brent Prompt	\$ 84.46	▼ \$ (0.21)	▲ \$ 2.1

Page Menu

[Short-term Weather Model Outlooks](#)

[Lower 48 Component Models](#)

[Regional S/D Models Storage Projection](#)

[Weather Model Storage Projection](#)

[Supply – Demand Trends](#)

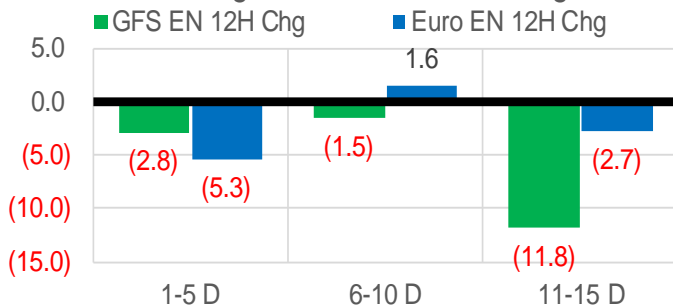
[Nat Gas Options Volume and Open Interest](#)

[Nat Gas Futures Open Interest](#)

[Price Summary](#)

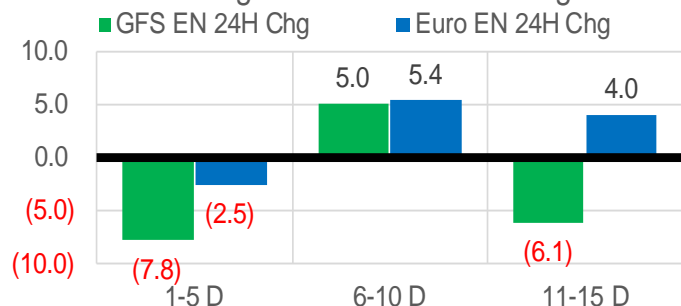
Vs. 12H Ago

L48 Region - 00z TDD vs 12H Ago



Vs. 24H Ago

L48 Region - 00z TDD vs 24H Ago



	Current	Δ from YD	Δ from 7D Avg
US Dry Production	95.5	▲ 0.36	▲ 0.22

	Current	Δ from YD	Δ from 7D Avg
US Power Burns	29.8	▼ -0.56	▼ -1.03

	Current	Δ from YD	Δ from 7D Avg
US ResComm	38.4	▼ -2.99	▼ -10.82

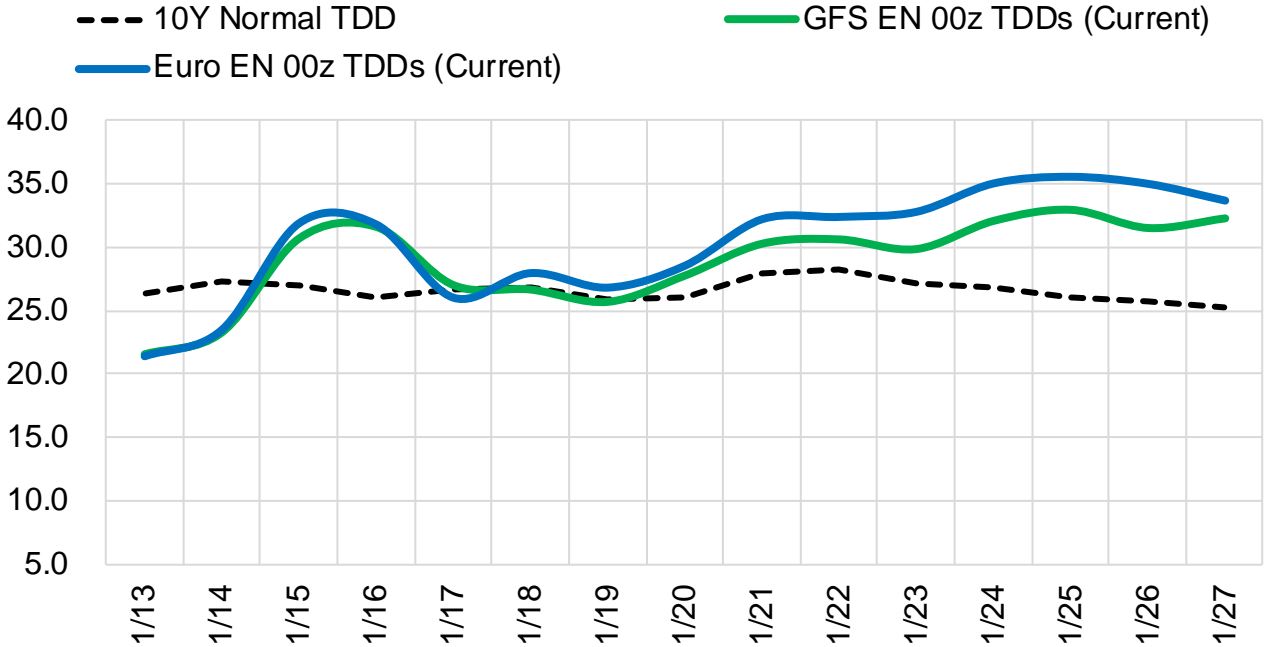
	Current	Δ from YD	Δ from 7D Avg
Canadian Imports	6.3	▼ -0.13	▼ -0.19

	Current	Δ from YD	Δ from 7D Avg
Net LNG Exports	12.6	▼ -0.35	▲ 0.38

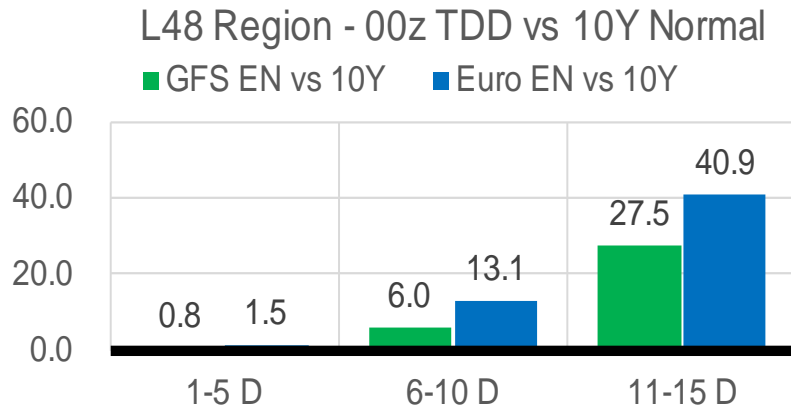
	Current	Δ from YD	Δ from 7D Avg
Mexican Exports	6.5	▼ -0.04	▲ 0.24

Short-term Weather Model Outlooks (00z)

L48 Region



Vs. 10Y Normal



Source: WSI , Bloomberg

Lower 48 Component Models

Daily Balances

	7-Jan	8-Jan	9-Jan	10-Jan	11-Jan	12-Jan	13-Jan	DoD	vs. 7D
Lower 48 Dry Production	95.3	95.1	95.7	95.4	95.3	95.1	95.5	▲ 0.4	▲ 0.2
Canadian Imports	6.3	6.5	6.5	7.0	6.7	6.5	6.3	▼ -0.1	▼ -0.2
L48 Power	31.6	28.7	29.5	31.7	30.5	30.3	29.8	▼ -0.6	▼ -0.6
L48 Residential & Commercial	56.2	48.0	44.4	51.8	50.3	41.3	38.4	▼ -3.0	▼ -10.3
L48 Industrial	27.6	26.1	25.9	26.5	26.1	25.0	24.6	▼ -0.5	▼ -1.7
L48 Lease and Plant Fuel	5.2	5.2	5.2	5.2	5.2	5.2	5.2	▼ 0.0	▼ 0.0
L48 Pipeline Distribution	4.3	3.7	3.6	4.1	3.9	3.5	3.3	▼ -0.2	▼ -0.5
L48 Regional Gas Consumption	124.9	111.8	108.6	119.3	116.1	105.4	101.2	▼ -4.2	▼ -13.1
Net LNG Delivered	12.29	12.07	12.17	12.26	12.07	12.95	12.58	▼ -0.4	▲ 0.3
Total Mexican Exports	6.2	5.9	6.0	6.3	6.7	6.6	6.5	▼ 0.0	▲ 0.3
Implied Daily Storage Activity	-41.8	-28.1	-24.6	-35.5	-32.8	-23.3	-18.5		
EIA Reported Daily Storage Activity									
Daily Model Error									

EIA Storage Week Balances

	3-Dec	10-Dec	17-Dec	24-Dec	31-Dec	7-Jan	WoW	vs. 4W
Lower 48 Dry Production	96.8	96.6	96.4	96.7	98.7	95.5	▼ -3.2	▼ -1.7
Canadian Imports	5.6	5.3	4.6	5.0	4.2	5.7	▲ 1.5	▲ 0.9
L48 Power	28.7	29.1	28.4	29.9	26.4	29.9	▲ 3.5	▲ 1.4
L48 Residential & Commercial	33.1	35.4	31.4	40.3	33.4	44.3	▲ 10.9	▲ 9.2
L48 Industrial	22.5	23.7	23.7	24.0	22.2	25.9	▲ 3.7	▲ 2.5
L48 Lease and Plant Fuel	5.3	5.2	5.2	5.2	5.4	5.2	▼ -0.1	▼ -0.1
L48 Pipeline Distribution	3.2	3.2	3.0	3.5	3.0	3.6	▲ 0.6	▲ 0.4
L48 Regional Gas Consumption	92.9	96.7	91.7	103.0	90.4	109.0	▲ 18.6	▲ 13.5
Net LNG Exports	11.8	12.0	11.9	12.7	12.3	11.9	▼ -0.4	▼ -0.3
Total Mexican Exports	6.4	6.4	6.2	6.1	5.8	5.9	▲ 0.1	▼ -0.2
Implied Daily Storage Activity	-8.7	-13.2	-8.8	-20.0	-5.5	-25.7	-20.1	
EIA Reported Daily Storage Activity	-8.4	-12.6	-7.9	-19.4	-4.4			
Daily Model Error	-0.3	-0.6	-0.9	-0.5	-1.1			

Monthly Balances

	2Yr Ago Jan-20	LY Jan-21	Sep-21	Oct-21	Nov-21	Dec-21	MTD Jan-22	MoM	vs. LY
Lower 48 Dry Production	94.6	91.4	93.4	94.3	95.9	97.1	95.2	▼ -1.9	▲ 3.7
Canadian Imports	4.8	6.3	5.1	5.4	5.3	4.8	6.2	▲ 1.5	▼ 0.0
L48 Power	29.9	28.3	33.1	30.5	28.8	28.4	30.5	▲ 2.1	▲ 2.2
L48 Residential & Commercial	41.7	44.0	8.8	12.5	29.4	34.5	47.6	▲ 13.2	▲ 3.7
L48 Industrial	24.5	23.8	20.2	21.0	22.4	23.3	26.3	▲ 3.0	▲ 2.5
L48 Lease and Plant Fuel	5.1	5.0	5.1	5.2	5.2	5.3	5.2	▼ -0.1	▲ 0.2
L48 Pipeline Distribution	3.6	3.5	2.3	2.4	3.1	3.1	3.8	▲ 0.7	▲ 0.3
L48 Regional Gas Consumption	104.8	104.6	69.4	71.5	88.9	94.5	113.4	▲ 18.9	▲ 8.9
Net LNG Exports	8.4	10.5	10.3	10.6	11.4	12.1	12.1	▼ 0.0	▲ 1.6
Total Mexican Exports	5.1	6.2	6.7	6.6	6.1	6.1	6.1	▼ 0.0	▼ 0.0
Implied Daily Storage Activity	-18.9	-23.5	12.1	11.0	-5.2	-11.0	-30.2		
EIA Reported Daily Storage Activity									
Daily Model Error									

Source: Bloomberg, analytix.ai

Daily Average Generation Data

Nuclear Generation Daily Average - GWh (NRC)

	5-Jan	6-Jan	7-Jan	8-Jan	9-Jan	10-Jan	11-Jan	DoD	vs. 7D
NRC Nuclear Daily Output	91.1	91.3	90.8	89.8	89.9	90.1	90.6	0.5	0.1
NRC Nuclear Max Capacity	104.9	104.9	104.9	104.9	104.9	104.9	104.9	0.0	0.0
NRC Nuclear Outage	13.8	13.6	14.1	15.0	15.0	14.7	14.3	-0.5	-0.1
NRC % Nuclear Cap Utilization	92.7	92.8	92.3	91.4	91.4	91.7	92.1	0.5	0.1

Wind Generation Daily Average - MWh (EIA)

	5-Jan	6-Jan	7-Jan	8-Jan	9-Jan	10-Jan	11-Jan	DoD	vs. 7D
CALI Wind	1579	531	2678	1616	1278	885	906	21	-522
TEXAS Wind	10851	13037	11809	16261	17906	7450	10479	3029	-2406
US Wind	67565	52508	53629	72018	62763	35810	60522	24713	3140

Generation Daily Average - MWh (EIA)

	5-Jan	6-Jan	7-Jan	8-Jan	9-Jan	10-Jan	11-Jan	DoD	vs. 7D
US Wind	67565	52508	53629	72018	62763	35810	60522	24713	3140
US Solar	8514	9100	9385	9072	7743	8376	9830	1454	1132
US Petroleum	2496	4404	6080	4176	3920	5593	5655	61	1210
US Other	8574	8477	8780	8915	8462	9254	7621	-1633	-1123
US Coal	99579	109891	122329	111336	102542	121425	117539	-3886	6355
US Nuke	96251	96549	95542	95132	94745	95413	96120	707	515
US Hydro	33295	35263	35865	34488	31877	35275	34948	-327	604
US Gas	157749	171299	178489	141233	130584	172634	171160	-1474	12496

See National Wind and Nuclear daily charts

Source: Bloomberg, analytix.ai

Storage Week Average Generation Data

Nuclear Generation Weekly Average - GWh (NRC)

	3-Dec	10-Dec	17-Dec	24-Dec	31-Dec	7-Jan	WoW	WoW Bcf/d Impact
NRC Nuclear Daily Output	87.8	88.0	90.0	92.1	92.1	91.3	-0.7	0.1
NRC Nuclear Max Capacity	104.9	104.9	104.9	104.9	104.9	104.9	0.0	
NRC Nuclear Outage	17.1	16.9	14.9	12.8	12.8	13.6	0.7	
NRC % Nuclear Cap Utilization	0.1	0.1	0.1	0.1	0.1	0.1	0.0	

Wind Generation Weekly Average - MWh (EIA)

	3-Dec	10-Dec	17-Dec	24-Dec	31-Dec	7-Jan	WoW	WoW Bcf/d Impact
CALI Wind	363	1263	1709	943	2591	1603	-987	0.2
TEXAS Wind	8733	12216	16176	11007	13891	13603	-288	0.1
US Wind	47210	51470	68412	48727	53102	57155	4053	-0.7
					4374.8			
					9%			

Generation Weekly Average - MWh (EIA)

	3-Dec	10-Dec	17-Dec	24-Dec	31-Dec	7-Jan	WoW	WoW Bcf/d Impact
US Wind	47210	51470	68412	48727	53102	57155	4053	-0.7
US Solar	9921	7413	7570	7098	6957	8345	1388	-0.2
US Petroleum	3166	3440	2700	3581	3084	3038	-46	0.0
US Other	8482	8398	8301	8532	7584	8239	655	-0.1
US Coal	82287	82743	76931	87373	80019	94990	14971	-2.7
US Nuke	92817	92983	95054	97422	97083	96342	-741	0.1
US Hydro	26777	29626	30257	32560	31279	34489	3211	-0.6
US Gas	155286	159457	148807	166457	135613	154119	18506	

See National Wind and Nuclear daily charts

Source: Bloomberg, analytix.ai

Monthly Average Generation Data

Nuclear Generation Monthly Average - GWh (NRC)

	2Yr Ago	LY	MTD						
	Same 30 days	Same 30 days	Oct-21	Nov-21	Dec-21	Jan-22	Last 30 days	MoM (MTD vs LY)	Last 30 days YoY
	NRC Nuclear Daily Output	94.1	90.5	75.5	82.7	90.3	90.9	91.5	0.6
NRC Nuclear Max Capacity	104.9	104.9	104.9	104.9	104.9	104.9	104.9	0.0	0.0
NRC Nuclear Outage	10.8	14.4	29.4	22.2	14.6	14.0	13.3	-0.6	-1.0
NRC % Nuclear Cap Utilization	95.7	92.0	76.8	84.1	91.8	92.5	93.1	0.6	1.1

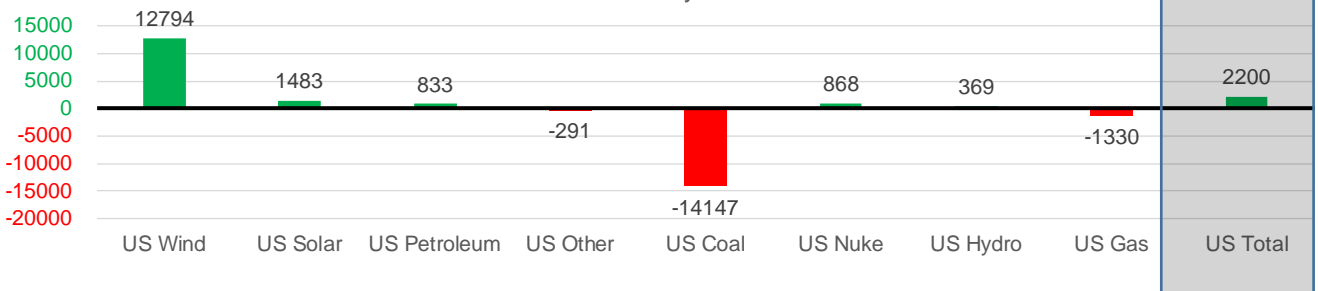
Wind Generation Monthly Average - MWh (EIA)

	2Yr Ago	LY	MTD						
	Same 30 days	Same 30 days	Oct-21	Nov-21	Dec-21	Jan-22	Last 30 days	MoM (MTD vs LY)	Last 30 days YoY
	CALI Wind	1235	938	1765	1252	1585	1341	1615	-243
TEXAS Wind	10248	11302	11565	11869	12927	12785	12884	-141	1581
US Wind	40786	42387	43142	49974	54822	57798	55181	2976	12794

Generation Monthly Average - MWh (EIA)

	2Yr Ago	LY	MTD						
	Same 30 days	Same 30 days	Oct-21	Nov-21	Dec-21	Jan-22	Last 30 days	MoM (MTD vs LY)	Last 30 days YoY
	US Wind	40786	42387	43142	49974	54822	57798	55181	▼-2617.2
US Solar	4718	6378	11059	9690	7376	8978	7861	▼-1116.6	▲1483
US Petroleum	3611	2830	3239	3045	3134	4288	3664	▼-624	▲833
US Other	8060	8471	11109	8435	8214	8328	8179	▼-149	▼-291
US Coal	82295	107369	84432	80848	81680	107211	93222	▼-13989	▼-14147
US Nuke	97458	95766	77089	87404	95408	95937	96634	▲697	▲868
US Hydro	29966	32699	24078	26593	30805	34627	33068	▼-1559	▲369
US Gas	148552	155605	159049	151462	152400	160275	154276	▼-19357	▼-1330
US Total	424372	450090	413353	417925	434111	477558	452290	▼-36097	▲2200

Last 30 days YoY



See National Wind and Nuclear daily charts

Source: Bloomberg, analytix.ai

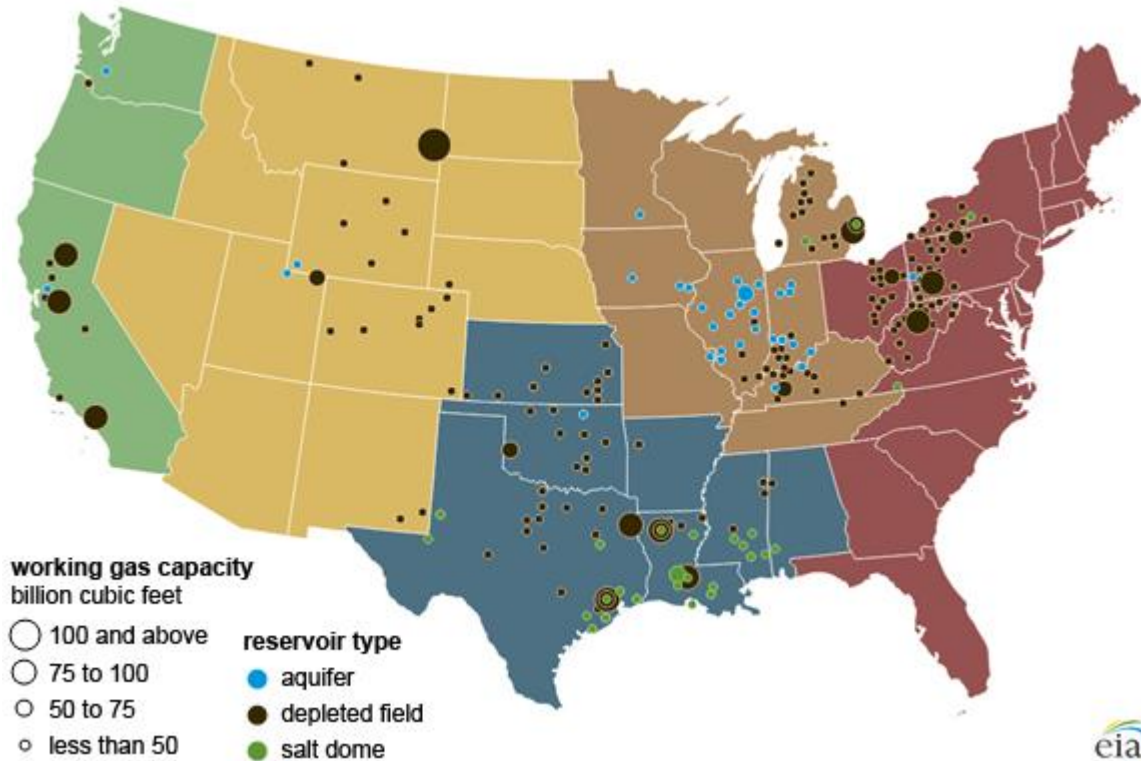
Regional S/D Models Storage Projection

Week Ending 7-Jan

	Daily Raw Storage	Daily Adjustment Factor	Daily Average Storage Activity (Adjusted) *	Weekly Adjusted Storage Activity
L48	-25.9	1.1	-24.8	-174
East	-7.7	2.6	-5.1	-35
Midwest	-7.5	0.9	-6.6	-47
Mountain	0.8	-3.3	-2.5	-18
South Central	-10.0	1.8	-8.2	-57
Pacific	-1.6	-0.9	-2.5	-17

*Adjustment Factor is calculated based on historical regional deltas

U.S. underground natural gas storage facilities by type (July 2015)

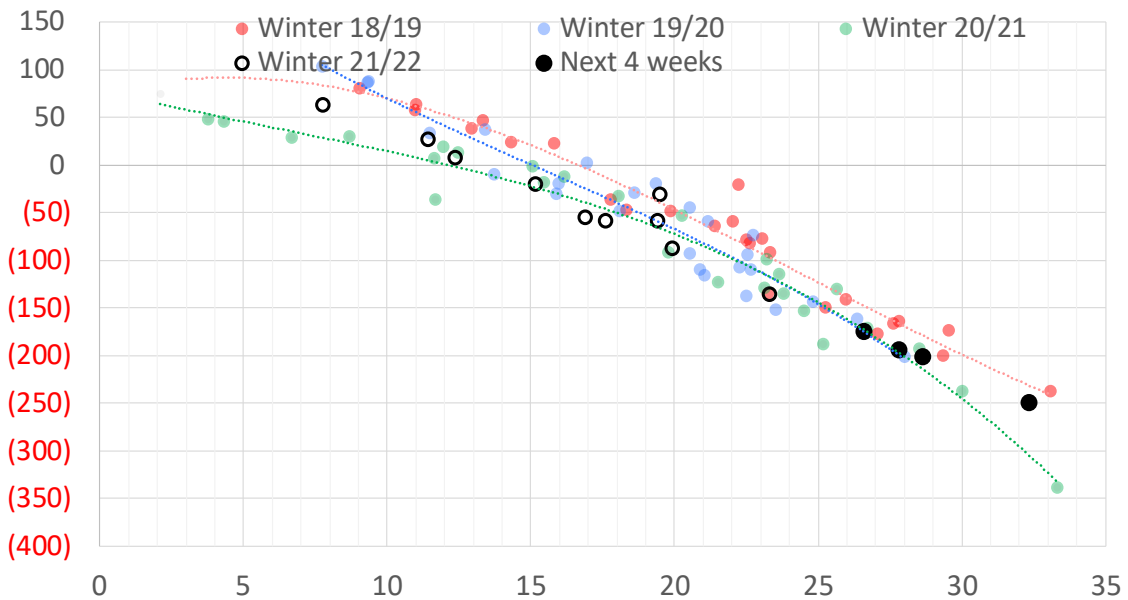


Weather Model Storage Projection

Next report
and beyond

Week Ending	GWDDs	Week Storage Projection
07-Jan	27	-174
14-Jan	28	-194
21-Jan	29	-201
28-Jan	32	-249

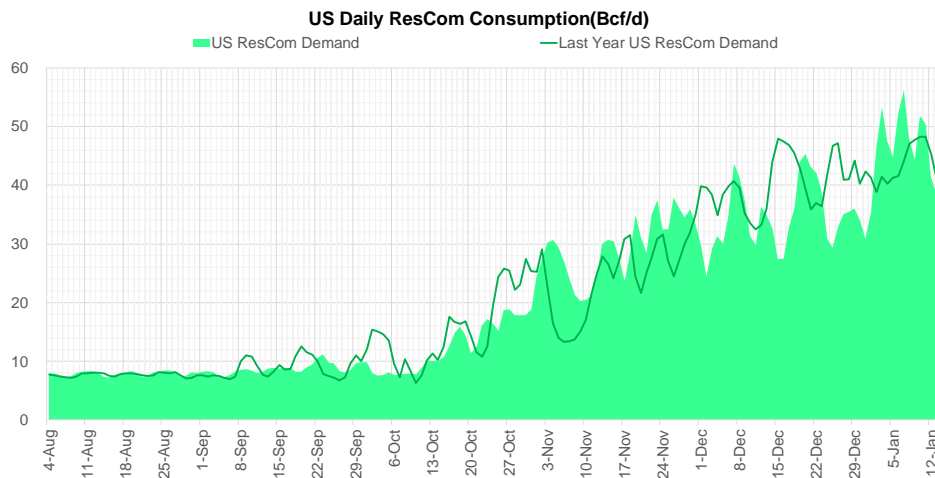
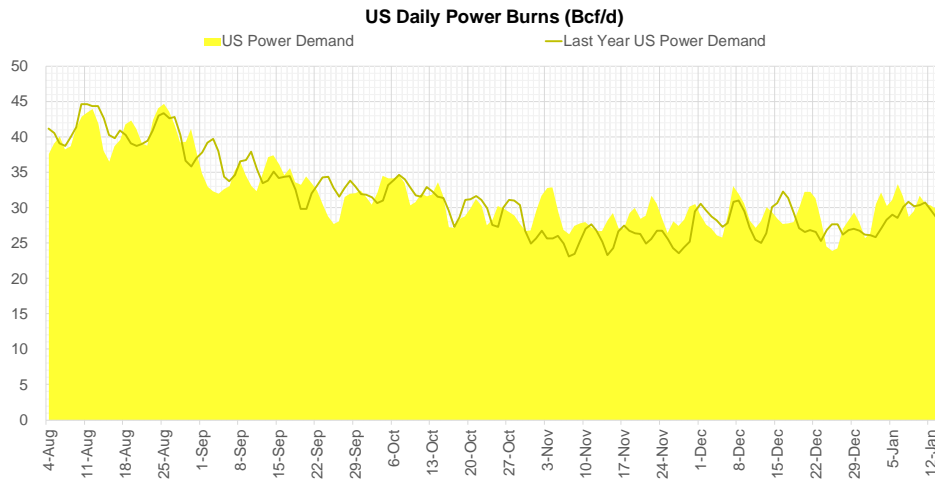
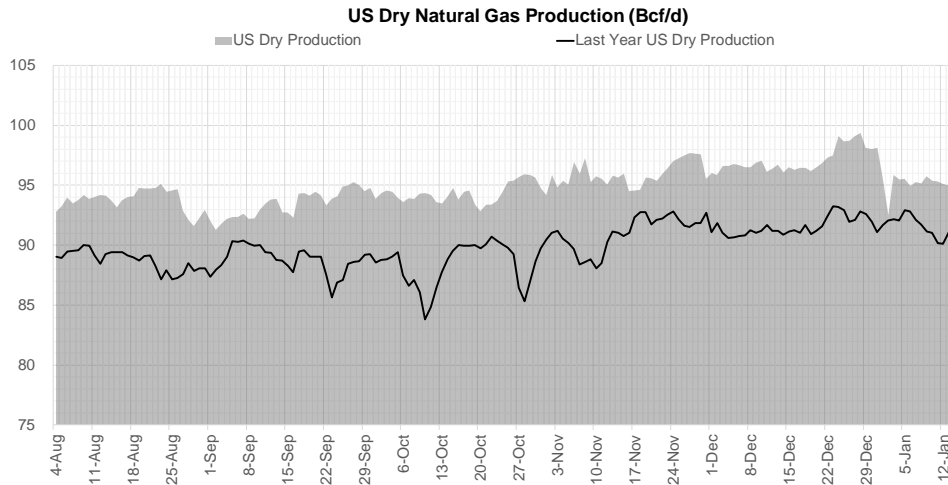
Weather Storage Model - Next 4 Week Forecast



Go to larger image



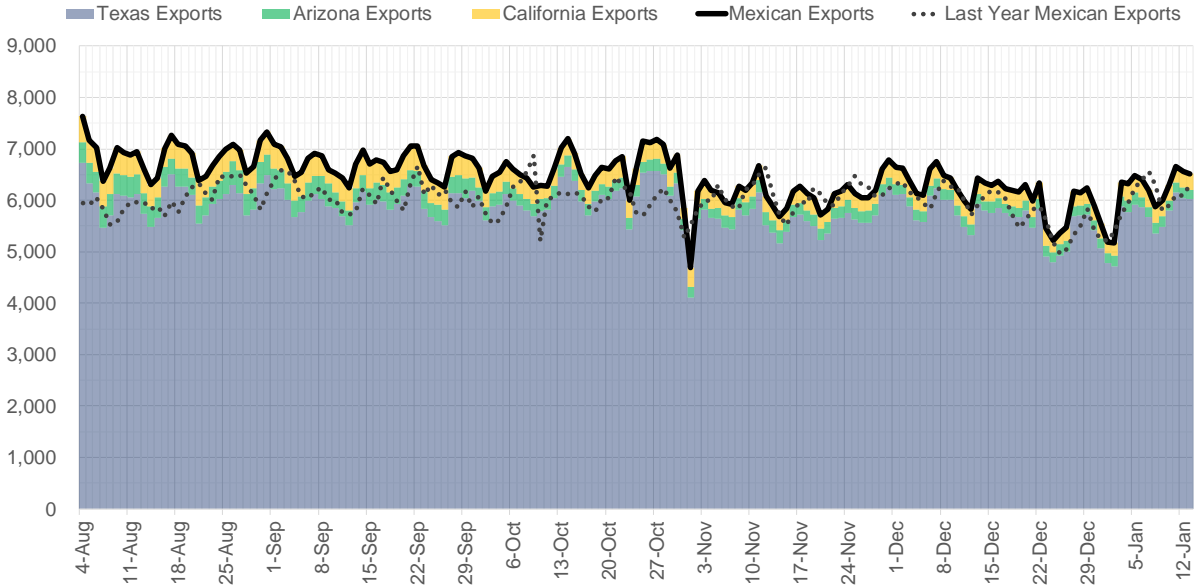
Supply – Demand Trends



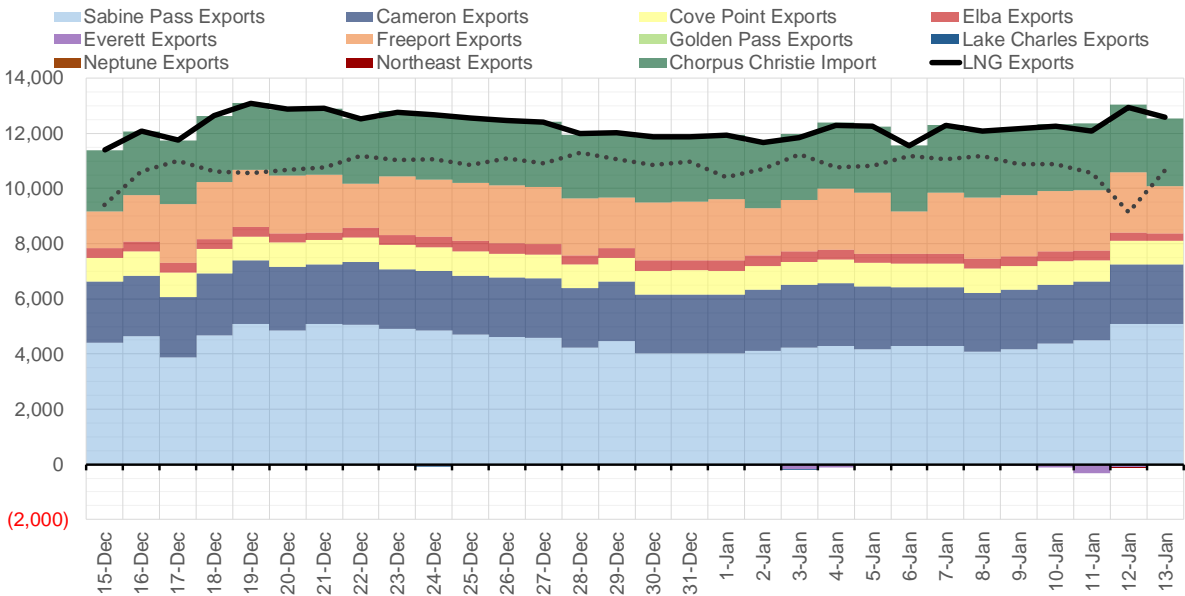
Source: Bloomberg

The risk of trading futures and options and other derivatives involves a substantial risk of loss and is not suitable for all persons. Each person must consider whether a particular trade, combination of trades, or strategy is suitable for that person's financial means and objectives. Past results are not necessarily indicative of future results. This communication may contain links to third party websites which are not under the control of and are not maintained by ION Energy Group, and ION Energy Group is not responsible for their content.

Mexican Exports (MMcf/d)



Net LNG Exports - Last 30 days (MMcf/d)



Source: Bloomberg

The risk of trading futures and options and other derivatives involves a substantial risk of loss and is not suitable for all persons. Each person must consider whether a particular trade, combination of trades, or strategy is suitable for that person's financial means and objectives. Past results are not necessarily indicative of future results. This communication may contain links to third party websites which are not under the control of and are not maintained by ION Energy Group, and ION Energy Group is not responsible for their content.

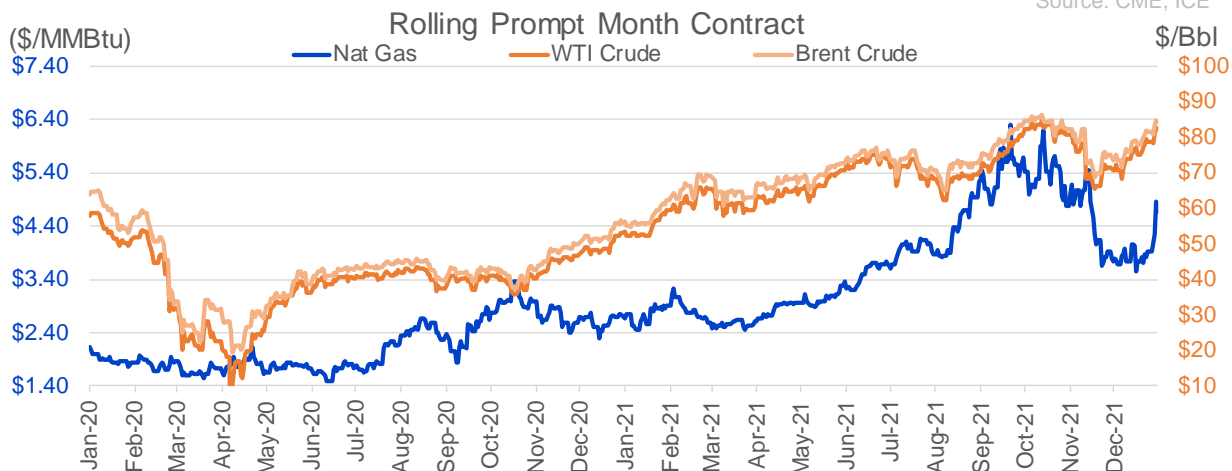
Nat Gas Options Volume and Open Interest CME and ICE Combined

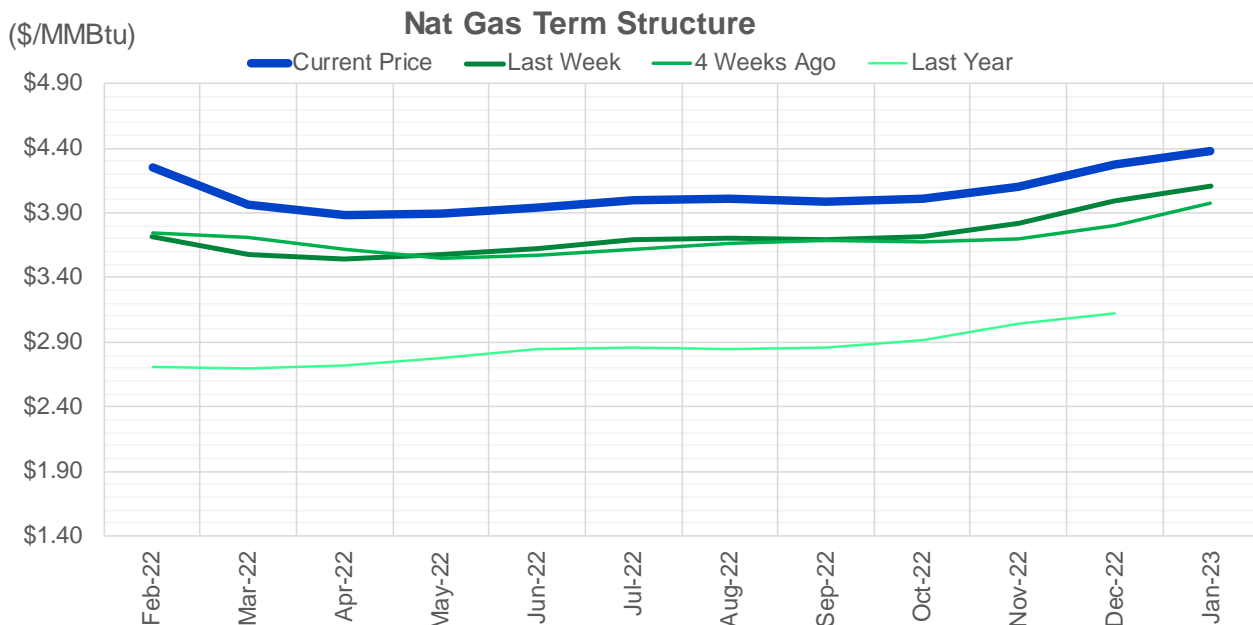
CONTRACT MONTH	CONTRACT YEAR	PUT/CALL	STRIKE	CUMULATIVE VOL	CONTRACT MONTH	CONTRACT YEAR	PUT/CALL	STRIKE	CUMULATIVE OI
2	2022	C	5.00	12984	3	2022	C	5.00	33586
2	2022	P	4.00	11881	3	2022	C	10.00	32798
2	2022	C	6.00	8489	2	2022	C	4.00	28777
3	2022	C	6.00	7375	2	2022	C	5.00	28385
4	2022	C	6.00	6833	3	2022	C	8.00	28282
7	2022	C	6.00	6425	3	2022	C	4.00	25708
2	2022	P	3.75	6139	3	2022	P	2.50	21493
2	2022	P	4.50	5802	2	2022	P	3.50	21351
2	2022	C	4.50	5652	12	2022	C	5.00	20927
3	2022	C	5.00	5623	3	2022	C	6.00	20750
5	2022	C	6.00	5170	3	2022	P	3.00	20193
10	2022	C	6.00	5125	2	2022	C	6.00	19935
6	2022	C	6.00	4925	4	2022	C	3.00	19710
8	2022	C	6.00	4925	4	2022	C	5.00	19614
9	2022	C	6.00	4925	2	2022	C	4.50	17542
3	2022	C	4.00	4849	5	2022	P	3.00	17051
2	2022	C	6.50	4472	2	2022	P	4.00	16813
3	2022	P	3.50	3885	6	2022	C	5.00	16542
2	2022	P	4.25	3876	3	2022	P	3.50	16404
3	2022	C	4.50	3452	3	2022	P	4.00	16394
2	2022	C	7.00	3312	4	2022	P	3.00	16367
2	2022	P	3.50	3234	4	2022	P	2.50	16364
4	2022	C	7.00	3231	3	2022	C	7.00	16339
2	2022	C	5.25	3158	10	2022	C	6.00	15755
5	2022	C	7.00	3025	10	2022	C	5.00	15500
6	2022	C	7.00	3025	2	2022	C	4.25	15292
7	2022	C	7.00	3025	3	2022	C	4.50	15166
8	2022	C	7.00	3025	3	2022	P	2.00	14985
9	2022	C	7.00	3025	2	2022	P	3.00	14906
10	2022	C	7.00	3025	2	2022	C	10.00	14428
2	2022	C	5.50	2919	10	2022	P	2.00	13921
3	2022	P	3.00	2908	3	2022	P	2.25	13917
2	2022	C	8.00	2850	4	2022	C	4.00	13763
3	2022	P	4.00	2848	5	2022	C	3.00	13733
2	2022	C	4.75	2825	2	2022	C	8.00	13698
2	2022	C	4.25	2747	5	2022	C	5.00	13628
2	2022	C	4.00	2208	3	2022	P	5.00	13560
3	2022	C	10.00	2208	2	2022	P	3.75	13511
12	2022	P	3.50	2167	6	2022	C	3.00	13438
2	2022	P	3.35	2102	2	2022	C	5.50	13360
2	2022	P	3.90	2060	3	2022	C	3.00	13307
7	2022	C	5.00	2050	12	2022	C	4.50	13307
4	2022	C	5.00	1898	12	2022	C	5.25	13263
2	2022	C	5.75	1896	2	2022	C	7.00	13260
3	2022	C	8.00	1717	3	2022	C	3.50	13252
2	2022	P	4.10	1658	5	2022	P	2.50	13248
12	2022	C	6.00	1655	7	2022	C	3.00	13230
3	2022	C	4.25	1651	8	2022	C	3.00	13226
8	2022	C	5.00	1550	9	2022	C	3.00	13225
					10	2022	C	3	13114

Source: CME, ICE

Nat Gas Futures Open Interest CME and ICE Combined

CME Henry Hub Futures (10,000 MMBtu)				ICE Henry Hub Futures Contract Equivalent (10,000 MM			
	Current	Prior	Daily Change		Current	Prior	Daily Change
FEB 22	88165	90410	-2245	FEB 22	76211	78252	-2041
MAR 22	272137	265239	6898	MAR 22	92287	89961	2327
APR 22	88050	84056	3994	APR 22	74211	74627	-416
MAY 22	115843	115465	378	MAY 22	69306	67311	1996
JUN 22	59014	56227	2787	JUN 22	56458	54986	1473
JUL 22	58790	54329	4461	JUL 22	60047	59660	388
AUG 22	37705	35922	1783	AUG 22	56662	55728	934
SEP 22	49039	48302	737	SEP 22	57469	56791	678
OCT 22	82042	78750	3292	OCT 22	62272	62180	92
NOV 22	35802	35784	18	NOV 22	51962	51762	200
DEC 22	37926	36379	1547	DEC 22	61272	60657	615
JAN 23	49206	46528	2678	JAN 23	49375	49421	-46
FEB 23	14594	14116	478	FEB 23	38960	38000	960
MAR 23	30380	28784	1596	MAR 23	43934	42473	1460
APR 23	29534	26689	2845	APR 23	45058	44015	1043
MAY 23	16322	14712	1610	MAY 23	37867	36874	993
JUN 23	10859	10109	750	JUN 23	35597	34187	1410
JUL 23	9442	8771	671	JUL 23	34984	33527	1457
AUG 23	6386	5943	443	AUG 23	34668	33693	975
SEP 23	9368	8413	955	SEP 23	34407	33004	1403
OCT 23	12374	13696	-1322	OCT 23	37579	36616	963
NOV 23	8155	8155	0	NOV 23	37150	36637	513
DEC 23	10017	9886	131	DEC 23	34010	33679	331
JAN 24	6643	6273	370	JAN 24	24033	23734	300
FEB 24	1777	1778	-1	FEB 24	17446	17164	281
MAR 24	10088	9705	383	MAR 24	23366	23104	262
APR 24	5568	5187	381	APR 24	16521	16204	317
MAY 24	2069	2064	5	MAY 24	16906	16562	343
JUN 24	921	932	-11	JUN 24	17041	16728	313
JUL 24	563	564	-1	JUL 24	17655	17332	324





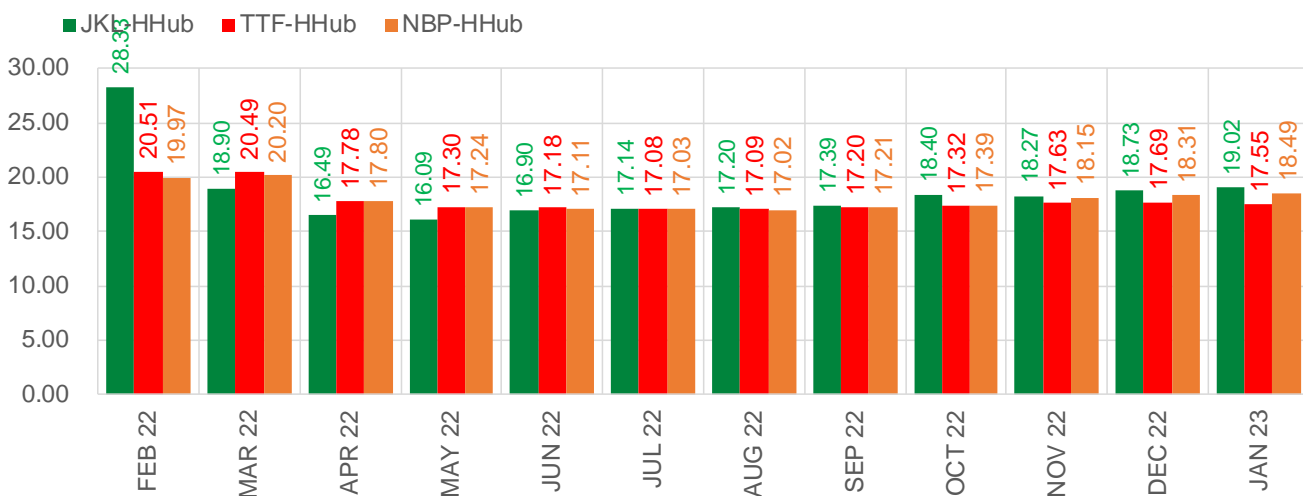
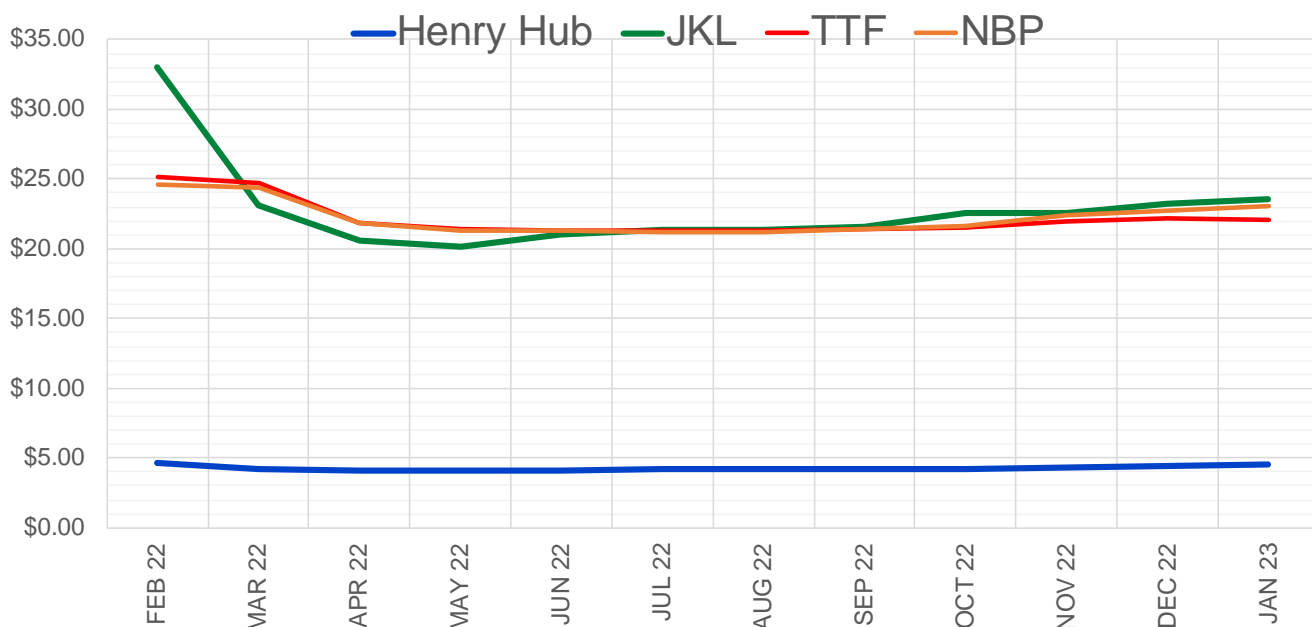
	Feb-22	Mar-22	Apr-22	May-22	Jun-22	Jul-22	Aug-22	Sep-22	Oct-22	Nov-22	Dec-22	Jan-23
Current Price	\$4.249	\$3.968	\$3.881	\$3.893	\$3.942	\$3.998	\$4.006	\$3.986	\$4.013	\$4.098	\$4.271	\$4.374
Last Week	\$3.717	\$3.582	\$3.549	\$3.575	\$3.629	\$3.689	\$3.706	\$3.692	\$3.721	\$3.819	\$3.998	\$4.104
vs. Last Week	\$0.532	\$0.386	\$0.332	\$0.318	\$0.313	\$0.309	\$0.300	\$0.294	\$0.292	\$0.279	\$0.273	\$0.270
4 Weeks Ago	\$3.747	\$3.713	\$3.619	\$3.552	\$3.567	\$3.613	\$3.665	\$3.683	\$3.672	\$3.704	\$3.805	\$3.978
vs. 4 Weeks Ago	\$0.502	\$0.255	\$0.262	\$0.341	\$0.375	\$0.385	\$0.341	\$0.303	\$0.341	\$0.394	\$0.466	\$0.396
Last Year	\$2.753	\$2.707	\$2.699	\$2.716	\$2.772	\$2.841	\$2.856	\$2.842	\$2.863	\$2.916	\$3.039	\$3.123
vs. Last Year	\$1.496	\$1.261	\$1.182	\$1.177	\$1.170	\$1.157	\$1.150	\$1.144	\$1.150	\$1.182	\$1.232	\$1.251

	Units	Cash Settled	Prompt Settle	Cash to Prompt
AGT Citygate	\$/MMBtu	18.00	17.40	-0.60
TETCO M3	\$/MMBtu	5.16	6.10	0.94
FGT Zone 3	\$/MMBtu	5.31	3.97	-1.34
Zone 6 NY	\$/MMBtu	5.31	8.30	2.99
Chicago Citygate	\$/MMBtu	4.41	4.46	0.05
Michcon	\$/MMBtu	4.37	3.63	-0.74
Columbia TCO Pool	\$/MMBtu	4.32	3.39	-0.93
Ventura	\$/MMBtu	4.37	5.83	1.46
Rockies/Opal	\$/MMBtu	5.11	4.32	-0.79
El Paso Permian Basin	\$/MMBtu	4.25	3.93	-0.32
Socal Citygate	\$/MMBtu	5.62	5.49	-0.13
Malin	\$/MMBtu	5.08	5.07	-0.01
Houston Ship Channel	\$/MMBtu	3.96	3.97	0.01
Henry Hub Cash	\$/MMBtu	4.60	3.74	-0.87
AECO Cash	C\$/GJ	3.73	3.27	-0.46
Station2 Cash	C\$/GJ	3.94	5.38	1.44
Dawn Cash	C\$/GJ	4.40	3.92	-0.48

Source: CME, Bloomberg

	Units	Current Price	vs. Last Week	vs. 4 Weeks		vs. Last Year
				Ago		
NatGas Jul21/Oct21	\$/MMBtu	2.224	▲ 0.000	▲ 0.000	▲ 2.199	
NatGas Oct21/Nov21	\$/MMBtu	0.361	▲ 0.000	▲ 0.000	▲ 0.307	
NatGas Oct21/Jan22	\$/MMBtu	-1.817	▲ 0.000	▲ 0.222	▼ -2.078	
NatGas Apr22/Oct22	\$/MMBtu	0.102	▼ -0.050	▼ -0.041	▲ 0.086	
WTI Crude	\$/Bbl	82.64	▲ 4.790	▲ 11.770	▲ 29.730	
Brent Crude	\$/Bbl	84.67	▲ 3.870	▲ 10.790	▲ 28.610	
Fuel Oil, NY Harbour 1%	\$/Bbl	97.18	▲ 0.000	▲ 0.000	▲ 0.000	
Heating Oil	cents/Gallon	259.42	▲ 14.810	▲ 37.380	▲ 99.530	
Propane, Mt. Bel	cents/Gallon	1.17	▲ 0.069	▲ 0.134	▲ 0.276	
Ethane, Mt. Bel	cents/Gallon	0.38	▲ 0.028	▲ 0.050	▲ 0.147	
Coal, PRB	\$/MTon	12.30	▲ 0.000	▲ 0.000	▲ 0.000	
Coal, PRB	\$/MMBtu	0.70				
Coal, ILB	\$/MTon	31.05	▲ 0.000	▲ 0.000	▲ 0.000	
Coal, ILB	\$/MMBtu	1.32				

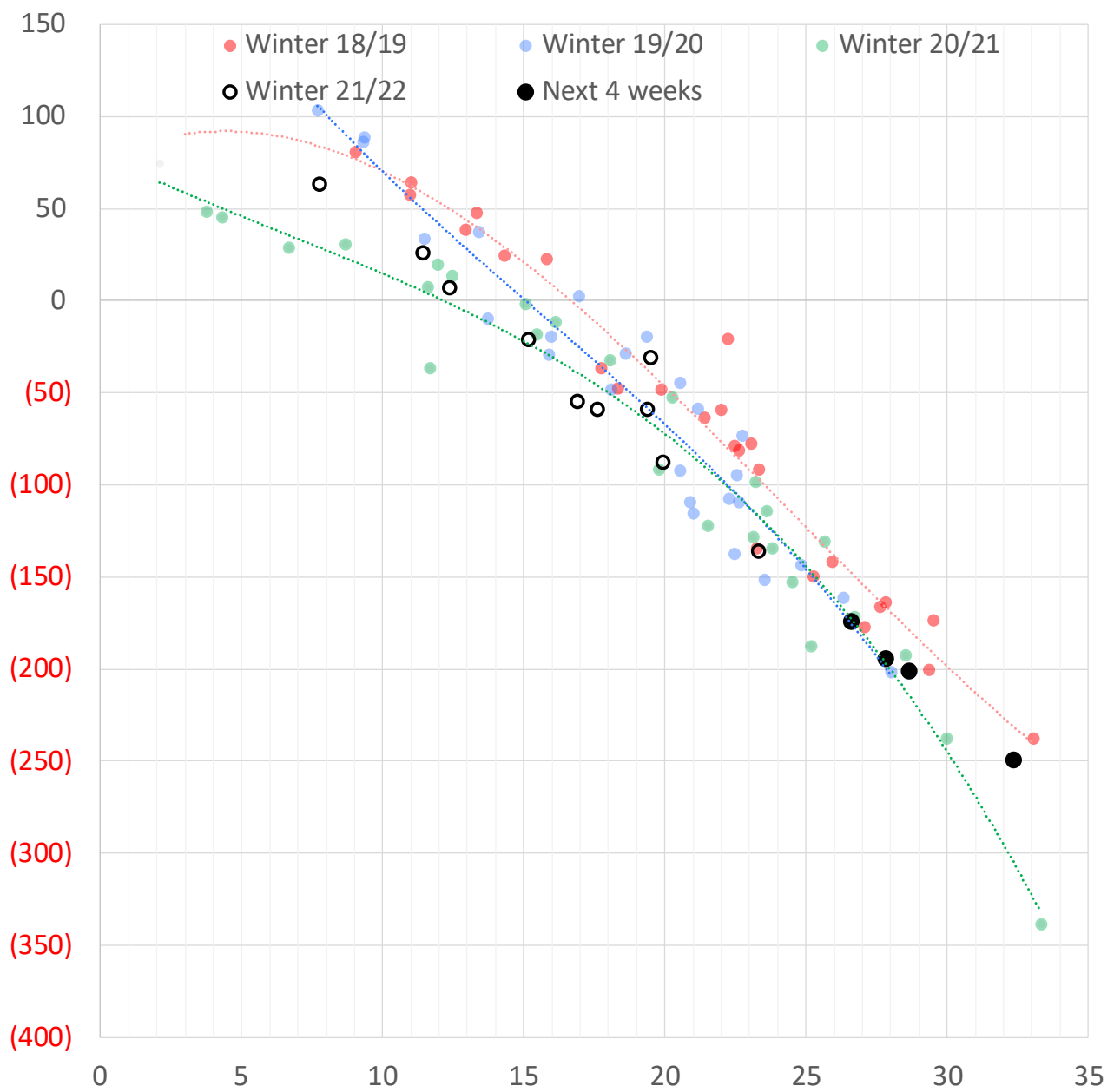
Nat Gas Term Structure (\$MMBTU)



	FEB 22	MAR 22	APR 22	MAY 22	JUN 22	JUL 22	AUG 22	SEP 22	OCT 22	NOV 22	DEC 22	JAN 23
Henry Hub	\$4.666	\$4.226	\$4.091	\$4.097	\$4.143	\$4.196	\$4.203	\$4.183	\$4.205	\$4.282	\$4.459	\$4.555
JKL	\$33.000	\$23.130	\$20.585	\$20.185	\$21.045	\$21.335	\$21.405	\$21.570	\$22.605	\$22.550	\$23.190	\$23.575
JKL-HHub	\$28.334	\$18.904	\$16.494	\$16.088	\$16.902	\$17.139	\$17.202	\$17.387	\$18.400	\$18.268	\$18.731	\$19.020
TTF	\$25.174	\$24.716	\$21.870	\$21.401	\$21.322	\$21.277	\$21.296	\$21.385	\$21.529	\$21.914	\$22.144	\$22.106
TTF-HHub	\$20.508	\$20.490	\$17.779	\$17.304	\$17.179	\$17.081	\$17.093	\$17.202	\$17.324	\$17.632	\$17.685	\$17.551
NBP	\$24.631	\$24.425	\$21.891	\$21.341	\$21.254	\$21.223	\$21.218	\$21.389	\$21.590	\$22.434	\$22.772	\$23.043
NBP-HHub	\$19.965	\$20.199	\$17.800	\$17.244	\$17.111	\$17.027	\$17.015	\$17.206	\$17.385	\$18.152	\$18.313	\$18.488

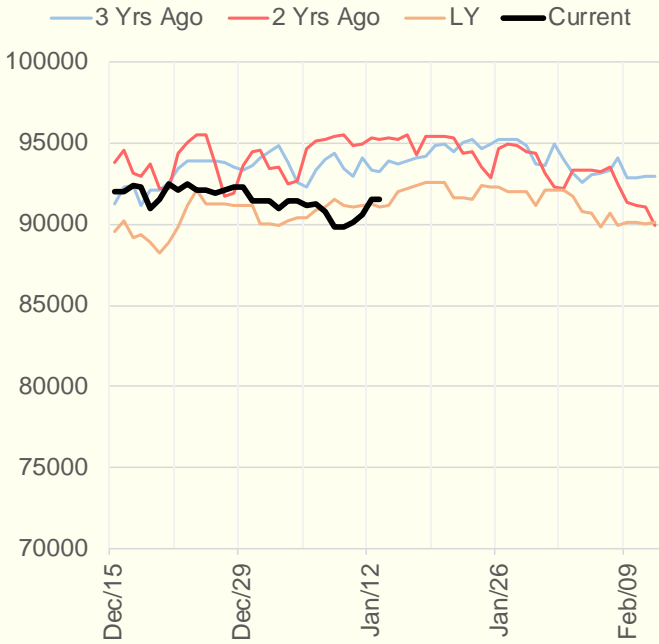
The risk of trading futures and options and other derivatives involves a substantial risk of loss and is not suitable for all persons. Each person must consider whether a particular trade, combination of trades, or strategy is suitable for that person's financial means and objectives. Past results are not necessarily indicative of future results. This communication may contain links to third party websites which are not under the control of and are not maintained by ION Energy Group, and ION Energy Group is not responsible for their content.

Weather Storage Model - Next 4 Week Forecast

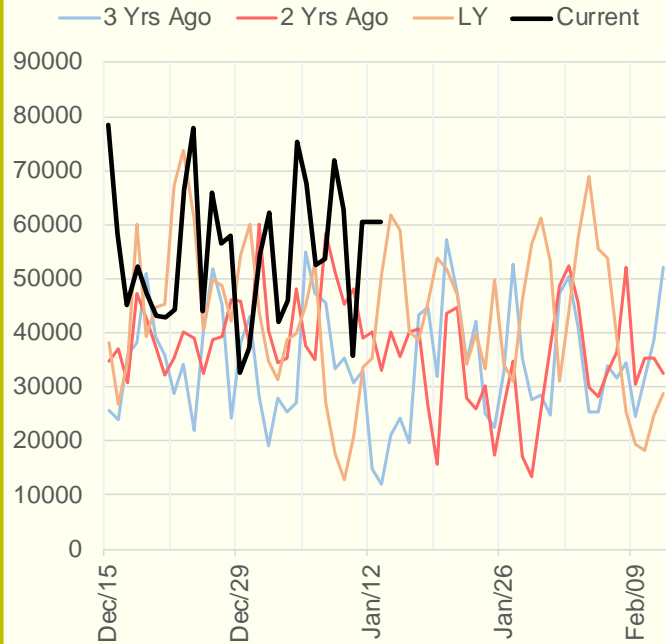


The risk of trading futures and options and other derivatives involves a substantial risk of loss and is not suitable for all persons. Each person must consider whether a particular trade, combination of trades, or strategy is suitable for that person's financial means and objectives. Past results are not necessarily indicative of future results. This communication may contain links to third party websites which are not under the control of and are not maintained by ION Energy Group, and ION Energy Group is not responsible for their content.

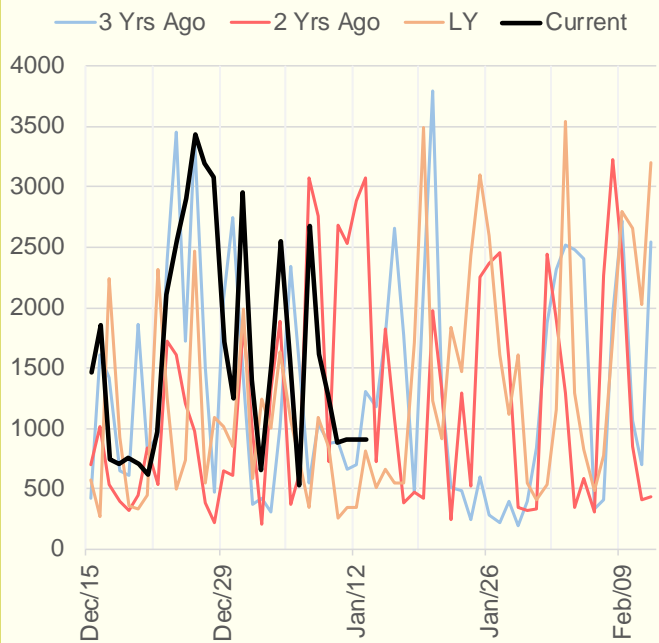
NRC Nuclear Daily Output



US Wind



CALI Wind



TEXAS Wind

